

# PCCC

IT'S  
ALL  
ABOUT  
THE  
PEOPLE

PEMBROOK CATTLE COMPANY

## Annual Fall Production Sale

OCTOBER 12, 2024 • AT THE RANCH • FAIRVIEW, OKLAHOMA

# PEMBROOK PCC CATTLE COMPANY

## PEMBROOK CATTLE CO.

49061 SCR 249 • FAIRVIEW, OK 73737

TRAVIS PEMBROOK 405.206.7997  
BETH PEMBROOK 405.245.1834

PEMBROOKCC@PLDI.NET  
WWW.PEMBROOKCATTLE.COM

DERRICK WOOD • SHOW/SALE CATTLE MANAGER  
918.803.2973



CATTLE ARE AVAILABLE FOR VIEWING  
AT ANYTIME PRIOR TO THE SALE . FEEL  
FREE TO CALL TRAVIS OR BETH TO  
SCHEDULE YOUR VISIT. VISITORS ARE  
ALWAYS WELCOME AT PCC!

### LOT VIDEOS:



SCAN TO VIEW VIDEOS

# WELCOME

On behalf of the Pembroke family, Beth and I would like to welcome and extend a special thank you to everyone that has taken the time to read through the catalog, stop by the ranch, or called with interest regarding the 2024 fall offering at PCC.

This fall's offering is, without a doubt, the most diverse and elite set of genetics to be offered at Pembroke Cattle. As you read through the catalog you will notice that every lot offered has their own unique history of success in their pedigree, either in the show ring or in the donor pen and is the product of cutting-edge genetics. One thing we would like to note, and as many of us that raise cattle and have shown cattle know, these animals go through different stages in timing and maturity as they grow and age. We would encourage everyone to really study their lesson as they go through the offering. Every year there are hidden gems in the sale that end up either winning one of the big shows or becoming big time donors and high revenue generators and this year is no different.

At Pembroke Cattle, our success is still based on "Great Cattle, Great People, and Strong Relationships equaling Incredible Results"! We appreciate all who made us who we are today and, as always, we look forward to making those same kind of relationships with our new friends and customers. One thing that we never take for granted is what a blessing it is to be in an industry that still promotes and rewards the core values and principles that we have grown up with, where sharing your faith in God and your love for your country are not just expected, but applauded.

In conclusion, if myself, Beth, Bret, Derrick, or Matt can be of any assistance please do not hesitate to call or come by. We take every call and question very seriously and it is our goal to put you on the right path to the genetics that best fit your goals for the future.

We appreciate your friendship and your faith in our program!

*Travis & Beth  
Pembroke*



## PEMBROOK CATTLE COMPANY

"It's All About the People"

# SALE SCHEDULE

## FRIDAY, OCTOBER 11TH

ALL DAY • CATTLE AVAILABLE TO BE VIEWED AT THE RANCH IN FAIRVIEW, OK  
5:00 PM CST • PCC PLACE 'EM LIKE YOU SEE 'EM FALL EDITION JUDGING CONTEST  
6:30 PM CST • DINNER AND JUDGING CONTEST AWARDS

## SATURDAY, OCTOBER 12TH

ALL DAY • CATTLE AVAILABLE TO BE VIEWED AT THE RANCH IN FAIRVIEW, OK  
11:30 PM CST • LUNCH SPONSORED BY LIVESTOCK NUTRITION CENTER  
12:30 PM CST • SALE STARTS

## WE WOULD LIKE TO EXTEND A SPECIAL THANK YOU TO OUR GENETIC PARTNERS

BROWN FARMS • GANA FARMS • SCHAFFER SHOW CATTLE • STIERWALT CATTLE  
SULLIVAN FARMS • TWIN FALLS ANGUS • WINEGARDNER SHOW CATTLE



Matt C. Sims Auction, Inc.  
PO Box 1219  
Edmond, OK 73083  
(405) 641-6081  
matt@mcsauction.com  
www.mcsauction.com

# PEMBROOK FALL PRODUCTION SALE

OCTOBER 12, 2024 AT 12:30 PM

# SELLING 71 LOTS

Dear Friends and Fellow Breeders:

Welcome to the **2024 Pembroke Cattle Co. Fall Production Sale**. This sale has become one of the top events of the fall in terms of offering multiple breeds that accumulate success in the show ring and the pasture after sale day for their customers, and this is their largest and deepest offering to date! This unique offering is once again the effort of forward-thinking seedstock producers with an eye for cattle that can compete in any venture. Pembroke Cattle Company has worked toward the goal of assembling an offering of elite show heifer prospects, exceptional bred females, proven donors, and frozen genetics that represent the best of all breeds.

Travis and Beth Pembroke go the extra mile in terms of customer service to maximize the success of the juniors while making it a learning experience as well. They truly are about "putting good cattle together with great people", and the lasting relationships with their customers and the past and current champions they have bred and sold are a testament to this fact.



MATT C. SIMS

These females combine performance with excellent phenotype to become competitors at any level in the industry. The genetics represented from all breeds in this offering, on both sides of the pedigrees, are second to none and are, in many cases, daughters of or full or maternal sibs to some of the most highly valued and successfully shown females in the country. This is a well-balanced offering, and quality is present throughout. These show heifer and donor prospects are halter broke and started. Whatever breed/s you are interested in, you will find something to your liking in this special sale.

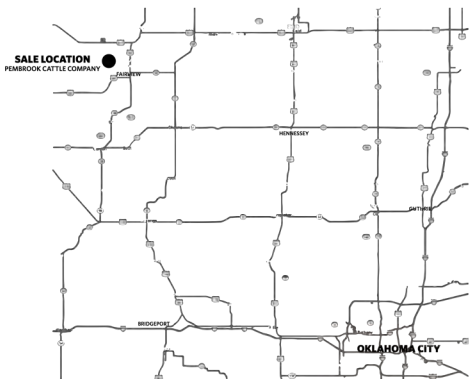
I encourage each of you to evaluate your own situation and goals, and on **Saturday, October 12**, take advantage of the knowledge and cutting-edge efforts of PCC and their program. Please join us on Friday to preview the cattle and enjoy great food and fellowship that evening. If I can be of assistance to you, please let me know.

Sincerely,

Matt C. Sims

## SALE LOCATION

49061 SOUTH COUNTY ROAD 249 • FAIRVIEW, OK 73737



ANGUS • CHIANINA • SIMMENTAL • % SIMMENTAL • LIM-FLEX  
MAINETAINER • MAINE-ANJOU • MAINE ANGUS • RED ANGUS

### SALE STAFF

**MATT SIMS**  
AUCTIONEER & SALE MANAGER.....405.641.6081  
**JEFF MAFI**  
AMERICAN ANGUS ASSOCIATION.....816.344.4266  
**CHISOLM KINDER**  
SPECIAL ASSIGNMENT.....405.747.4683  
**ROBBIE SCHACHER**  
SPECIAL  
ASSIGNMENT.....817.219.0102

### SALE CONSULTANTS

**WILLY COUCH**.....405.627.5200  
**CRAIG GANA**.....402.430.2526  
**LES JONES**.....972.743.8603  
**STUART ROSE**.....316.772.6018  
**JEFF SARGENT**.....903.624.7265

**MCM** MARKETING MANAGEMENT  
OWNER: **KILEY McKINNA**  
402-350-3447  
JR SALES ASSOCIATE: **WILEY FANTA**  
320-287-0751  
MCMARKETINGMANAGEMENT.COM

**R&R** MARKETING  
**RANDALL O. RATLIFF**  
615.330.2735  
RRMKTG.COM

**AMS** AUCTION SERVICES  
**JEFF K. AEGERTER**  
402.641.4696

### MOTEL ACCOMMODATION

**BEST WESTERN PLUS FAIRVIEW INN & SUITES**  
802 N. MAIN ST., FAIRVIEW.....580.227.2880  
ASK FOR THE PEMBROOK CATTLE RATE & ROOM BLOCK  
**HERITAGE INN MOTEL**  
911 N. MAIN, FAIRVIEW.....580.227.2534  
**HOLIDAY INN EXPRESS**  
4702 W. OWEN K. GARRIOTT RD, ENID.....580.237.7722  
**HAMPTON INN AND SUITES**  
511 DEMIA CT., ENID.....580.234.4600  
FOR FURTHER ASSISTANCE WITH RESERVATIONS,  
CALL BETH PEMBROOK.....405.245.1834

### AIR TRANSPORTATION

Oklahoma City's Will Rogers World Airport is served by most major airlines and is a 1-3/4 hour drive from the ranch; rental cars are available. Private aircraft can be accommodated at Fairview Municipal Airport or Enid Woodring Regional Airport.

### SALE TERMS AND CONDITIONS

All cattle are to be paid for during or immediately after the sale and will not be released until after settlement has been made. Cattle will not be transferred until paid for in full. Pembroke Cattle Co. reserves the right to retain a 50% embryo interest in every open heifer in the offering. PCC will pay flush expense on their flushes.

THE PCC SALE BOOK & ADVERTISING PREPARED BY  
MATT C. SIMS AUCTION, INC. - 405.641.6081  
DESIGN & PRODUCTION BY THE SHOWTIMES, INC  
PHOTOGRAPHY BY JOHN REASOR & MATT SIMS  
VIDEOS BY OUTCROSS GROUP, JOHN REASOR

LOT  
VIDEOS:



SCAN  
TO VIEW  
VIDEOS

### HERD HEALTH

Cattle will be accompanied by proper health certificates needed for immediate transport. All females have been brucellosis vaccinated and PCC maintains a high quality vaccine and parasite control regime that is suggested by their Veterinarian.

### GUARANTEE

The cattle sell under Suggested Terms and Conditions of the breed association that applies to each lot. (American Angus Association, American Chianina Association, American Maine-Anjou Association, American Red Angus Association, American Shorthorn Association, and American Simmental Association.) Exception: Females are guaranteed to breed or produce at least three transferable embryos. If female is evaluated by a licensed veterinarian and is considered obese, breeding guarantee is voided.

### REGISTRATION CERTIFICATES

Animals will be transferred to the buyer at the seller's expense. Each buyer must be sure to give the sale clerk the proper name and address for making transfers. All calves born before the sale are to be registered by the seller; proper breeding certificates will be signed for the buyer to use in registering calves born after the sale.

### ABSENTEE BIDS

Real-time bidding will be available via the internet through the CCI Live website. Be sure to register to bid prior to the sale. You may also contact the owners, sale manager, sale consultants or any member of the sale staff to place a bid if you will not be able to attend the sale.

### TRUCKING

Randy Lathrop, (847) 910-4673, and Tom Snell, (580) 374-4168 are reliable options. Let us know if you need assistance with your trucking arrangements.

### INSURANCE

Insurance for your purchases will be available sale day at the clerk's desk. We recommend that insurance be obtained on lots purchased.



INSURE YOUR  
CATTLE.COM



### NOTE

Supplemental information will be available at sale time. Announcements made at the sale from the auction block will take precedence over statements in the sale book. We reserve the right to withdraw any lot not meeting our specifications prior to sale time. All persons who attend the sale do so at their own risk. Neither the owners nor the sale manager assume liability, legal or otherwise, for accidents or loss of property. As the sale manager, Matt C. Sims Auction, Inc. is only an agent for the seller and has no responsibilities other than those involved in conducting the sale.

VIDEOS ONLINE ON THE PEMBROOKCATTLE.COM & AT MCSAUCTION.COM



PLEASE PLAN TO JOIN US AS WE ANNOUNCE  
THE NEWEST INDUCTEE TO THE  
**PEMBROOK CATTLE CO. HALL OF FAME**

WE CREATED THIS AWARD TO HONOR OUR  
PAST AND PRESENT CUSTOMERS AND  
RECOGNIZE THEM FOR THEIR SUCCESS AND  
CONTRIBUTION TO OUR PROGRAM.

THE RECIPIENT OF THIS AWARD WILL BE  
ANNOUNCED DURING THE SALE ON  
**SATURDAY, OCTOBER 12, 2024**

PEMBROOK CATTLE COMPANY



PEMBROOK CATTLE CO. FALL EDITION

# PLACE 'EM LIKE YOU SEE 'EM JUDGING CONTEST

**5PM • FRIDAY  
OCTOBER 11TH**

**AGE DIVISIONS**

**PEE WEE**  
5-8 YEAR OLDS

**JUNIOR**  
9-12 YEAR OLDS

**INTERMEDIATE**  
13-17 YEAR OLDS

**SENIOR**  
18-22 YEAR OLDS

**\$1,000  
SALE CREDIT**

**TO EACH DIVISION WINNER**

**ALONG WITH OTHER  
GREAT PRIZES AND PCC GEAR!**

# P R O D U C T I O N

IT'S ALL ABOUT THE PEOPLE



# Chianina

PEMBROOK  
CATTLE  
COMPANY

PEMBROOK CATTLE COMPANY

# PCC





JSUL WHO DAT CAT 7184E ET  
DONOR DAM OF LOTS 1 THRU 5

## LOTS 1-5

- Lots 1 thru 5 are flush sisters that represent the first daughters of the popular young sire, Cardinal Crossover that we have marketed at PCC, and they have exceeded our expectations! Crossover stacks the Cardinal's most elite Chiangus genetics from a line proven to win. His progeny possess the wonderful look, shape, and presence of their sire with tremendous depth of rib, impeccable structure, and some of the best hair of any sire we have used.
- The dam of lots 1 thru 5, JSUL WHO DAT CAT 7184E ET, was the 2018 Grand Champion Chianina Female at Junior Nationals and has since become a staple in the elite donor herd at Sullivan Farms.
- Eight flush sisters to the dam of lots 1 thru 5 sold in the 2023 Fall PCC Sale for a total of \$355,000 to average \$44,375. Other sisters to the dam of lots 1 thru 5 include: The 2020 NAILE Supreme Champion Female, JSUL WHO DAT DARLING 902G ET; JSUL PCC DAT LOOKER 2199K, THE \$75,000 top-selling Chi heifer in the Fall 2022 PCC Sale; the \$61,000 JSUL DAT SHINY DARLIN 9000G that was named Reserve Grand Champion Female at the 2020 Southwestern Livestock Exposition in Ft. Worth; as well as the \$41,000 H F PCC DAT LADY DARLING ET that was named Champion Chi at the 2023 FWSS for Piper Goodsen; the \$41,000 JSUL PCC DARLIN PRIMO 1162J that was named Champion Chi and Supreme Continental at the 2023 San Antonio Stock Show for Cora Hardy; and the \$39,000 JSUL PCC PRIMOS DARLIN ET, all three of which sold in the 2021 Fall PCC Sale; and JSUL PCC WHOS LOOKIN 3001K, who sold for \$25,000 in the fall 2022 PCC Sale.

### LOT 1

## PCC JSUL WHO DAT 4429M ET

DOB 4/6/24 REG. # 423785 TATTOO 4429M

CEU	BW	WW	YW	MILK	HIGH CHI
9	2.1	58	90	18	

- ▮ SOMEWHERE IN THE MIDDLE ET
- ▮ LLW CARDINAL CROSSOVER 236J
- ▮ LLW CARD ERROLINE 38Z
- ▮ COLBURN PRIMO 5153
- ▮ JSUL WHO DAT CAT 7184E ET
- ▮ SSUL WHO DAT DARLING

## PCC

• Lot 1 leads off an outstanding set of flush sisters that typify the quality PCC strives to produce. This heifer is super attractive thru her front end and combines the right kind of body shape after her successful show career ends and she transitions to the donor pen. Additionally, she is big footed, heavy boned and great haired.

- Sells open.



**LOT 2**

## PCC JSUL WHO DAT 4416M ET

**DOB 3/8/24 REG. # 423786 TATTOO 4416M**

<b>GED</b>	<b>BW</b>	<b>WW</b>	<b>YW</b>	<b>MILK</b>	<b>HIGH CHI</b>
9	2.1	58	90	18	

└─ SOMEWHERE IN THE MIDDLE ET

└─ LLW CARDINAL CROSSOVER 236J

└─ LLW CARD ERROLINE 36Z

└─ COLBURN PRIMO 5153

└─ JSUL WHO DAT CAT 7184E ET

└─ SSUL WHO DAT DARLING

- The next in line of these five flush sisters is hairy and good looking. She is awesome on the profile, while still having the right kind of center body for practicality. Blending this look with shape and skeletal width suggests long-term value both in and out of the show ring. It is going to be interesting to see which of these emerge as the sale day favorites.
- Sells open.



SSUL WHO DAT DARLING  
MATERNAL GRANDAM OF LOTS 1 THRU 5

**PCC**



**LOT 3**

## PCC JSUL WHO DA 4422M ET

**DOB 4/6/24 REG. # 423784 TATTOO 4422M**

<b>GED</b>	<b>BW</b>	<b>WW</b>	<b>YW</b>	<b>MILK</b>	<b>HIGH CHI</b>
9	2.1	58	90	18	

└─ SOMEWHERE IN THE MIDDLE ET

└─ LLW CARDINAL CROSSOVER 236J

└─ LLW CARD ERROLINE 36Z

└─ COLBURN PRIMO 5153

└─ JSUL WHO DAT CAT 7184E ET

└─ SSUL WHO DAT DARLING

- Almost a carbon copy of the two that precede her, lot 3 is built right, good bodied and good looking! This heifer starts with advantages at the surface, and then carries them up high for added width and power. Additionally, she is bold thru her heart, deep in her center and still lady-like from her shoulder forward.
- Sells open.



PCC JSUL WHO'S READY 3409L ET  
\$75,000 FLUSH SISTER TO THE DAM OF LOTS 1 THRU 5



LLW CARDINAL CROSSOVER 236J  
SIRE OF LOTS 1 THRU 7



**LOT 4**

## PCC JSUL WHO DAT 4426M ET

DOB 3/5/24 REG. # 423782 TATTOO 4426M

CEU	BW	WW	YW	MILK	HIGH CHI
9	2.1	58	90	18	

- └ SOMEWHERE IN THE MIDDLE ET
- └ LLW CARDINAL CROSSOVER 236J
- └ LLW CARD ERROLINE 36Z
- └ COLBURN PRIMO 5153
- └ JSUL WHO DAT CAT 7184E ET
- └ SSUL WHO DAT DARLING

- Continuing the trend initiated by her flush sisters, lot 4 exudes quality. Her build and added length up front is complimented by her unrivaled style and visual excellence! She is opened up at her skeletal base, deep and full thru her midrib while remaining captivating from the side. She is feminine and also sound in terms of her feet and legs. Her design suggests both banner generating power and long-term profit potential!
- Sells open.



**LOT 5**

## PCC JSUL WHO DEY 4450M ET

DOB 2/16/24 REG. # 423783 TATTOO 4450M

CEU	BW	WW	YW	MILK	HIGH CHI
9	2.1	58	90	18	

- └ SOMEWHERE IN THE MIDDLE ET
- └ LLW CARDINAL CROSSOVER 236J
- └ LLW CARD ERROLINE 36Z
- └ COLBURN PRIMO 5153
- └ JSUL WHO DAT CAT 7184E ET
- └ SSUL WHO DAT DARLING

- Do not discount this show and donor prospect because she is lotted at the end of five outstanding flush sisters. Lot 5 is an exceptionally stylish female with added body depth and stoutness out of her hip while being attractive fronted and bold from her shoulder back. Her look is in vogue and her kind is sure to be lucrative once she reaches production.
- Sells open.





SSUL WHO DAT DARLING  
MATERNAL SISTER TO LOT 6 EMBRYOS



JSUL WHO DAT RAPTOR 6976D ET  
MATERNAL SISTER TO LOT 6 EMBRYOS



PCC

LLW CARDINAL CROSSOVER 236J  
SIRE OF LOTS 1 THRU 7



SULL TAMALE TOO  
MATERNAL SISTER TO LOT 7 EMBRYOS



SULL JALYNN 0904  
MATERNAL SISTER TO LOT 7 EMBRYOS

LOT 6

3 SEXED FEMALE IVF EMBRYOS

HIGH CHI

- └ SOMEWHERE IN THE MIDDLE ET
- └ LLW CARDINAL CROSSOVER 236J
- └ LLW CARD ERROLINE 36Z
- └ BHCS HEAT SEEKER 23
- └ JSUL SULTRY 6640
- └ JSUL MA X AN 6651

- The sire of this mating, Cardinal Crossover, stacks the Cardinal's most elite Chiangus genetics from a line proven to win. His progeny possess the wonderful look, shape, and presence of their sire with tremendous depth of rib, impeccable structure, and some of the best hair of any sire we have used as is evident in his daughters selling as lots 1 thru 5 in this sale.
- The donor dam of lot 6, JSUL Sultry 6640, has produced more National Champions and Supreme Champions at every level than any female in the country including JSUL Who Dat Raptor 6976D ET, who was the Supreme Champion Junior Heifer and Grand Champion Junior Chianina Female at the 2017 North American in Louisville and is the leading Chi donor in the PCC herd, as well as SSUL Who Dat Darling, who is the maternal grandam of lots 1 thru 5 and a prominent donor in the Sullivan program that has been a top income generator thru PCC Sales.
- Selling three sexed female IVF embryos with a guarantee of at least one pregnancy to result if implanted within one year of purchase by a certified embryologist.

LOT 7

3 SEXED FEMALE IVF EMBRYOS

HIGH CHI

- └ SOMEWHERE IN THE MIDDLE ET
- └ LLW CARDINAL CROSSOVER 236J
- └ LLW CARD ERROLINE 36Z
- └ HEAT WAVE
- └ SSUL TAMALE 588-3
- └ JSUL MOMMA TAMALE 58

- The sire of this mating, Cardinal Crossover, stacks the Cardinal's most elite Chiangus genetics from a line proven to win. His progeny possess the wonderful look, shape, and presence of their sire with tremendous depth of rib, impeccable structure, and some of the best hair of any sire we have used as is evident in his daughters selling as lots 1 thru 5 in this sale.
- The dam of this mating, JSUL Tamale 588, has been a dominate producer of sale toppers, Supreme Champions at every level, and National Junior Show champions. Her Right Direction progeny in the ShorthornPlus and Chianina breeds have produced two Maternal Legend sale toppers at \$100,000 and have averaged well over \$10,000 per lot. Success from Tamale 588 in the show ring comes in year after year and started in 2010 with SULL Tamale being selected supreme champion female at the NAILE and was also selected champion Shorthorn Plus at the National Junior Shorthorn Show. A more recent champion was SULL Tamale Too 6000D that was the 2017 grand champion Shorthorn Plus at the NJSS and 3rd overall female at the 2017 National Junior Chianina Show. Another recent champion was the 2018 FWSS Champion Chianina Female in the open show shown by Abby Bell. Other champions include Kane Aegerter's Supreme Female at the Nebraska State Fair and many other champion ShorthornPlus females at the Jr Nationals, American Royal, and NAILE. Tamale 588 progeny flat get it done and this mating could be the best yet.
- Selling three sexed female IVF embryos with a guarantee of at least one pregnancy to result if implanted within one year of purchase by a certified embryologist.

EMBRYOS



## LOTS 8-12

• Lots 8 thru 12 are full sisters to the most consistent mating in terms of income generation in the history of the PCC program, Primo x Who Dat Darling. Eight flush sisters to lots 8 thru 12 sold in the 2023 Fall PCC Sale for a total of \$355,000 to average \$44,375. Other flush sisters to lots 8 thru 12 include: The 2020 NAILE Supreme Champion Female, JSUL WHO DAT DARLING 902G ET; JSUL PCC DAT LOOKER 2199K, THE \$75,000 top-selling Chi heifer in the Fall 2022 PCC Sale; the \$61,000 JSUL DAT SHINY DARLIN 9000G that was named Reserve Grand Champion Female at the 2020 Southwestern Livestock Exposition in Ft. Worth; as well as the \$41,000 H F PCC DAT LADY DARLING ET that was named Champion Chi at the 2023 FWSS for Piper Goodsen; the \$41,000 JSUL PCC DARLIN PRIMO 1162J that was named Champion Chi and Supreme Continental at the 2023 San Antonio Stock Show for Cora Hardy; and the \$39,000 JSUL PCC PRIMOS DARLIN ET, all three of which sold in the 2021 Fall PCC Sale; and JSUL PCC WHOS LOOKIN 3001K, who sold for \$25,000 in the fall 2022 PCC Sale.

### LOT 8

## JSUL PCC WHO DEY 4112M ET

DOB 2/5/24 REG. # 423787 TATTOO 4112M

GED	BW	WW	YW	MILK	HIGH CHI
8	17	54	82	12	HIGH CHI

- └ DAMERON FIRST CLASS
- └ COLBURN PRIMO 5153
- └ SILVEIRAS SARAS DREAM 1339
- └ ASHW WHO DA MAN
- └ SSUL WHO DAT DARLING
- └ JSUL SULTRY 6640

- This lead lot in another awesome set of flush sisters is an attractive made, good structured heifer with added bone and all the extras. Her look and body type are captivating, while her basics of power and shape only add to her overall quality. Stylish and well-built, this heifer is sure to create an exciting show career and follow in the footsteps of her famous sisters in terms of her show ring success and production capacity.
- Sells open.



### LOT 9

## JSUL PCC WHO DAT 4307M ET

4/26/24 REG. # 423620 TATTOO 4307M

GED	BW	WW	YW	MILK	HIGH CHI
8	17	54	82	12	HIGH CHI

- └ DAMERON FIRST CLASS
- └ COLBURN PRIMO 5153
- └ SILVEIRAS SARAS DREAM 1339
- └ ASHW WHO DA MAN
- └ SSUL WHO DAT DARLING
- └ JSUL SULTRY 6640

- This heifer offers shape and stoutness throughout while maintaining a complete and attractive phenotypic profile. Her center body emulates function, which is complemented by a sound structural base that allows her to stay good in her lines and offer the look needed to capture the judge's eye and keep it.
- Sells open.



PCC JSUL WHO'S READY 3409L ET  
\$75,000 Full sister to lots 8 thru 12 and maternal sister to lots 13 thru 15



JSUL PCC DAT LOOKER 2199K  
\$75,000 FULL SISTER TO LOTS 8 THRU 12 AND MATERNAL SISTER TO LOTS 13 THRU 15



JSUL PCC WHO WHO 3249L ET  
\$52,000 FULL SISTER TO LOTS 8 THRU 12 AND MATERNAL SISTER TO LOTS 13 THRU 15



PCC JSUL WHO DAT 3115L ET  
\$48,000 FULL SISTER TO LOTS 8 THRU 12 AND MATERNAL SISTER TO LOTS 13 THRU 15

# LOTS 8-12

- └ DAMERON FIRST CLASS
- └ COLBURN PRIMO 5153
- └ SILVEIRAS SARAS DREAM 1339
- └ ASHW WHO DA MAN
- └ SSUL WHO DAT DARLING
- └ JSUL SULTRY 6640



WHO DAT DARLING



SSUL WHO DAT DARLING  
DONOR DAM OF LOTS 8 THRU 15



COLBURN PRIMO 5153  
SIRE OF LOTS 8 THRU 12

**LOT 10**

## JSUL PCC WHO DEY 4248M ET

DOB 5/6/24 REG. # 423788 TATTOO 4248M

GED	BW	WW	YW	MILK	HIGH CHI
8	1.7	55	82	12	HIGH CHI

- Among the two youngest of the flush sisters but equally as impressive, this May prospect has the pieces and pedigree to compete in the show ring and make an awesome addition to any donor herd. Truly fault free and complete with a profile that is sure to capture the attention of any judge.
- Sells open.

## PCC



**LOT 11**

## JSUL PCC WHO DAT 4269M ET

DOB 4/15/24 REG. # 423789 TATTOO 4269M

GED	BW	WW	YW	MILK	HIGH CHI
8	1.7	55	82	12	HIGH CHI

- Good built, good bodied and good looking! This heifer starts with advantages at the surface, and then carries them up high for added width and power. Additionally, she is bold through her heart, deep in her center and still lady-like from her shoulder forward.
- Sells open.



**LOT 12**

## JSUL PCC WHAT DAT 4253M ET

DOB 5/6/24 REG. # 423790 TATTOO 4253M

GED	BW	WW	YW	MILK	HIGH CHI
8	1.7	55	82	12	HIGH CHI

- If you are looking to add extra power and body volume, here is the female for you. On top of this, she is bold centered, attractive fronted and goes to the ground with extra substance of bone. Sure to be a favorite of many, this young prospect has all the right pieces.
- Sells open.



**PRIME TIME**  
SIRE OF LOTS 13 THRU 15



**PCC JSUL WHO'S PLAYING 3100L ET**  
\$51,000 FULL SISTER TO LOTS 8 THRU 12 AND MATERNAL SISTER TO LOTS 13 THRU 15



**PCC JSUL WHO'S LOOKIN 3114L ET**  
\$55,000 FULL SISTER TO LOTS 8 THRU 12 AND MATERNAL SISTER TO LOTS 13 THRU 15

## LOTS 13-15

• Like their maternal sisters that sell as lots 8 thru 12, lots 13 thru 15 are flush sisters out of Who Dat Darling, who has been a leader in terms of income generation in the recent PCC sales. Eight maternal sisters to lots 13 thru 15 sold in the 2023 Fall PCC Sale for a total of \$355,000 to average \$44,375. Other maternal sisters to lots 13 thru 15 include: The 2020 NAILE Supreme Champion Female, JSUL WHO DAT DARLING 902G ET; JSUL PCC DAT LOOKER 2199K, THE \$75,000 top-selling Chi heifer in the Fall 2022 PCC Sale; the \$61,000 JSUL DAT SHINY DARLIN 9000G that was named Reserve Grand Champion Female at the 2020 Southwestern Livestock Exposition in Ft. Worth; as well as the \$41,000 H F PCC DAT LADY DARLING ET that was named Champion Chi at the 2023 FWSS for Piper Goodsen; the \$41,000 JSUL PCC DARLIN PRIMO 1162J that was named Champion Chi and Supreme Continental at the 2023 San Antonio Stock Show for Cora Hardy; and the \$39,000 JSUL PCC PRIMOS DARLIN ET, all three of which sold in the 2021 Fall PCC Sale; and JSUL PCC WHOS LOOKIN 3001K, who sold for \$25,000 in the fall 2022 PCC Sale.

### LOT 13

## PCC JSUL WHO DAT TIME 4198M ET

DOB 3/6/24 REG. # 423791 TATTOO 4198M

CEU	BW	WW	YW	MILK	HIGH CHI
6	1.9	44	66	16	

- └ COLBURN PRIMO 5153
- └ PRIMETIME ET
- └ K&A DAIQUIRI 176Y
- └ ASHW WHO DA MAN
- └ JSUL WHO DAT DARLING
- └ JSUL SULTRY 6640

### PCC

• Here is a chromed-up heifer with loads of volume and center body dimension. She offers the unique ability to combine style and eye appeal with added shape and power. She is correct in her structure and blends visual merit with genetic versatility allowing her to compete in both the breed and supreme drives and make a front pasture donor after her show career.

- Sells open.



**LOT 14**

## PCC JSUL WHO'S DAT 4255M ET

DOB 2/24/24 REG. # 423793 TATTOO 4255M

GED	BW	WW	YW	MILK	HIGH CHI
6	1.9	44	66	16	

- └ COLBURN PRIMO 5153
- PRIMETIME ET
- └ K&A DAIQUIRI 176Y
- └ ASHW WHO DA MAN
- SSUL WHO DAT DARLING
- └ JSUL SULTRY 6640

• Like her flush sister, this elite show and donor prospect has a splash of color to help catch the judge's eye, and all of the other necessary attributes to keep it. Lot 14 is a stout made, sound structured female with added function and softness of body. The heifer is level in her design, and blends well from the side. She is sure to capture the attention of those who appreciate added volume and dimension.

- Sells open.



H/F PCC DAT LADY DARLING ET  
FULL SISTER TO LOTS 8 THRU 12 AND  
MATERNAL SISTER TO LOTS 13 THRU 15



JSUL DAT SHINY DARLIN 9000G  
\$61,000 FULL SISTER TO LOTS 8 THRU  
12 AND MATERNAL SISTER TO LOTS 13  
THRU 15



JSUL PCC DARLIN PRIMO 1162J ET  
\$41,000 FULL SISTER TO LOTS 8 THRU  
12 AND MATERNAL SISTER TO LOTS 13  
THRU 15



JSUL PCC PRIMOS DARLIN ET  
\$39,000 FULL SISTER TO LOTS 8 THRU  
12 AND MATERNAL SISTER TO LOTS 13  
THRU 15

**PCC**



**LOT 15**

## PCC JSUL DAT TIME 4161M ET

DOB 2/20/24 REG. # 423792 TATTOO 4161M

GED	BW	WW	YW	MILK	HIGH CHI
6	1.9	44	66	16	

- └ COLBURN PRIMO 5153
- PRIMETIME ET
- └ K&A DAIQUIRI 176Y
- └ ASHW WHO DA MAN
- SSUL WHO DAT DARLING
- └ JSUL SULTRY 6640

• Lot 15 is the last of this run of eight maternal sisters, that like the eight that sold last fall in the 2023 PCC Sale, is a testament to the consistency and production capacity of their famous dam. This feminine fronted heifer showcases style and flare while staying correct in her skeletal design, flexible in movement and adequate in terms of center body dimension.

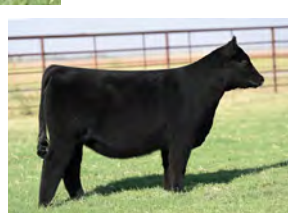
- Sells open.



JSUL WHO DAT CAT 7104E ET  
FULL SISTER TO LOTS 8 THRU 12 AND  
MATERNAL SISTER TO LOTS 13 THRU 15



JSUL WHO DAT DARLING 9026 ET  
FULL SISTER TO LOTS 8 THRU 12 AND  
MATERNAL SISTER TO LOTS 13 THRU 15



JSUL PCC WHOS LOOKIN 3001K  
\$25,000 FULL SISTER TO LOTS 8 THRU  
12 AND MATERNAL SISTER TO LOTS 13  
THRU 15



**LOT 16**

## TSSC PCC WON'T BE PLAYED ET

DOB 2/10/24 REG. # 423679 TATTOO 4009M

CEU	BW	WW	YW	MILK	HIGH CHI
9	2.5	63	94	12	

- └ DAMERON FIRST CLASS
- └ COLBURN PRIMO 5153
- └ SILVEIRAS SARAS DREAM 1339
- └ ASHW WHO DA MAN
- └ JSUL WHO'D PLAYING 6973D ET
- └ JSUL SULTRY 6640

- Here is a powerful, yet good built heifer who is wide based and stout featured. She is practical in her center body design as she drops from her spine with upper curvature to her rib and sill maintains volume and dimension throughout. At the stand, she is correct in her lines and offers eye appeal and style, while still being functional in her kind.
- The dam of lot 16, JSUL Who's Playing 6973D ET, has emerged as one of the shining daughters of the famed Who Da Man x 6640 mating and has completely dominated the National Chianina Show at the North American over the past several years, with two full sisters to lot 16 being crowned as the coveted National Champion Female including, PRESTON'S ETHEL ET ET, who was named Champion Chianina Heifer at the 2022 NAILE for Sara Sullivan and TSSC Who's Lizzo 907G, Champion Open Chianina Heifer at the 2020 NAILE for Ashtin Guyer with a maternal sister, TSSC I'm Gonna Be 048H, being named Champion Open Chianina Heifer at the 2021 NAILE for Olivia Jones. Another maternal sister to lot 16, TSSC Game On Girls 1061J ET, was named Reserve Grand Champion Chianina Female and Champion Junior Yearling at the 2022 National Junior Chi Heifer Show for MacKenzie Neal.
- Sells open.



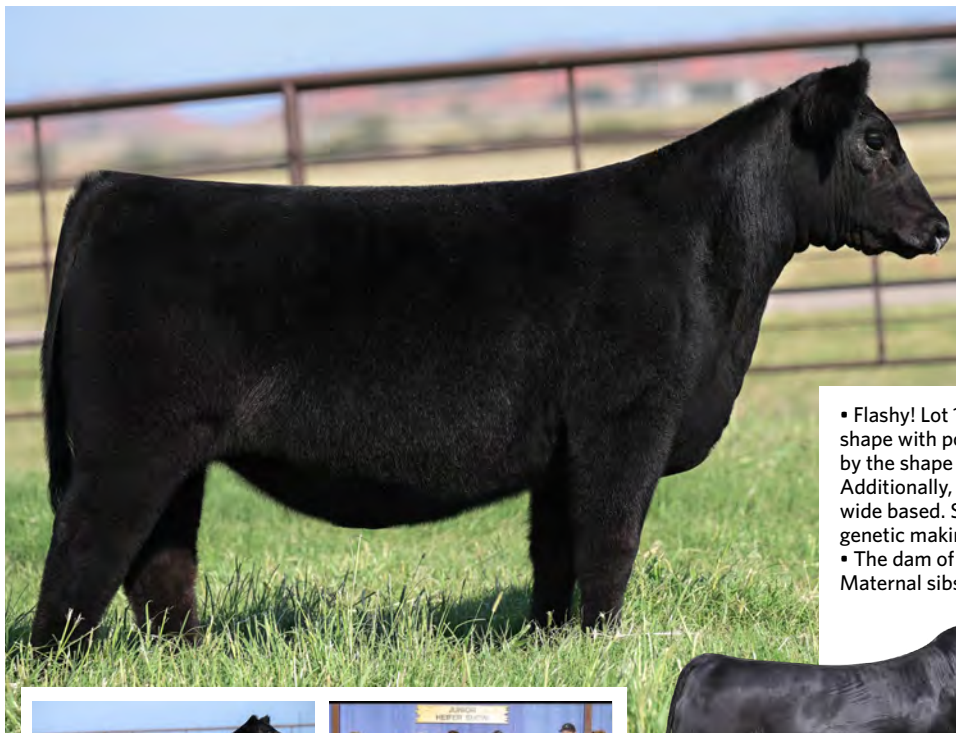
COLBURN PRIMO 5153  
SIRE OF LOT 16



PRESTON'S ETHEL ET  
FULL SISTER TO LOT 16



TSSC WHO'S LIZZO 907G  
FULL SISTER TO LOT 16



**LOT 17**

## BMW PCC Y NOT 238M

DOB 4/2/24 REG. # PENDING TATTOO 445M

CHI ANGUS / HIGH CHI

- └ SILVEIRAS STYLE 9303
- └ SILVEIRAS FORBES 8088
- └ COLLISON FOREVER LADY 1622
- └ TR TRAIL BLAZER 2CA
- └ TR/TKM Y NOT PCA
- └ TR NELLIE 375

- Flashy! Lot 17 is captivating from the side as she blends a robust body shape with power and eye appeal. Her look up front is only enhanced by the shape and dimension she lays in over her top and out of her hip. Additionally, here is a sound structured heifer that's heavy boned and wide based. Sure to have a stellar show career, this female has all the genetic makings of a great one.
- The dam of lot 17 is the ever-consistent TR/TKM Y NOT donor. Maternal sibs to lot 17 include: PCC WJ ELLAS LADY 344L, the \$60,000 top-selling Mainetainer in the 2024 Spring PCC Sale; BMW Mr Classic 421E ET, the Reserve Grand Champion Chi-Angus Bull at the 2018 National Western Stock Show; the 2016 Champion ChiAngus female at the 2016 NAILE for David Smith, and a set of females that averaged over \$15,000 in the 2019 Harvest of Excellence Sale. Y Not progeny have been among the very best for several years at Winegardner- Klingaman Show Cattle and the results are proven with Jr national and major show champions being produced.
- Sells open.



PCC WJ ELLAS LADY 344L  
\$60,000 MATERNAL SISTER TO LOT 17



TR/TKM Y NOT PCA  
DAM OF LOT 17



SILVEIRAS FORBES 8088  
SIRE OF LOT 17



**LOT 18**

## PCC WIDE LOAD 738L ET

DOB 5/5/23 REG. # 422223 TATTOO 738L

GED	BW	WW	YW	MILK	HIGH CHI
9	2.3	62	92	12	

- └ DAMERON FIRST CLASS
- └ COLBURN PRIMO 5153
- └ SILVEIRAS SARAS DREAM 1339
- └ ASHW WHO DA MAN
- └ JSUL WHO DAT RAPTOR 6976D ET
- └ JSUL SULTRY 6640

• Lot 18 is the only herd sire prospect in this fall's PCC production sale but he represents his contemporary group well, especially considering he was named Grand Champion Bred & Owned Bull at the 2024 AJCA National Junior Show. This TH free and PH free high percentage Chi herd sire prospect offers a unique blend of style and balance and stoutness of bone while maintaining adequate shape and base width on an impeccable structural foundation.

• Lot 18 and the embryos selling as lot 18A are produced by JSUL Who Dat Raptor 6976D ET, the powerful member of the PCC donor herd that was the Supreme Champion Junior Heifer and Grand Champion Junior Chianina Female at the 2017 North American in Louisville. Raptor 6976D produced PCC Who Dat Raptor 130L ET, the Grand Champion Bred & Owned Chianina Female and Champion Early Junior Heifer Calf Bred & Exhibited by Bryson Pembroke, who is full sister to lot 18A and a maternal sister to lot 18. Additionally, Raptor 6976D has also made her mark beyond the show ring with progeny sales exceeding \$210,000 including the \$63,000 full sister to lot 18, PCC WJ WHO DAT RAPTOR 342L who was the top-selling Chi heifer in the 2024 Spring PCC Sale; the \$17,000 PCC WHO DAT RAPTOR 211L and the \$12,500 PCC WHO DAT RAPTOR 216L that sold in the Fall 2023 PCC Sale, the \$25,000 PCC LF WHO DAT RAPTOR 830J that was featured as lot 2 from the 2021 Fall PCC Sale where a flush also sold for \$14,000; the \$48,000 PCC WHO DAT RAPTOR 205H ET and the \$13,000 PCC WHO DAT RAPTOR 212H ET both features of the Spring 2021 Limited Edition Sale at PCC, and the \$14,000 PCC JSUL WHO DAT 9847G from the 2020 Limited Edition Sale just to name a few. In the Spring 2022 PCC Sale, a heifer pregnancy sold for \$14,000 and eight embryos sold for \$4,000 per embryo.

• Selling 2/3 interest and full possession.



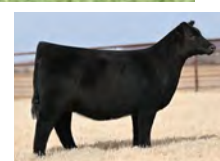
**PCC WHO DAT RAPTOR 130L ET**  
MATERNAL SISTER TO LOT 18 AND FULL SISTER TO LOT 18A EMBRYOS



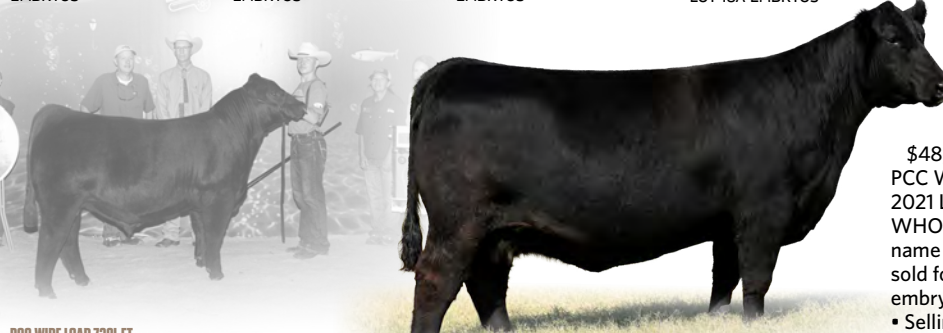
**PCC WJ WHO DAT RAPTOR 342L**  
\$63,000 FULL SISTER TO LOT 18 MATERNAL SIB TO LOT 18A EMBRYOS



**PCC WHO DAT RAPTOR 830J**  
FULL SISTER TO 18 AND MATERNAL SIB TO LOT 18A EMBRYOS



**PCC WHO DAT RAPTOR 205H**  
FULL SISTER TO 18 AND MATERNAL SIB TO LOT 18A EMBRYOS

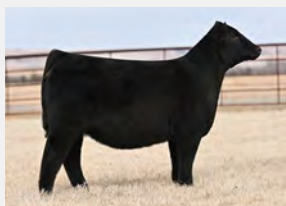


**PCC WIDE LOAD 738L ET**  
GRAND CHAMPION BRED & OWNED BULL AT THE 2024 AJCA NATIONAL JR. SHOW

**JSUL WHO DAT RAPTOR 6976D ET**  
DONOR DAM OF LOTS 18 AND 18A EMBRYOS

**PCC**

# EMBRYOS



**PCC WHO DAT RAPTOR 212H**  
FULL SISTER TO 18 AND MATERNAL SIB TO LOT 18A EMBRYOS



**SILVEIRAS FORBES 8088**  
SIRE OF LOT 18A

- A full sister to this mating, PCC Who Dat Raptor 130L ET, was the Grand Champion Bred & Owned Chianina Female and Champion Early Junior Heifer Calf Bred & Exhibited by Bryson Pembroke.
- The sire of this mating, Forbes, has made quite an impact across multiple breeds through his progeny after being named himself The ROV Show Bull of the Year being slapped Grand Champion Bull at the 2021 Cattlemen's Congress and Atlantic National Angus Show. He was also Supreme Champion Open Angus Animal at Atlantic National Angus Show, Grand Champion Bull at the 2021 Western National Angus Futurity and Grand Champion Bull at the 2020 Kansas State Fair as well as being named the 2020 Grand Champion Angus Bull at the Fort Worth Stock Show & Rodeo, the 2020 Grand Champion Angus Bull at the Houston Livestock Show & Rodeo and the Reserve Grand Champion Angus Bull at the 2019 ROV American Royal Angus Show.
- Selling four sexed female IVF embryos with a guarantee of at least one pregnancy to result if implanted within one year of purchase by a certified embryologist.

**LOT 18A**

## 4 SEXED FEMALE IVF EMBRYOS

HIGH CHI

- └ SILVEIRAS STYLE 9303
- └ SILVEIRAS FORBES 8088
- └ COLLISON FOREVER LADY 1622
- └ ASHW WHO DA MAN
- └ JSUL WHO DAT RAPTOR 6976D ET
- └ JSUL SULTRY 6640

P E M B R O O K C A T T L E C O M P A N Y

IT'S ALL ABOUT THE PEOPLE



PEMBROOK CATTLE COMPANY

# Simmental PCC

PEMBROOK CATTLE COMPANY





PEINE/GS ROSIE 677D  
DAM OF LOTS 19 THRU 22



PCC JSUL RED ROSIE 2306K  
\$17,000 MATERNAL SISTER TO LOT 19 AND FULL SISTER TO LOTS 20 THRU 22



JSUL PCC ALL ABOUT ROSIE 1115J  
\$50,000 MATERNAL SISTER TO LOT 19 AND FULL SISTER TO LOTS 20 THRU 22



JSUL PCC ROSIE 3653L  
\$21,000 MATERNAL SISTER TO LOT 19 AND FULL SISTER TO LOTS 20 THRU 22



JSUL PCC ABOUT ROSIE 0501H  
MATERNAL SISTER TO LOT 19 AND FULL SISTER TO LOTS 20 THRU 22

R/C SFI CREEDENCE 417J  
SIRE OF LOT 19



LOT 19

PCC JSUL FANCY ROSIE 4241M

DOB 4/4/24 REG. # 4411598 TATTOO 4241M

GED	BW	WW	YW	MILK	PB SIMMY
9.2	4.0	81.7	125.8	19.6	

- └ JSUL SOMETHING ABOUT MARY 8421
- └ R/C SFI CREEDENCE 417J
- └ SFI LOVE ME LATER A9X
- └ LLSF ADDICTION AY792
- └ PEINE/GS ROSIE 677D
- └ GUNN 227 DO BLACK ROSE

- This lead lot in the Simmental division of this offering combines the 2023 Cattlemen's Congress Champion Purebred Bull, R/C SFI Creedence 417J, with Peine/GS Rosie 677D, who was selected as the Reserve grand champion purebred female at the 2018 NWSS and FWSS open shows and was also selected 7th overall at the 2018 National Jr heifer show before becoming a top income generator for PCC and Sullivan.
- Lot 19 is a super stylish, well-balanced heifer that gives an impressive look from the profile, and is also stout made, opened up and high performing. Its hard to make purebred Simmi's with this kind of elegance while still being high volumed and functional though her center body. Her added foot and bone provide the ground work for extra power and feature, while still being a flexible heifer in terms of mobility.
- Maternal sisters to lot 19 include: JSUL PCC All About Rosie 1115J, was the \$50,000 top-selling Simmental from the 2021 Fall PCC Sale selected by Jaxon Hilbrands and is going to be a big part of our Simmental program as we retained a ½ embryo interest in her. Three maternal sisters to lot 19 sold in the 2024 Spring PCC Sale for \$21,000, \$21,000, and \$12,000 to average of \$18,000, while three more sold for \$29,000, \$29,000, and \$13,000 in the 2023 Fall PCC Sale for an average of \$23,667. Additionally, five other maternal sisters sold in the Fall 2022 PCC Sale for an impressive gross of \$95,000 to average \$19,000. JSUL PCC RED ROSIE 2558K another maternal sister to lot 19 sold for \$29,000 in the Spring 2023 PCC Sale where another full sister also sold for \$16,000. JSUL PCC RED ROSIE 2558K was named Champion Simmental at the 2023 East TX State Fair. Another maternal sister to lot 19, PCC JSUL RED ROSIE 2306K sold in the 2022 Fall PCC Sale for \$17,000 and went on to be named Grand Champion Simmental Female at the 2024 FWSS and 2024 San Antonio Stock Show and Rodeo.
- Eligible for the San Antonio Simmental and Simbrah Super Bowl.
- Sells open.



JSUL SOMETHING ABOUT MARY 8421  
SIRE OF LOTS 20 THRU 22

## LOTS 20-22

- Simply put, this is one phenomenal trio of flush sisters selling as lots 20 thru 22! The Sam x Peine Rosie mating never misses and these females again exemplify the kind and quality of purebred Simmentals that Beth and Travis want to offer their customers at PCC.
- Their dam, Peine/GS Rosie 677D, was selected as the Reserve grand champion purebred female at the 2018 NWSS and FWSS open shows and was also selected 7th overall at the 2018 National Jr heifer show before becoming a top income generator for PCC and Sullivan.
- Full sisters to lots 20 thru 22 include: JSUL PCC All About Rosie 1115J, was the \$50,000 top-selling Simmental from the 2021 Fall PCC Sale selected by Jaxon Hilbrands and is going to be a big part of our Simmental program as we retained a ½ embryo interest in her. Three full sisters to lots 20 thru 22 sold in the 2024 Spring PCC Sale for \$21,000, \$21,000, and \$12,000 to average of \$18,000, while three more sold for \$29,000, \$29,000, and \$13,000 in the 2023 Fall PCC Sale for an average of \$23,667. Additionally, five other maternal sisters sold in the Fall 2022 PCC Sale for an impressive gross of \$95,000 to average \$19,000. JSUL PCC RED ROSIE 2558K another full sister to lot 19 sold for \$29,000 in the Spring 2023 PCC Sale where another full sister also sold for \$16,000. JSUL PCC RED ROSIE 2558K was named Champion Simmental at the 2023 East TX State Fair. Another full sister to lots 20 thru 22, PCC JSUL RED ROSIE 2306K sold in the 2022 Fall PCC Sale for \$17,000 and went on to be named Grand Champion Simmental Female at the 2024 FWSS and 2024 San Antonio Stock Show and Rodeo.

LOT 20

### PCC JSUL ROSIE 4519M

DOB 4/21/24 REG. # 4411594 TATTOO 4519M

CEB	BW	WW	YW	MILK	PB SIMMY
10.9	2.8	78.1	119.0	17.9	

- W/C RELENTLESS 32C
- JSUL SOMETHING ABOUT MARY 8421
- JBSF PROUD MARY
- LLSF ADDICTION AY792
- PEINE/GS ROSIE 677D
- GUNN 227 DO BLACK ROSE

PCC

- Here is an elite blaze-faced show and donor prospect with all the extras to make her a dominate force in the showing as well. She offers power and practicality while looking stylish. She is good structured, wide based and maintains topside power, all while offering a broody center body and added length of front end.
- Eligible for the San Antonio Simmental and Simbrah Super Bowl.
- Sells open.
- Sells open.



LOT 21

**PCC JSUL ROSIE 4219M**

DOB 2/22/24 REG. # 4411595 TATTOO 4219M

GED	BW	WW	YW	MILK	PB SIMMY
10.9	2.8	78.1	119.0	17.9	

- └ W/C RELENTLESS 32C
- └ JSUL SOMETHING ABOUT MARY 8421
- └ JBSF PROUD MARY
- └ LLSF ADDICTION AY792
- └ PEINE/GS ROSIE 677D
- └ GUNN Z27 DO BLACK ROSE

- This purebred is built impeccable from the side with a neck that ties high and still long and extended from her shoulder forward. From there back she further impresses by being opened up in her forerib, bold bodied, and stout made. She is trendy and flashy, while still providing production merit for operation versatility.
- Eligible for the San Antonio Simmental and Simbrah Super Bowl.
- Sells open.



PEINE/GS ROSIE 677D  
DAM OF LOTS 19 THRU 22



JSUL PCC ALL ABOUT ROSIE 1115J  
\$50,000 FULL SISTER TO LOTS 20 THRU 22



JSUL PCC ALL ABOUT ROSIE 1115J  
\$50,000 FULL SISTER TO LOTS 20 THRU 22



JSUL PCC RED ROSIE 2558K  
\$29,000 FULL SISTER TO LOTS 20 THRU 22 AND CHAMPION SIMMENTAL AT THE 2023 EAST TX STATE FAIR



JSUL PCC ABOUT ROSIE 0501H  
FULL SISTER TO LOTS 20 THRU 22

PCC



LOT 22

**PCC JSUL ROSIE RED 4103M**

DOB 1/2/24 REG. # 4411596 TATTOO 4103M

GED	BW	WW	YW	MILK	PB SIMMY
10.9	2.8	78.1	119.0	17.9	

- └ W/C RELENTLESS 32C
- └ JSUL SOMETHING ABOUT MARY 8421
- └ JBSF PROUD MARY
- └ LLSF ADDICTION AY792
- └ PEINE/GS ROSIE 677D
- └ GUNN Z27 DO BLACK ROSE

- The red and red baldy SAM x PEINE ROSIE heifers have been as dominant of a force as the black and black baldys and this one could continue that trend! Lot 22 is impressive on the profile. She is powerful, yet super attractive and feminine in her design. She is long fronted, deep bodied, opened up in her rib shape and still stout at the ground. But what makes her even more unique is her flexibility and correctness in terms of angles. This female puts together all the show ring flash with real world function.
- Eligible for the San Antonio Simmental and Simbrah Super Bowl.
- Sells open.



PCC JSUL ROSIE 2225K  
FULL SISTER TO LOTS 20 THRU 22



PCC JSUL CHERRI ROSIE 3487L  
\$29,000 FULL SISTER TO LOTS 20 THRU 22



JSUL PCC ROSIE 3653L  
\$21,000 FULL SISTER TO LOTS 20 THRU 22



PCC JSUL RED ROSIE 2306K  
\$17,000 MATERNAL SISTER TO LOT 19 AND FULL SISTER TO LOTS 20 THRU 22



PCC JSUL SHINY ROSIE 2395K



**LOT 23**

## JSUL PCC HONEY 4594M

DOB 5/5/24 REG. # 4411600 TATTOO 4594M

GED	BW	WW	YW	MILK	PB SIMMY
10.4	3.6	77.0	103.2	20.9	

- └ W/C BANKROLL 811D
- └ RJ TRUST FUND 212K
- └ HARA'S KIM KARDASHIAN 1C
- └ W/C RELENTLESS 32C
- └ 4/B MISS HONEY BUTTER 08J
- └ 4/B MISS SECRET WEAPON 41D

- Style, volume and practicality- this female has it all. She paints an impressive look from the side, while her extra base width and stoutness lay the foundation for added dimension throughout. Visually, she is as attractive as the come, but just as importantly she offers genetic breeding flexibility.
- Eligible for the San Antonio Simmental and Simbrah Super Bowl.
- Sells open.



RJ TRUST FUND 212K  
SIRE OF LOTS 23 AND 23A



4/B MISS HONEY BUTTER 08J  
DONOR DAM OF LOTS 23, 23A,  
AND 24



4/B MISS SECRET WEAPON 41D  
MATERNAL GRANDAM OF LOTS 23,  
23A, AND 24

## LOTS 23, 23A + 24

- The dam of lots 23, 23A and 24, 4/B MISS HONEY BUTTER 08J, was named Supreme Champion Female and Champion Simmental Female at the 2023 Cattlemen's Congress after commanding \$280,000 in the Griswold Cattle Co. Sale. The grandam of lots 23, 23A and 24, 4/B MISS SECRET WEAPON 41D continues to leave her mark in the Simmental breed as one of the great Secret Weapon daughters producing not only the dam of lots 23, 23A and 24, but also two daughters by Relentless named Champion and Reserve Champion Spring Heifer Calves at the American Royal, and 4B Honey Bun 50H who sold for \$62,000 at Griswold Cattle Co. and went on to be named 5th Overall Purebred Heifer at the AJSA Classic and Grand Champion at the 2021 American Royal.

# EMBRYOS

**LOT 23A**

**PB SIMMY**

## 3 SEXED FEMALE IVF EMBRYOS

- └ W/C BANKROLL 811D
- └ RJ TRUST FUND 212K
- └ HARA'S KIM KARDASHIAN 1C
- └ W/C RELENTLESS 32C
- └ 4/B MISS HONEY BUTTER 08J
- └ 4/B MISS SECRET WEAPON 41D

**PCC**

- This mating will produce full sisters to lot 23. Sired by the \$270,000 valued, RJ Trust Fund 212K, the massive, bold featured, athletic built son of the \$205,000 W/C Bankroll 811D that is backed by the influence of the iconic "Lady Killer." A full sister to "Trust Fund" commanded \$50,500 for 50% interest to Sara Sullivan while another full sister sold for \$48,000 for 50% interest in a past Weis sale. A maternal brother to Trust Fund by This Is It sold for \$47,500 in Charlie Wilson's online sale. Seven other full or maternal sibs to RJ Trust Fund 212K averaged north of \$24,000.
- Selling three sexed female IVF embryos with a guarantee of at least one pregnancy to result if implanted within one year of purchase by a certified embryologist.



**LOT 24**

## JSUL PCC SWEET HONEY 4362M

DOB 3/21/24 REG. # 4411599 TATTOO 4362M

GED	BW	WW	YW	MILK	PB SIMMY
12.0	2.0	76.7	113.8	23.5	

- └ HPF/HILL UPRISING C104
- └ SO REMEDY 7F
- └ B&K CREAM SODA 8D
- └ W/C RELENTLESS 32C
- └ 4/B MISS HONEY BUTTER 08J
- └ 4/B MISS SECRET WEAPON 41D

- Great build and with an elite genetic base. Here is a female with added shape and power, while still being attractive and looking like a lady up front. She has flex and reach, and still good bodied and stout out of her hip.
- This March Remedy daughter has what it takes to follow in the footsteps of her famous dam.
- Eligible for the San Antonio Simmental and Simbrah Super Bowl.
- Sells open.



**LOT 25**

## JSUL PCC MARY IS PROUD 4287M

DOB 4/3/24 REG. # 4411597 TATTOO 4287M

GED 12.8 BW 1.3 WW 73.9 YW 117.1 MILK 21.1 **PB SIMMY**

- └ HPF/HILL UPRISING C104
- └ SD REMEDY 7F
  - └ B&K CREAM SODA 8D
- └ YARDLEY HIGH REGARD W242
- └ JBSF PROUD MARY
  - └ BROOKS STEELMAGNOLIA X57

- Lot 25 is a maternal sib and the embryos selling as lot 25A are full sibs to the \$230,000 record selling female in the 2023 Fall PCC Sale, PCC JSUL MARY'S RECKONING 3229L, and the \$125,000 top-selling lot from the 2024 Spring PCC Sale, PCC JSUL PROUD MARY 3654L, who both went on to be named Top 10 at the 2024 AJSA Classic.
- The dam of lots 25 and 25A, JBSF Proud Mary, is becoming one of the most consistent donors and top income generators for Sullivan Farms and PCC.
- In addition to the aforementioned 3229L and 3654L, four maternal sisters to lots 25 and 25A sold in the 2023 PCC Spring Sale for an impressive average of

**LOT 25A** **PB SIMMY**

## 4 SEXED FEMALE IVF EMBRYOS

- └ RWA KRISHA-ET
- └ RECKONING 711F
  - └ RWA KRISHA-ET
- └ YARDLEY HIGH REGARD W242
- └ JBSF PROUD MARY
  - └ BROOKS STEELMAGNOLIA X57

- This mating will produce full sibs to the \$230,000 record selling female in the 2023 Fall PCC Sale, PCC JSUL MARY'S RECKONING 3229L, and the \$125,000 top-selling lot from the 2024 Spring PCC Sale, PCC JSUL PROUD MARY 3654L, who both went on to be named Top 10 at the 2024 AJSA Classic.
- Selling four sexed female IVF embryos with a guarantee of at least one pregnancy to result if implanted within one year of purchase by a certified embryologist.



JBSF PROUD MARY  
DAM OF LOTS 25 AND 25A AND GRANDAM OF LOT 26



PCC JSUL PROUD MARY 3654L  
\$125,000 FULL SISTER TO LOT 25A AND MATERNAL SISTER TO LOT 25 - 9TH OVERALL 2024 AJSA NATIONAL CLASSIC

\$30,375 and included JSUL PCC MARY 2459K, the \$60,000 selection of Finn Romanchuk, and JSUL PCC MARY 2573K, the \$40,000 selection of Sadie Sears. Additionally, three maternal sisters to 25 and 25A were featured in the 2022 Spring PCC Sale and included PCC JSUL PROUD MARY 1532J, who has been a many-time champion for Breckyn Bloomberg, including being named Reserve Grand Champion Purebred Simmental Heifer in the 2022 NAILE Open Show; Reserve Grand Champion Purebred Simmental Heifer in the 2023 Cattlemen's Congress Junior Show; 5th Overall Heifer at the 2022 World Beef Expo Junior Show; Reserve Champion Purebred Heifer at the 2022 Illinois Junior Simmental Show; and Res. Division Champion at the 2022 Illinois State Fair.



PCC JSUL MARY'S RECKONING 3299L  
\$230,000 FULL SISTER TO LOT 25A AND MATERNAL SISTER TO LOT 25 - 10TH OVERALL 2024 AJSA NATIONAL CLASSIC



PCC JSUL PROUD MARY 1532J  
MATERNAL SISTER TO LOTS 24 THRU 25A - RESERVE GRAND CHAMPION PUREBRED SIMMENTAL HEIFER AT THE 2023 CATTLEMEN'S CONGRESS JUNIOR SHOW



JSUL MARY IS PROUD 8047F  
DONOR DAM OF LOT 26

**LOT 26** **PB SIMMY**

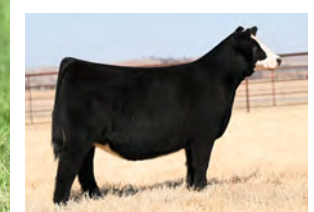
## 4 SEXED FEMALE IVF EMBRYOS

- └ RWA KRISHA-ET
- └ RECKONING 711F
  - └ RWA KRISHA-ET
- └ HPF QUANTUM LEAP Z952
- └ JSUL MARY IS PROUD 8047F
  - └ JBSF PROUD MARY

- JSUL MARY IS PROUD 8047F, the donor dam of this mating, is a maternal sister to lots 25 and 25A, who was Calf Champion and Reserve Overall Purebred Simmental Female at the 2018 NAILE Open Show and she also went on to be selected Grand Champion Simmental Female at the 2019 FWSS Open Show before becoming a member of the elite Sullivan donor herd.
- Selling four sexed female IVF embryos with a guarantee of at least one pregnancy to result if implanted within one year of purchase by a certified embryologist.

PCC

# EMBRYOS



PCC BANKIN ON REBA 1500J  
\$50,000 MATERNAL SISTER TO LOT 27



WHF/JS/GCS WOODFORD J001  
SIRE OF LOT 27



JSUL REBA `S FANCY 8375F  
DAM OF LOT 27



PCC BANKIN ON REBA 1500J  
\$50,000 MATERNAL SISTER TO LOT 27



PCC BANKIN ON REBA 1500J  
\$50,000 MATERNAL SISTER TO LOT 27

LOT 27

DUAL REGISTERED

## JSUL PCC FANCY REBA 4160M

DOB 2/11/24

REG. # 4411593

TATTOO 4160M

% SIMMY

EGL FIRESTEEL 103F

WHF/JS/GCS WOODFORD J001

WHF SUMMER 365C

FHEN HALFTIME A127

JSUL REBA `S FANCY 8375F

DAF REBA C85

• Here is a DUAL-REGISTERED super stylish, stout featured heifer that offers length of front with added depth and dimension. She drops out of her spine with upper curvature to her rib, then goes to the surface on added foot and bone. She is tucked up in her chest and bold from there back. Lot 27 is sure to generate attention when she goes in the ring.

• The real power behind Fancy Reba is her dam. JSUL REBA `S FANCY 8375F was the dominate 2020 NJHS Grand Champion Percentage heifer. She was also the Champion Bred and Owned female at the 2019 NJHS.

• Coupled with the popular sire WOODFORD J001, the Champion SimAngus/SimSolutions bull at the 2023 NAILE and 2024 Cattlemen's Congress and Reserve Champion Percentage Simmental Bull at the 2023 American Royal, this pedigree along with her added body shape, eye appeal, and structural correctness will make her a donor candidate that will raise them to compete at any level.

• A maternal sister to lot 27 was the \$50,000 selection of the Weems family from the 2022 Spring PCC Sale and has been campaigned successfully over her show career.

• Her grand-dam, DAF Reba C85, has been a dominate producer of elite females. DAF Reba C85 herself was the 2016 Grand Champion Percentage Simmental Female in the Jr. Show at the NWSS and went on to be the Reserve Supreme at the 2016 Iowa Beef Expo as well as 5th overall female at the National Jr. Heifer Show.

• Eligible for the San Antonio Simmental and Simbrah Super Bowl.

• Sells open.

PCC

LOT 28

DUAL REGISTERED

## JSUL PCC LOOK AT DAT 4449M

DOB 2/26/24

REG. # PENDING

TATTOO 4449M

% SIMMY/HIGH CHI

- └ W/C RELENTLESS 32C
- └ JSUL SOMETHING ABOUT MARY 8421
- └ JBSF PROUD MARY
- └ ASHW WHO DA MAN
- └ SSUL WHO DAT DARLING
- └ JSUL SULTRY 6640

- Like her famous maternal sisters, this DUAL-REGISTERED heifer is sure to leave her mark, lot 28 offers all the stye and look on the side, while still being powerful in her construction. Stoutness of feature, soft and practical through her center, and shapely from behind, this female has it going on.
- Eligible for the San Antonio Simmental and Simbrah Super Bowl.
- Sells open.



## LOTS 28 + 28A

- Like her famous maternal sisters, this DUAL-REGISTERED heifer is sure to leave her mark, lot 28 offers all the stye and look on the side, while still being powerful in her construction. Stoutness of feature, soft and practical through her center, and shapely from behind, this female has it going on.
- Lot 28 and the 28A embryos are out of one of the most prolific income generation in the history of the PCC program, Who Dat Darling. In addition to the eight maternal sisters selling in this offering as lots 8 thru 15, eight maternal sisters to lots 28 thru 28A sold in the 2023 Fall PCC Sale for a total of \$355,000 to average \$44,375. Other maternal sisters to lots 28 and 28A include: The 2020 NAILE Supreme Champion Female, JSUL WHO DAT DARLING 902G ET; JSUL PCC DAT LOOKER 2199K, THE \$75,000 top-selling Chi heifer in the Fall 2022 PCC Sale; the \$61,000 JSUL DAT SHINY DARLIN 9000G that was named Reserve Grand Champion Female at the 2020 Southwestern Livestock Exposition in Ft. Worth; as well as the \$41,000 H F PCC DAT LADY DARLING ET that was named Champion Chi at the 2023 FWSS for Piper Goodsen; the \$41,000 JSUL PCC DARLIN PRIMO 1162J that was named Champion Chi and Supreme Continental at the 2023 San Antonio Stock Show for Cora Hardy; and the \$39,000 JSUL PCC PRIMOS DARLIN ET, all three of which sold in the 2021 Fall PCC Sale; and JSUL PCC WHOS LOOKIN 3001K, who sold for \$25,000 in the fall 2022 PCC Sale.



JSUL DAT SHINY DARLIN 9000G  
\$61,000 MATERNAL SISTER TO LOTS 28 AND 28A



JSUL WHO DAT 1602  
DONOR DAM OF LOT 29



SSUL WHO DAT DARLING  
DONOR DAM OF LOTS 28 AND 28A



JSUL SOMETHING ABOUT MARY 8421  
SIRE OF LOTS 28, 28A, AND 29

LOT 28A

% SIMMY/HIGH CHI

DUAL REGISTERED

## 4 SEXED FEMALE IVF EMBRYOS

- └ W/C RELENTLESS 32C
- └ JSUL SOMETHING ABOUT MARY 8421
- └ JBSF PROUD MARY
- └ ASHW WHO DA MAN
- └ SSUL WHO DAT DARLING
- └ JSUL SULTRY 6640

- This mating will result in DUAL-REGISTERED full sibs to lot 28.
- Selling four sexed female IVF embryos with a guarantee of at least one pregnancy to result if implanted within one year of purchase by a certified embryologist.

LOT 29

% SIMMY/HIGH CHI

DUAL REGISTERED

## 4 SEXED FEMALE IVF EMBRYOS

- └ W/C RELENTLESS 32C
- └ JSUL SOMETHING ABOUT MARY 8421
- └ JBSF PROUD MARY
- └ ASHW WHO DA MAN
- └ JSUL WHO DAT 1602Y CLONE
- └ JSUL DREAM MAKER HS46

- The donor dam of this DUAL-REGISTERABLE mating, JSUL WHO DAT 1602, is one of the most famous NAILE and American Royal Supreme Champions to have ever walked the green chips, shown by Luke Elder.
- Maternal sisters to this mating include: JSUL WHO DAT WHITNEY 091H ET, Sara Sullivan's heifer that was named Champion in the Junior Chi Show at Cattleman's Congress that went on to be named Reserve Grand Champion Female at the 2021 Chi Junior National as well as the Grand Champion, JSUL MO WHO DAT 9022G ET shown by Brock Cottrell, and Reserve Grand Female, JSUL WHO DAT COLBURN 0197H shown by Kaiser Show Cattle, in the Open Chi Show at the inaugural Cattlemen's Congress and the \$22,500 selection by Cora Hardy from the 2020 PCC Fall Production Sale that just recently won Grand Champion Chianina Heifer at the 2021 Cowgirls in Cowtown, JSUL PCC LOOK AT DAT 0266H ET.
- Selling four sexed female IVF embryos with a guarantee of at least one pregnancy to result if implanted within one year of purchase by a certified embryologist.

# EMBRYOS



JBSF BERWICK 41F  
SIRE OF LOT 30

## LOTS 30, 31 + 31A

• Lots 30, 31, and 31A are out of the 2020 NAILE Supreme Champion Female, JSUL WHO DAT DARLING 902G ET, who has produced numerous Champions including JSUL WHO DAT 3392L, the Reserve Grand Champion Percentage Female at the 2024 AJSA National Classic and JSUL PCC DAT DARLIN 2554K, named 7th Overall Percentage Female at the 2024 AJSA National Classic who are both full sisters to lot 30 and maternal sisters to lots 31 and 31A.

LOT **30**

*DUAL REGISTERED*

### PCC JSUL WHO DAT 4204M

DOB 3/6/24 REG. # 4411588 / 423795 TATTOO 4204M

GED	BW	WW	YW	MILK
11.8	1.1	66.0	101.6	20.0

50% SIMMY/ LOW CHI/ HIGH CHI IN OK, TX

┌ ROCKING P LEGENDARY C918

└ JBSF BERWICK 41F

└ JBSF 402B

┌ COLBURN PRIMO 5153

└ JSUL WHO DAT DARLING 902G ET

└ SSUL WHO DAT DARLING

**PCC**

• This DUAL-REGISTERED lead lot in another awesome pair of maternal sisters is an attractive made, good structured heifer with all the extras. Her look and body type are captivating, while her basics of power and shape only add to her overall quality. Stylish and well-built, this heifer is sure to create an exciting show career that follows in the footsteps of her famous full sisters, JSUL WHO DAT 3392L, the Reserve Grand Champion Percentage Female at the 2024 AJSA National Classic and JSUL PCC DAT DARLIN 2554K, named 7th Overall Percentage Female at the 2024 AJSA National Classic.

- Eligible for the San Antonio Simmental and Simbrah Super Bowl.
- Sells open.





**LOT 31**

*DUAL REGISTERED*

**PCC JSUL WHO S DAT 4304M**

**DOB 4/4/24 REG. # 4411592 / 423799 TATTOO 4304M**

<b>GED</b> 12.3	<b>BW</b> 0.1	<b>WW</b> 68.1	<b>YW</b> 100.9	<b>MILK</b> 21.3	<b>50% SIMMY/ LOW CHI/ HIGH CHI IN OK, TX</b>
--------------------	------------------	-------------------	--------------------	---------------------	-----------------------------------------------

- └ W/C LOADED UP 1119Y
- └ W/C BANKROLL 811D
- └ MISS WERNING KP 8543U
- └ COLBURN PRIMO 5153
- └ JSUL WHO DAT DARLING 9026 ET
- └ SSUL WHO DAT DARLING

- This DUAL-REGISTERED female is already turning heads. Her sound structural base, added width and powerful build sets the stage for her impeccable style and genuine functionality. On the profile, lot 10 is flashy fronted, bold bodied and stout hipped. When in motion, she further solidifies herself as a sale feature being flexible off both ends of her skeleton. Truly unique in her kind, this female is impressive!
- Eligible for the San Antonio Simmental and Simbrah Super Bowl.
- Sells open.



JSUL WHO DAT DARLING 9026 ET  
Dam of lots 30 thru 32



JSUL PCC DAT DARLIN 2554K  
FULL SISTER TO LOT 30 AND  
MATERNAL SISTER TO LOTS 31 AND 31A



JSUL WHO DAT 3392L  
FULL SISTER TO LOT 30 AND  
MATERNAL SISTER TO LOTS 31 AND 31A



W/C BANKROLL 811D  
SIRE OF LOT 31 AND 31A

**PCC**

**LOT 31A**

**4 SEXED FEMALE IVF EMBRYOS**

**50% SIMMY/ LOW CHI/ HIGH CHI IN OK, TX**

- └ W/C LOADED UP 1119Y
- └ W/C BANKROLL 811D
- └ MISS WERNING KP 8543U
- └ COLBURN PRIMO 5153
- └ JSUL WHO DAT DARLING 9026
- └ SSUL WHO DAT DARLING

- Sired by W/C Bankroll 811D, the \$205,000 past sale topper for Wernings, this mating will result in DUAL-REGISTERABLE full sibs to lot 31.
- Selling four sexed female IVF embryos with a guarantee of at least one pregnancy to result if implanted within one year of purchase by a certified embryologist.

# EMBRYOS



LOT 32

DUAL REGISTERED

## JSUL PCC DAT STINE 4555M

DOB 6/3/24 REG. # 4411587 / 423794 TATTOO 4555M

CEB	BW	WW	YW	MILK	50% SIMMY/HIGH CHI
10.8	2.3	67.5	101.1	19.9	

ROCKING P LEGENDARY C918

JBSF BERWICK 41F

JBSF 402B

ASHW WHO DA MAN

JSUL WHO'S DAT STINE 826F

JSUL JALYNN'S DIRECTION 904A

• This show and donor prospect is a classy, extra attractive heifer with loads of potential. Her look and extension up front is complimented by the way she blends into her heart and offers body shape and width from her shoulder back. When set into motion, she stays elegant in her design and pulls together a stylish look on the go.

- Eligible for the San Antonio Simmental and Simbrah Super Bowl.
- Sells open.

## LOTS 32-35A+B

- Lots 32 thru 35 and the embryos selling as lots 35A and 35B combine W/C Bankroll 811D, the \$205,000 past sale topper for Wernings, with JSUL Who's Dat Stine 826F, who had a very decorative show career as she was the Champion AOB at the 2019 American Royal, Champion Chi in the Open and Junior shows at the 2019 NAILE, as well as the Champion Chi at the 2020 NWSS. The grandam of 32 thru 35 and the embryos selling as lots 35A and 35B is the ever popular and versatile donor cow, SULL Jalynn 0904, or better know as "Steiner".
- This unique pedigree results in DUAL-REGISTERED 50% Simmental/High Chi heifers that allow the owner options at every show.



JBSF BERWICK 41F  
SIRE OF LOTS 32 THRU 35



LOT 33

DUAL REGISTERED

## JSUL PCC DAT STINE 4549M

DOB 6/6/24 REG. # 4411589 / 423796 TATTOO 4549M

CEB	BW	WW	YW	MILK	50% SIMMY/HIGH CHI
10.8	2.3	67.5	101.1	19.9	

ROCKING P LEGENDARY C918

JBSF BERWICK 41F

JBSF 402B

ASHW WHO DA MAN

JSUL WHO'S DAT STINE 826F

JSUL JALYNN'S DIRECTION 904A

• This flashy built heifer is unique in her design and impeccable in her structure to further enhance her center body dimension and added shape up high. Additionally, her length of neck and strength of topline put her in an elite class of show prospects destined for success.

- Eligible for the San Antonio Simmental and Simbrah Super Bowl.
- Sells open.



LOT 34

DUAL REGISTERED

## JSUL PCC WHO DAT STINE 4261M

DOB 3/7/24 REG. # 4411590 / 423797 TATTOO 4261M

GED	BW	WW	YW	MILK	% SIMMY/HIGH CHI
10.8	2.3	67.5	101.1	19.9	50 % SIMMY/HIGH CHI

- └ ROCKING P LEGENDARY C918
- └ JBSF BERWICK 41F
- └ JBSF 402B
- └ ASHW WHO DA MAN
- └ JSUL WHO'S DAT STINE 826F
- └ JSUL JALYNN'S DIRECTION 904A

- Built from the mold of her dam, this blends function and practicality into a complete, well-balanced package. Her soft, easy keeping kind will never go out of style. Additionally, she is good structured and sound footed, long strided and true moving.
- Eligible for the San Antonio Simmental and Simbrah Super Bowl.
- Sells open.



JSUL WHO'S DAT STINE 826F  
DAM OF LOTS 32 THRU 35

PCC



LOT 35

DUAL REGISTERED

## JSUL PCC WHO DAT STINE 4302M

DOB 3/27/24 REG. # 4411591 / 423798 TATTOO 4302M

GED	BW	WW	YW	MILK	% SIMMY/HIGH CHI
10.8	2.3	67.5	101.1	19.9	% SIMMY/HIGH CHI

- └ ROCKING P LEGENDARY C918
- └ JBSF BERWICK 41F
- └ JBSF 402B
- └ ASHW WHO DA MAN
- └ JSUL WHO'S DAT STINE 826F
- └ JSUL JALYNN'S DIRECTION 904A

- Here is a good bodied, powerful made female that's flexible and well balanced. Her added width and dimension should keep her among the top of her contemporaries, while her structure and feminine look will give her the extra edge in the show ring.
- Eligible for the San Antonio Simmental and Simbrah Super Bowl.
- Sells open.

LOT 35A

DUAL REGISTERED

## 4 SEXED FEMALE IVF EMBRYOS

% SIMMY/HIGH CHI

LOT 35B

DUAL REGISTERED

## 4 SEXED FEMALE IVF EMBRYOS

% SIMMY/HIGH CHI

- └ ROCKING P LEGENDARY C918
- └ JBSF BERWICK 41F
- └ JBSF 402B
- └ ASHW WHO DA MAN
- └ JSUL WHO'S DAT STINE 826F
- └ JSUL JALYNN'S DIRECTION 904A

- This mating will result in DUAL-REGISTERABLE full sibs to lots 32 thru 35.
- Selling two lots of four sexed female IVF embryos with a guarantee of at least one pregnancy to result per lot if implanted within one year of purchase by a certified embryologist.

# EMBRYOS



LOT **36**

DUAL REGISTERED

## PCC WHO DAT RAPTOR 348M

DOB 5/6/24

REG. # 4413018

TATTOO 348M?

% SIMMY/ HIGH CHI

- └ W/C LOADED UP 1119Y
- └ W/C BANKROLL 811D
- └ MISS WERNING KP 8543U
- └ ASHW WHO DA MAN
- └ JSUL WHO DAT RAPTOR 6976D ET
- └ JSUL SULTRY 664D

• Lot 36 is a DUAL-REGISTERED %Simmental/High Chi direct daughter of JSUL Who Dat Raptor 6976D ET, the powerful member of the PCC donor herd that was the Supreme Champion Junior Heifer and Grand Champion Junior Chianina Female at the 2017 North American in Louisville. Raptor 6976D produced PCC Who Dat Raptor 130L ET, the Grand Champion Bred & Owned Chianina Female and Champion Early Junior Heifer Calf Bred & Exhibited by Bryson Pembroke, who is maternal sister to lot 36. Additionally, Raptor 6976D has also made her mark beyond the show ring with progeny sales exceeding \$210,000 including the \$63,000 maternal sister to lot 36, PCC WJ WHO DAT RAPTOR 342L who was the top-selling Chi heifer in the 2024 Spring PCC Sale; the \$17,000 PCC WHO DAT RAPTOR 211L and the \$12,500 PCC WHO DAT RAPTOR 216L that sold in the Fall 2023 PCC Sale, the \$25,000 PCC LF WHO DAT RAPTOR 830J that was featured as lot 2 from the 2021 Fall PCC Sale where a flush also sold for \$14,000; the \$48,000 PCC WHO DAT RAPTOR 205H ET and the \$13,000 PCC WHO DAT RAPTOR 212H ET both features of the Spring 2021 Limited Edition Sale at PCC, and the \$14,000 PCC JSUL WHO DAT 9847G from the 2020 Limited Edition Sale just to name a few. In the Spring 2022 PCC Sale, a heifer pregnancy sold for \$14,000 and eight embryos sold for \$4,000 per embryo.

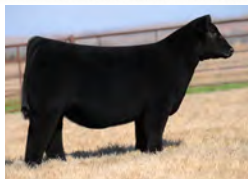
- Eligible for the San Antonio Simmental and Simbrah Super Bowl.
- Sells open.



JSUL WHO DAT RAPTOR 6976D ET  
Dam of lot 36



PCC WHO DAT RAPTOR 130L ET  
MATERNAL SISTER TO LOT 36



PCC WJ WHO DAT RAPTOR 342L  
\$63,000 MATERNAL SISTER TO LOT 36



PCC WHO DAT RAPTOR 830J  
MATERNAL SISTER TO LOT 36



PCC WHO DAT RAPTOR 205H  
MATERNAL SISTER TO LOT 36



2023 KANSAS BEEF EXPO SUPREME CHAMPION FEMALE  
MATERNAL SISTER TO LOT 37

PCC

PEMBROOK CATTLE COMPANY

# EMBRYOS

LOT **37**

## 3 SEXED FEMALE IVF EMBRYOS

DOB REG. # TATTOO

% SIMMY

- └ W/C UNITED 956Y
- └ W/C EXECUTIVE ORDER 8543B
- └ MISS WERNING KP 8543U
- └ SILVEIRAS STYLE 9303
- └ MLA PROVEN QUEEN 701
- └ FCF PROVEN QUEEN 419

• The dam of this mating was a many-time Champion for Sara Sullivan and is a maternal sister to the popular sire, SCC SCH 24 Karat 838 tracing to the foundation dam, Dameron PVF Proven Queen010, who is among the most the most dominant donors in the PVF program and was a Reserve Division Champion at the 2001 National Junior Angus Show; Supreme Heifer, 2001 Ohio Beef Expo; Reserve Champion, 2001 Atlantic National Junior Show; Reserve Junior Champion, 2001 NAILE; Champion Heifer, 2002 Junior Show; Reserve Champion, 2002 Atlantic National Open Show; and Champion Cow/Calf, 2002 Atlantic National, Eastern Regional and National Junior Show.

• The sire of this mating, W/C Executive Order, continues to rise in popularity within the Simmental breed. He has proven to be a perfect blend of his two historical parents. He transmits the growth of his sire and the maternal traits of his famous mother. He produced a \$71,000 high seller in the 2015 Werning sale to Hilbrands Cattle Co and Hilbrands Simmental as well as many other AI sires listed in top studs and herds around the country.

• Selling three sexed female IVF embryos with a guarantee of at least one pregnancy to result if implanted within one year of purchase by a certified embryologist.

PCCDCCDCC



PEMBROOK  
CATTLE  
COMPANY



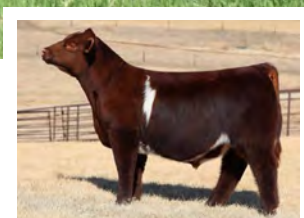
IT'S ALL ABOUT  
THE PEOPLE



# Shorthorn

# PCC

PEMBROOK CATTLE COMPANY



SULL ACCOUNTABILITY 1319J ET  
SIRE OF LOTS 38 AND 39



CF CSF MAX ROSA 725 RR X ET  
DAM OF LOTS 38 AND 39

**LOT 38**

## ANA PCC MISS MAX ROSA 480

DOB 4/15/24

REG. # PENDING

TATTOO 480

SHORTHORN

- └ SULL RED KNIGHT 2030 ET
- └ SULL ACCOUNTABILITY 1319J ET
- └ SULL DREAM ON 5158 ET
- └ SULL RED REWARD 9321
- └ CF CSF MAX ROSA 725 RR X ET
- └ CYT MAX ROSA 1145 ET

- This lead lot in the Shorthorn division is as elegant as they come. Flash and femininity describe this female that is one of the coolest built heifers in the offering. She is super extended and attractive through her front end, while maintaining a look of broodiness from her shoulder back with impeccable structure.
- Sells open.

## LOTS 38 + 39

- Lots 38 and 39 are flush sisters that blend the hot Shorthorn sire SULL ACCOUNTABILITY 1319J ET, who is a full sib to Dream Maker backed by the great Dream On 5158 Donor, with CF CSF MAX ROSA 725 RR the Sullivan donor that was named the 5th overall female at the 2018 National Jr Heifer Show for Sara Sullivan. These are among the first progeny from that young donor offered. The Red Reward daughters are some of the best cows and producers in the breed and this one will soon be a household name. We have high expectations for these heifers and feel they can compete on a national level, just as their dam did.

**LOT 39**

## ANA PCC MISS MAX ROSA 565

DOB 5/10/24

REG. # PENDING

TATTOO 565

SHORTHORN

- └ SULL RED KNIGHT 2030 ET
- └ SULL ACCOUNTABILITY 1319J ET
- └ SULL DREAM ON 5158 ET
- └ SULL RED REWARD 9321
- └ CF CSF MAX ROSA 725 RR X ET
- └ CYT MAX ROSA 1145 ET

- Lot 39 is impressive in terms of her overall balance of power, structure, belly, and just "make you look" eye appeal. She stands perfectly on a huge foot and his feet and leg structure is impeccable. It is going to be interesting to watch these Shorthorn heifers develop and compete...they have what it takes to get it done on any level.
- Sells open.



CSF EVOLUTION HC  
SIRE OF LOT 40



SULL CRYSTAL'S LUCY ET  
GRANDAM OF LOT 40

**LOT 40**

## ANA PCC MISS LUCY CRYSTAL 473

DOB 3/25/24 REG. # PENDING TATTOO 473

SHORTHORN

FREE K-KIM HOT COMMODITY

CSF EVOLUTION HC

CF BOY CAROLINE 210 ET

SULL RED KNIGHT 2030 ET

KANE LUCY'S CRYSTAL 278K ET

SULL CRYSTAL'S LUCY ET

- This well-designed roan heifer is attractive fronted, good bodied and well balanced. She combines look and practicality with shape and dimension.
- The dam of lot 40 was shown successfully by Kyson Gana before joining the donor herd at Gana Farms.
- The grandam of lot 60, SULL Crystals' Lucy ET, was a many-time champion for Nick Sullivan including being named Grand Champion Female at the 2012 Shorthorn Junior Nationals, Grand Champion Female at the 2012 NWSS Junior Show, and Division II Champion Female at the 2011 Shorthorn Junior Nationals.
- CSF Evolution HC Now Deceased sire of lot 40, has sire multiple National Champions and sale toppers including the 2020 NAILE and 2021 Oklahoma Supreme Shorthorn Female.
- Sells open.

PCC



SULL DREAM MAKER 9141G ET  
SIRE OF LOT 41



SULL ROSES ARE RED ET  
DAM OF LOT 41

**LOT 41**

## SULL PCC ROSES ARE RED 4106M ET

DOB 1/17/24 REG. # 4381440 TATTOO 4106M

GED	BW	WW	YW	MILK	SHORTHORN
8	1.4	52	76	33	

SULL RED KNIGHT 2030 ET

SULL DREAM MAKER 9141G ET

SULL DREAM ON 5158 ET

SULL RED REWARD 9321

SULL ROSES ARE RED ET

SULL RED ROSEMARY -2 ET CL

- This powerful and big-ribbed daughter of the 2020 NAILE Grand Champion Shorthorn Bull has some pieces that will set her apart from the pack.
- The donor dam of lot 41, SULL Roses Are Red, was named Grand Champion Bred and Owned Female - 2014 National Junior Shorthorn Show, Reserve National Champion Female at the 2014 NWSS Open Show, and Division Champion at the 2014 NAILE. She continues to produce high end Shorthorn females and this Dream Maker daughter continues that trend.
- In the spring 2021 Sullivan sale, two maternal sisters to lot 41 sold for \$41,000 and \$20,000. One of these heifers went onto be selected champion in the fall division at the National Jr Heifer Show. Most recently another maternal sister to lot 41 was 3rd overall at the 2023 National Jr Heifer Show. In 2017, SULL RED KNIGHT ROSE 6452 ET, a maternal sister to lot 41 was the champion female at the National Junior Heifer show and carried that success into the fall where she was selected the champion female in the Open and Junior Shows in Louisville.
- Sells open.



**LOT 42**

## SULL PCC DREAMY CHERRI 4603M ET

DOB 4/20/24 REG. # 4361439 TATTOO 4603M

CEU	BW	WW	YW	MILK	SHORTHORN
7	1.5	44	65	23	

- └ SULL DREAM MAKER 9141G ET
- └ MFS DREAM WEAVER 37K
- └ SULL BO'S KNIGHT 5804 ET
- └ WHR SONNY 8114
- └ SULL CHERRI 205-3 ET
- └ MCKEE'S ASL CHERRI 742

- Lot 42 combines added substance with a profile that is to die for with enough color to help get the judges attention.
- The progeny of Cherrri 205 has stood the test of time and she continues to have the ability to produce National Champions. She has already produced two Junior National Champions and multiple winners at all of the majors. Her greatest daughter to date is Wild Cherrri 3269. This daughter is sired by MFS DREAM WEAVER 37K who was the \$112,000 2023 Summit sale topper from Meyer Family Shorthorns. If you're serious about raising and contending in the shorthorn breed the genetics this heifer has to offer are as good as they get.
- Sells open.



SULL CHERRI 205  
DAM OF LOT 42



SULL WILD CHERRI 3269  
MATERNAL SISTER TO LOT 42



**LOT 43**

## ANA PCC MISS REVIVAL 4087

DOB 4/25/24 REG. # PENDING TATTOO 4087

SHORTHORN

- └ FREE K-KIM HOT COMMODITY
- └ CSF EVOLUTION HC
- └ CF BOY CAROLINE 210 ET
- └ DUNBEACON VENTURE
- └ SS REVIVAL RT
- └ MARIEHAMN MS REVIVAL 1A

- The final heifer in the largest group of Shorthorns offered to date in a PCC Sale exhibits the depth of quality this division has to offer.
- CSF Evolution HC Now Deceased sire of lot 43, has sire multiple National Champions and sale toppers including the 2020 NAILE and 2021 Oklahoma Supreme Shorthorn Female.
- Sells open.



CSF EVOLUTION HC  
SIRE OF LOT 43





**LOT 44**

**DUAL REGISTERED**

**PCC DKBF FETTY 331M**

DOB 5/7/24

REG. # PENDING

TATTOO 331M

SHORTHORN PLUS/LOW CHI EXCEPT OK AND TX

- CF SOLUTION X ET
- SULL RED KNIGHT 2030 ET
- K-KIM MONA LISA 10T ET
- SILVEIRAS STYLE 9303
- JSUL PCC DAT STYLE 0356H ET
- JSUL WHO DAT FETTY 6322D ET

- This DUAL-REGISTERED Shorthorn Plus/Low Chi/High Chi OK & TX is a feminine fronted heifer that offers length and stoutness. She is correct in terms of mobility and still blends width and dimension with depth and body volume.
- Sells open.

**LOTS 44 + 45**

- Bret campaigned a maternal sister to lots 44 and 45 that was selected for \$30,000 from the 2020 PCC Fall Sale by our partners Brown Farms to add to their awesome donor arsenal, and her first daughter sells in this offering as lot 47. She was Calf Champion at Congress before being named the Bronze Medallion Supreme Heifer and Reserve Champion Chi at the 2022 Oklahoma Youth Expo. Bret also exhibited another maternal sister to lots 44 and 45 that was named Grand Champion Chi Female at the 2022 Fort Worth Stock Show as a calf.
- The dam of lots 44 and 45, JSUL Who Dat Fetty 6322D is a decorated producer of champions and high sellers and was sold for herself for \$85,000.



JSUL PCC FETTY WHO 2173K  
\$36,000 Maternal sister to lots 44 and 45



JSUL PCC FETTY'S PRIDE 1407J  
Maternal sister to lots 44 and 45

**PCC**



**LOT 45**

**DUAL REGISTERED**

**PCC DKBF FETTY 326M**

DOB 4/25/24

REG. # PENDING

TATTOO 326M

SHORTHORN PLUS/LOW CHI EXCEPT OK AND TX

- CF SOLUTION X ET
- SULL RED KNIGHT 2030 ET
- K-KIM MONA LISA 10T ET
- SILVEIRAS STYLE 9303
- JSUL PCC DAT STYLE 0356H ET
- JSUL WHO DAT FETTY 6322D ET

- Another DUAL-REGISTERED Shorthorn Plus/Low Chi/High Chi OK & TX and flush sister to lot 45 that is as cool necked as they come with a profile that will certainly catch the attention of whoever is evaluating her.
- Sells open.



JSUL PCC FETTY'S PRIDE 1407J  
MATERNAL SISTER TO LOTS 44 AND 45



JSUL PCC DAT STYLE 0356H  
MATERNAL SISTER TO LOTS 44 AND 45



JSUL WHO DAT FETTY 6322D  
DAM OF LOTS 44 AND 45

PCCPCCPCC

IT'S ALL ABOUT THE PEOPLE



PEMBROOK CATTLE COMPANY



# MaineTainers / Maine Angus



PEMBROOK CATTLE COMPANY



**LOT 46**

*DUAL REGISTERED*

## DKBF PCC FETTY 333M ET

DOB 4/20/24

REG. # 554457

TATTOO 333M

MAINETAINER/LOW CHI EXCEPT OK AND TX

┌ BK XIKES X59

└ TJSC END GAME 616 ET

┌ TJSC MISS HARMONY 58C

┌ ASHW WHO DA MAN

└ JSUL PCC DAT GIRL 0393H ET

┌ JSUL TOTAL GIRL 41

- Continuing with the "Fetty" family, this DUAL-REGISTERED Maintainer/Low Chi offers the same look and quality we have come to expect from this cow line. This flashy built heifer has the length of neck and strength of topline put her in an elite class of show prospects destined for success while still being impeccable in her structure and unique in her design to further enhance her center body dimension and added shape up high.
- Bret campaigned a maternal sister to 46 that was selected for \$30,000 from the 2020 PCC Fall Sale by our partners Brown Farms to add to their awesome donor arsenal, and her first daughter sells in this offering as lot 47. She was Calf Champion at Congress before being named the Bronze Medallion Supreme Heifer and Reserve Champion Chi at the 2022 Oklahoma Youth Expo. Bret also exhibited another maternal sister to 46 that was named Grand Champion Chi Female at the 2022 Fort Worth Stock Show as a calf.
- The dam of this female, JSUL Who Dat Fetty 6322D is a decorated producer of champions and high sellers and was sold for herself for \$85,000.
- Sells open.



JSUL PCC FETTY WHO 2173K  
\$36,000 MATERNAL SISTER TO LOT 46  
AND TO THE DAM OF LOT 47



JSUL PCC FETTY'S PRIDE 1407J  
MATERNAL SISTER TO LOT 46 AND TO  
THE DAM OF LOT 47

PCC



**LOT 47**

*DUAL REGISTERED*

## PCC DKBF FETTY 327M ET

DOB 05/08/2024

REG. # 423737

TATTOO 327M

MAINETAINER/LOW CHI EXCEPT OK AND TX

┌ BK XIKES X59

└ TJSC END GAME 616 ET

┌ TJSC MISS HARMONY 58C

┌ ASHW WHO DA MAN

└ JSUL PCC DAT GIRL 0393H ET

┌ JSUL TOTAL GIRL 41

- This DUAL-REGISTERED Maintainer/Low Chi is a 3/4 sister to lot 46 and offers the same level of style and balance with her combination of angularity and power.
- The dam of lot 47 was selected for \$30,000 from the 2020 PCC Fall Sale by our partners Brown Farms to add to their awesome donor arsenal, and this is her first daughter to sell. She was Calf Champion at Congress before being named the Bronze Medallion Supreme Heifer and Reserve Champion Chi at the 2022 Oklahoma Youth Expo.
- Sells open.



JSUL WHO DAT FETTY 6322D  
DAM OF LOT 46 AND  
GRANDAM OF LOT 47



JSUL PCC FETTY'S PRIDE 1407J  
MATERNAL SISTER TO LOT 46 AND TO  
THE DAM OF LOT 47



JSUL PCC DAT STYLE 0356H  
DAM OF LOT 47 AND MATERNAL SISTER  
TO LOT 46



KJSC REAL DEAL 19D  
PRODUCED FROM THE SAME COW FAMILY AS LOT 48

**LOT 48**

### KJSC PCC FIONA 419M

DOB 4/3/24 REG. # 553566 TATTOO 419M

MAINE ANGUS IN NATIONAL SHOWS / MAINETAINER

- └ DAMERON FIRST CLASS
- └ SILVEIRAS HARAS PRIMAL 8525
- └ SILVEIRAS SARAS DREAM 1339
- └ BOE GARTH
- └ KJSC FIONA 819F
- └ KJSC KYRO C19 ET

**PCC**

- Lot 48 is a well-designed, bold ribbed female that goes to the surface on extra substance of bone. She blends power with femininity, as she not only has width and shape up high, but is long fronted, deep bodied and good structured.
- This heifer traces to the same foundation female as the popular Steirwalt sire, Real Deal and many other top selling heifers from the Steirwalt online sales.
- This heifer will compete as a MaineAngus in national shows and in the Maintainer division in all others.
- Sells open.

• • MAINTAINER • •

# LOTS 49-51

- └ NMR MATERNAL MADE
- └ ML MVP 23E ET
- └ MISS GREEN VALLEY 535R
- └ MINN HYBRID 101D ET
- └ PCC ANNISTON 215F
- └ PCC WITCH DOCTOR 480W

## LOTS 49-51

- Lots 49 thru 51 are flush sisters by MVP out of PCC Anniston 215F aka "Betty Davis", who was named Division Champion for Bret Pembroke at the Maine Junior National, National Western Stock Show, and many others.
- A ¾ brother to lots 49 thru 51 was named Reserve Grand Champion B&O Maintainer Bull at the 2024 Maine Anjou Junior National.
- These unique flush sisters are DUAL-REGISTERED Maintainer/High Chi and will be competitive in both realms.



LOT 49

DUAL REGISTERED

### DKBF PCC ANNISTON 332M ET

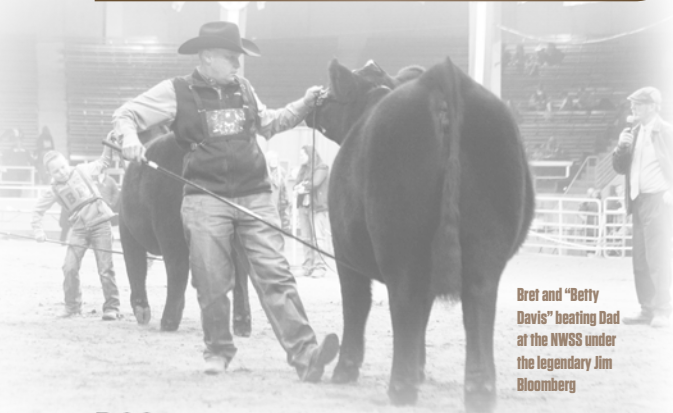
DOB 4/26/24

REG. # 554459

TATTOO 332M

MAINTAINER/HIGH CHI

- Leading off these flush sisters is this flashy, good-looking heifer that is bound to generate a buzz in the showing. She is great in her body shape, wide chested, powerful out of her hip and still flexible off both ends of her skeleton. She is high-headed and super stylish, while still being bold and functional in her basic design.
- Sells open.



Bret and "Betty Davis" beating Dad at the NWSS under the legendary Jim Bloomberg



ML MVP 23E ET  
SIRE OF LOTS 49 THRU 51



PCC ANNISTON 215F AKA "BETTY DAVIS"  
DAM OF LOTS 49 THRU 51



DKBF PCC SURE SHOT 444L  
3/4 BROTHER TO LOTS 49 THRU 51

PCC



LOT 50

MAINTAINER/HIGH CHI

DUAL REGISTERED

### DKBF PCC ANNISTON 335M ET

DOB 04/25/2024

REG. # 554461

TATTOO 335M

- Lot 50 is big footed, heavy boned and powerful in her general build. She blends shape and width with a functional body type, while still being super stout out of her hip. She gives a wild look up front as she is a flashy, long necked and high headed female destined for the showing.
- Sells open.



LOT 51

MAINTAINER/HIGH CHI

DUAL REGISTERED

### DKBF PCC ANNISTON 334M ET

DOB 5/2/24

REG. # 554460

TATTOO 334M

- Another impressive heifer to round out this trio of flushmates that all have a bright future ahead of them. Showcasing look and balance, lot 51 is a stylish female that offers advantages in terms of her structural build, while merging the right kind of body type with added stoutness. She is level and square, yet wide based and extra dimensional.
- Sells open.

PCC PCC PCC PCC

IT'S ALL ABOUT THE PEOPLE



PEMBROOK CATTLE COMPANY

# ANGUS

PCC

PEMBROOK CATTLE COMPANY



ROSE MC ENCORE 0463  
SIRE OF LOT 52



UDE ELLIE 153E  
MATERNAL SISTER TO THE DAM OF  
LOT 52



UDE ELLIE 9197  
MATERNAL SISTER TO THE DAM OF  
LOT 52



UDE ELLIE 9230  
MATERNAL SISTER TO THE DAM OF  
LOT 52



UDE ELLIE 9230  
MATERNAL SISTER TO THE DAM OF  
LOT 52

LOT 52

**PCC S&S ELLIE 4105**

DOB 5/11/24 REG. # PENDING TATTOO 4105

ANGUS

- └ SSF ON POINT 4028
- └ ROSE MC ENCORE 0463
- └ BURNS ELBA 1454
- └ PVF BLACKLIST 7077
- └ UDE ELLIE 0009
- └ SLL ELLIE 2201

- Style and femininity define this lead lot in the Angus division! Lot 52 is a special sale feature offering the phenotypic excellence that not only win shows, but also transitions to next generation profitability! Her build and feature at the surface is the foundation for all her added shape and power from there up. Additionally, she is robust bodied heifer with a long neck that ties high to the top of her shoulder. Her unmatched look from the side is sure to find her many friends in the showing, but just as importantly, her pattern and structural advantages imply long-term donor value!
- The dam of lot 52 is a maternal sister to the 2020 NJAS Grand Champion Angus Female, owned by Sara Sullivan, as well as the \$100,000 UDE Ellie 9230, and the \$32,000 UDE Ellie 9197 who was the 2019 KS Beef Expo Reserve Supreme Champion Female, 2020 NWSS ROV Late Junior Heifer Calf Champion, and the 2020 KY Beef Expo Supreme Champion Female. Another sister to the dam of lot 52, UDE Ellie 153E was the 2018 NAILE Grand Champion for Chesney Steenhoek.
- The grandam of lot 52, SLL Ellie 2201, has positioned herself as one of the elite producing Angus females within the industry.
- The sire of lot 52, Encore, has a pedigree lined with championship caliber genetics that can be credited for much of the success that the Angus breed has accomplished in the show and sale arenas across North America and this daughter should add to his already impressive resume.
- Sells open.

PCC



LOT **53** PB ANGUS

**PCC SULL ELLIE 4254M**

DOB 4/9/24 REG. # PENDING TATTOO 4254M

- CFGC BLACK JACK 001
- KR CASINO 6243
- MALSONS SAVANNAH 27Y
- EXAR BLUE CHIP 1877B
- UDE ELLIE 9230
- SLL ELLIE 2201

- This cool looking Angus heifer is chic and flashy in terms of look. To add to this, she is big footed and heavy boned, powerful in her design and robust in her body shape. Collectively, she is destined to generate attention in the ring, while still offering value from a breeding standpoint.
- Sells open.

**LOTS 53 + 54**

• Kicking off a rare run of four KR Casino daughters with lots 53 and 54 that are out of the \$100,000 donor dam, UDE Ellie 9230, that like these daughters, is a true outlier for stoutness, look, and sheer presence from one of the most successful matings to ever carry the UDE prefix...EXAR Blue Chip 1877B x SLL Ellie 2201. This mating yielded two of the most popular Angus heifer calves to sell during the 2019 sale season. The aforementioned dam of lots 53 and 54, UDE Ellie 9230, who

was the 2020 NWSS Division Champion for Sara Sullivan, prior to being named 2020 NJAS Grand Champion Owned Female. She capped off her career with a victory in Freedom Hall when she was selected as the 2020 Grand Champion Junior Angus Female at the NAILE.

- Flush sisters to lots 53 and 54, PCC SULL Ellie 3662L and PCC SULL Ellie 3666L sold for \$50,000 and \$25,000 respectively in the spring 2024 PCC Sale.
- Maternal sisters to lots 53 and 54 include: PCC SULL ELLIE 3197L, the \$45,000 selection of Jelani King from the 2023 Fall PCC Sale; SULL PCC ELLIE 2503K, the \$28,000 selection of Jelani King and SULL PCC ELLIE 2577K, the \$23,000 selection of Denton Cook from the 2023 Spring PCC Sale; and PCC SULL Ellie 2397K who was the \$25,000 selection of Jelani King from the 2022 Fall PCC Sale.



PCC SULL ELLIE 2397K  
\$45,000 MATERNAL SISTER TO 53 AND 54



PCC SULL ELLIE 3666L  
\$25,000 FLUSH SISTER TO LOTS 53 AND 54



PCC SULL ELLIE 3662L  
\$50,000 FLUSH SISTER TO LOTS 53 AND 54



UDE ELLIE 9230  
DAM OF LOT 53



LOT **54** PB ANGUS

**PCC SULL ELLIE 4373M**

DOB 3/4/24 REG. # PENDING TATTOO 4373M

- CFGC BLACK JACK 001
- KR CASINO 6243
- MALSONS SAVANNAH 27Y
- EXAR BLUE CHIP 1877B
- UDE ELLIE 9230
- SLL ELLIE 2201

- Lot 54 offers power and performance in one high-volumed, complete package. She is deep sided, square hiped and sound at the ground. Additionally, she is attractive fronted, and stout featured making her a practical female with lots of extras to compete in the showing.
- Sells open.



SULL PCC ELLIE 2503K  
\$28,000 MATERNAL SISTER TO 53 AND 54

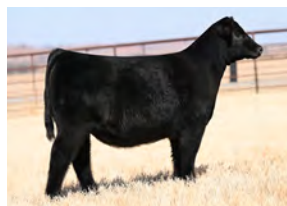


PCC SULL ELLIE 3197K  
\$25,000 MATERNAL SISTER TO 53 AND 54



SULL PCC ELLIE 2577K  
\$23,000 MATERNAL SISTER TO 53 AND 54





**SULL PCC SARAS DREAM 1551J**  
\$85,000 MATERNAL SISTER TO LOT 55



**SULL PCC SARAS DREAM 1541J**  
\$50,000 MATERNAL SISTER TO LOT 55



**SULL PCC SARAS DREAM 1544J**  
\$37,000 MATERNAL SISTER TO LOT 55



**SULL PCC SARAS DREAM 2110K**  
\$100,000 MATERNAL SISTER TO LOT 55



**EXG SARAS DREAM S609 R3**  
FOUNDATION DAM OF LOT 55



**COLBURN'S SARA'S DREAM 6758**  
DAM OF LOT 55

**LOT 55**

## PCC SULL SARAS DREAM 4109M

**DOB 1/6/24 REG. # PENDING TATTOO 4109**

**PB ANGUS**

- └ GFCC BLACK JACK 001
- └ KR CASINO 6243
- └ MALSONS SAVANNAH 27Y
- └ C&C MCKINLEY 3000 EXAR
- └ COLBURN SARAS DREAM 6785
- └ SILVEIRAS SARAS DREAM 1339

**PCC**

- Truly a special feature here! Destined to make her mark in the showing, this elite prospect also offers all the elements of a high-end donor. She is tall fronted while still being bold through her center body, powerful from behind, and correct in her angles for comfort and flexibility in motion. Additionally, she is backed by a proven cow line for added investment return and production value.
- A maternal sister to lot 55, SULL PCC Saras Dream 2110K, was the \$100,000 top-selling heifer in the Fall 2022 PCC Production Sale that was a champion for Cambria Cook, Clovis CA. Another flush sister to lot 34 sold in the 2023 Fall PCC sale for \$10,000.
- Maternal sisters to lot 34 that sold in the 2022 Spring PCC Sale grossed \$232,000 to average an incredible \$38,667 and included the \$85,000 top selling heifer in that event, SULL PCC SARAS DREAM 1551J, selected by Brown Farms in Texas to join their elite donor program, while another maternal sister from that same flush sold for \$18,000 in the 2023 Fall PCC Sale. In the 2024 Spring PCC Sale, a maternal sister sold for \$14,000.
- The dam of lot 34, Colburn Saras Dream 6758, is a maternal sister to Colburn Primo 5153 and traces to the legendary deceased donor EXG Saras Dream S609 R3.
- Sells open.



**LOT 56**

## SULL PCC QUEEN RUTH 4165M

DOB 3/5/24

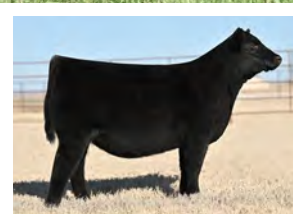
REG. # PENDING

TATTOO 4165M

PB ANGUS

- ┌ CFCG BLACK JACK 001
- └ KR CASINO 6243
- ┌ MALSONS SAVANNAH 27Y
- ┌ PVF INSIGHT 0129
- └ KDJ QUEEN RUTH 608
- ┌ K D J QUEEN RUTH

- This high volumed female is sound footed, level in her design and attractive. She blends shape and width with added look and eye appeal complimenting her physical attributes with a lineage of champions in her pedigree. Casino semen is hard to find and expensive when you do so don't miss the opportunity to own a direct daughter.
- Lot 56 is a direct daughter of KDJ Queen Ruth 608 and a maternal sister to the three EXAR Blue Chip 1877B sired sisters that sold as lots 2 thru 4 in the 2021 Limited Edition Sale at Pembrook Cattle Co. for \$29,000, \$25,000 and 15,000. Another maternal sister by Forbes sold for \$14,000 in the 2023 Fall PCC Sale where maternal sib embryos also sold for \$1,000 per embryo.
- KDJ Queen Ruth 608 is a full sister to the famous Udell donor, KDJ Queen Ruth 502 who was a dominant show heifer for Maddy Udell in 2016 and was named the 2016 NAILE Reserve Grand Champion Junior Angus Heifer.
- In Udell's 2022 The Advantage Production Sale 7 daughters of Queen Ruth 502 averaged \$111,070 and include daughters that sold for \$500,000 and 130,000.
- Sells open.



SULL PCC QUEEN RUTH 0524H  
\$29,000 MATERNAL SISTER TO LOT 56



KDJ QUEEN RUTH 608  
DAM OF LOT 56



KR CASINO 6243  
SIRE OF LOTS 53 THRU 56



**LOT 57**

## PCC TWIN FALLS FOREVERMORE T108

DOB 2/2/24

REG. # 20952567

TATTOO T108

PB ANGUS

- ┌ SILVEIRAS STYLE 9303
- └ SILVEIRAS FORBES 8088
- ┌ COLLISON FOREVER LADY 1622
- ┌ MSF JOURNEY
- └ TWIN FALLS FOREVERMORE TF83
- ┌ TWIN FALLS FOREVERMORE TF56

- Function and practicality provide this Forbes daughter with the basics to be an elite show and donor prospect. This heifer is attractive fronted, good bodied and built correct at the ground.
- The sire of lot 57, Forbes, has made quite an impact across multiple breeds through his progeny after being named himself The ROV Show Bull of the Year being slapped Grand Champion Bull at the 2021 Cattlemen's Congress and Atlantic National Angus Show. He was also Supreme Champion Open Angus Animal at Atlantic National Angus Show, Grand Champion Bull at the 2021 Western National Angus Futurity and Grand Champion Bull at the 2020 Kansas State Fair as well as being named the 2020 Grand Champion Angus Bull at the Fort Worth Stock Show & Rodeo, the 2020 Grand Champion Angus Bull at the Houston Livestock Show & Rodeo and the Reserve Grand Champion Angus Bull at the 2019 ROV American Royal Angus Show.
- Sells open.



SILVEIRAS FORBES 8088  
SIRE OF LOT 57

PCCDCCPCC



PEMBROOK  
CATTLE  
COMPANY



# PCC Angus

PEMBROOK CATTLE COMPANY



**BWP DKBF VALENTINA 3203K**  
\$20,000 FULL SISTER TO LOT 58 AND  
MATERNAL SISTER TO LOTS 59 THRU 61



**BWP DKBF VALENTINA 206K**  
\$10,000 FULL SISTER TO LOT 58 AND  
MATERNAL SISTER TO LOTS 59 THRU 61

**ROJAS VALENTINA 9113 (SASSY)**  
DAM OF LOTS 58 THRU 61



## LOTS 58-61

### LOT 58

## BWP DKBF VALENTINA 120M

DOB 5/4/24 REG. # 4967890 TATTOO 120M

CEU	BW	WW	YW	MILK	RED ANGUS
13	-0.9	71	109	25	

- └ RED U-2 RECKONING 149A
- └ SIX MILE JOHN WICK 882E
- └ RED SIX MILE & CO GLORIA 29A
- └ PZC TMAS FIRESTORM 1800 ET
- └ ROJAS VALENTINA 9113
- └ SIX MILE LAKOTA 112Y

PCC

• Here is a powerful, yet feminine daughter of the popular SIX MILE JOHN WICK 882E who is wide based and stout featured while maintaining angularity through her front end. She is practical in her center body design as she drops from her spine with upper curvature to her rib and sill maintains volume and dimension throughout. At the stand, she is correct in her lines and offers eye appeal and style, while still being functional in her kind.

- Two full sisters to lot 58 have sold for \$20,000 and \$10,000 in past PCC Sales with another selling as lot 68 to lead off the bred division of this sale.
- Sells open.

- We lead off the Red Angus division with four maternal sisters out of Rojas Valentina, aka "Sassy", the 2021 Cattlemen's Congress Grand Champion Red Angus Female and National Champion that was also named Champion Red Angus Female at the FWSS, OYE, and Tulsa State Fair.
- Maternal sisters to lots 58 thru 61 sold for \$20,000, \$18,000, and \$15,500 in the Spring 2023 PCC Sale while maternal brothers were selected by 74-51 for \$20,000 and \$17,000 and included Red Wave whose semen is being offered as lot 67A-E. Two more maternal sisters to lots 58 thru 61 sold for \$12,000 and \$9750 in the 2024 PCC Spring Sale, while in the 2023 Fall PCC Sale, maternal sisters to lots 58 thru 61 sold for \$17,000, \$9,000, \$7,000, and \$6,500 to add to "Sassy's" already impressive legacy and we feel these daughters will continue that trend.

• • RED ANGUS • •



**BWP DKBV VALENTINA 2201K**  
\$18,000 FULL SISTER TO LOT 60 AND  
MATERNAL SISTER TO LOTS 58, 59, & 61



**BWP DKBV VALENTINA 108L**  
\$17,000 MATERNAL SISTER TO  
LOTS 58 THRU 61



**RED DIAMOND EL REY 102**  
SIRE OF LOT 59

LOT **59**

**BWP DKBV VALENTINA 117M**

DOB 5/5/24 REG. # 4967886 TATTOO 117M

CEB	BW	WW	YW	MILK	RED ANGUS
11	-0.4	65	99	30	

- └ MANN RED BOX 55C
- └ RED DIAMOND EL REY 102
- └ COLLIER RUBY 37
- └ PZC TMAS FIRESTORM 1800 ET
- └ ROJAS VALENTINA 9113
- └ SIX MILE LAKOTA 112Y

- Combining genetic value with visual performance, this daughter of RED DIAMOND EL REY 102, who was named Supreme Champion at the 2023 Cattleman's Congress and National Champion Red Angus Bull after first being named Champion Red Angus Bull at the 2022 NWSS and the 2022 FWSS, is a true sale highlight. Her body type and volume suggest function and profitability, as she offers width, volume and stoutness. In addition to this, she is a flexible made heifer that provides an attractive look from the side.
- Sells open.

**VALENTINA "SASSY"**

**PCC**



LOT **60**

**BWP DKBV VALENTINA 119M**

DOB 5/8/24 REG. # 4967896 TATTOO 119M

CEB	BW	WW	YW	MILK	RED ANGUS
9	0.7	70	103	19	

- └ RED U-2 RIFF 1213C
- └ EGL GCC RED EAGLE E7194
- └ TJS SARABEL A174
- └ PZC TMAS FIRESTORM 1800 ET
- └ ROJAS VALENTINA 9113
- └ SIX MILE LAKOTA 112Y

- This female is correct in terms of her lines and functional in her body type. She has flex and cushion at the surface while being bold and dimensional from there up. A young female that is bound to make her mark in the showing.
- Full sibs to lot 60 include BWP DKBV RED WAVE 59K, the featured member of the Pembroke, Brown, and 74-51 herd sire battery whose semen is being offered as lot 67A-67E in this sale, and the \$18,000 BWP DKBV Valentina 2201K.
- Sells open.



LOT **61**

**BWP DKBV VALENTINA 131M**

DOB 5/10/24 REG. # 4973282 TATTOO 131M

CEB	BW	WW	YW	MILK	RED ANGUS COMPOSITE
9	1.0	71	104	27	

- └ SCC TRADITION OF 24
- └ SCC SCH 24 KARAT 838
- └ FCF PROVEN QUEEN 419
- └ PZC TMAS FIRESTORM 1800 ET
- └ ROJAS VALENTINA 9113
- └ SIX MILE LAKOTA 112Y

- This Red Angus Composite is sure to turn some heads. Talk about pizzaz! This young female creates a truly unique look as she is exceptional in terms of front end design and then still bold bodied and powerful from her forerib back through her hip. Her look indicates showing success, and her body type is built for production value. Adding to this, she is correct in her structure and functional making her a big-time show and donor prospect!
- Sells open.



**LOT 62**

## DKBF PCC DAVOR 116M

DOB 4/14/24 REG. # 4967946 TATTOO 116M

CEB	BW	WW	YW	MILK	RED ANGUS
11	-0.2	73	119	34	

- └ MANN RED BOX 55C
- └ RED DIAMOND EL REY 102
- └ COLLIER RUBY 37
- └ SILVEIRAS MISSION NEXUS 1378
- └ SILVEIRAS DAORV 4385
- └ SILVEIRAS DAORV 2370

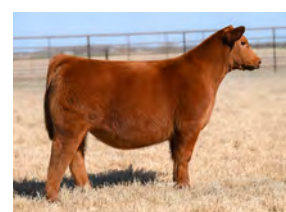
- If you are seeking a Red Angus female that sets herself apart in terms of profile, take a look here.
- The sire of lot 62, RED DIAMOND EL REY 102, was named Supreme Champion at the 2023 Cattlemen's Congress and National Champion Red Angus Bull after first being named Champion Red Angus Bull at the 2022 NWSS and the 2022 FWSS and many say that the dam of this donor prospect is the best Red Angus female ever raised at Silveiras.
- Many say that the dam of lot 62 is the best Red Angus female ever raised at Silveiras.
- Sells open.



RED DIAMOND EL REY 102  
SIRE OF LOT 62 - SUPREME CHAMPION BULL 2023 CATTLEMEN'S CONGRESS



SILVEIRAS DAORV 4385  
DAM OF LOT 62



DKBF PCC DAORV 148L  
FLUSH SISTER TO LOT 62



**LOT 63**

## DKBF PCC PRICILLA 125M

DOB 3/2/24 REG. # 4967950 TATTOO 125M

CEB	BW	WW	YW	MILK	RED ANGUS
10	0.7	71	111	27	

- └ ALT MOON SHOT 920G
- └ GCC JBCC HARVEST MOON 313K
- └ TW LULU 'S GIRL 906G
- └ MANN RED BOX 55C
- └ DKBF PRICILLA 415H
- └ RED BLAIRS PRICILLA 44Z

- This is a powerhouse Red Angus heifer in terms of combining rib, volume, and bone all while maintain the length of front and structural integrity to find her way to the front of the class.
- Lot 63 combines GCC JBCC HARVEST MOON 313K, a member of the Griswold sire lineup, with a daughter of the famous Blairs.Ag donor, Priscilla 44Z who is also the dam of the popular Semex sire, Red Double B Bullseye 1B.
- A maternal sister to the dam of lot 63 was campaigned by Bret Pembrook and was named Division 1 Champion at the 2019 Oklahoma Youth Expo and Class Winner at the 2019 National Junior Red Angus Show.
- Sell open.



RED BLAIRS PRICILLA 44Z  
GRANDAM OF LOT 63



GCC JBCC HARVEST MOON 313K  
SIRE OF LOT 63



**BF PCC CROSSFIRE 427J**  
\$15,000 MATERNAL SISTER TO  
LOTS 64 AND 65

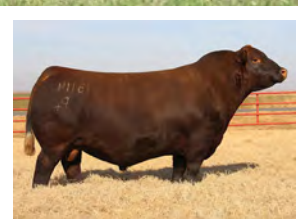


**BIX CROSSFIRE 125E**  
DAM OF LOTS 64 AND 65

**PCC**



**BIX CROSSFIRE 125E**  
DAM OF LOTS 64 AND 65



**DUFF RED BLOOD 1814A**  
SIRE OF LOTS 64 AND 65

**LOT 64**

## DKBF PCC CROSSFIRE 118M

DOB 3/20/24 REG. # 4967948 TATTOO 118M

GED	BW	WW	YW	MILK	RED ANGUS
13	-1.8	63	93	29	

- └ ROJAS RIOJA 6052
- └ DUFF RED BLOOD 18114
- └ DUFF JUANADA 927K 15124
- └ CBCB CROSSFIRE 1209B
- └ BIX CROSSFIRE 125E
- └ C-BAR ABIGRACE Y36

- This dark red, chestnut colored Red Blood daughter is striking on the profile with a head and neck presentation that is rare among her breed contemporaries.
- Sells open.

## LOTS 64 + 65

- This proven donor dam of lots 64 and 65 was one of Bret's first Red Angus show heifers and won her division at every national show and was named breed champion many times before selling in the 2023 Fall PCC Sale.
- A maternal sister to lots 64 and 65, was the \$15,000 selection of Blane Sadler, Groesbeck, TX from the 2021 Fall PCC Production Sale.
- The sire of lots 64 and 65, Duff Red Blood 18114, is truly a unique individual that is evoking generations of Angus history in a dark Red version. Combining the legendary Dixie Erica and Juanada cow families to extend breed altering maternal capabilities through his progeny.

**LOT 65**

## DKBF PCC CROSSFIRE 124M

DOB 3/22/24 REG. # 4967954 TATTOO 124M

GED	BW	WW	YW	MILK	RED ANGUS
13	-1.8	63	93	29	

- └ ROJAS RIOJA 6052
- └ DUFF RED BLOOD 18114
- └ DUFF JUANADA 927K 15124
- └ CBCB CROSSFIRE 1209B
- └ BIX CROSSFIRE 125E
- └ C-BAR ABIGRACE Y36

- This heifer is extra impressive from the side, being big bodied and high volumed, while still being flashy up front and stout out of her hip. In addition, she is expansive in her heart yet trendy in her chest giving her a killer look while on the profile.
- Sells open.

RED U2Q

# OUTLANDER

2462K



LOT 66A-E

**SELLING 25 SEXED FEMALE UNITS  
IN 5-UNIT PACKAGES**

RED ANGUS

└ RED U-2 FOREIGNER 413B  
└ RED U2Q OUTLANDER 2462K  
└ RED U-2 ANEXA 271Y

- RED U2Q OUTLANDER 2462K presents a proven pedigree with a dominant phenotype. He has a commanding presence, a GREAT foot shape and impeccable skeletal design, with POWER AND DIMENSION to spare.
- His dam, Anexa 271Y, is a high dollar generating, proven, power cow and is known for her sons Reckoning, Entourage, Bad Moon Rising and others. She has consistently produced high sellers with performance and muscle. Outlander's sire, Foreigner 413B, adds muscle and is one of the breed's best foot improvers. His sons and daughters have an impressive square hip and great fleshing ability. In Outlander's pedigree, there are foundational cows like 333N, 09E, 271Y and 8026U. Use him with confidence to build foundations for your program!
- With an adjusted WW of 996 and 1585 YW, Outlander brings performance in the right design. Additionally, he will be a great mating choice to diversify many of today's popular Red Angus pedigrees.
- SELLING 25 SEXED FEMALE UNITS IN FIVE 5-UNIT PACKAGES

SEMEN

BWP DKBF

# RED WAVE

59K



LOT 67A-E

**SELLING 25 SEXED FEMALE UNITS  
IN 5-UNIT PACKAGES**

RED ANGUS

└ EGL GCC RED EAGLE E7194  
└ BWP DKBF RED WAVE 59K  
└ ROJAS VALENTINA 9113

- This is the first opportunity to purchase semen on BWP DKBF RED WAVE 59K through a live PCC sale and only the second time it has been offered, who is a featured member of the Pembroke, Brown, and 74-51 herd sire battery that blends the PCC herd sire Red Eagle with Rojas Valentina, aka "Sassy", who was the 2021 Cattlemen's Congress Grand Champion Red Angus Female and National Champion that was also named Champion Red Angus Female at the FWSS, OYE, and Tulsa State Fair and who is rapidly ascending as one of the top donors in the PCC herd.
- RED WAVE is going to be used heavily in the PCC and Brown programs and progeny will be featured soon in upcoming PCC sales.
- Countless maternal sisters and two flush brothers have been among the top sellers in past PCC sales and full and maternal sib embryos have been in high demand.
- SELLING 25 SEXED FEMALE UNITS IN FIVE 5-UNIT PACKAGES

PCC





**LOT 68**

## BWP DKBF VALENTINA 113L

**DOB 5/6/23 REG. # 4799014 TATTOO 113L**

GED	BW	WW	YW	MILK	RED ANGUS
13	-1.0	71	109	25	

- └ RED U-2 RECKONING 149A
- └ PZC TMAS FIRESTORM 1800 ET
- └ SIX MILE JOHN WICK 882E
- └ ROJAS VALENTINA 9113
- └ RED SIX MILE & CO GLORIA 29A
- └ SIX MILE LAKOTA 112Y

- AI'd on 2/17/24 to Duff HD 2046. Safe to AI.
- This lead bred heifer is a donor in the making and is a direct daughter of Rojas Valentina, aka "Sassy", the 2021 Cattlemen's Congress Grand Champion Red Angus Female and National Champion that was also named Champion Red Angus Female at the FWSS, OYE, and Tulsa State Fair.
- Two full sisters to lot 58 have sold for \$20,000 and \$10,000 in past PCC Sales with another being featured as lot 58 in this offering.
- Maternal sisters to lot 68 sold for \$18,000, and \$15,500 in the Spring 2023 PCC Sale while maternal brothers were selected by 74-51 for \$20,000 and \$17,000 and included Red Wave whose semen is being offered as lot 67A-E. Two more maternal sisters to lot 68 sold for \$12,000 and \$9750 in the 2024 PCC Spring Sale, while in the 2023 Fall PCC Sale, maternal sisters to lot 68 sold for \$17,000, \$9,000, \$7,000, and \$6,500 to add to "Sassy's" already impressive legacy.



ROJAS VALENTINA 9113 (SASSY)  
DAM OF LOT 68



BWP DKBF VALENTINA 3203K  
\$20,000 FULL SISTER TO LOT 68

**PCC**



**LOT 69 RED ANGUS**

## BWP SWAY 901K

**DOB 12/12/22 REG. # 4764877 TATTOO 901K**

- └ RED U-2 RIFF 1213C
- └ EGL GCC RED EAGLE E7194
- └ TJS SARABEL A174
- └ PZC TMAS FIRESTORM 1800 ET
- └ ROJAS SWAY 9401
- └ SIX MILE LAKOTA 112Y

- PE'd 3/1/24 until 4/12/24 to RED U2Q OUTLANDER 2462K. Checked safe.
- This bred female is flashy and attractive, while being impressive in the look to her center body, and correct in her structural build making her the ideal foundation donor to cultivate top show and performance genetics.
- The dam of lot 69, ROJAS Sway 9401, was the \$14,000 lead Red Angus lot in the 2023 Fall PCC Sale and is a flush sister to Rojas Valentina, aka "Sassy", who was the 2021 Cattlemen's Congress Grand Champion Red Angus Female and National Champion, and both have been top donors in the PCC herd.
- 16 Maternal sib embryos to lot 69 sold for \$11,400 to average an impressive \$712.50 per embryo in the 2023 Spring PCC Sale.



ROJAS SWAY 9401  
DAM OF LOT 69



EGL GCC RED EAGLE E7194  
SIRE OF LOT 69



SIX MILE JOHN WICK 882E  
SIRE OF LOTS 68 & 70



**LOT 70**

## DKBF PCC BLOCKANA 307L

**DOB 5/7/23 REG. # 4799022 TATTOO 307L**

GED	BW	WW	YW	MILK	RED ANGUS
11	1.1	81	130	23	

- └ RED U-2 RECKONING 149A
- └ RED FINE LINE MULBERRY 26P
- └ SIX MILE JOHN WICK 882E
- └ DAMAR 101J BLOCKANA A121
- └ RED SIX MILE & CO GLORIA 29A
- └ DFRA BLOCKANA 101

- AI'd on 2/18/24 to Duff HD 2046. Safe to AI.
- The dam of lot 70 is one powerful beast and is one of the elite donor females at Brown Farms. She was purchased out of the Cloud 9 Dispersal and was one of their high sellers for \$26,000 where her natural heifer calf and maternal sister to lot 70 commanded \$25,000.
- A maternal sister to lot 70 was the \$21,000 high-selling Red Angus in the 2021 PCC Fall Sale and was successfully campaigned by Madeline McClain.

PCCPCCPCCPCC



IT'S ALL ABOUT THE PEOPLE

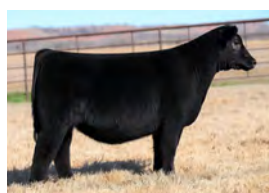


PEMBROOK CATTLE COMPANY



# Lim-Flex PCC

PEMBROOK CATTLE COMPANY



**PCC TSSL LADY IN BLACK**  
\$15,000 MATERNAL SISTER TO LOT 71



**MKLN 1105J**  
FLUSH SISTER TO LOT 58



**JSZC HH TSSG LARISSA 101G ET**  
DAM OF LOT 71



**RIVERSTONE CHARMED**  
MATERNAL GRANDAM OF LOT 71



**HSF YOUR FANTASY**  
FOUNDATION THIRD DAM OF LOT 71

**LOT 71**

**PCC TSSL BTOM BEYONCE 460IM**

**DOB 2/22/24 REG. # PENDING TATTOO 460IM**

**LIMOUSIN**

- └ SCC TRADITION OF 24
- └ SCC SCH 24 KARAT 838
- └ FCF PROVEN QUEEN 419
- └ SILVEIRAS STYLE 9303
- └ JSZC TSSC LARISSA 49G ET
- └ RIVERSTONE CHARMED

• “Hard to beat” defines this Lim-Flex female. At the stand, she is impressive in her look ahead of her shoulder, and then from there back she is bold and robust in her center body. Additionally, she is wide based, stout hipped and offers genuine shape throughout. Going to the ground, she blends added bone and foot size with the ability to move with flexibility and authority. There is no question this female will garner her share of successes, and then ultimately make her mark on the bottom side of Lim-Flex pedigrees.

• The dam of lot 71 is one of the leading daughters of the once in a lifetime producer, Riverstone Charmed. Charmed will forever remain the benchmark of quality that one envisions when evaluating Limousin seedstock. The impact that this cow family has had on the progression of the Limousin business is simply unparalleled. In 2021, JSZC TSSC Larissa 101G joined the Larissa cow family’s winners list when she was selected as the Limousin Junior National Third Overall Lim-Flex Heifer for Mackenzie Neal. 101G continued her winning ways when she was selected as the 2021 Ohio State Fair Supreme Champion Junior Breeding Heifer.

• Maternal sisters to lot 71 include: PCC TSSL LADY IN BLACK, who sold for \$15,000 in the Spring 2023 PCC Sale; MKLN 1105J, who was the 3rd Overall Junior Female and Grand Champion Lim-Flex Female at the 2023 Cattleman’s Congress as well as the Limousin Junior National Grand Champion Lim-Flex Heifer in 2022 and the 2023 Reserve Grand Champion Lim-Flex Female; two other maternal sisters by SCC SCH 24 Karat 838 that commanded \$86,000 and \$72,000; and another sister who was a top 5 finisher at the Cattleman’s Congress.

• Sells open.

**PCC**



**LIVE** *like* **LILY**  
FOUNDATION



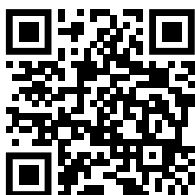
IN MEMORY OF *Lily Romanchuk* 2000-2019

# FOR FULL MORTALITY INSURANCE TO BE BOUND IMMEDIATELY,

please scan the QR code or go to [www.insureyourcattle.com](http://www.insureyourcattle.com).

Must be done within 24 hours of sale closing.

If more than 24 hours after sale closing please go to [www.cattleinsurance.com](http://www.cattleinsurance.com).



If you have any questions please contact:



**INSURE YOUR  
CATTLE.COM**

Jimmy James 580-481-0955 or Jace James 580-481-0927



## TARGETED NUTRITION PROGRAMS FOR SERIOUS RANCHERS

**CUSTOM BLENDED FEED PROGRAMS** with a local staff as passionate about serving our customers as you are about your operation. **YOU DESERVE THE SERVICE AND RELATIONSHIP** of a local company with the resources of a large one.

With over 15 locations, our nutritionists, experienced sales staff and committed employees are focused on delivering one thing... **BETTER FEED, BETTER RESULTS.**

☎ 800.777.1562    ✉ [INFO@LNC-ONLINE.COM](mailto:INFO@LNC-ONLINE.COM)

[LNC-ONLINE.COM](http://LNC-ONLINE.COM)





STATE CHAMPIONS  
FAIRVIEW  
8 7:30 34  
BALL ON 4TH CITY  
Championship

THE SHOWTIMES  
Reserve Champion  
Chionis Female  
THE SHOWTIMES

M FARMS  
12 Mile Division

STATE CHAMPION  
FAIRVIEW

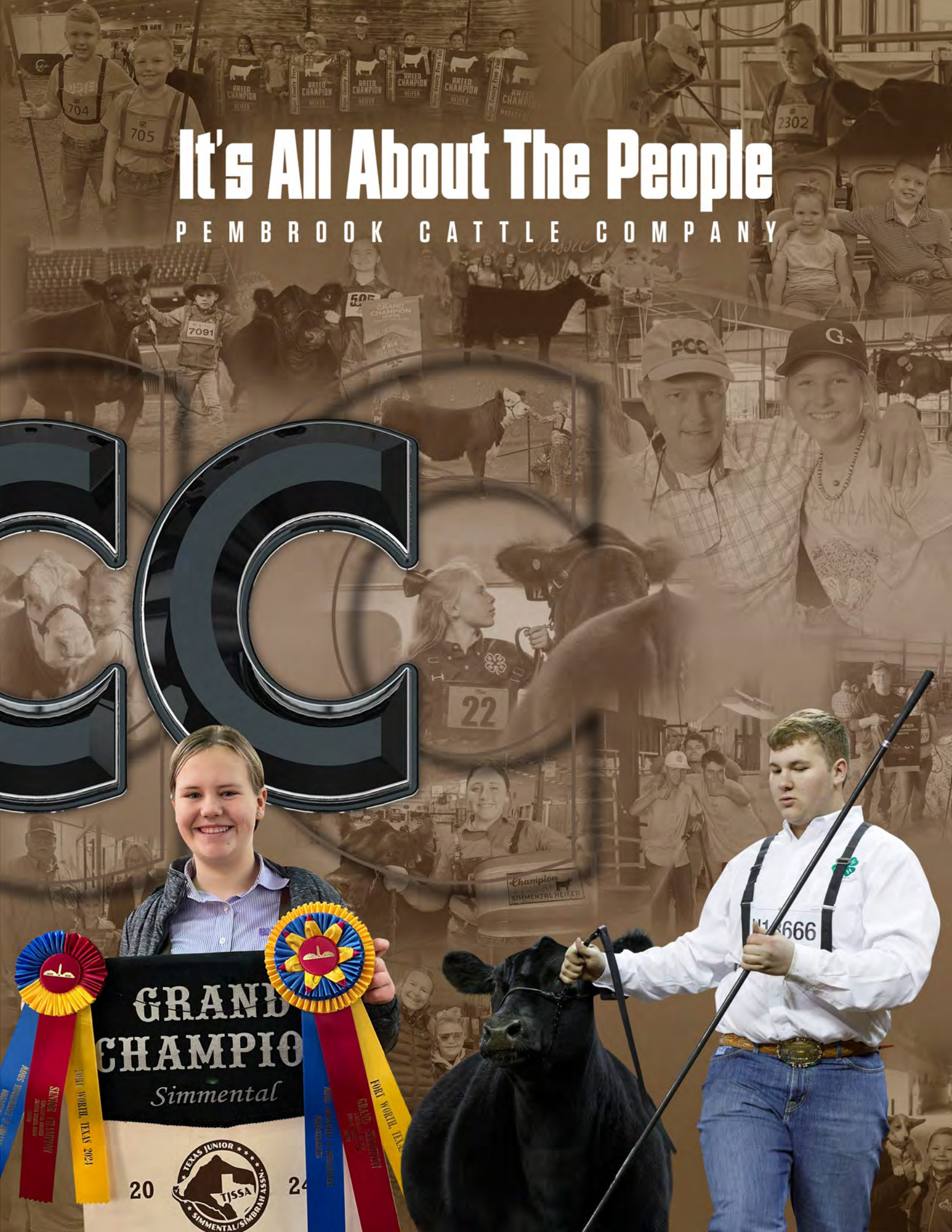
CHAMPION  
BREAUX BREWER SHOW

2024 NATIONAL EXHIBITION  
2113  
SALLERSON

6146  
705  
SALLERSON

# It's All About The People

PEMBROOK CATTLE COMPANY





PO BOX 1219  
EDMOND, OK 73083



# PEMBROOK CATTLE COMPANY

LOT VIDEOS:



SCAN TO VIEW VIDEOS



CATALOG DESIGN BY THE SHOWTIMES, INC.



**Bid Live Online** cci.live  
"Gavel's Down. The Best in Online Marketing"  
(516) 366-0734 | cci.live | schedule@cci.live