



CONLEY  

---

CATTLE

**ANNUAL FALL PRODUCTION SALE**

6:30 P.M. - SATURDAY, SEPTEMBER 21, 2024 - SULPHUR, OKLAHOMA





# SCHEDULE OF EVENTS

---

## THURSDAY, SEPTEMBER 19TH

8 A.M. - Cattle available for viewing  
6 P.M. - 2024 Diamond Hats Annual Gala  
*National Cowboy & Western Heritage Museum  
Oklahoma City, OK*

## FRIDAY, SEPTEMBER 20TH

OPEN HOUSE ALL DAY - Refreshments Available  
12 P.M. - Linz Heritage Angus 8th Annual Female Sale

## SATURDAY, SEPTEMBER 21ST

8 A.M. - Cattle available for viewing  
*Food & refreshments available all day*  
12 P.M. - Lunch served  
12 P.M. - Pollard Farms 27th Annual Female Sale  
5 P.M. - Dinner served  
**6:30 P.M. CONLEY CATTLE FALL PRODUCTION SALE**

# THE COW FAMILIES

---

THE HONEY BEAR FAMILY	pgs. 10-13
THE SANDY 2355 FAMILY	pgs. 14-23
THE SANDY 5104 FAMILY	pgs. 24-29
THE PRINCESS FAMILY	pgs. 30-33
THE MADDIE FAMILY	pgs. 34-37
THE QUEEN MEG FAMILY	pgs. 38-40
FANCY SHOW HEIFER PROSPECTS	pgs. 41-46
RED ANGUS DIVISION	pg. 47
SIMMENTAL DIVISION	pgs. 48-49
MAINE-ANGUS DIVISION	pgs. 50-51
BRED FEMALES	pgs. 52-75
SEMEN + EMBRYOS	pgs. 76-90

# C W E L C O M E

# FRIENDS,

WELCOME to our biggest event of our year, the 14th Annual Fall Production Sale at Conley Cattle! This is undeniably the deepest and most unique set of cattle that we have ever offered. We look forward to this event every year, as it brings back our customers and friends from all over the country. We also look forward to the opportunity to meet many new friends and the chance to earn your business!

There is absolutely no way possible that we could do what we do without a tremendous level of talent, and I feel that we are extremely fortunate to have the crew that we do. I would truly like to say 'thank you' to Cole Atkinson, Jacob Hanen, Kristen Lovett, and Adam Erickson for the hours that they have logged in the preparation for this sale. We have a great team at Conley Cattle that works tirelessly day in and day out. We couldn't do it without each of them, and for that I am thankful.

I firmly believe that the females represented between the covers of this sale catalog have the credentials to find success at any level. Again in 2024, we will feature an incredible offering of daughters sired by the record selling, Conley Lead The Way 0738. We lost his dam this summer, and this will be the one of the last times that we ever offer daughters from the iconic EXAR Princess 1637. Additionally, daughters of Conley Bristow 2317, Conley DS Clear Cut 0510, and Conley Ransom 1810 will highlight the sale. Our very best cow families saturate the entire offering. We are proud of the genuine cow power that supports the females that will sell on September 21st! Many full and maternal sisters to past high sellers, champions, AI sires, and influential individuals in the Angus breed will highlight the event. There is truly something for everyone!

The proven donor cow division of the sale is as loaded as it has EVER been. We are cutting loose of some of our most profitable and predictable females. The bred heifer division is also packed with quality throughout. Many of the females are full and maternal sisters to past high sellers and show ring champions. A large portion of the bred heifers are carrying the service of one of our newest and most intriguing new sire acquisitions, Sitz Comstock 643L. Be sure to check him out when on display at the sale!

Again this year, we will be offering semen from the NEW, the PROVEN, and the RARE that collectively make up the herd sire battery at Conley Cattle! We will also be offering select embryos from the most prolific and highest dollar generating females in our breeding program. The embryos selling are sired by some of our hottest AI sires to ensure optimum success for you! This is an unprecedented chance to add herd building genetics to your breeding program.

I would like to personally invite each of you to Sulphur, Oklahoma for our 14th Annual Fall Production Sale! A special thank you to our loyal customers and partners for the role they have played. Your success is what drives us each and every day. I look forward to seeing each of you on sale day in Sulphur on September 21st! Please call with any questions about the offering.

Thank you for your interest,

*Kyle*



**CASE CONLEY**  
2022 Tulsa State Fair Grand Champion Market Steer



**JACK CONLEY**  
2024 OYE Supreme Champion Commercial Heifer

# THANK YOU!



**COLE, TAILOR, & MADDOX ATKINSON**  
2024 American Angus Association Herdsman of the Year.



**JACOB HANEN**



**KRISTEN LOVETT**



**ADAM ERICKSON**

**SAVE THE DATE!**

*The NJAS is coming to Tulsa, Oklahoma!*

**NATIONAL JUNIOR ANGUS SHOW**  
JUNE 28-JULY 5, 2025

# CONLEY CATTLE

# SALE INFORMATION

SEPTEMBER 21, 2024 - 6:30 P.M. - SULPHUR, OKLAHOMA

## SALE LOCATION

3555 KOLLER ROAD • SULPHUR, OKLAHOMA 73086

## DIRECTIONS

From I-35 take Exit 55 (Davis Sulphur Exit). Go East 8 miles then turn left on to Chickasaw Nation Turnpike and go 4 miles. Exit onto HWY 177 and go North 2 miles to Palmer Road, then turn East (right) and go 2.5 miles on Palmer Road or until you go over the Turnpike. Go right on Koller Road 0.5 miles and on the right is the sale site. You will see the signs on the highway to guide you.

## SALE DAY TELEPHONES

Kyle Conley - 580-618-4533 • Cole Atkinson - 417-773-6421  
Jacob Hanen - 620-200-8774 • Adam Erickson - 918-616-6316  
Kristen Lovett - 580-371-6718

## AUCTIONEER

Steve Dorran - 760-972-7736

## SALE MANAGEMENT

### Angus Live, LLC

Jeremy Haag - 406-833-0117 • anguslive.com

### Innovation AgMarketing, LLC

Graham Blagg - 530-913-6418 • Tim Anderson - 605-682-9343  
Jered Shipman - 806-983-7226 • innovationagmarketing.com

## LIVESTOCK PUBLICATIONS REPRESENTATIVES

Jeff Mafi, Angus Journal - 405-269-6387  
Colton Pratz, OK Cattleman - 405-385-1054  
Delvin Heldermon, Special Assignment - 405-205-1116  
Kelvin Jorgensen, Special Assignment - 402-366-9475  
Kiley McKinna, Special Assignment - 402-350-3447  
Ryan Denton, Special Assignment - 918-629-3004  
DeRon Heldermon, Special Assignment - 405-850-5102

## SALE ACCOMMODATIONS

### ARTESIAN HOTEL & SPA • 580-622-8100

1001 West 1st Street • Sulphur, Oklahoma - Group Code - CCRB24

### HILTON GARDEN INN • 580-226-2223

710 Premier Pkwy • Ardmore, OK 73401

### HAMPTON INN & SUITES • 580-436-4040

1220 Lonnie Abbott Blvd • Ada, OK 74820

### SUPER 8 • 580-622-6500

2116 W. Broadway • Sulphur, Oklahoma

### HAMPTON INN & SUITES • 405-238-7700

105 S. Humphrey Blvd. • Pauls Valley, Oklahoma

### HOLIDAY INN EXPRESS • 405-207-9434

2412 W. Grant Ave. • Pauls Valley, Oklahoma

## SPECIAL CREDITS

Jeana Hurlbut, Catalog & Ad Design, 605-880-7601  
Melissa Grimmel-Schaake, Photos & Videos, 443-417-4842



All 2024 heifers have been i50K'd for genomic enhanced EPDs and parent verification

## LIABILITY

All persons who attend the sale do so at their own risk, legal or otherwise, for their safety or for behavior of the animals. The owners, sale management firm, and the sale stall assume no liability for property loss or any accident that may occur

## SUPPLEMENTAL INFORMATION

A supplemental sheet will be available sale day with complete and up to date calving information. Announcements from the auction block regarding the cattle selling in this sale take precedence over information listed in the catalog. Up-to-date genetic recessive status can be viewed online at [www.angus.org](http://www.angus.org). Retained embryo interests and/or future genetics from specific lots selling will be noted on the supplement sheet.

## SALE PHOTOS

The sale photos of the spring bred cows and bred heifers were taken mid-June. We finished taking photos of the open heifer calves the first weekend in August.

## HERD HEALTH

All cattle will be accompanied by proper health certificated for immediate shipment. Canadian buyers, all Canadian health work will be done at Hill Top Animal Health, by Dr. Cade Copenbarger, 580-622-4088.

## BREEDING GUARANTEE

All females are sold as sound breeders. Seller guarantees each female to produce a live calf or transferrable embryos.

## EMBRYOS/SEMEN + SHIPPING

Each package of 3 embryos will sell with a guarantee of 1-60 day pregnancy if implanted by a certified embryologist. The shipping costs associated with all frozen genetics will be the responsibility of the buyer. For assistance scheduling shipping from Trans Ova Genetics please contact Savannah Dei at 712-441-7427.

## TRUCKING

Truckers believed to be reliable will be available to assist in shipping your purchases.

## LIVESTOCK MORTALITY INSURANCE

To properly insure your investments, James F. Bessler, Inc 815-762-2641

## EMBRYO INTEREST

Conley Cattle will be retaining an embryo interest in several females in the offering, please call to discuss details or check the update sheet on sale day.

## VIEWING AND ONLINE BIDDING

View the sale from your phone, tablet, or desktop computer and bid with confidence! Visit [www.CCI.live](http://www.CCI.live) for complete sale information and online registration. 405.400.9505  
CCI.Live - ONLINE BIDDING



**Watch the Sale Live**  
[www.CCI.live](http://www.CCI.live) - Broadcasting Live  
(405) 400-9505 [schedule@cci.live](mailto:schedule@cci.live)  
Over 35 years in livestock marketing!



# WELCOME.

Quality is defined as “the standard of something as measured against other things of a similar kind; the standard of excellence”. The beef cattle marketplace has certainly put pressure on improvements in quality throughout all classes of cattle. Genetics play a significant role in the quest for obtaining that mark and knowing how to mate the cowherd each generation successfully puts the master plan all in motion. Kyle Conley is a generational cattleman with generational success in the seedstock business. Like those before him, he maintains a disciplined course with flawless execution.

The cattle featured between the covers of this sale book are saturated in the good stuff that Conley Cattle is synonymous with. Stock with high-end features in look, build, and skeleton are on every page with only subtle differences in muscle and body shape. Each lot represents a member of the substantially proven donor pen or one of the profitable and prolific cow families that set the foundation for this name-brand program. Every hoof also features the sire power that continues to drive the bottom line and further prove that this operation is of elite competitive status. This breeding program will only continue to engage the throttle with the fresh turnaround of youthful sire power blended with those that are proven today.

The successful track record of this young program is documented, and the claim is further supported by the customer base filled with staunch critics of the business. Conley Cattle has an awesome crew, they are great to do business with, and the follow-up customer service is unrivaled. Make Sulphur, Oklahoma your destination on the third Saturday of September to take in an outstanding set of top-shelf stock and even better hospitality. The cattle are available for viewing any time prior to the event, and we encourage you to schedule a time to go through them at any point prior to the sale.

Thank you for your interest in this offering, and we are certain that you will like what Conley Cattle has to offer on September 21.

Enjoy the stock!





1736

CATTLEMEN'S  
CONGRESS  
2022

H27392

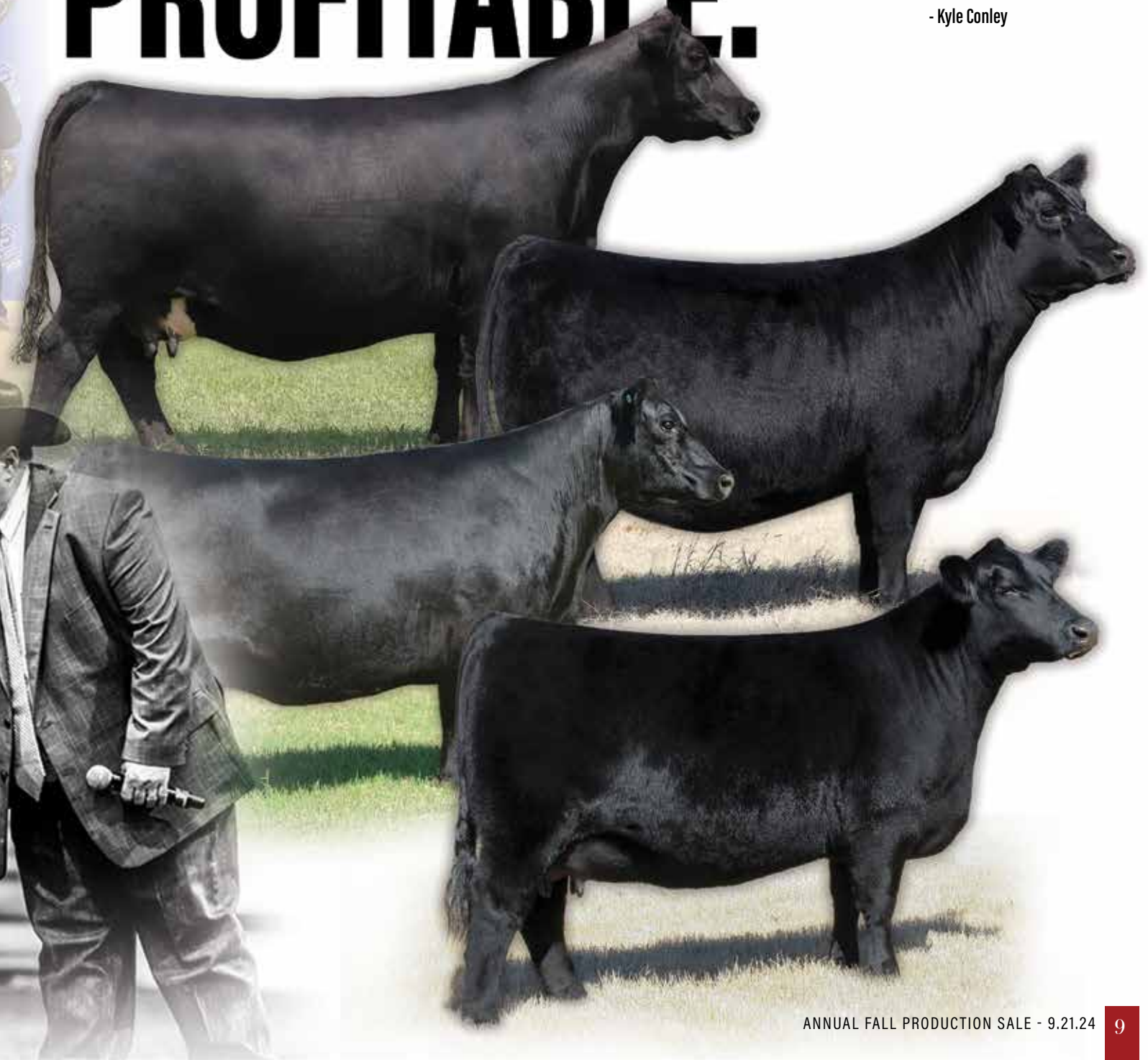


# PROVEN. PREDICTABLE. PROFITABLE.

**"BEHIND** every show heifer prospect, proven donor, or bred heifer in this sale catalog you can count on the fact that they are supported by a strong maternal foundation that is multiple generations deep.

At Conley Cattle we strive to produce championship genetics that you can count on! At the end of the day, it is our goal to maintain the tradition of the Angus breed by producing cattle that thrive in any situation that they are exposed to. Embracing the fundamentals that built the Angus breed is essential to forward progression."

- Kyle Conley



CONLEY  
**SANDY 8934**



The \$540,000 Valued Donor Dam of Lots 1-4 and Full Sister to Lot 5



**CONLEY HONEY BEAR 3762**  
2024 Atlantic National ROV Grand Champion Angus Heifer  
*Congratulations Rob Oakley*



**CONLEY HONEY BEAR 3214**  
2024 NJAS Reserve Heifer Calf Champion Division I  
*Congratulations Hudson DeBerry*

# HONEY BEAR

# THE HONEY BEAR FAMILY



LOT 1

- 4277 is supported by undoubtedly one of the most proven, profitable, and predictable matings that has ever carried the Conley prefix!
- The first of four ET flushmate sisters sired by the \$920,000 Conley Lead The Way 0738 and supported by the \$540,000 valued Conley Sandy 8934 donor that was a featured live lot in the 18th Annual Embryos on Snow sale.
- 4277 is a full sister to the \$215,000 Conley Honey Bear 3762, the 2024 Atlantic National ROV Grand Champion Angus Heifer for Rob Oakley. Other full sibs would include Conley Honey Bear 2147, the \$190,000 high-selling heifer in the 2022 Fall Production Sale that was selected by Houston Ferree. Another full sister, Conley Honey Bear 2147, sold to Circle M Farms and Josie Phillips for \$180,000 in the 2023 Spring Production Sale. She is also a full sister to Conley Honey Bear 3638, the \$135,000 sale feature from the 2023 Fall Production Sale and Conley Honey Bear 3150, the \$85,000 high selling female that sold to Carrol Cattle



Company.  
 • Exquisite featured with the unrivaled skeletal quality and natural dimension to be a major contender!

**CONLEY HONEY BEAR 3762**  
 \$215,000 Full Sister to Lots 1-4

## 1 CONLEY HONEY BEAR 4277

DOB. 4/27/24 AAA. 21022017 TATTOO. 4277 Angus

**CONLEY LEAD THE WAY 0738**  
 19881255

Gateway Follow Me F163  
 EXAR Princess 1637

**CONLEY SANDY 8934**  
 19181593

HA Relevant 6022  
 Silveiras S Sis Sandy 2355

CED	BW	WW	YW	MILK	CW	MARB	REA	SM	SW	SB	SC
1	4.1	62	104	23	43	0.3	0.72	33	47	131	203

## 2 CONLEY HONEY BEAR 4648

DOB. 3/3/24 AAA. 21022019 TATTOO. 4648 Angus

**CONLEY LEAD THE WAY 0738**  
 19881255

Gateway Follow Me F163  
 EXAR Princess 1637

**CONLEY SANDY 8934**  
 19181593

HA Relevant 6022  
 Silveiras S Sis Sandy 2355

CED	BW	WW	YW	MILK	CW	MARB	REA	SM	SW	SB	SC
1	4.1	62	104	23	43	0.3	0.72	33	47	131	203



LOT 2

- Conley Honey Bear 4648 is the second of four extremely high quality ET flushmate sisters from arguably the most consistent mating in the history of Conley Cattle!
- 4648 is so long and extended about her front third yet transitions into a bold and three dimension forerib and center body shape. She sets to the surface with a near ideal set to her hip and hind leg design while offering a square pin set.
- She is a full sister to countless high sellers and champion, including Conley Honey Bear 3214, the 2024 NJAS Division I Reserve Champion for Hudson DeBerry of Texas.
- Conley Sandy 8934 has secured her place as one of the great producing "Sandy" derivatives in existence.



**CONLEY HONEY BEAR 2147**  
 \$190,000 Full Sister to Lots 1-4

# THE HONEY BEAR FAMILY

- 4749 is a big footed, stout boned, and well balanced daughter of the legendary Conley Sandy 8934, affectionately known as "Honey Bear"!
- Another full sister to 4749 was selected in the 2024 Spring Production Sale by the Lockhart family of Oklahoma.
- A soft haired, big ribbed, high capacity female that is flawless on her feet and legs with a tremendous look of balance and maternal excellence from the profile.
- Conley Honey Bear 4749 combines so many positives, making her one of the most complete and fault free heifers in the entire sale. Backed by true maternal prowess!



LOT 3

**CONLEY HONEY BEAR 2110**  
\$180,000 Full Sister to Lots 1-4

## 3 CONLEY HONEY BEAR 4749

DOB. 5/10/24 AAA. 21022018 TATTOO. 4749 Angus

**CONLEY LEAD THE WAY 0738**  
19881255

Gateway Follow Me F163  
EXAR Princess 1637

**CONLEY SANDY 8934**  
19181593

HA Relevant 6022  
Silveiras S Sis Sandy 2355

CED	BW	WW	YW	MILK	CW	MARB	REA	SM	SW	SB	SC
1	4.1	62	104	23	43	0.3	0.72	33	47	131	203

## 4 CONLEY HONEY BEAR 4838

DOB. 4/26/24 AAA. 21022014 TATTOO. 4838 Angus

**CONLEY LEAD THE WAY 0738**  
19881255

Gateway Follow Me F163  
EXAR Princess 1637

**CONLEY SANDY 8934**  
19181593

HA Relevant 6022  
Silveiras S Sis Sandy 2355

CED	BW	WW	YW	MILK	CW	MARB	REA	SM	SW	SB	SC
1	4.1	62	104	23	43	0.3	0.72	33	47	131	203

- The class of 2024 from the famed Conley Sandy 8934 are sure to turn heads on sale day!
- Conley Honey Bear 4838 offers so many unique positives that is hard not to admire her. She is so refined and feminine about her front third, clean chested, and smooth shouldered. She transitions into a bold and three-dimension rib cage that is met with a stout hip and pin set.
- She offers a tremendous combination of design, body, substance, and proportionality from the profile!
- It's hard to argue with results, and the fact of the matter is that the "Honey Bear" tribe continues to surface in each set of cattle that we have offered to date!



LOT 4

**CONLEY HONEY BEAR 3638**  
\$135,000 Full Sister to Lots 1-4

SILVEIRAS S SIS  
**SANDY 2355**



**CONLEY SANDY 8522**  
2018 NAILE Spring Heifer Calf Champion  
Maternal Sister to Lots 5-10  
*Congratulations Tate Bell*

Famous Dam of Lots 5-10 and Maternal Granddam of Lots 11-14



**K N C CABIN CREEK SANDY 804**  
Matriarch of the "Sandy" Cow Family!



**CONLEY SANDY 2300**  
2023 IN State Fair Champion Commercial Heifer  
\$180,000 Full Sister to Lots 7-9  
*Congratulations Houston Ferree*



**CONLEY NO LIMIT**  
Promotional AI Sire and Maternal Brother to Lots 5-10



**CONLEY SANDY 7084**  
2018 NAILE Reserve Grand Champion Angus Heifer  
\$80,000 Maternal Sister to Lots 5-10  
*Congratulations Sara Sullivan*

# THE SANDY FAMILY



LOT 5

- **INVESTMENT OPPORTUNITY** of a lifetime!
- It's hard to even begin to put into words what the "Honey Bear" matron has done and means to the Conley Cattle breeding program. Allow us to introduce you to Conley Honey Bear 4355, a FULL SISTER to the \$540,000 valued Conley Sandy 8934, a female that has exceeded the million dollar mark in progeny sales with a lifetime average of more than \$90,000 per head!
- Conley Sandy 8934 has produced as many or more high sellers annually than any Angus cow in modern times, and based on what she produced this year it is safe to say that she is nowhere close to being done yet!
- 4355 is smooth and angular about her front third, bold ribbed, and flawless from a skeletal design standpoint. The opportunity to invest in the future of your breeding program with a female of this caliber that offers this sort of genetic merit is simply unprecedented.
- This is your fast track to success and the chance to own



the next million dollar producing female!

**CONLEY SANDY 8934**  
\$540,000 Valued Full Sister to Lot 5

## 5 CONLEY HONEY BEAR 4355

DOB. 1/27/24 AAA. 21022030 TATTOO. 4355 Angus

**HA RELEVANT 6022**  
18634293

HA Outside 3008  
HA Blackcap Lady 0855

**SILVEIRAS S SIS SANDY 2355**  
17286745

Silveiras Style 9303  
K N C Cabin Creek Sandy 804

CED	BW	WW	YW	MILK	CW	MARB	REA	SM	SW	SB	SC
1	2.8	52	95	29	28	0.18	0.35	38	48	108	178



LOT 6

## 6 CONLEY SANDY 4370

DOB. 4/2/24 AAA. 21022036 TATTOO. 4370 Angus

**S A V EXTENSION 6856**  
18579001

Sinclair Emulation XXP  
S A V Blackcap May 4136

**SILVEIRAS S SIS SANDY 2355**  
17286745

Silveiras Style 9303  
K N C Cabin Creek Sandy 804

CED	BW	WW	YW	MILK	CW	MARB	REA	SM	SW	SB	SC
1	2.7	58	95	22	27	0.31	0.53	45	49	106	182

- Next up is Conley Sandy 4370, a daughter of the foundation matriarch at Conley Cattle, Silveiras S Sis Sandy 2355! She is sired by the \$85,000 S A V Extension 6856, a popular and proven son of the \$8 million+ producing S A V Blackcap May 4136.
- 4370 is a full sister to Conley Sandy 1126, owned by Camden Upchurch of Alabama. 1126 was selected as the 2023 Cattlemen's Congress Reserve Division VI Champion for the Upchurch family.
- She is so long and elegant about her front third, smooth in her shoulder design, and offers an ultra-maternal turn and shape to her center body. We love the balance and eye appeal that this female brings to the table.
- 4370 will be a competitive show heifer, but more importantly she will be a top generator that is backed by true maternal excellence!



**CONLEY SANDY 1126**  
2023 Cattlemen's Congress  
Reserve Division VI Champion  
Full Sister to Lot 6





LOT 7

**7 CONLEY SANDY 4356**

DOB. 5/4/24    AAA. 21022033    TATTOO. 4356    Angus

**CONLEY LEAD THE WAY 0738**  
19881255

Gateway Follow Me F163  
EXAR Princess 1637

**SILVEIRAS S SIS SANDY 2355**  
17286745

Silveiras Style 9303  
K N C Cabin Creek Sandy 804

CEU	BW	WW	YW	MILK	CW	MARB	REA	SM	SW	SB	SC
-2	4.4	59	97	17	32	0.42	0.6	20	37	127	185

• The next trio of ET flushmate sisters are certain to catch your attention! All three females are sired by the \$920,000 valued Conley Lead The Way 0738 and backed by the everlasting influence of the iconic Silveiras S Sis Sandy 2355.

• This trio of elite females are FULL SIBS to the \$180,000 Conley Sandy 2300 owned by Mercedes Ferree. She was the 2022 American Royal Reserve Spring Heifer Calf Champion and 2023 Indiana State Fair Grand Champion Commercial Heifer.

• 4356 is one of the best 2355 daughters that we have ever offered. Her eye appeal, balance, and proportions are unparalleled.... come see for yourself!



**CONLEY SANDY 2300**  
\$180,000 Full Sister to Lots 7-10



LOT 8

**8 CONLEY SANDY 4235**

DOB. 4/11/24    AAA. 21022016    TATTOO. 4235    Angus

**CONLEY LEAD THE WAY 0738**    Gateway Follow Me F163  
19881255    EXAR Princess 1637

**SILVEIRAS S SIS SANDY 2355**    Silveiras Style 9303  
17286745    K N C Cabin Creek Sandy 804

CEB	BW	WW	YW	MILK	CW	MARB	REA	SM	\$W	SB	SC
-2	4.4	59	97	17	32	0.42	0.6	20	37	127	185

- 4235 is a full sib to the \$70,000 Conley Sandy 2746, owned by Kathryn Coleman. She was selected as the 2023 Western National Angus Futurity Division II Champion Junior Heifer Calf.
- Other daughters of 2355 have commanded \$130,000, \$80,000, \$70,000, \$26,000, and numerous others from \$10,000 to \$20,000.
- A full brother to this trio of sisters, Conley Lead The Way 2123, was selected for \$30,000 by Diamond T Cattle Company.
- The most notable maternal brother to these females would be none other than the widely popular AI sire, Conley No Limit!
- 4235 takes things to another level... these 2355 daughters are big time show heifer prospects!



**CONLEY SANDY 2746**  
\$70,000 Full Sister to Lots 7-10

THE SANDY FAMILY



**CONLEY LEAD THE WAY 2123**  
\$30,000 Full Brother to Lots 7-10

- Here is another pair of ET flushmate sisters from the iconic Silveiras S Sis Sandy 2355 donor dam, a female that has produced as many champions and high sellers as any matriarch within our breeding program.
- 4602 is an ultra-sleek made female that is refined about her front third, clean chested, and offers a robust shape to the center portion of her body cavity.
- 4161 is the complete, fault free female of the group that is so balanced and maternal in overall look and design. She is a stout hipped, thick made female that offers the look of a donor in the making!
- Invest in the future of your breeding program and add a 2355 daughter to your arsenal!



LOT 9



**CONLEY SANDY 3712**  
2024 NJAS 4th Overall Bred & Owned Heifer  
Maternal Sister to Lots 5-10



LOT 10

**9 CONLEY SANDY 4602**  
DOB. 5/7/24 AAA. 21022037 TATTOO. 4602 Angus

**CONLEY LEAD THE WAY 0738** Gateway Follow Me F163  
19881255 EXAR Princess 1637

**SILVEIRAS S SIS SANDY 2355** Silveiras Style 9303  
17286745 K N C Cabin Creek Sandy 804

CED	BW	WW	YW	MILK	CW	MARB	REA	SM	SW	SB	SC
-2	4.4	59	97	17	32	0.42	0.6	20	37	127	185

**10 CONLEY SANDY 4161**  
DOB. 2/26/24 AAA. 21022038 TATTOO. 4161 Angus

**CONLEY LEAD THE WAY 0738** Gateway Follow Me F163  
19881255 EXAR Princess 1637

**SILVEIRAS S SIS SANDY 2355** Silveiras Style 9303  
17286745 K N C Cabin Creek Sandy 804

CED	BW	WW	YW	MILK	CW	MARB	REA	SM	SW	SB	SC
-2	4.4	59	97	17	32	0.42	0.6	20	37	127	185

# THE SANDY FAMILY



- The first of four ET flushmate sisters from the young and exciting new donor dam at Conley Cattle, Conley Sandy 1729. She is sired by P R Black Friday 0244 and backed by the famous Silveiras S Sis Sandy 2355 donor dam.
- 4553 is by the \$920,000 valued Conley Lead The Way 0738 and offers the signature look of style and presence that he consistently stamps his progeny with!
- She is so refined and feminine about her head and neck, which ties high at the top of her shoulder and transitions into a robust forerib and center body.
- Her silhouette and presence from the side is noteworthy and we believe that her maturity pattern should allow for her to develop into an incredible yearling show heifer.



## CONLEY SANDY 9135

2020 NJAS Division I Heifer Calf Champion  
Maternal Sister to Dam of Lots 11-14

LOT 11

## 11 CONLEY SANDY 4553

DOB. 3/22/24 AAA. 21023655 TATTOO. 4553 Angus

**CONLEY LEAD THE WAY 0738** Gateway Follow Me F163  
19881255 EXAR Princess 1637

**CONLEY SANDY 1729** P R Black Friday 0244  
20299783 Silveiras S Sis Sandy 2355

CED	BW	WW	YW	MILK	CW	MARB	REA	SM	SW	SB	SC
0	4.3	60	94	18	38	0.51	0.66	33	42	136	209

## 12 CONLEY SANDY 4057

DOB. 3/2/24 AAA. 21023656 TATTOO. 4057 Angus

**CONLEY LEAD THE WAY 0738** Gateway Follow Me F163  
19881255 EXAR Princess 1637

**CONLEY SANDY 1729** P R Black Friday 0244  
20299783 Silveiras S Sis Sandy 2355

CED	BW	WW	YW	MILK	CW	MARB	REA	SM	SW	SB	SC
0	4.3	60	94	18	38	0.51	0.66	33	42	136	209



- Much like her sister, 4057 offers a tremendous look of balance and eye appeal from the side. She is chiseled about her front third and transitions into a massive rib cage and hip design.
- Her heaviness of structure and natural dimension is hard to deny! She is undoubtedly one of the stouter featured females from this particular mating.
- The influence of Silveiras S Sis Sandy 2355 on the maternal side of her lineage makes her and her band of sisters even more valuable when considering the generating potential that lies within!



## CONLEY AMERICAN EXPRESS 0159

Maternal Brother to Dam of Lots 11-14

LOT 12

# THE SANDY FAMILY

- 4668 is the third ET flushmate sister from the young and exciting Conley Sandy 1729 donor dam. She is big hipped, stout pinned, and wide bodied. Her dense build and robust body type lead us to believe that her ultimate value will be as a future donor dam.
- A maternal sister to the dam of these four ET flushmate heifers is Conley Sandy 1391, the 2023 ROV Reserve Grand Champion Heifer shown by Lauren Frederick.
- The influence of the legendary Silveiras S Sis Sandy 2355 can be identified throughout the entire sale offering. Genetics of this caliber will only increase in value over time!



## CONLEY SANDY 1391

2023 FWSS ROV Reserve Grand Champion Heifer  
Maternal Sister to Dam of Lots 11-14

LOT 13

## 13 CONLEY SANDY 4668

DOB. 2/20/24 AAA. 21023654 TATTOO. 4668 Angus

**CONLEY LEAD THE WAY 0738** Gateway Follow Me F163  
19881255 EXAR Princess 1637

**CONLEY SANDY 1729** P R Black Friday 0244  
20299783 Silveiras S Sis Sandy 2355

CED	BW	WW	YW	MILK	CW	MARB	REA	SM	SW	SB	SC
0	4.3	60	94	18	38	0.51	0.66	33	42	136	209

## 14 CONLEY SANDY 4177

DOB. 2/24/24 AAA. 21023657 TATTOO. 4177 Angus

**CONLEY LEAD THE WAY 0738** Gateway Follow Me F163  
19881255 EXAR Princess 1637

**CONLEY SANDY 1729** P R Black Friday 0244  
20299783 Silveiras S Sis Sandy 2355

CED	BW	WW	YW	MILK	CW	MARB	REA	SM	SW	SB	SC
0	4.3	60	94	18	38	0.51	0.66	33	42	136	209

- 4177 is a massive ribbed, stout pinned, big hipped daughter of the \$920,000 valuation Conley Lead The Way 0738 that is supported by the up and coming young donor dam, Conley Sandy 1729!
- She is a smooth made female that offers an elegant and attractive look about her front third. She reads with a futuristic look of quality. 4177 so long and stout in her hip structure, with an ideal set to her hind leg design.
- A very competitive show heifer with big league donor cow potential!



## CONLEY SANDY 2355

Maternal Granddam of Lots 11-14

LOT 14

# THE SANDY FAMILY



- 4940 is the first of four ET flushmate heifer calves that are supported by the influence of Conley S Sis Sandy 435, the full sister to the dominant producing Silveiras S Sis Sandy 2355.
- 435 is now a member of the illustrious donor pen at K&M Cattle Company of Indiana.
- She is a big footed, stout featured female that is sired by the record selling Conley Lead The Way 0738!
- In addition to her balance and symmetry, 4940 has been blessed with an incredible hair coat.
- A high quality female that is supported by one of the foundation matrons of the "Sandy" cow family.



**CONLEY S SIS SANDY 435**  
Dam of Lots 15-18

LOT 15

## 15 CONLEY KM SANDY 4940

DOB. 3/18/24 AAA. 21023889 TATTOO. 4940 Angus

**CONLEY LEAD THE WAY 0738** Gateway Follow Me F163  
19881255 EXAR Princess 1637

**CONLEY S SIS SANDY 435** Silveiras Style 9303  
17908017 K N C Cabin Creek Sandy 804

CED	BW	VW	YW	MILK	CW	MARB	REA	SM	SW	SB	SC
3	5	60	97	14	32	0.6	0.54	11	32	134	185

## 16 CONLEY KM SANDY 4067

DOB. 3/20/24 AAA. 21023890 TATTOO. 4067 Angus

**CONLEY LEAD THE WAY 0738** Gateway Follow Me F163  
19881255 EXAR Princess 1637

**CONLEY S SIS SANDY 435** Silveiras Style 9303  
17908017 K N C Cabin Creek Sandy 804

CED	BW	VW	YW	MILK	CW	MARB	REA	SM	SW	SB	SC
3	5	60	97	14	32	0.6	0.54	11	32	134	185



- An ultra-refined, feminine made daughter of Conley S Sis Sandy 435 that is from a powerful flush of heifers sired by Conley Lead The Way 0738.
- Conley S Sis Sandy 435 is a full sister to the \$54,000 valued Conley S Sis Sandy 4313, a leading donor in the Sunrise Sunset Farm breeding program.
- A beautiful profiling female that offers a pedigree saturated with some of the most influential individuals in the breed!



**CONLEY KM SANDY 3095**  
\$28,000 Maternal Sister to Lots 15-18

LOT 16

# THE SANDY FAMILY

- 4030 is another standout member of the Conley S Sis Sandy 435 flush that is also sired by Conley Lead The Way 0738. She is one of the biggest boned, stoutest featured females in the offering.
- A full sister to the dam of 4030 is the prolific Conley S Sis Sandy 4350 donor that was purchased by Ben Kiner of Illinois. 4350 is the dam of the \$90,000 Conley Sandy 7350!
- Four three-quarter sisters in blood to 4940, 4067, and 4030 sired by the \$100,000 Conley A1 were sale features in the 2024 Spring Production Sale. Those four daughters commanded prices of \$28,000, \$19,000, \$18,500, and \$12,000!
- Three very high quality ET flushmate sisters from one of the most prolific cow families!



**CONLEY S SIS SANDY 4350**  
Full Sister to Dam of Lots 15-18

LOT 17

## 17 CONLEY KM SANDY 4030

DOB. 3/16/24 AAA. 21023887 TATTOO. 4030 Angus

**CONLEY LEAD THE WAY 0738**  
19881255

Gateway Follow Me F163  
EXAR Princess 1637

**CONLEY S SIS SANDY 435**  
17908017

Silveiras Style 9303  
K N C Cabin Creek Sandy 804

CED	BW	WW	YW	MILK	CW	MARB	REA	SM	SW	SB	SC
3	5	60	97	14	32	0.6	0.54	11	32	134	185

## 18 CONLEY KM SANDY 4410

DOB. 4/1/24 AAA. 21022032 TATTOO. 4410 Angus

**CONLEY RANSOM 1810**  
20174820

Conley No Limit  
Conley Sandy 8104

**CONLEY S SIS SANDY 435**  
17908017

Silveiras Style 9303  
K N C Cabin Creek Sandy 804

CED	BW	WW	YW	MILK	CW	MARB	REA	SM	SW	SB	SC
-1	3.6	57	91	16	24	0.44	0.27	30	39	111	174

- 4410 is the lone daughter by the \$70,000 Conley Ransom 1810 and from the prolific Conley S Sis Sandy 435 donor dam.
- Her sire, Conley Ransom 1810, was the 2022-2023 ROV Show Bull of the Year!
- She is without question one of the most elegant and refined fronted females in the entire offering. She is chiseled about her jawline, clean chested, and smooth shouldered. We love the up headed and arrogant presence that she brings to the table.
- A big footed, heavy boned female that is so smooth and angular. This is a female that should be on a lot of short lists on sale day. A bright future lies ahead!



**CONLEY S SIS SANDY 4313**  
Full Sister to Dam of Lots 15-18

LOT 18

# CONLEY **SANDY 5104**



**CONLEY DS SANDY 3714**  
2024 MSU Block & Bridle Reserve Supreme Champion Breeding Heifer  
\$100,000 Maternal Sister to Lots 20-22  
*Congratulations Evan Blanding*



2016-2017 ROV Show Heifer of the Year  
 Maternal Sister to Lot 19 and Dam of Lots 20-22  
*Congratulations David Smith*



**CONLEY SANDY 5104**  
 2016 American Royal ROV Grand Champion Angus Heifer



**CONLEY SANDY 5104**  
 2016 NAILE ROV Reserve Grand Champion Angus Heifer



**CONLEY SANDY 5104**  
 2017 FWSS ROV Grand Champion Angus Heifer



**CONLEY SANDY 8510**  
 2019 NWSS Reserve Grand Champion Junior Angus Heifer  
 Maternal Sister to Lots 20-22  
*Congratulations Kynlee Dailey*



**CONLEY DS CLEAR CUT 0510**  
 2021-2022 ROV Show Bull of the Year  
 Maternal Brother to Lots 20-22

# THE SANDY FAMILY



LOT 19

- Next up is the ONLY daughter in the entire sale of the prolific S Sis Sandy 104 matriarch. She is responsible for producing countless individuals of significant influence within the Angus breed. She is the first daughter of the influential champion turned dominant producer, K N C Cabin Creek Sandy 804!
- S Sis Sandy 104 is the dam of the 2016-2017 ROV Show Heifer of the Year and million dollar producing Conley Sandy 5104!
- 104 is also a maternal sister to Silveiras S Sis Sandy 2355, the dam of the iconic Conley No Limit and countless other high sellers and champions!
- 104 is the dam of Conley Sandy 8104, the \$75,000 donor that was featured in the 2022 Fall Production Sale. 8104 is the dam of the 2022-2023 ROV Show Bull of the Year, Conley Ransom 1810!
- 4232 is as stout featured and robust as any heifer calf in this year's offering. She is destined to be a big time generator, much like the maternal icons that line her pedigree.



• The proof is in the progeny... cow power at it's very finest!

**CONLEY DT SANDY 1054**  
\$35,000 Maternal Sister to Lot 19

## 19 CONLEY SANDY 4232

DOB. 2/16/24 AAA. 21022026 TATTOO. 4232 Angus

**CONLEY LEAD THE WAY 0738** Gateway Follow Me F163  
19881255 EXAR Princess 1637

**S SIS SANDY 104** GCC Total Recall 806T  
16742581 K N C Cabin Creek Sandy 804

CED	BW	WW	YW	MILK	CW	MARB	REA	SM	SW	SB	SC
0	4.4	60	99	17	35	0.47	0.53	22	40	128	188



LOT 20

## 20 CONLEY DS SANDY 4510

DOB. 3/5/24 AAA. 21022041 TATTOO. 4510 Angus

**CONLEY LEAD THE WAY 0738** Gateway Follow Me F163  
19881255 EXAR Princess 1637

**CONLEY SANDY 5104** EXAR Blue Chip 1877B  
18197707 S Sis Sandy 104

CED	BW	WW	YW	MILK	CW	MARB	REA	SM	SW	SB	SC
1	3.7	66	106	15	41	0.64	0.64	28	46	131	198

- An exquisite built daughter of the \$920,000 Conley Lead The Way 0738 that is backed by the million dollar producing Conley Sandy 5104!
- Conley Sandy 5104 was the 2016 American Royal ROV Grand Champion Angus Heifer, 2016 NAILE ROV Reserve Grand Champion Angus Heifer, and 2017 FWSS ROV Grand Champion Angus Heifer. She culminated her show career by being named as the 2016-2017 ROV Show Heifer of the Year!
- 4510 is a full sister to the \$20,000 Conley Sandy 2661, owned by Kevin Newman of Indiana. Another full sister is the \$30,000 Conley Sandy 2751, a female that was selected by the Yocham family of Oklahoma.
- She is also a maternal sister to the \$200,000 Conley DS Clear Cut 0510, the 2021-2022 ROV Show Bull of the Year!



**CONLEY SANDY 2661**  
\$20,000 Full Sister to Lot 20

# THE SANDY FAMILY

- Undeniably one of the most unique females in the entire sale offering!
- Conley DS Sandy 4202 is huge footed, big boned, massive in her upper rib cage, and comes as stout and square from hooks to pins as any female in the sale. She is long and slender about her neck, clean chested, and smooth shouldered. She opens up into a bold and three-dimensional rib cage that facilitates her extra top shape and width.
- A maternal sister to 4202, Conley DS Sandy 3714, sold for \$100,000 to Evan Blanding in the 2023 Fall Production Sale. She has been a many times champion for the Blanding family!
- 4202 three-quarter sister in blood to 4510. A must see on sale day if you're looking for a female that is a true outlier!



**CONLEY SANDY 1467**  
2022 NJAS 4th Overall Bred & Owned Heifer  
Maternal Sister to Lots 20-22

LOT 21

## 21 CONLEY DS SANDY 4202

DOB. 5/12/24 AAA. 21022042 TATTOO. 4202 Angus

**GATEWAY FOLLOW ME F163**  
19334239

C&C McKinley 3000 EXAR  
Dunk-W Maxine HR 505C

**CONLEY SANDY 5104**  
18197707

EXAR Blue Chip 1877B  
S Sis Sandy 104

CED	BW	WW	YW	MILK	CW	MARB	REA	SM	SW	SB	SC
-1	4.2	63	99	12	31	0.31	0.67	31	40	113	178

## 22 CONLEY DS SANDY 4515

DOB. 3/13/24 AAA. 21022043 TATTOO. 4515 Angus

**BRDG MAHOGANY PRIME 904B**  
19472801

Silveiras Style 9303  
EXAR Saras Dream 3763

**CONLEY SANDY 5104**  
18197707

EXAR Blue Chip 1877B  
S Sis Sandy 104

CED	BW	WW	YW	MILK	CW	MARB	REA	SM	SW	SB	SC
2	3.4	62	101	14	34	0.27	0.45	16	40	116	166

- 4515 is another daughter of the 2016-2017 ROV Show Heifer of the Year, Conley Sandy 5104! She is a maternal sister to countless high sellers and champions that have become instrumental breeding pieces in production.
- 4515 is sired by the 2021 National Junior Angus Show Grand Champion Bred & Owned Bull, BRDG Mahogany Prime 904B. She is a long and extended female that offers tremendous power and substance.
- 4515 is a maternal sister to Conley Sandy 1467, the 2022 National Junior Angus Show 4th Overall Bred & Owned Heifer for Case Conley.
- Backed by a true maternal great!



**CONLEY DS SANDY 3714**  
\$100,000 Maternal Sister to Lots 20-22

LOT 22

# THE SANDY FAMILY



LOT 23

- 4814 is a maternal sister to the \$70,000 Conley Ransom 1810, the son of Conley No Limit! This ultra-stout and very practical built daughter of Conley Lead The Way 0738 is supported by the \$75,000 Conley Sandy 8104 donor dam.
- Conley Sandy 8104 is a daughter of the impressive E&B Confederate 507 that is backed by the iconic S Sis Sandy 104, the first born daughter of the iconic K N C Cabin Creek Sandy 804!
- 4814 is destined to make an imprint on the Angus breed, much like the proven matrons that line her pedigree!



**CONLEY SANDY 8104**  
\$75,000 Dam of Lot 23



**CONLEY RANSOM 1810**  
2022-2023 ROV Show Bull of the Year  
Maternal Brother to Lot 23

## 23 CONLEY SANDY 4814

DOB. 3/12/24    AAA. 21022025    TATTOO. 4814    Angus

**CONLEY LEAD THE WAY 0738**    Gateway Follow Me F163  
19881255    EXAR Princess 1637

**CONLEY SANDY 8104**    E&B Confederate 507  
19288274    S Sis Sandy 104

CED	BW	WW	YW	MILK	CW	MARB	REA	SM	SW	SB	SC
5	2.8	62	103	21	43	0.55	0.75	44	53	143	229

## 24 CONLEY SANDY 4300

DOB. 3/17/24    AAA. 21023819    TATTOO. 4300    Angus

**CONLEY LEAD THE WAY 0738**    Gateway Follow Me F163  
19881255    EXAR Princess 1637

**CONLEY SANDY 9486**    5T Power Chip 4790  
19479798    Conley Sandy 7271

CED	BW	WW	YW	MILK	CW	MARB	REA	SM	SW	SB	SC
6	3.4	69	113	16	46	0.85	0.54	27	49	153	225



LOT 24

- 4300 is the first of two ET flushmate sisters from the exciting Conley Sandy 9486 donor.
- 9486 is a daughter of 5T Powerchip 4790 and further supported by a FULL SISTER to the iconic Conley Express 7211. She is also a full sister to Conley Sandy 728, a powerful female that was Griswold Cattle Company's selection from our 2023 Fall Production Sale.
- 4300 may be even more extended about her front third and chiseled about her jaw and throat line. She is a big hipped and wide pinned heifer that offers a futuristic look that can't be denied!



**CONLEY SANDY 9486**  
2021 OYE Reserve Grand Champion Angus Heifer  
Dam of Lots 24 & 25



LOT 25

**25 CONLEY SANDY 41611**

DOB. 3/2/24    AAA. 21023860    TATTOO. 4161    Angus

**CONLEY LEAD THE WAY 0738**  
19881255

Gateway Follow Me F163  
EXAR Princess 1637

**CONLEY SANDY 9486**  
19479798

5T Power Chip 4790  
Conley Sandy 7271

CEB	BW	WW	YW	MILK	CW	MARB	REA	SM	SW	SB	SC
6	3.4	69	113	16	46	0.85	0.54	27	49	153	225

- The second sister from a big time pair of ET flushmates that are supported by the impressive Conley Sandy 9486 donor dam that was selected as the 2021 OYE Reserve Grand Champion Angus Heifer.
- 41611 is so elegant and sleek about her front third, offering a balanced look from the profile that will compete at any level. Her mass, genuine shape, and outline from the side is simply breathtaking.
- A unique pair of sisters that are supported by one of the up and coming young donor females in the breed!



**CONLEY SANDY 7271**  
Maternal Granddam of Lots 24 & 25

EXAR  
**PRINCESS 1637**



Deceased Dam of Lots 26-28



**CONLEY C-4 PRINCESS 2732**  
\$75,000 Maternal Sister to Lots 26-28



**CONLEY LEAD THE WAY 0738**  
\$920,000 Valued Maternal Brother of Lots 26-28



LOT 26

**26 CONLEY PRINCESS 4781**

DOB. 2/14/24    AAA. 21022024    TATTOO. 4781    Angus

**BRDG MAHOGANY PRIME 904B** Silveiras Style 9303  
19472801 EXAR Saras Dream 3763

**EXAR PRINCESS 1637** S&R Roundtable J328  
18877017 EXAR Princess 5391

CEB	BW	WW	YW	MILK	CW	MARB	REA	SM	SW	SB	SC
6	2.5	56	91	17	37	0.43	0.44	15	41	136	191

- The lead off maternal sister to the \$920,000 Conley Lead The Way 0738 is something special to say the very least! Unmatched eye appeal, skeletal quality, and presence combined is what makes her so unique.
- Her late dam, EXAR Princess 1637, has left a substantial impact on the breeding program at Conley Cattle. Her influence will be noticed for generations to come!
- 4781 is so elegant about her head and neck, while offering an ultra-maternal shape to her forerib and center body cavity. She is long and square from hooks to pins and sets to the surface with true authority.
- Maternal sisters to this stunning female have sold for \$130,000, \$75,000, and \$30,000. We believe that 4781 and her two ET flushmate sisters by Conley Ransom 1810 are three of the very best 1637 daughters that we have ever offered!
- 1637 may be gone, however her legacy and impact on the Angus breed will certainly live on!



**CONLEY PRINCESS 3261**  
\$130,000 Maternal Sister to Lots 26-28



# THE PRINCESS FAMILY



**CONLEY PRINCESS 3254**  
\$30,000 Maternal Sister to Lots 26-28

- Here is another dynamic duo from the late EXAR Princess 1637 donor dam. This pair of ET flushmate sisters are sired by the 2022-2023 ROV Show Bull of the Year, Conley Ransom 1810!
- Backed by a royal pedigree, this pair of sisters are supported by two of the most lucrative and highest earning cow families at Conley Cattle!
- They are maternal sisters to the \$920,000 valued Conley Lead The Way 0738, one of the most consistent sires that we have EVER utilized. Maternal sisters to this pair of females have commanded \$130,000, \$75,000, and \$30,000.
- Both females are tremendous in their rib shape, depth of body, and offer unmatched power and substance. They are very similar in terms of type and kind, offering the "donor cow" look with extra style and quality.
- 1637 is a full sister to Ward Brother's Livestock donor, EXAR Princess 6680, the 2017-2018 ROV Show Heifer of the Year that is affectionately known as "Pebbles".
- True cow power lies within!



LOT 27



**CONLEY PRINCESS 3716**  
Maternal Sister to Lots 26-28



LOT 28

## 27 CONLEY PRINCESS 4163

DOB. 1/29/24 AAA. 21022029 TATTOO. 4163 Angus

**CONLEY RANSOM 1810**  
20174820

**EXAR PRINCESS 1637**  
18877017

Conley No Limit  
Conley Sandy 8104

S&R Roundtable J328  
EXAR Princess 5391

CED	BW	WW	YW	MILK	CW	MARB	REA	SM	SW	SB	SC
7	1.4	57	90	20	36	0.41	0.36	45	54	128	211

## 28 CONLEY PRINCESS 4820

DOB. 3/29/24 AAA. 21022028 TATTOO. 4820 Angus

**CONLEY RANSOM 1810**  
20174820

**EXAR PRINCESS 1637**  
18877017

Conley No Limit  
Conley Sandy 8104

S&R Roundtable J328  
EXAR Princess 5391

CED	BW	WW	YW	MILK	CW	MARB	REA	SM	SW	SB	SC
7	1.4	57	90	20	36	0.41	0.36	45	54	128	211

SCHELKE MSF  
**MADDIE 8229**



## Prominent Dam of Lots 29-32



**CONLEY MADDIE 3157**  
2023 Hoosier Beef Congress 4th Overall Breeding Heifer  
\$220,000 Maternal Sister to Lots 29-32  
*Congratulations Houston Ferree*



**CONLEY MADDIE 3017**  
\$40,000 Maternal Sister to Lots 29-32



**CONLEY MADDIE 3618**  
\$37,000 Maternal Sister to Lots 29-32

# THE MADDIE FAMILY



- A big time show heifer prospect that is sired by the tried and true, Conley Lead The Way 0738 and out of one of the most incredible females to roam the pastures of Sulphur, Oklahoma... Schelske Maddie 8229!
- 4400 offers a truly elite profile that is further complimented by the extra mass and dimension that she possesses. She ties in so neatly at the top of her blade, is clean chested, big ribbed, and comes as stout and square from hooks to pins as any heifer in the sale. Her basic build is flawless, as she is laid back and comfortable in her shoulder angle, with a textbook design to her hip and hind leg.
- 4400 is a maternal sister to the \$220,000 high selling female from the 2023 Fall Production Sale, Conley Maddie 3157, the 2023 Hoosier Beef Congress 4th Overall Breeding Heifer.



**CONLEY MADDIE 3735**  
\$20,000 Maternal Sister to Lots 29-32

LOT 29

## 29 CONLEY MADDIE 4400

DOB. 1/26/24 AAA. 21022021 TATTOO. 4400 Angus

**CONLEY LEAD THE WAY 0738** Gateway Follow Me F163  
19881255 EXAR Princess 1637

**SCHELSKE MSF MADDIE 8229** BCII MLA Next Up 015  
19177293 MSF Lucy 201

CED	BW	WW	YW	MILK	CW	MARB	REA	SM	SW	SB	SC
2	3.6	63	102	24	36	0.41	0.63	29	51	133	202

## 30 CONLEY MADDIE 4986

DOB. 3/7/24 AAA. 21022035 TATTOO. 4986 Angus

**CONLEY BRISTOW 2317** Conley Lead The Way 0738  
20491419 Conley Sandy 7662

**SCHELSKE MSF MADDIE 8229** BCII MLA Next Up 015  
19177293 MSF Lucy 201

CED	BW	WW	YW	MILK	CW	MARB	REA	SM	SW	SB	SC
1	2.9	61	99	28	30	0.48	0.68	33	57	130	202



- 4986 is another daughter of the prolific Schelske Maddie 8229 donor dam. She and her two ET flushmate sisters are sired by the \$150,000 Conley Bristow 2317, one of the most incredible sons of Conley Lead The Way 0738 that has ever surfaced!
- She is a maternal sister to a set of Conley DS Clear Cut 0510 daughters that highlighted the 2024 Spring Production Sale with an impressive \$15,650 average on 10 head with a high of \$40,000!
- Consistency and fertility are all inclusive with this dynamic set of Conley Bristow 2317 daughters!



**CONLEY BRISTOW 2317**  
\$150,000 Sire of Lots 30-32

LOT 30

# THE MADDIE FAMILY



**CONLEY MADDIE 3424**  
Maternal Sister to Lots 29-32  
She Sells as Lot 74

- The next pair of ET flushmate sisters by Conley Bristow 2317 and from the dynamic Schelske Maddie 8229 are very similar to their dam in terms of possessing the "bells and whistles" needed to compete at the highest level.
- Both sisters are extreme from a look and design standpoint, offering tremendous length and eye appeal about their front third. They are big boned, stout featured females that transcend the normal!
- This set of Conley Bristow 2317 sisters are truly outliers in terms of foot size, bone, shape, and overall uniqueness of build. They are the type and kind of females that will serve as incredibly valuable breeding pieces to "push the needle" in a forward trajectory.
- Bid with confidence, the "Maddie" cow family simply does not miss!



LOT 31



**CONLEY MADDIE 3176**  
\$16,000 Maternal Sister to Lots 29-32



LOT 32

## 31 CONLEY MADDIE 4142

DOB. 4/24/24 AAA. 21022015 TATTOO. 4142 Angus

**CONLEY BRISTOW 2317**  
20491419

Conley Lead The Way 0738  
Conley Sandy 7662

**SCHELSKE MSF MADDIE 8229**  
19177293

BCII MLA Next Up 015  
MSF Lucy 201

CED	BW	WW	YW	MILK	CW	MARB	REA	\$M	\$W	\$B	\$C
1	2.9	61	99	28	30	0.48	0.68	33	57	130	202

## 32 CONLEY MADDIE 4514

DOB. 5/15/24 AAA. 21022034 TATTOO. 4514 Angus

**CONLEY BRISTOW 2317**  
20491419

Conley Lead The Way 0738  
Conley Sandy 7662

**SCHELSKE MSF MADDIE 8229**  
19177293

BCII MLA Next Up 015  
MSF Lucy 201

CED	BW	WW	YW	MILK	CW	MARB	REA	\$M	\$W	\$B	\$C
1	2.9	61	99	28	30	0.48	0.68	33	57	130	202

# CONLEY FRKG QUEEN MEG 1085



2022-2023 ROV Show Heifer of the Year  
 2023 Cattlemen's Congress Supreme Champion Open Breeding Heifer  
 Maternal Sister to Lots 33, 34, & 48  
*Congratulations Houston Ferree*



**COLLISON PROVEN QUEEN 875**  
 Prolific Dam of Lots 33, 34 & 48



**CONLEY FRKG QUEEN MEG 1085**  
 2023 IN State Fair Supreme Champion Junior Breeding Heifer  
 Maternal Sister to Lots 33, 34, & 48



**CONLEY FRKG QUEEN MEG 1085**  
 2022 American Royal ROV Grand Champion Angus Heifer  
 Maternal Sister to Lots 33, 34, & 48

THE QUEEN MEG FAMILY



LOT 33



**CONLEY FRKG QUEEN MEG 1085**  
2022 NJAS Third Overall Owned Heifer  
Maternal Sister to Lots 33, 34, & 48

- An absolutely stunning pair of ET flushmate sisters by Conley Lead The Way 0738 and supported by the legendary Collison Proven Queen 875 donor dam! This duo would be maternal sisters to the 2022-2023 ROV Show Heifer of the Year and one of the most decorated champions of the last decade, Conley FRKG Queen Meg 1085!
- Conley FRKG Queen Meg 1085 was the 2022 NJAS Third Overall Owned Heifer, 2022 IN State Fair Supreme Champion Overall Junior Breeding Heifer, 2022 American Royal ROV Grand Champion Angus Heifer, 2022 Atlantic National ROV Grand Champion Angus Heifer, 2023 Cattlemen's Congress ROV Grand Champion Angus Heifer and Supreme Champion Overall Open Heifer!
- A maternal sister to 4200 and 4520, Conley FRKG Queen Meg 3000 was the \$59,000 sale feature this past spring that sold to Moore Land & Cattle and Hadley Hartman!
- 4200 is incredible from every angle, offering tremendous shape and true skeletal integrity.
- 4520 is much like her maternal sister in terms of her elite silhouette and capitating presence.
- The choice between these two sisters will be yours on September 21... pick your poison!



LOT 34



**CONLEY FRKG QUEEN MEG 1085**  
2022 Atlantic National ROV  
Grand Champion Heifer  
Maternal Sister to Lots 33, 34, & 48

**33 CONLEY FRKG QUEEN MEG 4200**

DOB. 3/30/24 AAA. 21022022 TATTOO. 4200 Angus

**CONLEY LEAD THE WAY 0738** Gateway Follow Me F163  
19881255 EXAR Princess 1637

**COLLISON PROVEN QUEEN 875** C&C Priority 1428B EXAR  
20108529 Moffitt Proven Queen M301

CED	BW	WW	YW	MILK	CW	MARB	REA	SM	SW	SB	SC
1	4.3	62	103	16	46	0.46	0.5	14	35	145	202

**34 CONLEY FRKG QUEEN MEG 4520**

DOB. 3/1/24 AAA. 21022020 TATTOO. 4520 Angus

**CONLEY LEAD THE WAY 0738** Gateway Follow Me F163  
19881255 EXAR Princess 1637

**COLLISON PROVEN QUEEN 875** C&C Priority 1428B EXAR  
20108529 Moffitt Proven Queen M301

CED	BW	WW	YW	MILK	CW	MARB	REA	SM	SW	SB	SC
1	4.3	62	103	16	46	0.46	0.5	14	35	145	202



# THE PROVEN QUEEN + LADY FAMILIES

- 4152 is a captivating female that is sired by Conley Lead The Way 0738 and out of a maternal sister to the widely popular SCC SCH 24 Karat 838!
- The dam of 4152 is a direct daughter of the legendary FCF Proven Queen 419, arguably one of the most dominant champions in the Angus breed. 4152 is chiseled about her front third, high in her neck attachment and long spined.
- Her pedigree aligns the influence of the famed "Princess", "Proven Queen", and "Sandy" cow families... what more could you want!?
- The dam of 4152 is a highlight among the donor division in this year's sale. She sells as lot 69!



LOT 35



**BCR PROVEN QUEEN 001J**  
Dam of Lot 35  
She Sells as Lot 69



**FCF PROVEN QUEEN 419**  
Famous Maternal Granddam of Lot 35

## 35 CONLEY PROVEN QUEEN 4152

DOB. 2/20/24 AAA. 21022023 TATTOO. 4152 Angus

**CONLEY LEAD THE WAY 0738** Gateway Follow Me F163  
19881255 EXAR Princess 1637

**BCR PROVEN QUEEN 001J** Conley Express 7211  
20194962 FCF Proven Queen 419

CED	BW	WW	YW	MILK	CW	MARB	REA	SM	SW	SB	SC
1	4.8	64	104	18	39	0.5	0.62	24	40	140	206

## 36 CONLEY LADY 4561

DOB. 4/14/24 AAA. PENDING TATTOO. 4561 Angus

**CONLEY BRISTOW 2317** Conley Lead The Way 0738  
20491419 Conley Sandy 7662

**DIECKMANN LADY 1117** Conley No Limit  
20160897 Chapman Lady 4128

	CED	BW	WW	YW	MILK	CW	MARB	REA	SM	SW	SB	SC
sire epds	0	3.1	60	98	23	35	0.72	0.94	29	50	194	217
dam epds	-5	2.9	71	113	7	31	0.6	0.39	14	42	120	170

- Conley Lady 4561 is a powerfully constructed female that offers a superior build and skeletal design. She is without a doubt one of the most complete heifers in the entire sale!
- The dam of 4561 is the impressive Dieckmann Lady 1117, the Conley No Limit daughter that is backed by the iconic Chapman Lady 4128 donor that has produced countless champions and high sellers!
- 1117 was a many times champion for the Yocham family of Oklahoma. She is a maternal sister to C-4 Lead Lady 2K, the 2023 NJAS Third Overall Bred & Owned Heifer for Ty Collum. 2K was also selected as the 2024 OYE Supreme Champion Junior Breeding Heifer.
- The dam of 4561 is also a maternal sister to the \$69,000 C-4 Lady Extension 1K female that is now working in the Stagmeyer breeding program in Nebraska.
- Backed by a superior cow family that does not miss!



LOT 36



**DIECKMANN LADY 1117**  
Dam of Lot 36



**C-4 LEAD LADY 2K**  
2024 OYE Supreme Champion  
Breeding Heifer  
Maternal Sister to Dam of Lot 36

THE ROSE + PRINCESS FAMILY



- 4007 is the first of two daughters sired by the dominant KR Casino 6243, a proven sire whose semen has become extremely scarce!
- Without a question in our mind, 4007 is one of the neatest featured, smoothest made, and most angular daughters of KR Casino 6243 that we have ever laid our eyes on. She is so up headed and elegant from the side, while remaining clean chested, yet robust in her forerib design. She has the optimum turn and sweep to her lower rib design and remains stout pinned and long hipped. When set into motion she is simply flawless!
- A definite sale feature and one of the favorites among early visitors to Sulphur!



**KR CASINO 6243**  
Sire of Lots 37 & 38

LOT 37

**37 CONLEY HARA ROSE 4007**

DOB. 4/26/24 AAA. 21024433 TATTOO. 4007 Angus

**KR CASINO 6243**  
18624063

**HARA ROSE 9221G**  
20537624

CFCC Black Jack 001  
Malsons Savannah 27Y

Plum Creek Paradox 161B  
Hara Rose 7104E

CED	BW	WW	YW	MILK	CW	MARB	REA	SM	\$W	\$B	\$C
-3	5.1	63	116	32	39	0.39	0.41	44	51	127	209

**38 CONLEY KM PRINCESS 4310**

DOB. 1/29/24 AAA. 21024267 TATTOO. 4310 Angus

**KR CASINO 6243**  
18624063

**WB PRINCESS 902**  
19457172

CFCC Black Jack 001  
Malsons Savannah 27Y

WB Pendleton 708 PVF SWSN  
EXAR Princess 6680

CED	BW	WW	YW	MILK	CW	MARB	REA	SM	\$W	\$B	\$C
-4	5.2	70	120	27	46	0.42	0.61	38	55	143	223



- The second daughter of KR Casino 6243 is one that is certain to be a favorite of many on sale day! Her unmatched ability to combine power, substance, and quality is hard to mirror. It's no secret that KR Casino 6243 daughters have endured a tremendous run in the sale ring, show ring, and now in production!
- 4310 is supported by the influence of the legendary "Pebbles" donor dam. EXAR Princess 6680 was the 2017-2018 ROV Show Heifer of the Year for the Ward family of Missouri. "Pebbles" has now exceeded the million dollar mark in progeny sales!
- The dam of 4310 is arguably the best "Pebbles" daughter in existence. She is sired by the 2109 NWSS ROV Grand Champion Angus Bull, WB Pendleton 708 PVF SWSN. WB Princess 902 was a many time champion for Sara Sullivan that was ultimately selected as the 2021 Cattlemen's Congress ROV Grand Champion Angus Heifer.
- 4310 is an outcross to nearly all Conley Cattle herd sires, offering



tremendous mating versatility and unrivaled earning potential!

LOT 38

**WB PRINCESS 902**  
2021 Cattlemen's Congress ROV Grand Champion Angus Heifer  
Dam of Lot 38

# THE WINNIE FAMILY



**EXAR WINNIE 1577**  
Dam of Lots 39 & 40  
She Sells as Lot 72

- Here is a pair of ET flushmate sisters that are supported by the EXAR Winnie 1577 donor dam, a female that will be a highlight in the donor division of this year's Fall Production sale!
- EXAR Winnie 1577 is a powerful female that is sired by PVF Insight 0129 and supported by the famed EXAR Winnie 5291.
- A three-quarter sister to the dam of 4297 and 4754 is Schnoor Winnie 9323, the 2014 NJAS Grand Champion Bred & Owned Heifer for Sydney Schnoor of California.
- Both sisters offer a tremendous shape to their forerib and center body, with more than adequate sweep from their chest to flank. They have been blessed with an excellent hair coat as an added bonus!
- The dam of this duo sells as lot 72... a tried and true producer that has been underutilized!



LOT 39



**SCHNOOR WINNIE 9323**  
2014 NJAS Grand Champion Bred & Owned Heifer  
Maternal Sister to Dam of Lots 39 & 40



LOT 40

## 39 CONLEY WINNIE 4297

DOB. 3/2/24 AAA. 21022031 TATTOO. 4297 Angus

**CONLEY LEAD THE WAY 0738**  
19881255

Gateway Follow Me F163  
EXAR Princess 1637

**EXAR WINNIE 1577**  
18877011

PVF Insight 0129  
EXAR Winnie 5291

CED	BW	WW	YW	MILK	CW	MARB	REA	SM	SW	SB	SC
1	4.8	72	117	17	55	0.58	0.98	28	46	170	248

## 40 CONLEY WINNIE 4754

DOB. 3/14/24 AAA. 21023862 TATTOO. 4754 Angus

**CONLEY LEAD THE WAY 0738**  
19881255

Gateway Follow Me F163  
EXAR Princess 1637

**EXAR WINNIE 1577**  
18877011

PVF Insight 0129  
EXAR Winnie 5291

CED	BW	WW	YW	MILK	CW	MARB	REA	SM	SW	SB	SC
1	4.8	72	117	17	55	0.58	0.98	28	46	170	248

THE GEORGINA + BLACKBIRD FAMILIES



- Unmatched presence and eye appeal are the best ways to describe Conley DT Georgina 4704! Another stunning daughter of Conley Lead The Way 0738 that is sure to be on several short lists on sale day.
- 4704 is supported by the famed "Georgina" cow family that originated in the historic Champion Hill breeding program. She is backed by the same cow family that produced the \$85,000 Conley DT Georgina 1076. 1076 went on to be selected as the 2023 Cattlemen's Congress ROV Reserve Grand Champion Angus Heifer. She culminated her show career when she was selected as the 2023 NJAS Grand Champion Owned Heifer for Ty Collum.
- She ties her neck high at the top of her neatly laid in shoulder, while offering tremendous turn and sweep to her rib cage. We love her silhouette and firmly believe that she has the credentials to follow in the footsteps of the matrons from this dominant cow family that have come before her!



**CONLEY DT GEORGINA 1076**  
2023 NJAS Grand Champion Owned Heifer

LOT 41

**41 CONLEY DT GEORGINA 4704**

DOB. 3/22/24 AAA. 21022075 TATTOO. 4704 Angus

**CONLEY LEAD THE WAY 0738** Gateway Follow Me F163  
19881255 EXAR Princess 1637  
**CHAMPION HILL GEORGINA 6154** S A V Bismarck 5682  
18728811 Champion Hill Georgina 8154

CED	BW	WW	YW	MILK	CW	MARB	REA	SM	SW	SB	SC
6	2.2	51	81	19	30	0.46	0.71	43	44	133	216

**42 CONLEY DT BLACKBIRD 4809**

DOB. 1/10/24 AAA. 21022076 TATTOO. 4809 Angus

**CONLEY LEAD THE WAY 0738** Gateway Follow Me F163  
19881255 EXAR Princess 1637  
**DIAMOND T BLACKBIRD 9101** Colburn Primo 5153  
19692541 Champion Hill Blackbird 8411

CED	BW	WW	YW	MILK	CW	MARB	REA	SM	SW	SB	SC
1	4.5	57	92	19	35	0.41	0.59	22	36	128	188



- The next daughter sired by Conley Lead The Way 0738 offers the big features, big hair, and big time potential! From the ground up this female is simply flawless on the move. She takes a long and authoritative stride when set into motion and always seems to stop with a picture perfect look from the profile.
- The dam of 4809 is the impressive Diamond T Blackbird 9101 donor dam that is supported by the famed Champion Hill Blackbird 8411. A three-quarter sister to 4809 sired by Conley A1 was the \$50,000 selection of Gana Farms of Martell, Nebraska in the Spring 2024 Production Sale.
- A maternal sister to the dam of 4809, Conley DT Blackbird 1067, is a member of the donor pen at Boyert Show Cattle in Iowa.
- An ultra-complete female that will compete at the highest level!



**CONLEY DT BLACKBIRD 3910**  
\$50,000 3/4 Sister to Lot 42

LOT 42

# THE LUCY + ERICA FAMILIES

- 4118 is a FULL SISTER to the extremely popular \$170,000 high selling female from the 2024 Spring Production Sale that was selected by the Cook family of California.
- Conley DT Miss Lucy 3701 was admired by every visitor that stopped by before our Spring Production Sale in March. 3701 was a class winner at the 2024 NJAS this past July in Madison, Wisconsin.
- Much like 3701, Conley DT Lucy 4118 offers a captivating presence that is supported by her extra substance of foot and bone. She is wide pinned, bold ribbed, and massive from behind, yet remains smooth in her shoulder design and refined about her head and neck.
- Power in the blood!



**CONLEY DT MISS LUCY 3701**  
\$170,000 Full Sister to Lot 43

LOT 43

## 43 CONLEY DT MISS LUCY 4118

DOB. 1/26/24 AAA. 21024597 TATTOO. 4118 Angus

**CONLEY LEAD THE WAY 0738**  
19881255

Gateway Follow Me F163  
EXAR Princess 1637

**CONLEY MISS LUCY 7011**  
19180417

5T Power Chip 4790  
Womack Miss Lucy 011

CED	BW	WW	YW	MILK	CW	MARB	REA	SM	SW	SB	SC
2	4.1	66	109	18	46	0.42	0.75	26	43	146	215

## 44 CONLEY ERICA 4914

DOB. 1/20/24 AAA. 21022027 TATTOO. 4914 Angus

**BC ROBUST 0807**  
18456252

BC Surveyor 680D  
BC 327-8 CP Belle 0-807

**G&J ERICA 914**  
17385822

Bushs Unbelievable 423  
G&J Imperial Erica 2523

CED	BW	WW	YW	MILK	CW	MARB	REA	SM	SW	SB	SC
7	1	44	66	11	9	0.13	0.27	44	32	87	157

- DONOR COW ALERT!
- 4914 is a direct daughter of the ultimate power sire, BC Robust 0807! We love the natural dimension and center body shape that this female possesses. She is big hipped, long sided, and offers the ideal characteristics of what an Angus female should be built like.
- It's no secret the BC Robust 0807 is siring females that are in high demand. Semen is scarce and females of this caliber are invaluable in production.
- The dam of 4914, G&J Erica 914, is a picture perfect female that offers superior udder quality, foot shape, and fleshing ease.
- 4914 is supported by a truly royal genetic combination!



**BC ROBUST 0807**  
Sire of Lot 44

LOT 44

THE EMPRESS FAMILY + SHOW STEER



- Power, substance, and unrivaled dimension for every angle! 4616 is a brood cow in the making that offers a classy and elegant look from the profile.
- The dam of 4616 is a SCC First-N-Goal GAF 114 sired daughter of the legendary L A H Empress 415 donor dam that was the cornerstone matriarch of the Horstman Cattle Company breeding program of West Lafayette, Indiana. 415 is the highest income producing female in the history of the program and has left countless daughters in production at some of the top programs in North America.
- Longevity, predictability, and generating potential is all inclusive!



**L A H EMPRESS 415**  
Maternal Granddam of Lot 45

LOT 45

**45 CONLEY KM EMPRESS 4616**

DOB. 2/28/24    AAA. 21025346    TATTOO. 4616    Angus

**CONLEY RANSOM 1810**  
20174820

Conley No Limit  
Conley Sandy 8104

**HORSTMAN LAH EMPRESS 735E**  
18840935

SCC First-N-Goal GAF 114  
L A H Empress 415

CED	BW	WW	YW	MILK	CW	MARB	REA	SM	SW	SB	SC
1.5	3.3	58	97	14	33	0.29	0.46	31	38	116	183

**46 CONLEY CLINE 4669**

DOB. 3/1/24    AAA. 21022174    TATTOO. 4669    Angus

**BRDG MAHOGANY PRIME 904B**  
19472801

Silveiras Style 9303  
EXAR Saras Dream 3763

**CONLEY POLLY 0966**  
19783266

5T Power Chip 4790  
V D A R Polly 7966

CED	BW	WW	YW	MILK	CW	MARB	REA	SM	SW	SB	SC
3	3.3	60	96	13	27	0.32	0.46	16	37	107	155



- The lone show steer in this year's offering, but one that can stand toe to toe with them all day long! In our opinion he is one of the best Angus show steers that will sell all fall! He is flawless on his feet and legs, big boned, wide pinned, and bold in the shape of his upper rib cage to facilitate a big square back.
- This son of BRGD Mahogany Prime 904B is backed by the influence of V D A R Polly 7966, a \$22,000 daughter of Penners-CC Double Black 2257.
- His presence and eye-appeal from the side is hard to deny and he has also been blessed with an incredible hair coat!
- With the National Junior Angus Show being held in Tulsa next summer, we felt that it was only fitting to offer a show steer of this caliber!



**V D A R POLLY 7966**  
\$22,000 Maternal Granddam of Lot 46

LOT 46



LOT 47



**DUFF HD 2046**  
\$150,000 Sire of Lot 47

**47 CONLEY C-4 HOLLY SHAY 063M**

DOB. 4/15/24 RAAA. PENDING TATTOO. 063M RED ANGUS

**DUFF HD 2046**

4466181

**DDAD HOLLY SHAY**

4435953

Mann Red Box 55C

Duff Cita 4060 15522

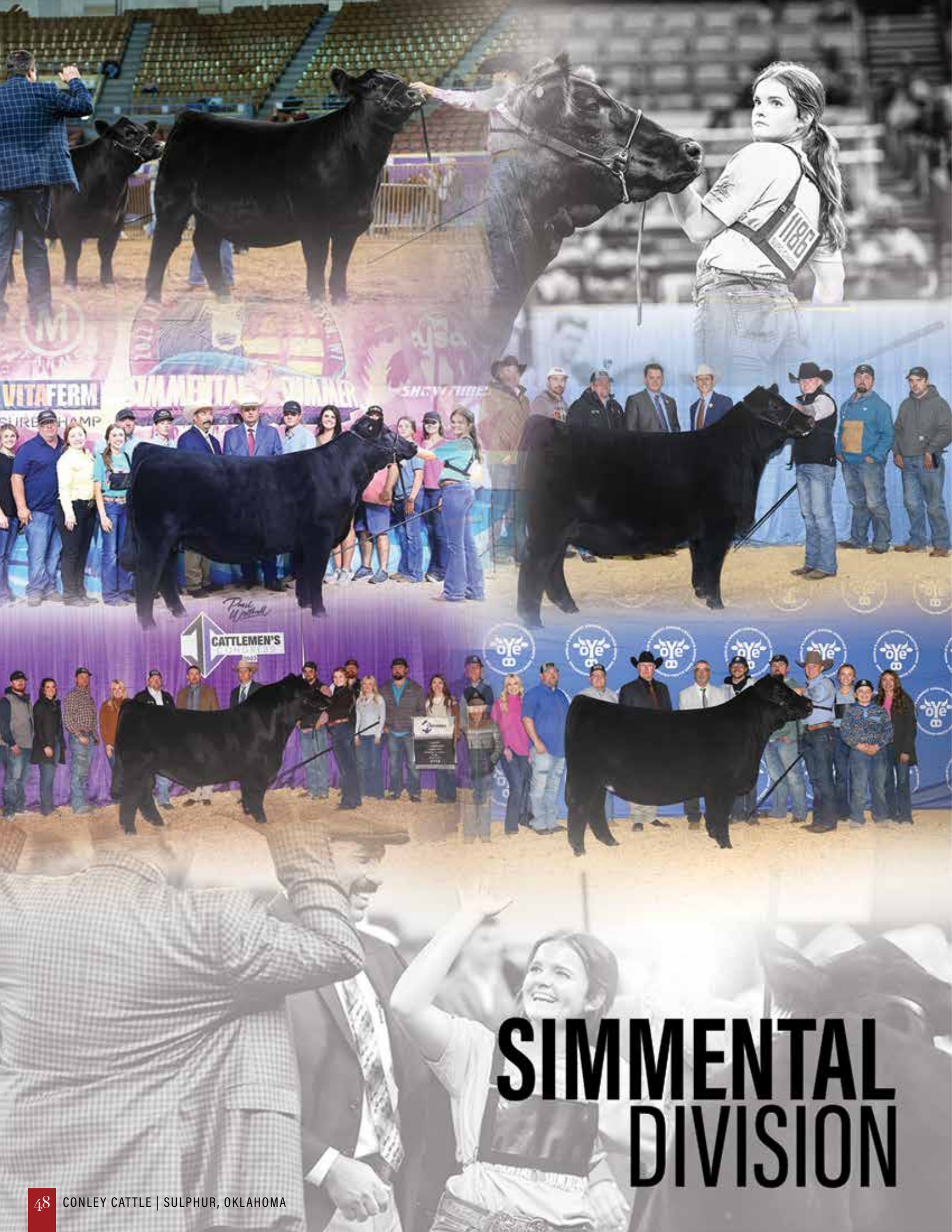
DDAD Oakie Power

DDAD Holly 882

ProS	HB	GM	CED	BW	WW	YW	MILK	CW	MARB	REA
44	47	41	14	-1.2	64	103	25	21	0.26	0.16

- The lone Red Angus female in this year's sale, but one that deserves serious consideration if you're looking for a heifer that can compete at the highest level!
- 063M is sired by the popular and \$150,000 high selling Duff HD 046, a son of the iconic Mann Red Box 55C that is backed by the famous GT Cita 4060 matriarch. The bottom side of her pedigree offers tremendous consistency and maternal excellence!
- She is huge footed, big boned, and offers a look from the side that is undeniable! The shape to her rib cage and squareness to her pin set is hard to replicate.
- A big time Red Angus show heifer that will be a versatile and profitable breeding piece!





VITAFERM  
SHIRE HAMP  
SIMMENTAL  
SHOW TIME

THE  
CATTLEMEN'S  
CONTEST

eye

# SIMMENTAL DIVISION



# THE SIMMENTAL DIVISION

- Undeniably one of the best females in the entire sale offering! She is sired by the \$200,000 EC Rebel 156F, one of the best Profit sons in existence. Her dam is the tried and true, Collison Proven Queen 875!
- 416M is a maternal sister to one of the most decorated Angus females of the last decade, Conley FRKG Queen Meg 1085. She was the 2022-2023 ROV Show Heifer of the Year after a dominant campaign for the Ferree family of Indiana. 1085 was the 2022 NJAS 3rd Overall Owned Heifer, 2022 IN State Fair Supreme Champion Junior Breeding Heifer, 2022 American Royal ROV Grand Champion Angus Heifer, and 2023 Cattlemen's Congress Supreme Champion Open Breeding Heifer.
- This half-blood SimAngus superstar has the basic build, unique presence, and extra "bells and whistles" to be a major force at the highest level!



**CONLEY FRKG QUEEN MEG 1085**  
2022-2023 ROV Show Heifer of the Year  
Maternal Sister to Lot 48

LOT 48

## 48 CONLEY FRKG QUEEN MEG 416M

DOB. 2/20/24 ASA. 4396055 TATTOO. 416M 1/2SM 1/2AN

**EC REBEL 156F**  
3485371

Profit  
DSFF Countess 357D

**COLLISON PROVEN QUEEN 875**  
20108529

C&C Priority 14288B EXAR  
Moffitt Proven Queen M301

CED	BW	WW	YW	MILK	CW	MARB	REA	API	TI
6.7	3.2	73.9	108	15.2	30.7	0.28	0.38	105.8	69

## 49 CONLEY SOPHIA 412M

DOB. 2/16/24 ASA. 4396056 TATTOO. 412M PB SM

**R/C SFI CREEDENCE 417J**  
3980387

JSUL Something About Mary 8421  
SFI Love Me Later A9X

**WLTR SOPHIA 3A ET**  
2745104

SS/PRS High Voltage 244X  
LLSF Cayenne UP401

CED	BW	WW	YW	MILK	CW	MARB	REA	API	TI
10.5	3.5	83.4	118.5	19	30.5	-0.14	0.85	103.6	71.1

- 412M is the only Purebred Simmental heifer in the sale, but one that we have loved since day one! Sired by the many-time champion R/C SFI Creedence 417J, this stunning female is massive in her rib cage, soft centered, and offers a look of balance from the side that is hard to deny.
- The dam of 412M, WLTR Sophia 3A ET is a daughter of the American Royal Champion, SS/PRS High Voltage 244X, one of the great maternal sires in the breed. The dam of 3A, LLSF Cayenne UP401, was the 2010 NWSS Grand Champion Purebred Simmental Heifer.
- A royal pedigree that is lined in purple, we believe that this female is destined to find the backdrop!

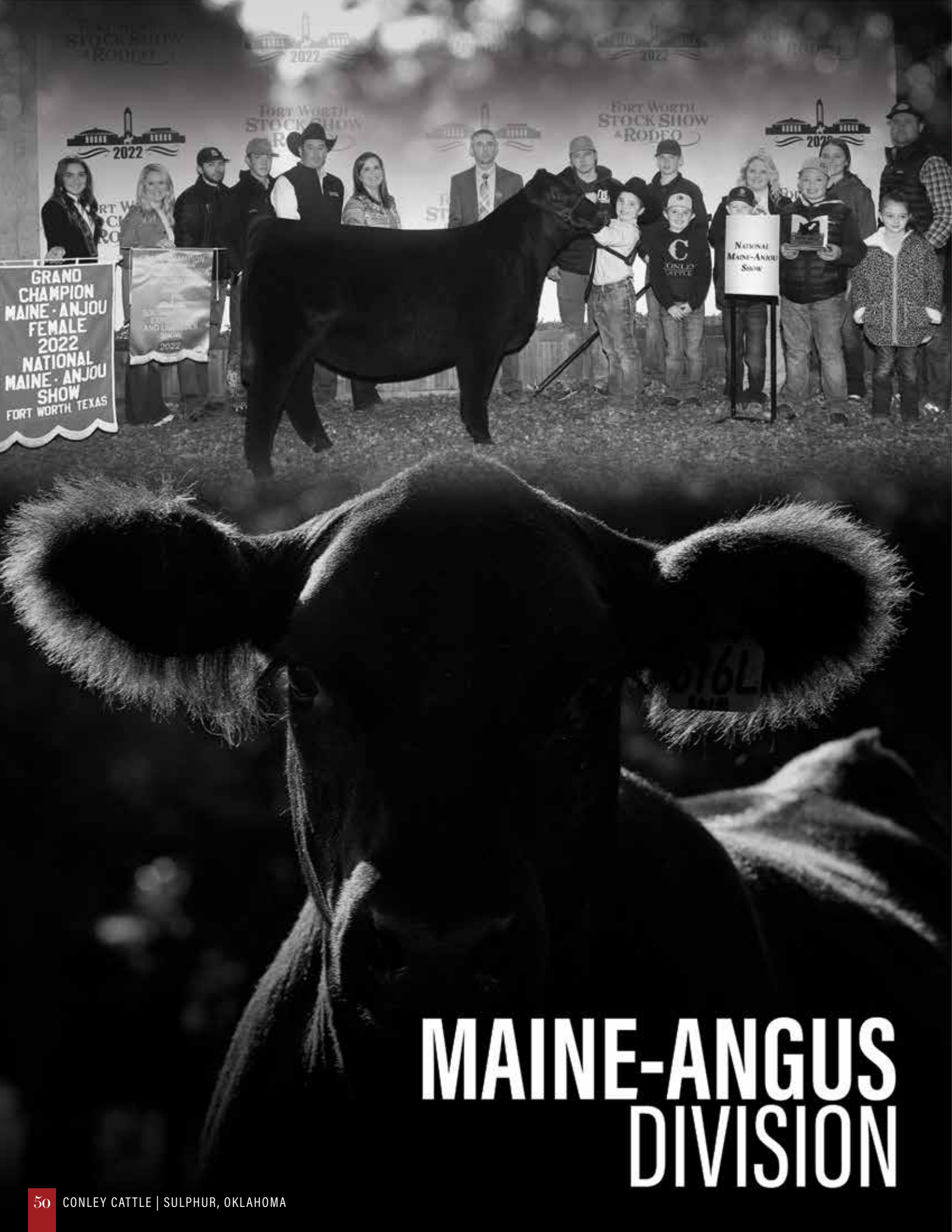


**LLSF CAYENNE UP401**  
2010 NWSS Grand Champion  
Purebred Simmental Heifer &  
Maternal Granddam of Lot 49



**R/C SFI CREEDENCE 417J**  
2023 Cattlemen's Congress  
Grand Champion Purebred Simmental Bull  
Sire of Lot 49

LOT 49



GRAND  
CHAMPION  
MAINE-ANJOU  
FEMALE  
2022  
NATIONAL  
MAINE-ANJOU  
SHOW  
FORT WORTH, TEXAS

EXHIBIT  
AND LECTURE  
SERIES  
2022

NATIONAL  
MAINE-ANJOU  
SHOW

# MAINE-ANGUS DIVISION

**50 CONLEY JELLY YUM 453M ET**

DOB. 4/4/24 AMAA. 553693 TATTOO. 453M Maine-Angus

**CONLEY LEAD THE WAY 0738**  
19881255

Gateway Follow Me F163  
EXAR Princess 1637

**DUP JELLY YUM 109J ET**  
523128

BOE Epic  
CMCC Yum 105

- Here is an interesting trio of Maine-Angus females that are bred in the purple! They are sired by the iconic Conley Lead The Way 0738 and supported by the 2022 FWSS Grand Champion Maine-Anjou Heifer, DUP Jelly Yum 109J ET.
- The dam of DUP Jelly Yum 109J, CMCC Yum 105, was the 2012 NAILE Grand Champion Maine-Anjou Heifer. 109J is a full sister to the \$120,000 high selling female, DUP Feature 801 ET, that was purchased by the Walker family of Arkansas. 801 was successfully campaigned to countless wins that would include being selected as the 2019 NWSS Grand Champion Maine-Anjou Heifer and the 2019 National Junior Heifer Show Reserve Grand Champion Maine-Anjou Heifer!



LOT 50

**51 CONLEY JELLY YUM 459M ET**

DOB. 4/14/24 AMAA. 553694 TATTOO. 459M Maine-Angus

**CONLEY LEAD THE WAY 0738**  
19881255

Gateway Follow Me F163  
EXAR Princess 1637

**DUP JELLY YUM 109J ET**  
523128

BOE Epic  
CMCC Yum 105

- All three females offer tremendous skeletal integrity, body dimension, and possess the show stopping look of the dominant females that line their pedigree.
- True generating potential lies within when these females enter production at the end of their show careers!



**CONLEY JELLY YUM 109L ET**  
Full Sister to Lots 50-52



LOT 51

**52 CONLEY JELLY YUM 470M ET**

DOB. 4/27/24 AMAA. 553695 TATTOO. 470M Maine-Angus

**CONLEY LEAD THE WAY 0738**  
19881255

Gateway Follow Me F163  
EXAR Princess 1637

**DUP JELLY YUM 109J ET**  
523128

BOE Epic  
CMCC Yum 105



**CMCC YUM 105**

2012 NAILE Grand Champion Maine-Anjou Heifer  
Maternal Granddam of Lots 50-52



**DUP FEATURE 801 ET**

2019 NWSS Grand Champion Maine-Anjou Heifer  
\$120,000 Full Sister to Dam of Lots 50-52



LOT 52





# **BRED HEIFER + COW DIVISION**

ANNUAL FALL PRODUCTION SALE - 9.21.24



LOT 60



**SILVEIRAS S SIS SANDY 2355**  
Prolific Dam of Lots 60 & 61



**CONLEY WILLARD 3319**  
\$100,000 Son of Lot 60



**CONLEY SANDY 7305**  
\$105,000 Maternal Sister to Lots 60 & 61

**60 CONLEY SANDY 9893**

DOB. 11/25/19    AAA. 19739370    TATTOO. 9893    Angus

**BC ROBUST 0807**  
18456252

BC Surveyor 680D  
BC 327-8 CP Belle 0-807

**SILVEIRAS S SIS SANDY 2355**  
17286745

Silveiras Style 9303  
K N C Cabin Creek Sandy 804

CE	BW	WW	YW	MILK	CW	MARB	REA	SM	SW	SB	SC
-5	6.2	80	120	18	42	0.1	0.58	54	56	114	202

- What an incredible female to initiate the donor and bred female division of the 2024 Conley Cattle Fall Production Sale! Conley Sandy 9893 is without a doubt one of the most impressive daughters of BC Robust 0807 that we have ever laid eyes on!
- 9893 is the dam of the \$100,000 Conley Willard 3319, the high selling yearling bull from the 2024 Conley Cattle Bull Sale. Conley Willard 3319 was selected by Jon-Ern Farms and Clarke Family Farms of Blenheim, Ontario, Canada.
- Conley Willard 3319 is an elite performance sire that ranks among the elite in the breed for growth and maternal traits. Semen from Conley Willard 3319 will also be offered on September 21!
- 9893 is massive in terms of her rib cage, flawless on her feet and legs, and offers a look of quality and maternal functionality from the side that is simply unmatched!
- The dam of 9893 is the iconic Silveiras S Sis Sandy 2355, the dam of Conley No Limit and countless other high sellers and individuals of influence within the breed. 2355 is one of the highest income generating females at Conley Cattle. 9893 is also a maternal sister to the \$105,000 Conley Sandy 7305.
- An elite investment opportunity awaits the winning bidder! 9893 is on her way to becoming one of the biggest names in the Angus breed!
- **AI Bred 2/5/24 to Conley Bristow 2317 (AAA: 20491419)**



**CONLEY SANDY 8104**  
\$75,000 3/4 Sister to Lot 61



**CONLEY VERIFIED 0853**  
\$75,000 Son of Lot 61



**CONLEY REPUBLIC 3119**  
\$23,000 Son of Lot 61

LOT 61

**61 CONLEY SANDY 8355**

DOB. 3/10/18 AAA. 19290787 TATTOO. 8355 Angus

**E&B CONFEDERATE 507**  
18215493

Connealy Confidence Plus  
E&B Lady Complete 330

**SILVEIRAS S SIS SANDY 2355**  
17286745

Silveiras Style 9303  
K N C Cabin Creek Sandy 804

CED	BW	WW	YW	MILK	CW	MARB	REA	SM	SW	SB	SC
5	3.3	71	119	31	45	0.43	0.54	70	70	130	239

• 8355 is the second direct daughter of the famous Silveiras S Sis Sandy 2355 to highlight the donor and bred female division! Conley Sandy 8355 is sired by E&B Confederate 507, the impressive son of Connealy Confidence Plus that has left a substantial impact on the Angus breed in terms of siring elite females.

• 8355 is the prolific dam of the \$75,000 Conley Verified 0853, the high selling bull in 2021 National Angus Bull Sale. He was also selected as the 2021 Cattlemen's Congress ROV Division I Champion Bull.

• Without a doubt one of the absolute stoutest, most three-dimensional, and wide built females to roam the pasture in Sulphur, Oklahoma! She is huge footed, big boned, and offers a look of balance and eye appeal from the profile that is so challenging to mirror.

• She sells safe in calf to the \$125,000 LT Deep Canyon 2040, a past high seller from the famed Lindskov's LT Ranch Bull Sale that was selected by Duff Cattle Company.

• Another elite investment opportunity to add a proven producer to your donor arsenal!

• **AI Bred 4/9/24 to LT Deep Canyon 2040 (AAA: 20478857)**



LOT 62



**CONLEY SANDY 5104**  
2016-2017 ROV Show Heifer of the Year  
Influential Dam of Lots 62 & 63



**CONLEY SANDY 9743**  
2019 Hoosier Beef Congress Supreme Champion Heifer  
\$150,000 Maternal Sister to Lots 62 & 63

**62 CONLEY SANDY 0251**

DOB. 2/5/20 AAA. 19781320 TATTOO. 0251 Angus

**5T POWER CHIP 4790**  
17956297

EXAR Blue Chip 1877B  
5T Miss Wix 8002

**CONLEY SANDY 5104**  
18197707

EXAR Blue Chip 1877B  
S Sis Sandy 104

CED	BW	WW	YW	MILK	CW	MARB	REA	SM	SW	SB	SC
8	1.6	60	90	19	33	0.5	0.52	45	53	112	190

- A sleek made, elegant designed daughter of the 2016-2017 ROV Show Heifer of the Year, Conley Sandy 5104! 5104 is the million dollar producing female that is supported by the legendary S Sis Sandy 104, the first daughter of the influential K N C Cabin Creek Sandy 804.
- 0251 is sired by the impressive 5T Power Chip 4790, one of the great EXAR Blue Chip 1877B sons in existence.
- 0251 is a maternal sister to the 2021-2022 ROV Show Bull of the Year, Conley DS Clear Cut 0510. She is also a maternal sister to the \$100,000 Conley DS Sandy 3714, a popular champion for Evan Blanding of Indiana. Conley Sandy 9743 is the \$150,000 maternal sister to 0251 that was selected as the 2019 Hoosier Beef Congress Supreme Champion for the Ferree family!
- Another one of her most famous maternal sisters is Conley Sandy 8510, the 2019 NWSS Reserve Grand Champion Junior Angus Heifer for the Dailey family.
- Her basic build, look of quality, and profile is something to see! Without a doubt one of the most intriguing females in the offering that has the credentials to raise elite show heifer prospects and be a big time generator!
- Power in the blood!
- **AI Bred 3/10/24 to Conley A1 (AAA: 20177675)**



# THE SANDY FAMILY



**CONLEY DS CLEAR CUT 0510**  
2021-2022 ROV Show Bull of the Year  
Maternal Brother to Lots 62 & 63

- The next mother daughter duo would include Conley BTYL Sandy 314H and her daughter, Conley Sandy 3314, sired by 5T Power Chip 4790!
- 314H is a massive built, big ribbed, deep sided daughter of the iconic Silveiras Style 9303, making her a maternal sister to the \$200,000 Conley DS Clear Cut 0510, the 2021-2022 ROV Show Bull of the Year!
- Her dam, Conley Sandy 5104, was the 2016-2017 ROV Show Heifer of the Year for David Smith and has since become a matriarch that has exceeded the million dollar mark in production! 5104 is now deceased, take advantage of the opportunity to acquire a direct daughter of this iconic matron.
- 3314 is a daughter of 314H that is sired by 5T Power Chip 4790, making her a three-quarter sister in blood to Conley Sandy 0251.
- A unique pair of females that are built for the long-haul and have the cow family support to be big time generators for your breeding program!



LOT 63



**CONLEY SANDY 8510**  
2019 NWSS Reserve Grand Champion  
Junior Angus Heifer  
Maternal Sister to Lots 62 & 63



LOT 64

## 63 CONLEY BTYL SANDY 314H

DOB. 4/40/20 AAA. 19916478 TATTOO. 314H Angus

**SILVEIRAS STYLE 9303**  
16427563

Gambles Hot Rod  
Silveiras Elba 2520

**CONLEY SANDY 5104**  
18197707

EXAR Blue Chip 1877B  
S Sis Sandy 104

CED	BW	WW	YW	MILK	CW	MARB	REA	SM	SW	SB	SC
6	1.4	57	90	12	21	0.51	0.01	29	45	97	155

• Will calve by sale day to Rosewood Bellagio 090 (AAA: 20046900)

## 64 CONLEY SANDY 3314

DOB. 2/5/23 AAA. 21018926 TATTOO. 3314 Angus

**5T POWER CHIP 4790**  
17956297

EXAR Blue Chip 1877B  
5T Miss Wix 8002

**CONLEY BTYL SANDY 314H**  
19916478

Silveiras Style 9303  
Conley Sandy 5104

CED	BW	WW	YW	MILK	CW	MARB	REA	SM	SW	SB	SC
8	1.3	60	94	13	26	0.76	0.33	40	48	121	197

• AI Bred 6/25/24 to Conley A 1 (AAA: 20177675)

# THE SANDY FAMILY



LOT 65

• Tremendous eye appeal, length, and femininity can be identified in this well designed daughter of the \$165,000 J Trademark 1037. The dam of 332L is the \$90,000 Conley Sandy 7350 donor dam, arguably one of the most incredible females ever produced at Conley Cattle. 7350 offers exemplary udder quality, fleshing ease, and eye appeal with extra mass and dimension.

• Backed by the famed Conley S Sis Sandy 4350, one of the great daughters of the iconic K N C Cabin Creek Sandy 804. She is bred to one of our newest and most exciting sire acquisitions, Sitz Comstock 643L!

• **AI Bred 6/1/24 to Sitz Comstock 643L (AAA: 20614823)**



**CONLEY SANDY 7350**  
\$90,000 Dam of Lot 65

## 65 CONLEY SANDY 332L

DOB. 3/17/23 AAA. 21015371 TATTOO. 332L Angus

**J TRADEMARK 1037**  
20160403

Sitz Resilient 10208  
Mill Brae Iden Georgina 4086

**CONLEY SANDY 7350**  
18987298

E&B Confederate 507  
Conley S Sis Sandy 4350

CED	BW	WW	YW	MILK	CW	MARB	REA	SM	SW	SB	SC
6	0.9	67	118	27	45	0.64	0.62	78	71	147	269

## 66 CONLEY BW PASSPORT SANDY 482

DOB. 3/24/23 AAA. 20856406 TATTOO. 482 Angus

**CONLEY PASSPORT 0440**  
19802224

Mill Brae Identified 4031  
Conley Sandy 7305

**CONLEY SANDY 8210**  
19180565

E&B Confederate 507  
Conley S Sis Sandy 4369

CED	BW	WW	YW	MILK	CW	MARB	REA	SM	SW	SB	SC
3	1.8	53	89	22	30	0.79	0.58	74	51	138	253



LOT 66

• Another member of the "Sandy" tribe that is sired by Conley Passport 0440, the \$42,000 son of Mill Brae Identified 4031 that is supported by the \$105,000 Conley Sandy 7305!

-- Her dam is Conley Sandy 8210, the E&B Confederate 507 daughter that is supported by Conley S Sis Sandy 4369. 4369 traces to the iconic 2009 American Royal ROV Grand Champion Angus Heifer, K N C Cabin Creek Sandy 804.

• She is safe in calf to the calving ease stud known as Sitz Comstock 643L, a bull that will be on display at the sale on September 21!

• **AI Bred 6/28/24 to Sitz Comstock 643L (AAA: 20614823)**



**CONLEY PASSPORT 0440**  
\$42,000 Sire of Lot 66

THE SANDY FAMILY



**CONLEY SANDY 8522**  
Prolific Dam of Lots 67 & 68

- The next pair of ET flushmate sisters are sired by the \$920,000 Conley Lead The Way 0738 and out of the \$130,000 Conley Sandy 8522, the 2018 NAILE Division 1 Champion for Tate Bell. 8522 is now a member of the donor battery at Moore Land & Cattle in Illinois!
- 3734 is one of the premier females in the bred heifer division, offering a look of balance and style that is unmatched. 3682 is a long and extended female that is clean chested, bold ribbed, and offers true skeletal integrity. This pair of ET flushmate sisters offer a royal pedigree that is lined with purple!



LOT 67



**CONLEY SANDY 2421**  
\$35,000 Maternal Sister to Lots 67 & 68



LOT 68

**67 CONLEY SANDY 3734**

DOB. 3/20/23 AAA. 21013120 TATTOO. 3734 Angus

**CONLEY LEAD THE WAY 0738** Gateway Follow Me F163  
19881255 EXAR Princess 1637

**CONLEY SANDY 8522** Stevenson Turning Point  
19181136 Silveiras S Sis Sandy 2355

CED	BW	WW	YW	MILK	CW	MARB	REA	SM	SW	SB	SC
3	3	64	103	23	46	0.49	0.73	42	53	145	231

- AI Bred 4/15/24 to Sitz Comstock 643L (AAA: 20614823)

**68 CONLEY SANDY 3682**

DOB. 3/7/223 AAA. 20764243 TATTOO. 3682 Angus

**CONLEY LEAD THE WAY 0738** Gateway Follow Me F163  
19881255 EXAR Princess 1637

**CONLEY SANDY 8522** Stevenson Turning Point  
19181136 Silveiras S Sis Sandy 2355

CED	BW	WW	YW	MILK	CW	MARB	REA	SM	SW	SB	SC
3	3	64	103	23	46	0.49	0.73	42	53	146	231

- AI Bred 2/22/24 to 5T Power Chip 4790 (AAA: 17956297)



LOT 69



**FCF PROVEN QUEEN 419**  
Prolific Dam of Lot 69



**MLA PROVEN QUEEN 2156**  
2023 Cattlemen's Congress  
Grand Champion Junior Angus Heifer  
Maternal Sister to Lot 69



**MLA PROVEN QUEEN 803**  
2019-2020 ROV Reserve Show Heifer of the Year  
Maternal Sister to Lot 69

**69 BCR PROVEN QUEEN 001J**

DOB. 1/1/21    AAA. 20194962    TATTOO. 001J    Angus

**CONLEY EXPRESS 7211**  
18941522

SMA Watchout 482  
DPL Sandy 3040

**FCF PROVEN QUEEN 419**  
17889848

SCC First-N-Goal GAF 114  
FCF SCC PVF Proven Queen 615

CED	BW	WW	YW	MILK	CW	MARB	REA	SM	SW	SB	SC
0	5.2	64	103	22	33	0.4	0.4	31	44	125	193

- The next donor female in the offering is BCR Proven Queen 001J, a maternal sister to the widely popular and heavily utilized SCC SCH 24 Karat 838!
- 001J is sired by the \$400,000 valued Conley Express 7211 and out of the iconic champion, FCF Proven Queen 419. Her pedigree aligns the influence of the most lucrative and proven cow families in the Angus breed.
- The dam of 001J, FCF Proven Queen 419, is one of the most decorated champions of the last decade. She was the 2015 NAILE ROV Grand Champion Angus Heifer and the 2016 NWSS ROV Grand Champion Angus Heifer. 419 has produced countless high sellers and champions over the last decade!
- 001J is also a maternal sister to MLA Proven Queen 2156, the 2023 Cattlemen's Congress Grand Champion Junior Angus Heifer for the Brunker and Allen families of Kansas. Another maternal sister, MLA Proven Queen 803, was a dominant champion for the Lemenager family of Illinois. She was the 2019-2020 ROV Reserve Show Heifer of the Year!
- She is a true genetic masterpiece that is certain to leave a substantial impact on the business!
- **Will calve by sale day to Conley Lead The Way 0738 (AAA: 19881255)**

# THE PROVEN QUEEN FAMILY

- **UNIQUE.** The best way to describe this stunning daughter of Hara Proven Queen 0140H! 24L is sired by SCC SCH 24 Karat 838, making her line-bred to the impactful influence of the iconic FCF Proven Queen 419.
- The dam of 24L is a daughter of 419 that is sired by Silveiras Style 9303. The dam of 24L is a full sister to MLA Proven Queen 2058, the dam of the \$95,000 BLC/MLA Omega 2258, a past sale feature in the 17th Annual Embryos on Snow sale.
- She sells AI bred to the \$100,000 Conley A 1 for a BIG TIME return on investment!
- **AI Bred 3/25/24 to Conley A 1 (AAA: 20177675)**



**MLA PROVEN QUEEN 2058**  
Full Sister to Dam of Lot 70

LOT 70

## 70 CONLEY HARA'S PROVEN QUEEN 24L

DOB. 3/24/23 AAA. 21014137 TATTOO. 24L Angus

**SCC SCH 24 KARAT 838**  
19262743

SCC Tradition of 24  
FCF Proven Queen 419

**HARA PROVEN QUEEN 0140H**  
20448907

Silveiras Style 9303  
FCF Proven Queen 419

CED	BW	WW	YW	MILK	CW	MARB	REA	SM	SW	SB	SC
1	5	55	92	20	30	0.24	0.55	12	33	120	168

## 71 CONLEY FRKG QUEEN MEG 3527

DOB. 3/14/23 AAA. 21013118 TATTOO. 3527 Angus

**CONLEY LEAD THE WAY 0738**  
19881255

Gateway Follow Me F163  
EXAR Princess 1637

**COLLISON PROVEN QUEEN 875**  
20108529

C&C Priority 1428B EXAR  
Moffitt Proven Queen M301

CED	BW	WW	YW	MILK	CW	MARB	REA	SM	SW	SB	SC
1	4.4	62	103	17	45	0.45	0.48	15	36	144	202

- A big time show heifer producing type female that has the extra "bells and whistles" needed to generate at a high level. She is so long and extended about her front third with an eccentric neck and head design. She is big ribbed, neat chested and deep flanked, all adding to her ultra-balanced look from the side.
- 3572 is sired by the \$920,000 valued Conley Lead The Way 0738 and is out of the prolific Collison Proven Queen 875 donor. 3572 is a maternal sister to Conley FRKG Queen Meg 1085, the 2022-2023 ROV Show Heifer of the Year! There is no denying that 1085 is one of the most dominant Angus show ring champions of the last decade with countless wins at the most competitive shows in North America!
- She sells bred to the calving ease stud known as Sitz Comstock 643L!
- **AI Bred 4/15/24 to Sitz Comstock 643L (AAA: 20614823)**



**CONLEY FRKG QUEEN MEG 1085**  
2023 Cattlemen's Congress Supreme  
Champion Open Breeding Heifer  
Maternal Sister to Lot 71

LOT 71



LOT 72



**SCHNOOR WINNIE 9323**  
2014 NJAS Grand Champion Bred & Owned Heifer  
Three-Quarter Sister to Lot 72



**CONLEY WINNIE 4297**  
Daughter of Lot 72  
She Sells as Lot 39



**CONLEY WINNIE 4754**  
Daughter of Lot 72  
She Sells as Lot 40

**72 EXAR WINNIE 1577**

DOB. 9/7/17    AAA. 18877011    TATTOO. 1577    **Angus**

**PVF INSIGHT 0129**  
16805884

S A V Brilliance 8077  
PVF Missie 790

**EXAR WINNIE 5291**  
16998516

Dameron First Class  
EXAR Winnie 2655

CED	BW	WW	YW	MILK	CW	MARB	REA	SM	SW	SB	SC
1	5.2	80	130	19	65	0.57	1.13	41	54	189	286

- We have decided to offer a set of young and productive donor females this fall that would rival any set of proven donors and production age cows that we have ever offered before!

- EXAR Winnie 1577 is another top shelf donor female that has proven her value with her two ET heifer calves sired by Conley Lead The Way 0738 that sell as lots 39 and 40. She also has a sensational set of summer born ET heifer calves!

- 1577 is sired by PVF Insight 0129 and is backed by EXAR Winnie 5129, a Dameron First Class daughter. 1577 is a maternal sister to Schnoor Winnie 9323, the 2014 National Junior Angus Show Grand Champion Bred & Owned Heifer for Sydney Schnoor of California. She is a big footed, stout boned female that is wide bodied, big hipped, and square built.

- A definite sale feature that will be a profitable investment for any firm that is looking to add true cow power to their donor arsenal!

- AI Bred 4/9/24 to Sexed Female Conley A 1 (AAA: 20177675)



**SILVEIRAS SARAS DREAM 2335**  
2013 American Royal ROV  
Grand Champion Angus Heifer  
Deceased Dam of Lot 73



**SILVEIRAS SARAS DREAM 1339**  
Famous Full Sister to Dam of Lot 73



**UDE SARAS DREAM 1086**  
\$600,000 Maternal Sister to Lot 73

LOT 73

**73 SILVEIRAS SARAS DREAM 6311**

DOB. 3/3/16    AAA. 18545898    TATTOO. 6311    **Angus**

**PVF INSIGHT 0129**  
16805884

S A V Brilliance 8077  
PVF Missie 790

**SILVEIRAS SARAS DREAM 2335** Silveiras Style 9303  
17266734 EXG Saras Dream S609 R3

CED	BW	WW	YW	MILK	CW	MARB	REA	SM	SW	SB	SC
-3	4.7	52	92	16	38	-0.32	1.05	34	29	126	197

• Pedigree, pedigree, pedigree! Allow us to introduce you to Silveiras Saras Dream 6311, the PVF Insight 0129 daughter of Silveiras Saras Dream 2335! 2335 was the 2013 American Royal ROV Grand Champion Angus Heifer. Before her untimely death, 2335 evolved as one of the premier members of the S609 cow family!

• 2335 is a FULL SISTER to Silveiras Saras Dream 1339, the high income producing donor dam for Colburn Cattle Company of California. 1339 is the dam of the iconic AI sire, Colburn Primo 5153. 1339 is also the dam of CCC Saras Dream 5116, the many time champion female that was selected as the 2016 NJAS Grand Champion Owned Heifer, 2016 American Royal Supreme Champion Junior Breeding Heifer, and 2017 NWSS ROV Grand Champion Angus Heifer. 5116 is the dam of countless high sellers and champions including BNWZ Dignity 8017 and BNWZ Executive Decision 2219.

• 6311 is a maternal sister to the \$600,000 world record selling heifer calf, UDE Saras Dream 1086! She is an ultra-attractive profiling female that ties together flawlessly from the side. She is long fronted and feminine about her head and neck, huge ribbed, and massive in her hip and pin set. A unique built female that is backed by a world class pedigree.

• The mating flexibility that this female offers is simply unrivaled. Bid to own!

• AI Bred 5/1/24 to Conley DS Clear Cut 0510 (AAA: 20032604)

# THE MADDIE FAMILY



- We initiate the "Maddie" cow family with one of the very best daughters of Schelske Maddie 8229 that we have EVER offered!
- 3424 is sired by Conley DS Clear Cut 0510, the 2021-2022 ROV Show Bull of the Year! She is a full sister to the \$220,000 high selling female from the 2023 Fall Production Sale, Conley Maddie 3157.
- Conley Maddie 3157 was the 2023 Hoosier Beef Congress 4th Overall Breeding Heifer for Houston Ferree.
- She is massive in her rib design, huge boned, big footed, and offers an ultra-maternal look from the side. We love the type and kind of the Angus female that 3424 represents.
- She is without a doubt a top donor candidate among the bred heifer offering!

• **AI Bred 4/15/24 to Sitz Comstock 643L (AAA: 20614823)**



**CONLEY MADDIE 3157**  
\$220,000 Full Sister to Lots 74-76

LOT 74

## 74 CONLEY MADDIE 3424

DOB. 2/24/23 AAA. 20949069 TATTOO. 3424 Angus

**CONLEY DS CLEAR CUT 0510** Conley No Limit  
20032604 Conley Sandy 5104

**SCHELSKE MSF MADDIE 8229** BCII MLA Next Up 015  
19177293 MSF Lucy 201

CED	BW	VV	YW	MILK	CW	MARB	REA	SM	SW	SB	SC
1	2.8	63	104	23	30	0.18	0.44	36	53	109	177



LOT 75

## 75 CONLEY MADDIE 3010

DOB. 2/20/23 AAA. 21015373 TATTOO. 3010 Angus

**CONLEY DS CLEAR CUT 0510** Conley No Limit  
20032604 Conley Sandy 5104

**SCHELSKE MSF MADDIE 8229** BCII MLA Next Up 015  
19177293 MSF Lucy 201

CED	BW	VV	YW	MILK	CW	MARB	REA	SM	SW	SB	SC
1	2.8	63	104	23	30	0.18	0.44	36	53	109	177

- Another big time daughter of Schelske Maddie 8229 that is sired by the \$200,000 Conley DS Clear Cut 0510.
- She is a moderate framed, big ribbed, dense made female that is long and level in her topline and square built from the ground up.
- She is a full sister to a set of Conley DS Clear Cut 0510 daughters that highlighted the 2024 Spring Production Sale with an impressive \$15,650 average on 10 head with a high of \$40,000!
- 3010 was AI bred with sexed female semen to the \$100,000 Conley A 1 for a quick and lucrative return!

• **AI Bred 2/22/24 to Sexed Female Conley A 1 (AAA: 20177675)**



**CONLEY DS CLEAR CUT 0510**  
2021-2022 ROV Show Bull of the Year  
Sire of Lots 74-76



## 76 CONLEY MADDIE 3025

DOB. 4/10/23 AAA. 21015374 TATTOO. 3025 Angus

**CONLEY DS CLEAR CUT 0510**  
20032604

Conley No Limit  
Conley Sandy 5104

**SCHELKSKE MSF MADDIE 8229**  
19177293

BCII MLA Next Up 015  
MSF Lucy 201

CED	BW	WW	YW	MILK	CW	MARB	REA	SM	SW	SB	SC
1	2.8	63	104	23	30	0.18	0.44	36	53	109	177

- Here is the third ET flushmate sister from the Conley DS Clear Cut 0510 sired flush from the incredible Schelske Maddie 8229 donor dam!
- Another dense built, big ribbed, sound structured female from one of the most consistent and proven matings at Conley Cattle.
- She offers unmatched maternal function with show ring appeal!
- **AI Bred 2/22/24 to Sexed Female Conley A1 (AAA: 20177675)**



LOT 76

## 77 CONLEY MADDIE 3234

DOB. 3/21/23 AAA. 21015375 TATTOO. 3234 Angus

**CONLEY LEAD THE WAY 0738**  
19881255

Gateway Follow Me F163  
EXAR Princess 1637

**SCHELKSKE MSF MADDIE 8229**  
19177293

BCII MLA Next Up 015  
MSF Lucy 201

CED	BW	WW	YW	MILK	CW	MARB	REA	SM	SW	SB	SC
2	3.6	62	102	24	35	0.39	0.63	28	50	133	201

- 3234 is the first of two ET flushmate sisters sired by the \$920,000 Conley Lead The Way 0738 that are supported by the prolific Schelske Maddie 8229 matron.
- She is so attractive from the profile, offering a look that is hard to deny. She is clean chested and smooth shouldered yet offers tremendous turn and shape to her forerib and center body.
- True genetic consistency supports this set of 8229 daughters!
- **AI Bred 4/6/24 to Sitz Comstock 643L (AAA: 20614823)**



**SCHELKSKE MSF MADDIE 8229**  
Prolific Dam of Lots 74-78



LOT 77

## 78 CONLEY MADDIE 3600

DOB. 2/25/23 AAA. 21015376 TATTOO. 3600 Angus

**CONLEY LEAD THE WAY 0738**  
19881255

Gateway Follow Me F163  
EXAR Princess 1637

**SCHELKSKE MSF MADDIE 8229**  
19177293

BCII MLA Next Up 015  
MSF Lucy 201

CED	BW	WW	YW	MILK	CW	MARB	REA	SM	SW	SB	SC
2	3.6	62	102	24	35	0.39	0.63	28	50	133	201

- 3600 is a neat featured, ultra-attractive profiling daughter of Schelske Maddie 8229 that is sired by Conley Lead The Way 0738.
- A sound built female that is level in her design, strong topped, and square pinned.
- She is bred to Sitz Comstock 643L, one of the new and exciting sire additions to the herd bull battery at Conley Cattle!
- **AI Bred 5/1/24 to Sitz Comstock 643L (AAA: 20614823)**



LOT 78

THE PRINCESS FAMILY



- 3720 is a stunning daughter of Conley No Limit that is backed by EXAR Princess 7086, a daughter of S&R Roundtable J328 that was successfully shown by Madilyn Norvell.
- The maternal side of her pedigree is supported by EXAR Princess 9443, the Dameron First Class daughter that was 2014 National Junior Angus Show Reserve Division III Champion Owned Heifer.
- She is flawless at the surface, smooth made, and big ribbed. A maternal built female that is so angular about her front third.
- **AI Bred 5/15/24 to Sitz Comstock 643L (AAA: 20614823)**



**CONLEY NO LIMIT**  
Sire of Lot 79

LOT 79

**79 CONLEY NCC PRINCESS 3720**

DOB. 3/8/23    AAA. 21019629    TATTOO. 3720    Angus

**CONLEY NO LIMIT**  
19290775

EXAR Blue Chip 1877B  
Silveiras S Sis Sandy 2355

**EXAR PRINCESS 7086**  
18719918

S&R Roundtable J328  
EXAR Princess 9443

CED	BW	WW	YW	MILK	CW	MARB	REA	SM	SW	SB	SC
3	3.4	61	96	19	34	0.44	0.32	16	44	127	181

**80 CONLEY NCC PRINCESS 3751**

DOB. 3/7/23    AAA. 21017000    TATTOO. 3751    Angus

**EXAR BLUE CHIP 1877B**  
16980412

Dameron First Class  
Greens Princess 1012

**EXAR PRINCESS 7086**  
18719918

S&R Roundtable J328  
EXAR Princess 9443

CED	BW	WW	YW	MILK	CW	MARB	REA	SM	SW	SB	SC
1	3.9	65	104	18	45	0.65	0.34	18	45	153	217



- 3751 is the second ET daughter of EXAR Princess 7086. She is sired by EXAR Blue Chip 1877B, the Dameron First Class sired son that is also the sire of Conley No Limit, therefore making her a three-quarter sister in blood to 3720.
- She offers a pedigree that is linebred to the influence of the \$400,000 Greens Princess 1012. Greens Princess 1012 was the 2003 NWSS ROV Grand Champion Angus Heifer.
- A proven and predictable pedigree supports this sharp featured bred heifer that was AI bred to the GENEX Beef sire, E&B Confederate 507.
- **AI Bred 2/6/24 to E&B Confederate 507 (AAA: 18215493)**



**EXAR PRINCESS 1637**  
Full Sister to Dam of Lots 79-81

LOT 80

# THE PRINCESS FAMILY

- Another eye-appealing daughter of the \$920,000 Conley Lead The Way 0738 that is supported by EXAR Princess 7086.
- 3015 is a long bodied, angular female that is soft bodied, bold ribbed, and sets to the surface with an excellent set to her hip and hind leg.
- She is also line-bred to the influence of the iconic Greens Princess 1012, a female that can be identified on both sides of her lineage. She is bred to the new calving ease specialist in Sulphur, Sitz Comstock 643L.
- **AI Bred 4/5/24 to Sitz Comstock 643L (AAA: 20614823)**



**CONLEY LEAD THE WAY 0738**  
\$920,000 Valued Sire of Lot 81

LOT 81

## 81 CONLEY NCC PRINCESS 3015

DOB.	AAA.	TATTOO.	Angus								
3/23/23	21017684	3015	Angus								
<b>CONLEY LEAD THE WAY 0738</b> 19881255		Gateway Follow Me F163 EXAR Princess 1637									
<b>EXAR PRINCESS 7086</b> 18719918		S&R Roundtable J328 EXAR Princess 9443									
CED	BW	WW	YW	MILK	CW	MARB	REA	SM	SW	SB	SC
3	3.5	61	100	19	45	0.56	0.72	13	44	155	214

## 82 CB WB PRINCESS 308

DOB.	AAA.	TATTOO.	Angus								
2/14/23	20712951	308	Angus								
<b>KR RALLY</b> 18885447		Bushs Tundra 602 KR Mamie 5412									
<b>WB PRINCESS 908</b> 19493725		WB Pendleton 708 PVF SWSN EXAR Princess 6680									
CED	BW	WW	YW	MILK	CW	MARB	REA	SM	SW	SB	SC
4	4.9	84	147	25	51	0.8	0.7	56	62	146	245

- 308 is sired by KR Rally, the Bushs Tundra 602 son that is a herd sire for Krebs Ranch, Thomas Ranch, and RBM Livestock. The dam of 308 is WB Princess 908, a daughter of the 2019 NWSS ROV Grand Champion Angus Bull, WB Pendleton 708 PVF SWN.
- WB Princess 908 was a successful show heifer for Cealy Bedwell that has become a role model brood cow in production. 908 is the dam of 2024 National Junior Angus Show Division I Champion Bred & Owned Heifer, CB Princess 316.
- 908 is a full sister to WB Princess 902, the 2021 Cattlemen's Congress ROV Grand Champion Angus Heifer for Sara Sullivan.
- 308 is a three-quarter sister in blood to the \$120,000 WB Princess 309, a daughter of KR Rally that is a direct daughter of EXAR Princess 6680 that was selected by the Gensini family of Illinois.
- **AI Bred 6/1/24 to Sitz Comstock 643L (AAA: 20614823)**



**EXAR PRINCESS 6680 "PEBBLES"**  
2017-2018 ROV Show Heifer of the Year  
Maternal Granddam of Lot 82

LOT 82

# THE FRONTIER GAL FAMILY



- Here are two maternal sisters from the impressive Conley WCC Frontier Gal 7776 donor dam, a female that is sired by 5T Power Chip 4790 and backed by the legendary WCC Frontier Gal 893 donor.
- A maternal sister to 3777 and 3695, Conley DCC Frontier Gal 2267, was the 2024 San Antonio Livestock Exposition Reserve Supreme Champion Breeding Heifer Overall Breeds for Brax Friedrich.
- 3777 is sired by the influential power sire, BC Robust 0807. She is massive in terms of her rib cage, soft bodied, and offers a strong maternal look from every angle. While BC Robust 0807 semen is scarce, daughters are in high demand and continue to gain popularity!
- A tremendous brood cow prospect that is certain to make a productive and profitable addition to any program!

• AI Bred 4/25/24 to Sitz Comstock 643L (AAA: 20614823)



## CONLEY DCC FRONTIER GAL 2267

2024 San Antonio Livestock Exposition Reserve  
Supreme Champion Junior Breeding Heifer  
Maternal Sister to Lots 83 & 84

LOT 83

## 83 CONLEY FRONTIER GAL 3777

DOB. 3/1/23 AAA. 21015372 TATTOO. 3777 Angus

BC ROBUST 0807  
18456252

BC Surveyor 680D  
BC 327-8 CP Belle 0-807

CONLEY WCC FRONTIER GAL 7776 5T Power Chip 4790  
18943617 WCC Frontier Gal 893

CED	BW	WW	YW	MILK	CW	MARB	REA	SM	SW	SB	SC
4	2.3	65	101	13	38	0.33	0.66	53	53	128	219

## 84 CONLEY FRONTIER GAL 3965

DOB. 1/9/23 AAA. 20716270 TATTOO. 3965 Angus

COLBURN PRIMO 5153  
18217480

Dameron First Class  
Silveiras Saras Dream 1339

CONLEY WCC FRONTIER GAL 7776 5T Power Chip 4790  
18943617 WCC Frontier Gal 893

CED	BW	WW	YW	MILK	CW	MARB	REA	SM	SW	SB	SC
-2	4.8	73	119	16	51	0.44	0.44	24	48	136	201



- 3695 is a maternal sister to 3777 that is sired by Colburn Primo 5153. Her pedigree aligns the impact of the legendary Silveiras Saras Dream 1339 with the strong maternal influence of the iconic W C C Frontier Gal 39. These cow families would respectively be two of the highest income producing females in the Angus breed!
- She was AI bred to the \$87,500 Boyd Justification, a member of the GENEX Beef sire line-up that offers multi-trait excellence!

• AI Bred 2/22/24 to Boyd Justification (AAA: 20038723)



**BOYD JUSTIFICATION**  
Service Sire to Lot 84



**CONLEY WCC FRONTIER GAL 7776**  
Dam of Lots 83 & 84

LOT 84

### 85 CONLEY FRONTIER GAL 3430

DOB. 4/3/23 AAA. 21015377 TATTOO. 3430 Angus

CONLEY SOUTH POINT 8362  
19248022

Stevenson Turning Point  
P R Lady 909 4200-587

WCC FRONTIER GAL 893  
16297280

EXAR Lutton 1831  
W C C Frontier Gal 39

CED	BW	WW	YW	MILK	CW	MARB	REA	SM	SW	SB	SC
8	0.8	54	85	22	30	0.65	0.66	72	56	139	252

- Here is a dynamic trio of females that are sired by the first ever International Champion, Conley South Point 8362, the 2019 Canadian Western Agribition Grand Champion Angus Bull and the 2020 NWSS ROV Grand Champion Angus Bull!

- The dam of this trio is WCC Frontier Gal 893, a daughter of EXAR Lutton 1831 that is supported by the high income generating donor, W C C Frontier Gal 39.

- AI Bred 2/22/24 to Sexed Female Conley A1  
(AAA: 20177675)



EXAR FRONTIER GAL 3734  
Influential Maternal Sister to  
Dam of Lots 85-87

LOT 85

### 86 CONLEY FRONTIER GAL 3570

DOB. 3/2/23 AAA. 20706057 TATTOO. 3570 Angus

CONLEY SOUTH POINT 8362  
19248022

Stevenson Turning Point  
P R Lady 909 4200-587

WCC FRONTIER GAL 893  
16297280

EXAR Lutton 1831  
W C C Frontier Gal 39

CED	BW	WW	YW	MILK	CW	MARB	REA	SM	SW	SB	SC
5	2.2	51	75	19	25	0.45	0.77	77	50	116	227

- The dam of this trio, 893 is a maternal sister to EXAR Frontier Gal 3734, the 2014 National Junior Angus Show Grand Champion Owned Heifer and the 2015 NWSS ROV Grand Champion Angus Heifer that was shown by Calli West.

- EXAR Frontier Gal 1400 is another maternal sister to 893. She was 2021 National Junior Angus Show 4th Overall Owned Heifer for the Dailey family.

- 3570 was AI bred to the \$27,000 Conley Step Ahead, a member of the Alta Beef sire line-up!

- AI Bred 2/22/24 to Conley Step Ahead  
(AAA: 20344877)



CONLEY STEP AHEAD  
Service Sire to Lots 86 & 91

LOT 86

### 87 CONLEY FRONTIER GAL 3631

DOB. 2/25/23 AAA. 20706056 TATTOO. 3631 Angus

CONLEY SOUTH POINT 8362  
19248022

Stevenson Turning Point  
P R Lady 909 4200-587

WCC FRONTIER GAL 893  
16297280

EXAR Lutton 1831  
W C C Frontier Gal 39

CED	BW	WW	YW	MILK	CW	MARB	REA	SM	SW	SB	SC
13	0.3	53	80	18	31	0.46	0.76	66	52	129	233

- The third sister in this dynamic trio of ET flushmate sisters is the impressive Conley Frontier Gal 3631. She is ultra-feminine and refined about her front third, clean chested, and opens up into a bold and three-dimensional center body. She is long hipped, square pinned, and stout featured.

- Daughters of Conley South Point 8362 are making incredible brood cows in production. There is no doubt that these three females will continue the trend.

- 3631 was AI bred to Sitz Comstock 643L, the newest member of the Conley Cattle herd sire battery!

- AI Bred 5/15/24 to Sitz Comstock 643L  
(AAA: 20614823)



WCC FRONTIER GAL 893  
2009 American Royal ROV Grand Champion  
Angus Heifer & Dam of Lots 85-87

LOT 87

THE PATRICIA + PURE PRIDE FAMILY



- Conley Patricia 2237 is a powerfully constructed daughter of the \$200,000 Conley DS Clear Cut 0510, the 2021-2022 ROV Show Bull of the Year!
- A big footed, stout featured female that is massive in the shape to her center body. She is big hiped, square pinned, long bodied, and offers a true brood cow look from every angle!
- 2237 is a member of the "Patricia" tribe, the same cow family that produced Conley Patricia 110, the 2022 OYE Supreme Champion Breeding Heifer for the Madilyn Norvell.
- **AI Bred 2/22/24 to Sexed Female Conley A 1 (AAA: 20177675)**



**CONLEY PATRICA 110**  
2022 OYE Supreme Champion Breeding Heifer  
Member of the "Patricia" Cow Family!

LOT 88

**88 CONLEY PATRICIA 2237**

<b>DOB.</b> 10/25/22	<b>AAA.</b> 20646198	<b>TATTOO.</b> 2237	<b>Angus</b>								
<b>CONLEY DS CLEAR CUT 0510</b> 20032604		Conley No Limit Conley Sandy 5104									
<b>PATRICIA 36 KN</b> 18488996		Penners-CC Double Black 2257 Patricia 92 KN									
<b>CED</b>	<b>BW</b>	<b>WW</b>	<b>YW</b>	<b>MILK</b>	<b>CW</b>	<b>MARB</b>	<b>REA</b>	<b>SM</b>	<b>SW</b>	<b>SB</b>	<b>SC</b>
-1	4.4	68	106	19	43	1.3	0.49	46	52	117	198

**89 CONLEY PURE PRIDE 3043**

<b>DOB.</b> 2/11/23	<b>AAA.</b> 21015378	<b>TATTOO.</b> 3043	<b>Angus</b>								
<b>CONLEY NO LIMIT</b> 19290775		EXAR Blue Chip 1877B Silveiras S Sis Sandy 2355									
<b>DOUBLE R BAR PURE PRIDE Z246</b> 17305055		P R Black Friday 0244 Bohi Pure Pride 6096									
<b>CED</b>	<b>BW</b>	<b>WW</b>	<b>YW</b>	<b>MILK</b>	<b>CW</b>	<b>MARB</b>	<b>REA</b>	<b>SM</b>	<b>SW</b>	<b>SB</b>	<b>SC</b>
-3	4.6	63	100	20	31	0.14	0.15	39	44	97	165



- 3043 is a beautiful profiling female by Conley No Limit that is a direct daughter of Double R Bar Pure Pride Z246 that is certain to be a favorite on sale day!
- Z246 is an influential female in the Conley Cattle breeding program that has left behind countless daughters of influence and many high sellers during her tenure in Sulphur, Oklahoma.
- A maternal sister to 3043, Conley Pure Pride 8456, was the 2020 NAILE Reserve Senior Yearling Division Champion for Morgan Hutchins. Another maternal sister, Conley Pure Pride 8456, was the \$77,500 selection of J6 Ranch from our 2018 Fall Production Sale.
- The most noted maternal brother of 3043 is Conley Expression 9213, a member of The Semex Alliance sire line-up!
- **AI Bred 5/28/24 to E&B Confederate 507 (AAA: 18215493)**



**DOUBLE R BAR PURE PRIDE Z246**  
Dam of Lot 89

LOT 89

# THE MULBEN PRIDE FAMILY

- Conley Mulben Pride 3573 is a beautiful profiling daughter of Conley Mulben Pride 8248 that is sired by the \$920,000 Conley Lead The Way 0738!
- 8248 is a maternal sister to the \$113,500 high selling female from our 2013 Fall Production Sale, P R 3921 BF-909! She was the 2014 American Royal ROV Grand Champion Angus Heifer for the Nowatzke family of Michigan.
- Conley Mulben Pride 9248 is also a maternal sister to the International Champion, Conley South Point 8362! He was the 2019 Canadian Western Agribition Grand Champion Angus Bull and the 2020 NWSS ROV Grand Champion Angus Bull.
- A maternal sister to 3573, Conley Mulben Pride 3564, sold for \$62,500 last fall to Carroll Cattle Company. Another maternal sister, Conley Mulben Pride 0248, sold for \$20,000 to Classic Genetics. Time-tested and proven genetics!
- **AI Bred 2/22/24 to Boyd Justification (AAA: 20038723)**



LOT 90



**P R LADY 909 4200-587**  
Maternal Granddam of  
Lots 90 & 91



**CONLEY MULBEN PRIDE 3564**  
\$62,500 Maternal Sister to Lot 90

## 90 CONLEY MULBEN PRIDE 3573

DOB. 2/21/23 AAA. 21018956 TATTOO. 3573 Angus

**CONLEY LEAD THE WAY 0738**  
19881255

Gateway Follow Me F163  
EXAR Princess 1637

**CONLEY MULBEN PRIDE 8248**  
19180424

SMA Watchout 482  
P R Lady 909 4200-587

CED	BW	WW	YW	MILK	CW	MARB	REA	SM	SW	SB	SC
8	3.1	60	102	18	37	0.39	0.67	36	45	126	199

## 91 CONLEY MULBEN PRIDE 33810

DOB. 4/14/23 AAA. 21017071 TATTOO. 3810 Angus

**E&B CONFEDERATE 507**  
18215493

Connealy Confidence Plus  
E&B Lady Complete 330

**CONLEY MULBEN PRIDE 8105**  
19181141

Stevenson Turning Point  
P R Lady 909 4200-587

CED	BW	WW	YW	MILK	CW	MARB	REA	SM	SW	SB	SC
13	1.1	54	92	25	38	0.84	0.73	70	59	155	271

- 3810 is a E&B Confederate 507 sired female that is backed by the influence of P R Lady 909 4200-587. The dam of 3810 is a maternal sister to the \$113,500 3921 BF-909 female that was selected by the Nowatzke family. She was the 2014 American Royal ROV Grand Champion Angus Heifer.
- The dam of 3810 is a FULL SISTER to the International Champion, Conley South Point 8362! He was the 2019 Canadian Western Agribition Grand Champion Angus Bull and the 2020 NWSS ROV Grand Champion Angus Bull.
- A strong maternal foundation supports this female!
- **AI Bred 2/22/24 to Conley Step Ahead (AAA: 20344877)**



LOT 91



**P R 3921 BF-909**  
2014 American Royal ROV Grand  
Champion Angus Heifer  
Maternal Sister to Dam of  
Lots 90 & 91



**CONLEY SOUTH POINT 8362**  
2019 CWA Grand Champion Angus Bull  
2020 NWSS ROV Grand Champion Angus Bull  
Full Brother to Dam of Lot 91



LOT 92

**92 CONLEY EMMA 3860**

DOB. 4/4/23 AAA. 20707952 TATTOO. 3860 Angus

**E&B CONFEDERATE 507**  
18215493

Connealy Confidence Plus  
E&B Lady Complete 330

**SITZ EMMA 212F**  
19078015

Raven Powerball 53  
Sitz Emma 78C

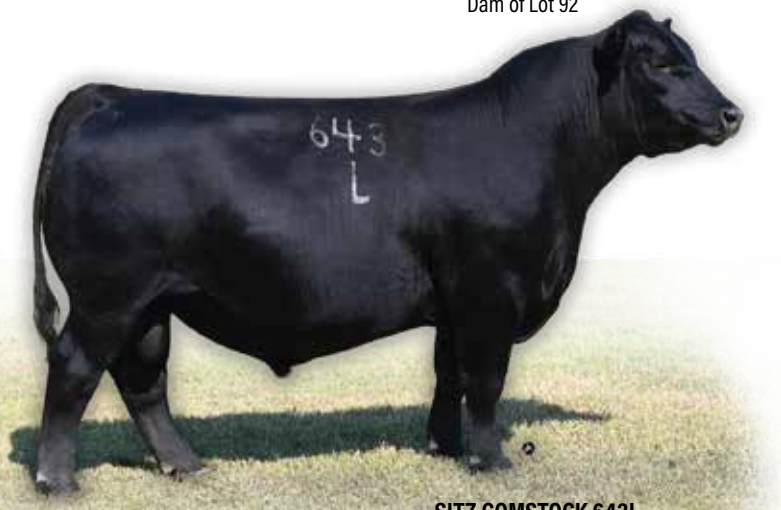
CEM	BW	WW	YW	MILK	CW	MARB	REA	SM	SW	SB	SC
8	2	59	103	24	47	1.16	0.92	57	53	179	289



**SITZ EMMA 212F**  
Dam of Lot 92

- Conley Emma 3860 is most definitely one of the premier bred heifers within this year's offering! She is the type of female that we strive to produce year after year. She has a strong maternal foundation with unmatched eye appeal and quality.
- 3860 is sired by E&B Confederate 507, a member of the GENEX Beef sire line-up that has left behind a sensational set of daughters that excel in production.
- The dam of 3860 was our selection from the 2021 Sitz Angus Female Sale. Sitz Emma 212F is sired by Raven Powerball 53 and backed by a daughter of V A R Reserve 1111.
- 3860 ranks among the top 10% \$G, 15% Marb, 15% \$AxH, 20% \$AxL, 20% %G, 25% \$C, and 25% CEM.
- Incredible maternal genetics that will serve as the foundation for any progressive breeding program!

• AI Bred 4/15/24 to Sitz Comstock 643L (AAA: 20614823)



**SITZ COMSTOCK 643L**  
Service Sire to several females throughout the offering!



THE ERNESTINE + ENAMEL FAMILY

- Here is a high quality, neat featured, beautifully designed daughter of PVF Blacklist 7077 that is supported by Conley Ernestine 9478, a daughter of the \$400,000 valued Conley Express 7211 that commanded \$170,000 in the 2019 Fall Productions Sale at Conley Cattle.

- The dam of 3477 traces to the influence of PR Mona Lisa 529, the \$52,500 half interest and high selling female at the 2010 National Finals Angus Sale. PR Mona Lisa 529 is the dam of the \$96,000 PR Black Friday 0244!

- Elite pedigree, exquisite quality, and safe in calf to the new calving ease sensation at Conley Cattle, Sitz Comstock 643L!

• AI Bred 4/15/24 to Sitz Comstock 643L (AAA: 20614823)



LOT 93



**CONLEY ERNESTINE 9478**  
\$170,000 Dam of Lot 93



**PENNERS ERNESTINE 3496**  
Maternal Granddam of Lot 93

**93 CONLEY DIECKMANN ERNESTINE 3477**

DOB. 5/20/23 AAA. 20716257 TATTOO. 3477 Angus

**PVF BLACKLIST 7077**  
18944889

PVF Insight 0129  
PVF Blackbird 3070

**CONLEY ERNESTINE 9478**  
19479803

Conley Express 7211  
Penners Ernestine 3496

CED	BW	WW	YW	MILK	CW	MARB	REA	SM	SW	SB	SC
-2	5.7	87	146	28	68	0.46	0.32	31	65	153	230

**94 CONLEY ENAMEL 3918**

DOB. 3/10/23 AAA. 21013119 TATTOO. 3918 Angus

**CONLEY A1**  
20177675

Gateway Follow Me F163  
EXAR Princess 6741

**WHITESTONE ENAMEL 918**  
19796442

Conley Express 7211  
Triara Enamel 894U

CED	BW	WW	YW	MILK	CW	MARB	REA	SM	SW	SB	SC
-3	4.3	59	96	21	31	0.45	0.42	54	45	120	210

- A chiseled featured daughter of the \$100,000 Conley A 1, the popular AI sire that is a member of the illustrious line up at ST Genetics!

- The dam of 3918 is Whitestone Enamel 918, sired by the \$400,000 valued Conley Express 7211. The maternal granddam of 2918 is the impressive Triara Enamel 894U by Connealy Power One. 894U has produced countless high sellers, including the Virginia Beef Expo Supreme Champion breeding Heifer. 894U was undefeated during the 2010-2011 show season as a cow-calf pair. She was also selected as the Canadian National Junior Angus Show Grand Champion Heifer!

- Conley Enamel 2918 is a maternal sister to 3918 that was the \$36,000 high selling bred heifer in the 2023 Fall Production Sale to Thomas Ranch of Harrold, South Dakota!

• AI Bred 4/15/24 to Sitz Comstock 643L (AAA: 20614823)



LOT 94



**CONLEY ENAMEL 2918**  
\$36,000 Maternal Sister to Lot 94

THE LASS + CHEYENNE FAMILY



- 287 is one of the stoutest made, most powerful females in this year's bred heifer offering! She is sired by Conley Passport 0440, the Mill Brae Identified 4031 son that is out of the \$105,000 Conley Sandy 7305 donor.
- A maternal sister to 287, Conley AF Lass 3875, sold for \$40,000 in the 2024 Spring Production Sale to Saylor Norvell. Another maternal sister to 287, BBPB Pio Lass 1094 sold for \$10,000.
- She is so elegant about her front third, great footed, and offers superior skeletal integrity. Her natural dimension and mass make her one of the premier brood cow prospects in this offering.
- A surefire donor prospect that is from a cow family that never misses!

• **AI Bred 1/23/24 to Conley Lead The Way 0738 (AAA: 19881255)**



**CONLEY AF LASS 3875**  
\$40,000 Maternal Sister to Lot 95

LOT 95

**95 CONLEY AF PIO LASS 287**

DOB. 9/2/22 AAA. 20796895 TATTOO. 287 Angus

**CONLEY PASSPORT 0440**  
19802224

Mill Brae Identified 4031  
Conley Sandy 7305

**BBPB PIO LASS 8487**  
19596869

Blacktop Cash Crop  
BBPB Pio Lass 8027 0031

CED	BW	WW	YW	MILK	CW	MARB	REA	SM	SW	SB	SC
10	1.1	48	83	33	15	0.39	0.1	62	59	88	176

**96 CONLEY BW POSS MAVERICK CHEYENNE 521**

DOB. 5/7/23 AAA. 20856401 TATTOO. 521 Angus

**BW POSS MAVERICK 151**  
20305267

Poss Maverick  
Pilgrim Rachel 415

**ZWT CHEYENNE 5208**  
18205101

S A V Hesston 2217  
Craft Cheyenne 1397-581

CED	BW	WW	YW	MILK	CW	MARB	REA	SM	SW	SB	SC
3	2.5	68	112	32	37	-0.2	0.5	45	53	108	185



- Here is a high quality female that offers a different pedigree twist within this offering. She is sired by BW Poss Maverick 151, a son of Poss Maverick that is owned by Brandywine Cattle & Deer Company of Indiana.
- The dam of 521 is a daughter of S A V Hesston 2217 that is influenced by a daughter of Champion Hill Tecumseh 2382. She was bred in the ZWT Ranch breeding program of Tennessee.
- 521 is further supported by the strong maternal influence of Craft Cheyenne 1397-659, the 2007 National Junior Angus Show Reserve Grand Champion Cow-Calf Pair.
- She is bred to Sitz Comstock 643L for a fast return on investment!

• **AI Bred 4/15/24 to Sitz Comstock 643L (AAA: 20614823)**

LOT 96

# 97 CONLEY LADY 3277

DOB. 4/15/23 AAA. PENDING TATTOO. 3277 Angus

**DIECKMANN J-WALL 1326**  
20511410

Silveiras Style 9303  
Dieckmann Forever Lady 9326

**DIECKMANN LADY 1277**  
20160903

5T Power Chip 4790  
Chapman Lady 4128

sire epds  
dam epds

CED	BW	WW	YW	MILK	CW	MARB	REA	SM	SW	SB	SC
7	2.6	65	111	15	44	0.29	0.79	17	43	144	204
5	2.1	69	105	13	36	0.58	0.89	44	54	126	208

- 3277 is a member of the famed Chapman Lady 4128 dynasty! She is sired by a son of Silveiras Style 9303 that is from the Dieckmann Forever Lady 9326 donor.
- The dam of 3277 is a maternal sister to the widely popular Dieckmann Lady 1117

female that competitively campaigned by the Yocham family to countless national division wins and ultimately was selected as the 2022 American Royal Reserve Grand Champion Junior Angus Heifer.

• Chapman Lady 4128 is also the dam of C-4 Lead Lady 2K, the 2024 OYE Supreme Champion Junior Breeding Heifer for Ty Collum. This cow family never misses!

• A valuable breeding piece that will be a profitable addition to any program!

• **AI Bred 6/19/24 to Conley A 1**  
(AAA: 20177675)



**CHAPMAN LADY 4128**  
Prolific Maternal Granddam of Lot 97



LOT 97

# 98 CONLEY SANDY 3122

DOB. 3/14/23 AAA. 21018838 TATTOO. 3122 Angus

**5T POWER CHIP 4790**  
17956297

EXAR Blue Chip 1877B  
5T Miss Wix 8002

**CONLEY SANDY 0271**  
19802225

Bushs High Caliber 674  
Conley Sandy 7271

CED	BW	WW	YW	MILK	CW	MARB	REA	SM	SW	SB	SC
5	2.6	67	109	22	43	0.71	0.65	60	60	144	247

• Here is an ultra-complete daughter of 5T Power Chip 4790 that offers a maternal look of quality and balance.

• Her dam is sired by Bushs High Caliber 674, one of the great sons of Panther CR Incredible 6704 that is supported by the influence of a daughter by Vin-Mar O'Reilly Factor.

• A complete and fault-free type of brood cow prospect that is AI bred to the \$100,000 Conley A 1 for a BIG return on investment!

• **AI Bred 6/19/24 to Conley A 1 (AAA: 20177675)**

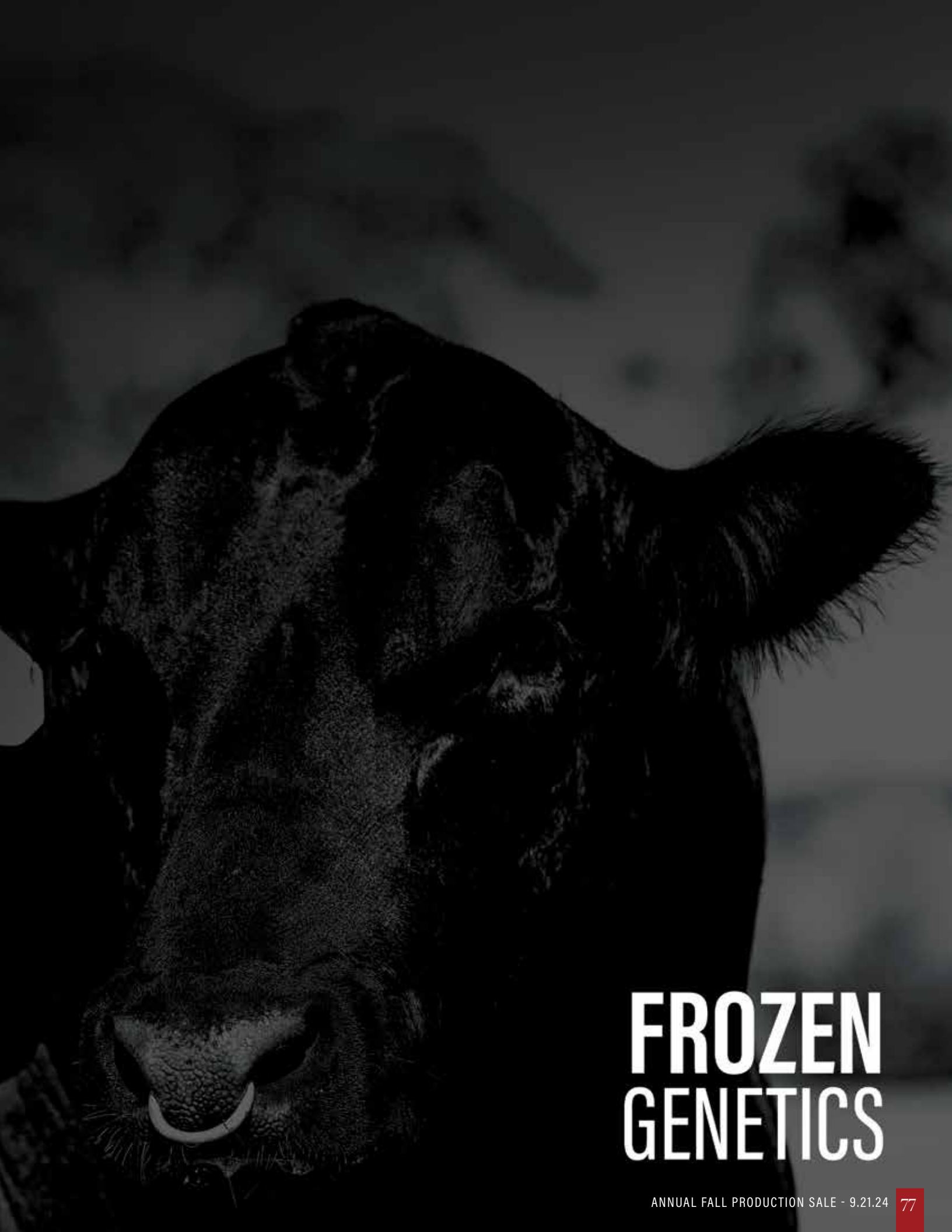


LOT 98



**CONLEY A 1**  
\$100,000 Service Sire to several females throughout the offering!





# FROZEN GENETICS

ANNUAL FALL PRODUCTION SALE - 9.21.24

# BELLAGIO



## 101 ROSEWOOD BELLAGIO 090

DOB. 9/14/20    AAA. 20046900    TATTOO. 090    Angus

**KR CASINO 6243**  
18624063

CFCC Black Jack 001  
Malsons Savannah 27Y

**ROSEWOOD GEORGINA 290Z**  
17691427

Champion Hill Fullback 380  
Champion Hill Georgina 6318

**KR CASINO 6243**

Influential Sire of Rosewood Bellagio 090

CEU	BW	WW	YW	MILK	CW	MARB	REA	SM	SW	SB	SC
2	3.4	51	91	29	28	0.3	0.34	42	43	110	185

- The largest public semen offering from the \$160,000 high selling bull from the 2024 Conley Cattle Bull Sale! We are pleased to introduce the iconic Rosewood Bellagio 090, arguably the most impressive son of the great KR Casino 6243 in existence!
- It is no secret that KR Casino 6243 has made a substantial impact on the Angus breed in a short amount of time with extremely limited semen available. We have searched near and far to find an alternative to KR Casino 6243, and in our opinion we have found a better option that brings even more cow power to the table!
- Rosewood Bellagio 090 is supported by the famed Champion Hill Georgina cow family that produced the iconic Conley DT Georgina 1076, the 2023 NJAS Grand Champion Owned Heifer for the Collum family of Oklahoma. 1076 was also selected as the 2023 Cattleman's Congress ROV Reserve Grand Champion Angus Heifer.
- Rosewood Bellagio 090 is a MUST USE sire in the spring of 2024! The same stoutness and power the KR Casino 6243 offers, with more length and extension in a smoother made package!
- This is the ONLY semen to sell in the fall of 2024 that will not be in the form of a 40 unit breeder package... don't let this opportunity pass you by!
- Owned with JS Simmentals.

- 101A - 5 units of conventional semen
- 101B - 5 units of conventional semen
- 101C - 5 units of conventional semen
- 101D - 5 units of conventional semen
- 101E - 5 units of conventional semen

- 101F - 5 units of conventional semen
- 101G - 5 units of conventional semen
- 101H - 5 units of conventional semen
- 101I - 5 units of conventional semen
- 101J - 5 units of conventional semen

# WILLARD



## 102 CONLEY WILLARD 3319

DOB. 1/22/23 AAA. 20707963 TATTOO. 3319 Angus

**J TRADEMARK 1037**  
20160403

Sitz Resilient 10208  
Mill Brae Iden Georgina 4086

**CONLEY SANDY 9893**  
19739370

BC Robust 0807  
Silveiras S Sis Sandy 2355

CED	BW	VV	YW	MILK	CW	MARB	REA	SM	SW	SB	SC
3	2.4	87	140	27	54	0.39	0.53	81	82	130	250

• When we selected J Trademark 1037 with Coleman Angus for \$165,000 this is exactly the type and kind of Angus breeding bull that we had a goal of creating. Conley Willard 3319 is the \$100,000 high selling yearling bull from the 2024 Conley Cattle Bull Sale that was purchased by two very progressive outfits from Ontario, Canada.

• A member of the 2024 NWSS Reserve Grand Champion Pen of Three, Conley Willard 3319 is a bull that sets the standard for skeletal quality, eye appeal, and functionality. He does this without sacrificing carcass merit or genetic value, in fact he blends one of the most elite sets of scan data and genomic figures with a captivating phenotype! Conley Willard 3319 scanned with an impressive 17+ inch REA and over a 7% IMF at the National Western Stock Show!

• His dam is one of the most impressive young females on the ranch. She is one of the featured females that will sell on September 21! She is sired by the widely used and very popular BC Robust 0807 and backed by the everlasting influence of Silveiras S Sis Sandy 2355, the dam of Conley No Limit.

• Elite phenotype, elite cow family, elite number profile, and elite scan data... Conley Willard 3319 leaves no stone unturned. He checks every box!

• Owned with Clarke Family Farms, Inc. & Jon-Ern Farms.

**CONLEY SANDY 9893**  
Dam of the \$100,000 Conley Willard 3319  
She Sells as Lot 60



**J TRADEMARK 1037**  
\$165,000 Sire of Conley Willard 3319

- 102A - 5 units of conventional semen
- 102F - 5 units of conventional semen
- 102B - 5 units of conventional semen
- 102G - 5 units of conventional semen
- 102C - 5 units of conventional semen
- 102H - 5 units of conventional semen
- 102D - 5 units of conventional semen
- 102I - 5 units of conventional semen
- 102E - 5 units of conventional semen
- 102J - 5 units of conventional semen

# LEAD THE WAY



## 103 CONLEY LEAD THE WAY 0738

DOB. 3/7/20 AAA. 19881255 TATTOO. 0738 Angus

**GATEWAY FOLLOW ME F163**  
19334239

C&C Mckinley 3000 EXAR  
Dunk-W Maxine HR 505C

**EXAR PRINCESS 1637**  
18877017

S&R Roundtable J328  
EXAR Princess 5391

CEB	BW	WW	YW	MILK	CW	MARB	REA	SM	SW	SB	SC
2	4.4	64	104	15	46	0.57	0.83	16	38	152	213

• Conley Lead The Way 0738 is the most exciting Angus bull in the industry! In January of 2023 at the 17th Annual Embryos on Snow, held in conjunction with the Cattlemen's Congress, Conley Lead The Way 0738 commanded a \$460,000 hammer price for 50% US semen interest that was purchased by Hawes Cattle Company of Texas. His rookie calf crop exceeded even the wildest of expectations, with the first 10 heifer calves averaging \$57,000 at Conley Cattle in September of 2022, while a full sister to Conley Lead The Way 0738 commanded a \$75,000 hammer price the same day. In the spring of 2023, a son of Conley Lead The Way 0738, Conley Bell Bristow 2317 commanded \$150,000. Daughters sold for an impressive \$180,000, \$40,000, and \$39,000!

• Fast forward to the fall of 2023, the second set of Conley Lead The Way 0738 daughters set a record of their own, where 24 daughters averaged \$28,520! The high selling females from the sire group included prices of \$215,000, \$135,000, \$85,000, and several more from \$20,000 to \$50,000. A pair of full sisters to Conley Lead The Way 0738 averaged \$80,000 the same day!

• Conley Lead The Way 0738 continues to sire high sellers and winners! This year he sired the 2024 OYE Supreme Champion Junior Breeding Heifer for the Collum family and the 2024 Atlantic National ROV Grand Champion Angus Heifer for the Dakley family!

• Owned with Hawes Cattle Company, C-4 Land & Cattle, & Harlan Yocham.

**EXAR PRINCESS 1637**  
Deceased Dam of Conley Lead The Way 0738



**C-4 LEAD LADY 2K**  
2024 OYE Supreme Champion  
Junior Breeding Heifer



**CONLEY HONEY BEAR 3762**  
2024 Atlantic National ROV  
Grand Chamion Angus Heifer

- 103A - 5 units of conventional semen
- 103B - 5 units of conventional semen
- 103C - 5 units of conventional semen
- 103D - 5 units of conventional semen
- 103E - 5 units of conventional semen

- 103F - 5 units of conventional semen
- 103G - 5 units of conventional semen
- 103H - 5 units of conventional semen
- 103I - 5 units of conventional semen
- 103J - 5 units of conventional semen



# BRISTOW



**CONLEY SANDY 4561**  
 Daughter of Conley Bristow 2317  
 She Sells as Lot 36

## 104 CONLEY BRISTOW 2317

DOB. 6/3/22 AAA. 20491419 TATTOO. 2317 Angus

**CONLEY LEAD THE WAY 0738**  
 19881255

Gateway Follow Me F163  
 EXAR Princess 1637

**CONLEY SANDY 7662**  
 18850960

5T Power Chip 4790  
 Silveiras S Sis Sandy 2355

CEB	BW	WW	YW	MILK	CW	MARB	REA	SM	SW	SB	SC
0	3.1	60	98	23	35	0.71	0.94	30	50	145	218



**CONLEY SANDY 7662**  
 Dam of Conley Bristow 2317



**CONLEY SANDY 2662**  
 \$40,000 Full Sister to Conley Bristow 2317

- The hottest son of the record selling Conley Lead The Way 0738 in existence! Conley Bristow 2317 took the industry by storm last spring when he sold in the Conley Cattle Spring 2023 Production Sale for \$150,000 to a group of the industry's most progressive Angus breeders!

- Several daughters of Conley Bristow 2317 will be favorites on sale day!
- His look of quality and style is simply unparalleled! A surefire option to sire elite show heifers that command BIG premiums!
- Owned with The Bristow Syndicate.

- 104A - 2 units of conventional semen
- 104B - 2 units of conventional semen
- 104C - 2 units of conventional semen
- 104D - 2 units of conventional semen
- 104E - 2 units of conventional semen
- 104F - 2 units of conventional semen
- 104G - 2 units of conventional semen
- 104H - 2 units of conventional semen
- 104I - 2 units of conventional semen
- 104J - 2 units of conventional semen



CONLEY DS CLEAR CUT 0510

- Conley DS Clear Cut 0150 is the \$400,000 valuation herd bull that is owned by Ferree-Fitzgerald, Lookout Ridge Farm, and Conley Cattle. He was the 2021-2022 ROV Show Bull of the Year that was a many-time champion during his campaign.
- His list of accolades would include being named the Grand Champion Angus Bull at the National Western Stock Show, Western National Angus Futurity, Atlantic National, Tennessee State Fair, and World Beef Expo.
- Conley DS Clear Cut 0150 sired the \$220,000 high selling Angus heifer from our Fall Production sale last year!
- The dam of Conley DS Clear Cut 0150 is the dominant Conley Sandy 5104, the 2016-2017 ROV Show Heifer of the Year for David Smith. She was the 2016 American Royal ROV Grand Champion Angus Heifer, 2016 NAILE ROV Reserve Grand Champion Angus Heifer, and 2017 FWSS ROV Grand Champion Angus Heifer.
- Owned with Ferree-Fitzgerald & Lookout Ridge Farm.



CONLEY MADDIE 3157  
\$220,000 Daughter of  
Conley DS Clear Cut 0510

- 105A - 2 units of sexed female semen
- 105B - 2 units of sexed female semen
- 105C - 2 units of sexed female semen
- 105D - 2 units of sexed female semen
- 105E - 5 units of conventional semen
- 105F - 5 units of conventional semen
- 105G - 5 units of conventional semen
- 105H - 5 units of conventional semen

**105 CONLEY DS CLEAR CUT 0510**

DOB. 10/25/20 AAA. 20032604 TATTOO. 510 Angus

CONLEY NO LIMIT  
19290775 EXAR Blue Chip 1877B  
Silveiras S Sis Sandy 2355

CONLEY SANDY 5104  
18197707 EXAR Blue Chip 1877B  
S Sis Sandy 104

CED	BW	WW	YW	MILK	CW	MARB	REA	SM	SW	SB	SC
-1	2.9	66	108	12	33	0.12	0.45	30	42	100	160

**106 CONLEY RANSOM 1810**

DOB. 4/9/21 AAA. 20174820 TATTOO. 1810 Angus

CONLEY NO LIMIT  
19290775 EXAR Blue Chip 1877B  
Silveiras S Sis Sandy 2355

CONLEY SANDY 8104  
19288274 E&B Confederate 507  
S Sis Sandy 104

CED	BW	WW	YW	MILK	CW	MARB	REA	SM	SW	SB	SC
5	1.6	59	93	17	31	0.26	0.3	50	52	107	189



CONLEY RANSOM 1810

- Conley Ransom 1810 is one of the most impressive individuals ever produced in the Conley Cattle breeding program! This powerhouse was the 2022-2023 ROV Show Bull of the Year after a dominant year on the show road!
- The dam of this powerful individual is the impressive Conley Sandy 8104, a daughter of the legendary S Sis Sandy 104, backed by the immortal K N C Cabin Creek Sandy 804.
- A must use sire to generate substance, shape, and natural dimension without sacrificing maternal excellence or skeletal quality!
- Owned with K&M Cattle Company, Carroll Cattle Company, & Black Knight Cattle Company.

- 106A - 2 units of sexed female semen
- 106B - 2 units of sexed female semen
- 106C - 2 units of sexed female semen
- 106D - 2 units of sexed female semen
- 106E - 5 units of conventional semen
- 106F - 5 units of conventional semen
- 106G - 5 units of conventional semen
- 106H - 5 units of conventional semen



CONLEY SANDY 8104  
\$75,000 Dam of Conley Ransom 1810

# NO LIMIT SEXED FEMALE SEMEN

- The appropriately named, Conley No Limit has become one of the leading options for breeders when it comes to breeding both high caliber Angus seedstock and perhaps even more potentially as an Angus sire for creating composite show heifers that muster extreme added value. Conley No Limit consistently sires cattle that have been featured on the high sellers lists for a wide range of operations, and the collection of wins is simply too long to list!
- Owned with Schaeffer-Tice Show Cattle.



**SILVEIRAS S SIS SANDY 2355**  
 Legendary Dam of Conley No Limit



**CONLEY NO LIMIT**

- 107A** - 2 units of sexed female semen
- 107B** - 2 units of sexed female semen
- 107C** - 2 units of sexed female semen
- 107D** - 2 units of sexed female semen

## 107 CONLEY NO LIMIT

DOB. 2/26/18    AAA. 19290775    TATTOO. 8188    Angus

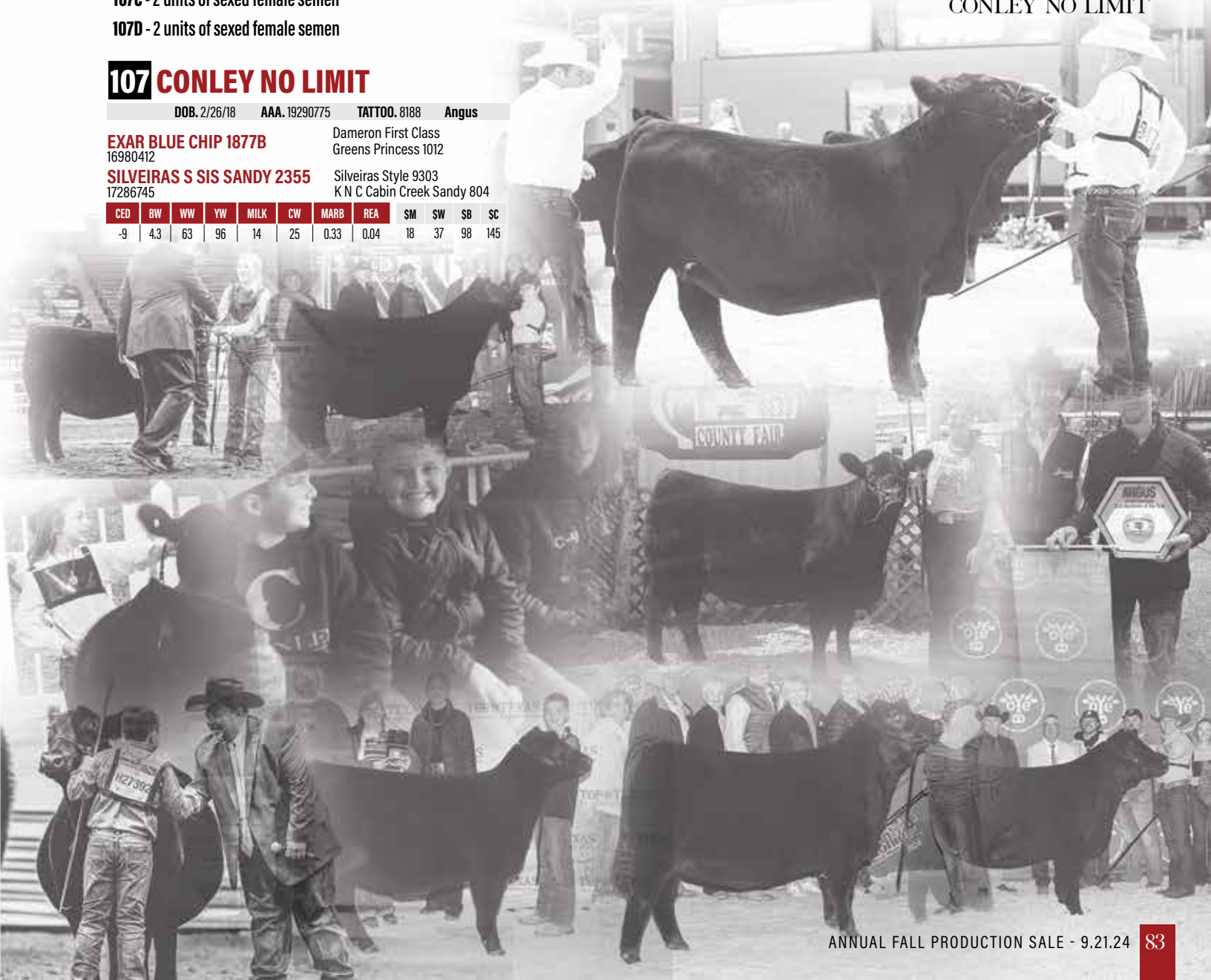
**EXAR BLUE CHIP 1877B**  
 16980412

Dameron First Class  
 Greens Princess 1012

**SILVEIRAS S SIS SANDY 2355**  
 17286745

Silveiras Style 9303  
 K N C Cabin Creek Sandy 804

CEU	BW	WW	YW	MILK	CW	MARB	REA	SM	SW	SB	SC
-9	4.3	63	96	14	25	0.33	0.04	18	37	98	145





\$540,000 Dam of Lot 201 Embryos

## 201 CONLEY SANDY 8934

Angus AAA. 19181593

Donor Sire. **HA RELEVANT 6022**

Donor Dam. **SILVEIRAS S SIS SANDY 2355**

**PACKAGE 201A** - Mated to Rosewood Bellagio 090  
3 Non Sexed IVF Embryos

- A NEW and exciting mating from the \$540,000 valued Conley Sandy 8934, the highest dollar generating female at Conley Cattle! The embryos selling are sired by the \$320,000 Rosewood Bellagio 090, the high selling bull from the 2024 Conley Cattle Bull Sale. Maternal sisters to these embryos have sold for \$215,000, \$190,000, \$180,000, \$135,000, and countless others from \$20,000 to \$50,000 over the last two years!
- The embryos selling are also maternal sibs to Conley Honey Bear 3762, the 2024 Atlantic National ROV Grand Champion Heifer that was shown by Rob Oakley.
- This mating is certain to produce an elite show heifer or the next six-figure promotional AI sire!
- Conley Sandy 8934 is now owned with Cook Land & Livestock of California.
- Maternal sibs to these embryos will sell as lots 1 through 4.



**CONLEY HONEY BEAR 3762**  
2024 Atlantic National ROV  
Grand Champion Angus Heifer  
\$215,000 Maternal Sister to Lot 201 Embryos



**CONLEY HONEY BEAR 4277**  
Maternal Sister to Lot 201 Embryos  
She Sells as Lot 1

**NOTE: Each package of 3 embryos will sell with a guarantee of 1-60 day pregnancy if implanted by a certified embryologist.**



Iconic Dam of Lot 202 Embryos

## 202 SILVEIRAS S SIS SANDY 2355

Angus AAA. 17286745

Donor Sire. **SILVEIRAS STYLE 9303**

Donor Dam. **K N C CABIN CREEK SANDY 804**

**PACKAGE 202A** - Mated to Rosewood Bellagio 090  
3 Sexed Female IVF Embryos

**PACKAGE 202B** - Mated to BRDG Mahogany Prime 904B  
3 Sexed Female IVF Embryos

- The next embryos are backed by one of the foundation matrons of Conley Cattle, Silveiras S Sis Sandy 2355. The embryos selling are also maternal sibs to Conley No Limit, the popular AI sire that is owned with Schaeffer-Tice Show Cattle.
- Daughters of 2355 have commanded \$130,000, \$80,000, \$70,000, \$26,000, and numerous others from \$10,000 to \$20,000.
- The embryos selling are sired by the \$320,000 valued Rosewood Bellagio 090 and BRDG Mahogany Prime 904B, two exciting new matings from the legendary 2355!



**CONLEY SANDY 2300**  
2023 IN State Fair Champion Commercial Heifer  
\$180,000 Maternal Sister to 202 Embryos



**CONLEY SANDY 4356**  
Maternal Sister to Lot 202 Embryos  
She Sells as Lot 7

## 203 CONLEY S SIS SANDY 4313

Angus AAA. 17908018

Donor Sire. **SILVEIRAS STYLE 9303**

Donor Dam. **K N C CABIN CREEK SANDY 804**

**PACKAGE 203A** - Mated to Conley A 1  
3 Sexed Female IVF Embryos

**PACKAGE 203B** - Mated to Conley DS Clear Cut 0510  
3 Sexed Female IVF Embryos

**PACKAGE 203C** - Mated to SCC SCH 24 Karat 838  
3 Sexed Female IVF Embryos

- Conley S Sis Sandy 4313 is a FULL SISTER to the iconic Silveiras S Sis Sandy 2355 that is owned with Sunrise Sunset Farm of Indiana.
- The embryos selling are by the \$100,000 Conley A 1, the \$200,000 Conley DS Clear Cut 0510, and the popular SCC SCH 24 Karat 838.
- Proven, predictable, and profitable genetics behind these elite genetic opportunities!



Dam of Lot 203 Embryos

## 204 CONLEY SANDY 8104

Angus AAA. 19288274

Donor Sire. **E&B CONFEDERATE 507**

Donor Dam. **S SIS SANDY 104**

**PACKAGE 204A** - Mated to Rosewood Bellagio 090  
3 Non Sexed IVF Embryos

**PACKAGE 204B** - Mated to Conley Bristow 2317  
3 Sexed Female IVF Embryos

- Here are two new and very exciting matings from the \$75,000 Conley Sandy 8104, the powerful maternal sister to the 2016-2017 ROV Show Heifer of the Year, Conley Sandy 5104!
- The embryos selling are maternal sibs to the \$70,000 Conley Ransom 1810, the 2022-2023 ROV Show Bull of the Year!
- The choice is yours between a package of eggs sired by the \$320,000 Rosewood Bellagio 090 or the \$150,000 Conley Bristow 2317... both are matings that we have high hopes for!



**CONLEY RANSOM 1810**  
2022-2023 ROV Show Bull of the Year  
Maternal Brother to Lot 204 Embryos



Dam of Lot 204 Embryos

## 205 CONLEY SANDY 8355

Angus AAA. 19290787

Donor Sire. **E&B CONFEDERATE 507**

Donor Dam. **SILVEIRAS S SIS SANDY 2355**

**PACKAGE 205A** - Mated to Conley Lead The Way 0738  
3 Sexed Female IVF Embryos

**PACKAGE 205B** - Mated to Conley A 1  
3 Sexed Female IVF Embryos

**PACKAGE 205C** - Mated to S A V Extension 6856  
3 Sexed Female IVF Embryos

- Conley Sandy 8355 is one of the most impressive young females to ever grace the pastures of Sulphur, Oklahoma. She is the dam of the \$75,000 Conley Verified 0853 and sells as one of the featured donors on September 21!
- There is no doubt that she is one of the absolute most impressive daughters of the iconic Silveiras S Sis Sandy 2355 in existence.
- Embryos sired the \$920,000 Conley Lead The Way 0738, the \$100,000 Conley A 1, or S A V Extension 6856 are sure to be in high demand on sale day. Pick and choose..the opportunity is yours for a big time ROI!



**CONLEY VERIFIED 0853**  
\$75,000 Maternal Brother to Lot 205 Embryos



Dam of Lot 205 Embryos  
She Sells as Lot 61



## 206 CONLEY SANDY 9486

Angus AAA. 19479798

Donor Sire. **5T POWER CHIP 4790**

Donor Dam. **CONLEY SANDY 7271**

**PACKAGE 206A** - Mated to Conley Lead The Way 0738  
3 Sexed Female IVF Embryos

- Conley Sandy 9486 was selected as the 2021 OYE Reserve Grand Champion Angus Heifer for Sage Hanrahan.
- 9486 is a daughter of 5T Powerchip 4790 and further supported by a FULL SISTER to the iconic Conley Express 7211. She is also a full sister to Conley Sandy 728, a powerful female that was Griswold Cattle Company's selection from our 2023 Fall Production Sale.
- Full sisters to the embryos selling will sell as lots 24 and 25.

Dam of Lot 206 Embryos



### CONLEY SANDY 41611

Full Sister to Lot 206 Embryo  
She Sells as Lot 25



## 207 CONLEY SANDY 8522

Angus AAA. 19181136

Donor Sire. **STEVENSON TURNING POINT**

Donor Dam. **SILVEIRAS S SIS SANDY 2355**

**PACKAGE 207A** - Mated to SCC SCH 24 Karat 838  
3 Sexed Female IVF Embryos

- A unique opportunity to acquire embryos from the \$130,000 Conley Sandy 8522, the 2018 NAILE Division 1 Champion for Tate Bell. 8522 is now a member of the donor battery at Moore Land & Cattle in Illinois!
- Two maternal sisters to the embryos selling will be featured in the bred heifer division as lots 67 and 68.
- The embryos selling are maternal sister to Conley Sandy 2421, the KR Cadillac Ranch daughter that was successfully shown by Case Conley.
- 8522 is one of the most impressive females that has ever left Sulphur, Oklahoma... bid with confidence!

Dam of Lot 207 Embryos



## 208 CONLEY SANDY 2421

Angus AAA. 20650179

Donor Sire. **KR CADILLAC RANCH**

Donor Dam. **CONLEY SANDY 8522**

**PACKAGE 208A** - Mated to Conley Lead The Way 0738  
3 Sexed Female IVF Embryos

**PACKAGE 208B** - Mated to Conley Bristow 2317  
3 Sexed Female IVF Embryos

**PACKAGE 208C** - Mated to Conley A 1  
3 Sexed Female IVF Embryos

- The first genetic offering EVER from the incredibly unique Conley Sandy 2421!
- 2421 was campaigned by Case Conley with great success in the Bred & Owned division. Her natural stoutness, shape, and genuine quality is unmatched! She is one of the stoutest featured, biggest footed, and most captivating females that we have raised to date. She is a female that we have put tremendous faith in moving forward and look forward to watching her make an impact on our breeding program!
- Embryos from 2421 sired by the \$920,000 valuation Conley Lead The Way 0738, the \$150,000 Conley Bristow 2317, and the \$100,000 Conley A 1 are matings that should be on your short list sale day if you're looking to generate the next big time show heifer or elite donor prospect!

Dam of Lot 208 Embryos

## 209 SCHELSKE MSF MADDIE 8229

Angus AAA. 19177293

Donor Sire. **BCII MLA NEXT UP 015**

Donor Dam. **MSF LUCY 201**

**PACKAGE 209A** - Mated to Conley DS Clear Cut 0510

3 Non Sexed IVF Embryos

**PACKAGE 209B** - Mated to Conley Willard 3319

3 Sexed Female IVF Embryos

- Two packages of embryos from one of the most incredible females to roam the pastures of Sulphur, Oklahoma... Schelske Maddie 8229!
- The Lot A embryos selling are FULL SIBS to the \$220,000 high selling female from the 2023 Fall Production Sale, Conley Maddie 3157. She was the 2023 Hoosier Beef Congress 4th Overall Breeding Heifer for the Ferree family of Indiana.
- The Lot A embryos by Conley DS Clear Cut 0510 are full sibs to a set of ET flushmates that highlighted the 2024 Spring Production Sale with an impressive \$15,650 average on 10 head with a high of \$40,000! Proven and predictable with the chance to raise a promotional AI sire or an elite show heifer from this genetic opportunity!
- The Lot B embryos are sired by the sensational Conley Willard 3319! He is the \$100,000 high selling yearling bull from our 2024 Bull Sale that was purchased by Clark Family Farms and Jon-Ern Farms. This mating aligns the elite of the elite in the Conley breeding program!



Dam of Lot 209 Embryos



**CONLEY MADDIE 3157**  
2023 Hoosier Beef Congress  
4th Overall Breeding Heifer  
\$220,000 Full Sister to Lot 209A Embryos



**CONLEY MADDIE 440**  
Maternal Sister to Lot 209 Embryos  
She Sells as Lot 29

## 210 COLLISON PROVEN QUEEN 875

Angus AAA. 20108529

Donor Sire. **C&C PRIORITY 1428B EXAR**

Donor Dam. **MOFFITT PROVEN QUEEN M301**

**PACKAGE 210A** - Mated to Rosewood Bellagio 090

3 Non Sexed IVF Embryos

**PACKAGE 210B** - Mated to Conley Bristow 2317

3 Sexed Female IVF Embryos

**PACKAGE 210C** - Mated to Conley A 1

3 Sexed Female IVF Embryos

- Three packages of maternal sib embryos to the 2022-2023 ROV Show Heifer of the Year, Conley FRKG Queen Meg 1085!
- Conley FRKG Queen Meg 1085 was the 2022 NJAS Third Overall Owned Heifer, 2022 IN State Fair Supreme Champion Overall Junior Breeding Heifer, 2022 American Royal ROV Grand Champion Angus Heifer, 2022 Atlantic National ROV Grand Champion Angus Heifer, 2023 Cattlemen's Congress ROV Grand Champion Angus Heifer and Supreme Champion Overall Open Heifer!
- Another maternal sister to the embryos selling is Conley FRKG Queen Meg 3000, the \$59,000 sale feature this past spring that sold to Moore Land & Cattle and Hadley Hartman!
- The embryos sired by Rosewood Bellagio 090 are sure to be at the top of every short list on sale day! The newest, freshest, and most exciting genetics from Conley Cattle!
- Other options would be between the \$150,000 Conley Bristow 2317 and the \$100,000 Conley A 1... pick your poison, both options are sure to generate big returns!
- Maternal sisters sell as lots 33, 34, 48 and 71!



Dam of Lot 210 Embryos



**CONLEY FRKG QUEEN MEG 1085**  
2022-2023 ROV Show Heifer of the Year  
Maternal Sister to Lot 210 Embryos



**CONLEY FRKG QUEEN MEG 4200**  
Maternal Sister to Lot 210 Embryos  
She Sells as Lot 33



**CONLEY FRKG QUEEN MEG 4520**  
Maternal Sister to Lot 210 Embryos  
She Sells as Lot 34



Dam of Lot 211 Embryos



**CONLEY LADY 4561**

Maternal Sister to Lot 211 Embryos  
She Sells as Lot 36

**211 DIECKMANN LADY 1117**

Angus AAA. 20160897

Donor Sire. **CONLEY NO LIMIT**

Donor Dam. **CHAPMAN LADY 4128**

**PACKAGE 211A** - Mated to Conley Lead The Way 0738  
3 Sexed Female IVF Embryos

**PACKAGE 211B** - Mated to Conley A 1  
3 Sexed Female IVF Embryos

**PACKAGE 211C** - Mated to SCC SCH 24 Karat 838  
3 Sexed Female IVF Embryos

- Dieckmann Lady 1117 is the Conley No Limit daughter that is backed by the iconic Chapman Lady 4128 donor that has produced countless champions and high sellers!
- 1117 was a many times champion for the Yocham family of Oklahoma. She is a maternal sister to C-4 Lead Lady 2K, the 2023 NJAS Third Overall Bred & Owned Heifer for Ty Collum. 2K was also selected as the 2024 OVE Supreme Champion Junior Breeding Heifer.
- Embryos by the \$920,000 Conley Lead The Way 0738, the \$100,000 Conley A 1, or SCC SCH 24 Karat 838 are precision matings from one of the most exciting young females in the donor pen!
- A maternal sister to the three packages of sexed female embryos selling is a featured open heifer by Conley Bristow 2317 that sells as lot 36!



Dam of Lot 212 Embryos



**CONLEY PROVEN QUEEN 4152**

Full Sister to Lot 212A Embryos  
She Sells as Lot 35

**212 BCR PROVEN QUEEN 001J**

Angus AAA. 20194962

Donor Sire. **CONLEY EXPRESS 7211**

Donor Dam. **FCF PROVEN QUEEN 419**

**PACKAGE 212A** - Mated to Conley Lead The Way 0738  
3 Non Sexed IVF Embryos

**PACKAGE 212B** - Mated to Conley DS Clear Cut 0510  
3 Non Sexed IVF Embryos

- BCR Proven Queen 001J, a maternal sister to the widely popular and heavily utilized SCC SCH 24 Karat 838! 001J is sired by the \$400,000 valued Conley Express 7211 and out of the iconic champion, FCF Proven Queen 419.
- The embryos selling by the \$920,000 Conley Lead The Way 0738 will result in full sisters to Conley Proven Queen 4152, a sharp featured and beautiful profiling female that sells as lot 35.
- The lot B embryos are sired by Conley DS Clear Cut 0510, the 2021-2022 ROV Show Bull of the Year and son of the iconic Conley Sandy 5104!
- 001J is a featured donor that sells as lot 69!



Dam of Lot 213 Embryos



**CONLEY ERICA 4914**

Maternal Sister to Lot 213 Embryos  
She Sells as Lot 44

**213 G&J ERICA 914**

Angus AAA. 17385822

Donor Sire. **BUSHES UNBELIEVABLE 423**

Donor Dam. **G&J IMPERIAL ERICA 2523**

**PACKAGE 213A** - Mated to Conley Lead The Way 0738  
3 Sexed Female IVF Embryos

**PACKAGE 213B** - Mated to Conley A 1  
3 Sexed Female IVF Embryos

- G&J Erica 914 is a picture perfect female that offers superior udder quality, foot shape, and fleshing ease. We selected 914 from a past C-4 Land & Cattle Production Sale. 914 produced a daughter by Conley Express 7211 that was purchased by Helen Orr for \$18,500!
- A daughter of 914 that is sired by BC Robust 0807 sells as lot 44. She is one of the stoutest, biggest ribbed, most unique brood cow/donor prospects in the entire sale offering!
- 914 is a generator and will play a vital role moving forward in the donor pen at Conley Cattle.



## 214 SITZ EMMA 212F

Angus AAA. 19078015

Donor Sire. **RAVEN POWERBALL 53**

Donor Dam. **SITZ EMMA 78C**

**PACKAGE 214A** - Mated to BC Robust 0807  
3 Non Sexed IVF Embryos

**PACKAGE 214B** - Mated to J Trademark 1037  
3 Non Sexed IVF Embryos

• Another NEW face at Conley Cattle is Sitz Emma 212F, our selection from the 2021 Sitz Angus Female Sale! She is sired by Raven Powerball 53 and backed by the influence of Sitz Emma 78C. She traces to the Pathfinder Dam, Sitz Emma 224T.

• The first mating is sired by the iconic BC Robust 0807. It's no secret the BC Robust 0807 is siring females that are in high demand. Semen is scarce and females of this caliber are invaluable in production. The lot A mating will generate females that are the kind you build an entire program around!

• Lot B embryos are sired by the \$165,000 J Trademark 1037, one of the greatest breeding bulls we have ever utilized. The bulls sired by J Trademark 1037 were extremely well received this past spring and we are confident the daughters are every bit as good, if not better!

• A maternal sister to the embryos selling will sell as lot 92.



**CONLEY EMMA 3860**  
Maternal Sister to Lot 214 Embryos  
She Sells as Lot 92



Dam of Lot 214 Embryos

## 215 EXAR WINNIE 1577

Angus AAA. 18877011

Donor Sire. **PVF INSIGHT 0129**

Donor Dam. **EXAR WINNIE 5291**

**PACKAGE 215A** - Mated to Conley No Limit  
3 Non Sexed IVF Embryos

**PACKAGE 215B** - Mated to JSUL Something About Mary 8421  
3 Non Sexed IVF Embryos

• EXAR Winnie 1577 is a powerful female that is sired by PVF Insight 0129 and supported by the famed EXAR Winnie 5291. 1577 was a many times champion for the Collum family.

• A three-quarter sister to the dam of 4297 and 4754 is Schnoor Winnie 9323, the 2014 NJAS Grand Champion Bred & Owned Heifer for Sydney Schnoor of California.

• The embryos selling are by Conley No Limit, one of the greatest sons of EXAR Blue Chip 1577B in existence. The lot B embryos will result in half-blood progeny sired by the late JSUL Something About Mary 8421. A full sister to the lot B embryos sold in 2022 at C-4 Land & Cattle for \$11,000 to Quincy West.

• 1577 sells as lot 72 and maternal sisters to the embryos selling will be featured as lots 39 and 40.



**CONLEY WINNIE 4297**  
Maternal Sister to Lot 215 Embryos  
She Sells as Lot 39



Dam of Lot 215 Embryos  
She Sells as Lot 72

**NOTE: Each package of 3 embryos will sell with a guarantee of 1-60 day pregnancy if implanted by a certified embryologist.**



Dam of Lot 216 Embryos

## 216 DUP JELLY YUM 109J ET

Maine-Anjou AAA. 523128

Donor Sire. **BOE EPIC**

Donor Dam. **CMCC YUM 105**

**PACKAGE 216A** - Mated to Conley Bristow 2317  
3 Sexed Female IVF Embryos

- DUP Jelly Yum 109J was the 2022 FWSS Grand Champion Maine-Anjou Heifer for Case Conley.
- The dam of DUP Jelly Yum 109J, CMCC Yum 105, was the 2012 NAILE Grand Champion Maine-Anjou Heifer. 109J is a full sister to the \$120,000 high selling female, DUP Feature 801 ET, that was purchased by the Walker family of Arkansas. 801 was successfully campaigned to countless wins that would include being selected as the 2019 NWSS Grand Champion Maine-Anjou Heifer and the 2019 National Junior Heifer Show Reserve Grand Champion Maine-Anjou Heifer!
- Proven, predictable, and profitable Maine-Angus genetics that are supported by the hottest cow families in the business!
- The embryos selling are sired by the \$150,000 Conley Bristow 2317, therefore making them three-quarter sibs in blood to the three ET flushmate sisters that sell as lots 50, 51, and 52.



**CONLEY SOPHIA 412M**  
Maternal Sister to Lot 217 Embryos  
She Sells as Lot 52



**LLSF CAYENNE UP401**  
Maternal Granddam of Lot 217 Embryos

## 217 WLTR SOPHIA 3A ET

Simmental AAA. 2745104

Donor Sire. **SS/PRS HIGH VOLTAGE 244X**

Donor Dam. **LLSF CAYENNE UP401**

**PACKAGE 217A** - Mated to MR HOC Broker  
3 Non Sexed IVF Embryos

**PACKAGE 217B** - Mated to RP/BCR Eminence H005  
3 Sexed Female IVF Embryos

**PACKAGE 217C** - Mated to MR CCF 20-20  
3 Sexed Female IVF Embryos

**PACKAGE 217D** - Mated to LKCC Bold Venture 194F  
3 Sexed Female IVF Embryos

- WLTR Sophia 3A ET is a daughter of the American Royal Champion, SS/PRS High Voltage 244X, one of the great maternal sires in the breed. The dam of 3A, LLSF Cayenne UP401, was the 2010 NWSS Grand Champion Purebred Simmental Heifer.
- The embryos selling are maternal sibs to Conley Sophia 412M, the lone Purebred Simmental heifer in this year's offering that is elite in terms of phenotype and pedigree!
- The lot A embryos are sired by the Triple Crown winning MR HOC Broker, the most proven Purebred Simmental bull of the last decade!
- Lot B embryos are sired by RP/BCR Eminence H005, one of the most popular sons of WLE Copacetic E02 that is now owned by Buck Creek Ranch and RJ Cattle Co.
- Lot C embryos are sired by the now deceased \$100,000 MR CCF 20-20, one of the truly elite female makers that the breed has ever known. Semen is extremely scarce, but the daughters are invaluable in production!
- Finally, the lot D embryos by the powerful LKCC Bold Venture 194F may very well be the most ideal mating based on complimenting phenotypes. LKCC Bold Venture 194F has begun to gain popularity as breeders have realized the genuine quality and consistency that he sires!
- The embryos selling are maternal sibs to the featured lot 49 Purebred Simmental heifer.

**NOTE: Each package of 3 embryos will sell with a guarantee of 1-60 day pregnancy if implanted by a certified embryologist.**

# SALE NOTES

---

---

---

---

---

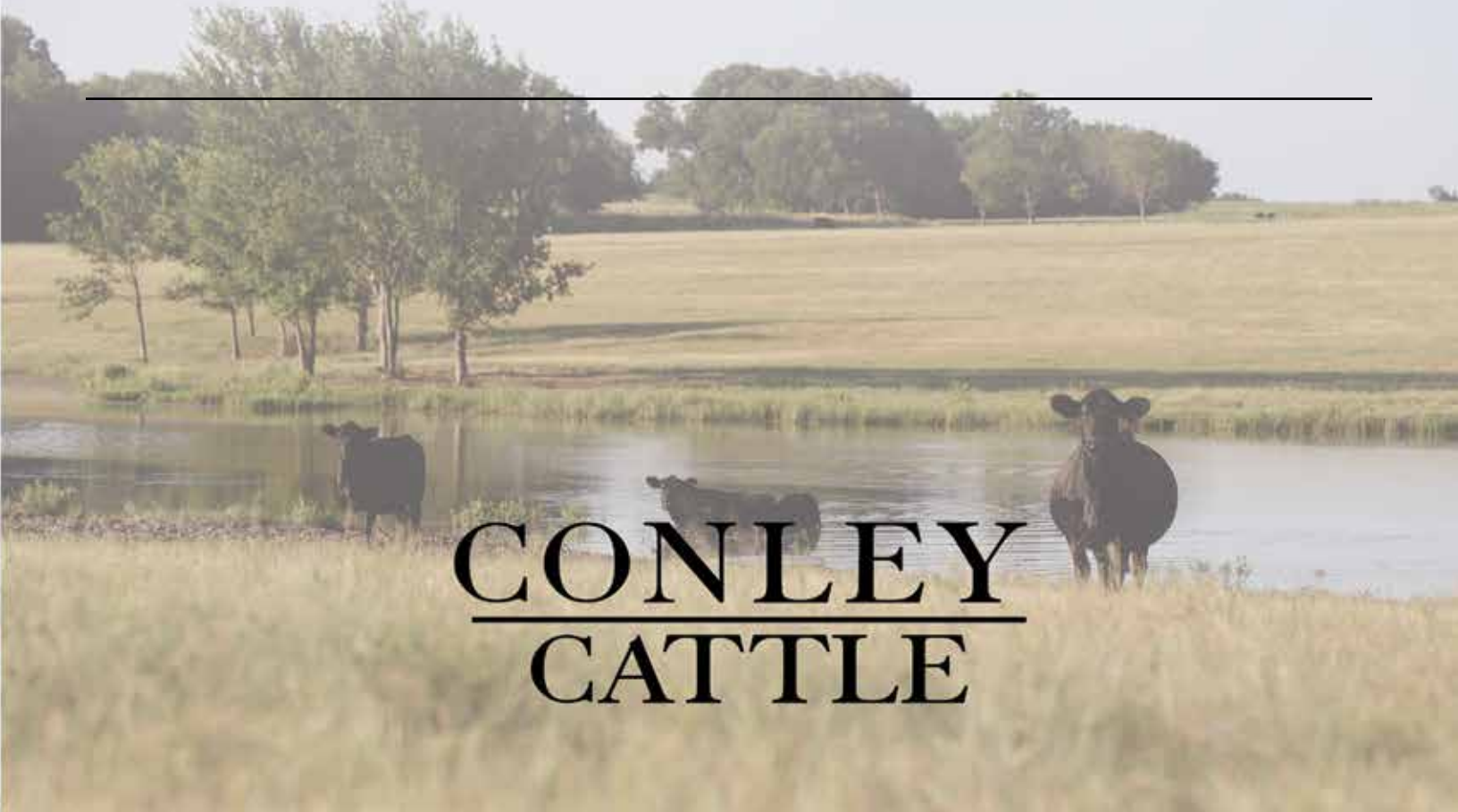
---

---

---

---

---



**CONLEY**  

---

**CATTLE**



PO Box Z  
De Soto, Kansas 66018

# CONLEY CATTLE

6:30 P.M. - SATURDAY, SEPTEMBER 21, 2024 - SULPHUR, OKLAHOMA