



Stowers Limousin

**MATERNAL
COW POWER**

Online Sale

OCTOBER 17, 2018

STowers

STowers

Stowers Limousin

MATERNAL COW POWER

Online Sale

OCTOBER 17, 2018

STowers

Scott, Donna & Lauren Stowers
Scott cell, 940.577.1300
stowerslandandcattle@gmail.com
Jason Gaston, ranch manager, 817.247.8011
jasongaston85@gmail.com
430 CR 1326, Bridgeport, TX 76426
www.stowerslimousin.com

hosted on...



www.L365auctions.com

BIDDING OPENS ... 7:00 a.m. (CST)
BIDDING CLOSES ... 7:00 p.m. (CST)

SALE-DAY CONTACTS ...

Jason Gaston 817.247.8011, JasonGaston85@gmail.com
Randy Ratliff 615.330.2735, Randy@RRMktg.com

SALE MANAGEMENT ...



Randall O. Ratliff • 615.330.2735
Randy@RRMktg.com • www.RRMktg.com
(L#2845)

FOR TECHNICAL SUPPORT

Abby Hinton 919.618.8098

CATTLE VIEWING

Call/text/email: Jason Gaston
at Stowers Limousin to view offering

TRUCKING

Cattle can be picked up at the farm location or we can assist
with trucking (buyer pays trucking expense)

All Credit Cards Accepted





LIM-FLEX(37/33.6)
 HOMO POLLED (P2)
 HOMO BLACK (P2)
 3/3/2015
 CELL 5107C
 LFF2081173

ADJ BW: 78
 ADJ WW: 694
 ADJ YW: 996
 ADJ IMF: 4.18
 ADJ REA: 14.33

TC FREEDOM 104
CLF FREEDOM FORCE 06Z
 GAMBLES WB LADY 6047
 DHVO DEUCE 132R
PBRs ZARA 215Z
 LEWIS SELENA 216S

CONNELLY FOREFRONT
 TC RUBY 9095
 BR MIDLAND
 GAMBLES LADY 944
 GPFF BLAQUE RULON
 AMY JO DHAN 20L
 JCL LODESTAR 27L
 AMEN WENDYS LASS 380



Morris

- **AI'd 12.18.17 to Riverstone Crown Royal**
- Homozygous Polled & Homozygous Black
- Sired by CFL Freedom Force 06Z, the purebred Angus son of TC Freedom back to Gambles WB Lady 6047.
- Here dam, PBRs Zara 215Z, is a daughter of the national champion DHVO Deuce 132R and from the proven donor Lewis Selena 216S.
- CELL 5107C scanned a 14.75 for REA and 4.38 for IMF
- She ranks in the top 1% SC, top 3% YW, top 4% for CW, top 10% for WW and \$MTI, and top 15% for Marb.
- This young female is big in her foot size, heavy in her bone structure and very sound in her movement.

	CED	BW	WW	YW	MK	CEM	SC	DOC	YG	CW	RE	MB	\$MTI
EPDS	11	1.5	74	116	21	7	1.9	13	-.26	22	.73	.06	57
%RANK	45	60	3	3	50	30	1	35	90	20	80	20	10



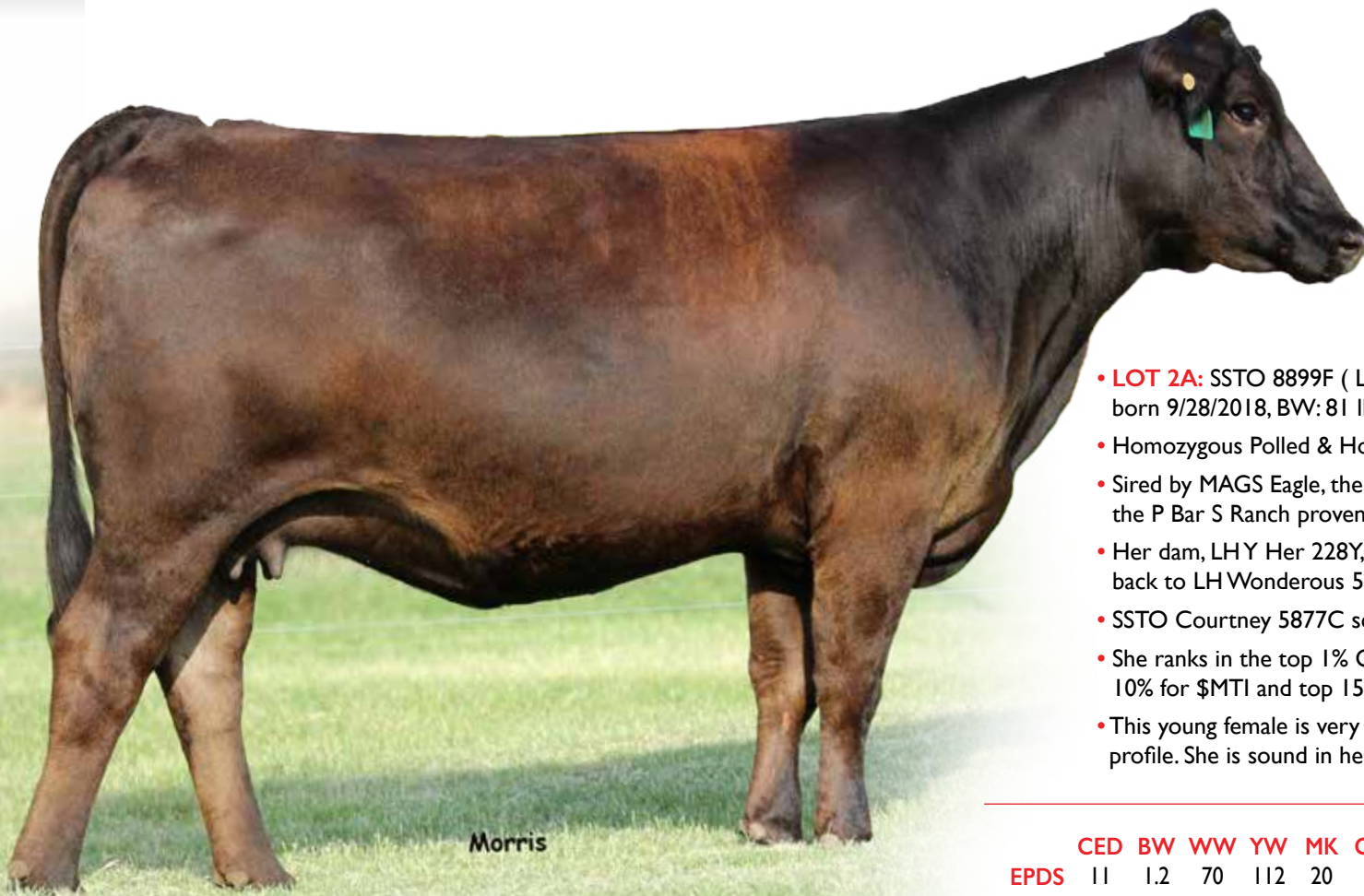
LIM-FLEX(50/45.6)
 HOMO POLLED (P3)
 HOMO BLACK (P3)
 10/2/2015
 SSTO 5877C
 LFF2093955

ADJ BW: 78
 ADJ WW: 695
 ADJ YW: 885
 ADJ IMF: 3.74
 ADJ REA: 12.1

MAGS WINSTON
MAGS EAGLE
 MAGS WEB OF DECEIT

 KRVN UNLIMITED L527U
LH Y HER 228Y
 LH WONDEROUS 534W

BT CROSSOVER 758N
 MAGS STRAWBERRY
 AUTO DOLLAR GENERAL 122R
 CABIN CREEK BEHAVE 6040
 GPF BLAQUE RULON
 STEVENSON CLOVA PRIDE I 6P I
 EXLR POLLED BENCHMARK 709G
 CALLAWAYS RITA 0818



Morris

- **LOT 2A:** SSTO 8899F (LFF2150829) heifer by MAGS Bronson, born 9/28/2018, BW: 81 lbs.
- Homozygous Polled & Homozygous Black
- Sired by MAGS Eagle, the breed-leading son of MAGS Winston from the P Bar S Ranch proven donor, MAGS Web of Deceit.
- Her dam, LH Y Her 228Y, is a daughter of KRVN Unlimited L527U back to LH Wonderous 534W
- SSTO Courtney 5877C scanned a 12.24 for REA and 3.77 for IMF
- She ranks in the top 1% CW, top 2% for YW, top 3% for WW, top 10% for \$MTI and top 15% for Marb
- This young female is very feminine and angular in her design and profile. She is sound in her make-up and very productive in her look.

	CED	BW	WW	YW	MK	CEM	SC	DOC	YG	CW	RE	MB	\$MTI
EPDS	11	1.2	70	112	20	5	0.9	14	-.19	33	.63	.18	59
%RANK	45	50	10	5	60	70	25	30	95	4	90	10	10

Lot 3

LIM-FLEX(62/56)
 HOMO POLLED (T)
 HOMO BLACK (P2)
 3/8/2015
 SSTO 5821C
 LFF2077897

ADJ BW: 75
 ADJ WW: 593
 ADJ YW: 923
 ADJ IMF: 4.55
 ADJ REA: 11.77

DHVO DEUCE 132R
MAGS XYLOID
 BOHI RHONDA 314R
 CONNEALY LEAD ON
BOHI RED ROBIN 282R
 MAGS MANUELA

GPFF BLAQUE RULON
 AMY JO DHAN 20L
 EXLR NEW GENERATION 071M
 DAVIS ROSETTA 9514
 CONNEALY LEADTIME
 ELIGENCE PLUS OF CONANGA
 EXLR LIMITED EDITION 765J
 AUTO CITY NIGHTS 214H



- **LOT 3A:** SSTO Full Force 8883F (LFM2150830) bull by TMCK Architect 031A, born 9/3/2018, BW: 62 lbs.
- Homozygous Polled & Homozygous Black
- Sired by MAGS Xyloid, the once All-American Futurity supreme champion bull who has been the leading service sire Edwards Land & Cattle Co. He is now deceased and has certainly left behind many progeny that have done well and have a bright future.
- SSTO Catalina 5821C scanned a 11.98 for REA and 4.69 for IMF
- She ranks in the top 4% Marb, top 10% for \$MTI, top 15% for Milk and Doc.
- This female has a strong presence in the pasture and holds herself together very well.
- Her future calf will be big numbered being sired by TMCK Architect.

	CED	BW	WW	YW	MK	CEM	SC	DOC	YG	CW	RE	MB	\$MTI
EPDS	9	1.7	55	91	33	5	1.0	16	-.34	24	.68	.10	53
%RANK	70	65	70	45	1	70	20	15	85	15	85	15	20

Lot **4**

PERCENTAGE(81/72.6)
 HOMO POLLED (P1)
 HOMO BLACK (P2)
 3/25/2015
 TMCK 261C
 NXF2075216

ADJ BW: 80
 ADJ WW: 708
 ADJ YW: 1,019
 ADJ IMF: 3.87
 ADJ REA: 12.01

LH WAR HERO 195W
MAGS ANCHOR
 MGS XIPHOPAGOUS

AHCC WESTWIND W544
TMCK TRANQUILITY 24Z
 MCBN TRANQUILLITY BROWN

JCL LODESTAR 27L
 VERMILION ERICA LADY 1229
 DHVO DEUCE 132R
 MAGS SALINA
 KAJO RESPONDER 120R
 AHCC MISS WULF HUNT R544
 AUTO DOLLAR GENERAL 122R
 CARROUSELS PINA COLADA



Morris

- PE'd 1.01.18 to 2.18.18 to SBLX First Class and MAGS Bronson
- Homozygous Polled & Homozygous Black
- Sired by MAGS Anchor, the powerful son of LH War Hero 195W who has done a top job siring prominent calves.
- Her dam, TMCK Tranquility 24Z, is a proven daughter of AHCC WestWind W544 from the \$30,000-valued once Denver top-selling female, MCBN Tranquility Brown.
- TMCK Cashmere 261C scanned an 11.82 for REA and 3.76 for IMF
- She ranks in the top 10% WW, YW and CW, and top 25% for SC
- We admire the brood cow look and femininity of this female and think you will agree when you see her video.

	CED	BW	WW	YW	MK	CEM	SC	DOC	YG	CW	RE	MB	\$MTI
EPDS	12	1.5	66	103	12	7	0.8	10	-42	30	.79	-.25	44
%RANK	30	60	20	15	>95	30	25	60	80	10	75	40	40

Lot 5

LIM-FLEX(50/44.6)
 HOMO POLLED (T)
 HOMO BLACK (T)
 11/1/2016
 SSTO 109D
 LFF2114412

ADJ BW: 77
 ADJ WW: 642
 ADJ YW: 836
 ADJ IMF: 4.2
 ADJ REA: 10.16

DAMERON FIRST CLASS
SBLX FIRST CLASS
 MAGS MANUELA

G A R PREDESTINED
SBLX UNDERTHECOVERS 201U
 ELMW GINNIE P58G

EXG RS FIRST RATE S903 R3
 DAMERON NORTHERN MISS 311
 EXLR LIMITED EDITION 765J
 AUTO CITY NIGHTS 214H
 B/R NEW DESIGN 036
 G A R EXT 4206
 TCDT MR T.D'S POWER PACK
 ELMW POLLED ECSTASY 67E



- **LOT 5A:** SSTO First Date 8882F (LFM2150831) bull by CJSJL Dauntless, born 9/3/2018, BW: 64 lbs.
- Homozygous Polled & Homozygous Black
- Sired by SBLX First Class, the highly syndicated 50% Lim-Flex son of Dameron First Class from MAGS Manuela. He is a leading sire for Stowers, P Bar S, Milam and Southern Cattle Co.
- Her dam, SBLX Underthecovers 201U, is the big-league donor and daughter of GAR Predestined from the many-time national MOE Gold Medal Dam, ELMW Ginnie P58G. 201U is a maternal sister to the once national champion female, Carrousel's Pina Colada
- SSTO Dreamy 109D scanned a 9.5 for REA and 4.03 for IMF
- She ranks in the top 10% Marb and \$MTI, top 15% for CEM.
- This female has all the ingredients needed to be a big-league donor for any program. She is heavy in her structure, strong and powerful down her top line and very square and appealing out from her hooks to her pins. She has the perfect amount of spring of rib and body capacity.

	CED	BW	WW	YW	MK	CEM	SC	DOC	YG	CW	RE	MB	\$MTI
EPDS	9	1.7	54	86	25	6	0.7	9	-.19	26	.54	.25	57
%RANK	80	70	85	75	15	55	50	80	95	20	95	10	15



LIM-FLEX(71/63.5)
 HET POLLED (T)
 HOMO BLACK (T)
 9/11/2014
 LSTO 4867B
 LFF2074191

ADJ BW: 76
 ADJ WW: 525
 ADJ YW: 820
 ADJ IMF: 5.04
 ADJ REA: 14.47

BASIN FRANCHISE P142
LH U HAUL 135U
 EXLR DUCHESS 7129R
 DHVO TREY 133R
PBRS YOUR THE ONE 1134Y
 CARROUSELS PINA COLADA

CA FUTURE DIRECTION 532I
 BASIN CHLOE 812L
 EXLR NEW GENERATION 071M
 EXLR 199H
 GPFF BLAQUE RULON
 AMY JO DHAN 20L
 AUTO BLACK DAKOTA 129J
 ELMW GINNIE P58G



Morris

- **LOT 6A:** LSTO Full Form 8880F (LFF2150838) heifer by MAGS Bronson, born 9/1/2018, BW: 67 lbs.
- Her dam, PBRS Your the One 1134Y, is the prominent Stowers donor. She is a daughter of DHVO Trey from the once national champion female and big-league donor, Carrouseles Pina Colada.
- LSTO Best Effort 4867B scanned a 14.47 for REA and 5.04 for IMF
- She ranks in the top 15% Marb, top 20% for \$MTI and top 35% for CED, SC and REA.
- We admire this young female for her style and balance up through her head and neck. She is straight in her lines and desirable in her profile and makeup.

	CED	BW	WW	YW	MK	CEM	SC	DOC	YG	CW	RE	MB	\$MTI
EPDS	13	0.7	60	96	21	7	0.8	8	-.51	20	1.05	.02	53
%RANK	20	40	45	30	50	30	30	75	70	20	35	20	20

Lot **7**

LIM-FLEX(50/44.6)
 HOMO POLLED (T)
 DBL BLACK
 9/7/2014
 SSTO 4861B
 LFF2070548

ADJ BW: 74
 ADJ WW: 563
 ADJ YW: 800
 ADJ IMF: 4.43
 ADJ REA: 11.88

GPFF BLAQUE RULON
DHVO DEUCE 132R
 AMY JO DHAN 20L

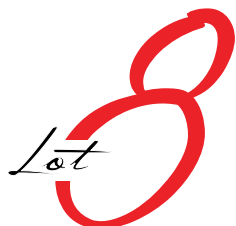
RITO 112 OF 2536 RITO 616
TF BLACKBIRD 9106
 EXG BLACKBIRD S064 R3

BLACK DIAMOND
 QUAIL RUN RAMONA BP
 BLACK CAT DHAN 152G
 GPFF AMBER JO
 RITO 616 OF 4820 6807
 G A R PRECISION 2536
 BR MIDLAND
 DAVISYR BLACKBIRD 558H



- PE'd 1.01.18 to 2.18.18 to SBLX First Class and MAGS Bronson
- Homozygous Polled
- Sired by DHVO Deuce 132R, the once national champion bull and the go-to sire for producing show champions.
- Her dam, TF Blackbird 9106, is the purebred Angus donor and daughter of Rito 112 of 2536 Rito 616. She has been a prominent and prolific donor in the Stowers program over the years.
- SSTO Bet You Can 4861B scanned an 11.86 for REA and 4.45 for IMF
- She ranks in the top 5% SC, top 15% for Marb and \$MTI.
- There is always something very special when you mate DHVO Deuce back to purebred Angus. This female is a prime example of that statement as she combines that femininity with a strong stance and plenty of rib shape and volume.

	CED	BW	WW	YW	MK	CEM	SC	DOC	YG	CW	RE	MB	\$MTI
EPDS	10	0.5	67	100	27	5	1.2	14	-.25	26	.73	.11	56
%RANK	60	35	15	20	10	70	5	30	95	10	80	15	15



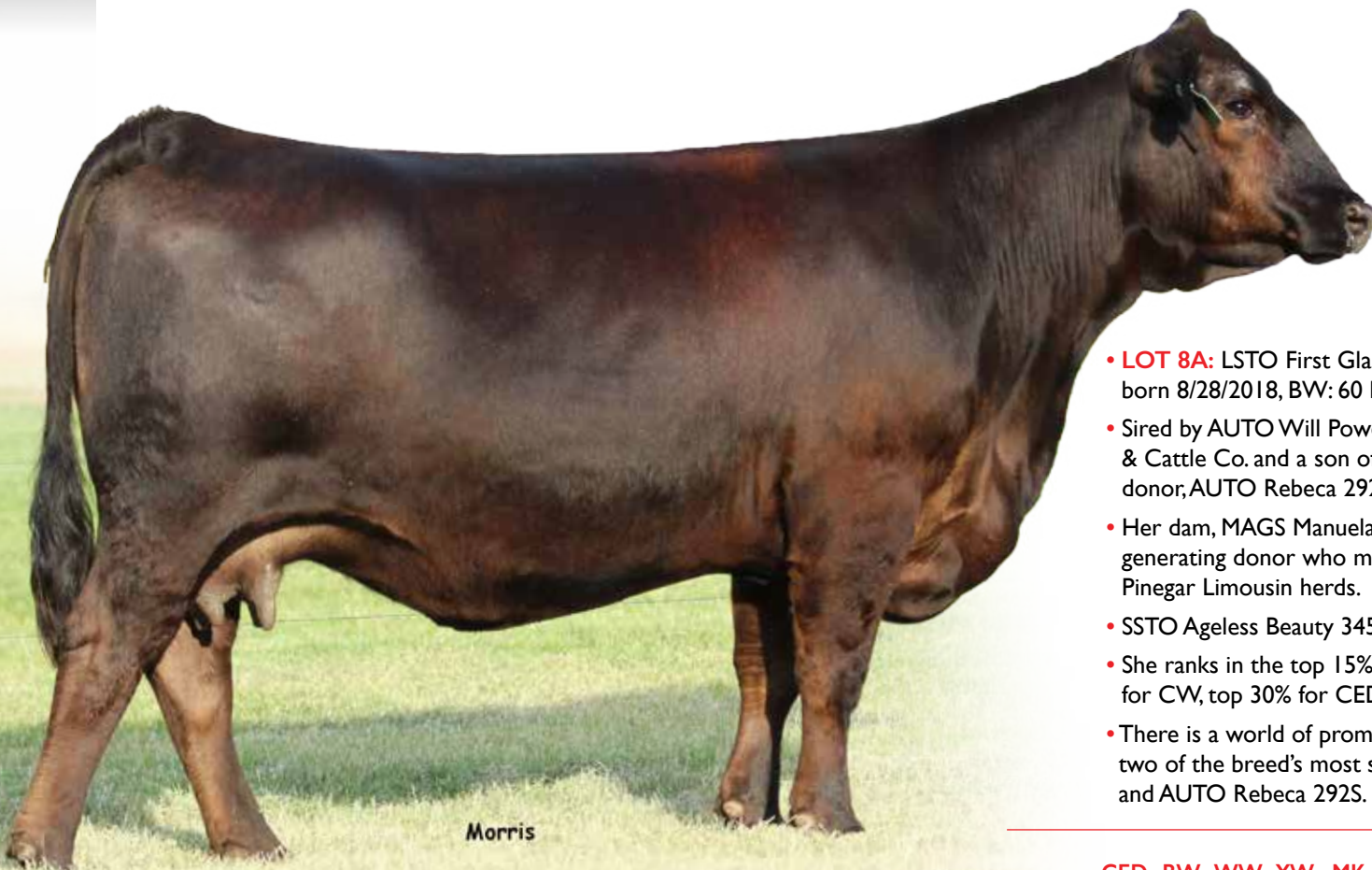
LIM-FLEX(68/61.4)
 POLLED
 DBL BLACK
 10/1/2013
 SSTO 345A
 LFF2050695

ADJ BW: 70
 ADJ WW: 679
 ADJ YW: 986
 ADJ IMF: 3.95
 ADJ REA: 15.62

G A R PREDESTINED
AUTO WILL POWER 160X
 AUTO REBECA 292S

EXLR LIMITED EDITION 765J
MAGS MANUELA
 AUTO CITY NIGHTS 214H

B/R NEW DESIGN 036
 G A R EXT 4206
 LESF ASPHALT 9N
 EXLR REBECA 1019P
 EXLR POLLED BENCHMARK709G
 WULFS GLENDA 7021G
 COLE FIRST DOWN 46D
 MISS WOLFETTE 9049X



Morris

- **LOT 8A:** LSTO First Glance 8875F (LFF2150837), heifer by MAGS Ali, born 8/28/2018, BW: 60 lbs.
- Sired by AUTO Will Power 160X, the leading sire for Edwards Land & Cattle Co. and a son of GAR Predestined from the famed Pinegar donor, AUTO Rebeca 292S.
- Her dam, MAGS Manuela, is the now deceased but all-time money-generating donor who made her mark in the Sugar Bush Cattle and Pinegar Limousin herds.
- SSTO Ageless Beauty 345A scanned a 15.40 for REA and 3.89 for IMF
- She ranks in the top 15% for Marb and \$MTI, top 20% for SC, top 25% for CW, top 30% for CED and REA.
- There is a world of promotion behind this female as she comes from two of the breed's most sought-after lines of cattle in MAGS Manuela and AUTO Rebeca 292S.

	CED	BW	WW	YW	MK	CEM	SC	DOC	YG	CW	RE	MB	\$MTI
EPDS	7	2.3	58	93	27	5	1.0	10	-.40	27	.84	.02	52
%RANK	95	80	55	40	10	70	20	60	80	10	70	20	20

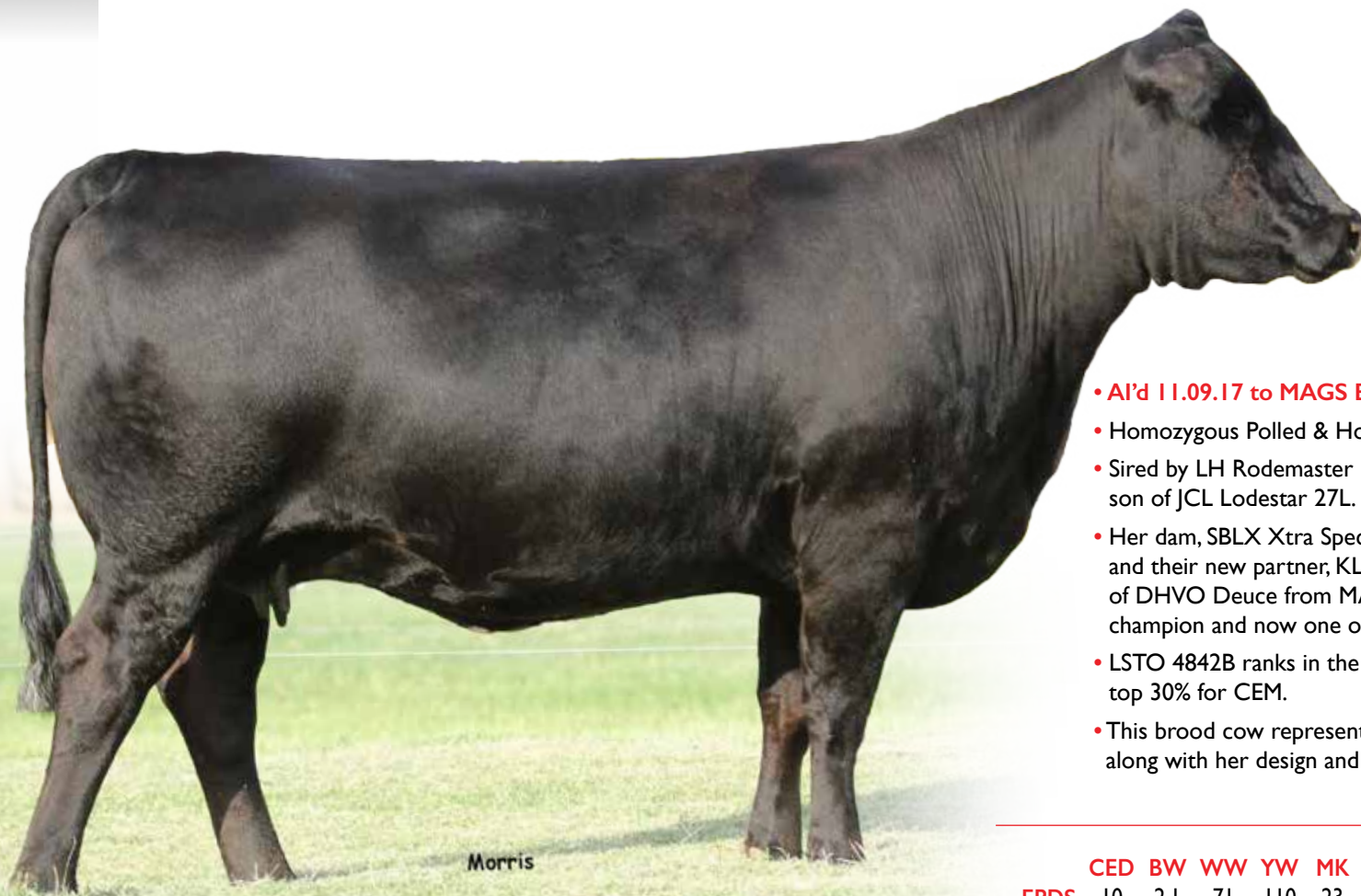


LIM-FLEX(75/67.5)
 HOMO POLLED (T)
 HOMO BLACK (PI)
 5/2/2014
 LSTO 4842B
 LFF2073095

ADJ BW: 73
 ADJ WW: 584
 ADJ YW: 954
 ADJ IMF:
 ADJ REA:

JCL LODESTAR 27L
LH RODEMASTER 338R
 VERMILION E BLACKBIRD9546
 DHVO DEUCE 132R
SBLX XTRA SPECIAL
 MAGS MANUELA

HUNTS HI-LITER 245G
 LOGAN'S CHEERLEADER 280G
 VERMILION 31 STACLER 349I
 CH ENV BLACKBIRD C594I
 GPFF BLAQUE RULON
 AMY JO DHAN 20L
 EXLR LIMITED EDITION 765J
 AUTO CITY NIGHTS 214H



- AI'd 11.09.17 to **MAGS Bronson**
- Homozygous Polled & Homozygous Black
- Sired by LH Rodemaster 338R, the deceased but still breed popular son of JCL Lodestar 27L.
- Her dam, SBLX Xtra Special, is the \$50,000-valued donor for Stowers and their new partner, KLS Farms in Louisiana. She is the daughter of DHVO Deuce from MAGS Manuela who was a many-time show champion and now one of the most noted donors.
- LSTO 4842B ranks in the top 15% YW and CW, top 25% for SC and top 30% for CEM.
- This brood cow represents a prominent and proven pedigree and along with her design and profile needed to produce excellence.

	CED	BW	WW	YW	MK	CEM	SC	DOC	YG	CW	RE	MB	\$MTI
EPDS	10	2.1	71	110	23	6	0.9	12	-.63	24	1.07	-.37	43
%RANK	70	80	10	15	30	55	30	55	45	20	30	70	60

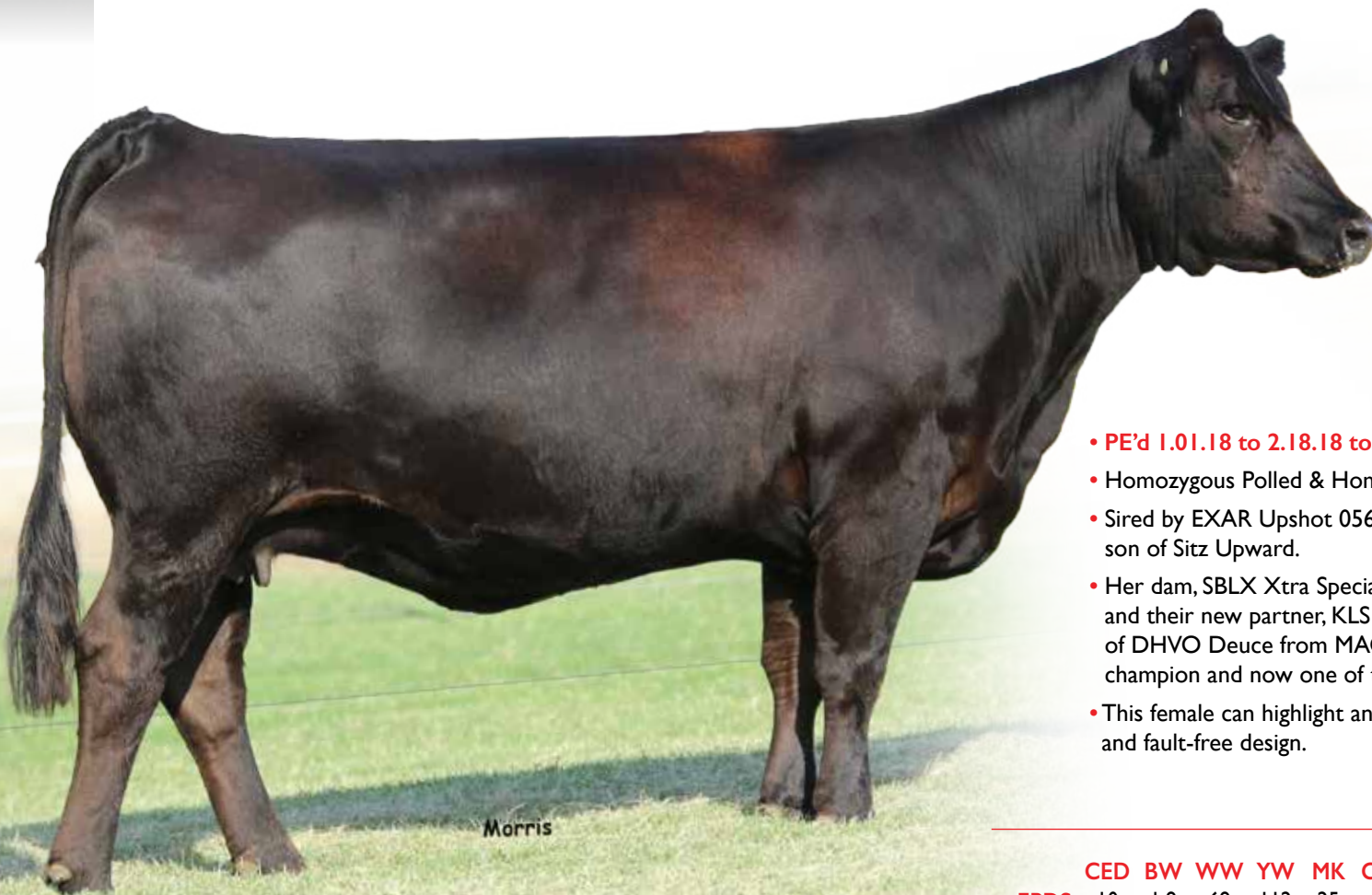


LIM-FLEX(50/44.9)
 HOMO POLLED (T)
 HOMO BLACK (T)
 3/3/2014
 LSTO 4819B
 LFF2056740

ADJ BW: 64
 ADJ WW: 673
 ADJ YW: 1,005
 ADJ IMF:
 ADJ REA:

SITZ UPWARD 307R
EXAR UPSHOT 0562B
 EXAR BARBARA T020
 DHVO DEUCE 132R
SBLX XTRA SPECIAL
 MAGS MANUELA

CONNEALY ONWARD
 SITZ HENRIETTA PRIDE 81M
 ISU IMAGING Q 9111
 LCC MC HENRY BARBAR MG382
 GPFF BLAQUE RULON
 AMY JO DHAN 20L
 EXLR LIMITED EDITION 765J
 AUTO CITY NIGHTS 214H



Morris

- PE'd 1.01.18 to 2.18.18 to SBLX First Class and MAGS Bronson
- Homozygous Polled & Homozygous Black
- Sired by EXAR Upshot 0562B, the prominent purebred Angus bull and son of Sitz Upward.
- Her dam, SBLX Xtra Special, is the \$50,000-valued donor for Stowers and their new partner, KLS Farms in Louisiana. She is the daughter of DHVO Deuce from MAGS Manuela who was a many-time show champion and now one of the most noted donors.
- This female can highlight any program at any level with her pedigree and fault-free design.

	CED	BW	WW	YW	MK	CEM	SC	DOC	YG	CW	RE	MB	\$MTI
EPDS	10	1.9	69	112	25	6	1.2	12	-.30	35	.93	.14	59
%RANK	60	70	10	5	20	50	10	40	90	3	55	15	10



LIM-FLEX(50/44.3)
 HOMO POLLED (T)
 HOMO BLACK (P2)
 2/23/2015
 TMCK 215C
 LFF2076599

ADJ BW: 90
 ADJ WW: 757
 ADJ YW: 1,088
 ADJ IMF: 5.14
 ADJ REA: 13.78

TC ABERDEEN 759
MAGS Y-AXIS
 MAGS UAHUKA

COLE WINDFALL 144W
LFL PEACHES 1032Y
 MAGS SILHOUETTE

C R A BEXTOR 872 5205 608
 TC BLACKBIRD 4034
 DHVO DEUCE 132R
 CARROUSELS PINA COLADA
 COLEMAN PRODUCTION 608
 COLE MISS FIRSTDOWN 6162S
 BR MIDLAND
 MAGS LADY ACE



Morris

- **LOT 11A:** SSTO Full Contact 8881F (LFM2150832), bull by MAGS Ali, born 9/2/2018, BW: 76 lbs.
- Homozygous Polled & Homozygous Black
- Sired by MAGS Y-Axis, the TC Aberdeen son back to the once national champion female, MAGS Uahuka.
- Her dam, LFL Peaches 1032Y, is the Lawrence Family Limousin donor and daughter of COLE Windfall 144W back to MAGS Silhouette.
- She scanned a 14.40 for REA and 5.51 for IMF
- She ranks in the top 2% YW and CW, top 3% for SC, top 10% for WW, TM, top 15% for \$MTI and top 20% for CED, REA and Marb.
- This brood cow is picture perfect and is made as nice as you would ever want. Her future calf sired by MAGS Ali will be a big-time coupon for the new owner.

	CED	BW	WW	YW	MK	CEM	SC	DOC	YG	CW	RE	MB	\$MTI
EPDS	10	1.5	68	116	22	6	1.4	17	-.32	31	.97	.11	58
%RANK	60	60	15	3	40	50	3	10	85	5	50	15	10

Lot 12

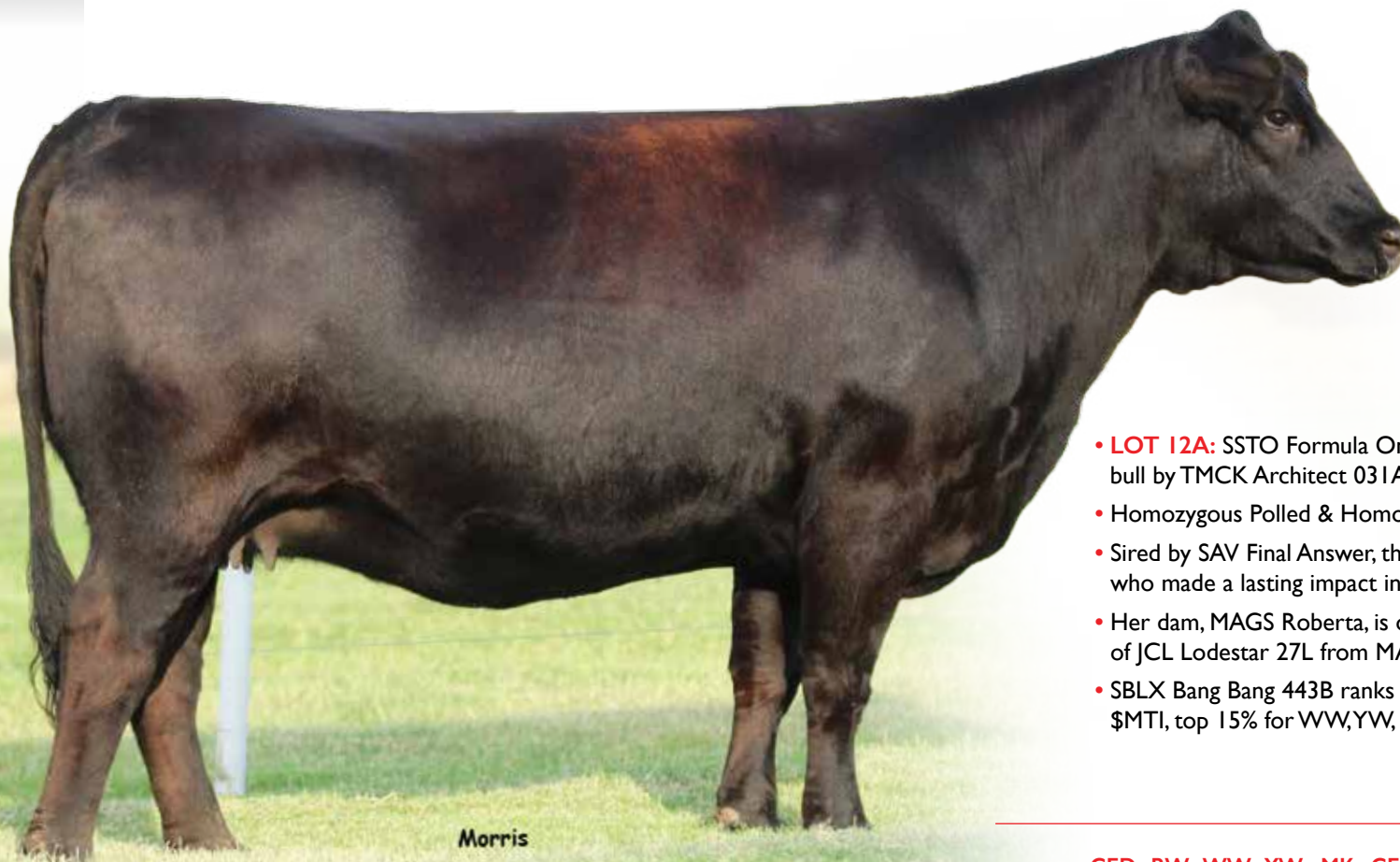
LIM-FLEX(50/45.3)
 HOMO POLLED (P1)
 HOMO BLACK (T)
 5/3/2014
 SBLX 443B
 LFF2064134

ADJ BW: 82
 ADJ WW: 578
 ADJ YW:
 ADJ IMF:
 ADJ REA:

SITZ TRAVELER 8180
SAV FINAL ANSWER 0035
 SAV EMULOUS 8145

 JCL LODESTAR 27L
MAGS ROBERTA
 MAGS JODI

GDAR TRAVELER 71
 SITZ EVERELDA ENTENSE I 137
 BONVIEW BANDO 598
 SAV SKY EMULOUS 2124
 HUNTS HI-LITER 245G
 LOGAN'S CHEERLEADER 280G
 CHAZ FIRST CHOICE 6004F
 SLVL SABLE COOKIE 381E



Morris

- **LOT 12A:** SSTO Formula One 8887F (LFM2150833), bull by TMCK Architect 031A, born 9/6/2018, BW: 83 lbs.
- Homozygous Polled & Homozygous Black
- Sired by SAV Final Answer, the purebred Angus son of Sitz Traveler who made a lasting impact in the Angus breed with his daughters.
- Her dam, MAGS Roberta, is one of the leading donors and daughter of JCL Lodestar 27L from MAGS Jodi.
- SBLX Bang Bang 443B ranks in the top 3% SC, top 10% CED, CEM, \$MTI, top 15% for WW, YW, CW and Marb, top 25% for BW.

	CED	BW	WW	YW	MK	CEM	SC	DOC	YG	CW	RE	MB	\$MTI
EPDS	15	-0.4	66	104	20	9	1.4	15	-.17	25	.54	.23	60
%RANK	10	20	20	15	60	10	3	20	>95	15	95	10	10

13
Lot

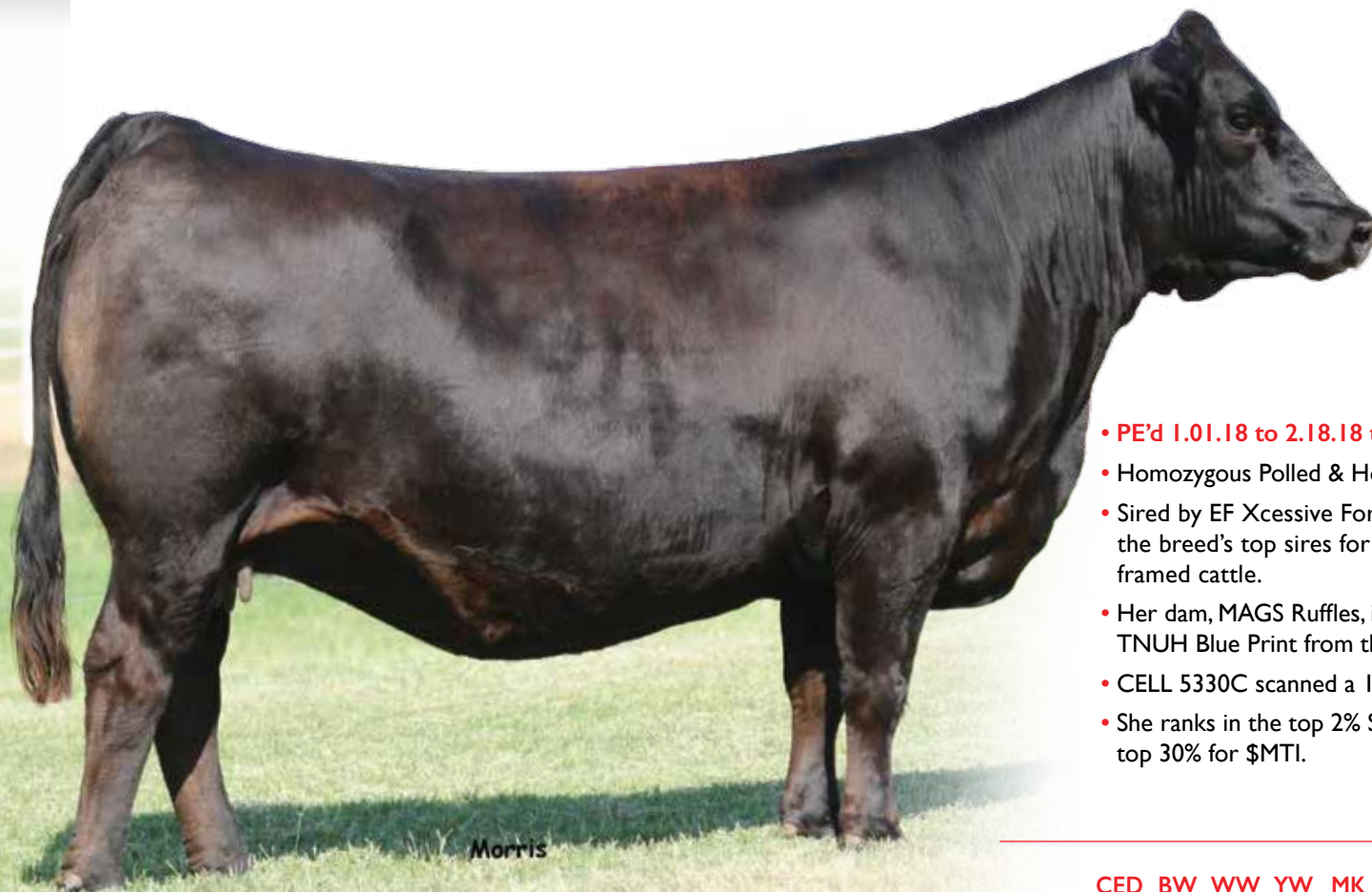
LIM-FLEX(75/67.2)
HOMO POLLED (T)
HOMO BLACK (P2)
1/21/2015
CELL 5330C
LFF2078349

ADJ BW: 87
ADJ WW: 647
ADJ YW: 949
ADJ IMF: 4.31
ADJ REA: 11.49

DA TRAVELER 004 703
EF XCESSIVE FORCE
CFLX MOLLYS IMAGE

TNUH BLUE PRINT 245H
MAGS RUFFLES
MAGS LADY DOCTOR

SAV 8180 TRAVELER 004
ROSEWOOD ERICA 5010
DHVO DEUCE 132R
JCL PEPPERMINT
WADDLES COBALT 3106
TNUH MISS C245
MAGS JUMANJI
AUTO CITY NIGHTS 214H



Morris

- PE'd 1.01.18 to 2.18.18 to SBLX First Class and MAGS Bronson
- Homozygous Polled & Homozygous Black
- Sired by EF Xcessive Force, a past national champion and one of the breed's top sires for show cattle and heavy muscled, moderate framed cattle.
- Her dam, MAGS Ruffles, is a past and proven donor and daughter of TNUH Blue Print from the past champion donor, MAGS Lady Doctor.
- CELL 5330C scanned a 12.71 for REA and 5.12 for IMF
- She ranks in the top 2% SC, top 15% for CEM, top 25% for Marb and top 30% for \$MTI.

	CED	BW	WW	YW	MK	CEM	SC	DOC	YG	CW	RE	MB	\$MTI
EPDS	12	1.9	64	92	15	9	1.4	10	-.38	32	.83	-.24	44
%RANK	30	70	25	40	95	10	2	60	80	4	70	40	45

14
Lot

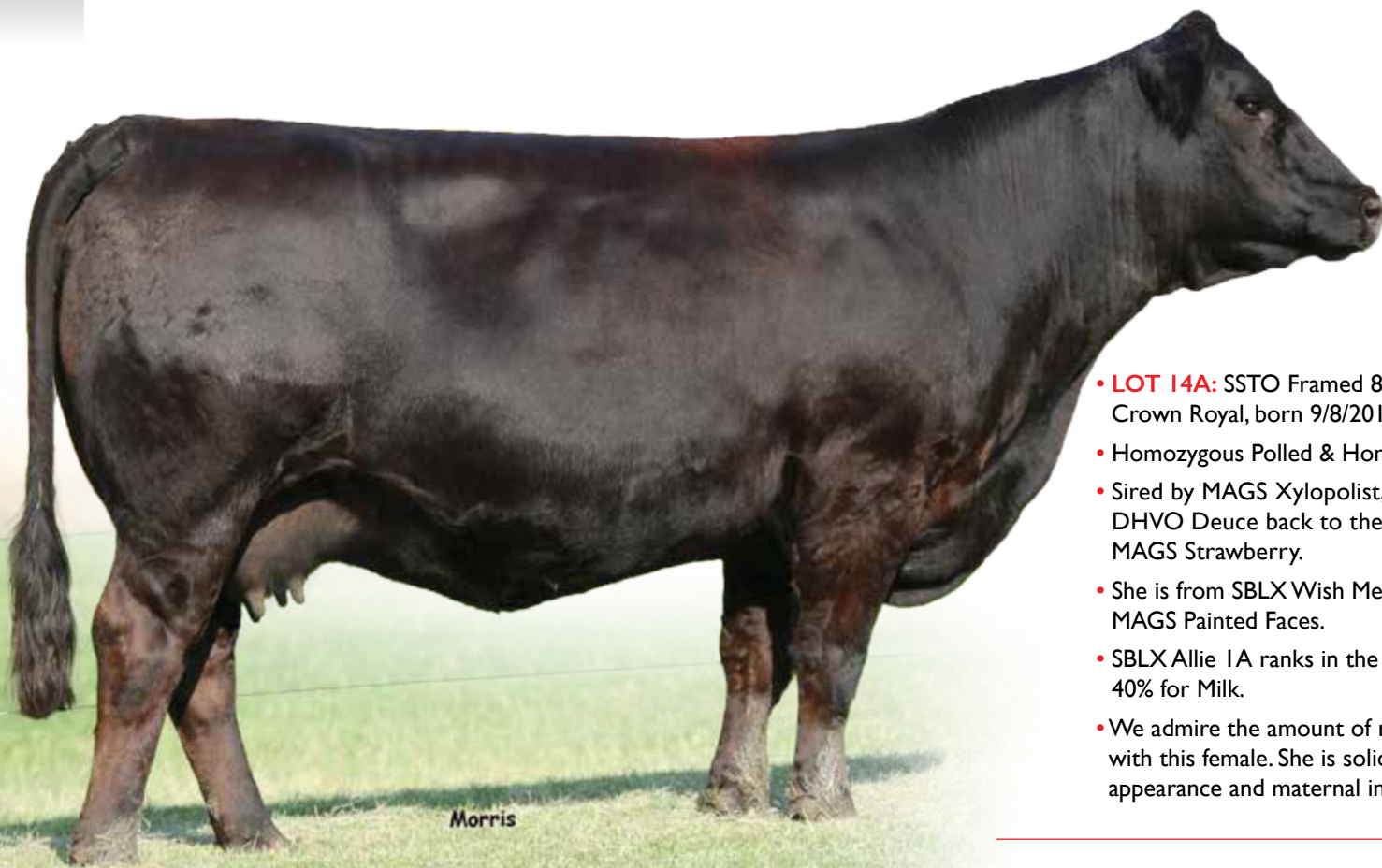
PUREBRED(100/89.3)
HOMO POLLED (P1)
HOMO BLACK (P2)
1/16/2013
LMSE IA
NPF2035977

ADJ BW: 78
ADJ WW:
ADJ YW:
ADJ IMF:
ADJ REA:

DHVO DEUCE I32R
MAGS XYLOPOLIST
MAGS STRAWBERRY

WLR DIRECT HIT
SBLX WISH ME LUCK
MAGS PAINTED FACES

GPFF BLAQUE RULON
AMY JO DHAN 20L
EXLR NEW GENERATION 071M
MAGS FRUITFUL 487M
KRVN NASKAR 013N
MAGS NIGHT AMBUSH
EXLR INTRIGUE 361G
MAGS LADY DOCTOR



Morris

- **LOT 14A:** SSTO Framed 8400F (NPM2150828), bull by Riverstone Crown Royal, born 9/8/2018, BW: 78 lbs.
- Homozygous Polled & Homozygous Black
- Sired by MAGS Xylopolist, the purebred Limousin son of DHVO Deuce back to the big-time donor and many-time champion, MAGS Strawberry.
- She is from SBLX Wish Me Luck, a daughter of WLR Direct Hit from MAGS Painted Faces.
- SBLX Allie IA ranks in the top 10% for Fat, top 30% for YG and top 40% for Milk.
- We admire the amount of rib shape, body capacity and do-ability found with this female. She is solid in her stance, extremely broody in her appearance and maternal in her look.

	CED	BW	WW	YW	MK	CEM	SC	DOC	YG	CW	RE	MB	\$MTI
EPDS	8	3.3	59	88	22	4	0.8	8	-.72	11	1.05	-.59	32
%RANK	90	95	65	70	40	90	40	85	25	65	30	>95	>95