



02.08.2020

Heartland Regional Stockyards, Inc | Plainville, KS

SMITH & SONS

LIMOUSIN & LIM-FLEX BULL & FEMALE SALE

02.08.2020

Heartland Regional Stockyards, Inc | Plainville, KS

SMITH & SONS

LIMOUSIN & LIM-FLEX BULL & FEMALE SALE

Dear Cattleman and Cattlewomen,

On behalf of the Smith family I would like to invite you to come and celebrate with us at our inaugural production sale Saturday, February 8th at Heartland Regional Stockyards, Plainville Kansas.

For over 30 years we have been committed to you our valued customers striving to provide you with superior Limousin and Lim-Flex genetics. Smith and Sons cattle truly has a deep love, appreciation, and understanding of how Limousin influenced cattle fit in today's beef industry. Our goals are to continue to build superior seedstock and offer exemplary customer service to meet your needs in the future.

Quality runs deep throughout this year's sale offering. Beef bulls engineered to be balanced in terms of calving ease to performance adding pounds to your next calf crop. In addition, we will have for your appraisal an exceptional group of registered spring bred heifers that bring forth unique breed leading genetic packages. As an added sale feature, we will have a solid of running age spring bred cows.

A heartfelt thank you to all of those individuals who have had and continue to have an impact on our family. If you have any questions or require any assistance feel free to contact us at any time. We would be grateful to have you come and celebrate this momentous day with our family and sale staff.

Best Regards,

Michael L Smith, Owner
Smith and Sons Cattle

**MIKE & DEB SMITH
COLE & JONAH**

785.737.8070 | mdsmith@ruraltel.net
809 SW 5th Street, Plainville, KS 67663

CALF BUYBACK PROGRAM ...

Smith & Sons is extremely grateful for the continued relationships we have with our customers. The trust they put in us to provide quality genetics to continue to improve this great breed is rewarding. It is important to us to communicate with our clients to understand their wants and needs. We will collaborate with our customers on their program goals, breeding strategies, nutritional information, performance data and more.

If you are interested in our calf buyback program, Smith & Sons will gladly connect you with one of their representatives below to start the conversation in helping your calves sell for a premium.



MIKE SMITH

Owner, Smith & Sons
785.737.8070 | Mdsmith@ruraltel.net



RANDY RATLIFF

Branding & Marketing for Smith & Sons
615.330.2735 | Randy@RRMktg.com



GREG CAREY

Owner of Russell, Kansas Stockyards
785.483.2961



RON RATLIFF

Owner of Anderson County Sales Company, Garnett, KS
785.448.8200

LANDON SCHNEIDER, Heartland Regional Stockyards | 785.259.3234

TERMS & CONDITIONS:

Terms of the sale are cash unless satisfactory credit arrangements have been made prior to the sale. A representative will be on hand sale day if your wishes are to insure your purchases. Please note: The sale manager is only an agent for the seller and has no responsibility other than those involved in conducting the sale. All persons who attend the sale do so at their own risk. Neither the sale manager nor Smith & Sons assume liability, legal or otherwise, for any accidents which may occur.

SALE ORDER & SUPPLEMENTAL INFORMATION:

Sale order and supplemental information will be posted at www.RRMktg.com for your convenience on Friday evening, February 7th.

TRUCKING:

Free delivery on central locations! Smith & Sons offers its customers free delivery to anywhere in the lower 48 states. As a part of that delivery we work with reputable livestock transportation companies that we feel comfortable with the handling of your cattle in both a professional and conscientious way. Smith & Sons will do everything possible to deliver your cattle to a central location that is convenient for both you and the trucking company. Central locations for delivery will include auction barns, vet clinics and ranches that offer to serve as a delivery point. We will map out the route after the sale and do our best to get your bulls to you as quickly and conveniently as possible. If you would like to insure your cattle, you can do so on sale day. Most of the cattle will be delivered within 30 days following the sale. If you have questions on delivery then please call Mike Smith at 785.737.8070.

REBATE:

We will also be offering a \$50 PER HEAD REBATE for customers that arrange to pick up their bulls here at the sale location or within one week of the sale.

PAYMENT:

Cattle must be paid for at the time of the sale unless prior arrangements are made with sale management at the time of the sale at 615.330.2735.

AIR TRANSPORTATION:

Wichita, KS
Approximately 3 hours

Denver, CO
Approximately 5 hours

Kansas City, MO
Approximately 4.5 hours

SELLING 88 LOTS:

52 Two-Year-Old Limousin & Lim-Flex Bulls
36 Bred Limousin, Lim-Flex & Angus Females

SALE SCHEDULE:

Saturday, February 8, 2020

8:30 a.m. Coffee and Pastries and cattle available for viewing
11:00 a.m. Complimentary lunch
1:00 p.m. Smith & Sons Limousin and Lim-Flex Bull & Female Sale Begins

SALE DAY PHONES:

Mike Smith.....785.737.8070 Randy Ratliff615.330.2735
Cole Smith785.434.6331 Jonah Smith785.303.0380
Landon Schneider....785.259.3234

SALE LOCATION:

Heartland Regional Stockyards, Inc., Lloyd & Judy Schneider, Owners
1/2 mile West of the US Hwy. 183 & K-18 junction in Plainville, Kansas

LIVESTOCK REPRESENTATIVES:

Landon Schneider, Heartland Regional Stockyard785.259.3234
Greg Carey, Russell Livestock.....785.483.2961
Brandon Hamel, Heartland Regional Stockyard785.434.6280
Craig Talkington, Special Assignment
Andrew Sylvester, Special Assignment

SALE MANAGEMENT:

Randall O. Ratliff, 615.330.2735
Randy@rrmktg.com | www.rrmktg.com
PO Box 60097 Nashville, TN 37206
(L#2845)



If you have questions or want to discuss the genetics selling then please feel free to contact R & R Marketing Company. As a paid marketing agent for Smith & Sons we take pride in the opportunity to work closely with this program. We can assist you with your phone order and/or handle your bid in the most confidential manner. Email, call or text and we will be more than honored to assist.

AUCTIONEER:

Bruce Brooks.....580.695.2036

BID & WATCH LIVE:

Log onto www.cattleusa.com to pre-register, bid and/or view the sale.

SPECIAL GUESTS:

Dean Summerbell, Heartland Limousin Association
Perry Nowak, Farleigh Feed Yard
Bernie Tonroy, High Plains Nutrition Midway Coop
Grant Davidson, Zoetis
Ken Conway, Gene Net
PJ Nowak, Double Tree Feeders
Bonnie Swayne, B&D Feeds
Doug Melton, Melton Ranch
Craig Iwanski, Veterinarian, Central Vet Service, 785.425.5100

SALE ACCOMMODATIONS:

Hampton Inn785.621.4444
4002 General Hays Road, Hays, KS 67601 | Located off I-70 and Hwy 183
Holiday Inn Express Hotel & Suites785.625.8000
4650 Roth Ave, Hays, KS 67601 | Located off I-70 and Hwy 183

HOW TO FIND WHAT YOU ARE LOOKING FOR IN THE SALE ...

We first select without papers, finding all visible phenotypic defects and problems. Once the outliers are eliminated, we then select on paper, eliminating those cattle with performance, EPD or genetic problems. This two-step selection process is done at weaning and repeated again just before the sale with yearling data and semen checking added to the criteria. Of course, disposition is still the number one culling criteria in our herd. Choose the type of bull that best meets your cowherd or feel free to call us to further discuss your options. We would be happy to visit with you.

'MAXIMIZERS' ...

Purebred & High Percentage Limousin Bulls

These lean, red meat machines will maximize hybrid vigor on your British and British X cows. These bulls will maximize performance without sacrificing calving ease. Several of these prospects go back into the purebred industry each year, being purchased by other purebred breeders.

'STABLIZERS' ...

75% Limousin x 25% Angus Bulls

Our most popular hybrid for 28 years, these ultrathick and deep machines are unequaled in their muscle, volume and phenotype. These bulls work well on most any cowherd, offering the extreme thickness of Limousin and the volume of Angus. Hybrid vigor can be increased and maintained with these bulls on most all straight bred and crossbred cows.

'OPTIMIZERS' ...

50% Angus x 50% Limousin Bulls

These Angus x Limousin F1 Composites have been a hit on our sale for many years as well. Many cattlemen are using these bulls to moderate their cow size and create consistency or in a four way cross breeding system. Optimizers are moderately framed, very deep and offer much more thickness than the pure-bred Angus cattle.

'OPTIMIZER' ...

25% Limousin x 75% Angus Bulls

They are 25% Limousin and 75% Angus. These bulls combine the best of the numbers of the elite Angus combined with the prominent Limousin. These bulls are huge numbered and have some of the strongest weights and stats of the entire sale offering. These bulls bring the statement of LimFlex to a whole new level in our breed. We urge you to see for yourself how any one of these bulls might fit into your program to sire a uniform and very desirable calf crop.

ABOUT OUR CATTLE ...

FEEDING:

The yearling cattle are fed to gain 3.25 per day, receiving a ration of corn gluten and alfalfa. We feed our bulls to gain sufficiently, without pushing a lot corn in the ration. We believe that corn causes structure problems later in life and causes yearling bulls to 'melt' when turned out to pasture. We are very proud of the success rate our yearling bulls have had.

SEMEN TESTING:

All bulls have been semen tested and measured and a certificate will go with each bull sold.

UNCONDITIONAL GUARANTEE:

If the cattle that you purchase at our sale fail to meet your expectations, we will replace the animal, providing you return the animal to our ranch at your expense. We will provide you with a replacement animal or give you full credit toward next year's sale or a cash refund. This guarantee expires after the first breeding season. We ask that you provide travel expenses for the replacement animal. Customer Service is #1!

ANALYZING THE PERFORMANCE DATA ...

BW :: BIRTH WEIGHT

We take birth weights on our cattle in order to give you some method of determining calving ease. Larger calves will sometimes come very easy. We believe that calf structure determines calving ease along with size.

WW :: WEANING WEIGHT

This is the weight of the cattle taken at weaning time adjusted to a constant age of 205 days, and a good indication of early growth.

YW :: YEARLING WEIGHT

This is the weight of the cattle taken at approximately one year of age and adjusted to a constant age of 365 days with at least 150 days between actual weaning and yearling weight dates.

ADG :: AVERAGE DAILY GAIN

Growth rate is highly heritable and these numbers will give you an idea of how the cattle respond to environmental conditions. i.e. feed, weather, etc.

CRVL CALIFORNIA 505C SONS

CRVL CALIFORNIA 505C

PB Limousin (100) Bull | HP/ Red
02.16.15 | CRVL 505C | NPM 2075248

WULFS XCELLSIOR X252X
CRVL MISS XEROX 307A

WULFS SIRLOIN 3172S
WULFS MISSIVE 2258M
DLVL XEROX 023X
CRVL MISS FRIENDLY 140Y

	CED	BW	WW	YW	MILK	CEM	SC	STAY	DOC	YG	CW	REA	MARB	FAT	SMTI
EPD	13	0.3	66	109	24	5	0.60	20	14	-0.40	26	0.83	-0.01	-0.08	53.02
%Rank	25	35	45	30	30	75	85	2	30	35	50	40	60	30	55

LVBR MAXIMIZER 814F

PB Limousin (93) Bull | Polled/ Red | 05.14.18 | LVBR 814F | NPM 2265279

CRVL CALIFORNIA 505C
RRDC 292 A

WULFS XCELLSIOR X252X
CRVL MISS XEROX 307A
MAGS WITH RYTHMN
RRDC 81 U

	CED	BW	WW	YW	MILK	CEM	SC	STAY	DOC	YG	CW	REA	MARB	FAT	SMTI
EPD	11	0.5	67	100	23	5	0.5	9	16	-0.73	13	1.18	-0.33	-0.15	44.23
%Rank	45	470	30	35	25	70	55	85	20	40	60	40	40	40	35

- Purebred
- Weaning weight and milk EPD's rank in the top 25% of the breed
- This Maximizer bull is a son of CRVL California 505C and from a MAGS With Rhythm daughter, RRDC 292A
- The reason this bull is so good is because he's supposed to be
- Bred with some of the most outstanding production-oriented genetics and we believe he will make a positive impact in any program he's introduced to

[Act. BW: 79 lbs.]



LVBR MAXIMIZER 832F

PB Limousin (87) Bull | DP/ Red | 03.30.18 | LVBR 832F | NPM 2265297

CRVL CALIFORNIA 505C
RRDC 272 Y

WULFS XCELLSIOR X252X
CRVL MISS XEROX 307A
MAGS RANSFORD
RRDC 808 U

	CED	BW	WW	YW	MILK	CEM	SC	STAY	DOC	YG	CW	REA	MARB	FAT	SMTI
EPD	12	0.3	71	104	19	5	0.5	11	14	-0.67	15	1.08	-0.32	-0.14	45.13
%Rank	35	35	15	25	75	70	55	70	45	60	55	65	35	55	30

- Purebred and double polled
- This guy sure pounded down the scale when weaning rolled around. He ranks in the top 15% of the breed for the weaning weight EPD he recorded
- This bull's dam is a MAGS Ransford daughter, RRDC 272Y
- We really admire this individual's prominent herd bull look and his eye appeal from any angle
- He is super sound made, strong in his top, heavy in his bone structure and one of those bulls that just has it 'goin' on'

[Act. BW: 81 lbs.]

LVBR OPTIMIZER 805F

Lim-Flex (50) Bull | HP/ Red | 04.12.18 | LVBR 805F | LFM 2265271

CRVL CALIFORNIA 505C
WFL RED FUTURE 078Y

WULFS XCELLSIOR X252X
CRVL MISS XEROX 307A
MONTVUE RED FUTURE W439
LCOC VICILA RA018

	CED	BW	WW	YW	MILK	CEM	SC	STAY	DOC	YG	CW	REA	MARB	FAT	SMTI
EPD	15	-2.2	58	89	25	8	0.65	14	13	-0.35	5	0.63	0.1	-0.05	54.03
%Rank	10	3	85	85	20	20	90	20	45	45	>95	80	40	60	55

- 50% Lim-Flex and homozygous polled
- Son of CRVL California 505C
- This bull's dam is WFL RED FUTURE 078, a MONTVUE Red Future W439 daughter
- What better pedigree figured EPD's can you ask for in a young herd sire prospect than these? He ranks in the top 3% for his birthweight EPD and the top 20% for milk
- This Optimizer bull is so level made, moderate in his frame and stands out amongst his contemporaries
- He is balanced, extremely thick and has an added touch of volume and rib shape

[Act. BW: 74 lbs.]

LVBR MAXIMIZER 819F

01

PB Limousin (100) Bull | DP/ Red | 05.06.18 | LVBR 819F | NPM 2265284

CRVL CALIFORNIA 505C
RRDC 129 Z

WULFS XCELLSIOR X252X
CRVL MISS XEROX 307A
BAR JZ TIMBERLINE 525S
RRDC 143 S

	CED	BW	WW	YW	MILK	CEM	SC	STAY	DOC	YG	CW	REA	MARB	FAT	SMTI
EPD	11	0.2	65	93	17	6	0.28	11	9	-0.79	10	1.19	-0.39	-0.16	41.91
%Rank	45	30	40	55	90	50	90	70	80	20	75	40	60	25	50

- Purebred, double polled
- He ranks in the top 30% for birthweight
- A young herd sire prospect out of CRVL California 505C, a great WULFS Xcellsior X252X son
- This is the bull to consider if you're looking to add performance and keep a set of calves uniform with some unique eye appeal

[Act. BW: 73 lbs.]

LVBR STABILIZER 829F

04

Lim-Flex (75) Bull | DP/ Red | 04.02.18 | LVBR 829F | LFM 2265294

CRVL CALIFORNIA 505C
RRDC YSANNE 287Y

WULFS XCELLSIOR X252X
CRVL MISS XEROX 307A
GV LINEBACKER 636U
MBAB R78

	CED	BW	WW	YW	MILK	CEM	SC	STAY	DOC	YG	CW	REA	MARB	FAT	SMTI
EPD	13	-0.1	67	100	22	6	0.6	14	14	-0.57	14	0.92	-0.22	-0.12	46.96
%Rank	25	25	40	55	45	60	90	20	35	4	90	30	95	2	90

- 75% Lim-Flex and double polled
- Here is a tremendous calving ease bull who ranks in the top 25% of the breed for his birthweight EPD
- This is a bull we appreciate for the predictable genetics that make up his pedigree, the desirable phenotype he possesses and his strength in number profile
- Everything is stacked in this one's favor!

[Act. BW: 73 lbs.]

MAGS ZARAH

Lim-Flex (68) Bull | HP/ HB
10.05.12 | MAGS 119Z | LFM 2028454

MAGS ZARAH SONS

MAGS WHITCOMB

AUTO CARMINDA 656S

BT CROSSOVER 758N
EXLR 199H

JCL LODESTAR 27L
AUTO BLACK DAKOTA 129J



	CED	BW	WW	YW	MILK	CEM	SC	STAY	DOC	YG	CW	REA	MARB	FAT	SMTI
EPD	13	0.3	66	109	24	5	0.60	20	14	-0.40	26	0.83	-0.01	-0.08	53.02
%Rank	25	35	45	30	30	75	85	2	30	35	50	40	60	30	55

LVBR STABLIZER 801F 06

% Limousin (84) Bull | Polled/ Black | 03.15.18 | LVBR 801F | NXM 2265267

MAGS ZARAH

RRDC 103 Z

MAGS WHITCOMB
AUTO CARMINDA 656S
BAR JZ TIMBERLINE 525S
RRDC 193M

	CED	BW	WW	YW	MILK	CEM	SC	STAY	DOC	YG	CW	REA	MARB	FAT	SMTI
EPD	10	1.9	63	96	23	4	0.45	18	10	-0.62	15	1.03	-0.26	-0.12	44.71
%Rank	60	75	55	55	30	90	85	15	75	40	70	45	60	45	65

- 84% Limousin
- He ranks in the top 25% for milk
- A first-class son of MAGS Zarah, a MAGS Whitcomb son
- This is the kind of bull that can truly change a set of females in one mating if you're looking to keep them moderate, performance oriented and easy doing

[Act. BW: 86 lbs.]

LVBR MAXIMIZER 811F 07

% Limousin (84) Bull | DP/ Black | 04.26.18 | LVBR 811F | NXM 2265276

MAGS ZARAH

RRDC 252 Z

MAGS WHITCOMB
AUTO CARMINDA 656S
MAGS RAWHIDE
RRDC 858 U

	CED	BW	WW	YW	MILK	CEM	SC	STAY	DOC	YG	CW	REA	MARB	FAT	SMTI
EPD	13	-0.1	58	93	28	6	0.45	16	10	-0.56	16	0.93	-0.21	-0.12	44.70
%Rank	25	25	75	65	3	55	85	20	75	50	70	60	55	45	65

- 84% Limousin and double polled
- A lot of performance backing his strong pedigree with a milk EPD ranking in the top 4% of the breed and birth weight in the top 25%
- Another MAGS Zarah son out of a MAGS Rawhide daughter, RRDC 252Z
- He is super long and level down his spine, strong in his stance and thick made

[Act. BW: 76 lbs.]



LVBR STABLIZER 825F 08

% Limousin (84) Bull | DP/ DB | 04.14.18 | LVBR 825F | NXM 2265289

MAGS ZARAH

RRDC LR BELLE 73B

MAGS WHITCOMB
AUTO CARMINDA 656S
LV BAR X FACTOR 42X
RRDC 143 S

	CED	BW	WW	YW	MILK	CEM	SC	STAY	DOC	YG	CW	REA	MARB	FAT	SMTI
EPD	14	-0.4	54	84	25	7	0.5	14	11	-0.5	19	0.83	-0.19	-0.11	43.54
%Rank	15	20	90	85	15	35	75	35	65	60	55	75	50	50	70

- 84% Limousin and double black double polled
- Looking for maternal power backed by calving ease from the start? This bull will do the trick. He ranks in the top 15% for milk and the top 20% for birthweight
- We appreciate the foot size and substance of bone this bull stands on and the amount of thickness he carries down into a deep, muscular hindquarter

[Act. BW: 70 lbs.]



LVBR STABLIZER 802F 09

Lim-Flex (71) Bull | DP/ Black | 04.01.18 | LVBR 802F | LFM 2265268

MAGS ZARAH

RRDC WERA 333 W

MAGS WHITCOMB
AUTO CARMINDA 656S
MAGS SEYMOUR
RRDC 131M

	CED	BW	WW	YW	MILK	CEM	SC	STAY	DOC	YG	CW	REA	MARB	FAT	SMTI
EPD	11	1.4	61	99	25	4	0.5	13	6	-0.46	24	0.85	-0.12	-0.10	48
%Rank	55	70	75	60	20	95	95	30	>95	20	65	40	85	10	90

- 71% Lim-Flex and double polled
- This bull ranks in the top 20% of the breed for milk
- An impressive son of the great MAGS Zarah bull
- His dam, RRDC Wera 333W is a MAGS Seymour daughter
- He is thick ended and wide in his top, rugged in his structure and has a terrific disposition

[Act. BW: 89 lbs.]

LVBR STABILIZER 838F 10

Lim-Flex (59) Bull | HP/ HB | 03.11.18 | LVBR 838F | LFM 2265303

MAGS ZARAH

LVLS 654D

MAGS WHITCOMB
 AUTO CARMINDA 656S
 MAGS UNREAL
 WOLF CREEK BLAZER 4172

	CED	BW	WW	YW	MILK	CEM	SC	STAY	DOC	YG	CW	REA	MARB	FAT	SMTI
EPD	15	0.3	67	110	28	6	0.62	18	17	-0.27	28	0.67	0.12	-0.05	56.94
%Rank	10	35	40	30	4	60	90	5	10	70	50	75	35	60	45

- 59% Lim-Flex and homozygous black and homozygous polled
- Maternal power to the max. This MAGS Zarah son ranks in the top 5% for milk and the top 25% for yearling weight
- His dam is LVLS 654D, a MAGS Unreal daughter- MAGS Unreal is recognized as one of the top purebred bulls in the industry and is a son of the multiple trait-leading bull, AUTO Dollar General 122R

[Act. BW: 70 lbs.]

LVBR OPTIMIZER 824F 11

Lim-Flex (53) Bull | HP/ DB | 04.16.18 | LVBR 824F | LFM 2265290

MAGS ZARAH

RRDC APPLE BUTTER 3319A

MAGS WHITCOMB
 AUTO CARMINDA 656S
 LH XCEL BOY 113X
 RRA PRIDE 8653

	CED	BW	WW	YW	MILK	CEM	SC	STAY	DOC	YG	CW	REA	MARB	FAT	SMTI
EPD	12	0.2	63	102	26	5	-	14	10	-0.31	24	0.68	0.12	-0.06	56.16
%Rank	35	35	65	50	10	80	-	20	80	55	65	75	35	50	45

- 53% Lim-Flex and homozygous polled and double black
- This bull ranks in the top 15% for his milk EPD
- He is super appealing from the profile and clean through his front end
- We appreciate his levelness from hooks to pins and his length of body

[Act. BW: 72 lbs.]

LVBR OPTIMIZER 808F 12

Lim-Flex (34) Bull | HP/ Black | 04.01.18 | LVBR 808F | LFM 2265273

MAGS ZARAH

WFL MUR ECIC 0190

MAGS WHITCOMB
 AUTO CARMINDA 656S
 MUSHRUSH EPIC LN U
 WFL MAJOR LEAGUE C745

	CED	BW	WW	YW	MILK	CEM	SC	STAY	DOC	YG	CW	REA	MARB	FAT	SMTI
EPD	13	-0.3	61	96	25	6	0.75	17	14	-0.14	23	0.39	0.16	-0.03	55.40
%Rank	25	20	75	70	20	60	80	10	35	95	65	>95	30	85	45

- 34% Lim-Flex and homozygous polled
- Another outstanding MAGS Zarah son
- This bull ranks in the top 20% for birthweight and milk and in the top 30% for marbling assured that this guy will be very predictable
- Truly a phenomenal combination of genetics, numbers and phenotype!
- He is square and level out of his hip, super thick made down his topline and great on his feet and legs

[Act. BW: 77 lbs.]

LVBR OPTIMIZER 807F 13

Lim-Flex (34) Bull | HP/ Black | 03.25.18 | LVBR 807F | LFM 2265272

MAGS ZARAH

WFL AFFIRMED 203Y

MAGS WHITCOMB
 AUTO CARMINDA 656S
 BROWN-CBAR AFFIRMED P7081
 WFL VACATION 1215

	CED	BW	WW	YW	MILK	CEM	SC	STAY	DOC	YG	CW	REA	MARB	FAT	SMTI
EPD	12	-0.2	64	98	24	4	0.75	17	16	-0.17	18	.36	0.23	-0.04	59.10
%Rank	35	25	55	65	25	90	80	10	15	90	85	>95	20	70	25

- 34% Lim-Flex and homozygous polled
- Interested in a promising all-around bull? Here he is! He ranks in the top 20% for marbling, the top 25% for birthweight and in the top 30% for milk
- Out of the phenomenal MAGS Zarah bull
- This bull's dam, WFL Affirmed 203Y is a daughter of BROWN-CBAR Affirmed P7081
- We admire the soundness of structure, feet and leg conformation and levelness of design this bull offers

[Act. BW: 76 lbs.]

AHCC BADLANDS 908B SONS

AHCC BADLANDS 908B

PB Limousin (100) Bull | HP/ HB
 03.15.14 | AHCC 908B | LFM 2064021

AHCC WESTWIND W544

LVLS 9066U

KAJO RESPONDER 120R
 AHCC MISS WULF HUNT R544
 LVLS FARMER JOHN 7428P
 COLE WULF HUNT

	CED	BW	WW	YW	MILK	CEM	SC	STAY	DOC	YG	CW	REA	MARB	FAT	SMTI
EPD	10	3.3	76	126	19	6	0.60	16	16	-0.54	45	1.00	-0.35	-0.15	45.13
%Rank	45	90	10	3	65	40	40	15	20	95	1	80	30	55	20



LVBR MAXIMIZER 803F 14

% Limousin (81) Bull | DP/ DB | 03.26.18 | LVBR 803F | NXM 2265269

AHCC BADLANDS 908B

RRDC 177 Z

AHCC WESTWIND W544
 LVLS 9066U
 MAGS WILD BUNCH
 RRDC 0634 S

	CED	BW	WW	YW	MILK	CEM	SC	STAY	DOC	YG	CW	REA	MARB	FAT	SMTI
EPD	9	3	67	101	18	6	0.65	14	8	-0.51	28	0.94	-0.19	-0.12	47.67
%Rank	75	95	35	40	85	55	65	35	90	60	25	60	50	45	50

- 81% Limousin and double black and double polled
- Out of AHCC BADLANDS 908B
- Dam is RRDC 177Z, a MAGS Wild Bunch daughter
- He ranks in the top 30% for weaning weight EPD
- This is a bull that balances up so well and one that we truly appreciate from a production standpoint
- If you are in the market for muscle, performance and an elite look, then consider this young herd sire prospect

[Act. BW: 86 lbs.]

LVBR STABILIZER 837F 15

% Limousin (81) Bull | DP/ DB | 03.21.18 | LVBR 837F | NXM 2265302

AHCC BADLANDS 908B

RRDC 131 Z

AHCC WESTWIND W544
 LVLS 9066U
 RRDC 100W
 RRDC 710 T

	CED	BW	WW	YW	MILK	CEM	SC	STAY	DOC	YG	CW	REA	MARB	FAT	SMTI
EPD	10	2.6	64	100	17	6	0.5	12	6	-0.52	27	0.84	-0.29	-0.13	43.21
%Rank	60	90	50	45	90	55	75	50	95	55	30	70	65	35	70

- 81% Limousin
- Double polled and double black
- This bull is great in his lines, super balanced and has a substantial amount of eye appeal that anyone can get behind

[Act. BW: 86 lbs.]

LVBR MAXIMIZER 816F 16

% Limousin (81) Bull | DP/ DB | 04.26.18 | LVBR 816F | NXM 2265281

AHCC BADLANDS 908B AHCC WESTWIND W544
 LVLS 9066U
 RRDC LR BELLE 81B MDCS YAHOO 100 Y
 RRDC 157 X

	CED	BW	WW	YW	MILK	CEM	SC	STAY	DOC	YG	CW	REA	MARB	FAT	SMTI
EPD	9	2.7	63	104	21	6	0.5	13	9	-0.49	28	0.76	-0.29	-0.13	42.78
%Rank	75	90	55	35	55	55	75	40	85	60	25	80	65	35	70

- 81% Limousin and double black and double polled
- He ranks in the top 30% for yearling weight
- A super well made AHCC Badlands 908B son
- This Maximizer bull is impressively fluid in his movement and maintains such a prominent look to him no matter how he plants his feet
- Super strong down his top, level in his hip and such an exciting potential herd sire

[Act. BW: 86 lbs.]

**ADDITIONAL WEIGHTS
 WILL BE PROVIDED SALE DAY.**

SELLING 88 LOTS:
 52 Limousin & Lim-Flex Bulls
 36 Bred Limousin, Lim-Flex
 & Angus Females

LVBR STABLIZER 809F 17

Lim-Flex (75) Bull | DP/ DB | 04.26.18 | LVBR 809F | LFM 2265274

AHCC BADLANDS 908B AHCC WESTWIND W544
 LVLS 9066U
 RRDC LR BELLE 52B MAGS XTRA WET
 RRA LUCKY CARD 1120

	CED	BW	WW	YW	MILK	CEM	SC	STAY	DOC	YG	CW	REA	MARB	FAT	SMTI
EPD	9	3.2	74	117	20	4	0.74	13	16	-0.35	33	0.7	-0.06	-0.09	53.20
%Rank	85	>95	15	15	70	90	80	30	15	45	30	70	75	20	60

- 75% Lim-Flex and double black and double polled
- Sired by AHCC Badlands 908B
- This bull's dam is RRDC LR BELLE 52B, a truly exceptional MAGS Xtra Wet daughter
- Weaning weight and yearling weight EPDs both rank in the top 15%
- Wanting to improve number profiles, moderate some size and add extra pounds to your future calf crop? Consider this elite young herd sire prospect!

[Act. BW: 84 lbs.]

LVBR STABLIZER 810F 18

Lim-Flex (71) Bull | DP/ HB | 05.15.18 | LVBR 810F | LFM 2265275

AHCC BADLANDS 908B AHCC WESTWIND W544
 LVLS 9066U
 RRDC LR BELLE 97B AHCC ZERO IN Z505
 RRA QUEEN 1127

	CED	BW	WW	YW	MILK	CEM	SC	STAY	DOC	YG	CW	REA	MARB	FAT	SMTI
EPD	9	3.6	76	129	22	5	0.9	13	13	-0.35	41	0.83	-0.05	-0.09	54.47
%Rank	85	>95	10	4	45	80	60	30	45	45	15	45	70	20	55

- 71% Lim-Flex and homozygous black double polled
- This bull ranks in the top 4% for his yearling weight EPD and the top 10% for weaning weight
- He is a son of AHCC Badlands 908B and from RRDC LR Belle 97B, an AHCC Zero In Z505 daughter
- Talk about overall mass, extra thickness and heaviness of structure!
- We love this bull's solid performance and elite pedigree and believe in his ability to completely revamp a calf crop

[Act. BW: 85 lbs.]

AHCC ZERO IN SONS

AHCC ZERO IN Z505

% Limousin (87) Bull | DP/ HB
 02.25.12 | HACC 505Z | NXM 2018211

MAGS WHITCOMB BT CROSSOVER 758N
 EXLR 199H
 AUTO CARMINDA 656S JCL LODESTAR 27L
 AUTO BLACK DAKOTA 129J

	CED	BW	WW	YW	MILK	CEM	SC	STAY	DOC	YG	CW	REA	MARB	FAT	SMTI
EPD	7	5.0	77	136	27	5	1.00	12	4	-0.49	36	1.18	-0.22	-0.09	49.87
%Rank	90	>95	10	2	10	65	25	35	95	65	10	30	40	70	30



LVBR MAXIMIZER 827F 19

PB Limousin (93) Bull | DP/ Black | 03.17.18 | LVBR 827F | NPM 2265292

AHCC ZERO IN Z505 MAGS WAZOWSKI
 HC PASSION 505
 RRDC 222 X FWKW MIKE
 RRDC 305J

	CED	BW	WW	YW	MILK	CEM	SC	STAY	DOC	YG	CW	REA	MARB	FAT	SMTI
EPD	7	3.4	67	110	25	6	0.85	12	4	-0.67	23	1.21	-0.36	-0.13	42.95
%Rank	90	95	30	10	10	50	25	65	95	60	25	35	50	70	40

- Purebred and double polled
- We like to think of this bull as the home run type when it comes to a number profile
- He ranks in the top 10% of the breed for the yearling weight he recorded, in the top 15% for milk and in the top 25% for his weaning weight
- This guy is clean in his front end and stands on an excellent structure
- He is massive in his foot size and super soft in his pasterns

[Act. BW: 85 lbs.]

LVBR MAXIMIZER 834F **20**

% Limousin (81) Bull | DP/ DB | 04.19.18 | LVBR 834F | NXM 2265299

AHCC ZERO IN Z505
RRDC 300 X

MAGS WAZOWSKI
HC PASSION 505
MAGS STAY TUNED
TLIM MISS LX BANDO 824U

	CED	BW	WW	YW	MILK	CEM	SC	STAY	DOC	YG	CW	REA	MARB	FAT	SMTI
EPD	8	2.4	62	101	26	6	0.75	11	1	-0.51	19	0.92	-0.14	-0.10	47.94
%Rank	85	85	60	40	10	55	55	60	>95	60	55	60	45	60	50

- 81% Limousin
- This Maximizer bull ranks in the top 15% for birthweight and the top 20% for milk
- He is out of a MAGS Stay Tuned daughter, RRDC 300X
- We are confident in this young herd sire prospect's ability to positively impact any cow herd that will result in more dollars in the future- a sound investment for your program!

[Act. BW: 84 lbs.]

LVBR STABLIZER 835F **21**

Lim-Flex (68) Bull | DP/ DB | 04.12.18 | LVBR 835F | LFM 2265300

AHCC ZERO IN Z505
RRDC 104 X

MAGS WAZOWSKI
HC PASSION 505
MAGS RITCHIE
RX LOU 8106

	CED	BW	WW	YW	MILK	CEM	SC	STAY	DOC	YG	CW	REA	MARB	FAT	SMTI
EPD	7	3.9	63	104	20	5	0.75	12	6	-0.37	25	0.69	-0.10	-0.09	48.75
%Rank	95	>95	65	45	70	80	80	40	>95	40	60	70	80	20	85

- 68% Lim-Flex and double polled and double black
- His dam is RRDC 104X, a MAGS Ritchie daughter
- Look at this exciting herd bull prospect!
- He has all kinds of depth and rib shape, a powerful hip and hind leg stance
- We love his rugged design that'll keep longevity in the picture and at the base of his existence in your program

[Act. BW: 80 lbs.]

LVBR STABLIZER 839F **22**

Lim-Flex (68) Bull | DP/ Black | 03.16.18 | LVBR 839F | LFM 2265304

AHCC ZERO IN Z505
RRDC 841 U

MAGS WAZOWSKI
HC PASSION 505
RRDC 028P
MBAB M198

	CED	BW	WW	YW	MILK	CEM	SC	STAY	DOC	YG	CW	REA	MARB	FAT	SMTI
EPD	7	3.6	70	111	22	5	0.8	10	8	-0.41	25	0.82	-0.19	-0.08	47.71
%Rank	95	>95	30	25	45	80	70	65	95	30	60	45	95	30	90

- 68% Lim-Flex and double polled
- This bull recorded weaning weight and yearling weight numbers in the top 25% of the breed
- Not only is this bull's number package super impressive, but he's got a flashy look and we're confident that when you see him on sale day you'll fall in love

[Act. BW: 86 lbs.]

LVBR OPTIMIZER 818F **23**

Lim-Flex (43) Bull | DP/ HB | 04.06.18 | LVBR 818F | LFM 2265283

AHCC ZERO IN Z505
RRA BLACKCAP 9803

MAGS WAZOWSKI
HC PASSION 505
WK REWARD
RRA BLACKCAP 6579

	CED	BW	WW	YW	MILK	CEM	SC	STAY	DOC	YG	CW	REA	MARB	FAT	SMTI
EPD	7	4.7	83	140	25	8	1.05	12	6	-0.21	37	0.81	-0.16	-0.03	62.88
%Rank	95	>95	3	1	20	20	45	40	>95	80	20	50	30	85	15

- 43% Lim-Flex and homozygous black and double polled
- Truly a do-it-all bull right here. He ranks in the top 1% for yearling weight, the top 4% for weaning weight and the top 20% for milk
- He's a son of AHCC Zero In Z505 and out of a tremendous female, RRA Blackcap 9803
- This bull is massive in his rib shape and overall capacity and width
- Super soft in his pasterns and flexible in his movement
- Elite performance and a true standout!

[Act. BW: 89 lbs.]

RRDC BEEFEATER 533B SONS

RRDC BEEFEATER 533B

Lim-Flex (75) Bull | HP/ Red
03.04.14 | RRDC 118Z | LFM 2087722

MAGS UNREAL
RRDC 118Z

AUTO KYRIA 232K
MAGS PASSION FLOWER
MAGS UNREAL
WOLF CREEK AMBUSH 8358



	CED	BW	WW	YW	MILK	CEM	SC	STAY	DOC	YG	CW	REA	MARB	FAT	SMTI
EPD	16	0.0	67	106	28	9	0.70	21	25	-0.26	29	0.64	-0.01	-0.05	52.12
%Rank	3	30	40	40	5	10	75	1	1	65	40	75	60	55	65

LVBR MAXIMIZER 804F **24**

PB Limousin (87) Bull | Polled/ Black | 04.27.18 | LVBR 804F | NPM 2265270

RRDC BEEFEATER 533B
RRDC WILDNITES 272 W

MAGS UNREAL
RRDC 118 Z
MAGS RAJAH
RRDC MISS CHUCKWAGON 339K

	CED	BW	WW	YW	MILK	CEM	SC	STAY	DOC	YG	CW	REA	MARB	FAT	SMTI
EPD	13	0.9	60	92	30	7	0.42	14	9	-0.5	18	0.85	-0.22	-0.10	44.32
%Rank	25	45	65	60	1	35	70	45	80	>95	40	>95	15	>95	35

- Purebred
- This bull's dam, RRDC Wildnites 272W is a MAGS Rajah daughter
- Buy with complete confidence in this young herd sire prospect, we believe you'll be incredibly pleased when you see him on sale day
- He has breed leading numbers backed with a super prominent pedigree
- He is a chart topper that ranks in the top 1% of the entire breed for his impressive milk EPD and his marbling EPD also ranks in the top 10%

[Act. BW: 76 lbs.]

LVBR MAXIMIZER 820F **25**

PB Limousin (87) Bull | DP/ Black | 04.22.18 | LVBR 820F | NPM 2265285

RRDC BEEFEATER 533B
RRDC ALLTIMESGOOD 79 A

MAGS UNREAL
RRDC 118 Z
RRDC UNREAL 17X
RRDC 253 X

	CED	BW	WW	YW	MILK	CEM	SC	STAY	DOC	YG	CW	REA	MARB	FAT	SMTI
EPD	14	0.5	67	104	27	8	0.64	15	14	-0.45	24	0.86	-0.20	-0.10	46.82
%Rank	20	40	30	25	4	20	45	40	45	>95	20	>95	10	>95	20

- Purebred and double polled
- This RRDC Beefeater 533B son is one of the biggest numbered bulls in this offering.
- He ranks in the top 5% of the breed for milk, the top 10% for marbling and the top 20% for yearling weight
- He is super fluid in his movement, soft in his pasterns and stands on a substantial amount of bone
- We admire this one's performance, his pedigree and his killer profile

[Act. BW: 78 lbs.]

LVBR MAXIMIZER 813F **26**

% Limousin (78) Bull | DP/ Black | 04.16.18 | LVBR 813F | NXM 2265278

RRDC BEEFEATER 533B
RRDC 73 X

MAGS UNREAL
RRDC 118 Z
MAGS UNREAL
RRDC 020 U

	CED	BW	WW	YW	MILK	CEM	SC	STAY	DOC	YG	CW	REA	MARB	FAT	SMTI
EPD	16	0.3	63	98	27	8	0.59	16	24	-0.33	25	0.69	-0.08	-0.07	48.98
%Rank	10	35	55	50	15	20	75	20	1	80	35	90	40	75	45

- 78% Limousin and double polled
- Ranks in the top 10% for milk
- Another powerful RRDC Beefeater 533B son from a MAGS Unreal daughter, RRDC 73X
- This bull is level

[Act. BW: 76 lbs.]

LVBR STABLIZER 828F **27**

% Limousin (78) Bull | DP/ Black | 04.13.18 | LVBR 828F | NXM 2265293

RRDC BEEFEATER 533B
RRDC ALLBEOK 102 A

MAGS UNREAL
RRDC 118 Z
RRDC UNREAL 17X
RRDC 150 X

	CED	BW	WW	YW	MILK	CEM	SC	STAY	DOC	YG	CW	REA	MARB	FAT	SMTI
EPD	13	1.1	68	104	24	7	0.6	15	15	-0.40	25	0.77	-0.15	0-0.09	48.32
%Rank	25	55	30	35	20	35	65	25	25	70	35	80	45	65	45

- 78% Limousin and double polled
- This guy ranks in the top 25% of the breed for his weaning weight and milk EPDs
- A moderately framed, yet super thick-made bull that is so complete and appealing when he stops and plants his feet

[Act. BW: 80 lbs.]

LVBR STABLIZER 831F **28**

Lim-Flex (62) Bull | DP/ Black | 04.06.18 | LVBR 831F | LFM 2265296

RRDC BEEFEATER 533B
RRDC YANISSA 337Y

MAGS UNREAL
RRDC 118 Z
MAGS RITCHIE
RX ROSE 8125

	CED	BW	WW	YW	MILK	CEM	SC	STAY	DOC	YG	CW	REA	MARB	FAT	SMTI
EPD	13	0.7	56	90	24	7	0.65	17	14	-0.26	20	0.41	0.01	-0.07	49.72
%Rank	25	50	90	85	25	40	90	10	35	70	75	>95	60	40	80

- 62% Lim-Flex and double polled
- He ranks in the top 30% for milk
- His dam, RRDC Yanissa 337Y is a MAGS Ritchie daughter
- This herd sire prospect will catch your eye and impress you right off the bat, he's super strong down his top and balances up adequately no matter how he stops

[Act. BW: 79 lbs.]

LVBR STABLIZER 812F **29**

Lim-Flex (62) Bull | DP/ Black | 05.03.18 | LVBR 812F | LFM 2265277

RRDC BEEFEATER 533B
RRDC ALLTIMESGOOD 142 A

MAGS UNREAL
RRDC 118 Z
MAGS XTRA WET
RRA 855S WULFS EXT 028X

	CED	BW	WW	YW	MILK	CEM	SC	STAY	DOC	YG	CW	REA	MARB	FAT	SMTI
EPD	15	-0.4	63	97	23	8	0.65	17	21	-0.23	26	0.59	0.06	-0.05	53.14
%Rank	10	20	65	65	35	20	90	10	1	80	55	85	50	60	60

- 62% Lim-Flex and double polled
- Here is quite the unique pedigreed individual. This Stabilizer bull is an RRDC Beefeater 533B son and from a MAGS Xtra West female, RRDC Alltimesgood 142A
- He ranks in the top 20% for birthweight
- T his is the best of the best all in one super powerful package

[Act. BW: 71 lbs.]

LVBR MAXIMIZER 817F **30**

PB Limousin (100) Bull | DP/ Black | 03.28.18 | LVBR 817F | NPM 2265282

RRDC ALBERT 307 A
RRDC 88 U

JCL LODESTAR 27L
RRDC 349 Y
MAGS RAINEY
RRDC 08J

	CED	BW	WW	YW	MILK	CEM	SC	STAY	DOC	YG	CW	REA	MARB	FAT	SMTI
EPD	9	3.9	57	96	29	5	0.85	10	5	-0.64	20	1.01	-0.4	-0.14	38.24
%Rank	70	>95	75	45	2	70	25	80	95	70	35	80	60	55	75

- Purebred and double polled
- He ranks in the top 2% of the breed for milk
- An RRDC Albert 307A son
- This bull has the performance and design to positively change a calf crop along with adding maternal power

[Act. BW: 87 lbs.]

LVBR MAXIMIZER 836F **31**

PB Limousin (100) Bull | DP/ Black | 03.17.18 | LVBR 836F | NPM 2265301

RRDC ALBERT 307 A
RRDC 349 Y

JCL LODESTAR 27L
RRDC 349 Y
MAGS UNREAL
RRDCWELL DEFINED 237 Wa

	CED	BW	WW	YW	MILK	CEM	SC	STAY	DOC	YG	CW	REA	MARB	FAT	SMTI
EPD	12	3.4	60	109	32	7	0.60	14	17	-0.53	30	0.97	-0.31	-0.12	41.69
%Rank	35	95	65	15	1	35	45	45	10	>95	5	90	35	85	50

- Purebred and double polled
- Here is a chart topper that ranks in the top 1% of the entire breed for milk and in the top 10% for the yearling weight he recorded
- This bull is out of a MAGS Unreal daughter, RRDC 349Y
- He has excited us from day one- he's got such a unique pedigree and such a strength in numbers that he's always surfaced to the top amongst his contemporaries
- A prominent look and super fluid in his movement, this bull is a sound investment any way you look at it

[Act. BW: 83 lbs.]



LVBR STABILIZER 821F **32**

Lim-Flex (71) Bull | DP/ DB | 04.29.18 | LVBR 821F | LFM 2265286

MAGS BACK ROOM

RRDC ANNABELL 3322A

MAGS Y-AXIS
MAGS UNKEPT
MAGS UNREAL
RRDC YAKIRA 14Y

	CED	BW	WW	YW	MILK	CEM	SC	STAY	DOC	YG	CW	REA	MARB	FAT	SMTI
EPD	13	0.7	68	104	22	8	0.75	0.14	16	-0.42	21	0.89	-0.03	-0.08	53.04
%Rank	25	50	35	45	45	20	80	20	15	30	75	35	70	30	60

- 71% Lim-Flex and double black and double polled
- MAGS Back Room son
- His dam, RRDC Annabell 3322A is another great MAGS Unreal daughter
- We love this bull's top side shape and ideal set to his back leg and pastern
- Represents a unique blending of some of the breed's strongest genetics

[Act. BW: 79 lbs.]



LVBR STABILIZER 830F **33**

Lim-Flex (70) Bull | DP/ DB | 03.22.18 | LVBR 830F | LFM 2265295

MAGS APPLE JACK

LVLS 614D

MAGS XUKALANI
WLR UGLY BETTY 432U
MAGS ZARAH
RRDC 432 W

	CED	BW	WW	YW	MILK	CEM	SC	STAY	DOC	YG	CW	REA	MARB	FAT	SMTI
EPD	10	1	67	106	20	4	0.78	10	11	-0.42	26	0.84	-0.04	-0.09	52.34
%Rank	70	60	40	40	70	90	80	65	70	30	55	40	70	20	65

- 70% Lim-Flex and double polled and double black
- He is sired by MAGS Apple Jack and from a MAGS Zarah daughter, LVLS 614D
- This bull proudly represents the performance, powerful efficiency and superb look that cattlemen have come to expect from cattle that carry the LVBR prefix
- It's individuals like this Stabilizer bull that will take your program to the next level

[Act. BW: 69 lbs.]

LVBR STABILIZER 822F **34**

Lim-Flex (65) Bull | DP/ Black | 05.02.18 | LVBR 822F | LFM 2265287

MAGS BACK ROOM

RRDC 183 Z

MAGS Y-AXIS
MAGS UNKEPT
MAGS WITTER
RRDC 142 X

	CED	BW	WW	YW	MILK	CEM	SC	STAY	DOC	YG	CW	REA	MARB	FAT	SMTI
EPD	12	0.3	63	92	21	7	0.75	10	12	-0.45	15	0.85	-0.03	-0.08	51.46
%Rank	35	35	65	80	60	40	80	65	60	25	90	40	70	30	70

- 65% Lim-Flex and double polled
- Another super powerful MAGS Back Room son from a MAGS Witter daughter, RRDC 183Z
- This bull is so solid from the ground up, he's big boned, soft in his pasterns and has such a powerful hip

[Act. BW: 80 lbs.]

LVBR OPTIMIZER 826F **35**

Lim-Flex (56) Bull | DP/ DB | 05.19.18 | LVBR 826F | NPM 2265291

MAGS BRONC BUSTER ET

RRDEC MISS LOADSTAR 705T

MAGS XYLOID
MAGS SIMPLY NORMAL
JCL LODESTAR 27L
MBAB R78

	CED	BW	WW	YW	MILK	CEM	SC	STAY	DOC	YG	CW	REA	MARB	FAT	SMTI
EPD	9	2.7	67	110	19	5	0.8	15	15	-0.21	26	0.49	-0.01	-0.05	51.79
%Rank	85	95	40	30	75	80	70	15	25	80	55	95	65	60	70

- 56% Lim-Flex and double black and double polled
- He ranks in the top 25% for yearling weight
- T his Optimizer bull is a true portrait of what the optimizers are. He is a son of MAGS Bronc Buster ET
- We appreciate this bull's near flawless profile, his extreme thickness and volume
- Looking to keep a set of replacements and

[Act. BW: 86 lbs.]



MIKE SMITH

Owner, Smith & Sons
785.737.8070 | Mdsmith@rurertel.net



RANDY RATLIFF

Branding & Marketing for Smith & Sons
615.330.2735 | Randy@RRMktg.com



GREG CAREY

Owner of Russell, Kansas Stockyards
785.483.2961



RON RATLIFF

Owner of Anderson County Sales Company
Garnett, KS
785.448.8200

CALF BUYBACK PROGRAM ...

Smith & Sons is extremely grateful for the continued relationships we have with our customers. The trust they put in us to provide quality genetics to continue to improve this great breed is rewarding. It is important to us to communicate with our clients to understand their wants and needs. We will collaborate with our customers on their program goals, breeding strategies, nutritional information, performance data and more.

If you are interested in our calf buyback program, Smith & Sons will gladly connect you with one of their representatives below to start the conversation in helping your calves sell for a premium.

LVLS DON JULIO 2149D SONS

LVLS DON JULIO 2149D

% Limousin (56) Bull | HP/ HB
01.25.16 | LVLS 2149D | LFM 2103660

MAGS ZODIAC
LVLS AQUA 2148A

MAGS WINSTON
DHVO DEUCE 132R
MAGS UNWASHED
LVLS 2048W



	CED	BW	WW	YW	MILK	CEM	SC	STAY	DOC	YG	CW	REA	MARB	FAT	SMTI
EPD	12	0.7	67	113	23	6	0.90	6	15	-0.26	47	0.81	-0.03	-0.06	51.55
%Rank	35	45	40	25	35	55	55	90	20	65	10	45	65	50	65



LVBR OPTIMIZER 815F 36

Lim-Flex (57) Bull | DP/ HB | 03.12.18 | LVBR 815F | LFM 2265280

LVLS DON JULIO 2149D
LVLS 629D

MAGS ZODIAC
LVLS AQUA 2148A
MAGS ZARAH
RRDC LR BELLE 39B

	CED	BW	WW	YW	MILK	CEM	SC	STAY	DOC	YG	CW	REA	MARB	FAT	SMTI
EPD	14	1	67	109	25	6	-	11	16	-0.27	35	0.73	0.02	-0.06	53.38
%Rank	15	60	40	30	20	60	-	55	15	70	25	65	60	50	60

- 57% Lim-Flex and homozygous black and double polled
- This bull ranks in the top 20% for milk
- An LVLS Don Julio 2149D son from a MAGS Zarah daughter, LVLS 629D
- It's not every day that we get a bull with this phenomenal structural integrity and smoothness of lines

[Act. BW: 74 lbs.]

LVBR OPTIMIZER 823F 37

Lim-Flex (53) Bull | DP/ DB | 03.24.18 | LVBR 823F | LFM 2265288

LVLS DON JULIO 2149D
LVVLS 701D

MAGS ZODIAC
LVLS AQUA 2148A
LV BAR ARIAT 3369A
RRDC 136 X

	CED	BW	WW	YW	MILK	CEM	SC	STAY	DOC	YG	CW	REA	MARB	FAT	SMTI
EPD	12	1.4	64	102	25	7	0.78	5	14	-0.37	31	0.77	-0.10	-0.08	48.77
%Rank	35	70	55	50	20	40	80	>95	35	40	35	55	80	30	85

- 53% Lim-Flex
- Double black and double polled
- This LVLS Don Julio son ranks in the top 20% for milk
- Wanting a masculine, muscular looking bull with a massive foot size? This is the bull for you

[Act. BW: 77 lbs.]

LVBR OPTIMIZER 833F 38

Lim-Flex (46) Bull | DP/ DB | 03.12.18 | LVBR 833F | LFM 2265298

LVLS DON JULIO 2149D
LVLS 609D

MAGS ZODIAC
LVLS AQUA 2148A
RRDC 3003 A
E&B LADY 8021 IN FOCUS 18

	CED	BW	WW	YW	MILK	CEM	SC	STAY	DOC	YG	CW	REA	MARB	FAT	SMTI
EPD	13	1.2	71	119	26	7	1.05	10	12	-0.17	42	0.62	0.15	-0.04	58.52
%Rank	25	65	25	15	10	40	45	65	60	90	10	85	30	70	30

- 46% Lim-Flex and double polled and double black
- Whew! Here is a guy that can check all of the numeric profile boxes off twice- he ranks in the top 10% for the yearling weight he recorded, in the top 15% of the breed for milk and the top 25% for his recorded weaning weight
- Not only does this bull bring a powerful number package to the table, he stands on such a great conformation
- If you're looking for a lower percentage bull to add numbers and create quite the uniform calf crop, then look no further!

[Act. BW: 70 lbs.]



MAGS XTRA WET SONS

MAGS XTRA WET

PB Limousin (100) Bull | Polled/ Black
10.06.10 | MAGS 513X | LFM 1980060

DHVO DEUCE 132R
MAGS PUDDLES

GPFF BLAQUE RULON
AMY JO DHAN 20L
JCL LODESTAR 27L
CANE RIDGE POLL ANGEL 318



	CED	BW	WW	YW	MILK	CEM	SC	STAY	DOC	YG	CW	REA	MARB	FAT	SMTI
EPD	10	2.5	62	84	12	5	0.30	9	20	-0.56	11	0.82	-0.34	-0.12	40.86
%Rank	45	75	45	65	95	60	65	65	3	95	60	>95	30	95	40

MDCS MAXIMIZER 853F 39

PB Limousin (87) Bull | DP/ DB | 04.20.18 | MDCS 853F | NPM 2268685

MAGS XTRA WET
RRDC YAKIRA 1109 Y

DHVO DEUCE 132R
MAGS PUDDLES
MAGS RANSFORD
RRDC 811 U

	CED	BW	WW	YW	MILK	CEM	SC	STAY	DOC	YG	CW	REA	MARB	FAT	SMTI
EPD	11	1.4	57	81	15	6	0.53	11	20	-0.53	8	0.74	-0.31	-0.11	40.20
%Rank	45	60	75	85	95	50	55	70	1	>95	80	>95	35	95	60

- Double black and double polled
- His dam is RRDC Yakira 1109Y, a MAGS Ransford daughter
- If you want a purebred bull that has the prominent pedigree, extreme numbers and the cool look to him, then consider this solid breeding piece

[Act. BW: 78 lbs.]

**ADDITIONAL WEIGHTS
WILL BE PROVIDED SALE DAY.**

**A special Thank You
to Quinn Peterson for
clipping and picturing bulls!**

MDCS MAXIMIZER 852F 40

PB Limousin (100) Bull | DP/ DB | 04.06.18 | MDCS 852F | NPM 2268654

MAGS XTRA WET
RRDC ALBERTA 152 A

DHVO DEUCE 132R
MAGS PUDDLES
MAGS UNREAL
RRDC 881 U

	CED	BW	WW	YW	MILK	CEM	SC	STAY	DOC	YG	CW	REA	MARB	FAT	SMTI
EPD	12	1.6	62	86	18	6	0.35	12	17	-0.59	13	0.89	-0.33	-0.13	41.56
%Rank	35	65	55	75	85	50	80	65	10	90	60	95	40	70	55

- Double black and double polled
- His dam, RRDC Alberta 152A is a MAGS Unreal daughter
- This bull is loaded with look, power and functionality

[Act. BW: 86 lbs.]



MDCS MAXIMIZER 850F 41

PB Limousin (87) Bull | DP/ DB | 03.26.18 | MDCS 850F | NPM 2268622

MAGS XTRA WET
RRDC LR BELLE 219B

DHVO DEUCE 132R
MAGS PUDDLES
RRDC YANDER 1106 Y
RRDC 892 U

	CED	BW	WW	YW	MILK	CEM	SC	STAY	DOC	YG	CW	REA	MARB	FAT	SMTI
EPD	11	1.8	64	95	16	6	0.5	12	13	-0.52	16	0.79	-0.28	-0.11	43.58
%Rank	45	70	45	50	95	50	55	65	55	>95	50	>95	25	95	40

- Double black and double polled
- Marbling ranks in top 25%
- He is built to produce individuals full of carcass merit that also have a super production oriented look with quality muscle

[Act. BW: 86 lbs.]

MDCS MAXIMIZER 851F 42

% Limousin (84) Bull | DP/ DB | 03.18.18 | MDCS 851F | NXM 2268653

MAGS XTRA WET
RRDC LR BELLE 134B

DHVO DEUCE 132R
MAGS PUDDLES
HC BENCHMARK 015
RRDC 853 U

	CED	BW	WW	YW	MILK	CEM	SC	STAY	DOC	YG	CW	REA	MARB	FAT	SMTI
EPD	11	1.9	63	91	16	6	0.5	9	14	-0.54	15	0.91	-0.23	-0.11	44.96
%Rank	50	75	55	70	95	55	75	80	35	55	70	65	55	50	60

- Double black and double polled
- Goes back to Coleman Benchmark 671 on dam's side
- This bull is super soggy middled, rugged in his design and sound on all fours

[Act. BW: 81 lbs.]

MDCS MAXIMIZER 845F **43**

PB Limousin (100) Bull | DP/ DB | 03.24.18 | MDCS 845F | NPM 2268646

RRDC LVLS 312C

MAGS XTRA WET

RRDC 221 Y

RRDC 200 Z

MAGS RIDGE

RRDC 473P

	CED	BW	WW	YW	MILK	CEM	SC	STAY	DOC	YG	CW	REA	MARB	FAT	SMTI
EPD	10	1.9	60	93	21	5	0.52	11	6	-0.63	17	0.99	-0.39	-0.14	39.37
%Rank	55	70	65	55	50	70	55	70	90	75	45	85	60	55	70

- Double black and double polled
- Out of a MAGS Ridge daughter, RRDC 200Z
- We appreciate the looseness of skeleton and athleticism this bull has had since he hit the ground

[Act. BW: 80 lbs.]

MDCS STABILIZER 849F **44**

% Limousin (81) Bull | DP/ DB | 05.01.18 | MDCS 849F | NXM 2268650

RRDC LVLS 312C

MAGS XTRA WET

RRDC 221 Y

RRDC 244 Z

MAGS WITH RYTHMN

RRDC 811 U

	CED	BW	WW	YW	MILK	CEM	SC	STAY	DOC	YG	CW	REA	MARB	FAT	SMTI
EPD	10	2.2	65	99	18	6	0.75	12	18	-0.47	20	0.82	-0.22	-0.10	45.64
%Rank	60	85	45	45	85	55	55	50	4	65	55	75	55	60	60

- Double black and double polled
- Dam is a MAGS With Rythmn daughter, RRDC 244Z
- This bull has such a cool look about him and a super sound structure under him that excites us for his future progeny

[Act. BW: 80 lbs.]

MDCS STABILIZER 846F **45**

Lim-Flex (75) Bull | DP/ DB | 03.16.18 | MDCS 846F | LFM 2268647

RRDC LVLS 329C

MAGS XTRA WET

WOLF CREEK NEW LEVEL 2460

RRDC 163 X

MAGS RIDGE

RRDC 87L

	CED	BW	WW	YW	MILK	CEM	SC	STAY	DOC	YG	CW	REA	MARB	FAT	SMTI
EPD	9	1.9	52	79	21	5	0.59	13	8	-0.45	10	0.7	-0.15	-0.09	44.02
%Rank	85	85	>95	>95	60	80	95	30	95	25	>95	70	90	20	>95

- Double black
- His dam is a MAGS Ridge daughter, RRDC 163X
- We really do love the foot under this bull, his muscle expression and the way he carries himself when he gets out on the move

[Act. BW: 81 lbs.]

MDCS OPTIMIZER 854F **46**

Lim-Flex (25) Bull | DP/ DB | 05.25.18 | MDCS 854F | LFM 2268655

RRDC LVLS 329C

MAGS XTRA WET

WOLF CREEK NEW LEVEL 2460

E&B LADY PREDOMINANT 1000

SAV 004 PREDOMINANT 4438

E&B LADY 1123 PRECISION 5

	CED	BW	WW	YW	MILK	CEM	SC	STAY	DOC	YG	CW	REA	MARB	FAT	SMTI
EPD	13	1.2	71	119	26	7	1.05	10	12	-0.17	42	0.62	0.15	-0.04	58.52
%Rank	25	65	25	15	10	40	45	65	60	90	10	85	30	70	30

- Double black and double polled
- Ranks in top 4% of the breed for marbling
- This bull is loaded down with program changing potential and about as good as you can make a lower percentage bull

[Act. BW: 72 lbs.]

LVLS DENALI 8213D **SONS**

LVLS DENALI 8213D

Lim-Flex (37) Bull | HP/ HB
01.10.16 | LVLS 8213D | LFM 2104807

LSTO BEST EFFORT 4833B

EXAR UPSHOT 0562B

DHVO DEUCE 132R

LVLS Y YES 8212Y

MAGS UNHOOKS

LVLS 8212R

	CED	BW	WW	YW	MILK	CEM	SC	STAY	DOC	YG	CW	REA	MARB	FAT	SMTI
EPD	9	1.9	72	112	18	6	1.10	8	10	-0.25	49	0.95	0.07	-0.04	56.44
%Rank	60	80	80	20	25	55	35	75	75	70	5	20	45	7	40



MDCS STABILIZER 841F **47**

Lim-Flex (68) Bull | DP/ DB | 04.12.18 | MDCS 841F | LFM 2268643

LVLS DENALI 8213D

LSTO BEST EFFORT 4833B

LVLS Y YES 8212Y

RRDC 230 Z

MAGS RIDGE

RRDC 109M

	CED	BW	WW	YW	MILK	CEM	SC	STAY	DOC	YG	CW	REA	MARB	FAT	SMTI
EPD	10	1.7	59	92	18	6	0.75	8	-2	-0.47	28	0.94	-0.17	-0.10	45.73
%Rank	70	80	80	80	85	60	80	85	>95	20	50	25	90	10	95

- Double black and double polled
- This bull gets around with ease and when he stops, he's impressive! We are confident in this young prospect's ability to sire cattle with functionality, efficiency and longevity

[Act. BW: 73 lbs.]

MDCS OPTIMIZER 856F 48

Lim-Flex (43) Bull | HP/ HB | 04.02.18 | MDCS 856F | LFM 2268656

LVLS DENALI 8213D
RRDC LR BELLE 43B

LSTO BEST EFFORT 4833B
LVLS Y YES 8212Y
MAGS UNREAL
RAA REVOLUTION ROSE 0102

	CED	BW	WW	YW	MILK	CEM	SC	STAY	DOC	YG	CW	REA	MARB	FAT	SMTI
EPD	12	1.4	72	111	20	8	0.8	9	15	-0.2	48	0.8	0.15	-0.04	58.74
%Rank	35	70	20	25	70	20	70	75	25	85	4	50	30	70	30

- Homozygous polled and homozygous black
 - Weaning weight in top 20%, top 25% for yearling weight
 - This one should be studied, he's got a superb number profile and a better pedigree
- [Act. BW: 70 lbs.]



MAGS BUTLER ET SONS

MAGS BUTLER ET

Lim-Flex (56) Bull | HP/ HB
09.02.14 | MAGS 9226B | LFM 2071667

MAGS ZODIAC MAGS WINSTON
MAGS XANTHOUS
MAGS THEATRICAL KAJO RESPONDER 120R
FINKS BEAUTY 373 1134 416

	CED	BW	WW	YW	MILK	CEM	SC	STAY	DOC	YG	CW	REA	MARB	FAT	SMTI
EPD	8	3.9	75	117	18	2	0.80	12	11	-0.19	42	0.67	0.12	-0.04	58.72
%Rank	90	>95	15	15	80	>95	65	25	60	85	15	70	35	70	25

MDCS STABILIZER 844F 49

Lim-Flex (65) Bull | DP/ DB | 04.16.18 | MDCS 844F | LFM 2268684

MAGS BUTLER ET
RRDC LR BELLE 192B

MAGS ZODIAC
MAGS THEATRICAL
RRDC YOGI 27Y
RRDC 197 X

	CED	BW	WW	YW	MILK	CEM	SC	STAY	DOC	YG	CW	REA	MARB	FAT	SMTI
EPD	8	4	65	96	19	3	0.73	12	10	-0.3	26	0.58	-0.02	-0.07	50.93
%Rank	90	>95	55	70	75	>95	80	40	80	60	55	90	365	40	75

- Double black and double polled
 - This bull is stamped with a greatness that follows any MAGS Zodiac son, just like MAGS Butler is continuing to do time and time again with his progeny
- [Act. BW: 79 lbs.]



MDCS OPTIMIZER 843F 50

Lim-Flex (53) Bull | DP/ DB | 04.07.18 | MDCS 843F | LFM 2268683

MAGS BUTLER ET
RRDC 223 Y

MAGS ZODIAC
MAGS THEATRICAL
HC COLEMAN PRECISION 812
RRDC TALOSE 765 T

	CED	BW	WW	YW	MILK	CEM	SC	STAY	DOC	YG	CW	REA	MARB	FAT	SMTI
EPD	9	3.2	70	108	16	4	0.85	12	6	-0.24	31	0.6	0.07	-0.05	55.73
%Rank	85	>95	30	35	95	90	70	40	>95	75	35	85	45	60	45

- Double black and double polled
 - Top 30% for birthweight
 - This bull has such a unique design and comes from such productive genetics
 - He's sound from the ground up and ready to go to work in your herd
- [Act. BW: 82 lbs.]

MDCS MAXIMIZER 848F 51

PB Limousin (92) Bull | DP/ DB | 04.16.18 | MDCS 848F | NPM 2268649

RRDC CHAMP 024C
RRDC 206 X

MAGS ZARAH
CYWD ZADA 24Z
MAGS RACE THE SUN
RRDC TAILOR MADE 741 T

	CED	BW	WW	YW	MILK	CEM	SC	STAY	DOC	YG	CW	REA	MARB	FAT	SMTI
EPD	12	1.4	62	98	27	6	0.47	12	9	-0.56	22	0.99	-0.27	-0.12	43.79
%Rank	35	60	55	40	4	50	70	65	80	95	25	85	25	85	35

- Double black and double polled
 - Milk ranks in the top 4% of the breed
 - We believe this bull's future is bright whichever way he's directed
- [Act. BW: 80 lbs.]

MDCS STABILIZER 842F 52

Lim-Flex (42) Bull | DP/ DB | 03.16.18 | MDCS 842F | LFM 2268644

RRDC CHAMP 024C

RRA DIXIE ERICA 1106

MAGS ZARAH
CYWD ZADA 24Z
CONNELLY BARON 4103
RRA DIXIE ERICA 9328

	CED	BW	WW	YW	MILK	CEM	SC	STAY	DOC	YG	CW	REA	MARB	FAT	SMTI
EPD	16	-1.4	58	96	29	8	-	13	16	-0.18	34	0.64	0.29	-0.04	59.78
%Rank	3	10	85	70	3	20	-	30	15	90	30	80	15	70	25

- Double black and double polled
- This bull has an impressive milk EPD that ranks in the top 3%, a birthweight ranking in the top 10% and his marbling EPD ranks in the top 15%
- A maternally bred Stabilizer bull that is bred for calving ease and carcass merit

[Act. BW: 80 lbs.]



MDCS OPTIMIZER 855F 53

Lim-Flex (37) Bull | HP/ DB | 04.10.18 | MDCS 855F | LFM 2268645

RRDC UNREAL 63B

WOLF CREEK ANALYST 3591

MAGS UNREAL
HC DYNASTY 913
WOLF CREEK ANALYST 2468
WOLF CREEK RIGHT TIME3359

	CED	BW	WW	YW	MILK	CEM	SC	STAY	DOC	YG	CW	REA	MARB	FAT	SMTI
EPD	18	-1.8	54	84	30	11	0.8	14	14	-0.08	25	0.39	0.23	-0.01	55.16
%Rank	1	4	95	95	2	1	70	20	35	>95	60	>95	20	95	50

- Homozygous polled and double black
- Here is probably one of the most versatile individuals in this offering
- His Milk EPD ranks in the top 2% of the entire breed and birthweight ranks in top 4%
- Dam is a Wolf Creek Analyst 2468 daughter
- This bull is so conformationally correct and has all the power cattleman seek in their young herd sire prospects

[Act. BW: 71 lbs.]

MDCS OPTIMIZER 847F 54

Lim-Flex (37) Bull | HP/ HB | 04.26.18 | MDCS 847F | LFM 2268648

RRDC LVLS 245C

RRA PRIDE 1168

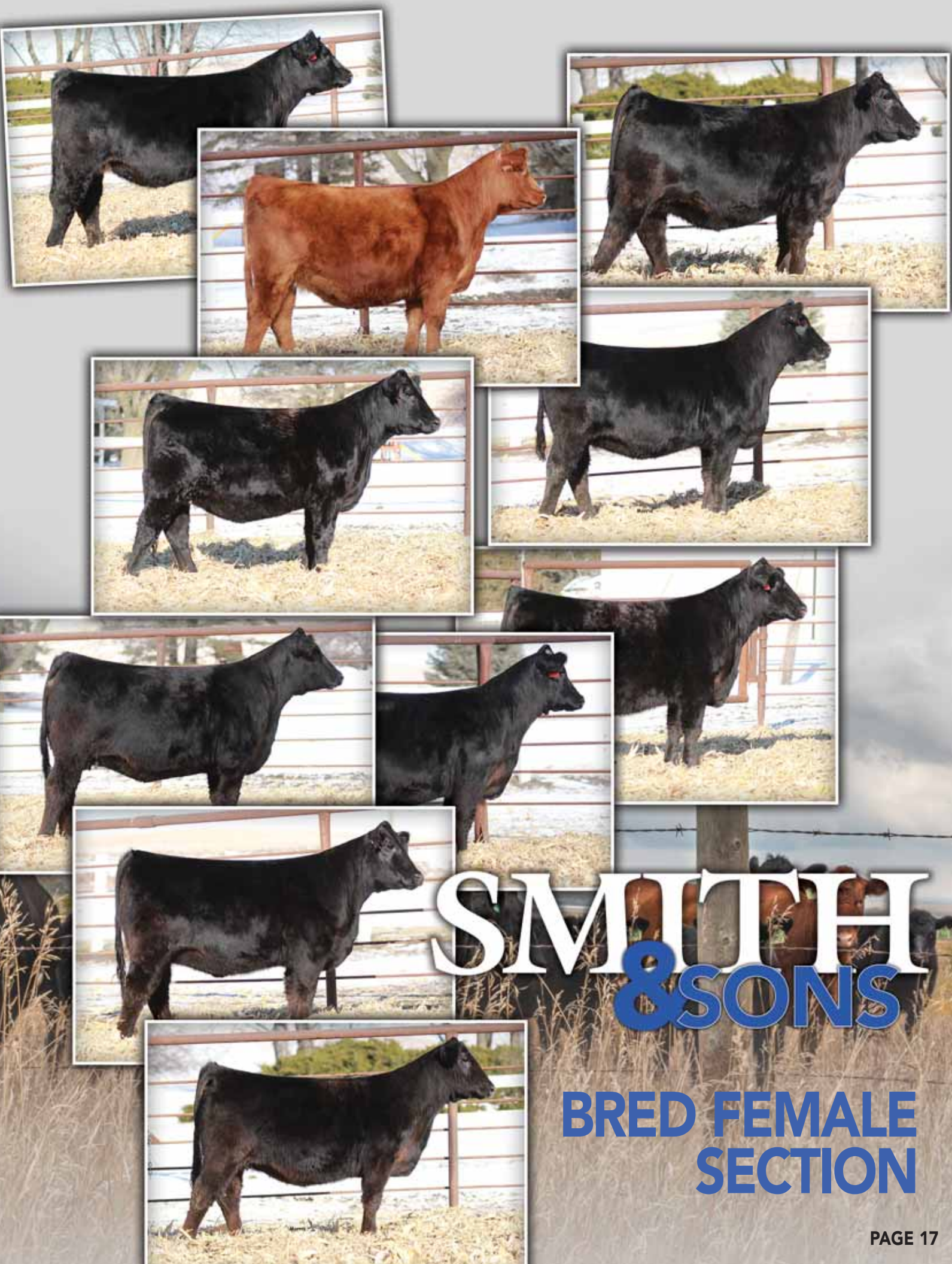
MAGS UNREAL
RRDC ADRIANA 51 A
CONNELLY FORESIGHT 7588
TCC PRIDE 2147

	CED	BW	WW	YW	MILK	CEM	SC	STAY	DOC	YG	CW	REA	MARB	FAT	SMTI
EPD	13	1	69	110	20	5	0.85	11	13	-0.08	36	0.5	0.28	-0.01	61.82
%Rank	25	60	35	30	70	80	70	55	45	>95	25	95	15	95	15

- Homozygous black and homozygous polled
- Marbling ranks in top 15%
- Out of a Connealy Foresight 7588 daughter
- This guy is built great and has 'herd bull' written all over him

[Act. BW: 75 lbs.]

SMITH & SONS



SMITH & SONS

BRED FEMALE SECTION

LVBR MISS 853F 55

PB Limousin (100) Cow | DP/ Black | 03.30.18 | LVBR 853F | NPF 2265318
 CRVL CALIFORNIA 505C
 RRDC 187 X
 WULFS XCELLSIOR X252X
 CRVL MISS XEROX 307A
 MAGS ROPER
 ELOR MISS CROCUS 057K

	CED	BW	WW	YW	MILK	CEM	SC	STAY	DOC	YG	CW	REA	MARB	FAT	SMTI
EPD	13	-0.9	60	89	24	6	0.5	11	11	-0.81	8	1.17	-0.34	-0.17	42.42
%Rank	25	15	65	65	20	50	55	70	70	20	80	45	45	15	45

- A.I. 05.18.19 to MAGS Zenith
- Purebred and double polled
- Milk EPD ranks in top 10% of entire breed and marbling ranks in top 25%
- This bred heifer is out of CRVL California 505C, a purebred bull that goes back to the great COLE Wulf Hunt
- Her dam, RRDC 187 is a MAGS Roper daughter
- She is near-perfect in her design and build and has such a promising forecast as a donor

[Act. BW: 72 lbs.]

LVBR MISS 678F 56

Lim-Flex (53) Cow | DP/ DB | 03.07.18 | LVBR 678F | LFF 2265306
 MAGS APPLE JACK
 LVLS 678D
 MAGS XUKALANI
 WLR UGLY BETTY 432U
 MAGS UNREAL
 WOLF CREEK ADVANTAGE 2000

	CED	BW	WW	YW	MILK	CEM	SC	STAY	DOC	YG	CW	REA	MARB	FAT	SMTI
EPD	13	0.5	63	100	23	7	-	10	13	-0.22	27	0.56	0.17	-0.04	57.03
%Rank	25	40	65	55	35	40	-	65	45	80	50	90	30	70	40

- A.I. 05.18.19 to MAGS Y-Axis; P.E. 05.25.19 to 08.15.19 to LVLS Optimizer 9076E, LVLS Optimizer 3D and LVLS Detroit 9098D (Angus)
- 53% Lim-Flex and double black and double polled
- Here is a splendid bred female out of MAGS Apple Jack, the MAGS Xukalni son who has always been a continued favorite. This female's dam, LVLS 678D is a MAGS Unreal daughter

[Act. BW: 71 lbs.]

LVBR MISS 302F 57

% Limousin (84) Cow | DP/ DB | 03.26.18 | LVBR 302F | NXF 2265305
 MAGS ZARAH
 RRDC 302 Y
 MAGS WHITCOMB
 AUTO CARMINDA 656S
 MAGS UNREAL
 RRDC MISS LOADSTAR 218 W

	CED	BW	WW	YW	MILK	CEM	SC	STAY	DOC	YG	CW	REA	MARB	FAT	SMTI
EPD	16	-0.7	60	97	26	7	0.5	20	18	-0.44	24	0.83	-0.12	-0.09	47.53
%Rank	10	15	70	55	10	35	75	10	4	65	40	75	45	65	50

- A.I. 05.18.19 to MAGS Zenith
- 84% Limousin and double black and double polled
- She ranks in the top 10% for milk and in the top 15% for birthweight
- We truly admire the depth of quality that is generations deep on both sides of this female's pedigree- she is out of MAGS Zarah, the popular MAGS Whitcomb son. Her dam is RRDC 302Y, a daughter of MAGS Unreal.

[Act. BW: 73 lbs.]

LVBR MISS 861F 58

% Limousin (84) Cow | Polled/ DB | 04.05.18 | LVBR 861F | NXF 2265316
 MAGS ZARAH
 RRDC 281 Y
 MAGS WHITCOMB
 AUTO CARMINDA 656S
 MAGS RANSFORD
 RRDC 858 U

	CED	BW	WW	YW	MILK	CEM	SC	STAY	DOC	YG	CW	REA	MARB	FAT	SMTI
EPD	12	0.7	61	94	24	5	0.55	16	14	-0.55	16	0.9	-0.23	-0.12	44.70
%Rank	35	45	65	60	20	75	75	20	35	55	70	65	55	45	65

- A.I. 05.18.19 to LVLS Full Duty
- 84% Limousin and double black
- Her milk EPD ranks in the top 20% of the breed
- Here is a female that will impress you as soon as you lay eyes on her. She is a MAGS Zarah daughter that is out of a MAGS Ransford cow, RRDC 281Y
- This young female will certainly make a nice replacement for your program

[Act. BW: 80 lbs.]

LVBR MISS 085F 59

Lim-Flex (34) Cow | HP/ Red | 03.24.18 | LVBR 085F | LFF 2265307
 MAGS ZARAH
 WFL DOUBLE DESIGN 085Y
 MAGS WHITCOMB
 AUTO CARMINDA 656S
 5L DOUBLE DESIGN 1177-227
 WFL PAWNEE 9160

	CED	BW	WW	YW	MILK	CEM	SC	STAY	DOC	YG	CW	REA	MARB	FAT	SMTI
EPD	14	-1.1	58	92	26	6	0.75	20	12	-0.15	22	0.38	0.17	-0.03	55.07
%Rank	15	10	85	80	10	60	80	3	60	95	70	>95	30	85	50

- A.I. 05.18.19 to MAGS Y-Axis
- 34% Lim-Flex and homozygous polled and red
- Birthweight and milk both rank in top 10%
- This is another excellent daughter of MAGS Zarah
- We admire this female's flexibility on the move, strength of topline and her overall design

[Act. BW: 77 lbs.]

LVBR MISS 316F 60

% Limousin (81) Cow | DP/ DB | 03.25.18 | LVBR 316F | NXF 2265311
 AHCC ZERO IN Z505
 RRDC 316 Y
 MAGS WAZOWSKI
 HC PASSION 505
 MAGS RANSFORD
 TLIM MISS LX BANDO 825U

	CED	BW	WW	YW	MILK	CEM	SC	STAY	DOC	YG	CW	REA	MARB	FAT	SMTI
EPD	8	3	67	111	25	5	0.88	10	6	-0.5	22	1	-0.18	-0.09	48.07
%Rank	85	95	35	20	15	75	45	70	95	60	45	50	50	65	50

- A.I. 05.18.19 to MAGS Y-Axis
- 81% Limousin and double black and double polled
- This bred heifer ranks in the top 15% of the breed for milk and in the top 20% for yearling weight
- She is extremely big-numbered and has such a prominent design and profile

[Act. BW: 88 lbs.]

LVBR MISS 878F 61

Lim-Flex (68) Cow | DP/ HB | 04.16.18 | LVBR 878F | LFF 2265320

AHCC ZERO IN Z505
RRDC ADELINE 65 A

MAGS WAZOWSKI
HC PASSION 505
MAGS UNREAL
RRA ELBA 1124

	CED	BW	WW	YW	MILK	CEM	SC	STAY	DOC	YG	CW	REA	MARB	FAT	SMTI
EPD	11	2.6	71	116	25	6	-	12	11	-0.32	34	0.87	-0.03	-0.06	53.12
%Rank	55	95	25	15	20	60	-	40	70	55	30	35	70	50	60

- A.I. 05.18.19 to LVBR Down Payment
- 68% Lim-Flex and homozygous black and double polled
- This female is truly has an impressive number profile. Her yearling weight ranks in the top 15%, milk in the top 20% and weaning weight in the top 25%
- She is out of AHCC Zero In Z505 and from a MAGS Unreal daughter
- We admire this female's foot size, heaviness of bone and the flex in her pasterns

[Act. BW: 84 lbs.]

LVBR MISS 862F 62

PB Limousin (100) Cow | DP/ DB | 04.03.18 | LVBR 862F | NPF 2265313

AHCC BADLANDS 908B
RRDC 258 Z

AHCC WESTWIND W544
LVLS 9066U
MAGS RIDGE
RRDC 438P

	CED	BW	WW	YW	MILK	CEM	SC	STAY	DOC	YG	CW	REA	MARB	FAT	SMTI
EPD	10	2.6	65	103	19	6	0.72	14	4	-0.6	28	0.95	-0.39	-0.15	40.55
%Rank	55	85	40	25	75	50	30	45	95	85	10	90	60	40	60

- A.I. 05.18.19 to MAGS Zenith
- Purebred and double black and double polled
- This female's yearling weight ranks in the top 25% of the breed
- A daughter of AHCC Badlands 908B, the standout bull in Hager's pen in Denver and son of the highly renowned AHCC Westwind W544. This bred female is out of RRDC 258Z, a MAGS Ridge cow
- She is super strong and level out of her hip and has such a strong, flashy stance

[Act. BW: 84 lbs.]

LVBR MISS 903F 63

% Limousin (84) Cow | DP/ DB | 04.14.18 | LVBR 903F | NXF 2265317

AHCC BADLANDS 908B
RRDC LR BELLE 238B

AHCC WESTWIND W544
LVLS 9066U
LV BAR X FACTOR 42X
RRDC 809 U

	CED	BW	WW	YW	MILK	CEM	SC	STAY	DOC	YG	CW	REA	MARB	FAT	SMTI
EPD	9	3.1	66	105	21	6	0.72	14	17	-0.47	30	0.76	-0.30	-0.12	42.95
%Rank	75	95	40	30	55	55	55	35	10	65	20	80	65	45	70

- A.I. 05.18.19 to LVLS Don Julio
- 84% Limousin and double black and double polled
- AHCC Badlands 908B continues to sire individuals that set the bar in terms of genetic predictability, elite phenotype and splendid functionality
- You are sure to appreciate this one on sale day for her smooth design and powerful muscle expression

[Act. BW: 86 lbs.]

LVBR MISS 883F 64

Lim-Flex (65) Cow | Polled/ DB | 04.12.18 | LVBR 883F | LFF 2265315

MAGS BACK ROOM
RRDC ANISTON 133 A

MAGS Y-AXIS
MAGS UNKEPT
MAGS WITH RYTHMN
RRDC 842 U

	CED	BW	WW	YW	MILK	CEM	SC	STAY	DOC	YG	CW	REA	MARB	FAT	SMTI
EPD	12	-0.3	70	109	24	8	0.95	10	14	-0.47	26	1.01	-0.06	-0.09	52.86
%Rank	35	20	30	30	25	20	60	65	35	20	55	15	75	20	65

- A.I. 05.18.19 to MAGS Y-Axis; P.E. 05.25.19 to 08.15.19 to LVLS Optimizer 9076E, LVLS Optimizer 3D and LVLS Detroit 9098D (Angus)
- 65% Lim-Flex and double black
- Her birthweight EPD ranks in the top 20%, milk in the top 25% and weaning weight and yearling weight in top 30%
- She is complete in her design and gets out with flexibility off both ends

[Act. BW: 72 lbs.]

LVBR MISS 148F 65

Lim-Flex (59) Cow | DP/ DB | 03.28.18 | LVBR 148F | LFF 2265309

MAGS BACK ROOM
RRDC AOLFE 148 A

MAGS Y-AXIS
MAGS UNKEPT
BAR JZ WIDELoad 269W
RRDC 236 Y

	CED	BW	WW	YW	MILK	CEM	SC	STAY	DOC	YG	CW	REA	MARB	FAT	SMTI
EPD	11	0.3	64	101	19	6	0.93	13	7	-0.44	16	0.86	-0.06	-0.08	50.99
%Rank	55	35	55	55	75	60	60	30	>95	25	90	40	75	30	75

- A.I. 05.18.19 to LVBR Down Payment; P.E. 05.25.19 to 08.15.19 to LVLS Optimizer 9076E, LVLS Optimizer 3D and LVLS Detroit 9098D (Angus)
- 59% Lim-Flex and double black and double polled
- We have always appreciated this female for her super sound structure and feminine breed character

[Act. BW: 80 lbs.]

LVBR MISS 866F 66

Lim-Flex (46) Cow | DP/ DB | 04.16.18 | LVBR 866F | LFF 2265319

MAGS BACK ROOM
RRDC ALONDRA 61 A

MAGS Y-AXIS
MAGS UNKEPT
MAGS SHERIFF
RRDC MISS LOADSTAR 700 T

	CED	BW	WW	YW	MILK	CEM	SC	STAY	DOC	YG	CW	REA	MARB	FAT	SMTI
EPD	12	0.2	64	98	18	7	1	11	8	-0.29	18	0.63	0.09	-0.05	55.19
%Rank	35	35	55	65	85	85	40	45	55	95	60	85	80	45	60

- A.I. 05.18.19 to LVBR Down Payment; P.E. 05.25.19 to 08.15.19 to LVLS Optimizer 9076E, LVLS Optimizer 3D and LVLS Detroit 9098D (Angus)
- 46% Lim-Flex and double black and double polled
- This MAGS Back Room daughter is quite unique. Her dam is RRDC Alondra 61A, a MAGS Sheriff daughter
- Here is a powerfully structured female

[Act. BW: 78 lbs.]

LVBR MISS 851F **67**

Lim-Flex (75) Cow | DP/ Black | 04.14.18 | LVBR 851F | LFF 2268688

AHCC BADLANDS 908B
 AHCC WESTWIND W544
 LVLS 9066U
 RRDC 137 Z
 BAR JZ TIMBERLINE 525S
 RX ROSE 8152

	CED	BW	WW	YW	MILK	CEM	SC	STAY	DOC	YG	CW	REA	MARB	FAT	SMTI
EPD	8	2.7	64	103	20	6	0.65	16	8	-0.43	27	0.72	-0.20	-0.11	45.73
%Rank	90	95	55	50	70	60	90	10	95	25	50	65	95	5	95

- A.I. 05.18.19 to MAGS Zenith; P.E. 05.25.19 to 08.15.19 to LVLS Optimizer 9076E, LVLS Optimizer 3D and LVLS Detroit 9098D (Angus)
- Double polled
- This bred heifer has the balance and substance to grab your attention immediately
- Super deep bodied, level in her lines and sound in her structure

[Act. BW: 87 lbs.]

LVBR MISS 103F **68**

Lim-Flex (75) Cow | DP/ Black | 04.01.18 | LVBR 103F | LFF 2268651

AHCC BADLANDS 908B
 AHCC WESTWIND W544
 LVLS 9066U
 RRDC LR BELLE 103B
 RRDC YOGI 27Y
 WFL COMMITMENT 050Y

	CED	BW	WW	YW	MILK	CEM	SC	STAY	DOC	YG	CW	REA	MARB	FAT	SMTI
EPD	10	1.8	66	100	22	6	0.75	15	15	-0.39	26	0.65	-0.05	-0.1	51.30
%Rank	70	80	45	55	45	60	80	15	25	35	55	80	70	10	70

- A.I. 05.18.19 to LVBR Down Payment P.E. 05.25.19 to 08.15.19 to LVLS Optimizer 9076E, LVLS Optimizer 3D and LVLS Detroit 9098D (Angus)
- Double polled
- Another dignified AHCC Badlands 908B daughter from an RRDC Yogi 27Y daughter, RRDC LR Belle 103B
- This gal is feminine in her front end, strong and level out of her hip and super sound in her movement

[Act. BW: 96 lbs.] [Adj. WW: 580 lbs.]

LBVR MISS 382F **69**

PB Limousin (100) Cow | Polled/ Black | 04.06.18 | LBVR 382F | NPF 2265308

CRVL CALIFORNIA 505C
 WULFS XCELLSIOR X252X
 CRVL MISS XEROX 307A
 RRDC 382 T
 MAGS RAWHIDE
 RRDC 1L

	CED	BW	WW	YW	MILK	CEM	SC	STAY	DOC	YG	CW	REA	MARB	FAT	SMTI
EPD	12	-0.9	53	79	25	6	0.30	9	15	-0.76	3	1.03	-0.36	-0.16	39.24
%Rank	35	15	90	85	10	50	80	85	30	30	95	75	50	25	70

- A.I. 05.18.19 to MAGS Y-Axis; P.E. 05.25.19 to 08.15.19 to LVLS Optimizer 9076E, LVLS Optimizer 3D and LVLS Detroit 9098D (Angus)
- A super unique daughter of CRVL California 505C
- Ranks in the top 10% of the breed for milk and the top 15% for birthweight
- This is a female you have to admire her angularity through her front end and her overall powerful build and unique design

[Act. BW: 73 lbs.]

LVBR MISS 905F **70**

Lim-Flex (81) Cow | DP/ Black | 04.06.18 | LVBR 905F | NXF 2268689

CRVL CALIFORNIA 505C
 WULFS XCELLSIOR X252X
 CRVL MISS XEROX 307A
 RRDC 124 Z
 MAGS WILD BUNCH
 RRDC 171 S

	CED	BW	WW	YW	MILK	CEM	SC	STAY	DOC	YG	CW	REA	MARB	FAT	SMTI
EPD	12	0.2	66	93	20	6	0.47	11	13	-0.61	7	0.94	-0.17	-0.12	48.51
%Rank	35	35	40	65	65	55	85	60	45	45	90	60	50	45	45

- A.I. 05.18.19 to LVLS Full Duty; P.E. 05.25.19 to 08.15.19 to LVLS Optimizer 9076E, LVLS Optimizer 3D and LVLS Detroit 9098D (Angus)
- Double polled
- This female is another outstanding daughter of CRVL California 505C. Her dam is RRDC 124X, a MAGS Relative Fear daughter
- We admire her strong stance and thickness combined with extra volume

[Act. BW: 76 lbs.]

LVBR MISS 885F **71**

Lim-Flex (40) Cow | DP/ DB | 04.09.18 | LVBR 885F | LFF 2268621

MAGS BACK ROOM
 MAGS Y-AXIS
 MAGS UNKEPT
 LH XCEL BOY 113X
 RRDC ASHLYN 3320A
 RRA MISS BLACKCAP 7628

	CED	BW	WW	YW	MILK	CEM	SC	STAY	DOC	YG	CW	REA	MARB	FAT	SMTI
EPD	12	0.0	68	102	22	8	-	10	12	-0.27	18	0.64	0.18	-0.04	59.34
%Rank	35	30	35	50	45	20	-	65	60	70	85	80	25	70	25

- A.I. 05.18.19 to LVLS Top Criteria; P.E. 05.25.19 to 08.15.19 to LVLS Optimizer 9076E, LVLS Optimizer 3D and LVLS Detroit 9098D (Angus)
- Double black and double polled
- Ranks in the top 25% for marbling
- A MAGS Back Room daughter that is worth your attention
- This young bred heifer has such a potential as a top donor in any program

[Act. BW: 79 lbs.]



SMITH & SONS

REGISTERED PUREBRED LIMOUSIN

LOT #	NAME	REG #	% of LIMOUSIN	AGE	COLOR	SIRE
LOT 72	RRDC LR Belle 132B P.E. 06.10.19 to 09.10.19 to RRDC Unreal 61B (purebred son of MAGS Unreal, NPM 2120353)	NPF 2080169	93% PB Limousin	04.15.14	Black / DP	RRDC 59Y
LOT 73	RRDC 330Y P.E. 06.10.19 to 09.10.19 to LH After Hours 019A (50% Lim-Flex son of MAGS Eagle, LFM 2036195)	NPF 2009163	87% Lim-Flex	03.21.11	DB / DP	MAGS Wild Bunch
LOT 74	RRDC 208X P.E. 06.10.19 to 09.10.19 to LH After Hours 019A (50% Lim-Flex son of MAGS Eagle, LFM 2036195)	NPF 1985058	100% Limousin	03.16.10	Red / Polled	MAGS Ridge
LOT 75	RRDC 186X P.E. 06.10.19 to 09.10.19 to LH After Hours 019A (50% Lim-Flex son of MAGS Eagle, LFM 2036195)	NPF 1985115	100% Limousin	03.30.10	Red / DP	MAGS Stay Tuned
LOT 76	RRDC Windy 256W P.E. 06.10.19 to 09.10.19 to LH After Hours 019A (50% Lim-Flex son of MAGS Eagle, LFM 2036195)	NPF 1968794	100% Limousin	03.12.09	DB / Hored	MAGS No Sale

REGISTERED PUREBRED ANGUS

LOT	NAME	REG #	AGE	SIRE
LOT 77	Wolf Creek Magnitude 9252 P.E. 06.10.19 to 09.10.19 to RRDC Unreal 61B (Purebred son of MAGS Unreal, NPM 2120353)	AAA 17351263	01.05.12	OCC Magnitude 805M
LOT 78	Wolf Creek Rito 6602 P.E. 06.10.19 to 09.10.19 to LH After Hours 019A (50% Lim-Flex son of MAGS Eagle, LFM 2036195)	AAA 17337868	02.04.12	Wolf Creek Rito 3910
LOT 79	RRA Erica 1114 P.E. 06.10.19 to 09.10.19 to LH After Hours 019A (50% Lim-Flex son of MAGS Eagle, LFM 2036195)	AAA 17214591	01.15.11	Connealy Baron 4103

REGISTERED LIM-FLEX

LOT	NAME	REG #	% of LIMOUSIN	AGE	COLOR	SIRE
LOT 80	RRDC LR Belle 104B P.E. 06.10.19 to 09.10.19 to LH After Hours 019A (50% Lim-Flex son of MAGS Eagle, LFM 2036195)	LFF 2080139	56% Lim-Flex	03.24.14	Red / DP	HC Benchmark 015
LOT 81	RRDC LR Belle 196B P.E. 06.10.19 to 09.10.19 to LH After Hours 019A (50% Lim-Flex son of MAGS Eagle, LFM 2036195)	LFF 2080295	43% Lim-Flex	03.02.14	HB / DP	AHCC Zero In Z505
LOT 82	RRDC LR Belle 92B P.E. 06.10.19 to 09.10.19 to RRDC Unreal 61B (Purebred son of MAGS Unreal, NPM 2120353)	LFF 2078113	50% Lim-Flex	04.19.14	Black / DP	RRDC Yander 1106Y
LOT 83	RRDC Anaconda 202A P.E. 06.10.19 to 09.10.19 to RRDC Unreal 61B (Purebred son of MAGS Unreal, NPM 2120353)	LFF 2054171	37% Limousin	04.07.13	DB / DP	E&B 8021 In Focus 0302
LOT 84	RRDC 143Z P.E. 06.10.19 to 09.10.19 to LH After Hours 019A (50% Lim-Flex son of MAGS Eagle, LFM 2036195)	LFF 2035730	50% Limousin	05.15.12	DB / DP	HC Coleman Precision 812
LOT 85	RRDC 123Z P.E. 06.10.19 to 09.10.19 to RRDC Unreal 61B (Purebred son of MAGS Unreal, NPM 2120353)	LFF 2035698	75% Limousin	03.21.12	DB / DP	HC Coleman Precision 812
LOT 86	RRDC 297Z P.E. 06.10.19 to 09.10.19 to LH After Hours 019A (50% Lim-Flex son of MAGS Eagle, LFM 2036195)	NXF 2035948	50% Limousin	04.02.12	DB / DP	HC Coleman Precision 812
LOT 87	RRDC 341Y P.E. 06.10.19 to 09.10.19 to RRDC Unreal 61B (Purebred son of MAGS Unreal, NPM 2120353)	LFF 2009172	75% Lim-Flex	02.27.19	DB / DP	MAGS Unreal
LOT 88	RRDC 236Y P.E. 06.10.19 to 09.10.19 to RRDC Unreal 61B (Purebred son of MAGS Unreal, NPM 2120353)	LFF 2009057	75% Lim-Flex	02.27.11	DB / DP	MAGS Unreal
LOT 89	RRDC 132X P.E. 06.10.19 to 09.10.19 to LH After Hours 019A (50% Lim-Flex son of MAGS Eagle, LFM 2036195)	NXF 1985006	25% Limousin	04.12.10	Black/Polled	MAGS Sheriff
LOT 80	RRDC 197X P.E. 06.10.19 to 09.10.19 to LH After Hours 019A (50% Lim-Flex son of MAGS Eagle, LFM 2036195)	LFF 1985118	50% Lim-Flex	03.27.10	Black / DP	MAGS Ritchie



SMITH
& SONS

R&R
MARKETING

PO Box 60097
Nashville, TN 37206

**FIRST CLASS
PRE-SORTED
PAID**
Montezuma, Iowa
Permit No. 30

Catalog
designed by



02.08.2020

Heartland Regional Stockyards, Inc | Plainville, KS

SMITH
& SONS

LIMOUSIN & LIM-FLEX BULL & FEMALE SALE