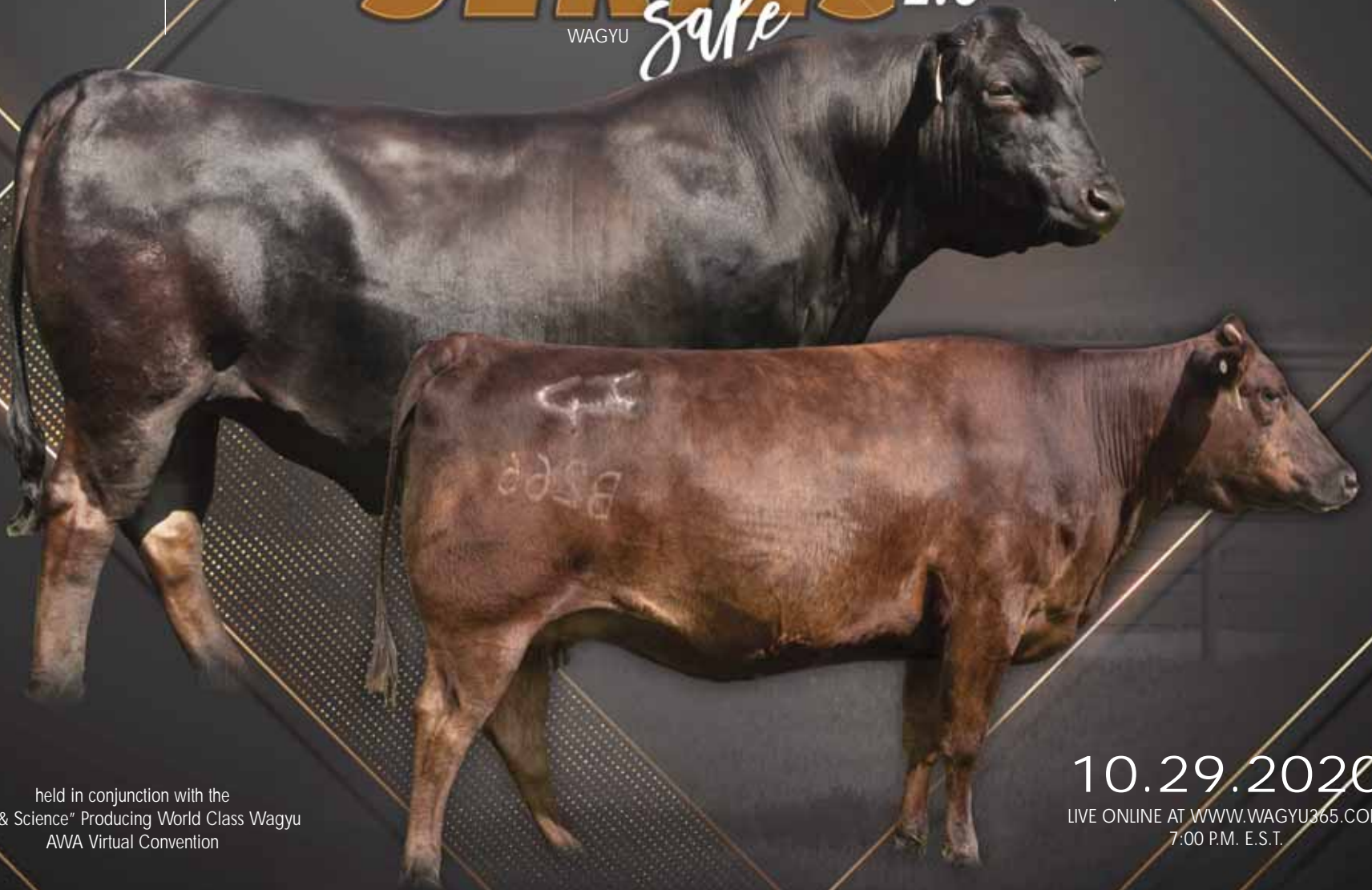


SIGNATURE SERIES ^{2.0}

WAGYU *sale*



held in conjunction with the
"Art & Science" Producing World Class Wagyu
AWA Virtual Convention

10.29.2020
LIVE ONLINE AT WWW.WAGYU365.COM
7:00 P.M. E.S.T.

SIGNATURE SERIES ^{2.0} WAGYU *sale*

10.29.2020

LIVE ONLINE AT WWW.WAGYU365.COM
7:00 P.M. E.S.T.

held in conjunction with the
"Art & Science" Producing World Class Wagyu
AWA Virtual Convention

auctioneer ~

Cody Shelley, 580.467.7887
(FL Auctioneers License #AU5070; TX Auctioneers License #17375)

sale day phones ~

Randall RatliffWagyu365615.330.2735Randy@wagyu365.com
Kiley McKinnaWagyu365402.350.3447Kiley@wagyu365.com
P.J. BudlerWagyu365682.597.0380PJ@wagyu365.com

sale order & supplemental information ~

Sale order is catalog order! Any additional information or corrections to the sale catalog will be available online at www.wagyu365.com prior to the sale.

watch live & bid ~

Log onto Wagyu365.com to view the sale offering and sign up to bid.

general sale terms ~

TERMS AND CONDITIONS ... Cattle will sell under the standard terms and conditions. All consignors in the Signature Series 2.0 Wagyu Sale sell their lots 100% fully guaranteed. Any announcements from the sale podium will take precedence over the printed sale catalog.

EMBRYO GUARANTEE ... Any embryos sold as stated and are not guaranteed on conception. All embryo lots will have statements regarding each with their descriptions.

DESCRIPTIONS AND FOOTNOTES ... Each consignor wrote the descriptions that pertained to their lot or lots. Wagyu365 does not take any responsibility, in regards, to the guarantee of what was written. Any adjustments or corrections will be made at the time of the sale.

REGISTRATIONS, TRANSFERS AND EMBRYO TRANSFERS ... Within 60 days of the date of the sale, the cattle sold will be transferred (registrations) to the new owners through the offices of the American Wagyu Association. The fee is paid for by the seller.

PAYMENT ... All lots must be paid for immediately following the conclusion of the Signature Series 2.0 Wagyu Sale unless prior payment arrangements have been made with any representative of Wagyu365. Buyers are welcome to pay by credit card. If so, you will be charged a 3% fee on the total sum of your purchase.

DELIVERY ... Buyers are responsible for any shipping cost pertaining to embryo purchases and transportation of the live cattle. Wagyu365 buyers and sellers will work together to make this the easiest and most efficient process possible.

LIVESTOCK MORTALITY INSURANCE ... Any representative of the Wagyu365 team can assist any buyer with insurance regarding their purchases.

HEALTH PAPERS ... All live cattle sold will be accompanied with an appropriate health paper for immediate shipment. Additional health testing may be required from some locations.

GENETIC CONDITIONS ... Log onto www.wagyu.org, go to the animal search and results of the genetic testing will be found on the lot selling.

Auction money and proceeds will be conducted under Randall O. Ratliff dba R & R Marketing, P.O. Box 60097, Nashville, TN 37206. Bond # 7901027402 (U.S. Department of Agriculture, Grain Inspection, Packers and Stockyards Administration Packers and Stockyards Program.



AWA 2020 ANNUAL VIRTUAL CONVENTION

ART &
SCIENCE
Producing World-Class Wagyu

2020 AWA VIRTUAL ANNUAL MEETING SCHEDULE

Log-in information will be provided after registration, contact the AWA for registration.

Phone: 208.262.8100 or email: office@wagyu.org

Thursday, October 29, 2020 -

Noon to 4:00 P.M. Eastern Daylight Time (9:00 A.M. to 1:00 P.M. Pacific Daylight Time)

Thursday, October 29, 2020 ~

- 12:00 Noon E.S.T. - Call to Order
- Approval of the Minutes for 2019 AGM
- AWA Reports
 - President
 - Treasurer
 - Executive Director
- 4:00 P.M. E.S.T. - Board Nominations
- New Business
- Sponsorship Recognition
- Welcome 2021 AGM & Conference, Fort Collins, CO
- Adjournment
- 7:00 P.M. E.S.T. Wagyu365 Signature Series Wagyu Sale 2.0
www.wagyu365.com

Conference Presentations ~

(available on demand with registration)

Francis Fluharty, Ph.D.

Animal & Dairy Science | Professor & Department Head, University of Georgia

Topic: Nutrition of the Cow Herd, and Implications for Reproductive Performance, Fetal Development and Calf Performance

Matt Spangler, Ph.D.

Professor, Extension Beef Genetics Specialist, University of Nebraska

Topic: The Value of Phenotypes in A Genomic World

Mark Gardiner

Gardiner Angus Ranch, Ashland, KS

Topic: Data Based Selection and Technology Application Used for Progress at Gardiner Angus Ranch

William Herring, Ph.D.

Director of Genetic Development, PIC, Hendersonville, TN

Topic: How Science Continues to Impact Livestock Production

Jamie Courter, M.S.

Beef Product Manager, Neogen

Topic: Advancements in Genomics

Mike MacNeil, Ph.D.

Delta G, Miles City, Montana

Topic: Inbreeding and Linebreeding

Harvey Blackburn, Ph.D.

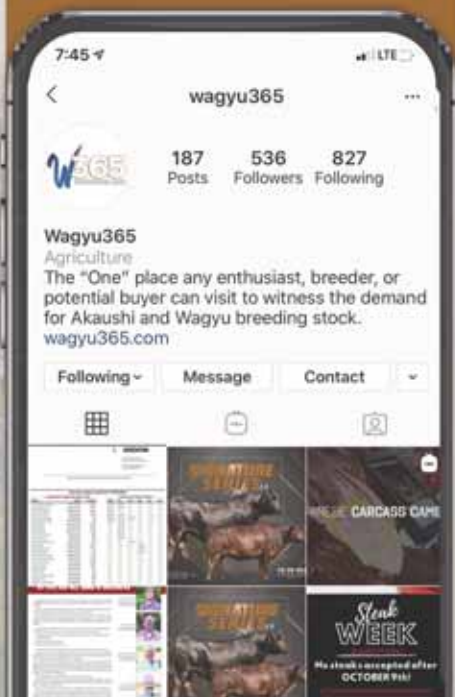
USDA Agricultural Research Service's National Animal Germplasm Program, Fort Collins, CO

Topic: Genetic Diversity in the American Wagyu Population

Joe Heitzeberg

CEO & Co-Founder, Crowd Cow

Topic: Farm to Fork Wagyu in 2020 and Beyond



MEET THE WAGYU 365 TEAM

Dear Wagyu Enthusiasts,

It is with great pride and pleasure that Wagyu365 welcomes you to the Signature Series 2.0 Wagyu Live Online Sale. The team members of Wagyu365 have worked closely with the AWA in the production of the AWA Virtual convention program and sponsorships and we couldn't be more pleased with the amount of interest in the promotion and the betterment of the Wagyu breed. It is evident by the positive response from so many fellow breeders, as to the strong desire to make the AWA the best it can be and keep the Wagyu breed at the highest level. My hat's off to the hard work of the AWA President, Pete Eshelman, AWA Executive, Robert Williams, Martha Patterson of the AWA staff for their time and devotion to the betterment of the AWA. They and so many others have spent countless hours of their time in making this AWA Virtual Convention the best it can be for all. As you review the sale catalog, you will find some of the finest registered Wagyu cattle in the breed. These breeders have worked hard to showcase their genetics to the highest level to highlight in this sale. The consignors have outlined their thoughts on each of their lots and we look forward to showcasing them in the sale. Make plans to join us for this special Live Online Sale event on the evening of September 29th at 7 p.m. E.S.T. Immediately following the genetic sale, we will have the AWA donation auction. If you have any questions in regard to the sale, please feel free to contact me or any of my team members at Wagyu365.

Best regards,
Randall O. Ratliff



RANDALL O. RATLIFF
SALES REPRESENTATIVE
615.330.2735 | Randy@wagyu365.com



KILEY MCKINNA
SALES REPRESENTATIVE
402.350.3447 | Kiley@wagyu365.com



P.J. BUDLER
INTERNATIONAL AFFAIRS
682.597.0380 | PJ@wagyu365



ABBY LANE
OFFICE MANAGEMENT
919.618.8098 | Abby@wagyu365.com



AMY SHAW
CUSTOMER RELATIONS
Amy@wagyu365.com



CONNECT WITH US
FOLLOW WAGYU365 ON SOCIAL MEDIA ~
#Wagyumarketingatitsfinest #24/7/365Wagyu
#alldayeverydaywagyu

To learn more about Wagyu365 events, sale updates and more, visit Wagyu365.com.

WATCH &
BID LIVE AT



CONVENIENCE BUYING

Wagyu365 want to make your buying experience easy and convenient!

1. VISIT US

You can't beat the experience of seeing your potential new investments in person! We are looking forward to this day of opportunity to view the sale cattle, see old friends, connect with new friends and answer any questions you have about your interests before sale day. We hope you can make it out to Tennessee for the full Convention, but if you can't make it, we've got you covered with quality options to purchase cattle with convenience!

2. CALL US IN ADVANCE


With all the quick-messaging technology at our disposal, sometimes picking up the phone is the easiest way to get the information you need! We are happy to have a conversation and walk you through any questions or information you need for sale day to make the best buying decisions for your program. Any member of our team would be happy to talk with you and connect you to the right people and information you need to feel fully informed for sale day. Contact any member of Wagyu365.

3. BID ONLINE

Join us online for REAL TIME, LIVE online bidding for the Signature Series 2.0 Wagyu Sale. All lots in the sale will be available for viewing prior to sale day and bidding on sale day at www.wagyu365.com.

4. VALUE PURCHASING

This sale combines options from some of the AWA's largest source of registered Wagyu cattle in the US. No matter what your needs are, this offering is sure to add value to an already thriving program and enhance the future of your herd. From commercial options to some of the highest quality genetic influences of the breed — this will be the sale for you.

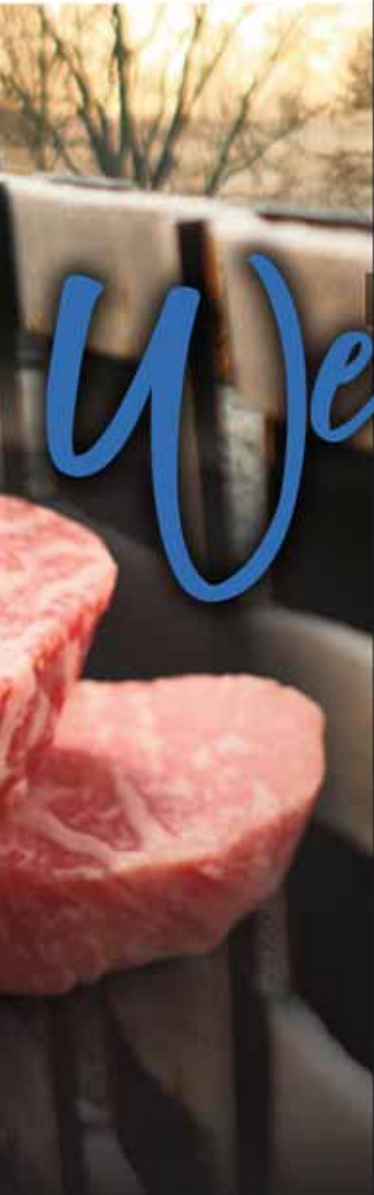
[HOME](#)[SALES](#)[UNDERSTANDING WAGYU](#)[HISTORY & ORIGINS](#)[ORIGINAL IMPORTS & BLOODLINES](#)[INDUSTRY/WAGYU SECTORS](#)[MARBLING](#)A dark brown Wagyu cow is shown in profile, looking towards the right. It is in a pen with a wooden fence. In the foreground, the back of a marbled Wagyu cow is visible. The 'W365 WAGYU365.COM' logo is overlaid on the image.

W365
WAGYU365.COM

24/7/365

Welcome to Wagyu365.com—your one-stop source for all things Wagyu. The “One” place any enthusiast, breeder, or potential buyer can visit to witness the demand for Akaushi and Wagyu breeding stock. This real time, all-inclusive web community has a single purpose—spread the positive message of the Wagyu breed. We encourage you to visit often and become engaged as we showcase the breed and its impact on the industry.

CONTACT



We Welcome You

To log onto
Wagyu365.com on a
daily basis.

To get current and
updated information on
the Wagyu breed and all
the happenings!

#itsallaboutthemeat

#Wagyuatitsfinest

sale consignors ~



Birch Bay Wagyu

Richard Hanna ~ 303.502.7772 ~ Rich.hanna@gmail.com
PO Box 778, Harbor Springs, MI 49740



Codenwarra Wagyu

+61.457.500.330 ~ Codenwarrawagyu4720@gmail.com
PO Box 59, Emerald Qld, 4720
www.codenwarrawagyu.com



Crescent Harbor Ranch, LLC

Ralph Valdez ~ 360.675.0392
cell, 360.941.0644 ~ rh@oakharbor.net
88 W. Crescent Harbor Road, Oak Harbor, WA 98277



G Five Cattle

214.364.7622 ~ marvin9200@att.net
3197 I.H. 30 West, Sulphur Springs, TX 75482



Golden Age Farm

Caleb Schaeffer ~ 989.620.6118
goldenagecattle@gmail.com
2335 Old Lemons Mill Rd, Lexington, KY 40511



J Brand Wagyu, LLC

bill.johnsoncpa@gmail.com
PO Box 824, Welsh, LA 70591
337.764.4169



Landgraf Ranch at Walnut Creek

512.633.0154 ~ Kenny@landgratranch.com
299 Boyd Road, Red Rock, TX 78662
www.landgratranch.com



Lone Mountain Cattle

Robert Estrin ~ 505.281.1432
info@lonemountaincattle.com
1818 AB NM 14, Golden, NM 87047
www.lonemountaincattle.com



Prime Valley Farms, LLC

Courtney & Clem Kuns ~ 765.714.8563
wagyu@primevalleyfarms.com
3179 E 500 S., Cutler, IN 46920
www.primevalleyfarms.com



Rowe Wagyu

17091 Parks Corner, Lincoln, AR 72744
479.738.7283 ~ earl.rowe@hotmail.com
www.rowewagyu.com

SULLIVAN

Sullivan Farms

Marketing Rep: Randall Ratliff
615.330.2735r ~ andy@rrmktg.com
701 Iowa Ave, Dunlap, IA 51529



Synergy Wagyu

484.369.9590 ~ Loren@synergywagyu.com
446 Stony Run Rd., Spring City, PS 19475
www.synergywagyu.com

Wagyu Endless Sky Cattle Ranch LLC

972.672.9115 ~ blangmade@pmiconnect.com
5080 Spectrum Drive, Suite 300 E., Dallas, TX 75001
www.wagyuendlesskycattleranch.com

Wagyu Florida Inc.

Stan Potter ~ 904.557.3126 ~ stan@wagyuflorida.com
85272 Miner Road, Yulee, FL 32097



Wagyu Shimizu & Twin Oaks Wagyu

404.405.2245 ~ barry_m_elliott@hotmail.com
25565 Sawmill Rd., Carson, VA 23830 & Powhatan, VA
www.twinoaksanguswagyufarm.com

Tally Windham Wagyu Ranch

325.668.6920 ~ Twind52519@aol.com
PO Box 1447, Clyde, TX 79510

**SIGNATURE
SERIES**
safe 2.0



paternal grandsire, Yasufuku 930

3 IVF Fullblood Embryos _____ LOT 1

BLACK | Selling one package of three IVF, Fullblood embryos.

KOUSYUN
F11F, F13F, CHSF, B3F, CL16C

YASUFUKU 930

YASUTANI DOI
CHIZURU
OKUSHIGE 1803

OKUITO 9

ITOSACHIMI 6
ITOKITATSURU
YASUHIME

RWW MS ITOZURU DOI 795E ET
F11C, F13F, CHSF, B3F

ITOZURU DOI

WORLD K'S MICHIFUKU
WORLD K'S TANITSURU

WKS CHR MS TANITSURU 621A

CONSIGNED BY **CRESCENT HARBOR RANCH, LLC, OAK ARBOR, WA**

The \$50K lot! The sire of this embryo lot, Kousyun, sired the highest selling full-blood Wagyu bull in US auction history at \$50,000. The maternal granddam of these embryos also sold for \$50,000 at auction! This lot is showing the money! Kousyun is a son of one of the most famous Japanese bulls, Yasufuku J930. The dam of these embryos, CHR 795, is sired by TF151 Itozuru Doi, a legend of the breed in the US and Australia. Itozuru Doi is coveted in pedigrees because of his ability to pass on a tremendous balance of carcass and growth traits. The 795 cow is backed by the \$50,000 cow, WKS CHR Ms Tanitsuru 621A, who in turn is a maternal granddaughter of the original import female, Kanetani. The maternal line in this lot includes some incredible sires – Michifuku and Japanese legends Monjiro, Tanifuku Doi, and Tanishige. The extreme value in these embryos comes from a unique combination of rare genetics with superior performance.

Embryos stored at Vytelle, 80383 US-395, Hermiston, OR 97838 (541.289.7993)



paternal grandsire, Yasufuku 930

3 IVF Fullblood Embryos LOT 2

BLACK | Selling one package of three IVF, Fullblood embryos.

KOUSYUN
F11F, F13F, CHSF, B3F, CL16C

YASUFUKU 930

YASUTANI DOI
CHIZURU
OKUSHIGE 1803

OKUITO 9

ITOSACHIMI 6
ITOKITATSURU
YASUHIME

RVW MS ITOZURU DOI 795E ET
F11C, F13F, CHSF, B3F

ITOZURU DOI

WORLD K'S MICHIFUKU
WORLD K'S TANITSURU

WKS CHR MS TANITSURU 621A

CONSIGNEE BY **CRESCENT HARBOR RANCH, LLC, OAK ARBOR, WA**

The \$50K lot! The sire of this embryo lot, Kousyun, sired the highest selling full-blood Wagyu bull in US auction history at \$50,000. The maternal granddam of these embryos also sold for \$50,000 at auction! This lot is showing the money! Kousyun is a son of one of the most famous Japanese bulls, Yasufuku J930. The dam of these embryos, CHR 795, is sired by TF151 Itozuru Doi, a legend of the breed in the US and Australia. Itozuru Doi is coveted in pedigrees because of his ability to pass on a tremendous balance of carcass and growth traits. The 795 cow is backed by the \$50,000 cow, WKS CHR Ms Tanitsuru 621A, who in turn is a maternal granddaughter of the original import female, Kanetani. The maternal line in this lot includes some incredible sires – Michifuku and Japanese legends Monjiro, Tanifuku Doi, and Tanishige. The extreme value in these embryos comes from a unique combination of rare genetics with superior performance.

Embryos stored at Vytelle, 80383 US-395, Hermiston, OR 97838 (541.289.7993)



sire, World K's Shigesigetani



dam, VT Ms Mitsuitomichi

4 Fullblood Embryos _____ **LOT 3**

BLACK | Selling one package of four Grade 1, Fullblood, Exportable to Canada & the EU embryos.

WORLD K'S SHIGESHIGETANI

F11F, F131F, CHSF, B3F, CL16F

WORLD K'S HARUKI 2

WORLD K'S SUZUTANI

MITSUHIKOKURA 149

VT MS ITOSHIGEMICHI

MONJIRO 11550

SAKURA 2 741638

TANISHIGE 1526

SUZUNAMI 472255

ITOHKARI

HIKOKURA 3/9

ITOSHIGENAMI

CHR MS MICHIFUKU 030H

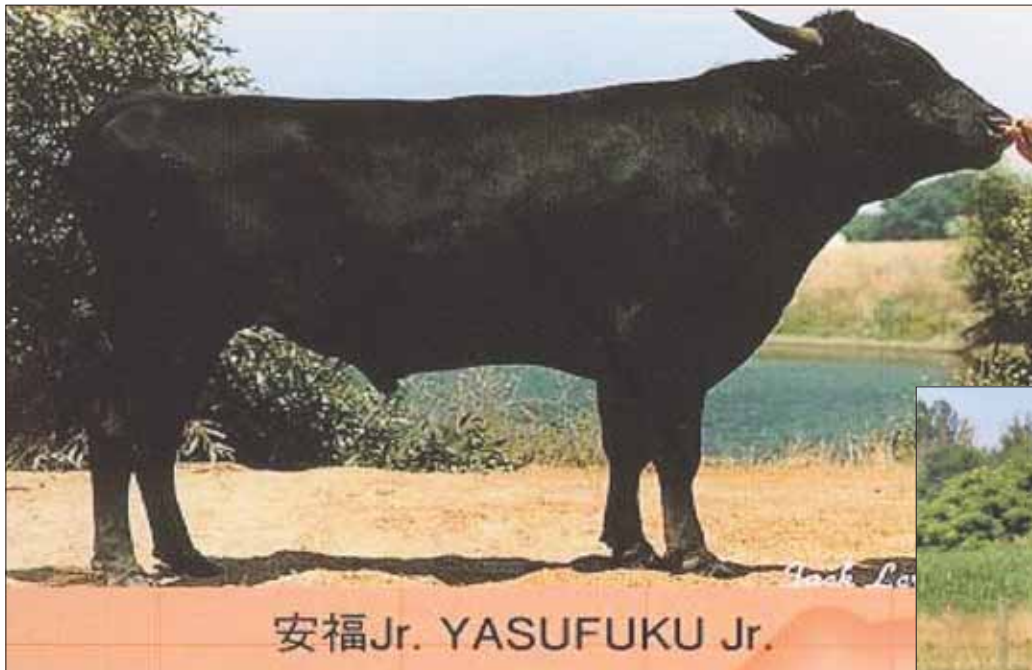
VT MS MITSUITOMICHI

F11F, F13F, CHSF, B3F

CONIGNED BY **SYNERGY WAGYU**, SPRING CITY, PA

Embryos sired by the super sire World K's Shigesigetani! The addition of 50 carcasses to his Breedplan proof has elevated his EBVs to +2.1 MS, +10.8 REA, and \$264 Self Replacing Index. Shigesigetani's extreme marbling and rib eye area are a perfect match to the donor Ms Mitsuitomichi, who is a balanced, rare daughter of TF 149 Mitsuhiokura. This Hikokura donor dam, Ms Mitsuitomichi, is genomic tested in Australia and is the highest Self Replacing Index daughter of TF 149 in the breed. This maternal line has produced breed leading sires Sumo Michifuku F154 and Coates Itoshigenami G113. Don't miss this combination of Suzutani and Hikokura genetics.

Stored at Keystone Embryo Transfer, 6651 Valley Camp Rd., Greencastle, PA (717.729.6453).



sire, World K's Yasufuku Jr



dam, ESF Sanj - 96

4 Fullblood Embryos _____ **LOT 4**

BLACK | Selling one package of four Grade 1, Fullblood, Exportable to Canada & the EU embryos.

WORLD K'S YASUFUKU JR
F11F, F13F, CHSF, B3F, CL16C

YASUFUKU 930

YASUTANI DOI
CHIZURU
MONJIRO 11550
KANEKO 47492

KANEKO 5

WORLD K'S SANJIROU

WORLD K'S MICHIFUKU
WORLD K'S SUZUTANI
WORLD K'S MICHIFUKU
BR MS FUKUTSURU 0614

ESF SANJ - 96
F11F, F13F, CHSF, B3F, CL16C

ESF MICHIFUKU P 614 016

This embryo lot is sired World K's Yasufuku Jr, a carcass proven leader for marble score and rib eye area! Yasufuku Jr has leading Breedplan EBVs of +6.1 REA and +1.8 MS which are backed by 147 carcasses. The donor dam of these embryos is a daughter of World K's Sanjirou, who is a proven marbling and rib eye area leader. ESF Sanj - 96 is genomic tested in Australia with a top 1% REA EBV of 7.0! These embryos are an excellent foundation of elite carcass traits that will maximize profit on all carcasses.

Stored at Keystone Embryo Transfer, 6651 Valley Camp Rd., Greencastle, PA (717.729.6453).

CONSIGNED BY **SYNERGY WAGYU**, SPRING CITY, PA



sire, TF727 Yoshizuru 1



dam, CHR Ms Kimifuku 452

5 Fullblood Embryos _____ **LOT 5**

BLACK | Selling one package of five Grade 1, Fullblood embryos.

TF727 YOSHIZURU 1
F11F, CHSF, B3F, CL16F

OKUMIYA

JAPANESE BULL
JAPANESE COW
ITOSHIGENAMI
HIKOKURA 1/10
ITOKITATSURU
YASUHIME
KIMIFUKU 3
HIKOKURA 1/12

CF 505

ITOZURU DOI

CHR MS KIMIFUKU 452
F11F, F413F CHSF, B3F, CL16C

TF 709

_____ **CONSIGNED BY PRIME VALLEY FARMS, CULTLER, IN**

This embryo lot presents a rare and unique genetic opportunity by blending the Oku-Doi and Yasumi-Doi lines of elite marbling Tajima Black Wagyu. It is impossible to easily locate Oku-Doi Tajima bloodlines. The sire of TF727 Yoshizuru is the Japanese bull Okumiya. Okumiya is a 100% Tajima bull from the Oku-Doi line; he was never exported from Japan. The only offspring registered in the world (outside of Japan) out of this rare and badly needed Oku-Doi Tajima bull is the sire of these embryos, TF 727 Yoshizuru. The dam of these embryos, CHR Ms Kimifuku 542, is one of only two living Wagyu which combine the ultra elite sires of TF151 and Kimifuku. This masterful embryo mating is intended to collect and combine the ultra elite marbling of Yasumi-Doi (via Kimifuku 3 and TF151 Itozuru Doi) with the outstanding marbling and added size of Oku-Doi blood (via TF727 and Okumiya). This mating is 100% Takeda genetics throughout. For the discerning purest focused on Japanese A5 quality marbling, these embryos are not to be missed!

Embryos are exportable to European Union (EU), Australia, Boliva, Brazil, Canada, Columbia, Ecuador, Guatemala, Honduras, Mexico, Paraguay, Portugal, Thailand, Vietnam. Embryo Sire and Dam are both fully registered in the American and Australia Wagyu Associations

Embryos are stored at Boviteq, 3801 Kipp Street, Madison, WI (608.838.2504). Shipping and handling is buyers responsibility.

4 Fullblood Embryos

LOT **6**

BLACK | Selling one package of four Conventional, Fullblood, Domestic embryos.

MAYURA L0010 ET

MAYURA ITOSHIGENAMI JNR ITOSHIGENAMI
MAYURA H0159 MAYURA DAI NI KINNTOU 1
MAYURA ZULU
WAGYU GENETIS AIZAKURA D837 ET
ITOSHIGEFUKI ITOFUJI 483
DAI 30 NOBORU J920752
LMR MS ITOSHIGENAMI 8107 ITOSHIGENAMI
BR MS MICHIFUKU T4E 8605

LMR MS ITOSHIGEFUJI 0206X

F11F, CHSF, B3F, CL16F

CONSIGNED BY LONE MOUNTAIN CATTLE, GOLDEN, NM

LMR Ms Itoshigefuji 0206X, sired by Itoshigefuji TF147, is an astounding donor cow by Itoshigefuji TF147 out of a dam by Itoshigenami TF148, who has produced 56 viable conventional embryos in eight flushes, averaging seven viable embryos per flush.

0206X's sire is Itoshigefuji TF147, a larger framed bull for the Wagyu breed. He was born in Japan and is a linebred son of Itofuji J483 and his dam, Dai 30 Noboru, is a direct descendant of the famous cow family Takenotanitsuru. His original bloodlines trace back over 300 years. He is known for being gentle and well-balanced, with excellent growth rates, excellent feed conversion, and he produces F1 Wagyu cross cattle with excellent weaning weights. According to David Blackmore, "Itoshigefuji has been the most valuable bull used in our breeding herd. His progeny's carcass quality far exceeded the expectations of his pedigree. The strength, constitution, milk and forage ability has left his daughters the best brood cows in our herd."

LMR Ms Itoshigefuji 0206X's dam, LMR MS ITOSHIGENAMI 8107U, ranks in the Top 1% for Birthweight EBV (-2.5), in the Top 3% for REA (EMA) EBV (+5.1) and in the Top 7% for Marble Score EBV (+1.5). 8107U has had 10 calves, including an F11+ steer (6541D) that graded 44% IMF. 0206X's dam sire, Itoshigenami TF148, really needs no introduction - only to say that he is the sire of the extremely well-regarded Australian sire, Itoshigenami JNR J0139 and is Trait Leader of the breed and in the Top 1% for Marble Score EBV (+2.2).

0206X's bloodlines show 35% Tajima, 27% Itozakura, 22% Okayama, 5% Shimane, 2% Kedaka and 2% Tottori. 0206X has thus far produced 28 calves, with only 2 harvested thus far: a Michifuku steer who graded 47.77% IMF (VAB100 by USDA) and a LMR Shichiro 2403Z steer who graded 38.87% IMF.

MAYURA L0010 is a promising young son of Mayura Itoshigenami Jnr 0139. MAYURA L0010 ranks in the Top 1% for Marble Score EBV (+2.3) and Ribeye Area



sire, Mayura L0010 ET

(EMA) EBV (+7.7), and in the Top 1% for all 4 Wagyu Indexes: Wagyu Breeder (\$277), Self-Replacing (\$292), Fullblood Terminal (\$245) and F1 Terminal (\$228). Purchased in 2017 for AUS105,000, L0010's EBVs were calculated using genomics, as well as 46 recorded calves weights.

L0010's dam, Mayura H0159, reflects Itozurudo TF151 and Kanadagene 100 bloodlines from the Aizakura maternal line.

MAYURA L0010 was sired by Mayura Itoshigenami Jnr, sometimes referred to as "King of Australian Wagyu Sires", who has been at the top of the Australian Published Sire Reports since 2015 with more than 842 carcasses imaged and measured - he has sired more than 1450 calves at last count. In 2016, 10 straws of 0139 were sold for AUS30,050 (\$3050 each); in 2017 his son L0010 was sold at auction for AUS105,000; and in 2019, one of his heifers sold for a record-setting AUS280,000. And 6 straws of his recently sold in the 2020 Mayura Sale for \$68,000 per straw!

Mayura Itoshigenami Jnr is a proven progeny sire, a son of Itoshigenami TF148 - and his dam features the genetics of Sanjirou and Suzutani and TF Dai 2 Kinntou 3, an Ito-michi daughter from the Hikokura maternal line.

L0010's half-brother, Mayura Jackpot J0399, won the Grand Champion Fullblood Wagyu award at the 2019 Australian Wagyu Branded Beef competition - with a 28-month old carcass weighing 970 lbs; on feed for 266 days; graded 54% IMF; Marbling Fineness 62.3; and with a Ribeye Area of 30.8 in²! The judges' comments: "Beautiful piece of beef, tender, juicy with a great buttery flavor. An excellent example of Wagyu."

Mayura L0010 is a carrier of CHS, but free for all remaining four known Wagyu genetic defects

Stored at Colorado Genetics, Inc. 5441 Boeing Dr # 1A, Loveland, CO 80538, (970.222.1793)



sire, TF Itohana 2

LMR Ms Kitaguni 1252Y has been a valuable donor at Lone Mountain cattle Company producing 68 viable embryos in six flushes – averaging 11 embryos per flush.

Her sire, WKS Kitaguni Jr, a valuable son of Kitaguni 7⁰8 J1530, was born October 7, 1994 shortly after WKS Nakayuki J13943, his dam, arrived in the United States (exported by the Mannett Group).

In the 2017 LMCC Sire Performance Study, WKS Kitaguni Jr, with 61 carcasses studied, ranks 4th for IMF with an average of 31.73%, following Yasufuku Jr and his own sons, LMR Koichi 1409Y and LMR Kitaguni 1441Y. And with 16 images studied as Dam Sire, Kitaguni Jr displays his staying power for IMF by ranking #1 (34.35%).

In terms of Marble Fineness, Kitaguni Jr ranks 3rd as Dam Sire. WKS Kitaguni Jr, is a Trait Leader for two traits; Top 1% for Birth Weight EBV (-3.4) and Top 4% for Marble Score (+1.7). Kitaguni Jr has been a powerhouse for Lone Mountain, producing outstanding carcasses achieving the 50% IMF range.

Michifuku, on the maternal side of the pedigree, is another superb sire. WKS Michifuku was sired by Monjiro 11550, listed by Kenichi Ono as #7 on his list of the Top 15 most outstanding Wagyu of Japan.

Monjiro, sired by Yasumi Doi J10328, was born March 15, 1981 in Hyogo Prefecture and was the 11th calf by his dam, Harumi. Monjiro, originally named Harutoshi 2, was just a yearling when he won the Number 2 spot at the Zenkyo (All-Japan Wagyu Show) and was auctioned for \$160,000. Michifuku's dam, Michiko J655635, was sired by Tanishige 1526, grandsired by Yasutani Doi J472 and great-grand-sired by Yasumi Doi J10328.

4 Fullblood Embryos

LOT 7

BLACK | Selling one package of four Conventional, Fullblood, Domestic embryos.

TF ITOHANA 2
F11C, F13F, CHSF, B3F, CL16F

ITOHANA

DAI 7 ITOZAKURA
YOSHIFUKUHANA
ITOMICHI

AINO 6

WORLD K'S KITAGUNI JR.

AINO 5
KITAGUNI 7/8
WORLD K'S NAKAYUKI

LMR MS KITAGUNI 1252Y
CL16F

LMR MS MICHIFUKU 628S

WORLD K'S MICHIFUKU
CHR MS HIRASHIGE 055J

CONSIGNED BY LONE MOUNTAIN CATTLE, GOLDEN, NM

TF Itohana 2, born 22 October 1993, was exported to the US by Takeda Farm as a 2-year-old. He was sired by his namesake Itohana J809 (son of Dai 7 Itozakura J65) and used primarily to increase frame size and improve maternal ability – but at the same time, he is thought to be an outstanding sire for amount of marbling, particularly striking coming from a Shimane/Okayama sire. See evidence of his ability as dam sire (1248Y).

Itohana 2 is a linebred Dai 7 Itozakura, with Dai 7 showing up on both strands of his paternal side of his parentage and on both strands of his maternal parentage. Itohana J809 was one of Dai 7's most important progeny. Kenichi Ono writes in his tome, *Elite Wagyu of Japan*, including Kitaguni 7⁰8 J1530 and Itomichi J1158.

Ono continues, "Itohana is the one bull who most strongly resembled Dai 7 Itozakura in meat quality. If the recognition of the value of his breeding ability had happened 10 years earlier, I am convinced that Itohana's value would have been amongst the top in the country."

Aino 6 J674297, Itohana 2's dam, was sired by Itomichi J1158 – which appears to be another case of Modoshi Kohai (or back-crossing). All of the carcasses (17 of 17 cattle slaughtered) from the Aino 6 group graded A-5 – the highest grade possible – and the average carcass weight was 1,040 lb. David Blackmore writes: "TF Itohana 2 is a product of an ideal matching: a product of the second-generation inbreeding of Dai 7 Itozakura on the paternal side and the second-generation inbreeding of the same on the maternal side."

TF Itohana 2 is a carrier of F11, but free for all remaining 4 known Wagyu genetic defects – untested but 99% Free.

Stored at Colorado Genetics, Inc. 5441 Boeing Dr # 1A, Loveland, CO 80538, (970.222.1793)

4 Fullblood Embryos

LOT **8**

BLACK | Selling one package of four Conventional, Fullblood, Domestic embryos.

TF TERUTANI

F11C, F13F, CHSF, B3F, CL16F

KIKUTERU DOI

TANIFUKU 2

ITOSHIGEFUKI

LMR MS ITOSHIGENAMI 8107

KIKUNORI DOI 9285

TOKUKANE

YASUTANI DOI

YUKIFUKU - J417832

ITOFUJI 483

DAI 30 NOBORU J920752

ITOSHIGENAMI

BR MS MICHIFUKU T4E 8605

LMR MS KITAGUNI 1265Y

CL16F

CONSIGNED BY LONE MOUNTAIN CATTLE, GOLDEN, NM



sire, TF Terutani

LMR Ms Kitaguni 1265Y is AA 6 Group “C” donor cow, with 48% Tajima, 21% Itozakura, 11% Kedaka, 10% Okayama and 7% Shimane bloodlines.

1265Y is sired by WKS Kitaguni Jr, the #1 Dam Sire for Marbling (35.08% IMF) based on 45 carcasses, in the June 2019 LMCC Sire Performance Study and #6 Dam Sire for Marble Fineness (3.09) – and as Sire averaged 32.43% IMF based on 94 imaged carcasses. BREEDPLAN numbers have Kitaguni Jr as Trait Leader for 2 traits: Top 1% for Birth Weight EBV (-3.4) and Top 4% for Marble Score (+1.7). In the 2017 LMCC Sire Performance Study, WKS Kitaguni Jr ranks fourth with an average of 31.73% IMF.

Her dam, LMR Ms Michifuku 628S, descending from Hikokura, is a balanced and still active twelve-year-old dam-sired by Hirashigetayasu ETJ001. 628S is a prolific donor cow, producing 48 viable embryos and 17 live calves, including one Itoshigenami TF148 steer graded 34% IMF.

Terutani J2494 TF40 is 100% Tajima, – sired by Kikuteru Doi J10787 and grandsired by Kikunori Doi J9285 – out of a dam, Tanifuku 2, sired by Yasutani Doi J472 and linebred to Yasumidoi J10328 (both paternal grandsire and maternal sire). This is truly Wagyu royalty.

Kikuteru Doi is perhaps best known as the maternal grandsire of Fukutsuru 068, Kikuyasu 400, Kitateruyasudoi ETJ003 and Kimifuku 3. He was also both maternal grandsire and sire of Kikuterushige TF150. His sire, Kikunori Doi, was the sire of Mt Fuji and grandsire of Kikuyasu 400.

Terutani’s dam, Tanifuku 2, is a half-sib of Tanifuku Doi J1606 who sired both Kimifuku 3 and Kikutsurudoi TF150 and was out of Kikutsuru, famously known as the “The Hyogo cow” and the granddam of both Fukutsuru 068 and Kikutsurudoi TF146. Terutani’s sire, Yasutani Doi, was the sire of Yasufuku J930, Tanifuku Doi and Tanifuku 2. Terutani’s grandsire, Yasumi Doi, was the sire of Monjiro and grandsire of Michifuku, Haruki II and Fukutsuru 068.

Shogo Takeda back-crossed Terutani from time to time into the Aizakura, Dai Kintou, Chiyotake, Hikohime and Hikokura families to create well-balanced sires and dams. There are currently over 580 Terutani progeny registered in the Australian Wagyu Association. He is a Trait Leader and ranks in the Top 1% for Birthweight EBVs (-2.9) based on 169 progeny and genomics.

TF Terutani is a carrier of F11, but free for all remaining four known Wagyu genetic defects.

Stored at Colorado Genetics, Inc. 5441 Boeing Dr # 1A, Loveland, CO 80538, (970.222.1793)



sire, Itozuru Doi

LMR Ms Michifuku 0162X is a productive Group “D” cow, with 64% Tajima, 17% Itozakura, 5% Okayama and 3% Okayama bloodlines.

0162X’s sire, WKS Michifuku, is a Wagyu Trait Leader ranking in the Top 1% for both Ribeye Area (EMA) EBV (+7.0) and for Marble Fineness EBV (+0.45) with accuracies of 96% and 98% in the current BREEDPLAN report.

LMR Ms Michifuku 0162X’s dam, BR Ms Kikuhana 8610, is by TF Kikuhana and descends from the Chisahime maternal line. 8610 produced 10 calves for Lone Mountain before she passed away at 16 years of age.

LMR Ms Michifuku 0162X has produced six calves for Lone Mountain – one of whom, a 30-month-old steer by LMR Daisuke 2470Z, a Kitaguni Jr son, graded 42.29% IMF.

Itozuru Doi TF151 was born March 12, 1991 and exported by Takeda-san in 1997 in the final shipment shortly before he was expelled from the Japanese Wagyu Registry (Zenwa) in that same year.

Itozurudoi TF151’s sire, Itokitatsuru J1081 (Tottori), was a son of Dai 7 Itozakura (brother to Kitaguni 7-8 J1530, Itomichi J1158, Itofuji J483, Itofuji J1711, Itohana J809, among many others). In addition to TF151, Itokitatsuru J1081 also sired Itohirashige J1555, who sired Itomoritaka J2703 ETJ002. Kenichi Ono refers to TF151 as one of Dai 7’s most famous progeny.

4 IVF Fullblood Embryos

LOT 9

BLACK | Selling one package of four, IVF, Fullblood, Exportable embryos.

ITOZURU DOI
F11F, CHSF, B3F, CL16F

ITOKITATSURU

DAI 7 ITOZAKURA

YASUHIME

NASHIZURU

YASUMI DOI

FUJIHIME

LMR MS MICHIFUKU 0162X
F11F, CHSF, B3F, CL16F

WORLD K’S MICHIFUKU

MONJIRO 11550

MICHIKO 655635

BR MS KIKUHANA 8610

TF KIKUHANA

JVP MS FUKUKANE 05E

CONSIGNED BY LONE MOUNTAIN CATTLE, GOLDEN, NM

Dai 7 Itozakura was Itokitatsuru J1081’s sire and Kedaka was his maternal grandfather, making Itokitatsuru a blend of Kedaka/Itozakura lines. Itozurudoi’s dam, Yasuhime J433313, was sired by Yasumi Doi J10328, and her dam sire was Kikuteru Doi J10787 – making her a blend of Naka Doi/Kikumi Doi lines. One could not dream up a more diverse bull. He is: 50% Tajima; 25% Fujiyoshi; and 25% Kedaka.

Itozurudoi TF151 has an extremely big frame, weighing 2,420 lbs, and carries early maturing traits that produce great fullblood mothers with excellent milk. He is also the best marbling bull of the Fujiyoshi bloodlines, anecdotally. By the time his progeny was tested and his value was discovered, Itozurudoi TF151 was deceased, leaving a very limited supply of semen.

BREEDPLAN figures for Itozurudoi TF151 show him to be a Trait Leader for the Wagyu Breed and in the top 5% for Marble Fineness EBV (+0.34).

Itozurudoi TF151 is a carrier of F11, but free for all remaining known Wagyu genetic defects.

Embryos stored at Trans Ova Genetics, 2938 380th St, Sioux Center, IA 51250 (712.722.3586)

4 IVF Fullblood Embryos LOT 10

BLACK | Selling one package of four IVF, Fullblood, Domestic embryos.

ITOZURU DOI

F11F, CHSF, B3F, CL16F

LMR MS KITAGUNI 1252Y

CL16F

ITOKITATSURU

YASUHIME

WORLD K'S KITAGUNI JR.

LMR MS MICHIFUKU 628S

DAI 7 ITOZAKURA

NASHIZURU

YASUMI DOI

FUJIHIME

KITAGUNI 7/8

WORLD K'S NAKAYUKI

WORLD K'S MICHIFUKU

CHR MS HIRASHIGE 055J

CONSIGNED BY LONE MOUNTAIN CATTLE, GOLDEN, NM



sire, Itozuru Doi

LMR Ms Kitaguni 1252Y has been a valuable donor at Lone Mountain cattle Company producing 68 viable embryos in 6 flushes – averaging 11 embryos per flush.

Her sire, WKS Kitaguni Jr, a valuable son of Kitaguni 7 $\text{\textcircled{D}}$ 8 J1530, was born October 7, 1994 shortly after WKS Nakayuki J13943, his dam, arrived in the United States (exported by the Mannett Group).

In the 2017 LMCC Sire Performance Study, WKS Kitaguni Jr, with 61 carcasses studied, ranks 4th for IMF with an average of 31.73%, following Yasufuku Jr and his own sons, LMR Koichi 1409Y and LMR Kitaguni 1441Y. And with 16 images studied as Dam Sire, Kitaguni Jr displays his staying power for IMF by ranking #1 (34.35%).

In terms of Marble Fineness, Kitaguni Jr ranks third as Dam Sire. WKS Kitaguni Jr, is a Trait Leader for two traits; Top 1% for Birth Weight EBV (-3.4) and Top 4% for Marble Score (+1.7). Kitaguni Jr has been a powerhouse for Lone Mountain, producing outstanding carcasses achieving the 50% IMF range.

Michifuku, on the maternal side of the pedigree, is another superb sire. WKS Michifuku was sired by Monjiro 11550, listed by Kenichi Ono as #7 on his list of the Top 15 most outstanding Wagyu of Japan.

Monjiro, sired by Yasumi Doi J10328, was born March 15, 1981 in Hyogo Prefecture and was the 11th calf by his dam, Harumi. Monjiro, originally named Harutoshi 2, was just a yearling when he won the Number 2 spot at the Zenkyo (All-Japan Wagyu Show) and was auctioned for \$160,000. Michifuku's dam, Michiko J655635, was sired by Tanishige 1526, grandsired by Yasutani Doi J472 and great-grand- sired by Yasumi Doi J10328.

Itozuru Doi TF151 was born March 12, 1991 and exported by Takeda-san in 1997 in the final shipment shortly before he was expelled from the Japanese Wagyu Registry (Zenwa) in that same year.

Itozurudoi TF151's sire, Itokitatsuru J1081 (Tottori), was a son of Dai 7 Itozakura (brother to Kitaguni 7-8 J1530, Itomichi J1158, Itofuji J483, Itofuji J1711, Itohana J809, among many others). In addition to TF151, Itokitatsuru J1081 also sired Itohirashige J1555, who sired Itomoritaka J2703 ETJ002. Kenichi Ono refers to TF151 as one of Dai 7's most famous progeny.

Dai 7 Itozakura was Itokitatsuru J1081's sire and Kedaka was his maternal grandfather, making Itokitatsuru a blend of Kedaka/Itozakura lines. Itozurudoi's dam, Yasuhime J433313, was sired by Yasumi Doi J10328, and her dam sire was Kikuteru Doi J10787 – making her a blend of Naka Doi/Kikumi Doi lines. One could not dream up a more diverse bull. He is: 50% Tajima; 25% Fujiyoshi; and 25% Kedaka.

Itozurudoi TF151 has an extremely big frame, weighing 2,420 lbs, and carries early maturing traits that produce great fullblood mothers with excellent milk. He is also the best marbling bull of the Fujiyoshi bloodlines, anecdotally. By the time his progeny was tested and his value was discovered, Itozurudoi TF151 was deceased, leaving a very limited supply of semen.

BREEDPLAN figures for Itozurudoi TF151 show him to be a Trait Leader for the Wagyu Breed and in the top 5% for Marble Fineness EBV (+0.34).

Itozurudoi TF151 is a carrier of F11, but free for all remaining known Wagyu genetic defects.

Embryos stored at Trans Ova Genetics, 2938 380th St, Sioux Center, IA 51250 (712.722.3586)



sire, Itozuru Doi

LMR Ms Kitaguni 8168U is a brilliant donor sporting a Marble Score EBV of +2.0 and Birthweight EBV of -4.9, both traits ranking in the Top 1% of the breed, according to the most recent BREEDPLAN report. She has already produced 43 calves - and two steers by TF148 graded 41% and 43% IMF - in addition, a five-year-old cow by TF148 was butchered and graded 34% IMF. In another display of her value as a dam, a twenty-nine-month-old by LMR Toshiro 723T graded 35% IMF.

LMR Ms Kitaguni 8168U is sired by WKS Kitaguni Jr, who is a Trait Leader and for two traits: Top 1% for Birth Weight EBV (-3.4) and Top 6% for Marble Score (+1.7). In the 2017 LMCC Sire Performance Study, WKS Kitaguni Jr as a Sire ranks 4th for Marbling with an average of 31.73%, with 61 carcasses studied, following WKS Yasufuku Jr and his own son, LMR Koichi 1409Y. And with 16 images studied as a Dam Sire, Kitaguni Jr displays his staying power by ranking #1 for IMF (34.35%). In terms of Marble Fineness, Kitaguni Jr ranks 5th as Sire and 3rd as Dam Sire.

The dam of 8168U is BR Ms Yasufuku 0645, one of the premier donor cows in the Lone Mountain herd - nineteen-years-old, she is the dam of both LMR Kitaguni 1441Y (the #1 Sire for IMF) and LMR Koichi 1409Y. 0645 has produced 22 calves over her breeding life, including a son of Kitaguni Jr (8166U) who graded 50.2% IMF and scored VAB100 by the USDA Grading Inspector. The average of 0645's 11 harvested calves is 33.12% IMF, with 6 steers grading over 30% IMF.

BR Ms Yasufuku 0645 was sired by WKS Yasufuku Jr, the #1 Dam Sire for Marble Fineness (33.31) and the #3 Dam Sire (62 carcasses = average 34.23% IMF). WKS Yasufuku Jr is Trait Leader of the breed for 4 traits in EBVs: Top 1% for Birthweight EBV (-4.0), and in the Top 3% for Ribeye Area (EMA) EBV (+6.1); Rump Fat EBV (+2.9); and Marble Score EBV (+1.8).

4 IVF Fullblood Embryos

LOT **11**

BLACK | Selling one package of four, IVF, Fullblood, Domestic embryos.

ITOZURU DOI
F11F, CHSF, B3F, CL16F

ITOKITATSURU

DAI 7 ITOZAKURA
NASHIZURU
YASUMI DOI
FUJIHIME

YASUHIME

WORLD K'S KITAGUNI JR.

KITAGUNI 7/8
WORLD K'S NAKAYUKI
WORLD K'S YASUFUKU JR
MISS BAR R 321H

LMR MS KITAGUNI 8168U
F11F, CHSF, B3F, CL16F

BR MS YASUFUKU 0645

CONSIGNEE BY LONE MOUNTAIN CATTLE, GOLDEN, NM

Itozuru Doi TF151 was born March 12, 1991 and exported by Takeda-san in 1997 in the final shipment shortly before he was expelled from the Japanese Wagyu Registry (Zenwa) in that same year.

Itozurudoi TF151's sire, Itokitatsuru J1081 (Tottori), was a son of Dai 7 Itozakura (brother to Kitaguni 7-8 J1530, Itomichi J1158, Itofuji J483, Itofuji J1711, Itohana J809, among many others). In addition to TF151, Itokitatsuru J1081 also sired Itohirashige J1555, who sired Itomoritaka J2703 ETJ002. Kenichi Ono refers to TF151 as one of Dai 7's most famous progeny.

Dai 7 Itozakura was Itokitatsuru J1081's sire and Kedaka was his maternal grandfather, making Itokitatsuru a blend of Kedaka/Itozakura lines. Itozurudoi's dam, Yasuhime J433313, was sired by Yasumi Doi J10328, and her dam sire was Kikuteru Doi J10787 - making her a blend of Naka Doi/Kikumi Doi lines. One could not dream up a more diverse bull. He is: 50% Tajima; 25% Fujiyoshi; and 25% Kedaka.

Itozurudoi TF151 has an extremely big frame, weighing 2,420 lbs, and carries early maturing traits that produce great fullblood mothers with excellent milk. He is also the best marbling bull of the Fujiyoshi bloodlines, anecdotally. By the time his progeny was tested and his value was discovered, Itozurudoi TF151 was deceased, leaving a very limited supply of semen.

BREEDPLAN figures for Itozurudoi TF151 show him to be a Trait Leader for the Wagyu Breed and in the top 5% for Marble Fineness EBV (+0.34).

Itozurudoi TF151 is a carrier of F11, but free for all remaining known Wagyu genetic defects.

Embryos stored at Trans Ova Genetics, 2938 380th St, Sioux Center, IA 51250 (712.722.3586)

4 IVF Fullblood Embryos LOT 12

BLACK | Selling one package of four, IVF, Fullblood, Domestic embryos.

ITOZURU DOI
F11F, CHSF, B3F, CL16F

LMR MS KITAGUNI 8168U
F11F, CHSF, B3F, CL16F

ITOKITATSURU

YASUHIME

WORLD K'S KITAGUNI JR.

BR MS YASUFUKU 0645

DAI 7 ITOZAKURA

NASHIZURU

YASUMI DOI

FUJIHIME

KITAGUNI 7/8

WORLD K'S NAKAYUKI

WORLD K'S YASUFUKU JR

MISS BAR R 321H

CONSIGNED BY LONE MOUNTAIN CATTLE, GOLDEN, NM

LMR Ms Kitaguni 8168U is a brilliant donor sporting a Marble Score EBV of +2.0 and Birthweight EBV of -4.9, both traits ranking in the Top 1% of the breed, according to the most recent BREEDPLAN report. She has already produced 43 calves - and two steers by TF148 graded 41% and 43% IMF - in addition, a five-year-old cow by TF148 was butchered and graded 34% IMF. In another display of her value as a dam, a 29-month-old by LMR Toshiro 723T graded 35% IMF.

LMR Ms Kitaguni 8168U is sired by WKS Kitaguni Jr, who is a Trait Leader and for two traits: Top 1% for Birth Weight EBV (-3.4) and Top 6% for Marble Score (+1.7). In the 2017 LMCC Sire Performance Study, WKS Kitaguni Jr as a Sire ranks 4th for Marbling with an average of 31.73%, with 61 carcasses studied, following WKS Yasufuku Jr and his own son, LMR Koichi 1409Y. And with 16 images studied as a Dam Sire, Kitaguni Jr displays his staying power by ranking #1 for IMF (34.35%). In terms of Marble Fineness, Kitaguni Jr ranks fifth as Sire and third as Dam Sire.

The dam of 8168U is BR Ms Yasufuku 0645, one of the premier donor cows in the Lone Mountain herd - nineteen-years-old, she is the dam of both LMR Kitaguni 1441Y (the #1 Sire for IMF) and LMR Koichi 1409Y. 0645 has produced 22 calves over her breeding life, including a son of Kitaguni Jr (8166U) who graded 50.2% IMF and scored VAB100 by the USDA Grading Inspector. The average of 0645's 11 harvested calves is 33.12% IMF, with 6 steers grading over 30% IMF.

BR Ms Yasufuku 0645 was sired by WKS Yasufuku Jr, the #1 Dam Sire for Marble Fineness (33.31) and the #3 Dam Sire (62 carcasses = average 34.23% IMF). WKS Yasufuku Jr is Trait Leader of the breed for 4 traits in EBVs: Top 1% for Birthweight EBV (-4.0), and in the Top 3% for Ribeye Area (EMA) EBV (+6.1); Rump Fat EBV (+2.9); and Marble Score EBV (+1.8).



sire, Itozuru Doi

Itozuru Doi TF151 was born March 12, 1991 and exported by Takeda-san in 1997 in the final shipment shortly before he was expelled from the Japanese Wagyu Registry (Zenwa) in that same year.

Itozurudoi TF151's sire, Itokitatsuru J1081 (Tottori), was a son of Dai 7 Itozakura (brother to Kitaguni 7-8 J1530, Itomichi J1158, Itofuji J483, Itofuji J1711, Itohana J809, among many others). In addition to TF151, Itokitatsuru J1081 also sired Itohirashige J1555, who sired Itomoritaka J2703 ETJ002. Kenichi Ono refers to TF151 as one of Dai 7's most famous progeny.

Dai 7 Itozakura was Itokitatsuru J1081's sire and Kedaka was his maternal grandfather, making Itokitatsuru a blend of Kedaka/Itozakura lines. Itozurudoi's dam, Yasuhime J433313, was sired by Yasumi Doi J10328, and her dam sire was Kikuteru Doi J10787 - making her a blend of Naka Doi/Kikumidoi lines. One could not dream up a more diverse bull. He is: 50% Tajima; 25% Fujiyoshi; and 25% Kedaka.

Itozurudoi TF151 has an extremely big frame, weighing 2,420 lbs, and carries early maturing traits that produce great fullblood mothers with excellent milk. He is also the best marbling bull of the Fujiyoshi bloodlines, anecdotally. By the time his progeny was tested and his value was discovered, Itozurudoi TF151 was deceased, leaving a very limited supply of semen.

BREEDPLAN figures for Itozurudoi TF151 show him to be a Trait Leader for the Wagyu Breed and in the top 5% for Marble Fineness EBV (+0.34).

Itozurudoi TF151 is a carrier of F11, but free for all remaining known Wagyu genetic defects.

Embryos stored at Trans Ova Genetics, 2938 380th St, Sioux Center, IA 51250 (712.722.3586)



sire, Itozuru Doi

LMR Ms Kimifuku 6101D, the dam of this mating, is a Group “C” cow expressing 55% Tajima, 34% Itozakura and 8% Shimane bloodlines.

6101D was sired by Kimifuku TF726, a son of Kimifuku 3, who is thought to be Mr Takeda’s highest marbling imported sire. TF726 has sired 7 calves for Lone Mountain so far – two Full-Sibs of 6101D have been the only steers harvested: LMR Kimifuku 6107D graded 37% IMF and LMR Kimifuku 6110D graded 35% IMF – averaging 35.88% IMF, trailing only #5 Sire Kimitofuku TF813 (35.98% IMF) by one-tenth of a percentage point.

TF726, has shown outstanding Marble Fineness (+36.10), besting #1 Sire LMR Sensei 817T by eight-tenths of a percent – and amazing Ribeye Area (15.00”²) ahead of #1 Sire ETJ001 by a one-half percentage point. TF726, owned by AWA President Pete Eshelman, has the potential to be a sire LMR has to reckon with.

Itozuru Doi TF151 was born March 12, 1991 and exported by Takeda-san in 1997 in the final shipment shortly before he was expelled from the Japanese Wagyu Registry (Zenwa) in that same year.

Itozurudoi TF151’s sire, Itokitatsuru J1081 (Tottori), was a son of Dai 7 Itozakura (brother to Kitaguni 7-8 J1530, Itomichi J1158, Itofuji J483, Itofuji J1711, Itohana J809, among many others). In addition to TF151, Itokitatsuru J1081 also sired Itohirashige J1555, who sired Itomoritaka J2703 ETJ002. Kenichi Ono refers to TF151 as one of Dai 7’s most famous progeny.

4 IVF Fullblood Embryos

LOT 13

BLACK | Selling one package of four, IVF, Fullblood, Domestic embryos.

ITOZURU DOI
F11F, CHSF, B3F, CL16F

ITOKITATSURU

DAI 7 ITOZAKURA

YASUHIME

NASHIZURU

YASUMI DOI

FUJIHIME

LMR MS KIMIFUKU 6101D ET
F11F, F13F, CHSF, B3F, CL16F

KIMIFUKU TF 726

KIMIFUKU 3

CHIYOTAKE 10

LMR MS SANJIROU 617S

WORLD K’S SANJIROU

CHR KIKUHANAHIME

CONSIGNED BY LONE MOUNTAIN CATTLE, GOLDEN, NM

Dai 7 Itozakura was Itokitatsuru J1081’s sire and Kedaka was his maternal grandfather, making Itokitatsuru a blend of Kedaka/Itozakura lines. Itozurudoi’s dam, Yasuhime J433313, was sired by Yasumi Doi J10328, and her dam sire was Kikuteru Doi J10787 – making her a blend of Naka Doi/Kikumi Doi lines. One could not dream up a more diverse bull. He is: 50% Tajima; 25% Fujiyoshi; and 25% Kedaka.

Itozurudoi TF151 has an extremely big frame, weighing 2,420 lbs, and carries early maturing traits that produce great fullblood mothers with excellent milk. He is also the best marbling bull of the Fujiyoshi bloodlines, anecdotally. By the time his progeny was tested and his value was discovered, Itozurudoi TF151 was deceased, leaving a very limited supply of semen.

BREEDPLAN figures for Itozurudoi TF151 show him to be a Trait Leader for the Wagyu Breed and in the top 5% for Marble Fineness EBV (+0.34). His influence is felt with LMR Akahige 8119U (TF151 x TF600) – see one of his steers (4200B).

Itozurudoi TF151 is a carrier of F11, but free for all remaining known Wagyu genetic defects.

Embryos stored at Trans Ova Genetics, 2938 380th St, Sioux Center, IA 51250 (712.722.3586)

4 IVF Fullblood Embryos LOT 14

BLACK | Selling one package of four, IVF, Fullblood Domestic embryos.

ITOZURU DOI

F11F, CHSF, B3F, CL16F

LMR MS KIMIFUKU 6101D ET

F11F, F13F, CHSF, B3F, CL16F

ITOKITATSURU

YASUHIME

KIMIFUKU TF 726

LMR MS SANJIROU 617S

DAI 7 ITOZAKURA

NASHIZURU

YASUMI DOI

FUJIHIME

KIMIFUKU 3

CHIYOTAKE 10

WORLD K'S SANJIROU

CHR KIKUHANAHIME

CONSIGNED BY LONE MOUNTAIN CATTLE, GOLDEN, NM

LMR Ms Kimifuku 6101D, the dam of this mating, is a Group "C" cow expressing 55% Tajima, 34% Itozakura and 8% Shimane bloodlines.

6101D was sired by Kimifuku TF726, a son of Kimifuku 3, who is thought to be Mr Takeda's highest marbling imported sire. TF726 has sired 7 calves for Lone Mountain so far – two Full-Sibs of 6101D have been the only steers harvested: LMR Kimifuku 6107D graded 37% IMF and LMR Kimifuku 6110D graded 35% IMF – averaging 35.88% IMF, trailing only #5 Sire Kimitofuku TF813 (35.98% IMF) by one-tenth of a percentage point.

TF726, has shown outstanding Marble Fineness (+36.10), besting #1 Sire LMR Sensei 817T by eight-tenths of a percent – and amazing Ribeye Area (15.00"2) ahead of #1 Sire ETJ001 by a one-half percentage point. TF726, owned by AWA President Pete Eshelman, has the potential to be a sire LMR has to reckon with.

Itozuru Doi TF151 was born March 12, 1991 and exported by Takeda-san in 1997 in the final shipment shortly before he was expelled from the Japanese Wagyu Registry (Zenwa) in that same year.

Itozurudoi TF151's sire, Itokitatsuru J1081 (Tottori), was a son of Dai 7 Itozakura (brother to Kitaguni 7-8 J1530, Itomichi J1158, Itofuji J483, Itofuji J1711, Itohana J809, among many others). In addition to TF151, Itokitatsuru J1081 also sired Itohirashige J1555, who sired Itomoritaka J2703 ETJ002. Kenichi Ono refers to TF151 as one of Dai 7's most famous progeny.



sire, Itozuru Doi

Dai 7 Itozakura was Itokitatsuru J1081's sire and Kedaka was his maternal grandfather, making Itokitatsuru a blend of Kedaka/Itozakura lines. Itozurudoi's dam, Yasuhime J433313, was sired by Yasumi Doi J10328, and her dam sire was Kikuteru Doi J10787 – making her a blend of Naka Doi/Kikumi Doi lines. One could not dream up a more diverse bull. He is: 50% Tajima; 25% Fujiyoshi; and 25% Kedaka.

Itozurudoi TF151 has an extremely big frame, weighing 2,420 lbs, and carries early maturing traits that produce great fullblood mothers with excellent milk. He is also the best marbling bull of the Fujiyoshi bloodlines, anecdotally. By the time his progeny was tested and his value was discovered, Itozurudoi TF151 was deceased, leaving a very limited supply of semen.

BREEDPLAN figures for Itozurudoi TF151 show him to be a Trait Leader for the Wagyu Breed and in the top 5% for Marble Fineness EBV (+0.34). His influence is felt with LMR Akahige 8119U (TF151 x TF600) – see one of his steers (4200B).

Itozurudoi TF151 is a carrier of F11, but free for all remaining known Wagyu genetic defects.

Embryos stored at Trans Ova Genetics, 2938 380th St, Sioux Center, IA 51250 (712.722.3586)



dam, CHR Ms Sanjiro 321



full sib, GAF 939G

3 Fullblood Embryos

LOT 15

BLACK | Selling one package of three Fullblood, Conventional, Non-Exportable embryos.

BAY DAI 7 HERO 5658

YCB ITO AINO 7252
TF HIKOKURA HOSHI - 2242

TF ITOHANA 2
TF AINO 115/1
TF KIKUHANA
TF HIKOKURA 8/3

CHR MS SANJIRO 321

WORLS K'S SANJIROU
MJB MS KITAFUKU 05K

WORLD K'S MICHIFUKU
WORLD K'S SUZUTANI
JVP FUKUTSURU -068
CHR MSKITAGUNI 037H

CONSIGNED BY GOLDEN AGE FARM, LEXINGTON, KY

Offering three conventional embryos on a foundational female of our herd. CHR Ms Sanjiro 321 has five daughters in production in our herd, with two more replacement heifers in the top sort of our replacement group. 321 is a standout during farm visits and has garnered much admiration from cattle breeders both inside and outside of the Wagyu breed. She has a phenomenal pedigree on paper, and backs that up with her feminine design and brood cow look. We have harvested several of her sons, with the carcass quality being at the top of the spectrum within their fed contemporaries. In addition, 321 is the dam of 2 National Champion Wagyu females, each sired by different bulls. Take note of the great balance of traits that this mating provides, combining marbling with frame, growth, and maternal characteristics. Daughters from this mating will be the high-quality keeping kind, and resulting bull calves will have growth, masculinity and reliable carcass traits.

Stored at MultiGen Reproductive Solutions, 1540 Newlands Ln, Stanford, KY 40484 (606.365.2654) stan@multigen.net or taylor@multigen.net



dam, ESF Shig 200-137

3 Fullblood Embryos

LOT 16

BLACK | Selling one package of three Fullblood, Conventional, Non-Exportable embryos.

WSU AKIYOSHI 479P

F11F, F13F, CHSF, B3F

BAR R FUKUTSURU 36H

WSU USAGI 2515H

WORLD K'S SHIGESHIGETANI

ESF Z278-31-200

JVP FUKUTSURU-068

METANI

TF KIKUHANA

JVP MS KIKUCHISA 19E

WORLD K'S HARUKI 2

TANISHIGE 1526

WESTHOLME HIRASHIGETAYASU Z278

ESF MICHIFUKU R 042 031

CONSIGNED BY GOLDEN AGE FARM, LEXINGTON, KY

This mating stacks marbling, carcass merit, and great sires all into one convenient package. ESF Shig 200-317 is a direct daughter of WK's Shigeshigetani and out of a Z278 x Michifuku cow with great frame and solid maternal characteristics. 317 herself is an attractive long patterned female that carries great marbling and carcass traits in her pedigree. The sire of the embryos is WSU Akiyoshi 479P. 479P has JVP Fukutsuru-068, WK's Takazakura, TF Kikuhana and JVP Kikayasu-400 all in his three-generation pedigree. When we decided to flush 317 we wanted to use a masculine, well-patterned bull that was rife with marbling genetics. We have harvested a few paternal siblings to this mating and as expected, they marble extremely well! Embryos are available in either direct thaw or 3-Step thaw. So, let us know which you prefer when you win the bid!

Stored at MultiGen Reproductive Solutions, 1540 Newlands Ln, Stanford, KY 40484

(606.365.2654) stan@multigen.net or taylor@multigen.net



sire, HP Mayura L0010 ET



dam, LMR MS Kitaguni 6328D

5 Fullblood Embryos

LOT 17

BLACK | Selling one package of five Grade 1, Fullblood, Conventional, Domestic embryos.

HP MAYURA L0010 ET

MAYURA ITOSHIGENAMI JNR
MAYURA H0159
WORLD K'S KITAGUNI JR.
BR MS SANJIROU 0656

ITOSHIGENAMI
MAYURA DAI NI KINNTOU 1
MAYURA ZULU
WAGYU GENETICS AIZAKURA D837
KITAGUNI 7/8
WORLD K'S NAKAYUKI
WORLD K'S SANJIROU
MISS BAR R 301H

LMR MS KITAGUNI 6328D

CONSIGNED BY WAGYU SHIMIZU & TWIN OAKS WAGYU,
CARSON, VA & POWHATAN, VA

We guarantee two pregnancies if implanted in by a certified embryologist.

Here's a chance based on Genomics to have Wagyu cattle with better growth & marbling than both the Dam Sire Kitaguni Jr and Grandsire WKS Sanjirou. LMR Mayura 0361H, a full sibling to this flush is already posting EPDs in Australia that is better than his Dam Sire & Grandsire, two of the biggest names in meat quality in Wagyu. The Genomics of this pairing has already been rated in the Top 1% in marbling & top 10% in Ribeye in the breed. We are expecting great things from this combination as we plan to collect 0361H going forward.

The Dam, 6328D which starts from the Miss Bar R 301H cow is considered an extremely balanced and phenotypically correct cow with tons of potential on her own, regardless of sire. Matching with L10, just makes it that much better.

Shipping is the responsibility of the buyer and are stored at Southside Large Animal Clinic, Gretna, VA. 617 Andrew Rd, Gretna, VA 24557, (434) 656-8232



sire, SOR Big Al



dam, ROWE Ms Red Star

4 Fullblood Sexed Female Embryos LOT 18

RED | Selling one package of four Grade 1, Fullblood Conventional, Genetic Carrier Free, Sexed Female embryos.

SOR BIG AL

HB BIG AL 502

UKB MS HIKARI HOMARE J30E(JVP)

KALANGA RED STAR

ROWE MS RED STAR

F11F, F13F, CHSF, B3F, CL16F 803 ID

DAI 10 MITSUMARU

AKIKO

HIKARI

JVP MS HOMARE J 30E

HEART BRAND RED STAR

KALANGA HIKAHOMARE VW36

SHIGEMARU

JVP MS HOMARE HIKARI

CONSIGNED BY ROWE WAGYU, LINCOLN, AR

SOR BIG AL is a long bodied, powerfully constructed, deep ribbed, and well footed son of Heartbrand Big Al (FB 2998) over UKB Ms Hikari Homare J30E (FB 11800). SOR Big Al's sire, Heartbrand Big Al is considered by many Akaushi breeders to be one of the premier foundation Akaushi bulls and he is renowned for his 200 day, 400 day, 600 day, mature weight, and carcass weights as being the only foundation Akaushi bull to be found in the top 30 in all growth categories according to the Australian Wagyu Association EBV's. SOR Big Al's pedigree also boasts outcross genetics through his dam UKB Ms Hikari Homare J30E who is the grand daughter of original import dam JVP 27 Homare 128 (FB 2114) imported in 1994. The J30E maternal line consistently shows to pass on unsurpassed length and structure to progeny of this line. Rowe Ms Red Star is a full sister to Red Galaxy and is a beautiful example of what you would want in an Akaushi cow. She is also a prolific producer of embryos. These embryos should produce some fantastic Akaushi cows.

Stored at Flying Cow Genetics, 429746 E 70 Rd, Welch, OK 74369
(918.929.3178)



sire, GK4 Rueshamaru



dam, ROWE Ms Red Star

3 Fullblood Embryos

LOT 19

RED | Selling one package of three Grade 1, Fullblood, Conventional, Genetic Carrier Free embryos.

GK4 RUESHAMARU

F11F, F13F, CHSF, B3F, CL16F

RUESHAW

WSI KAEDEMARU 2

KALANGA RED STAR

803 ID

RUEMEI H39
KIKUTAMA 14285

TAMAMARU
KAEDEMARU
HEART BRAND RED STAR
KALANGA HIKAHOMARE VW36
SHIGEMARU
JVP MS HOMARE HIKARI

ROWE MS RED STAR

F11F, F13F, CHSF, B3F, CL16F

CONSIGNED BY ROWE WAGYU, LINCOLN, AR

Rueshamaru was bred by Wagyu Sekai and is owned by JMK Cattle. He is a son of Japanese National Champion Rueshaw and Kaedemaru 2. We have used him for several years and love his calves. Rowe Ms Red Star is a full sister to Red Galaxy and is a beautiful example of what you would want in an Akaushi cow. She is also a prolific producer of embryos.

Stored at Flying Cow Genetics, 429746 E 70 Rd, Welch, OK 74369 (918.929.3178)



paternal grandsire, Itoshigenami TF148

3 Fullblood Embryos _____ **LOT 20**

BLACK | Selling one package of three Fullblood embryos.

WJB ITOSHIGENAMI 210F ET
F11F, F13F, CHSF, B3F, CL16F

ITOSHIGENAMI

CHR MS KITAGUNI 586

BAR R SHIGESHIGETANI 30T

RW EMI 301C

SHIGESHIGENAMI 10632
FUKUYUKI

WORLD K'S KITAGUNI JR.
CHR YASUFUKU 486

WORLD K'S SHIGESHIGETANI
BAR R 68P

WORLD K'S SHIGESHIGETANI
BJ SHIGE 301

WJB SHIGESHIGETANI 805F ET
F11F, F13F, CHSF, B3F, CL16F

WJB Itoshigenami 210F has the foundation bull Itoshigenami TF148 as his sire, which is considered by the Australian Wagyu Industry as the #1 marbling foundation sire. The maternal grandsire of 210F is World K's Kitaguni, Jr, again a bull which is considered one of the top marbling foundation bulls available with Yasafuku and Sanjiro also on the bottom of the pedigree. The dam has World K's Shigeshigetani as well as Suzitani on BOTH top and bottom of the pedigree.

Both parents are free from all genetic defects and embryos are currently stored at Transova, 11500 FM974, Bryan, TX 77808 (712) 722-3576)

CONSIGNED BY **J BRAND WAGYU, LLC, WELSH, LA**



*paternal grandsire,
Itoshigenami TF148*

3 Fullblood Embryos _____ LOT 21

BLACK | Selling one package of three Fullblood embryos.

WJB ITOSHIGENAMI 210F ET
F11F, F13F, CHSF, B3F, CL16F

ITOSHIGENAMI
CHR MS KITAGUNI 586

SHIGESHIGENAMI 10632
FUKUYUKI
WORLD K'S KITAGUNI JR.
CHR YASUFUKU 486
WORLD K'S HARUKI 2
WORLD K'S OKUTANI
JB100 TAKAYAMA
BAR R 14P

WJB MS BEIJIROU 208F ET
F11F, F13F, CHSF, B3F

WORLD K'S BEIJIROU
JB 100 KIKUHANA

CONSIGNED BY J BRAND WAGYU, LLC, WELSH, LA

WJB Itoshigenami 210F has the foundation bull Itoshigenami TF148 as his sire, which is considered by the Australian Wagyu Industry as the #1 marbling foundation sire. The maternal grandsire of 210F is World K's Kitaguni, Jr, again a bull which is considered one of the top marbling foundation bulls available with Yasafuku and Sanjiro also on the bottom of the pedigree. The dam is out of World K's Beijiro (FB2289), an animal that is well known as one of the premier foundation sires in the Wagyu industry.

Both parents are free from all genetic defects and embryos are currently stored at Transova, 11500 FM974, Bryan, TX 77808 (712) 722-3576)



paternal grandsire, Itomoritaka J2703

5 Fullblood Embryos

LOT **22**

BLACK | Selling one package of five Fullblood embryos.

LMR RMW ITOMORITAKA, ROCKY

F11F, F13F, CHSF, B3F, CL16F

ITOMORITAKA J2703

LMR MS SANJIROU 767T

SR Y13 SANJI

WINSON

ITOHIRASHIGE 10632

DAI 6 OEFUJII J565554-KURO KOH

WORLD K'S SANJIROU

WORLD K'S NAKAZAKURA

WORLD K'S SANJIROU

KITATEMAKO 003

WORLD K'S KITAGUNI JR.

BR MS MICH/1628 4628

WINDY 91W

Low risk and high-performance probability are the two main keys to breeding success and profitability. These embryos are that kind of investment! This offering pairs the proven Itomoritaka FB861 son, Rocky, with Windy, 91W, a daughter of SR Y13 Sanji. Windy has been tested resulting in a SCD AA and five tenderness. Rocky, son of Itomoritaka J2703 and Sanjirou 767T, tested a SCD AA and seven tenderness. These embryos are a high reliability investment in fantastic genetics.

Embryos are stored at Stroud Vet. Embryo Services
6601 Granbury Hwy, Weatherford, TX 76087 (817.599.7721)

CONSIGNED BY TALLY WINDHAM WAGYU RANCH, BAIRD, TX



sire, Kitateruyasudo J2810

5 Fullblood Embryos _____ **LOT 23**

BLACK | Selling one package of five Fullblood embryos.

KITATERUYASUDO J2810 (ET003)
F11F, F13F, CHSF, B3F, CL16F

TERUNAGADOI
YOSHIMI3

KIKUTERU DOI
TERUNAH
YASUTANI DOI
YOSIMI

TWW ANGEL 238W

MAVERICK
LAURA

ITOSHIGENAMI
OTANASHII
WORLD K'S SHIGESHIGETANI
OTANASHII

CONSIGNED BY TALLY WINDHAM WAGYU RANCH, BAIRD, TX

Low risk and high-performance probability are the two main keys to breeding success and profitability. These embryos are that kind of investment! This offering pairs the proven elite marbling sire, Kitateruyasudo J2810 with Angel, daughter of Maire, an outstanding daughter of TF148 Itoshigenami. Angel is a AA Fat and 3 Tenderness. Kitateruyasudo J2810 ranks in the top 15% for EMA. He ranks in the top 1% for Marble Fineness and top 5% for marble score and BW.

Embryos are stored at Stroud Vet. Embryo Services
6601 Granbury Hwy, Weatherford, TX 76087 (817.599.7721)



sire, SMO Sumo Cattle Co Michifuku F154

5 Fullblood Embryos

BLACK | Selling one package of five Grade 1, Fullblood, Conventional, Domestic only embryos.

LOT **24**

SMO SUMO CATTLE CO MICHIFUKU F154

WORLD K'S MICHIFUKU

SMO SUMO CATTLE CO TANI C016 ET

GVW YASUFUKU JR 90713

CCF C FREES MAZDA 646E

F11F, F13F, CHSF, B3F, CL16F MS TR 5231

MONJIRO 11550

MICHIKO 655635

TF TERUTANI 40/1

TF HIKOHIME 34/3

MFC YASUFUKU JR 7-12

GVW MICHIFUKU 9003

LTR ITOMAZAKEMI 1117

LMR MS TAKAZAKURA 1231Y

CONSIGNED BY WAGYU FLORIDA INC., YULEE, FL

F154 is the sire. He has extremely superb EBVs for both marble score and carcass weight and with all three indexes in the top 1% makes him not only sought after but one of the best bulls available with none of the five genetic diseases and is free untested for IARS! He is 67% Tajima and 23% Itozakura and 4% Shimane. We find the influence of Takazakura on the bottom of this mating. He is one of the great foundation bulls of the Wagyu breed. His grandsire, Yasufuku J930, sired three of the highest marbling sires of the 9th Zenkoku in Japan. His sire is Takaei 1412, and his dam is Dai Ni Sakura 7. The dam brings the bloodlines of Yasufuku Jr, Kitaguni Jr., Takazakua and Itomich 1/2 to this mating; all proven all stars of the breed that solidifies the marbling potential that this mating has. Mazda 646E produced 25 embryos in her first flush! This donor has given us very impressive calves and all our calves from F154 have been heifers even though the semen is not sexed!

Stored at Southeastern Semen Services, 16878 45th Road, Wellborn, FL (386.963.5916)
Flushed by Dr. Jim Griffin



sire, SMO Sumo Cattle Co Michifuku F154

5 Fullblood Embryos _____ **LOT 25**

BLACK | Selling one package of five Grade 1, Fullblood, Conventional, Domestic embryos.

SMO SUMO CATTLE CO. MICHIFUKU F154	WORLD K'S MICHIFUKU	MONJIRO 11550
SMO SUMO CATTLE CO TANI C016 ET	MICHIKO 655635	MARCUS
	TF TERUTANI 40/1	CHR MS FUKUTSURU 147N
	TF HIKOHIME 34/3	BR ITOMICHI/0602 4632
	C FREE'S TAKAZAKURA	CHR MS MICHIFUKU 1T
C FREE'S ITOMICHIKURA CFF 524		
F11F, F13F, CHSF, B3F, CL16F	TAI MS ITOMICHI B043W	

The featured sire here is Sumo Michifuku F154. He has extremely superb EBVs for both marble score and carcass weight and with all three indexes in the top 1% makes him not only sought after but the best scoring bull available with none of the 5 genetic diseases and he is free untested for the IARS! He is 67% Tajima and 23% Itozakura and 4% Shimane. He was born in 2010 so his stats are beyond proven. This is a beyond powerful mating! CFF524 produced 25 embryos in her first flush. This donor has given us very impressive calves and all our calves from F154 have been heifers even though the semen is not sexed!

Stored at Southeastern Semen Services of Wellborn, FL
Flushed by Dr. Jim Griffin

CONSIGNED BY **WAGYU FLORIDA INC., YULEE, FL**



sire, HP Mayura L0010 ET



dam, WEBBCO Hira Rebecca 133

3 Fullblood Embryos

LOT 26

BLACK | Selling one package of three Grade 1, Fullblood, Conventional embryos.

HP MAYURA L0010 ET

MAYURA ITOSHIGENAMI JNR
MAYURA H0159

ITOSHIGENAMI
MAYURA DAI NI KINNTOU 1
MAYURA ZULU
WAGYU GENETICS AIZAKURA D837
DAI 20 HIRASHIGE 287
DAI 5 YURUHIME
TF ITOMICHI 1/2
LMR MS SANJIROU 4P 728T

WEBBCO HIRA REBECCA 133

HIRASHIGETAYASU J2351
WEBBCO ITO 500Y

CONSIGNED BY **G FIVE CATTLE**, SULPHUR SPRINGS, TX

This mating brings the most popular of the US and Australia together. The dam represented here was a top seller selling for \$30,000! She is phenotypically superb and a female that you keep in the front pasture. Beyond looking pretty, she is also an AA – 9 combo and has amazing calves. She is sired by a phenotypically correct bull, Hirashigetayasu on top of an Itomichi half daughter. Both these bulls bring size, maternal traits and marbling to the table. Her dam goes back to a Lone Mountain Ranch cow and Bar R 12P. The sire of this mating is incredible and also very popular. He's gaining in popularity by the day because he ranks in the Top 1% for Marble Score EBV and Ribeye Area EBV and in the Top 1% for all 3 Wagyu Indexes: Self-Replacing, Fullblood Terminal and F1 Terminal Index. In 2017, he sold for \$105,000! L0010's dam, Mayura H0159, reflects Itozurudo! TF151 and Kanadagene 100 bloodlines from the Aizakura maternal line. Mayura L0010 is sired by Mayura Itoshigenami Jnr, sometimes referred to as "King of Australian Wagyu Sires", who has been at the top of the Australian Published Sire Reports since 2015 with more than 75 carcasses imaged and measured – he has sired more than 900 Mayura calves at last count. In 2016, 10 straws of 0139 were sold for \$30,050 (\$3050 each); in 2019, one of his heifers sold for a record-setting \$280,000 and a son sold for \$185,000 in 2018. Mayura Itoshigenami Jnr semen just sold and averaged over \$55,000 per straw, a world record. Mayura Itoshigenami Jnr is a proven progeny sire, a son of Itoshigenami TF148 – and his dam features the genetics of Sanjirou and Suzutani and TF Dai 2 Kinntou 3, an Itomichi daughter from the Hikokura maternal line.

Embryos stored at Champion Genetics, Canton, TX (1.866.604.4044)



sire, LMR Toshiro 1/3



dam, MP141

3 Fullblood Embryos LOT 27

BLACK | Selling one package of three Grade 1, Fullblood, Conventional embryos.

LMR TOSHIRO 1/3
F11F, CHSF, B3F, CL16F

WORLD K'S MICHIFUKU

ITOHANA
NAYORI 1

WORLD K'S REIKO

KITAGUNI 7/8

WORLD K'S SHIGESHIGETANI

WORLD K'S OKAHANA

WORLD K'S HARUKI 2

MP141

MPCC 106B

ITOSHIGEFUJI

BR MS SANJIRO 1619

CONSIGNED BY **G FIVE CATTLE**, SULPHUR SPRINGS, TX

The sire of this mating comes from the Lone Mountain Cattle Company program. He is a Trait Leader among all Wagyu Sires outside of Japan. With accuracy figures of 80%+, 723T ranks in the Top 1% of the breed for Carcass Weight EBV (+60) according to the October 2019 BREEDPLAN Report. In addition, 723T is a Trait Leader, ranking in the Top 2% for 400-day Weight EBV (+38) and 600-day Weight EBV (+52) - and his excellent Milking EBV (+6) and REA (EMA) EBV (+4.0) ranks him in the Top 3% of the breed. Testifying positively to this number, Lone Mountain has noted an average carcass weight of 988 lbs. and ranks Toshiro as the #1 Sire (ahead of Itoshigefuji TF147) and #4 Sire for Ribeye Area (just behind WKS Shigeshigetani), in the 2019 LMCC Sire Performance Study. The dam is just as valuable as she brings some fantastic players to the court. Her pedigree is littered with value. Her sire, is WK Shigeshigetani. He is believed to have a high degree of propensity to transmit his characteristics to offspring. He is bred from some of the most famous and highly regarded genetics exported from Japan, and has been well proven. His offspring are born small but grow relatively rapidly, and grow to have a long body with good ribeye size. Shigeshigetani's offspring exhibit relatively rapid growth to relatively good size, which is impressive given the fact that his genetics are 75% Tajima line, which is known for being slower growing and achieving a smaller overall mature size. Her dam is an Itoshigefuji on top of Sanjirou. Offspring from these females produce good carcass, the best average daily gain, early maturing, and are high marbling from the Dai 7 Itozakura bloodline. These females carry a calf very well on pasture. As mentioned Sanjirou is also found in the dam's pedigree; he has become a very influential bull. He has great meat quality, large ribeye area, thick rib and high yields and has outperformed his sire Michifuku in the latest U.S. Sire summary. His dam, Suzutani, is probably one of the top imported females from Japan.

Embryos stored at Champion Genetics, Canton, TX (1.866.604.4044)



sire, World K's Sanjirou



dam, Haruki Nami B266

4 Fullblood Embryos

LOT **28**

BLACK | Selling one package of three Grade 1, Fullblood Conventional embryos.

WORLD K'S SANJIROU

WORLD K'S MICHIFUKU

WORLD K'S SUZUTANI

WORLD K'S HARUKI 2

HARUKI NAMI B266

MS CHR YASUFUKU 260

MONJIRO 11550

MICHIKO 655635

TANISHIGE 1526

SUZUNAMI 472255

MONJIRO 11550

SAKURA 2 741638

ITOSHIGENAMI

CHR MS YASUFUKU 189R

CONIGNED BY SULLIVAN FARMS, DUNLAP, IA

Haruki Nami B266 is a powerful cow with a spectacular pedigree. Her genetics form a faultless foundation that feature a beautiful blend of growth and carcass traits which are enhanced by the transmitting power of the Takeda Hikokura maternal line. B266 is a perfect example of the kind of brood cow that her sire, Haruki II, makes. Haruki II is the ideal bull to cap B266's stack of high Tajima sires which are TF148 Itoshigenami x Yasufuku Jr. x Michifuku. These proven foundation sires pack carcass performance into a pedigree that already featured growth and size through TF Kikuhana and the tremendous brood cow, CHR Kikuhanahime. The popular bulls Kitaguni 07K and Takazakura 101L descend from Kikuhanahime.

This embryo lot will excite any Wagyu breeder with the pairing of two of the most influential maternal lines of the breed! It is an opportunity to match Suzutani genetics with Hikokura genetics. Suzutani is represented through her son, Sanjirou, who is the sire of the embryos. He has proven to be a breed leader for Rib Eye Area on an international scale and is the maternal grandsire of the carcass legend, Mayura Itoshigenami Jr. Sanjirou should match extremely well with the donor dam, Nami B266. She is a powerful cow that carries carcass traits inherited from the high Tajima-content sires in her pedigree such as TF148 Itoshigenami, Yasufuku Jr., and Michifuku. These embryos are a wise investment opportunity for carcass trait performance.

Stored at Trans Ova Genetics, 12425 Liv 224 #8504, Chillicothe, MO 64601 (660.646.5165)



sire, Kitateruyasudo J2810



dam, Haruki Nami B266

5 Fullblood Embryos

LOT 29

BLACK | Selling one package of five Fullblood, Conventional, Domestic embryos.

KITATERUYASUDO J2810

F11C, F13F CHSF, B3F, CL16F

TERUNAGADOI

YOSHIMI3

KIKUTERU DOI

TERUNAHU

YASUTANI DOI

YOSIMI

MONJIRO 11550

SAKURA 2 741638

ITOSHIGENAMI

CHR MS YASUFUKU 189P

HARUKI NAMI B266

WORLD K'S HARUKI 2

MS CHR YASUFUKU 260

CONSIGNEE BY SULLIVAN FARMS, DUNLAP, IA

Haruki Nami B266 is a powerful cow with a spectacular pedigree. Her genetics form a faultless foundation that feature a beautiful blend of growth and carcass traits which are enhanced by the transmitting power of the Takeda Hikokura maternal line. B266 is a perfect example of the kind of brood cow that her sire, Haruki II, makes. Haruki II is the ideal bull to cap B266's stack of high Tajima sires which are TF148 Itoshigenami x Yasufuku Jr. x Michifuku. These proven foundation sires pack carcass performance into a pedigree that already featured growth and size through TF Kikuhana and the tremendous brood cow, CHR Kikuhanahime. The popular bulls Kitaguni 07K and Takazakura 101L descend from Kikuhanahime.

Kitateruyasudo 003 was imported by Westholme as their feature carcass trait sire. He certainly met those expectations and his influence has been passed on to numerous other breed leading sires for carcass performance. As the sire of these embryos, he brings a high level of genetic reliability for carcass trait improvement. He will work extremely well with a powerful Haruki II daughter such as the embryo donor B266. Combine that with the foundation sires found in B266's pedigree that are stacked on the sensational brood cow, CHR Kikuhanahime, and you have a highly reliable investment in Wagyu genetics featuring the best of Westholme and Takeda breeding!

Stored at Trans Ova Genetics, 12425 Liv 224 #8504, Chillicothe, MO 64601 (660.646.5165)



sire, Takamichi Doi



dam, Haruki Nami B266

5 Fullblood Embryos

LOT 30

BLACK | Selling one package of five Fullblood, Conventional, Domestic embryos.

TAKAMICHI DOI

F11F, F13F CHSF, B3F, CL16F

WORLD K'S TAKAZAKURA

MISAKO

TAKAEI 1412

DAI NI SAKURA 7

WORLD K'S MICHIFUKU

HISAKO

MONJIRO 11550

SAKURA 2 741638

ITOSHIGENAMI

CHR MS YASUFUKU 189R

HARUKI NAMI B266

WORLD K'S HARUKI 2

MS CHR YASUFUKU 260

CONSIGNED BY SULLIVAN FARMS, DUNLAP, IA

Haruki Nami B266 is a powerful cow with a spectacular pedigree. Her genetics form a faultless foundation that feature a beautiful blend of growth and carcass traits which are enhanced by the transmitting power of the Takeda Hikokura maternal line. B266 is a perfect example of the kind of brood cow that her sire, Haruki II, makes. Haruki II is the ideal bull to cap B266's stack of high Tajima sires which are TF148 Itoshigenami x Yasufuku Jr. x Michifuku. These proven foundation sires pack carcass performance into a pedigree that already featured growth and size through TF Kikuhana and the tremendous brood cow, CHR Kikuhanahime. The popular bulls Kitaguni 07K and Takazakura 101L descend from Kikuhanahime.

These embryos are sired by WSI Takamichi Doi. He is a Takazakura son that has been used internationally and has gained a following because of the outstanding carcasses produced by his progeny. That should not be a surprise because his strong Tajima pedigree stacks Takazakura on Michifuku and JVP 068. His maternal line is from the World K's imported cow, Kanetani, who has proven herself to be an elite transmitter of quality carcasses. Takamichi Doi should prove to be a great mating combination with the Nami B266 cow that results in superior carcasses.

Stored at Trans Ova Genetics, 12425 Liv 224 #8504, Chillicothe, MO 64601 (660.646.5165)



sire, Takamichi Doi



dam, Haruki Nami B266

5 Fullblood Embryos _____ **LOT 31**

BLACK | Selling one package of five Fullblood, Conventional, Domestic embryos.

TAKAMICHI DOI

F11F, F13F CHSF, B3F, CL16F

WORLD K'S TAKAZAKURA

MISAKO

TAKAEI 1412

DAI NI SAKURA 7

WORLD K'S MICHIFUKU

HISAKO

MONJIRO 11550

SAKURA 2 741638

ITOSHIGENAMI

CHR MS YASUFUKU 189R

HARUKI NAMI B266

WORLD K'S HARUKI 2

MS CHR YASUFUKU 260

CONSIGNED BY **SULLIVAN FARMS, DUNLAP, IA**

Haruki Nami B266 is a powerful cow with a spectacular pedigree. Her genetics form a faultless foundation that feature a beautiful blend of growth and carcass traits which are enhanced by the transmitting power of the Takeda Hikokura maternal line. B266 is a perfect example of the kind of brood cow that her sire, Haruki II, makes. Haruki II is the ideal bull to cap B266's stack of high Tajima sires which are TF148 Itoshigenami x Yasufuku Jr. x Michifuku. These proven foundation sires pack carcass performance into a pedigree that already featured growth and size through TF Kikuhana and the tremendous brood cow, CHR Kikuhanahime. The popular bulls Kitaguni 07K and Takazakura 101L descend from Kikuhanahime.

These embryos are sired by WSI Takamichi Doi. He is a Takazakura son that has been used internationally and has gained a following because of the outstanding carcasses produced by his progeny. That should not be a surprise because his strong Tajima pedigree stacks Takazakura on Michifuku and JVP 068. His maternal line is from the World K's imported cow, Kanetani, who has proven herself to be an elite transmitter of quality carcasses. Takamichi Doi should prove to be a great mating combination with the Nami B266 cow that results in superior carcasses.

Stored at Trans Ova Genetics, 12425 Liv 224 #8504, Chillicothe, MO 64601 (660.646.5165)

sire, HP Mayura L0010 ET



4 Fullblood Embryos

LOT 32

BLACK | Selling one package of four Fullblood, Domestic embryos.

HP MAYURA L0010 ET

F11F, F13F CHSF, B3F, CL16F

MAYURA ITOSHIGENAMI JNR
MAYURA H0159

ITOSHIGENAMI
MAYURA DAI NI KINNTOU 1
MAYURA ZULU
WAGYU GENETICS AIZAKURA D837

LMR MS KIMIFUKU 6101D

F11F, F13F CHSF, B3F, CL16F

KIMIFUKU TF 726
LMR MS SANJIROU 617S

KIMIFUKU 3
CHIYOTAKE 10
WORLD K'S SANJIROU
CHR KIKUHANAHOME

CONSIGNEE BY LONE MOUNTAIN CATTLE, GOLDEN, NM

LMR Ms Kimifuku 6101D, the dam of this mating, is a Group "C" cow expressing 55% Tajima, 34% Itozakura and 8% Shimane bloodlines.

6101D was sired by Kimifuku TF726, a son of Kimifuku 3, who is thought to be Mr Takeda's highest marbling imported sire. TF726 has sired 7 calves for Lone Mountain so far – 2 Full-Sibs of 6101D have been the only steers harvested: LMR Kimifuku 6107D graded 37% IMF and LMR Kimifuku 6110D graded 35% IMF – averaging 35.88% IMF, trailing only #5 Sire Kimitofuku TF813 (35.98% IMF) by one-tenth of a percentage point.

TF726, has shown outstanding Marble Fineness (+36.10), besting #1 Sire LMR Sensei 817T by eight-tenths of a percent – and amazing Ribeye Area (15.00"2) ahead of #1 Sire ETJ001 by a one-half percentage point. TF726, owned by AWA President Pete Eshelman, has the potential to be a sire LMR has to reckon with.

MAYURA L0010 is a promising young son of Mayura Itoshigenami Jnr 0139. MAYURA L0010 ranks in the Top 1% for Marble Score EBV (+2.3) and Ribeye Area (EMA) EBV (+7.7), and in the Top 1% for all 4 Wagyu Indexes: Wagyu Breeder (\$277), Self-Replacing (\$292), Fullblood Terminal (\$245) and F1 Terminal (\$228). Purchased in 2017 for AUS\$105,000, L0010's EBVs were calculated using genomics, as well as 46 recorded calves weights.

L0010's dam, Mayura H0159, reflects Itozurudoi TF151 and Kanadagene 100 bloodlines from the Aizakura maternal line.

MAYURA L0010 was sired by Mayura Itoshigenami Jnr, sometimes referred to as "King

of Australian Wagyu Sires," who has been at the top of the Australian Published Sire Reports since 2015 with more than 842 carcasses imaged and measured – he has sired more than 1450 calves at last count. In 2016, 10 straws of 0139 were sold for AUS\$30,050 (\$3,050 each); in 2017 his son L0010 was sold at auction for AUS\$105,000; and in 2019, one of his heifers sold for a record-setting AUS\$280,000. And six straws of his recently sold in the 2020 Mayura Sale for \$68,000 per straw!

Mayura Itoshigenami Jnr is a proven progeny sire, a son of Itoshigenami TF148 – and his dam features the genetics of Sanjiro and Suzutani and TF Dai 2 Kinntou 3, an Itomichi daughter from the Hikokura maternal line.

L0010's half-brother, Mayura Jackpot J0399, won the Grand Champion Fullblood Wagyu award at the 2019 Australian Wagyu Branded Beef competition – with a 28-month old carcass weighing 970 lbs; on feed for 266 days; graded 54% IMF; Marbling Fineness 62.3; and with a Ribeye Area of 30.8 in 2! The judges' comments: "Beautiful piece of beef, tender, juicy with a great buttery flavor. An excellent example of Wagyu."

Mayura L0010 is a carrier of CHS, but free for all remaining four known Wagyu genetic defects.

Embryos stored at Trans Ova Genetics, 2938 380th St, Sioux Center, IA 51250 (712.722.3586)



sire, HP Mayura L0010 ET

4 Fullblood Embryos

LOT **33**

BLACK | Selling one package of four Fullblood, Domestic embryos.

HP MAYURA L0010 ET

F11F, F13F CHSF, B3F, CL16F

MAYURA ITOSHIGENAMI JNR
MAYURA H0159

LMR MSKITAGUNI 8724F

WORLD K'S KITAGUNI JR.
BR MS YASUFUKU 0645

ITOSHIGENAMI
MAYURA DAI NI KINNTOU 1
MAYURA ZULU
WAGYU GENETICS AIZAKURA D837
KITAGUNI 7/8
WORLD K'S NAKAYUKI
WORLD K'S YASUFUKU JR
MISS BAR R 321H

CONSIGNEE BY **LONE MOUNTAIN CATTLE, GOLDEN, NM**

8724F is a daughter of BR Ms Yasufuku 0645- and is a full sibling of LMR Ms Kitaguni 8168U, one of our most prolific and productive donors. 8168U sports a Marble Score EBV of +2.0 and Birthweight EBV of -4.9, both traits ranking in the Top 1% of the breed, according to the most recent BREEDPLAN report. She has already produced 43 calves - including 2 steers by TF148 graded 41% and 43% IMF.

8724F is also a full sibling to both LMR Koichi 1409Y and LMR Kitaguni 1441Y. 1441Y is the #1 Sire for Marbling (39.54%) and #2 Sire for Marble Fineness (33.75) in the 2019 LMCC Sire Performance Study. In the current BREEDPLAN report, 1441Y is Trait Leader and Top 1% for Birthweight EBV (-3.5); just outside the Top 5% for Marble Score EBV (+1.5).

LMR Ms Kitaguni 8724F was sired by WKS Kitaguni Jr, the #1 Dam Sire in the most recent LMCC Sire Performance Study (SPS) for Marbling (45 carcasses = average 35.08% IMF) and #6 Dam Sire for Marble Fineness (30.94). For many years, Kitaguni Jr was the leading sire in the early iterations of the SPS - but recently, he has been outshone by his sons, LMR Daisuke 2470Z and LMR Kitaguni 1441Y. Still, as a sire, Kitaguni Jr shows decent numbers as a sire, averaging 34.23% IMF on 94 carcasses. BREEDPLAN numbers have Kitaguni Jr as Trait Leader for two traits; Top 1% for Birth Weight EBV (-3.4) and Top 4% for Marble Score EBV (+1.7).

8724F is an example of the Kitaguni x Yasufuku breeding that has worked so well for Lone Mountain. WKS Kitaguni Jr and WKS Yasufuku Jr occupy two of the three top places on the 2019 LMCC Sire Performance Study (SPS) as Dam Sires for Marbling. Yasufuku is #3 (62 carcasses = average 34.23% IMF). In addition, Yasufuku Jr is the #1 Dam Sire for Marble Fineness (average 33.31).

LMR Kitaguni 8724F carries 57% Tajima, 13% Itozakura, 6% Shimane, 5% Okayama and 3% Kedaka bloodlines - and ranks in the Top 1% of the breed for Birthweight EBV (-2.8).

MAYURA L0010 is a promising young son of Mayura Itoshigenami Jnr 0139. MAYURA L0010 ranks in the Top 1% for Marble Score EBV (+2.3) and Ribeye Area (EMA) EBV (+7.7), and in the Top 1% for all 4 Wagyu Indexes: Wagyu Breeder (\$277), Self-Replacing (\$292), Fullblood Terminal (\$245) and F1 Terminal (\$228). Purchased in 2017 for AU\$105,000, L0010's EBVs were calculated using genomics, as well as 46 recorded calves weights.

L0010's dam, Mayura H0159, reflects Itozurudoi TF151 and Kanadagene 100 bloodlines from the Aizakura maternal line.

MAYURA L0010 was sired by Mayura Itoshigenami Jnr, sometimes referred to as "King of Australian Wagyu Sires," who has been at the top of the Australian Published Sire Reports since 2015 with more than 842 carcasses imaged and measured - he has sired more than 1450 calves at last count. In 2016, 10 straws of 0139 were sold for AU\$30,050 (\$3,050 each); in 2017 his son L0010 was sold at auction for AU\$105,000; and in 2019, one of his heifers sold for a record-setting AU\$280,000. And six straws of his recently sold in the 2020 Mayura Sale for \$68,000 per straw!

Mayura Itoshigenami Jnr is a proven progeny sire, a son of Itoshigenami TF148 - and his dam features the genetics of Sanjirou and Suzutani and TF Dai 2 Kinntou 3, an Itomichi daughter from the Hikokura maternal line.

L0010's half-brother, Mayura Jackpot J0399, won the Grand Champion Fullblood Wagyu award at the 2019 Australian Wagyu Branded Beef competition - with a 28-month old carcass weighing 970 lbs; on feed for 266 days; graded 54% IMF; Marbling Fineness 62.3; and with a Ribeye Area of 30.8 in 2! The judges' comments: "Beautiful piece of beef, tender, juicy with a great buttery flavor. An excellent example of Wagyu."

Mayura L0010 is a carrier of CHS, but free for all remaining four known Wagyu genetic defects.

Embryos stored at Trans Ova Genetics, 2938 380th St, Sioux Center, IA 51250 (712.722.3586)

sire, Itozurudoï TF 151



4 Fullblood Embryos _____ **LOT 34A**
BLACK | Selling one package of four Fullblood, Domestic embryos.

4 Fullblood Embryos _____ **LOT 34B**
BLACK | Selling one package of four Fullblood, Domestic embryos.

ITOZURUDOÏ TF 151
F11C, CHSF, B3F, CL16F

ITOKITATSURU
YASUHIME

DAI 7 ITOZAKURA
NISHIZURU
YASUMI DOI
FUJIHIME
KITAGUNI 7/8
WORLD K'S NAKAYUKI
WORLD K'S MICHIFUKU
CHR MS HIRASHIGE 055J

LMR MS KITAGUNI 1265Y

WORLD K'S KITAGUNI JR.
LMR MS MICHIFUKU 628S

CONSIGNEE BY **LONE MOUNTAIN CATTLE, GOLDEN, NM**

LMR Ms Kitaguni 1265Y is AA 6 Group "C" donor cow, with 48% Tajima, 21% Itozakura, 11% Kedaka, 10% Okayama and 7% Shimane bloodlines.

1265Y is sired by WKS Kitaguni Jr, the #1 Dam Sire for Marbling (35.08% IMF) based on 45 carcasses, in the June 2019 LMCC Sire Performance Study and #6 Dam Sire for Marble Fineness (3.09)– and as Sire averaged 32.43% IMF based on 94 imaged carcasses. BREEDPLAN numbers have Kitaguni Jr as Trait Leader for 2 traits: Top 1% for Birth Weight EBV (-3.4) and Top 4% for Marble Score (+1.7). In the 2017 LMCC Sire Performance Study, WKS Kitaguni Jr ranks 4th with an average of 31.73% IMF.

Her dam, LMR Ms Michifuku 628S, descending from Hikokura, is a balanced and still active twelve-year-old dam-sired by Hirashigetayasu ETJ001. 628S is a prolific donor cow, producing 48 viable embryos and 17 live calves, including one Itoshigenami TF148 steer graded 34% IMF.

Itozuru Doi TF151 was born March 12, 1991 and exported by Takeda-san in 1997 in the final shipment shortly before he was expelled from the Japanese Wagyu Registry (Zenwa) in that same year.

Itozurudoï TF151's sire, Itokitatsuru J1081 (Tottori), was a son of Dai 7 Itozakura (brother to Kitaguni 7-8 J1530, Itomichi J1158, Itofuji J483, Itofuji J1711, Itohana J809, among many others). In addition to TF151, Itokitatsuru J1081 also sired Itohirashige J1555, who sired Itomoritaka J2703 ETJ002. Kenichi Ono refers to TF151 as one of Dai 7's most famous progeny.

Dai 7 Itozakura was Itokitatsuru J1081's sire and Kedaka was his maternal grandfather, making Itokitatsuru a blend of Kedaka/Itozakura lines. Itozurudoï's dam, Yasuhime J433313, was sired by Yasumi Doi J10328, and her dam sire was Kikuteru Doi J10787 – making her a blend of Naka Doi/Kikumidoi lines. One could not dream up a more diverse bull. He is: 50% Tajima; 25% Fujiyoshi; and 25% Kedaka.

Itozurudoï TF151 has an extremely big frame, weighing 2,420 lbs, and carries early maturing traits that produce great fullblood mothers with excellent milk. He is also the best marbling bull of the Fujiyoshi bloodlines, anecdotally. By the time his progeny was tested and his value was discovered, Itozurudoï TF151 was deceased, leaving a very limited supply of semen.

BREEDPLAN figures for Itozurudoï TF151 show him to be a Trait Leader for the Wagyu Breed and in the top 5% for Marble Fineness EBV (+0.34). His influence is felt with LMR Akahige 8119U (TF151 x TF600) – see one of his steers (4200B).

Itozurudoï TF151 is a carrier of F11, but free for all remaining known Wagyu genetic defects.

His influence is felt with LMR Akahige 8119U (TF151 x TF600) – see one of his steers (4200B).

Embryos stored at Trans Ova Genetics, 2938 380th St, Sioux Center, IA 51250 (712.722.3586)



sire, Itozurudoi TF 151

4 Fullblood Embryos

LOT **35**

BLACK | Selling one package of four Fullblood, Domestic embryos.

ITOZURUDOI TF 151
F11C, CHSF, B3F, CL16F

ITOKITATSURU

DAI 7 ITOZAKURA

YASUHIME

NISHIZURU

YASUMI DOI

FUJIHIME

WORLD K'S MICHIFUKU

MONJIRO 11550

LMR MS MICHIFUKU 0162X

BR MS KIKUHANA 8610

MICHIKO 655635

TF KIKUHANA

JVP MS FUKUKANE 05E

CONSIGNED BY LONE MOUNTAIN CATTLE, GOLDEN, NM

LMR Ms Michifuku 0162X is a productive Group "D" cow, with 64% Tajima, 17% Itozakura, 5% Okayama and 3% Okayama bloodlines.

0162X's sire, WKS Michifuku, is a Wagyu Trait Leader ranking in the Top 1% for both Ribeye Area (EMA) EBV (+7.0) and for Marble Fineness EBV (+0.45) with accuracies of 96% and 98% in the current BREEDPLAN report.

LMR Ms Michifuku 0162X's dam, BR Ms Kikuhana 8610, is by TF Kikuhana and descends from the Chisahime maternal line. 8610 produced 10 calves for Lone Mountain before she passed away at 16 years of age.

LMR Ms Michifuku 0162X has produced 6 calves for Lone Mountain – one of whom, a thirty-month-old steer by LMR Daisuke 2470Z, a Kitaguni Jr son, graded 42.29% IMF.

Itozuru Doi TF151 was born March 12, 1991 and exported by Takeda-san in 1997 in the final shipment shortly before he was expelled from the Japanese Wagyu Registry (Zenwa) in that same year.

Itozurudoi TF151's sire, Itokitatsuru J1081 (Tottori), was a son of Dai 7 Itozakura (brother to Kitaguni 7-8 J1530, Itomichi J1158, Itofuji J483, Itofuji J1711, Itohana J809, among many others). In addition to TF151, Itokitatsuru J1081

also sired Itohirashige J1555, who sired Itomoritaka J2703 ETJ002. Kenichi Ono refers to TF151 as one of Dai 7's most famous progeny.

Dai 7 Itozakura was Itokitatsuru J1081's sire and Kedaka was his maternal grandfather, making Itokitatsuru a blend of Kedaka/Itozakura lines. Itozurudoi's dam, Yasuhime J433313, was sired by Yasumi Doi J10328, and her dam sire was Kikuteru Doi J10787 – making her a blend of Naka Doi/Kikumidoi lines. One could not dream up a more diverse bull. He is: 50% Tajima; 25% Fujiyoshi; and 25% Kedaka.

Itozurudoi TF151 has an extremely big frame, weighing 2,420 lbs, and carries early maturing traits that produce great fullblood mothers with excellent milk. He is also the best marbling bull of the Fujiyoshi bloodlines, anecdotally. By the time his progeny was tested and his value was discovered, Itozurudoi TF151 was deceased, leaving a very limited supply of semen.

BREEDPLAN figures for Itozurudoi TF151 show him to be a Trait Leader for the Wagyu Breed and in the top 5% for Marble Fineness EBV (+0.34).

Itozurudoi TF151 is a carrier of F11, but free for all remaining known Wagyu genetic defects.

Embryos stored at Trans Ova Genetics, 2938 380th St, Sioux Center, IA 51250 (712.722.3586)

sire, HP Mayura L0010 ET



4 Fullblood Embryos

LOT **36**

BLACK | Selling one package of four Fullblood, Domestic embryos.

HP MAYURA L0010 ET

F11F, F13F CHSF, B3F, CL16F

MAYURA ITOSHIGENAMI JNR

MAYURA H0159

WORLD K'S KITAGUNI JR.

LMR MS KITAGUNI 1252Y

CL16F

LMR MS MICHIFUKU 628S

ITOSHIGENAMI

MAYURA DAI NI KINNTOU 1

MAYURA ZULU

WAGYU GENETICS AIZAKURA D837

KITAGUNI 7/8

WORLD K'S NAKAYUKI

WORLD K'S MICHIFUKU

CHR MS HIRASHIGE 055J

CONSIGNEE BY LONE MOUNTAIN CATTLE, GOLDEN, NM

LMR Ms Kitaguni 1252Y has been a valuable donor at Lone Mountain cattle Company producing 68 viable embryos in 6 flushes – averaging 11 embryos per flush.

Her sire, WKS Kitaguni Jr, a valuable son of Kitaguni 7D8 J1530, was born October 7, 1994 shortly after WKS Nakayuki J13943, his dam, arrived in the United States (exported by the Mannett Group).

In the 2017 LMCC Sire Performance Study, WKS Kitaguni Jr, with 61 carcasses studied, ranks 4th for IMF with an average of 31.73%, following Yasufuku Jr and his own sons, LMR Koichi 1409Y and LMR Kitaguni 1441Y. And with 16 images studied as Dam Sire, Kitaguni Jr displays his staying power for IMF by ranking #1 (34.35%).

In terms of Marble Fineness, Kitaguni Jr ranks 3rd as Dam Sire. WKS Kitaguni Jr, is a Trait Leader for two traits; Top 1% for Birth Weight EBV (-3.4) and Top 4% for Marble Score (+1.7). Kitaguni Jr has been a powerhouse for Lone Mountain, producing outstanding carcasses achieving the 50% IMF range.

Michifuku, on the maternal side of the pedigree, is another superb sire. WKS Michifuku was sired by Monjiro 11550, listed by Kenichi Ono as #7 on his list of the Top 15 most outstanding Wagyu of Japan.

Monjiro, sired by Yasumi Doi J10328, was born March 15, 1981 in Hyogo Prefecture and was the 11th calf by his dam, Harumi. Monjiro, originally named Harutoshi 2, was just a yearling when he won the Number 2 spot at the Zenkyo (All-Japan Wagyu Show) and was auctioned for \$160,000. Michifuku's dam, Michiko J655635, was sired by Tanishige 1526, grandsired by Yasutani Doi J472 and great-grand-sired by Yasumi Doi J10328.

MAYURA L0010 is a promising young son of Mayura Itoshigenami Jnr 0139. MAYURA L0010 ranks in the Top 1% for Marble Score EBV (+2.3) and Ribeye Area (EMA) EBV (+7.7), and in the Top 1% for all four Wagyu Indexes: Wagyu Breeder (\$277), Self-Replacing (\$292), Fullblood Terminal (\$245) and F1 Terminal (\$228). Purchased in 2017 for

AUS\$105,000, L0010's EBVs were calculated using genomics, as well as 46 recorded calves weights.

L0010's dam, Mayura H0159, reflects Itozurudoi TF151 and Kanadagene 100 bloodlines from the Aizakura maternal line.

MAYURA L0010 was sired by Mayura Itoshigenami Jnr, sometimes referred to as "King of Australian Wagyu Sires", who has been at the top of the Australian Published Sire Reports since 2015 with more than 842 carcasses imaged and measured – he has sired more than 1450 calves at last count. In 2016, 10 straws of 0139 were sold for AUS\$30,050 (\$3050 each); in 2017 his son L0010 was sold at auction for AUS\$105,000; and in 2019, one of his heifers sold for a record-setting AUS\$280,000. And six straws of his recently sold in the 2020 Mayura Sale for \$68,000 per straw!

Mayura Itoshigenami Jnr is a proven progeny sire, a son of Itoshigenami TF148 – and his dam features the genetics of Sanjiro and Suzutani and TF Dai 2 Kinntou 3, an Itomichi daughter from the Hikokura maternal line.

L0010's half-brother, Mayura Jackpot J0399, won the Grand Champion Fullblood Wagyu award at the 2019 Australian Wagyu Branded Beef competition – with a 28-month old carcass weighing 970 lbs; on feed for 266 days; graded 54% IMF; Marbling Fineness 62.3; and with a Ribeye Area of 30.8 in! The judges' comments: "Beautiful piece of beef, tender, juicy with a great buttery flavor. An excellent example of Wagyu."

Mayura L0010 is a carrier of CHS, but free for all remaining 4 known Wagyu genetic defects.

Embryos stored at Trans Ova Genetics, 2938 380th St, Sioux Center, IA 51250 (712.722.3586)



lot 37, Synergy Sanj Yuriko 512F ET

Synergy Sanj Yuriko 512F ET _____ **LOT 37**

FB40130 | 08.27.2018 | FULLBLOOD HEIFER | BLACK

WORLD K'S SANJIROU

F11F, F13F, CHSF, B3F, CL16F

WORLD K'S MICHIFUKU

WORLD K'S SUZUTANI

WORLD K'S SHIGESHIGETANI

STUD YURIKO-TANI 414

CHR MS FUKUTSURU 148N

MONJIRO 11550

MICHIKO 655635

TANISHIGE 1526

SUZUNAMI 472255

WORLD K'S HARUKI 2

WORLD K'S SUZUTANI

JVP FUKUTSURU-068

CHR MS KIKUSHIGE 016

Confirmed Pregnant to 7/23/2020 AI to Ginjo Marblemax Hiranami B901

This is an elite bred heifer stacked with proven marbling and rib eye area! Huge Suzutani influence from her sire World K's Sanjirou and maternal grandsire World K's Shigeshigetani. Behind those two proven breed leaders for marble score and ribeye area is JVP Fukutsuru 068, the former #1 marbling sire in the USA. She is confirmed pregnant to the sire Ginjo Marblemax Hiranami B901 who has leading Breedplan EBVs among proven sires for growth, carcass weight, ribeye area, and marbling.

CONSIGNED BY **SYNERGY WAGYU**, SPRING CITY, PA

CHOICE CALVES

Choice of Calf

LOT 38

Selling choice out of 12 calves sired by Genjiro.

Genjiro (sire)

FB5200 | 06.23.1994 | FULLBLOOD Bull | BLACK

WORLD K'S HARUKI 2

MONJIRO 11550
SAKURA 2 741638

YASUMI DOI
HARUMI 1086409
KENSHIN 902
ITOHOME 3 545978

WORLD K'S OKUTANI

OKUSHIGE 1803
FUJITANI 655405

SHIGESHIGENAMI 10632
OKUMUNE 165585
KIKUTANI 908
ITOFUJI 9 410738

CONSIGNED BY PRIME VALLEY FARMS, CUTLER, IN



Dam's include ... CHR MS Kimifuku 452, PV Dainaa 25E (PV25E), PV Milcah (PV11C), LL MS Itohana 90X (LL90X) and UKB I205.

Here we have an unprecedented opportunity to invest in rare, proven, data driven Full-blood Black Wagyu genetics. The successful buyer may choose a calf from 12 calves sired by the elite, proven sire Genjiro. Not only is Genjiro proven to perform, but each of the dams have a history of producing superior and profitable calves. An inquiry of the very latest Breedplan Genomic Estimated Breeding Values (GEBV) highlights the amazing fact that there are only 16 sires (out of thousands) ever tested worldwide that can match Genjiro's Breedplan Indices. Genjiro has proven his elite status as a bull who able to produce high performance growth and carcass in one balanced package. A son of original Japanese imported animals World K Haruki II and World K Okutani, Genjiro also carries rare, hard to obtain bloodlines. Genjiro has proven on hundreds of Holstein F1 cross carcasses that he is one of the few proven sires that can deliver high end and profitable Fullblood, F1 Beef and F1 Holstein carcasses. A recent steer carcass raised by Prime Valley Farms (PVF) yielded at marbling of over 50% IMF!! Each of the dams of these calves are high performing and elite in their own right. Each of the donors are registered in the American Wagyu Association as well as the Australian Wagyu Association. Dams are referenced in the table provided. Page space constrains us; PVF is happy to provide much more information and commentary on the genetics and data behind this rare, exciting and elite offering. These calves are all extremely docile and very approachable. All have been genomically tested via BreedPlan to aid the lucky buyer in selection. Calf selection and possession shall be performed the first week of November 2020. All calves will be fully weaned and backgrounded before this time. Transportation from Indiana is buyer's responsibility. All calves are tested BVD-PI free. PVF annually tests for and is free of Johnes, BVD, Neospora and Anaplasmosis. Buy with confidence. (Calf would need selected and picked up the first week of November.)



sire, Genjiro

Name/ID	Sex	October 2020 Wagyu BREEDPLAN														Genetic Test Status			Dam		
		Gestation Length (days)	Birth Wt (kg)	200 Day Wt (kg)	400 Day Wt (kg)	600 Day Wt (kg)	Mat Cow Wt (kg)	Carcass Wt (kg)	Eye Muscle Area (sq cm)	Retail Beef Yield (%)	Marble Score	Marble Fineness (%)	Wagyu Breeder Index	Self Replacing Index	Fullblood Terminal Index	F1 Terminal Index	ID	USA Registration	AUS Registration		
PV MS GENJIRO 910H	H	-1.6	-2.4	2	0	-2	-8	5	3.8	0.3	0.5	0.12	\$79	\$93	\$92	\$96	B3FU, CHSFU, CL16F, F11FU, IARSC	CHR452	FB12154	USAFB12154	
PV GENJIRO 911H	B	-0.8	0.5	10	19	26	21	29	2.2	-0.1	0.9	0.2	\$155	\$155	\$143	\$130	B3FU, CHSFU, CL16?, F11FU, IARSC	CHR452	FB12154	USAFB12154	
PV GENJIRO 912H	B	-1.2	2.2	15	26	36	33	26	3.3	0.2	0.9	0.2	\$204	\$201	\$169	\$149	B3FU, CHSFU, CL16FU, F11FU, IARSF	PV11C	FB20157	USAFB20157	
PV GENJIRO 913H	B	-1	-1.7	7	12	18	13	21	2.7	-0.6	1.2	0.17	\$194	\$215	\$196	\$191	B3FU, CHSFU, CL16FU, F11FU, IARSF	PV25E	FB27448	USAFB27448	
PV MS GENJIRO 914H	H	-1.6	0.9	14	20	29	22	28	3.1	0.3	0.9	0.21	\$174	\$169	\$162	\$146	B3FU, CHSFU, CL16F, F11FU, IARSC	CHR452	FB12154	USAFB12154	
PV GENJIRO 916H	B	-1.7	0.8	14	21	35	24	35	2.1	0	1.1	0.27	\$195	\$194	\$180	\$162	B3FU, CHSFU, CL16F, F11FU, IARSC	CHR452	FB12154	USAFB12154	
PV MS GENJIRO 917H	H	-0.1	3.3	18	27	37	26	27	5.4	1.1	0.6	0.02	\$192	\$181	\$151	\$127	B3FU, CHSFU, CL16FU, F11FU, IARSC	PV11C	FB20157	USAFB20157	
PV GENJIRO 918H	B	0.8	2.3	13	21	28	27	19	3.3	0.5	0.8	0.07	\$169	\$165	\$138	\$122	B3FU, CHSFU, CL16FU, F11FU, IARSC	PV11C	FB20157	USAFB20157	
PV GENJIRO 919H	B	-1.9	-2.1	5	6	8	-1	15	2.4	-0.1	0.6	0.16	\$113	\$126	\$116	\$114	B3FU, CHSFU, CL16?, F11FU, IARSC	CHR452	FB12154	USAFB12154	
PV MS GENJIRO 922H	H	-0.8	1.4	9	15	18	16	12	5	0.5	1.3	0.18	\$184	\$194	\$165	\$156	B3FU, CHSFU, CL16FU, F11FU, IARSF	PV11C	FB20157	USAFB20157	
PV PV GENJIRO 923H	B	-1.8	1.2	18	35	54	44	47	1.6	0.2	0.7	0.07	\$249	\$238	\$208	\$178	B3F, CHSF, CL16FU, F11F, F13F, IARSF	UKB1205	FB11794	PEDFB11794	
PV GENJIRO 924H	B	-0.5	1	9	13	14	13	14	0.9	-1.1	0.8	0.13	\$115	\$121	\$123	\$119	B3FU, CHSFU, CL16FU, F11FU, IARSC	LL90X	FB17252	USAFB17252	



lot 39, ESR Mr Aoichi F12

ESR Mr Aoichi F12

LOT **39**

FB35456 | 04.15.2018 | FULLBLOOD BULL | BLACK

ITOSHIGENAMI

SHIGESHIGENAMI 10632

LMR AOICHI 2468Z

B3F, CHSF, CL16F, F11F, F13F LMR MS MICHIFUKU 783T

FUKUYUKI

WORLD K'S MICHIFUKU

BR MS FUKUTSURU 9671

DAI 20 HIRASHIGE 287

MORIKITA J141042

373 SHIGHARU

CHR MS SANJIROU 309T

SHIGEFUKU J1822

ESR MS SHIGEFUKU C04

B3F, CHSF, CL16F, F11F, F13F GAW SANSHIGA

— CONSIGNED BY **WAGYU ENDLESS SKY CATTLE RANCH LLC, SULPHUR SPRINGS, TX**

AA4 Tested Free

1,235 pounds as of August 2020

SCR 36

ESR Mr. Aoichi was bred for balance, low birthweight, high marbling and high fineness. Mr. Aoichi F12's sire LMR Aoichi 2468Z is one of Lone Mountain Ranch's primary TF148 sires. He is a low birthweight bull with higher than average marble score of +1.4 and a marbling fineness of +.018 (BREEDPLAN 2017) ESR Mr. Aoichi's Dam is out of ESR Ms. Shigefuku C04 FB 21894, who was sired by Shigefuku J1822 considered to be one of the most influential Kedaka bulls in Japan. ESR Mr. Aoichi is a Group D – 61% Tajima, 22% Kedaka.



Selling 5 units of Semen

HP Mayura L0010 ET LOT **40A**

FB45043 | 01.22.2015 | FULLBLOOD BULL | BLACK

<p>MAYURA ITOSHIGENAMI JNR MAYURA DAI NI KINNTOU 1</p> <p>MAYURA H0159 MAYURA ZULU WAGYU GENETICS AIZAKURA D837</p>	<p>SHIGESHIGENAMI 10632 FUKUYUKI WORLD K'S SANJIROU MAYURA DIA 2 KINNTOU 7/2 ET ITOZURU DOI MAYURA DAI 2 TERUHANA 10/1 ET ITOSHIGENAMI BENLEE AIZAKURA X158 ET</p>
---	--

CONSIGNED BY **LANDGRAF RANCH AT WALNUT CREEK, RED ROCK, TX**

Selling 5 units of Semen

HP Mayura L0010 ET LOT **40B**

FB45043 | 01.22.2015 | FULLBLOOD BULL | BLACK

<p>MAYURA ITOSHIGENAMI JNR MAYURA DAI NI KINNTOU 1</p> <p>MAYURA H0159 MAYURA ZULU WAGYU GENETICS AIZAKURA D837</p>	<p>SHIGESHIGENAMI 10632 FUKUYUKI WORLD K'S SANJIROU MAYURA DIA 2 KINNTOU 7/2 ET ITOZURU DOI MAYURA DAI 2 TERUHANA 10/1 ET ITOSHIGENAMI BENLEE AIZAKURA X158 ET</p>
---	--

CONSIGNED BY **LANDGRAF RANCH AT WALNUT CREEK, RED ROCK, TX**

L0010 is a son of Mayura Itoshigenami Jnr 0139. Mayura L0010 ranks in the Top 1% for Marble Score EBV and Ribeye Area EBV and in the Top 1% for all 3 Wagyu Indexes: Self-Replacing, Fullblood Terminal and F1 Terminal Index. In 2017, he sold for \$105,000! L0010's dam, Mayura H0159, reflects Itozurudo TF151 and Kanadagene 100 bloodlines from the Aizakura maternal line. Mayura L0010 was sired by Mayura Itoshigenami Jnr, sometimes referred to as "King of Australian Wagyu Sires," who has been at the top of the Australian Published Sire Reports since 2015 with more than 75 carcasses imaged and measured—he has sired more than 900 Mayura calves at last count. In 2016, 10 straws of 0139 were sold for \$30,050 (\$3,050 each); in 2019, one of his heifers sold for a record-setting \$280,000 and a son sold for \$185,000 in 2018. Mayura Itoshigenami Jnr semen just sold and averaged over \$55,000 per straw, a world record. Mayura Itoshigenami Jnr is a proven progeny sire, a son of Itoshigenami TF148—and his dam features the genetics of Sanjirou and Suzutani and TF Dai 2 Kinntou 3, an Itomichi daughter from the Hikokura maternal line. L0010 semen is no longer being sold, so the value here is priceless.

Stored at Elgin Breeding Service, 875 Central Ave., Elgin, TX (1.800.654.2503)



LRX Taz 5U 0320F - 30F ET is a DNA verified **homozygous polled** purebred Wagyu bull with genetics from the Bar R Cattle Company. He is the genetic twin to the recently deceased BAR R ARIMURA, another highly desired homozygous bull. He is free of all test genetic defects. LRX 30F has an exceptional pedigree with his sire Bar R 52Y producing exceptional progeny results in Australia. 52Y sired bulls that have sold for \$80,000 as well as a female who just recently sold for over \$40,000. On the BreedSeek DNA test, his score confirmed his pure Wagyu genetics. Polled Wagyu will have a significant impact on the future of the Wagyu breed with proven genetics, with the added benefit of no horns. The advantages include: Genetic quality, Adaptability, Growth Rate, No Horns, No Cost of Horns, Polled calves, Registered Sires to name a few. Since Bar R 52Y, his sire, progeny have been coming through the Robbins Island Program in Australia, the profitability and consistency has increased immensely. 695 Bar R 52Y Progeny have now been processed through the Robbins Island Wagyu Program. And additionally Bar R 52Y progeny were processed in a trial in Queensland. The dams of these animals are all Hammond Farms original Heterozygous Polled females. The following shows Marbling, Carcass Weight, Eye Muscle Area, and Days on Feed. His dam, Bar R 5U was the high selling cow in the 2016 Bar R Wagyu production sale and has 29 progeny in the American Wagyu Association registry. 5U is a true foundation dam for the future of polled Wagyu!

Stored at Elgin Breeding Service, 875 Central Ave., Elgin, TX (1.800.654.2503)

— *Selling 5 units Homozygous Polled Semen* —
LRX Taz 5U 0320F - 30F ET _____ LOT **41A**

PB33987 | 03.20.2018 | PUREBRED BULL | BLACK

BAR R 52Y

B3F, CHSF, CL16F, F11F

BAR R SHIGESHIGETANI 30T

BAR R 16T

WORLD K'S SHIGESHIGETANI

BAR R 68P

BAR R 72P

MISS BAR R 52L

BAR R 7P

SUZIWONG

BAR R TAKASURU 1 K

BAR R 29L

BAR R 5U

B3F, CHSF, CL16F, F11F

BAR R 10S

BAR R 13P

— CONSIGNED BY **LANDGRAF RANCH AT WALNUT CREEK, RED ROCK, TX** —

— *Selling 5 units Homozygous Polled Semen* —
LRX Taz 5U 0320F - 30F ET _____ LOT **41B**

PB33987 | 03.20.2018 | PUREBRED BULL | BLACK

BAR R 52Y

B3F, CHSF, CL16F, F11F

BAR R SHIGESHIGETANI 30T

BAR R 16T

WORLD K'S SHIGESHIGETANI

BAR R 68P

BAR R 72P

MISS BAR R 52L

BAR R 7P

SUZIWONG

BAR R TAKASURU 1 K

BAR R 29L

BAR R 5U

B3F, CHSF, CL16F, F11F

BAR R 10S

BAR R 13P

— CONSIGNED BY **LANDGRAF RANCH AT WALNUT CREEK, RED ROCK, TX** —

Selling 5 units of Semen

CHR Kikutsuru Doi 624A LOT **42A**

FB17077 | 08.28.2013 | FULLBLOOD BULL | BLACK

TF KIKUTSURUDOI
B3F, CHSF, CL16F, F11C, F13F

TANIFUKU-DOI
YASUTSURU 509605

YASUTANI DOI
KIKUTSURU 978542
YASUTANI DOI
JAPANESE COW (BLACK)
WORLD K'S KITAGUNI JR.
CHR MS MICHIFUKU 030H
MJB MUSASHI 03K
CHR MS KIKUSHIGE 012

CHR MS KITAGUNI 394
B3F, CHSF, CL16F, F11F

CHR KITAGUNI 07K
CHR MS FUKUTSURU 199R

CONSIGNED BY **BIRCH BAY WAGYU, HARBOR SPRINGS, MI**



Selling 5 units of Semen

CHR Kikutsuru Doi 624A LOT **42B**

FB17077 | 08.28.2013 | FULLBLOOD BULL | BLACK

TF KIKUTSURUDOI
B3F, CHSF, CL16F, F11C, F13F

TANIFUKU-DOI
YASUTSURU 509605

YASUTANI DOI
KIKUTSURU 978542
YASUTANI DOI
JAPANESE COW (BLACK)
WORLD K'S KITAGUNI JR.
CHR MS MICHIFUKU 030H
MJB MUSASHI 03K
CHR MS KIKUSHIGE 012

CHR MS KITAGUNI 394
B3F, CHSF, CL16F, F11F

CHR KITAGUNI 07K
CHR MS FUKUTSURU 199R

CONSIGNED BY **BIRCH BAY WAGYU, HARBOR SPRINGS, MI**

What a tremendous opportunity here. "624A" is the one of the very few fullblood sons of TF Kikutsurudoï to be recorded in the US and free of all genetic conditions. "Kikutsurudoï" was imported in the US in 2001 by Takada Genetics. His semen lacked an enzyme preventing his sperm from penetrating the zona pellucida of an embryo; conventional AI conception has been rare. Only three in-vitro fertilization have resulted in limited success. Kikutsurudoï is line bred Tajima with Yasutani Doi who appears top and bottom of his tabulation. Yasutani Doi is the sire of the legendary Yasufuku 930 as well as Tanishige, the sire of Suzutani, the dam of Sanjirou and Shigeshigetani. "624" has the potential to sire excellent carcass traits, while being utilized to keep the inbreeding co-efficiency down in your Wagyu program. Take advantage on what is being offered here with this unique sire. (Shipping costs are the buyer's responsibility.)

Stored with Dr. John Gunther at GGS Genetics in 11349 Chandler Rd, DeWitt, MI 48820 (517.641.7453)
www.ggsgenetics.com



Selling 5 units of Semen

MCK Sumo CC Hirashigetayasu E148 ET — LOT **43**

FB58341 | 02.21.2009 | FULLBLOOD BULL | BLACK

HIRASHIGETAYASU J2351
B3F, CHSF, CL16F, F11F, F13F

DAI 20 HIRASHIGE 287
DAI 5 YURUHIME

KEDAKA 7212
DAI 13 HIRASHIGE
TAYASUHUKU
YURIKO 795455

SUMI NAMI W1433 ET

ITOSHIGENAMI
SUMO RUKI T0913 ET

SHIGESHIGENAMI 10632
FUKUYUKI
WORLD K'S HARUKI 2
TF HIKOHIME 12/2

CONSIGNED BY **CODENWARRA WAGYU, EMERALD, QLD**

Sumo Hirashigetayasu E148, using the latest September Sire summary guide out of Australian Wagyu Association, is in the top ten of the breed with accuracies over 80% and the top 1% of the breed in all areas of growth - 200 day, 400 day, 600 day and mature cow growth EBV's. E148 has a MS of 1 and has good eyemuscle and fineness. This growth sire will improve your herd and not sacrifice carcass quality.

Semen stored at Brushy Creek Custom Sires, 18051 Fm 1660, Taylor, TX 76574 (512.352.7444)



Selling 5 units of Semen

MSM Codenwarra Hirashigetayasu L299 – lot **44**

FB58344 | 10.02.2015 | FULLBLOOD BULL | BLACK

MCK SUMO CC HIRASHIGETAYASU E148 ET
 HIRASHIGETAYASU J2351
 SUMO NAMI W1433 ET

DAI 20 HIRASHIGE 287
 DAI 5 YURUHIME
 ITOSHIGENAMI
 SUMO RUKI T0913 ET
 ITOSHIGENAMI
 NABO YASU T721 ET
 ITOSHIGENAMI
 TWA SHITASII ET

MCK CODENWARRA F C345
 NOBO F V2374 ET
 MCK CODENWARRA F W0045 ET

Codenwarra Hirashigetayasu L1299 is the top performing son of his proven next generation growth sire E148. Not only are his preliminary genomic ebvs showing improvements over his father with a whopping + 54 in carcass weight, but excellent eye-muscle and marbling scores as well. Looking deeper into his pedigree is Itoshigenami three times as grandsire! Yes ... triple bred itoshigenami with a carcass weight EBV of +54... THAT IS COMPLETELY RECESSIVE FREE!

Semen stored at Brushy Creek Custom Sires, 18051 Fm 1660, Taylor, TX 76574 (512.352.7444)

CONSIGNED BY **CODENWARRA WAGYU, EMERALD, QLD**



WAGYU

donations

**All donated items will be sold following the Signature Series 2.0 Wagyu Sale,
October 29th starting at 7:00 P.M. E.S.T.**

Proceeds will benefit the AWA and the Junior Wagyu Association. **Log onto www.wagyu365.com** to the auction section to bid online or call any of the Wagyu365 team members if you have any questions.

Donation A

JEWELRY CHAIN | Value \$750 | Donated by Shannon Bagby of Kansas City, Mo

About the Designer

Shannon Bagby, the woman behind Maggie Jones fine jewelry, is a hard-working creative who recalibrated her life after a near-fatal accident in college. Her Grandmother, the real Maggie Jones, inspired and encouraged her to follow a more truthful path – healing first, finding her passion, and then a working towards fully weaving that into her life. She began by taking classes at the University of Kansas and later at the new approach school in Tennessee. She honed her skills while apprenticing as a metalsmith and stone setter in Kansas City.

Her love for jewelry led her to launch her own design business. She named it after her beloved Grammie Maggie to remind herself of her journey and her grandmother's constant love and support. One way she has realized she can help spread that supportive and positive ideology is through working with children. She has taught numerous workshops on metalsmithing to young children for many different organizations including the girl scouts and the boys and girls club.

In addition to manufacturing her collection, Shannon has continued her education at the Gemological Institute of America and will graduate with the GIA Graduate Gemologist Certificate, one of the most prestigious credentials in the industry. She was recently accepted into the American Craft Council and has participated in fairs across the south and midwestern United States. Her collections have been featured in the KC Magazine and the September Issue of British Vogue.

Shannon lives and works out of her studio in her historic home in Kansas City, Missouri. When she's not setting stones, she can be found in her extensive garden, taking care of her chickens and her new puppy, Pearl, and laughing amongst her friends whom she frequently hosts for meals on her back porch.

About the Jewelry "The Oklahoma Collection"

This piece is from a special collection called "The Oklahoma Collection," named for where the stones come from. The stones are from my dad's family ranch in Freedom, OK. There are natural salt flats on the property giving the mica a unique luster and hardness much different from mica found in other parts of the world.





Donation B

BREEDER'S GUIDE **INSIDE FRONT COVER** | Value \$350
Donated by the American Wagyu Association, Post Falls, ID

Donation C

BREEDER'S GUIDE **OPPOSITE INSIDE FRONT COVER** | Value \$350
Donated by the American Wagyu Association, Post Falls, ID

Donation D

BREEDER'S GUIDE **MIDDLE TWO PAGE SPREAD** | Value \$700
Donated by the American Wagyu Association, Post Falls, ID

Donation E

BREEDER'S GUIDE **INSIDE BACK COVER** | Value \$350
Donated by the American Wagyu Association, Post Falls, ID

Donation F

BREEDER'S GUIDE **BACK COVER** | Value \$350
Donated by the American Wagyu Association, Post Falls, ID

Donation G

TROPHY WHITETAIL DEER HUNT | Value \$3,000 Donated by Bob Mehall of Still Waters Ranch, Bulverde, Texas

This \$3,000 gift certificate can be applied to a four-day, three-night trophy whitetail deer hunt at Still Waters Ranch in Bulverde, Texas. Abundant white-tail deer in a high fence hunting preserve will allow you the opportunity to take a trophy buck up to 150" SCI for \$3,000 or up to 200" SCI for \$6,500. Bigger bucks up to and over 300" SCI are possible. This fully guided hunt includes first class accommodations in an outstanding setting on a historical ranch founded in the 1860's. Accompanying guests and/or additional hunters are welcome and arrangements can be made for them to join you on your hunt of a lifetime.

For a more detailed description of the ranch facilities as well as photos of representative deer that might be seen and taken are available on the ranch website www.stillwatersranchtx.com and also at www.vrbo.com/1292442.



Donation H

FISHING TRIP Donated by Ralph & Helene Valdez of Crescent Harbor, Oak Harbor, WA

Come Salmon fishing in Washington state with Ralph and Helene Valdez. Visit Crescent Harbor Ranch and dine on excellent seafood and Wagyu.



Donation I

WAGYU WEEKEND GETAWAY FOR TWO | Value \$1,500

Donated by Alice & Pete Eshelman of Joseph Decuis in Columbia City, IN

Joseph Decuis, Grand Champion winner of the 2019 Triple Crown Great Steak Championship, offers an idyllic get-away from your farm – to ours - for an auction item. Joseph Decuis Wagyu Farm raising full blood Wagyu in northeast Indiana, provides a world-class culinary experience, especially for Wagyu connoisseurs.

The Farmstead, an 1884 brick Italianate home and Bed & Breakfast on the farm, is your base. Enjoy first class accommodations, hearty breakfasts, and a private tour of the farm with owners, Pete & Alice Eshelman.

Your dinner is at our award-winning restaurant, Joseph Decuis in nearby Roanoke, Indiana, a charming Hoosier village known for its local, attractive shops and galleries. Our fine-dining restaurant is a AAA Four Diamond and Wine Spectator Best of the Award of Excellence recipient and you will enjoy sumptuous Wagyu degustation dinners plus lunches next door at the more casual Emporium for Wagyu burgers, Wagyu Reubens, salads, etc. A total WAGYU extravaganza!

Anything special you would like to see or do while you are here? Let's talk! We have beautiful trails in the woods for nature and athletic enthusiasts, horses for a horse drawn carriage ride, and more. We look forward to seeing you here!

Alice & Pete Eshelman, Owners



Joseph Decuis
Est. 2000

Thank You ... for Sponsorships & Donations to the AWA Conference

MAGGIE JONES FINE JEWELRY

Shannon Bagby | 816.588.1152
Kansas City, MO | www.maggiejones.shop

JOSEPH DECUIS WAGYU FARMSTEAD INN

The Eshelman Family | 260-672-1715
6756 East 900 South, Columbia City, IN 46725
www.josephdecuis.com

STILL WATERS RANCH

Bob Mehall | 210-722-4472
33561 Blanco Road, Bulverde, TX 78163
www.stillwatersranchtx.com

CRESCENT HARBOR RANCH

Ralph & Helene Valdez | 360.941.0644
88W Crescent Harbor Rd., Oak Harbor, WA 98277
www.crescentharborranch.com

NEOGEN, INC.

402.435.0665 | www.genomics.neogen.com
4131 N. 48th St., Lincoln, NE 68504

TAI RANCH

Tom & Mary Isola | tisola702@aol.com
10772 Modoc Rd., White City, OR 97503

WAGYU365

615.330.2735 | randy@wagyu365.com
PO Box 60097, Nashville, TN 37206
www.wagyu365.com

SUPER PRIME BEEF, INC.

Lindsay Ranch, Corrine Lindsay | 541.989.8478
73375 Lindsay Feedlot Lane, Lexington, OR 97839
www.washugyu.com

VERMONT WAGYU AT SPRING-ROCK FARM

Dr. Sheila Patinkin | 847.702.7812
150 Lower Parker Hill Rd., Springfield, VT 05156
www.vermontwagyu.com

PROTOCOL NATURALS

Dr. Jimmy Horner | 800.687.6455
210 Lake Road, Bridgeport, TX 76426
www.protocolnaturals.net

ALLFLEX

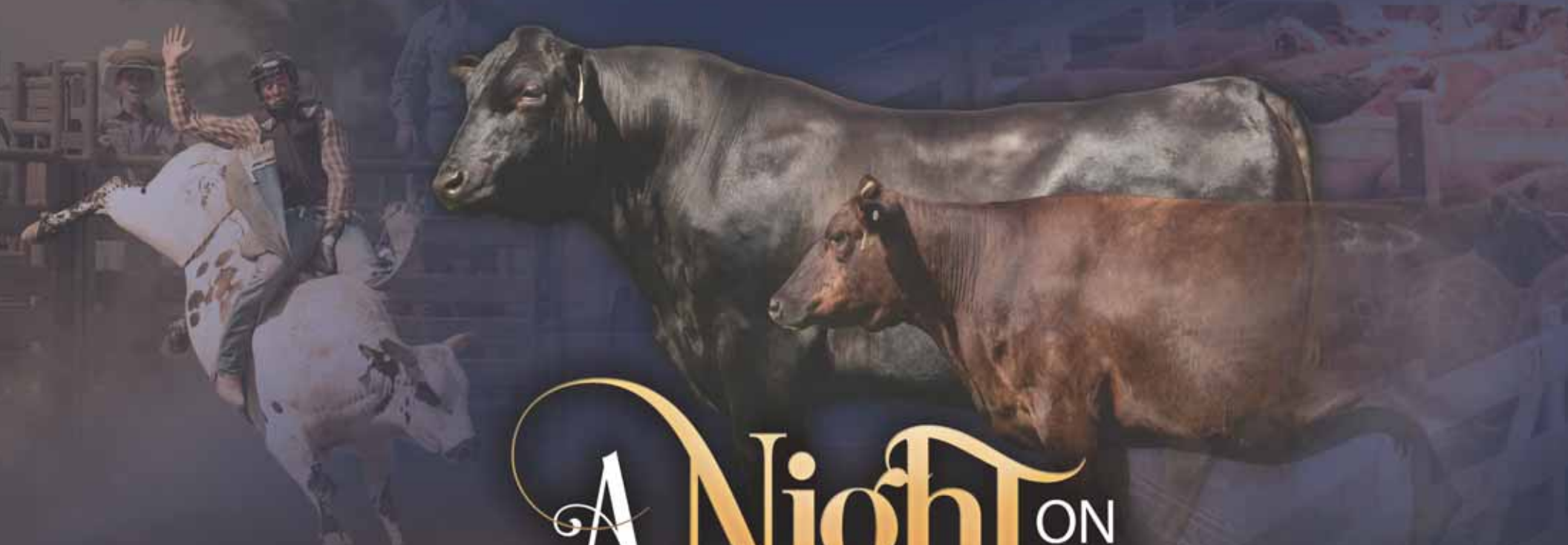
bill.mccoy@merck.com
P.O. Box 612266, Dallas/ Fort Worth Airport, TX 75261

IMPERIAL AMERICAN WAGYU BEEF

Jeremy Tibben | 402.557.6200
www.imperialamericanwagyubeef.com

SAKURA WAGYU FARMS

Lawrence Adams
170 North Sunbury Rd., Westerville, OH 43081-1931



A Night ON THE TOWN Sale III

WAGYU EDITION

SCHEDULE

- 11:30 a.m. Complimentary hors d'oeuvres & refreshments
- 1:00 p.m. A NIGHT ON THE TOWN SALE Starts
- 6:45 p.m. National Finals Rodeo starts (20 minutes from the sale)

SALE LOCATION & ACCOMODATIONS

Springhill Suites Fort Worth Historic Stockyards 682.255.5100
2315 North Main Street, Fort Worth, TX 76164

** Cowboy Christmas will be located near the sale site

IN CONJUNCTION WITH THE Wrangler 2020 NFR Experience

Selling 50 of the Finest of Wagyu Genetics!!

12.05.2020

AUCTIONEER, Doak Lambert | 972.839.6485

BRANDING & MARKETING ...



Sales Representative	Randall O. Ratliff		615.330.2735		Randy@wagyu365.com
Sales Representative	Kiley McKinna		402.350.3447		Kiley@wagyu365.com
Office Management	Abby Lane		919.618.8098		Abby@wagyu365.com
International Affairs	P J Budler		682.597.0380		PJ@wagyu365.com



IT'S ALL ABOUT THE MEAT

Volume 1

Live Online Sale at www.Wagyu365.com

TRIPLE CROWN
THE GREAT STEAK CHALLENGE

Join us 11.17.2020 at 7:00 p.m. E.S.T. on www.Wagyu365 for the live results of the Triple Crown Great Steak Challenge!!

The winning steak from each entry will sell at auction in this Live Online Sale.
A portion of the proceeds will benefit the Junior Wagyu Association.

ALSO FEATURED IN THIS SALE WILL BE ...

- Full Carcasses • Half Carcasses • Boxed Beef
- Live Fat Steers that are sire verified with a picture and video of each

A special Thank You to Bowman Farms for their Platinum sponsorship and all the Gold and Silver Sponsors for their support.

Platinum Sponsor



Silver Sponsors



Gold Sponsors

