



# RIVERSTONE

CATTLE COMPANY

BULL SALE • 03/27/17 • OLDS, AB



*“ In matters of style... move with the current  
In matters of integrity... stand like a rock ”*



**RIVERSTONE**  
CATTLE COMPANY

TIM & KIM MATTHEWS & FAMILY • OLDS, ALBERTA • 403.556.5744  
[www.riverstonecattle.com](http://www.riverstonecattle.com)



# RIVERSTONE

CATTLE COMPANY

**30** Angus Bulls  
**30** Limousin Bulls

Yearlings, Long Yearlings and 2 Year Olds



I would like to welcome you to the 2nd Annual Riverstone Cattle Co. Bull Sale. It's hard to believe at a year has passed since we inaugurated our own bull sale under our new farm name and location. As with ever year, it seems we have had our share of ups and down but the only thing that always stays consistent is our enthusiasm towards the cattle business. I am extremely proud of this years bull offering. This group consists of 30 Angus and 30 Limousin. We have spring born yearlings, fall born yearlings and 2 year old bulls for your appraisal. The spring born yearlings calved in January, February and March where as the fall born yearlings are calved in September and October. The fall calves are weaned in May and turned back out on grass for the summer and then brought back in September when we wean the spring yearlings so that we can manage them together. This group of bulls are put on a free choice pelleted ration through Masterfeeds along with home raised



**TIM MATTHEWS**  
Sale Day Phone  
403-556-5744

Plan on joining us for a pre-sale lunch served at 12 noon  
**Sale starts at 1:00 pm**

**BULL SALE • MARCH 27 2017 • C**



Videos of all **SALE BULLS**  
are available at  
[www.riverstonecattle.com](http://www.riverstonecattle.com)

silage as roughage. We are always short of pen space so this management allows us to use one large pen for all the yearlings. The 2 year old group of bulls were out on pasture until December then brought in also put on the pellets and silage.

This past year we have had great feedback from previous customers on how happy they have been with last years purchases. Texts and email showing the docility, condition and in some cases where they sold to purebred breeders the progeny they already have on the ground.

The bulls are available for viewing at the farm anytime prior to sale say. We are once again hosting our sale at the Olds Regional Exhibition Cow Palace in Olds, I hope you can join us. As always if you are unable to attend the sale please feel free to give me or one of the sale representatives a call and we would be happy to assist you in choosing a bull that fits your needs in the utmost professional way to make sure you are satisfied with your purchase.

Sincerely,

*Tim Matthews*

**OLDS COW PALACE • OLDS ALBERTA**

## SIGHT UNSEEN PURCHASE PROGRAM

If you are unable to attend the sale, please call Tim Matthews, Randy Ratliff or a Bohrson Marketing representative. We would be glad to discuss the bulls and your needs and find a bull or bulls that fit your program. If we deliver a bull that you do not like - you will not own him.

**ALL BULLS WILL BE  
SEMEN TESTED!**



Follow us on Facebook & Instagram



**US BUYERS!!!**

Take advantage of the Canadian dollar. \$1000 CA = Approx. \$750 US  
Sale exchange rate will be announced on sale day

**R&R**  
MARKETING

Randy Ratliff 615.330.2735  
1212 Laurel St #1614  
Nashville, TN 37203  
randy@rrmktg.com



**BOHRSON**  
MARKETING SERVICES

[www.bohrson.com](http://www.bohrson.com)

Scott Bohrson	403-370-3010
Martin Bohrson	306-220-7901
Geoff Anderson	306-731-7921
Taylor Richards	306-821-4169
Darryl Snider	780-385-5561
Rob Voice	306-361-6775



#### **Sale Location**

The Sale will be held at Olds Cow Palace. 5116 54 ST, Olds Alberta.

#### **Sale Staff**

Ryan Dorrn, Auctioneer • 403-507-6483

Rod McLeod • 403-932-4622

Craig Flewelling • 403-556-0515

#### **Viewing of the Bulls**

Viewing of the bulls will be welcome at any time prior to the sale. At the farm west of Olds. To arrange a time please call Tim 403.556.5744

#### **Right to Semen**

Riverstone Cattle Co. reserves the right to draw semen on any of the bulls in the offering. Semen will be used for in herd use only and will be drawn at the expense of Riverstone Cattle and at the convenience of the buyer.

#### **DNA Testing**

Individual DNA test results are not available. The homozygous status that is printed in the catalog were acquired by parentage verification. Animals in this offering may possess the homozygous black and/or polled genes.

#### **Absentee Buyers Option**

If you are unable to attend the sale, please call Tim Matthews, Randy Ratliff or a Bohrsen Marketing representative. We would be glad to discuss the bulls and your need and find a bull or bulls that fit your program. If we deliver a bull that you do not like - you will not own him.

#### **EPDs Information**

The information printed in the catalog is known to be true and accurate as provided by the Canadian Limousin & Angus Associations. Please note that EPDs may have changed by the time the registration paper is transferred.

#### **Terms & Conditions**

All bulls sell under the Standard Breeders's Guarantee and Guidelines recommended by the individual breed associations. Copies are available upon request.

#### **Board on Sale Bulls**

We can keep the bulls until delivery. We would like all bulls picked up or delivered by May 1 unless previous arrangements have been made. **These bulls must be insured.** Pick-Up on sale day would be greatly appreciated.

#### **Insurance**

There will be an insurance representative present sale day. We recommend Cassie Dorrn 403-507-5953

#### **Catalog**

Design and photography by Kim Matthews - Prime Cut Publishing



*Riverstone*

10 JANUARY 2016 • TCM 14D • 1914955

**REBEL 14D**

**PUREBRED**

BW	82	BW	WW	YW	MK	TM	CE	MCE
ADJ WW	697	1.9	47	79	25	49	6.0	7.0
ADJ SALE WT	1580							

**HF REBEL 53Y**

1627442

**HIGHLAND BARBARA 140Y**

1618763

HF TIGER 5T

HF TIBBIE 103T

HIGHLAND TRACTION 265T

HIGHLAND BARBARA 172T



*Riverstone*

18 JANUARY 2016 • TCM 32D • 1914959

**KODIAK 32D**

**PUREBRED**

**HF KODIAK 5R** SANDY BAR ADVANTAGE 43M  
1274305 WILBAR RUBY 955N

**HIGHLAND DELIA 51A** DMM CREED 75W  
1767483 HIGHLAND DELIA 190W

BW	80	BW	WW	YW	MK	TM	CE	MCE
ADJ WW	701	1.4	47	79	14	38	9.0	8.0
ADJ SALE WT	1452							



*Riverstone*

06 FEBRUARY 2016 • TCM 77D • 1914972

**MARVEL 77D**

**PUREBRED**

**D.S. MARVEL 901W**  
1538291

S A V 004 DENSITY 4336  
LEGEND LANE 410 ANNE 620

**HIGHLAND MISS BURGESS 157U**  
1446305

HIGHLAND SPARTAN 75S  
HIGHLAND MISS BURGESS 78R

BW	85	BW	WW	YW	MK	TM	CE	MCE
ADJ WW	649	2.3	44	81	10	32	6.0	8.0
ADJ SALE WT	1306							



*Riverstone*

06 FEBRUARY 2016 • TCM 78D • 1914973

**MARVEL 78D**

**PUREBRED**

BW	86	BW	WW	YW	MK	TM	CE	MCE
ADJ WW	688	2.2	42	73	9	30	6.0	7.0
ADJ SALE WT	1394							

**D.S. MARVEL 901W** SA V 004 DENSITY 4336  
1538291 LEGEND LANE 410 ANNE 620

**HIGHLAND BLACKBIRD 82U** HIGHLAND BANDO 9S  
1446290 HIGHLAND BLACKBIRD 59P



*Riverstone*

25 FEBRUARY 2016 • TCM 115D • 1914990

**MARVEL 115D**

**PUREBRED**

**D.S. MARVEL 901W** SA V 004 DENSITY 4336  
1538291 LEGEND LANE 410 ANNE 620

**HIGHLAND GEORGINA 24W** DUFF NEW ATTRACTION 6110  
1523451 HIGHLAND GEORGINA 12T

BW	86	BW	WW	YW	MK	TM	CE	MCE
ADJ WW	727	3.4	45	80	14	37	4.0	5.0
ADJ SALE WT	1408							



*Riverstone*

07 FEBRUARY 2016 • TCM 82D • 1914974

**MARVEL 82D**

**PUREBRED**

**D.S. MARVEL 901W** SA V 004 DENSITY 4336  
1538291 LEGEND LANE 410 ANNE 620

**HIGHLAND BLACKBIRD 104A** HIGHLAND BOB 18Y  
1767645 HIGHLAND BLACKBIRD 22W

BW	80	BW	WW	YW	MK	TM	CE	MCE
ADJ WW	738	2.1	46	80	14	37	7.0	8.0
ADJ SALE WT	1231							





*Riverstone*

11 JANUARY 2016 • TCM 20D • 1914957

**HERITAGE 20D**

**PUREBRED**

BW	98	BW	WW	YW	MK	TM	CE	MCE
ADJ WW	798	4.3	56	100	28	56	-4.0	4.0
ADJ SALE WT	1652							

**S A V HERITAGE 6295** CAR DUKE 104  
1481376 S A V BLACKCAP MAY 4136

**HIGHLAND BARBARA 37T** DRR TEXMAN 382P  
1418050 HIGHLAND BARBARA 11R



*Riverstone*

08 FEBRUARY 2016 • TCM 83D • 1914975

**MARVEL 83D**

**PUREBRED**

**D.S. MARVEL 901W** S A V 004 DENSITY 4336  
1538291 LEGEND LANE 410 ANNE 620

**HIGHLAND EVENING TINGE 182X** HIGHLAND WARRIOR 187T  
1584904 HIGHLAND EVENING TINGE 49R

BW	82	BW	WW	YW	MK	TM	CE	MCE
ADJ WW	674	2.7	44	80	12	34	6.0	9.0
ADJ SALE WT	1414							



*Riverstone*

21 JANUARY 2016 • TCM 43D • 1914962

**HARVESTOR 43D**

**PUREBRED**

**S A V HARVESTOR 0338** S A V HERITAGE 6295  
1633982 S A V EMBLYNETTE 7749

**HIGHLAND BLACKBIRD 264T** DMM POSI-TRACTION 57P  
1446271 HIGHLAND BLACKBIRD 29S

BW	98	BW	WW	YW	MK	TM	CE	MCE
ADJ WW	719	6.2	55	93	22	50	-8.0	-2.0
ADJ SALE WT	1594							



Riverstone

18 FEBRUARY 2016 • TCM 105D • 1914983

**MARVEL 105D**

**PUREBRED**

**D.S. MARVEL 901W** S A V 004 DENSITY 4336  
1538291 LEGEND LANE 410 ANNE 620

**HIGHLAND BLACKBIRD 15A** DMM CREED 75W  
1767472 HIGHLAND BLACKBIRD 156T

BW	87	BW	WW	YW	MK	TM	CE	MCE
ADJ WW	694	3.9	46	83	12	35	4.0	6.0
ADJ SALE WT	1299							



Riverstone

20 FEBRUARY 2016 • TCM 110D • 1914987

**MARVEL 110D**

**PUREBRED**

**D.S. MARVEL 901W** S A V 004 DENSITY 4336  
1538291 LEGEND LANE 410 ANNE 620

**HIGHLAND BARBARA 106A** HIGHLAND ATTRACTION 11X  
1767627 HIGHLAND BARBARA 145W

BW	87	BW	WW	YW	MK	TM	CE	MCE
ADJ WW	735	3.4	45	78	10	33	3.0	5.0
ADJ SALE WT	1339							

Riverstone

02 MARCH 2016 • TCM 125D • 1914994

**MARVEL 125D**

**PUREBRED**

**D.S. MARVEL 901W** S A V 004 DENSITY 4336  
1538291 LEGEND LANE 410 ANNE 620

**HIGHLAND GEORGINA 12W** DUFF NEW ATTRACTION 6110  
1519985 HIGHLAND GEORGINA 26P

BW	90	BW	WW	YW	MK	TM	CE	MCE
ADJ WW	722	3.0	41	77	14	35	4.0	5.0
ADJ SALE WT	1335							



Riverstone

05 MARCH 2016 • TCM 136D • 1914995

**PEACEMAKER 136D**

**PUREBRED**

**HIGHLAND CREED 20A** DMM CREED 75W  
1767475 HIGHLAND EVENING TINGE 12X

**HIGHLAND PRIDE OF ABERDEEN 35B** HIGHLAND MARVEL 80Z  
1812143 HIGHLAND PRIDE OF ABERDEEN 43Z

BW	82	BW	WW	YW	MK	TM	CE	MCE
ADJ WW	772	3.8	46	79	21	44	4.0	7.0
ADJ SALE WT	1242							





*Riverstone*

18 FEBRUARY 2016 • TCM 101D • 1914986

**MARVEL 101D**

**PUREBRED**

BW	87	BW	WW	YW	MK	TM	CE	MCE
ADJ WW	794	2.8	47	83	17	41	5.0	6.0
ADJ SALE WT	1568							

**D.S. MARVEL 901W**  
1538291

S A V 004 DENSITY 4336  
LEGEND LANE 410 ANNE 620

**HIGHLAND BLACKBIRD 19Z**  
1691645

PVF WINDFALL SCC 9005  
HIGHLAND BLACKBIRD 149K



*Riverstone*

02 SEPTEMBER 2015 • TCM 169C • 1915101

**FASTPASS 169C**

**PUREBRED**

**HIGHLAND MARVEL 80Z** D.S. MARVEL 901W  
1691665 HIGHLAND EVENING TINGE 27L

**HIGHLAND BARBARA 49T** DRR TEXMAN 382P  
1418055 HIGHLAND BARBARA 5R

BW	85	BW	WW	YW	MK	TM	CE	MCE
ADJ WW	680	4.3	45	73	18	41	1.0	5.0
ADJ SALE WT	1678							



*Riverstone*

03 OCTOBER 2015 • TCM 193C • 1915111

**FASTPASS 193C**

**PUREBRED**

**HIGHLAND MARVEL 80Z** D.S. MARVEL 901W  
1691665 HIGHLAND EVENING TINGE 27L

**HIGHLAND BARBARA 13Z** MCATL PURE PRODUCT 903-55  
1691642 HIGHLAND BARBARA 144X

BW	90	BW	WW	YW	MK	TM	CE	MCE
ADJ WW	565	5.5	50	87	21	46	-2.0	4.0
ADJ SALE WT	1520							



*Riverstone*

31 AUGUST 2015 • TCM 165B • 1915098

**FASTPASS 165C**

**PUREBRED**

BW	81	BW	WW	YW	MK	TM	CE	MCE
ACT WW	580	4.8	46	78	16	39	1.0	4.0
ADJ SALE WT	1679							

**HIGHLAND MARVEL 80Z**  
1691665

D.S. MARVEL 901W  
HIGHLAND EVENING TINGE 27L

**HIGHLAND ELSA ERICA 212U**  
1519980

B C LOOKOUT 7024  
HIGHLAND ELSA ERICA 174T



*Riverstone*

05 SEPTEMBER 2015 • TCM 172C • 1915104

**FASTPASS 172C**

**PUREBRED**

**HIGHLAND MARVEL 80Z** D.S. MARVEL 901W  
1691665 HIGHLAND EVENING TINGE 27L

**HIGHLAND BARBARA 27X** DMM POSI-TRACTION 57P  
1584886 HIGHLAND BARBARA 124P

BW	81	BW	WW	YW	MK	TM	CE	MCE
ACT WW	670	5.3	53	87	16	43	1.0	6.0
ADJ SALE WT	1915							



*Riverstone*

14 SEPTEMBER 2015 • TCM 183C • 1915108

**FASTPASS 183C**

**PUREBRED**

**HIGHLAND MARVEL 80Z** D.S. MARVEL 901W  
1691665 HIGHLAND EVENING TINGE 27L

**HIGHLAND GEORGINA 32S** DRR TEXMAN 382P  
1355424 HIGHLAND GEORGINA 26P

BW	73	BW	WW	YW	MK	TM	CE	MCE
ACT WW	560	3.1	40	73	18	38	5.0	9.0
ADJ SALE WT	1455							



*Riverstone*

01 SEPTEMBER 2015 • TCM 167C • 1915100

**FASTPASS 167C**

**PUREBRED**

BW	72
ACT WW	670
ADJ SALE WT	1822

BW	WW	YW	MK	TM	CE	MCE
3.1	52	84	22	48	6.0	10.0

**HIGHLAND MARVEL 80Z** D.S. MARVEL 901W  
1691665 HIGHLAND EVENING TINGE 27L

**HIGHLAND EVENING TINGE 84S** DIAMOND T WARRIOR 01'02  
1335122 HIGHLAND EVENING TINGE 27L



*Riverstone*

11 SEPTEMBER 2015 • TCM 180C • 1915107

**FASTPASS 180C**

**PUREBRED**

**HIGHLAND MARVEL 80Z** D.S. MARVEL 901W  
1691665 HIGHLAND EVENING TINGE 27L

**HIGHLAND GEORGINA 61Y** DMM POSI-TRACTION 57P  
1652388 HIGHLAND GEORGINA 7R

BW	82
ACT WW	600
ADJ SALE WT	1564

BW	WW	YW	MK	TM	CE	MCE
5.0	47	77	15	39	1.0	6.0



*Riverstone*

03 SEPTEMBER 2015 • TCM 170C • 1915102

**FASTPASS 170C**

**PUREBRED**

**HIGHLAND MARVEL 80Z** D.S. MARVEL 901W  
1691665 HIGHLAND EVENING TINGE 27L

**HIGHLAND TIPTOP 35U** DMM POSI-TRACTION 57P  
1446278 HIGHLAND TIPTOP 22S

BW	80
ACT WW	710
ADJ SALE WT	1698

BW	WW	YW	MK	TM	CE	MCE
4.7	52	78	18	14	2.0	6.0



*Riverstone*

12 FEBRUARY 2015 • TCM 63C • 1857640

**FASTPASS 63C**

**PUREBRED**

**HIGHLAND MARVEL 80Z** D.S. MARVEL 901W  
1691665 HIGHLAND EVENING TINGE 27L

**HIGHLAND BARBARA 145W** HIGHLAND WARRIOR 187T  
1528487 HIGHLAND BARBARA 5S

BW	90	BW	WW	YW	MK	TM	CE	MCE
ADJ WW	620	4.9	41	71	14	35	1.0	6.0
ADJ SALE WT	1726							



*Riverstone*

23 MARCH 2015 • TCM 127C • 1883324

**PEACEMAKER 127C**

**PUREBRED**

**HIGHLAND CREED 20A** DMM CREED 75W  
1767475 HIGHLAND EVENING TINGE 12X

**HIGHLAND GEORGINA 24W** DUFF NEW ATTRACTION 6110  
1523451 HIGHLAND GEORGINA 12T

BW	84	BW	WW	YW	MK	TM	CE	MCE
ADJ WW	674	4.5	32	60	20	36	1.0	4.0
ADJ SALE WT	1700							



*Riverstone*

19 JANUARY 2015 • TCM 28C • 1857632

**FASTPASS 28C**

**PUREBRED**

**HIGHLAND MARVEL 80Z** D.S. MARVEL 901W  
1691665 HIGHLAND EVENING TINGE 27L

**HIGHLAND EVENING TINGE 12X** DUFF NEW ATTRACTION 6110  
1584882 HIGHLAND EVENING TINGE 8T

BW	96	BW	WW	YW	MK	TM	CE	MCE
ADJ WW	728	5.9	46	77	20	43	-1.0	3.0
ADJ SALE WT	1943							



*Riverstone*

23 JANUARY 2015 • TCM 35C • 1857635

**FASTPASS 35C**

**PUREBRED**

**HIGHLAND MARVEL 80Z** D.S. MARVEL 901W  
1691665 HIGHLAND EVENING TINGE 27L

**HIGHLAND BLACKBIRD 5X** DUFF NEW ATTRACTION 6110  
1584880 HIGHLAND BARBARA 11R

BW	90	BW	WW	YW	MK	TM	CE	MCE
ADJ WW	776	5.0	54	88	24	51	0.0	4.0
ADJ SALE WT	1833							





*Riverstone*

25 JANUARY 2015 • TCM 38C • 1857637

## FASTPASS 38C

PUREBRED

HIGHLAND MARVEL 80Z D.S. MARVEL 901W  
1691665 HIGHLAND EVENING TINGE 27L

HIGHLAND BLACKBIRD 22W DUFF NEW ATTRACTION 6110  
1519989 HIGHLAND BLACKBIRD 59P

BW	96	BW	WW	YW	MK	TM	CE	MCE
ADJ WW	689							
ADJ SALE WT	1760	5.7	44	74	16	38	-1.0	4.0



*Riverstone*

10 MARCH 2015 • TCM 114C • 1883327

## PEACEMAKER 114C

PUREBRED

HIGHLAND CREED 20A DMM CREED 75W  
1767475 HIGHLAND EVENING TINGE 12X

HIGHLAND GEORGINA 17W B C LOOKOUT 7024  
1519986 HIGHLAND GEORGINA 20S

BW	87	BW	WW	YW	MK	TM	CE	MCE
ADJ WW	665							
ADJ SALE WT	1722	3.8	35	64	17	35	3.0	3.0

*Riverstone*

21 JANUARY 2015 • TCM 32C • 1857634

## FASTPASS 32C

PUREBRED

HIGHLAND MARVEL 80Z D.S. MARVEL 901W  
1691665 HIGHLAND EVENING TINGE 27L

HIGHLAND ERROLLINE 119T DIAMOND T WARRIOR 01'02  
1411726 HIGHLAND ERROLLINE 119M

BW	89	BW	WW	YW	MK	TM	CE	MCE
ADJ WW	724							
ADJ SALE WT	2023	4.8	47	77	18	42	0.0	6.0



*Riverstone*

25 MARCH 2015 • TCM 131C • 1883323

## PEACEMAKER 131C

PUREBRED

HIGHLAND CREED 20A DMM CREED 75W  
1767475 HIGHLAND EVENING TINGE 12X

HIGHLAND ERROLLINE 92Z D.S. MARVEL 901W  
1691670 HIGHLAND ERROLLINE 23S

BW	84	BW	WW	YW	MK	TM	CE	MCE
ADJ WW	530							
ADJ SALE WT	1745	3.1	35	64	19	37	4.0	6.0





*Riverstone*

02 FEBRUARY 2016 • TCM 68D • CPM4083264

**DRILLMASTER 68D**

91% PUREBRED

DOUBLE POLLED • DOUBLE BLACK

BW	94
ADJ WW	698
ADJ SALE WT	1404

GE	CED	BW	WW	YW	MK	TM	CEM	SC
-2.6	3	4.5	74	106	25	62	7	0.87

**PBR3 382Z**  
NPM2025251

BOHI TOP DOLLAR 7144T  
PBR30122X

**HSF ANJELICA**  
CPF0215236

TMCK DURHAM WHEAT 6030X  
HSF WHISKEY SOUR



*Riverstone*

04 FEBRUARY 2016 • TCM 72D • CXM4083797

**DUTY FREE 72D**

46% LIM-FLEX

MAGS WAR ADMIRAL MAGS SAVAGE  
NPM1928346 MAGS REMBRANDT

HIGHLAND BLACKBIRD 256X HIGHLAND TRACTION 265T  
CANAN1591884 HIGHLAND BLACKBIRD 3S

BW	70
ADJ WW	656
ADJ SALE WT	1245

HOMO POLLED • DOUBLE BLACK

GE	CED	BW	WW	YW	MK	TM	CEM	SC
10	-0.3	53	79	29	56			



*Riverstone*

21 JANUARY 2016 • TCM 40D • CXM4083796

**DRUGLORD 40D**

46% LIM-FLEX

MAGS WAR ADMIRAL MAGS SAVAGE  
NPM1928346 MAGS REMBRANDT

HIGHLAND BLACKBIRD 131W HIGHLAND BANDO 9S  
CANAN1519997 HIGHLAND BLACKBIRD 108P

BW	96
ADJ WW	694
ADJ SALE WT	1255

HOMO POLLED • DOUBLE BLACK

GE	CED	BW	WW	YW	MK	TM	CEM	SC
4	3.5	62	93	29	60	3		





*Riverstone*

15 JANUARY 2016 • TCM 24D • CPM4083249

**DOUBLE DARE 24D** 92% PUREBRED  
DOUBLE POLLED • DOUBLE BLACK

BW	98
ADJ WW	631
ADJ SALE WT	1524

GE	CED	BW	WW	YW	MK	TM	CEM	SC
-3.3	4	3.8	64	88	33	65	7	1.00

**TMCK DURHAM WHEAT 6030X**  
CPF0201866

AUTO DOLLAR GENERAL 122R  
MAGS STRAWBERRY PIE

**HSF XYLACANE**  
CPF0200539

AUTO DOLLAR GENERAL 122R  
EXLR GEORGEANNA Z 915S



*Riverstone*

30 JANUARY 2016 • TCM 60D • CPM4083260

**DE NIRO 60D** 91% PUREBRED

**PBRS 382Z** BOHI TOP DOLLAR 7144T  
NPM2025251 PBRS0122X

**HSF ZAI JIAN** MAGS WAR ADMIRAL  
CPF0211146 RWK NEW ORLEANS

BW	80
ADJ WW	730
ADJ SALE WT	1349

GE	CED	BW	WW	YW	MK	TM	CEM	SC
-2.6	4	3.1	70	101	29	64	6	0.68



*Riverstone*

05 JANUARY 2016 • TCM 4D • CPM4083241

**DIPLOMAT 4D** 92% PUREBRED

**TMCK DURHAM WHEAT 6030X**  
NPM1965905

DHVO DEUCE 132R  
MAGS STRAWBERRY PIE

**TGBC PRINCESS 025X 132R**  
NPF1959721

DHVO DEUCE 132R  
TLIM PRINCESS LODESTAR

BW	96
ADJ WW	503
ADJ SALE WT	1332

GE	CED	BW	WW	YW	MK	TM	CEM	SC
-2.0	2	4.5	61	88	25	56	3	0.80



*Riverstone*

18 FEBRUARY 2016 • TCM 102D • CPM4083274

**DOUBLE DIZZY 102D** 92% PUREBRED  
DOUBLE POLLED • DOUBLE BLACK

BW	84
ADJ WW	584
ADJ SALE WT	1225

GE	CED	BW	WW	YW	MK	TM	CEM	SC
-3.5	5	2.9	65	100	24	56	8	.81

**PBRS 382Z** BOHI TOP DOLLAR 7144T  
NPM2025251 PBRS0122X

**HSF LIZZY** AHCC WESTWIND W54  
CPF0211139 TMF TOO MUCH FUN 507T



*Riverstone*

11 JANUARY 2016 • TCM 18D • CXM4083247

**DIRECTORS CUT 18D** 80% PERCENTAGE

TMCK DURHAM WHEAT 6030X DHVO DEUCE 132R  
NPM1965905 MAGS STRAWBERRY PIE

TMCK SWEET ABBE 183U EXLR RIGHT OF WAY 177R  
NXF1910936 TMCK 516S

BW	90
ADJ WW	663
ADJ SALE WT	1464

DOUBLE POLLED • DOUBLE BLACK								
GE	CED	BW	WW	YW	MK	TM	CEM	SC
-2.3	7	2.0	61	86	24	55	6	1.05



*Riverstone*

14 FEBRUARY 2016 • TCM 95D • CPM4083272

**DON 95D** 92% PUREBRED

**PBRS 382Z** BOHI TOP DOLLAR 7144T  
NPM2025251 PBRS0122X

**MAGS STRAWBERRY PIE** TNUH BLUE PRINT 245H  
NPF1845446 MAGS PIE IN THE SKY

BW	86
ADJ WW	610
ADJ SALE WT	1227

HOMO POLLED • HOMO BLACK								
GE	CED	BW	WW	YW	MK	TM	CEM	SC
-3.1	6	3.5	64	91	28	60	8	0.84



*Riverstone*

16 JANUARY 2016 • TCM 25D • CPM4083250

**DEFENDER 25D**

92% PUREBRED

POLLED • DOUBLE BLACK

BW	93
ADJ WW	794
ADJ SALE WT	1444

GE	CED	BW	WW	YW	MK	TM	CEM	SC
-2.2	2	4.4	80	114	30	70	7	0.64

**PBRS 382Z** BOHI TOP DOLLAR 7144T  
NPM2025251 PBRS0122X

**HSF Z NEWS** HSF UNSUNG HERO  
CPF0211161 HSF TABLOID NEWS



*Riverstone*

01 FEBRUARY 2016 • TCM 64D • CXM4083262

**DOUBLE DUTY 64D**

45% LIM-FLEX

**PBRS 382Z** BOHI TOP DOLLAR 7144T  
NPM2025251 PBRS0122X

**HIGHLAND BARBARA 9Y** SALT CREEK BOB 7003  
CANAN1618733 HIGHLAND BARBARA 11R

HOMO POLLED • DOUBLE BLACK

BW	95
ADJ WW	664
ADJ SALE WT	1398

GE	CED	BW	WW	YW	MK	TM	CEM	SC
5	3.1	65	101	27	60	6		



*Riverstone*

19 JANUARY 2016 • TCM 36D • CXM4083254

**DARK SIDE 36D**

69% LIM-FLEX

**PBRS 382Z** BOHI TOP DOLLAR 7144T  
NPM2025251 PBRS0122X

**HSF RACHEL** EXLR POLLED AUSTIN 265J  
CXF4072329 HIGHLAND BLACKBIRD 149K

DOUBLE POLLED • DOUBLE BLACK

BW	89
ADJ WW	622
ADJ SALE WT	1422

GE	CED	BW	WW	YW	MK	TM	CEM	SC
-2.0	3	5.0	66	95	23	56	4	



*Riverstone* 20 FEBRUARY 2016 • TCM 109D • CXM4083277  
**DURANGO 109D** 89% PERCENTAGE

**PBRS 382Z** BOHI TOP DOLLAR 7144T  
 NPM2025251 PBRS0122X

**TMCK COLE 141U** FWLY BIG TIME  
 NXF1899713 COLE 41R

**DOUBLE POLLED • DOUBLE BLACK**

BW	84	GE	CED	BW	WW	YW	MK	TM	CEM	SC
ADJ WW	671	-2.6	2	5.1	7	103	24	60	7	0.86
ADJ SALE WT	1201									



*Riverstone* 28 JANUARY 2016 • TCM 55D • CXM4083259  
**DISTINGUISHED 55D** 81% PERCENTAGE

**TMCK DURHAM WHEAT 6030X** DHVO DEUCE 132R  
 NPM1965905 MAGS STRAWBERRY PIE

**HSF XTRACTABLE** EXLR TOTAL CONTROL 065T  
 CXF4073405 HSF TIGER LILY

**DOUBLE POLLED • DOUBLE BLACK**

BW	90	GE	CED	BW	WW	YW	MK	TM	CEM	SC
ADJ WW	625	-1.6	4	3.9	72	102	23	59	4	0.88
ADJ SALE WT	1259									

*Riverstone* 27 FEBRUARY 2016 • TCM 117D • CPM4083282  
**DISCOVERY 117D** 92% PUREBRED

**PBRS 382Z** BOHI TOP DOLLAR 7144T  
 NPM2025251 PBRS0122X

**HSF YES I AM** MAGS WAR ADMIRAL  
 CPF0209996 RWK TIPS Y

**DOUBLE POLLED • DOUBLE BLACK**

BW	89	GE	CED	BW	WW	YW	MK	TM	CEM	SC
ADJ WW	646	-1.9	2	4.2	65	93	31	64	6	0.67
ADJ SALE WT	1318									



*Riverstone* 14 FEBRUARY 2016 • TCM 93D • CPM4083270  
**DEPENDABLE 93D** 91% PUREBRED

**TMCK DURHAM WHEAT 6030X** DHVO DEUCE 132R  
 NPM1965905 MAGS STRAWBERRY PIE

**HSF XYLITOL** CARROUSELS NASDAQ  
 CPF0200959 HSF SISTER SINISTER

**DOUBLE POLLED • DOUBLE BLACK**

BW	92	GE	CED	BW	WW	YW	MK	TM	CEM	SC
ADJ WW	710	-3.8	5	2.6	66	94	26	60	6	1.00
ADJ SALE WT	1265									





*Riverstone*

08 FEBRUARY • TCM 84D • CXM4083267

**DETAILER 84D**

**69% LIM-FLEX  
HOMO POLLED • RED**

BW	90
ADJ WW	689
ADJ SALE WT	1359

GE	CED	BW	WW	YW	MK	TM	CEM	SC
4	3.1	58	84	29	58	6		

**WULFS ZILLION BUCKS X231Z**  
NPM2012371

WULFS UPGRADE 0500U  
WULFS MYRENE 2332M

**HSF ALTERED STATE**  
CXF4074152

HIGHLAND ATTRACTION 11X  
HSF XYLACANE



*Riverstone*

20 FEBRUARY 2016 • TCM 108D • CPM4083276

**DYNASTY 108D**

**93% PUREBRED**

**WULFS ZILLION BUCKS X231Z** WULFS UPGRADE 0500U  
NPM2012371 WULFS MYRENE 2332M

**HSF UNCONDITIONAL LOVE** ANDERS RICH & FAMOUS  
CPF0188608 EXLR 7116J

BW	82
ADJ WW	687
ADJ SALE WT	1295

GE	CED	BW	WW	YW	MK	TM	CEM	SC
-3.3	7	0.5	54	74	27	54	8	0.64

**POLLED • RED**



*Riverstone*

02 FEBRUARY 2016 • TCM 70D • CPM4083265

**DREAMSCAPE 70D**

**94% PUREBRED**

**WULFS ZILLION BUCKS X231Z**  
NPM2012371

WULFS UPGRADE 0500U  
WULFS MYRENE 2332M

**HSF UNEQUAL PAYMENTS**  
CPF0188608

ANDERS RICH & FAMOUS  
HIGHLAND RENE

BW	75
ADJ WW	664
ADJ SALE WT	1255

GE	CED	BW	WW	YW	MK	TM	CEM	SC
-3.1	7	-0.3	53	73	29	56	8	0.70

**POLLED • RED**



*Riverstone*

08 SEPTEMBER 2015 • TCM 177C • CPM4083223

**CAVALIER 177C**

92% PUREBRED

DOUBLE POLLED • DOUBLE BLACK

BW	91
ACT WW	575
ADJ SALE WT	1438

GE	CED	BW	WW	YW	MK	TM	CEM	SC
-1.6	4	3.2	58	74	27	56	5	1.14

TMCK DURHAM WHEAT 6030X  
NPM1965905

DHVO DEUCE 132R  
MAGS STRAWBERRY PIE

HSF XCEPTED  
CPF0200984

HSF TIMBERWOLF  
HIGHLAND SHOWGIRL



*Riverstone*

18 OCTOBER 2015 • TCM 201C • CPM4083235

**CHORE BOY 201C**

93% PUREBRED

TMCK DURHAM WHEAT 6030X DHVO DEUCE 132R  
NPM1965905 MAGS STRAWBERRY PIE

HSF YELLOW HORIZON EXLR TOTAL CONTROL 065T  
CPF0206241 HIGHLAND HORIZON

BW	85
ACT WW	460
ADJ SALE WT	1426

DOUBLE POLLED • DOUBLE BLACK

GE	CED	BW	WW	YW	MK	TM	CEM	SC
-1.9	6	2.9	62	80	25	56	6	0.93



*Riverstone*

18 OCTOBER 2015 • TCM 200C • CPM4083234

**CHOPPER 200C**

92% PUREBRED

TMCK DURHAM WHEAT 6030X DHVO DEUCE 132R  
NPM1965905 MAGS STRAWBERRY PIE

HSF ZERO CONTROL EXLR TOTAL CONTROL 065T  
CPF0211157 HIGHLAND SWEETIE PIE

BW	87
ACT WW	455
ADJ SALE WT	1444

DOUBLE POLLED • DOUBLE BLACK

GE	CED	BW	WW	YW	MK	TM	CEM	SC
-2.0	3	4.2	73	97	22	59	5	0.89



*Riverstone*

16 SEPTEMBER 2015 • TCM 186C • CPM4083227

**COOL 186C**

92% PUREBRED

DOUBLE POLLED • HOMO BLACK

BW	92
ACT WW	520
ADJ SALE WT	1578

GE	CED	BW	WW	YW	MK	TM	CEM	SC
-2.9	5	2.4	72	103	22	58	7	1.02

TMCK DURHAM WHEAT 6030X  
NPM1965905

DHVO DEUCE 132R  
MAGS STRAWBERRY PIE

TMCK JOYCE 200T  
NPF1885502

HUNT CORNHUSKER 225N  
AUTO JOYCE 218L



*Riverstone*

03 OCTOBER 2015 • TCM 192C • UNREGISTERED

**COUNT DOWN 192C**

91% PUREBRED

TMCK DURHAM WHEAT 6030X DHVO DEUCE 132R  
NPM1965905 MAGS STRAWBERRY PIE

HSF ZEALOUS 234Z WULFS UPGRADE  
UNREGISTERED ENGD WATCH OUT 928W

BW	80
ACT WW	470
ADJ SALE WT	1484

DOUBLE POLLED • DOUBLE BLACK

GE	CED	BW	WW	YW	MK	TM	CEM	SC
-	-	-	-	-	-	-	-	-



*Riverstone*

16 SEPTEMBER 2015 • TCM 184C • CPM4083226

**CAJUN 184C**

93% PUREBRED

WULFS ZILLION BUCKS X231Z WULFS UPGRADE 0500U  
NPM2012371 WULFS MYRLENE 2332M

TMF MISS 49U TMF SUPERDUTY 516S  
CPF0189287 TOP MEADOW 513S

BW	83
ACT WW	463
ADJ SALE WT	1425

HOMO POLLED • RED

GE	CED	BW	WW	YW	MK	TM	CEM	SC
-3.1	6	1.7	58	80	29	58	8	0.76



*Riverstone*

09 OCTOBER 2015 • TCM 198C • CPM4083233

**CAST OFF 198C**

**92% PUREBRED**

**DOUBLE POLLED • DOUBLE BLACK**

BW	85
ACT WW	490
ADJ SALE WT	1576

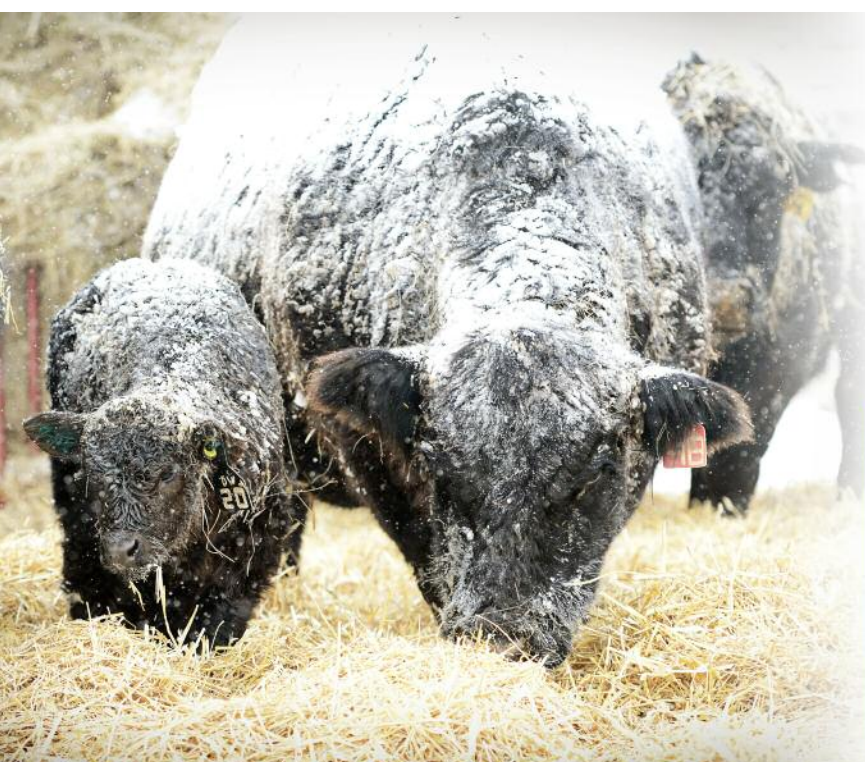
GE	CED	BW	WW	YW	MK	TM	CEM	SC
-4.0	7	1.4	56	79	28	56	8	0.90

**TMCK DURHAM WHEAT 6030X**  
NPM1965905

DHVO DEUCE 132R  
MAGS STRAWBERRY PIE

**HSF ZEYA RIVER**  
CPF0211145

SL BULLET PROOF  
HSF XYLITOL



*Our sincerest thanks  
to everyone who has encouraged us in our new venture as  
Riverstone Cattle Company  
Your support is greatly appreciated!*







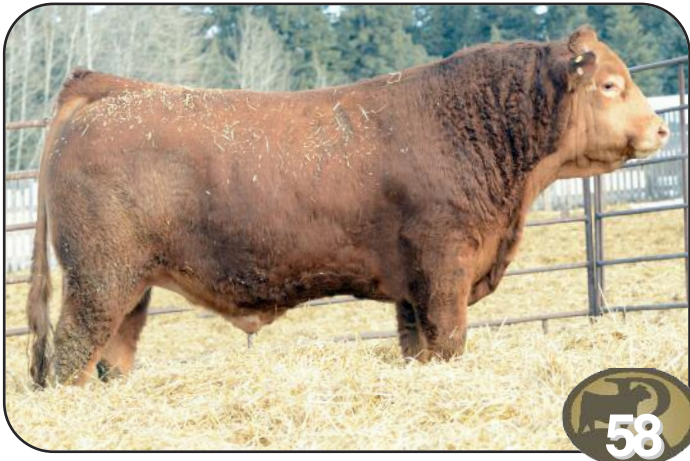
Riverstone 04 MARCH 2015 • TCM 105C • CPM4075270

**COLD WAR 105C** 93% PUREBRED

WULFS ZILLION BUCKS X231Z NPM2012371 WULFS UPGRADE 0500U WULFS MYRENE 2332M

HSF SATURDAY NIGHT CPF0179793 EXLR DAKOTA 353G RPY SHANIA

BW	78	<b>POLLED • RED</b>								
ADJ WW	669	GE	CED	BW	WW	YW	MK	TM	CEM	SC
ADJ SALE WT	1672	-2.2	5	0.7	50	62	32	57	8	0.81



Riverstone 14 MARCH 2015 • TCM 120C • CPM4075278

**CHEAP TRICKS 120C** 94% PUREBRED

WULFS ZILLION BUCKS X231Z NPM2012371 WULFS UPGRADE 0500U WULFS MYRENE 2332M

HIGHLAND RENE CPF0173550 EXLR POLLED AUSTIN 265J HIGHLAND KIBITZ

BW	81	<b>POLLED • RED</b>								
ADJ WW	586	GE	CED	BW	WW	YW	MK	TM	CEM	SC
ADJ SALE WT	1590	-2.6	5	1.0	48	65	33	57	6	0.75

Riverstone 16 MARCH 2015 • TCM 122C • CPM4075279

**CITY HALL 122C** 94% PUREBRED

WULFS ZILLION BUCKS X231Z NPM2012371 WULFS UPGRADE 0500U WULFS MYRENE 2332M

HSF WISHFUL THINKING CPF0195872 RPY PAYNES SIGNAL 6S HIGHLAND HORIZON

BW	72	<b>DOUBLE POLLED • RED</b>								
ADJ WW	606	GE	CED	BW	WW	YW	MK	TM	CEM	SC
ADJ SALE WT	1524	-2.1	9	-0.5	41	47	29	50	9	0.78



Riverstone 20 FEBRUARY 2015 • TCM 86C • CPM4075264

**CON AIR 86C** 92% PUREBRED

TMCK DURHAM WHEAT 6030X NPM1965905 DHVO DEUCE 132R MAGS STRAWBERRY PIE

HIGHLAND ROXI CPF0173997 EXLR CHISHOLM 685F HIGHLAND MAYBELLINE

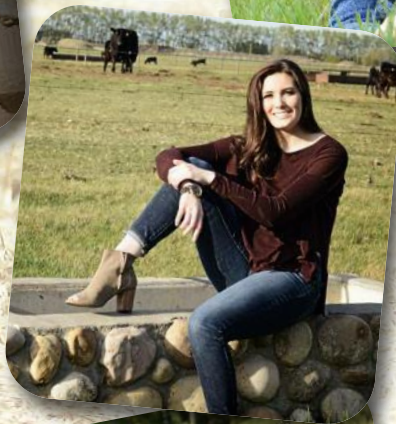
BW	95	<b>DOUBLE POLLED • DOUBLE BLACK</b>								
ADJ WW	709	GE	CED	BW	WW	YW	MK	TM	CEM	SC
ADJ SALE WT	1672	-2.9	5	2.4	72	103	22	58	7	1.02





*Visitors welcome anytime*

*Kids and Cows... its what we do!*



  
**RIVERSTONE**  
CATTLE COMPANY  
Box 19 Site 5 RR#2  
Olds, Alberta, T4H 1P3

CANADA		POSTES
POST		CANADA
	Postage paid Personalized Mail	Port payé Courrier personnalisé
01987585		



time sensitive material



[www.riverstonecattle.com](http://www.riverstonecattle.com)