



Prime Time International Wagyu Sale

Waukesha, Wisconsin

Saturday, August 6, 2016

PRIME TIME

international



Prime Time International Wagyu Sale

Saturday, August 6, 2016 Waukesha, WI

schedule of events

Friday, August 5th

- 1:00 p.m. Prime Time International Sale cattle available for viewing
- 3:00 p.m. Wagyu Breed Educational Seminar
- 5:00 p.m. Complementary social hour & Hors D'Oeuvres

Saturday, August 6th

- 8:00 a.m. Cattle are available for viewing
Coffee, juice & pastries available
- 11:00 a.m. A complementary Wagyu hamburger luncheon available
- 1:00 p.m. Designer Wagyu Prime Time International Sale will start**

Dear Wagyu Enthusiasts,

It is with great pleasure that all of us at R & R Marketing Company welcome you to the first ever Designer Wagyu Prime Time International Sale. Brian Greenman and his family have worked diligently for the past year in developing, planning and promoting this sale. We are proud to have been involved in the branding and marketing of this event with Designer Wagyu. Owner Brian Greenman and his family are joined in this event with only the finest propagators and promoters of Registered Fullblood Wagyu. All consignors have made a concentrated effort to offer only the very best to showcase in this event and to properly market and highlight this wonderful and most popular breed of cattle. We are very confident as you read thru this sale catalog that you will be pleased with what we have to offer. We think they are genetics that can highlight any program at any level and for sure bring attention to any firm that is just starting or has been established in the breed. As we know the Wagyu breed is very popular around the world and rightfully so. This first ever sale features only non-recessive Fullblood Wagyu cattle. They represent genetics from cow families and lineages that are not readily available in the United States. If we can be of any assistance with your questions or purchases in this sale please don't hesitate to call as we enjoy talking and promoting seed stock.

Sincerely,
Randall O. Ratliff
R & R Marketing
Company



Dear Fellow Wagyu Breeders,

On behalf of Designer Wagyu we would like to cordially welcome you to our first ever Prime Time International Wagyu Sale. My family and I have been more than excited for the last year to create and develop a sale that would make the entire Wagyu breed proud. We wanted to show case the best of the best Fullblood Wagyu for breeders in the United States and for our many fellow International Breeders. We feel we have done just that and we want to thank each and every consignor for digging deep into their programs to offer only their finest to make this sale the best it can be.

This Prime Time Sale will give everyone in the world a chance to be a part of this sale as we are hosting it on the Internet with Cattle In Motion. This will also be a live sale where you will be able to view the sale cattle as they come through the ring. We want to give the buyers a chance to view and appreciate the sale offering.

The sale cattle will be available for viewing on Friday afternoon and there will be a social and reception that early evening as well.

If we can be of any assistance with you with your travel arrangements and/or questions regarding the sale cattle then please don't hesitate to call.

We look forward to hosting the Prime Time International Sale where we all can come together and appreciate each other and all we have to offer the great Wagyu breed of cattle.

Best Regards,
Brian Greenman & Family
Designer Wagyu



SALE TERMS AND CONDITIONS ...

TERMS: All cattle/genetics must be paid for immediately after the sale. Checks should be made payable to R & R Marketing Company. Credit cards are also accepted, and a processing fee will apply. Cattle/genetics will not be released until proper settlement has been made.

SPECIAL TERMS: (cattle/genetics for export) Lots and genetics that are sold for export must be paid for at the time of the sale. There will be a representative of a forwarding company on hand to assist in this matter. It will be the responsibility of the buyer of these cattle/genetics for export to make arrangements with the seller for the care of the lots or genetics after the sale. Buyers will be responsible for any layover costs following the sale.

BREEDERS GUARANTEE: Every lot in this sale is, to the best of the seller's knowledge, sound and free of any disease. Pregnant cows and cows with calves are considered breeders without further guarantee. All consigners will guarantee all open heifers to breed, however please keep in mind that the animals condition influences their fertility greatly. If there is a problem, we will work with you in the most professional manner. Open heifers that have been in embryo transplant/IVF are not guaranteed. Open heifers on intensive show diets are not subject to guarantee.

DISPUTES: The auctioneer in charge will settle any bid disputes. The decision of the auctioneer on such matters is final.

HEALTH: All necessary health papers will be provided for the purposes of shipping cattle and genetics anywhere in the U.S.

EXPORTS: Cattle/genetics sold for export to foreign countries must, by state law test for diseases flagged by the country receiving the animal after the sale is made. The seller will be responsible for this testing.

ANNOUNCEMENTS: Any announcements from the auction block will take precedence over the printed material, this catalog and all other printed advertisements.

LIABILITIES: All persons who attend the sale do so at their own risk. Designer Wagyu and Brian Greenman, including the sale manager, assume no liability, legal or otherwise, for any accidents that may occur. Seller accepts no liability for the lots after they are sold. Insurance will be available at the sale for cattle/genetics upon the buyer's request.

CONTRACT: The above terms and conditions shall constitute a contract between the buyer and the seller of each lot sold.

HANDLING: As the sale takes effect, all lots are under the buyer's risk.

SALE LOCATION ...

Waukesha County Expo Center
262.548.7200
1000 Northview RD
Waukesha, WI 53188 USA

(Located approximately 37 minutes from the Milwaukee airport)

HOTEL ACCOMODATIONS ...

Holiday Inn Hotel, Pewaukee-Milwaukee
262.506.6300
N14 W24140 Tower Place
Pewaukee, WI 53072

Wildwood Lodge, 262.506.2000
N14 W24121 Tower Place
Pewaukee, WI 53072

Best Western, Waukesha Grand, 262.524.9300
2840 N Grandview Blvd
Pewaukee, WI 53072

Country Springs Hotel, 262.547.0201
2810 Golf Road
Pewaukee, WI 53072

AIRPORT ...General Mitchell International Airport (MKE) - 5300 S Howell Ave, Milwaukee, WI

GENERAL SALE INFORMATION ...

SALE MANAGEMENT ...

R&R
MARKETING

(L #2845)

Randall O. Ratliff
615.330.2735
Randy@RRMktg.com
www.RRMktg.com
1212 Laurel St. #1614
Nashville, TN 37203

RING SERVICE ...

Cody Shelly 580.467.7887
Ryan Denton918.629.3004
Bill Stade608.585.2431
Richland Center, WI

SALE DAY PHONES ...

Brian Greenman920.410.4533
bgreenman@designerwagyu.com

Randy Ratliff615.330.2735
randy@rrmktg.com



PJ Budler682.597.0380
info@thecattlemarket.net

AUCTIONEER ...

CK "Sonny" Booth.....918.533.5587

SALE CONSULTANTS ...

P.J. Budler682.597.0380
Thecattlemarket.net

Hubertus Dierscell, 0173.542.9187
PrismaGen, Altenberge, Germany
hd@prismagen.de

Jim Hoskens, Pedigree Announcer 920.366.7153
DePere, WI

BID & WATCH LIVE ...

This sale will be broadcast live at
www.cattleinmotion.com.

To view and bid on this sale live, simply log onto
www.cattleinmotion.com and click on the sale
that will be listed on the right hand side of the
screen.





ACADEMY CATTLE

Barbara Roberts-Thompson
80 Roseneath Lane, Armidale NSW 2350, Australia
www.academyredwagyu.com | acadcattle@tpg.com.au
P: 02.6772.1856



MUDDY FLATS CATTLE

Michael Goodell
211 Sandy Hill Dr., Augusta, WI 54722, USA
www.muddyflatscattle.com | muddyflatscattle@live.com
P: 715.271.8021



SOUTHERN CATTLE COMPANY

4226 N Highway 231, Marianna, FL 32446, USA
www.sccgenetics.com | frankhorn6627@bellsouth.net
Frank Horn: 601.573.6627 | Randy Ratliff: 615.330.2735



IDAHO WAGYU GENETICS

Garth Monroe
16901 Nounan Rd., Soda Springs, ID 83276, USA
www.idahowagyu.genetics.com | garthm2@gmail.com
P: 208.547.7103



Hubertus Diers
Eisenbahnstraße 1, 48341 Altenberge, Germany
www.prismagen.de | hd@wwsgermany.de
P: 49.2505.9392222



DRATH FAMILY FARM, LLC

Nate Drath
N6028 Drath Rd., Ogdensburg, WI
natedrathwagyu@gmail.com
P 920.538.0508

PAGE FARMS

W12875 Cork Street Rd., Ripon, WI 54971
pagefarms@frontier.com
P: 920.748.2110

JW Wagyu

Jimmy Webb
1319 S. Prairie Flower Road, Turlock, CA 95380
webbet74@yahoo.com
P: 209.479.1709

CONSIGNORS...



RAINES FARMS

Hayden Louisiana Prime Wagyu Beef
PO Box 248, Mangham, LA 71295, USA
www.louisianabeefcompany.com
john@reddochmediagroup.com
P: 318.791.9402



BAYCROFT WAGYU

1892 Old Martin Rd., De Pere, WI 54115, USA
www.baywagyu.com | baycroftcows@att.net
P: 920.366.7153

STONY RUN FARMS

446 Stony Run Rd., Spring City, PA 19475
www.stonyrunfarms.com | loren@stonyrunfarms.com
P: 484.369.9590

Atlantic **WAGYU**

ATLANTIC WAGYU

Mel Crane
P.O. Box 579, Kensington, PE C0B 1M0, Canada
www.facebook.com/AtlanticWagyuBeef
gentec@gentecld.com
P: 902.888.7992



SILVERWIND RANCH

Nick Bell
4209 Sylvan Rd., Ewart, MI 49631, USA
www.silverwindranch.org | amstate@qwest.net
P: 231.734.0535

KENTUCKY STUD, INC.

446 Stony Run Road, Spring City, PA 19475
www.stonyrungenetics.com | Loren@stonyrungenetics.com
P: 484.369.9590



SYNERGY WAGYU

106 N Market St., Charleston, SC 29401 USA
www.synergywagyu.com | info@synergywagyu.com
P: 484.369.9590



DESIGNER WAGYU

Brian Greenman
343 North Peters Ave., Fond du Lac, WI 54935, USA
www.designerwagyu.com | bgreenman@designerwagyu.com
P: 920.410.4533

WAGYU 100

Carl Fischer
Wing Dingers Texas, All Box 798, Mineola Texas 75773
Easttexasstars@hotmail.com
469.338.6939



Donor Cow Family

Bar R 68P



Bar R Shigeshigetani 30T, son of Lot 1 Donor, and sire of Lots 3, 4 & 5.

Lot 1

SIX EMBRYOS [Full sibs to 30T]

Selling six IVF embryos that are full sibs to 30T.

SIRE: WORLD K'S HARUKI 2 (FB1614)	MONJIRO 11550 (FB201)
WORLD K'S SHIGESHIGETANI (FB2907)	SAKURA 2 741638 (FB206)
WORLD K'S SUZUTANI (FB1617)	TANISHIGE 1526 (FB211)
	SUZUNAMI 472255 (FB227)
DAM: BAR R MICHISURU 2 K (FB4955)	WORLD K'S MICHIFUKU (FB1615)
BAR R 68P (FB5969)	JVP MS FUKUSHIGE T10E (FB3090)
BLUE ROCK HARUKI (FB3102)	MISS BAR R 18H (FB4216)
	JVP MS KIKUSHIGE 24E (FB3099)

Full siblings in blood to Bar R Shigeshigetani 30T.

We could not be more thrilled to have Southern Cattle Company be involved with this first ever sale. Highlighting this are full sibling embryos to one of the breeds most prominent sires, Bar R Shigeshigetani 30T. He is the breed's #1 ranking bull for ribeye, #1 for carcass weight, #2 for back fat and #8 for marbling in the 2016 Wagyu sire summary. Owned by Bar R Ranch, Jerry Reeves a well-respected Wagyu breeder has created this breed leader where his progeny are very well sought after. Southern Cattle Company owns Bar R 68P, the dam of 30T. She is a daughter of Bar R Michisuru 2K from a daughter of Blue Rock Haruki. Lot 1 will give you a chance to own six embryos that will be full siblings in blood to 30T. These embryos have not been made yet. Exportable.

Consigned by Southern Cattle Company, Marianna, FL

Lot 2

SIX EMBRYOS from BAR R 68P

REG#: FB5969 SEX: Female DOB: 11.09.04 B3F, CHSF, CL16F, F11F

SIRE: WORLD K'S MICHIFUKU (FB1615)	MONJIRO 11550 (FB201)
BAR R MICHISURU 2 K (FB4955)	MICHIKO 655635 (FB215)
JVP MS FUKUSHIGE T10E (FB3090)	JVP FUKUTSURU-068 (FB2101)
	JVP SHIGEHIME 208 (FB2104)
DAM: BLUE ROCK HARUKI (FB3102)	WORLD K'S HARUKI 2 (FB1614)
MISS BAR R 18H (FB4216)	JVP FUKUTOMI 990 (FB2111)
JVP KIKUYASU-400 (FB2100)	JVP MS KIKUSHIGE 24E (FB3099)
	JVP YURIKO-1 050 (FB2103)

Selling six IVF embryos from Bar R 68P and sired by the bull of the buyer's choice. Exportable.

Here is an opportunity to get the premier maternal genetics from one of the breed's top Fullblood Wagyu cows, Bar R 68P. She is the dam of the breed's most popular Fullblood Wagyu bull, Bar R Shigeshigetani 30T. He is the breed's #1 ranking bull for ribeye, #1 for carcass weight, #2 for back fat and #8 for marbling in the 2016 Wagyu sire summary. Southern Cattle Company Mr. Downs is giving the buying public an opportunity to use the bull of the buyer's choice on an embryo flush to the dam of 30T. Purchase agreement; Buyer supplies flush quality semen, Southern Cattle Company will pay to have the embryo transplant work done and create 6 embryos. Any embryos beyond 6, the price will be negotiated between the buyer and the seller.

Consigned by Southern Cattle Company, Marianna, FL

Lot 3

THREE EMBRYOS

Selling three IVF embryos.

SIRE: BAR R SHIGESHIGETANI 30T (FB8177)
 BAR R 68P (FB5969)

DAM: BAR R 68P (FB5969)
 MISS BAR R 18H (FB4216)

WORLD K'S SHIGESHIGETANI (FB2907)
 WORLD K'S HARUKI 2 (FB1614)
 WORLD K'S SUZUTANI (FB1617)
 BAR R MICHISURU 2 K (FB4955)
 MISS BAR R 18H (FB4216)
 WORLD K'S MICHIFUKU (FB1615)
 JVP MS FUKUSHIGE T10E (FB3090)
 BLUE ROCK HARUKI (FB3102)
 JVP KIKUYASU-400 (FB2100)

Southern Cattle Company wanted to be creative with the genetics from their leading Fullblood Wagyu donor cow, Bar R 68P and they have done just that. Why not take the breed's #1 sire and mate him back to his mother for a little line breeding? The genetics from this mating will for sure be tight and very well aligned but strong with predictability. Buy with confidence and we welcome your inquiries as to this unique mating.

Consigned by Southern Cattle Company, Marianna, FL

Lot 4

THREE EMBRYOS

Selling three IVF embryos.

SIRE: BAR R SHIGESHIGETANI 30T (FB8177)
 BAR R 68P (FB5969)

DAM: LMR MS HIROSHI 1212Y (FB13105)
 LMR MS MICHIFUKU 628S (FB6639)

WORLD K'S SHIGESHIGETANI (FB2907)
 WORLD K'S HARUKI 2 (FB1614)
 WORLD K'S SUZUTANI (FB1617)
 BAR R MICHISURU 2 K (FB4955)
 MISS BAR R 18H (FB4216)
 BR TAKAZAKURA 0606 3612 (FB5972)
 BR MS ITOMICHI-0602 2654 (FB5827)
 WORLD K'S MICHIFUKU (FB1615)
 CHR MS HIRASHIGE 055J (FB4832)

Here are three embryos straight from the heart of the embryo transplant program at Southern Cattle Company. Selling will be three embryos sired by ever-popular 30T bull, Bar R Shigeshigetani 30T. He is the breed's #1 ranking bull for ribeye, #1 for carcass weight, #2 for back fat and #8 for marbling in the 2016 Wagyu sire summary. The dam of the embryos is the 1212Y donor and she is rapidly being recognized as one of the top donors representing SCC Elite Genetics.

Consigned by Southern Cattle Company, Marianna, FL

Lot 5

THREE EMBRYOS

Selling three IVF embryos.

SIRE: BAR R SHIGESHIGETANI 30T (FB8177)
 BAR R 68P (FB5969)

DAM: JB-BAR R ICHIRO 68A (FB17299)
 21 GREEN (FB10648)

WORLD K'S SHIGESHIGETANI (FB2907)
 WORLD K'S HARUKI 2 (FB1614)
 WORLD K'S SUZUTANI (FB1617)
 BAR R MICHISURU 2 K (FB4955)
 MISS BAR R 18H (FB4216)
 JVP FUKUTSURU-068 (FB2101)
 BAR R MISS 31M (FB5437)
 TSUSHIMA 2 (FB8076)
 BAR R 11P (FB5707)

Selling will be three embryos sired by ever-popular 30T bull, Bar R Shigeshigetani 30T. He is the breed's #1 ranking bull for ribeye, #1 for carcass weight, #2 for back fat and #8 for marbling in the 2016 Wagyu sire summary. The dam of the embryos, 68A, is a daughter of Bar R Ichiro 31R. This mating was intended to create the very best progeny that highlight the extreme numbers in ribeye, marbling and carcass weight.

Consigned by Southern Cattle Company, Marianna, FL



Bay Mak Mana 129,
dam of Lot 6 embryos.



Bay Sanj Kumiko 147, dam of Lot 7 embryos.

Lot 6

FOUR EMBRYOS

Selling four conventional embryos.

SIRE: YCB ITO AINO 7252 (FB11733)
BAY DAI 7 HERO 5856 (FB11978)
TF HIKOKURA HOSHI - 2242 (FB11418)

DAM: YCB ITO MAKOTO 5626 (FB11765)
BAY MAK MANA 129 (FB16091)
MISAMI (FB7968)

TF ITOHANA2 (FB2294)
TF AINO 115/1 (FB4732)
TF KIKUHANA (FB2127)
TF HIKOKURA 8/3 (FB2444)
TF ITOMICHI 1/2 (FB2126)
YCB ITOHIME TAKARA 5381 (FB11764)
ITOSHIGENAMI (FB3682)
MISAKO (FB5768)

This mating will make you a highly sought after wagyu not only for domestic demand but also foreign demand as a "Hero." As a Hero daughter was the top sellign lot at the 2015 European Wagyu Gala. Available for immediate shipping and export qualified.

Consigned by Designer Wagyu, Fon du Lac, WI

Lot 7

FIVE IVF EMBRYOS

Selling five IVF embryos.

SIRE: HB BIG AL 502 (FB2998)
HEART BRAND RED EMPEROR (FB14999)
DAI 8 MARUNAMI J19461 (FB2454)

DAM: WORLD K'S SANJIROU (FB2501)
BAY SANJ KUMIKO 147 (FB17489)
YCB ITO KAMEYO 5635 (FB11981)

DAI 10 MITSUMARU (FB424)
AKIKO (FB2120)
DAI 3 MITSUMARU 30 (FB415)
DAI 7 MARUNAMI J14289 (FB448)
WORLD K'S MICHIFUKU (FB1615)
WORLD K'S SUZUTANI (FB1617)
TF ITOMICHI 1/2 (FB2126)
YCB ALZAKIKU KYOKO 3601-10 (FB11980)

Kumiko is a high marbling and high type female from the Anio 6 cow family, and one of the highest type females in the breed. She has proven herself as an excellent show animal. This cow family has produced highly scored bulls used to increase frame and milking ability. This family's genetics has been used on Tajima to provide more milk and increase their mothering abilities. Kumiko's 6th dam is the genetic powerhouse Aino 6 cow who produce many elite wagyu animals. Her offspring has some of the best rumps that the breed has ever seen, supporting their udders to provide excellent milking abilities. TF Itohana 2 was one of her famous sons. He made great framed cattle along with strong maternal abilities, solid milking, and big powerful mature cattle. Kumiko won her class at World Beef Expo in 2015 and is out of some of the biggest framed cattle we have ever seen. She is by far the tallest yearling that has ever been at Designer Wagyu. In her direct pedigree you will find Itomichi appear multiple times as her dam is sired by the great Itomichi 1/2 who is a son of Itomichi. (The great Aino 6 is also sired by Itomichi.) Itomichi's genetics bring in the high type along with good frames which has been passed on to Kumiko who excels in these traits as well as strong growth and milking abilities. Kumiko is sired by WORLD K'S SANJIROU (FB2501) and could be one of his most correct daughters. Her offspring will soon be born and we predict that they will have excellent growth and large framed traits like her and her family.

Consigned by Designer Wagyu, Fon du Lac, WI



GTL Ms Shigeshigetani 232A,
dam of Lot 9 embryos.

Lot 8

SIX EMBRYOS

Selling six Conventional, Grade 1 embryos.

SIRE: JVP FUKUTSURU-068 (FB2101)
BAR R JIRO 22T (FB7879)
BAR R MISS 2N (FB5446)

DAM: WORLD K'S SHIGESHIGETANI (FB2907)
GTL MS SHIGESHIGETANI 232A (FB19427)
CHR MS TAKAZAKURA 043J (FB4836)

DAI 2 YASUTSURU 774 (FB306)
TERUYASU 649663 (FB307)
WORLD K'S SANJIROU (FB2501)
MISS BAR R 321H (FB4209)
WORLD K'S HARUKI 2 (FB1614)
WORLD K'S SUZUTANI (FB1617)
WORLD K'S TAKAZAKURA (FB2892)
CHR MS KIKUSHIGE 018 (FB4016)

These embryos are from GTL MS SHIGESHIGETANI 232A (FB19427) who is AV the SCD gene, has a tenderness score of 4 and has the very rare BB configuration of the Exon 5 gene. The embryos are by BAR R JIRO 22T (FB7879) who is AA for the SCD fat gene and is also BB for the Exon 5 gene. There is limited semen available on this bull. All resulting progeny will have the elusive Exon 5 BB configuration. No testing required. 50% of the progeny will also be AA for the SCD gene. They will all have a high tenderness score and be free of the known genetic disorders.

Consigned by Atlantic Wagyu, Kensington, PE, Canada

Lot 9

SIX EMBRYOS

Selling six Conventional, Grade 1 embryos.

SIRE: JVP FUKUTSURU-068 (FB2101)
BAR R JIRO 22T (FB7879)
BAR R MISS 2N (FB5446)

DAM: WORLD K'S SHIGESHIGETANI (FB2907)
GTL MS SHIGESHIGETANI 232A (FB19427)
CHR MS TAKAZAKURA 043J (FB4836)

DAI 2 YASUTSURU 774 (FB306)
TERUYASU 649663 (FB307)
WORLD K'S SANJIROU (FB2501)
MISS BAR R 321H (FB4209)
WORLD K'S HARUKI 2 (FB1614)
WORLD K'S SUZUTANI (FB1617)
WORLD K'S TAKAZAKURA (FB2892)
CHR MS KIKUSHIGE 018 (FB4016)

Six number 1 quality embryos from GTL MS SHIGESHIGETANI 232A (FB19427) who is AV the SCD gene, has a tenderness score of 4 and has the very rare BB configuration of the Exon 5 gene. The embryos are by BAR R JIRO 22T (FB7879) who is AA for the SCD fat gene and is also BB for the Exon 5 gene. Semen is no longer available for sale on this bull. All resulting progeny will have the elusive Exon 5 BB configuration. No testing required. 50% of the progeny will also be AA for the SCD gene. They will all have a high tenderness score and be free of the known genetic disorders.

Consigned by Atlantic Wagyu, Kensington, PE, Canada



CHR Hirashige Tayasu 533,
sire of Lot 10 embryos.



Bay Itomichi 1/2 Toshimi 175,
dam to Lot 10 embryos.



Sapporo, full sister to
Lot 10 dam.

Lot 10

FOUR EMBRYOS

Selling four embryos (Conventional Flush with FEMALE SEXED Semen).

SIRE: CHR HIRASHIGE TAYASU J2351 (FB670)
CHR HIRASHIGE TAYASU 533 (FB13499)
SUZUTAKA 2 (FB6032)

DAM: BAY ITOMICHI 1/2 TOSHIMI 175 (FB20478)
YCB MS TOSHIGENA 2237 (FB4849)

DAI 20 HIRASHIGE 287 (FB330)
DAI 5 YURUHIME (FB669)
WORLD K'S TAKAZAKURA (FB2892)
WORLD K'S SUZUTANI (FB1617)
ITOMICHI (FB500)
DAI 2 KINTOU (FB464)
ITOSHIGENAMI (FB3682)
TF CHIYOTAKE 8/1A (FB2435)

Toshimi 175, the donor dam, is the result of a complimentary mating combining the strength and growth of Itomichi 1/2 with the marbling and carcass quality of Itoshigenami (TF148). A full sister to Toshimi 175 brought 13000 Euro in the European Wagyu Gala. This popular 001 son from the Suzutani family should make fancy calves. 100% Recessive free mating. Embryos are qualified to ship to the EU. Embryos frozen by Gen-O-Vations, Lodi, WI.

Consigned by Baycroft Wagyu, De Pere, WI & Mell-View Farm, Lodi, WI



BPF Ms Mich 109, dam of Lot 11 embryos.



GAF Harukatani, full sib to Lot 11.

FIVE EMBRYOS

Lot 11

Selling five Grade 1 embryos

SIRE: MONJIRO 11550 (FB201)
WORLD K'S HARUKI II (FB1614)
SAKURA 2 741638 (FB206)

DAM: WORLD K'S MICHIFUKU (FB1615)
BPF MS MICH 109 (FB8101)
SUZUTAKA 2 (FB6032)

YASUMI DOI (FB548)
HARUMI 1086409 (FB203)
KENSHIN 902 (FB207)
ITOHIME 3 545978 (FB208)
MONJIRO 11550 (FB201)
MICHIKO 655635 (FB215)
WORLD K'S TAKAZAKURA (FB2892)
WORLD K'S SUZUTANI (FB1617)

Ms Mich 109 is a direct maternal granddaughter of the incomparable breed icon, Suzutani. Her dam, Suzutaka 2, is a maternal sister to several of the elite genetic AI bulls in both the USA and Australia, including Sanjiro and Shigesigetani. She is a full sister to leading Australian sire Shikikan. The genetics of the Suzutani maternal line are in demand by top breeders. A maternal brother to Ms Mich, Stonyrun Ichiro, sold to Larry Tebben, TX, for \$12,500 at the 2016 Denver sale and two full sisters to Ms Mich sold for \$18,000 and \$17,000 at the Belcampo dispersal to Golden Age Farm in Kentucky. Golden Age Farm consigned a Harukii II son of one of these full sisters to the Passion for Prime sale in June that sold for \$17,000. The embryos of this consignment will be 100% the same blood as that sale topping bull! These embryos qualify for export.

Consigned by Synergy Wagyu, Charleston, SC



Sarah P, dam of Lot 13 embryos.

Stonyrun Shig Hikokura 15, dam of Lot 12.



Suzito 3, dam of Lot 14 embryos.



Ichiro, full brother to Suzito 3, dam of Lot 14 embryos.

Lot 12

FIVE EMBRYOS

Selling five Conventional embryos.

SIRE: CHR MICHISURU 089L (FB5315)
MICHIFUKUTSURU (FB6836)
CHR MS TAK 108M (FB5333)

DAM: WORLD K'S SHIGESHIGETANI (FB2907)
STONYRUN SHIG HIKOKURA 15 (FB 18908)
LMR MS ITOZURUDOI 8164U (FB8839)

JVP FUKUTSURU -068 (FB2101)
CHR MS MICHIFUKU 035H
WORLD K'S TAKAZAKURA (FB2892)
CHR MS MICHIFUKU 032H (FB4242)
WORLD K'S HARUKI 2 (FB1614)
WORLD K'S SUZUTANI (FB1617)
ITOZURU DOI (FB3685)
CF 503 (FB5698)

Hikokura 15 is an awesome Shigeshigetani daughter with tremendous body capacity that descends from the best of Takeda Farms breeding, the Hikokura maternal line. This maternal line produced the elite Australian sire, Mayura Itoshigenami Jnr, whose semen sold for over \$3000 per straw at the Wagyu World Conference held in May in Australia. Other successful bulls from this line bred by Takeda farms include TF Itomichi 1/2 and TF Mitsuhikokura 149. Hikokura 15 has a rare recessive free pedigree containing the great TF 151 x TF 148 combination. The Hikokura line is known for it's combination of size, growth, and quality carcasses. A full sister to the of dam Hikokura 15 sold for \$16,000 at the last Lone Mountain sale and a cow that is 100% the same blood as her dam was the co-top of the Belcampo dispersal at \$19,500. These embryos are sired by the great carcass bull, Michifuku, who was previously the #1 Marbling sire in the US and transmits great rib eye size. These embryos present a great chance to tie into top Takeda genetics. Eligible for export.

Consigned by Synergy Wagyu, LLC, Charleston, SC

Lot 13

FIVE EMBRYOS

Selling five Conventional embryos.

SIRE: WORLD K'S MICHIFUKU (FB1615)
WORLD K'S SANJIROU (FB2501)
WORLD K'S SUZUTANI (FB1617)

DAM: CHR TAKAZAKURA 101L (FB5317)
SARAH P (FB 7637)
SARASON (FB6067)

MONJIRO 11550 (FB201)
MICHIKO 655635 (FB215)
TANISHIGE 1526 (FB211)
SUZUNAMI 472255 (FB227)
WORLD K'S TAKAZAKURA (FB2892)
CHR KIKUHANAHIME (FB3311)
ITOMORITAKA J2703 (FB681)
UTSUKUSHII (FB4461)

Sara P sold as the \$19,500 co-top of the Belcampo dispersal. She is from the Okutani maternal line which is one of the elite lines imported from Japan by the current World K group. Okutani is the dam of two outstanding Haruki II full brothers, Bejirou and Genjiro. Sara P traces back to Fujiko, who is the tremendous full sister to these bulls. Sara P has proven her value by being an excellent flush cow and her genetics are in great demand with embryos being exported to South Africa. Sara P is a favorite because of her large frame and great body capacity. These embryos are a great opportunity to get into a superior genetic maternal line which has proven itself many times with outstanding offspring in top herds in the US, Canada, and Australia. There are several progeny of the Sara P x Sanjirou mating born that are SCD AA. These embryos qualify for export.

Consigned by Synergy Wagyu, LLC, Charleston, SC

Lot 14

FIVE EMBRYOS

Selling five embryos.

SIRE: WORLD K'S HARUKI 2 (FB1614)
WORLD K'S SHIGESHIGETANI (FB2907)
WORLD K'S SUZUTANI (FB1617)

DAM: ITOZURU DOI (FB3685)
STONYRUN ID 151 SUZITO 3 (FB11844)
SUZUTAKA 2 (FB6032)

MONJIRO 11550 (FB201)
SAKURA 2 741638 (FB206)
TANISHIGE 1526 (FB211)
SUZUNAMI 472255 (FB227)
ITOKITATSURU (FB678)
YASUHIME (FB662)
WORLD K'S TAKAZAKURA (FB2892)
WORLD K'S SUZUTANI (FB1617)

Suzito is a cow with outstanding phenotype and an even more impressive pedigree. She is the only recessive free Itozurudo TF 151 granddaughter of the legendary Suzutani. Suzito has an outcross pedigree from possibly the most potent carcass line in the breed. Her dam is a maternal sister to breed greats Sanjirou and Shigeshigetani, and full sister to Australian leader Shikikan, making Suzito one of the most genetically valuable cows in the breed. A cloning opportunity of Suzito sold for \$19,000 and her full brother, Ichiro, sold for \$12,500 at the 2016 Denver sale. The embryos are sired by breed leader Shigeshigetani. Several progeny from this mating have tested SCD AA and Tenderness 7. The embryos qualify for export and represent an unbelievable opportunity to acquire Suzutani genetics!

Consigned by Synergy Wagyu, LLC, Charleston, SC



MFC Kimitofuki 434B,
sire to Lot 15 embryos.



Michiyoshi, sire to
Lot 16 embryos.

Lot 15

FIVE EMBRYOS

Selling five Conventional, Grade 1 embryos.

SIRE: MFC KIMITOFUKU 434B (FB 17785)
MFC MS ITOSHIGEFUJI 0-23 (FB11579)

DAM: MFC MS MITSOHIKOKURA 2-4 (FB13938)
MFC MS KIKUYASU 9-20 (FB10637)

TF 813 KIMITOFUKU (FB10687)
ITOSHIGENAMI (FB3682)
TF 709 (FB7578)
ITOSHIGEFUJI (FB3681)
TF 709 (FB7578)
ITOHIKARI (FB573)
HIKOKURA 3/9 (FB572)
JVP KIKUYASU-400 (FB2100)
MJB MS KITAGUNI 06K (FB5139)

The sire of the embryos is intensely concentrated Takeda (Fujiyoshi) breeding. With two crosses to Kimifuku 3, a top marbling Takeda sire and a maternal family going back to Ezokintau, a Japanese Champion cow, here's a one of a kind combination. The donor dam has more Fujiyoshi on the top and Kikuyasa 400 and Kitaguni JR on the bottom. Embryos F.O.B. GenOvations, Lodi, WI.

Consigned by Synergy Wagyu, LLC, Charleston, SC

MFC Ms Mitsohikokura 2-4, dam of Lot 15 & 16 embryos.

Lot 16

FIVE EMBRYOS

Selling five Conventional, Grade 1 embryos.

SIRE: MICHİYOSHI (FB9420)
CHR MS FUKUTSURU 107L (FB5861)

DAM: MFC MS MITSOHIKOKURA 2-4 (FB13938)
MFC MS KIKUYASU 9-20 (FB10637)

WORLD K'S SANJIROU (FB2501)
WORLD K'S MICHIFUKU (FB1615)
WORLD K'S SUZUTANI (FB1617)
JVP FUKUTSURU-068 (FB2101)
CHR MS TAKAZAKURA 044J (FB4835)
ITOHIKARI (FB573)
HIKOKURA 3/9 (FB572)
JVP KIKUYASU-400 (FB2100)
MJB MS KITAGUNI 06K (FB5139)

This combination puts the Tajima Michiyoshi sire over the Fujiyoshi/Tajima cross of the maternal line. This is a balanced pedigree for marbling and growth. Embryos F.O.B. GenOvations, Lodi, WI.

Consigned by Muddy Flats Cattle Co., Augusta, WI



IWG Judo 76Z, dam of Lot 17 embryos.

Lot 17

SIX EMBRYOS

Selling six embryos.

SIRE: HB BIG AL 502 (FB2998)
HEART BRAND RED EMPEROR (FB14999)
DAI 8 MARUNAMI J19461 (FB2454)

DAI 10 MITSUMARU (FB424)
AKIKO (FB2120)
DAI 3 MITSUMARU 30 (FB415)
DAI 7 MARUNAMI J14289 (FB448)
SHIGETAKARA H40 (FB7)
SAKAE RK23331 (FB8)
SHIGEMARU (FB2124)
SUMO CATTLE CO HINODE C157 (FB14994)

DAM: JUDO (FB102)
IWG MS JUDO 76Z (FB14722)
GABNI RUBI (FB12161)

Consigned by Idaho Wagyu Genetics, Soda Springs, ID



Planned Matings

Buyer Choice of Matings

Wing Dingers Texas DBA. Wagyu 100 is offering the rare opportunity to bring foundation genetics into your herd from foundation sires whose semen has become not just limited but nearly non-existent. All our matings have foundation sires on the top of the pedigree and daughters of foundation sires on the bottom of the pedigree. At this time we are offering the Buyer the choice pick in each lot. Buyer will be given the ear tag numbers of the three Trans Ova recipis carrying each mating. Recips are all 60 days plus safe in calf. Seller will calf out the recipis on our East Texas ranch. At 60 days post birth buyer must choose which calf they will take. Seller will hold calf till weaning at 4 months. Seller will pay 50% at close of auction, 25% upon choosing calf and 25% at pickup. All embryo work was done at Trans Ova Texas and Iowa. Seller guarantees DNA confirmation and will register all calves with the AWA. Seller retains 10% interest in semen on all bulls.

Lot 18A

BULL CALF

SIRE: RUESHAW (FB101) KIKUTAMA 14285 (FB2)	RUEMEI H39 (FB1)	RYUEI H20 (FB3) HARUMI H376 (FB4) SOCHU H10 (FB5) KIKUFUJI RK41627 (FB6) DAI 10 MITSUMARU (FB424) AKIKO (FB2120) HIKARI (FB2455) JVP MS HOMARE J 30E (FB3370)
DAM: SOR MS BIG ALKARI #3 (FB22251) UKB MS HIKARI HOMARE J30E(JVP) (FB11800)	HB BIG AL 502 (FB2998)	
SIRE: WORLD K'S BEIJIROU (FB2289) WORLD K'S OKUTANI (FB1616)	WORLD K'S HARUKI 2 (FB1614)	MONJIRO 11550 (FB201) SAKURA 2 741638 (FB206) OKUSHIGE 1803 (FB218) FUJITANI 655405 (FB223) DAI 2 YASUTSURU 774 (FB306) TERUYASU 649663 (FB307) TF KIKUHANA (FB2127) JVP YURIKO-1 050 (FB2103)
DAM: MS USURAMI (FB11014) CHR MS KIKUSHIGE 016 (FB4014)	JVP FUKUTSURU-068 (FB2101)	
SIRE: ITOZURU DOI (FB3685) YASUHIME (FB662)	ITOKITATSURU (FB678)	DAI 7 ITOZAKURA (FB226) NISHIZURU (FB4569) YASUMI DOI (FB548) FUJIHIME (FB638) WORLD K'S MICHIFUKU (FB1615) WORLD K'S SUZUTANI (FB1617) JVP FUKUTSURU-068 (FB2101) CHR MS KITAGUNI 037H (FB4247)
DAM: CHR MS SANJIROU 432 (FB11309) MJB MS KITAFUKU 05K (FB5138)	WORLD K'S SANJIROU (FB2501)	

Lot 18B

BULL CALF

SIRE: KIKUNORI DOI 9285 (FB19)
MT FUJI (FB104)
SHIZUKO 978524 (FB20)

DAM: ITOZURU DOI (FB3685)
NANASHI (FB10054)
CHR MS SANJIROU 186R (FB6015)

KIKUMI DOI 5 (FB21)
TAMARU 491.064 (FB22)
TAFUJI DOI 179 (FB23)
SHIZUYO 4TH 707.099 (FB24)
ITOKITATSURU (FB678)
YASUHIME (FB662)
WORLD K'S SANJIROU (FB2501)
CHR MS KITAGUNI 84L (FB5131)

SIRE: DAI 20 HIRASHIGE 287 (FB330)
SHIGEFUKU J1822 (FB6538)
MORIKITA J141042 (FB6537)

DAM: ITOZURU DOI (FB3685)
NANASHI (FB10054)
CHR MS SANJIROU 186R (FB6015)

KEDAKA 7212 (FB334)
DAI 13 HIRASHIGE (FB668)
HAYANOBU J9627 (FB6534)
KITAFUJI J1342299 (FB6535)
ITOKITATSURU (FB678)
YASUHIME (FB662)
WORLD K'S SANJIROU (FB2501)
CHR MS KITAGUNI 84L (FB5131)

SIRE: ITOHANA (FB504)
KENHANAFUJI (FB2461)
HANA FUJI 472029 (FB563)

DAM: ITOZURU DOI (FB3685)
NANASHI (FB10054)
CHR MS SANJIROU 186R (FB6015)

DAI 7 ITOZAKURA (FB226)
YOSHIFUKUHANA (FB561)
KENSEI 108 (FB209)
HANAYUU 158303 (FB564)
ITOKITATSURU (FB678)
YASUHIME (FB662)
WORLD K'S SANJIROU (FB2501)
CHR MS KITAGUNI 84L (FB5131)

Lot 18D

HEIFER CALF

SIRE: DAI 20 HIRASHIGE 287 (FB330)
SHIGEFUKU J1822 (FB6538)
MORIKITA J141042 (FB6537)

DAM: ITOZURU DOI (FB3685)
NANASHI (FB10054)
CHR MS SANJIROU 186R (FB6015)

KEDAKA 7212 (FB334)
DAI 13 HIRASHIGE (FB668)
HAYANOBU J9627 (FB6534)
KITAFUJI J1342299 (FB6535)
ITOKITATSURU (FB678)
YASUHIME (FB662)
WORLD K'S SANJIROU (FB2501)
CHR MS KITAGUNI 84L (FB5131)

SIRE: RUEMEI H39 (FB1)
RUESHAW (FB101)
KIKUTAMA 14285 (FB2)

DAM: TAMAMARU (FB2125)
SOR MS TAMAKARI-HOMARE (FB23376)
UKB MS HIKARI HOMARE J30E(JVP) (FB11800) HIKARI (FB2455)
JVP MS HOMARE J 30E (FB3370)

RYUEI H20 (FB3)
HARUMI H376 (FB4)
SOCHU H10 (FB5)
KIKUFUJI RK41627 (FB6)
DAI GO TAMANAMI 96 (FB444)
DAI 8 MARUNAMI J19461 (FB2454)
JVP MS HOMARE J 30E (FB3370)

SIRE: ITOHANA (FB504)
KENHANAFUJI (FB2461)
HANA FUJI 472029 (FB563)

DAM: ITOZURU DOI (FB3685)
NANASHI (FB10054)
CHR MS SANJIROU 186R (FB6015)

DAI 7 ITOZAKURA (FB226)
YOSHIFUKUHANA (FB561)
KENSEI 108 (FB209)
HANAYUU 158303 (FB564)
ITOKITATSURU (FB678)
YASUHIME (FB662)
WORLD K'S SANJIROU (FB2501)
CHR MS KITAGUNI 84L (FB5131)

Lot 18C

HEIFER CALF

SIRE: ITOKITATSURU (FB678)
ITOZURU DOI (FB3685)
YASUHIME (FB662)

DAM: WORLD K'S KITAGUNI JR. (FB2422)
CHR MS KITAGUNI 037H (FB4247)
CHR MS KIKUHIME 007F (FB3415)

DAI 7 ITOZAKURA (FB226)
NISHIZURU (FB4569)
YASUMI DOI (FB548)
FUJIHIME (FB638)
KITAGUNI 7/8 (FB581)
WORLD K'S NAKAYUKI (FB2893)
JVP KIKUYASU-400 (FB2100)
JVP CHISAHIME 662 (FB2108)

SIRE: RUEMEI H39 (FB1)
RUESHAW (FB101)
KIKUTAMA 14285 (FB2)

DAM: HB BIG AL 502 (FB2998)
SOR MS BIG ALKARI #3 (FB22251)
UKB MS HIKARI HOMARE J30E(JVP) (FB11800) HIKARI (FB2455)
JVP MS HOMARE J 30E (FB3370)

RYUEI H20 (FB3)
HARUMI H376 (FB4)
SOCHU H10 (FB5)
KIKUFUJI RK41627 (FB6)
DAI 10 MITSUMARU (FB424)
AKIKO (FB2120)
JVP MS HOMARE J 30E (FB3370)

SIRE: WORLD K'S HARUKI 2 (FB1614)
WORLD K'S BEIJIROU (FB2289)
WORLD K'S OKUTANI (FB1616)

DAM: MITSUHIKOKURA 149 (FB3683)
CHR MS MITSUHIKOKURA 521 (FB13334)
SUZUTAKA 2 (FB6032)

MONJIRO 11550 (FB201)
SAKURA 2 741638 (FB206)
OKUSHIGE 1803 (FB218)
FUJITANI 655405 (FB223)
ITOHIKARI (FB573)
HIKOKURA 3/9 (FB572)
WORLD K'S TAKAZAKURA (FB2892)
WORLD K'S SUZUTANI (FB1617)



Bay Mak Mana 129,
dam of Lots 19 - 23.

© Cubil Fisher



Westholme Hirashigetayasu Z278, sire of Lot 21 heifer calf.



Bar R Sanjirou 4P, sire of Lot 22 heifer calf.

Guaranteed Heifer Matings from the Bay Mak Mana 129 Cow Family

Bay Mak Mana 129 is from the elite Hisako cow family which is known for high quality meat traits including extremely high marbling. To our knowledge, Mana's dam, Misami, is the one of the highest; Mana's second dam, Misako, one of the highest marbling cows tested (as far as we know). Her sire YCB ITO MAKOTO 5626 (FB11765) is a high type son of TF ITOMICHI 1/2 (FB2126). Mana is a very impressive individual and has the long wide loin that is needed to produce high value Wagyu carcasses with high steak value. Her genetics and offspring (who match her in wide loin) are sought after by breeders from around the world. Her sons will be entering stud and will help to improve carcass quality into the next generation.

Consigned by Designer Wagyu, Fon du Lac, WI

Lot 19

Guaranteed HEIFER CALF

SIRE: HIRASHIGETAYASU J2351 (FB670)
DAI 20 HIRASHIGE 287 (FB330)
DAI 5 YURUHIME (FB669)
TAYASUHUKU (FB667)
YURIKO 795455 (FB340)
TF ITOMICHI 1/2 (FB2126)
DAM: BAY MAK MANA 129 (FB16091)
MISAMI (FB7968)
YCB ITO MAKOTO 5626 (FB11765)
YCB ITOHIME TAKARA 5381 (FB11764)
ITOSHIGENAMI (FB3682)
MISAKO (FB5768)

Sells 90 days guaranteed safe bred.

Lot 20

Guaranteed HEIFER CALF

SIRE: HEART BRAND RED EMPEROR (FB14999)
HB BIG AL 502 (FB2998)
DAI 8 MARUNAMI J19461 (FB2454)
DAI 10 MITSUMARU (FB424)
AKIKO (FB2120)
DAI 3 MITSUMARU 30 (FB415)
DAI 7 MARUNAMI J14289 (FB448)
TF ITOMICHI 1/2 (FB2126)
DAM: BAY MAK MANA 129 (FB16091)
MISAMI (FB7968)
YCB ITO MAKOTO 5626 (FB11765)
YCB ITOHIME TAKARA 5381 (FB11764)
ITOSHIGENAMI (FB3682)
MISAKO (FB5768)

Sells 90 days guaranteed safe bred.

Lot 21

Guaranteed HEIFER CALF

SIRE: WESTHOLME HIRASHIGETAYASU Z278 (FB8376)
HIRASHIGETAYASU J2351 (FB670)
WESTHOLME OHYURIHIME X106 (FB8375)
KITATERUYASUDO I2810 (FB686)
WESTHOLME MORITAKE U38 (FB8374)
TF ITOMICHI 1/2 (FB2126)
DAM: BAY MAK MANA 129 (FB16091)
MISAMI (FB7968)
DAI 20 HIRASHIGE 287 (FB330)
DAI 5 YURUHIME (FB669)
YCB ITOHIME TAKARA 5381 (FB11764)
ITOSHIGENAMI (FB3682)
MISAKO (FB5768)

This heifer calf will have GH Exon 5 potential types: BB or AB. She will be loaded with marbling and ready to roll in the show ring this year at the National shows.

Lot 22

Guaranteed HEIFER CALF

SIRE: BAR R SANJIROU 4P (FB5663)
WORLD K'S SANJIROU (FB2501)
BAR R MISS FUKUTSURU 47K (FB5098)
WORLD K'S MICHIFUKU (FB1615)
WORLD K'S SUZUTANI (FB1617)
JVP FUKUTSURU-068 (FB2101)
MISS BAR R 301H (FB4208)
TF ITOMICHI 1/2 (FB2126)
DAM: BAY MAK MANA 129 (FB16091)
MISAMI (FB7968)
YCB ITO MAKOTO 5626 (FB11765)
YCB ITOHIME TAKARA 5381 (FB11764)
ITOSHIGENAMI (FB3682)
MISAKO (FB5768)

This heifer calf will come with built in marbling power as her sire is the number 3 marbling sire of the breed in 2009 sire summary adding in the power of highest marbling cow family that we know of, Mana's second dam, Misako, one of the highest marbling cows tested (as far as we know).. She will also be loaded with high type and will give you a great chance at landing in the winner's circle at any national show.

Lot 23

Guaranteed HEIFER CALF

SIRE: LMR TOSHIRO 1/3 (FB7475)
TF KIKUHANA (FB2127)
WORLD K'S REIKO (FB2424)
YCB ITO MAKOTO 5626 (FB11765)
DAM: BAY MAK MANA 129 (FB16091)
MISAMI (FB7968)
ITO HANA (FB504)
NAYORI 1 (FB523)
KITAGUNI 7/8 (FB581)
WORLD K'S OKAHANA (FB2894)
TF ITOMICHI 1/2 (FB2126)
YCB ITOHIME TAKARA 5381 (FB11764)
ITOSHIGENAMI (FB3682)
MISAKO (FB5768)

This calf resulting from the pregnancy will bring outstanding marbling, high carcass weights, and high type. This calf will be the complete package that you can breed from and have excellent transmitting power.

LOTS 19 - 23 ...

- Ultrasound female pregnancy that sell with recip, which is one of the top recip animals from the Designer Recip program.
- Guaranteed heifer pregnancy that can ship at 90 days of gestation.
- 50% down at sale time; 50% when the pregnancy is at 90 days.
- If lots sells over \$7,500 recip can calve at Designer free of charge and both recip and heifer will ship to buyer when the pair is ready.



Bay Sanj Kumiko 147-ET,
dam of Lot 24 planned
heifer mating.

Kathy DeBruin

Lot 24

HEIFER CALF from Bay Sanj Kumiko 147-ET

REG#: FB17489 SEX: Female DOB: 05.15.14 B3F, CHSFU, CL16FU, F11FU

SIRE: WORLD K'S MICHIFUKU (FB1615)
WORLD K'S SANJIROU (FB2501)
WORLD K'S SUZUTANI (FB1617)

DAM: TF ITOMICHI 1/2 (FB2126)
YCB ITO KAMEYO 5635 (FB11981)
YCB ALZAKIKU KYOKO 3601-10 (FB11980)

MONJIRO 11550 (FB201)
MICHIKO 655635 (FB215)
TANISHIGE 1526 (FB211)
SUZUNAMI 472255 (FB227)
ITOMICHI (FB500)
DAI 2 KINTOU (FB464)
YCB KIKUHANA 467 (FB5044)
TF AIZAKURA 6/1 (FB2430)

Heifer pregnancy that sells with the recip, which is one of the top recip animals from the Designer Recip program. Guaranteed heifer pregnancy that can ship at 90 days of gestation. 50% down sale time; 50% when the pregnancy is at 90 days. If lot sells over \$7,500, recip can calve at Designer free of charge and both recip and heifer will ship to buyer when the pair is able to.

Kumiko is a high marbling and high type female from the Anio 6 cow family, and one of the highest type females in the breed. She has proven herself as an excellent show animal. This cow family has produced highly scored bulls used to increase frame and milking ability. This family's genetics has been used on Tajima to provide more milk and increase their mothering abilities. Kumiko's 6th dam is the genetic powerhouse Aino 6 cow who produce many elite wagyu animals. Her offspring has some of the best rumps that the breed has ever seen, supporting their udders to provide excellent milking abilities. TF Itohana 2 was one of her famous sons. He made great framed cattle along with strong maternal abilities, solid milking, and big powerful mature cattle. Kumiko won her class at World Beef Expo in 2015 and is out of some of the biggest framed cattle we have ever seen. She is by far the tallest yearling that has ever been at Designer Wagyu. In her direct pedigree you will find Itomichi appear multiple times as her dam is sired by the great Itomichi 1/2 who is a son of Itomichi. (The great Aino 6 is also sired by Itomichi.) Itomichi's genetics bring in the high type along with good frames which has been passed on to Kumiko who excels in these traits as well as strong growth and milking abilities. Kumiko is sired by WORLD K'S SANJIROU (FB2501) and could be one of his most correct daughters. Her offspring will soon be born and we predict that they will have excellent growth and large framed traits like her and her family.

Consigned by Designer Wagyu, Fon du Lac, WI

Bay Sanj Kumiko 147-ET,
dam of Lot 25 planned
heifer mating.



Lot 25

Guaranteed HEIFER CALF

SIRE: HB BIG AL 502 (FB2998)
HEART BRAND RED EMPEROR (FB14999)
DAI 8 MARUNAMI J19461 (FB2454)

DAM: WORLD K'S SANJIROU (FB2501)
BAY SANJ KUMIKO 147-ET (FB17489)
YCB ITO KAMEYO 5635 (FB11981)

DAI 10 MITSUMARU (FB424)
AKIKO (FB2120)
DAI 3 MITSUMARU 30 (FB415)
DAI 7 MARUNAMI J14289 (FB448)
WORLD K'S MICHIFUKU (FB1615)
WORLD K'S SUZUTANI (FB1617)
TF ITOMICHI 1/2 (FB2126)
YCB ALZAKIKU KYOKO 3601-10 (FB11980)

Heifer pregnancy that sells with the recip, which is one of the top recip animals from the Designer Recip program. Guaranteed heifer pregnancy that can ship at 90 days of gestation. 50% down sale time; 50% when the pregnancy is at 90 days. If lot sells over \$7,500, recip can calve at Designer free of charge and both recip and heifer will ship to buyer when the pair is able to.

Kumiko is a high marbling and high type female from the Anio 6 cow family, and one of the highest type females in the breed. She has proven herself as an excellent show animal. This cow family has produced highly scored bulls used to increase frame and milking ability. This family's genetics has been used on Tajima to provide more milk and increase their mothering abilities. Kumiko's 6th dam is the genetic powerhouse Aino 6 cow who produce many elite wagyu animals. Her offspring has some of the best rumps that the breed has ever seen, supporting their udders to provide excellent milking abilities. TF Itohana 2 was one of her famous sons. He made great framed cattle along with strong maternal abilities, solid milking, and big powerful mature cattle. Kumiko won her class at World Beef Expo in 2015 and is out of some of the biggest framed cattle we have ever seen. She is by far the tallest yearling that has ever been at Designer Wagyu. In her direct pedigree you will find Itomichi appear multiple times as her dam is sired by the great Itomichi 1/2 who is a son of Itomichi. (The great Aino 6 is also sired by Itomichi.) Itomichi's genetics bring in the high type along with good frames which has been passed on to Kumiko who excels in these traits as well as strong growth and milking abilities. Kumiko is sired by WORLD K'S SANJIROU (FB2501) and could be one of his most correct daughters. Her offspring will soon be born and we predict that they will have excellent growth and large framed traits like her and her family.

Consigned by Designer Wagyu, Fon du Lac, WI



Bay Sanj Kumiko 147-ET, dam of Lot 26 heifer calf.

Westholme Hirashigetayasu Z278, sire of Lot 26 heifer calf.

Lot 26

Guaranteed HEIFER CALF

SIRE: HIRASHIGETAYASU J2351 (FB670) DAI 20 HIRASHIGE 287 (FB330)
 WESTHOLME HIRASHIGETAYASU Z278 (FB8376) DAI 5 YURUHIME (FB669)
 WESTHOLME OHYURIHIME X106 (FB8375) KITATERUYASUDOJ J2810 (FB686)
 WESTHOLME MORITAKE U38 (FB8374)
DAM: WORLD K'S SANJIROU (FB2501) WORLD K'S MICHIFUKU (FB1615)
 BAY SANJ KUMIKO 147-ET (FB17489) WORLD K'S SUZUTANI (FB1617)
 YCB ITO KAMEYO 5635 (FB11981) TF ITOMICHI 1/2 (FB2126)
 YCB ALZAKIKU KYOKO 3601-10 (FB11980)

Heifer pregnancy that sells with the recip, which is one of the top recip animals from the Designer Recip program. Guaranteed heifer pregnancy that can ship at 90 days of gestation. 50% down sale time; 50% when the pregnancy is at 90 days. If lot sells over \$7,500, recip can calve at Designer free of charge and both recip and heifer will ship to buyer when the pair is able to.

Kumiko is a high marbling and high type female from the Anio 6 cow family, and one of the highest type females in the breed. She has proven herself as an excellent show animal. This cow family has produced highly scored bulls used to increase frame and milking ability. This family's genetics has been used on Tajima to provide more milk and increase their mothering abilities. Kumiko's 6th dam is the genetic powerhouse Aino 6 cow who produce many elite wagyu animals. Her offspring has some of the best rumps that the breed has ever seen, supporting their udders to provide excellent milking abilities. TF Itohana 2 was one of her famous sons. He made great framed cattle along with strong maternal abilities, solid milking, and big powerful mature cattle. Kumiko won her class at World Beef Expo in 2015 and is out of some of the biggest framed cattle we have ever seen. She is by far the tallest yearling that has ever been at Designer Wagyu. In her direct pedigree you will find Itomichi appear multiple times as her dam is sired by the great Itomichi 1/2 who is a son of Itomichi. (The great Aino 6 is also sired by Itomichi.) Itomichi's genetics bring in the high type along with good frames which has been passed on to Kumiko who excels in these traits as well as strong growth and milking abilities. Kumiko is sired by WORLD K'S SANJIROU (FB2501) and could be one of his most correct daughters. Her offspring will soon be born and we predict that they will have excellent growth and large framed traits like her and her family.

Lot 27

Guaranteed HEIFER CALF

SIRE: WORLD K'S SANJIROU (FB2501)
MICHİYOSHI (FB9420)
CHR MS FUKUTSURU 107L (FB5861)

DAM: HIRASHIGETAYASU J2351 (FB670)
BAY MISAO-ET (FB17485)
MISAMI (FB7968)

WORLD K'S MICHIFUKU (FB1615)
WORLD K'S SUZUTANI (FB1617)
JVP FUKUTSURU-068 (FB2101)
CHR MS TAKAZAKURA 044J (FB4835)
DAI 20 HIRASHIGE 287 (FB330)
DAI 5 YURUHIME (FB669)
ITOSHIGENAMI (FB3682)
MISAKO (FB5768)

Ultrasound female pregnancy that will sell with recip. Heifer calf due to be born two weeks after the sale.

Consigned by Designer Wagyu, Fon du Lac, WI



Bay Misao ET, dam of Lot 27 & 28.

Lot 28

Guaranteed HEIFER CALF

SIRE: HIRASHIGETAYASU J2351 (FB670)
WESTHOLME HIRASHIGETAYASU Z278 (FB8376)
WESTHOLME OHYURIHIME X106 (FB8375)

DAM: HIRASHIGETAYASU J2351 (FB670)
BAY MISAO-ET (FB17485)
MISAMI (FB7968)

DAI 20 HIRASHIGE 287 (FB330)
DAI 5 YURUHIME (FB669)
KITATERUYASUDO J2810 (FB686)
WESTHOLME MORITAKE U38 (FB8374)
DAI 20 HIRASHIGE 287 (FB330)
DAI 5 YURUHIME (FB669)
ITOSHIGENAMI (FB3682)
MISAKO (FB5768)

Ultrasound female pregnancy that will sell with recip. Heifer calf due to be born two weeks after the sale.

Bay Misao -ET is from the elite Hisako cow family which is known for high quality meat traits including extremely high marbling. To our knowledge, Misa's dam, Misami, is the one of the highest; Misao's second dam, Misako, one of the highest marbling cows tested (as far as we know).

Consigned by Designer Wagyu, Fon du Lac, WI



Westholme Hirashigetayasu Z278, sire of Lot 28.



Lot 29

Guaranteed HEIFER CALF

SIRE: WORLD K'S TAKAZAKURA (FB2892)
TAKAMICHI DOI (FB7970)
MISAKO (FB5768)

DAM: WORLD K'S SHIGESHIGETANI (FB2907)
BAY SHIGE MIKI 118 (FB16081)
BAY FUJI MIKI 62 (FB11734)

TAKAEI 1412 (FB609)
DAI NI SAKURA 7 (FB612)
WORLD K'S MICHIFUKU (FB1615)
HISAKO (FB5767)
WORLD K'S HARUKI 2 (FB1614)
WORLD K'S SUZUTANI (FB1617)
ITOSHIGEFUJI (FB3681)
MISAMI (FB7968)

Heifer pregnancy that sells with the recip, which is one of the top recip animals from the Designer Recip program. Guaranteed heifer pregnancy that can ship at 90 days of gestation. 50% down sale time; 50% when the pregnancy is at 90 days. If lot sells over \$7,500, recip can calve at Designer free of charge and both recip and heifer will ship to buyer when the pair is able to.

Bay Shige Miki 118 is from the elite Hisako cow family known for high quality meat traits including extremely high marbling. To our knowledge, Miki's 2nd dam, Misami, is one of the highest marbling Wagyu tested; Miki's 3rd dam, Misako, is one of the highest marbling Wagyu tested (as far as we know). Miki is the complete package-high in type and marbling genes. Her sire is one the greatest powerful genetic bulls the breed has ever seen. He brings consistent marbling traits with quality throughout. Miki has the genetic power to be one of his best daughters. She was named Grand Champion Cow at World Beef Expo in 2015. Her offspring are proving her transmitting power and are as correct as Miki is.

Consigned by Page Farms, Ripon, WI

Lot 31

Guaranteed HEIFER CALF

SIRE: DAI 20 HIRASHIGE 287 (FB330)
HIRASHIGETAYASU J2351 (FB670)
DAI 5 YURUHIME (FB669)

DAM: WORLD K'S SHIGESHIGETANI (FB2907)
BAY SHIGE MIKI 118 (FB16081)
BAY FUJI MIKI 62 (FB11734)

KEDAKA 7212 (FB334)
DAI 13 HIRASHIGE (FB668)
TAYASUHUKU (FB667)
YURIKO 795455 (FB340)
WORLD K'S HARUKI 2 (FB1614)
WORLD K'S SUZUTANI (FB1617)
ITOSHIGEFUJI (FB3681)
MISAMI (FB7968)

Heifer pregnancy that sells with the recip, which is one of the top recip animals from the Designer Recip program. Guaranteed heifer pregnancy that can ship at 90 days of gestation. 50% down sale time; 50% when the pregnancy is at 90 days. If lot sells over \$7,500, recip can calve at Designer free of charge and both recip and heifer will ship to buyer when the pair is able to.

Bay Shige Miki 118 is from the elite Hisako cow family known for high quality meat traits including extremely high marbling. To our knowledge, Miki's 2nd dam, Misami, is one of the highest marbling Wagyu tested; Miki's 3rd dam, Misako, is one of the highest marbling Wagyu tested (as far as we know). Miki is the complete package-high in type and marbling genes. Her sire is one the greatest powerful genetic bulls the breed has ever seen. He brings consistent marbling traits with quality throughout. Miki has the genetic power to be one of his best daughters. She was named Grand Champion Cow at World Beef Expo in 2015. Her offspring are proving her transmitting power and are as correct as Miki is.

Consigned by Page Farms, Ripon, WI

Lot 30

Guaranteed HEIFER CALF

SIRE: MONJIRO 11550 (FB201)
WORLD K'S MICHIFUKU (FB1615)
MICHIKO 655635 (FB215)

OR

SIRE: WORLD K'S MICHIFUKU (FB1615)
WORLD K'S SANJIROU (FB2501)
WORLD K'S SUZUTANI (FB1617)

DAM: HIRASHIGETAYASU J2351 (FB670)
BAY 001 MIYO 199 (FB22472)
MISAMI 2 (FB7969)

YASUMI DOI (FB548)
HARUMI 1086409 (FB203)
TANISHIGE 1526 (FB211)
MICHIFUKU 494290 (FB216)

MONJIRO 11550 (FB201)
MICHIKO 655635 (FB215)
TANISHIGE 1526 (FB211)
SUZUNAMI 472255 (FB227)
DAI 20 HIRASHIGE 287 (FB330)
DAI 5 YURUHIME (FB669)
ITOSHIGENAMI (FB3682)
MISAKO (FB5768)

Ultrasound female pregnancy that will sell with recip. Sells 90 days safe in calf.

Miyo is from the same cow family as Bay Misao. Miyo is all of the heifer Misao was at the same age and looks to be hard to beat in the show ring. A Michifuku son from Miyo has created a lot of interest for breeding.

Consigned by Designer Wagyu, Fond du Lac, WI

Lot 32

Guaranteed HEIFER CALF

SIRE: HIRASHIGETAYASU J2351 (FB670)
WESTHOLME HIRASHIGETAYASU Z278 (FB8376)
WESTHOLME OHYURIHIME X106 (FB8375)

DAM: WORLD K'S SHIGESHIGETANI (FB2907)
BAY SHIGE MIKI 118 (FB16081)
BAY FUJI MIKI 62 (FB11734)

DAI 20 HIRASHIGE 287 (FB330)
DAI 5 YURUHIME (FB669)
KITATERUYASUDOJ I2810 (FB686)
WESTHOLME MORITAKE U38 (FB8374)
WORLD K'S HARUKI 2 (FB1614)
WORLD K'S SUZUTANI (FB1617)
ITOSHIGEFUJI (FB3681)
MISAMI (FB7968)

Heifer pregnancy that sells with the recip, which is one of the top recip animals from the Designer Recip program. Guaranteed heifer pregnancy that can ship at 90 days of gestation. 50% down sale time; 50% when the pregnancy is at 90 days. If lot sells over \$7,500, recip can calve at Designer free of charge and both recip and heifer will ship to buyer when the pair is able to.

Bay Shige Miki 118 is from the elite Hisako cow family known for high quality meat traits including extremely high marbling. To our knowledge, Miki's 2nd dam, Misami, is one of the highest marbling Wagyu tested; Miki's 3rd dam, Misako, is one of the highest marbling Wagyu tested (as far as we know). Miki is the complete package-high in type and marbling genes. Her sire is one the greatest powerful genetic bulls the breed has ever seen. He brings consistent marbling traits with quality throughout. Miki has the genetic power to be one of his best daughters. She was named Grand Champion Cow at World Beef Expo in 2015. Her offspring are proving her transmitting power and are as correct as Miki is.

Consigned by Designer Wagyu, Fond du Lac, WI

Semen

Westholme Hirashigetayasu Z278



10 Units of SEMEN

Westholme Hirashigetayasu Z278

Lot 33

REG#: FB8376 SEX: Bull DOB: 10.05.04 B3F, CHSF, CL16F, F11F

DAI 20 HIRASHIGE 287 (FB330)
SIRE: HIRASHIGETAYASU J2351 (FB670)
DAI 5 YURUHIME (FB669)

KITATERUYASUDOI J2810 (FB686)
DAM: WESTHOLME OHYURIHIME X106 (FB8375)
WESTHOLME MORITAKE U38 (FB8374)

KEDAKA 7212 (FB334)
DAI 13 HIRASHIGE (FB668)
TAYASUHUKU (FB667)
YURIKO 795455 (FB340)
TERUNAGADOI (FB685)
YOSHIMI3 (FB684)
ITOMORITAKA J2703 (FB681)
TAKEHARU J4347 (FB8372)

Selling 10 units.

CD: AA Terminal Index of \$281 GH EXON 5 GENE TYPE: BB Z278 is the product of the three elite Westholme bulls; his sire is the great ETJ001 whose sire Dai 20 Hirashige is one of the top 15 bulls in Japan. His dam is by ETJ003 who is out of a daughter of the high milk and meat trait bull, ETJ002. Z278 has grown into a big bull, that is balanced and correct. He has reached a weight over 2200 lbs and frame score is an 8. He has been used in Australia, North American and Mexico with great results. He is one of the top carcass weight bull in the 2014 Research EBV's, and moreover, he is a trait leader in growth, milk, testicle size and EMA. He is currently being used as a sire of sons at Designer and other leading programs as well as having high contract interest for making embryos for export. His unborn sons are currently being contracted for stud and (as well as semen for export). With being GH Exon 5 gene type BB, he is the only bull with semen for sale in the U.S.A. that has this very elite and rare trait. His offspring have the ability to increase carcass yields more so than any other bull that we know of because of this rare gene type. His demand for siring the next genetics to for breed and meat production sons is very high. In addition, he was the sire of the winning carcass in the 2014 Branded Beef Competition, Grass Fed Class

Consigned by Raines Farms/Hayden Louisiana Prime Wagyu Beef, Mangham, LA



BIDDING NOTE ...

All proceeds will be donated
the Gilada's Club to help families
fighting cancer.

Bay Shige Miki 118,
dam of Designer Abe -ET.

10 Units of SEMEN
Designer Abe -ET

Lot 34

10 Units of SEMEN
Designer Abe -ET

Lot 35

REG#: FB21943 SEX: Bull DOB: 10.08.15 B3F, CHSF, CL16F, F11F

SIRE: WORLD K'S TAKAZAKURA (FB2892)
TAKAMICHI DOI (FB7970)
MISAKO (FB5768)

DAM: WORLD K'S SHIGESHIGETANI (FB2907)
BAY SHIGE MIKI 118 (FB16081)
BAY FUJI MIKI 62 (FB11734)

TAKAEI 1412 (FB609)
DAI NI SAKURA 7 (FB612)
WORLD K'S MICHIFUKU (FB1615)
HISAKO (FB5767)
WORLD K'S HARUKI 2 (FB1614)
WORLD K'S SUZUTANI (FB1617)
ITOSHIGEFUJI (FB3681)
MISAMI (FB7968)

Abe is sired by one of the hottest bull TAKAMICHI DOI (FB7970). He is a double Misako and with the marbling power along with his extreme growth you cannot go wrong. His dam is the great brood cow BAY SHIGE MIKI 118 (FB16081) who continues to stamp out the legend makers! At five months of age he stood over 47 1/2 inches tall at the rump! He is on track to be hard not to miss in the Supreme Champion drive at any National Show! His dam ,Bay Shige Miki 118, is from the elite Hisako cow family known for high quality meat traits including extremely high marbling. To our knowledge, Mana's dam, Misami, is the one of the highest; Mana's second dam, Misako, one of the highest marbling cows tested (as far as we know). Miki is the complete package - high in type and marbling genes. Her sire is one the greatest powerful genetic bulls the breed has ever seen. He brings consistent marbling traits with quality throughout. Miki has the genetic power to be one of his best daughters. She was named Grand Champion Cow at World Beef Expo in 2015. Her offspring are proving her transmitting power and are as correct as Miki.

Consigned by Designer Wagyu, Fond du Lac, WI



Academy Red Wagyu Tambo H18



Academy Red Wagyu J34

10 Units of SEMEN

Academy Red Wagyu Tambo H18

10 Units of SEMEN

Academy Red Wagyu Tambo H18

Lot 36

Lot 37

REG#: ARWFH0018 SEX: Bull DOB: 11.21.12 B3FU, CHSFU, CL16FU, F1123%

TAMAMARU (FB2125) DAI GO TAMANAMI 96 (FB444)
SIRE: THE WRIGHT WAGYU TAMBO E161 (FB17471) DAI 8 MARUNAMI J19461 (FB2454)
 KALANGA SHIGEHOMARE B234 (FB17469) SHIGEMARU (FB2124)
 KALANGA HIKAHOMARE VW36 (FB12683)
 HB BIG AL 502 (FB2998) DAI 10 MITSUMARU (FB424)
DAM: COATES BIG AL E424 (FB19519) AKIKO (FB2120)
 SUMO MARU W1232 (FB19518) SHIGEMARU (FB2124)
 JAPANESE COW (NR251)

Selling 20 straws in this up and coming young sire who is very long, structurally correct, has a smooth fine coat and an excellent sires head. His sire E161 is out of the same cow as the well known Master Chef E146. The dam of Tambo E424 is a large framed, very attractive, very quiet good milking cow. Use Tambo to increase length and frame of the average Red Wagyu cow and he is ideally suited as a terminal sire for many of the red breeds of cattle to improve meat quality. (Located at Hawkeye Breeders Adel, IA).

Consigned by Academy Cattle, Armidale NSW, Australia

10 Units of SEMEN

Academy Red Wagyu J34

10 Units of SEMEN

Academy Red Wagyu J34

Lot 38

Lot 39

REG#: ARWFJ0034 SEX: Bull DOB: 09.18.13 B3FU, CHSFU, CL16FU, F1112%

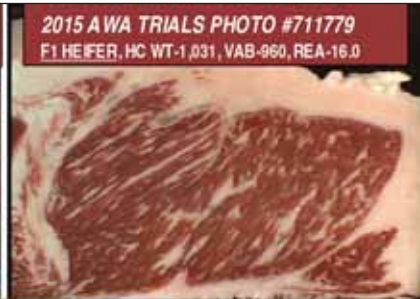
HB BIG AL 502 (FB2998) DAI 10 MITSUMARU (FB424)
SIRE: SUMO CATTLE CO BIG AL E211 (FB19522) AKIKO (FB2120)
 TWA MUSUME (FB14997) HB BIG AL 502 (FB2998)
 DAI 8 MARUNAMI J19461 (FB2454)
 HEART BRAND RED EMPEROR (FB14999) HB BIG AL 502 (FB2998)
ADAM: CADEMY RED WAGYUS REIKO F10 (FB19521) DAI 8 MARUNAMI J19461 (FB2454)
 KALANGA SHIGEHOMARE B234 (FB17469) SHIGEMARU (FB2124)
 KALANGA HIKAHOMARE VW36 (FB12683)

Selling 20 straws in this most attractive young sire who is bred to add marbling to the Akashi breed. The original HB Big Al is known to be the best IMF Red Wagyu bull used in Australia and Recital is a double cross of his genetics. Added to that he has high growth and high milk figures on Breedplan yet his calves are born small and he is suitable for heifers. The dam of Recital Reiko H18 is one of the most beautiful cows of the breed. (Located at Hawkeye Breeders Adel, IA).

Consigned by Academy Cattle, Armidale NSW, Australia



Michiyoshi



10 Units of SEMEN
Michiyoshi

Lot 40

10 Units of SEMEN
Michiyoshi

Lot 41

REG#: FB9420 SEX: Bull DOB: 02.22.06 B3F, CHSF, CL16F, F11F

SIRE: WORLD K'S MICHIFUKU (FB1615)
WORLD K'S SANJIROU (FB2501)
WORLD K'S SUZUTANI (FB1617)

MONJIRO 11550 (FB201)
MICHIKO 655635 (FB215)
TANISHIGE 1526 (FB211)
SUZUNAMI 472255 (FB227)
DAI 2 YASUTSURU 774 (FB306)
TERUYASU 649663 (FB307)
WORLD K'S TAKAZAKURA (FB2892)
CHR MS KIKUSHIGE 016 (FB4014)

DAM: JVP FUKUTSURU-068 (FB2101)
CHR MS FUKUTSURU 107L (FB5861)
CHR MS TAKAZAKURA 044J (FB4835)

Michiyoshi carries copies of Exon 5, SCD and AA. All F1 offspring in the AWA trials graded Prime, 8% moderate Prime, 92% Prime Abundant and above. Largest rib eye of top 7 listed marbling bulls.

Consigned by Nick Bell/Silverwind Ranch, Evart, MI

5 Units of SEMEN
Kenhanafuji

Lot 42

REG#: FB2461 SEX: Bull DOB: 12.16.93 B3F, CHSF, CL16F, F11F

SIRE: DAI 7 ITOZAKURA (FB226)
ITO HANA (FB504)
YOSHIFUKUHANA (FB561)

DAM: KENSEI 108 (FB209)
HANA FUJI 472029 (FB563)
HANAYUU 158303 (FB564)

DAI 14 SHIGERU 8994 (FB347)
DAI 9 ITOZAKURA (FB395)
DAI 7 ITOZAKURA (FB226)
DAI 4 FUKUHANA (FB469)
HARUMI 9878 (FB565)
JAPANESE COW (NR251)
ITOCHIYO 309 (FB566)
JAPANESE COW (NR251)

Semen purchased directly from Interglobe Genetics, Pontiac, IL where he was collected. This is rare semen with a double cross of DAI 7 Itozakura in this Fujiyoshi pedigree. Kenhanafuji is tested recessive free and this semen lot sells with no reserve.

Consigned by Baycroft Wagyu, De Pere, WI

• The ORIGINAL PACKAGE •

15 Units of SEMEN
Hirashigetayasu J2351

Lot 43

REG#: FB670 SEX: Bull DOB: 12.27.89 B3F, CHSF, CL16F, F11F

SIRE: KEDAKA 7212 (FB334)
DAI 20 HIRASHIGE 287 (FB330)
DAI 13 HIRASHIGE (FB668)

DAM: TAYASUHUKU (FB667)
DAI 5 YURUHIME (FB669)
YURIKO 795455 (FB340)

HOUSAN (FB666)
JAPANESE COW (NR251)
KEDAKA 7212 (FB334)
JAPANESE COW (NR251)
TAYASU DOI 7208 (FB204)
JAPANESE COW (NR251)
SOBONISHIKI 1532 (FB341)
DAI 6 YURI 710676 (FB342)

15 Units of SEMEN
World K's Sanjirou

REG#: FB2501 SEX: Bull DOB: 06.28.94 B3F, CHSF, CL16F, F11F

SIRE: MONJIRO 11550 (FB201)
WORLD K'S MICHIFUKU (FB1615)
MICHIKO 655635 (FB215)

DAM: TANISHIGE 1526 (FB211)
WORLD K'S SUZUTANI (FB1617)
SUZUNAMI 472255 (FB227)

YASUMI DOI (FB548)
HARUMI 1086409 (FB203)
TANISHIGE 1526 (FB211)
MICHIFUKU 494290 (FB216)
YASUTANI DOI (FB212)
TETSUSHIGE 5 101117 (FB213)
SHIGESHIGENAMI 10632 (FB219)
SUZUKO 289535 (FB228)

15 doses each of two of the great original bulls of the Wagyu breed. Hirashigetayasu FB670 is the great Kedaka sire who makes growth, balance and frame in combination with good carcasses. Sanjirou FB2501 is becoming one of the real influential sires of the Tajima line and is known for great meat quality, large ribeye area, thick rib and high yields.

Consigned by Hubertus Diers/PrismaGen, Altenberge, Germany

• The SPECIAL PACKAGE •

10 Units of SEMEN
Michifuku

Lot 44

REG#: FB1615 SEX: Bull DOB: 04.08.92 B3F, CHSF, CL16F, F11F

SIRE: YASUMI DOI (FB548)
MONJIRO 11550 (FB201)
HARUMI 1086409 (FB203)

DAM: TANISHIGE 1526 (FB211)
MICHIKO 655635 (FB215)
MICHIFUKU 494290 (FB216)

TAYASU DOI 7208 (FB204)
DAI 4 FUKUMUSUME (FB320)
TAMORI DOI 7663 (FB205)
JAPANESE COW (NR251)
YASUTANI DOI (FB212)
TETSUSHIGE 5 101117 (FB213)
KAMINAKA-13 10804 (FB217)
JAPANESE COW (NR251)

5 Units of SEMEN
Kitaguni Jr

REG#: FB2422 SEX: Bull DOB: 10.07.94 B3F, CHSF, CL16F, F11F

SIRE: DAI 7 ITOZAKURA (FB226)
KITAGUNI 7/8 (FB581)
KITAGUNI 7 (FB580)

DAM: KOUFUKU (FB616)
WORLD K'S NAKAYUKI (FB2893)
NAKAHANA 3 (FB591)

DAI 14 SHIGERU 8994 (FB347)
DAI 9 ITOZAKURA (FB395)
HARUMI 9878 (FB565)
MORINAKA (FB579)
YASUYUKIDOI 875 (FB353)
MICHIHIME-2 417845 (FB354)
MIFUKU 11206 (FB592)
NAKAHANA NO 1-18252 (FB593)

5 Units of SEMEN
Takazakura

REG#: FB2892 SEX: Bull DOB: 11.02.93 B3F, CHSF, CL16F, F11F

SIRE: YASUFUKU 930 (FB576)
TAKAEI 1412 (FB609)
TAKAEI 180868 (FB610)

DAM: NAKATAKE 10633 (FB613)
DAI NI SAKURA 7 (FB612)
DAI-NI SAKURA 13407 (FB614)

YASUTANI DOI (FB212)
CHIZURU (FB16905)
SHIGEFUJI 10486 (FB611)
JAPANESE COW (NR251)
NAKAYA 1 (FB517)
JAPANESE COW (NR251)
DAI-NANA TOYKWA 8805 (FB615)
JAPANESE COW (NR251)

3 Units of SEMEN
World K's Sanjirou

REG#: FB1614 SEX: Bull DOB: 11.02.93 B3F, CHSF, CL16F, F11F

SIRE: YASUFUKU 930 (FB576)
TAKAEI 1412 (FB609)
TAKAEI 180868 (FB610)

DAM: NAKATAKE 10633 (FB613)
DAI NI SAKURA 7 (FB612)
DAI-NI SAKURA 13407 (FB614)

YASUTANI DOI (FB212)
CHIZURU (FB16905)
SHIGEFUJI 10486 (FB611)
JAPANESE COW (NR251)
NAKAYA 1 (FB517)
JAPANESE COW (NR251)
DAI-NANA TOYKWA 8805 (FB615)
JAPANESE COW (NR251)

A semen package with some of the great bulls whose semen is becoming more rare all the time. The great marbling bull Michifuku FB1615, as well as Kitaguni Jr, Takazakura and Haruki 2 - all in one package.

Consigned by Hubertus Diers/PrismaGen, Altenberge, Germany



Big 10 Club

SCD, AA and Tenderness 10

Lot 45

Selling 10 Units of ...

**MFC Michiyoshi 522C, Bay Ito Macho 177,
TBR Yasukaneko 1074X and MCF Sanjirou 3-39**

MFC Michiyoshi 522C

REG#: FB21095 SEX: Bull DOB: 03.19.15 B3F, CHSF, CL16F, F11F

SIRE: WORLD K'S SANJIROU (FB2501) WORLD K'S MICHIFUKU (FB1615)
MICHİYOSHI (FB9420) WORLD K'S SUZUTANI (FB1617)
CHR MS FUKUTSURU 107L (FB5861) JVP FUKUTSURU-068 (FB2101)
CHR MS TAKAZAKURA 044J (FB4835)
DAM: ITOSHIGEFUJI (FB3681) ITOFUJI 483 (FB319)
MFC MS ITOSHIGEFUJI 2-9 (FB13942) DAI 30 NOBORU J920752 (FB660)
MFC MS SANJIROU 7-2 (FB8117) WORLD K'S SANJIROU (FB2501)
CHR MS HIRASHIGE 055J (FB4832)

BW: 74 lbs.; WW: 550 lbs.; YW: 952 lbs.

AA-10, Recessive clean and a balanced pedigree with a Tajima top side and a Takeda/Fujiyoshi maternal line for longevity, growth and frame. (EU qualified semen, when available [late summer])

Consigned by Muddy Flats Cattle Co., Augusta, WI

TBR Yasukaneko 1074X

REG#: FB12362 SEX: Bull DOB: 10.24.10 B3F, CHSF, CL16F, F11F

SIRE: DAI 2 YASUTSURU 774 (FB306) YASUMI DOI (FB548)
VP FUKUTSURU-068 (FB2101) KIKUTSURU 978542 (FB308)
TERUYASU 649663 (FB307) KIKUTERU DOI (FB512)
YASUTSURU 509605 (FB310)
DAM: WORLD K'S SANJIROU (FB2501) WORLD K'S MICHIFUKU (FB1615)
TBR UMEKO 8020U (FB10399) WORLD K'S SUZUTANI (FB1617)
BR MS TAKAZAKURA 0652 (FB5076) WORLD K'S TAKAZAKURA (FB2892)
JVP MS FUKUKANE 05E (FB3094)

AA-10, recessive clean, and a power packed combination of the greatest imported sires are the credentials of 1074X. Sires like 068, Sanjirou, Michifuku and Takazakura make a marbling pedigree to ensure carcass quality. TBR Umeko 8020U is well known in the Triangle B Ranch herd as producing the best carcass animals since the beginning of their meat program. 1074X is structurally sound as a medium framed bull and now has two generations of offspring on the ground. (Domestic semen)

Consigned by Triangle B Ranch, Stigler, OK



Bay Ito Macho 177

Bay Ito Macho 177

REG#: FB22028 SEX: Bull DOB: 06.24.15 B3F, CHSF, CL16F, F11F

SIRE: ITOMORITAKA J2703 (FB681) ITOHIRASHIGE (FB680)
MFC ITOMORITAKA 0-41 (FB12247) DAI 6 OEFUJII J565554-KURO KOH (FB679)
CHR MS MICHIFUKU 209S (FB6775) WORLD K'S MICHIFUKU (FB1615)
CHR MS KITAGUNI 84L (FB5131)
DAM: ITOSHIGEFUJI (FB3681) ITOFUJI 483 (FB319)
BAY FUJI MIKI 62 (FB11734) DAI 30 NOBORU J920752 (FB660)
MISAMI (FB7968) ITOHIGENAMI (FB3682)
MISAKO (FB5768)

BW: 65 lbs.; YW 965 lbs.

Start with a three generation sire stack of the greatest marbling bulls to ever leave Japan, 068, Michifuku and Itohigenami. Add in a powerful dam by Itoshigefuji (TF147) for growth and frame and top the pedigree off with a son of the breed leading maternal traits sire, Itomoritaka (002). Finally, a grandson of Misami whose marbling MVP was 1.01 and a great-grand son of Misako whose marbling MVP was 1.03. The exciting result is a tested recessive clean young super sire with a AA-10 score for SCD and tenderness. (EU qualified) (CSS Semen)

Consigned by Baycroft Wagyu, De Pere, WI

MCF Sanjirou 3-39

REG#: FB160035 SEX: Bull DOB: 05.12.13 B3F, CHSF, CL16F, F11F

SIRE: WORLD K'S MICHIFUKU (FB1615) MONJIRO 11550 (FB201)
WORLD K'S SANJIROU (FB2501) MICHIKO 655635 (FB215)
WORLD K'S SUZUTANI (FB1617) TANISHIGE 1526 (FB211)
SUZUNAMI 472255 (FB227)
DAM: WORLD K'S SANJIROU (FB2501) WORLD K'S MICHIFUKU (FB1615)
BAR R 57T (FB7720) WORLD K'S SUZUTANI (FB1617)
WORLD K'S NAKAGISHI 5 (FB2895) KENRYU 1905 (FB590)
NAGAYOSHI 472016 (FB601)

AA-10, recessive clean and a double Sanjirou pedigree could jump start your wagyu pedigrees. Add in the out-cross Nakagishi maternal line and you have a special cross. (CSS semen).

Consigned by Muddy Flats Cattle Co., Augusta, WI

Bred Females



Gabni Rubi, dam of Lot 49.



IWG MS Shigemaru 95, Lot 46



Kalanga Red Star, sire of Lot 49.

Lot 46

IWG MS Shigemaru 95

REG#: FB16204 SEX: Female DOB: 07.04.13 B3FU, CHSFU, CL16FU, F11FU

SIRE: HEART BRAND RED STAR (FB12903)
 KALANGA RED STAR (FB12904)
 KALANGA HIKAHOMARE VW36 (FB12683)

DAM: SHIGEMARU (FB2124)
 GABNI RUBI (FB12161)
 SUMO CATTLE CO HINODE C157 (FB14994)

SHIGEMARU (FB2124)
 AKIKO (FB2120)
 HIKARI (FB2455)
 RWA HOMARE BLUE 2 (FB14995)
 DAI 2 SHIGENAMI (FB375)
 DAI YON AKIBARE 3357 (FB442)
 HB BIG AL 502 (FB2998)
 TWA KIKAN (FB14993)

This heifer, IWG Shigemaru 95, has all the great Red Wagyu bulls in her pedigree, Big Al, Shigemaru, Red Emperor as sire, Kalanga Red Star. She comes from Idaho Wagyu Genetics and had a good flush history as a heifer. She is now safe in calf to FB23555, a Bald Ridge Henshin son from a Kalanga Shigemaru FB16736 daughter. Wait until you see this great heifer.

Consigned by Hubertus Diers/PrismaGen, Altenberge, Germany



Bay Kiseki 87 -ET, dam of Lot 47.

Bay Hero Kiku 172, Lot 47

Bay Hero Kiku 172

Lot 47

REG#: FB20098 SEX: Female DOB: 03.19.15 B3FU, CHSFU, CL16FU, F11FU

SIRE: BAY DAI 7 HERO 5658 (FB11978)
TF HIKOKURA HOSHI - 2242 (FB11418)

DAM: BAY KISEKI 87-ET (FB12431)
MISAMI 2 (FB7969)

TF ITOHANA2 (FB2294)
TF AINO 115/1 (FB4732)
TF KIKUHANA (FB2127)
TF HIKOKURA 8/3 (FB2444)
DAI 20 HIRASHIGE 287 (FB330)
DAI 5 YURUHIME (FB669)
ITOSHIGENAMI (FB3682)
MISAKO (FB5768)

Bay Hero Kiku 172 FB20098 and her dam were the Grand Champion Cow/Calf pair at the first World Beef Expo Wagyu show in 2015. Kiku 172 continues to develop as a yearling and is entered for the 2016 World Beef Expo.

The sire "Hero" carries 14 crosses to Dai 7 Itozakura. His dam "Hoshi" lived past 17 years of age, and is from the Ezokintau Championship Japanese family. Hero also sired the top seller of the European Wagyu Gala at 27000 Euro.

Kiku's dam, Bay Kiseki 87-ET FB12431, AA-7 is a powerful daughter of Hirashigetayasu (001). 001 Australian Breedplan EBV's for Milk +8, and Mature Cow Weight +56. Kiseki echos these numbers. She is from the high marbling family of Misako FB6758.

This heifer has Fujjyoshi, Kedaka, and Tajima greats in the pedigree and looks the part of a show winner this fall. Recessive clean and carries service to CHR Hirashige Tayasu 533 (FB13499) sexed female semen.

Consigned by Baycroft Wagyu, De Pere, WI



Bay Itomichi 1-2 Mi 171 ET, Lot 48

Lot 48

Bay Itomichi 1-2 Mi 171 ET

REG#: FB20097 SEX: Female DOB: 03.06.15 B3FU, CHSFU, CL16FU, F11FU

ITOMICHI (FB500)
SIRE: TF ITOMICHI 1/2 (FB2126)
 DAI 2 KINTOU (FB464)

ITOSHIGENAMI (FB3682)
DAM: MISAMI (FB7968)
 MISAKO (FB5768)

DAI 7 ITOZAKURA (FB226)
 TOMISAKAE 2/1 (FB545)
 DAI 3 KIYOHIME (FB468)
 EZOKINTOU 1A (FB475)
 SHIGESHIGENAMI 10632 (FB219)
 FUKUYUKI (FB661)
 WORLD K'S MICHIFUKU (FB1615)
 HISAKO (FB5767)

Bay Itomichi 1/2 Mi 171 ET FB20097 will be entered to show at the 2016 World Beef Expo. Few bulls sire the consistent frame, size and perfect feet and legs like Itomichi 1/2, the sire of Mi 171. Itomichi 1/2's Australian Wagyu Association Breedplan EBV for Milk +12 and Index Value +\$207 compared to Breed Average of \$118.

The maternal line of Mi-171 combines the elite marbling sires that have made the wagyu breed famous. Itoshigenami, Michifuku, and Fukutsuru 068 have each been at the top of marbling rankings in the USA and Australia.

Recessive clean, Mi 171 is a VA-7 for SCD and tenderness, and will be bred to sexed female CHR Hirashige Tayasu 533 FB13499 semen. This balanced pedigree for growth and marbling allows the new owner unlimited opportunities for next generation matings. Misami and Misako have both been embryo donors for the EU market.

Consigned by Baycroft Wagyu, De Pere, WI



Donor & Donor Prospects



Stud Shig-Yuriko 148NB, Lot 49

Lot 49

Stud Shig-Yuriko 148NB

REG#: FB20937 SEX: Female DOB: 11.20.14 B3F, CHSF, CL16F, F11F

SIRE: WORLD K'S HARUKI 2 (FB1614)
WORLD K'S SHIGESHIGETANI (FB2907)
WORLD K'S SUZUTANI (FB1617)

DAM: JVP FUKUTSURU-068 (FB2101)
CHR MS FUKUTSURU 148N (FB5581)
CHR MS KIKUSHIGE 016 (FB4014)

MONJIRO 11550 (FB201)
SAKURA 2 741638 (FB206)
TANISHIGE 1526 (FB211)
SUZUNAMI 472255 (FB227)
DAI 2 YASUTSURU 774 (FB306)
TERUYASU 649663 (FB307)
TF KIKUHANA (FB2127)
JVP MS KIKUSHIGE 403 (FB3081)

Sells open and ready immediate reproduction. This Shigeshigetani daughter is from the Yuriko maternal line which has produced the current #1 Rib Eye and #1 Hot Carcass Weight sire, Bar R Shigeshigetani 30T, on the current WSU National Sire Summary, as well as the current #5 Marbling sire, Michiyoshi. Her maternal grandsire, Fukutsuru 068, is the current #1 Marbling bull on the Sire Summary making this heifer a fantastic opportunity to acquire breed leading genetics to build a superior herd. She sells open and ready to breed or flush.

Consigned by Kentucky Stud, Inc



CHR MS Sanjirou 313, dam of Lot 50.



BPF Mr San 4, a full brother to
CHR MS Sanjirou 313, dam of Lot 50.

Synergy 170P Suzutani 200, Lot 50

Lot 50

Synergy 170P Suzutani 200

REG#: FB20581 SEX: Female DOB: 12.01.13 B3FU, CHSFU, CL16FU, F11FU

SIRE: CHR HIRASHIGE 081L (FB5256)
CHR HIRASHIGE 170P (FB6008)
CHR MS KIKUSHIGE 017 (FB4015)

DAM: WORLD K'S SANJIROU (FB2501)
CHR MS SANJIROU 313 (FB8717)
SUZUTAKA 2 (FB6032)

HIRASHIGETAYASU J2351 (FB670)
CHR MS TERUTANI 024 (FB4021)
TF KIKUHANA (FB2127)
JVP MS KIKUSHIGE 403 (FB3081)
WORLD K'S MICHIFUKU (FB1615)
WORLD K'S SUZUTANI (FB1617)
WORLD K'S TAKAZAKURA (FB2892)
WORLD K'S SUZUTANI (FB1617)

Sells open and ready for immediate reproduction. Suzutani 200 is from the breed defining Suzutani maternal. Suzutani is considered by many to have had the greatest genetic impact on the Wagyu breed of all the females exported from Japan. She is the dam of leading AI sires such as Sanjirou, Shigeshigetani, and Shikikan which have excelled in the US and Australia. This heifer consignment's granddam is a maternal sister to Sanjirou and Shigeshigetani and a full sister to Australian leader Shikikan. A full sister to her dam sold for \$12,500 at the Belcampo dispersal and her dam is also a full brother to BPF Mr San 4 who is a popular bull in the lineup at Origen. Selling open and ready to breed or flush, Suzutani 200 represents an excellent opportunity to get into the Suzutani

Consigned by Synergy Wagyu, LLC, Charleston, SC



JC MS Hakari 84, Lot 51

Lot 51

JC MS Hakari 84

REG#: FB15453 SEX: Female DOB: 10.05.12 B3F, CHSF, CL16F, F11F

HIKARI (FB2455)
SIRE: UKB HAKARI'S LEGEND (FB11732)
JVP MS HOMARE J 30E (FB3370)

SR GENJIRO JR 156E (FB7429)
DAM: UKB MS J84 / 84-156E (FB12434)
JVP MS 84 / 48F OLIVER (FB12433)

DAI 10 MITSUMARU (FB424)
KAZUTOMO 92958 (FB425)
JUDO (FB102)
JVP 27-HOMARE 128 (FB2114)
GENJIRO (FB5200)
KITATEMAKO 003 (FB6202)
JVP OLIVER (FB5567)
48F (FB11688)

Hakari 84 has the Red Wagyu gene in her, but with a good touch of the Tajima breeding. She has been of excellent fertility, having produced over 50 embryos as a heifer. And is now pregnant with a heifer calf. Type, fertility, the red gene, Hakari offers that to the Wagyu breed. Hakari 84 has a red pedigree on the male side and a top pedigree with Genjiro and Fukutsuru 068 (as sire of Oliver) on the female side. She is tested free of all recessives and has a great flushing history. 2 Shigeshigetani 5 daughters of her, both AA6 in SCD test, will sell in the Wagyu Gala Sale in Germany in September. Hakari 84 was bred to Rueshaw 74Z FB14720 on Dec 22. The inbreeding coefficient of the mating is only 1%. You have a 50% chance to get a red fullblood calf.

Consigned by Hubertus Diers/PrismaGen, Altenberge, Germany

Open Heifers



GTL MS Okukanemichi 546C, Lot 52



MS Kikuyasu 220Z, dam of Lot 52.

Lot 52

GTL MS Okukanemichi 546C

REG#: FB23197 SEX: Female DOB: 09.18.15 B3FU, CHSFU, CL16FU, F11FU

TAKAMICHI DOI (FB7970)
SIRE: WSI OKUKANEMICHI (FB15234)
WSI OKUKANE (FB12702)

JVP KIKUYASU-400 (FB2100)
DAM: MS KIKUYASU 220Z (FB15349)
CHR MS KITAGUNI 339 (FB9758)

WORLD K'S TAKAZAKURA (FB2892)
MISAKO (FB5768)
JVP FUKUKANE 402E (FB3080)
OKU HARU (FB10981)
KIKUYASU DOI 575 (FB301)
FUKUYOSHI 703223 (FB302)
CHR KITAGUNI 07K (FB5140)
CHR MS HIRASHIGE 055J (FB4832)

This attractive, easy fleshing heifer comes with an impressive genetic compliment. She carries the AA double copy of the SCD gene as well as testing 7 on the tenderness scale and GTL MS Okukanemichi 546C carries the rare BC configuration of the Exon 5 gene. She is from a large JVP Kikuyashu cow and is sired by WSI Okukanemichi. She comes open and can be flushed before carrying her first calf.

Consigned by Atlantic Wagyu, Kensington, PE, Canada



Bay Shige Mika 168, Lot 53

Lot 53

Bay Shige Mika 168

REG#: FB18854 SEX: Female DOB: 11.04.14 B3FU, CHSFU, CL16FU, F11FU

SIRE: WORLD K'S HARUKI 2 (FB1614)
WORLD K'S SHIGESHIGETANI (FB2907)
WORLD K'S SUZUTANI (FB1617)

MONJIRO 11550 (FB201)
SAKURA 2 741638 (FB206)
TANISHIGE 1526 (FB211)
SUZUNAMI 472255 (FB227)
DAI 20 HIRASHIGE 287 (FB330)
DAI 5 YURUHIME (FB669)
WORLD K'S MICHIFUKU (FB1615)
HISAKO (FB5767)

DAM: HIRASHIGETAYASU J2351 (FB670)
BAY MADOKA 85-ET (FB12429)
MISAKO (FB5768)

Bay Shige Mika 168 FB18854 scores AA-6 for SCD and tenderness. She also won her class at the 2015 World Beef Expo Wagyu show.

Mika 168's sire, Shigeshigetani, is recognized worldwide as a marbling and carcass quality leader. His sons will be prominent sires in the next generation of wagyu genetics. Australian Wagyu Association May 2016 Breedplan ranks Eye Muscle Area +1.8 and Marble Score +0.1 for Shigeshigetani. Mika's dam, Bay Madoka 85 ET FB12429 (AA-7 and Pfizer MVP 0.73) is sired by the Westholme foundation sire, Hirashigetayasu 001, a growth and frame leader. Madoka's full sister was Lot 1 in the European Wagyu Gala sale and sold with her daughter for over 20000 Euro. The second dam, Misako FB6758 (1.03 Pfizer MVP marbling) by Michifuku and the third dam by 068 complete a Tajima maternal line.

At AA-6, Mika is one of the highest rated Shigeshigetani females of the breed and recessive clean.

Consigned by Baycroft Wagyu, De Pere, WI



Bay Michifuku Blue Moon 182, Lot 54

Lot 54

By Michifuku Blue Moon 182

REG#: FB21510 SEX: Female DOB: 07.31.15 B3F, CHSF, CL16F, F11F

SIRE: MONJIRO 11550 (FB201)
WORLD K'S MICHIFUKU (FB1615)
MICHIKO 655635 (FB215)

YASUMI DOI (FB548)
HARUMI 1086409 (FB203)
TANISHIGE 1526 (FB211)
MICHIFUKU 494290 (FB216)
TF TERUTANI (FB2409)
MORIYOSHI 5/3 (FB3721)
ITOMICHI (FB500)
DAI 2 KINTOU (FB464)

DAM: YCB TERUTANI 450 (FB5043)
YCB ITOKINTAU MEGUMI 8759-11 (FB12280)
TF DIA 2 KINNTOU 3 (FB2453)

Only "once in a blue moon" will you find this unique combination of world class wagyu genetics in a pedigree. Michifuku, the sire of "Blue Moon", is unchallenged as a foundation sire in the wagyu breed. His legend is unique for carcass traits. Australian Wagyu Association May 2016 Breedplan ranks Eye Muscle Area +7.7, Marble Score +1.2 and Marble Fineness +0.46. The dam of Blue Moon is pregnant for 2017 and due at over 15 years of age. The maternal line of "Blue Moon" has the full sister to Itomichi 1/2 as the second dam. Other greats from the Takeda Farm breeding program listed in this pedigree include Itomichi, Terutani and the champion show cow Ezokintau. "Blue Moon" is tested recessive clean and AA-7 for SCD and tenderness. This is the "franchise kind" to build a Wagyu herd. Sells open.

Consigned by Baycroft Wagyu, De Pere, WI

Synergy Z278 Yuritani 31, Lot 55



Westholme Hirashigetayasu Z278, sire of Lot 55.



ESF Shigetani 42-250, dam of Lot 55.

Lot 55

Synergy Z278 Yuritani 31

REG#: FB21539 SEX: Female DOB: 07.19.15 B3FU, CHSFU, CL16FU, F11FU

SIRE: HIRASHIGETAYASU J2351 (FB670)
WESTHOLME HIRASHIGETAYASU Z278 (FB8376)
WESTHOLME OHYURIHIME X106 (FB8375)

DAI 20 HIRASHIGE 287 (FB330)
DAI 5 YURUHIME (FB669)
KITATERUYASUDOJ J2810 (FB686)
WESTHOLME MORITAKE U38 (FB8374)
WORLD K'S HARUKI 2 (FB1614)
WORLD K'S SUZUTANI (FB1617)
WORLD K'S TAKAZAKURA (FB2892)
JVP MS KIKUSHIGE 403 (FB3081)

DAM: WORLD K'S SHIGESHIGETANI (FB2907)
ESF SHIGETANI 42-250 (FB13513)
CHR TAKAZAKURA 042H (FB4252)

Yuritani 31 is a hard to find Westholme Z278 daughter from a powerful Shigesigetani dam. Yuritani 31 follows the breeding pattern of Z278 by displaying plenty of body capacity and excellent growth. She has the highly desirable SCD score of AA. She is a direct maternal descendant of Yuriko, who is perhaps the most genetically influential cow from the JVP imports. Evidence of the genetic influence of the Yuriko maternal line is that the #1 Rib Eye and #1 Hot Carcass Weight sire on the WSU Sire Summary, Bar R Shigesigetani 30T, and the #5 Marbling sire, Michiyoshi, both descend from Yuriko. Adding to the desirability of Yuritani 31 is the fact that she can be bred to any of the high Tajima bulls to increase marbling while still retaining size and growth.

Consigned by Synergy Wagyu, LLC, Charleston, SC



MFC Itomoritaka 40C, Lot 56

Lot 56

MFC Itomoritaka 540C

REG#: FB21102 SEX: Female DOB: 05.04.15 B3F, CHSF, CL16F, F11F

ITOMORITAKA J2703 (FB681)
SIRE: MFC ITOMORITAKA 0-41 (FB12247)
CHR MS MICHIFUKU 209S (FB6775)

JVP KIKUYASU-400 (FB2100)
DAM: MFC MS KIKUYASU 0-2 (FB11575)
MFC MS SANJIROU 7-2 (FB8117)

ITOHIRASHIGE (FB680)
DAI 6 OEFUJII J565554-KURO KOH (FB679)
WORLD K'S MICHIFUKU (FB1615)
CHR MS KITAGUNI 84L (FB5131)
KIKUYASU DOI 575 (FB301)
FUKUYOSHI 703223 (FB302)
WORLD K'S SANJIROU (FB2501)
CHR MS HIRASHIGE 055J (FB4832)

The sire MFC Itomoritaka 0-41 has sired class winners at the Denver Show. He's a great combination for maternal from 002 and carcass from Michifuku. The maternal side has two generations of Tajima on top of Kedaka influenced 001, and then Kikuhana and the original Itomichi in a Takeda/Fujiyoshi extended pedigree. Here's a recessive clean, show type, AA-7 beauty to build your wagyu herd.

Consigned by Muddy Flats Cattle Co., Augusta, WI



HPW Keiko -ET, Lot 57



HPW Kia -ET, Lot 58

Lot 57

HPW Keiko -ET

REG#: FB20290 SEX: Female DOB: 03.20.14 B3F, CHSF, CL16F, F11F

SIRE: HB BIG AL 502 (FB2998)
HEART BRAND RED EMPEROR (FB14999)
DAI 8 MARUNAMI J19461 (FB2454)

DAM: WORLD K'S MICHIFUKU (FB1615)
JC MICHI 400 TEX 86981 (FB10103)
CHR MS KIKUYOSHI (FB3653)

DAI 10 MITSUMARU (FB424)
AKIKO (FB2120)
DAI 3 MITSUMARU 30 (FB415)
DAI 7 MARUNAMI J14289 (FB448)
MONJIRO 11550 (FB201)
MICHIKO 655635 (FB215)
JVP KIKUYASU-400 (FB2100)
JVP MS YASUYOSHI 410 (FB3084)

She won her class at the Midwest Fall National Wagyu show at World Beef Expo. She also is one of the highest type Red factor Red Emperor daughters that we know of. She is making a name for herself as a big time brood cow. All of her calves born to date average over 100 lbs at birth and they never stop their rapid rate of growth. She is show ready and will give you the ability to keep on winning at the shows as well as having steers produce high yielding carcasses.

Consigned by Hayden Louisiana Prime Wagyu Beef, Mangham, LA

Lot 58

HPW Kia -ET

REG#: FB20291 SEX: Female DOB: 03.20.14 B3F, CHSF, CL16F, F11F

SIRE: HB BIG AL 502 (FB2998)
HEART BRAND RED EMPEROR (FB14999)
DAI 8 MARUNAMI J19461 (FB2454)

DAM: WORLD K'S MICHIFUKU (FB1615)
JC MICHI 400 TEX 86981 (FB10103)
CHR MS KIKUYOSHI (FB3653)

DAI 10 MITSUMARU (FB424)
AKIKO (FB2120)
DAI 3 MITSUMARU 30 (FB415)
DAI 7 MARUNAMI J14289 (FB448)
MONJIRO 11550 (FB201)
MICHIKO 655635 (FB215)
JVP KIKUYASU-400 (FB2100)
JVP MS YASUYOSHI 410 (FB3084)

Another amazing Red factor Red Emperor daughter that will make the high marbling kind. From the heart of the MATSUFUJI 1802465 (FB322) cow family that is known for high transmitting power as well as consistency.

Consigned by Hayden Louisiana Prime Wagyu Beef, Mangham, LA



CHR Itosuru Doi 282T, sire of Lot 59.

DFY Y-3 Itosuru Doi 282T 3-27, Lot 59

Lot 59

DFY Y-3 Itosuru Doi 282T 3-27

REG#: FB21122 SEX: Female DOB: 06.01.15 B3F, CHSF, CL16F, F11F

ITOUZURU DOI (FB3685)
SIRE: CHR ITOSURU DOI 282T (FB7738)
SUZUTAKA 2 (FB6032)

TF ITOMICHI 1/2 (FB2126)
DAM: MFC MS ITOMICHI 1/2 3-27 (FB16010)
MFC MS ITOSHIGENAMI 0-10 (FB11577)

ITOKITATSURU (FB678)
YASUHIME (FB662)
WORLD K'S TAKAZAKURA (FB2892)
WORLD K'S SUZUTANI (FB1617)
ITOMICHI (FB500)
DAI 2 KINTOU (FB464)
ITOSHIGENAMI (FB3682)
CHR MS KITATERU 59J (FB4830)

This extremely well balanced heifer was shown at the World Beef Expo 2015 and was top of her class. She was bred to be a great mother with milk and frame and still have high marbling. She is free of all known genetic disorders.

Consigned by Drath Family Farm, LLC, Ogdensburg, WI

Bulls

Lot 60

Bay Itomichi 1-2 Houdini 170

REG#: FB20096 SEX: Bull DOB: 01.27.15 B3FU, CHSFU, CL16FU, F11FU

SIRE: ITOMICHI (FB500)
TF ITOMICHI 1/2 (FB2126)
DAI 2 KINTOU (FB464)

DAM: WORLD K'S TAKAZAKURA (FB2892)
BAY TAKAMICI HANA 79 (FB10775)
MISAKO (FB5768)

DAI 7 ITOZAKURA (FB226)
TOMISAKAE 2/1 (FB545)
DAI 3 KIYOHIME (FB468)
EZOKINTOU 1A (FB475)
TAKAEI 1412 (FB609)
DAI NI SAKURA 7 (FB612)
WORLD K'S MICHIFUKU (FB1615)
HISAKO (FB5767)

Bay Itomichi 1/2 Houdini 170 FB20096 was the Reserve Champion Bull at the first World Beef Expo Wagyu show in 2015. TF Itomichi 1/2, the sire of Houdini, has Australian Breedplan ratings showing extreme growth and exceptional ratings for Milk production, (+12). Houdini is a natural calf from "Hana 79", our special donor cow and a full sister to Takamichi Doi, the popular AI sire with high numbers for marbling and tenderness. Hana and Doi are both AA-8. The famous Michifuku daughter, Misako (1.03 marbling MVP from Pfizer), and the foundation Fukutsura 068 daughter Hisako fill out the maternal pedigree. The Tajima sire stack on the maternal side combined with the Fujiyoshi growth powerhouse on the paternal side makes for a great combination. Houdini is a VA-9 for SCD and tenderness and is recessive clean.

Consigned by Baycroft Wagyu, De Pere, WI



Bay Itomichi 1-2 Houdini 170, Lot 60

Lot 61

IWG 145

REG#: FB19812 SEX: Bull DOB: 11.15.14 B3FU, CHSFU, CL16FU, F11FU

SIRE: RUESHAW (FB101)
IWG RUESHAW 74Z (FB14720)
GABNI RUBI (FB12161)

DAM: HB BIG AL 502 (FB2998)
COATES TSUKI (FB12163)
TWA MUSUME (FB14997)

RUEMEI H39 (FB1)
KIKUTAMA 14285 (FB2)
SHIGEMARU (FB2124)
SUMO CATTLE CO HINODE C157 (FB14994)
DAI 10 MITSUMARU (FB424)
AKIKO (FB2120)
HB BIG AL 502 (FB2998)
DAI 8 MARUNAMI J19461 (FB2454)

With Rueshaw and double bred Big Al in his pedigree 145 will produce offspring with growth and marbling traits. Rueshaw was the 1975 Japanese National Champion and was also the only national champion to leave Japan. 145 is free of known genetic conditions.

Consigned by Idaho Wagyu Genetics, Soda Springs, ID



IWG 145, Lot 61



MFC Michiyoshi 522C, Lot 62

Lot 62

MFC Michiyoshi 522C

REG#: FB21095 SEX: Bull DOB: 03.19.15 B3F, CHSF, CL16F, F11F

SIRE: WORLD K'S SANJIROU (FB2501)
MICHİYOSHI (FB9420)
CHR MS FUKUTSURU 107L (FB5861)

WORLD K'S MICHIFUKU (FB1615)
WORLD K'S SUZUTANI (FB1617)
JVP FUKUTSURU-068 (FB2101)
CHR MS TAKAZAKURA 044J (FB4835)
ITOFUJI 483 (FB319)
DAI 30 NOBORU J920752 (FB660)
WORLD K'S SANJIROU (FB2501)
CHR MS HIRASHIGE 055J (FB4832)

DAM: ITOSHIGEFUJI (FB3681)
MFC MS ITOSHIGEFUJI 2-9 (FB13942)
MFC MS SANJIROU 7-2 (FB8117)

522C is currently housed at Hawkeye Breeders in their European Union (EU) quarantine barn. He is clear on all his health tests and sells F.O.B. Adel, IA, USA. This genetic powerhouse pedigree starts with the intensely bred Tajima paternal side of Michiyoshi. This puts favorable Exxon 5 B or C genes and AA SCD markers on the topside. With the underutilized Itoshigefuji on the bottom side, 522C has growth and maternal potential that reinforces a maternal line of Takeda genetics including Kikuhana and the original Itomichi. Don't miss this recessive clean, AA-10 opportunity!

Consigned by Muddy Flats Cattle Co., Augusta, WI



Webbco Michiyoshi B113, Lot 63

Lot 63

Webbco Michiyoshi B113

REG#: FB19880 SEX: Bull DOB: 09.10.14 B3FU, CHSFU, CL16FU, F11FU

SIRE: WORLD K'S SANJIROU (FB2501)
MICHİYOSHI (FB9420)
CHR MS FUKUTSURU 107L (FB5861)

WORLD K'S MICHIFUKU (FB1615)
WORLD K'S SUZUTANI (FB1617)
JVP FUKUTSURU-068 (FB2101)
CHR MS TAKAZAKURA 044J (FB4835)
ITOMICHI (FB500)
DAI 2 KINTOU (FB464)
BAR R SANJIROU 4P (FB5663)
BR MS FUKUTSURU 9671 (FB4950)

DAM: TF ITOMICHI 1/2 (FB2126)
WEBBCO ITO 500Y (FB13786)
LMR MS SANJIROU 4P 728T (FB10330)

Webbco Michiyoshi B113 is highly favorable for Fullblood and F1 production. He is the oldest listed Fullblood son of Michiyoshi, one of the top marbling and rib eye bulls (Sanjiro son) of the breed. He is AA 9 on SCD fat/Tenderness 2, and tested BC on the GH Exon 5 test for Marbling and Growth traits. His dam, 500y, is a Lone Mountain bred cow sired by TF Itomichi 1/2 that brings substance and strength to the pedigree. She carries over 1600 lbs. with a lot of style and balance. Her pedigree also includes 2 crosses with 068 that insures marbling to go with the substance. She has 7 ET Hirashigetayasu J2351 heifer calves you will be hearing about in the near future. Free of undesirable recessives and over 1,200 pounds at 20 months, he is long, thick, very stylish and halter broke. A show prospect but ready to work in the pasture or collection facility.

Definitely the complete package!

Consigned by JW Wagyu, Turlock, CA

Lot 64

Designer Mavi -ET

REG#: FB23946 SEX: Bull DOB: 04.21.16

SIRE: MAZDA (FB103)
HAKUHO BR92 BH514 (FB13)
MASUTANI B1136818 (FB14)

DAM: BAY MAK MANA 129 (FB16091)
YCB ITO MAKOTO 5626 (FB11765)
MISAMI (FB7968)

YUHO BH184 (FB15)
SUGI 1ST B898560 (FB16)
YUTAKA-ICHI BH253 (FB17)
MASUMOYOI B891992 (FB18)
TF ITOMICHI 1/2 (FB2126)
YCB ITOHIME TAKARA 5381 (FB11764)
ITOSHIGENAMI (FB3682)
MISAKO (FB5768)

This rare Mazda son will impress you from every angle. His front end that is picture perfect which allows him to stand uphill will make you want to lead him to the winners circle at any national show. He has a 0% inbreeding, high marbling, and a perfect out cross to any breeding program. He is the largest and one of the fastest growing bulls at Designer currently. He will be entered in the Midwest Fall National Wagyu show at World Beef Expo this year. His dam is Bay Mak Mana 129. She is from the elite Hisako cow family which is known for high quality meat traits including extremely high marbling. To our knowledge, Mana's dam, Misami, is one of the highest; Mana's second dam, Misako, one of the highest marbling cows tested (as far as we know). Her sire YCB ITO MAKOTO 5626 (FB11765) is a high type son of TF ITOMICHI 1/2 (FB2126). Mana is a very impressive individual and has the long wide loin that is needed to produce high value Wagyu carcasses with high steak value. Her genetics and offspring (who match her in wide loin) are sought after by breeders from around the world. Her sons will be entering stud and will help to improve carcass quality into the next generation. Just measured 43 inches at the rump. At 10,000 Designer will show at the World Beef Expo at their cost for the new buyer.

Consigned by Designer Wagyu, Fond du Lac, WI



Bay Mak Mana 129, dam of Lot 64.

Lot 65

IWG 140

REG#: FB19809 SEX: Bull DOB: 10.22.14 B3FU, CHSFU, CL16FU, F11FU

SIRE: IWG UMEMARU 69Z (FB14715)
WSI UMEMARU (FB9979)
JVP 702 HOMARE-27 (FB7331)

DAM: COATES TAIYO (FB12162)
HB BIG AL 502 (FB2998)
TWA MUTSUNAMI (FB14996)

HIKARI (FB2455)
KAEDEMARU (FB9978)
JUDO (FB102)
JVP 27-HOMARE 128 (FB2114)
DAI 10 MITSUMARU (FB424)
AKIKO (FB2120)
SHIGEMARU (FB2124)
DAI 8 MARUNAMI J19461 (FB2454)

He was the 2015 Over-All Champion Bull at the Midwest Fall National Wagyu Show at the World Beef Expo. His full sister was the Over-All Grand Champion of the same female show. He is one of the high type Red bulls of the breed. His great balance with his boxcar rump will produce big daughters with wide rear udders. He is ready to be shown this year and looks to repeat his success from last year.

Consigned by Raines Farms, Mangham, LA



IWG 140, Lot 65



HPW Keiko -ET, dam of Lot 66.



Michiyoshi, sire of Lot 66.

Lot 66

HPW

REG#: FB Pending SEX: Bull DOB: 02.05.16

SIRE: WORLD K'S SANJIROU (FB2501)
MICHİYOSHI (FB9420)
CHR MS FUKUTSURU 107L (FB5861)

DAM: HEART BRAND RED EMPEROR (FB14999)
HPW KEIKO (FB20290)
JC MICHİ 400 TEX 86981 (FB10103)

WORLD K'S MICHIFUKU (FB1615)
WORLD K'S SUZUTANI (FB1617)
JVP FUKUTSURU-068 (FB2101)
CHR MS TAKAZAKURA 044J (FB4835)
HB BIG AL 502 (FB2998)
DAI 8 MARUNAMI J19461 (FB2454)
WORLD K'S MICHIFUKU (FB1615)
CHR MS KİKUYOSHI (FB3653)

Buyer can name the bull.

This bull will have the ability to improve the carcass quality in your herd along with adding growth, type, and mothering abilities. This bull is one of the most stylist bulls at Designer and has never missed a beat since birth. His birth weight was 106 lbs.

Consigned by Hayden Louisiana Prime Wagyu Beef, Mangham, LA



On behalf of the Greenman Family
we thank all that have participated
in this FIRST EVER SALE!



1212 Laurel St. #1614
Nashville, TN 37203

**FIRST CLASS
PRE-SORTED
PAID**
Montezuma, Iowa
Permit No. 30



Bay Mak Mana 129, dam
of several Lots selling.



Bay Misao ET,
dam of several Lots selling.



Bay Hero Kiku 172, Lot 50



JC MS Hakari 84, Lot 58



PRIME TIME international

Prime Time International Wagyu Sale

Waukesha, Wisconsin

Saturday, August 6, 2016