

PINEGAR LIMOUSIN

12 Show
Heifers &

A BULL

ONLINE SALE

WEDNESDAY, OCTOBER 4, 2017

www.PINEGARLIMOUSIN.com

PINEGAR LIMOUSIN

12 Show Heifers & A BULL ONLINE SALE

Purebred • Fullblood • Lim-Flex

www.PINEGARLIMOUSIN.com

WEDNESDAY, OCTOBER 4, 2017

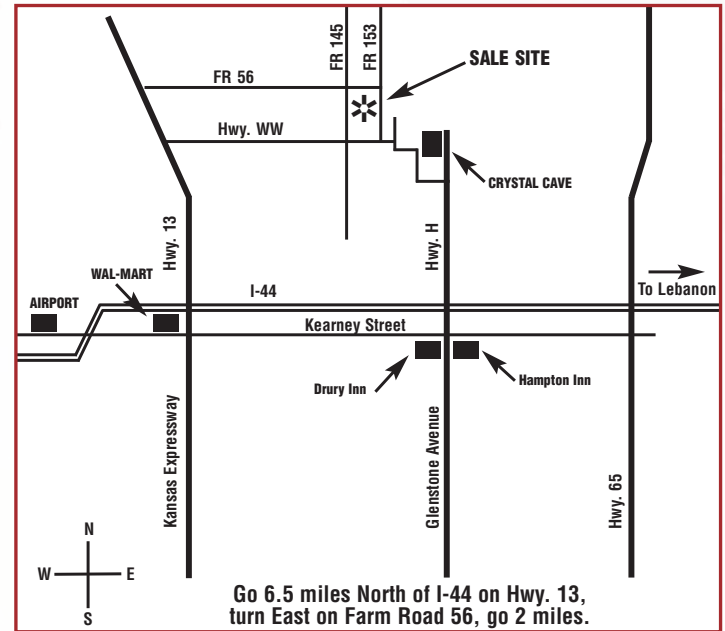
BIDDING OPENS ... 7:00 a.m. (CST) • BIDDING CLOSES ... 7:00 p.m. (CST)

SALE-DAY PHONES ...

Ty Heavin ... 417.839.8549
Ed Pinegar ... 417.833.6784
Randy Ratliff ... 615.330.2735



ED & CAROL PINEGAR, OWNERS
TOLL FREE 1.877.PINEGAR • 417.833.6784
850 W. Farm Road 56, Springfield, MO 65803
Ty & Susie Heavin, Farm Managers, 417.839.5849
James Henderson, Show & Sale Cattle



Go 6.5 miles North of I-44 on Hwy. 13, turn East on Farm Road 56, go 2 miles.

CATTLE VIEWING...

Call/text/e-mail: Ty Heavin at Pinegar Limousin to view the offering.

TRUCKING...

Cattle be picked up at Farm location or we can assist with trucking (buyer pays trucking expense)

TECHNICAL SUPPORT...

Abby Hinton • 919.618.8098

SALE MANAGEMENT...



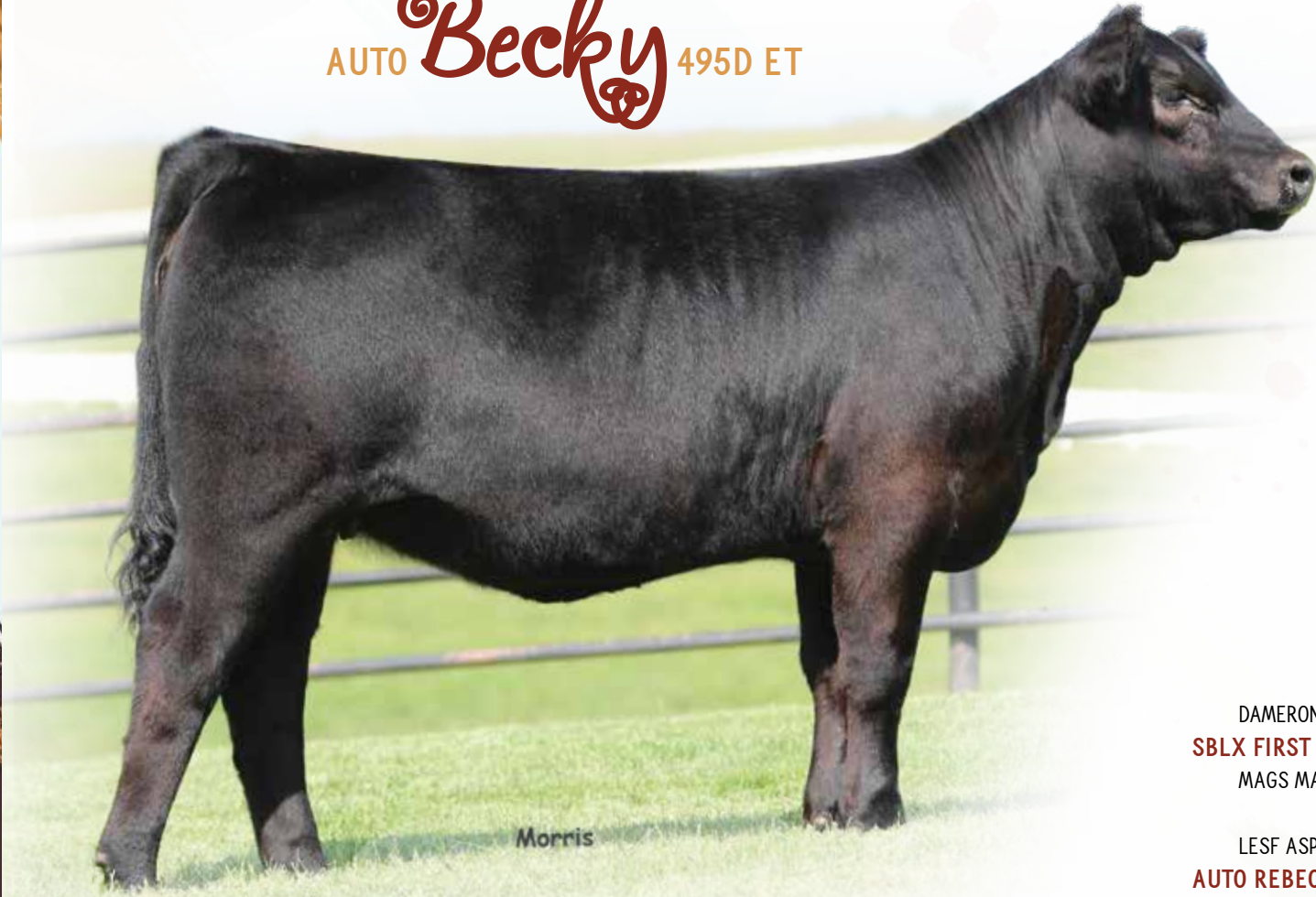
Randall O. Ratliff • 615.330.2735
PO BOX 60097 • NASHVILLE, TN 37206
Randy@RRMktg.com • www.RRMktg.com (L#2845)

Credit Cards Accepted



AUTO *Becky* 495D ET

1



LIM-FLEX(62) COW
 Het Polled (T) - Homo Black (T)
 12/24/2016 - AUTO 495D - LFF2120713

	EPD	Rank
CD	9	35
BW	1.8	60
WW	66	45
YW	108	20
MK	28	30
CM	6	55
SC	0.7	55
DC	10	90
YG	.01	95
CW	35	20
RE	.17	95
MB	.10	35
\$MI	54	40

DAMERON FIRST CLASS
SBLX FIRST CLASS
 MAGS MANUELA

LESF ASPHALT 9N
AUTO REBECA 292S
 EXLR REBECA 1019P

EXG RS FIRST RATE S903 R3
 DAMERON NORTHERN MISS 311
 EXLR LIMITED EDITION 765J
 AUTO CITY NIGHTS 214H

GPFF BLAQUE RULON
 GPFF EXTRA SWEET ELITE
 BR MIDLAND
 EXLR REBECA 614H

AUTO Becky 495D is one the premium females to be offered this entire sale season. Her lines are perfectly aligned, her foundation is solid and she is powerfully designed from one end of her skeleton to the other.

This Homozygous Black daughter of SBLX First Class ranks in the top 20% for YW, along with being in the top 25% for TM. First Class is the Dameron First Class x MAGS Manuela son who is now at Stowers Limousin in Texas. Dameron First Class semen has been fetching over \$10,000/unit; this is a great opportunity to inject his genetics into your cowherd.

Becky is a direct daughter of the ever-popular AUTO Rebeca 292S; this makes her a descendant of both Rebeca and Manuela, more than our two leading donors.

AUTO *Pink* 420D ET

2



FULLBLOOD COW
 Polled - Red
 9/10/2016 - AUTO 420D - NFF2122800

	EPD	Rank
CD	1	>95
BW	3.1	90
WW	62	60
YW	92	55
MK	31	15
CM	4	80
SC	0.1	>95
DC	6	95
YG	-.34	15
CW	29	40
RE	.73	10
MB	-.43	>95
\$MI	40	>95

- EAFF POLLED HUMMER 530P
- SVL POLLED IMPACT 516U**
- SVL POLLED ELEGANCE 608J
- AUTO CLIFF HANGER 194D
- AUTO RED PEPPER 216X**
- LAURA'S ECHELON
- MINE GOLD MEDAL 436G
- SOGF AMBER KRUG 264B
- MH VELOCITY
- OAK-E'S BELL RINGER 303C
- TEXS RANGER PRIMO
- YKCC HEART THROB 141W
- PUNCH
- SOULES QUEEN 103X

It has been a long time since a Fullblood female has garnered as much attention as this one has. If you want a heifer that will be highly competitive next summer at the National Fullblood Show, this is the heifer our money is on. Plenty of milk and grow in the pedigree of this female to further compliment her exceptional phenotype. Pink is a flushmate to the 2017 National Champion Fullblood female.

If you are looking for a Fullblood heifer, Pink ranks in the top 15% of her contemporaries for MK. As many know, we have a limited number of Fullblood cows, but the ones we have are the front-pasture kind.

Sired by the legendary SVL Polled Impact, whose progeny post an average Yearling ratio of 106.

AUTO **Enchantress** 227E



PERCENTAGE(38) COW
 DBL Polled - DBL Black
 3/4/2017 - AUTO 227E - APPLIED



EPD Rank

CD	3
BW	2.6
WW	54
YW	88
MK	18
CM	-6
SC	0.7
DC	7
YG	-.05
CW	27
RE	.15
MB	-.05
\$MI	46



HEAT WAVE
MONOPOLY
 W T F RUTH MEDINA

LESF ASPHALT 9N
AUTO REBECA 292S
 EXLR REBECA 1019P

BHCS HEAT SEEKER 23
 FAWL MA X AN X CA 100
 W T F BLACK CENTURY
 W T F DAISY ANN
 GPFF BLAQUE RULON
 GPFF EXTRA SWEET ELITE
 BR MIDLAND
 EXLR REBECA 614H

A direct daughter of Monopoly, who has produced more champions than any other sire in the modern era on the terminal side of the show industry. The original Monopoly progeny is in high demand due to their consistent results and high marketability. This female is stamped like the many that have come before her.

If you have always appreciated the lines and power of Limousin heifers but wanted to tone down the front end in them, here is the answer. She will be highly competitive as a jackpot female and could take someone on an exciting journey this fall and next spring.

Be sure to check your local and state show percentage rules before purchasing this heifer, we would hate for you to easily fall in love with her and not be able to exhibit her.

AUTO **Exie** 231E ET



LIM-FLEX(46) COW
 Homo Polled (T) - Het Black (T)
 2/15/2017 - AUTO 231E - LFF2123662

	EPD	Rank
CD	9	35
BW	1.2	50
WW	66	45
YW	106	25
MK	28	30
CM	5	70
SC	1.0	25
DC	24	25
YG	-.04	85
CW	34	25
RE	.36	70
MB	.49	5
\$MI	68	5

EXAR UPSHOT 0562B
LH ADVANTAGE 105A
 EXLR DUCHESS 7129R

CONNEALY CONSENSUS 7229
AUTO MABELLINE 267Z
 MAGS MANUELA

SITZ UPWARD 307R
 EXAR BARBARA T020
 EXLR NEW GENERATION 071M
 EXLR 199H
 CONNEALY CONSENSUS
 BLUE LILLY OF CONANGA 16
 EXLR LIMITED EDITION 765J
 AUTO CITY NIGHTS 214H

We love this youthful, fresh female. She is so true in her makeup and designed in such a functional manner. When you look at the pieces in this female, you can't help but be excited for the future. Exie is a 46% Lim-Flex daughter of LH Advantage, who is homozygous polled. Exie won her division at the 2017 Ozark Empire Fair and Missouri State Fair.

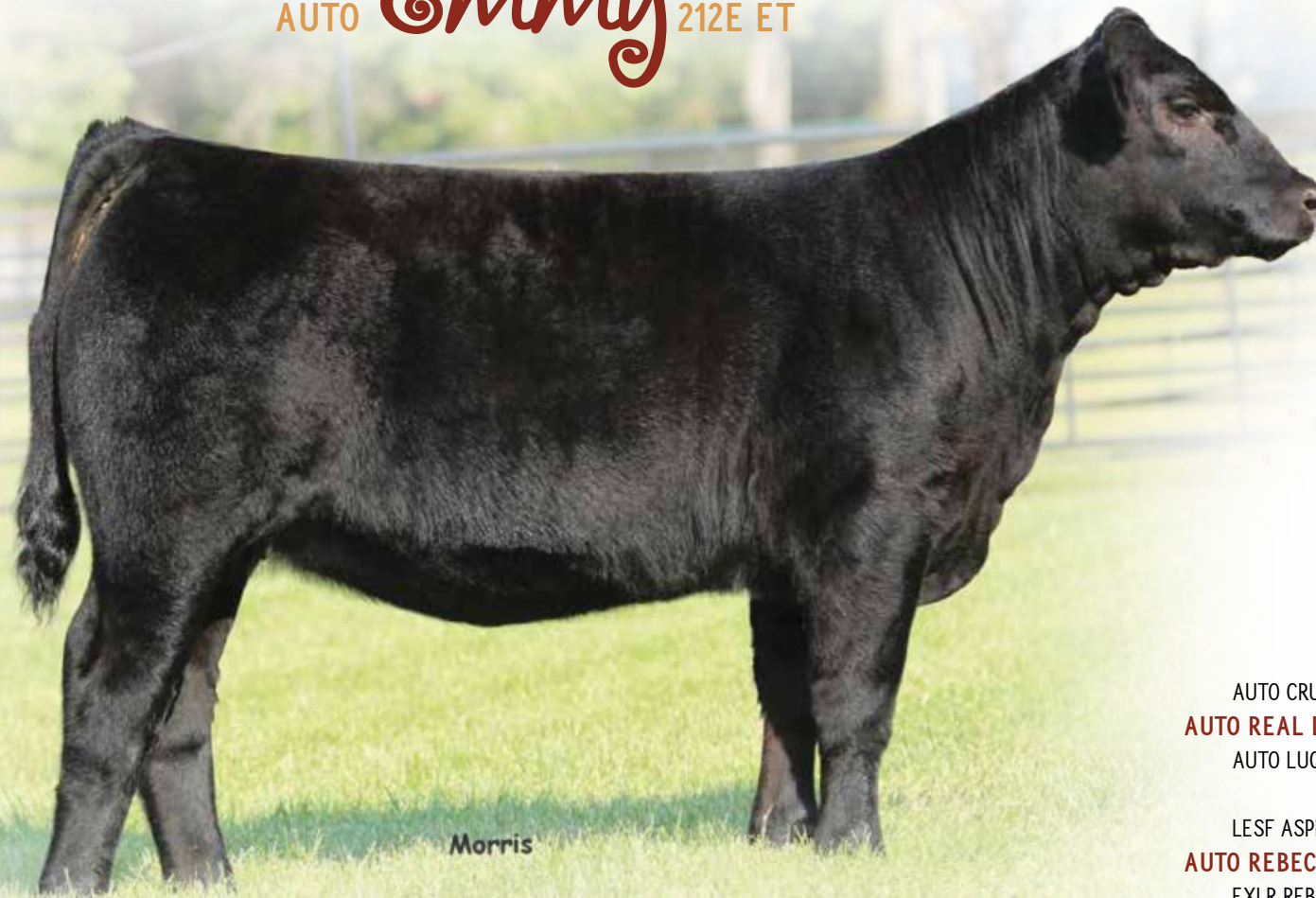
Rarely does a female hit it out of the park for MB and \$MI and still have the flash and look this one has. She ranks in the top 5% for MB and \$MTI, and in the top 25% for YW and SC.

AUTO *Emmy* 212E ET

5

PUREBRED COW
Homo Polled (P1) - Homo Black (P-2)
2/27/2017 - AUTO 212E - NPF2122442

	EPD	Rank
CD	8	45
BW	1.1	45
WW	73	20
YW	109	20
MK	27	35
CM	4	80
SC	0.7	45
DC	6	95
YG	-.09	75
CW	35	20
RE	.17	95
MB	-.10	60
\$MI	49	55



AUTO CRUZE 132X
AUTO REAL DEAL 150B
AUTO LUCKIE TOO 423Y

LESF ASPHALT 9N
AUTO REBECA 292S
EXLR REBECA 1019P

MAGS THE GENERAL
AUTO REBECA 292S
WLR DIRECT HIT
TYEJ DB SERENITY
GPFF BLAQUE RULON
GPFF EXTRA SWEET ELITE
BR MIDLAND
EXLR REBECA 614H

AUTO Emmy is a Homozygous Black and Polled direct daughter of Rebeca 292S, making her destined for greatness. There are very few Rebeca progeny that don't make it to the top of our elite sales, she is one of the most consistent donors we have ever had the opportunity to work with.

Her EPDs place her solidly in the top 20% for WW, YW, and TM.

AUTO *Diamond* 452D ET

6

LIM-FLEX(75) COW
 Homo Polled (T) - Homo Black (T)
 11/22/2016 - AUTO 452D - LFF2120520

	EPD	Rank
CD	8	45
BW	1.3	50
WW	60	65
YW	85	70
MK	20	95
CM	9	10
SC	1.1	15
DC	16	55
YG	.02	95
CW	22	70
RE	.03	>95
MB	.15	30
\$MI	54	40

D A TRAVELER 004 703
EF XCESSIVE FORCE
 CFLX MOLLYS IMAGE

GPFF BLAQUE RULON
SBLX TRUE LOVE 918T
 MAGS MANUELA

S A V 8180 TRAVELER 004
 ROSEWOOD ERICA 5010
 DHVO DEUCE 132R
 JCL PEPPERMINT

BLACK DIAMOND
 QUAIL RUN RAMONA BP
 EXLR LIMITED EDITION 765J
 AUTO CITY NIGHTS 214H

AUTO Diamona 452D is one of the Xcessive Force daughters who jumps off the page or out of the screen and screams "Look at Me!" You get this one stopped and popped, and her stunning good looks quickly become apparent. Diamond won her class at the 2017 All-American Limousin Futurity in Grand Island, NE.

Homozygous Polled and black, this female does it all!

She is a trait leader for CEM, being in the top 10%.

AUTO **Edwina** 259E

7



LIM-FLEX(38) COW
 HOMO Polled - DBL Black
 4/9/2017 - AUTO 259E - APPLIED

	EPD	Rank
CD	5	80
BW	0.7	45
WW	77	25
YW	122	15
MK	21	95
CM	3	90
SC	1.3	10
DC	5	>95
YG	-.17	65
CW	43	5
RE	.67	35
MB	.19	20
\$MI	62	20

S A V BISMARCK 5682
S A V BRAND NAME 9115
 S A V BLACKCAP MAY 5530

LESF ASPHALT 9N
AUTO REBECA 292S
 EXLR REBECA 1019P

G A R GRID MAKER
 S A V ABIGALE 0451
 B C C BUSHWACKER 41-93
 S A V MAY 7238
 GPFF BLAQUE RULON
 GPFF EXTRA SWEET ELITE
 BR MIDLAND
 EXLR REBECA 614H

AUTO 259E comes from one of the most exciting matings we have ever produced at Pinegar Limousin. AUTO Rebeca 292S stacked with S A V Brand Name is mating the best to the best. Brand Name was the record-selling at the 2010 Schaff's Angus Valley sale and is a maternal sibling to the \$260,000 sire, S A V Cutting Edge. Brand Name was a common sire in the show programs last year at all the majors, both in the Angus breed and the hybrid shows.

AUTO Rebeca 292S needs no introduction, she is clearly one of the most consistent producers in the Limousin breed. 259E is the type of Lim-Flex female you can build a program around.

AUTO Dealers Choice 488D ET



LIM-FLEX(50) COW
 Polled - Black
 11/15/2016 - AUTO 488D - LFF2126614

	EPD	Rank
CD	10	25
BW	1.6	55
WW	61	65
YW	98	45
MK	36	2
CM	7	35
SC	0.7	45
DC	11	85
YG	-.33	15
CW	31	35
RE	1.06	1
MB	.05	40
\$MI	53	40

S A V BRILLIANCE 8077
PVF INSIGHT 0129
 PVF MISSIE 790

EXLR DAKOTA 353G
EXLR MOLLY 7103K
 EXLR MOLLY 343G

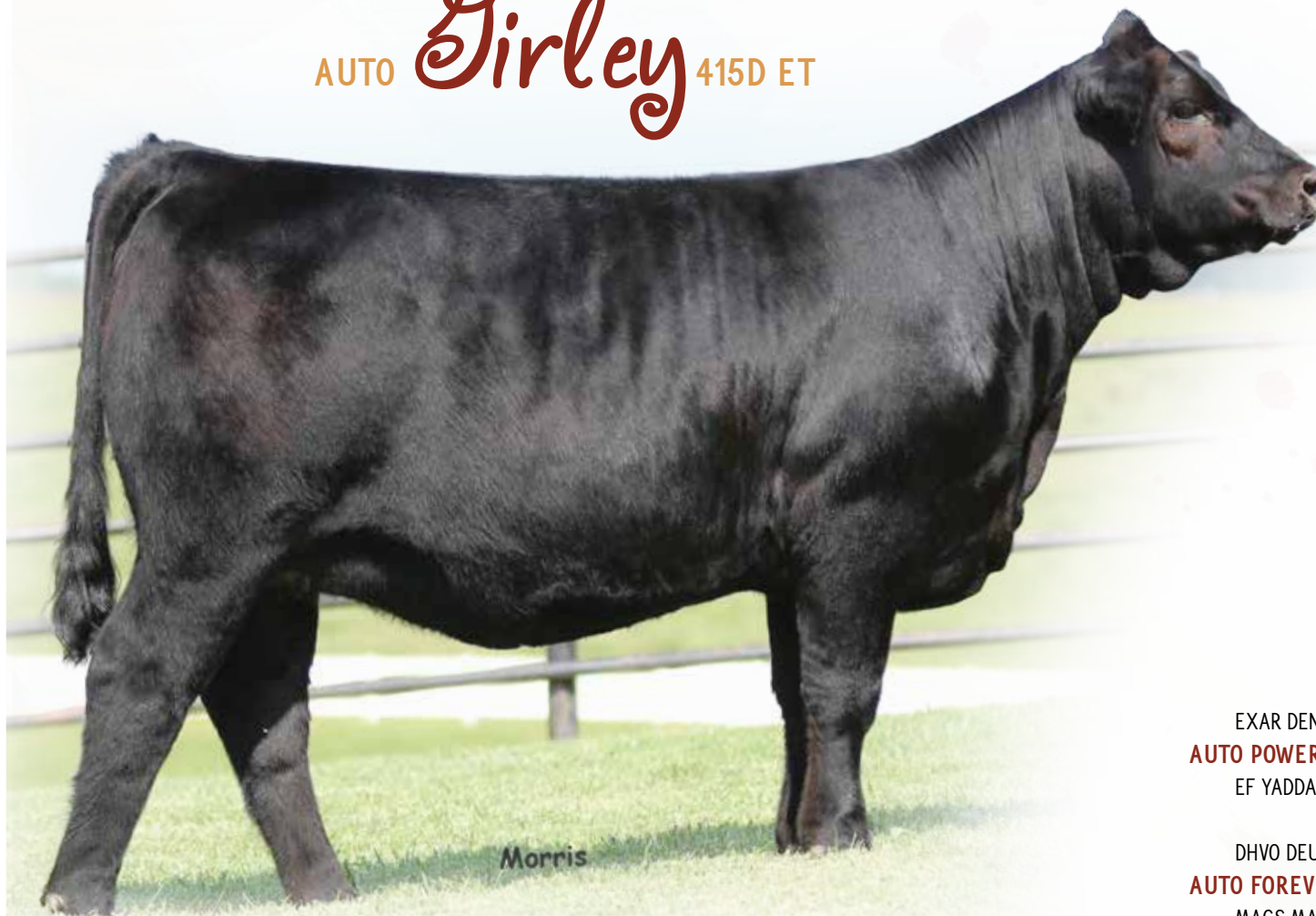
S A V BISMARCK 5682
 S A V BLACKCAP MAY 5270
 P V F NEW HORIZON 001
 P V F MISS RAPTOR 024

WULF'S COUNT DOWN 9251C
 CANE RIDGE DAPHNE 011D
 CANE RIDGE POLLED WYATT
 JCL MOLLY

If you are looking for a female that is going to be successful in the long haul, here is the one to tie to, or should we say tie up! She is smooth patterned, refined in her joint work, good footed and true in her underline. She has held her chest floor together like a good young heifer and we feel that she is going to handle feed really well into the fall.

AUTO Dealers Choice 488D is a 50% Lim-flex, sired by the popular Angus sire PVF Insight 0129, who has sired numerous champions throughout the country. She has the genetic profile to go with her style, ranking in the top 1% for REA, top 2% for MK, and top 10% TM.

AUTO *Girley* 415D ET



LIM-FLEX(75) COW
 Polled - Het Black (T)
 9/13/2016 - AUTO 415D - LFF2121201

	EPD	Rank
CD	9	35
BW	2.7	80
WW	66	45
YW	105	25
MK	29	20
CM	6	55
SC	1.2	15
DC	23	25
YG	-.20	45
CW	36	20
RE	.85	4
MB	.20	25
\$MI	60	20

EXAR DENVER 2002B
AUTO POWER PLUS 133B ET
 EF YADDA YADDA 809Y

DHVO DEUCE 132R
AUTO FOREVER 219X
 MAGS MANUELA

EXAR UPSHOT 0562B
 EXAR ROYAL LASS 1067
 DHVO DEUCE 132R
 MAGS RUFFLES

GPFF BLAQUE RULON
 AMY JO DHAN 20L
 EXLR LIMITED EDITION 765J
 AUTO CITY NIGHTS 214H

AUTO Girley 415D has some serious power going on! As you watch her going away from you, she is particularly square hipped and comes from hooks to pins with a ton of dimension. That power cumulated with the great mid-body shape and soundness of structure make this female a serious contender.

Girley is a daughter of the Stowers herd sire, AUTO Power Plus 133B ET, a son of the popular EXAR Denver 2002B.

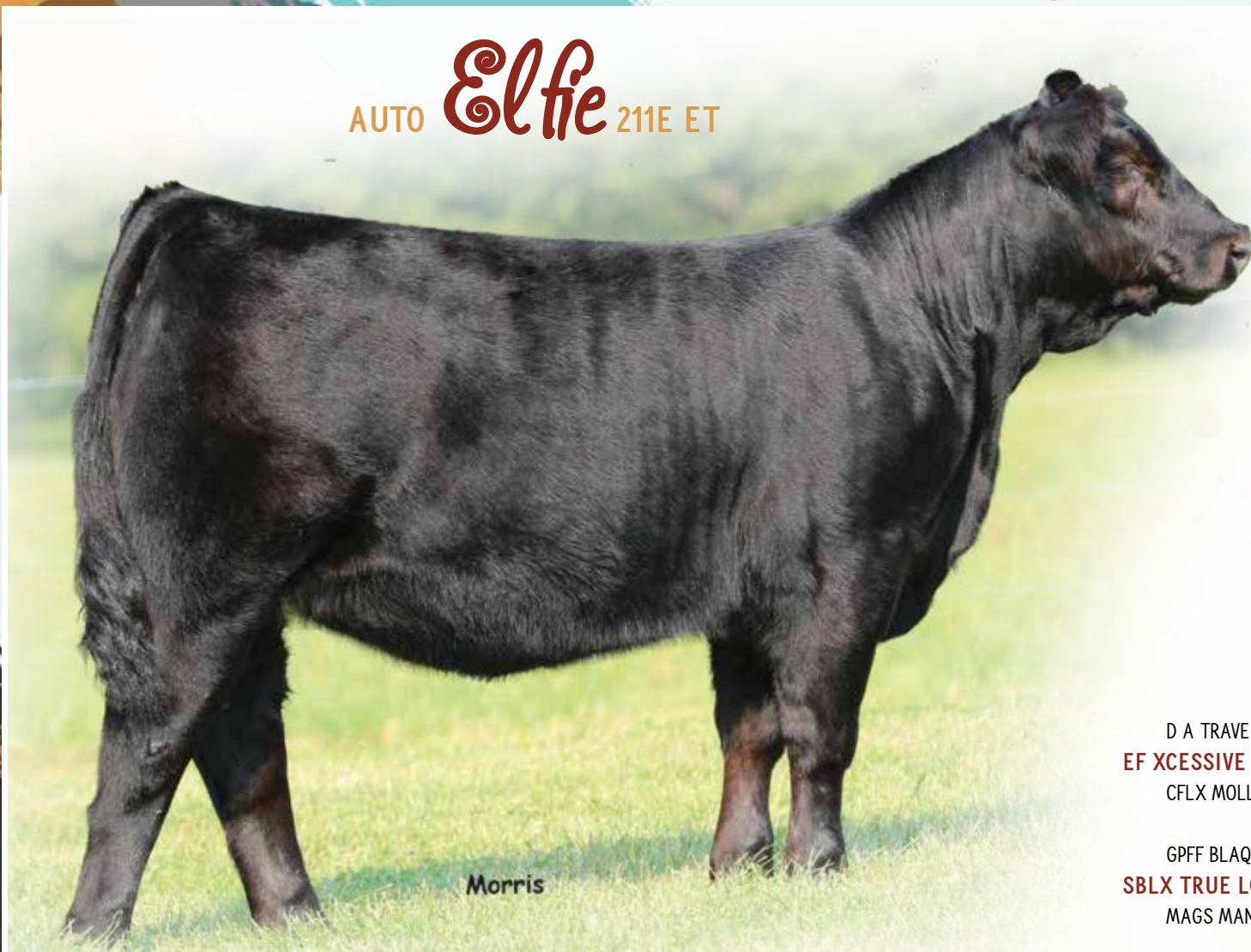
This 75% Lim-Flex female is in the top 4% for REA, along with the top 20% for MK, CW, and \$MI.

AUTO **Elfie** 211E ET

10

LIM-FLEX(75) COW
 Horned (T) - Homo Black (T)
 3/5/2017 - AUTO 211E - LFF2122437

	EPD	Rank
CD	8	45
BW	-0.7	15
WW	58	75
YW	85	70
MK	20	95
CM	9	10
SC	1.1	15
DC	16	55
YG	.02	95
CW	22	70
RE	.07	>95
MB	.18	25
\$MI	54	40



Morris

D A TRAVELER 004 703
EF XCESSIVE FORCE
 CFLX MOLLYS IMAGE

GPFF BLAQUE RULON
SBLX TRUE LOVE 918T
 MAGS MANUELA

S A V 8180 TRAVELER 004
 ROSEWOOD ERICA 5010
 DHVO DEUCE 132R
 JCL PEPPERMINT

BLACK DIAMOND
 QUAIL RUN RAMONA BP
 EXLR LIMITED EDITION 765J
 AUTO CITY NIGHTS 214H

Great haired, big bellied and stout at the ground describes this female. Maybe she isn't jet fronted, but her power and broodiness certainly make up for it. Here is another Xcessive Force daughter who is Homozygous Black. Her full sister sells as Lot 6. Elfie has a solid set of numbers, being in the top 10% for CEM, top 15% for BW and SC.

AUTO *Sunny Day* 418D ET

11



LIM-FLEX(37) COW
 Homo Polled (T) - Homo Black (T)
 12/2/2016 - AUTO 418D - LFF2119205

	EPD	Rank
CD	12	15
BW	-0.9	15
WW	71	25
YW	117	10
MK	30	15
CM	7	35
SC	1.1	20
DC	9	90
YG	-.11	70
CW	39	15
RE	.58	30
MB	.76	1
\$MI	80	1

EXAR DENVER 2002B
EXAR POWERSOURCE 4723B
 EXAR LUCY 2944

LESF ASPHALT 9N
AUTO REBECA 292S
 EXLR REBECA 1019P

EXAR UPSHOT 0562B
 EXAR ROYAL LASS 1067
 CONNEALY CONSENSUS 7229
 EXAR LUCY 9703
 GPFF BLAQUE RULON
 GPFF EXTRA SWEET ELITE
 BR MIDLAND
 EXLR REBECA 614H

The only thing missing in this one's picture is a backdrop and banners, but we have confidence if she doesn't hang one her progeny certainly will. This is the type of female you can mate to make show heifers and performance bulls all day long. She is nearly flawless in her type and has that special look of quality that doesn't come along every day.

Sunny Day is a Homozygous Black and Polled direct daughter of AUTO Rebeca 292S. She is sired by the Express Angus sire, EXAR PowerSource 4723B. PowerSource is excellent on his feet and leg structure. He has the look, proven pedigree, performance, and carcass merit to have a tremendous impact within the industry.

You couldn't ask for a more powerful set of numbers, top 1% MB and \$MI, top 10% YW, and top 15% CED, BW, MK, and TM.

AUTO *Remi* 674D

12



PERCENTAGE(79) COW
Het Polled (T) - DBL Black
12/19/2016 - AUTO 674D - NXF2120715

	EPD	Rank
CD	10	25
BW	1.8	60
WW	66	45
YW	96	50
MK	29	20
CM	5	70
SC	0.9	35
DC	18	45
YG	-.08	75
CW	28	45
RE	.28	80
MB	.10	35
\$MI	54	35

LH U HAUL 135U
AUTO LUCKY STRIKE 118B
AUTO LUCKIE 246W

AUTO GUNN POINT 192Y
AUTO KIERA 438A
MAGS MANUELA

BASIN FRANCHISE P142
EXLR DUCHESS 7129R
WLR DIRECT HIT
TYEJ DB SERENITY

LH RODEMASTER 338R
AVA JO DHVO 721R
EXLR LIMITED EDITION 765J
AUTO CITY NIGHTS 214H

Possibly the thickest-ended heifer offered this fall. AUTO Remi 674D has a ton of muscular dimension from all angles. She handles that muscle with tremendous grace and athleticism.

This 79% female is sired by AUTO Lucky Strike, who is a mating of LH U Haul and AUTO Luckie 246W, the heifer campaigned very successfully by Cody Heavin.

Remi is in the top 25% or better for the economically important traits of MK, CED and TM.

AUTO STRIKER 159D

13



PERCENTAGE(79) BULL
Het Polled (T) - Homo Black (T)
9/14/2016 - AUTO 159D - NXM2119203

	EPD	Rank
CD	10	25
BW	2.0	65
WW	80	10
YW	105	25
MK	28	30
CM	4	80
SC	0.9	35
DC	12	80
YG	-.05	85
CW	33	30
RE	.64	20
MB	.10	35
\$MI	58	25

LH U HAUL 135U
AUTO LUCKY STRIKE 118B
AUTO LUCKIE 246W

MAGS XYLOPOLIST
AUTO REBECA 479A
AUTO REBECA 292S

BASIN FRANCHISE P142
EXLR DUCHESS 7129R
WLR DIRECT HIT
TYEJ DB SERENITY
DHVO DEUCE 132R
MAGS STRAWBERRY
LESF ASPHALT 9N
EXLR REBECA 1019P

Having a bull in this offering wasn't in the original plans for this open heifer sale, however we are so excited to share him with the industry we couldn't wait until our bull sale next spring! This bull is so fancy and attractive, he fits right in with these show heifer prospects! Big topped, big-middled, big butted and big footed—what more could you ask for? This herd sire prospect has a big future ahead of him! Striker was the 2017 Ozark Empire Fair Grand Champion Bull.

AUTO Striker is a 79%, Homozygous Black herd-sire prospect and a son of the P Bar S herd sire, AUTO Lucky Strike 118B, out of a direct daughter of AUTO Rebeca 292S.

He ranks in the top 10% for WW, top 20% for RE and top 25% for CED, YW, TM and \$MI.