



SMOKY MOUNTAIN

CLASSIC
LIMOUSIN & LIM-FLEX SALE

1:00 P.M. EST.

MAY 15, 2021

GRAY, TN



Sale Offering 75 Lots The Finest In Limousin • Lim-Flex • Angus

Semen Packages - 2
Donor Cow Prospects - 2
Genetic Opportunities - 2
Fall Cow Calf Pairs - 12
Spring Cow Calf Pairs - 5
Proven Herd Sire - 1
Beef Bulls - 15
Bred Cows - 9
Bred Heifers/Pairs - 16
Open Show Heifers - 10

SCHEDULE

Saturday, May 15

- Complementary lunch 11:30 a.m. E.S.T.
- Sale time 1 p.m. E.S.T.

SALE LOCATION

Appalachian Fair Sale Facility

Grey 100 Lakeview St
Gray, TN 37615

SALE DAY PHONES

David Byers	423.963.2744
Jr. Winstead	423.921.2494
Jimmy Byers	423.817.1796
Randall O. Ratliff	615.330.2735
Kiley McKinna	402.350.3447
Bill Helton	256.962.0256

HOTEL ACCOMODATIONS

Holiday Inn

101 W Springbrook Dr.
Johnson City, TN 37604
423.2824611

AUCTIONEER

Cody Lowderman

Codylowderman@yahoo.com
309.313.2171

SALE ORDER

Sale order is the way they are listed in the sale catalog

SUPPLEMENTAL INFORMATION Friday, May 14th the sale order and supplemental information will be posted at www.RRMktg.com for your convenience.

GUARANTEE All cattle sell under the standard guarantee of the North American Limousin Foundation

TRUCKING A trucking company will be on hand sale day to assist with any trucking that might be needed at the Smoky Mountain Sale will see to it that cattle will be delivered to several central locations to accommodate anyone that lives throughout the United States and Canada

TERMS AND CONDITIONS Terms of the sale are cash unless satisfactory credit arrangements have been made prior to the sale. A representative will be on hand sale day if your wishes are to insure your purchases. Please note: The sale manager is only an agent for the seller and has no responsibility other than those involved in conducting the sale. All persons who attend the sale do so at their own risk. Neither the sale manager nor the Smoky Mountain sale consignors assume liability, legal or otherwise for, any accidents which may occur.

SIGHT UNSEEN PURCHASE AGREEMENT If you are unable to attend the sale and want to speak with Randall O. Ratliff and/or any of the marketing team, then please don't hesitate to call. They will provide you with a complete satisfaction guarantee for the have purchased. If within two weeks from the date of the sale you are not satisfied with your purchased and how they were described to you then the consignors will gladly take the animal back.

PAYMENTS All cattle must be paid for immediately following the conclusion of the sale. R & R Marketing Company will now be accepting credit cards the day of the sale.



Sale Management

R & R Marketing Company

P.O. Box 60097
Nashville, TN 37206
www.RRMktg.com
Randy@rrmktg.com
615.330.2735

If you need assistance with your purchases or want to discuss the genetics selling, then please feel free to contact R & R Marketing Company. As a paid marketing agent for the Smoky Mountain Sale we take pride in the opportunity to work closely with this program. We can assist you with your phone order and/or handle your bid in the most confidential manner. Email, call or text and we will be more than happy to assist.

SALE CONSULTANTS



MC Marketing Management
 mcmarketingsales@aol.com
Kiley McKinna
 402.350.3447
Wiley Fanta
 320.287.0751

Bill Helton Consulting
 williamh@mindspring.com
 256.962.0256

Preston Kellner 423.863.3667
 Jared Givens 615.512.2960

SALE DAY STAFF / RINGMAN

Shane Ryan 309.371.7490
 Ryan Profit 423.791.1710
 Micah Montgomery 423.823.1228

GUEST CONSIGNORS

Edwards Land & Cattle Co.

Dexter Edwards
 910.385.6192
 Nicholas Edwards
 910.290.1424
 NicholasELC@hotmail.com
 314 Willard Edwards Road
 Beulaville, NC 28518



Ridgeway Family Farm

Steven Ridgeway
 2726 Brush Road
 Lewisburg, WV 24901-9745
 304.667.2702
 seridgeway@yahoo.com



Circle R Ranch

Steve Revell
 146 Coppinger Place
 St. Johns, FL 32259
 904.482.7197
 Srevell57@msn.com



TBH Farms

Billy Vanwinkle
 1762 SR 101
 Pikeville, TN 37367
 423.618.3193
 Tbhfarms@hotmail.com



Sale Hosts:



From left to right:
 Grayson, Rhonda, Heiskell, Morgan (carrying Heiskell IV)
 and Heiskell III



WINVUE ENTERPRISES

Win Vue Farm
 1404 Melinda Ferry Road
 Bulls Gap, TN 37711
 Heiskell Winstead, Jr.
 423.921.2494
 winvue@yahoo.com



Cross Creek Farms
 803 Ford Creek Road
 Gray, TN 37615
 Jimmy
 423.817.1796
 David
 423.963.2744
 Davidbyers772890@gmail.com



From left to right:
 Jimmy Byers, Aleah Byers, Cathy Byers, Aleah Byers,
 Beverly Byers, Abbi Byers, David Byers



ATNF **HIGHER REVENUE** JCLC013H



SEMEN PACKAGE



JCL CINNAMON LNLM 522C

Pay special attention to this attractive powerhouse Purebred Limousin bull. He's got the elite look, function and build to make large strides across the entire industry and within the Limousin ranks. ATNF Higher Revenue JCLC013H is a Purebred Limousin son of TASF Crown Royal and out of a MAGS Yip daughter, JCL Cinnamon LNLM 522C. TASF Crown Royal 960C is the DHVO Deuce 132R son out of an EXLR Nasdaq 380R female, TASF Whiskey Lullaby 357W. TASF Crown Royal 960C generates banner-winning progeny across the board and set the breed on fire in 2018 when he sired 2018 North American International Livestock Exposition Grand Champion Limousin female exhibited by Kinnick Paulsen. JCL Cinnamon LNLM 522C was a powerful show female for Linden Faith Linthicum and is the dam of the 2021 San Angelo Stock Show Champion Limousin Female exhibited by Bryntlee Wilkerson. ATNF Higher Revenue's weaning weight figure ranks in the 25th percentile and milk figure ranks in the 30th percentile. He is homozygous black and double polled. If you're in the business of obtaining "higher revenue" for your ventures in the Limousin breed and beyond, tap into this highly anticipated TASF Crown Royal 960C son, ATNF Higher Revenue JCLC 013H!

Contact any of the owners or sale marketing team to be on the list for your semen package once the semen is collected.

SELLING 20 UNITS at \$1000

Owned By:
ATKINSON FARM, SULPHUR, OK
WIN VUE ENTERPRISES, BULLS GAP, TN
CROSS CREEK FARMS, GRAY, TN



TASF CROWN ROYAL 960C

1 ATNF HIGHER REVENUE JCLC013H
 NPM2323600 | Purebred(87/77.7) Bull | Homo Polled | Homo Black (P-2) | 4/12/2020 | JCLC 013H

DHVO DEUCE 132R
TASF CROWN ROYAL 960C ET
 TASF WHISKEY LULLABY 357W

GPFF BLAQUE RULON
 AMY JO DHAN 20L
 EXLR NASDAQ 380R
 TMCK MISS THICK 37T

MAGS YIP
JCL CINNAMON LNLM 522C
 JCL KATNISS LNLM 207Z

MAGS THE GENERAL
 AUTO CARMINDA 656S
 CALO BRICKYARD 902W
 PBR UNBELIEVABLE 8149U

	CED	BW	WW	YW	MK	CEM	SC	DOC	YG	CW	RE	MB	\$MI
EPD	8	2.8	72	100	23	4	0.74	8	-0.36	26	0.91	-0.01	54.28
%RANK	80	80	25	35	30	85	40	85	>95	30	90	30	35



AUTO HOW IT'S DONE 1219H ET

SEMEN PACKAGE

Owned By:
Pinegar Limousin, Springfield, MO
Circle R Ranch, St. Johns, FL



Contact any of the owners or
sale marketing team to be on the
list for your semen package.

20 UNITS for \$1000

AUTO HOW IT'S DONE 1219H ET

2021 Cattlemen's Congress
Grand Champion Lim-Flex Bull



AUTO HOW IT'S DONE 1219H ET

LFM2276105 | Lim-Flex (50/43) Cow | Het Polled (T) | Homo Black (T) | 3/1/2020 | AUTO 1219H

DAMERON FIRST CLASS
COLBURN PRIMO 5153
SILVEIRAS SARAS DREAM 1339

WLR DIRECT HIT
AUTO LUCKIE TOO 423Y
TYEJ DB SERENITY

EXG RS FIRST RATE S903 R3
DAMERON NORTHERN MISS 311
SILVEIRAS STYLE 9303
EXG SARAS DREAM S609 R3

KRVN NASKAR 013N
MAGS NIGHT AMBUSH
LESF ASPHALT 9N
TYEJ DB SIZZLE

	CED	BW	WW	YW	MK	CEM	SC	DOC	YG	CW	RE	MB	\$MI
EPD	9	4.4	70	97	16	2	0.9	10	-0.07	20	0.34	0.11	55.61
%RANK	85	>95	45	75	90	>95	60	85	85	90	>95	80	85

AUTO How It's Done 1219H ET is a homozygous black and heterozygous polled Colburn Primo 5153 son. Primo is one of the most popular sires in the industry today and he's from one of Silveiras Style's most highly acclaimed daughters, Silveiras Saras Dream. AUTO How It's Done 1219H's dam is AUTO Luckie Too 423Y, the WLR Direct Hit daughter out of TYEJ DB Serenity who was a National Junior Show Champion for Cody Heavin. Most notably she produced the incredible AUTO Real Deal 150B bull and numerous other high caliber offspring and top-dollar show heifer prospects. AUTO How It's Done 1219H is super deep sided, wide in his top with impeccable muscle expression. This guy will get it done time after time- it's your chance to take your program to the next level with AUTO How It's Done 1219H!

AUTO DIOR 245D ET
 Selling half interest with
 the option to double up
 and take all.



3

AUTO DIOR 245D ET

LFF2114534 | Lim-Flex(43/39.3) Cow | Het Polled (T) | Het Black (T) | 3/9/2016 | AUTO 245D

EXAR UPSHOT 0562B
EXAR DENVER 2002B
 EXAR ROYAL LASS 1067

MAGS XYLOID
AUTO ZOFIA 439Z
 MAGS MANUELA

SITZ UPWARD 307R
 EXAR BARBARA T020
 EXAR 263C
 BR ROYAL LASS 19-132

DHVO DEUCE 132R
 BOHI RHONDA 314R
 EXLR LIMITED EDITION 765J
 AUTO CITY NIGHTS 214H

	CED	BW	WW	YW	MK	CEM	SC	DOC	YG	CW	RE	MB	\$MI
EPD	10	2.4	71	115	22	8	1.2	13	-0.02	48	0.58	0.46	68.46
%RANK	70	85	45	35	35	20	25	45	95	10	80	10	15

Consignor: **CROSS CREEK FARM, GRAY, TN**

A.I. on 7.10.2020 to CELL Envision 7023E (NPM2127167)
P.E. from 7.15.20 to 10.01.20 to AUTO Blaquer 100F (NPM2151820)

AUTO Dior 245D ET is all the rage, folks! She is sired by EXAR Denver 2002B and from the great AUTO Zofia 439Z female. EXAR Denver 2002B is the legendary son of EXAR Upshot 0562B who is continuing to sire phenomenal progeny countrywide. AUTO Zofia 439Z is the ever-popular crowd favorite MAGS Xyloid and MAGS Manuela daughter that Cody Heavin of Springfield, MO campaigned and garnered the American Royal Grand Champion Limousin Female honors. She ranks in the 10th percentile for her marbling figure. This female is astonishingly feminine through her front one third, deep in her rib, long in her spine and powerful in her stance. She is 43% Lim-Flex and brings versatility and longevity into the equation, which makes her a no-brainer donor female to buy into! Selling half interest with option to double up.



ELCX ELEVATE 684E ET
-Open and ready to flush



ELCX HIGH TIME 065H ET

4 ELCX ELEVATE 684E ET

LFF2120485 | Lim-Flex(62/55.1) Cow | Homo Polled (T) | Homo Black (T) | 1/4/2017 | ELCX 684E

D A TRAVELER 004 703
EF XCESSIVE FORCE
CFLX MOLLYS IMAGE

JCL LODESTAR 27L
DFLC HBHPC 1S
DFLC HBPC 25L

S A V 8180 TRAVELER 004
ROSEWOOD ERICA 5010
DHVO DEUCE 132R
JCL PEPPERMINT

HUNTS HI-LITER 245G
LOGAN'S CHEERLEADER 280G
DFLC DOUBLE SHOT BPB 41E
DALTONS EDITH ERICA 250

	CED	BW	WW	YW	MK	CEM	SC	DOC	YG	CW	RE	MB	\$MI
EPD	13	-1	62	96	11	8	1.25	12	-0.04	26	0.33	0.25	58.2
%RANK	20	15	65	60	>95	20	20	45	95	60	>95	35	55

Consignor: CROSS CREEK FARM, GRAY, TN

Looking to "elevate" your operation to the next level and come out on top? Now is your time! ELCX Elevate 684E is your ticket to the backdrop and far beyond. She is sired by the legendary EF Xcessive Force and the prolific DFCL HBHPC 1S donor female. For those that need a quick refresher on the storied history of EF Xcessive Force- he was the Champion Lim-Flex Bull at the 2012 National Western Stock Show. He goes back to SAV 8180 Traveler 004 and is out of a great DHVO Deuce 132R show female, CFLX Mollys Image. ELCX Elevate 684E is double homozygous and 62% Lim-Flex. She ranks in the 15th percentile for her birthweight figure of -1.0. Stomp down your competition and elevate the worth of your future calf crops with this remarkable donor female! **Selling half embryo interest.**

5 ELCX HIGH TIME 065H ET

LFM2332406 | Lim-Flex(71/63.8) Bull | Homo Polled (P-1) | Homo Black (P-1) | 11/10/2020 | ELCX 065H

MAGS XYLOID
ELCX KINGS LANDING 599 D ET
WLR PRADA

EF XCESSIVE FORCE
ELCX ELEVATE 684E ET
DFLC HBHPC 1S

DHVO DEUCE 132R
BOHI RHONDA 314R
MAGSWL USUAL SUSPECT 538U
AUTO REBECA 292S

D A TRAVELER 004 703
CFLX MOLLYS IMAGE
JCL LODESTAR 27L
DFLC HBPC 25L

	CED	BW	WW	YW	MK	CEM	SC	DOC	YG	CW	RE	MB	\$MI
EPD	11	0.6	62	95	16	6	0.93	12	-0.17	20	0.49	0.11	54.26
%RANK	55	45	80	80	90	55	60	60	60	90	90	80	90

Consignor: CROSS CREEK FARM, GRAY, TN and EDWARDS LAND & CATTLE COMPANY, BEULAVILLE, NC

The proof is in the pedigree right here, folks! A direct son of the remarkable ELCX Elevate 684E donor. ELCX High Time 065H will have you high above the water in just one breeding season. He is a double homozygous son of ELCX Kings Landing 599D ET and from the tremendous donor, ELCX Elevate 684E ET. ELCX Kings Landing 599D is the MAGS Xyloid son and out of the influential WLR Prada female. ELCX Kings Landing 599D was the 2016 North American International Livestock Exposition Reserve Grand Champion Bull. ELCX Elevate 684E ET comes from EF Xcessive Force and the highly productive DFCL HBHPC 1S donor female. ELCX High Time 065H is 71% Lim-Flex and ready to work wonders in your herd. **Selling full possession and retaining 1/3 semen interest**

BW 82 Adj. WW 818

EMBRYO FLUSH OPPORTUNITIES

Open and ready to flush



AUTO GUESS WORK 215G ET



AUTO GLORIA 229G ET

6 AUTO GUESS WORK 215G ET

LFF2167259 | Lim-Flex(43/39.3) Cow | Homo Polled (T) | Homo Black (T) | 1/30/2019 | AUTO 215G

S A V BRILLIANCE 8077
PVF INSIGHT 0129
 PVF MISSIE 790

MAGS XYLOID
AUTO ZOFIA 439Z
 MAGS MANUELA

S A V BISMARCK 5682
 S A V BLACKCAP MAY 5270
 P V F NEW HORIZON 001
 P V F MISS RAPTOR 024

DHVO DEUCE 132R
 BOHI RHONDA 314R
 EXLR LIMITED EDITION 765J
 AUTO CITY NIGHTS 214H

	CED	BW	WW	YW	MK	CEM	SC	DOC	YG	CW	RE	MB	\$MI
EPD	8	2.1	68	110	21	4	1.2	14	-0.19	50	1	0.15	57.86
%RANK	90	80	55	45	45	90	25	35	50	10	20	70	70

Consignor: CROSS CREEK FARM, GRAY, TN

Here is a PVF Insight 0129 daughter that is sure to take the "guesswork" out of your decision making! AUTO Guess Work 215G ET is a double homozygous female from the renowned AUTO Zofia 439Z donor who is a daughter of MAGS Xyloid and the surefire MAGS Manuela female. PVF Insight is the Angus sire known for his numerics, sheer body mass and overall power. He is the SAV Brilliance 8077 out of PVF New Horizon 001 daughter, PVF Missie 790. AUTO Guess Work 215G ET is 43% Lim-Flex. **Open and ready to flush.**

7 AUTO GLORIA 229G ET

NPF2167854 | Purebred(87/77.4) Cow | Het Polled (T) | Homo Black (T) | 3/8/2019 | AUTO 229G

TMCK DURHAM WHEAT 6030X
RIVERSTONE CROWN ROYAL
 HSF YOUR FANTASY

LESF ASPHALT 9N
AUTO REBECA 292S
 EXLR REBECA 1019P

DHVO DEUCE 132R
 MAGS STRAWBERRY PIE
 MAGS WAR ADMIRAL
 HSF TINKERBELL

GPFF BLAQUE RULON
 GPFF EXTRA SWEET ELITE
 BR MIDLAND
 EXLR REBECA 614H

	CED	BW	WW	YW	MK	CEM	SC	DOC	YG	CW	RE	MB	\$MI
EPD	11	1.1	59	90	24	6	0.95	10	-0.31	14	0.7	-0.12	46.14
%RANK	50	50	70	60	25	50	15	75	>95	75	>95	70	85

Consignor: CROSS CREEK FARM, GRAY, TN and CIRCLE R RANCH, ST JOHNS, FL

What a glorious opportunity to flush this jaw-dropping daughter of Riverstone Crown Royal. AUTO Gloria 229G ET is a Purebred Limousin female that'll blow you away in terms of overall balance, muscle shape and structural integrity. She is a daughter of the one and only AUTO Rebeca 292S donor who continues to dominate across the breed and beyond. This female's milk figure is in the 25th percentile of the breed and she is homozygous black and heterozygous polled.

FALL PAIRS



MAGS AVIATOR - Ref Sire

8 WNVU 684D

LFF2134415 | Lim-Flex(50/43) Cow | Homo Polled (P-3) | Homo Black (P-2) | 11/6/2016 | WNVU 684D

PVF INSIGHT 0129
 PVF MISSIE 790

S A V BRILLIANCE 8077
 S A V BISMARCK 5682
 S A V BLACKCAP MAY 5270
 P V F NEW HORIZON 001
 P V F MISS RAPTOR 024

WIN VUE RITA STET 434
 WIN VUE RITA WESTWIND 205

RUNL STETSON 850S
 JCL LODESTAR 27L
 RUNL 72L
 AHCC WESTWIND W544
 TMCK BLAQUE RITA 569U

	CED	BW	WW	YW	MK	CEM	SC	DOC	YG	CW	RE	MB	\$MI
EPD	12	0.3	70	112	16	7	114	16	-0.33	48	1.28	0.04	55.61
%RANK	35	35	30	25	85	35	30	10	20	5	1	85	70

Consignor: WIN VUE ENTERPRISES, BULLS GAP, TN

A.I. on 12.21.2020 to COLE Genesis 86G (NPM2174722)
 P.E. from 12.25.20 to 4.01.21 to AUTO Blaque Blazer 100F (NPM2151820)

A double homozygous daughter of PVF Insight to set your sights on. WNVU 684D is a 50% Lim-Flex female who charts an impressive 1.28 REA figure and a 112 yearling weight figure. This female's dam is Win Vue Rita Stet 434 out of a JCL Lodestar 27L son, RUNL Stetson 850S and from an AHCC Westwind W544 female, Win Vue Rita Westwind 205.

8A WINVUE 084H

LFM2332474 | Lim-Flex(56/49.5) Bull | Double Polled | Homo Black (P-3) | 9/28/2020 | WNVU 084H

MAGS ZODIAC
 MAGS XANTHOUS

MAGS WINSTON
 BT CROSSOVER 758N
 MAGS STRAWBERRY
 DHVO DEUCE 132R
 BOHI RHONDA 314R

WNVU 684D
 WIN VUE RITA STET 434

PVF INSIGHT 0129
 S A V BRILLIANCE 8077
 PVF MISSIE 790
 RUNL STETSON 850S
 WIN VUE RITA WESTWIND 205

	CED	BW	WW	YW	MK	CEM	SC	DOC	YG	CW	RE	MB	\$MI
EPD	12	11	76	126	19	5	0.77	16	-0.19	57	0.98	0.11	58.72
%RANK	40	55	25	15	70	75	80	15	50	3	20	80	65

Consignor: WIN VUE ENTERPRISES, BULLS GAP, TN

An impressive MAGS Zodiac son at the side of WNVU 684D. He is a homozygous black and double polled 56% Lim-Flex bull. MAGS Zodiac is the MAGS Winston son who brings versatility and predictability into a pedigree with stout featured individuals that project doability and efficiency.

9 WNVU 693D

LFF2114236 | Cow | Purebred (100/89.8) Cow | Double Polled | Homo Black | 9/11/2016 | WNVU 692D

MAGS YIP
 AUTO CARMINDA 656S

MAGS THE GENERAL
 EXLR LOVELY 821M
 JCL LODESTAR 27L
 AUTO CARMINDA 872P

ENGD BP MISS 8115U
 PLD BLACK AMBER KRUG 102

LESF ASPHALT 9N
 GPFF BLAQUE RULON
 GPFF EXTRA SWEET ELITE
 RADS BLACK PRODEIGY
 SOGF AMBER KRUG 264B

	CED	BW	WW	YW	MK	CEM	SC	DOC	YG	CW	RE	MB	\$MI
EPD	11	1.4	62	90	23	4	.20	7	-0.44	25	0.90	-0.04	\$50.73
%RANK	40	45	40	40	35	80	80	80	90	20	90	30	40

Consignor: WIN VUE ENTERPRISES, BULLS GAP, TN

P.E. from 12.14.20 to 4.01.21 to AUTO Blaque Blazer 100F (NPM2151820)

Win Vue 693D is a homozygous black and double polled daughter of MAGS Yip. MAGS Yip is the MAGS The General son out of AUTO Carminda 656S. She is a Purebred Limousin female from an LESF Asphalt 9N daughter, ENGD BP Miss 8115U.

9A WINVUE 094H

NXM2332480 | Percentage (81/72.9) Bull | Double Polled | Homo Black (P-2) | 10/10/2020 | WNVU 094H

MAGS ZODIAC
 MAGS XANTHOUS

MAGS WINSTON
 BT CROSSOVER 758N
 MAGS STRAWBERRY
 DHVO DEUCE 132R
 BOHI RHONDA 314R

WIN VUE 693D
 ENGD BP MISS 8115U

MAGS YIP
 MAGS THE GENERAL
 AUTO CARMINDA 656S
 LESF ASPHALT 9N
 PLD BLK AMBER KRUG 102

	CED	BW	WW	YW	MK	CEM	SC	DOC	YG	CW	RE	MB	\$MI
EPD	13	0.6	68	110	23	4	0.3	12	-0.24	46	0.78	0.07	55.41
%RANK	25	40	40	25	30	90	90	55	65	10	65	60	60

Consignor: WIN VUE ENTERPRISES, BULLS GAP, TN

This MAGS Zodiac bull calf will be one to pay attention to for a future herd sire prospect. He is a homozygous black and double polled bull that ranks in the 25th percentile for yearling weight and in the 30th percentile for his milk figure.

10 CELL 6551D

LFF2117932 | Lim-Flex(54/48.8) Cow | Double Polled | Homo Black (P-3) | 9/13/2016 | CELL 6551D

MAGS AVIATOR
 MAGS XTRA REST

MAGS WINSTON
 BT CROSSOVER 758N
 MAGS STRAWBERRY
 DHVO DEUCE 132R
 MAGS UNREST

CELL 4343B
 MAGS ZANDRA

MAGS XUKALANI
 RITO 112 OF 2536 RITO 616
 MAGS UKALANI
 DHVO DEUCE 132R
 MAGS TIMELESS

	CED	BW	WW	YW	MK	CEM	SC	DOC	YG	CW	RE	MB	\$MI
EPD	13	0.7	72	110	17	7	0.56	14	0.01	45	0.48	0.4	66.14
%RANK	20	45	25	30	80	35	90	25	>95	10	85	10	15

Consignor: CROSS CREEK FARM, GRAY, TN & WIN VUE ENTERPRISES, BULLS GAP, TN
 A.I. 12.20.2020 to COLE Genesis 86G (NPM2174722)
 P.E. from 12.25.20 to 4.01.21 to AUTO Blaque Blazer 100F (NPM2151820)

CELL 6551D is a daughter of MAGS Aviator you'll want to check out. She is a homozygous black and double polled female out of a MAGS Xukalani daughter, CELL 4343B that goes back to DHVO Deuce 132R on the bottom side of her pedigree. On paper this female ranks in the 10th percentile for her marbling figure, the 25th for weaning weight and the 30th percentile for yearling weight. She is 54% Lim-Flex.

10A Bull Calf

BD: 10/10/2020 | 58% Lim-Flex Bull | Homozygous Black | Double Polled

Sire: MAGS ZODIAC
 MAGS XANTHOUS

MAGS WINSTON
 BT CROSSOVER 758N
 MAGS STRAWBERRY
 DHVO DEUCE 132R
 BOHI RHONDA 314R

Consignor: CROSS CREEK FARM, GRAY, TN & WIN VUE ENTERPRISES, BULLS GAP,

Here is quite the flashy MAGS Zodiac son at the side of CELL 6551D. He is a 58% Lim-Flex bull who is homozygous black and double polled. We look for big things to come in this guy's future, so get him on a trailer to your facility before someone else!



MAGS Xyloid - Ref Sire



MAGS Y-Axis - Ref Sire

11 ELCX ELSIE 410E

LFF2126647 | Lim-Flex(62/55.8) Cow | Double Polled | Double Black | 5/18/2017 | ELCX 410E

DHVO DEUCE 132R
MAGS XYLOID
BOHI RHONDA 314R

GPFF BLAQUE RULON
AMY JO DHAN 20L
EXLR NEW GENERATION 071M
DAVIS ROSETTA 9514

MAGS ZAMINDAR
PBRS BELL 4100B
OAK HILL MISS WIX 72S

BOHI TOP DOLLAR 7144T
MAGS TAVISH
S A V 8180 TRAVELER 004
OAK HILL MISS WIX 940Z

	CED	BW	WW	YW	MK	CEM	SC	DOC	YG	CW	RE	MB	\$MI
EPD	10	2.1	66	100	17	5	0.97	15	-0.02	34	0.41	0.21	57.68
%RANK	65	80	50	50	80	75	50	15	95	35	95	45	60

Consignor: WIN VUE ENTERPRISES, BULLS GAP, TN

ELCX Elsie 410E is a daughter of MAGS Xyloid and from a MAGS Zamindar female, PBRS Bell 4100B. This 62% Lim-Flex female is far and above many of her contemporaries. We admire this female's depth of rib, muscle shape and her athleticism on the move. She is double black and double polled. This female will make a great addition to any herd with her reproductive ability and added body.

12 ELCX DOTTED 41D

LFF2148534 | Lim-Flex(59/53.4) Cow | Double Polled | Double Black | 10/27/2016 | ELCX 41D

DHVO DEUCE 132R
MAGS XYLOID
BOHI RHONDA 314R

GPFF BLAQUE RULON
AMY JO DHAN 20L
EXLR NEW GENERATION 071M
DAVIS ROSETTA 9514

S A V PIONEER 7301
APLI RUMOR 41Y
CLLL BLACK POWER 613W

SAV FINAL ANSWER 0035
S A V BLACKBIRD 5297
CARROUSELS PURE POWER
TUBB BENCH 999L

	CED	BW	WW	YW	MK	CEM	SC	DOC	YG	CW	RE	MB	\$MI
EPD	9	2.9	66	102	8	4	0.41	13	-0.15	29	0.63	0.13	55.86
%RANK	80	90	50	45	70	4	90	35	70	50	65	65	70

Consignor: WIN VUE ENTERPRISES, BULLS GAP, TN

P.E. from 12.14.20 to 4.01.2021 to AUTO Blaque Blazer 100F (NPM2151820)

ELCX Dotted 41D is a MAGS Xyloid female that will impress many with her attractive build, flawless structure and depth of body. Her dam is an SAV Pioneer 7301 daughter from a Carrouseles Pure Power female. This 59% Lim-Flex cow continues to do a tremendous job with each calf she produces. A female of this worth won't go unnoticed- she's versatile, complete in her build and tremendous on the profile. She is double polled and double black.

13 WNVU 613D

LFF214250 | Lim-Flex(75/671) Cow | Homo Polled (P-3) | Homo Black (P-1) | 10/12/2016 | WNVU 613D

TC ABERDEEN 759
MAGS Y-AXIS
MAGS UAHUKA

C R A BEXTOR 872 5205 608
TC BLACKBIRD 4034
DHVO DEUCE 132R
CARROUSELS PINA COLADA

AUTO DOLLAR GENERAL 122R
TINY WINNIE
TRTF KORTNEY'S LADY 307M

LVLS SECRET WEAPON 4408K
AUTO KYRIA 232K
EXLR LIMITED EDITION 765J
LOGAN'S KORTNEY 307K

	CED	BW	WW	YW	MK	CEM	SC	DOC	YG	CW	RE	MB	\$MI
EPD	15	-0.8	58	88	21	9	1.05	15	-0.36	25	0.92	-0.02	49.62
%RANK	10	15	80	80	45	10	40	15	15	65	20	95	95

Consignor: WIN VUE ENTERPRISES, BULLS GAP, TN

A.I. on 12.20.2020 to COLE Genesis 86G (NPM2174722)

P.E. from 12.25.20 to 4.01.21 to AUTO Blaque Blazer 100F (NPM2151820)

Everyone appreciates MAGS Y-Axis females and this gal is sure rings true as to why his progeny have such flash and function! WNVU 613D is a 75% Lim-Flex female from an AUTO Dollar General 122R daughter, TINY Winnie. This cow is a powerhouse from all angles. She's correct in her structure, long bodied, deep in her center rib and attractive on the profile. She will set any program up for success with her added depth of pedigree and her ability to produce standout individuals year after year. She is double homozygous.

11A WINVUE 034H

Pending | Lim-Flex (62%) Bull | Double Polled | 12/14/2020 | WNVU 034H

MAGS WINSTON
Sire: MAGS ZODIAC
MAGS XANTHOUS

BT CROSSOVER 758N
MAGS STRAWBERRY
DHVO DEUCE 132R
BOHI RHONDA 314R

Consignor: WIN VUE ENTERPRISES, BULLS GAP, TN

BW#66. Be sure to get your eyes on this 62% Lim-Flex hunk! ELCX Elsie 410E has done a tremendous job raising this powerful December bull calf. He is a MAGS Zodiac son who is double polled and double black. The future is truly bright for this young bull and we're excited to see where the road takes him.

12A WINVUE 194H

LFF2332477 | Lim-Flex(60/54.7) Cow | Double Polled | Double Black | 10/14/2020 | WNVU 194H

MAGS WINSTON
MAGS ZODIAC
MAGS XANTHOUS

BT CROSSOVER 758N
MAGS STRAWBERRY
DHVO DEUCE 132R
BOHI RHONDA 314R

MAGS XYLOID
ELCX DOTTED 41D
APLI RUMOR 41Y

DHVO DEUCE 132R
BOHI RHONDA 314R
S A V PIONEER 7301
CLLL BLACK POWER 613W

	CED	BW	WW	YW	MK	CEM	SC	DOC	YG	CW	RE	MB	\$MI
EPD	9	3.5	76	125	20	2	15	-0.1	48	0.65	0.16	0.16	59.86
%RANK	85	>95	25	15	55	>95	25	75	10	70	70	70	60

Consignor: WIN VUE ENTERPRISES, BULLS GAP, TN

Winvue 194H will turn heads with her beautiful silhouette, powerful hip and structural correctness. She is a 60% Lim-Flex daughter of MAGS Zodiac, the MAGS Winston son out of the great MAGS Xanthous female. This October heifer calf is double black and double polled. We forecast many accolades in this girl's future- she's flashy, excellent on the move and reads with tremendous doability.

13A WINVUE 037H

NPF2332471 | Purebred(87/78.7) Cow | Double Polled | Homo Black (P-2) | 9/12/2020 | WNVU 037H

DHVO DEUCE 132R
TMCK DURHAM WHEAT 6030X
MAGS STRAWBERRY PIE

GPFF BLAQUE RULON
AMY JO DHAN 20L
TNUH BLUE PRINT 245H
MAGS PIE IN THE SKY

MAGS Y-AXIS
WNVU 613D
TINY WINNIE

TC ABERDEEN 759
MAGS UAHUKA
AUTO DOLLAR GENERAL 122R
TRTF KORTNEY'S LADY 307M

	CED	BW	WW	YW	MK	CEM	SC	DOC	YG	CW	RE	MB	\$MI
EPD	14	-0.1	58	86	20	9	1.18	16	-0.34	21	0.92	-0.15	44.84
%RANK	25	30	75	70	65	15	10	15	>95	50	90	80	90

Consignor: WIN VUE ENTERPRISES, BULLS GAP, TN

TMCK Durham Wheat 6030X daughters have been some of our favorites year after year and this September female is no exception. Winvue 037H is a Purebred Limousin female worth jotting down. A heifer calf of this notoriety will be a hot commodity on sale day for her stylish composition, structural integrity and muscle expression. She is homozygous black and double polled.

FALL PAIRS

14

WNVU 614D

LFF2114242 | Lim-Flex(75/66.3) Cow | Homo Polled (P-3) | Homo Black (P-2) | 10/20/2016 | WNVU 614D

TC ABERDEEN 759
MAGS Y-AXIS
MAGS UAHUKA

C R A BEXTOR 872 5205 608
TC BLACKBIRD 4034
DHVO DEUCE 132R
CARROUSELS PINA COLADA

AHCC WESTWIND W544
TMCK WINNIE 37Y
TINY WINNIE

KAJO RESPONDER 120R
AHCC MISS WULF HUNT R544
AUTO DOLLAR GENERAL 122R
TRTF KORTNEY'S LADY 307M

	CED	BW	WW	YW	MK	CEM	SC	DOC	YG	CW	RE	MB	\$MI
EPD	13	0	69	108	22	8	0.97	15	-0.33	37	0.99	-0.05	51.88
%RANK	20	25	35	35	40	20	50	15	20	25	15	95	90

Consignor: WIN VUE ENTERPRISES, BULLS GAP, TN

P.E. from 12.14.20 to 4.01.21 to AUTO Blaque Blazer 100F (NPM2151820).

Another MAGS Y-Axis daughter that'll capture the attention of even the most critical eye. WNVU 614D is a double homozygous female out of TMCK Winnie 37Y, an AHCC Westwind W544 daughter. She is a 75% Lim-Flex with a birthweight EPD that ranks in the 25th percentile. We have always appreciated this female's functional build, her tremendous maternal ability and her length of stride. She's gearing up to be in her prime reproductive years, so now is your opportunity to add a fresh pedigree to your herd.

14A WNVU 39H

NXF2332484 | PERCENTAGE(78/67.4) Cow | Double Polled | Homo Black (P-3) | 9/1/2020 | WNVU 39H

MAGS ANCHOR
AHCC EARNING POWER 900E ET
LVLS 9066U

LH WAR HERO 195W
MGS XIPHOPAGOUS
LVLS FARMER JOHN 7428P
LVLS9066R

MAGS Y-AXIS
WNVU 614D
TMCK WINNIE 37Y

TC ABERDEEN 759
MAGS UAHUKA
AHCC WESTWIND W544
TINY WINNIE

	CED	BW	WW	YW	MK	CEM	SC	DOC	YG	CW	RE	MB	\$MI
EPD	13	0.7	74	121	19	7	1.54	16	-0.29	44	0.99	0.12	59.48
%RANK	25	45	20	10	75	35	4	15	55	10	45	50	40

Consignor: WIN VUE ENTERPRISES, BULLS GAP, TN

Folks check out this fancy lady! WNVU 39H is a daughter of AHCC Earning Power 900E ET, the MAGS Anchor son out of an LVLS Farmer John 7428P cow. This September heifer calf is homozygous black and double polled. She is 78% Limousin and packed with some powerful EPD figures. She is in the 10th percentile for yearling weight and the 20th percentile for weaning weight. We're certain this heifer calf will be a crowd favorite when sale day comes around, you better have her high on your list!

14B WNVU 039H

NXF2332483 | PERCENTAGE(78/67.4) Cow | Double Polled | Homo Black (P-3) | 9/1/2020 | WNVU 039H

MAGS ANCHOR
AHCC EARNING POWER 900E ET
LVLS 9066U

LH WAR HERO 195W
MGS XIPHOPAGOUS
LVLS FARMER JOHN 7428P
LVLS9066R

MAGS Y-AXIS
WNVU 614D
TMCK WINNIE 37Y

TC ABERDEEN 759
MAGS UAHUKA
AHCC WESTWIND W544
TINY WINNIE

	CED	BW	WW	YW	MK	CEM	SC	DOC	YG	CW	RE	MB	\$MI
EPD	13	0.7	74	121	19	7	1.54	16	-0.29	44	0.99	0.12	59.48
%RANK	25	45	20	10	75	35	4	15	55	10	45	50	40

Consignor: WIN VUE ENTERPRISES, BULLS GAP, TN

WNVU 039H is a carbon copy of her full sister and powerful dam. She is an AHCC Earning Power 900E ET daughter with one heck of a future in store. She is homozygous black and double polled. This heifer calf reads with a tremendous amount of flexibility, cow power and functional design.

15

ELCX CADILLAC 074C

LFF2126568 | Lim-Flex(62/57.8) Cow | Polled | Double Black | 3/2/2015 | ELCX 074C

LH RODEMASTER 338R
WLR RELOAD
MAGS PHANTOMS PRIZE

JCL LODESTAR 27L
VERMILION E BLACKBIRD9546
GPFF BLAQUE RULON
ALCM KOOL TUNES

EXAR TITELIST T011
EXLR MISS DARCIE 8074Y
AHFF MISS DARCIE 602S

BR MIDLAND
EXG BLACKCAP R054 R3
TRFC 01M
JHFF 110N

	CED	BW	WW	YW	MK	CEM	SC	DOC	YG	CW	RE	MB	\$MI
EPD	10	2.4	68	100	21	5	0.68	9	-0.32	23	0.79	0.02	53.75
%RANK	65	85	40	50	45	75	80	80	25	70	35	90	80

Consignor: WIN VUE ENTERPRISES, BULLS GAP, TN

P.E. from 12.14.20 to 4.01.21 to AUTO Blaque Blazer 100F (NPM2151820)

This female's pedigree mixes it up a bit in terms of proven and elite genetics that have more than withstood the test of time. ELCX Cadillac 074C is a double black daughter of WLR Reload. WLR Reload is the LH Rodemaster 338R son from the great MAGS Phantoms Prize donor female. This female's dam is EXLR Miss Darcie 8074Y, an EXAR Titleist T011 daughter out of an impressive cow that goes back to EXLR Dakota 353G. ELCX Cadillac 074C is a 62% Lim-Flex female.

16

ELCX ELSEE 520E

LFF2141007 | Lim-Flex(31/28.2) Cow | Homo Polled (P-2) | Homo Black (P-2) | 10/9/2017 | ELCX 520E

MAGS WIGGLER
WLR GAME OF THRONES
WLR URSULA 499U

WULFS TITUS 2149T
MAGS SNICKERS
DR J ANALYST M250
MAGS PHANTOMS PRIZE

RITO 616 OF 4B20 6807
HCC 616 GEORGINA 5204
HCC 185 GEORGINA 3263

D H D TRAVELER 6807
RITA 4B20 OF OFB1
TC FOREFRONT 185
HCC BR GEORGINA 1107

	CED	BW	WW	YW	MK	CEM	SC	DOC	YG	CW	RE	MB	\$MI
EPD	10	0.1	68	105	20	5	1	11	-0.08	22	0.43	0.39	65.4
%RANK	65	30	40	40	55	75	40	60	85	75	90	15	15

Consignor: WIN VUE ENTERPRISES, BULLS GAP, TN

A.I. 12.20.2020 to CJSL Data Bank 6124D (NXM2106141)
P.E. from 12.25.20 to 4.01.21 to AUTO Blaque Blazer 100F (NPM2151820)

ELCX Elsee 520E is a double homozygous daughter of WLR Game of Thrones, the MAGS Wiggler son out of a highly productive female, WLR Ursula 499U. This female's dam is HCC 616 Georgina 5204, a daughter of RITO 616 of 4B20 6807, one of the highest ranked bulls in the Angus breed for docility. On paper this female ranks in the 15th percentile for marbling and in the 30th percentile for birthweight. She is double homozygous and 31% Lim-Flex. The options are endless with a female of this caliber!

17

ELCX DESTINY 235D

LFF2123587 | Lim-Flex(56/50.5) | Double Polled | Homozygous Black | 10/7/2016 | ELCX 235D

MAGS WIGGLER
WLR GAME OF THRONES
WLR URSULA 499U

WULFS TITUS 2149T
MAGS SNICKERS
DR J ANALYST M250
MAGS PHANTOMS PRIZE

MAGS WAZOWSKI
AUTO BARBIE 235Z
EXLR BARB 170R

DHVO DEUCE 132R
BOHI RED ROBIN 282R
BON VIEW DESIGN 1407
EXLR BARB 102M

	CED	BW	WW	YW	MK	CEM	SC	DOC	YG	CW	RE	MB	\$MI
EPD	9	2.1	73	109	28	5	1	7	-0.24	26	0.80	0.27	63.94
%RANK	80	80	20	30	10	75	40	95	45	60	35	30	20

Consignor: WIN VUE ENTERPRISES, BULLS GAP, TN

P.E. from 12.14.20 to 4.01.21 to AUTO Blaque Blazer 100F (NPM2151820)

Another WLR Game of Thrones daughter to have on your short list! ELCX Destiny 235D is a 56% Lim-Flex female with loads of body, femininity and longevity. Numerically, this female ranks in the 10th percentile for milk, the 20th percentile for weaning weight and the 30th percentile for yearling weight and marbling. It's all here, folks! She is homozygous black and double polled.

15A

Heifer Calf

Pending | Lim-Flex (62) Cow | Double Black | Doiube Polled | 11/10/2020

MAGS WINSTON
Sire: MAGS ZODIAC
MAGS XANTHOUS

BT CROSSOVER 758N
MAGS STRAWBERRY
DHVO DEUCE 132R
BOHI RHONDA 314R

Consignor: WIN VUE ENTERPRISES, BULLS GAP, TN

This November heifer calf at side of ELCX Cadillac 074C is a MAGS Zodiac daughter with a world of future. She is a double black, double polled heifer that will adapt to absolutely any circumstance she's introduced to. She is 62% Lim-Flex.

16A

WINVUE 019H

LFF2332469 | Lim-Flex(46/42.1) Cow | Homo Polled (P-3) | Homo Black (P-3) | 9/7/2020 | WNVU 019H

MAGS WINSTON
MAGS ZODIAC
MAGS XANTHOUS

BT CROSSOVER 758N
MAGS STRAWBERRY
DHVO DEUCE 132R
BOHI RHONDA 314R

WLR GAME OF THRONES
ELCX ELSEE 520E
HCC 616 GEORGINA 5204

MAGS WIGGLER
WLR URSULA 499U
RITO 616 OF 4B20 6807
HCC 185 GEORGINA 3263

	CED	BW	WW	YW	MK	CEM	SC	DOC	YG	CW	RE	MB	\$MI
EPD	12	0.3	75	122	21	4	0.7	14	-0.06	45	0.56	0.29	63.81
%RANK	40	35	25	20	45	90	80	35	85	15	80	35	35

Consignor: WIN VUE ENTERPRISES, BULLS GAP, TN

Truly a well-made, neatly patterned heifer calf at side of ELCX Elsee 520E. Winvue 019H is a double homozygous daughter of MAGS Zodiac. Be sure to study her numerics- she ranks in the 20th percentile for yearling weight, the 25th percentile for weaning weight and the 35th percentile for marbling. She is 46% Lim-Flex.

17A

WINVUE 022H

LFM2332478 | Lim-Flex(59/53.3) Bull | Double Polled | Homo Black (P-3) | 10/27/2020 | WNVU 022H

MAGS WINSTON
MAGS ZODIAC
MAGS XANTHOUS

BT CROSSOVER 758N
MAGS STRAWBERRY
DHVO DEUCE 132R
BOHI RHONDA 314R

WLR GAME OF THRONES
ELCX DESTINY 235D
AUTO BARBIE 235Z

MAGS WIGGLER
WLR URSULA 499U
MAGS WAZOWSKI
EXLR BARB 170R

	CED	BW	WW	YW	MK	CEM	SC	DOC	YG	CW	RE	MB	\$MI
EPD	9	2.6	79	126	25	4	0.7	12	-0.14	46	0.73	0.23	63.53
%RANK	85	90	15	15	15	90	80	60	65	15	55	50	35

Consignor: WIN VUE ENTERPRISES, BULLS GAP, TN

This MAGS Zodiac son is worth taking note of. Winvue 022H is a homozygous black and double polled bull calf sired by MAGS Zodiac. He is a 59% Lim-Flex bull that ranks in the 15th percentile for weaning weight, yearling weight and milk. It doesn't get much better than this!

18

ELCX CHARMING 836C

LFF2169727 | Lim-Flex(50/45.3) Cow | Homo Polled (P-2) | Double Black | 4/15/2015 | ELCX 836C

MAGS WINSTON
ELCX POSTMASTER 208Y
SSTO SADIE 6854S

BT CROSSOVER 758N
MAGS STRAWBERRY
JCL LODESTAR 27L
THOMAS LUCY ROSE 9509

LH RODEMASTER 338R
MAGS UPPER SAUNTER
MAGS SAUNTER

JCL LODESTAR 27L
VERMILION E BLACKBIRD9546
BR MIDLAND
MAGS LADY ACE

	CED	BW	WW	YW	MK	CEM	SC	DOC	YG	CW	RE	MB	\$MI
EPD	13	0.4	68	107	22	7	0.93	14	-0.15	27	0.51	0.32	63.49
%RANK	20	35	40	35	40	35	50	25	70	55	85	25	25

Consignor: WIN VUE ENTERPRISES, BULLS GAP, TN

P.E. from 12.14.20 to 4.01.21 to AUTO Blaue Blazer 100F (NPM2151820).

Talk about a "charmer" of a female! ELCX Charming 836C is all that and so much more. She is sired by ELCX Postmaster 208Y, a MAGS Winston son out of a JCL Lodestar 27L daughter, SSTO Sadie 6854S. This female's dam is MAGS Upper Saunter, an LH Rodemaster 338R daughter. ELCX Charming 836C is homozygous polled and double black. This female has a unique pedigree that still holds true to its roots- extreme maternal power, longevity and structural integrity that is present in each generation. She is 50% Lim-Flex.

18A

WINVUE 092H

LFF232481 | Lim-Flex(56/50.7) Cow | Homo Polled (P-3) | Double Black | 10/8/2020 | WNVU 092H

MAGS WINSTON
MAGS ZODIAC
MAGS XANTHOUS

BT CROSSOVER 758N
MAGS STRAWBERRY
DHVO DEUCE 132R
BOHI RHONDA 314R

ELCX POSTMASTER 208Y
ELCX CHARMING 836C
MAGS UPPER SAUNTER

MAGS WINSTON
SSTO SADIE 6854S
LH RODEMASTER 338R
MAGS SAUNTER

	CED	BW	WW	YW	MK	CEM	SC	DOC	YG	CW	RE	MB	\$MI
EPD	12	11	74	123	23	5	0.66	15	-0.1	47	0.59	0.25	62.59
%RANK	40	55	30	20	30	75	85	25	75	15	75	45	40

Consignor: WIN VUE ENTERPRISES, BULLS GAP, TN

Here is a 56% Lim-Flex female that is already following closely in her mother's footsteps.

Winvue 092H is sired by MAGS Zodiac and reads with as much future and depth of pedigree as any heifer calf we've raised this year. Numerically speaking she ranks in the 20th percentile for yearling weight and in the 30th percentile for weaning weight and milk. She is homozygous polled and double black.

21

WLR EBONY

LFF2154302 | Lim-Flex(75/67.8) Cow | Polled | Black | 12/9/2017 | BJLR 72E

MAGS SASQUATCH
MAGSWL USUAL SUSPECT 538U
MAGS PHANTOMS PRIZE

EXLR NEW GENERATION 071M
MAGS FRUITFUL 487M
GPFF BLAQUE RULON
ALCM KOOL TUNES

EHF NET WORTH J400
TMCK PRUDENCE 72X
TMCK PRUDENCE 117U

S A V NET WORTH 4200
THREE TREES EVERELDA 1544
FWLY BIG TIME
LFRO PRUDENCE 489P

	CED	BW	WW	YW	MK	CEM	SC	DOC	YG	CW	RE	MB	\$MI
EPD	9	2.1	58	85	23	6	7	-0.36	20	0.86	0.1	54.14	
%RANK	80	80	80	85	30	55	95	15	80	25	75	80	

Consignor: CROSS CREEK FARM, GRAY, TN & WIN VUE ENTERPRISES, BULLS GAP, TN

If you missed your opportunity with WLR Ebay to obtain a MAGSWL Usual Suspect 538U daughter, now's your chance with this gorgeous female. WLR Ebony is a 75% Lim-Flex female from TMCK Prudence 72X, a daughter of EHF Net Worth J400, a direct son of SAV Net Worth 4200.

21A

Heifer Calf

PENDING | Purebred (87.5) Cow | Double Polled | Double Black | 3/19/2021

AHCC BARN BURNER B907
CELL ENVISION
PBRZ ZSA ZSA 246Z

AHCC WESTWIND W544
LVLS 9066U
TW FIRE N' ICE
PBRZ ULL 854U

Consignor: CROSS CREEK FARM, GRAY, TN & WIN VUE ENTERPRISES, BULLS GAP, TN

A March heifer calf with this much flash and functionality already is sure to be a surefire stand-out! This daughter of CELL Envision is going to capture the hearts of many on sale day. CELL Envision is the AHCC Barn Burner B907 son from PBRZ Zsa Zsa 246Z, a TW Fire N' Ice daughter. This heifer calf is a Purebred Limousin female and she's double polled and double black.

19

WIN VUE IN FOCUS PRIDE 566

AA18504966 | Angus Cow | Homo Polled (P-1) | Homo Black (P-1) | 16/15/2015 | 566

S A V 8180 TRAVELER 004
S A V NET WORTH 4200
S A V MAY 2410

SITZ TRAVELER 8180
BOYD FOREVER LADY 8003
SAF 598 BANDO 5175
S A V MAY 6269

MYTTY IN FOCUS
WIN VUE FOCUS PRIDE
LONGACRES PURE PRIDE 201

S A F FOCUS OF E R
MYTTY COUNTRESS 906
HUNTS CALCULATOR 2720
LONGACRES PURE PRIDE 009

	CED	BW	WW	YW	MK	CEM	SC	DOC	YG	CW	RE	MB	\$MI
EPD	12	-0.1	67	111	20	8	11	0.26	42	0.07	0.55	68.38	
%RANK	30	25	30	15	60	20	55	>95	10	>95	1	3	

Consignor: WIN VUE ENTERPRISES, BULLS GAP, TN

P.E. from 12.14.20 to 4.01.21 to AUTO Blaue Blazer 100F (NPM2151820)

Win Vue In Focus Pride 566 is a Purebred Angus female to keep high on your radar. She is sired by SAV Net Worth 4200 and out of a MYTTY In Focus daughter, Win Vue Focus Pride. This female will be a fresh pedigree for numerous operations with several highly notable individuals throughout. Opportunity will strike with this beauty and you better be ready!

19A

Bull Calf

Pending | Lim-Flex 31% Bull | Homo Polled | Homo Black | 10/26/2020

MAGS WINSTON
Sire: MAGS ZODIAC
MAGS XANTHOUS

BT CROSSOVER 758N
MAGS STRAWBERRY
DHVO DEUCE 132R
BOHI RHONDA 314R

Consignor: WIN VUE ENTERPRISES, BULLS GAP, TN

Here is a 31% Lim-Flex bull calf sired by MAGS Zodiac with opportunity written from top to bottom. He is double homozygous and if he's anything like his impressive dam, you won't want to miss this bull calf. He's sure to capture the attention of many, so be alert!

20

WLR EBAY

LFF2154301 | Lim-Flex(75/68) Cow | Homo Polled (P-3) | Black | 1/31/2017 | BJLR 646E

MAGS SASQUATCH
MAGSWL USUAL SUSPECT 538U
MAGS PHANTOMS PRIZE

EXLR NEW GENERATION 071M
MAGS FRUITFUL 487M
GPFF BLAQUE RULON
ALCM KOOL TUNES

S A V BISMARCK 5682
WLR TWITTER
MAGS RATTLE

G A R GRID MAKER
S A V ABIGALE 0451
JCL LODESTAR 27L
GPFF BLAQUE CRYSTAL

	CED	BW	WW	YW	MK	CEM	SC	DOC	YG	CW	RE	MB	\$MI
EPD	10	2	64	94	20	7	0.72	8	-0.34	21	0.84	0.05	53.87
%RANK	65	75	55	65	55	35	70	90	20	75	30	85	80

Consignor: CROSS CREEK FARM, GRAY, TN & WIN VUE ENTERPRISES, BULLS GAP, TN

Look in- if you've been searching for a MAGSWL Usual Suspect 538U daughter, here she is! WLR Ebay is a 75% Lim-Flex female with as much function, body and style as anyone could ask for in a female. MAGSWL Usual Suspect 538U is the MAGS Sasquatch son from the undeniable MAGS Phantoms Prize donor. WLR Ebay's dam is WLR Twitter, a daughter of SAV Bismarck 5682 and out of a JCL Lodestar female, MAGS Rattle. This female is homozygous polled.

20A

Heifer Calf

Pending | Lim-Flex (78) Cow | Homozygous Polled | Double Black | 3/19/2021

MAGS ANCHOR
Sire: AHCC EARNING POWER 900E
LVLS 9066U

LH WAR HERO 195W
MGS XIPHOPAGOUS
LVLS FARMER JOHN 7428P
LVLS9066R

Consignor: CROSS CREEK FARM, GRAY, TN & WIN VUE ENTERPRISES, BULLS GAP, TN

A pedigree of this stature doesn't hit the open market quite often! This heifer calf is sired by AHCC Earning Power 900E and boy is she impressive from the ground up. She is homozygous polled and double black. A 78% Lim-Flex female with versatile written all over.

22

ELCX EBATE 735E ET

LFF2135070 | Lim-Flex(75/67.7) Cow | Homo Polled (P-1) | Double Black | 4/8/2017 | ELCX 735E

WULFS XCLUSIVE 2458X
SYES BEST BUY 316B
MISS SYES LINEBACKER 317S

WZRK PRIMESTAR 861P
WULFS MISSIVE 2258M
OKLF LINEBACKER 341L
MISS SYES R JUST 318P

BC 7022 RAVEN 7965
WLR COCOA PUFF
MAGS TABU

B C MARATHON 7022
O C C BLACKBIRD 796F
JCL LODESTAR 27L
MAGS PHANTOMS PRIZE

	CED	BW	WW	YW	MK	CEM	SC	DOC	YG	CW	RE	MB	\$MI
EPD	11	2.5	73	111	10	5	0.12	13	-0.41	29	1	0.13	60.23
%RANK	55	90	35	40	>95	75	>95	45	10	65	20	75	55

Consignor: WIN VUE ENTERPRISES, BULLS GAP, TN

ELCX Ebate 735E ET is a 75% Lim-Flex female to zero in on. She is sired by SYES Best Buy 316B, a son of Wulfs Xclusive 2458X. Her dam is WLR Cocoa Puff, a daughter of BC Marathon 7022 and from the great MAGS Tabu female. MAGS Tabu is a daughter of JCL Lodestar and MAGS Phantoms Prize. She is homozygous polled and double black.

22A

Heifer Calf

Pending | Lim-Flex (68) Cow | Homozygous Polled | Double Black | 4/1/2021

MAGS WINSTON
Sire: MAGS ZODIAC
MAGS XANTHOUS

BT CROSSOVER 758N
MAGS STRAWBERRY
DHVO DEUCE 132R
BOHI RHONDA 314R

Consignor: WIN VUE ENTERPRISES, BULLS GAP, TN

An impressive April heifer calf sired by MAGS Zodiac. She is 68.5% Lim-Flex and homozygous polled and double black.

FALL & SPRING PAIRS

BRED COWS

Due by Sale Day

HERD SIRES

23 ETGC CHEVELLE

LFF2095272 | Lim-Flex(75/661) Cow | Scurred | Double Black | 10/29/2015 | ETGC 285C

EF XCESSIVE FORCE
D A TRAVELER 004 703
CFLX MOLLYS IMAGE

S A V 8180 TRAVELER 004
ROSEWOOD ERICA 5010
DHVO DEUCE 132R
JCL PEPPERMINT

EBFL ANNIE 240U
CARROUSELS PURE POWER
DLRF 77N

GPFF BLAQUE LULON
TUBB FIRST CLASS 666F
JCL BLACK MONSTER
CORL MISS IRONSIDES 21G

	CED	BW	WW	YW	MK	CEM	SC	DOC	YG	CW	RE	MB	\$MI
EPD	11	0.3	54	77	10	7	119	7	-0.22	22	0.63	0.09	51.44
%RANK	50	35	90	95	>95	35	30	95	50	75	65	75	90

Consignor: TBH FARMS, PIKEVILLE, TN

Will calve by sale day to HWCB Guns and Roses.

This EF Xcessive Force female exemplifies the level of excellence seen across the board from Xcessive Force progeny. ETGC Chevelle is a 75% Lim-Flex, double black female that set the standard for quality Lim-Flex females. Her dam is EBFL Annie 240U, a Carrouseles Pure Power daughter.

24 ELCX DIAMOND 327 B

LFF2078178 | Lim-Flex(82/55.5) Cow | Homo Polled (T) | Het Black (T) | 12/6/2014 | ELCX 327B

TW FIRE N' ICE
BOHI TITELIST 7050T
MAGS UPPER SAUNTER

AUTO DOLLAR GENERAL 122R
CARROUSELS PINA COLADA
LH RODEMASTER 338R
MAGS SAUNTER

NHCA XCELLENT 327X
O C C EMBLAZON 854E
TUBB JASMINE 944

D H D TRAVELER 6807
DIXIE ERICA OF C H 1019
L 7'N SEVEN
TUBB DEAN 573E

	CED	BW	WW	YW	MK	CEM	SC	DOC	YG	CW	RE	MB	\$MI
EPD	13	1.7	72	105	20	6	0.75	15	-0.26	20	0.68	0.06	56.09
%RANK	20	70	25	40	55	55	70	15	35	80	55	80	70

Consignor: TBH FARMS, PIKEVILLE, TN

Will calve by sale day to HWCB Guns and Roses.

A diamond in the rough! ELCX Diamond 327B has been a crowd favorite for several years. She is a 62% Lim-Flex daughter of TW Fire N' Ice and out of an OCC Emblazon 854E female, NHCA Xcellent 327X. This female ranks in the 25th percentile for her weaning weight figure. She is homozygous polled and heterozygous black.



TMCK CASH FLOW 247C - Sells in his entirety!

25 TMCK CASH FLOW 247C

LFM2078011 | Lim-Flex(43/39.2) Bull | Homo Polled (T) | Homo Black (T) | 3/15/2015 | TMCK 247C

MAGS ALI
CONNEALY CONSENSUS 7229
MAGS YOKO

CONNEALY CONSENSUS
BLUE LILLY OF CONANGA 16
DHVO DEUCE 132R
EXLR LADY 5112N

TMCK NINA 17X
S A V PIONEER 7301
DVFC NINA 239U

SAV FINAL ANSWER 0035
S A V BLACKBIRD 5297
AUTO DOLLAR GENERAL 122R
DVFC NINA 145N

	CED	BW	WW	YW	MK	CEM	SC	DOC	YG	CW	RE	MB	\$MI
EPD	6	3.4	101	168	28	3	1.7	20	0.11	66	0.82	0.37	73.51
%RANK	>95	95	1	1	5	95	5	1	>95	1	35	20	4

Consignor: CIRCLE R RANCH, SAINT JOHNS, FL

TMCK Cash Flow 247C has been at the forefront of nearly every Limousin breeders' mind for the past six years as a performance-oriented sire with a tremendous ability to produce high caliber individuals. This MAGS Ali son hit the scene in 2016 as a crowd favorite and has continued to produce numerous champions throughout the breed. MAGS Ali is the Connealy Consensus 7229 son out of a DHVO Deuce 132R female, MAGS Yoko. TMCK Cash Flow 247C's dam is TMCK Nina 17X, a daughter of SAV Pioneer 7301 and out of an AUTO Dollar General 122R female, DVFC Nina 239U. The depth of pedigree this proven sire exhibits is truly second to none. He ranks in the 1st percentile for weaning weight, yearling weight and in the 5th percentile for milk. TMCK Cash Flow 247C combines growth and a fresh pedigree to nearly all individuals in the breed.

BW 90 Adj. WW 987 Adj. YW 1608



Lot 23



Lot 24

HERD SIRES



MAGS Zodiac - Ref Sire



AUTO PARIS - Dam Lot 27

26 CCWV ZODIAC POWER 982G

LFM2278297 | Lim-Flex(65/58.5) Bull | Homo Polled (P-3) | Homo Black (P-1) | 11/20/2019 | CCWV 982G

MAGS WINSTON		BT CROSSOVER 758N											
MAGS ZODIAC		MAGS STRAWBERRY											
MAGS XANTHOUS		DHVO DEUCE 132R											
		BOHI RHONDA 314R											
MAGS YELLOW PAPER		MAGS WINSTON											
SEEE APHRODITE		MAGS WHITEOUT											
MAGS WELLROUNDED		AUTO BLACK DAKOTA 129J											
		MAGS RAPHAELA											
CED	BW	WW	YW	MK	CEM	SC	DOC	YG	CW	RE	MB	\$MI	
EPD	9	2.2	76	127	18	3	0.57	13	-0.18	54	0.81	0.17	60.86
%RANK	85	85	25	15	75	>95	90	45	55	4	40	65	55

Consignor: CROSS CREEK FARM, GRAY, TN & WIN VUE ENTERPRISES, CCWV Zodiac Power 982G is a double homozygous son of MAGS Zodiac. His dam is SEEE Aphrodite, a MAGS Yellow Paper daughter out of an AUTO Black Dakota 129J female. This 65% Lim-Flex bull ranks in the 15th percentile for yearling weight and in the 25th percentile for weaning weight.

BW 77 WW 615 YW 1103

29 WNVU 066H

LFM2289739 | Lim-Flex(56/50.3) Bull | Homo Polled (P-3) | Double Black | 3/7/2020 | WNVU 066H

MAGS WINSTON		BT CROSSOVER 758N										
MAGS ZODIAC		MAGS STRAWBERRY										
MAGS XANTHOUS		DHVO DEUCE 132R										
		BOHI RHONDA 314R										
WIN VUE MAIN STAY 218		EF MAIN STAY 541M										
WNVU 766E		TMCK HIDDEN COOKIE 2X										
WIN VUE FOCUS PRIDE		MYTTY IN FOCUS										
		LONGACRES PURE PRIDE 201										
CED	BW	WW	YW	MK	CEM	SC	DOC	YG	CW	RE	MB	\$MI
EPD	11	0.7	70	115	23	5	15	-0.07	41	0.53	0.21	59.68
%RANK	55	45	45	35	30	75	25	85	25	85	55	60

Consignor: WIN VUE ENTERPRISES, BULLS GAP, TN This MAGS Zodiac son is sure to stop you in your tracks. WNVU 066H is a homozygous polled, double black bull with loads of upside potential. He is out of a Win Vue Main Stay 218 daughter that goes back to EF Main Stay 541M on the top side and MYTTY In Focus on the bottom side of her pedigree. This 56% Lim-Flex bull ranks in the 30th percentile for his milk EPD, in the 35th percentile for yearling weight and in the 45th percentile for birthweight and weaning weight.

BW 68 WW 690 YW 1190

27 CCWV 049H

LFM2289745 | Lim-Flex(56/50.5) Bull | Homo Polled (P-2) | Homo Black (P-1) | 5/2/2020 | CCWV 049H

MAGS WINSTON		BT CROSSOVER 758N											
MAGS ZODIAC		MAGS STRAWBERRY											
MAGS XANTHOUS		DHVO DEUCE 132R											
		BOHI RHONDA 314R											
EXAR DENVER 2002B		EXAR UPSHOT 0562B											
AUTO PARIS 406B ET		EXAR ROYAL LASS 1067											
EF YADDA YADDA 809Y		DHVO DEUCE 132R											
		MAGS RUFFLES											
CED	BW	WW	YW	MK	CEM	SC	DOC	YG	CW	RE	MB	\$MI	
EPD	14	0.5	75	124	21	7	1	14	-0.09	53	0.72	0.24	62.29
%RANK	15	40	25	15	45	35	45	35	80	5	55	50	45

Consignor: CROSS CREEK FARM, GRAY, TN & WIN VUE ENTERPRISES, BULLS GAP, TN If you're in the market for a double homozygous MAGS Zodiac son, CCWV 049H will be your golden ticket! He is a 56% Lim-Flex bull that ranks in the 15th percentile for yearling weight and in the 25th percentile for weaning weight. Truly pounds to market with this powerful beef bull. His dam, AUTO Paris 406B, is an EXAR Denver 2002B daughter and from the legendary EF Yadda Yadda 809Y donor female.

BW 66 WW 675 YW 945

30 WNVU 063H

LFM2289742 | Lim-Flex(60/54.1) Bull | Homo Polled (P-2) | Double Black | 3/18/2020 | WNVU 063H

MAGS WINSTON		BT CROSSOVER 758N											
MAGS ZODIAC		MAGS STRAWBERRY											
MAGS XANTHOUS		DHVO DEUCE 132R											
		BOHI RHONDA 314R											
LH U HAUL 135U		BASIN FRANCHISE P142											
AUTO DECAF 453D ET		EXLR DUCHESS 7129R											
AUTO REBECA 292S		LESF ASPHALT 9N											
		EXLR REBECA 1019P											
CED	BW	WW	YW	MK	CEM	SC	DOC	YG	CW	RE	MB	\$MI	
EPD	11	2.6	80	132	23	4	0.65	13	-0.12	52	0.69	0.3	66.23
%RANK	55	90	15	10	30	90	85	45	70	5	60	35	25

Consignor: WIN VUE ENTERPRISES, BULLS GAP, TN Another MAGS Zodiac son worth paying close attention to. WNVU 063H is a 60% Lim-Flex bull who is terrific on paper and phenotypically. He ranks in the 10th percentile for his yearling weight EPD, the 15th percentile for weaning weight and his total maternal EPDs. His dam is the great AUTO Decaf 453D ET donor female from the renowned LH U Haul 135U and AUTO Rebeca 292S mating. WNVU 063H is homozygous polled and double black.

BW 81 WW 681 YW 1008

28 WNVU 028H

LFM2289744 | Lim-Flex(31/28) Bull | Homo Polled (P-2) | Homo Black (P-1) | 3/27/2020 | WNVU 028H

MAGS WINSTON		BT CROSSOVER 758N										
MAGS ZODIAC		MAGS STRAWBERRY										
MAGS XANTHOUS		DHVO DEUCE 132R										
		BOHI RHONDA 314R										
WERNER FINAL ANSWER 0268		SAV FINAL ANSWER 0035										
P BAR S 434		LONE OAKS FOREVER LADY 8123										
BUFORD ERISKAY 225Z		BOHI TRAVELER 6134										
		J BAR 7 ERISKAY 7112										
CED	BW	WW	YW	MK	CEM	SC	DOC	YG	CW	RE	MB	\$MI
EPD	14	-0.1	70	126	20	4	14	0.05	53	0.46	0.31	62.55
%RANK	15	25	45	15	55	90	35	>95	5	90	30	40

Consignor: WIN VUE ENTERPRISES, BULLS GAP, TN Truly another outstanding MAGS Zodiac son that adds versatility through performance-mindedness. WNVU 028H is a double homozygous 31% Lim-Flex bull that ranks in the 15th percentile for yearling weight, in the 25th percentile for birthweight and in the 30th percentile for marbling. What a tremendously well-rounded beef bull that will set your operation up for success! This bull's dam is a Werner Final Answer 0268 daughter out of a BOHI Traveler 6134 female, Buford Eriskay 225Z.

BW 73 WW 645 YW 1150

31 WNVU 071H

LFM2289735 | Lim-Flex(65/58.9) Bull | Double Polled | Homo Black (P-1) | 3/2/2020 | WNVU 071H

MAGS WINSTON		BT CROSSOVER 758N											
MAGS ZODIAC		MAGS STRAWBERRY											
MAGS XANTHOUS		DHVO DEUCE 132R											
		BOHI RHONDA 314R											
AUTO POWER LINE 135B ET		EXAR DENVER 2002B											
AUTO PRIMROSE 457D ET		EF YADDA YADDA 809Y											
AUTO ZOFIA 439Z		MAGS XYLOID											
		MAGS MANUELA											
CED	BW	WW	YW	MK	CEM	SC	DOC	YG	CW	RE	MB	\$MI	
EPD	9	3.2	73	121	22	4	0.75	15	-0.12	49	0.7	0.19	60.27
%RANK	85	95	35	20	35	90	80	25	70	10	60	60	55

Consignor: WIN VUE ENTERPRISES, BULLS GAP, TN We truly believe in these powerhouse MAGS Zodiac sons and WNVU 071H is truly no exception. He is a homozygous black, double polled bull with a bright future ahead. He comes from an AUTO Power Line 135B ET daughter, AUTO Primrose 457D ET who's dam is the great AUTO Zofia 439Z donor cow. On paper this bull will catch your eye- he ranks in the 20th percentile for his yearling weight figure, the 30th percentile for total maternal and in the 35th percentile for his weaning weight and milk figures. He is 65% Lim-Flex.

BW 81 WW 635 YW 1105

32 CCWV ANCHOR DOWN E24H ET

LFM2333245 | Lim-Flex (63/57.7) Bull | Homozygous Polled | Double Black | CCWV E24H

MAGS ANCHOR													
LH WAR HERO 195W						JCL LODESTAR 27L							
MGS XIPOGAGOUS						VERMILLION ERICA LADY							
						DHVO DEUCE 132R							
						MAGS SELENA							
AUTO BETTY 266Y													
LH UHAUL						BASIN FRANCHISE P142							
WLR UGLY BETTY 432U						EXLR DUCHESS 7129R							
						MAGS SHYLLO							
						JCL HEIDI 2S							
CED	BW	WW	YW	MK	CEM	SC	DOC	YG	CW	RE	MB	\$MI	
EPD	10	2.1	70	108	13	5	0.80	151	-0.19	30	0.68	0.27	62.44
%RANK	70	80	45	45	>95	75	70						45

Consignor: CROSS CREEK FARM, GRAY, TN & WIN VUE ENTERPRISES, BULLS GAP, TN

CCWV E24H is sired by MAGS Anchor, the LH War Hero 195W son from a DHVO Deuce 132R daughter, MGS Xipogagous. His dam is an LH U Haul 135U daughter, AUTO Bette 266Y out of the one and only WLR Ugly Betty 432U donor. This 63.5% Lim-Flex bull is homozygous polled and double black.

BW 81 WW 558 YW 1124

33 WIN VUE E66H ET

NPM 2333218 | PUREBRED (87/78.2) Bull | Double Polled | Double Black | 3/22/2020 | WNVU E66H

TMCK DURHAM WHEAT 6030X													
DHVO DEUCE 132R						GPFF BLAQUE RULON							
MAGS STRAWBERRY PIE						AMY JO DHAN 20L							
						TNUH BLUE PRINT 245H							
						MAGS PIE IN THE SKY							
DFLC HBHPC 1S													
JCL LODESTAR 27L						HUNTS HI-LITER 245G							
DFLC HBPC 25L						LOGAN'S CHEERLEADER 280G							
						DFLC DOUBLE SHOT BPB 4IE							
						DALTONS EDITH ERICA 250							
CED	BW	WW	YW	MK	CEM	SC	DOC	YG	CW	RE	MB	\$MI	
EPD	14	0.9	64	98	19	8	0.90	14	-0.28	23	0.81	-0.01	51.20
%RANK	25	45	50	40	75	25	15	45	>95	40	<95	30	55

Consignor: WIN VUE ENTERPRISES, BULLS GAP, TN

A TMCK Durham Wheat 6030X son to set your sights on early! WNVU E66H is a homozygous black and double polled Purebred bull with as much body, function and structural integrity as any. TMCK Durham Wheat 6030X is the DHVO Deuce 132R son from the great MAGS Strawberry Pie female. WNVU E66H's dam is the highly productive DFLC HBHPC 1S donor and daughter of JCL Lodestar 27L. The proof is in the pedigree and you won't want to pass this guy up!

BW 75 WW 545 YW 1015

34 Win Vue E64H ET

PERCENTAGE (87.5) | BULL | Homozygous black | Double polled | 3.25.2020 | WNCU E64H

TMCK DURHAM WHEAT 6030X													
DHVO DEUCE 132R						GPFF BLAQUE RULON							
MAGS STRAWBERRY PIE						AMY JO DHAN 20L							
						TNUH BLUE PRINT 245H							
						MAGS PIE IN THE SKY							
DFLC HBHPC 1S													
JCL LODESTAR 27L						HUNTS HI-LITER 245G							
DFLC HBPC 25L						LOGAN'S CHEERLEADER 280G							
						DFLC DOUBLE SHOT BPB 4IE							
						DALTONS EDITH ERICA 250							
CED	BW	WW	YW	MK	CEM	SC	DOC	YG	CW	RE	MB	\$MI	
EPD	14	0.9	64	98	19	8	0.90	14	-0.28	23	0.81	-0.01	51.20
%RANK	25	45	50	40	75	25	15	45	>95	40	<95	30	55

Consignor: WIN VUE ENTERPRISES, BULLS GAP, TN

If you're searching for a Purebred bull that checks all of the boxes for structural soundness, sheer body mass and efficiency, look no further than WNVU E64H. This son of TMCK Durham Wheat 6030X is a full sib to WNVU E66H and boy do they read with true longevity and functionality. Their dam is the phenomenal DFLC HBHPC 1S female, a daughter of JCL Lodestar 27L. He is homozygous black and double polled.

BW 66 WW 515 YW 1000

35 WNVU 032H

LFM2289727 | Lim-Flex(59/53.3) Bull | Double Polled | Double Black | 1/20/2020 | WNVU 032H

ELCX CAESAR 331 C													
RLBH AIR FORCE ONE						EF XCESSIVE FORCE							
PBRs ALICE 331A						EF YAFFA 821Y							
						MAGS YIP							
						BUFORD LUCY 9302							
ELCX CARTRIDGE 618 C													
MAGS XYLOID						DHVO DEUCE 132R							
WLR PISTOL ANNIE						BOHI RHONDA 314R							
						S S INCENTIVE 9J17							
						MAGS PHANTOMS PRIZE							
CED	BW	WW	YW	MK	CEM	SC	DOC	YG	CW	RE	MB	\$MI	
EPD	10	1.2	66	103	17	6	0.86	14	-0.06	35	0.43	0.25	59.62
%RANK	70	60	65	60	85	55	70	35	85	40	95	45	60

Consignor: WIN VUE ENTERPRISES, BULLS GAP, TN

Here is a double black, double polled bull sired by ELCX Caesar 331C, the RLBH Air Force One son. His dam is ELCX Cartridge 618C, a MAGS Xyloid daughter that goes back to the great MAGS Phantoms Prize female. He is 59% Lim-Flex.

BW 63 WW 560 YW 1120

36 MOCO

LFM2272317 | Lim-Flex(37/32.2) Bull | Double Polled | Homo Black (P-3) | 3/21/2020 | RFML 558H

V A R POWER PLAY 7018													
BASIN PAYWEIGHT 1682						BASIN PAYWEIGHT 006S							
SANDPOINT BLACKBIRD 8809						21AR O LASS 7017							
						CONNELLY ONWARD							
						RIVERBEND BLACKBIRD 4301							
ULTRA BLACK													
TMCK WESTWIND 35Z						AHCC WESTWIND W544							
CTCA LADY LUCK 404B						CLLL REPRESS 916U							
						CONNELLY CONSENSUS 7229							
						CTCA BLUEBERRY 6310S							
CED	BW	WW	YW	MK	CEM	SC	DOC	YG	CW	RE	MB	\$MI	
EPD	12	0.5	89	143	20	7	1.17	13	0.03	65	0.66	0.51	75.24
%RANK	40	40	2	2	55	35	35	45	>95	1	65	5	2

Consignor: RIDGEWAY FAMILY FARM, LEWISBURG, WV

A performance giant! Moco is a 37% Lim-Flex son of VAR Power Play 7018. VAR Power Play was the top-selling Angus bull in 2018 known as a breed changer for rib shape, depth and tremendous power. His dam is one of the most dominant herd bull-producing cows in the Angus breed, Sandpoint Blackbird 8809. Moco's dam is Ultra Black, a daughter of TMCK Westwind 35Z and from a Connelly Consensus 7229 daughter, CTCA Lady Luck 404B. This homozygous black and double polled bull ranks in the 2nd percentile for weaning weight and yearling weight and in the 5th percentile for marbling.

BW 77

37 CRCK BLAQUE SAGA 382H

NPM2332797 | Purebred(93/811) Bull | Double Polled | Double Black | 4/15/2020 | CRCK 382H

ELCX SAGA 414B													
DHVO DEUCE 132R						GPFF BLAQUE RULON							
DFLC HBHPC 1S						AMY JO DHAN 20L							
						JCL LODESTAR 27L							
						DFLC HBPC 25L							
WIN VUE BLAQUE RITA 382A													
MAGS SASQUATCH						EXLR NEW GENERATION 071M							
TMCK BLAQUE RITA 569U						MAGS FRUITFUL 487M							
						LEWIS RILIAN 384R							
						WIN VUE BLAQUE RITA 570R							
CED	BW	WW	YW	MK	CEM	SC	DOC	YG	CW	RE	MB	\$MI	
EPD	11	1.4	61	92	23	6	0.57	11	-0.34	17	0.75	0.06	53.33
%RANK	50	55	65	55	30	50	65	70	>95	65	>95	15	40

Consignor: CROSS CREEK FARM, GRAY, TN

CRCK Blaque Saga 382H is the Purebred bull we've all been waiting for! He is a double black, double polled son of ELCX Saga 414B and out of Win Vue Blaque Rita 382A. ELCX Saga 414B is sired by DHVO Deuce 132R and out of the proven DFLC HBHPC 1S donor. Win Vue Blaque Rita 382A is a daughter of MAGS Sasquatch. This bull ranks in the 15th percentile for his marbling figure and in the 30th percentile for his milk figure.

BW 73 WW 661 YW 1160

38 CRCK SAGA 1181H

NXM2332798 | PERCENTAGE(91/72.6) Bull | Double Polled | Double Black | 4/4/2020 | CRCK 1181H

ELCX SAGA 414B													
DHVO DEUCE 132R						GPFF BLAQUE RULON							
DFLC HBHPC 1S						AMY JO DHAN 20L							
						JCL LODESTAR 27L							
						DFLC HBPC 25L							
ENGD YAKI 1181Y													
WULFS UPGRADE 0500U						JLWM DIRE STRAYTS 4109P							
MCBN WAKI 951W						WULFS KYAH 0500K							
						MYTTY IN FOCUS							
						MCBN SULTRY NIGHT 604S							
CED	BW	WW	YW	MK	CEM	SC	DOC	YG	CW	RE	MB	\$MI	
EPD	11	1.1	65	98	18	6	1.18	10	-0.3	22	0.8	0.02	52.76
%RANK	50	55	50	50	80	50	20	80	55	70	65	65	75

Consignor: CROSS CREEK FARM, GRAY, TN

Here is another great ELCX Saga 414B son, CRCK Saga 1181H. He is an 81% Limousin bull from a powerful female, ENGD Yaki 1181Y that goes back to MYTTY In Focus on the bottom side of her pedigree. He is double black and double polled.

BW 74 WW 623 YW 1090

39 Angus Bull #729

Pending | ANGUS Bull | 03/02/2020

DVFC GROWTH FUND													
BASIN PAYWEIGHT 1682						BASIN PAYWEIGHT 006S							
AAA18827828						21AR O LASS 7017							
DEER VALLEY RITA 36113						PLATTEMERE WEIGHT UP K360							
						DEER VALLEY RITA 9457							
P BAR S 440													
WERNER FINAL ANSWER 0268						S A V FINAL ASWER 003T							
AAA 17988764						LONE OAKS FOREVER LADY 8123							
BUFORD LUCY 224Z						BUSHS TROOPER 402							
						BROOKFIELD LUCY 7026.							
CED	BW	WW	YW	MK	CEM	SC	DOC	YG	CW	RE	MB	\$M	
SIRE	9	1.2	62	160	27	16	.84	28			73	.61	.50
EPD	30	50	3	1	35	1	60	10			2	40	50
%RANK													
DAM	11	-3	41	91	24	10					20	48	50
EPD	10	15	80	50	60	30					90	45	50
%RANK													

Consignor: WIN VUE ENTERPRISES, BULLS GAP, TN

A Purebred Angus bull sired by Deer Valley Growth Fund, a son of Basin Payweight 1682. His dam is P Bar S 440, a Werner Final Answer 0268 daughter out of the Buford Lucy 224Z female.





Granddam of Lot 40 - MAGS MANUELA



Dam of Lot 41 - MAGS UAHUKA



Sire of Lot 43 - EF XCESSIVE FORCE

40 WIN VUE MS INSIGHT 712E ET
LFF2139881 | Lim-Flex(50/45.2) Cow | Het Polled (T) | Homo Black (T) | 5/6/2017 | CCWV 712E

S A V BRILLIANCE 8077
PVF INSIGHT 0129
PVF MISSIE 790

S A V BISMARCK 5682
S A V BLACKCAP MAY 5270
P V F NEW HORIZON 001
P V F MISS RAPTOR 024

JCL LODESTAR 27L
AUTO MANUELA 298S
MAGS MANUELA

HUNTS HI-LITER 245G
LOGAN'S CHEERLEADER 280G
EXLR LIMITED EDITION 765J
AUTO CITY NIGHTS 214H

	CED	BW	WW	YW	MK	CEM	SC	DOC	YG	CW	RE	MB	\$MI
EPD	10	1.3	74	121	21	6	115	10	-0.24	54	116	0.35	59.9
%RANK	70	60	30	20	45	55	35	85	40	4	10	70	60

Consignor: CROSS CREEK FARM, GRAY, TN & WIN VUE ENTERPRISES, BULLS GAP, TN
PE from 12.14.20 to 4.01.21 to AUTO Blaque Blazer 100F (NPM2151820).

Win Vue Ms Insight 712E ET is quite an impressive 50% Lim-Flex daughter of PVF Insight 0129, the SAV Brilliance 8077 son. This female's dam is AUTO Manuela 298S that comes from the breed matriarch herself, MAGS Manuela and JCL Lodestar 27L. On paper, this female ranks in the 20th percentile for yearling weight and in the 30th percentile for weaning weight. She is homozygous black and heterozygous polled.

41 SEEE ELUSIVE ET
LFF2139573 | Lim-Flex(50/43.8) Cow | Homo Polled (T) | Homo Black (T) | 10/25/2017 | SEEE 921E

DAMERON FIRST CLASS
COLBURN PRIMO 5153
SILVEIRAS SARAS DREAM 1339

EXG RS FIRST RATE S903 R3
DAMERON NORTHERN MISS 311
SILVEIRAS STYLE 9303
EXG SARAS DREAM S609 R3

DHVO DEUCE 132R
MAGS UAHUKA
CARROUSELS PINA COLADA

GPFF BLAQUE RULON
AMY JO DHAN 20L
AUTO BLACK DAKOTA 129J
ELMW GINNIE P58G

	CED	BW	WW	YW	MK	CEM	SC	DOC	YG	CW	RE	MB	\$MI
EPD	11	1.6	70	105	15	4	0.7	12	-0.12	22	0.54	0.05	53.96
%RANK	50	65	30	40	90	4	90	70	45	80	75	80	85

Consignor: CROSS CREEK FARM, GRAY, TN & WIN VUE ENTERPRISES, BULLS GAP, TN
Lot 41a CCWV 921J, a 4.09.21 56% Lim-Flex homo polled, homo black bull sired by MAGS Zodiac, BW 73#

Colburn Primo 5153 daughters continue to be all the rage across the industry! SEEE Elusive ET is an exceptional daughter of Primo herself and out of the high performing MAGS Uahuka donor female. SEEE Elusive ET is a 50% Lim-Flex female who ranks in the 30th percentile for weaning weight and the 40th percentile for yearling weight. She is homozygous black and homozygous polled.

43 TASF CATALINA 921C
LFF2082654 | Lim-Flex(75/67) Cow | Het Polled (T) | Homo Black (T) | 2/15/2015 | TASF 921C

D A TRAVELER 004 703
EF XCESSIVE FORCE
CFLX MOLLYS IMAGE

S A V 8180 TRAVELER 004
ROSEWOOD ERICA 5010
DHVO DEUCE 132R
JCL PEPPERMINT

WULFS REALTOR 1503R
WULFS WISH UPON A STAR
WULFS PLEASURE 4251P

HUNT MR JOCK 44J
WULFS LENA 1503L
JCL LODESTAR 27L
WULF'S ESTHER 5146 E

	CED	BW	WW	YW	MK	CEM	SC	DOC	YG	CW	RE	MB	\$MI
EPD	9	1.7	71	105	7	5	1.3	11	-0.26	32	0.78	0.07	56.05
%RANK	80	70	30	40	>95	75	15	60	35	40	40	80	70

Consignor: CROSS CREEK FARM, GRAY, TN & WIN VUE ENTERPRISES, BULLS
PE from 9.01.20 to 3.01.21 to ELCX Saga 414B (NXM2059028)

Here is another tremendous daughter of EF Xcessive Force, TASF Catalina 921C. She is a 75% Lim-Flex cow from the Wulfs Wish Upon A Star female. On paper this female ranks in the 30th percentile for weaning weight and in the 40th percentile for yearling weight. She is homozygous black and heterozygous polled.

42 WNNU SWEET PEACHES 631D
LFF2114243 | Lim-Flex(75/64.4) Cow | Homo Polled (T) | Het Black (T) | 9/28/2016 | WNNU 631D

D A TRAVELER 004 703
EF XCESSIVE FORCE
CFLX MOLLYS IMAGE

S A V 8180 TRAVELER 004
ROSEWOOD ERICA 5010
DHVO DEUCE 132R
JCL PEPPERMINT

MAGS SASQUATCH
WIN VUE BLAQUE RITA 375A
TMCK BLAQUE RITA 569U

EXLR NEW GENERATION 071M
MAGS FRUITFUL 487M
LEWIS RILIAN 384R
WIN VUE BLAQUE RITA 570R

	CED	BW	WW	YW	MK	CEM	SC	DOC	YG	CW	RE	MB	\$MI
EPD	12	0.3	63	92	14	8	11	10	-0.11	25	0.38	0.18	56.29
%RANK	35	35	60	70	90	20	30	70	80	65	95	55	65

Consignor: WIN VUE ENTERPRISES, BULLS GAP, TN
PE from 12.14.20 to 4.01.21 to AUTO Blaque Blazer 100F (NPM2151820)

WNNU Sweet Peaches 631D is a 75% Lim-Flex daughter of the legendary EF Xcessive Force. Her dam, Win Vue Blaque Rita 375A, is sired by MAGS Sasquatch and from TMCK Blaque Rita 569U. She ranks in the 35th percentile for birthweight and she is homozygous polled and heterozygous black.

44 WIN VUE DREAMER 716E ET
NXF2139699 | Percentage (84/75.2) Cow | Homo Polled (P-3) | Homo Black (P-1) | 4/10/2017 | WNNU 716E

MAGS THE GENERAL
MAGS YIP
AUTO CARMINDA 656S

AUTO DOLLAR GENERAL 122R
EXLR LUVLY 821M
JCL LODESTAR 27L
AUTO CARMINDA 872P

MAGS YELLOW PAPER
SEEE APHRODITE
MAGS WELLROUNDED

MAGS WINSTON
MAGS WHITEOUT
AUTO BLACK DAKOTA 129J
MAGS RAPHAELA

	CED	BW	WW	YW	MK	CEM	SC	DOC	YG	CW	RE	MB	\$MI
EPD	9	2.2	69	112	14	4	0.47	10	-0.33	37	0.81	0.08	56.68
%RANK	70	70	25	15	95	80	75	65	65	15	70	40	35

Consignor: WIN VUE ENTERPRISES, BULLS GAP, TN
PE from 6.16.20 to 9.01.20 to MAGS Zodiac (LFM2006060)

Win Vue Dreamer 716E ET is a daughter of MAGS Yip, the MAGS The General son from the great AUTO Carminda 656S female. Her dam is SEEE Aphrodite, a MAGS Yellow Paper daughter. She ranks in the 15th percentile for yearling weight and in the 25th percentile for weaning weight. She is homozygous black and homozygous polled.



AUTO BLAQUE BLAZER 100F - Ref. Sire



AUTO POEM - Dam Lot 49



ELCX EXTRA SPECIAL 701E ET - Lot 49

45 ELCX DESIREE 298D
LFF2113835 | Lim-Flex(50/44.3) Cow | Double Polled | Double Black | 1/3/9/2016 | ELCX 298D

G A R PREDESTINED
AUTO WILL POWER 160X
AUTO REBECA 292S

B/R NEW DESIGN 036
G A R EXT 4206
LESF ASPHALT 9N
EXLR REBECA 1019P

MAGS XYLOID
ELCX SAVANNAH 298Z
SBLX UNKNOWN 104U

DHVO DEUCE 132R
BOHI RHONDA 314R
MYTTY IN FOCUS
MAGS MANUELA

	CED	BW	WW	YW	MK	CEM	SC	DOC	YG	CW	RE	MB	\$MI
EPD	13	-0.3	62	102	19	8	1.25	13	-0.08	35	0.46	0.35	62.41
%RANK	25	25	80	65	70	20	25	45	80	40	90	25	45

Consignor: CROSS CREEK FARM, GRAY, TN
PE from 701.20 to 10.01.20 to ELCX Excessive 758E ET (LFM2140147)

ELCX Desiree 298D is a 50% Lim-Flex female sired by AUTO Will Power 160X. AUTO Will Power 160X is a son of GAR Predestined and from the unparalleled AUTO Rebeca 292S female. This female's dam is ELCX Savannah 298Z, a MAGS Xyloid daughter out of the great SBLX Unknown 104U donor. Numerically, she ranks in the 25th percentile for both birthweight and marbling. She is double black and double polled.

46 JWBT CALLY 453D
LFF2096025 | Lim-Flex(56/50.4) Cow | Homo Polled (P-2) | Homo Black (P-2) | 1/3/2016 | JWBT 453D

MAGS WIGGLER
WLR GAME OF THRONES
WLR URSULA 499U

WULFS TITUS 2149T
MAGS SNICKERS
DR J ANALYST M250
MAGS PHANTOMS PRIZE

CALO BRICKYARD 902W
ELCX AALIYAH 453 A
MAGS SKYLINE

SCHILLING'S TALLADEGA
EXG E839 1407 M175 LS
EXAR NEW DESIGN 2997
MAGS MAJOR XPOSE 172M

	CED	BW	WW	YW	MK	CEM	SC	DOC	YG	CW	RE	MB	\$MI
EPD	10	1.6	64	94	20	5	0.86	9	-0.24	20	0.65	0.18	57.89
%RANK	65	65	55	65	55	75	60	80	40	80	65	55	55

Consignor: CROSS CREEK FARM, GRAY, TN
P.E. from 7.21.20 to 10.01.20 to AUTO Blaque Blazer 100F (NPM2151820)

A stylish WLR Game Of Thrones daughter that will impress many. JWBT Cally 453D is a 56% Lim-Flex female out of a CALO Brickyard 902W female, ELCX Aaliyah 453A. WLR Game Of Thrones is a MAGS Wiggler son out of a tremendous female, WLR Ursula 499U. JWBT Cally 453D is homozygous black and homozygous polled.

47 CCWV 743E
LFF2135287 | Lim-Flex(59/53.3) Cow | Double Polled | Double Black | 5/3/2017 | CCWV 743E

AUTO CRUZE 132X
AUTO SILVERADO 543B
LVLS 8713W

MAGS THE GENERAL
AUTO REBECA 292S
POSS 112 6509
LVLS 8713M

EF XCESSIVE FORCE
RADB CLARE
CJSL 3003A

D A TRAVELER 004 703
CFLX MOLLYS IMAGE
S A V BISMARCK 5682
CJSL ULTRA HOT 8032U

	CED	BW	WW	YW	MK	CEM	SC	DOC	YG	CW	RE	MB	\$MI
EPD	11	1.3	70	100	19	7	10	-0.16	27	0.51	0.13	57.01	
%RANK	50	60	30	50	65	35	70	65	55	85	65	60	

Consignor: CROSS CREEK FARM, GRAY, TN & WIN VUE ENTERPRISES, BULLS
PE from 6.16.20 to 9.01.20 to MAGS Zodiac (LFM2006060)

Here is a 59% Lim-Flex female sired by AUTO Silverado 534B, a son of AUTO Cruze 132X. This female's dam is RADB Clare, a daughter of EF Xcessive Force and goes back to SAV Bismarck 5682 on the bottom side of her pedigree. She ranks in the 30th percentile for weaning weight. She is double black and double polled.

48 ETGC BLISS 277B
LFF2070476 | Lim-Flex(75/65.8) Cow | Homo Polled (P-1) | Double Black | 1/9/10/2014 | ETGC 277B

O C C EMBLAZON 854E
ENGD TATER SALAD 2524Z
LESF ELITE 218S

D H D TRAVELER 6807
DIXIE ERICA OF C H 1019
GPFF BLAQUE RULON
GPFF EXTRA SWEET ELITE

MNWS FRONTIER 507R
RDIO XOXO 29X
EXLR GLENDA 168M

GPFF BLAQUE RULON
WELZ MACY 203M
AUTO BLACK DAKOTA 129J
EXLR GLENDA 083J

	CED	BW	WW	YW	MK	CEM	SC	DOC	YG	CW	RE	MB	\$MI
EPD	9	1.8	56	82	19	2	0.45	14	-0.35	13	0.75	-0.03	48.58
%RANK	80	75	85	90	65	>95	95	25	20	95	45	95	>95

Consignor: TBH FARMS, PIKEVILLE, TN
P.E. from 12.15.20 to 03.15.21 to ELCX Display 650D

ETGC Bliss 277B is a 75% Lim-Flex daughter of ENGD Tater Salad 2524Z, an OCC Emblazon 854E son. She is homozygous polled and double black.

49 ELCX EXTRA SPECIAL 701E ET
LFF2124562 | Lim-Flex(25/22.8) Cow | Homo Polled (T) | Het Black (T) | 2/3/2017 | ELCX 701E

S A V BRILLIANCE 8077
PVF INSIGHT 0129
PVF MISSIE 790

S A V BISMARCK 5682
AUTO POEM 273Y
MAGS PHANTOMS PRIZE

S A V BISMARCK 5682
G A R GRID MAKER
S A V ABIGALE 0451
GPFF BLAQUE RULON
ALCM KOOL TUNES

	CED	BW	WW	YW	MK	CEM	SC	DOC	YG	CW	RE	MB	\$MI
EPD	11	0.8	80	123	18	7	1.43	10	-0.18	52	1.08	0.04	57.2
%RANK	55	50	15	20	75	35	15	85	55	5	10	90	75

Consignor: EDWARDS LAND & CATTLE COMPANY, BEULAVILLE, NC

This female will be an "extra special" highlight! ELCX Extra Special 701E ET is a daughter of PVF Insight 0129, the powerhouse SAV Brilliance 8077 son. Her dam is AUTO Poem 273Y, the highly renowned daughter of SAV Bismarck 5682 and the great MAGS Phantoms Prize female. This female is 25% Lim-Flex and on paper she's growthy and powerful. She ranks in the 15th percentile for weaning weight and in the 20th percentile for yearling weight. She is homozygous polled and heterozygous black.

49A ELCX JOHNNIE 701J
LFM 2333315 | Lim-Flex (48) Bull | Double Polled | Double Black | 3/30/2021 | ELCX 701J

ELCX CAESAR 331C
HWCB EYE OF THE STORM
FBFL PRINCESS KATE 406C

RLBH AIR FORCE ONE
PBRS ALICE 331A
MAGS XYLOID
DPBN MEDAL 4063U

PVF INSIGHT 0129
ELCX EXTRA SPECIAL 701ET
AUTO POEM 273Y

SAV BRILLIANCE 8077
PVF MISSIE 790
SAV BISMARCK 5682
MAGS PHANTOMS PRIZE

	CED	BW	WW	YW	MK	CEM	SC	DOC	YG	CW	RE	MB	\$MI
EPD	11	0.6	70	105	18	6	1.08	12	-0.15	40	0.82	0.15	58
%RANK	55	45	45	55	75	55	45	60	65	25	40	70	70

Consignor: EDWARDS LAND & CATTLE COMPANY, BEULAVILLE, NC

The impressive bull calf at the side of ELCX Extra Special 701E ET is a 48% Lim-Flex son of HWCB Eye of the Storm 406E, an ELCX Caesar 331C son from a MAGS Xyloid daughter. This March bull calf is double black and double polled.

BW 75



ELCX GET IT 510G - Lot 50

50 ELCX GET IT 510G

LFF2326171 | Lim-Flex(71/63.9) Cow | Double Polled | Double Black | 5/29/2019 | ELCX 510G

MAGS XYLOID
 DHVO DEUCE 132R
 BOHI RHONDA 314R

GPFF BLAQUE RULON
 AMY JO DHAN 20L
 EXLR NEW GENERATION 071M
 DAVIS ROSETTA 9514

ELCX COOL CHICK 510C
 EXLR REVIEW 7153R
 PBRS TAINTED LOVE 257T

AUTO BLACK DAKOTA 129J
 EXLR 199H
 JCL LODESTAR 27L
 SEDGWICKS PRIDE 7984

	CED	BW	WW	YW	MK	CEM	SC	DOC	YG	CW	RE	MB	\$MI
EPD	10	1.5	57	89	22	5		14	-0.17	26	0.48	0.11	52.68
%RANK	70	70	95	90	35	75		35	60	75	90	80	95

Consignor: EDWARDS LAND & CATTLE COMPANY, BEULAVILLE, NC

ELCX Get It 510G is a 71% Lim-Flex MAGS Xyloid daughter to get on your short list! Her dam is ELCX Cool Chick 510C, who comes from the potent mating of EXLR Review 7153R and the great PBRS Tainted Love 257T female. She is double black and double polled.



ELCX GOLDRUSH 549G - Lot 51

51 ELCX GOLDRUSH 549G

LFF2326172 | Lim-Flex(62/56.2) Cow | Double Polled | Homo Black (P-2) | 6/1/2019 | ELCX 549G

MAGS XYLOID
 DHVO DEUCE 132R
 BOHI RHONDA 314R

GPFF BLAQUE RULON
 AMY JO DHAN 20L
 EXLR NEW GENERATION 071M
 DAVIS ROSETTA 9514

PBRS 549W
 JCL LODESTAR 27L
 PBRS 397T

HUNTS HI-LITER 245G
 LOGAN'S CHEERLEADER 280G
 HOMEACRES DESIGNER E97
 HOMEACRES EDWINA D59

	CED	BW	WW	YW	MK	CEM	SC	DOC	YG	CW	RE	MB	\$MI
EPD	11	2	61	99	20	6		14	-0.1	31	0.48	0.2	56.7
%RANK	55	80	85	70	55	55		35	75	55	90	60	80

Consignor: EDWARDS LAND & CATTLE COMPANY, BEULAVILLE, NC

ELCX Goldrush 549G is a 62% Lim-Flex daughter of MAGS Xyloid. Her dam is a JCL Lodestar 27L daughter. Longevity is the name of the game with this female. She has produced several individuals that have been tremendous standouts among their contemporaries. We admire this female's bone, foot size, flexible patterns and her agility in motion. She is homozygous black and double polled.



ELCX DELUXE 34D - Lot 52

52 ELCX DELUXE 34D

NPF2126653 | Purebred(93/83.5) Cow | Polled | Double Black | 2/28/2016 | ELCX 34D

BOHI TOP DOLLAR 7144T
 AUTO DOLLAR GENERAL 122R
 CARROUSELS PINA COLADA

LVLS SECRET WEAPON 4408K
 AUTO KYRIA 232K
 AUTO BLACK DAKOTA 129J
 ELMW GINNIE P58G

ELCX SPLENDA 416 Z
 MAGS XYLOID
 MAGS ROSE MARIE

DHVO DEUCE 132R
 BOHI RHONDA 314R
 TNUH BLUE PRINT 245H
 MAGS MANDA

	CED	BW	WW	YW	MK	CEM	SC	DOC	YG	CW	RE	MB	\$MI
EPD	10	3.3	65	94	21	6		13	-0.33	28	0.88	0.02	52.88
%RANK	50	85	30	30	50	45		25	40	>95	15	95	25

Consignor: EDWARDS LAND & CATTLE COMPANY, BEULAVILLE, NC

If you're in need of a Purebred female in your breeding program, here's the one for you! ELCX Deluxe 34D is a double black daughter of BOHI Top Dollar 7144T, who is a son of AUTO Dollar General 122R and out of the legendary Carrousel's Pina Colada female. This female's dam is ELCX Splenda 416Z, sired by MAGS Xyloid. When you analyze this female's EPD profile you'll appreciate her even more. She ranks in the 15th percentile for marbling and in the 30th percentile for both weaning weight and yearling weight.

50A ELCX JESS 510J

LFF2333316 | Lim-Flex(71/64.2) Cow | Double Polled | Double Black | 3/30/2021 | ELCX 510J

HWCB EYE OF THE STORM
 ELCX CAESAR 331C
 FBFL PRINCESS KATE 406C

RLBH AIR FORCE ONE
 PBRS ALICE 331A
 MAGS XYLOID
 DPBN MEDAL 4063U

ELCX GET IT 510G
 MAGS XYLOID
 ELCX COOL CHICK 510C

DHVO DEUCE 132R
 BOHI RHONDA 314R
 EXLR REVIEW 7153R
 PBRS TAINTED LOVE 257T

	CED	BW	WW	YW	MK	CEM	SC	DOC	YG	CW	RE	MB	\$MI
EPD	11	0.9	59	88	20	6		14	-0.15	27	0.53	0.19	55.90
%RANK	55	50	90	90	55	55		35	65	70	85	80	80

Consignor: EDWARDS LAND & CATTLE COMPANY, BEULAVILLE, NC

Here is a March heifer calf sired by HWCB Eye of the Storm you'll want to get your eyes on! She is a 71% Lim-Flex female that is double polled and double black. If she's anything like her dam in a few years, this female will be a true standout in any crowd! BW #82

51A ELCX JASMINE 549J

LFF2333318 | Purebred (69/61.3) Cow | Double Polled | Double Black | 2/20/2021 | ELCX 549J

ELCX FULLY ROYAL 451F
 RIVESTONE CROWN ROYAL
 HBRL BASHFUL 451B

TMCK DURHAM WHEAT 6030X
 HSF YOUR FANTASY
 EXAR DENVER
 HBRL ZAVVI 253Z

ELCX GOLDRUSH 549G
 MAGS XYLOID
 PBRS 549W

DHVO DEUCE 132R
 BOHI RHONDA 314R
 JCL LODESTAR 27L
 PBRS 397T

	CED	BW	WW	YW	MK	CEM	SC	DOC	YG	CW	RE	MB	\$MI
EPD	12	11	61	97	21	7		13	-0.15	27	0.63	0.16	55.79
%RANK	40	55	85	75	45	35		45	60	70	70	70	85

Consignor: EDWARDS LAND & CATTLE COMPANY, BEULAVILLE, NC

52A ELCX JUNIOR 34J

NPM 2333313 | Purebred (93/80.7) Bull | Double Polled | Double Black | 2/20/2021 | ELCX 34J

VORT DAYTONA 603D
 ALTER EGO
 RMKR X'S AND O'S 086X

EF XCESSIVE FORCE
 CISL TEQUILA SUNRISE 7003
 RMKR UNFORGETTABLE 847U
 RMKR MISS STARBURST 500R

ELCX DELUXE 34D
 BOHI TOP DOLLAR 7144T
 ELCX SPLENDA 416Z

AUTO DOLLAR GENERAL 122R
 CARROUSELS PINA COLADA
 MAGS XYLOID
 MAGS ROSEMARIE

	CED	BW	WW	YW	MK	CEM	SC	DOC	YG	CW	RE	MB	\$MI
EPD	10	1.9	66	96	20	6		14	-0.32	26	0.85	0.01	52.73
%RANK	60	65	45	45	65	50		40	45	>95	30	95	25

Consignor: EDWARDS LAND & CATTLE COMPANY, BEULAVILLE, NC

Here is an impressive February bull calf sired by VL Daytona 603D. Daytona is the Purebred Alter Ego son known for his balanced numbers and incredible phenotype. This bull calf is a Purebred and double black and double polled. BW #82



ELCX GODDESS 6G - Sire of Lot 53

53 ELCX GODDESS 6G
LFF22714451 Lim-Flex(46/42.2) Cow | Double Polled | Homo Black (P-2) | 8/6/2019 | ELCX 6G

RLBH AIR FORCE ONE		EF XCESSIVE FORCE	
ELCX CAESAR 331 C		EF YAFFA 821Y	
PBRS ALICE 331A		MAGS YIP	
		BUFORD LUCY 9302	
MAGS WINSTON		BT CROSSOVER 758N	
ELCX ZEMMIE 507Z		MAGS STRAWBERRY	
MAGS TAPESTRY		MYTTY IN FOCUS	
		MAGS GRETCHEN 143L	

CED	BW	WW	YW	MK	CEM	SC	DOC	YG	CW	RE	MB	\$MI	
EPD	12	-01	65	102	18	6	0.82	13	0.01	36	0.27	0.41	64.68
%RANK	40	25	70	65	75	55	70	45	95	40	>95	15	30

Consignor: EDWARDS LAND & CATTLE COMPANY, BEULAVILLE, NC

The ELCX Goddess 6G is truly a "goddess" in her own right. She is a 46% Lim-Flex daughter of ELCX Caesar 331C, the RLBH Air Force One son. Her dam is ELCX Enter 906E, a PVF Insight 0129 daughter out of an LH Rodmaster 338R and MAGS Phantoms Prize daughter, WLR Original Sin. She is homozygous black and double polled.

53A ELCX JAZZY 6J
LFF2333317 | Lim-Flex(48/43.6) Cow | Double Polled | Double Black | 04/01/2021 | ELCX 6J

EF XCESSIVE FORCE		DA TRAVELER 004 703	
ELCX GONE FISHIN 929G ET		CFLX MOLLYS IMAGE	
AUTO POEM		SAV BISMARCH 5682	
		MAGS PHANTOMS PRIZE	
ELCX CAESAR 331C		RLBH AIR FORCE ONE	
ELCX GODDESS 6G		PBRS ALICE 331A	
ELCX ENTER 906E		PVF INSIGHT 0129	
		WLR ORIGINAL SIN	

CED	BW	WW	YW	MK	CEM	SC	DOC	YG	CW	RE	MB	\$MI	
EPD	11	1.1	69	103	14	6	1.29	10	-0.05	35	0.50	0.12	55.65
%RANK	55	55	50	60	95	55	25	85	90	40	90	75	85

Consignor: EDWARDS LAND & CATTLE COMPANY, BEULAVILLE, NC

A beautiful April heifer calf at side of ELCX Goddess 6G. This female is a daughter of ELCX Gone Fishin 929G ET, a son of EF Xcessive Force and the influential AUTO Poem 273Y donor. She is a 48% Lim-Flex female that will fit the bill for any occasion, but we're certain she'll make her way to the backdrop time after time. She is double black and double polled. BW#68

54 ELCX GOOD GOLLY 507G
LFF2171856 | Lim-Flex(53/47.7) Cow | Double Polled | Double Black | 3/28/2019 | ELCX 507G

RLBH AIR FORCE ONE		EF XCESSIVE FORCE	
ELCX CAESAR 331 C		EF YAFFA 821Y	
PBRS ALICE 331A		MAGS YIP	
		BUFORD LUCY 9302	
MAGS WINSTON		BT CROSSOVER 758N	
ELCX ZEMMIE 507Z		MAGS STRAWBERRY	
MAGS TAPESTRY		MYTTY IN FOCUS	
		MAGS GRETCHEN 143L	

CED	BW	WW	YW	MK	CEM	SC	DOC	YG	CW	RE	MB	\$MI	
EPD	12	-01	65	102	18	6	0.82	13	0.01	36	0.27	0.41	64.68
%RANK	40	25	70	65	75	55	70	45	95	40	>95	15	30

Consignor: EDWARDS LAND & CATTLE COMPANY, BEULAVILLE, NC

The ELCX Caesar 331C daughters sure do impress with their structural build, overall balance and flawless design and ELCX Good Golly 507G exemplifies all three in a feminine package. She is a 53% Lim-Flex female out of an impressive dam, ELCX Zemmie 507Z. ELCX Zemmie 507Z is a daughter of MAGS Winston and out of the storied MAGS Tapestry donor. This female ranks in the 15th percentile for her marbling EPD and in the 25th percentile for her birthweight EPD. She is double polled and double black.

55 ELCX EMPOWER 983E
LFF2130602 | Lim-Flex(50/44.8) Cow | Homo Polled (T) | Red | 4/22/2017 | ELCX 983E

S A V BRILLIANCE 8077		S A V BISMARCK 5682	
ELCX BACARDI 427B ET		S A V BLACKCAP MAY 5270	
WLR TAINTED LOVE 746X		WULFS URBAN COWBOY 2149U	
		MAGS PHANTOMS PRIZE	
MAGS WINSTON		BT CROSSOVER 758N	
SBLX ZANE		MAGS STRAWBERRY	
SBLX UNDERTHECOVERS 201U		G A R PREDESTINED	
		ELMW GINNIE P58G	

CED	BW	WW	YW	MK	CEM	SC	DOC	YG	CW	RE	MB	\$MI	
EPD	12	0	59	90	21	6	0.76	12	-0.19	31	0.76	0.19	56.18
%RANK	40	30	59	90	45	55	80	60	50	55	50	60	80

Consignor: EDWARDS LAND & CATTLE COMPANY, BEULAVILLE, NC

This gal will "empower" you to buy into this great Limousin breed if you haven't already! ELCX Empower 983E is a 50% Lim-Flex daughter of ELCX Bacardi 427B ET, an SAV Brilliance 8077 son from the infamous WLR Tainted Love 746X donor female. ELCX Empower 983E's dam is the son and only SBLX Zane. She is a daughter of MAGS Winston and from the phenomenal SBLX Underthecovers 201U female. This female is homozygous polled and quite the red beauty.



ELCX GOOD GOLLY 507G - Lot 54

54A ELCX JEWEL 507J
LFF2333320 | Lim-Flex(62/56.1) Cow | Double Polled | Double Black | 4/12/2021 | ELCX 507J

ELCX CAESAR 331C		RLBH AIR FORCE ONE	
HWCB EYE OF THE STORM		PBRS ALICE 331A	
FBFL PRINCESS KATE 406C		MAGS XYLOID	
		DPBN MEDAL 4063U	
ELCX CAESAR 331C		RLBH AIR FORCE ONE	
ELCX GOOD GOLLY 507G		PBRS ALICE 331A	
ELCX ZEMMIE 507Z		MAGS WINSTON	
		MAGS TAPESTRY	

CED	BW	WW	YW	MK	CEM	SC	DOC	YG	CW	RE	MB	\$MI	
EPD	12	01	63	94	18	6	0.78	14	-0.06	32	0.42	0.34	61.93
%RANK	40	30	75	80	75	55	80	35	85	55	95	25	45

Consignor: EDWARDS LAND & CATTLE COMPANY, BEULAVILLE, NC

55A ELCX JENNA 983J
LFF2333314 | Lim-Flex(50/45.2) Cow | Homozygous Polled | Black | 2/25/2021 | ELCX 983J

EBFL YPSILANTI 420Y		TC ABERDEEN 759	
ELCX BULLET PROOF 438B		MAGS RAMADA	
AUTO POEM 273Y		SAV BISMARCK 5682	
		MAGS PHANTOMS PRIZE	
ELCX BACARDI 427B ET		SAV BRILLIANCE 8077	
ELCX EMPOWER 983E		WLR TAINTED LOVE 746X	
SBLX ZANE		MAGS WINSTON	
		SBLX UNDERTHECOVERS 201U	

CED	BW	WW	YW	MK	CEM	SC	DOC	YG	CW	RE	MB	\$MI	
EPD	12	1.4	73	108	21	6	1.09	11	-0.20	35	0.83	0.17	59.95
%RANK	40	65	35	50	45	55	45	75	50	40	35	65	80

Consignor: EDWARDS LAND & CATTLE COMPANY, BEULAVILLE, NC



ELCX EMPOWER 983E - Lot 55



ELCX 927G - Lot 56



ELCX GOT IT - Lot 58

58 ELCX GOT IT 110G

LFF2333018 | Lim-Flex(40/36.4) Cow | Double Polled | Double Black | 3/28/2019 | ELCX 110G

RLBH AIR FORCE ONE
ELCX CAESAR 331 C
PBR5 ALICE 331A

EF XCESSIVE FORCE
EF YAFFA 821Y
MAGS YIP
BUFORD LUCY 9302

MAGS WINSTON
ELCX FANNIE 110A
PCF FANNIE 110 OF IN FOCUS

BT CROSSOVER 758N
MAGS STRAWBERRY
MYTTY IN FOCUS
PCF EXPECTATION HEADTIME 428

CED	BW	WW	YW	MK	CEM	SC	DOC	YG	CW	RE	MB	\$MI
EPD	13	-0.4	69	110	18	8	14	0.09	42	0.2	0.52	69.06
%RANK	25	20	50	45	75	20	35	>95	20	>95	4	15

Consignor: EDWARDS LAND & CATTLE COMPANY, BEULAVILLE, NC

Will calve by sale day to HWCB Eye of the Storm 406E (LFM2117062).

ELCX Got It 110G is a 40% Lim-Flex daughter of ELCX Caesar 331C, the RLBH Air Force One son out of PBR5 Alice 331A. This female's dam is a MAGS Winston daughter from a MYTTY In Focus female, PCF Fannie 110 Of In Focus. On paper ELCX Got It 110G ranks in the 4th percentile for marbling and in the 20th percentile for birthweight. She is double black and double polled.

56 ELCX 927G

Pending | Purebred | Cow | Double Polled | Homo Black | | ELCX 927G

AUTO CRUZE 132X
AUTO REAL DEAL 150B
AUTO LUCKIE TOO 423Y

MAGS THE GENERAL
AUTO REBECA 292S
WLR DIRECT HIT
TYEJ DB SERENITY

MAGS XYLOID
ELCX CHARMER 566C
WLR PRADA

DHVO DEUCE 132R
BOHI RHONDA
MAGSWL USUAL SUSPECT 538R
AUTO REBECA 292S

CED	BW	WW	YW	MK	CEM	SC	DOC	YG	CW	RE	MB	\$MI
-----	----	----	----	----	-----	----	-----	----	----	----	----	------

EPD PENDING
%RANK PENDING

Consignor: EDWARDS LAND & CATTLE COMPANY, BEULAVILLE, NC

Will calve by sale day to HWCB Eye of the Storm 406E (LFM2117062)

ELCX 927G is a Purebred daughter of AUTO Real Deal 150B, the AUTO Cruze 132X son out of the influential AUTO Luckie Too 423Y female. This female's dam is ELCX Charmer 566C ET, sired by MAGS Xyloid and out of the great WLR Prada donor. She is homozygous black and double polled.

57 ELCX GREYLYN 51G

LFF2333017 | Lim-Flex(75/66.6) Cow | Double Polled | Homo Black (P-2) | 4/24/2019 | ELCX 51G

DHVO DEUCE 132R
MAGS XYLOID
BOHI RHONDA 314R

GPFF BLAQUE RULON
AMY JO DHAN 20L
EXLR NEW GENERATION 071M
DAVIS ROSETTA 9514

JCL LODESTAR 27L
ELCX CORE SOUND 512C ET
DFLC HBPC 25L

HUNTS HI-LITER 245G
LOGAN'S CHEERLEADER 280G
DFLC DOUBLE SHOT BPB 41E
DALTONS EDITH ERICA 250

CED	BW	WW	YW	MK	CEM	SC	DOC	YG	CW	RE	MB	\$MI
-----	----	----	----	----	-----	----	-----	----	----	----	----	------

EPD 11 1.4 56 89 20 6 0.65 13 -0.17 26 0.57 0.12 53.1
%RANK 55 65 95 90 55 55 85 45 60 75 80 75 95

Consignor: EDWARDS LAND & CATTLE COMPANY, BEULAVILLE, NC

Will calve by sale day to HWCB Eye of the Storm 406E (LFM2117062).

A MAGS Xyloid daughter worth getting your eyes on! ELCX Greylyn 51G is a 75% Lim-Flex female out of a JCL Lodestar 27L cow, ELCX Core Sound 512C ET. She is homozygous black and double polled.

58A ELCX JUSTIN 110J

LFM2333319 | Lim-Flex(57/51.4) Cow | Double Polled | Double Black | 4/13/2021 | ELCX 110J

RIVERSTONE CROWN ROYAL
ELCX FULLY ROYAL 451F
HBRL BASHFUL 451B

TMCK DURHAM WHEAT 6030X
HSF YOUR FANTASY
EXAR DENVER
HBRL ZAVVI 253Z

ELCX CAESAR 331C
ELCX GOT IT 110G
ELCX FANNIE 110A

RLBH AIR FORCE ONE
PBR5 ALICE 331A
MAGS WINSTON
PCF FANNIE 110 OF IN FOCUS

CED	BW	WW	YW	MK	CEM	SC	DOC	YG	CW	RE	MB	\$MI
-----	----	----	----	----	-----	----	-----	----	----	----	----	------

EPD 13 -0.2 65 102 20 8 13 -0.07 33 .48 0.32 62.04
%RANK 25 25 70 65 55 20 45 85 50 90 30 45

Consignor: EDWARDS LAND & CATTLE COMPANY, BEULAVILLE, NC

59 CCWV MS AVALON 630G

LFF2172173 | Lim-Flex(53/48) Cow | Homo Polled (P-3) | Double Black | 3/17/2019 | CCWV 630G

MAGS APPLESEED
MAGS CABLE
MAGS ZEQUIN

RITO 6EM3 OF 4L1 EMBLAZON
MAGS WAY TO SHINE
BOHI TOP DOLLAR 7144T
WERNER RITA 118

MAGS ZODIAC
WLBL AVALON 630D
AUTO AVALON 222A

MAGS WINSTON
MAGS XANTHOUS
DAMERON FIRST CLASS
AUTO LANA 255L

CED	BW	WW	YW	MK	CEM	SC	DOC	YG	CW	RE	MB	\$MI
-----	----	----	----	----	-----	----	-----	----	----	----	----	------

EPD 13 1.5 76 120 22 7 1.05 13 -0.09 51 0.75 0.4 68.45
%RANK 25 70 25 25 35 35 45 45 80 10 50 15 15

Consignor: CROSS CREEK FARM, GRAY, TN & WIN VUE ENTERPRISES, BULLS GAP, TN

PE from 7.01.20 to 10.01.20 to ELCX Excessive 758E (LFM2140147)

A neatly bred female right here, folks! CCWV Ms Avalon 630G is a MAGS Cable daughter from a MAGS Zodiac female, WLBL Avalon 630D. This 53% Lim-Flex bred heifer has a remarkable set of numbers. She ranks in the 15th percentile for marbling, the 25th percentile for weaning weight and yearling weight and in the 35th percentile for milk. She is homozygous polled and double black.

60 WNVU 928G

LFF2171046 | Lim-Flex(50/44.5) Cow | Homo Polled (P-3) | Double Black | 4/6/2019 | WNVU 928G

MAGS APPLESEED
MAGS CABLE
MAGS ZEQUIN

RITO 6EM3 OF 4L1 EMBLAZON
MAGS WAY TO SHINE
BOHI TOP DOLLAR 7144T
WERNER RITA 118

WIN VUE MAIN STAY 218
WNVU 728E
P BAR S 434

EF MAIN STAY 541M
TMCK HIDDEN COOKIE 2X
WERNER FINAL ANSWER 0268
BUFORD ERISKAY 225Z

CED	BW	WW	YW	MK	CEM	SC	DOC	YG	CW	RE	MB	\$MI
-----	----	----	----	----	-----	----	-----	----	----	----	----	------

EPD 15 0 67 109 22 8 14 -0.1 39 0.68 0.36 64.3
%RANK 10 30 60 45 35 20 35 75 30 65 25 30

Consignor: WIN VUE ENTERPRISES, BULLS GAP, TN

Lot 60a WNVU 928J, a 414.21 62.5% Lim-Flex double black and homo polled heifer sired by CRCK Cruze 612G, BW 63#

A 50% Lim-Flex daughter of MAGS Cable you'll want to study, WNVU 928G goes back to EF Main Stay 541M on the top side of her pedigree and SAV Final Answer 0035 on the bottom side. This female ranks in the 25th percentile for her marbling figure, the 30th percentile for birthweight and in the 35th percentile for milk. She is homozygous polled and double black.

61 CCWV 907G

LFF2332886 | Lim-Flex(68/61.7) Cow | Double Polled | Double Black | 4/19/2019 | CCWV 907G

MAGS WINSTON
MAGS ZODIAC
MAGS XANTHOUS

BT CROSSOVER 758N
MAGS STRAWBERRY
DHVO DEUCE 132R
BOHI RHONDA 314R

MAGS UNITE TOGETHER
AUTO CLAIR 256C ET
MAGS MANUELA

BASIN FRANCHISE P142
MAGS REMBRANDT
EXLR LIMITED EDITION 765J
AUTO CITY NIGHTS 214H

CED	BW	WW	YW	MK	CEM	SC	DOC	YG	CW	RE	MB	\$MI
-----	----	----	----	----	-----	----	-----	----	----	----	----	------

EPD 10 2.4 72 119 25 5 0.55 14 -0.19 48 0.8 0.29 63.95
%RANK 70 85 40 25 15 75 90 35 50 10 40 35 35

Consignor: CROSS CREEK FARM, GRAY, TN & WIN VUE ENTERPRISES, BULLS GAP, TN

PE from 7.01.20 to 10.01.20 to ELCX Excessive 758E (LFM2140147)

Be sure to check out this bred heifer on sale day! CCWV 907G is a 68% Lim-Flex daughter of the great MAGS Zodiac. Her dam is AUTO Clair 256C ET, a daughter of MAGS Unite Together and from the breed matriarch herself, MAGS Manuela. Numerically this female ranks in the 15th percentile for milk, the 25th percentile for yearling weight and total maternal and in the 35th percentile for marbling. She is double black and double polled.

62 CRCK MS AXIS RITA

NXF2278182 | PERCENTAGE(81/70.3) Cow | Homo Polled (P-2) | Double Black | 4/13/2019 | CRCK 382G

MAGS ZODIAC
MAGS WINSTON
MAGS XANTHOUS

BT CROSSOVER 758N
MAGS STRAWBERRY
DHVO DEUCE 132R
BOHI RHONDA 314R

WIN VUE BLAQUE RITA 382A
MAGS SASQUATCH
TMCK BLAQUE RITA 569U

EXLR NEW GENERATION 071M
MAGS FRUITFUL 487M
LEWIS RILIAN 384R
WIN VUE BLAQUE RITA 570R

	CED	BW	WW	YW	MK	CEM	SC	DOC	YG	CW	RE	MB	\$MI
EPD	11	1.7	87	109	25	4	0.3	13	-0.21	38	0.63	0.14	57.4
%RANK	50	70	45	30	15	90	90	45	70	20	80	50	50

Consignor: CROSS CREEK FARM, GRAY, TN

PE from 7.01.20 to 10.01.20 to ELCX Excessive 758E (LFM2140147)

An 81% Limousin female worth setting your sights on. CRCK Ms Axis Rita is a daughter of MAGS Zodiac and out of a MAGS Sasquatch daughter, Win Vue Blaque Rita 382A. She ranks in the 15th percentile for her milk figure, the 25th percentile for total maternal and in the 30th percentile for yearling weight. She is homozygous polled and double black.



63 WNVU 837F

LFF2171042 | Lim-Flex(37/33.6) Cow | Double Polled | Homo Black (P-2) | 11/24/2018 | WNVU 837F

WIN VUE INSIGHT 673
PVF INSIGHT 0129
WIN VUE LADY OBJECTIVE 744

S A V BRILLIANCE 8077
PVF MISSIE 790
CONNEALY IN FOCUS 4925
SR 878 BLACKBIRD 6519

WNVU 613D
MAGS Y-AXIS
TINY WINNIE

TC ABERDEEN 759
MAGS UAHUKA
AUTO DOLLAR GENERAL 122R
TRTF KORTNEY'S LADY 307M

	CED	BW	WW	YW	MK	CEM	SC	DOC	YG	CW	RE	MB	\$MI
EPD	12	0.4	69	108	21	8	14	-0.16	42	0.82	0.16	58.1	
%RANK	40	40	50	50	45	20	35	50	20	40	70	70	

Consignor: WIN VUE ENTERPRISES, BULLS GAP, TN

Lot 63a WNVU 837F, a 4.08.21 56% Lim-Flex double polled, homo black heifer sired by CRCK Cruze 612G, BW 58#

Here is a daughter of Win Vue Insight 673, a direct son of PVF Insight 0129 and a Connealy In Focus 4825 female, Win Vue Lady Objective 744. This female's dam is a MAGS Y-Axis daughter and from an AUTO Dollar General 122R cow. WNVU 837F is homozygous black and double polled. She is 37% Lim-Flex.

ELCX Caesar 331C - Ref. Sire



64 WNVU 831F

NXF2171041 | PERCENTAGE(81/71) Cow | Double Polled | Double Black | 11/18/2018 | WNVU 831F

ELCX SAGA 414B
DHVO DEUCE 132R
DFLC HBHPC 1S

GPFF BLAQUE RULON
AMY JO DHAN 20L
JCL LODESTAR 27L
DFLC HBPC 25L

WNVU SWEET PEACHES 631D
EF XCESSIVE FORCE
WIN VUE BLAQUE RITA 375A

D A TRAVELER 004 703
CFLX MOLLYS IMAGE
MAGS SASQUATCH
TMCK BLAQUE RITA 569U

	CED	BW	WW	YW	MK	CEM	SC	DOC	YG	CW	RE	MB	\$MI
EPD	12	0.6	65	97	16	7	1.02	12	-0.21	24	0.64	0.1	55.1
%RANK	35	40	50	55	95	35	30	55	70	65	80	55	60

Consignor: WIN VUE ENTERPRISES, BULLS GAP, TN

PE from 6.16.20 to 9.01.20 to CRCK Cruze612G (LFM2172170)

An 81% Limousin daughter of ELCX Saga 414B you'll want to have on your short list! ELCX Saga 414B is the DHVO Deuce 132R son out of the tremendous donor female, DFCL HBHPC 1S. WNVU 831F's dam is an EF Xcessive Force daughter. She is double black and double polled.



AUTO Real Deal 150B - Ref. Sire

MAGS Zodiac - Ref. Sire

OPEN HEIFERS

65 CCVV SWEET BETTY E69H ET

LFF2333246 | Lim-Flex (63.5/57.7) Cow | Homo Polled | Double Black | 04/02/2020 | CCVV E69H

LH WAR HERO 195W
MAGS ANCHOR
 MGS XIPOPAOUS

LH UHAUL
AUTO BETTY 266Y
 WLR UGLY BETTY 432U

JCL LODESTAR 27L
 VERMILLION ERICA LADY
 DHVO DEUCE 132R
 MAGS SELENA

BASIN FRANCHISE P142
 EXLR DUCHESS 7129R
 MAGS SHYLLO
 JCL HEIDI 2S

	CED	BW	WW	YW	MK	CEM	SC	DOC	YG	CW	RE	MB	\$MI
EPD	10	2.1	70	108	13	5	0.80	11	-0.19	30	0.68	0.27	62.44
%RANK	70	80	45	50	>95	75	70	75	50	60	60	40	45

Consignor: CROSS CREEK FARM, GRAY, TN & WIN VUE ENTERPRISES, BULLS GAP, TN

This open female is ready for your program however you desire. CCVV E69H is a daughter of MAGS Anchor and AUTO Bette 266Y. AUTO Bette 266Y is sired by LH U Haul 135U and out of the storied WLR Ugly Betty 432U female. CCVV E69H is a 63.5% Lim-Flex female that is homozygous polled and double black.

BW 81 WW 538 YW 819

66 CCVV MS MANUELA E62H ET

NPF2333247 | Purebred Cow (100/90.1) | Double Polled | Double Black | 5/12/2020 | CCVV E62H

TMCK DURHAM WHEAT 6030X
RIVERSTONE CROWN ROYAL 51C
 HSF YOUR FANTASY

JCL LODESTAR 27L
AUTO MANUELA 298S
 MAGS MANUEALA

DHVO DEUCE
 MAGS STRAWBERRY PIE
 MAG WAR ADMIRAL
 HSF TINKERBELLE

HUNTS HI- LITER 245G
 LOGAN'S CHEERLEAR 280G
 EXLR LIMITED EDITION 765J
 AUTO CITY NIGHTS 214H

	CED	BW	WW	YW	MK	CEM	SC	DOC	YG	CW	RE	MB	\$MI
EPD	10	1.7	59	94	24	6	0.85	10	-0.33	21	0.87	-0.06	48.53
%RANK	60	60	70	50	25	50	25	7	>95	50	95	50	75

Consignor: CROSS CREEK FARM, GRAY, TN & WIN VUE ENTERPRISES, BULLS GAP, TN

A rare opportunity if you ask us! CCVV E62H is a direct Purebred daughter of the ever-popular Riverstone Crown Royal 51C bull. He is sired by TMCK Durham Wheat 6030X and out of the prolific HSF Your Fantasy donor. Then you throw in that this female's dam is AUTO Manuela 298S, a daughter of JCL Lodestar 27L and the legendary MAGS Manuela female and you've got a recipe for total success! This female is double black and double polled.

BW 57 WW 420

67 WINVUE 673H

LFF2332472 | Lim-Flex Cow | Homozygous Polled | Homozygous Black | 9/15/2020 | WINVU 673H

MAGS WINSTON
MAGS ZODIAC
 MAGS XANTHOUS

PVF INSIGHT
WIN VU INSIGHT BLACKBIRD773
 WIN VIEW LADY OBJECTIVE 744

BT CROSSOVER 758N
 MAGS STRAWBERRY
 DHVO DEUCE 132
 BOHI RHONDA 314R

S A V BRILLIANCE 8077
 PVF MISSIE 790
 CONNEALY IN FORCE 4925
 SR 878 BLACKBIRD 652

	CED	BW	WW	YW	MK	CEM	SC	DOC	YG	CW	RE	MB	\$MI
EPD	10	1.9	82	135	21	5	15	0.00	63	81	0.27	\$64.82	
%RANK	70	75	10	45	20	75	25	95	1	55	40	40	

Consignor: WIN VUE ENTERPRISES, BULLS GAP, TN

Another MAGS Zodiac daughter that'll catch your eye. Winvue 673H is a 31% Lim-Flex female with one heck of a set of numbers. She ranks in the 5th percentile for yearling weight, the 10th percentile for yearling weight and the 35th percentile for milk. This female's dam is a PVF Insight 0129 daughter, Win Vue Insight Blackbird 773. She is homozygous black and homozygous polled.

68 TMCK HAIKU 763H

LFF2275180 | Lim-Flex(56/50.3) Cow | Double Polled | Double Black | 1/23/2020 | TMCK 763H

MAGS AVIATOR
CJSL CREED 5042C
 CJSL 2090Z

TMCK CASH FLOW 247C
TMCK ENTANGLED 532E
 MAGS UNTANGLE

MAGS WINSTON
 MAGS XTRA REST
 MAGS XUKALANI
 MAGS XULEMA

MAGS ALI
 TMCK NINA 17X
 MAGS SASQUATCH
 AUTO COOKIE CUTTER 295R

	CED	BW	WW	YW	MK	CEM	SC	DOC	YG	CW	RE	MB	\$MI
EPD	14	-0.3	69	116	25	8	0.65	14	0.01	37	0.59	0.53	70.36
%RANK	15	25	50	30	15	20	85	35	95	35	75	4	10

Consignor: CIRCLE R RANCH, SAINT JOHNS, FL

A unique pedigreed female who is open and ready to go work in your program. TMCK Haiku 763H is a daughter of CJSL Creed 5042C, the MAGS Aviator son. Her dam is a TMCK Cash Flow 247C daughter, TMCK Entangled 532E. She is 56% Lim-Flex and hits you hard with a balanced set of EPDs. She ranks in the 4th percentile for marbling, the 15th percentile for milk, the 25th percentile for birthweight and the 30th percentile for yearling weight. TMCK Haiku 763H is double black and double polled.

69 CCVV 646H

LFF2289736 | Lim-Flex(68/62) Cow | Double Polled | Double Black | 3/2/2020 | CCVV 646H

MAGS WINSTON
MAGS ZODIAC
 MAGS XANTHOUS

MAGSWL USUAL SUSPECT 538U
WLR EBAY
 WLR TWITTER

BT CROSSOVER 758N
 MAGS STRAWBERRY
 DHVO DEUCE 132R
 BOHI RHONDA 314R

MAGS SASQUATCH
 MAGS PHANTOMS PRIZE
 S A V BISMARCK 5682
 MAGS RATTLE

	CED	BW	WW	YW	MK	CEM	SC	DOC	YG	CW	RE	MB	\$MI
EPD	11	2	73	117	21	5	0.56	12	-0.19	44	0.75	0.12	58.06
%RANK	55	80	35	30	45	75	90	60	50	20	50	75	70

Consignor: CROSS CREEK FARM, GRAY, TN & WIN VUE ENTERPRISES, BULLS GAP, TN

A MAGS Zodiac daughter that'll be a fit in any operation. CCVV 646H is a 68% Lim-Flex female that comes from a pretty unique dam, WLR Ebay. WLR Ebay is sired by MAGSWL Usual Suspect 538U and out of the WLR Twitter female, who is a daughter of SAV Bismarck 5682. On paper this female ranks in the 30th percentile for yearling weight, the 35th percentile for weaning weight and the 45th percentile for milk. She is double black and double polled.

70 CCVV 072H

LFF2289737 | Lim-Flex(68/61.9) Cow | Double Polled | Double Black | 3/2/2020 | CCVV 072H

MAGS WINSTON
MAGS ZODIAC
 MAGS XANTHOUS

MAGSWL USUAL SUSPECT 538U
WLR EBONY
 TMCK PRUDENCE 72X

BT CROSSOVER 758N
 MAGS STRAWBERRY
 DHVO DEUCE 132R
 BOHI RHONDA 314R

MAGS SASQUATCH
 MAGS PHANTOMS PRIZE
 EHF NET WORTH J400
 TMCK PRUDENCE 117U

	CED	BW	WW	YW	MK	CEM	SC	DOC	YG	CW	RE	MB	\$MI
EPD	10	2.2	70	113	23	4	12	-0.2	43	0.76	0.15	58.45	
%RANK	70	85	45	35	30	90	60	50	20	50	70	70	

Consignor: CROSS CREEK FARM, GRAY, TN & WIN VUE ENTERPRISES, BULLS GAP, TN

The MAGS Zodiac daughters sure have been some of our favorite females this year. CCVV 072H is one of those and she's 68% Lim-Flex with all the versatility in the world. Her dam is WLR Ebony, a daughter of MAGSWL Usual Suspect 538U and from an EHF Net Worth J400 daughter, TMCK Prudence 72X. Numerically, this female ranks in the 30th percentile for milk, the 35th percentile for yearling weight and the 45th percentile for weaning weight. She is double black and double polled.

OPEN HEIFERS

71 WNVU 767H

LFF2289741 | Lim-Flex(67/58.3) Cow | Double Polled | Homo Black (P-3) | 3/13/2020 | WNVU 767H

MAGS WINSTON
MAGS ZODIAC
 MAGS XANTHOUS

WNVU 767E
 AUTO SURE DEAL 149B
 WIN VUE RITA'S PIONEER405

BT CROSSOVER 758N
 MAGS STRAWBERRY
 DHVO DEUCE 132R
 BOHI RHONDA 314R

AUTO CRUZE 132X
 AUTO LUCKIE TOO 423Y
 S A V PIONEER 7301
 TMCK BLAQUE RITA 569U

	CED	BW	WW	YW	MK	CEM	SC	DOC	YG	CW	RE	MB	\$MI
EPD	10	2.4	78	126	24	3	0.62	13	-0.16	48	0.74	0.09	58.44
%RANK	70	85	20	15	20	>95	85	45	60	10	50	85	70

Consignor: WIN VUE ENTERPRISES, BULLS GAP, TN

Another impressive daughter of MAGS Zodiac, WNVU 767H. She is a 67% Lim-Flex female with a set of numbers you'll want to check out. She ranks in the 15th percentile for yearling weight and in the 20th percentile for both weaning weight and milk. This female's dam is an AUTO Sure Deal 149B daughter out of an SAV Pioneer 7301 female, Win Vue Rita's Pioneer 405. She is homozygous black and double polled.

72 WNVU 057H

LFF2289743 | Lim-Flex(68/61.8) Cow | Double Polled | Double Black | 3/25/2020 | WNVU 057H

MAGS WINSTON
MAGS ZODIAC
 MAGS XANTHOUS

AUTO EVERLEE 203E ET
 EXLR MOLLY 7103K

BT CROSSOVER 758N
 MAGS STRAWBERRY
 DHVO DEUCE 132R
 BOHI RHONDA 314R

TC ABERDEEN 759
 MAGS UAHUKA
 EXLR DAKOTA 353G
 EXLR MOLLY 343G

	CED	BW	WW	YW	MK	CEM	SC	DOC	YG	CW	RE	MB	\$MI
EPD	12	0.9	69	111	23	5	0.6	14	-0.21	42	0.78	0.07	55.19
%RANK	40	50	50	40	30	75	85	35	45	20	45	85	85

Consignor: WIN VUE ENTERPRISES, BULLS GAP, TN

This MAGS Zodiac daughter is 68% Lim-Flex and ready for whatever you choose to introduce her to. Her dam is AUTO Everlee 203E ET, a MAGS Y-Axis daughter and from an EXLR Dakota 353G female, EXLR Molly 7103K. This female ranks in the 30th percentile for milk and in the 40th percentile for yearling weight. She is double black and double polled.

73 CRCK PASSION 102 H

LFF2332796 | Lim-Flex(73/65.1) Cow | Double Polled | Homo Black (P-3) | 11/3/2020 | CRCK 102H

ELCX SAGA 414B
 DFLC HBHPC 1S

CRCK BLACK PASSION
 SEEE APHRODITE

DHVO DEUCE 132R
 GPFJ BLAQUE RULON
 AMY JO DHAN 20L
 JCL LODESTAR 27L
 DFLC HBPC 25L

D A TRAVELER 004 703
 CFLX MOLLYS IMAGE
 MAGS YELLOW PAPER
 MAGS WELLROUNDED

	CED	BW	WW	YW	MK	CEM	SC	DOC	YG	CW	RE	MB	\$MI
EPD	11	0.9	68	103	14	6	1.16	12	-0.2	30	0.7	0.12	56.46
%RANK	55	50	55	60	95	55	35	60	50	60	60	75	80

Consignor: CROSS CREEK FARM, GRAY, TN

CRCK Passion 102H is a daughter of ELCX Saga 414B, the bull sired by DHVO Deuce 132R and out of the highly productive DFLC HBHPC 1S female. This female's dam is CRCK Black Passion, a daughter of EF Xcessive Force and out of a tremendous cow, SEEE Aphrodite. She is a 73% Lim-Flex open heifer that is homozygous black and double polled.

74 LACIE

LFF2289952 | Lim-Flex(64/56.9) Cow | Double Polled | Double Black | 10/31/2019 | RFML 539G

TMCK EARL GREY 482E
 TMCK BREAKING DAWN 087B

HAHK YVETTE 06Y
 MAGS TALCUM POWDER

TMCK CAMDEN YARDS 195C
 TMCK ALFALFA 35X
 TMCK CASUAL AFFAIR 311A
 S A V ANGUS VALLEY 1867
 TMCK SUNSHINE 534Z

CLLL HAHK THE APPRENTICE
 MNWS FRONTIER 507R
 GPFJ ALLIE
 MAGS RUSHMORE
 MAGS ROCK POWDER

	CED	BW	WW	YW	MK	CEM	SC	DOC	YG	CW	RE	MB	\$MI
EPD	10	0.7	69	108	22	6	0.86	9	-0.3	30	0.94	0.08	56.43
%RANK	70	45	50	50	35	55	70	90	25	60	25	85	80

Consignor: RIDGEWAY FAMILY FARM, LEWISBURG, WV

Lacie is a 64% Lim-Flex female sired by TMCK Earl Grey 482E, a son of TMCK Camden Yards 195C and out of an SAV Angus Valley 1867 female, TMCK Breaking Dawn. She ranks in the 35th percentile for her milk EPD. She is double black and double polled.

75 MOLLY

LFF2289950 | Lim-Flex(70/61) Cow | Double Polled | Double Black | 12/16/2019 | RFML 544G

TMCK EARL GREY 482E
 TMCK BREAKING DAWN 087B

MCC SOLID ROCK 767A
 HAHK WILLOW 767W

TMCK CAMDEN YARDS 195C
 TMCK ALFALFA 35X
 TMCK CASUAL AFFAIR 311A
 S A V ANGUS VALLEY 1867
 TMCK SUNSHINE 534Z

RVDR THE WINNER 934W
 EXLR REVIEW 7153R
 EXLR PERFECT MARGARITA
 WULFS SIRLOIN 3172S
 MAGS ROCKCRESS

	CED	BW	WW	YW	MK	CEM	SC	DOC	YG	CW	RE	MB	\$MI
EPD	9	1.9	78	121	28	7	0.88	10	-0.29	37	0.93	0.13	60.71
%RANK	85	75	20	20	4	35	70	85	30	35	25	75	55

Consignor: RIDGEWAY FAMILY FARM, LEWISBURG, WV

Another TMCK Early Grey 482E daughter, Molly. She is a 70% Lim-Flex female with a great set of numbers. She ranks in the 4th percentile for her milk figure, the 20th percentile for both her yearling weight and weaning weight figures and in the 25th percentile for REA. She is double black and double polled.



WEBSITE



ONLINE SALES



OFFICIAL BREED PUBLICATION

Encompassing all that is Limousin



NORTHERN TERRITORY

Will Bollum • 507.244.0833 • will@Limousin365.com

SOUTHERN TERRITORY

DeRon Heldermon • 405.850.5102 • DeRon@Limousin365.com

- [HOME](#)
- [ASSOCIATION](#)
- [YOUTH](#)
- [COMMERCIAL](#)
- [EVENTS](#)
- [ONLINE SALES](#)
- [PROMOTION](#)
- [CONTACT](#)



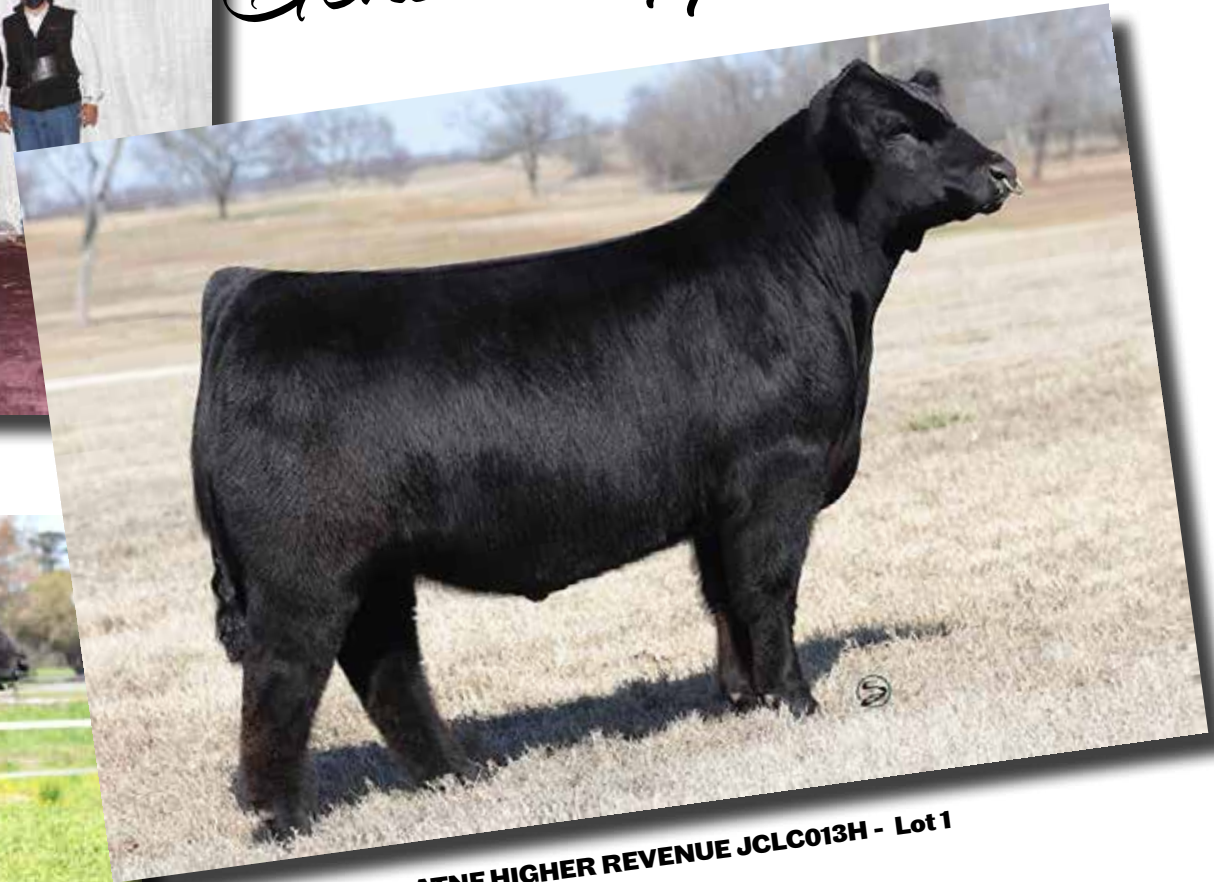
Herd Sire and Genetic Opportunities



AUTO HOW IT'S DONE 1219H ET - Lot 2



ELCX HIGH TIME 065H ET - Lot 5



ATNF HIGHER REVENUE JCLC013H - Lot 1



R & R Marketing
P.O. Box 60097
Nashville, TN 37206

