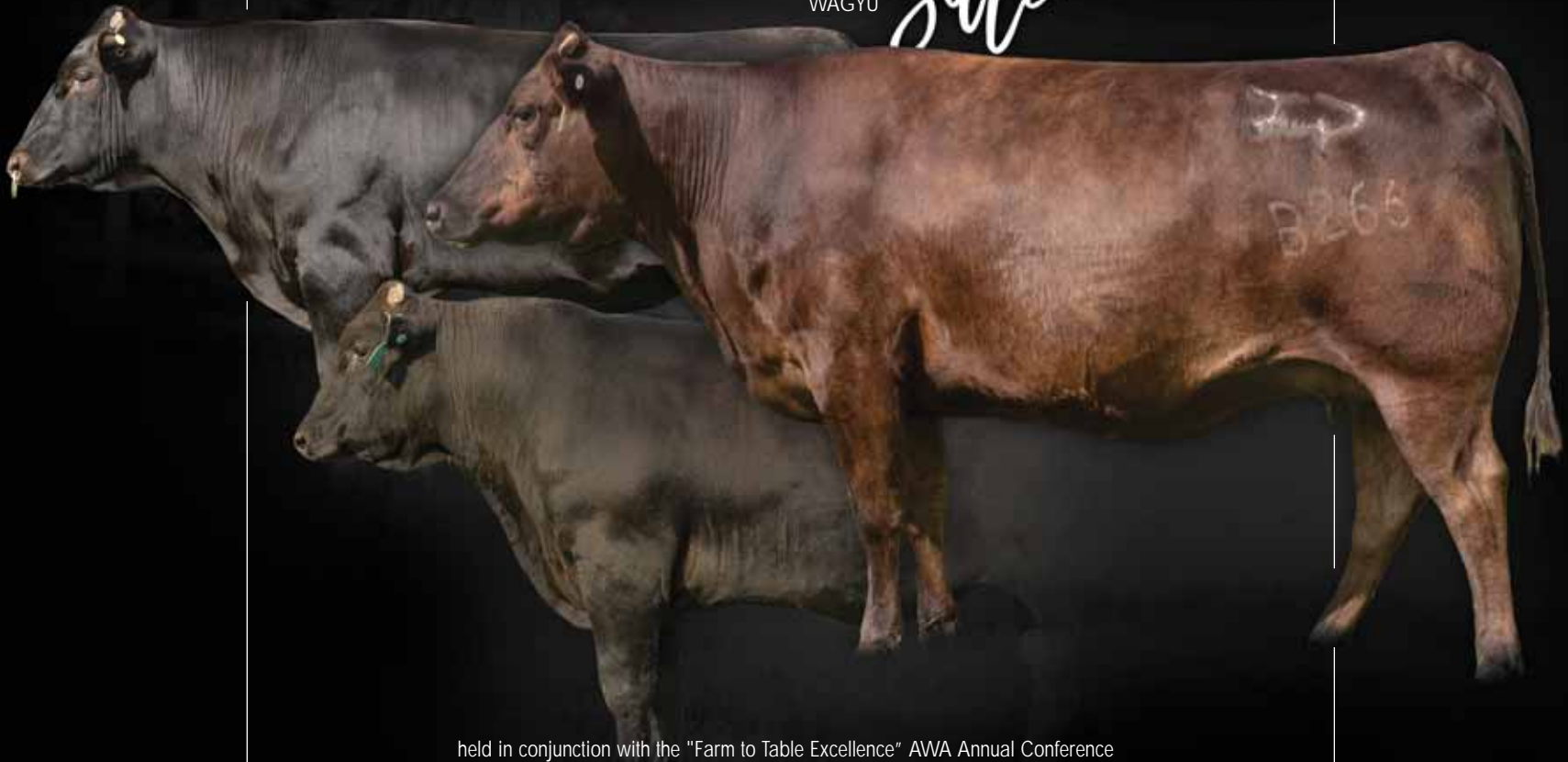


MUSIC CITY

# SIGNATURE SERIES

WAGYU

*sale*



held in conjunction with the "Farm to Table Excellence" AWA Annual Conference

09.26.19

7:45 P.M. C.S.T. | THE BELL TOWER | NASHVILLE, TN

# SCHEDULE

## WEDNESDAY, SEPTEMBER 25, 2019

12:00 p.m. - 5:00 p.m.	Conference Registration	Bell Tower
1:00 p.m. - 2:00 p.m.	Board Meeting	Hilton Garden Inn
3:00 p.m. - 5:00 p.m.	Annual General Meeting	Bell Tower
6:00 p.m. - 8:00 p.m.	Wagyu Around the World	Hilton Garden Inn

## THURSDAY, SEPTEMBER 26, 2019 (MORNING SESSION)

7:00 a.m. - 7:45 a.m.	Conference Registration & Continental Breakfast	Hilton Garden Inn
8:00 a.m.	TRADE SHOW OPENS	Hilton Garden Inn
8:00 a.m. - 8:30 a.m.	Welcome <i>Robert Williams</i>	Hilton Garden Inn
8:30 a.m. - 9:00 a.m.	Presidents Report <i>Pete Eshelman</i>	Hilton Garden Inn
9:00 a.m. - 9:30 a.m.	Office Update <i>Martha Patterson</i>	Hilton Garden Inn
9:30 a.m. - 10:00 a.m.	Digital Beef <i>Brad Wright</i>	Hilton Garden Inn
10:00 a.m. - 10:15 a.m.	Break/ Visit AWA Trade Show	Hilton Garden Inn
10:15 a.m. - 10:45 a.m.	Marketing Update <i>Robert Williams/ Jenny Tweedy/ Mike Kerby</i>	Hilton Garden Inn
10:45 a.m. - 11:15 a.m.	Breed Improvement Update <i>Robert Williams/ Jenny Tweedy</i>	Hilton Garden Inn
11:15 a.m. - 11:45 a.m.	Strategic Plan Update <i>Phil Bowman</i>	Hilton Garden Inn
12:15 p.m. - 1:45 p.m.	Lunch	Bell Tower

## FRIDAY, SEPTEMBER 27, 2019 (MORNING SESSION)

7:00 a.m. - 7:45 a.m.	Continental Breakfast	Hilton Garden Inn
8:00 a.m.	TRADE SHOW OPENS	Hilton Garden Inn
8:00 a.m. - 8:30 a.m.	Uncle Sam & the Beef Industry <i>Congressman Marlin Stutzman</i>	Hilton Garden Inn
8:30 a.m. - 9:15 a.m.	Japanese Carcass Camera <i>Kiego Kuchida</i>	Hilton Garden Inn
9:15 a.m. - 9:45 a.m.	Fully Integrated Method of Production, Part 1 <i>David Blackmore</i>	Hilton Garden Inn
9:45 a.m. - 10:15 a.m.	Break & Visit Trade Show	Hilton Garden Inn
10:15 a.m. - 11:00 a.m.	Melting Point of Fat <i>Roger Dawkins/ Dan Hammond</i>	Hilton Garden Inn
11:00 a.m. - 11:30 a.m.	Wagyu Value Added Products <i>Chef Antonio Fiasche</i>	Hilton Garden Inn
12:00 p.m. - 1:30 p.m.	Lunch Value Added Wagyu	Bell Tower

## JOIN US FOR THE 2019 AWA ANNUAL CONVENTION FARM TO TABLE EXCELLENCE

## THURSDAY, SEPTEMBER 26, 2019 (AFTERNOON SESSION)

2:00 p.m. - 2:45 p.m.	Understand the history to utilise the positives and reject the failures <i>David &amp; Ben Blackmore</i>	Hilton Garden Inn
2:45 p.m. - 3:15 p.m.	Wagyu In America <i>Charley Gaskins</i>	Hilton Garden Inn
3:15 p.m. - 3:45 p.m.	Functional Physiology & Genetic Principles <i>Eldon Clawson</i>	Hilton Garden Inn
3:45 p.m. - 4:00 p.m.	Break & Visit Trade Show	Hilton Garden Inn
4:00 p.m. - 4:30 p.m.	Wagyu Husbandry <i>Jimmy Horner</i>	Hilton Garden Inn
4:30 p.m. - 4:45 p.m.	Meet the Trotter Group	Hilton Garden Inn
5:30 p.m.	TRADE SHOW CLOSES	Hilton Garden Inn
6:30 p.m. - 7:45 p.m.	Reception Signature Drinks & Appetizers	Bell Tower
<b>7:45 p.m. - 9:45 p.m.</b>	<b>Music City Signature Series Wagyu Sale</b>	<b>Bell Tower</b>

## FRIDAY, SEPTEMBER 27, 2019 (AFTERNOON SESSION)

2:00 p.m. - 2:45 p.m.	Fully Integrated Method of Production Part 2 <i>Ben Blackmore</i>	Hilton Garden Inn
2:45 p.m. - 3:15 p.m.	Heifer Development & Reproductive Technologies <i>Emily Taylor</i>	Hilton Garden Inn
3:15 p.m. - 3:30 p.m.	Break & Visit Trade Show	Hilton Garden Inn
3:30 p.m. - 4:00 p.m.	AWA Awards Ceremony	Hilton Garden Inn
5:00 p.m.	TRADE SHOW CLOSES	Hilton Garden Inn
5:30 p.m. - 10:00 p.m.	AWA Gala Dinner	Bell Tower



**MUSIC CITY**  
**SIGNATURE**  
**SERIES**  
*safe*

09.26.19

7:45 P.M. C.S.T. | THE BELL TOWER | NASHVILLE, TN

held in conjunction with the "Farm to Table Excellence"  
 AWA Annual Conference

**AUCTIONEER** Eddie Birks, 270.991.6398 (TN Auctioneers License #4990)

**SALE DAY PHONES**

Randy Ratliff.....Wagyu365 .....615.330.2735  
 Kiley McKinna .....Wagyu365 .....402.350.3447  
 P.J. Budler .....Wagyu365 .....682.597.0380

**SALE ORDER & SUPPLEMENTAL INFORMATION**

Sale order is catalog order! Any additional information or corrections to the printed sale catalog will be available online at [www.wagyu365.com](http://www.wagyu365.com) as of Wednesday, September 25th.

**AIR TRANSPORTATION**

Nashville International Airport and John Tune Private Airport

**VISIT WAGYU365.COM**

to view the sale book and videos of live lots.

*Sale Consignors —*

**AAA Wagyu**

Dennis Woodring  
 903.312.4990 | [AAAWagyu@gmail.com](mailto:AAAWagyu@gmail.com)  
 PO Box 130456, Tyler, TX 75713

**Bar R Cattle Co.**

Jerry Reeves  
 509.397.2502 | [jreeves@colfax.com](mailto:jreeves@colfax.com)  
 1751 Halpin Rd, Pullman, WA 99163  
[www.barrwagyu.com](http://www.barrwagyu.com)

**Bar V Wagyu**

Vince & Laurita Berland  
 785.280.1672 | [vberland@hotmail.com](mailto:vberland@hotmail.com)  
 2333 Lar Road, Abilene, KS 67410  
[www.barvwagyu.com](http://www.barvwagyu.com)

**Black Rain Genetics**

Joe Hoyer  
 712.249.2076 | [joeh@netins.net](mailto:joeh@netins.net)  
 64919 Yankton Rd., Villisca, IA 50864  
 Lawrence Adams | 402.440.0924  
 PO Box 79, Blaire, NE 68008

**Bowman Farms**

803.960.0201 | [pbowman@bowmanfarmsllc.com](mailto:pbowman@bowmanfarmsllc.com)  
[www.bowmanfarmsllc.com](http://www.bowmanfarmsllc.com)  
 7779 Old 60, Roaring River, NC 28669

**Crescent Harbor Ranch, LLC**

Ralph Valdez  
 360.675.0392 | cell: 360.941.0644  
[rh@oakharbor.net](mailto:rh@oakharbor.net)  
 88 W. Crescent Harbor Road  
 Oak Harbor, WA 98277

**Emma Farm/CMC Wagyu**

Christina Hall  
 970.596.2654 | [Cmccalves111@gmail.com](mailto:Cmccalves111@gmail.com)  
 Olathe, CO

**Golden Age Farm**

Caleb Schaeffer  
 989.620.6118 | [goldenagecattle@gmail.com](mailto:goldenagecattle@gmail.com)  
 2335 Old Lemons Mill Rd, Lexington, KY 40511  
[www.goldenagefarms.com](http://www.goldenagefarms.com)

**High Hope Ranches**

Sam Frazier  
 15780 155th Ave., Bloomer, WI 54724  
 715.829.2827 | [samfrazier78@gmail.com](mailto:samfrazier78@gmail.com)

**JDH Wagyu**

Joe & Galyann Hoyer  
 64919 Yankton Rd., Villisca, IA 50864  
 C: 712.249.2076 | O: 712.763.4611  
[JoeH@netins.net](mailto:JoeH@netins.net)  
 Herdsman: Tony Orstad, 712.249.6979

**Landgraf Ranch at Walnut Creek**

Kenny Landgraf  
 299 Boyd Road, Red Rock, TX 78662  
 572.633.0154 | [kenny@landgraf ranch.com](mailto:kenny@landgraf ranch.com)  
[www.landgraf ranch.com](http://www.landgraf ranch.com)

**Old Stone Wagyu**

John Dorshorst  
 608.852.7321 | [john.dorshorst@gmail.com](mailto:john.dorshorst@gmail.com)  
 Junction City, WI

**Platinum Beef, South Africa**

Andries Schutte  
 +27 83 309 2333 | [andries17@gmail.com](mailto:andries17@gmail.com)  
 22nd Street, Pretoria, South Africa 0081  
[www.platinumbeef.co.za](http://www.platinumbeef.co.za)

**Prime Wagyu / Strydom Prime Genetics (Pty) Ltd**

Johan Strydom, Owner  
 +447789798945 | [jastrydom@gmail.com](mailto:jastrydom@gmail.com)  
 59 Watt Street, Grodons Bay, South Africa  
[www.PrimeWagyu.co.za](http://www.PrimeWagyu.co.za)

**Prime Valley Farms, LLC**

Courtney & Clem Kums  
 3179 E 500 S., Cutler, IN 46920  
 765.714.8563 | [wagyu@primevalleyfarms.com](mailto:wagyu@primevalleyfarms.com)  
[www.primevalleyfarms.com](http://www.primevalleyfarms.com)

**Ragland Wagyu**

Tommy Ragland  
 256.714.6182 | [raglandwagyu@gmail.com](mailto:raglandwagyu@gmail.com)  
 206 West Limestone Rd., Hazel Green, AL 35750

**Rowe Wagyu**

Earl Rowe  
 PO Box 132, Kingston, AR 72742  
 479.738.7283 | [earl.rowe@hotmail.com](mailto:earl.rowe@hotmail.com)  
[www.rowewagyu.com](http://www.rowewagyu.com)

**Southern Cattle Company**

John Downs | [jdowns0476@yahoo.com](mailto:jdowns0476@yahoo.com)  
 4226 FL-2, Marianna, FL 32446  
 Marketing Rep.: Randy Ratliff, 615.330.2735  
[randy@rrmktg.com](mailto:randy@rrmktg.com)

**Sullivan Farms**

701 Iowa Ave, Dunlap, IA, 51529  
 Marketing Rep.: Randy Ratliff, 615.330.2735  
[randy@rrmktg.com](mailto:randy@rrmktg.com)

**Sumo Wagyu International**

Georgia Finden  
 117 McMullen Rd., Brookfield, QLD 4069, Australia  
 617.3376.9716 | [global@sumowagyu.com](mailto:global@sumowagyu.com)

**Synergy Wagyu**

Loren Ruth  
 446 Stony Run Rd, Spring City, PA 19475  
 484.369.9590 | [Loren@stonyrungenetics.com](mailto:Loren@stonyrungenetics.com)  
[www.synergywagyu.com](http://www.synergywagyu.com)

**Tally Windham Wagyu Ranch**

325.668.6920 | [Twind52519@aol.com](mailto:Twind52519@aol.com)  
 PO Box 1447, Clyde, TX 79510

**Wagyu Florida Inc.**

Stan Potter  
 904.557.3126 [stan@happytrailswalkers.com](mailto:stan@happytrailswalkers.com)  
 85272 Miner Road, Yulee, FL 32097

GENERAL SALE  
 INFORMATION  
 & CONSIGNORS





# MEET THE WAGYU 365 TEAM

Dear Wagyu Enthusiasts,

It is with great pride and pleasure that Wagyu365 welcomes you to the Inaugural Signature Series Wagyu Sale.

The team members of Wagyu365 have worked closely with the AWA in the production of the AWA convention program and sponsorships and we couldn't be more pleased with the amount of interest in the promotion and the betterment of the Wagyu breed. It is evident by the positive response from so many fellow breeders, as to the strong desire to make the AWA the best it can be and keep the Wagyu breed at the highest level.

My hat's off to the hard work of the AWA President, Pete Eshelman, AWA Executive, Robert Williams, AWA Board Member, Desi Cicale and Martha Patterson of the AWA staff for their time and devotion to the AWA Convention. They and so many others have spent countless hours of their time in making this AWA Convention the best it can be for all.

As you review the sale catalog, you will find some of the finest registered Wagyu cattle in the breed. These breeders have worked hard to showcase their genetics to the highest level to highlight in this sale. The consignors have outlined their thoughts on each of their lots and we look forward to showcasing them in the sale. Make plans to join us for this special event on the evening of September 26th. Immediately following the genetic sale, we will have the AWA donation auction where 100% of the proceeds will go either to the AWA and/or the Wagyu Junior Association.

If you have any questions in regard to the sale, please feel free to contact me or any of my team members at Wagyu365.

Best regards,  
Randy Ratliff



**RANDALL O. RATLIFF**  
SALES REPRESENTATIVE  
615.330.2735 | Randy@wagyu365.com



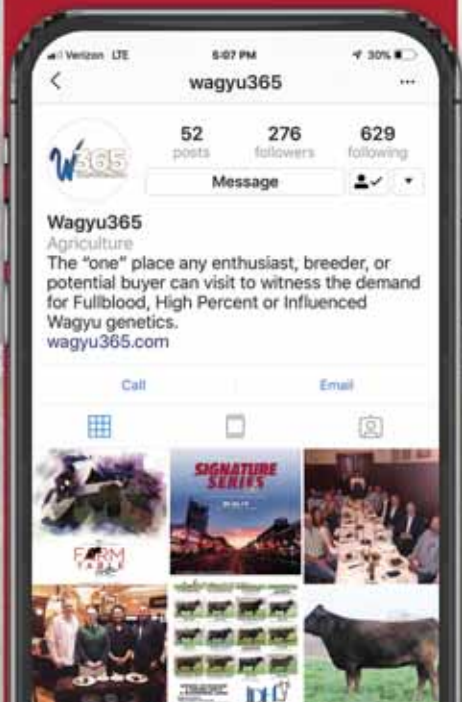
**KILEY MCKINNA**  
SALES REPRESENTATIVE  
402.350.3447 | Kiley@wagyu365.com



**ABBY LANE**  
OFFICE MANAGEMENT  
919.618.8098 | Abby@wagyu365.com



**P.J. BUDLER**  
INTERNATIONAL AFFAIRS  
682.597.0380 | PJ@wagyu365



CONNECT WITH US  
FOLLOW WAGYU365 ON SOCIAL MEDIA ~  
#Wagyumarketingatitsfinest #24/7/365Wagyu  
#alldayeverydaywagyu

To learn more about Wagyu365 events, sale updates and more, visit [Wagyu365.com](http://Wagyu365.com).

WATCH &  
BID LIVE AT



## CONVENIENCE BUYING

Wagyu365 want to make your buying experience easy and convenient!

### 1. VISIT US

You can't beat the experience of seeing your potential new investments in person! We are looking forward to this day of opportunity to view the sale cattle, see old friends, connect with new friends and answer any questions you have about your interests before sale day. We hope you can make it out to Tennessee for the full Convention, but if you can't make it, we've got you covered with quality options to purchase cattle with convenience!

### 2. CALL US IN ADVANCE

With all the quick-messaging technology at our disposal, sometimes picking up the phone is the easiest way to get the information you need! We are happy to have a conversation and walk you through any questions or information you need for sale day to make the best buying decisions for your program. Any member of our team would be happy to talk with you and connect you to the right people and information you need to feel fully informed for sale day. Contact any member of Wagyu365.

### 3. BID ONLINE

If you are unable to make it to Tennessee for the sale, join us online for REAL TIME, LIVE online bidding for the Music City Signature Series Sale. All lots in the sale will be available for viewing prior to sale day and bidding on sale day at [www.wagyu365.com](http://www.wagyu365.com).

### 4. VALUE PURCHASING

This sale combines options from some of the AWA's largest source of registered Wagyu cattle in the US. No matter what your needs are, this offering is sure to add value to an already thriving program and enhance the future of your herd. From commercial options to some of the highest quality genetic influences of the breed — this will be the sale for you.



## BF ITOZURU DOI 45F

FB38341 | 10.1.18 | FULLBLOOD BULL |

ITOZURU DOI 151	ITOKITATSURU	DAI 7 ITOZAKURA
	YASUHIME	NISHIZURU
		YASUMI DOI
		FUJIHIME
MFC MS HISAKO 3-17	WORLD K'S KAGE	TF KIKUHANA
	HISAKO	WORLD K'S REIKO
		JVP FUKUTSURU-068
		WORLD K'S KANETANI

*bf* 1

It is our pleasure to make the following offering available. This bull is sired by ITOZURU DOI 151 who highly is regarded for growth and marbling and semen from this sire is very, very limited in the USA and his genetics (10k + per semen straw) are infamous for the calves it produces. The sire is an F11 carrier, but this bull has all of his unique traits weaned at 515lbs and is a stud! The Dam is also extremely rare and sold for \$46k in the Muddy Flats sale in 2018, weighs in excess of 1,600lbs and is the standard for a full-blood Wagyu phenotype! Sired World K's KAGE who's sire TF KIKUHANA is a SHIMANE sire (ITOZAKURA line) imported by SUMO from Takeda Farm in 1997. He is line bred to one of the most influential SHIMANE sires ever in Japan (DAI NANA ITOZAKURA). This bull helped establish Shogo Takeda as one of the premier breeders in Japan. The Dam of MFC HISAKO 3-17 is HISAKO. HISAKO is 100% TAJIMA and purchased directly from the world K group. HISAKO is sired by JVP FUKUTSURU 068, who is known for extremely high-quality carcass traits as reflected in all progeny tests done in the United States. HISAKO herself has produced a number of well-known sires and valuable females. This is a rare opportunity to own two of the rarest Dam and Sire combinations in the Wagyu breed!

*Collection starting February 2020 at Hawkeye Breeders.*

*Tested clean for Brucellosis, Johnes, Anaplasmosis and Blue Tongue. He has not been given the live virus for EU collection qualifications.*

*Tenderness: VA 5, CL16: Free, F11: Free*

- OPTION 1** Spring Possession (April 1st - August 31st)
- OPTION 2** Fall Possession (September 1 - March 31st)
- OPTION 3** Offering: 2.5% shares - up to 50% ownership for receipt of 100 straws per year
- OPTION 4** International Semen ownerships  
200 units of semen buyer to use as they wish
 

1 - Australia	2 - Canadian
3 - South America	4 - South Africa
5 - Russia	6 - United Kingdom





**DAM, MFC HISAKO 3-17**



**DAM, MFC HISAKO 3-17, AND DAUGHTERS**

## FLUSH ... PICK OF 4 HEIFERS

Selling Choice of A - D.

<b>SANJIROU 3</b>	WORLD K'S MICHIFUKU	MONJIRO 11550 MICHIKO 655635 TANISHIGE 1526 SUZUNAMI 472255
	WORLD K'S SUZUTANI	TF KIKUHANA
<b>MFC HISAKO 3-17</b>	WORLD K'S KAGE	WORLD K'S REIKO JVP FUKUTSURU-068 WORLD K'S KANETANI
	HISAKO	

- CHOICE A** FB37145 35F DOB: 8.18.18  
CL16: F, F11:F, SCD:VA
- CHOICE B** FB37149 39F DOB: 8.23.18  
CL16: F, F11:F, SCD:AA
- CHOICE C** FB38049 43F DOB: 8.31.18  
CL16: F, F11:F, SCD:AA
- CHOICE D** FB38050 44F DOB: 9.17.18  
CL16: F, F11:F, SCD:VA

Bowman Farms has the pick of four Sanjirou 3 heifers up for bid! The sire is Sanjirou 3 highest marbling in the USA! He is sired by World K's MICHIFUKU and World K's SUZUTANI and has been some of the most sought-after semen of 2019 and impossible to find! The Dam is also extremely rare and sought after sold for \$46k in the Muddy Flats sale in 2018, weighs in excess of 1,600lbs and is the standard for a full-blood Wagyu phenotype!. Sired World K's KAGE who's sire TF KIKUHANA is a SHIMANE sire (ITOZAKURA line) imported by SUMO from Takeda Farm in 1997. He is line bred to one of the most influential SHIMANE sires ever in Japan (DAI NANA ITOZAKURA). This bull helped establish Shogo Takeda as one of the premier breeders in Japan. The Dam of MFC HISAKO 3-17 is HISAKO. HISAKO is 100% TAJIMA and purchased directly from the world K group. HISAKO is sired by JVP FUKUTSURU 068, who is known for extremely high-quality carcass traits as reflected in all progeny tests done in the United States. HISAKO herself has produced a number of well-known sires and valuable females. This is a rare opportunity to own two of the rarest Dam and Sire combinations in the Wagyu breed! A pregnancy from this same breeding sold for \$14k in the 2018 Mile High Sale!

*Testing completed on all heifers: Johnes, Blue Tongue, etc.*

*Consigned by* **Bowman Farms,  
Roaring River, NC**

**09.26.19**  
7:45 P.M. C.S.T.  
THE BELL TOWER  
NASHVILLE, TN

HOMOZYGOUS POLLED WAGYU BULL



One of the very few **HOMOZYGOUS POLLED BULLS** in the entire breed!  
His full brother sold for \$80,000 last month where possession is owned by JDH Wagyu.

**SELLING** Full Interest & Full Possession with 300 units of semen.

**BAR V TAZ 5U 754E ET**

PB35483 | 09.08.17 | PB BULL | HOMOZYGOUS POLLED

- |                  |                          |                          |
|------------------|--------------------------|--------------------------|
|                  | BAR R SHIGESHIGETANI 30T | WORLD K'S SHIGESHIGETANI |
| <b>BAR R 52Y</b> | BAR R 16T                | BAR R 68P                |
|                  |                          | BAR R 72P                |
|                  | BAR R 10S                | MISS BAR R 52L           |
| <b>BAR R 5U</b>  | BAR R 13P                | BAR R 7P                 |
|                  |                          | SUZIWONG                 |
|                  |                          | BAR R TAKASURU 1 K       |
|                  |                          | BAR R 29L                |

*3*

BarV Taz 5U 754E is a phenomenal young sire to usher in the new era of Polled Wagyu genetics. He displays tremendous phenotype, is homozygous polled, and is backed by a proven pedigree of polled genetics. His sire, Bar R52Y, is highly proven by the Robbins Island and Poll Wagyu program in Australia. In the last half year Robbins Island has processed more than 230 Bar R 52Y progeny resulting in an amazing average of 8.5 for Marbling and 1047 lbs. for Carcass Weight. That is proven carcass and growth performance! The dam of Tazsuru 753E is the fantastic brood cow Bar R 5U. She sold for \$34,000 through a Bar R sale and has repeatedly proven her value as truly elite brood cow by being the dam of numerous polled AI sires, including several who have been marketed internationally. This list includes the very popular Arimura 30B, 6123, and the red bull, Bar R 4504, who is now Australian owned. As the Wagyu breed moves forward and is incorporated into mainstream beef genetics this bull is what the market will be demanding. Taz 5U 754E is the total package combining carcass traits, growth, polled, recessive-free, and tested AA for SCD. He has it all! This is the bull of the future that you can be part of by owning a semen share interest. Don't miss out on being part of this very unique opportunity! (Breed Seek tested DNA, BW 63#)

*Bar V Taz 5U 754E ET is housed at Hawkeye Breeders (Adel, IA) at this time, along with 300 straws of semen.*

*Consigned by* Bar V Wagyu,  
Abilene, KS





DAM OF LOT 3 & 4, BAR R 5U

**FOUR EMBRYOS (EXPORTABLE)** *4*

PB WAGYU | BLACK | DOUBLE POLLED

- |   |  |  |
|---|--|--|
| <p>BAR R 52Y</p><br><br><br><br><br><br><br><p>BAR R 5U</p> | <p>BAR R SHIGESHIGETANI 30T</p> <p>BAR R 16T</p> <p>BAR R 10S</p> <p>BAR R 13P</p> | <p>WORLD K'S SHIGESHIGETANI</p> <p>BAR R 68P</p> <p>BAR R 72P</p> <p>MISS BAR R 52L</p> <p>BAR R 7P</p> <p>SUZIWONG</p> <p>BAR R TAKASURU 1 K</p> <p>BAR R 29L</p> |
|---|--|--|

Selling one package of Four, Grade 1, Conventional Embryos.

These embryos are sired by the best proven polled bull in the Wagyu breed, Bar R 52Y! 52Y has averaged an incredible 8.5 MS and 1,047 lbs. HCW on 238 head in the Robbins Island Wagyu program. He is sired by none other than Bar R Shigeshigetani 30T and also boasts impressive Breedplan EBVs of \$152 Self Replacing Index, +27 Carcass Weight and +0.2 MS. The dam of the embryos is Bar R 5U, she is the mother of popular and recently deceased polled bull Bar R Arimura 30B! She has recently had a son and full brother to Arimura 30B syndicated for \$80,000. This is a once in a lifetime opportunity to make full siblings to the top polled animals in Wagyu!

*Consigned by* **Bar V Wagyu,  
Abilene, KS**

**09.26.19**  
7:45 P.M. C.S.T.  
THE BELL TOWER  
NASHVILLE, TN

CHOICE OF THREE FULL SISTERS



**SIRE, ECHIGO FARMS MAIFUKU**



**DAM, OLD STONE VOODOO 013D**



**FB25999 - FULL SIBLING TO VOODOO 013D**

**CHOICE OF 3 FULL SISTERS**



Selling pick of three June heifer calves.

<p>KITATERUYASUDO I2810 <b>ECHIGO FARMS MAIFUKU</b> JAPANESE COW (BLACK)</p> <p>SHIGEFUKU J1822 <b>OLD STONE VOODOO 013D</b> CHR MS MICHIFUKU 433</p>	<p>TERUNAGADO I YOSHIMI3</p> <p>DAI 20 HIRASHIGE 287 MORIKITA J141042 WORLD K'S MICHIFUKU CHR MS TAK 102L</p>
---	---

- CHOICE A** U46364 (OLD STONE 049G)  
DOB: June 20, 2019
- CHOICE B** U46365 (OLD STONE 050G)  
DOB: June 23, 2019
- CHOICE C** U46366 (OLD STONE 051G)  
DOB: June 23, 2019

This magical pairing conjures up a double dose of World K's Michifuku through both the maternal line of Takao Suzuki's Kitateruyasudo I ETJ003 son, the illustrious next generation sire Echigo Farms MAIFUKU, as well as Old Stone's massive young donor cow, VOODOO 013D. Just like her dam, the prolific CHR Ms Michifuku 443, VOODOO 013D is building a brood cow legacy of her own through her reproductive proficiency, high growth, and outcross potential represented by the Kedaka influence of Shigefuku ETJ005. She traces back to the same enchanting JVP Chisahime 662 maternal line responsible for genomic super stars including Macquarie Wagyu F C1255 as well as the franchise female, BAR R Miss 2N, via World K's Michifuku, Takazakura, and Kitaguni Jr! With bloodlines reminiscent of the hidden Australian treasure, Blue Mountains Wagyu Mainokuni, this pick of three is one special brew!

Calves all parent verified by SNP and tested free of all five genetic recessives through the American Wagyu Association. Registration will be completed by seller at weaning. F.O.B. Old Stone Farms, pickup within 45 days of sale. Health papers provided for shipping anywhere ConUS. Additional housing and donor options available for this purchase through GenOvations, Lodi, WI.





**SIRE, SUMO CATTLE CO MICHIFUKU F126**



**MATERNAL GRANDAM,  
STONYRUN SHI HIKOKURA 15**



**DAM, SYN SYNERGY  
ITOMICHI HIKO 35C**

## FOUR EMBRYOS (EXPORTABLE)

FULLBLOOD WAGYU | BLACK | HORNED

*6*

WORLD K'S MICHIFUKU  
SMO SUMOCATTLE CO MICHIFUKU F126  
SMO SUMO CATTLE CO HANA C152

TF ITOMICHI 1/2  
SYN SYNERGY ITOMICHI HIKO 35C  
STONYRUN SHIG HIKOKURA 15

MONJIRO 11550  
MICHIKO 655635  
TF ITOHANA 2  
SMO SUM MICHIFUKU U2208  
ITOMICHI  
DAI 2 KINTOU  
WOLD K'S SHIGESHIGETANI  
LMR MS ITOZURUDOI 8164U

Selling one package of Four, Grade 1, Conventional Embryos.

This embryo lot is an incredible opportunity to invest in world leading genetics. These are the first embryos to be offered in the US that are sired by the breed-leading Australian sire, Sumo Cattle Co Michifuku F126! On Australia's Breedplan, when selecting for sires with EBVs of 80% reliability or higher for MS, F126 ranks 5th out of 95 sires at \$212 SRI. The maternal side of this offering is equally powerful – the amazing Hikokura maternal line from Master Breeder Shogo Takeda. The Hikokuras have produced exceptional bulls in the US and Australia, including the sensational proven bulls Mayura Itoshigenami Jnr, Coates Itoshigenami G113, and Sumo Cattle Co Michifuku F154. The dam of the embryos is a powerful daughter of Itomichi 1/2 and the maternal grandam is Stonyrun Shig Hikokura 15, who topped the Synergy Sale at \$56,000 for the second highest price ever for a female at auction in the US, purchased by Brian Stamps, G\$ Ranch. You can't go wrong with this complementary mating of elite genetics.

*Consigned by* Synergy Wagyu, Spring City, PA  
and Platinum Beef, South Africa

09.26.19

7:45 P.M. C.S.T.  
THE BELL TOWER  
NASHVILLE, TN





SIRE, ITOZURU DOI 151

## FIVE EMBRYOS (EXPORTABLE)

7

FULLBLOOD WAGYU | BLACK | HORNED

ITOZURU DOI 151	ITOKITATSURU YASUHIME	DAI 7 ITOZAKURA NISHIZURU YASUMI DOI FUJIHIME
CHR MS SANJIROU 909F	SANJIROU 3 CHR MS KITAGUNI 586	WORLD K'S MICHIFUKU WORLD K'S SUZUTANI WORLD K'S KITAGUNI JR. CHR YASUFUKU 486

*Consigned by* Crescent Harbor Ranch,  
Oak Harbor, WA

### Embryos are Exportable to EU only.

Selling one package of Five, Grade 1, IVF Embryos.

Crescent Harbor Ranch is proud to offer these five embryos sired by the Legendary Itozuru Doi 151 FB 3685. The donor dam to these embryos is CHR Ms Sanjirou 909F, FB 44432 who is sired by WKS Sanjirou 3, the number 1 marbling sire in the 2017 WSU sire summery, the donors dam is sired by the great WKS Kitaguni Jr.

*Stored at Vytelle Embryo transfer center, 80383 N Highway 395, Hermiston, Or. | 541.289.7993*

## GENERAL SALE TERMS

**TERMS AND CONDITIONS ...** Cattle will sell under the standard terms and conditions. All consignors in the Signature Series Sale sell their lots 100% fully guaranteed. Any announcements from the sale podium will take precedence over the printed sale catalog.

**EMBRYO GUARANTEE ...** Any embryos sold as stated and are not guaranteed on conception. All embryo lots will have statements regarding each with their descriptions.

**DESCRIPTIONS AND FOOTNOTES ...** Each consignor wrote the descriptions that pertained to their lot or lots. Wagyu365 does not take any responsibility, in regards, to the guarantee of what was written. Any adjustments or corrections will be made at the time of the sale.

**REGISTRATIONS, TRANSFERS AND EMBRYO TRANSFERS ...** Within 60 days of the date of the sale, the cattle sold will be transferred (registrations) to the new owners through the offices of the American Wagyu Association. The fee is paid for by the seller.

**PAYMENT ...** All lots must be paid for immediately following the conclusion of the Signature Series Sale unless prior payment arrangements have been made with any representative of Wagyu365. Buyers are welcome to pay by credit card. If so, you will be charged a 3% fee on the total sum of your purchase.

**DELIVERY ...** Buyers are responsible for any shipping cost pertaining to embryo purchases and transportation of the live cattle. Wagyu365 buyers and sellers will work together to make this the easiest and most efficient process possible.

**LIVESTOCK MORTALITY INSURANCE ...** Any representative of the Wagyu365 team can assist any buyer with insurance regarding their purchases.

**HEALTH PAPERS ...** All live cattle sold will be accompanied with an appropriate health paper for immediate shipment. Additional health testing may be required from some locations.

**GENETIC CONDITIONS ...** Log onto [www.wagyu.org](http://www.wagyu.org), go to the animal search and results of the genetic testing will be found on the lot selling.

**LIABILITY ...** All persons attending the sale, do so at their own risk, legal or otherwise for their safety. The consignors, sale management, and sales staff assume no responsibility or liability for property loss or any accidents that may occur.



## FLUSH ... HARUKI NAMI B266



FB20430 | 07.18.14 | FB COW | HORNED

MONJIRO 11550  
**WORLD K'S HARUKI 2**  
 SAKURA 2 741638

ITOSHIGENAMI  
**CHR MS YASUFUKU 189R**  
 CHR MS YASUFUKU 189R

YASUMI DOI  
 HARUMI 1086409  
 KENSHIN 902  
 ITOHIME 3 545978  
 SHIGESHIGENAMI 10632  
 FUKUYUKI  
 WORLD K'S YASUFUKU JR  
 CHR MS MICHIFUKU 030H

Sale Terms - Buyer supplies semen and gets Five, Grade 1 Conventional Embryos. Seller pays for the flush expense and will work with buyer on prices per embryo if she produces over five. Trans Ova Genetics in Missouri is in charge of the flush work.

This cow is not to be missed! Her good looks are backed by a spectacular pedigree. She is backed by the breed leading Hikokuras with this particular line producing popular Crescent Harbor bulls Kitaguni 07K and Takazakura 101L. Her sire, Haruki II, is highly proven and provides excellent growth traits. Haruki II is a Monjiro son, and in turn Haruki II is the sire of the great Shigesigetani. Tracing the sire pathway shows three of the breed's elite carcass bulls stacked on top of each other - Itoshigenami TF 148, Yasufuku Jr, and Michifuku. The fourth dam of this lot is the great Crescent Harbor cow, Kikuhanahime, who is a daughter of TF Hikohime 3/2.

The TF Hikohime 3/2 female line has produced Australian mega sires Sumo Cattle Co Michifuku F154 and Coates Itoshigenami G113. This donor cow represents an opportunity to get into one of the elite maternal lines in Wagyu. The product of these embryos could be the next super sire of the Wagyu breed!

Consigned by **Sullivan Farms, Dunlap, IA**

09.26.19

7:45 P.M. C.S.T.  
 THE BELL TOWER  
 NASHVILLE, TN





**SIRE,  
BAR R ZURUTANI D64**

## THREE EMBRYOS (EXPORTABLE)

PUREBRED WAGYU | POLLED

BAR R 52Y  
**BAR R ZURUTANI D64**  
BAR R 57X

BAR R 72P  
**BAR R 16T**  
MISS BAR R 52L

BAR R SHIGESHIGETANI 30T  
BAR R 16T  
LMR ITOZURUDOI 8161U  
BAR R 16T  
BAR R MICHISURU 2K  
MISS BAR R 22G  
JVP FUKUTSURU-068  
MISS BAR R 22G



**Embryos are Exportable to Canada, South Africa & Australia - NOT to EU.**

Selling one package of Three, Grade 1, Conventional Embryos.

These are the first embryos to be released from the heterozygous polled dam of Bar R 52Y (Taz). Hammond Farms in Australia who ranked Kanadagene 100 (full brother to Sanjiro and Sanjiro 3) as their top carcass bull before using Bar R 52Y on over 5,000 cows, now consider 52Y their top dollar indexing carcass bull.

These embryos are sired by Bar R Polled Zurutani D64 a homozygous polled son of Bar R 52Y. D64 is fast becoming the most popular young bull in the Wagyu breed with 118 registered calves in the last two years. These double bred 52Y embryos have a 22% coefficient of inbreeding meaning that 22% of the genes are homozygous, resulting in very consistent carcass traits from their offspring. The 16T cow is a carrier of F11. All calves will be polled and 1/2 have the opportunity to be homozygous polled out of high carcass genetics. Embryos were conventionally collected and are exportable. Sold by Bar R Cattle Co. and Southern Cross Cattle Co.

*Consigned by* **Bar R Cattle Co.,  
Pullman, WA**





SIRE, BAR R SHIGESHIGETANI 30T

**THREE EMBRYOS**

FULLBLOOD WAGYU | BLACK | HORNED

10A

**THREE EMBRYOS**

FULLBLOOD WAGYU | BLACK | HORNED

10B

**THREE EMBRYOS**

FULLBLOOD WAGYU | BLACK | HORNED

10C

WORLD K'S SHIGESHIGETANI  
**BAR R SHIGESHIGETANI 30T**  
 BAR R 68P

BAR R MICHISURU 2 K

MISS BAR R 18H

WORLD K'S HARUKI 2  
 WORLD K'S SUZUTANI  
 BAR R MICHISURU 2 K  
 MISS BAR R 18H  
 WORLD K'S MICHIFUKU  
 JVP MS FUKUSHIGE T10E  
 BLUE ROCK HARUKI  
 JVP MS. KIKUSHIGE 24E

Selling three packages of three embryos.

The sire of these embryos is the best all-round bull Jerry Reeves believes he has ever bred, Bar R Shigeshigetani 30T. 30T is a breed leading sire for Marbling, Rib Eye Area, and Hot Carcass Weight on the 2017 WSU Sire Summary EPD's. It doesn't get any better than that! The dam of these embryos is Bar R 68P, who is the none other than the mother of Bar R Shigeshigetani 30T! This is linebreeding at its finest concentrating the potent potential for Marbling, Rib Eye Area, and Carcass Weight that 30T already possesses. Don't miss this chance to make a sibling to the legendary Bar R Shigeshigetani 30T!

*Consigned by* **Southern Cattle Company**  
 Marianna, FL

**09.26.19**  
 7:45 P.M. C.S.T.  
 THE BELL TOWER  
 NASHVILLE, TN

FULLBLOOD BULL OF CHOICE



**LOT 11A -  
PV HIRASHIGETAYASU 128F**



**LOT 11B -  
PV ROTTO 228E ET**



## PV HIRASHIGETAYASU 128F ET <sup>1A</sup>

FB34912 | 03.06.18 | HORNED | FB BULL | BLACK

DAI 20 HIRASHIGE 287  
HIRASHIGETAYASUJ2351  
DAI 5 YURUHIME

JVP FUKUTSURU-068  
CHR MS FUKUTSURU 258R  
SUZUTAKA 1

KEDAKA 7212  
DAI 13 HIRASHIGE  
TAYASUHUKU  
YURIKO 795455  
DAI 2 YASUTSURU 774  
TERUYASU 649663  
WORLD K'S TAKAZAKURA  
WORLD K'S SUZUTANI

## PV ROTTO 228E ET

FB34741 | 08.29.17 | HORNED | FB BULL | BLACK

DAI 20 HIRASHIGE 287  
HIRASHIGETAYASUJ2351  
DAI 5 YURUHIME

WORLD K'S SANJIROU  
CHR MS SANJIROU 318  
SUZUTAKA 2

KEDAKA 7212  
DAI 13 HIRASHIGE  
TAYASUHUKU  
YURIKO 795455  
WORLD K'S MICHIFUKU  
WORLD K'S SUZUTANI  
WORLD K'S TAKAZAKURA  
WORLD K'S SUZUTANI

Since Japanese Black Wagyu is a breed offering more multifaceted opportunity than any other breed we know of, we find it fitting to offer buyers a choice of one of Prime Valley Farms young, elite, 100% fullblood black Wagyu bulls. A quick review of the pedigree of these bulls catches the attention of any astute Wagyu breeder. We have not in recent memory seen an animal with these upstream and foundational genetics sell publicly; every animal at the source of these bull's 4-generation pedigree was born in Japan!! This is truly a rare and exciting opportunity to add a herd sire to your program that brings with him the certainty of a pedigree stacked with proven, elite bloodlines.

On the sire side of these bulls is the famous and unassailable ETJ 001 HIRASHIGETAYASU J2351 (FB670). He is an excellent mix of Tajima, Kedaka and Okayama strains. Hirashigetayasu has not only been proven elite thousands of times over by his importer Westholme but he was tested and proven by the meticulous Japanese prior to his exportation. After a progeny test in which 80% of his steers gained the highest grade of A5, the Zenwa (Japanese Wagyu Registry) deemed him qualified to be labeled a Hongen Certified bull. His half-brother, Hirashigekatsu, is the most utilized bull in Japan for making large, ultra-premium carcasses. Currently, there are only eight (8) proven sires in the Australian Wagyu herdbook who possess a "Self-Replacing Index" and a "Fullblood Terminal Index" that match Hirashigetayasu. As the sire of these lots, Hirashigetayasu is a premier influence bull who brings larger frames, growth, milk and balance to his offspring... all while maintaining superior and reliable marbling. A producer who has fed out hundreds of Wagyu once said: "every pedigree must have 001 in it somewhere"!

On the dam side of these bulls you find your choice; the maternal grandsire World K's Sanjiro or JVP Fukusuru 068. Little can be said or acclaimed to either famous, elite sire that has not already been celebrated. They are both very highly sought after and proven bulls for generating top-shelf marbling and carcass quality. We see Fukusuru 068 blood as bulletproof and extremely high marbling. Sanjiro is also excellent marbling but is also one of the few foundation bulls who transmits massive ribeye size to his offspring. As a last point regarding these pedigrees (but likely the most remarkable, exciting and reputable) is the presence of the queen of the Wagyu Breed, World K's Suzutani herself. Suzutani is elite on every level and a required bloodline in every herd. She is the dam of uber-proven sires including WORLD K'S KANADAGENE 100, WORLD K'S SANJIROU, WORLD K'S SHIGESHIGETANI, SANJIRO 3 and more!

At Prime Valley Farms, we guarantee transparency and stand behind every animal we sell. Our bulls are docile, and hand fed daily. These bulls are guaranteed to leave our farm free and clear of: Johnes Disease, BVD, Trichomoniasis, Neospora and Anaplasmosis. Both bulls have recently passed breeding soundness exams (BSE). They are ready to breed and guaranteed to succeed!

*Genetic Condition Status: B3F, CHSF, CL16F, F11F, F13F*

Consigned by Prime Valley Farms,  
Cutler, IN

09.26.19  
7:45 P.M. C.S.T.  
THE BELL TOWER  
NASHVILLE, TN





## JDH 17F AI

FB36168 | 04.12.18 | HORNED | FB BULL | BLACK

12  
at

TF KIKUHANA  
LMR TOSHIRO 1/3  
WORLD K'S REIKO

CHR MS ITOZURU DOI 364  
ESF KOBE 108-255  
MPCC 108B

ITOHANA  
NAYORI 1  
KITAGUNI 7/8  
WORLD K'S OKAHANA  
ITOZURU DOI  
CF504  
WORLD K'S SANJIROU  
BAR R 57T

The phenotype of this bull is fantastic, he has a perfectly straight top line and is long, deep, and balanced throughout. This lot stands of an ideal set of feet and legs and to top it all off has one of the best ADG in the JDH herd. He is sired by the growth specialist LMR Toshiro 1/3 and backed by TF 151, two crosses of Sanjiro, and the World K's Nakagishi cow on the maternal side. His great grandam, Bar R 57T sold for \$15,000 in the 2016 Bar R Production Sale.

BW: 72 lbs.; Adj. WW: 480 lbs.; YW: 844 lbs. (on 05.30.19); Adj. YW: 791 lbs.  
SS346

# LRX MICHIFUKU 0311F 17F AI

13  
AI

FB33542 | 03.11.18 | HORNED | FB BULL | BLACK

WORLD K'S  
MONJIRO 11550  
MICHIFUKU  
MICHIKO 655635

CX4 MS  
TF ITOMICHI 1/2  
YASUKO 9018W-310C  
TBR YASUKO 9018W

YASUMI DOI  
HARUMI 1086409  
TANISHIGE 1526  
MICHIFUKU 494290  
TIOMICHI  
DAI 2 KINTOU  
LMR FUKUTSURU 611S  
BR MS SANJIRO 0630

What can be said that has not already been said about LRX Michifuku 0311F's sire, WKS, Michifuku (FB1615)? Sire Michifuku is thought to be the best carcass bull ever to leave Japan. In the 2017 National Wagyu Sire Summary, he had more progeny than any other bull times two. He held leading rankings in Marbling EPD's, Rib Eye Area EPD's, and External Fat EPD's. LRX Michifuku 0311F's grandsire is Monjiro (FB201) 11550, line-bred to Tajima J105, great grandsire of Yasumi Doi.

LRX Michifuku 0311F's dam is CX4 MS Yasuko 9018W-310C (FB21878). This female and her 2019 bull calf (U44572 - also sired by Michifuku) were the top selling cow / calf pair in the 2019 Passion for Prime Sale for \$8,000. This dam is stacked with foundation genetics and comes out of TBR Yasuko 9018W, who's pedigree is a who's who in Wagyu. The extraordinary bull Fukutsuru 068 and WKS Sanjirou appear on 9018W's dam side and on the grandsire side you have TF Itomichi 1/2.

LRX Michifuku 0311F is an exemplary upcoming herd bull with outstanding genetic history and meat production potential.

*Bull is free of all genetic defects. SCD / TEND: AA / 6*



*Consigned by* Landgraf Ranch  
at Walnut Creek,  
Red Rock, TX



09.26.19

7:45 P.M. C.S.T.  
THE BELL TOWER  
NASHVILLE, TN





## GAF SUZANNE 12D

FB26686 | 03.29.16 | HORNED | FB COW | BLACK

14

MONJIRO 11550  
 WORLD K'S HARUKI 2  
 SAKURA 2 741638

WORLD K'S MICHIFUKU  
 MS CHR SUZUTANI 252T  
 SUZUTAKA 2

YASUMI DOI  
 HARUMI 1086409  
 KENSHIN 902  
 ITOHIME 3 545978  
 MONJIRO 11550  
 MICHIKO 655635  
 WORLD K'S TAKAZAKURA  
 WORLD K'S SUZUTANI

Here is a truly elite female with a powerful pedigree, outstanding phenotype and her entire productive life in front of her. Her deceased dam has produced over \$41,000 in offspring sales for us in just the last three years. This female is sired by the world-renowned Haruki II bull, and can trace the bottom side of her pedigree directly back to the famous Suzatani cow. There is tremendous prestige in this female's pedigree, and she just gets more attractive when you study her picture and video. She is a larger framed cow, with excellent depth and spring of rib. Watch her on the move and observe her move out with a functional design that is indicative of a long productive life as a donor and brood cow. Full siblings to this young cow have sold at public auction for \$17,000, \$7,500 and \$5,000 respectively. She sells with a September born calf on side sired by CC Hirashige 4821. The service sire is an extremely exciting bull from the Celina Cattle Company program in Texas. He is a phenotypic standout that sires cattle with great look and amazing carcasses. Semen is limited on this bull, so acquiring a live calf sired by him is a great opportunity!

**LOT 14A - GAF Suzanne 964G** - Fullblood heifer calf born 9.01.19, sired by CC Hirashige 4821 (FB21209). BW: 64 lbs.

*Consigned by* Golden Age Farm,  
 Lexington, KY

**ESF KOBE 108-255**

15  
*lot*

FB13516 | 04.10.12 | HORNED | FB BULL | BLACK

<p><b>CHR MS</b> ITOZURU DOI 364 CF504</p> <p><b>MPCC 108B</b> WORLD K'S SANJIROU BAR R 57T</p>	<p>ITOKITATSURU YASUHIME KENSEI 108 ITOSHIGENAMI WORLD K'S MICHIFUKU WORLD K'S SUZUTANI WORLD K'S SANJIROU WORLD K'S NAKAGISHI 5</p>
---	--

Itozurudo TF 151 is a highly sought-after breed legend. The sire of this lot is a TF 151 son that has made some outstanding progeny of his own. He was a feature herd sire in the Empire State herd. The bottom side of this pedigree traces back to another popular, feature cow - Nakagishi, who is behind the well-known Bar R sire, 56T. This line shows a unique double up of Sanjiro which will lock carcass traits into this pedigree. This lot is a super opportunity to get into the Nakagishi line.

**LOT 15A - 239G** - Fullblood heifer born 5.10.19, sired by OAO7 (FB16603).

*Consigned by* JDH Wagyu,  
Villisca, IA



**JDH MS GENESIS 199D ET**

16  
*lot*

FB30230 | 05.14.16 | HORNED | FB BULL | BLACK

<p><b>GENESIS</b> JVP KIKU SHIGE 529E</p> <p><b>QUEENFUJI SHIG</b> QUEENFUJI</p>	<p>ITOMORITAKA J2703</p> <p>WORLD K'S SHIGESHIGETANI</p> <p>ITOHIRASHIGE DAI 6 OEFUJII J565554-KURO KOH JVP KIKUYASU-400 JVP KIKUHANA 298 WORLD K'S HARUKI 2 WORLD K'S SUZUTANI INAKA YAMA UTSUKUSHI QUEEN</p>
--	--

This is an exciting young cow with loads of potential that is just beginning to mature and enter her prime years. With the growth bull, Genesis, as her sire she can be confidently mated to most any high Tajima carcass trait bulls to produce high quality carcasses that will also maintain size and growth. Her pedigree is greatly enhanced with highly proven Suzutani son, Shigeshigetani, as her maternal grandsire. To increase her value even more, she comes from the highly proven Okutani female line and has elite sires such as Michifuku and Haruki II in her extended pedigree. As an added bonus, she sells with her daughter sired by the highly proven carcass-maker, Yasufuku Jr. This cow/calf pair holds much promise as a smart genetic investment!

**LOT 16A - 760G** - Fullblood heifer born 8.17.19, sired by World K'S Yasufuku Jr. (FB5061).

*Consigned by* JDH Wagyu,  
Villisca, IA





OPEN HEIFERS



**LOT 17 -  
BRG NAMIKAWA 59F**



**LOT 18 -  
BRG SHIGESHIGETANI 72F**



**LOT 19 -  
JDH MS OAO7 294F**

## BRG NAMIKAWA 59F

17

FB37321 | 06.03.18 | HORNED | FB COW | BLACK

BAR R SHIGESHIGETANI 30T BAR R NAMIKAWA 63Y BAR R 2P	WORLD K'S SHIGESHIGETANI BAR R 68P BAR R TAKASURU 1 K BAR R MISS 53J ITOZURU DOI CF 503 ITOMORITAKA J2703 UTSUKUSHII
372 BRG 151 ITOSURU DOI BRG Y1362 SC ITOMOUTSU 77	

This young heifer brings a great genetic foundation to build upon. She descends from the legendary Okutani maternal line with cows like Utsukushi and Fujiko up close in her pedigree. This provides an exceptional genetic foundation for this heifer. Her sire, Namikawa 63Y, is proving to be a profitable bull from the Bar R breeding program. Her maternal grandsire is a son of the Wagyu legend, itozurudoit TF151. Beyond that are the growth sire, It-omoritaka, and the all-time great carcass bull, Michifuku. These genetics have laid all of the groundwork. Invest in this heifer to great returns for many years to come.

Consigned by **Black Rain Genetics,  
Villisa, IA & Blair, NE**

## BRG SHIGESHIGETANI 72F

18

FB41873 | 05.24.18 | HORNED | FB COW | BLACK

WORLD K'S SHIGESHIGETANI MFC SHIGESHIGETANI 2-12 MFC MS ITOSURU DOI 8-1	WORLD K'S HARUKI 2 WORLD K'S SUZUTANI ITOZURU DOI CF502 ITOHIRASHIGE DAI 6 OEFUJII J56554-KURO KOH WORLD K'S MICHIFUKU WORLD K'S OKUTANI
ITOMORITAKA J2703 SC ITOMOUTSU 77 UTSUKUSHII	

Here is an open heifer that will bring total performance. She possesses a wonderful balance of carcass traits and growth. Carcass traits are emphasized through her sire, a Shigeshigetani son, and Michifuku, who is her maternal great-grandsire and produces some of the largest Rib Eyes in the Wagyu breed. Itomoritaka and Haruki II bring growth to the pedigree. Not only does this heifer have a great sire stack, but she has two highly sought after females of the breed on her maternal side, Fujiko and Okutani. Fujiko and Okutani are both highly proven brood cows that give this heifer a tremendous genetic foundation.

Consigned by **Black Rain Genetics,  
Villisa, IA & Blair, NE**

## JDH MS OAO7 294F

19

FB41873 | 08.27.18 | HORNED | FB COW | BLACK

ECHIGO FARMS MAIFUKU OAO7 ECHIGO FARMS F B1002	KITATERUYASUDOJI J2810 JAMPANESE COW ITOMORITAKA J2703 WESTHOLME AYAKA V13 WORLD K'S HARUKI 2 WORLD K'S SUZUTANI LMR MICHIFUKU 607F LMR MS FUKUTSURU 606S
WORLD K'S SHIGESHIGETANI JDH 233D ET LMR MS MICHIFUKU 607S 81	

This well-bred young heifer boasts a desirable, unique pedigree. Her sire is a son of the Australian bull, Maifuku, who excels in Rib Eye Area. You will not find much genetics available in the US from this particular line. Tracing this heifer's maternal line leads you back to the original Japanese import, Okutani. The performance of Okutani genetics are becoming legendary as they consistently produce high end carcasses. This heifer will carry on the tradition with great carcass sires in her pedigree, including the highly sought after Shigeshigetani, and bulls such as Michifuku and JVP Fukutsuru 068.

Consigned by **Black Rain Genetics,  
Villisa, IA & Blair, NE**

09.26.19

7:45 P.M. C.S.T.  
THE BELL TOWER  
NASHVILLE, TN





DAM, SUMO CATTLE CO. FUKU J216

SIRE OF LOTS 20, 21 & 22,  
POLL WAGYU MIDNIGHT M0775



### THREE EMBRYOS (DOMESTIC ONLY) <sup>20</sup>

PUREBRED WAGYU | SIRE IS POLLED | BLACK | DAM IS FULLBLOOD

MAYURA ITOSHIGENAMI JNR  
POLL WAGYU MIDNIGHT M0775  
ISLAND WAGYU B2083

SUMO CATTLE CO MICHIFUKU F154  
SUMO CATTLE CO. FUKU J216  
SUMO CATTLE CO NAMI D108

ITOSHIGENAMI  
MAYURA DAI NI KINNTOU 1  
TWA ICHIRYUNO ET  
ISLAND WAGYU T405 ET  
WORLD K'S MICHIFUKU  
SUMO CATTLE CO TANI C016 (AI) (ET)  
SUMO ITOSHIGENAMI X0081  
SUMO DOI W0076 (AI) (ET)

Consigned by **Sumo Wagyu,  
Australia &  
Prime Wagyu,  
South Africa**

Selling one package of Three, Stage 5/ Grade 1 Embryos.

These purebred Wagyu embryos have a combination of some of the best fullblood Wagyu and polled Wagyu genetics available in the world. Sired by heterozygous Poll Wagyu bull MIDNIGHT M0775, son of champion sire Mayura Itoshigenami Jnr, who has proven himself as a consistent marbling king (M/S EBV +2.5). The sire Midnight M0775 has huge potential to deliver standout carcass outcomes, with the following results recorded from 6 Midnight siblings slaughtered at 28 months of age after nine months on feed: Ausmeat MSA 8.7 Avg HSCW 446kg. The donor female SUMO FUKU J216 is 40% Tajima and 60% Shimane/Tottori and is one of Sumo Wagyu's top 1% ranked females, sired by elite Bull Sumo Michifuku F154. Sumo Michifuku F154 is a proven carcass performer with an average M/S of 8.6 and CWT of 463kg recorded across 21 analysed carcasses. The donor female J216's pedigree also contains genetics from Sumo's most awarded bull Sumo Itoshigenami X81. This champion carcass bull sired the Grand champion carcass winner of the 2014 AWA branded beef competition and was the grandsire of the 2018 Gold medal winner. The resulting embryos have a notable top 5% EBV for marble score (+1.6) with the added benefit of the polled advantage.

Buyer pays for shipping. Embryos are located at The Gene Source, 825 Jahn Lane, Schulenburg, TX 78956. Contacts: Dave Allan | 979-561-7115 | dave@thegenesource.com



DAM, SUMO CATTLE CO FUKU K174

### THREE EMBRYOS (DOMESTIC ONLY) <sup>21</sup>

PUREBRED WAGYU | SIRE IS POLLED | BLACK | DAM IS FULLBLOOD

MAYURA ITOSHIGENAMI JNR  
POLL WAGYU MIDNIGHT M0775  
ISLAND WAGYU B2083

SUMO CATTLE CO MICHIFUKU F154  
SUMO CATTLE CO FUKU K174  
SUMO CATTLE CO NAMI E071 (ET)

ITOSHIGENAMI  
MAYURA DAI NI KINNTOU 1  
TWA ICHIRYUNO ET  
ISLAND WAGYU T405 ET  
WORLD K'S MICHIFUKU  
SUMO CATTLE CO TANI C016 (AI) (ET)  
SUMO ITOSHIGENAMI X0081 (AI) (ET)  
COATES NAMI A089

Consigned by **Sumo Wagyu,  
Australia &  
Prime Wagyu,  
South Africa**

Selling one package of Three, Stage 5/ Grade 1 Embryos.

These purebred Wagyu embryos have a combination of some of the best fullblood Wagyu and polled Wagyu genetics available in the world. Sired by heterozygous Poll Wagyu bull MIDNIGHT M0775, son of champion sire Mayura Itoshigenami Jnr, who has proven himself as a consistent marbling king (M/S EBV +2.5). The sire Midnight M0775 has huge potential to deliver standout carcass outcomes, with the following results recorded from 6 Midnight siblings slaughtered at 28 months of age after nine months on feed: Ausmeat MSA 8.7 Avg HSCW 446kg. The donor female SUMO FUKU K174 has a well-balanced genetic pedigree of 55% Tajima and 44% Shimane/Tottori. She has a notable top 1% ranked marble score EBV +1.7 which has been inherited from a combination of high Tajima foundation sires including Sumo most awarded bull: Itoshigenami X81: SUMFX0081. This champion carcass bull sired the Grand champion carcass winner of the 2014 AWA branded beef competition and was the grandsire of the 2018 Gold medal winner. The resulting embryos have a notable top 5% EBV for marble score (+1.5) with the added benefit of the polled advantage.

Buyer pays for shipping. Embryos are located at The Gene Source, 825 Jahn Lane, Schulenburg, TX 78956. Contacts: Dave Allan | 979-561-7115 | dave@thegenesource.com

# THREE EMBRYOS (DOMESTIC ONLY) <sup>22</sup>

PUREBRED WAGYU | SIRE IS POLLED | DAM IS FULLBLOOD

MAYURA ITOSHIGENAMI JNR  
POLL WAGYU MIDNIGHT M0775  
ISLAND WAGYU B2083

ITOSHIGENAMI  
MAYURA DAI NI KINNTOU 1  
TWA ICHIRYUNO ET  
ISLAND WAGYU T405 ET  
ITOSHIGENAMI (IMP USA)  
SUMO MICHIFUKU U2208 (AI) (ET)  
TF TERUTANI 40/1 (IMP USA) (AI) (ET)  
TF HIKOHIME 34/3 (IMP USA) (ET)

SUMO CATTLE CO ITOSHIGENAMI C0158  
SUMO CATTLE CO NAMI G195  
SUMO CATTLE CO TANI C099 (AI) (ET)

Selling one package of Three, Stage 4/ Grade 1 Embryos.

These purebred Wagyu embryos have a combination of some of the best fullblood Wagyu and polled Wagyu genetics available in the world. Sired by heterozygous Poll Wagyu bull MIDNIGHT M0775, son of champion sire Mayura Itoshigenami Jnr, who has proven himself as a consistent marbling king (M/S EBV +2.5). The sire Midnight M0775 has huge potential to deliver standout carcass outcomes, with the following results recorded from 6 Midnight siblings slaughtered at 28 months of age after 9 months on feed: Ausmeat MSA 8.7 Avg HSCW 446kg. The donor female SUMO NAMI G195 is a genetically well-balanced animal with a 60% Tajima and 40% Shimane/Tottori pedigree. G195 has an outstanding top 1% EBV for carcass weight (+48kg) and maintains an excellent marble score EBV of +1.0. She is sired by elite bull Sumo Itoshigenami C158: SMOFC0158, who is the sire to one of highest ranked bulls in Australia: Coates Itoshigenami G113:CCOFG0113. The resulting embryos are of an excellent standard ranking in the top 10% according to Self-replacing index, Full-blood Terminal Index and F1 terminal index.

Buyer pays for shipping. Embryos are located at The Gene Source, 825 Jahn Lane, Schulenburg, TX 78956. Contacts: Dave Allan | 979-561-7115 | dave@thegenesource.com

*Consigned by*

Sumo Wagyu,  
Australia &  
Prime Wagyu,  
South Africa

DAM, SUMO CATTLE CO NAMI G195



AMERICAN WAGYU ASSOCIATION, INC.

PO Box 1115, Post Falls, ID 83877 | PHONE: 208.262.8100 (Reception) | FAX: 208.292.2670 | EMAIL: office@wagyu.org

Physical Address for Deliveries (Fedex/UPS), University of Idaho Research Park  
721 S Lochsa St, Suite 120 | Post Falls ID 83854

OFFICE HOURS: 8:00 a.m. - 4.30 p.m., Pacific Time Weekdays

09.26.19

7:45 P.M. C.S.T.  
THE BELL TOWER  
NASHVILLE, TN



CHOICE OF EMBRYOS



**DAM, UKB MS UMEHOMARE 702 I (BE)**



**SIRE OF LOT 23A EMBRYOS, HB BIG AL 502**



**SIRE OF LOT 23B EMBRYOS, SHIGEMARU**



**SIRE OF LOT 23B EMBRYOS, TAMAMARU**

**THREE EMBRYOS**

*23A*

FULLBLOOD WAGYU | RED | HORNED

**HB BIG AL 502**  
DAI 10 MITSUMARU  
AKIKO

**UKB MS UMEHOMARE 702 I (BE)**  
WSI UMEMARU  
JVP 702 HOMARE-27

DAI 2 MITSUMARU  
GODAI  
NAMIMARU  
MITSUKO B 9639  
HIKARI  
KAEDEMARU  
JUDO  
JVP 27-HOMARE 128

**THREE EMBRYOS (EXPORTABLE)**

*23B*

FULLBLOOD WAGYU | RED | HORNED

**SHIGEMARU**  
DAI 2 SHIGENAMI  
DAI YON AKIBARE 3357

**UKB MS UMEHOMARE 702 I (BE)**  
WSI UMEMARU  
JVP 702 HOMARE-27

JAPANESE COW (RED)  
JAPANESE COW (RED)  
DAI 10 SHIGEKAWA 65  
DAI NI AKIBARE 53244  
HIKARI  
KAEDEMARU  
JUDO  
JVP 27-HOMARE 128

**THREE EMBRYOS (EXPORTABLE)**

*23C*

FULLBLOOD WAGYU | RED | HORNED

**TAMAMARU**  
DAI GO TAMANANAMI 96  
DAI 8 MARUNAMI J19461

**UKB MS UMEHOMARE 702 I (BE)**  
WSI UMEMARU  
JVP 702 HOMARE-27

AMANAMI 70  
FUJIMITSU 2030  
DAI 3 MITSUMARU 30  
DAI 7 MARUNAMI J14289  
HIKARI  
KAEDEMARU  
JUDO  
JVP 27-HOMARE 128

**Lot 23B & 23C Embryos are Exportable.**

Offering buyer's choice of embryos out of this outstanding red Wagyu cow! The (\$30K) 702I cow has powerful genetics from both sides of her pedigree and is F11 free. Her sire is Umemaru, out of the great foundation bull Hikari and the matriarch Kaedemaru cow. And her dam is a Japanese Venture Partnership cow sired by Judo, JVP 702 Homare 27. We are offering you 'your choice' of three, conventional, Grade 1 embryos from a pick of three different herdsires. We have mated her to three of the foundation herdsires of the breed, Big Al, Tamamaru, and Shigemaru. With these matings you're assured of adding much value to the genetics in your herd.

*Consigned by* AAA Wagyu,  
Tyler, TX

Selling one package of three embryos.

Wagyu cattle are famous the world over because they are simply the best breed in the world for producing premium beef.

One of the most versatile original import cows was the great cow OKUTANI who was a wonderful fusion of blended genetics that represented the mainstream breeding in Japan at its best. HOSHI GO FUJIKO is a fusion of two line bred descendants of OKUTANI through her famous daughter FUJIKO and is in the pedigree of HOSHI GO FUJIKO, 6 times. You will also find MICHIFUKU 4 times in her pedigree. There is no more sure way to achieve predictability and consistency than through homozygous genes. The dam's sire "HOSHI" has proven to be an exceptional carcass sire excelling in exceptionally fine, highly abundant marbling.

The sire of these embryos, GENESIS, was created to infuse maternal strength and rib eye into one if the most successful proven marbling matriarchs lines, 5298. At the time GENESIS was created, his dam 5298, had five proven sons and one grandson in the top 20 tested in the US for marbling, no other cow had more than two sons in the top 20. He did not disappoint, he has proven to sire highly marbled carcass and exceptional females with remarkable capacity and maternal performance. For your reference, the photo used to create the cutting boards that were given out at the 2018 convention was a GENESIS sired carcass.

## THREE EMBRYOS

24

FULLBLOOD WAGYU | BLACK | HORNED

GENESIS	ITOMORITAKA J2703	ITOHIRASHIGE
	JVP KIKU SHIGE 5298E	DAI 6 OEFUJII J565554-KURO KOH
HOSHI GO FUJIKO	EFCO HOSHI MARU	JVP KIKUYASU-400
		JVP KIKUHANA298
		SHIDOOSHA
		LMR MS FUKUTSURU 606S
QUEENFUJI	INAKA YAMA	UTSUKUSHI QUEEN

*Consigned by* EMMA Farms/ CMC Wagyu, Olathe, CO



SIRE, GENESIS



GENESIS DAUGHTER

Selling one package of three embryos.

The dam of these embryos, LMR MS FUKUTSURU 606S is from the OKUTANI line through FUJIKO. MS FUKUTSURU is also the mother of HOSHI MARU who was used heavily and very successfully in one of the largest full blood Wagyu meat programs in the US where he excelled at producing unusually fine evenly dispersed beautiful marbling.

The sire of these embryos is SHIGESHIGETANI, a well known sire from a well known mother, has passed marbling, good growth and respectable rib eye size to his descendants. SHIGESHIGETANI's sire, HARUKI II, is a son of SAKURA, a cow with Kedaka influence, comes a bit more growth and maternal ability. Expect tremendous carcass potential from proven lines.

## THREE EMBRYOS

25

FULLBLOOD WAGYU | BLACK | HORNED

SHIGESHIGETANI	WORLD K'S HARUKI 2	MONJIRO 11550
	WORLD K'S SUZUTANI	SAKURA 2 741638
	JVP FUKUTSURU-068	TANISHIGE 1526
LMR MS FUKUTSURU 606S	HOSHI	SUZUNAMI 472255
		DAI 2 YASUTSURU 774
		TERUYASU 649663
		TF KIKUHANA FUJIKO

*Consigned by* EMMA Farms/ CMC Wagyu, Olathe, CO



SON OF LMR MS FUKUTSURU 606S

09.26.19

7:45 P.M. C.S.T.  
THE BELL TOWER  
NASHVILLE, TN



EMBRYOS



SIRE, MAZDA

**FIVE EMBRYOS (DOMESTIC ONLY)**

26

FULLBLOOD WAGYU | BLACK | HORNED

MAZDA	HAKUHO BR92 BH514	YUHO BH184
	MASUTANI B1136818	SUGI 1ST B898560
WINDY	SR Y13 SANJI	YUTAKA-ICHI BH253
	WINSON	MASUMOYI B891992
		WORLD K'S SANJIROU
		KITATEMAKO 003
		WORLD K'S KITAGUNI JR.
		BR MS MICH/1628 4628

Consigned by Tally Windham  
Wagyu, Clyde, TX

Selling one package of five embryos.  
Mazda, FB103, speaks for himself! Even Australia hasn't had a Mazda son or daughter hit the ground in over two decades. Mazda was a gift by the emperor of Japan to the governor of Hawaii in the 70's and he is the only 100% Tottori bull to ever leave Japan. The only true and total outcross to virtually all wagyu herds worldwide loaded with the awesome frame and thickness of old school Eikou Tottori blood from the lowlands! Former president of the AWA, Kenneth Briggs, raised many Mazda carcasses over the years back in the day and said, "Mazda is one of the best marbling of all the import bulls." Indeed, the top marbling bull of the 2018 Texas Wagyu Association bull test was a bull out of a Mazda cow that out marbled all the sons bred up heavy with the who's who of high Tajimas. The DAM side of the embryo is from Windy, 91W, FB14605. Her sire is Sanji, FB6193 and Dam is 2W, Winson, FB10951. Windy is a SCD AA and 5 tenderness.

Flush date April 17, 2019.

**FIVE EMBRYOS (EXPORTABLE)**

27

FULLBLOOD WAGYU | BLACK | HORNED

MAVERICK	ITOSHIGENAMI	SHIGESHIGENAMI 10632
	OTANASHI	FUKUYUKI
HW KIKOKO	WORLD K'S KAGE	WORLD K'S MICHIFUKU
	AGE 29A	FUJIKO
	KIKUMONO	TF KIKUHANA
		WORLD K'S REIKO
		OKURIMONO
		NINJOO

Consigned by Tally Windham  
Wagyu, Clyde, TX

**Embryos are Exportable.**  
Selling one package of five embryos.

Maverick is sired by Itoshigenami TF148 FB3682 and his Dam is Otanashii FB4458. When he was six-years-old, he weighed 1,610 lbs. He is a very gentle, well-mannered bull. His full sister's (42W Elizabeth FB13775) embryos sold for \$10,000 each in Australia recently. Itoshigenami TF148 is considered to be one of the top three bulls exported from Japan according to David Blackmore, renowned Australian Wagyu producer. Itoshigenami is a medium frame bull at 1,650#s with excellent conformation. His offspring's exhibit an excellent balance in all traits, both for quality beef production and cattle production. Producing carcasses of the highest quality, characterized by an abundance of very fine marbling, extremely soft fat with a low temperature melting point. He has Sired roughly 370 Registered Full-blood offspring, unknown on progeny used for beef production.

SCD: VA, Tenderness: 3  
Flush date May 28, 2019



SIRE, MAVERICK

**Embryos are Exportable from Bickett Genetics.**

Selling one package of Four, Grade 1 Conventional Embryos.

WKS Kitaguni Jr, a valuable son of Kitaguni 7/8 J1530, was born October 7 1994 shortly after his dam, WKS Nakayuki J13943, arrived in the United States (exported by the Mannett Group.) In the 2017 LMCC Sire Performance Study WKS Kitaguni Jr. with 55 carcasses studied ranks 3rd with an average of 31.71%, following Yasufuku Jr. and his own own, LMR Koichi 1409Y. And with 13 images studied as Dam Sire, Kitaguni Jr. displays his staying power by ranking #2 (33.03%). And in terms of Marble Fineness Kitaguni Jr. ranks 4th as both Sire and Dam Sire. He has produced some outstanding herd sires and an exemplary set of Breedplan figures. He is a trait leader and ranks in the top 1% for Birth Weight EBV (-2.7). Kitaguni ranks in the top 1% for Marble Score EBV (+1.4) and in the top 3% for Rib Fat EBV (+1.4).

Bar R Sanjirou 4P—son of World K's acclaimed bull WKS Sanjirou—has the potential to become one of the most influential sires of the Tajima line, having great meat quality, large ribeye area, thick rib and high yields. WKS Sanjirou is a linebred Yasumi Doi J10328 bull. Yasumi Doi, widely known for his ability to produce excellent meat quality sired Yasutani Doi J472 and grandsired both Fukutsuru 068 and Yasufuku K930. Sanjirou is out of the prominent Japanese cow Suzutani, who represents one of the most potent bloodlines in Japan.

**Embryos are Exportable.**

Selling one package of Four, Grade 1 Conventional embryos.

These embryos combine some of the best bloodlines there are in the wagyu breed - female bloodlines Suzutani, Rikitanki, and Kanentani with the sire bloodlines Kanadagene 100 and Hirashigetayasu! The sire of the embryos, WSI Kanadagene M256, is a son of the legendary and rare Kanadagene 100, who is known as the best son of Suzutani. He has high EBVs for growth, eye muscle, and extreme carcass quality with high marbling and fineness. The dam of the embryos traces her bloodline back to the elite cow family Hisako, popular around the world for producing high value carcasses. The Hisako line traces back to World K's Kanetani. The Kanetani bloodline is known for high quality meat with extremely high marbling. Add in the great Hirashigetayasu, known to add in growth and balance to his offspring, and you have a perfect combination! Don't miss out on your chance to add these high value bloodlines to your herd.

**FOUR EMBRYOS (EXPORTABLE)**

FULLBLOOD WAGYU | BLACK | HORNED

28

<p>KITAGUNI 7/8  <b>WORLD K'S KITAGUNI JR.</b>          WORLD K'S NAKAYUKI</p>	<p>DAI 7 ITOZAKURA          KITAGUNI 7          KOUFUKU          NAKAHANA 3          WORLD K'S SANJIROU          BAR R MISS FUKUTSURU 47K          CHR HIRASHIGE 170P          CHR MS SANJIROU 322</p>
<p>BAR R SANJIROU 4P  <b>RW RIO SANJIROU 322D</b>          RW RIOSHIGE</p>	

*Consigned by* **Ragland Wagyu, Hazel Green, AL & Frankewing, TN**



**SIRE, WORLD K'S KITAGUNI JR.**

**FOUR EMBRYOS (EXPORTABLE)**

FULLBLOOD WAGYU | BLACK | HORNED

29

<p>WORLD K'S KANADAGENE 100  <b>WSI KANADAGENE M256 ET</b>          WSI RIKITERU 2</p>	<p>WORLD K'S MICHIRUKU          WORLD K'S SUZUTANI          KITATERUYASUDO I J2810          RIKIHARU          DAI 20 HIRASHIGE 287          DAI 5 YURUHIME          YCB ITO MAKOTO 5626          MISAMI</p>
<p>HIRASHIGETAYASU J2351  <b>DWG HIRAHISAKO 1803F ET</b>          BAY MAK MANA 129</p>	

*Consigned by* **High Hope Ranches, Bloomer, WI**



**DAM, DWG HIRAHISAKO 1803F ET**

09.26.19  
 7:45 P.M. C.S.T.  
 THE BELL TOWER  
 NASHVILLE, TN



EMBRYOS

**FOUR SEXED EMBRYOS**

*Lot* 30

FULLBLOOD WAGYU | RED | HORNED

HB BIG AL 502  
**SOR BIG AL**  
 UKB MS HIKARI HOMARE J30E (JVP)

KALANGA RED STAR  
**ROWE MS RED STAR**  
 801 ID

DAI 10 MITSUMARU  
 AKIKO  
 HIRAKI  
 JVP MS HOMARE J 30E  
 HEART BRAND RED STAR  
 KALANGA HIKAHOMARE VW36  
 SHIGEMARU  
 JVP MS HOMARE HIKARI



**SIRE, SOR BIG AL**



**DAM OF LOT 30 & 31,  
 ROWE MS RED STAR**

Selling one package of Four SEXED, Grade 1 Conventional Embryos.

SOR Big Al is a very long bodied Akaushi bull and was the high selling bull at the 2017 Texas Wagyu sale. Rowe Ms Red Star is a full sister to Red Galaxy and is a beautiful example of what you would want in an Akaushi cow. She is also a prolific producer of embryos. These embryos should produce some fantastic Akaushi cows. Both dam and sire in this embryo mating are genetic defect free.

*Consigned by* **Rowe Wagyu,  
 Lincoln, AR**

**FOUR EMBRYOS**

*Lot* 31

FULLBLOOD WAGYU | BLACK | HORNED

HB BIG AL 502  
**SOR HASTINGS 1066**  
 WSI KAEDEMARU 2

KALANGA RED STAR  
**ROWE MS RED STAR**  
 803 ID

DAI 10 MITSUMARU  
 AKIKO  
 TAMAMARU  
 KAEDEMARU  
 HEART BRAND RED STAR  
 KALANGA HIKAHOMARE VW36  
 SHIGEMARU  
 JVP MS HOMARE HIKARI



**SIRE, SOR HASTINGS 1066**

Selling one package of Four, CARRIER FREE, Grade 1 Conventional Embryos.

Hastings is Legendary's top Big Al X Kaedemaru #2 son. He is genetically exceptional in marbling, being ranked 2nd in Legendary's Proprietary Marbling Index and scored .35 units higher than Big Al! Hastings resembles Big Al's functional and fleshy body type, feet and leg structure and is good natured. The dam of this mating is Rowe Ms Red Star who is a sister to Red Galaxy and has a wonderful phenotype of the perfect Akaushi female. These embryos should make some beautiful cows.

*Consigned by* **Rowe Wagyu,  
 Lincoln, AR**

32  
WJ

## FOUR EMBRYOS

FULLBLOOD WAGYU | BLACK | HORNED

Selling one package of Four CARRIER FREE, Conventional Embryos - one Grade 1 and three Grade 2.

SR Y13 Sanji (FB6193) is the product of sire World K's Sanjiro and dam Kitatemako 003, both from a great fullblood Wagyu line. His maternal grandsire was Kitateruyasu Doi, one of the greatest marbling bulls in history. Sanji is well balanced, and he passes on his intense marbling and growth to his offspring. In a grading of 500 of Sanji's calves, not one was graded any lower than Prime by World K. Two people I consider my mentor's have told me about what a great bull he was and he was killed by another bull while in a collection facility so there is no more semen.

Ms Haruki's pedigree includes Michifuku, Haruki 2, Suzutani, O68, and Kitaguni Jr. With this stellar lineage she is expected to produce exceptional progeny.

*Both parents have tested B3F, CHSF CL16F, F11F*

*Consigned by* **Rowe Wagyu,  
Lincoln, AR**

**SR Y13 SANJI**  
WORLD K'S SANJIROU  
KITATEMAKO 003

**ROWE MS HARUKI**  
WORLD K'S HARUKI 2  
IWG MS SANJIROU 002U

WORLD K'S MICHIFUKU  
WORLD K'S SUZUTANI  
KITATERUYASUDOJ J2810  
KITATEMAKO J14138  
MONJIRO 11550  
SAKURA 2 741638  
WORLD K'S SANJIROU  
MJB MS KITAFUKU 05K



**DAM, ROWE MS HARUKI**



**SIRE, SR Y13 SANJI**

BID & BUY ONLINE AT ...

**W365**  
**WAGYU365.COM**

CONNECT WITH US  
FOLLOW WAGYU365 ON SOCIAL MEDIA ~

#Wagyumarketingatitsfinest  
#24/7/365Wagyu  
#alldayeverydaywagyu



@Wagyu365

**09.26.19**  
7:45 P.M. C.S.T.  
THE BELL TOWER  
NASHVILLE, TN





SIRE, MACQUARIE PRELUDE M0495 ET

**FIVE EMBRYOS (DOMESTIC ONLY)**

33

FULLBLOOD WAGYU | BLACK | HORNED

MACQUARIE WAGYU Y408 ET  
**MACQUARIE PRELUDE M0495 ET**  
 MACQUARIE WAGYU C1589 ET

WORLD K'S SHIGESHIGETANI  
**ML MS KENICHI-SHEGETANI 104B**  
 LMR MS. KENICHI 0184X

KITATERUYASUDO I J2810  
 TWA F U561 ET  
 WORLD K'S MICHIFUKU  
 MACQUARIE WAGYU F X358 ET  
 WORLD K'S HARUKI 2  
 WORLD K'S SUZUTANI  
 LMR KENICHI 807T  
 BR MS TAKAZAKURA 9640

*Consigned by* **Wagyu Florida, Inc., Yulee, FL**

**FIVE EMBRYOS (DOMESTIC ONLY)**

34

FULLBLOOD WAGYU | BLACK | HORNED

MFC ITOMORITAKA 0-41  
**BAY ITO MACHO 177**  
 BAY FUJI MIKI 62

CX4 ITOFUJINAMI 101Z  
**CX4 MS SHINJU 1055X-282B**  
 TBR SHINJU 1055X

ITOMORITAKA J2703  
 CHR MS MICHIFUKU 209S  
 ITOSHIGEFUJI  
 MISAMI  
 TBR ITOFUJINAMI 1003X  
 TBR YASU 2 9038W  
 LMR FUKUTSURU 625S  
 BR MS KIKUYASU 4602

*Consigned by* **Wagyu Florida, Inc., Yulee, FL**



SIRE, BAY ITO MACHO 177

Selling one package of Five Grade 1, Conventional Embryos.

Macquarie Prelude M0495 is the most used bull of any breed in all of Australia. In the Australian Breedplan (which records many US Wagyu herds as well) he scored in the top 10% for 400 day growth, top 40% for milk, top 32% for rib eye area, top 10% for retail beef, top 3% for marbling, top 5% for marbling fineness and less than the top 1% for his self-replacing index! You won't find a better bull to produce high marbling, great growing calves with above average milk in the USA.

The donor cow is a daughter of the great World K's Shigeshigetani who is above average in marbling and scores in the top 15% for rib eye area. She produced 24 embryos in her latest flush and has a great temperament!

*Ships from South Eastern Semen Services of Wellborn, FL*

Selling one package of Five Grade 1, Conventional Embryos.

CX4 MS Shinju 1055X-282B is out of an Itofujinami sire who is known for good marbling, size and growth; the best of all worlds! She gave 20 embryos on her first flush, and descends from the same Kikuhana line that contributed to Takana giving 52 embryos in one flush. She is an AA5 cow with an excellent disposition and is well bred with Itoshigefuji and Yojimbo on the sire side, and Fukutsuru-068 and Kikayasu-400 on the dam side.

BAY ITO Macho 177 is a very correct, show quality, AA10 bull with a YW gain of 2.47#/s/day. His sire MFC Itomoritaka 0-41 is known for growth, large rib eye, milk and maternal characteristics. His dam's sire is Itoshigefuji, who adds further to his calves growth and passes down great maternals and disposition. Itoshigenami on the dam's side adds marbling and carcass traits. Macho weighed 65 pounds at birth and 965 as a yearling. His calves will improve your herd!

*Ships from South Eastern Semen Services of Wellborn, FL*



# WAGYU Donations

All donated items will be sold following the Signature Series Wagyu sale, Thursday, September 26th. Proceeds will benefit the AWA and the Junior Wagyu Association.

**Log onto [www.wagyu365.com](http://www.wagyu365.com) to the auction section to bid online or call any of the Wagyu365 team members if you have any questions.**



# Joseph Decuis

Est. 2000

## Donation A

Wagyu Weekend Getaway | VALUE: \$3,000  
Thank you Joseph Decuis and the Eshelman Family for your Donation!

Enjoy a well-earned weekend getaway at northeast Indiana's beautiful Joseph Decuis Wagyu Farm spending private time with the Eshelmans who have turned their small Indiana town into a culinary destination. Treasure a private stay at their bed & breakfast on the farm, enjoy a private tour of the farm, restaurant and culinary operations, experience a Wagyu fabrication and cooking session, relish your dinners in their award winning restaurant, and learn how the Eshelmans made a Wagyu culinary destination.

The Farmstead Inn, a brick Italianate home located on the farm and built in 1884, will be your headquarters for the weekend for two couples or four people. Arrive afternoon on Friday, cocktails at the Farmstead and a sumptuous dinner with the owners at the restaurant in nearby Roanoke, a charmingly restored Indiana farm town. Joseph Decuis restaurant is a renowned award winning Farm to Table gourmet restaurant, awarded Four Diamonds by AAA and a Wine Spectator Award winner; it was highlighted by the Travel Channel's Food Paradise and rated the #1 most eco-friendly restaurant in Indiana by Travel & Leisure.

Saturday morning help out with chores (optional) and then breakfast in the Farmstead's antique kitchen after which you take a tour of the Wagyu operation with owner, Pete Eshelman. Next step is heading to Roanoke to meet with their Executive Chef for a Wagyu fabrication and culinary session including lunch at the Emporium, their casual dining restaurant. After a respite back at the Inn and a chance to change, you have reservations in Roanoke to experience a five course Wagyu Chef's Tasting dinner, matched with wines. The weekend ends after a Sunday breakfast at the Farmstead Inn.

In addition to a great Wagyu escape, you will learn from the Eshelmans and their culinary team:

- How Wagyu became the star of the menu - 85% of entree sales
- How Joseph Decuis maximizes the value of the entire carcass
- How the Eshelmans created a world class farm to table culinary destination centered around Wagyu.

If time allows, you will be treated to a horse drawn carriage ride and for fitness or nature enthusiasts enjoy a run or walk in the beautiful wooded trails on the farm.



## Donation B

5 Units of Old Stone LEGEND 021E-ET SEXED FEMALE Semen  
Thank you Old Stone Farms, Junction City, WI for your Donation!

CSS Heifer Sexed, F.O.B. Hawkeye Breeders, Adel, IA  
FB41493, SCD-AA, Tenderness-7

Old Stone LEGEND 021E is an early MFC Kimitofuku 434B son. MFC Kimitofuku 434B is a large framed sire who sold for \$20,500 in the acclaimed 2017 Muddy Flats Complete Dispersal Sale. LEGEND 021E's high-powered sire contains the growth and maternal strength of Itoshigefuji and two crosses to the prepotent Hikokura 1/12 lineage, a cow resulting from 3 consecutive matings to the famed Itomichi TF500 himself. With a notable maternal grand sire of Mitsuhikokura to reinforce milk and growth, and the preeminent marbling sires of Itoshigenami, Kitaguni Jr. and 2 crosses each to Kimifuku 3 and Kikuyasu-400, this pedigree has all the makings of balanced breeding that will stamp out Legendary Dai-7 Itozakura line brood cows for a life-time.

LEGEND 021E has extreme length from nose to tail, and stands on an exceptional set of feet and legs with a very deep heel. He is sure to cross well with the most acclaimed marbling sires of today, especially those profuse with the ever-popular Michifuku and Suzutani bloodlines. This pedigree has been cleaned of numerous genetic recessives along the way thanks to Michael Goodells due diligence. Weighing an honest 1120 pounds at one year and 10 months of age while being housed at Hawkeye Breeders, LEGEND 021E is currently in isolation and has met all pre-qualifications for E.U. exportable semen. Post collection testing for final E.U. qualification is pending his last collection. Be the first to use these Legendary Genetics!

**100% of the proceeds of the semen donations go to the National Junior Wagyu Association.**



## Donation C

Trophy Whitetail Deer Hunt | VALUE: \$3,000  
Thank you Bob Mehall of Still Waters Ranch, Bulverde, TX for your Donation!

This \$3,000 gift certificate can be applied to purchase a four day/ three-night trophy whitetail deer hunt at Still Waters Ranch in Bulverde, Texas. Abundant whitetail deer in a high fence hunting preserve will allow you the opportunity to take a trophy buck up to 160" SCI for \$3,000 or up to 250" SCI for an additional fee of \$100/ inch SCI over 160." Trophy bucks over 250" SCI will add another \$150/inch SCI. This hunt includes first class accommodations in an outstanding setting with all the support facilities needed to make your experience memorable. Accompanying guests and/or additional hunters are welcome and arrangements can be made for them to join you on your hunt of a lifetime. The winning bidder has the option to purchase up to three more \$3,000 gift certificates at the same price.

For additional info, please go the website at [www.stillwatersranchtx.com](http://www.stillwatersranchtx.com)



## Donation D

Wagyu Beef Cuts Package  
Thank you Diamond T Ranch, Dylan Tristani of Jacksonville, Texas for your Donation!

2 Ribeyes	2 New York Strips	2 Filets	1 Brisket
1 Flank	1 Skirt	1 Flap	10 pounds of ground beef

The Tristani Family is proud to offer you the healthiest, most delicious beef on the market. Much effort is put in to carefully maintaining the health and integrity of our herd on a daily basis. Close attention is paid to the growth of our all-coastal grasslands, to the strict feed regimen, and maturation of our finished feed lot steers. Our entire program, consisting of intelligent genetic combinations, embryo transfer, cow-calf operations, and finished steer feed program are all completed in house, allowing us to ensure every part of the process from birth to harvest, for not only your benefit, but also for our own, it's all we eat!

Awarded Grand Champion at the American Royal Steak Contest in 2016, 2017, and 2018!

**100% of the proceeds of the semen donations go to the National Junior Wagyu Association.**



## Donation E

Distillery Tour Weekend Getaway  
Thank you Treaty Oaks of Dripping Springs, Texas for your Donation!

Bid on a trip with Airfare for two from anywhere in the US to Treaty Oaks Distillery, Dripping Springs, Texas.

Come experience Treaty Oak Distillery located on a 28-acre ranch in the beautiful Hill Country of Texas. Your flight and lodging are covered. All meals and, of course, refreshments on the ranch included as well.

Get a behind the scenes look into their brewing and distilling process, and learn about the history of Treaty Oak, one of the oldest distilleries in Texas. Spend the entire weekend complimentary, choosing delicious prepared menu items from Alice's Restaurant. You can expect a menu dedicated to using locally sourced ingredients that tell a truly unique Texas story. Order at the counter from one of their team members, then enjoy tableside service in relaxed Treaty Oak fashion!

At the bar, choose from beer, cocktails, tapped drinks, and the distillery's experimental whiskeys. Their cocktails are made only with Treaty Oak Spirits and fresh ingredients that are kegged and served on tap, resulting in a perfectly balanced cocktail, every time.

Treaty Oaks looks forward to welcoming you soon.





## Donation F

### 10 Units of SOR Big AI Conventional Semen

Thank you Y2 Wagyu, Joshua Yarbrough of Noble, Oklahoma for your Donation!

SOR Big AI is a direct son of Heartbrand Big AI paired with UKB Ms Hikari Homare J30E. HB Big AI is the pinnacle of balance in the Akaushi breed in the US. The Homare maternal line is well established as possessing superior maternal ability, structure, and length. SOR Big AI has proven to pass this length, superior growth, and structure to his progeny. Coupled with his superior feet and legs, he has the best temperament I have seen in the breed. SOR Big AI is a hidden gem. Semen located at Champion Genetics in Canton, TX.



100% Fullblood Akaushi  
AWA #: FB16724 | AAKa #: EAF141154  
Recessive Genetic Disorder FREE  
(2195# Mature Weight)

**100% of the proceeds of the semen donations go to the National Junior Wagyu Association.**

## Donation G

### Maggie Jones Fine Jewelry

Thank you Shannon Bagby of Kansas City, Missouri for your Donation!

#### *About the Designer*

Shannon Bagby, the woman behind Maggie Jones fine jewelry, is a hard-working creative who recalibrated her life after a near-fatal accident in college. Her Grandmother, the real Maggie Jones, inspired and encouraged her to follow a more truthful path - healing first, finding her passion, and then working towards fully weaving that into her life. She began by taking classes at the University of Kansas and later at the new approach school in Tennessee. She honed her skills while apprenticing as a metal-smith and stone setter in Kansas City.

Her love for jewelry led her to launch her own design business. She name it after her beloved Grammie Maggie to remind herself of her journey and her grandmother's constant love and support. One way she has realized she can help spread that supportive and positive ideology is through working with children. She has taught numerous workshops on metalsmithing to young children for many different organizations including the girl scouts and the boys and girls club.

In addition to manufacturing her collection, Shannon has continued her education at the Gemological Institute of America and will graduate with the GIA Graduate Gemologist Certificate, one of the most prestigious credentials in the industry. She was recently accepted into the American Craft Council and has participated in fairs across the south and midwestern United States. Her collections have been featured in the KC Magazine and the September Issue of British Vogue.

Shannon lives and works out of her studio in her historic home in Kansas City, Missouri. When she's not setting stones, she can be found in her extensive garden, taking care of her chickens and her new puppy, Pearl, and laughing amongst her friends whom she frequently hosts for meals on her back porch.

#### *About the Jewelry "The Oklahoma Collection"*

This piece is from a special collection called "The Oklahoma Collection", named for where the stones come from. The stones are from my dad's family ranch in Freedom, OK. There are natural salt flats on the property giving the mica a unique luster and hardness much different from mica found in other parts of the world.

Made of sustainable sterling silver, handmade chain, and mica.

Chain measures approximately 40"



## Donation H

### 10 Units of Y2 Kedakanami D031 Conventional Semen

Thank you Y2 Wagyu, Joshua Yarbrough of Noble, Oklahoma for your Donation!

Y2 Kedakanami D031 is a direct son of the highest Kedaka strain sire in the Black Wagyu breed paired with an Itoshigenami TF 148 direct daughter out of Chisholm Cattle Company, JC Ms Itoshigenami 010. Itoshigenami genetics are widely used in Australia and have set the standard for carcass performance through Mayura Itoshigenami Jr, Coates Itoshigenami G113, and many more. D031 has displayed excellent growth and structure in F1, F2, and Fullblood Wagyu progeny and we attribute much of this to his Kedaka/Tottori heritage with is known to possess higher growth, faster maturity, feed efficiency and superior maternal qualities. D031 is rotationally bred to maintain carcass performance containing mainstays of the Wagyu breed known for carcass performance including Itoshigenami, Takazakura, Michifuku, Haruki II, and Okutani. Y2 Kedakanami D031 is tested free of all recessive genetic disorders and has a coefficient of inbreeding of 1%. He still has a couple of years of growth left in him, but we are estimating D031 to top out around 1900#. Semen located at Champion Genetics in Canton, TX

100% Fullblood Black Wagyu | AWA #: FB28784 | Recessive Genetic Disorder FREE | SCD: AA / Tend: 4

**100% of the proceeds of the semen donations go to the National Junior Wagyu Association.**



## Donation I

### Breeder Guide Pages

Donated by the American Wagyu Association of Post Falls, ID

The American Wagyu Association will sell five premium pages for the 2020 WAGYU Breeders Guide.



## Donation L

### AWA Registration Number 50,000

Donated by the American Wagyu Association

The American Wagyu Association is offering registration number 50,000.



## Donation J

### TW-3 Touch Screen Scale Indicator & Carrying Bag | VALUE: \$2,400 retail

Thank you Gallagher North American, Inc. of Riverside, Missouri for your Donation!

Advanced EID compatible weigh scale and data collector. Simple to operate, touch screen weigh scale with the additional functionality of life data and trait recording.

The TW-3 Weigh Scale has won the following awards:

2018 Good Design Award Australia

2017 Good Design Award Chicago

2017 Best Design Awards NZ

2018 Red dot Award - Product Design



**This donation item  
will sell as a raffle!**

## Donation M

### 10 Straws of WJB Itoshigenami 210F ET Semen

Thank you Bar R Cattle Company of Pullman, WA for your Donation!

Itoshigenami is regarded as one of the best animals imported from Japan. In Australian reports as well as Lone Mountain's 2017 Sire Performance Study, he comes in among the top ten bulls (usually top five) for IMF, USDA grade and marble fineness. The Dam, CHR Ms Kitaguni (FB 15635) brings a powerful pedigree with such names as Kitaguni 7/8, World K's Kitaguni Jr, World K's Yasufuku Jr, Itozuru Doi and CHR Ms Sanjiro. (Semen stored at Elgin Breeders, 512.285.2019, 875 Central Ave, Elgin, TX 78621)

100% Fullblood Wagyu | AWA #: FB36471

Sire: KB TF 148 Itoshigenami FB3682 | Dam: KB Kitaguni (586) FB15635.

## Donation K

### 5 Units of Sumo Cattle co Seisakushu C221 Conventional Semen

Thank you Y2 Wagyu, Joshua Yarbrough of Noble, Oklahoma for your Donation!

Translated as "The Creator," this moderately framed full blood Akaushi bull is a filled with front line genetics. He was sired by Hikari, a son of Dai 10 Mitsumaru over Kazutomo who was a combination of the famed Dai 2 Shigenami and Dai 10 Shigekawa lines. C221's second sire again ties to these two famous Akaushi lines through Shigemaru who was a son of Dai 2 Shigenami over a Dai 10 Shigekawa daughter. The second dam of this bull is the famed Dai 8 Marunami who was one of the original import dams of the breed to the U.S. This bull not only boasts superior Akaushi genetics, but is also free of all known genetics disorders.

Semen located at Champion Genetics in Canton, TX

100% Fullblood Akaushi | AWA #: FB12682 | AAKA #: EAF114505 | AU AWA #: SMOFC0221  
Recessive Genetic Disorder FREE



**100% of the proceeds of the semen donations go to the National Junior Wagyu Association.**



# Donation N

**Five Day South Africa Safari for Two Hunters | VALUE: \$8,300**  
Thank you Avula Safaris Adventure True of South Africa for your Donation!

Safari must be taken between March 2020 - October 2020.

1 - Impala, Trophy (Per Hunter)      1 - Springbok - Common, Trophy (Per Hunter)      1 - Warthog, Trophy (Per Hunter)

Accommodations for Hunter includes: Private en-suite, three home cooked meals daily, snacks, local beers, local wines (red & white), soft drinks, daily maid service in your suite, daily laundry service, lodge staff service, professional hunter (Licensed PH-Guide), tracker, skimmers, field dressing, caping, trophy pick-up service by local taxidermist for processing.

Additional days, hunters, non-hunters and trophies can be added off the price list. Must commit to two hunters, cannot be transferred or sold, Donation has no monetary value

Avula Safaris owns and/or operates three locations in South Africa with property sizes from 23,000 to 64,000 acres.

You will be hunting in the heart of Africa near the town of Colesberg in the Karoo, Avula Karoo Lodge spans over 64, 000+ acres of unsurpassed beauty. Run your eyes across horizons that never end. Taste the champagne air. Follow the embers from the fire as they drift lazily upwards towards a celestial ceiling. Relax in style as our highly-trained staff take care of your every need. Enjoy home cooked style African cuisine at its finest, with fresh local bread and beverages all adjusted to your dietary needs. Only once you've stayed in this part of the world are you able to successfully describe serenity. Avula Karoo offers both Rifle & Archery hunting. The accomplished bow hunter will enjoy the challenge of walking and stalking this beautiful landscape.

We do not mix clients. With a deposit, each client and their group will have a secured schedule at one of our lodges with all the attention to detail based around them.

The day you arrive they are more than welcome to start their hunting safari once firearms are sighted in and there is day light left. It is the same on their day of departure, if there is time they are welcome to hunt.

All our PH's are licensed, professional and knowledgeable. They speak English when with clients, and will not only be a PH, but much like a chaperone making sure the client has what they need from the time they wake up until they retire for the evening.

Day Fees Include: Avula serves three home cooked meals daily, Breakfast is dried cereal, yogurt, fruit, with bacon & eggs, toast. Pancakes are an option if the client so desires. Lunch is stews, burgers, fries, salads, Dinner is fillets, steak, vegetables, potato dishes, and salads made fresh daily, fresh baked desserts every day. All snacks (cheese platters, crackers, biltong, chips, and dip) are served daily. Soft drinks, Red & White African Wines, local beers are also included in the accommodations. Prior to the hunt the client is requested to complete a dietary/allergy needs form, which the chef will then adjust the menus as per the clients diet. We try and serve two main dishes every night for dinner such as, Kudu fillets and Chicken, Eland and Pork

Approximately a week prior to departure you will receive the proposed weather for your scheduled week, reminder of papers you should travel with and we will re-send the packing list.

A basic day at Avula Safaris

- The day begins with breakfast at the lodge approx. 7:00, then off to the bush for their safari.
- Depending on the progress of the safari lunch is served at approx. 12 / 1:00. Then you have about two hours to freshen up, call home/office, rest or enjoy conversation around the lodge.
- Approximately 3:00 the safari is off and running again until dark.
- When returning back to the lodge your cocktails are prepared and waiting to be served. Snacks around the fire until dinner is called and you sit down for a meal fit for a king.
- After dinner we return to the fire with cocktails or coffees to discuss the day's adventure and the expectations for tomorrow's safari.



# Thank You to all who Donated!

## **AMERICAN WAGYU ASSOCIATION**

PO Box 1115, Post Falls, ID 83877  
Phone 208.262.8100  
office@wagyu.org  
www.wagyu.org

## **GALLAGHER NORTH AMERICA, INC.**

PO Box 681409, Riverside MO  
Carrie.Byrum@gallagher.com  
www.GallagherUSA.com

## **OLD STONE WAGYU / JOHN DORSHORST**

Chicago, IL  
608.852.7321  
john.dorshorst@gmail.com

## **BOB MEHALL / STILL WATERS RANCH**

Member 1805  
33561 Blanco Road, Bulverde, TX 78163  
210.722.4472  
whitetailsandwagyu@gmail.com  
www.stillwatersranchtx.com

## **JOSEPH DECUIS / THE ESHELMAN FAMILY**

Joseph Decuis Farmstead Inn  
6756 E. 900 South,  
Columbia City, IN 46725  
260.672.1715  
www.josephdecuis.com

## **TREATY OAKS**

16604 Fitzhugh Rd,  
Dripping Springs, TX 78620  
512.599.0335  
nate@treatyoakdistilling.com  
www.treatyoakdistilling.com

## **DIAMOND T RANCH / DYLAN TRISTANI**

1298 County Road 1405  
Jacksonville, TX 75766  
903.284.9145  
diamondtranchwagyubeef@gmail.com  
www.diamondtwagyubeef.com

## **MAGGIE JONES FINE JEWELRY**

Shannon Bagby  
Kansas City, MO  
816.588.1152  
www.maggiejones.shop

## **Y2 RANCH / JOSHUA YARBROUGH**

PO Box 636, Noble, OK 73068  
405.226.5187  
y2wagyu@gmail.com

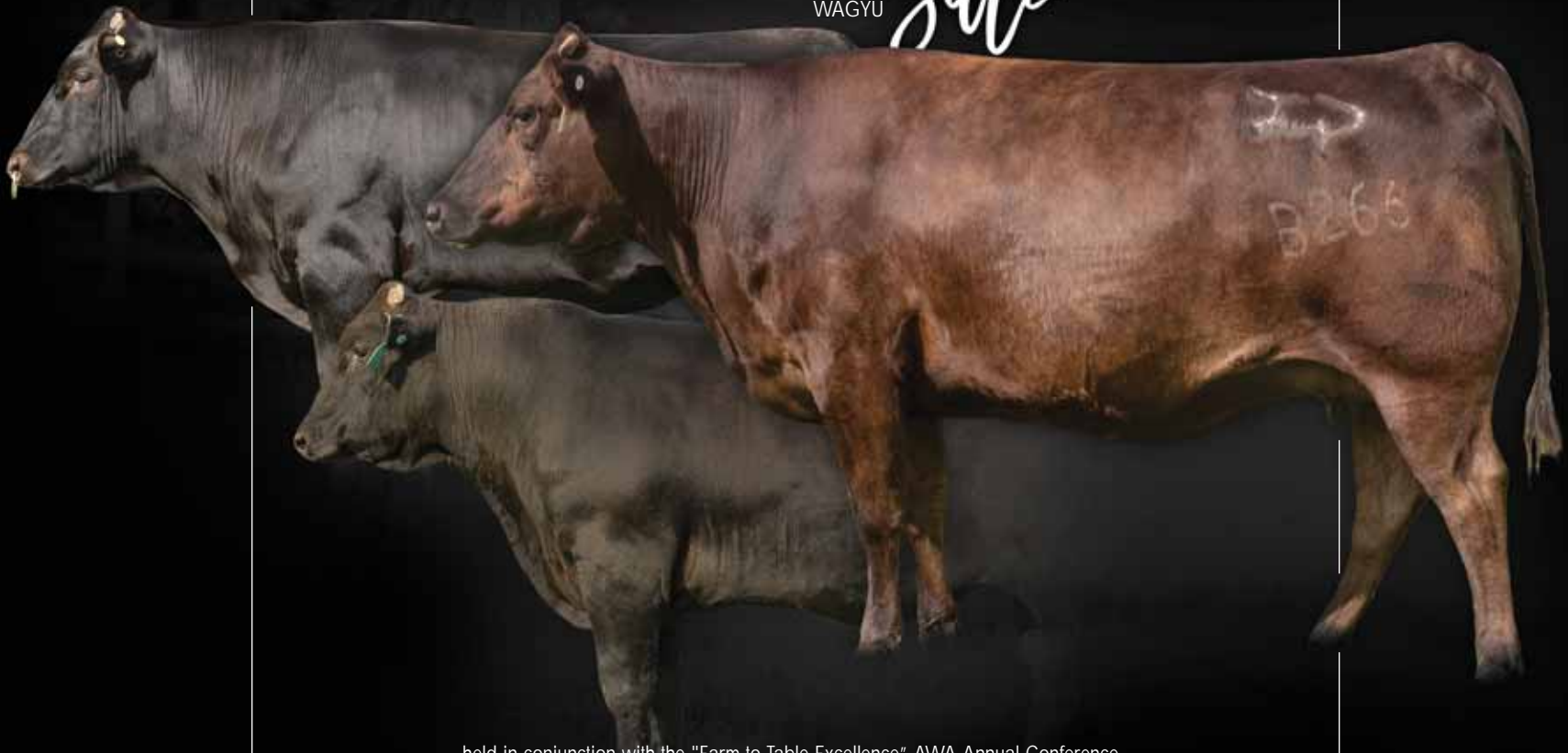


MUSIC CITY

# SIGNATURE SERIES

WAGYU

*sale*



held in conjunction with the "Farm to Table Excellence" AWA Annual Conference

09.26.19

7:45 P.M. C.S.T. | THE BELL TOWER | NASHVILLE, TN