

VAUGHAN FAMILY RANCH | SIXTEEN PEAKS

PEAK FOR *Prime*



ONLINE SALE

**11.03.2022**

4:00 - 7:00 p.m. C.S.T. ~ [www.Wagyu365.com](http://www.Wagyu365.com)



As we move our fullblood herd genetics forward, we want to maintain one of the hallmarks of the breed – marbling! We also feel that we need to maintain a focus with some blood lines on disposition and calmness, feet and leg structure, good top line, spring of rib, length and udder quality and milking ability. Where we don't have significant carcass data on cows, we are using the best historical information and data we can evaluate. Our donor selection is based on piecing together a uniform set of fullblood cows. The foundation bulls used are selected to grow the quality of this foundation herd.

This isn't the end goal. We believe several breeders are advancing the fullblood genetics sires that can improve areas we need to without sacrificing the ability to marble. One bull that caught our attention is Rapid Bay Blue Chip ET. He is out of Ashwood Park Virile and his dam by Kotsukari. Past champion of the World sire by the past champion of the World Dam. We want to maintain general fullblood breeding improvement without focusing strictly on single trait selection.

We welcome you to look at our planned foundation genetics with diversity for your breeding strategy.

-Vaughan Family Farm



Jerry Vaughan, 316.765.3878  
jerry@3ncattle.com

Corey Vaughan,  
316.213.5484

14630 E. 44th S.

Derby, Kansas 67037

www.vaughanfamilyranch.com  
www.VFRbeef.com

We are so excited for the future of Akaushi! We are making a strong push to progress our genetics on a breed we are so proud to be a part of. Akaushi cattle have performed phenomenally in very many areas and continue to improve in efficiency with each generation. As we move forward, areas we are focusing on are correct structure through feet and legs, milking ability, docility, fleshing ability, and most importantly, bringing a top-quality carcass with us.

We harvest a large portion of our fullblood calf crop annually, and we use that carcass data heavily in our breeding decisions for the next generation of Akaushi genetics. We understand that carcass merit is what brings the breed to the table, and we will not sacrifice it at the extent of other production traits as we progress. We are excited to offer a set of embryos today that we feel are an elite representation of what our herd has to offer.



**SIXTEEN PEAKS**

AKAUSHI WAGYU

Andrew Pryor, 865.776.0629

apryor@sixteenpeaks.com

2814 Rhett Butler Dr.,

Louisville, TN 37777

www.sixteenpeaks.com

FB: Sixteen Peaks

Cattle Company

Instagram:

@sixteenpeakscattleco

**Selling 23 Embryo Packages & 6 Heifer Pregnancies.**



## SALE DATE, TIME & LOCATION ...

Thursday, November 3, 2022 | 4:00 p.m. - 7:00 p.m. C.S.T. | Selling online at [www.Wagyu365.com](http://www.Wagyu365.com)

## WAGYU365 TEAM ...



Randall O. Ratliff 615.330.2735

Kiley McKinna 402.350.3447

PJ Budler 682.597.0380

[randy@wagyu365.com](mailto:randy@wagyu365.com)

[kiley@wagyu365.com](mailto:kiley@wagyu365.com)

[pj@wagyu365.com](mailto:pj@wagyu365.com)

## TERMS & CONDITIONS ...

All lots sell under standard terms and conditions of the American Akaushi Association.

**RACEHORSE ENDING ...** This sale will close with extended bidding, racehorse style. All lots will close at the same time. (Buy now lots do not reset the clock - only lots with live bids.) Beginning at 7 pm CST, any time a bid is received the clock will reset on all lots for five minutes. This will continue until there are no bids on any lot for a full 5 minutes and the clock runs down to zero to close the sale. If a bid is received very close to the clock closing, lots may say “pending” while the system registers the bid and resets the clock. Lots are not closed until they say “Ended” in red text.

**MAX BIDS ...** When you place a maximum bid, there is a possibility that another bidder has already placed a higher bid than you. When setting a max bid, please bid the maximum amount you are willing to pay on the lot. If another bidder has submitted a bid or max bid for the same amount, the first bid received at that amount will be the winner (until or unless it is out-bid). The lot will be sold at the lowest price possible based on the competing bids.

**PAYMENT ...** All lots must be paid for immediately following the conclusion of the Online Sale unless prior payment arrangements have been made with any representative of Wagyu365. Buyers are welcome to pay by credit card. If so, you will be charged a 3% fee on the total sum of your purchase. Wiring instructions are available, and checks are also accepted.

**EMBRYO GUARANTEE ...** Any embryos sold as stated and are not guaranteed on conception. **Note that all Vaughan IVF aspirations** were performed by Cross Country Genetics, Westmoreland, KS. Reverse sort semen process and oocyte fertilization performed by Trans Ova Genetics, Sioux Center, IA. Final embryo grading, freezing or fresh transfer performed by Cross Country Genetics. Pregnant and fetal sexing performed by Cross Country Genetics.

**Note that all Sixteen Peaks IVF aspirations** were performed by Multi-gen Reproductive Solutions, Stanford, KY. Reverse sort semen process and oocyte fertilization performed by Trans Ova Genetics, Boonsboro, MD. Final embryo grading, freezing or fresh transfer performed by Multi-gen Reproductive Solutions.

**PAYMENTS ...** Auction money and proceeds will be conducted under Randall O. Ratliff DBA R & R Marketing, P.O. Box 60097, Nashville, TN 37206. Bond # 7901027402 (U.S. Department of Agriculture, Grain Inspection, Packers and Stockyards Administration Packers and Stockyards Program)

**LIVESTOCK MORTALITY INSURANCE ...** Any representative of the Wagyu365 team can assist any buyer with insurance regarding their purchases.

**DELIVERY ...** Once paid for, embryos will be released with the storage facility. Buyer pays all shipping or transfer costs.

### ADDITIONAL ONLINE SALE TERMS

Any person placing bids on items in this auction agrees to these terms and conditions and understands that, by placing bids, they are entering into a binding contract between themselves and the seller(s) and that they will be held financially responsible for their actions. Wagyu 365, LLC acts only as an agent between buyer and seller and may not be held responsible for any livestock or merchandise. It is to be clearly understood that Wagyu 365, LLC and representatives act only as a means between buyer and seller, and may not be held liable, financially or otherwise, for any failure on the part of the same to fulfill any obligations set forth in this sale or for the truth of any warranties expressed or implied. This catalog offering has been prepared from information provided by the seller(s) and is assumed accurate as presented to Wagyu 365, LLC. The seller (s) guarantee age, pedigree, reproductive status, and any other listed information or media of the animals or genetics selling. Wagyu 365, LLC is not to be held liable outside of the seller (s) guarantee. Any and all agreements or adjustments made are between buyer and seller.

# W365

WAGYU365.COM



**RANDALL O. RATLIFF**  
SALES REPRESENTATIVE  
615.330.2735 | Randy@wagyu365.com



**KILEY MCKINNA**  
SALES REPRESENTATIVE  
402.350.3447 | Kiley@wagyu365.com



**P.J. BUDLER**  
INTERNATIONAL AFFAIRS  
682.597.0380 | PJ@wagyu365



**ABBY LANE**  
OFFICE MANAGEMENT  
919.618.8098 | Abby@wagyu365.com



**AMY SHAW**  
CUSTOMER RELATIONS  
214.554.8223 | Amy@wagyu365.com

## WAGYU365 TEAM



@Wagyu365

### CONNECT WITH US

FOLLOW WAGYU365 ON SOCIAL MEDIA ~

#Wagymarketingatitsfinest #24/7/365Wagyu  
#alldayeverydaywagyu





**SIRE** Big Al



**DAM** HeartBrand 2107A

1A

## Three IVF Heifer Embryos

FULLBLOOD AKAUSHI | IVF | HEIFER | GRADE 1

**SIRE:** BIG AL  
 DAI-JU 10 MITSUMARU KO 76  
 AKIKO  
 DAI-NI 2 MITSUMARU TOKKYU 22  
 GODAI KO 2739  
 NAMIMARU KO 74  
 MITSUKO TOKKYU 9639  
 SHIGETAKARA H 40

**DAM:** HEARTBRAND 2107A  
 JUDO 1223  
 HEARTBRAND BARBARA B3518R  
 SAKAE RK23331  
 BIG AL  
 HEARTBRAND 2128J

Consigned by Vaughan Family Ranch, Derby, KS

Big Al was the first bull born outside of Japan in January of 1995. Big Al is the legendary Dai 10 Mitsumaru 76 son of Akiko and is highly proven with elite EPDs. To this day Big Al has top 30% growth and maternal EPDs along with top 10% carcass EPD for Ribeye Area, Marbling, and Carcass Index! On top of his fantastic EPDs, he is known for making incredible females with growth, strength, maternal traits, and longevity. Big Al is considered by many to be the greatest Akaushi bull of all-time!

We literally searched across the U.S. to find and develop a unique and purpose filled donor pen. We wanted to develop numbers of top foundation genetics. One of the original foundation bulls that excelled in marbling was Judo. He has been on our radar for some time. In our search, we found a great breeding program in 16 Peaks Akaushi. When they hand picked their startup herd from Heartbrand, they may have two of the best Judo daughters to ever leave Texas. Heartbrand 2107A is a unique breeding piece with noted production value. She is sired by Judo, but she is also the maternal sibling of Heartbrand Rhubarb who brings in his growth, milk and marbling strength. We are pleased to have a partnership interest in these two Judo daughters.



**SIRE** HeartBrand Rhubarb 2142A



**DAM** HeartBrand 2107A

1B

## Three IVF Heifer Embryos

FULLBLOOD AKAUSHI | IVF | HEIFER | GRADE 1

	RUESHAW 430	RUEMEI H39
<b>SIRE:</b>	HEARTBRAND RHUBARB 2142A	FB2 KIKUTAMA 14285
	HEARTBRAND BARBARA B3518R	BIG AL
		HEARTBRAND 2128J
	JUDO 1223	SHIGETAKARA H 40
<b>DAM:</b>	HEARTBRAND 2107A	SAKAE RK23331
	HEARTBRAND BARBARA B3518R	BIG AL
		HEARTBRAND 2128J

Consigned by Vaughan Family Ranch, Derby, KS

HeartBrand Rhubarb is sired by Rueshaw and out of a top Big Al daughter, Barbara B3518R. He combines the calving ease, eye appeal and correctness of design of Rueshaw with additional skeletal width and muscularity. His dam, Barbara B3518R, is a true generator of high performance, stout featured herd bulls. Breed with confidence in this stout-built outcross sire. Rhubarb is from one of the premier Akaushi maternal lines in the entire world, the Namiko line! The Namiko maternal line has produced elite proven sires used heavily around the globe including Ashwood F X0014, Bald Ridge Henshin, Ashwood Park Virile, and Kalanga Kajikari B0125.

We literally searched across the U.S. to find and develop a unique and purpose filled donor pen. We wanted to develop numbers of top foundation genetics. One of the original foundation bulls that excelled in marbling was Judo. He has been on our radar for some time. In our search, we found a great breeding program in 16 Peaks Akaushi. When they hand picked their startup herd from Heartbrand, they may have two of the best Judo daughters to ever leave Texas. Heartbrand 2107A is a unique breeding piece with noted production value. She is sired by Judo, but she is also the maternal sibling of Heartbrand Rhubarb who brings in his growth, milk and marbling strength. We are pleased to have a partnership interest in these two Judo daughters.





**SIRE** Hikari



**DAM** HeartBrand 2107A

1C

## Three IVF Embryos

FULLBLOOD AKAUSHI | IVF | GRADE 1

**SIRE:** HIKARI  
 DAI-JU 10 MITSUMARU KO 76  
 GODAI KO 2739

**DAM:** HEARTBRAND 2107A  
 HEARTBRAND BARBARA B3518R

DAI-NI 2 MITSUMARU TOKKYU 22  
 GODAI KO 2739  
 NAMIMARU KO 74  
 KIKUMI TOKKYU 11875  
 SHIGETAKARA H 40  
 SAKAE RK23331  
 BIG AL  
 HEARTBRAND 2128J

Consigned by Vaughan Family Ranch, Derby, KS

Hikari has a fantastic legacy that precedes him! Hikari is known for his extreme balance of growth with high marbling and carcass traits. He is a son of Japanese legend, Dai 10 Mitsumaru 76 who also sired breed legends Big Al, Kaedemaru, and “the Elephant Cow” Heartbrand T0504E. Hikari is a leading proven sire of sons having produced elite bulls such as WSI Umemaru, TWA Kajikari, Kotsukari, and Heartbrand Hercules 2619A!

We literally searched across the U.S. to find and develop a unique and purpose filled donor pen. We wanted to develop numbers of top foundation genetics. One of the original foundation bulls that excelled in marbling was Judo. He has been on our radar for some time. In our search, we found a great breeding program in 16 Peaks Akaushi. When they hand picked their startup herd from Heartbrand, they may have two of the best Judo daughters to ever leave Texas. Heartbrand 2107A is a unique beeding piece with noted production value. She is sired by Judo, but she is also the maternal sibling of Heartbrand Rhubarb who brings in his growth, milk and marbling strength. We are pleased to have a partnership interest in these two Judo daughters.



**SIRE** Rapid Bay Blue Chip ET



**DAM** HeartBrand 2107A

1D

## Three IVF Heifer Embryos

FULLBLOOD AKAUSHI | IVF | HEIFER | GRADE 1

<b>SIRE:</b>	ASHWOOD PARK VIRILE RAPID BAY BLUE CHIP ET RAPID BAY ASUKA	SHIGEMARU TWA MEKATA KOTSUKARI IWG MS JUDO 73Z SHIGETAKARA H 40 SAKAE RK23331 BIG AL HEARTBRAND 2128J
<b>DAM:</b>	JUDO 1223 HEARTBRAND 2107A HEARTBRAND BARBARA B3518R	

Consigned by Vaughan Family Ranch, Derby, KS

Rapid Bay Blue Chip is a past Champion of the World Akaushi sire! Take note of his impressive phenotype and conformation. Add to this a stunningly deep pedigree of Ashwood Park Virile x Kotsukari x Judo x Shigemaru x Big Al x Tamarau x Akiko and we have true super star sire! The Akiko maternal that Blue Chip descends from is known as the premier carcass traits line in the breed. Akiko herself is the dam of proven sires Big Al, Heart Brand Red Star, TWA Kotsukari, and Come and Take It! This bull is sure to contribute a balance of carcass traits, growth, and conformation to his progeny.

We literally searched across the U.S. to find and develop a unique and purpose filled donor pen. We wanted to develop numbers of top foundation genetics. One of the original foundation bulls that excelled in marbling was Judo. He has been on our radar for some time. In our search, we found a great breeding program in 16 Peaks Akaushi. When thy hand picked their startup herd from Heartbrand, they may have two of the best Judo daughters to ever leave Texas. Heartbrand 2107A is a unique beeding piece with noted production value. She is sired by Judo, but she is also the maternal sibling of Heartbrand Rhubarb who brings in his growth, milk and marbling strength. Check out her pedigree. On the bottom side you have a Big Al dam with Shigamaru and Namiko on the bottom side. We are pleased to have a partnership interest in these two Judo daughters.





**SIRE** Big Al



**DAM** HeartBrand 2110A

2A

## Three IVF Heifer Embryos

FULLBLOOD AKAUSHI | IVF | HEIFER | GRADE 1

**SIRE:** BIG AL  
 DAI-JU 10 MITSUMARU KO 76  
 AKIKO  
 DAI-NI 2 MITSUMARU TOKKYU 22  
 GODAI KO 2739  
 NAMIMARU KO 74  
 MITSUKO TOKKYU 9639  
 SHIGETAKARA H 40

**DAM:** HEARTBRAND 2110A  
 HEARTBRAND S1166P  
 SAKAE RK23331  
 SHIGEMARU  
 HEARTBRAND C0062L

Consigned by Vaughan Family Ranch, Derby, KS

Big Al was the first bull born outside of Japan in January of 1995. Big Al is the legendary Dai 10 Mitsumaru 76 son of Akiko and is highly proven with elite EPDs. To this day Big Al has top 30% growth and maternal EPDs along with top 10% carcass EPD for Ribeye Area, Marbling, and Carcass Index! On top of his fantastic EPDs, he is known for making incredible females with growth, strength, maternal traits, and longevity. Big Al is considered by many to be the greatest Akaushi bull of all-time!

We literally searched across the U.S. to find and develop a unique and purpose filled donor pen. We wanted to develop numbers of top foundation genetics. One of the original foundation bulls that excelled in marbling was Judo. He has been on our radar for some time. In our search, we found a great breeding program in 16 Peaks Akaushi. When thy hand picked their startup herd from Heartbrand, they may have two of the best Judo daughters to ever leave Texas. Heartbrand 2110 larger scale Judo daughter, but still maintains good leg struf-ture and overall structure. She is out of a Shigamaru daughter going back to H0518 X Ume on the bottom side. We are pleased to have a partnership interest in these two Judo daughters.



**SIRE** HeartBrand Rhubarb 2142A



**DAM** HeartBrand 2110A

**2B**

## Three IVF Heifer Embryos

FULLBLOOD AKAUSHI | IVF | HEIFER | GRADE 1

<b>SIRE:</b>	RUESHAW 430 HEARTBRAND RHUBARB 2142A HEARTBRAND BARBARA B3518R	RUEMEI H39 FB2 KIKUTAMA 14285 BIG AL HEARTBRAND 2128J SHIGETAKARA H 40
<b>DAM:</b>	JUDO 1223 HEARTBRAND 2110A HEARTBRAND S1166P	SAKAE RK23331 SHIGEMARU HEARTBRAND C0062L

Consigned by Vaughan Family Ranch, Derby, KS

Sired by Rhubarb, an elite Rueshaw son and out of a top Big Al daughter, Barbara B3518R. He combines the calving ease, eye appeal and correctness of design of Rueshaw with additional skeletal width and muscularity. His dam, Barbara B3518R, is a true generator of high performance, stout featured herd bulls. Rhubarb is from one of the premier Akaushi maternal lines in the entire world, the Namiko line! The Namiko maternal line has produced elite proven sires used heavily around the globe including Ashwood F X0014, Bald Ridge Henshin, Ashwood Park Virile, and Kalanga Kajikari B0125.

He is mated to a direct daughter of Judo! Judo is one of the outcross and extremely rare original import sires from 1976. He is known for being a balanced sire and his semen is extremely rare selling for \$5,000 plus per straw. Behind Judo we find an impressive sire stack of Shigemaru x H0518E x Shigemaru x Ume! This is one of the top cow families in Akaushi, having produced breed legends such as the Elephant Cow, TWA Kajikari, Heartbrand Charlie C4037S, and many more! This is a top-notch embryo package combining the Namiko and Ume maternal lines!





**SIRE** Hikari



**DAM** HeartBrand 2110A

2C

## Three IVF Embryos

FULLBLOOD AKAUSHI | IVF | GRADE 1

<b>SIRE:</b>	HIKARI	DAI-JU 10 MITSUMARU KO 76	DAI-NI 2 MITSUMARU TOKKYU 22
		GODAI KO 2739	GODAI KO 2739
<b>DAM:</b>	HEARTBRAND 2110A	JUDO 1223	NAMIMARU KO 74
		HEARTBRAND S1166P	KIKUMI TOKKYU 11875
			SHIGETAKARA H 40
			SAKAE RK23331
			SHIGEMARU
			HEARTBRAND C0062L

Consigned by Vaughan Family Ranch, Derby, KS

The sire here is the original import Hikari and his fantastic legacy precedes him. Hikari is known for his extreme balance of growth with high marbling and carcass traits. He is a son of Japanese legend, Dai 10 Mitsumaru 76 who also sired breed legends Big Al, Kaedemaru, and “the Elephant Cow” Heartbrand T0504E. Hikari is a leading proven sire of sons having produced elite bulls such as WSI Umemaru, TWA Kajikari, Kotsukari, and Heartbrand Hercules 2619A!

He is mated to a direct daughter of Judo! Judo is one of the outcross and extremely rare original import sires from 1976. He is known for being a balanced sire and his semen is extremely rare selling for \$5,000 plus per straw. Behind Judo we find an impressive sire stack of Shigemaru x H0518E x Shigemaru x Ume! This is one of the top cow families in Akaushi, having produced breed legends such as the Elephant Cow, TWA Kajikari, Heartbrand Charlie C4037S, and many more! This is a top-notch embryo package combining the Namiko and Ume maternal lines!





**SIRE** Rapid Bay Blue Chip ET



**DAM** HeartBrand 2110A

As we move our fullblood herd genetics forward, we want to maintain one of the hallmarks of the breed – marbling! We also feel that we need to maintain a focus with some blood lines on disposition and calmness, feet and leg structure, good top line, spring of rib, length and udder quality and milking ability. Where we don't have significant carcass data on cows, we are using the best historical information and data we evaluate. Our donor selection is based on piecing together a uniform set of fullblood cows. The foundation bulls used are selected to grow the quality of this foundation herd.

This isn't the end goal. We believe several breeders are advancing the fullblood genetics sires that can improve areas we need to without sacrificing the ability to marble.

Embryos sired by a past Champion of the World Akaushi sire! Take note of his impressive phenotype and conformation. Add to this a stunningly deep pedigree of Ashwood Park Virile x Kotsukari x Judo x Shigemaru x Big Al x Tamarau x Akiko and we have true super star sire! The Akiko maternal that Blue Chip descends from is known as the premier carcass traits line in the breed. Akiko herself is the dam of proven sires Big Al, Heart Brand Red Star, TWA Kotsukari, and Come and Take It! This bull is sure to contribute a balance of carcass traits, growth, and conformation to his progeny.

He is mated to a direct daughter of Judo! Judo is one of the outcross and extremely rare original import sires from 1976. He is known for being a balanced sire and his semen is extremely rare selling for \$5,000 plus per straw. Behind Judo we find an impressive sire stack of Shigemaru x H0518E x Shigemaru x Ume! This is one of the top cow families in Akaushi, having produced breed legends such as the Elephant Cow, TWA Kajikari, Heartbrand Charlie C4037S, and many more! This is a top-notch embryo package combining the Namiko and Ume maternal lines!

2D

## Three IVF Heifer Embryos

FULLBLOOD AKAUSHI | IVF | HEIFER | GRADE 1

**SIRE:** ASHWOOD PARK VIRILE  
RAPID BAY BLUE CHIP ET  
RAPID BAY ASUKA

**DAM:** JUDO 1223  
HEARTBRAND 2110A  
HEARTBRAND S1166P

SHIGEMARU  
TWA MEKATA  
KOTSUKARI  
IWG MS JUDO 73Z  
SHIGETAKARA H 40  
SAKAE RK23331  
SHIGEMARU  
HEARTBRAND C0062L

Consigned by Vaughan Family Ranch, Derby, KS



**SIRE** Rapid Bay Blue Chip ET



**DAM** MCC 754Y

Embryos sired by a past Champion of the World Akaushi sire! Take note of his impressive phenotype and conformation. Add to this a stunningly deep pedigree of Ashwood Park Virile x Kotsukari x Judo x Shigemaru x Big Al x Tamarau x Akiko and we have true super star sire! The Akiko maternal that Blue Chip descends from is known as the premier carcass traits line in the breed. Akiko herself is the dam of proven sires Big Al, Heart Brand Red Star, TWA Kotsukari, and Come and Take It! This bull is sure to contribute a balance of carcass traits, growth, and conformation to his progeny.

He is mated to MCC 754Y - Tamamaru x Shigemaru x Ume - We were fortunate to purchase this great proven Donor female and her half sister (MCC 7228Z) from Larry Ascherman of Carthage Missouri. These two females sired by Tamamaru were a key piece to finish out our donor lineup due to their outstanding structure and conformation. What first caught our eye about 754Y was the sheer depth, width and overall mass to her skeleton. She embodies the physical traits of what you look for in a true beef cow. Her phenotype alone drove us to the conclusion that she could be a cornerstone for our program in moving the Akaushi breed forward, but it only got better. 754Y is a granddaughter of the marbling queen and direct import Ume. Not only does 754Y have the physical and confirmation qualities we look for, but she also has the pedigree with a high propensity to marble. We thought if we could stack proven carcass genetics with 754Y, we could very well be on our way to overall breed improvement. Her dam, in our opinion is a product of the very best cross on the original import cattle. She combines the high maternal strength of Shigemaru with the high carcass value of Ume and you have genetic potential to move the breed forward with profitable cattle and do something special.

3A

## Three IVF Heifer Embryos

FULLBLOOD AKAUSHI | IVF | HEIFER | GRADE 1

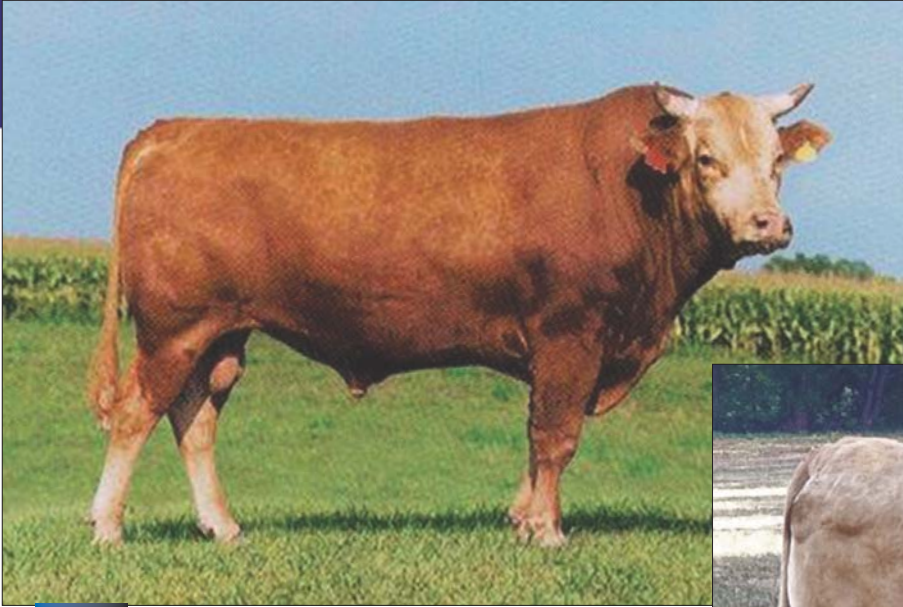
**SIRE:** ASHWOOD PARK VIRILE  
RAPID BAY BLUE CHIP ET  
RAPID BAY ASUKA

SHIGEMARU  
TWA MEKATA  
KOTSUKARI  
IWG MS JUDO 73Z  
DAI-GO 5 TAMANAMI TOKKYU 96  
DAI-HACHI 8 MARUNAMI  
SHIGEMARU  
UME

**DAM:** TAMAMARU  
MCC 754Y  
HEARTBRAND S1754P

Consigned by Vaughan Family Ranch, Derby, KS





**SIRE** Hikari



**DAM** MCC 754Y

**3B**

## Three IVF Embryos

FULLBLOOD AKAUSHI | IVF | GRADE 1

**SIRE:** HIKARI  
 DAI-JU 10 MITSUMARU KO 76  
 GODAI KO 2739

**DAM:** MCC 754Y  
 TAMAMARU  
 HEARTBRAND S1754P

DAI-NI 2 MITSUMARU TOKKYU 22  
 GODAI KO 2739  
 NAMIMARU KO 74  
 KIKUMI TOKKYU 11875  
 DAI-GO 5 TAMANAMI TOKKYU 96  
 DAI-HACHI 8 MARUNAMI  
 SHIGEMARU  
 UME

Consigned by Vaughan Family Ranch, Derby, KS

Hikari has a fantastic legacy that precedes him! Hikari is known for his extreme balance of growth with high marbling and carcass traits. He is a son of Japanese legend, Dai 10 Mitsumaruru 76 who also sired breed legends Big Al, Kaedemaru, and “the Elephant Cow” Heartbrand T0504E. Hikari is a leading proven sire of sons having produced elite bulls such as WSI Umemaru, TWA Kajikari, Kotsukari, and Heartbrand Hercules 2619A!

He is mated to MCC 754Y - Tamamaru x Shigemaru x Ume - We were fortunate to purchase this great proven Donor female and her half sister (MCC 7228Z) from Larry Ascherman of Carthage Missouri. These two females sired by Tamamaru were a key piece to finish out our donor lineup due to their outstanding structure and conformation. What first caught our eye about 754Y was the sheer depth, width and overall mass to her skeleton. She embodies the physical traits of what you look for in a true beef cow. Her phenotype alone drove us to the conclusion that she could be a cornerstone for our program in moving the Akaushi breed forward, but it only got better. 754Y is a granddaughter of the marbling queen and direct import Ume. Not only does 754Y have the physical and confirmation qualities we look for, but she also has the pedigree with a high propensity to marble. We thought if we could stack proven carcass genetics with 754Y, we could very well be on our way to overall breed improvement. Her dam, in our opinion is a product of the very best cross on the original import cattle. She combines the high maternal strength of Shigemaru with the high carcass value of Ume and you have genetic potential to move the breed forward with profitable cattle and do something special.





**SIRE** Hikari



**DAM** MCC 7228Z

**4A**

## Three IVF Embryos

FULLBLOOD AKAUSHI | IVF | GRADE 1

**SIRE:** HIKARI

DAI-JU 10 MITSUMARU KO 76  
GODAI KO 2739

DAI-NI 2 MITSUMARU TOKKYU 22  
GODAI KO 2739  
NAMIMARU KO 74  
KIKUMI TOKKYU 11875  
DAI-GO 5 TAMANAMI TOKKYU 96  
DAI-HACHI 8 MARUNAMI  
HIKARI  
HEARTBRAND S0930J

**DAM:** MCC 7228Z

TAMAMARU  
HEARTBRAND H1146P

Consigned by Vaughan Family Ranch, Derby, KS

Hikari has a fantastic legacy that precedes him! Hikari is known for his extreme balance of growth with high marbling and carcass traits. He is a son of Japanese legend, Dai 10 Mitsumaru 76 who also sired breed legends Big Al, Kaedemaru, and “the Elephant Cow” Heartbrand T0504E. Hikari is a leading proven sire of sons having produced elite bulls such as WSI Umemaru, TWA Kajikari, Kotsukari, and Heartbrand Hercules 2619A!

He is mated to MCC 7228Z - Tamamaru x Hikari - 7228Z is the paternal sister to 754Y, this cow is an outstanding product of two 1994 original import sires, Tamamaru and Hikari. We can really appreciate the maternal value, overall milking and udder structure of the Tamamaru females. Both of these “Tam”, donors get breeding value by going back to Dia-Hachi 8 Marunami, the dam of Tamamaru. These two half sisters have a lot of spring of rib, are easy keepers, We also wanted to go deeper in the ability to keep marbling in our foundation donors. In our research, few original import bulls can not only hold, but gain in marbling such as Hikari. This Tam x Hikari cross adds so much value to our breeding program in one generation. There have been numerous sib carcasses from sib F1’s to FB. This is a reason why we pursued obtaining these elite donor sisters for several years.



**SIRE** Rapid Bay Blue Chip ET



**DAM** MCC 7228Z

**4B**

## Three IVF Heifer Embryos

FULLBLOOD AKAUSHI | IVF | HEIFER | GRADE 1

**SIRE:** ASHWOOD PARK VIRILE  
RAPID BAY BLUE CHIP ET  
RAPID BAY ASUKA

SHIGEMARU  
TWA MEKATA  
KOTSUKARI  
IWG MS JUDO 73Z  
DAI-GO 5 TAMANAMI TOKKYU 96  
DAI-HACHI 8 MARUNAMI  
HIKARI  
HEARTBRAND S0930J

**DAM:** TAMAMARU  
MCC 7228Z  
HEARTBRAND H1146P

Consigned by Vaughan Family Ranch, Derby, KS

Embryos sired by a past Champion of the World Akaushi sire! Take note of his impressive phenotype and conformation. Add to this a stunningly deep pedigree of Ashwood Park Virile x Kotsukari x Judo x Shigemaru x Big Al x Tamarau x Akiko and we have true super star sire! The Akiko maternal that Blue Chip descends from is known as the premier carcass traits line in the breed. Akiko herself is the dam of proven sires Big Al, Heart Brand Red Star, TWA Kotsukari, and Come and Take It! This bull is sure to contribute a balance of carcass traits, growth, and conformation to his progeny.

He is mated to MCC 7228Z - Tamamaru x Hikari - 7228Z is the paternal sister to 754Y, this cow is an outstanding product of two 1994 original import sires, Tamamaru and Hikari. We can really appreciate the maternal value, overall milking and udder structure of the Tamamaru females. Both of these "Tam", donors get breeding value by going back to Dia-Hachi 8 Marunami, the dam of Tamamaru. These two half sisters have a lot of spring of rib, are easy keepers, We also wanted to go deeper in the ability to keep marbling in our foundation donors. In our research, few original import bulls can not only hold, but gain in marbling such as Hikari. This Tam x Hikari cross adds so much value to our breeding program in one generation. There have been numerous sib carcasses from sib F1's to FB. This is a reason why we pursued obtaining these elite donor sisters for several years.





**SIRE** Shigemaru



**DAM** HeartBrand 8438D

5A

## Three IVF Heifer Embryos

FULLBLOOD AKAUSHI | IVF | HEIFER | GRADE 1

**SIRE:** SHIGEMARU  
 DAI-NI 2 SHIGENAMI TOKKYU 27 SHIGENAMI KO 48  
 DAI 2 TAMASHIGE KO 1842  
 DAI-YON 4 AKIBARE TOKKYU 3357 DAI-JYUU 10 SHIGEKAWA KO 65  
 DAI-NI 2 AKIBARE 1KYU 53244

**DAM:** HEARTBRAND 9134X  
 HEARTBRAND S0132R  
**HEARTBRAND 8438D** HEARTBRAND T2126P  
 HEARTBRAND V7438U HEARTBRAND SAMSUNG S0947P  
 HEARTBRAND C4176S

Consigned by Sixteen Peaks Akaushi, Louisville, TN

Embryos are sired by the original import Shigemaru! Shigemaru is a fantastic highly proven sire that makes the best Akaushi females you will ever own. He sires moderately sized females with extreme depth, width, and strength. They are excellent maternal traits and will last turning into elite brood cows. Shigemaru has sired elite proven bulls including Heartbrand Joe, Heartbrand Raymond Reddington, Heartbrand Samsung, and Heart Brand Red Star.

The dam of this embryo lot, 8438D, brings the tremendous performance of the Akiko maternal line. She is sired by Heartbrand 9134X, who is a grandson of Shigemaru, and traces back to the Hitomi cow on his maternal side. The maternal grandsire of 8438D is Samsung, who is a son of Shigemaru. The next sire is the outstanding Heartbrand H0518E, who is a Hikari son of Marunami. 518E has been a proven, superior sire in the Heartbrand program. The concentration of Shigemaru blood in the pedigree of these embryos will allow for many breeding options with the resulting calves.





**SIRE** HeartBrand Joe S5394S



**DAM** HeartBrand 8438D

5B

## Three Embryos

FULLBLOOD AKAUSHI

**SIRE:** SHIGEMARU  
HEARTBRAND JOE S5394S  
HEARTBRAND B0004M

**DAM:** HEARTBRAND 9134X  
HEARTBRAND 8438D  
HEARTBRAND V7438U

DAI-NI 2 SHIGENAMI TOKKYU 27  
DAI-YON 4 AKIBARE TOKKYU 3357  
BIG AL  
FUYUKO  
HEARTBRAND S0132R  
HEARTBRAND T2126P  
HEARTBRAND SAMSUNG S0947P  
HEARTBRAND C4176S

Consigned by Sixteen Peaks Akaushi, Louisville, TN

Embryos by Heartbrand Joe, the leading Shigemaru son. He is a well pedigreed sire with high ranking EPDs. His sire stack is an impressive Shigemaru x Big Al x Fuyuko. Joe's EPDs feature multiple top 1% traits including Weighting Weight, Yearling weight and top 5% EPDs for Total Maternal and Ribeye Area! On top of this he has elite Indexes for both Growth and Carcass in the top 15% of the breed. This is the elite high-performance sire that will take any breeding program to the next level.

The dam of this embryo lot, 8438D, brings the tremendous performance of the Akiko maternal line. She is sired by Heartbrand 9134X, who is a grandson of Shigemaru, and traces back to the Hitomi cow on his maternal side. The maternal grandsire of 8438D is Samsung, who is a son of Shigemaru. The next sire is the outstanding Heartbrand H0518E, who is a Hikari son of Marunami. 518E has been a proven, superior sire in the Heartbrand program. The concentration of Shigemaru blood in the pedigree of these embryos will allow for many breeding options with the resulting calves



**SIRE** Big Al



**DAM** HeartBrand 8438D

5C

## Three IVF Heifer Embryos

FULLBLOOD AKAUSHI | IVF | HEIFER | GRADE 1

**SIRE:** BIG AL  
 DAI-JU 10 MITSUMARU KO 76  
 AKIKO

**DAM:** HEARTBRAND 9134X  
 HEARTBRAND 8438D  
 HEARTBRAND V7438U

DAI-NI 2 MITSUMARU TOKKYU 22  
 GODAI KO 2739  
 NAMIMARU KO 74  
 MITSUKO TOKKYU 9639  
 HEARTBRAND S0132R  
 HEARTBRAND T2126P  
 HEARTBRAND SAMSUNG S0947P  
 HEARTBRAND C4176S

Consigned by Sixteen Peaks Akaushi, Louisville, TN

Sired by Big Al, the first bull born outside of Japan in January of 1995. Big Al is the legendary Dai 10 Mitsumaru 76 son of Akiko and is highly proven with elite EPDs. On top of his fantastic EPDs, he is known for making incredible females with growth, strength, maternal traits, and longevity. Big Al is considered by many to be the greatest Akaushi bull of all-time!

The dam of this embryo lot, 8438D, brings the tremendous performance of the Akiko maternal line. She is sired by Heartbrand 9134X, who is a grandson of Shigemaru, and traces back to the Hitomi cow on his maternal side. The maternal grandsire of 8438D is Samsung, who is a son of Shigemaru. The next sire is the outstanding Heartbrand H0518E, who is a Hikari son of Marunami. 518E has been a proven, superior sire in the Heartbrand program. The combination of Shigemaru and Big Al in the pedigree of these embryos will allow for many breeding options with the resulting calves.





**SIRE** Big Al



**DAM** HeartBrand 9427D ET

6A

## Three Embryos

FULLBLOOD AKAUSHI

**SIRE:** BIG AL  
 DAI-JU 10 MITSUMARU KO 76  
 AKIKO

**DAM:** HEARTBRAND JOE S5394S  
 HEARTBRAND 9427D ET  
 HEARTBRAND T0139R

DAI-NI 2 MITSUMARU TOKKYU 22  
 GODAI KO 2739  
 NAMIMARU KO 74  
 MITSUKO TOKKYU 9639  
 SHIGEMARU  
 HEARTBRAND B0004M  
 TAMAMARU  
 HEARTBRAND B0139M

Consigned by Sixteen Peaks Akaushi, Louisville, TN

Sired by Big Al, the first bull born outside of Japan in January of 1995. Big Al is the legendary Dai 10 Mitsumaru 76 son of Akiko and is highly proven with elite EPDs. On top of his fantastic EPDs, he is known for making incredible females with growth, strength, maternal traits, and longevity. Big Al is considered by many to be the greatest Akaushi bull of all-time!

Look closely at the pedigree of this special donor dam. It is pretty spectacular featuring a sire stack of Heartbrand Joe x Tamamaru x Big Al x Ringo x Marunami! The pedigree power and performance value of this donor dam, 9427D, is amazing. The foundation dams of Ringo and Marunami guarantee top level performance! Further assurances come from the highly proven sires in the 9427D pedigree. Combining 9427D with Big Al will produce elite level calves.



**SIRE** HeartBrand Rhubarb 2142A



**DAM** HeartBrand 9427D ET

6B

## Three IVF Heifer Embryos

FULLBLOOD AKAUSHI | IVF | HEIFER | GRADE 1

	RUESHAW 430	RUEMEI H39
<b>SIRE:</b>	HEARTBRAND RHUBARB 2142A	FB2 KIKUTAMA 14285
	HEARTBRAND BARBARA B3518R	BIG AL
		HEARTBRAND 2128J
	HEARTBRAND JOE S5394S	SHIGEMARU
<b>DAM:</b>	HEARTBRAND 9427D ET	HEARTBRAND B0004M
	HEARTBRAND T0139R	TAMAMARU
		HEARTBRAND B0139M

Consigned by Sixteen Peaks Akaushi, Louisville, TN

Sired by Rhubarb, an elite Rueshaw son and out of a top Big Al daughter, Barbara B3518R. He combines the calving ease, eye appeal and correctness of design of Rueshaw with additional skeletal width and muscularity. His dam, Barbara B3518R, is a true generator of high performance, stout featured herd bulls. Rhubarb is from one of the premier Akaushi maternal lines in the entire world, the Namiko line! The Namiko maternal line has produced elite proven sires used heavily around the globe including Ashwood F X0014, Bald Ridge Henshin, Ashwood Park Virile, and Kalanga Kajikari B0125.

Look closely at the pedigree of this special donor dam. It is pretty spectacular featuring a sire stack of Heartbrand Joe x Tamamaru x Big Al x Ringo x Marunami! The pedigree power and performance value of this donor dam, 9427D, is amazing. The foundation dams of Ringo and Marunami guarantee top level performance! Further assurances come from the highly proven sires in the 9427D pedigree. Combining 9427D with Rhubarb will produce elite level calves.





**SIRE** HeartBrand Hercules 2619A



**DAM** HeartBrand 9427D ET

7

## Three Embryos

FULLBLOOD AKAUSHI

	HIKARI	DAI-JU 10 MITSUMARU KO 76
<b>SIRE:</b>	HEARTBRAND HERCULES 2619A	KAZUTOMO 1KYU 92958
	HEARTBRAND BUCKCHERRY S2421R	SHIGEMARU
		HEARTBRAND AU346G
	HEARTBRAND JOE S5394S	SHIGEMARU
<b>DAM:</b>	HEARTBRAND 9427D ET	HEARTBRAND B0004M
	HEARTBRAND T0139R	TAMAMARU
		HEARTBRAND B0139M

Consigned by Sixteen Peaks Akaushi, Louisville, TN

Sired by Hercules, a direct Hikari son from the legendary Heartbrand donor dam BUCKCHERRY! Hikari is one of the premier proven original import bulls and known for his elite marbling and ribeye area abilities. This is an ideal mating for the proven bull dam Buckcherry, who herself is a double bred Shigemaru daughter cementing the elite growth and maternals of Shigemaru in her blood. She is already the dam of proven Heartbrand sires Captain Ron, KC Bones, and Judo Rocks!

Look closely at the pedigree of this special donor dam. It is pretty spectacular featuring a sire stack of Heartbrand Joe x Tamamaru x Big Al x Ringo x Marunami! The pedigree power and performance value of this donor dam, 9427D, is amazing. The foundation dams of Ringo and Marunami guarantee top level performance! Further assurances come from the highly proven sires in the 9427D pedigree. Combining 9427D with Hercules will produce elite level calves.



**SIRE** Big Al



**DAM** HeartBrand 2100A

8A

## Three Embryos

FULLBLOOD AKAUSHI

<b>SIRE:</b>	BIG AL	DAI-JU 10 MITSUMARU KO 76	DAI-NI 2 MITSUMARU TOKKYU 22
	AKIKO		GODAI KO 2739
<b>DAM:</b>	HEARTBRAND 2100A	RUESHAW 430	NAMIMARU KO 74
		HEARTBRAND JONIE V7341U	MITSUKO TOKKYU 9639
			RUEMEI H39
			FB2 KIKUTAMA 14285
			SHIGEMARU
			HEARTBRAND S1741P

Consigned by Sixteen Peaks Akaushi, Louisville, TN

Sired by Big Al, the first bull born outside of Japan in January of 1995. Big Al is the legendary Dai 10 Mitsumaru 76 son of Akiko and is highly proven with elite EPDs. On top of his fantastic EPDs, he is known for making incredible females with growth, strength, maternal traits, and longevity. Big Al is considered by many to be the greatest Akaushi bull of all-time!

The donor dam of these embryos, 2100A, provides a very rare and desirable pedigree. She is a direct daughter of Rueshaw, whose genetics are currently in tremendous demand within the Akaushi breed. Rueshaw is backed up in this pedigree with a double mating to Shigemaru, locking in the great performance of Shigemaru. Behind the double mating of Shigemaru we find the highly desirable and sought after brood cow Ume. Ume is one of the highlight foundation cows imported from Japan. Ume has established a legacy of her own through the incredible performance of her progeny. Imagine the value of the resulting calves in this mating to Big Al!





**SIRE** HeartBrand Hercules 2619A



**DAM** HeartBrand 2100A

8B

## Three IVF Embryos

FULLBLOOD AKAUSHI | IVF

**SIRE:** HIKARI  
HEARTBRAND HERCULES 2619A  
HEARTBRAND BUCKCHERRY S2421R

DAI-JU 10 MITSUMARU KO 76  
KAZUTOMO IKYU 92958  
SHIGEMARU  
HEARTBRAND AU346G  
RUEMEI H39  
FB2 KIKUTAMA 14285  
SHIGEMARU  
HEARTBRAND S1741P

**DAM:** RUESHAW 430  
HEARTBRAND 2100A  
HEARTBRAND JONIE V7341U

Consigned by Sixteen Peaks Akaushi, Louisville, TN

Sired by Hercules, a direct Hikari son from the legendary Heartbrand donor dam BUCKCHERRY! Hikari is one of the premier proven original import bulls and known for his elite marbling and ribeye area abilities. This is an ideal mating for the proven bull dam Buckcherry, who herself is a double bred Shigemaru daughter cementing the elite growth and maternals of Shigemaru in her blood. She is already the dam of proven Heartbrand sires Captain Ron, KC Bones, and Judo Rocks!

The donor dam of these embryos, 2100A, provides a very rare and desirable pedigree. She is a direct daughter of Rueshaw, whose genetics are currently in tremendous demand within the Akaushi breed. Rueshaw is backed up in this pedigree with a double mating to Shigemaru, locking in the great performance of Shigemaru. Behind the double mating of Shigemaru we find the highly desirable and sought after brood cow Ume. Ume is one of the highlight foundation cows imported from Japan. Ume has established a legacy of her own through the incredible performance of her progeny. Imagine the value of the resulting calves in this mating to Hercules!



**SIRE** Big Al



**DAM** HeartBrand 2110A

9A

## Three IVF Embryos

FULLBLOOD AKAUSHI | IVF

**SIRE:** BIG AL  
 DAI-JU 10 MITSUMARU KO 76  
 AKIKO  
 DAI-NI 2 MITSUMARU TOKKYU 22  
 GODAI KO 2739  
 NAMIMARU KO 74  
 MITSUKO TOKKYU 9639  
 SHIGETAKARA H 40

**DAM:** HEARTBRAND 2110A  
 HEARTBRAND S1166P  
 SAKAE RK23331  
 SHIGEMARU  
 HEARTBRAND C0062L

Consigned by Sixteen Peaks Akaushi, Louisville, TN

Sired by Big Al, the first bull born outside of Japan in January of 1995. Big Al is the legendary Dai 10 Mitsumaru 76 son of Akiko and is highly proven with elite EPDs. On top of his fantastic EPDs, he is known for making incredible females with growth, strength, maternal traits, and longevity. Big Al is considered by many to be the greatest Akaushi bull of all-time!

The dam is a direct daughter of Judo! Judo is one of the outcross and extremely rare original import sires from 1976. He is known for being a balanced sire and his semen is extremely rare selling for \$5,000 plus per straw. Behind Judo we find an impressive sire stack of Shigemaru x H0518E x Shigemaru x Ume! This is one of the top cow families in Akaushi, having produced breed legends such as the Elephant Cow, TWA Kajikari, Heartbrand Charlie C4037S, and many more! This is a top-notch embryo package combining the Namiko and Ume maternal lines!





**SIRE** HeartBrand Joe S5394S



**DAM** HeartBrand 2110A

9B

## Three IVF Heifer Embryos

FULLBLOOD AKAUSHI | IVF | HEIFER

**SIRE:** SHIGEMARU  
HEARTBRAND JOE S5394S  
HEARTBRAND B0004M

**DAM:** JUDO 1223  
HEARTBRAND 2110A  
HEARTBRAND S1166P

DAI-NI 2 SHIGENAMI TOKKYU 27  
DAI-YON 4 AKIBARE TOKKYU 3357  
BIG AL  
FUYUKO  
SHIGETAKARA H 40  
SAKAE RK23331  
SHIGEMARU  
HEARTBRAND C0062L

Consigned by Sixteen Peaks Akaushi, Louisville, TN

Embryos by Heartbrand Joe, the leading Shigemaru son. He is a well pedigreed sire with high ranking EPDs. His sire stack is an impressive Shigemaru x Big Al x Fuyuko. Joe's EPDs feature multiple top 1% traits including Weighting Weight, Yearling weight and top 5% EPDs for Total Maternal and Ribeye Area! On top of this he has elite Indexes for both Growth and Carcass in the top 15% of the breed. This is the elite high-performance sire that will take any breeding program to the next level.

The dam is a direct daughter of Judo! Judo is one of the outcross and extremely rare original import sires from 1976. He is known for being a balanced sire and his semen is extremely rare selling for \$5,000 plus per straw. Behind Judo we find an impressive sire stack of Shigemaru x H0518E x Shigemaru x Ume! This is one of the top cow families in Akaushi, having produced breed legends such as the Elephant Cow, TWA Kajikari, Heartbrand Charlie C4037S, and many more! This is a top-notch embryo package combining the Namiko and Ume maternal lines!



**SIRE** Big Al



**DAM** LAG Fuyuko 2008D

10

## Bull Pregnancy

FULLBLOOD AKAUSHI | DUE 03.04.2023 | RECIPIENT ANGUS E866

**SIRE:** BIG AL  
 DAI-JU 10 MITSUMARU KO 76  
 AKIKO  
 DAI-NI 2 MITSUMARU TOKKYU 22  
 GODAI KO 2739  
 NAMIMARU KO 74  
 MITSUKO TOKKYU 9639

**DAM:** LAG FUYUKO 2008D  
 HEARTBRAND 2439Z  
 HEARTBRAND V7194U  
 HEARTBRAND H0518E  
 HEARTBRAND JONIE V7341U  
 BIG AL  
 FUYUKO

Consigned by Vaughan Family Ranch, Derby, KS

LAG Fuyuko 2008D – When we began our search for elite Akaushi genetics for potential top Donors and Donor prospects, one stop we made was at Legendary Akaushi. We came home with a top pair and donor prospect. Her heifer calf at side was a definite attention grabber. When you look at the donor prospect mom, LAG Fuyuko 2008D checks many of the boxes we wanted to supplement. Her sire is a direct son of HB H0518E with Shigemaru on the top side. However what really excited us about this young prospect is her stacked bottom side of her pedigree. Her dam is a direct daughter of Big Al and Fuyuko - The Big Al x Fuyuko combo has been a very successful mating for many years and there is a track record of proven production. LAG Fuyuko 2008D has a very easy, smooth confirmation with a strong top line. She is solid in her feet and leg structure and walks out nicely. She is pictured after weaning her heifer calf, but does have a nice udder and has passed on very nice growth performance to her heifer calf. We look forward to LAG Fuyuko as a solid breeding piece. She is currently multi-sire exposed in Legendarys front pasture and is bred. We are excited to see her next calf for sure. Big Al was the first bull born outside of Japan in January of 1995. Big Al is the legendary Dai 10 Mitsumaru 76 son of Akiko and is highly proven with elite EPDs. To this day Big Al has top 30% growth and maternal EPDs along with top 10% carcass EPD for Ribeye Area, Marbling, and Carcass Index! On top of his fantastic EPDs, he is known for making incredible females with growth, strength, maternal traits, and longevity. Big Al is considered by many to be the greatest Akaushi bull of all-time!





**SIRE** Big Al



**DAM** HeartBrand 2107A

11

## Heifer Pregnancy

FULLBLOOD AKAUSHI | IVF | HEIFER

**SIRE:** BIG AL  
 DAI-JU 10 MITSUMARU KO 76  
 AKIKO  
 DAI-NI 2 MITSUMARU TOKKYU 22  
 GODAI KO 2739  
 NAMIMARU KO 74  
 MITSUKO TOKKYU 9639  
 SHIGETAKARA H 40  
 SAKAE RK23331  
 BIG AL

**DAM:** HEARTBRAND 2107A  
 JUDO 1223  
 HEARTBRAND BARBARA B3518R  
 HEARTBRAND 2128J

Sired by Big Al, the first bull born outside of Japan in January of 1995. Big Al is the legendary Dai 10 Mitsumaru 76 son of Akiko and is highly proven with elite EPDs. On top of his fantastic EPDs, he is known for making incredible females with growth, strength, maternal traits, and longevity. Big Al is considered by many to be the greatest Akaushi bull of all-time!

The dam is an elite Judo daughter and out of a top Big Al daughter, Barbara B3518R. Barbara B3518R, is a true generator of high performance bulls including Rhubarb! Rhubarb and Barbara are from one of the premier Akaushi maternal lines in the entire world, the Namiko line! The Namiko maternal line has produced elite proven sires used heavily around the globe including Ashwood F X0014, Bald Ridge Henshin, Ashwood Park Virile, and Kalanga Kajikari B0125. Once again this is a rare and highly proven Akaushi maternal line!

Consigned by Vaughan Family Ranch, Derby, KS



**SIRE** HeartBrand Rhubarb 2142A



**DAM** HeartBrand 2107A

12

## Heifer Pregnancy

FULLBLOOD AKAUSHI | DUE 03.25.2023 | RECIP ANGUS E806

**SIRE:** RUESHAW 430  
HEARTBRAND RHUBARB 2142A  
HEARTBRAND BARBARA B3518R

**DAM:** JUDO 1223  
HEARTBRAND 2107A  
HEARTBRAND BARBARA B3518R

RUEMEI H39  
FB2 KIKUTAMA 14285  
BIG AL  
HEARTBRAND 2128J  
SHIGETAKARA H 40  
SAKAE RK23331  
BIG AL  
HEARTBRAND 2128J

Consigned by Vaughan Family Ranch, Derby, KS

A double bred Namiko pregnancy! WOW! Sired by Rhubarb, an elite Rueshaw son and out of a top Big Al daughter, Barbara B3518R. He combines the calving ease, eye appeal and correctness of design of Rueshaw with additional skeletal width and muscularity. His dam, Barbara B3518R, is a true generator of high performance, stout featured herd bulls. Rhubarb is from one of the premier Akaushi maternal lines in the entire world, the Namiko line! The Namiko maternal line has produced elite proven sires used heavily around the globe including Ashwood F X0014, Bald Ridge Henshin, Ashwood Park Virile, and Kalanga Kakikari B0125.

The dam is also a Barbara B3518R daughter but sired by outcross bull Judo. Making this a brother sister mating further concentrating the potency of these elite Namiko genetics. Once again this is a rare and highly proven Akaushi maternal line!





**SIRE** Big Al



**DAM** HeartBrand 2647A

13

## Heifer Pregnancy

FULLBLOOD AKAUSHI | DUE 03.04.2023 | RECIP ANGUS E818

**SIRE:** BIG AL  
 DAI-JU 10 MITSUMARU KO 76  
 AKIKO  
 DAI-NI 2 MITSUMARU TOKKYU 22  
 GODAI KO 2739  
 NAMIMARU KO 74  
 MITSUKO TOKKYU 9639

**DAM:** HEARTBRAND 2647A  
 SHIGEMARU  
 HEARTBRAND T1018P  
 DAI-NI 2 SHIGENAMI TOKKYU 27  
 DAI-YON 4 AKIBARE TOKKYU 3357  
 TAMAMARU  
 HEARTBRAND B0949J

Consigned by Vaughan Family Ranch, Derby, KS

Heartbrand 2647A – Another stop we felt we needed to make in search of assembling an elite Donor pen with as much of a diverse foundational genetic base we could find was at Heartbrand. 2647A has developed her way over time to be a proven producer and worthy of the Donor lineup. 2647A is a direct daughter of Shigemaru. He is known for producing beautiful, broody females with body mass, width and good feet. He has been widely used and regarded as one of the top foundational import bulls for overall value and versatility. The bottom side of her pedigree doesn't disappoint either. Her dam is out of Tamamaru which brings in Dia-Hachi 8 Marunami. Her granddam brings in not only Big Al, but HB Himawari 245. This is a large broody female who maintains her body condition. She is the Boss cow of the Donor pen and has a great disposition. She is very calm and will eat out of your hand. Big Al was the first bull born outside of Japan in January of 1995. Big Al is the legendary Dai 10 Mitsumaru 76 son of Akiko and is highly proven with elite EPDs. To this day Big Al has top 30% growth and maternal EPDs along with top 10% carcass EPD for Ribeye Area, Marbling, and Carcass Index! On top of his fantastic EPDs, he is known for making incredible females with growth, strength, maternal traits, and longevity. Big Al is considered by many to be the greatest Akaushi bull of all-time!



**SIRE** HeartBrand Rhubarb 2142A



**DAM** HeartBrand 2647A

14

## Heifer Pregnancy

FULLBLOOD AKAUSHI | DUE 03.25.2023 | RECIPIENT ANGUS E848

**SIRE:** RUESHAW 430  
HEARTBRAND RHUBARB 2142A  
HEARTBRAND BARBARA B3518R

**DAM:** SHIGEMARU  
HEARTBRAND 2647A  
HEARTBRAND T1018P

RUEMEI H39  
FB2 KIKUTAMA 14285  
BIG AL  
HEARTBRAND 2128J  
DAI-NI 2 SHIGENAMI TOKKYU 27  
DAI-YON 4 AKIBARE TOKKYU 3357  
TAMAMARU  
HEARTBRAND B0949J

Consigned by Vaughan Family Ranch, Derby, KS

Sired by Rhubarb, an elite Rueshaw son and out of a top Big Al daughter, Barbara B3518R. He combines the calving ease, eye appeal and correctness of design of Rueshaw with additional skeletal width and muscularity. His dam, Barbara B3518R, is a true generator of high performance, stout featured herd bulls. Rhubarb is from one of the premier Akaushi maternal lines in the entire world, the Namiko line! The Namiko maternal line has produced elite proven sires used heavily around the globe including Ashwood F X0014, Bald Ridge Henshin, Ashwood Park Virile, and Kalanga Kajikari B0125.

Heartbrand 2647A – Another stop we felt we needed to make in search of assembling an elite Donor pen with as much of a diverse foundational genetic base we could find was at Heartbrand. 2647A has developed her way over time to be a proven producer and worthy of the Donor lineup. 2647A is a direct daughter of Shigemaru. He is known for producing beautiful, broody females with body mass, width and good feet. He has been widely used and regarded as one of the top foundational import bulls for overall value and versatility. The bottom side of her pedigree doesn't disappoint either. Her dam is out of Tamamaru which brings in Dia-Hachi 8 Marunami. Her granddam brings in not only Big Al, but HB Himawari 245. This is a large broody female who maintains her body condition. She is the Boss cow of the Donor pen and has a great disposition. She is very calm and will eat out of your hand.





**SIRE** HeartBrand Rhubarb 2142A



**DAM** HeartBrand 2110A

15

## Heifer Pregnancy

FULLBLOOD AKAUSHI | DUE 03.25.2023 | RECIPIENT ANGUS E819

**SIRE:** RUESHAW 430  
HEARTBRAND RHUBARB 2142A  
HEARTBRAND BARBARA B3518R

**DAM:** JUDO 1223  
HEARTBRAND 2110A  
HEARTBRAND S1166P

RUEMEI H39  
FB2 KIKUTAMA 14285  
BIG AL  
HEARTBRAND 2128J  
SHIGETAKARA H 40  
SAKAE RK23331  
SHIGEMARU  
HEARTBRAND C0062L

Consigned by Vaughan Family Ranch, Derby, KS

Sired by Rhubarb, an elite Rueshaw son and out of a top Big Al daughter, Barbara B3518R. He combines the calving ease, eye appeal and correctness of design of Rueshaw with additional skeletal width and muscularity. His dam, Barbara B3518R, is a true generator of high performance, stout featured herd bulls. Rhubarb is from one of the premier Akaushi maternal lines in the entire world, the Namiko line! The Namiko maternal line has produced elite proven sires used heavily around the globe including Ashwood F X0014, Bald Ridge Henshin, Ashwood Park Virile, and Kalanga Kajikari B0125.

The dam is a direct daughter of Judo! Judo is one of the outcross and extremely rare original import sires from 1976. He is known for being a balanced sire and his semen is extremely rare selling for \$5,000 plus per straw. Behind Judo we find an impressive sire stack of Shigemaru x H0518E x Shigemaru x Ume! This is one of the top cow families in Akaushi, having produced breed legends such as the Elephant Cow, TWA Kajikari, Heartbrand Charlie C4037S, and many more! This is a top-notch embryo package combining the Namiko and Ume maternal lines!