



WEDNESDAY, NOVEMBER 14, 2018
Crown Plaza, Louisville, KY at 7:30 p.m. E.S.T.

A NIGHT

AT THE NAILE
LIMOUSIN & LIM-FLEX SALE

SUNDAY, NOVEMBER 11, 2018

TBD Limousin Junior Show

WEDNESDAY NOVEMBER 14, 2018

6:30 p.m. (E.S.T.) Social Hour and conversation
about the NAILE sale lots

7:30 p.m. (E.S.T.) *A Night at the NAILE Sale*
Crown Plaza in the Russell Room
Louisville, KY

THURSDAY, NOVEMBER 15, 2018

8:00 a.m. (E.S.T.) NAILE M.O.E. Limousin Show

SALE MANAGEMENT TEAM



Randall O. Ratliff, Owner
615.330.2735 | Randy@RRMktg.com
www.RRMktg.com
P.O. Box 60097, Nashville, TN 37206



Kiley McKinna, Owner
402.350.3447 | mcmarketingsales@aol.com
648 West Sawgrass Trail
Dakota Dunes, South Dakota 57049

SALE LOCATION & DIRECTIONS

Crown Plaza Louisville Airport Expo Center
830 Phillips Ln, Louisville, KY 40209
GPS address is 830 Phillips Ln, Louisville, KY 40209

Directions ... Off I-264, this modern hotel is one mile from the Louisville International Airport and across the street from the NAILE show.

**A
NIGHT
AT THE NAILE**

WEDNESDAY, NOVEMBER 14, 2018

Crown Plaza, Louisville, KY at 7:30 p.m. E.S.T.



GENERAL SALE INFORMATION

SALE ORDER Sale order and any additions and corrections to the sale catalog will be posted the evening prior to the sale at www.RRMktg.com and www.mcmarketingmanagement.com.

ANNOUNCEMENTS Announcements made sale day by the owners, auctioneer or sale management take precedence over statements in the sale catalog.

PAYMENT All lots must be paid for at the time of the sale unless prior arrangements have been made. R & R Marketing will accept credit cards with a 3% convenience fee charged to the buyer.

SHIPPING COSTS Buyers pay for the shipping of any lots in this sale.

TERMS AND CONDITIONS Terms of the sale are cash unless satisfactory credit arrangements have been made prior to the sale. A representative will be on hand sale day if your wishes are to insure your purchases. Please note; The sale manager is an agent for the seller and has no responsibility other than those involved in conducting the sale. All persons who attend the sale do so at their own risk. Neither the sale manager nor the sale consigners assume liability. Legal and/or otherwise on any accidents that may occur.

SALE DAY PHONES & EMAILS

Kiley McKinna.....402.350.3447
or Mcmarketingsales@aol.com

Randall O. Ratliff.....615.330.2735
or Randy@RRMktg.com

AUCTIONEER

Cody Lowderman.....309.313.2171

SALE CONSULTANT

Grassroots Genetics, Mark Smith
515.229.5227 or grgenetics@aol.com



Featuring the Limousin & Lim-Flex breed's finest genetics!

CONSIGNORS

ATAK LIMOUSIN

ATAK Limousin
478 140th St, Avon, IL 61415
Andy Schmalshof309.333.0029
Adam Schmalshof309.333.3044
Atak4limo@agristar.net
www.attakcattle.com

Brown Land & Cattle Company **MCBN**

Brown Land & Cattle Co.
17305 Highway FF, Diamond, MO 64840
Marty Brown417.310.6649
Cheryl Brown417.438.2519
Cheryl@brownlandandcattleco.com
www.brownlandandcattle.com



CIRCLE L LIMOUSIN & LAND CO.

Circle L Limousin & Land Co., Inc.
4306 West Sterling Rd., Burbank Ohio 44214
Cory Baker330.352.1845
Cbaker.clll@aol.com | www.circlecattle.com



Counsil Family Limousin
Jim and Kevin Counsil
21314 OSR, Madisonville, TX 77864-4811
281.808.5511
cookinkev@aol.com
www.counsilfamilylimousin.com



Edwards Land & Cattle Co.
290 Willard Edwards Road
Beulaville, NC 28518-8666
Dexter Edwards910.290.0467
Nicholas Edwards910.290.1424
nicholasel@hotmail.com
www.edwardslandandcattle.com

EDWARDS LIMOUSIN

Edwards Limousin
21853 Hwy. AA, Higginsville, MO 64037
Emmet Edwards816.726.1919
Shaun Edwards660.441.0811
Scott Edwards660.641.0409
dedwards@ctcis.net

A NIGHT AT THE NAILE



FOSDICK
Cattle

FREED
LIVESTOCK
— Fairbury - IL —

Fosdick Cattle / Freed Livestock
31507 N 3460 E, Chenoa IL 61726
Thadd Fosdick815.867.6915
Jon Freed.....815.867.0488
thadd@fosdickcattle.com
www.fosdickcattlecompany.com



FreeBird Farms
324 T E McGee Road
McMinnville, TN 37110-4547
423.240.5533
freebirdfarms@frontiernet.net



HB Farms
1938 West Leestown Road
Midway, KY 40347
Greg Blyades859.338.9402
Nathan Hicks.....859.576.6738
hbfarms@hbfarms.net
www.hbfarms.net



J6 Farms
5960 Maple Road, Gibbon, NE 68840
David Spencer308.627.6259
David.spencer@hvrtrust.com
Mark Blake712.269.1361
Markblake11@yahoo.com
www.J6farms.com

LEGACY FARMS
LIMOUSIN

Legacy Farms Limousin
18241 Irving Road, Witt, IL 62094
Joan and Randy Meyer217.594.7758
Jordan Ruppert, Manager217.827.2564
Rupp46@yahoo.com
Legacyfarms22@yahoo.com
www.Legacyfarmscattle.com

LINHART
LIMOUSIN

Linhart Limousin
27195 175th St., Leon, IA 50144
Charles Linhart641.340.1306
Charles@linhartlimousin.com
www.linhartlimousin.com

STowers

Stowers Limousin
430 CR 1326, Bridgeport, TX 76426
Scott, Donna & Lauren Stowers940.577.1300
Jason Gaston, Ranch Manager.....817.247.8011
Jasongaston85@gmail.com
Stowerslandandcattle@gmail.com
www.stowerslimousin.com



Thomas & Sons Farms
7320 Cattle Run Lane, Boonsboro, MD 21713
Lonnie Thomas724.858.5669
Chris Thomas717.275.4443
Thomaslonnie21@gmail.com
www.thomasandsonfarms.com



Tubmill Creek Farms
152 Florida Lane, New Florence, PA 15944
John Goodish.....412.996.1715
Zeb O'boyle.....724.858.5669
Kelly O'boyle717.275.4443
Zbob85@icloud.com
www.tubmillcreekfarms.com



White Valley Ranch
12555 Hwy 69, Adair, OK 74330
Chris White918.803.1787
Chrisku2@yahoo.com
Kelsey White918.803.3570
Kelseywhite3570@gmail.com
www.whitevalleyranch.com



Wies Limousin
103 Harris School Road, Wellsville, MO 63384
Bob & Euvonne Wies573.684.2773
Heather Henderson, Manager573.220.5768
HHenderson538u@gmail.com
Robert Taylor 706.215.0038
www.wieslimousin.com



WILDER FAMILY
LIMOUSIN

Wilder Family Limousin
PO Box 551, Snook, TX 77878
Jay Wilder:979.268.5491
Jwilder1993@gmail.com
www.wilderfamilylimousin.com

We Have It Covered!



- ✓ Industry Relevant News
- ✓ Up-to-the Minute Advertising
- ✓ Current Breed Happenings
- ✓ Unique Online Sale Platform

If it's Limousin ... It's Here



[HOME](#) [ASSOCIATION](#) [YOUTH](#) [COMMERCIAL](#) [EVENTS](#) [ONLINE SALES](#) [PROMOTION](#) [CONTACT](#) [Q](#)

405.260.3775 • info@limousin365.com
www.limousin365.com • Like us on [f](#)



365

LIMOUSIN365.COM

For REAL TIME, LIVE online bidding
for A Night at the NAILE Sale,
visit www.limousin365.com

Selling Spring Possession & 10% Semen Interest!



MAGS AVIATOR

Morris

1 MAGS Aviator

Lim-Flex (59) Bull HP / HB MAGS 373A LFM 2028667 03.13.2013

BT CROSSOVER 758N
MAGS WINSTON
 MAGS STRAWBERRY
 DHVO DEUCE 132R
MAGS XTRA REST
 MAGS UNREST

C A FUTURE DIRECTION 5321
 BT ROYAL PRIDE 237G
 EXLR NEW GENERATION 071M
 MAGS FRUITFUL 487M
 GPFF BLAQUE RULON
 AMY JO DHAN 20L
 MAGS REMOTE
 HA LADY 1091

- Selling Spring Possession & 10% Semen Interest
- With out question the most popular Lim-Flex bull in the business.
- Nearly 1,000 Progeny on record with NALF
- Has sired dozens of show ring champions and scores of top-sellers
- Calves display phenotypic superiority with eye appeal to burn
- Top EPD percentiles for Gest, CED, BW, YW, CEM, DOC, CW, MB, SMTI
- Generated in excess of \$50,000 in return to owners semen revenue over past three years.

	CED	BW	WW	YW	MA	TM	CEM	SC	ST	DOC	YT	CW	REA	MB	FT	SMTI
EPD	16	-0.6	63	98	17	49	10	-0.1	13	19	-0.22	27	0.74	0.19	-0.02	57.80
%Rank	10	15	40	35	85	65	10	95	30	10	95	15	80	10	95	15



Consigned by Linhart Limousin, Leon, IA



TASF CROWN ROYAL 960C



RIVERSTONE CHARMED

The finest in Purebred Genetics!

2 THREE IVF Embryos

Purebred Limousin Double Polled Homozygous Black IVF Embryos

DHVO DEUCE 132R
TASF CROWN ROYAL 960C ET
 TASF WHISKEY LULLABY 357W

TMCK DURHAM WHEAT 6030X
RIVERSTONE CHARMED
 HSF YOUR FANTASY

GPFF BLAQUE RULON
 AMY JO DHAN 20L
 EXLR NASDAQ 380R
 TMCK MISS THICK 37T
 DHVO DEUCE 132R
 MAGS STRAWBERRY PIE
 MAGS WAR ADMIRAL
 HSF TINKERBELL

	CED	BW	WW	YW	MA	TM	CEM	SC	ST	DOC	YT	CW	REA	MB	FT	SMTI
SIRE	6	3.3	74	109	23	60	3	1.1	12	12	-0.71	18	1.26	-0.53	-0.14	38.77
DAM	8	2.1	54	78	27	54	5	0.95	10	13	-0.65	12	1.12	-0.45	-0.12	35.32

- Seller guarantees one confirmed pregnancy.
- Purebred genetics at the tenth degree!
- What more would a person want than purebred genetics at this level.
- Sired by the once National Champion and now one of the breed's top sires of choice.
- From the \$100,000 valued donor for Ratliff and Stowers and the one donor that has knocked the breath out of everyone the minute they saw her win the supreme championship over all breeds in Louisville.

Consigned by Stowers Limousin, Bridgeport, TX

Proven Donor



FBFL PRINCESS KATE 406C

3 FBFL Princess Kate 406C

PB Limousin (87) Cow DP / HB FBFL 406C NPF 2082739 03.29.2015

DHVO DEUCE 132R
MAGS XYLOID
BOHI RHONDA 314R

CRSL 5064R
DPBN MEDAL 4063U
EXLR LUVLY 603P

GPFF BLAQUE RULON
AMY JO DHAN 20L
EXLR NEW GENERATION 071M
DAVIS ROSETTA 9514
WULFS FANFARE 4055F
MINE SOUTHERN DOLL 1154L
AUTO BLACK DAKOTA 129J
EXLR LUVLY 002H

	CED	BW	WW	YW	MA	TM	CEM	SC	ST	DOC	YT	CW	REA	MB	FT	SMTI
EPD	6	2.1	60	93	18	48	3	0.64	9	15	-0.54	15	0.84	-0.29	-0.12	42.14
%Rank	>95	75	45	40	75	65	95	40	75	20	70	35	70	45	65	50

- FBFL Princess Kate 406C is open and ready to flush on 12.01.18.
- She resides in North Carolina at Edwards Land & Cattle Co.
- Selling 50% embryo interest
- Dam of the 2017 NAILE Grand Champion bull HWCB Eye of the Storm 406E
- Purebred donor at its finest and from the heart of the ELCX and Freebird Farm program.
- Polled and Homozygous black
- Sired by the deceased and once All American Futurity Supreme Champion bull, MAGS Xyloid.
- From an ELCX bred cow sired by the once syndicated sire, SRCL 5064R and from a daughter of EXLR Luvly donor.

Consigned by Edwards Land & Cattle Co., Beulaville, NC and
Freebird Farms, McMinnville, TN

Pick of Possession & Semen



HWCB EYE OF THE STORM 406E



Pick of Spring or Fall Possession
& 20 units Semen Packages

4 HWCB Eye of the Storm 406E

Limi-Flex (71) Bull DP / HB HWCB 406B LFM 2117062 03.17.2017

RLBH AIR FORCE ONE
ELCX CAESAR 331 C
PBRS ALICE 331A

MAGS XYLOID
FBFL PRINCESS KATE 406C
DPBN MEDAL 4063U

EF XCESSIVE FORCE
EF YAFFA 821Y
MAGS YIP
BUFORD LUCY 9302
DHVO DEUCE 132R
BOHI RHONDA 314R
CRSL 5064R
EXLR LUVLY 603P

	CEB	BW	WW	YW	MA	TM	CEM	SC	ST	DOC	YT	CW	REA	MB	FT	SMTI
EPD	11	0.6	58	92	18	47	7	0.69	11	14	-0.31	27	0.57	-0.01	-0.08	49.94
%Rank	55	40	70	60	80	85	35	50	65	35	85	15	95	30	70	35

- He will be show at the 2018 NAILE show the day after this sale and is on display at the show
- Pick of Spring or Fall possession
- 20 units semen packages for \$1,000 each
- 2017 NAILE Grand Champion Bull
- 2018 North Carolina State Fair Supreme Champion Bull
- Solid in his footing, sound in his structure and movement
- Packed full of muscle and thickness.
- Sired by a son of RLBH Air Force One from a MAGS Yip daughter back to an Angus female.
- From the FBL Princess Kate 406C female that is catalog as the previous lot

Consigned by Edwards Land & Cattle Co., Beulaville, NC and
Freebird Farms, McMinnville, TN

Featuring the Limousin & Lim-Flex breed's finest genetics!

Embryos



AUTO CRUZE 132X



AUTO CINDEE 160C

5 TWO Embryos

Purebred Limousin Homozygous Polled Homozygous Black Conventional Embryos

MAGS THE GENERAL
AUTO CRUZE 132X
AUTO REBECA 292S

WLR DIRECT HIT
AUTO CINDEE 160C ET
MAGS SALMETTO

AUTO DOLLAR GENERAL 122R
EXLR LUVLY 821M
LESF ASPHALT 9N
EXLR REBECA 1019P
KRVN NASKAR 013N
MAGS NIGHT AMBUSH
TNUH BLUE PRINT 245H
MAGS PALMETTO

	CEB	BW	WW	YW	MA	TM	CEM	SC	ST	DOC	YT	CW	REA	MB	FT	SMTI
SIRE	14	-0.5	76	113	24	62	7	0.3	6	12	-0.49	18	0.8	-0.25	-0.12	47.94
DAM	10	2.4	60	85	24	54	6	0.95	4	4	-0.66	2	0.95	-0.49	-0.13	35.70

- Highlighting the NAILE Sale will be two heifer embryos sired by AUTO Cruze 132X-Cruze is the leading sire for Pinegar Limousin who is not on the open market, his genetics and influence are as popular in the business as ever right now
- This mating is some of the finest Purebred genetics you can get your hands on and we are proud to be highlighting the NAILE sale with his influence
- The dam of these embryos are from the leading Purebred Limousin donor at J6 Farms, Inc. She is a daughter of WLR Direct Hit and back to the MAGS Salmetto female
- Here are premier purebred genetics that are double homozygous.

Consigned by J6 Farms, Gibbon, NE

Embryos



RIVERSTONE CROWN ROYAL



AUTO ZOFIA 439Z

6A THREE Sexed Heifer Embryos
 Purebred Limousin Double Polled Double Black Sexed Heifer Embryos

6B THREE Sexed Heifer Embryos
 Purebred Limousin Double Polled Double Black Sexed Heifer Embryos

TMCK DURHAM WHEAT 6030X	DHVO DEUCE 132R
RIVERSTONE CROWN ROYAL	MAGS STRAWBERRY PIE
HSF YOUR FANTASY	MAGS WAR ADMIRAL
	HSF TINKERBELL
MAGS XYLOID	DHVO DEUCE 132R
AUTO ZOFIA 439Z	BOHI RHONDA 314R
MAGS MANUELA	EXLR LIMITED EDITION 765J
	AUTO CITY NIGHTS 214H

Top-selling female in the breed so far this year. Zofia was the \$45,000 purchase by J6 Farms from the April Pinegar Limousin sale. Zofia is one of the finest purebred females to exist. She represents a pedigree and lineage that is proven and predictable. Her full sister, SBLX Znote, the \$40,000-valued female owned by P Bar S Ranch, Sand Springs, OK, and Stowers Limousin, Bridgeport, TX, was a past National Junior Heifer Show grand champion. Highlighting the Summit Sale will be three heifer embryos sired by Riverstone Crown Royal. His genetics and influence are as prominent in the business as ever right now! This mating is some of the finest Purebred genetics you can get your hands on and we are proud to be highlighting the NAILE sale with Zofia's influence.

Consigned by J6 Farms, Gibbon, NE

	CED	BW	WW	YW	MA	TM	CEM	SC	ST	DOC	YT	CW	REA	MB	FT	SMTI
SIRE	11	2.1	53	78	24	50	7	0.95	15	12	-0.57	-3	0.7	-0.47	-0.12	33.68
DAM	7	3.6	56	90	25	53	5	0.70	9	14	-0.45	20	0.66	-0.23	-0.11	42.45

Featuring the Limousin & Lim-Flex breed's finest genetics!

Embryos



RIVERSTONE CROWN ROYAL



AUTO DANITA 222D

7A THREE Embryos

84% Purebred Limousin Double Polled Double Black Conventional Embryos

7B THREE Embryos

84% Purebred Limousin Double Polled Double Black Conventional Embryos

TMCK DURHAM WHEAT 6030X
RIVERSTONE CROWN ROYAL
 HSF YOUR FANTASY

AUTO CRUZE 132X
AUTO DANITA 222D ET
 SBLX UMBRELLA 305U

DHVO DEUCE 132R
 MAGS STRAWBERRY PIE
 MAGS WAR ADMIRAL
 HSF TINKERBELL
 MAGS THE GENERAL
 AUTO REBECA 292S
 G A R PREDESTINED
 ELMW GINNIE P58G

- Sired by the leading syndicated bull, Riverstone Crown Royal.
- From AUTO Danita 222D, a black and homozygous polled daughter of AUTO Cruze and from SBLX Umbrella 305U.
- The blending of these two well bred greats we feel will create results that will be very advantage for the new owner.
- Purebred Limousin at its best....Crown Royal blended with AUTO Cruze genetics will create future progeny that will have instant value
- These embryos represent the best of the best from the heart of the J6 Farms program

	CED	BW	WW	YW	MA	TM	CEM	SC	ST	DOC	YT	CW	REA	MB	FT	SMTI
SIRE	11	2.1	53	78	24	50	7	0.95	15	12	-0.57	-3	0.7	-0.47	-0.12	33.68
DAM	15	-0.4	61	93	24	54	8	0.50	7	9	-0.39	20	0.68	0	-0.09	51.71

Consigned by J6 Farms, Gibbon, NE



Maddy

LEGACY'S DAISY

Selling 5 Embryos to Bull of Buyers Choice

8 Legacy's Daisy

PB Limousin (100) Cow DP / Red DOMR 111D NPF 2118217 11.11.2016

CJSL WINDFALL 9072W
FC ANGELS ANSWER
 SL ANGELS SWEET MELODY

MAGS STARBUCKS
LEGACY'S YALI
 LGCY HONEY BARREL

LVLS SECRET WEAPON 4408K
 CJ'S MS ARROWHEAD 456P
 MAGS SASQUATCH
 JSTH ANGELS CENTERFOLD
 GPF BLAQUE RULON
 CARROUSELS LADYLIKE 1230L
 WULF'S POLLED PROGRESS
 CANE RIDGE ELVIRA 5520E

	CED	BW	WW	YW	MA	TM	CEM	SC	ST	DOC	YT	CW	REA	MB	FT	SMTI
EPD	12	0.4	51	76	26	51	7	0.38	8	11	-0.71	4	0.87	-0.41	-0.16	36.24
%Rank	40	35	95	95	10	60	35	85	90	60	30	90	60	30	15	90

"Big Red" is what everyone referred to this heifer on the show road this summer. Red as we like to call her is just that. She is very powerful in her overall make up and perfect on her feet and legs. She is definitely built for the long haul as you study her from the ground up. It's hard to make a purebred so stout, but also have that huge sweeping rib cage that is admired in the ring today and Red has both. She was made by no accident for she comes from our favorite cow family line. We have kept and shown everything that has been out of her mother and maternal grandmother. They have beautiful udders and very easy fleshing! The possibilities are endless when deciding on what to mate her too. You can either go purebred or Angus and be ok.

She was Grand Bred & Owned at Eastern Regional, Third Overall Bred & Owned at the Junior Nationals and won her division at Illinois State Fair.

Buyer supplies the semen and seller pays for the transplant work.

Consigned by Legacy Farms, Witt, IL

Bred Heifer



ELCX ELEGANT 722E

9 ELCX Elegant 722E ET

Lim-Flex (42) Cow HP / HB ELCX 722E LFF 2124567 04.05.2017

MAGS WINSTON
MAGS AVIATOR
 MAGS XTRA REST

EXAR SUNDANCE 6216
EXLR LISA 8223X
 EXLR LISA 8095T

BT CROSSOVER 758N
 MAGS STRAWBERRY
 DHVO DEUCE 132R
 MAGS UNREST
 BR MIDLAND
 WK PRINCESS 1194
 RODROCK RA AMBUSH M147
 EXLR LISA N856

	CED	BW	WW	YW	MA	TM	CEM	SC	ST	DOC	YT	CW	REA	MB	FT	SMTI
EPD	14	-0.6	59	95	19	48	10	0.38	11	14	-0.18	32	0.69	0.32	-0.02	61.03
%Rank	20	20	65	90	75	80	4	85	65	35	95	10	85	4	>95	10

- PE. 08.12.18 to sale time to HWCB Eye Of The Storm 406E
- She will be show in the NAILE show the day after the sale. She will also be on display at the show.
- 42% Lim-Flex
- Homozygous polled and homozygous black
- Big league bred heifer from the heart of the ELCX program
- Sired by the ever-popular MAGS Aviator
- Her dam is EXLR Lisa 8223X, a proven donor and daughter of EXAR Sundance
- She is massive in her foot size, big ribbed and very capacious

Consigned by Edwards Land & Cattle Co., Beulaville, NC



TMCK APPLAUSE 301A



Choice of Embryos



CJSL Creed 5042C, sire of Lot 10A.



S STO Best Bet 456B, sire of Lot 10B.

Selling Choice of Embryos

10A THREE Embryos

57.5% Lim-Flex Homozygous Polled Homozygous Black

MAGS AVIATOR
CJSL CREED 5042C
CJSL 2090Z

MAGS Y-AXIS
TMCK APPLAUSE 301A
TMCK CASUAL 28Y

MAGS WINSTON
MAGS XTRA REST
MAGS XUKALANI
MAGS XULEMA
TC ABERDEEN 759
MAGS UAHUKA
AHCC WESTWIND W544
BLEL CASUAL 646S

	CEB	BW	WW	YW	MA	TM	CEM	SC	ST	DOC	YT	CW	REA	MB	FT	SMTI
SIRE	18	-0.3	64	99	22	54	11	0.5	13	13	-0.24	18	0.72	0.36	-0.02	64.42
DAM	12	0.8	68	111	26	59	7	0.9	15	19	-0.41	32	1.09	0.02	-0.06	54.68

10B THREE Embryos

52.5% Lim-Flex Double Polled Homozygous Black

S A V HARVESTOR 0338
S STO BEST BET 456B ET
ELCX TWILIGHT 114X

MAGS Y-AXIS
TMCK APPLAUSE 301A
TMCK CASUAL 28Y

S A V HERITAGE 6295
S A V EMBLYNETTE 7749
DHVO DEUCE 132R
DFLC HBHPC 1S
TC ABERDEEN 759
MAGS UAHUKA
AHCC WESTWIND W544
BLEL CASUAL 646S

	CEB	BW	WW	YW	MA	TM	CEM	SC	ST	DOC	YT	CW	REA	MB	FT	SMTI
SIRE	13	1.4	74	118	21	58	6	1.1	12	7	0.01	41	0.37	0.31	0	63.64
DAM	12	0.8	68	111	26	59	7	0.9	15	19	-0.41	32	1.09	0.02	-0.06	54.68

- Dam ranks in the top 20% or better for 11 traits.
- TMCK Applause 301A combines an elite EPD profile with a recognizable pedigree and proven producing ability.
- The progeny by Best Bet will not only sport elite EPDs for growth, marbling and mainstream terminal index, they should be some of the most phenotypically respected in the Lim-Flex business
- The progeny by Creed 5042C are functional and eye appealing with plenty of middle and stoutness combined with curve bending EPDs.

Consigned Tubmill Creek Farm, New Florence, PA

Featuring the Limousin & Lim-Flex breed's finest genetics!



WLR FARAH

11 WLR Farah

Lim-Flex (46) Cow HP / DB BJLR 421F LFF 2150815 01.08.2018

OSU CLASS ACT
WLR COLD PLAY ET
 WLR PRADA

S A V BRILLIANCE 8077
ELCX GIRL CRUSH 421B ET
 WLR TAINTED LOVE 746X

DAMERON FIRST CLASS
 OSU EMPRESS 7165
 MAGSWL USUAL SUSPECT 538U
 AUTO REBECA 292S
 S A V BISMARCK 5682
 S A V BLACKCAP MAY 5270
 WULFS URBAN COWBOY 2149U
 MAGS PHANTOMS PRIZE

	CEB	BW	WW	YW	MA	TM	CEM	SC	ST	DOC	YT	CW	REA	MB	FT	SMTI
EPD	12	1.1	63	98	22	54	6	-	9	10	-0.27	25	0.68	0.02	-0.05	52.15
%Rank	40	55	45	40	40	35	55	-	80	70	90	20	85	25	85	30

- She will be shown the day after the sale at the NAILE Open M.O.E. Show and is on display at the show
- 46% Lim-Flex
- Double black and homozygous polled
- This deep ribbed and broody female has it all stacked in her favor
- She represents two of the strongest cow families ever created for the WVR program
- Sired by WLR Cold Play, a proven son of OSU Class Act and from WLR Prada
- WLR Prada is one of the greatest purebred donors in the entire breed ... period
- From a daughter of SAV Brilliance back to WLR Tainted Love 746X
- WLR Tainted Love 746X was the 2010 NAILE Grand Champion Female

Consigned by Wies Limousin, Wellsville, MO



WLR FENDI ET

WLR Prada, dam of Lot 12.

12 WLR Fendi ET

Lim-Flex (50) Cow DP / DB BJLR 72F LFF -- 04.10.2018

S A V BRILLIANCE 8077	S A V BISMARCK 5682
PVF INSIGHT 0129	S A V BLACKCAP MAY 5270
PVF MISSIE 790	P V F NEW HORIZON 001
MAGSWL USUAL SUSPECT 538U	P V F MISS RAPTOR 024
WLR PRADA	MAGS SASQUATCH
AUTO REBECA 292S	MAGS PHANTOMS PRIZE
	LESF ASPHALT 9N
	EXLR REBECA 1019P

- She will be shown the day after the sale at the NAILE Open M.O.E. Show and is on display at the show
- 50% Lim-Flex, double polled and double black
- Here is one of the finest show heifers that has come from the Wies program
- The Prada family has been profitable, predictable and successful! Prada captured numerous banners during her show road career: National Junior heifer show Reserve Grand Champion, American Royal Reserve Grand Champion, NAILE Grand Champion, Junior Show, NAILE Reserve Grand, Open Show, FWSS Grand Champion, MOE Show Heifer of the Year, and current MOE Dam of the Year. Two Prada daughters have been show heifer of the year, a son was show bull of the year; a daughter was Third Overall at the 2018 National Junior Show, and another daughter was Reserve Grand Champion at the 2015 National Junior Show in Tulsa. Expect similar results with Fendi, she'll have you rocking in style.

	CED	BW	WW	YW	MA	TM	CEM	SC	ST	DOC	YT	CW	REA	MB	FT	SMTI
SIRE	14	-0.3	75	124	20	58	7	1.2	14	15	-0.07	72	1.42	0.40	0.05	67.98
DAM	10	2	61	93	23	54	6	0.45	3	8	-0.60	11	0.88	-0.45	-0.13	37.16

Consigned by Wies Limousin, Wellsville, MO

Embryo Flush



BSTR GOLD DIGGER ET



SBLX Zane

13 BSTR Gold Digger ET

Lim-Flex (50) Cow DP / Red BSTR 333D LFF 2102858 03.14.2016

BT CROSSOVER 758N
MAGS WINSTON
 MAGS STRAWBERRY

G A R PREDESTINED
SBLX UNDERTHECOVERS 201U
 ELMW GINNIE P58G

C A FUTURE DIRECTION 5321
 BT ROYAL PRIDE 237G
 EXLR NEW GENERATION
 MAGS FRUITFUL 487M
 B/R NEW DESIGN 036
 G A R EXT 4206
 TCDT MR T.D'S POWER PACK
 ELMW POLLED ECSTASY 67E

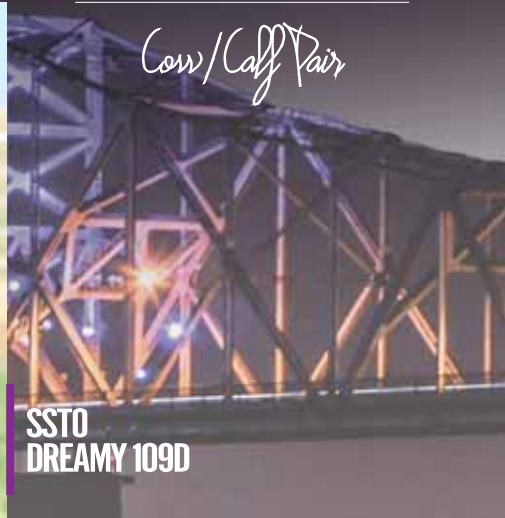
	CED	BW	WW	YW	MA	TM	CEM	SC	ST	DOC	YT	CW	REA	MB	FT	SMTI
EPD	13	0.2	58	97	24	54	7	0.35	9	12	-0.2	35	0.63	0.42	-0.04	64.75
%Rank	20	30	55	30	25	30	30	75	75	40	95	3	90	2	95	3

Selling 1 Embryo Flush

- Guarantee of five embryos sired by the bull of the buyer's choice. Seller pays for the flush work and buyer supplies the semen
- This female represents premier genetics like no other
- She is a daughter of the deceased and popular MAGS Winston
- From the donor SBLX Underthecovers 201U, the \$25,000 valued donor
- She is a full sister to the \$60,000 valued donor SBLX Zane in the ELCX program
- This gorgeous red female is one of the finest in the business
- Ranks in the top 1% for GEST, top 2% for MB and CW and top 3% for SMTI

Consigned by Edwards Land & Cattle Co., Beulaville, NC
 and White Valley Ranch, Adair, OK

Cow/Calf Pair



**SSTO
DREAMY 109D**



SBLX Underthecovers 201U, dam of Lot 14.

14 SSTO Dreamy 109D

Lim-Flex (50) Cow HP / HB SSTO 109D LFF 2114412 11.01.2016

DAMERON FIRST CLASS
SBLX FIRST CLASS
MAGS MANUELA

G A R PREDESTINED
SBLX UNDERTHECOVERS 201U
ELMW GINNIE P58G

EXG RS FIRST RATE S903 R3
DAMERON NORTHERN MISS 311
EXLR LIMITED EDITION 765J
AUTO CITY NIGHTS 214H
B/R NEW DESIGN 036
G A R EXT 4206
TCDT MR TD'S POWER PACK
ELMW POLLED ECSTASY 67E

	CED	BW	WW	YW	MA	TM	CEM	SC	ST	DOC	YT	CW	REA	MB	FT	SMTI
EPD	9	1.4	54	86	24	51	6	0.68	8	8	-0.19	26	0.53	0.24	-0.04	56.68
%Rank	70	55	70	55	25	45	50	40	80	75	95	10	95	10	95	10

14A SSTO First Date 8882F

Lim-Flex (53) Cow HP / HB SSTO 8882F LFM 2150831 09.03.2018

CJSL DAUNTLESS 6257D ET
SSTO DREAMY 109D

MAGS ZODIAC
LLJB ABSOLUTE STYLE 3056A
SBLX FIRST CLASS
SBLX UNDERTHECOVERS 201U

	CED	BW	WW	YW	MA	TM	CEM	SC	ST	DOC	YT	CW	REA	MB	FT	SMTI
EPD	12	0.5	60	97	25	54	8	0.74	9	10	-0.18	27	0.46	0.14	-0.04	54.77
%Rank	40	40	60	45	15	35	20	40	80	70	95	15	>95	15	90	20

- This pair is not at the sale and can be picked up at White Valley Ranch, Adair, OK
- Homozygous polled and homozygous black
- Sired by SBLX First Class. He is the highly syndicated 50% Lim-Flex and son of Dameron First Class from MAGS Manuela. He is a leading sire for Stowers, P Bar S, Milam and Southern Cattle Co.
- Her dam is SBLX Underthecovers 201U, the big league donor and daughter of GAR Predestined from the many times national M.O.E. gold medal dam, ELMW Ginnie P58G. 201U is a maternal sister to the once national champion female, Carrousel's Pina Colada
- SSTO Dreamy 109D scanned a 9.5 for REA and 4.03 for IMF. She ranks in the top 10% of the breed for marbling with a .40 and SMTI with a 63.80, top 15% for calving ease maternal with an 8
- This female has all the ingredients needed to be a big league donor for any program. She is heavy in her structure, strong and powerful down her top line and very square and appealing out from her hooks to her pens. She has the perfect amount of rib shape, body capacity and spring of rib shape

Consigned by White Valley Ranch, Adair, OK

Featuring the Limousin & Lim-Flex breed's finest genetics!



SBLX UTOPIAN QUEEN 1305U



MAGS WINSTON

15 FOUR Embryos

50% Lim-Flex Double Polled Double Black Conventional Embryos

COLEMAN PRODUCTION 608
COLE WINDFALL 144W
 COLE MISS FIRSTDOWN 6162S

G A R PREDESTINED
SBLX UTOPIAN QUEEN 1305U
 AUTO ELITE 270F

GAR PRECISION 1680
 COLEMAN BLACKCAP 211
 CLONE-COLE FIRST DOWN 46D
 COLE 18K
 B/R NEW DESIGN 036
 G A R EXT 4206
 JCL BLACK OUT
 STBR GRACIOUS GIRL

	CED	BW	WW	YW	MA	TM	CEM	SC	ST	DOC	YT	CW	REA	MB	FT	SMTI
SIRE	11	2.6	78	129	32	71	6	1.3	9	14	-0.23	50	0.97	0.18	-0.04	62.21
DAM	9	2	59	98	32	61	6	0.95	7	10	-0.29	33	0.78	0.31	-0.06	61.54

- Sired by one of the biggest numbers bulls in the entire breed, COLE Windfall 144W
- Windfall ranks in the top 1% of the breed for GEST, TM and CW, top 2% for YW, top 4% for WW and top 5% for SMTI.
- These embryos are from a female that ranks in the top 1% in the breed for GEST, top 2% for MK, top 4% for TM, CW and MB and top 5% for SMTI.
- These future calves are going to be something special and certainly have the extreme numbers to get anyone's attention.

Consigned by Brown Land & Cattle Co., Diamond, MO

16 FOUR Embryos

50% Lim-Flex Double Polled Double Black Conventional Embryos

BT CROSSOVER 758N
MAGS WINSTON
 MAGS STRAWBERRY

G A R PREDESTINED
SBLX UTOPIAN QUEEN 1305U
 AUTO ELITE 270F

C A FUTURE DIRECTION 5321
 BT ROYAL PRIDE 237G
 EXLR NEW GENERATION 071M
 MAGS FRUITFUL 487M
 B/R NEW DESIGN 036
 G A R EXT 4206
 JCL BLACK OUT
 STBR GRACIOUS GIRL

	CED	BW	WW	YW	MA	TM	CEM	SC	ST	DOC	YT	CW	REA	MB	FT	SMTI
SIRE	4	-0.7	65	110	25	57	6	-0.1	8	16	-0.18	47	0.62	0.44	-0.05	67.28
DAM	9	2	59	98	32	61	6	0.95	7	10	-0.29	33	0.78	0.31	-0.06	61.54

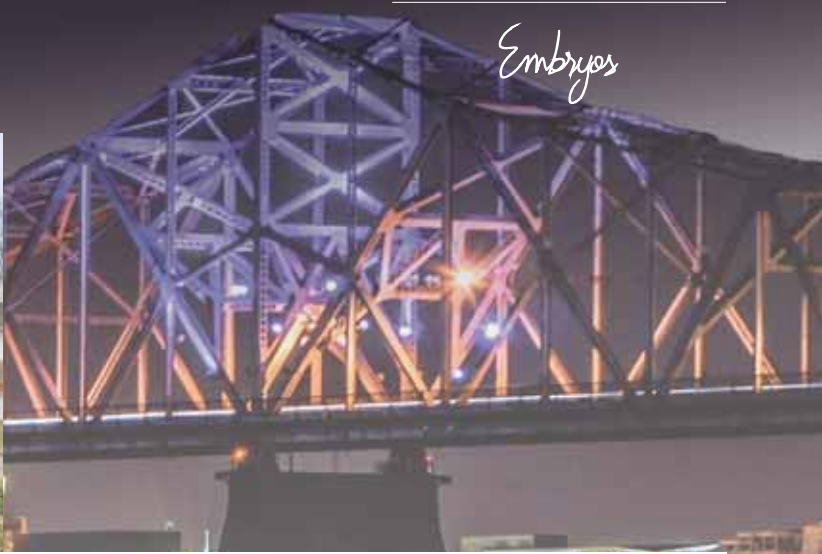
- These embryos are from a female that ranks in the top 1% in the breed for GEST, top 2% for MK, top 4% for TM, CW and MB and top 5% for SMTI.
- They are sired by the deceased and seriously popular, MAGS Winston.
- Winston ranks in the top 1% of the breed for GEST and CW and top 2% for MB and SMTI.
- These are some exceptional mating's that will not be made anymore since MAGS Winston is deceased.

Consigned by Brown Land & Cattle Co., Diamond, MO

Embryos



EF XCESSIVE FORCE



SBLX UNIFORM DESIGN 5243U

17 THREE Embryos

50% Lim-Flex Double Polled Double Black Conventional Embryos

D A TRAVELER 004 703
EF XCESSIVE FORCE
 CFLX MOLLYS IMAGE

RITO REVENUE 5M2 OF 2536
SBLX UNIFORM DESIGN 5243U
 MAGS ROBERTA

S A V 8180 TRAVELER 004
 ROSEWOOD ERICA 5010
 DHVO DEUCE 132R
 JCL PEPPERMINT
 G A R PREDESTINED
 G A R PRECISION 2536
 JCL LODESTAR 27L
 MAGS JODI

- These embryos are from SBLX Uniform Design 5243U, the huge numbered and big time donor for Brown Land & Cattle.
- She is a daughter of RITO Revenue and from the elite donor, MAGS Roberta.
- These future calves are sired by the many times show champion, EF Xcessive Force. He has sired as many show champions as any bull in the breed.
- The blending of these genetics of these two premier animals we feel will create something special.

	CED	BW	WW	YW	MA	TM	CEM	SC	ST	DDC	YT	CW	REA	MB	FT	SMTI
SIRE	14	-2.3	58	88	9	38	11	1.8	14	11	0.01	36	0.32	0.11	0	51.51
DAM	13	0.8	57	94	21	50	7	0.5	14	16	-0.06	26	0.51	0.81	0.01	77.30

Consigned by Brown Land & Cattle Co., Diamond, MO

Choice of Mating



AHCC
Earning
Power

Musgrave Headway,
sire of Lot 18A.



CJSL Creed, sire of Lot 18B.



TASF Crown Royal 960C,
sire of Lot 18C.



AHCC DAKOTA DIAMOND

- Dam is a full sister AHCC Earning Power, owned by Magness Land & Cattle and who was appraised at north of \$50,000.
- All calves will be homozygous black and homozygous polled
- The sire choices allow the buyer to propagate either elite Lim-Flex or Purebreds
- Each sire represents notoriety on the national level.

Consigned by **ATAK Limousin, Avon, IL**

18B FOUR Embryos

68.5% Lim-Flex Homozygous Polled Homozygous Black

MAGS AVIATOR
CJSL CREED 5042C
CJSL 2090Z

MAGS ANCHOR
AHCC DAKOTA DIAMOND 6061D ET
LVLS 9066U

MAGS WINSTON
MAGS XTRA REST
MAGS XUKALANI
MAGS XULEMA
LH WAR HERO 195W
MGS XIPHOPAGOUS
LVLS FARMER JOHN 7428P
LVLS9066R

	CED	BW	WW	YW	MA	TM	CEM	SC	ST	DOC	YT	CW	REA	MB	FT	SMTI
SIRE	18	-0.3	64	99	22	54	11	0.5	13	13	-0.24	18	0.72	0.36	-0.02	64.42
DAM	10	1.4	73	114	11	47	6	1.2	8	14	-0.37	31	0.71	-0.15	-0.09	49.66

18A FOUR Embryos

40% Lim-Flex Homozygous Polled Homozygous Black

SCHIEFELBEIN ALLIED 514
MUSGRAVE HEADWAY
MUSGRAVE LADY BARBARA 524-57

MAGS ANCHOR
AHCC DAKOTA DIAMOND 6061D ET
LVLS 9066U

PLATTEMERE WEIGH UP K360
FROSTY ELBA 5152
MUSGRAVE INVISION
MCATL LADY BARBARA 57-715
LH WAR HERO 195W
MGS XIPHOPAGOUS
LVLS FARMER JOHN 7428P
LVLS9066R

	CED	BW	WW	YW	MA	TM	CEM	SC	ST	DOC	YT	CW	REA	MB	FT	SMTI
SIRE	19	-1.7	90	144	31	76	15	-	13	11	0.30	58	0.09	1.06	0.05	93.39
DAM	10	1.4	73	114	11	47	6	1.2	8	14	-0.37	31	0.71	-0.15	-0.09	49.66

18C FOUR Embryos

Purebred Limousin Homozygous Polled Homozygous Black

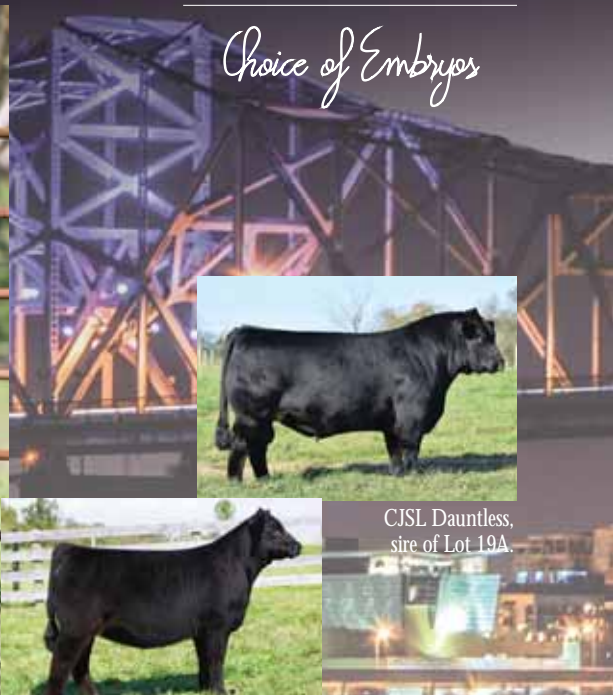
DHVO DEUCE 132R
TASF CROWN ROYAL 960C ET
TASF WHISKEY LULLABY 357W

MAGS ANCHOR
AHCC DAKOTA DIAMOND 6061D ET
LVLS 9066U

GPFF BLAQUE RULON
AMY JO DHAN 20L
EXLR NASDAQ 380R
TMCK MISS THICK 37T
LH WAR HERO 195W
MGS XIPHOPAGOUS
LVLS FARMER JOHN 7428P
LVLS9066R

	CED	BW	WW	YW	MA	TM	CEM	SC	ST	DOC	YT	CW	REA	MB	FT	SMTI
SIRE	6	3.3	74	109	23	60	3	1.1	12	12	-0.71	18	1.26	-0.53	-0.14	38.77
DAM	10	1.4	73	114	11	47	6	1.2	8	14	-0.37	31	0.71	-0.15	-0.09	49.66

Choice of Embryos



CJSL Dauntless,
sire of Lot 19A.

Full sib to
Lot 19A embryos.

EF Xcessive Force,
sire of Lot 19B.

Full sib to Lot 19B embryos.

Selling Choice of Embryos

MAGS WITH CLASS

19A THREE Embryos

65.5% Lim-Flex Homozygous Polled Homozygous Black

MAGS ZODIAC
CJSL DAUNTLESS 6257D ET
LLJB ABSOLUTE STYLE 3056A

DHVO DEUCE 132R
MAGS WITH CLASS
MAGS PHYLLO

MAGS WINSTON
MAGS XANTHOS
SILVEIRAS STYLE 9303
MAGS WASSAIL
GPFF BLAQUE RULON
AMY JO DHAN 20L
BR MIDLAND
MISS WULFETTE 6230F

	GED	BW	WW	YW	MA	TM	CEM	SC	ST	DOC	YT	CW	REA	MB	FT	SMTI
SIRE	14	0.5	70	114	18	53	9	0.8	12	11	-0.16	28	0.39	0.04	-0.05	54.18
DAM	12	-0.4	50	75	20	45	6	1.3	8	12	-0.41	26	0.76	-0.32	-0.09	36.70

19B THREE Embryos

62.5% Lim-Flex Double Polled Homozygous Black

D A TRAVELER 004 703
EF XCESSIVE FORCE
CFLX MOLLYS IMAGE

DHVO DEUCE 132R
MAGS WITH CLASS
MAGS PHYLLO

S A V 8180 TRAVELER 004
ROSEWOOD ERICA 5010
DHVO DEUCE 132R
JCL PEPPERMINT
GPFF BLAQUE RULON
AMY JO DHAN 20L
BR MIDLAND
MISS WULFETTE 6230F

	GED	BW	WW	YW	MA	TM	CEM	SC	ST	DOC	YT	CW	REA	MB	FT	SMTI
SIRE	14	-2.3	58	88	9	38	11	1.8	14	11	0.01	36	0.32	0.11	0	51.51
DAM	12	-0.4	50	75	20	45	6	1.3	8	12	-0.41	26	0.76	-0.32	-0.09	36.70

- Dam is truly one of the greatest producing Deuce donors in the breed.
- The progeny by Dauntless will be full sibs to the top-selling lot in the Thomas fall 2018 online sale which brought \$17,500.
- The progeny by Xcessive Force will be full sibs to the 2018 reserve grand champion Lim-Flex female at Junior Nationals.
- Resulting calves are guaranteed homozygous black and will be big league show heifer prospects.

Consigned by Thomas & Sons Farm, Boonsboro, MD

Choice of Mating



AUTO EXCITEMENT 405E



MAGS Cable, sire of Lot 20A.



CJSL Creed 5042C, sire of Lot 20B.



SSTO Best Bet 456B, sire of Lot 20C.



CJSL Dauntless 6257D, sire of Lot 20D.

- AUTO Excitement was the top-selling lot at the 2018 Heart Of Missouri Sale.
- Dam is a direct daughter of the famed donor, Rebeca 292S.
- The resulting heifer calf will stand serious competition on the national level.
- Progeny guaranteed to be Homozygous black, huge numbered and really good.

Consigned by Wilder Family Limousin, Snook, TX

20A FOUR SEXED HEIFER Embryos

46.5% Lim-Flex Homozygous Polled Homozygous Black SEXED HEIFER

MAGS APPLESEED
MAGS CABLE
MAGS ZEQUIN

S A V BRAND NAME 9115
AUTO EXCITEMENT 405E ET
AUTO REBECA 292S

RITO 6EM3 OF 4L1 EMBLAZON
MAGS WAY TO SHINE
BOHI TOP DOLLAR 7144T
WERNER RITA 118
S A V BISMARCK 5682
S A V BLACKCAP MAY 5530
LESF ASPHALT 9N
EXLR REBECA 1019P

	CED	BW	WW	YW	MA	TM	CEM	SC	ST	DOC	YT	CW	REA	MB	FT	SMTI
SIRE	14	1.0	74	113	18	54	8	1.5	11	15	-0.17	47	0.83	0.27	-0.02	63.44
DAM	11	0.6	70	111	21	56	5	1.25	5	10	-0.19	35	0.69	0.02	-0.03	53.66

20B FOUR SEXED HEIFER Embryos

45% Lim-Flex Homozygous Polled Homozygous Black SEXED HEIFER

MAGS AVIATOR
CJSL CREED 5042C
CJSL 2090Z

S A V BRAND NAME 9115
AUTO EXCITEMENT 405E ET
AUTO REBECA 292S

MAGS WINSTON
MAGS XTRA REST
MAGS XUKALANI
MAGS XULEMA
S A V BISMARCK 5682
S A V BLACKCAP MAY 5530
LESF ASPHALT 9N
EXLR REBECA 1019P

	CED	BW	WW	YW	MA	TM	CEM	SC	ST	DOC	YT	CW	REA	MB	FT	SMTI
SIRE	18	-0.3	64	99	22	54	11	0.5	13	13	-0.24	18	0.72	0.36	-0.02	64.42
DAM	11	0.6	70	111	21	56	5	1.25	5	10	-0.19	35	0.69	0.02	-0.03	53.66

20C FOUR SEXED HEIFER Embryos

40% Lim-Flex Double Polled Homozygous Black SEXED HEIFER

S A V HARVESTOR 0338
SSTO BEST BET 456B ET
ELCX TWILIGHT 114X

S A V BRAND NAME 9115
AUTO EXCITEMENT 405E ET
AUTO REBECA 292S

S A V HERITAGE 6295
S A V EMBLYNETTE 7749
DHVO DEUCE 132R
DFLC HBHPC 1S
S A V BISMARCK 5682
S A V BLACKCAP MAY 5530
LESF ASPHALT 9N
EXLR REBECA 1019P

	CED	BW	WW	YW	MA	TM	CEM	SC	ST	DOC	YT	CW	REA	MB	FT	SMTI
SIRE	13	1.4	74	118	21	58	6	1.1	12	7	0.01	41	0.37	0.31	0	63.64
DAM	11	0.6	70	111	21	56	5	1.25	5	10	-0.19	35	0.69	0.02	-0.03	53.66

20D FOUR SEXED HEIFER Embryos

46.5% Lim-Flex Homozygous Polled Homozygous Black SEXED HEIFER

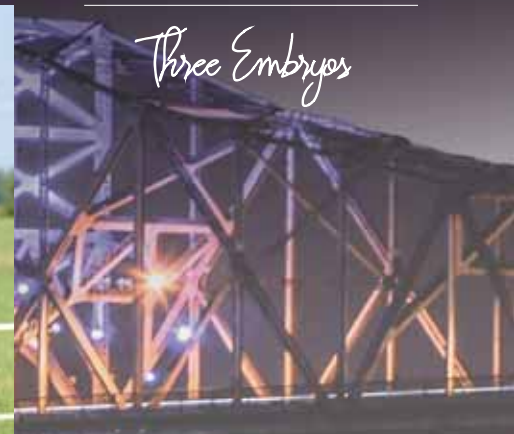
MAGS ZODIAC
CJSL DAUNTLESS 6257D ET
LLJB ABSOLUTE STYLE 3056A

S A V BRAND NAME 9115
AUTO EXCITEMENT 405E ET
AUTO REBECA 292S

MAGS WINSTON
MAGS XANTHOS
SILVEIRAS STYLE 9303
MAGS WASSAIL
S A V BISMARCK 5682
S A V BLACKCAP MAY 5530
LESF ASPHALT 9N
EXLR REBECA 1019P

	CED	BW	WW	YW	MA	TM	CEM	SC	ST	DOC	YT	CW	REA	MB	FT	SMTI
SIRE	14	0.5	70	114	18	53	9	0.8	12	11	-0.16	28	0.39	0.04	-0.05	54.18
DAM	11	0.6	70	111	21	56	5	1.25	5	10	-0.19	35	0.69	0.02	-0.03	53.66

Three Embryos



WLBL Avalon 608D

WLBL AVALON 608D

MAGS CABLE

21 THREE Embryos

53% Lim-Flex Homozygous Polled Homozygous Black

MAGS APPLESEED
MAGS CABLE
 MAGS ZEQUIN

MAGS ZODIAC
WLBL AVALON 608D ET
 AUTO AVALON 222A

RITO 6EM3 OF 4L1 EMBLAZON
 MAGS WAY TO SHINE
 BOHI TOP DOLLAR 7144T
 WERNER RITA 118
 MAGS WINSTON
 MAGS XANTHOUS
 DAMERON FIRST CLASS
 AUTO LANA 255L

- The blending of these two outstanding individuals project to produce functionally sound, high power progeny that will be huge numbered, double homozygous and highly marketable.
- A mating bred for success - WLBL Avalon 608D was the 2018 National Champion Cow/Calf pair at the 2018 Junior Nationals and MAGS Cable is one of the most formidable Lim-Flex A.I sires in the Limousin breed today.
- She ranks in the top 20% or better for weaning weight, yearling weight, milk, total maternal, carcass weight, marbling and mainstream terminal index.
- One of the most accomplished show females in the history of the Limousin breed!
 - Grand Champion, 2017 Kentucky Beef Expo Junior Show
 - Reserve Grand Champion, 2017 Southeast Summer Classic
 - Grand Champion, 2017 Kentucky State Fair
 - Reserve Supreme Champion, 2017 Kentucky State CATTlemen's Fall Classic
 - Grand Champion Cow/ Calf, 2018 Eastern Regional Junior Show
 - Supreme Champion, 2018 Southeast Summer Classic
 - Grand Champion Lim-Flex Cow/ Calf, 2018 National Junior Heifer Show
 - Reserve Grand Champion Cow/ Calf, 2018 All-American Futurity
 - Grand Champion Cow/ Calf, 2018 Kentucky State Fair
 - Supreme Champion Cow/ Calf, 2018 Kentucky State Fair

	CED	BW	WW	YW	MA	TM	CEM	SC	ST	DOC	YT	CW	REA	MB	FT	SMTI
SIRE	14	1.0	74	113	18	54	8	1.5	11	15	-0.17	47	0.83	0.27	-0.02	63.44
DAM	11	2	72	116	26	62	5	0.45	9	14	-0.26	43	0.71	-0.02	-0.07	53.25

Consigned by HB Farms, Midway, KY

Featuring the Limousin & Lim-Flex breed's finest genetics!

Semen



RLBH AIR FORCE ONE



TASF Dignity
035D



ELCX Candy 330C



LSLX Carla 68C

22A 5 Units CONVENTIONAL Semen
22B 5 Units CONVENTIONAL Semen
22C 5 Units CONVENTIONAL Semen

23A 5 Units SEXED HEIFER Semen
23B 5 Units SEXED HEIFER Semen
23C 5 Units SEXED HEIFER Semen

RLBH Air Force One

Lim-Flex (62) Bull DP / HB RLBH 821A LFM 2026301 03.28.2013

D A TRAVELER 004 703
EF XCESSIVE FORCE
 CFLX MOLLYS IMAGE

EXLR NEW GENERATION 071M
EF YAFFA 821Y
 MAGS ROSE PETAL

S A V 8180 TRAVELER 004
 ROSEWOOD ERICA 5010
 DHVO DEUCE 132R
 JCL PEPPERMINT
 AUTO BLACK DAKOTA 129J
 EXLR LUVLY 084F
 GPFF BLAQUE RULON
 TECC DATELINE'S GAL 10J

	CEU	BW	WW	YW	MA	TM	CEM	SC	ST	DOC	YT	CW	REA	MB	FT	SMTI
EPD	11	-1	55	85	13	40	9	1	13	17	-0.13	35	0.51	0.32	-0.03	59.24
%Rank	45	10	75	70	>95	>95	10	20	30	15	>95	5	95	4	95	10

- Polled and homozygous black
- 2008 Denver National Western Lim-Flex Grand Champion Bull
- 2015 Denver National Limousin Sale top-selling lot
- A sire of excellence like no other!
- Son of EF Xcessive Force and from the Rachel Booth donor, EF Yaffa 821Y
- Sire of numerous champions around the U.S. and some of the nicest show cattle in the business.

Consigned by Council Family Limousin, Madisonville, TX

Choice of Embryos



AUTO ANGELINA 225A



Selling Choice of Embryos

23A FOUR Sexed Heifer Embryos

50% Lim-Flex Double Polled Homozygous Black Sexed Heifer Embryos

MAGS APPLESEED
MAGS CABLE
 MAGS ZEQUIN
 DAMERON FIRST CLASS
AUTO ANGELINA 225A
 MAGS MANUELA

RITO 6EM3 OF 4L1 EMBLAZON
 MAGS WAY TO SHINE
 BOHI TOP DOLLAR 7144T
 WERNER RITA 118
 EXG RS FIRST RATE S903 R3
 DAMERON NORTHERN MISS 311
 EXLR LIMITED EDITION 765J
 AUTO CITY NIGHTS 214H



MAGS CABLE



CJSL DAUNTLESS 6257D

	CED	BW	WW	YW	MA	TM	CEM	SC	ST	DOC	YT	CW	REA	MB	FT	SMTI
SIRE	14	1.0	74	113	18	54	8	1.5	11	15	-0.17	47	0.83	0.27	-0.02	63.44
DAM	7	3.2	66	100	23	55	6	0.55	6	10	-0.21	31	0.54	0.02	-0.05	52.38

23B FOUR Sexed Heifer Embryos

53% Lim-Flex Double Polled Homozygous Black Sexed Heifer Embryos

MAGS ZODIAC
CJSL DAUNTLESS 6257D ET
 LLJB ABSOLUTE STYLE 3056A
 DAMERON FIRST CLASS
AUTO ANGELINA 225A
 MAGS MANUELA

MAGS WINSTON
 MAGS XANTHOUS
 SILVEIRAS STYLE 9303
 MAGS WASSAIL
 EXG RS FIRST RATE S903 R3
 DAMERON NORTHERN MISS 311
 EXLR LIMITED EDITION 765J
 AUTO CITY NIGHTS 214H

	CED	BW	WW	YW	MA	TM	CEM	SC	ST	DOC	YT	CW	REA	MB	FT	SMTI
SIRE	14	0.5	70	114	18	53	9	0.8	12	11	-0.16	28	0.39	0.04	-0.05	54.18
DAM	7	3.2	66	100	23	55	6	0.55	6	10	-0.21	31	0.54	0.02	-0.05	52.38

- AUTO Angelina 225A is the highly regarded First Class x Manuela donor.
- Dam produced the top-selling lot in the Pinegar Fall Show Heifer Sale.
- Progeny will be homozygous black, heifer calves with numbers and style to burn.
- These embryos represent elite Lim-Flex genetics on both sides of the pedigree.

Consigned by Fosdick Cattle, Chenoa, IL
 and Freed Livestock, Fairbury, IL

Featuring the Limousin & Lim-Flex breed's finest genetics!

Embryos



SEEE ETERNITY ET

SSTO BEST BET

24A THREE Embryos

46.5% Lim-Flex Double Polled Homozygous Black

24B THREE Embryos

46.5% Lim-Flex Double Polled Homozygous Black

S A V HARVESTOR 0338
SSTO BEST BET 456B ET
ELCX TWILIGHT 114X

COLBURN PRIMO 5153
SEEE ETERNITY ET
CARROUSELS PINA COLADA

S A V HERITAGE 6295
S A V EMBLYNETTE 7749
DHVO DEUCE 132R
DFLC HBHPC 1S
DAMERON FIRST CLASS
SILVEIRAS SARAS DREAM 1339
AUTO BLACK DAKOTA 129J
ELMW GINNIE P58G

- Dam is well-respected show-female on both the state and national level. She was named the Reserve Overall Grand Champion at The 2018 Missouri State Fair and claimed Reserve Division champion titles at both the 2018 Junior National and All American Futurity shows.
- SEEE Eternity 917E combines the powerful genes of both Primo and Pina Colada.
- The sire of these elite embryos is the Harvester son with massive growth, marbling and \$MTI EPDs.
- The progeny will be Homozygous black, solid numbered and phenotypically ideal.

	CED	BW	WW	YW	MA	TM	CEM	SC	ST	DOC	YT	CW	REA	MB	FT	SMTI
SIRE	13	1.4	74	118	21	58	6	1.1	12	7	0.01	41	0.37	0.31	0	63.64
DAM	12	0.2	56	86	18	46	8	0.58	3	5	-0.21	18	0.48	-0.09	-0.04	45.31

Consigned by Edwards Limousin, Higginsville, MO

Choice of Embryos



Morris

MAGS Unremarkable Color, maternal grandam of Lot 25.



MAGS CABLE



SSTO BEST BET

25A THREE Embryos

50% Lim-Flex Homozygous Polled Double Black

MAGS APPLESEED
MAGS CABLE
MAGS ZEQUIN

MAGS WINSTON
CLLL ZAYLYN 103Z
MAGS UNREMARKABLE COLOR

RITO 6EM3 OF 4L1 EMBLAZON
MAGS WAY TO SHINE
BOHI TOP DOLLAR 7144T
WERNER RITA 118
BT CROSSOVER 758N
MAGS STRAWBERRY
AUTO DOLLAR GENERAL 122R
HA LADY 1079

	CED	BW	WW	YW	MA	TM	CEM	SC	ST	DOC	YT	CW	REA	MB	FT	SMTI
SIRE	14	1.0	74	113	18	54	8	1.5	11	15	-0.17	47	0.83	0.27	-0.02	63.44
DAM	12	1.3	67	109	26	59	7	0.5	13	15	-0.19	38	0.65	0.49	-0.04	69.65

25B THREE Embryos

50% Lim-Flex Double Polled Double Black

S A V HARVESTOR 0338
SSTO BEST BET 456B ET
ELCX TWILIGHT 114X

MAGS WINSTON
CLLL ZAYLYN 103Z
MAGS UNREMARKABLE COLOR

S A V HERITAGE 6295
S A V EMBLYNETTE 7749
DHVO DEUCE 132R
DFLC HBHPC 1S
BT CROSSOVER 758N
MAGS STRAWBERRY
AUTO DOLLAR GENERAL 122R
HA LADY 1079

	CED	BW	WW	YW	MA	TM	CEM	SC	ST	DOC	YT	CW	REA	MB	FT	SMTI
SIRE	13	1.4	74	118	21	58	6	1.1	12	7	0.01	41	0.37	0.31	0	63.64
DAM	12	1.3	67	109	26	59	7	0.5	13	15	-0.19	38	0.65	0.49	-0.04	69.65

Selling Choice of Embryos

- CLLL Zaylyn 103Z is a huge numbered Winston daughter for the venerable Circle L Program.
- Dam consistently produces high performance, high marbling progeny with "The Look."
- MAGS Cable continues to see more use by top-tier breeders across the country.
- The calves by Best Bet will be among the breed's most impressive for growth genetics.

Consigned by Circle L Limousin, Wadsworth, OH

Featuring the Limousin & Lim-Flex breed's finest genetics!



WEDNESDAY, NOVEMBER 14, 2018
Crown Plaza, Louisville, KY at 7:30 p.m. E.S.T.

A NIGHT

AT THE NAILE
LIMOUSIN & LIM-FLEX SALE