



Building

RELATIONSHIPS

to last a Lifetime.



All-American
SUMMER SALE II

July 7, 2016 7:00 p.m. CST
Hilton Garden Inn Ballroom, West Monroe, Louisiana



All-American SUMMER SALE II

July 7, 2016 7:00 p.m. CST
Hilton Garden Inn Ballroom, West Monroe, Louisiana

Dear Brahman Friends,

On behalf of everyone at Moreno Ranches we would like to extend an invitation to each of you to attend our 2nd annual All-American II Brahman Sale. We have hand selected 30 of our finest show heifer and herd sire prospects to make this event something extraordinary. We are very excited to bring this sale offering to West Monroe, LA to be displayed at the Hilton Garden Inn. Moreno Ranches runs an extensive embryo transplant program producing in excess of 400 embryo calves a year. This offering is the result of some of our finest mating choices to date. As always this grouping is halter broke, very gentle, and meets our strict requirements to be called show prospects. The Moreno Family takes pride in supporting youth and will continue to be a committed party in the success of the junior organization.

We wholeheartedly believe that we can continue to build the breed "one junior" at a time! We are most grateful to be involved in a breed that is backed by excellent leadership from the top and built around families of integrity! Wishing everyone a tremendous show and looking forward to seeing old friends and making new ones at the All American.

Best Wishes,

Kelvin Moreno, Moreno Ranches All-American Summer Sale II

**"In the cattle industry,
knowledge is something that is
not learned from books;
it is experienced."**



THE MORENO FAMILY

17 Virginia Circle, Moreno Estate, Venus, Florida 33960

Kelvin 305.218.1238 Brian 863.444.2254
Randy 615.330.2735 Office 863.444.8745
Fax 305.742.2777

office@morenoranches.com • www.morenoranches.com

{SALE TERMS & CONDITIONS}

TERMS: All cattle/genetics must be paid for immediately after the sale. Checks should be made payable to Moreno Ranches, Inc. Credit cards are also accepted, and a processing fee will apply. Cattle/genetics will not be released until proper settlement has been made.

SPECIAL TERMS: (cattle/genetics for export) Lots and genetics that are sold for export must be paid for at the time of the sale. There will be a representative of a forwarding company on hand to assist in this matter. It will be the responsibility of the buyer of these cattle/genetics for export to make arrangements with the seller for the care of the lots or genetics after the sale. Buyers will be responsible for any layover costs following the sale.

EMBRYOS: Each package of three embryos guarantees one pregnancy. All procedures must be performed at Trans Ova Genetics, and using Trans Ova Genetic's recips, or the guaranteed minimum will be voided.

IVF PROCEDURE: Each IVF PROCEDURE has a guaranteed minimum of five transferable embryos. Buyer will receive all additional embryos of the procedure, should there be any. Buyer pays for all flushing costs, as well as any procedure related expenses. All procedures must be performed at Trans Ova Genetics, or the guaranteed minimum will be voided. If reverse sorted semen is used to fertilize, the guaranteed minimum will be voided.

BREEDERS GUARANTEE: Every lot in this sale is, to the best of the seller's knowledge, sound and free of any disease. Pregnant cows and cows with calves are considered breeders without further guarantee. Moreno Ranches will guarantee all open heifers to breed, however please keep in mind that the animals condition influences their fertility greatly. If there is a problem, we will work with you in the most professional manner. Open heifers that have been in embryo transplant/IVF are not guaranteed. Open heifers on intensive show diets are not subject to guarantee.

DISPUTES: The auctioneer in charge will settle any bid disputes. The decision of the auctioneer on such matters is final.

HEALTH: All necessary health papers will be provided for the purposes of shipping cattle and genetics anywhere in the U.S.

EXPORTS: Cattle/genetics sold for export to foreign countries must, by state law test for diseases flagged by the country receiving the animal after the sale is made. The seller will be responsible for this testing.

ANNOUNCEMENTS: Any announcements from the auction block will take precedence over the printed material, this catalog and all other printed advertisements.

LIABILITIES: All persons who attend the sale do so at their own risk. Moreno Firms, Inc. and Moreno Ranches, including the sale manager, assume no liability, legal or otherwise, for any accidents that may occur. Seller accepts no liability for the lots after they are sold. Insurance will be available at the sale for cattle/genetics upon the buyer's request.

CONTRACT: The above terms and conditions shall constitute a contract between the buyer and the seller of each lot sold.

HANDLING: As the sale takes effect, all lots are under the buyer's risk.

RETAINED INTEREST: Moreno Ranches retains the right to one in-herd flush on any female sold, and a 10% semen interest on any bull sold.

{SCHEDULE}

MONDAY, JULY 4th

- 7:00 a.m. Facilities available for cattle
- 2:00 p.m. AJBA Jr. Board Meeting
- 4:00 p.m. Cattle MUST be in place
- 6:00 p.m. Queen & Princess Meeting

TUESDAY, JULY 5th

- 7:00 a.m. AJBA Jr. Board Meeting
- 8 - 10:00 a.m. Exhibitor Registration
- 8 - 10:00 a.m. Better Beef Contest Scanning
- 9:00 a.m. Sale cattle available for preview**
- 11:00 a.m. Public Speaking Contest
- 1:30 p.m. Photography/Poster Contest Judging
- 6:30 - 8:00 p.m. Opening Ceremonies, Welcome Supper, Leadership Speaker, Semen Auction & Exhibitor Fun Night

WEDNESDAY, JULY 6th

- 9:00 a.m. Sale cattle available for preview (tent by hotel)**
- 8:00 a.m. Showmanship Contest
- 4:00 p.m. AJBA Annual Membership Meeting Group Photo

THURSDAY, JULY 7th

- 8:00 a.m. Bred & Owned Judging - 30 minutes following the conclusion of Bred & Owned - F-1 Female Show
- 9:00 a.m. Sale cattle available for preview**
- 4:30 p.m. Queen & Princess Tea/Interview
- 5:00 p.m. Shawnee Bailey Nominee Interviews
- 6:30 p.m. Scholarship Interviews
- 7:00 p.m. Moreno Ranches All-American Summer Sale Hilton Garden Inn**

FRIDAY, JULY 8th

- 8:00 a.m. Female Judging

SATURDAY, JULY 9th

- 8:00 a.m. Bull Judging
- 12:00 Noon Autograph Contest Deadline One hour following Bull Show Quiz Bowl
- 6:30 p.m. Awards Banquet
- 9 p.m. - Dance
- Midnight



{SALE MANAGEMENT}



Randall O. Ratliff, 615.330.2735
Randy@RRMktg.com • www.RRMktg.com
1212 Laurel St. #1614, Nashville, TN 37203
(L#2845)

{SALE LOCATION}

Hilton Garden Inn, Magnolia Ballroom, 400 Mane Street, West Monroe, Louisiana 71291 ... 318.398.0653

{DIRECTIONS}

From the East ... 1. Head west on I-20 W; 2. Take Exit 113 for Downing Pines Rd.; 3. Turn right on Downing Pines Rd.; 4. Take the first right onto Mane St.; 5. Travel 0.5 miles. Destination on the right.

From the West ... 1. Head east on I-20 E; 2. Take Exit 113 toward Downing Pines Rd; 3. Turn left onto Mane St.; 4. Travel 0.2 miles. Destination on the left.

Directions from the Monroe Regional Airport ... 1. Begin: 5400 Operations Road, Monroe, LA 71203; 2. Head north on Operations Rd. toward Central Ave N; 3. Turn left onto Central Ave N; 4. Turn left onto Kansas Lane; 5. Turn left onto LA-594; 6. Take the first right onto Garrett Rd.; 7. Slight right to merge onto I-20 W toward Monroe; 8. Take Exit 113 for Downing Pines Rd.; 9. Turn right on Downing Pines Rd.; 10. Take the first right onto Mane St.; 11. Travel 0.5 miles. Destination on the right.

{SALE DAY PHONE NUMBERS}

Kelvin Moreno	305.218.1238	Tammie Watts	903.654.8076
Randy Ratliff	615.330.2735	Brian Barnes	863.444.2254
Tim Lockhart	979.204.4302	Erin Lockhart	979.220.8265

{AUCTIONEER} Jared Shipman (#16030)806.983.7226

{BID & WATCH LIVE} This sale will be broadcast live at www.cattleinmotion.com. To view and bid on this sale live, simply log onto www.cattleinmotion.com and click on the sale that will be listed on the right hand side of the screen.



MORENO RANCHES

Our Continued Commitment to the Future ...

Moreno Ranches has been 198 years in the making and is six generations strong. We realize the value of a firm handshake, reliable word of mouth, and honest customer relations. This integrity with which we live every day is what has kept us going strong for nearly two centuries.

Moreno Ranches believes that youth are the future, and we strive to build the Brahman breed one junior at a time. Through scholarships, show sponsorships, and donations to the AJBA and FYBBA, support efforts for the juniors this year total over **\$85,000**. Moreno Ranches believes that through strong support of the youth and their families, we can help build a stronger tomorrow for the Brahman breed.

Moreno Ranches has and continues to proudly support the following youth organizations ...



Brahman Foundation



Junior Florida Cattlemen's Association



American Junior Brahman Association



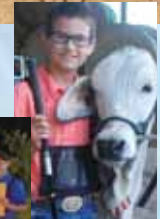
American Brahman Breeders Association



All American Junior Show



Florida Youth Brahman Breeders Association



2015 AJBA Heifer Donation

{ BRAHMAN CATTLE SCHOLARSHIP PROGRAM }

The Moreno Ranches Junior Scholarship Program is designed to help America's youth continue their education by enrolling in undergraduate courses of studies at an accredited two or four year college, university or vocational-technical school.

ELIGIBILITY FOR OUR SCHOLARSHIPS ...

1. Animals must be purchased from Moreno Ranches at public auction or by private treaty in order to qualify for the program.
2. Qualifying animals must be bought and registered by a junior exhibitor and be in his/her name from the time of the sale and throughout their show career.
3. Animals participating in the program are not transferable from child to child.
4. The amount of the scholarship is determined by the animal's placing at a qualifying show and by the number of calendar years in which the exhibitor has purchased an animal from Moreno Ranches. For award amounts, please refer to the Moreno Ranches Junior Scholarship Program Award Schedule at www.morenoranches.com.
5. If a junior showman qualifies for more than one scholarship award, the single highest award amount will be awarded. Award levels cannot be combined.
6. The ONLY shows eligible are Junior Shows. Please refer to the "Eligible Shows" section at www.morenoranches.com.

{ BREED BACK PROGRAM }

If a Junior exhibitor buys a Brahman heifer from Moreno Ranches, we are committed to assisting the Junior in breeding the heifer when she is of age. This is for a number of reasons. First and foremost, we want to grow interest in Brahman cattle breeding among the next generation. Knowledge is something that is not learned from books; it is experienced, especially when it comes to the cattle industry. So we are committed to helping Brahman Juniors continue, and build on the knowledge of Brahman breeding techniques including wise husbandry of registered Brahman show heifers during their show careers.

Registered Brahman show heifers purchased from us and subject to our terms and conditions, can be brought back to Moreno Ranches, and we will artificially inseminate or naturally breed the heifer to one of our quality Brahman herd sires at no cost to the Junior. Cattle must be insured in order to qualify for this program. In short, if a Junior buys a Brahman heifer from Moreno Ranches, we are committed to assisting that junior in breeding the heifer when she comes of age.

{ SELL BACK PROGRAM }

When it comes to investing in future Brahman cattle breeders, there are few as dedicated as we are here at Moreno Ranches. Brahman Juniors are truly the future of the Brahman breed and we are committed to assisting them in any way possible. We currently have three programs in place to help Juniors to be successful in the Brahman breed. These include a junior Brahman scholarship program, a Brahman heifer breed back program, and a Registered Brahman Heifers Sell-Back Program.

{ LOOKING BACK ... 'THIS IS IT' EVEN FOR BRAHMAN JUNIORS }

Moreno Ranches has long been a supporter of youth education in the Brahman industry. We are so proud of everyone who participated in the April 2015 "This is It" Brahman cattle educational event for Juniors in Venus, FLORIDA. It brought together a new generation of youth as well as industry-leading educators and experts to cultivate future interest in both cattle breeding and the Brahman breed in particular.

We encourage those who want to continue learning to visit www.morenoranches.com where they can not only learn about Brahman cattle for sale, but also view our 'news' section to browse upcoming events and industry information from the ranch.

{ CREATING THE FUTURE: FYBBA }

Youth are the future of any society, and that is particularly true of Brahman Juniors. We are fortunate to be involved in an industry that connects young people to the land and the rich experience of raising cattle from birth to production. The Florida Youth Brahman Boosters Association is an organization founded to support the programs and activities of youth involved in raising, producing and showing Brahman cattle in Florida.

The FYBBA provides a place to nurture a passion for agriculture in today's youth, and to give them a strong presence at some of the most important competitions in the United States, including the Brahman Junior Nationals. Kelvin Moreno, head of Moreno Ranches, comments, "We are very excited about this forward-looking organization. Juniors are the future of our industry, and if we want to have a thriving community of Brahman breeders, organizations of this type are critical." To learn more about the activities of FYBBA, please visit www.floridabrahmanyouth.org.

823/4



{ 1 }

Moreno Ms. Lady Salsera 32/1

COLOR: Gray REG#: C 941978 DOB: 09.04.15 ID: 32/1 BW: -0.4 WW: 2.5 YW: 23.4 MILK: 38.7

+JDH MR ELMO MANSO (B 850913)
JDH SIR STRATTON MANSO 823/4
+JDH LADY SANDY MANSO (C 855575)

+BB MR STING-RAY 10/0 (B 804910)
MS SS 164
+MS SS 126 (C 838433)

+JDH SIR LAWFORD MANSO (B 803613)
\$JDH LADY ELLIS MANSO (C590390)
(+)JDH MADISON DE MANSO (B 669048)
JDH LADY EARLINE MANSO
+MR. 3H X-RAY 825 (B 775361)
BB MS ON TARGET 132/8 (C 775682)
+MR. V8 287/5 (B 780619)
JJ MS CINCO DIDOR 271 (C 804989)

- Here is one of the breed's first ever daughters of JDH Sir Stratton Manso 823/4 to be offered for sale in the United States
- JDH Sir Stratton Manso 823/4 is the leading Elmo son in the U.S. and worldwide for the Brahman breed. He ranks in the top 10% of the breed for weaning and yearling weight and his calves are being recognized as performance type Brahman cattle
- His dark pigment is admired and appreciated, and his progeny are following the same look and promise
- Her dam, Ms. SS 164, is the proven Moreno Ranches donor and daughter of the Register of Renown, National Champion, and Show Bull of the Year, +BB Mr. Sting Ray 10/0. She represents one of the strongest lines of cattle that our breed has to offer. Ms. SS 164 is sired by the prominent sire, +Mr. V8 287/5 ("Superstroke"). There are few other bulls to have as much influence and domination in the U.S. and International shows as him. He is undefeated five years in a row in the Get-Of-Sire at the Houston International Show. He is noted as being one of the most widely used sires of all time.
- This young heifer is a feature of this event and will be a highlight for any program at any level. We hope you will appreciate her as much as we do
- Moreno Ms. Lady Salsera 32/1 is flawless in her lines, extreme in her muscle pattern, feminine fronted, clean in her design, with excellent hump placement and a calm disposition.



{ LOT 1 Moreno Ms. Lady Salsera 32/1 }



JDH Sir Stratton Manso 823/4

JDH Sir Stratton Manso 823/4, a powerful son of Elmo that has created quite a stir in the Brahman breed with his first progeny making such a big impact in the U.S. and worldwide. He is a top performance sire ranking in the top 10% of the breed in weaning weight and yearling weight. His calves have made a statement in the breed and are very much in demand around the country.



=JDH Lady Susie Manso 579/3, dam of Lot 2 & 3.

Selling Full Possession & 50% Embryo Interest on Lots 1, 2 & 3.

Moreno Ms. Lady Sparky 72/1

COLOR: Gray REG#: C 941994 DOB: 10.25.15 ID: 72/1

BW: -0.4 WW: 2.5 YW: 23.4 MILK: 38.7

{ 2 }



{ LOT 2 Moreno Ms. Lady Sparky 72/1 }

Moreno Ms. Lady Shine 74/1

COLOR: Gray REG#: C 941995 DOB: 10.25.15 ID: 74/1

BW: +0.8 WW: +19.8 YW: +36.7 MILK: +3.7

{ 3 }



{ LOT 3 Moreno Ms. Lady Shine 74/1 }

+JDH MR ELMO MANSO (B 850913)
 JDH SIR STRATTON MANSO 823/4
 +JDH LADY SANDY MANSO (C 855575)
 (=)JDH PRESCOT MANSO (B 764877)
 =JDH LADY SUSIE MANSO
 JDH LADY BADGETT MANSO (C 682575)

+JDH SIR LAWFORD MANSO (B 803613)
 \$JDH LADY ELLIS MANSO (C590390)
 (+)JDH MADISON DE MANSO (B 669048)
 JDH LADY EARLINE MANSO
 (+)JDH MADISON DE MANSO (B 669048)
 +JDH LADY NEL MANSO (C 702925)
 JDH BROTHER PRAT MANSO (B 569211)
 JDH MISS DELILAH MANSO (C 449177)

- We love for our Brahman females to have as much mass and body to them as possible
- This young female exudes a tremendous amount of rib shape and capacity from every angle
- We love her center rib shape, depth of flank, and the amount of power that she has through her chest floor back through her back three quarters
- Her dam is =JDH Lady Susie Manso 579/3, one of the leading Moreno Gray Brahman donors. She is recognized by many as one of the best constructed, easy doing donors in our extensive embryo transplant program at Moreno Ranches. She is a Maternal Merit Cow and puts extra pounds and performance into her progeny. She has proven her worth just in this one amazing young heifer calf
- She is a known daughter of one the breed's most sought after sires, JDH Sir Stratton Manso 823/4. His first progeny were recently sold in Australia at the 2016 World Brahman Congress Sale, where they were one of the highlights of the show and sale, commanding top selling prices of \$18,000, \$17,000, \$16,000, \$14,000 and \$8,000

139/9



{ LOT 4 Moreno Ms. Lady Rebella 118/1 }



{ LOT 5 Moreno Ms. Lady Raylen 138/1 }

- What a dream come true! We have been so anxious to see and experience the results of this much anticipated mating
- These calves are sired by the leading sire JDH Sir Stratton Manso 823/4 and will be his very first progeny ever sold in the United States. He is currently only used by Moreno Ranches and the J.D. Hudgins-Locke Division and our results at Moreno Ranches are highlighted in this sale offering
- Here are four daughters of Miss B-F 139/9, a daughter of +Mr. H Red Rhino 765 and a full sister to the two time National Champion and two time International Champion female +CT Lady Rhineaux Ray 8/9 for Circle T Cattle. This big time Moreno Ranches donor continues to amaze everyone at the ranch with her producing ability
- Lots 4, 5, 6 and 7 represent the most progressive and prominent mating ever created at Moreno Ranches. They are sired by the leading closed bull JDH Sir Stratton Manso 823/4 and from the donor Miss B-F 139/9 that has surfaced as the leading donor who continues to impresses us with her progeny time and time again
- If you want show females that will capture the attention of any cattleman and then create value down the road with their prominent pedigree, then look no further
- Moreno Ranches will retain a 50% embryo interest on Moreno Ms. Lady Rebella 118/1. Selling full possession.

Moreno Ms. Lady Rebella 118/1

{ 4 }

COLOR: Red REG#: C943390 DOB: 12.03.15 ID: 118/1

BW: 1.4 WW: 18.3 YW: 31.3 MILK: 4.3

+JDH MR ELMO MANSO (309/4) B 850913
JDH SIR STRATTON MANSO 823/4 (823/4) B 902151
+JDH LADY SANDY MANSO (301/7) C 855575

+MR H RED RHINO 765 (765) B 845115
MISS B-F 139/9 (B-F 139/9) C 887407
+5M MISS MARCIA (144) C 838885

+JDH SIR LAWFORD MANSO (616/6) B 803613
\$JDH LADY ELLIS MANSO (178/2) C 590390
(+JDH MADISON DE MANSO (737/4) B 669048
JDH LADY EARLINE MANSO (704/6) C 830134
+MR. 3H X-RAY 825 (825) B 775361
+MISS 3-S KELLI 848 (848) C 778518
+BB MR STING-RAY 10/0 (10/0) B 804910
SRS MISS DALLAS (660) C 804841

Moreno Ms. Lady Raylen 138/1

{ 5 }

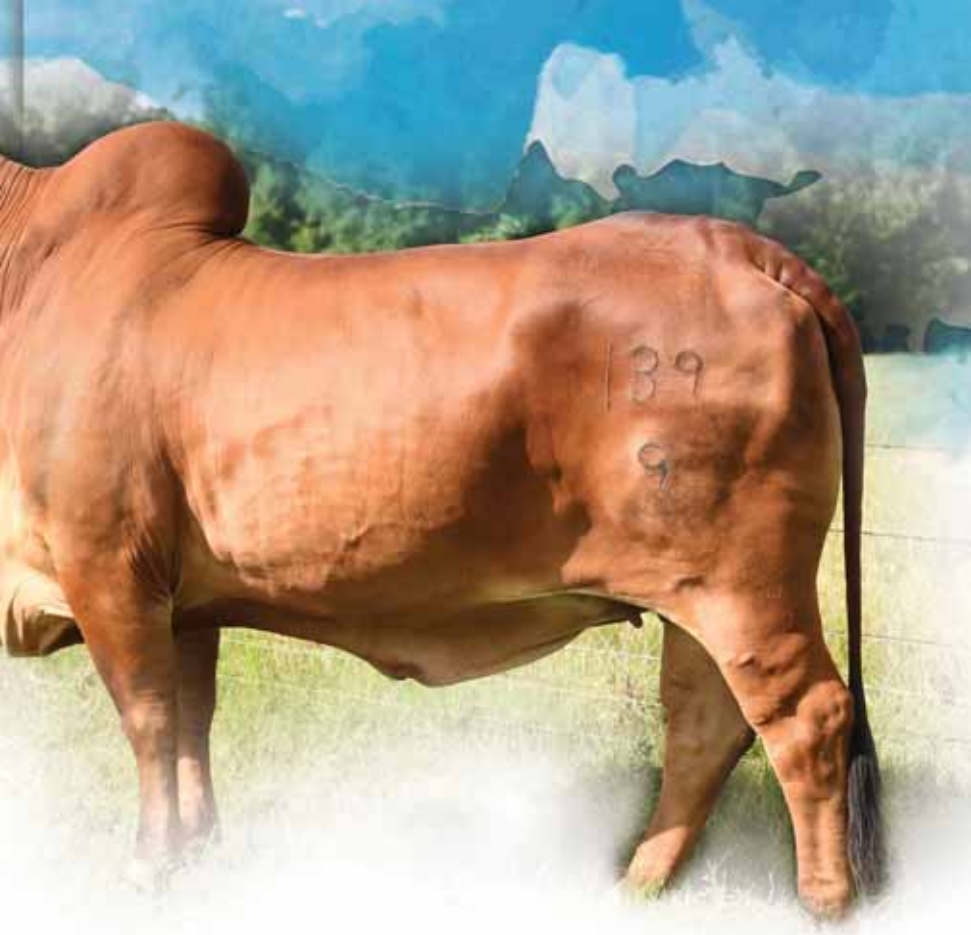
COLOR: RED REG#: C943400 DOB: 12.14.15 ID: 138/1

BW: 1.4 WW: 18.3 YW: 31.3 MILK: 4.3

+JDH MR ELMO MANSO (309/4) B 850913
JDH SIR STRATTON MANSO 823/4 (823/4) B 902151
+JDH LADY SANDY MANSO (301/7) C 855575

+MR H RED RHINO 765 (765) B 845115
MISS B-F 139/9 (B-F 139/9) C 887407
+5M MISS MARCIA (144) C 838885

+JDH SIR LAWFORD MANSO (616/6) B 803613
\$JDH LADY ELLIS MANSO (178/2) C 590390
(+JDH MADISON DE MANSO (737/4) B 669048
JDH LADY EARLINE MANSO (704/6) C 830134
+MR. 3H X-RAY 825 (825) B 775361
+MISS 3-S KELLI 848 (848) C 778518
+BB MR STING-RAY 10/0 (10/0) B 804910
SRS MISS DALLAS (660) C 804841



Moreno Ms. Lady Rina 14/1

{ 6 }

COLOR: Red REG#: C 942032 DOB: 09.28.15 ID: 14/1

BW: 1.4 WW: 18.3 YW: 31.3 MILK: 4.3

+JDH MR ELMO MANSO (309/4) B 850913
JDH SIR STRATTON MANSO 823/4 (823/4) B 902151
 +JDH LADY SANDY MANSO (301/7) C 855575

+MR H RED RHINO 765 (765) B 845115
MISS B-F 139/9 (B-F 139/9) C 887407
 +5M MISS MARCIA (144) C 838885

+JDH SIR LAWFORD MANSO (616/6) B 803613
 \$JDH LADY ELLIS MANSO (178/2) C 590390
 (+)JDH MADISON DE MANSO (737/4) B 669048
 JDH LADY EARLINE MANSO (704/6) C 830134
 +MR. 3H X-RAY 825 (825) B 775361
 +MISS 3-S KELLI 848 (848) C 778518
 +BB MR STING-RAY 10/0 (10/0) B 804910
 SRS MISS DALLAS (660) C 804841

{ LOT 6 Moreno Ms. Lady Rina 14/1 }

Moreno Ms. Lady Relinda

{ 7 }

COLOR: Red REG#: C 943388 DOB: 12.01.15 ID: 114/1

BW: 1.4 WW: 18.3 YW: 31.3 MILK: 4.3

+JDH MR ELMO MANSO (309/4) B 850913
JDH SIR STRATTON MANSO 823/4 (823/4) B 902151
 +JDH LADY SANDY MANSO (301/7) C 855575

+MR H RED RHINO 765 (765) B 845115
MISS B-F 139/9 (B-F 139/9) C 887407
 +5M MISS MARCIA (144) C 838885

+JDH SIR LAWFORD MANSO (616/6) B 803613
 \$JDH LADY ELLIS MANSO (178/2) C 590390
 (+)JDH MADISON DE MANSO (737/4) B 669048
 JDH LADY EARLINE MANSO (704/6) C 830134
 +MR. 3H X-RAY 825 (825) B 775361
 +MISS 3-S KELLI 848 (848) C 778518
 +BB MR STING-RAY 10/0 (10/0) B 804910
 SRS MISS DALLAS (660) C 804841



{ LOT 7 Moreno Ms. Lady Relinda 114/1 }



{ LOT 8 Moreno Ms. Lady Ronette 64/1 }

Moreno Ms. Lady Ronette 64/1

{ 8 }

COLOR: Red REG#: C 941804 DOB: 09.19.15 ID: 64/1

BW: 1.8 WW: 25.7 YW: 38.4 MILK: 1.1

#21ST MR PONCRATA 06-2 (06-2) B 765759
#CIGSA MR 162/0 (162/0) B 870604
 CIGSA LDY MAGNUM MANSTARA 15/5 (15/5) C
 +JDH MR ELMO MANSO (309/4) B 850913
JDH LADY BABETTE MANSO 486/4 (486/4) C 902039
 +JDH LADY MURILE MANSO (117/4) C 864529

A B G SUGARLAND 05/7 (05/7) B 606657
 (SSS MISS SUGAR 53-7) (53-7) C 9002463
 +HK MR. AMERICA 435/2 (435/2) B 659862
 HK MS TRISTAN 173 (173) C 697398
 +JDH SIR LAWFORD MANSO (616/6) B 803613
 \$JDH LADY ELLIS MANSO (178/2) C 590390
 +JDH MR BRANDON MANSO (761/3) B 801983
 =JDH LADY DEANA MANSO (692/3) C 831032



JDH Lady Babette Manso 486/4,
dam of Lot 8.



#CIGSA Mr 162/0, sire of Lot 8.

- Selling full possession and 50% embryo interest.
- Moreno Ms. Lady Ronette 64/1 is a daughter of the great 2013 National Champion, 2014 International Champion, and 2014 Premier Gray Show Cow of the Year, JDH Lady Babette Manso 486/4. She is truly a gift to the breed.
- Ronette is the granddaughter of the Register of Renown dam, +JDH Lady Murile Manso 117/4. Murile has garnered much fame by producing a National and International Champion Produce of Dam. She is becoming a leading donor cow at Moreno Ranches, possessing femininity and structural correctness. Ronette is also the granddaughter of the great +JDH Mr. Elmo Manso 309/4, one of the leading sires in the Brahman breed that has made a tremendous contribution worldwide. His influence and impact in this breed is unprecedented. He sired back to back International Champion females in both colors. 2014 JDH Lady Babette Manso 486/4 (Gray) and 2015 LB Lady Violet Manso 576/4 (Red)
- Moreno Ms. Lady Ronette is sired by #Cigsa Mr 162/0, the Venezuela imported bull that has 37 progeny recorded in the ABBA registry. This bull has a proven track record in Central and South America, and is known for producing the great ones
- This unique female is the result of blending proven genetics with outcross genetics that will work in any program worldwide. She is eye appealing from the side profile and has a fault free design. She is deep flanked, big boned, and still possesses ample femininity
- Her full sister was a top selling female in the '16 Magic City Sale in Miami that sold to Valenta Cattle Co., Alleton, TX



{ LOT 9 Moreno Ms. Lady Rabona 106/1 }

Moreno Ms. Lady Rabona 106/1

{ 9 }

COLOR: Red REG#: C 943384 DOB: 11.30.15 ID: 106/1 BW: 2.1 WW: 12.9 YW: 22.6 MILK: 2.3

+JDH MR ELMO MANSO (309/4) B 850913
JDH IMPRESSION MANSO (719/4) B 887237
 JDH LADY FATIMA MANSO (534/3) C 814175

MR MK VERNON 350/1 (350/1) B 810336
MISS MK 4/512 (4/512) C 838680
 MISS MK 6/190 (6/190) C 754647

+JDH SIR LAWFOED MANSO (616/6) B 803613
 \$JDH LADY ELLIS MANSO (178/2) C 590390
 +JDH CHARLEY'S JAZZ 946/1 (946/1) B 750937
 JDH ALINA MANSO (268/3) C 779334
 5M MR RINGER ROHO VERNON (044) B 716205
 +MK LOJA 137 (137) C 721533
 MR. HV 142/2 (142/2) B 689783
 MK LUPITA 52 (52) C 628900

- Selling full possession and 50% embryo interest.
- Moreno Ms. Lady Rabona 106/1 just happens to be a full sister to the top selling lot in the 2015 Denim & Diamonds Sale which sold for \$15,000 to Mi Tierra Ranches, Homestead, FL
- She is a November yearling show heifer and future donor cow that has tremendous potential for the new buyer. She has a good show look to her with a very feminine head and neck
- She is a daughter of JDH Impression Manso 719/4 and from Miss MK 4/512, a daughter of Mr MK Vernon 350/1
- We are more than impressed with the amount of rib shape, body capacity, and ease of fleshing ability found in this young show female
- From the ground up, she has impeccable structural correctness and ease of movement



Moreno Ms Lady Rock It 752,
a full sister to Lot 9.



Miss MK 4/512, dam of Lot 9.



{ LOT 10 Moreno Ms. Lady Rally 52/1 }



{ LOT 11 Moreno Ms. Lady Roxy 56/1 }

Four Full Sisters

Moreno Ms. Lady Rally 52/1

{10}

COLOR: Red REG#: C 941984 DOB: 09.08.15 ID: 52/1

BW: 1.7 WW: 15 YW: 25.5 MILK: 2.9

Moreno Ms. Lady Roxy 56/1

{11}

COLOR: Red REG#: C 942044 DOB: 09.10.15 ID: 56/1

BW: 1.7 WW: 15 YW: 25.5 MILK: 2.9

Moreno Ms. Lady Rathburne 986

{12}

COLOR: Red REG#: C 936842 DOB: 08.10.15 ID: 986

BW: 1.7 WW: 15 YW: 25.5 MILK: 2.9

Moreno Ms. Lady Rafaella 58/1

{13}

COLOR: Red REG#: C 942043 DOB: 09.13.15 ID: 58/1

BW: 1.7 WW: 15 YW: 25.5 MILK: 2.9

+JDH MR ELMO MANSO (309/4) B 850913
JDH IMPRESSION MANSO (719/4) B 887237
 JDH LADY FATIMA MANSO (534/3) C 814175

+MR H RED RHINO 765 (765) B 845115
MISS B-F 139/9 (B-F 139/9) C 887407
 +5M MISS MARCIA (144) C 838885

+JDH SIR LAWFORD MANSO (616/6) B 803613
 \$JDH LADY ELLIS MANSO (178/2) C 590390
 +JDH CHARLEY'S JAZZ 946/1 (946/1) B 750937
 JDH ALINA MANSO (268/3) C 779334
 +MR. 3H X-RAY 825 (825) B 775361
 +MISS 3-S KELLI 848 (848) C 778518
 +BB MR STING-RAY 10/0 (10/0) B 804910
 SRS MISS DALLAS (660) C 804841



{ LOT 13 Moreno Ms. Lady Rafaella 58/1 }



{ LOT 12 Moreno Ms. Lady Rathburne 986 }

- Here are four daughters out of Miss B-F 139/9, a daughter of the International Champion and Register of Renown +Mr. H Red Rhino 765, and a full sister to the two time National Champion and two time International Champion female +CT Lady Rhineaux Ray 8/9. This big time Moreno Ranches donor continues to amaze everyone at the ranch with her producing ability
- These four daughters of 139/9 are sired by JDH Mr. Impression Manso 719/4, the consistent producing and prominent sire for Moreno Ranches. We have experienced tremendous predictability with his calves being calm in their disposition, quick to grow, and having ample muscle with that prominent show look to them
- His daughters in production have been easy to maintain, easy to get bred, and maintain that look with a moderate and feminine head to them
- All of these heifers are big boned, stout made, feminine, and very sound
- The blending of the genetics of these two great lines of cattle in 719/4 and 139/9 has created tremendous results in these lots 10 through 13



Miss B-F 139/9, dam of Lots 10, 11, 12 & 13.



JDH Impression Manso 719/4, sire of Lots 16 - 20.

719/4
Progeny

Moreno Ms. Karamel 44/1

14

COLOR: Gray REG#: C 942046 DOB: 11.06.15 ID: 44/1 BW: 1.4 WW: 18.8 YW: 31.9 MILK: 2.2

+JDH WOODSON DE MANSO (206/7) B 839863
JDH MR KABRAM MANSO (434/8) B 912318
 JDH LADY EUFAULA MANSO (905/6) C 839920
 +#JADL REY TE (110) B 876049
MISS RB 515/1 (515/1) C 912056
 MISS RB 169/8 (169/8) C 875935
 +JDH MR WOODMAN MANSO (578/6) B 801161
 JDH LADY IRMA MANSO (484/6) C 813847
 (+)JDH SIR LIBERTY MANSO (847/5) B 747549
 JDH LADY HALONA MANSO (436/6) C 813783
 (+)JDH MADISON DE MANSO (737/4) B 669048
 (JERS CALANDRIA TE) (145) C 9005179
 #SMG. MONUMENTAL (74/0) B 805410
 S BAR MISS 358/7 (358/7) C 762019

Moreno Ms. Grandious 996

{15}

COLOR: Gray REG#: C 942034 DOB: 09.15.15 ID: 996 BW: 1.3 WW: 12.7 YW: 20.2 MILK: 6.6

JDH MR. MANSO 362/1
JDH GOUDEAU MANSO 174/0
 JDH LADY MANSO 625/3

JDH MR MANSO 991/4
MISS LA PRECIOSA 206/1
 MISS SNS 307/6

JDH BROSS MANSO
 JDH LADY MANSO 337/9
 JDH MR. MANSO 13/2
 =JDH LADY SWATTER MANSO
 MR. WINDY HILL 89/3
 JDH LADY MANSO 585/2
 MR. V8 328/5
 SNS MS DOUBLE NANCE 158

Moreno Ms. Lady Illary 20/1

{16}

COLOR: Gray REG#: C 941997 DOB: 10.29.15 ID: 20/1 BW: 1.5 WW: 13.9 YW: 23.2 MILK: 3.1

+JDH MR ELMO MANSO (309/4) B 850913
JDH IMPRESSION MANSO (719/4) B 887237
 JDH LADY FATIMA MANSO (534/3) C 814175

+HK MR. AMERICA 435/2
HK MS MAGNUM 654
 HM MISS MARSHA 317

+JDH SIR LAWFORD MANSO (616/6) B 803613
 \$JDH LADY ELLIS MANSO (178/2) C 590390
 +JDH CHARLEY'S JAZZ 946/1 (946/1) B 750937
 JDH ALINA MANSO (268/3) C 779334
 HK MR. AMERICA 379/1
 MISS 3X MATRIARCH 71
 HM GANDY IV 213
 HM MISS SILVA 263

Moreno Ms. Lady Its All Me 832

{17}

COLOR: Gray REG#: C 939433 DOB: 04.24.15 ID: 832 BW: 1.2 WW: 13.9 YW: 24.2 MILK: 3

+JDH MR ELMO MANSO (309/4) B 850913
JDH IMPRESSION MANSO (719/4) B 887237
 JDH LADY FATIMA MANSO (534/3) C 814175

BB MR JUANCITO 477 (477/7) B 859452
BB MS SPECIAL FREEDOM 786/2 (786/2) C 913900
 BB MS LOOK OF RAY 316 (316/4) C 838391

+JDH SIR LAWFORD MANSO (616/6) B 803613
 \$JDH LADY ELLIS MANSO (178/2) C 590390
 +JDH CHARLEY'S JAZZ 946/1 (946/1) B 750937
 JDH ALINA MANSO (268/3) C 779334
 HK PASSPORT 599 (599) B 838028
 BB MS SPECIAL X 286 (286/3) C 831289
 +MR. 3H X-RAY 825 (825) B 775361
 BB SHE HAS THE LOOK106/7 (106/7) C 761017

Moreno Ms. Lady It's A Boo 838

{18}

COLOR: Gray REG#: C 939436 DOB: 05.05.15 ID: 838 BW: 1.4 WW: 13.3 YW: 22.8 MILK: 2.7

+JDH MR ELMO MANSO (309/4) B 850913
JDH IMPRESSION MANSO (719/4) B 887237
 JDH LADY FATIMA MANSO (534/3) C 814175

BB MR JUANCITO 477 (477/7) B 859452
BB MS SPECIAL RAY 794/2 (794/2) C 913892
 LADY H ALANZA 464 (464) C 819098

+JDH SIR LAWFORD MANSO (616/6) B 803613
 \$JDH LADY ELLIS MANSO (178/2) C 590390
 +JDH CHARLEY'S JAZZ 946/1 (946/1) B 750937
 JDH ALINA MANSO (268/3) C 779334
 HK PASSPORT 599 (599) B 838028
 BB MS SPECIAL X 286 (286/3) C 831289
 VL ROJO DESIGNER 4/128 (4/128) B 734419
 ST MISS TNT 206 (206) C 691065

Moreno Mr. Ibusto 525

{19}

COLOR: Gray REG#: B 943369 DOB: 09.30.15 ID: 525 BW: 1.3 WW: 14.5 YW: 25.2 MILK: 0.6

+JDH MR ELMO MANSO (309/4) B 850913
JDH IMPRESSION MANSO (719/4) B 887237
 JDH LADY FATIMA MANSO (534/3) C 814175

JDH SIR LEOPOL MANSO (901/6) B 822680
+21ST MS TNT 201 (201) C 863709
 ST MISS TNT 375 (375) C 766597

+JDH SIR LAWFORD MANSO (616/6) B 803613
 \$JDH LADY ELLIS MANSO (178/2) C 590390
 +JDH CHARLEY'S JAZZ 946/1 (946/1) B 750937
 JDH ALINA MANSO (268/3) C 779334
 (=)JDH PRESCOT MANSO (82/6) B 764877
 JDH LADY SUV MANSO (294/5) C 733701
 ST MR TNT 175 (175) B 673981
 ST MISS TNT 91 (91) C 580381

Moreno Mr. Inside Man 511

{20}

COLOR: Gray REG#: B 936816 DOB: 09.03.15 ID: 511 BW: 2.6 WW: 19 YW: 30.4 MILK: 1.6

+JDH MR ELMO MANSO (309/4) B 850913
JDH IMPRESSION MANSO (719/4) B 887237
 JDH LADY FATIMA MANSO (534/3) C 814175

+MR. V8 287/5 (287/5) B 780619
MISS V8 765/6 (765/6) C 857147
 MISS V8 997/5 (997/5) C 807775

+JDH SIR LAWFORD MANSO (616/6) B 803613
 \$JDH LADY ELLIS MANSO (178/2) C 590390
 +JDH CHARLEY'S JAZZ 946/1 (946/1) B 750937
 JDH ALINA MANSO (268/3) C 779334
 +MR. V8 777/4 (777/4) B 722181
 +MISS V8 611/4 (611/4) C 690529
 +MR. V8 901/4 (901/4) B 733891
 +MISS V8 653/5 (653/5) C 780674



{ LOT 14 Moreno Ms. Karamel 44/1 }

{ LOT 17 Moreno Ms. Lady Lady
Its All Me 832 }



{ LOT 16 Moreno Ms. Lady Illary 20/1 }



{ LOT 15 Moreno Ms. Grandious 996 }



{ LOT 18 Moreno Ms. Lady Lady It's A Boo 838 }



{ LOT 19 Moreno Mr. Ibusto 525 }

- Here are seven progeny of JDH Mr. Impression Manso 719/4, a sire that continues to impress the Moreno Ranches team with every calf born at the Florida based ranch
- 719/4 has been a production machine. He produces functional cattle that are reproductively sound with tons of muscle, added bone, and the structural correctness that we desire so much
- Those elite Brahman breeders that have influenced their programs with 719/4 have been very impressed with the results, as we have been
- There are over 120 progeny registered with the ABBA and many more worldwide
- When evaluating these heifers, you will realize the uniformity found within these five siblings
- Take a close look at Lot 16 for your next herd sire prospect. He is from the Register of Renown donor + MS TNT 201. This young bull's maternal sister topped the 2014 All American Sale at \$20,500 selling to Lanier Brahmans, Okeechobee, Fl.
- Lot 20 is from the elite Moreno Ranches donor Miss V8 765/6, an International Sale high-selling lot and a known daughter of +Superstroke out of a +V8 901/4 daughter
- This bull's pedigree is loaded with eight Register of Renown animals in his pedigree
- Take your pick of any of these tremendous progeny from JDH Mr. Impression Manso 719/4



{ LOT 20 Moreno Mr. Inside Man 511 }



Miss V8 952/6, dam of Lot 21.

652/6

Miss V8 652/6 is one of the leading donors at Moreno Ranches and her influence highlights this All American II sale. Unfortunately the day came too early and she is now deceased. When she was in production she was always that Brahman female that stood out in a crowd of others. She always had that look of prominence and seemed to know that she had it all working in her favor. Well, this is your chance to influence your program by selecting from her progeny that are offered here in lot 21.



Moreno Ms. Lady Malisa 112/1

{ 21 }

COLOR: Gray REG#: C 943387 DOB: 11.30.15 ID: 112/1 BW: 2.4 WW: 24.7 YW: 36.6 MILK: 6.7

(+JDH ATLAS MANSO 328/3 (328/3) B 803386
JDH MR. MANSO 854/4 (854/4) B 854045
 +JDH LADY MANSO 953/3 (953/3) C 822156
 +JDH KARU MANSO 800 (800) B 727046
MISS V8 652/6 (652/6) C 854002
 MISS V8 170/6 (170/6) C 820686

+JDH CHARLEY'S JAZZ 946/1 (946/1) B 750937
 +JDH LADY MANSO 251/9 (251/9) C 660795
 JDH SAGE MANSO 92/1 (92/1) B 702209
 JDH LADY MANSO 429/1 (429/1) C 717386
 (+JDH DAKOTA MANSO 599 (599) B 660367
 JDH LADY REM S. MANSO (707) C 674728
 +MR. V8 287/5 (287/5) B 780619
 +MISS V8 567/3 (567/3) C 611924

- This heifer is sired by the now deceased JDH Mr Manso 854/4. Even though 854 passed away at a young age, his progeny continue to impress us and cattlemen across Latin America year after year. He is known as the sire of champions worldwide, and rightfully so
- Moreno Ms. Lady Malisa 112/1 is straight in her lines, very structurally correct, and has the balance and poise needed to get attention from any quality conscious breeder
- With both parents now deceased, this incredible mating is the last of its kind. Don't miss your opportunity to own a piece of history

{ LOT 21 Moreno Ms. Lady Malisa 112/1 }

434/8



{ LOT 23 Moreno Ms. Lady Kali 60/1 }



{ LOT 22
Moreno Mr. Polled
Kyros 571 }



JDH Mr Kabram Manso 434/8, sire of Lot 22 & 23.



Moreno Ms. Polled Paulina 758,
full sister to dam of Lot 23.



Moreno Mr. Polled Kyros 571

{ 22 }

COLOR: Gray REG#: B 943372 DOB: 10.29.15 ID: 571

BW: 0.8 WW: 14.2 YW: 25.6 MILK: 2.4

+JDH WOODSON DE MANSO (206/7) B 839863
JDH MR KABRAM MANSO (434/8) B 912318

JDH LADY EUFAULA MANSO (905/6) C 839920

JME US LEXOR MANSO 71 (P) (71) B 880657
ZE MADDOX LEXOR 78 (78/3) C 924715

ZE LADY MADDOX COPANO 21 (21) C 880570

+JDH MR WOODMAN MANSO (578/6) B 801161
JDH LADY IRMA MANSO (484/6) C 813847

(+)JDH SIR LIBERTY MANSO (847/5) B 747549

JDH LADY HALONA MANSO (436/6) C 813783

+BNA THE DEACON MANSO253 (253/0) B 802443

JME MS REM PONCRATA474(POLLED) (474/6) C

+MR H MADDOX MANSO 684 (684) B 837246

MS SS LIBERTY COPANO (140) C 852972

- Here is the only known polled son from JDH Mr. Kabram Manso 434/8, a son of the International Champion +JDH Woodson De Manso 206/7. 434/8's daughters were very well accepted and were top sellers in the Moreno Ranches Catalyst 3 Sale. Moreno Ms. Lady Kyra was purchased for \$19,000 by RW Ranches, Moreno Ms. Lady Kiss Me sold for \$13,000 to the McCrimmon Family, and Moreno Ms. Lady Keona sold for \$12,000 to the Maheu Family
- This young bull's dam is a full sister to a top selling lot in the 2016 ABBA International Sale, Moreno Ms. Polled Paulina 758. She is sired by the popular polled sire JME US Lexor Manso 71 that won numerous titles before an early accidental death. On the maternal side of her pedigree, she goes back to +H Maddox 684 and a Sagraera bred female that sold in the 2007 International sale. There is a tremendous amount of predictability found in this pedigree and it is one that you can count on
- Buy with confidence and invest in a polled herd sire prospect that will certainly make an impact in any program

Moreno Ms. Lady Kali 60/1

{ 23 }

COLOR: Gray REG#: C 943376 DOB: 11.16.15 ID: 60/1

BW: 1.3 WW: 18.2 YW: 32.2 MILK: -1.2

+JDH WOODSON DE MANSO (206/7) B 839863
JDH MR KABRAM MANSO (434/8) B 912318

JDH LADY EUFAULA MANSO (905/6) C 839920

+JDH MR ELMO MANSO (309/4) B 850913
JDH MISS BOOTH MANSO (583/4) C 922358

JDH LADY HIPSON MANSO (951/3) C 851044

+JDH MR WOODMAN MANSO (578/6) B 801161
JDH LADY IRMA MANSO (484/6) C 813847

(+)JDH SIR LIBERTY MANSO (847/5) B 747549

JDH LADY HALONA MANSO (436/6) C 813783

+JDH SIR LAWFORD MANSO (616/6) B 803613

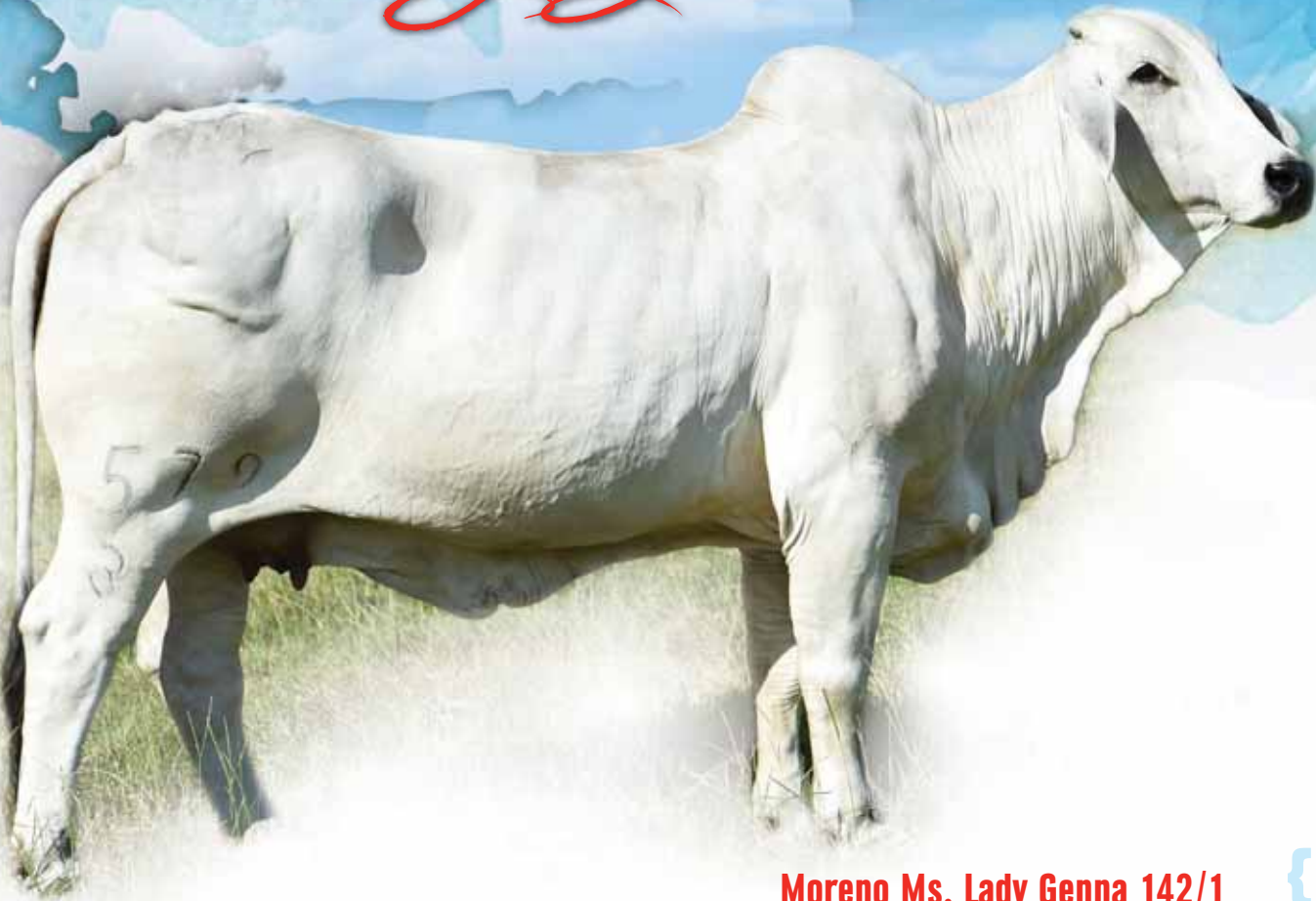
\$JDH LADY ELLIS MANSO (178/2) C 590390

JDH MR BERTRAM MANSO (725/3) B 801949

JDH MS MOYO CORO MANSO (847/2) C 713216

- This young November yearling show heifer prospect represents a visionary mating and her results are a dream come true
- She is sired by JDH Mr Kabram Manso 434/8, a leading son of +JDH Woodson De Manso 206/7
- Her dam is sired by +JDH Mr. Elmo Manso 309/4, the 2008 National Champion and sire of champions and top money earners globally
- This young Gray female is the product of blending two amazing animals, leading to the creation of one of the finest in the All American II sale. We admire her hump placement, her flawless conformation, strength in her lines, excellent feet placement, and still maintains tremendous femininity up through her head and neck

579/3 Progeny



Moreno Ms. Lady Genna 142/1

{24}

COLOR: Gray REG#: C - DOB: 05.20.15 ID: 142/1

BW: 1.9 WW: 18.9 YW: 32.3 MILK: 7



JDH Goudeau Manso 174/0, sire of Lots 24, 25 & 26..

Moreno Ms. Lady Grumpy 34/1

{25}

COLOR: Gray REG#: C 941979 DOB: 09.04.15 ID: 34/1

BW: 1.9 WW: 18.9 YW: 32.3 MILK: 7

Moreno Ms. Rally Girl 146/1

{26}

COLOR: Gray REG#: C 942040 DOB: 09.26.15 ID: 146/1

BW: 1.9 WW: 18.9 YW: 32.3 MILK: 7.0

JDH MR. MANSO 362/1 (362/1) B 717164
JDH GOUDEAU MANSO 174/0 (174/0) B 892664
 JDH LADY MANSO 625/3 (625/3) C 813155

(=)JDH PRESCOT MANSO (82/6) B 764877
-JDH LADY SUSIE MANSO (579/3) C 818437
 JDH LADY BADGETT MANSO (652/2) C 682575

JDH BROSS MANSO (949/2) B 610839
 JDH LADY MANSO 337/9 (337/9) C 660805
 JDH MR. MANSO 13/2 (13/2) B 750892
 =JDH LADY SWATTER MANSO (68/8) C 562251
 (+)JDH MADISON DE MANSO (737/4) B 669048
 +JDH LADY NEL MANSO (925/4) C 702925
 JDH BROTHER PRAT MANSO (83/8) B 569211
 JDH MISS DELILAH MANSO (811/1RT) C 449177



{ LOT 24 Moreno Ms. Lady Genna 142/1 }

{ LOT 25 Moreno Ms. Lady Grumpy 34/1 }



{ LOT 26 Moreno Ms. Rally Girl 146/1 }

- Sired by JDH Goudeau Manso 174/0, who offers a complete outcross pedigree to most established lines of cattle and stemming from a very maternal line of cow families. He is a powerful performance bull and his progeny are at the top in terms of weaning weight and performance. He is positive in nine economically important traits across the board, super sound in his structure, and very prominent in his stance. His progeny seem to just keep surfacing at the top of all contemporary groups year after year
- Their dam is =JDH Lady Susie Manso 579/3, a Maternal Merit Cow. She is one of the leading Moreno Gray Brahman donors that is recognized by many as one of the most well constructed, easy doing donors that is now in extensive embryo transplant for Moreno Ranches
- We love the extra bone, extreme foot size, power, substance, ease of fleshing ability, and appealing stance found in these two full siblings



JDH Mr. Manso 854/4,
sire of Lots 27 - 30.



Miss B-F 139/9, dam of
Lots 27 - 30.

854/4 & 139/9 Progeny



{ LOT 27 Moreno Ms. Lady Rasine 108/1 }

Moreno Ms. Lady Rasine 108/1

{27}

COLOR: Red REG#: C 943385 DOB: 11.30.15 ID: 108/1

BW: 2 WW: 16.6 YW: 27.5 MILK: 6.9

Moreno Ms. Lady Raizel 102/1

{28}

COLOR: Red REG#: C 943382 DOB: 11.30.15 ID: 102/1

BW: 2 WW: 16.6 YW: 27.5 MILK: 6.9

Moreno Ms. Lady Renita 126/1

{29}

COLOR: Red REG#: C 943395 DOB: 12.05.15 ID: 126/1

BW: 2 WW: 16.6 YW: 27.5 MILK: 6.9

Moreno Ms. Lady Robyn 128/1

{30}

COLOR: Red REG#: C 943396 DOB: 12.05.15 ID: 128/1

BW: 2 WW: 16.6 YW: 27.5 MILK: 6.9

(+J)JDH ATLAS MANSO 328/3 (328/3) B 803386 +JDH CHARLEY'S JAZZ 946/1 (946/1) B 750937
JDH MR. MANSO 854/4 (854/4) B 854045 +JDH LADY MANSO 251/9 (251/9) C 660795
 +JDH LADY MANSO 953/3 (953/3) C 822156 JDH SAGE MANSO 92/1 (92/1) B 702209
 JDH LADY MANSO 429/1 (429/1) C 717386
 +MR. 3H X-RAY 825 (825) B 775361
MISS B-F 139/9 (B-F 139/9) C 887407 +MISS 3-S KELLI 848 (848) C 778518
 +5M MISS MARCIA (144) C 838885 +BB MR STING-RAY 10/0 (10/0) B 804910
 SRS MISS DALLAS (660) C 804841



{ LOT 28 Moreno Ms. Lady Raizel 102/1 }



{ LOT 29 Moreno Ms. Lady Renita 126/1 }



{ LOT 30 Moreno Ms. Lady Robyn 128/1 }

- These four heifers are sired by the now deceased JDH Mr Manso 854/4. Even though 854 passed away at a young age, his progeny continue to impress us and cattlemen across Latin America year after year. He is known as the sire of champions worldwide, and rightfully so
- Their dam is Miss B-F 139/9, a daughter of +Mr. H Red Rhino 765 and a full sister to the two time National Champion and two time International Champion female +CT Lady Rhineaux Ray 8/9. This big time Moreno Ranches donor continues to amaze everyone at the ranch with her producing ability
- Lots 27 through 30 represent some of the most progressive and prominent matings ever created at Moreno Ranches. They are sired by the deceased bull 854/4 and from the donor 139/9 who has surfaced as the leading donor that impresses us with her progeny time and time again



MOORENO RANCHES





Showing our continued support for Brahman youth.



MORENO RANCHES

17 Virginia Circle, Moreno Estate
Venus, Florida 33960

**FIRST CLASS
PRE-SORTED
PAID**

Montezuma, Iowa
Permit No. 30

Catalog designed by www.designsbyarin.com



VERIFICATION PROGRAM

With the increase in demand for the M Check branded product, Moreno Ranches has significantly expanded their embryo transplant program. Moreno Ranches takes pride in remaining at the forefront of technology, while also adding value for the customer. In an effort to provide the utmost level of product integrity, Moreno Ranches is pleased to announce its new "M Check" verification program.

The M Check verification certifies that the animal's sire and dam have been confirmed, using the latest DNA technology. Animals bearing the M Check verification stamp are 100% guaranteed in that their bloodline is precisely known. A final bonus is that any Brahman cattle that have an M Check verification stamp will qualify for all of the standard Moreno Ranches Junior programs, such as the Scholarship Program, the Breed Back Program, and the Sell Back Program.

All M Check branded cattle selling in the All-American Summer Sale will be sold with the M check verification guarantee.