

MI
QUALITY IN VOLUME



ML

QUALITY IN VOLUME

First and foremost we would like to start off by giving a big thank you to everyone for taking the time to review our program of elite genetics. Fall is fast approaching here in Southwest Iowa and that means sale season and harvest is upon us. Here at Sullivan Farms we strive to produce top end genetics with proven pedigrees. Year after year we commit to producing cattle that you can show as well as take home and implement them into your genetic pool with the expectation that they will help you produce for the long haul.

In the 2017 Maternal Legends Sale we have an elite open heifer offering in multiple breeds. As you read through this catalog you will see that our quality of show heifers runs deep. We pride ourselves in selling Quality in Volume in an affordable package. Year after year we see our customers, at all price ranges, compete in and excel in shows, at the local, state, and national levels. Check out pages 46-49 of this catalog to see the phenomenal success our customers continue to have.

In our bred heifer division, we all agree that this year is our best set yet. Many of these matings come from some of the most elite pedigrees. A large volume of these females are AI'd to some of the hottest most proven heifer bulls in their respective breeds. The genetic value of these winning pedigrees will add quality and value back into your program.

Don't forget to check out our frozen embryo and semen packages. We have seen a large amount of success for other breeders who over the years have taken advantage of the opportunity to use our genetics to enhance their programs.

A special thank you to our families and our farm crew for your continued hard work and dedication you put into making this sale and every sale the best it can be.

We look forward to seeing everyone October 15th and visiting with and answering any questions you might have. Please don't hesitate to give us a call so we can answer any and all your questions from open heifers, bred heifers, frozen embryos and semen. We are here for you.



Maternal Legends

SULLIVAN

farms

John, Dede, Sara & Sage • James • Nick

Dunlap, Iowa 51529

www.maternallegends.com

John Elder, 402.650.1385

Josh Elder, Marketing Representative

402.650.1380



MATERNAL LEGENDS SALE

Sunday, October 15th, 2017 at 12:30 pm CST at the farm, Dunlap, Iowa

Sale Day Phones

Josh Elder.....402.650.1380	Nate Tice.....717.926.0874
John Elder.....402.650.1385	Sale Barn.....712.643.2126
Jess Recknor.....507.383.8529	Megan Mitchell.....712.269.6009
Drew Davis.....712.592.9627	James Sullivan.....712.263.9434

Livestock Representatives

Montie D. Soules, ASA Executive Secretary.....918.645.4322	
Joe Rickabaugh, AHA Representative.....785.633.3188	
Blake Nelson, AMAA Executive Director.....918.441.3433	
Andee Marston, ACA Executive Director.....785.250.4449	
Bruce Brooks, Auctioneer.....580.695.2036	
Kevin Wendt, Auctioneer.....419.566.1599	
Darryl Rahn, Shorthorn Country.....217.473.1124	
Stuart Wilson, Livestock Insurance.....217.454.9355	
Shelia Jensen, Livestock Insurance.....785.262.1116	
Dwyer Cattle Services.....Bob, 309.337.1404 Nick, 309.337.6404	
Dr. Roger Hunsley.....502.468.5714	
Kyle Colyer.....208.250.3924	
Dave Allan.....979.561.7115	Tyler Humphrey.....419.230.3450
Kent Jaecke.....405.408.2440	Alan K. Sears.....970.396.7521
Jeff Bedwell.....580.822.5590	Frank Sullivan.....612.860.6665
Kevin Wendt.....419.566.1599	Jeff Sargent.....903.624.7265
Tom Rooney.....515.491.6025	Craig Talkington.....785.623.1789
Joel Edge.....319.540.1731	Scott Trennepohl.....765.620.1700
Jim Suver.....402.690.7354	Brian Kohlstaedt.....816.716.4614
John Tucker.....308.530.5765	Cody Lowderman.....309.313.2171
Tony Jeffs.....806.663.6418	Monte W. Lowderman...309.255.0110

Sullivan Farms Marketing Representative

Josh Elder : 402.650.1380

Sale Manager's

Agitater Marketing : Jeff K. & Darla Aegerter : 402.641.4696
jaegerter@neb.rr.com : www.aegertercattle.com
1250 Ridge Run, Seward, NE 68434

Cagwin Cattle Services, Inc. : Dr. Don Cagwin, cell 217.341.7552
Cindy Cagwin-Johnston, 217.452.3056
PO Box 77, Virginia, IL 62691 : 217.452.3051 : FAX: 217.452.3053
cagwincattle@casscomm.com : www.cagwincattle.com

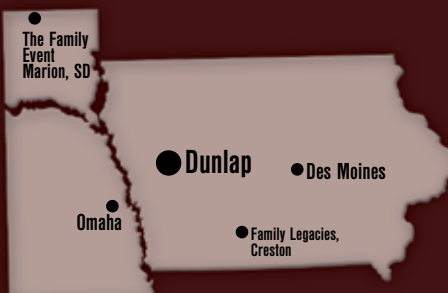
Marketing Representative

R&R MARKETING COMPANY : Randy Ratliff
615.330.2735 : randy@rrmktg.com : www.rrmktg.com

Directions to Farm

Sullivan Farms is located on
Hwy. 37, 1/4 mile East of Dunlap.
20 minutes from I-80 or I-29

Omaha, NE is 1 hour
Des Moines, IA is 2 hours
Stoux Falls, SD is 2 1/2 hours
Kansas City, MO is 3 1/2 hours
Oklahoma City, OK is 7 1/2 hours
Indianapolis, IN is 9 hours
Dallas/Fort Worth, TX is 11 1/2 hours



Schedule

FRIDAY, OCTOBER 13th

6:00 PM The Family Event, Marion, South Dakota

SATURDAY, OCTOBER 14th

12:30 PM Family Legacies Sale, Creston, Iowa

3:00 PM Cattle available for viewing.
Food and refreshments will be served all day.

6:00 PM **Prime Rib Meal & Social at Sullivan Farms**

6:30 PM **Leading A Legacy Junior National Fundraiser Sale**

SUNDAY, OCTOBER 15th

8:00 AM Complimentary Breakfast at Sullivan Farms

10:30 AM Complimentary refreshments and a beef meal.

12:30 PM **Sullivan Farms Maternal Legends Sale**
at the Farm, Dunlap, Iowa

Sale Videos

View Sale videos at CW Online Sales or MaternalLegends.com

Accommodations

*HEADQUARTERS ...

*Boulder Inn & Suites, Oak Ridge, Denison, IA.....1.800.430.4663

***Located near Crawford County Memorial Hospital *** Ask for Sullivan Block*

*Boulder Inn & Suites, Majestic Hills, Denison, IA..1.866.700.2206

***Adjacent to the Majestic Hills Golf Course *** Ask for Sullivan Block*

Denison Inn, Denison, IA.....712.263.2500

Travelodge, Denison, IA.....712.263.5081

Settle Inn, Harlan, IA.....1.800.677.3060

Days Inn, Missouri Valley, IA.....712.642.4003

Oak Tree Inn, Missouri Valley, IA.....712.642.3000

Cobblestone Inn, Avoca, IA.....712.307.6006

Harrah's Casino & Hotel, Council Bluffs, IA.....712.329.6000

Trucking & Registration

For trucking assistance, call John Elder, 402.650.1385.

For registration assistance, call Megan Mitchell, 712.269.6009

Air Travel

Omaha, Nebraska : 50 miles.....Des Moines, Iowa : 120 miles

Denison, Iowa : 18 miles, 712.263.6392

***Hard surfaced & lighted runway, length 5,000 feet*

Photos & Catalog

Photos by Josh Elder. Catalog design by Luke Bolin.

Cover: Four-time National Champion. SULL RGLC Legacy 525
ET, owned with Rockin' G Land and Cattle.

Online Bidding

Maternal Legends &
Leading a Legacy can

be viewed online at www.liveauctions.tv.



Lady Crystal/ Dream Girl

cow family



SS Dream Lady 161

Reserve Grand Champion Female,
2013 NWSS Junior Show
Dam of Lots 1AA - 1CC



SULL Dream On 5158

Show Heifer of the Year
Grand Champion Female, 2016 NAILE, Junior and Open
Grand Champion Female, 2017 Fort Worth Stock Show Open Show
Grand Champion Female, 2017 NWSS Junior Show
Grand Champion Female, 2016 American Royal, Junior and Open
Grand Champion Female, 2016 NWSS Open Show
Reserve Grand Champion Female, 2016 NWSS Junior Show
Full sibs selling as Lot 1AA & 1BB



Sherwood Lady Crystal

Dam of Multiple National Champions



SULL Crystal's Lucy

Grand Champion Female, 2012 National Junior Shorthorn Show
Grand Champion Female, 2012 NWSS Junior Show
Dam of Lots 1A - 1Z

SULL Crystal's Tootie

Grand Champion Female, 2013 NAILE Open Show
Grand Champion Female, 2013 NAILE Junior Show
Grand Champion Female, 2013 American Royal
Grand Champion Female, 2013 Iowa State Fair Open Show



1a**SULL CRYSTAL'S QUEEN 7175E**

3.4.17 Heifer LE 7175E Polled Reg. # *x4256584

SULL RGLC LEGACY 525 ET

SULL RED REWARD 9321

SULL MIRAGE FOREVER 8121 ET

SULL LADY CRYSTAL434P-2 ET CL

WHR SONNY 8114

AF MARGIES DREAM LADY 05 ET

SHORTHORN

BW: 1.7 WW:56 YW: 70 M: 19

- Every year we have a new mating that we can't wait to see and watch develop. This year it just happens to be our Lot 1A. We feel that Lot 1A has the potential to be Lady Crystal's best yet!
- Lot 1A's sire, SULL RGLC Legacy was the 2016 & 2017 Triple Crown Winner and by the looks of his first set of calves he is living up to that title.
- SULL Crystal Queen's dam, Lady Crystal 434P, has produced multiple state fair champions as well as the 2012 NWSS and NJHS Champion, SULL Crystal's Lucy and the 2013 NAILE Champion Female, SULL Crystal's Tootie. The mating possibilities are endless with the Lady Crystal's. You have the potential for greatness, breeding to purebred bull or making ShorthornPlus's, either way, you come out on top.

**1b****SULL LADY CRYSTAL TOO 7177E**

2.13.17 Heifer LE 7177E Polled Reg. # *x4256585

SULL RGLC LEGACY 525 ET

SULL RED REWARD 9321

SULL MIRAGE FOREVER 8121 ET

SULL LADY CRYSTAL434P-2 ET CL

WHR SONNY 8114

AF MARGIES DREAM LADY 05 ET

SHORTHORN

BW: 1.7 WW:56 YW: 70 M: 19

- An ultra-feminine roan power house. Lot 1b has the look, power, and phenotype of her great sire SULL RGLC Legacy 525.
- Lot 1a and lot 1b are examples of what is yet to come in this catalog with our deep set of SULL RGLC Legacy sired calves.
- Lady Crystal 434P, dam to lot 1b, has produced multiple state fair champions as well as the 2012 NWSS and NJHS Champion, SULL Crystal's Lucy and the 2013 NAILE Champion Female, SULL Crystal's Tootie. The mating possibilities are endless with the Lady Crystal's. You have the potential for greatness, breeding to purebred bull or making ShorthornPlus's, either way, you come out on top.

**1c****SULL LADY CRYSTAL 7007E**

1.17.17 Heifer LE 7007E Polled Reg. # *xAR4257016

SILVEIRAS STYLE 9303

GAMBLES HOT ROD

SILVEIRAS ELBA 2520

SHERWOOD LADY CRYSTAL ET

WHR SONNY 8114

AF MARGIES DREAM LADY 05 ET

SHORTHORNPLUS

BW: 0.7 WW:50 YW: 74 M: 19

- SULL Lady Crystal stands at the top of our impressive 2017 ShorthornPlus offering. You be the judge on sale day, she won't be hard to find.
- The Lady Crystal cow family has been a proven and consistent mating the past couple of years at Sullivan Farms, producing multiple winners and sale features.
- Lady Crystal 434P, dam to Lot 1c, has produced multiple state fair champions as well as the 2012 NWSS and NJHS Champion, SULL Crystal's Lucy and the 2013 NAILE Champion Female, SULL Crystal's Tootie. The mating possibilities are endless with the Lady Crystal's. You have the potential for greatness, breeding to purebred bull or making ShorthornPlus's, either way, you come out on top.



**1d****SULL LADY CATHERINE 7001E**

1.7.17 Heifer LE 7001E Polled Reg. # *xAR4256567

SILVEIRAS STYLE 9303

GAMBLES HOT ROD
SILVEIRAS ELBA 2520

SULL LADY CRYSTAL434P-2 ET CL

WHR SONNY 8114
AF MARGIES DREAM LADY 05 ET**SHORTHORNPLUS**

BW: 0.8 WW:49 YW: 74 M: 17

- SULL Lady Catherine 7001e is as elegantly designed as you can draw one. If you like them extended, deep sided and smooth from end to end and top to bottom, look no further.
- Lady Crystal 434P, dam to Lot 1d, has produced multiple state fair champions as well as the 2012 NWSS and NJHS Champion, SULL Crystal's Lucy and the 2013 NAILE Champion Female, SULL Crystal's Tootie. The mating possibilities are endless with the Lady Crystal's. You have the potential for greatness, breeding to purebred bull or making ShorthornPlus's, either way, you come out on top.

**1e****SULL LADY DIAMOND 7008E**

1.3.17 Heifer LE 7008E Polled Reg. # *xAR4256704

SILVEIRAS STYLE 9303

GAMBLES HOT ROD
SILVEIRAS ELBA 2520

SULL LADY CRYSTAL434P-2 ET CL

WHR SONNY 8114
AF MARGIES DREAM LADY 05 ET**SHORTHORNPLUS**

BW: 0.8 WW:49 YW: 74 M: 17

- SULL Lady Diamond 7008e in our mind is the combination of her five full sisters. She possesses the same body and maternal design with added power.
- The Lady Crystal cow family has been a proven and consistent mating the past couple of years at Sullivan Farms, producing multiple winners and sale features.
- Lady Crystal 434P, dam to Lot 1e, has produced multiple state fair champions as well as the 2012 NWSS and NJHS Champion, SULL Crystal's Lucy and the 2013 NAILE Champion Female, SULL Crystal's Tootie. The mating possibilities are endless with the Lady Crystal's. You have the potential for greatness, breeding to purebred bull or making ShorthornPlus's, either way, you come out on top.

**1f****SULL CRYSTAL'S LADY 7012E**

1.25.17 Heifer LE 7012E Polled Reg. # *xAR4256570

SILVEIRAS STYLE 9303

GAMBLES HOT ROD
SILVEIRAS ELBA 2520

SHERWOOD LADY CRYSTAL ET

WHR SONNY 8114
AF MARGIES DREAM LADY 05 ET**SHORTHORNPLUS**

BW: 0.7 WW:50 YW: 74 M: 19

- SULL Crystal's Lady 7012e will be one of those females that fits any judge's type; sound, big bodied and good looking. She is the prototype of today's trends.
- Lady Crystal 434P, dam to Lot 1f, has produced multiple state fair champions as well as the 2012 NWSS and NJHS Champion, SULL Crystal's Lucy and the 2013 NAILE Champion Female, SULL Crystal's Tootie. The mating possibilities are endless with the Lady Crystal's. You have the potential for greatness, breeding to purebred bull or making ShorthornPlus's, either way, you come out on top.

1g**SULL MISS CRYSTAL 7002E**

2.4.17 Heifer LE 7002E Polled Reg. # *xAR4256568

SILVEIRAS STYLE 9303

GAMBLES HOT ROD
SILVEIRAS ELBA 2520

SULL LADY CRYSTAL434P-3 ET CL

WHR SONNY 8114
AF MARGIES DREAM LADY 05 ET**SHORTHORNPLUS** BW: 0.8 WW:49 YW: 74 M: 17

- One of our favorites from day one of this consistent, proven mating. SULL Miss Crystal 7002e is one of those heifers that is just hard to put a hole in. She will compete at every show all year long.
- The Lady Crystal cow family has been a successful and consistent mating for us the past couple of years, producing multiple winners and sale features.
- Lady Crystal 434P, dam to Lot 1g, has produced multiple state fair champions as well as the 2012 NWSS and NJHS Champion, SULL Crystal's Lucy and the 2013 NAILE Champion Female, SULL Crystal's Tootie. The mating possibilities are endless with the Lady Crystal's. You have the potential for greatness, breeding to purebred bull or making ShorthornPlus's, either way, you come out on top.

**1h****SULL PERFECT LADY 7103E**

2.12.17 Heifer LE 7103E Polled Reg. # *xAR4256701

COLBURN PRIMO 5153

DAMERON FIRST CLASS
SILVEIRAS SARAS DREAM 1339

SHERWOOD LADY CRYSTAL ET

WHR SONNY 8114
AF MARGIES DREAM LADY 05 ET**SHORTHORNPLUS** BW: 0.6 WW:58 YW: 84 M: 20

- SULL Perfect Lady 7103e fits the definition of cow power. She might not be the flashiest one through her front one- third but she is big bodied, big footed and boned, and flawless in her structure.
- With this first set of Colburn Primo calves at Sullivan Farms we are excited to see how they progress and the success they will have throughout the year.
- Lady Crystal 434P, dam to Lot 1h, has produced multiple state fair champions as well as the 2012 NWSS and NJHS Champion, SULL Crystal's Lucy and the 2013 NAILE Champion Female, SULL Crystal's Tootie. The mating possibilities are endless with the Lady Crystal's. You have the potential for greatness, breeding to purebred bull or making ShorthornPlus's, either way, you come out on top.

**1j****SULL LADY 7178E**

1.21.17 Heifer LE 7178E Polled Reg. # *xAR4256586

COLBURN PRIMO 5153

DAMERON FIRST CLASS
SILVEIRAS SARAS DREAM 1339

SULL LADY CRYSTAL434P-2 ET CL

WHR SONNY 8114
AF MARGIES DREAM LADY 05 ET**SHORTHORNPLUS** BW: 0.7 WW:58 YW: 84 M: 19

- SULL Lady 7178e will definitely be the topic of conversation on which ShorthornPlus heifer we like the most come sale weekend. This one has the added power and maternal look that we all like in a flawless structural package.
- Sherwood Lady Crystal 434p hit it out of the park with Colburn Primo.
- Lady Crystal 434P, dam to Lot 1j, has produced multiple state fair champions as well as the 2012 NWSS and NJHS Champion, SULL Crystal's Lucy and the 2013 NAILE Champion Female, SULL Crystal's Tootie. The mating possibilities are endless with the Lady Crystal's. You have the potential for greatness, breeding to purebred bull or making ShorthornPlus's, either way, you come out on top



**1k****SULL LEADING LADY 7182E**

2.8.17 Heifer LE 7182E Polled Reg. # xAR4256589

COLBURN PRIMO

DAMERON FIRST CLASS
SILVEIRAS SARAS DREAM 1339

SULL LADY CRYSTAL434P-3 ET CL

WHR SONNY 8114
AF MARGIES DREAM LADY 05 ET**SHORTHORNPLUS**

BW: 0.7 WW:58 YW: 84 M: 19

- An impressive blue roan female with show heifer written all over her. This is one of those heifers that someone will have a lot of fun, memories, and success with.

-Lady Crystal 434P, dam to Lot 1k, has produced multiple state fair champions as well as the 2012 NWSS and NJHS Champion, SULL Crystal's Lucy and the 2013 NAILE Champion Female, SULL Crystal's Tootie. The mating possibilities are endless with the Lady Crystal's. You have the potential for greatness, breeding to purebred bull or making ShorthornPlus's, either way, you come out on top.

**1m****SULL CLASSY CRYSTAL 7207E**

1.24.17 Heifer LE 7207E Polled Reg. # *xAR4256595

COLBURN PRIMO 5153

DAMERON FIRST CLASS
SILVEIRAS SARAS DREAM 1339

SULL LADY CRYSTAL434P-3 ET CL

WHR SONNY 8114
AF MARGIES DREAM LADY 05 ET**SHORTHORNPLUS**

BW: 0.7 WW:58 YW: 84 M: 19

- SULL Classy Crystal 7207e will be another one of those ShorthornPlus heifers in this year's offering that will catch your eye. She has the added power with a cool maternal design.

-Lady Crystal 434P, dam to Lot 1m, has produced multiple state fair champions as well as the 2012 NWSS and NJHS Champion, SULL Crystal's Lucy and the 2013 NAILE Champion Female, SULL Crystal's Tootie. The mating possibilities are endless with the Lady Crystal's. You have the potential for greatness, breeding to purebred bull or making ShorthornPlus's, either way, you come out on top.

**1n****SULL CRYSTAL CLEAR 7077E**

1.20.17 Heifer LE 7077E Polled Reg. # *xAR4256700

SMA WATCHOUT 482

SILVEIRAS WATCHOUT 0514
2K BEAUTY 961

SULL LADY CRYSTAL-434P-1 ET

WHR SONNY 8114
AF MARGIES DREAM LADY 05 ET**SHORTHORNPLUS**

BW: -0.3 WW:51 YW: 75 M: 26

- SULL Crystal Clear 7077e is one long necked, ultra-feminine, super sound female.

- Her sire SMA Watchout 482 was the 2016 National Champion Angus Bull.

- Lady Crystal 434P, dam to Lot 1n, has produced multiple state fair champions as well as the 2012 NWSS and NJHS Champion, SULL Crystal's Lucy and the 2013 NAILE Champion Female, SULL Crystal's Tootie. The mating possibilities are endless with the Lady Crystal's. You have the potential for greatness, breeding to purebred bull or making ShorthornPlus's, either way, you come out on top.

1p**SULL LADY LEGACY 7395E**

4.10.17 Heifer LE 7395E Polled Reg. # *xAR4256684

GOET 180

COWAN'S ALL 4M
BPF MILEY 80T

SULL LADY CRYSTAL-434P-1 ET

WHR SONNY 8114
AF MARGIES DREAM LADY 05 ET**SHORTHORNPLUS/MAINETAINER** BW: -0.9 WW:43 YW: 51 M: 25

- SULL Lady Legacy 7395e, or Fancy Pants as we like to call her, will be a fun show heifer. Dual registered, cool, stout and tame.
- SULL Lady Legacy's dam, Lady Crystal 434P, has produced multiple state fair champions as well as the 2012 NWSS and NJHS Champion, SULL Crystal's Lucy and the 2013 NAILE Champion Female, SULL Crystal's Tootie. The mating possibilities are endless with the Lady Crystal's. You have the potential for greatness, breeding to purebred bull or making ShorthornPlus's, either way, you come out on top.
- Dual Registered ShorthornPlus/MaineTainer

**1r****SULL LADY CRYSTALS 7398E**

3.18.17 Heifer LE 7398E Polled Reg. # *xAR4256609

GOET 180

COWAN'S ALL 4M
BPF MILEY 80T

SULL LADY CRYSTAL-434P-1 ET

WHR SONNY 8114
AF MARGIES DREAM LADY 05 ET**SHORTHORNPLUS/MAINETAINER** BW: -0.9 WW:43 YW: 51 M: 25

- SULL Lady Crystals 7398e is almost identical to her sister, Lot 1p. These two I-80 show heifers will be highly competitive whether you decide to show as a MaineTainer or ShorthornPlus. Little kid friendly.
- SULL Lady Crystals's dam, Lady Crystal 434P, has produced multiple state fair champions as well as the 2012 NWSS and NJHS Champion, SULL Crystal's Lucy and the 2013 NAILE Champion Female, SULL Crystal's Tootie. The mating possibilities are endless with the Lady Crystal's. You have the potential for greatness, breeding to purebred bull or making ShorthornPlus's, either way, you come out on top.
- Dual registered ShorthornPlus/MaineTainer.

**1s****SULL H/F CRYSTAL JUDY 1471**

4.24.17 Heifer LE 500E Polled Reg. # *xAR4256214

SILVEIRAS STYLE 9303

GAMBLES HOT ROD
SILVEIRAS ELBA 2520

SULL CRYSTAL JUDY 1471 ET

SULL RIGHT DIRECTION ET
SULL LADY CRYSTAL-434P-1 ET**SHORTHORNPLUS** BW: -0.6 WW:54 YW: 82 M: 24

- An extra fancy show heifer with a big future ahead of her.
- Last fall multiple full sibs to Lot 1s sold on the Maternal Legends Sale as well as one that sold on the Schaeffer/Tice Sale for \$25,000 to the Mize family that went on to be the Reserve Supreme Champion at Hoosier Beef Congress and Grand Champion ShorthornPlus at the Indiana State Fair. Other champions were Reserve Champion at the Ohio State Fair for the Mobitzer family; Champion ShorthornPlus at the Illinois State Fair for the Campbell family and the Supreme Champion ShorthornPlus at Norfolk and Champion ShorthornPlus at the Iowa State Fair for the Reetz family. These genetics are proven and consistent.
- Her now deceased dam was Champion Bred and Owned at the 2012 Shorthorn Junior Nationals, Champion Shorthorn at the Iowa State Fair and the Iowa Shorthorn Field Day. She stems from the Sherwood Lady Crystal 434p cow family.
- Owned with Andrew Hamann




1t

SULL CRYSTAL'S DIRECTION 7285E

3.9.17 Heifer LE 7285E Polled Reg. # x4256599

SULL RIGHT DIRECTION ET

CF TRUMP X
NPS DESERT ROSE 004

SULL CRYSTAL'S LUCY ET

LITTLE CEDAR AVIATOR 503X
SULL LADY CRYSTAL-434P-1 ET**SHORTHORN**

BW: 0.5 WW: 65 YW: 85 M: 28

- Extremely feminine, well balanced, sound female with a big square hip.
- Her dam SULL Crystal's Lucy was the 2012 NWSS and NJHS Champion Female. Full sister to Lot 1t, shown by David Smith, was the 2015 NJHS 4th Overall as well as the Reserve Supreme at the Nebraska State Fair Junior and Open Shows, another full sib, SULL Crystal's Lucy 3804, was Champion Bred and Owned at the 2015 NJHS.


1u

SULL CRYSTAL'S TRUDY 7036E

3.19.17 Heifer LE 7036E Polled Reg. # x4256573

SULL RIGHT DIRECTION ET

CF TRUMP X
NPS DESERT ROSE 004

SULL CRYSTAL'S LUCY -1

LITTLE CEDAR AVIATOR 503X
SULL LADY CRYSTAL-434P-1 ET**SHORTHORN**

BW: 0.8 WW: 64 YW: 83 M: 26

- A moderate framed, loose structured beast. Lot 1u has a unique combination of power and yet still in a feminine package.
- Her dam SULL Crystal's Lucy was the 2012 NWSS and NJHS Champion Female. Full sister to Lot 1u, shown by David Smith, was the 2015 NJHS 4th Overall as well as the Reserve Supreme at the Nebraska State Fair Junior and Open Shows, another full sib, SULL Crystal's Lucy 3804, was Champion Bred and Owned at the 2015 NJHS.


1w

SULL CRYSTAL 7117E

2.28.17 Heifer LE 7117E Horned Reg. # 4256698

SULL RIGHT DIRECTION ET

CF TRUMP X
NPS DESERT ROSE 004

SULL CRYSTAL'S LUCY -1

LITTLE CEDAR AVIATOR 503X
SULL LADY CRYSTAL-434P-1 ET**SHORTHORN**

BW: 0.8 WW: 64 YW: 83 M: 26

- Roan show heifer deluxe! This heifer was a late bloomer that we added to the sale last minute, but we think with a little more time she will be a big-time heifer. Study her balance, look, and structure, the rest will come.
- Her dam SULL Crystal's Lucy was the 2012 NWSS and NJHS Champion Female. Full sister to Lot 1w, shown by David Smith, was the 2015 NJHS 4th Overall as well as the Reserve Supreme at the Nebraska State Fair Junior and Open Shows, another full sib, SULL Crystal's Lucy 3804, was Champion Bred and Owned at the 2015 NJHS.

1x**SULL LUCY'S RIGHT 7212E**

2.28.17 Heifer LE 7212E Polled Reg. # x4256600

SULL RIGHT DIRECTION ET

CF TRUMP X
NPS DESERT ROSE 004

SULL CRYSTAL'S LUCY ET

LITTLE CEDAR AVIATOR 503X
SULL LADY CRYSTAL-434P-1 ET**SHORTHORN** BW: 0.5 WW:65 YW: 85 M: 28

- SULL Lucy's Right 7212e has been one of our top picks all summer long. She will be at the top chasing banners show after show.
- Her dam SULL Crystal's Lucy was the 2012 NWSS and NJHS Champion Female. Full sister to Lot 1x, shown by David Smith, was the 2015 NJHS 4th Overall as well as the Reserve Supreme at the Nebraska State Fair Junior and Open Shows, another full sib, SULL Crystal's Lucy 3804, was Champion Bred and Owned at the 2015 NJHS.

**1y****SULL DREAM LADY 7160E**

2.5.17 Heifer LE 7160E Polled Reg. # x4256579

LITTLE CEDAR AVIATOR 503X

WHR SONNY 8114
NPS ROSES RIDER 031 ET

CYT DREAM LADY SOLUTION ET

CF SOLUTION X ET
SS DREAM LADY 420 ET**SHORTHORN** BW: 3.4 WW:64 YW: 84 M: 20

- Lot 1y might possibly be our top pick for the most valuable genetic piece in our open heifer offering.
- She is a full sib to the 2014 NAILE Open Shorthorn Show Reserve Champion as a calf, CYT Dream Lady AV 4141, that went on to win the 2015 National Junior Heifer Show as well. Her dam CYT Dream Lady Solution 0120 was the 2010 Reserve National Champion as a calf and was selected as the Reserve Grand Champion at the 2011 NHJS.

**1z****SULL RIGHT LUCY 7385E**

3.5.17 Heifer LE 7385E Polled Reg. # x4256603

SULL RIGHT DIRECTION ET

CF TRUMP X
NPS DESERT ROSE 004

SULL CRYSTAL'S LUCY -1

LITTLE CEDAR AVIATOR 503X
SULL LADY CRYSTAL-434P-1 ET**SHORTHORN** BW: 0.8 WW:64 YW: 83 M: 26

- SULL Right Lucy 7385e reminds me of David Smith's 4th Overall heifer at the NJHS. Extra cool, sound, and deep sided. She is still a tic green but this one has all the right pieces.
- Her dam SULL Crystal's Lucy was the 2012 NWSS and NJHS Champion Female. Full sister to Lot 1z, shown by David Smith, was the 2015 NJHS 4th Overall as well as the Reserve Supreme at the Nebraska State Fair Junior and Open Shows, another full sib, SULL Crystal's Lucy 3804, was Champion Bred and Owned at the 2015 NJHS.



**1aa****SULL DREAM GIRL 7201E**

2.19.17 Heifer LE 7201E Polled Reg. # x4256708

SULL RIGHT DIRECTION ET

CF TRUMP X
NPS DESERT ROSE 004

SS DREAM LADY 161 ET

HD SWAGGER 802
SS DREAM LADY 424 ET**SHORTHORN**

BW: 1.1 WW:68 YW: 89 M: 36

- A powerfully constructed female with the maternal design and femininity to compete at the highest level in today's showing.
- Her Full sister, SULL Dream On 5158, was the to the 2016 NAILE Junior & Open Show Champion, 2017 NWSS Junior Show Champion and 2017 Fort Worth Open Show Champion Shorthorn
- Her dam SS Dream Lady 161 was the 2013 NWSS Reserve Champion Female for Sammi Schrag.

**1bb****SULL DREAM LADY TOO 7202E**

2.26.17 Heifer LE 7202E Horned Reg. # 4256593

SULL RIGHT DIRECTION ET

CF TRUMP X
NPS DESERT ROSE 004

SS DREAM LADY 161 ET

HD SWAGGER 802
SS DREAM LADY 424 ET**SHORTHORN**

BW: 1.1 WW:68 YW: 89 M: 36

- A complete, fancy made show heifer with a proven pedigree. Lot 1bb is one of those heifers that just keeps getting better every day.
- Her Full sister, SULL Dream On 5158, was the to the 2016 NAILE Junior & Open Show Champion, 2017 NWSS Junior Show Champion and 2017 Fort Worth Open Show Champion Shorthorn.
- Her dam SS Dream Lady 161 was the 2013 NWSS Reserve Champion Female for Sammi Schrag.

**1cc****SULL DREAM GAL 7511E**

4.21.17 Heifer LE 7511E Horned Reg. # 4256694

SULL RED KNIGHT 2030 ET

CF SOLUTION X ET
K-KIM MONA LISA 10T ET

SS DREAM LADY 161 ET

HD SWAGGER 802
SS DREAM LADY 424 ET**SHORTHORN**

BW: 1.1 WW:74 YW: 100 M: 30

- One of the younger purebred heifers in the sale but we think she has all the parts and piece to be a big time show heifer at any level.
- Her maternal sister, SULL Dream On 5158, was the to the 2016 NAILE Junior & Open Show Champion, 2017 NWSS Junior Show Champion and 2017 Fort Worth Open Show Champion Shorthorn.
- Her dam SS Dream Lady 161 was the 2013 NWSS Reserve Champion Female for Sammi Schrag.

1dd**SULL CRYSTAL'S LADY 6265D**

1.17.16 Bred Heifer LE 6265D Polled Reg. # x4249644

JSF MARQUIS 127X

EIONMOR MARQUIS 86G

JSF MARVEL 12U

SULL LADY CRYSTAL-434P-1 ET

WHR SONNY 8114

AF MARGIES DREAM LADY 05 ET

SHORTHORN

BW: 0.5 WW: 65 YW: 74 M: 23

- Bred to SULL Red Reward 9321; Due January 29, 2018.
- An elite daughter of the outcross sire, JSF Marquis 127x
- Lady Crystal 434P, dam to lot 1dd, has produced multiple state fair champions as well as the 2012 NWSS and NJHS Champion, SULL Crystal's Lucy and the 2013 NAILE Champion Female, SULL Crystal's Tootie. The mating possibilities are endless with the Lady Crystal's. You have the potential for greatness, breeding to purebred bull or making ShorthornPlus's, either way, you come out on top.

**1ee****SULL LADY CRYSTAL TOO 6433D**

1.24.16 Bred Heifer LE 6433D Horned Reg. # 4256561

JSF MARQUIS 127X

EIONMOR MASTERPIECE 36D

EIONMOR CAMELOT RUBY 94T

SHERWOOD LADY CRYSTAL ET

WHR SONNY 8114

AF MARGIES DREAM LADY 05 ET

SHORTHORN

BW: 1.8 WW: 68 YW: 78 M: 19

- Bred to CF S/F Ultimate Reward; Due February 10, 2018.
- Looking for a beastly breeding piece? Look no further. Lot 1ee is an eye appealing powerhouse
- Daughter of the outcross sire JSF Marquis 127X.
- Lady Crystal 434P, dam to lot 1ee, has produced multiple state fair champions as well as the 2012 NWSS and NJHS Champion, SULL Crystal's Lucy and the 2013 NAILE Champion Female, SULL Crystal's Tootie. The mating possibilities are endless with the Lady Crystal's. You have the potential for greatness, breeding to purebred bull or making ShorthornPlus's, either way, you come out on top.

**1ff****SULL LADY CAROLINE 6133D**

1.21.16 Bred Heifer LE 6133D Polled Reg. # x4256712

JSF MARQUIS 127X

EIONMOR MASTERPIECE 36D

EIONMOR CAMELOT RUBY 94T

SULL LADY CRYSTAL-434P-1 ET

WHR SONNY 8114

AF MARGIES DREAM LADY 05 ET

SHORTHORN

BW: 0.5 WW: 65 YW: 74 M: 22

- Bred to SULL Red Reward 9321; Due January 22, 2018.
- The JSF Marquis 127x and Lady Crystal 434P cross has clicked extremely well. These three sisters, Lot 1dd, 1ee, 1ff, will catch your eye on sale day.
- Lot 1ff is one of those breeding pieces that will work in any scenario, whether you're raising, bulls, replacements, or show heifers.
- Lady Crystal 434P, dam to lot 1ff, has produced multiple state fair champions as well as the 2012 NWSS and NJHS Champion, SULL Crystal's Lucy and the 2013 NAILE Champion Female, SULL Crystal's Tootie. The mating possibilities are endless with the Lady Crystal's. You have the potential for greatness, breeding to purebred bull or making ShorthornPlus's, either way, you come out on top.



**1gg****SULL CRYSTAL 6057D**

1.5.16 Bred Heifer LE 6057D Polled Reg. # *xAR4256393

SILVEIRAS STYLE 9303

GAMBLES HOT ROD
SILVEIRAS ELBA 2520

SHERWOOD LADY CRYSTAL ET

WHR SONNY 8114
AF MARGIES DREAM LADY 05 ET**SHORTHORNPLUS**

BW: 0.7 WW:50 YW: 74 M: 19

- Bred to Goet I-80; Due January 20, 2018.

- A stylish bred heifer bred to one of the winningest sires of multiple champions in the country, Goet I-80.

- SULL Crystal's 6057d is a full sister to our top end ShorthornPlus females selling as Lots 1c-1g in this year's sale.

- Lady Crystal 434P, dam to lot 1jj, has produced multiple state fair champions as well as the 2012 NWSS and NJHS Champion, SULL Crystal's Lucy and the 2013 NAILE Champion Female, SULL Crystal's Tootie. The mating possibilities are endless with the Lady Crystal's. You have the potential for greatness, breeding to purebred bull or making ShorthornPlus's, either way, you come out on top.

**1hh****SULL TOOTIES CRYSTAL 6208D**

1.3.16 Bred Heifer LE 6208D Polled Reg. # x4256400

FREE K-KIM HOT COMMODITY

K-KIM ALLURE 124M ET
K-KIM MEG 270N ET

SULL CRYSTAL'S TOOTIE ET

SULL RIGHT DIRECTION ET
SULL LADY CRYSTAL-434P-1 ET**SHORTHORN**

BW: -0.5 WW:60 YW: 64 M: 19

- Bred to SULL Red Reward 9321; Due January 16, 2018.

- A phenotypically flawless Free K-Kim Hot Commodity daughter bred to the outcross legend, SULL Red Reward 9321

- Her dam SULL Crystal's Tootie was the 2013 NAILE Open and Jr. Show Champion Female as well as the 2013 Iowa State Fair Open Show and the American Royal Champion Females.

**1jj****SULL DREAMER 6283D**

2.5.16 Bred Heifer LE 6283 Horned Reg. # 4257006

CF Solution X ET

NPS DESERT ROSE 004
CF TRUMP X

CYT DREAM LADY 420-2 ET

CCC GOLD RUSH
AF MARGIES DREAM LADY 05 ET**SHORTHORN**

BW: 3.3 WW:69 YW: 91 M: 23

- Bred to KL Right Time RF15; Due March 10, 2018.

- Full sister to CYT Dream Lady Solution that was the 2010 Reserve National Champion that later went on to be selected the 2011 NJHS Reserve Champion Female. Lot 1gg is a genetic masterpiece with a proven track record. Her full sister, CYT Dream Lady Solution, is also the dam of the 2014 Reserve National Champion and 2015 NJHS Champion Female, CYT Dream Lady 4141.

1kk**SULL I LOVE LUCY 5782**

9.28.15 Bred Heifer LE 5782 Polled Reg. # x4233680

SULL RIGHT DIRECTION ET

CF TRUMP X
NPS DESERT ROSE 004

SULL CRYSTAL'S LUCY ET

LITTLE CEDAR AVIATOR 503X
SULL LADY CRYSTAL-434P-1 ET**SHORTHORN**

BW: 0.5 WW:65 YW: 85 M: 28

- Bred to Free K-Kim Hot Commodity; Due November 23, 2017.
- Big time donor cow potential here. SULL I Love Lucy 5782c was a successful show heifer, taking Champion Division II at 2016 NJHS and Reserve Champion at the 2016 Iowa Shorthorn Field Day.
- Her dam SULL Crystal's Lucy was the 2012 NWSS and NJHS Champion Female. Full sister to Lot 1kk, shown by David Smith, was the 2015 NJHS 4th Overall as well as the Reserve Supreme at the Nebraska State Fair Junior and Open Shows, another full sib, SULL Crystal's Lucy 3804, was Champion Bred and Owned at the 2015 NJHS.

**1mm****SULL HELLO LUCY 5143**

1.27.15 Bred Heifer LE 5143C Horned Reg. # 4223174

SULL RIGHT DIRECTION ET

CF TRUMP X
NPS DESERT ROSE 004

SULL CRYSTAL'S LUCY ET

LITTLE CEDAR AVIATOR 503X
SULL LADY CRYSTAL-434P-1 ET**SHORTHORN**

BW: 0.5 WW:65 YW: 85 M: 28

- Bred to Free K-Kim Hot Commodity; Due November 30, 2017.
- Donor cow potential that you will proudly display in the front pasture. SULL Hello Lucy 5143c had a successful show career taking 5th Overall honors at the 2016 NJHS.
- Her dam SULL Crystal's Lucy was the 2012 NWSS and NJHS Champion Female. Full sister to Lot 1mm, shown by David Smith, was the 2015 NJHS 4th Overall as well as the Reserve Supreme at the Nebraska State Fair Junior and Open Shows, another full sib, SULL Crystal's Lucy 3804, was Champion Bred and Owned at the 2015 NJHS.



MOVE THE BREED FORWARD. MOVE YOUR HERD FORWARD.

The form and function of the modern day Shorthorn is evident in the bred heifer division. Fertility, fleshing ability, good feet and legs with balanced EPD's is obvious. Bred to calve early to the breeds leading sires for a quick return on your investment.



Rosemary

cow family



SULL Roses Are Red

Grand Champion Female - 2014 American Royal Open & Junior Show
 Grand Champion Female - 2014 Iowa State Fair Open & Junior Show
 Grand Champion Bred and Owned Female - 2014 National Junior Shorthorn Show
 Reserve National Champion Female - 2014 NWSS Open Show

SULL Red Knight Rose 6452

Grand Champion Female, 2017 National Junior Shorthorn Show
 Calf Champion, 2016 NAILE Junior & Open
 Calf Champion, 2017 National Western Stock Show, Open & Junior
 Calf Champion, 2017 Fort Worth Show Show, Open
 Full sibs sell as Lots 2H & 2J.



SULL Red Traveler 2405Z

Powerful donor cow sells as lot 69. Progeny sells as lots; 2f, 2p - 2t.



SULL Rose Mary 636

Dam of National Champions
 2007 National Champion Female
 Supreme Champion Heifer, 2007 NAILE
 Grand Champion Female, 2007 NUSS
 Grand Champion Female, 2007 American Royal, Open & Junior Show

SULL Rose Mary Song

Supreme Champion Heifer,
 2016 Keystone
 Reserve Supreme Champion Heifer,
 2016 Ohio State Fair
 Congratulations to the Van Vorhis Family



2a**SULL ROSE'S LEGACY 7102E**

2.27.17 Heifer LE 7102E Polled Reg. # *x4256705

SULL RGLC LEGACY 525 ET

SULL RED REWARD 9321

SULL MIRAGE FOREVER 8121 ET

SULL ROSE MARY 636-5 ET CL

CF TRUMP X

NPS DESERT ROSE 004

SHORTHORN

BW: 2 WW:62 YW: 84 M: 25

- SULL Rose's Legacy is one of those show heifers that will be on everyone's radar sale day.
- Super complete, fault free, moderate framed and easy fleshing.
- National Pedigree on both sides. Her Dam SULL Rose Mary 636 was an NJHS Champion and NAILE Supreme Champion Female in 2007. Her sire SULL RGLC Legacy 525 was the 2016- 2017 Triple Crown Winner.

**2b****SULL ROSE MARY'S LEGACY 7104E**

1.4.17 Heifer LE 7104E Polled Reg. # *x4256574

SULL RGLC LEGACY 525 ET

SULL RED REWARD 9321

SULL MIRAGE FOREVER 8121 ET

SULL ROSE MARY 636 -1 ET CL

CF TRUMP X

NPS DESERT ROSE 004

SHORTHORN

BW: 2.3 WW:62 YW: 84 M: 24

- One of the biggest bodied and most powerful heifers in the sale that puts it all together in a smooth stylish package.
- National Champion Pedigree on both sides. Her Dam SULL Rose Mary 636 was an NJHS Champion and NAILE Supreme Champion Female in 2007. Her sire SULL RGLC Legacy 525 was the 2016- 2017 Triple Crown Winner.

**2c****SULL MARY'S LEGACY 7107E**

3.12.17 Heifer LE 7107E Polled Reg. # *x4256575

SULL RGLC LEGACY 525 ET

SULL RED REWARD 9321

SULL MIRAGE FOREVER 8121 ET

SULL ROSE MARY 636-3 ET

CF TRUMP X

NPS DESERT ROSE 004

SHORTHORN

BW: 1.5 WW:61 YW: 85 M: 25

- Another daughter out of the 2016-2017 Triple Crown winner, SULL RGLC Legacy 525
- Sleek, smooth, feminine, deep side & easy fleshing.
- National Champion Pedigree on both sides. Her Dam SULL Rose Mary 636 was an NJHS Champion and NAILE Supreme Champion Female in 2007.




2d

SULL ROSES KNIGHT 7003E

2.24.17 Heifer LE 7003E Horned Reg. # 4256569

SULL RED KNIGHT 2030 ET

 CF SOLUTION X ET
 K-KIM MONA LISA 10T ET

SULL ROSE MARY 636 ET

 CF TRUMP X
 NPS DESERT ROSE 004

SHORTHORN

BW: 2.2 WW: 78 YW: 112 M: 24

- Powerful, cowy, showy, whatever word you want to use to describe her, she has it all. SULL Roses Knight is in it for the long haul, she won't disappoint.
- Her full sister sib was the \$34,000 Shorthorn sale topper in Schaeffer/Tice's 2017 Sale.
- She stems from a family of National Champions. Her sire is today's breed dominating sire, SULL Red Knight, that was a three-time National Champion and her dam SULL Rose Mary 636 was the 2007 NAILE Overall Supreme Champion as well as the NJHS Champion Female.


2e

SULL ROSIE DESERT 7191E

2.18.17 Heifer LE 7191E Horned Reg. # 4256590

SULL RED KNIGHT 2030 ET

 CF SOLUTION X ET
 K-KIM MONA LISA 10T ET

SULL DESERT ROSE 0004 ET CL

 NPS DURANGO 774 CBH ET
 NPS DESERT ROSE 833 ET

SHORTHORN

BW: 2.1 WW: 77 YW: 104 M: 21

- One of the most complete genetic profiled open heifers in the sale. Not only is she a valuable genetic piece, she will be a highly competitive show heifer as well.
- Sired by the three-time national champion, SULL Red Knight.
- Her dam Desert Rose 0004 is a legend of her own right. She is dam to three NAILE Champions, SULL Rose Mary 636, SULL Red Rose Mary 8085, and HD Ruby 903, as well as the dam to breed leading sires, CF Solution and SULL Right Direction.


2f

SULL TRAVELING LEGACY 7185E

2.20.17 Heifer LE 7185E Horned Reg. # *4256707

SULL RGLC LEGACY 525 ET

 SULL RED REWARD 9321
 SULL MIRAGE FOREVER 8121 ET

SULL RED TRAVELER 2405Z E ET

 SULL TRAVELER 9807 ET
 HD RUBY 903

SHORTHORN

BW: 2.2 WW: 64 YW: 83 M: 23

- Dark red show heifer that has been one of our favorites since day one. In the right hands, she will line your walls with banner after banner.
- Sired by the 2016-2017 Triple Crown winner, SULL RGLC Legacy 525.
- Her dam SULL Red Traveler 2405z is a young consistent donor at Sullivan Farms. She stems from the National Champion HD Ruby. Pedigrees like this take the guess work out and adds predictability with a proven pedigree of success. SULL Traveler 2405z sells as Lot 69.

2g**SULL LGF RUBY'S HOT JEWEL**

4.10.17 Heifer LE 410E Polled Reg. # *x4251442

FREE K-KIM HOT COMMODITY

K-KIM ALLURE 124M ET
K-KIM MEG 270N ET

SULL BLOODED RUBY 3278 ET

SULL RED BLOOD
HD RUBY 903**SHORTHORN** BW: -1.1 WW:55 YW: 58 M: 18

- A phenotypically flawless Free K-Kim Hot Commodity daughter that has a ton of future ahead of her.
- Her full sister LGF Ruby's Hot Emerald was Champion Female at the 2017 Illinois State Fair Open Show and was also Champion Female at the 2017 Illinois Shorthorn State Show.
- Her dam SULL Blooded Ruby 3278 was the 2014 Illinois State Fair Reserve Supreme Female Overall Breeds and the 2014 NAILE Junior Show Reserve Champion Shorthorn.
- Lot 2g is owned with the Gellerman Family.

**2h****SULL RED ROSES 6437D**

1.28.16 Bred Heifer LE 6437D Horned Reg. # *4256721

SULL RED KNIGHT 2030 ET

CF SOLUTION X ET
K-KIM MONA LISA 10T ET

SULL ROSES ARE RED ET

SULL RED REWARD 9321
SULL RED ROSEMARY -2 ET CL**SHORTHORN** BW: 0.1 WW:73 YW: 101 M: 28

- Bred to Free K-Kim Hot Commodity (sexed female); due February 9, 2018.
- One of the most fault free breeding pieces in the bred heifer group. Don't let her short ears distract you from the potential she has.
- Full sister to the 2017 NJHS Champion Female, SULL Red Knight Rose 2030.
- Her dam SULL Roses Are Red 3213A is quickly becoming an elite donor at Sullivan Farms. Out of her first set of calves she raised the 2017 NJHS Champion Female. SULL Roses are Red 3213A had a successful show career herself winning Reserve Grand Champion at the 2014 NWSS Open Show as a calf, the 2014 NJHS Champion Bred & Owned, 2014 Champion Shorthorn at the Iowa St. Fair Open Show & 2014 Champion Shorthorn at the American Royal.

**2j****SULL ROSES KNIGHTS 6270D**

3.16.16 Bred Heifer LE 6270D Polled Reg. # *x4243499

SULL RED KNIGHT 2030 ET

CF SOLUTION X ET
K-KIM MONA LISA 10T ET

SULL ROSES ARE RED ET

SULL RED REWARD 9321
SULL RED ROSEMARY -2 ET CL**SHORTHORN** BW: 0.1 WW:73 YW: 101 M: 28

- Bred to SULL Brilliance 9515 (ANGUS); due December 3, 2017.
- An elite donor in the making. One of the best breds to ever sell at the Maternal Legends Sale.
- She is a full sister to the 2017 NJHS Champion female SULL Red Knight Rose 2030
- Her dam SULL Roses Are Red 3213A is quickly becoming an elite donor at Sullivan Farms. Out of her first set of calves she raised the 2017 NJHS Champion Female. SULL Roses are Red 3213A had a successful show career herself winning Reserve Grand Champion at the 2014 NWSS Open Show as a calf, the 2014 NJHS Champion Bred & Owned, 2014 Champion Shorthorn at the Iowa St. Fair Open Show & 2014 Champion Shorthorn at the American Royal.



**2k****SULL ROSE'S DELIGHT 6019D**

1.8.16 Bred Heifer LE 6019D Polled Reg. # *x4256717

SULL RED REWARD 9321

TEGM RED ADVANTAGE 100T
JSF PRINCESS 0441E

SULL ROSE MARY 636-4 ET CL

CF TRUMP X
NPS DESERT ROSE 004**SHORTHORN/MAINETAINER** BW: 0.1 WW:57 YW: 76 M: 29

- Bred to Free K-Kim Hot Commodity (sexed female); due January 29, 2018.
- A solid red breeding piece out of the outcross legend, SULL Red Reward 9321.
- Lot 2k is a full sister to the 2016 Ohio State Fair Reserve Overall Champion and 2016 KILE Supreme Female, SULL Rose Mary's Song shown by the VanVorhis Family.
- Her dam, SULL Rose Mary 636, was the 2007 NJHS Champion Female as well as the 2007 NAILE Supreme Champion Overall Breeds. SULL Rose Mary 636 stems from the NPS Desert Rose 004 family that produced National Champions HD Ruby 903 and SULL Red Rose Mary 8085, and breed leading sires CF Solution and SULL Right Direction.
- Dual Registered Purebred Shorthorn/MaineTainer.

**2m****SULL ROSES REWARD 6099D**

1.20.16 Bred Heifer LE 6099D Polled Reg. # *x4256395

SULL RED REWARD 9321

TEGM RED ADVANTAGE 100T
MCV MARGIE MILLION 503Q

SULL ROSE MARY 636-4 ET CL

CF TRUMP X
NPS DESERT ROSE 004**SHORTHORN/MAINETAINER** BW: 0.1 WW:57 YW: 76 M: 29

- Bred to Free K-Kim Hot Commodity (sexed female); due February 10, 2018.
- An ultra-feminine, maternally designed female out of one of the best cow making sires in the breed, SULL Red Reward 9321.
- Lot 2m is a full sister to the 2016 Ohio State Fair Reserve Overall Champion and 2016 KILE Supreme Female, SULL Rose Mary's Song shown by the VanVorhis Family.
- Her dam, SULL Rose Mary 636, was the 2007 NJHS Champion Female as well as the 2007 NAILE Supreme Champion Overall Breeds. SULL Rose Mary 636 stems from the NPS Desert Rose 004 family that produced National Champions HD Ruby 903 and SULL Red Rose Mary 8085, and breed leading sires CF Solution and SULL Right Direction.
- Dual Registered Purebred Shorthorn/MaineTainer.

**2n****SULL RED ROSE 6006D**

1.4.16 Bred Heifer LE 6006D Polled Reg. # *x4256389

SULL RED REWARD 9321

TEGM RED ADVANTAGE 100T
MCV MARGIE MILLION 503Q

SULL ROSE MARY 636 ET

CF TRUMP X
NPS DESERT ROSE 004**SHORTHORN/MAINETAINER** BW: 0.5 WW:59 YW: 80 M: 28

- Bred to KL Right Time RF15; due March 15, 2018
- Fleshing ability, structural correctness, power, and look, SULL Red Rose 6006 has it all and will be on everyone's radar come sale day.
- Lot 2n is a full sister to the 2016 Ohio State Fair Reserve Overall Champion and 2016 KILE Supreme Female, SULL Rose Mary's Song shown by the VanVorhis Family.
- Her dam, SULL Rose Mary 636, was the 2007 NJHS Champion Female as well as the 2007 NAILE Supreme Champion Overall Breeds. SULL Rose Mary 636 stems from the NPS Desert Rose 004 family that produced National Champions HD Ruby 903 and SULL Red Rose Mary 8085, and breed leading sires CF Solution and SULL Right Direction.
- Dual Registered Purebred Shorthorn/MaineTainer.

2p**SULL RED TRAVELER 6219D**

1.23.16 Bred Heifer LE 6219D Polled Reg. # *x4256402

SULL RED REWARD 9321

TEGM RED ADVANTAGE 100T
MCV MARGIE MILLION 503Q

SULL RED TRAVELER 2405Z E ET

SULL TRAVELER 9807 ET
HD RUBY 903**SHORTHORN/MAINE TAINER** BW: 0.1 WW: 58 YW: 74 M: 25

- Bred to Free K-Kim Hot Commodity (sexed female); due January 26, 2018.
- Wow! Check out this future donor. Extra power, heavy structured and extra pizzazz. As you can tell we like this one.
- Her dam, SULL Red Traveler 2405z, is a young consistent donor at Sullivan Farms. She stems from the National Champion HD Ruby 903. Pedigrees like this take the guess work out and add predictability with a proven pedigree of success. SULL Red Traveler 2405Z sells as Lot 69.
- Dual Registered Purebred Shorthorn/MaineTainer.

**2r****SULL RUBY'S REWARDS 6095D**

3.26.16 Bred Heifer LE 6095D Polled Reg. # *x4244912

SULL RED REWARD 9321

TEGM RED ADVANTAGE 100T
MCV MARGIE MILLION 503Q

SULL RED TRAVELER 2405Z E ET

SULL TRAVELER 9807 ET
HD RUBY 903**SHORTHORN/MAINE TAINER** BW: 0.1 WW: 58 YW: 74 M: 25

- Bred to KL Right Time RF15; due March 5, 2018.
- A fancy, square built, moderate framed SULL Red Reward Daughter. This will be one of those cows that you can count on her consistency year after year. - Her popular full sister, SULL Roses Are Red, was the 2014 American Royal Champion Female as well as a top five finisher at the Iowa Beef Expo, Iowa State Fair and AkSarBen.
- Her dam, SULL Red Traveler 2405z, is a young consistent donor at Sullivan Farms. She stems from the National Champion HD Ruby 903. Pedigrees like this take the guess work out and add predictability with a proven pedigree of success. SULL Red Traveler 2405Z sells as Lot 69.
- Dual Registered Purebred Shorthorn/MaineTainer.

**2s****SULL TRAVELER'S PRIZE 6196D**

1.12.16 Bred Heifer LE 6196D Polled Reg. # *x4256399

SULL RED REWARD 9321

TEGM RED ADVANTAGE 100T
MCV MARGIE MILLION 503Q

SULL RED TRAVELER 2405Z E ET

SULL TRAVELER 9807 ET
HD RUBY 903**SHORTHORN/MAINE TAINER** BW: 0.1 WW: 58 YW: 74 M: 25

- Bred to Free K-Kim Hot Commodity (sexed female); due January 31, 2018.
- One of the top breds that will sell in this year's offering. Lot 2s has donor cow potential written all over her. The Red Reward daughters are making incredible cows with exceptional milking abilities
- Her dam, SULL Red Traveler 2405z, is a young consistent donor at Sullivan Farms. She stems from the National Champion HD Ruby 903. Pedigrees like this take the guess work out and add predictability with a proven pedigree of success. SULL Red Traveler 2405Z sells as Lot 69.
- Dual Registered Purebred Shorthorn/MaineTainer.



**2t****SULL TRAVELER'S REWARD 6084D**

1.10.16 Bred Heifer LE 6084D Polled Reg. # *x4256394

SULL RED REWARD 9321

TEGM RED ADVANTAGE 100T
MCV MARGIE MILLION 503Q

SULL RED TRAVELER 2405Z E ET

SULL TRAVELER 9807 ET
HD RUBY 903**SHORTHORN/MAINETAINER** BW: 0.1 WW:58 YW: 74 M: 25

- Bred to Free K-Kim Hot Commodity (sexed female); due February 11, 2018.
- A powerfully constructed SULL Red Reward 9312 daughter that will add value to anyone's program
- Her dam, SULL Red Traveler 2405z, is a young consistent donor at Sullivan Farms. She stems from the National Champion HD Ruby 903. Pedigrees like this take the guess work out and add predictability with a proven pedigree of success. SULL Red Traveler 2405Z sells as Lot 69.
- Dual Registered Purebred Shorthorn/MaineTainer.

**2u****SULL MARY'S ROSE 6028D**

1.11.16 Bred Heifer LE 6028D Polled Reg. # *x4256391

SULL RED REWARD 9321

TEGM RED ADVANTAGE 100T
MCV MARGIE MILLION 503Q

SULL RED ROSEMARY -3 ET CL

CF TRUMP X
NPS DESERT ROSE 004**SHORTHORN/MAINETAINER** BW: 0 WW:56 YW: 74 M: 28

- Bred to KL Right Time RF15; due February 23, 2018.
- A big boned powerhouse of a bred heifer here. Don't miss out on these genetics, as they will start to become hard to find.
- Full sister to the popular champion and dam of the 2017 NJHS Champion, SULL Roses Are Red 3213a.
- Her dam, SULL Red Rose Mary 8085 stems from the NPS Desert Rose 004 family that has produced SULL Mary 636, HD Ruby 903 and breed leading sires, CF Solution and SULL Right Direction.
- Dual Registered Purebred Shorthorn/MaineTainer.

**2w****SULL ROSEMARY'S SURPRISE 6027D**

1.6.16 Bred Heifer LE 6027D Polled Reg. # *x4256390

SULL RED REWARD 9321

TEGM RED ADVANTAGE 100T
MCV MARGIE MILLION 503Q

SULL RED ROSEMARY -1 ET CL

CF TRUMP X
NPS DESERT ROSE 004**SHORTHORN/MAINETAINER** BW: 0.4 WW:56 YW: 74 M: 25

- Bred to Free K-Kim Hot Commodity (sexed female); due January 29, 2018.
- A standout in a deep set of SULL Red Reward bred females. Lot 2w has a nice combination of power, balance, and style that will breed on into her progeny
- Full sister to the popular champion and dam of the 2017 NJHS Champion, SULL Roses Are Red 3213a.
- Her dam, SULL Red Rose Mary 8085 stems from the NPS Desert Rose 004 family that has produced SULL Mary 636, HD Ruby 903 and breed leading sires, CF Solution and SULL Right Direction.
- Dual Registered Purebred Shorthorn/MaineTainer.

2x**SULL ROSEMARY'S MAGIC 6038D**

1.7.16 Bred Heifer LE 6038D Polled Reg. # *x4256392

SULL RED REWARD 9321

TEGM RED ADVANTAGE 100T
MCV MARGIE MILLION 503Q

SULL RED ROSEMARY -1 ET CL

CF TRUMP X
NPS DESERT ROSE 004**SHORTHORN/MAINE TAINER** BW: 0.4 WW: 56 YW: 74 M: 25

- Bred to Free K-Kim Hot Commodity (sexed female); due February 9, 2018.
- Lot 2x has all the special traits that you can come to expect from the SULL Red Reward crossed with Rose Mary daughters. Body, structural integrity, look and fleshing ability.
- Full sister to the popular champion and dam of the 2017 NJHS Champion, SULL Roses Are Red 3213a.
- Her dam, SULL Red Rose Mary 8085 stems from the NPS Desert Rose 004 family that has produced SULL Mary 636, HD Ruby 903 and breed leading sires, CF Solution and SULL Right Direction.
- Dual Registered Purebred Shorthorn/MaineTainer.

**2y****SULL DESERT ROSE 6222D**

2.3.16 Bred Heifer LE 6222D Polled Reg. # sx4239694

SULL RED KNIGHT 2030 ET

CF SOLUTION X ET
K-KIM MONA LISA 10T ET

SULL DESERT ROSE 0004 ET CL

NPS DURANGO 774 CBH ET
NPS DESERT ROSE 833 ET**SHORTHORN** BW: 2.1 WW: 77 YW: 104 M: 21

- Bred to Studer's True Value 83B; due January 9, 2018.
- Lot 2y was a successful show heifer in 2016-2017 for Dominic Fouts being selected Champion Shorthorn multiple times including the 2017 Iowa Beef Expo.
- Her dam, NPS Desert Rose 004 is a breed legend. She is the dam to three NAILE Champions, SULL Rose Mary 636, SULL Red Rose Mary 8085, HD Ruby 903, and breed leading sires CF Solution and SULL Right Direction.

**Bred Heifer Service Sires****FREE K-KIM Hot Commodity**

CW: 18 BW:-0.6 WW:59 YW:51 MK: 9

**Silveiras Style 9303**

CW: 10 BW:2.6 WW:38 YW:69 MK: 14

**SULL Red Reward**

CW: 11 BW:-3.2 WW:48 YW:60 MK: 28

KL Right Time RF 15

CW:10 BW:-0.1 WW:36 YW:29 MK: 22



Hot Tamale/Jalynn

cow family



SULL Tamale Too 6000D ET

Grand Champion
ShorthornPlus Female,
2016 National Junior
Shorthorn Show



SULL Tamale's Tale 5186c

Grand Champion Female,
2016 NAILE Junior Show
Congratulations to Stewart Skiles



SULL Tamale's Right

Reserve Champion Female, 2016 American Royal, Junior & Open
Reserve Supreme 4-H Female, 2016 Nebraska State Fair
Reserve Champion Female, 2017 NAILE Junior Show
Congratulations to Kane Aegerter

SULL Tamale 588



3a

SULL JALYNN'S MAGIC 7033E

2.2717 Heifer LE 7033E Polled Reg. # *xAR4256587

SULL RIGHT DIRECTION ET

JSUL JALYNN 344

CF TRUMP X
NPS DESERT ROSE 004
FAWL HEAT WAVE
MISS FOREPLAY

SHORTHORNPLUS/CHIANINA 12.85% BW: 2 WW:53 YW: 73 M: 22

- SULL Jalynn's Magic 7033e is a big-time show heifer prospect. She has that extra look and body of today's trends with a pedigree for success.
- Lot 3a is a full sibling to SULL Jalynn 0904 and SULL Jalynn Beauty that were many time champions including the NJHS, American Royal, NAILE, and NWSS along with many supreme Jackpot wins that were respectfully shown by Nick Sullivan and Kane Aegerter.
- Dual Registered ShorthornPlus/12.85% Chianina.

3b**SULL HOT TAMALE TOO 7289E**

2.22.17 Heifer LE 7289E Polled Reg. # *xAR4257012

SULL RIGHT DIRECTION ET

CF TRUMP X
NPS DESERT ROSE 004

SULL TAMALE

FAWL HEAT WAVE
JSUL AN X MX 58

SHORTHORNPLUS/CHIANINA 9.1% BW: 1.7 WW:55 YW: 80 M: 26

- Year after year the SULL Right Direction x Tamale mating clicks very well and this without a doubt could be her best set.
- SULL Hot Tamale Too 7289e leads a great set of her full siblings. She in our opinion the combination heifer, smooth but powerful, sound, awesome rib shape with depth of body and of course well structured.
- Where do we start with what this pedigree has produced? Well let's start with two sale topping \$100,000 heifers. Three NJHS Champions for Konner Kirkpatrick, Nick Sullivan, and Sara Sullivan. Multiple NWSS Champion ShorthornPlus females. A supreme Female at the Illinois Beef Expo, Supreme Female at the Nebraska State Fair, and a Supreme Overall Breeds at the NAILE. This pedigree works year after year and continues to dominate
- Dual Registered ShorthornPlus/9.1% Chianina

**3c****SULL TRICKY TAMALE 7290E**

2.12.17 Heifer LE 7290E Polled Reg. # *xAR4256601

SULL RIGHT DIRECTION ET

CF TRUMP X
NPS DESERT ROSE 004

SSUL TAMALE 588-2

FAWL HEAT WAVE
JSUL MOMMA TAMALE 58

SHORTHORNPLUS/CHIANINA 9.1% BW: 2 WW:54 YW: 77 M: 23

- An ultra-feminine Tamale show heifer. Put this one in the right hands and I promise you will see some banners.
- Where do we start with what this pedigree has produced? Well let's start with two sale topping \$100,000 heifers. Three NJHS Champions for Konner Kirkpatrick, Nick Sullivan, and Sara Sullivan. Multiple NWSS Champion ShorthornPlus females. A supreme Female at the Illinois Beef Expo, Supreme Female at the Nebraska State Fair, and a Supreme Overall Breeds at the NAILE. This pedigree works year after year and continues to dominate
- Dual Registered ShorthornPlus/9.1% Chianina

**3d****SULL SIZZLING TAMALE 7295E**

4.11.17 Heifer LE 7295E Polled Reg. # *xAR4256699

SULL RIGHT DIRECTION ET

CF TRUMP X
NPS DESERT ROSE 004

SSUL TAMALE 588-2

FAWL HEAT WAVE
JSUL MOMMA TAMALE 58

SHORTHORNPLUS/CHIANINA 9.1% BW: 2 WW:54 YW: 77 M: 23

- The youngest of the Tamales but wow is this one a stand out. Bone, power, awesome structured, and killer looking big time female here.
- Where do we start with what this pedigree has produced? Well let's start with two sale topping \$100,000 heifers. Three NJHS Champions for Konner Kirkpatrick, Nick Sullivan, and Sara Sullivan. Multiple NWSS Champion ShorthornPlus females. A supreme Female at the Illinois Beef Expo, Supreme Female at the Nebraska State Fair, and a Supreme Overall Breeds at the NAILE. This pedigree works year after year and continues to dominate
- Dual Registered ShorthornPlus/9.1% Chianina




3e
SULL REDHOT TAMALE 7209E

2.21.17 Heifer LE 7209E Polled Reg. # *xAR4256597
 SULL RIGHT DIRECTION ET CF TRUMP X
 NPS DESERT ROSE 004
 SULL TAMALE FAWL HEAT WAVE
 JSUL AN X MX 58

SHORTHORNPLUS/CHIANINA 9.1% BW: 1.7 WW:55 YW: 80 M: 26

- The most cowiest, biggest bodied, easiest fleshing of the Tamale daughters.
- Where do we start with what this pedigree has produced? Well let's start with two sale topping \$100,000 heifers. Three NJHS Champions for Konner Kirkpatrick, Nick Sullivan, and Sara Sullivan. Multiple NWSS Champion ShorthornPlus females. A supreme Female at the Illinois Beef Expo, Supreme Female at the Nebraska State Fair, and a Supreme Overall Breeds at the NAILE. This pedigree works year after year and continues to dominate .Dual Registered ShorthornPlus/9.1% Chianina


3f
SULL RIGHT TAMALE 7283E

3.17.17 Heifer LE 7283E Polled Reg. # *xAR4256598
 SULL RIGHT DIRECTION ET CF TRUMP X
 NPS DESERT ROSE 004
 SULL TAMALE FAWL HEAT WAVE
 JSUL AN X MX 58

SHORTHORNPLUS/CHIANINA 9.1% BW: 1.7 WW:55 YW: 80 M: 26

- Solid black, sound, moderate framed, complete made, dual registered heifer.
- Where do we start with what this pedigree has produced? Well let's start with two sale topping \$100,000 heifers. Three NJHS Champions for Konner Kirkpatrick, Nick Sullivan, and Sara Sullivan. Multiple NWSS Champion ShorthornPlus females. A supreme Female at the Illinois Beef Expo, Supreme Female at the Nebraska State Fair, and a Supreme Overall Breeds at the NAILE. This pedigree works year after year and continues to dominate
- Dual Registered ShorthornPlus/9.1% Chianina


3g
SULL RIGHT TAMALE 7193E

2.28.17 Heifer LE 7193E Polled Reg. # *xAR4256591
 SULL RIGHT DIRECTION ET CF TRUMP X
 NPS DESERT ROSE 004
 SULL TAMALE FAWL HEAT WAVE
 JSUL AN X MX 58

SHORTHORNPLUS/CHIANINA 9.1% BW: 1.7 WW:55 YW: 80 M: 26

- One of the smoothest built, most complete of the Tamale siblings. Take a good look here and study her hard, she has all the parts and pieces to be highly competitive at any level. She is my sleeper pick.
- Where do we start with what this pedigree has produced? Well let's start with two sale topping \$100,000 heifers. Three NJHS Champions for Konner Kirkpatrick, Nick Sullivan, and Sara Sullivan. Multiple NWSS Champion ShorthornPlus females. A supreme Female at the Illinois Beef Expo, Supreme Female at the Nebraska State Fair, and a Supreme Overall Breeds at the NAILE. This pedigree works year after year and continues to dominate
- Dual Registered ShorthornPlus/9.1% Chianina

3h**SULL TAMALE TOO 7176E**

2.25.17 Heifer LE 7176E Polled Reg. # *xAR4256706

SULL RIGHT DIRECTION ET

SSUL TAMALE 588-2

CF TRUMP X
NPS DESERT ROSE 004
FAWL HEAT WAVE
JSUL MOMMA TAMALE 58

SHORTHORNPLUS/CHIANINA 9.1% BW: 2 WW:54 YW: 77 M: 23



- A stand out in this stout set of the Tamale sisters. SULL Tamale Too 7176e is a big timer with the extra power and look. Keep her lean and fresh and watch her win.
- Where do we start with what this pedigree has produced? Well let's start with two sale topping \$100,000 heifers. Three NJHS Champions for Konner Kirkpatrick, Nick Sullivan, and Sara Sullivan. Multiple NWSS Champion ShorthornPlus females. A supreme Female at the Illinois Beef Expo, Supreme Female at the Nebraska State Fair, and a Supreme Overall Breeds at the NAILE. This pedigree works year after year and continues to dominate
- Dual Registered ShorthornPlus/9.1% Chianina

3j**SULL SWEET TAMALE 7520E**

3.9.17 Heifer LE 7520E Polled Reg. # *xAR4256696

SULL RIGHT DIRECTION ET

SSUL TAMALE 588-2

CF TRUMP X
NPS DESERT ROSE 004
FAWL HEAT WAVE
JSUL MOMMA TAMALE 58

SHORTHORNPLUS/CHIANINA 9.1% BW: 2 WW:54 YW: 77 M: 23



- When I first saw SULL Sweet Tamale 7520e after getting the four inches of hair off her head, neck, and top I thought she reminded me a ton of her sister, SULL Hot Tamale, that won Supreme Champion at the 2010 NAILE
- Where do we start with what this pedigree has produced? Well let's start with two sale topping \$100,000 heifers. Three NJHS Champions for Konner Kirkpatrick, Nick Sullivan, and Sara Sullivan. Multiple NWSS Champion ShorthornPlus females. A supreme Female at the Illinois Beef Expo, Supreme Female at the Nebraska State Fair, and a Supreme Overall Breeds at the NAILE. This pedigree works year after year and continues to dominate
- Dual Registered ShorthornPlus/9.1% Chianina

3k**SULL TAMALE 6462D**

3.17.16 Bred Heifer LE 6462D Polled Reg. # *xAR4239735

SULL RIGHT DIRECTION ET

SULL TAMALE

CF TRUMP X
NPS DESERT ROSE 004
FAWL HEAT WAVE
JSUL AN X MX 58

SHORTHORNPLUS/CHIANINA 9.1% BW: 1.7 WW:55 YW: 80 M: 26



- Bred to Silveiras Style 9303; due January 27, 2018.
- One of the most phenotypically flawless Tamale daughters in the offering.
- Where do we start with what this pedigree has produced? Well let's start with two sale topping \$100,000 heifers. Three NJHS Champions for Konner Kirkpatrick, Nick Sullivan, and Sara Sullivan. Multiple NWSS Champion ShorthornPlus females. A supreme Female at the Illinois Beef Expo, Supreme Female at the Nebraska State Fair, and a Supreme Overall Breeds at the NAILE. This pedigree works year after year and continues to dominate
- Dual Registered ShorthornPlus/9.1% Chianina

Myrtle Bo

cow family



SULL Myrtle Bo 46P-3

SULL Bo's Martha 4101

Reserve Champion Female, 2015 National Junior Shorthorn Show
 Grand Champion Female, 2015 NAILE Junior Show
 Grand Champion Female, 2015 NAILE Open Show
 Dam of Lots 4D - 4G



SULL Myrtle Bo 6120

Fifth Overall Female,
 2017 National Junior Shorthorn Show
 Congratulations to the Obrecht Family



SULL Ruthie Bo 6269D

Grand Champion Bred & Owned Female,
 2017 National Junior Shorthorn Show
 Grand Champion Female,
 2017 IA Shorthorn Field Day

SULL Bo's Knight 5904

Third Overall Female, 2017 National Junior Shorthorn Show
 Fourth Overall Female, 2017 Iowa State Fair 4-H Show
 Grand Champion Female, 2017 Iowa State Fair Open Show
 Congratulations to the Burkhart Family



4a**SULL BETTY BO 7110E**

3.3.17 Heifer LE 7110E Polled Reg. # *x4256578
 SULL RGLC LEGACY 525 ET SULL RED REWARD 9321
 SULL MIRAGE FOREVER 8121 ET
 CF MYRTLE BO 46 TP X CF TRUMP X
 GF MISS MYRTLE BO 305 ET

SHORTHORN BW: 2.4 WW:59 YW: 76 M: 22

- An elite Legacy daughter, SULL Betty Bo 7110e, is one of the soundest heifers in the entire sale with a huge rib cage, depth of body and killer front third.
- SULL RGLC Legacy 525 is a four-time National Champion Shorthorn bull and we are beyond excited about his first calf crop. Exciting things for an exciting national champion.
- Myrtle Bo, year after year produces calves that are top end show heifers and bred heifers. This cow does it all and has worked to every bull we have ever mated her to. Myrtle Bo produced the 2015 NAILE Champion Female, SULL Martha's Bo 4101, and the 2015 Reserve Champion NJHS Champion Bred & Owned Female.

**4b****SULL MYRTLE JO 7108E**

2.6.17 Heifer LE 7108E Polled Reg. # *x4256576
 SULL RGLC LEGACY 525 ET SULL RED REWARD 9321
 SULL MIRAGE FOREVER 8121 ET
 CF MYRTLE BO 46 TP X CF TRUMP X
 GF MISS MYRTLE BO 305 ET

SHORTHORN BW: 2.4 WW:59 YW: 76 M: 22

- A maternally designed future show heifer future donor cow potential.
- SULL RGLC Legacy 525 is a four-time National Champion Shorthorn bull and we are beyond excited about his first calf crop. Exciting things for an exciting national champion.
- Myrtle Bo, year after year produces calves that are top end show heifers and bred heifers. This cow does it all and has worked to every bull we have ever mated her to. Myrtle Bo produced the 2015 NAILE Champion Female, SULL Martha's Bo 4101, and the 2015 Reserve Champion NJHS Champion Bred & Owned Female.

**4c****SULL MYRTLE'S LEGACY 7196E**

3.8.17 Heifer LE 7196E Polled Reg. # *x4256592
 SULL RGLC LEGACY 525 ET SULL RED REWARD 9321
 SULL MIRAGE FOREVER 8121 ET
 CF MYRTLE BO 46 TP X CF TRUMP X
 GF MISS MYRTLE BO 305 ET

SHORTHORN BW: 2.4 WW:59 YW: 76 M: 22

- One of my sleeper picks in the sale offering. SULL Myrtle's Legacy 7196e is so smooth, feminine, and from shoulder back, perfect hiped and awesome bodied. Sired by the 2016-2017 Triple Crown Winner, SULL RGLC Legacy 525.
- Myrtle Bo, year after year produces calves that are top end show heifers and bred heifers. This cow does it all and has worked to every bull we have ever mated her to. Myrtle Bo produced the 2015 NAILE Champion Female, SULL Martha's Bo 4101, and the 2015 Reserve Champion NJHS Champion Bred & Owned Female.



**4d****SULL MYRTLE BO TOO 7167E**

1.22.17 Heifer LE 7167E Polled Reg. # x4256582

LITTLE CEDAR AVIATOR 503X

WHR SONNY 8114
NPS ROSES RIDER 031 ET

SULL BO'S MARTHA 4101 ET

SULL RED KNIGHT 2030 ET
SULL MYRTLE BO 46P-1**SHORTHORN**

BW: 2.1 WW: 64 YW: 86 M: 19

- SULL Myrtle Bo Too 7167e is made about as good as you can draw one, killer looking, big hiped, and deep sided. She will be one you will want to keep an eye on come sale day.
- Her dam SULL Bo's Martha 4101 was the 2015 NAILE Open and Jr. Show Champion Shorthorn and was also the Reserve Champion Female at the 2015 NJHS. This is her first set of calves and boy does she have some good ones.

**4e****SULL MARTHA BO 7161E**

1.14.17 Heifer LE 7161E Polled Reg. # x4256580

LITTLE CEDAR AVIATOR 503X

WHR SONNY 8114
NPS ROSES RIDER 031 ET

SULL BO'S MARTHA 4101 ET

SULL RED KNIGHT 2030 ET
SULL MYRTLE BO 46P-1**SHORTHORN**

BW: 2.1 WW: 64 YW: 86 M: 19

- One of the older heifers of the Shorthorn offering. SULL Martha Bo 7161e is one that keeps developing and shines bright day after day.
- Her dam SULL Bo's Martha 4101 was the 2015 NAILE Open and Jr. Show Champion Shorthorn and was also the Reserve Champion Female at the 2015 NJHS. This is her first set of calves and boy does she have some good ones.

**4f****SULL MARTHA 7536E**

1.2.17 Heifer LE 7536E Polled Reg. # x4257014

LITTLE CEDAR AVIATOR 503X

WHR SONNY 8114
NPS ROSES RIDER 031 ET

SULL BO'S MARTHA 4101 ET

SULL RED KNIGHT 2030 ET
SULL MYRTLE BO 46P-1**SHORTHORN**

BW: 2.1 WW: 64 YW: 86 M: 19

- A national level show heifer here. She is one of those females that will demand your attention and will catch every judge's eye.
- Her dam SULL Bo's Martha 4101 was the 2015 NAILE Open and Jr. Show Champion Shorthorn and was also the Reserve Champion Female at the 2015 NJHS. This is her first set of calves and boy does she have some good ones.

4g**SULL MARTHA TOO 7537E**

3.4.17 Heifer LE 7537E Polled Reg. # x4257015

LITTLE CEDAR AVIATOR 503X

WHR SONNY 8114
NPS ROSES RIDER 031 ET

SULL BO'S MARTHA 4101 ET

SULL RED KNIGHT 2030 ET
SULL MYRTLE BO 46P-1**SHORTHORN** BW: 2.1 WW: 64 YW: 86 M: 19

- I truly believe that we have a very impressive set of Shorthorn heifers to offer in this year's sale and to be quite honest, I'm not sure that we have a favorite yet, but one thing is for sure, Lot 4g needs to be included in the discussion of the top end show heifers.
- Her dam SULL Bo's Martha 4101 was the 2015 NAILE Open and Jr. Show Champion Shorthorn and was also the Reserve Champion Female at the 2015 NJHS. This is her first set of calves and boy does she have some good ones.

**4h****SULL MAGIC MYRTLE 7288E**

4.7.17 Heifer LE 7288E Horned Reg. # xU4257080

SULL RED KNIGHT 2030 ET

CF SOLUTION X ET
K-KIM MONA LISA 10T ET

SULL MYRTLE BO 46P-3

CF TRUMP X
GF MISS MYRTLE BO 305 ET**SHORTHORN** BW: 2.6 WW: 71 YW: 98 M: 19

- SULL Magic Myrtle 7288e is another one of those heifers that we have a lot of confidence and high hopes for. It's hard to put a hole in this one, give her a good home and stay with her and she will not disappoint.
- Full sister to the 2015 NJHS Reserve Champion SULL Bo's Martha, who was also the 2015 Open and Junior Show NAILE Champion. She is also a full sib to the 2016 and 2017 Bred and Owned Champion Females and the 5th Overall Heifer at the 2017 NJHS shown by the Obrecht Family. These cattle win.
- Myrtle Bo, year after year produces calves that are top end show heifers and bred heifers. This cow does it all and has worked to every bull we have ever mated her to. Myrtle Bo produced the 2015 NAILE Champion Female, SULL Martha's Bo 4101, and the 2015 Reserve Champion NJHS Champion Bred & Owned Female.
- Sired by the three-time National Champion, SULL Red Knight.

**4j****SULL MYRTLES BO 7388E**

3.17.17 Heifer LE 7388E Polled Reg. # x4256606

SULL RED KNIGHT 2030 ET

CF SOLUTION X ET
K-KIM MONA LISA 10T ET

SULL MYRTLE BO 46P-1

CF TRUMP X
GF MISS MYRTLE BO 305 ET**SHORTHORN** BW: 1.2 WW: 70 YW: 96 M: 23

- Another one of my top picks from the open Shorthorn heifers. This one has it all, body, power, eye appeal, and she can flat out motor.
- Full sister to the 2015 NJHS Reserve Champion SULL Bo's Martha, who was also the 2015 Open and Junior Show NAILE Champion. She is also a full sib to the 2016 and 2017 Bred and Owned Champion Females and the 5th Overall Heifer at the 2017 NJHS shown by the Obrecht Family. These cattle win.
- Myrtle Bo, year after year produces calves that are top end show heifers and bred heifers. This cow does it all and has worked to every bull we have ever mated her to. Myrtle Bo produced the 2015 NAILE Champion Female, SULL Martha's Bo 4101, and the 2015 Reserve Champion NJHS Champion Bred & Owned Female.



**4k****SULL MYRTLES MAGIC 7513E**

5.7.17 Heifer LE 7513E Polled Reg. # xU4257067

SULL RED KNIGHT 2030 ET

CF SOLUTION X ET
K-KIM MONA LISA 10T ET

SULL MYRTLE BO 46P-3

CF TRUMP X
GF MISS MYRTLE BO 305 ET**SHORTHORN**

BW: 2.6 WW:71 YW: 98 M: 19

- One of the youngsters in the sale but she has all the parts backed with a proven pedigree to do big things.
- Full sister to the 2015 NJHS Reserve Champion SULL Bo's Martha, who was also the 2015 Open and Junior Show NAILE Champion. She is also a full sib to the 2016 and 2017 Bred and Owned Champion Females and the 5th Overall Heifer at the 2017 NJHS shown by the Obrecht Family. These cattle win.
- Myrtle Bo, year after year produces calves that are top end show heifers and bred heifers. This cow does it all and has worked to every bull we have ever mated her to. Myrtle Bo produced the 2015 NAILE Champion Female, SULL Martha's Bo 4101, and the 2015 Reserve Champion NJHS Champion Bred & Owned Female.

**4m****SULL RED MYRTLE 7109E**

2.20.17 Heifer LE 7109E Horned Reg. # 4256577

SULL RED KNIGHT 2030 ET

CF SOLUTION X ET
K-KIM MONA LISA 10T ET

CF MYRTLE BO 46 TP X

CF TRUMP X
GF MISS MYRTLE BO 305 ET**SHORTHORN**

BW: 2 WW:73 YW: 98 M: 20

- A combination female that has the added power, style and can flat get out and go.
- Sired by the three-time National Champion, SULL Red Knight.
- Full sister to the 2015 NJHS Reserve Champion SULL Bo's Martha, who was also the 2015 Open and Junior Show NAILE Champion. She is also a full sib to the 2016 and 2017 Bred and Owned Champion Females and the 5th Overall Heifer at the 2017 NJHS shown by the Obrecht Family. These cattle win.
- Myrtle Bo, year after year produces calves that are top end show heifers and bred heifers. This cow does it all and has worked to every bull we have ever mated her to. Myrtle Bo produced the 2015 NAILE Champion Female, SULL Martha's Bo 4101, and the 2015 Reserve Champion NJHS Champion Bred & Owned Female.

**4n****SULL BETTY'S BO 6144D**

1.28.16 Bred Heifer LE 6144D Polled Reg. # *x4256396

SULL RED REWARD 9321

TEGM RED ADVANTAGE 100T
MCV MARGIE MILLION 503Q

SULL BO'S TRAVELING ET

SULL TRAVELER 9807 ET
SULL MYRTLE BO 46P-1**SHORTHORN**

BW: -0.1 WW:54 YW: 70 M: 25

- Bred to Free K-Kim Hot Commodity (Sexed Female); due January 27, 2018.
- A royally bred genetic masterpiece. Myrtle Bo genetics crossed with outcross legend SULL Red Reward. Lot 4n will be one of those front pasture kind of mature cows.
- Her dam SULL Bo's Traveling 2268 was the 3rd Overall Heifer at the 2013 NJHS and was Champion Female at the 2014 NWSS.

4p

SULL MYRTLE'S MAGIC 6611D

2.16.16 Bred Heifer LE 6611D Polled Reg. # x4256724

SULL RED KNIGHT 2030 ET

CF SOLUTION X ET
K-KIM MONA LISA 10T ET

SULL MYRTLE BO 46P-1

CF TRUMP X
GF MISS MYRTLE BO 305 ET

SHORTHORN BW: 1.2 WW:70 YW: 96 M: 23

- Bred to SULL Red Reward 9312; due February 10, 2018.
- Oh boy!! Once this one calves, you will want to move her to the donor pen. Lot 4p is probably one of the most powerful yet perfectly structured SULL Red Knight x Myrtle Bo 46p daughters to date. If you are serious about raising show heifers or bulls write this one down! Sired by the three-time National Champion SULL Red Knight.
- Full sister to the 2015 NJHS Reserve Champion SULL Bo's Martha, who was also the 2015 Open and Junior Show NAILE Champion. She is also a full sib to the 2016 and 2017 Bred and Owned Champion Females and the 5th Overall Heifer at the 2017 NJHS shown by the Obrecht Family. These cattle win.
- Myrtle Bo, year after year produces calves that are top end show heifers and bred heifers. This cow does it all and has worked to every bull we have ever mated her to. Myrtle Bo produced the 2015 NAILE Champion Female, SULL Martha's Bo 4101, and the 2015 Reserve Champion NJHS Champion Bred & Owned Female.



4r

SULL MYRTLE 6212D

2.9.16 Bred Heifer LE 6212D Polled Reg. # x4256401

SULL RED KNIGHT 2030 ET

CF SOLUTION X ET
K-KIM MONA LISA 10T ET

CF MYRTLE BO 46 TP X

CF TRUMP X
GF MISS MYRTLE BO 305 ET

SHORTHORN BW: 2 WW:73 YW: 98 M: 20

- Bred to Free K-Kim Hot Commodity (Sexed Female); due January 22, 2018.
- This one's phenotype and maternal design will make her a fun one to breed. We think she can raise some big time show heifers.
- Full sister to the 2015 NJHS Reserve Champion SULL Bo's Martha, who was also the 2015 Open and Junior Show NAILE Champion. She is also a full sib to the 2016 and 2017 Bred and Owned Champion Females and the 5th Overall Heifer at the 2017 NJHS shown by the Obrecht Family. These cattle win.
- Myrtle Bo, year after year produces calves that are top end show heifers and bred heifers. This cow does it all and has worked to every bull we have ever mated her to. Myrtle Bo produced the 2015 NAILE Champion Female, SULL Martha's Bo 4101, and the 2015 Reserve Champion NJHS Champion Bred & Owned Female.



GOOD, BAD, UGLY



Max Rosa

cow family



CYT Magical Max Rosa
 Grand Champion Female, 2016 Fort Worth Stock Show Open Show
 Reserve Grand Champion Female, 2016 NWSS Open Show
 Congratulations to Jennifer Bedwell



CYT Max Rosa 9111
 Grand Champion Shorthorn Female, 2009 NAILE, Open Show
 Grand Champion Shorthorn Female, 2010 NAILE, Open and Junior Show
 Grand Champion Female, 2010 National Junior Shorthorn Show



CYT Max Rosa 1145
 Elite donor at Sullivan Farms



SULL Max Rosa 310-1
 One of the most prolific donors in the breed.
 Clone to Minnedman Max Rosa 310

5a**SULL RED ROSA 7162E**

3.20.17 Heifer LE 7162E Polled Reg. # x4256581

SULL RED KNIGHT 2030 ET

CF SOLUTION X ET
K-KIM MONA LISA 10T ET
LITTLE CEDAR AVIATOR 503X
CYT MAX ROSA 9111 ET

CYT MAX ROSA CHROME 411 ET

SHORTHORN

BW: 1.8 WW:76 YW: 106 M: 20

- An elite show heifer from a pedigree of superior show heifer genetics. Lots 5a and 5b have been stand outs since the day they were born. You be the judge on which one is better, we go back and forth every day.

- CYT Max Rosa Chrome 4111 was a Division Champion at the 2015 NJHS and 2015 NWSS Calf Champion. She stems from the two-time NAILE Champion CYT Max Rosa 9111 that was also the 2010 NJHS Champion and the 2010 Iowa Beef Expo Supreme Champion.

**5b****SULL MISS ROSA 7169E**

3.27.17 Heifer LE 7169E Polled Reg. # x4256583

SULL RED KNIGHT 2030 ET

CF SOLUTION X ET
K-KIM MONA LISA 10T ET
LITTLE CEDAR AVIATOR 503X
CYT MAX ROSA 9111 ET

CYT MAX ROSA CHROME 411 ET

SHORTHORN

BW: 1.8 WW:76 YW: 106 M: 20

- Another top end show heifer prospect. We couldn't be happier with her and her full sib Lot 5a. We think they fit the prototype of today's show cattle. Backed by an elite pedigree this heifer will see some banners and backdrops.

- CYT Max Rosa Chrome 4111 was a Division Champion at the 2015 NJHS and 2015 NWSS Calf Champion. She stems from the two-time NAILE Champion CYT Max Rosa 9111 that was also the 2010 NJHS Champion and the 2010 Iowa Beef Expo Supreme Champion.



2018 JUNIOR NATIONALS

National Junior Shorthorn Show

June 25 - 1, 2018

Madison, WI

National Junior Maine-Anjou Show

June 17 - 24, 2018

Grand Island, NE

National Junior Chianina Show

June 17 - 24, 2018

Grand Island, NE

North American Junior Red Angus Event

June 17 - 23, 2018

Hutchinson, KS

Junior National Hereford Expo

July 1 - 7, 2018

Grand Island, NE

American Junior Simmental Association National Classic

July 2 - 7, 2018

Minneapolis, MN

National Junior Angus Show

July 7 - 13, 2018

Madison, WI

National Junior Charolais Show

June 17 - 22, 2018

Des Moines, IA

National Junior Gelbvieh Show

July 1 - 6, 2018

Waterloo, IA

National Junior Limousin Show

July 14 - 20, 2018

Denver, CO



5c

SULL MISS MAX ROSA 7035E

1.26.17 Heifer LE 7035E Polled Reg. # x4256572

LITTLE CEDAR AVIATOR 503X

WHR SONNY 8114
NPS ROSES RIDER 031 ET

CYT MAX ROSA 9111 ET

CF SOLUTION X ET
MINDEMANN MAX ROSA 310 ET

SHORTHORN BW: 3.4 WW: 65 YW: 89 M: 19

- An elite January Aviator daughter out of the CYT Max Rosa 9111. Lot 5c has the Max Rosa look with the extra power that we have come to expect from the Aviator progeny.
- Full sister to CYT Max Rosa Chrome 4111.
- Her dam, CYT Max Rosa 9111, was one of the most dominate show heifers to date, winning NAILE as a calf in 2009 and as a bred in 2010. She also on the 2010 NJHS and was Supreme at the 2010 Iowa Beef Expo.



5d

SULL ROSA 7518E

3.17.17 Heifer LE 7518E Polled Reg. # x4256697

LITTLE CEDAR AVIATOR 503X

WHR SONNY 8114
NPS ROSES RIDER 031 ET

SULL MAX ROSA 310-3 ET

WHR SONNY 8114
HOMEDALE MAX ROSA

SHORTHORN BW: 3.2 WW: 54 YW: 71 M: 16

- SULL Rosa 7518e is one of the most powerful, soundest constructed heifers in the sale.
- She will make a fun show heifer and a beast of a donor cow.
- Mindeman Max Rosa 310 was a NWSS Champion during her show career. Now she is proving herself year after year in the donor pen. She is the dam of countless high sellers and numerous champions, including the two-time NAILE Champion, 2010 NJHS Champion and 2010 Iowa Beef Expo Supreme Champion, CYT Max Rosa 9111.



5e

SULL MAX ROSA 7514E

3.24.17 Heifer LE 7514E Polled Reg. # x4257013

LITTLE CEDAR AVIATOR 503X

WHR SONNY 8114
NPS ROSES RIDER 031 ET

SULL MAX ROSA 310-1 ET

WHR SONNY 8114
HOMEDALE MAX ROSA

SHORTHORN BW: 3.2 WW: 54 YW: 71 M: 16

- A later maturing heifer here, but study her hard. She is unique with her true muscle shape and turn to her upper rib. She has a razor front end on her.
- Mindeman Max Rosa 310 was a NWSS Champion during her show career. Now she is proving herself year after year in the donor pen. She is the dam of countless high sellers and numerous champions, including the two-time NAILE Champion, 2010 NJHS Champion and 2010 Iowa Beef Expo Supreme Champion, CYT Max Rosa 9111.



SULL MAXIE'S ROSA 6613D

5.17.16 Bred Heifer LE 6613D Polled Reg. # x4250435

SULL RED KNIGHT 2030 ET

CF SOLUTION X ET
K-KIM MONA LISA 10T ET

SULL MAX ROSA 310-1 ET

WHR SONNY 8114
HOMEDALE MAX ROSA

SHORTHORN

BW: 1.8 WW: 69 YW: 94 M: 18



- Bred to SULL Brilliance 9515 (ANGUS); due February 19, 2018.

- Another top end breeding piece in an impressive set of heifers. SULL Maxie's Rosa 6613d has donor potential written all over her. - Her popular full sister, SULL Roses Are Red, was the 2014 American Royal Champion Female as well as a top five finisher at the Iowa Beef Expo, Iowa State Fair and AKSarBen.

- Mindeman Max Rosa 310 was a NWSS Champion during her show career. Now she is proving herself year after year in the donor pen. She is the dam of countless high sellers and numerous champions, including the two-time NAILE Champion, 2010 NJHS Champion and 2010 Iowa Beef Expo Supreme Champion, CYT Max Rosa 9111.

GENERAL SALE INFORMATION

Terms: The terms of the sale are cash or check payable to Sullivan Farms. Payment to be made to the clerk immediately following the sale and before the cattle are removed from Sullivan Farms. Purchasers or their representative must sign the bill of sale prior to leaving the sale site.

Insurance will be available for your purchase at the sale through Stuart Wilson or Sheila Jensen. Contact either their representative or the clerk at the settlement desk.

Health: Each animal will be represented by a state approved health certificate for interstate shipment. Buyers should make themselves aware of the health requirements for their respective states. All vaccinations are up-to-date, and cattle born at Sullivan Farms have been vaccinated.

Semen Rights: We are retaining an in-herd semen use on all bulls selling in the Maternal Legends Sale.

Genetic Conditions: All Purebred Shorthorns have been tested or are free by pedigree. All genetic conditions that Sullivan Farms has received results on will be on a supplement sheet sale day.

Liability: Each animal will be at the buyer's risk as soon as sold, but will be cared for by the seller for a reasonable amount of time. Neither the owners, employees, auctioneer, sale manager or other affiliated personnel can be responsible for any accidents, but they will make every effort to provide for the safety and comfort of those attending.

Announcements made sale day will take precedence over printed material in this catalog.

Breeding Update/Calving Information: There will be added information available at the sale site that will list any additions to the catalog information as to new calves born and new breeding information that will occur after the printing of this catalog.

ASA Breeding Guarantee: All animals sell guaranteed to be fertile. Exceptions 1) Disease, or injury occurring after purchase; 2) Bulls being run with the herd prior to 14 months of age. Sullivan Farms will guarantee open heifers to breed; however, please keep in mind that animal conditions influence fertility greatly. If there is a problem, we would want the females to be returned to us to be bred. Open heifers that have been transplanted are not guaranteed. In the event that an animal will not settle with the efforts of the buyer and seller, a sale credit in the amount of the purchase price will be issued to the buyer that can be used at any time on any animal, flush, semen or embryos sold by Sullivan Farms.

Flushes & DNA: Sullivan Farms reserves one flush of eight or more grade 1 or 2 embryos at our expense on all females selling. Sullivan Farms retains at our expense the opportunity to obtain a DNA cell line for cloning purposes on all cattle selling in this sale.

Embryos: Guarantee one pregnancy on each package of embryos sold if implanted by a certified technician. If a pregnancy is not confirmed, an additional embryo will be received.

Retained Flushes: Flushes to take place at the convenience of the buyer at a location of their choice. We will pay all normal costs associated with the flush. Animals may be returned here for transplant if buyer desires at no cost.

Cherri

cow family



SULL Cherri 205-7

National Champion that produces National Champions.
Clone to DJS Cherri 205

SULL Wild Cherri

Grand Champion Female, 2014 NAILE Open Show
Grand Champion Female, 2014 NAILE Junior Show
Grand Champion Female, 2014 National Junior Shorthorn Show



6a

SULL CHERRI PIE 6607D

2.17.16 Bred Heifer LE 6607D Polled Reg. # x4256723

SULL RIGHT DIRECTION ET CF TRUMP X
NPS DESERT ROSE 004
SULL CHERRI 205-3 ET WHR SONNY 8114
MCKEE'S ASL CHERRI 742

SHORTHORN BW: 1.9 WW:63 YW: 80 M: 25

- Bred to SULL Red Reward 9312; due February 14, 2018.
- One of the most phenotypically flawless bred heifers in the bred heifer offering. Another masterpiece of breeding with donor potential.
- She is a full sister to the 2014 NAILE Junior and Open Show Champion along with the 2014 NJHS Champion, SULL Wild Cherri. She is also a full sister to the 2013 NJHS Champion SULL Cherri Mary Lou.
- Her Dam DJS Cherri 205 was a National Champion herself.



6b

SULL RIGHT CHERRI 6602D E

4.8.16 Bred Heifer LE 6602D Polled Reg. # x4239896

SULL RIGHT DIRECTION ET CF TRUMP X
NPS DESERT ROSE 004
SULL CHERRI 205-3 ET WHR SONNY 8114
MCKEE'S ASL CHERRI 742

SHORTHORN BW: 1.8 WW:63 YW: 80 M: 24

- Bred to SULL Red Reward 9312; due January 15, 2018.
- Extra stylish, maternally designed female that will stamp her look and balance into her progeny. They are sure to make elite show cattle.
- She is a full sister to the 2014 NAILE Junior and Open Show Champion along with the 2014 NJHS Champion, SULL Wild Cherri. She is also a full sister to the 2013 NJHS Champion SULL Cherri Mary Lou.
- Her Dam DJS Cherri 205 was a National Champion herself.

6c**SULL SWEET CHERRI 7517E**

4.3.17 Heifer LE 7517E Polled Reg. # x4256695

SULL RIGHT DIRECTION ET

CF TRUMP X
NPS DESERT ROSE 004

SULL CHERRI 205 -2 ET

WHR SONNY 8114
MCKEE'S ASL CHERRI 742**SHORTHORN**

BW: 1.8 WW:63 YW: 80 M: 25

- Check out this April daughter. Lot 6c just keeps climbing her way up the ladder of quality. She is an example of the depth that we focus on raising in our program at Sullivan Farms. She will be a lot of fun to watch progress through the year and see her success.

- She is a full sister to the 2014 NAILE Junior and Open Show Champion along with the 2014 NJHS Champion, SULL Wild Cherrri. She is also a full sister to the 2013 NJHS Champion SULL Cherrri Mary Lou.

- Her Dam DJS Cherrri 205 was a National Champion herself.

**6d****SULL BLACK CHERRI 7204E**

2.26.17 Heifer LE 7204E Polled Reg. # *xAR4256594

COLBURN PRIMO 5153

DAMERON FIRST CLASS
SILVEIRAS SARAS DREAM 1339

SULL CHERRI 205-3 ET

WHR SONNY 8114
MCKEE'S ASL CHERRI 742**SHORTHORNPLUS**

BW: 1.1 WW:58 YW: 84 M: 20

- An extremely mobile, big square hip, with the big swoopy belly. Keep this one fresh through the year and she will always be in the hunt at any level of show.

- Her Dam DJS Cherrri 205 was a National Champion herself.

**6e****SULL CHERRI TOO 7292E**

3.27.17 Heifer LE 7292E Polled Reg. # *xAR4256602

COLBURN PRIMO 5153

DAMERON FIRST CLASS
SILVEIRAS SARAS DREAM 1339

SULL CHERRI 205 -2 ET

WHR SONNY 8114
MCKEE'S ASL CHERRI 742**SHORTHORNPLUS**

BW: 1.1 WW:58 YW: 84 M: 20

- SULL Cherrri Too 7292e possesses a combination of that long cool neck we all like with a deep belly and can flat out get out and go.

- Her Dam DJS Cherrri 205 was a National Champion herself.



Sophia Magic

cow family



JSUL MAGIC SOPHIA 6S

Dam of Lot 7a, 7b, 7c & 7d

SULL Red Knight Magic

Sells as Lot 73



7a

SULL SOPHIA'S MAGIC 7031E

2.18.17 Heifer LE 7031E Polled Reg. # *xAR4256571

SULL RED KNIGHT 2030 ET

CF SOLUTION X ET
K-KIM MONA LISA 10T ET

JSUL MAGIC SOPHIA 6S

FAWL HEAT WAVE
MISS FOREPLAY

SHORTHORNPLUS/ CHIANINA 12.82% BW: 2.4 WW:60 YW: 86 M: 17

- A well balanced dual registered show heifer. Show her as a ShorthornPlus or Chianina, she will be competitive however or wherever you show her.
- A full sister to SULL Red Knight Magic was the 2016 NWSS Open Show Reserve Champion ShorthornPlus and 4th Overall at the 2016 NJHS. She is also a full sister to SULL Sophia 6250d that was 3rd Overall at the 2017 Ohio State Fair shown by Kathy Lehman. Her maternal sister JSUL Blue Magic was Supreme Overall at the 2012 Iowa State Fair.
- Dual registered ShorthornPlus/12.82% Chianina



7b

SULL MAGICAL SOPHIA 7386E

5.9.17 Heifer LE 7386E Polled Reg. # *xAR4256604

SULL RED KNIGHT 2030 ET

CF SOLUTION X ET
K-KIM MONA LISA 10T ET

JSUL MAGIC SOPHIA 6S

FAWL HEAT WAVE
MISS FOREPLAY

SHORTHORNPLUS/ CHIANINA 12.82% BW: 2.4 WW:60 YW: 86 M: 17

- Still a little green and young but man does she have a big future ahead of her. Take her home and watch her flourish and have the same success as her full sisters.
- A full sister to SULL Red Knight Magic was the 2016 NWSS Open Show Reserve Champion ShorthornPlus and 4th Overall at the 2016 NJHS. She is also a full sister to SULL Sophia 6250d that was 3rd Overall at the 2017 Ohio State Fair shown by Kathy Lehman. Her maternal sister JSUL Blue Magic was Supreme Overall at the 2012 Iowa State Fair.
- Dual registered ShorthornPlus/12.82% Chianina

7c**SULL MAGIC KNIGHTS**

9.11.15 Heifer LE 5724C Polled Reg. # *xAR4235336

SULL RED KNIGHT 2030 ET

CF SOLUTION X ET
K-KIM MONA LISA 10T ET

JSUL MAGIC SOPHIA 6S

FAWL HEAT WAVE
MISS FOREPLAY

SHORTHORNPLUS/ CHIANINA 12.82% BW: 2.3 WW:60 YW: 86 M: 17

- Bred to Goet I-80; due January 27, 2018.
- A powerhouse female here. Imagine the things a S can do with this one as a cow. Raise a show heifer, show steers, whatever your cup of tea is she has the goods.
- A full sister to SULL Red Knight Magic was the 2016 NWSS Open Show Reserve Champion ShorthornPlus and 4th Overall at the 2016 NJHS. She is also a full sister to SULL Sophia 6250d that was 3rd Overall at the 2017 Ohio State Fair shown by Kathy Lehman. Her maternal sister JSUL Blue Magic was Supreme Overall at the 2012 Iowa State Fair.
- Dual registered ShorthornPlus/12.82% Chianina

**7d****SULL MAGIC SOPHIA 6D**

2.14.16 Heifer LE 6D Horned Reg. # *AR4257004

SULL RED KNIGHT 2030 ET

CF SOLUTION X ET
K-KIM MONA LISA 10T ET

JSUL MAGIC SOPHIA 6S

FAWL HEAT WAVE
MISS FOREPLAY

SHORTHORNPLUS/ CHIANINA 12.82% BW: 2.3 WW:60 YW: 86 M: 17

- Bred to SULL Brilliance 9515 (Angus); due February 23, 2018.
- A powerhouse female here. Imagine the things a guy can do with this one as a cow. Raise a show heifer, show steers, whatever your cup of tea is she has the goods.
- A full sister to SULL Red Knight Magic was the 2016 NWSS Open Show Reserve Champion ShorthornPlus and 4th Overall at the 2016 NJHS. She is also a full sister to SULL Sophia 6250d that was 3rd Overall at the 2017 Ohio State Fair shown by Kathy Lehman. Her maternal sister JSUL Blue Magic was Supreme Overall at the 2012 Iowa State Fair.
- Dual registered ShorthornPlus/12.82% Chianina

**7e****MADI MAGIC KNIGHT 6002D**

3.19.16 Bred Heifer LE 6002D Polled Reg. # *xAR4233671

KL PRIME TIME PAYMASTER

KL PRIME TIME 685
KL MELITA ROSEWOOD 696

SULL RED KNIGHT MAGIC ET

SULL RED KNIGHT 2030 ET
JSUL MAGIC SOPHIA 6S

SHORTHORNPLUS/ CHIANINA 6.41% BW: 3.8 WW:56 YW: 72 M: 22

- Bred to SULL Brilliance 9515 (Angus); due March 5, 2018.
- Madi Magic Knight 6002d was shown as a pair last summer at the 2016 NJHS. She and her mom SULL Red Knight Magic 4252 were selected 4th overall in the ShorthornPlus show.
- Her dam SULL Red Knight Magic 4252 sells as Lot 74 and was selected as Reserve ShorthornPlus at the 2016 NWSS.
- Dual registered 3/4 blood ShorthornPlus and 6.41% Chianina.



Glamour Girl

cow family



JA Sonny Girl 1J40



CYT Solution Girl 9114



8a

SULL RED SOLUTION 6439D

2.4.16 Bred Heifer LE 6439D Polled Reg. # *x4256562

SULL RED REWARD 9321
CYT SOLUTION GIRL 9114 ET

TEGM RED ADVANTAGE 100T
MCV MARGIE MILLION 503Q
CF SOLUTION X ET
JA SONNY GIRL 1J40 ET

SHORTHORN BW: 0.7 WW:60 YW: 80 M: 21

- Bred to Free K-Kim Hot Commodity (Sexed Female); due January 18, 2018.
- The quality of bred's in this year's set runs deep and this one can run with the best of them. Another high end Red Reward daughter that will put some eye appeal and phenotype back into her progeny.
- Her dam CYT Solution Girl 9114 is a daughter of JA Sonny Girl 1J40. CYT Solution Girl 9114 was a NAILE Calf Champion.



8b

SULL HOT SOLUTION 6187D

1.18.16 Bred Heifer LE 6187D Polled Reg. # x4256398

FREE K-KIM HOT COMMODITY
CYT SOLUTION GIRL 9114 ET

K-KIM ALLURE 124M ET
K-KIM MEG 270N ET
CF SOLUTION X ET
JA SONNY GIRL 1J40 ET

SHORTHORN BW: 2 WW:65 YW: 75 M: 11

- Bred to SULL Red Reward 9312; due January 19, 2018.
- Lot 8b is a well balanced, heavy structured female that will work well being bred to SULL Red Reward.
- Her dam CYT Solution Girl 9114 is a daughter of JA Sonny Girl 1J40. CYT Solution Girl 9114 was a NAILE Calf Champion.

Stockman 898/ Breathless P898

cow family



SULL Breathless P898 CL 8408



SULL Breathless Halo

Reserve Supreme Champion Female,
2016 Oklahoma Youth Expo
Congratulations to the Bailey Family



SULL Breathless 4306

Grand Champion ShorthornPlus Female,
2016 NWSS Open & Junior Show
Supreme Champion Female,
2015 Nebraska State Fair
Congratulations to the Aegerter Family



SULL Blue Raspberry

Grand Champion ShorthornPlus, 2013 NAILE
Grand Champion ShorthornPlus, American Royal Open Show
Grand Champion Bred & Owned Female, 2013 National Jr. Shorthorn Show
Reserve Grand Champion ShorthornPlus, 2014 NWSS Jr. Show
Sells as Lot 72

9

SULL LUCKY REVOLUTION 6408D

2.15.16 Bred Heifer LE 6408D Polled Reg. # *xU4257436

SULL REVOLUTION 4383

SULL RIGHT DIRECTION ET
JSUL JALYNN 344

SULL LUCKY STOCK 8411 ET

DF VEGAS 310M ET
SULL STOCKMAN 898

SHORTHORNPLUS/CHIANINA 6.41% BW: 4.2 WW:42 YW: 55 M: 18

- Bred to Goet I-80; due January 17, 2018.
- Stout, powerful, good looking blue roan that will be a versatile breeding piece. We feel that she will raise top quality steers or heifers.
- Her dam is a clone to the famous SULL Breathless P898 that was Supreme at the Iowa Beef Expo, Iowa State Fair, and AKSarBen.
- Dual Registered ShorthornPlus/6.41% Chianina



Margie cow family



MCV Margie Million 503Q



10

SULL MARGIE'S MAGIC 6590D

1.9.16 Bred Heifer LE 6590D Polled Reg. # x4256729

FREE K-KIM HOT COMMODITY

K-KIM ALLURE 124M ET
K-KIM MEG 27ON ET

SULL MARGIE MILLION ET CL

CCC GOLD RUSH
ROCKDALE MARGIE MILLION

SHORTHORN

BW: -0.8 WW: 52 YW: 49 M: 19

- Bred to KL Right Time RF15; due February 17, 2018.
- A maternally built, out crossed breeding piece.
- Her dam SULL Margie Million is the mother of the now deceased SULL Red Reward 9312

Sable cow family



SULL Bobbi's Sable



11

SULL SARA'S KNIGHT 5805 E

9.18.15 Bred Heifer LE 5805 Polled Reg. # x4234189

SULL RED KNIGHT 2030 ET

CF SOLUTION X ET
K-KIM MONA LISA 10T ET

SULL SARA'S SABLE ET

CCS EQUITY'S CHARMER ET
WF EVERGREEN SABLE ET

SHORTHORN

BW: 3.2 WW: 75 YW: 102 M: 18

- Bred to SULL Red Reward 9312; due November 19, 2017
- High performing, elegantly designed direct daughter of the three-time National Champion SULL Red Knight.
- Her dam SULL Sara's Sable P321 is a past American Royal Supreme Champion, NAILE Champion Shorthorn, and NWSS Champion.



GCC Augusta Pride 3127



Augusta Pride

cow family



12

SULL RGLC FRANNY'S GIRL 7522E

5.18.17 Heifer LE 7522E Polled Reg. # *x4256667

SULL RGLC LEGACY 525 ET

SULL RED REWARD 9321

SULL MIRAGE FOREVER 8121 ET

RFC-KOLT FRANNY 923 ET

HI VIEW'S ACE OF DIAMONDS

LITTLE CEDAR AUGUSTA PR ET

SHORTHORN

BW: 2.7 WW:56 YW: 70 M: 16

- Wow, this one's balance and killer front end will be turning heads on sale day. Just a May born heifer but she will give those older heifers a run for their money.
- Dam is a special young donor cow owned by Sullivan Farms and Rockin' G Land and Cattle.
- Her sire SULL RGLC Legacy 525 is the 2016-2017 Triple Crown Winner. This is his first set of calves and as you can see from the past few pages, he was a big hit.
- Owned with Rockin' G Land and Cattle



CF Cumberland 183 TP



Cumberland

cow family



13

SULL SASSY CUMBERLAND 6264D

1.5.16 Bred Heifer LE 6264D Horned Reg. # 4257005

JSF MARQUIS 127X

EIONMOR MASTERPIECE 36D

EIONMOR CAMELOT RUBY 94T

CF CUMBERLAND 183 TP

CF TRUMP X

WHR CUMBERLAND 3R52

SHORTHORN

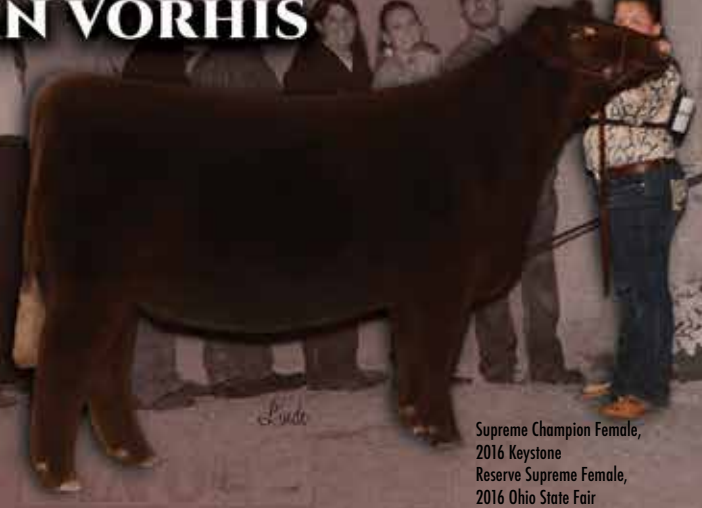
BW: 2.8 WW:69 YW: 82 M: 14

- Bred to KL Right Time RF15; due February 28, 2018.
- A high performing mobile beast. If you want to add some performance and power while keeping that show look in your program, then take a good look here.
- CF Cumberland 183 was a past high seller we purchased from the Cates Farm Production Sale.

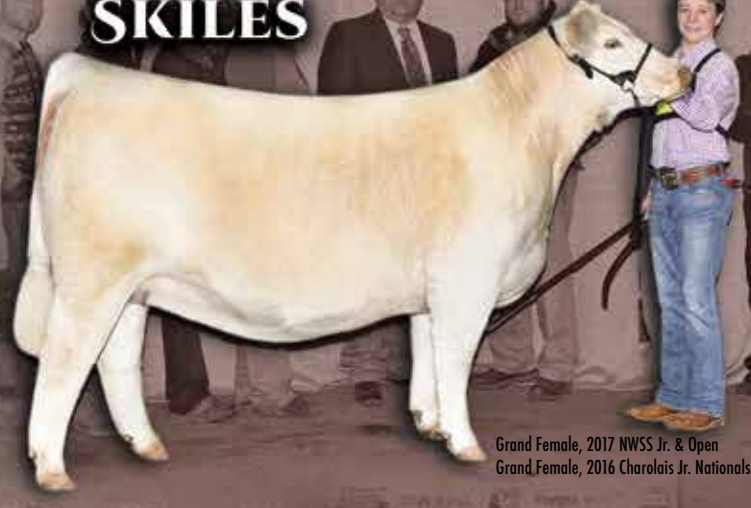


VAN VORHIS

SKILES



Supreme Champion Female,
2016 Keystone
Reserve Supreme Female,
2016 Ohio State Fair



Grand Female, 2017 NWSS Jr. & Open
Grand Female, 2016 Charolais Jr. Nationals

MORBITZER

BAILEY

LEHMAN



Supreme Champion Female,
2017 Ohio Beef Expo



Reserve Supreme Female,
2017 Oklahoma Youth Expo



Grand Female,
2017 Keystone Open Show
Reserve Female,
2016 National Jr. Charolais Show

WE SELL



\$4500

10th Overall Female, 2017 Ohio Beef Expo
Congratulations to Lindsey Pugh



\$4000

Reserve Supreme Female,
2017 Georgia Jr. Beef Futurity
Congratulations to
Wilson Matthews



Reserve ShorthornPlus, 2017 Indiana State Fair
Congratulations to Brad Johnson



\$7500

Grand ShorthornPlus, 2017 Illinois State Fair
Congratulations to Mason Campbell

Grand Market Heifer,
2017 Illinois State Fair
Congratulations to
Miranda Reed



\$7500

Third Overall Female, 2017 Michigan Winter Classic
Congratulations to Collin Trattle



\$9000

Reserve ShorthornPlus,
2017 Illinois Beef Expo
Congratulations to
Andrew Williams



\$9000

BURKHART

TOMSON



Third Overall, 2017 Shorthorn Jr. Nationals
Grand Female, 2017 Iowa State Fair Open Show
Fourth Overall, 2017 Iowa State Fair 4-H Show

Lindsay Homewick

Supreme Champion Female, 2017 Indiana State Fair

REETZ

COLYER

KREIS



\$6750

Grand ShorthornPlus,
2017 Iowa State Fair

\$7500

Reserve Horned Hereford,
2017 Fort Worth Stock Show

Grand Female, 2016 Keystone

CHAMPIONS



Reserve Chianina, 2017 Ohio State Fair
Congratulations to Ashley Buell



\$4500

Grand Polled Hereford,
2017 Illinois State Fair Open Show
Congratulations to Lucas Beckman



Reserve Chianina,
2017 Illinois State Fair
Congratulations to
Ashley Moore



Grand AOB, 2017 Illinois State Fair
Congratulations to Nicole Haverback



\$9750

Grand Shorthorn, 2017 Dixie National Livestock Show
Congratulations to Aaron Lay



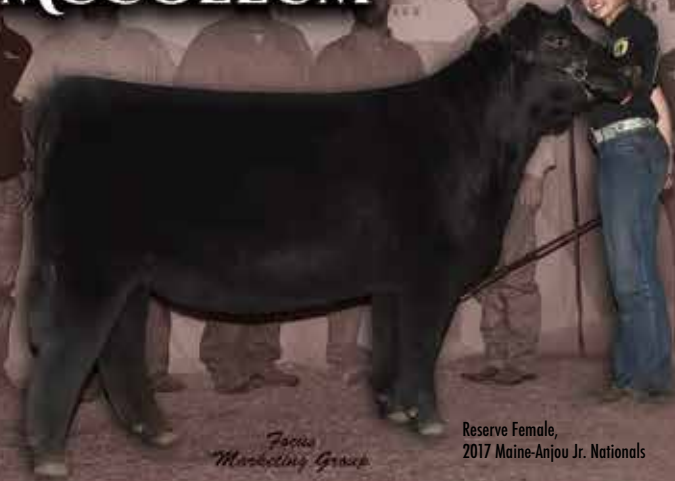
Reserve Division, 2017 NWSS
Congratulations to Kane Aegerter



\$4000

MCCOLLUM

OBRECHT



Reserve Female,
2017 Maine-Anjou Jr. Nationals

Focus Marketing Group



Cindy

Fifth Overall, 2017 Shorthorn Jr. Nationals

CHAMPIONS EVERYWHERE



Reserve Shorthorn, 2017 IA Shorthorn Field Day
Congratulations to Madeline Berg

\$5500



Fifth Overall, 2016 Oklahoma AGR
Congratulations to Aaron Kerlee

\$7500



Reserve Hereford, 2017 Wisconsin State Fair
Congratulations to Aspen Bader



\$5000

Reserve Limousin,
2017 Indiana State Fair
Congratulations to Kayla Fagg



Grand AOB, 2017 Illinois Beef Expo
Congratulations to Kade Gensinis



Grand Maine-Anjou, 2017 Illinois State Fair Open
Congratulations to Jamie Moore



\$7500

Reserve Shorthorn, 2017 Oklahoma Youth Expo
Congratulations to Mitchell Hunter

DOERSTLER

MOORE

POPE



Fourth Overall,
2017 Hoosier Beef Congress



Division Champion,
2017 Jr. National Hereford Expo



\$7000

Reserve Champion Shorthorn,
2017 Fort Worth Stock Show Jr Show

STATE FAIR

MAIN

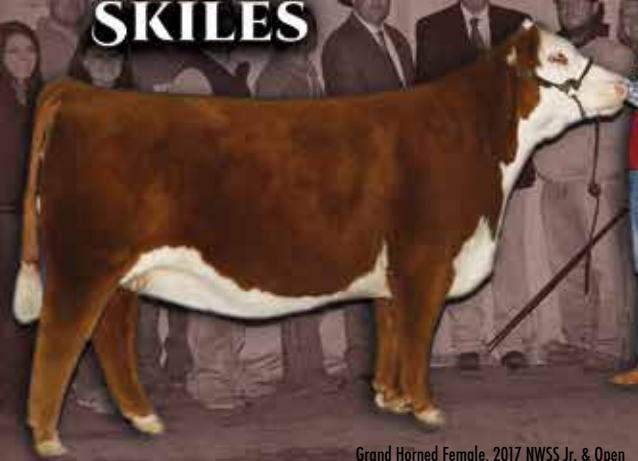
2017

SKILES



Lindsay Hancock

Reserve Supreme Female,
2017 Indiana State Fair



Grand Horned Female, 2017 NWSS Jr. & Open
Grand Horned Female, 2016 Jr National Hereford Expo

AT ALL PRICE POINTS



Reserve Commercial Heifer,
2017 Indiana State Fair
Congratulations to Brad Johnson

Reserve Supreme Heifer,
2016 Illinois Beef Expo
Congratulations to Brent Schiller



\$2900

Grand ShorthornPlus,
2017 Dixie National Livestock Show
Congratulations to Aaron Lay



\$5000

Reserve Shorthorn,
2017 Iowa Beef Expo
Congratulations to Dominic Fouts



\$3500



\$3250

Reserve Shorthorn, 2017 Minnesota State Fair
Congratulations to Riley Hoffman



Reserve ShorthornPlus, 2017 OH State Fair
Congratulations to Kyle Piscione



Supreme Champion Female, Crawford County Fair, Iowa
Congratulations to Connor Sullivan

LEHMAN

RAY

MIZE



Third Overall Female,
2017 Ohio State Fair



Grand Champion Horned Hereford,
2016 NWSS Open Show



Reserve Supreme Champion,
2016 Hoosier Beef Congress

Hereford



SULL Serendipity 5352C

Grand Champion Horned Heifer, 2017 National Western Stock Show Open & Junior
Reserve Grand Champion Horned Heifer, 2016 Junior National Hereford Expo
Congratulations to the Skiles Family



SULL TCC Diana 4069B

Grand Champion Horned Female, NWSS 2015 & 2016 Open Show
Congratulations to Trent Ray



SULL Harley 6535D

Grand Champion Polled Female,
2017 Illinois State Fair
Congratulations to Lucas Beckman



SULL Diana 6365D

Division IV Champion Horned Female,
2017 Junior National Hereford Expo
Congratulations to the Moore Family



SULL Diana 5130

Reserve Supreme Champion Heifer,
2016 Illinois State Fair
Congratulations to the Collins Family



LCC Two Timin' "Harley" 438



TCC MS Diana 01



TCC Miss Shelby 82

14

SULL DAZZLING DIANA 7311E ET

3.5.17 Heifer LE 7311E Horned Reg. # 43832997

CRR 719 CATAPULT 109

TH 122 711 VICTOR 719T
CRR 4037 ECLIPSE 808

TCC MS DIANA 01

CRR ABOUT TIME 743
TCC MISS SHELBY 82 ET

HORNED HEREFORD BW: 2.9 WW:55 YW: 89 M: 26

- TCC MS Diana 01 has done it again, she has absolutely clicked with every bull we have used, and look what she has done with CRR 719 Catapult 109.
- SULL Dazzling Diana 7311e might possibly be one of the best Horned Hereford females to sell this fall.
- Her dam TCC MS Diana 01 needs no introduction, she was a former national champion herself that stems from a long line of national champions. Her dam TCC MS Shelby 82 was a National Champion and her dam, LCC Two Timin Harley 438 was a National Champion as well. Now Diana is raising high sellers and national champions year after year. She recently sold for \$150,000 on our Hereford dispersal to Beckman Herefords in 2016.



15

SULL SHELBY 7315E ET

2.28.17 Heifer LE 7315E Polled Reg. # 43832996

CRR 719 CATAPULT 109

TH 122 711 VICTOR 719T
CRR 4037 ECLIPSE 808

TCC MISS SHELBY 82 ET

ANKONIAN MIDAS 72
LCC TWO TIMIN 438 ET

POLLED HERFORD BW: 3.8 WW:55 YW: 92 M: 24

- SULL Shelby 7315e is an absolute beast. Study her structure and added foot and bone size, it's truly impressive. She will make a fun heifer and an even more fun breeding piece.
- Her dam TCC MS Shelby 82 is the dam of TCC MS Diana and is a direct daughter of the now deceased breed legend LCC Two Timin Harley 438. Shelby 82 was a former national champion in 2010.



16

SULL HARLEY TOO 7310E ET

2.27.17 Heifer LE 7310E Polled Reg. # 43832998

CRR 719 CATAPULT 109

TH 122 711 VICTOR 719T
CRR 4037 ECLIPSE 808

LCC TWO TIMIN 438 ET

REMITALL ONLINE 122L
RST ROF REBA 28H

POLLED HERFORD BW: 4.9 WW:61 YW: 104 M: 20

CE: 15.9 BW: 0.1 WW: 57.7 YW: 93.8 M: 19.5 API: 152.0 TI: 73.5

- If you're looking for a powerful future donor and beast of a show heifer. Study this one hard. One of the biggest boned heifers I have seen.
- Her Now deceased dam LCC Two Timin Harley 438 has raised national champion after national champion. Her first calf TCC MS Shelby 82 was a national champion. She is also the dam of the 2014 NJHS Reserve Champion Polled Heifer, SULL TCC Harley 4267, and the 2014 NWSS Jr Show Champion Polled heifer, SULL TCC Harley 322.





17

SULL HARLEY 7312E ET

3.11.17 Heifer LE 7312E Polled Reg. # 43831763
 C MILES MCKEE 2103 ET NJW 98S R117 RIBEYE 88X ET
 C NOTICE ME ET
 LCC TWO TIMIN 438 ET REMITALL ONLINE 122L
 RST ROF REBA 28H

POLED HERFORD BW: 4.7 WW:50 YW: 90 M: 31

- Extremely maternal in her overall design, loose made in her overall skeleton and feet and legs with a smooth shoulder and long neck. She is one of our favorites.
- She is a full sibling to the 2017 Illinois State Fair Polled Open Show Female, SULL 6535d shown by Lucas Beckman. Another full sister, SULL TCC Harley 4267 was the 2014 NJHS Reserve Champion Polled Female.
- Direct daughter of the now deceased legendary LCC Two Timin Harley 438.



18

C SULL HARLEYS MILES 7289 ET

2.17.17 Heifer LE 7289 Polled Reg. # 43819520
 C MILES MCKEE 2103 ET NJW 98S R117 RIBEYE 88X ET
 C NOTICE ME ET
 LCC TWO TIMIN 438 ET REMITALL ONLINE 122L
 RST ROF REBA 28H

POLED HERFORD BW: 4.9 WW:50 YW: 90 M: 31

- Cocky fronted female with some real dimension and muscle. Maybe one of the most over looked heifers in the Hereford offering.
- She is a full sibling to the 2017 Illinois State Fair Polled Open Show Female, SULL 6535d shown by Lucas Beckman. Another full sister, SULL TCC Harley 4267 was the 2014 NJHS Reserve Champion Polled Female.
- Direct daughter of the now deceased legendary LCC Two Timin Harley 438.



19

C BAR1 UNTAPPED 88X 7248 ET

2.4.17 Heifer LE 7248 Horned Reg. # 43819451
 NJW 98S R117 RIBEYE 88X ET SHF RIB EYE M326 R117
 NJW 9126J DEW DOMINO 98S
 C NOTICE ME UNTAPPED 2212 ET TH 89T 743 UNTAPPED 425X ET
 C NOTICE ME ET

HORNED HERFORD BW: 2.9 WW:50 YW: 72 M: 35

- This 88X female has a lot of look and has the genetics to compete. She would be a 3/4 sister to Miles McKee as her mother is out of the National Supreme Champion Female Notice Me. We feel that with time and the right care this one could be as good as any.

20**SULL Diana 7523E ET**

3.11.17 Heifer LE 7523E Horned Reg. # 4382891

C Miles MCKEE 2103 ET

NJW 98S R117 RIBEYE 88X ET
C NOTICE ME ET

TCC MS DIANA 01

CRR ABOUT TIME 743
TCC MISS SHELBY 82 ET**HORNED HERFORD** BW: 2.7 WW:45 YW: 75 M: 36

- Maybe the most complete Hereford female in the offering. Extremely sound, square hipped, deep bodied, and smooth from end to end.
- Multiple full sisters have had loads of success in the past couple years. SULL Diana 4069 was the 2015 and 2016 NWSS Champion Horned Female. SULL Diana 5130 was Reserve Supreme at the 2016 Illinois State Fair for the Collins Family.
- Her dam TCC MS Diana 01 needs no introduction, she was a former National Champion herself that stems from a long line of National Champions. Her dam TCC MS Shelby 82 was a National Champion and her dam, LCC Two Timin Harley 438 was a National Champion as well. Now Diana is raising high sellers and national champions year after year. She recently sold for \$150,000 on our Hereford dispersal to Beckman Herefords in 2016.
- Owned with Joe Sullivan

**21****C SULL MILES DIANA 7300 ET**

2.23.17 Heifer LE 7300 Polled Reg. # 43819484

C MILES MCKEE 2103 ET

NJW 98S R117 RIBEYE 88X ET
C NOTICE ME ET

TCC MS DIANA 01

CRR ABOUT TIME 743
TCC MISS SHELBY 82 ET**POLLED HERFORD** BW: 2.7 WW:45 YW: 73 M: 36

- One of the greener, later maturing heifers of the group but everyone that has seen her loves her and knows what her future holds. She is flat good, cool necked and clean chested as you can make one. Be patient with her and you won't be disappointed.
- Multiple full sisters have had loads of success in the past couple years. SULL Diana 4069 was the 2015 and 2016 NWSS Champion Horned Female. SULL Diana 5130 was Reserve Supreme at the 2016 Illinois State Fair for the Collins Family.
- Her dam TCC MS Diana 01 needs no introduction, she was a former National Champion herself that stems from a long line of National Champions. Her dam TCC MS Shelby 82 was a National Champion and her dam, LCC Two Timin Harley 438 was a National Champion as well. Now Diana is raising high sellers and national champions year after year. She recently sold for \$150,000 on our Hereford dispersal to Beckman Herefords in 2016.

**22****C SULL MILES DIANA 7001 ET**

1.2.17 Heifer LE 7001 Scurred Reg. # 43790994

C MILES MCKEE 2103 ET

NJW 98S R117 RIBEYE 88X ET
C NOTICE ME ET

TCC MS DIANA 01

CRR ABOUT TIME 743
TCC MISS SHELBY 82 ET**POLLED HERFORD** BW: 2.7 WW:45 YW: 73 M: 36

- A very complete and smooth made, elegantly designed Miles McKee daughter with a bright future ahead of her. Female is scurred but will show as a Polled Hereford.
- Multiple full sisters have had loads of success in the past couple years. SULL Diana 4069 was the 2015 and 2016 NWSS Champion Horned Female. SULL Diana 5130 was Reserve Supreme at the 2016 Illinois State Fair for the Collins Family.
- Her dam TCC MS Diana 01 needs no introduction, she was a former National Champion herself that stems from a long line of National Champions. Her dam TCC MS Shelby 82 was a National Champion and her dam, LCC Two Timin Harley 438 was a National Champion as well. Now Diana is raising high sellers and national champions year after year. She recently sold for \$150,000 on our Hereford dispersal to Beckman Herefords in 2016.





23 C 4212 BLACK HAWK LADY 7070 ET

1.11.17 Heifer LE 7070 Polled Reg. # 43791043
 C BLACK HAWK DOWN ET WLB WINCHESTER POWERBALL 27A
 BR BAILEE 1066 ET
 C 95T LADY TRUST 4212 ET NJW 73S M326 TRUST 100W ET
 RPH MAIDEN 95T

POLLED HERFORD BW: 2.2 WW:58 YW: 91 M: 32

- This is the first calf crop sired by the two-time Fort Worth Champion, Blackhawk Down. Her dam 4212 is a full sister to Colyer's Wildcat bull who is producing some tremendous calves around the country. We like the look and profile of this female. She is perfect from the side with lots of body depth and look. Her extra length of neck and pigment make her one of the standouts.



C BLACK HAWK DOWN ET
 Two time Fort Worth Champion.
 Sire of Lots 23 & 24.



24 C COTTON 7247 ET

2.4.17 Heifer LE 7247 Polled Reg. # 43819450
 C BLACK HAWK DOWN ET WLB WINCHESTER POWERBALL 27A
 BR BAILEE 1066 ET
 C COTTON CANDY 3003 NJW 98S R117 RIBEYE 88X ET
 HHR PAY IN GOLD 1008X ET

POLLED HERFORD BW: 2.8 WW:61 YW: 92 M: 35

- This is a good looking moderate sized female that could be a great jackpot female as a bred next spring. She has a great hip and hind leg with a super neck set. You can't make one much better. Her dam is also a full sister to Eye Candy.



25 C BAR1 COPPER LADY 7294

2.20.17 Heifer LE 7294 Horned Reg. # 43819523
 BR CSF COPPER ET DM BR SOONER
 BR GABRIELLE 5082
 C R111 UNTAPPED LADY 3112 ET TH 89T 743 UNTAPPED 425X ET
 S LADY ADVANCE 176L R111 ET

HORNED HERFORD BW: 4.3 WW:68 YW: 109 M: 23

- One of the more interesting females in the sale that has the tools to be as good as any when it's all said and done. She is great fronted and very good in her lines. She has a perfect hip and hind leg. All this female needs is a little time and the sky is the limit. Her sire Copper is one of the breeds best female producers and on the bottom side she has two of the most famous cows with R111 and 89T.

26**C SULL HARLEY WHO 7243**

2.3.17 Heifer LE 7243 Polled Reg. # 43819446

ECR WHO MAKER 210 ET

DKF RO CASH FLOW 0245 ET
RV GOLDEN LADY 5064

SULL TCC MS HARLEY 322 ET

H EXCEL 8051 ET
LCC TWO TIMIN 438 ET**POLLED HERFORD**

BW: 5.2 WW: 58 YW: 93 M: 26

- This one will make your eyes get wide when you see her. There is so much to say about this female. To start let's talk about her incredible structure, then her unique ultra femininity. She is also one of the biggest ribbed and deepest bodied Herefords that has come through Sullivan Farms.
- Her dam SULL TCC Harley 322, is a direct daughter of LCC Two Timin Harley 438 and was the 2014 NWSS Champion Polled Female in the Junior Show. She sold through our 2016 Hereford dispersal to Colyer Herefords and boy do they have a future donor after seeing her first calf, Lot 26.

**27****C SULL CANDYMAKER 7140**

1.17.17 Heifer LE 7140 Horned Reg. # 43791109

ECR WHO MAKER 210 ET

DKF RO CASH FLOW 0245 ET
RV GOLDEN LADY 5064

C EYE CANDY 2079

NJW 98S R117 RIBEYE 88X ET
HHR PAY IN GOLD 1008X ET**HORNED HERFORD**

BW: 1.9 WW: 56 YW: 81 M: 34

- Here is a tremendous breeding piece that is very hard to part with. This female is a big ribbed, high-quality individual with a pedigree that is hard to match. Both of her parents are national champions. Her mother Eye Candy is the 2013 National Champion Polled Female and her sire ECR Who Maker was the 2014 National Champion Bull. The genetic power that this one brings can take you to the next level.

**28****C SULL SHELBY TIME 7296 ET**

2.21.17 Heifer LE 7296 Horned Reg. # 43822753

CRR ABOUT TIME 743

THM DURANGO 4037
CRR D03 CASSIE 206

TCC MISS SHELBY 82 ET

ANKONIAN MIDAS 72
LCC TWO TIMIN 438 ET**HORNED HERFORD**

BW: 3.4 WW: 50 YW: 83 M: 24

- This dark red heifer is absolutely phenotypically flawless. Still a little green and a tic immature but this one has all the pieces and a pedigree to back it up.
- Full sib to TCC MS Diana 01.
- Her dam TCC MS Shelby 82 is the dam of TCC MS Diana and is a direct daughter of the now deceased breed legend LCC Two Timin Harley 438. Shelby 82 was a former National Champion in 2010.



Chianina & Maintainer



JSUL WHO DAT SULTRY 6215D
Reserve Supreme Champion Heifer, 2017 Indiana State Fair
Congratulations to the Main Family



KS Erica 36T
Grand Champion Female, Kansas City, NAILE, NWSS.
One of the most dominate females in the breed. Daughters selling.



JSUL Red Ginger 3241
Reserve Champion Female, 2014 NAILE Open Show



SSUL WHO DAT DARLING
Supreme Champion Female, 2015 Iowa State Fair, AkSarBen



JSUL Who Dat 1602Y
Supreme Champion Female,
2012 NAILE & American Royal

29

JSUL WHO DAT SULTRY 7186E ET

2.21.17 Heifer LE 7186E Horned Reg. # 389436

ASHW WHO DA MAN WHO MADE WHO 411F 1CM
 ASHW CA X MA X SM 55
 JSUL SULTRY 6640 BHCS HEAT SEEKER 23
 JSUL MA X AN 6651

CHIANINA 13.08% BW: 2.7 WW:33 YW: 43 M: 16

- Lot 29 will be one of those females everyone will be looking at on sale day. This dark red female has show heifer deluxe and cash cow written all over her. We are excited to see what show ring success she has and what she will produce for her new owner.

-Where do we start on this cow family and other Who Da Man x JSUL Sultry 6640 heifers? First how about we start with the most recent, Reserve Grand Champion Female at the Indiana State Fair for Clayton Main, the 2017 National Champion Chianina Female, the 2014 Illinois State Fair Supreme Female and the 2015 Iowa State Fair Supreme Female. Then let's talk about what the cows are doing; producing multiple high selling steers. At the 2017 National Junior Chianina Heifer Show they produced the Grand, Reserve, Fourth and Fifth Overall Heifers.



30

JSUL WHO DAT SULTRY 7282E ET

4.7.17 Heifer LE 7282E Polled Reg. # 389425

ASHW WHO DA MAN WHO MADE WHO 411F 1CM
 ASHW CA X MA X SM 55
 JSUL SULTRY 6640 BHCS HEAT SEEKER 23
 JSUL MA X AN 6651

CHIANINA 13.08% BW: 1.9 WW:37 YW: 44 M: 18

- An elite show heifer with the killer Who Da Man pizzazz. This dark red female, like her sister Lot 29, will be a real eye catcher come sale day. If you are looking for elite genetics and a big time show heifer look hard at this one.

-Where do we start on this cow family and other Who Da Man x JSUL Sultry 6640 heifers? First how about we start with the most recent, Reserve Grand Champion Female at the Indiana State Fair for Clayton Main, the 2017 National Champion Chianina Female, the 2014 Illinois State Fair Supreme Female and the 2015 Iowa State Fair Supreme Female. Then let's talk about what the cows are doing; producing multiple high selling steers. At the 2017 National Junior Chianina Heifer Show they produced the Grand, Reserve, Fourth and Fifth Overall Heifers.



31

SUL MISS SULTRY 7396E ET

4.11.17 Heifer LE 7396E Polled Reg. # 389438

ASHW WHO DA MAN WHO MADE WHO 411F 1CM
 ASHW CA X MA X SM 55
 JSUL SULTRY 6640 BHCS HEAT SEEKER 23
 JSUL MA X AN 6651

CHIANINA 13.08% BW: 2.4 WW:37 YW: 44 M: 18

- Lot 31 may be the most phenotypically flawless of all the Who Da Man sisters. She is super smooth and has the extra depth of the body.

-Where do we start on this cow family and other Who Da Man x JSUL Sultry 6640 heifers? First how about we start with the most recent, Reserve Grand Champion Female at the Indiana State Fair for Clayton Main, the 2017 National Champion Chianina Female, the 2014 Illinois State Fair Supreme Female and the 2015 Iowa State Fair Supreme Female. Then let's talk about what the cows are doing; producing multiple high selling steers. At the 2017 National Junior Chianina Heifer Show they produced the Grand, Reserve, Fourth and Fifth Overall Heifers.





32

JSUL SULTRY 7180E ET

3.11.17 Heifer LE 7180E Horned Reg. # 389424
 ASHW WHO DA MAN WHO MADE WHO 411F 1CM
 JSUL SULTRY 6640 BHCS HEAT SEEKER 23
 JSUL MA X AN 6651

CHIANINA 13.08% BW: 2.6 WW:37 YW: 44 M: 18

- The greenest of the Who Da Man daughters but she has all the parts and structure with that killer Who Da Man look. Give this one sometime and she won't disappoint, or just put her in the donor pen and watch her produce.
- Where do we start on this cow family and other Who Da Man x JSUL Sultry 6640 heifers? First how about we start with the most recent, Reserve Grand Champion Female at the Indiana State Fair for Clayton Main, the 2017 National Champion Chianina Female, the 2014 Illinois State Fair Supreme Female and the 2015 Iowa State Fair Supreme Female. Then let's talk about what the cows are doing; producing multiple high selling steers. At the 2017 National Junior Chianina Heifer Show they produced the Grand, Reserve, Fourth and Fifth Overall Heifers.



33

JSUL GINGER TOO 7183E ET

2.7.17 Heifer LE 7183E Polled Reg. # 389509
 GOET I-80 COWAN'S ALI 4M
 SSUL WHO DAT GINGER BPF MILEY 80T
 ASHW WHO DA MAN
 JSUL SULTRY 6640

MAINTEINER / CHIANINA 8.88% BW: 1.6 WW:38 YW: 46 M: 21

- A unique combination of power, structural correctness, and style.
- Looking for a dual registered big time show heifer? Here she is! She is one of those heifers that can win early and still be in the hunt as a big bred.
- Her dam JSUL Who Dat Ginger 3241a was the 2014 Reserve National Champion. She stems from the Who Da Man x SSUL Sultry 6640 mating that has dominated the show ring and is producing multiple high sellers and champions across the country.
- Dual Registered Mainetainer / Chianina 8.88%



34

JSUL GINGER 7512E ET

4.23.17 Heifer LE 7512E Horned Reg. # 389440
 GOET I-80 COWAN'S ALI 4M
 SSUL WHO DAT GINGER BPF MILEY 80T
 ASHW WHO DA MAN
 JSUL SULTRY 6640

MAINTEINER / CHIANINA 8.88% BW: 0.4 WW:38 YW: 46 M: 21

- The youngest of the three sisters in the offering but definitely no slouch. She is stout, square built, big bodied, and cocky looking. She will be fun to show throughout the year and is dual registered!
- Her dam JSUL Who Dat Ginger 3241a was the 2014 Reserve National Champion. She stems from the Who Da Man x SSUL Sultry 6640 mating that has dominated the show ring and is producing multiple high sellers and champions across the country.
- Dual Registered MaineTainer/8.88% Chianina.

35

JSUL MISS GINGER 7174E ET

2.23.17 Heifer LE 7174E Horned Reg. # 389426

GOET I-80
 SSUL WHO DAT GINGER

COWAN'S ALI 4M
 BPF MILEY 80T
 ASHW WHO DA MAN
 JSUL SULTRY 6640

MAINETAINER / CHIANINA 8.88% BW: 0.7 WW:38 YW: 46 M: 21

- An extremely complete dual registered show heifer here. This heifer is built for the long haul, not only in the show ring but as a donor as well.
- Her dam JSUL Who Dat Ginger 3241a was the 2014 Reserve National Champion. She stems from the Who Da Man x SSUL Sultry 6640 mating that has dominated the show ring and is producing multiple high sellers and champions across the country.
- Dual Registered MaineTainer/8.88% Chianina.



36

JSUL MISS REVOLUTION 7519E ET

4.13.17 Heifer LE 7519E Polled Reg. # 389441

JSUL REVOLUTION 4383 ET
 SSUL 6899

SULL RIGHT DIRECTION ET
 JSUL JALYNN 344
 ASHW WHO DA MAN
 SSUL 232

CHIANINA 12.94% BW: 2.2 WW:45 YW: 59 M: 20

- A very elegantly designed high percent Chianina show heifer that just keeps getting better every day. Females like Lot 36 will make you money as a donor long after their show career is over. Progeny bred to any bull will produce high percent Chianina cattle as well.
- Her dam SSUL 6899 is a big-time Who Da Man donor we at Sullivan Farms that has produced multiple champion show steers and show heifers. We all know how these Who Da Man cows have been doing across the country.



37

JSUL DARLING TOO 7210E ET

3.14.17 Heifer LE 7210E Polled Reg. # 389437

COLBURN PRIMO 5153
 SSUL WHO DAT DARLING

DAMERON FIRST CLASS
 SILVEIRAS SARAS DREAM 1339
 ASHW WHO DA MAN
 JSUL SULTRY 6640

CHIANINA 6.54% BW: 1.3 WW:50 YW: 75 M: 20

- Lot 37 is our pick for this set of Chianina heifers to hit the gate running. She will be a handful from her first show to her very last as a big bred.
- She is a super sound with that killer look, power and body in an easy fleshing package.
- Her Dam JSUL Who Dat Darling was Supreme Champion at the 2015 Iowa State Fair and 2015 AkSarBen. She comes from the dominate Who Da Man x SSUL Sultry 6640 mating that has generated multiple state fair champions and donor cows that are now producing champions across the country.
- Full sister recently brought \$90,000 on the 2017 Schaeffer/Tice sale.





38

JSUL WHO DAT SHELLY 7181E ET

2.16.17 Heifer LE 7181E Polled Reg. # 389435

COLBURN PRIMO

DAMERON FIRST CLASS
SILVEIRAS SARAS DREAM 1339

JSUL WHO DAT 1602

ASHW WHO DA MAN
JSUL DREAM MAKER HS46

CHIANINA 6.54%

BW: 1.1 WW: 58 YW: 76 M: 28

- A highlight in this year's strong deep set of Chianina cattle. JSUL Who Dat Shelly 7181e is definitely one of our top picks out of the entire sale.
- She has been a standout since day one with her perfect structure and extra style in a huge bodied, powerful package.
- Oh, and did you study her pedigree? Colburn Primo has created a lot of buzz around the country with his first set of calves on the ground. Her dam, JSUL Who Dat 1602y is one of the most dominate NAILE and American Royal Supreme Females to date. This might be her best mating yet.



39

JSUL ERICA'S STYLE 7101E ET

2.20.17 Heifer LE 7101E Polled Reg. # 480462

SILVEIRAS STYLE 9303

GAMLES HOT ROD
SILVEIRAS ELBA 2520

KS ERICA 36T

SLC SOONER 101M
WCC ERICA 36R

MAINETAINER

BW: 1 WW: 48 YW: 72 M: 18

- One of the most flawless show heifers of the entire sale. She is so extended and feminine from end to end and has the added depth of body and structural correctness. She will be a fun one to show all year. She also qualifies for the new Maine-Angus Division at Junior Nationals.
- Her dam KS Erica 36t was a dominate purebred Maine that was Reserve at Junior Nationals and took the Triple Crown, winning American Royal, NAILE, and NWSS.
- Classifies as Maine-Angus at the National Junior Heifer show.



40

JSUL ERICA'S TYPE ET

3.4.17 Heifer LE 7194E Polled Reg. # 480464

SILVEIRAS STYLE 9303

GAMLES HOT ROD
SILVEIRAS ELBA 2520

KS ERICA 36T

SLC SOONER 101M
WCC ERICA 36R

MAINETAINER

BW: 1 WW: 48 YW: 72 M: 18

- An extra fancy Maine-Angus show heifer with that maternal look and body that fits today's trends.
- Her dam KS Erica 36t was a dominate purebred Maine that was Reserve at Junior Nationals and took the Triple Crown, winning American Royal, NAILE, and NWSS.
- Classifies as Maine-Angus at the National Junior Heifer show.

41

JSUL WHO'S STYLE 7521E ET

4.23.17 Heifer LE 7521E Polled Reg. # 389449

SILVEIRAS STYLE 9303

JSUL WHO'S TAMALE 4305

GAMLES HOT ROD
SILVEIRAS ELBA 2520
ASHW WHO DA MAN
SUL TAMALE

CHIANINA 8.9%

BW: 0.8 WW:41 YW: 69 M: 19

-JSUL Who's Stylin is a uniquely bred Silveiras Style x Who Da Man female. This mating has made a huge splash in the 2017 show season thus far. Producing the Grand Champion, Reserve Grand Champion, and 4th Overall Heifers at the 2017 National Junior Chianina Show along with the 2017 Supreme Female at the Ohio State Fair. All were sired by Silveiras Style and out of Who Da Man Cows.

- Her dam, JSUL Who's Tamale 4305b, is a young new elite Who Da Man donor at Sullivan Farms. We will be looking forward to a lot more progeny to come.



42

JSUL WHO DAT REBA 6321D ET

2.11.16 Bred Heifer LE 6321D Polled Reg. # 389444

ASHW WHO DA MAN

JSUL 7253

WHO MADE WHO 411F 1CM
ASHW CA X MA X SM 55
BHCS HEAT SEEKER 23
JSUL MA X AN 6651

CHIANINA 13.08%

BW: 2.9 WW:36 YW: 44 M: 18

-Bred to Silveiras Style 9303; due February 9, 2018.

- Who Da Man genetics here. Proven genetics like these are hard to find. If you haven't heard about what these Who Da Man cows have done across the country you may want to ask around. Four out of five heifers at the 2017 Chianina Junior Nationals were all out of Who Da Man cows. Not only are they raising elite show heifers but they are also raising elite show steers and sale toppers. They might not always look like front pasture cows, but trust me they work.

- Keep in mind she is 13.08% Chianina.



43

JSUL WHO'S SASSY 6426D ET

1.23.16 Bred Heifer LE 6426D Polled Reg. # 389445

ASHW WHO DA MAN

JSUL 7253

WHO MADE WHO 411F 1CM
ASHW CA X MA X SM 55
BHCS HEAT SEEKER 23
JSUL MA X AN 6651

CHIANINA 13.08%

BW: 3.3 WW:36 YW: 44 M: 18

-Bred to Silveiras Style 9303; due January 20, 2018.

- Big-time breeding piece that will raise steers or show heifers. You can't put a value on genetics like these.

- Proven genetics like these are hard to find. If you haven't heard about what these Who Da Man cows have done across the country you may want to ask around. Four out of five heifers at the 2017 Chianina Junior Nationals were all out of Who Da Man cows. Not only are they raising elite show heifers but they are also raising elite show steers and sale toppers. They might not always look like front pasture cows, but trust me they work.

- Keep in mind she is 13.08% Chianina.





44

JSUL DAT SULTRY 6977D ET

3.10.16 Bred Heifer LE 6977D Polled Reg. # 389448

ASHW WHO DA MAN WHO MADE WHO 411F 1CM
 ASHW CA X MA X SM 55
 JSUL SULTRY 6640 BHCS HEAT SEEKER 23
 JSUL MA X AN 6651

- CHIANINA 13.08%** BW: 3 WW:37 YW: 44 M: 18
- Bred to Silveiras Style 9303; due February 17, 2018.
 - What a breeding piece opportunity. This is our pick of the Who Da Man breds. We're curious to see which one is your top pick.
 - Already bred to Silveiras Style, the calf will be a full sib in blood to the Grand Champion, Reserve Champion, and the 4th and 5th Overall females at the 2017 NJHS.
 - Full sibs to Lot 44 have dominated the show ring, winning Supreme at the Iowa State Fair and Illinois State Fair, Reserve Grand Champion at the Indiana State Fair, Supreme at NAILE and the American Royal, three National Champions and one Reserve National Champion Chianina at the NAILE. Not only do they win, they breed it into their progeny. We could go on and on but trust me if you are serious about raising good cattle you will want these genetics in your herd.
 - 13.08% Chianina.



45

JSUL WHO DAT SULTRY 6581D ET

2.7.16 Bred Heifer LE 6581D Polled Reg. # 389447

ASHW WHO DA MAN WHO MADE WHO 411F 1CM
 ASHW CA X MA X SM 55
 JSUL SULTRY 6640 BHCS HEAT SEEKER 23
 JSUL MA X AN 6651

- CHIANINA 13.08%** BW: 2.5 WW:37 YW: 44 M: 18
- Bred to SULL Brilliance 9515 (Angus); due February 28, 2018.
 - Unique look and eye appeal with the balance and proven pedigree. Buy these genetics with confidence in what they can generate into their progeny.
 - Full sibs to Lot 45 have dominated the show ring, winning Supreme at the Iowa State Fair and Illinois State Fair, Reserve Grand Champion at the Indiana State Fair, Supreme at NAILE and the American Royal, three National Champions and one Reserve National Champion Chianina at the NAILE. Not only do they win, they breed it into their progeny. We could go on and on but trust me if you are serious about raising good cattle you will want these genetics in your herd.
 - 13.08% Chianina.



46

SULL SASSY SULTRY 6436D ET

2.15.16 Bred Heifer LE 6436D Polled Reg. # 389446

ASHW WHO DA MAN WHO MADE WHO 411F 1CM
 ASHW CA X MA X SM 55
 JSUL SULTRY 6640 BHCS HEAT SEEKER 23
 JSUL MA X AN 6651

- CHIANINA 13.08%** BW: 1.7 WW:37 YW: 44 M: 18
- Bred to Silveiras Style 9303; due February 1, 2018.
 - The last of our bred heifer Who Da Man genetics to sell in this year's Maternal Legend Sale. This is a mating that year after year we know will produce a top end show heifer or future donor. Breeders across the country can testify to how valuable these cows are.
 - Full sibs to Lot 46 have dominated the show ring, winning Supreme at the Iowa State Fair and Illinois State Fair, Reserve Grand Champion at the Indiana State Fair, Supreme at NAILE and the American Royal, three National Champions and one Reserve National Champion Chianina at the NAILE. Not only do they win, they breed it into their progeny. We could go on and on but trust me if you are serious about raising good cattle you will want these genetics in your herd.
 - 13.08% Chianina.

47

JPV EMMA'S YOUR WELCOME

9.14.15 Bred Heifer LE JPV98C Polled Reg. # 481006

GAMBLES SAFE BET

NORTHRN IMPROVEMENT 4480 GF

GAMBLES LADY 961

JPV YOUR WELCOME

GOET 180

BBR WELCOME 990W

MAINETAINDER

BW: 2.5 WW:37 YW: 44 M: 18

- Bred to SULL Brilliance 9515 (angus); due February 23, 2018
- A maternally bred female with some added power and look.
- Her sire Gambles Safe Bet is a Northern Improvement son and his dam is a full sister to Hot Rod. Gambles Safe Bet is a calving ease sire with a cool neck, plenty of muscle shape and incredible body shape



Chi/Maine Winners



JSUL Erica's Money 6480D

Reserve Champion Maine-Anjou Female, 2017 National Junio Maine-Anjou Show
KS Erica 36T Daughter, Congratulations to Macie McCollum



SIEK Made You Look

Grand Champion Maine-Anjou Female,
Illinois State Fair Open Show
Congratulations to Ashley Moore

JSUL Who Dat Who Dat 5464C

Another major show champion from the
Who Da Man x 6640 mating.
Grand Champion Chianina, 2017 Fort Worth
Grand Champion Chianina, 2017 NAILE Open



Simmental



Hara's SULL Princess 219

Supreme Champion Female, 2017 Indiana State Fair
 Congratulations to Bailey Tomson
 Full sisters sell as Lot 48 & 49.



M2C/PHF Infinity 387A

Grand Champion Female, 2013 Simmental Breeders Sweepstakes
 Lead purebred Simmental donor at Sullivan Farms



Hara's Princess 6352D

Supreme Champion Female, 2016 Badger Kick-Off Classic
 Full sisters sell as Lot 48 & 49.



J6 RA Bada Bing 1602B

Grand Champion Female, 2015 American Royal
 Grand Champion Female, 2015 NAILE
 Full sib to Lot 50. Maternal Sib to Lot 51

JBSF Proud Mary

Grand Champion Female, 2016 AJSA National Classic
 Supreme Champion Female, 2016 Iowa State Fair
 Grand Champion Female, 2016 NAILE Open Show
 Grand Champion Female, 2016 NAILE Junior Show



48**HARA`S SULL PRINCESS 02**

2.9.17 Heifer LE 7502E Polled Reg. # 3285302

MR HOC BROKER

SVF STEEL FORCE S701
JM BF H25

HARAS HAIRIETTA CLONE H4W

WHO MADE WHO 411F
ANGUS**50% FOUNDATION SIMMENTAL**

CE:0.3 BW: 2.7 WW:49.8 YW: 69.4 M: 14.3 API:64.5 TI: 49.6

- Every year we look forward to our stop at Mark and Jeff Hara's to look at their calf crop. Lot 48 might be the best Broker/Hairietta heifer that we have ever had our hands on. I know that is saying a lot but this one is a beast in a sound package with that killer look you can expect from this mating.

- Full sibs have dominated year after year. To name a few; the Reserve Female at NJSHS for the Walker Family, the Hartman Cattle Company \$16,000 high seller, and the many-time champion for the Udell Family, the 2014 Schaeffer/Tice high seller and the many-time champion for the Skiles Family, 2014 Indiana Hoosiers Beef Congress Supreme Female for the Main Family, 2015 Reserve Female at the Illinois State Fair and most recent the 2017 Supreme Female at the Indiana State Fair for the Thompson Family. This pedigree is not only consistent but dominate in the show ring.

**49****HARA`S SULL PRINCESS 03**

3.26.17 Heifer LE 7503E Polled Reg. # 3285303

MR HOC BROKER

SVF STEEL FORCE S701
JM BF H25

HARAS HAIRIETTA CLONE H4W

WHO MADE WHO 411F
ANGUS**50% FOUNDATION SIMMENTAL**

CE:0.3 BW: 2.7 WW:49.8 YW: 69.4 M: 14.3 API:64.5 TI: 49.6

- An ultra-feminine, smooth, sound, Broker/Hairietta heifer that reminds me of last year's full sister that went on to on to be Supreme at the 2017 Indiana State Fair for Bailey Tomson.

- Full sibs have dominated year after year. To name a few; the Reserve Female at NJSHS for the Walker Family, the Hartman Cattle Company \$16,000 high seller, and the many-time champion for the Udell Family, the 2014 Schaeffer/Tice high seller and the many-time champion for the Skiles Family, 2014 Indiana Hoosiers Beef Congress Supreme Female for the Main Family, 2015 Reserve Female at the Illinois State Fair and most recent the 2017 Supreme Female at the Indiana State Fair for the Thompson Family. This pedigree is not only consistent but dominate in the show ring.

**50****JSUL EVENING 7391E**

2.22.17 Heifer LE 7391E Polled Reg. # Pending

MR HOC BROKER

SVF STEEL FORCE S701
JM BF H25

GF EVENING TINGE 1X

LEACHMAN SAUGAHATCHEE 3000C
JL EVENING TINGE 8001**50% FOUNDATION SIMMENTAL**

CE:3.6 BW: 2.5 WW:59 YW: 93.45 M: 17.75 API:66.6 TI: 51.1

- Take a look at this maternal powerhouse. She is extremely explosive in her body, rib shape and exceptional in terms of her structural correctness. She will be a force right off the bat and is built for the long haul.

- Full sister to the Effling Family's 2015 NAILE and American Royal Champion Percentage Simmental Female.



**51****J6-JSUL TINGE 7313E**

5.17 Heifer LE 7313E Polled Reg. # 3284990

WS PILGRIM H182U

CNS DREAM ON L186
WS MARLA 276M

GF EVENING TINGE 1X

LEACHMAN SAUGAHATCHEE 3000C
JL EVENING TINGE 8001**50% FOUNDATION SIMMENTAL**

CE:10.9 BW: 1.5 WW:56.4 YW: 81.2 M: 22.9 API:116.7 TI: 65.7

- One of the youngest heifers in the sale but definitely one of the biggest bodied, most complete, females in the offering. Study this heifer's maternal design and her balanced EPD profile. J6 JSUL Tinge 7313e will be one to see some banners before the end of her show career.

-Maternal Sister to the 2015 American Royal and NAILE Champion Percent Simmental Female

- Her dam GF Evening Tinge 1x is a powerhouse Saugahatchee donor at J6 Farms, and was a Calf Champion at the American Royal and NAILE.

**52****JSUL SULTRY 7515E**

4.9.17 Heifer LE 7515E Polled Reg. # 3285910

MR HOC BROKER

SVF STEEL FORCE S701
JM BF H25

JSUL SULTRY 6640

BHCS HEAT SEEKER 23G

50% FOUNDATION SIMMENTAL

CE:-2.1 BW: 3.9 WW:51.9 YW: 68.5 M: 13.3 API:58.3 TI: 45.8

-A unique Percentage Simmental show heifer with a powerful pedigree to back it up. Whether you are looking to raise females or clubbies this one will get it done. We love her in terms of her structure, body, power, and fleshing ability.

- Her dam is the famous JSUL Sultry 6640 Heat Seeker cow that has produced all of the dominant Who Da Man show heifers and cows that are producing champions and high sellers all across the country.

**53****JSUL MISS PENNY 7291E**

2.23.17 Heifer LE 7291E Polled Reg. # 3285909

MR TR HAMMER 308A ET

MR NLC UPGRADE U8676
SVF/HS EXPECTING A DREAM

MISS PENNY 15B

MR HOC BROKER
15X**75% FOUNDATION SIMMENTAL**

CE:2.8 BW: 2.5 WW:69.1 YW: 105.4 M: 16.1 API:95.7 TI: 64.8

- Study the maternal design, structural integrity and added dimension and power. This heifer represents all the traits of today's trends.

- Her dam Miss Penny 15b is a new half-blood Broker that we purchased from Holtkamp Cattle Company. She had a successful show career, winning Supreme at the Nebraska AGR and Champion Commercial Heifer at the Iowa State Fair.

54**MS DONNA WHITCOMB**

03.14.16 Bred Heifer LE 19D Polled Reg. # 3285244

MR HOC BROKER

SVF STEEL FORCE S701
JM BF H25

0013

ANGUS

50% FOUNDATION SIMMENTAL

CE:0.9 BW: 3.1 WW:61.1 YW: 90.9 M: .19 API:67.6 TI: 56.1

- Bred to SULL Brilliance 9515 (Angus); due February 19, 2018.
- Ultra smooth, good looking, maternally bred female that has the overall quality and traits that it takes to become a future donor in your program.
- The MR HOC Broker female's possess maternal traits with structural correctness, eye appeal, and power. These cattle are making great breeding pieces.

**55****JSUL BROKER `S GIRL 6585D**

2.18.16 Bred Heifer LE 6585D Polled Reg. # 3286705

MR HOC BROKER

SVF STEEL FORCE S701
JM BF H25

GCC YARDLEY TOTAL RECALL X23

GCC TOTAL RECALL 806T
GCC QUINCE 419U**50% FOUNDATION SIMMENTAL**

CE:2.4 BW: 2.8 WW:63.8 YW: 94.5 M: 15.4 API:89.7 TI: 61.8

- Bred to SULL Brilliance 9515 (Angus); due March 20, 2018.
- Maternal sisters to Lot 55 have sold for \$38,000, \$18,000, and \$10,000 respectively. These full sisters were some of the most consistent matings born at Sullivan Farms in our Simmental division.
- A full sister in blood to Lot 55 was a Supreme Champion in the Open Show at the 2017 Nebraska State Fair shown by Abby Nelson.

**56****BBRS DANGER 656D**

1.23.16 Bred Heifer LE 656D Polled Reg. # 3162751

MR HOC BROKER

SVF STEEL FORCE S701
JM BF H25

DMCC REGO 29P

O C C ANCHOR 771A
DMCC PERFECT ANGEL 36E**50% FOUNDATION SIMMENTAL/MAINTEINER**

CE:1.1 BW: 3.8 WW:59.7 YW: 85.6 M: 9.8 API:69.1 TI: 52.4

- Bred to FHEN Halftime A217; due January 15, 2018. The Halftime progeny are working very well when mated back on the half blood Broker daughters to produced high end half blood Simmental Foundation show cattle with a balanced epd profile.
- Big-time donor prospect here.
- BBRS Danger 656d dam DMCC Rego 29p is a big time Anchor daughter at Blind Badger Ranch that has been a big time donor.
- The MR HOC Broker female's possess maternal traits with structural correctness, eye appeal, and power. These cattle are making great breeding pieces.
- Dual Registred Foundation Simmental /Mainetainer



Angus

PVF Blackbird 5008

Grand Champion Heifer,
2016 Atlantic National
Supreme Champion
2016 Iowa Beef Expo
Full sib to Lot 58

Congratulations to Maddy Udell



SULL HOTZ Lady Pippa 1508

Supreme Champion Heifer, 2015 Michigan Winter Classic
Maternal sib to Lot 59
Congratulations to Sterling Reichenbach



57

HARA'S SULL DIXIE SARA

3.12.17 Heifer LE 7501E Polled Reg. # Pending

COLBURN PRIMO DAMERON FIRST CLASS
SILVEIRAS SARAS DREAM 1339

CHERRY KNOLL HARA ERICA 1312 SILVEIRAS STYLE
HARA'S DIXIE ERICA 09

ANGUS BW: 2.6 WW: 46 YW: 75 M: 10

- This may be our favorite Angus heifer that we have ever sold from the Hara Brothers. Primo worked really well on this young new donor for Hara's. She has that extra look, boldness of rib with plenty of depth.
- Her dam is a Silveiras Style x Dixie Erica. She was very successfully shown during her career, winning her division at the NJHS, Champion Angus at the Pennsylvania Farm Show, and Champion Angus at the KILE.



58

SULL HOTZ BLACKBIRD 7506E

2.10.17 Heifer LE 7506E Polled Reg. # 18857456

EXG RS First Rate S903 R3 EXAR LUTTON 1831
RAFTER S BLACKCAP
PVF BLACKBIRD 1167 PVF WINDFALL SCC 9005
ALL PVF BLACKBIRD 645

ANGUS BW: 4.2 WW: 54 YW: 99 M: 16

- One of the most fundamentally sound females in the sale. SULL Hotz Blackbird 7506e is extremely bold and deep bodied with a ton of power combined into a smooth attractive profile.
- She is a full sister to PVF Black 5008, the Supreme Female Overall Breeds at the 2016 Iowa Beef Expo, shown by the Udell Family. She was also Reserve Grand Champion at the 2016 Atlantic Nationals.

59**SULL HOTZ LADY PIPPA 7504E**

2.5.17 Heifer LE 7504E Polled Reg. # 18861347

EXAR CLASSEN 1422B

CHERRY KNOLL Pippa 1111

DAMERON FIRST CLASS
EXAR PRINCESS 2006
CONNEALY FINAL SOLUTION
CHERRY KNOLL LADY 831

ANGUS

BW: 4.4 WW:65 YW: 113 M: 23

- This is one of those females that will send chills down your spine. From the first time we saw this female with Kyle Hutz we knew she was special. We have been fortunate enough to work with the Hutz family over the past few years and we both agree that this is the best one yet.
- SULL Hotz Lady Pippa walks around like she knows she is good. So cocky, smooth, sound, and deep bodied.
- Her dam Cherry Knoll Pippa 1111 is a top donor for the Hutz family and every year we go there she has the best calves. On our 2015 Maternal Legends Sale a maternal sib sold for \$36,000.

**60****SULL HAG LH BLACKCAP 1703**

2.21.17 Heifer LE 1703E Polled Reg. # 18854479

COLBURN PRIMO 5153

COPPER CREEK BLACKCAP 102

DAMERON FIRST CLASS
SILVEIRAS SARAS DREAM 1339
S A V 8180 TRAVELER 004
C C C BLACKCAP LAUREN 352

ANGUS

BW: 2.8 WW:49 YW: 80 M:13

- The Colburn Primo daughters are creating a lot of buzz around the country with his first year of calves on the ground.
- This female gives you a knockout look with the power to boot. Study her dimension, angles, and flexibility. SULL HAGLH Blackcap 1703 is a major league investment with endless potential.
- Her dam, Copper Creek Blackcap 102 is a SAV 8180 Traveler 004 daughter. She was a dominate and memorable female campaigned on the national level by Ashley Judge.

**61****Hara's SULL Dixie Erica 7505**

3.30.17 Heifer LE 7505E Polled Reg. # 18863237

PLUM CREEK PARADOX

CHERRY KNOLL ERICA 1315

GAMBLES HOT ROD
S H MISS ANNIE LU 6087
DAMERON FIRST CLASS
HARA'S DIXIE ERICA 09

ANGUS

BW: 2 WW:57 YW: 93 M: 24

- One of the most striking profiled Angus heifers to possibly sell this fall. She has show heifer written all over her.
- Her dam is a First Class daughter that stems from Hara's, Dixie Erica, a top donor at Hara Cattle Company in Ohio.



Charolais



TR PZC MS Ivory Angel 0711
One of the most popular Charolais Champion Females of all time.



SULL Impressive Stones

Grand Champion Female, 2017 NWSS Open & Junior
Grand Champion Female, 2017 NAILE Junior Show
Grand Champion Female, 2017 American Royal Open
Grand Champion Female, 2016 National Jr. Charolais Show
Congratulations to the Skiles Family



SULL Impressive Fire

Grand Grand Champion Female,
2016 Keystone Open Show
Reserve Grand Champion Female,
2016 National Jr. Charolais Show
Congratulations to Kathy Lehman



SULL Miss Impressive 0641-1

A clone to the breed leading
Thomas Ms Impressive 0641 cow



62

SULL SWEET IVORY 6138D

1.8.16 Bred Heifer LE 6138D Polled Reg. # ERF710555

FU MAN CHU MONOPOLY
W T F RUTH MEDINA

TR PZC MS IVORY ANGEL 0711 ET TR MR FIRE WATER 5792RET
THOMAS MS IMPRESSIVE0641

CHAROLAIS COMPOSITE/ CHIANINA 8.16% BW: .25 WW:41 YW:64 M: 15.5

- Bred to Goet I-80; due January 18, 2018.
- Full sister to the 2016 NJHS champion percentage Charolais female shown by Lillie Skiles.
- A female that replicates a lot of the same great traits of her incredible mother, TR PZC MS Ivory Angel 0711.
- TR PZC MS Ivory Angel 0711 is one of the most popular dominate Charolais females of all time. She was the Champion Female at NAILE and NWSS.

63**SULL IMPRESSIVE LADY 6237D**

1.10.16 Bred Heifer LE 6237D Polled Reg. # ERF710556

FU MAN CHU

MONOPOLY
W T F RUTH MEDINA
JWK IMPRESSIVE D040 ET
BCI MISS VERYLIMIT 6033P

SULL IMPRESSIVE 0641-2 CLONE

CHAROLAIS COMPOSITE/
CHIANINA 8.16% BW: 1.8 WW: 39 YW: 61 M: 7

- Bred to Goet I-80; due January 19, 2018.

- A versatile, royally bred female that will work in many different ways, whether you are looking to raise steers or breeding heifers, she can do it.

- Her dam SULL Miss Impressive 0641 without a doubt has dominated the Charolais breed over the past several years. Her progeny have not only dominated the show ring at all levels but they are generating champions back into the show ring. Whether its show steers or breeding heifers these genetics are proven and valuable.

**64****SULL IMPRESSIVE LADY 6020D**

1.1.16 Bred Heifer LE 6020D Polled Reg. #P1127029

SHF FIRE POWER 0080

TR MR FIRE WATER 5792RET
ACE MS DYNASTY 7117
JWK IMPRESSIVE D040 ET
BCI MISS VERYLIMIT 6033P

SULL IMPRESSIVE 0641-2 CLONE

CHAROLAIS BW: 65 WW: 26 YW: 50 M: 9

- Bred to MHR Nyquist (champion maintainer bull at the 2016 NAILE); Due April 2, 2018

- An easy fleshing, big bodied, and powerful Impressive 0641 daughter.

- Her dam SULL Impressive 0641 has dominated the Charolais breed for years. Not only has she dominated in the show ring but she has also been producing champions. Many steers have won multiple major fat steer shows and state fairs.

**65****SULL THATS IMPRESSIVE 6032D**

1.5.16 Bred Heifer LE 6032D Polled Reg. #EF1240925

SHF FIRE POWER 0080

TR MR FIRE WATER 5792RET
ACE MS DYNASTY 7117
JWK IMPRESSIVE D040 ET
BCI MISS VERYLIMIT 6033P

SULL IMPRESSIVE 0641-2 CLONE

CHAROLAIS BW: 65 WW: 26 YW: 50 M: 9

- Bred to Daddy's Money; due January 6, 2018.

- SULL That's Impressive 6032d is just what her name says, impressive. She is a combination of power and mobility in a feminine package. Bred to Daddy's Money could make for a quick return on your investment.

- Her dam SULL Impressive 0641 has dominated the Charolais breed for years. Not only has she dominated in the show ring but she has also been producing champions. Many steers have won multiple major fat steer shows and state fairs.



**66****JSUL WHO DAT JALYNN**

3.24.15 Cow LE 5720 Polled Reg. #380054

ASHW WHO DA MAN

SUL JAYLNN 0904X

WHO MADE WHO 411F 1CM
ASHW CA X MA X SM 55SULL RIGHT DIRECTION ET
JSUL JALYNN 344**CHIANINA 15.10%**

BW: 23 WW: 44 YW: 59 M: 21

- Bred to Colburn Primo; due December 18, 2017.
- Looking for Who Da Man genetics?? Heifers like this one don't come along very often. She is one of those future donors that don't come up for sale very often.
- The Who Da Man cows are dominating the show ring with their progeny. Four of the top five females at the Chianina NJHS were out of Who Da Man cows. They are also raising top selling steers all over the country.
- Her dam SULL Jalynn 0904 or "Steiner" was the 2011 NAILE and American Royal Supreme Champion Female.
- Never been flushed or IVF'd

67**SULL ZERO GRAVITY**

3.10.07 Cow LE 107 Polled

WNT CARNAC 88P

Ground Zero

HEAT WAVE
WENTS BLACK 46
EBB STRICTLY BUSINESS**CROSSBRED**

- Bred to MR HOC Broker; due January 8, 2018.
- SULL Zero Gravity is one of those front pasture type of donors. We have used her sparingly in our ShorthornPlus program for show heifers. Steer producers will love this cow. She looks like she can raise the steers of today's trends.
- She has been a good consistent egg producer in our IVF program, producing 110 transferrable embryos on 21 IVF cycles.

68**LJR MS X2 DREAMGIRL 2113C**

11.29.15 Cow LE 2113c Polled Reg. #475713

BBBN X2 201X

LJR MS 1245

GVC Statesman 4R ET
BOSS BEAUTY 84M

--

--

MAINTAINER

BW: 2.7 WW: 49 YW: 9 M: 20

- A moderate framed Maine-Anjou female that was in our 2016 and 2017 show string. She is an easy fleshing, big bodied, and sound structured female.
- She sells open with a bull calf at side
- Bull calf sired by SULL Brilliance 9515, black, born on 8/19/17 weighing 55 pounds. Registered as a 1/4 Maintainer. Registration # pending DNA

69**JSUL ERIN'S DREAM 1600Y ET**

3.2.11 Cow LE 1600Y Polled Reg. #387610

ASHW WHO DA MAN

JSUL DREAM MAKER HS46

WHO MADE WHO 411F 1CM
ASHW CA X MA X SM 55
BHCS HEAT SEEKER 23
JSUL MA X AN 6651**CHIANINA 13.08%**

BW: 2.8 WW: 38 YW: 48 M: 19

- Bred to Colburn Primo. Due 3.28.18
- A genetic masterpiece in her prime with donor traits written all over.
- Full sibs to Lot 46 have dominated the show ring, winning Supreme at the Iowa State Fair and Illinois State Fair, Reserve Grand Champion at the Indiana State Fair, Supreme at NAILE and the American Royal, three National Champions and one Reserve National Champion Chianina at the NAILE. Not only do they win, they breed it into their progeny. We could go on and on but trust me if you are serious about raising good cattle you will want these genetics in your herd.
- Owned by Mark Sullivan

70**SULL RED TRAVELER 2405Z E ET**

11.27.12 Cow LE 2405z Horned Reg. #4239676

SULL TRAVELER 9807 ET

HD RUBY 903

SULL GNCC ASSET ET
SULL SABLE DELIGHT ET
CF TRUMP X
NPS DESERT ROSE 004**SHORTHORN**

BW: 3.5 WW:67 YW:88 M: 23

- Bred to SULL RGLC Legacy 525; due November 19, 2017.
- An elite young donor. We decided to offer a top end young cow to you and boy is SULL Red Traveler 2405z a good one. Her outstanding progeny sell as Lots 2P - 2T
- Her dam HD Ruby 903 was a former NJHS Champion Female and a NAILE Open Show Female for the Hahn Family.
- She is another big egg producer and she is right in her prime, producing 77 transferrable or frozen embryos on 7 IVF cycles.

**71****SULL AUGUSTA PRIDE 3127-2 CL**

3.6.08 Cow LE 8235 Horned Reg. #4200733CL

WHR SONNY 8114

SS AUGUSTA PRIDE 3127

CF TRUMP X
WR4 RODEO CUMBERLAND 3R52
AF WARRIOR 195
SS AUGUSTA PRIDE 063**SHORTHORN**

BW: 3.3 WW:43 YW:49 M: 8

- Bred to Colburn Primo; due November 19, 2017
- A clone to GCC Augusta Pride 3127 that was a dominate force in the show ring for the Greenhorn Family and was a big-time producer for us here at Sullivan Farms.
- Here is your chance to own a genetic masterpiece.
- SULL Augusta Pride 3127-2 was a consistent egg producer. She was IVF'd 5 times and conventionally flushed 6 times for a total of 74 freezable or transferrable embryos.

**72****SULL BLUE RASPBERRY 2264**

4.23.12 Cow LE 2264 Polled Reg. #*xAR56136

SULL TRAVELER 9807 ET

SULL BREATHLESS P898

SULL GNCC ASSET ET
SULL SABLE DELIGHT ET
DF VEGAS 310M ET
SULL ANGUS**SHORTHORNPLUS**

BW: 3.8 WW54 YW:71 M: 17

- Bred to Colburn Promo. Due 1.6.18
- SULL Blue Raspberry was a very successful show heifer for us in the 2013 and 2014 show season. She was the Grand Champion ShorthornPlus in the Open Show at the American Royal and NAILE. She was also Reserve Grand Champion ShorthornPlus Female at the 2014 NWSS Junior Show.
- A pedigree of success and champions runs deep in SULL Blue Raspberry 2264. Her sire SULL Traveler was a former National Champion and her dam SULL Breathless was a many-time champion including Supreme at the Iowa State Fair and Iowa Beef Expo along with Champion ShorthornPlus female at NJHS.
- She has been IVF'd seven times for a total of 23 transferrable embryos.



**73****CYT MAX ROSA MISTRESS ET**

11.23.13 Cow LE 3259 Polled Reg. #**xAR60133

MONOPOLY

CYT MAX ROSA 9111 ET

HEAT WAVE
W T F RUTH MEDINA (HAZEL)
CF SOLUTION X ET
MINDEMANN MAX ROSA 310 ET**SHORTHORNPLUS**

BW: 3.1 WW:62 YW:89 M: 16

- Bred to SULL Ferrari 6597d; due January 4, 2018.
- CYT Max Rosa Mistress is one of those cows that has always done what a cow is supposed to do; lay down and have her calf, milk good, and breed back for the next calf.
- Her dam CYT Max Rosa 9111 was one of the most dominate Shorthorn show females to date. She won NAILE Open Show as a calf in 2009 and came back the next year and won the Junior and Open Show as a bred. She also won the 2010 NJHS and was Supreme at the 2010 Iowa Beef Expo.
- Never flushed or IVF'd

74**SULL RED KNIGHT MAGIC ET**

6.11.14 Cow LE 4252 Polled Reg. #**xAR62876

SULL RED KNIGHT 2030 ET

JSUL MAGIC SOPHIA 6S

CF SOLUTION X ET
K-KIM MONA LISA 10T ET
HEAT WAVE
MISS FOREPLAY**SHORTHORNPLUS/CHIANINA 12.82%** BW: 4.2 WW:52 YW:80 M: 14

- Bred to MR HOC Broker; due January 7, 2018.
- Former NWSS Reserve Champion ShorthornPlus Female in 2016 and 4th Overall ShorthornPlus at the 2016 NJHS as a Cow/Calf Pair.
- Dual registered half blood Shorthorn and 12.82% Chianina. Note: She has enough Chianina to raise a high percent Chianina regardless of what she is bred to.
- Never been IVF'd or flushed.

75**SORNSONS MISS CRIMSON**

4.3.09 Cow LE s939 Polled Reg. #**xAR48624

CRIMSON TIDE

WILD GIRL

CLONE FL HAIRY BEAR
LAKEVIEW ROBIN EJ306
WILD CARD
CROSSBRED COW**SHORTHORNPLUS**

BW: 1.3 WW:42 YW:50 M: 14

- Bred to Goet I-80; due March 5, 2018.
- A beast of a cow that has a calf that we either sell privately or on a sale every year. She has been one of our best producers in our natural calving program.
- She has been flushed one time for a total of 6 transferrable embryos.

76**BHC/JCC MS. VOLTAGE C013**

9.15.15 Cow LE C013 Reg. #3232962

SS/PRS HIGH VOLTAGE 244X

K/F BELLA IMPACT 5032

HTP/SVF DURACELL T52
KENCO MILEY COTTONTAIL
EXAR SUDDEN IMPACT 1537
PAF 7684 DATELINE E129**50% FOUNDATION SIMMENTAL** BW: -1 WW:58.6 YW:88.4 M: 20.4

- We showed this female this past summer at the NJHS in Mississippi where she took fourth overall.
- She sells open with a bull calf at side and boy what a beautiful cow she is making. She has a great udder on her and looks like you could still walk her into the show ring.
- Bull calf sired by SULL Brilliance 9515 (Angus) born on 8/1/17 weighing 69 pounds. Registered as a 1/4 Simmental. Registration # 387612

SHORTHORN EMBRYOS

77

THREE - IVF Embryos

- 1 SEXED HEIFER - SULL Red Blood x SULL Max Rosa 1145-1 (Clone)
- 2 - SULL Red Reward x SULL Max Rosa 1145-1 (Clone)

A full sib to the SULL Red Reward x CYT Max Rosa 1145 eggs recently sold through Cates Farm 2017 production sale for \$77,000. CYT Max Rosa 1145 was a past CYT high seller and full sib to the two-time NAILE Champion CYT Max Rosa 9111



CYT DSC Max Rosa 1145



SULL Red Reward daughter,
\$77,000 '17 Cates Farms Sale Topper

78

FOUR - IVF Embryos

SULL RGLC Legacy 525 x SULL Myrtle Bo 46P-3

SULL RGLC Legacy 525 is the hottest new bull in the breed and was the 2016/2017 Triple Crown Winner. SULL Myrtle Bo 46p-3 has been the most consistent producer of multiple bulls at Sullivan Farms. A full sister to these embryos, SULL Betty Bo 7110e (Lot 4a) is a top heifer in this year's sale. Myrtle Bo has produced as many champions as any Shorthorn cow in recent history.



SULL RGLC Legacy 525



SULL Myrtle Bo 46P-3

79

FOUR Sexed HEIFER - IVF Embryos

SULL RGLC Legacy 525 x SULL Rosemary 636-3

A mating of champions that runs deep here. SULL Rose Mary 636-3 was the 2007 NAILE Supreme Champion Overall Breeds as well as the 2007 National Champion and well the 2007 NJHS Champion. SULL RGLC Legacy is the 2016/2017 Triple Crown Winner. There are many full sisters to these embryos will sell on this year's Maternal Legend Sale. A 636 daughter sold for \$49,500 in the 2017 Schaeffer/Tice Sale.



SULL Rose Mary 636



SULL Red Sensation, 636 Son

80

FOUR Sexed HEIFER - IVF Embryos

SULL RGLC Legacy 525 x SULL Red Traveler 2405Z

SULL RGLC Legacy 525 is the 2016/2017 Triple Crown Winner. One of the top shorthorn heifers, SULL Traveling Legacy 7185e (Lot 2f), a full sister to these embryos, is selling in this year's sale. SULL Red Traveler 2405z has many of the top bred in this year's sale as well. Legacy cattle are proving to be exactly what we expected. Elite and popular.



SULL Red Traveler 2405Z



SULL RGLC Legacy 525

81

FOUR Sexed HEIFER - IVF Embryos

SULL Red Knight x SULL RED ROSEMARY -1 ET CL

The three-time National Champion SULL Red Knight mated with the NAILE and NWSS Champion SULL Red Rose Mary -1. The very popular 2017 Junior National Champion Purebred heifer is a SULL Red Knight x Rosemary. Turn to page 16 to learn more about this powerful cow family.



SULL Red Rosemary -1 ET CL



'17 Jr. National Champion, Full Sib to Eggs

82

FOUR Sexed HEIFER - IVF Embryos

SULL Red Knight x SULL Lucy's Crystal 3804

SULL Crystal's Lucy 3804 was the 2015 NJHS Champion Bred and Owned. She is a direct daughter of SULL Crystal's Lucy 0686, who was the 2012 NWSS and NJHS Champion Female. The SULL Red Knight progeny are producing champions after champions. Look to page 4 to see what this cow family can produce. We have many coming in our 2018 calf crop, high expectations.



SULL Lucy's Crystal



Dam of Embryos

SHORTHORN & SHORTHORNPLUS EMBRYOS



Full Sib, SULL Red Knight 2030



Full Sib Sale Features in Eyes on the Midwest Sale

83

FOUR - IVF Embryos

CF Solution x K-KIM Mona Lisa 10T

A full sib mating to the breed leading sire of champions and the three-time National Champion SULL Red Knight. The 2017 Ripberger Farms top sale feature was also a full sib to the mating selling. K-KIM Mona Lisa 10T, one of the better brood cows in the breed is now deceased.



Bolin - Sullivan Donor, Hot Commodity x Cherry 205



SULL Wild Cherry SULL Right Direction x 205

84

FOUR - IVF Embryos

2 - FREE K-KIM Hot Commodity x SULL Cherri 205-5
2 - SULL Right Direction x SULL Cherri 205-5

Both of these matings are big time proven matings. The Right Direction on SULL Cherri produced the 2013 and 2014 NJHS Champions and 2014 NAILE Open and Junior Show Champion. SULL Cherri with Free K-Kim Hot Commodity produced the top selling bred heifer at the 2016 Maternal Legends sale, selling for \$20,000.



Cherri 205 Daughter



'13 Jr National Champion, Cherri 205 Daughter

85

FOUR - Sexed HEIFER - IVF Embryos

JSF Marquis 127X x SULL Cherri 205-4

A unique pedigree of the great outcross sire JSF Marquis 127x and the dam of multiple champions and a champion herself SULL Cherri 205-4. This is a new mating here at Sullivan Farms.



Reserve NWSS - Full Sib



Dam of Lot 86

86

FOUR Sexed HEIFER - IVF Embryos

SULL Revolution x SULL Breathless 8411 ET (P898 CLONE)

A full sib mating to SULL Breathless Revolution 6225d that was Champion ShorthornPlus at the 2017 Iowa State Fair Open Show and was Reserve at the 2017 NWSS JR ShorthornPlus Show. These embryos will be ShorthornPlus and 6.4% Chianina. The SULL Revolution progeny have the look, soundness and stoutness to set themselves apart. Look to page 43 for more information on this cow family.



SULL Pure Hottie 7033



NAILE Champion AOB - Maternal Sib

87

FOUR Sexed HEIFER - IVF Embryos

SULL Revolution x SULL Pure Hottie 7033 ET

Dual registered mating that will make 6.4% Chianina and a ShorthornPlus. SULL Pure Hottie 7033 was Champion ShorthornPlus at the NWSS as a calf and went on to be selected Reserve at the NJHS and Champion ShorthornPlus at NAILE. This is also a full sib in blood to the Lot 86 proven champion mating. Look to page 43 for more information on this cow family.



Colburn Primo



SULL Lucy's Crystal 3804

88

FOUR Sexed HEIFER - IVF Embryos

Colburn Primo x SULL Lucy's Crystal 3804 ET

A new mating that should be a perfect fit on the 2015 NJHS Champion Bred and Owned Female, SULL Crystal's Lucy 3804. Colburn Primo's extra power and SULL Crystal's Lucy 3804's mobility and extra smoothness should click well here. Expect blue roan, high dollar heifer calves.

HEREFORD & CHAROLAIS EMBRYOS

89

FOUR - IVF Embryos

ECR Who Maker x LCC Two Timin "Harley" 438

LCC Two Timin "Harley" 438 has raised multiple National Champions. She is the mother of TCC MS Shelby 82 and SULL TCC Harley 4267 who was Reserve Champion at the 2014 NJHS Polled Hereford Show. Harley is also the grandmother of TCC MS Diana 01.



TCC Two Timin' "Harley" 438



Stand Out Who Maker Calf

90

FOUR Sexed HEIFER - IVF Embryos

CRR About Time x TCC Miss Shelby 82T-1 (Clone)

National Champions run deep in this mating here. TCC MS Shelby is a direct daughter of LCC Two Timing "Harley" 438. Both were National Champions. These embryos are full sibs to TCC MS Diana 01!!



TCC Miss Shelby 82T



TCC MS Diana 01, Shelby daughter

91

FOUR Sexed HEIFER - IVF Embryos

C Miles McKee x TCC Miss Shelby 82T-1 (Clone)

National Champion pedigree!! Miles McKee won on the hill at the 2014 NWSS. Full sib to these embryos SULL Shelby 5478c shown by the Pugh Family was fourth overall at the 2016 Ohio State Fair, a Top Ten finish at the Ohio Beef Expo, and Supreme Champion at the Ohio AGR.



TCC MS Diana 01, Shelby daughter



C Miles McKee

92

FOUR - IVF Embryos

CRR 719 Catapult x TCC Miss Shelby 82T

TCC MS Shelby, the direct daughter of "Harley" 438, is a former National Champion and her first calf TCC MS Diana 01 was a National Champion as well. This is a newer mating at Sullivan Farms and Lot 15 is a full sib to these embryos.



TCC MS Diana 01, Shelby daughter



Shelby Daughter Selling as Lot 28

93

FOUR - IVF Embryos

CRR 719 Catapult x SULL TCC Harley 4267

A new mating that should be a perfect fit for SULL TCC Harley 4267 who was Reserve Champion at the 2014 NJHS Polled Hereford Show. Harley 4267 is a Miles McKee x Harley 438 and may be her best daughter yet.



TCC Two Timin' "Harley" 438



SULL TCC Harley 4267

94

THREE - IVF Embryos

ECR Who Maker x SULL TCC Harley 4267

Another new mating on SULL TCC Harley 4267 who was Reserve Champion at the 2014 NJHS Polled Hereford Show. ECR Who Maker has sired multiple high sellers and champions through our Maternal Legends Sale. Harley 4267 is a Miles McKee x Harley 438 and may be her best daughter yet.



SULL TCC Harley 4267



WCR Who Maker

95a

FOUR Sexed HEIFER - IVF Embryos

M&M Outsider 4003 x SULL Miss Impressive 0641(Clone)

95b

FOUR Sexed HEIFER - IVF Embryos

M&M Outsider 4003 x SULL Miss Impressive 0641(Clone)

In just one year M&M Outsider has become one of the most talked about sires in the breed, producing a \$88,000, \$60,000 and a \$40,000 high seller in the fall of 2016. This could be a grand slam being mated with one of the most prolific cows in the breed.



TR PZC MS Ivory Angel 0711, 0641 daughter



Many time champion, 0641 daughter

96

FOUR Sexed HEIFER - IVF Embryos

TR MR Firewater x SULL Miss Impressive 0641

One of the most consistent and prolific mating of the Charolais breed ever produced. The number of champions this mating has produced is incredible. TR PZC MS Ivory Angel 0711, and SULL Impressive 4272 are just a couple of the many champions. The daughters go on to produce big time cows.



NAILE Champion, 0641 Daughter



SULL Miss Impressive 0641

SIMMENTAL & CHI/MAINE EMBRYOS



Fort Worth & NAILE Champion
6640 daughter



One of the best of all time,
6640 daughter



\$30,000 Full Sib



GCC Yardley Total Recall X23



Fortune 393D



Miss Penny 15B Daughter
Sells as Lot 53



Full Sib Sells as Lot 53



MR TR Hammer 308A



Full Sib Sells as Lot 35



SSUL Who Dat Ginger



SSUL Who Dat Ginger



Res NWSS - Revolution Daughter



Supreme Champion & Dam of Eggs
Page 78 ~ OCTOBER 16th



Dam of JSUL Blue Magic 2669

97

FOUR Sexed HEIFER - IVF Embryos

Profit x JSUL SULTRY 6640

A new half blood Simmental mating. Profit has been hot and consistent as any Simmental bull out there. He is the \$400,000 record selling bull at the 2015 Hartman Bull Sale. SSUL Sultry 6640 is the mother of all the Who Da Man daughters that have dominated the NAILE, National Chianina Show, including 2 Supreme NAILE Champions. Progeny will be 1/2 Foundation Simmentals.

98

FOUR Sexed HEIFER - IVF Embryos

MR HOC Broker x GCC Yardley Total Recall X23

A mating in the past few years that has been as consistent as any. This mating has produced a \$30,000 heifer on the 2014 Maternal Legends Sale that went on to be a many time champion, a \$18,000 heifer on the Griswold Cattle Company Sale and a \$10,000 heifer on the 2016 Maternal Legends Sale. Progeny will be 1/2 Foundation Simmentals.

99

FOUR Sexed HEIFER - IVF Embryos

Fortune 393D(Hartman Syndicate Sire) x Miss Penny 15B

ACLL Fortune 393D is a Hammer x Pilgrim son, his dam is the great Firefly that sold for \$100,000 in the 2013 Hartman Cattle Company Sale. Miss Penny 15B is a moderate framed Broker daughter that excels with her exceptional structure. She was Supreme at the 2014 Nebraska AGR. These embryos will be 3/4 Simmental.

100

FOUR Sexed HEIFER - IVF Embryos

MR TR Hammer 308A x Miss Penny 15B

A new mating in our 2017 calf crop. A mating of consistent structural correctness with incredible body shape in an attractive package. Miss Penny 15b excels in our Foundation Simmental program with her exceptional structure in a smooth maternal package, she was also Supreme at the 2016 NE AGR Jackpot Show. This mating will be a 3/4 blood Simmental.

101

FOUR Sexed HEIFER - IVF Embryos

GOET I-80 x SSUL WHO DAT GINGER

SSUL Who Dat Ginger was the 2014 Reserve National Champion Chianina Female at NAILE. She comes from the prolific Who Da Man x Sultry 6640 mating. This one is an awesome mating in our 2017 calf crop. Check out the full sisters lots 33, 34, 35 in this year's Maternal Legends Sale.

102

FOUR Sexed HEIFER - IVF Embryos

SULL Revolution x SSUL WHO DAT GINGER

SSUL Who Dat Ginger was the 2014 Reserve National Champion Chianina Female at NAILE. She comes from the prolific Who Da Man x Sultry 6640 mating. This mating will be 12.94% Chi and we expect great things from the Revolutionx Who Da Man mating.

103

FOUR Sexed HEIFER - IVF Embryos

SULL Revolution x JSUL Blue Magic 2669

JSUL Black Magic 2669y was the 2012 Iowa State Fair Supreme Heifer for Luke Elder. This mating will be a 1/4 blood Shorthorn and a High Percent Chianina. This could be a big-time mating. Revolution progeny have been outstanding and include a Reserve at NWSS and Grand at the IA State Fair.

CHI/MAINE EMBRYOS

104

FOUR Sexed HEIFER - IVF Embryos

JHC Yahtzee x JSUL Sultry 6640

JHC Mr Yahtzee was the 2014 National Champion Chiangus Bull. SSUL Sultry 6640-2 is the prolific dam of all the Who Da Man daughters we have raised that have been National Champions and are making incredible donors across the country. High Chi Mating. Selling eggs out of 6640, considering the value she brings, mated to any sire, should be illegal.

One of the best of all time,
6640 daughterFort Worth & NAILE Champion
6640 daughter

105

FOUR Sexed HEIFER - IVF Embryos

Colburn Primo x JSUL Sultry 6640

SSUL Sultry 6640-2 is the prolific dam of all the Who Da Man daughters we have raised that have been National Champions and are making incredible donors across the country. Colburn Primo has an incredible set of calves in this year's Maternal Legends Sale. Two of the most popular animals in the country merge to make this impressive mating.



Colburn Primo



JSUL Who Dat Ginger, 6640 Daughter

106

FOUR Sexed HEIFER - IVF Embryos

I-80 x SULL PURE HOTTIE 7033 ET

SULL Pure Hottie was a NWSS Champion and NAILE Champion ShorthornPlus Female. A full sib to these embryos was 5th overall at the 2016 Maintainer NJHS and also Champion AOB at NAILE. This mating will be Maintainer or 1/4 ShorthornPlus. Expect elite heifer calves from this cow family.



NAILE Champion, Full Sib



SULL Pure Hottie 7033 ET

107

FOUR Sexed HEIFER - IVF Embryos

Silveiras Style x GCC ALRIGHT ALREADY 421T

GCC All Right All Ready 421t was the 2008 Supreme Champion at NAILE, American Royal, and AkSarBen. Her style calves have been extremely consistent the past two years with incredible body shape, structural correctness, and that attractive eye appeal that Silveiras Style puts in his progeny.



Supreme Champion, Dam of Eggs



Full Sib to Eggs Selling

108

FOUR Sexed HEIFER - IVF Embryos

BBBN X2 x GCC ALRIGHT ALREADY 421T

GCC All Right All Ready 421t was the 2008 Supreme Champion at NAILE, American Royal, and AkSarBen. BBBN X2 201x was the sire of the 2013 Supreme Champion Female at NAILE. The resulting heifer calves will be high quality black, Maintainer females.



X2 Daughter



Supreme Champion, Dam of Eggs

109

FOUR Sexed HEIFER - IVF Embryos

GCC Stock Broker x SUL Tamale 588-3

Tamale 588-3 is the mother of 2 \$100,000 Maternal Legends high selling females. She has raised two NJHS Champion ShorthornPlus heifers and one Grand Champion at the Chianina NJHS and a Supreme Champion Female at NAILE. Tamale 588 has been one of our best producing cows.

'17 Jr National Champion,
Maternal Sib to Eggs Selling

Stock Broker

SHORTHORN SEMEN



SULL RGLC Legacy 525



SULL RGLC Legacy 525



SULL Red Knight 2030



SULL Red Knight Rose, Daughter



SULL Ferrari 6597D ET



Full sib to SULL Ferrari



SULL Roses are Red, Daughter



SULL Red Reward



SULL Cool Crystal, Daughter



SULL Blooded Ruby, Daughter



SULL Breathless Revolution, Daughter



SULL Revolution 1383

110 SULL RGLC LEGACY 525 ET *x4223162

Selling 2 Straws, conventional

2016/2017 Triple Crown winner, along with the 2017 FWSS Champion Bull is a unique combination of power and incredible body shape in an attractive package. His 2017 Maternal Legends progeny are deep in quality.

111 SULL Red Knight 2030 ET 4190557

Selling 2 Straws, conventional

Three time National Champion and sire of National Champions. A breed changer that's progeny speaks for themselves.

112 SULL Ferrari 6597D *xAR4241357

Selling 5 Straws, conventional

Maybe the most phenotypically flawless herd sire ever raised at Sullivan Farms. Incredible body shape with a unique look. He was used heavily for our 2018 calf crop.

113a SULL Red Reward 9321 *xAR48841

Selling 5 Straws, conventional

113b SULL Red Reward 9321 *xAR48841

Selling 5 Straws, conventional

A deceased super star that has done it all. Sire of sale toppers, cow makers, and show ring winners.

114a SULL Red Blood *x4181029

Selling 5 Straws, conventional

114b SULL Red Blood *x4181029

Selling 5 Straws, conventional

A true cow changer that sires champions all across the country including at the NAILE and NWSS.

115 SULL Revolution 1383 *xAR4235705

Selling 5 Straws, conventional

A unique sire of moderation with extra mass in a maternal package. He has sired champion ShorthornPlus females and high percent Chianina heifers all across the country including at the NWSS.

SHORTHORN SEMEN

116 SULL Traveler 9807 ET 4165654
Selling 5 Straws, SEXED Heifer

SULL Traveler has sired multiple champion heifers in Denver and at the NJHS.



SULL Traveler 9807 ET



Gana Lucky TR Charm 4127

117 SULL Blue ET *xAR44266
Selling 5 Straws, conventional

This deceased sire has produced many sale toppers and show champions. His semen is rare and is in a limited supply.



SULL Blue ET



SULL Blue, Daughter

118a FREE K-KIM Hot Commodity x4141432 - SEXED HEIFER
Selling 5 Straws, SEXED heifer**118b FREE K-KIM Hot Commodity x4141432**
Selling 5 Straws, conventional

The leading outcross sire of champions, including at NWSS and NJHS.

Bolin - Sullivan Donor,
Hot Commodity Daughter

Hot Commodity Daughter

119 SULL Muscle Man 9043 4157800
Selling 5 Straws, SEXED HEIFER - SEXED HEIFER

A proven sire of mobility and mass. Offering sexed heifer semen.



SULL GNCC Muscle Man



Muscle Man Daughter, NAILE Division Winner

120a KL Prime Time Paymaster x4162111
Selling 5 Straws, conventional**120b KL Prime Time Paymaster x4162111**
Selling 5 Straws, conventional

One of the most consistent popular outcross heifer bulls in the breed to date.



KL Prime Time Paymaster



KL Primetime Paymaster Son

121 JSF MARQUIS 127X -x4169554
Selling 5 Straws, SEXED HEIFER

An outcross sire of phenotype and calving ease. He has an impressive set of bred heifers in the 2017 Maternal Legends sale offering.



JSF Marquis 127X



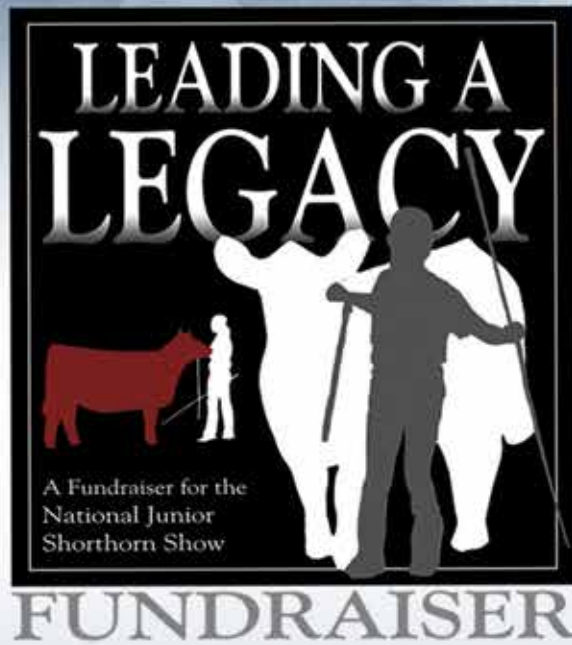
A Marquis 127x daughter selling as Lot 1DD



american junior shorthorn association

AJSA

The Family Friendly Breed



100% of the proceeds goes toward the National Junior Shorthorn Show.

O'Sullivan Auctioneers
Frank Sullivan, 612-860-6665 - Joseph O'Sullivan, 612-868-8580

Sale Day Phones

Montie Soules.....918.645.4322	Kent Jaecke.....405.408.2440
Alan Sears.....970.396.7521	Roger Sullivan.....612.860.0158
Jeff Aegerter.....402.641.4696	Darryl Rahn.....217.473.1124
Shelby Rogers.....214.676.9225	Don Cagwin.....217.341.7552
Zach Fanning.....217.494.7896	Kaila Williams.....580.736.2386

If interested in bidding, please contact any of the ringmen or visit LiveAuctions.tv. Thank you to all of the above for donating your time.

Event Chairman ... Advisor, Shelby Rogers & Junior Auction Chairman Zach Fanning

Special Thank You ... A special Thank You to everyone who donated to support this sale and the legacy of the National Junior Shorthorn Show. Your support and generosity is greatly appreciated. Thank you to Shorthorn Country for advertising this event and Luke Bolin for creating the catalog. Also, a big thank you to John Sullivan for supplying the meal and hosting this event.

BID and Watch it LIVE!! ... Live starting Saturday, October 14th at 4:00 pm broadcast, on www.LiveAuctions.tv.

Saturday, October 14, 2017
at Sullivan Farms, Dunlap, Iowa

6:00 PM Prime Rib Meal and Social compliments of Sullivan Farms
6:30 PM Leading a Legacy, Junior National Fundraiser Sale

1 FOUNDATION FEMALE

WHR Mattis Lady 7108

01/25/17 Polled Registration # 4255550

WHR CREEDENCE 3N19 HD BLOODSTONE 603 ET
 SULL MATTIS LADY 0201 ET RHS AUGUSTA PRIDE 547 ET
 TM DAZZLER 54P
 SULL MATTIS 530-2

CE: -1 BW: 6.5 WW: 61 YW: 78 M: 9

The Shorthorn Foundation female has become a tradition to raise money for Shorthorn Junior Nationals. Breeders have donated heifers where 100% of the proceeds goes toward Junior Nationals.

A huge thank you goes out to WHR Shorthorns, Bill and Becky Rasor. Dark red, structurally correct heifer from the very consistent Mattis cow family. She is sired by the Fort Worth Champion Bull WHR Creedance 3N19. Her pedigree includes many of the breed's more consistent genetics and provide an opportunity to make a positive addition to any Shorthorn herd.



The Tradition Continues...

The American Junior Shorthorn Association has started a great program where they ask the exhibitor of the Grand Champion Purebred Female and the Grand Champion ShorthornPlus Female from the National Junior Shorthorn Heifer Show to voluntarily donate a flush. This year, both exhibitors were excited to participate. What a great way for our Junior Members to give back and appreciate their success!



SULL Red Knight Rose 6452 ET. Grand Champion Shorthorn Female,
 2017 National Junior Shorthorn Show
 BW: 0.6 WW: 80 YW: 107 M: 28

2 IVF Flush

Thank you Sara Sullivan for your donation.

VALUE - A progressive breeder will bid without hesitation.

Selling one IVF cycle flush on SULL Red Knight Rose 6452, the 2017 National Junior Shorthorn Show Grand Champion Shorthorn Female. Sara will guarantee a minimum of three transferable embryos on the IVF Cycle. Sull Red Knight Rose 6452 stems from a line of proven genetics. Her sire Sull Red Knight was the 3 time national champion. Her dam Sull Roses Are Red 3213a was reserve champion shorthorn as a calf at the 2014 NWSS, then she went on to be named champion bred-n-owned at the 2014 NJHS and grand champion shorthorn in the open and jr show at the American Royal. Flush to take place at Trans Ova Genetics.



SULL Tamale Too 6000D ET. Grand Champion ShorthornPlus Female,
 2017 National Junior Shorthorn Show
 BW: 1.7 WW: 55 YW: 80 M: 26

3 IVF Flush

Thank you Sara Sullivan for your donation.

VALUE - A progressive breeder will bid without hesitation.

Selling one IVF cycle flush on SULL Tamale Too 6000D, the 2017 National Junior Shorthorn Show Grand Champion ShorthornPlus Female. Sara will guarantee a minimum of three transferable embryos on the IVF Cycle. SULL Tamale Too 6000d was no fluke, she comes from one of the most proven consistent mating ever produced at Sullivan Farms. She has had 2 other full sisters win the Shorthorn plus at the NJHS. Another full sister was named supreme overall breeds at the 2010 NAILE. Kane Aegerter's full sister was named grand champion at the 2014 chianina NJHS, and she has also had two other full sisters sell for \$100,000 on the Maternal Legends sale. Flush to take place at Trans Ova Genetics.



4 Traeger Grill Tailgate Package

Thank you Beaver Hardware and Aegerter Marketing Service for your donation.

VALUE - \$850

Pro 20 Tailgater Grill, Full Length Grill Cover Pro 20 Series, Folding Shelf 20 Series, (2 bags) Traeger Pellets, 20 Series Drip Tray Liner, Bucket Insert, Mesh Grill mat, Traeger Sweet & Heat, Traeger Beef Rub, Traeger Salmon Shake, Bison 12 can soft cooler, Orca Rocket



5 Shorthorn Decorated Window

Thank you Danielle Thompson for your donation.

VALUE - \$350

A painted window that says "And on the 9th day, after God made a farmer, God looked down on his planned paradise and said I need someone to show off my prized creations." So God made a stock show kid.



6 Yeti Package

Thank you Illinois and Wisconsin Shorthorn Breeders for your donation.

VALUE - \$450

Yeti Roadie 20 Cooler, 2 20 oz Yeti Tumbler, Assorted Snacks, Assorted Wisconsin Craft Beers, Two Wisconsin "Drink Beer" Glasses.



7 South Texas Hog Hunt

Thank you Jim & Luann Williams, Brandon & Rachel Cutrer and Luke & Catherine Neumayr of V8 Shorthorns for your donation.

www.v8ranch.com

VALUE - \$5000

Get your snake boots and hunting gear ready and head to Premont, TX for a wild hog hunt at V8 Ranch South guided by Jim Williams. This lot includes hunting for two, lodging for up to five people, and some meals. Great sightseeing for wildlife and birds, and a quiet retreat for non-hunters. Ranch is 30 minutes from King Ranch, one hour from Corpus Christi. Come enjoy the south Texas brush country and Texas gulf coast! Hunt can be used anytime during 2017 with flexible dates (except during Aggie Football season!)

Page 84 ~ OCTOBER 15th

Lindsay Hanewich
PHOTOGRAPHY & DESIGN

8 Lindsay Hanewich Photography

Thank you Lindsay Hanewich for your donation.

www.lindsayhanewichphotography.com

VALUE - \$350

1 Donor or Promotional Sire Photo. Mileage and expenses not included.



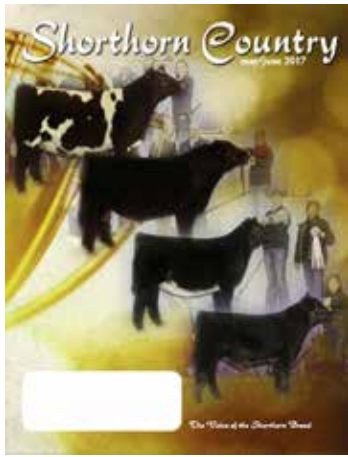
9 AB Customs Speaker

Thank you AB Customs for your donation.

VALUE - \$1,500

Buyer has the opportunity to design a custom built stereo with 2 speakers, Bluetooth, USB ports, and custom cuts, color and lights

Thank you for supporting the American Junior Shorthorn Association and the National Junior Shorthorn Show.



10 Shorthorn Country Advertising and Web Ad

Thank you to Shorthorn Country for your donation

www.shorthorncountry.net

VALUE - \$765

A full color, one-page ad in the May/June issue of Shorthorn Country ONLY and a revolving banner ad on shorthorncountry.net. No additional charges for graphics. A very special thank you to the Shorthorn Country and Don Cagwin for all his support he has shown the junior's through the years. Including the free advertisements on this very sale, Leading A Legacy. Let's give the Shorthorn Country staff, Darryl, Cindy, Tracy and Amy a big thank you for the expansive and tremendous coverage of the major national Shorthorn shows.



13 Trans Ova Package

Thank you Trans Ova Genetics for your donation.

www.transova.com

VALUE - \$750

Trans Ova Genetics presents this donation for 1 certificate for \$750 towards any service provided by Trans Ova*. These services can be performed at any of our regional or satellite centers, as well as our headquarters in Sioux Center, Iowa. For more information about Trans Ova Genetics services or locations, please visit www.transova.com or call 1.800.999.3586



11 Dollars Toward Sale Catalog Printing

Thank you Johnson Litho Graphics & El's Acres for your donation.

www.johnsonlitho.com

VALUE - \$500

A certificate for up to \$500.00 towards printing services at Johnson Litho Graphics. Includes the printing and/or designing of either a sale catalog, magazine, or brochure. Johnson Litho Graphics has experience in producing sale catalogs and magazines for places such as Cattle Visions, The Midwest Herdsman, and Presto Industries. Please contact Devin Hadorn-Papke (715)271-5018 for questions and redeeming the \$500 certificate.



THE SHOWTIMES
JK. LIVESTOCK MAGAZINE

14 Showtimes Advertisement

Thank you to The Showtimes Magazine, the Reid Family for your donation.

www.theshowtimesmagazine.com

VALUE - \$650

One page, full color advertisement. Design is included. The Showtimes junior livestock magazine is owned and operated by the Reid family of Colorado. They have grown into a prominent national junior livestock magazine business from the love their family has for the industry. The Reid family are Shorthorn enthusiasts and sure enjoyed Shorthorn Junior Nationals.



12 Bench

Thank you to various Shorthorn breeders for your donation.

VALUE - \$450

The bench is a thick wood with color inlays and will have a show heifer outline in the middle. It's made by Braden Bowers



15a 20 Bags Wind and Rain

15b 20 Bags Wind and Rain

Thank you Purina Animal Nutrition, LLC and Cogdill Farm Supply for your donation.

www.purinamills.com

VALUE - \$1106

Wind & Rain Storm All Season 7.5 Complete Availa 4 Purina's Wind and Rain® All Season Minerals are available as a comprehensive line of beef cattle minerals designed to address the mineral deficiencies of the available forage, in a palatable, weather-resistant, granular formula. Wind and Rain® Storm® cattle minerals' large particle size and special formulation keeps the mineral from absorbing water and blowing out of the feeder. The Storm® technology provides the ultimate in weather resistance to reduce waste and makes Wind and Rain® Storm® Formula more economical to feed than conventional loose minerals. Wind and Rain® Storm® minerals contain the proper balance and ratios of all 14 essential cattle minerals. Matching the correct product for the cattleman's available forage assures cattle receive the mineral nutrition they need for health, growth and reproduction. This product is designed for 4 ounce intake.

2018 National Junior Shorthorn Show

Madison, Wisconsin
June 25 - July 1



16 National Jr. Heifer Show Program Back Cover

VALUE - Priceless

Outstanding opportunity! This will be the back cover of the 2018 National Junior Shorthorn Show & Youth Conference program. This can be a special ad featuring your program in front of all juniors in America. The ad will need to be clean lined and approved by the ASA staff. This ad will be full page and full color.

17 NAILE Show Program Back Cover

VALUE - Priceless

The recognition you receive from your firm being on the back cover of the program is endless. Ad is black & white.

18 605 Sires Semen Collection

Thank you to 605 Sires for your donation.

www.605sires.com

VALUE - \$830

Donating \$500 credit toward any services provided, such as collecting and freezing semen and boarding bulls. Our brand new, state-of-the-art lab, featuring the CASA system (Computer Assisted Semen Analysis) will insure your valuable genetics are handled with the utmost care and quality control. Our boarding barn and collection area are designed to focus on your sires' comfort and safety. Our convenient drive-thru load-out alley provides quick and easy loading/unloading. 605 Sires was designed from the ground up with you, the customer, in mind. Visit www.605sires.com for more information.



19 Show Supply Package

Thank you Sullivan Supply for your donation.
www.sullivansupply.com

VALUE - \$1,500

Includes Sullivan's 5' Upright Treadbright Dolly Box (\$965 value) fully loaded with Sullivan show supplies, Sullivan's Turbo Fan (\$275 value) and a complete Sullivan's Smart Series Package. A special thank you to Sullivan Supply and Stock Show University. They are always generous sponsors of the American Junior Shorthorn Association.



20 SCI Creations Ad Design

Thank you Stephanie Steck for your donation.

www.stephaniecronin.com

VALUE - \$650

SCI is thrilled to be assisting in the National Junior Shorthorn Show in it's efforts to fund-raise for the 2018 Shorthorn Junior National & Youth Expo. Stephanie Steck & her family (Craig, husband & Keagan, son) know first hand the countless hours and finances needed to host this outstanding event. They have been involved in the Shorthorn youth program for years and are committed to it's future success. They feel it is very important to give back to the program that has given them so much. It is their pleasure to donate a logo design & one page ad design for any progressive breeder to take advantage of. Set your operation apart from the rest with a recognizable logo to boost your brand. Then put it in print to get noticed!



21 Wooden Snack Box

Thank you AJSA Member Cade Lott for your donation.

VALUE - \$400

This was donated by junior member, Cade Lott, from Mississippi. He made this for the Arts & Crafts contest at the NJSS. This snack box is made to be hung on stall panels at a stock show and store snacks.



22 Toy Tractor w/Trailer

VALUE - \$500

John Deere Ground Loader Tractor with matching trailer will delight kids! 3 to 7 year olds will have fun driving the 2 speed tractor as they move and haul their loads. The large adjustable seat has flip up armrests. 2-speeds; 2 1/4 or 4 1/2 mph, plus reverse, foot pedal accelerator, automatic brakes and traction wheels makes driving easy, comfortable and safe. Parents control the speed with the 2nd gear lock out feature.



23 Legacy Livestock Photo Shoot

Thank you Legacy Livestock Imaging, Charles & Heidi Anderson for your donation.

VALUE - \$1,200

Show day, farm visits or the picture pen, nobody captures the moment like Legacy Livestock Imaging. We are excited to donate a one day agricultural photo shoot. We will provide eight hours of photography, transportation to the location or to the nearest major airport and a file of edited images. Valid in the continental United States only. Must be used by October 15, 2018. Buyer is responsible for meals, overnight accommodations and secondary transportation.



24 2017 Junior National Photo Backdrop

VALUE - Priceless

The actual photo backdrop from the 2017 National Junior Shorthorn Show. This photo backdrop would look great in any barn or displayed on a wall. It is a great memory to have from the 2017 NJSS!



25 Two Night Stay at Sheraton Madison

Thank you Shorthorn Lassies for your donation.

VALUE - \$500

We got a two night stay in a club level room with access to the Sheraton Club and dinner for two at the restaurant. This donation to be used during the Jr. National dates, but must call to reserve the room. Sheraton Madison 706 John Nolan Dr. Madison, Wisconsin.



26 Donor Solutions Collection Certificate

Thank you Donor Solutions for your donation.

www.donorsolutionsinc.com

VALUE - \$350

Donor Solutions Collection Certificate includes up to 30 days room and board at no cost and the setup of a donor for 1 conventional or IVF procedure



27 Black Hill Vacation Package

Thank you the Burkhardt family for your donation.

VALUE - \$1160

Enjoy the mountain air, spectacular views and quiet privacy of this new cabin in the premier Gilded Mountain development conveniently located in the Black Hills! A 4-night stay during peak season along with a \$100 gift certificate to the historic Saloon No. 10 in downtown Deadwood. View property details at www.deadwoodconnections.com

Sullivan Farms

701 Iowa Ave.
Dunlap, Iowa 51529



Maternal Legends

SULLIVAN

farms