



Diamond

Brown Land & Cattle Co.

Gem Sale



Saturday

May 17, 2014

1:00 pm at the ranch

Diamond, Missouri 64840

Saturday, May 17, 2014

1:00 pm

**Selling 83 Registered
Limousin & Lim-Flex**

**Bred & Open Heifers * Pairs & Splits
Fall & Spring Bred Cows
Planned Matings * Embryos
Yearling Bulls * Herd Sire Prospects**

SCHEDULE OF EVENTS

FRIDAY, May 16th

Afternoon—Cattle available for viewing

Saturday, May 17th

8:00 am—Cattle available for viewing

11:00 am—Complementary lunch served

1:00 pm—Brown Land & Cattle Co. sale begins

SALE DAY PHONES

Randy Ratliff.....615-330-2735

Cheryl Brown.....417-438-2519

Marty Brown417-310-6649

AUCTIONEER

C. K. "Sonny" Booth

Brown Land & Cattle Co.
MCBN

Marty & Cheryl Brown
17305 Highway FF, Diamond, MO 64840
www.BrownLandAndCattleCo.com
Cheryl@BrownLandAndCattleCo.com

SALE LOCATION

GPS address—17305 Hwy FF, Diamond, MO 64840

Lat 37° 3'12.14"N Log 94° 19'33.02"W

From I-44, take exit 18A, so. 2 miles to flashing light (Hwy FF), w 1/2 mile to ranch
Kansas City, MO 2 hrs * Springfield, MO 45 min * Tulsa, OK 1.5 hrs * OK City, OK 3 hrs

HOTEL ACCOMMODATIONS

Hampton Inn.....417-659-9900

3107 East 36th Street,
Joplin, MO 64804

Homewood Suites by Hilton.....417-623-1900

2642 East 32nd Street,
Joplin, MO 64804



TRUCKING Will be available on site to haul any purchases out the day of the sale. To make prior arrangements, feel free to call R&R Marketing company at 615-330-2735 and we will make your buying easy and accommodating.

SUPPLEMENTAL INFORMATION A supplemental sheet with complete breeding information and performance data will be posted on www.RRMktg.com and www.BrownLandAndCattleCo.com Friday, May 16th and be available at the sale.

TERMS, CONDITIONS & PAYMENT Terms of the sale are cash or credit card (3% convenience fee added) unless satisfactory credit arrangements have been made prior to the sale. No cattle removed from premises until bill is settled. Cattle must be paid for at the time of the sale unless prior arrangements are made.



FINANCING AVAILABLE Contact R&R Marketing to discuss finance options on your purchases. We want to make your purchasing as easy as possible; and, if we can be of any assistance, feel free to let us know.

LIABILITIES Please note: The sale manager is only the agent for the seller and has no responsibilities other than those involved in conducting the sale. All persons who attend the sale do so at their own risk. Neither the sale manager nor Brown Land & Cattle Co. assume liability, legal or otherwise, for any accidents that may occur.

SALE MANAGEMENT



R&R Marketing Company

Randall O. Ratliff * 615-330-2735

Randy @ RRMktg.com

www.RRMktg.com

PO Box 281677, Nashville, TN 37228 (L#2845)

If you need any assistance with your purchases or if you want to discuss the genetics selling please feel free to contact R&R Marketing company. As a paid marketing agent for the sellers, we take pride in the opportunity to work closely with each and every seller. We can assist you with your phone order and/or handle your bid in the most confidential manner. Email, call or text and we will be more than happy to assist.

Bred Heifers



MCBN Zamela 268Z

Cow

Lot 1

8/16/12 25% LF LFF 2025668 Homo Polled Homo Black

CED	BW	WW	YW	MA	CEM	SC	DOC	CW	REA	YG	MARB	\$MTI
8	-2.7	46	90	40**	1	—	13	7	-0.23	0.30	0.21	49



Connealy Consensus 7229



EXLR Scotch Cap 1005N

****Trait Leaders**

Connealy Consensus
Connealy Consensus 7229
 Blue Lilly of Conanga 16

MK Alliance 6595 187
 Blinda of Conanga 004
 Woodhill Admiral 77K
 Blue Cash of Conanga 6020
 COLE First Down 46D
 RADS Black Prodigy
 RADS Poll Black Powder 1
 Bon View New Design 1407
 EXAR Scotch Cap 1548
 EXAR Scotch Cap 9427

◆ One of the sale features is this daughter of Connealy Consensus 7229 and EXLR Scotch Cap 1005N, a big-time donor for Diamond Hill Cattle Co (and a former Brown Land & Cattle Co. donor).

◆ She has the extreme depth of rib, extra capacity and super brood cow look to her.

Ai'd 12/5/13 ENGD Zip Line 2515Z for a HP/HB—CED 9, BW -1.2, WW 51, YW 93, MA 33, CEM 2, DOC 14, CW 18, REA 0.12, YG 0.12, MARB 0.10, \$MTI 48
PE 12/13/13-4/19/14 MCBN Zenith 282Z [MAGS Winston X PBRs 718U] for a HP/HB*—CED 9, BW -1.7, WW 42, YW 88, MA 32, CEM 2, CW 22, REA -0.30, YG 0.42, MARB 0.34, \$MTI 52

SAFE



MCBN Zasy Pace 270Z

Cow

Lot 2

8/21/12 87.5% PB NPF 2047441 Double Polled Homo Black

CED	BW	WW	YW	MA	CEM	SC	DOC	CW	REA	YG	MARB	\$MTI
10	1.2	43	86	25	6	0.4	—	24	0.22	0.12	0.03	43



ELMW Ginie P58G



LH Rodemaster 338R

AUTO Black Dakota 129J
Carrousel Pacesetter
 ELMW Ginie P58G

LH Rodemaster 338R
MAGS Witty
 MAGS Tickler

EXLR Dakota 353G
 DFCL Jet Set BPC 34Y
 TCDT Mr T.D's Power Pack
 ELMW Polled Ecstasy 67E
 JCL Lodestar 27L
 Vermilion E Blackbird9546
 WULFs Nasa 1212N
 JBRH Sheza Looker

◆ This purebred heifer is sired by Carrousel Pacesetter, the son of AUTO Black Dakota 129J from the elite Sugar Bush donor ELMW Ginie P58G.

◆ Her dam is a daughter of LH Rodemaster 338R from a daughter of Wulf's Nasa back to the proven donor JBRH Sheza Looker.

Ai'd 12/5/13 SYDGEN Mandate 6079 for a HP*/HB*—CED 12, BW -1.1, WW 56, YW 113, MA 33, CEM 5, CW -5, REA 0.07, YG 0.06, MARB 0.04, \$MTI 48
PE 12/13/13-4/19/14 MCBN Zenith 282Z [MAGS Winston X PBRs 718U] for a HP*/HB*—CED 10, BW 0.3, WW 41, YW 86, MA 24, CEM 5, SC 0.1, CW 31, REA -0.07, YG 0.33, MARB 0.25, \$MTI 49

SAFE



Bred Heifers

MCBN Zinnia 276Z

Cow



Lot 3

9/5/12 62.5% LF LFF 2024923 Homo Polled Homo Black

CED	BW	WW	YW	MA	CEM	SC	DOC	CW	REA	YG	MARB	\$MTI
9	-0.5	46	91	29	4	0.6*	—	28*	-0.07*	0.37*	0.35*	54*

*Estimated



MCBN Zinnia 276Z

**Breed
Ranking**

30% BW
40% MA



MCBN Xalvador 022X

****Trait Leaders**

AUTO Dollar General 122R**
MCBN Xalvador 022X
 EXLR Rebeca 1019P**

LVLS Secret Weapon 4408K
 AUTO Kyria 232K
 BR Midland
 EXLR Rebeca 614H



MAGS Scribbler

TNUH Blue Print 245H
MAGS Scribbler**
 Rodens 1 680 Blackcap 9041

Waddles Cobalt 3106
 TNUH Miss C245
 GAR Precision 1680
 RR Blackcap 2349

- ◆ Homozygous polled and homozygous black
- ◆ This 62.5% Lim-Flex heifer is sired by the son of AUTO Dollar General 122R from the famed EXLR Rebeca 1019P, MCBN Xalvador 022X.
- ◆ Her dam is MAGS Scribbler, a daughter of TNUH Blue Print from a daughter of GAR Precision.
- ◆ She has a -0.5 for birth, 91 for yearling and 29 for milk.



MAGS Xukalani

Al'd 12/5/13 MAGS Xukalani for a HP/HB—CED 9, BW -1.2, WW 52, YW 102, MA 29, CEM 4, SC 0.6, CW 42, REA -0.27, YG 0.54, MARB 0.45, \$MTI 58
PE 12/13/13-4/19/14 MCBN Zenith 282Z [MAGS Winston X PBRS 718U] for a HP/HB*— CED 10, BW -0.6, WW 42, YW 88, MA 26, CEM 4, SC 0.1, CW 33, REA -0.22, YG 0.45, MARB 0.41, \$MTI 54

SAFE



Bred Heifers



MCBN Zalia 278Z

Cow

Lot 4

9/13/12 75% LF LFF 2024925 Double Polled Homo Black

CED	BW	WW	YW	MA	CEM	SC	DOC	CW	REA	YG	MARB	\$MTI
9	1.3	49	92	30	5	0.6*	6*	20*	0.10*	0.19*	0.32*	55*



AUTO Dollar General 122R

***Trait Leaders

*Estimated

MCBN Xalvador 022X
 AUTO Dollar General 122R***
 EXLR Rebeca 1019P**

LVLS Secret Weapon 4408K

AUTO Kyria 232K

BR Midland

EXLR Rebeca 614H

GPFF Blaque Rulon

MAGS Manda

EXLR Broadway 041E

C&C Barb



MAGS Savage

MCBN Whitney 959W
 MAGS Savage**
 EXLR Barb 1027M

◆ This terrific heifer comes from heart of our program and represents a strong lineage and proven genetics.

◆ We appreciate her EPDs with a 1.3 for birth, 92 for yearling and 30 for milk.

AI'd 12/5/13 RITO Revenue 5M2 of 2536 for a HP*/HB*—CED 10, BW -0.7, WW 48, YW 98, MA 35, CEM 4, SC -0.4, DOC 11, CW 25, REA -0.29, YG 0.55, MARB 0.65, \$MTI 64
PE 12/13/13-4/19/14 MCBN Zenith 282Z [MAGS Winston X PBRs 718U] for a HP*/HB*— CED 10, BW 0.4, WW 44, YW 89, MA 27, CEM 4, SC 0.2, CW 29, REA -0.13, YG 0.36, MARB 0.39, \$MTI 55

*Test!

SAFE



MCBN Zuzanna 293Z

Cow

Lot 5

10/14/12 50% NX NXF 2031210 Double Polled Double Black

CED	BW	WW	YW	MA	CEM	SC	DOC	CW	REA	YG	MARB	\$MTI
10	1.4	44	88	30	5	0.5*	-	9*	0.10*	0.08*	0.13*	47*



MCBN Xalvador 022X

***Trait Leaders

*Estimated

MCBN Xalvador 022X
 AUTO Dollar General 122R***
 EXLR Rebeca 1019P**
 Unknown Sire

LVLS Secret Weapon 4408K

AUTO Kyria 232K

BR Midland

EXLR Rebeca 614H



LVLS 259T

LVLS 259T
 LVLS 259R
 LVLS 276N
 L V Miss Ext 2200

◆ This is an outstanding DP/DB daughter of MCBN Xalvador 022X and check out the photo of her dam to the left. This 50% Lim-Flex is one of the really nice first calf heifers.

◆ She offers a low birth weight of 1.4 and 30 for milking ability.

AI'd 12/5/13 CALO Brickyard 902W for a HP*/HB*—CED 10, BW 0.8, WW 40, YW 81, MA 30, CEM 5, CW -3, REA -0.17, YG 0.16, MARB 0.18, \$MTI 47

PE 12/13/13-4/19/14 MCBN Zenith 282Z [MAGS Winston X PBRs 718U] for a HP/ HB*—CED 10, BW 0.4, WW 41, YW 87, MA 27, CEM 4, SC 0.2, CW 23, REA -0.13, YG 0.31, MARB 0.30, \$MTI 51

*Test!

SAFE



MCBN Athena 313A

Cow



Lot 6

2/7/13 50% LF LFF 2031238 Homo Polled Homo Black

CED	BW	WW	YW	MA	CEM	SC	DOC	CW	REA	YG	MARB	\$MTI
9	-0.1	53	102	39	4	0.4	0	35	-0.07	0.48	0.37	56



MCBN Athena 313A
Photo taken Jan, 2014

**Breed
Ranking**

35% BW
35% WW
25% YW
1.5% MA
40% CEM
40% CW
15% MARB
15% \$MTI



S A V Brilliance 8077

Trait Leaders

S A V Bismarck 5682

S A V Brilliance 8077

S A V Blackcap May 5270

G A R Grid Maker

S A V Abigale 0451

S A V 8180 Traveler 004

S A V May 2420

G P F F Blaue Rulon

M A G S Manda

A U T O Dollar General 122R**

J C L Fresh Air



M A G S Savage

M A G S Savage**

M C B N Yesenia 105Y

M C B N Browns Treasure 742T

- ◆ Homozygous polled and homozygous black.
- ◆ This 50% Lim-Flex female is big-time and comes from the heart of our program.
- ◆ She is a daughter of SAV Brilliance 8077 and from a daughter of MAGS Savage.
- ◆ She offers a super set of EPDs with a -0.1 for birth, 102 for yearling weight, 39 for milk and .37 for marbling.

EF Main Stay 541M



Al'd 4/16/14 EF Main Stay 541M for a HP/HB—CED 9, BW 1.0, WW 43, YW 91, MA 36, SC 0.0, CEM 5, DOC 12, CW 3, REA 0.00, YG 0.23, MARB 0.14, \$MTI 47

PE 4/22/14-Sale MCBN Brave Eagle 214Z [SAV Brave X LVLS 111U] for a HP/HB*— CED 10, BW 0.0, WW 56, YW 107, MA 39, CEM 3, CW 47, REA -0.17, YG 0.58, MARB 0.38, \$MTI 56



Bred Heifers



MCBN Zhaklina 1218Z

Cow

Lot 7

12/12/12 48.3% LF LFF 2031534 Double Polled Double Black

CED	BW	WW	YW	MA	CEM	SC	DOC	CW	REA	YG	MARB	\$MTI
10	0.1	57	106	27	4	0.6	—	42	-0.21	0.45	0.36	57



MAGS Xukalani



LVLS9885

RITO 112 of 2536
MAGS Xukalani
 MAGS Ukalani
 RITO 616 of 4B20 6807
 GAR Precision 2536
 Basin Franchise P142
 Carrousel Pina Colada
 MAGS Remote
 EXLR Remote 7200T
LVLS Yaris 9885Y
 LVLS Who Girl 9885W
 EXLR Blackcap 522N
 LVLS Top Criteria 8862P
 LVLS9885S

- ◆ This 48.3% Lim-Flex heifer is bred well and with a solid set of EPDs.
- ◆ Her sire, MAGS Xukalani is a calving ease, big-numbered son of RITO 112 of 2536 back to a daughter of Basin Franchise out of Carrousel Pina Colada.
- ◆ She posts a 0.1 for birth, 57 for weaning, 106 for yearling, 27 for milk and .36 for marbling.

AI'd 2/20/14 ENGD Zip Line 2515Z for a HP/HB—CED 10, BW 0.3, WW 56, YW 101, MA 26, CEM 4, SC 0.7, CW 36, REA 0.13, YG 0.19, MARB 0.17, \$MTI 52
PE 3/6-4/19/14 MCBN Brave Eagle 214Z [SAV Brave X LVLS 111U] for a HP/HB*— CED 10, BW 0.1, WW 58, YW 109, MA 33, CEM 3, CW 51, REA -0.24, YG 0.57, MARB 0.37, \$MTI 57

SAFE



MCBN Anita 319A

Cow

Lot 8

12/12/12 62.5 LF Pending Double Polled Double Black

CED	BW	WW	YW	MA	CEM	SC	DOC	CW	REA	YG	MARB	\$MTI
12*	-0.2*	52*	98*	35*	9*	—	7*	14*	0.05*	0.13*	0.14*	29*



MCBN Xalvador 022X

**Trait Leaders

*Estimated

AUTO Dollar General 122R**
MCBN Xalvador 022X
 EXLR Rebeca 1019P**
 AUTO Dollar General 122R**
MCBN What It Takes 107W
 FC #1977452
 LVLS Secret Weapon 4408K
 AUTO Kyria 232K
 BR Midland
 EXLR Rebeca 614H
 LVLS Secret Weapon 4408K
 AUTO Kyria 232K

- ◆ This 62.5% Lim-Flex daughter of MCBN Xalvador 022X, she throws performance to the extreme. Her dam MCBN 107W is a AUTO Dollar General 122R daughter.
- ◆ With performance from the sire side and milk production from the dam side, she will be a productive cow for years to come.

AI'd 4/16/14 EXLR New Generation 071M for a DP/DB—CED 11, BW 1.8, WW 47, YW 92, MA 30, CEM 8, SC 0.7, DOC 11, CW 11, REA 0.02, YG 0.07, MARB 0.11, \$MTI 37
PE 4/22/14-Sale MCBN Brave Eagle 214Z [SAV Brave X LVLS 111U] for a HP*/HB*— CED 11, BW -0.1, WW 56, YW 105, MA 37, CEM 7, CW 37, REA -0.11, YG 0.41, MARB 0.26, \$MTI 43



MCBN Aiesha 389A

Cow



Lot 9

2/16/13 50% LF LFF 2045588 Double Polled Homo Black

CED	BW	WW	YW	MA	CEM	SC	DOC	CW	REA	YG	MAR.B	\$MTI
11	-1.4	53	96	28	2	0.4	9	46	-0.06	0.39	0.50	61



MCBN Aiesha 389A
Photo taken Jan, 2014

Breed Ranking

- 20% CED
- 15% BW
- 35% WW
- 45% YW
- 45% MA
- 15% CW
- 15% CW
- 5% MAR.B
- 3% \$MTI



MAGS Wazowski



EXLR Barb 170R

- DHVO Deuce 132R
- MAGS Wazowski**
- BOHI Red Robin 282R
- Bon View New Design 1407
- EXLR Barb 170R**
- EXLR Barb 1027M

- GPFF Blaque Rulon
- Amy Jo Dhan 20L
- Connealy Lead On
- MAGS Manuela
- B/R New Design 036
- Bon View Pride 664
- EXLR Broadway 041E
- C&C Barb

- ◆ Double polled and homozygous black
- ◆ Here is a big-time donor cow in the making and one of the finest to carry the MCBN prefix.
- ◆ She is a daughter of MAGS Wazowski and from the big-marbling donor EXLR Barb 170R.
- ◆ She posts a -1.4 for birth, 96 for yearling, 28 for milk and .50 for marbling.



ENGD Zip Line 2515Z

Al'd 2/20/14 ENGD Zip Line 2515Z for a HP/HB—CED 10, BW 0.5, WW 54, YW 96, MA 27, CEM 3, SC 0.6, CW 38, REA 0.21, YG 0.16, MARB 0.24, \$MTI 54
PE 3/6-4/19/14 MCBN Brave Eagle 214Z [SAV Brave X LVLS 111U] for a HP/HB*—CED 11, BW -0.7, WW 56, YW 104, MA 34, CEM 2, CW 53, REA -0.16, YG 0.54, MARB 0.44, \$MTI 59



Bred Heifers



MCBN Hestia 324A

Cow

Lot 10

2/23/13 75% LF LFF 2031241 Double Polled Homo Black

CED	BW	WW	YW	MA	CEM	SC	DOC	CW	REA	YG	MARB	\$MTI
10	0.8	47	89	29	5	0.5	10	11	0.06	0.15	0.14	48



CALO Brickyard 902W

****Trait Leaders**

Schilling's Talladega

CALO Brickyard 902W

EXG E839 1407 M174LS

KRVN Naskar 013N

RCSX Rainy Day 80R

Bon View New Design 1407

PAF 4019 6807 E839

LVLS Secret Weapon 4408K



LVLS Mayberry 8954X
Photo at Yearling

AUTO Dollar General 122R **

LVLS Mayberry 8954X

JCL Mayberry 62S

AUTO Kyria 232K

Carrousels Pure Power

JCL Mayberry

- ◆ This heifer is a solid breeding piece and one that you will appreciate on sale day.
- ◆ Sired by national champion CALO Brickyard 902W. Her dam is a daughter of AUTO Dollar General 122R from the past donor JCL Mayberry.

Ai'd 4/16/14 RITO Revenue 5M2 of 2536 for a HP/HB—CED 10, BW -1.0, WW 47, YW 96, MA 34, CEM 4, SC 0.3, DOC 13, CW 21, REA -0.31, YG 0.53, MARB 0.56, \$MTI 60

PE 4/22/14-Sale MCBN Brave Eagle 214Z [SAV Brave X LVLS 111U] for a HP/HB*— CED 10, BW 0.5, WW 53, YW 101, MA 34, CEM 4, CW 35, REA -0.10, YG 0.42, MARB 0.26, \$MTI 52



MCBN Adelina 386A

Cow

Lot 11

2/15/13 25% LF LFF 2043915 Double Polled Homo Black

CED	BW	WW	YW	MA	CEM	SC	DOC	CW	REA	YG	MARB	\$MTI
9	-2.6	45	93	29	3	0.3	—	38	-0.58	0.61	0.65	62



MAGS Xukalani

****Trait Leaders**

RITO 112 of 2536

MAGS Xukalani

MAGS Ukalani

RITO 616 of 4B20 6807

GAR Precision 2536

Basin Franchise P142

Carrousels Pina Colada

B/R New Design 036



EXLR Barb 157R

Bon View New Design 1407

EXLR Barb 157R**

EXLR Barb 1027M

Bon View Pride 664

EXLR Broadway 041E

C&C Barb

- ◆ This 25% Lim-Flex daughter of MAGS Xukalani is from the big-time donor EXLR Barb 157R, owned with Salt Creek Cattle, Amber, OK.
- ◆ This young heifer posts a breed leading marbling number of .65, milk of 29, yearling of 93 and birth of -2.6.

Ai'd 4/16/14 AUTO Dollar General 122R for a HP/HB—CED 12, BW -1.0, WW 55, YW 103, MA 37, CEM 9, SC 0.5, CW 40, REA -0.10, YG 0.39, MARB 0.43, \$MTI 59

PE 4/22/14-Sale MCBN Brave Eagle 214Z [SAV Brave X LVLS 111U] for a HP/HB—CED 10, BW -1.3, WW 52, YW 103, MA 34, CEM 3, CW 49, REA -0.42, YG 0.65, MARB 0.52, \$MTI 59



Open Heifers

MCBN Ariel 328A

Cow



Lot 12

3/5/13 59.3% LF LFF 2031245 Double Polled Double Black

CED	BW	WW	YW	MA	CEM	SC	DOC	CW	REA	YG	MARB	\$MTI
9	1.5	59	109	32	7	0.9*	20*	39*	-0.03*	0.39*	0.25*	54*



**Trait Leaders

Mytty In Focus
MCBN Warner 955W
 LVLS 408H

LH Rodemaster 338R
LVLS Young Babe 774Y

MCBN Turned Out Perfect

S A F Focus of E R
 Mytty Countess 906
 LVLS Polled Justice 060 1E
 LVLS Miss Stabilizer 1408E
 JCL Lodestar 27L
 Vermilion E Blackbird9546
 AUTO Dollar General 122R**
 MCBN Razzle Dazzle

*Estimated

- ◆ Double polled and double black.
- ◆ This daughter of MCBN Warner 955W is from a daughter of LH Rodemaster 338R back to a daughter of AUTO Dollar General 122R.
- ◆ This young female has a super set of EPDs with a 1.5 for birth, 59 for weaning, 109 for yearling weight, and 32 for milking ability.

MCBN Dotted Iris 333A

Cow



Lot 13

3/10/13 62.5% LF LFF 2031247 Homo Polled Homo Black

CED	BW	WW	YW	MA	CEM	SC	DOC	CW	REA	YG	MARB	\$MTI
11	0.2	57	110	28	5	0.8*	21*	30*	-0.03*	0.33*	0.31*	56*



**Trait Leader

AUTO Dollar General 122R**
MCBN Xalvador 022X
 EXLR Rebeca 1019P**

Mytty In Focus
DPBN Dip N Dots 15W
 DFCL BPC 15T

LVLS Secret Weapon 4408K
 AUTO Kyria 232K
 BR Midland
 EXLR Rebeca 614H
 S A F Focus of E R
 Mytty Countess 906
 WULFs Realtor 1503R
 DFCL BPC 28L

*Estimated

- ◆ Homozygous polled and homozygous black.
- ◆ This 62.5% Lim-Flex heifer is sired by MCBN Xalvador 022X, the son of AUTO Dollar General back to the now deceased but proven donor EXLR Rebeca 1019P.
- ◆ This young female has a 0.2 for birth, 57 for weaning, 110 for yearling weights and 28 for milk.



Open Heifers



MCBN A Focused Brick 335A Cow

Lot 14 3/14/13 25% LF Pending Homo Polled Double Black

CED	BW	WW	YW	MA	CEM	SC	DOC	CW	REA	YG	MARB	\$MTI
-----	----	----	----	----	-----	----	-----	----	-----	----	------	-------

11	-2.0*	45*	87*	35*	4*	0.4*	12*	2*	-0.42*	0.35*	0.29*	40*
----	-------	-----	-----	-----	----	------	-----	----	--------	-------	-------	-----

*Estimated



CALO Brickyard 902W

Schilling's Talladega
CALO Brickyard 902W
EXG E839 1407 M175LS

KRVN Naskar 013N
RCSX Rainy Day 80R
Bon View New Design 1407
PAF 4019 6807 E839
S A F Focus of E R



Woodall 808 of 462 MIF

Mytty In Focus
Woodall 808 of 462 MIF
Woodalls 462 of 1003 010

Mytty Countess 906
Woodalls 010 of 803 807
Woodalls 1003 of 662 N D

- ◆ Sired by national champion, CALO Brickyard 902W.
- ◆ This heifer is from a daughter of Mytty In Focus.
- ◆ 808U consistently produces excellence. With this heifer, you will see for yourself on sale day.



MCBN Ariadna 337A Cow

Lot 15 3/15/13 25% LF LFF 2031248 Homo Polled Homo Black

CED	BW	WW	YW	MA	CEM	SC	DOC	CW	REA	YG	MARB	\$MTI
-----	----	----	----	----	-----	----	-----	----	-----	----	------	-------

14	-2.2	56	108	32	4	0.5	22	46	-0.53	0.79	0.42	56
----	------	----	-----	----	---	-----	----	----	-------	------	------	----



SAV Final Answer 0035

SITZ Traveler 8180
SAV Final Answer 0035
SAV Emulous 8145

GDAR Traveler 71
SITZ Everelda Entense 1137
Bon View Bando 598
SAV Sky Emulous 2124
JCL Lodestar 27L



EXLR Scotch Cap 1005N

LH Rodemaster 338R
MCBN Yandra 122Y
EXLR Scotch Cap 1005N

Vermilion E Blackbird8546
RADS Black Prodigy
EXAR Scotch Cap 1548

- ◆ Homozygous polled and homozygous black.
- ◆ Here is a big-numbered, well-made daughter of SAV Final Answer.
- ◆ She offers a breed-leading set of EPDs with a -2.2 for birth weight, 108 for yearling weight, 32 for milk and .42 for marbling.
- ◆ This heifer is from a daughter of LH Rodemaster 338R back to the elite donor EXLR Scotch Cap 1005N.



Open Heifers

MCBN A Red Star 340A

Cow



Lot 16

3/22/13 71.8% LF LFF 2047443 Double Polled Red

CED	BW	WW	YW	MA	CEM	SC	DOC	CW	REA	YG	MARB	\$MTI
10	1.0	52	102	27	8	0.9*	—	30*	-0.02*	0.27*	0.21*	51*

*Estimated



MCBN Warner 955W



JCL Lodestar 27L



Mytty In Focus

Mytty In focus
MCBN Warner 955W
 LVLS 408Y

JCL Lodestar 27L
MCBN Yesterday Star 1131Y
 ACLI Grapevine 901G

S A F Focus of E R
 Mytty Countess 906
 LVLS Polled Justice 060 1E
 LVLS Miss Stabilizer 1408E
 HUNT's Hi-Liter 245G
 Logan's Cheerleader 280G
 COLE First Down 46D
 AMBL Yolanda 83Y

- ◆ Red and double polled, here is a pretty red heifer.
- ◆ We appreciate this heifer's low birth of 1.0, weaning of 52, yearling of 102 and milking ability of 27.
- ◆ She is sired by the Mytty In Focus' son, MCBN Warner 955W and from a daughter of LH Rodemaster 338R from a daughter of COLE First Down.

MCBN Ashleigh 342A

Cow



Lot 17

3/27/13 50% LF LFF 2031249 Homo Polled Double Black

CED	BW	WW	YW	MA	CEM	SC	DOC	CW	REA	YG	MARB	\$MTI
11	-0.8	59	106	42	5	—	15	12	0.15	0.10	0.06	49



Connealy Consensus 7229



AUTO Dollar General 122R

**Trait Leaders

Connealy Consensus
Connealy Consensus 7229
 Blue Lilly of Conanga 16

AUTO Dollar General 122R**
MCBN Browns Treasure 742T
 JCL Fresh Air

MK Alliance 6595 187
 Blinda of Conanga 004
 Woodhill Admiral 77K
 Blue Cash of Conanga 6020
 LVLS Secret Weapon 4408K
 AUTO Kyria 232K
 EXLR Dakota 353G
 CIC Mo Starry Nights

- ◆ Double black and homozygous polled.
- ◆ This 50% Lim-Flex heifer is well bred and very well made.
- ◆ Sired by the leading Angus sire, Connealy Consensus 7229, and from a daughter of AUTO Dollar General 122R back to JCL Fresh Air.
- ◆ This young female has a great set of EPDs with a -0.8 for birth, 106 for yearling weights and a breed-topping 42 for milking ability.



Open Heifers



MCBN Ambrosia 362A

Cow

Lot 18

5/31/13 71.8% LF LFF 2031261 Double Polled Double Black

CED	BW	WW	YW	MA	CEM	SC	DOC	CW	REA	YG	MARB	\$MTI
8	1.0	55	102	35	7	0.8*	23*	31*	0.08*	0.29*	0.22*	52*



**Trait Leader

Mytty In focus
MCBN Warner 955W
 LVLS 408Y

AUTO Dollar General 122R**
LVLS X-tra Special 1069X
 LVLS 1069P

S A F Focus of E R
 Mytty Countess 906
 LVLS Polled Justice 060 1E
 LVLS Miss Stablizer 1408E
 LVLS Secret Weapon 4408K
 AUTO Kyria 232K
 LVLS Duramax 2408M
 LVLS Ebony 1069E

*Estimated

- ◆ Double polled and double black.
- ◆ Here is a daughter of MCBN Warner 955W, a son of Mytty In Focus back to the dam of LVLS Secret Weapon, LVLS 408H.
- ◆ Her dam is a daughter of AUTO Dollar General 122R, back to a daughter of LVLS Duramax 2408M.
- ◆ She has a 1.0 for birth, 55 for weaning, 102 for yearling weights and 35 for milking ability.



MCBN Ameera 361A

Cow

Lot 19

6/2/13 56% LF LFF 2031537 Double Polled Double Black

CED	BW	WW	YW	MA	CEM	SC	DOC	CW	REA	YG	MARB	\$MTI
9	0.6	56	107	30	6	0.9*	19*	33*	-0.44*	0.35*	0.25*	53*



Mytty In focus
MCBN Warner 955W
 LVLS 408Y

AHCC Westwind W544
LVLS Yeliz 9886Y
 LVLS9885S

S A F Focus of E R
 Mytty Countess 906
 LVLS Polled Justice 060 1E
 LVLS Miss Stablizer 1408E
 KAJO Responder 120R
 AHCC Miss Wulf Hunt R544
 POSS Lead On 419
 LVLS9885N

*Estimated

- ◆ Double polled and double black.
- ◆ Here is a big-numbered 56% Lim-Flex daughter of MCBN Warner 955W. He is a son of Mytty In Focus from the elite MCBN donor LVLS 408H.
- ◆ Her dam is a daughter of AHCC Westwind W544 back to a daughter of POSS Lead On 419.



Open Heifers & Pairs

MCBN Alohilani 382A

Cow



Lot 20

3/10/13 50% LF LFF 2043007 Double Polled Double Black

CED	BW	WW	YW	MA	CEM	SC	DOC	CW	REA	YG	MARB	\$MTI
6	0.9	57	104	24	3	—	—	37	0.11	0.20	0.38	59



R/M Ironstone 4047



MCBN Razzle Dazzle



GPFF Blaque Rulon

C A Future Direction 5321
R/M Ironstone 4047
 B/R Ruby of Tiffany 5144

GPFF Blaque Rulon
MCBN Razzle Dazzle
 LVLS 408H

GAR Precision 1680
 RCSX Rainy Day 80R
 B/R New Design 323
 B/R Ruby of Tiffany 346
 Black Diamond
 Quail Run Ramona BP
 LVLS Polled Justice 060 1E
 LVLS Miss Stabilizer 1408E

- ◆ Double polled and double black.
- ◆ Take a look here at this daughter of R/M Ironstone 4047 that is from MCBN Razzle Dazzle, a daughter of GPFF Blaque Rulon from the dam of LVLS Secret Weapon, LVLS 408H.
- ◆ This heifer offers a top marbling number of .38, MTI of 59, birth of .09 and yearling weight of 104.

MCBN Browns Treasure 742T

Cow



Lot 21

10/3/07 100% PB NPF 1908040 Homo Polled Black

CED	BW	WW	YW	MA	CEM	SC	DOC	CW	REA	YG	MARB	\$MTI
9	2.2	57	99	34	7	0.6	15	27	0.35	0.06	0.05	48



AUTO Dollar General 122R

LVLS Secret Weapon 4408K
AUTO Dollar General 122R**
 AUTO Kyria 232K

EXLR Dakota 353G
JCL Fresh Air
 CIC Mo Starry Nights

LVLS Farmer 4G
 LVLS 408H
 AUTO Hackett 702H
 WULFs Happiness 8136H
 WULF's Count Down 9251C
 CANE Ridge Daphne 011D
 JCL Night Watchman
 Backfield In Motion

- ◆ Black and homozygous polled.
- ◆ This purebred daughter of AUTO Dollar General 122R is from the long-time Brown donor JCL Fresh Air.
- ◆ She has a strong set of EPDs with a 99 for yearling weight, 34 for milk and .35 for ribeye.
- ◆ Selling at her side is a 50% heifer of big numbered Angus sire, PA Full Power 1208.

23A— MCBN 452B, 4/17/14, Heifer, Pending, 50% LF, HP/HB by PA Full Power 1208 (AAA 16981588), Act BW 72#. Estimated EPDs: CED 12, BW 0.7, WW 60, YW 102, MA 40, CEM 10, SC 0.7, DOC 27, CW 31, REA 0.67, MARB 0.64



Pairs



MCBN Xhibitionist 080X

Cow

Lot 22

11/27/10 100% PB NPF 1976903 Homo Polled Homo Black

CED	BW	WW	YW	MA	CEM	SC	DOC	CW	REA	YG	MARB	\$MTI
11	1.0	51	91	31	7	0.5	16	26	0.52	0.01	0.04	47



AUTO Dollar General 122R

**Trait Leaders



DJDF Jayla 707P

LVLs Secret Weapon 4408K LVLs Farmer 4G
AUTO Dollar General 122R** LVLs 408H
 AUTO Kyria 232K AUTO Hackett 702H
 WULFs Happiness 8136H
 Black Diamond
 GPFf Blaue Rulon Quail Run Ramona BP
DJDF Jayla 707P WULFs Gage 5158G
 DJDF Carey 303M BRLM Lacey 214B

- ◆ Homozygous polled and homozygous black.
- ◆ This purebred daughter of AUTO Dollar General 122R is from a daughter of GPFf Blaue Rulon.
- ◆ She offers a low birth of 1.0, yearling weight of 91 and milk of 31.
- ◆ Sells along beside her double homozygous heifer.

21A— MCBN 438B, 3/22/14, Heifer, Pending, 87.5% PB, HP/HB by MCBN Xalvador 022X, Act BW 65#. Estimated EPDs: CED 12, BW 1.2, WW 57, YW 104, MA 33, CEM 8, SC 0.7, DOC 15, CW 27, REA 0.31, YG 0.13, MARB 0.16, \$MTI 52



MCBN X-rated Baby 083X

Cow

Lot 23

12/6/13 100% PB NPF 1976947 Homo Polled Homo Black

CED	BW	WW	YW	MA	CEM	SC	DOC	CW	REA	YG	MARB	\$MTI
14	-0.6	52	99	33	8	0.8	18	38	0.50	0.08	0.05	47



LVLs Secret Weapon 4408K

**Trait Leaders



Carrousel Pina Colada

LVLs Secret Weapon 4408K LVLs Farmer 4G
AUTO Dollar General 122R** LVLs 408H
 AUTO Kyria 232K AUTO Hackett 702H
 WULFs Happiness 8136H
 GPFf Blaue Rulon
 DHVO Deuce 132R AMY Jo Dhan 20L
MCBN Ulla 853U AUTO Black Dakota 129J
 Carrousel Pina Colada ELMW Ginnie P58G

- ◆ Homozygous polled and homozygous black.
- ◆ This female has a breed leading pedigree in being sired by AUTO Dollar General 122R and then out of a daughter of DHVO Deuce back to Carrousel Pina Colada.
- ◆ This is a very well-bred purebred female that sells along beside her double homozygous heifer.

22A— MCBN 439B, 3/22/14, Heifer, Pending, 87.5% PB, HP/HB by MCBN Xalvador 022X, Act BW 69#. Estimated EPDs: CED 13, BW 0.4, WW 57, YW 108, MA 34, CEM 9, SC 0.8, DOC 16, REA 0.30, YG 0.17, MARB 0.17, \$MTI 52



LVLS 5026U

Cow



1/20/08 42% LF LFF 1901923 Double Polled Black

Lot 24

CED	BW	WW	YW	MA	CEM	SC	DOC	CW	REA	YG	MARB	\$MTI
8	0.8	45	88	18	2	0.1	18	18	-0.11	0.33	0.31	52



LVLS 5026U

PAPA Forte 1921
Woodhill Foresight
 Bon View Gammer 85

CQLC Mahoney 09G
LVLS 5026J
 LVLS Ms Stabilizer 2626F

PAPA Optima 9818
 PAPA Envious Blackbird
 Bon View Bando 598
 Bon View Gammer 233
 COLE First Down 46D
 CQLC Toots 34C
 MAYS Black Jet
 LVLS 606T

- ◆ This 42% Lim-Flex brood cow is sired by the Angus sire, Woodhill Foresight.
- ◆ She is a solid producer and sells with her young bull calf sired by the deceased MAGS Wazowski.
- ◆ Buy with confidence as we are sure you will appreciate this pair on sale day.

32A— MCBN 411B, 2/4/14, Bull, Pending, 58.5% LF, DP/HB by MAGS Wazowski. Act. BW 79#. Estimated EPDs: CED 10, BW 0.9, WW 58, YW 103, MA 23, CEM 2, SC 0.5, DOC 16, CW 35, REA 0.13, YG 0.29, MARB 0.25, \$MTI 54

AI'd 5/6/14 WULFs Yankee K689Y.





LVLS9586T

Cow

Lot 25

2/19/07 42% LF LFF 1880703 Homo Polled Double Black

CED	BW	WW	YW	MA	CEM	SC	DOC	CW	REA	YG	MARB	\$MTI
5	1.8	59	111	32	3	0.2	—	24	-0.26	0.37	0.35	58



Bon View New Design 1407

Bon View New Design 1407
Poss New Design 410
 Poss Maverick252
 LVLS Polled Black Jack
LVLS 9586N
 LVLS 3586G

B/R New Design 036
 Bon View Pride 664
 Whitestone Widespread MB
 Poss Maverick 929
 MAYS Black Jet
 LVLS Rebeca
 LVLS Wide Load 442E
 LVLS Sherry

- ◆ Double black and homozygous polled.
- ◆ This 42% Lim-Flex daughter of POSS New Design 410 is from a daughter of LVLS Polled Black Jack.
- ◆ Sells with her April, double homozygous bull calf.
- ◆ She offers a 59 for weaning, 111 for yearling weights, 32 for milk and .35 for marbling.

25A— MCBN 444B, 4/3/14, Bull, Pending, 46%LF, HP/HB by SBLX Yinne 614Y, Act BW 77#.
Estimated EPDs: CED 8, BW 1.6, WW 56, YW 106, MA 34, CEM 3, CW 29, REA -0.26, YG 0.44, MARB 0.32, \$MTI 55



LVLS Miss Rachel 718X

Cow

Lot 26

1/14/10 50% LF LFF 1967550 Double Polled Double Black

CED	BW	WW	YW	MA	CEM	SC	DOC	CW	REA	YG	MARB	\$MTI
9	1.5	48	95	26	6	0.3	11	36	-0.23	0.46	0.30	52



MCBN Rachel

SITZ Traveler 8180
S A V 8180 Traveler 004
 BOYD Forever Lady 8003
 EXLR New Generation 071M
MCBN Rachel
 LVLS Gabby 3302G

BDAR Traveler 71
 SITZ Everelda Intense 1137
 AAR New Trend
 S V F Forever Lady 57D
 AUTO Black Dakota 129J
 EXLR Luvly 084F
 Galileo
 LVLS Rebeca

- ◆ Here is a very productive daughter of SAV 8180 Traveler 004 that goes back to a daughter of EXLR New Generation 071M and MCBN Rachel.
- ◆ We appreciate her numbers with a 1.5 for birth, 95 for yearling weight, 26 for milk and .30 for marbling.
- ◆ Sells with her bull calf by MAGS Wazowski.

26A—MCBN 456B, 4/30/14, Bull, Pending, 62.5% LF, HP/HB by MAGS Wazowski, Act BW 76#. **Estimated EPDs:** CED 11, BW 1.2, WW 60, YW 107, MA 27, CEM 4, SC 0.6, DOC 13, CW 44, REA 0.07, YG 0.36, MARB 0.24, \$MTI 54



LVLS Yes Master 9586Y

Cow



Lot 27

1/12/11 46% LF LFF 1988626 Homo Polled Homo Black

CED	BW	WW	YW	MA	CEM	SC	DOC	CW	REA	YG	MARB	\$MTI
8	2.5	65	120	31	5	0.4	—	46	-0.19	0.54	0.37	59



LVLS 9586Y
Weaning Photo



LH Rodemaster 338R

JCL Lodestar 27L
LH Rodemaster 338R
 Vermilion E Blackbird 9546
 Poss New Design 410
LVLS9586T
 LVLS9586N

HUNT's Hi-Liter 245G
 Logan's Cheerleader 280G
 Vermilion 31 Stacler 3491
 CH Env Blackbird C5941
 Bon View New Design 1407
 Poss Maverick 252
 LVLS Polled Black Jack
 LVLS 3586G

- ◆ Homozygous polled and homozygous black.
- ◆ Here is a big numbered daughter of LH Rodemaster 338R back to a daughter of POSS new Design 410.
- ◆ She has earned a 120 for yearling weight, 31 for milk and .37 for marbling.
- ◆ Just take a look at her heifer calf at her side and the numbers she carries.

27A— MCBN 436B, 4/16/14, Heifer, Pending, 48% LF, HP/HB by SBLX Yinne 614Y, Act BW 71#. Estimated EPDs: CED 9, BW 2.0, WW 59, YW 111, MA 34, CEM 4, CW 34, REA -0.23, YG 0.53, MARB 0.33, \$MTI 56



Pairs



LVLS Miss Jacks 9115X

Cow

Lot 28

1/15/10 75% LF LFF 1965025 Double Polled Double Black

CED	BW	WW	YW	MA	CEM	SC	DOC	CW	REA	YG	MARB	\$MTI
5	2.7	50	88	25	6	0.6	—	31	-0.05	0.18	0.16	49



COLE First Down 46D

LVLS Farmer 4G
LVLS Farmer Jack 5842M
 LVLS 5842J

LVLS7052P
LVLS 9115S
 KG Daisy 3K63

COLE First down 46D
 LVLS Jeni 601V
 LVLS Polled Black Jack
 LVLS Candy 842C
 LVLS Farmer 4G
 CQLC Sally 052L
 2TM Elixor 100-139
 Stockman 365 K G 12

- ◆ This 75% Lim-Flex daughter of LVLS Farmer Jack 5842M has been a top producer and sells with her young heifer sired by MCBN Yasir 125Y.
- ◆ We appreciate the productive look and the performance found within this young brood cow.
- ◆ Sells with her double homozygous heifer calf.

28A— MCBN 406B, 1/23/14, Heifer, Pending, 62.5% LF, HP/HB by MCBN Yasir 125Y (Rodemaster X EXLR 1019P), Act BW 76#. Estimated EPDs: CED 8, BW 2.6, WW 58, YW 106, MA 26, CEM 6, CW 36, REA -0.10, YG 0.34, MARB 0.26, \$MTI 54



WLR Fool Me Twice

Cow

Lot 29

3/1/11 62.5% LF LFF 1989105 Homo Polled Black

CED	BW	WW	YW	MA	CEM	SC	DOC	CW	REA	YG	MARB	\$MTI
9	0.7	41	82	23	5	0.1	1	22	0.03	0.17	0.15	46



MAGS Shyllo

JCL Lodestar 27L
MAGS Shyllo
 MAGS Phyllo

EF Smack Down 764S
RVDR Ultra Red 3810U
 BGRR MS Madison

HUNT's Hi-Liter 245G
 Logan's Cheerleader 280G
 BR Midland
 MISS Wulfette 6230F
 EF Main Stay 541M
 M L Prudence 427
 CCF Traveler G3
 WHLA 104F

- ◆ Black and homozygous polled.
- ◆ Sired by the JCL Lodestar 27L son, MAGS Shyllo, and from a daughter of EF Smack-down.
- ◆ This young female sells with her young bull sired by MAGS Wazowski at her side.

29A— MCBN 423B, 2/12/14, Bull, Pending, 69% LF, DP/DB by MAGS Wazowski, Act BW 83#. Estimated EPDs: CED 11, BW 0.8, WW 56, YW 100, MA 25, CEM 4, SC 0.5, DOC 8, CW 37, REA -0.20, YG 0.21, MARB 0.17, \$MTI 51



LVLS X-star 3207X

Cow



Lot 30

2/9/10 71.5% LF LFF 1964961 Double Polled Double Black

CED	BW	WW	YW	MA	CEM	SC	DOC	CW	REA	YG	MARB	\$MTI
9	2.0	55	107	25	8	0.5	—	36	-0.05	0.30	0.23	53



LVLS 3207X
Yearling photo



JCL Lodestar 27L

- | | |
|--------------------------|--------------------------|
| HUNTs Hi-Liter 245G | Waddles Cobalt 3106 |
| JCL Lodestar 27L | TNUH Miss C245 |
| Logan's Cheerleader 280G | COLE First Down 46D |
| LVLS New Design 9109 | TTCC Confidence Maker |
| LVLS 3207U | Bon View New Design 878 |
| LVLS 2206S | L V Miss Prompter 9109 |
| | AUTO Black Dakota 129J |
| | LVLS Ms Stabilizer 2206F |

- ◆ This 71.5% Lim-Flex female is sired by the deceased, but multiple trait-leading sire, JCL Lodestar 27L, and from a daughter of LVLS New Design 9109.
- ◆ She offers a 107 for yearling weight, 25 for milk and .23 for marbling.
- ◆ She sells with her young heifer at her side sired by SBLX Yinne, the 50% double homozygous son of SAV Providence 6922 of ELMW Ginnie.

30A— MCBN 451B, 4/16/14, Heifer, Pending, 61% LF, HP/HB by SBLX Yinne 614Y (SAV Providence X ELMW Ginnie P58G), Act BW 75#. Estimated EPDs: CED 10, BW 1.7, WW 53, YW 104, MA 31, CEM 6, CW 35, REA -0.16, YG 0.41, MARB 0.26, \$MTI 53





LVLS Yeliz 9886Y

Cow

Lot 31

1/16/11 68.5% LF LFF 1988637 Double Polled Double Black

CED	BW	WW	YW	MA	CEM	SC	DOC	CW	REA	YG	MARB	\$MTI
9	1.4	58	110	28	5	0.8	13	38	-0.06	0.26	0.18	52



LVLS Yeliz 9886Y
Yearling Photo



AHCC Westwind W544

KAJO Responder 120R
AHCC Westwind W544
 AHCC Miss Wulf Hunt R544
 POSS Lead On 419
LVLS9885S
 LVLS9885N

JCL Lodestar 27L
 KAJO Sheryl Swoops 11H
 COLE Wulf Hunt
 AHCC Miss Outcross N844
 Connealy Lead On
 POSS Blueblood Lady 261
 LVLS Polled Justice 0601E
 LVLS 885C

- ◆ There is tremendous growth and potential found within this female.
- ◆ She is sired by AHCC Westwind and from a daughter of POSS Lead On 419.
- ◆ She has earned a 1.4 for birth, 110 for yearling weights, 28 for milk and .18 for marbling.

Due by sale

AI'd 7/18/13 COLE Windfall 144W for a 59% LF, HP/HB—CED 8, BW 1.8, WW 66, YW 124, MA 34, CEM 4, SC 0.6, DOC 15, CW 56, REA -0.01, YG 0.39, MARB 0.31, \$MTI 58
PE 7/27/13-11/15/13 SLBX Yinne 614Y (SAV Providence X ELMW Ginnie P58G) for a 59% LF, HP/HB—CED 10, BW 1.4, WW 56, YW 106, MA 32, CEM 4, CW 36, REA -0.16, YG 0.39, MARB 0.24, \$MTI 52

SAFE



Spring Breds

LVLS Young Babe 774Y

Cow



Lot 32

1/3/11 75% LF LFF 1988646 Homo Polled Homo Black

CED	BW	WW	YW	MA	CEM	SC	DOC	CW	REA	YG	MARB	\$MTI
10	2.1	61	111	31	8	0.7	14	49	0.21	0.34	0.20	53



LH Rodemaster 338R



MCBN Razzle Dazzle

JCL Lodestar 27L
LH Rodemaster 338R
 Vermilion E Blackbird9546

AUTO Dollar General 122R
MCBN Turned Out Perfect
 MCBN Razzle Dazzle

HUNT's Hi-Liter 245G
 Logan's Cheerleader 280G
 Vermilion 31 Stacler 3491
 CH Env Blackbird C5941
 LVLS Secret Weapon 4408K
 AUTO Kyria 232K
 GPFf Blaque Rulon
 LVLS 408H

- ◆ Homozygous polled and homozygous black
- ◆ Here is a daughter of LH Rodemaster 338R that goes back to a daughter of AUTO Dollar General, back to the dam of LVLS Secret Weapon, LVLS 408H.
- ◆ She offer a 111 for yearling weight, 31 for milk and .20 for marbling.

Safe—Due approx. 6/13/14

PE 6/24/13-11/15/13 to MCBN Yasir 125Y (Rodemaster X EXLR 1019P) for a 50% LF, HP/HB— CED 9, BW 2.2, WW 61, YW 114, MA 26, CEM 5, CW 39, REA -0.02, YG 0.35, MARB 0.37, \$MTI 59

SAFE

MCBN Yesterday Star 1131Y

Cow



Lot 33

5/5/11 95% PB NPF 2047442 Double Polled Double Black

CED	BW	WW	YW	MA	CEM	SC	DOC	CW	REA	YG	MARB	\$MTI
10	1.5	50	101	20	10	0.7	—	31	0.24	0.11	0.11	48



JCL Lodestar 27L

HUNT's Hi-Liter 245G
JCL Lodestar 27L
 Logan's Cheerleader 280G

COLE First Down 46D
ACLI Grapeview 901G
 AMBL Yolanda 83Y

Waddles Cobalt 3106
 TNUH Miss C245
 COLE First Down 46D
 TTCC Confidence Maker
 LKCC Tomahawks Touchdown
 2 155P
 YKCC Atlantic 397N
 PRTE Miss 825S

- ◆ Double polled and double black.
- ◆ This female is the result of the blending of JCL Lodestar 27L and COLE First Down.
- ◆ She is extremely deep bodied, feminine up through her front end and very appealing from the side profile.

Safe—Due approx. 5/28/14

PE 7/15/13-11/15/13 to MCBN Xalvador 022X (AUTO Dollar General 122R X EXLR 019P) for a 85% PB, HP/HB— CED 11, BW 1.5, WW 56, YW 109, MA 27, CEM 10, SC 0.8, CW 30, REA 0.17, YG 0.18, MARB 0.20, \$MTI 53

SAFE



Planned Matings



MCBN Blazing Star 455B

Bull

Lot 34 4/24/14 62.5% LF Pending Homo Polled Homo Black Act BW 82#

CED	BW	WW	YW	MA	CEM	SC	DOC	CW	REA	YG	MAR.B	\$MTI
9	1.8	52	92	39	9	0.4	14	29	0.43	-0.03	0.10	49



ET MATING

DHVO Deuce 132R
MAGS Wazowski
 BOHI Red Robin 282R

LVLS Farmer John 7428P
LVLS 8115T
 Frenzen Missy M152

GPFF Blaque Rulon
 Amy Jo Dhan 20L
 Connealy Lead On
 MAGS Manuela
 LVLS Farmer Jack 5824M
 LVLS7428L
 Frenzen Heavy HarvestH113
 WK Missy 3138

- ◆ Homozygous black and homozygous polled.
- ◆ Joining the style of MAGS Wazowski and the do-bility of LVLS 8115T is sure to create a stunning star with MCBN Blazing Star 455B.
- ◆ The potential of this future herd sire is boundless.

Recipient Cow is Commercial Cow #118, open and ready for transplant.



MCBN Brute Force 445B

Bull

Lot 35 4/2/14 50% LF Pending Homo Polled Homo Black Act BW 82#

CED	BW	WW	YW	MA	CEM	SC	DOC	CW	REA	YG	MAR.B	\$MTI
8	0.2	49	93	27	3	0.7	—	28	-0.22	0.43	0.22	50



ET MATING

D A Traveler 004 703
EF Xcessive Force
 CFLX Mollys Image

LVLS Farmer John 7428P
LVLS8105T
 Frenzen Mayflower M74

S A V 8180 Traveler 004
 Rosewood Erica 5010
 DHVO Deuce 132R
 JCL Peppermint
 LVLS Farmer Jack 5842M
 LVLS 7428L
 Frenzen Heavy HarvestH113
 Frenzen Mayflower F32

- ◆ Homozygous polled and homozygous black.
- ◆ Sired by the once national champion Lim-Flex sire, EF Xcessive Force, and from the leading Brown donor LVLS 8105T. She is a daughter of LVLS Farmer John that has proven her worth time and time again.
- ◆ This calf is exciting, well-bred and one that will have instant value in the market place.

Recipient Cow is Commercial Cow #113, open and ready for transplant.



Planned Matings

MCBN Brute Xcess 440B

Bull



Lot 36

3/24/14 50% LF Pending Homo Polled Homo Black Act BW 77#

CED	BW	WW	YW	MA	CEM	SC	DOC	CW	REA	YG	MARB	\$MTI
8	0.2	49	93	27	3	0.7	—	28	-0.22	0.43	0.22	50



EF Xcessive Force

ET MATING

D A Traveler 004 703
EF Xcessive Force
 CFLX Mollys Image

S A V 8180 Traveler 004
 Rosewood Erica 5010
 DHVO Deuce 132R
 JCL Peppermint
 LVLS Farmer Jack 5842M
 LVLS 7428L
 Frenzen Heavy HarvestH113
 Frenzen Mayflower F32



LVLS8105T

LVLS Farmer John 7428P
LVLS8105T
 Frenzen Mayflower M74

- ◆ Homozygous polled and homozygous black.
- ◆ Sired by the once national champion Lim-Flex sire, EF Xcessive Force, and from the leading Brown donor LVLS 8105T. She is a daughter of LVLS Farmer John that has proven her worth time and time again.
- ◆ This calf is exciting, well-bred and one that will have instant value in the market place.

Recipient Cow

COLE06M

Cow



Lot 36A

2/12/02 100% PB NPF 1689208 Double Polled Double Black

CED	BW	WW	YW	MA	CEM	SC	DOC	CW	REA	YG	MARB	\$MTI
11	0.7	31	62	13	3	0.4	3	-2	0.01	0.14	-0.01	38



COLE First Down 46D

Anders Jag

GreenwoodPolled455Rocket

Anders Gemini

COLE First Down 46D

COLE 930J

COLE 232B

Polled Chief Cada
 Diamonds Are Forever
 Master Brun Mozart 274D
 Anders Black Epic
 LKCC Tomahawks Touchdown
 2 155P
 HC Polled Manhattan
 COLE 66Y

- ◆ Double polled and double black.
- ◆ 06M is a well-made purebred cow.
- ◆ This calf is exciting, well-bred and one that will have instant value in the market place.
- ◆ Sells with her March ET calf listed above.
- ◆ 06M is a long-time cow here at Brown Land & Cattle Co. and has raised many excellent calves of her own.

Due to the age of this calf, this cow is open and ready to breed.



Planned Matings



MCBN Twice As Nice 763T

Cow

Lot 37

5/23/11 100% PB NPF 1888738 Polled Black

CED	BW	WW	YW	MA	CEM	SC	DOC	CW	REA	YG	MARB	\$MTI
9	1.8	52	92	39	9	0.4	14	29	0.43	-0.03	0.10	49



AUTO Dollar General 122R

****Trait Leaders**

LVLS Secret Weapon 4408K
AUTO Dollar General 122R**
 AUTO Kyria 232K

SLDJ Polled Equity
DVFC Eilene 411K

VRCC Maternal Magic 350D

LVLS Farmer 4G
 LVLS 408H
 AUTO Hackett 702H
 WULFs Happiness 8136H
 WULF's Polled Progress
 Goldenview Theresa GVC 486
 Orion
 PLLP Michele 27X

- ◆ MCBN 763T is a purebred AUTO Dollar General daughter.
- ◆ She sells with a possible ET mating of Hoover Dam and AUTO Show Off 233X OR PE to MCBN Zero Wind 286Z (EXAR Upshot 0562B X LVLS Miss Blackbird 111U).
- ◆ Sells safe, but not confirmed to which mating.



Hoover Dam

ET MATING



AUTO Show Off 233X

50% LF Double Polled Double Black

Embryo Transferred 12/17/13

CED	BW	WW	YW	MA	CEM	SC	DOC	CW	REA	YG	MARB	\$MTI
12	-1.1	54	107	37	4	—	17	5	-0.07	0.13	0.13	51

Syngen C C & 7
Hoover Dam
 Erica of Ellston C124
 MAGS The General
AUTO Show Off 233X
 AUTO Rebeca 292S

S A F Connection
 Syngen Forever Lady 4087
 TC Gridiron 258
 Erica of Ellston V65
 AUTO Dollar General 122R
 EXLR Luvly 821M
 LESF Asphalt 9N
 EXLR Rebeca 1019P

- ◆ Homozygous polled and double black.
- ◆ This is an exciting mating from the heart of the progressive embryo transplant program here.
- ◆ Sired by the leading Angus sire, Hoover Dam, and from the elite donor, AUTO Show Off 233X, a proven daughter of MAGS The General from AUTO Rebeca 292S.

PE 12/24/13-4/19/14 to MCBN Zero Wind 286Z (EXAR Upshot 0562B X LVLS Miss Blackbird 111U) for a 75% PB, DP/DB— CED 10, BW 0.6, WW 56, YW 105, MA 40, CEM 6, CW 24, REA 0.23, YG 0.10, MARB 0.09, \$MTI 49

—SAFE—



Planned Matings

WBBK Miss Blackjack 7049T

Cow



Lot 38

9/9/07 100% PB NPF 1888594 Double Polled Double Black

CED	BW	WW	YW	MA	CEM	SC	DOC	CW	REA	YG	MARB	\$MTI
6	0.8	35	72	18	3	0.8	16	12	0.26	0.04	-0.02	39



AUTO Black Dakota 129J

AUTO Black Dakota 129J
JCL Black Okie
 JCL Mayberry

COLE First Down 46L
TNUH Miss Dynasty 521J
 TNUH Miss C245

EXLR Dakota 353G
 DFCL Jet Set BPC 34Y
 Waddles Clear Choice 360
 JCL Madeline
 LKCC Tomahawks Touchdown
 2 155P
 RUNL 486A
 MS Rott 172A

- ◆ WBBK 7049T is a purebred daughter of AUTO Black Dakota 129J and COLE First Down 46D.
- ◆ She sells with a possible ET mating of EF Xcessive Force and LVLS8105T OR PE to MCBN Zero Wind 286Z (EXAR Upshot 0562B X LVLS Miss Blackbird 111U).
- ◆ Sells safe, but not confirmed to which mating.



EF Xcessive Force

ET MATING



LVLS8105T

50% LF Homo Polled Homo Black

Embryo Transferred 12/17/13

CED	BW	WW	YW	MA	CEM	SC	DOC	CW	REA	YG	MARB	\$MTI
8	0.2	49	93	27	3	0.7	—	28	-0.22	0.43	0.22	50

D A Traveler 004 703
EF Xcessive Force
 CFLX Mollys Image
 LVLS Farmer John 7428P
LVLS8105T
 Frenzen Mayflower M74

S A V 8180 Traveler 004
 Rosewood Erica 5010
 DHVO Deuce 132R
 JCL Peppermint
 LVLS Farmer Jack 5842M
 LVLS 7428L
 Frenzen Heavy HarvestH113
 Frenzen Mayflower F32

- ◆ Homozygous polled and homozygous black.
- ◆ Sired by the once national champion Lim-Flex sire, EF Xcessive Force, and from the leading Brown donor LVLS 8105T. She is a daughter of LVLS Farmer John that has proven her worth time and time again.
- ◆ This future calf will be exciting, well-bred and one that will have instant value in the market place.

PE 12/24/13-4/19/14 to MCBN Zero Wind 286Z (EXAR Upshot 0562B X LVLS Miss Blackbird 111U) for a 75% PB, HP/HB— CED 9, BW 0.1, WW 47, YW 95, MA 30, CEM 3, CW 15, REA 0.15, YG 0.14, MARB 0.03, \$MTI 44

—SAFE—



Planned Matings



ET MATING

Lot 39 62.5 LF Double Polled Double Black Embryo Transferred 12/17/13

CED	BW	WW	YW	MA	CEM	SC	DOC	CW	REA	YG	MARB	\$MTI
12	0.5	58	104	34	3	0.4	31	39	0.65	—	0.76	—



PA Full Power 1208

PA Power Tool 9108
PA Full Power 1208
 Pine View SQR Rita W091

G A R Predestined
 Shamrocks Beebee Queen 3095
 G A R New Design 5050
 Pine View Rita R084
 HUNT's Hi-Liter 245G
 Logan's Cheerleader 280G
 CHAZ First Choice 6004F
 SLVL Sable Cookie 381E



MAGS Roberta

JCL Lodestar 27L
MAGS Roberta
 MAGS Jodi

◆ With calving ease, growth and marbling of PA Full Power and leading donor, MAGS Roberta by Lodestar, this calf will have the marketing value all in place to be an exciting addition to your herd.

◆ She sells with a possible ET mating of PA Full Power 1208 and MAGS Roberta **OR** PE to MCBN Zero Wind 286Z (EXAR Upshot 0562B X LVLS Miss Blackbird 111U).

◆ Sells safe, but not confirmed to which mating.

—SAFE—

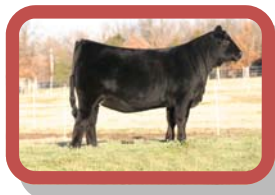
Recipient Cow is Commercial Cow #108.

PE 12/24/13-4/19/14 to MCBN Zero Wind 286Z (EXAR Upshot 0562B X LVLS Miss Blackbird 111U).

Brown Land & Cattle Co.

MCBN

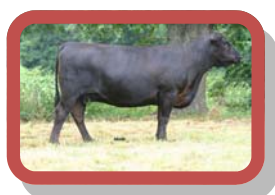
Donor Females



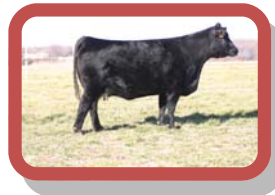
AUTO Show Off 233X



SBLX Uniform Design 5243U



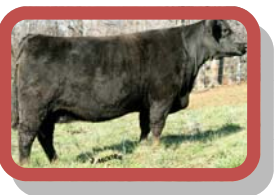
EXLR Barb 157R



LVLS 8105T



MAGS Roberta



EXLR Rebeca 1003P



Fall Breeds

MCBN Zaila Brown 204Z

Cow



Lot 40

1/9/12 62.5% LF LFF 2023229 Double Polled Homo Black

CED	BW	WW	YW	MA	CEM	SC	DOC	CW	REA	YG	MARB	\$MTI
8	-1.5	37	78	24	3	0.4	5	32	0.10	0.21	0.34	52



EXLR Barb 157R

MAGS Landmark

WULFs Titus 2149T

MAGS Shari

Bon View New Design 1407

EXLR Barb 157R

EXLR Barb 1027M

WULFs Realtor 1503R

WULFs Meadow Grass 2149M

GPFF Blaque Rulon

MAGS Manda

B/R New Design 036

Bon View Pride 664

EXLR Broadway 041E

C&C Barb

- ◆ Double polled and homozygous black.
- ◆ This 62.5% Lim-Flex heifer is sired by the outcross sire, MAGS Landmark, and from the big-numbered donor, EXLR Barb 157R, a daughter of Bon View New Design 1407.

Al'd 2/20/14 COLE Windfall 144W for a 56% LF, HP/HB—CED 7, BW 0.4, WW 56, YW 108, MA 32, CEM 2, SC 0.4, DOC 11, CW 53, REA 0.07, YG 0.37, MARB 0.39, \$MTI 58
PE 2/22/14-4/19/14 MCBN Yasir 125Y [LH Rodemaster X EXLR Rebeca 1019P] for a 56% LF, HP/HB*—CED 10, BW 0.5, WW 51, YW 101, MA 26, CEM 5, SC 0.6, DOC 8, CW 37, REA -0.03, YG 0.36, MARB 0.35, \$MTI 55

SAFE

MCBN Yandra 122Y

Cow



Lot 41

4/17/11 50% LF LFF 2000915 Homo Polled Homo Black

CED	BW	WW	YW	MA	CEM	SC	DOC	CW	REA	YG	MARB	\$MTI
12	-0.4	48	94	31	5	0.4	12	43	-0.25	0.59	0.37	53



LH Rodemaster 338R

LH Rodemaster 338R

JCL Lodestar 27L

Vermilion E Blackbird9546

RADS Black Prodigy

EXLR Scotch Cap 1005N

EXAR Scotch Cap 1548

HUNT's Hi-Liter 245G

Logan's Cheerleader 280G

Vermilion 31 Stacler 3491

CH Env Blackbird C5941

COLE First Down 46D

RADS Poll Black Powder 1

Bon View New Design 1407

EXAR Scotch Cap 9427



EXLR Scotch Cap 1005N

- ◆ Homozygous polled and homozygous black.
- ◆ Sired by LH Rodemaster 338R and from the elite donor, EXLR Scotch Cap 1005N.
- ◆ She offers a great set of numbers with a -0.4 for birth, 94 for yearling weight, 31 for milk and .37 for marbling.

PE 11/24/13-4/16/14 MCBN Zoolander 274Z [EXAR Upshot 0562B X MAGS Roberta] for a 50% LF, HP/HB*—CED 12, BW 0.0, WW 53, YW 106, MA 33, CEM 6, DOC 13, CW 29, REA -0.08, YG 0.37, MARB 0.24, \$MTI 52

SAFE



Fall Breds



MCBN Yesenia 105Y

Cow

Lot 42 2/28/11 100% PB NPF 1998627 Double Polled Double Black

CED	BW	WW	YW	MA	CEM	SC	DOC	CW	REA	YG	MARB	\$MTI
6	2.6	50	88	33	5	0.7	4	14	0.39	0.05	0.10	48



MAGS Savage

**Trait Leaders

<p style="text-align: center;">GPFF Blaque Rulon</p> <p>MAGS Savage</p> <p style="text-align: center;">MAGS Manda</p> <p style="text-align: center;">AUTO Dollar General 122R**</p> <p>MCBN Browns Treasure 742T</p> <p style="text-align: center;">JCL Fresh Air</p>	<p style="text-align: center;">Black Diamond</p> <p>Quail Run Ramona BP</p> <p>EXLR Dakota 353G</p> <p>MAGS Jewel</p> <p>LVLS Secret Weapon 4408K</p> <p>AUTO Kyria 232K</p> <p>EXLR Dakota 353G</p> <p>CIC Mo Starry Nights</p>
--	--

- ◆ A cross that has proven to work time and time again—blending MAGS Savage with AUTO Dollar General.
- ◆ This young purebred female has a 33 for milking ability and 39 for ribeye.

PE 10/14/13-11/24/13 SBLX Yinne 614Y (SAV Providence 6922 X ELMW Ginnie P58G) for a 75% LF, HP/HB—CED 8, BW 2.0, WW 51, YW 95, MA 35, CEM 4, CW 24, REA 0.07, YG 0.28, MARB 0.20, \$MTI 50

PE 11/24/13-4/16/14 MCBN Zoolander 274Z [EXAR Upshot 0562B X MAGS Roberta] for a 75%, HP/HB*— CED 9, BW 1.5, WW 54, YW 103, MA 34, CEM 6, DOC 10, CW 14, REA 0.25, YG 0.10, MARB 0.10, \$MTI 49

SAFE



MCBN Zamora Brown 248Z

Cow

Lot 43 4/13/12 62.5% LF LFF 2022559 Double Polled Homo Black

CED	BW	WW	YW	MA	CEM	SC	DOC	CW	REA	YG	MARB	\$MTI
8	1.8	49	93	32	2	0.6	0	13	-0.02	0.31	0.38	56



MAGS Savage

<p style="text-align: center;">GPFF Blaque Rulon</p> <p>MAGS Savage</p> <p style="text-align: center;">MAGS Manda</p> <p style="text-align: center;">Basin Franchise P142</p> <p>AUTO Wonderful 220W</p> <p style="text-align: center;">AUTO Rain 220R</p>	<p style="text-align: center;">Black Diamond</p> <p>Quail Run Ramona BP</p> <p>EXLR Dakota 353G</p> <p>MAGS Jewel</p> <p>C A Future Direction 5321</p> <p>Basin Chloe 812L</p> <p>BR Midland</p> <p>WULFs Frejya 6036F</p>
---	--

- ◆ This 62.5% Lim-Flex daughter of MAGS Savage is from a daughter of Basin Franchise back to the BR Midland daughter, AUTO Rain 220R.
- ◆ She offers a 1.8 for birth, 32 for milk and .38 for marbling.

PE 10/24/13-11/24/13 MCBN Yasir 125Y (LH Rodemaster 338R X EXLR Rebeca 1019P) for a 56% LF, HP/HB—CED 10, BW 2.1, WW 57, YW 109, MA 30, CEM 4, SC 0.7, CW 27, REA -0.09, YG 0.41, MARB 0.37, \$MTI 57

PE 11/24/13-4/16/14 MCBN Zoolander 274Z [EXAR Upshot 0562B X MAGS Roberta] for a 56% LF, HP/HB*— CED 10, BW 1.1, WW 53, YW 105, MA 33, CEM 5, DOC 8, CW 14, REA 0.04, YG 0.23, MARB 0.24, \$MTI 53

SAFE



LVLS Your Girl 703Y

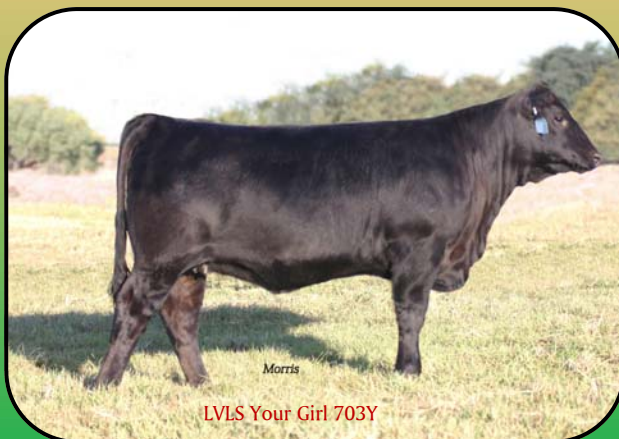
Cow



Lot 44

1/20/11 43.5% LF LFF 1988932 Double Polled Double Black

CED	BW	WW	YW	MA	CEM	SC	DOC	CW	REA	YG	MARB	\$MTI
8	1.4	53	101	28	6	0.2	13	31	-0.21	0.36	0.24	52



S A V 8180 Traveler 004
S A V Net Worth 4200
 S A V May 2410

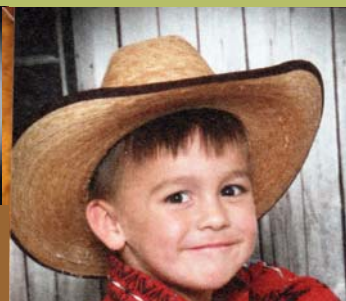
LVLS Secret Weapon 4408K
LVLS 703R
 LVLS Becha 703B

SITZ Traveler 8180
 BOYD Forever Lady 8003
 SAF 598 Bando 5175
 S A V May 6269
 LVLS Farmer 4G
 LVLS 408H
 MAYS Black Jet
 LVLS Teds Girl 404X

- ◆ Double polled and double black.
- ◆ Here is a daughter of SAV Net Worth from a daughter of LVLS Secret Weapon.
- ◆ She is big-numbered with a 1.4 for birth, 101 for yearling weights and 28 for milk.

PE 11/24/13-4/16/14 MCBN Zoolander 274Z [EXAR Upshot 0562B X MAGS Roberta]
 for a 47% LF, HP/DB*— CED 10, BW 0.9, WW 55, YW 109, MA 31, CEM 7, DOC 14,
 CW 23, REA -0.06, YG 0.26, MARB 0.17, \$MTI 51

SAFE



MCBN



Fall Breeds



LVLS X-tra Down 3587X

Cow

Lot 45

1/5/10 37.5% LF LFF 1964963 Double Polled Homo Black

CED	BW	WW	YW	MA	CEM	SC	DOC	CW	REA	YG	MARB	\$MTI
15	-2.1	44	91	30	5	0.9	5	26	-0.28	0.44	0.38	54



Mytty In Focus

Mytty In Focus

S A F Focus of E R

Mytty Countess 906

COLE First Down 46D

LVLS 3587G

LVLS Georgio

S A F Fame

G D A R Forever Lady 246

SITZ Alliance 6595

Baldrige Countess 357

LKCC Tomahawks Touchdown

2 155P

YKCC Ironside Bull 155NS

FC #121121

- ◆ This daughter of Mytty In Focus is from a daughter of COLE First Down back to Ironsides.
- ◆ She offers a -2.1 for birth, 30 for milk and .38 for marbling.

PE 10/27/13-11/24/13 MCBN Yasir 125Y (LH Rodemaster 338R X EXLR Rebeca 1019P) for a 44% LF, HP/HB—CED 13, BW 0.2, WW 55, YW 108, MA 29, CEM 6, SC 0.9, DOC 17, CW 34, REA -0.22, YG 0.47, MARB 0.37, \$MTI 57

PE 11/24/13-4/16/14 MCBN Zoolander 274Z [EXAR Upshot 0562B X MAGS Roberta] for a 44% LF, HP/HB*— CED 13, BW -0.9, WW 51, YW 104, MA 32, CEM 6, DOC 19, CW 20, REA -0.09, YG 0.30, MARB 0.24, \$MTI 52

SAFE



LVLS Yaris 9885Y

Cow

Lot 46

1/10/11 71.5% LF LFF 1988639 Double Polled Homo Black

CED	BW	WW	YW	MA	CEM	SC	DOC	CW	REA	YG	MARB	\$MTI
11	0.2	53	95	26	5	0.5	16	29	0.05	0.19	0.17	50



EXLR Remote 7200T

EXLR Remote 7200T

MAGS Remote

EXLR Blackcap 522N

JCL Lodestar 27L

MAGS 13M

AUTO Black Dakota 129J

EXLR 5118H

COLE Wulf Hunt



LVLS9885S

LVLS Whoa Girl 9885W

LVLS Top Criteria 8862P

LVLS9885S

LVLS8862M

POSS Lead On 419

LVLS9885N

- ◆ This is an extremely deep bodied daughter of EXLR Remote 7200T that goes back to a daughter of LVLS Top Criteria, back to POSS Lead On.
- ◆ She offers a low birth of 0.2, yearling weight of 95 and milk of 26.

PE 11/24/13-4/16/14 MCBN Zoolander 274Z [EXAR Upshot 0562B X MAGS Roberta] for a 61% LF, HP/HB*— CED 11, BW 0.3, WW 55, YW 106, MA 30, CEM 6, DOC 16, CW 22, REA 0.08, YG 0.17, MARB 0.14, \$MTI 50

SAFE



Split Pairs

MCBN Yevette Brown 153Y Cow



Lot 47

9/5/11 37.5% LF LFF 2022548 Double Polled Double Black

CED	BW	WW	YW	MA	CEM	SC	DOC	CW	REA	YG	MARB	\$MTI
7	0.5	45	92	29	1	—	—	7	0.18	0.04	0.19	50



RCC Preference 867

RCC Preference
RCC Preference 867
 RCC Ellie 378-564

Summitcrest Hi Flyer 3B18
 W A F J Band Elbandina 97
 Nichols Extra H6
 RCC Ellie 847-378
 GPFf Blaque Rulon
 MAGS Manda
 EXLR Broadway 041E
 C & C Barb



MCBN Whitney 959W

MAGS Savage
MCBN Whitney 959W
 EXLR Barb 1027M

◆ This 37.5% Lim-Flex daughter of RCC Preference 867 is from a daughter of MAGS Savage from the female EXLR Barb 1027M.

◆ She offers a low birth of 0.5, yearling weight of 92 and milk of 29.

Ai'd 12/5/13 AUTO Blaque Label (GPFf Blaque Rulon X EXLR Rebeca 1019P) for a 56% LF, HP/HB—CED 7, BW 1.3, WW 52, YW 103, MA 27, CEM 0, CW 13, REA 0.17, YG 0.07, MARB 0.21, \$MTI 53

PE 12/9/13-4/16/14 MCBN Zeplin 263Z [MCBN Xalvador 022X X MCBN Xpensive Taste 025X] for a 44% LF, HP/HB*—CED 11, BW -0.1, WW 50, YW 98, MA 29, CEM 4, CW 12, REA 0.27, YG 0.26, MARB 0.29, \$MTI 54

SAFE

MCBN Prefer Black 379A Bull



Lot 47A

9/24/13 43.8% LF LFM 2047436 Double Polled Double Black

CED	BW	WW	YW	MA	CEM	SC	DOC	CW	REA	YG	MARB	\$MTI
8	1.0	48	96	32	2	—	—	20*	-0.04*	0.28*	0.24*	51*



ELMW Ginnie P58G

S A V Providence 6922
SBLX Yinne
 ELMW Ginnie P58G

SAV 004 Predominant 4438
 S A V May 7238
 TCDDT Mr T.D's Power Pack
 EXLR 5118H
 RCC Preference
 RCC Ellie 378-564
 MAGS Savage
 EXLR Barb 1027M



MCBN Whitney 959W Yearling Photo

RCC Preference 867
MCBN Yevette Brown 153Y
 MCBN Whitney 959W

◆ This Lim-Flex bull sired by SBLX Yinne (with the elite donors ELMW Ginnie and EXLR Barb 1027M in his pedigree).

Act BW 79#, Act WW 640#



Split Pairs



EXLR Luvly 152W

Cow

Lot 48

3/30/09 50% LF LFF 1945980 Double Polled Double Black

CED	BW	WW	YW	MA	CEM	SC	DOC	CW	REA	YG	MARB	\$MTI
10	-0.2	37	77	30	1	—	—	19	-0.25	0.38	0.38	52



Gardens Prime Star
EXAR Prime Star 7086
 G A R 1407 New Design 982

LESF Asphalt 9N
EXLR Luvly 235S
 EXLR Luvly 084F

N Bar Prime Time D806
 Green Garden Jilt C242 S1
 Bon View New Design 1407
 G A R Precision 1559
 GPFF Blaue Rulon
 GPFF Extra Sweet Elite
 WULFs Dawson 4421D
 AMBL Luvly 340Y

- ◆ This 50% Lim-Flex daughter of EXAR Prime Star 7086 is from a daughter of LESF Asphalt 9N back to a daughter of WULFs's Dawson back to EXLR Luvly 084F.
- ◆ She offer a -0.2 for birth, 30 for milk and .38 for marbling.

AI'd 12/5/13 AUTO Blaue Label (LESF Asphalt 9N X EXLR Rebeca 1019P) for a 62.5% LF, HP/HB—CED 8, BW 0.9, WW 48, YW 96, MA 27, CEM 0, CW 19, REA -0.05, YG 0.24, MARB 0.31, \$MTI 54

PE 12/9/13-4/16/14 SBLX Yinne (614Y) [S A V Providence 6922 X ELMW Ginnee P58G] for a 50% LF, HP/HB—CED 10, BW 0.6, WW 45, YW 89, MA 33, CEM 2, CW 26, REA -0.26, YG 0.45, MARB 0.34, \$MTI 52

SAFE



MCBN Luvly Beca 366A

Cow

Lot 48A

8/13/13 62.5% LF LFF 2047437 Double Polled Double Black

CED	BW	WW	YW	MA	CEM	SC	DOC	CW	REA	YG	MARB	\$MTI
11	0.3	50	97	32	5	—	—	24*	-0.08*	0.32*	0.33*	55*



AUTO Dollar General 122R
MCBN Xalvador 022X
 EXLR Rebeca 1019P

EXAR Prime Star 7086
EXLR Luvly 152W
 EXLR Luvly 235S

LVLS Secret Weapon 4408K
 AUTO Kyria 232K
 BR Midland
 EXLR Rebeca 614H
 Gardens Prime Star
 G A R 1407 New Design 982
 LESF Asphalt 9N
 EXLR Luvly 084F

*Estimated

- ◆ Another powerhouse MCBN Xalvador 022X daughter!
- ◆ With AUTO Dollar General, EXLR Rebeca 1019P & EXLR Luvly 084F in her pedigree, she will work in any herd.

Act BW 66#, Act WW 598#



Split Pairs

MCBN Yajaira 136Y

Cow



Lot 49

7/24/11 75% LF LFF 2000927 Double Polled Double Black

CED	BW	WW	YW	MA	CEM	SC	DOC	CW	REA	YG	MARB	\$MTI
3	0.5	46	89	34	1	0.6	0	13	0.23	0.18	0.23	51



MAGS Savage

**Trait Leaders

MAGS Savage**

GPFF Blaque Rulon

MAGS Manda

G A R Predestined

SBLX Utopian Queen 1305U

AUTO Elite 270F

Black Diamond

Quail Run Ramona BP

EXLR Dakota 353G

MAGS Jewel

B/R New Design 036

G A R Ext 4206

JCL Black Out

STBR Gracious Girl



SBLX Utopian Queen 1305U

◆ This 75% Lim-Flex daughter of MAGS Savage is from the donor SBLX 1305X (GAR Predestined) back to the famed donor AUTO Elite 270F.

◆ She offers a low birth of 0.5, 34 for milk and .23 for marbling.

◆ This young pair is solid and one of the top ones in this sale.

Al'd 12/5/13 S A V Bruiser 9164 (S A V Bismarck 5682 X S A V Miss Bobbie 7463) for a 37.5% LF, HP/HB— BW -0.8, WW 61, YW 115, MA 34, CW 27, REA -0.14, YG 0.39, MARB 0.27, \$MTI 55
 PE 12/9/13-4/16/14 MCBN Zeplin 263Z [MCBN Xalvador 022X X MCBN Xpensive Taste 025X] for a 62.5% LF, HP/HB— CED 9, BW -0.1, WW 50, YW 97, MA 31, CEM 4, DOC 9, CW 19, REA 0.29, YG 0.33, MARB 0.31, \$MTI 54

SAFE

MCBN Ye Savage 377A

Bull



Lot 49A

9/21/13 62.5% LF Pending Homo Polled Homo Black

CED	BW	WW	YW	MA	CEM	SC	DOC	CW	REA	YG	MARB	\$MTI
7*	1.0*	49*	95*	35*	2*	—	—	23*	-0.02*	0.34*	0.26*	52*



ELMW Ginie P58G

**Trait Leaders

*Estimated

SBLX Yinne

S A V Providence 6922

ELMW Ginie P58G

SAV 004 Predominant 4438

S A V May 7238

TCDT Mr T.D's Power Pack

EXLR 5118H

GPFF Blaque Rulon

MAGS Manda

G A R Predestined

AUTO Elite 270F



MAGS Savage

MAGS Savage**

MCBN Yajaira 136Y

SBLX Utopian Queen 1305U

◆ Look at the genetics in this bull's pedigree. With elite genetics from Limousin and Angus, this Lim-Flex bull can shine in any program.

Act BW 76#, Act WW 604#



Split Pairs



CFLX Running Wild 007T

Cow

Lot 50

1/19/07 25% LF LFF 1874853 Homo Polled Homo Black

CED	BW	WW	YW	MA	CEM	SC	DOC	CW	REA	YG	MARB	\$MTI
12	-3.0	47	93	33	3	0.9	19	24	-0.53	0.66	0.58	60



Mytty In Focus

S A F Focus of E R
Mytty In Focus
 Mytty Countess 906

S A F Fame
 G D A R Forever Lady 246
 SITZ Alliance 6595
 Baldrige Countess 357
 Gardens Prime Time



MAGS Lady Ace

SummitcrestHighPrime0H29
MAGS Running Wild
 MAGS Lady Ace

Summitcrest Missie 2F55
 EXLR Intrigue 361G
 CHAZ Miss Greta 7003G

- ◆ Homozygous polled and homozygous black.
- ◆ This 25% Lim-Flex daughter of Mytty In Focus is from the MAGS Lady Ace donor MAGS Running Wild.

- ◆ She offers a low birth of -3.0, yearling weight of 93 and milk of 33. she also post a .58 for marbling and 60 for MTLI.

Af'd 2/20/14 WULFs Yankee K689Y (HUNT Mr Jock 44J X WULFs Soloist 6284S) for a 62.5% LF, HP/DB—CED 9, BW 0.4, WW 61, YW 111, MA 33, CEM 8, SC 1.0, DOC 30, CW 44, REA 0.27, YG 0.29, MARB 0.40, \$MTI 61

PE 2/22/14-4/16/14 MCBN Yasir 125Y [LH Rodemaster 338R X EXLR Rebeca 1019P] for a 37.5% LF, HP/HB— CED 12, BW -0.3, WW 56, YW 109, MA 30, CEM 5, SC 0.9, DOC 15, CW 33, REA -0.34, YG 0.58, MARB 0.47, \$MTI 60

SAFE



MCBN Running General 337A

Bull

Lot 50A

12/14/13 50% LF Pending Homo* Polled Homo* Black

CED	BW	WW	YW	MA	CEM	SC	DOC	CW	REA	YG	MARB	\$MTI
12*	-0.8*	55*	105*	34*	6*	0.9*	16*	26*	-0.22*	0.45*	0.43*	59*



MCBN Xalvador 022X

AUTO Dollar General 122R
MCBN Xalvador 022X
 EXLR Rebeca 1019P

LVLs Secret Weapon 4408K
 AUTO Kyria 232K
 BR Midland
 EXLR Rebeca 614H
 S A F Focus of E R
 G D A R Forever Lady 246
 SummitcrestHighPrime 0H29
 MAGS Lady Ace

Mytty In Focus
CFLX Running Wild 007T
 MAGS Running Wild

*Estimates

- ◆ MCBN 337A has the EPD profile to be a leading herd sire.
- ◆ This 50% Lim-Flex bull combines AUTO Dollar General, EXLR Rebeca 1019P, Mytty In Focus and Lady Ace!!!!

Act BW 77#



Split Pairs

LVLS 9578U

Cow



Lot 51

1/23/08 50% LF LFF 1902037 Double Polled Double Black

CED	BW	WW	YW	MA	CEM	SC	DOC	CW	REA	YG	MARB	\$MTI
8	0.8	48	95	26	4	0.6	6	25	-0.43	0.41	0.29	52



Connealy Lead On

Connealy Lead On
POSS Lead On 419

POSS Blueblood Lady 261

Anders Jag
LVLS Nadine 9578N
LVLS 408H

Connealy Leadtime
Eligence Plus of Conanga
Bon View New Design 1407
POSS Blueblood Lady 945
GreenwoodPolled455Rocket
Anders Gemini
LVLS Polled Justice 060 1E
LVLS Miss Stabilizer 1408E

- ◆ This 50% Lim-Flex daughter of POSS Lead On 419 is from a daughter of Anders Jag back to the dam of LVLS Secret Weapon, LVLS 408H.
- ◆ She offs a low birth of 0.8, 95 for yearling weight, milk of 26 and .29 marbling.

AI'd 2/20/14 WULFs Yankee K689Y (HUNT Mr Jock 44J X WULFs Soloist 6284S) for a 50% LF, HP/DB—CED 7, BW 2.3, WW 61, YW 112, MA 30, CEM 9, SC 0.8, DOC 23, CW 44, REA 0.32, YG 0.17, MARB 0.25, \$MTI 57

PE 2/22/14-4/16/14 MCBN Yasir 125Y [LH Rodemaster 338R X EXLR Rebeca 1019P] for a 50% LF, HP/HB—CED 10, BW 1.6, WW 57, YW 110, MA 27, CEM 5, SC 0.7, DOC 8, CW 33, REA -0.29, YG 0.46, MARB 0.33, \$MTI 56

SAFE

MCBN Blackbird 330A

Cow



Lot 51A

12/4/13 50% LF Pending Homo* Polled Homo* Black

CED	BW	WW	YW	MA	CEM	SC	DOC	CW	REA	YG	MARB	\$MTI
12*	0.9*	57*	108*	29*	6*	0.7*	9*	47*	-0.27*	0.55*	0.34*	55*

*Estimates



LH Rodemaster 338R

JCL Lodestar 27L
LH Rodemaster 338R
Vermilion E Blackbird9546

HUNT's Hi-Liter 245G
Logan's Cheerleader 280G
Vermilion 31 Stacler 3491
CH Env Blackbird C5941
Connealy Lead On
Poss Blueblood Lady 261
Anders Jag
LVLS 408H



LVLS 9578U

Poss Lead On 419
LVLS 9578U
LVLS Nadine 9578N

- ◆ This 50% Lim-Flex heifer offers good numbers with a proven pedigree.
- ◆ Everything is stacked in her favor!

Act BW 79#



Yearling Bulls



MCBN A Dollar's Worth 373A

Bull

Lot 52 9/1/13 50% LF Pending Homo Polled Double Black

CED	BW	WW	YW	MA	CEM	SC	DOC	CW	REA	YG	MARB	\$MTI
-----	----	----	----	----	-----	----	-----	----	-----	----	------	-------

12*	-0.3*	52*	102*	42*	9*	—	—	40*	-0.22*	0.47*	0.42*	57*
-----	-------	-----	------	-----	----	---	---	-----	--------	-------	-------	-----



AUTO Dollar General 122R



SAV Net Worth 4200

****Trait Leaders**

<p>LVL Secret Weapon 4408K AUTO Dollar General 122R** AUTO Kyria 232K</p>	<p>LVL Farmer 4G LVL 408H AUTO Hackett 702H WULFs Happiness 8136H S A V 8180 Traveler 004 S A V May 2410 GAR Precision 1680 E&B Lady Precision 310 E&D Lady 6807 767</p>
--	--

*Estimated

◆ Double black and homozygous polled.

- ◆ This 50% Lim-Flex son of AUTO Dollar General 122R is a big, stout-made herd sire prospect from a leading Net Worth donor.
- ◆ He posts a .42 for marbling, 57 for MTI along with a 102 for yearling weight.

Act BW 68#, Act WW 638#



MCBN Windstar 364A

Bull

Lot 53 7/20/13 56% LF Pending Double Polled Double Black

CED	BW	WW	YW	MA	CEM	SC	DOC	CW	REA	YG	MARB	\$MTI
-----	----	----	----	----	-----	----	-----	----	-----	----	------	-------

9*	1.3*	62*	120*	34*	5*	0.5*	—	61*	-0.04*	0.48*	0.40*	60*
----	------	-----	------	-----	----	------	---	-----	--------	-------	-------	-----



COLE Windfall 144W



LVL Your My Girl 9115Y

<p>Coleman Production 608 COLE Windfall 144W COLE Miss Firstdown 6162S</p>	<p>GAR Precision 1680 Coleman Blackcap 211 AUTO Hackett 702H COLE 18K HUNT's Hi-Liter 245G Logan's Cheerleader 280G Bon View New Design 878 LVL S9115T</p>
---	---

*Estimated

◆ Double black and double polled.

- ◆ This is a big, stout-made herd sire prospect sired by COLE Windfall from a proven daughter of JCL Lodestar 27L back to a daughter of Bon View New Design 878.
- ◆ This young bull is big-numbered and very soon will add performance to a set of cows.

Act BW 75#, Act WW 784#



Yearling Bulls

MCBN War Master 365A

Bull



Lot 54

8/5/13 47% LF Pending Double Polled Double Black

CED BW WW YW MA CEM SC DOC CW REA YG MARB \$MTI

8* 0.5* 54* 103* 30* 5* 0.8 — 32* -0.31* 0.51* 0.34* 54*

*Estimated



MCBN Warner 955W



CLFX Rasslyn 079U

Mytty In Focus
MCBN Warner 955W
 LVLS 408H

LH Rodemaster 338R
CFLX Rasslyn 079U
 KRVN Rasslyn 193R

S A F Focus of E R
 Mytty Countess 906
 LVLS Polled Justice 0601E
 LVLS Miss Stabilizer 1408E
 JCL Lodestar 27L
 Vermilion E Blackbird8546
 J Bar 7 Ranger G3145
 WL Libby 75L

- ◆ Double black and double polled.
- ◆ This 47% Lim-Flex son of MCBN Warner 955W from CLFX Rasslyn 079U a LH Rodemaster daughter.
- ◆ This bull has the EPDs to improve a set of calves.
- ◆ He posts a .34 for marbling, 54 for MTI along with a 103 for yearling weight.

Act BW 86#, Act WW 740#

MCBN Anchor 369A

Bull



Lot 55

8/25/13 37.5% LF Pending Homo Polled Homo Black

CED BW WW YW MA CEM SC DOC CW REA YG MARB \$MTI

— -0.4* 54* 108* 38* — — — 15* 0.18* 0.09* 0.15* 51*

*Estimated



MCBN Xalvador 022X



JEPS 61 RITO 7065

AUTO Dollar General 122R
MCBN Xalvador 022X
 EXLR Rebeca 1019P

RITO 7065 of RITA 5M46 OB
JEPS 61 RITO 7065
 Van 1028 Predestined M505

LVLS Secret Weapon 4408K
 AUTO Kyria 232K
 BR Midland
 EXLR Rebeca 614H
 S S Objective T510 OT26
 RITA 5M46 of 2536 PRED
 G A R Predestined M505
 GAR Future Direction S374

- ◆ Homozygous black and homozygous polled.
- ◆ This 38% herd sire prospect is thick made, sound in his structure.
- ◆ This MCBN Xalvador 022X son is from a proven producing Angus donor.

Act BW 74#, Act WW 786#



Herd Sire Prospects



MCBN Sensably Designed 302

Bull

Lot 56

1/27/13 25% LF LFM 2034119 Homo Polled Homo Black

CED	BW	WW	YW	MA	CEM	SC	DOC	CW	REA	YG	MARB	\$MTI
9	-1.1	57	110	40	4	—	17	13	-0.18	0.43	0.46	60



Connealy Consensus 7229



SBLX Uniform Design 5243U

<p>Connealy Consensus Connealy Consensus 7229 Blue Lilly of Conanga 16</p> <p>RITO Revenue 5M2 of 2536 SBLX Uniform Design 5243U MAGS Roberta</p>	<p>MK Alliance 6595 187 Blinda of Conanga 004 Woodhill Admiral 77K Blue Cash of Conanga 6020 G A R Predestined G A R Precision 2536 JCL Lodestar 27L MAGS Jodi</p>
---	---

- ◆ Homozygous polled and homozygous black.
- ◆ Wow! Look at these numbers—birth of -1.1, yearling weight of 110 and milk of 40. He also has a .46 for marbling and 60 for MTI.
- ◆ Sired by Consensus back to the elite Sugar Bush/Brown donor SBLX Uniform Design 5243U.

Act BW 75#



MCBN Design Worthy 306A

Bull

Lot 57

2/3/13 25% LF LFM 2034120 Homo Polled Homo Black

CED	BW	WW	YW	MA	CEM	SC	DOC	CW	REA	YG	MARB	\$MTI
9	-1.4	56	109	40	4	—	—	17	-0.18	0.43	0.46	60



Connealy Consensus 7229



SBLX Uniform Design 5243U

<p>Connealy Consensus Connealy Consensus 7229 Blue Lilly of Conanga 16</p> <p>RITO Revenue 5M2 of 2536 SBLX Uniform Design 5243U MAGS Roberta</p>	<p>MK Alliance 6595 187 Blinda of Conanga 004 Woodhill Admiral 77K Blue Cash of Conanga 6020 G A R Predestined G A R Precision 2536 JCL Lodestar 27L MAGS Jodi</p>
---	---

- ◆ Homozygous polled and homozygous black.
- ◆ A big-numbered Consensus son with a 109 for yearling weight and 40 for milk. He also posts a .46 for marbling and 60 for MTI.
- ◆ He represents an exciting pedigree with Consensus and the RITO Revenue 5M2 daughter, SBLX Uniform Design 5243U

Act BW 75#



Herb Sire Prospects

MCBN Armoni 308A

Bull



Lot 58

2/5/13 50% LF LFM 2043006 Double Polled Homo Black

CED	BW	WW	YW	MA	CEM	SC	DOC	CW	REA	YG	MARB	\$MTI
5	2.2	60	112	30	3	0.6	—	58	-0.07	0.47	0.30	55



COLE Windfall 144W

Coleman Production 608
COLE Windfall 144W
 COLE Miss Firstdown 6162S

GAR Precision 1680
 Coleman Blackcap 211
 Clone-COLE First Down 46D
 COLE 18K



LVLS8105T

LVLS Farmer John 7428P
LVLS8105T
 Frenzen Mayflower M74

LVLS Farmer Jack 5842M
 LVLS 7428L
 Frenzen Heavy HarvestH113
 Frenzen Mayflower F32

- ◆ Double polled and homozygous black.
- ◆ Sired by COLE Windfall 144W and from the MCBN donor LVLS 8105T, the daughter of LVLS Farmer John.
- ◆ He offers a 60 for weaning weight, 112 for yearling weight and .30 for marbling.

Act BW 83#

MCBN Ascelpius 311A

Bull



Lot 59

2/7/13 50% LF LFM 2034121 Home Polled Homo Black

CED	BW	WW	YW	MA	CEM	SC	DOC	CW	REA	YG	MARB	\$MTI
5	2.0	60	112	30	3	0.6	—	58	-0.07	0.47	0.30	55



COLE Windfall 144W

Coleman Production 608
COLE Windfall 144W
 COLE Miss Firstdown 6162S

GAR Precision 1680
 Coleman Blackcap 211
 Clone-COLE First Down 46D
 COLE 18K



LVLS8105T

LVLS Farmer John 7428P
LVLS8105T
 Frenzen Mayflower M74

LVLS Farmer Jack 5842M
 LVLS 7428L
 Frenzen Heavy HarvestH113
 Frenzen Mayflower F32

- ◆ Homozygous polled and homozygous black.
- ◆ This 50% Lim-Flex bull is sired by COLE Windfall 144W and is from the elite donor LVLS 8105T.
- ◆ He offers a 60 for weaning weight and 112 for yearling weight and 30 for milk.

Act BW 80#



Herd Sire Prospects



MCBN Anderson 395A

Bull

Lot 60

3/19/13 75% LF LFM 2042440 Homo Polled Homo Black

CED	BW	WW	YW	MA	CEM	SC	DOC	CW	REA	YG	MARB	\$MTI
13	0.1	55	105	38	10	0.4	19	35	0.05	0.44	0.54	63



AUTO Dollar General 122R



SBLX Uniform Design 5243U

**Trait Leaders

LVLs Secret Weapon 4408K	LVLs Farmer 4G
AUTO Dollar General 122R**	LVLs 408H
AUTO Kyria 232K	AUTO Hackett 702H
	WULFs Happiness 8136H
RITO Revenue 5M2 of 2536	G A R Predestined
SBLX Uniform Design 5243U	G A R Precision 2536
MAGS Roberta	JCL Lodestar 27L
	MAGS Jodi

- ◆ Homozygous polled and homozygous black.
- ◆ This 75% Lim-Flex son of AUTO Dollar General 122R is from the elite donor SBLX Uniform Design 5243U.
- ◆ MCBN 395A posts a 0.1 for birth, 105 for yearling weight and 38 for milk. He also has a .5 for marbling and 63 for MTI.

Act BW 82#



MCBN Apollo 327A

Bull

Lot 61

3/3/13 62.5% LF LFM 2031244 Double Polled Double Black

CED	BW	WW	YW	MA	CEM	SC	DOC	CW	REA	YG	MARB	\$MTI
10	1.7	53	100	26	8	0.9*	--	19*	0.29*	0.42*	0.29*	53*



MCBN Xalvador 022X

**Trait Leaders		<small>*Estimates</small>
AUTO Dollar General 122R**	AUTO Kyria 232K	LVLs Secret Weapon 4408K
MCBN Xalvador 022X	BR Midland	
EXLR Rebeca 1019P	EXLR Rebeca 614H	
	LVLs Polled Justice 0601E	
LVLs 842L	LVLs Candy 842C	
LVLs 8212S	H A Prime Time 0019	
Silver Oak Vintage 807	S O Pride of FullbackH630	

- ◆ Double polled and double black.
- ◆ Sired by the AUTO Dollar General 122R from EXLR Rebeca 1019P son, MCBN Xalvador 022X. His dam, LVLs 8212S is always a consistent producer and proves it here.
- ◆ 1.7 for birth, 100 for yearling weight and 26 for milk.

Act BW 80#



Herd Sire Prospects

MCBN Rodemaster General 303A

Bull



Lot 62

1/26/13 60.5% LF LFM 2025746 Homo Polled Homo Polled

CED	BW	WW	YW	MA	CEM	SC	DOC	CW	REA	YG	MARB	\$MTI
9	2.7	65	121	33	7	0.6*	—	37*	-0.05	0.40*	0.33*	58*



MCBN Xalvador 022X



LVLS Yes Master 9586Y
Weaning photo

**Trait Leaders

MCBN Xalvador 022X

AUTO Dollar General 122R**
EXLR Rebeca 1019P

LH Rodemaster 338R

LVLS Yes Master 9586Y
LVLS9586T

LVLS Secret Weapon 4408K

AUTO Kyria 232K
BR Midland
EXLR Rebeca 614H
JCL Lodestar 27L
Vermilion E Blackbird9546
Poss New Design 410
LVLS9586N

*Estimates

- ◆ Homozygous polled and homozygous black.
- ◆ Sired by the AUTO Dollar General 122R from EXLR Rebeca 1019P son, MCBN Xalvador 022X.
- ◆ He is from a daughter of LH Rodemaster 338R back to a daughter of Poss New Design 410.

Act BW 85#



Brown Land & Cattle Co.
MCBN

Martin & Cheryl Brown

17305 Highway FF

Diamond, MO 64840

417-438-2519

Cheryl@BrownLandAndCattleCo.com

Www.BrownLandAndCattleCo.com





Brown Land & Cattle Co.
MCBN

Martin & Cheryl Brown
17305 Highway FF
Diamond, MO 64840-8131