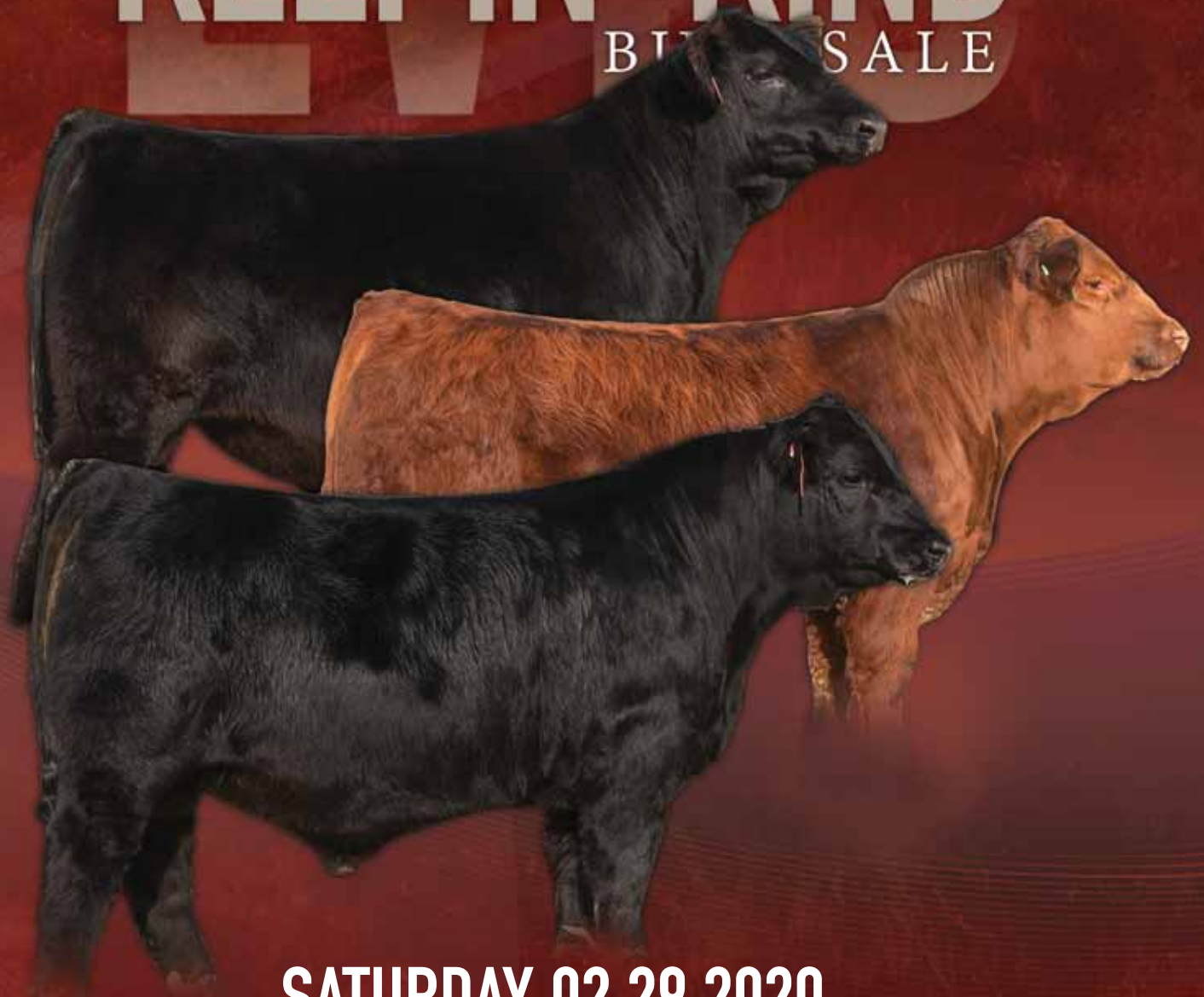


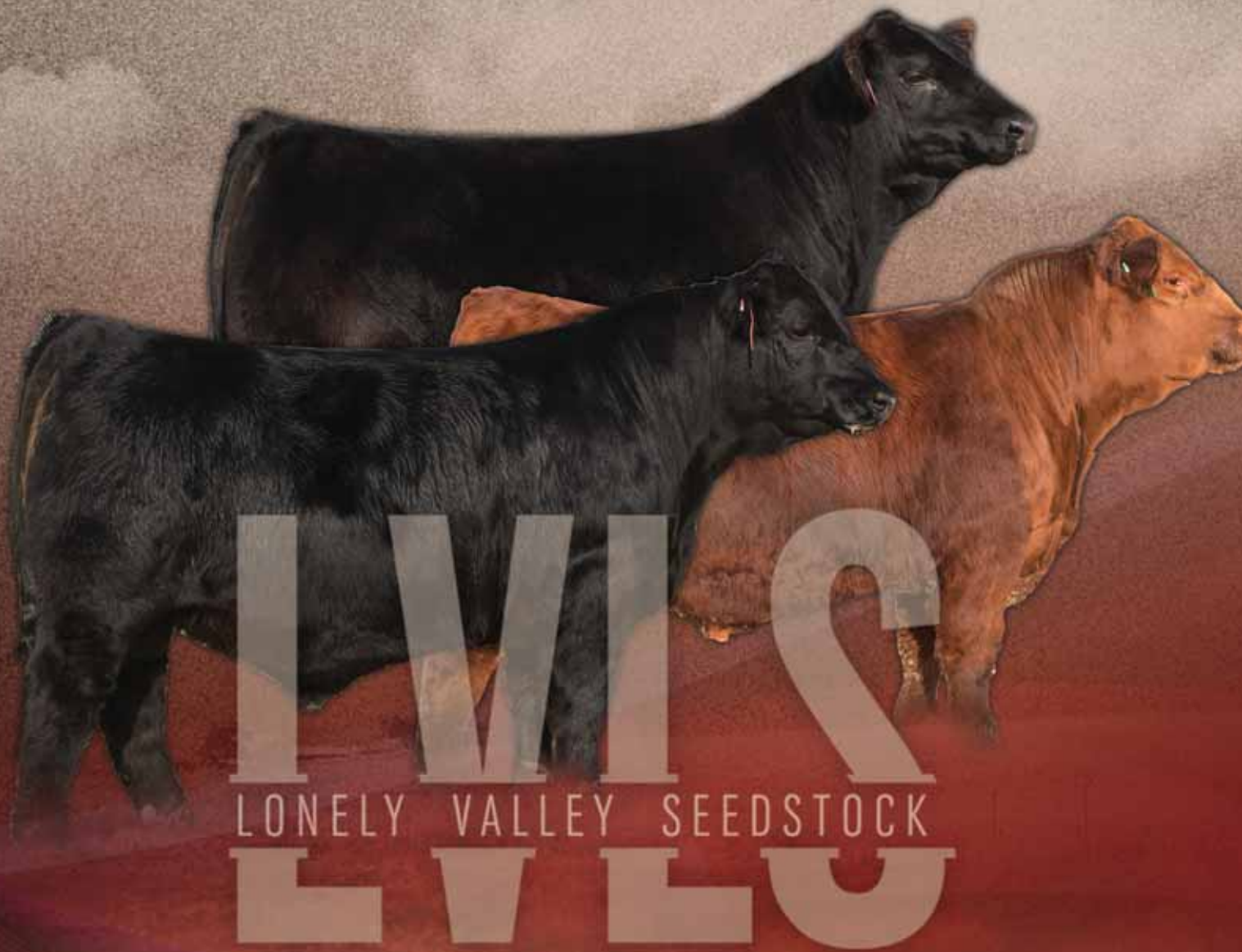
LVI C

29TH ANNUAL LONELY VALLEY
KEEPIN' KIND
BUYER SALE



SATURDAY 02.29.2020

1:00 p.m., at the farm, Creston, Nebraska



CELEBRATING 37 YEARS IN THE PUREBRED SEEDSTOCK BUSINESS!!

Welcome to our 29th Annual 'Keepin' Kind' Production Sale. After 37 years in the seedstock business, we have been blessed to have so many friends in this business. We are very grateful for the opportunity to bring another set outstanding stout bulls to you, our customer.

We know that there are other places to make your seed stock purchases and we appreciate your loyalty. Last year we sold 90% of our bulls to repeat customers. Taking care of you our customer is out #1 priority. As always, we offer an unconditional guarantee on all cattle sold. If you should have a bull go down during breeding season, we can usually have a replacement for you within a few days, available at our ranch or we will try to meet you half way, depending on the distance. We are very proud to say that we replace very few bulls each year.

Our Nebraska herd consist of over 450 head of registered Limousin, Lim-Flex and Angus cattle. Our goal is to become a one-stop bull shop for all your genetic needs. Lonely Valley's Bull Battery continues to be ranked in the top 10% for all EPD traits.

Currently our bull battery ranks in the top of the breed for weaning and yearling growth and milk and does so with a low to moderate birth weight. Our Marbling and Scrotal circumference EPD is unsurpassed, not just on one bull, but all LVLS herd sires combined. Nearly 40 years of selection pressure really do pay off. We continue to place extensive selection pressure on calm, easy doing cattle. This set of bulls have been easy to work with. You will notice the difference. As well, cows that fail to breed being sent down the road. Fertility in these bulls is excellent with an average scrotal measurement that is unequaled in the Limousin and Angus.

The bulls will be available to be viewed at the ranch near Creston a few days prior to the sale. As well, we will have 300 calves on the ground by sale day and several of the herd bulls for your viewing. We will be serving a complimentary Limousin Beef lunch at 11:00 a.m. Should you need assistance with travel plans, trucking and delivery or anything else, please call and we will be happy to assist you. See you Saturday, February 29th at the Ranch.

Sincerely,

Lonely Valley Seedstock

SATURDAY 02.29.2020

1:00 p.m., at the farm, Creston, Nebraska

29TH ANNUAL LONELY VALLEY **KEEPIN' KIND** BULL SALE

SALE DAY PHONES:

Chad Settje	402.910.5504	Dean Settje	402.649.2615	Mike Settje.....	402.920.0230
Mark Settje	402.920.0218	Kiley McKinna	402.350.3447	Mark Smith	515.229.5227
Randy Ratliff	615.330.2735	Alan Sears	970.396.7521		

SALE REPRESENTATIVES:

Bruce Brooks, Auctioneer	580.695.2036	Randy Ratliff, Sale Manager.....	615.330.2735
Mark Smith, Sale Consultant	515.229.5227	Kiley McKenna, Sale Consultant	402.350-3447

HOTEL ACCOMMODATIONS:

Holiday Inn Express402.564-2566.....East Hwy 30, Columbus, NE

DIRECTIONS TO LONELY VALLEY SEEDSTOCK:

From Omaha: Take Hwy 275 North and travel Northwest to Hwy 91. Turn West on Hwy 91 and travel West to Leigh, NE, and look for the large propane tank on South side of road, continue to travel west on Hwy 91 four more miles to 160th Ave. Turn North on 160th Ave. and go three miles north to the ranch.

From Columbus: Go to Hwy 30 and 23rd Ave. (Kentucky Fried Chicken) and travel 18 miles North on blacktop road to Hwy 91. Then turn East on Hwy. 91 and go one mile to 160th Ave. Turn North on 160th Ave. and go three miles north to the ranch.

WATCH OR BID LIVE:

The 29th Annual Lonely Valley Keepin' Kind Bull Sale can be viewed and bids can be accepted through www.dvauction.com.



MARKETING TEAM:



Mark Smith
515.229.5227
grgenetics@aol.com



Randall O. Ratliff, 615.330.2735
Randy@RRMktg.com
www.RRMktg.com
PO Box 60097
Nashville, TN 37206
(L#2845)



Kiley McKinna, 402.350.3447
mcmarketingsales@aol.com



Stan, Mike, Mark, Dean,
Reed, Alex & Chad Settje

Chad, 402.910.5504
Dean, 402.649.2615
Mike, 402.920.0230
Mark, 402.920.0218

270 5th Street,
Creston, Nebraska 68631

www.lonelyvalley.com
chad@lonelyvalley.com

GENERAL SALE INFORMATION

AIRPORTS: Columbus Municipal Airport, Norfolk Regional Airport & Omaha Eppley Airfield.

DELIVERY: Free delivery within a 250 mile radius and cost share arrangements will be made for traveling 250+ miles.

ANNOUNCEMENTS: Announcements made sale day will take precedence over printed material in the catalog. Please take note of any changes.

SEMEN: Lonely Valley Seedstock reserves the right to semen int. on any bull in the sale.

TERMS: Terms of the sale are cash unless prior credit arrangements are established between buyer and seller. Settlements are to be made with the clerk immediately after the conclusion of the auction.

MAIL & PHONE BIDS: Mailed or phone bids will be handled in a confidential matter. If you are unable to attend the sale, simply contact anyone in the sale day phone numbers. Please call in advance of the sale so we can help you ringside sale day. All cattle purchased through our 'sight unseen program' are unconditionally guaranteed, if the cattle purchased for you on order are not what you expected, we don't expect you to pay for them, no questions.

BLOOD TYPE FOR PARENTAGE VERIFICATION: All animals sold are guaranteed to be offspring of the recorded parents. Under the rules of NALF, all bulls born after January 1, 1991 that are to be used for artificial insemination or used naturally in a herd other than the owner of record must be parent verified by blood typing to both sire and dam. All females born after July 1, 1987 and December 31, 1990 that are to be used for artificial insemination or naturally in a herd other than the owner of record must be sire verified through blood typing. Sellers shall make the necessary parent blood samples available to purchasers upon written request by the purchaser's so long as a written request is received by sellers within 60 days after the sale of the applicable animal.

LIABILITY: Each animal will be the buyer's risk as soon as it is sold, but will be cared for by the seller for a reasonable period of time. Every precaution will be taken for the welfare of the cattle sold. Neither owner nor sales management can be responsible for accidents, but every effort will be made to provide for safety and comfort of those attending the sale.

INSURANCE: Insurance on your purchase can be provided by Mark Smith, Grass Roots Genetics & Consulting, Ankeny, IA, 515.229.5227



PAYMENT: Cattle must be paid for at the time of the sale unless prior arrangements are made with sale management at the time of the sale at 615.330.2735. 3% fee on all credit card payments.

ABOUT OUR CATTLE

FEEDING: The yearling cattle are fed to gain 3.25 per day, receiving a ration of corn gluten and alfalfa. We feed our bulls to gain sufficiently, with-out pushing a lot corn in the ration. We believe that corn causes structure problems later in life and causes yearling bulls to 'melt' when turned out to pasture. We are very proud of the success rate our yearling bulls have had.

SEMEN TESTING: All bulls have been semen tested and measured and a certificate will go with each bull sold.

UNCONDITIONAL GUARANTEE: If the cattle that you purchase at our sale fail to meet your expectations, we will replace the animal, providing you return the animal to our ranch at your expense. We will provide you with a replacement animal or give you full credit toward next year's sale or a cash refund. This guarantee expires after the first breeding season. We ask that you provide travel expenses for the replacement animal. Customer Service is #1!

ANALYZE THE PERFORMANCE DATA

BW :: BIRTH WEIGHT We take birth weights on our cattle in order to give you some method of determining calving ease. Larger calves will sometimes come very easy. We believe that calf structure determines calving ease along with size.

WW :: WEANING WEIGHT This is the weight of the cattle taken at weaning time adjusted to a constant age of 205 days, and a good indication of early growth.

YW :: YEARLING WEIGHT This is the weight of the cattle waken at approximately one year of age and adjusted to a constant age of 365 days with at least 150 days between actual weaning and yearling weight dates.

ADG :: AVERAGE DAILY GAIN Growth rate is highly heritable and these numbers will give you an idea of how the cattle respond to environmental conditions. i.e. feed, weather, etc.

HOW TO FIND WHAT YOU ARE LOOKING FOR IN THE SALE

We first select without papers, finding all visible phenotypic defects and problems. Once the outliers are eliminated, we then select on paper, eliminating those cattle with performance, EPD or genetic problems. This two-step selection process is done at weaning and repeated again just before the sale with yearling data and semen checking added to the criteria. Of course, disposition is still the number one culling criteria in our herd. Choose the type of bull that best meets your cowherd or feel free to call us to further discuss your options. We would be happy to visit with you.

'MAXIMIZERS': Purebred & High Percentage Limousin Bulls These lean, red meat machines will maximize hybrid vigor on your British and British X cows. These bulls will maximize performance with-out sacrificing calving ease. Several of these prospects go back into the purebred industry each year, being purchased by other purebred breeders.

'STABLIZERS': 75% Limousin x 25% Angus Bulls Our most popular hybrid for 28 years, these ultra-thick and deep machines are unequaled in their muscle, volume and phenotype. These bulls work well on most any cowherd, offering the extreme thickness of Limousin and the volume of Angus. Hybrid vigor can be increased and maintained with these bulls on most all straight bred and crossbred cows.

'OPTIMIZERS': 50% Angus x 50% Limousin Bulls These Angus x Limousin F1 Composites have been a hit on our sale for many years as well. Many cattlemen are using these bulls to moderate their cow size and create consistency or in a four-way cross breeding system. Optimizers are moderately framed, very deep and offer much more thickness than the pure-bred Angus cattle.

'OPTIMIZERS': 25% Limousin x 75% Angus Bulls They are 25% Limousin and 75% Angus. These bulls combine the best of the numbers of the elite Angus combined with the prominent Limousin. These bulls are huge numbered and have some of the strongest weights and stats of the entire sale offering. These bulls bring the statement of Lim-Flex to a whole new level in our breed. We urge you to see for yourself how any one of these bulls might fit into your program to sire a uniform and very desirable calf crop.

'ANGUS': Purebred Registered Angus Bulls Over the past several years we have acquired over 100 Registered Angus females, along with flushing one of our top Angus cows in our Embryo Transfer Program, to promulgate a complimentary breed to our existing lines of seed-stock. Our goal is to provide Purebred Angus bulls that can offer an ideal complement to high percentage Limousin based cows. We have known for years that the Limousin x Angus cross is the best, now we will be offering both sides of the equation.

MAGS Wazowski Sons

1 LVLS GRAIN BELT 2063G ET

Lim-Flex (50) Bull | DP / HB | 01.12.19 | LVLS 2063G | LFM 2267534

DHVO DEUCE 132R
MAGS WAZOWSKI
 BOHI RED ROBIN 282R

MAGS UNHOOKS
LVLS BARE ASSETS 798B
 LVLS 798R

GPFF BLAQUE RULON
 AMY JO DHAN 20L
 CONNEALY LEAD ON
 MAGS MANUELA
 BASIN FRANCHISE P142
 MAGS MARQUEE
 BON VIEW NEW DESIGN 1407
 BLACKCAP V935

	EPD	%Rank
CED	8	90
BW	0.8	50
WW	71	25
YW	110	30
MILK	24	25
TM	59	20
CEM	6	60
SC	1.2	25
STAY	7	95
DOC	10	80
YG	-0.32	55
CW	41	15
REA	1	15
MARB	0.21	20
FAT	-0.05	60
SMTI	61.81	15

Actual BW: 75 lbs. Adj. WW: 603 lbs. Adj. YW: 1,103 lbs. ADG: 3.13

In need of a more moderately-framed herd sire prospect that doesn't lack doability and substance? LVLS Grain Belt 2063G is truly such a powerhouse of a bull that is so true in his kind and functionally designed. He ranks in the top 20% of the breed for his milk EPD and in the top 25% for his weaning weight and marbling EPDs. Not only does this guy have it down on paper, he's got the genetic potential to be a true all star herd sire. He is a son of the legendary MAGS Wazowski and out of a MAGS Unhooks daughter. He is a 50% Lim-Flex that is heterozygous polled and homozygous black. A sound investment all the way around that will add performance, look and functionality to a group of females.



LOT 1. LVLS GRAIN BELT 2063G ET



LVLS Bare Assets 798B, dam of Lot 1

2 LVLS OPTIMIZER 7009G ET

Lim-Flex (75) Bull | DP / HB | 01.04.19 | LVLS 7009G | LFM 2268774

DHVO DEUCE 132R
MAGS WAZOWSKI
 BOHI RED ROBIN 282R

LVLS TOP CRITERIA 8862P
LVLS WILMA 8116W
 LVLS 8115T

GPFF BLAQUE RULON
 AMY JO DHAN 20L
 CONNEALY LEAD ON
 MAGS MANUELA
 COLE WULF HUNT
 LVLS8862M
 LVLS FARMER JOHN 7428P
 FRENZEN MISSY M152

	EPD	%Rank
CED	8	90
BW	1.6	75
WW	74	15
YW	114	20
MILK	28	4
TM	64	3
CEM	6	60
SC	0.75	80
STAY	12	40
DOC	9	90
YG	-0.5	15
CW	29	45
REA	1.21	2
MARB	-0.03	70
FAT	-0.08	30
SMTI	55.38	45

Actual BW: 82 lbs. Adj. WW: 637 lbs. Adj. YW: 1,099 lbs. ADG: 2.89

A MAGS Wazowski son that is deserving of your full attention. This 75% Lim-Flex bull is homozygous black, heterozygous polled and boy does he offer a wicked amount of maternal power. His milk EPD surfaces to the top 4% of the entire breed with a 28. He is so clean in his lines, deep in his forerib and expressively muscled. This Optimizer bull is one that you'll be proud to have in your program for so many years to come.



LVLS Bank Account, a full brother to Lot 2

LVLS Bank Account 8116B Sons



LOT 3 LVLS GATE KEEPER 9105G

3 LVLS GATE KEEPER 9105G

Lim-Flex (50) Bull | DP / HB | 01.12.19 | LVLS 9104G | LFM 2267534

MAGS WAZOWSKI
LVLS BANK ACCOUNT 8116B
LVLS WILMA 8116W

HBRL WINNER 961W
LVLS ZESTY PICKLE 9105Z
LVLS 9105S

DHVO DEUCE 132R
BOHI RED ROBIN 282R
LVLS TOP CRITERIA 8862P
LVLS 8115T
MYTTY IN FOCUS
HBRL TRUE STAR 760T
LVLS 842L
KG RACHEL 3971

Actual BW: 84 lbs. Adj. WW: 693 lbs. Adj. YW: 1,366 lbs. ADG: 4.21

Style, freshness AND balance all in one package? LVLS Gate Keeper 9104G exemplifies all of those traits and so much more. We absolutely love the amount of natural rib shape and depth of body this sound herd sire prospect possesses. He stands on a huge foot, is super long and level in his spine and he doesn't lack muscle expression in the least bit. He is an LVLS Bank Account 8116B son that is a 62% Lim-Flex- versatility to the max. He is in the top 4% of the breed for his weaning weight EPD and in the top 10% for yearling weight. He is heterozygous black and heterozygous polled.

	EPD	%Rank
CED	10	70
BW	2.2	90
WW	82	3
YW	126	5
MILK	21	60
TM	62	10
CEM	8	20
SC	1.1	35
STAY	10	65
DOC	17	10
YG	-0.31	55
CW	48	4
REA	0.94	25
MARB	-0.03	70
FAT	-0.07	40
SMTI	56.25	40



LOT 4 LVLS GUARD RAIL 1060G

4 LVLS GUARD RAIL 1060G

Lim-Flex (62) Bull | HP / HB | 01.05.19 | LVLS 1060G | LFM 2171419

MAGS WAZOWSKI
LVLS BANK ACCOUNT 8116B
LVLS WILMA 8116W

LVLS OLD SCHOOL 5751U
LVLS AUBRY 9131A
LVLS 9133R

DHVO DEUCE 132R
BOHI RED ROBIN 282R
LVLS TOP CRITERIA 8862P
LVLS 8115T
JCL LODESTAR 27L
LVLS 5750S
G A R 6807 TRAVELER 4144
L V MISS PROMPTER 9133

Actual BW: 89 lbs. Adj. WW: 662 lbs. Adj. YW: 1,229 lbs. ADG: 3.54

This LVLS Bank Account son sure has it goin' on. He's sleek fronted, long and level in his spine and reads with such a maternal design. When this bull gets out on the move, you'll be even more impressed with the composure he has. He is a 62% Lim-Flex and boy are we excited to see what he can do for you. He is homozygous black and homozygous polled.

	EPD	%Rank
CED	6	>95
BW	1.1	60
WW	67	40
YW	105	40
MILK	20	70
TM	54	55
CEM	5	80
SC	0.85	70
STAY	10	65
DOC	9	90
YG	-0.29	65
CW	38	20
REA	0.84	40
MARB	0.12	35
FAT	-0.06	50
SMTI	57.22	35

5 LVLS MAXIMIZER 62G

PB Limousin (87) Bull | HP / HB | 01.14.19 | LVLS 62G | NPM 2173061

MAGS WAZOWSKI
LVLS BANK ACCOUNT 8116B
LVLS WILMA 8116W

MAGS MARKSMAN 224R
BBJY KARLEE 62U
KRVN RAFTER 434R

DHVO DEUCE 132R
BOHI RED ROBIN 282R
LVLS TOP CRITERIA 8862P
LVLS 8115T
JCL LODESTAR 27L
MAGS NAKETTA
GPF BLAQUE RULON
KDPI 65F

Actual BW: 85 lbs. Adj. WW: 625 lbs. Adj. YW: 1,201 lbs. ADG: 3.60

This Maximizer bull is in the top 15% or better for some of the most sought after numbers in a herd sire for growth and performance. His marbling EPD ranks in the top 10% of the breed and his weaning and yearling weights rank in the top 15%. He is a son of LVLS Bank Account 8116B and out of a MAGS Marksman 224R daughter. This purebred bull is homozygous black and homozygous polled.

	EPD	%Rank
CED	9	70
BW	1.6	65
WW	72	15
YW	109	15
MILK	22	35
TM	58	10
CEM	6	50
SC	0.6	45
STAY	10	80
DOC	10	75
YG	-0.59	90
CW	21	30
REA	1.17	45
MARB	-0.18	10
FAT	-0.1	>95
SMTI	49.93	5

6 LVLS STABILIZER 810G

Lim-Flex (75) Bull | DP / HB | 01.29.19 | LVLS 810G | LFM 2173068

MAGS WAZOWSKI
LVLS BANK ACCOUNT 8116B
LVLS WILMA 8116W

AUTO CAPT SPRINGFIELD351P
AUTO BLAQUE CHARM 811X
AUTO BLACKCAP 826S

DHVO DEUCE 132R
BOHI RED ROBIN 282R
LVLS TOP CRITERIA 8862P
LVLS 8115T
AUTO AMERICAN IDOL 162L
AUTO BARBARA ANN 277H
CLLL NEW DIRECTION 394P
EXAR BLACKCAP C 3275

Actual BW: 84 lbs. Adj. WW: 634 lbs. Adj. YW: 1,105 lbs. ADG: 2.95

A great maternally oriented son of LVLS Bank Account that is ultra thick, moderate in his design and super soggy made. His dam is out of the great AUTO Blackcap 826S cow. This Stabilizer bull has a milk EPD that quickly surfaced to the top 4% of the breed. He is homozygous black and double polled and 75% Lim-Flex.

	EPD	%Rank
CED	8	90
BW	1.8	80
WW	67	40
YW	104	45
MILK	28	4
TM	62	10
CEM	6	60
SC	0.75	80
STAY	8	85
DOC	11	70
YG	-0.48	20
CW	21	75
REA	1.02	15
MARB	-0.01	65
FAT	-0.08	30
SMTI	53.90	55

7 LVLS GO GETTER 9313G

Lim-Flex (62) Bull | HP / Black | 01.17.19 | LVLS 9313G | LFM 2171420

MAGS WAZOWSKI LVLS BANK ACCOUNT 8116B LVLS WILMA 8116W	DHVO DEUCE 132R BOHI RED ROBIN 282R LVLS TOP CRITERIA 8862P LVLS 8115T AUTO DOLLAR GENERAL 122R LVLS ANGEL 9313A LVLS NEW DESIGN 9313P		
MAGS THE GENERAL LVLS ANGEL 9313A LVLS NEW DESIGN 9313P	EXLR LUVLY 821M BON VIEW DESIGN 208 L V MISS NEW TREND 9313		

Actual BW: 85 lbs. Adj. WW: 732 lbs. Adj. YW: 1,192 lbs. ADG: 2.87

This is a bull that can anchor any program he's introduced to. His name says it all- LVLS Go Getter 9313G will be that go-getter type that all cattlemen desire. He's a 62% Lim-Flex son of LVLS Bank Account and from a MAGS The General daughter. We love this guy's balance of lines and his overall power. Where he truly excels is in his numbers. He's risen to the top 15% of the breed with three of the most important traits, weaning weight, yearling weight and milk. Talk about a bull that can service a set of females and stamp them with superior performance and added style! He is heterozygous black and homozygous polled.

	EPD	%Rank
CED	9	80
BW	1.4	70
WW	75	15
YW	118	15
MILK	26	10
TM	63	4
CEM	6	60
SC	-	-
STAY	12	40
DOC	13	45
YG	-0.36	45
CW	26	55
REA	0.88	35
MARB	0.13	35
FAT	-0.06	50
SMTI	60.46	20

8 LVLS STABILIZER 5791G

Lim-Flex (58) Bull | HP / HB | 01.01.19 | LVLS 5791G | LFM 2171404

MAGS WAZOWSKI LVLS BANK ACCOUNT 8116B LVLS WILMA 8116W	DHVO DEUCE 132R BOHI RED ROBIN 282R LVLS TOP CRITERIA 8862P LVLS 8115T B/R NEW DESIGN 036 BON VIEW NEW DESIGN 878 LVLS 5792W LVLS5791T		
	B/R NEW DESIGN 036 BON VIEW GAMMER 85 LVLS CONCEALED WEAPON6794 LVLS 5791J		

Actual BW: 87 lbs. Adj. WW: 703 lbs. Adj. YW: 1,276 lbs. ADG: 3.58

Here is quite the maternally oriented homozygous black and homozygous polled Bank Account son. LVLS Stabilizer 5791G is a 58% Lim-Flex bull that is out of a Bon View New Design 878 daughter. He is a masculine made, rugged and expressively muscled bull that is so athletic in his movement. When this guy stops, he commands the attention of anyone that's here. He ranks in the top 20% of the breed for milk.

	EPD	%Rank
CED	10	70
BW	0.7	45
WW	69	35
YW	108	35
MILK	25	20
TM	60	15
CEM	7	40
SC	0.9	60
STAY	13	30
DOC	12	55
YG	-0.34	50
CW	30	40
REA	0.93	25
MARB	0.12	35
FAT	-0.05	60
SMTI	58.06	30

CELL Hercules
6120D ET Sons



9 LVLS STABILIZER 1044G

Lim-Flex (68) Bull | DP / HB | 01.26.19 | LVLS 1044G | LFM 2171179

S A V HESSTON 2217 CELL HERCULES 6120D ET AUTO TOOTSIE POP 2272T	S A V HARVESTOR 0338 S A V EMBLYNETTE 3301 DHVO DEUCE 132R EXLR MOLLY 7103K AHCC WESTWIND W544 LVLS 9066U CHR WILD BILL 150W LVLS 4867W		
AHCC BACK AGAIN B901 LVLS EDITH 4868E LVLS ANNA 4868A			

Actual BW: 82 lbs. Adj. WW: 736 lbs. Adj. YW: 1,220 lbs. ADG: 3.03

Are you a cattleman that likes your bulls to have an extra dose of style and growth? Be sure to check this Stabilizer bull out. This CELL Hercules son is so rugged in his build, long in his spine and doesn't sacrifice any muscle expression. This stylish, good bodied bull will inject rapid growth and style into his calves from the start. His weaning weight ranks in the top 20% of the breed and his yearling weight in the top 25%. He's a 68% Lim-Flex and homozygous black and double polled.

	EPD	%Rank
CED	9	80
BW	2.1	90
WW	73	20
YW	112	25
MILK	21	60
TM	58	25
CEM	4	90
SC	0.81	70
STAY	12	40
DOC	10	80
YG	-0.34	50
CW	32	35
REA	0.87	35
MARB	-0.08	80
FAT	-0.06	50
SMTI	51.99	65

WE BELIEVE IN A FIRM HANDSHAKE,
CUSTOMER SERVICE AND
STANDING BEHIND OUR PRODUCT 100%.



LOT 10 LVLS BLAZER 6793G

10 LVLS BLAZER 6793G

Lim-Flex (64) Bull | HP / Red | 01.08.19 | LVLS 6793G | LFM 2171409

S A V HESSTON 2217
CELL HERCULES 6120D ET
AUTO TOOTSIE POP 2272T

PBRs EQUINOX 161Y
LVLS ECHO 6792E
LVLS 6792W

S A V HARVESTOR 0338
S A V EMBLYNETTE 3301
DHVO DEUCE 132R
EXLR MOLLY 7103K
LH U HAUL 135U
MAGS NATASHA
CARROUSELS PURE POWER
LVLS6792K

Actual BW: 72 lbs. Adj. WW: 739 lbs. Adj. YW: 1,234 lbs. ADG: 3.10

A solid, all around well made RED bull right here! LVLS Blazer 6793G is a son of CELL Hercules and out of a PBRs Equinox daughter. He ranks in the top 25% for weaning weight and is homozygous polled. This combination doesn't happen very often, but when it does this is the result and we're super proud of this bull.

	EPD	%Rank
CED	11	50
BW	0	30
WW	71	25
YW	105	40
MILK	21	60
TM	56	35
CEM	5	80
SC	0.93	60
STAY	6	>95
DOC	8	95
YG	-0.34	50
CW	36	25
REA	0.89	35
MARB	-0.03	70
FAT	-0.06	50
SMTI	52.99	60

11 LVLS STABILIZER 1018G

Lim-Flex (54) Bull | DP / HB | 01.14.19 | LVLS 1018G | NPM 2171171

S A V HESSTON 2217
CELL HERCULES 6120D ET
AUTO TOOTSIE POP 2272T

MAGS ZARAH
LVLS ELIZABETH 944E
LVLS MISS 944Z

S A V HARVESTOR 0338
S A V EMBLYNETTE 3301
DHVO DEUCE 132R
EXLR MOLLY 7103K
MAGS WHITCOMB
AUTO CARMINDA 656S
LVLS SECRET WEAPON 4408K
LVLS 944R

	EPD	%Rank
CED	10	70
BW	1.7	80
WW	66	45
YW	102	50
MILK	23	35
TM	56	35
CEM	4	90
SC	1.02	45
STAY	12	40
DOC	10	80
YG	-0.25	75
CW	28	45
REA	0.69	70
MARB	0.12	35
FAT	-0.04	75
SMTI	56.50	40

Actual BW: 82 lbs. Adj. WW: 679 lbs. Adj. YW: 1,200 lbs. ADG: 3.26

Talk about 'stabilizing' genetics! This 54% Lim-Flex bull is out of CELL Hercules 6120D ET, an impressive son of SAV Hesston 2217. His dam is LVLS Elizabeth 944E, a MAGS Zarah daughter. His milk EPD ranks in the top 35% of the breed. We love this guy because he is so sound all the way around, he's big footed and super rugged in his kind. He is homozygous black and double polled.

12 LVLS OPTIMIZER 1036G

Lim-Flex (46) Bull | DP / Black | 01.17.19 | LVLS 1036G | LFM 2171175

S A V HESSTON 2217
CELL HERCULES 6120D ET
AUTO TOOTSIE POP 2272T

CHR WILD BILL 150W
LVLS ELANE 2241E
LVLS2241Y

S A V HARVESTOR 0338
S A V EMBLYNETTE 3301
DHVO DEUCE 132R
EXLR MOLLY 7103K
GPF BLAQUE RULON
MAGS SHUTTERBUG
MYTTY IN FOCUS
LVLS 2241W

Actual BW: 82 lbs. Adj. WW: 780 lbs. Adj. YW: 1,259 lbs. ADG: 2.99

A total standout of a bull that hits you hard on paper and especially when you get your eyes on him. This CELL Hercules 6120D son is a 46% Lim-Flex bull that has so much potential as a young herd sire prospect. His body type and kind are what we strive to create around here. He's round in his rib shape, loose made and stands on a killer hind leg. His weaning weight EPD ranks in the top 20%. He is heterozygous black and double polled.

	EPD	%Rank
CED	10	70
BW	1.6	75
WW	72	20
YW	108	35
MILK	22	45
TM	58	25
CEM	6	60
SC	1.36	20
STAY	12	40
DOC	9	90
YG	-0.2	85
CW	28	45
REA	0.68	75
MARB	0.15	30
FAT	-0.02	90
SMTI	58.68	30



LOT 13 LVLS GUARDIAN 9105G

13 LVLS GUARDIAN 9105G

Lim-Flex (43) Bull | HP / Black | 02.01.19 | LVLS 9105E | LFM 2171186

S A V HESSTON 2217
CELL HERCULES 6120D ET
AUTO TOOTSIE POP 2272T

LVLS BANK ACCOUNT 8116B
LVLS ECSTASY 9105E
LVLS 9100Y

S A V HARVESTOR 0338
S A V EMBLYNETTE 3301
DHVO DEUCE 132R
EXLR MOLLY 7103K
MAGS WAZOWSKI
LBLE WILMA 8116W
MYTTY IN FOCUS
LVLS ND 1407 9100T

Actual BW: 92 lbs. Adj. WW: 753 lbs. Adj. YW: 1,405 lbs. ADG: 4.08

Astute cattlemen will see that this one is clearly designed for success. Everyone is drawn to this guy's sheer power, mass and extreme depth of body. LVLS Guardian 9105G is a son of CELL Hercules and is out of an LVLS Bank Account daughter. Not only is this guy impressive phenotypically, he has such a unique blend of numbers. His marbling and weaning weight EPDS ranks in the top 10% of the breed and his yearling weight in the top 15%. He is heterozygous black and homozygous polled. Don't miss your opportunity to invest in such a high performance and high class bull. He ties such great numerical advantages and genetic predictability into one of the most impressive packages we've raised.

	EPD	%Rank
CED	5	>9
BW	3.0	>95
WW	80	5
YW	126	5
MILK	17	90
TM	57	30
CEM	3	95
SC	1.23	25
STAY	9	80
DOC	7	>95
YG	-0.16	90
CW	43	10
REA	0.80	50
MARB	0.32	10
FAT	-0.02	90
SMTI	67.37	4



MAGS Zodiac Sons & Grandsons

14 LVLS GOLD DUST 7314G

Lim-Flex (67) Bull | HP / HB | 01.12.19 | LVLS 7314G | LFM 2171415

MAGS WINSTON
MAGS ZODIAC
 MAGS XANTHOUS

MAGS THE GENERAL
LVLS ANASTASIA 7316A
 LVLS 7316W

BT CROSSOVER 758N
 MAGS STRAWBERRY
 DHVO DEUCE 132R
 BOHI RHONDA 314R
 AUTO DOLLAR GENERAL 122R
 EXLR LUVLY 821M
 LAGRAND ARCHITECT 7118
 LVLS7316L

	EPD	%Rank
CED	10	70
BW	2.5	95
WW	74	15
YW	120	10
MILK	22	45
TM	59	20
CEM	3	>95
SC	0.55	95
STAY	10	65
DOC	14	35
YG	-0.34	50
CW	45	10
REA	0.81	50
MARB	-0.13	85
FAT	-0.09	20
SMTI	50.52	75

Actual BW: 90 lbs. Adj. WW: 670 lbs. Adj. YW: 1,273 lbs. ADG: 3.77

Here is a direct son of the great MAGS Zodiac, the impressive son of MAGS Winston. LVLS Gold Dust 7314G is loaded with a proven pedigree and a balanced number profile. His dam is a daughter of MAGS The General. This bull is 71% Lim-Flex and brings forth a ridiculous amount of genetic potential. His weaning weight and yearling weights both rank in the top 15% of the breed. He is homozygous black and homozygous polled.



15 LVLS OPTIMIZER 797G

Lim-Flex (33) Bull | HP / HB | 01.15.19 | LVLS 797G | LFM 2267797

MAGS ZODIAC
LVLS DIESEL 9585D
 LVLS BETSY 9585B

EXAR DENVER 2002B
LVLS EVERYTIME 798E
 LVLS MISS BISMARCK 798Y

MAGS WINSTON
 MAGS XANTHOUS
 LVLS X-TERNAL 3506X
 LVLS MISS TRAVLER 9586U
 EXAR UPSHOT 0562B
 EXAR ROYAL LASS 1067
 S A V BISMARCK 5682
 LVLS MISS TRAVELER 798P

	EPD	%Rank
CED	12	35
BW	0.5	40
WW	73	20
YW	122	10
MILK	24	25
TM	60	15
CEM	8	20
SC	1.17	35
STAY	10	65
DOC	12	55
YG	-0.07	>95
CW	47	5
REA	0.61	85
MARB	-0.21	15
FAT	-0.01	95
SMTI	62.80	15

Actual BW: 79 lbs. Adj. WW: 699 lbs. Adj. YW: 1,216 lbs. ADG: 3.23

This one has it all stacked in his favor to produce dynamic, highly functional individuals that will inject a unique spin of hybrid vigor into your program. LVLS Optimizer 797G is out of LVLS Diesel 9585D, a MAGS Zodiac son. He is a 33% Lim-Flex bull out of an EXAR Denver 2002B daughter. He sure pounded down the scales for his yearling weight that is in the top 10% of the breed along with a marbling EPD in the top 15%. He is homozygous black and homozygous polled.

17 LVLS OPTIMIZER 9113G

Lim-Flex Bull | DP \ DP | 01.23.19 | LVLS 9113G |

MAGS ZODIAC
LVLS DIESEL 9585D
 LVLS BETSY 9585B

PBRS BUNK HOUSE 48B
LVLS 9112E
 LVLS 9112A

MAGS WINSTON
 MAGS XANTHOUS
 LVLS X-TERNAL 3506X
 LVLS MISS TRAVLER 9586U
 MAGS YIP
 LBAF SHAWNEE 602

	EPD	%Rank
CED	11	-
BW	0.2	-
WW	78	-
YW	128	-
MILK	25	-
TM	60	-
CEM	6	-
SC	1.1	-
STAY	5	-
DOC	13	-
YG	-0.01	-
CW	27	-
REA	0.65	-
MARB	0.21	-
FAT	-0.02	-
SMTI	58	-

Actual BW: 78 lbs. Adj. WW: 654 lbs. Adj. YW: 1,148 lbs. ADG: 3.06

This Optimizer bull is a son of LVLS Diesel and out of a PBRS Bunkhouse female. A genetic combination that will work well in any breeding scenario. He is a 57% Lim-Flex bull.

16 LVLS OPTIMIZER 13G

Lim-Flex (33) Bull | HP / HB | 01.17.19 | LVLS 13G | LFM 2268620

MAGS ZODIAC
LVLS DIESEL 9585D
 LVLS BETSY 9585B

EXAR DENVER 2002B
LVLS EASTON 13E
 LVLS 798R

MAGS WINSTON
 MAGS XANTHOUS
 LVLS X-TERNAL 3506X
 LVLS MISS TRAVLER 9586U
 EXAR UPSHOT 0562B
 EXAR ROYAL LASS 1067
 BON VIEW NEW DESIGN 1407
 BLACKCAP V935

	EPD	%Rank
CED	12	35
BW	0.7	45
WW	76	10
YW	128	4
MILK	29	3
TM	67	1
CEM	8	20
SC	1.1	35
STAY	9	80
DOC	12	55
YG	-0.06	>95
CW	52	2
REA	0.65	80
MARB	0.35	10
FAT	-0.01	95
SMTI	66.56	5

Actual BW: 85 lbs. Adj. WW: 628 lbs. Adj. YW: 1,199 lbs. ADG: 3.57

Lookout- this Optimizer bull has an insanely stacked number profile. He surfaces to the elite top 3% of the entire breed for milk, the top 5% for yearling weight and the top 10% for weaning weight and marbling. Does it get much better than that? LVLS Optimizer 13G is out of the impressive MAGS Zodiac son, LVLS Diesel 9585D. Not only does he have a superb backing on his paternal side, he's got it on the maternal side with an EXAR Denver 2002B daughter as his dam. He combines so much genetic excellence between these two cow families that have produced some of the Limousin and Angus breed's most legendary individuals. This bull is 33% Lim-Flex and homozygous black and homozygous polled.



PBRS Bunk House 48B Sons



LOT 18 LVLS GAME TIME 9068G

18 LVLS GAME TIME 9068G

% Limousin (50) Bull | HP / HB | 01.21.19 | LVLS 9068G | NXM 2173074

MAGS YIP
PBRS BUNK HOUSE 48B
LBAF SHAWNEE 602

LVLS X-TRA PROFIT 2014
LVLS CAMEO 9068C

MAGS THE GENERAL
AUTO CARMINDA 656S
TWIN VALLEY PRECISION E161
SUNSET SHAWNEE 3905
AUTO DOLLAR GENERAL 122R
JCL MAYBERRY 62S

	EPD	%Rank
CED	9	75
BW	2.1	80
WW	75	10
YW	118	10
MILK	23	30
TM	61	5
CEM	6	55
SC	0.9	35
STAY	10	70
DOC	10	75
YG	-0.18	95
CW	46	3
REA	0.67	90
MARB	0.19	15
FAT	-0.05	85
SMTI	61.13	10

Actual BW: 84 lbs. Adj. WW: 705 lbs. Adj. YW: 1,314 lbs. ADG: 3.81

Talk about a commanding presence! This PBRS Bunk House 48B son is so strong in his stance, level in his hip and super flexible in his pasterns. Not only do we love this guy's look, we love the amount of power he has from so many different angles. He surfaces to the top 10% of the breed for his weaning and yearling weight EPDs and in the top 15% for marbling. If you're the type of cattleman that likes to think outside the box, this 50% Lim-Flex bull is one that can take you to the top every breeding season with so much versatility. He is homozygous black and homozygous polled.

19 LVLS OPTIMIZER 1000G

Lim-Flex (62) Bull | DP / DB | 02.04.19 | LVLS 1001G | LFM 2268615

MAGS YIP
PBRS BUNK HOUSE 48B
LBAF SHAWNEE 602

MAGS UNWASHED
LVLS YES MOM 9075Y
LVLS UNKNOWN 9075U

MAGS THE GENERAL
AUTO CARMINDA 656S
TWIN VALLEY PRECISION E161
SUNSET SHAWNEE 3905
WLR DIRECT HIT
H&H POLLED STARGAZER
LVLS SECRET WEAPON 4408K

	EPD	%Rank
CED	8	90
BW	3	>95
WW	68	35
YW	108	35
MILK	23	35
TM	58	25
CEM	6	60
SC	1.05	45
STAY	7	95
DOC	12	55
YG	-0.3	60
CW	37	20
REA	0.67	75
MARB	-0.01	65
FAT	-0.08	30
SMTI	52.93	60

Actual BW: 88 lbs. Adj. WW: 675 lbs. Adj. YW: 1,254 lbs. ADG: 3.42

Here is an Optimizer bull that has a versatile pedigree that you'll appreciate in terms of power and proven genetics. He is a PBRS Bunk House 48B son from a MAGS Unwashed daughter. Bunk House is the ever-popular son of MAGS Yip. This bull is deep through his forerib and center body and has plenty of natural thickness all the way around. LVLS Optimizer 1001G is a 62% Lim-Flex bull that is double black and double polled.

20 LVLS OPTIMIZER 9070G

Lim-Flex (50) Bull | DP / HB | 01.05.19 | LVLS 9070G | NXM 2173076

MAGS YIP
PBRS BUNK HOUSE 48B
LBAF SHAWNEE 602

LVLS X-TRA PROFIT 2014
LVLS ZADDY
9069

MAGS THE GENERAL
AUTO CARMINDA 656S
TWIN VALLEY PRECISION E161
SUNSET SHAWNEE 3905
AUTO DOLLAR GENERAL 122R
JCL MAYBERRY 62S

	EPD	%Rank
CED	11	50
BW	1.1	55
WW	67	35
YW	103	35
MILK	24	20
TM	58	15
CEM	7	35
SC	0.9	35
STAY	10	70
DOC	11	65
YG	-0.18	95
CW	42	5
REA	0.61	95
MARB	0.19	15
FAT	-0.05	85
SMTI	58.72	15

Actual BW: 81 lbs. Adj. WW: 640 lbs. Adj. YW: 1,102 lbs. ADG: 2.89

Another PBRS Bunk House son that offers so much genetic potential and power as a herd sire prospect. His marbling EPD ranks in the top 15% and this will carry his future progeny through as production-oriented individuals with a unique and functional design. He is a 50% Lim-Flex bull that is homozygous black and double polled.

21 LVLS OPTIMIZER 9871G

Lim-Flex (50) Bull | HP / HB | 01.11.19 | LVLS 9871G | LFM 2173082

MAGS YIP
PBRS BUNK HOUSE 48B
LBAF SHAWNEE 602

S A V BISMARCK 5682
MAGS XTRA RAIN
MAGS TELEGRAM

MAGS THE GENERAL
AUTO CARMINDA 656S
TWIN VALLEY PRECISION E161
SUNSET SHAWNEE 3905
G A R GRID MAKER
S A V ABIGALE 0451
GPFF BLAQUE RULON
MAGS MANDA

	EPD	%Rank
CED	12	35
BW	1.1	60
WW	74	15
YW	114	20
MILK	19	75
TM	56	35
CEM	8	20
SC	1.2	25
STAY	13	30
DOC	11	70
YG	-0.22	80
CW	36	25
REA	0.63	80
MARB	0.09	40
FAT	-0.05	60
SMTI	57.36	35

Actual BW: 82 lbs. Adj. WW: 672 lbs. Adj. YW: 1,177 lbs. ADG: 3.15

Take notice with this young herd sire prospect. He's rugged in his structure, shapely in his muscle expression and great on his feet and legs. This is a bull that can remain functional in any scenario and add such a powerful look to his future offspring.

22 LVLS OPTIMIZER 9112E

Lim-Flex Bull | DP / DB | 01.18.19 | LVLS 9112E |

MAGS YIP
PBRS BUNK HOUSE 48B
LBAF SHAWNEE 602

LVLS X-TRA PROFIT 2014
LVLS 9112A
LVLS 9112Y

MAGS THE GENERAL
AUTO CARMINDA 656S
TWIN VALLEY PRECISION E161
SUNSET SHAWNEE 3905
AUTO DOLLAR GENERAL 122R
JCL MAYBERRY 62S

	EPD	%Rank
CED	9	-
BW	2.4	-
WW	68	-
YW	113	-
MILK	28	-
TM	63	-
CEM	7	-
SC	1.1	-
STAY	1	-
DOC	12	-
YG	0.08	-
CW	41	-
REA	0.05	-
MARB	0.25	-
FAT	-0.01	-
SMTI	59.00	-

Actual BW: 88 lbs. Adj. WW: 734 lbs. Adj. YW: 1,289 lbs. ADG: 3.84

A PBRS Bunkhouse son that is stout featured, deep in the center part of his body and flexible on the move. He combines so much power into a truly complete, functional all-around herd sire prospect. He is 63% Lim-Flex.

23 LVLS OPTIMIZER 8211G

Lim-Flex (25) Bull | HP / HB | 01.09.19 | LVLS 8211G | LFM 2173071

MAGS YIP
PBRS BUNK HOUSE 48B
 LBAF SHAWNEE 602

S A V 8180 TRAVELER 004
LVLS MISS TRAVELER
 SILVER OAK 616 061

MAGS THE GENERAL
 AUTO CARMINDA 656S
 TWIN VALLEY PRECISION E161
 SUNSET SHAWNEE 3905
 SITZ TRAVELER 8180
 BOYD FOREVER LADY 8003
 RITO 616 OF 4B20 6807
 S O BLUEBIRD 0400

	EPD	%Rank
CED	9	80
BW	2.0	85
WW	65	50
YW	108	35
MILK	24	25
TM	57	30
CEM	6	55
SC	1.45	15
STAY	13	30
DOC	12	55
YG	0.05	>95
CW	38	20
REA	0.21	>95
MARB	0.34	10
FAT	0.00	>95
SMTI	61.71	15

Actual BW: 89 lbs. Adj. WW: 557 lbs. Adj. YW: 1,204 lbs. ADG: 3.89

TMCK American
 Made 353D Sons



24 LVLS STABILIZER 1049G

Lim-Flex (60) Bull | DP / HB | 01.06.19 | LVLS 1047G | LFM 2171408

WULFS XCLUSIVE 2458X
TMCK AMERICAN MADE 353D ET
 TMCK UPPER HAND 54Y

MYTTY IN FOCUS
LVLS MISS FOCUS 6792Y
 LVLS 6792U

WZRK PRIMESTAR 861P
 WULFS MISSIVE 2258M
 AHCC WESTWIND W544
 PBRS UPPER HAND
 S A F FOCUS OF E R
 MYTTY COUNTESS 906
 BON VIEW NEW DESIGN 878
 LVLS 6792S

	EPD	%Rank
CED	11	50
BW	1.3	65
WW	66	45
YW	103	45
MILK	19	75
TM	52	70
CEM	7	40
SC	0.9	60
STAY	16	10
DOC	16	15
YG	-0.28	65
CW	26	55
REA	0.57	90
MARB	0.27	15
FAT	-0.07	40
SMTI	62.03	15

Actual BW: 92 lbs. Adj. WW: 641 lbs. Adj. YW: 1,232 lbs. ADG: 3.69

A more moderately designed bull that surely doesn't lack any power! We love the amount of natural rib shape and muscle expression this Stabilizer bull has had from the beginning. He is a TMCK American Made 353D son from an MYTTY In Focus daughter. He ranks in the top 15% of the breed for marbling. He is homozygous black and double polled and 60% Lim-Flex.



LOT 24 LVLS STABILIZER 1049G

25 LVLS MAXIMIZER 1017G

PB Limousin (87) Bull | DP / DB | 01.03.19 | LVLS 1017G | NPM 2171393

WULFS XCLUSIVE 2458X
TMCK AMERICAN MADE 353D ET
 TMCK UPPER HAND 54Y

LVLS TOP CRITERIA 8862P
LVLS 944U
 LVLS 944S

WZRK PRIMESTAR 861P
 WULFS MISSIVE 2258M
 AHCC WESTWIND W544
 PBRS UPPER HAND
 COLE WOLF HUNT
 LVLS8862M
 LVLS 842L
 L V MISS ROYCE 944

	EPD	%Rank
CED	12	35
BW	0.6	40
WW	64	45
YW	93	55
MILK	16	95
TM	48	85
CEM	6	50
SC	0.28	90
STAY	12	65
DOC	13	55
YG	-0.55	95
CW	23	25
REA	0.92	95
MARB	-0.04	1
FAT	-0.12	85
SMTI	52.19	2

Actual BW: 81 lbs. Adj. WW: 677 lbs. Adj. YW: 1,131 lbs. ADG: 2.84

A tremendous marbling chart-topper of a bull in this purebred bull. He is a son of TMCK American Made 353D ET, a WULFS Xclusive 2458X son. This bull's dam is an LVLS Top Criteria 8862P daughter. Not only does he excel to the top 1% of the breed for marbling, he has a phenomenal amount of genetic potential. He is double black and double polled.

CELEBRATING 37 YEARS
 IN THE PUREBRED
 SEEDSTOCK BUSINESS!!



LSTO Best Effort 48336 Sons

26 LVLS OPTIMIZER 4059G

Lim-Flex (63) Bull | Polled / HB | 01.11.19 | LVLS 4059G | LFM 2173052

EXAR UPSHOT 0562B
LSTO BEST EFFORT 4833B
SBLX XTRA SPECIAL

MAGS ZARAH
LVLS DIPPIN DOTS 4059D ET
LVLS7428L

SITZ UPWARD 307R
EXAR BARBARA T020
DHVO DEUCE 132R
MAGS MANUELA
MAGS WHITCOMB
AUTO CARMINDA 656S
LVLS COWBOY 015F
LVLS MS STABILIZER 2408E

	EPD	%Rank
CED	8	90
BW	2.5	95
WW	71	25
YW	112	25
MILK	25	20
TM	60	15
CEM	4	90
SC	1	45
STAY	14	20
DOC	13	45
YG	-0.41	30
CW	35	25
REA	1.01	15
MARB	-0.03	70
FAT	-0.08	30
SMTI	53.77	55

Actual BW: 87 lbs. Adj. WW: 644 lbs. Adj. YW: 1,187 lbs. ADG: 3.39

Another LSTO Best Effort son that will give you so many options when breeding season rolls around. This Optimizer bull is a powerfully built 63% Lim-Flex bull that will capture your attention right off the bat. His dam is a MAGS Zarah daughter, so you know he's got the genetics behind him to be a great one. He is performance oriented, ranking in the top 20% of the breed for milk and the top 25% for weaning weight and yearling weight. He is heterozygous polled and homozygous black.

27 LVLS OPTIMIZER 1885G

Lim-Flex (46) Bull | HP / HB | 01.15.19 | LVLS 1885G | LFM 2173042

EXAR UPSHOT 0562B
LSTO BEST EFFORT 4833B
SBLX XTRA SPECIAL

BASIN MAX 602C
LVLS WILLA 1885W
LVLS1885P

SITZ UPWARD 307R
EXAR BARBARA T020
DHVO DEUCE 132R
MAGS MANUELA
G T MAXIMUM
BASIN ELINE ERICA 315U
LVLS DOUBLEDOWN 3615K
LVLS MISS STABILIZER 1885E

	EPD	%Rank
CED	8	90
BW	2.5	95
WW	70	30
YW	109	30
MILK	19	75
TM	54	55
CEM	5	80
SC	1.15	35
STAY	14	20
DOC	12	55
YG	-0.21	85
CW	31	35
REA	0.69	70
MARB	0.15	30
FAT	-0.03	85
SMTI	58.28	30

Actual BW: 94 lbs. Adj. WW: 665 lbs. Adj. YW: 1,174 lbs. ADG: 3.18

A powerful bull out of LSTO Best Effort 4833B, an EXAR Upshot 0562 son who is out of the great SBLX Xtra Special donor female. LVLS 1885G's dam is a Basin Max 602C daughter, so the proof of genetic excellence is right here in this uniquely designed young herd sire prospect. He has a balanced EPD profile that weaning weight, yearling weight and marbling all rank in the top 30% of the breed. He is a 46% Lim-Flex bull that is homozygous black and homozygous polled.



MAGS Cable Sons



LOT 28 LVLS GATEWAY 84G

28 LVLS GATEWAY 84G

Lim-Flex (50) Bull | HP / HB | 01.02.19 | LVLS 84G | LFM 2173072

MAGS APPLESEED
MAGS CABLE
MAGS ZEQUIN

MAGS UNREAL
RRDC ADELE 84 A
RRA ERISKAY 1115

RITO 6EM3 OF 4L1 EMBLAZON
MAGS WAY TO SHINE
BOHI TOP DOLLAR 7144T
WERNER RITA 118
AUTO DOLLAR GENERAL 122R
MAGS PASSION FLOWER
CONNEALY ADMIRAL 690
TCC ERISKAY 1497

	EPD	%Rank
CED	14	15
BW	0.5	40
WW	73	20
YW	114	20
MILK	21	60
TM	57	30
CEM	7	40
SC	1.07	45
STAY	12	40
DOC	18	3
YG	-0.18	90
CW	44	10
REA	0.84	40
MARB	0.28	15
FAT	-0.02	90
SMTI	63.67	10

Actual BW: 79 lbs. Adj. WW: 629 lbs. Adj. YW: 1,186 lbs. ADG: 3.48

What a chunk of a young herd sire prospect! We see so much potential in this bull's ability to cover a set of females and add elite performance and a powerful look. He is crazy deep bodied, level in his hip and tracks with such confidence on the move. LVLS Gateway 84G truly has an impressive set of numbers- his marbling EPD ranks in the top 10% of the breed, weaning weight in the top 20% and yearling weight in the top 25%. He is a son of MAGS Cable and from a MAGS Unreal daughter. Switch it up when breeding season rolls around with this uniquely patterned bull and don't lose power and substance that. He is a 50% Lim-Flex that is homozygous black and homozygous polled.

29 LVLS GOLDEN BOY 43G ET

Lim-Flex (50) Bull | HP / HB | 02.01.19 | LVLS 43G | LFM 2267535

MAGS APPLESEED
MAGS CABLE
MAGS ZEQUIN

RITO 6EM3 OF 4L1 EMBLAZON
MAGS WAY TO SHINE
BOHI TOP DOLLAR 7144T
WERNER RITA 118
COLE WULF HUNT
LVLS8862M
VERMILION YELLOWSTONE
TRAVELER 6807 K G 9

	EPD	%Rank
CED	14	15
BW	0.2	35
WW	67	40
YW	102	50
MILK	21	60
TM	54	55
CEM	9	10
SC	1	45
STAY	11	55
DOC	14	35
YG	-0.23	80
CW	26	55
REA	0.7	70
MARB	0.32	10
FAT	-0.03	85
SMTI	63.70	10

LVLS TOP CRITERIA 8862P
LVLS WITHOUT U 9098W
KG CAMMIE 326

Actual BW: 84 lbs. Adj. WW: 705 lbs. Adj. YW: 1,330 lbs. ADG: 3.91

Holy smokes! It's not everyday that herd sire prospects carry this much style and presence. LVLS Golden Boy 43G has truly been a 'golden' stand-out no matter where he is. This 50% Lim-Flex MAGS Cable son is a double homozygous option that you'll seriously want to consider for your operation. He is from an LVLS Top Criteria 8862P daughter. His marbling EPD ranks in the top 10% of the breed. He is homozygous black and homozygous polled.



LOT 28 LVLS GOLDEN BOY 43G ET



LVLS Without U 9089W, dam of Lot 29.

30 LVLS OPTIMIZER 107G ET

Lim-Flex (50) Bull | HP / HB | 01.01.19 | LVLS 107G | LFM 2267533

MAGS APPLESEED
MAGS CABLE
MAGS ZEQUIN

RITO 6EM3 OF 4L1 EMBLAZON
MAGS WAY TO SHINE
BOHI TOP DOLLAR 7144T
WERNER RITA 118
COLE WULF HUNT
LVLS8862M
VERMILION YELLOWSTONE
TRAVELER 6807 K G 9

	EPD	%Rank
CED	16	50
BW	-0.1	65
WW	65	45
YW	101	45
MILK	23	75
TM	55	70
CEM	10	40
SC	1.00	60
STAY	11	10
DOC	15	15
YG	-0.24	65
CW	35	55
REA	0.84	90
MARB	0.28	15
FAT	-0.03	40
SMTI	61.99	15

LVLS TOP CRITERIA 8862P
LVLS WITHOUT U 9098W
KG CAMMIE 326

Actual BW: 84 lbs. Adj. WW: 648 lbs. Adj. YW: 1,110 lbs. ADG: 2.89

A nice featured MAGS Cable son that has such an ideal skeletal outline, structural soundness and muscle expression that we all strive to have in a herd bull. Cable is the total outcross sire that hit everyone hard when he made his debut in the yards. LVLS Optimizer 107G is out of an LVLS Top Criteria daughter and is homozygous black and homozygous polled. He is a 50% Lim-Flex bull that puts all of the pieces together just right for a young herd sire prospect. His marbling EPD surfaced to the top 15% of the breed.

31 LVLS OPTIMIZER 036G

Lim-Flex (50) Bull | HP / Black | 01.02.19 | LVLS 036G | LFM 2173036

MAGS APPLESEED
MAGS CABLE
MAGS ZEQUIN

RITO 6EM3 OF 4L1 EMBLAZON
MAGS WAY TO SHINE
BOHI TOP DOLLAR 7144T
WERNER RITA 118
GAR PRECISION 1680
COLEMAN BLACKCAP 211
HC OVERTIME 972
HACO 692F

	EPD	%Rank
CED	15	10
BW	-0.9	10
WW	70	30
YW	109	30
MILK	23	35
TM	58	25
CEM	8	20
SC	1.15	35
STAY	12	40
DOC	18	3
YG	-0.21	85
CW	46	5
REA	0.88	35
MARB	0.30	10
FAT	-0.03	85
SMTI	63.93	10

COLEMAN PRODUCTION 608
HC VELVET 036
HC VELVET 426

Actual BW: 72 lbs. Adj. WW: 690 lbs. Adj. YW: 1,237 lbs. ADG: 3.42

Genetically speaking, this herd sire prospect is as potent as they come around here. LVLS Optimizer 036G is a son of the great MAGS Cable and from a Coleman Production 608 female. Talk about a neat pedigree that holds some outstanding female producers! He also combines incredible thickness and fleshing ability with such an attractive design. This bull has a 0.31 marbling EPD that ranks in the top 10% of the breed and a -0.9 birthweight that sits in the top 15%. He is a 50% Lim-Flex and is homozygous polled and heterozygous black.

32 LVLS 5G

Lim-Flex (50) Bull | HP / HB | 01.12.19 | LVLS 5G | LFM 2173059

MAGS APPLESEED
MAGS CABLE
MAGS ZEQUIN

RITO 6EM3 OF 4L1 EMBLAZON
MAGS WAY TO SHINE
BOHI TOP DOLLAR 7144T
WERNER RITA 118
COLE WULF HUNT
LVLS8862M
FRENZEN KEYSTONE K17
FRENZEN BLACKBIRD H115

	EPD	%Rank
CED	14	15
BW	0.3	35
WW	69	35
YW	105	40
MILK	24	25
TM	58	25
CEM	8	20
SC	0.93	60
STAY	11	55
DOC	12	55
YG	-0.27	70
CW	36	25
REA	0.89	35
MARB	0.27	15
FAT	-0.04	75
SMTI	62.78	15

LVLS TOP CRITERIA 8862P
LVLS APPLE PIE 5A
FRENZEN BLACKBIRD M120

Actual BW: 82 lbs. Adj. WW: 641 lbs. Adj. YW: 1,179 lbs. ADG: 3.36

5G is long and level over his top and into his upper hip and has an excellent breed character about him. This homozygous black and homozygous polled son of MAGS Cable is clean in his lines and attracts even the most critical eye. He is out of a LVLS Top Criteria daughter. His marbling EPD ranks in the top 15% of the breed.

33 LVLS OPTIMIZER 811G

Lim-Flex (50) Bull | HP / HB | 01.02.19 | LVLS 811G | LFM 2173067

MAGS APPLESEED
MAGS CABLE
MAGS ZEQUIN

RITO 6EM3 OF 4L1 EMBLAZON
MAGS WAY TO SHINE
BOHI TOP DOLLAR 7144T
WERNER RITA 118
S A V PATHFINDER 3134
S A V ROSETTA 3350
HC MONTANA JUSTICE 419
HC PASSION 472

	EPD	%Rank
CED	15	10
BW	0.9	55
WW	79	10
YW	122	10
MILK	18	85
TM	58	25
CEM	10	3
SC	1.45	15
STAY	12	40
DOC	12	55
YG	-0.23	80
CW	42	10
REA	0.88	35
MARB	0.34	10
FAT	-0.04	75
SMTI	68.15	3

S A V LEGACY 5216
HC PASSION 811
HC PASSION 666

Actual BW: 82 lbs. Adj. WW: 660 lbs. Adj. YW: 1,131 lbs. ADG: 2.95

If longevity, a balanced number profile and style are qualities you desire adding to your program, don't leave without this guy on sale day. This MAGS Cable son has three impressive numbers that rank in the top 10% of the breed - weaning weight, yearling weight and marbling. What more could a cattleman ask for in a herd sire prospect? He comes from an SAV Legacy 5216 daughter and is a 50% Lim-Flex. He's the solution you've been searching for to increase pounds of performance and quality grade to increase your profit. He is homozygous black and homozygous polled.

COLE Cadillac 05C sons



LOT 34 LVLS GENERATION X 247G

34 LVLS GENERATION X 247G

PB Limousin (87) Bull | HP / HB | 01.04.19 | LVLS 247G | LFM 2173046

ROMN TUFF ENUFF 103T	WULFS RANSOM 3059R	<table border="0"> <tr><td>CED</td><td>11</td><td>45</td></tr> <tr><td>BW</td><td>0.7</td><td>40</td></tr> <tr><td>WW</td><td>69</td><td>25</td></tr> <tr><td>YW</td><td>106</td><td>20</td></tr> <tr><td>MILK</td><td>26</td><td>10</td></tr> <tr><td>TM</td><td>60</td><td>4</td></tr> <tr><td>CEM</td><td>8</td><td>20</td></tr> <tr><td>SC</td><td>0.1</td><td>95</td></tr> <tr><td>STAY</td><td>10</td><td>80</td></tr> <tr><td>DOC</td><td>6</td><td>90</td></tr> <tr><td>YG</td><td>-0.63</td><td>75</td></tr> <tr><td>CW</td><td>16</td><td>50</td></tr> <tr><td>REA</td><td>1.06</td><td>70</td></tr> <tr><td>MARB</td><td>-0.33</td><td>40</td></tr> <tr><td>FAT</td><td>-0.13</td><td>75</td></tr> <tr><td>SMTI</td><td>44.14</td><td>35</td></tr> </table>	CED	11	45	BW	0.7	40	WW	69	25	YW	106	20	MILK	26	10	TM	60	4	CEM	8	20	SC	0.1	95	STAY	10	80	DOC	6	90	YG	-0.63	75	CW	16	50	REA	1.06	70	MARB	-0.33	40	FAT	-0.13	75	SMTI	44.14	35
CED	11		45																																															
BW	0.7		40																																															
WW	69		25																																															
YW	106		20																																															
MILK	26		10																																															
TM	60		4																																															
CEM	8		20																																															
SC	0.1		95																																															
STAY	10		80																																															
DOC	6		90																																															
YG	-0.63		75																																															
CW	16		50																																															
REA	1.06		70																																															
MARB	-0.33		40																																															
FAT	-0.13		75																																															
SMTI	44.14		35																																															
COLE CADILLAC 05C	ROMN ROBERTA 35R																																																	
COLE MISS XRATED 354A	MRL X-RATED 014X																																																	
	COLE MISS PRODUCTION 874U																																																	
	EF MAIN STAY 541M																																																	
MAGS RACE THE SUN	MINE PLD QUEEN SHEBA9006J																																																	
RRDC 247 X	MAGS RELATIVE FEAR																																																	
RRDC TAMMY 777 T	RRDC 492P																																																	

Actual BW: 86 lbs. **Adj. WW:** 684 lbs. **Adj. YW:** 1,135 lbs. **ADG:** 2.82

Another COLE Cadillac son that is packed full of maternal greatness and power. LVLS Generation X 247G is a homozygous black and homozygous polled bull out of a MAGS Race The Sun daughter. This purebred bull has a milk EPD that ranks in the top 10% of the breed. We are confident that this guy can add some quality value to any set of his future calves.

35 LVLS MAXIMIZER 126G

% Limousin (81) Bull | HP / HB | 01.03.19 | LVLS 126G | NXM 2173040

ROMN TUFF ENUFF 103T	WULFS RANSOM 3059R	<table border="0"> <tr><td>CED</td><td>14</td><td>15</td></tr> <tr><td>BW</td><td>-0.8</td><td>15</td></tr> <tr><td>WW</td><td>62</td><td>60</td></tr> <tr><td>YW</td><td>96</td><td>55</td></tr> <tr><td>MILK</td><td>25</td><td>15</td></tr> <tr><td>TM</td><td>56</td><td>30</td></tr> <tr><td>CEM</td><td>9</td><td>10</td></tr> <tr><td>SC</td><td>0.35</td><td>90</td></tr> <tr><td>STAY</td><td>13</td><td>40</td></tr> <tr><td>DOC</td><td>13</td><td>45</td></tr> <tr><td>YG</td><td>-0.54</td><td>55</td></tr> <tr><td>CW</td><td>20</td><td>55</td></tr> <tr><td>REA</td><td>1.03</td><td>45</td></tr> <tr><td>MARB</td><td>-0.18</td><td>50</td></tr> <tr><td>FAT</td><td>-0.10</td><td>60</td></tr> <tr><td>SMTI</td><td>46.82</td><td>55</td></tr> </table>	CED	14	15	BW	-0.8	15	WW	62	60	YW	96	55	MILK	25	15	TM	56	30	CEM	9	10	SC	0.35	90	STAY	13	40	DOC	13	45	YG	-0.54	55	CW	20	55	REA	1.03	45	MARB	-0.18	50	FAT	-0.10	60	SMTI	46.82	55
CED	14		15																																															
BW	-0.8		15																																															
WW	62		60																																															
YW	96		55																																															
MILK	25		15																																															
TM	56		30																																															
CEM	9		10																																															
SC	0.35		90																																															
STAY	13		40																																															
DOC	13		45																																															
YG	-0.54		55																																															
CW	20		55																																															
REA	1.03		45																																															
MARB	-0.18		50																																															
FAT	-0.10		60																																															
SMTI	46.82		55																																															
COLE CADILLAC 05C	ROMN ROBERTA 35R																																																	
COLE MISS XRATED 354A	MRL X-RATED 014X																																																	
	COLE MISS PRODUCTION 874U																																																	
HC COLEMAN PRECISION 812	COLEMAN PRODUCTION 608																																																	
HC DYNASTY 126	HC DYNASTY 591																																																	
HC DYNASTY 574	HC OVERTIME 972																																																	
	HC FIRST LADY 005																																																	

Actual BW: 77 lbs. **Adj. WW:** 595 lbs. **Adj. YW:** 1,133 lbs. **ADG:** 3.36

We like to think of this Maximizer bull as a great heifer and calving-ease bull that can create individuals full of tremendous breed character and maternal power. He is a son of COLE Cadillac 05C, the ROMN Tuff Enuff bull that works so well in any program, but especially on heifers. LVLS Maximizer 126G ranks in the top 15% for both birthweight and milk. He is 81% Limousin and homozygous black and homozygous polled.

36 LVLS MAXIMIZER 6790G

% Limousin (79) Bull | DP / Black | 01.01.19 | LVLS 6790G | NXM 2171180

ROMN TUFF ENUFF 103T	WULFS RANSOM 3059R	<table border="0"> <tr><td>CED</td><td>14</td><td>15</td></tr> <tr><td>BW</td><td>-2</td><td>4</td></tr> <tr><td>WW</td><td>54</td><td>90</td></tr> <tr><td>YW</td><td>80</td><td>90</td></tr> <tr><td>MILK</td><td>24</td><td>20</td></tr> <tr><td>TM</td><td>51</td><td>70</td></tr> <tr><td>CEM</td><td>9</td><td>10</td></tr> <tr><td>SC</td><td>0.3</td><td>90</td></tr> <tr><td>STAY</td><td>13</td><td>40</td></tr> <tr><td>DOC</td><td>10</td><td>75</td></tr> <tr><td>YG</td><td>-0.5</td><td>60</td></tr> <tr><td>CW</td><td>12</td><td>80</td></tr> <tr><td>REA</td><td>0.81</td><td>75</td></tr> <tr><td>MARB</td><td>-0.19</td><td>50</td></tr> <tr><td>FAT</td><td>-0.1</td><td>60</td></tr> <tr><td>SMTI</td><td>43.64</td><td>70</td></tr> </table>	CED	14	15	BW	-2	4	WW	54	90	YW	80	90	MILK	24	20	TM	51	70	CEM	9	10	SC	0.3	90	STAY	13	40	DOC	10	75	YG	-0.5	60	CW	12	80	REA	0.81	75	MARB	-0.19	50	FAT	-0.1	60	SMTI	43.64	70
CED	14		15																																															
BW	-2		4																																															
WW	54		90																																															
YW	80		90																																															
MILK	24		20																																															
TM	51		70																																															
CEM	9		10																																															
SC	0.3		90																																															
STAY	13		40																																															
DOC	10		75																																															
YG	-0.5		60																																															
CW	12		80																																															
REA	0.81		75																																															
MARB	-0.19		50																																															
FAT	-0.1		60																																															
SMTI	43.64		70																																															
COLE CADILLAC 05C	ROMN ROBERTA 35R																																																	
COLE MISS XRATED 354A	MRL X-RATED 014X																																																	
	COLE MISS PRODUCTION 874U																																																	
ENGD ZIP LINE 2515Z	AHCC WESTWIND W544																																																	
LVLS EDIE 6791E	RTTB ROYALTY 2505R																																																	
LVLS 6792Y	MYTTY IN FOCUS																																																	
	LVLS 6792W																																																	

Actual BW: 67 lbs. **Adj. WW:** 642 lbs. **Adj. YW:** 1,089 lbs. **ADG:** 2.80

Wanting to create some females that are the right kind? Here's your chance with this handsome COLE Cadillac son. His dam is an ENGD Zip Line daughter. LVLS 6790G is 79% Limousin and boy does he have a great birthweight EPD! He ranks in the top 4% of the breed with a -2.0. He is good bodied, sound on his feet and legs and his low birth weight makes him such a tremendous option to use on heifers. Don't miss your opportunity with this one! He is heterozygous black and double polled.

37 LVLS MAXIMIZER 1033G

Lim-Flex (75) Bull | DP / Black | 01.02.19 | LVLS 1033G | LFM 2171174

ROMN TUFF ENUFF 103T	WULFS RANSOM 3059R	<table border="0"> <tr><td>CED</td><td>14</td><td>15</td></tr> <tr><td>BW</td><td>-1.5</td><td>5</td></tr> <tr><td>WW</td><td>66</td><td>45</td></tr> <tr><td>YW</td><td>96</td><td>70</td></tr> <tr><td>MILK</td><td>23</td><td>35</td></tr> <tr><td>TM</td><td>55</td><td>45</td></tr> <tr><td>CEM</td><td>9</td><td>10</td></tr> <tr><td>SC</td><td>0.4</td><td>95</td></tr> <tr><td>STAY</td><td>14</td><td>20</td></tr> <tr><td>DOC</td><td>10</td><td>80</td></tr> <tr><td>YG</td><td>-0.45</td><td>25</td></tr> <tr><td>CW</td><td>19</td><td>80</td></tr> <tr><td>REA</td><td>0.81</td><td>50</td></tr> <tr><td>MARB</td><td>-0.15</td><td>90</td></tr> <tr><td>FAT</td><td>-0.09</td><td>20</td></tr> <tr><td>SMTI</td><td>48</td><td>90</td></tr> </table>	CED	14	15	BW	-1.5	5	WW	66	45	YW	96	70	MILK	23	35	TM	55	45	CEM	9	10	SC	0.4	95	STAY	14	20	DOC	10	80	YG	-0.45	25	CW	19	80	REA	0.81	50	MARB	-0.15	90	FAT	-0.09	20	SMTI	48	90
CED	14		15																																															
BW	-1.5		5																																															
WW	66		45																																															
YW	96		70																																															
MILK	23		35																																															
TM	55		45																																															
CEM	9		10																																															
SC	0.4		95																																															
STAY	14		20																																															
DOC	10		80																																															
YG	-0.45		25																																															
CW	19		80																																															
REA	0.81		50																																															
MARB	-0.15		90																																															
FAT	-0.09		20																																															
SMTI	48		90																																															
COLE CADILLAC 05C	ROMN ROBERTA 35R																																																	
COLE MISS XRATED 354A	MRL X-RATED 014X																																																	
	COLE MISS PRODUCTION 874U																																																	
ENGD ZIP LINE 2515Z	AHCC WESTWIND W544																																																	
LVLS ELISE 2240E	RTTB ROYALTY 2505R																																																	
LVLS 2240U	MYTTY IN FOCUS																																																	
	LVLS 2240S																																																	

Actual BW: 67 lbs. **Adj. WW:** 749 lbs. **Adj. YW:** 1,254 lbs. **ADG:** 3.36

If your desire is to have your cattle sure footed, heavy muscled and big bodied, this 75% Lim-Flex herd sire prospect deserves your attention. He is a COLE Cadillac 05C son and from an ENGD Zip Line 2515Z daughter. He's a great option for heifers, his birthweight EPD ranks in the top 5%. He is heterozygous black and double polled. There's so much breeding versatility in this guy and we're confident in his ability to make an impact on any herd.

38 LVLS STABILIZER 7315G

Lim-Flex (65) Bull | DP / Black | 01.14.19 | LVLS 7315G | LFM 2171416

ROMN TUFF ENUFF 103T	WULFS RANSOM 3059R	<table border="0"> <tr><td>CED</td><td>11</td><td>50</td></tr> <tr><td>BW</td><td>1.6</td><td>75</td></tr> <tr><td>WW</td><td>64</td><td>55</td></tr> <tr><td>YW</td><td>91</td><td>80</td></tr> <tr><td>MILK</td><td>20</td><td>70</td></tr> <tr><td>TM</td><td>52</td><td>70</td></tr> <tr><td>CEM</td><td>6</td><td>60</td></tr> <tr><td>SC</td><td>0.2</td><td>-95</td></tr> <tr><td>STAY</td><td>15</td><td>15</td></tr> <tr><td>DOC</td><td>10</td><td>80</td></tr> <tr><td>YG</td><td>-0.41</td><td>30</td></tr> <tr><td>CW</td><td>16</td><td>90</td></tr> <tr><td>REA</td><td>0.71</td><td>70</td></tr> <tr><td>MARB</td><td>-0.11</td><td>85</td></tr> <tr><td>FAT</td><td>-0.08</td><td>30</td></tr> <tr><td>SMTI</td><td>48.51</td><td>85</td></tr> </table>	CED	11	50	BW	1.6	75	WW	64	55	YW	91	80	MILK	20	70	TM	52	70	CEM	6	60	SC	0.2	-95	STAY	15	15	DOC	10	80	YG	-0.41	30	CW	16	90	REA	0.71	70	MARB	-0.11	85	FAT	-0.08	30	SMTI	48.51	85
CED	11		50																																															
BW	1.6		75																																															
WW	64		55																																															
YW	91		80																																															
MILK	20		70																																															
TM	52		70																																															
CEM	6		60																																															
SC	0.2		-95																																															
STAY	15		15																																															
DOC	10		80																																															
YG	-0.41		30																																															
CW	16		90																																															
REA	0.71		70																																															
MARB	-0.11		85																																															
FAT	-0.08		30																																															
SMTI	48.51		85																																															
COLE CADILLAC 05C	ROMN ROBERTA 35R																																																	
COLE MISS XRATED 354A	MRL X-RATED 014X																																																	
	COLE MISS PRODUCTION 874U																																																	
LAGRAND ARCHITECT 7118	KCF BENNETT ARCHITECTM299																																																	
LVLS 7316W	LAGRAND PRIMROSE 5835																																																	
LVLS7316L	LVLS COWBOY 015F																																																	
	LVLS MISS STABILIZER 1386E																																																	

Actual BW: 94 lbs. **Adj. WW:** 685 lbs. **Adj. YW:** 1,210 lbs. **ADG:** 3.28

This guy is so bold and naturally thick that it's easy to see the kind of power he will stamp his future progeny with. He is a 65% Lim-Flex son of COLE Cadillac 05C and from a Lagrand Architect 7118 cow. He is heterozygous black and double polled.



AHCC Badlands
908B Sons

39 LVLS STABILIZER 6791G

Lim-Flex (71) Bull | HP / Black | 01.01.19 | LVLS 6791G | LFM 2171407

AHCC WESTWIND W544
AHCC BADLANDS 908B
LVLS 9066U

MYTTY IN FOCUS
LVLS 6792Y
LVLS 6792W

KAJO RESPONDER 120R
AHCC MISS WULF HUNT R544
LVLS FARMER JOHN 7428P
LVLS9066R
S A F FOCUS OF E R
MYTTY COUNTESS 906
CARROUSELS PURE POWER
LVLS6792K

	EPD	%Rank
CED	12	35
BW	0.6	45
WW	70	30
YW	111	25
MILK	22	45
TM	56	35
CEM	7	40
SC	1	45
STAY	15	15
DOC	13	45
YG	-0.36	45
CW	34	30
REA	0.76	60
MARB	-0.08	80
FAT	-0.09	20
SMTI	51.25	70

Actual BW: 86 lbs. Adj. WW: 725 lbs. Adj. YW: 1,167 lbs. ADG: 2.76

This Stabilizer bull is a higher percentage Lim-Flex that offers such a terrific blend of Limousin and Angus genetics. He is an AHCC Badlands 908B son from a MYTTY In Focus female. He has performance in his number profile with his yearling weight that ranks in the top 25% of the breed. He is heterozygous black and homozygous polled.



LOT 39 LVLS STABILIZER 6791G

40 LVLS MAXIMIZER 259G

PB Limousin (87) Bull | Polled / HB | 01.05.19 | LVLS 259G | NPM 2171381

AHCC WESTWIND W544
AHCC BADLANDS 908B
LVLS 9066U

LVLS SECRET WEAPON 4408K
LVLS MISS 259Z
LVLS 259R

KAJO RESPONDER 120R
AHCC MISS WULF HUNT R544
LVLS FARMER JOHN 7428P
LVLS9066R
LVLS FARMER 4G
LVLS 408H
LVLS 276N
L V MISS EXT 2200

	EPD	%Rank
CED	9	70
BW	2.8	90
WW	67	35
YW	108	15
MILK	24	15
TM	58	10
CEM	7	35
SC	0.8	25
STAY	12	65
DOC	14	45
YG	-0.48	>95
CW	37	1
REA	0.82	>95
MARB	-0.25	20
FAT	-0.13	75
SMTI	45.29	30

Actual BW: 90 lbs. Adj. WW: 660 lbs. Adj. YW: 1,269 lbs. ADG: 3.81

What a way to lead off the sale! This purebred son of AHCC Badlands 908B is nothing short of impressive. AHCC Badlands is the high performance son of AHCC Westwind. This young herd sire prospect rises to the top 15% of the breed in yearling weight and marbling. He is strong on the maternal end of the spectrum, ranking in the top 20% for milk with a 24. Not only is this guy designed impeccably, he has such an exceptionally functional look and build to him. He is homozygous black and polled.



WATCH OR BID LIVE ...

The 29th Annual Lonely Valley Keepin' Kind Bull Sale
can be viewed and bids can be accepted through
www.dvauction.com.



LVLS Caesar 4C
Sons

41 LVLS MAXIMIZER 1041G

% Limousin (76) Bull | DP / Black | 01.21.19 | LVLS 1041G | NXM 2171403

AHCC ANCHOR 838A LVLS CAESAR 4C LVLS 04W	AHCC WESTWIND W544 AHCC MISS PRECISION U838 AUTO BLACK DAKOTA 129J LVLS 4P COLE WULF HUNT LVLS8862M BASIN MAX 602C LVLS 2867H
LVLS TOP CRITERIA 8862P LVLS 4867W LVLS4867T	

	EPD	%Rank
CED	11	50
BW	0.5	40
WW	64	50
YW	102	40
MILK	22	40
TM	54	45
CEM	6	55
SC	0.25	95
STAY	12	50
DOC	11	65
YG	-0.5	60
CW	20	55
REA	0.94	60
MARB	-0.17	50
FAT	-0.10	60
SMTI	47.48	50

Actual BW: 85 lbs. Adj. WW: 675 lbs. Adj. YW: 1,152 lbs. ADG: 2.99

If you're in the market for moderate frame and muscle expression 1041G will be the bull for you. He stems from such a powerful sire in LVLS Caesar 4C, an AHCC Anchor 838A son. He is 76% Limousin and will give you such flexibility when breeding season comes around. He is heterozygous black and double polled.

42 LVLS MAXIMIZER 1012G

% Limousin (82) Bull | Polled / Black | 02.03.19 | LVLS 1012G | NXM 2171389

AHCC ANCHOR 838A LVLS CAESAR 4C LVLS 04W	AHCC WESTWIND W544 AHCC MISS PRECISION U838 AUTO BLACK DAKOTA 129J LVLS 4P HUNTS HI-LITER 245G LOGAN'S CHEERLEADER 280G LVLS DURAMAX 2408M LVLS 794B
JCL LODESTAR 27L LVLS 794W LVLS 794T	

	EPD	%Rank
CED	10	60
BW	2.1	80
WW	72	15
YW	117	10
MILK	23	30
TM	59	10
CEM	6	55
SC	0.95	35
STAY	11	60
DOC	11	65
YG	-0.45	65
CW	31	20
REA	0.92	60
MARB	-0.24	55
FAT	-0.10	60
SMTI	46.99	55

Actual BW: 93 lbs. Adj. WW: 751 lbs. Adj. YW: 1,264 lbs. ADG: 3.21

Looking for a higher percentage Limousin herd sire prospect that is full of added growth and performance? This LVLS Caesar 4C son is an 82% Limousin bull that sure pounded down the scale during weaning and as a yearling. His yearling weight ranks in the top 10% and his weaning weight in the top 15%. LVLS Caesar 4C is a son of AHCC Anchor 838A, another great AHCC Westwind son. This bull's dam is a JCL Lodestar 27L daughter. When we think of stacked pedigrees, this bull immediately surfaces in our minds. He is heterozygous polled and heterozygous black.



TMCK Cash Flow
247C Sons

43 LVLS STABILIZER 6792G

Lim-Flex (65) Bull | HP / Black | 01.03.19 | LVLS 6792G | LFM 2171410

MAGS ALI TMCK CASH FLOW 247C TMCK NINA 17X	CONNELLY CONSENSUS 7229 MAGS YOKO S A V PIONEER 7301 DVFC NINA 239U GPFF BLAQUE RULON TUBB FIRST CLASS 666F LVLS POLLED BLACK JACK LVLS 792B
CARROUSELS PURE POWER LVLS 6792W LVLS6792K	

	EPD	%Rank
CED	8	90
BW	1.8	80
WW	76	10
YW	121	10
MILK	19	75
TM	57	30
CEM	3	>95
SC	1.05	45
STAY	12	40
DOC	13	45
YG	-0.31	55
CW	38	20
REA	0.99	15
MARB	0	60
FAT	-0.04	75
SMTI	55.70	45

Actual BW: 73 lbs. Adj. WW: 702 lbs. Adj. YW: 1,197 lbs. ADG: 3.1

A homozygous polled Cash Flow son that certainly will grab your attention when you study his pedigree. This Stabilizer bull is from a Carousels Pure Power daughter. His number profile only adds to the excitement of this young herd sire prospect. He ranks in the top 10% of the breed for weaning weight and yearling weight.

44 LVLS STABILIZER 5854G

Lim-Flex (65) Bull | Polled / HB | 01.12.19 | LVLS 5854G | LFM 2171405

MAGS ALI TMCK CASH FLOW 247C TMCK NINA 17X	CONNELLY CONSENSUS 7229 MAGS YOKO S A V PIONEER 7301 DVFC NINA 239U GPFF BLAQUE RULON MAGS SHUTTERBUG LVLS8736P LVLS5855P
CHR WILD BILL 150W LVLS ANNIE 5854A LVLS 5854S	

	EPD	%Rank
CED	10	70
BW	1.2	65
WW	73	20
YW	120	10
MILK	24	25
TM	61	10
CEM	6	60
SC	1.2	25
STAY	14	20
DOC	16	15
YG	-0.28	65
CW	35	25
REA	0.91	30
MARB	0.03	55
FAT	-0.04	75
SMTI	55.74	45

Actual BW: 86 lbs. Adj. WW: 675 lbs. Adj. YW: 1,242 lbs. ADG: 3.54

Rugged in his kind, fluid in his movement and flashy when he plants his feet. This TMCK Cash Flow son is a 65% Lim-Flex bull that catches everyone's eye. He's bred to be a good one. Not only is he impressive in person, he's got a powerful set of numbers. His weaning and yearling weights rank in the top 15% of the breed. He is homozygous black and heterozygous polled.

45 LVLS STABILIZER 1796G

Lim-Flex (49) Bull | DP / Black | 01.04.19 | LVLS 1796G | LFM 2171396

MAGS ALI TMCK CASH FLOW 247C TMCK NINA 17X	CONNEALY CONSENSUS 7229 MAGS YOKO S A V PIONEER 7301 DVFC NINA 239U GPFF BLAQUE RULON MAGS SHUTTERBUG BASIN MAX 602C LVLS MISS STABILIZER 1792E	EPD %Rank CED 8 90 BW 3 >95 WW 77 10 YW 126 5 MILK 18 85 TM 56 35 CEM 4 90 SC 1.25 25 STAY 15 15 DOC 16 15 YG -0.16 90 CW 37 20 REA 0.82 45 MARB -0.18 25 FAT -0.01 95 SMTI 61.38 20
---	--	--

Actual BW: 96 lbs. Adj. WW: 675 lbs. Adj. YW: 1,266 lbs. ADG: 3.69

This TMCK Cash Flow son has been an absolute standout here since he hit the ground. His performance and flashy design makes him a go-to for anyone that views him. He sure pounded down the scale when weaning time rolled around and again as a yearling. Numerically, his yearling weight quickly rose to the top, ranking in the top 5% of the breed and his weaning weight ranks in the top 10%. From a phenotypic standpoint this guy is exceptionally well made and carries himself with such presence. His dam is a CHR Wild Bill 150W daughter. He is 49% Lim-Flex and heterozygous black and double polled. This is such a rare purchasing opportunity for such a potential curve-bender of a herd sire prospect.

47 LVLS GOLDBERG 1040G

Lim-Flex (42) Bull | HP / HB | 01.03.19 | LVLS 1040G | LFM 2171402

MAGS ALI TMCK CASH FLOW 247C TMCK NINA 17X	CONNEALY CONSENSUS 7229 MAGS YOKO S A V PIONEER 7301 DVFC NINA 239U G T MAXIMUM BASIN ELINE ERICA 315U WULF'S PAYDAY 1198C LVLS MS STABILIZER 2867F	EPD %Rank CED 9 80 BW 1.3 65 WW 75 15 YW 122 10 MILK 18 85 TM 55 45 CEM 3 >95 SC 1 45 STAY 15 15 DOC 15 20 YG -0.07 >95 CW 36 25 REA 0.6 85 MARB 0.25 15 FAT 0.0 >95 SMTI 62.51 15
---	--	--

Actual BW: 85 lbs. Adj. WW: 690 lbs. Adj. YW: 1,203 lbs. ADG: 3.21

This is the kind of individual that will make an incredible herd bull. LVLS Goldberg 1040G is a 42% Lim-Flex son of TMCK Cash Flow 247C. He's in the top 10% of the breed for his weaning and yearling weight EPDs, so he's sure to inject performance into any calf crop. He's a bull that you have to appreciate for his power and presence and the added dimension he has from end to end. He is homozygous black and homozygous polled.

46 LVLS OPTIMIZER 059G

Lim-Flex (46) Bull | HP / HB | 01.13.19 | LVLS 059G | LFM 2173037

MAGS ALI TMCK CASH FLOW 247C TMCK NINA 17X	CONNEALY CONSENSUS 7229 MAGS YOKO S A V PIONEER 7301 DVFC NINA 239U WZRK PRIMESTAR 861P WULFS MISSIVE 2258M S A V 8180 TRAVELER 004 LVLS 770R	EPD %Rank CED 9 80 BW 2.4 90 WW 82 3 YW 134 2 MILK 19 75 TM 60 15 CEM 4 90 SC 1.35 20 STAY 14 20 DOC 16 15 YG -0.11 95 CW 46 5 REA 0.78 55 MARB 0.31 10 FAT 0 >95 SMTI 67.07 5
---	--	--

Actual BW: 88 lbs. Adj. WW: 645 lbs. Adj. YW: 1,235 lbs. ADG: 3.69

Looking for a herd sire prospect that is packed full of superior genetics? You better look this one up come sale day because we've always been super proud since he hit the ground. This Optimizer bull is a TMCK Cash Flow son out of a Wulfs Xclusive 2458 daughter that goes back to SAV 8180 Traveler 004. Not only does this guy have quite the impressive pedigree, his numbers are equally as impressive. His yearling weight surfaced to the top 2% of the entire breed and his weaning weight not far behind in the top 3% of the breed. This 46% Lim-Flex bull is solid across the board from end to end. He is homozygous black and homozygous polled and one that offers an incredible amount of versatility for your breeding needs.

48 LVLS GOLIATH 1009G

Lim-Flex (34) Bull | HP / Black | 01.01.19 | LVLS 1009G | LFM 2171386

MAGS ALI TMCK CASH FLOW 247C TMCK NINA 17X	CONNEALY CONSENSUS 7229 MAGS YOKO S A V PIONEER 7301 DVFC NINA 239U B/R NEW FRONTIER 095 L V MISS IDEAL 9307 YKCC IRONSIDE BULL 155NS	EPD %Rank CED 9 80 BW 0.5 40 WW 72 20 YW 116 15 MILK 25 20 TM 61 10 CEM 6 60 SC 1.2 25 STAY 16 10 DOC 16 15 YG -0.02 >95 CW 32 35 REA 0.51 95 MARB 0.32 10 FAT 0.02 >95 SMTI 63.71 10
---	---	---

Actual BW: 87 lbs. Adj. WW: 764 lbs. Adj. YW: 1,373 lbs. ADG: 3.81

This 34% Lim-Flex bull combines excellent phenotype with a superior pedigree and quite the uniquely balanced EPD profile that places him in the top 20% and higher for four traits. You'll see that his marbling EPD ranks in the top 10%, yearling weight in the top 15%, weaning weight and milk in the top 20% of the breed. LVLS Goliath 1009G is a TMCK Cash Flow 247C son. Cash Flow is the MAGS Ali son that injects breed leading numbers and remains one of the breed's top Lim-Flex sires. He is homozygous polled and heterozygous black.

LVLS Big Lebowski 10256 Sons

49 LVLS MAXIMIZER 1016G

% Limousin (76) Bull | DP / HB | 01.27.19 | LVLS 1016G | NXM 2171392

LVLS X-TRA PROFIT 2014 LVLS BIG LEBOWSKI 1025B LVLS 4867U	AUTO DOLLAR GENERAL 122R JCL MAYBERRY 62S TC FREEDOM 104 LVLS 2867H COLE WULF HUNT WULFS NEGOTIABLE 3172N JCL LODESTAR 27L LVLS 795S	EPD %Rank CED 12 35 BW 0.3 35 WW 60 70 YW 93 65 MILK 28 3 TM 58 15 CEM 8 20 SC 0.55 75 STAY 15 25 DOC 11 65 YG -0.48 60 CW 14 75 REA 0.9 65 MARB -0.1 40 FAT -0.09 65 SMTI 48.57 45
--	---	---

Actual BW: 82 lbs. Adj. WW: 642 lbs. Adj. YW: 1,125 lbs. ADG: 3.02

Here is an individual that offers a stacked pedigree for proven maternal values and power. This 76% Limousin son of LVLS Big Lebowski 1025B is one you'll be even more interested in when you see him sale day. His milk EPD impressively ranks in the top 3% of the entire breed with a 28. He is homozygous black and double polled.

50 LVLS STABILIZER 9867G

Lim-Flex (56) Bull | Polled / HB | 01.04.19 | LVLS 9867G | LFM 2171423

LVLS X-TRA PROFIT 2014 LVLS BIG LEBOWSKI 1025B LVLS 4867U	AUTO DOLLAR GENERAL 122R JCL MAYBERRY 62S TC FREEDOM 104 LVLS 2867H G T MAXIMUM BASIN ELINE ERICA 315U WZRK BIG KAHUNA 8046K LVLS5860J	EPD %Rank CED 9 80 BW 2 85 WW 64 55 YW 100 55 MILK 25 20 TM 57 30 CEM 4 90 SC 0.75 80 STAY 12 40 DOC 9 90 YG -0.32 55 CW 26 55 REA 0.73 65 MARB 0.01 60 FAT -0.06 50 SMTI 52.25 65
--	---	--

Actual BW: 93 lbs. Adj. WW: 699 lbs. Adj. YW: 1,230 lbs. ADG: 3.33

In the market for a Lim-Flex bull that can throw some power and functionality to a group of calves? This Stabilizer bull will do just that- and then some. He is a son of LVLS Big Lebowski 1025B and out of a Basin Max 602C cow. This bull has the maternal side of things covered, ranking in the top 20% of the breed with his milk EPD. He is heterozygous polled and homozygous black.

Beef Bulls



HUNT Credentials 37C ET, sire of Lot 51

51 LVLS GLADIATOR 36G

PB Limousin Bull | HP / Red | 01.19.19 | LVLS 36G | LFM Pending

HUNT TESTAMENT 40T
HUNT CREDENTIALS 37C ET
JKTW WHISKEY RIVER 985 W

HUNT ROSS 42R
HUNT RUTH 07R
WULFS SIGNATURE 9302S
JKTW RADDISON 6602R
WULFS TITUS 2149T
WULFS MYRLENE 2332M
LVLS TOP CRITERIA 8862P
LVLS 8115T

Actual BW: 87 lbs. Adj. WW: 640 lbs. Adj. YW: 1,124 lbs. ADG: 2.93

LVLS Gladiator 36G is a purebred that is truly following in his father's footsteps. This HUNT Credentials son is full of so much natural thickness and width from end to end. Credentials is the super powerful HUNT Testament son. Gladiator has the look that so many commercial cattlemen desire, but everyone that views him falls in love with his powerful build and promising herd sire prospect look he embraces.

	SIRE	DAM
CED	11	-
BW	1.2	-
WW	75	-
YW	115	-
MILK	18	-
TM	55	-
CEM	6	-
SC	1	-
STAY	13	-
DOC	16	-
YG	15	-
CW	27	-
REA	0.92	-
MARB	-0.09	-
FAT	-0.15	-
SMTI	54.02	-

52 LVLS MAXIMIZER 1010G

% Limousin (84) Bull | Polled / Black | 01.09.19 | LVLS 1010G | NXM 2171387

DHVO DEUCE 132R
TASF CROWN ROYAL 960 ET
TASF WHISKEY LULLABY 357W

LVLS DURAMAX 2408M
LVLS 794T
LVLS 794B

GPPF BLAQUE RULON
AMY JO DHAN 20L
EXLR NASDAQ 380R
TMCK MISS THICK 37T
LVLS DOUBLEDOWN 3615K
LVLS MS STABILIZER 2408E
YKCC IRONSIDE BULL 155NS

Actual BW: 93 lbs. Adj. WW: 706 lbs. Adj. YW: 1,195 lbs. ADG: 3.06

The future owner of this Maximizer bull better be ready to buy a round of Crown! This 84% Limousin bull is living up to everything that his sire, TASF Crown Royal 960 ET is bringing to the breed today. Crown Royal is the tremendous son of DHVO Deuce and commands top dollar for progeny that rise to the top of their contemporaries, just like this one. He is out of an LVLS Duramax 2408M daughter. If you're searching for a balanced and workable EPD profile that avoids extremes, truly study this one. His weaning weight ranks in the top 15% of the breed and his yearling weight in the top 20%. He is heterozygous polled and heterozygous black. LVLS Maximizer 1010G has the ability to work in so many different management scenarios.

	EPD	%Rank
CED	6	>95
BW	3.6	>95
WW	73	15
YW	109	20
MILK	20	65
TM	57	20
CEM	4	90
SC	1.1	20
STAY	8	85
DOC	8	90
YG	-0.53	55
CW	27	30
REA	1.1	35
MARB	-0.33	70
FAT	-0.1	60
SMTI	44.39	65

53 LVLS MAXIMIZER 1015G

% Limousin (82) Bull | DP / DB | 01.02.19 | LVLS 1015G | NXM 2171391

DLVL XEROX 023X
SYES BACKSTAGE 466B
MISS SYES FRIENDLY 465Z

LH XPLOER 152X
LVLS CAITLYN 796C
LVLS 796X

COLE THUNDER 110T
DLVL SKY 605S
SYES USER FRIENDLY 524U
MISS SYES TRUCK 464X
GPPF BLAQUE RULON
G A R T510 TRAVELER H93
WULFS SIRLOIN 3172S
LVLS 795U

Actual BW: 80 lbs. Adj. WW: 638 lbs. Adj. YW: 1,092 lbs. ADG: 2.84

An SYES Backstage son that we appreciate for his soundness of structure and moderate build. This Maximizer bull represents the performance and power found in LVLS bulls. His birthweight ranks in the top 10% with a -1.4, so get him on some first calf heifers and you'll have a little more sleep to run on when calving season rolls around. He is 82% Limousin and double black and double polled.

	EPD	%Rank
CED	16	10
BW	-1.4	10
WW	56	85
YW	87	80
MILK	21	55
TM	49	80
CEM	8	20
SC	0.4	85
STAY	11	60
DOC	10	75
YG	-0.52	55
CW	9	90
REA	0.88	65
MARB	-0.28	65
FAT	-0.09	65
SMTI	41.01	80

54 LVLS OPTIMIZER 336G

% Limousin (81) Bull | DP / Black | 02.24.19 | LVLS 336G | NXM 2267785

LVLS BANK ACCOUNT 8116B
LV BAR STABILIZER 612D
RRDC AIYANA 186 A

MAGS STAY TUNED
RRDC 336 Y
RRDC 445P

MAGS WAZOWSKI
LVLS WILMA 8116W
MAGS UNREAL
RRA DIXIE ERICA 129I
WULFS FANFARE 4055F
COLE 844H
GV COOKIE 206K
ELOR MISS ASH 069K

Actual BW: 84 lbs. Adj. WW: 738 lbs. Adj. YW: 1,200 lbs. ADG: 2.89

Another great son of LV Bar Stabilizer that deserves your consideration. He is a double polled 81% Limousin bull that stacks up just as well on paper as he does in person. This Optimizer bull is in the top 10% of the breed for his weaning weight EPD and the top 15% for his yearling weight EPD. This bull's dam is a MAGS Stay Tuned daughter.

	EPD	%Rank
CED	10	60
BW	1.9	75
WW	77	5
YW	114	15
MILK	24	20
TM	62	4
CEM	8	20
SC	0.7	55
STAY	13	40
DOC	8	90
YG	-0.54	55
CW	26	35
REA	1.08	35
MARB	-0.12	45
FAT	-0.1	60
SMTI	53.25	30

55 LVLS MAXIMIZER 1030G

Lim-Flex (75) Bull | HP / Black | 01.06.19 | LVLS 1030G | LFM 2171398

MRL X-RATED 014X
COLE ARCHITECT 08A
COLE MISS LODESTAR 826U

MAGS THE GENERAL
LVLS 2200R

CTCA BUCKEYE BULL 826IU
MRL TASTE OF COUNTRY 790T
JCL LODESTAR 27L
COLE MISS JUSTICE 694S
AUTO DOLLAR GENERAL 122R
EXLR LUVLY 821M
BON VIEW NEW DESIGN 1407
L V MISS EXT 2200

Actual BW: 84 lbs. Adj. WW: 674 lbs. Adj. YW: 1,229 lbs. ADG: 3.47

We've been a big fan of this bull since day one. He is so stout and powerfully designed, massive in his foot size and rugged in his structure. This moderate made COLE Architect 08A son is sound and flexible on the move and super deep bodied. He is from a MAGS The General daughter and will look to add performance to his progeny with a weaning weight that ranks in the top 10% of the breed and a yearling weight in the top 20%. He is homozygous polled and heterozygous black.

	EPD	%Rank
CED	10	70
BW	0.6	45
WW	79	10
YW	115	20
MILK	14	>95
TM	53	60
CEM	6	60
SC	1.3	20
STAY	15	15
DOC	15	20
YG	-0.42	30
CW	33	30
REA	0.96	20
MARB	-0.26	>95
FAT	-0.08	30
SMTI	47.77	90

56 LVLS MAXIMIZER 7100G

Lim-Flex (75) Bull | DP / DB | 01.11.19 | LVLS 7100G | LFM 2171411

WULFS WILLARD 5115W
WULFS COMPLIANT K687C ET
 WULFS SOLOIST 6284S

LVLS OLD SCHOOL 5751U
LVLS 7100X
 L V L S 7100

WULFS REVOLVER 1219R
 WULFS REMI 5115R
 WULFS NOBEL PRIZE 3861N
 WULFS JOY BELLS 9202J
 JCL LODESTAR 27L
 LVLS 5750S
 LOUP VALLEY FOCUS 882
 L V MISS PROMPTER 9100

	EPD	%Rank
CED	7	95
BW	-3.1	>95
WW	74	15
YW	109	30
MILK	24	25
TM	61	10
CEM	4	90
SC	0.55	95
STAY	15	15
DOC	13	45
YG	-0.5	15
CW	12	95
REA	0.87	35
MARB	-0.03	70
FAT	-0.09	20
SMTI	55.31	45

Actual BW: 95 lbs. Adj. WW: 767 lbs. Adj. YW: 1,280 lbs. ADG: 3.21

Here is a WULFS Compliant K687C son that is double black and double polled. Compliant was a top selling bull for Wulfs and brings a fresh pedigree packed full of growth and maternal power. Both are exemplified in this 75% Lim-Flex Maximizer bull. His weaning weight ranks in the top 15% of the breed and his milk EPD in the top 25%. This bull is particularly impressive from a numbers standpoint, but he's also got the look to hang with the best of them.

57 LVLS STABILIZER 7754G

Lim-Flex (68) Bull | DP / HB | 01.14.19 | LVLS 7754G | LFM 2171417

AHCC WESTWIND W544
AHCC BACK AGAIN B901
 LVLS 9066U

LVLS 9307R
LVLS7754T
 LVLS1754L

KAJO RESPONDER 120R
 AHCC MISS WULF HUNT R544
 LVLS FARMER JOHN 7428P
 LVLS9066R
 B/R NEW FRONTIER 095
 L V MISS IDEAL 9307
 CHAZ FIRST CHOICE 6004F
 LJ MISS TED 352B

	EPD	%Rank
CED	10	70
BW	2.1	90
WW	59	80
YW	94	75
MILK	21	60
TM	51	75
CEM	6	60
SC	0.54	95
STAY	15	15
DOC	14	35
YG	-0.32	55
CW	18	80
REA	0.52	95
MARB	-0.09	80
FAT	-0.08	30
SMTI	37.42	90

Actual BW: 93 lbs. Adj. WW: 696 lbs. Adj. YW: 1,138 lbs. ADG: 2.76

This Stabilizer bull is a son of AHCC Back Again who is out of the legendary AHCC Westwind bull. This 68% Lim-Flex bull has the potential to be a front pasture herd bull who has the genetic ability to sire naturally thick, performance oriented offspring. We have always admired his depth of body, width of top and his flexibility when you get him in motion. He is homozygous black and double polled. This bull has the elite genetics and power to create some of the most functional cattle that don't lack style.

58 LVLS STABILIZER 6868G

Lim-Flex (68) Bull | DP / HB | 01.01.19 | LVLS 6868G | LFM 2171422

DHVO DEUCE 132R
 CHR ZERRIN 182Z
 KRVN TISH 082T

CHR WILD BILL 150W
LVLS BIANCA 9868B
 LVLS 9868W

GPF BLAQUE RULON
 AMY JO DHAN 20L
 KRVN PICANTE 036P
 FOSTER ELAINE 0310
 GPF BLAQUE RULON
 MAGS SHUTTERBUG
 BASIN MAX 602C
 LVLS9868N

	EPD	%Rank
CED	11	50
BW	-0.1	25
WW	62	65
YW	94	75
MILK	24	25
TM	55	45
CEM	6	55
SC	1.02	45
STAY	11	55
DOC	10	80
YG	-0.43	25
CW	14	90
REA	0.81	50
MARB	-0.12	85
FAT	-0.08	30
SMTI	47.88	90

Actual BW: 79 lbs. Adj. WW: 730 lbs. Adj. YW: 1,190 lbs. ADG: 2.87

LVLS Stabilizer 9868G is a complete, well-made individual that brings a unique pedigree and look to this offering. He is a 66% Lim-Flex son of CHR Zerrin 182Z. This bull's milk EPD ranks in the top 25% of the breed. If you're looking to add a bull from a unique pedigree that will add a different genetic twist to your program, check out this guy on sale day. He is homozygous black and double polled.

59 LVLS OPTIMIZER 4G

Lim-Flex (65) Bull | HP / HB | 01.28.19 | LVLS 4G | LFM 2173054

MAGS XYLOID
ELCX CABIN FEVER 273 C
 AUTO POEM 273Y

EBFL YPSILANTI 420Y
LVLS 4D
 LVLS WADE 4W

DHVO DEUCE 132R
 BOHI RHONDA 314R
 S A V BISMARCK 5682
 MAGS PHANTOMS PRIZE
 TC ABERDEEN 759
 MAGS RAMADA
 AUTO BLACK DAKOTA 129J
 LVLS 4P

	EPD	%Rank
CED	10	70
BW	1.9	85
WW	68	35
YW	102	50
MILK	18	85
TM	52	70
CEM	7	40
SC	1.18	35
STAY	5	>95
DOC	16	15
YG	-0.34	50
CW	33	30
REA	0.78	55
MARB	-0.04	70
FAT	-0.08	30
SMTI	52.00	65

Actual BW: 78 lbs. Adj. WW: 665 lbs. Adj. YW: 1,242 lbs. ADG: 3.61

This Optimizer bull sure is packed full of style and balance. He is a super sound structured bull from two awesome cow families that continue to impress us each year. This bull is out of a tremendous EBFL Ypsilanti 420Y daughter. If you like your bulls a little moderate, yet rugged and full of body be sure to check this Cabin Fever son out. He is 65% Lim-Flex and homozygous black and homozygous polled.



LOT 59 LVLS OPTIMIZER 4G



ELCX Cabin Fever 273C, a past All-American Futurity Champion Bull and a full brother to Lot 59.

60 LVLS OPTIMIZER 9063G

% Limousin (62) Bull | DP / Black | 02.12.19 | LVLS 9063G | LFM 2173073

S A V NORTH DAKOTA 7451
ADLL AXL 3007A
EF YADDA YADDA 809Y

LVLS TOP CRITERIA 8862P
LVLS DANA 9063D
LVLS BEE STING 9063B

S A V MANDAN 5664
S A V PRIMROSE 4410
DHVO DEUCE 132R
MAGS RUFFLES
COLE WULF HUNT
LVLS8862M
LVLS X-TRA PROFIT 2014
9068T

	EPD	%Rank
CED	11	50
BW	1.6	70
WW	66	40
YW	98	50
MILK	23	30
TM	56	30
CEM	7	35
SC	-	-
STAY	8	85
DOC	12	55
YG	-0.37	75
CW	25	35
REA	0.95	55
MARB	-0.08	40
FAT	-0.05	85
SMTI	50.05	40

Actual BW: 81 lbs. Adj. WW: 625 lbs. Adj. YW: 1,274 lbs. ADG: 4.06

If you're in the market for a sound herd sire prospect from all angles look closely and don't lose this guy in the mix. This Optimizer bull is an ADLL Axl son that is a 62% Lim-Flex. He is heterozygous black and double polled. If you need a complete, well-balanced bull to go to work for you - then your search stops here.

62 LVLS SLASH 7304G

Lim-Flex (57) Bull | DP / DB | 01.08.19 | LVLS 7304G | LFM 2171413

S A V NORTH DAKOTA 7451
ADLL AXL 3007A
EF YADDA YADDA 809Y

MAGS ZODIAC
LVLS CAROLYN 7304C
LVLS AMBER 7306A

S A V MANDAN 5664
S A V PRIMROSE 4410
DHVO DEUCE 132R
MAGS RUFFLES
MAGS WINSTON
MAGS XANTHOUS
CHR WHITE ROSE 162W
LVLS 7306W

	EPD	%Rank
CED	11	50
BW	1.8	80
WW	66	45
YW	103	45
MILK	25	20
TM	58	25
CEM	6	60
SC	1.2	25
STAY	9	80
DOC	13	45
YG	-0.28	65
CW	34	30
REA	0.83	45
MARB	-0.11	85
FAT	-0.05	60
SMTI	48.23	85

Actual BW: 87 lbs. Adj. WW: 678 lbs. Adj. YW: 1,346 lbs. ADG: 4.18

This double black, double polled son of ADLL Axl 3007A will be a game changer. ADLL Axl is the great son of SAV North Dakota and out of a phenomenal DHVO Deuce daughter, EF Yadda Yadda. LVLS Slash 7304G is out of a MAGS Zodiac daughter. This is your chance to add muscle, doability and maternal power into your program while keeping functionality at the forefront of your mind. His milk EPD ranks in the top 20% of the breed. He is a 57% Lim-Flex bull.

64 LVLS STABILIZER 1035G

Lim-Flex (56) Bull | DP / HB | 01.05.19 | LVLS 1035G | LFM 2171400

AHCC WESTWIND W544
ENGD ZIP LINE 2515Z
RTTB ROYALTY 2505R

MYTTY IN FOCUS
LVLS2241Y
LVLS 2241W

KAJO RESPONDER 120R
AHCC MISS WULF HUNT R544
GPFF BLAQUE RULON
WULFS JULIETTE 9025J
S A F FOCUS OF E R
MYTTY COUNTESS 906
MOGCK LEAD ON 245
LVLS 2240S

	EPD	%Rank
CED	13	25
BW	-0.5	20
WW	61	70
YW	96	70
MILK	22	45
TM	52	70
CEM	8	20
SC	1.26	25
STAY	13	30
DOC	11	70
YG	-0.29	65
CW	24	60
REA	0.58	90
MARB	0.05	50
FAT	-0.07	40
SMTI	52.76	65

Actual BW: 84 lbs. Adj. WW: 685 lbs. Adj. YW: 1,294 lbs. ADG: 3.81

We are so confident that this bull will appeal to the cattlemen looking to succeed in the show ring as well as the cattlemen wanting to create commercial replacement females. This Stabilizer bull is 56% Lim-Flex and ranks in the top 20% for birthweight, so another great perk to what this one has to offer. He's an ENGD Zip Line son and out of a MYTTY In Focus daughter. He is homozygous black and double polled.

61 LVLS STABILIZER 9803G

Lim-Flex (57) Bull | DP / DB | 02.04.19 | LVLS 9803G | LFM 2171421

LVLS X-TRA PROFIT 2014
LVLS EXTRA PROFIT 1014E
LVLS MISS 1793Z

LVLS FOCUS 5047Y
LVLS COTTON CANDY 9803C
LVLS9803N

AUTO DOLLAR GENERAL 122R
JCL MAYBERRY 62S
CHR WILD BILL 150W
LVLS1792T
MYTTY IN FOCUS
LVLS 5048 S
LVLS DOUBLEDOWN 3615K
LVLS 803C

	EPD	%Rank
CED	10	70
BW	1.1	60
WW	61	70
YW	95	70
MILK	24	25
TM	54	55
CEM	7	40
SC	1.02	45
STAY	15	15
DOC	11	70
YG	-0.32	55
CW	22	70
REA	0.71	70
MARB	0.05	50
FAT	-0.06	50
SMTI	52.87	60

Actual BW: 73 lbs. Adj. WW: 696 lbs. Adj. YW: 1,263 lbs. ADG: 3.54

This bull exhibits so much depth of body, looseness of flank and flexibility off both ends of his skeleton. LVLS Stabilizer 9803G is out of LVLS Extra Profit 1014E. We truly admire his softness of lines and doability that has been present since he hit the ground. This guy will add a little more look, dimension and maternal power to a set of calves. His milk EPD ranks in the top 25%. He is 57% Lim-Flex and double black and double polled.

63 LVLS OPTIMIZER 017G

Lim-Flex (57) Bull | HP / HB | 01.09.19 | LVLS 017G | LFM 2268595

MAGS AVIATOR
CJSL CREED 5042C
CJSL 2090Z

COLEMAN BENCHMARK 671
HC CRYSTAL 017
HC CRYSTAL 839

MAGS WINSTON
MAGS XTRA REST
MAGS XUKALANI
MAGS XULEMA
JCL LODESTAR 27L
HC DYNASTY 905
COLEMAN PRODUCTION 608
HC CRYSTAL 209

	EPD	%Rank
CED	15	10
BW	0.5	40
WW	66	45
YW	109	30
MILK	22	45
TM	56	35
CEM	8	20
SC	0.55	95
STAY	9	80
DOC	8	95
YG	-0.29	65
CW	27	50
REA	0.89	35
MARB	0.27	15
FAT	-0.03	85
SMTI	62.45	15

Actual BW: 82 lbs. Adj. WW: 610 lbs. Adj. YW: 1,139 lbs. ADG: 3.31

Quite the unique pedigree here in this 57% Lim-Flex CJSL Creed 5042C son. LVLS Optimizer 017G is from a Coleman Benchmark 671 daughter and epitomizes these two great bloodlines. His marbling EPD ranks in the top 20% of the breed. He is homozygous black and homozygous polled.

65 SSTO FORMULA ONE 8887F

Lim-Flex (52) Bull | HP / HB | 09.06.18 | SSTO 887F | LFM 2150833

TMCK HYDRAULIC 17Y
TMCK ARCHITECT 031A
TMCK LA VEDA 909Y

SAV FINAL ANSWER 0035
SBLX BANG BANG
MAGS ROBERTA

S A V PIONEER 7301
HSF WALL OF FAME
DHVO DEUCE 132R
EXLR LA VEDA 1002P
SITZ TRAVELER 8180
SAV EMULOUS 8145
JCL LODESTAR 27L
MAGS JODI

	EPD	%Rank
CED	12	35
BW	1.3	65
WW	76	10
YW	116	15
MILK	22	45
TM	60	15
CEM	6	60
SC	1.05	45
STAY	13	30
DOC	15	20
YG	-0.24	75
CW	22	70
REA	0.7	70
MARB	0.12	35
FAT	-0.03	85
SMTI	59.23	25

Actual BW: 83 lbs. Adj. WW: 643 lbs. Adj. YW: -- ADG:

Here is a royally bred homozygous black and homozygous polled individual that will get your blood pumping. LVLS 8887F is a son of TMCK Architect 031A, the big numbered son of TMCK Hydraulic. This bull's dam is SBLX Bang Bang, an SAV Final Answer 0035 daughter. He has an abundant amount of natural thickness from behind and rib shape that will wow anyone. His weaning weight ranks in the top 10% of the breed and his yearling weight in the top 20%. If you're looking for a bull to invest in that covers all the bases, this one should be taken into strong consideration.

66 LVLS OPTIMIZER 2048G

Lim-Flex (50) Bull | HP / HB | 01.11.19 | LVLS 2048G | LFM 2173044

WZRK PRIMESTAR 861P
WULFS XCLUSIVE 2458X
 WULFS MISSIVE 2258M

BON VIEW NEW DESIGN 878
LVLS MISS DESIGN 2048X
 LVLS ND 208 2048R

JCL LODESTAR 27L
 WZRK MISS P ULTRA 861F
 LVLS POLLED BLACK JACK
 WULFS FAITH 6501F
 B/R NEW DESIGN 036
 BON VIEW GAMMER 85
 BON VIEW DESIGN 208
 VISION MISS POWERMARK 486

	EPD	%Rank
CED	12	35
BW	0.7	45
WW	59	80
YW	92	80
MILK	20	70
TM	49	85
CEM	6	60
SC	0.85	70
STAY	14	20
DOC	11	70
YG	-0.20	85
CW	26	55
REA	0.49	95
MARB	0.34	10
FAT	-0.05	60
SMTI	61.80	15

Actual BW: 84 lbs. Adj. WW: 600 lbs. Adj. YW: 1,114 lbs. ADG: 3.21

It's not everyday that a pedigree like this bull has rolls around. LVLS 2048G is a Wulfs Xclusive 2458X son from a Bon View New Design 878 daughter. This guy will sure add to your bottom line with a marbling EPD that is in the top 10% of the breed. He is homozygous black and homozygous polled and 50% Lim-Flex.

67 LVLS OPTIMIZER 5048G

Lim-Flex (50) Bull | DP / HB | 01.28.19 | LVLS 5048G | LFM 2201391

GPFF BLAQUE RULON
DHVO DEUCE 132R
 AMY JO DHAN 20L

S A V 8180 TRAVELER 004
LVLS MISS TRAVELER 5048W
 BLACKCAP V935

BLACK DIAMOND
 QUAIL RUN RAMONA BP
 BLACK CAT DHAN 152G
 GPFF AMBER JO
 SITZ TRAVELER 8180
 BOYD FOREVER LADY 8003
 B T FREEWAY 91F
 BLACKCAP V632

	EPD	%Rank
CED	9	80
BW	1.2	65
WW	72	20
YW	107	35
MILK	24	25
TM	60	15
CEM	5	80
SC	1.55	10
STAY	11	55
DOC	12	55
YG	-0.23	80
CW	30	40
REA	0.73	65
MARB	-0.03	75
FAT	-0.03	85
SMTI	52.43	65

Actual BW: 84 lbs. Adj. WW: 645 lbs. Adj. YW: 1,126 lbs. ADG: 3.01

This is a tremendous opportunity to select a top herd sire that is backed by some of both the Limousin and Angus breed's most proven and highest valued cow families. LVLS Optimizer 5048G is a direct son of the infamous DHVO Deuce 132R bull and from an SAV 8180 Traveler 004 female. His weaning weight ranks in the top 20% of the breed and his milk in the top 25%. He is homozygous black and double polled.

68 LVLS OPTIMIZER 40G

Lim-Flex (50) Bull | DP / HB | 01.28.19 | LVLS 40G | LFM 2173053

CONNEALY CONSENSUS 7229
MILL BAR HICKOK 7242
 MILL BAR BEMINDFUL MAID 6304

LVLS TOP CRITERIA 8862P
LVLS DAZZLED 40D
 LVLS BAMBI 4B

CONNEALY CONSENSUS
 BLUE LILLY OF CONANGA 16
 SAV FINAL ANSWER 0035
 MILL BAR LADY DI 3400
 COLE WULF HUNT
 LVLS8862M
 MAGS YIP
 LVLS 04W

	EPD	%Rank
CED	14	15
BW	0.4	40
WW	74	15
YW	113	20
MILK	21	60
TM	58	25
CEM	6	60
SC	-	-
STAY	13	30
DOC	14	35
YG	-0.28	65
CW	37	20
REA	0.94	25
MARB	0.25	15
FAT	-0.04	75
SMTI	63.72	10

Actual BW: 86 lbs. Adj. WW: 648 lbs. Adj. YW: 1,231 lbs. ADG: 3.66

This Mill Bar Hickok 7242 son is about as good as they come. LVLS Optimizer 40G is a 50% Lim-Flex bull that is sure to sire cattle that grow and grade as evidence by his weaning weight and marbling EPDs both ranking in the top 15% of the breed. This bull's dam is an LVLS Top Criteria 8862P daughter. He is homozygous black and double polled. If you're looking for a bull that can tie it all together, here's your next herd sire!

69 LVLS OPTIMIZER 3941G

Lim-Flex (43) Bull | DP / DB | 01.14.19 | LVLS 3941G | LFM 2268616

MAGS XYLOID
ELCX CABIN FEVER 273 C
 AUTO POEM 273Y

MYTTY IN FOCUS
LVLS BELLE 3942B
 LVLS 3942X

DHVO DEUCE 132R
 BOHI RHONDA 314R
 S A V BISMARCK 5682
 MAGS PHANTOMS PRIZE
 S A F FOCUS OF E R
 MYTTY COUNTESS 906
 LAGRAND VRD 7185
 LVLS 942S

	EPD	%Rank
CED	14	15
BW	0.2	35
WW	65	50
YW	103	45
MILK	23	35
TM	56	35
CEM	9	10
SC	1.32	20
STAY	12	40
DOC	14	35
YG	-0.15	95
CW	20	75
REA	0.44	>95
MARB	0.18	25
FAT	-0.02	90
SMTI	57.58	35

Actual BW: 81 lbs. Adj. WW: 643 lbs. Adj. YW: 1,162 lbs. ADG: 3.24

Looking for a different blend of Limousin and Angus genetics that will take you in a new direction? LVLS Optimizer 3941G is an ELCX Cabin Fever 273C son from a MYTTY In Focus female. He is 43% Lim-Flex and double black and double polled.

70 LVLS OPTIMIZER 9069G

% Limousin (25) Bull | HP / HB | 01.01.19 | LVLS 9069G | NXM 2173075

SUMMITCREST COMPLETE 1P55
KM BROKEN BOW 002
 SUMMITCREST PRINCESS 0P12

PBRS BUNK HOUSE 48B
LVLS ERICA 9069E
 LVLS ZADDY

C F RIGHT DESIGN 1802
 SUMMITCREST ELBA 1M17
 BASIN AMBUSH 8161
 SUMMITCREST PRINCESS 2J10
 MAGS YIP
 LBAF SHAWNEE 602
 LVLS X-TRA PROFIT 2014
 9069

	EPD	%Rank
CED	13	25
BW	-0.3	25
WW	72	15
YW	111	20
MILK	23	30
TM	59	10
CEM	10	4
SC	1.15	20
STAY	10	70
DOC	13	45
YG	-0.06	>95
CW	44	4
REA	0.61	95
MARB	0.55	1
FAT	-0.01	>95
SMTI	72.35	1

Actual BW: 80 lbs. Adj. WW: 648 lbs. Adj. YW: 1,189 lbs. ADG: 3.38

This KM Broken Bow 002 son excels to the extreme top 1% of the entire breed for marbling with a 0.54. Not only does he have an impressive marbling EPD, his weaning weight ranks in the top 15%. He is a 25% Lim-Flex bull out of a PBRS Bunk House 48B daughter. This outstanding herd sire prospect offers such unique numbers and he excels in person as well. He's a stout made, big bodied and functional kind of bull that will go to work in your program creating cattle with look and efficiency. He is homozygous black and homozygous polled.

**THIS IS THE 29TH CONSECUTIVE
 PRODUCTION SALE FOR THE
 LVLS PROGRAM**



LOT 71 LVLS OPTIMIZER 1029G

71 LVLS OPTIMIZER 1029G

% Limousin (29) Bull | DP / HB | 01.01.19 | LVLS 1029G | LFM 2171173

HERO 6267 OF R R 2418
H A IMAGE MAKER 0415
H A RITO BLACKCAP 9038

MAGS ZARAH
LVLS EMERY 2201E
LVLS 2001Y

RR HERO 3237
RR EVERELDA ENTENSE 0413
H 96 RITO 2100 7371
H 96 BLACKCAP 9038
MAGS WHITCOMB
AUTO CARMINDA 656S
MAGS THE GENERAL
LVLS 2200R

	EPD	%Rank
CED	16	3
BW	-2.7	2
WW	67	40
YW	103	45
MILK	30	2
TM	63	4
CEM	8	20
SC	1.15	35
STAY	18	5
DOC	12	55
YG	-0.05	>95
CW	33	30
REA	0.38	>95
MARB	0.25	15
FAT	-0.01	95
SMTI	59.78	25

Actual BW: 66 lbs. **Adj. WW:** 687 lbs. **Adj. YW:** 1,197 lbs. **ADG:** 3.19

This Optimizer bull is backed by a pedigree proven to excel for calving ease and maternal values. He combines impressive performance and super smooth lines that make him such a sure-fire herd sire prospect. He is a 29% Lim-Flex bull that is out of HA Image Maker 0415 and a MAGS Zarah female. Image Maker is the outcross sire that is known for his superior female making ability. This bull rises to the top 2% of the entire breed for his birthweight and milk EPDs. His marbling EPD ranks in the top 15%. Needless to say, this guy has an elite pedigree and a phenomenal number profile. He is homozygous black and double polled.

Angus Bulls



LOT 72 LVLS RESOURCE 59G

72 LVLS RESOURCE 59G

Angus Bull | Polled / Black | 01.07.19 | LVLS 59G | AAA 19597753

RITO 707 OF IDEAL 3407 7075
S A V RESOURCE 1441
S A V BLACKCAP MAY 4136

S A V 8180 TRAVELER 004
LVLS MISS TRAVELER 59Y
LVLS 770R

R R RITO 707
IDEAL 3407 OF 1418 076
S A V 8180 TRAVELER 004
S A V MAY 2397
SITZ TRAVELER 8180
BOYD FOREVER LADY 8003
BON VIEW NEW DESIGN 1407
BLACKCAP V935

	EPD	%Rank
CED	3	75
BW	2.7	80
WW	57	40
YW	104	35
MILK	23	65
TM	-	-
CEM	4	90
SC	-	-
STAY	-	-
DOC	-	-
YG	-	-
CW	-	-
REA	-	-
MARB	-	-
FAT	-	-
SMTI	-	-

Actual BW: 82 lbs. **Adj. WW:** 610 lbs. **Adj. YW:** 1,139 lbs. **ADG:** 3.4

In need of a powerfully functional 'resource' to have in your breeding arsenal? LVLS Resource 59G is the purebred Angus son of SAV Resource 1441 and from an SAV 8180 Traveler 004 female. SAV Resource is one of the most iconic sires still in the Angus ranks today. This young herd sire prospect has so much breed character, masculinity and muscle shape to carry him through any program and create individuals with sound structure and such a neat design.



LOT 73 LVLS /EMBLAZON 1047G

73 LVLS EMBLAZON 1047G

Angus Bull | Polled / Black | 01.01.19 | LVLS 1047G | AAA 19596058

O C C EMBLAZON 854E
LD EMBLAZON 999
SH FOREVER LADY 3124 5118

BON VIEW NEW DESIGN 1407
LVLS 5048 S
BLACKCAP V935

D H D TRAVELER 6807
DIXIE ERICA OF C H 1019
RITO 111 OF 2536 RITO 616
TOEBBEN FOREVER LADY 3124
B/R NEW DESIGN 036
BON VIEW PRIDE 664
B T FREEWAY 91F
BLACKCAP V632

	EPD	%Rank
CED	8	35
BW	0.7	40
WW	52	60
YW	95	55
MILK	24	55
TM	-	-
CEM	10	35
SC	0.09	90
STAY	-	-
DOC	-	-
YG	-	-
CW	-	-
REA	-	-
MARB	-	-
FAT	-	-
SMTI	-	-

Actual BW: 82 lbs. **Adj. WW:** 723 lbs. **Adj. YW:** 1,272 lbs. **ADG:** 3.4

Woah- talk about a load of power and balance in one unbelievably flashy package. This bull has been another favorite of ours since we first laid eyes on him as a calf. We knew he had the look and design to be a great one and here we are! LVLS Emblazon 1047G is from an OCC Emblazon 854E son and a Bon View New Design 1407 daughter.

74 LVLS FINAL PRODUCT 1063G

Angus Bull | Polled / Black | 01.02.19 | LVLS 1063G | AAA 19596024

CONNEALY PRODUCT 568
CONNEALY FINAL PRODUCT
 EBONISTA OF CONANGA 471

BON VIEW NEW DESIGN 1407
LVLS MISS NEW DESIGN 9133U
 L V MISS PROMPTER 9133

G A R RETAIL PRODUCT
 PRIDE FINE OF CONANGA 566
 CONNEALY DEEP CANYON 454
 EBONISA OF CONANGA 5469
 B/R NEW DESIGN 036
 BON VIEW PRIDE 664
 RALLY PROMPTER 1071
 L V MISS HOSS 4215

	EPD	%Rank
CED	1	90
BW	1.7	60
WW	48	75
YW	86	70
MILK	27	35
TM	-	-
CEM	9	45
SC	0.69	55
STAY	-	-
DOC	-	-
YG	-	-
CW	-	-
REA	-	-
MARB	-	-
FAT	-	-
SMTI	-	-

Actual BW: 88 lbs. Adj. WW: 730 lbs. Adj. YW: 1,261 lbs. ADG: 3.29

This Connealy Final Product son is packed full of greatness. He is out of a Bon View New Design 1407 daughter and exudes functionality and efficiency. We can sure appreciate his sound structure, the way he comes out of his shoulder into a sleek front third and his phenomenal balance. This is a young herd sire prospect that can truly change a set of individuals and inject some major look and power.

75 LVLS HICKOK 1024G

Angus Bull | Polled / Black | 01.14.19 | LVLS 1024G | AAA 19596186

CONNEALY CONSENSUS 7229
MILL BAR HICKOK 7242
 MILL BAR BEMINDFUL MAID 6304

BON VIEW NEW DESIGN 1407
LVLS ND 1407 2048T
 LVLS ND 208 2048R

CONNEALY CONSENSUS
 BLUE LILLY OF CONANGA 16
 A V FINAL ANSWER 0035
 MILL BAR LADY DI 3400
 B/R NEW DESIGN 036
 BON VIEW PRIDE 664
 BON VIEW NEW DESIGN 208
 VISION MISS POWERMARK 486

	EPD	%Rank
CED	9	30
BW	0.8	40
WW	59	35
YW	101	45
MILK	28	25
TM	-	-
CEM	9	45
SC	0.56	65
STAY	-	-
DOC	-	-
YG	-	-
CW	-	-
REA	-	-
MARB	-	-
FAT	-	-
SMTI	-	-

Actual BW: 90 lbs. Adj. WW: 769 lbs. Adj. YW: 1,283 lbs. ADG: 3.18

What a particularly special opportunity to inject some of the most proven Angus genetics into your herd! LVLS Hickok 1024G is a Mill Bar Hickok 7242 son that goes back to Connealy Consensus. 7242 is a bull that topped semen sales in 2018 for ABS and is maternally oriented to create consistent, well balanced individuals just like this Hickok son. To add to his uniqueness, this young herd sire prospect is out of a Bon View New Design 1407 daughter. 1407 is the performance great that has exceptional EPD's straight across the board. This is truly a bull to consider for all of the genetic excellence and proven power he is packed full of.

76 LVLS CHAPS 1062G

Angus Bull | Polled / Black | 01.05.19 | LVLS 1062G | AAA 19593487

S A V RESOURCE 1441
ELLINGSON CHAPS 4095
 E A BLACKCAP 0360

PA SAFEGUARD 021
LVLS BECCA 9132B
 LVLS ND 878 9133T

RITO 707 OF IDEAL 3407 7075
 S A V BLACKCAP MAY 4136
 M A S WIDE BUTT 6032
 E A BLACKCAP 718
 G A R NEW DESIGN 5050
 PA LORNA MARSHALL 2905-730
 BON VIEW NEW DESIGN 878
 LVLS 9133R

	EPD	%Rank
CED	5	60
BW	1.1	45
WW	53	55
YW	99	45
MILK	26	40
TM	-	-
CEM	5	85
SC	-	-
STAY	-	-
DOC	-	-
YG	-	-
CW	-	-
REA	-	-
MARB	-	-
FAT	-	-
SMTI	-	-

Actual BW: 87 lbs. Adj. WW: 726 lbs. Adj. YW: 1,299 lbs. ADG: 3.55

LVLS Chaps 1062G is a purebred Angus herd sire prospect that deserves your attention. The amount of royal genetics that are part of this bull's pedigree are nearly unmatched in the industry today. He is out of Ellingson Chaps 4095, an SAV Resource 1441 son and he goes back to Bon View New Design 878 on the bottom side. We love the way this bull carries himself and his ability to get out and go with such comfort. He's packed full of power and balance that is backed by a world of genetic excellence.

77 LVLS STUD 1064G

Angus Bull | Polled / Black | 01.09.19 | LVLS 1064G | AAA 1956291

A A R TEN X 7008 S A
EXAR STUD 4658B
 BOBO RITA 1559

BON VIEW NEW DESIGN 878
LVLS ND 878 9133T
 LVLS 9133R

MYTTY IN FOCUS
 A A R LADY KELTON 5551
 SUMMITCREST COMPLETE 1P55
 DRMCTR 111 RITA 6108
 B/R NEW DESIGN 036
 BON VIEW GAMMER 85
 G A R 6807 TRAVELER 4144
 L V MISS PROMPTER 9133

	EPD	%Rank
CED	10	20
BW	0.7	40
WW	50	65
YW	91	65
MILK	21	80
TM	-	-
CEM	14	4
SC	-	-
STAY	-	-
DOC	-	-
YG	-	-
CW	-	-
REA	-	-
MARB	-	-
FAT	-	-
SMTI	-	-

Actual BW: 84 lbs. Adj. WW: 755 lbs. Adj. YW: 1,406 lbs. ADG: 4.03

Here is another Angus bull that can hang with the best of them. He is out of EXAR Stud 4658B, the sire with truly elite genomic statistics from the great Ten X bull. His dam is a direct daughter of Bon View New Design 878. This bull truly lives up to his name as being a 'stud' amongst his contemporaries with his tremendous amount of body, rib shape and structural integrity.

78 LVLS BROKEN BOW 9251G

Angus Bull | Polled / Black | 01.03.19 | LVLS 9251G | AAA 19596066

SUMMITCREST COMPLETE 1P55
KM BROKEN BOW 002
 SUMMITCREST PRINCESS 0P12

CONNEALY CONSENSUS 7229
LVLS EXCEPTIONAL 9252E
 LVLS MISS BRILLIANCE 9252Z

C F RIGHT DESIGN 1802
 SUMMITCREST ELBA 1M17
 BASIN AMBUSH 8161
 SUMMITCREST PRINCESS 2J10
 CONNEALY CONSENSUS
 BLUE LILLY OF CONANGA 16
 S A V BRILLIANCE 8077
 L V MISS ROYCE 9252

	EPD	%Rank
CED	10	20
BW	-0.1	25
WW	54	55
YW	92	60
MILK	25	50
TM	-	-
CEM	11	25
SC	-	-
STAY	-	-
DOC	-	-
YG	-	-
CW	-	-
REA	-	-
MARB	-	-
FAT	-	-
SMTI	-	-

Actual BW: 79 lbs. Adj. WW: 745 lbs. Adj. YW: 1,267 lbs. ADG: 3.33

LVLS Broken Bow 9251G is a purebred Angus bull from the great KM Broken Bow 002. Broken Bow is the bull known for his high accuracy calving ease and heavy muscled, attractive profile. This bull is surely following in his father's footsteps- he's bold in his rib, moderate framed and sound on all fours. His dam is a Connealy Consensus 7229 daughter. You can put your trust in this bull when breeding season comes around and we're confident he'll impress you just as much as he's impressed us from day one.


THIS IS THE 29TH CONSECUTIVE PRODUCTION SALE FOR THE LVLS PROGRAM

R&R PO Box 60097
MARKETING Nashville, TN 37206

**FIRST CLASS
PRE-SORTED
PAID**
Montezuma, Iowa
Permit No. 30

Catalog
designed
by

designs by
am
www.designsbyarin.com



LVI C
29TH ANNUAL LONELY VALLEY
KEEPIN' KIND
BULL SALE

SATURDAY 02.29.2020
1:00 p.m., at the farm, Creston, Nebraska