



LINHART LIMOUSIN

# Fall Harvest

PRODUCTION SALE

**SUN, NOVEMBER 3, 2019**

1 PM CST • LINHART SALE FACILITY • LEON, IOWA





LINHART LIMOUSIN

# Fall Harvest

PRODUCTION SALE

SUN, NOVEMBER 3, 2019

1 PM CST • LINHART SALE FACILITY • LEON, IA

**AUCTIONEER:**

CK "SONNY" BOOTH ..... 918-542-1587

**CONSULTANTS:**

MARK SMITH, *Grassroots Consulting* ..... 515-229-5227

BILL HELTON, *Helton Consulting* ..... 256-962-0256

RANDY RATLIFF, *R&R Marketing* ..... 615-330-2735

**LIVESTOCK REPRESENTATIVES:**

TOM ROONEY, *Midwest Marketer* ..... 515-491-6025

DEAN SUMMERBELL, *Heartland Limousin Assoc* ..... 612-963-3799

DERON HELDERMAN, *Special Assignment* ..... 405-850-5102

**SALE MANAGEMENT:**



MC MARKETING MANAGEMENT

Kiley McKinna • 402.350.3447

mcmarketingsales@aol.com

www.mcmarketingmanagement.com

# LINHART LIMOUSIN

27195 175TH STREET • LEON, IOWA 50144

Charles & Heather Linhart, 641-340-1306

Aaron Linhart, 641-414-5060

VIEW SALE VIDEOS AND MORE AT

[LINHARTLIMOUSIN.COM](http://LINHARTLIMOUSIN.COM)

## Schedule:

10:00 AM Viewing Begins  
12:00 PM Complimentary Lunch  
1:00 PM 2019 Fall Harvest  
Production Sale Begins

**SALE DAY PHONES:**

CHARLES LINHART ..... 641-340-1306

AARON LINHART ..... 641-414-5060

KILEY MCKINNA ..... 402-350-3447

**SALE SITE DIRECTIONS:**

**GPS Address:**

**19166 270TH AVENUE • LEON, IOWA**

From Leon, travel 2 miles north to 190th Street. Turn east, go 3 miles to 270th Avenue. Turn south, go 1/4 mile to sale facility on the east side.

**ACCOMMODATIONS:**

Lakeside Hotel & Casino: 641-342-9511

Osceola, Iowa

AmericInn: 641-342-9400

Osceola, Iowa

**TERMS:**

Cattle will sell under the standard sale terms and conditions of the North American Limousin Foundation. Payment may be made by cash or check due on sale day.

**ANNOUNCEMENTS:**

Announcements made sale day by the owners, auctioneer or sale management will take precedence over statements in the sale catalog.

**EPD INFORMATION:**

All EPDs and performance information are in accordance with the North American Limousin Foundation as of 10/1/19.

**TRUCKING:**

Free shipping will be available to central locations. Contact Charles Linhart, 641-340-1306, to make arrangements.

## Limousin Friends & Enthusiasts,

We would like to cordially welcome you to our 11th annual Fall Harvest Production Sale. We are a family operation that's located just north Leon, Iowa, in the heart of cow-calf country of southern Iowa. Our Limousin and Lim-Flex operation started in 1979 and has grown to near 650 producing females. Over the years we've always taken great pride in producing a quality product, our customers successes and doing things the right way.

In this sale offering we have brought you our very best. As you page through the catalog, we hope you'll notice the reflection of many of our premier donor cow families, elite herd sires, a progressive A.I program and the no 'short-cuts' approach we've adopted over the years. Note, new to this year's sale offering not only have we brought you our very finest open show heifer prospects and bred heifers but, also a highly productive set of fall cows with calves at side. In totality, whether you're a junior looking for a show heifer project or breeder looking to make an investment, rest assured we'll have quality product backed with quality service.

With the sale offering in mind, we would like to take the time to reinforce to our fellow breeders and valued junior show families the opportunity of affordable success that can be found in our sale pens. Over the past several years, we have been extremely fortunate to have sold many females at wide ranging price points that have gone on to win championship banners at the local, regional and national levels. To illustrate our 'affordable success' mantra be sure to check out our historically price break averages found on page 35. Folks, make no mistake November 3 there will be several high quality females at various price ranges to suit your budget.

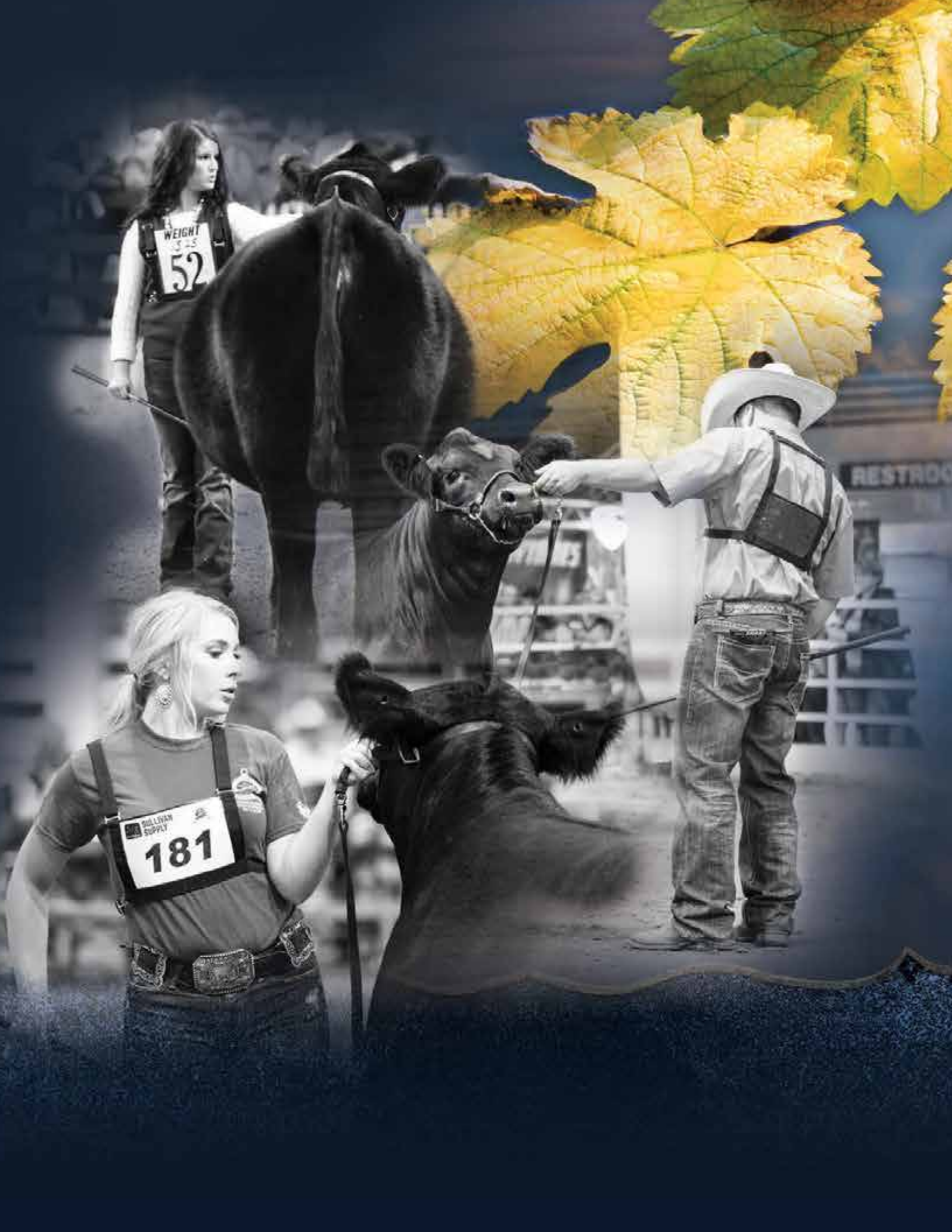
That said, it's a priority of ours to make all business transactions with customers a pleasant experience. As it was last year, our sale will be held in our on farm sale facility (GPS directions found under sale information) and the cattle will be displayed in our on site display pens and will be auctioned off on video screens in our facility. In addition, all cattle sold are fully guaranteed to the catalog as in accordance with the North American Limousin Foundation as of October 1, 2019. Furthermore, if you would like to discuss the sight unseen purchase program, financial arrangements or trucking plans we are happy to accommodate.

We are excited to see all of you sale day November 3. If we can be of any assistance to you prior to or during the sale we have an open door policy and welcome all calls and questions.

Sincerely,

*The Linhart Family  
Linhart Limousin*







# Open Show Heifer Prospects

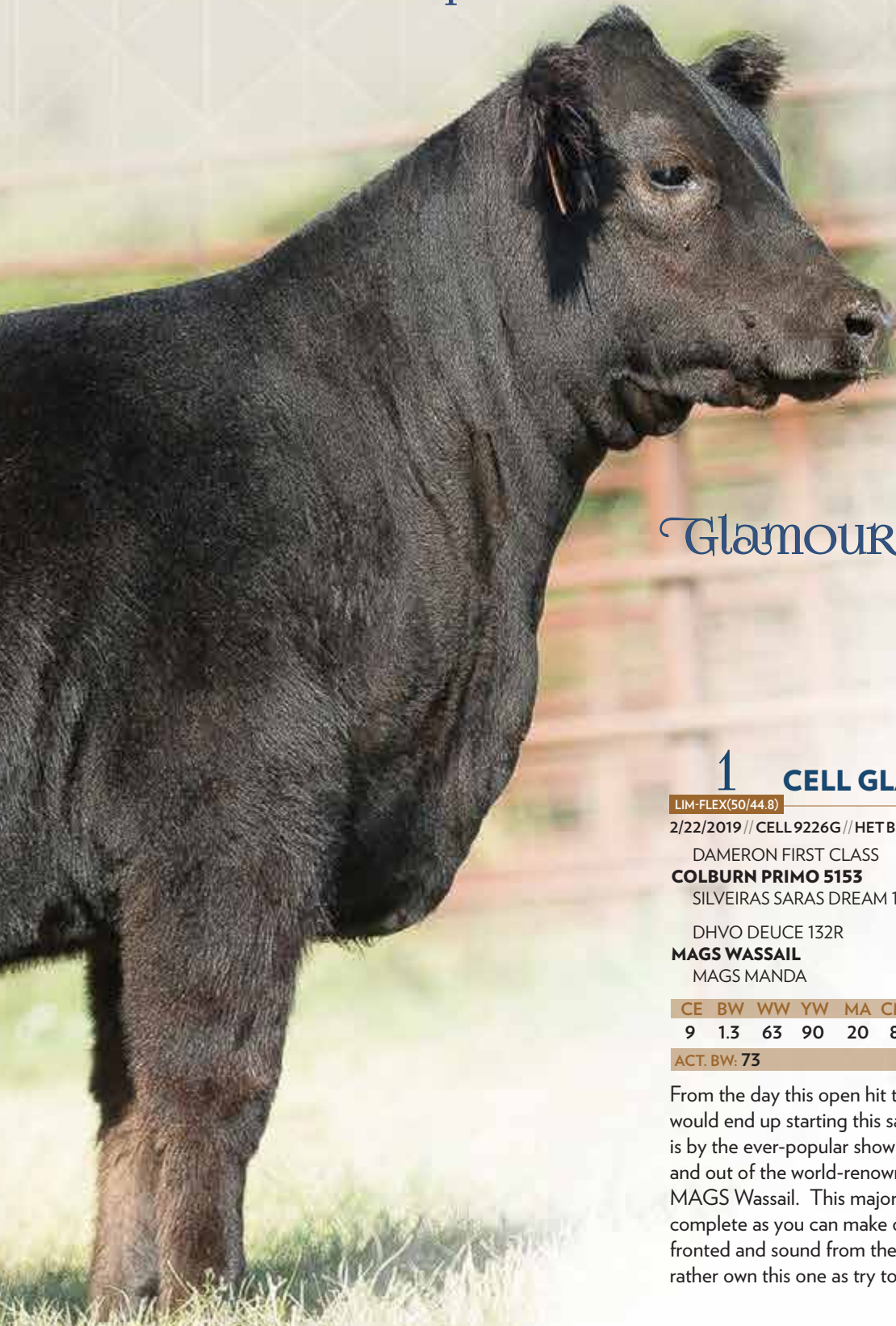
“The Best of Our Best”  
LOTS 1-33

This offering of spring open show heifers is simply our finest to date. A vast majority of these females are from the heart of our embryo program and feature genetics out of our elite donors and some of the breed's best A.I. sires. We've elected to literally sell 'the cream of our crop' and it is with great pleasure to bring to you this exceptional set that we think will be highly competitive in the show ring and excel in production.

Open Show Heifers



# Open Show Heifers



## Glamour Girl

### 1 CELL GLAMOUR GIRL 9226G ET

LIM-FLEX(50/44.8)

2/22/2019 // CELL 9226G // HET BLK (T) // HOMO PLD (P-1) // LFF2173285 // COW

DAMERON FIRST CLASS	EXG RS FIRST RATE S903 R3
<b>COLBURN PRIMO 5153</b>	DAMERON NORTHERN MISS 311
SILVEIRAS SARAS DREAM 1339	SILVEIRAS STYLE 9303
	EXG SARAS DREAM S609 R3
DHVO DEUCE 132R	GPFF BLAQUE RULON
<b>MAGS WASSAIL</b>	AMY JO DHAN 20L
MAGS MANDA	EXLR DAKOTA 353G
	MAGS JEWEL

CE	BW	WW	YW	MA	CM	SC	DC	CW	RE	YG	MS	\$MI
9	1.3	63	90	20	8	0.9	9	22	.61	-.24	-.06	49

ACT. BW: 73

From the day this open hit the ground, there was little doubt that we would end up starting this sale with her. CELL Glamour Girl 9226G is by the ever-popular show heifer maker A.I. sire, Colburn Primo and out of the world-renowned donor and once national champion, MAGS Wassail. This major-league show heifer prospect is as complete as you can make one—square hipped, big middled, elegant fronted and sound from the ground up. As the old saying goes, I'd rather own this one as try to beat her.

# Open Show Heifers



Gia

2A

LIM-FLEX(56/50.2)

3/2/2019 // CELL 9217G // DBL BLK // HOMO PLD (T) // LFF2172403 // COW

EF XCESSIVE FORCE  
**RLBH AIR FORCE ONE**  
 EF YAFFA 821Y

SILVEIRAS STYLE 9303  
**LLJB ABSOLUTE STYLE 3056A**  
 MAGS WASSAIL

**CELL GIA 9217G ET**

D A TRAVELER 004 703  
 CFLX MOLLYS IMAGE  
 EXLR NEW GENERATION 071M  
 MAGS ROSE PETAL  
 GAMBLES HOT ROD  
 SILVEIRAS ELBA 2520  
 DHVO DEUCE 132R  
 MAGS MANDA

CE	BW	WW	YW	MA	CM	SC	DC	CW	RE	YG	MS	\$MI
11	-0.6	56	83	18	8	1.2	13	30	.46	-.14	.21	56

ACT. BW: 91

Here's a daughter from the wildly successful flush of Air Force One and Absolute Style. Gia is just what you think of when you picture a female who can stand major competition in the show ring, yet still possesses the maternal characteristics to make a major impact as a leading donor female in even the most progressive program. She is big boned, yet soft and flexible in her pasterns and possesses the angularity and body dimension that is in such high demand these days. Combine that with her level top and sweeping rib cage and you are left with a female who checks all the appropriate boxes.



# Open Show Heifers



Georgie



Gennae

## 2B

### CELL GEORGIE 9219G ET

LIM-FLEX(56/50.2)

3/2/2019 // CELL 9219G // HET BLK (T) // HOMO PLD (T) // LFF2172404 // COW  
 EF XCESSIVE FORCE  
**RLBH AIR FORCE ONE**  
 EF YAFFA 821Y  
 SILVEIRAS STYLE 9303  
**LLJB ABSOLUTE STYLE 3056A**  
 MAGS WASSAIL  
 D A TRAVELER 004 703  
 CFLX MOLLYS IMAGE  
 EXLR NEW GENERATION 071M  
 MAGS ROSE PETAL  
 GAMBLES HOT ROD  
 SILVEIRAS ELBA 2520  
 DHVO DEUCE 132R  
 MAGS MANDA

CE	BW	WW	YW	MA	CM	SC	DC	CW	RE	YG	MS	\$MI
11	-0.6	56	83	18	8	1.2	13	30	.46	-.14	.21	56

ACT. BW: 91

The second of the three Air Force One x Absolute Style flushmate sisters is the stoutest made, boldest featured of the litter. This homozygous polled, 56% Lim-Flex open heifer stands on huge feet and legs, while combining the often elusive combination of thickness and do-ability. When you consider her genetic heritage and phenotypic characteristics, it is easy to picture CELL Georgie as a headliner donor female in the not too distant future.

## 2C

### CELL GENNAE 9231G ET

LIM-FLEX(56/50.2)

2/24/2019 // CELL 9231G // DBL BLK // HOMO PLD (T) // LFF2172402 // COW  
 EF XCESSIVE FORCE  
**RLBH AIR FORCE ONE**  
 EF YAFFA 821Y  
 SILVEIRAS STYLE 9303  
**LLJB ABSOLUTE STYLE 3056A**  
 MAGS WASSAIL  
 D A TRAVELER 004 703  
 CFLX MOLLYS IMAGE  
 EXLR NEW GENERATION 071M  
 MAGS ROSE PETAL  
 GAMBLES HOT ROD  
 SILVEIRAS ELBA 2520  
 DHVO DEUCE 132R  
 MAGS MANDA

CE	BW	WW	YW	MA	CM	SC	DC	CW	RE	YG	MS	\$MI
11	-0.6	56	83	18	8	1.2	13	30	.46	-.14	.21	56

ACT. BW: 72

If you like length of body and a head and neck-shoulder junction that is near perfect, then Gennae should tickle your fancy. The consistency found in the Air Force x Absolute Style mating is among the most true we have ever experienced. It's hard not to sound like a broken record when describing these three flushmate sisters, but that is a great problem to have. In addition to the many positive phenotypic qualities found in these genetic building blocks, they also possess homozygous polled traits and pedigree depth to be used in a variety of mating scenarios.

# Open Show Heifers



Georgina



Giada

3

## CELL GEORGINA 9227G ET

LIM-FLEX(43/39.1)

1/21/2019//CELL9227G//HOMOBLK(P-2)//HOMOPLD(P-3)//LFF2173278//COW

CONNEALY CONSENSUS 7229

**MAGS ALI**

MAGS YOKO

LH RODEMASTER 338R

**MAGS UR SALINA**

MAGS SALINA

CONNEALY CONSENSUS

BLUE LILLY OF CONANGA 16

DHVO DEUCE 132R

EXLR LADY 5112N

JCL LODESTAR 27L

VERMILION E BLACKBIRD9546

BR MIDLAND

MAGS LADY ACE

CE	BW	WW	YW	MA	CM	SC	DC	CW	RE	YG	MS	\$MI
10	3.2	83	127	19	5	1.9	14	32	.77	-.28	.11	61

ACT. BW: 87

Big numbered, double homozygous cattle continue to turn heads and demand premiums, and we feel CELL Georgina fits that mold. Not only is she royally bred being by Ali and out of the prolific donor MAGS UR Salina on the bottom side, she bends the curve in a positive manner ranking in the top 2% for both weaning and yearling. Couple that with her completeness, depth of body and huge MB and \$MTI numbers, and we are confident you haven't heard the last of this female.

4

## CELL GIADA 9228G ET

LIM-FLEX(50/44.8)

1/21/2019//CELL9228G//HOMOBLK(T)//HOMOPLD(P-1)//LFF2173294//COW

DAMERON FIRST CLASS

**COLBURN PRIMO 5153**

SILVEIRAS SARAS DREAM 1339

DHVO DEUCE 132R

**MAGS WASSAIL**

MAGS MANDA

EXG RS FIRST RATE S903 R3

DAMERON NORTHERN MISS 311

SILVEIRAS STYLE 9303

EXG SARAS DREAM S609 R3

GPFF BLAQUE RULON

AMY JO DHAN 20L

EXLR DAKOTA 353G

MAGS JEWEL

CE	BW	WW	YW	MA	CM	SC	DC	CW	RE	YG	MS	\$MI
9	1.3	63	90	20	8	0.9	9	22	.61	-.24	-.06	49

ACT. BW: 71

Take your time and study the many positive attributes of CELL Giada, the double homozygous, 50% Lim-Flex daughter of Primo x Wassail that is a flushmate to Lot 1. In the show world, Primo progeny have been some of the most highly sought-after in the recent marketplace and MAG Wassail, well, the results speak for themselves. Giada is moderate in her frame and huge middled. She also tracks out exceptionally well and has the femininity and angularity to capture your attention. There aren't many sure things in the cattle business, but this one may just very well be the exception to that rule.

# Open Show Heifers



Ginger



Gina

5

## CELL GINGER 9224G ET

LIM-FLEX(25/22.7)

1/22/2019//CELL9224G//HOMOBK(P-2)//HOMOPLD(P-2)//LFF2173327//COW

S A V BRILLIANCE 8077  
**PVF INSIGHT 0129**  
 PVF MISSIE 790

LH RODEMASTER 338R  
**MAGS UR SALINA**  
 MAGS SALINA

S A V BISMARCK 5682  
 S A V BLACKCAP MAY 5270  
 P V F NEW HORIZON 001  
 P V F MISS RAPTOR 024  
 JCL LODESTAR 27L  
 VERMILION E BLACKBIRD9546  
 BR MIDLAND  
 MAGS LADY ACE

CE	BW	WW	YW	MA	CM	SC	DC	CW	RE	YG	MS	\$MI
12	1.4	73	115	25	6	1.3	12	45	1.27	-.31	.11	59

ACT. BW: 82

This maternal sister to Lot 3 and out of the proven donor, MAGS UR Salina, whose been accredited with numerous sale toppers and producing north of \$300,000 in progeny. CELL Ginger is a double homozygous daughter of the famed Angus bull PVF Insight, who himself, is siring cattle with marketplace appeal. Her EPDs for WW, YW, MK, REA and MB and are among the best you can find, making her a well-rounded breeding piece.

6

## CELL GINA 9005G

LIM-FLEX(62/54.7)

1/23/2019//CELL9005G//HETBLK(T)//HOMOPLD(T)//LFF2170564//COW

MAGS WINSTON  
**MAGS AVIATOR**  
 MAGS XTRA REST

TMCK ARCHITECT 031A  
**TMCK EGO 435E**  
 CELL 4B

BT CROSSOVER 758N  
 MAGS STRAWBERRY  
 DHVO DEUCE 132R  
 MAGS UNREST  
 TMCK HYDRAULIC 17Y  
 TMCK LA VEDA 909Y  
 MAGS UNHOOKS  
 LVLS MISS CRITERIA 4Y

CE	BW	WW	YW	MA	CM	SC	DC	CW	RE	YG	MS	\$MI
13	1.5	74	115	20	8	0.3	15	31	.95	-.32	.06	57

ACT. BW: 78

Any other year, a female like this would have started the sale. This homozygous polled, 62% Lim-Flex daughter of the breed great MAGS Aviator is one to watch as well. Once you get past this one's many positive visual attributes, you'll notice her number package is just as impressive as her profile. With EPDs in the breed's top 30% or better in 9 different traits, this female will serve you well in the breeding pasture once her promising show career is over.

# Open Show Heifers



Gillian



Gladys

7

## CELL GILLIAN 9011G

LIM-FLEX(39/34.5)

1/25/2019 // CELL9011G // HOMOBLK(T) // HOMOPLD(T) // LFF2170619 // COW

S A V HARVESTOR 0338  
**SSTO BEST BET 456B ET**  
 ELCX TWILIGHT 114X

SILVEIRAS S SIS GQ 2353  
**FC DIAMOND HEIRESS**  
 CYWD ZESTY 22Z

S A V HERITAGE 6295  
 S A V EMBLYNETTE 7749  
 DHVO DEUCE 132R  
 DFLC HBHPC 1S  
 SILVEIRAS STYLE 9303  
 K N C CABIN CREEK SANDY 804  
 CYWD X GAMES 2X  
 CYWD SUGAR N SPICE

CE	BW	WW	YW	MA	CM	SC	DC	CW	RE	YG	MS	\$MI
12	0.6	65	101	22	7	1.0	10	19	.26	-.08	.36	63

ACT. BW. 68

Study CELL Gillian and it's easy to see why SSTO Best Bet has earned a rock-solid reputation for producing Lim-Flex that surface to the top. Not only is she big bellied and square made, she is as sound as you can make one while sporting strong EPDs for carcass merit. This double homozygous Lim-Flex will more than hold her own in the showing ring and breeding pasture.

8

## CELL GLADYS 9221G ET

LIM-FLEX(75/67.8)

1/28/2019 // CELL 9221G // RED // HOMO PLD (T) // LFF2173300 // COW

BT CROSSOVER 758N  
**MAGS WINSTON**  
 MAGS STRAWBERRY

DHVO DEUCE 132R  
**AUTO TOOTSIE POP 2272T**  
 EXLR MOLLY 7103K

C A FUTURE DIRECTION 5321  
 BT ROYAL PRIDE 237G  
 EXLR NEW GENERATION 071M  
 MAGS FRUITFUL 487M  
 GPFF BLAQUE RULON  
 AMY JO DHAN 20L  
 EXLR DAKOTA 353G  
 EXLR MOLLY 343G

CE	BW	WW	YW	MA	CM	SC	DC	CW	RE	YG	MS	\$MI
11	0.7	61	95	25	6	0.4	12	30	.89	-.43	-.10	48

ACT. BW. 72

We have had quite a few of these, and this tried-and-true mating has never failed to impress. Her sire, Winston, has been one of the most influential bulls in the Lim-Flex business in the last decade; and her dam, AUTO Tootsie Pop 2272T, is among the most impressive Deuce daughters to ever be flushed, and that is saying something. This red, homozygous polled, open heifer has the flash and style to hold her own in extreme competition and the pedigree predictability to go on to produce the next generation of Lim-Flex royalty.

# Open Show Heifers

9

## CELL GRACIE 9016G

LIM-FLEX(54/49)

1/28/2019//CELL9016G//HOMOBLK(P-1)//HOMOPLD(P-2)//LFF2170573//COW

MAGS WINSTON  
**MAGS AVIATOR**  
MAGS XTRA REST

DHVO DEUCE 132R

**PBRS ZOLA 152Z**  
BUFORD ERISKAY 9118

BT CROSSOVER 758N  
MAGS STRAWBERRY  
DHVO DEUCE 132R  
MAGS UNREST  
GPFF BLAQUE RULON  
AMY JO DHAN 20L  
B C MARATHON 7022  
J BAR 7 LADY ERISKAY 5559

CE	BW	WW	YW	MA	CM	SC	DC	CW	RE	YG	MS	\$MI
13	1.0	69	109	17	8	0.6	14	40	.79	-.20	.02	53

ACT. BW: 76

CELL Gracie has all the characteristics necessary to be a big-league producer. She has tons of syle, a big square hip and a long, level top. She projects to pass on elite EPDs for calving ease, weaning and yearling growth, docility, carcass weight and mainstream terminal index. Bid with confidence November 3 on this double homozygous Aviator daughter.

Gracie

10

## KVLN GRETA 9225G ET

LIM-FLEX(67/60.2)

1/31/2019//KVLN9225G//HOMOBLK(P-2)//HOMOPLD(T)//LFF2172423//COW

MAGS WINSTON  
**MAGS AVIATOR**  
MAGS XTRA REST

DHVO DEUCE 132R

**MAGS WALKIN**  
BOHI RED ROBIN 282R

BT CROSSOVER 758N  
MAGS STRAWBERRY  
DHVO DEUCE 132R  
MAGS UNREST  
GPFF BLAQUE RULON  
AMY JO DHAN 20L  
CONNELLY LEAD ON  
MAGS MANUELA

CE	BW	WW	YW	MA	CM	SC	DC	CW	RE	YG	MS	\$MI
11	0.7	64	98	20	7	0.6	16	29	.96	-.37	-.03	51

ACT. BW: 91

It's hard to put more middle or flank in one than CELL Greta has. This daughter of MAGS Aviator is out of a tremendous donor MAGS Walkin that's known for producing high growth, big boned, good footed progeny. If you're looking for one that'll compete in the show-ring but, also has the body type to be a major league donor, study this one sale day - she's the complete package.

Greta

11

## CELL GRACYN 9216G ET

PERCENT(84/75.6)

2/2/2019//CELL9216G//HOMOBLK(P-2)//HOMOPLD(T)//NXF2172411//COW

TMCK DURHAM WHEAT 6030X  
**RIVERSTONE CROWN ROYAL**  
HSF YOUR FANTASY

DHVO DEUCE 132R

**MAGS XTRA REST**  
MAGS UNREST

DHVO DEUCE 132R  
MAGS STRAWBERRY PIE  
MAGS WAR ADMIRAL  
HSF TINKERBELL  
GPFF BLAQUE RULON  
AMY JO DHAN 20L  
MAGS REMOTE  
HA LADY 1091

CE	BW	WW	YW	MA	CM	SC	DC	CW	RE	YG	MS	\$MI
12	1.6	60	88	21	8	0.8	14	7	.82	-.47	-.28	42

ACT. BW: 81

CELL Gracyn is one of a handful of elite high percentage open heifers in this year's offering. The double homozygous daughter of Riverstone Crown Royal is out of the elite donor dam which happens to be the mother of MAGS Aviator on the bottom side. She combines plenty of middle and fleshing ability with desirable muscle shape and a square hip. From a numerical vantage point, she is very well balanced across the page.

Gracyn

# Open Show Heifers



Graybelle



Gwentyth

12

## CELL GRAYBELLE 9310G ET

LIM-FLEX(46/42.1)

2/10/2019 // CELL 9310G // HOMO BLK (P-2) // HOMO PLD (P-1) // LFF2172392 // COW

MAGS YIP  
**PBRS BUNK HOUSE 48B**  
LBAF SHAWNEE 602

MAGS EAGLE  
**MAGS DOMINANT DEVA**  
CYWD ZAYLEE 6Z

MAGS THE GENERAL  
AUTO CARMINDA 656S  
TWIN VALLEY PRECISION E161  
SUNSET SHAWNEE 3905  
MAGS WINSTON  
MAGS WEB OF DECEIT  
CONNEALY THUNDER  
CYWD XOXOX 12X

CE	BW	WW	YW	MA	CM	SC	DC	CW	RE	YG	MS	\$MI
10	2.2	76	126	21	6	1.2	11	38	.50	-.15	.16	60

ACT. BW: 83

Wow. Imagine this one all dolled up and ready to enter the show ring. The blending of the big-numbered sire of performance cattle, PBRS Bunkhouse, really clicked with the proven donor MAGS Dominant Deva. This female numerically is one of the best in the entire offering, ranking in the top 15% or better for weaning, yearling, total maternal, marbling and mainstream terminal index. If you are looking for a female with show ring appeal that will be easy to feed and even easier to breed, make sure you study Graybelle sale day.

13

## CELL GWENYTH 9067G

LIM-FLEX(55/49.6)

2/11/2019 // CELL 9067G // HOMO BLK (P-3) // HORNED // LFF2170881 // COW

S A V HARVESTOR 0338  
**SSTO BEST BET 456B ET**  
ELCX TWILIGHT 114X

MAGS AVIATOR  
**CELL 5059C**  
MAGS YARDING

S A V HERITAGE 6295  
S A V EMBLYNETTE 7749  
DHVO DEUCE 132R  
DFLC HBHPC 1S  
MAGS WINSTON  
MAGS XTRA REST  
DHVO DEUCE 132R  
MAGS SALINA

CE	BW	WW	YW	MA	CM	SC	DC	CW	RE	YG	MS	\$MI
13	0.8	68	108	20	8	0.9	12	38	.57	-.14	.20	59

ACT. BW: 72

The consistency of the SSTO Best Bet progeny is part of what makes him so popular. This daughter of his is out of an Aviator cow that's moderate in her frame, easy doing and tremendously maternal. Combine that with huge EPDs for CE, YW, CEM, CW, MB and \$MTI, and you can understand why this one may be on several short lists sale day.

# Open Show Heifers



Gail



Genie

14

## CELL GAIL 9292G ET

LIM-FLEX(37/33.8)

2/15/2019 // CELL 9292G // HOMO BLK (T) // HOMO PLD (P-1) // LFF2172388 // COW

MUSGRAVE BIG SKY  
**MUSGRAVE SKY HIGH 1535**  
FLAG QUEEN W 00649

DHVO DEUCE 132R  
**MAGS XUZETTE**  
MAGS SUZETTE

CONNEALY EARNAN 076E  
SAV PRIMROSE 7861  
S A V 004 DENSITY 4336  
PLATTEMERE QUEEN W 660  
GPFF BLAQUE RULON  
AMY JO DHAN 20L  
BR MIDLAND  
ANLC MAGGIE MAY 2112M

CE	BW	WW	YW	MA	CM	SC	DC	CW	RE	YG	MS	\$MI
11	1.6	78	125	20	7		12	44	.84	-.12	.29	65

ACT. BW: 80

Of all the Angus bulls used to make Lim-Flex, Sky High has been one of the most consistent in terms of stamping them with the parts and pieces that make them stand out from the crowd. When mated with the proven 75% Deuce daughter, MAGS Xuzette, the results are just what we had hoped for—amazing. What's more, this double homozygous, February open heifer is breed leading in terms of her EPD profile ranking in the top 25% or better for WW, YW, CW, REA, MB and \$MTI. This is the kind you can build a program around.

15

## CELL GENIE 9307G

LIM-FLEX(37/33.8)

2/15/2019 // CELL 9307G // HOMO BLK (T) // HOMO PLD (P-1) // PENDING // COW

MUSGRAVE BIG SKY  
**MUSGRAVE SKY HIGH 1535**  
FLAG QUEEN W 00649

DHVO DEUCE 132R  
**MAGS XUZETTE**  
MAGS SUZETTE

CONNEALY EARNAN 076E  
SAV PRIMROSE 7861  
S A V 004 DENSITY 4336  
PLATTEMERE QUEEN W 660  
GPFF BLAQUE RULON  
AMY JO DHAN 20L  
BR MIDLAND  
ANLC MAGGIE MAY 2112M

CE	BW	WW	YW	MA	CM	SC	DC	CW	RE	YG	MS	\$MI
11	1.6	78	125	20	7		12	44	.84	-.12	.29	65

ACT. BW: 78

CELL Genie is a double homozygous 37% Lim-Flex female who leads her contemporaries on the number scale for WW, YW and carcass traits. This should come as no surprise since her dam, MAGS Zodiac, has been producing genetically superior seedstock since she burst onto the scene. Her dam, MAGS Xuzette, has been a proven and prolific producer for many years. Here's a female who checks all the boxes for sure. Bid with confidence on this full sibling to lot 14.

# Open Show Heifers



Gwynevere



Gypsy

16

## CELL GWYNEVERE 9324G ET

LIM-FLEX(37/33.8)

2/16/2019 // CELL 9324G // HET BLK (T) // HOMO PLD (P-1) // LFF2172398 // COW

MUSGRAVE BIG SKY  
**MUSGRAVE SKY HIGH 1535**  
 FLAG QUEEN W 00649

DHVO DEUCE 132R  
**MAGS XUZETTE**  
 MAGS SUZETTE

CONNELLY EARNAN 076E  
 SAV PRIMROSE 7861  
 S A V 004 DENSITY 4336  
 PLATTEMERE QUEEN W 660  
 GPFF BLAQUE RULON  
 AMY JO DHAN 20L  
 BR MIDLAND  
 ANLC MAGGIE MAY 2112M

CE	BW	WW	YW	MA	CM	SC	DC	CW	RE	YG	MS	\$MI
11	1.6	78	125	20	7		12	44	.84	-.12	.29	65

ACT. BW: 82

If you are fan of heifers who look just like they are bred, then CELL Gwynevere deserves your undivided attention. Her dam, MAGS Xuzette, is a big time donor with big time reputation known for producing sound, high performance cattle with a ton of rib shape. Her sire, Musgrave Sky High, needs no introduction as his progeny continue to make waves across the country. Rounding out this complete package is an outstanding numerical profile, highlighted by top 15% rankings for yearling, marbling and mainstream terminal index.

17

## CELL GYPSY 9085G

LIM-FLEX(46/41.8)

2/16/2019 // CELL 9085G // HOMO BLK (P-2) // HET PLD (T) // LFF2170961 // COW

S A V HARVESTOR 0338  
**SSTO BEST BET 456B ET**  
 ELCX TWILIGHT 114X

MAGS ZODIAC  
**CELL 5653C**  
 MAGS ZAHOO

S A V HERITAGE 6295  
 S A V EMBLYNETTE 7749  
 DHVO DEUCE 132R  
 DFLC HBHPC 1S  
 MAGS WINSTON  
 MAGS XANTHOUS  
 TNT TRUE GRIT X254  
 MAGS WAHOO

CE	BW	WW	YW	MA	CM	SC	DC	CW	RE	YG	MS	\$MI
11	1.8	72	118	25	6	1.2	13	42	.52	-.11	.27	63

ACT. BW: 74

If you are looking for one with a killer profile, is square hipped and that never stops wrong, then CELL Gypsy is the open heifer for you. This homozygous black, 46% Lim-Flex daughter is by SSTO Best Bet and out of good Zodiac half-blood cow. From a production standpoint down the road, Gypsy is extremely balanced from a calving-ease, growth, milk and carcass perspective.



# Open Show Heifers



Greenbee



Gizelle

18

## CELL GREENLEE 9287G ET

LIM-FLEX(55/50.3)

2/16/2019 // KVLN 9287G // DBL BLK // DBL PLD // LFF2173315 // COW

S A V PIONEER 7301  
**TMCK HYDRAULIC 17Y**  
HSF WALL OF FAME

DHVO DEUCE 132R  
**MAGS WALKIN**  
BOHI RED ROBIN 282R

SAV FINAL ANSWER 0035  
S A V BLACKBIRD 5297  
RPY PAYNES SIGNAL 6S  
HSF PENTHOUSE PIN-UP  
GPFF BLAQUE RULON  
AMY JO DHAN 20L  
CONNELLY LEAD ON  
MAGS MANUELA

CE	BW	WW	YW	MA	CM	SC	DC	CW	RE	YG	MS	\$MI
8	2.4	74	116	26	4	0.9	14	34	.95	-.36	-.06	53

ACT. BW: 83

Here is really well-made, stout featured Hydraulic daughter back to the MAGS Walkin' female who is also the mother of Lot 10. Her breed-leading genetics for weaning weight, yearling weight and milking ability will serve her well once she makes her way to the front pasture.

19

## CELL GIZELLE 9297G ET

LIM-FLEX(50/44.8)

2/19/2019//CELL9297G//HOMOBK(T)//HOMOPLD(P-2)//LFF2173317//COW

S A V BRILLIANCE 8077  
**PVF INSIGHT 0129**  
PVF MISSIE 790

DHVO DEUCE 132R  
**MAGS WASSAIL**  
MAGS MANDA

S A V BISMARCK 5682  
S A V BLACKCAP MAY 5270  
P V F NEW HORIZON 001  
P V F MISS RAPTOR 024  
GPFF BLAQUE RULON  
AMY JO DHAN 20L  
EXLR DAKOTA 353G  
MAGS JEWEL

CE	BW	WW	YW	MA	CM	SC	DC	CW	RE	YG	MS	\$MI
9	0.6	67	100	24	6	1.4	11	47	1.24	-.37	-.21	46

ACT. BW: 72

Sleeper Alert! CELL Gizelle is a double homozygous, 50% Lim-Flex daughter of the Angus great, PVF Insight. Her dam, MAGS Wassail, is the once national champion and big time donor who has clicked with both Angus and Lim-Flex sires. The predictability, especially on the maternal side of the pedigree, is uncanny as evidenced by her imprint in this very sale offering.

# Open Show Heifers



Gracia



Glee

20

## CELL GRACIA 9311G ET

LIM-FLEX(43/39.1)

2/19/2019 // CELL 9311G // HOMOBLK(P-2) // HOMOPLD(P-3) // LFF2173247 // COW

CONNEALY CONSENSUS 7229

**MAGS ALI**

MAGS YOKO

LH RODEMASTER 338R

**MAGS UR SALINA**

MAGS SALINA

CONNEALY CONSENSUS

BLUE LILLY OF CONANGA 16

DHVO DEUCE 132R

EXLR LADY 5112N

JCL LODESTAR 27L

VERMILION E BLACKBIRD9546

BR MIDLAND

MAGS LADY ACE

CE	BW	WW	YW	MA	CM	SC	DC	CW	RE	YG	MS	\$MI
10	3.2	83	127	19	5	1.9	14	32	.77	-.28	.11	61

ACT. BW: 78

A highly desirable, double homozygous, 43% Lim-Flex female out of MAGS Ali and back to one of the breed's foundation donors on the bottom side, MAGS UR Salina. She is big middled, thick ended, easy on the eyes and is near the top of the breed in several economically relevant traits including WW, YW, SC, CW, MB and \$MTI.

21

## CELL GLEE 9318G ET

LIM-FLEX(50/45.2)

2/20/2019 // CELL 9318G // HOMO BLK(T) // HET PLD(T) // LFF2172396 // COW

SCHIEFELBEIN ALLIED 514

**MUSGRAVE HEADWAY**

MUSGRAVE LADY BARBARA 524-57

DHVO DEUCE 132R

**AUTO TOOTSIE POP 2272T**

EXLR MOLLY 7103K

PLATTEMERE WEIGH UP K360

FROSTY ELBA 5152

MUSGRAVE INVISION

MCATL LADY BARBARA 57-715

GPFF BLAQUE RULON

AMY JO DHAN 20L

EXLR DAKOTA 353G

EXLR MOLLY 343G

CE	BW	WW	YW	MA	CM	SC	DC	CW	RE	YG	MS	\$MI
13	0.4	70	108	28	10	0.9	9	28	.54	-.21	.23	61

ACT. BW: 78

One look at CELL Glee, and it's easy to see why we purchased her sire, Musgrave Headway. We bought him specifically to create quality Lim-Flex cattle who are solid numbered and outcross pedigreed. Remember this female as one of the first in what we expect to be a long line of Headway daughters to lead the way in Lim-Flex genetic progress.

# Open Show Heifers



Gigi

22

**CELL GIGI 9273G ET**

LIM-FLEX(50/44.8)

2/23/2019//CELL9273G//HETBLK(T)//HOMOPLD(P-2)//LFF2173224//COW

S A V BRILLIANCE 8077  
**PVF INSIGHT 0129**  
 PVF MISSIE 790

DHVO DEUCE 132R  
**MAGS WASSAIL**  
 MAGS MANDA

S A V BISMARCK 5682  
 S A V BLACKCAP MAY 5270  
 P V F NEW HORIZON 001  
 P V F MISS RAPTOR 024  
 GPFF BLAQUE RULON  
 AMY JO DHAN 20L  
 EXLR DAKOTA 353G  
 MAGS JEWEL

CE	BW	WW	YW	MA	CM	SC	DC	CW	RE	YG	MS	\$MI
9	0.6	67	100	24	6	1.4	11	47	1.24	-.37	-.21	46

ACT. BW: 72

Another high quality Insight x Wassail female that comes to us in a homozygous polled package that sports a phenotype to make your mouth water. This female is proof there is still value in combining new, fresh genetics with the tried and true bloodlines of the past. Watch for this one sale day.



Geraldine

23

**CELL GERALDINE 9280G ET**

LIM-FLEX(43/39.1)

2/23/2019//CELL9280G//HOMOBLK(P-2)//HOMOPLD(P-3)//LFF2173230//COW

CONNEALY CONSENSUS 7229  
**MAGS ALI**  
 MAGS YOKO

LH RODEMASTER 338R  
**MAGS UR SALINA**  
 MAGS SALINA

CONNEALY CONSENSUS  
 BLUE LILLY OF CONANGA 16  
 DHVO DEUCE 132R  
 EXLR LADY 5112N  
 JCL LODESTAR 27L  
 VERMILION E BLACKBIRD9546  
 BR MIDLAND  
 MAGS LADY ACE

CE	BW	WW	YW	MA	CM	SC	DC	CW	RE	YG	MS	\$MI
10	3.2	83	127	19	5	1.9	14	32	.77	-.28	.11	61

ACT. BW: 80

Here's another great one out of the home-run mating of MAGS Ali x MAGS UR Salina. CELL Geraldine is a long spined, elegant made female that's striking on the profile. This 43% Lim-Flex open heifer is homozygous black, homozygous polled and balanced in her EPDs, with exceptional genetics for growth, scrotal and mainstream terminal index.



Gibly

24

**CELL GILLY 9114G**

LIM-FLEX(59/51.8)

2/25/2019//CELL9114G//HOMOBLK(P-2)//HOMOPLD(T)//LFF2170966//COW

EBFL YPSILANTI 420Y  
**CELL DENALI 6405D**  
 MAGS ANNIE

AHCC BIG WIND B904  
**COLE MISS BIG WIND 651D**  
 COLE MISS PRODUCT 3126A

TC ABERDEEN 759  
 MAGS RAMADA  
 EXAR UPSHOT 0562B  
 MAGS XEROMAS  
 AHCC WESTWIND W544  
 LVLS 9066U  
 COLEMAN PRODUCTION 608  
 COLE MISS FIRSTDOWN 9114W

CE	BW	WW	YW	MA	CM	SC	DC	CW	RE	YG	MS	\$MI
10	1.2	67	108	24	6	1.2	15	42	.61	-.22	.20	59

ACT. BW: 76

Don't let this one's spot in the catalog fool you. She has as much show-ring appeal as anything in the offering. Which makes sense, being that she is by one of our new elite herd sires, CELL Denali and out of a tremendous Coleman female. After her show career, this double homozygous black, 59% Lim-Flex can lead a program in the right direction.

# Open Show Heifers

## 25

### CELL GEORGIA 9110G

LIM-FLEX(46/42.3)

2/25/2019 // CELL 9110G // HOMO BLK (P-2) // DBL PLD // LFF2170910 // COW

EBFL YPSILANTI 420Y

**CELL DENALI 6405D**

MAGS ANNIE

S A V MANDAN 5664

**MAGS YEASTLIKE**

MAGS GRETCHEN 855M

TC ABERDEEN 759

MAGS RAMADA

EXAR UPSHOT 0562B

MAGS XEROMAS

S A V 8180 TRAVELER 004

S A V ABIGALE 0451

MAGS JUMANJI

MAGS GRETCHEN

CE	BW	WW	YW	MA	CM	SC	DC	CW	RE	YG	MS	\$MI
9	1.6	65	102	27	5	1.8	8	35	.79	-.21	.26	61

ACT. BW: 76

Sleeper alert! CELL Georgia is a homozygous black, 46% Lim-Flex direct daughter of CELL Denali 6405D who continues to do a stand up job in our program. Her dam traces back to the prolific MAGS Gretchen donor, who left many great daughters in an impressive production career. There is power in this blood. Look for this hard hitting one sale day.



Georgia

## 26

### CELL GENNY 9229G ET

LIM-FLEX(37/33.8)

3/1/2019 // CELL 9229G // HET BLK (T) // HOMO PLD (P-1) // LFF2173273 // COW

EXAR CLASSEN 1422B

**COLBURN INSPIRE 6116**

SILVEIRAS SARAS DREAM 1339

DHVO DEUCE 132R

**MAGS XUZETTE**

MAGS SUZETTE

DAMERON FIRST CLASS

EXAR PRINCESS 2006

SILVEIRAS STYLE 9303

EXG SARAS DREAM S609 R3

GPFF BLAQUE RULON

AMY JO DHAN 20L

BR MIDLAND

ANLC MAGGIE MAY 2112M

CE	BW	WW	YW	MA	CM	SC	DC	CW	RE	YG	MS	\$MI
8	3.0	79	122	18	7	1.1	10	39	.70	-.13	.30	66

ACT. BW: 86

Females as good as this one seem to find friends no matter where they go. CELL Genny is by the newly popular Angus bull Colburn Inspire and out of the famed MAGS Xuzette cow that has produced many in this very sale offering. Appreciate not only her 'cool' look, but also her EPDs which are well above average and are highlighted with top 2% marbling and top 1% mainstream terminal index.



Genny

## 27

### CELL GABY 9121G

LIM-FLEX(50/44)

3/1/2019 // CELL 9121G // HOMO BLK (T) // HET PLD (T) // LFF2170914 // COW

MAGS XUKALANI

**TMCK CHAVEZ 245C**

MAGS YOKO

TMCK BRONX 113B

**ATAK EAT YOUR HEART OUT ET**

EF XCLUSIVE

RITO 112 OF 2536 RITO 616

MAGS UKALANI

DHVO DEUCE 132R

EXLR LADY 5112N

MAGS Y-AXIS

AUTO BROOKLYN 249U

BC 7022 RAVEN 7965

MAGS SHEILA

CE	BW	WW	YW	MA	CM	SC	DC	CW	RE	YG	MS	\$MI
14	0.6	68	103	23	9	1.4	13	30	.81	-.31	.09	57

ACT. BW: 68

This exceptionally well designed, homozygous black female is a truly unique buying opportunity. High quality best describes this big footed, free moving, long fronted, deep bodied, square hipped female to a tee. On paper, she's well balanced across the page. Also note, pedigree-wise she is by our lead herd sire Denali, which has proven to be both predictable and performance driven. Bid with confidence.



Gaby

# Open Show Heifers

## 28

### CELL GENTRY 9125G

LIM-FLEX(35/32.4)

3/3/2019//CELL9125G//HOMOBLK(T)//HOMOPLD(P-2)//LFF2170918//COW

SCHIEFELBEIN ALLIED 514  
**MUSGRAVE HEADWAY**  
 MUSGRAVE LADY BARBARA 524-57  
 TMCK CASH FLOW 247C  
**TMCK ELAINE 453E**  
 TMCK WISTERIA 32Y

PLATTEMERE WEIGH UP K360  
 FROSTY ELBA 5152  
 MUSGRAVE INVISON  
 MCATL LADY BARBARA 57-715  
 MAGS ALI  
 TMCK NINA 17X  
 AHCC WESTWIND W544  
 HSF WISTERIA

CE	BW	WW	YW	MA	CM	SC	DC	CW	RE	YG	MS	\$MI
15	-1.7	81	131	25	11	1.0	12	48	.49	-.01	.46	72

ACT. BW: 54

This exceptionally stout made female had little trouble sorting herself to the top. This double homozygous daughter of the widely regarded Headway A.I. sire, traces back to an extraordinarily productive Tubmill Creek female. Visually she is deep sided, while maintaining a level top and superb structure. She rounds out the package with plenty of bone, a big foot and muscle. Numerically, she's a true curve bender ranking among the breed's best in several traits.

## Gentry

## 29

### CELL GARNET 9220G ET

LIM-FLEX(46/42.2)

3/7/2019//CELL9220G//HOMOBLK(P-1)//HOMOPLD(T)//LFF2172401//COW

S A V HARVESTOR 0338  
**SSTO BEST BET 456B ET**  
 ELCX TWILIGHT 114X  
 SAV 004 PREDOMINANT 4438  
**MAGS YEOMEN**  
 MAGS RAMADA

S A V HERITAGE 6295  
 S A V EMBLYNETTE 7749  
 DHVO DEUCE 132R  
 DFCL HBHPC 1S  
 S A V 8180 TRAVELER 004  
 S A V EMBLYNETTE 1182  
 TNUH BLUE PRINT 245H  
 MAGS MANDA

CE	BW	WW	YW	MA	CM	SC	DC	CW	RE	YG	MS	\$MI
12	1.3	65	97	21	8	1.2	9	22	.50	-.20	.19	58

ACT. BW: 81

Study the overall design and makeup of this double homozygous, Lim-Flex female. She does an excellent job of combining a brood cow look with ample power and mass. Numerically, she's among the best in the breed ranking in the top 1% for calving ease and well above breed average for marbling. From a pedigree standpoint, she is out of a tremendous donor, MAGS Yeoman. Make no mistake November 3rd and invest in this outstanding breeding piece.

## Garnet

## 30

### CELL GALAXY 9142G

LIM-FLEX(53/47.6)

3/18/2019//CELL9142G//HOMOBLK(P-2)//HETPLD(T)//LFF2170931//COW

EBFL YPSILANTI 420Y  
**CELL DENALI 6405D**  
 MAGS ANNIE  
 DHVO DEUCE 132R  
**ADLL 5119C ET**  
 MAGS UNSEAT THE WINNER

TC ABERDEEN 759  
 MAGS RAMADA  
 EXAR UPSHOT 0562B  
 MAGS XEROMAS  
 GPFF BLAQUE RULON  
 AMY JO DHAN 20L  
 MYTTY IN FOCUS  
 MAGS MISCHIEF 14M

CE	BW	WW	YW	MA	CM	SC	DC	CW	RE	YG	MS	\$MI
12	-0.6	65	98	27	8	1.5	12	32	.67	-.22	.08	54

ACT. BW: 64

Visually this homozygous black daughter of the ever-consistent Denali sire will quite simply catch your attention every time you set foot into the pen. She is without a doubt easy fleshing, has a tremendous amount of rib shape, is heavy muscled and structurally correct. Numerically, she's very well balanced across the page. This is the type of female that'll work both in the ring and in production.

## Galaxy

# Open Show Heifers

## 31

### CELL GAIL 9152G

LIM-FLEX(46/42)

4/2/2019 // CELL 9152G // HOMOBLK(P-2) // HOMOPLD(T) // LFF2170939 // COW

EBFL YPSILANTI 420Y

**CELL DENALI 6405D**

MAGS ANNIE

DHVO DEUCE 132R

**PBRS ZOHEY 92Z**

BUFORD JOY 9097

TC ABERDEEN 759

MAGS RAMADA

EXAR UPSHOT 0562B

MAGS XEROMAS

GPFF BLAQUE RULON

AMY JO DHAN 20L

BOHI PREDESTINED 6100

J BAR 7 AUDREY'S JOY 5487

CE	BW	WW	YW	MA	CM	SC	DC	CW	RE	YG	MS	\$MI
10	1.7	75	116	23	6	1.5	12	42	.87	-.24	.15	60

ACT. BW: 81

This, fellow cattlemen, is what the cattle business is all about -- a double homozygous, high quality, 46% Lim-Flex daughter of the predictable herd sire CELL Denali. From an EPD vantage point, she is extremely well balanced across the entire page and is highlighted by offering a weaning weight, yearling weight and total maternal EPD which ranks in the 15% of the breed. Bid with confidence on this April born November 3.

Gail

## 32

### CELL GALENA 9174G

LIM-FLEX(46/41.6)

5/2/2019 // CELL 9174G // HET BLK (T) // HOMO PLD (P-1) // LFF2170955 // COW

ELMW XPEDIENT 4X

**TNGC DEVOTION 643D**

MAGS BLUEBELL ET

MAGS AVIATOR

**CELL 7049E**

PBRS ZINK 62Z

SAV FINAL ANSWER 0035

ELMW UNENDING LOVE 16U

MAGS Y-AXIS

MAGS THEATRICAL

MAGS WINSTON

MAGS XTRA REST

DHVO DEUCE 132R

LBAF SHAWNEE 602

CE	BW	WW	YW	MA	CM	SC	DC	CW	RE	YG	MS	\$MI
12	0.5	74	116	19	7	1.1	16	39	.71	-.14	.09	57

ACT. BW: 67

MAY BORN alert - check out this homozygous polled, stout featured, high quality, 46% Lim-Flex female that will most certainly catch your attention sale day and garner respect from even the most discriminating cattlemen. On paper she excels - this daughter of our herd sire that hails from the Graven Land & Cattle program, TNGC Devotion 643D, ranks in the top 30% or better for weaning, yearling, docility and mainstream terminal index. Evaluate the true breeding value in this big-time prospect.

Galena

## 33

### CELL GWEN 9185G

LIM-FLEX(51/45.9)

5/11/19 // CELL 9185G // HOMO BLK (P-3) // HET PLD (T) // LFF2170976 // COW

S A V HARVESTOR 0338

**SSTO BEST BET 456B ET**

ELCX TWILIGHT 114X

TMCK ARCHITECT 031A

**TMCK DREAMCATCHER 327D ET**

TMCK APPLAUSE 301A

S A V HERITAGE 6295

S A V EMBLYNETTE 7749

DHVO DEUCE 132R

DFLC HBHPC 1S

TMCK HYDRAULIC 17Y

TMCK LA VEDA 909Y

MAGS Y-AXIS

TMCK CASUAL 28Y

CE	BW	WW	YW	MA	CM	SC	DC	CW	RE	YG	MS	\$MI
12	1.2	74	118	23	7	0.9	14	32	.67	-.19	.17	60

ACT. BW: 76

Performance meets marbling in this outstanding daughter out of the elite A.I. sire, SSTO Best Bet, and out of a highly productive Tubmill Creek female. Visually, this homozygous black female combines a square hipped look along with an abundance of capacity and structural integrity. From a numbers standpoint, her growth indicators place her in the top 15% of breed and carcass-wise she ranks in the top 15% for mainstream terminal index. Here's an exceptional heifer with plenty of upside potential that should prove to be a cornerstone female for years to come.

Gwen



# Show Steer Prospects

**LOTS 34-37**

New to our sale offering is a small segment of prospect steers. Due to popular request, we elected to offer a handful of steer calves that we feel will be competitive locally, regionally and nationally. Note, these Lim-Flex steers are mates to some of our elite show heifer prospects built and bred for show ring success.

# Show Steer Prospects



George

34

LIM-FLEX(56/50.2)

## CELL GEORGE 9266G ET

2/23/2019 // CELL 9266G // DBL BLK // DBL PLD // LFM2173270 // STEER  
EF XCESSIVE FORCE  
**LLJB AIR FORCE ONE**  
EF YAFFA 821Y  
SILVEIRAS STYLE 9303  
**LLJB ABSOLUTE STYLE 3056A**  
MAGS WASSAIL  
D A TRAVELER 004 703  
CFLX MOLLYS IMAGE  
EXLR NEW GENERATION 071M  
MAGS ROSE PETAL  
GAMBLES HOT ROD  
SILVEIRAS ELBA 2520  
DHVO DEUCE 132R  
MAGS MANDA

Sit up and take notice of this steer that promises to be competitive locally, regionally and on national levels. This full sibling to the lot 2 heifers certainly has the cool factor as do they. What's more, visually George is wide bodied, easy fleshing and extra sound at the ground. Bid with confidence.



# Show Steer Prospects



Garth

35

LIM-FLEX(50/44.8)

1/21/2019 // CELL 9267G // DBL BLK // HOMO PLD (P-1) // LFM2173299 // STEER

DAMERON FIRST CLASS  
**COLBURN PRIMO 5153**  
 SILVEIRAS SARAS DREAM 1339

DHVO DEUCE 132R  
**MAGS WASSAIL**  
 MAGS MANDA

**CELL GARTH 9267G ET**

EXG RS FIRST RATE S903 R3  
 DAMERON NORTHERN MISS 311  
 SILVEIRAS STYLE 9303  
 EXG SARAS DREAM S609 R3  
 GPFF BLAQUE RULON  
 AMY JO DHAN 20L  
 EXLR DAKOTA 353G  
 MAGS JEWEL

A full brother to the lead off heifer, Garth is functionally practical, long fronted and loaded with natural growth performance. We really have admired the combination of his rib and muscle relative to frame size and feels he's one that can handle some competitive heat.



Gavel

36

LIM-FLEX(46/41.7)

2/14/2019 // CELL 9080G // HOMO BLK (P-1) // DBL PLD // LFM2170890 // STEER

S A V HARVESTOR 0338  
**SSTO BEST BET 456B ET**  
 ELCX TWILIGHT 114X

DHVO DEUCE 132R  
**PBRs BAILEY WIX 43B**  
 OAK HILL MISS WIX 72S

**CELL GAVEL 9080G**

S A V HERITAGE 6295  
 S A V EMBLYNETTE 7749  
 DHVO DEUCE 132R  
 DFCL HBHPC 1S  
 GPFF BLAQUE RULON  
 AMY JO DHAN 20L  
 S A V 8180 TRAVELER 004  
 OAK HILL MISS WIX 9402

Jack necked, huge bodied, sound - this is a steer that'll command your attention on instant contact. What's more, this Best Bet son is square hiped, thick ended and really flexible at the ground. As this one feeds out, we think he'll progressively get better each and every day you own him.



GARRISON

37

LIM-FLEX(56/50.2)

3/2/2019 // CELL 9264G // DBL BLK // DBL PLD // LFM2173271 // STEER

EF XCESSIVE FORCE  
**RLB AIR FORCE ONE**  
 EF YAFFA 821Y

SILVEIRAS STYLE 9303  
**LLJB ABSOLUTE STYLE 3056A**  
 MAGS WASSAIL

**CELL GARRISON 9264G ET**

D A TRAVELER 004 703  
 CFLX MOLLYS IMAGE  
 EXLR NEW GENERATION 071M  
 MAGS ROSE PETAL  
 GAMBLES HOT ROD  
 SILVEIRAS ELBA 2520  
 DHVO DEUCE 132R  
 MAGS MANDA

As full sibling to Lot 34 and maybe the steer in the group with the most upside potential. He comes to us in a tick greener package than the others, but the combination of his structure, natural base width and front end design gives us confidence by the time next summer rolls around he'll stack up with the best of them. Bid with assertion.





# POWER OF PRODUCTION

**LOTS 38-62 • BRED HEIFERS**  
**LOTS 63-73 • FALL PAIRS**

This segment of the sale is a direct reflection of our commitment to raising production cattle. Our production philosophy is simply - we aim to create a product that's reproductively sound, high performance and mainstream acceptable. It's our goal that this group of 25 bred heifers and 11 fall pairs on offer, which features a blend of both Limousin and Lim-Flex genetics, will translate not only into your seedstock program seamlessly but, the results of their breeding will also meet your commercial customer's targets.

# Spring Bred Cows & Fall Pairs



Francis

38

LIM-FLEX(59/53.3)

## CELL FRANCIS 8230F ET

1/21/2018//CELL8230F//HOMOBLK(T)//HOMOPLD(P-1)//LFF2151970//COW

BT CROSSOVER 758N

**MAGS WINSTON**

MAGS STRAWBERRY

DHVO DEUCE 132R

**MAGS XTRA REST**

MAGS UNREST

C A FUTURE DIRECTION 5321

BT ROYAL PRIDE 237G

EXLR NEW GENERATION 071M

MAGS FRUITFUL 487M

GPFF BLAQUE RULON

AMY JO DHAN 20L

MAGS REMOTE

HA LADY 1091

CE	BW	WW	YW	MA	CM	SC	DC	CW	RE	YG	MS	\$MI
13	0.6	68	108	22	8	0.2	16	39	.87	-.28	.14	58

ACT. BW: 74 ADJ WW: 534 ADJ YW: 796 ADJ REA: 11.82 ADJ IMF: 4.86

AI'd 4/20/19 to MAGS Y-Axis. PE'd 5/1/19 - 7/20/19 to

TNGC Devotion 643D. Safe, due approx. 2/20/20.

This bred female covers the bases in terms of calving ease, weaning weight, yearling weight and marbling! As a bonus note, this full sibling to MAGS Aviator comes to us in a double homozygous package. Take it one step further, visually she is easy fleshing, big middled, stout and correctly designed. The bottom-line is the combination of her stout look, distinct numerical advantages and breeding give her the credibility to be a top-shelf donor.

# Spring Bred Cows & Fall Pairs



Fancy



Franchise

39

## CELL FANCY 8216F ET

LIM-FLEX(50/45.1)

1/13/2018//CELL8216F//HOMOBLK(P-1)//HOMOPLD(T)//LFF2151946//COW

SAV FINAL ANSWER 0035  
**S A V THUNDERBIRD 9061**  
 S A V EMBLYNETTE 7411  
 TNUH BLUE PRINT 245H  
**MAGS RUFFLES**  
 MAGS LADY DOCTOR

SITZ TRAVELER 8180  
 SAV EMULOUS 8145  
 S A V BISMARCK 5682  
 S A V EMBLYNETTE 4408  
 WADDLES COBALT 3106  
 TNUH MISS C245  
 MAGS JUMANJI  
 AUTO CITY NIGHTS 214H

CE	BW	WW	YW	MA	CM	SC	DC	CW	RE	YG	MS	\$MI
12	0.9	72	108	19	7	1.4	10	25	.66	-.27	-.18	47
ACT. BW: 89 ADJ WW: 678 ADJ YW: 950 ADJ REA: 15.96 ADJ IMF: 2.75												

AI'd 4/20/19 to MAGS Aviator. Safe, due approx. 2/1/20.  
 PE'd 5/1/19 - 7/20/19 to TNGC Devotion 643D.

Here is a double homozygous, 50% Lim-Flex daughter of Thunderbird and out of a tremendous donor, MAGS Ruffles, who's cemented her legacy as one our very best. Consider her well-rounded, balanced EPD package and realize this is the kind of female who will be profitable for years to come.

40

## CELL FRANCHISE 8219F ET

LIM-FLEX(59/52.9)

1/15/2018//CELL8219F//HOMOBLK(P-2)//HOMOPLD(P-3)//LFF2151934//COW

MAGS APPLESEED  
**MAGS CABLE**  
 MAGS ZEQUIN  
 DHVO DEUCE 132R  
**MAGS XTRA REST**  
 MAGS UNREST

RITO 6EM3 OF 4L1 EMBLAZON  
 MAGS WAY TO SHINE  
 BOHI TOP DOLLAR 7144T  
 WERNER RITA 118  
 GPFF BLAQUE RULON  
 AMY JO DHAN 20L  
 MAGS REMOTE  
 HA LADY 1091

CE	BW	WW	YW	MA	CM	SC	DC	CW	RE	YG	MS	\$MI
13	1.4	73	112	16	8	1.0	16	37	.95	-.29	.08	57
ACT. BW: 93 ADJ WW: 663 ADJ YW: 1037 ADJ REA: 15 ADJ IMF: 2.82												

AI'd 4/20/19 to Musgrave Headway. Safe, due approx. 2/1/20. PE'd 5/1/19 - 7/20/19 to CELL Denali 6405D.

If numbers are your thing, then check out this double homozygous female that ranks in the top 30% or better in nine industry relevant traits. Visually, this numerical giant excels in terms of her depth of body, spring of rib, muscle shape and circumference of bone. In the realm of Lim-Flex genetics, this female is royally bred and projects to push the envelope forward from a phenotype, numerical and genetic standpoint.

# Spring Bred Cows & Fall Pairs

## 41

### CELL FASCINATION 8067F

LIM-FLEX(50/44.9)

2/16/2018 // CELL 8067F // BLACK // DBL PLD // LFF2149124 // COW

LSF SAGA 1040Y

**AHCC COWBOY KIND C595 ET**

AHCC DAKOTA LUVLY R595

S A V BRAND NAME 9115

**LSTO ALL ABOUT YOU 3817A**

SBLX XTRA SPECIAL

BECKTON EPIC R397 K

LSF MINOLA T7172 W9041

AUTO BLACK DAKOTA 129J

EXLR 794H

S A V BISMARCK 5682

S A V BLACKCAP MAY 5530

DHVO DEUCE 132R

MAGS MANUELA

CE	BW	WW	YW	MA	CM	SC	DC	CW	RE	YG	MS	\$MI
7	2.7	82	127	21	5	1.6	9	35	1.10	-.42	-.26	49

ACT. BW: 75 ADJ WW: 581 ADJ YW: 918 ADJ REA: 15.44 ADJ IMF: 1.95

AI'd 4/20/19 to MAGS Aviator. Safe, due approx. 2/1/20.

PE'd 5/1/19 - 7/20/19 to TNGC Devotion 643D.

Performance, Performance, Performance. AHCC Cowboy Kind is doing many things right in our program, but none more important than producing cattle that grow. Take a look at this double polled female's number profile and think of the scores of bulls you could use to create the next generation of performance-minded seedstock.

## 42

### CELL FABULOUS 8030F

LIM-FLEX(50/45)

2/2/2018 // CELL 8030F // BLACK // DBL PLD // LFF2148557 // COW

SCHIEFELBEIN ALLIED 514

**MUSGRAVE HEADWAY**

MUSGRAVE LADY BARBARA 524-57

CJSL WINDFALL 9072W

**CJSL 5324C ET**

MAGS TIZZY

PLATTEMERE WEIGH UP K360

FROSTY ELBA 5152

MUSGRAVE INVISION

MCATL LADY BARBARA 57-715

LVLS SECRET WEAPON 4408K

CJ'S MS ARROWHEAD 456P

TNUH BLUE PRINT 245H

MAGS FRUITFUL 487M

CE	BW	WW	YW	MA	CM	SC	DC	CW	RE	YG	MS	\$MI
14	-0.1	82	134	32	10	0.8	10	52	.69	-.17	.27	66

ACT. BW: 61 ADJ WW: 609 ADJ YW: 1065 ADJ REA: 11.66 ADJ IMF: 3.91

AI'd 4/20/19 to MAGS Aviator. Safe, due approx. 2/1/20. PE'd 5/1/19 - 7/20/19 to SHSK Empire 701E.

Another Headway daughter who traces back to the ever consistent donor MAGS Tizzy on the bottom side. In addition to being easy fleshing and sound structured, here's one that really pushes the envelope in terms of EPDs for BW, YW, MB and \$MTI.

## 43

### CELL FRENCHY 8118F ET

LIM-FLEX(53/47.5)

3/12/2018 // CELL 8118F // HOMO BLK (P-3) // DBL PLD // LFF2151909 // COW

MAGS WINSTON

**MAGS AVIATOR**

MAGS XTRA REST

MAGS XUKALANI

**CJSL 2090Z**

MAGS XULEMA

BT CROSSOVER 758N

MAGS STRAWBERRY

DHVO DEUCE 132R

MAGS UNREST

RITO 112 OF 2536 RITO 616

MAGS UKALANI

MAGS SAVAGE

MAGS ULEMA

CE	BW	WW	YW	MA	CM	SC	DC	CW	RE	YG	MS	\$MI
16	-0.7	65	100	19	10	0.6	13	29	.77	-.21	.30	62

ACT. BW: 71 ADJ WW: 472 ADJ YW: 791 ADJ REA: 11.32 ADJ IMF: 5.13

AI'd 4/20/19 to MAGS Y-Axis. Safe, due approx. 2/1/20.

PE'd 5/1/19 - 7/20/19 to SHSK Empire 701E.

As much as we like the Aviator daughters as babies, they are even more impressive as breds. This broody, deep bodied major league cow prospect promises to pass along her curve-bending numbers for birth, marbling and mainstream terminal index. Bid with confidence on this one November 3rd.



Fascination



Fabulous



Frenchy

# Spring Bred Cows & Fall Pairs

## 44

### CELL FOREVER 8227F ET

LIM-FLEX(59/53.3)

1/15/2018 // CELL 8227F // DBL BLK // HOMO PLD (P-1) // LFF2151962 // COW  
 BT CROSSOVER 758N  
**MAGS WINSTON**  
 MAGS STRAWBERRY  
 DHVO DEUCE 132R  
**MAGS XTRA REST**  
 MAGS UNREST  
 C A FUTURE DIRECTION 5321  
 BT ROYAL PRIDE 237G  
 EXLR NEW GENERATION 071M  
 MAGS FRUITFUL 487M  
 GPFF BLAQUE RULON  
 AMY JO DHAN 20L  
 MAGS REMOTE  
 HA LADY 1091

CE BW WW YW MA CM SC DC CW RE YG MS \$MI

13 0.6 68 108 22 8 0.2 16 39 .87 -.29 .13 58

ACT. BW: 63 ADJ WW: 480 ADJ YW: 734 ADJ REA: 9.8 ADJ IMF: 4.56

AI'd 4/20/19 to **MAGS Y-Axis**. PE'd 5/1/19 - 7/20/19 to **CELL Denali 6405D**. Safe, due approx. 3/10/20.

If you were to draw a picture of what a homozygous polled, Lim-Flex female should look like, many folks would end up right here. This full sibling to the ultra popular and proven A.I. sire, MAGS Aviator, not only is impressive visually, but her EPD profile is one to behold in terms of combining calving ease, yearling growth and marbling.

## Forever

## 45

### CELL FOREMOST 8147F

LIM-FLEX(53/49)

3/26/2018 // CELL 8147F // DBL BLK // DBL PLD // LFF2149726 // COW  
 MAGS ZAPPO  
**MAGS CHARLTON**  
 MAGS ZASHA  
 LIMESTONE JUPITER U449  
**DJ YO YO**  
 DVFC ANGELICA 154H  
 MAGS XYLOID  
 MAGS TIMELESS  
 RITO REVENUE 5M2 OF 2536  
 MAGS PASSION FLOWER  
 O C C JUPITER 671J  
 LIMESTONE EVERELDA R187  
 SLDJ POLLED EQUITY  
 SLVL ANGEL COOKIE 140D

CE BW WW YW MA CM SC DC CW RE YG MS \$MI

11 1.5 63 96 23 7 0.7 13 25 .75 -.28 .22 59

ACT. BW: 74 ADJ WW: 600 ADJ YW: 882 ADJ REA: 12.8 ADJ IMF: 4.46

AI'd 4/20/19 to **MAGS Aviator**. Safe, due approx. 2/1/20. PE'd 5/1/19 - 7/20/19 to **SHSK Empire 701E**.

Another performance-oriented, double polled, double black female here on offer. This time we have a female out of the high growth sire, MAGS Charlton that traces back to the National Western Stock Show champion, MAGS Zappo. Being an outcross on the bottom side, combined with top 15% marbling gives this female all the tools needed to be a cornerstone producer.

## Foremost

## 46

### CELL FINLEY 8223F ET

LIM-FLEX(50/44.9)

2/23/2018 // CELL 8223F // HET BLK (T) // HET PLD (T) // LFF2151938 // COW  
 SAV FINAL ANSWER 0035  
**SA V THUNDERBIRD 9061**  
 S A V EMBLYNETTE 7411  
 GPFF BLAQUE RULON  
**MAGS SHEILA**  
 MAGS MANDA  
 SITZ TRAVELER 8180  
 SAV EMULOUS 8145  
 S A V BISMARCK 5682  
 S A V EMBLYNETTE 4408  
 BLACK DIAMOND  
 QUAIL RUN RAMONA BP  
 EXLR DAKOTA 353G  
 MAGS JEWEL

CE BW WW YW MA CM SC DC CW RE YG MS \$MI

12 -0.3 66 98 23 8 1.1 10 25 .66 -.21 .07 54

ACT. BW: 63 ADJ WW: 597 ADJ YW: 884 ADJ REA: 11.08 ADJ IMF: 3.01

AI'd 4/20/19 to **MAGS Aviator**. Safe, due approx. 2/1/20. PE'd 5/1/19 - 7/20/19 to **SHSK Empire 701E**.

A well-bred and equally well-made Lim-Flex who proudly represents some of the most respected genetics in the business. If you are looking for one to moderate birth while maintaining a combination of rib, muscle, fleshing ability and structural correctness, then take a good study of this own daughter of the famed MAGS Sheila cow.

## Finley

47

CELL FAE 8272F ET

LIM-FLEX(55/50.3)

3/9/2018 // CELL 8272F // HOMO BLK (T) // HOMO PLD (T) // LFF2152368 // COW SAV FINAL ANSWER 0035 S A V BLACKBIRD 5297 RPY PAYNES SIGNAL 6S HSF PENTHOUSE PIN-UP GPF BLAQUE RULON AMY JO DHAN 20L CONNEALY LEAD ON MAGS MANUELA

Table with 13 columns: CE, BW, WW, YW, MA, CM, SC, DC, CW, RE, YG, MS, \$MI. Values: 8, 2.4, 74, 116, 26, 4, 0.9, 14, 34, .95, -.36, -.01, 55

ACT. BW: 94 ADJ WW: 688 ADJ YW: 1006 ADJ REA: 14.66 ADJ IMF: 3.33

Al'd 4/20/19 to MAGS Aviator. Safe, due approx. 2/1/20. PE'd 5/1/19 - 7/20/19 to TNGC Devotion 643D.

49

CELL FABIA 8025F

LIM-FLEX(65/58.6)

2/1/2018 // CELL 8025F // HOMO BLK (P-2) // DBL PLD // LFF2148552 // COW AHCC XPENSE ACCOUNT X516 COLE ABSOLUTE 05A COLE MISS TRAVELER 029X MAGS UNHEARD OF MAGS Y BE LOUD MAGS WHISPER

Table with 13 columns: CE, BW, WW, YW, MA, CM, SC, DC, CW, RE, YG, MS, \$MI. Values: 8, 2.5, 70, 114, 28, 2, 1.2, 11, 18, .93, -.39, .05, 56

ACT. BW: 80 ADJ WW: 552 ADJ YW: 874 ADJ REA: 14.74 ADJ IMF: 3.00

Al'd 4/20/19 to MAGS Aviator. Safe, due approx. 2/1/20. PE'd 5/1/19 - 7/20/19 to CELL Denali 6405D.

51

CELL FALON 8046F

LIM-FLEX(43/39.2)

2/8/2018 // CELL 8046F // BLACK // DBL PLD // LFF2149087 // COW LSF SAGA 1040Y AHCC COWBOY KIND C595 ET AHCC DAKOTA LUVLY R595 MAGS Y-AXIS PBRs AMERICAN DREAM 372A FLLR TIGER LILY

Table with 13 columns: CE, BW, WW, YW, MA, CM, SC, DC, CW, RE, YG, MS, \$MI. Values: 9, 2.1, 79, 127, 22, 6, 1.6, 10, 39, .67, -.23, -.03, 55

ACT. BW: 81 ADJ WW: 536 ADJ YW: 953 ADJ REA: 12.48 ADJ IMF: 3.06

Al'd 4/20/19 to MAGS Aviator. PE'd 5/1/19 - 7/20/19 to SHSK Empire 701E. Safe, due approx. 2/20/20.

53

CELL FAWN 8065F

PB(87/77.4)

2/16/2018 // CELL 8065F // DBL BLK // HOMO PLD (P-1) // NPF2149122 // COW AHCC WESTWIND W544 AHCC BARN BURNER B907 LVLS 9066U LH RODEMASTER 338R ALE XENDER 516X LH TENDER MERCY 567T

Table with 13 columns: CE, BW, WW, YW, MA, CM, SC, DC, CW, RE, YG, MS, \$MI. Values: 9, 2.1, 72, 115, 19, 5, 0.8, 10, 34, 1.06, -.62, -.40, 42

ACT. BW: 60 ADJ WW: 503 ADJ YW: 811 ADJ REA: 13.34 ADJ IMF: 2.91

Al'd 4/20/19 to COLE Cadillac. Safe, due approx. 2/1/20. PE'd 5/1/19 - 7/20/19 to TNGC Devotion 643D.

48

CELL FABLE 8021F

LIM-FLEX(53/44.9)

2/1/2018 // CELL 8021F // BLACK // DBL PLD // LFF2148554 // COW LSF SAGA 1040Y AHCC COWBOY KIND C595 ET AHCC DAKOTA LUVLY R595 MAGS XYLOID AUTO MISTY 251Z SBLX UNNA 391U

Table with 13 columns: CE, BW, WW, YW, MA, CM, SC, DC, CW, RE, YG, MS, \$MI. Values: 12, -0.5, 68, 106, 26, 8, 1.5, 10, 40, .38, -.14, -.06, 50

ACT. BW: 60 ADJ WW: 510 ADJ YW: 874 ADJ REA: 9.44 ADJ IMF: 3.60

Al'd 4/20/19 to MAGS Aviator. Safe, due approx. 2/1/20. PE'd 5/1/19 - 7/20/19 to CELL Denali 6405D.

50

CELL FARREN 8032F

LIM-FLEX(50/44.9)

2/5/2018 // CELL 8032F // RED // DBL PLD // LFF2148559 // COW LSF SAGA 1040Y AHCC COWBOY KIND C595 ET AHCC DAKOTA LUVLY R595 LJC MISSION STATEMENT P27 MAGS YOLK MAGS MARQUEE

Table with 13 columns: CE, BW, WW, YW, MA, CM, SC, DC, CW, RE, YG, MS, \$MI. Values: 6, 2.5, 77, 119, 23, 5, 1.6, 9, 39, .80, -.33, -.16, 50

ACT. BW: 80 ADJ WW: 553 ADJ YW: 938 ADJ REA: 12.42 ADJ IMF: 2.65

Al'd 4/20/19 to MAGS Aviator. Safe, due approx. 2/1/20. PE'd 5/1/19 - 7/20/19 to CELL Denali 6405D.

52

KQLL FAIRY 8057F

LIM-FLEX(46/41.8)

2/12/2018 // KQLL 8057F // HOMO BLK (P-3) // DBL PLD // LFF2149098 // COW S A V HARVESTOR 0338 S A V BEST BET 456B ET ELCX TWILIGHT 114X EF XCESSIVE FORCE MAGS CALMHEARTED MAGS WHOLEHEARTED

Table with 13 columns: CE, BW, WW, YW, MA, CM, SC, DC, CW, RE, YG, MS, \$MI. Values: 13, 0.1, 68, 105, 20, 8, 1.3, 10, 33, .48, -.11, .23, 60

ACT. BW: 72 ADJ WW: 504 ADJ YW: 771 ADJ REA: 11.66 ADJ IMF: 2.26

Al'd 4/20/19 to MAGS Y-Axis. PE'd 5/1/19 - 7/20/19 to TNGC Devotion 643D. Safe, due approx. 2/20/20.

54

CELL FEDORA 8258F ET

LIM-FLEX(50/44.3)

3/4/2018 // CELL 8258F // HOMO BLK (P-3) // HOMO PLD (P-3) // LFF2152361 // COW CONNEALY CONSENSUS 7229 MAGS ALI MAGS YOKO MAGS XYLOID MAGS ACCLAIM MAGS THORA

Table with 13 columns: CE, BW, WW, YW, MA, CM, SC, DC, CW, RE, YG, MS, \$MI. Values: 9, 2.1, 73, 114, 17, 4, 1.7, 15, 35, .37, -.10, .20, 60

ACT. BW: 72 ADJ WW: 514 ADJ YW: 794 ADJ REA: 12.46 ADJ IMF: 4.95

Al'd 4/20/19 to MAGS Y-Axis. PE'd 5/1/19 - 7/20/19 to SHSK Empire 701E. Safe, due approx. 4/1/20.



55

CELL FERN 8107F

LIM-FLEX(50/44.6)

3/5/2018 // CELL 8107F // BLACK // DBL PLD // LFF2149705 // COW
LSF SAGA 1040Y
AHCC COWBOY KIND C595 ET
AHCC DAKOTA LUVLY R595
LVLS 3202U
LVLS YAZMIN 668Y
CJLM ROXANNE 668W
DBL BECKTON EPIC R397 K
LSF MINOLA T7172 W9041
AUTO BLACK DAKOTA 129J
EXLR 794H
BON VIEW NEW DESIGN 1407
LVLS 9202S
MAGS SCOTLAND
MAGS ROAD HOME

Table with 13 columns: CE, BW, WW, YW, MA, CM, SC, DC, CW, RE, YG, MS, \$MI. Row 1: 9, 0.9, 69, 105, 30, 7, 1.5, 9, 25, .58, -.27, -.09, 50.

ACT. BW: 70 ADJ WW: 575 ADJ YW: 847 ADJ REA: 12.68 ADJ IMF: 2.62

AI'd 4/20/19 to MAGS Aviator. Safe, due approx. 2/1/20.
PE'd 5/1/19 - 7/20/19 to SHSK Empire 701E.

57

CELL FLORIDA 8290F ET

LIM-FLEX(62/54.3)

3/6/2018 // CELL 8290F // HOMO BLK (P-1) // HET PLD (T) // LFF2152363 // COW
AHCC WESTWIND W544
AHCC BARN BURNER B907
LVLS 9066U
RITO 112 OF 2536 RITO 616
MAGS UBEDA
AUTO MS NEW DESIGN 827P
KAJO RESPONDER 120R
AHCC MISS WULF HUNT R544
LVLS FARMER JOHN 7428P
LVLS9066R
RITO 616 OF 4820 6807
G A R PRECISION 2536
EXAR NEW DESIGN 227
AUTO MARLEE 225M

Table with 13 columns: CE, BW, WW, YW, MA, CM, SC, DC, CW, RE, YG, MS, \$MI. Row 1: 7, 1.7, 69, 111, 19, 4, 0.6, 12, 38, .44, -.19, -.06, 50.

ACT. BW: 89 ADJ WW: 631 ADJ YW: 892 ADJ REA: 12.7 ADJ IMF: 2.92

AI'd 4/20/19 to Musgrave Headway. PE'd 5/1/19 - 7/20/19 to
SHSK Empire 701E. Safe, due approx. 3/10/20.

59

CELL FORTUNE 8267F ET

LIM-FLEX(37/33.3)

3/11/2018 // CELL 8267F // HOMOBLK (P-2) // HOMOPLD (P-2) // LFF2152366 // COW
S A V BRILLIANCE 8077
PVF INSIGHT 0129
PVF MISSIE 790
DHVO DEUCE 132R
AUTO LUCKIE 815X
AUTO NOELLE 247U
S A V BISMARCK 5682
S A V BLACKCAP MAY 5270
P V F NEW HORIZON 001
P V F MISS RAPTOR 024
GPFF BLAQUE RULON
AMY JO DHAN 20L
G A R PREDESTINED
MAGS NIGHT AMBUSH

Table with 13 columns: CE, BW, WW, YW, MA, CM, SC, DC, CW, RE, YG, MS, \$MI. Row 1: 9, 2.1, 78, 120, 21, 5, 1.8, 13, 54, 1.20, -.28, .06, 58.

ACT. BW: 95 ADJ WW: 643 ADJ YW: 996 ADJ REA: 10.7 ADJ IMF: 3.40

AI'd 4/20/19 to MAGS Aviator. PE'd 5/1/19 - 7/20/19 to
CELL Denali 6405D. Safe, due approx. 4/15/20.

61

CELL FAITH 8140F

LIM-FLEX(43/39.2)

3/26/2018 // CELL 8140F // HOMOBLK (P-3) // HOMOPLD (P-2) // LFF2149720 // COW
SCHIEFELBEIN ALLIED 514
MUSGRAVE HEADWAY
MUSGRAVE LADY BARBARA 524-57
AHCC WESTWIND W544
JDUB YOUR SO GOOD
MAGS UTTERLY GOOD
PLATTEMERE WEIGH UP K360
FROSTY ELBA 5152
MUSGRAVE INVISON
MCATL LADY BARBARA 57-715
KAJO RESPONDER 120R
AHCC MISS WULF HUNT R544
KRVN RODESTER 278R
MAGS SHERBET

Table with 13 columns: CE, BW, WW, YW, MA, CM, SC, DC, CW, RE, YG, MS, \$MI. Row 1: 13, 0.9, 79, 127, 22, 10, 0.7, 9, 41, .46, -.12, .21, 63.

ACT. BW: 80 ADJ WW: 623 ADJ YW: 981 ADJ REA: 12.9 ADJ IMF: 3.08

AI'd 4/20/19 to MAGS Aviator. Safe, due approx. 2/1/20.
PE'd 5/1/19 - 7/20/19 to CELL Denali 6405D.

56

CELL FIFI 8260F ET

LIM-FLEX(50/41.9)

3/6/2018 // CELL 8260F // BLACK // HET PLD (T) // LFF2152369 // COW
LJC MISSION STATEMENT P27
SILVEIRAS MISSION NEXUS 1378
SILVEIRAS DAORV 8399
AUTO CRUZE 132X
AUTO POPPY 421Z
MAGS MANUELA
LJC LANCER 806
LJC HANNAH 106
TROTTERS ROMEO 412
MOORE'S DAORV 5365
MAGS THE GENERAL
AUTO REBECA 292S
EXLR LIMITED EDITION 765J
AUTO CITY NIGHTS 214H

Table with 13 columns: CE, BW, WW, YW, MA, CM, SC, DC, CW, RE, YG, MS, \$MI. Row 1: 12, -0.2, 68, 110, 22, 7, 1.3, 13, 34, .71, -.29, .06, 55.

ACT. BW: 78 ADJ WW: 567 ADJ YW: 877 ADJ REA: 10.5 ADJ IMF: 3.78

AI'd 4/20/19 to Musgrave Headway. Safe, due approx. 2/1/20.
PE'd 5/1/19 - 7/20/19 to TNGC Devotion 643D.

58

CELL FRANCE 8277F ET

LIM-FLEX(37/33.5)

3/8/2018 // CELL 8277F // HOMO BLK (P-1) // HET PLD (T) // LFF2152352 // COW
S A V BRILLIANCE 8077
PVF INSIGHT 0129
PVF MISSIE 790
DHVO DEUCE 132R
MAGS XANTHOCOMIC
MAGS SUGAR N SPICE
S A V BISMARCK 5682
S A V BLACKCAP MAY 5270
P V F NEW HORIZON 001
P V F MISS RAPTOR 024
GPFF BLAQUE RULON
AMY JO DHAN 20L
BR MIDLAND
MAGS MARQUEE

Table with 13 columns: CE, BW, WW, YW, MA, CM, SC, DC, CW, RE, YG, MS, \$MI. Row 1: 11, 1.0, 68, 102, 22, 7, 1.7, 12, 42, 1.12, -.24, .01, 53.

ACT. BW: 70 ADJ WW: 551 ADJ YW: 808 ADJ REA: 11.14 ADJ IMF: 2.8

AI'd 4/20/19 to MAGS Aviator. PE'd 5/1/19 - 7/20/19 to
CELL Denali 6405D. Safe, due approx. 4/20/20.

60

CELL FRAN 8245F ET

LIM-FLEX(50/44.6)

3/13/2018 // CELL 8245F // HOMOBLK (P-2) // HOMOPLD (T) // LFF2152633 // COW
D A TRAVELER 004 703
EF XCESSIVE FORCE
CFLX MOLLYS IMAGE
SENNETT POWER RANGER 707T
SENNETT WHISPER 919W
SENNETT BLACKCAP 705T
S A V 8180 TRAVELER 004
ROSEWOOD ERICA 5010
DHVO DEUCE 132R
JCL PEPPERMINT
CARROUSELS PURE POWER
BLACKBIRD OF R R 7694
CARROUSELS PURE POWER
SENNETT BLACKCAP 412P

Table with 13 columns: CE, BW, WW, YW, MA, CM, SC, DC, CW, RE, YG, MS, \$MI. Row 1: 10, -0.2, 58, 88, 17, 7, 1.3, 8, 25, .55, -.20, .08, 52.

ACT. BW: 83 ADJ WW: 532 ADJ YW: 811 ADJ REA: 11.14 ADJ IMF: 3.04

AI'd 4/20/19 to MAGS Y-Axis. PE'd 5/1/19 - 7/20/19 to
SHSK Empire 701E. Safe, due approx. 3/10/20.

62

CELL FUTURE 8155F

LIM-FLEX(50/44.4)

4/1/2018 // CELL 8155F // DBL BLK // DBL PLD // LFF2149730 // COW
SCHIEFELBEIN ALLIED 514
MUSGRAVE HEADWAY
MUSGRAVE LADY BARBARA 524-57
COLE MONTANA SKY 36M
EXLR MOLLY 605R
EXLR MOLLY 4139J
PLATTEMERE WEIGH UP K360
FROSTY ELBA 5152
MUSGRAVE INVISON
MCATL LADY BARBARA 57-715
ANDERS JAG
COLE 87G
EXLR DAKOTA 353G
EXLR MOLLY 343G

Table with 13 columns: CE, BW, WW, YW, MA, CM, SC, DC, CW, RE, YG, MS, \$MI. Row 1: 16, -2.3, 53, 82, 27, 12, 0.5, 5, 23, .34, -.20, .24, 56.

ACT. BW: 62 ADJ WW: 513 ADJ YW: 857 ADJ REA: 11.12 ADJ IMF: 4.75

AI'd 4/20/19 to MAGS Y-Axis. PE'd 5/1/19 - 7/20/19 to
TNGC Devotion 643D. Safe, due approx. 2/20/20.

# Fall Pairs

## LOTS 63-73

64

### JULF MISS BELLA 16B

LIM-FLEX(50/45.2)

2/14/2014 // JULF 16B // DBL BLK // HOMO PLD (P-1) // LFF2068795 // COW

G A R GRID MAKER  
**SA V BISMARCK 5682**  
 S A V ABIGALE 0451  
 MAGS RADCLIFF  
**CJSL URSA MAJOR 8067U**  
 DFLC BPC 7P  
 GDAR TRAVELER 044  
 G A R PRECISION 2536  
 SCHOENES FIX IT 826  
 S A V ABIGALE 6062  
 EF MAIN STAY 541M  
 MAGS DANIELLE 528L  
 IBRR BLACK SHADOW  
 DFLC BHC 14M

CE	BW	WW	YW	MA	CM	SC	DC	CW	RE	YG	MS	\$MI
12	1.3	62	92	24	8	1.1	12	12	.90	-.45	-.17	46

ACT. BW: 93 ADJ WW: 587 ADJ YW: 973 ADJ REA: 14.48 ADJ IMF: 2.84

Calved 9/7/19 Heifer - CELL 9487G, black, polled, 81 lb.

Sire: Musgrave Headway

66

### MAGS ALWAYS A CLUE

LIM-FLEX(46/41.5)

9/1/2013 // MAGS624A // HOMOBLK(P-2) // HOMOPLD(P-3) // LFF2049102 // COW

TC ABERDEEN 759  
**MAGS Y-AXIS**  
 MAGS UAHUKA  
 MAGS WHITCOMB  
**MAGS YOU HAVE NO CLUE**  
 MAGS WITHOUT A CLUE  
 C R A BEXTOR 872 5205 608  
 TC BLACKBIRD 4034  
 DHVO DEUCE 132R  
 CARROUSELS PINA COLADA  
 BT CROSSOVER 758N  
 EXLR 199H  
 BALDRIDGE RANGERIDER R827  
 MAGS KLUELESS

CE	BW	WW	YW	MA	CM	SC	DC	CW	RE	YG	MS	\$MI
12	1.6	71	112	24	7	1.0	16	39	.84	-.28	-.02	53

ACT. BW: 82 ADJ WW: 832 ADJ YW: 1078 ADJ REA: 11.06 ADJ IMF: 2.65

Calved 9/4/19 Bull - CELL 9462G, black, polled, 76 lb.

Sire: CJSL Creed

68

### MAGS ZIPPY

LIM-FLEX(56/50.4)

10/22/2012 // MAGS182Z // HOMOBLK(P-2) // HOMOPLD(P-2) // LFF2030866 // COW

BT CROSSOVER 758N  
**MAGS WHITCOMB**  
 EXLR 199H  
 DHVO DEUCE 132R  
**MAGS WHIPPY**  
 MAGS SKIPPY  
 C A FUTURE DIRECTION 5321  
 BT ROYAL PRIDE 237G  
 WULFS FANFARE 4055F  
 EXLR 558F  
 GPFF BLAQUE RULON  
 AMY JO DHAN 20L  
 EF MAIN STAY 541M  
 PRECISION PET 3 OF RWR

CE	BW	WW	YW	MA	CM	SC	DC	CW	RE	YG	MS	\$MI
13	-.03	56	83	24	6	0.8	12	12	.74	-.41	.01	51

ACT. BW: 68 ADJ WW: 663 ADJ YW: 933 ADJ REA: 13.02 ADJ IMF: 2.64

Calved 9/13/19 Heifer - CELL 9516G, black, polled, 81 lb.

Sire: TNGC Devotion 643D

63

### TMCK BLACK BETTY 143B

PERCENT(81/72)

3/20/2014 // TMCK143B // HOMOBLK(P-1) // HETPLD(T) // NXF2053262 // COW

MAGS WINSTON  
**MAGS Y SO TANGLED**  
 MAGS UNTANGLE  
 AUTO DOLLAR GENERAL 122R  
**MCBN TRANQUILLITY BROWN**  
 CARROUSELS PINA COLADA  
 BT CROSSOVER 758N  
 MAGS STRAWBERRY  
 MAGS SASQUATCH  
 AUTO COOKIE CUTTER 295R  
 LVLS SECRET WEAPON 4408K  
 AUTO KYRIA 232K  
 AUTO BLACK DAKOTA 129J  
 ELMW GINNIE P58G

CE	BW	WW	YW	MA	CM	SC	DC	CW	RE	YG	MS	\$MI
14	-.02	56	86	28	8	0.3	14	28	.67	-.34	-.01	49

ACT. BW: 72 ADJ WW: 451 ADJ YW: 838 ADJ REA: 11.58 ADJ IMF: 3.51

Calved 9/3/19 Heifer - CELL 9452G, a 9/3/19 black, polled, 68 lb.

Sire: Musgrave Headway

65

### MAGS ANY MAIDEN

LIM-FLEX(62/56.8)

9/21/2013 // MAGS 601A // HOMOBLK(P-2) // HETPLD(T) // LFF2049100 // COW

BT CROSSOVER 758N  
**MAGS WHITCOMB**  
 EXLR 199H  
 MAGS LANDMARK  
**MCC POLLED MAIDEN 83Y**  
 MAGS SALMETTO  
 C A FUTURE DIRECTION 5321  
 BT ROYAL PRIDE 237G  
 WULFS FANFARE 4055F  
 EXLR 558F  
 WULFS TITUS 2149T  
 MAGS SHARI  
 TNUH BLUE PRINT 245H  
 MAGS PALMETTO

CE	BW	WW	YW	MA	CM	SC	DC	CW	RE	YG	MS	\$MI
11	2.4	56	83	26	6	0.7	8	15	.71	-.43	.01	51

ACT. BW: 82 ADJ WW: 713 ADJ YW: 894 ADJ REA: 10.16 ADJ IMF: 4.05

Calved 8/28/19 Bull - CELL 9422G, black, polled, 70 lb.

Sire: TNGC Devotion 643D

67

### MAGS ZAHOO

PERCENT(37/33.6)

11/18/2012 // MAGS236Z // HOMOBLK(T) // HOMOPLD(T) // NXF2028445 // COW

SAV FINAL ANSWER 0035  
**TNT TRUE GRIT X254**  
 TNT MISS U32  
 DHVO DEUCE 132R  
**MAGS WAHOO**  
 BOHI RED ROBIN 282R  
 SITZ TRAVELER 8180  
 SAV EMULOUS 8145  
 MYTTY IN FOCUS  
 TNT MISS S93  
 GPFF BLAQUE RULON  
 AMY JO DHAN 20L  
 CONNEALY LEAD ON  
 MAGS MANUELA

CE	BW	WW	YW	MA	CM	SC	DC	CW	RE	YG	MS	\$MI
12	0.1	63	99	29	8	1.9	13	27	.52	-.18	.37	64

ACT. BW: 68 ADJ WW: 627 ADJ YW: 1011 ADJ REA: 11.26 ADJ IMF: 5.66

Calved 10/4/19 Heifer - CELL 9565G, black, polled, 60 lb.

Sire: TNGC Devotion 643D

69

### MAGS ZIPLINE

LIM-FLEX(75/67.4)

9/13/2012 // MAGS 164Z // HOMOBLK(T) // HETPLD(T) // LFF2027643 // COW

DHVO DEUCE 132R  
**MAGS XYLOID**  
 BOHI RHONDA 314R  
 MAGS SASQUATCH  
**MAGS WEALTHY**  
 MAGS SNICKERS  
 GPFF BLAQUE RULON  
 AMY JO DHAN 20L  
 EXLR NEW GENERATION 071M  
 DAVIS ROSETTA 9514  
 EXLR NEW GENERATION 071M  
 MAGS FRUITFUL 487M  
 BR MIDLAND  
 MAGS LADY ACE

CE	BW	WW	YW	MA	CM	SC	DC	CW	RE	YG	MS	\$MI
11	1.3	45	71	16	6	0.8	14	14	.41	-.31	.05	48

ACT. BW: 82 ADJ WW: 637 ADJ YW: 935 ADJ REA: 10.54 ADJ IMF: 4.53

Calved 10/3/19 Heifer - CELL 9563G, black, polled, 67 lb.

Sire: TNGC Devotion 643D

70

MAGS ZESTY BERRIES

LIM-FLEX(50/45)

9/6/2012 // MAGS107Z // HOMO BLK (P-2) // HET PLD (T) // LFF2027660 // COW
DHVO DEUCE 132R
MAGS XYLOID
BOHI RHONDA 314R
BALDRIDGE RANGERIDER R827
MAGS WILD BERRIES
BOHI RASBERRY 289R
GPFF BLAQUE RULON
AMY JO DHAN 20L
EXLR NEW GENERATION 071M
DAVIS ROSETTA 9514
BR MIDLAND
BALDRIDGE FOREVER LADY N4
TNUH BLUE PRINT 245H
EXAR LASS 2454

Table with columns: CE, BW, WW, YW, MA, CM, SC, DC, CW, RE, YG, MS, \$MI. Values: 11, 2.0, 64, 99, 19, 6, 1.2, 14, 23, .49, -.17, .37, 64. ACT. BW: 88, ADJ WW: 754, ADJ YW: 1095, ADJ REA: 12.3, ADJ IMF: 5.8

Calved 10/3/19 Bull - CELL 9562G, black, polled, 88 lb. Sire: CJSL Creed

71

MAGS ZEBA

LIM-FLEX(50/43.6)

9/1/2012 // MAGS9044Z // HET BLK (T) // HOMO PLD (T) // LFF2026070 // COW
G A R GRID MAKER
S A V BISMARCK 5682
S A V ABIGALE 0451
AUTO BLACK DAKOTA 129J
MAGS NATASHA
MAGS JULIET
GDAR TRAVELER 044
G A R PRECISION 2536
SCHOENES FIX IT 826
S A V ABIGALE 6062
EXLR DAKOTA 353G
DFLC JET SET BPC 34Y
CHAZ FIRST CHOICE 6004F
SLVL SABLE COOKIE 381E

Table with columns: CE, BW, WW, YW, MA, CM, SC, DC, CW, RE, YG, MS, \$MI. Values: 13, 1.7, 75, 113, 8, 9, 1.1, 12, 29, .58, -.24, -.06, 53. ACT. BW: 78, ADJ WW: 873, ADJ YW: 1243, ADJ REA: 12.1, ADJ IMF: 5.07

Due to calve by sale day.

72

LVLS ZABEL 9078Z

PB(87/72.8)

1/1/2012 // LVLS 9078Z // BLACK // DBL PLD // NPF2012549 // COW
COLE WULF HUNT
LVLS TOP CRITERIA 8862P
LVLS8862M
LVLS FARMER JOHN 7428P
LVLS MISS JOHN 9078X
LVLS 9077S
COLE FIRST DOWN 46D
COLE CATALINA 3309C
WZRK BIG KAHUNA 8046K
LVLS 3862G
LVLS FARMER JACK 5842M
LVLS7428L
LVLS 842L
KG EILEEN 3940

Table with columns: CE, BW, WW, YW, MA, CM, SC, DC, CW, RE, YG, MS, \$MI. Values: 10, 0.7, 66, 100, 21, 6, --A, 10, 21, .96, -.56, -.15, 49. ACT. BW: 76, ADJ WW: 589, ADJ YW: --, ADJ REA: --, ADJ IMF: --

Calved 8/30/19 Heifer - CELL 9426G, black, polled, 72 lb. Sire: TNGC Devotion 643D

73

MAGS YORKE

LIM-FLEX(62/56.8)

10/16/2011 // MAGS8819Y // HET BLK (T) // HOMO PLD (T) // LFF2006055 // COW
BT CROSSOVER 758N
MAGS WINSTON
MAGS STRAWBERRY
WULFS FANFARE 4055F
EXLR 199H
EXLR 558F
C A FUTURE DIRECTION 5321
BT ROYAL PRIDE 237G
EXLR NEW GENERATION 071M
MAGS FRUITFUL 487M
TOMAHAWKS BLACK FRONTIER
WULFS DELTA DAWN 4055D
WULFS CHANCELLOR 0210C
PINE DRIVE DUCHESS 1381

Table with columns: CE, BW, WW, YW, MA, CM, SC, DC, CW, RE, YG, MS, \$MI. Values: 12, 0.7, 61, 94, 30, 6, 0.4, 13, 36, .59, -.32, .04, 52. ACT. BW: 86, ADJ WW: 746, ADJ YW: 1056, ADJ REA: 11.4, ADJ IMF: 4.35

Calved 9/11/19 Heifer - CELL 9509G, black, polled, 65 lb. Sire: TNGC Devotion 643D

Affordable Success

We would like to take the time to reinforce to our fellow breeders and valued junior show families the opportunity of affordable success that can be found in our sale pens. Over the past several years, we have been extremely fortunate to have sold many females in EVERY price bracket below that have gone on to win championship banners at the local, regional and national levels. To illustrate our 'affordable success' mantra take a look at our historically price break averages. Folks, make no mistake November 4 there will be several high quality females at various price ranges to suit your budget.

LINHART LIMOUSIN HISTORICAL PRICE BREAKS 2013 - 2018

201 TOTAL OPEN HEIFERS SOLD

- 13% . . . . . \$10,000 & Above
21% . . . . . \$5,000-\$9,999
41% . . . . . \$3,000-\$4,999
25% . . . . . \$2,500-\$2,999

172 TOTAL BRED HEIFERS SOLD

- 7% . . . . . \$10,000 & Above
11% . . . . . \$5,000-\$9,999
61% . . . . . \$3,000-\$4,999
21% . . . . . \$2,500-\$2,999

# Reference Sires

The importance of quality herd bulls, be it in a commercial or seedstock operation, cannot be stressed enough. Herd bull decisions made today influence your program, either positively or negatively, for years to come through daughters retained in the herd. At Linhart Limousin we have always believed in having the absolute best bull power available in the industry. As such, we have invested heavily over the years to ensure only the best sires walk behind our progressive A.I. and embryo program.



## LIM-FLEX SIRES

BULL NAME	SIRE	DAM	CE	BW	WW	YW	MA	CM	SC	DC	CW	RE	YG	MS	\$MI
AHCC COWBOY KIND C595 ET	LSF SAGA 1040Y	AHCC DAKOTA LUVLY R595	5	3.1	88	137	25	4	1.7	5	47	.80	-.28	-.23	51
CELL DENALI 6405D	EBFL YPSILANTI 420Y	MAGS ANNIE	11	0.5	68	107	20	6	1.5	12	43	.62	-.14	.34	64
CELL ENVISION 7023E	AHCC BARN BURNER B907	PBR5 ZSA ZSA 246Z	6	3.8	84	138	20	3	1.3	18	43	1.20	-.52	-.31	48
CJSL CREED 5042C	MAGS AVIATOR	CJSL 2090Z	17	0.0	72	117	16	10	0.4	12	30	.90	-.19	.46	70
CJSL DATA BANK 6124D	MAGS ANCHOR	AUTO CARMINDA 656S	12	0.6	74	115	12	6	0.4	14	20	.67	-.43	-.08	53
CJSL DAUNTLESS 6257D	MAGS ZODIAC	LLJB ABSOLUTE STYLE 3056A	13	0.9	76	121	13	8	0.9	12	37	.56	-.20	.02	55
COLE ABSOLUTE 05A	AHCC XPENSE ACCOUNT X516	COLE MISS TRAVELER 029X	4	4.0	89	155	25	-2	1.3	8	32	1.13	-.42	-.13	56
EF XCESSIVE FORCE	D A TRAVELER 004 703	CFLX MOLLYS IMAGE	13	-2.3	58	86	10	10	2.0	11	27	.17	.01	.07	50
MAGS ALI	CONNELY CONSENSUS 7229	MAGS YOKO	9	3.6	95	146	13	4	2.8	17	47	.41	-.04	.20	67
MAGS AVIATOR	MAGS WINSTON	MAGS XTRA REST	16	-0.6	63	100	10	11	-0.1	16	36	.80	-.19	.12	55
MAGS CABLE	MAGS APPLESEED	MAGS ZEQUIN	15	0.9	77	120	15	9	1.5	14	52	.90	-.19	.38	69
MAGS CHARLTON	MAGS ZAPPO	MAGS ZASHA	11	2.5	70	112	24	6	1.0	15	30	.54	-.11	.32	64
MAGS DODGEBALL	MAGS Y-AXIS	MAGS BATH HOUSE	15	-1.9	55	90	29	9	0.8	16	21	.75	-.37	.04	51
MAGS WHITCOMB	BT CROSSOVER 758N	EXLR 199H	12	1.5	58	90	28	5	0.8	14	26	.62	-.27	.14	55
MAGS WINSTON	BT CROSSOVER 758N	MAGS STRAWBERRY	14	-0.6	65	110	26	7	-0.1	15	56	.73	-.16	.29	62
MAGS XYLOID	DHVO DEUCE 132R	BOHI RHONDA 314R	9	2.4	57	91	22	5	0.7	18	21	.51	-.29	-.08	47
MAGS Y SO TANGLED	MAGS WINSTON	MAGS UNTANGLE	11	0.6	54	86	29	5	0.1	17	29	.53	-.25	.20	56
MAGS Y-AXIS	TC ABERDEEN 759	MAGS UAHUKA	14	-0.7	67	110	26	9	1.3	19	25	.91	-.40	-.11	50
PBR5 BUNK HOUSE 48B	MAGS YIP	LBAF SHAWNEE 602	9	2.7	78	130	21	6	1.1	13	50	.45	-.14	.17	61
RIVERSTONE CROWN ROYAL	TMCK DURHAM WHEAT 6030X	HSF YOUR FANTASY	11	1.3	50	71	23	7	1.1	12	-8	.63	-.54	-.48	32
RLBH AIR FORCE ONE	EF XCESSIVE FORCE	EF YAFFA 821Y	10	-1.2	52	80	15	8	1.1	18	37	.45	-.11	.30	58
SHSK EMPIRE 701E ET	PVF INSIGHT 0129	WLR PRADA	12	0.6	62	96	23	6	0.9	10	33	1.20	-.42	.00	52
SSTO BEST BET 456B ET	S A V HARVESTOR 0338	ELCX TWILIGHT 114X	13	1.5	76	121	21	7	1.1	12	40	.43	-.03	.40	68
TMCK CHAVEZ 245C	MAGS XUKALANI	MAGS YOKO	16	0.1	75	111	22	11	1.9	14	36	.69	-.26	.09	58
TMCK HYDRAULIC 17Y	S A V PIONEER 7301	HSF WALL OF FAME	9	3.0	84	135	20	5	0.6	12	45	.79	-.17	.09	60
TNGC DEVOTION 643D	ELMW XPEDIENT 4X	MAGS BLUEBELL ET	13	-0.9	74	116	12	6	1.3	15	35	.50	-.06	.32	65

## LIMOUSIN SIRES

BULL NAME	SIRE	DAM	CE	BW	WW	YW	MA	CM	SC	DC	CW	RE	YG	MS	\$MI
AHCC BARN BURNER B907	AHCC WESTWIND W544	LVL5 9066U	7	2.4	77	128	14	3	0.8	13	58	.90	-.46	-.44	41
COLE CADILLAC 05C	ROMN TUFF ENUFF 103T	COLE MISS XRATED 354A	16	-1.6	65	91	22	11	-0.4	10	7	.91	-.59	-.36	41
LVL5 TOP CRITERIA 8862P	COLE WULF HUNT	LVL58862M	12	0.8	70	103	18	6	-0.7	12	13	1.45	-.82	-.31	47

## ANGUS SIRES

BULL NAME	SIRE	DAM	CE	BW	WW	YW	MA	CM	SC	DC	CW	RE	YG	MS	\$MI
COLBURN INSPIRE 6116	EXAR CLASSEN 1422B	SILVEIRAS SARAS DREAM 1339	9	2.4	76	116	17	8	0.8	11	36	.28	.15	.76	79
COLBURN PRIMO 5153	DAMERON FIRST CLASS	SILVEIRAS SARAS DREAM 1339	12	1.3	67	100	13	10	0.7	10	22	.15	.15	.51	67
MUSGRAVE HEADWAY	SCHIEFELBEIN ALLIED 514	MUSGRAVE LADY BARBARA 524-57	17	-1.0	84	137	31	15	0.9	8	52	.01	.27	.96	88
MUSGRAVE SKY HIGH 1535	MUSGRAVE BIG SKY	FLAG QUEEN W 00649	15	-0.4	74	123	22	9		14	46	.57	.16	.74	78
PVF INSIGHT 0129	S A V BRILLIANCE 8077	PVF MISSIE 790	12	0.0	76	122	23	6	1.7	14	72	1.42	-.10	.20	61
S A V BISMARCK 5682	G A R GRID MAKER	S A V ABIGALE 0451	17	-2.1	67	103	22	11	1.8	12	25	.33	.09	.40	64
S A V THUNDERBIRD 9061	SAV FINAL ANSWER 0035	S A V EMBLYNETTE 7411	15	-2.3	79	126	21	9	1.7	13	46	.18	.26	.51	71
SILVEIRAS MISSION NEXUS 1378	LJC MISSION STATEMENT P27	SILVEIRAS DAORV 8399	15	-2.8	69	117	20	8	2.1	17	33	.38	-.02	.36	64
TNT TRUE GRIT X254	SAV FINAL ANSWER 0035	TNT MISS U32	16	-2.9	65	99	23	10	2.3	13	9	.25	-.05	.56	70



# Thank You

We appreciate your support and interest in our breeding program. We take the people side of the business very seriously and never for granted, that's why producing a quality product and making sure our customers are satisfied has always been a top priority. Simply put, your attendance and participation in our sale event has humbled us, and we wish you many successes with your purchases.

*Thank you for taking time to view the catalog and allowing us the opportunity to earn your business.*

**MAKE PLANS TO ATTEND**  
**LINHART LIMOUSIN ANNUAL BULL SALE**  
**SATURDAY, MARCH 7, 2020**  
 At the Linhart Sale Facility • Leon, Iowa  
 Offering 75 Registered Limousin & Lim-Flex Bulls  
*Watch our website and upcoming ads for details*

## Sale Averages

NUMBER OF LOTS		TOTAL	AVERAGE
_____	Open Heifers	_____	_____
_____	Steers	_____	_____
_____	Spring Breds	_____	_____
_____	Cows/Pairs	_____	_____
_____	<b>GROSS</b>	_____	_____





MC Marketing Management  
648 West Sawgrass Trail  
Dakota Dunes, South Dakota 57049

Catalog Design by:



LINHART LIMOUSIN

# Fall Harvest

PRODUCTION SALE

**NOVEMBER 3, 2019**

SUNDAY • 1 PM CST • LEON, IOWA

Offering 73 lots of  
Elite Open Show Heifers,  
Show Steers, Bred Heifers,  
and Fall Pairs