

JOSEPH DECUIS

*Toast*  
TO A

*Wagyu*

CELEBRATION  
SALE II

*Browny*  
©

08.10.2022

4:00 p.m. - 7:00 p.m. C.S.T. | [www.Wagyu365.com](http://www.Wagyu365.com)

# SALE TERMS

## TERMS AND CONDITIONS

Cattle will sell under standard terms and conditions.

## RACEHORSE ENDING

This sale will close with extended bidding, racehorse style. All lots will close at the same time. (Buy now lots do not reset the clock - only lots with live bids.) Beginning at 7 pm CST, any time a bid is received the clock will reset on all lots for 5 minutes. This will continue until there are no bids on any lot for a full 5 minutes and the clock runs down to zero to close the sale. If a bid is received very close to the clock closing, lots may say “pending” while the system registers the bid and resets the clock. Lots are not closed until they say “Ended” in red text.

## MAX BIDS

When you place a maximum bid, there is a possibility that another bidder has already placed a higher bid than you. When setting a max bid, please bid the maximum amount you are willing to pay on the lot. If another bidder has submitted a bid or max bid for the same amount, the first bid received at that amount will be the winner (until or unless it is out-bid). The lot will be sold at the lowest price possible based on the competing bids.

## REGISTRATIONS & TRANSFERS

Within 60 days of the date of the sale, the cattle sold will be transferred (registrations) to the new owners through the offices of the American Wagyu Association. The fee is paid for by the seller.

## PAYMENT

All lots must be paid for immediately following the conclusion of the Online Sale unless prior payment arrangements have been made with any representative of Wagyu365. Buyers are welcome to pay by credit card. If so, you will be charged a 3% fee on the total sum of your purchase. Wiring instructions are available, and checks are also accepted.

**All females selling are open and guaranteed to be breeders. All bulls have been semen tested and are ready for service.**

## LIVESTOCK MORTALITY INSURANCE

Any representative of the Wagyu365 team can assist any buyer with insurance regarding their purchases.

## DELIVERY

As soon as the cattle are paid for, buyers may contact Mikayla (260.450.0393) or Hilary (260.416.9608) to organize pick up details with Joseph Decuis directly. If you need assistance with transportation, we recommend Lathrop Livestock Transportation Trucking (847.910.4673). It is the buyer’s responsibility to check any lot they are buying to see if it is domestic or can be shipped out of the U.S.A. Buyer pays all trucking costs.

## GENETIC CONDITIONS

Log onto [www.wagyu.org](http://www.wagyu.org), go to the animal search and results of the genetic testing will be found on the lot selling.

## PAYMENTS

Auction money and proceeds will be conducted under Randall O. Ratliff DBA R & R Marketing, P.O. Box 60097, Nashville, TN 37206. Bond # 7901027402 (U.S. Department of Agriculture, Grain Inspection, Packers and Stockyards Administration Packers and Stockyards Program)

## ADDITIONAL ONLINE SALE TERMS

Any person placing bids on items in this auction agrees to these terms and conditions and understands that, by placing bids, they are entering into a binding contract between themselves and the seller(s) and that they will be held financially responsible for their actions. Wagyu 365, LLC acts only as an agent between buyer and seller and may not be held responsible for any livestock or merchandise. It is to be clearly understood that Wagyu 365, LLC and representatives act only as a means between buyer and seller, and may not be held liable, financially or otherwise, for any failure on the part of the same to fulfill any obligations set forth in this sale or for the truth of any warranties expressed or implied. This catalog offering has been prepared from information provided by the seller(s) and is assumed accurate as presented to Wagyu 365, LLC. The seller (s) guarantee age, pedigree, reproductive status, and any other listed information or media of the animals or genetics selling. Wagyu 365, LLC is not to be held liable outside of the seller (s) guarantee. Any and all agreements or adjustments made are between buyer and seller.

JOSEPH DECUIS

# Toast TO A Wagyu

CELEBRATION

SALE II

08.10.2022

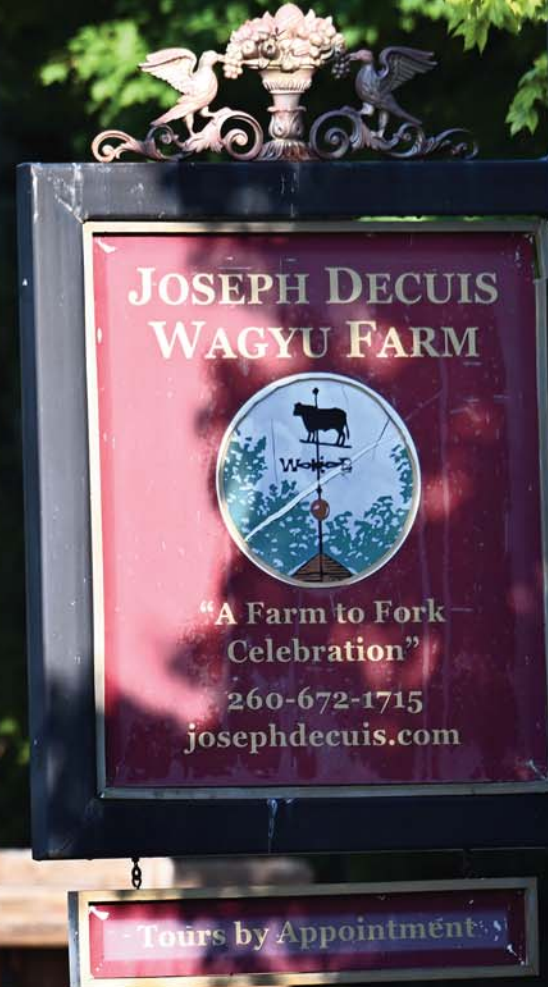
4:00 p.m. - 7:00 p.m. C.S.T.

[www.Wagyu365.com](http://www.Wagyu365.com)

*Only the finest in  
foundation Wagyu genetics!*

*Joseph Decuis*  
Est. 2000

260.672.1715 | [www.josephdecuis.com](http://www.josephdecuis.com)  
Columbia City, Indiana





## WELCOME!

To those who are seeking world class full blood Wagyu genetics to add to, improve or start your herd, we invite you to participate in our sale.

This is our second on-line sale managed by the great team at Wagyu 365. We call it a “boutique sale” because it is all about superior quality. We are offering 22 virgin heifers and eight two-year-old bulls for sale. Their futures are in front of them.

What makes Joseph Decuis Wagyu so special?

- **PROVEN GENETICS.** Our foundation Wagyu genetics are Takeda genetics. For over seventy years, Takeda genetics are proven in Japan and around the world to produce superior quality. Under Mr. Takeda’s mentorship, his legacy of Wagyu excellence continues on Joseph Decuis Farm. A successful track record is an important indicator for future results.

- **PROVEN QUALITY.** We view Wagyu through a unique lens. We are one of the few restaurants in the world that raises its own Wagyu. While many breeders rely heavily on EPD to make decisions which is a great tool, we have a distinct advantage. We see every carcass we produce and have the luxury of tasting it. We make our breeding decisions based on actual results: marbling, tenderness, and taste. The purpose of our herd management and breeding program is to develop consistent superior quality.

- **PROVEN ECONOMIC VALUE.** Our Wagyu, featured in our fine dining restaurant in our small rural community, is the only beef on our menu, and represents 85% of our entrée sales. Our featured menu cuts are priced at \$95 for 5 oz. portions. Our Wagyu’s consistent quality provides consistent premium prices and is in high demand.

- **PROVEN WORLD CLASS.** Our Wagyu has been featured nationally. Its quality attracts attention. Our Joseph Decuis Wagyu has been served at the Capitol Building in Washington DC and at the James Beard House in New York City and our Farm to Fork dinners on the farm, featuring Wagyu, are our most popular farm events. Our Wagyu earned “Grand Champion” two years in a row for the Triple Crown Steak Challenge and most importantly, Wagyu has turned our farm and restaurant into a culinary destination enjoyed by Wagyu enthusiasts worldwide.

If you are looking for full blood Wagyu that are mild mannered, excellent breeders, and have the genetic capacity to create superior marbling, tenderness, and great taste, the Wagyu we are offering in our sale will be a great addition to your herd.

Enjoy our auction! We invite you to visit our farm and restaurant and experience Joseph Decuis Wagyu.

Regards,  
Pete & Alice

*Only the finest in  
foundation Wagyu genetics!*



## WAGYU365 TEAM



**RANDALL O. RATLIFF**  
SALES REPRESENTATIVE  
615.330.2735 | Randy@wagyu365.com



**KILEY MCKINNA**  
SALES REPRESENTATIVE  
402.350.3447 | Kiley@wagyu365.com



**ABBY LANE**  
OFFICE MANAGEMENT  
919.618.8098 | Abby@wagyu365.com



**P.J. BUDLER**  
INTERNATIONAL AFFAIRS  
682.597.0380 | PJ@wagyu365



**AMY SHAW**  
CUSTOMER RELATIONS  
214.554.8223 | Amy@wagyu365.com



@Wagyu365

### CONNECT WITH US

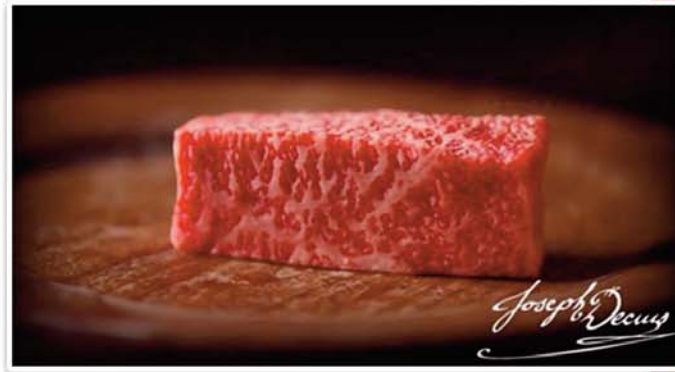
FOLLOW WAGYU365 ON SOCIAL MEDIA ~  
#Wagymarketingatitsfinest #24/7/365Wagyu  
#alldayeverydaywagyu

# JOSEPH DECUIS GENETIC PLATFORM

In 1997, my brother Tim and I met Mr. Takeda at his farm in Japan and we established lifetime relationship. We call Shogo Takeda our Wagyu Mentor. We purchased his genetics, he taught us his husbandry practices and visited our farm in Indiana several times, providing us with counsel and wisdom.

We say that our full blood Wagyu genetics are founded on Takeda genetics. What does this mean? It's complicated because Mr. Takeda took decades to perfect his Wagyu herd in Japan. His gift was having a "sixth sense" for excellence and a passion to produce the best Wagyu in the world. Our Wagyu genetic program is Mr. Takeda's legacy. Our foundation bulls are: Itomichi TF728, Kimifuku TF726, and Kimitofuku TF813 and our foundation dames are Hikokura, Chiyotake, and Fujihime.

On our farm, we strictly adhere to raising our Wagyu in the Takeda method: drug free, stress free and with love.







Hot 1

*ADW* H2003

FULLBLOOD HEIFER | 04.13.2020 | HORNED | BLACK | H2003 | FB54062

This is a rare direct daughter of a Takeda bred female! Not to mention she is only two generations removed from the legendary import Hikokura 1/10 as maternal grandam! This is one of Master breeder Takeda's best cow families that has produced elite proven sires in the USA and Australia!

The sire of this female is CRCC ITOSHIGEFUJI 112X, a TF 147 Itoshigefuji son. He possesses an elite outcross and high-performance pedigree combining TF 147 x Kimifuku 3 x Itomichi and is a maternal brother to the elite proven sire TF 813 Kimitofuku! His sire TF 147 is known for elite growth and maternal without reducing carcass traits, combine this with Kimifuku 3, Takeda's rare elite marbling Tanifuku Doi son and we have an outcross high performance sire!

	ITOSHIGEFUJI	ITOFUJI 483
CRCC	ITOSHIGEFUJI 112X	DAI 30 NOBORU J920752
	TF 709	KIMIFUKU 3
		HIKOKURA 1/12
	KIKUFUKU	KIKUSHIGE
TF 708		ITOSUZU
	HIKOKURA 1/10	ITOMICHI
		HIKOKURA 1/7





Lot 2

**JW HIKOKURA H2009**

FULLBLOOD HEIFER | 04.18.2020 | HORNED | BLACK | H2009 | FB54068

The sire of this female is CRCC ITOSHIGEFUJI 112X, a TF 147 Itoshigefuji son. He possesses an elite outcross and high-performance pedigree combining TF 147 x Kimifuku 3 x Itomichi and is a maternal brother to the elite proven sire TF 813 Kimitofuku! His sire TF 147 is known for elite growth and maternal without reducing carcass traits, combine this with Kimifuku 3, Takeda's rare elite marbling Tanifuku Doi son and we have an outcross high performance sire!

ITOSHIGEFUJI  
 CRCC ITOSHIGEFUJI 112X  
 TF 709  
  
 KIMIFUKU TF 726  
 JDW JDW HIKOKURA E1744  
 HIKOKURA 1483

ITOFUJI 483  
 DAI 30 NOBORU J920752  
 KIMIFUKU 3  
 HIKOKURA 1/12  
 KIMIFUKU 3  
 CHIYOTAKE 10  
 TF 813 KIMITOFUKU  
 TF 707



Lot 3

**ADW HIKOKURA H2004**

FULLBLOOD HEIFER | 04.15.2020 | HORNED | BLACK | H2004 | FB54063

The sire of this female is CRCC ITOSHIGEFUJI 112X, a TF 147 Itoshigefuji son. He possesses an elite outcross and high-performance pedigree combining TF 147 x Kimifuku 3 x Itomichi and is a maternal brother to the elite proven sire TF 813 Kimitofuku! His sire TF 147 is known for elite growth and maternal without reducing carcass traits, combine this with Kimifuku 3, Takeda's rare elite marbling Tanifuku Doi son and we have an outcross high performance sire!

The dam's side of this female continues the linebreeding to Kimifuku 3 with a sire stack of Kimifuku TF 726 x TF 813 x Kimifuku 3! This will work to cement elite carcass ability in this pedigree. This is stacked on the Hikokura maternal line which ideally contributes the Shimane strengths of growth and maternal traits.

	ITOSHIGEFUJI	ITOFUJI 483
CRCC ITOSHIGEFUJI 112X	TF 709	DAI 30 NOBORU J920752
		KIMIFUKU 3
	ITOMICHI	HIKOKURA 1/12
HIKOKURA 902	TF 717	DAI 7 ITOZAKURA
		TOMISAKAE 2/1
		KIKUFUKU
		HIKOKURA 1/10



Lot 4

**ADW HIKOKURA H2013**

FULLBLOOD HEIFER | 04.22.2020 | HORNED | BLACK | H2013 | FB54072

The sire of this female is CRCC ITOSHIGEFUJI 112X, a TF 147 Itoshigefuji son. He possesses an elite outcross and high-performance pedigree combining TF 147 x Kimifuku 3 x Itomichi and is a maternal brother to the elite proven sire TF 813 Kimitofuku! His sire TF 147 is known for elite growth and maternal without reducing carcass traits, combine this with Kimifuku 3, Takeda's rare elite marbling Tanifuku Doi son and we have an outcross high performance sire!

The dam here is a daughter of TF 813, further concentrating the line breeding to this elite family. Stacked on the Hikokura 1/10 maternal line this cow is sure to transmit. The Hikokuras are one of Takeda's most potent performers both on and off the rail. This makes this female a reliable investment.

ITOSHIGEFUJI	ITOFUJI 483
CRCC ITOSHIGEFUJI 112X	DAI 30 NOBORU J920752
TF 709	KIMIFUKU 3
	HIKOKURA 1/12
TF 813 KIMITOFUKU	ITOSHIGENAMI
HIKOKURA 1484	TF 709
TF 715	KIKUFUKU
	HIKOKURA 1/10



Lot 5

JDW H2039

FULLBLOOD HEIFER | 05.10.2020 | HORNED | BLACK | H2039 | FB57681

Sired by CRCC BEIJIRO 126X, this female brings the rare influence of Okutani through her elite son World K's Beijirou on her sire side. Her sire is built on elite Crescent Harbor Ranch breeding of Kitaguni Jr, JVP Fukutsuru, and Chisahime genetics. Specifically featuring proven mainstays of the CHR program in Kitaguni 07K and MJB Musashi 03K. These sons of Kitaguni Jr and JVP Fukutsuru 068 are elite balanced bred sires used heavily in the American Wagyu industry and proven performers.

Her dam is TF 726 daughter bringing further marbling from Kimifuku 3, who is known by many to be one of Takeda's highest marbling and best carcass traits sires. This is no surprise as he is a son of the legendary Japanese bull Tanifuku-Doi! The depth of the pedigree continues as we find Kikufuku, Itomichi, and the legendary Hikokura 1/10. This is a pedigree packed with breed greats!

	WORLD K'S BEIJIROU	WORLD K'S HARUKI 2
CRCC BEIJIRO 126X	CHR KITAGUNI 214S	CHR KITAGUNI 07K
		MJB MS MUSASHI 08M
	KIMIFUKU TF 726	KIMIFUKU 3
JDW 1007		CHIYOTAKE 10
	TF 717	KIKUFUKU
		HIKOKURA 1/10



Lot 6

*HDW* H2026

FULLBLOOD HEIFER | 05.02.2020 | HORNED | BLACK | H2026 | FB57539

This is an ultra rare female! She is a direct daughter of a Takeda bred Chiyotake maternal line cow. Her dam is TF 711, a rare daughter of the bull Kikufuku who only has 9 registered progeny in the USA. He is stacked on top of original import TF Chiyotake 6/1. This is the Takeda cow family that has dominated in Australia having produced breed leading sires such as Macquarie Y408, Blackmore G615, Blackmore K733, Mayura Admiral, Sumo X0081, and more! Don't miss a rare opportunity to acquire Chiyotake genetics standing in the USA.

This female is a daughter of CRCC BEIJIRO 126X, who possesses a rare sire stack of World K's Beijirou x CHR Kitaguni 07K x the Chisahime maternal line! CRCC Bejiro contributes an outcross source of marbling and carcass traits through the genetics of Okutani, Kitaguni, and Fukutsuru 068. His pedigree is built on elite Crescent Harbor Ranch breeding which inspires tremendous confidence in the performance of his genetics on and off the rail.

WORLD K'S BEIJIROU	WORLD K'S HARUKI 2
CRCC BEIJIRO 126X	WORLD K'S OKUTANI
CHR KITAGUNI 214S	CHR KITAGUNI 07K
	MJB MS MUSASHI 08M
KIKUFUKU	KIKUSHIGE
TF 711	ITOSUZU
CHIYOTAKE 6/1	ITOMICHI
	CHIYOTAKE 6



Lot 7

**JDW CHIYOTAKE H2025**

FULLBLOOD HEIFER | 05.01.2020 | HORNED | BLACK | H2025 | FB57538

This is a rare female, line bred to World K's Bejjirou through her sire CRCC Bejjiro! CRCC BEIJIRO 126X, brings the rare influence of Okutani through her elite son World K's Bejjirou on her sire side. Her sire is built on elite Crescent Harbor Ranch breeding of Kitaguni Jr, JVP Fukutsuru, and Chisahime genetics. Specifically featuring proven mainstays of the CHR program in Kitaguni 07K and MJB Musashi 03K. These sons of Kitaguni Jr and JVP Fukutsuru 068 are elite balanced bred sires used heavily in the American Wagyu industry and proven performers.

Her dam is also a daughter of CRCC BEIJIRO 126X, with a sire stack of Kimifuku TF 726 x Kikufuku x Chiyotake 6/1 behind that! This is the Takeda cow family that has dominated in Australia having produced breed leading sires such as Macquarie Y408, Blackmore G615, Blackmore K733, Mayura Admiral, Sumo X0081, and more! Don't miss a rare opportunity to acquire Chiyotake genetics standing in the USA.

WORLD K'S BEIJIROU	WORLD K'S HARUKI 2
CRCC BEIJIRO 126X	WORLD K'S OKUTANI
CHR KITAGUNI 214S	CHR KITAGUNI 07K
	MJB MS MUSASHI 08M
CRCC BEIJIRO 126X	WORLD K'S BEIJIROU
JDW JDW CHIYOTAKE 1742E	CHR KITAGUNI 214S
JDW 1009	KIMIFUKU TF 726
	TF 711



Lot 8

**JDW FUKUYUKI H2011**

FULLBLOOD HEIFER | 04.22.2020 | HORNED | BLACK | H2011 | FB54070

Sired by CRCC BEIJIRO 126X, this female brings the rare influence of Okutani through her elite son World K's Bejjirou on her sire side. Her sire is built on elite Crescent Harbor Ranch breeding of Kitaguni Jr, JVP Fukutsuru, and Chisahime genetics. Specifically featuring proven mainstays of the CHR program in Kitaguni 07K and MJB Musashi 03K. These sons of Kitaguni Jr and JVP Fukutsuru 068 are elite balanced bred sires used heavily in the American Wagyu industry and proven performers.

The dam of this female is a direct daughter of TF 813 Kimitofuku! TF 813 is a carcass proven sire known for his elite carcass traits. This is no surprise as he is a son of TF 148 Itoshigenami and his maternal grandsire is Kimifuku 3! He combines the two best Takeda Farms marbling sires into one pedigree creating a carcass quality machine. As we follow the maternal line back there are two more generations of TF 148, further cementing the marbling ability of this female!

WORLD K'S BEIJIROU  
 CRCC BEIJIRO 126X  
 CHR KITAGUNI 214S  
 TF 813 KIMITOFUKU  
 JDW JDW FUKUYUKI E1709  
 CRF 107

WORLD K'S HARUKI 2  
 WORLD K'S OKUTANI  
 CHR KITAGUNI 07K  
 MJB MS MUSASHI 08M  
 ITOSHIGENAMI  
 TF 709  
 ITOSHIGENAMI  
 CF504



Lot 9

**HW H2038**

FULLBLOOD HEIFER | 05.07.2020 | HORNED | BLACK | H2038 | FB57680

Sired by CRCC BEIJIRO 126X, this female brings the rare influence of Okutani through her elite son World K's Beijirou on her sire side. Her sire is built on elite Crescent Harbor Ranch breeding of Kitaguni Jr, JVP Fukutsuru, and Chisahime genetics.

The dam side of her pedigree is steeped in heavy Takeda Farms influence featuring sires Kimifuku TF 726, Kikufuku, and Itomichi! She traces back to the TF 708 cow a rare direct daughter of Kikufuku and Hikokura 1/10. This is Wagyu royalty and the heart of one of Takeda Farms best cow families.

WORLD K'S BEIJIROU	WORLD K'S HARUKI 2
CRCC BEIJIRO 126X	WORLD K'S OKUTANI
CHR KITAGUNI 214S	CHR KITAGUNI 07K
	MJB MS MUSASHI 08M
KIMIFUKU TF 726	KIMIFUKU 3
JOSEPH DECUIS 1123	CHIYOTAKE 10
TF 708	KIKUFUKU
	HIKOKURA 1/10





Lot 10

*ADW* HIKOKURA H2050

FULLBLOOD HEIFER | 10.12.2020 | HORNED | BLACK | H2050 | FB57707

This daughter of CRCC BEIJIRO 126X features a unique and rare sire stack of CRCC BEIJIRO 126X x Itomichi TF 728 x Kikufuku x Itomichi! CRCC Bejiro contributes an outcross source of marbling and carcass traits through the genetics of Okutani, Kitaguni, and Fukutsuru 068. His pedigree is built on elite Crescent Harbor Ranch breeding and the Chisahime maternal line which inspires tremendous confidence.

He is stacked ideally on top of a high Itozakura/Shimane female. Her dam is sired by Itomichi TF 728, who brings a balance of growth, maternals, and carcass quality. The foundation of this cow family is the powerhouse cow Hikokura 1/10 who has been a super matriarch in the USA Wagyu industry producing countless high performing progeny. This family is known for breeding tremendous carcass quality without sacrificing performance.

WORLD K'S BEIJIROU	WORLD K'S HARUKI 2
CRCC BEIJIRO 126X	WORLD K'S OKUTANI
CHR KITAGUNI 214S	CHR KITAGUNI 07K
	MJB MS MUSASHI 08M
ITOMICHI TF 728	ITOMICHI
HIKOKURA 1478	CF504
TF 708	KIKUFUKU
	HIKOKURA 1/10



Lot 11 **JW H2053**

FULLBLOOD HEIFER | 06.08.2020 | HORNED | BLACK | H2053 | FB57709

This is a rare direct daughter of a Takeda bred cow, TF 718! TF 718 is an Itomichi daughter bringing tremendous growth and maternals from Itomichi and the Takeda Hikokura maternal line. This branch of the Hikokura cow family has produced many elite sires and cows both in the USA and Australia! This female is a tremendous opportunity to get into original Takeda genetics.

This lot is a daughter of CRCC BEIJIRO 126X, who possesses a rare sire stack of World K's Bejiro x CHR Kitaguni 07K x the Chisahime maternal line! CRCC Bejiro contributes an outcross source of marbling and carcass traits through the genetics of Okutani, Kitaguni, and Fukutsuru 068. His pedigree is built on elite Crescent Harbor Ranch breeding which inspires tremendous confidence in the performance of his genetics on and off the rail.

	WORLD K'S BEIJIROU	WORLD K'S HARUKI 2
	CRCC BEIJIRO 126X	WORLD K'S OKUTANI
	CHR KITAGUNI 214S	CHR KITAGUNI 07K
		MJB MS MUSASHI 08M
	ITOMICHI	DAI 7 ITOZAKURA
TF 718		TOMISAKAE 2/1
	CF 505	ITOSHIGENAMI
		HIKOKURA 1/10



Lot 12

**ADW CHIYOTAKE H2048**

FULLBLOOD HEIFER | 05.14.2020 | HORNED | BLACK | H2048 | FB57705

Sired by CRCC BEIJIRO 126X, this female brings the rare influence of Okutani through her elite son World K's Bejjirou on her sire side. Her sire is built on elite Crescent Harbor Ranch breeding of Kitaguni Jr, JVP Fukutsuru, and Chisahime genetics. Specifically featuring proven mainstays of the CHR program in Kitaguni 07K and MJB Musashi 03K. These sons of Kitaguni Jr and JVP Fukutsuru 068 are elite balanced bred sires used heavily in the American Wagyu industry and proven performers.

The maternal side of this pedigree features an exclusively Takeda bred cow family! Her unique sire stack includes Itomichi TF 728 x Kikufuku x Chiyotake 6/1! This is an especially rare Takeda cow family in the USA, the Chiyotakes are prevalent in Australia having produced breed leading sires such as Macquarie Y408, Blackmore G615, Blackmore K733, Mayura Admiral, Sumo X0081, and more! Don't miss a rare opportunity to acquire Chiyotake genetics standing in the USA.

WORLD K'S BEIJIROU	WORLD K'S HARUKI 2
CRCC BEIJIRO 126X	WORLD K'S OKUTANI
CHR KITAGUNI 214S	CHR KITAGUNI 07K
	MJB MS MUSASHI 08M
ITOMICHI TF 728	ITOMICHI
CHIYOTAKE 1350	CF504
TF 711	KIKUFUKU
	CHIYOTAKE 6/1



Lot 13

ADW H2041

FULLBLOOD HEIFER | 05.12.2020 | HORNED | BLACK | H2041 | FB57683

Sired by CRCC BEIJIRO 126X, this female brings the rare influence of Okutani through her elite son World K's Beijirou on her sire side. Her sire is built on elite Crescent Harbor Ranch breeding of Kitaguni Jr, JVP Fukutsuru, and Chisahime genetics. Specifically featuring proven mainstays of the CHR program in Kitaguni 07K and MJB Musashi 03K. These sons of Kitaguni Jr and JVP Fukutsuru 068 are elite balanced bred sires used heavily in the American Wagyu industry and proven performers.

Her dam is a TF Terutani daughter contributing the proven marbling and carcass quality of TF 40. A son of Kikuteru Doi, TF Terutani 40 is known and used in the for his strengths at improving carcass marbling, being an ideal outcross source of carcass traits to the typical Monjiro and Shigeshigenami lines. This heifer is sure to produce fantastic carcasses!

	WORLD K'S BEIJIROU	WORLD K'S HARUKI 2
CRCC BEIJIRO 126X	CHR KITAGUNI 214S	WORLD K'S OKUTANI
		CHR KITAGUNI 07K
	TF TERUTANI	MJB MS MUSASHI 08M
CRF 103		KIKUTERU DOI
	TF 712	TANIFUKU 2
		ITOMICHI
		CF 503



*Brookline*  
©

Lot 14

JDW H2040

FULLBLOOD HEIFER | 05.11.2020 | HORNED | BLACK | H2040 | FB57682

Here is a daughter of CRCC BEIJIRO 126X, who possesses a rare sire stack of World K's Bejjirou x CHR Kitaguni 07K x the Chisahime maternal line! CRCC Bejiro contributes an outcross source of marbling and carcass traits through the genetics of Okutani, Kitaguni, and Fukutsuru 068. His pedigree is built on elite Crescent Harbor Ranch breeding which inspires tremendous confidence in the performance of his genetics on and off the rail.

He is stacked ideally on top of a high Itozakura/Shimane female. Her dam is sired by Itomichi TF 728, who brings a balance of growth, maternals, and carcass quality. The foundation of this cow family is the powerhouse cow Hikokura 1/10 who has been a super matriarch in the USA Wagyu industry producing countless high performing progeny. This family is known for breeding tremendous carcass quality without sacrificing performance.

CRCC BEIJIRO	WORLD K'S BEIJIROU 126X CHR KITAGUNI 214S	WORLD K'S HARUKI 2 WORLD K'S OKUTANI CHR KITAGUNI 07K MJB MS MUSASHI 08M
JDW 1230	ITOMICHI TF 728 TF 701	ITOMICHI CF504 KIKUFUKU HIKOKURA 1/10



Lot 15

JDW H2002

FULLBLOOD HEIFER | 04.07.2020 | HORNED | BLACK | H2002 | FB54061

Don't miss the Fujihime cow family here! This is the rare Takeda maternal line that produced one of the proven legends of the Wagyu breed, TF 151 Itozuru Doi! TF 151 Itozuru Doi has proven carcass performance in some of the breeds leading herd; In the Mayura Station herd, TF151 averaged an 8.78 MS, 990 lbs HCW, and a 16.03 In2 REA across 17 carcasses. In the Blackmore Wagyu herd across 325 carcasses on feed for 650 days TF151 averaged a 1,005 lbs HCW, 14.8 In2 REA, and 302 of 325 graded a MS 9 or 9+.

This female is a daughter of CRCC BEIJIRO 126X, who possesses a rare sire stack of World K's Bejirou x CHR Kitaguni 07K x the Chisahime maternal line! CRCC Bejiro contributes an outcross source of marbling and carcass traits through the genetics of Okutani, Kitaguni, and Fukutsuru 068. His pedigree is built on elite Crescent Harbor Ranch breeding which inspires tremendous confidence in the performance of his genetics on and off the rail. Follow the sire stack of CRCC BEIJIRO 126X x ITOMICHI TF 728 x ITOMICHI x FUJIHIME 2/4 and the elite level of this pedigree becomes evident!

CRCC BEIJIRO 126X	WORLD K'S BEIJIROU CHR KITAGUNI 214S	WORLD K'S HARUKI 2 WORLD K'S OKUTANI CHR KITAGUNI 07K MJB MS MUSASHI 08M
JDW 1125	ITOMICHI TF 728 TF 704	ITOMICHI CF504 ITOMICHI FUJIHIME 2/4



Lot 16

**JDW SOZA H2021**

FULLBLOOD HEIFER | 04.26.2020 | HORNED | BLACK | H2021 | FB57534

Here is a daughter of CRCC BEIJIRO 126X, who possesses a rare sire stack of World K's Beijirou x CHR Kitaguni 07K x the Chisahime maternal line! CRCC Beijiro contributes an outcross source of marbling and carcass traits through the genetics of Okutani, Kitaguni, and Fukutsuru 068. His pedigree is built on elite Crescent Harbor Ranch breeding which inspires tremendous confidence in the performance of his genetics on and off the rail.

Her dam is TF 726 daughter bringing further marbling from Kimifuku 3, who is known by many to be one of Takeda's highest marbling and best carcass traits sires. This is no surprise as he is a son of the legendary Japanese bull Tanifuku-Doi! The depth of the pedigree continues as we find Itomichi TF 728 and Kimifuku TF 726 again. This is a pedigree packed with breed greats and a balance of carcass, growth, and maternals.

WORLD K'S BEIJIROU  
 CRCC BEIJIRO 126X  
 CHR KITAGUNI 214S  
  
 KIMIFUKU TF 726  
 JDW CHIYOTAKE D1646  
 CHIYOTAKE 1491

WORLD K'S HARUKI 2  
 WORLD K'S OKUTANI  
 CHR KITAGUNI 07K  
 MJB MS MUSASHI 08M  
 KIMIFUKU 3  
 CHIYOTAKE 10  
 ITOMICHI TF 728  
 JOSEPH DECUIS 1121



Lot 17

**ADW HIKOKURA H2024**

FULLBLOOD HEIFER | 04.30.2020 | HORNED | BLACK | H2024 | FB57537

Sired by CRCC BEIJIRO 126X, this female brings the rare influence of Okutani through her elite son World K's Beijirou on her sire side. Her sire is built on elite Crescent Harbor Ranch breeding of Kitaguni Jr, JVP Fukutsuru, and Chisahime genetics. Specifically featuring proven mainstays of the CHR program in Kitaguni 07K and MJB Musashi 03K. These sons of Kitaguni Jr and JVP Fukutsuru 068 are elite balanced bred sires used heavily in the American Wagyu industry and proven performers.

Her dam is linebred to Itomichi through his son TF 728 as her sire and the original Itomichi as her grandsire! Itomichi is known for his incredible growth and maternals in his female progeny. He creates amazing cows that do not sacrifice carcass traits, meaning this is an ideal foundation cow for any herd.

CRCC BEIJIRO 126X	WORLD K'S BEIJIROU	WORLD K'S HARUKI 2
	CHR KITAGUNI 214S	WORLD K'S OKUTANI
		CHR KITAGUNI 07K
		MJB MS MUSASHI 08M
HIKOKURA 1351	ITOMICHI TF 728	ITOMICHI
		CF504
	HIKOKURA 903	ITOMICHI
		TF 701





Lot 18

**JW HIKOKURA H2023**

FULLBLOOD HEIFER | 04.30.2020 | HORNED | BLACK | H2023 | FB57536

Here is a daughter of CRCC BEIJIRO 126X, who possesses a rare sire stack of World K's Bejjirou x CHR Kitaguni 07K x the Chisahime maternal line! CRCC Bejjiro contributes an outcross source of marbling and carcass traits through the genetics of Okutani, Kitaguni, and Fukutsuru 068. His pedigree is built on elite Crescent Harbor Ranch breeding which inspires tremendous confidence in the performance of his genetics on and off the rail.

The maternal side of this pedigree features an exclusively Takeda bred cow family! Her unique sire stack includes Itomichi TF 728 x Kimifuku TF 726 x Kikufuku x Hikokura 1/10!

The legendary Hikokura 1/10 cow has produced elite daughters and granddaughters in the USA and Australia that have been prolific donors of elite Wagyu genetics. This is a pedigree packed with breed greats!

WORLD K'S BEIJIROU	WORLD K'S HARUKI 2
CRCC BEIJIRO 126X	WORLD K'S OKUTANI
CHR KITAGUNI 214S	CHR KITAGUNI 07K
	MJB MS MUSASHI 08M
ITOMICHI TF 728	ITOMICHI
HIKOKURA 1343	CF504
	KIMIFUKU TF 726
JDW 1011	TF 708



Lot 19

JW H2058

FULLBLOOD HEIFER | 06.29.2020 | HORNED | BLACK | H2058 | FB57714

Here is a daughter of CRCC BEIJIRO 126X, who possesses a rare sire stack of World K's Beijirou x CHR Kitaguni 07K x the Chisahime maternal line! CRCC Beijiro contributes an outcross source of marbling and carcass traits through the genetics of Okutani, Kitaguni, and Fukutsuru 068. His pedigree is built on elite Crescent Harbor Ranch breeding which inspires tremendous confidence in the performance of his genetics on and off the rail.

Her dam is TF 726 daughter bringing further marbling from Kimifuku 3, who is known by many to be one of Takeda's highest marbling and best carcass traits sires. This is no surprise as he is a son of the legendary Japanese bull Tanifuku-Doi! The depth of the pedigree continues as we find Kikufuku, Itomichi, and the legendary Hikokura 1/10 behind this. This is a pedigree packed with breed greats!

WORLD K'S BEIJIROU  
 CRCC BEIJIRO 126X  
 CHR KITAGUNI 214S  
  
 KIMIFUKU TF 726  
 JOSEPH DECUIS 1116  
 TF 715

WORLD K'S HARUKI 2  
 WORLD K'S OKUTANI  
 CHR KITAGUNI 07K  
 MJB MS MUSASHI 08M  
 KIMIFUKU 3  
 CHIYOTAKE 10  
 KIKUFUKU  
 HIKOKURA 1/10



Lot 20

**ADW CHIYOTAKE H2057**

FULLBLOOD HEIFER | 06.22.2020 | HORNED | BLACK | H2057 | FB57713

Sired by CRCC BEIJIRO 126X, this female brings the rare influence of Okutani through her elite son World K's Bejjirou on her sire side. Her sire is built on elite Crescent Harbor Ranch breeding of Kitaguni Jr, JVP Fukutsuru, and Chisahime genetics. Specifically featuring proven mainstays of the CHR program in Kitaguni 07K and MJB Musashi 03K. These sons of Kitaguni Jr and JVP Fukutsuru 068 are elite balanced bred sires used heavily in the American Wagyu industry and proven performers.

The maternal side of this pedigree features an exclusively Takeda bred cow family! Her unique sire stack includes Itomichi TF 728 x Kimifuku TF 726 x Kikufuku x Chiyotake 6/1! This is an especially rare Takeda cow family in the USA, the Chiyotakes are prevalent in Australia having produced breed leading sires such as Macquarie Y408, Blackmore G615, Blackmore K733, Mayura Admiral, Sumo X0081, and more! Don't miss a rare opportunity to acquire Chiyotake genetics standing in the USA.

CRCC BEIJIRO 126X	WORLD K'S BEIJIROU	WORLD K'S HARUKI 2
	CHR KITAGUNI 214S	WORLD K'S OKUTANI
		CHR KITAGUNI 07K
	ITOMICHI TF 728	MJB MS MUSASHI 08M
CHIYOTAKE 1491		ITOMICHI
	JOSEPH DECUIS 1121	CF504
		KIMIFUKU TF 726
		TF 711



Lot 21

**JDW FUJIHIME H2047**

FULLBLOOD HEIFER | 05.13.2020 | HORNED | BLACK | H2047 | FB57704

Don't miss the Fujihime cow family here! This is the rare Takeda maternal line that produced one of the proven legends of the Wagyu breed, TF 151 Itozuru Doi! TF 151 Itozuru Doi has proven carcass performance in some of the breeds leading herd; In the Mayura Station herd, TF151 averaged an 8.78 MS, 990 lbs HCW, and a 16.03 In2 REA across 17 carcasses. In the Blackmore Wagyu herd across 325 carcasses on feed for 650 days TF151 averaged a 1,005 lbs HCW, 14.8 In2 REA, and 302 of 325 graded a MS 9 or 9+.

This lot is a daughter of CRCC BEIJIRO 126X, who possesses a rare sire stack of World K's Bejiro x CHR Kitaguni 07K x the Chisahime maternal line! CRCC Bejiro contributes an outcross source of marbling and carcass traits through the genetics of Okutani, Kitaguni, and Fukutsuru 068. His pedigree is built on elite Crescent Harbor Ranch breeding which inspires tremendous confidence in the performance of his genetics on and off the rail.

WORLD K'S BEIJIROU  
 CRCC BEIJIRO 126X  
 CHR KITAGUNI 214S  
  
 TF 813 KIMITOFUKU  
 JDW JDW FUJIHIMI E1738  
 FUJIHIME 1479

WORLD K'S HARUKI 2  
 WORLD K'S OKUTANI  
 CHR KITAGUNI 07K  
 MJB MS MUSASHI 08M  
 ITOSHIGENAMI  
 TF 709  
 ITOMICHI TF 728  
 JDW 1012



Lot 22

JW FUJHIME H2031

FULLBLOOD HEIFER | 05.05.2020 | HORNED | BLACK | H2031 | FB57668

This is a daughter of JDF ITOMICHI, who stacks proven Takeda sires ITOMICHI TF 728 x KIMIFUKU TF 726 x ITOMICHI in one pedigree. He combines the growth and maternal strengths of TF 728 with the carcass traits of TF 726, joining the genetics of legends Kimifuku 3 and Itomichi into one bull! But don't forget he traces back to Hikokura 1/10, so he carries some of the best maternal genetics the Wagyu breed has to offer!

Don't miss the Fujihime cow family here! This is the rare Takeda maternal line that produced one of the proven legends of the Wagyu breed, TF 151 Itozuru Doi! TF 151 Itozuru Doi has proven carcass performance in some of the breeds leading herd; In the Mayura Station herd, TF151 averaged an 8.78 MS, 990 lbs HCW, and a 16.03 In2 REA across 17 carcasses. In the Blackmore Wagyu herd across 325 carcasses on feed for 650 days TF151 averaged a 1,005 lbs HCW, 14.8 In2 REA, and 302 of 325 graded a MS 9 or 9+.

This female's dam is a daughter of CRCC BEIJIRO 126X, who possesses a rare sire stack of World K's Beiji-ro x CHR Kitaguni 07K x the Chisahime maternal line! CRCC Beiji-ro contributes an outcross source of marbling and carcass traits through the genetics of Okutani, Kitaguni, and Fukutsuru 068. His pedigree is built on elite Crescent Harbor Ranch breeding which inspires tremendous confidence in the performance of his genetics on and off the rail.

JDF ITOMICHI	ITOMICHI TF 728	ITOMICHI CF504
	JDW 1118	KIMIFUKU TF 726
		HIKOKURA 903
FUJHIMI 1369	CRCC BEIJIRO 126X	WORLD K'S BEIJIROU
		CHR KITAGUNI 214S
	CRF SOZA	ITOSHIGENAMI TF 720



Lot 23

JDW H2051

FULLBLOOD HEIFER | 05.29.2020 | HORNED | BLACK | H2051 | FB57717

This is a daughter of JDF ITOMICHI, who stacks proven Takeda sires ITOMICHI TF 728 x KIMIFUKU TF 726 x ITOMICHI all in one pedigree. He combines the growth and maternal strengths of TF 728 with the carcass traits of TF 726, joining the genetics of legends Kimifuku 3 and Itomichi into one bull! But don't forget he traces back to Hikokura 1/10, so he carries some of the best maternal line genetics the Wagyu breed has to offer!

This female's dam is TF 715, a Kikufuku daughter of Hikokura 1/10 herself! Making this an incredible linebred Hikokura opportunity. Don't miss your chance to acquire concentrated Hikokura 1/10 original import genetics.

JDF ITOMICHI	ITOMICHI TF 728	ITOMICHI CF504
	JDW 1118	KIMIFUKU TF 726
		HIKOKURA 903
	KIKUFUKU	KIKUSHIGE
TF 715		ITOSUZU
	HIKOKURA 1/10	ITOMICHI
		HIKOKURA 1/7



Lot 24

*ADW* ITOSHIGEFUJI H2008

FULLBLOOD BULL | 04.17.2020 | HORNED | BLACK | H2008 | FB54067

Sired by CRCC ITOSHIGEFUJI 112X, a TF 147 Itoshigefuji son. He possesses an elite outcross and high-performance pedigree combining TF 147 x Kimifuku 3 x Itomichi and is a maternal brother to the elite proven sire TF 813 Kimitofuku! His sire TF 147 is known for elite growth and maternal without reducing carcass traits, combine this with Kimifuku 3, Takeda's rare elite marbling Tanifuku Doi son and we have an outcross high performance sire!

The dam's side of this bull continues a linebreeding to Kimifuku 3 with a sire stack of TF 813 Kimitofuku x Kimifuku 3 x Hikokura 1/10! This sire stack cements elite carcass ability in this pedigree. This is stacked on the Hikokura maternal line which ideally contributes the Shimane strengths of growth and maternal traits.

ITOSHIGEFUJI  
CRCC ITOSHIGEFUJI 112X  
TF 709

TF 813 KIMITOFUKU  
HIKOKURA 1483  
TF 707

ITOFUJI 483  
DAI 30 NOBORU J920752  
KIMIFUKU 3  
HIKOKURA 1/12  
ITOSHIGENAMI  
TF 709  
KIMIFUKU 3  
HIKOKURA 1/10



Lot 25

**JW ITOSHIGEFUJI H2005**

FULLBLOOD BULL | 04.15.2020 | HORNED | BLACK | H2005 | FB54064

Sired by CRCC ITOSHIGEFUJI 112X, a TF 147 Itoshigefuji son. He possesses an elite outcross and high-performance pedigree combining TF 147 x Kimifuku 3 x Itomichi and is a maternal brother to the elite proven sire TF 813 Kimitofuku! His sire TF 147 is known for elite growth and maternal without reducing carcass traits, combine this with Kimifuku 3, Takeda's rare elite marbling Tanifuku Doi son and we have an outcross high performance sire!

His dam is sired by CRCC Beijiro 126X bringing Okutani and Kitaguni Jr genetics to the table. This is an ideal compliment to Kimifuku 3 as the maternal great grandsire. The pedigree here inspires confidence in this bulls ability to produce excellent beef!

ITOSHIGEFUJI	ITOFUJI 483
CRCC ITOSHIGEFUJI 112X	DAI 30 NOBORU J920752
TF 709	KIMIFUKU 3
	HIKOKURA 1/12
CRCC BEIJIRO 126X	WORLD K'S BEIJIROU
JDW JDW HIKOKURA E1749	CHR KITAGUNI 214S
TF 703	KIMIFUKU 3
	HIKOKURA 1/12





Lot 26

**JW ITOSHIGEFUJI H2010**

FULLBLOOD BULL | 04.18.2020 | HORNED | BLACK | H2010 | FB54069

Sired by CRCC ITOSHIGEFUJI 112X, a TF 147 Itoshigefuji son. He possesses an elite outcross and high-performance pedigree combining TF 147 x Kimifuku 3 x Itomichi and is a maternal brother to the elite proven sire TF 813 Kimitofuku! His sire TF 147 is known for elite growth and maternal without reducing carcass traits, combine this with Kimifuku 3, Takeda's rare elite marbling Tanifuku Doi son and we have an outcross high performance sire!

Don't miss that this is the Fujihime cow family here! This is the rare Takeda maternal line that produced one of the proven legends of the Wagyu breed, TF 151 Itozuru Doi! TF 151 Itozuru Doi has proven carcass performance in some of the breeds leading herd; In the Mayura Station herd, TF151 averaged an 8.78 MS, 990 lbs HCW, and a 16.03 In2 REA across 17 carcasses. In the Blackmore Wagyu herd across 325 carcasses on feed for 650 days TF151 averaged a 1,005 lbs HCW, 14.8 In2 REA, and 302 of 325 graded a MS 9 or 9+.

This bull's dam is a daughter of TF 813, furthering a slight linebreeding to Kimifuku 3 with a sire stack of 112X x TF 813 x TF 728 x TF 704! This will work to cement elite carcass ability in this pedigree and balanced by the growth and maternals of TF 147.

ITOSHIGEFUJI  
CRCC ITOSHIGEFUJI 112X  
TF 709  
  
TF 813 KIMITOFUKU  
FUJIHIME 15128  
JDW 1125

ITOFUJI 483  
DAI 30 NOBORU J920752  
KIMIFUKU 3  
HIKOKURA 1/12  
ITOSHIGENAMI  
TF 709  
ITOMICHI TF 728  
TF 704



Lot 27

**JDW ITOSHIGEFUJI H2015**

FULLBLOOD BULL | 04.22.2020 | HORNED | BLACK | H2015 | FB54075

Sired by CRCC ITOSHIGEFUJI 112X, a TF 147 Itoshigefuji son. He possesses an elite outcross and high-performance pedigree combining TF 147 x Kimifuku 3 x Itomichi and is a maternal brother to the elite proven sire TF 813 Kimitofuku! His sire TF 147 is known for elite growth and maternal without reducing carcass traits, combine this with Kimifuku 3, Takeda's rare elite marbling Tanifuku Doi son and we have an outcross high performance sire!

The dam's side of this bull continues slight linebreeding to Kimifuku 3 with a sire stack of Kimifuku TF 726 x Kikufuku x Hikokura 1/10! This will work to cement elite carcass ability in this pedigree. This is stacked on the Hikokura maternal line which ideally contributes the Shimane strengths of growth and maternal traits.

ITOSHIGEFUJI	ITOFUJI 483
CRCC ITOSHIGEFUJI 112X	DAI 30 NOBORU J920752
TF 709	KIMIFUKU 3
	HIKOKURA 1/12
KIMIFUKU TF 726	KIMIFUKU 3
JDW 1011	CHIYOTAKE 10
TF 708	KIKUFUKU
	HIKOKURA 1/10



Lot 28

**JW BEIJIRO H2045**

FULLBLOOD BULL | 05.13.2020 | HORNED | BLACK | H2045 | FB57702

Sired by CRCC BEIJIRO 126X, who possesses a rare sire stack of World K's Bejjirou x CHR Kitaguni 07K x the Chisahime maternal line! CRCC Bejjiro contributes an outcross source of marbling and carcass traits through the genetics of Okutani, Kitaguni, and Fukutsuru 068. His pedigree is built on elite Crescent Harbor Ranch breeding which inspires tremendous confidence in the performance of his genetics on and off the rail.

His dam is sired by TF 726 bringing further marbling from Kimifuku 3, who is known by many to be one of Takeda's highest marbling and best carcass traits sires. This is no surprise as he is a son of the legendary Japanese bull Tanifuku-Doi! The depth of the pedigree continues as we find Kikufuku, Itomichi, and the legendary Chiyotake 6 behind this. This is a pedigree packed with breed greats!

	WORLD K'S BEIJIROU	WORLD K'S HARUKI 2
CRCC BEIJIRO	126X	WORLD K'S OKUTANI
	CHR KITAGUNI 214S	CHR KITAGUNI 07K
		MJB MS MUSASHI 08M
JDW 1009	KIMIFUKU TF 726	KIMIFUKU 3
		CHIYOTAKE 10
	TF 711	KIKUFUKU
		CHIYOTAKE 6/1



Lot 29

**JDW ITOMICHI H2029**

FULLBLOOD BULL | 05.03.2020 | HORNED | BLACK | H2029 | FB57666

This is a son of JDF ITOMICHI, who stacks proven Takeda sires ITOMICHI TF 728 x KIMIFUKU TF 726 x ITOMICHI all in one pedigree. He combines the growth and maternal strengths of TF 728 with the carcass traits of TF 726, joining the genetics of legends Kimifuku 3 and Itomichi into one bull! But don't forget he traces back to Hikokura 1/10, so he carries some of the best maternal line genetics the Wagyu breed has to offer!

Another bull from the Fujihime cow family here! This is the rare Takeda maternal line that produced one of the proven legends of the Wagyu breed, TF 151 Itozuru Doi! TF 151 Itozuru Doi has proven carcass performance in some of the breeds leading herd; In the Mayura Station herd, TF151 averaged an 8.78 MS, 990 lbs HCW, and a 16.03 In2 REA across 17 carcasses. In the Blackmore Wagyu herd across 325 carcasses on feed for 650 days TF151 averaged a 1,005 lbs HCW, 14.8 In2 REA, and 302 of 325 graded a MS 9 or 9+.

This is an ideal opportunity to get into one of the rarest maternal lines in the Wagyu breed!

JDF ITOMICHI	ITOMICHI TF 728	ITOMICHI CF504
	JDW 1118	KIMIFUKU TF 726
		HIKOKURA 903
FUJIHIME 1479	ITOMICHI TF 728	ITOMICHI CF504
	JDW 1012	KIMIFUKU TF 726
		TF 704



Lot 30

**JDW ITOMICHI H2018**

FULLBLOOD BULL | 04.25.2020 | HORNED | BLACK | H2018 | FB57715

This is a son of JDF ITOMICHI, who stacks proven Takeda sires ITOMICHI TF 728 x KIMIFUKU TF 726 x ITOMICHI all in one pedigree. He combines the growth and maternal strengths of TF 728 with the carcass traits of TF 726, joining the genetics of legends Kimifuku 3 and Itomichi into one bull! But don't forget he traces back to Hikokura 1/10, so he carries some of the best maternal line genetics the Wagyu breed has to offer!

This bull's dam brings the sires CRCC BEIJIRO 126X and TF TERUTANI to the table, consolidating the carcass traits of Terutani with the balance of 126X. Not to mention he is from the Chiyotake maternal line. This is the Takeda cow family that has dominated in Australia having produced breed leading sires such as Macquarie Y408, Blackmore G615, Blackmore K733, Mayura Admiral, Sumo X0081, and more! Don't miss a rare opportunity to acquire a Chiyotake bull standing in the USA.

JDF ITOMICHI	ITOMICHI TF 728	ITOMICHI CF504
	JDW 1118	KIMIFUKU TF 726
	CRCC BEIJIRO 126X	HIKOKURA 903
JDW YAKIFUKU D1620		WORLD K'S BEIJIROU
CRF MOMOE		CHR KITAGUNI 214S
		TF TERUTANI
		TF 719