

HERDBUILDER

Twenty-Five

MARCH 16, 2019

1 P.M. | AT THE FARM | SPRINGFIELD, MO



Dear Limousin Enthusiasts,

Welcome to our HERDBUILDER Twenty-Five Limousin production sale! This annual sale represents a total of 28 years in the purebred seedstock business. What a ride this has been for all of us at Pinegar Limousin. We know that in any business we are only sustainable if we make the customers satisfied with their product.

Our motto in the cattle business has been to have common sense and planned genetics to assure our customers the most predictable product possible. We have surrounded our program and laid a foundation with only the best and proven donor cows we could possible create and/or find. That nucleus of females has secured our place as one of the largest seed stock suppliers in the entire breed.

I would like to thank the entire Pinegar crew who work day in and day out in keeping all in order with the volume of cattle that we run.

Our program has been managed by Ty and Susie Heavin for many years now, and we thank them for all they do. The professionalism, care and maintenance of the cattle is beyond compare and like no other.

We cordially invite you to come early, stay late and enjoy the relationships we have developed over the years in a business that has been very rewarding for us as a family.

Sincerely,
Ed Pinegar



ED & CAROL PINEGAR, OWNERS

TOLL FREE 1.877.PINEGAR • 417.833.6784

850 W. Farm Road 56, Springfield, MO 65803

TY & SUSIE HEAVIN, FARM MANAGERS, 417.839.5849

HANNAH MCCALL, SHOW CATTLE



Credit Cards Accepted



SCHEDULE OF EVENTS

FRIDAY, MARCH 15, 2019

Afternoon cattle available for viewing

SATURDAY, MARCH 16, 2019

8:00 a.m. Coffee and Pastries

11:30 a.m. Complimentary Beef Lunch

1:00 p.m. HERDBUILDER Twenty-Five Sale

SELLING 79 LOTS

LIMOUSIN - LIM-FLEX - FULLBLOOD

30 Bulls - 33 Spring Bred Females - 10 Fall Bred Females - 6 Show Heifers

SALE-DAY PHONES

Ty Heavin.....	417.839.5849
Ed Pinegar.....	417.833.6784
Randy Ratliff.....	615.330.2735
Ken Holloway.....	580.581.7652
Mark Smith.....	515.229.5227
Bill Helton.....	256.962.0256

SALE HEADQUARTERS

HAMPTON INN & SUITES

417.869.5548

2750 N Glenstone, Springfield, MO 65803

DRURY INN & SUITES

417.863.8400

2715 N Glenstone Ave., Springfield, MO 65803

AUCTIONEER C.K. "Sonny" Booth

MARKETING TEAM



AMERICAN CATTLE SERVICES

Ken Holloway • 580.581.7652



HELTON CONSULTING

Bill Helton • 256.962.0256



GRASSROOTS GENETICS

Mark Smith • 515.229.5227



MC MARKETING MANAGEMENT

Kiley McKinna • 402.350.3447



SALE MANAGER

Randall O. Ratliff • 615.330.2735 • Randy@RRMktg.com

PO Box 60097, Nashville, TN 37206 • www.RRMktg.com

(L#2845)

If you need assistance with your purchases or want to discuss the genetics selling, feel free to contact any member of our marketing team. As a paid marketing agent for Pinegar Limousin, we take pride in the opportunity to work closely with this program. We can assist you with your phone order and/or handle your bid in the most confidential manner. Email, call or text, we will be more than happy to assist.

TRUCKING

Will be available on site to haul any purchases out the day of the sale. To make prior arrangements feel free to call R&R Marketing Co. at 615.330.2735 and we will make your buying easy and accommodating.

PAYMENT

Cattle must be paid for at the time of the sale unless prior arrangements are made with sale management at the time of the sale at 615.330.2735. All credit cards accepted.

ANNOUNCEMENTS

Announcements at the sale by the owners, auctioneers or sale management will take precedence over statements in the sale catalog.

SALE ORDER & SUPPLEMENTAL INFORMATION

Sale order is catalog order. A supplement sheet will be posted Friday, March 16 at www.RRMktg.com.

TERMS & CONDITIONS

Terms of the sale are cash unless satisfactory credit arrangements have been made prior to the sale. A representative will be on hand sale day if you wish to insure your purchases. Please note: The sale manager is only an agent for the seller and has no responsibility other than those involved in conducting the sale. All persons who attend the sale do so at their own risk. Neither the sale manager nor Pinegar Limousin assume liability, legal or otherwise, for any accidents which may occur.

INSURANCE

Insurance on your purchase can be provided by Mark Smith, Grassroots Genetics, Ankeny, IA, 515.229.5227.

EPDs - EPDs are dated 1.29.2019

DIRECTIONS - Are on the back cover

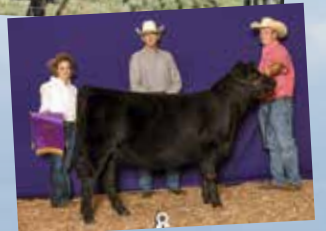
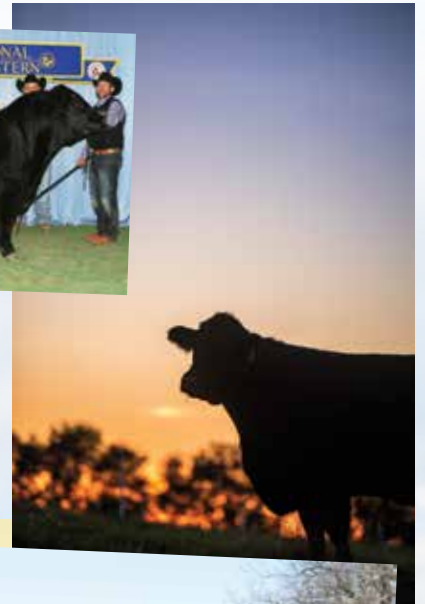
HERDBUILDER

Twenty-Five

SATURDAY, MARCH 16, 2019

1 P.M. | AT THE FARM | SPRINGFIELD, MO







LOT 1

AUTO KING DAVID 120E ET

LIM-FLEX(62/54.8) BULL | HET POLLED (T) | HOMO BLACK (T)
4/17/2017 | AUTO 120E | LFM2141555

COLE WINDFALL 144W
AUTO KING JAMES 162Z
AUTO LUCKIE 246W

DHVO DEUCE 132R
PBRS DUTCHES 790X
SEDGWICKS DUTCHES 2280

COLEMAN PRODUCTION 608
COLE MISS FIRSTDOWN 6162S
WLR DIRECT HIT
TYEJ DB SERENITY
GPFF BLAQUE RULON
AMY JO DHAN 20L
RR 9440 SCOTCH CAP 1483
CIRCLE S DUTCHESS 280

BW | 68
ADJ WW | 807
ADJ YW | 1,331
ADJ FAT | 0.35
ADJ REA | 15.24
ADJ IMF | 3.51

	CED	BW	WW	YW	MK	CEM	SC	DOC	YG	CW	RE	MB	SMTI
EPDS	10	1.6	63	98	26	6	1.1	11	-36	34	.79	-.03	51
%RANK	70	75	55	60	15	60	35	70	15	40	45	65	70

AUTO King David is an AUTO King James 162Z son who stems from incredibly elite genetics. King James' sire is one of the breed's biggest numbered Lim-Flex sires, COLE Windfall 144W. AUTO King David's dam, PBRS Dutches 790X, is a super powerful DHVO Deuce daughter who delivers each time. His milk EPD ranks in the top 15% of the breed. King David captured the coveted All-American Limousin Futurity champion banner in 2018 and was the reserve grand champion bull at the 2019 National Limousin Show at the National Western Stock Show in Denver. His powerful stature, elite genetics earned him the spot as Lot 1 in our 25th annual sale.



PBRS DUTCHES 790K | DAM OF LOT 1



LOT 2



AUTO PEYTON 206Y DAM OF LOTS 2, 3 & 4



LOT 2 GRAND CHAMPION BULL, 2018 SESC

2

AUTO KINGDOM KOM 131E ET

PERCENTAGE(85/75.2) BULL | HET POLLED (T) | HOMO BLACK (T)
 9/10/2017 | AUTO 131E | NXM2139124

LH U HAUL 135U	BASIN FRANCHISE P142	BW	74
AUTO LUCKY STRIKE 118B	EXLR DUCHESS 7129R	ADJ WW	802
AUTO LUCKIE 246W	WLR DIRECT HIT	ADJ YW	1,238
	TYEJ DB SERENITY	ADJ FAT	0.28
DHVO TREY 133R	GPFF BLAQUE RULON	ADJ REA	15.11
AUTO PEYTON 206Y	AMY JO DHAN 20L	ADJ IMF	2.70
CARROUSELS PINA COLADA	AUTO BLACK DAKOTA 129J		
	ELMW GINNIE P58G		

	CED	BW	WW	YW	MK	CEM	SC	DOC	YG	CW	RE	MB	SMTI
EPDS	10	2.0	62	94	22	5	0.4	8	-.57	12	.99	-.22	45
%RANK	65	80	55	55	40	75	75	90	60	40	50	50	55

AUTO Kingdom Kom 131E is one of our best features. He won the Southeast Summer Classic show this past summer in Murfreesboro, as well 2018 Missouri State Fair Grand Champion Limousin Bull banner. This is a unique pedigree stacked with champions is we couldn't be more excited about. His sire, AUTO Lucky Strike 118B, is the popular LH U Haul son who was a past AALF Futurity Champion Bull. Kingdom Kom's dam, AUTO Peyton 206Y, is an impressive donor for Thomas & Son Farms from the legendary Carrouseles Pina Colada donor; both females hauled home their fair share of banners. He was the 2018 MOE National Gold medal bull.



LOT 3

3

AUTO THE NATURAL 130E ET

PERCENTAGE(85/75.2) BULL | HOMO POLLED (T) | HET BLACK (T)
9/28/2017 | AUTO 130E | NXM2150712

LH U HAUL 135U
AUTO LUCKY STRIKE 118B
AUTO LUCKIE 246W

DHVO TREY 133R
AUTO PEYTON 206Y
CARROUSELS PINA COLADA

BASIN FRANCHISE P142
EXLR DUCHESS 7129R
WLR DIRECT HIT
TYEJ DB SERENITY
GPFF BLAQUE RULON
AMY JO DHAN 20L
AUTO BLACK DAKOTA 129J
ELMW GINNIE P58G

BW | 72
ADJ WW | 870
ADJ YW | 1,109
ADJ FAT | 0.21
ADJ REA | 13.79
ADJ IMF | 3.11

	CED	BW	WW	YW	MK	CEM	SC	DOC	YG	CW	RE	MB	SMTI
EPDS	10	2.0	62	94	22	5	0.4	8	-.55	12	.90	-.21	46
%RANK	65	80	55	55	40	75	75	90	60	55	55	50	55

Few bulls have as much look and presence as this one. This Purebred bull is long spined and incredibly sound on his feet and legs. AUTO The Natural 130E is a full sib to AUTO Kingdom Kom 131E and he's commanded so much attention of anyone that views him he's sure to be a favorite sale day. This homozygous polled bull produces attractive, maternal-oriented daughters as well as bulls that can headline any program.

4e

AUTO PAYWEIGHT 132E ET

PERCENTAGE(85/75.2) BULL | HOMO POLLED (T) | HOMO BLACK (T)
9/28/2017 | AUTO 132E | NXM2150713

LH U HAUL 135U
AUTO LUCKY STRIKE 118B
AUTO LUCKIE 246W

DHVO TREY 133R
AUTO PEYTON 206Y
CARROUSELS PINA COLADA

BASIN FRANCHISE P142
EXLR DUCHESS 7129R
WLR DIRECT HIT
TYEJ DB SERENITY
GPFF BLAQUE RULON
AMY JO DHAN 20L
AUTO BLACK DAKOTA 129J
ELMW GINNIE P58G

BW | 68
ADJ WW | 796
ADJ YW | 1,118
ADJ FAT | 0.21
ADJ REA | 11.51
ADJ IMF | 2.06

	CED	BW	WW	YW	MK	CEM	SC	DOC	YG	CW	RE	MB	SMTI
EPDS	10	2.0	62	94	22	5	0.5	8	-.51	11	.76	-.27	43
%RANK	65	80	55	55	40	75	60	90	65	75	60	60	65

Enhance your cow herd with AUTO Payweight 132E and his flawless phenotype and pedigree. Here is another Purebred full sib to AUTO Kingdom Kom 131E and AUTO The Natural 130E who is equally a powerful herd sire prospect. Timeless genetics right here that won't go out of style.



LOT 5

5

AUTO RESOURCE 151E ET

PUREBRED(87/74.4) BULL | HOMO POLLED (T) | HOMO BLACK (T)
10/10/2017 | AUTO 151E | NPM2150711

AUTO CRUZE 132X	MAGS THE GENERAL	BW	74
AUTO REAL DEAL 150B	AUTO REBECA 292S	ADJ WW	803
AUTO LUCKIE TOO 423Y	WLR DIRECT HIT	ADJ YW	1,107
MAGS Y-AXIS	TYEJ DB SERENITY	ADJ FAT	0.14
AUTO GLENDA 208B	TC ABERDEEN 759	ADJ REA	16.53
MAGS MANUELA	MAGS UAHUKA	ADJ IMF	2.71
	EXLR LIMITED EDITION 765J		
	AUTO CITY NIGHTS 214H		

	CED	BW	WW	YW	MK	CEM	SC	DOC	YG	CW	RE	MB	SMTI
EPDS	8	2.7	66	100	24	5	0.8	12	-59	18	1.03	-.31	43
%RANK	85	85	30	30	20	70	15	60	20	55	90	30	35

Here is a big bodied, rugged built, powerhouse of an individual who is double homozygous. AUTO Resource 151E is sired by AUTO Real Deal 150B is nothing short of the 'real deal' just like his father. Real Deal is the proven purebred son of AUTO Cruze 132X from the great AUTO Luckie Too 423Y female and is working in the Begert program in Texas. This bull's dam also comes from superior genetics—she's a MAGS Y-Axis daughter from the famed MAGS Manuela female. His milk EPD ranks in the top 20%. Bulls like this are few and far between.

6

AUTO RAWHIDE 157E ET

PUREBRED(87/74.4) BULL | HOMO POLLED (T) | HOMO BLACK (T)
11/1/2017 | AUTO 157E | NPM2150721

AUTO CRUZE 132X	MAGS THE GENERAL	BW	68
AUTO REAL DEAL 150B	AUTO REBECA 292S	ADJ WW	732
AUTO LUCKIE TOO 423Y	WLR DIRECT HIT	ADJ YW	1,107
MAGS Y-AXIS	TYEJ DB SERENITY	ADJ FAT	0.11
AUTO GLENDA 208B	TC ABERDEEN 759	ADJ REA	12.48
MAGS MANUELA	MAGS UAHUKA	ADJ IMF	3.66
	EXLR LIMITED EDITION 765J		
	AUTO CITY NIGHTS 214H		

	CED	BW	WW	YW	MK	CEM	SC	DOC	YG	CW	RE	MB	SMTI
EPDS	8	2.7	66	100	24	5	0.8	12	-52	17	.81	-.26	45
%RANK	85	85	30	30	20	70	20	60	20	>95	>95	20	30

This bull is a full sib to AUTO Resource 151E and ranks in the top 20% for milk and the top 25% for marbling. AUTO Rawhide 157E exemplifies what fundamental correctness and fleshing ability should be. He's full of rib shape and incredibly well balanced and is double homozygous for the black and polled traits. Keep your program ahead of the competition with Rawhide.



LOT 7

7

AUTO BRADY 156E ET

LIM-FLEX(75/64.4) BULL | HOMO POLLED (T) | HOMO BLACK (T)
10/11/2017 | AUTO 156E | LFM2150716

AUTO CRUZE 132X
AUTO REAL DEAL 150B
AUTO LUCKIE TOO 423Y

DAMERON FIRST CLASS
AUTO AVALON 222A
AUTO LANA 255L

MAGS THE GENERAL
AUTO REBECA 292S
WLR DIRECT HIT
TYEJ DB SERENITY
EXG RS FIRST RATE S903 R3
DAMERON NORTHERN MISS 311
EXLR DAKOTA 353G
TEXS STAR 208Y

BW | 73
ADJ WW | 892
ADJ YW | 1,132
ADJ FAT | 0.21
ADJ REA | 12.20
ADJ IMF | 3.18

	CED	BW	WW	YW	MK	CEM	SC	DOC	YG	CW	RE	MB	SMTI
EPDS	7	2.7	66	95	23	3	0.7	8	-.43	16	.72	-.13	49
%RANK	>95	95	40	70	40	95	70	95	75	55	25	85	80

AUTO Brady 156E is super deep ribbed, good fronted and is uniquely put together in a functional, attractive package. He is another AUTO Real Deal 150B son who deserves your attention. This big ribbed, great patterned young herd-sire prospect will sire cattle that have the look, functionality and power to hang with the best of them. His dam, AUTO Avalon 222A, is a Dameron First Class daughter now in the HB Farms program in Kentucky. The bonus is he's both is homozygous black and homozygous polled. Circle him in your catalog.

8

AUTO MAXX 152E ET

LIM-FLEX(75/64.4) BULL | HOMO POLLED (T) | HOMO BLACK (T)
10/10/2017 | AUTO 152E | LFM2150715

AUTO CRUZE 132X
AUTO REAL DEAL 150B
AUTO LUCKIE TOO 423Y

DAMERON FIRST CLASS
AUTO AVALON 222A
AUTO LANA 255L

MAGS THE GENERAL
AUTO REBECA 292S
WLR DIRECT HIT
TYEJ DB SERENITY
EXG RS FIRST RATE S903 R3
DAMERON NORTHERN MISS 311
EXLR DAKOTA 353G
TEXS STAR 208Y

BW | 70
ADJ WW | 803
ADJ YW | 1,084
ADJ FAT | 0.17
ADJ REA | 11.17
ADJ IMF | 3.26

	CED	BW	WW	YW	MK	CEM	SC	DOC	YG	CW	RE	MB	SMTI
EPDS	7	2.7	66	95	23	3	0.1	8	-.44	16	.72	-.11	49
%RANK	>95	95	40	70	40	95	>95	95	75	55	25	80	80

Sound, functional and nice patterned, AUTO Maxx 152E is sure to 'maxx' out the most potential in his future offspring. We have admired this one's power since he hit the ground. He comes from solid producing genetics and we're sure he'll make a producer incredibly proud. This full sib to AUTO Brady 156E is homozygous black and homozygous polled.



LOT 9

9

AUTO DRIVER 146E ET

LIM-FLEX(75/64.4) BULL | HOMO POLLED (T) | HET BLACK (T)
10/2/2017 | AUTO 146E | LFM2150714

AUTO CRUZE 132X
AUTO REAL DEAL 150B
AUTO LUCKIE TOO 423Y

DAMERON FIRST CLASS
AUTO AVALON 222A
AUTO LANA 255L

MAGS THE GENERAL	BW	68
AUTO REBECA 292S	ADJ WW	906
WLR DIRECT HIT	ADJ YW	1,236
TYEJ DB SERENITY	ADJ FAT	0.17
EXG RS FIRST RATE S903 R3	ADJ REA	12.16
DAMERON NORTHERN MISS 311	ADJ IMF	3.51
EXLR DAKOTA 353G		
TEXS STAR 208Y		

	CED	BW	WW	YW	MK	CEM	SC	DOC	YG	CW	RE	MB	SMTI
EPDS	7	2.7	66	95	23	3	0.5	8	-44	16	.72	-.12	49
%RANK	>95	95	40	70	40	95	85	95	75	55	25	80	80

We really like this one's symmetry and overall design. AUTO Driver profiles so well in terms of balance and uniformity, and he stands on such a big foot. He is great structured and doesn't give up the power and stoutness to be a strong producer.



AUTO AVALON 222A | DAM OF LOTS 7 — 11

10

AUTO TOP SHELF 1152E ET

LIM-FLEX(75/64.4) BULL | HOMO POLLED (T) | HET BLACK (T)
10/20/2017 | AUTO 1152E | LFM2150717

AUTO CRUZE 132X
AUTO REAL DEAL 150B
AUTO LUCKIE TOO 423Y

DAMERON FIRST CLASS
AUTO AVALON 222A
AUTO LANA 255L

MAGS THE GENERAL	BW	69
AUTO REBECA 292S	ADJ WW	824
WLR DIRECT HIT	ADJ YW	1,122
TYEJ DB SERENITY	ADJ FAT	0.28
EXG RS FIRST RATE S903 R3	ADJ REA	10.90
DAMERON NORTHERN MISS 311	ADJ IMF	3.33
EXLR DAKOTA 353G		
TEXS STAR 208Y		

	CED	BW	WW	YW	MK	CEM	SC	DOC	YG	CW	RE	MB	SMTI
EPDS	7	2.7	66	95	23	3	0.5	8	-44	16	.72	-.13	49
%RANK	>95	95	40	70	40	95	95	95	75	55	25	85	80

AUTO Top Shelf 1152E offers an abundance of performance with added style and length of body. He's moderate in his frame and will be a great herd-sire prospect for any operation. He'll be versatile and remain incredibly functional. A full sib to AUTO Brady 156E, AUTO Maxx 152E and AUTO Driver 146E. This bull will be such an intriguing breeding piece—look him up sale day and be sure he's on your must-have list.



AUTO REAL DEAL 150B | SIRE OF LOTS 5 — 11

11

AUTO SENSATION 160E ET

LIM-FLEX(75/64.4) BULL | HOMO POLLED (T) | HET BLACK (T)
11/1/2017 | AUTO 160E | LFM2150726

AUTO CRUZE 132X
AUTO REAL DEAL 150B
AUTO LUCKIE TOO 423Y

DAMERON FIRST CLASS
AUTO AVALON 222A
AUTO LANA 255L

MAGS THE GENERAL	BW	70
AUTO REBECA 292S	ADJ WW	716
WLR DIRECT HIT	ADJ YW	1,183
TYEJ DB SERENITY	ADJ FAT	0.19
EXG RS FIRST RATE S903 R3	ADJ REA	11.23
DAMERON NORTHERN MISS 311	ADJ IMF	2.93
EXLR DAKOTA 353G		
TEXS STAR 208Y		

	CED	BW	WW	YW	MK	CEM	SC	DOC	YG	CW	RE	MB	SMTI
EPDS	7	2.7	66	95	23	3	0.5	8	-43	16	.72	-.14	48
%RANK	>95	95	40	70	40	95	95	95	75	55	25	85	85

Another AUTO Real Deal 150B son you have to study. Real Deal is the proven purebred son of AUTO Cruze 132X from the great AUTO Luckie Too 423Y female, MAGS Y-Axis daughter from the famed MAGS Manuela. This homozygous polled standout's pedigree was designed with greatness.

12

AUTO SCOTLAND 186E ETLIM-FLEX(73/63.8) BULL | HET POLLED (T) | HOMO BLACK (T)
11/12/2017 | AUTO 186E | LFM2150725LH U HAUL 135U
AUTO LUCKY STRIKE 118B
AUTO LUCKIE 246WBASIN FRANCHISE P142
EXLR DUCHESS 7129R
WLR DIRECT HIT
TYEJ DB SERENITY
GPFF BLAQUE RULON
GPFF EXTRA SWEET ELITE
BR MIDLAND
EXLR REBECA 614HBW | 70
ADJ WW | 715
ADJ YW | 1,083
ADJ FAT | 0.20
ADJ REA | 12.42
ADJ IMF | 3.18LESF ASPHALT 9N
AUTO REBECA 292S
EXLR REBECA 1019P

	CED	BW	WW	YW	MK	CEM	SC	DOC	YG	CW	RE	MB	SMTI
EPDS	12	1.3	66	105	24	6	0.7	9	-43	16	.76	-.11	50
%RANK	40	65	40	40	25	60	70	85	75	45	25	80	75

AUTO Scotland 186E, a son of AUTO Lucky Strike 118B, is homozygous black. He is from one of the all-time great Lim-Flex donors who has staked her claim in the history book, AUTO Rebeca 292S. Her progeny have won across the country, topped sales and are producing elite individuals. His milk EPD ranks in top 25%.



LOT 12

13

AUTO ARMSTRONG 148E ETPUREBRED(87/77.4) BULL | HOMO POLLED (T) | HOMO BLACK (T)
10/20/2017 | AUTO 148E | NPM2150720TMCK DURHAM WHEAT 6030X
RIVERSTONE CROWN ROYAL
HSF YOUR FANTASYDHVO DEUCE 132R
MAGS STRAWBERRY PIE
MAGS WAR ADMIRAL
HSF TINKERBELL
GPFF BLAQUE RULON
GPFF EXTRA SWEET ELITE
BR MIDLAND
EXLR REBECA 614HBW | 72
ADJ WW | 799
ADJ YW | 1,057
ADJ FAT | 0.20
ADJ REA | 11.33
ADJ IMF | 2.59

	CED	BW	WW	YW	MK	CEM	SC	DOC	YG	CW	RE	MB	SMTI
EPDS	12	1.1	59	89	25	6	0.9	10	-49	3	.58	-.39	38
%RANK	40	50	65	65	15	50	10	75	85	>95	>95	55	75

Everyone who views this guy is beyond impressed. He's got rib shape, depth of body for days and sound to the ground. We love his unique build and powerhouse kind. AUTO Armstrong's pedigree is second-to-none. This Purebred son is from the famed AUTO Rebeca 292S female and out of the great Riverstone Crown Royal bull. Crown Royal's full sister, Riverstone Charmed, was the high seller in the 2015 Forged in Fire Sale in Canada. She was a National Champion for the Ratliff family and took home every major title where she was exhibited. This homozygous black, homozygous polled bull's milk



LOT 13

EPD ranks in the top 15%. There is so much power in this pedigree—these royal cow families breed true.

14

AUTO BLACK MAGIC 150E ETPUREBRED(87/77.4) BULL | HET POLLED (T) | HOMO BLACK (T)
10/22/2017 | AUTO 150E | NPM2139111TMCK DURHAM WHEAT 6030X
RIVERSTONE CROWN ROYAL
HSF YOUR FANTASYDHVO DEUCE 132R
MAGS STRAWBERRY PIE
MAGS WAR ADMIRAL
HSF TINKERBELL
GPFF BLAQUE RULON
GPFF EXTRA SWEET ELITE
BR MIDLAND
EXLR REBECA 614HBW | 66
ADJ WW | 774
ADJ YW | 1,138
ADJ FAT | 0.15
ADJ REA | 12.85
ADJ IMF | 3.12

	CED	BW	WW	YW	MK	CEM	SC	DOC	YG	CW	RE	MB	SMTI
EPDS	12	1.1	59	89	25	6	0.8	10	-52	3	.71	-.36	39
%RANK	40	50	65	65	15	50	15	75	85	>95	>95	45	65

Here's a bull easy doing in his appearance that has such a presence about him. AUTO Black Magic 150E is homozygous black and truly 'magical' to the eyes. He is a full sib to AUTO Armstrong 148E and his milk EPD ranks in the top 15%. Well bred, attractive profiling bulls like this one are hard to find! Buy with confidence in this guy's potential for functionality for years to come.



AUTO REBECA 292S | DAM OF LOTS 12, 13 & 14

HERD-SIRE PROSPECTS



LOT 15

15

AUTO SPEEDWAY 580E

LIM-FLEX(63/56.5) BULL | HOMO POLLED (T) | HOMO BLACK (T)
11/12/2017 | AUTO 580E | LFM2150709

EXAR DENVER 2002B	EXAR UPSHOT 0562B	BW	58
AUTO POWER PLUS 133B ET	EXAR ROYAL LASS 1067	ADJ WW	660
EF YADDA YADDA 809Y	DHVO DEUCE 132R	ADJ YW	1,074
	MAGS RUFFLES	ADJ FAT	0.15
AUTO CRUZE 132X	MAGS THE GENERAL	ADJ REA	11.14
AUTO COPY CAT 403C ET	AUTO REBECA 292S	ADJ IMF	3.20
AUTO BETTE 266Y	LH U HAUL 135U		
	WLR UGLY BETTY 432U		

	CED	BW	WW	YW	MK	CEM	SC	DOC	YG	CW	RE	MB	SMTI
EPDS	14	-0.4	61	98	25	8	1.1	12	-28	29	.61	.01	51
%RANK	15	20	70	60	20	20	25	55	25	75	65	55	70

AUTO Speedway 580E is sired by AUTO Power Plus 133B, the proven EXAR Denver son. This bull's dam, AUTO Copy Cat 403C, is the known daughter of AUTO Cruze 132X. Speedway ranks in the top 20% for milk, is homozygous black and homozygous polled. His offspring will sure set your program apart from the rest.

16

AUTO TREASURE 554E

LIM-FLEX(68/63.9) BULL | HET POLLED (T) | HET BLACK (T)
10/15/2017 | AUTO 554E | LFM2150703

EXAR DENVER 2002B	EXAR UPSHOT 0562B	BW	73
AUTO POWER PLUS 133B ET	EXAR ROYAL LASS 1067	ADJ WW	938
EF YADDA YADDA 809Y	DHVO DEUCE 132R	ADJ YW	1,282
	MAGS RUFFLES	ADJ FAT	0.11
MAGS ROBIN HOOD 276Y	MAGS UR A ROBIN	ADJ REA	13.91
AUTO CINDERELLA 659C	MAGS UNDERFOOT	ADJ IMF	2.27
AUTO RED MISSY 253X	HARVEST OLYMPUS		
	STBR DEMETRIA 669D		

	CED	BW	WW	YW	MK	CEM	SC	DOC	YG	CW	RE	MB	SMTI
EPDS	10	2.5	66	104	28	7	1.1	10	-50	27	.95	-.21	46
%RANK	70	95	40	40	5	40	25	80	30	15	15	95	90

AUTO Treasure 554E is another powerful AUTO Power Plus 133B son. When you talk about maternal power, you couldn't write any better pedigree. His dam, AUTO Cinderella 659C, MAGS Robin Hood out of a stalwart Fullblood female, has a 30 for milk ranking her in the top 3%. This 68% Lim-Flex has milk EPD ranks in the top 5%, and will carry on that tradition of Limousin muscle.



LOT 19

17

AUTO BANK NOTE 153E ET

LIM-FLEX(25/22.5) BULL | HOMO POLLED (T) | HOMO BLACK (T)
10/10/2017 | AUTO 153E | LFM2156654

HA OUTSIDE 3008 HA COWBOY UP 5405 HA BLACKCAP LADY 1602	KG SOLUTION 0018 HA EVER LADY 1575 HA PROGRAM 7328 HA BLCKCAP LADY 5515 LVLS SECRET WEAPON 4408K AUTO KYRIA 232K TWIN VALLEY PRECISIONE161 HA PATSY 1033	BW 68 ADJ WW 888 ADJ YW 1,256 ADJ FAT 0.14 ADJ REA 13.69 ADJ IMF 3.27
AUTO DOLLAR GENERAL 122R MAGS TOTSI HA PATSY 1121		

EPDS	14	0.2	72	122	23	7	0.9	12	.08	58	.44	.24	60
%RANK	15	>95	20	10	40	40	45	55	1	95	>95	15	20

AUTO Blank Note 153E is a good numbered, homozygous black and homozygous polled bull. He is a son of the ever-popular Angus sire, HA Cowboy Up, who sires balanced numbers and loads of muscle. Bank Note's dam is an AUTO Dollar General daughter who knows how to raise the great ones. This bull's YW EPD ranks in the top 10%, marbling in the top 15% and his WW in the top 20%. If you're looking for a bull that can get the job done in all the important areas, you'll want to take on this Bank Note.

18

AUTO WHITLOCK 187E ET

LIM-FLEX(75/68.5) BULL | HOMO POLLED (T) | RED
10/25/2017 | AUTO 187E | LFM2150718

RPY PAYNES DERBY 46Z B BAR COGNAC 1B ANCHOR B URBAN GIRL	KJO RESPONDER 120R IVY'S POLLED PRINCESS 1P ROMN MADE TO ORDER B BAR RED PEPPER LJC LANCER 806 LJC HANNAH 106 LVLS POLLED BLACK JACK CANE RIDGE POLL ANGEL 318	BW 74 ADJ WW 825 ADJ YW 1,118 ADJ FAT 0.17 ADJ REA 11.32 ADJ IMF 2.18
LJC MISSION STATEMENT P27 MAGS ANGEL 9748W MAGS PARKER		

EPDS	8	2.4	66	103	25	5	1.0	10	-.53	10	.76	-.32	43
%RANK	95	90	40	45	20	80	35	80	90	45	10	>95	95

AUTO Whitlock 187E is a unique breeding piece who is a red, homozygous polled B Bar Cognac 1B son. Cognac is known for his extreme Purebred breed character and proven power. Whitlock's dam, MAGS Angel 9748W, is a daughter of the Red Angus sire LJC Mission Statement from the prolific MAGS Parker donor. His milk EPD ranks in the top 20%.

19

AUTO NITRO 172E ET

LIM-FLEX(50/45.1) BULL | HOMO POLLED (T) | RED
10/20/2017 | AUTO 172E | LFM2150728

LSF SAGA 1040Y AHCC COWBOY KIND C595 ET AHCC DAKOTA LUVLY R595	BECKTON EPIC R397 K LSF MINOLA T7172 W9041 AUTO BLACK DAKOTA 129J EXLR 794H LJC LANCER 806 LJC HANNAH 106 LVLS POLLED BLACK JACK CANE RIDGE POLL ANGEL 318	BW 72 ADJ WW 807 ADJ YW 1,169 ADJ FAT 0.20 ADJ REA 12.61 ADJ IMF 3.49
LJC MISSION STATEMENT P27 MAGS ANGEL 9748W MAGS PARKER		

EPDS	6	2.9	76	123	25	5	1.4	9	-.31	29	.65	-.10	52
%RANK	>95	>95	10	10	20	80	5	85	25	70	60	80	65

AUTO Nitro 172E is a growth focused, herd-sire prospect who is red and homozygous polled. He is as long as a freight train in his skeletal makeup and is sound on his feet and legs. We really admire his spring of rib and his overall power. He's a son of AHCC Cowboy Kind C595 who was the talk-of-the-town in Denver in 2016. AUTO Nitro is a MAGS Angel 9748W son and has such great growth numbers. His WW and YW EPDs both rank in the top 10% while his milk is in the top 20%. It's hard to find red Lim-Flex bulls with his kind of power and functionality.

20

AUTO TOP PRIORITY 145E ET

LIM-FLEX(75/65.4) BULL | HOMO POLLED (T) | RED
10/1/2017 | AUTO 145E | LFM2150710

LSF SAGA 1040Y AHCC COWBOY KIND C595 ET AHCC DAKOTA LUVLY R595	BECKTON EPIC R397 K LSF MINOLA T7172 W9041 AUTO BLACK DAKOTA 129J EXLR 794H EXLR DAKOTA 353G DFLC JET SET BPC 34Y TCDT MR T.D'S POWER PACK ELMW POLLED ECSTASY 67E	BW 72 ADJ WW 798 ADJ YW 1,231 ADJ FAT 0.13 ADJ REA 12.31 ADJ IMF 3.31
AUTO BLACK DAKOTA 129J CARROUSELS PEACHES 4330P ELMW GINNIE P58G		

EPDS	8	2.6	68	108	24	6	0.9	6	-.48	19	.74	-.36	42
%RANK	95	95	35	30	25	60	45	>95	65	50	15	>95	95

AUTO Top Priority is another AHCC Cowboy Kind C595 son from the famed Carrouseles Peaches 4330P donor. This red, homozygous polled bull carries a milk EPD that ranks in the top 25%. Top Priority has marketability and loads of quality that is hard to come by these days.



LOT 21



MAGS MANUELA | MATERNAL GRANDAM OF LOTS 21 — 24

21

AUTO HOMETOWN 137E ET

PUREBRED(100/86.1) BULL | HET POLLED (T) | HET BLACK (T)
9/28/2017 | AUTO 137E | NPM2151246

AUTO CRUZE 132X
AUTO REAL DEAL 150B
AUTO LUCKIE TOO 423Y

JCL LODESTAR 27L
AUTO MANUELA 298S
MAGS MANUELA

MAGS THE GENERAL
AUTO REBECA 292S
WLR DIRECT HIT
TYEJ DB SERENITY
HUNTS HI-LITER 245G
LOGAN'S CHEERLEADER 280G
EXLR LIMITED EDITION 765J
AUTO CITY NIGHTS 214H

BW | 70
ADJ WW | 935
ADJ YW | 1,269
ADJ FAT | 0.14
ADJ REA | 13.80
ADJ IMF | 3.32

	CED	BW	WW	YW	MK	CEM	SC	DOC	YG	CW	RE	MB	SMTI
EPDS	9	2.6	68	105	23	5	0.6	8	-.54	21	.87	-.3	44
%RANK	75	85	25	20	25	70	30	85	10	95	>95	30	30

We just absolutely love the sogginess in this Purebred bull. AUTO Hometown 137E is rugged in his design, super level through his top and has great muscle expression—above all, he has that wickedly impressive breeding bull phenotype that blow people away when they see him. The cow power lines backing this bull on both sides of his pedigree are nothing short of impressive. AUTO Hometown 137E is a son from the proven AUTO Real Deal 150B bull out of AUTO Manuela 298S, an own daughter of the legendary MAGS Manuela female from the trusted and reliable JCL Lodestar. Hometown has a YW EPD that ranks in the top 20% and his WW and milk rank in the top 25%.

22

AUTO UNIVERSAL 564E

PERCENTAGE(84/71.6) BULL | HOMO POLLED (T) | HET BLACK (T)
11/10/2017 | AUTO 564E | NXM2150707

AUTO CRUZE 132X
AUTO REAL DEAL 150B
AUTO LUCKIE TOO 423Y

MAGS ALI
AUTO CYLIE 284C ET
MAGS MANUELA

MAGS THE GENERAL
AUTO REBECA 292S
WLR DIRECT HIT
TYEJ DB SERENITY
CONNEALY CONSENSUS 7229
MAGS YOKO
EXLR LIMITED EDITION 765J
AUTO CITY NIGHTS 214H

BW | 72
ADJ WW | 858
ADJ YW | 1,192
ADJ FAT | 0.10
ADJ REA | 11.15
ADJ IMF | 3.56

	CED	BW	WW	YW	MK	CEM	SC	DOC	YG	CW	RE	MB	SMTI
EPDS	7	3.4	76	110	22	4	1.1	11	-.38	28	.61	-.21	48
%RANK	95	>95	5	15	40	85	10	65	15	90	75	50	45

Another beautiful profiling son of AUTO Real Deal 150B. AUTO Universal 564E is a son of AUTO Cylie 284C, the popular MAGS Ali daughter out of the famed MAGS Manuela. Talk about a stacked pedigree! Universal is homozygous polled and has great growth numbers to back him. His WW EPD is in the top 10% and YW in the top 15%.



LOT 23



SBLX UNKNOWN 104U | DAM OF LOTS 23 & 24

23

AUTO POWER SURGE 155E ET

LIM-FLEX(60/53.9) BULL | HOMO POLLED (T) | HET BLACK (T)
11/1/2017 | AUTO 155E | LFM2153513

LH U HAUL 135U
AUTO LUCKY STRIKE 118B
AUTO LUCKIE 246W

MYTTY IN FOCUS
SBLX UNKNOWN 104U
MAGS MANUELA

BASIN FRANCHISE P142	BW	68
EXLR DUCHESS 7129R	ADJ WW	758
WLR DIRECT HIT	ADJ YW	1,140
TYEJ DB SERENITY	ADJ FAT	0.23
SAF FOCUS OF ER	ADJ REA	13.35
MYTTY COUNTESS 906	ADJ IMF	2.89
EXLR LIMITED EDITION 765J		
AUTO CITY NIGHTS 214H		

	CED	BW	WW	YW	MK	CEM	SC	DOC	YG	CW	RE	MB	SMTI
EPDS	13	0.9	62	99	24	8	1.1	12	-26	17	.44	.14	56
%RANK	25	55	60	55	25	20	25	55	70	95	75	30	40

AUTO Power Surge 155E has all the pieces of a tremendous herd sire. He stands on such substance of bone, reaches with incredible comfort and is super flexible when he sets down on his pasterns. He's incredibly attractive from every angle and chock-full of muscle. From the great AUTO Lucky Strike 118 bull, AUTO Power Surge 155E is one with truly a royal pedigree. His dam, SBLX Unknown 104U, is the daughter of Mytty In Focus and from the famous MAGS Manuela cow. This bull's milk EPD ranks in the top 25% and he is homozygous polled.

24

AUTO AFTER SHOCK 175E ET

LIM-FLEX(60/53.9) BULL | HET POLLED (T) | HET BLACK (T)
11/10/2017 | AUTO 175E | LFM2150723

LH U HAUL 135U
AUTO LUCKY STRIKE 118B
AUTO LUCKIE 246W

MYTTY IN FOCUS
SBLX UNKNOWN 104U
MAGS MANUELA

BASIN FRANCHISE P142	BW	72
EXLR DUCHESS 7129R	ADJ WW	630
WLR DIRECT HIT	ADJ YW	1,001
TYEJ DB SERENITY	ADJ FAT	0.17
SAF FOCUS OF ER	ADJ REA	12.51
MYTTY COUNTESS 906	ADJ IMF	3.87
EXLR LIMITED EDITION 765J		
AUTO CITY NIGHTS 214H		

	CED	BW	WW	YW	MK	CEM	SC	DOC	YG	CW	RE	MB	SMTI
EPDS	13	0.9	62	99	24	8	1.1	12	-27	18	.47	.15	57
%RANK	25	55	60	55	25	20	25	55	70	95	70	30	35

AUTO After Shock 175 is well balanced, loaded with body and rib shape, and has lots of genetic potential. He is a full sib to AUTO Power Surge 155E with a milk EPD in the top 25%. If you're looking for a bull with quality that will generate great offspring with maternal power, you'll want this one leaving on your trailer.



LOT 25

25

AUTO TNT 705E

PERCENTAGE(79/69.4) BULL | HET POLLED (T) | HOMO BLACK (T)
11/15/2017 | AUTO 705E | NXM2150727

LH U HAUL 135U	BASIN FRANCHISE P142	BW	72
AUTO FIRST STRIKE 113B	EXLR DUCHESS 7129R	ADJ WW	718
AUTO LUCKIE 246W	WLR DIRECT HIT	ADJ YW	1,146
	TYEJ DB SERENITY	ADJ FAT	0.18
AUTO BLAQUE LABEL 176S	LESF ASPHALT 9N	ADJ REA	14.15
AUTO COFFE CAKE 699W	EXLR REBECA 1019P	ADJ IMF	3.38
AUTO RAMONA 257T	AUTO DOLLAR GENERAL 122R		
	EXLR EXPRESSWAY 736J		

	CED	BW	WW	YW	MK	CEM	SC	DOC	YG	CW	RE	MB	SMTI
EPDS	12	0.8	64	103	22	7	0.8	10	-46	19	.82	-.10	50
%RANK	40	50	45	30	40	35	40	75	35	70	65	35	40

AUTO TNT 705E is impressive in his makeup, stout in his build and super correct in his structure. From the prestigious AUTO First Strike 117B bull and AUTO Coffe Cake 699W, the dam of AUTO Black Coffee 512A, the Purebred bull working in the Begert and Keeton herds in Texas. This bull goes back to a lot of great ones—AUTO Dollar General and GPFF Blaque Rulon. This is a bull that will generate top of the line seedstock and great females that will be top producers in any program and will guarantee every calf is black. We know this one will prove to be a great breeding bull.



LOT 26

26

AUTO KASH ONLY 579E

LIM-FLEX(59/53.6) BULL | HOMO POLLED (T) | HOMO BLACK (T)
11/10/2017 | AUTO 579E | LFM2150708

EXAR DENVER 2002B	EXAR UPSHOT 0562B	BW	74
AUTO POWER LINE 135B ET	EXAR ROYAL LASS 1067	ADJ WW	753
EF YADDA YADDA 809Y	DHVO DEUCE 132R	ADJ YW	1,092
	MAGS RUFFLES	ADJ FAT	0.10
MAGS XYLOPOLIST	DHVO DEUCE 132R	ADJ REA	11.12
CFLX UNNA 323A	MAGS STRAWBERRY	ADJ IMF	3.63
SBLX UNNA 391U	MYTTY IN FOCUS		
	MAGS SALMETTO		

	CED	BW	WW	YW	MK	CEM	SC	DOC	YG	CW	RE	MB	SMTI
EPDS	13	1.3	63	94	24	9	1.2	12	-.30	26	.63	.05	53
%RANK	25	65	55	70	25	10	25	55	35	75	60	50	55

If you're in the market for presence, style and functionality, this is the bull for you. This guy is so soggy in his design and incredibly deep bodied. He's super rugged in his structure and great moving. AUTO Kash Only 579E comes from a dam of superior number and phenotypic significance, CFLX Unna 323A, a MAGS Xylopolist daughter from a Mytty In Focus female. He is an AUTO Power Line 135B son. He is homozygous black and homozygous polled. His milk EPD ranks in the top 25% of the breed. This bull's offspring will be at the top of any outfit and will definitely be the talk of the town.

27 AUTO LEADMAN 584E

PERCENTAGE(77/69.6) BULL | HOMO POLLED (T) | HOMO BLACK (T)
10/23/2017 | AUTO 584E | NXM2150704

LH U HAUL 135U	BASIN FRANCHISE P142	BW	74
AUTO LUCKY STRIKE 118B	EXLR DUCHESS 7129R	ADJ WW	787
AUTO LUCKIE 246W	WLR DIRECT HIT	ADJ YW	1,252
	TYEJ DB SERENITY	ADJ FAT	0.19
DHVO DEUCE 132R	GPFF BLAQUE RULON	ADJ REA	13.30
AUTO BRIAH 635B	AMY JO DHAN 20L	ADJ IMF	3.02
AUTO JANELL 670Y	MAGS UNDOING		
	AUTO LET'S SEE 248R		

	CED	BW	WW	YW	MK	CEM	SC	DOC	YG	CW	RE	MB	SMTI
EPDS	11	2.5	76	118	24	6	0.9	11	-.48	23	.90	-.17	51
%RANK	50	90	5	10	25	55	30	65	25	55	65	45	35

AUTO Leadman 584E is a terrific numbered young herd-sire prospect who is double homozygous. This AUTO Lucky Strike 118B son has a WW EPD that ranks in the top 5%, a YW in the top 10% and milk in the top 25%. His dam, AUTO Briah 635B, is a DHVO Deuce daughter out of a MAGS Undoing female.

28

AUTO KLONDIKE 561E

LIM-FLEX(50/44.5) BULL | HET POLLED (T) | HOMO BLACK (T)
11/2/2017 | AUTO 561E | LFM2150706

EXAR DENVER 2002B	EXAR UPSHOT 0562B	BW	64
AUTO LODE UP 137B ET	EXAR ROYAL LASS 1067	ADJ WW	714
AUTO EXCEPTIONAL 282S	JCL LODESTAR 27L	ADJ YW	1,105
	MINE PLD EXCEPTIONAL 981E	ADJ FAT	0.18
PVF INSIGHT 0129	S A V BRILLIANCE 8077	ADJ REA	12.12
AUTO CAMELIA 408C ET	PVF MISSIE 790	ADJ IMF	3.32
AUTO MANUELA 298S	JCL LODESTAR 27L		
	MAGS MANUELA		

	CED	BW	WW	YW	MK	CEM	SC	DOC	YG	CW	RE	MB	SMTI
EPDS	13	0.1	63	104	24	8	0.8	12	-.23	37	.80	.24	60
%RANK	25	30	55	40	25	20	55	55	10	35	80	15	20

There are so many phenomenal genetics throughout this one's pedigree. From the EXAR Denver son, AUTO Lode Up 137B, this bull has it all stacked in his favor. AUTO Klondike 561E is out of a PVF Insight 0129 daughter, AUTO Camelia 408C, who goes back to MAGS Manuela. This bull ranks in the top 15% for marbling and is homozygous black.

29

AUTO BOMBSHELL 100F ET

PUREBRED(93/84.1) BULL | HOMO POLLED (T) | HOMO BLACK (T)
1/1/2018 | AUTO 100F | NPM2151820

TMCK DURHAM WHEAT 6030X
RIVERSTONE CROWN ROYAL
HSF YOUR FANTASY

COLE ABSOLUTE 05A
CELL MISS RESPONDER 6078D
MAGS YODH

DHVO DEUCE 132R	BW	66
MAGS STRAWBERRY PIE	ADJ WW	758
MAGS WAR ADMIRAL	ADJ YW	1,263
HSF TINKERBELL	ADJ FAT	0.13
AHCC XPENSE ACCOUNT X516	ADJ REA	14.64
COLE MISS TRAVELER 029X	ADJ IMF	2.79
DHVO DEUCE 132R		
MAGS RAMADA		

	CED	BW	WW	YW	MK	CEM	SC	DOC	YG	CW	RE	MB	SMTI
EPDS	8	2.5	70	105	22	4	1.1	11	-57	5	.88	-.43	40
%RANK	85	85	15	20	35	85	5	65	75	90	95	65	55

AUTO Bombshell 100F is another uniquely designed Riverstone Crown Royal son. He's got great rib shape, stands on an outstanding amount of bone and is great fronted. AUTO Bombshell 100F is out of a COLE Absolute daughter, CELL Miss Responder 6078D. His weaning weight ranks in the top 15% and the top 25% for yearling weight. He is homozygous black and homozygous polled. This one will be a top herd sire for any program and will make his own offspring 'bombshells' in your pastures.



LOT 29

30

AUTO RAMPAGE 101F ET

LIM-FLEX(68/61.1) BULL | HET POLLED (T) | HOMO BLACK (T)
1/2/2018 | AUTO 101F | LFM2151819

MAGS THE GENERAL
AUTO CRUZE 132X
AUTO REBECA 292S

EXAR BLUE CHIP 1877B
AUTO DONELLA 210D ET
AUTO GEMINI 248T

AUTO DOLLAR GENERAL 122R	BW	65
EXLR LUVLY 821M	ADJ WW	692
LESF ASPHALT 9N	ADJ YW	1,177
EXLR REBECA 1019P	ADJ FAT	0.18
DAMERON FIRST CLASS	ADJ REA	13.30
GREENS PRINCESS 1012	ADJ IMF	3.97
GPFF BLAQUE RULON		
MAGS MANUELA		

	CED	BW	WW	YW	MK	CEM	SC	DOC	YG	CW	RE	MB	SMTI
EPDS	10	1.5	74	111	22	7	0.4	10	-32	20	.55	-.02	54
%RANK	70	75	15	25	50	40	95	80	60	85	55	65	50

Here is a bull super uniform in his makeup, has great muscle shape and a big, strong top. This AUTO Cruze 132X son is from an EXAR Blue Chip daughter, AUTO Donella 210D, who sold to White Valley Ranch in Adair, OK. Her dam is AUTO Gemini 248T a great in the breed. He ranks in the top 15% for weaning weight and the top 25% for yearling weight. Let this polled, homozygous black standout do great for you like his dam has done for White Valley.



LOT 30

Limousin Today Profit Tomorrow

"In these times when the margin on feeding cattle is so slim, the difference between YG 1-2 and YG 3 can be the difference in a profit or loss on a set of calves. We run a lot of Limousin influenced cattle through our barn and they consistently top the market and make our customers money."



-Jackie Moore, Owner/Operator,
Joplin Regional Stockyards, Missouri

Limousin and Lim-Flex® (Limousin x Angus hybrid) deliver to your bottom line.

- ☞ Calving ease & calf vigor
- ☞ More pounds to sell at weaning
- ☞ Feed efficiency
- ☞ Tested & proven docility
- ☞ Cow & bull longevity
- ☞ Carcass merit

To find out more about how you can profit tomorrow with Limousin or Lim-Flex® bulls and females, contact a NALF regional manager, Andy Rest or Nathan Smith or visit www.NALF.org.
North American Limousin Foundation • 303-220-1693 • Limousin@NALF.org • NALF.org



LOT 31



EXLR MOLLY 7103K | DAM OF LOTS 31 & 32



LOT 32

31

AUTO EBBA 200E ET

LIM-FLEX(75/67.6) COW | POLLED | BLACK
1/10/2017 | AUTO 200E | LFF2135086

TC ABERDEEN 759
MAGS Y-AXIS
MAGS UAHUKA

EXLR DAKOTA 353G
EXLR MOLLY 7103K
EXLR MOLLY 343G

C R A BEXTOR 872 5205 608
TC BLACKBIRD 4034
DHVO DEUCE 132R
CARROUSELS PINA COLADA
WULF'S COUNT DOWN 9251C
CANE RIDGE DAPHNE 011D
CANE RIDGE POLLED WYATT
JCL MOLLY

BW | 62
ADJ WW | 671
ADJ YW | 926
ADJ FAT | 0.19
ADJ REA | 15.41
ADJ IMF | 3.29

	CED	BW	WW	YW	MK	CEM	SC	DOC	YG	CW	RE	MB	SMTI
EPDS	11	0.5	58	89	25	7	0.8	12	-.62	7	.98	-.38	39
%RANK	55	40	80	85	20	40	70	55	95	10	1	>95	95

DUE 4.23.19 TO MAGS AVIATOR (HP/HB)

It takes females of this caliber to produce the great ones. AUTO Ebba 200E has it all—body, dimension, super sound feet and legs and a great design. This female is a daughter of MAGS Y-Axis, the renowned curve-bender sire with a flawless phenotype. Her dam, EXLR Molly 7103K, has raised some of the breed's great individuals. Molly is a daughter of the great EXLR Dakota 353G. Her milk EPD ranks in the top 20%.

32

AUTO EBBI 207E ET

LIM-FLEX(75/67.6) COW | POLLED | BLACK
1/2/2017 | AUTO 207E | LFF2123612

TC ABERDEEN 759
MAGS Y-AXIS
MAGS UAHUKA

EXLR DAKOTA 353G
EXLR MOLLY 7103K
EXLR MOLLY 343G

C R A BEXTOR 872 5205 608
TC BLACKBIRD 4034
DHVO DEUCE 132R
CARROUSELS PINA COLADA
WULF'S COUNT DOWN 9251C
CANE RIDGE DAPHNE 011D
CANE RIDGE POLLED WYATT
JCL MOLLY

BW | 68
ADJ WW | 615
ADJ YW | 976
ADJ FAT | 0.20
ADJ REA | 14.27
ADJ IMF | 3.00

	CED	BW	WW	YW	MK	CEM	SC	DOC	YG	CW	RE	MB	SMTI
EPDS	11	0.5	58	89	25	7	0.8	12	-.60	7	.92	-.39	38
%RANK	55	40	80	85	20	40	70	55	95	15	2	>95	95

DUE 4.02.19 TO MAGS AVIATOR (HP/HB)

This female has the build to upgrade any herd. AUTO Ebba 207E is super clean fronted and deep sided. She's moderate in her frame, stout in her structure and long, level topped. On the move you can't help but fall more in love with her. She's as sound as a cat and tracks with such a confident, long stride. A full sib to AUTO Ebba 200E, she too ranks in the top 20% for milk.



LOT 33



CARROUSELS PEACHES | DAM OF LOTS 33 — 36



LOT 34

33

AUTO EMBER 205E ET

LIM-FLEX(50/43) COW | HOMO POLLED (T) | BLACK
1/1/2017 | AUTO 205E | LFF2123610

DAMERON FIRST CLASS
EXAR CLASSEN 1422B
EXAR PRINCESS 2006

AUTO BLACK DAKOTA 129J
CARROUSELS PEACHES 4330P
ELMW GINNIE P58G

EXG RS FIRST RATE S903 R3
DAMERON NORTHERN MISS 311
EXAR LUTTON 1831
GREENS PRINCESS 1012
EXLR DAKOTA 353G
DFLC JET SET BPC 34Y
TCDT MR T.D.'S POWER PACK
ELMW POLLED ECSTASY 67E

BW | 68
ADJ WW | 782
ADJ YW | 1,070
ADJ FAT | 0.40
ADJ REA | 15.44
ADJ IMF | 4.16

	CED	BW	WW	YW	MK	CEM	SC	DOC	YG	CW	RE	MB	SMTI
EPDS	9	2.5	67	102	20	8	0.4	9	-.30	24	.78	.15	58
%RANK	85	95	35	45	70	20	95	85	45	40	60	30	30

DUE 4.20.19 TO HBRL DELUXE PACKAGE 6114D(HP/HB)

Here is an elegantly designed, long fronted donor in the making. She comes from such a powerful cow family, so we know she's destined for greatness. She is a daughter of the popular, EXAR Classen 1422B who was a top seller for \$150,000 half interest in a past Express Ranches sale. Her dam is our legendary, proven and ever so predictable, Carrousel Peaches 4330P. This female is homozygous polled.

34

AUTO EVER 201E ET

LIM-FLEX(50/43) COW | HET POLLED (T) | BLACK
1/10/2017 | AUTO 201E | LFF2135087

MOHNEN LONG DISTANCE 1639
MOHNEN LONG HAUL 502
MOHNEN ZARA 390

AUTO BLACK DAKOTA 129J
CARROUSELS PEACHES 4330P
ELMW GINNIE P58G

MOHNEN BRUSHPOPPER 295
BALDRIDGE BLACKBIRD M565
SITZ UPWARD 307R
MOHNEN ZARA 146
EXLR DAKOTA 353G
DFLC JET SET BPC 34Y
TCDT MR T.D.'S POWER PACK
ELMW POLLED ECSTASY 67E

BW | 64
ADJ WW | 596
ADJ YW | 874
ADJ FAT | 0.14
ADJ REA | 14.14
ADJ IMF | 3.44

	CED	BW	WW	YW	MK	CEM	SC	DOC	YG	CW	RE	MB	SMTI
EPDS	11	-0.4	56	89	28	4	-	11	-.39	19	.81	.24	59
%RANK	55	20	90	85	5	90	-	70	65	35	35	15	25

DUE 4.02.19 TO AUTO REAL DEAL 150B (HP/HB)

She is from the popular Mohnen Long Haul 502 bull. Long Haul is the superior numbered sire with a great disposition. Her dam, Carrousel Peaches, needs no introduction. She is the donor who continues to produce the special ones. Her milk EPD ranks in the top 5%, marbling in top 15% and her birth weight top 20%.



LOT 35

35

AUTO EPIE 204E ET

LIM-FLEX(50/43) COW | HET POLLED (T) | BLACK
1/2/2017 | AUTO 204E | LFF2123609

MOHNEN LONG DISTANCE 1639	MOHNEN BRUSHPOPPER 295	BW	66
MOHNEN LONG HAUL 502	BALDRIDGE BLACKBIRD M565	ADJ WW	539
MOHNEN ZARA 390	SITZ UPWARD 307R	ADJ YW	908
AUTO BLACK DAKOTA 129J	MOHNEN ZARA 146	ADJ FAT	0.27
CARROUSELS PEACHES 4330P	EXLR DAKOTA 353G	ADJ REA	13.48
ELMW GINNIE P58G	DFLC JET SET BPC 34Y	ADJ IMF	3.85
	TCDT MR T.D.'S POWER PACK		
	ELMW POLLED ECSTASY 67E		

	CED	BW	WW	YW	MK	CEM	SC	DOC	YG	CW	RE	MB	SMTI
EPDS	11	-0.4	56	89	28	4	-	11	-36	19	.78	.28	60
%RANK	55	20	90	85	5	90		70	65	40	45	15	20

DUE 4.02.19 TO AUTO LUCKY GUY 140D (HP/HB)

Nice fronted, square hipped and long spined—all characteristics that we think takes this female to the top. AUTO Eppie 204E is super athletic in her movement and sound on her feet and legs. She is a full sib to Lot 34, AUTO Ever 201E. Numbered exactly the same as her sister, her milk EPD ranks in the top 5%, marbling in top 15% and her birth weight top 20%.



LOT 36

36

AUTO EILENE 248E ET

PUREBRED(87/76.6) COW | HOMO POLLED (T) | BLACK
2/28/2017 | AUTO 248E | NPF2135092

DHVO DEUCE 132R	GPFF BLAQUE RULON	BW	70
MAGS WAZOWSKI	AMY JO DHAN 20L	ADJ WW	632
BOHI RED ROBIN 282R	CONNELLY LEAD ON	ADJ YW	973
AUTO BLACK DAKOTA 129J	MAGS MANUELA	ADJ FAT	0.24
CARROUSELS PEACHES 4330P	EXLR DAKOTA 353G	ADJ REA	13.45
ELMW GINNIE P58G	DFLC JET SET BPC 34Y	ADJ IMF	3.49
	TCDT MR T.D.'S POWER PACK		
	ELMW POLLED ECSTASY 67E		

	CED	BW	WW	YW	MK	CEM	SC	DOC	YG	CW	RE	MB	SMTI
EPDS	10	1.8	66	104	25	7	0.8	6	-64	17	1.12	-.37	42
%RANK	60	70	30	20	15	35	15	90	20	40	75	50	45

DUE 4.02.19 TO AUTO BLACK COFFEE 512A (P/HB)

There's no question that any female from the Carrouseles Peaches cow family will be a superb individual and AUTO Eilene 248E is a testament to that statement. She is graceful in her movement, uniform in her design and one that will be remembered for her flashy profile. AUTO Eilene 248E is a MAGS Wazowski daughter from our prolific Carrouseles Peaches 4330P. This female's milk EPD ranks in top 15%, and her yearling weight in the top 25% and she is a homozygous polled Purebred.



LOT 37

37

AUTO EMMIE 213E ET

PERCENTAGE(85/77.2) COW | HOMO POLLED (T) | RED
2/1/2017 | AUTO 213E | NXF2135183

RPY PAYNES DERBY 46Z	KAJO RESPONDER 120R	BW	64
B BAR COGNAC 1B	IVY'S POLLED PRINCESS 1P	ADJ WW	536
ANCHOR B URBAN GIRL	ROMN MADE TO ORDER	ADJ YW	857
LH U HAUL 135U	B BAR RED PEPPER	ADJ FAT	0.29
AUTO ARDIS 415A	BASIN FRANCHISE P142	ADJ REA	13.22
CARROUSELS PEACHES 4330P	EXLR DUCHESS 7129R	ADJ IMF	3.47
	AUTO BLACK DAKOTA 129J		
	ELMW GINNIE P58G		

	CED	BW	WW	YW	MK	CEM	SC	DOC	YG	CW	RE	MB	SMTI
EPDS	12	1.7	63	97	25	7	0.5	9	-60	11	.98	-.28	44
%RANK	40	70	50	50	15	35	60	80	65	40	45	60	60

DUE 4.02.19 TO LFLC BANK ACCOUNT 701B (R/HP)

Here is an impressive red, homozygous polled female. We really admire this one's build as she stands on great feet and legs, is bold in her rib shape and exquisitely muscled. She is a daughter of B Bar Cognac 1B, the meat wagon of a bull with excellent breed character. Her dam, AUTO Ardis 415A (who is working in the Logan Hills herd), goes back to the famed Ginnie cow family. AUTO Emmie ranks in the top 15% for milk.



LOT 38



AUTO MANUELA 2985 DAM OF LOTS 38 & 39

38

AUTO ELLYN 254E ET

PUREBRED(100/86.1) COW | HET POLLED (T) | HET BLACK (T)
3/4/2017 | AUTO 254E | NPF2135094

AUTO CRUZE 132X
AUTO REAL DEAL 150B
AUTO LUCKIE TOO 423Y

JCL LODESTAR 27L
AUTO MANUELA 298S
MAGS MANUELA

MAGS THE GENERAL	BW	70
AUTO REBECA 292S	ADJ WW	674
WLR DIRECT HIT	ADJ YW	993
TYEJ DB SERENITY	ADJ FAT	0.24
HUNTS HI-LITER 245G	ADJ REA	12.16
LOGAN'S CHEERLEADER 280G	ADJ IMF	3.32
EXLR LIMITED EDITION 765J		
AUTO CITY NIGHTS 214H		

	CED	BW	WW	YW	MK	CEM	SC	DOC	YG	CW	RE	MB	SMTI
EPDS	9	2.6	68	105	23	5	0.6	8	-.52	21	.8	-.35	42
%RANK	75	85	25	20	25	70	30	85	10	>95	>95	40	45

DUE 4.02.19 TO AUTO BLACK COFFEE 512A (P/HB)

We love this one's lines. AUTO Elyn 254E is big boned, soggy middled and super nice through her front one third. She's got such a great extension to her neck and we really admire her muscle shape and expression. She is sired by the impressive AUTO Cruze son, AUTO Real Deal 150B. AUTO Manuela 298S is a trusted donor from the multiple trait-leading sire, JCL Lodestar 27L out of the famed MAGS Manuela. Her YW EPD ranks in the top 20%, and her WW and milk EPDs rank in the top 25%.

39

AUTO EVERLY 255E ET

PUREBRED(100/86.1) COW | HET POLLED (T) | HET BLACK (T)
3/5/2017 | AUTO 255E | NPF2135095

AUTO CRUZE 132X
AUTO REAL DEAL 150B
AUTO LUCKIE TOO 423Y

JCL LODESTAR 27L
AUTO MANUELA 298S
MAGS MANUELA

MAGS THE GENERAL	BW	70
AUTO REBECA 292S	ADJ WW	553
WLR DIRECT HIT	ADJ YW	891
TYEJ DB SERENITY	ADJ FAT	0.24
HUNTS HI-LITER 245G	ADJ REA	12.51
LOGAN'S CHEERLEADER 280G	ADJ IMF	3.03
EXLR LIMITED EDITION 765J		
AUTO CITY NIGHTS 214H		

	CED	BW	WW	YW	MK	CEM	SC	DOC	YG	CW	RE	MB	SMTI
EPDS	9	2.6	68	105	23	5	0.6	8	-.52	21	.82	-.37	41
%RANK	75	85	25	20	25	70	30	85	10	>95	>95	50	50

DUE 4.04.19 TO AUTO LUCKY GUY 140D (HP/HB)

AUTO Everly 255E is built to be a great maternal producer who will add style and performance to her offspring. She is a full sib to Lot 38, AUTO Elyn 254E, and has the same great number profile as her sister. Her YW EPD ranks in the top 20% and her WW and milk EPDs in the top 25%.



LOT 40



AUTO MABELLINE 267Z | DAM OF LOTS 40 & 41



LOT 41

4e0

AUTO EMI 228E ET

LIM-FLEX(46/42.3) COW | HOMO POLLED (T) | HET BLACK (T)
2/17/2017 | AUTO 228E | LFF2135100

EXAR UPSHOT 0562B
LH ADVANTAGE 105A
EXLR DUCHESS 7129R

CONNEALY CONSENSUS 7229
AUTO MABELLINE 267Z
MAGS MANUELA

SITZ UPWARD 307R
EXAR BARBARA T020
EXLR NEW GENERATION 071M
EXLR 199H

CONNEALY CONSENSUS
BLUE LILLY OF CONANGA 16
EXLR LIMITED EDITION 765J
AUTO CITY NIGHTS 214H

BW 68
ADJ WW 566
ADJ YW 879
ADJ FAT 0.48
ADJ REA 11.27
ADJ IMF 4.40

	CED	BW	WW	YW	MK	CEM	SC	DOC	YG	CW	RE	MB	SMTI
EPDS	11	1.4	66	104	24	6	1.1	12	-18	37	.54	.25	61
%RANK	55	70	40	40	25	60	35	55	10	85	90	15	20

DUE 4.03.19 TO AUTO REAL DEAL 150B (HP/HB)

AUTO Emi 228E is from such prolific and profitable cow family, you'll want to study her hard. This female is homozygous polled. Her marbling EPD ranks in the top 15% and milk EPD in the top 25%. She is from an EXAR Upshot son, LH Advantage 105A. Her dam, AUTO Mabelline 267Z, was the 2014 National Western Champion female and is one of the most decorated females we've produced.

4e1

AUTO ENYA 226E ET

LIM-FLEX(46/42.3) COW | HET POLLED (T) | HET BLACK (T)
2/13/2017 | AUTO 226E | LFF2135567

EXAR UPSHOT 0562B
LH ADVANTAGE 105A
EXLR DUCHESS 7129R

CONNEALY CONSENSUS 7229
AUTO MABELLINE 267Z
MAGS MANUELA

SITZ UPWARD 307R
EXAR BARBARA T020
EXLR NEW GENERATION 071M
EXLR 199H

CONNEALY CONSENSUS
BLUE LILLY OF CONANGA 16
EXLR LIMITED EDITION 765J
AUTO CITY NIGHTS 214H

BW 68
ADJ WW 623
ADJ YW 866
ADJ FAT 0.47
ADJ REA 13.28
ADJ IMF 4.58

	CED	BW	WW	YW	MK	CEM	SC	DOC	YG	CW	RE	MB	SMTI
EPDS	11	1.4	66	104	24	6	1.1	12	-22	38	.66	.26	61
%RANK	55	70	40	40	25	60	35	55	10	65	85	15	15

DUE 4.03.19 TO MAGS AVIATOR (HP/HB)

Here is a female that will prove herself time and time again. She is expressively muscled, super long in her spine and built like a powerhouse. AUTO Enya 226E is a full sib to Lot 40, AUTO Emi 228E, and her marbling EPD ranks in the top 15% and milk in the top 25%. We believe this female has a big-time future in front of her and the genetics to back this great one.

4e2

AUTO EMIRA 220E ETPERCENTAGE(84/74) COW | DBL POLLED | HOMO BLACK (P1)
2/5/2017 | AUTO 220E | NXF2135090

AUTO CRUZE 132X	MAGS THE GENERAL	BW	69
AUTO SILVERADO 543B	AUTO REBECA 292S	ADJ WW	619
LVL5 8713W	POSS 112 6509	ADJ YW	935
	LVL5 8713M	ADJ FAT	0.19
WLR DIRECT HIT	KRVN NASKAR 013N	ADJ REA	12.29
AUTO LUCKIE 246W	MAGS NIGHT AMBUSH	ADJ IMF	3.38
TYEJ DB SERENITY	LESF ASPHALT 9N		
	TYEJ DB SIZZLE		

	CED	BW	WW	YW	MK	CEM	SC	DOC	YG	CW	RE	MB	SMTI
EPDS	8	2.5	62	88	21	4	-	9	-53	5	.66	-.38	39
%RANK	90	90	55	75	55	85	-	80	85	85	60	75	80

DUE 4.11.19 TO HBRL DELUXE PACKAGE 6114D (HP/HB)

This female is hard to put a fault in—she is wickedly feminine in her makeup, long in her stride and flexible off both ends of her skeleton. AUTO Emira 220E is a homozygous black, double polled female from AUTO Silverado 543B, a promising AUTO Cruze son. Her dam, AUTO Luckie 246W, was the 2012 All-American Futurity Grand Champion female.



LOT 42

4e3

AUTO EMMY 212E ETPUREBRED(87/73.3) COW | HOMO POLLED (T) | HOMO BLACK (T)
2/27/2017 | AUTO 212E | NPF2122442

AUTO CRUZE 132X	MAGS THE GENERAL	BW	68
AUTO REAL DEAL 150B	AUTO REBECA 292S	ADJ WW	680
AUTO LUCKIE TOO 423Y	WLR DIRECT HIT	ADJ YW	846
	TYEJ DB SERENITY	ADJ FAT	0.25
LESF ASPHALT 9N	GPFF BLAQUE RULON	ADJ REA	14.21
AUTO REBECA 292S	GPFF EXTRA SWEET ELITE	ADJ IMF	3.54
EXLR REBECA 1019P	BR MIDLAND		
	EXLR REBECA 614H		

	CED	BW	WW	YW	MK	CEM	SC	DOC	YG	CW	RE	MB	SMTI
EPDS	10	1.7	67	100	24	4	0.7	8	-51	15	.79	-.35	42
%RANK	60	65	25	30	20	85	30	85	25	>95	>95	40	45

DUE 4.02.19 TO AUTO POWER PLUS 133B (HP/HB)

Here is a notable pedigreed female with a crazy amount of cow power. We can't get over how stout and flawlessly designed she is in her makeup. She stands on a big foot, a great substance of bone and is super strong topped. This Purebred female is homozygous black and homozygous polled. Her milk EPD ranks in the top 20%. Her sire, AUTO Real Deal 150B, is the purebred bull from the great AUTO Luckie Too 423Y. This female's dam is the all-time great, can't-miss Lim-Flex donor, AUTO Rebeca 292S.



LOT 43

4e4

AUTO BLACKBERRY 437D ETLIM-FLEX(68/60.9) COW | HOMO POLLED (T) | HOMO BLACK (T)
9/17/2016 | AUTO 437D | LFF2122408

MAGS THE GENERAL	AUTO DOLLAR GENERAL 122R	BW	70
AUTO CRUZE 132X	EXLR LUVLY 821M	ADJ WW	564
AUTO REBECA 292S	LESF ASPHALT 9N	ADJ YW	800
	EXLR REBECA 1019P	ADJ FAT	0.26
DHVO DEUCE 132R	GPFF BLAQUE RULON	ADJ REA	11.38
PBR5 DUTCHES 790X	AMY JO DHAN 20L	ADJ IMF	3.29
SEDGWICKS DUTCHES 2280	RR 9440 SCOTCH CAP 1483		
	CIRCLE 5 DUTCHES 280		

	CED	BW	WW	YW	MK	CEM	SC	DOC	YG	CW	RE	MB	SMTI
EPDS	12	0.6	69	103	24	7	0.7	11	-31	23	.56	-.13	49
%RANK	40	45	30	45	25	40	70	70	45	85	60	85	80

DUE 4.09.19 TO AUTO ENTERPRISE100E (HP/HB)

If you're looking for cow power, consistency and a high-end pedigree—here's your girl! She is long necked, deep bodied and sound structured. AUTO Blackberry 437D is sired by one of the breed's hottest bulls, AUTO Cruze 132X. Her dam, PBR5 Dutches 790X, is an impressive DHVO Deuce daughter who always produces the great ones. Her milk EPD ranks in the top 25%, and she's homozygous black and homozygous polled.



LOT 44

SPRING BRED FEMALES



LOT 45



LOT 46



LOT 47

4e5

AUTO EILY 633E

LIM-FLEX(56/49.4) COW | HOMO POLLED (T) | HOMO BLACK (T)
3/29/2017 | AUTO 633E | LFF2136113

EXAR DENVER 2002B
AUTO POWER PLUS 133B ET
EF YADDA YADDA 809Y

MAGS ROBIN HOOD 276Y
AUTO PERFECT 603C
MISS PERFECTION 547Y

EXAR UPSHOT 0562B	BW	64
EXAR ROYAL LASS 1067	ADJ WW	570
DHVO DEUCE 132R	ADJ YW	953
MAGS RUFFLES	ADJ FAT	0.35
MAGS UR A ROBIN	ADJ REA	14.43
MAGS UNDERFOOT	ADJ IMF	4.26
S A V NET WORTH 4200		
JEPS PERFECTION 237 W		

	CED	BW	WW	YW	MK	CEM	SC	DOC	YG	CW	RE	MB	SMTI
EPDS	11	2.0	68	109	27	7	1.3	11	-36	26	.88	.06	56
%RANK	55	85	35	30	10	40	10	70	35	25	45	45	40

DUE 4.04.19 TO AUTO BLACK COFFEE 512A (P/HB)

Elegant and clean are the words that immediately come to mind when we go to describe this one. She is big bodied, extremely soft in her pasterns and is solid from the ground up. The quality we probably love the most about this one is elite cow families that are seen in her pedigree. AUTO Eily 633E is a homozygous black and homozygous polled female out of AUTO Power Plus 133B, a son of the popular EXAR Denver bull. Her dam, AUTO Perfect 693C, is a MAGS Robin Hood 276Y daughter. Her milk EPD ranks the top 10%. We are so confident in this one's future in production. Study her pedigree generations back and you'll understand why.

4e6

AUTO ELA 634E

LIM-FLEX(75/66.6) COW | HOMO POLLED (T) | BLACK
3/29/2017 | AUTO 634E | LFF2136114

CJSL WINDFALL 9072W
AUTO RED ROC 180B
MAGS HANNAH 9726W

MAGS Y-AXIS
AUTO REINA 402A
AUTO NEVA 234N

LVL'S SECRET WEAPON 4408K	BW	68
CJ'S MS ARROWHEAD 456P	ADJ WW	621
LJC MISSION STATEMENT P27	ADJ YW	1,084
MAGS PARKER	ADJ FAT	0.29
TC ABERDEEN 759	ADJ REA	14.02
MAGS UAHUKA	ADJ IMF	3.20
AUTO BLACK DAKOTA 129J		
EXLR LUVLY 087F		

	CED	BW	WW	YW	MK	CEM	SC	DOC	YG	CW	RE	MB	SMTI
EPDS	9	1.9	68	112	27	6	1.0	13	-.52	28	.94	-.27	45
%RANK	85	85	35	20	10	60	45	40	30	15	10	>95	95

DUE 4.04.19 TO LFLC BANK ACCOUNT 701B (R/HP)

This is a maternal bred female that you'll want to have in your pastures come calving season. We love the swoop to her belly, the commanding presence she has and her long, strong top. AUTO Ela 634E is homozygous polled and has impressive maternal characteristics and numbers. Her milk EPD ranks in the top 10% and her yearling weight ranks in the top 20%. This female's dam, AUTO Reina 402A, is a MAGS Y-Axis daughter.

4e7

AUTO ELF 635E

LIM-FLEX(68/61.1) COW | HOMO POLLED (T) | HOMO BLACK (T)
3/30/2017 | AUTO 635E | LFF2136115

MAGS THE GENERAL
AUTO CRUZE 132X
AUTO REBECA 292S

EXAR DENVER 2002B
AUTO SADIE 274B ET
EF YADDA YADDA 809Y

AUTO DOLLAR GENERAL 122R	BW	62
EXLR LUVLY 821M	ADJ WW	621
LESF ASPHALT 9N	ADJ YW	956
EXLR REBECA 1019P	ADJ FAT	0.27
EXAR UPSHOT 0562B	ADJ REA	13.21
EXAR ROYAL LASS 1067	ADJ IMF	2.67
DHVO DEUCE 132R		
MAGS RUFFLES		

	CED	BW	WW	YW	MK	CEM	SC	DOC	YG	CW	RE	MB	SMTI
EPDS	13	0.9	75	114	24	8	0.8	12	-.41	27	.82	-.20	49
%RANK	25	55	10	20	25	20	55	55	30	35	30	95	80

DUE 4.02.19 TO HBRL DELUXE PACKAGE 6114D (HP/HB)

When you're looking for performance-oriented genetics, both sides of this one's pedigree are priceless. She is another impressive AUTO Cruze 132X daughter. This female's dam, AUTO Sadie 274B, an EXAR Denver daughter, is a full sister to AUTO Power Plus. AUTO Elf 635E is homozygous polled and homozygous black. Her weaning weight ranks in the top 10% and her yearling weight ranks in the top 20% and milk in the top 25%.

4e8

AUTO EYDIE 278E ETLIM-FLEX(50/45) COW | HOMO POLLED | HOMO BLACK
4/11/2017 | AUTO 278E | LFF2138430HA OUTSIDE 3008
HA COWBOY UP 5405
HA BLACKCAP LADY 1602GPFF BLAQUE RULON
AUTO GEMINI 248T
MAGS MANUELAKG SOLUTION 0018
HA EVER LADY 1575
HA PROGRAM 7328
HA BLACKCAP LADY 5515
BLACK DIAMOND
QUAIL RUN RAMONA BP
EXLR LIMITED EDITION 765J
AUTO CITY NIGHTS 214HBW | 66
ADJ WW | 631
ADJ YW | 1,041
ADJ FAT | 0.56
ADJ REA | 14.06
ADJ IMF | 2.70

	CED	BW	WW	YW	MK	CEM	SC	DOC	YG	CW	RE	MB	SMTI
EPDS	10	1.7	76	126	17	5	0.8	9	-23	46	.82	-10	52
%RANK	70	80	10	5	90	80	55	85	2	35	80	80	65

DUE 4.23.19 TO HBRL DELUXE PACKAGE 6114D (HP/HB)

If moderate made, solid numbers and pretty design are the recipe you like to work with, here's your main ingredient. AUTO Eydie 278E ranks in the top 5% of the breed for yearling weight and the top 10% for weaning weight. This female is an HA Cowboy Up 5405 daughter, the popular bull siring high dollar cattle all across the country. Her dam, AUTO Gemini 248T, is a MAGS Manuela daughter. She is double homozygous. Full sisters are working in the Winters, Diamond Hills, Coyote Hills Ranch and Hall Cattle Co. programs.



LOT 48

4e9

AUTO DIANGO 478D ETLIM-FLEX(50/45) COW | HOMO POLLED (T) | HOMO BLACK (T)
10/20/2016 | AUTO 478D | LFF2123615S A V FIRST CLASS 0207
S A V CLASSIFIED 3427
S A V BLACKCAP MAY 4136GPFF BLAQUE RULON
AUTO GEMINI 248T
MAGS MANUELAS A V NET WORTH 4200
S A V DUKE GIRL 7348
S A V 8180 TRAVELER 004
S A V MAY 2397
BLACK DIAMOND
QUAIL RUN RAMONA BP
EXLR LIMITED EDITION 765J
AUTO CITY NIGHTS 214HBW | 66
ADJ WW | 593
ADJ YW | 780
ADJ FAT | 0.24
ADJ REA | 10.24
ADJ IMF | 3.40

	CED	BW	WW	YW	MK	CEM	SC	DOC	YG	CW	RE	MB	SMTI
EPDS	11	1.9	67	108	30	8	1.1	9	-19	39	.63	-.03	51
%RANK	55	85	35	30	2	20	25	85	10	75	90	65	70

DUE 4.20.19 TO HBRL DELUXE PACKAGE 6114D (HP/HB)

This female is balanced and correct from end to end. We appreciate her production look, strong top and muscle expression. AUTO Diango 478D is homozygous black and homozygous polled. Her milk EPD ranks in the top 2%. This female is out of SAV Classified 3427, a son of First Class 0207 and the proven AUTO Gemini 248T female. We are confident this female will make you proud when she's grazing in your pasture.



LOT 49

50

AUTO EBBA 630EPUREBRED(93/80.2) COW | HOMO POLLED (T) | DBL BLACK
3/24/2017 | AUTO 630E | NPF2136111AUTO CRUZE 132X
AUTO REAL DEAL 150B
AUTO LUCKIE TOO 423YAUTO GUNN POINT 192Y
AUTO BETHAL 270B
MAGS MANUELAMAGS THE GENERAL
AUTO REBECA 292S
WLR DIRECT HIT
TYEJ DB SERENITY
LH RODEMASTER 338R
AVA JO DHVO 721R
EXLR LIMITED EDITION 765J
AUTO CITY NIGHTS 214HBW | 64
ADJ WW | 560
ADJ YW | 867
ADJ FAT | 0.29
ADJ REA | 10.69
ADJ IMF | 3.55

	CED	BW	WW	YW	MK	CEM	SC	DOC	YG	CW	RE	MB	SMTI
EPDS	8	2.4	61	90	24	5	0.6	10	-53	18	.72	-.39	39
%RANK	85	80	55	60	20	70	30	75	20	>95	>95	55	65

DUE 4.03.19 TO AUTO DOLLAR GENERAL 122R (HP/HB)

We like to joke that this one's always saying, "look at me!" but really she's one to take a hard look at. She will rock the boat in terms of performance and style. We really admire her beautiful front one third, her extended neck and feminine look. This female is an AUTO Real Deal 150B daughter from a MAGS Manuela daughter, AUTO Bethal 270B. She is homozygous polled and double black. Her milk EPD ranks in the top 20%. She is also a maternal sister in blood to Lot 52.



LOT 50

SPRING BRED FEMALES



LOT 51



LOT 52

51

AUTO SALINA 7159E ET

LIM-FLEX(75/67.2) COW | HET POLLED (T) | HOMO BLACK (T)
3/27/2017 | AUTO 7159E | LFF2124939

TMCK DURHAM WHEAT 6030X
RIVERSTONE CROWN ROYAL
HSF YOUR FANTASY

MAGS Y-AXIS
MAGS BARBIE
MAGS UR SALINA

DHVO DEUCE 132R
MAGS STRAWBERRY PIE
MAGS WAR ADMIRAL
HSF TINKERBELL
TC ABERDEEN 759
MAGS UAHUKA
LH RODEMASTER 338R
MAGS SALINA

BW | 68
ADJ WW | 623
ADJ YW | 836
ADJ FAT | 0.31
ADJ REA | 11.75
ADJ IMF | 4.03

	CED	BW	WW	YW	MK	CEM	SC	DOC	YG	CW	RE	MB	SMTI
EPDS	12	1.4	60	91	23	7	1.0	15	-.52	2	.82	-.22	44
%RANK	40	70	75	80	40	40	45	20	>95	35	10	95	95

DUE 4.03.19 TO AUTO REAL DEAL 150B (HP/HB)

There is so much power in this one's pedigree, not to mention she's super easy on the eyes. She's feminine in her makeup and super solid from every angle. AUTO 7159E is quite an attractive Riverstone Crown Royal daughter. Her dam, MAGS Barbie, is a MAGS Y-Axis daughter. The sky's the limit with this one.

52

AUTO ESTELL 615E

PERCENTAGE(78/70.3) COW | HET POLLED (T) | HET BLACK (T)
2/14/2017 | AUTO 615E | NXF2135105

AUTO CRUZE 132X
AUTO SILVERADO 543B
LVLS 8713W

AUTO GUNN POINT 192Y
AUTO EMELY 445A
MAGS MANUELA

MAGS THE GENERAL
AUTO REBECA 292S
POSS 112 6509
LVLS 8713M
LH RODEMASTER 338R
AVA JO DHVO 721R
EXLR LIMITED EDITION 765J
AUTO CITY NIGHTS 214H

BW | 70
ADJ WW | 580
ADJ YW | 911
ADJ FAT | 0.18
ADJ REA | 12.24
ADJ IMF | 3.37

	CED	BW	WW	YW	MK	CEM	SC	DOC	YG	CW	RE	MB	SMTI
EPDS	9	2.4	66	100	23	5	-	11	-.52	17	.74	-.24	46
%RANK	80	85	35	40	30	75	-	65	45	80	60	55	55

DUE 4.03.19 TO AUTO DOLLAR GENERAL 122R (HP/HB)

Females like this one will keep you in business. She is powerful in her hip, has tons of rib shape and is super easy fleshing in her makeup. This female stems from the powerful MAGS Manuela cow family on the bottom and backed by the infamous AUTO Cruze on the top. If you want to take your operation to the next level, this is the female that will do it. She is a maternal sister in blood to Lot 50.

53

AUTO ELANI 636EPUREBRED(87/79.2) COW | HET POLLED (T) | HOMO BLACK (T)
3/30/2017 | AUTO 636E | NPF2136116LH RODEMASTER 338R
AUTO GUNN POINT 192Y
AVA JO DHVO 721RJCL LODESTAR 27L
AUTO REBECCA 214R
MISS WOLFETTE 9049XJCL LODESTAR 27L
VERMILION E BLACKBIRD9546
GPFF BLAQUE RULON
AMY JO DHAN 20L
HUNTS HI-LITER 245G
LOGAN'S CHEERLEADER 280G
POLLED PACK LEADER 1182U
MISS WOLFETTE 4059SBW | 64
ADJ WW | 554
ADJ YW | 867
ADJ FAT | 0.33
ADJ REA | 11.93
ADJ IMF | 4.56

	CED	BW	WW	YW	MK	CEM	SC	DOC	YG	CW	RE	MB	SMTI
EPDS	12	0.7	56	88	25	7	0.6	10	-.60	17	.86	-.25	43
%RANK	40	40	80	65	15	35	45	75	20	95	85	20	40

DUE 4.02.19 TO AUTO REAL DEAL 150B (HP/HB)

Here is an AUTO Gunn Point 192Y female from a JCL Lodestar daughter, AUTO Rebecca 214R. She is super big bodied, long and level down her top and loose in her movement. Pedigree wise, this female is priceless and is deep generations back. AUTO Elani 636E is homozygous black. Her milk EPD ranks in the top 15% and marbling ranks in the top 20%.

55

AUTO ERIEANN 637ELIM-FLEX(60/53.5) COW | HOMO POLLED (T) | HOMO BLACK (T)
4/1/2017 | AUTO 637E | LFF2136117EXAR DENVER 2002B
AUTO LODE UP 137B ET
AUTO EXCEPTIONAL 282SLH U HAUL 135U
AUTO BRANDIS 255B
JCL PEPPERMINTEXAR UPSHOT 0562B
EXAR ROYAL LASS 1067
JCL LODESTAR 27L
MINE PLD EXCEPTIONAL 981E
BASIN FRANCHISE P142
EXLR DUCHESS 7129R
AUTO BLACK DAKOTA 129J
JCL PEPPERBW | 64
ADJ WW | 565
ADJ YW | 914
ADJ FAT | 0.35
ADJ REA | 12.50
ADJ IMF | 4.95

	CED	BW	WW	YW	MK	CEM	SC	DOC	YG	CW	RE	MB	SMTI
EPDS	12	0.4	60	100	25	9	0.8	12	-.31	24	.71	.24	60
%RANK	40	40	75	55	20	10	70	55	45	55	60	15	25

DUE 4.03.19 TO HBRL DELUXE PACKAGE 6114D (HP/HB)

Here is an attractive, great profiling female with a good number profile. She is nice fronted, powerfully designed and super athletic in her movement. From an EXAR Denver son, AUTO Lode Up 137B, this female is homozygous black and homozygous polled. Her marbling EPD ranks in the top 15% and her milk EPD ranks in the top 20%. She is one who is as good as her picture in person. Don't miss her come sale day!

56

AUTO EVE-MARIE 625EPUREBRED(87/82.3) COW | HOMO POLLED (T) | BLACK
2/23/2017 | AUTO 625E | NPF2136108LH RODEMASTER 338R
AUTO GUNN POINT 192Y
AVA JO DHVO 721RAUTO AMERICAN IDOL 162L
AUTO KAYLEE 638X
AUTO PAPRIKA 463PJCL LODESTAR 27L
VERMILION E BLACKBIRD9546
GPFF BLAQUE RULON
AMY JO DHAN 20L
AUTO ROUGH IDLE 141J
WULFS DELIGHT 4114D
AUTO CLIFF HANGER 194D
AUTO MILKY WAY 204EBW | 70
ADJ WW | 576
ADJ YW | 921
ADJ FAT | 0.33
ADJ REA | 13.14
ADJ IMF | 3.03

	CED	BW	WW	YW	MK	CEM	SC	DOC	YG	CW	RE	MB	SMTI
EPDS	11	1.3	54	90	27	6	0.4	10	-.72	11	1.08	-.40	38
%RANK	50	55	85	60	5	50	75	75	45	45	45	55	70

DUE 4.03.19 TO HBRL DELUXE PACKAGE 6114D (HP/HB)

We love this one's build and brood cow look. She's incredibly deep bodied, long in her spine and stands on a great foot that when she sets it down is flexible and confident. She is a smooth one who is built to last and put some extra flare into your herd. AUTO Eve-Marie 625E is an AUTO Gunn Point 192Y daughter that is homozygous polled. Her milk EPD ranks in the top 5%.

54

AUTO EVABELLE 647ELIM-FLEX(65/58.8) COW | POLLED | HOMO BLACK (T)
4/14/2017 | AUTO 647E | LFF2136121EXAR DENVER 2002B
AUTO LODE UP 137B ET
AUTO EXCEPTIONAL 282SAUTO KING JAMES 162Z
AUTO CECILY 623C
AUTO PATTY CAKE 234WEXAR UPSHOT 0562B
EXAR ROYAL LASS 1067
JCL LODESTAR 27L
MINE PLD EXCEPTIONAL 981E
COLE WINDFALL 144W
AUTO LUCKIE 246W
AUTO BLAQUE LABEL 176S
STBR DEMETRIA 669DBW | 60
ADJ WW | 574
ADJ YW | 861
ADJ FAT | 0.33
ADJ REA | 9.65
ADJ IMF | 5.58

	CED	BW	WW	YW	MK	CEM	SC	DOC	YG	CW	RE	MB	SMTI
EPDS	12	0.5	56	87	24	8	0.6	11	-.37	21	.72	.17	56
%RANK	40	40	90	85	25	20	80	70	55	55	40	25	40

DUE 4.02.19 TO AUTO REAL DEAL 150B (HP/HB)

Here is another AUTO Lode Up 137B daughter, AUTO Evabelle 647E. She has great rib shape and depth of flank to be as flashy profiling as she is. This female's marbling and milk EPDs rank in the top 25%. She is homozygous black and has tons of potential in line for her future! Bred to be an incredible producer and has the promising look we all desire in our females.



LOT 55



LOT 56



LOT 57

57

AUTO EVONKA 624E

LIM-FLEX(60/54.2) COW | HOMO POLLED (T) | HOMO BLACK (T)
2/14/2017 | AUTO 624E | LFF2136107

TC ABERDEEN 759	C R A BEXTOR 872 5205 608	BW	62
MAGS Y-AXIS	TC BLACKBIRD 4034	ADJ WW	606
MAGS UAHUKA	DHVO DEUCE 132R	ADJ YW	954
	CARROUSELS PINA COLADA	ADJ FAT	0.22
MAGS ZARAH	MAGS WHITCOMB	ADJ REA	13.01
HB BLACKCAP 526C	AUTO CARMINDA 656S	ADJ IMF	3.72
HB BLACKCAP 211Z	WULFS WARBONNET 6254W		
	HB BLACKCAP 911W		

	CED	BW	WW	YW	MK	CEM	SC	DOC	YG	CW	RE	MB	SMTI
EPDS	13	0.5	65	105	26	6	0.8	18	-45	19	.91	-.11	50
%RANK	25	40	45	40	15	60	55	4	65	20	20	80	75

DUE 4.03.19 TO HBRL DELUXE PACKAGE 6114D (HP/HB)

Here is a long necked female with a soggy design. She's got great rib shape, depth of hind quarter and stands on a sound structure. This is an impressive MAGS Y-Axis daughter. Her dam, HB Blackcap 526C is from some of the best producing cow families in the Angus and Limousin breeds. AUTO Evonka 624E is homozygous black and homozygous polled. Her milk EPD ranks in the top 15%. She will definitely put any owner on the map for a progressive future.

58

AUTO EVAN 627E

PUREBRED(87/77.9) COW | HET POLLED (T) | HOMO BLACK (T)
2/23/2017 | AUTO 627E | NPF2136109

LH RODEMASTER 338R	JCL LODESTAR 27L	BW	68
AUTO GUNN POINT 192Y	VERMILION E BLACKBIRD9546	ADJ WW	570
AVA JO DHVO 721R	GPFF BLAQUE RULON	ADJ YW	843
	AMY JO DHAN 20L	ADJ FAT	0.26
CARROUSELS NASDAQ	AUTO BLACK DAKOTA 129J	ADJ REA	11.63
MAGS SPIEGEL	CARROUSELS JAMAICA	ADJ IMF	4.57
AUTO KATIE 0846K	WULFS GUARDIAN 5074G		
	AUTO ELITE 270F		

	CED	BW	WW	YW	MK	CEM	SC	DOC	YG	CW	RE	MB	SMTI
EPDS	11	0.6	55	85	25	5	0.5	11	-65	11	.94	-.32	40
%RANK	50	40	80	75	15	70	45	65	45	80	70	35	55

DUE 4.02.19 TO AUTO REAL DEAL 150B (HP/HB)

You're really going to like this one come sale day. She has the body type that we all need in our programs to make fancy, yet functional individuals. She is a homozygous black female that you'll want to really study when you see her. She is an AUTO Gunn Point 192Y daughter from a Carrouseles Nasdaq daughter. Her milk EPD ranks in top 15%. We believe this female will be a standout donor candidate in any program.

59

AUTO ELENA 640E

LIM-FLEX(50/50) COW | POLLED | BLACK
4/1/2017 | AUTO 640E | LFF2153935

CONNEALY CONSENSUS	KMK ALLIANCE 6595 187	BW	64
CONNEALY CONSENSUS 7229	BLINDA OF CONANGA 004	ADJ WW	586
BLUE LILLY OF CONANGA 16	WOODHILL ADMIRAL 77K	ADJ YW	923
	BLUE CASH OF CONANGA 6020	ADJ FAT	0.39
COJR HIGH TIDE 236M	STBR KIPPER 639K	ADJ REA	14.04
AUTO 626C	STBR LILITH 208G	ADJ IMF	4.28
AUTO RED HOT 213X	AUTO CLIFF HANGER 194D		
	LAURA'S ECHELON		

	CED	BW	WW	YW	MK	CEM	SC	DOC	YG	CW	RE	MB	SMTI
EPDS	12	1.0	63	93	24	4	0.9	11	-40	14	.75	.21	60
%RANK	40	60	55	75	25	90	55	70	80	50	35	20	20

DUE 4.04.19 TO MAGS ALL STAR (HP/HB)

Few females have this much look and presence in combination with awesome cow power. She's correct in her structure, balanced and comfortably sound. AUTO Elena 640E is from the highly coveted cow power bull, Connealy Consensus 7229. Her marbling EPD ranks in the top 20%. She's got a great look, but also unmatched uniformity from her pedigree to her number profile.



LOT 60

60

AUTO ERIE 273E ET

FULLBLOOD(100/100) COW | POLLED | RED
4/3/2017 | AUTO 273E | NFF2135570

TEXS RANGER PRIMO	TEXS RANGER EL PRESIDENTE	BW	66
AUTO CLIFF HANGER 194D	TEXS STAR LUV	ADJ WW	622
YKCC HEART THROB 141W	URANUS	ADJ YW	915
	MS TGJS PETTICOAT 129 R		
EAFF POLLED PUGILIST 633R	DENISON POLLED PUB		
ENGD WILD STORM 911W	BEMS MISS MEDALIST		
LENAPE APHID	LENAPE WASATCH		
	QUAIL RUN LADYBUG		

	CED	BW	WW	YW	MK	CEM	SC	DOC	YG	CW	RE	MB	SMTI
EPDS	12	1.6	57	88	20	6	-0.1	6	-93	7	1.32	-.41	40
%RANK	40	65	75	65	65	50	>95	90	65	10	2	60	60

DUE 4.18.19 TO SOGF SPECIAL K (FB)

This one is full of versatility and donor cow potential. We are confident that she'll be a standout in any program and will make one producer incredibly proud to show her off. AUTO Erie 273E is the first polled Fullblood daughter of the once All-American Futurity champion bull, AUTO Cliff Hanger 194D. She'll be a super valuable breeding piece and will inject great breed character and style into her offspring.

61

AUTO ELANA 238E ET

FULLBLOOD(100/100) COW | HORNED | RED
2/25/2017 | AUTO 238E | NFF2135569

TEXS RANGER PRIMO
AUTO CLIFF HANGER 194D
YKCC HEART THROB 141W

PUB
EAFF AMBER PEARL 419M
SOGF AMBER KRUG 264B

TEXS RANGER EL PRESIDENTE
TEXS STAR LUV
URANUS
MS TGJS PETTICOAT 129 R
MIMOSA
JIGUE
GOLDNVIEW KRUGERRAND
EJPS AMBER

BW | 70
ADJ WW | 543
ADJ YW | 896

	CED	BW	WW	YW	MK	CEM	SC	DOC	YG	CW	RE	MB	SMTI
EPDS	14	1.3	54	82	26	7	0.0	4	-.97	6	1.46	-.50	36
%RANK	20	55	85	80	10	35	95	95	70	1	1	85	80

DUE 4.17.19 TO SOGF SPECIAL K (FB)

We've always thought highly of this one since she hit the ground. She's another one that has the look that commands the attention of each person that views her. AUTO Elana 238E is a AUTO Cliff Hanger 194D daughter that ranks in the top 10% of the breed for milk. Her dam is from the elite family of producers, EAFF Amber Pearl 419M. This female is backed by a tremendous lineage and has the maternal characteristics to add great value in any herd.



LOT 61

62

AUTO ERRIN 262E ET

FULLBLOOD(100/100) COW | HORNED | RED
3/13/2017 | AUTO 262E | NFF2135102

WINTERSHALL JUPITER
HARVEST OLYMPUS
LABORIEUSE

PUB
EAFF AMBER PEARL 419M
SOGF AMBER KRUG 264B

FLEURI
FAIENCE
FLAMBEAU
FABIOLA (INITIAL ENTRY)
MIMOSA
JIGUE
GOLDNVIEW KRUGERRAND
EJPS AMBER

BW | 70
ADJ WW | 627
ADJ YW | 956

	CED	BW	WW	YW	MK	CEM	SC	DOC	YG	CW	RE	MB	SMTI
EPDS	7	4.0	60	80	28	4	0.1	-2	-1.01	13	1.56	-.72	30
%RANK	95	>95	60	85	3	85	90	>95	35	1	1	>95	95

DUE 4.18.19 TO AUTO CLIFF HANGER 194D (FB)

This female will be a fantastic of a mature cow. She's well made, powerfully muscled and one that you won't be able to stop thinking about once you lay eyes on her. AUTO Errin 262E is also an EAFF Amber Pearl daughter from the legendary Harvest Olympus bull. If you need a major maternal giant- this is the girl for you. Her milk EPD ranks in the top 3%. That is just proof that she's got everything to make great ones for one lucky cattleman.



AUTO CLIFF HANGER 194D SERVICE SIRE OF LOT 62

63

AUTO MISS FLUER 275E ET

FULLBLOOD(100/100) COW | HOMO POLLED (T) | RED
4/7/2017 | AUTO 275E | NFF2156270

POSTHAVEN KNOWN FACTOR
POSTHAVEN POLLED TRISTAN
CEDAR PATCH PP HI-SABLE

MTN PARK LEPRECHAUN
MTN PARK PERFECT FLEUR
MTN PARK FLEUR-DE-LIS

D'HANIS GUILBEAU
POSTHAVEN GOLDEN CHOICE
EBY EXTRA SPECIAL
CEDAR PATCH P HI-SERENA
BLACK INK FAST FORWARD
POSTHAVEN GLORIA
DOUBLE N BACCHUS
MOUNTN PARK CAN TOO

BW | 74
ADJ WW | 600
ADJ YW | 933

	CED	BW	WW	YW	MK	CEM	SC	DOC	YG	CW	RE	MB	SMTI
EPDS	13	0.8	46	67	16	8	0.0	4	-.87	6	1.11	-.62	28
%RANK	30	45	>95	>95	95	20	95	95	70	40	10	>95	95

DUE 4.18.19 TO SOGF SPECIAL K (FB)

AUTO Miss Fluer 275E is good legged, sound made and designed to be a great female loaded with cow power. This one's wide and has a great muscle shape that is sure to impress many. Be sure to watch her on the move- she's crazy sound and super flexible off both ends of her skeleton. She is a homozygous polled daughter of Posthaven Polled Tristan. You'll want this one to end up in your trailer at the conclusion of the sale.



LOT 63

SPRING BRED FEMALES



LOT 64



SBLX UNKNOWN 104U | DAM OF LOTS 64 & 65

64

AUTO EXCEPTIONAL 410E ET

LIM-FLEX(50/45) COW | HET POLLED (T) | HET BLACK (T)
10/18/2017 | AUTO 410E | LFF2139119

EXAR DENVER 2002B
AUTO POWER PLUS 133B ET
EF YADDA YADDA 809Y

MYTTY IN FOCUS
SBLX UNKNOWN 104U
MAGS MANUELA

EXAR UPSHOT 0562B
EXAR ROYAL LASS 1067
DHVO DEUCE 132R
MAGS RUFFLES
SAF FOCUS OF ER
MYTTY COUNTESS 906
EXLR LIMITED EDITION 765J
AUTO CITY NIGHTS 214H

BW | 64
ADJ WW | 835
ADJ YW | 1,087
ADJ FAT | 0.26
ADJ REA | 12.41
ADJ IMF | 3.82

	CED	BW	WW	YW	MK	CEM	SC	DOC	YG	CW	RE	MB	SMTI
EPDS	13	0.7	63	100	26	10	1.7	12	-18	26	.44	.11	55
%RANK	25	50	55	55	15	3	1	55	35	95	90	35	50

DUE 9.06.19 TO AUTO KING DAVID 120E (P/HB)

Talk about a royal pedigree! This one's got some of the breed's most sought after genetics in her pedigree. She is out of the Stowers Limousin herd sire, AUTO Power Plus 133B who is a son of the popular EXAR Denver bull. Her donor dam, SBLX Unknown 104U, is from the highly coveted Mytty In Focus bull. We have the privilege of co-owning her with Edwards Land & Cattle Co. of Beulaville, NC. We can't say enough about this one's look and presence. She's just about picture perfect and we believe she'll continue on her family's legacy as being one of the great producers in the breed. This female ranks in top 15% for milk.

65

AUTO LUCKY ONE 418E ET

LIM-FLEX(60/53.9) COW | HOMO POLLED (T) | HET BLACK (T)
9/6/2017 | AUTO 418E | LFF2146195

LH U HAUL 135U
AUTO LUCKY STRIKE 118B
AUTO LUCKIE 246W

MYTTY IN FOCUS
SBLX UNKNOWN 104U
MAGS MANUELA

BASIN FRANCHISE P142
EXLR DUCHESS 7129R
WLR DIRECT HIT
TYEJ DB SERENITY
SAF FOCUS OF ER
MYTTY COUNTESS 906
EXLR LIMITED EDITION 765J
AUTO CITY NIGHTS 214H

BW | 68
ADJ WW | 663
ADJ YW | 903
ADJ FAT | 0.19
ADJ REA | 10.39
ADJ IMF | 4.02

	CED	BW	WW	YW	MK	CEM	SC	DOC	YG	CW	RE	MB	SMTI
EPDS	13	0.9	62	99	24	8	1.1	12	-25	17	.42	.14	56
%RANK	25	55	60	55	25	20	25	55	70	95	75	30	40

DUE 9.07.19 TO AUTO KING DAVID 120E (P/HB)

This female is super deep bodied, has a great rib shape about her and moves with such confidence. AUTO Lucky One 418E will sure make you a "lucky one" sale day. She is an impressive SBLX Unknown 104U daughter from AUTO Lucky Strike 118B. Lucky Strike is from the great LH U Haul bull. She is homozygous polled. Her milk EPD ranks in the top 25%. If you're looking for proven, predictable genetics- here's your female.

AUTO PINK 423E ET

LIM-FLEX(75/65.4) COW | HOMO POLLED (T) | RED
9/12/2017 | AUTO 423E | LFF2146196

66

LSF SAGA 1040Y
AHCC COWBOY KIND C595 ET
AHCC DAKOTA LUVLY R595

AUTO BLACK DAKOTA 129J
CARROUSELS PEACHES 4330P
ELMW GINNIE P58G

BECKTON EPIC R397 K
LSF MINOLA T7172 W9041
AUTO BLACK DAKOTA 129J
EXLR 794H
EXLR DAKOTA 353G
DFLC JET SET BPC 34Y
TCDT MR T.D.'S POWER PACK
ELMW POLLED ECSTASY 67E

BW 66
ADJ WW 770
ADJ YW 844
ADJ FAT 0.16
ADJ REA 11.68
ADJ IMF 3.46

	CED	BW	WW	YW	MK	CEM	SC	DOC	YG	CW	RE	MB	SMTI
EPDS	8	2.6	68	108	24	6	0.9	7	-50	19	.8	-.38	41
%RANK	95	95	35	30	25	60	45	95	65	35	15	>95	95

DUE 9.07.19 TO HUNT CREDENTIALS 37C (R/HP)

Any of these Peaches females will blow you away, but really study this one. She is soft made, constructed for functionality and feminine throughout. AUTO Pink 423E is an AHCC Cowboy Kind C595 daughter from the famed Carrousel Peaches 4330P female. She is homozygous polled and her milk EPD ranks in top 25%. This one will be a great investment for any producer.



CARROUSELS PEACHES | DAM OF LOTS 66, 67 & 68

AUTO RUBY RED 408E ET

LIM-FLEX(75/65.4) COW | HET POLLED (T) | RED
9/2/2017 | AUTO 408E | LFF2146191

67

LSF SAGA 1040Y
AHCC COWBOY KIND C595 ET
AHCC DAKOTA LUVLY R595

AUTO BLACK DAKOTA 129J
CARROUSELS PEACHES 4330P
ELMW GINNIE P58G

BECKTON EPIC R397 K
LSF MINOLA T7172 W9041
AUTO BLACK DAKOTA 129J
EXLR 794H
EXLR DAKOTA 353G
DFLC JET SET BPC 34Y
TCDT MR T.D.'S POWER PACK
ELMW POLLED ECSTASY 67E

BW 66
ADJ WW 725
ADJ YW 896
ADJ FAT 0.08
ADJ REA 9.15
ADJ IMF 2.74

	CED	BW	WW	YW	MK	CEM	SC	DOC	YG	CW	RE	MB	SMTI
EPDS	8	2.6	68	108	24	6	0.9	7	-51	19	.79	-.42	40
%RANK	95	95	35	30	25	60	45	95	65	40	10	>95	95

DUE 9.06.19 TO LFLC BANK ACCOUNT 701B (R/HP)

This one just has a cool look to her. She definitely has her mother's design and power. She'll be known as following in her dam's footsteps because of her wonderful structure and maternal build. Here is another powerful AHCC Cowboy Kind C595 daughter. She is a full sib to AUTO Pink 423E.

AUTO MANDA 461E ET

LIM-FLEX(50/43) COW | HOMO POLLED (T) | BLACK
12/6/2017 | AUTO 461E | LFF2141469

68

S A V BISMARCK 5682
S A V BRAND NAME 9115
S A V BLACKCAP MAY 5530

AUTO BLACK DAKOTA 129J
CARROUSELS PEACHES 4330P
ELMW GINNIE P58G

G A R GRID MAKER
S A V ABIGALE 0451
B C C BUSHWACKER 41-93
S A V MAY 7238
EXLR DAKOTA 353G
DFLC JET SET BPC 34Y
TCDT MR T.D.'S POWER PACK
ELMW POLLED ECSTASY 67E

BW 66
ADJ WW 834
ADJ YW 1,028
ADJ FAT 0.21
ADJ REA 11.60
ADJ IMF 3.49

	CED	BW	WW	YW	MK	CEM	SC	DOC	YG	CW	RE	MB	SMTI
EPDS	10	1.3	64	99	19	6	1.1	10	-.32	29	.78	-.15	46
%RANK	70	65	50	55	80	60	35	80	25	40	55	85	90

DUE 10.10.19 TO MAGS YIP (HP/HB)

This is a female with a pedigree most would only dream of having set foot in their pastures. She's beautifully designed, strong in her stance and one that we just love from a functionality standpoint. This female's sire, SAV Brand Name 9115 is the high-selling bull with elite cow family power from the 2010 SAV Sale. This female is homozygous polled and has the look to be a darn good one.

YOUR FIRST CHOICE

for Free-Choice SupplementationSM

SINCE 1885

For superior performance you can count on contact
Brian Fieser, Ph.D.
Beef Field Nutritionist
Stillwater, OK
405-269-9143

Contact your local sales representative:
Adam McCall
Springfield, MO
417-399-9907

ADM Animal Nutrition[™],
Quincy, IL
A division of Archer Daniels
Midland Company
ADMAnimalNutrition.com
866-666-7626
AN_BeefHelp@adm.com



LOT 69

AUTO PENNY 290E ET

69

LIM-FLEX(75/72.5) COW | POLLED | RED
9/21/2017 | AUTO 290E | LFF2146184

LSF SAGA 1040Y	BECKTON EPIC R397 K	BW	74
AHCC COWBOY KIND C595 ET	LSF MINOLA T7172 W9041	ADJ WW	684
AHCC DAKOTA LUVLY R595	AUTO BLACK DAKOTA 129J	ADJ YW	992
	EXLR 794H	ADJ FAT	0.22
TEXS RANGER PRIMO	TEXS RANGER EL PRESIDENTE	ADJ REA	11.86
AUTO CICILY 200P	TEXS STAR LUV	ADJ IMF	3.76
YKCC HEART THROB 141W	URANUS		
	MS TGJS PETTICOAT 129 R		

	CED	BW	WW	YW	MK	CEM	SC	DOC	YG	CW	RE	MB	SMTI
EPDS	8	2.4	65	100	25	5	0.8	7	-58	16	.93	-.32	43
%RANK	95	90	45	55	20	80	70	95	75	15	3	>95	95

DUE 9.06.19 TO HUNT CREDENTIALS 37C (R/HP)

We want you to really study this AHCC Cowboy Kind C595 daughter. She's maternal in her look, super uniform and great in her structure makeup. AUTO Penny 290E ranks in the top 20% for milk and her dam is a full sister to AUTO Cliff Hanger. We've always admired this one's look. Be confident on sale day and make sure this one ends up on your trailer at the end of the sale.

AUTO BEAR 400E ET

70

LIM-FLEX(37/32.5) COW | HOMO POLLED (T) | HOMO BLACK (T)
9/25/2017 | AUTO 400E | LFF2146189

S A V BISMARCK 5682	G A R GRID MAKER	BW	64
S A V BRAND NAME 9115	S A V ABIGALE 0451	ADJ WW	748
S A V BLACKCAP MAY 5530	B C C BUSHWACKER 41-93	ADJ YW	1,056
	S A V MAY 7238	ADJ FAT	0.35
LESF ASPHALT 9N	GPFF BLAQUE RULON	ADJ REA	11.94
AUTO REBECA 292S	GPFF EXTRA SWEET ELITE	ADJ IMF	3.84
EXLR REBECA 1019P	BR MIDLAND		
	EXLR REBECA 614H		

	CED	BW	WW	YW	MK	CEM	SC	DOC	YG	CW	RE	MB	SMTI
EPDS	11	0.7	70	110	21	5	1.3	10	-19	35	.74	.03	54
%RANK	55	50	25	25	60	80	15	80	15	50	90	55	50

DUE 9.08.19 TO AUTO LUCKY STRIKE 118B (B/P)

Whoa! This one's got crazy good donor cow potential. She will blow you away with her look and incredible design. Here is another cow power daughter of SAV Brand Name 9115. AUTO Bear 400E is from the proven AUTO Rebecca 292S female. Not only does this female have the superior genetics that you can bank on, she's got such a great phenotype that will be highly sought after. When this one moves, it's just refreshing to see. Super flexible in her pasterns and she moves with such grace and poise. She is homozygous black and homozygous polled. Her weaning weight and yearling weight both rank in top 25%. Don't miss your chance with this crazy good female! Full sib heifers are in the Wilder family's program in Texas.

AUTO ENERGY 673E

71

LIM-FLEX(50/44.1) COW | HOMO POLLED (T) | HOMO BLACK (T)
10/28/2017 | AUTO 673E | LFF2139109

DAMERON FIRST CLASS	EXG RS FIRST RATE S903 R3	BW	70
SBLX FIRST CLASS	DAMERON NORTHERN MISS 311	ADJ WW	854
MAGS MANUELA	EXLR LIMITED EDITION 765J	ADJ YW	1,087
	AUTO CITY NIGHTS 214H	ADJ FAT	0.27
EXAR COUNSEL 1016B	CONNELLY CONSENSUS 7229	ADJ REA	11.99
AUTO CELINDA 416C ET	EXAR EVAS 71561	ADJ IMF	5.13
AUTO LUCKIE 246W	WLR DIRECT HIT		
	TYEJ DB SERENITY		

	CED	BW	WW	YW	MK	CEM	SC	DOC	YG	CW	RE	MB	SMTI
EPDS	8	3.2	68	107	25	4	0.9	10	-19	30	.52	.14	57
%RANK	95	>95	35	35	20	90	55	80	25	90	90	30	30

DUE 9.07.19 TO AUTO POWER PLUS 133B (HP/HB)

Here is a moderately designed female that can go to work in any herd and impress you with her great look and functionality. AUTO Energy 673E comes from the progressive giant, SBLX First Class. Her dam, AUTO Celinda 416C is a stand out daughter of EXAR Counsel from a AUTO Luckie 246W. She is homozygous black and homozygous polled. Her milk EPD ranks in top 20%. Her pedigree speaks for itself, but we'll let her impeccable phenotype do the talking when you view her sale day.



LOT 70



LOT 71



LOT 72



AUTO LUCKIE TOO 423Y | DAM OF LOT 72



MAGS MANUELA | DAM OF LOT 73



LOT 73

72

AUTO ESSANCE 474E ET

LIM-FLEX(50/43) COW | HOMO POLLED (T) | HOMO BLACK (T)
11/16/2017 | AUTO 474E | LFF2139877

HA OUTSIDE 3008
HA COWBOY UP 5405
HA BLACKCAP LADY 1602

WLR DIRECT HIT
AUTO LUCKIE TOO 423Y
TYEJ DB SERENITY

KG SOLUTION 0018
HA EVER LADY 1575
HA PROGRAM 7328
HA BLCKCAP LADY 5515
KRVN NASKAR 013N
MAGS NIGHT AMBUSH
LESF ASPHALT 9N
TYEJ DB SIZZLE

BW 64
ADJ WW 869
ADJ YW 1,052
ADJ FAT 0.22
ADJ REA 10.39
ADJ IMF 3.68

	CED	BW	WW	YW	MK	CEM	SC	DOC	YG	CW	RE	MB	SMTI
EPDS	10	2.1	73	116	16	3	1.0	8	-22	41	.74	-.05	52
%RANK	70	90	15	15	95	95	35	95	5	50	85	70	60

DUE 9.06.19 TO HBRL DELUXE PACKAGE 6114D(HP/HB)

The 'essence' of what a female should look like. This HA Cowboy Up 5405 daughter is one to sure have on your list for sale day. We admire her stout structure, big rib shape and her length of body. Her dam, AUTO Luckie Too 423Y was a National Junior Show Champion for Cody Heavin. Her weaning weight and yearling weights both rank in the top 15%. She is homozygous polled and homozygous black. Success is seen in every generation in this one's pedigree and will only continue to add success to your operation.

73

AUTO ELEGANT 459E ET

LIM-FLEX(50/45.1) COW | POLLED | HET BLACK (T)
11/7/2017 | AUTO 459E | LFF2139125

BSAR OPPORTUNITY 9114
BSF OPPORTUNIST Z5
BSF PRINCESS EL CAP W2

EXLR LIMITED EDITION 765J
MAGS MANUELA
AUTO CITY NIGHTS 214H

BSAR DESIGN DOCTOR 0910
BISHOPS LASSIE 746
SILVEIRAS EL CAPITAN 6510
B S F PRINCESS TCF N2
EXLR POLLED BENCHMARK709G
WULFS GLENDA 7021G
COLE FIRST DOWN 46D
MISS WOLFETTE 9049X

BW 66
ADJ WW 866
ADJ YW 1,005
ADJ FAT 0.14
ADJ REA 10.06
ADJ IMF 4.55

	CED	BW	WW	YW	MK	CEM	SC	DOC	YG	CW	RE	MB	SMTI
EPDS	4	4.1	72	108	23	4	0.7	11	-.31	39	.72	.27	64
%RANK	>95	>95	20	30	40	90	70	70	10	55	60	15	10

DUE 9.06.19 TO AUTO POWER PLUS 133B (HP/HB)

Another female carrying on the tradition of the great MAGS Manuela family. This BSF Opportunist Z5 daughter will command top dollar with her progeny just like her father. Opportunist was the two-time Reserve Champion at NWSS. Long and pretty in her design, she's got the build and structure to keep her highly productive for years to come. We can't wait to hear about her progeny in the future. Her marbling EPD ranks in the top 15% and her weaning weight ranks in the top 20%.



LOT 74



AUTO CRUZE 132X | SIRE OF LOT 74



MAGS WASSAIL | DAM OF LOT 74

74e

AUTO FRESHEN UP 256F

PUREBRED(93/83.4) COW | HOMO POLLED (T) | HOMO BLACK (T)
4/22/2018 | AUTO 256F | NPF2157126

MAGS THE GENERAL
AUTO CRUZE 132X
AUTO REBECA 292S

DHVO DEUCE 132R

MAGS WASSAIL
MAGS MANDA

AUTO DOLLAR GENERAL 122R
EXLR LUVLY 821M
LESF ASPHALT 9N
EXLR REBECA 1019P
GPFF BLAQUE RULON
AMY JO DHAN 20L
EXLR DAKOTA 353G
MAGS JEWEL

BW | 70
ADJ WW | 659

	CE	BW	WW	YW	MK	CEM	SC	DOC	YG	CW	RE	MB	SMTI
EPDS	10	0.3	67	95	25	6	0.6	10	-56	17	.83	-.47	38
%RANK	60	35	25	45	15	50	45	75	95	20	95	75	70

This female's got a phenotype that will pair well with anything you desire. We really admire her soundness of structure, impeccable design and her commanding presence. She's a daughter of the great AUTO Cruze bull and from a great DHVO Deuce daughter, MAGS Wassil 9706W. We really are proud of this one's ancestors and would love to see them go to work in your herd.



LOT 75

75

AUTO FLORE 229F ET

PUREBRED(93/84.5) COW | HET POLLED (T) | HOMO BLACK (T)
 3/27/2018 | AUTO 229F | NPF2146741

DHVO DEUCE 132R
TMCK DURHAM WHEAT 6030X
 MAGS STRAWBERRY PIE

GPFF BLAQUE RULON
 AMY JO DHAN 20L
 TNUH BLUE PRINT 245H
 MAGS PIE IN THE SKY
 DHVO DEUCE 132R
 BOHI RHONDA 314R
 EXLR LIMITED EDITION 765J
 AUTO CITY NIGHTS 214H

BW | 64
 ADJ WW | 774

MAGS XYLOID
SBLX ZNOTE
 MAGS MANUELA

	CEB	BW	WW	YW	MK	CEM	SC	DOC	YG	CW	RE	MB	SMTI
EPDS	10	2.3	63	95	20	7	0.9	15	-.51	19	.86	-.34	41
%RANK	60	80	45	45	65	35	10	35	15	95	>95	40	50

Here's one of royal breeding that we are so proud to offer to you. With just one look, she'll take your breath away. This female's sire is from the outstanding DHVO Deuce, TMCK Durham Wheat 6030X. She is out of the 2014 National Junior Show Champion Female, SBLX Znote who is out of the great MAGS Manuela cow. The predictability is evident in AUTO Flore 229F's pedigree. She is homozygous black.



SBLX ZNOTE | DAM OF LOT 75



LOT 76



AUTO PIA 245X | DAM OF LOT 76



AUTO MABELLINE 267Z | DAM OF LOT 77



LOT 77

76 AUTO FIRST WATCH 255F ET
 PERCENTAGE(83/73.7) COW | HOMO POLLED (T) | HOMO BLACK (T)
 4/25/2018 | AUTO 255F | NXF2149831

AUTO LUCKY STRIKE 118B
AUTO LUCKY GUY 140D ET
 AUTO REBECA 479A

MAGS THE GENERAL
AUTO PIA 245X
 AUTO REBECA 292S

LH U HAUL 135U
 AUTO LUCKIE 246W
 MAGS XYLOPOLIST
 AUTO REBECA 292S
 AUTO DOLLAR GENERAL 122R
 EXLR LUVLY 821M
 LESF ASPHALT 9N
 EXLR REBECA 1019P

BW | 70
 ADJ WW | 745

	CED	BW	WW	YW	MK	CEM	SC	DOC	YG	CW	RE	MB	SMTI
EPDS	12	1.2	68	105	24	6	0.5	11	-.53	17	.91	-.22	47
%RANK	40	60	25	25	25	55	60	65	45	55	60	50	50

This one is sound at the ground. We admire every angle in this female and the way she carries her big, powerful stature. AUTO First Watch 255F is an AUTO Lucky Guy 140D daughter from a great female, AUTO Pia 245X. Pia is a daughter of MAGS The General and from the famed AUTO Rebeca 292S female. She is homozygous black and homozygous polled. Her weaning weight, yearling weight and milk EPDs all rank in the top 25%.

77 AUTO FREEDOM 200F ET
 LIM-FLEX(75/63.4) COW | HOMO POLLED (T) | HOMO BLACK (T)
 1/2/2018 | AUTO 200F | LFF2146480

AUTO CRUZE 132X
AUTO REAL DEAL 150B
 AUTO LUCKIE TOO 423Y

CONNEALY CONSENSUS 7229
AUTO MABELLINE 267Z
 MAGS MANUELA

MAGS THE GENERAL
 AUTO REBECA 292S
 WLR DIRECT HIT
 TYEJ DB SERENITY
 CONNEALY CONSENSUS
 BLUE LILLY OF CONANGA 16
 EXLR LIMITED EDITION 765J
 AUTO CITY NIGHTS 214H

BW | 70
 ADJ WW | 824
 ADJ YW | 1,089

	CED	BW	WW	YW	MK	CEM	SC	DOC	YG	CW	RE	MB	SMTI
EPDS	8	2.6	66	98	24	4	0.9	10	-.37	18	.62	-.05	51
%RANK	95	95	40	60	25	90	45	80	70	75	40	70	70

Here is another great AUTO Real Deal 150B daughter, AUTO Freedom 200F. This is a female that will work so exceptionally with anything you use on her. This one's not only writing her own page in history, but authoring a great story for one lucky producer. She is from the 2014 NWSS Champion female, AUTO Mabelline 267Z. Her milk ranks in the top 25% and she is homozygous polled and homozygous black. This female is unbelievable in type and kind—study this one hard when you see her.



LOT 78



AUTO LUCKIE TOO 423Y | DAM OF LOT 78



MAGS ANGEL 9748W | DAM OF LOT 79



LOT 79

78

AUTO FARA 217F ET

PERCENTAGE(81/70.7) COW | HOMO POLLED (T) | HOMO BLACK (T)
2/6/2018 | AUTO 217F | NXF2147734

MAGS ROBIN HOOD 276Y
AUTO ACE VENTURA 557C
AUTO MIGHTY GIRL 670W

WLR DIRECT HIT
AUTO LUCKIE TOO 423Y
TYEJ DB SERENITY

MAGS UR A ROBIN
MAGS UNDERFOOT
MYTTY IN FOCUS
AUTO BLACK TAFFY 223T
KRVN NASKAR 013N
MAGS NIGHT AMBUSH
LESF ASPHALT 9N
TYEJ DB SIZZLE

BW | 68
ADJ WW | 706
ADJ YW | 967

	CED	BW	WW	YW	MK	CEM	SC	DOC	YG	CW	RE	MB	SMTI
EPDS	10	2.1	62	92	25	5	1.0	9	-.53	7	.81	-.27	43
%RANK	65	80	55	65	15	75	20	80	80	70	60	60	65

This one already has so much potential. She'll be a great maternal, solid producer in any program she's a part of. She's got the look, stoutness and power to produce great ones. AUTO Fara 217F is an AUTO Ace Ventura 557C daughter from the great AUTO Luckie Too 423Y female. Ace Ventura is a MAGS Robin Hood son. This female ranks in the top 15% for milk. She is homozygous polled and homozygous black.

79

AUTO FINE 817F

LIM-FLEX(75/68.3) COW | HOMO POLLED (T) | RED
2/26/2018 | AUTO 817F | LFF2153628

SYES XEROX 464Z
WASY BAKERS MAN 629B
MISS WASY LINEBACKER 621S

LJC MISSION STATEMENT P27
MAGS ANGEL 9748W
MAGS PARKER

DLVL XEROX 023X
MISS SYES ROSCOE 464T
OKLF LINEBACKER 341L
MISS WASY PATSY 623P
LJC LANCER 806
LJC HANNAH 106
LVLS POLLED BLACK JACK
CANE RIDGE POLL ANGEL 318

BW | 71
ADJ WW | 614

	CED	BW	WW	YW	MK	CEM	SC	DOC	YG	CW	RE	MB	SMTI
EPDS	8	2.8	77	119	20	4	0.7	11	-.66	16	1.13	-.26	49
%RANK	95	95	10	10	70	90	70	70	75	2	1	>95	80

This female has a really unique pedigree you'll want to analyze. She's got a look that screams do-ability for years to come. Sound on her feet and legs and beautiful in her design, this is one you'll want grazing in your pastures. AUTO Fine 817F is a WASY Bakers Man 629B daughter. Bakers Man is packed full of breed character and power. She is out of MAGS Angel 9748W from the proven MAGS Parker donor. Her weaning weight and yearling weight both rank in the top 10% and she is homozygous polled.



<< AUTO KING DAVID 120E



AUTO POWER PLUS 133B ET >>



<< AUTO REAL DEAL 150B



AUTO LUCKY GUY 140D ET >>



<< AUTO LUCKY STRIKE 118B



AUTO CLIFF HANGER 194D >>



<< AUTO ENTERPRISE 100E ET



AUTO DOLLAR GENERAL 122R >>



<< AUTO BLACK COFFEE 512A



HBRL DELUXE PACKAGE 6114D >>



AUTO ENTERPRISE 100E ET

LIM-FLEX(46/42) BULL | HOMO POLLED (T) | HOMO BLACK (T)
1/5/2017 | AUTO 100E | LFM2129613

LH ADVANTAGE 105A x PBRs DUTCHES 790X

	CED	BW	WW	YW	MK	CEM	SC	DOC	YG	CW	RE	MB	SMTI
EPDS	12	1.0	64	100	23	7	1.1	11	-0.20	39	0.68	0.10	55
%RANK	40	60	50	55	40	40	35	70	85	10	65	40	45



AUTO KING DAVID 120E ET

LIM-FLEX(62/54.8) BULL | HET POLLED (T) | HOMO BLACK (T)
4/17/2017 | AUTO 120E | LFM2141555

AUTO KING JAMES 162Z x PBRs DUTCHES 790X

	CED	BW	WW	YW	MK	CEM	SC	DOC	YG	CW	RE	MB	SMTI
EPDS	10	1.6	63	98	26	6	1.1	11	-0.36	34	.79	-0.03	5
%RANK	70	75	55	60	15	60	35	70	45	15	40	65	70



AUTO POWER PLUS 133B ET

LIM-FLEX(50/44.9) BULL | HOMO POLLED (T) | HOMO BLACK (T)
9/21/2014 | AUTO 133B | LFM2074245

EXAR DENVER 2002B x EF YADDA YADDA 809Y

	CED	BW	WW	YW	MK	CEM	SC	DOC	YG	CW	RE	MB	SMTI
EPDS	13	1.8	67	107	26	9	1.9	12	-0.24	33	0.75	.10	56
%RANK	25	80	35	30	15	10	2	50	75	20	45	40	40



AUTO REAL DEAL 150B

PUREBRED(93/81.7) BULL | HOMO POLLED (T) | HOMO BLACK (P1)
10/1/2014 | AUTO 150B | NPM2070516

AUTO CRUZE 132X x AUTO LUCKIE TOO 423Y

	CED	BW	WW	YW	MK	CEM	SC	DOC	YG	CW	RE	MB	SMTI
EPDS	7	3.1	68	97	21	3	0.6	8	-0.54	13	.77	-0.43	39
%RANK	85	85	20	35	45	90	30	70	>95	35	>95	45	45



AUTO LUCKY GUY 140D ET

PERCENTAGE(79/70.1) BULL | HOMO POLLED (T) | HOMO BLACK (T)
4/28/2016 | AUTO 140D | NXM2108303

AUTO LUCKY STRIKE 118B x AUTO REBECA 479A

	CED	BW	WW	YW	MK	CEM	SC	DOC	YG	CW	RE	MB	SMTI
EPDS	12	1.2	65	103	23	7	0.6	10	-0.51	17	.90	-0.14	49
%RANK	30	50	35	30	35	30	45	65	65	40	60	35	30



AUTO LUCKY STRIKE 118B

LIM-FLEX(71/62.7) BULL | HET POLLED (T) | HET BLACK (T)
3/14/2014 | AUTO 118B | LFM2058750

LH U HAUL 135U x AUTO LUCKIE 246W

	CED	BW	WW	YW	MK	CEM	SC	DOC	YG	CW	RE	MB	SMTI
EPDS	12	2.2	67	106	22	7	0.7	10	-0.41	15	.78	.08	57
%RANK	40	85	35	35	50	35	65	70	30	75	40	45	35



AUTO CLIFF HANGER 194D

FULLBLOOD(100/100) BULL | HORNED | RED
9/16/1994 | AUTO 194D | NFM1162529

TEXS RANGER PRIMO x YKCC HEART THROB 141W

	CED	BW	WW	YW	MK	CEM	SC	DOC	YG	CW	RE	MB	SMTI
EPDS	15	0.9	55	88	22	8	0.0	9	-0.95	0	1.32	-0.35	42
%RANK	10	35	75	55	40	20	85	65	4	90	20	25	30



AUTO DOLLAR GENERAL 122R

PUREBRED(100/89.8) BULL | HOMO POLLED (T) | HOMO BLACK (T)
4/2/2005 | AUTO 122R | NPM1794135

LVLS SECRET WEAPON 4408K x AUTO KYRIA 232K

	CED	BW	WW	YW	MK	CEM	SC	DOC	YG	CW	RE	MB	SMTI
EPDS	16	0.9	75	112	33	11	0.5	13	-0.47	30	.86	-0.27	47
%RANK	10	35	10	10	1	4	40	40	>95	4	90	10	10

Ref J **AUTO BLACK COFFEE 512A**
 PERCENTAGE(93/82.9) BULL | HET POLLED (T) | HOMO BLACK (T)
 3/4/2013 | AUTO 512A | NXM2037113

MAGS XYLOPOLIST x AUTO COFFE CAKE 699W

	CED	BW	WW	YW	MK	CEM	SC	DOC	YG	CW	RE	MB	SMTI
EPDS	12	0.3	66	103	22	7	0.6	13	-.48	14	.68	-.36	41
%RANK	30	30	35	30	40	30	45	40	70	50	85	55	60

Ref J **MAGS AVIATOR**
 LIM-FLEX(59/53.3) BULL | HOMO POLLED (P1) | HOMO BLACK (T)
 3/13/2013 | MAGS 373A | LFM2028667

MAGS WINSTON x MAGS XTRA REST

	CED	BW	WW	YW	MK	CEM	SC	DOC	YG	CW	RE	MB	SMTI
EPDS	16	-0.8	63	97	14	9	0.0	19	-.20	27	.71	.15	56
%RANK	4	15	55	55	95	10		4	85	30	50	35	40

Ref M **LFLC BANK ACCOUNT 701B**
 PUREBRED(100/88.8) | HOMO POLLED (T) | RED
 4/22/2014 | LFLC 701B | NPM2060965

WULF'S ZIPLOCK N922Z x LFLC 701X XTRA GOOD

	CED	BW	WW	YW	MK	CEM	SC	DOC	YG	CW	RE	MB	SMTI
EPDS	15	-1.1	58	90	23	8	0.6	15	-.72	-2	.95	-.24	45
%RANK	10	10	60	50	30	20	30	30	60	95	80	10	15

Ref O **SOGF SPECIAL K 247B**
 FULLBLOOD(100/100) BULL | HORNED | RED
 9/27/1992 | SOGF 247B | NFM1009152

GOLDNVIEW KRUGERRAND x SOGF LONESOME DOVE 832W

	CED	BW	WW	YW	MK	CEM	SC	DOC	YG	CW	RE	MB	SMTI
EPDS	5	4.3	58	76	30	-1	-0.1	12	-.99	2	1.36	-.60	34
%RANK			60	85	4		90	45	1	80	15	90	80

Ref J **HBRL DELUXE PACKAGE 6114D**
 LIM-FLEX(56/49.9) BULL | HOMO POLLED (T) | HOMO BLACK (T)
 8/15/2016 | HBRL 6114D | LFM2109882

MAGS ZODIAC x HBRL BAMBI 489B

	CED	BW	WW	YW	MK	CEM	SC	DOC	YG	CW	RE	MB	SMTI
EPDS	13	1.0	76	128	20	7	0.9	17	-.11	43	.49	.28	64
%RANK	25	55	10	4	65	35	45	10	95	4	90	15	10

Ref L **MAGS ALL-STAR 700A**
 LIM-FLEX(50/44.3) BULL | HOMO POLLED (T) | HOMO BLACK (P2)
 9/5/2013 | MAGS 700A | LFM2049166

MAGS XUKALANI x MAGS YORKSHIRE PUDDING

	CED	BW	WW	YW	MK	CEM	SC	DOC	YG	CW	RE	MB	SMTI
EPDS	15	-0.6	65	105	26	8	2.5	10	-.32	32	.85	.02	53
%RANK	10	20	445	35	15	20	1	70	55	20	25	55	60

Ref W **HUNT CREDENTIALS 376 ET**
 PUREBRED(100/89.6) BULL | HOMO POLLED (T) | RED
 2/21/2015 | HUNT 37C | NPM2074458

HUNT TESTAMENT 40T x JKTW WHISKEY RIVER 985 W

	CED	BW	WW	YW	MK	CEM	SC	DOC	YG	CW	RE	MB	SMTI
EPDS	15	0.9	79	123	17	9	1.2	18	-.52	60	1.12	.18	65
%RANK	10	35	3	3	80	15	4	10		1	50	1	1

Ref P **COJR HIGH TIDE 236M**
 FULLBLOOD(100/100) BULL | HORNED | RED
 10/8/2002 | COJR 236M | NFM1689707

STBR KIPPER 639K x STBR LILITH 208G

	CED	BW	WW	YW	MK	CEM	SC	DOC	YG	CW	RE	MB	SMTI
EPDS	10	1.8	58	79	26	6	0.4	10	-.91	2	1.23	-.47	38
%RANK	50	60	60	80	15	45	50	60	10	80	30	55	50



24/7/365

Real-time. Industry Relevant.

Think Limousin. Think L365.



The Site That Never Sleeps

405.260.3775 • info@limousin365.com • www.limousin365.com • Like us on

PINEGAR

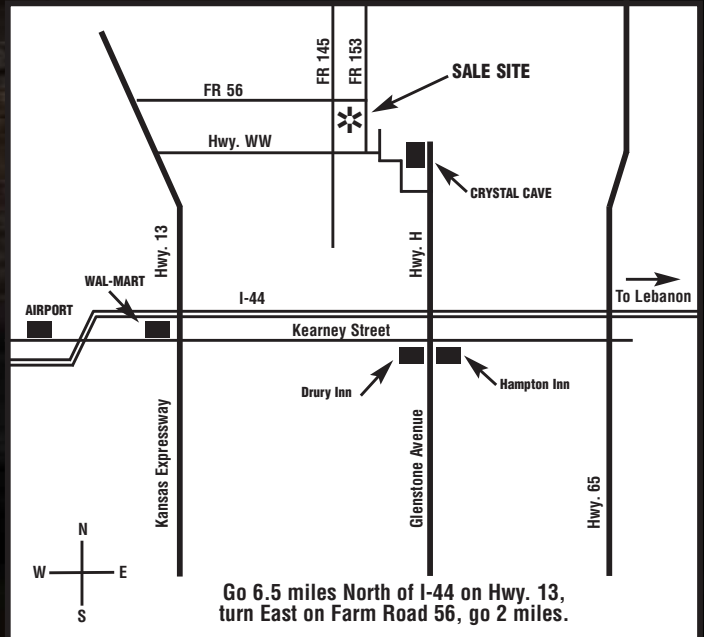
LIMOUSIN

769 E. Hwy 60
Republic, MO 65738



PINEGAR

LIMOUSIN



Go 6.5 miles North of I-44 on Hwy. 13,
turn East on Farm Road 56, go 2 miles.

HERDBUILDER

Twenty-Five

MARCH 16, 2019

1 P.M. | AT THE FARM | SPRINGFIELD, MO