



HALL-COYOTE HILLS RANCH & guests

LIMOUSIN & LIM-FLEX PRODUCTION SALE

SATURDAY, MAY 7, 2016 • 1 PM

AT COYOTE HILLS RANCH • CHATTANOOGA, OKLAHOMA

**WELCOME TO
COYOTE HILLS RANCH**



VIEW VIDEOS OF MANY OF THE LOTS VIA OUR WEBSITE:

www.hallchr.com



HALL-COYOTE HILLS RANCH

& guests

SALE HEADQUARTERS:

Best Western Hotel • I-44 & Gore Blvd.
Lawton, OK • 580/353-0200

Springhill Suites • I-44 & Gore Blvd
Lawton, OK • 580/248-8500

Holiday Inn Express • 209 SE Interstate Drive
(between Gore & Lee on I-44)
Lawton, OK • 580/248-4446

Hilton Garden Inn • 135 NW 2nd Street
Lawton, OK • 580/280-2100
(new, located one mile from I-44)

AUCTIONEERS:

Bruce Brooks • 580/695-2036 mob.
Ronn Cunningham • 918/629-3982 mob.

SALE DAY PHONES:

580/581-7652 • 580/597-2419

The catalog & supplement sheet is
available for download at
www.hallchr.com

Sale Management By:



KEN HOLLOWAY
580/597-2419

580/581-7652 mobile

24018 State Hwy. 5 • Chattanooga, OK 73528
580/597-3006 • FAX: 580/597-6619

E-mail: acs@americancattleservices.com
www.americancattleservices.com

Marketing Team:

Mark Smith • Grassroots Genetics
515/229-5227 (mob)

Randy Ratliff • R & R Marketing
615/330-2735 (mob)

BRUCE BROOKS
580/276-5137

580/695-2036 mobile

Limousin & Lim-Flex Production Sale

SATURDAY, MAY 7, 2016 • 1 PM

at Coyote Hills Ranch Chattanooga, Oklahoma

(located 18 miles east of Frederick, Oklahoma on Hwy. 5, or 1 mile west, 2 miles south, and 1 mile west of Chattanooga, Oklahoma on Hwy. 5. See map on back cover.)

SELLING 163 HEAD AS 99 LOTS

Including:

- 1 Semen Package** on LH Blockbuster 124B ET
- 14 Fancy Heifer Calves** - from our E.T. program & TLA Shoot-Out eligible
- 45 Fall Calving Purebred & Lim-Flex Females** with calves at side - many fancy show heifer prospects that will be split off their dams sale day
- 22 Spring Calving Purebred & Lim-Flex Females** with spring-born calves at side
- 15 Fall-Calving bred heifers**

Join us Friday afternoon for a pre-sale viewing

Certified Bangs Free Herd No. 826—For more information, contact:



Ken Holloway

580/597-2419, night • 580/581-7652, day

Clendon Bailey, Cattle Manager • 580/704-6739

23998 State Hwy. 5 • Chattanooga, OK 73528

580/597-3006, office • www.hallchr.com

email: chr@hallchr.com



Lance, David & Mike Hall

P.O. Box 168 • Sweetwater, TX 79556

325/235-4345 office • 325/235-2863 home

email: lance@hallchr.com

We are pleased to be joined in this sale offering by:

Lawrence Family Limousin – Anton, TX – 806/790-2535

Barton Limousin, – Jarrell, TX – 512/848-8360

Diamond Hill Cattle Co. – Newcastle, OK – 405/520-5846

Just-A-Mere Limousin – Thornville, OH – 740/572-6983

TNT Cattle Co. – Chattanooga, OK – 580/512-7621

Dwayne Harper – Katy, TX – 713/837-6132



Percentile Breakdown

	Calving Ease Direct	Birth Weight	Weaning Weight	Yearling Weight	Milking Ability	Calving Ease Maternal	Scrotal Circumference	Docility	Carcass Weight	Ribeye Area	Yield Grade	Marbling Score	\$MTI
Current Average of Purebred Active Sires	6.0	2.1	62	88	27	6	0.5	18	24	0.48	-0.25	-0.22	42.9
Current Average of Purebred Active Dams	6.0	2.2	59	83	27	6	0.5	18	22	0.48	-0.26	-0.22	41.8
Current Average of Lim-Flex Active Sires	9.0	1.1	65	101	25	7	0.7	14	31	0.43	-0.09	0.20	58.1
Current Average of Lim-Flex Active Dams	9	1.1	62	96	26	7	0.7	15	28	0.38	-0.11	0.19	56.6

In order to allow you to compare these females with the breed average, we have listed their percentile rank along side the EPDs of several of the most economically important traits. This allows you to make quick reference when selecting for specific traits to fit your needs.

Vaccination Program

as recommended by Dr. L.D. Barker

TIMING	PRODUCT SUGGESTION	
Birth	CalfGuard (if needed) ¹	1 Rota-corona virus vaccine administered prior to nursing
Branding (~ 3 months).....	Bovi-shield Gold 5 Ultrachoice™ 7	2 May be given to calves nursing pregnant cows if cows have been vaccinated within the previous year with Bovi-Shield (or PregGuard).
Preweaning (~ 2-4 weeks prior).....	Bovi-Shield™ Gold 5 OneShot™ Ultrabac™ 7/Somubac Spirovac™ 3 Ivomec™	3 Spirovac should be administered to breeding animals twice at 4-6 week intervals the first year of administration. Spirovac should be administered as early in life as possible (after 4 weeks of age) to provide immunity prior to exposure and potential development of the carrier state. A preweaning/weaning period is included in the protocol. However, this could be given at branding (followed by a 2-4 week booster) or twice prior to breeding.
Weaning	Bovi-shield™ Gold 5 Spirovac™ 3 Ultrabac™ 7/Somubac	NOTES No more than three gram (-) vaccines administered at one time “5-way” Lepto administered twice annual (~ 6 month intervals) in “high risk” herds and once annually in “low risk” herds Spirovac™ administered twice the first year and once annually.
Prebreeding (heifers/developing bulls).....	Bovi-shield “ Gold FP ‘5 VL5 Ivomec	Spirovac™ titers may be a problem for export requirements or AI centers. Consult your veterinarian or AI center personnel prior to administration to breeding animals destined for export or semen collection.
Prebreeding (cows/bulls annually)	Bovi-shield™ Gold FP ‘5 VL5 Spirovac™ 3 Ivomec™	Bovi-Shield may be used in calves nursing pregnant heifers/cows or in pregnant heifers/cows if the heifers/cows were vaccinated within 12 months. Bovi-Shield must be given initially to open females. ScourGuard 3™ (K)/C should be administered precalving if calf scours is a problem. This should be administered twice (at least two weeks apart) the first year, with the second dose given 2-3 weeks before calving. A single annual booster may be given 2-3 weeks before each subsequent calving.
Pregnancy Exam (cows/bulls annually)	Leptoferm 5™ Ivomec™	Heifers’ calves are twice as likely to develop scours as calves born to mature cows.

Special Guests & Representatives

George Hubbard	President, Okla. Limousin Breeders Assn.
Jim Bob Hendrickson	North American Limousin Found., director
Mark Barker, DVM	North American Limousin Found., director
Ralph Hawkins	Executive Secretary, Texas Limousin Association
Andy Rest.....	Limousin World
Chisolm Kinder	Oklahoma Cowman
Ralph Means.....	The Weekly Livestock Reporter
Doug Paul.....	The Stock Exchange
Delvin Heldermon	Special Representative
DeRon Heldermon	Special Representative
L.D. Barker, DVM & Mark Barker, DVM.....	Professional Animal Health
Shari Holloway	Ag Risk Management Livestock Mortality Insurance, 580/695-3788
Keith Smiley, trucking.....	580/695-2735
Randy Lathrop, trucking	847/910-4673



HALL CATTLE CO.

COYOTE HILLS RANCH

Dear Friends,

Welcome to Coyote Hills Ranch. We trust you will come early and enjoy yourself, meet new friends and renew old acquaintances.

We are offering an outstanding offering of young females from the Hall-CHR, Harper Limousin and Barton Limousin programs. We also have again asked guest consignors to consign additional females, knowing full well they will compliment this sale offering.

The National Western Stock Show in Denver proved to be a banner year for our associates. The Lawrence Family along with Jimmy Linthicum exhibited the Grand Champion bull, HUBB Bulletproof. The Lawrence Family Limousin program was named the Premier Exhibitor at the NWSS Level I Limousin Show. Our congratulations to them.

Colt Cunningham continued to wave the banner for Hall Cattle Co. with his LH Belle 015B—who is out of a cow owned jointly by Hall-CHR and Diamond Hill Cattle Co. Colt has enjoyed a tremendously successful year. Congratulations Colt!

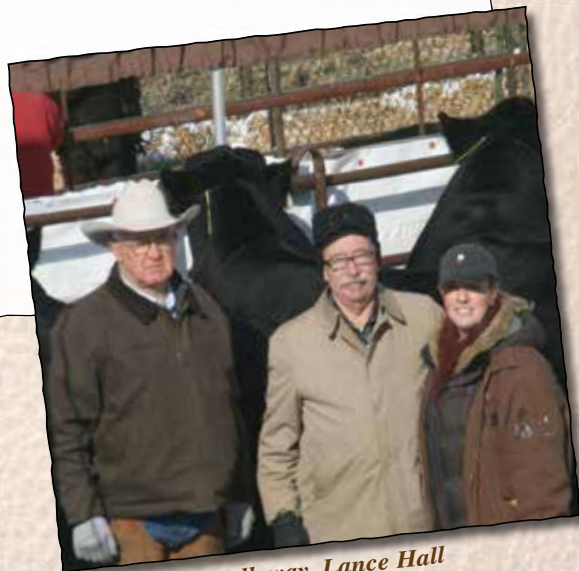
Just-A-Mere exhibited a class winning bull at the All American Limousin Futurity and Tony and Tina Morrison of TNT Cattle Co. exhibited cattle at the Oklahoma State Fair. We are proud to be associated with these good people and to recommend their genetics is an honor and privilege.

We have attempted to provide as much information as possible in this catalog and additional information will be posted on our website, www.hallchr.com or on our supplement to the catalog prior to the sale. Videos of many of the lots selling can also be viewed on our website.

Plan to come early, inspect the offering and enjoy yourself.

Sincerely,

Ken Holloway



Ken Holloway, Lance Hall
& Shana Holloway

SEMEN PACKAGES



LOT 1

LH BLOCKBUSTER 124B ET



50% LIM-FLEX BULL
BD: 9/5/14

HOMO BLACK (P-1) HOMO POLLED (P-2)
LCHA 124B LFM2073456



┌ HUNTS HI-LITER 245G
└ JCL LODESTAR 27L
┌ LOGAN'S CHEERLEADER 280G
└ VERMILION 31 STACLER 3491
┌ VERMILION E BLACKBIRD9546
└ CH ENV BLACKBIRD C5941

BW: 74 ADJ WW: 800 ADJ YW: 1316
CONSIGNED BY: HALL CATTLE CO

EPDs	%	Rank
CD:	11	20
BW:	0.3	30
WW:	80	4
YW:	120	10
MA:	22	
CM:	5	
SC:	0.55	
DC:	17	
CW:	39	15
RE:	0.26	
YG:	0.07	
MS:	0.3	15
\$MI:	64.5	10

SELLING SEMEN PACKAGES ONLY

- Offering semen packages for a limited period of time – 20 units for \$1,000 or 50 units for \$2,000
- LH Blockbuster 124B ET is a full brother to the late LH Rodemaster 338R. He surfaced in much the same manner as Rodemaster – as a high-performing, sound-made, attractively-designed individual that rose to the top of 100 fall yearling bulls on feed prior to gathering yearling performance and ultrasound data.
- Blockbuster's full brother, Rodemaster, has more than 1,100 sons and daughters recorded with NALF – many of them contributing genetics improvement to the Lim-Flex portion of this breed. Rodemaster sired the 2010 National Western Gand Champion Lim-Flex female, KRVN Unique Lady 525U, and the 2013 AALF

Grand Champion bull, WLR Reload. Many herd sires are sired by him including MAGS Ur A Robin, AUTO Gunn Point 192Y, CHR XHale and countless others. Donor cows such as MAGS UR Salina, KRVN Unavailable 005U, LFL Upper crust 8083U and others are by Rodemaster.

- Blockbuster's performance, power, soundness and structural soundness make him a logical choice to continue this lineage of Lim-Flex.
- Join Heldermon Limousin, Just-A-Mere Limousin, Lawrence Family Limousin and Massey Limousin by contacting Lance Hall, Ken Holloway or any of the marketing team to purchase a semen package.



OPEN HEIFERS

2

LFL CORINA 5021C ET

62% LIM-FLEX COW HOMO BLACK (P-2) HET POLLED (T)
BD: 4/1/15 BLAW 5021C LFF2086030



- ┌ TC ABERDEEN 759
- EBFL YPSILANTI 420Y
- ┌ MAGS RAMADA
- ┌ DHVO DEUCE 132R
- DJ XECUTIVE PRIVILEGE
- ┌ DJ UPTOWN GIRL

BW: 72 ADJ WW: 641

CONSIGNED BY: LAWRENCE FAMILY LIMOUSIN

- Square-hipped and structurally-sound
- Flushmate to LFL Classy the high-selling 2016 Denver sale heifer and LFL Cozmo, the Division II Champion Bull at Denver and Fort Worth
- Outstanding numbers!

EPDs % Rank	
CD:	5
BW:	3.7
WW:	80 4
YW:	126 3
MA:	30 25
CM:	7 35
SC:	1.25 5
DC:	13
CW:	50 2
RE:	0.67 20
YG:	-0.11
MS:	0.08 35
\$MI:	58.01 25



LOT 2

3

CHR CARMEL 110C

56% LIM-FLEX COW HOMO BLACK (P-1) HOMO POLLED (P-1)
BD: 9/7/15 KQ 110C LFF2093992



- ┌ MAGS WINSTON
- MAGS Y SO TANGLED
- ┌ MAGS UNTANGLE
- ┌ GPFF BLAQUE RULON
- CHR SHANABELLE 277S
- ┌ KQ 8105H

BW: 70 ADJ WW: 619

CONSIGNED BY: COYOTE HILLS RANCH

EPDs % Rank	
CD:	8
BW:	0.9 40
WW:	64
YW:	96
MA:	20
CM:	8 20
SC:	0.3
DC:	12
CW:	28
RE:	0.37
YG:	-0.1
MS:	0.21 20
\$MI:	57.79 25



LOT 3

4

DCHP CAMI 115C

53% LIM-FLEX COW HOMO BLACK (P-2) DOUBLE POLLED
BD: 9/8/15 DCHP 115C LFF2093973



- ┌ CONNEALY CONSENSUS 7229
- MAGS ALI
- ┌ MAGS YOKO
- ┌ MAGS Y-AXIS
- AUTO ARI'AL 414A
- ┌ AUTO PIA 245X

BW: 72 ADJ WW: 668

CONSIGNED BY: HARPER LIMOUSIN

- An outstanding young prospect out of a top Y-Asis and Pia female from the Pinegar program. Both parents are homozygous polled — however this heifer must be tested since her dam is a P-3.

EPDs % Rank	
CD:	7
BW:	2.3
WW:	85 2
YW:	131 1
MA:	27
CM:	6
SC:	1.02 15
DC:	18
CW:	51 2
RE:	0.48
YG:	0.03
MS:	0.3 15
\$MI:	66.42 10



LOT 4

OPEN HEIFERS



5 LFL CAROLYN 5078 C

73% LIM-FLEX COW HOMO BLACK (P-3) HOMO POLLED (P-1)
BD: 9/8/15 BLAW 5078C LFF2093902



┌ GPFF BLAQUE RULON
└ DHVO TREY 133R
┌ AMY JO DHAN 20L
└ MAGS USDA CHOICE
┌ LFL UPPER CRUST 0090 X
└ LFL UPPER CRUST 8083 U

BW: 78 ADJ WW: 743

CONSIGNED BY: LAWRENCE FAMILY LIMOUSIN

- Square hip, sound-made and clean-fronted
- Granddaughter of donor cow, Upper Crust

EPDs % Rank	
CD:	7
BW:	2.9
WW:	70 25
YW:	98 40
MA:	20
CM:	-1
SC:	0.65
DC:	13
CW:	31 35
RE:	0.47
YG:	-0.13
MS:	0.07 35
\$MI:	54.6 35



6 DHIL BLISS 5265C

63% LIM-FLEX COW HOMO BLACK HOMO POLLED
BD: 9/8/15 BDHC 5265C LFF-PENDING



┌ LH WAR HERO
└ MAGS ANCHOR
┌ MAGS XIPHOPAGOUS
└ LH UHAUL 135U
└ AUTO BLISS 265Y
┌ WLR UGLY BETTY 432U

BW: 78 ADJ WW: 564

CONSIGNED BY: DIAMOND HILL CATTLE CO

- A daughter of the syndicated Anchor bull out of the \$30,000 AUTO Bliss

EPDs % Rank	
CD:	9
BW:	2.3
WW:	73 1.5
YW:	115 1.5
MA:	26
CM:	5
SC:	0.8 30
DC:	13
CW:	36 25
RE:	0.56 25
YG:	0.03
MS:	0.38
\$MI:	65 20



7 LFL CHATTERBOX 5088C

75% LIM-FLEX COW HET BLACK (T) HOMO POLLED (P-3)
BD: 9/9/15 BLAW 5088C LFF2093888



┌ WULFS SPRING LOADED 3158S
└ WULFS WARRIOR 9302W
┌ WULFS JOY BELLS 9202J
└ BASIN FRANCHISE P142
┌ LFL WINNERS CIRCLE 9057 W
└ TARA JO 7132T

BW: 79 ADJ WW: 804

CONSIGNED BY: LAWRENCE FAMILY LIMOUSIN

- Deep-ribbed, rugged-made with a big foot
- Maternal sister to LFL Zander

EPDs % Rank	
CD:	7
BW:	2.8
WW:	78 10
YW:	118 10
MA:	32 15
CM:	6
SC:	0.65
DC:	21
CW:	43 10
RE:	0.47
YG:	-0.08
MS:	0.2 25
\$MI:	61.52 15



OPEN HEIFERS

8

LH CINNABAR 121C

59% LIM-FLEX COW DOUBLE BLACK HOMO POLLED (P-2)
 BD: 9/10/15 LCHA 121C LFF2093991



- ┌ MAGS WINSTON
- ┌ MAGS ZODIAC
- ┌ MAGS XANTHOUS
- ┌ MAGS XUKALANI
- ┌ MAGS ASTRA
- ┌ WLR UGLY BETTY 432U

BW: 70 ADJ WW: 642

CONSIGNED BY: HALL CATTLE CO

EPDs % Rank	
CD:	13 10
BW:	2.2
WW:	76 10
YW:	122 4
MA:	21
CM:	10 4
SC:	0.88 30
DC:	9
CW:	45 4
RE:	0.32
YG:	0.04
MS:	0.4 10
\$MI:	67.35 10



LOT 8

9

BARTON'S COCOA 122C

50% LIM-FLEX COW HOMO BLACK (P-3) DOUBLE POLLED
 BD: 9/10/15 MBLN 122C LFF2093984



- ┌ JCL LODESTAR 27L
- ┌ LH RODEMASTER 338R
- ┌ VERMILION E BLACKBIRD9546
- ┌ KRVN UNLIMITED L527U
- ┌ BARTON'S YUM YUM 262Y
- ┌ BARTON'S WORLD CLASS 165W

BW: 80 ADJ WW: 657

CONSIGNED BY: BARTON LIMOUSIN

• Both parents are homozygous polled – however her dam is a P-3, this calf must be tested

EPDs % Rank	
CD:	8
BW:	2.3
WW:	75 15
YW:	115 10
MA:	22
CM:	9 10
SC:	0.62
DC:	10
CW:	41 10
RE:	0.47
YG:	0.01
MS:	0.3 15
\$MI:	63.54 15



LOT 9

10

DHIL PRINCESS 5177C

31% LIM-FLEX RED HOMO POLLED
 BD: 9/15/15 BDHC 5177C LFF-PENDING



- ┌ MAGS WINSTON
- ┌ MAGS YOUR FAITHFUL
- ┌ MAGS UNFAITHFUL
- ┌ 35CC RIGHT TIME U266
- ┌ 35CC PRINCESS X176
- ┌ 35CC PRINCESS 5144

BW: 65 ADJ WW: 637

CONSIGNED BY: DIAMOND HILL CATTLE CO

EPDs % Rank	
CD:	4
BW:	1.2
WW:	58
YW:	90
MA:	25
CM:	6
SC:	
DC:	
CW:	25
RE:	0.22
YG:	
MS:	0.70
\$MI:	



LOT 10

OPEN HEIFERS



LOT 11

11

LFL CHOCOLATE CHIP 5099C

56% LIM-FLEX COW HOMO BLACK (T) HET POLLED (T)
BD: 9/28/15 BLAW 5099C LFF2093890



- └ RSKY WIPEOUT 0029
- └ LFL ZEKE 2073Z
- └ ASHTON JO DHVO 720R
- └ LFL BOARDWALK
- └ LFL ANGEL EYES 3086 A
- └ MAGS XUBICS CUBE

BW: 52 ADJ WW: 661

CONSIGNED BY: LAWRENCE FAMILY LIMOUSIN

- Moderate-framed, deep-ribbed and neat-fronted

EPDs % Rank	
CD:	6
BW:	-0.3 20
WW:	56
YW:	84
MA:	18
CM:	1
SC:	0.77
DC:	16
CW:	22
RE:	0.45
YG:	-0.23 40
MS:	-0.18
\$MI:	42.28



LOT 12

12

BARTON'S CHEYENNE 157C

50% LIM-FLEX COW HOMO BLACK (P-1) HOMO POLLED (P-3)
BD: 10/2/15 MBLN 157C LFF2093987



- └ JCL LODESTAR 27L
- └ LH WAR HERO 195W
- └ VERMILION ERICA LADY 1229
- └ GPFF BLAQUE RULON
- └ KRVN REBEL 070R
- └ VERMILION POWER 8409

BW: 77 ADJ WW: 760

CONSIGNED BY: BARTON LIMOUSIN

EPDs % Rank	
CD:	9 35
BW:	0 25
WW:	63
YW:	101 35
MA:	21
CM:	8 20
SC:	0.62
DC:	12
CW:	30 40
RE:	0.28
YG:	-0.1
MS:	0.17 25
\$MI:	56.18 30



LOT 13

13

LFL CLAUDIA 5106C

62% LIM-FLEX COW HET BLACK (T) HET POLLED (T)
BD: 10/6/15 BLAW 5106C LFF2093892



- └ BASIN FRANCHISE P142
- └ MAGS UNITE TOGETHER
- └ MAGS REMBRANDT
- └ KRVN PACESETTER 053P
- └ LFL UPSY DAISY 8316U
- └ LFL 2303M

BW: 78 ADJ WW: 714

CONSIGNED BY: LAWRENCE FAMILY LIMOUSIN

- Deep-sided, structurally correct, very angular prospect with good EPDs

EPDs % Rank	
CD:	7
BW:	2.5
WW:	73 15
YW:	110 20
MA:	29 30
CM:	6
SC:	0.6
DC:	17
CW:	38 15
RE:	0.4
YG:	0
MS:	0.33 15
\$MI:	64.06 10



OPEN HEIFERS

14

LH CALI 170C

59% LIM-FLEX COW
BD: 10/12/15

HOMO BLACK HOMO POLLED
LCHA 170C LFF-PENDING



— MAGS WINSTON
MAGS EAGLE
— MAGS WEB OF DECEIT
— GPFF BLAQUE RULON
LH WITCHEY WOMAN 045W
— SENNETT BLACKCAP 517R

BW: 76 ADJ WW: 757

CONSIGNED BY: HALL CATTLE CO

- Dam is a full sister to LH Yoyo that produced the National Junior Show & All American Limousin Futurity Grand Champion female, C Bar Audi, for Colt Cunningham

EPDs % Rank	
CD: 10	30
BW: 1.3	
WW: 78	5
YW: 114	15
MA: 25	
CM: 7	
SC: 0.6	
DC: 12	
CW: 38	20
RE: 0.17	
YG:	
MS: 0.33	30
\$MI: 65	20



LOT 14

15

CHR CAYENNE 198C

62% LIM-FLEX COW
BD: 11/14/15

HOMO BLACK (P-1) HOMO POLLED (P-1)
KQ 198C LFF2093994



— MAGS WINSTON
MAGS EAGLE
— MAGS WEB OF DECEIT
— GPFF BLAQUE RULON
KRVN TAMALES C313T
— CHR LANA SUE 321L

BW: 75

CONSIGNED BY: COYOTE HILLS RANCH

- A top daughter of the Tamale cow that has produced countless offspring of note in our ET program

EPDs % Rank	
CD: 8	
BW: 2.1	
WW: 74	15
YW: 106	25
MA: 21	
CM: 8	20
SC: 0.55	
DC: 13	
CW: 35	25
RE: 0.28	
YG: -0.04	
MS: 0.15	25
\$MI: 58.03	25



LOT 15

LONE STAR SHOOT-OUT

All heifer calves in this sale are eligible to compete in the Lone Star Shoot-Out which will be held in conjunction with the 2017 Fort Worth Stock Show junior Limousin heifer show. The Shoot-Out is open to any Texas 4-H & FFA member who purchases a nominated heifer and tells the clerk sale day that the heifer is to be entered in the Lone Star Shoot-Out.

Management and administration of Lone Star Shoot-Out program by:



LONE STAR SHOOT-OUT

TEXAS LIMOUSIN ASSOCIATION

Ralph Hawkins, Exec. Sec.
P.O. Box 880 • Krum, TX 76249
940/367-4633 • 940/482-3649 fax
www.texas-limousin.com
email: txlimo@aol.com



FALL-CALVING COW/CALF PAIRS



LFL UPPER CRUST 0090X • DAUGHTER OF LOT 16

16

43% LIM-FLEX COW
BD: 11/30/08

HOMO BLACK (P-1) DOUBLE POLLED
BLAW 8083U LFF1928926



┌ JCL LODESTAR 27L
└ LH RODEMASTER 338R
┌ VERMILION E BLACKBIRD9546
└ EXAR PROGRESSIVE 4153
TYCU 1009S
┌ KRVN PATCHWORK 191P

COW BW: 70 ADJ WW: 847
CALF BW: 82

CONSIGNED BY: LAWRENCE FAMILY LIMOUSIN

- Lot 16A: 12/10/15 homo black (P-2), Het polled (T) 46% Lim-Flex bull calf, tattoo BLAW 5119C, by MAGS UNITE TOGETHER.
- Dam to BLAW 0090X, a top donor at Lawrence Family Limousin and Edwards Land & Cattle
- Open and ready to ET flush

EPDs	% Rank	Proj AI	Proj PE	Calf
CD: 8	35			8
BW: 2.4				2.4
WW: 81	2			82
YW: 123	3			130
MA: 33	15			34
CM: 8	20			9
SC: 0.9	15			0.75
DC: 9				14
CW: 46	3			50
RE: 0.6	30			0.66
YG: -0.1				-0.04
MB: 0.12	20			0.47
\$MI: 59.58	15			72.33



LOT 17

17

PUREBRED COW
BD: 3/26/08

HET BLACK (T) HOMO POLLED (P-1)
BLAW 8097U NPF1929047



┌ GPFF BLAQUE RULON
└ DHVO TREY 133R
┌ AMY JO DHAN 20L
└ DJ GENTLEMAN IN BLACK
LFL BONNIE 3060N
┌ CABIN CREEK HONEY DEW 41H

COW BW: 78 ADJ WW: 561 ADJ YW: 916

CALF BW: 87 ADJ WW: 680

CONSIGNED BY: LAWRENCE FAMILY LIMOUSIN

- Lot 17A: 9/23/15 homo black (T), homo polled (P-2) 50% Lim-Flex bull calf, tattoo BLAW 5097C, by RSKY WIPEOUT 0029.
- Cow PE 12/6/15-3/8/16 to LFL ZANDER 2082Z
- Grand Champion Purebred Heifer at the 2010 Fort Worth and Houston and the 2010 TLA Show Heifer of the Year

EPDs	% Rank	Proj AI	Proj PE	Calf
CD: 3	5	7	6	
BW: 4.4		3.7	26	3.7
WW: 61		71	65	56
YW: 86		108	98	88
MA: 22		24	30	20
CM: -4		1	2	0
SC: 0.5		0.7	0.6	0.8
DC: 19		18	16	13
CW: 28	35	40	32	26
RE: 0.27		0.15	0.45	0.23
YG: -0.18		-0.04	-0.07	-0.14
MB: -0.28		0.03	0.03	0.06
\$MI: 39.69		53	51	50.34

LH ULTRA GAL O32U

18

50% LIM-FLEX COW
BD: 3/12/08

HOMO BLACK (P-1) HOMO POLLED (P-2)
LCHA O32U LFF1918476



┌ HUNTS HI-LITER 245G
└ JCL LODESTAR 27L
┌ LOGAN'S CHEERLEADER 280G
└ C A FUTURE DIRECTION 5321
DIAMOND TROJAN ERICA P702
┌ DIAMOND TROJAN ERICA 924L

COW BW: 70 ADJ WW: 573

CALF BW: 74 ADJ WW: 789

CONSIGNED BY: HALL CATTLE CO

- Lot 18A: 10/5/15 homo black (P-2), homo polled (P-3) 50% Lim-Flex bull calf, tattoo LCHA 162C, by MAGS EAGLE.
- Cow PE 12/23/15-2/17/16 to MAGS EAGLE, safe.

EPDs	% Rank	Proj AI	Proj PE	Calf
CD: 12	10	8	12	12
BW: -0.6	15	1.4	0.5	0.6
WW: 65	30	77	78	78
YW: 110	10	118	123	123
MA: 26		24	25	25
CM: 8	20	6	10	10
SC: 0.7	30	1.1	0.6	0.65
DC: 15		220	13	16
CW: 35	15	42	44	44
RE: 0.49		0.56	0.29	0.29
YG: 0.04		-0.05	0.13	0.13
MB: 0.58	4	0.09	0.62	0.62
\$MI: 70.72	4	55	75	75.16



FALL-CALVING COW/CALF PAIRS

19

LFL UP FRONT 8048U

37% LIM-FLEX COW
BD: 9/23/08

HET BLACK (T) HET POLLED (T)
LRAW 8048U LFF1926020



- └ B/R NEW DESIGN 036
- G A R PREDESTINED
 - └ G A R EXT 4206
 - └ GPFF BLAQUE RULON
- LFL MY GIRL 3077N
 - └ LFL 51F

EPDs	% Rank	Proj AI	Proj PE	Calf
CD: 5	9	8	7	7
BW: 1.3	40	1.5	1.0	3.1
WW: 66	30	77	68	74
YW: 94	35	125	102	116
MA: 32	15	25	35	33
CM: 7	30	9	7	8
SC: 0.8	20	0.75	0.75	0.7
DC: 11	14	12	15	15
CW: 27	40	42	31	41
RE: 0.65	20	0.41	0.64	0.69
YG: -0.16	0.0	0.56	-0.07	
MB: 0.78	2	0.60	0.56	0.8
\$MI: 79.3	1	75	71	82.09

COW BW: 83 ADJ YW: 1069

CALF BW: 86 ADJ WW: 877

CONSIGNED BY: LAWRENCE FAMILY LIMOUSIN

- Lot 19A: 10/5/15 homo black (T), homo polled (T) 43% Lim-Flex bull calf, tattoo BLAW 5103C, by MAGS UNITE TOGETHER.
- Calf DD-free and has the herd bull look
- Cow AI 12/18/15 to MAGS ZODINE. PE 12/30/15-3/8/16 to LFL ZANDER 2052Z.
- Grand Champion Lim-Flex Heifer at the 2010 Ft Worth. Dam was LFL My Girl the Denver Champion Jr. Female 2005. Her last year bull calf was a top selling bull to David Phillips!
- Cow is DD Carrier
- Selling 5 embryos by LH RODEMASTER



LOTS 19 & 19A

20

BARTON'S WORLD CLASS I65W

50% LIM-FLEX COW
BD: 10/1/09

HOMO BLACK (P-1) HOMO POLLED (P-2)
MBLN 165W LFF1954306



- └ JCL LODESTAR 27L
- LH RODEMASTER 338R
 - └ VERMILION E BLACKBIRD9546
 - └ GPFF BLAQUE RULON
- KRVN REBEL 070R
 - └ VERMILION POWER 8409

EPDs	% Rank	Proj AI	Proj PE	Calf
CD: 7	6	10	6	6
BW: 0.9	35	2.1	1.2	2
WW: 66	30	78	78	78
YW: 100	25	113	118	114
MA: 22	22	23	22	22
CM: 8	20	6	10	6
SC: 0.62	40	1.1	0.61	1.11
DC: 10	17	14	17	17
CW: 30	30	40	41	40
RE: 0.46	0.55	0.27	0.55	
YG: -0.05	-0.09	0.08	-0.09	
MB: 0.2	20	-0.10	0.44	-0.1
\$MI: 57.57	20	50	69	50.62

COW BW: 68 ADJ WW: 622 ADJ YW: 892

CALF BW: 80 ADJ WW: 729

CONSIGNED BY: BARTON LIMOUSIN

- Lot 20A: 9/19/15 homo black (P-2), double polled 75% Lim-Flex heifer calf, tattoo MBLN 137C, by DHVO DEUCE 132R.
- Cow AI 12/3/15 to DHVO DEUCE, safe, & PE 12/23/15-2/17/16 to MAGS EAGLE
- A super producing, deep-ribbed, thick-made, powerful cow with a great Deuce heifer calf at side.



LOTS 20 & 20A

21

MAGS WIDE AWAKE

50% LIM-FLEX COW
BD: 9/22/09

HOMO BLACK (P-1) HOMO POLLED (T)
MAGS 9728W LFF1958023



- └ AUTO DOLLAR GENERAL 122R
- MAGS TWAIN
 - └ THOMAS PATRICIA 1911
 - └ SUMMITCRESTHIGHPRIME 0H29
- MAGS RAPHAELA
 - └ MAGS LADY ACE

EPDs	% Rank	Proj AI	Proj PE	Calf
CD: 7	10	7	7	7
BW: 1.1	40	1.4	0.5	0.5
WW: 70	15	79	67	67
YW: 111	10	127	106	106
MA: 32	15	25	31	31
CM: 5	8	5	5	5
SC: 1.1	5	0.9	0.75	0.75
DC: 11	14	14	14	14
CW: 38	10	48	35	35
RE: 0.65	20	0.41	0.65	0.65
YG: -0.31	25	0.07	-0.23	-0.23
MB: 0.34	10	0.38	0.46	0.46
\$MI: 66.31	10	68	68	68.95

COW BW: 86 ADJ WW: 687 ADJ YW: 1055

CALF BW: 68 ADJ WW: 616

CONSIGNED BY: LAWRENCE FAMILY LIMOUSIN

- Lot 21A: 10/18/15 homo black (T), homo polled (P-3) 50% Lim-Flex bull calf, tattoo BLAW 5109C, by MAGS ACAPULCO.
- Cow AI 12/18/15 to MAGS ZODIAC
- Cow PE 12/30/15-3/8/16 to LFL ZANDER 2082Z



LOT 21

FALL-CALVING COW/CALF PAIRS



22 75% LIM-FLEX COW HOMO BLACK (P-1) HET POLLED (T)
BD: 10/3/09 RHOT 167W LFF1954325



GPFF BLAQUE RULON
DHVO DEUCE 132R
AMY JO DHAN 20L
JCL LODESTAR 27L
KRVN REDEFINE 333R

EPDs	% Rank	Proj AI	Proj PE	Calf
CD: 7	11	10	7	
BW: 1.8	0.7	1.6	2.9	
WW: 71	15	74	81	76
YW: 104	20	114	120	115
MA: 21	24	23	23	
CM: 4	8	8	7	
SC: 1.15	5	1.6	0.9	0.93
DC: 23	30	8	20	16
CW: 34	20	1.6	43	40
RE: 0.35	12	0.22	0.41	
YG: -0.08	-0.02	0.07	-0.01	
MB: -0.15	0.05	0.26	0.1	
\$MI: 46.67	54	63	56.71	

COW BW: 78 ADJ WW: 668 ADJ YW: 914
CALF BW: 82 ADJ WW: 593

CONSIGNED BY: COYOTE HILLS RANCH

- Lot 22A: 9/1/15 homo black (P-2), double polled 62% Lim-Flex heifer calf, tattoo KQ 101C, by LH RODEMASTER 338R.
- Cow AI 1/21/16 to MAGS ALL-STAR 700A
- Cow PE 2/17-3/31/16 to MAGS EAGLE

23 PUREBRED COW HOMO BLACK (T) HOMO POLLED (T)
BD: 3/11/09 PERF 906W NPF1942328



HUNTS HI-LITER 245G
JCL LODESTAR 27L
LOGAN'S CHEERLEADER 280G
LYLL BLACK VERDICT 828L
PERF BP BV 572R
PERF MISS CARRIE 853H

EPDs	% Rank	Proj AI	Proj PE	Calf
CD: 10	20	9	9	8
BW: 0	20	-0.2	1.4	0.7
WW: 55	56	70	60	
YW: 90	89	109	91	
MA: 26	26	25	24	
CM: -1	3	4	3	
SC: 0.5	0.7	0.52	0.6	
DC: 16	15	14	14	
CW: 23	22	36	26	
RE: 0.35	0.24	0.32	0.33	
YG: -0.16	-0.08	-0.04	-0.13	
MB: -0.06	35	-0.02	-0.02	-0.03
\$MI: 46	49	56	48.14	

COW BW: 64 ADJ WW: 524 ADJ YW: 841
CALF BW: 71 ADJ WW: 549

CONSIGNED BY: TNT LIMOUSIN

- Lot 23A: 9/30/15 homo black (P-2), homo polled (P-2) 81% bull calf, tattoo TNTM 506C, by CHR Y NOT 163Y.
- Cow AI 11/22/15 to RLBH AIR FORCE ONE, safe, the 2014 All American Futurity Grand Champion bull
- Cow PE 11/25/15-2/27/16 to CHR AERO 024A

24 PUREBRED COW HOMO BLACK (T) HOMO POLLED (T)
BD: 3/21/09 LCHA 517W NPF1943568



BLACK DIAMOND
GPFF BLAQUE RULON
QUAIL RUN RAMONA BP
COLE FIRST DOWN 46D
MAGS LAKE ERIE
LADY BEEF 417V

EPDs	% Rank	Proj AI	Proj PE	Calf
CD: 6	8	7	6	
BW: 2.1	20	2.4	2.3	
WW: 56	61	71	60	
YW: 78	90	103	85	
MA: 17	23	20	20	
CM: 4	3	6	5	
SC: 0.7	30	0.8	0.7	0.7
DC: 13	14	13	12	
CW: 19	25	35	24	
RE: 0.48	0.40	0.38	0.4	
YG: -0.26	40	-0.14	-0.10	-0.18
MB: -0.12	-0.01	0.10	-0.06	
\$MI: 44.59	50	55	47.32	

COW BW: 73 ADJ WW: 610 ADJ YW: 847
CALF BW: 74 ADJ WW: 502

CONSIGNED BY: TNT LIMOUSIN

- Lot 24A: 10/13/15 homo black (P-2), homo polled (P-2) 81% heifer calf, tattoo TNTM 508C, by CHR Y NOT 163Y.
- Cow AI 11/21/15 to AUTO LUCKY STRIKE, safe, 2015 All American Futurity Grand Champion bull
- Cow PE 11/25/15-2/27/16 to CHR Aero 024A

25 50% LIM-FLEX COW DOUBLE BLACK DOUBLE POLLED
BD: 9/5/09 EXLR 208W LFF1951544



BR MIDLAND
EXAR TITLELIST T011
EXG BLACKCAP R054 R3
CARROUSELS PURE POWER
EXLR LUVLY 608S
EXLR LUVLY 084F

EPDs	% Rank	Proj AI	Proj PE	Calf
CD: 14	4	13	7	
BW: -0.2	20	0.7	2.5	
WW: 54	70	68		
YW: 84	110	98		
MA: 24	24	21		
CM: 6	9	6		
SC: 0.3	0.4	0.5		
DC: -1	8	4		
CW: 20	36	32		
RE: 0.42	0.25	0.50		
YG: -0.14	0.04	-0.14		
MB: 0.49	10	0.58	-0.2	
\$MI: 65.45	10	62	62	

COW BW: 78
CALF BW: 78 ADJ WW: 591

CONSIGNED BY: DIAMOND HILL CATTLE CO

- Lot 25A: 9/21/15 homo black, double polled 62% Lim-Flex heifer calf, tattoo BDHC 5172C, by LH XPRESS FREIGHT 136X
- Cow PE 3/11-4/30/16 to MAGS EAGLE



LOT 26

26 50% LIM-FLEX COW HET BLACK (T) HOMO POLLED (P-3)
BD: 1/5/10 SSTS 0805X LFF1959047



EF MAIN STAY 541M
EF SMACK DOWN 764S
M L PRUDENCE 427
JCL LODESTAR 27L
SSTS TANGO 7862T
HPCA NEW DESIGN 911

EPDs	% Rank	Proj AI	Proj PE	Calf
CD: 11	15	11	11	
BW: -1.5	10	-0.4	-2	
WW: 49	59	62		
YW: 82	96	92		
MA: 31	20	354	28	
CM: 5	6	5		
SC: 0.28	6	0.5	0.94	
DC: 6	9	15		
CW: 17	26	22		
RE: 0.54	35	0.59	0.59	
YG: -0.24	-0.10	-0.23		
MB: 0.17	20	0.26	-0.12	
\$MI: 53.1	25	58	46.23	

COW BW: 65 ADJ WW: 703 ADJ YW: 845
CALF BW: 50 ADJ WW: 646

CONSIGNED BY: LAWRENCE FAMILY LIMOUSIN

- Lot 26A: 9/12/15 homo black (T), Het polled (T) 75% Lim-Flex heifer calf, tattoo SSTS 5859C, by DHVO DEUCE 132R.
- Cow PE 12/6/15-3/8/16 to LFL ZANDER 2087Z
- Sells with an outstanding show heifer prospect at side



FALL-CALVING COW/CALF PAIRS

27

50% LIM-FLEX COW
BD: 10/8/10

CHR XPOSED 181X

HET BLACK (T) HOMO POLLED (T)
KQ 181X LFF1979549



- └ HUNTS HI-LITER 245G
- JCL LODESTAR 27L
- └ LOGAN'S CHEERLEADER 280G
- └
- └

EPDs	% Rank	Proj AI	Proj PE	Calf
CD: 8	35	10	10	10
BW: 1.7		106	2.1	
WW: 65	30	78	78	
YW: 104	20	120	121	
MA: 17		21	20	
CM: 4		8	8	
SC:				
DC: 20	40	19	19	
CW: 35	15	43	44	
RE: 0.09		0.09	0.09	
YG: 0.03		0.12	0.12	
MB: 0.24	15	0.0	0.46	
\$MI: 58.17	15	69	69.39	

COW BW: 70 ADJ WW: 589 ADJ YW: 1035

CALF BW: 76 ADJ WW: 641

CONSIGNED BY: COYOTE HILLS RANCH

- Lot 27A: 10/7/15 double black, homo polled (P-1) 50% Lim-Flex heifer calf, tattoo KQ 165C, by MAGS EAGLE.
- Cow AI 12/23/15—2/17/16 to MAGS Eagle, observed bred 1/3/167, safe

28

50% LIM-FLEX COW
BD: 10/10/10

JUST-A-MERE RITO 94X

HOMO BLACK (T) HOMO POLLED (T)
JMFA 094X LFF1980247



- └ COLE BLACK TANK 24P
- COLE SUDDEN IMPACT 50S
- └ COLE 100G
- └ TC TOTAL 410
- JUST-A-MERE RITO 70Z
- └ HERITAGE 616 RITO 158

EPDs	% Rank	Proj AI	Proj PE	Calf
CD: 4	7	5		
BW: 3.6		2.8	3	
WW: 82	2	81	82	
YW: 129	2	127	127	
MA: 21		25	21	
CM: 3		4	5	
SC: 0.9	15	0.75	0.7	
DC: 12		15	9	
CW: 52	1	47	50	
RE: 0.79	10	0.60	0.74	
YG: -0.17		-0.10	-0.12	
MB: 0.21	20	0.29	0.21	
\$MI: 63.83	10	65	63.51	

COW BW: 72 ADJ WW: 664 ADJ YW: 1088

CALF BW: 76 ADJ WW: 704

CONSIGNED BY: JUST-A-MERE-FARMS

- Lot 28A: 9/4/15 homo black (P-1), homo polled (P-1) 50% Lim-Flex heifer calf, tattoo JMFA 597C, by CHR UTMOST 158U.
- Cow AI 11/24/15 to LH ADVANTAGE 105A, safe
- A consistent producer of top quality calves

29

PUREBRED COW
BD: 5/13/11

LFL YOUNG EMOTIONS 1037Y

DOUBLE BLACK DOUBLE POLLED
BLAW 1037Y NPF1988800



- └ GPFF BLAQUE RULON
- DHVO TREY 133R
- └ AMY JO DHAN 20L
- └ EXLR DAKOTA 353G
- EXLR EMOTIONS 643K
- └ DBDV EMOTIONS 311E

EPDs	% Rank	Proj AI	Proj PE	Calf
CD: 3	8	6		
BW: 3.3		2.5	1.3	
WW: 54		71	53	
YW: 63		103	76	
MA: 16		17	18	
CM: -3		4	1	
SC: 0.55		0.62	0.82	
DC: 20	40	18	13	
CW: 11		35	18	
RE: 0.11		0.14	0.15	
YG: -0.18		-0.01	-0.14	
MB: -0.18		-0.02	0.11	
\$MI: 40.95		55	51.08	

COW BW: 74 ADJ WW: 690 ADJ YW: 1029

CALF BW: 68

CONSIGNED BY: LAWRENCE FAMILY LIMOUSIN

- Lot 29A: 10/2/15 double black, double polled 50% Lim-Flex heifer calf, tattoo BLAW 5092C, by RSKY WIPEOUT 0029.
- Cow AI 12/17/15 to MAGS ZODIAC
- Cow PE 12/6/15—3/8/16 to LFL ZANDER 2082Z
- Young Emotions was a class winning heifer for Shelbi Lawrence at the Springfield, MO 2012 National Junior Limousin Show



LOT 29

30

46% LIM-FLEX COW
BD: 9/2/11

LH YEARS TO COME 119Y

HET BLACK (T) HOMO POLLED (P-3)
LCHA 119Y LFF2003296



- └ BASIN FRANCHISE P142
- LH U HAUL 135U
- └ EXLR DUCHESS 7129R
- └ JCL LODESTAR 27L
- LH ULTRA GAL 032U
- └ DIAMOND TROJAN ERICA P70Z

EPDs	% Rank	Proj AI	Proj PE	Calf
CD: 13	10	13	12	
BW: -0.3		0.6	-0.7	
WW: 70	15	80	71	
YW: 116	5	127	118	
MA: 29	30	27	24	
CM: 7	30	9	8	
SC: 0.85	20	0.7	0.78	
DC: 15		17	14	
CW: 38	10	45	40	
RE: 0.44		0.27	0.28	
YG: 0.05		0.13	-0.01	
MB: 0.68	3	0.02	0.48	
\$MI: 75.63	2	78	69.23	

COW BW: 72 ADJ WW: 674 ADJ YW: 992

CALF BW: 68

CONSIGNED BY: HARPER LIMOUSIN

- Lot 30A: 11/3/15 double black, double polled 48% Lim-Flex bull calf, by LH WAR HERO 195W.
- Cow PE 12/23/15—4/15/16 to MAGS Eagle, observed bred 3/1/16



LOT 30

FALL-CALVING COW/CALF PAIRS



LOT 31

31

BDHC UNAVAILABLE 2005Z

46% LIM-FLEX COW
BD: 3/1/12

HOMO BLACK (T) HOMO POLLED (T)
BDHC 2005Z LFF2016937



- └ BASIN FRANCHISE P142
- LH U HAUL 135U
- └ EXLR DUCHESS 7129R
- └ LH RODEMASTER 338R
- KRVN UNAVAILABLE 005U
- └ SCUN COOL BREEZE 202S

COW BW: 79 ADJ WW: 688 ADJ YW: 995

CALF BW: 72 ADJ WW: 652

CONSIGNED BY: HALL CATTLE CO

- Lot 31A: 9/7/15 homo black (P-1), homo polled (P-1) 48% Lim-Flex heifer calf, tattoo LCHA 111C, by MAGS EAGLE.
- Cow AI 11/23/15 to CHR ACE VENTURA 129A, safe
- Cow PE 12/23/15-2/17/16 to MAGS EAGLE
- A tremendous, young cow that is thick, deep-ribbed and pretty-profiling

EPDs	% Rank	Proj AI	Proj PE	Calf
CD: 12	10	13	12	12
BW: 0.5	30	0.1	1.0	1.5
WW: 62	40	69	75	76
YW: 101	25	116	119	119
MA: 22		25	23	23
CM: 8	20	9	10	10
SC: 0.85	20	0.9	0.7	0.72
DC: 8		17	13	13
CW: 31	25	40	41	42
RE: 0.29		0.68	0.19	0.19
YG: 0.01		-0.11	0.11	0.12
MB: 0.6	4	-0.01	0.01	0.64
\$MI: 70.67	4	65	75	75.33



LOT 32

32

LH ZELMA 125Z

75% LIM-FLEX COW
BD: 9/4/12

HOMO BLACK (P-1) HOMO POLLED (T)
LCHA 125Z LFF2026835



- └ GPFF BLAQUE RULON
- DHVO DEUCE 132R
- └ AMY JO DHAN 20L
- └ BR MIDLAND
- EXLR BLACK SHEENA 1035P
- └ LKCC BLACK SHEENA

COW BW: 74 ADJ WW: 728 ADJ YW: 995

CALF BW: 78 ADJ WW: 653

CONSIGNED BY: HALL CATTLE CO

- Lot 32A: 9/19/15 homo black (P-2), homo polled (P-1) 62% Lim-Flex bull calf, tattoo LCHA 136C, by MAGS EAGLE.
- Cow AI 12/8/15 to MAGS ANCHOR, safe
- Cow PE 12/23/15-2/17/16 to MAGS EAGLE

EPDs	% Rank	Proj AI	Proj PE	Calf
CD: 7	7	10	9	7
BW: 1.9	22	1.7	2.5	
WW: 78	4	78	84	84
YW: 111	10	117	124	124
MA: 18		20	21	21
CM: 4	6	8	8	
SC: 1	10	0.8	0.8	0.8
DC: 13		13	16	15
CW: 38	10	42	45	45
RE: 0.46		0.59	0.27	0.28
YG: -0.08		-0.03	0.07	0.07
MB: 0.11	25	0.012	0.0	0.39
\$MI: 58.01	15	60	69	68.93



LOT 33

33

LH ZENVIOUS 135Z

PUREBRED COW
BD: 9/8/12

HOMO BLACK (P-1) HET POLLED (T)
LCHA 135Z NPF2026841



- └ GPFF BLAQUE RULON
- DHVO DEUCE 132R
- └ AMY JO DHAN 20L
- └ JCL LODESTAR 27L
- MAGS ROUGHHOUSE
- └ GPF BLAQUE CRYSTAL

COW BW: 77 ADJ WW: 631 ADJ YW: 953

CALF BW: 74 ADJ WW: 673

CONSIGNED BY: HALL CATTLE CO

- Lot 33A: 10/19/15 double black, double polled 81% bull calf, tattoo LCHA 176C, by JMFA RODEMASTER 294Z.
- Cow AI 12/15/15 to WULFS XCLUSIVE 2458X
- Cow PE 1/25-2/17/16 to DHIL BARKER 4076B, safe

EPDs	% Rank	Proj AI	Proj PE	Calf
CD: 7			11	7
BW: 1.9			1.2	2.1
WW: 77	10		71	77
YW: 114	15		120	115
MA: 21			21	22
CM: 4			6	5
SC: 1.25	5		0.9	0.97
DC: 21			17	18
CW: 40	10		42	41
RE: 0.52			40	0.38
YG: -0.12			-0.05	0.01
MB: -0.29			-0.02	-0.05
\$MI: 43.77			55	51.37



FALL-CALVING COW/CALF PAIRS

34

AUTO KELSEA 259Z

56% LIM-FLEX COW HOMO BLACK (P-2) HOMO POLLED (T)
BD: 9/17/12 AUTO 259Z LFF2024388



┌ DHVO DEUCE 132R
MAGS XYLOID
└ BOHI RHONDA 314R
┌ MYTTY IN FOCUS
SBLX UNNA 391U
└ MAGS SALMETTO

EPDs	% Rank	Proj AI	Proj PE	Calf
CD: 12	10	9	11	9
BW: 0.8	30	1.7	0.7	1.7
WW: 64	35	71	66	71
YW: 100	25	107	105	107
MA: 20		25	29	25
CM: 9	10	9	8	9
SC: 1.05	10	1.23	0.9	1.23
DC: 24	25	15	18	15
CW: 30	30	35	33	35
RE: 0.18		0.53	0.41	0.53
YG: 0		-0.11	0.02	-0.11
MB: 0.34	10	-0.02	0.34	0.24
\$MI: 61.83	15	61	62	61.18

COW BW: 61 ADJ WW: 721
CALF BW: 73 ADJ WW: 660

CONSIGNED BY: LAWRENCE FAMILY LIMOUSIN

- Lot 34A: 9/10/15 homo black (P-3), homo polled (P-1) 53% Lim-Flex heifer calf, tattoo LSTO 5855C, by EBFL YPSILANTI 420Y.
- Cow AI 12/18/15 to EBFL Ypsilanti 420Y
- Cow PE 12/30/15-3/8/16 to LFL ZANDER 2082Z
- Has a good heifer calf at side by the syndicated bull Ypsilanti



LOT 34

35

LH ZEEZAROO 154Z

75% LIM-FLEX COW HOMO BLACK (P-2) HOMO POLLED (P-2)
BD: 9/18/12 LCHA 154Z LFF2026852



┌ JCL LODESTAR 27L
LH RODEMASTER 338R
└ VERMILION E BLACKBIRD9546
┌ KRVN SAILOR 083S
KRVN ULTRA SWEET 033U
└ KRVN SWISS MOCHA 038S

EPDs	% Rank	Proj AI	Proj PE	Calf
CD: 6		9	9	
BW: 2.5		2.0	3.4	
WW: 76	10	83	84	
YW: 109	15	122	123	
MA: 22		23	23	
CM: 7	30	10	10	
SC: 0.5		0.55	0.55	
DC: 9		13	13	
CW: 37	15	45	45	
RE: 0.49		29	0.29	
YG: -0.07		0.07	0.07	
MB: 0.14	20	0.01	0.41	
\$MI: 58.59	15	69	69.63	

COW BW: 79 ADJ WW: 758 ADJ YW: 966
CALF BW: 78 ADJ WW: 701

CONSIGNED BY: COYOTE HILLS RANCH

- Lot 35A: 9/8/15 homo black (P-3), homo polled (P-3) 62% Lim-Flex bull calf, tattoo KQ 116C, by MAGS EAGLE.
- Cow PE 12/23/15-4/15/16 to MAGS EAGLE, observed bred 2/28/16

36

BNBA ZETTA 155Z

59% LIM-FLEX COW HOMO BLACK (T) HOMO POLLED (P-1)
BD: 9/18/12 BNBA 155Z LFF2026718



┌ BASIN FRANCHISE P142
LH U HAUL 135U
└ EXLR DUCHESS 7129R
┌ LH RODEMASTER 338R
BNBA XCEPTIONAL JO 014X
└ ASHTON JO DHVO 720R

EPDs	% Rank	Proj AI	Proj PE	Calf
CD: 10	20	11	11	11
BW: 1	35	1.2	1.2	2.3
WW: 69	20	80	80	80
YW: 104	20	120	120	121
MA: 26		25	25	25
CM: 5	9	9	8	
SC: 0.85	20	0.7	0.7	0.72
DC: 14		16	16	16
CW: 33	20	42	42	43
RE: 0.51	40	0.30	0.30	0.3
YG: -0.07		0.7	0.7	0.07
MB: 0.32	15	0.5	0.5	0.49
\$MI: 63.01	10	70	70	71.42

COW BW: 72 ADJ WW: 649 ADJ YW: 907
CALF BW: 82 ADJ WW: 724

CONSIGNED BY: BARTON LIMOUSIN

- Lot 36A: 10/2/15 homo black (P-1), homo polled (P-2) 54% Lim-Flex bull calf, tattoo BNBA 158C, by MAGS EAGLE.
- Cow AI 11/30/15 to MAGS EAGLE, safe
- Cow PE 12/23/15-2/17/16 to MAGS EAGLE

37

BNBA ZELLA 159Z

81% COW HET BLACK (T) HOMO POLLED (T)
BD: 9/20/12 BNBA 159Z NXF2025615



┌ LH RODEMASTER 338R
CHR XHALE 001X
└ KRVN TAMALES C313T
┌ GPFF BLAQUE RULON
ASHTON JO DHVO 720R
└ AMY JO DHAN 20L

EPDs	% Rank	Proj AI	Proj PE	Calf
CD: 6	7	9	9	
BW: 2.1		2.0	1.8	1.7
WW: 65		72	78	78
YW: 89		108	113	113
MA: 19		22	22	21
CM: 2		6	7	7
SC: 0.65		0.7	0.6	0.62
DC: 12		11	15	15
CW: 25		36	38	39
RE: 0.63	25	0.56	0.36	0.36
YG: -0.28	25	-0.11	-0.03	-0.03
MB: -0.36		-0.01	0.16	0.15
\$MI: 38.72	52	59	59	59.18

COW BW: 77 ADJ WW: 749 ADJ YW: 975
CALF BW: 74 ADJ WW: 660

CONSIGNED BY: BARTON LIMOUSIN

- Lot 37A: 9/11/15 double black, homo polled (P-1) 65% Lim-Flex bull calf, tattoo BNBA 123C, by MAGS EAGLE.
- Cow AI 11/30/15 to LH RODEMASTER 338R, safe
- Cow PE 12/23/15-2/17/16 to MAGS EAGLE



DHVO 720R • GRANDDAM OF LOT 36 & DAM OF LOT 37

FALL-CALVING COW/CALF PAIRS



LOT 38

38 BNBA ZENZY LADY 190Z

75% LIM-FLEX COW HOMO BLACK (P-1) HOMO POLLED (P-1)
BD: 10/8/12 BNBA 190Z LFF2026723



JCL LODESTAR 27L
LH RODEMASTER 338R
VERMILION E BLACKBIRD9546
GPFF BLAQUE RULON
BNBA WRATTLE 036W
WL JU JU GAL 149J

COW BW: 79 ADJ WW: 732 ADJ YW: 1057
CALF BW: 70

CONSIGNEE BY: BARTON LIMOUSIN

- Lot 38A: 12/3/15 homo black (P-2), homo polled (P-2) 62% Lim-Flex heifer calf, tattoo BNBA 211C, by MAGS EAGLE.
- Cow PE 12/23/15-4/15/16 to MAGS EAGLE
- Dam is a full sister to Naskar

EPDs	% Rank	Proj AI	Proj PE	Calf
CD: 7		10	9	
BW: 2.4		2.0	1.9	
WW: 78	4	85	84	
YW: 118	4	128	127	
MA: 23		24	23	
CM: 6		9	9	
SC: 0.6	40	0.6	0.6	
DC: 12		15	15	
CW: 43	5	47	48	
RE: 0.55	35	0.32	0.32	
YG: -0.05		0.08	0.09	
MB: 0.03	30	0.35	0.35	
\$MI: 54.99	20	67	67.38	



LOT 39

39 AUTO GEORGIA 435Z

50% LIM-FLEX COW HOMO BLACK (P-1) HOMO POLLED (T)
BD: 10/9/12 AUTO 435Z LFF2036520



COLEMAN PRODUCTION 608
COLE WINDFALL 144W
COLE MISS FIRSTDOWN 6162S
GPFF BLAQUE RULON
KRVN PROGENY 175P
KRVN 011K

COW BW: 64 ADJ WW: 548 ADJ YW: 830
CALF BW: 82 ADJ WW: 771

CONSIGNEE BY: HARPER LIMOUSIN

- Lot 39A: 9/30/15 homo black (P-2), homo polled (P-1) 50% Lim-Flex bull calf, tattoo DCHP 153C, by MAGS EAGLE.
- Cow AI 12/5/15 to LH RODEMASTER 338R, safe
- Cow PE 12/23/15-2/17/16 to MAGS EAGLE
- A deep-ribbed, heavy-milking, structurally-sound, young cow with worlds of style and balance

EPDs	% Rank	Proj AI	Proj PE	Calf
CD: 9	30	8	10	10
BW: 0.7	30	1.3	1.1	2.4
WW: 64	35	73	77	77
YW: 97	30	112	117	117
MA: 30	25	27	27	27
CM: 7	30	8	10	9
SC: 0.7	30	0.7	0.6	0.65
DC: 6		8	12	12
CW: 28	35	38	40	40
RE: 0.51	40	0.49	0.30	0.3
YG: -0.06		0.0	0.08	0.08
MB: 0.17	20	0.01	0.02	0.42
\$MI: 55.93	20	61	68	67.9



LOT 40

40 RHOT ADA 009A

59% LIM-FLEX COW HOMO BLACK (T) HET POLLED (T)
BD: 2/17/13 RHOT 009A LFF2036189



BASIN FRANCHISE P142
LH U HAUL 135U
EXLR DUCHESS 7129R
DHVO DEUCE 132R
CHR XTRA CLASS 173X
KRVN REDEFINE 333R

COW BW: 71 ADJ WW: 636 ADJ YW: 892
CALF BW: 65 ADJ WW: 629

CONSIGNEE BY: COYOTE HILLS RANCH

- Lot 40A: 9/15/15 homo black (P-1), double polled 79% bull calf, tattoo KQ 130C, by JCL LODESTAR 27L.
- Cow AI 1/1/16 to MAGS ALL-STAR 700A, safe
- Cow PE 2/17-3/15/16 to MAGS EAGLE
- A powerful young cow with a world of performance

EPDs	% Rank	Proj AI	Proj PE	Calf
CD: 11	20	12	12	11
BW: 0.6	35	0.1	1.1	0.7
WW: 73	15	76	82	75
YW: 114	15	118	125	121
MA: 27		27	26	26
CM: 5		8	8	7
SC: 1.07	15	1.5	0.8	0.94
DC: 18		10	18	19
CW: 38	15	40	45	42
RE: 0.37		0.35	0.23	0.25
YG: 0		0.01	0.11	0.04
MB: 0.3	15	0.48	0.01	0.21
\$MI: 63.08	15	71	71	60.17



FALL-CALVING COW/CALF PAIRS

CHR ADDA BABE 029A

41

75% LIM-FLEX COW HOMO BLACK (P-1) HOMO POLLED (P-1)
BD: 3/13/13 KQ 029A LFF2038690



- └ JCL LODESTAR 27L
- LH RODEMASTER 338R
- └ VERMILION E BLACKBIRD9546
- └ BLACK DIAMOND
- GPF BLAQUE CRYSTAL
- └ QUAIL RUN RAMONA BP

COW BW: 83 ADJ WW: 749 ADJ YW: 992

CALF BW: 78 ADJ WW: 658

CONSIGNED BY: COYOTE HILLS RANCH

- Lot 41A: 9/21/15 homo black (P-2), homo polled (P-2) 62% Lim-Flex bull calf, tattoo KQ 141C, by MAGS EAGLE.
- Cow AI 11/28/15 to CHR ACE VENTURA 129A, safe
- Cow PE 12/23/15-2/17/16 to MAGS Eagle
- Dam is a full sister to Blaque Rulon

EPDs	% Rank	Proj AI	Proj PE	Calf
CD: 6	10	9	9	9
BW: 2.2	1.0	1.9	3.4	
WW: 70	25	73	80	80
YW: 102	35	117	119	119
MA: 21	24	23	22	
CM: 6	8	9	9	
SC: 0.8	30	0.9	0.7	0.7
DC: 13	19	16	15	
CW: 33	30	40	42	43
RE: 0.62	30	0.85	0.35	0.35
YG: -0.12	-0.17	0.05	0.05	
MB: 0.02	40	-0.01	0.01	0.34
\$MI: 52.75	40	56	66	66.09



LOTS 41 & 41A

LH ADDIE LOU 037A

42

59% LIM-FLEX COW HOMO BLACK (T) HOMO POLLED (P-1)
BD: 3/28/13 LCHA 037A LFF2036198



- └ BASIN FRANCHISE P142
- LH U HAUL 135U
- └ EXLR DUCHESS 7129R
- └ LH RODEMASTER 338R
- PBRs UNICE 8137U
- └ MAGS NATASHA

COW BW: 70 ADJ WW: 559 ADJ YW: 937

CALF BW: 72 ADJ WW: 606

CONSIGNED BY: HALL CATTLE CO

- Lot 42A: 10/4/15 double black, homo polled (P-3) 60% Lim-Flex heifer calf, tattoo LCHA 160C, by JMFA RODEMASTER 294Z.
- Cow AI 4/29/15 to CHR ACE VENTURA 129A, safe
- Cow PE 12/23/15-2/17/16 to MAGS EAGLE

EPDs	% Rank	Proj AI	Proj PE	Calf
CD: 9	35	11	11	8
BW: 0.9	40	0.3	1.2	2.2
WW: 60	68	75	69	
YW: 96	114	116	106	
MA: 29	30	28	26	26
CM: 7	35	8	9	7
SC: 0.75	0.9	0.7	0.72	
DC: 12	19	15	13	
CW: 29	39	40	35	
RE: 0.42	0.75	0.26	0.33	
YG: -0.05	-0.14	0.08	0.05	
MB: 0.33	15	0.21	0.50	0.26
\$MI: 60.78	20	59	70	59.95



LOT 42

LH APRIL 042A

43

50% LIM-FLEX COW HOMO BLACK (P-2) HOMO POLLED (P-2)
BD: 4/3/13 LCHA 042A LFF2036201



- └ DHVO DEUCE 132R
- CHR XPRT 176X
- └ CHR MOLLY ROSE 001M
- └ EXAR 263C
- BASIN PRIDE 3677
- └ BASIN PRIDE 0573

COW BW: 74 ADJ WW: 648 ADJ YW: 963

CALF BW: 72 ADJ WW: 707

CONSIGNED BY: HALL CATTLE CO

- Lot 43A: 9/25/15 homo black (P-3), homo polled (P-3) 75% Lim-Flex bull calf, tattoo LCHA 146C, by JCL LODESTAR 27L.
- Cow AI 11/27/15 to MAGS ALI-STAR 700A, safe
- Cow PE 12/23/15-2/17/16 to MAGS EAGLE

EPDs	% Rank	Proj AI	Proj PE	Calf
CD: 9	35	11	11	10
BW: 0.6	35	0.1	1.1	0.9
WW: 58	68	74	68	
YW: 87	105	112	107	
MA: 26	27	25	26	
CM: 5	8	8	6	
SC: 0.7	1.3	0.65	0.75	
DC: 22	12	20	21	
CW: 22	-0.05	37	34	
RE: 0.26	32	0.17	0.2	
YG: -0.13	0.30	0.05	-0.03	
MB: 0.19	25	-0.02	0.43	0.15
\$MI: 55.46	30	59	67	56.36

DHIL RITA 3031A

44

72% LIM-FLEX COW DOUBLE BLACK HOMO POLLED (P-3)
BD: 5/4/13 BDHC 3031A LFF2030973



- └ LH RODEMASTER 338R
- LH XPRESS FREIGHT 136X
- └ KRVN NACHES 151N
- └ EXLR TOTAL DOMINANCE 8008
- EXLR RITA 031X
- └ SKLS 902S

COW BW: 64 ADJ WW: 552

CALF BW: 65

CONSIGNED BY: DIAMOND HILL CATTLE CO

- Lot 44A: 11/4/15 double black, double polled 61% Lim-Flex bull calf, tattoo BDHC 5303C, by JCL CURRENCY LNLM 203Z.
- Cow PE 3/11-4/30/16 to MAGS EAGLE

EPDs	% Rank	Proj AI	Proj PE	Calf
CD: 6		9	9	
BW: 2		1.7	0.5	
WW: 69	30	80	59	
YW: 104	30	120	87	
MA: 24		24	25	
CM: 5		8	5	
SC: 0.67		0.63	0.64	
DC: 9		13	7	
CW: 34	25	43	22	
RE: 0.51		0.30	0.45	
YG: -0.12		0.05	-0.12	
MB: 0.13	30	0.40	0.23	
\$MI: 56.49	25	68	56.83	

FALL-CALVING COW/CALF PAIRS



LOT 45

45

50% LIM-FLEX COW
BD: 9/1/13

LH ANGEL 107A

HOMO BLACK (P-1) HOMO POLLED (P-3)
LCHA 107A LFF2049196



┌ JCL LODESTAR 27L
└ LH RODEMASTER 338R
┌ VERMILION E BLACKBIRD9546
└ GPFF BLAQUE RULON
┌ LH WALKABOUT 008W
└ HALL ENCHANTRESS 601T

COW BW: 73 ADJ WW: 641
CALF BW: 68 ADJ WW: 685

CONSIGNED BY: HALL CATTLE CO

- Lot 45A: 9/1/15 homo black (P-2), double polled 50% Lim-Flex heifer calf, tattoo LCHA 103C, by MAGS EAGLE.
- Cow AI 12/4/15 to MAGS EAGLE, safe
- Cow PE 12/23/15-2/17/16 to MAGS EAGLE
- Wow! Grteat young cow with a super show heifer prospect at side

EPDs	% Rank	Proj AI	Proj PE	Calf
CD: 8	10	10	10	10
BW: 1.3	1.8	1.8	1.8	1.8
WW: 64	78	78	78	78
YW: 107	25	122	122	122
MA: 23	23	23	23	23
CM: 8	20	10	10	10
SC: 0.7	0.65	0.65	0.65	0.65
DC: 11	14	14	14	14
CW: 35	25	44	44	44
RE: 0.42	0.26	0.26	0.26	0.26
YG: 0	0.11	0.11	0.11	0.11
MB: 0.33	15	0.5	0.5	0.5
\$MI: 61.67	15	70.94	70.94	70.94



LOTS 46 & 46A

46

50% LIM-FLEX COW
BD: 9/2/13

MAGS AGATE

HOMO BLACK (T) HOMO POLLED (T)
MAGS 9113A LFF2049251



┌ D A TRAVELER 004 703
└ EF XCESSIVE FORCE
┌ CFLX MOLLYS IMAGE
└ BR MIDLAND
┌ MAGS UNLACE
└ MAGS GRETCHEN 855M

COW BW: 86 ADJ WW: 691 ADJ YW: 886
CALF BW: 86 ADJ WW: 657

CONSIGNED BY: HARPER LIMOUSIN

- Lot 46A: 9/16/15 homo black (P-1), homo polled (P-2) 56% Lim-Flex bull calf, tattoo DCHP 131C, by MAGS ZODIAC.
- Cow AI 1/30/16 to DHIL BARKER 4076B, safe
- Cow PE 2/17-3/16/16 to MAGS EAGLE
- Bull calf at side could be your next herd sire

EPDs	% Rank	Proj AI	Proj PE	Calf
CD: 9	35	12	11	12
BW: 1.4	1.0	1.5	3.5	3.5
WW: 61	64	76	74	74
YW: 98	40	117	121	121
MA: 25	23	24	21	21
CM: 8	20	9	10	10
SC: 1.5	1.0	1.0	1.1	1.1
DC: 9	11	13	13	13
CW: 28	36	40	43	43
RE: 0.01	0.14	0.05	0.1	0.1
YG: 0.15	0.08	0.19	0.15	0.15
MB: 0.74	1	0.61	0.70	0.58
\$MI: 74.16	2	71	77	72.42



LOT 47

47

50% LIM-FLEX COW
BD: 9/7/13

SSTO ASHLEY 3865A

HOMO BLACK (P-2) HET POLLED (T)
SSTO 3865A LFF2065758



┌ LH RODEMASTER 338R
└ MAGS UR A ROBIN
┌ BOHI RED ROBIN 282R
└ BR MIDLAND
┌ MAGS SILHOUETTE
└ MAGS LADY ACE

COW BW: 73 ADJ WW: 627 ADJ YW: 958
CALF BW: 56 ADJ WW: 744

CONSIGNED BY: LAWRENCE FAMILY LIMOUSIN

- Lot 47A: 9/14/15 homo black (P-3), double polled 50% Lim-Flex heifer calf, tattoo SSTO 5861C, by EBFL YPSILANTI 420Y.
- Cow AI 11/8/15 to MAGS ZODIAC
- Cow PE 12/6/15-3/8/16 to LFL ZANDER 2082Z

EPDs	% Rank	Proj AI	Proj PE	Calf
CD: 9	30	11	10	9
BW: 1.1	40	1.4	0.9	0.4
WW: 68	20	78	69	69
YW: 108	15	126	109	105
MA: 29	30	23	33	30
CM: 8	20	9	7	9
SC: 0.75	30	0.72	0.72	1.07
DC: -5	6	4	1	1
CW: 36	15	47	36	32
RE: 0.84	5	0.51	0.74	0.86
YG: -0.08	0.04	-0.01	-0.17	-0.17
MB: 0.62	3	0.52	0.48	0.38
\$MI: 73.72	2	71	68	66.15



FALL-CALVING COW/CALF PAIRS

48

50% LIM-FLEX COW HOMO BLACK (P-1) HOMO POLLED (P-2)
BD: 9/8/13 PBRS 3167A LFF2048717



└ DHVO DEUCE 132R
PBRS024X
└ OAK HILL MISS WIX 72S
└ JCL LODESTAR 27L
LEWIS SELENA 216S
└ AMEN WENDYS LASS 380

EPDs	% Rank	Proj AI	Proj PE	Calf
CD: 11	15	8	11	12
BW: 0.1	20	1.3	0.4	0.5
WW: 67	25	72	68	78
YW: 107	15	110	108	121
MA: 23		27	30	24
CM: 7	30	8	7	9
SC: 1.18	5	1.29	0.9	0.89
DC: 18		12	15	18
CW: 33	20	36	35	42
RE: 0.15		0.51	0.40	0.12
YG: 0.18		0.18	0.12	0.2
MB: 0.22	15	0.01	0.28	0.45
\$MI: 56.86	20	59	60	68.36

COW BW: 68 ADJ WW: 663

CALF BW: 68 ADJ WW: 727

CONSIGNED BY: LAWRENCE FAMILY LIMOUSIN

- Lot 48A: 9/17/15 homo black (P-2), homo polled (P-3) 50% Lim-Flex bull calf, tattoo PBRS 5162C, by MAGS EAGLE.
- Cow 12/18/15 EBFL YPSILANTI 420Y
- Cow PE 12/30/15-3/8/16 to LFL ZANDER 2082Z
- A first-calf heifer that is doing a great job with her double homozygous bull calf

49

50% LIM-FLEX COW HOMO BLACK (P-1) HOMO POLLED (P-3)
BD: 9/10/13 LCHA 128A LFF2048282



└ HUNTS HI-LITER 245G
JCL LODESTAR 27L
└ LOGAN'S CHEERLEADER 280G
└ G A R PREDICTION
HF TRAVELER 210Y
└ CHAIR ROCK OBJECTIVE 9142

EPDs	% Rank	Proj AI	Proj PE	Calf
CD: 12	15		12	12
BW: 1.2			1.3	0.5
WW: 77	10		84	63
YW: 130	2		133	100
MA: 26			25	26
CM: 8	20		10	7
SC: 0.81	30		0.7	0.76
DC: 18			18	13
CW: 49	2		50	30
RE: 0.42			0.25	0.4
YG: -0.01			0.10	-0.07
MB: 0.6	2		0.63	0.46
\$MI: 75.44	2		77	66.44

COW BW: 76 ADJ WW: 765

CALF BW: 67

CONSIGNED BY: DIAMOND HILL CATTLE CO

- Lot 49A: 11/24/15 homo black (P-2), double polled 50% Lim-Flex heifer calf, tattoo BDHC 5128C, by JCL CURRENCY LNLM 203Z.
- Cow PE 3/11-4/30/16 to MAGS EAGLE

50

62% LIM-FLEX COW HOMO BLACK (P-2) HOMO POLLED (P-2)
BD: 9/11/13 KQ 131A LFF2048347



└ MAGS WINSTON
MAGS EAGLE
└ MAGS WEB OF DECEIT
└ LH RODEMASTER 338R
CHR YEEHAW 196Y
└ CHR SILKY ROSE 177S

EPDs	% Rank	Proj AI	Proj PE	Calf
CD: 9	35		10	8
BW: 2.4			1.9	0.5
WW: 84	2		87	81
YW: 125	3		131	121
MA: 22			23	22
CM: 9	10		10	8
SC: 0.57			0.58	0.64
DC: 13			15	14
CW: 47	3		49	44
RE: 0.3			0.20	0.27
YG: 0.06			0.14	0.1
MB: 0.32	15		0.50	0.26
\$MI: 66.47	10		73	63.1

COW BW: 69 ADJ WW: 678

CALF BW: 52

CONSIGNED BY: COYOTE HILLS RANCH

- Lot 50A: 10/30/15 double black, homo polled (P-3) 62% Lim-Flex bull calf, tattoo KQ 184C, by JMFA RODEMASTER 294Z.
- Cow PE 12/23/15-4/15/16 to MAGS EAGLE

51

62% LIM-FLEX COW HOMO BLACK (P-2) HOMO POLLED (T)
BD: 9/14/13 MAGS 9190A LFF2050893



└ DHVO DEUCE 132R
MAGS XYLOID
└ BOHI RHONDA 314R
└ BON VIEW NEW DESIGN 1407
EXLR LA VEDA 1002P
└ WULFS LA VEDA 1025L

EPDs	% Rank	Proj AI	Proj PE	Calf
CD: 10	25		11	15
BW: 0.5	35		1.0	0.6
WW: 56			74	64
YW: 97			117	108
MA: 23			23	22
CM: 7	35		9	8
SC: 0.7			0.65	0.9
DC: 23	40		20	23
CW: 34	25		43	35
RE: 0.42			0.25	0.35
YG: -0.08			0.07	0.13
MB: 0.22	20		0.44	0.47
\$MI: 55.79	30		67	65.62

COW BW: 62 ADJ WW: 511 ADJ YW: 815

CALF BW: 73 ADJ WW: 662

CONSIGNED BY: COYOTE HILLS RANCH

- Lot 51A: 9/8/15 double black, homo polled (P-1) 43% Lim-Flex bull calf, tattoo KQ 108C, by ELMW XPEDIENT 4X.
- Cow PE 12/23/15-4/15/16 to MAGS EAGLE, safe

52

71% LIM-FLEX COW HET BLACK (T) HET POLLED (T)
BD: 10/6/13 KQ 154A LFF2048352



└ BASIN FRANCHISE P142
LH U HAUL 135U
└ EXLR DUCHESS 7129R
└ WULFS GUARDIAN 5074G
CHR MOCHA 096M
└ CHR KOKO

EPDs	% Rank	Proj AI	Proj PE	Calf
CD: 11	20		11	9
BW: 0.9	40		1.2	1.6
WW: 66	40		78	72
YW: 100	35		118	108
MA: 28	35		26	25
CM: 5			8	6
SC: 0.45			0.52	0.57
DC: 18			18	16
CW: 30	40		41	36
RE: 0.39			0.24	0.32
YG: -0.08			0.07	0.04
MB: 0.1	30		0.39	0.14
\$MI: 54.31	35		67	56.52

COW BW: 73 ADJ WW: 710

CALF BW: 68

CONSIGNED BY: COYOTE HILLS RANCH

- Lot 52A: 11/14/15 double black, double polled 67% Lim-Flex heifer calf, tattoo KQ 199C, by JMFA RODEMASTER 294Z.
- Cow PE 12/23/15-4/15/16 to MAGS EAGLE

53

50% LIM-FLEX COW HOMO BLACK (P-2) HOMO POLLED (P-2)
BD: 10/7/13 KQ 155A LFF2049482



└ DHVO DEUCE 132R
CHR XPERT 176X
└ CHR MOLLY ROSE 001M
└ GARDENS SPECIAL T
GREEN GARDEN STELLA F018
└ GREEN GARDEN ESTELLE 4088

EPDs	% Rank	Proj AI	Proj PE	Calf
CD: 10	25		12	11
BW: -1.4	10		-0.8	0.1
WW: 50			63	71
YW: 76			100	107
MA: 23			25	24
CM: 4			7	8
SC:				
DC: 20			23	19
CW: 13			30	32
RE: 0.17			0.62	0.13
YG: -0.15			-0.19	0.03
MB: 0.14	30		0.12	-0.01
\$MI: 51.48			55	65

COW BW: 58 ADJ WW: 655

CALF BW: 69 ADJ WW: 553

CONSIGNED BY: COYOTE HILLS RANCH

- Lot 53A: 9/29/15 homo black (P-3), homo polled (P-3) 56% Lim-Flex heifer calf, tattoo KQ 150C, by CHR AERO 024A.
- Cow AI 11/30/15 to CHR ACE VENTRUA 129A
- Cow PE 12/23/15-4/15/16 to MAGS EAGLE

FALL-CALVING COW/CALF PAIRS



LOT 54

54 37% LIM-FLEX COW
BD: 10/7/13

MAGS ANGELFISH
HOMO BLACK (T) HET POLLED (T)
MAGS 8004A LFF2049276



┌ SITZ UPWARD 307R
EXAR UPSHOT 0562B
└ EXAR BARBARA T020
┌ DHVO DEUCE 132R
MAGS XEROMAS
└ BOHI RHONDA 314R

	EPDs	% Rank	Proj AI	Proj PE	Calf
CD:	12	15	10	12	9
BW:	0.4	30	1.7	1.0	1.3
WW:	62		72	76	64
YW:	114	15	122	125	111
MA:	26		25	25	25
CM:	6		7	9	8
SC:	0.9	20	0.9	0.8	0.6
DC:	20		19	19	11
CW:	40	10	46	0\46	38
RE:	0.82	10	0.42	0.45	0.31
YG:	-0.14		-0.02	0.04	0.01
MB:	0.4	10	-0.01	0.53	0.34
\$MI:	64.81	10	65	78	61.95

COW BW: 66 ADJ WW: 697 ADJ YW: 815
CALF BW: 72 ADJ WW: 656

CONSIGNED BY: HARPER LIMOUSIN

- Lot 54A: 9/14/15 homo black (P-1), double polled 68% Lim-Flex bull calf, tattoo DCHP 128C, by MAGS YIP.
- Cow AI 12/1/15 to WULFS XCLUSIVE 2458X, safe
- Cow PE 12/23/15-2/17/16 to MAGS EAGLE
- A stout bull calf at side of this outstanding first-calf heifer



LOTS 55 & 55A

55 71% LIM-FLEX COW
BD: 10/10/13

LFL AFTER HOURS 3100 A
HOMO BLACK (P-2) HET POLLED (T)
BLAW 3100A LFF2046389



┌ DHVO TREY 133R
LFL X-AVIER 0026 X
└ EXLR EMOTIONS 643K
┌ LH RODEMASTER 338R
LFL UPPER CRUST 8083 U
└ TYCU 1009S

	EPDs	% Rank	Proj AI	Proj PE	Calf
CD:	5		7	8	8
BW:	3		1.9	1.8	1.4
WW:	67	35	62	68	65
YW:	94		90	102	95
MA:	26		22	32	25
CM:	2		2	5	7
SC:	0.7		0.8	0.7	0.3
DC:	17		14	15	16
CW:	29		25	32	29
RE:	0.38		0.48	0.52	0.6
YG:	-0.16		-0.21	-0.05	-0.18
MB:	-0.02		-0.06	0.16	0.39
\$MI:	50.65		47	56	65.21

COW BW: 70 ADJ WW: 661 ADJ YW: 983
CALF BW: 68 ADJ WW: 631

CONSIGNED BY: LAWRENCE FAMILY LIMOUSIN

- Lot 55A: 10/10/15 double black, double polled 67% Lim-Flex bull calf, tattoo BLAW 5094C, by MAGS ZYLOMETER.
- Cow AI 11/19/15 to LFL ZEKE 2973Z
- Cow PE 12/6/15-3/8/16 to LFL ZANDER 2082Z
- Bull calf at side looks like he would make a good show steer prospect

56 50% LIM-FLEX COW
BD: 10/10/13

DHIL XCLUSIVE BELLE 3013A
HOMO BLACK (P-2) DOUBLE POLLED
BDHC 3013A LFF2038866



┌ JCL LODESTAR 27L
LH WAR HERO 195W
└ VERMILION ERICA LADY 1229
┌ DHVO TREY 133R
LH XCLUSIVE BELLE 013X
└ STEVENSON ELDORENE T457

	EPDs	% Rank	Proj AI	Proj PE	Calf
CD:	9	35	10	11	
BW:	1.2		1.3	0.8	
WW:	65		78	57	
YW:	104	30	120	87	
MA:	17		21	21	
CM:	4		8	4	
SC:	0.8	30	0.7	0.59	
DC:	18		18	13	
CW:	34	25	43	22	
RE:	0.12		0.10	0.25	
YG:	-0.06		0.08	-0.09	
MB:	0.28	15	0.48	0.3	
\$MI:	60.37	20	70	58.77	

COW BW: 81 ADJ WW: 531
CALF BW: 68

CONSIGNED BY: DIAMOND HILL CATTLE CO

- Lot 56A: 11/10/15 homo black (P-3), double polled 50% Lim-Flex bull calf, tattoo BDHC 5301C, by JCL CURRENCY LNLN 203Z.
- Cow PE 3/11-4/30/16 to MAGS EAGLE, observed bred 3/29/16

57 59% LIM-FLEX COW
BD: 10/12/13

CHR AMAZING GRACE 162A
HOMO BLACK (T) HOMO POLLED (P-1)
KQ 162A LFF2048458



┌ BASIN FRANCHISE P142
LH U HAUL 135U
└ EXLR DUCHESS 7129R
┌ GPFF BLAQUE RULON
KRVN TAMALES C313T
└ CHR LANA SUE 321L

	EPDs	% Rank	Proj AI	Proj PE	Calf
CD:	9	35	12	11	8
BW:	1		0.8	1.3	2.7
WW:	66	40	66	78	72
YW:	99	40	112	118	108
MA:	26		24	25	24
CM:	5		8	8	6
SC:	0.75		0.6	0.7	0.72
DC:	12		12	15	13
CW:	30	40	37	41	36
RE:	0.43		0.35	0.26	0.34
YG:	-0.11		-0.05	0.06	0.02
MB:	0.2	25	0.34	0.44	0.2
\$MI:	58.17	25	63	69	58.86

COW BW: 70 ADJ WW: 734
CALF BW: 76 ADJ WW: 638

CONSIGNED BY: COYOTE HILLS RANCH

- Lot 57A: 10/3/15 double black, homo polled (P-3) 60% Lim-Flex heifer calf, tattoo KQ 159C, by JMFA RODEMASTER 294Z.
- Cow AI 2/11/16 to DHIL BARKER 4076B
- Cow PE 2/17-3/15/16 to MAGS EAGLE



FALL-CALVING COW/CALF PAIRS

CHR A LOTTA LOVE 159A

58

50% LIM-FLEX COW HOMO BLACK (P-1) HOMO POLLED (P-3)
BD: 10/10/13 KQ 159A LFF2048353



- └ JCL LODESTAR 27L
- LH WAR HERO 195W
- └ VERMILION ERICA LADY 1229
- └ GPFF BLAQUE RULON
- CHR BLACK ROUGE 100M
- └ KQ 8142H

COW BW: 69 ADJ WW: 641

CALF BW: 70 ADJ WW: 532

CONSIGNED BY: COYOTE HILLS RANCH

- Lot 58A: 9/13/15 homo black (P-2), double polled 50% Lim-Flex heifer calf, tattoo KQ 126C, by MAGS EAGLE.
- Cow AI 12/17/15 to MAGS EAGLE, safe
- Cow PE 12/23/15-2/17/16 to MAGS EAGLE

	EPDs	%	Rank	Proj AI	Proj PE	Calf
CD:	9	35	10	10	10	10
BW:	0.3	30	1.4	1.4	1.4	1.4
WW:	65		78	78	78	78
YW:	103	30	120	120	120	120
MA:	21		22	22	22	22
CM:	8	20	10	10	10	10
SC:	0.65		0.62	0.62	0.62	0.62
DC:	14		16	16	16	16
CW:	32	35	42	42	42	42
RE:	0.32		0.2	0.2	0.2	0.2
YG:	-0.1		0.06	0.06	0.06	0.06
MB:	0.15	25	0.41	0.41	0.41	0.41
\$MI:	55.94	30	68.04	68.04	68.04	68.04



LOT 58

MAGS ALL RENEWAL

59

62% LIM-FLEX COW HOMO BLACK (P-2) HOMO POLLED (T)
BD: 11/5/13 MAGS 709A LFF2049120



- └ DHVO DEUCE 132R
- MAGS XYLOID
- └ BOHI RHONDA 314R
- └ LVLS 8211U
- MAGS XTRA RENEWAL
- └ MAGS URBAN RENEWAL

COW BW: 82 ADJ WW: 748 ADJ YW: 930

CALF BW: 70 ADJ WW: 584

CONSIGNED BY: HARPER LIMOUSIN

- Lot 59A: 10/29/15 homo black (P-3), homo polled (P-3) 62% Lim-Flex bull calf, tattoo DCHP 182C, by TMCK APOLLO 010A.
- Cow AI 2/14/16 to DHIL BARKER 4076D
- Cow PE 2/17-4/15/16 to MAGS EAGLE

	EPDs	%	Rank	Proj AI	Proj PE	Calf
CD:	9	35	12	11	10	10
BW:	2.1		1.3	1.8	1.1	1.1
WW:	69	30	657	80	73	73
YW:	106	25	115	121	112	112
MA:	18		20	21	25	25
CM:	7	35	9	9	8	8
SC:	0.5		0.50	0.55	0.65	0.65
DC:						
CW:	36	20	40	44	36	36
RE:	-0.09		0.10	0.0	0.17	0.17
YG:	0.07		0.04	0.14	0.01	0.01
MB:	0.47	10	0.47	0.51	0.3	0.3
\$MI:	67.3	10	67	73	62.93	62.93



LOT 59

JMFA STARBURST 302A

60

62% LIM-FLEX COW HOMO BLACK (P-1) HOMO POLLED (T)
BD: 10/17/13 JMFA 302A LFF2047064



- └ LH RODEMASTER 338R
- CHR UTMOST 158U
- └ CHR BLACK ROUGE 100M
- └ WZRK PRIMESTAR 861P
- HB STARSTRUCK 932W
- └ MISS WULFETTE 6072S

COW BW: 71 ADJ WW: 685

CALF BW: 76 ADJ WW: 648

CONSIGNED BY: HALL CATTLE CO

- Lot 60A: 10/8/15 homo black (P-3), homo polled (P-3) 62% Lim-Flex heifer calf, tattoo LCHA 167C, by CHR AERO 024A.
- Cow AI 1/6/16 to MAGS ALL-STAR 700A
- Cow PE 2/17-3/15/16 to MAGS EAGLE, safe

	EPDs	%	Rank	Proj AI	Proj PE	Calf
CD:	7		11	9	7	7
BW:	2.5		1.1	20	3.7	3.7
WW:	76	10	77	83	81	81
YW:	114	15	118	125	121	121
MA:	24		26	24	24	24
CM:	8	20	9	10	8	8
SC:	0.3		1.1	0.4	0.42	0.42
DC:	13		8	15	13	13
CW:	41	10	41	46	45	45
RE:	0.68	20	0.50	0.38	0.48	0.48
YG:	-0.14		-0.05	0.04	-0.04	-0.04
MB:	0.11	30	0.18	0.39	0.21	0.21
\$MI:	58.14	25	60	69	62.43	62.43

MAKE PLANS TO SHOW YOUR
NEW SHOW HEIFER AT THE
2016 NATIONAL JUNIOR
LIMOUSIN SHOW & CONGRESS
JULY 8-14 • LEXINGTON, KY
ENTRY DEADLINE: MAY 15
ENTER ONLINE AT WWW.NALF.ORG

PREGNANT RECIPIENTS



61

AUTO ZINA 246Z

50% LIM-FLEX COW
BD: 9/1/12
HOMO BLACK (T) POLLED
LFF2022396

AUTO 246Z



- ┌ S A V BISMARCK 5682
- ┌ S A V BRILLIANCE 8077
- ┌ S A V BLACKCAP MAY 5270
- ┌ EXLR LIMITED EDITION 765J
- ┌ MAGS MANUELA
- ┌ AUTO CITY NIGHTS 214H

	EPDs	% Rank	Proj AI	Proj PE
CD:	14	4		13
BW:	1.1	40		1.3
WW:	57			74
YW:	91	40		114
MA:	27			25
CM:	8	20		10
SC:	0.6	40		0.6
DC:	20	40		19
CW:	26	40		39
RE:	0.22			0.15
YG:	0.01			0.12
MB:	0.41	10		0.54
\$MI:	62.06	10		71

BW: 62 ADJ WW: 710

CONSIGNED BY: DIAMOND HILL CATTLE CO

- PE 3/11 - 4/30/16 to MAGS EAGLE.

61A

DHIL UNAVAILABLE 5007C

46% LIM-FLEX COW
BD: 9/16/15
DOUBLE BLACK DOUBLE POLLED
BDHC 5007C
LFF-PENDING



- ┌ BASIN FRANCHISE P142
- ┌ LH UHAUL 135U
- ┌ EXLR DUCHESS 7129R
- ┌ LH RODEMASTER 338R
- ┌ KRVN UNAVAILABLE 005U
- ┌ SCUN COOL BREEZE 202S

	EPDs	% Rank
CD:	12	
BW:	0.5	
WW:	65	
YW:	106	
MA:	27	
CM:	7	
SC:	0.5	
DC:	11	
CW:	34	
RE:	0.29	
YG:	0.02	
MB:	0.60	
\$MI:	71	

BW: 72

CONSIGNED BY: DIAMOND HILL CATTLE CO

- ET calf at side of Lot 61



EXAR DIXIE ERICA 0705 • DAM OF LOT 62

62

ANGUS COW
BD: 2010

RECIP 140

BLACK POLLED
UNREGISTERED



- ┌ MAGS WINSTON
- ┌ MAGS ZODIAC
- ┌ MAGS XANTHOUS
- ┌ EXAR LUTTON
- ┌ EXAR DIXIE ERICA 0705
- ┌ J&J DIXIE ERICA 520

	EPDs	% Rank	Proj ET
CD:			15
BW:			0.5
WW:			66
YW:			125
MA:			21
CM:			11
SC:			0.5
DC:			13
CW:			45
RE:			28
YG:			0.01
MB:			48
\$MI:			68

CONSIGNED BY: DIAMOND HILL CATTLE CO

- Due: 9/23/16
- Embryo is a full sib to Super Bull at 2015 Oklahoma Select Bull Sale and also senior herd sire at Hall-CHR-TNT - Barker 4076B.
- Dixie Erica 0705 produced a Division Champion at the 2015 Angus Junior National



DHIL BARKER 4076B
2015 SUPER BULL,
OKLAHOMA SELECT BULL
SALE & FULL SIB TO LOT 62



SPRING-CALVING COW/CALF PAIRS

63

PUREBRED COW
BD: 9/7/07

TARA JO 7132T

HET BLACK (T) HOMO POLLED (T)
DHVO 7132T NPF1897761



— BLACK DIAMOND
GPFF BLAQUE RULON
— QUAIL RUN RAMONA BP
— BLACK CAT DHAN 152G
VOET ANNA JO
— GPFF AMBER JO

	EPDs	% Rank	Proj AI	Proj PE	Calf
CD:	6		8		7
BW:	2.5		0.6		2.2
WW:	66	30	66		75
YW:	92	40	96		115
MA:	28	35	25		31
CM:	1		5		5
SC:	0.3		0.85		0.45
DC:	14		10		16
CW:	27	40	27		41
RE:	0.34		0.32		0.53
YG:	-0.19		-0.11		-0.09
MB:	-0.37		-0.03		0.23
\$MI:	37.94		48		61.81

COW BW: 80 ADJ WW: 598 ADJ YW: 978

CALF BW: 79

CONSIGNED BY: LAWRENCE FAMILY LIMOUSIN

- Lot 63A: 1/2/16 double black, homo polled (P-1) 75% Lim-Flex heifer calf, tattoo BLAW 6003D, by MAGS UNITE TOGETHER.
- Cow AI 3/21/16 to HUBB Bulletproof
- Tara Jo is a full sister in blood to Deuce, Trey, Alma Jo, Ashton Joe and Ala Jo.
- She is the dam of LFL Arnold, 2014 Reserve Grand Champion purebred bull in Denver
- We are retaining some embryos
- Lot 63B: 5 Embryos by EXAR Denver
- Lot 63C: 5 Embryos by RSKY Wipeout



LOT 63 & LFL ARNOLD

64

50% LIM-FLEX COW
BD: 1/6/09

WLR WHIMSICAL 567W

HOMO BLACK (T) HOMO POLLED (T)
BJLR 567W LFF1963835



— C A FUTURE DIRECTION 5321
BASIN FRANCHISE P142
— BASIN CHLOE 812L
— AUTO BLACK DAKOTA 129J
MAGS NIGHT AMBUSH
— MISS WULFETTE 6230F

	EPDs	% Rank	Proj AI	Proj PE	Calf
CD:	12	10	12		13
BW:	0.9	35	1.2		0.3
WW:	67	25	79		72
YW:	106	15	121		114
MA:	33	15	29		31
CM:	-2		5		5
SC:	1	10	0.8		1.5
DC:	13		15		8
CW:	34	20	43		38
RE:	0.91		3		0.50 0.62
YG:	-0.27		40		-0.02 -0.12
MB:	0.37		10		0.52 0.31
\$MI:	66.03		10		73 64

COW BW: 88 ADJ WW: 557 ADJ YW: 906

CALF BW: 60

CONSIGNED BY: DIAMOND HILL CATTLE CO

- Lot 64A: 3/19/16 homo black, homo polled 50% Lim-Flex heifer calf, tattoo BDHC 6567D, by MAGS ALL-STAR 700A
- Cow PE 3/29-4/30/16 to MAGS EAGLE
- Xcessive Force daughter was class winner at OYE and National Junior Heifer Show
- Flushed one time and produced 19 freezable embryos



LOT 64

65

50% LIM-FLEX COW
BD: 9/27/09

LH WANNA DANCE 161W

HOMO BLACK (T) HOMO POLLED (T)
LCHA 161W LFF1954290



— GPFF BLAQUE RULON
DHVO DEUCE 132R
— AMY JO DHAN 20L
— BOYD ON TARGET 1083
HALL CLOVA
— STEVENSON CLOVA PRIDEL901

	EPDs	% Rank	Proj AI	Proj PE	Calf
CD:	8	35	8		8
BW:	0.5	30	1.7		1.7
WW:	72	15	79		79
YW:	115	10	121		121
MA:	22		23		23
CM:	6		7		7
SC:	1.2	3	0.87		0.87
DC:	19		16		16
CW:	39	10	45		45
RE:	0.36				0.32 0.32
YG:	0.01				0.04 0.04
MB:	0.28		15		0.30 0.30
\$MI:	61.95		10		64 64

COW BW: 68 ADJ WW: 630 ADJ YW: 913

CALF BW: 80

CONSIGNED BY: HALL CATTLE CO

- Lot 65A: 3/5/16 homo black, homo polled 50% Lim-Flex bull calf, tattoo LCHA 008D, by MAGS EAGLE
- Cow PE 4/5-5/5/16 to MAGS EAGLE

66

50% LIM-FLEX COW
BD: 2/10/10

SSTO XTRA STYLE 0810X

HOMO BLACK (P-1) HOMO POLLED (P-2)
SSTO 0810X LFF1959045



— GPFF BLAQUE RULON
DHVO TREY 133R
— AMY JO DHAN 20L
— BON VIEW NEW DESIGN 1407
HPCA 1407 NEW DESIGN 16
— HPCA FUTURE DIRECTION 394

	EPDs	% Rank	Proj AI	Proj PE	Calf
CD:	10	20	11		9
BW:	0.2	25	0.9		1.5
WW:	49		70		67
YW:	72		104		100
MA:	22		23		23
CM:	-1		5		3
SC:	0.52				0.6 0.54
DC:	8		13		11
CW:	13		33		32
RE:	0.12				0.10 0.20
YG:	-0.16				0.03 -0.05
MB:	0.33	15			0.50 0.32
\$MI:	58.04	15			69 62

COW BW: 75 ADJ WW: 639 ADJ YW: 850

CALF BW: 76

CONSIGNED BY: TNT LIMOUSIN

- Lot 66A: 3/23/16 homo black, homo polled 56% Lim-Flex heifer calf, tattoo TNTM 605D, by CHR Aero 024A
- Cow PE 4/5-5/5/16 to MAGS EAGLE

SPRING-CALVING COW/CALF PAIRS



67 75% LIM-FLEX COW
BD: 4/5/10

EXLR TROUBLE 108X
DOUBLE BLACK HOMO POLLED (P-2)
EXLR 108X LFF1953126



┌ GPF BLAQUE RULON
CARROUSELS PURE POWER
└ TUBB FIRST CLASS 666F
┌ JCL LODESTAR 27L
PBR TROUBLE 127T
└ SEDGWICKS PRIDE 3465

	EPDs	% Rank	Proj AI	Proj PE	Calf
CD:	8	35	10	9	
BW:	0.5	30	1.0	0.2	
WW:	62	40	76	76	
YW:	97	30	117	121	
MA:	21		23	23	
CM:	6		9		
SC:	0.6	40	0.6	0.9	
DC:					
CW:	28	35	40	41	
RE:	0.62	25	0.36	0.66	
YG:	-0.16		0.03	-0.09	
MB:	0.17	20	0.42	0.17	
\$MI:	56.34	20	68	60	

COW BW: 70 ADJ WW: 632 ADJ YW: 850
CALF BW: 71

CONSIGNED BY: DIAMOND HILL CATTLE CO

- Lot 67A: 3/11/16 double black, homo polled 65% Lim-Flex heifer calf, tattoo BDHC 6108D, by TMCK Architect 031A
- Cow PE 3/29-4/30/16 to MAGS EAGLE

68 21% COW
BD: 3/23/11

EXLR EMULOUS 025Y
DOUBLE BLACK HOMO POLLED (P-1)
EXLR 025Y NXF1977741



┌ BT CROSSOVER 758N
DAJS CROSSROADS 928
└ D A J S ELECTRESS J928
┌ EXAR NEW LOOK 6795
EXLR EMULOUS 099U
└ EXLR EMULOUS 007S

	EPDs	% Rank	Proj AI	Proj PE	Calf
CD:	13	10	13	10	
BW:	-2.4	3	-0.4	0.2	
WW:	44		68	65	
YW:	73		105	101	
MA:	22		23	23	
CM:	9	10	10	8	
SC:	0.42		0.5	0.48	
DC:					
CW:	10		31	30	
RE:	0.63	25	0.36	0.46	
YG:	-0.22		0.0	-0.07	
MB:	0.37	10	0.52	0.34	
\$MI:	58.58	15	69	62	

COW BW: 64

CALF BW: 72

CONSIGNED BY: TNT LIMOUSIN

- Lot 68A: 2/7/16 double black, homo polled 41% Lim-Flex heifer calf, tattoo TNTM 601D, by CHR AERO 024A
- Cow PE 3/17-5/5/16 TO MAGS EAGLE, observed bred 3/18/16



LFL CANDY CORN • FULL SIB TO LOT 69

69 87% PUREBRED COW
BD: 6/4/11

LFL STAR STRUCK 1054 Y
HOMO BLACK (T) HET POLLED (T)
BLAW 1054Y NPF1990201



┌ GPF BLAQUE RULON
DHVO TREY 133R
└ AMY JO DHAN 20L
┌ LFL WEST TEXAS PLAYBOY
LFL 6032 S
└ LFL PATTY 4208

	EPDs	% Rank	Proj AI	Proj PE	Calf
CD:	4			6	
BW:	3.6			3.4	
WW:	50			66	
YW:	62			100	
MA:	17			25	
CM:	-5			2	
SC:	0.6	40		0.6	
DC:	11			15	
CW:	12			33	
RE:	0.23			0.47	
YG:	-0.19			-0.09	
MB:	-0.14			0.34	
\$MI:	41.16			63.05	

COW BW: 75 ADJ WW: 583

CALF BW: 84

CONSIGNED BY: LAWRENCE FAMILY LIMOUSIN

- Lot 69A: 3/11/16 homo black (P-1), double polled 68% Lim-Flex heifer calf, tattoo BLAW 6032D, by MAGS UNITE TOGETHER.
- A full sib to LFL Candy Corn, the Supreme Champion at Houston
- A nice heifer calf at side



LOT 70

70 75% LIM-FLEX COW
BD: 11/2/11

WLR WICKED GAME
HOMO BLACK (P-1) DOUBLE POLLED
BJLR 358Y LFF2013258



┌ GPF BLAQUE RULON
DHVO DEUCE 132R
└ AMY JO DHAN 20L
┌ MYTTY IN FOCUS
EF UNHEARD OF
└ MAGS MANUELA

	EPDs	% Rank	Proj AI	Proj PE	Calf
CD:	8	35	9	8	
BW:	2.9		0.8	5.4	
WW:	78	4	72	81	
YW:	116	5	108	127	
MA:	23		23	28	
CM:	6		8	8	
SC:	1.45	1	1.4	1.02	
DC:	29	15	18	24	
CW:	42	10	35	49	
RE:	0.36		0.34	0.54	
YG:	-0.04		-0.03	-0.01	
MB:	0.15	20	0.22	0.48	
\$MI:	59.43	15	60	72.11	

COW BW: 80

CALF BW: 97

CONSIGNED BY: LAWRENCE FAMILY LIMOUSIN

- Lot 70A: 1/2/16 homo black (P-2), double polled 62% Lim-Flex bull calf, tattoo BLAW 6001D, by MAGS UNITE TOGETHER.
- Cow AI 3/23/16 to HUBB BULLETPROOF
- A nicely made Deuce daughter with a stout-made bull calf at side



SPRING-CALVING COW/CALF PAIRS

71

46% LIM-FLEX COW
BD: 1/22/12

BDHC MONGOOSE 215Z

DOUBLE BLACK HOMO POLLED (P-1)
BDHC 215Z LFF2020226



- └ BASIN FRANCHISE P142
- LH U HAUL 135U
- └ EXLR DUCHESS 7129R
- └ AUTO BLACK DAKOTA 129J
- CLLL MONGOOSE 15S
- └ S R NICOLE DUCHESS 206

EPDs	% Rank	Proj AI	Proj PE	Calf
CD: 9	30			12
BW: 0.9	35			0.3
WW: 62	40			70
YW: 99	25			111
MA: 28	35			28
CM: 5				1
SC: 0.7	30			1.3
DC: 14				8
CW: 30	30			36
RE: 0.2				0.26
YG: -0.02				0.01
MB: 0.31	15			0.29
\$MI: 60.16	15			61

COW BW: 71 ADJ WW: 549 ADJ YW: 787

CALF BW: 61

CONSIGNED BY: DIAMOND HILL CATTLE CO

- Lot 71A: 4/5/16 double black, homo polled 48% Lim-Flex bull calf, tattoo BDHC 6215D, by MAGS ALL-STAR 700A

72

PUREBRED COW
BD: 4/14/12

MAGS ZERO WIND

HET BLACK (T) HOMO POLLED (P-1)
MAGS 843Z NPF2008223



- └ AUTO DOLLAR GENERAL 122R
- BOHI TOP DOLLAR 7144T
- └ CARROUSELS PINA COLADA
- └ GPFF BLAQUE RULON
- MAGS WINDBAG
- └ CARROUSELS JANA

EPDs	% Rank	Proj AI	Proj PE	Calf
CD: 3				7
BW: 4.6				3.6
WW: 75	10			83
YW: 105	15			121
MA: 28	35			26
CM: 8	20			10
SC: 0.7	30			0.65
DC: 16				17
CW: 38	10			45
RE: 0.44				0.27
YG: -0.29	30			-0.04
MB: -0.44				0.12
\$MI: 38.85				59.69

COW BW: 87 ADJ WW: 760 ADJ YW: 1070

CALF BW: 79

CONSIGNED BY: LAWRENCE FAMILY LIMOUSIN

- Lot 72A: 2/24/16 double black, homo polled (P-2) 75% Lim-Flex bull calf, tattoo BLAW 6028D, by MAGS EAGLE.

73

50% LIM-FLEX COW
BD: 10/30/12

LFL ZORTHA 2113 Z

HOMO BLACK (T) HOMO POLLED (T)
BLAW 2113Z LFF2029958



- └ BASIN FRANCHISE P142
- MAGS UNITE TOGETHER
- └ MAGS REMBRANDT
- └ BLACKJACKS FAME 9057
- MISS COMBO
- └ JABI 524H

EPDs	% Rank	Proj AI	Proj PE	Calf
CD: 9	35			8
BW: 1.1				1.8
WW: 68	30			76
YW: 110	20			124
MA: 30	25			32
CM: 8	20			9
SC: 0.6				0.6
DC: 18				18
CW: 37	20			46
RE: 0.29				0.51
YG: 0.02				0.02
MB: 0.71	1			0.77
\$MI: 76.41	1			80.98

COW BW: 68 ADJ WW: 690 ADJ YW: 1183

CALF BW: 72

CONSIGNED BY: LAWRENCE FAMILY LIMOUSIN

- Lot 73A: 1/1/16 homo black (P-1), homo polled (P-1) 50% Lim-Flex bull calf, tattoo BLAW 6000D, by MAGS UNITE TOGETHER.
- A very eye-appealing female with a nice bull calf at side

74

PUREBRED COW
BD: 2/2/13

LFL ABIGAIL 3009A

HET BLACK (T) HOMO POLLED (P-2)
BLAW 3009A NPF2036674



- └ JCL LODESTAR 27L
- RUNL STETSON 850S
- └ RUNL 72L
- └ GPFF BLAQUE RULON
- TARA JO 7132T
- └ VOET ANNA JO

EPDs	% Rank	Proj AI	Proj PE	Calf
CD: 9	30			12
BW: 0.2	25			1.2
WW: 68	20			78
YW: 99	25			122
MA: 24				21
CM: 4				7
SC: 0.55				0.62
DC: 27	20			22
CW: 28	35			43
RE: 0.42				0.3
YG: -0.13				0.01
MB: -0.15				0.14
\$MI: 46.02				58.7

COW BW: 50 ADJ WW: 534

CALF BW: 77

CONSIGNED BY: LAWRENCE FAMILY LIMOUSIN

- Lot 74A: 3/5/16 double black, homo polled (P-3) 81% heifer calf, tattoo BLAW 6031D, by MAGS ZODIAC.
- Has a really nice, big-numbered, Zodiac heifer calf at side

75

50% LIM-FLEX COW
BD: 9/15/13

DHIL WINSOME 3021A

HOMO BLACK (T) DOUBLE POLLED
BDHC 3021A LFF2038859



- └ WULFS TITUS 2149T
- MAGS LANDMARK
- └ MAGS SHARI
- └ DUFF BASIC INSTINCT 6501
- HCC 6501 WINSOME WITCH 02
- └ HCC 4397 WINSOME WITCH 272

EPDs	% Rank	Proj AI	Proj PE	Calf
CD: 7				10
BW: 0.5	35			1.0 -0.1
WW: 52				71
YW: 78				107
MA: 20				22
CM: 6				9
SC:				
DC:				
CW: 17				35
RE: 0.83	10			0.46
YG: -0.26	30			-0.03 -0.19
MB: 0.01	40			0.34
\$MI: 48.11				64

COW BW: 74 ADJ WW: 511

CALF BW: 71

CONSIGNED BY: DIAMOND HILL CATTLE CO

- Lot 75A: 3/6/16 homo black, double polled 50% Lim-Flex bull calf, tattoo BDHC 6302D, by JCL Currency LNLN 203Z
- Cow PE 3/29-4/30/16 to MAGS EAGLE

76

62% LIM-FLEX COW
BD: 9/15/13

BDHC URBAN SIDE 3813A

HOMO BLACK (P-2) HOMO POLLED (P-2)
BDHC 3813A LFF2038858



- └ LH RODEMASTER 338R
- LH XPRESS FREIGHT 136X
- └ KRVN NACHES 151N
- └ LH RODEMASTER 338R
- PBRs URBAN SIDE 8131U
- └ CHR SILKY 208S

EPDs	% Rank	Proj AI	Proj PE	Calf
CD: 6				10
BW: 1.8				1.1
WW: 72	20			73
YW: 103	30			112
MA: 19				26
CM: 6				6
SC: 0.7				0.8
DC: 10				13
CW: 33	30			38
RE: 0.55	40			0.46
YG: -0.11				-0.02
MB: 0.13	30			0.45
\$MI: 57.13	25			68

COW BW: 72 ADJ WW: 525

CONSIGNED BY: DIAMOND HILL CATTLE CO

- Cow AI 7/16/15 to LH UHAUL 135U

SPRING-CALVING COW/CALF PAIRS



77 TNT ARBOR MIST 306A
62% LIM-FLEX COW HOMO BLACK (T)
BD: 9/17/13 TNTM 306A LFF2048916



— BASIN FRANCHISE P142
MAGS UNITE TOGETHER
— MAGS REMBRANDT
— LH RODEMASTER 338R
BNBA XZACTLY WHAT U WANT
— ASHTON JO DHVO 720R

EPDs	% Rank	Proj AI	Proj PE	Calf
CD: 7				7
BW: 2				2.4
WW: 78	10			82
YW: 122	4			125
MA: 28	35			26
CM: 7	35			8
SC: 0.65				0.60
DC: 13				13
CW: 45	4			47
RE: 0.69	20			0.49
YG: -0.08				-0.01
MB: 0.33	15			0.32
SMI: 66.41	10			66

COW BW: 75 ADJ WW: 615

CALF BW: 79

CONSIGNED BY: TNT LIMOUSIN

- Lot 77A: 4/3/16 homo black, double polled 62% Lim-Flex heifer calf, tattoo TNTM 606D, by CHR AERO 024A

78 DHIL RAV RACH 4285B
60% LIM-FLEX COW DOUBLE BLACK HOMO POLLED (P-2)
BD: 2/12/14 BDHC 4285B LFF2050758



— HUNTS HI-LITER 245G
JCL LODESTAR 27L
— LOGAN'S CHEERLEADER 280G
— LH U HAUL 135U
BDHC RAV RACH 285Z
— RAVISHING RACHEL 85

EPDs	% Rank	Proj AI	Proj PE	Calf
CD: 12	15			12
BW: -0.5	20			-0.6
WW: 65				56
YW: 107	25			88
MA: 25				25
CM: 8	20			6
SC: 0.75				0.7
DC:				
CW: 33	30			21
RE: 0.1				0.24
YG: 0.08				-0.02
MB: 0.4	10			0.36
SMI: 63.74	15			60

COW BW: 63 ADJ WW: 482

CALF BW: 68

CONSIGNED BY: DIAMOND HILL CATTLE CO

- Lot 78A: 4/8/16 double black, homo polled 55% Lim-Flex heifer calf, tattoo BDHC 6285D, by JCL CURRENCY LNLIM 203Z

79 LFL BEVERLY 4018 B
50% LIM-FLEX COW DOUBLE BLACK HOMO POLLED (P-2)
BD: 3/9/14 BLAW 4018B LFF2061900



— MYTTY IN FOCUS
MAGS TRAILBLAZER
— MAGS TRIXIE 455M
— DRMCTR 112 RITO 6286
LFL XCEPTIONAL 0002 X
— SARETTE DHVO 794S

EPDs	% Rank	Proj AI	Proj PE	Calf
CD: 13	10			11
BW: -0.6	15			0.1
WW: 56				65
YW: 89				103
MA: 35	5			32
CM: 7	35			8
SC: 0.98	20			0.77
DC: 22				14
CW: 22				32
RE: 0.5				0.34
YG: -0.04				-0.03
MB: 0.42	10			0.38
SMI: 62.67	15			63.81

COW BW: 60 ADJ WW: 662 ADJ YW: 1053

CALF BW: 62

CONSIGNED BY: LAWRENCE FAMILY LIMOUSIN

- Lot 79A: 2/5/16 double black, homo polled (P-3) 61% Lim-Flex bull calf, tattoo BLAW 6019D, by LFL BOUNCER 4021B.
- Sells with a bull calf at side sired by LFL Bouncer, the 2015 Division I Champion bull in Denver

80 DHIL RAV RACH 486B
50% LIM-FLEX COW BLACK DOUBLE POLLED
BD: 4/20/14 BDHC 486B LFF2052895



— AUTO DOLLAR GENERAL 122R
BOHI TITELIST 7050T
— CARROUSELS PINA COLADA
— CITATION 138
RAVISHING RACHEL 85
— BASIN RACHEL 1879

EPDs	% Rank	Proj AI	Proj PE	Calf
CD: 8				10
BW: 0.5	35			1.0
WW: 61				76
YW: 92				114
MA: 27				26
CM: 9	10			10
SC: 0.4				0.5
DC:				
CW: 25				38
RE: 0.11				0.10
YG: 0.09				0.15
MB: 0.25	20			0.51
SMI: 56.69	25			68

COW BW: 68

CALF BW: 70

CONSIGNED BY: DIAMOND HILL CATTLE CO

- Lot 80A: 3/21/16 double black, double polled 46% Lim-Flex heifer calf, tattoo BDHC 6484D, by LH UHAUL 135U
- Cow PE 3/29—4/30/16 to MAGS EAGLE



LOT 81

81 LFL BLUEBELL 4114 B
62% LIM-FLEX COW HET BLACK (T) HOMO POLLED (T)
BD: 4/26/14 BLAW 4114B LFF2062357



— BASIN FRANCHISE P142
MAGS UNITE TOGETHER
— MAGS REMBRANDT
— MAGS USDA CHOICE
LFL YES YOU CAN 1027Y
— LFL SENSATION 8037 U

EPDs	% Rank	Proj AI	Proj PE	Calf
CD: 8				6
BW: 2				2.8
WW: 74	15			80
YW: 115	10			120
MA: 34	10			32
CM: 9	10			8
SC: 0.53				0.89
DC: 7				16
CW: 41	10			45
RE: 0.57	35			0.56
YG: 0.19				-0.13
MB: 0.83	1			0.21
SMI: 80.95	1			62

COW BW: 67 ADJ WW: 758 ADJ YW: 1200

CONSIGNED BY: LAWRENCE FAMILY LIMOUSIN

- Cow PE 6/20—8/17/15 to LFL BOOMERANG 4050B, observed bred 7/24/15
- Cow ranks in the top 10% of the breed or higher for YW, Milk, CM, CW, MB and SMI



SPRING-CALVING COW/CALF PAIRS

82

LFL BON VOYAGE 4056 B

59% LIM-FLEX COW HOMO BLACK (P-2) HOMO POLLED (P-2)
BD: 5/21/14 BLAW 4056B LFF2061928



┌ BASIN FRANCHISE P142
└ LFL ZING ZANG 2048Z
┌ MAGS SILHOUETTE
└ MAGS TRAILBLAZER
┌ LFL ZEE 2020Z
└ LFL 5035R

EPDs	% Rank	Proj AI	Proj PE	Calf
CD: 8				10
BW: 3.4				2.6
WW: 70	25			80
YW: 107	25			122
MA: 34	10			29
CM: 5				8
SC: 0.95	20			0.78
DC: 5				11
CW: 38	15			45
RE: 0.58	35			0.34
YG: -0.07				0.07
MB: 0.3	15			0.48
\$MI: 62.58	15			71.08

COW BW: 70 ADJ WW: 629 ADJ YW: 1187
CALF BW: 70

CONSIGNED BY: LAWRENCE FAMILY LIMOUSIN

- Lot 82A: 3/20/16 homo black (P-3), homo polled (P-3) 54% Lim-Flex bull calf, tattoo BLAW 6039D, by MAGS EAGLE.
- A great milking female with a YW REA of 13.7 and IMF% of 5.93

83

LFL BITTERSWEET 4054 B

68% LIM-FLEX COW HOMO BLACK (P-2) HOMO POLLED (P-2)
BD: 5/21/14 BLAW 4054B LFF2061926



┌ BASIN FRANCHISE P142
└ MAGS UNITE TOGETHER
┌ MAGS REMBRANDT
└ KRVN PACESETTER 053P
┌ LFL TONYA 7003 T
└ LFL DREAM GIRL 4095P

EPDs	% Rank	Proj AI	Proj PE	Calf
CD: 7				9
BW: 2.8				2.3
WW: 76	10			83
YW: 109	20			123
MA: 26				25
CM: 6				9
SC: 0.35				0.47
DC: 20				18
CW: 38	15			45
RE: 0.41				0.25
YG: 0				0.11
MB: 0.18	25			0.42
\$MI: 59.35	20			69.4

COW BW: 76 ADJ WW: 769 ADJ YW: 1169
CALF BW: 69

CONSIGNED BY: LAWRENCE FAMILY LIMOUSIN

- Lot 83A: 3/22/16 homo black (P-3), homo polled (P-3) 59% Lim-Flex bull calf, tattoo BLAW 6040D, by MAGS EAGLE.
- A Unite Together daughter that ratio'd 106 WW, 105 YW and 102 REA

84

LFL BUMBLE BEE 4058 B

75% LIM-FLEX COW HOMO BLACK (T) HOMO POLLED (T)
BD: 5/23/14 BLAW 4058B LFF2061930



┌ BASIN FRANCHISE P142
└ MAGS UNITE TOGETHER
┌ MAGS REMBRANDT
└ DHVO TREY 133R
┌ LFL SHASTA 1038Y
└ LFL LONI 1003L

EPDs	% Rank	Proj AI	Proj PE	Calf
CD: 6				5
BW: 3				3.2
WW: 70	25			78
YW: 109	20			117
MA: 24				27
CM: 3				5
SC: 0.6				0.92
DC: 20				17
CW: 39	15			45
RE: 0.63	25			0.56
YG: -0.21				-0.13
MB: 0.4	10			0.21
\$MI: 67.51	10			62

COW BW: 70 ADJ WW: 692 ADJ YW: 1169

CONSIGNED BY: LAWRENCE FAMILY LIMOUSIN

- Cow PE 6/20-8/17/15 to LFL BOOMERANG 4050B



BRED HEIFERS



LH BELLE 015B • FULL SIB TO LOT 85



LOT 85

LH BELLE STAR 016B

85

50% LIM-FLEX COW
BD: 3/1/14

HOMO BLACK (T) HOMO POLLED (P-1)
LCHA 016B LFF2061346



- └ SITZ UPWARD 307R
- └ EXAR UPSHOT 0562B
- └ EXAR BARBARA T020
- └ DHVO DEUCE 132R
- └ PBRS TOUCH ME GENTLY 798T
- └ CARROUSELS PINA COLADA

BW: 72 ADJ WW: 703 ADJ YW: 918

CONSIGNED BY: HALL CATTLE CO

- AI 11/27/15 to LH RODEMASTER 338R, safe
- PE 12/10/15–2/17/16 to JMFA RODEMASTER 294Z
- A tremendous flushmate sister to one of the winningest heifers in recent times – the LH Belle 015B shown by Colt Cunningham – Grand Champion at Louisville, Denver open and junior, Fort Worth and Supreme Grand Champion at the Oklahoma Youth Expo
- Lot 85A: Selling four frozen embryos – full sibs to LH Belle 105B & LH Belle Star 016B

EPDs	% Rank	Proj AI	Proj PE
CD: 11	20	9	9
BW: 0.9	40	1.4	1.5
WW: 68	30	75	73
YW: 116	10	121	116
MA: 27		26	25
CM: 6		8	6
SC: 0.95	20	0.8	0.8
DC: 18		14	16
CW: 41	10	44	41
RE: 0.84	5	0.66	0.54
YG: -0.11		-0.02	0.02
MB: 0.27	20	0.30	0.23
SMI: 61.46	15	63	60



BRED HEIFERS

86

25% LIM-FLEX COW
BD: 1/18/14

HOMO BLACK (T) HOMO POLLED (P-2)
LCHA 518B LFF2057301



- └ LH RODEMASTER 338R
- └ MAGS UNIVERSE 135U
- └ MAGS ROSAMOND
- └ RITO 112 OF 2536 RITO 616
- └ R T R BLACKBIRD 7115
- └ ACF BLACKBIRD 1119

BW: 82 ADJ YW: 230

CONSIGNED BY: HALL CATTLE CO

- AI 12/12/15 to MAGS ALL-STAR 700A, safe
- PE 1/25-2/17/16 to DHIL BARKER 4076B

EPDs	%	Rank	Proj	AI	Proj	PE
CD:	9	35	11	12		
BW:	1.4		0.5	1.0		
WW:	70	25	74	68		
YW:	113	15	118	119		
MA:	20		24	21		
CM:	7	35	9	9		
SC:	0.66		1.3	0.6		
DC:	7		4	10		
CW:	39	15	40	0.01		
RE:	0.13		0.23	42		
YG:	0.02		0.02	0.20		
MB:	0.65	2	0.45	0.56		
\$MI:	74.85	2	68	71		



LOT 86

87

25% LIM-FLEX COW
BD: 1/25/14

HOMO BLACK (P-1) HOMO POLLED (P-3)
LCHA 525B LFF2057303



- └ LH RODEMASTER 338R
- └ MAGS UNIVERSE 135U
- └ MAGS ROSAMOND
- └ MYTTY IN FOCUS
- └ BASIN TROJAN ERICA 4U02
- └ BASIN TROJAN ERICA 01P4

BW: 74 ADJ WW: 592 ADJ YW: 937

CONSIGNED BY: HALL CATTLE CO

- AI 11/22/15 to CHR ACE VENTURA 129A, safe
- PE 12/10/15-2/17/16 to JMFA Rodemaster 294Z

EPDs	%	Rank	Proj	AI	Proj	PE
CD:	11	20	12	9		
BW:	0	25	-0.1	1.1		
WW:	55		65	66		
YW:	100	35	116	108		
MA:	27		27	25		
CM:	8	20	9	7		
SC:	1.06	15	1.0	0.8		
DC:	14		20	14		
CW:	30	40	39	36		
RE:	0.14		0.61	0.19		
YG:	0.04		-0.10	0.10		
MB:	0.55	3	0.32	0.37		
\$MI:	66.75	10	62	63		

88

62% LIM-FLEX COW
BD: 3/4/14

HOMO BLACK (P-1) HOMO POLLED (P-1)
LCHA 019B LFF2066440



- └ MAGS WINSTON
- └ MAGS EAGLE
- └ MAGS WEB OF DECEIT
- └ LH RODEMASTER 338R
- └ PBR UNICE 8137U
- └ MAGS NATASHA

BW: 75 ADJ WW: 717 ADJ YW: 883

CONSIGNED BY: HALL CATTLE CO

- PE 1/25-3/15/16 to DHIL BARKER 4076B

EPDs	%	Rank	Proj	AI	Proj	PE
CD:	8			11		
BW:	1.8			1.2		
WW:	78	10		72		
YW:	110	20		117		
MA:	22			22		
CM:	10	4		10		
SC:	0.55			0.5		
DC:	16			15		
CW:	37	20		41		
RE:	0.28			0.28		
YG:	0.04			0.02		
MB:	0.28	15		0.38		
\$MI:	63.24	15		65		

89

50% LIM-FLEX COW
BD: 3/6/14

HOMO BLACK (P-1) HOMO POLLED (P-1)
KQ 022B LFF2059146



- └ MAGS WINSTON
- └ MAGS EAGLE
- └ MAGS WEB OF DECEIT
- └ GPFF BLAQUE RULON
- └ CHR WARM AND FUZZY 141W
- └ KQ 8105H

BW: 70 ADJ WW: 770 ADJ YW: 930

CONSIGNED BY: COYOTE HILLS RANCH

- AI 11/21/15 to CHR ACE VENTURA 129A, safe
- PE 12/10/15-2/17/16 to JMFA RODEMASTER 294Z

EPDs	%	Rank	Proj	AI	Proj	PE
CD:	10	25	12	8		
BW:	1		0.4	1.5		
WW:	80	4	78	79		
YW:	114	15	123	115		
MA:	19		23	20		
CM:	9	10	9	7		
SC:	0.55		0.8	0.6		
DC:	14		20	14		
CW:	38	15	43	40		
RE:	0.26		0.67	0.25		
YG:	0.03		-0.10	0.09		
MB:	0.31	15	0.20	0.25		
\$MI:	64.96	10	62	62		

90

25% LIM-FLEX COW
BD: 1/15/14

HOMO BLACK (T) HOMO POLLED (P-2)
LCHA 515B LFF2057300



- └ LH RODEMASTER 338R
- └ MAGS UNIVERSE 135U
- └ MAGS ROSAMOND
- └ C A FUTURE DIRECTION 5321
- └ BASIN CHLOE S043
- └ BASIN CHLOE 812L

BW: 70 ADJ WW: 781 ADJ YW: 956

CONSIGNED BY: HALL CATTLE CO

- AI 1/22/16 to MAGS ALL-STAR 700A
- PE 1/25-3/15/16 to DHIL BARKER 4076B
- Dam is a full sister to Basin Franchise

EPDs	%	Rank	Proj	AI	Proj	PE
CD:	15	4	14	15		
BW:	-1.1	10	-0.7	-0.03		
WW:	59		69	62		
YW:	95		109	110		
MA:	24		26	23		
CM:	10	4	11	10		
SC:	0.78		1.4	0.65		
DC:	5		3	9		
CW:	25		34	35		
RE:	0.26		0.30	0.27		
YG:	0		0.01	0.01		
MB:	0.67	2	0.46	0.57		
\$MI:	72.19	3	67	70		

BRED HEIFERS



LOT 91

91

50% LIM-FLEX COW
BD: 3/13/14

LH BUNNY 029B

HET BLACK (T) HET POLLED (T)
LCHA 029B LFF2059205



- ┌ BC 7022 RAVEN 7965
- └ MAGS WHIRLIGIG
- ┌ MAGS MANDA
- └ DHVO DEUCE 132R
- └ LH YELLOW GOLD 135Y
- ┌ HF QUEEN MOTHER 563W

BW: 80 ADJ WW: 758 ADJ YW: 943

CONSIGNED BY: HALL CATTLE CO

- AI 11/21/15 to CHR ACE VENTURA 129A, safe
- PE 12/10/15-2/17/16 to JMFA Rodemaster 294Z
- Safe to an outstanding young son of Y-Axis purchased by Sexing Technologies LLC

EPDs	% Rank	Proj AI	Proj PE
CD: 6		10	7
BW: 2.8		1.2	2.5
WW: 72	20	74	75
YW: 110	20	121	113
MA: 23		25	23
CM: 6		8	6
SC: 0.91	20	1.0	0.8
DC: 20		23	17
CW: 39	15	43	41
RE: 0.6	30	0.84	0.42
YG: -0.1		-0.16	0.02
MB: 0.28	15	0.19	0.23
\$MI: 62.85	15	60	61



LOT 92

92

50% LIM-FLEX COW
BD: 3/31/14

LH BETTY 037B

HOMO BLACK (P-2) HOMO POLLED (P-2)
LCHA 037B LFF2059208



- ┌ DHVO DEUCE 132R
- └ CHR XPERT 176X
- ┌ CHR MOLLY ROSE 001M
- └ BON VIEW NEW DESIGN 1407
- └ W A QUEEN KIMBERLY 5022
- ┌ WELLINGTON QUEEN KIMBERLY

BW: 74 ADJ WW: 652 ADJ YW: 897

CONSIGNED BY: HALL CATTLE CO

- AI 11/21/15 to JCL Lodestar 27L
- PE 12/10/15-2/17/16 to JMFA Rodemaster 294Z, observed bred 12/14/15, safe

EPDs	% Rank	Proj AI	Proj PE
CD: 10	25	10	8
BW: 0.4	30	0.3	1.2
WW: 57		67	67
YW: 90		107	103
MA: 25		25	23
CM: 4		4	5
SC: 0.9	20	0.85	0.8
DC: 23	40	21	18
CW: 24		35	33
RE: 0.35		0.24	0.30
YG: -0.12		-0.02	0.01
MB: 0.28	15	0.25	0.24
\$MI: 58.52	20	58	59

93

75% LIM-FLEX COW
BD: 4/14/13

DHIL TROUBLE 3308A

DOUBLE BLACK HOMO POLLED (P-3)
BDHC 3308A LFF2030972



- ┌ LH RODEMASTER 338R
- └ LH XPRESS FREIGHT 136X
- ┌ KRVN NACHES 151N
- └ CARROUSELS PURE POWER
- └ EXLR TROUBLE 108X
- ┌ PBRS TROUBLE 127T

BW: 72 ADJ WW: 554

CONSIGNED BY: DIAMOND HILL CATTLE CO

- AI 12/15/15 to LH ADVANTAGE 105A
- PE 1/1-3/29/16 to LH ADVANTAGE 105A, safe

EPDs	% Rank	Proj AI	Proj PE
CD: 5		7	8
BW: 2.7		2.4	2.1
WW: 71	15	75	81
YW: 104	20	114	121
MA: 20		25	22
CM: 6		5	9
SC: 0.7	30	0.65	0.65
DC: 7		12	12
CW: 35	15	-0.09	44
RE: 0.61	25	39	
YG: -0.15		0.51	0.02
MB: 0.14	20	0.25	0.35
\$MI: 57.71	20	62	69

94

62% LIM-FLEX COW
BD: 9/5/14

JMFA MISS STAR 496B ET

HOMO BLACK (P-1) HOMO POLLED (T)
JMFA 496B LFF2074686



- ┌ LH RODEMASTER 338R
- └ CHR UTMOST 158U
- ┌ CHR BLACK ROUGE 100M
- └ WZRK PRIMESTAR 861P
- └ HB STARSTRUCK 932W
- ┌ MISS WULFETTE 6072S

BW: 72 ADJ WW: 705 ADJ YW: 1018

CONSIGNED BY: JUST-A-MERE-FARMS

- PE 1/1-2/29/16 to LFL BUDDY 4031B, safe, due to calve around 10/15/16
- Safe in calf to the top selling bull in the 2015 Hall-CHR Bull Sale and a class winning bull at the 2015 All American Futurity

EPDs	% Rank	Proj AI	Proj PE
CD: 7			8
BW: 2.5			2.5
WW: 76	10		79
YW: 114	15		122
MA: 24			27
CM: 8	20		7
SC: 0.3			0.65
DC: 13			15
CW: 41	10		46
RE: 0.68	20		0.55
YG: -0.14			-0.05
MB: 0.11	30		0.28
\$MI: 58.13	25		64



BRED HEIFERS

95

50% LIM-FLEX COW
BD: 4/27/14

HOMO BLACK (P-1) HOMO POLLED (P-2)
DCHP 002B LFF2063397



- TC ABERDEEN 759
- EBFL YPSILANTI 420Y
- MAGS RAMADA
- DVFC HUSTLER 301P
- SSTO UNREAL 8810U
- SSTO PREMIUM DESIGN 5623R

BW: 76 ADJ WW: 721 ADJ YW: 821

CONSIGNED BY: HARPER LIMOUSIN

- AI 12/7/15 JCL Lodestar 27L
- PE 12/10/15-2/17/16 to JMFA RODEMASTER 294Z, observed bred 12/27/15, safe

EPDs	% Rank	Proj AI	Proj PE
CD: 8	10	8	
BW: 1.4	0.8	1.8	
WW: 70	25	74	73
YW: 107	25	117	112
MA: 24	24	23	
CM: 9	10	8	7
SC: 0.8	30	0.8	0.75
DC: 11	15	13	
CW: 35	25	39	39
RE: 0.66	25	42	42
YG: -0.16	-0.04	-0.01	
MB: 0.25	20	-0.02	0.22
\$MI: 61.45	15	59	60



LOT 95

96

68% LIM-FLEX COW
BD: 9/6/14

HOMO BLACK (P-2) HOMO POLLED (P-1)
DCHP 126B LFF2070652



- MAGS THE GENERAL
- AUTO CRUZE 132X
- AUTO REBECA 292S
- COLE WINDFALL 144W
- AUTO GEORGIA 435Z
- KRVN PROGENY 175P

BW: 80 ADJ WW: 777 ADJ YW: 851

CONSIGNED BY: HARPER LIMOUSIN

- AI 12/7/15 to JCL LODESTAR 27L
- PE 12/10/15-2/17/16 to JMFA RODEMASTER 294Z, observed bred 12/27/15, safe
- An own daughter of AUTO Cruze 132X

EPDs	% Rank	Proj AI	Proj PE
CD: 9	35	10	8
BW: -0.1	25	0.1	1.0
WW: 64	70	70	
YW: 97	112	106	
MA: 28	35	27	25
CM: 9	10	9	7
SC: 0.5	0.65	0.6	
DC: 10	15	12	
CW: 27	37	35	
RE: 0.37	0.25	0.30	
YG: -0.06	0.01	0.05	
MB: 0.12	30	0.12	0.01
\$MI: 54.19	35	56	57



LOT 96

97

75% LIM-FLEX COW
BD: 9/26/14

HOMO BLACK (P-1) HOMO POLLED (P-2)
PBRS 4198B LFF2061818



- HUNTS HI-LITER 245G
- JCL LODESTAR 27L
- LOGAN'S CHEERLEADER 280G
- BOHI TOP DOLLAR 7144T
- PBRS ZAHRA 472Z
- P BAR S 904W

BW: 68 ADJ WW: 743 ADJ YW: 1034

CONSIGNED BY: HARPER LIMOUSIN

- AI 12/13/15 to MAGS ALL-STAR 700A, safe
- PE 1/25-2/17/16 to DHIL BARKER 4076B

EPDs	% Rank	Proj AI	Proj PE
CD: 9	35	12	12
BW: 1.6	0.6	1.0	
WW: 74	15	76	70
YW: 118	10	120	121
MA: 26	27	24	
CM: 8	20	9	9
SC:			
DC:			
CW: 42	10	42	43
RE: 0.18	0.25	0.23	
YG: 0.08	0.05	0.05	
MB: 0.28	15	0.26	0.38
\$MI: 61.91	15	62	65



LOT 97

BRED HEIFERS



LOT 98

BDHC RAV RACH 285Z

98

21% COW
BD: 1/17/12

BDHC 285Z

BLACK HOMO POLLED (P-1)
NXF2014648



- └ BASIN FRANCHISE P142
- └ LH U HAUL 135U
- └ EXLR DUCHESS 7129R
- └ CITATION 138
- └ RAVISHING RACHEL 85
- └ BASIN RACHEL 1879

BW: 88 ADJ WW: 549 ADJ YW: 767

CONSIGNED BY: DIAMOND HILL CATTLE CO

- AI 11/7/15 to AHCC BADLANDS 9083
- PE 12/23/15-2/10/16 LCHA ADVANTAGE 105A

EPDs	% Rank	Proj AI	Proj PE
CD: 12	10	9	10
BW: -0.4	15	1.3	0.8
WW: 63	40	70	71
YW: 101	25	108	113
MA: 22	25	26	
CM: 7	30	7	5
SC: 0.7	30	0.8	0.7
DC:			
CW: 29	30	36	36
RE: 0.07	0.10	0.56	
YG: 0.11	0.09	0.04	
MB: 0.69	2	0.29	0.53
\$MI: 73.27	3	60	71

DHIL CUE COW 3190A

99

23% COW
BD: 1/1/13

DOUBLE BLACK HOMO POLLED (P-3)
BDHC 3190A NXF2030897



- └ O C C LEGEND 616L
- └ B C LOOKOUT 7024
- └ GIBBET HILL MIGNONNE E37
- └ LH U HAUL 135U
- └ BDHC CUE COW 1904Y
- └ SKLS 902S

BW: 66 ADJ WW: 587

CONSIGNED BY: DIAMOND HILL CATTLE CO

- AI 3/10/16 to MAGS ALL-STAR
- PE 3/29-4/30/16 to MAGS EAGLE

EPDs	% Rank	Proj AI	Proj PE
CD: 12	10	13	12
BW: 0.5	30	0.1	1.0
WW: 66	30	72	78
YW: 108	15	115	122
MA: 24	26	24	
CM: 4	7	8	
SC: 0.8	20	1.4	0.7
DC: 13	7	16	
CW: 35	15	38	44
RE: 0.68	20	0.50	0.39
YG: -0.15	-0.06	0.03	
MB: 0.61	3	0.43	0.64
\$MI: 73.48	3	68	76

REFERENCE SIRES



MAGS EAGLE

A

50% LIM-FLEX BULL
BD: 3/18/11

HOMO BLACK (T) HOMO POLLED (T)
MAGS 229Y LFM1985442



- └ BT CROSSOVER 758N
- MAGS WINSTON
 - └ MAGS STRAWBERRY
 - └ AUTO DOLLAR GENERAL 122R
- MAGS WEB OF DECEIT
 - └ CABIN CREEK BEHAVE 6040

BW: 86 ADJ WW: 929 ADJ YW: 1342

OWNED BY: MAGNESS / HALL CATTLE CO

EPDs % Rank	
CD:	12 20
BW:	1.5
WW:	91 1
YW:	137 2
MA:	24
CM:	1.2 3
SC:	0.6
DC:	18
CW:	52 3
RE:	0.09
YG:	0.22
MS:	0.67 10
\$MI:	79.95 4



DHVO DEUCE 132R

B

% PUREBRED BULL
BD: 3/13/05

HOMO BLACK (T) DOUBLE POLLED
DHVO 132R NPM1797878



- └ BLACK DIAMOND
- GPFF BLAQUE RULON
 - └ QUAIL RUN RAMONA BP
 - └ BLACK CAT DHAN 152G
- AMY JO DHAN 20L
 - └ GPFF AMBER JO

BW: 88 ADJ WW: 713 ADJ YW: 1231

OWNED BY: MAGNESS/LAWRENCE/KERVIN/HALL

EPDs % Rank	
CD:	4
BW:	3.3
WW:	90 1
YW:	127 5
MA:	22
CM:	3
SC:	1.6 2
DC:	24 25
CW:	49 4
RE:	0.63 30
YG:	-0.13
MS:	-0.4
\$MI:	43.65



LH RODEMASTER 338R

C

50% LIM-FLEX BULL
BD: 10/2/05

HOMO BLACK (T) HOMO POLLED (T)
LCHA 338R LFM1832688



- └ HUNTS HI-LITER 245G
- JCL LODESTAR 27L
 - └ LOGAN'S CHEERLEADER 280G
 - └ VERMILION 31 STACLER 3491
- VERMILION E BLACKBIRD9546
 - └ CH ENV BLACKBIRD C5941

BW: 74 ADJ WW: 686 ADJ YW: 1268

OWNED BY: MAGNESS / HALL CATTLE CO

EPDs % Rank	
CD:	7
BW:	1.9
WW:	82 5
YW:	126 10
MA:	24
CM:	10 10
SC:	0.7 40
DC:	10
CW:	47 10
RE:	0.48
YG:	0.06
MS:	0.34 20
\$MI:	66.62 15



REFERENCE SIRES



LH U HAUL 135U

D

43% LIM-FLEX BULL
BD: 9/18/08

DOUBLE BLACK HOMO POLLED (T)
LCHA 135U LFM1927490



┌ C A FUTURE DIRECTION 5321
└ BASIN FRANCHISE P142
┌ BASIN CHLOE 812L
└ EXLR NEW GENERATION 071M
┌ EXLR DUCHESS 7129R
└ EXLR 199H

BW: 76 ADJ WW: 796 ADJ YW: 1439
OWNED BY: DIAMOND HILL CATTLE CO/HALL CATTLE CO

EPDs	% Rank
CD: 14	10
BW: 0.3	30
WW: 73	20
YW: 121	10
MA: 33	15
CM: 6	
SC: 1	20
DC: 15	
CW: 42	15
RE: 0.38	
YG: 0.07	
MS: 0.77	5
\$MI: 79.73	4

MAGS ALL-STAR 700A

LIM-FLEX	HOMO BLACK (P-2)	HOMO POLLED (T)	BD: 9/5/13	LFM2049166	MAGS XUKALANI X MAGS YORKSHIRE PUDDING
CD: 14	BW: -0.4	WW: 78	YW: 123	MA: 28	CW: 42 RE: 0.33 YG: 0.03 MS: 0.25 \$MI: 62.52
%RANK: 10	20	10	4	35	10 20 15

DHIL BARKER 4076B

LIM-FLEX	HOMO BLACK (P-1)	HOMO POLLED (P-2)	BD: 7/4/14	LFM2066597	MAGS ZODIAC X EXAR DIXIE ERICA 0705
CD: 15	BW: 0.5	WW: 66	YW: 125	MA: 21	CW: 45 RE: 0.28 YG: 0.01 MS: 0.48 \$MI: 68
%RANK: 4	35	40	3	21	4 5 5

LH ADVANTAGE 105A

LIM-FLEX	HET BLACK (T)	HOMO POLLED (P-1)	BD: 9/1/13	LFM2048276	EXAR UPSHOT 0562B X EXLR DUCHESS 7129R
CD: 9	BW: 2.1	WW: 79	YW: 125	MA: 29	CW: 43 RE: 0.42 YG: -0.03 MS: 0.37 \$MI: 67.71
%RANK: 35		5	3	30	10 10 10

CHR ACE VENTURA 129A

LIM-FLEX	HOMO BLACK (P-1)	HOMO POLLED (P-3)	BD: 9/10/13	LFM2048345	MAGS Y-AXIS X CHR XCELLANT ALIBI 162X
CD: 14	BW: -0.3	WW: 76	YW: 132	MA: 27	CW: 48 RE: 1.08 YG: -0.23 MS: 0.1 \$MI: 58.77
%RANK: 10	20	10	1	27	3 1 40 30 20

JMFA RODEMASTER 294Z

LIM-FLEX	HOMO BLACK (P-3)	HOMO POLLED (P-2)	BD: 9/20/12	LFM2026963	LH RODEMASTER 338R X MBLN WONDERING EYE 076W
CD: 7	BW: 2.1	WW: 77	YW: 116	MA: 22	CW: 42 RE: 0.24 YG: 0.15 MS: 0.19 \$MI: 59.02
%RANK:		10	15		15 40 30 25

CHR AERO 024A

LIM-FLEX	HOMO BLACK (P-2)	HOMO POLLED (P-2)	BD: 3/9/13	LFM2036230	MAGS EAGLE X CHR WINDSTORM 203W
CD: 8	BW: 2.8	WW: 86	YW: 128	MA: 24	CW: 50 RE: 0.29 YG: 0.07 MS: 0.31 \$MI: 66.53
%RANK: 40		3	5	24	4 20 15

WULFS XCLUSIVE 2458X

PUREBRED	HET BLACK (T)	HOMO POLLED (T)	BD: 4/7/10	NPM1967755	WZRK PRIMESTAR 861P X WULFS MISSIVE 2258M
CD: 8	BW: 3	WW: 82	YW: 130	MA: 25	CW: 53 RE: 0.03 YG: 0.09 MS: 0.35 \$MI: 66.92
%RANK: 40		5	4	25	3 20 15

JCL LODESTAR 27L

PUREBRED	HOMO BLACK (T)	HOMO POLLED (T)	BD: 3/18/01	NPM1623559	HUNTS HI-LITER 245G X LOGAN'S CHEERLEADER 280G
CD: 11	BW: 0.2	WW: 77	YW: 128	MA: 25	CW: 46 RE: 0.13 YG: 0.08 MS: 0.12 \$MI: 57.3
%RANK: 25	30	10	5	25	10 30 35

MAGS ANCHOR

LIM-FLEX	HOMO BLACK (T)	HOMO POLLED (T)	BD: 3/2/13	LFM2028543	LH WAR HERO 195W X MGS XIPHOPAGOUS
CD: 7	BW: 2.5	WW: 79	YW: 123	MA: 22	CW: 46 RE: 0.72 YG: 0.02 MS: 0.23 \$MI: 62.09
%RANK:		10	10	35	10 20 25 20



TERMS & CONDITIONS

IDENTIFICATION OF ANIMALS: (1) Each animal sold will have a readable tattoo corresponding to its registration paper. (2) Seller agrees to check all tattoos for accuracy prior to the sale. The buyer has the responsibility for rechecking the tattoos after taking possession and reporting any discrepancies to the seller immediately. (3) All animals to be sold will be identified by their official registration number, their tattoo and their registered name. If nicknames are used, they should be in addition to the other information. (4) The NALF board recommends that when any animal is sold, there is complete disclosure of any retained genetics in the form of pregnant recipients, frozen embryos or frozen semen.

REGISTRATION CERTIFICATES: (1) The seller of the animal will submit the original registration certificate with transfer information or an application for registration with transfer information on it so that a certificate can be produced by the Foundation and transferred to the new buyer. The seller must sign the back of the certificate on the application to authorize the transfer. (2) It is the responsibility of the seller to provide the North American Limousin Foundation with the buyer's complete name, address and membership number (if available) so that we can complete the transfer. It is important that the membership number be given if the buyer is already a member of NALF. (3) It is the seller's responsibility to provide the certificate or application, and transfer information to NALF within 60 days following the date of sale, and pay transfer and registration fees.

TERMS: (1) Terms of all sales are considered to be cash unless credit arrangements have been made prior to the sale between the buyer and the seller.

HEALTH: (1) On all animals sold, health tests will be announced at the sale or printed in the sale catalog. It is understood that health papers reflect the condition of the animal at the time of the sale but carry no further guarantee as to the future health of the animal. (2) Buyers having special health requests or who wish to take cattle into states with specific and rigid health regulations should inquire specifically about the health tests required for entry into their state. (3) All females sold are considered to be calfhood vaccinated for Brucellosis unless they are otherwise stated in the catalog or announced from the block. It is suggested that verification of vaccination be written on the health certificate.

PURCHASER'S RISK: Each animal becomes the risk of the purchaser as soon as sold. It shall be the obligation of the purchaser to see that trucking of the animal and care of the animal are taken care of prior to leaving the sale location.

ANNOUNCEMENTS: (1) Any change from the information that is printed in the catalog will be announced from the auction block. (2) All announcements made from the auction block take precedence over the printed catalog. (3) Catalogued lots not selling will be announced prior to the sale.

BREEDING GUARANTEE: (1) All animals are guaranteed to be breeders with the exception of: a. calves under twelve months of age; b. in the event of any injury or disease that occurs to the calf after sale or; c. gross negligence or willful misconduct on the part of the purchaser; d. females used in embryo transplant. (2) Bulls are guaranteed to be breeders at the time of sale or at 16 months of age if they are younger than 16 months at time of sale. Any bull which either settles cows by natural service and/or passes a fertility test made by a competent veterinarian is considered to be fertile. Any guarantee with respect to the ability to freeze semen shall be a separate agreement between buyer and seller. (3) Females sold as safe in calf have been examined by a competent veterinarian or other reproductive technician and are so

guaranteed to be with calf. Cows with calf at side are considered breeders as indicated by the calf at side. (4) Any guarantee with respect to embryo transplant production shall be a separate agreement between buyer and seller.

OPTION AND PRIVILEGE OF RETURN OR ADJUSTMENT: (1) All claims for adjustments or refunds must be made in writing either within six months of the date of the sale or no later than six months after the animal reaches 18 months of age, whichever occurs last. (2) In the event that an animal is claimed to be a non-breeder, that animal must be returned to the farm of the seller in good condition and must have met the health requirements of the original sell state. The seller shall be entitled to six months trial following the return of the animal in which to prove the animal is a breeder, the seller shall, at the option of the buyer, replace the animal with another of equal value or refund the total purchase price. The return of the purchase price shall in all cases be deemed as full settlement.

Any expense incurred in transporting the animal that is claimed to be a non-breeder shall be the responsibility of the purchaser except that the seller shall be responsible for transportation costs in the excess of the distance between the purchaser's farm and the location of the sale. If the seller proves the animal to be a breeder, it shall be the obligation of the purchaser to take delivery of the animal and pay all expenses incurred for transportation. (3) It is the obligation of the buyer and seller to negotiate any settlements on cattle that have not been properly presented at a sale. The selling of an animal constitutes a contract between buyer and sell and is not the responsibility or the right of the North American Limousin Foundation or of the sale management firm to settle disagreements between buyers and sellers of cattle that have not been properly presented.

The return of an animal at the expense of the purchaser with a refund of the purchase price made by the seller is in all cases considered to be a complete settlement. Other settlements which are negotiated between buyer and seller may be equitable to cover instances in which cattle are not as represented sale day, but that does not warrant complete return of the animal.

BLOOD TYPING FOR PARENTAGE VERIFICATION: All animals sold are guaranteed to be offspring of their recorded parents. Under the rules of NALF, all bulls born after January 1, 1991 that are to be used for artificial insemination or used naturally in a herd other than the owner of record must be parent verified by blood typing to both sire and dam. All females born after July 1, 1987 that are to be used for embryo transplant and all bulls born between July 1, 1987 and December 31, 1990 that are to be used for artificial insemination or used naturally in a herd other than the owner of record must be sire verified through blood samples available to purchasers upon written request by the purchasers so long as written request is received by sellers within 60 days after the date of the sale of the applicable animal. Proto test guaranteed normal if done within 60 days of sale date.

INSURANCE: Anyone wishing to insure their purchases may do so by contacting the sale manager or settling clerk.

MAIL BIDS: Mailed or telephoned bids will be handled in a most confidential manner if you are unable to attend the sale personally. By contacting a representative of American Cattle Services, Inc., in advance prior to sale day, you will enable us to assist you at ringside on sale day.

EPDS USED IN THIS CATALOG ARE CURRENT AS SPRING 2016

GLOSSARY OF THE SALE



FERTILITY TESTED - Definition: Bulls' semen has been tested by a licensed veterinarian or a recognized A.I. breeding center and is considered a satisfactory breeder as per the accompanying signed veterinarian certificate.

HEALTH PAPERS - Definition: Proper health papers furnished on all animals in the sale resulting from T.B. and Bangs test.

a. T.B. Test - Animals have been tested for T.B. and found negative within thirty (30) days of the sale, both males and females with the exception of young calves or from a TB-free state.

b. BANGS TEST - Animals have been tested by licensed veterinarian and have met the requirements for a negative test of the state in which animals sells. This includes all males and females except those exempted from this test due to age, calfhood vaccination, or certified Brucellosis free herd status.

BREEDER - The owner or lessee of the dam at the time the dam was served to produce the calf.

OWNER - The individual partnership, or corporation in whose name an animal is registered.

HORNED - Those animals with hard, bony projections from their head. May be surgically removed or dehorned.

POLLED - Those animals that are genetically hornless. They have at least one copy of the polled gene. Animals with both parents polled that have been tested and found not to be homozygous are not listed double polled, but simply polled.

DOUBLE POLLED - Those animals that result from two polled parents and have not been DNA-tested.

HOMOZYGOUS POLLED - Individual has been DNA-tested to be genetically "PP" or proven by parentage to be homozygous thus not carrying the "p" horned gene by pedigree or DNA test.

HOMO (T) - The (T) indicates this animal has been DNA-tested

HOMO (P) - The (P) indicates this animal is homozygous by parentage – both parents are homozygous by test or parentage.

HOMO (P-1) - First generation since tested parents

HOMO (P-2) - Second generation from test

HOMO (P-3) - Third generation from test. There is not a (P-4). Animals must be tested at that point to be certain no errors have been made in testing by the lab or in record-keeping by the breeder.

PUREBRED - Those animals that are 94% or more Limousin.

a. American Purebred - Those upgraded purebreds that are 94% or greater Limousin, and 6% or less other breed as indicated by the breed codes. Registration numbers beginning NPM (North American Purebred Male) and NPF (North American Purebred Female).

b. Fullblood - Those purebred that are from 100% or full French ancestry. They have registration numbers beginning with NFM (North American Fullblood Male) and NFF (North American Fullblood Female).

HOMOZYGOUS BLACK - DNA-tested by and found to be homozygous black or genotype ED/ED or both parents were DNA-tested homozygous.

DOUBLE BLACK - This notation is made in the catalog to indicate animals with both parents black in color. These animals have NOT been DNA-tested. Animals with both parents black that have been tested and found to be red carriers are not listed as double black, but simply as "black."

LIM-FLEX - Denotes the Limousin-Angus hybrid that may vary in composition from 25-75% Limousin and 25-75% Angus or Red Angus with a maximum allowance of other breed or unknown genetics of 12.5%.

EPD - Expected Progeny Difference - A user friendly way of summarizing performance information for quick reference.

% RANK - Percentile breakdown that allows for quick reference when comparing individuals to current sires of the most recent calf crop recorded with NALF.

(100/89.9) - Percentage of Limousin genetics. The first figure indicates the rounded NALF percentage while the second number is the actual percentage of Limousin genetics.



**COME BACK
SOON AND OFTEN!**



24018 State Hwy. 5
Chattanooga, OK 73528

FIRST CLASS

POSTAL CARRIER:
PLEASE DO NOT DELAY
Dated Material

Presorted First Class
US Postage

PAID
Permit # 1541
Okla City OK



HALL-COYOTE HILLS RANCH

LIMOUSIN & LIM-FLEX PRODUCTION SALE *& guests*

Saturday, May 7, 2016 • 1 pm
at Coyote Hills Ranch
Chattanooga, Oklahoma

