

09.10.2022

Beulaville, NC



# ANNUAL FALL PRODUCTION *Bull & Female Sale*

Limousin | Lim-Flex | Angus





# ANNUAL FALL PRODUCTION Bull & Female Sale

LIMOUSIN LIM-FLEX ANGUS

## Saturday, September 10, 2022

1:00 P.M. E.S.T. | Beulaville, NC

### SCHEDULE OF EVENTS

\*\* To schedule an appointment for viewing the sale offering, contact Nicholas Edwards at 910.290.1424

Friday, September 9th  
2:00 p.m. Cattle available for viewing

Saturday, September 10th  
9:00 p.m. Cattle available for viewing  
11:30 a.m. ELCX Customer Appreciation  
Dinner will be served  
1:00 p.m. Annual Fall Production  
Bull & Female Sale

The Edwards Land and Cattle Family is again excited to welcome you to our 2022 Annual Fall Production Sale. Again, this year the sale will be held on the farm at our sale facility located at 314 Willard Edwards Road, Beulaville, North Carolina. I think Nicholas has raised some of the very best genetically sound cattle that you will see in the industry and are looking forward to presenting them to you. Our cattle can compete in the show ring and in the pasture a combination that is not easy to be achieved. We are again presenting ALL CATTLE ON VIDEO. We are looking forward to hosting you and will be pleased to have you visit the facility anytime prior to the sale to view the cattle, simply give us a call to set up a time. We will again be offering you some of the best genetic cattle in the Limousin breed, along with very high-quality Lim-Flex, and Angus. We remain committed to bringing you the cows that will be useful and profitable in your herd.

We take great pride in being a family operation that takes great pride in our cattle and would only like to provide you with high performing quality to enhance your herd in Limousin, Angus and Lim-flex. Our number one goal is to create a long-term relationship with our customers; therefore, we only provide you with our finest stock. All our cattle sale under the standard guarantee of the North American Limousin Foundation and the National Angus Association. If you have any questions pertaining to any of the genetics or any other questions about our cattle, please feel free to give us a call. If you need financing or trucking arrangements, we will be glad to assist you in those matters. If you are unable to attend, please feel free to call us or any of the sale management to assist you on sale day. We will also be online at [CattleAuctionLive.com](http://CattleAuctionLive.com).

We will be serving lunch just before the sale. The whole family looks forward to seeing you in person or online.

Sincerely,  
Dexter Edwards



Dexter and Nicholas Edwards  
Dexter, 910.385.6192  
Nicholas, cell: 910.290.1424  
NicholasELC@hotmail.com

314 Willard Edwards Road, Beulaville, NC 28518

## OFFERING 74 LOTS

LIMOUSIN  
LIM-FLEX  
ANGUS

- 2 Open Heifers
- 2 Proven Donors
- 9 Spring Cow/ Calf Pairs
- 8 Spring Calving Females
- 36 Fall Calving Females
- 9 Angus Fall Bred Females
- 6 Herd Sire (Beef Bulls)
- 12 Embryos (Sets of 3)



## GUARANTEE

All cattle sell under the standard guarantee of the North American Limousin Foundation.

## FINANCING

For financing options please contact Dexter Edwards at 910.385.6192, Nicholas Edwards at 910.290.1424 or Randy Ratliff at 615.330.2735.

## TRUCKING

A trucking company will be on hand sale day to assist with any trucking that might be needed. Edwards Land & Cattle Co. will see to it that cattle will be delivered to several central locations to accommodate anyone that lives throughout the United States and Canada.

## TERMS & CONDITIONS

Terms of the sale are cash unless satisfactory credit arrangements have been made prior to the sale. A representative will be on hand sale day if your wishes are to insure your purchases. Please note: The sale manager is only an agent for the seller and has no responsibility other than those involved in conducting the sale. All persons who attend the sale do so at their own risk. Neither the sale manager nor Edwards Land & Cattle Co. assume liability, legal or otherwise for, any accidents which may occur.

## SIGHT UNSEEN PURCHASE AGREEMENT

If you are unable to attend the sale and want to speak with Dexter or Nicholas Edwards or Randy Ratliff then please don't hesitate to call. They will provide you with a complete satisfaction guarantee for the have purchased. If within two weeks from the date of the sale you are not satisfied with your purchased and how they were described to you then the Edwards family will gladly take the animal back.

## DRIVING DIRECTIONS

*From Raleigh-Durham International Airport (RDU) to Edwards Land and Cattle Sale Facility take interstate I 40 east towards Wilmington/Benson. Continue on 40 East until exit 373 (Magnolia/Kenansville) turn left on 903 towards Kenansville, stay on 903 until intersection of Hwy 24. Take Hwy 24 East towards Beulaville. Stay on hwy 24 through Beulaville; go approximately 6 miles to Willard Edwards Rd on the left. The Sale Facility will be located approximately 1.5 miles on the left.*

*From Albert Ellis Airport (OAJ) take left onto NC HWY 111 to Haw Branch Rd. Take Haw Branch Rd to Hwy 24 west. Willard Edwards Rd will be approximately 4 miles on the right. The Sale Facility will be located approximately 1.5 miles on the left.*

*From Wilmington International Airport (ILM) take I-40 West to Exit 385 (Wallace/Beulaville). Take right towards Beulaville on Hwy NC-41. Travel 18 miles to intersection of 41/24 take hwy 24 east approximately 6 miles to Willard Edwards Rd on the left. The Sale Facility will be located approximately 1.5 miles on the left.*

## PAYMENTS

All cattle must be paid for immediately following the conclusion of the sale. R & R Marketing Company will now be accepting credit cards the day of the sale.

## SALE DAY PHONES

Randall O. Ratliff ..615.330.2735     Kiley McKinna .....402.350.3447  
Dexter Edwards.....910.385.6192     Nicholas Edwards..910.290.1424

AUCTIONEER ... Ryan Dorran .....403.507.6483

## ACCOMMODATIONS

Hampton Inn .....910.347.3400  
1032 Hampton Inn Way, Jacksonville, NC 28546

Hilton Garden Inn .....910.346.2400  
1016 Jacksonville Pkwy, Jacksonville, NC 28546

## SALE ORDER & SUPPLEMENTAL INFORMATION

Friday, September 9th the sale order and supplemental information will be posted at [www.RRMktg.com](http://www.RRMktg.com) for your convenience.

## SALE CONSULTANT



Kiley McKinna, 402.350.3447 | [mcmarketingsales@aol.com](mailto:mcmarketingsales@aol.com)  
Wiley Fanta, 320.287.0751

## WATCH THE SALE & BID ONLINE

Online bidding provided in partnership with CCI.LIVE. Join us to watch the sale or bid online. Please create your account and obtain credentials prior to auction date. Login not necessary to view the auction live.



## SALE MANAGEMENT



Randall O. Ratliff, 615.330.2735  
Randy@RRMktg.com • [www.RRMktg.com](http://www.RRMktg.com)  
PO Box 60097, Nashville, TN 37206  
(L#2845)

If you need assistance with your purchases or want to discuss the genetics selling then please feel free to contact R & R Marketing Company. As a paid marketing agent for Edwards Land & Cattle we take pride in the opportunity to work closely with this program. We can assist you with your phone order and/or handle your bid in the most confidential manner. Email, call or text and we will be more than happy to assist. Auction money and proceeds will be conducted under Randall O. Ratliff, DBA R & R Marketing, P.O. Box 60097, Nashville, TN 37206. Bond # 7901027402 (U.S. Department of Agriculture, Grain Inspection, Packers and Stockyards Administration Packers & Stockyards Program).



# Champions



## ELCX High Time 065H

Congratulations to all the owners of ELCX High Time 065H as he was selected as the 2022 Denver National Western Grand Champion Limousin/Lim-Flex bull. 71% Lim-Flex son of ELCX Kings Landing 599D and from ELCX Elevate 684E.

CONGRATULATIONS TO THE OWNERS ... Anderson Farms, Topeka, KS  
 Davis Ranches, Brownwood, TX  
 Route 66 Farm, Marshfield, MO  
 Edwards Land & Cattle Co., Beulaville, NC  
 Linhart Limousin, Leon, IA  
 Cross Creek Farm, Gray, TN

## ELCX Jazzed Up 308J

Congratulations to D'Leleh Laber from Ohio on her big win at the recent Ohio State Fair Junior Fair. She showed ELCX Jazzed Up 308J, a 65% Lim-Flex daughter of ELCX Kings Landing from ELCX Aeriela 308A to win the grand champion Limousin Female title. We appreciate her support of our program and wish her the best of luck in the future

## ELCX Jouster 129J

2022 Eastern Regional Limousin Show  
Grand Champion bull is ELCX Jouster 129J.  
He is a 65% Lim-Flex son of ELCX Kings Landing  
from AUTO Poem 273Y. He was a top seller in the  
ELCX Online Sale and is owned with  
Billy Vanwinkle of Pikeville, TN



## ELCX Jingles 72J

2021 North Carolina State Fair Grand Champion Limousin female.  
She is a daughter of HWCB Eye of the Storm and from PBRS 7242E.  
She was  
purchased by Sarah Sullivan, Dunlap, IA.



## TW Candice 062H

2021 North Carolina State Fair Reserve Supreme Champion Heifer.  
She is a purebred Red Angus heifer sired by DAMAR Trump  
from Keifers Lulu. She is owned by ELCX, Twin Willows Farm,  
Springfield, MO and Sullivan Farms, Dunlap, IA

# Show Heifer Prospect



6

Poster

1A

Lim-Flex (35) Cow HP / DB ELCX 702K LFF2494028 01.29.2022

## ELCX Kimber 702K

1A

|       | CED | BW | WW | YW  | MA | CEM | SC   | ST | DOC | YG   | CW | REA  | MS   | \$MTL |
|-------|-----|----|----|-----|----|-----|------|----|-----|------|----|------|------|-------|
| EPD   | 11  | 1  | 75 | 117 | 17 | 7   | 1.21 | 13 | 10  | -0.1 | 41 | 0.64 | 0.08 | 56.46 |
| %Rank | 50  | 55 | 30 | 30  | 85 | 40  | 25   | 40 | 85  | 70   | 25 | 60   | 75   | 70    |

PBRS BUNK HOUSE 48B  
CELL GUARD HOUSE 9300G ET  
MAGS DOMINANT DEVA

PVF INSIGHT 0129  
ELCX EXTRA SHOT 702E ET  
AUTO POEM 273Y

MAGS YIP  
LBAF SHAWNEE 602  
MAGS EAGLE  
CYWD ZAYLEE 6Z  
S A V BRILLIANCE 8077  
PVF MISSIE 790  
S A V BISMARCK 5682  
MAGS PHANTOMS PRIZE

Folks, this is a show heifer prospect that deserves some major attention! ELCX Kimber 702K is a 35% Lim-Flex daughter of CELL Guard House 9300G, a son of PBRS Bunk House 48B and out of MAGS Dominant Deva. CELL Guard House 9300G was the \$34,500 top-selling lot in the Linhart Limousin Business Done Right Bull Sale V. This female's dam is ELCX Extra Shot 702E, a daughter of PVF Insight 0129, the powerhouse SAV Brilliance 8077 son. Her dam is AUTO Poem 273Y, the highly renowned daughter of SAV Bismarck 5682 and the great MAGS Phantoms Prize female. On paper, this heifer ranks in the 30th percentile for both her weaning weight and yearling weight figures. Phenotypically this female is lights out excellent. She is designed so well from the ground up. She stands on such a correct structure, she's bold and capacious through her center body and she's symmetrical from all angles. This is the type of female that gets talked about long after sale day because she'll be ingrained in your mind. ELCX Kimber 702K is about to set any show ring she steps into on fire! She is homozygous polled and double black.

Proven Donor



AUTO Poem 273Y, dam of Lot 1.

Lim-Flex (25) Cow HP / Black ELCX 702E LFF2124563 02.04.2017

## ELCX Extra Shot 702E ET

1

|       | CED | BW  | WW | YW  | MA | CEM | SC   | ST | DOC | YG   | CW | REA  | MS    | \$MTL |
|-------|-----|-----|----|-----|----|-----|------|----|-----|------|----|------|-------|-------|
| EPD   | 10  | 0.3 | 78 | 120 | 19 | 6   | 1.32 | 12 | 10  | -0.2 | 48 | 1.02 | -0.02 | 54.63 |
| %Rank | 65  | 35  | 15 | 15  | 65 | 55  | 15   | 45 | 75  | 50   | 10 | 10   | 85    | 65    |

S A V BRILLIANCE 8077  
 PVF INSIGHT 0129  
 PVF MISSIE 790

S A V BISMARCK 5682  
 AUTO POEM 273Y  
 MAGS PHANTOMS PRIZE

S A V BISMARCK 5682  
 S A V BLACKCAP MAY 5270  
 P V F NEW HORIZON 001  
 P V F MISS RAPTOR 024  
 G A R GRID MAKER  
 S A V ABIGALE 0451  
 GPF BLAQUE RULON  
 ALCM KOOL TUNES

P.E. 06.20.21 to 07.20.22 to TASF Grey Goose 333G (PB, black and homo polled)

Selling 50% embryo interest and possession is negotiable.

ELCX Extra Shot 702E is a 25% Lim-Flex female sired by PVF Insight 0129. Her dam is AUTO Poem 273Y, the SAV Bismarck 5682 daughter that's out of the one and only MAGS Phantoms Prize female. This female ranks in the 15th percentile for both her weaning weight and yearling weight figures. We are proud to offer this female and it goes without saying that our confidence is incredibly high for what this female can do in your program and take you to the next level in the blink of an eye! The breeding versatility that this female possesses is quite exciting- the possibilities are nearly endless. ELCX Extra Shot 702E will bring an "extra shot" of genetic superiority to your operation and you'll be on cloud nine. She is homozygous polled and heterozygous black.



8

ELCX Extra Show 702E, dam of Lot 1B embryos.

Ratliff Jump Start 340J, sire of Lot 1B embryos.

54.5% Lim-Flex      Double Polled      Double Black

**THREE Conventional Embryos** **1B**

|      | CED | BW  | WW | YW  | MA | CEM | SC   | ST | DOC | YG    | CW | REA  | MS    | \$MTI |
|------|-----|-----|----|-----|----|-----|------|----|-----|-------|----|------|-------|-------|
| SIRE | 7   | 3.2 | 67 | 96  | 21 | 4   | 0.94 | 7  | 12  | -0.39 | 29 | 1.03 | -0.16 | 47.41 |
| DAM  | 10  | 0.3 | 78 | 120 | 19 | 6   | 1.32 | 12 | 10  | -0.2  | 48 | 1.02 | -0.02 | 54.63 |

FWLY CAN DO  
RATLIFF JUMP START 340J ET  
RIVERSTONE CHARMED

PVF INSIGHT 0129  
ELCX EXTRA SHOT 702E ET  
AUTO POEM 273Y

RLBH AIR FORCE ONE  
CLLL CRYSTAL 334W  
TMCK DURHAM WHEAT 6030X  
HSF YOUR FANTASY  
S A V BRILLIANCE 8077  
PVF MISSIE 790  
S A V BISMARCK 5682  
MAGS PHANTOMS PRIZE

Check this combination out! Three embryos to Ratliff Jump Start 340J and ELCX Extra Shot 702E. Ratliff Jump Start 340J is the purebred son of FWLY Can Do and out of the infamous Riverstone Charmed female. He was the Grand Champion Limousin Bull at the 2022 Cattleman's Congress. ELCX Extra Shot 702E is the PVF Insight 0129 daughter and out of the great AUTO Poem 273Y donor female. The offspring from this mating is about to shake things up within the breed. The influence from both of these cow families is astounding and incredibly powerful. Now is the time to act fast and get on board with generating the next elite show prospects. These embryos will be 54.5% Lim-Flex, double black and double polled.



**Future Donor  
Prospect**

Full sibling in blood to  
ELCX Elevate, dam of the 2022  
Denver National Champion Bull  
And many breed top sellers



ELCX Elevate, full sister to Lot 2.

Lim-Flex (62) Cow Polled / HB TAYS 221J LFF2481025 09.24.2021

## **GCC Jodie 221J ET**

**2**

|       | CEB | BW   | WW | YW | MA  | CEM | SC  | ST | DOC | YG    | CW | REA  | MS   | \$MTL |
|-------|-----|------|----|----|-----|-----|-----|----|-----|-------|----|------|------|-------|
| EPD   | 13  | -0.7 | 59 | 90 | 13  | 8   | 1.2 | 10 | 11  | -0.02 | 30 | 0.25 | 0.20 | 55.25 |
| %Rank | 25  | 20   | 90 | 90 | >95 | 20  | 25  | 75 | 75  | 90    | 65 | >95  | 50   | 75    |

D A TRAVELER 004 703  
EF XCESSIVE FORCE  
CFLX MOLLYS IMAGE

JCL LODESTAR 27L  
DFLC HBHPC 1S  
DFLC HBPC 25L

S A V 8180 TRAVELER 004  
ROSEWOOD ERICA 5010  
DHVO DEUCE 132R  
JCL PEPPERMINT  
HUNTS HI-LITER 245G  
LOGAN'S CHEERLEADER 280G  
DFLC DOUBLE SHOT BPB 41E  
DALTONS EDITH ERICA 250

This is a future donor prospect that will set the world on fire! GCC Jodie 221J is a 62% Lim-Flex female sired by EF Xcessive Force. Her dam is DFLC HBHPC 1S, the daughter of JCL Lodestar 27L and out of the great DFLC HBHPC 25L donor. She ranks in the 20th percentile for her birthweight figure. This genetic combination is potent and we believe she's capable of big things in the near future. GCC Jodie 221J has been a total standout from day one. She is so attractive in her design, functional at the base of her skeleton and excellent when you set her in motion. We admire her foot size, her muscle expression and her overall cow power. This is the type of female that takes your program to the next level in the blink of an eye. She is homozygous black and heterozygous polled. We believe this is an opportunity that won't soon be forgotten by many that have this gal at the top of their list on sale day!

Proven Donor



AUTO Rebeca 292S,  
dam of Lot 3.

10

Lim-Flex (37) Cow HP / HB AUTO 404E LFF2139117 09.12.2017

**AUTO Matron 404E ET** **3**

|       | CED | BW  | WW | YW  | MA | CEM | SC  | ST  | DOC | YG    | CW | REA  | MS   | \$MTL |
|-------|-----|-----|----|-----|----|-----|-----|-----|-----|-------|----|------|------|-------|
| EPD   | 9   | 1.6 | 74 | 115 | 19 | 5   | 1.4 | 2   | 12  | -0.13 | 35 | 0.49 | 0.03 | 54.68 |
| %Rank | 80  | 70  | 35 | 35  | 70 | 75  | 10  | >95 | 60  | 65    | 45 | 80   | 85   | 80    |

S A V BRAND NAME 9115  
 S A V BISMARCK 5682  
 S A V BLACKCAP MAY 5530  
 G A R GRID MAKER  
 S A V ABIGALE 0451  
 B C C BUSHWACKER 41-93  
 S A V MAY 7238  
 LESF ASPHALT 9N  
 G P F F B L A Q U E R U L O N  
 G P F F E X T R A S W E E T E L I T E  
 BR MIDLAND  
 EXLR REBECA 1019P  
 EXLR REBECA 614H  
 AUTO REBECA 292S

P.E. 06.01.22 to 07.28.22 to Riverstone Exodus (Purebred, Homo/Homo)

AUTO Matron 404E is a 37% Lim-Flex daughter of SAV Brand Name 9115, the SAV Bismarck 5682 son. Her dam is none other than AUTO Rebeca 292S, the LESF Asphalt 9N daughter and out of EXLR Rebeca 1019P. AUTO Rebeca 292S is by far one of the most influential donors in Limousin history. On paper she ranks in the 35th percentile for both her weaning weight and yearling weight figures. When you study this backing this female has from her impressive lineage, you'll be certain to get her on a trailer to your pastures at the conclusion of the sale. AUTO Matron 404E is incredibly attractive on the profile, she's excellent in her structural build and feminine in her design. This female is made to produce the good ones plain and simple. Now it's your chance to decide how her chapter in breed history gets written. She is homozygous black and homozygous polled.

Lim-Flex (56) Bull DP / DB ELCX 404K LFM25177105 06.02.2022

**AUTO Matron 404E ET** **3A**

|       | CED | BW   | WW | YW | MA | CEM | SC   | ST  | DOC | YG    | CW | REA  | MS   | \$MTL |
|-------|-----|------|----|----|----|-----|------|-----|-----|-------|----|------|------|-------|
| EPD   | 10  | -0.2 | 60 | 90 | 20 | 6   | 1.05 | 6   | 10  | -0.19 | 19 | 0.46 | 0.08 | 52.58 |
| %Rank | 70  | 25   | 90 | 90 | 60 | 60  | 40   | >95 | 85  | 45    | 95 | 85   | 75   | 85    |

ELCX EXCESSIVE 758E ET  
 RIVERSTONE CROWN ROYAL  
 AUTO CHRISTY 8889R  
 S A V B R A N D N A M E 9 1 1 5  
 AUTO MATRON 404E ET  
 AUTO REBECA 292S

ELCX Killen It 404K is a 56% Lim-Flex son of ELCX Excessive 758E. ELCX Excessive 758E is sired by Riverstone Crown Royal and out of AUTO Christy 8889R, a daughter of EXAR New Design 3903. On paper he ranks in the 25th percentile for his birthweight figure. He is double black and double polled.

# Embryos

67% Lim-Flex Double Polled Double Black

## THREE IVF Embryos

4

|      | CED | BW  | WW | YW  | MA | CEM | SC   | ST | DOC | YG    | CW | REA  | MS    | \$MTI |
|------|-----|-----|----|-----|----|-----|------|----|-----|-------|----|------|-------|-------|
| SIRE | 7   | 3.2 | 67 | 96  | 21 | 4   | 0.94 | 7  | 12  | -0.39 | 29 | 1.03 | -0.16 | 47.41 |
| DAM  | 11  | 0.8 | 78 | 114 | 19 | 7   | 1.05 | 10 | 5   | -0.27 | 30 | 0.91 | -0.20 | 48.31 |

FWLY CAN DO  
RATLIFF JUMP START 340J ET  
RIVERSTONE CHARMED

S A V BISMARCK 5682  
AUTO POEM 273Y  
MAGS PHANTOMS PRIZE

RLBH AIR FORCE ONE  
CLLL CRYSTAL 334W  
TMCK DURHAM WHEAT 6030X  
HSF YOUR FANTASY  
G A R GRID MAKER  
S A V ABIGALE 0451  
GPFF BLAQUE RULON  
ALCM KOOL TUNES

25% Lim-Flex Double Polled Red

## THREE IVF Embryos

5A&B

|      | CED | BW  | WW | YW  | MA | CEM | SC  | ST | DOC | YG    | CW | REA  | MS   | \$MTI |
|------|-----|-----|----|-----|----|-----|-----|----|-----|-------|----|------|------|-------|
| SIRE | 7   | 1.7 | 72 | 108 | 23 | 6   | -   | 15 | -   | 0.01  | 27 | 0.19 | 0.11 | -     |
| DAM  | 12  | 0.1 | 58 | 94  | 22 | 6   | 0.4 | 8  | 10  | -0.01 | 37 | 0.41 | 0.32 | 59.33 |

RED U-2 RIFF 1213C  
EGL GCC RED EAGLE E7194  
TJS SARABEL A174

MAGS WINSTON  
SBLX ZANE  
SBLX UNDERTHECOVERS 201U

RED U-2 RECKONING 149A  
RED U2 OPHELIA 70W  
LOOSLI RIGHT KIND 147  
TJS LONE STAR S663  
BT CROSSOVER 758N  
MAGS STRAWBERRY  
G A R PREDESTINED  
ELMW GINNIE P58G

37.5% Lim-Flex Double Polled Homozygous Black

## THREE Conventional Embryos

6A&B

|      | CED | BW  | WW | YW  | MA | CEM | SC    | ST | DOC | YG    | CW | REA  | MS   | \$MTI |
|------|-----|-----|----|-----|----|-----|-------|----|-----|-------|----|------|------|-------|
| SIRE | 10  | 2.4 | 59 | 92  | 19 | 4   | 0.6   | 11 | 17  | -0.05 | 32 | 0.37 | 0.08 | 51.26 |
| DAM  | -3  | 4.0 | 60 | 103 | 17 | 6   | -0.01 | -  | -   | -     | 40 | 0.46 | 0.75 | -     |

DHVO DEUCE 132R  
MAGS XYLOID  
BOHI RHONDA 314R

EXAR BLUE CHIP 1877B  
ELC JULES CHIP J066  
PCF JULIE 216 PRED

GPFF BLAQUE RULON  
AMY JO DHAN 20L  
EXLR NEW GENERATION 071M  
DAVIS ROSETTA 9514  
DAMERON FIRST CLASS  
GREENS PRINCESS 1012  
G A R PREDESTINED T598  
PCF JULIE 922 APACHE

Folks, this is an embryo package that ranks right at the top of our list for blending proven, consistent genetics with an exciting new individual that comes from a storied lineage of elite success. Ratliff Jump Start 340J is the purebred son of FWLY Can Do and out of the infamous Riverstone Charmed female. He was the Grand Champion Limousin Bull at the 2022 Cattleman's Congress. It goes without saying that it'd be tough to find another female within the Limousin breed with as much influence as AUTO Poem 273Y. She is the SAV Bismarck 5682 daughter that's out of the one and only MAGS Phantoms Prize female. These embryos will be 67% Lim-Flex, double polled and double black. This is a rare opportunity to acquire some of the most sought after genetics in the entire industry right now, so act fast. You could look long and hard attempting to purchase genetics as proven and in high demand as the offspring of this lot will produce. The rate of return on investment here will be big!

A unique blend of genetics in this offering. Three embryos to the highly influential Red Angus sire, Red Eagle and the great SBLX Zane donor. EGL GCC Red Eagle E7194 is a son of Red U-2 Riff 1213C and out of TJS Sarabel A174. Red Eagle is known as being one of the best and most consistent Red Angus bulls on the market. He is unmatched when it comes to body composition and muscle shape. SBLX Zane is the daughter of MAGS Winston and the great SBLX Underthecovers 201U donor female. The power in the blood will run deep in this genetic combination. The time is now to get in on a tremendous investment opportunity! These embryos will be 25% Lim-Flex, double polled and red.

Popular and proven Limousin and Angus genetics in this embryo lot. Three 37.5% Lim-Flex embryos that will be homozygous black and double polled. MAGS Xyloid needs no introduction, but he is the ever-popular DHVO Deuce 132R son from the great BOHI Rhonda 314R female. ELC Jules Chip J066 is a female sired by EXAR Blue Chip 1877B, the Dameron First Class son. Her dam is PCF Julie 216, a daughter of GAR Predestined T598. The history and success behind this pedigree and these cow families are rare and unprecedented. It is a great pleasure to include these embryos in this offering with KLS Farms of Chatham, LA and Sullivan Farms of Dunlap, IA. The potential for success behind this mating will be unparalleled!

Consigned by KLS Farms, Chatham, LA, Sullivan Farms, Dunlap, IA and Edwards Land & Cattle Co.



AUTO Poem 273Y,  
dam of Lot 4 embryos.



Ratliff Jump Start 340J ET,  
sire of Lot 4 embryos.



SBLX Zane,  
dam of Lot 5A & 5B  
embryos.



EGL GCC Red Eagle E7194,  
sire of Lot 5A & 5B embryos.



ELC Jules Chip J066,  
dam of Lot 6A & 6B  
embryos.



MAGS Xyloid, sire of  
Lot 6A & 6B embryos.

# Spring Cow/Calf Pairs



PB Limousin (87) Cow HP / HB ELCX 656D NPF2116203 10.05.2016

## ELCX Designer 656D ET

7

|       | CED | BW  | WW | YW | MA | CEM | SC  | ST | DOC | YG    | CW | REA  | MS   | \$MTI |
|-------|-----|-----|----|----|----|-----|-----|----|-----|-------|----|------|------|-------|
| EPD   | 11  | 1.3 | 60 | 96 | 19 | 6   | 0.5 | 10 | 12  | -0.31 | 28 | 0.68 | 0.02 | 51.48 |
| %Rank | 35  | 45  | 50 | 30 | 70 | 40  | 40  | 70 | 50  | >95   | 25 | >95  | 5    | 15    |

AHCC WESTWIND W544  
ENGD ZIP LINE 2515Z  
RTTB ROYALTY 2505R

JCL LODESTAR 27L  
DFLC HBHPC 1S  
DFLC HBPC 25L

KAJO RESPONDER 120R  
AHCC MISS WULF HUNT R544  
GPFF BLAQUE RULON  
WULFS JULIETTE 9025J  
HUNT'S HI-LITER 245G  
LOGAN'S CHEERLEADER 280G  
DFLC DOUBLE SHOT BPB 41E  
DALTONS EDITH ERICA 250

P.E. 06.01.22 to 07.28.22 to Riverstone Exodus (Purebred, Homo/Homo).

12

river



lot 7A

%Limousin (81) Cow DP / DB ELCX 656K NXF2509214 06.05.2022

## ELCX Kimmie 656K

7A

|       | CED | BW   | WW | YW | MA | CEM | SC  | ST | DOC | YG    | CW | REA  | MS   | \$MTI |
|-------|-----|------|----|----|----|-----|-----|----|-----|-------|----|------|------|-------|
| EPD   | 11  | -0.4 | 53 | 80 | 20 | 7   | 0.6 | 10 | 10  | -0.28 | 15 | 0.56 | 0.08 | 51.16 |
| %Rank | 55  | 35   | 70 | 60 | 60 | 40  | 60  | 60 | 75  | 50    | 90 | 75   | 55   | 70    |

ELCX EXCESSIVE 758E ET

ELCX DESIGNER 656D ET

RIVERSTONE CROWN ROYAL  
AUTO CHRISTY 8889R  
ENGD ZIP LINE 2515Z  
DFLC HBHPC 1S

ELCX Designer 656D is a purebred daughter of ENGD Zip Line 2515Z, the son of AHCC Westwind W544. This female's dam is the legendary DFCL HBHPC 1S donor, a daughter of JCL Lodestar 27L. DFCL HBHPC 1S is the dam of ELCX Twilight 114X, the 2013 National Western Stock Show Grand Champion Limousin Female owned with Wies Limousin. ELCX Designer 656D ranks in the top five percent for her marbling figure. She is homozygous polled and homozygous black.

ELCX Kimmie 656K is a purebred Limousin heifer at side and sired by ELCX Excessive 758E, the son of Riverstone Crown royal and out of the great AUTO Christy 8889R donor. This June heifer calf is double polled and double black. BW: 70 lbs.

Lim-Flex (34) Cow Polled / HB AUTO 660D LFF2122546 10.10.2016

# AUTO DOWNTOWN 660D

8

|       | CED | BW  | WW | YW  | MA | CEM | SC   | ST | DOC | YG    | CW | REA  | MS   | \$MTI |
|-------|-----|-----|----|-----|----|-----|------|----|-----|-------|----|------|------|-------|
| EPD   | 12  | 0.5 | 73 | 110 | 19 | 6   | 1.38 | 13 | 9   | -0.02 | 28 | 0.26 | 0.37 | 65.61 |
| %Rank | 30  | 40  | 25 | 35  | 65 | 55  | 15   | 35 | 85  | 95    | 60 | >95  | 15   | 15    |

CONNEALY CONSENSUS  
 CONNEALY CONSENSUS 7229  
 BLUE LILLY OF CONANGA 16  
 COLE ZONE 89Z  
 AUTO STORMIE 473B ET  
 SBLX UNNA 391U  
 KMK ALLIANCE 6595 187  
 BLINDA OF CONANGA 004  
 WOODHILL ADMIRAL 77K  
 BLUE CASH OF CONANGA 6020  
 DHVO DEUCE 132R  
 COLE 02L  
 MYTTY IN FOCUS  
 MAGS SALMETTO

P.E. 04.28.22 to 07.29.22 to HWCB Eye of the Storm 406E (71% polled, homo blk)

Not only does this female have a prominent pedigree and a phenomenal look, she's one that you can build a program around. AUTO DOWNTOWN 660D is a 34% Lim-Flex daughter of Connealy Consensus 7229. You'll want to study this female's number profile- she ranks in the 15th percentile for her marbling figure, in the 25th percentile for her weaning weight figure and in the 35th percentile for her yearling weight figure. This female is massive in her rib shape and she has an overwhelming amount of volume and capacity to her. She has such a powerful donor cow look to her, we're confident you'll admire her as much as we do. AUTO DOWNTOWN 660D has taken the term maternal powerhouse to the next level. She is homozygous black and heterozygous polled.

ELCX Kool 660K is a 42% Lim-Flex bull calf sired by ELCX Camp Fire 508C, a son of OKSU The Profit 3401. This May bull calf ranks in the 20th percentile for his marbling figure. He is homozygous black and double polled. BW: 74 lbs.

Lim-Flex (34) Cow HP / HB ELCX 846F LFF2170439 10.23.2018

# ELCX Fresno 846F ET

9

|       | CED | BW  | WW | YW  | MA | CEM | SC   | ST | DOC | YG   | CW | REA  | MS   | \$MTI |
|-------|-----|-----|----|-----|----|-----|------|----|-----|------|----|------|------|-------|
| EPD   | 7   | 1.5 | 80 | 135 | 25 | 4   | 1.55 | 16 | 15  | 0.02 | 60 | 0.79 | 0.28 | 64.50 |
| %Rank | 95  | 65  | 10 | 3   | 20 | 90  | 5    | 15 | 20  | 95   | 1  | 30   | 25   | 20    |

MAGS ALI  
 TMCK CASH FLOW 247C  
 TMCK NINA 17X  
 S A V PIONEER 7301  
 EBFL SAN JOSE 170X  
 TMCK SAN JOSE 170U  
 CONNEALY CONSENSUS 7229  
 MAGS YOKO  
 S A V PIONEER 7301  
 DVFC NINA 239U  
 SAV FINAL ANSWER 0035  
 S A V BLACKBIRD 5297  
 G A R PREDESTINED  
 MAGS SAN JOSE

Lim-Flex (62) Cow Polled / HB ELCX 905G LFF2325292 01.15.2019

# ELCX Grand Account 905G ET

10

|       | CED | BW  | WW | YW | MA | CEM | SC   | ST | DOC | YG    | CW | REA  | MS   | \$MTI |
|-------|-----|-----|----|----|----|-----|------|----|-----|-------|----|------|------|-------|
| EPD   | 8   | 1.2 | 57 | 87 | 24 | 5   | 0.55 | 9  | 10  | -0.16 | 24 | 0.53 | 0.13 | 53.30 |
| %Rank | 85  | 60  | 85 | 85 | 25 | 75  | 85   | 75 | 75  | 60    | 75 | 70   | 55   | 75    |

MAGS WAZOWSKI  
 LVLS BANK ACCOUNT 8116B  
 LVLS WILMA 8116W  
 DFCL DOUBLE SHOT BPB 41E  
 DFCL HBPC 25L  
 DALTONS EDITH ERICA 250  
 DHVO DEUCE 132R  
 BOHI RED ROBIN 282R  
 LVLS TOP CRITERIA 8862P  
 LVLS 8115T  
 DFCL BPB 31C  
 DFCL BPC 12C  
 T C DIVIDEND 963  
 HILL CREST EDITH ERICA 50

Lim-Flex (42) Cow DP / HB ELCX 660K LFM2509303 05.10.2022

# ELCX Kool 660K

8A

|       | CED | BW  | WW | YW  | MA | CEM | SC   | ST | DOC | YG    | CW | REA  | MS   | \$MTI |
|-------|-----|-----|----|-----|----|-----|------|----|-----|-------|----|------|------|-------|
| EPD   | 10  | 0.8 | 70 | 110 | 20 | 6   | 1.19 | 11 | 10  | -0.11 | 32 | 0.49 | 0.36 | 65.11 |
| %Rank | 70  | 50  | 50 | 45  | 60 | 60  | 30   | 65 | 85  | 70    | 60 | 80   | 20   | 25    |

ELCX CAMP FIRE 508C ET  
 AUTO DOWNTOWN 660D  
 OKSU THE PROFIT 3401  
 EBFL SAN JOSE 170X  
 CONNEALY CONSENSUS 7229  
 AUTO STORMIE 473B ET



13

Lim-Flex (67) Cow HP / HB ELCX 846K LFF2509306 04.26.2022

# ELCX Kassidy 846K

9A

|       | CED | BW  | WW | YW  | MA | CEM | SC   | ST | DOC | YG    | CW | REA  | MS   | \$MTI |
|-------|-----|-----|----|-----|----|-----|------|----|-----|-------|----|------|------|-------|
| EPD   | 6   | 2.6 | 71 | 110 | 26 | 4   | 1.23 | 10 | 14  | -0.16 | 39 | 0.82 | 0.01 | 53.12 |
| %Rank | >95 | 90  | 45 | 45  | 10 | 90  | 25   | 75 | 35  | 55    | 35 | 30   | 85   | 85    |

RIVERSTONE EXODUS ET  
 ELCX FRESNO 846F ET  
 TMCK DURHAM WHEAT 6030X  
 HSF YOUR FANTASY  
 TMCK CASH FLOW 247C  
 EBFL SAN JOSE 170X

P.E. 04.28.22 to 07.29.22 to HWCB Eye of the Storm 406E (71% polled, homo blk).

ELCX Fresno 846F is a 34% Lim-Flex daughter of TMCK Cash Flow 247C. This female's dam is EBFL San Jose 170X, the influential donor female sired by SAV Pioneer 7301. On paper this female totally knocks it out of the park with her EPD rankings. She ranks in the third percentile for her yearling weight figure, in the tenth percentile for her weaning weight figure and in the twenty-fifth percentile for her marbling figure. You'll appreciate this female's substance of body, her attractive donor female look and the added dimension she brings to the table. ELCX Fresno 846F is homozygous black and homozygous polled.

The heifer calf at side is ELCX Kassidy 846K, a 67% Lim-Flex daughter of Riverstone Exodus. This April heifer calf ranks in the tenth percentile for her milk figure and is homozygous polled and homozygous black. BW: 75 lbs.

Lim-Flex (56) Cow DP / DB ELCX 905K LFM2509217 05.10.2022

# ELCX Killian 905K

10A

|       | CED | BW  | WW | YW | MA | CEM | SC   | ST | DOC | YG    | CW | REA  | MS   | \$MTI |
|-------|-----|-----|----|----|----|-----|------|----|-----|-------|----|------|------|-------|
| EPD   | 10  | 0.7 | 64 | 94 | 18 | 6   | 1.01 | 9  | 8   | -0.06 | 27 | 0.37 | 0.09 | 52.91 |
| %Rank | 70  | 45  | 75 | 85 | 80 | 60  | 40   | 85 | 95  | 80    | 75 | 95   | 70   | 85    |

ELCX GONE FISHIN 929G ET  
 ELCX GRAND ACCOUNT 905G ET  
 EF XCESSIVE FORCE  
 AUTO POEM 273Y  
 LVLS BANK ACCOUNT 8116B  
 DFCL HBPC 25L

P.E. 06.01.22 to 07.28.22 to Riverstone Exodus (Purebred, HP/HB son of TMCK Durham Wheat)

ELCX Grand Account 905G is a female sired by LVLS Bank Account 8116B, the highly reputable son of MAGS Wazowski. Her dam is the great DFCL HBPC 25L donor female. This 62% Lim-Flex female ranks in the twenty-fifth percentile for her milk figure. This female possesses added cow power and tremendous maternal influence from her superior dam that will carry her through each breeding season impeccably. She is homozygous black and heterozygous polled.

ELCX Killian 905K is the bull calf at side. He is a 56% Lim-Flex son of ELCX Gone Fishin 929G. This May bull calf is double black and double polled. BW: 72 lbs.

# Spring Cow/ Calf Pairs

Lim-Flex (50) Cow HP / HB ELCX 604D LFF2107219 03.04.2016

## ELCX Delta 604D ET

11

|       | CED | BW  | WW | YW | MA | CEM | SC  | ST | DOC | YG   | CW | REA | MS  | \$MTI |
|-------|-----|-----|----|----|----|-----|-----|----|-----|------|----|-----|-----|-------|
| EPD   | 10  | 0.8 | 63 | 94 | 14 | 6   | 1.7 | 10 | 11  | 0.09 | 37 | 0.2 | 0.4 | 62.94 |
| %Rank | 65  | 45  | 65 | 70 | 90 | 55  | 2   | 65 | 60  | >95  | 30 | >95 | 10  | 25    |

D A TRAVELER 004 703  
EF XCESSIVE FORCE  
CFLX MOLLYS IMAGE

S A V 8180 TRAVELER 004  
ROSEWOOD ERICA 5010  
DHVO DEUCE 132R  
JCL PEPPERMINT  
B/R NEW DESIGN 036  
G A R EXT 4206  
COLE FIRST DOWN 46D  
TTCC CONFIDENCE MAKER

Lim-Flex (75) Cow HP / HB ELCX 604K LFF2509302 05.02.2022

## ELCX Kylei 604K

11A

|       | CED | BW  | WW | YW | MA | CEM | SC  | ST | DOC | YG    | CW | REA  | MS   | \$MTI |
|-------|-----|-----|----|----|----|-----|-----|----|-----|-------|----|------|------|-------|
| EPD   | 8   | 1.9 | 61 | 88 | 20 | 5   | 1.3 | 8  | 12  | -0.13 | 27 | 0.52 | 0.07 | 52.03 |
| %Rank | 90  | 80  | 85 | 90 | 60 | 75  | 15  | 90 | 60  | 65    | 75 | 75   | 75   | 90    |

RIVERSTONE EXODUS ET  
ELCX DELTA 604D ET

TMCK DURHAM WHEAT 6030X  
HSF YOUR FANTASY  
EF XCESSIVE FORCE  
MAGS UNLIKELY CANDIDATE

P.E. 04.28.22 to 07.29.22 to  
HWCB Eye of the Storm  
406E (71% polled, homo  
blk).

ELCX Delta 604D is a 50%  
Lim-Flex daughter of EF  
Xcessive Force. She is out of  
the donor female MAGS  
Unlikely Candidate, a GAR  
Predestined daughter. On  
paper this female ranks in the  
tenth percentile for her mar-  
bling figure. If you're a fan  
of maternal strength and  
consistency, then you'll ap-  
preciate ELCX Delta 604D.  
This female is square hipped,  
stout boned and as attrac-  
tively made as you can get  
one. She is homozygous  
black and homozygous  
polled.

ELCX Kylie 604D is a 75%  
Lim-Flex heifer at the side of  
ELCX Delta 604D. This  
May heifer calf is homozy-  
gous black and homozygous  
polled. BW: 80 lbs.

Lim-Flex (63) Cow DP / DB RRDC 60D LFF2124098 10.20.2016

## LVBR Dixie 60D

12

|       | CED | BW  | WW | YW  | MA | CEM | SC   | ST | DOC | YG    | CW | REA | MS   | \$MTI |
|-------|-----|-----|----|-----|----|-----|------|----|-----|-------|----|-----|------|-------|
| EPD   | 9   | 2.4 | 71 | 109 | 20 | 5   | 0.88 | 9  | 14  | -0.22 | 26 | 0.6 | 0.05 | 55.06 |
| %Rank | 75  | 85  | 30 | 35  | 55 | 75  | 55   | 75 | 25  | 45    | 65 | 60  | 70   | 65    |

MAGS XUKALANI  
MAGS APPLE JACK  
WLR UGLY BETTY 432U

RITO 112 OF 2536 RITO 616  
MAGS UKALANI  
MAGS SHYLLO  
JCL HEIDI 2S  
COLEMAN REGIS 904  
HC PASSION 928  
ROMN JUSTICE  
HC DYNASTY 119

Lim-Flex (56) Cow DP / DB ELCX 60K LFF2509300 05.16.2022

## ELCX Kassie 60K

12A

|       | CED | BW  | WW | YW  | MA | CEM | SC   | ST | DOC | YG    | CW | REA  | MS  | \$MTI |
|-------|-----|-----|----|-----|----|-----|------|----|-----|-------|----|------|-----|-------|
| EPD   | 9   | 1.4 | 67 | 108 | 20 | 5   | 0.94 | 9  | 12  | -0.21 | 31 | 0.66 | 0.2 | 59.46 |
| %Rank | 80  | 65  | 65 | 50  | 60 | 75  | 50   | 85 | 60  | 40    | 60 | 55   | 50  | 50    |

ELCX CAMP FIRE 508C ET  
LVBR DIXIE 60D

OKSU THE PROFIT 3401  
EBFL SAN JOSE 170X  
MAGS APPLE JACK  
LVLS BETSY 4014B

P.E. 04.28.22 to 07.29.22 to  
HWCB Eye of the Storm  
406E (71%, polled, homo blk)  
LVBR Dixie 60D is sired by  
MAGS Apple. This female's  
dam is LVLS Betsy 4014B,  
a Coleman Regis 210 daugh-  
ter. This 63% Lim-Flex fe-  
male ranks in the 30th  
percentile for her weaning  
weight figure and in the  
35th percentile for her year-  
ling weight figure. Pheno-  
typically this female has a  
great look from the side, lots  
of dimension and a great set  
of growth numbers to back  
her excellent pedigree and  
appearance.

ELCX Kassie 60K is a May  
heifer calf sired by ELCX  
Camp Fire 508C. This heifer  
calf is 56% Lim-Flex and is  
double black and double  
polled. BW: 70 lbs.

Lim-Flex (59) Cow HP / HB ELCX 734G LFF2509215 00.20.2019

## ELCX Goodbye 734G

13

|       | CED | BW  | WW | YW  | MA | CEM | SC   | ST | DOC | YG   | CW | REA  | MS   | \$MTI |
|-------|-----|-----|----|-----|----|-----|------|----|-----|------|----|------|------|-------|
| EPD   | 8   | 1.9 | 66 | 101 | 17 | 4   | 1.09 | 7  | 11  | -0.1 | 34 | 0.45 | 0.24 | 59.58 |
| %Rank | 85  | 75  | 50 | 55  | 80 | 90  | 35   | 90 | 60  | 75   | 40 | 85   | 30   | 40    |

G A R PREDESTINED  
AUTO WILL POWER 160X  
AUTO REBECA 292S

B/R NEW DESIGN 036  
G A R EXT 4206  
LESF ASPHALT 9N  
EXLR REBECA 1019P  
MAGS THE GENERAL  
AUTO CARMINDA 656S  
MAGS XYLOID  
MAGS TAPESTRY

Lim-Flex (67) Cow DP / DB ELCX 734K LFF2509216 06.02.2022

## ELCX Kym 734K

13A

|       | CED | BW   | WW | YW  | MA | CEM | SC   | ST | DOC | YG    | CW | REA  | MS   | \$MTI |
|-------|-----|------|----|-----|----|-----|------|----|-----|-------|----|------|------|-------|
| EPD   | 10  | -0.3 | 55 | 82  | 20 | 6   | 0.89 | 8  | 10  | -0.17 | 18 | 0.45 | 0.19 | 55.01 |
| %Rank | 70  | 25   | 95 | >95 | 60 | 60  | 60   | 90 | 85  | 55    | 95 | 85   | 50   | 75    |

ELCX EXCESSIVE 758E ET  
ELCX GOODBYE 734G

RIVERSTONE CROWN ROYAL  
AUTO CHRISTY 8889R  
AUTO WILL POWER 160X  
ELCX ENORMOUS 734E ET

P.E. 06.01.22 to 07.28.22 to  
Riverstone Exodus (Pure-  
bred, HP/HB son of TMCK  
Durham Wheat)  
ELCX Goodbye 734G is a 59%  
Lim-Flex daughter of AUTO  
Will Power 160X, a son of  
GAR Predestined and  
AUTO Rebeca 292S. This  
female is stout from the  
ground up, she is genuine in  
her muscle shape and dimen-  
sion and she stands on a  
practical build. We admire  
this female's ability to turn  
heads from a mile away. She  
is homozygous black and ho-  
mozygous polled.  
ELCX Kym 734K is a heifer calf  
sired by ELCX Excessive  
758E. This 67% Lim-Flex  
heifer calf ranks in the 15th  
percentile for her birth-  
weight figure. She is double  
black and double polled.  
BW: 65 lbs.

# ELCX

Represents a family owned operation  
that is backed with integrity and faith  
needed to earn your business!

Lim-Flex (55) Cow DP / DB ELCX 020H LFF2386243 02.09.2020

## ELCX Happiness 020H

14

|       | CED | BW  | WW | YW  | MA | CEM | SC   | ST | DOC | YG    | CW | REA  | MS   | \$MTI |
|-------|-----|-----|----|-----|----|-----|------|----|-----|-------|----|------|------|-------|
| EPD   | 9   | 1.5 | 69 | 102 | 23 | 6   | 0.76 | 9  | 16  | -0.17 | 27 | 0.48 | 0.16 | 58.11 |
| %Rank | 75  | 65  | 40 | 50  | 30 | 55  | 70   | 75 | 10  | 35    | 65 | 80   | 50   | 45    |

WULFS WARRIOR 9302W  
ELCX DONT TELL 663D ET  
LFL UPPER CRUST 0090 X

WULFS SPRING LOADED 3158S  
WULFS JOY BELLS 9202J  
MAGS USDA CHOICE  
LFL UPPER CRUST 8083 U  
MYTTY IN FOCUS  
SSTO SADIE 6854S  
TPIE RED CANYON LC 9347  
ARWL PLD CASHABANKA 7131T

ELCX BENCHWARMER 363B  
ELCX EXTRA CASH 020E  
MINE CANYON'S CASH 1020Y

Lim-Flex (52) Cow DP / DB ELCX 020K LFF2509304 04.21.2022

## ELCX Kammie 020K

14A

|       | CED | BW  | WW | YW  | MA | CEM | SC   | ST | DOC | YG    | CW | REA | MS   | \$MTI |
|-------|-----|-----|----|-----|----|-----|------|----|-----|-------|----|-----|------|-------|
| EPD   | 9   | 1.6 | 68 | 107 | 22 | 6   | 0.89 | 9  | 13  | -0.18 | 31 | 0.6 | 0.25 | 61.34 |
| %Rank | 80  | 70  | 60 | 55  | 35 | 60  | 60   | 85 | 45  | 50    | 60 | 65  | 40   | 40    |

ELCX CAMP FIRE 508C ET  
ELCX HAPPINESS 020H

OKSU THE PROFIT 3401  
EBFL SAN JOSE 170X  
ELCX DONT TELL 663D ET  
ELCX EXTRA CASH 020E

Lim-Flex (53) Cow DP / DB ELCX 022H LFF2509301 04.07.2020

## ELCX Hidden Gem 022H

15

|       | CED | BW | WW | YW  | MA | CEM | SC   | ST | DOC | YG    | CW | REA  | MS   | \$MTI |
|-------|-----|----|----|-----|----|-----|------|----|-----|-------|----|------|------|-------|
| EPD   | 10  | 1  | 69 | 106 | 15 | 4   | 0.72 | 12 | 14  | -0.04 | 33 | 0.34 | 0.22 | 59.31 |
| %Rank | 65  | 50 | 40 | 40  | 90 | 90  | 70   | 45 | 25  | 90    | 40 | 95   | 35   | 40    |

RLBH AIR FORCE ONE  
ELCX CAESAR 331 C  
PBRS ALICE 331A

EF XCESSIVE FORCE  
EF YAFFA 821Y  
MAGS YIP  
BUFORD LUCY 9302  
O C C EMBLAZON 854E  
RITA 4L1 OF 2536 208  
WULFS KIOWA 3361K  
LOGAN'S KANDY KISS 1116K

RITO 6EM3 OF 4L1 EMBLAZON  
SPRING CRKS KANDY KISS  
EXLR KANDY KISS N839

Lim-Flex (51) Bull DP / DB ELCX 2K LFM2509305 04.28.2022

## ELCX Kount 2K

15A

|       | CED | BW  | WW | YW  | MA | CEM | SC   | ST | DOC | YG    | CW | REA  | MS   | \$MTI |
|-------|-----|-----|----|-----|----|-----|------|----|-----|-------|----|------|------|-------|
| EPD   | 10  | 1.1 | 68 | 108 | 18 | 5   | 0.87 | 10 | 12  | -0.12 | 34 | 0.52 | 0.28 | 61.77 |
| %Rank | 70  | 60  | 60 | 50  | 80 | 75  | 60   | 75 | 60  | 65    | 50 | 75   | 30   | 40    |

ELCX CAMP FIRE 508C ET  
ELCX HIDDEN GEM 022H

OKSU THE PROFIT 3401  
EBFL SAN JOSE 170X  
ELCX CAESAR 331 C  
SPRING CRKS KANDY KISS

P.E. 04.28.22 to 07.29.22 to  
HWCB Eye of the Storm 406E  
(71% polled, homo blk)

ELCX Happiness 020H is a 55%  
Lim-Flex female sired by ELCX  
Don't Tell 663D, a son of  
Wulfs Warrior 9302W and out  
of the LFL Upper Crust 0090X  
female. On paper this female  
ranks in the 30th percentile for  
her milk figure. If you're  
searching for an all around ma-  
ternally oriented female, ELCX  
Happiness 020H is the real  
deal. This female has every  
characteristic to be an  
excellent foundation female in  
your program. She has a capti-  
vating presence, a  
productive pedigree and an  
even more attractive heifer calf  
at side. She is double black and  
double polled.

The heifer calf at side is ELCX  
Kammie 020K, a double black  
and double polled daughter of  
ELCX Camp Fire 508C, the  
OKSU The Profit 4301 son.  
This April heifer calf is 52%  
Lim-Flex. BW: 72 lbs.



ELCX Caesar 331C, sire of Lot 15 & 16.

P.E. 04.28.22 to 07.29.22 to  
HWCB Eye of the Storm  
406E (71% polled, homo blk)

ELCX Hidden Gem 022H is a  
two-year-old daughter of  
ELCX Caesar 331C, a bull  
sired by RLBH Air Force  
One and out of the PBRS  
Alice 331A female. ELCX  
Hidden Gem 022H ranks in  
the 35th percentile for her  
marbling figure. When you  
study this female's design  
you'll appreciate her levelness  
of spine, her huge middle and  
her comfortable stride.

ELCX Kount 2K is the April  
bull calf at side. He is sired by  
ELCX Camp Fire 508C, the  
OKSU The Profit 4301 son.  
This 51% Lim-Flex bull calf  
ranks in the 30th percentile  
for his marbling figure. He is  
double black and double  
polled. BW: 72 lbs.

Lim-Flex (53) Cow DP / HB ELCX 46G LFF2509574 01.12.2019

## ELCX Got Two 46G

16

|       | CED | BW   | WW | YW | MA | CEM | SC | ST | DOC | YG   | CW | REA  | MS   | \$MTI |
|-------|-----|------|----|----|----|-----|----|----|-----|------|----|------|------|-------|
| EPD   | 11  | -0.3 | 61 | 98 | 60 | 14  | 6  | 12 | 14  | 0.07 | 36 | 0.06 | 0.32 | 59.59 |
| %Rank | 45  | 25   | 75 | 60 | 90 | 90  | 55 | 45 | 25  | >95  | 30 | >95  | 20   | 40    |

RLBH AIR FORCE ONE  
ELCX CAESAR 331 C  
PBRS ALICE 331A

EF XCESSIVE FORCE  
EF YAFFA 821Y  
MAGS YIP  
BUFORD LUCY 9302  
MAGS THE GENERAL  
AUTO CARMINDA 656S  
J BAR 7 ALLIANCE 6869  
LCC ERICA LG008

%Limousin (76) bull DP / HB ELCX 46K NXM2509575 04.02.2022

## ELCX Kool Dude 46K

16A

|       | CED | BW  | WW | YW | MA | CEM | SC | ST | DOC | YG    | CW | REA  | MS   | \$MTI |
|-------|-----|-----|----|----|----|-----|----|----|-----|-------|----|------|------|-------|
| EPD   | 9   | 1.3 | 60 | 90 | 20 | 5   | -  | 9  | 13  | -0.14 | 27 | 0.45 | 0.03 | 50.35 |
| %Rank | 80  | 70  | 50 | 45 | 60 | 75  | -  | 70 | 30  | 75    | 60 | 85   | 65   | 70    |

RIVERSTONE EXODUS ET  
ELCX GOT TWO 46G

TMCK DURHAM WHEAT 6030X  
HSF YOUR FANTASY  
ELCX CAESAR 331 C  
PBRS AUDREY 346A

P.E. 04.28.22 to 07.29.22 to  
HWCB Eye of the Storm 406E  
(71% polled, homo blk)

ELCX Got Two 46G is a 53%  
Lim-Flex female sired by ELCX  
Caesar. He sired the 2017  
North American International  
Livestock Exposition Grand  
Champion Limousin Bull bred  
and exhibited by Camron  
Bryant, as well as the 2018  
NAILE Reserve Champion  
Limousin Bull bred by  
Cameron Bryant and exhibited  
with Owen Cattle and Freebird  
Farms. PBRS Audrey 346A has  
been a top donor for us over  
the years and this is a phenom-  
enal daughter following closely  
in her footsteps. This female is  
such an excellent young pro-  
ducer and we believe she has  
some years ahead of her in pro-  
duction!

ELCX Kool Dude 46K is the bull  
calf at side. You'll want to focus  
on this young bull calf for a fu-  
ture herd sire prospect. BW: 82  
lbs.

# Spring Calving Females



16

*Teeter*



MAGS Winston, sire of Lot 17

Lim-Flex (51) Cow HP / DB ELCX 8223J LFF2509720 01.05.2021

## ELCX Jam Session 8223J

17

|       | CED | BW   | WW | YW  | MA | CEM | SC   | ST | DOC | YG    | CW | REA  | MS   | \$MTI |
|-------|-----|------|----|-----|----|-----|------|----|-----|-------|----|------|------|-------|
| EPD   | 13  | -0.6 | 62 | 102 | 22 | 7   | 0.28 | 9  | 13  | -0.08 | 38 | 0.46 | 0.25 | 58.66 |
| %Rank | 25  | 20   | 80 | 65  | 35 | 40  | >95  | 85 | 45  | 75    | 35 | 85   | 40   | 55    |

BT CROSSOVER 758N  
MAGS WINSTON  
MAGS STRAWBERRY

ELCX KINGS LANDING 599 D ET  
ELCX FIRST QUEEN 223F  
EXLR LISA 8223X

C A FUTURE DIRECTION 5321  
BT ROYAL PRIDE 237G  
EXLR NEW GENERATION 071M  
MAGS FRUITFUL 487M  
MAGS XYLOID  
WLR PRADA  
EXAR SUNDANCE 6216  
EXLR LISA 8095T

P.E. 05.15.22 to 07.30.22 to ELCX E-Town 736E (42% Lim-Flex, Homo/homo).

This female will be rockin' and rollin' in the minds of many when sale day comes around. ELCX Jam Session 8223J is a 51% Lim-Flex female sired by MAGS Winston. Her dam is ELCX First Queen 223F, a female sired by ELCX Kings Landing 599D and out of an EXAR Sundance 6216 female, EXLR Lisa 8223X. On paper this female ranks in the 20th percentile for her birthweight figure and in the 35th percentile for her milk figure. ELCX Jam Session 8223J is stacked with a phenomenal pedigree, a maternally oriented numeric profile and she's ultra-attractive when you get your eyes on her. This female knocks it completely out of the park phenotypically. She is flawless in her design, feminine in her features and wickedly deep and capacious through her center third. This spring calving female has all the cards stacked in her favor and we know she'll be a hot commodity, so you better be ready! She is homozygous polled and double black.





EBFL San Jose 170X, dam of Lot 18.

*Feeter*

17

Lim-Flex (53) Cow HP / HB ELCX 141J LFF2518137 05.21.2021

# ELCX Just Fine 141J ET

18

|       | CED | BW  | WW | YW  | MA | CEM | SC  | ST | DOC | YG   | CW | REA  | MS   | \$MTI |
|-------|-----|-----|----|-----|----|-----|-----|----|-----|------|----|------|------|-------|
| EPD   | 8   | 2.5 | 75 | 124 | 18 | 4   | 0.7 | 11 | 12  | -016 | 44 | 0.73 | 0.27 | 63.77 |
| %Rank | 90  | 90  | 30 | 20  | 80 | 90  | 75  | 65 | 60  | 55   | 20 | 45   | 35   | 30    |

MAGS ZODIAC  
LVLS DEVIL'S ADVOCATE 1036D  
LVLS 7316U

S A V PIONEER 7301  
EBFL SAN JOSE 170X  
TMCK SAN JOSE 170U

MAGS WINSTON  
MAGS XANTHOUS  
LVLS TOP CRITERIA 8862P  
LVLS7316L  
SAV FINAL ANSWER 0035  
S A V BLACKBIRD 5297  
G A R PREDESTINED  
MAGS SAN JOSE

P.E. 05.15.22 to 07.30.22 to ELCX E-Town 736E (42% Lim-Flex, Homo/homo)

By far one of the most attractive females in this offering. ELCX Just Fine 141J is sired by LVLS Devil's Advocate 1036D, a son of MAGS Zodiac and out of an LVLS Top Criteria 8862P cow. This female's dam is EBFL San Jose 170X, a daughter of SAV Pioneer 7301 and out of a GAR Predestined cow, TMCK San Jose 170U. We admire this female's massive foot size, her softness of pasterns and the incredibly powerful donor cow look she has. ELCX Just Fine 141J is super feminine through her head and neck and she's tremendously strong down her topline and square out of her hip. This female balances up so well from every angle and always stops with such a poised and elegant profile.



EBFL San Jose 170X, dam of Lot 19.

Lim-Flex (53) Cow HP / HB ELCX 131J LFF2518139 05.05.2021

**ELCX Journey 131J ET** **19**

| EPD   | CED | BW | WW  | YW | MA | CEM | SC | ST | DOC   | YG | CW   | REA  | MS    | \$MTI |
|-------|-----|----|-----|----|----|-----|----|----|-------|----|------|------|-------|-------|
| 8     | 2.5 | 75 | 124 | 18 | 4  | 0.7 | 11 | 12 | -0.16 | 44 | 0.73 | 0.27 | 63.77 |       |
| %Rank | 90  | 90 | 30  | 20 | 80 | 90  | 75 | 65 | 60    | 55 | 20   | 45   | 35    | 30    |

MAGS ZODIAC  
LVLS DEVIL'S ADVOCATE 1036D  
LVLS 7316U

S A V PIONEER 7301  
EBFL SAN JOSE 170X  
TMCK SAN JOSE 170U

MAGS WINSTON  
MAGS XANTHOUS  
LVLS TOP CRITERIA 8862P  
LVLS7316L  
SAV FINAL ANSWER 0035  
S A V BLACKBIRD 5297  
G A R PREDESTINED  
MAGS SAN JOSE

P.E. 05.15.22 to 07.30.22 to ELCX E-Town 736E (42% Lim-Flex, Homo/homo)

Here is one of our absolute favorite spring calving females. ELCX Journey 131J is a full sibling to both ELCX Just Fine 141J and ELCX Just Right 137J. She is a daughter of LVLS Devil's Advocate, a bull sired by MAGS Zodiac. Her dam is EBFL San Jose 170X, a daughter of SAV Pioneer 7301 and out of a GAR Predestined cow, TMCK San Jose 170U. When you get your eyes on this female, you'll understand our admiration for her. She is as long as a freight train, as level as you can make one in their skeletal build, huge in her rib shape and near-perfect in her structural design. This female is tough to part with because we know what she's capable of and she's destined for big things up ahead. When she stops on the profile it's picture-perfect every single time- that speaks volumes to what she'll generate in production and we're excited to see what she accomplishes in your operation.

# Spring Calving Females



EBFL San Jose 170X, dam of Lot 20.

Lim-Flex (53) Cow HP / HB ELCX 137J LFF2518136 05.17.2021

## ELCX Just Right 137J ET 20

|       | CED | BW  | WW | YW  | MA | CEM | SC  | ST | DOC | YG    | CW | REA  | MS   | \$MTI |
|-------|-----|-----|----|-----|----|-----|-----|----|-----|-------|----|------|------|-------|
| EPD   | 8   | 2.5 | 75 | 124 | 18 | 4   | 0.7 | 11 | 12  | -0.16 | 44 | 0.73 | 0.27 | 63.77 |
| %Rank | 90  | 90  | 30 | 20  | 80 | 90  | 75  | 65 | 60  | 55    | 20 | 45   | 35   | 30    |

MAGS ZODIAC  
LVLS DEVIL'S ADVOCATE 1036D  
LVLS 7316U

S A V PIONEER 7301  
EBFL SAN JOSE 170X  
TMCK SAN JOSE 170U

MAGS WINSTON  
MAGS XANTHOUS  
LVLS TOP CRITERIA 8862P  
LVLS7316L  
SAV FINAL ANSWER 0035  
S A V BLACKBIRD 5297  
G A R PREDESTINED  
MAGS SAN JOSE

P.E. 05.15.22 to 07.30.22 to ELCX E-Town 736E (42% Lim-Flex, Homo/homo); P.E. as of 07.31.22 to HWCB Eye of the Storm 406E (71% /polled, homo blk)

ELCX Just Right 137J is a full sibling to ELCX Just Fine 141J. She is a daughter of LVLS Devil's Advocate, a bull sired by MAGS Zodiac. Her dam is EBFL San Jose 170X, a daughter of SAV Pioneer 7301 and out of a GAR Predestined cow, TMCK San Jose 170U. This female represents a lineage of wildly successful individuals and she'll do the same with her offspring. She is sound from the ground up, level in her spine and excellent in her structural conformation. ELCX Just Right 137J has a ton of future in front of her and is a terrific breeding piece regardless of your program.

We are nothing without our family and our faith!

%Limousin (80) Cow DP / Black ELCX 1172J NXF509272 03.05.2011

**ELCX Jazzed 1172J** **21**

|       | CE | BW  | WW | YW | MA | CEM | SC   | ST  | DOC | YG    | CW | REA  | MS    | \$MTI |
|-------|----|-----|----|----|----|-----|------|-----|-----|-------|----|------|-------|-------|
| EPD   | 9  | 1.6 | 64 | 95 | 24 | 6   | 0.80 | 5   | 12  | -0.25 | 28 | 0.71 | -0.04 | 49.77 |
| %Rank | 80 | 75  | 40 | 40 | 20 | 55  | 40   | >95 | 50  | 55    | 55 | 60   | 75    | 75    |

|  |  |
|--|--|
| TMCK DURHAM WHEAT 6030X<br>RIVERSTONE EXODUS<br>HSF YOUR FANTASY | DHVO DEUCE 132R<br>MAGS STRAWBERRY PIE<br>MAGS WAR ADMIRAL<br>HSF TINERBELL<br>LH U HAUL 135U<br>MAGS NATASHA<br>LCC CHEYENNE B221L<br>MAGS PARKER |
| PBR8 EQUINOX 161Y<br>CLM UNNECESSARY 172B<br>MAGS UNNECESSARY    |  |

P.E. 05.15.22 to 07.30.22 to ELCX E-Town 736E (42% Lim-Flex, Homo/homo)

ELCX Jammin 172J is a 50% Lim-Flex female sired by MAGS Xyloid. Her dam is EBFL San Jose 170X, a daughter of SAV Pioneer 7301. The genetic influence doesn't get much more attractive than this, folks! ELCX Jammin 172J is loaded with athleticism, dependability from a genetic perspective and such an attractive and unique design. This female is strong in her top, wide at the base of her skeleton and offers so much versatility from a production standpoint. She is homozygous black and heterozygous polled.



20

Lim-Flex (71) Cow DP / HB ELCX 556J LFF2509273 03.05.2021

**ELCX Jazz 556J** **22**

|       | CE | BW  | WW | YW | MA | CEM | SC  | ST | DOC | YG    | CW | REA  | MS   | \$MTI |
|-------|----|-----|----|----|----|-----|-----|----|-----|-------|----|------|------|-------|
| EPD   | 9  | 1.8 | 65 | 98 | 25 | 5   | 0.7 | 8  | 14  | -0.15 | 29 | 0.65 | 0.03 | 51.93 |
| %Rank | 80 | 75  | 70 | 75 | 15 | 75  | 75  | 90 | 35  | 60    | 70 | 55   | 85   | 90    |

|   |  |
|---|--|
| TMCK DURHAM WHEAT 6030X<br>RIVERSTONE EXODUS ET<br>HSF YOUR FANTASY | DHVO DEUCE 132R<br>MAGS STRAWBERRY PIE<br>MAGS WAR ADMIRAL<br>HSF TINKERBELL<br>MAGS WINSTON<br>MAGS XTRA REST<br>COLE WINDFALL 144W<br>EXAR FOREVER LADY 2169 |
| MAGS AVIATOR<br>ELCX EVE 556E<br>LSTO COOKIE 556C ET                |  |

P.E. 05.15.22 to 07.30.22 to ELCX E-Town 736E (42% Lim-Flex, Homo/homo)

ELCX Jazz 556J is a daughter of Riverstone Exodus, the TMCK Durham Wheat 6030X x HSF Your Fantasy son. This female's dam is ELCX Eve 556E, a MAGS Aviator daughter and out of LSTO Cookie 556C. LSTO Cookie 556C is a daughter of COLE Windfall 144W and out of the great EXAR Forever Lady 2169 female. This 71% Lim-Flex female ranks in the 15th percentile for her milk figure. We appreciate this female's substance, structural correctness and her overall design. ELCX Jazz 556J is sure to spice things up when she's introduced to your herd. This female not only offers a strong pedigree and maternal power, she's unique in her design and adds an exceptional amount of flare to her composition. She is homozygous black and double polled.

Int 22

**ELCX** The Edwards Family proudly supports the youth of this great breed! The future is in their hands.

Lim-Flex (68) Cow DP / DB ELCX 298J LFF2509274 03.16.2021

# ELCX Joselyn 298J

## 23

|       | CED | BW  | WW | YW  | MA | CEM | SC | ST | DOC | YG    | CW | REA  | MS   | \$MTI |
|-------|-----|-----|----|-----|----|-----|----|----|-----|-------|----|------|------|-------|
| EPD   | 10  | 1.4 | 67 | 102 | 20 | 6   | 1  | 8  | 14  | -0.19 | 29 | 0.55 | 0.07 | 54.38 |
| %Rank | 70  | 65  | 65 | 65  | 60 | 60  | 40 | 90 | 35  | 45    | 70 | 70   | 75   | 80    |

ALTER EGO  
VL DAYTONA 603D  
RMKR X'S AND O'S 086X  
  
AUTO WILL POWER 160X  
ELCX CINDY LOO 298 C  
ELCX SAVANNAH 298Z

EF XCESSIVE FORCE  
CJSL TEQUILA SUNRISE 7003  
RMKR UNFORGETTABLE 847U  
RMKR MISS STARBURST 500R  
G A R PREDESTINED  
AUTO REBECA 292S  
MAGS XYLOID  
SBLX UNKNOWN 104U

P.E. 05.15.22 to 07.30.22 to ELCX E-Town 736E (42% Lim-Flex, Homo/homo). ELCX Joselyn 298J is sired by VL Daytona 603D, a bull sired by Alter Ego. This female's dam is ELCX Cindy Loo 298C, a daughter of AUTO Will Power 160X and out of ELCX Savannah 298Z. ELCX Savannah 298Z is a daughter of MAGS Xyloid and the great SBLX Unknown

104U donor. It doesn't get much better than this! ELCX Joselyn 298J is full of natural muscle expression, rib dimension and a fantastic structural build. We appreciate this female's unique pedigree, but even more so her elite donor female look. ELCX Joselyn 298J is a 68% Lim-Flex female that is double black and double polled.

Lim-Flex (40) Cow DP / DB ELCX 1161J LFF2509292 02.15.2021

# ELCX Jessie 1161J

## 24

|       | CED | BW  | WW | YW  | MA | CEM | SC   | ST | DOC | YG   | CW | REA  | MS   | \$MTI |
|-------|-----|-----|----|-----|----|-----|------|----|-----|------|----|------|------|-------|
| EPD   | 10  | 1.4 | 69 | 115 | 21 | 6   | 1.28 | 11 | 12  | -0.1 | 35 | 0.51 | 0.31 | 63.28 |
| %Rank | 70  | 65  | 55 | 35  | 50 | 60  | 25   | 65 | 60  | 70   | 45 | 80   | 25   | 35    |

OKSU THE PROFIT 3401  
ELCX CAMP FIRE 508C ET  
EBFL SAN JOSE 170X  
  
ELCX BENCHWARMER 363B  
ELCX DIANA 161D  
OCCC BALA 161B

LH RODEMASTER 338R  
OKSU EXCITEMENT 0406  
S A V PIONEER 7301  
TMCK SAN JOSE 170U  
MYTTY IN FOCUS  
SSTO SADIE 6854S  
MAGS Y-AXIS  
LVLS 9115U

P.E. 05.15.22 to 07.30.22 to ELCX E-Town 736E (42% Lim-Flex, Homo/homo). ELCX Jessie 1161J is a 40% Lim-Flex daughter of ELCX Camp Fire 508C. Her dam is ELCX Diana 161D, a female sired by ELCX Benchwarmer 363B and out of a MAGS Y-Axis cow. On paper this female ranks in the 30th percentile for her marbling figure. This is truly an impressive Lim-Flex

female you'll want to pay attention to. ELCX Jessie 1161J is genuine in her overall muscle shape and dimension, feminine through her front end and excellent on her feet and legs. This female moves with athleticism and authority. ELCX Jessie 1161J is put together just right and she'll be an excellent addition to any group of females. She is double polled and double black.





Lim-Flex (56) Cow DP / DB ELCX 71H LFF2509258 11.03.2020

## ELCX House Party 71H 25

|       | CED | BW  | WW | YW  | MA | CEM | SC | ST | DOC | YG    | CW | REA  | MS   | \$MTI |
|-------|-----|-----|----|-----|----|-----|----|----|-----|-------|----|------|------|-------|
| EPD   | 9   | 3.2 | 77 | 123 | 17 | 6   | 1  | 9  | 12  | -0.17 | 44 | 0.59 | 0.09 | 58.20 |
| %Rank | 80  | 95  | 25 | 20  | 85 | 60  | 40 | 85 | 60  | 55    | 20 | 65   | 70   | 60    |

MAGS YIP  
 PBRS BUNK HOUSE 48B  
 LBAF SHAWNEE 602  
  
 MAGS XUKALANI  
 WLR COUNTING STARS  
 WLR TAINTED LOVE 746X

MAGS THE GENERAL  
 AUTO CARMINDA 656S  
 TWIN VALLEY PRECISION E161  
 SUNSET SHAWNEE 3905  
 RITO 112 OF 2536 RITO 616  
 MAGS UKALANI  
 WULFS URBAN COWBOY 2149U  
 MAGS PHANTOMS PRIZE

A.I. 11.25.21 to ELCX Kings Landing (81%, HP/HB son of MAGS Xyloid).

Folks, it's about to get steamy! This fall calving female is bringing the heat in more ways than not. ELCX House Party 71H is a coming two year old daughter of PBRS Bunk House 48B. PBRS Bunk House 48B is the son of MAGS Yip and out of a Twin Valley Precision E161 daughter, LBAF Shawnee 602. This female's dam is WLR Counting Stars, a daughter of MAGS Xukalani and out of the infamous WLR Tainted Love 746X donor. This female's numeric profile is one to study if you're searching for some powerful growth figures- she ranks in the 25th percentile for both her weaning weight and yearling weight figures. ELCX House Party 71H is a big time donor female prospect that proudly represents our prefix. This female is so appealing from every angle and offers a tremendous amount of cow power and breeding versatility. Simply put- she just has the look and the pedigree to take her to the top of any program. She is 56% Lim-Flex and is double black and double polled. We anticipate exciting things to come in this one's future.

Lim-Flex (40) Cow Polled / HB ELCX 075J LFF2509691 01.20.2021

# ELCX Jenie 075J ET

26

|       | CED | BW  | WW | YW  | MA | CEM | SC   | ST | DOC | YG    | CW | REA  | MS   | \$MTI |
|-------|-----|-----|----|-----|----|-----|------|----|-----|-------|----|------|------|-------|
| EPD   | 11  | 0.7 | 69 | 114 | 20 | 7   | 0.99 | 8  | 12  | -0.04 | 37 | 0.47 | 0.53 | 70.75 |
| %Rank | 50  | 45  | 55 | 40  | 60 | 40  | 50   | 90 | 60  | 85    | 40 | 85   | 4    | 10    |

OKSU THE PROFIT 3401  
 ELCX CAMP FIRE 508C ET  
 EBFL SAN JOSE 170X

WOODSIDE RITO 4050 OF 0M3  
 ELCX DEBBIE 172D  
 CJLM UNNECESSARY 172B

LH RODEMASTER 338R  
 OKSU EXCITEMENT 0406  
 S A V PIONEER 7301  
 TMCK SAN JOSE 170U  
 G A R PROPHET  
 RITA OF RITA 5F56 PRED  
 PBRS EQUINOX 161Y  
 MAGS UNNECESSARY

great amount of longevity and productivity. A female that is structurally correct off both ends of her skeleton, she's level in her hip and feminine in her features. This female's pedigree will work well in many scenarios and will offer another level of versatility to your operation. She is homozygous black and heterozygous polled.

A.I. 11.25.21 to TASF Heineken (50% Hp/HB son of TASF Crown Royal).

ELCX Jennie 075J is a 40% Lim-Flex female sired by ELCX Camp Fire 508C. Her dam is ELCX Debbie 172D, a daughter of Woodsie Rito 4050 of 0M3. This female ranks in the fourth percentile for her marbling figure. ELCX Jennie 075J deserves some special attention. She reads with a



lot 26

Lim-Flex (60) Cow DP / DB WNVU 194H LFF2332477 10.14.2020

# Winvue 194H

27

|       | CED | BW  | WW | YW  | MA | CEM | SC | ST | DOC | YG    | CW | REA  | MS   | \$MTI |
|-------|-----|-----|----|-----|----|-----|----|----|-----|-------|----|------|------|-------|
| EPD   | 9   | 3.2 | 76 | 124 | 18 | 3   | -  | 11 | 15  | -0.07 | 46 | 0.54 | 0.11 | 57.70 |
| %Rank | 3.2 | 95  | 25 | 20  | 80 | 95  | -  | 65 | 20  | 80    | 15 | 75   | 65   | 60    |

MAGS WINSTON  
 MAGS ZODIAC  
 MAGS XANTHOUS

MAGS XYLOID  
 ELCX DOTTED 41D  
 APLI RUMOR 41Y

BT CROSSOVER 758N  
 MAGS STRAWBERRY  
 DHVO DEUCE 132R  
 BOHI RHONDA 314R  
 DHVO DEUCE 132R  
 BOHI RHONDA 314R  
 S A V PIONEER 7301  
 CLLL BLACK POWER 613W

in the 25th percentile for her weaning weight figure. This young female will be great for anyone looking for breeding versatility and strength in pedigree. Winvue 194H is feminine through her front one third, correct in her angles and comfortable on the move. We believe in the power of this gal's pedigree and we know you'll feel the same. She is double black and double polled.

A.I. 11.25.21 to FWLY Capital; P.E. 12.29.21 to 05.09.22 to ELCX Englishman 769E (50% Lim-Flex, homo polled, red)

Winvue 194H is a 60% Lim-Flex female sired by MAGS Zodiac, the MAGS Winston x MAGS Xanthous son. Her dam is ELCX Dotted 41D, a daughter of MAGS Xyloid. On paper this female ranks in the 20th percentile for her yearling weight figure and



lot 27



Int 28

Lim-Flex (56) Cow HP / DB WNVU 092H LFF2332481 10.08.2020

## Winvue 092H

28

|       | CEP | BW  | WW | YW  | MA | CEM | SC  | ST | DOC | YG    | CW | REA  | MS   | \$MTI |
|-------|-----|-----|----|-----|----|-----|-----|----|-----|-------|----|------|------|-------|
| EPD   | 12  | 0.8 | 74 | 122 | 20 | 6   | 0.6 | 11 | 15  | -0.07 | 46 | 0.48 | 0.19 | 60.07 |
| %Rank | 35  | 50  | 35 | 25  | 60 | 60  | 80  | 65 | 20  | 80    | 15 | 80   | 50   | 50    |

MAGS WINSTON  
MAGS ZODIAC  
MAGS XANTHOUS  
ELCX POSTMASTER 208Y  
ELCX CHARMING 836C  
MAGS UPPER SAUNTER

BT CROSSOVER 758N  
MAGS STRAWBERRY  
DHVO DEUCE 132R  
BOHI RHONDA 314R  
MAGS WINSTON  
SSTO SADIE 6854S  
LH RODEMASTER 338R  
MAGS SAUNTER

P.E. 12.29.21 to 05.09.22 to ELCX Englishman 769E (50% Lim-Flex, homo polled, red)

Check out this unique female. Winvue 092H is a 56% Lim-Flex female sired by MAGS Zodiac. She is out of an ELCX Postmaster 208Y daughter, ELCX Charming 836C. This female ranks in the 25th percentile for her

yearling weight figure and in the 35th percentile for her weaning weight figure. Study this feminine featured female and you'll appreciate her breeding versatility. Winvue 092H is as dead level in her spine as you can make one, she's deep and robust through her center rib and ultra functional in her structural makeup. She is homozygous polled and double black.



Riverstone Exodus ET, sire of Lot 29.

Lim-Flex (75) Cow DP / DB ELCX 308H LFF2509291 12.02.2020

## ELCX Hippie 308H

29

|       | CEP | BW  | WW | YW  | MA | CEM | SC   | ST  | DOC | YG    | CW | REA  | MS | \$MTI |
|-------|-----|-----|----|-----|----|-----|------|-----|-----|-------|----|------|----|-------|
| EPD   | 8   | 2.9 | 66 | 100 | 24 | 4   | 0.53 | 6   | 12  | -0.23 | 25 | 0.65 | 0  | 51.93 |
| %Rank | 90  | 95  | 65 | 70  | 20 | 90  | 90   | >95 | 60  | 35    | 80 | 55   | 90 | 90    |

TMCK DURHAM WHEAT 6030X  
RIVERSTONE EXODUS ET  
HSF YOUR FANTASY  
MAGS WINSTON  
ELCX AERIELA 308A  
AUTO CHRISTY 8889R

DHVO DEUCE 132R  
MAGS STRAWBERRY PIE  
MAGS WAR ADMIRAL  
HSF TINKERBELL  
BT CROSSOVER 758N  
MAGS STRAWBERRY  
EXAR NEW DESIGN 3903  
AUTO CHRISTY 853N

P.E. 12.29.21 to 05.09.22 to ELCX Englishman 769E (50% Lim-Flex, homo polled, red)

ELCX Hippie 308H is a daughter of Riverstone Exodus, the TMCK Durham Wheat 6030X x HSF Your Fantasy son. Her dam is ELCX Aeriela 308A, a female sired by MAGS Winston and out of an EXAR

New Design 3903 female, AUTO Christy 8889R. ELCX Hippie 308H is a 75% Lim-Flex female that ranks in the 20th percentile for her milk figure. It doesn't get much better than this, folks! ELCX Hippie 308H is a total package type of female. She's got the pedigree, the maternal influence and a standout phenotype. She is full of natural thickness, depth of body and she's correct in her angles. You won't want to miss the sound investment this female will be for the future of your operation. She is double black and double polled.





Lim-Flex (75) Cow HP / Black ELCX 016H LFF2325795 03.21.2020

# ELCX Humbled 016H ET 30

|       | CED | BW   | WW  | YW  | MA | CEM | SC   | ST | DOC | YG    | CW | REA  | MS   | \$MTI |
|-------|-----|------|-----|-----|----|-----|------|----|-----|-------|----|------|------|-------|
| EPD   | 10  | -0.1 | 47  | 8   | 25 | 8   | 1.25 | 9  | 15  | -0.14 | 21 | 0.54 | 0.12 | 49.68 |
| %Rank | 70  | 30   | >95 | >95 | 15 | 20  | 25   | 85 | 20  | 60    | 90 | 75   | 65   | 95    |

TMCK DURHAM WHEAT 6030X  
RIVERSTONE EXODUS ET  
HSF YOUR FANTASY

MYTTY IN FOCUS  
SBLX UNKNOWN 104U  
MAGS MANUELA

DHVO DEUCE 132R  
MAGS STRAWBERRY PIE  
MAGS WAR ADMIRAL  
HSF TINKERBELL  
S A F FOCUS OF E R  
MYTTY COUNTLESS 906  
EXLR LIMITED EDITION 765J  
AUTO CITY NIGHTS 214H

P.E. 12.16.21 to 04.20.22 to ELCX Frisco 847F (34% Lim-Flex, Homo/Homo)

ELCX Humbled 016H is another female sired by Riverstone Exodus, the impressive son of TMCK Durham Wheat 6030X and out of the great HSF Your Fantasy donor. She is a daughter of the tried and true SBLX Unknown 104U donor. SBLX Unknown 104U is sired by MYTTY In Focus and her dam is the one and only MAGS Manuela female. This 75% Lim-Flex female ranks in the 15th percentile for her milk figure and in the 25th percentile for her birthweight figure. When you study this female from the ground up, you'll understand her tremendous worth. ELCX Humbled 016H is dead level in her spine, capacious and shapely through her center body, feminine in her design and tremendous on her feet and legs. This female will remain sound and functional in production for many years to come. She is homozygous polled and heterozygous black.



# Fall Calving Females



Riverstone Exodus ET, sire of Lots 31, 32 and 33.

PB Limousin (93) Cow HP / HB ELCX 656H NPF2509269 11.28.2020

## ELCX Have To 656H

31

|       | CED | BW  | WW | YW | MA | CEM | SC  | ST | DOC | YG    | CW | REA  | MS    | \$MTI |
|-------|-----|-----|----|----|----|-----|-----|----|-----|-------|----|------|-------|-------|
| EPD   | 8   | 2.8 | 61 | 91 | 22 | 4   | 0.7 | 8  | 12  | -0.33 | 22 | 0.76 | -0.12 | 46.78 |
| %Rank | 80  | 85  | 65 | 60 | 50 | 85  | 30  | 90 | 65  | >95   | 60 | >95  | 35    | 60    |

TMCK DURHAM WHEAT 6030X  
RIVERSTONE EXODUS ET  
HSF YOUR FANTASY

ENGD ZIP LINE 2515Z  
ELCX DESIGNER 656D ET  
DFLC HBHPC 1S

DHVO DEUCE 132R  
MAGS STRAWBERRY PIE  
MAGS WAR ADMIRAL  
HSF TINKERBELL  
AHCC WESTWIND W544  
RTTB ROYALTY 2505R  
JCL LODESTAR 27L  
DFLC HBPC 25L

P.E. 12.29.21 to 05.09.22 to ELCX Englishman 769E (50% Lim-Flex, homo polled, red)

ELCX Have To 656H is another great female sired by Riverstone Exodus. Her dam is ELCX Designer 656D, a daughter of ENG D Zip Line 2515Z and out of the proven DFLC HBHPC

IS donor. ELCX Have To 656H is a purebred female and ranks in the 35th percentile for her marbling figure. Not only is this female easy on the eyes, she'll be a consistent producer just as her pedigree will prove. We admire this female's level top, natural thickness and depth of body and her overall style. What an impressive resume for a young female if you ask us! She is homozygous black and homozygous polled.

Lim-Flex (68) Cow DP / DB ELCX 58H LFF2509249 12.20.2020

## ELCX Hi There 58H

32

|       | CED | BW  | WW | YW | MA | CEM | SC  | ST | DOC | YG    | CW | REA  | MS    | \$MTI |
|-------|-----|-----|----|----|----|-----|-----|----|-----|-------|----|------|-------|-------|
| EPD   | 9   | 1.1 | 59 | 89 | 23 | 6   | 123 | 8  | 14  | -0.18 | 20 | 0.53 | -0.01 | 49.07 |
| %Rank | 80  | 60  | 90 | 90 | 30 | 60  | 25  | 90 | 35  | 50    | 95 | 75   | 90    | 95    |

TMCK DURHAM WHEAT 6030X  
RIVERSTONE EXODUS ET  
HSF YOUR FANTASY

ELCX BENCHWARMER 363B  
ELCX DONNA 158D  
OCCC BAKANA 158B

DHVO DEUCE 132R  
MAGS STRAWBERRY PIE  
MAGS WAR ADMIRAL  
HSF TINKERBELL  
MYTTY IN FOCUS  
SSTO SADIE 6854S  
MAGS Y-AXIS  
JEPS SARAFINA 146Z

warmer 363B and out of a MAGS Y-Axis cow. ELCX Hi There 58H ranks in the 30th percentile for her milk figure. This female is sleek made with added style, function and power and we're confident in her ability to add eye appeal and production value to any outfit. ELCX Hi There 58H is fundamentally correct in her structure when she's in motion and we know she'll have an exciting future ahead. She is double black and double polled.

P.E. 12.29.21 to 05.09.22 to ELCX Englishman 769E (50% Lim-Flex, homo polled, red)

ELCX Hi There 58H is a 68% Lim-Flex female sired by Riverstone Exodus, the TMCK Durham Wheat 6030X x HSF Your Fantasy son. This female's dam is ELCX Donna 158D, a daughter of ELCX Bench-

Lim-Flex (75) Cow HP / HB ELCX 331H LFF232538 03.01.2020

## ELCX Hailey 331H

33

|       | CED | BW  | WW | YW  | MA | CEM | SC  | ST | DOC | YG    | CW | REA  | MS  | \$MTI |
|-------|-----|-----|----|-----|----|-----|-----|----|-----|-------|----|------|-----|-------|
| EPD   | 8   | 2.8 | 68 | 102 | 23 | 4   | 0.7 | 9  | 13  | -0.21 | 35 | 0.58 | 0.1 | 55.85 |
| %Rank | 90  | 95  | 60 | 65  | 30 | 90  | 75  | 85 | 45  | 40    | 45 | 70   | 70  | 70    |

TMCK DURHAM WHEAT 6030X  
RIVERSTONE EXODUS ET  
HSF YOUR FANTASY

MAGS YIP  
PBRS ALICE 331A  
BUFORD LUCY 9302

DHVO DEUCE 132R  
MAGS STRAWBERRY PIE  
MAGS WAR ADMIRAL  
HSF TINKERBELL  
MAGS THE GENERAL  
AUTO CARMINDA 656S  
J BAR 7 ALLIANCE 6597  
J BAR 7 MISS TRAVELER 686

P.E. 12.16.21 to 04.20.22 to ELCX Frisco 847F (34% Lim-Flex, Homo/Homo)

ELCX Hailey 331H is a 75% Lim-Flex daughter of Riverstone Exodus. Her dam is PBRS Alice 331A, a female sired by MAGS Yip. This female ranks in the 30th percentile for her milk figure. ELCX Hailey 331H will be a valuable addition to any

herd in terms of maternal influence, structural soundness and superior genetics. It goes without saying that this female has it stacked in her favor from a pedigree standpoint, but what excites us most about her is her phenomenal build and overall dimension. She is homozygous black and homozygous polled.



Lim-Flex (37) Cow HP / HB ELCX 023H LFF2333868 05.01.2020

**ELCX High Class 023H ET** **34**

|       | CED | BW  | WW | YW  | MA | CEM | SC   | ST | DOC | YG   | CW | REA  | MS   | \$MTI |
|-------|-----|-----|----|-----|----|-----|------|----|-----|------|----|------|------|-------|
| EPD   | 16  | 0.9 | 86 | 137 | 22 | 10  | 0.95 | 11 | 16  | 0.02 | 36 | 0.32 | 0.47 | 73.19 |
| %Rank | 4   | 55  | 5  | 5   | 35 | 4   | 50   | 65 | 15  | 95   | 45 | 95   | 10   | 4     |

MAGS APPLESEED  
MAGS CABLE  
MAGS ZEQUIN  
MAGS WINSTON  
ELCX ELBA 512A  
PCF ELBA RP OF 512

RITO 6EM3 OF 4L1 EMBLAZON  
MAGS WAY TO SHINE  
BOHI TOP DOLLAR 7144T  
WERNER RITA 118  
BT CROSSOVER 758N  
MAGS STRAWBERRY  
G A R PREDESTINED T598  
PCF APACHE ELBA 512

P.E. 12.16.21 to 04.20.22 to ELCX Frisco 847F (34% Lim-Flex, Homo/Homo)

Talk about sheer cow power! ELCX High Class 023H is a 37% Lim-Flex daughter of MAGS Cable, the MAGS Appleseed son. Her dam is ELCX Elba 512A, a female sired by MAGS Winston. This two year old female is a numbers giant. She ranks in the fifth percentile for both her weaning weight and yearling weight figures, in the 10th percentile for her marbling figure and in the 35th percentile for her milk figure. Not only does this female bring the heat from a numerical standpoint- she's wicked good phenotypically. ELCX High Class 023H is ultra maternal in her appearance, feminine and clean through her front one third and she's massive down her top and throughout her center body. This female stands on a huge foot, a flexible pastern and when she gets out and goes she remains composed and elegant. ELCX High Class 023H is one we anticipate will take things to the next level no matter where she ends up. She is homozygous black and homozygous polled.

Lim-Flex (46) Cow DP / DB ELCX 250H LFF2509251 12.19.2020

## ELCX Hallee 250H

35

|       | CED | BW   | WW | YW  | MA | CEM | SC   | ST | DOC | YG    | CW | REA  | MS   | \$MTI |
|-------|-----|------|----|-----|----|-----|------|----|-----|-------|----|------|------|-------|
| EPD   | 11  | -1.2 | 75 | 114 | 19 | 7   | 1.33 | 10 | 12  | -0.09 | 32 | 0.47 | 0.48 | 59.95 |
| %Rank | 50  | 60   | 30 | 40  | 70 | 40  | 15   | 75 | 60  | 75    | 60 | 85   | 50   | 50    |

EBFL YPSILANTI 420Y  
ELCX BULLET PROOF 438B ET  
AUTO POEM 273Y

ELCX BENCHWARMER 363B  
ECX ELEXA 250E  
ELCX CELLULAR 250 C

TC ABERDEEN 759  
MAGS RAMADA  
S A V BISMARCK 5682  
MAGS PHANTOMS PRIZE  
MYTTY IN FOCUS  
SSTO SADIE 6854S  
MAGS XYLOID  
ELCX ZEMMIE 507Z

warmer 363B and out of a MAGS Xyloid cow, ELCX Cellular 250C. On paper this female ranks in the 25th percentile for her marbling figure and in the 35th percentile for her birthweight figure. A true all around type of female that will be a favorite of many on sale day. Phenotypically speaking, this female is solid from the ground up. She has tremendous base width, levelness of hip and is excellent on her feet and legs. ELCX Hallee 250H is 43% Lim-Flex and is double black and double polled.

P.E. 12.29.21 to 05.09.22 to ELCX Englishman 769E (50% Lim-Flex, homo polled, red)

ELCX Hallee 250H is a young daughter of ELCX Bullet Proof 438B, the EBFL Ypsilanti 420Yx AUTO Poem 273Y son. This female's dam is ECX Elexa 250E, a female sired by ELCX Bench-

Lim-Flex (62) Cow HP / HB ELCX 906H LFF2509221 04.25.2020

## ELCX High Tops 906H

36

|       | CED | BW  | WW | YW  | MA | CEM | SC   | ST | DOC | YG    | CW | REA | MS    | \$MTI |
|-------|-----|-----|----|-----|----|-----|------|----|-----|-------|----|-----|-------|-------|
| EPD   | 8   | 3.1 | 80 | 118 | 20 | 5   | 0.96 | 7  | 9   | -0.32 | 34 | 0.9 | -0.12 | 52.45 |
| %Rank | 90  | 95  | 15 | 30  | 60 | 75  | 50   | 95 | 90  | 20    | 50 | 20  | >95   | 85    |

EBFL YPSILANTI 420Y  
ELCX BULLET PROOF 438B ET  
AUTO POEM 273Y

LH RODEMASTER 338R  
WLR ORIGINAL SIN  
MAGS PHANTOMS PRIZE

TC ABERDEEN 759  
MAGS RAMADA  
S A V BISMARCK 5682  
MAGS PHANTOMS PRIZE  
JCL LODESTAR 27L  
VERMILION E BLACKBIRD9546  
GPFF BLAQUE RULON  
ALCM KOOL TUNES

Sin, a daughter of LH Rodemaster 338R and out of the infamous MAGS Phantoms Prize donor female. ELCX High Tops 906H is a two year old that ranks in the 15th percentile for her weaning weight figure and in the 30th percentile for her yearling weight figure. The genetic superiority in this one female alone is astonishing. ELCX High Tops 906H combines such a tremendous amount of substance with genuine body shape and dimension that she'll get your gears turning. We are ever confident that this female will be a reputable influence no matter the program she's introduced to. She is homozygous black and homozygous polled.

P.E. 01.20.22 to 04.28.22 to HWCB Eye of the Storm 406E (71% polled, homo blk)

ELCX High Tops 906H is a 62% Lim-Flex female sired by ELCX Bullet Proof 438B. He is the son of EBFL Ypsilanti 420Y and out of the legendary AUTO Poem 273Y donor. This female's dam is WLR Original

Lim-Flex (67) Cow DP / HB ELCX 188J LFF2509327 01.29.2021

## ELCX Jump Up 188J

37

|       | CED | BW   | WW  | YW  | MA | CEM | SC   | ST | DOC | YG   | CW | REA  | MS   | \$MTI |
|-------|-----|------|-----|-----|----|-----|------|----|-----|------|----|------|------|-------|
| EPD   | 13  | -0.1 | 54  | 81  | 18 | 8   | 0.61 | 8  | 14  | -0.1 | 29 | 0.43 | 0.13 | 51.93 |
| %Rank | 25  | 30   | >95 | >95 | 80 | 20  | 80   | 90 | 35  | 70   | 70 | 85   | 65   | 90    |

ELCX CAESAR 331 C  
HWCB EYE OF THE STORM 406E  
FBFL PRINCESS KATE 406C

MAGS XYLOID  
ELCX FINALLY 188F  
LH WATERGATE 188W

RLBH AIR FORCE ONE  
PBRs ALICE 331A  
MAGS XYLOID  
DPBN MEDAL 4063U  
DHVO DEUCE 132R  
BOHI RHONDA 314R  
MCBN TARGET 705T  
FOSTER MAXINE 0206

is ELCX Finally 188F, a daughter of MAGS Xyloid. If you're in the market for a female backed by highly marketable and proven genetics, look no further than this beauty. This female has such a captivating look of excellence that grabs everyone's attention quickly. ELCX Jump Up 188J will have you doing just that on sale day! This 67% Lim-Flex female is homozygous black and double polled.

P.E. 12.29.21 to 05.09.22 to ELCX Englishman 769E (50% Lim-Flex, homo polled, red)

ELCX Jump Up 188J is a daughter of HWCB Eye of the Storm 406E, a bull sired by ELCX Caesar 331C and out of a MAGS Xyloid female, FBFL Princess Kate 406C. This female's dam

Lim-Flex (54) Cow DP / DB ELCX 373H LFF2509293 11.28.2020

## ELCX Hot One 373H

38

|       | CED | BW  | WW | YW | MA | CEM | SC   | ST | DOC | YG    | CW | REA  | MS   | \$MTI |
|-------|-----|-----|----|----|----|-----|------|----|-----|-------|----|------|------|-------|
| EPD   | 13  | 0.2 | 64 | 94 | 18 | 8   | 0.96 | 9  | 16  | -0.09 | 27 | 0.42 | 0.33 | 61.87 |
| %Rank | 25  | 35  | 75 | 85 | 80 | 20  | 50   | 85 | 15  | 75    | 75 | 90   | 25   | 40    |

ELCX CAESAR 331 C  
HWCB EYE OF THE STORM 406E  
FBFL PRINCESS KATE 406C

TW FIRE N' ICE  
ELCX DASANI 373D  
44 BLACKCAP 81375

RLBH AIR FORCE ONE  
PBRs ALICE 331A  
MAGS XYLOID  
DPBN MEDAL 4063U  
BOHI TITTLIST 7050T  
MAGS UPPER SAUNTER  
G A R PREDESTINED  
SOUTHERN BLACKCAP Z38 S17

This female ranks in the 25th percentile for her marbling figure and in the 30th percentile for her birthweight figure. ELCX Hot One 373H is incredibly well balanced from end to end and she's great when she's on the move. She takes a huge, confident stride and is comfortable off both ends of her skeleton. This female is attractive in her presence, smooth and feminine through her front end and expressive in her muscle shape and dimension. She is double black and double polled.

P.E. 12.29.21 to 05.09.22 to ELCX Englishman 769E (50% Lim-Flex, homo polled, red)

ELCX Hot One 373H is a 54% Lim-Flex female sired by HWCB Eye of the Storm, an ELCX Caesar 331C son. Her dam is ELCX Dasani 373D, a daughter of TW Fire N' Ice and out of a GAR Predestined female.

Lim-Flex (53) Cow DP / DB ELCX 507H LFF2509220 04.20.2020

## ELCX 507H

39

|       | CED | BW   | WW | YW  | MA  | CEM | SC   | ST | DOC | YG   | CW | REA  | MS   | \$MTI |
|-------|-----|------|----|-----|-----|-----|------|----|-----|------|----|------|------|-------|
| EPD   | 12  | -0.2 | 67 | 105 | 118 | 6   | 0.78 | 11 | 14  | 0.05 | 36 | 0.16 | 0.37 | 63.31 |
| %Rank | 35  | 25   | 65 | 60  | 80  | 60  | 75   | 65 | 35  | >95  | 45 | >95  | 20   | 35    |

RLBH AIR FORCE ONE  
ELCX CAESAR 331 C  
PBRS ALICE 331A

MAGS WINSTON  
ELCX ZEMMIE 507Z  
MAGS TAPESTRY

EF XCESSIVE FORCE  
EF YAFFA 821Y  
MAGS YIP  
BUFORD LUCY 9302  
BT CROSSOVER 758N  
MAGS STRAWBERRY  
MYTTY IN FOCUS  
MAGS GRETCHEN 143L

ELCX 507H ranks in the 20th percentile for her marbling figure and in the 35th percentile for her birthweight figure. We admire what this female offers in terms of phenotype and her future ability to generate sound, functional cattle. She is double black and double polled.

Lim-Flex (65) Cow DP / HB ELCX 51H LFF2509218 04.12.2020

## ELCX Hi Lite 51H

40

|       | CED | BW  | WW | YW  | MA | CEM | SC   | ST | DOC | YG    | CW | REA  | MS   | \$MTI |
|-------|-----|-----|----|-----|----|-----|------|----|-----|-------|----|------|------|-------|
| EPD   | 10  | 1.4 | 64 | 101 | 18 | 5   | 0.68 | 11 | 12  | -0.04 | 32 | 0.26 | 0.22 | 57.82 |
| %Rank | 70  | 65  | 75 | 70  | 80 | 75  | 80   | 65 | 60  | 85    | 60 | >95  | 45   | 60    |

RLBH AIR FORCE ONE  
ELCX CAESAR 331 C  
PBRS ALICE 331A

JCL LODESTAR 27L  
ELCX CORE SOUND 512C ET  
DFLC HBPC 25L

EF XCESSIVE FORCE  
EF YAFFA 821Y  
MAGS YIP  
BUFORD LUCY 9302  
HUNTS HI-LITER 245G  
LOGAN'S CHEERLEADER 280G  
DFLC DOUBLE SHOT BPB 41E  
DALTONS EDITH ERICA 250

her center body, level in her skeletal makeup and powerful in her muscle shape. We are excited to see what this female will do for you in the near future! This two year old female is homozygous black and double polled.

Lim-Flex (68) Cow HP / Black ELCX 133H LFF2509268 11.19.2020

## ELCX Hush Hush 133H

41

|       | CED | BW  | WW | YW  | MA | CEM | SC   | ST | DOC | YG    | CW | REA  | MS  | \$MTI |
|-------|-----|-----|----|-----|----|-----|------|----|-----|-------|----|------|-----|-------|
| EPD   | 11  | 0.4 | 72 | 113 | 16 | 6   | 0.76 | 9  | 12  | -0.11 | 39 | 0.54 | 0.2 | 59.91 |
| %Rank | 50  | 40  | 40 | 40  | 90 | 60  | 75   | 85 | 60  | 70    | 35 | 75   | 50  | 50    |

EF XCESSIVE FORCE  
AGRI CHAIRMAN 1C ET  
TGBC SWIZZLE 270W

MAGS WINSTON  
ELCX JOYCE 133 A  
LH YESTERDAY'S DREAM 133Y

D A TRAVELER 004 703  
CFLX MOLLYS IMAGE  
JCL LODESTAR 27L  
MAGS SWIZZLE  
BT CROSSOVER 758N  
MAGS STRAWBERRY  
LH RODEMASTER 338R  
KRVN TICKLES 048T

MAGS Winston. This female ranks in the 35th percentile for her birthweight figure. Phenotypically this female is capacious through her center body, deep in her rib, long and level in her spine and feminine through her front one third. This is the type of female you can utilize in any type of program. She is homozygous polled and black.

P.E. 12.16.21 to 04.20.22 to ELCX Frisco 847F (34% Lim-Flex, Homo/Homo)

An exceptionally well-bred female that reads with longevity and cow power. ELCX 507H is a two year old daughter of ELCX Caesar 331C, the RLBH Air Force One x PBRS Alice 331A son. This female's dam is ELCX Zemmie 507Z, a female sired by MAGS Winston and out of the great MAGS Tapestry donor. On paper

P.E. 01.20.22 to 04.28.22 to HWCB Eye of the Storm 406E (71% polled, homo blk)

ELCX Hi Lite 51H is a 65% Lim-Flex female sired by ELCX Caesar 331C. Her dam is ELCX Core Sound 512C, a daughter of JCL Lodestar 27L and out of the proven DFLC HBPC 25L donor female. ELCX Hi Lite 51H is one that we admire for her unique genetic combination and elite production value. She is deep through

P.E. 12.29.21 to 05.09.22 to ELCX Englishman 769E (50% Lim-Flex, homo polled, red)

Such a youthful appearing female with all the breeding flexibility and longevity one could ask for! ELCX Hush Hush 133H is a 68% Lim-Flex daughter of AGRI Chairman 1C, a bull sired by EF Xcessive Force and out of a JCL Lodestar 27L female, TGBC Swizzle 270W. Her dam is ELCX Joyce 133A, a female sired by



Int 39



Int 41



30

*Feeter*

42

Lim-Flex (56) Cow DP / DB ELCX 123H LFF2509219 04.02.2020

## ELCX Howaboutthat 123H 42

|       | CEB | BW  | WW | YW  | MA | CEM | SC   | ST | DOC | YG   | CW | REA  | MS   | \$MTI |
|-------|-----|-----|----|-----|----|-----|------|----|-----|------|----|------|------|-------|
| EPD   | 11  | 0.3 | 66 | 106 | 18 | 6   | 0.57 | 11 | 14  | 0.03 | 38 | 0.19 | 0.33 | 62.01 |
| %Rank | 50  | 35  | 65 | 55  | 80 | 60  | 90   | 65 | 35  | 95   | 35 | >95  | 25   | 40    |

RLBH AIR FORCE ONE  
ELCX CAESAR 331 C  
PBRS ALICE 331A

ELCX POSTMASTER 208Y  
ELCX ELANTRA 123E  
ELCX ATTENTION 123A

EF XCESSIVE FORCE  
EF YAFFA 821Y  
MAGS YIP  
BUFORD LUCY 9302  
MAGS WINSTON  
SSTO SADIE 6854S  
MAGS WINSTON  
LH YAKIMA LADY 123Y

P.E. 01.20.22 to 04.28.22 to HWCB Eye of the Storm 406E (71% polled, homo blk)

A total show-stopper of a female! ELCX Howaboutthat 123H is a two year old daughter of ELCX Caesar 331C, the RLBH Air Force One son. This female's dam is ELCX Elantra 123E, a female sired by ELCX Postmaster 208Y and out of a MAGS Winston daughter, ELCX Attention 123A. ELCX Howaboutthat 123H ranks in the 25th percentile for her marbling figure and in the 35th percentile for her birthweight figure. You couldn't design a more attractive, feminine featured and powerfully built female in our eyes. ELCX Howaboutthat 123H is tremendous from every angle- she's square from the ground up, she's incredibly long and level in her spine, she's expressively muscled and wicked good through her front one third. This female will remain in production for quite some time and she'll do so with grace and functionality. She is double balck and double polled.



Lim-Flex (76) Cow Polled / HB ELCX 72H NXF2332403 12.06.2020

# ELCX Heather 72H

43

|       | CED | BW  | WW | YW  | MA  | CEM | SC | ST | DOC | YG    | CW | REA | MS   | \$MTL |
|-------|-----|-----|----|-----|-----|-----|----|----|-----|-------|----|-----|------|-------|
| EPD   | 10  | 0.9 | 70 | 108 | 14  | 6   | 1  | 8  | 11  | -0.17 | 36 | 0.6 | 0.15 | 58.22 |
| %Rank | 65  | 60  | 25 | 20  | >95 | 55  | 25 | 80 | 65  | 70    | 30 | 70  | 45   | 35    |

EF XCESSIVE FORCE  
 AGRI CHAIRMAN 1C.ET  
 TGBC SWIZZLE 270W  
 ENGD ZIP LINE 2515Z  
 ELCX DORTHY 72D  
 WLR ATHENA

D A TRAVELER 004 703  
 CFLX MOLLYS IMAGE  
 JCL LODESTAR 27L  
 MAGS SWIZZLE  
 AHCC WESTWIND W544  
 RITB ROYALTY 2505R  
 MAGS XUKALANI  
 WLR UGLY BETTY 432U

P.E. 01.20.22 to 04.28.22 to HWCB Eye of the Storm 406E (71% polled, homo blk)

What a picture-perfect female! ELCX Heather 72H is a 76% Lim-Flex daughter of AGRI Chairman 1C. Her dam is ELCX Dorothy 72D, a female sired by ENGD Zip Line 2515Z and out of a MAGS Xukalani x WLR Ugly Betty 432U daughter, WLR Athena. This female ranks in the 25th percentile for both her weaning weight and yearling weight figures. When you study this female you'll notice her incredible balance, depth and spring of rib, her fleshing ability and squareness of hip. We love this female's hind leg and foot size. If you're looking to build a cow family around one individual, ELCX Heather 72H is the exact place to start. She is homozygous black.

Lim-Flex (48) Cow Polled / Black ELCX 206H LFF2509264 11.07.2020

## ELCX Hip Hop 206H

44

| EPD   | CED  | BW | WW  | YW | MA  | CEM  | SC | ST | DOC   | YG | CW  | REA  | MS    | \$MTI |
|-------|------|----|-----|----|-----|------|----|----|-------|----|-----|------|-------|-------|
| 14    | -1.4 | 66 | 104 | 14 | 8   | 1.07 | 12 | 12 | -0.07 | 34 | 0.5 | 0.37 | 64.03 |       |
| %Rank | 15   | 10 | 65  | 60 | >95 | 20   | 40 | 50 | 60    | 80 | 50  | 80   | 20    | 30    |

EF XCESSIVE FORCE  
AGRI CHAIRMAN 1C ET  
TGBC SWIZZLE 270W

LAGRAND VRD 7185  
LVLS YUM YUM 1206Y  
LVLS 1206S

D A TRAVELER 004 703  
CFLX MOLLYS IMAGE  
JCL LODESTAR 27L  
MAGS SWIZZLE  
VERMILION DATELINE 7078  
LAGRAND LUCY 4206  
RITO 616 OF 4B20 6807  
LVLS2206P

20th percentile for her marbling figure. This female is well balanced, angular in her design, feminine featured and level in her skeletal build. She is fault-free when you set her in motion and she tracks with such a level of confidence and flexibility. A female with genetic influence you won't want to pass up. She is 48% Lim-Flex.

P.E. 12.29.21 to 05.09.22 to ELCX Englishman 769E (50% Lim-Flex, homo polled, red)

ELCX Hip Hop 206H is another daughter of AGRI Chairman 1C, the RLBH Air Force One son. On paper this female ranks in the 15th percentile for her birthweight figure and in the

%Limousin (80) Cow DP / DB ELCX 162H NXF2509252 12.27.2020

## ELCX Hottie 162H

45

| EPD   | CED  | BW | WW | YW | MA | CEM  | SC | ST | DOC   | YG | CW   | REA   | MS    | \$MTI |
|-------|------|----|----|----|----|------|----|----|-------|----|------|-------|-------|-------|
| 12    | -0.1 | 64 | 95 | 21 | 6  | 0.75 | 10 | 13 | -0.31 | 30 | 0.76 | -0.08 | 48.92 |       |
| %Rank | 40   | 40 | 40 | 40 | 50 | 55   | 50 | 60 | 30    | 45 | 50   | 55    | 80    | 75    |

ALTER EGO  
VL DAYTONA 603D  
RMKR X'S AND O'S 086X

BDHC IRONMAN 2006Z  
OCCC BAJI 162B  
JLWM MYRTLE 1215Y

EF XCESSIVE FORCE  
CJSL TEQUILA SUNRISE 7003  
RMKR UNFORGETTABLE 847U  
RMKR MISS STARBURST 500R  
LH U HAUL 135U  
KRVN UNAVAILABLE 005U  
JLWM DIRE STRAYTS 4109P  
JLWM BLACK MYRTLE 7102T

attractive profile, excellent structural build and overall balance. This female is bold through her center body, soft in her angles and has a feminine presence. We are certain you'll be hearing more about this female in the future! Don't miss this unique opportunity to add her to your program with confidence. She is double black and double polled.

P.E. 12.29.21 to 05.09.22 to ELCX Englishman 769E (50% Lim-Flex, homo polled, red)

ELCX Hottie 162H is a purebred female sired by VL Daytona 603D, a son of Alter Ego. This young female ranks in the 35th percentile for her yearling weight figure. ELCX Hottie 162H is equipped with an

Lim-Flex (68) Cow DP / DB ELCX 3442H LFF2509255 12.23.2020

## ELCX Hillarity 3442H

46

| EPD   | CED | BW | WW | YW | MA | CEM | SC | ST | DOC   | YG | CW   | REA  | MS    | \$MTI |
|-------|-----|----|----|----|----|-----|----|----|-------|----|------|------|-------|-------|
| 11    | 0.4 | 61 | 93 | 19 | 6  | 1   | 10 | 12 | -0.24 | 26 | 0.71 | 0.07 | 53.11 |       |
| %Rank | 50  | 40 | 85 | 85 | 70 | 60  | 40 | 75 | 60    | 35 | 80   | 45   | 75    | 85    |

ALTER EGO  
VL DAYTONA 603D  
RMKR X'S AND O'S 086X

BR MIDLAND  
MAGS SATCHEL  
MAGS LADY ACE

EF XCESSIVE FORCE  
CJSL TEQUILA SUNRISE 7003  
RMKR UNFORGETTABLE 847U  
RMKR MISS STARBURST 500R  
TWIN VALLEY PRECISION E161  
BR ROYAL LASS 7036-19  
EXLR INTRIGUE 361G  
CHAZ MISS GRETA 7003G

true asset to absolutely any program. We admire this female's bone work, genuine muscle shape and her added thickness. This female is attractive through her front end, strong in her stance on the profile and ultra fancy in her lines. You'll want to pay close attention to her on sale day. This 68% Lim-Flex female is double black and double polled.

P.E. 12.29.21 to 05.09.22 to ELCX Englishman 769E (50% Lim-Flex, homo polled, red)

ELCX Hillarity 3442H is another excellent female sired by VL Daytona 603D, the Alter Ego son. This female's dam is MAGS Satchel, a BR Midland daughter. ELCX Hillarity 3442H will be a

%Limousin (18) Cow HP / DB ELCX 798H NXF2509253 11.28.2020

## ELCX Hottest 798H

47

| EPD   | CED  | BW | WW  | YW | MA | CEM  | SC | ST | DOC  | YG  | CW   | REA  | MS    | \$MTI |
|-------|------|----|-----|----|----|------|----|----|------|-----|------|------|-------|-------|
| 13    | -0.3 | 74 | 119 | 20 | 9  | 1.55 | 12 | 14 | 0.14 | 36  | 0.12 | 0.59 | 72.67 |       |
| %Rank | 30   | 35 | 15  | 10 | 60 | 10   | 4  | 35 | 20   | >95 | 30   | >95  | 10    | 4     |

MYTTY IN FOCUS  
ELCX BENCHWARMER 363B  
SSTO SADIE 6854S

G A R PROPHET  
ELCX FLORA 798F  
LVLS ALL ME 798A

S A F FOCUS OF E R  
MYTTY COUNTESS 906  
JCL LODESTAR 27L  
THOMAS LUCY ROSE 9509  
C R A BEXTOR 872 5205 608  
G A R OBJECTIVE 1885  
MAGS UNHOOKS  
LVLS 798R

and yearling weight figures. She ranks in the 20th percentile for her weaning weight figure and in the 35th percentile for her birthweight figure. This is a female you can appreciate for her symmetry, her feminine features and her overall depth of body. She has a unique combination of genetic influence and we're confident you'll appreciate her as much as we do. She is homozygous polled and double black.

P.E. 12.29.21 to 05.09.22 to ELCX Englishman 769E (50% Lim-Flex, homo polled, red)

ELCX Hottest 798H is sired by ELCX Benchwarmer 363B, the MYTTY In Focus son. Her dam is ELCX Flora 798F, a daughter of GAR Prophet. On paper this female ranks in the 10th percentile for both her marbling



Lim-Flex (31) Cow DP / DB ELCX 161D LFF2123584 10.05.2016

## ELCX Diana 161D

48

|       | CED | BW  | WW | YW  | MA | CEM | SC   | ST | DOC | YG | CW | REA  | MS   | \$MTI |
|-------|-----|-----|----|-----|----|-----|------|----|-----|----|----|------|------|-------|
| EPD   | 12  | 0.3 | 69 | 114 | 21 | 8   | 1.55 | 13 | 15  | 0  | 34 | 0.32 | 0.27 | 60.91 |
| %Rank | 30  | 35  | 40 | 25  | 45 | 20  | 5    | 35 | 20  | 95 | 40 | 95   | 25   | 30    |

MYTTY IN FOCUS  
ELCX BENCHWARMER 363B  
SSTO SADIE 6854S

MAGS Y-AXIS  
OCCC BALA 161B  
LVLS 9115U

S A F FOCUS OF E R  
MYTTY COUNTESS 906  
JCL LODESTAR 27L  
THOMAS LUCY ROSE 9509  
TC ABERDEEN 759  
MAGS UAHUKA  
BUFORDS ALLIANCE B614  
LVLS 9115S

percentile for both her birthweight and yearling weight figures. When you get your eyes on this female you'll notice her clean and feminine front end, her structural correctness and her overall balance. ELCX Diana 161D is in great condition and will remain functional in production for many years ahead. She is double black and double polled.

Will calve by sale day to ELCX Englishman 769E (50% Lim-Flex, homo polled, red)

ELCX Diana 161D is a 31% Lim-Flex daughter of ELCX Benchwarmer 363B. Her dam is OCCC Bala 161B, a MAGS Y-Axis female. ELCX Diana 161D ranks in the 25th percentile for her marbling figure and in the 30th



*Teeter*

Int 48

Lim-Flex (54) Cow DP / DB ELCX 125H LFF2509271 12.17.2020

## ELCX High Up 125H

49

|       | CED | BW  | WW | YW  | MA | CEM | SC   | ST | DOC | YG    | CW | REA  | MS   | \$MTI |
|-------|-----|-----|----|-----|----|-----|------|----|-----|-------|----|------|------|-------|
| EPD   | 10  | 2.9 | 69 | 107 | 25 | 5   | 0.78 | 7  | 11  | -0.19 | 39 | 0.64 | 0.15 | 57.90 |
| %Rank | 70  | 95  | 55 | 55  | 15 | 75  | 75   | 95 | 75  | 45    | 35 | 60   | 60   | 60    |

AUTO KING JAMES 162Z  
AUTO KING DAVID 120E ET  
PBRB DUTCHES 790X

MAGS WINSTON  
ELCX ALL IN 125 A  
TW RAINY DAY 25Y

COLE WINDFALL 144W  
AUTO LUCKIE 246W  
DHVO DEUCE 132R  
SEDGWICKS DUTCHES 2280  
BT CROSSOVER 758N  
MAGS STRAWBERRY  
MAGS TEDDIE  
AUTO RAIN 220R

out of a MAGS Teddie female, TW Rainy Day 25Y. She ranks in the 15th percentile for her milk figure. This female is perfectly structured, sound from the ground up and offers an incredible view on the profile. She is a remarkably designed female that compliments her pedigree to the highest degree. When you take a step back and study this female in person, you won't be able to say no. ELCX High Up 125H is a 54% Lim-Flex female that is double black and double polled.

P.E. 12.29.21 to 05.09.22 to ELCX Englishman 769E (50% Lim-Flex, homo polled, red)

ELCX High Up 125H is sired by AUTO King David 120E, a son of AUTO King James 162Z and out of the great PBRB Dutches 790X donor. This female's dam is ELCX All In 125A, a daughter of MAGS Winston and



*Teeter*

Int 49

Lim-Flex (75) Cow DP / DB AUTO 695H LFF2326711 12.08.2020

## AUTO 695H

50

| EPD   | CED | BW | WW | YW | MA | CEM  | SC | ST | DOC   | YG | CW   | REA  | MS    | \$MTI |
|-------|-----|----|----|----|----|------|----|----|-------|----|------|------|-------|-------|
| 9     | 2.3 | 67 | 97 | 22 | 6  | 0.47 | 8  | 10 | -0.25 | 37 | 0.70 | 0.08 | 55.16 |       |
| %Rank | 65  | 80 | 85 | 65 | 80 | 40   | 95 | 90 | 85    | 35 | 40   | 50   | 75    | 75    |

AUTO CRUZE 132X  
PBRS CRUZE CONTROL 6245D ET  
EF UP THE CHALLENGE

EXAR CLASSEN 1422B  
AUTO BOJO 421B ET  
MAGS MANUELA

MAGS THE GENERAL  
AUTO REBECA 292S  
MNWS FRONTIER 507R  
EF BLUE J 347R  
DAMERON FIRST CLASS  
EXAR PRINCESS 2006  
EXLR LIMITED EDITION 765J  
AUTO CITY NIGHTS 214H

doability and sheer cow power. We anticipate exciting things to come from this female when she goes into production in your operation.

P.E. 12.29.21 to 05.09.22 to ELCX Englishman 769E (50% Lim-Flex, homo polled, red)

ELCX 695H is attractive in her angles, articulate on the move and impressively designed from the ground up. This female is elegant in her overall build, reads with a tremendous amount of

Lim-Flex (49) Cow DP / Black ELCX 171G LFF2386233 09.22.2019

## ELCX Gia 171G

51

| EPD   | CED  | BW | WW | YW | MA | CEM | SC | ST | DOC   | YG | CW   | REA  | MS    | \$MTI |
|-------|------|----|----|----|----|-----|----|----|-------|----|------|------|-------|-------|
| 14    | -1.2 | 68 | 10 | 22 | 8  | 0.5 | 11 | 12 | -0.17 | 32 | 0.66 | 0.21 | 59.67 |       |
| %Rank | 15   | 10 | 60 | 60 | 35 | 20  | 90 | 65 | 60    | 55 | 60   | 55   | 45    | 50    |

RITO 6EM3 OF 4L1 EMBLAZON  
MAGS BYLAN  
MAGS ZYLAN

PBRS EQUINOX 161Y  
CJLM UNNECESSARY 171B  
MAGS UNNECESSARY

O C C EMBLAZON 854E  
RITA 4L1 OF 2536 208  
MAGS XRAYS  
MAGS XYLAN  
LH U HAUL 135U  
MAGS NATASHA  
LCC CHEYENNE B221L  
MAGS PARKER

birthweight figure and in the 35th percentile for her milk figure. This female is maternal minded and has such an exciting potential to generate marketable offspring with genetic and phenotypic excellence. We admire this female's powerful build, feminine front one third and her center body capacity. She is double polled.

P.E. 12.16.21 to 04.20.22 to ELCX Frisco 847F (34% Lim-Flex, Homo/Homo)

ELCX Gia 171G is a 49% Lim-Flex daughter of MAGS Bylan, a bull sired by Rito 6EM3 of 4L1 Emblazon. Her dam is a PBRS Equinox 161Y daughter, CJLM Unnecessary 171B. On paper this female ranks in the 15th percentile for her

Lim-Flex (50) Cow HP / HB ELCX 669H LFF2509257 11.13.2020

## ELCX Hasty 669H

52

| EPD   | CED | BW | WW  | YW | MA | CEM  | SC | ST | DOC   | YG | CW   | REA  | MS    | \$MTI |
|-------|-----|----|-----|----|----|------|----|----|-------|----|------|------|-------|-------|
| 11    | 1.2 | 82 | 137 | 25 | 7  | 0.97 | 11 | 13 | -0.15 | 47 | 0.85 | 0.24 | 65.09 |       |
| %Rank | 50  | 60 | 15  | 5  | 15 | 40   | 50 | 65 | 45    | 60 | 15   | 25   | 40    | 25    |

TMCK ALFALFA 35X  
TMCK CAMDEN YARDS 195C  
TMCK CASUAL AFFAIR 311A

MAGS ZODIAC  
ELCX DREAM GIRL 669D ET  
EBFL SAN JOSE 170X

S A V PIONEER 730I  
TMCK JOYCE 570U  
MAGS Y-AXIS  
TMCK CASUAL 28Y  
MAGS WINSTON  
MAGS XANTHOUS  
S A V PIONEER 730I  
TMCK SAN JOSE 170U

diac and out of the great EBFL San Jose 170X female. ELCX Hasty 669H is a number freak on paper. She ranks in the fifth percentile for her yearling weight figure, in the 10th percentile for her weaning weight figure and in the 15th percentile for her milk figure. Whew- impressive growth numbers if you ask us! ELCX Hasty 669H has such an attractive brood cow look and comes from such proven and predictable genetics. She is great in her structural build, feminine in her lines and excellent when she's on the move. This young female will be a tremendous addition to any program. She is a coming two year old 50% Lim-Flex female.

P.E. 12.29.21 to 05.09.22 to ELCX Englishman 769E (50% Lim-Flex, homo polled, red)

ELCX Hasty 669H is a double homozygous female sired by TMCK Camden Yards 195C, a son of TMCK Alfalfa 35X. This female's dam is ELCX Dream Girl 669D, a daughter of MAGS Zo-

Lim-Flex (65) Cow DP / DB ELCX 210H LFF2509270 12.06.2020

## ELCX Here It Is 210H

53

| EPD   | CED | BW | WW | YW | MA | CEM  | SC | ST | DOC   | YG | CW   | REA  | MS    | \$MTI |
|-------|-----|----|----|----|----|------|----|----|-------|----|------|------|-------|-------|
| 10    | 0.9 | 60 | 96 | 20 | 6  | 0.66 | 8  | 10 | -0.27 | 27 | 0.70 | 0.18 | 56.91 |       |
| %Rank | 70  | 55 | 90 | 80 | 60 | 60   | 85 | 90 | 85    | 30 | 75   | 45   | 50    | 65    |

OKSU THE PROFIT 340I  
ELCX CAMP FIRE 508C ET  
EBFL SAN JOSE 170X

PBRS ADD IT UP 3120A  
ELCX DIANN 210D  
GPFX GABRIELLA

LH RODEMASTER 338R  
OKSU EXCITEMENT 040E  
S A V PIONEER 730I  
TMCK SAN JOSE 170U  
PBRS MILESTONE 137Y  
PBRS Y NOT ME 165Y  
EF MAIN STAY 541M  
COSC GABRIELLA 444G

dous amount of versatility to your herd. She is a true investment opportunity that you'll want in your pastures when calving season rolls around. This female is long bodied, correct in her features and smooth strided. ELCX Here It Is 210H is double black and double polled.

P.E. 12.29.21 to 05.09.22 to ELCX Englishman 769E (50% Lim-Flex, homo polled, red)

ELCX Here It Is 210H is a 65% Lim-Flex female sired by ELCX Camp Fire 508C, a son of OKSU The Profit 340I. Her dam is ELCX Diann 210D, a PBRS Add It Up 3120A daughter. This female will bring a tremen-

Lim-Flex (75) Cow DP / DB ELCX 840H LFF2509266 12.13.2020

## ELCX Hop To It 840H

54

|       | CED | BW  | WW | YW  | MA | CEM | SC   | ST | DOC | YG    | CW | REA  | MS   | \$MTI |
|-------|-----|-----|----|-----|----|-----|------|----|-----|-------|----|------|------|-------|
| EPD   | 10  | 1.9 | 71 | 114 | 20 | 7   | 0.76 | 13 | 10  | -0.22 | 32 | 0.71 | 0.12 | 57.85 |
| %Rank | 70  | 80  | 45 | 40  | 60 | 40  | 75   | 40 | 85  | 40    | 60 | 45   | 65   | 60    |

RIVERSTONE CROWN ROYAL  
ELCX FULLY ROYAL 451F  
HBRL BASHFUL 451B

JCL LODESTAR 27L  
ELCX FUN SIZE 840F ET  
AUTO CHRISTY 8889R

TMCK DURHAM WHEAT 6030X  
HSF YOUR FANTASY  
EXAR DENVER 2002B  
HBRL ZAVVI 253Z  
HUNTS HI-LITER 245G  
LOGAN'S CHEERLEADER 280G  
EXAR NEW DESIGN 3903  
AUTO CHRISTY 853N

Lodestar 27L and out of an EXAR New Design 3903 daughter, AUTO Christy 8889R. This female has generated a lot of attention from those that have seen her in person. This young female is powerful in her stance, beautiful on the profile and she's superb on her feet and legs. She is youthful in her appearance, deep in her center rib and well balanced from every angle. ELCX Hop To It 840H is 75% Lim-Flex and is double black and double polled.



Int 54

Lim-Flex (46) Cow HP / HB ELCX 1272H LFF2509299 12.01.2020

## ELCX Happiness 1272H

55

|       | CED | BW   | WW | YW | MA | CEM | SC   | ST | DOC | YG    | CW | REA | MS    | \$MTI |
|-------|-----|------|----|----|----|-----|------|----|-----|-------|----|-----|-------|-------|
| EPD   | 12  | -0.7 | 65 | 98 | 18 | 5   | 0.96 | 8  | 9   | -0.18 | 42 | 0.8 | -0.08 | 48.24 |
| %Rank | 35  | 20   | 70 | 75 | 80 | 75  | 50   | 90 | 90  | 50    | 25 | 35  | 95    | >95   |

PVF INSIGHT 0129  
ELCX ETHAN 718E ET  
AUTO POEM 273Y

DHVO TREY 133R  
ELCX GOT MILK 272Z  
SENNETT BLACKCAP 517RLF37

S A V BRILLIANCE 8077  
PVF MISSIE 790  
S A V BISMARCK 5682  
MAGS PHANTOMS PRIZE  
GPF BLAQUE RULON  
AMY JO DHAN 20L  
EXLR MODERATOR 053M  
SENNETT BLACKCAP 351N

The depth of pedigree this female has is highly valuable and will generate excellent marketability for her future offspring. This female is one with tons of natural muscle shape, depth of rib and overall dimension. We can't say enough about the genetic influence this female will have in your program. This female is long and level in her hip, correct in her structural build and reads with such a functional future. ELCX Happiness 1272H is homozygous polled and double black.

A.I. 11.25.21 to FWLY  
LHC Capital (62% HP/HB  
son of MAGS Cable)

ELCX Hop To It 840H is a daughter of ELCX Fully Royal 451F, a bull sired by Riverstone Crown Royal and out of an EXAR Denver 2002B daughter, HBRL Bashful 451B. This female's dam is ELCX Fun Size 840F, a female sired by JCL

P.E. 12.29.21 to 05.09.22  
to ELCX Englishman 769E  
(50% Lim-Flex, homo  
polled, red)

ELCX Happiness 1272H is a 46% Lim-Flex female sired by ELCX Ethan 718E, a PVF Insight 0129 son out of the influential AUTO Poem 273Y donor. Her dam is ELCX Got Milk 272Z, a DHVO Trey 133R daugh-

Lim-Flex (46) Cow HP / DB ELCX 110H LFF2386229 04.01.2020

## ELCX Halley 110H

56

|       | CED | BW  | WW | YW  | MA | CEM | SC | ST | DOC | YG    | CW | REA  | MS   | \$MTI |
|-------|-----|-----|----|-----|----|-----|----|----|-----|-------|----|------|------|-------|
| EPD   | 11  | 1.4 | 71 | 111 | 20 | 6   | -  | 11 | 13  | -0.12 | 6  | 0.58 | 0.32 | 64.14 |
| %Rank | 50  | 65  | 45 | 45  | 60 | 60  | -  | 65 | 45  | 65    | 45 | 70   | 25   | 30    |

MAGS Y-AXIS  
ELCX DANTE 618D ET  
MAGS UNLIKELY CANDIDATE

WLR GAME OF THRONES  
ELCX FLOW 110F  
ELCX FANNIE 110A

TC ABERDEEN 759  
MAGS UAHUKA  
G A R PREDESTINED  
LOGAN'S CHEERLEADER 280G  
MAGS WIGGLER  
WLR URSULA 499U  
MAGS WINSTON  
PCF FANNIE 110 OF IN FOCUS

ELCX Fannie 110A. On paper this 46% Lim-Flex female ranks in the 25th percentile for her marbling figure. This female will be a crowd favorite on sale day based solely off her pedigree. ELCX Halley 110H is destined for greatness and she knows it. This female has such an attractive brood cow look about her and she reads with major efficiency and productivity. No matter what your plans are for this female, she'll accommodate just about any scenario with elegance and grace. She is homozygous polled and double black.

P.E. 12.16.21 to 04.20.22  
to ELCX Frisco 847F (34%  
Lim-Flex, Homo/Homo)

ELCX Halley 110H is sired by ELCX Dante 618D, a bull sired by MAGS Y-Axis and out of the MAGS Unlikely Candidate female. This female's dam is ELCX Flow 110F, a daughter of WLR Game of Thrones and out of a MAGS Winston female,

Lim-Flex (37) Cow HP / DB ELCX 229H LFF2509256 12.26.2020

## ELCX Holly 229H

57

|       | CED | BW  | WW | YW  | MA | CEM | SC   | ST | DOC | YG    | CW | REA  | MS    | \$MTI |
|-------|-----|-----|----|-----|----|-----|------|----|-----|-------|----|------|-------|-------|
| EPD   | 9   | 1.9 | 76 | 118 | 20 | 6   | 0.99 | 8  | 13  | -0.18 | 47 | 0.85 | -0.08 | 51.76 |
| %Rank | 80  | 80  | 25 | 30  | 60 | 60  | 50   | 90 | 45  | 50    | 15 | 25   | 95    | 90    |

PVF INSIGHT 0129  
ELCX ETHAN 718E ET  
AUTO POEM 273Y

QUAKERHILL OBJECTIVE 3J15  
ELCX HIGH SCHOOL 229Y  
DEDO HIGH HOPES 012H

S A V BRILLIANCE 8077  
PVF MISSIE 790  
S A V BISMARCK 5682  
MAGS PHANTOMS PRIZE  
SS OBJECTIVE T510 0T26  
QUAKER HILL QUEEN 1L4  
CHAZ FIRST CHOICE 6004F  
DVFC DREAM FANTASY 902E

P.E. 12.29.21 to 05.09.22 to ELCX Englishman 769E (50% Lim-Flex, homo polled, red)

ELCX Holly 229H is a 37% Lim-Flex daughter of ELCX Ethan 718E, a son of PVF Insight 0129 and out of the great AUTO Poem 273Y donor. She ranks in the 25th percentile for her weaning weight figure and in the 35th percentile for her yearling weight figure. This female is a prime example of what happens with a genetic blend of this caliber. ELCX Holly 229H is strong in her stance, balanced from every angle and she's tremendous on her feet and legs. She is homozygous polled and double black.



Lim-Flex (53) Cow DP / HB ELCX 2J LFF2509265 01.17.2021

## ELCX Just In 2J

58

|       | CED | BW  | WW | YW  | MA | CEM | SC   | ST | DOC | YG    | CW | REA | MS   | \$MTI |
|-------|-----|-----|----|-----|----|-----|------|----|-----|-------|----|-----|------|-------|
| EPD   | 9   | 0.8 | 65 | 103 | 18 | 5   | 0.96 | 8  | 9   | -0.19 | 31 | 0.6 | 0.28 | 61.37 |
| %Rank | 80  | 50  | 70 | 65  | 80 | 75  | 50   | 90 | 90  | 45    | 60 | 65  | 30   | 40    |

OKSU THE PROFIT 3401  
ELCX CAMP FIRE 508C ET  
EBFL SAN JOSE 170X

MAGS XUKALANI  
WLR ATHENA  
WLR UGLY BETTY 432U

LH RODEMASTER 338R  
OKSU EXCITEMENT 0406  
S A V PIONEER 7301  
TMCK SAN JOSE 170U  
RITO 112 OF 2536 RITO 616  
MAGS UKALANI  
MAGS SHYLLO  
JCL HEIDI 2S

P.E. 12.29.21 to 05.09.22 to ELCX Englishman 769E (50% Lim-Flex, homo polled, red)

ELCX Just In 2J is another great daughter of ELCX Camp Fire 508C, the OKSU The Profit 3401 son. This female's dam is WLR Athena, a daughter of MAGS Xukalani and the legendary WLR Ugly Betty 432U donor. She ranks in the 30th percentile for her marbling figure. This female has such a commanding presence about her and you'll admire her overall design as soon as you get your eyes on her. ELCX Just In 2J is refined and feminine in her build, deep through her center rib, strong in her top and ultra freak-necked. We appreciate this female's ability to remain composed and elegant when set in motion. She takes a huge, confident stride and remains flexible in her skeleton from end to end. ELCX Just In 2J is a 53% Lim-Flex female that is homozygous black and double polled.



Lim-Flex (43) Cow HP / HB ELCX 35H LFF2509267 10.26.2020

## ELCX Here N Now 35H

59

|       | CED | BW  | WW | YW  | MA | CEM | SC   | ST | DOC | YG    | CW | REA  | MS   | \$MTI |
|-------|-----|-----|----|-----|----|-----|------|----|-----|-------|----|------|------|-------|
| EPD   | 11  | 0.8 | 73 | 116 | 20 | 5   | 0.62 | 15 | 11  | -0.14 | 30 | 0.65 | 0.25 | 62.55 |
| %Rank | 50  | 50  | 40 | 35  | 60 | 75  | 80   | 20 | 75  | 60    | 65 | 55   | 40   | 35    |

RITO 6EM3 OF 4L1 EMBLAZON  
MAGS BYLAN  
MAGS ZYLAN

JCL LODESTAR 27L  
LH YANKEE GAL 113Y  
SITZ RLS EISA EVERGREEN 4

O C C EMBLAZON 854E  
RITA 4L1 OF 2536 208  
MAGS XRAYS  
MAGS XYLAN  
HUNT'S HI-LITER 245G  
LOGAN'S CHEERLEADER 280G  
G A R RETAIL PRODUCT  
SITZ RLS EISA EVERGREEN 3

P.E. 12.29.21 to 05.09.22 to ELCX Englishman 769E (50% Lim-Flex, homo polled, red)

Whew! You better be ready with this fancy female. ELCX Here N Now 35H is a 43% Lim-Flex female sired by MAGS Bylan, a son of Rito 6EM3 of 4L1 Emblazon. Her dam is LH Yankee Gal 113Y, a daughter of JCL Lodestar 27L. She ranks in the 35th percentile for her birthweight figure and in the 40th percentile for both her yearling weight and milk figures. Not only does this female have a uniquely impressive pedigree, she's built just right phenotypically. ELCX Here N Now 35H is incredibly long in her skeletal makeup, ultra feminine fronted and excellent through her center body composition. This is the type of female that will take your program to the next level with the blink of an eye. She is homozygous black and homozygous polled.

# Angus Females



ELC Jules Chip J066, full sister.

Angus Cow Polled / Black H074 AAA +20403520 12.14.2020

## ELC Hot Chips H074

60

|       | CED | BW  | WW | YW  | MA | CEM | SC    | ST | DOC | YG | CW | REA  | MS   | \$MTI |
|-------|-----|-----|----|-----|----|-----|-------|----|-----|----|----|------|------|-------|
| EPD   | 3   | 4.0 | 60 | 103 | 17 | 6   | -0.01 | -  | 8   | -  | 40 | 0.46 | 0.75 | -     |
| %Rank | 95  | 95  | 50 | 60  | 95 | 75  | 95    | -  | 90  | -  | 70 | 75   | 35   | -     |

DAMERON FIRST CLASS  
EXAR BLUE CHIP 1877B  
GREENS PRINCESS 1012

G A R PREDESTINED T598  
PCF JULIE 216 PRED  
PCF JULIE 922 APACHE

EXG RS FIRST RRATE S903 R3  
DAMERON NORTHERN MISS 3114  
GREENS PREMIUM 7578  
GREENS PRINCESS 7418  
G A R PREDESTINED  
G A R FUTURE DIRECTION 1804  
WERNER RETAIL PRODUCT 1357  
PCF JULIE RITA 3639 711

P.E. 01.18.22-05.25.22 to URF Brute (AAA+19139050)( Son of Quaker Hill Rampage)

They don't come much deeper bodied than this female! ELC Hot Chips H074 is a daughter of EXAR Blue Chip 1877B, the Dameron First Class son. Her dam is PCF Julie 216, a female sired by GAR Predestined T598. This female is massive in her body shape and packed full of sheer volume. ELC Hot Chips H074 is a true brood cow in the making. She is more moderate in her frame, easy in her condition and has such a powerful look to her. The breeding versatility this female brings to the table is worthy of praise.



Int 61

## Angus Females

Angus Cow Polled / Black H022 AAA +19932696 05.02.2020

### ELC High Class Lady H022

61

|       | CED | BW  | WW | YW  | MA | CEM | SC   | ST | DOC | YG | CW | REA  | MS   | \$MTI |
|-------|-----|-----|----|-----|----|-----|------|----|-----|----|----|------|------|-------|
| EPD   | 8   | 1.8 | 56 | 102 | 21 | 10  | 0.26 | -  | 12  | -  | 42 | 0.52 | 0.62 | -     |
| %Rank | 35  | 65  | 65 | 60  | 85 | 30  | 85   | -  | 80  | -  | 65 | 65   | 50   | -     |

EXAR UPSHOT 0562B  
EXAR DENVER 2002B  
EXAR ROYAL LASS 1067  
  
SOO LINE MOTIVE 9016  
WSA LADY 9162  
GAMBLES LADY 2021

SITZ UPWARD 307R  
EXAR BARBARA T020  
EXAR 263C  
BR ROYAL LASS 19-132  
HF KODIAK 5R  
TLA BEAUTY 5R  
S A V IRON MOUNTAIN 8066  
GAMBLES LADY 3016

Will calve before sale to URF Brute (AAA+19139050)( Son of Quaker Hill Rampage)

We admire this female for the maternal look and prominence she commands wherever she is in the pasture. ELC High Class Lady H022 is bred to be a good one and we are certain she will be a feature in any program across the country.

She is a daughter of EXAR Denver 2002B, the EXAR Upshot 0562B son. Her dam is WSA Lady 9162, a female sired by Soo Line Motive 9016 and out of the great Gambles Lady 2021 female. This female is incredibly well made and has the pedigree and predictability needed to enhance your operation!



Int 62

Angus Cow Polled / Black H29 AAA 20403667 11.22.2020

### ELC Happy Times H29

62

|       | CED | BW  | WW | YW  | MA | CEM | SC | ST | DOC | YG | CW | REA | MS | \$MTI |
|-------|-----|-----|----|-----|----|-----|----|----|-----|----|----|-----|----|-------|
| EPD   | 7   | 1.8 | 65 | 115 | 25 | 9   | -  | -  | -   | -  | -  | -   | -  | -     |
| %Rank | 45  | 65  | 35 | 35  | 55 | 40  | -  | -  | -   | -  | -  | -   | -  | -     |

G A R MOMENTUM  
G A R INERTIA  
G A R PROPHET 2984  
  
B C LOOKOUT 7024  
ELC BELLE B29  
PCF BLUE BELLE 215 PRED

G A R PROGRESS  
G A R BIG EYE 1770  
G A R PROPHET  
G A R DAYBREAK 1521  
O C C LEGEND 616L  
GIBBET HILL MIGNONNE E37  
G A R PREDESTINED T598  
PCF BLUE BELLE 913 V306

A.I. 01.08.22 to Asyland; P.E. 01.18.22-05.25.22 to URF Brute (AAA+19139050)( Son of Quaker Hill Rampage)

Holy smokes! ELC Happy Times H29 is one heck of a powerful female. She is sired by GAR Inertia, a GAR Momentum son that's out of a GAR Prophet daughter. Her dam is ELC Belle B29, a

daughter of BC Lookout 7024 and out of a GAR Predestined T598 female, PCF Blue Belle 215. This female is big footed, sound in her pasterns and incredibly fluid in her movement. She is attractive through her front, thick made and dead level in her spine. We appreciate this female's body mass, rib shape and tremendous volume. She's one to watch out for- she'll be creating some pretty special individuals in the years ahead.

Angus Cow Polled / Black 049 AAA +20039425 10.12.2020

# KBCY Julie Blacksmith 049 63

|       | CED | BW  | WW | YW  | MA | CEM | SC   | ST | DOC | YG | CW | REA  | MS   | \$MTI |
|-------|-----|-----|----|-----|----|-----|------|----|-----|----|----|------|------|-------|
| EPD   | 4   | 1.8 | 60 | 108 | 28 | 7   | 0.46 | -  | 21  | -  | 44 | 0.74 | 0.45 | -     |
| %Rank | 70  | 65  | 50 | 50  | 35 | 65  | 75   | -  | 40  | -  | 60 | 35   | 70   | -     |

CONNEALY BLACK GRANITE  
MARDA BLACKSMITH 683  
S A V BLACKCAP MAY 3092

G A R PREDESTINED T598  
PCF JULIE 216 PRED  
PCF JULIE 922 APACHE

BONNEALY CONSENSUS 7229  
EURA ELGA OF CONANGA 9109  
A A R TEN X 7008 S A  
S A V BLACKCAP MAY 1443  
G A R PREDESTINED  
G A R FUTURE DIRECTION 1804  
WERNER RETAIL PRODUCT 1357  
PCF JULIE RITA 3639 711

216, a daughter of GAR Predestined T598. This female is very productive in her look and overall design. She is appealing through her front one third, strong in her stance and correct in her angles. This female will draw attention from all kinds of cattlemen because she'll be that versatile in production. KBCY Julie Blacksmith 049 is capable of generating progeny with look, function and cow power.

A.I. 01.09.22 to Coleman Nine Pipes 9291; P.E. 01.18.22-05.25.22 to URF Brute (AAA+19139050)( Son of Quaker Hill Rampage)  
KBCY Julie Blacksmith 049 is a daughter of Marda Blacksmith 683, a Connealy Black Granite son from the SAV Blackcap May 3092 female. Her dam is PCF Julie



Int 63

Angus Cow Polled / Black H813 AAA 20401928 11.18.2020

# ELC Hit It H813 64

|       | CED | BW   | WW | YW | MA | CEM | SC   | ST | DOC | YG    | CW | REA | MS    | \$MTI |
|-------|-----|------|----|----|----|-----|------|----|-----|-------|----|-----|-------|-------|
| EPD   | 12  | -0.7 | 65 | 98 | 18 | 5   | 0.96 | 8  | 9   | -0.18 | 42 | 0.8 | -0.08 | 48.24 |
| %Rank | 35  | 20   | 70 | 75 | 80 | 75  | 50   | 90 | 90  | 50    | 25 | 35  | 95    | >95   |

BALDRIDGE WILLIE Y34  
ELC TWISTED EX C561  
RITA 9MA1 OF RITA 7067 PRED

WHITESTONE TRAVELER V306  
PCF TRAVELER ELINE 813  
PCF 878 ELINE 608

BALDRIDGE WAYLON W34  
BALDRIDGE DUCHESS T69  
G A R PREDESTINED  
RITA 7067 OF RITA 5M46 OBJ  
S A V 8180 TRAVELER 004  
G A R EXT 704  
P C F EXT OF 878 383  
P C F ELINE FOREFRONT 418

that goes back to SAV 8180 Traveler 004. ELC Hit It H813 is strong and level in her top, square in her hip and shapely through her center body. This young female is well made and has every characteristic needed to work in your operation. We appreciate the amount of natural thickness, muscle shape and overall balance this female has. Her future offspring will be functional, attractive made powerhouses when they hit the ground.

P.E. 01.18.22-05.25.22 to URF Brute (AAA+19139050)( Son of Quaker Hill Rampage)  
Now this female is spicing things up! ELC Hit It H813 is a daughter of ELC Twisted Ex C561, a son of Baldrige Willie Y34. Her dam is PCF Traveler Eline 813, a female sired by Whitestone Traveler V306



Int 64

# Angus Females



Angus Cow Polled / Black H617 AAA 20398238 10.10.2020

## ELC Hi Twist H17

**65**

| EPD   | CED | BW | WW | YW | MA | CEM | SC | ST | DOC | YG | CW | REA | MS | \$MTI |
|-------|-----|----|----|----|----|-----|----|----|-----|----|----|-----|----|-------|
| %Rank | -   | -  | -  | -  | -  | -   | -  | -  | -   | -  | -  | -   | -  | -     |

BALDRIDGE WILLIE Y34  
ELC TWISTED EX C561  
RITA 9MA1 OF RITA 7O67 PRED

BALDRIDGE WAYLON W34  
BALDRIDGE DUCHESS T69  
G A R PREDESTINED  
RITA 7O67 OF RITA 5M46 OBJ  
S A V BRILLIANCE 8077  
PVF MISSIE 790  
SOO LINE MOTIVE 9016  
GAMBLES LADY 2021

P.E. 01.18.22-05.25.22 to URF Brute (AAA+19139050)( Son of Quaker Hill Rampage)

What a true investment piece! ELC Hi Twist H617 is sired by ELC Twisted Ex C561, a son of Baldridge Willie Y34. This female's dam is ELCX Ladies First E768, a daughter of PVF Insight 0129. ELC Hi Twist

H617 is stunning on the profile, powerful in her stance and commanding in her presence. This female has such an attractive front end, is overwhelmingly capacious and deep through her center body and she's structurally sound. This young Angus female will simply take your breath away. We're confident this female will be a hit on sale day!



Angus Cow Polled / Black H452 AAA 20398239 11.12.2020

## ELC Hot Ex H452

**66**

| EPD   | CED | BW | WW | YW | MA | CEM | SC | ST | DOC | YG | CW | REA | MS | \$MTI |
|-------|-----|----|----|----|----|-----|----|----|-----|----|----|-----|----|-------|
| %Rank | 95  | 90 | 80 | 75 | 55 | 90  | -  | -  | -   | -  | -  | -   | -  | -     |

BALDRIDGE WILLIE Y34  
ELC TWISTED EX C561  
RITA 9MA1 OF RITA 7O67 PRED

BALDRIDGE WAYLON W34  
BALDRIDGE DUCHESS T69  
G A R PREDESTINED  
RITA 7O67 OF RITA 5M46 OBJ  
EXAR EMBLAZON 8268  
THREE TREES LADY 1143  
COLEMAN TRAVELER 749  
BUFORD QUEEN 9157

BUFORD EMBLAZON Y92  
P BAR S 452  
BUFORD QUEEN 285Z

A.I. 01.09.22 to Coleman Nine Pipes 9291; P.E. 01.18.22-05.25.22 to URF Brute (AAA+19139050)( Son of Quaker Hill Rampage)

There isn't enough room in this one footnote to describe the eliteness of this female! ELC Hot Ex H452 is flat out good. She is a daughter of ELC Twisted Ex C561,

the Baldridge Willie Y34 son. Her dam is P Bar S 452, a daughter of Buford Emblazon Y92 and out of Buford Queen 285Z, a female sired by Coleman Traveler 749. This female is ultra-attractive, level in her skeletal build and functional in her design. She is sound in her structure, soft in her pasterns and incredibly flexible off both ends of her skeleton. When we think of picture perfect females, ELC Hot Ex H452 is always at the forefront of our mind. We love the extension through her front one third, her massive depth of body and her overall design. This one's special, folks!



Angus Cow Polled / Black H410 AAA 20398608 09.01.2020

## ELC High Tops H410

67

|       | CED | BW  | WW | YW | MA | CEM | SC | ST | DOC | YG | CW | REA | MS | SMTI |
|-------|-----|-----|----|----|----|-----|----|----|-----|----|----|-----|----|------|
| EPD   | -1  | 2.9 | 49 | 89 | 24 | 5   | -  | -  | -   | -  | -  | -   | -  | -    |
| %Rank | 95  | 85  | 85 | 80 | 65 | 85  | -  | -  | -   | -  | -  | -   | -  | -    |

BALDRIDGE WILLIE Y34  
ELC TWISTED EX C561  
RITA 9MA1 OF RITA 7O67 PRED

BUFORD RANCH HAND Y194  
P BAR S 410  
BUFORD LUCY 212Z

BALDRIDGE WAYLON W34  
BALDRIDGE DUCHESS T69  
G A R PREDESTINED  
RITA 7O67 OF RITA 5M46 OBJ  
MF NET RETURN 8197  
J BAR 7 BLACKBIRD 7209  
COLEMAN TRAVELER 7154  
J BAR 7 LUCY 6155

sired by Buford Ranch Hand Y194 and out of a Coleman Traveler 7194 daughter. She is so beautifully made, well designed and maternally powerful. We could go on and on about the positive attributes this female brings to the table, but we'll let her speak for herself.

P.E. 01.18.22-05.25.22 to URF Brute (AAA+19139050)( Son of Quaker Hill Rampage)

A true powerhouse female! ELC High Tops H410 will make you stop in your tracks when you see her on sale day. This female is another tremendous daughter of ELC Twisted Ex C561. Her dam is P Bar S 410, a female



int 67

Angus Cow Polled / Black J605 AAA 20409081 01.30.2021

## ELC Just Kidding J605

68

|       | CED | BW  | WW | YW  | MA | CEM | SC   | ST | DOC | YG | CW | REA  | MS   | SMTI |
|-------|-----|-----|----|-----|----|-----|------|----|-----|----|----|------|------|------|
| EPD   | -1  | 3.3 | 64 | 113 | 28 | 3   | 1.10 | -  | 23  | -  | 38 | 0.51 | 0.86 | -    |
| %Rank | 95  | 90  | 40 | 40  | 35 | 95  | 35   | -  | 30  | -  | 25 | 45   | 25   | -    |

BALDRIDGE WILLIE Y34  
ELC TWISTED EX C561  
RITA 9MA1 OF RITA 7O67 PRED

SITZ TOP GAME 561X  
SPRING CREEKS LUCY 6050  
EXG LUCY T608 R3

BALDRIDGE WAYLON W34  
BALDRIDGE DUCHESS T69  
G A R PREDESTINED  
RITA 7O67 OF RITA 5M46 OBJ  
GDAR GAME DAY 449  
SITZ PRIDE 88T  
BR MIDLAND  
R3 LUCY DATELINE L540

perfect in her structural build and super attractive on the profile. H605 will be one of the big donor female prospects in this offering, so now is your chance to add a tremendous individual to your lineup of top-end females.

A.I. 01.09.22 to GAR Ashland (AAA18217198)(Son of GAR Early Bird); P.E. 01.18.22-05.25.22 to URF Brute (AAA+19139050)( Son of Quaker Hill Rampage)

This female is ultra feminine in her front end, level in her design and bold in her rib. H605 is incredibly well balanced in her angles, near-



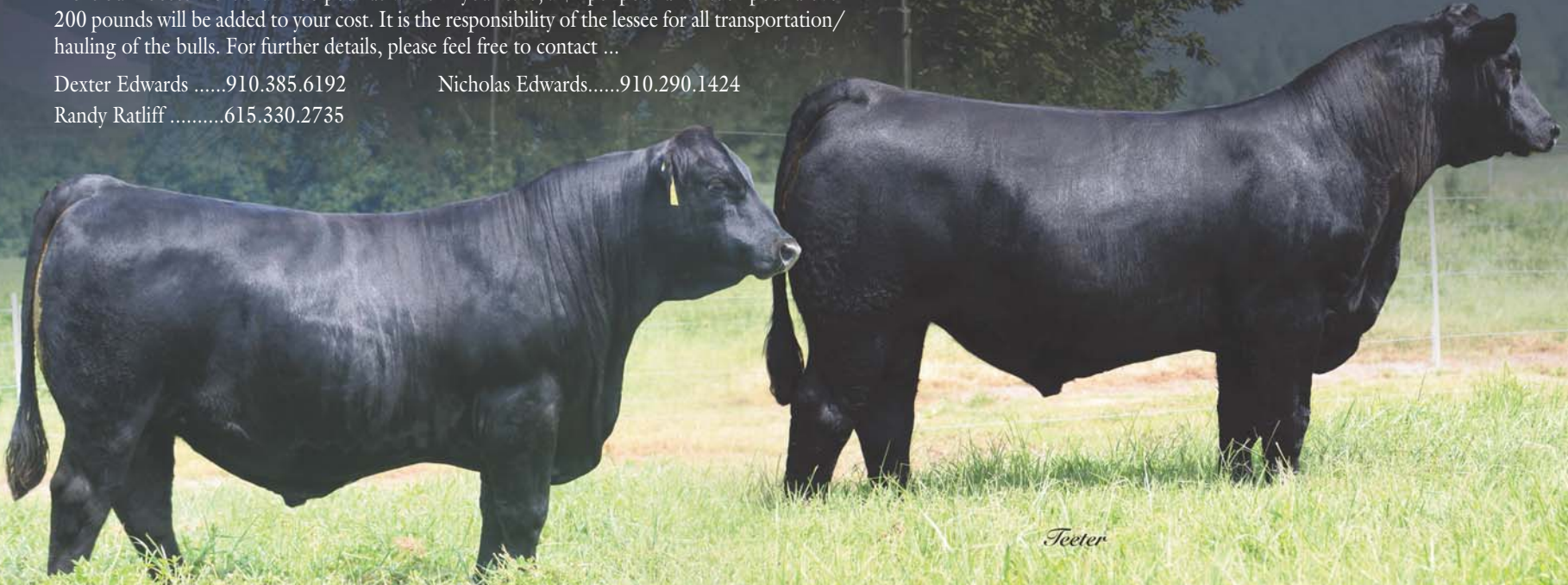
int 68




*Edwards*  
LAND & CATTLE CO.  
**BULL LEASE**  
*Program*

If purchasing a bull is NOT an option for you at this time then the Edwards Family are offering a bull lease program. The agreement is at the end of the sale, you can pay 25% of your bid purchase price with a (minimum of \$800). This pays for a 90 day lease on the herd bull. After 90 days of using the bull if not returned to the the Edwards operation then you will be charged \$5 per day. If the bull looses more than 200 pounds while in your care, a \$1 per pound for each pound over 200 pounds will be added to your cost. It is the responsibility of the lessee for all transportation/hauling of the bulls. For further details, please feel free to contact ...

Dexter Edwards .....910.385.6192      Nicholas Edwards.....910.290.1424  
Randy Ratliff .....615.330.2735



*Feeder*

*Feeder*

# Herd Sire Prospects

PB Limousin (87) Bull HP / HB ELCX 139J NPM 2432014 05.06.2021

## ELCX Joey 139J ET

69

|       | CED | BW  | WW | YW  | MA | CEM | SC  | ST | DOC | YG    | CW | REA  | MS    | SMTI  |
|-------|-----|-----|----|-----|----|-----|-----|----|-----|-------|----|------|-------|-------|
| EPD   | 7   | 2.5 | 65 | 103 | 22 | 4   | 0.8 | 9  | 12  | -0.15 | 24 | 0.57 | -0.07 | 48.53 |
| %Rank | 90  | 75  | 50 | 35  | 50 | 85  | 20  | 85 | 65  | >95   | 55 | >95  | 25    | 50    |

TMCK DURHAM WHEAT 6030X  
RIVERSTONE EXODUS ET  
HSF YOUR FANTASY

DHVO DEUCE 132R  
MAGS XANTHOPSIAS  
BOHI RHONDA 314R

DHVO DEUCE 132R  
MAGS STRAWBERRY PIE  
MAGS WAR ADMIRAL  
HSF TINKERBELL  
GPF BLAQUE RULON  
AMY JO DHAN 20L  
EXLR NEW GENERATION 071M  
DAVIS ROSETTA 9514

male. On paper this bull ranks in the 20th percentile for his marbling figure. One of the very best features of this young bull is the way he combines his heaviness of bone, massive foot size and into his fluidity of movement. We admire this guy's strength down his top, his levelness of hip and his overall masculine build. He is homozygous black and homozygous polled. Many factors make ELCX Joey 139J a highly desirable herd sire prospect, but we're positive he'll be influential in the furtherment of your program.

BW: 74 lbs. WW: 574 lbs.; YW: 1,180 lbs.



Int 69

PB Limousin (87) Bull DP / HB ELCX 146J NPM 2518135 05.23.2021

## ELCX Juiceman 146J ET

70

|       | CED | BW  | WW | YW | MA | CEM | SC  | ST | DOC | YG    | CW | REA  | MS    | SMTI  |
|-------|-----|-----|----|----|----|-----|-----|----|-----|-------|----|------|-------|-------|
| EPD   | 7   | 2.6 | 62 | 92 | 2  | 24  | 0.8 | 7  | 13  | -0.24 | 23 | 0.68 | -0.14 | 45.50 |
| %Rank | 90  | 80  | 65 | 60 | 50 | 85  | 20  | 90 | 55  | >95   | 55 | >95  | 45    | 70    |

TMCK DURHAM WHEAT 6030X  
RIVERSTONE EXODUS ET  
HSF YOUR FANTASY

DHVO DEUCE 132R  
MAGS XANTHOPSIAS  
BOHI RHONDA 314R

DHVO DEUCE 132R  
MAGS STRAWBERRY PIE  
MAGS WAR ADMIRAL  
HSF TINKERBELL  
GPF BLAQUE RULON  
AMY JO DHAN 20L  
EXLR NEW GENERATION 071M  
DAVIS ROSETTA 9514

soundness. He will have endless potential to add physical superiority and an elite genetic profile to keep your program ahead of the curve.

BW: 80 lbs.; WW: 558 lbs.; YW: 1,175 lbs.



Int 70

# Herd Sire Prospects



100/71

Lim-Flex (75) Bull HP / HB ELCX 124J LFM2431767 03.06.2021

## ELCX Jake 124J ET

71

|       | CED | BW  | WW | YW | MA | CEM | SC   | ST | DOC | YG   | CW | REA  | MS    | \$MTI |
|-------|-----|-----|----|----|----|-----|------|----|-----|------|----|------|-------|-------|
| EPD   | 9   | 1.1 | 62 | 85 | 23 | 6   | 0.97 | 11 | 8   | -0.3 | 21 | 0.86 | -0.17 | 44.87 |
| %Rank | 80  | 60  | 80 | 95 | 30 | 60  | 50   | 65 | 95  | 25   | 90 | 25   | >95   | >95   |

TMCK DURHAM WHEAT 6030X  
RIVERSTONE EXODUS ET  
HSF YOUR FANTASY

S A V BISMARCK 5682  
AUTO POEM 273Y  
MAGS PHANTOMS PRIZE

DHVO DEUCE 132R  
MAGS STRAWBERRY PIE  
MAGS WAR ADMIRAL  
HSF TINKERBELL  
G A R GRID MAKER  
S A V ABIGALE 0451  
GPFF BLAQUE RULON  
ALCM KOOL TUNES

We can always appreciate a young herd sire prospect that has all the bells and whistles from a pedigree standpoint, but when one can combine a prominent look no matter the angle with skeletal integrity, we've got an exciting blend. ELCX Jake 124J is a 75% Lim-Flex bull sired by Riverstone Exodus. Riverstone Exodus is

the son of TMCK Durham Wheat 6030X and out of the great HSF Your Fantasy donor. This bull's dam is AUTO Poem 273Y, the SAV Bismarck 5682 daughter and out of the one and only MAGS Phantoms Prize female. This yearling bull ranks in the 30th percentile for his milk figure. When this guy is on the profile he has the great herd sire look to him and is always striking a pose with sheer confidence. He is homozygous black and homozygous polled.

BW: 75 lbs.; WW: 625 lbs.; YW: 1,190 lbs.



100/72

Lim-Flex (65) Bull HP / HB ELCX 150J LFM2431770 05.08.2021

## ELCX Jammin 150J ET

72

|       | CED | BW   | WW | YW | MA | CEM | SC | ST | DOC | YG    | CW | REA  | MS    | \$MTI |
|-------|-----|------|----|----|----|-----|----|----|-----|-------|----|------|-------|-------|
| EPD   | 9   | -0.6 | 57 | 90 | 19 | 5   | -  | 11 | 13  | -0.22 | 24 | 0.37 | -0.07 | 46.47 |
| %Rank | 80  | 20   | 95 | 90 | 70 | 75  | -  | 65 | 45  | 40    | 85 | 95   | 95    | >95   |

MAGS XYLOID  
ELCX KINGS LANDING 599 D ET  
WLR PRADA

MAGS YIP  
PBRS AUDREY 346A  
BUFORD ERICA 9312

DHVO DEUCE 132R  
BOHI RHONDA 314R  
MAGSWL USUAL SUSPECT 538U  
AUTO REBECA 292S  
MAGS THE GENERAL  
AUTO CARMINDA 656S  
J BAR 7 ALLIANCE 6869  
LCC ERICA LG008

Check out this genetic combination! ELCX Jammin 150J is a 65% Lim-Flex son of ELCX Kings Landing 599D, the ever-popular bull sired by MAGS Xyloid and out of the famed WLR Prada female. This bull's dam is PBRS Audrey 346A, a daughter of MAGS Yip and Buford Erica 9312. When

you study this bull's number profile you'll see he ranks in the 20th percentile for his birthweight figure. This bull represents the strength of genetics and a lineage of cattle that have been tried and proven time after time. Phenotypically we appreciate this bull's softness of pasterns, ease of movement, length of skeletal build and his overall masculinity. ELCX Jammin 150J is homozygous black and homozygous polled.

BW: 74 lbs.; WW: 663 lbs.; YW: 1,245 lbs.

Lim-Flex (66) Bull DP / DB ELCX 347J LFM2494520 02.23.2021

# ELCX Just Stormed 347J 73

|       | CED | BW  | WW | YW | MA | CEM | SC   | ST | DOC | YG    | CW | REA  | MS   | SMTI  |
|-------|-----|-----|----|----|----|-----|------|----|-----|-------|----|------|------|-------|
| EPD   | 11  | 1.1 | 61 | 91 | 18 | 6   | 0.74 | 8  | 13  | -0.11 | 30 | 0.47 | 0.18 | 55.78 |
| %Rank | 50  | 60  | 85 | 90 | 80 | 60  | 75   | 90 | 45  | 70    | 65 | 85   | 50   | 70    |

ELCX CAESAR 331 C  
 HWCB EYE OF THE STORM 406E  
 FBFL PRINCESS KATE 406C

PBRB ADD IT UP 3120A  
 ELCX FOCUS 347C  
 ELCX ANABELLE 347A

RLBH AIR FORCE ONE  
 PBRB ALICE 331A  
 MAGS XYLOID  
 DPBN MEDAL 4063U  
 PBRB MILESTONE 137Y  
 PBRB Y NOT ME 165Y  
 MAGS XYLOID  
 MAGS SACHEL

phenotypic standpoint we admire his width of top, natural thickness and his rugged design. ELCX Just Stormed 347J is as picture-perfect as they come around here. He is incredibly well balanced from all angles, stout in his build and overwhelmingly powerful in his natural thickness. The predictability of genetics is all here folks- this is an exciting opportunity to introduce an elite herd sire prospect to your program. ELCX Just Stormed 347J is a 66% Lim-Flex bull that is double black and double polled.

BW: 78 lbs.; WW: 610 lbs.; YW: 1,225 lbs.



Int 73

Lim-Flex (53) Bull HP / HB ELCX 135J LFM 2432019 04.30.2021

# ELCX Joked 135J ET 74

|       | CED | BW  | WW | YW  | MA | CEM | SC   | ST | DOC | YG    | CW | REA  | MS   | SMTI  |
|-------|-----|-----|----|-----|----|-----|------|----|-----|-------|----|------|------|-------|
| EPD   | 10  | 1.9 | 78 | 115 | 17 | 6   | 0.82 | 10 | 6   | -0.01 | 33 | 0.27 | 0.22 | 61.68 |
| %Rank | 70  | 80  | 20 | 35  | 85 | 60  | 60   | 75 | >95 | 90    | 55 | >95  | 45   | 40    |

MAGS APPLE JACK  
 MAGS FIRESTONE 218F  
 MAGS DAYSTAR

MAGS ZAMINDAR  
 PBRB BELL 4100B  
 OAK HILL MISS WIX 72S

MAGS XUKALANI  
 WLR UGLY BETTY 432U  
 MAGS ZODIAC  
 MAGS ACTION MOVE  
 BOHI TOP DOLLAR 7144T  
 MAGS TAVISH  
 S A V 8180 TRAVELER 004  
 OAK HILL MISS WIX 9402

weaning weight figure and in the 35th percentile for his yearling weight figure. Phenotypically this bull is flawless on the profile, extremely deep in his center body and offers an incredible amount of natural shape and thickness. ELCX Joked 135J will be a standout in this offering, so get ready! If you're wanting to keep a set of replacements and create a uniform set of calves, consider this tremendous herd sire prospect. He is homozygous black and homozygous polled.

BW: 69 lbs.; WW: 685 lbs.; YW: 1,280 lbs.



Int 74

# Reference Sires



ELCX Englishman 769E



HWCB Eye of the Storm 406E

Lim-Flex (50) Bull HP / Red ELCX 769E LFM2140418 12.20.2017

## ELCX Englishman 769E ET A

|       | CED | BW   | WW | YW | MA | CEM | SC   | ST | DOC | YG    | CW | REA  | MS   | \$MTI |
|-------|-----|------|----|----|----|-----|------|----|-----|-------|----|------|------|-------|
| EPD   | 14  | -1.0 | 65 | 98 | 21 | 8   | 0.42 | 13 | 8   | -0.19 | 31 | 0.66 | 0.23 | 59.57 |
| %Rank | 85  | 15   | 15 | 70 | 75 | 45  | 90   | 30 | 95  | 45    | 60 | 50   | 40   | 45    |

|                     |                           |
|---------------------|---------------------------|
| BT CROSSOVVER 758N  | C A FUTURE DIRECTION 5321 |
| MAGS WINSTON        | BT ROYAL PRIDE 237G       |
| MAGS STRAWBERRY     | EXLR NEW GENERATION 071M  |
|                     | MAGS FRUITFUL 487M        |
| S A V BISMARCK 5682 | S A V BISMARCK 568        |
| AUTO POEM 273Y      | S A V ABIGALE 0451        |
| MAGS PHANTOMS PRIZE | GPF BLAQUE RULON          |
|                     | MAGS PHANTOMS PRIZE       |

Lim-Flex (42) Bull HP / HB ELCX 736E LFM2135071 04.09.2017

## ELCX E-Town 736E ET C

|       | CED | BW   | WW | YW | MA | CEM | SC   | ST | DOC | YG   | CW | REA  | MS   | \$MTI |
|-------|-----|------|----|----|----|-----|------|----|-----|------|----|------|------|-------|
| EPD   | 14  | -1.3 | 58 | 98 | 19 | 9   | 0.30 | 10 | 14  | 0.01 | 39 | 0.48 | 0.35 | 60.45 |
| %Rank | 15  | 10   | 90 | 75 | 65 | 10  | 95   | 60 | 35  | 90   | 35 | 80   | 20   | 40    |

|                 |                        |
|-----------------|------------------------|
| MAGS WINSTON    | BT CROSSOVER 758N      |
| MAGS AVIATOR    | MAGS STRAWBERRY        |
| MAGS XTRA REST  | DHVO DEUCE 132R        |
|                 | MAGS UNREST            |
| EXAR SUNDANCE   | BR MIDLAND             |
| EXLR LISA 8223X | WK PRINCESS 1194       |
| EXLR LISA 8095T | RODROCK RA AMBUSH M147 |
|                 | EXLR LISA N856         |

Lim-Flex (34) Bull HP / HB ELCX 847F LFM2170469 10.23.2018

## ELCX Frisco 847F ET B

|       | CED | BW  | WW | YW  | MA | CEM | SC   | ST | DOC | YG    | CW | REA  | MS   | \$MTI |
|-------|-----|-----|----|-----|----|-----|------|----|-----|-------|----|------|------|-------|
| EPD   | 5   | 4.6 | 97 | 160 | 25 | 3   | 1.55 | 14 | 17  | -0.05 | 55 | 0.84 | 0.49 | 77.91 |
| %Rank | >95 | >95 | 1  | 1   | 15 | 95  | 10   | 25 | 10  | 85    | 4  | 30   | 10   | 1     |

|                     |                          |
|---------------------|--------------------------|
| MAGS ALI            | CONNEALYU CONSENSUS 7229 |
| TMCK CASH FLOW 247C | MAGS YOKO                |
| TMCK NINA 17X       | S A V PIONEER 7301       |
|                     | DVFC NINA 239U           |
| S A V PIONEER 7301  | SAV FINAL ANSWER 0035    |
| EBFL SAN JOSE 170X  | S A V BLACKBIRD 5297     |
| TMCK SAN JOSE 170U  | G A R PREDESTINED        |
|                     | MAGS SAN JOSE            |

Lim-Flex (71) Bull Polled / HB HWCB 406E LFM2117062 03.17.2017

## HWCB Eye of the Storm 406E D

|       | CED | BW  | WW | YW | MA | CEM | SC   | ST | DOC | YG    | CW | REA  | MS   | \$MTI |
|-------|-----|-----|----|----|----|-----|------|----|-----|-------|----|------|------|-------|
| EPD   | 12  | 0.0 | 59 | 85 | 18 | 7   | 0.66 | 8  | 15  | -0.08 | 29 | 0.44 | 0.16 | 54.29 |
| %Rank | 35  | 30  | 90 | 90 | 75 | 35  | 75   | 80 | 25  | 75    | 65 | 85   | 55   | 75    |

|                         |                   |
|-------------------------|-------------------|
| RLBH AIR FORCE ONE      | EF XCESSIVE FORCE |
| ELCX CAESAR 331 C       | EF YAFFA 821Y     |
| PBR ALICA 331A          | MAGS YIP          |
|                         | BUFORD LUCY 9302  |
| MAGS XYLOID             | DHVO DEUCE 132R   |
| FBFL PRINCESS KATE 406C | BOHI RHONDA 314R  |
| DPBN MEDAL 4063U        | CRSL 5064R        |
|                         | EXLR LUVLY 603P   |



Riverstone Exodus ET



TASF Grey Goose 333G



GAR Ashland

Limousin (95) Bull HP / HB CSM 32E CPM4088530 01.13.2017

## Riverstone Exodus ET E

|       | CED | BW  | WW | YW | MA | CEM | SC   | ST | DOC | YG    | CW | REA  | MS    | \$MTI |
|-------|-----|-----|----|----|----|-----|------|----|-----|-------|----|------|-------|-------|
| EPD   | 6   | 3.0 | 60 | 83 | 26 | 3   | 0.90 | 5  | 12  | -0.34 | 18 | 0.85 | -0.26 | 41.24 |
| %Rank | 90  | 75  | 60 | 65 | 20 | 85  | 15   | 90 | 50  | 95    | 65 | 85   | 70    | 80    |

DHVO DEUCE 132R  
TMCK DURHAM WHEAT 6030X  
MAGS STRAWBERRY PIE

MAGS WAR ADMIRAL  
HSF YOUR FANTASY  
HSF TINKERBELL

GPFF BLAQUE RULON  
AMY JO DHAN 20L  
TNUH BLUE PRINT 245H  
MAGS PIE IN THE SKY  
MAGS SAVAGE  
MAGS REMBRANDT  
CARROUSELS NASDAQ  
NP VIDALIA 164H

Angus Bull Polled / Black K25 AAA +\*18217198 01.31.2015

## GAR Ashland G

|       | CED | BW  | WW | YW  | MA | CEM | SC   | ST | DOC | YG | CW | REA  | MS   | \$MTI |
|-------|-----|-----|----|-----|----|-----|------|----|-----|----|----|------|------|-------|
| EPD   | 13  | 0.3 | 82 | 142 | 25 | 7   | 0.87 | -  | 22  | -  | 49 | 1.05 | 1.22 | -     |
| %Rank | 10  | 30  | 5  | 10  | 55 | 65  | 50   | -  | 30  | -  | 40 | 4    | 15   | -     |

G A R DAYLIGHT  
G A R EARLY BIRD  
G A R PROGRESS 830

B/R AMBUSH 28  
CHAIR ROCK AMBUSH 1018  
G A R YIELD GRADE N366

MCC DAYBREAK  
G A R OBJECTIVE R227  
G A R PROGRESS  
G A R 111 RITO 3346  
ROCKN D AMBUSH 1531  
B/R RUBY OF TIFFANY 8250  
G A R YIELD GRADE  
G A R 1407 NEW DESIGN 1942

PB Limousin (100) Bull HP / Black TASF 333G NPM2268248 06.12.2019

## TASF Grey Goose 333G ET F

|       | CED | BW  | WW | YW | MA | CEM | SC   | ST | DOC | YG    | CW | REA  | MS   | \$MTI |
|-------|-----|-----|----|----|----|-----|------|----|-----|-------|----|------|------|-------|
| EPD   | 5   | 5.2 | 63 | 91 | 25 | 2   | 0.45 | 7  | 1   | -0.35 | 18 | 0.54 | 0.07 | 54.30 |
| %Rank | 95  | >95 | 50 | 50 | 30 | 95  | 55   | 80 | >95 | 95    | 65 | >95  | 5    | 15    |

DHVO DEUCE 132R  
TASF CROWN ROYAL 960C ET  
TASF WHISKEY LULLABY 357W

EXLR NEW GENERATION 071M  
TASF X-TANSY 488X  
EXLR BLACK CAP 7117R

GPFF BLAQUE RULON  
AMY JO DHAN 20L  
EXLR NASDAQ 380R  
TMCK MISS THICK 37T  
AUTO BLACK DAKOTA 129J  
EXLR LUVLY 084F  
LESF ASPHALT 9N  
EXLR BLACKCAP 437K

Angus Bull Polled / Black 1707 AAA +\*19139050 02.28.2017

## URF Brute 1707 H

|       | CED | BW  | WW | YW  | MA | CEM | SC   | ST | DOC | YG | CW | REA  | MS   | \$MTI |
|-------|-----|-----|----|-----|----|-----|------|----|-----|----|----|------|------|-------|
| EPD   | 2   | 3.8 | 94 | 158 | 21 | 9   | 2.11 | -  | 5   | -  | 72 | 1.28 | 0.58 | -     |
| %Rank | 85  | 95  | 1  | 2   | 80 | 45  | 2    | -  | 90  | -  | 4  | 1    | 1    | -     |

MCC DAYBREAK  
QUAKER HILL RAMPAGE 0A36  
QHF BLACKCAP 6E2 OF4V16 4355

YON FUTURE FOCUS T219  
YON SARAH Y79  
YON SARAH N170

BOYD NEW DAY 8005  
MCC MISS FOCUS 134  
IDEAL 4355 OF 0T26 2440  
QHF BLACKCAP 4V16 OF 1H8  
MYTTY IN FOCUS  
YON HAZEL R133  
BON VIEW NEW DESIGN 878  
YON H02 L96

**R&R**  
MARKETING

PO Box 60097  
Nashville, TN 37206  
(L#2845)

FIRST CLASS  
PRE-SORTED  
PAID  
Montezuma, Iowa  
Permit No. 30

designs by  
*ain*



*Edwards*  
LAND & CATTLE CO.

**ANNUAL FALL PRODUCTION**  
*Bull & Female Sale*

**09.10.2022**

Beulaville, NC