

Deer Valley Farm's Annual Spring Performance-Tested Angus Bull Sale



Noon - Saturday, March 26th, 2016 - Fayetteville, TN

The
BULL BRAND

Deer Valley Farm's Annual Spring Performance Tested Angus Bull Sale

Noon – Saturday, March 26th 2016

130 POWERFUL, PERFORMANCE – ENGINEERED BULLS SELL!

★ AI Sired

★ First Breeding Season Guarantee

★ Stacked Maternal, Growth and Carcass Genetics

★ Free Delivery on all Bulls

★ All Bulls Trich Tested Negative

SALE DAY PHONES

931/433-8312

931/438-4258

AUCTIONEER:

Bruce Brooks (580) 695-2036

LIVESTOCK PUBLICATION REPRESENTATIVES:

Alex Tolbert	Angus Journal
Kent Jaecke	Special Assignment
Chuck Grove	Special Assignment
Bruce Bradley	Special Assignment

SIGHT UNSEEN GUARANTEE:

Buyers unable to attend the sale should feel free to contact any of the Deer Valley Sale Staff. We will handle your bull purchases with the strictest of confidence. If for any reason you do not like a sight unseen purchase from Deer Valley and you have us select the bull for you, you will not own the bull! SATISFACTION GUARANTEED!

TERMS AND CONDITIONS:

All of the bulls selling sell FULLY GUARANTEED THROUGH THE FIRST BREEDING SEASON. Cattle will sell under the suggested Terms & Conditions of the American Angus Association (http://www.angus.org/Pub/suggested_sale_terms.pdf)

COOPERATOR BULLS:

Deer Valley works with a select set of cooperators around the country that source genetics from Deer Valley. We consult these cooperators on breeding and management decisions. The resulting bull calves that meet our requirements are sent to Deer Valley at weaning and are raised, developed and marketed through our program. These bulls are a designed product of Deer Valley and are bred to be consistent with what is bred and born on our farm. These bulls are sold with the same strict standards, 100% guarantee and terms that every bull sold here carries. Deer Valley owns these bulls with each cooperator, but in some cases the breeder on the certificate may not show up as DVF. They will all carry the Deer Valley name and be branded DVF.

**ABSENTEE BIDDERS CAN WATCH THE SALE
THROUGH SUPERIOR LIVESTOCK ON
SALE DAY. CALL OR CLICK TO BID!**

**DISH NETWORK, CHANNEL 232
FOR MORE INFO, SEE PAGE 3**



OR VIEW & BID LIVE, ONLINE:



SALE HEADQUARTERS:

Hampton Inn-Fayetteville (NEW!!!)

931/433-3355

OTHER ACCOMMODATIONS:

Best Western-Fayetteville

931/433-0100

Days Inn-Fayetteville

931/433-6121

LIVESTOCK INSURANCE:

May be purchased at the clerk's desk.

TRUCKING:

DVF will arrange delivery, unless you choose to take the \$100 discount and pickup on sale day.

HERD HEALTH:

All of the bulls will be accompanied with interstate health certificates for immediate shipment and they have all passed a breeding soundness exam. All bulls have been wormed with Dectomax Injectable, poured with Synergized Delice backpour and vaccinated with Bovi-Shield Gold 5 and Ultrabac 7.

SALE UPDATES:

We will provide an update sheet sale morning that will cover any changes to the sale book information. And any announcements made from the sale block take precedence over the information listed in the sale book.

All EPDs are current as of 2/22/2016.

FOR FURTHER ASSISTANCE, CONTACT:

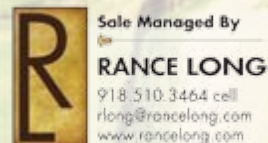
Jonathan Perry – (931) 703-6330

SALE CONSULTANT:

Tom Dalby – (404) 372-0973

Randy Ratliff – (615) 330-2735

SALE MANAGEMENT:



Buyers unable to attend the sale may send or phone their bids to Superior Livestock, on the LiveAuctions.tv web site, the Sale Manager, one of the Livestock Publication Representatives Auctioneer, or a Deer Valley Representative.

**VIEW SALE CATTLE ONLINE ON THE SUPERIOR WEB SITE OR ON OUR SITE AT
DeerValleyFarm.com**

11 Fred Clark Lane · Fayetteville, TN 37334
Owners: Fred & Rinda Clark · Kim Clark
Jonathan Perry, General Manager — Cell: 931/703-6330
Office: 931/433-1895 · Fax: 931/433-0730
Email: Jonathan Perry at jjperry@deervalleyfarm.com

**Free Delivery on ALL BULLS Anywhere in the United States
\$100 DISCOUNT FOR ANYONE PICKING UP THEIR OWN BULLS ON SALE DAY**

Welcome back to our annual spring bull sale! It is with great pleasure that we invite you back to evaluate what we feel is a promising set of herd sire prospects. We have assembled a tremendous offering for you this Spring and we believe that it is one of the deepest sets we have ever sold. The quality from front to back is as solid as any group we have ever offered. This is truly the most consistent set we have sold to date.

As you view the book, you will see that we have put much emphasis on balance and completeness — whether it be phenotypically or numerically. We have concentrated diligently to create a bull that has relevant balance from Calving Ease to Dollar Beef and everywhere in between. We strive to produce a herd sire that is first of all, sound and pleasing to the eye with the ability to travel and get the job done. We have then turned every stone to put the genetic capabilities in that package to excel in every pertinent trait that makes him profitable for you.

While we believe that our genetics will get you in the door and may separate us from many other programs, we can assure you that our customer service will keep you here as a customer. We are strong believers that service after the sale is paramount, for that reason, we will do everything reasonable to ensure that our product works for you. While we can never guarantee that you will not have a problem with your purchase, we can assure you that if you do, it will be treated in a fair and satisfactory manner to ensure that you get the warranty you have come to expect from us.

Please come and view the bulls before-hand. As always, they will be at the sale site several weeks before the sale and be very easy to sort through. We will be glad to go through them with you or you can help yourself and tour them at your own pace. Please don't hesitate to call on us if we can answer any questions or be of any service helping you select what you need. We hope to see you here on March 26th, if not before.

Sincerely,
Jonathan Perry



Fred, Rinda & Kim Clark



Fred Clark &
Alex Vaughn



JP, Jackie & Alli Perry
Zach Bailey

Directions

From Fayetteville

Take US Highway 64, west for approximately 2 miles to Hwy 273 and turn Left. Go approximately 1/4 mile to Ben Berry Road, and turn Left. Take the first Right (Pitts Bend Road) to the Deer Valley Farm Show & Sale Facility. Watch for Deer Valley signs at each turn.

From I-65

Take Exit 14 on US Hwy 64, going East past Deer Valley's main headquarters until you reach Hwy 273. Turn Right & go approximately 1/4 mile to Ben Berry Road. Turn Left & take the first Right onto Pitts Bend Road. Continue to the Deer Valley Farm Show & Sale Facility. Watch for Deer Valley signs at each turn, starting at Hwy 273.

GPS Address: 62 Pitts Bend Rd, Fayetteville, TN 37334

DNA - Decoded!

Most of us have read how DNA has changed the game in Livestock Evaluation. Most of us have tried to read the scientific explanations on how it works. Simply put, cattle that excelled in specific traits were tested, and DNA identified the genes (or markers) that superior animals had in common. For example, let's look at Weaning Weight (WW). Many thousands of animals with actual weaning weights recorded were evaluated with DNA. Some with very high weaning weights had the same gene markers in common, while some with poor weaning weights possessed an altogether different set of gene markers. We can now DNA test to investigate whether an animal outside the discovery group possess these favorable markers proven for superior weaning weight. The DNA possessed by a sire is directly correlated to his ability to transmit desirable traits to his offspring.

EPDs are good, DNA makes them better.

EPDs work. They are the best information in the industry, but are inherently dynamic with something called "possible change", which says that EPDs can change significantly once progeny arrive. No fault of the system, because a pedigree prediction cannot describe which genes an animal actually got from its parents, as there are billions of possible combinations. The American Angus Association owns the most complete database in the industry, comprising millions of animal records. When DNA for these favorable (or unfavorable) markers is applied to the calculation of EPDs for each trait, they become much more accurate. In fact, Zoetis HD 50K can make EPDs up to 6 times more accurate and predictable than a pedigree prediction alone.

Another way to look at it is with Progeny Equivalents. They describe how many progeny a bull would have to sire in order for his EPDs to reflect a comparable amount of accuracy:

- Birth** - BW EPD with 50K has the same accuracy as 8 progeny birth weights turned in on your bull.
- Weaning** - WW EPD with 50K has the same accuracy as 16 progeny weaning weights on your bull.
- Yearling** - YW EPD with 50K has the same accuracy as 20 progeny yearling weights on your bull.
- Milk** - M EPD with 50K has the same accuracy as having 12 daughters in production out of your bull.
- Carcass** - CW EPD with 50K has the same accuracy as 7 progeny carcasses weighed from your bull.
- Rib Eye** - RE EPD with 50K has the same accuracy as 9 progeny carcasses measured for Rib Eye.
- Marbling** - MB EPD with 50K has the same accuracy as having 12 progeny carcasses graded.
- Ultrasound** - Carcass EPDs with 50K have the same accuracy as up to 30 progeny scanned.

Do not accept substitutes!

The Zoetis 50K DNA test analyzes over 50,000 different markers spread across the entire bovine genome for the most comprehensive analysis, unlike cheaper DNA tests that only look at 400 gene markers, and are obviously less accurate.

Today we can reliably put bulls together for uniformity as well or better with Genomic-Enhanced (GE) EPDs than we can with half-brothers or even full brothers with non GE EPDs.

Service is synonymous with Deer Valley and we have invested heavily in Zoetis HD 50K DNA technology to bring you the most predictable and profitable bulls you can buy. There is no additional cost to you.

For more information on Zoetis HD 50K DNA and Genomic-Enhanced EPDs visit Angus.org or zoetisUS.com/genetics.



HOW TO PARTICIPATE ON THE PHONE OR ONLINE

We have made preparations to bid and buy livestock through Superior Productions' "Call or Click-To-Bid" service for those unable to attend in person on sale day. **Please note that all of the lots in the sale will also be available for viewing online prior to sale day at www.superiorlivestock.com.**

HOW IT WORKS

Turn in Bids Over the Phone. This is our traditional method of buying livestock and is the suggested process for anyone who does not have excellent, high-speed internet. To get started simply go online to www.superiorlivestock.com and click on the tab titled "Register for a Buyer Number". Select the registration form for Superior Productions and print the registration form. Fill it out and fax it in to Superior Productions at (817) 378-3380 with a signature on it, or scan and email the form to info@superiorauction.com. You can also mail it in to the address provided on the form. Upon receipt of this information Superior will call you with a buyer's number and the bid line phone number that you will use on sale day to place bids over the phone.

Turn in Bids Over the Internet through Click-To-Bid. This is Superior's online bidding program for cattle buying. **Please note that high speed internet is required - this is not for dial-up or satellite internet.** Registration is free, but you must become a member of www.superiorclicktobid.com to sign up. Becoming a member is easy - just go to the homepage of www.superiorclicktobid.com and follow the out-lined steps to get started. Input your information and select a username and password. You will receive an e-mail confirming you are a member. From that point forward you just have to sign in and select the sale you would like to register for and once approved by the ranch you will receive an e-mail confirming which sale you are now registered for.

Viewing the Auction. The sale will be broadcast via satellite on **Dish Network channel 231** and **DirectTV channel 345**. Please note that there is a short delay if you are watching the auction on television so call in a few lots ahead of the lot you are interested in bidding on. There are 2 places to view the sale broadcast live on the internet: www.superiorlivestock.com or www.superiorclicktobid.com. Just go to the home page of either website and select the auction. If you just want to watch the auction on your computer, smartphone, or tablet go to www.superiorlivestock.com, but if you want to bid over the computer you must go to www.superiorclicktobid.com. Remember you can call in to bid whether you watch on the TV or on the internet, but you must be a member of www.superiorclicktobid.com to "click-to-bid". Your computer must have Flash Media Player installed to view the auction. If you have any questions, please call the Superior Productions office at 800-431-4452.

Bidders who are successful in making purchases via satellite or internet will be contacted by the ranch after the sale to settle payment and make shipping arrangements.

GET CONNECTED.
FOLLOW THE SALE LIVE ON THE INTERNET

To register and follow the auction in real time on the internet, log on to: <http://www.liveauctions.tv>

If you wish to follow the sale on the computer and bid by telephone, please call the sale day phone numbers or one of the consultants listed in our catalog.

LIVE ON THE INTERNET. LIVE AUDIO. LIVE VIDEO. BIDDING.

LiveAuctions TV

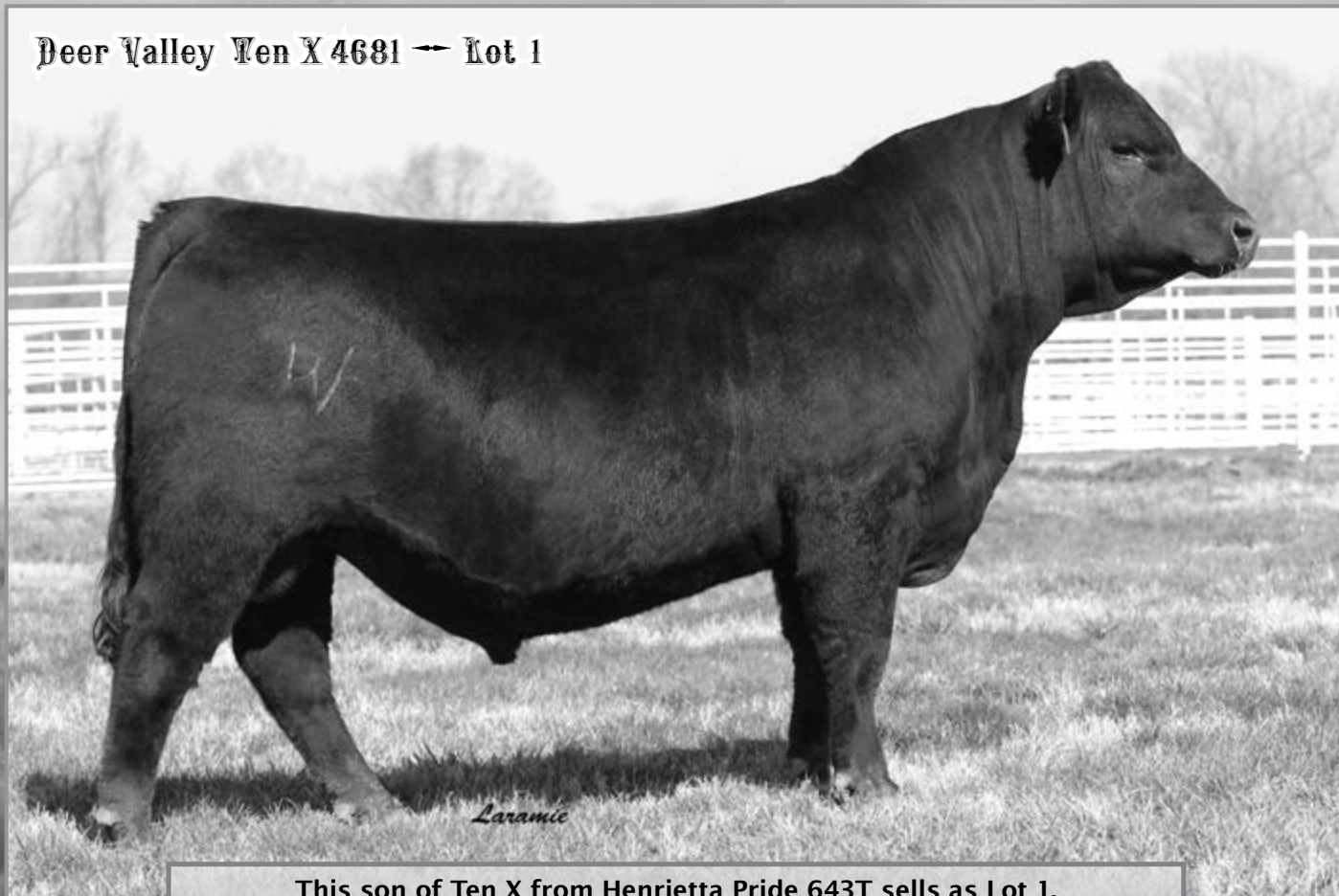
PO BOX 430, LEXINGTON, MO 64067
816.392.9241 TEL 937.515.1194 SUPPORT
www.liveauctions.tv

DVF

We realize that our valued customers have obligations that sometimes do not allow them to attend the bull sale. We are more than happy to discuss the bulls with you prior to the sale and offer a 100% satisfaction guarantee when we assist you with your purchases.

Feel free to contact any of the DVF crew or the sale staff to discuss the genetics selling. We can assist you by handling your order confidentially, having you on the phone when your bulls of interest are selling, or we invite you to register with Superior Productions or LiveAuctions where you can do your bidding as well.

Deer Valley Ten X 4681 ← Lot 1



This son of Ten X from Henrietta Pride 643T sells as Lot 1.



Deer Valley Ten X 4681

DOB: 08/15/2014

Reg: +18131080

Tattoo: 4681

Mytty In Focus
AAR Ten X 7008 SA
#15719841 AAR Lady Kelton 5551

SAF Focus of ER
Mytty Countess 906
SAV Adaptor 2213
HSAF Lady Kelton 504B
Connealy Onward
Connealy Lead On
Altune of Conanga 6104
Sitz Value 7097
Sitz Henrietta Pride 1370

\$W
+68.40
\$F
+90.93
\$G
+39.91
\$B
+184.14

CED	BW	WW	YW	SC	DOC	MILK	CW	MARB	RE
+5	+2.0	+67	+127	+1.01	+27	+25	+68	+.85	+.94

CED	BW	WW	YW	RFI	DMI	YH	SC	DOC	HP	CEM	Milk	MW	MH	CW	MB	RE	FAT	TNO
38	46	2	1	97	100	69	12	12	21	71	28	56	56	5	48	34	61	13

★ Leading off this year's spring Deer Valley Farm Performance-Tested Bull Sale is this direct son of the \$380,000 valued Sitz Henrietta Pride 643T sired by the breed-impacting Pathfinder sire AAR Ten X 7008 SA.

★ This powerful and massive dam who has been extremely influential in the DVF program is a full sister to the breed-leading growth sire Sitz Upward 307R. In addition, Sitz Henrietta Pride 643T has produced 23 direct daughters that are currently in production producing 29 progeny with an average weaning ratio of 102. She also records UREA 116@103. Through the 2014 DVF sale, a son of 643T - Deer Valley Compliance 2614, sold for \$27,000 to lead the offering and joined the Lisonbee Angus Ranch and Mower Angus programs in Utah. Through many of the past DVF female sales, direct daughters of 643T have been some of the highest valued females and are now working in prominent programs throughout the country.

★ This outstanding herd sire offers an impeccable EPD profile that excels him to the elite 1% of the breed for YW, \$F, and \$B traits, top 2% for weaning growth and he is in the top 4% for UREA and \$W values. A great opportunity to select a top herd sire backed by one of the breed's most proven and highest valued cow families.

Sitz Henrietta Pride 643T



Sons of this \$380,000 valued full sister to Sitz Upward 307R sell as Lots 1, 2, 3, and 4.

Henrietta Pride 643T x Denver

Deer Valley Denver 4761 -- Lot 2



DVF Deer Valley Denver 4761

DOB: 09/06/2014 Reg: +18131177 Tattoo: 4761

EXAR Upshot 0562B	Sitz Upward 307R	\$W
EXAR Denver 2002B	EXAR Barbara T020	+71.04
17160560 Exar Royal Lass 1067	EXAR 263C	\$F
	BR Royal Lass 19-132	+73.03
Connealy Onward	Connealy Lead On	\$G
Sitz Henrietta Pride 643T	Altune of Conanga 6104	+36.05
+15836552 Sitz Henrietta Pride 81M	Sitz Value 7097	\$B
	Sitz Henrietta Pride 1370	+168.16

CED	BW	WW	YW	SC	DOC	MILK	CW	MARB	RE
+6	+2.4	+67	+118	+1.56	+19	+34	+62	+62	+1.21

CED	BW	WW	YW	RFI	DMI	YH	SC	DOC	HP	CEM	MILK	MW	MH	CW	MB	RE	FAT	TNO
28	69	10	12	100	98	17	5	38	6	54	12	15	9	4	65	3	39	77

- ★ A stout and powerful herd sire in this son of the \$340,000 one-third interest EXAR Denver 2002B produced from the high income producing, DVF donor, Henrietta Pride 643T.
- ★ He offers an impressive EPD profile placing him in the top 1% of the breed with an impressive UREA EPD of +1.22 and he is in the top 2% for WW, YW, and \$B traits with a 3% ranking for \$W value.
- ★ His flush brother sells as Lot 3.

DVF Deer Valley Denver 4762

DOB: 09/07/2014 Reg: +18131178 Tattoo: 4762

EXAR Upshot 0562B	Sitz Upward 307R	\$W
EXAR Denver 2002B	EXAR Barbara T020	+69.47
17160560 Exar Royal Lass 1067	EXAR 263C	\$F
	BR Royal Lass 19-132	+63.51
Connealy Onward	Connealy Lead On	\$G
Sitz Henrietta Pride 643T	Altune of Conanga 6104	+32.61
+15836552 Sitz Henrietta Pride 81M	Sitz Value 7097	\$B
	Sitz Henrietta Pride 1370	+155.88

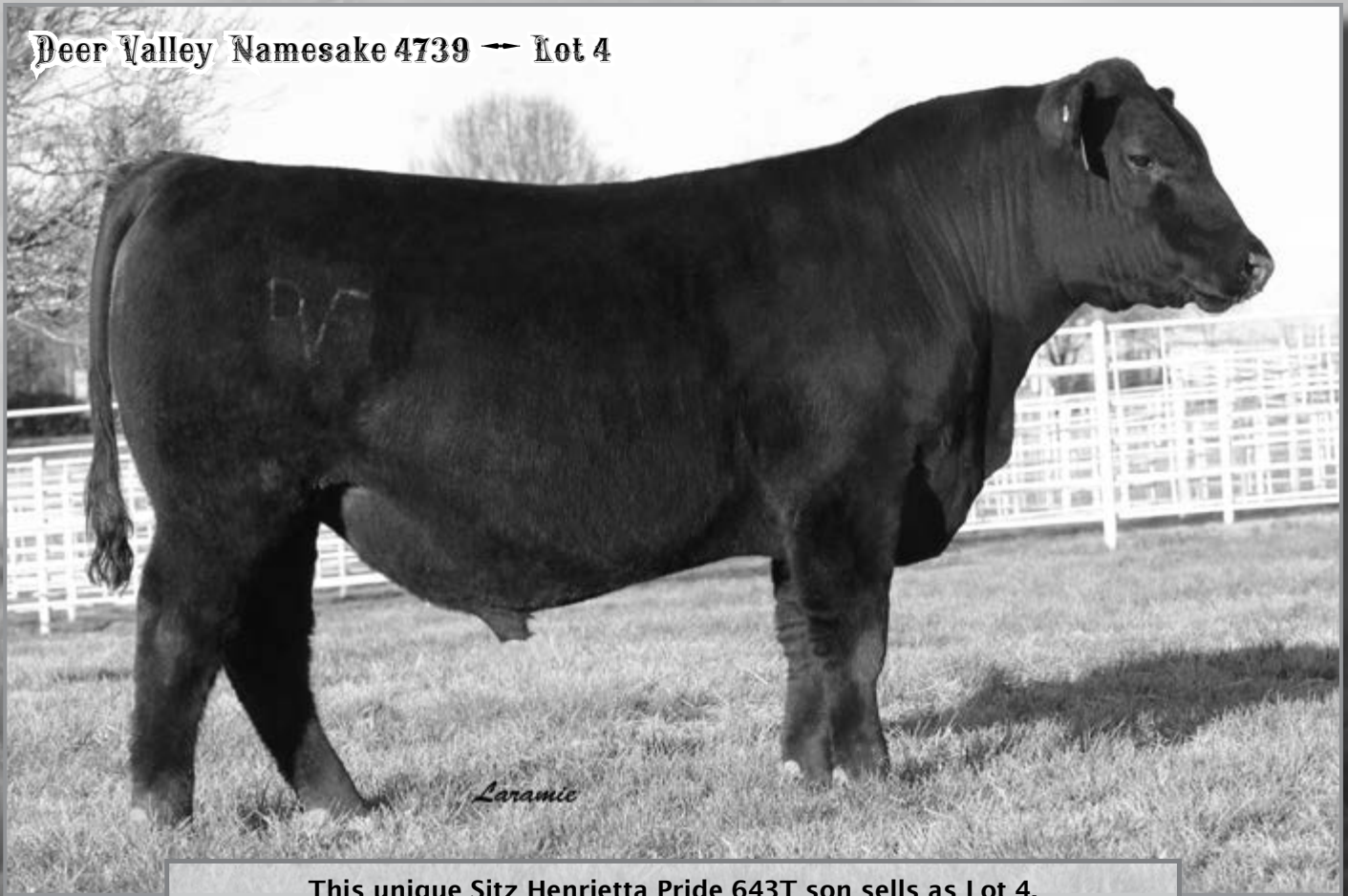
CED	BW	WW	YW	SC	DOC	MILK	CW	MARB	RE
+12	+1.8	+63	+112	+4.6	+22	+32	+58	+63	+1.09

CED	BW	WW	YW	RFI	DMI	YH	SC	DOC	HP	CEM	MILK	MW	MH	CW	MB	RE	FAT	TNO
7	55	24	25	100	99	31	54	24	17	13	22	37	23	10	64	10	66	67

- ★ This flush brother to Lot 2 offers added calving ease as he ranks in the top 10% of the breed for CED EPD. In addition he is in the top 4% of the breed for UREA, \$W, and \$B traits with a 5% ranking for yearling growth and a 10% ranking for WW EPD.
- ★ His powerful and massive dam records UREA 116@103 plus she has 23 daughters combining for WR 29@102.

Mush Brothers!

Deer Valley Namesake 4739 -- Lot 4



This unique Sitz Henrietta Pride 643T son sells as Lot 4.

DVF

Deer Valley Namesake 4739

DOB: 09/02/2014 Reg: +18126436 Tattoo: 4739

<p>Connealy Impression Connealy Namesake 10X 17029840 Mc Black Lillian 9011</p> <p>Connealy Onward Sitz Henrietta Pride 643T +15836552 Sitz Henrietta Pride 81M</p>	<p>Connealy Reflection Pearl Pammy of Conanga 194 TC Total 410 McK Black Lilly 7011</p> <p>Connealy Lead On Altune of Conanga 6104 Sitz Value 7097 Sitz Henrietta Pride 1370</p>	<table border="1" style="font-size: 0.8em;"> <tr><td>\$W</td></tr> <tr><td>+54.40</td></tr> <tr><td>\$F</td></tr> <tr><td>+37.59</td></tr> <tr><td>\$G</td></tr> <tr><td>+32.59</td></tr> <tr><td>\$B</td></tr> <tr><td>+129.30</td></tr> </table>	\$W	+54.40	\$F	+37.59	\$G	+32.59	\$B	+129.30
\$W										
+54.40										
\$F										
+37.59										
\$G										
+32.59										
\$B										
+129.30										

CED	BW	WW	YW	SC	DOC	MILK	CW	MARB	RE
+9	+1.9	+56	+97	+1.01	+33	+22	+47	+37	+1.12

CED	BW	WW	YW	RFI	DMI	YH	SC	DOC	HP	CEM	Milk	MW	MH	CW	MB	RE	FAT	TNO
40	67	7	19	100	99	42	18	5	4	33	21	26	34	14	85	3	20	5

- ★ An opportunity to select another direct son of the \$380,000 Sitz Henrietta Pride 643T sired by the proven calving ease sire, Connealy Namesake 10X.
- ★ His sire was bred in the Connealy program and has earned a double-digit CED EPD and combines the proven Pathfinder and growth traits of Connealy Impression and TC Total 410.
- ★ Sitz Henrietta Pride 643T is responsible for many of the top selling females for many of the DVF sale offerings plus she has produced numerous sale highlights through DVF bull sales and currently has a progeny record of WR 2@105, YR 1@100, and UREA 116@103.
- ★ This calving ease 643T son also offers a UREA EPD that ranks among the breed's most elite 1%.

Deer Valley Farm...

Our goal is to produce powerful, performance-tested bulls, in volume, that will work in all environments and ultimately add profitability to our customers' programs.



Deer Valley Ten X 46147

DDF

DOB: 08/25/2014 Reg: 18130971 Tattoo: 46147

Mytty In Focus	SAF Focus of ER	\$W
AAR Ten X 7008 SA	Mytty Countess 906	+75.43
#15719841 AAR Lady Kelton 5551	SAV Adaptor 2213	\$F
	HSAF Lady Kelton 504B	+84.27
	GAR Predestined	\$G
GAR Progress	GAR Objective 2345	+49.27
Deer Valley Blackcap 1263	Rito 616 of 4820 6807	\$B
+16964900 Rita 1194 of 2536 Rito 616	GAR Precision 2536	+181.43

CED	BW	WW	YW	SC	DOC	MILK	CW	MARB	RE
+9	+1.0	+65	+121	+1.70	+15	+29	+59	+1.27	+6.2

CED	BW	WW	YW	RFI	DMI	YH	SC	DOC	HP	CEM	Milk	MW	MH	CW	MB	RE	FAT	TNO
15	20	5	1	92	100	87	5	41	97	37	31	57	84	5	6	60	65	77

★ Tremendous EPDs in this son of Ten X who ranks among the breed's extreme 1% for MB and \$B values and he is in the top 2% for yearling growth and \$W with a 4% ranking for WW EPD.

★ He combines the extreme growth traits of Ten X with the impressive calving ease values of GAR Progress and Rito 616 and is backed by the longtime DVF donor Rita 1194.



Deer Valley Ten X 46147 -- Lot 5



Deer Valley Ten X 46101

DOB: 08/17/2014 Reg: 18131002 Tattoo: 46101

Mytty In Focus	SAF Focus of ER	\$W
AAR Ten X 7008 SA	Mytty Countess 906	+67.76
#15719841 AAR Lady Kelton 5551	SAV Adaptor 2213	\$F
	HSAF Lady Kelton 504B	+73.11
	SS Objective T510 OT26	\$G
GAR Ultimate	GAR Load Up 1314	+49.89
Deer Valley Rita 0782	Rito 616 of 4820 6807	\$B
+16870412 Deer Valley Rita 8514	GAR Ext 614	+157.75

CED	BW	WW	YW	SC	DOC	MILK	CW	MARB	RE
+16	-2.0	+60	+110	+1.12	+8	+18	+44	+99	+7.1

CED	BW	WW	YW	RFI	DMI	YH	SC	DOC	HP	CEM	Milk	MW	MH	CW	MB	RE	FAT	TNO
4	2	18	9	88	96	73	20	74	93	46	72	81	85	41	22	43	35	49

★ Extreme calving ease in this son of Ten X who ranks in the top 1% of the breed for CED EPD and top 3% of the breed for BW EPD. In addition, he also offers added marbling with an MB trait in the top 3% and is in the top 4% for \$B value with a \$W trait in the top 5%.

★ His low birth dam records BR 2@94.



Deer Valley Ten X 46101 -- Lot 6



Deer Valley Ten X 4792

DOB: 09/10/2014 Reg: 18131006 Tattoo: 4792

Mytty In Focus	SAF Focus of ER	\$W
AAR Ten X 7008 SA	Mytty Countess 906	+71.79
#15719841 AAR Lady Kelton 5551	SAV Adaptor 2213	\$F
	HSAF Lady Kelton 504B	+65.80
	SS Objective T510 OT26	\$G
	SS Traveler 6807 T510	+49.38
Deer Valley Lady 0740	SS Miss Rita R011 7R8	\$B
+16867696 Sunset Valley Lady 4501	Bon View New Design 878	+148.65
	SVF Forever Lady 57D	

CED	BW	WW	YW	SC	DOC	MILK	CW	MARB	RE
+13	-1.3	+61	+110	+5.2	+9	+25	+43	+1.15	+5.9

CED	BW	WW	YW	RFI	DMI	YH	SC	DOC	HP	CEM	Milk	MW	MH	CW	MB	RE	FAT	TNO
5	3	15	6	81	99	79	39	63	90	30	46	47	85	55	15	62	50	52

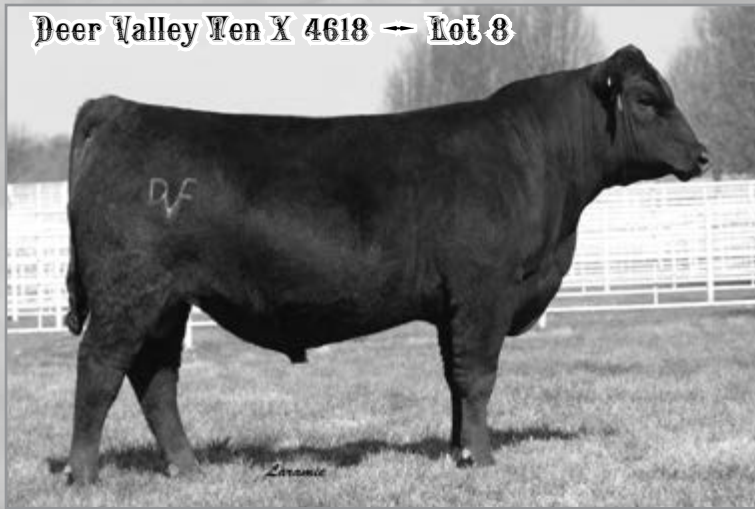
★ Another impressive, extreme calving ease son of Ten X who ranks in the top 5% of the breed for CED EPD while also ranking in the top 3% for both MB and \$W values with a \$B value in the top 10%.

★ His dam is a direct daughter of Lady 4501 and records WR 2@100 and \$IMF 2@130.



Deer Valley Ten X 4792 -- Lot 7

Deer Valley Ten X 4618 -- Lot 8



DF 8 **Deer Valley Ten X 4618**
 DOB: 08/09/2014 Reg: 18131026 Tattoo: 4618

Mytty In Focus SAF Focus of ER
 AAR Ten X 7008 SA Mytty Countess 906 \$W
 #15719841 AAR Lady Kelton 5551 SAV Adaptor 2213 +65.95
 HSAF Lady Kelton 5048 \$F
 Sitz Upward 307R Connealy Onward +96.81
 Deer Valley ForeverLady 0303 \$G
 +16730882 EXAR Forever Lady 611 C4D Sitz Henrietta Pride 81M +38.59
 Mytty In Focus \$B
 XXG Forever Lady 57D 57E2 +182.53

CED	BW	WW	YW	SC	DOC	MILK	CW	MARB	RE
+13	-1.3	+64	+125	+1.49	+20	+23	+63	+1.01	+48

CED	BW	WW	YW	RFI	DMI	YH	SC	DOC	HP	CEM	Milk	MW	MH	CW	MB	RE	FAT	TNO
6	3	1	1	94	92	44	2	22	35	9	20	27	68	8	37	67	62	90

★ This unique Ten X son excels to the extreme top 1% of the breed for \$B value while balancing CED and MB traits in the top 5% combined with a \$W value in the top 10%.

★ His dam who records BR 2@99 combines the extreme growth of Upward with the proven calving ease of In Focus.

Deer Valley Ten X 46126 -- Lot 9



DF 9 **Deer Valley Ten X 46126**
 DOB: 08/12/2014 Reg: +18351602 Tattoo: 46126

Mytty In Focus SAF Focus of ER
 AAR Ten X 7008 SA Mytty Countess 906 \$W
 #15719841 AAR Lady Kelton 5551 SAV Adaptor 2213 +64.75
 HSAF Lady Kelton 5048 \$F
 Summitcrest Complete 1P55 CF Right Design 1802 +88.88
 VAR Blackbird 1218 Summitcrest Elba 1M17 \$G
 +16917008 Sandpoint Blackbird 8809 Connealy Onward +51.71
 Riverbend Blackbird 4301 \$B
 +180.55

CED	BW	WW	YW	SC	DOC	MILK	CW	MARB	RE
-4	+3.7	+66	+122	+1.63	+18	+32	+55	+91	+1.09

CED	BW	WW	YW	RFI	DMI	YH	SC	DOC	HP	CEM	Milk	MW	MH	CW	MB	RE	FAT	TNO
86	76	3	1	94	100	36	2	26	35	49	27	28	17	14	35	5	19	51

★ Power and performance in this Ten X son who ranks in the extreme top 1% for yearling growth and for \$B value with a 2% ranking for UREA, 3% for WW, and 10% for MB and \$W values.

★ His dam is a maternal sister to VAR Generation 2100 and records %IMF 5@108.

Deer Valley Ten X 5015 -- Lot 10



DF 10 **Deer Valley Ten X 5015**
 DOB: 08/17/2014 Reg: +18227057 Tattoo: 5015

Mytty In Focus SAF Focus of ER
 AAR Ten X 7008 SA Mytty Countess 906 \$W
 #15719841 AAR Lady Kelton 5551 SAV Adaptor 2213 +62.58
 HSAF Lady Kelton 5048 \$F
 Rito 616 of 4B20 6807 DHD Traveler 6807 +79.36
 Rita 1198 of 2536 Rito 616 Rita 4B20 of 0FB1 Bando \$G
 +13801957 GAR Precision 2536 GAR Precision 1680 +44.86
 GAR Ext 2104 \$B
 +155.83

CED	BW	WW	YW	SC	DOC	MILK	CW	MARB	RE
+9	+7	+57	+107	+1.09	+11	+24	+41	+97	+37

CED	BW	WW	YW	RFI	DMI	YH	SC	DOC	HP	CEM	Milk	MW	MH	CW	MB	RE	FAT	TNO
21	21	24	8	52	70	81	19	50	93	41	60	87	89	54	25	81	51	27

★ Calving ease with proven growth and excellent carcass values in this Ten X son who is a direct son of Rito 1198.

★ His dam has 47 daughters in production with a combined weaning ratio on 110 head of 100 plus she records %IMF 129@100 while balancing BR 1@97, WR 1@113, and YR 1@107.

★ He is in the top 4% for \$B value and top 10% for MB and \$W values.



Deer Valley All In 4688 -- Lot 11



This impressive Deer Valley All In son sells as Lot 11.

Mush Brothers!



Deer Valley All In 4688

DOB: 08/15/2014

Reg: +18128377

Tattoo: 4688

AAR Ten X 7008 SA	Mytty In Focus	\$W
Deer Valley All In	AAR Lady Kelton 5551	+66.12
17307074	Sitz Upward 307R	\$F
	GAR Objective 2345	+70.17
	Bon View New Design 208	\$G
EF Rita 9401	TC Erica Eileen 2047	+40.36
+16602117	GAR Retail Product	\$B
	GAR Outlier 1360	+155.01

CED	BW	WW	YW	SC	DOC	MILK	CW	MARB	RE
+8	+2.5	+63	+110	+1.26	+25	+31	+48	+77	+88

CED	BW	WW	YW	RFI	DMI	YH	SC	DOC	HP	CEM	Milk	MW	MH	CW	MB	RE	FAT	TNO
26	57	8	8	62	87	8	10	22	33	17	47	15	27	8	23	14	75	63

★ This balanced trait son of the Select Sires AI sire Deer Valley All In offers an EPD package that places him in the top 4% for \$B value and top 10% for WW, YW, RE, and \$W values.

★ His dam who is also the dam of Lot 12 records %IMF 10@104.



Deer Valley All In 4683

DOB: 08/15/2014

Reg: +18127994

Tattoo: 4683

AAR Ten X 7008 SA	Mytty In Focus	\$W
Deer Valley All In	AAR Lady Kelton 5551	+55.63
17307074	Sitz Upward 307R	\$F
	GAR Objective 2345	+67.36
	Bon View New Design 208	\$G
EF Rita 9401	TC Erica Eileen 2047	+50.38
+16602117	GAR Retail Product	\$B
	GAR Outlier 1360	+156.51

CED	BW	WW	YW	SC	DOC	MILK	CW	MARB	RE
-1	+4.2	+61	+108	+1.13	+14	+35	+44	+1.09	+80

CED	BW	WW	YW	RFI	DMI	YH	SC	DOC	HP	CEM	Milk	MW	MH	CW	MB	RE	FAT	TNO
72	90	14	10	66	89	23	15	71	45	31	16	3	4	17	10	23	42	86

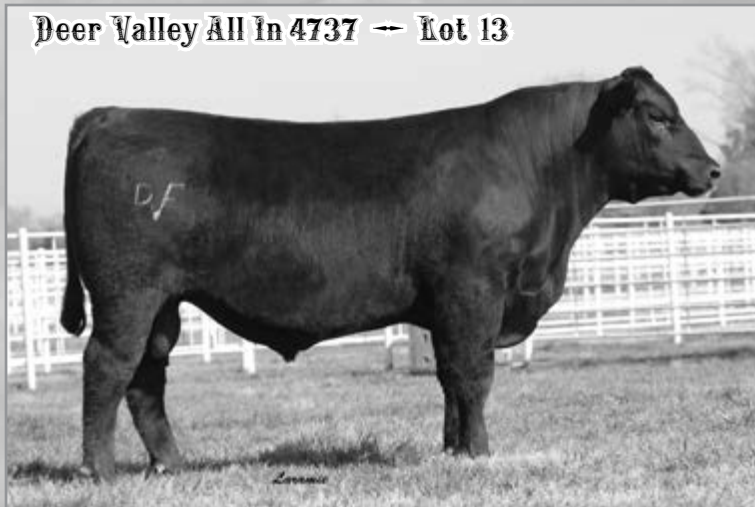
★ Added growth and performance in this powerful All In son who ranks in the top 10% of the breed for both weaning and yearling growth. He also excels to the extreme top 1% of the breed for Milk EPD and is in the top 4% of the breed for MB and \$B values.

★ He offers a pedigree stacked for proven growth with added maternal values.

Deer Valley All In 4683 -- Lot 12



Deer Valley All In 4737 -- Lot 13



13

Deer Valley All In 4737

DOB: 09/03/2014

Reg: 18127986

Tattoo: 4737

AAR Ten X 7008 SA
Deer Valley All In
 17307074 Deer Valley Rita 0274

Mytty In Focus
 AAR Lady Kelton 5551
 Sitz Upward 307R
 GAR Objective 2345

\$W
+76.54
\$F
+67.13
\$G
+48.99
\$B
+164.57

Summitcrest Complete 1P55
BoBo Blackcap 1527
 +17050245 Exar Blackcap 2397

CF Right Design 1802
 Summitcrest Elba 1M17
 B/R Ambush 28
 B/R Lantz Blackcap 5231

CED	BW	WW	YW	SC	DOC	MILK	CW	MARB	RE									
+11	+1	+57	+104	+1.05	+19	+35	+47	+97	+94									
CED	BW	WW	YW	RFI	DMI	YH	SC	DOC	HP	CEM	MILK	MW	MH	CW	MB	RE	FAT	TNO
8	9	48	24	61	92	63	16	34	42	7	8	84	80	9	14	10	46	55

★ A double-digit CED son of Deer Valley All In who also excels to the top 1% of the breed for Milk EPD while offering a balanced set of carcass traits that rank in the top 2% for \$B value, top 4% for UREA EPD and top 10% for MB with a \$W value that is also in the top 2%.

★ Calving ease with proven performance bred in to this individual.

Deer Valley All In 46160 -- Lot 14



14

Deer Valley All In 46160

DOB: 08/26/2014

Reg: 18139322

Tattoo: 46160

AAR Ten X 7008 SA
Deer Valley All In
 17307074 Deer Valley Rita 0274

Mytty In Focus
 AAR Lady Kelton 5551
 Sitz Upward 307R
 GAR Objective 2345

\$W
+71.17
\$F
+60.24
\$G
+39.80
\$B
+118.35

SAV Bismarck 5682
Shermans Eisa Erica 058
 16902584 Shermans Eisa Erica 691

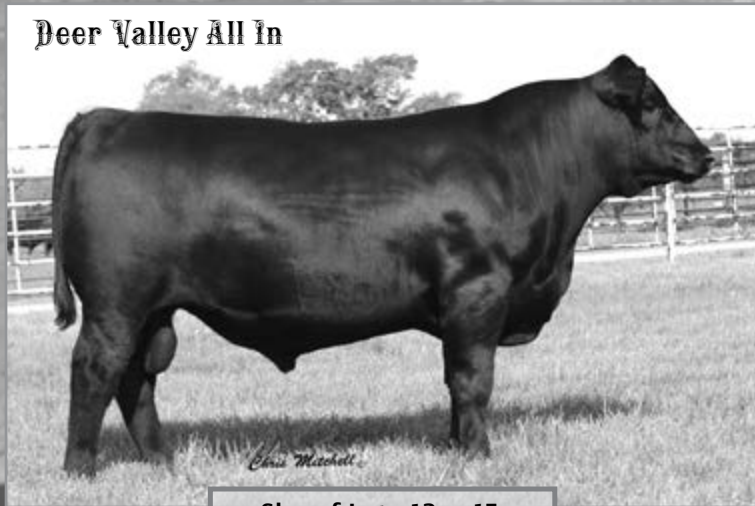
GAR Grid Maker
 SAV Abigale 0451
 GAR Predestined
 Circle S Eisa Erica 6073

CED	BW	WW	YW	SC	DOC	MILK	CW	MARB	RE									
+9	+8	+58	+102	+93	+16	+30	+31	+57	+73									
CED	BW	WW	YW	RFI	DMI	YH	SC	DOC	HP	CEM	MILK	MW	MH	CW	MB	RE	FAT	TNO
12	16	25	20	93	93	88	15	63	62	13	30	73	68	60	40	57	43	91

★ Calving ease with solid performance in this All In son who posted BR-97 and he ranks in the top 3% of the breed for \$W value with a Milk EPD in the top 2%.

★ His low birth dam is from the calving ease Eisa Erica family and records BR 3@95.

Deer Valley All In



15

Deer Valley All In 46108

DOB: 08/18/2014

Reg: 18121521

Tattoo: 46108

AAR Ten X 7008 SA
Deer Valley All In
 17307074 Deer Valley Rita 0274

Mytty In Focus
 AAR Lady Kelton 5551
 Sitz Upward 307R
 GAR Objective 2345

\$W
+70.58
\$F
+84.33
\$G
+34.87
\$B
+118.38

SandPoint Butkus X797
Deer Valley Blackbird 2439
 17343319 Sandpoint Blackbird 7290

SAV Final Answer 0035
 GAR Grid Maker 4603
 Stevenson Moneymaker R185
 ELD Blackbird P625

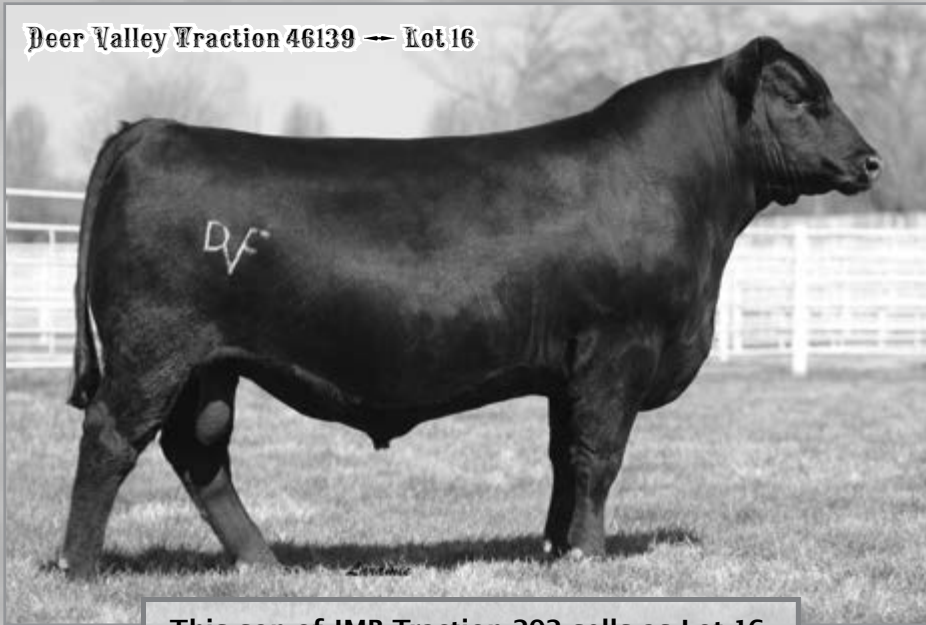
CED	BW	WW	YW	SC	DOC	MILK	CW	MARB	RE									
+10	+1.4	+64	+115	+1.49	+14	+26	+30	+65	+45									
CED	BW	WW	YW	RFI	DMI	YH	SC	DOC	HP	CEM	MILK	MW	MH	CW	MB	RE	FAT	TNO
10	13	36	13	79	80	61	4	54	57	22	72	53	25	76	39	85	78	78

★ This impressive All In son offers double-digit CED along with a \$W value in the top 3% of the breed.

★ His dam is sired by the proven calving ease sire who is a member of the DVF herd sire battery, and Select Sires lineup - Sandpoint Butkus X797.

Sire of Lots 13 — 15

Deer Valley Traction 46139 -- Lot 16



This son of JMB Traction 292 sells as Lot 16.



Deer Valley Traction 46139

DOB: 08/24/2014 Reg: 17995677 Tattoo: 46139

Sitz Top Game 561X	GDAR Game Day 449	\$W
JMB Traction 292	Sitz Pride 88T	+69.83
17262374 JMB Emulota 013	SAV 004 Predominant 4438	\$F
	BAR S Emulota 5426	+84.86
	SS Objective T510 OT26	\$G
Deer Valley Lucy 9123	SS Traveler 6807 T510	+43.77
+16350228 Basin Lucy 6433	SS Miss Rita R011 7R8	\$B
	Bon View New Design 1407	+156.79
	Basin Lucy 178E	

CED	BW	WW	YW	SC	DOC	MILK	CW	MARB	RE
+2	+2.3	+63	+114	+1.03	-1	+34	+43	+87	+96

CED	BW	WW	YW	RFI	DMI	YH	SC	DOC	HP	CEM	MILK	MW	MH	CW	MB	RE	FAT	TNO
51	59	11	16	6	52	34	49	90	16	86	19	16	52	28	24	36	75	40

★ Added muscle dimension and power in this son of Traction who ranks in the top 4% of the breed for \$W and \$B values and is also in the top 3% of the breed for yearling growth.

★ He posted WR-101 and his dam records %IMF 6@112 and YR 6@101 and is from the high valued Lucy cow family.



Deer Valley Traction 4726

DDF

DOB: 09/01/2014 Reg: 18121574 Tattoo: 4726

Sitz Top Game 561X	GDAR Game Day 449	\$W
JMB Traction 292	Sitz Pride 88T	+63.56
17262374 JMB Emulota 013	SAV 004 Predominant 4438	\$F
	BAR S Emulota 5426	+95.80
	GAR New Design 5050	\$G
GAR 5050 New Design 2601	B/R New Design 036	+40.18
17056972 GAR Predestined 1739	GAR Precision 706	\$B
	GAR Predestined	+166.40
	GAR Retail Product 155	

CED	BW	WW	YW	SC	DOC	MILK	CW	MARB	RE
+9	+1.2	+61	+118	+12	+21	+28	+48	+56	+114

CED	BW	WW	YW	RFI	DMI	YH	SC	DOC	HP	CEM	MILK	MW	MH	CW	MB	RE	FAT	TNO
28	36	24	9	39	50	58	92	13	11	51	34	22	36	16	38	7	53	51

★ A calving ease son of Traction who also excels with triple-digit growth and he is in the top 2% of the breed for \$B value with a UREA EPD that is in the top 1%.

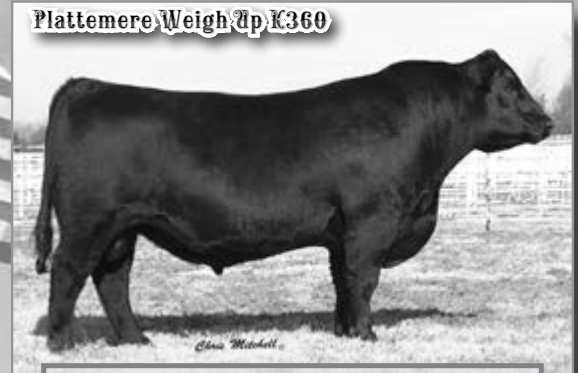
★ His dam is bred for superior carcass values and has earned a progeny record of WR 1@100 and YR 1@102.

Deer Valley Traction 4726 -- Lot 17





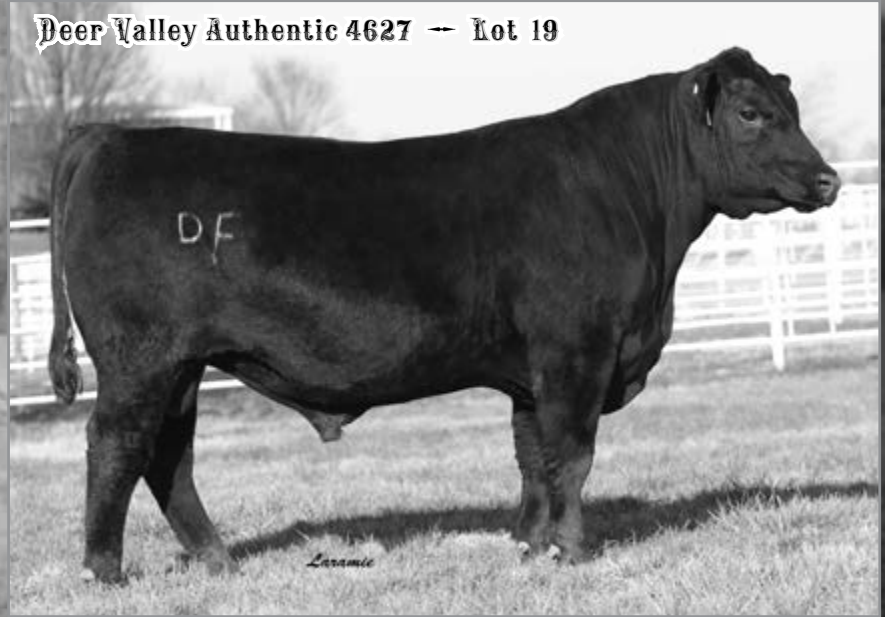
This impressive Pathfinder dam of Plattermere Weigh Up K360 is also the dam of Lot 18.



His maternal brother sells as Lot 18.



The sire of Lot 19.



18 Deer Valley Traction 4695

DOB: 08/16/2014 Reg: +18121555 Tattoo: 4695

Sitz Top Game 561X	GDAR Game Day 449	\$W
JMB Traction 292	Sitz Pride 88T	+61.56
17262374	JMB Emulota 013	\$F
	SAV 004 Predominant 4438	+79.06
	BAR S Emulota 5426	\$G
	GAR Retail Product	+44.77
	BAR Ext 4927	\$B
	Bon View New Design 1407	+129.80
	Barbara of Plattermere 311	
	Barbara of Plattermere 286	

CED	BW	WW	YW	SC	DOC	MILK	CW	MARB	RE
+7	+5	+57	+108	+1.40	+10	+27	+30	+69	+95

CED	BW	WW	YW	RFI	DMI	YH	SC	DOC	HP	CEM	Milk	MW	MH	CW	MB	RE	FAT	TNO
57	27	63	55	58	69	13	27	62	2	39	51	51	22	76	40	19	30	59

- ★ This low birth Traction son is a maternal brother to the DVF and Select Sires AI sire Plattermere Weigh Up K360.
- ★ His Pathfinder dam records WR 4@105, YR 2@111, and %IMF 30@108 plus she has 4 daughters combining for WR 8@102.

19 Deer Valley Authentic 4627

DOB: 08/10/2014 Reg: 18126428 Tattoo: 4627

GAR New Design 5050	B/R New Design 036	\$W
EF Authentic 0829	GAR Precision 706	+67.79
16822472	2 Bar Objective 7836	\$F
	SS Objective T510 OT26	+75.33
	2 Bar 6807 Traveler 5535	\$G
	Connealy Confidence 0100	+42.84
	Connealy Tobin	\$B
	Becka Gala of Conanga 8281	+115.76
	Mytty In Focus	
	Thomas Swan 4021	

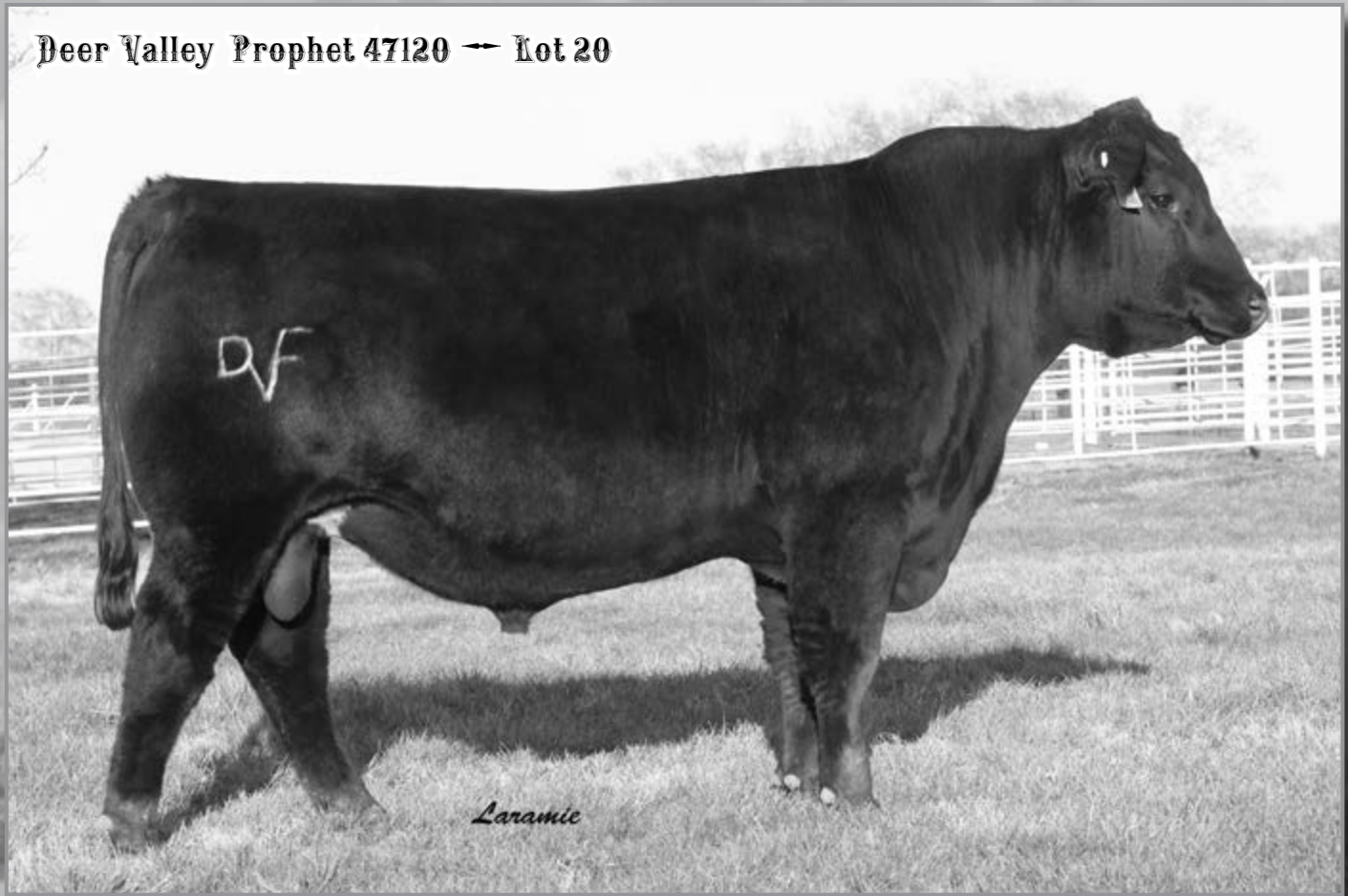
CED	BW	WW	YW	SC	DOC	MILK	CW	MARB	RE
+19	-3.1	+56	+110	+42	+12	+23	+28	+79	+73

CED	BW	WW	YW	RFI	DMI	YH	SC	DOC	HP	CEM	Milk	MW	MH	CW	MB	RE	FAT	TNO
1	1	50	30	15	29	79	82	39	90	2	44	79	60	39	25	24	78	19

- ★ A smooth designed, well made, extreme calving ease sire who ranks among the breed's elite 1% for both CED and BW EPDs. In addition, he also offers balanced carcass traits.
- ★ Three generations of extreme calving ease stacked in this pedigree.



Deer Valley Prophet 47120 ← Lot 20



20

Deer Valley Prophet 47120

DOB: 09/27/2014 Reg: Tattoo: 47120

CRA Bextor 872 5205 608	BAR Ext Traveler 205	\$W
GAR Prophet +16295688	Cra Lady Jaye 608 498 S Easy	+77.95
GAR Objective 1885	SS Objective T510 0T26	\$F
	GAR 1407 New Design 2232	+79.62
MCC Daybreak	Boyd New Day 8005	\$G
GAR Daybreak R240	MCC Miss Focus 134	+53.08
+16933567	SS Objective T510 0T26	\$B
	GAR 1407 New Design 2983	+126.83

CED	BW	WW	YW	SC	DOC	MILK	CW	MARB	RE
+17	-1.0	+65	+121	+55	+23	+31	+32	+1.02	+1.02

CED	BW	WW	YW	RFI	DMI	YH	SC	DOC	HP	CEM	Milk	MW	MH	CW	MB	RE	FAT	TNO
1	3	2	1	44	86	29	77	9	33	1	38	33	43	20	4	4	74	91

★ A unique opportunity to select a herd sire sired by the longtime Select Sires breed-leading growth and carcass sire GAR Prophet and produced from an outstanding donor.

★ GAR Daybreak R240 is an extremely well designed, attractive female who serves as a donor in the Deer Valley, Boyd Beef, and Myers programs and she is a full sister to the extremely popular and heavily used AI sire, GAR Sunrise.

★ Breed-leading genetics with a pedigree engineered for predictable calving ease, growth, and carcass values.



GAR Sunrise

Maternal brother to the dam of Lot 20.



GAR Daybreak R240

Her son sells as Lot 20.

Sons of Weigh Up

Deer Valley Weigh Up 4738 -- Lot 21



Deer Valley Weigh Up 4738

DDF

DOB: 09/03/2014 Reg: 18121577 Tattoo: 4738

Sitz Upward 307R	Connealy Onward	\$W
Plattermere Weigh Up K360	Sitz Henrietta Pride 81M	+77.32
16692552 Barbara of Plattermere 337	GAR Retail Product	\$F
	Barbara of Plattermere 311	+81.78
	Boyd New Day 8005	\$G
B/R New Day 454	B/R Ruby 1224	+45.12
Deer Valley Rita 1341	SS Objective T510 OT26	\$B
+16964653 GAR Objective 2345	GAR 1407 New Design 2413	+157.17

CED	BW	WW	YW	SC	DOC	MILK	CW	MARB	RE
+11	+6	+68	+123	+65	+22	+26	+50	+82	+95

CED	BW	WW	YW	RFI	DMI	YH	SC	DOC	HP	CEM	MIK	MW	MH	CW	MB	RE	FAT	TNO
16	25	5	4	94	97	24	69	21	5	44	4	83	67	4	21	4	6	73

★ A unique Weigh Up son to lead this division off as he offers double-digit CED with extreme growth that places him in the top 1% of the breed for YW and top 2% for WW Traits. In addition, he is in the top 2% of the breed for \$W value with a \$B value in the top 4%.

★ Multiple generations of proven, predictable genetics in this pedigree tracing to the \$300,000 GAR Objective 2345.



Deer Valley Weigh Up 4640

DOB: 08/12/2014 Reg: +18130982 Tattoo: 4640

Sitz Upward 307R	Connealy Onward	\$W
Plattermere Weigh Up K360	Sitz Henrietta Pride 81M	+70.11
16692552 Barbara of Plattermere 337	GAR Retail Product	\$F
	Barbara of Plattermere 311	+67.73
	Boyd New Day 8005	\$G
GAR Progress	B/R Ruby 1224	+61.33
Deer Valley Blackcap 1227	SS Objective T510 OT26	\$B
+16964898 Rita 1194 of 2536 Rito 616	GAR 1407 New Design 2413	+191.29

CED	BW	WW	YW	SC	DOC	MILK	CW	MARB	RE
+10	+1.4	+60	+106	-.47	+18	+31	+55	+1.42	+1.00

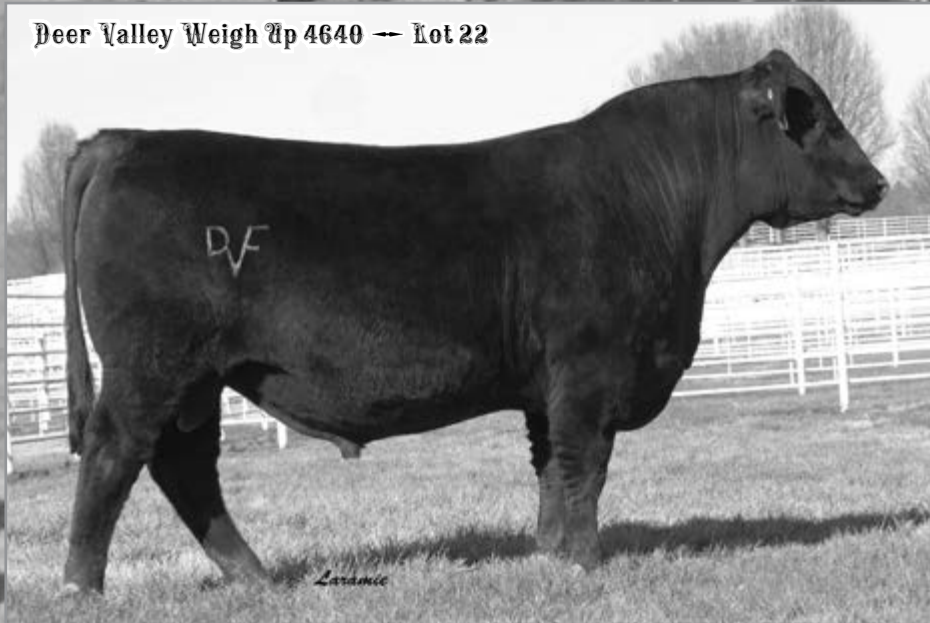
CED	BW	WW	YW	RFI	DMI	YH	SC	DOC	HP	CEM	MIK	MW	MH	CW	MB	RE	FAT	TNO
18	23	18	17	49	94	64	91	24	39	38	30	57	40	13	11	11	16	57

★ This impressive son of Weigh Up offers double digit CED with solid growth values combined with excellent carcass traits.

★ He excels to the extreme top 1% of the breed with a \$B value of +191, plus he is in the top 1% for MB EPD with a 15% ranking for CED, WW, and YW traits.

★ His dam stacks the proven calving ease traits of GAR Progress and Rito 616 and descends from the high valued 2536 donor.

Deer Valley Weigh Up 4640 -- Lot 22





23

Deer Valley Weigh Up 4690

DOB: 08/15/2014 Reg: +18121554 Tattoo: 4690

Sitz Upward 307R
Plattemere Weigh Up K360
 16692552 Barbara of Plattemere 337

SAV Pioneer 7301
Deer Valley Rita 9035
 +16577355 EF Rita 0221

Connealy Onward
 Sitz Henrietta Pride 81M
 GAR Retail Product
 Barbara of Plattemere 311

SAV Final Answer 0035
 SAV Blackbird 5297
 B/R New Design 036
 GAR Precision 2168

\$W
+73.22

\$F
+74.33

\$G
+30.71

\$B
+135.12

CED	BW	WW	YW	SC	DOC	MILK	CW	MARB	RE
+14	-1.6	+59	+110	+87	+14	+30	+42	+68	+72

CED	BW	WW	YW	RFI	DMI	YH	SC	DOC	HP	CEM	Milk	MW	MH	CW	MB	RE	FAT	TNO
6	6	24	21	66	87	91	34	46	4	36	18	68	67	45	46	35	62	34

★ Added calving ease with proven performance in this Weigh Up son who ranks in the top 4% of the breed for CED and BW traits while also offering a \$W value in the top 2% of the breed.

★ His dam is a direct daughter of Rito 0221 and records WR 3@116, YR 2@113, and UREA 24@100.

24

Deer Valley Weigh Up 4616

DOB: 08/10/2014 Reg: +18121538 Tattoo: 4616

Sitz Upward 307R
Plattemere Weigh Up K360
 16692552 Barbara of Plattemere 337

SAV Pioneer 7301
Deer Valley Rita 9035
 +16577355 EF Rita 0221

Connealy Onward
 Sitz Henrietta Pride 81M
 GAR Retail Product
 Barbara of Plattemere 311

SAV Final Answer 0035
 SAV Blackbird 5297
 B/R New Design 036
 GAR Precision 2168

\$W
+67.92

\$F
+83.20

\$G
+34.59

\$B
+161.40

CED	BW	WW	YW	SC	DOC	MILK	CW	MARB	RE
+8	+1.1	+60	+114	+62	+10	+31	+52	+74	+87

CED	BW	WW	YW	RFI	DMI	YH	SC	DOC	HP	CEM	Milk	MW	MH	CW	MB	RE	FAT	TNO
31	54	21	11	44	76	59	50	66	4	33	17	52	50	10	42	12	46	45

★ This flush brother to Lot 23 offers calving ease with solid performance values and is in the top 2% of the breed for \$B value while offering a \$W value in the top 5%.

★ His proven dam excels in her progeny record with WR 3@116 and YR 2@113.



Donor dam of Lots 23 & 24

Deer Valley 9013 4670 ← Lot 25



This son of Rito 9Q13 sells as Lot 25.

25 Deer Valley 9013 4670 DDF

DOB: 08/15/2014 Reg: 18121549 Tattoo: 4670

Gardens Highmark Rito 9Q13 of Rita 5F56 GHM +16408438 Rita 5F56 of 1198 FD B/R New Day 454 Deer Valley Rita 1343 +16964654 GAR Objective 2345	Summitcrest Scotch Cap 0B45 Green Garden Pride 6128 S1 CA Future Direction 5321 Rita 1198 of 2536 Rito 616 Boyd New Day 8005 B/R Ruby 1224 SS Objective T510 0T26 GAR 1407 New Design 2413	<table border="1" style="font-size: small;"> <tr><td>\$W</td></tr> <tr><td>+59.28</td></tr> <tr><td>\$F</td></tr> <tr><td>+70.73</td></tr> <tr><td>\$G</td></tr> <tr><td>+50.16</td></tr> <tr><td>\$B</td></tr> <tr><td>+172.11</td></tr> </table>	\$W	+59.28	\$F	+70.73	\$G	+50.16	\$B	+172.11
\$W										
+59.28										
\$F										
+70.73										
\$G										
+50.16										
\$B										
+172.11										

CED	BW	WW	YW	SC	DOC	MILK	CW	MARB	RE
+4	+2.3	+59	+109	+70	+17	+29	+52	+93	+1.28

CED	BW	WW	YW	RFI	DMI	YH	SC	DOC	HP	CEM	Milk	MW	MH	CW	MB	RE	FAT	TNO
60	74	17	22	20	40	34	43	55	95	58	15	61	79	2	8	1	51	27

★ This solid performing, well made Rito 9Q13 son excels to the top 1% of the breed for UREA EPD and is also in the top 1% of the breed for \$B traits.

★ His dam excels in her ultrasound progeny record with %IMF 3@121 and UREA 3@100.

Deer Valley Weigh Up 47130 ← Lot 26



This calving ease son of Weigh Up sells as Lot 26.

26 Deer Valley Weigh Up 47130

DOB: 09/03/2014 Reg: 18139323 Tattoo: 47130

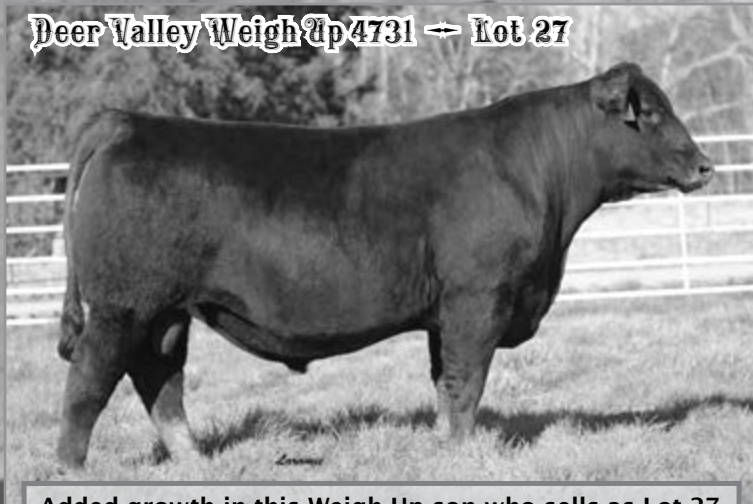
Sitz Upward 307R Plattermere Weigh Up K360 16692552 Barbara of Plattermere 337 SAV Bismarck 5682 Shermans Eisa Erica 071 16902588 Shermans Erica Erica 885	Connealy Onward Sitz Henrietta Pride 81M GAR Retail Product Barbara of Plattermere 311 GAR Grid Maker SAV Abigale 0451 SAV Final Answer 0035 Circle S Eisa Erica 6073	<table border="1" style="font-size: small;"> <tr><td>\$W</td></tr> <tr><td>+58.59</td></tr> <tr><td>\$F</td></tr> <tr><td>+82.65</td></tr> <tr><td>\$G</td></tr> <tr><td>+37.46</td></tr> <tr><td>\$B</td></tr> <tr><td>+144.79</td></tr> </table>	\$W	+58.59	\$F	+82.65	\$G	+37.46	\$B	+144.79
\$W										
+58.59										
\$F										
+82.65										
\$G										
+37.46										
\$B										
+144.79										

CED	BW	WW	YW	SC	DOC	MILK	CW	MARB	RE
+10	+1	+63	+116	+1.00	+18	+22	+42	+61	+89

★ Here is a calving ease son of Weigh Up who offers double-digit CED while also ranking in the top 3% of the breed for yearling growth and is in the top 10% for \$B value.

★ He posted BR-95 and his dam records BR 3@97, WR 3@101, and YR 1@100.

Deer Valley Weigh Up 4731 ← Lot 27



Added growth in this Weigh Up son who sells as Lot 27.

27 Deer Valley Weigh Up 4731

DOB: 09/01/2014 Reg: +18121576 Tattoo: 4731

Sitz Upward 307R Plattermere Weigh Up K360 16692552 Barbara of Plattermere 337 Bon View New Design 878 Sunset Valley Lady 4501 +14706425 SVF Forever Lady 57D	Connealy Onward Sitz Henrietta Pride 81M GAR Retail Product Barbara of Plattermere 311 B/R New Design 036 Bon View Gammer 85 Leachman Right Time SVF Forever Lady 1128	<table border="1" style="font-size: small;"> <tr><td>\$W</td></tr> <tr><td>+73.89</td></tr> <tr><td>\$F</td></tr> <tr><td>+86.36</td></tr> <tr><td>\$G</td></tr> <tr><td>+36.86</td></tr> <tr><td>\$B</td></tr> <tr><td>+173.41</td></tr> </table>	\$W	+73.89	\$F	+86.36	\$G	+36.86	\$B	+173.41
\$W										
+73.89										
\$F										
+86.36										
\$G										
+36.86										
\$B										
+173.41										

CED	BW	WW	YW	SC	DOC	MILK	CW	MARB	RE
+4	+2.3	+69	+122	+20	-2	+29	+60	+72	+71

CED	BW	WW	YW	RFI	DMI	YH	SC	DOC	HP	CEM	Milk	MW	MH	CW	MB	RE	FAT	TNO
57	68	7	4	95	94	50	76	93	1	59	11	41	68	8	50	39	14	86

★ Extreme growth in this Weigh Up son who excels to the top 1% of the breed for YW EPD and he is in the top 2% of the breed for WW EPD. In addition, he excels to the top 1% of the breed for \$B value while also ranking in the top 2% for \$W.

★ His dam has served as longtime donor in the DVF program and records BR 3@97, WR 3@102, %IMF 49@102, and UREA 49@102.

28

Deer Valley Weigh Up 4637

DOB: 08/12/2014 Reg: 18121542 Tattoo: 4637

Sitz Upward 307R Plattermere Weigh Up K360 16692552 Barbara of Plattermere 337 Connealy Impression LLF Isabel 921 +17312697 Eagle RP Isabel 278M	Connealy Onward Sitz Henrietta Pride 81M GAR Retail Product Barbara of Plattermere 311 Connealy Reflection Pearl Pammy of Conanga 194 GAR Retail Product LB 6807 Isabel 339	<table border="1" style="font-size: 0.8em;"> <tr><td>\$W</td></tr> <tr><td>+64.51</td></tr> <tr><td>\$F</td></tr> <tr><td>+85.76</td></tr> <tr><td>\$G</td></tr> <tr><td>+37.15</td></tr> <tr><td>\$B</td></tr> <tr><td>+140.44</td></tr> </table>	\$W	+64.51	\$F	+85.76	\$G	+37.15	\$B	+140.44
\$W										
+64.51										
\$F										
+85.76										
\$G										
+37.15										
\$B										
+140.44										

CED	BW	WW	YW	SC	DOC	MILK	CW	MARB	RE
+6	+1.6	+64	+121	+83	+4	+23	+43	+49	+81

CED	BW	WW	YW	RFI	DMI	YH	SC	DOC	HP	CEM	Milk	MW	MH	CW	MB	RE	FAT	TNO
52	49	9	4	95	98	22	45	77	4	17	6	53	39	18	61	16	3	37

★ This son of Weigh Up is produced from the same family that produced Protégé and his EPD tabulation ranks him in the top 2% for yearling growth with a 5% ranking for WW and 10% for \$W.

★ A pedigree offering breed-leading maternal traits backed by the Isabel cow family.

Deer Valley Weigh Up 4637 ← Lot 28



29

Deer Valley Weigh Up 4685

DOB: 08/15/2014 Reg: +18121552 Tattoo: 4685

Sitz Upward 307R Plattermere Weigh Up K360 16692552 Barbara of Plattermere 337 SAV Pioneer 7301 Deer Valley Rita 9035 +16577355 EF Rita 0221	Connealy Onward Sitz Henrietta Pride 81M GAR Retail Product Barbara of Plattermere 311 SAV Final Answer 0035 SAV Blackbird 5297 B/R New Design 036 GAR Precision 2168	<table border="1" style="font-size: 0.8em;"> <tr><td>\$W</td></tr> <tr><td>+76.09</td></tr> <tr><td>\$F</td></tr> <tr><td>+80.51</td></tr> <tr><td>\$G</td></tr> <tr><td>+27.28</td></tr> <tr><td>\$B</td></tr> <tr><td>+138.40</td></tr> </table>	\$W	+76.09	\$F	+80.51	\$G	+27.28	\$B	+138.40
\$W										
+76.09										
\$F										
+80.51										
\$G										
+27.28										
\$B										
+138.40										

CED	BW	WW	YW	SC	DOC	MILK	CW	MARB	RE
+10	-.7	+60	+115	+72	+7	+32	+46	+67	+70

CED	BW	WW	YW	RFI	DMI	YH	SC	DOC	HP	CEM	Milk	MW	MH	CW	MB	RE	FAT	TNO
20	15	20	9	89	96	80	44	78	6	69	9	84	86	29	47	38	74	61

★ A top calving ease son of Weigh Up that will not sacrifice performance as he ranks in the top 3% for yearling growth while offering double-digit CED, plus his \$W value excels to the top 2% of the breed.

★ His dam is also the dam of Lots 23 and 24 in this sale and she records WR 3@116 and YR 2@113.

Deer Valley Weigh Up 4685 ← Lot 29



30

Deer Valley Upward 4825

DOB: 08/25/2014 Reg: +18187706 Tattoo: 4825

Connealy Onward Sitz Upward 307R #14963730 Sitz Henrietta Pride 81M SAV 8180 Traveler 004 Sunset Valley Frrv Lady 5704 +15057528 SVF Forever Lady 57D	Connealy Lead On Altune of Conanga 6104 Sitz Value 7097 Sitz Henrietta Pride 1370 Sitz Traveler 8180 Boyd Forever Lady 8003 Leachman Right Time SVF Forever Lady 1128	<table border="1" style="font-size: 0.8em;"> <tr><td>\$W</td></tr> <tr><td>+65.37</td></tr> <tr><td>\$F</td></tr> <tr><td>+71.63</td></tr> <tr><td>\$G</td></tr> <tr><td>+13.43</td></tr> <tr><td>\$B</td></tr> <tr><td>+155.37</td></tr> </table>	\$W	+65.37	\$F	+71.63	\$G	+13.43	\$B	+155.37
\$W										
+65.37										
\$F										
+71.63										
\$G										
+13.43										
\$B										
+155.37										

CED	BW	WW	YW	SC	DOC	MILK	CW	MARB	RE
+6	+2.3	+65	+122	+57	-3	+29	+75	+53	+50

CED	BW	WW	YW	RFI	DMI	YH	SC	DOC	HP	CEM	Milk	MW	MH	CW	MB	RE	FAT	TNO
46	71	3	1	99	100	24	34	97	1	15	5	18	36	1	97	52	73	21

★ Extreme growth values in this Upward son who excels to the top 1% of the breed for yearling growth with a WW EPD in the top 4%.

★ His proven dam is bred for power and maternal greatness, plus she records %IMF 13@101 and UREA 13@102.

Deer Valley Weigh Up 4825 ← Lot 30



GAR EXT 614



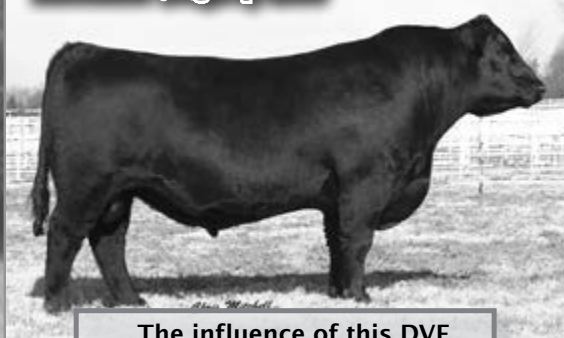
The influence of this longtime DVF donor is well represented throughout this offering, including two grandsons who sell as Lots 31 and 32.

Deer Valley Rita 9606



This unique daughter of GAR EXT 614 is sired by the Pathfinder sire Final Answer and is the dam of Lots 31 and 32.

Plattemere Weigh Up K360



The influence of this DVF Herdsire sells as Lots 31 - 34.

31

Deer Valley Weigh Up 4841

DOB: 11/25/2014

Reg: +18219575

Tattoo: 4841

Sitz Upward 307R

Connealy Onward

Plattemere Weigh Up K360

Sitz Henrietta Pride 81M

16692552 Barbara of Plattemere 337

GAR Retail Product

Barbara of Plattemere 311

SAV Final Answer 0035

Sitz Traveler 8180

Deer Valley Rita 9606

SAV Emulous 8145

+16497919 GAR Ext 614

N Bar Emulation EXT

GAR Scotch Cap 309

CED	BW	WW	YW	SC	DOC	MILK	CW	MARB	RE
+5	+1.6	+73	+127	+1.27	+6	+20	+43	+38	+61

CED	BW	WW	YW	RFI	DMI	YH	SC	DOC	HP	CEM	Milk	MW	MH	CW	MB	RE	FAT	TNO
37	31	8	10	95	83	51	32	74	2	17	36	19	14	65	83	71	36	96

★ Breed-impacting growth traits in this Weigh Up son who excels to the extreme top 1% of the breed for both WW and YW traits.

★ He should transmit high maternal traits making excellent replacement females as his dam by Final Answer records WR 3@104 and YR 3@107.

32

Deer Valley Weigh Up 4814

DOB: 11/17/2014

Reg: +18219574

Tattoo: 4814

Sitz Upward 307R

Connealy Onward

Plattemere Weigh Up K360

Sitz Henrietta Pride 81M

16692552 Barbara of Plattemere 337

GAR Retail Product

Barbara of Plattemere 311

SAV Final Answer 0035

Sitz Traveler 8180

Deer Valley Rita 9606

SAV Emulous 8145

+16497919 GAR Ext 614

N Bar Emulation EXT

GAR Scotch Cap 309

CED	BW	WW	YW	SC	DOC	MILK	CW	MARB	RE
+9	+1.1	+69	+124	+1.20	+10	+19	+46	+75	+63

CED	BW	WW	YW	RFI	DMI	YH	SC	DOC	HP	CEM	Milk	MW	MH	CW	MB	RE	FAT	TNO
19	23	18	14	81	81	39	36	58	3	13	50	51	29	39	53	52	76	90

★ This flush brother to Lot 31 is bred for maternal and growth values combining Weigh Up and Final Answer with GAR EXT 614.

★ He is in the top 1% of the breed for YW and top 2% for WW EPDs while offering a balanced set of carcass traits plus his dam records WR 3@104 and YR 3@107.



33

Deer Valley Weigh Up 4758

DOB: 09/06/2014 Reg: 18121583 Tattoo: 4758

Sitz Upward 307R	Connealy Onward				
Plattemere Weigh Up K360	Sitz Henrietta Pride 81M	\$W			
16692552	GAR Retail Product	+48.44			
	Barbara of Plattemere 337	\$F			
	Barbara of Plattemere 311	+62.82			
	B/R New Design 036	\$G			
	GAR Ext 4206	+40.78			
Deer Valley Erica 7006	E7B 1680 Precision 151	\$B			
16005427	Dixie Erica of RR 1725	+148.72			
	Dixie Erica of RR 3829				

CED	BW	WW	YW	SC	DOC	MILK	CW	MARB	RE									
+5	+1.7	+55	+103	+35	+16	+23	+45	+68	+65									
CED	BW	WW	YW	RFI	DMI	YH	SC	DOC	HP	CEM	MILK	MW	MH	CW	MB	RE	FAT	TNO
63	74	52	38	64	71	41	76	45	13	63	37	29	27	22	31	45	7	88

★ This son of Weigh Up offers low birth combined with proven growth traits and has \$B value that ranks in the top 10% of the breed.

★ His high maternal dam from the Dixie Erica cow family records BR 3@99 with WR 3@101.

34

Deer Valley Weigh Up 4779

DOB: 09/11/2014 Reg: 18121589 Tattoo: 4779

Sitz Upward 307R	Connealy Onward				
Plattemere Weigh Up K360	Sitz Henrietta Pride 81M	\$W			
16692552	GAR Retail Product	+61.75			
	Barbara of Plattemere 337	\$F			
	Barbara of Plattemere 311	+78.32			
	B/R New Design 036	\$G			
	GAR Ext 4206	+44.74			
GAR Predestined G180	SS Objective T510 OT26	\$B			
+16728006	GAR Objective 476	+162.33			
	GAR Retail Product H4114				

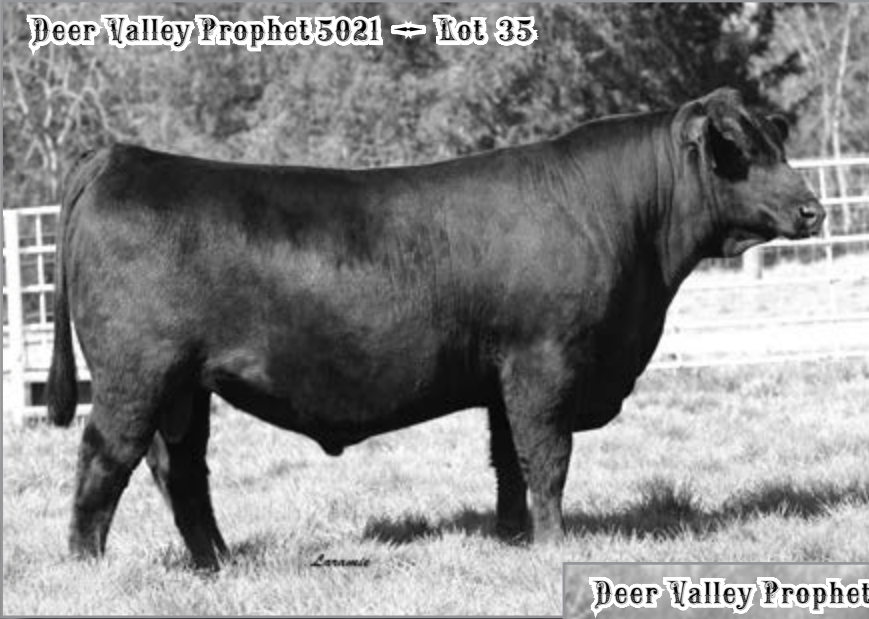
CED	BW	WW	YW	SC	DOC	MILK	CW	MARB	RE									
-4	+4.0	+70	+124	+66	+16	+24	+55	+87	+75									
CED	BW	WW	YW	RFI	DMI	YH	SC	DOC	HP	CEM	MILK	MW	MH	CW	MB	RE	FAT	TNO
87	95	3	3	99	100	18	59	48	11	79	10	31	32	3	17	18	11	100

★ Extreme growth values in this Weigh Up son who is in the top 1% of the breed for both WW and YW traits and his \$B value places him in the top 3% of the breed.

★ His dam is backed by a long line of proven GAR bred females.



Deer Valley Prophet 5021 ← Lot 35



Deer Valley Prophet 5019 ← Lot 36



Flush Brothers!

35

Deer Valley Prophet 5021

DOB: 08/16/2014 Reg: +18224855 Tattoo: 5021

CRA Bextor 872 5205 608	BAR Ext Traveler 205	\$W
GAR Prophet	Cra Lady Jaye 608 498 S Easy	+84.89
+16295688	SS Objective T510 OT26	\$F
	GAR 1407 New Design 2232	+57.16
	GAR Predestined	\$G
Basin Lucy 0747	B/R New Design 036	+52.97
+16685897	GAR Ext 4206	\$B
	CA Future Direction 5321	+131.74
	Basin Lucy 178E	

CED	BW	WW	YW	SC	DOC	MILK	CW	MARB	RE									
+14	-.2	+57	+101	+05	+17	+37	+32	+1.37	+78									
CED	BW	WW	YW	RFI	DMI	YH	SC	DOC	HP	CEM	Milk	MW	MH	CW	MB	RE	FAT	TNO
5	16	22	24	54	75	96	89	24	57	2	13	99	95	26	1	10	96	8

★ This flush brother to Lot 36 offers a unique EPD tabulation excelling for CED that ranks in the top 4% while also being in the top 1% of the breed for Milk as well as MB EPDs and \$W.

★ If you are looking for a low birth calving ease bull that will also add end product value, this son of Prophet from the proven donor 0747 will work.

36

Deer Valley Prophet 5019

DOB: 08/21/2014 Reg: +18224848 Tattoo: 5019

CRA Bextor 872 5205 608	BAR Ext Traveler 205	\$W
GAR Prophet	Cra Lady Jaye 608 498 S Easy	+78.29
+16295688	SS Objective T510 OT26	\$F
	GAR 1407 New Design 2232	+54.18
	GAR Predestined	\$G
Basin Lucy 0747	B/R New Design 036	+52.97
+16685897	GAR Ext 4206	\$B
	CA Future Direction 5321	+133.54
	Basin Lucy 178E	

CED	BW	WW	YW	SC	DOC	MILK	CW	MARB	RE									
+12	+.6	+60	+102	-.26	+20	+34	+34	+1.28	+76									
CED	BW	WW	YW	RFI	DMI	YH	SC	DOC	HP	CEM	Milk	MW	MH	CW	MB	RE	FAT	TNO
9	31	13	23	60	90	84	96	14	88	2	31	77	64	22	1	12	85	19

★ Another impressive Lucy 0747 son offering double-digit CED along with excelling to the top 1% of the breed for Milk, MB, and \$W traits.

★ His proven dam is a direct daughter of basin Lucy 3829 and records BR 1@84, WR 1@113, %IMF 2@118, and UREA 2@106.



37

Deer Valley Prophet 4612

DDC

DOB: 08/08/2014 Reg: 18130993 Tattoo: 4612

CRA Bextor 872 5205 608 GAR Prophet +16295688 GAR Objective 1885 Connealy Consensus 7229 Deer Valley Rita 1723 +17153609 GAR Objective 2345	BAR Ext Traveler 205 Cra Lady Jaye 608 498 S Easy SS Objective T510 0T26 GAR 1407 New Design 2232 Connealy Consensus Blue Lilly of Conanga 16 SS Objective T510 0T26 GAR 1407 New Design 2413	<table border="0" style="width: 100%;"> <tr><td>\$W</td><td></td></tr> <tr><td>+94.53</td><td></td></tr> <tr><td>\$F</td><td></td></tr> <tr><td>+90.68</td><td></td></tr> <tr><td>\$G</td><td></td></tr> <tr><td>+50.90</td><td></td></tr> <tr><td>\$B</td><td></td></tr> <tr><td>+133.42</td><td></td></tr> </table>	\$W		+94.53		\$F		+90.68		\$G		+50.90		\$B		+133.42	
\$W																		
+94.53																		
\$F																		
+90.68																		
\$G																		
+50.90																		
\$B																		
+133.42																		

CED	BW	WW	YW	SC	DOC	MILK	CW	MARB	RE
+10	+1.3	+73	+126	+42	+28	+38	+32	+1.45	+57

CED	BW	WW	YW	RFI	DMI	YH	SC	DOC	HP	CEM	MILK	MW	MH	CW	MB	RE	FAT	TNO
15	28	1	1	73	80	65	83	6	95	24	1	45	53	16	1	24	69	29

★ Double-digit calving ease with extreme growth in this Prophet son who excels to the extreme top 1% of the breed for both WW and YW EPDs as well as being in the top 1% of the breed for Milk and MB traits as well as for \$W value.

★ His young dam by 7229 records WR 1@112, YR 1@106, %IMF 1@149, and UREA 1@106.



Deer Valley Prophet 4612 ← Lot 37

38

Deer Valley All In 4755

DOB: 09/05/2014 Reg: 18391412 Tattoo: 4755

AAR Ten X 7008 SA Deer Valley All In 17307074 Deer Valley Rita 0274 B/R New Day 454 GAR New Day 1400 +16734768 GAR Objective 2927	Mytty In Focus AAR Lady Kelton 5551 Sitz Upward 307R GAR Objective 2345 Boyd New Day 8005 B/R Ruby 1224 SS Objective T510 0T26 GAR 1407 New Design 1905	<table border="0" style="width: 100%;"> <tr><td>\$W</td><td></td></tr> <tr><td>+71.08</td><td></td></tr> <tr><td>\$F</td><td></td></tr> <tr><td>+58.55</td><td></td></tr> <tr><td>\$G</td><td></td></tr> <tr><td>+52.58</td><td></td></tr> <tr><td>\$B</td><td></td></tr> <tr><td>+133.76</td><td></td></tr> </table>	\$W		+71.08		\$F		+58.55		\$G		+52.58		\$B		+133.76	
\$W																		
+71.08																		
\$F																		
+58.55																		
\$G																		
+52.58																		
\$B																		
+133.76																		

CED	BW	WW	YW	SC	DOC	MILK	CW	MARB	RE
+10	+3	+58	+105	+43	+18	+33	+35	+99	+1.02

CED	BW	WW	YW	RFI	DMI	YH	SC	DOC	HP	CEM	MILK	MW	MH	CW	MB	RE	FAT	TNO
8	11	29	18	80	96	62	52	44	52	47	11	57	68	18	11	3	39	72

★ An impressive well-made son of GAR Prophet.



Deer Valley All In 4755 ← Lot 38

GAR Prophet



CED	BW	WW	YW	SC	DOC	MILK	CW	MRB	RE	\$W	\$F	\$G	\$B
+11	+9	+75	+132	+21	+28	+40	+29	+1.63	+57	+91.38	+102.02	+55.49	+134.31

Sons of this breed-leading longtime Select Sires AI sire who excels for calving ease and extreme growth while also offering breed-impacting maternal values sell as highlights of this offering.

Deer Valley Prophet 46103 -- Lot 39



39

Deer Valley Prophet 46103

DOB: 08/17/2014 Reg: 18131033 Tattoo: 46103

DDF

GAR Prophet +16295688 GAR Objective 1885 GAR Predestined Bobo Rita B026 +16722506 GAR Retail Product 1712	CRA Bextor 872 5205 608 Cra Lady Jaye 608 498 S Easy SS Objective T510 0T26 GAR 1407 New Design 2232 B/R New Design 036 GAR Ext 4206 GAR Retail Product GAR Outlier 1360	<table border="1" style="font-size: 0.7em; border-collapse: collapse;"> <tr><td>\$W</td><td>+74.92</td></tr> <tr><td>\$F</td><td></td></tr> <tr><td>\$G</td><td>+53.26</td></tr> <tr><td>\$G</td><td></td></tr> <tr><td>\$B</td><td>+44.80</td></tr> <tr><td>\$B</td><td></td></tr> <tr><td>\$B</td><td>+105.69</td></tr> </table>	\$W	+74.92	\$F		\$G	+53.26	\$G		\$B	+44.80	\$B		\$B	+105.69
\$W	+74.92															
\$F																
\$G	+53.26															
\$G																
\$B	+44.80															
\$B																
\$B	+105.69															

CED	BW	WW	YW	SC	DOC	MILK	CW	MARB	RE
+7	+1.7	+57	+104	+38	+20	+37	+28	+1.09	+0.89

CED	BW	WW	YW	RFI	DMI	YH	SC	DOC	HP	CEM	Milk	MW	MH	CW	MB	RE	FAT	TNO
28	56	20	15	87	99	85	83	17	66	28	21	84	90	38	2	8	100	42

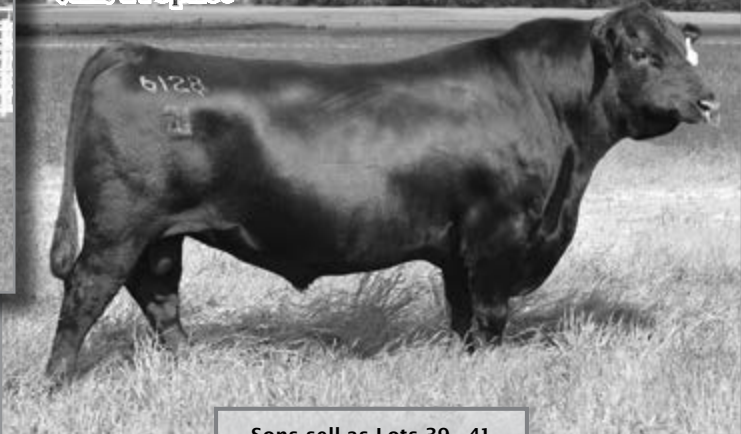
★ Calving ease with solid growth and performance in this Prophet son whose dam records BR 2@98, WR 2@106, and UREA 2@118.

GAR Objective 2345



This breed-impacting DVF donor is the maternal grandam of Lot 40.

GAR Prophet



Sons sell as Lots 39 - 41

40 Deer Valley Prophet 4763

DOB: 08/28/2014 Reg: +17897283 Tattoo: 4763

GAR Prophet +16295688 GAR Objective 1885 GAR Predestined 2578 +16290636 GAR Objective 2345	CRA Bextor 872 5205 608 BAR Ext Traveler 205 Cra Lady Jaye 608 498 S Easy SS Objective T510 0T26 GAR 1407 New Design 2232 B/R New Design 036 GAR Ext 4206 SS Objective T510 0T26 GAR 1407 New Design 2413	<table border="1" style="font-size: 0.7em; border-collapse: collapse;"> <tr><td>\$W</td><td>+75.49</td></tr> <tr><td>\$F</td><td></td></tr> <tr><td>\$G</td><td>+84.02</td></tr> <tr><td>\$G</td><td></td></tr> <tr><td>\$B</td><td>+55.67</td></tr> <tr><td>\$B</td><td></td></tr> <tr><td>\$B</td><td>+136.07</td></tr> </table>	\$W	+75.49	\$F		\$G	+84.02	\$G		\$B	+55.67	\$B		\$B	+136.07
\$W	+75.49															
\$F																
\$G	+84.02															
\$G																
\$B	+55.67															
\$B																
\$B	+136.07															

CED	BW	WW	YW	SC	DOC	MILK	CW	MARB	RE
+12	+1.2	+65	+120	+25	+26	+35	+32	+1.66	+0.55

CED	BW	WW	YW	RFI	DMI	YH	SC	DOC	HP	CEM	Milk	MW	MH	CW	MB	RE	FAT	TNO
4	20	2	2	19	70	40	90	7	92	2	9	29	41	10	1	34	97	69

★ This three-quarter brother to Lot 39 offers double-digit CED along with a YW EPD that ranks in the top 2% of the breed and WW in top 4%. In addition, his marbling EPD excels to the elite 1% of the breed and he is in the top 2% for \$W value.

★ His dam is a full sister to GAR Progress and records WR 3@104 and YR 2@102 with %IMF 26@109 and UREA 26@102.

41 Deer Valley Prophet 4777

DOB: 09/08/2014 Reg: 18121588 Tattoo: 4777

GAR Prophet +16295688 GAR Objective 1885 GAR Predestined 2700 +16734894 GAR Objective 3468	CRA Bextor 872 5205 608 BAR Ext Traveler 205 Cra Lady Jaye 608 498 S Easy SS Objective T510 0T26 GAR 1407 New Design 2232 B/R New Design 036 GAR Ext 4206 SS Objective T510 0T26 GAR Retail Product 2896	<table border="1" style="font-size: 0.7em; border-collapse: collapse;"> <tr><td>\$W</td><td>+58.62</td></tr> <tr><td>\$F</td><td></td></tr> <tr><td>\$G</td><td>+50.98</td></tr> <tr><td>\$G</td><td></td></tr> <tr><td>\$B</td><td>+54.43</td></tr> <tr><td>\$B</td><td></td></tr> <tr><td>\$B</td><td>+86.93</td></tr> </table>	\$W	+58.62	\$F		\$G	+50.98	\$G		\$B	+54.43	\$B		\$B	+86.93
\$W	+58.62															
\$F																
\$G	+50.98															
\$G																
\$B	+54.43															
\$B																
\$B	+86.93															

CED	BW	WW	YW	SC	DOC	MILK	CW	MARB	RE
+10	+1.1	+56	+102	-.39	+21	+24	+16	+1.28	+0.66

CED	BW	WW	YW	RFI	DMI	YH	SC	DOC	HP	CEM	Milk	MW	MH	CW	MB	RE	FAT	TNO
9	27	13	15	45	96	56	99	14	74	9	53	44	60	44	1	20	84	82

★ This three-quarter brother to Lots 39 and 40 offers double digit CED combined with an MB EPD that ranks among the breed's top 1%.



42

Deer Valley Ten X 4757

DOB: 09/05/2014 Reg: 18130999 Tattoo: 4757

Mytty In Focus	SAF Focus of ER	\$W
AAR Ten X 7008 SA	Mytty Countess 906	+53.68
#15719841	SAV Adaptor 2213	\$F
	HSAF Lady Kelton 5048	+61.60
	SS Objective T510 OT26	\$G
GAR Ultimate	GAR Load Up 1314	+44.98
Deer Valley Scotch Cap 0780	GAR Predestined	\$B
16870420	A Plus Blackcap 2151	+149.54

CED	BW	WW	YW	SC	DOC	MILK	CW	MARB	RE
+5	+1.5	+55	+103	+1.18	+6	+20	+44	+96	+59

CED	BW	WW	YW	RFI	DMI	YH	SC	DOC	HP	CEM	Milk	MW	MH	CW	MB	RE	FAT	TNO
44	40	27	10	71	97	61	15	84	84	86	64	58	61	34	19	43	72	18

★ Low birth with solid growth and performance in this high marbling son of Ten X produced from the DVF herd sire, GAR Ultimate who records %IMF 1@111.



Deer Valley Ten X 4757 ← Tot 42

43

Deer Valley Ten X 4679

DOB: 08/15/2014 Reg: 18130930 Tattoo: 4679

Mytty In Focus	SAF Focus of ER	\$W
AAR Ten X 7008 SA	Mytty Countess 906	+66.72
#15719841	SAV Adaptor 2213	\$F
	HSAF Lady Kelton 5048	+88.73
	Connealy Consensus	\$G
Connealy Consensus 7229	Blue Lilly of Conanga 16	+44.65
Deer Valley Henrietta 2604	Connealy Onward	\$B
+17398874	Sitz Henrietta Pride 81M	+177.99

CED	BW	WW	YW	SC	DOC	MILK	CW	MARB	RE
+11	-.1	+63	+122	+1.43	+25	+26	+59	+1.32	+67

CED	BW	WW	YW	RFI	DMI	YH	SC	DOC	HP	CEM	Milk	MW	MH	CW	MB	RE	FAT	TNO
18	12	3	1	97	99	60	6	9	36	46	13	19	24	17	18	41	58	50

★ Double-digit calving ease in this Ten X son who also excels to the top 1% of the breed for yearling growth along with being in the top 1% for MB EPD and for \$B value.

★ His dam by Consensus is produced from the \$100,000 valued Sitz Henrietta Pride 639T.



Deer Valley Ten X 4679 ← Tot 43

44

Deer Valley Ten X 4707

DOB: 09/01/2014 Reg: 18131022 Tattoo: 4707

Mytty In Focus	SAF Focus of ER	\$W
AAR Ten X 7008 SA	Mytty Countess 906	+71.12
#15719841	SAV Adaptor 2213	\$F
	HSAF Lady Kelton 5048	+81.80
	B/R New Design 036	\$G
Bon View New Design 878	Bon View Gammer 85	+45.82
Deer Valley Rita 0605	N Bar Emulation EXT	\$B
+16772065	GAR Scotch Cap 309	+176.47

CED	BW	WW	YW	SC	DOC	MILK	CW	MARB	RE
+9	+2	+63	+111	+70	+11	+21	+51	+88	+67

CED	BW	WW	YW	RFI	DMI	YH	SC	DOC	HP	CEM	Milk	MW	MH	CW	MB	RE	FAT	TNO
21	13	10	8	67	86	77	40	54	60	26	65	80	70	32	31	38	41	82

★ Calving ease with excellent growth traits in this Ten X son who is in the top 10% of the breed for both WW and YW EPDs and top 1% of the breed for \$B value, plus he has a 3% ranking for \$W.

★ His dam records YR 2@104 and UREA 2@112.



Deer Valley Ten X 4707 ← Tot 44

Deer Valley Ten X 46163 ← Lot 45



45

Deer Valley Ten X 46163

DOB: 08/31/2014

Reg: 18087205

Tattoo: 46163

Mytty In Focus
AAR Ten X 7008 SA
 #15719841 AAR Lady Kelton 5551

SAF Focus of ER
 Mytty Countess 906
 SAV Adaptor 2213
 HSAF Lady Kelton 5048

\$W	+57.13
\$F	+65.56
\$G	+48.14
\$B	+159.17

Connealy Impression
Deer Valley Blackcap 2779
 17503926 SMR Blackcap 9227

Connealy Reflection
 Pearl Pammy of Conanga 194
 Rito Revenue 5M2 of 2536 Pre
 EF Blackcap 2134

CED	BW	WW	YW	SC	DOC	MILK	CW	MARB	RE
+9	+4	+53	+102	+94	+8	+23	+45	+90	+75

CED	BW	WW	YW	RFI	DMI	YH	SC	DOC	HP	CEM	MILK	MW	MH	CW	MB	RE	FAT	TNO
30	15	22	11	39	96	61	21	79	66	14	56	54	51	30	28	25	44	60

★ Calving ease with solid performance and high carcass values in this Ten X son by a high maternal dam sired by the Pathfinder sire Connealy Impression.

Deer Valley Ten X 4729 ← Lot 46



46

Deer Valley Ten X 4729

DOB: 09/01/2014

Reg: 18131024

Tattoo: 4729

Mytty In Focus
AAR Ten X 7008 SA
 #15719841 AAR Lady Kelton 5551

SAF Focus of ER
 Mytty Countess 906
 SAV Adaptor 2213
 HSAF Lady Kelton 5048

\$W	+55.33
\$F	+68.11
\$G	+46.20
\$B	+165.50

Bon View New Design 878
Deer Valley Rita 0602
 +16772058 GAR Ext 614

B/R New Design 036
 Bon View Gammer 85
 N Bar Emulation EXT
 GAR Scotch Cap 309

CED	BW	WW	YW	SC	DOC	MILK	CW	MARB	RE
+4	+2.1	+58	+104	+59	+12	+23	+48	+1.35	+52

CED	BW	WW	YW	RFI	DMI	YH	SC	DOC	HP	CEM	MILK	MW	MH	CW	MB	RE	FAT	TNO
53	51	28	19	57	97	66	45	47	65	22	49	35	80	43	11	68	95	92

★ Extreme carcass values in this Ten X son who ranks among the breed's most elite 1% for MB EPD plus he is in the top 2% of the breed for \$B value.

★ His dam records %IMF 1@126 and UREA 1@105.

Deer Valley Ten X 4617 ← Lot 47



47

Deer Valley Ten X 4617

DOB: 08/09/2014

Reg: 18130926

Tattoo: 4617

Mytty In Focus
AAR Ten X 7008 SA
 #15719841 AAR Lady Kelton 5551

SAF Focus of ER
 Mytty Countess 906
 SAV Adaptor 2213
 HSAF Lady Kelton 5048

\$W	+68.84
\$F	+87.76
\$G	+44.27
\$B	+172.07

Summitcrest Complete IP55
Thomas Queen 2927
 17464194 Diablo Queen 3015

CF Right Design 1802
 Summitcrest Elba 1M17
 HARB Pendleton 765 JH
 Diablo Queen 1831

CED	BW	WW	YW	SC	DOC	MILK	CW	MARB	RE
+2	+1.1	+62	+116	+1.11	+17	+29	+51	+79	+74

CED	BW	WW	YW	RFI	DMI	YH	SC	DOC	HP	CEM	MILK	MW	MH	CW	MB	RE	FAT	TNO
65	22	10	4	67	86	19	12	28	44	58	18	48	26	31	42	44	31	57

★ Added growth traits in this Ten X son who is in the top 3% for yearling growth and top 10% for WW EPD while also exceling to the extreme top 1% of the breed for \$B value.

48

Deer Valley Ten X 4646

DOB: 08/13/2014 Reg: +18131065 Tattoo: 4646

Mytty In Focus SAF Focus of ER
 AAR Ten X 7008 SA Mytty Countess 906 \$W
 #15719841 AAR Lady Kelton 5551 SAV Adaptor 2213 +46.98
 HSAF Lady Kelton 504B \$F
 B/R Ambush 28 Rockn D Ambush 1531 +72.27
 GAR 28 Ambush 619 B/R Ruby of Tiffany 8250 \$G
 +16496660 GAR Objective 1885 SS Objective T510 0T26 +51.89
 GAR 1407 New Design 2232 \$B
 +175.56

CED	BW	WW	YW	SC	DOC	MILK	CW	MARB	RE
+10	-.1	+54	+108	+1.10	+20	+21	+53	+99	+77

CED	BW	WW	YW	RFI	DMI	YH	SC	DOC	HP	CEM	Milk	MW	MH	CW	MB	RE	FAT	TNO
18	13	14	3	87	93	37	31	32	43	18	79	9	11	14	11	35	5	8

★ This leadoff Ten X son from the flush of Ten X to the maternal sister to GAR Prophet, Ambush 619, offers outstanding potential for calving ease, growth, and breed-impacting carcass values.

★ He excels to the top 1% of the breed for \$B value and has an MB EPD that is in the top 10% while also offering double-digit CED.



Deer Valley Ten X 4646 ← Lot 48

49

Deer Valley Ten X 4693

DOB: 08/16/2014 Reg: +18131071 Tattoo: 4693

Mytty In Focus SAF Focus of ER
 AAR Ten X 7008 SA Mytty Countess 906 \$W
 #15719841 AAR Lady Kelton 5551 SAV Adaptor 2213 +40.84
 HSAF Lady Kelton 504B \$F
 B/R Ambush 28 Rockn D Ambush 1531 +90.97
 GAR 28 Ambush 619 B/R Ruby of Tiffany 8250 \$G
 +16496660 GAR Objective 1885 SS Objective T510 0T26 +56.05
 GAR 1407 New Design 2232 \$B
 +186.04

CED	BW	WW	YW	SC	DOC	MILK	CW	MARB	RE
+5	+1.8	+60	+119	+1.51	+24	+19	+54	+1.25	+69

CED	BW	WW	YW	RFI	DMI	YH	SC	DOC	HP	CEM	Milk	MW	MH	CW	MB	RE	FAT	TNO
46	52	3	1	91	86	4	13	16	72	48	87	1	5	11	5	50	4	21

★ This flush brother to Lots 48 and 50 is in the top 2% of the breed for yearling growth and is in the 1% of the breed for both MB and \$B traits.

★ His dam is a maternal sister to GAR Prophet.



Deer Valley Ten X 4693 ← Lot 49

50

Deer Valley Ten X 4689

DOB: 08/15/2014 Reg: +18131070 Tattoo: 4689

Mytty In Focus SAF Focus of ER
 AAR Ten X 7008 SA Mytty Countess 906 \$W
 #15719841 AAR Lady Kelton 5551 SAV Adaptor 2213 +40.39
 HSAF Lady Kelton 504B \$F
 B/R Ambush 28 Rockn D Ambush 1531 +73.94
 GAR 28 Ambush 619 B/R Ruby of Tiffany 8250 \$G
 +16496660 GAR Objective 1885 SS Objective T510 0T26 +56.25
 GAR 1407 New Design 2232 \$B
 +175.72

CED	BW	WW	YW	SC	DOC	MILK	CW	MARB	RE
+3	+8	+53	+109	+97	+21	+20	+51	+1.25	+74

CED	BW	WW	YW	RFI	DMI	YH	SC	DOC	HP	CEM	Milk	MW	MH	CW	MB	RE	FAT	TNO
56	28	17	3	88	96	12	39	26	67	45	86	5	14	20	5	40	7	70

★ Low birth with solid performance in this Ten X son who excels to the extreme top 1% of the breed for \$B and MB traits.

★ He is engineered for breed-leading carcass values as his dam is a maternal sister to GAR Prophet.



GAR 28 Ambush 619

The dam of Lots 48, 49, and 50.

GAR Objective 1885



This dam of GAR Prophet is the maternal grandam of Lots 48, 49, and 50.



Deer Valley Ten X 4663

DOB: 08/14/2014 Reg: +18131043 Tattoo: 4663

Mytty In Focus	SAF Focus of ER	\$W
AAR Ten X 7008 SA	Mytty Countess 906	+51.95
#15719841 AAR Lady Kelton 5551	SAV Adaptor 2213	\$F
	HSAF Lady Kelton 504B	+81.93
Sitz Upward 307R	Connealy Onward	\$G
Deer Valley Rita 0208	Sitz Henrietta Pride 81M	+41.19
+16659174 GAR EXT 614	N Bar Emulation EXT	\$B
	GAR Scotch Cap 309	+174.84

CED	BW	WW	YW	SC	DOC	MILK	CW	MARB	RE
+4	+1.7	+61	+117	+1.70	+5	+22	+59	+94	+66

CED	BW	WW	YW	RFI	DMI	YH	SC	DOC	HP	CEM	Milk	MW	MH	CW	MB	RE	FAT	TNO
46	51	24	4	99	100	44	4	76	43	24	55	11	20	19	43	55	52	97

★ This son of Ten X is a three-quarter brother to Deer Valley All In and excels for yearling growth ranking in the top 3% of the breed while also offering a \$B value that ranks among the breed's elite 1%.

★ His dam who is a direct daughter of GAR EXT 614 records BR 1@98, WR 2@103, YR 1@109, and UREA 6@105.



Deer Valley Ten X 4833 -- Lot 53



Deer Valley Ten X 4756

DOB: 09/05/2014 Reg: 18131017 Tattoo: 4756

Mytty In Focus	SAF Focus of ER	\$W
AAR Ten X 7008 SA	Mytty Countess 906	+60.18
#15719841 AAR Lady Kelton 5551	SAV Adaptor 2213	\$F
	HSAF Lady Kelton 504B	+86.07
Bon View New Design 878	B/R New Design 036	\$G
Deer Valley Rita 0607	Bon View Gammer 85	+41.95
+16727072 GAR EXT 614	N Bar Emulation EXT	\$B
	GAR Scotch Cap 309	+173.32

CED	BW	WW	YW	SC	DOC	MILK	CW	MARB	RE
+4	+2.4	+62	+115	+2.04	+12	+23	+53	+90	+54

CED	BW	WW	YW	RFI	DMI	YH	SC	DOC	HP	CEM	Milk	MW	MH	CW	MB	RE	FAT	TNO
54	57	10	3	26	97	26	2	53	41	38	41	55	51	23	30	57	68	3

★ This high growth individual is in the top 3% of the breed for YW EPD and top 10% for weaning growth and his \$B value places him among the breed's elite 1%.

★ His dam is a direct daughter of the world record selling GAR EXT 614.



Deer Valley Ten X 4833

DOB: 10/11/2014 Reg: 18131013 Tattoo: 4833

Mytty In Focus	SAF Focus of ER	\$W
AAR Ten X 7008 SA	Mytty Countess 906	+58.72
#15719841 AAR Lady Kelton 5551	SAV Adaptor 2213	\$F
	HSAF Lady Kelton 504B	+84.39
Sitz Upward 307R	Connealy Onward	\$G
Monarch Pride 0518	Sitz Henrietta Pride 81M	+39.79
+16791139 Monarch Pride P199	BR Midland	\$B
	Southern Pride 2341	+175.17

CED	BW	WW	YW	SC	DOC	MILK	CW	MARB	RE
+4	+1.9	+60	+118	+9.7	+14	+23	+60	+78	+76

CED	BW	WW	YW	RFI	DMI	YH	SC	DOC	HP	CEM	Milk	MW	MH	CW	MB	RE	FAT	TNO
45	50	12	2	57	99	60	13	47	9	31	57	51	39	19	51	35	42	24

★ Breed-leading growth traits in this Ten X son who is in the top 3% of the breed for YW EPD and excels to the elite 1% for \$B value.

★ His dam by Upward records BR 2@99, WR 2@102, and YR 2@104 with %IMF 2@110, and UREA 2@101.



Maternal Brothers to Weigh Up



This maternal brother to Plattermere Weigh Up K360 sells as Lot 54 and another maternal brother sells as Lot 55.

54

Deer Valley Ten X 4810

DOB: 11/17/2014 Reg: +18219534 Tattoo: 4810

Mytty In Focus	SAF Focus of ER	\$W
AAR Ten X 7008 SA	Mytty Countess 906	+58.96
#15719841 AAR Lady Kelton 5551	SAV Adaptor 2213	\$F
	HSAF Lady Kelton 504B	+97.52
	GAR Precision 1680	\$G
GAR Retail Product	GAR Ext 4927	+49.97
Barbara of Plattermere 337	Bon View New Design 1407	\$B
#16274856 Barbara of Plattermere 311	Barbara of Plattermere 286	+162.25

CED	BW	WW	YW	SC	DOC	MILK	CW	MARB	RE
+4	+1.2	+62	+122	+1.92	+21	+24	+43	+1.18	+65

CED	BW	WW	YW	RFI	DMI	YH	SC	DOC	HP	CEM	MILK	MW	MH	CW	MB	RE	FAT	TNO
66	38	10	1	42	92	22	2	20	19	46	31	25	50	30	11	56	51	83

- ★ A special feature of the bull offering is this high growth maternal brother to the Select Sires and DVF herd sire, Plattermere Weigh Up K360.
- ★ His EPD tabulation places him among the breed's elite 1% for YW EPD and he is in the top 2% for MB EPD and \$B value.
- ★ His Pathfinder dam has a record of WR 4@105, YR 2@111, and %IMF 30@108.

55

Deer Valley Barbara 46122

DOB: 08/22/2014 Reg: +18121527 Tattoo: 46122

Sitz Top Game 561X	GDAR Game Day 449	\$W
JMB Traction 292	Sitz Pride 88T	+59.72
17262374 JMB Emulota 013	SAV 004 Predominant 4438	\$F
	BAR S Emulota 5426	+98.48
	GAR Precision 1680	\$G
GAR Retail Product	GAR Ext 4927	+49.81
Barbara of Plattermere 337	Bon View New Design 1407	\$B
#16274856 Barbara of Plattermere 311	Barbara of Plattermere 286	+159.14

CED	BW	WW	YW	SC	DOC	MILK	CW	MARB	RE
+6	+4	+61	+119	+84	+14	+29	+39	+96	+93

CED	BW	WW	YW	RFI	DMI	YH	SC	DOC	HP	CEM	MILK	MW	MH	CW	MB	RE	FAT	TNO
62	27	39	17	28	59	53	62	44	5	60	40	5	6	38	23	23	30	42

- ★ This maternal brother to Lot 54 is also a maternal brother to Plattermere Weigh Up K360 and offers a yearling weigh EPD that ranks in the top 2% of the breed.
- ★ Here is a bull that will sire extra growth and performance at weaning time and also produce a top set of replacement females.

Connealy Confidence 0100



A son sells as Lot 56.

56

Deer Valley Confidence 4802

DOB: 11/12/2014 Reg: +18219609 Tattoo: 4802

Connealy Tobin	Bon View New Design 208	\$W
Connealy Confidence 0100	Delia of Conanga 667	+58.96
16761479 Becka Gala of Conanga 8281	Connealy Thunder	\$F
	Becka Lee of Conanga 37	+48.50
	SS Objective T510 0T26	\$G
GAR Objective R137	SS Traveler 6807 T510	+37.96
+15928027 GAR Retail Product H4114	SS Miss Rita R011 7R8	\$B
	GAR Retail Product	
	GAR 1407 New Design 432	+100.86

CED	BW	WW	YW	SC	DOC	MILK	CW	MARB	RE
+15	-.2	+49	+92	-.53	+9	+23	+25	+43	+95

CED	BW	WW	YW	RFI	DMI	YH	SC	DOC	HP	CEM	MILK	MW	MH	CW	MB	RE	FAT	TNO
1	2	76	64	10	60	87	100	83	59	29	26	86	95	43	55	10	21	40

- ★ Extreme calving ease in this Connealy Confidence son who ranks in the top 2% of the breed for CED EPD while also offering an REA EPD in the top 4%.
- ★ His dam has 8 daughters in production combining for WR 9@102.

Deer Valley Denver 4010 -- Lot 57



57

Deer Valley Denver 4010

DOB: 08/02/2014 Reg: +18187704 Tattoo: 4010

EXAR Upshot 0562B	Sitz Upward 307R	\$W
EXAR Denver 2002B	EXAR Barbara T020	+67.65
17160560	EXAR 263C	\$F
Exar Royal Lass 1067	BR Royal Lass 19-132	+75.52
SAV 8180 Traveler 004	Sitz Traveler 8180	\$G
Sunset Valley Frvr Lady 5704	Boyd Forever Lady 8003	+22.34
+15057528	Leachman Right Time	\$B
SVF Forever Lady 57D	SVF Forever Lady 1128	+152.71

CED	BW	WW	YW	SC	DOC	MILK	CW	MARB	RE
+8	+2.5	+66	+116	+84	-3	+32	+58	+61	+48

CED	BW	WW	YW	RFI	DMI	YH	SC	DOC	HP	CEM	Milk	MW	MH	CW	MB	RE	FAT	TNO
38	80	22	14	57	91	5	29	97	16	36	28	6	13	13	71	77	86	29

★ Breed-leading growth traits in this Denver son who is in the top 3% for both WW and YW EPDs as well as for Milk EPD.
 ★ His dam is a direct daughter of the multi-million dollar producing SVF Forever Lady 57D and she records %IMF 13@101 and UREA 13@102.

58

Deer Valley Denver 4511

DOB: 08/03/2014 Reg: +18187705 Tattoo: 4511

EXAR Upshot 0562B	Sitz Upward 307R	\$W
EXAR Denver 2002B	EXAR Barbara T020	+63.52
17160560	EXAR 263C	\$F
Exar Royal Lass 1067	BR Royal Lass 19-132	+64.09
SAV 8180 Traveler 004	Sitz Traveler 8180	\$G
Sunset Valley Frvr Lady 5704	Boyd Forever Lady 8003	+27.66
+15057528	Leachman Right Time	\$B
SVF Forever Lady 57D	SVF Forever Lady 1128	+157.47

CED	BW	WW	YW	SC	DOC	MILK	CW	MARB	RE
+4	+3.3	+62	+110	+20	-2	+33	+60	+68	+65

CED	BW	WW	YW	RFI	DMI	YH	SC	DOC	HP	CEM	Milk	MW	MH	CW	MB	RE	FAT	TNO
62	88	25	21	76	98	7	69	96	7	40	19	18	6	9	66	44	83	60

★ Excellent growth and performance values along with balanced carcass traits in this Denver son who is a full brother to Lot 57 who also ranks in the top 2% of the breed for Milk EPD.

Deer Valley Denver 4699 -- Lot 59



59

Deer Valley Denver 4699

DOB: 08/17/2014 Reg: +18131158 Tattoo: 4699

EXAR Upshot 0562B	Sitz Upward 307R	\$W
EXAR Denver 2002B	EXAR Barbara T020	+80.64
17160560	EXAR 263C	\$F
Exar Royal Lass 1067	BR Royal Lass 19-132	+91.84
SS Objective T510 0T26	SS Traveler 6807 T510	\$G
Deer Valley Rita 0503	SS Miss Rita R011 7R8	+38.71
+16719473	N Bar Emulation EXT	\$B
GAR Ext 614	GAR Scotch Cap 309	+163.28

CED	BW	WW	YW	SC	DOC	MILK	CW	MARB	RE
+6	+3.2	+74	+124	+1.52	+2	+35	+50	+97	+83

CED	BW	WW	YW	RFI	DMI	YH	SC	DOC	HP	CEM	Milk	MW	MH	CW	MB	RE	FAT	TNO
34	80	2	5	92	62	1	16	84	73	43	17	16	8	6	20	23	90	94

★ Extreme growth and performance in this Denver son who excels to the top 15 of the breed for both WW and YW EPDs as well as for \$W value. In addition, his \$B value ranks in the top 2%.
 ★ His dam who is a direct daughter of Rita 614 records BR 1@98, WR 1@111, %IMF 13@101, and UREA 13@103.

60

Deer Valley Denver 4687

DOB: 08/15/2014 Reg: +18131157 Tattoo: 4687

EXAR Upshot 0562B	Sitz Upward 307R	\$W
EXAR Denver 2002B	EXAR Barbara T020	+71.75
17160560 Exar Royal Lass 1067	EXAR 263C	\$F
	BR Royal Lass 19-132	+89.52
	SS Objective T510 OT26	\$G
Deer Valley Rita 0503	SS Traveler 6807 T510	+40.88
+16719473 GAR Ext 614	SS Miss Rita R011 7R8	\$B
	N Bar Emulation EXT	
	GAR Scotch Cap 309	+157.09

CED	BW	WW	YW	SC	DOC	MILK	CW	MARB	RE
+8	+2.3	+69	+121	+80	-2	+33	+46	+93	+71

CED	BW	WW	YW	RFI	DMI	YH	SC	DOC	HP	CEM	Milk	MW	MH	CW	MB	RE	FAT	TNO
20	60	9	8	86	66	2	56	93	83	29	28	5	7	16	22	43	69	57

★ Here is a high growth son of Denver who ranks in the top 2% of the breed for both WW and YW EPDs and his \$B value is in the top 4%.

★ His dam who is also the dam of Lot 59 records BR 1@98, WR 1@111, %IMF 13@101, and UREA 13@103.

EXAR Denver 2002B



CED	BW	WW	YW	SC	DOC	MILK	CW	MARB	RE	\$W	\$F	\$G	\$B
+9	+2.6	+72	+125	+1.03	+7	+41	+56	+83	+95	+80.13	+95.32	+34.58	+170.35

61

Deer Valley Denver 4921

DOB: 08/03/2014 Reg: +18187707 Tattoo: 4921

EXAR Upshot 0562B	Sitz Upward 307R	\$W
EXAR Denver 2002B	EXAR Barbara T020	+58.22
17160560 Exar Royal Lass 1067	EXAR 263C	\$F
	BR Royal Lass 19-132	+64.60
	TC Total 410	\$G
VAN Total 3037	Bon View New Design 208	+32.18
15920935 Wellington Forever Lady 35W2	TC Erica Eileen 2047	\$B
	B/R New Design 036	
	Toebben Forever Lady 102G	+124.42

CED	BW	WW	YW	SC	DOC	MILK	CW	MARB	RE
+10	+7	+55	+102	+60	+12	+30	+36	+50	+64

CED	BW	WW	YW	RFI	DMI	YH	SC	DOC	HP	CEM	Milk	MW	MH	CW	MB	RE	FAT	TNO
15	31	56	38	94	51	16	52	45	41	2	32	12	33	37	54	55	34	76

★ Double-digit Calving Ease in this solid performing son of the \$340,000 one-third interest EXAR Denver 2002B.

★ He is backed by the proven high maternal Forever Lady family and his dam is a direct daughter of the high growth Select Sires Al Sire, TC Total 410.

DVF

Rito 9Q13 OF Rita 5F56 GHM

Lots 62 - 68 are sons of this breed-leading End Product sire who offers a \$B value of +209.34.

62

Deer Valley 9Q13 Rito 4600

DOB: 07/19/2014 Reg: 17858832 Tattoo: 4600

Gardens Highmark	Summitcrest Scotch Cap 0845	\$W
Rito 9Q13 of Rita 5F56 GHM	Green Garden Pride 6128 S1	+39.82
+16408438 Rita 5F56 of 1198 FD	CA Future Direction 5321	\$F
	Rita 1198 of 2536 Rito 616	+75.47
	Summitcrest Complete 1P55	\$G
EF Blackcap 1067	CF Right Design 1802	+52.08
16995500 RB Blackcap 624	Summitcrest Elba 1M17	\$B
	E&B 1680 Precision 1023	
	Circle G Blackcap 4209	+184.30

CED	BW	WW	YW	SC	DOC	MILK	CW	MARB	RE
+2	+2.8	+52	+103	+1.47	+12	+23	+52	+90	+119

CED	BW	WW	YW	RFI	DMI	YH	SC	DOC	HP	CEM	Milk	MW	MH	CW	MB	RE	FAT	TNO
76	91	52	48	57	14	25	7	74	67	33	61	48	20	3	20	1	18	85

★ This leadoff son of Rito 9Q13 excels to the extreme top 1% of the breed for \$B value and for UREA EPD.

★ His dam by the DVF herd sire Summitcrest Complete 1P55 records %IMF 3@117 and UREA 3@100.

Deer Valley 9Q13 Rito 4600 - Lot 62



Deer Valley 9Q13 4614 ← Lot 63



63 Deer Valley 9Q13 4614
 DOB: 08/10/2014 Reg: +18131034 Tattoo: 4614

Gardens Highmark Summitcrest Scotch Cap 0845 \$W
 Rito 9Q13 of Rita 5F56 GHM Green Garden Pride 6128 S1 +50.40
 +16408438 Rita 5F56 of 1198 FD CA Future Direction 5321 \$F
 Rita 1198 of 2536 Rito 616 +79.08
 GAR Predestined B/R New Design 036 \$G
 Deer Valley Rita 8517 GAR Ext 4206 +41.08
 +16126849 GAR Ext 614 N Bar Emulation EXT \$B
 GAR Scotch Cap 309 +162.13

CED	BW	WW	YW	SC	DOC	MILK	CW	MARB	RE
+0	+2.4	+64	+112	+68	+11	+20	+48	+87	+88

CED	BW	WW	YW	RFI	DMI	YH	SC	DOC	HP	CEM	Milk	MW	MH	CW	MB	RE	FAT	TNO
83	94	6	17	69	35	13	41	66	80	35	65	9	20	6	12	12	97	89

★ Added growth and performance in this 9Q13 son who is in the top 5% of the breed for both WW and YW traits and his \$B value places him in the top 3% of the breed.
 ★ His dam who has done a phenomenal job in the DVF program records %IMF 31@102.

Deer Valley Rito 5009 ← Lot 64



64 Deer Valley Rito 5009
 DOB: 08/16/2014 Reg: +18223508 Tattoo: 5009

Gardens Highmark Summitcrest Scotch Cap 0845 \$W
 Rito 9Q13 of Rita 5F56 GHM Green Garden Pride 6128 S1 +60.26
 +16408438 Rita 5F56 of 1198 FD CA Future Direction 5321 \$F
 Rita 1198 of 2536 Rito 616 +99.38
 GAR New Design 5050 B/R New Design 036 \$G
 Goode 5050 New Design 8917 GAR Precision 706 +53.08
 +16361447 Goode Objective 544 SS Objective T510 0T26 \$B
 Goode Expectaion 226 +189.88

CED	BW	WW	YW	SC	DOC	MILK	CW	MARB	RE
+1	+3.9	+67	+125	+1.33	+11	+29	+56	+1.01	+1.15

CED	BW	WW	YW	RFI	DMI	YH	SC	DOC	HP	CEM	Milk	MW	MH	CW	MB	RE	FAT	TNO
73	95	2	2	65	28	3	16	65	78	63	32	15	14	1	9	2	32	32

★ This flush brother to Lot 65 is in the extreme top 1% of the breed for both YW and \$B traits and also excels to the top 1% of the breed for UREA EPD while offering a WW EPD that is in the top 2%.
 ★ His dam records BR 2@97, WR 2@112, YR 1@106, and %IMF 4@113.

DVF

65 Deer Valley Rito 5011
 DOB: 08/21/2014 Reg: +18223507 Tattoo: 5011

Gardens Highmark Summitcrest Scotch Cap 0845 \$W
 Rito 9Q13 of Rita 5F56 GHM Green Garden Pride 6128 S1 +68.88
 +16408438 Rita 5F56 of 1198 FD CA Future Direction 5321 \$F
 Rita 1198 of 2536 Rito 616 +75.61
 GAR New Design 5050 B/R New Design 036 \$G
 Goode 5050 New Design 8917 GAR Precision 706 +51.62
 +16361447 Goode Objective 544 SS Objective T510 0T26 \$B
 Goode Expectaion 226 +153.50

CED	BW	WW	YW	SC	DOC	MILK	CW	MARB	RE
+13	+7	+57	+109	+1.34	+6	+30	+40	+93	+1.05

CED	BW	WW	YW	RFI	DMI	YH	SC	DOC	HP	CEM	Milk	MW	MH	CW	MB	RE	FAT	TNO
12	32	28	23	26	31	29	16	83	71	12	24	84	84	11	12	6	48	84

★ This flush brother to Lot 64 offers a unique double-digit CED EPD while also offering impressive carcass values.
 ★ His proven dam has a record of BR 2@97 and WR 2@112 with YR 4@113.



66

Deer Valley 9Q13 4601

DDF

DOB: 08/01/2014 Reg: 18131031 Tattoo: 4601

Gardens Highmark Summitcrest Scotch Cap 0845 \$W
 Rito 9Q13 of Rita 5F56 GHM Green Garden Pride 6128 S1 +34.67
 +16408438 Rita 5F56 of 1198 FD CA Future Direction 5321 \$F
 Rita 1198 of 2536 Rito 616 +87.05
 GAR New Design 5050 B/R New Design 036 \$G
 Deer Valley Rita 9457 GAR Precision 706 +43.79
 +16356356 GAR Ext 614 N Bar Emulation EXT \$B
 GAR Scotch Cap 309 +193.14

CED	BW	WW	YW	SC	DOC	MILK	CW	MARB	RE
+2	+2.9	+57	+109	+77	+14	+18	+59	+64	+1.27

CED	BW	WW	YW	RFI	DMI	YH	SC	DOC	HP	CEM	Milk	MW	MH	CW	MB	RE	FAT	TNO
66	92	34	34	68	6	12	46	47	48	39	71	8	5	2	25	3	38	7

★ This solid performing Rito 9Q13 son offers the highest \$B value in the entire sale offering and is also in the top 1% of the breed for UREA EPD.

★ His dam who is the direct daughter of Rita 614 recording UREA 29@105.



Deer Valley 9Q13 4601 ← Lot 66

67

Deer Valley Rito 5003

DDF

DOB: 08/17/2014 Reg: +18223505 Tattoo: 5003

Gardens Highmark Summitcrest Scotch Cap 0845 \$W
 Rito 9Q13 of Rita 5F56 GHM Green Garden Pride 6128 S1 +44.47
 +16408438 Rita 5F56 of 1198 FD CA Future Direction 5321 \$F
 Rita 1198 of 2536 Rito 616 +77.29
 Three Trees Next Step Summitcrest High Prime 0H29 \$G
 Three Trees Barbara U0613 GAR Precision 706 +56.79
 +15842377 GAR 1407 New Design 882 Bon View New Design 1407 \$B
 GAR Precision 2239 +190.74

CED	BW	WW	YW	SC	DOC	MILK	CW	MARB	RE
+1	+1.4	+57	+105	+1.09	+16	+17	+52	+1.22	+1.30

CED	BW	WW	YW	RFI	DMI	YH	SC	DOC	HP	CEM	Milk	MW	MH	CW	MB	RE	FAT	TNO
73	63	34	42	6	10	21	25	58	92	27	76	22	13	3	5	1	52	85

★ An impressive MB and UREA combination in this 9Q13 son who is in the top 1% for UREA EPD and top 2% for MB while also exceling to the extreme top 1% for \$B value.



Deer Valley Rito 5003 ← Lot 67

68

Deer Valley Rito 5005

DDC

DOB: 08/26/2014 Reg: +18223504 Tattoo: 5005

Gardens Highmark Summitcrest Scotch Cap 0845 \$W
 Rito 9Q13 of Rita 5F56 GHM Green Garden Pride 6128 S1 +36.37
 +16408438 Rita 5F56 of 1198 FD CA Future Direction 5321 \$F
 Rita 1198 of 2536 Rito 616 +62.42
 Three Trees Next Step Summitcrest High Prime 0H29 \$G
 Three Trees Barbara U0613 GAR Precision 706 +58.30
 +15842377 GAR 1407 New Design 882 Bon View New Design 1407 \$B
 GAR Precision 2239 +179.66

CED	BW	WW	YW	SC	DOC	MILK	CW	MARB	RE
-2	+2.6	+51	+94	+1.02	+14	+16	+46	+1.10	+1.23

CED	BW	WW	YW	RFI	DMI	YH	SC	DOC	HP	CEM	Milk	MW	MH	CW	MB	RE	FAT	TNO
86	87	65	77	19	6	41	29	67	71	66	84	59	44	14	7	3	8	3

★ This flush brother to Lot 67 offers solid performance an impressive combination for marbling and UREA traits and again like his brother ranks among the breed's top 1% for \$B value.



Rito 9Q13 of Rita 5F56 GHM

CED	BW	WW	YW	SC	DOC	MILK	CW	MRB	RE	\$W	\$F	\$G	\$B
-3	+3.7	+60	+114	+1.50	+2	+24	+68	+88	+1.55	+42.43	+89.53	+48.80	+208.97

Connealy Consensus 7229



A son sells as Lot 69.

69 Deer Valley Consensus 5023

DOB: 08/20/2014 Reg: +18223509 Tattoo: 5023

Connealy Consensus Connealy Consensus 7229 #16447771 Blue Lilly of Conanga 16	KMK Alliance 6595 187 Blinda of Conanga 004 Woodhill Admiral 77K Blue Cash of Conanga 6020	\$W +54.99 \$F +54.83 \$G +29.87 \$B +119.56
GAR Predestined B/R New Design 036 GAR Ext 4206 Rito 616 of 4B20 6807 GAR Precision 2536		

CED	BW	WW	YW	SC	DOC	MILK	CW	MARB	RE
-1	+3.2	+58	+100	+94	+17	+25	+37	+73	+37

CED	BW	WW	YW	RFI	DMI	YH	SC	DOC	HP	CEM	Milk	MW	MH	CW	MB	RE	FAT	TNO
87	92	16	23	35	70	50	44	31	68	76	14	26	33	24	35	52	54	64

★ A direct son of the \$210,000 Connealy Consensus 7229 produced from a dam recording BR 1@90, WR 2@102, and %IMF 14@109.

Deer Valley Karnan 4796 ← Lot 70



70 Deer Valley Karnan 4796

DOB: 09/12/2014 Reg: +18131133 Tattoo: 4796

Connealy Consensus Connealy Earnan 076E +16969555 Brazila of Conanga 3991 839A	KMK Alliance 6595 187 Blinda of Conanga 004 Connealy Tobin Breesha of Conanga 1251	\$W +60.51 \$F +73.03 \$G +23.61 \$B +154.07
Bon View New Design 878 Sunset Valley Lady 4501 +14706425 SVF Forever Lady 57D		

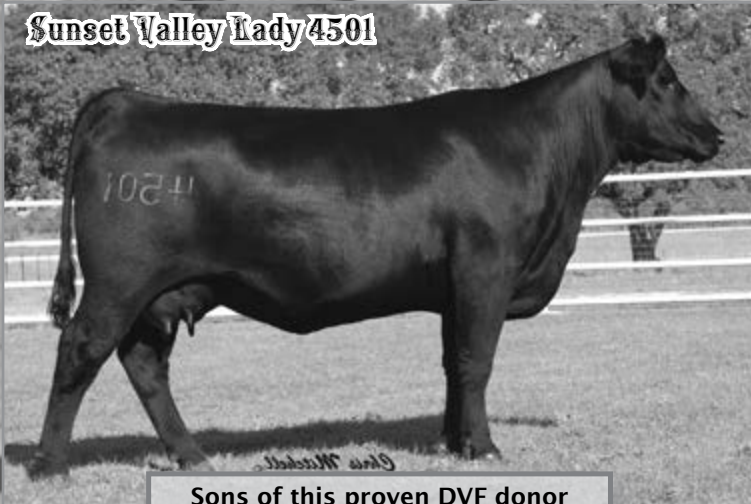
CED	BW	WW	YW	SC	DOC	MILK	CW	MARB	RE
+1	+3.2	+65	+111	+1.06	-10	+23	+55	+55	+57

CED	BW	WW	YW	RFI	DMI	YH	SC	DOC	HP	CEM	Milk	MW	MH	CW	MB	RE	FAT	TNO
73	78	9	6	69	89	52	26	96	11	37	36	17	33	19	74	63	88	4

★ A powerhouse Earnan son who ranks in the top 4% of the breed for weaning growth and he is in the top 15% for YW EPD.

★ His dam is the same dam as Lot 71 and she records BR 3@97, WR 3@102, %IMF 49@102, and UREA 49@102.

Sunset Valley Lady 4501



Sons of this proven DVF donor sell, including Lot 71.

71 Deer Valley Karnan 4763

DOB: 09/07/2014 Reg: +18131131 Tattoo: 4763

Connealy Consensus Connealy Earnan 076E +16969555 Brazila of Conanga 3991 839A	KMK Alliance 6595 187 Blinda of Conanga 004 Connealy Tobin Breesha of Conanga 1251	\$W +64.94 \$F +75.77 \$G +30.02 \$B +157.87
Bon View New Design 878 Sunset Valley Lady 4501 +14706425 SVF Forever Lady 57D		

CED	BW	WW	YW	SC	DOC	MILK	CW	MARB	RE
-2	+2.8	+63	+110	+16	-9	+27	+52	+72	+65

CED	BW	WW	YW	RFI	DMI	YH	SC	DOC	HP	CEM	Milk	MW	MH	CW	MB	RE	FAT	TNO
85	70	13	7	56	70	41	80	95	6	29	12	30	39	27	59	45	90	49

★ This high performance Earnan son is a flush brother to Lot 70 and is produced from the longtime DVF and Rutherford donor, Lady 4501 who records BR 3@97 and WR 3@102 with 19 daughters combining for WR 43@103.

72

Deer Valley Karnan 4759

DOB: 09/06/2014 Reg: +18131127 Tattoo: 4759

Connealy Consensus	KMK Alliance 6595 187	\$W
Connealy Earnan 076E	Blinda of Conanga 004	+61.31
+16969555	Connealy Tobin	\$F
	Breasha of Conanga 1251	+78.42
	B/R New Design 036	\$G
	GAR Ext 4206	+39.44
Deer Valley Rita 926E	SS Objective T510 0T26	\$B
+16356280	GAR 1407 New Design 2413	+151.05

CED	BW	WW	YW	SC	DOC	MILK	CW	MARB	RE
+6	+2.2	+60	+111	+72	+16	+21	+44	+1.12	+73

CED	BW	WW	YW	RFI	DMI	YH	SC	DOC	HP	CEM	Milk	MW	MH	CW	MB	RE	FAT	TNO
31	36	17	7	62	42	81	63	27	75	12	31	81	78	39	10	32	98	71

★ Growth and carcass values stacked in the pedigree of this Earnan son who ranks in the top 3% of the breed for MB EPD.

★ His dam who is a full sister to GAR Progress, records WR 3@114, YR 1@114, and %IMF 21@106.



CED	BW	WW	YW	SC	DOC	MILK	CW	MB	RE
-10	+4.4	+76	+133	+98	+6	+12	+57	+87	+65
\$W	\$F	\$G	\$B	\$T					
+54.39				+114.44					

74

Deer Valley Upshot 4835

DOB: 11/22/2014 Reg: +18219584 Tattoo: 4835

Sitz Upward 307R	Connealy Onward	\$W
EXAR Upshot 0562B	Sitz Henrietta Pride 81M	+66.02
16541214	Isu Imaging Q 9111	\$F
	LCC Mc Henry Barbar MG382	+56.03
	B/R New Design 036	\$G
	Bon View Gammer 85	+38.28
Sunset Valley Lady 4501	Leachman Right Time	\$B
+14706425	SVF Forever Lady 1128	+155.31

CED	BW	WW	YW	SC	DOC	MILK	CW	MARB	RE
+4	+3.2	+59	+103	+65	+5	+33	+52	+84	+91

CED	BW	WW	YW	RFI	DMI	YH	SC	DOC	HP	CEM	Milk	MW	MH	CW	MB	RE	FAT	TNO
41	89	27	19	87	80	29	39	74	2	57	11	48	50	8	46	16	74	48

★ This Upshot son is a maternal brother to Lots 70 and 71 as he is produced from a direct daughter of Forever Lady 57D who records BR 3@97, WR 3@102, %IMF 49@102, and UREA 49@102.

73

Deer Valley Karnan 47131

DOB: 09/12/2014 Reg: +18142599 Tattoo: 47131

Connealy Consensus	KMK Alliance 6595 187	\$W
Connealy Earnan 076E	Blinda of Conanga 004	+56.05
+16969555	Connealy Tobin	\$F
	Breasha of Conanga 1251	+71.46
	BCC Bushwacker 41-93	\$G
	Paramont Ambush 2172	+30.05
Shermans 6K20 Rita 492	RC Anita T Bando 918903	\$B
+15000848	Rita 6K20 of 2T6 EXT	+147.14
	N Bar Emulation EXT	
	Rita 2T6 of 5H11 Rito 149	

CED	BW	WW	YW	SC	DOC	MILK	CW	MARB	RE
-10	+3.2	+61	+105	+54	+14	+17	+45	+51	+74

CED	BW	WW	YW	RFI	DMI	YH	SC	DOC	HP	CEM	Milk	MW	MH	CW	MB	RE	FAT	TNO
99	86	12	14	21	48	93	77	32	36	72	72	69	86	46	78	29	70	32

★ This son of Earnan will sire extra pounds and performance at weaning time as he is a thick made, wide based individual produced from the proven donor Rita 492 who records WR 4@105, YR 3@100, and UREA 10@104.

Deer Valley Weigh Up 4007 ← Lot 75



75

Deer Valley Weigh Up 4007

DOB: 11/17/2014 Reg: +18139512 Tattoo: 4007

Sitz Upward 307R	Connealy Onward	\$W
Plattemere Weigh Up K360	Sitz Henrietta Pride 81M	+78.34
16692552	GAR Retail Product	\$F
	Barbara of Plattemere 337	+85.93
	GAR Progress	\$G
	GAR Predestined	+49.15
Deer Valley Blackcap 1227	GAR Objective 2345	\$B
+16964898	Rita 1194 of 2536 Rito 616	+166.69
	Rito 616 of 4B20 6807	
	GAR Precision 2536	

CED	BW	WW	YW	SC	DOC	MILK	CW	MARB	RE
+13	-1.3	+67	+122	+13	+14	+26	+50	+1.09	+78

CED	BW	WW	YW	RFI	DMI	YH	SC	DOC	HP	CEM	Milk	MW	MH	CW	MB	RE	FAT	TNO
6	8	12	8	90	90	67	91	56	25	20	24	74	53	14	10	25	17	79

★ This unique Weigh Up son offers double-digit CED while also excelling to the top 1% of the breed for yearling growth and for \$W value plus he is in the top 2% of the breed for \$B.

★ His dam records BR 1@99 and WR 1@125.

Deer Valley Weigh Up 4922 ← Lot 77



GAR Objective 1885



This dam of GAR Prophet is also the maternal grandam of Lots 76 and 77.

GAR 28 Ambush 619



This maternal sister to GAR Prophet is the dam of Lots 76 and 77.

76

Deer Valley Weigh Up 4907

DOB: 11/04/2014

Reg: +18388695

Tattoo: 4907

Sitz Upward 307R
Plattemere Weigh Up K360
 16692552 Barbara of Plattemere 337

B/R Ambush 28
GAR 28 Ambush 619
 +16496660 GAR Objective 1885

Connealy Onward
 Sitz Henrietta Pride 81M
 GAR Retail Product
 Barbara of Plattemere 311
 Rockn D Ambush 1531
 B/R Ruby of Tiffany 8250
 SS Objective T510 OT26
 GAR 1407 New Design 2232

\$W	
+50.98	\$F
+88.49	\$G
+46.10	\$B
+175.26	

CED	BW	WW	YW	SC	DOC	MILK	CW	MARB	RE
I+6	I+1.1	I+62	I+120	I+.82	I+22	I+21	I+55	I+.87	I+.77

- ★ This flush brother to Lot 77 ranks in the top 2% of the breed for yearling growth and excels to the breed's elite 1% for \$B value.
- ★ His dam is a maternal sister to the longtime Select Sires AI sire, GAR Prophet and sold as a highlight of the fall 2015 DVF female offering.

77

Deer Valley Weigh Up 4922

DOB: 11/05/2014

Reg: +18388696

Tattoo: 4922

Sitz Upward 307R
Plattemere Weigh Up K360
 16692552 Barbara of Plattemere 337

B/R Ambush 28
GAR 28 Ambush 619
 +16496660 GAR Objective 1885

Connealy Onward
 Sitz Henrietta Pride 81M
 GAR Retail Product
 Barbara of Plattemere 311
 Rockn D Ambush 1531
 B/R Ruby of Tiffany 8250
 SS Objective T510 OT26
 GAR 1407 New Design 2232

\$W	
+50.98	\$F
+88.49	\$G
+46.10	\$B
+175.26	

CED	BW	WW	YW	SC	DOC	MILK	CW	MARB	RE
I+6	I+1.1	I+62	I+120	I+.82	I+22	I+21	I+55	I+.87	I+.77

- ★ Another impressive son of the proven 619 donor and he is a full brother to Lot 76.
- ★ Much like his brother, he excels to the top 1% of the breed for \$B value and is also in the top 2% of the breed for yearling growth.

78

Deer Valley Weigh Up 4822

DOB: 11/18/2014 Reg: +18219585 Tattoo: 4822

Sitz Upward 307R	Connealy Onward	\$W
Plattemere Weigh Up K360	Sitz Henrietta Pride 81M	+59.95
16692552 Barbara of Plattemere 337	GAR Retail Product	\$F
	Barbara of Plattemere 311	+80.00
	B/R New Design 1407	\$G
EF Forever Lady 4015	Bon View Pride 664	+39.26
+14872279 Toebben Forever Lady 097G	DHD Traveler 6807	\$B
	SVF Forever Lady 57D	+152.61

CED	BW	WW	YW	SC	DOC	MILK	CW	MARB	RE
-2	+2.9	+61	+115	+14	+13	+28	+47	+86	+60

CED	BW	WW	YW	RFI	DMI	YH	SC	DOC	HP	CEM	Milk	MW	MH	CW	MB	RE	FAT	TNO
74	74	9	3	19	87	25	84	45	3	62	8	48	43	13	29	47	29	84

- ★ This flush brother to Lot 79 combines the extreme growth of Plattemere Weigh Up K360 with the proven donor EF Forever Lady 4015.
- ★ He has a full brother who is a herd sire in the Marshall and Fenner program in MO.



79

Deer Valley Weigh Up 4813

DOB: 11/17/2014 Reg: +18219582 Tattoo: 4813

Sitz Upward 307R	Connealy Onward	\$W
Plattemere Weigh Up K360	Sitz Henrietta Pride 81M	+49.22
16692552 Barbara of Plattemere 337	GAR Retail Product	\$F
	Barbara of Plattemere 311	+75.61
	B/R New Design 1407	\$G
EF Forever Lady 4015	Bon View Pride 664	+36.88
+14872279 Toebben Forever Lady 097G	DHD Traveler 6807	\$B
	SVF Forever Lady 57D	+138.77

CED	BW	WW	YW	SC	DOC	MILK	CW	MARB	RE
+3	+1.7	+57	+109	+1.07	+15	+24	+40	+62	+45

CED	BW	WW	YW	RFI	DMI	YH	SC	DOC	HP	CEM	Milk	MW	MH	CW	MB	RE	FAT	TNO
46	45	25	10	34	60	32	30	40	8	52	32	9	19	30	43	54	4	87

- ★ Low birth and solid performance in this Weigh Up son whose dam from the Forever Lady family records WR 4@103 and %IMF 41@100.
- ★ A full brother to this individual is a herd sire in the Marshall and Fenner program in Missouri.



80

Deer Valley Weigh Up 4813

DOB: 10/07/2014 Reg: 18121602 Tattoo: 4813

Sitz Upward 307R	Connealy Onward	\$W
Plattemere Weigh Up K360	Sitz Henrietta Pride 81M	+58.72
16692552 Barbara of Plattemere 337	GAR Retail Product	\$F
	Barbara of Plattemere 311	+88.43
	B/R New Day 454	\$G
Ogeechee Rita 008	Boyd New Day 8005	+41.24
16880710 Bricton Prime 8175	B/R Ruby 1224	\$B
	GAR Retail Product	+155.47
	Bricton Prime Time 6114	

CED	BW	WW	YW	SC	DOC	MILK	CW	MARB	RE
-6	+3.3	+66	+124	+82	+15	+23	+49	+77	+82

CED	BW	WW	YW	RFI	DMI	YH	SC	DOC	HP	CEM	Milk	MW	MH	CW	MB	RE	FAT	TNO
90	83	16	6	76	93	71	57	44	8	71	41	64	45	10	31	16	12	63

- ★ Extreme growth numbers in this Weigh Up son who is in the top 1% of the breed for YW EPD and his dam by the Select Sires Pathfinder sire New Day 454 records WR 1@105, YR 1@109, %IMF 1@130, and UREA 1@109.





81

Deer Valley Weigh Up 4793

DDC

DOB: 09/10/2014 Reg: 18121593 Tattoo: 4793

Sitz Upward 307R Plattemere Weigh Up K360 16692552 Barbara of Plattemere 337	Connealy Onward Sitz Henrietta Pride 81M GAR Retail Product Barbara of Plattemere 311	\$W +77.97 \$F +88.61 \$G +48.84 \$B +150.82
Connealy Consensus 7229 Deer Valley Rita 1630 +17096299 GAR Objective 2345	Connealy Consensus Blue Lilly of Conanga 16 SS Objective T510 OT26 GAR 1407 New Design 2413	\$W +76.57 \$F +82.51 \$G +51.32 \$B +167.02

CED	BW	WW	YW	SC	DOC	MILK	CW	MARB	RE									
+11	+1.2	+68	+124	+94	+21	+27	+42	+1.18	+61									
CED	BW	WW	YW	RFI	DMI	YH	SC	DOC	HP	CEM	Milk	MW	MH	CW	MB	RE	FAT	TNO
17	36	3	4	80	92	63	48	30	29	27	1	64	68	30	13	26	3	56

★ Double-digit calving ease combined with a top 1% ranking for yearling growth in this high performance individual whose dam by the \$210,000 Connealy Consensus 7229 is a direct daughter of the \$300,000 GAR Objective 2345.

83

Deer Valley Weigh Up 4605

DDC

DOB: 08/02/2014 Reg: 18121517 Tattoo: 4605

Sitz Upward 307R Plattemere Weigh Up K360 16692552 Barbara of Plattemere 337	Connealy Onward Sitz Henrietta Pride 81M GAR Retail Product Barbara of Plattemere 311	\$W +76.57 \$F +82.51 \$G +51.32 \$B +167.02
B/R New Day 454 Deer Valley Rita 1413 +16964657 GAR Objective 2345	Boyd New Day 8005 B/R Ruby 1224 SS Objective T510 OT26 GAR 1407 New Design 2413	\$W +76.57 \$F +82.51 \$G +51.32 \$B +167.02

CED	BW	WW	YW	SC	DOC	MILK	CW	MARB	RE									
+16	-1.5	+67	+121	+59	+27	+24	+50	+98	+96									
CED	BW	WW	YW	RFI	DMI	YH	SC	DOC	HP	CEM	Milk	MW	MH	CW	MB	RE	FAT	TNO
3	3	5	6	66	86	68	72	9	15	26	14	72	78	3	14	5	2	66

★ Extreme calving ease in this unique Weigh Up son who is in the extreme top 1% of the breed for CED EPD while also ranking in the top 2% for both WW and YW EPDs and in addition, has an excellent balance of MB and RE traits.

★ His \$B value ranks in the top 2% of the entire breed.

82

Deer Valley Weigh Up 4655

DOB: 08/13/2014 Reg: 18121545 Tattoo: 4655

Sitz Upward 307R Plattemere Weigh Up K360 16692552 Barbara of Plattemere 337	Connealy Onward Sitz Henrietta Pride 81M GAR Retail Product Barbara of Plattemere 311	\$W +71.52 \$F +77.46 \$G +47.41 \$B +141.27
SAV Bismarck 5682 Deer Valley Rita 1112 +16964738 GAR Objective 2345	GAR Grid Maker SAV Abigale 0451 SS Objective T510 OT26 GAR 1407 New Design 2413	\$W +71.52 \$F +77.46 \$G +47.41 \$B +141.27

CED	BW	WW	YW	SC	DOC	MILK	CW	MARB	RE									
+12	+5	+65	+117	+1.27	+17	+24	+39	+81	+77									
CED	BW	WW	YW	RFI	DMI	YH	SC	DOC	HP	CEM	Milk	MW	MH	CW	MB	RE	FAT	TNO
7	20	7	9	70	98	44	26	52	18	9	19	64	34	44	33	27	1	80

★ This son of Weigh Up is bred similar to Lot 81 as he traces to GAR Objective 2345.

★ He offers double digit CED while also ranking in the top 3% of the breed for yearling growth and top 4% for WW EPD plus his dam records WR 1@115.

84

Deer Valley Weigh Up 4832

DOB: 11/20/2014 Reg: +18219577 Tattoo: 4832

Sitz Upward 307R Plattemere Weigh Up K360 16692552 Barbara of Plattemere 337	Connealy Onward Sitz Henrietta Pride 81M GAR Retail Product Barbara of Plattemere 311	\$W +59.98 \$F +95.97 \$G +33.75 \$B +156.96
GAR Retail Product Deer Valley Rita 94113 +16356222 GAR Ext 614	GAR Precision 1680 GAR Ext 4927 N Bar Emulation EXT GAR Scotch Cap 309	\$W +59.98 \$F +95.97 \$G +33.75 \$B +156.96

CED	BW	WW	YW	SC	DOC	MILK	CW	MARB	RE									
+2	+2.5	+68	+126	+1.00	+9	+20	+51	+71	+56									
CED	BW	WW	YW	RFI	DMI	YH	SC	DOC	HP	CEM	Milk	MW	MH	CW	MB	RE	FAT	TNO
73	75	12	4	69	95	11	49	65	15	36	21	47	19	7	41	47	43	61

★ This son of Weigh Up should sire a tremendous set of replacement females as his dam by Retail Product is a direct daughter of Rita 614.

★ He excels to the top 1% for YW EPD and his in the top 2% of the breed for WW EPD with a 4% ranking for \$B value.

Deer Valley Old Hickory



This \$90,000 one-half interest of the Fall 2015 DVF sale is a three-quarter brother to Lot 82.

85

Deer Valley Weigh Up 4817

DOB: 10/09/2014 Reg: 18121603 Tattoo: 4817

Sitz Upward 307R Plattemere Weigh Up K360 16692552 Barbara of Plattemere 337	Connealy Onward Sitz Henrietta Pride 81M GAR Retail Product Barbara of Plattemere 311	\$W +75.45 \$F +77.90 \$G +35.10 \$B +139.20
Connealy Consensus 7229 Deer Valley Rita 1816 +17153611 GAR Objective 2345	Connealy Consensus Blue Lilly of Conanga 16 SS Objective T510 OT26 GAR 1407 New Design 2413	\$W +75.45 \$F +77.90 \$G +35.10 \$B +139.20

CED	BW	WW	YW	SC	DOC	MILK	CW	MARB	RE									
+13	+5	+67	+118	+81	+21	+25	+44	+80	+43									
CED	BW	WW	YW	RFI	DMI	YH	SC	DOC	HP	CEM	Milk	MW	MH	CW	MB	RE	FAT	TNO
10	17	4	7	76	90	19	55	33	21	33	3	53	22	23	31	61	11	96

★ This double-digit CED son of Weigh Up offers extreme growth that places him in the top 2% for YW and he is in the top 2% of the breed for \$W value.

Deer Valley Prophet 4138



Maternal brother to Lots 86 & 87

Deer Valley Denver 4805 ← Lot 88



86

Deer Valley Weigh Up 4017

DOB: 12/13/2014 Reg: +18139522 Tattoo: 4017

Sitz Upward 307R	Connealy Onward	\$W
Plattemere Weigh Up K360	Sitz Henrietta Pride 81M	+67.10
16692552	GAR Retail Product	\$F
Barbara of Plattemere 337	Barbara of Plattemere 311	+77.59
GAR Predestined	B/R New Design 036	\$G
Deer Valley Blackcap 9219	GAR Ext 4206	+38.56
+16350237	N Bar Emulation EXT	\$B
GAR Ext 614	GAR Scotch Cap 309	+151.05

CED	BW	WW	YW	SC	DOC	MILK	CW	MARB	RE									
+10	+9	+61	+114	+62	+7	+25	+47	+79	+73									
CED	BW	WW	RFI	DMI	YH	SC	DOC	HP	CEM	Milk	MW	MH	CW	MB	RE	FAT	TNO	
26	53	35	24	98	93	57	70	71	3	9	13	88	69	16	27	18	59	79

★ Double-digit calving ease with excellent growth and carcass values in this Weigh Up son produced from a donor who records BR 3@98, WR 3@101, YR 2@103, %IMF 20@107 and UREA 20@102.

88

Deer Valley Denver 4805

DOB: 10/01/2014 Reg: +18131170 Tattoo: 4805

EXAR Upshot 0562B	Sitz Upward 307R	\$W
EXAR Denver 2002B	EXAR Barbara T020	+65.11
17160560	EXAR 263C	\$F
Exar Royal Lass 1067	BR Royal Lass 19-132	+67.91
GAR Predestined	B/R New Design 036	\$G
Deer Valley Rita 8517	GAR Ext 4206	+37.68
+16126849	N Bar Emulation EXT	\$B
GAR Ext 614	GAR Precision 2168	+135.42

CED	BW	WW	YW	SC	DOC	MILK	CW	MARB	RE
I+6	I+2.2	I+61	I+107	I+61	I+7	I+28	I+39	I+89	I+59

★ An impressive high performance son of Denver produced from a DVF donor who records %IMF 31@102.

87

Deer Valley Weigh Up 4015

DOB: 12/13/2014 Reg: +18139521 Tattoo: 4015

Sitz Upward 307R	Connealy Onward	\$W
Plattemere Weigh Up K360	Sitz Henrietta Pride 81M	+64.40
16692552	GAR Retail Product	\$F
Barbara of Plattemere 337	Barbara of Plattemere 311	+87.38
GAR Predestined	B/R New Design 036	\$G
Deer Valley Blackcap 9219	GAR Ext 4206	+30.27
+16350237	N Bar Emulation EXT	\$B
GAR Ext 614	GAR Scotch Cap 309	+150.83

CED	BW	WW	YW	SC	DOC	MILK	CW	MARB	RE									
-2	+2.7	+67	+121	+54	+7	+25	+50	+60	+63									
CED	BW	WW	RFI	DMI	YH	SC	DOC	HP	CEM	Milk	MW	MH	CW	MB	RE	FAT	TNO	
85	90	10	10	95	90	42	74	73	9	65	14	48	40	10	39	34	66	63

★ Outstanding growth genetics that place him in the top 2% of the breed for both WW and YW traits and his dam who is also the dam of Lot 86 records BR 3@98, WR 3@101, and YR 2@103 with three daughters in production combing for WR 3@105.

89

Deer Valley Upshot 4816

DOB: 11/17/2014 Reg: +18219562 Tattoo: 4816

Sitz Upward 307R	Connealy Onward	\$W
EXAR Upshot 0562B	Sitz Henrietta Pride 81M	+59.90
16541214	Isu Imaging Q 9111	\$F
EXAR Barbara T020	LCC Mc Henry Barbar MG382	+39.53
SAV Pioneer 7301	SAV Final Answer 0035	\$G
Deer Valley Rita 9035	SAV Blackbird 5297	+38.39
+16577355	B/R New Design 036	\$B
EF Rita 0221	GAR Precision 2168	+125.83

CED	BW	WW	YW	SC	DOC	MILK	CW	MARB	RE									
+8	+1.2	+48	+88	+33	+14	+35	+37	+79	+99									
CED	BW	WW	RFI	DMI	YH	SC	DOC	HP	CEM	Milk	MW	MH	CW	MB	RE	FAT	TNO	
14	61	62	65	88	70	39	60	49	16	78	15	47	42	31	44	7	78	93

★ Calving ease with bred in maternal superiority in this pedigree backed by a dam recording WR 3@116 and YR 2@113.

90 Deer Valley Upshot 4021

DOB: 12/25/2014 Reg: +18139524 Tattoo: 4021

Sitz Upward 307R	Connealy Onward	\$W
EXAR Upshot 0562B	Sitz Henrietta Pride 81M	+61.27
16541214	Isu Imaging Q 9111	\$F
	LCC Mc Henry Barbar MG382	+55.86
EXAR 263C	Bon View New Design 1407	\$G
EXAR Lady Blanche 9056	Exar June C 3577	+30.72
16259738	CA Future Direction 5321	\$B
	B&C 163 Bando 854-780 1418	+123.44

CED	BW	WW	YW	SC	DOC	MILK	CW	MARB	RE
+7	+1.4	+55	+99	+1.59	+19	+27	+38	+43	+93

CED	BW	WW	YW	RFI	DMI	YH	SC	DOC	HP	CEM	Milk	MW	MH	CW	MB	RE	FAT	TNO
27	76	42	39	75	60	34	11	26	7	56	14	52	13	12	64	6	50	72

★ This calving ease son of Upshot is produced from an impressive 263C daughter who was selected as one of the highlight females of a past EXAR sale and now serves as a donor in the Deer Valley Farm program.

Deer Valley All In 4787 ← Lot 92



92 Deer Valley All In 4787

DOB: 09/10/2014 Reg: +18128008 Tattoo: 4787

AAR Ten X 7008 SA	Mytty In Focus	\$W
Deer Valley All In	AAR Lady Kelton 5551	+72.28
17307074	Sitz Upward 307R	\$F
	GAR Objective 2345	+60.58
	Bon View New Design 208	\$G
EF Rita 9401	TC Erica Eileen 2047	+44.00
+16602117	GAR Retail Product	\$B
	GAR Outlier 1360	+138.71

CED	BW	WW	YW	SC	DOC	MILK	CW	MARB	RE
+7	+2.2	+60	+104	+1.30	+20	+35	+39	+83	+80

CED	BW	WW	YW	RFI	DMI	YH	SC	DOC	HP	CEM	Milk	MW	MH	CW	MB	RE	FAT	TNO
28	49	19	18	71	89	36	9	46	65	51	16	51	45	33	20	24	61	48

★ Solid growth and performance combined with a CED EPD of +7 in this All In son whose dam by Total records %IMF 10@104.

91 Deer Valley All In 5017

DOB: 08/24/2014 Reg: +18224981 Tattoo: 5017

AAR Ten X 7008 SA	Mytty In Focus	\$W
Deer Valley All In	AAR Lady Kelton 5551	+63.04
17307074	Sitz Upward 307R	\$F
	GAR Objective 2345	+83.74
	DHD Traveler 6807	\$G
Rito 616 of 4B20 6807	Rita 4B20 of 0FB1 Bando	+38.49
Rita 1198 of 2536 Rito 616	GAR Precision 1680	\$B
+13801957	GAR Ext 2104	+157.86

CED	BW	WW	YW	SC	DOC	MILK	CW	MARB	RE
+7	+2.3	+64	+111	+1.29	+9	+33	+44	+47	+59

CED	BW	WW	YW	RFI	DMI	YH	SC	DOC	HP	CEM	Milk	MW	MH	CW	MB	RE	FAT	TNO
23	52	11	7	27	45	34	9	75	90	62	34	5	24	10	46	41	2	90

★ Excellent growth traits with balance carcass values in this All In son who is a direct son of the high valued DVF donor Rita 1198, a female who records %IMF 129@100.

Deer Valley All In 5017 ← Lot 91



93 Deer Valley All In 4694

DOB: 08/16/2014 Reg: +18127995 Tattoo: 4694

AAR Ten X 7008 SA	Mytty In Focus	\$W
Deer Valley All In	AAR Lady Kelton 5551	+67.73
17307074	Sitz Upward 307R	\$F
	GAR Objective 2345	+76.56
	Bon View New Design 208	\$G
TC Total 410	TC Erica Eileen 2047	+40.41
EF Rita 9401	GAR Retail Product	\$B
+16602117	GAR Outlier 1360	+151.53

CED	BW	WW	YW	SC	DOC	MILK	CW	MARB	RE
+7	+1.2	+63	+115	+1.62	+18	+32	+47	+81	+69

CED	BW	WW	YW	RFI	DMI	YH	SC	DOC	HP	CEM	Milk	MW	MH	CW	MB	RE	FAT	TNO
28	26	9	3	79	96	23	4	52	85	29	36	7	5	10	21	43	66	64

★ This full brother to Lot 92 offers calving ease with a yearling weight EPD that ranks among the breed's top 4% and a WW EPD among the breed's top 10%.

★ He stacks three generations of breed-leading genetics that have all been featured in the Select Sires AI program.

94

Deer Valley All In 46140

DOB: 08/24/2014 Reg: 18121531 Tattoo: 46140

DDC

AAR Ten X 7008 SA
Deer Valley All In
17307074 Deer Valley Rita 0274

GAR Predestined
Deer Valley Rita 0787
+16877004 GAR Grid Maker N284

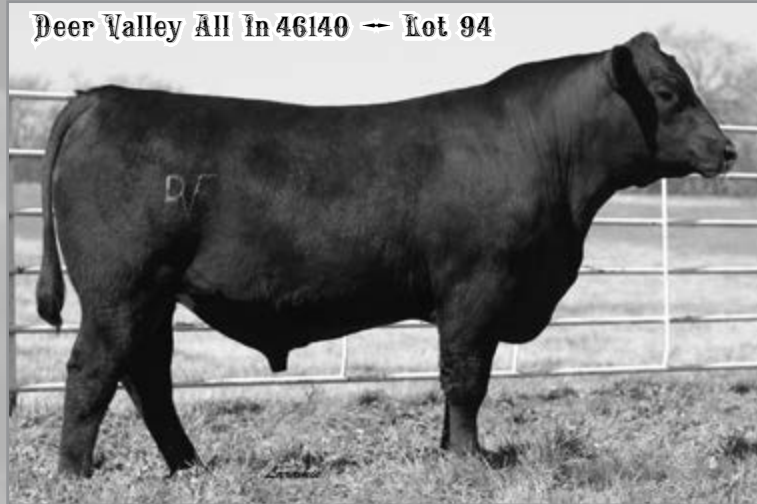
Mytty In Focus
AAR Lady Kelton 5551
Sitz Upward 307R
GAR Objective 2345
B/R New Design 036
GAR Ext 4206
GAR Grid Maker
GAR Precision 100

\$W
+63.43
\$F
+69.21
\$G
+50.42
\$B
+139.87

CED	BW	WW	YW	SC	DOC	MILK	CW	MARB	RE
+8	+1.9	+60	+110	+75	+10	+28	+37	+1.00	+73

CED	BW	WW	YW	RFI	DMI	YH	SC	DOC	HP	CEM	Milk	MW	MH	CW	MB	RE	FAT	TNO
19	39	22	9	94	97	53	19	71	66	26	23	51	40	32	11	46	54	69

★ Calving ease with solid growth and performance combined with carcass values in this All In son who is in the top 10% of the breed for WW and YW EPDs and has an MB value in the top 3%.
 ★ His low birth dam records BR 2@97 combined with %IMF 2@110.



95

Deer Valley All In 46141

DOB: 08/24/2014 Reg: 18121532 Tattoo: 46141

AAR Ten X 7008 SA
Deer Valley All In
17307074 Deer Valley Rita 0274

B/R New Day 454
GAR New Day G80
+16733471 GAR 5050 New Design G246

Mytty In Focus
AAR Lady Kelton 5551
Sitz Upward 307R
GAR Objective 2345
Boyd New Day 8005
B/R Ruby 1224
GAR New Design 5050
GAR Retail Product 512

\$W
+80.04
\$F
+63.60
\$G
+42.12
\$B
+121.28

CED	BW	WW	YW	SC	DOC	MILK	CW	MARB	RE
+13	-1	+63	+110	+58	+15	+31	+34	+66	+81

CED	BW	WW	YW	RFI	DMI	YH	SC	DOC	HP	CEM	Milk	MW	MH	CW	MB	RE	FAT	TNO
5	5	17	10	98	99	93	44	45	58	44	19	86	86	16	24	15	46	80

★ A unique double-digit CED son of All In from a dam by the longtime Pathfinder sire featured in the Select Sires program, New Day 454.
 ★ Four generations of proven Select Sires breeding in this pedigree.



96

Deer Valley All In 0754

DOB: 09/19/2014 Reg: +17935970 Tattoo: 0754

AAR Ten X 7008 SA
Deer Valley All In
17307074 Deer Valley Rita 0274

Summitcrest Complete 1P55
Springfield Blackcap 1094
+17217579 Springfield Blackcap 8167

Mytty In Focus
AAR Lady Kelton 5551
Sitz Upward 307R
GAR Objective 2345
CF Right Design 1802
Summitcrest Elba 1M17
GAR Predestined
Riverbend Blackcap 5762

\$W
+82.95
\$F
+85.63
\$G
+36.57
\$B
+167.11

CED	BW	WW	YW	SC	DOC	MILK	CW	MARB	RE
+2	+2.6	+69	+120	+75	+22	+39	+55	+60	+97

CED	BW	WW	YW	RFI	DMI	YH	SC	DOC	HP	CEM	Milk	MW	MH	CW	MB	RE	FAT	TNO
56	60	3	1	92	98	35	21	30	43	35	2	51	25	1	31	5	75	90

★ Extreme growth values in this All In son who is in the top 2% for both WW and YW EPDs and has a \$W value that excels to the top 1%. In addition, his \$B ranks in the top 2% and his dam records WR 2@101 and YR 1@100.



Deer Valley All In 0494 ← Lot 97



97

Deer Valley All In 0494

DOB: 09/11/2014 Reg: +17935957 Tattoo: 0494

AAR Ten X 7008 SA	Mytty In Focus	\$W
Deer Valley All In	AAR Lady Kelton 5551	+76.33
17307074	Sitz Upward 307R	\$F
	GAR Objective 2345	+76.13
	Summitcrest Complete 1P55	\$G
BoBo Blackcap 1533	CF Right Design 1802	+48.94
+17050239	Summitcrest Elba 1M17	\$B
	B/R Ambush 28	\$B
	B/R Lantz Blackcap 5231	+174.71

CED	BW	WW	YW	SC	DOC	MILK	CW	MARB	RE
+10	+5	+60	+108	+1.30	+24	+33	+50	+89	+1.09

CED	BW	WW	YW	RFI	DMI	YH	SC	DOC	HP	CEM	Milk	MW	MH	CW	MB	RE	FAT	TNO
10	11	31	14	33	74	65	8	18	15	4	14	73	63	6	16	4	40	49

★ Double-digit CED combined with a \$B value that ranks in the top 1% of the breed in this All In son whose \$W value also ranks in the top 2%.

Deer Valley All In 4991 ← Lot 98



98

Deer Valley All In 4991

DOB: 09/06/2014 Reg: +17936103 Tattoo: 4991

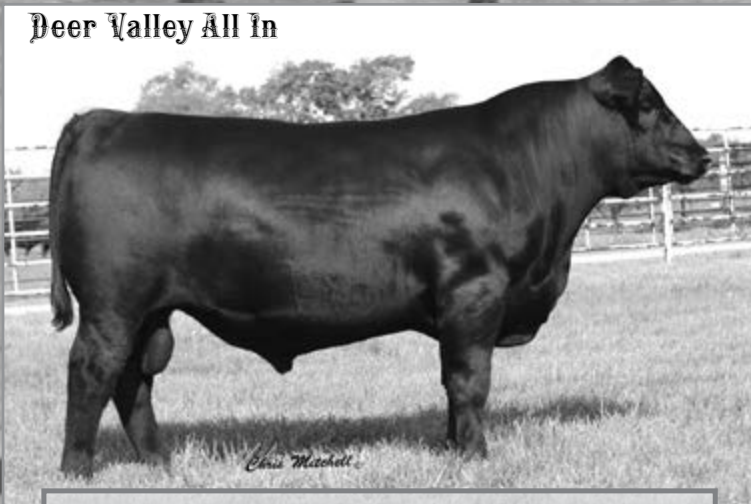
AAR Ten X 7008 SA	Mytty In Focus	\$W
Deer Valley All In	AAR Lady Kelton 5551	+70.49
17307074	Sitz Upward 307R	\$F
	GAR Objective 2345	+75.94
	Summitcrest Complete 1P55	\$G
BoBo Blackcap 1533	Summitcrest Elba 1M17	+46.15
+17050239	B/R Ambush 28	\$B
	B/R Lantz Blackcap 5231	+174.76

CED	BW	WW	YW	SC	DOC	MILK	CW	MARB	RE
+7	+1.0	+59	+107	+1.25	+15	+32	+51	+83	+1.13

CED	BW	WW	YW	RFI	DMI	YH	SC	DOC	HP	CEM	Milk	MW	MH	CW	MB	RE	FAT	TNO
18	18	37	16	47	67	68	9	56	18	24	21	51	67	5	19	3	58	83

★ A low birth All In son who is in the top 1% of the breed for \$B value and offers a pedigree bred for carcass excellence.

Deer Valley All In



99

Deer Valley All In 4803

DOB: 10/03/2014 Reg: 18121596 Tattoo: 4803

AAR Ten X 7008 SA	Mytty In Focus	\$W
Deer Valley All In	AAR Lady Kelton 5551	+85.67
17307074	Sitz Upward 307R	\$F
	GAR Objective 2345	+73.81
	GAR Predestined	\$G
GAR Predestined N1090	B/R New Design 036	+54.41
+16925180	GAR Ext 4206	\$B
	SS Objective T510 OT26	\$B
	GAR 1407 New Design N64	+134.38

CED	BW	WW	YW	SC	DOC	MILK	CW	MARB	RE
+10	+4	+68	+115	+99	+10	+30	+32	+1.20	+60

CED	BW	WW	YW	RFI	DMI	YH	SC	DOC	HP	CEM	Milk	MW	MH	CW	MB	RE	FAT	TNO
7	13	3	4	54	87	83	20	74	48	15	36	78	58	39	4	52	42	48

★ This double-digit CED son of All In also ranks in the top 4% of the breed for yearling growth and is in the top 2% for WW EPD with a 2% ranking for MB.

Several sons of this leading Select Sires AI sire sell.

100

Deer Valley All In 4827

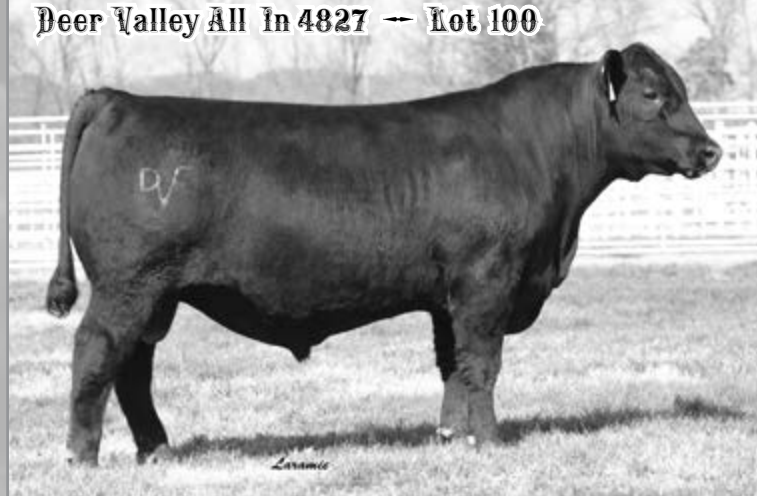
DOB: 11/19/2014 Reg: +18219654 Tattoo: 4827

AAR Ten X 7008 SA	Mytty In Focus	\$W
Deer Valley All In	AAR Lady Kelton 5551	+83.05
17307074	Sitz Upward 307R	\$F
	GAR Objective 2345	+81.38
	Bon View New Design 208	\$G
TC Total 410	TC Erica Eileen 2047	+43.65
Deer Valley Ideal 12101	N Bar Emulation EXT	\$B
+16964671	Ideal 4465 of 6807 4286	+165.27

CED	BW	WW	YW	SC	DOC	MILK	CW	MARB	RE
+10	+1	+66	+115	+1.42	+10	+33	+49	+73	+93

CED	BW	WW	YW	RFI	DMI	YH	SC	DOC	HP	CEM	Milk	MW	MH	CW	MB	RE	FAT	TNO
16	9	5	4	71	76	66	8	77	72	8	18	48	81	14	31	23	44	19

★ Double-digit CED in this low birth All In son produced from a dam by TC Total who records UREA 2@105.
 ★ He ranks in the top 2% of the breed for \$B and has a 1% ranking for \$W value.



101

Deer Valley All In 4850

DOB: 10/20/2014 Reg: 18139325 Tattoo: 4850

AAR Ten X 7008 SA	Mytty In Focus	\$W
Deer Valley All In	AAR Lady Kelton 5551	+91.44
17307074	Sitz Upward 307R	\$F
	GAR Objective 2345	+83.46
	SydGen CC&7	\$G
Hoover Dam	Erica of Ellston C124	+36.67
Shermans Eisa Erica 162	SAV Final Answer 0035	\$B
17234173	Circle S Eisa Erica 6073	+141.57

CED	BW	WW	YW	SC	DOC	MILK	CW	MARB	RE
+10	-.6	+69	+118	+5.6	+23	+34	+41	+50	+99

CED	BW	WW	YW	RFI	DMI	YH	SC	DOC	HP	CEM	Milk	MW	MH	CW	MB	RE	FAT	TNO
19	9	7	4	88	86	72	26	24	26	18	10	64	31	16	46	15	47	81

★ An excellent calving ease son of All In who ranks in the top 1% of the breed for \$W value along with being in the top 1% of the breed for Milk EPD.
 ★ He posted BR-92 and WR-105 and his dam records BR 2@93, WR 2@104, and YR 1@101.



102

Deer Valley All In 4824

DOB: 10/09/2014 Reg: +18121607 Tattoo: 4824

AAR Ten X 7008 SA	Mytty In Focus	\$W
Deer Valley All In	AAR Lady Kelton 5551	+81.38
17307074	Sitz Upward 307R	\$F
	GAR Objective 2345	+74.36
	Connealy Whitman	\$G
Connealy All Around	Entrust of Conanga 894	+48.17
Deer Valley Blackcap 9822	Rito 112 of 2536 Rito 616	\$B
+16577569	EXAR New Design 4212	+160.95

CED	BW	WW	YW	SC	DOC	MILK	CW	MARB	RE
I+9	I+1	I+63	I+109	I+45	I+17	I+32	I+44	I+91	I+83

★ A blending of the proven calving ease traits of All In with the high maternal values of All Around in this individual who ranks in the top 1% of the breed for \$W value and he is in the top 3% for \$B, plus he excels to the top 10% for WW and YW traits.



103

Deer Valley All In 4812

DOB: 10/06/2014 Reg: 18121601 Tattoo: 4812

AAR Ten X 7008 SA	Mytty In Focus	\$W
Deer Valley All In	AAR Lady Kelton 5551	+85.83
17307074	Sitz Upward 307R	\$F
	GAR Objective 2345	+81.18
	SS Objective T510 OT26	\$G
DVF Blackbird 0118	SS Traveler 6807 T510	+38.17
16708559	SS Miss Rita R011 7R8	\$B
	Mytty In Focus	+149.97
	Dameron Blackbird 526	

CED	BW	WW	YW	SC	DOC	MILK	CW	MARB	RE
+8	+9	+72	+121	+1.18	+21	+33	+47	+72	+70

CED	BW	WW	YW	RFI	DMI	YH	SC	DOC	HP	CEM	Milk	MW	MH	CW	MB	RE	FAT	TNO
7	11	1	2	85	93	63	7	35	89	35	31	15	31	8	26	38	74	51

- ★ Calving ease with extreme growth once again in this All In son from an Objective dam.
- ★ He is in the top 1% of the breed for both WW and YW EPDs and he excels to the extreme top 1% of the breed for \$W value.

104

Deer Valley All In 4818

DOB: 11/18/2014 Reg: +18219764 Tattoo: 4818

AAR Ten X 7008 SA	Mytty In Focus	\$W
Deer Valley All In	AAR Lady Kelton 5551	+66.76
17307074	Sitz Upward 307R	\$F
	GAR Objective 2345	+68.91
	Bon View New Design 1407	\$G
EXAR 263C	Exar June C 3577	+34.22
EXAR Lady Blanche 9056	CA Future Direction 5321	\$B
16259738	B&C 163 Bando 854-780 1418	+134.76
	Exar Lady Blanche 372	

CED	BW	WW	YW	SC	DOC	MILK	CW	MARB	RE
+8	+9	+57	+103	+1.13	+16	+30	+38	+50	+66

CED	BW	WW	YW	RFI	DMI	YH	SC	DOC	HP	CEM	Milk	MW	MH	CW	MB	RE	FAT	TNO
26	23	32	19	36	72	63	16	49	34	18	36	14	14	20	39	44	42	74

- ★ A blending of the proven calving ease traits of All In with the high maternal values of 263C in this individual whose dam records BR 2@97 and YR 1@110.

Deer Valley Ten X 46128 ← Lot 105



105

Deer Valley Ten X 46128

DOB: 08/21/2014 Reg: 18130889 Tattoo: 46128

Mytty In Focus	SAF Focus of ER	\$W
AAR Ten X 7008 SA	Mytty Countess 906	+64.75
#15719841	SAV Adaptor 2213	\$F
	HSAF Lady Kelton 504B	+74.61
	Baldrige Kaboom K243 KCF	\$G
Connealy Thunder	Parka of Conanga 241	+46.93
Thomas Blackbirdmere 21564	ALC Big Eye D09N	\$B
17592423	Blackbirdmere LGW 9684	+147.62

CED	BW	WW	YW	SC	DOC	MILK	CW	MARB	RE
+13	+1	+53	+105	+1.38	+20	+25	+38	+97	+48

CED	BW	WW	YW	RFI	DMI	YH	SC	DOC	HP	CEM	Milk	MW	MH	CW	MB	RE	FAT	TNO
6	9	51	14	59	53	81	7	19	27	10	44	90	88	46	32	67	29	9

- ★ Double-digit CED in this Ten X son produced from a high maternal daughter of the Pathfinder sire Connealy Thunder.

Deer Valley Ten X 46161 ← Lot 106



106

Deer Valley Ten X 46161

DOB: 08/24/2014 Reg: 18087204 Tattoo: 46161

Mytty In Focus	SAF Focus of ER	\$W
AAR Ten X 7008 SA	Mytty Countess 906	+55.94
#15719841	SAV Adaptor 2213	\$F
	HSAF Lady Kelton 504B	+75.36
	GAR Predestined	\$G
Rito 9M25 of Rita 5F56 Pred	Rita 5F56 of 1198 FD	+48.44
Deer Valley Rita 2778	SAV Final Answer 0035	\$B
17502952	Rita 9I28 of 4R13 6807	+154.23
	Deer Valley Rita 9737	

CED	BW	WW	YW	SC	DOC	MILK	CW	MARB	RE
+10	+1	+57	+109	+1.38	+17	+19	+42	+1.07	+68

CED	BW	WW	YW	RFI	DMI	YH	SC	DOC	HP	CEM	Milk	MW	MH	CW	MB	RE	FAT	TNO
11	8	12	4	20	93	83	7	28	90	23	64	69	78	50	21	43	76	39

- ★ Calving ease with solid growth and breed-leading marbling genetics in this Ten X son from a dam who combines the proven carcass traits of Rito 9M25 with the high maternal values of SAV Final Answer 0035.



107

Deer Valley Ten X 46121

DOB: 08/19/2014 Reg: 18130921 Tattoo: 46121

Mytty In Focus	SAF Focus of ER	\$W
AAR Ten X 7008 SA	Mytty Countess 906	+64.81
#15719841 AAR Lady Kelton 5551	SAV Adaptor 2213	\$F
	HSAF Lady Kelton 504B	+72.93
	Summitcrest Complete 1P55	\$G
Thomas Shania 2835	CF Right Design 1802	+49.12
17464235 Diablo Shania 3028	Summitcrest Elba 1M17	\$B
	SS Objective T510 0T26	+154.66
	Westwind Shania DJH 2124	

CED	BW	WW	YW	SC	DOC	MILK	CW	MARB	RE
+10	+2	+57	+109	+1.30	+22	+29	+43	+98	+62

CED	BW	WW	YW	RFI	DMI	YH	SC	DOC	HP	CEM	Milk	MW	MH	CW	MB	RE	FAT	TNO
21	14	22	6	53	98	44	9	16	55	26	15	36	39	37	24	48	26	61

★ Excellent calving ease traits combined with the added carcass values of Complete in this individual who is in the top 4% of the breed for \$B value.

110

Deer Valley Ten X 47132

DOB: 09/17/2014 Reg: 18139478 Tattoo: 47132

Mytty In Focus	SAF Focus of ER	\$W
AAR Ten X 7008 SA	Mytty Countess 906	+44.26
#15719841 AAR Lady Kelton 5551	SAV Adaptor 2213	\$F
	HSAF Lady Kelton 504B	+65.31
	SAV Final Answer 0035	\$G
Shermans Burgess 051	Sitz Traveler 8180	+46.21
16902591 Three Trees Burgess 3150	SAV Emulous 8145	\$B
	BT Right Time 24J	+145.96
	ALC Burgess 9285	

CED	BW	WW	YW	SC	DOC	MILK	CW	MARB	RE
+5	+1.2	+51	+99	+1.25	-3	+20	+38	+89	+60

CED	BW	WW	YW	RFI	DMI	YH	SC	DOC	HP	CEM	Milk	MW	MH	CW	MB	RE	FAT	TNO
44	25	44	19	66	74	62	8	92	62	42	85	37	37	77	41	75	45	5

★ This son of Ten X should sire a top set of replacement females as his dam combines the proven Pathfinder traits of Final Answer with the Pathfinder dam Burgess 3150.

108

Deer Valley Ten X 4666

DOB: 08/14/2014 Reg: 18130888 Tattoo: 4666

Mytty In Focus	SAF Focus of ER	\$W
AAR Ten X 7008 SA	Mytty Countess 906	+56.36
#15719841 AAR Lady Kelton 5551	SAV Adaptor 2213	\$F
	HSAF Lady Kelton 504B	+70.60
	Hoover Dam	\$G
Thomas Beauty 21606	SydGen CC&7	+49.45
17592465 Beauty LGW 8399	Erica of Ellston C124	\$B
	LGW Freighter 6037	+156.34
	FSHK Beauty 0123	

CED	BW	WW	YW	SC	DOC	MILK	CW	MARB	RE
+6	+2	+54	+103	+7.8	+10	+24	+41	+95	+77

CED	BW	WW	YW	RFI	DMI	YH	SC	DOC	HP	CEM	Milk	MW	MH	CW	MB	RE	FAT	TNO
39	10	48	22	74	71	78	20	59	49	27	26	24	24	53	27	33	28	36

★ A unique blending of the extreme carcass and growth traits of Ten X with the high maternal traits of Hoover Dam in this bull who is in the top 5% of the breed for \$B value.

111

Deer Valley Ten X 4675

DOB: 08/16/2014 Reg: 18388694 Tattoo: 4675

Mytty In Focus	SAF Focus of ER	\$W
AAR Ten X 7008 SA	Mytty Countess 906	+64.05
#15719841 AAR Lady Kelton 5551	SAV Adaptor 2213	\$F
	HSAF Lady Kelton 504B	+84.27
	Summitcrest Complete 1P55	\$G
Thomas Pride 21589	CF Right Design 1802	+45.28
17592448 Pride LGW 9157	Summitcrest Elba 1M17	\$B
	Woodhill Foresight	+173.89
	Pride LGW 5068	

CED	BW	WW	YW	SC	DOC	MILK	CW	MARB	RE
-3	+2.7	+59	+111	+1.58	+18	+28	+50	+89	+69

CED	BW	WW	YW	RFI	DMI	YH	SC	DOC	HP	CEM	Milk	MW	MH	CW	MB	RE	FAT	TNO
89	65	18	6	59	61	61	3	27	44	60	30	73	62	20	31	42	48	49

★ Added growth traits in this Ten X son who ranks in the top 10% of the breed for YW EPD and he excels to the top 1% for \$B value.

★ His dam combines the extra growth and carcass values of Summitcrest Complete 1P55 with the high maternal values of Woodhill Foresight.

109

Deer Valley Ten X 46115

DOB: 08/21/2014 Reg: 18130909 Tattoo: 46115

Mytty In Focus	SAF Focus of ER	\$W
AAR Ten X 7008 SA	Mytty Countess 906	+67.28
#15719841 AAR Lady Kelton 5551	SAV Adaptor 2213	\$F
	HSAF Lady Kelton 504B	+79.92
	Poss Total Impact 745	\$G
Deer Valley Rita 2782	TC Total 410	+43.24
+17509246 Deer Valley Rita 9606	Poss Blackcap 5116	\$B
	SAV Final Answer 0035	+149.67
	GAR Ext 614	

CED	BW	WW	YW	SC	DOC	MILK	CW	MARB	RE
+7	-3	+66	+115	+1.60	+16	+18	+42	+1.10	+40

CED	BW	WW	YW	RFI	DMI	YH	SC	DOC	HP	CEM	Milk	MW	MH	CW	MB	RE	FAT	TNO
35	7	6	7	94	90	54	4	33	45	16	75	40	34	59	21	92	75	78

★ This calving ease son of Ten X also ranks in the top 3% for WW and YW EPDs and his dam combines the extreme growth of Total Impact with the high maternal values of Final Answer.

Deer Valley Ten X 4675 ← Rot 111





AAR Ten X 7008 SA



CED	BW	WW	YW	SC	DOC	MILK	CW	MARB	RE	\$W	\$F	\$G	\$B
+8	+2	+67	+129	+1.49	+14	+24	+62	+1.30	+7.9	+86.68	+103.44	+52.33	+196.56

Deer Valley Ten X 4788

DOB: 09/10/2014 Reg: 18130914 Tattoo: 4788

Mytty In Focus AAR Ten X 7008 SA #15719841 AAR Lady Kelton 5551	SAF Focus of ER Mytty Countess 906 SAV Adaptor 2213 HSAF Lady Kelton 5048 GAR Ingenuity Deer Valley Blackcap 2660 17500647 GAR Predestined 1739	<table border="1" style="width: 100%; border-collapse: collapse;"> <tr><th>\$W</th></tr> <tr><td>+51.66</td></tr> <tr><th>\$F</th></tr> <tr><td>+80.28</td></tr> <tr><th>\$G</th></tr> <tr><td>+54.28</td></tr> <tr><th>\$B</th></tr> <tr><td>+191.86</td></tr> </table>	\$W	+51.66	\$F	+80.28	\$G	+54.28	\$B	+191.86
\$W										
+51.66										
\$F										
+80.28										
\$G										
+54.28										
\$B										
+191.86										

CED	BW	WW	YW	SC	DOC	MILK	CW	MARB	RE
+4	+8	+52	+109	+7.4	+11	+22	+58	+1.12	+9.4

CED	BW	WW	YW	RFI	DMI	YH	SC	DOC	HP	CEM	Milk	MW	MH	CW	MB	RE	FAT	TNO
48	24	31	3	71	89	58	33	43	57	65	44	62	85	10	7	16	30	88

★ A low birth son of Ten X who also excels to the extreme top 1% for \$B value and has an MB EPD that is in the top 2%.

Deer Valley Ten X 4209

DOB: 09/20/2014 Reg: 18011893 Tattoo: 4209

Mytty In Focus AAR Ten X 7008 SA #15719841 AAR Lady Kelton 5551	SAF Focus of ER Mytty Countess 906 SAV Adaptor 2213 HSAF Lady Kelton 5048 Vermilion Payweight J847 Vermilion Dateline 7078 Basin Lucy 338R 14973131 Basin Lucy 8N02 Bon View New Design 1407 Basin Lucy 178E	<table border="1" style="width: 100%; border-collapse: collapse;"> <tr><th>\$W</th></tr> <tr><td>+65.69</td></tr> <tr><th>\$F</th></tr> <tr><td>+81.00</td></tr> <tr><th>\$G</th></tr> <tr><td>+48.61</td></tr> <tr><th>\$B</th></tr> <tr><td>+191.30</td></tr> </table>	\$W	+65.69	\$F	+81.00	\$G	+48.61	\$B	+191.30
\$W										
+65.69										
\$F										
+81.00										
\$G										
+48.61										
\$B										
+191.30										

CED	BW	WW	YW	SC	DOC	MILK	CW	MARB	RE
+4	+2.1	+61	+114	+1.19	+0	+30	+62	+1.11	+7.6

CED	BW	WW	YW	RFI	DMI	YH	SC	DOC	HP	CEM	Milk	MW	MH	CW	MB	RE	FAT	TNO
51	45	6	3	68	92	10	6	85	39	25	45	28	29	11	17	45	68	70

★ This son of Ten X from a dam by Payweight excels to the extreme top 1% of the breed for \$B value and also is in the top 4% for YW with a 10% ranking for WW and \$W traits.
★ His dam descends from the high valued Basin Lucy cow family.

Deer Valley Ten X 46125

DOB: 08/25/2014 Reg: 18130910 Tattoo: 46125

Mytty In Focus AAR Ten X 7008 SA #15719841 AAR Lady Kelton 5551	SAF Focus of ER Mytty Countess 906 SAV Adaptor 2213 HSAF Lady Kelton 5048 Poss Total Impact 745 TC Total 410 Deer Valley Rita 2773 +17509243 Deer Valley Rita 9606	<table border="1" style="width: 100%; border-collapse: collapse;"> <tr><th>\$W</th></tr> <tr><td>+60.51</td></tr> <tr><th>\$F</th></tr> <tr><td>+98.84</td></tr> <tr><th>\$G</th></tr> <tr><td>+51.28</td></tr> <tr><th>\$B</th></tr> <tr><td>+172.33</td></tr> </table>	\$W	+60.51	\$F	+98.84	\$G	+51.28	\$B	+172.33
\$W										
+60.51										
\$F										
+98.84										
\$G										
+51.28										
\$B										
+172.33										

CED	BW	WW	YW	SC	DOC	MILK	CW	MARB	RE
+1	+2.2	+71	+128	+1.80	+8	+20	+49	+1.16	+7.8

CED	BW	WW	YW	RFI	DMI	YH	SC	DOC	HP	CEM	Milk	MW	MH	CW	MB	RE	FAT	TNO
69	40	1	1	78	98	22	2	57	72	21	62	6	23	36	18	31	37	68

★ Breed-impacting growth values in this Ten X son who is in the top 1% of the breed for both WW and YW EPDs plus he is in the top 1% for \$B value with an MB EPD that is in the top 2%.

Deer Valley Ten X 4798

DOB: 09/12/2014 Reg: 18131029 Tattoo: 4798

Mytty In Focus AAR Ten X 7008 SA #15719841 AAR Lady Kelton 5551	SAF Focus of ER Mytty Countess 906 SAV Adaptor 2213 HSAF Lady Kelton 5048 GAR Ultimate SS Objective T510 0T26 Deer Valley Rita 0626 16719493 Deer Valley Rita 8517 GAR Load Up 1314 GAR Predestined GAR Ext 614	<table border="1" style="width: 100%; border-collapse: collapse;"> <tr><th>\$W</th></tr> <tr><td>+50.15</td></tr> <tr><th>\$F</th></tr> <tr><td>+66.27</td></tr> <tr><th>\$G</th></tr> <tr><td>+43.12</td></tr> <tr><th>\$B</th></tr> <tr><td>+132.60</td></tr> </table>	\$W	+50.15	\$F	+66.27	\$G	+43.12	\$B	+132.60
\$W										
+50.15										
\$F										
+66.27										
\$G										
+43.12										
\$B										
+132.60										

CED	BW	WW	YW	SC	DOC	MILK	CW	MARB	RE
+7	+1.6	+58	+106	+7.9	+12	+19	+36	+9.6	+5.1

CED	BW	WW	YW	RFI	DMI	YH	SC	DOC	HP	CEM	Milk	MW	MH	CW	MB	RE	FAT	TNO
52	54	16	16	92	95	72	34	63	85	85	67	19	58	62	18	57	90	56

★ He posted BR-91 and WR-101 and his dam by Ultimate records BR 2@96 and WR 2@101.

Deer Valley Ten X 46155

DOB: 08/27/2014 Reg: 18130961 Tattoo: 46155

Mytty In Focus AAR Ten X 7008 SA #15719841 AAR Lady Kelton 5551	SAF Focus of ER Mytty Countess 906 SAV Adaptor 2213 HSAF Lady Kelton 5048 Connealy Consensus 7229 Connealy Consensus Blue Lilly of Conanga 16 Deer Valley Blackcap 1626 +17096244 SandPoint Blackcap 7821 Connealy Onward A Plus Blackcap 0094	<table border="1" style="width: 100%; border-collapse: collapse;"> <tr><th>\$W</th></tr> <tr><td>+68.05</td></tr> <tr><th>\$F</th></tr> <tr><td>+69.21</td></tr> <tr><th>\$G</th></tr> <tr><td>+40.11</td></tr> <tr><th>\$B</th></tr> <tr><td>+161.24</td></tr> </table>	\$W	+68.05	\$F	+69.21	\$G	+40.11	\$B	+161.24
\$W										
+68.05										
\$F										
+69.21										
\$G										
+40.11										
\$B										
+161.24										

CED	BW	WW	YW	SC	DOC	MILK	CW	MARB	RE
+4	+1.3	+60	+110	+1.03	+17	+26	+53	+9.0	+6.2

CED	BW	WW	YW	RFI	DMI	YH	SC	DOC	HP	CEM	Milk	MW	MH	CW	MB	RE	FAT	TNO
51	42	8	6	89	98	66	17	37	42	50	22	56	50	27	39	46	41	65

★ Low birth with triple-digit growth in this Ten X son whose dam by the \$210,000 Connealy Consensus 7229 records WR 1@107 and YR 1@107.

117

Deer Valley Confidence 46133

DOB: 08/23/2014 Reg: 18121529 Tattoo: 46133

Connealy Tobin	Bon View New Design 208	\$W
Connealy Confidence 0100	Delia of Conanga 667	+50.50
16761479	Connealy Thunder	\$F
	Becka Lee of Conanga 37	+48.70
	Summitcrest Complete 1P55	\$G
Thomas Zara 21542	CF Right Design 1802	+31.22
17592400	Summitcrest Elba 1M17	\$B
	GT Shear Force	+84.04
	Zara LGW 2005	

CED	BW	WW	YW	SC	DOC	MILK	CW	MARB	RE
+12	-.7	+44	+86	+.04	+13	+22	+18	+.35	+.65

CED	BW	WW	YW	RFI	DMI	YH	SC	DOC	HP	CEM	Milk	MW	MH	CW	MB	RE	FAT	TNO
7	2	88	81	53	42	91	95	56	16	32	42	89	93	82	68	35	42	72

★ A sure-shot calving ease son of Connealy Confidence whose maternal grandam is a Pathfinder daughter of Shear Force.

Deer Valley Confidence 46133 -- Lot 117



118

Deer Valley Confidence 4653

DOB: 08/13/2014 Reg: 18131088 Tattoo: 4653

Connealy Tobin	Bon View New Design 208	\$W
Connealy Confidence 0100	Delia of Conanga 667	+52.91
16761479	Connealy Thunder	\$F
	Becka Lee of Conanga 37	+53.88
	Summitcrest Complete 1P55	\$G
Thomas Swan 21545	CF Right Design 1802	+26.06
17592403	Summitcrest Elba 1M17	\$B
	B/R New Frontier 095	+102.31
	JH Swan 1695	

CED	BW	WW	YW	SC	DOC	MILK	CW	MARB	RE
+7	-.1	+49	+90	-.12	+22	+26	+27	+.27	+.90

CED	BW	WW	YW	RFI	DMI	YH	SC	DOC	HP	CEM	Milk	MW	MH	CW	MB	RE	FAT	TNO
29	5	75	68	13	33	99	96	19	25	56	10	27	44	44	74	4	62	38

★ This three-quarter brother to Lot 117 offers excellent calving ease traits as he is a direct son of the longtime Select Sires calving ease specialist, Connealy Confidence 0100.

Deer Valley Top Game 4775 -- Lot 120



119

Deer Valley Queen 46117

DOB: 08/19/2014 Reg: 18121526 Tattoo: 46117

Connealy Tobin	Bon View New Design 208	\$W
Connealy Confidence 0100	Delia of Conanga 667	+44.33
16761479	Connealy Thunder	\$F
	Becka Lee of Conanga 37	+29.45
	Connealy Thunder	\$G
Thomas Miss Queen 21521	Baldrige Kaboom K243 KCF	+32.61
17592379	Parka of Conanga 241	\$B
	SAV Mandan 5664	+83.23
	LGW Miss Queen 1062	

CED	BW	WW	YW	SC	DOC	MILK	CW	MARB	RE
+16	-1.6	+41	+77	-.22	+16	+18	+20	+.46	+.92

CED	BW	WW	YW	RFI	DMI	YH	SC	DOC	HP	CEM	Milk	MW	MH	CW	MB	RE	FAT	TNO
1	1	94	91	45	59	99	99	44	9	6	54	79	88	81	71	14	80	76

★ Extreme calving ease in this Confidence son who is in the top 1% of the breed for CED EPD.

★ If you are looking for a bull to sire replacement females, here is a bull who will do just that as his dam is a direct daughter of Connealy Thunder.

120

Deer Valley Top Game 4775

DOB: 09/09/2014 Reg: +18388647 Tattoo: 4775

GDAR Game Day 449	Boyd New Day 8005	\$W
Sitz Top Game 561X	GDAR Miss Wix 474	+71.24
16559105	Connealy Onward	\$F
	Sitz Pride 88T	+74.80
	Sitz Pride 46P	\$G
	SS Objective T510 OT26	+52.41
Springfield Blackcap 7217	SS Traveler 6807 T510	\$B
16085488	SS Miss Rita R011 7R8	+151.54
	GAR Predestined	
	GAR Focus 1001	

CED	BW	WW	YW	SC	DOC	MILK	CW	MARB	RE
+3	+1.6	+65	+116	+.72	+18	+30	+42	+1.15	+1.03

CED	BW	WW	YW	RFI	DMI	YH	SC	DOC	HP	CEM	Milk	MW	MH	CW	MB	RE	FAT	TNO
36	45	17	10	64	92	47	67	33	54	80	28	29	74	20	10	16	55	97

★ This paternal brother to JMB Traction 492 ranks in the top 3% of the breed for both YW and \$W traits and he is in the top 4% for WW EPD while his \$B value ranks in the top 10%.

★ His dam by the Pathfinder sire Objective and descends from the proven Blackcap cow family.



121

Deer Valley Reserve 47134

DOB: 09/19/2014 Reg: 18140329 Tattoo: 47134

B/R New Day 454	Boyd New Day 8005	\$W
VAR Reserve 1111	B/R Ruby 1224	+69.01
+16916944 Sandpoint Blackbird 8809	Connealy Onward	\$F
	Riverbend Blackbird 4301	+35.63
	Connealy Front Page 0228	\$G
Shermans Eisa Erica 080	Kesslers Bell 0024	+44.79
16902585 Shermans Eisa Erica 695	GAR Predestined	\$B
	Circle S Eisa Erica 6073	+105.31

CED	BW	WW	YW	SC	DOC	MILK	CW	MARB	RE									
+12	-1.4	+48	+88	+4.3	+14	+36	+27	+7.7	+8.6									
CED	BW	WW	YW	RFI	DMI	YH	SC	DOC	HP	CEM	Milk	MW	MH	CW	MB	RE	FAT	TNO
4	1	51	47	92	93	100	63	34	83	26	7	92	97	29	38	11	86	98

- ★ Extreme calving ease in this son of the feed efficiency leader VAR Reserve 1111.
- ★ His dam by Frontman descends from the high maternal Eisa Erica cow family and she records YR 1@106.

123

Deer Valley New Day 4797

DDF

DOB: 08/29/2014 Reg: +17899374 Tattoo: 4797

B/R New Day 454	Boyd New Day 8005	AAR New Trend	\$W
#14675445 B/R Ruby 1224		SVF Forever Lady 57D	+53.70
		B/R New Design 323	\$F
		HF Ruby 036-951	+32.69
	BR Midland	Twin Valley Precision E161	\$G
EXAR Erica 5314		BR Royal Lass 7036-19	+37.02
+14930629 Bon View Erica 2127		Bon View Bando 1394	\$B
		Bon View Erica 443	+94.97

CED	BW	WW	YW	SC	DOC	MILK	CW	MARB	RE									
+4	+5	+50	+87	+4.7	+30	+22	+26	+5.4	+5.1									
CED	BW	WW	YW	RFI	DMI	YH	SC	DOC	HP	CEM	Milk	MW	MH	CW	MB	RE	FAT	TNO
63	38	66	68	13	85	77	81	6	6	82	71	83	92	33	35	29	41	69

- ★ A blending of the Pathfinder traits of 454 with a dam by the \$202,000 BR Midland who records %IMF 5@103 and UREA 5@101.

122

Deer Valley Reserve 4577

DOB: 08/12/2014 Reg: +17914193 Tattoo: 4577

B/R New Day 454	Boyd New Day 8005	\$W
VAR Reserve 1111	B/R Ruby 1224	+63.04
+16916944 Sandpoint Blackbird 8809	Connealy Onward	\$F
	Riverbend Blackbird 4301	+39.66
	B/R New Design 036	\$G
BRITON Blackcap 9328	GAR Ext 4206	+54.78
+16522778 B/R Blackcap Empress 127	B/R Destination 727	\$B
	B/R Blackcap Empress 8183	+133.58

CED	BW	WW	YW	SC	DOC	MILK	CW	MARB	RE									
-4	+3.8	+55	+92	+9.3	+25	+35	+34	+1.07	+9.9									
CED	BW	WW	YW	RFI	DMI	YH	SC	DOC	HP	CEM	Milk	MW	MH	CW	MB	RE	FAT	TNO
82	94	19	34	93	95	45	37	5	28	92	22	88	87	14	11	4	56	100

- ★ A blending of the proven feed efficiency traits of Reserve with the carcass traits of Predestined and the Blackcap Empress cow family in this bull who is in the top 4% of the breed for MB EPD.

124

Deer Valley New Day 0074

DDF

DOB: 09/07/2014 Reg: +17935938 Tattoo: 0074

B/R New Day 454	Boyd New Day 8005	AAR New Trend	\$W
#14675445 B/R Ruby 1224		SVF Forever Lady 57D	+43.18
		B/R New Design 323	\$F
		HF Ruby 036-951	+41.19
	BR Midland	Twin Valley Precision E161	\$G
EXAR Erica 5314		BR Royal Lass 7036-19	+30.51
+14930629 Bon View Erica 2127		Bon View Bando 1394	\$B
		Bon View Erica 443	+105.18

CED	BW	WW	YW	SC	DOC	MILK	CW	MARB	RE									
+5	+7	+48	+90	+3.4	+23	+23	+32	+4.6	+5.1									
CED	BW	WW	YW	RFI	DMI	YH	SC	DOC	HP	CEM	Milk	MW	MH	CW	MB	RE	FAT	TNO
58	44	72	54	28	74	41	86	21	4	74	62	34	58	14	40	29	71	87

- ★ This full brother to Lot 123 combines the Pathfinder traits of New Day 454 with a daughter of the Pathfinder sire BR Midland descending from the high maternal BonView Erica cow family.
- ★ His dam has six daughters combining for WR 12@107 and she also has %IMF 5@103 and UREA 5@101.

125

Deer Valley Consensus 4809

DOB: 11/17/2014 Reg: +18219573 Tattoo: 4809

Connealy Consensus	KMK Alliance 6595 187	\$W
Connealy Consensus 7229	Blinda of Conanga 004	+56.57
#16447771 Blue Lilly of Conanga 16	Woodhill Admiral 77K	\$F
	Blue Cash of Conanga 6020	+35.18
	BAR Ext Traveler 205	\$G
CRA Bextor 872 5205 608	Cra Lady Jaye 608 498 S Easy	+44.96
Basin Miss Rita 9675	SS Rito Rito R76 R011	\$B
+16405205 SS Miss Rita R011 7R8	SS Miss Ultress U56	+88.91

CED	BW	WW	YW	SC	DOC	MILK	CW	MARB	RE
+7	+1.5	+49	+88	+82	+7	+24	+20	+83	+85

CED	BW	WW	YW	RFI	DMI	YH	SC	DOC	HP	CEM	Milk	MW	MH	CW	MB	RE	FAT	TNO
52	52	31	49	73	83	97	56	80	56	57	8	71	85	84	33	16	8	90

★ An impressive son of the \$210,000 Connealy Consensus 7229 whose dam combines the Pathfinder traits of Bextor with a full sister to Objective, plus Rita 9675 records %IMF 4@104 and UREA 4@108.

Deer Valley Consensus 4809 -- Lot 125



126

Deer Valley Consensus 4853

DOB: 12/12/2014 Reg: +18220591 Tattoo: 4853

Connealy Consensus	KMK Alliance 6595 187	\$W
Connealy Consensus 7229	Blinda of Conanga 004	+53.92
#16447771 Blue Lilly of Conanga 16	Woodhill Admiral 77K	\$F
	Blue Cash of Conanga 6020	+24.26
	SS Traveler 6807 T510	\$G
SS Objective T510 0T26	SS Miss Rita R011 7R8	+37.37
Riverbend Rita U1079	GAR Predestined	\$B
+16124665 FTJ Rita 503	GAR Precision 810	+81.32

CED	BW	WW	YW	SC	DOC	MILK	CW	MARB	RE
+12	+2	+45	+81	+0	+11	+25	+21	+83	+30

CED	BW	WW	YW	RFI	DMI	YH	SC	DOC	HP	CEM	Milk	MW	MH	CW	MB	RE	FAT	TNO
15	27	42	63	69	73	95	87	63	96	29	9	58	47	75	27	71	16	58

★ This double-digit CED son of Consensus posted %IMF-114.
 ★ His dam has an excellent record of WR 2@105, YR 1@105, %IMF 12@108, and UREA 12@100.

Deer Valley Consensus 4853 -- Lot 126



127

Deer Valley Peerless 4851

DOB: 12/05/2014 Reg: +18220590 Tattoo: 4851

Connealy All Around	Connealy Whitman	\$W
Riverbend Peerless 0016	Entrust of Conanga 894	+47.52
+16651533 Riverbend Blackcap S762	CA Future Direction 5321	\$F
	Rita 2811 of 2536 BVND 878	+30.96
	SS Traveler 6807 T510	\$G
SS Objective T510 0T26	SS Miss Rita R011 7R8	+49.71
Riverbend Rita U1079	GAR Predestined	\$B
+16124665 FTJ Rita 503	GAR Precision 810	+94.05

CED	BW	WW	YW	SC	DOC	MILK	CW	MARB	RE
+10	+2	+45	+79	-17	+20	+22	+17	+1.05	+27

CED	BW	WW	YW	RFI	DMI	YH	SC	DOC	HP	CEM	Milk	MW	MH	CW	MB	RE	FAT	TNO
29	37	49	61	19	24	97	94	34	88	28	44	62	85	48	7	65	16	31

★ Another top calving ease individual who is a maternal brother to Lot 126.
 ★ His dam by Objective has an excellent ultrasound record of %IMF 12@108 and UREA 12@100.

DRAFT

Deer Valley Waylon 4840 ← Lot 128



128

Deer Valley Waylon 4840

DOB: 11/24/2014

Reg: +18219552

Tattoo: 4840

GAR-EGL Protege		Rito 112 of 2536 Rito 616	\$W
Baldrige Waylon W34		LB 6807 Isabel 339	+62.86
16476949	Baldrige Blackcap T163	Woodhill Foresight	\$F
		Baldrige Blackcap P326	+81.29
	SS Objective T510 OT26	SS Traveler 6807 T510	\$G
Deer Valley Rita 0503		SS Miss Rita R011 7R8	+47.07
+16719473	GAR Ext 614	N Bar Emulation EXT	\$B
		GAR Scotch Cap 309	+159.12

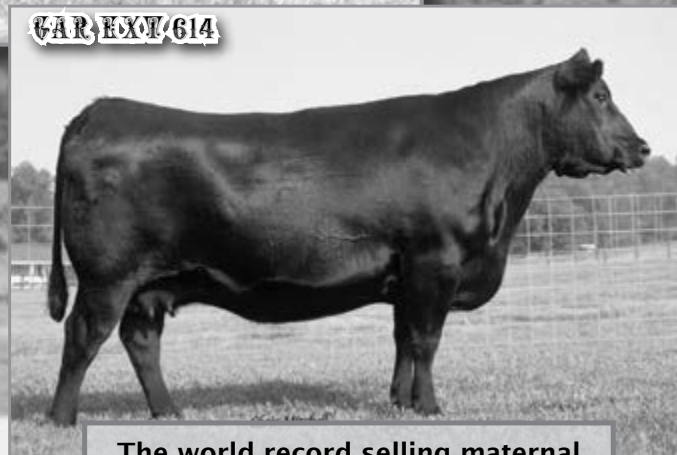
CED	BW	WW	YW	SC	DOC	MILK	CW	MARB	RE
+3	+3.3	+68	+118	+32	+16	+28	+46	+99	+80

CED	BW	WW	YW	RFI	DMI	YH	SC	DOC	HP	CEM	Milk	MW	MH	CW	MB	RE	FAT	TNO
50	74	5	5	80	35	76	83	42	96	49	62	5	47	14	16	31	36	4

★ This flush brother to Lot 129 posted %IMF-139 and offers both WW and YW EPDs in the top 2% of the breed combined with a \$B value in the top 3%.

★ His dam records BR 1@98, WR 1@111, %IMF 13@101, and UREA 13@103.

GAR EXT/614



The world record selling maternal grandam of Lots 128 and 129.

129

Deer Valley Waylon 4837

DOB: 11/22/2014

Reg: +18219551

Tattoo: 4837

GAR-EGL Protege		Rito 112 of 2536 Rito 616	\$W
Baldrige Waylon W34		LB 6807 Isabel 339	+66.90
16476949	Baldrige Blackcap T163	Woodhill Foresight	\$F
		Baldrige Blackcap P326	+87.60
	SS Objective T510 OT26	SS Traveler 6807 T510	\$G
Deer Valley Rita 0503		SS Miss Rita R011 7R8	+55.13
+16719473	GAR Ext 614	N Bar Emulation EXT	\$B
		GAR Scotch Cap 309	+172.49

CED	BW	WW	YW	SC	DOC	MILK	CW	MARB	RE
+6	+3.3	+68	+120	+16	+16	+29	+47	+1.30	+73

CED	BW	WW	YW	RFI	DMI	YH	SC	DOC	HP	CEM	Milk	MW	MH	CW	MB	RE	FAT	TNO
34	75	4	3	83	16	75	89	43	97	22	49	19	55	9	6	55	11	17

★ Added growth and performance in this full brother to Lot 128 who is in the top 2% of the breed for WW and YW traits and excels to the extreme top 1% of the breed for both \$B value and MB EPD.

★ His dam has two daughters combining for WR 2@104.

130

Deer Valley Waylon 4804

DOB: 11/17/2014

Reg: +18219548

Tattoo: 4804

GAR-EGL Protege		Rito 112 of 2536 Rito 616	\$W
Baldrige Waylon W34		LB 6807 Isabel 339	+73.80
16476949	Baldrige Blackcap T163	Woodhill Foresight	\$F
		Baldrige Blackcap P326	+74.53
	GAR Progress	GAR Predestined	\$G
Deer Valley Blackcap 1227		GAR Objective 2345	+54.34
+16964898	Rita 1194 of 2536 Rito 616	Rito 616 of 4820 6807	\$B
		GAR Precision 2536	+160.34

CED	BW	WW	YW	SC	DOC	MILK	CW	MARB	RE
+5	+2.1	+67	+116	+51	+23	+32	+45	+1.23	+78

CED	BW	WW	YW	RFI	DMI	YH	SC	DOC	HP	CEM	Milk	MW	MH	CW	MB	RE	FAT	TNO
36	46	6	6	30	60	92	72	26	98	31	53	63	63	13	4	30	16	19

★ He ranks in the top 3% of the breed for YW EPD and top 2% for WW and is also in the top 3% for \$B value with a 2% ranking for MB EPD.

★ His dam by Progress recording BR 1@99 and WR 1@125.

Reference Sires

AAR Ten X 7008 SA



CED	BW	WW	YW	SC	DOC	MILK	CW	MRB	RE	SW	SF	SG	SB
+8	+2	+67	+129	+1.49	+14	+24	+62	+1.30	+79	+86.68	+103.44	+52.33	+196.56

GAR Prophet



CED	BW	WW	YW	SC	DOC	MILK	CW	MRB	RE	SW	SF	SG	SB
+11	+9	+75	+132	+21	+28	+40	+29	+1.63	+57	+91.38	+102.02	+55.49	+134.31

Rito 9013 of Rita 5F56 CHM



CED	BW	WW	YW	SC	DOC	MILK	CW	MRB	RE	SW	SF	SG	SB
-3	+3.7	+60	+114	+1.50	+2	+24	+68	+88	+1.55	+42.43	+89.53	+48.80	+208.97

Connealy Consensus 7229



CED	BW	WW	YW	SC	DOC	MILK	CW	MRB	RE	SW	SF	SG	SB
+3	+1.8	+60	+102	+98	+22	+24	+36	+1.03	+56	+89.13	+56.61	+30.68	+118.13

Connealy Confidence 0100



CED	BW	WW	YW	SC	DOC	MILK	CW	MRB	RE	SW	SF	SG	SB
+20	-3.2	+47	+89	-.93	+13	+16	+21	+30	+1.17	+52.93	+52.50	+28.33	+89.16

Baldrige Waylon W34



CED	BW	WW	YW	SC	DOC	MILK	CW	MRB	RE	SW	SF	SG	SB
+1	+3.8	+73	+129	+62	+31	+31	+60	+1.27	+92	+67.37	+96.61	+53.97	+191.72

EXAR Upshot 0562B



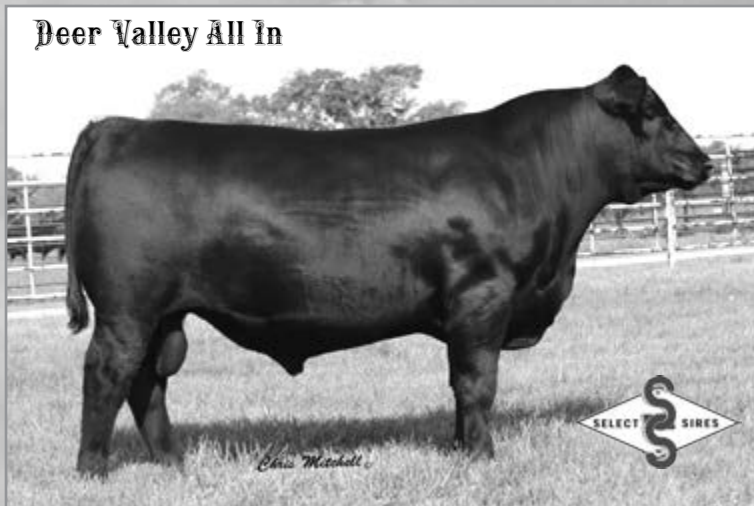
CED	BW	WW	YW	SC	DOC	MILK	CW	MRB	RE	SW	SF	SG	SB
+7	+2.7	+59	+112	+92	+18	+29	+52	+70	+1.20	+59.54	+63.80	+36.88	+147.21

EXAR Denver 2002B



CED	BW	WW	YW	SC	DOC	MILK	CW	MRB	RE	SW	SF	SG	SB
+9	+2.6	+72	+125	+1.03	+7	+41	+56	+83	+95	+80.13	+95.32	+34.58	+170.35

Deer Valley All In



Deer Valley All In

DOB: 01/23/2012

Reg: 17307074

Tattoo: 2138

Mytty In Focus	SAF Focus of ER	\$W
AAR Ten X 7008 SA	Mytty Countess 906	+93.67
#15719841 AAR Lady Kelton 5551	SAV Adaptor 2213	\$F
	HSAF Lady Kelton 5048	+95.57
Sitz Upward 307R	Connealy Onward	\$G
Deer Valley Rita 0274	Sitz Henrietta Pride 81M	+44.78
+16290636 GAR Objective 2345	SS Objective T510 0T26	\$B
	GAR 1407 New Design 2413	+170.15

CED	BW	WW	YW	SC	DOC	MILK	CW	MARB	RE
+13	-2	+74	+128	+1.25	+17	+41	+52	+80	+92

★ Several sons of this extremely popular and heavily used Select Sires AI sire sell in this offering.

★ All In has seen heavy use in our program as he consistently transmits all of the economic relevant traits that we have set as goals in our program - He excels with double-digit calving ease, extreme weaning and yearling growth, with exceptional maternal values, and does all of this while ranking near the top of the breed for all of his end product values.

★ He currently ranks in the top 1% of the breed for \$W and Milk EPDs, he is in the top 2% of the breed for WW, YW, \$F, and \$B values, and he is in the top 10% of the breed for both CED and CEM EPD values.

JMB Traction 292



JMB Traction 292

DOB: 03/11/2012

Reg: +17262374

Tattoo: 292

GDAR Game Day 449	Boyd New Day 8005	\$W
Sitz Top Game 561X	G D A R Miss Wix 474	+82.13
16559105 Sitz Pride 88T	Connealy Onward	\$F
	Sitz Pride 46P	+117.98
S A V 004 Predominant 4438	S A V 8180 Traveler 004	\$G
JMB Emulota 013	S A V Emblynette 1182	+41.76
16776281 BAR S Emulota 5426	Connealy Front Page 0228	\$B
	BAR S Emulota 0666	+196.97

CED	BW	WW	YW	SC	DOC	MILK	CW	MARB	RE
+3	+2.4	+72	+132	+1.26	+11	+35	+61	+71	+1.34

★ This proven high growth DVF herd sire is one of the proven power sires in the Select Sires lineup and consistently adds muscle dimension and shape to his progeny.

★ His impressive and impeccable EPD profile places him in the extreme top 1% of the breed for yearling growth while also ranking him in the top 1% for RE EPD and for \$F and \$B values. In addition, he excels to the top 2% among proven sires for weaning growth and for Milk EPD as well as for \$W value.

★ His unique outcross pedigree and proven EPD tabulation will create an impressive set of bulls we will be selling in the future at DVF.

Sandpoint Butkus X797



Sandpoint Butkus X797

DOB: 01/29/2010

Reg: 16829413

Tattoo: X797

Sitz Traveler 8180	G D A R Traveler 71	\$W
S A V Final Answer 0035	Sitz Everelda Entense 1137	+78.50
#13592905 S A V Emulous 8145	Bon View Bando 598	\$F
	S A V Sky Emulous 2124	+95.70
G A R Grid Maker	G D A R Traveler 044	\$G
G A R Grid Maker 4603	G A R Precision 2536	+34.05
+14755072 G A R New Design 741	B/R New Design 036	\$B
	G A R Precision 2168	+97.78

CED	BW	WW	YW	SC	DOC	MILK	CW	MARB	RE
+20	-1.3	+75	+124	+1.44	+19	+15	+20	+55	+60

★ This DVF herd sire who is a member of the Select Sires AI stud is one of the most proven sure shot calving ease bulls available today and offers the unique blending of the high maternal traits of Final Answer with the proven power and performance of Grid Maker.

★ His EPD tabulation places him among the breed's most elite 1% for calving ease plus he is in the top 2% for weaning growth and \$F value with a 3% ranking for YW EPD and \$W value.



Plattemere Weigh Up K360

DOB: 02/08/2010 Reg: 16692552 Tattoo: K360

Connealy Onward	Connealy Lead On	\$W
Sitz Upward 307R	Altune of Conanga 6104	+72.12
#14963730	Sitz Henrietta Pride 81M	\$F
	Sitz Value 7097	+122.42
	Sitz Henrietta Pride 1370	\$G
	GAR Retail Product	+37.29
Barbara of Plattemere 337	GAR Ext 4927	\$B
#16274856	Bon View New Design 1407	+191.20
	Barbara of Plattemere 286	

CED	BW	WW	YW	SC	DOC	MILK	CW	MARB	RE
+6	+1.3	+77	+144	+89	+15	+22	+68	+76	+82

★ This breed-leading high growth and proven performance sire has been a longtime member of the Select Sires AI stud and consistently transmits growth and added muscle dimension to all of his progeny and several of his impressive sons sell in this offering.

★ His breed-leading dominate EPD profile places him among the breed's most elite 1% for WW and YW EPDs as well as for \$F and \$B value. Plus, make special note that he ranks among the breed's top 1% for heifer pregnancy EPD as well.

★ In addition, he has also sired some of the top young females available today that are big bodied, easy fleshing, with excellent udder structure. His dam is a Pathfinder dam who has sons selling in this offering.

Plattemere Weigh Up K360



Deer Valley Old Hickory

DOB: 01/16/2014 Reg: 17873666 Tattoo: 4181

Sitz Upward 307R	Connealy Onward	\$W
Plattemere Weigh Up K360	Sitz Henrietta Pride 81M	+76.56
16692552	GAR Retail Product	\$F
	Barbara of Plattemere 311	+94.05
	S A V Bismarck 5682	\$G
Deer Valley Rita 1126	G A R Grid Maker	+43.30
+16964741	S A V Abigale 0451	\$B
	SS Objective T510 0T26	+166.77
	GAR 1407 New Design 2413	

CED	BW	WW	YW	SC	DOC	MILK	CW	MARB	RE
+16	+0	+64	+122	+1.14	+21	+29	+50	+79	+76

★ This impressive son of Weigh Up sold as the \$90,000 one-half interest lead off bull of the Fall 2015 DVF Performance-Tested Bull Sale and is now a member of the Select Sires AI stud.

★ He offers a unique pedigree combining the extreme growth and performance traits of Weigh Up with the high maternal traits of Bismarck and is backed by the proven calving ease and carcass traits of GAR Objective 2345.

★ His EPD profile places him in the top 1% of the breed for both calving ease direct and for yearling growth along with being in the top 1% for CEM EPD and \$F value. In addition, he balances a 2% ranking for \$W and \$B values.

★ Old Hickory has already seen heavy use in our program as well as in the program of our partners and we are excited about the genetic potential he offers.

Deer Valley Old Hickory



Deer Valley Patriot 3222

DOB: 02/04/2013 Reg: 17577916 Tattoo: 3222

S A V Final Answer 0035	Sitz Traveler 8180	\$W
Connealy Capitalist 028	S A V Emulous 8145	+80.43
16752262	C R A Bextor 872 5205 608	\$F
	Prides Trav of Conanga 6499	+77.60
	Connealy Onward	\$G
	Sitz Upward 307R	+44.70
Deer Valley Rita 0274	Sitz Henrietta Pride 81M	\$B
+16290636	SS Objective T510 0T26	+146.57
	GAR 1407 New Design 2413	

CED	BW	WW	YW	SC	DOC	MILK	CW	MARB	RE
+16	-.3	+69	+1.07	+36	+16	+26	+44	+94	+1.07

★ This impressive Connealy Capitalist 028 son who is now a member of the Select Sires AI stud sold as the lead-off Lot 1 bull of the Fall 2015 DVF Performance-Tested Bull Sale and he is a maternal brother to the proven all-around calving ease, growth, and carcass sire, Deer Valley All In.

★ He combines the high maternal values of Connealy Capitalist 028 with the extreme growth of Sitz Upward combined with the calving ease and carcass traits of GAR Objective 2345.

★ His EPD tabulation has him balancing a 2% ranking for CED EPD along with CEM and RE EPDs. Plus, he is in the top 3% of the breed for \$W value with a 4% ranking for WW and YW EPDs and balances all of this with a 10% ranking for \$B value.

★ In the years ahead we will have several sons of Patriot included in the offerings.

Deer Valley Patriot 3222





Your calves are more than a commodity. WE HAVE THE TOOLS THAT PROVE IT.

Reputation Feeder Cattle (RFC) is the most innovative, reliable and effective tool available to define the genetic performance potential of your calves and gain value-added advantage, year after year.

The added-value game is changing drastically. It's no longer enough to produce and process-verify a set of calves. The Reputation Feeder Cattle® program integrates the industry's leading genetic tools to help close the gap between buyer uncertainty and buyer confidence, putting you in position to get paid what your calves are worth.

The RFC program uses bull battery EPD data and/or DNA test results to evaluate six value-critical feedlot and carcass traits that buyers find essential. These traits are rated by the program's GENETIC MERIT SCORECARD® tool to reliably predict performance potential.

Genetic Merit Scorecard®		
Jimmy Cox Cox Farms Fayetteville, TN 37334 2015 Fall Calves		\$29.89
Estimated at a base weight of 675 lbs.		Relative Value / CWT
Average Daily Gain	Carcass Weight	Feed : Gain
★★★★★	★★☆☆☆	Not Available
Ribeye Area	Yield Grade	Percentage of Choice
★★★★★	★★☆☆☆	★★★★★

The GENETIC MERIT SCORECARD® tool applies a five-star rating to the six most economically important traits sought by cattle feeders, and combines these ratings to predict comparative profit potential (Relative Value/cwt).



THIS TOOL CAN BE USED IN TWO KEY WAYS:

Marketing Feeder Calves

At a time when calf price spreads vary widely, attracting more informed bidders using verified genetic value is key to unlocking profit potential. The RFC program packages the GENETIC MERIT SCORECARD® tool results with third-party certifications, presenting a complete calf management and age and source verification picture. This information is then provided to hundreds of feeders, giving them reliable information on the value of your calves.

Improving Herd Productivity

When the GENETIC MERIT SCORECARD® tool is used to pinpoint the performance strengths and weaknesses of a herd, producers gain insight to select more productive and profitable bull and heifer replacements. This allows producers to raise the bar with every calving cycle, eliminating guesswork and driving a straight line to more value-added performance time and time again.

FOR MORE INFORMATION:

Ralph Peterson
785-577-0332
rpeterson@verifiedbeef.net

Jim Collins
487-957-6572
jim@quintongrp.com

“By having the scorecard, we kept buyers on the phone and engaged during a time when cattle with less information and less predictability had buyers backing away. And that really paid off...a \$30 to \$40/CWT difference.”

—Jim Collins, Alabama Producer

GETTING STARTED IS EASY!

Reputation Feeder Cattle analyzes a rancher's 10 year EPD history on their bull battery or uses DNA testing from Zoetis to provide the necessary predictions. RFC crunches the numbers, resulting in a Genetic Merit Scorecard® tool on the herd, giving you the only tool you need to transform your cattle from a commodity into a valuable product.

Verified Beef, LLC

209 S. 19th Avenue Suite 3 • Bozeman, MT 59718 • Phone: 406-867-BEEF(2333) • Fax: 888-500-0903 • www.reputationfeedercattle.com

The Reputation Feeder Cattle® and Genetic Merit Scorecard® trademarks are wholly owned by Verified Beef, LLC • Copyright © 2016 Verified Beef, LLC. All Rights Reserved. U.S. Patent: 8,660,880

Thank You For Your Business!



DEER VALLEY FARM

A Program Focused on Proven Genetics and Customer Success

EXCITING HERD BULLS SELL AT DEER VALLEY FARM!

It is a pleasure to welcome you to the Annual Spring Performance-Tested Bull Sale at Deer Valley Farm where again this year we will be offering 130 impressive fall yearling bulls ready for heavy service.

As you study the pedigrees on all of the bulls selling, you will find large sire groups backed by breed-leading cow families to ensure accuracy when making your herd sire selections. All of the bulls selling have been genomic tested so you can buy with confidence that their genomic enhanced EPDs carry that extra accuracy to provide a higher amount of predictability in their EPD profiles. Deer Valley Farm has always been a pioneer in utilizing new technology and data when available and they believe that by providing these genomic enhanced EPDs their customers can make sound business decisions when making a herd sire decision that will impact a high percentage of your calf crop.

Regardless if you are a commercial cattleman or a leading purebred program, you will find genetics included in this sale offering that will simply work. It is evident when studying the EPD profiles on these bulls that Fred Clark and Johnathan Perry are constantly making the genetic decisions that will provide bulls, in volume, that will excel for calving ease and maternal values with growth that ranks near the top of the breed and end product values that also rank at the top of the breed. Through the utilization of their intense ET program, they are also able to offer not just large sire groups, but in many cases flush brothers for you to select from or to add to your program to once again increase uniformity and consistency.

I am honored to work with this reputation program that is 100% committed to working with their commercial customer's day in and day out. If you are a past customer, then you know the value of selecting bulls that carry the DVF brand - If you are someone who has been following the program and looking for a source for high quality genetics, then I would invite you to attend the sale and see first-hand how DVF bulls can work in your own program. If I can help or be of assistance or discuss Deer Valley Farms bull line up, please don't hesitate to give me a call at 918-510-3464.

Sincerely,
Rance Long



RANCE LONG

35504 S. 4415 Rd.
Big Cabin, OK 74332
rlong@rancelong.com
918.510.3464

www.rancelong.com



Owners: Fred & Rinda Clark • Kim Clark
Gen. Manager: Jonathan Perry - 931.703.6330
11 Fred Clark Lane • Fayetteville, TN 37334
Office: 931.433.1895 • Fax: 931.433.0730
Email Jonathan: jjperry@DeerValleyFarm.com
www.DeerValleyFarm.com

Deer Valley's Annual Spring Angus Bull Sale



Saturday, March 26th, 2016 – Fayetteville, TN

The
BULL BRAND

130 Stout Performance-Tested Bulls Sell!