

THE
Cowtown
CLASSIC

L i m o u s i n S a l e

Friday, January 29, 2016 • Fort Worth, Texas

6 p.m. ~ at the Fort Worth Stock Show

West Arena of the Bass-Richardson Building

CONSIGNORS...

Brittainy Barton • Chattanooga, OK
580.581.7652
Lot 18

Coyote Hills Ranch • Chattanooga, OK
580.581.7652
Lot 19

Diamond Hill Cattle Co. • Nichols Hills, OK
405.520.5846
Lots 34, 35

Edwards Land & Cattle Co. • Beulaville, NC
910.290.1424
Lot 33

Harper Limousin • Pattison, TX
713.837.6132
Lot 22

Hall Cattle Co. • Sweetwater, TX
580.581.7652
Lots 17, 29

J&J Cattle • Snook, TX
979.268.5491
Lot 8

JCL Land & Cattle • Welch, OK
918.533.0445 (Jimmy, text)
Lot 25

Lawrence Family Limousin • Anton, TX
806.790.2535
Lots 9, 12, 13, 14, 15, 16, 20, 21, 23, 25

Kara LeBeouf • DeRidder, LA
337.375.7537
Lot 32

LS Vance Farms • Timpson, TX
903.316.2408
Lot 24

Salt Creek Cattle & Genetics • Amber, OK
405.274.9338
Lots 1, 2, 3, 4, 5, 38, 39, 40

Stowers Limousin • Bridgeport, TX
817.247.8011
Lot 36

T Hill Limousin • Dover, AR
479.264.0720
Lots 6, 27, 28

Reed Thorn • Arp, TX
903.539.1145
Lot 30

Ross Thorn • Arp, TX
903.539.1145
Lot 31

Spencer Wilder • Snook, TX
979.268.5491
Lot 7

Wright Brothers Cattle Co. • Miami, OK
918.533.3995
Lots 10, 11, 26, 37

BUYER TRUCK & TRAILER PARKING

Buyers may park their trucks and trailers in the Farrington Field parking lot. This is just off of University east of the Stock Show grounds. Shuttle will be available. Please advise parking attendant you are attending the Limousin cattle sale. If you need to have cattle hauled, we will be happy to assist in transporting your purchase.

Contact Ralph Hawkins at (940) 367-4633 to make arrangements.

THE COWTOWN CLASSIC

Friday, January 29, 2016 • Fort Worth, Texas

6 p.m. ~ at the Fort Worth Stock Show
West Arena of the Bass-Richardson Building

**Featuring 40 Outstanding Lots
of Limousin genetics from leading breeders
in the Lone Star State and beyond.**

16 Open Heifers
6 Bred Heifers
1 Donor

12 Bulls
2 Semen Packages
3 Embryos

SALE MANAGEMENT:



TEXAS LIMOUSIN ASSOCIATION
Ralph Hawkins, Executive Secretary
PO Box 880 • Krum, TX 76249
940/482-3649 • 940/367-4633
txlimo@aol.com
www.texas-limousin.com

*View catalog online at
www.texas-limousin.com*

SALE MARKETING TEAM:

American Cattle Services
Ken Holloway • 580/581-7652

R&R Marketing
Randy Ratliff • 615/330-2735

Grassroots Consulting
Mark Smith • 515/229-5227

Trucking arrangements available upon request

*Join us for a western weekend
in historic Fort Worth.*

Friday, January 29

6 p.m. Cowtown Classic Sale

Saturday, January 30

Noon Limousin MOE Show

5 p.m. TLA's Annual Membership Meeting, Radisson

7 p.m. TLA's Banquet & Benefit Auction, Radisson

HOTEL HEADQUARTERS:

Radisson Fort Worth North • I-35 & Meacham Blvd.
(817) 625-9911 • (817) 759-4614



Open heifers with the Lone Star Shoot-Out logo are eligible to compete in the Lone Star Shoot-Out which will be held in conjunction with the Junior Limousin Heifer Show at the 2017 Fort Worth Stock Show. The Shoot-Out is open to Texas 4-H & FFA members who purchase a nominated heifer. This year's purse was \$10,000.



LOT 1

2 SALT CRK BABY DOLL 423B

LIM-FLEX(25/22.3) • DBL Black • HOMO Polled (P)
12/12/2014 • STSF 423B • LFF2088780



MAGS WINSTON
SBLX ZIP IT
SBLX UNTOUCHABLE 101U
O C C MISSING LINK 830M
HCC LADY 9268
HCC 1494 LADY 7128

BW: 62

CONSIGNED BY: Salt Creek Cattle & Genetics, Amber, OK

Salt Crk Baby Doll 423B is zipper-fronted with the middle the industry demands. She is homozygous polled, double black and offers a great BW to YW EPD spread. Baby Doll's sire is the 2013 National Gold Medal Lim-Flex Bull who is proving himself as a true herd sire. This female is ready to breed and could be mated a variety of ways, purebred or Lim-Flex.

EPDs
CE: 13
BW: -0.6
WW: 60
YW: 99
MK: 26
CM: 6
SC: -
DC: -
YG: -.07
CW: 28
RE: .52
MS: .52
\$MTI: 68



LOT 3

4 SALT CRK CASUAL 513C

LIM-FLEX(50/44.4) • HOMO Black (P) • HOMO Polled (P)
1/14/2015 • ASCC 513C • LFF2088867



MAGS WINSTON
SBLX ZIP IT
SBLX UNTOUCHABLE 101U
CALO BRICKYARD 902W
ASAP ZENITH 209Z
RVDR XTRA ELITE 0242X

BW: 65

CONSIGNED BY: Salt Creek Cattle & Genetics, Amber, OK

Salt Crk Casual 513C is double homozygous and amazing in her look with a fault-free structure. This 50% Lim-Flex is bred for the purple with Brickyard on the dam's side and going back to our famed donor, RVDR 0242X. Her sire, SBLX Zip It, the 2013 National Gold Medal Lim-Flex Bull, only solidifies her show-ring venture. Jump at this opportunity to add Casual to your herd.

EPDs
CE: 11
BW: 1.2
WW: 62
YW: 98
MK: 25
CM: 6
SC: 0.5
DC: 13
YG: -.10
CW: 30
RE: .40
MS: .51
\$MTI: 68

1

SALT CRK BARBI 415B

LIM-FLEX(75/67.3) • DBL Black • DBL Polled
12/2/2014 • STSF 415B • LFF2088779



MAGS WINSTON
SBLX ZIP IT
SBLX UNTOUCHABLE 101U
DVFC SITTING BULL
TAVES LUVLY 536W
ZWLC LUVLY 011S

BW: 69

CONSIGNED BY: Salt Creek Cattle & Genetics, Amber, OK

Salt Crk Barbi 415B is a 75% Lim-Flex who is bold sprung, deep in her flank and has a great hip. She is double black, double polled and out of a double homozygous sire, SBLX Zip It, the 2013 National Gold Medal Lim-Flex bull. If you're looking for a big-time cow prospect, Barbi will be your favorite sale day.

EPDs
CE: 6
BW: 2.6
WW: 68
YW: 104
MK: 24
CM: 7
SC: 0.4
DC: 12
YG: -.09
CW: 35
RE: .35
MS: .23
\$MTI: 60



LOT 2

3

SALT CRK CHERRY 533C

LIM-FLEX(50/44.5) • DBL Black • HOMO Polled (P)
1/5/2015 • STSF 533C • LFF2088781



SCHILLING'S TALLADEGA
CALO BRICKYARD 902W
EXG E839 1407 M175 LS
EF MAIN STAY 541M
PBR5 809W
LBAF SHAWNEE 602

BW: 65

CONSIGNED BY: Salt Creek Cattle & Genetics, Amber, OK

Salt Crk Cherry 533C is a big-hipped, soggy-middled 50% Lim-Flex out of the past national champion, CALO Brickyard 902W. She is homozygous polled, double black and has a big foot under her. Her dam has a wonderful udder in lactation. Cherry will make a great cow and a splash in the ring.

EPDs
CE: 8
BW: 2.3
WW: 53
YW: 83
MK: 25
CM: 4
SC: 0.4
DC: 11
YG: -.09
CW: 23
RE: .38
MS: .27
\$MTI: 57



LOT 4

OPEN HEIFER

OPEN HEIFER

OPEN HEIFER

OPEN HEIFER

5

SALT CRK CLASSY 520C

LIM-FLEX(50/44.1) • HOMO Black (P) • HOMO Polled (P)
2/4/2015 • ASCC 520C • LFF208868



MAGS WINSTON
SBLX ZIP IT
SBLX UNTOUCHABLE 101U
S S OBJECTIVE T510 OT26
RVDR XTRA ELITE 0242X
LESF ELITE 218S

BW: 68

EPDs
CE: 12
BW: 0.9
WW: 68
YW: 109
MK: 25
CM: 6
SC: 0.5
DC: 12
YG: -.10
CW: 36
RE: .43
MS: .55
\$MTI: 71

CONSIGNED BY: Salt Creek Cattle & Genetics, Amber, OK
Salt Crk Classy 520C is a unique genetic package. She is stout, capacious in her rib shape, smooth in her lines and huge in her hip design. Classy is the natural calf out of our donor RVDR 0242X. Her sire, SBLX Zip It, won Fort Worth as a calf in 2013. When you look at her EPD profile it's hard to find fault, even her \$MI is a 71. And did we mention, she is double homozygous!



LOT 5

6

THIL MOLLITA 16C

LIM-FLEX(43/39.1) • HOMO Black (P) • DBL Polled
2/13/2015 • THIL 16C • LFF2087340



EF XCESSIVE FORCE
RLBH AIR FORCE ONE
EF YAFFA 821Y
EXAR NEW DESIGN 3903
AUTO ALEXIS 618X
KRVN PROGENY 175P

BW: 67

EPDs
CE: 10
BW: 0.1
WW: 56
YW: 92
MK: 22
CM: 7
SC: 0.6
DC: 12
YG: .00
CW: 25
RE: .34
MS: .27
\$MTI: 57

CONSIGNED BY: T Hill Limousin, Dover, AR
Look at this February heifer and consider where she is heading. Her sire, RLBH Air Force One, won five national shows, was the 2014 Gold Medal Limousin Bull, and the high-selling lot in the 2015 National Limousin sale. THIL Mollita is one of his first offspring to come to market. Her dam, AUTO Alexis 618X, is a stunning daughter of KRVN Progeny 175P, a longtime donor for Pinegar Limousin. The legacy of this combination is reflected in her style and stature.



LOT 6

7

SDWI CANDY LAND 05C

PUREBRED(87/78.4) • HOMO Black (T) • HOMO Polled (T)
2/19/2015 • SDWI 05C • NPF2083501



GPFF BLAQUE RULON
DHVO TREY 133R
AMY JO DHAN 20L
LFL WEST TEXAS PLAYBOY
LFL 6032 S
LFL PATTY 4208

BW: 73 • Adj. WW: 809

EPDs
CE: 4
BW: 3.0
WW: 50
YW: 64
MK: 18
CM: -7
SC: 0.5
DC: 15
YG: -.15
CW: 12
RE: .18
MS: -.12
\$MTI: 42

CONSIGNED BY: Spencer Wilder, Snook, TX
Candy Land is a full sib to LFL Candy Corn, who won all three Texas majors (Fort Worth, San Antonio and Houston) and the Supreme Champion Heifer title in Houston in 2014. Don't miss your opportunity to get to the backdrop with Candy Land.



LOT 7

8

JJWI CLEMENTINE 07CT

PUREBRED(87/77.7) • HOMO Black (T) • Het Polled (T)
3/1/2015 • JJWI 07C • NPF2083500



GPFF BLAQUE RULON
DHVO TREY 133R
AMY JO DHAN 20L
EF SMACK DOWN 764S
SSTO WONDERGIRL 9803W
SSTO RHINESTONE 5154R

BW: 70 • Adj. WW: 799

EPDs
CE: 5
BW: 2.6
WW: 62
YW: 82
MK: 18
CM: -8
SC: 0.1
DC: 12
YG: -.21
CW: 23
RE: .44
MS: -.14
\$MTI: 44

CONSIGNED BY: J&J Cattle, Snook, TX
Here is a very stylish, homozygous black purebred heifer. She is out of SSTO Wondergirl who was the reserve champion heifer for Spencer Wilder in San Antonio and Houston in 2011. Here is your chance to win some purple banners.



9

LFL CHARITY 5014C

LIM-FLEX(50/45.1) • HOMO Black (T) • Het Polled (T)
3/2/2015 • BLAW 5014C • LFF2082972



- EXAR UPSHOT 0562B
- EXAR DENVER 2002B**
- EXAR ROYAL LASS 1067
- DHVO TREY 133R
- PCC XOTIC 016 X**
- LFL LORETTA 1039L

BW: 68 • Adj. WW: 624

EPDs	
CE:	11
BW:	0.8
WW:	70
YW:	103
MK:	19
CM:	2
SC:	0.7
DC:	17
YG:	-.11
CW:	29
RE:	.59
MS:	.47
\$MTI:	69

CONSIGNEE BY: Lawrence Family Limousin, Anton, TX

Selling half Interest with the option to double up.
LFL Charity 5014C is an ET daughter of PCC Xotic 016X, who sells as Lot 23, and sired by EXAR Denver, the lead bull in Express' 2013 NWSS Grand Champion Angus Carload. Charity is a long-bodied, sound-structured, easy-fleshing female who is definitely a strong candidate for your donor pen after what we think should be an exceptional show career!

OPEN HEIFER

10

WB CHANDRA

LIM-FLEX(75/67.1) • Black • DBL Polled
3/23/2015 • AAWW 858C • LFF2086313



- GAMBLES HOT ROD
- WB JUST WRIGHT**
- PBRS ROCKEN OUT 589R
- EF MAIN STAY 541M
- WB XTRA MOMENTS**
- PBRS ROCKEN OUT 589R

EPDs	
CE:	6
BW:	2.5
WW:	54
YW:	76
MK:	22
CM:	6
SC:	0.1
DC:	-
YG:	-.18
CW:	19
RE:	.35
MS:	-.08
\$MTI:	45

CONSIGNEE BY: Wright Brothers Cattle Co., Miami, OK

Cow power here. This female is the complete package. She is one a junior can haul and be successful with then turn around and make her the center of a breeding program. In the past two years, we haven't had a Just Wright heifer we haven't showed or sold for a show heifer—this one isn't any different.

OPEN HEIFER



11

WB CATERINA

LIM-FLEX(68/60.6) • DBL Black • DBL Polled
4/11/2015 • AAWW 02C • LFF2086314



- GAMBLES HOT ROD
- WB JUST WRIGHT**
- PBRS ROCKEN OUT 589R
- MAGS XRSALINA
- WB ZOE FIRECRACKER 02Z**
- WB BLACK ROSE

EPDs	
CE:	6
BW:	3.0
WW:	60
YW:	88
MK:	18
CM:	6
SC:	0.4
DC:	-
YG:	-.20
CW:	26
RE:	.49
MS:	-.04
\$MTI:	48

CONSIGNEE BY: Wright Brothers Cattle Co., Miami, OK

This show prospect comes from the 2015 Reserve National Champion Bull, WB Just Wright. This April heifer has the whole package. She is a stout-made female with body and looks that kill. And as if that isn't enough, she is dog gentle to boot.

OPEN HEIFER



12

LFL CHERRY 5025C

LIM-FLEX(50/45.1) • HOMO Black (P) • HOMO Polled (T)
4/16/2015 • BLAW 5025C • LFF2084404



- TC ABERDEEN 759
- EBFL YPSILANTI 420Y**
- MAGS RAMADA
- RSKY WIPEOUT 0029
- LFL AIDA 3037 A**
- LFL VELVET 8028U

BW: 70 • Adj. WW: 660

EPDs	
CE:	7
BW:	2.6
WW:	71
YW:	97
MK:	26
CM:	6
SC:	0.9
DC:	7
YG:	-.11
CW:	30
RE:	.41
MS:	.09
\$MTI:	54

CONSIGNEE BY: Lawrence Family Limousin, Anton, TX

LFL Cherry 5025C is a thick-made, big-footed female who is sound in her structure. This is a daughter of the highly syndicated EBFL Ypsilanti, a sire who has proven himself in many herds across the country. Cherry pick this heifer in Fort Worth.

OPEN HEIFER



13

LFL CANDY 5040C

LIM-FLEX(62/56.3) • HOMO Black (P) • Het Polled (T)
4/24/2015 • BLAW 5040C • LFF2086028



- TC ABERDEEN 759
- EBFL YPSILANTI 420Y
- MAGS RAMADA
- DHVO DEUCE 132R
- DJ XECUTIVE PRIVILEGE
- DJ UPTOWN GIRL

BW: 68 • Adj. WW: 710

CONSIGNED BY: Lawrence Family Limousin, Anton, TX

Here is a maternal sister to LFL Belinda, the high-selling female at the 2015 Denver National Sale going to Madison Culppepper. Belinda was shown successfully by Madison, including rs. division at the 2015 National Junior Show, rs. grand at 2015 Fort Worth and San Antonio open shows, and rs. division at the 2015 NWSS open show. Candy is by the highly syndicated EBFL Ypsilanti, and her dam, Xecutive Privilege, is a front-pasture donor at LFL.

EPDs
CE: 6
BW: 3.7
WW: 86
YW: 128
MK: 30
CM: 6
SC: 1.1
DC: 11
YG: -.09
CW: 51
RE: .61
MS: .10
\$MTI: 60



LOT 13



LOT 14

14

LFL COCONUT 5044C

LIM-FLEX(75/67.1) • HOMO Black (T) • HOMO Polled (P)
4/25/2015 • BLAW 5044C • LFF2084413



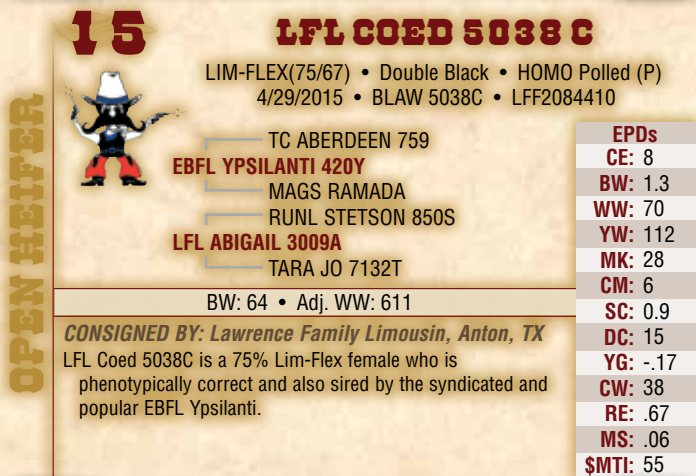
- MAGS THE GENERAL
- MAGS YIP
- AUTO CARMINDA 656S
- DRMCTR 112 RITO 6286
- LFL XCEPTIONAL 0002 X
- SARETTE DHVO 794S

BW: 78 • Adj. WW: 757

CONSIGNED BY: Lawrence Family Limousin, Anton, TX

WOW! Her picture says it all! This 75% female is sired by MAGS Yip and her dam goes back to DHVO Amy Jo cow family! Enough said. Don't miss this one sale day!

EPDs
CE: 10
BW: 1.9
WW: 73
YW: 103
MK: 30
CM: 8
SC: 0.4
DC: 10
YG: -.04
CW: 32
RE: .28
MS: .21
\$MTI: 60



LOT 15

15

LFL COED 5038C

LIM-FLEX(75/67) • Double Black • HOMO Polled (P)
4/29/2015 • BLAW 5038C • LFF2084410



- TC ABERDEEN 759
- EBFL YPSILANTI 420Y
- MAGS RAMADA
- RUNL STETSON 850S
- LFL ABIGAIL 3009A
- TARA JO 7132T

BW: 64 • Adj. WW: 611

CONSIGNED BY: Lawrence Family Limousin, Anton, TX

LFL Coed 5038C is a 75% Lim-Flex female who is phenotypically correct and also sired by the syndicated and popular EBFL Ypsilanti.

EPDs
CE: 8
BW: 1.3
WW: 70
YW: 112
MK: 28
CM: 6
SC: 0.9
DC: 15
YG: -.17
CW: 38
RE: .67
MS: .06
\$MTI: 55



LOT 16

16

LFL CHARLETTE 5059C

LIM-FLEX(68/61.4) • HOMO Black (T) • HOMO Polled (P)
5/28/2015 • BLAW 5059C • LFF2084422



- COLE WINDFALL 144W
- LFL ZANDER 2082Z
- LFL WINNERS CIRCLE 9057W
- DHVO TREY 133R
- LFL Y-NOT 1046Y
- LFL 6032S

BW: 71 • Adj. WW: 747

CONSIGNED BY: Lawrence Family Limousin, Anton, TX

LFL Charlette 5059C is a late May heifer who has the look combined with depth of rib, huge foot size and structural correctness to make her competitive in the 2016-2017 show season! Her dam is a flushmate to LFL Candy Corn 2008Z, the 2014 Supreme Grand Champion at the Houston Livestock Show & Rodeo. Charlette is one of the first daughters to sale out of LFL Zander, the high-selling bull in the 2014 Cowtown Classic Sale.

EPDs
CE: 7
BW: 2.8
WW: 69
YW: 92
MK: 24
CM: 0
SC: 0.6
DC: 14
YG: -.01
CW: 28
RE: .39
MS: .17
\$MTI: 55



LOT 16



LOT 17

BRED HEIFER

17

MAGS XRADIATION

LIM-FLEX(75/68.2) • HOMO Black (T) • HOMO Polled (P)
3/26/2010 • MAGS 3763X • LFF1958223

— GPFF BLAQUE RULON
MAGS U HAUL
— MAGS PARADISE CANYON
— WULFS FANFARE 4055F
EXLR 199H
— EXLR 558F

EPDs	Proj. AI
CE: 10	10
BW: 1.4	1.5
WW: 59	60
YW: 82	91
MK: 28	27
CM: 6	8
SC: 0.6	0.6
DC: 11	16
YG: -10	-07
CW: 20	26
RE: .20	.24
MS: .20	.32
\$MTI: 56	60

BW: 70

CONSIGNED BY: Salt Creek Cattle & Genetics, Amber, OK

Sells 5 months bred to Salt Crk Zillion 305Z

MAGS Xradiation is an amazing female out of the famed EXLR 199H cow, who was a cornerstone in the Magness program. She is bred to Salt Crk Zillion 305Z, a flushmate brother to 2015 NWSS Grand Champion Bull, who could be mistaken for his twin. This mating should produce a zinger of an April calf.

BRED HEIFER

18

LH ARIAL 028A

PERCENTAGE(81/72.7) • HOMO Black (T) • HOMO Polled (T)
3/12/2013 • LCHA 028A • NXF2038696

— LH RODEMASTER 338R
CHR XHALE 001X
— KRVN TAMALE C313T
— GPFF BLAQUE RULON
AVA JO DHVO 721R
— AMY JO DHAN 20L

EPDs	Proj. AI
CE: 6	9
BW: 3.0	2.3
WW: 70	71
YW: 99	113
MK: 18	25
CM: 2	5
SC: 0.6	0.6
DC: 13	15
YG: -.16	-.08
CW: 33	41
RE: .46	.47
MS: -.17	.22
\$MTI: 46	60

BW: 72 • Adj. WW: 634

CONSIGNED BY: Hall Cattle Co., Chattanooga, OK

PE'd 5/4/16 to /6/30/15 to LH Advantage 105A, due to calve in early March.

Dam is a flushmate to DHVO Deuce.



LOT 18

BRED HEIFER

19

BNBA ADRIENNE 178A

LIM-FLEX(75/67.7) • HOMO Black (P) • HOMO Polled (P)
11/10/2013 • BNBA 178A • LFF2048315

— JCL LODESTAR 27L
LH WAR HERO 195W
— VERMILION ERICA LADY 1229
— GPFF BLAQUE RULON
BNBA WRATTLE 036W
— WL JU JU GAL 149J

EPDs	Proj. AI
CE: 9	11
BW: 1.1	1.3
WW: 67	70
YW: 105	116
MK: 22	27
CM: 6	7
SC: 0.5	0.6
DC: 13	15
YG: -.13	-.06
CW: 34	41
RE: .38	.43
MS: .00	.31
\$MTI: 52	63

BW: 71 • Adj. WW: 661

CONSIGNED BY: Brittainy Barton, Chattanooga, OK

PE'd 5/4/15 to 6/30/15 to LH Advantage 105A, due to calve late Feb.

Dam is a full sister to KRVN Naskar.



LOT 19

BRED HEIFER

20

CHR ANN 179A

LIM-FLEX(62/55.7) • HOMO Black (P) • Het Polled (T)
11/15/2013 • KQ 179A • LFF2048463

— SEEE UNCONTROLABLE
SEEE YOU GOT IT
— SEEE UNFORGETTABLE 079U
— LH RODEMASTER 338R
CHR WALNUT 126W
— CHR NEAR BY 400N

EPDs	Proj. AI
CE: 9	11
BW: 0.2	0.9
WW: 55	64
YW: 81	104
MK: 20	26
CM: 8	8
SC: 0.9	0.8
DC: 15	16
YG: -.11	-.05
CW: 18	33
RE: .41	.45
MS: .13	.37
\$MTI: 52	63

BW: 69 • Adj. WW: 628

CONSIGNED BY: Coyote Hills Ranch, Chattanooga, OK

PE'd 5/4/15 to 6/30/15 to LH Advantage 105A, due to calve late Feb.

Advantage (43% LF) is the Upshot son who ranks high in the breed—top 20% WW, 3% YW, 10% MK, 3% CW, 3% MB and 3% \$MI.



LOT 20

BRED HEIFER

21 LFL BALLETT DANCER 4028B

LIM-FLEX(59/53) • HOMO Black (P) • HOMO Polled (P)
4/2/2014 • BLAW 4028B • LFF2061909

- BASIN FRANCHISE P142
- **MAGS UNITE TOGETHER**
- MAGS REMBRANDT
- MAGS USDA CHOICE
- **LFL YELLOW GOLD 1050 Y**
- LFL TONYA 7003 T

EPDs	Proj. AI	Proj. PE
CE:	8	11 7
BW:	2.6	1.8 2.9
WW:	82	76 73
YW:	120	117 103
MK:	28	26 23
CM:	8	9 2
SC:	0.3	0.7 0.6
DC:	20	20 -
YG:	.16	.27 .00
CW:	47	43 37
RE:	.37	.31 .37
MS:	.73	.74 .32
\$MTI:	80	78 63

BW: 70 • Adj. WW: 787 • Adj. YW: 1,143

CONSIGNEE BY: Lawrence Family Limousin, Anton, TX

AI'd 8/16/15 to MAGS Aviator. PE'd to 9/20/15 to 10/30/15 to LFL B52 4126B.

This homozygous black, homozygous polled female was a class winner at the 2015 All-American Futurity. She ranks in the top 3% for WW, 10% for YW, 5% for TM, 4% for CW, 1% for MB and 1% for \$MI. Her combination of a superb EPD profile and stunning phenotype make her a front-pasture female.



LOT 21



LOT 22

22 OAKC BECCA 452B

LIM-FLEX(75/67.5) • DBL Black • HOMO Polled (P)
4/21/2014 • OAKC 452B • LFF2068517

- MAGSWL USUAL SUSPECT 538U
- **OAKC TIM 127Y**
- LFL TRISHA 7037T
- MNWS NEW FRONTIER 909W
- **OAKC HAZEL**
- M H PROMPTER 88

EPDs	Proj. AI
CE:	6 9
BW:	3.0 2.2
WW:	63 74
YW:	86 107
MK:	20 24
CM:	5 9
SC:	- -
DC:	- -
YG:	-.09 .07
CW:	25 36
RE:	.24 .15
MS:	.02 .34
\$MTI:	50 64

BW: 72 • Adj. WW: 716 • Adj. YW: 1,036

CONSIGNEE BY: Harper Limousin, Pattison, TX

AI'd 6/12/15 to MAGS Eagle and PE'd 7/5/15 to 7/22/15 to MAGS Eagle. Due to calve late March.

Eagle is the double homozygous Winston son who is high-performing and ranks in the top 4% WW, 10% YW, 10% TM, 3% CM, 10% CW, 10% MB and 10% \$MI.

BRED HEIFER



LOT 23

DONOR

23 PCC XOTIC 016X

PUREBRED(100/90.3) • Het Black (T) • Het Polled (T)
7/22/2010 • JNPF 016X • NPF1975818

- GPFF BLAQUE RULON
- **DHVO TREY 133R**
- AMY JO DHAN 20L
- EXLR INTRIGUE 361G
- **LFL LORETTA 1039L**
- LFL 905J

EPDs	
CE:	3
BW:	2.3
WW:	65
YW:	71
MK:	15
CM:	-9
SC:	0.4
DC:	16
YG:	-.15
CW:	8
RE:	.21
MS:	-.28
\$MTI:	40

BW: 78

CONSIGNEE BY: Lawrence Family Limousin, Anton, TX

Selling half interest with the option to double up.

PCC Xotic 016X is probably one of the most successful purebred females in recent times. She was the 2012 Texas Show Heifer of the Year, 2012 grand champion at Fort Worth, and then the rs. grand champion purebred cow-calf pair at 2014 National Junior Show in Amarillo for our grandson, Tucker Parkinson.

She has been flushed successfully here at LFL, including producing a daughter, LFL Apple Crunch, who was one of the high-selling females in the breed in 2014 and shown successfully by the Wilder Family. Another daughter, LFL Charity, will be a highlight in this 2016 Cowtown Classic selling as Lot 9. Selling with her nice-patterned heifer at side by Air Force One!

23A LFL CELEBRITY 510S

10/6/15 heifer by RLBH Air Force One. BW 80 lbs.
BW: 1.6 WW: 64 YW: 87 MK: 21 SC: 0.6 DC: 14



LOT 24

25 HUBB BULLETPROOF

LIM-FLEX(43/38.7) • HOMO Black (P) • Het Polled (T)
9/5/2014 • HUBB 337B • LFM2071825

D A TRAVELER 004 703
EF XCESSIVE FORCE
 CFLX MOLLYS IMAGE
 MAGS XUKALANI
MAGS ZALIA
 MAGS RUNNING ON EMPTY

BW: 82 • Adj. WW: 805 • Adj. YW: 1,374 • SC: 39.3
UFAT: 0.35 • UREA: 0.35 • UIMF: 3.25

CONSIGNED BY: JCL Land & Cattle/Lawrence Family Limousin

The 2014 NJLS Lim-Flex Female for Grant Hubbard has outdone herself. Zalia was the epitome of perfection in the show ring, and is flawless as a matron. Mated to the proven EF Xcessive Force certainly worked as she produced this Tulsa State Fair Champion. Packages will be sold for a limited time, and semen will be off the market until January 2017.

EPDs
CE: 12
BW: -1.2
WW: 69
YW: 108
MK: 21
CM: 9
SC: 1.2
DC: 8
YG: -.04
CW: 32
RE: .41
MS: .26
SMTI: 61

26 WB BRUTE FORCE

LIM-FLEX(50/45.4) • DBL Black • DBL Polled
1/3/2014 • AAWW 255B • LFM2051274

GAMBLES HOT ROD
WB JUST WRIGHT
 PBRS ROCKEN OUT 589R
 BR MIDLAND
BOHI RISQUE 255R
 ANLC MANDY RAY 2141M

BW: 76

CONSIGNED BY: Wright Brothers Cattle Co., Miami, OK

Selling half interest and full possession.

Brute Force came out the gate as calf and was the 2014 NJLS Rs.

Grand Lim-Flex Bull for Drew and was the 2015 NJLS&C Champion Lim-Flex Bull. He has a bright future as a herd sire, much like his sire, WB Just Wright, has been for us. You can search through the breed and you won't find a bull with a complete package like this.

EPDs
CE: 10
BW: 1.4
WW: 57
YW: 85
MK: 17
CM: 6
SC: 0.4
DC: -
YG: -.21
CW: 22
RE: .42
MS: .12
SMTI: 53



LOT 27

24

SEEE BELIEVE IN ME

PUREBRED(100/89.8) • Het Black (T) • HOMO Polled (T)
4/25/2014 • SEEE 914B • NPM2058875

DHVO DEUCE 132R
MAGS XYLOPOLIST
 MAGS STRAWBERRY
 GPFF BLAQUE RULON
MAGS SCANDAL
 MAGS MANDA

BW: 76 • Adj. WW: 744 • Adj. YW: 1,242

CONSIGNED BY: LS Vance Farms, Timpson, TX

Selling two lots of 5 units of semen each.

Believe In Me was the high-selling lot in Edwards Limousin online sale. He is a homozygous polled purebred son of MAGS Xylopolist.

EPDs
CE: 6
BW: 2.0
WW: 65
YW: 91
MK: 25
CM: 7
SC: 0.6
DC: 17
YG: -.12
CW: 26
RE: .33
MS: -.12
SMTI: 46



LOT 25



LOT 26

27

THIL EAGLES WRATH 14

LIM-FLEX(75/67) • HOMO Black (P) • DBL Polled
9/7/2014 • THIL 14B • LFM2079347

MYTTY IN FOCUS
HBRL WINNER 961W
 HBRL TRUE STAR 760T
 EF MAIN STAY 541M
ANDIE JOE DHVO 712R
 VOET ANNA JO

BW: 73 • Adj. WW: 505 • Adj. YW: 915

CONSIGNED BY: T Hill Limousin, Dover, AR

This 75% homo black bull is sired by HBRL Winner 961W who ranks in the top 1% of the breed for YW. His dam, Andie Jo DHVO 712R, is from the great D'Hanis cow family that produced Deuce, Trey and many others. He is sure to produce high-growth offspring that have the exceptional phenotype represented in his dam's legacy.

EPDs
CE: 10
BW: 1.4
WW: 60
YW: 106
MK: 29
CM: 7
SC: 0.5
DC: 24
YG: -.02
CW: 41
RE: .33
MS: .11
SMTI: 53

SEMIEN PACKAGES

HERD SIRE

28 DOUBLE TROUBLE 55B

LIM-FLEX(43/39.3) • DBL Black • DBL Polled
9/9/2014 • THIL 55B • LFM2072871

S A V BISMARCK 5682
S A V BRAND NAME 9115
S A V BLACKCAP MAY 5530
MAGS XYLOID
AUTO ZAPPA 433Z
MAGS MANUELA

BW: 74 • Adj. WW: 700 • Adj. YW: 1,130

CONSIGNED BY: T Hill Limousin, Dover, AR

Double Trouble is a tremendous 43% Lim-Flex herd-sire prospect who has the phenotype and pedigree to improve a calf crop. Sired by the \$156,000 top-selling S A V Brand Name and out of an impressive MAGS Manuela daughter. Flushmate sisters to his dam, AUTO Zophia and SBLX Z Note, have been champions. Double Trouble offers moderate birth with exceptional weaning to yearling spread. We also love his muscle expression, smooth shoulder and fluidness.

EPDs
CE: 5
BW: 2.3
WW: 72
YW: 119
MK: 21
CM: 5
SC: 0.9
DC: 18
YG: -15
CW: 40
RE: .59
MS: .29
\$MTI: 63



LOT 28

HERD SIRE

29 LH BONEZ 147B

LIM-FLEX(62/55.5) • HOMO Black (P) • HOMO Polled (P)
9/16/2014 • LCHA 147B • LFM2070931

MAGS WINSTON
MAGS EAGLE
MAGS WEB OF DECEIT
DHVO DEUCE 132R
LH ZELMA 125Z
EXLR BLACK SHEENA 1035P

BW: 78 • Adj. WW: 663 • Adj. YW: 1,164 • SC: 37.4
UFAT: 0.32 • UREA: 0.32 • UIMF: 3.73

CONSIGNED BY: Hall Cattle Co., Chattanooga, OK

EPDs
CE: 9
BW: 2.3
WW: 81
YW: 118
MK: 23
CM: 8
SC: 0.7
DC: 19
YG: .07
CW: 44
RE: .26
MS: .38
\$MTI: 68

HERD SIRE



LOT 29

HERD SIRE

30 RWTC SILVIA'S FORCE 639B

LIM-FLEX(50/44.5) • HOMO Black (P) • DBL Polled
10/1/2014 • RWTC 639B • LFM2087843

D A TRAVELER 004 703
EF XCESSIVE FORCE
CFLX MOLLYS IMAGE
CALO BRICKYARD 902W
TGBC SILVIA 010Z
TGBC SILVIA 045X 7301

BW: 65 • Adj. WW: 568 • Adj. YW: 853

CONSIGNED BY: Reed Thorn, Arp, TX

EPDs
CE: 10
BW: -0.8
WW: 64
YW: 103
MK: 27
CM: 6
SC: 1.1
DC: 13
YG: 0
CW: 30
RE: .45
MS: .21
\$MTI: 57



LOT 30

31 RLTC SHAWNEE'S DEUCE 640

PUREBRED(100/88.8) • DBL Black • DBL Polled
10/2/2014 • RLTC 640B • NPM2087813

GPFF BLAQUE RULON
DHVO DEUCE 132R
AMY JO DHAN 20L
MAGS SASQUATCH
CLLL SHAWNEE 300W
DVFC BROKEN LANCE 357M

BW: 78 • Adj. WW: 656 • Adj. YW: 1,022

CONSIGNED BY: Ross Thorn, Arp, TX

EPDs
CE: 6
BW: 2.8
WW: 70
YW: 101
MK: 22
CM: 5
SC: 0.8
DC: -
YG: -.08
CW: 34
RE: .33
MS: -.17
\$MTI: 46

HERD SIRE



LOT 31



33 ELCX BLAZE 428B ET

LIM-FLEX(62/56.3) • Het Black (T) • HOMO Polled (T)
10/4/2014 • ELCX 428B • LFM2074238

DHVO DEUCE 132R
MAGS XYLOID
BOHI RHONDA 314R
S A V BISMARCK 5682
AUTO POEM 273Y
MAGS PHANTOMS PRIZE

BW: 78 • Adj. WW: 711 • Adj. YW: 1,196 • SC: 35.4
UFAT: 0.43 • UREA: 0.43 • UIMF: 2.05

CONSIGNED BY: Edwards Land & Cattle Co., Beulaville, NC

ELCX Blaze is the result of breeding iconic cattle in both the Limousin and Angus breeds. Sired by one of the most powerful sires of all time, MAGS Xyloid, and out of the up-and-coming donor in the Edwards program, AUTO Poem, who is by the Angus calving-ease bull, SAV Bismarck, and is a maternal sister to many-time champions, MAGSWL Usual Suspect and WLR Tainted Love. Blaze is sure to be a calving-ease specialist.

EPDs	
CE:	10
BW:	2.1
WW:	66
YW:	92
MK:	18
CM:	8
SC:	0.8
DC:	17
YG:	-14
CW:	33
RE:	.54
MS:	.17
\$MTI:	57



35 DHIL 4102B

LIM-FLEX(56/50.1) • HOMO Black (T) • HOMO Polled (T)
10/17/2014 • BDHC 4102B • LFM2065411

LH RODEMASTER 338R
LH XPRESS FREIGHT 136X
KRVN NACHES 151N
CLLL BLACKWOOD
JCL ERICA 102Y
RR ERICA 9003

BW: 87 • Adj. WW: 615 • Adj. YW: 1,097 • SC: 35.3
UFAT: 0.30 • UREA: 0.3 • UIMF: 4.13

CONSIGNED BY: Diamond Hill Cattle Co., Nichols Hills, OK

EPDs	
CE:	6
BW:	2.8
WW:	65
YW:	106
MK:	18
CM:	7
SC:	-
DC:	11
YG:	-07
CW:	32
RE:	.44
MS:	.22
\$MTI:	58

32

LEBF CINCH

LIM-FLEX(50/45.6) • Black • DBL Polled
10/3/2014 • KBLB 0314BvLFM2070663

CONNEALY CONSENSUS 7229
EXAR SIGNIFICANT 1769B
SITZ HENRIETTA PRIDE 643T
OPUS WINCHESTER JRL
JRL'S SUNSHINE 710T
CRTD DELIA 7151G

BW: 74 • Adj. WW: 664 • Adj. YW: 1,300

CONSIGNED BY: Kara LeBouf, Deridder, LA

EPDs	
CE:	11
BW:	0.5
WW:	59
YW:	95
MK:	34
CM:	6
SC:	0.4
DC:	-
YG:	-17
CW:	27
RE:	.57
MS:	.43
\$MTI:	65

HERD SIRE



34

DHIL 4286B

LIM-FLEX(62/56.1) • HOMO Black (T) • HOMO Polled (T)
10/12/2014 • BDHC 4286B • LFM2065399

CALO BRICKYARD 902W
JCL CURRENCY LNLM 203Z
PBR UNBELIEVABLE 8149U
DHVO DEUCE 132R
BDHC UP AND DOWN 2860Z
MAGS UP AND DOWN

BW: 82 • Adj. WW: 617 • Adj. YW: 1,034 • SC: 35.7
UFAT: 0.27 • UREA: 0.27 • UIMF: 3.62

CONSIGNED BY: Diamond Hill Cattle Co., Nichols Hills, OK

EPDs	
CE:	8
BW:	1.8
WW:	60
YW:	93
MK:	25
CM:	4
SC:	0.8
DC:	12
YG:	-17
CW:	25
RE:	.57
MS:	.19
\$MTI:	56

HERD SIRE



HERD SIRE

HERD SIRE

36**SBLX BO KNOWS**LIM-FLEX(50/45.1) • HOMO Black (P) • HOMO Polled (P)
11/23/2014 • SBLX 478B • LFM2064016

TC ABERDEEN 759
 EBFL YPSILANTI 420Y
 MAGS RAMADA
 SITZ UPWARD 307R
 LH ZELZA 117Z
 KRVN NACHES 151N

BW: 82 • Adj. WW: 758 • Adj. YW: 1,223
UFAT: 0.17 • UREA: 0.17 • UIMF: 3.145**CONSIGNED BY: Stowers Limousin, Bridgeport, TX**

His pedigree, EPD profile and actual performance indicate his future is full of potential. Sired by the \$120,000-valued EBFL Ypsilanti and out of a daughter of the KRVN Naches 151N donor who produced past Houston champion for Lauren Stowers, SSTO Waterlily. This double homozygous bull has an impressive BW to YW spread.

EPDs
CE: 8
BW: 2.1
WW: 76
YW: 116
MK: 30
CM: 8
SC: 1.0
DC: 7
YG: -15
CW: 41
RE: .75
MS: .30
SMTI: 65

**LOT 36****HERD SIRE****LOT 37****HERD SIRE****37****WB BAYLOR**LIM-FLEX(75/68.1) • DBL Black • HOMO Polled (P)
12/23/2014 • AAWW 156B • LFM2086312

GAMBLES HOT ROD
 WB JUST WRIGHT
 PBRs ROCKEN OUT 589R
 GPFF BLAQUE RULON
 CHR UNDYING LOVE 156U
 POPE'S BLAQUE MEADOW

EPDs
CE: 6
BW: 2.8
WW: 63
YW: 88
MK: 16
CM: 4
SC: 0.4
DC: -
YG: -18
CW: 26
RE: .43
MS: -.05
SMTI: 49

CONSIGNED BY: Wright Brothers Cattle Co., Miami, OK

Selling half interest and possession.
 Herd sire in the making. This Just Wright son is out of the CHR Undying Love cow we purchased from JCL Cattle Company. We feel the genetics this bull combines has him set for the future, both in the ring and the pasture.

38**7 EMBRYOS**

56% Lim-Flex • HOMO BLACK • HOMO POLLED

LH WAR HERO
 MAGS ANCHOR
 MGS XIPHOPAGOUS
 AUTO DOLLAR GENERAL 122R
 MAGS TIMELESS
 TWIN EAGLES PRIDE 405P

CONSIGNED BY: Salt Creek Cattle & Genetics, Amber, OK

These embryos will be maternal sibs to the 2015 Denver Champion Bull, MAGS Zappo. Zappo may be the bull who takes his famous sire's, MAGS Xyloid, place in terms of producing phenotypically superior cattle with the additional soundness and volume. Timeless has been a dream to mate due to her phenomenal alignment of Milk, MS and \$MI numbers. She ranks in the top 3% for MS and \$MI and the top 10% for MK. Sired by the recently deceased MAGS Anchor, an exceptional syndicated AI sire whose first calves are the talk of the industry.

EPDs
CE: 9
BW: 1.0
WW: 73
YW: 114
MK: 28
CM: 8
SC: 0.5
DC: 12
YG: -.06
CW: 39
RE: .61
MS: .46
SMTI: 69

**MAGS TIMELESS****EMBRYOS****39****3 EMBRYOS**

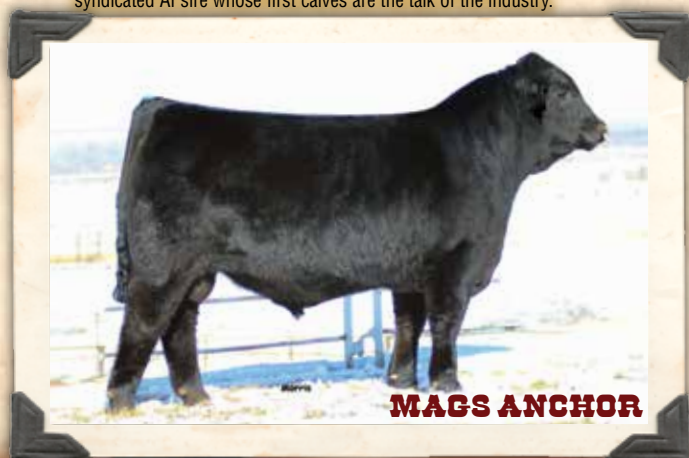
56% Lim-Flex • HOMO BLACK • HOMO POLLED

LH WAR HERO
 MAGS ANCHOR
 MGS XIPHOPAGOUS
 S A V BISMARCK 5682
 MAGS YAHWIST
 MAGS TELEGRAM

EPDs
CE: 10
BW: .6
WW: 74
YW: 111
MK: 23
CM: 8
SC: 0.8
DC: 10
YG: -.16
CW: 36
RE: .85
MS: .23
SMTI: 62

CONSIGNED BY: Salt Creek Cattle & Genetics, Amber, OK

MAGS Anchor first calf crop in 2015 was one to write home about. Calves have adequate growth and performance, are beautifully designed and have a quality, balanced look about them. Anchor ranks in the top 4% for WW and top 5% for YW, and has a workable set of carcass numbers. Embryos are out of the double homozygous, Salt Creek donor MAGS Yahwist. This female has a stacked data profile and is from the same cow family (MAGS Manda) that produced, MAGS Savage, MAGS Wassail, MAGS Ramada and nearly 100 other outstanding individuals. Study the numbers and history on this female, and you will see this mating is special.

**MAGS ANCHOR****EMBRYOS**

40

7 EMBRYOS

56% Lim-Flex • HOMO BLACK • HOMO POLLED

LH WAR HERO
MAGS ANCHOR
 MGS XIPHOPAGOUS
 S A V BRILLIANCE 8077
SBLX ZERO OUT
 MAGS MANUELA

EPDs	
CE:	11
BW:	1.3
WW:	72
YW:	113
MK:	28
CM:	7
SC:	0.8
DC:	15
YG:	.07
CW:	39
RE:	.54
MS:	.36
\$MTI:	65

CONSIGNEE BY: Salt Creek Cattle & Genetics, Amber, OK
 Chapters, well ok, novels can be written about the legends in the lineage of this elite embryo lot. MAGS Manuela, JCL Lodestar, MAGS Lady Ace and DHVO Deuce to name a few. As you can see, SBLX Zero Out is as flawless as one makes one. Straight lined, elegant fronted, smooth jointed, sweeping rib shape and still has that extra dimension and soundness that makes her so valuable. She is a three-quarters-sib to SBLX SULL Catch Of Dawn who sold to P Bar S Ranch in the record-setting Sullivan Maternal Legend Sale this fall. MAGS Anchor started his story by being part of the trio syndicate that highlighted the 2015 Magness bull sale and is now carrying on his script by producing excellent progeny that are phenotypically ideal and fast growing.



LONE STAR SHOOT-OUT PAST WINNERS



2015 Lone Star Shoot-Out Competitors



LFL Allison 3043A
 2015 Shoot-out Champion
 Sold by: Lawrence Family Limousin
 Purchased by: Macie Burnett



LFL American Pie 3111A
 2015 Rs. Shoot-out Rs. Champion
 Sold by: Lawrence Family Limousin
 Purchased by: Colton Shackelford



YRTX Adalida 360A
 2014 Shoot-out Champion
 Sold by: Young & Rogers Farm
 Purchased by: Sage Harlow



Miss PEDS Zippy 573Z
 2014 Shoot-out Rs. Champion
 Sold by: Schur Limousin Cattle
 Purchased by: Emily Hamilton

TERMS & CONDITIONS

IDENTIFICATION OF ANIMALS: (1) Each animal sold will have a readable tattoo corresponding to its registration paper. (2) Seller agrees to check all tattoos for accuracy prior to the sale. The buyer has the responsibility for rechecking the tattoos after taking possession and reporting any discrepancies to the seller immediately. (3) All animals to be sold will be identified by their official registration number, their tattoo and their registered name. If nicknames are used, they should be in addition to the other information. (4) The NALF board recommends that when any animal is sold, there is complete disclosure of any retained genetics in the form of pregnant recipients, frozen embryos or frozen semen.

REGISTRATION CERTIFICATES: (1) The seller of the animal will submit the original registration certificate with transfer information or an application for registration with transfer information on it so that a certificate can be produced by the Foundation and transferred to the new buyer. The seller must sign the back of the certificate on the application to authorize the transfer. (2) It is the responsibility of the seller to provide the North American Limousin Foundation with the buyer's complete name, address and membership number (if available) so that we can complete the transfer. It is important that the membership number be given if the buyer is already a member of NALF. (3) It is the seller's responsibility to provide the certificate or application, and transfer information to NALF within 60 days following the date of sale, and pay transfer and registration fees.

TERMS: (1) Terms of all sales are considered to be cash unless credit arrangements have been made prior to the sale between the buyer and the seller.

HEALTH: (1) On all animals sold, health tests will be announced at the sale or printed in the sale catalog. It is understood that health papers reflect the condition of the animal at the time of the sale but carry no further guarantee as to the future health of the animal. (2) Buyers having special health requests or who wish to take cattle into states with specific and rigid health regulations should inquire specifically about the health tests required for entry into their state. (3) All females sold are considered to be calfhood vaccinated for Brucellosis unless they are otherwise stated in the catalog or announced from the block. It is suggested that verification of vaccination be written on the health certificate.

PURCHASER'S RISK: Each animal becomes the risk of the purchaser as soon as sold. It shall be the obligation of the purchaser to see that trucking of the animal and care of the animal are taken care of prior to leaving the sale location.

ANNOUNCEMENTS: (1) Any change from the information that is printed in the catalog will be announced from the auction block. (2) All announcements made from the auction block take precedence over the printed catalog. (3) Catalogued lots not selling will be announced prior to the sale.

BREEDING GUARANTEE: (1) All animals are guaranteed to be breeders with the exception of: a. calves under twelve months of age; b. in the event of any injury or disease that occurs to the calf after sale or; c. gross negligence or willful misconduct on the part of the purchaser; d. females used in embryo transplant. (2) Bulls are guaranteed to be breeders at the time of sale or at 16 months of age if they are younger than 16 months at time of sale. Any bull which either settles cows by natural service and/or passes a fertility test made by a competent veterinarian is considered to be fertile. Any guarantee with respect to the ability to

freeze semen shall be a separate agreement between buyer and seller. (3) Females sold as safe in calf have been examined by a competent veterinarian or other reproductive technician and are so guaranteed to be with calf. Cows with calf at side are considered breeders as indicated by the calf at side. (4) Any guarantee with respect to embryo transplant production shall be a separate agreement between buyer and seller.

OPTION AND PRIVILEGE OF RETURN OR ADJUSTMENT: (1) All claims for adjustments or refunds must be made in writing either within six months of the date of the sale or no later than six months after the animal reaches 18 months of age, whichever occurs last. (2) In the event that an animal is claimed to be a non-breeder, that animal must be returned to the farm of the seller in good condition and must have met the health requirements of the original sell state. The seller shall be entitled to six months trial following the return of the animal in which to prove the animal is a breeder, the seller shall, at the option of the buyer, replace the animal with another of equal value or refund the total purchase price. The return of the purchase price shall in all cases be deemed as full settlement. Any expense incurred in transporting the animal that is claimed to be a non-breeder shall be the responsibility of the purchaser except that the seller shall be responsible for transportation costs in the excess of the distance between the purchaser's farm and the location of the sale. If the seller proves the animal to be a breeder, it shall be the obligation of the purchaser to take delivery of the animal and pay all expenses incurred for transportation. (3) It is the obligation of the buyer and seller to negotiate any settlements on cattle that have not been properly presented at a sale. The selling of an animal constitutes a contract between buyer and sell and is not the responsibility or the right of the North American Limousin Foundation or of the sale management firm to settle disagreements between buyers and sellers of cattle that have not been properly presented. The return of an animal at the expense of the purchaser with a refund of the purchase price made by the seller is in all cases considered to be a complete settlement. Other settlements which are negotiated between buyer and seller may be equitable to cover instances in which cattle are not as represented sale day, but that does not warrant complete return of the animal.

BLOOD TYPING FOR PARENTAGE VERIFICATION: All animals sold are guaranteed to be offspring of their recorded parents. Under the rules of NALF, all bulls born after January 1, 1991, that are to be used for artificial insemination or used naturally in a herd other than the owner of record must be parent verified by blood typing to both sire and dam. All females born after July 1, 1987, that are to be used for embryo transplant and all bulls born between July 1, 1987, and December 31, 1990, that are to be used for artificial insemination or used naturally in a herd other than the owner of record must be sire verified through blood samples available to purchasers upon written request by the purchasers so long as written request is received by sellers within 60 days after the date of the sale of the applicable animal. Proto test guaranteed normal if done within 60 days of sale date.

INSURANCE: Anyone wishing to insure their purchases may do so by contacting the sale manager or settling clerk.

MAIL BIDS: Mailed or telephoned bids will be handled in a most confidential manner if you are unable to attend the sale personally. By contacting a representative of the sale staff prior to sale day, you will enable us to assist you at ringside sale day.

EPDs USED IN THIS CATALOG ARE CURRENT AS OF FALL 2015.



TEXAS LIMOUSIN ASSOCIATION
P.O. Box 880
Krum, TX 76249

Postal Carrier: Please Do Not Delay DATED MATERIAL

THE COWTOWN CLASSIC

L i m o u s i n S a l e

Friday, January 29, 2016 • Fort Worth, Texas

6 p.m. ~ at the Fort Worth Stock Show

West Arena of the Bass-Richardson Building