

CONLEY

CATTLE

SPRING PRODUCTION SALE

MARCH 26, 2022 6:30 PM CDT ARTESIAN HOTEL, SULPHUR, OKLAHOMA

We welcome you to Conley Cattle and the Artesian Hotel for our 2nd Annual Spring Production Sale. Cattle will be available for viewing at our place, then join us for dinner and the auction at the Artesian Hotel just a few minutes away. As you witnessed in 2021, the Artesian is a luxurious hotel, casino, and spa- join us for a weekend getaway!

As we have said many times before, the key to our success is our crew. Cole Atkinson is an artist when it comes to caring for and raising cattle. His talent, attitude, and work ethic are out of this world. He keeps us and the cattle on schedule. Alex Bauer, the 2021 Angus Herdsman of the Year, can handle anything thrown his way. From ranch work to paperwork, he has it under control. Cole and Alex are also presenting several lots in this offering. Jacob Toombs, a junior at OSU, continues to be a staple here. Jackson Ray has joined our crew this year and has worked incredibly hard alongside the rest of the crew to get these cattle ready. These guys are truly the best at show and sale preparation and customer service.

We are excited where the past years have taken us. This book is full of our accomplishments as well as the achievements of our customers. As you flip through this catalog, you will appreciate the cow families and genetics we have made. We feel the strength of our donor lineup and herd bull battery are the very best of Conley Cattle. Join us March 26th!

-Kyle



KYLE, AMANDA,
CASE & JACK CONLEY



ALEX BAUER



COLE ATKINSON



JACOB TOOMBS



JACKSON RAY

SCHEDULE OF EVENTS

FRIDAY, MARCH 25TH

OPEN HOUSE ALL DAY - REFRESHMENTS AVAILABLE

SATURDAY, MARCH 26TH

8 A.M. - CATTLE AVAILABLE FOR VIEWING @ THE RANCH
1 P.M. - BUCK CATTLE ANNUAL PRODUCTION SALE, MADILL
4 P.M. - RED DIRT, PURPLE BANNERS, MARIETTA
5 P.M. - HORS D'OEUVRES & DRINKS @ THE ARTESIAN HOTEL
6:30 P.M. **CONLEY CATTLE SPRING PRODUCTION SALE**
ARTESIAN HOTEL, SULPHUR



KYLE, AMANDA, CASE & JACK CONLEY

Alex Bauer - 567-224-5512 - Cole Atkinson - 417-773-6421

3555 Koller Road - Sulphur, OK 73086

580-618-4533 - conleycattle@yahoo.com

visit us online at: www.conleycattle.com

VIDEOS WILL BE AVAILABLE ONLINE

CONLEYCATTLE.COM

SPRING SALE PARTNERS



SALE LOCATION

ARTESIAN HOTEL - 1001 West 1st Street
Sulphur, Oklahoma - 580-622-8100

SALE DAY TELEPHONES

Kyle Conley - 580-618-4533 • Alex Bauer - 567-224-5512
Cole Atkinson - 417-773-6421 • Jeremy Haag - 406-833-0117
Kylie McKenna - 402-350-3447 • Randy Ratliff - 615-330-2735

AUCTIONEER

Steve Bonham • 405-823-2972

LIVESTOCK PUBLICATIONS REPRESENTATIVES

Jeff Mafi, *Angus Journal* • 405-269-6387
Chisolm Kinder, *OK Cattleman* • 405-747-4783
Delvin Heldermon, *Special Assignment* • 405-205-1116

LIABILITY

All persons who attend the sale do so at their own risk, legal or otherwise, for their safety or for behavior of the animals. The owners, sale management firm, and the sale stall assume no liability for property loss or any accident that may occur

SUPPLEMENTAL INFORMATION

A supplemental sheet will be available sale day with complete and up to date calving information. Announcements from the auction block regarding the cattle selling in this sale take precedence over information listed in the catalog. Up-to-date genetic recessive status can be viewed online at www.angus.org.

HERD HEALTH

All cattle will be accompanied by proper health certificated for immediate shipment.

TRUCKING

Truckers believed to be reliable will be available to assist in shipping your purchases.

SALE ACCOMMODATIONS

Artesian Hotel & Spa • 580-622-8100 • 1001 West 1st Street • Sulphur, OK
Ask for 'Conley Cattle' block of rooms

Treasure Valley Casino & Hotel • 580-369-3223
Located at HWY 7 and I-35 • Davis, OK

Ask for 'Conley Cattle' block of rooms

Super 8 • 580-622-6500 • 2116 W. Broadway • Sulphur, OK

Hampton Inn & Suites • 405-238-7700 • 105 S. Humphrey Blvd. • Pauls Valley, OK

Holiday Inn Express • 405-207-9434 • 2412 W. Grant Ave. • Pauls Valley, OK
Additional hotels available in Ardmore and Ada, Oklahoma.

LIVESTOCK MORTALITY INSURANCE

To properly insure your investments, James F. Bessler, Inc 815-762-264

ONLINE BIDDING INFORMATION

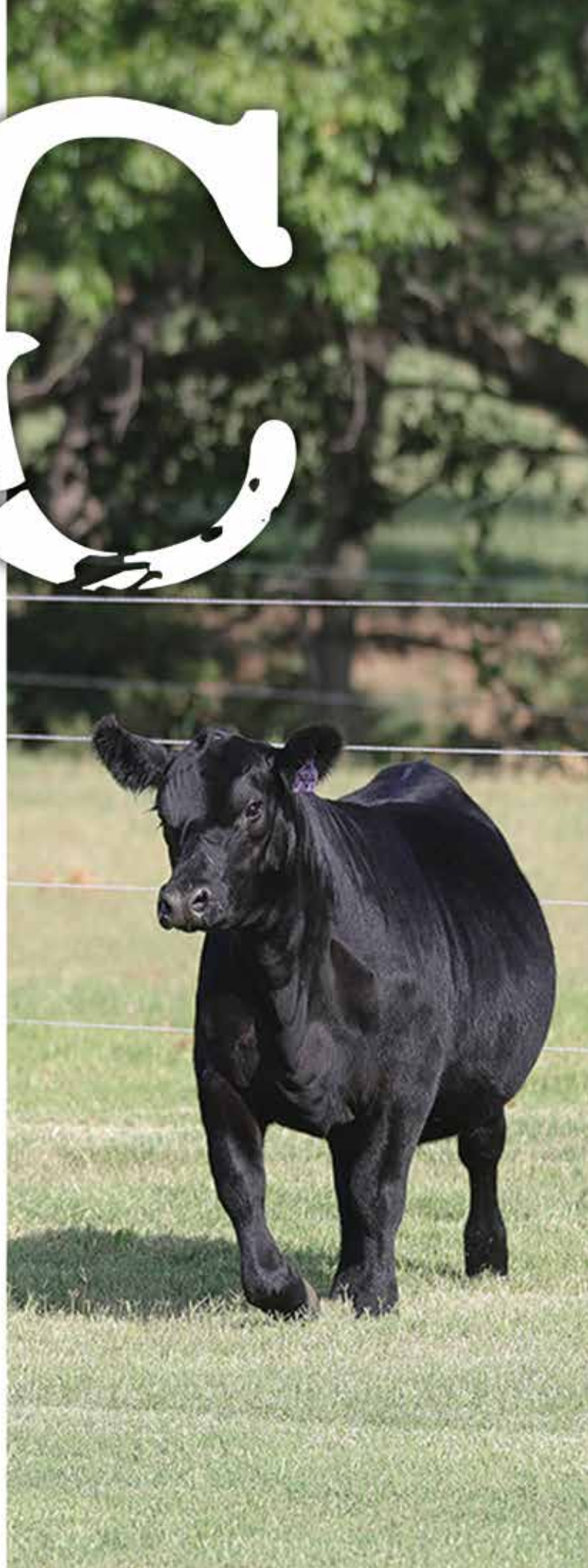
View the sale from your phone, tablet, or desktop computer and bid with confidence! Visit www.CCI.live for complete sale information and online registration. **CCI.Live - ONLINE BIDDING**



Watch the Sale Live Online...

View the sale from your phone, tablet, or desktop computer and bid with confidence! Visit www.CCI.live for complete sale information and online registration. If this is your first time to CCI Live, visit the web page and get approved for bidding at least three hours prior to sale time. With good internet speeds you can enjoy the sale from any location and bid with confidence.

ONLINE BIDDING • Catalog • Videos • Sale Order • Plus More!





CONLEY DS CLEAR CUT 0510 | The 2022 National Western Stock Show ROV Grand Champion Angus Bull, exhibited by Lookout Ridge, Ferree/Fitzgerald & Conley Cattle.



TASF GVAF HINA | Division Champion, 2022 Cattlemen's Congress. Sold in the 2021 Spring Production sale by Atkinson Farms. Exhibited by Carter Kornegay.



CONLEY SHEZ STAR F909 | The 2020 Supreme Champion Percentage Female of the Oklahoma Youth Expo exhibited by Finley Yocham.



CONLEY SHEZA STAR F912 | Reserve Grand Champion Purebred Simmental Female, 2020 Ft. Worth Stock Show exhibited by Madilyn Norvell.



CONLEY SHEZA STAR H575 | The Reserve Grand Champion Simmental Heifer, 2021 Oklahoma Youth Expo, exhibited by Madilyn Norvell.



CONLEY CATTLE | Grand Champion Pen of Three Bulls, 2022 Cattlemen's Congress



CONLEY SANDY 9486 | The 2021 Oklahoma Youth Expo Res. Champion Angus Female, exhibited by Sage Hanrahan.

MARCH 26, 2022 - SULPHUR, OKLAHOMA



CONLEY LEAD THE WAY 0738 | Reserve Grand Champion Bull, 2022 FWSS ROV Angus Show, exhibited by C-4 Land & Cattle, Cherokee Pride & Conley Cattle.



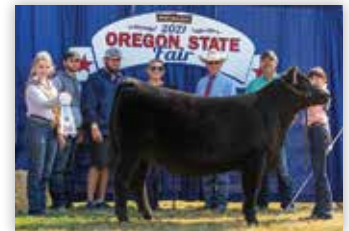
CONLEY DS CLEAR CUT 0510 | The 2021 Res. Supreme Champion Bull, World Beef Expo.



CONLEY SANDY 9135 | The 2021 Late Senior Champion Female of the National Junior Angus Show.



CONLEY SANDY 9463 | The 2021 Res. Late Senior Champion Female of the National Junior Angus Show.



CONLEY VAN ZEE BLACKBIRD 2033 | The 2021 Res. Grand Champion Female, Oregon State Fair, exhibited by Payton Hartill. 2033 sold in the 2021 Spring Sale.



CONLEY FRONTIER GAL 1168 | The 2022 Res. Calf division champion Female of the FWSS ROV Angus Show, exhibited by Cassidy Carroll.



CONLEY 3ACES MIGNONNE H892 | The 2021 Reserve Grand Champion Purebred Simmental Female, American Royal Simmental show, exhibited by Ruby Bell. H892 sold in the 2021 Spring Sale.

FOR YOUR NEXT CHAMPION - THINK CONLEY CATTLE





1

CONLEY A1

BULL 3/4/21 REG 20177675 TATTOO 105

GATEWAY FOLLOW ME F163
 *19334239 C&C McKinley 3000 EXAR Dunk-W Maxine HR 505C BC II Skyfall 2812

EXAR PRINCESS 6741
 +*18414022 EXAR Princess 5391

Dameron First Class
 RAC Winnie 7456
 Gambles Hot Rod
 KB Lady Maxine Lut 857
 BCII Money Makin Express 508
 Limestone Arkdale Pride U184
 Dameron First Class
 EXAR Princess 6414

CED	BW	WW	YW	MILK	CW	MARB	REA	SM 24	SB 99
I-1	I+4.4	I+64	I+98	I+8	I+25	I+.20	I+.46	SW 37	SC 152

• This remarkable son of Gateway Follow Me F163 stems back to the legendary Princess family. This bull is a three-quarter brother to Conley Lead The Way 0738, who was just recently selected as the Res. Grand Champion Bull at the Fort Worth Stock Show, the 2021 Grand Champion Bull of the Tulsa State Fair, Res. Junior Champion at the Cattleman's Congress Super Point ROV Angus Show, and a bull that has created tremendous interest from breeders across the country. Dam of this outstanding individual is a maternal sister to the Grand Champion Female at the North American ROV Angus Show in 2017 and third-generation dam, EXAR Princess 6414, was the Res. Grand Champion Female of the National Western Stock Show, Grand Champion Female of the Fort Worth Stock Show, and is a daughter of the past National Western Stock Show Grand Champion, Greens Princess 1012. This featured herd sire prospect stems from the same lineage that produced the Conley herd sire, EXAR Blue Chip 1877B.





LOT 2 | CONLEY ERICA 7201

2

CONLEY ERICA 7201

COW 2/3/17 REG 18990072 TATTOO 7201

SMA WATCHOUT 482

*17836525

Silveiras Watchout 0514
2K Beauty 961
Our Place Prominent 928

BC Lookout 7024
Silveiras Elba 6546
SAV Brilliance 8077
2K Beauty 2004

OUR PLACE ERICA PRIDE 201

17184890

OP Lady Erica of MAR 68

BC Matrix 4132
Our Place Lady Pride 397
N Bar Emulation EXT
Lady Midland of MAR 183

CED	BW	WW	YW	MILK	CW	MARB	REA	SM	42	SB	121
3	1.9	49	89	15	22	0.49	0.14	SW	39	SC	187

- A daughter of the 2016 National Western Stock Show Grand Champion, SMA Watchout 482 also a featured Conley herd sire, back to a daughter of Our Place Prominent 928 and the ever popular N Bar Emulation EXT.



LOT 2A | CONLEY ERICA 1201

2A

CONLEY ERICA 1201

HEIFER 11/11/21 REG 20297281 TATTOO 1201

CONLEY EXPRESS 7211

+*18941522

Sma Watchout 482
DPL Sandy 3040
SMA Watchout 482

Silveiras Watchout 0514
2K Beauty 961
Silveiras Style 9303
KNC Cabin Creek Sandy 804

CONLEY ERICA 7201

18990072

Our Peace Erica Pride 201

Silveiras Watchout 0514
2K Beauty 961
Our Place Prominent 928
OP Lady Erica of MAR 68

CED	BW	WW	YW	MILK	CW	MARB	REA	SM	28	SB	121
I-2	I+2.9	I+57	I+97	I+15	I+26	I+.56	I+.13	SW	42	SC	185

- Featured November show heifer prospect by the \$400,000 Fort Worth Champion, Conley Express 7211, back to a daughter of the 2016 National Western Stock Show Grand Champion, SMA Watchout 482.
- This mating has proved time and time again to be one of the consistent winning pedigrees throughout the country.



LOT 3 | J6 SANDY 113G

3

J6 SANDY 113G

COW 1/4/19 REG *19404857 TATTOO 113G

STEVENSON TURNING POINT

+*18434747

Plattemere Weigh Up K360

Stevenson Pride I167x

ST Power Chip 4790

Sitz Upward 307R
Barbara of Plattemere 337
SAV Bismarck 5682
FSHK Pride 180

EXAR Blue Chip 1877B
ST Miss Wix 8002
Silveiras Style 9303
KNC Cabin Creek Sandy 804

CONLEY SANDY 7305

+*18849925

Silveiras S Sis Sandy 2355

CED	BW	WW	YW	MILK	CW	MARB	REA	SM	SB
12	0.2	65	111	20	40	0.64	0.79	83	140
								66	265

- A maternal sister to the \$42,000 Conley Passport 0440, top-selling bull of the Conley spring bull sale, who stems back to Conley Sandy 7305, who was the \$105,000 Res. Grand Champion Female of the Nebraska State Fair ROV Angus Show.
- Maternal sisters of this female include the \$20,000 Conley Sandy 0100 and the \$17,000 Conley DS Sandy 0650.



LOT 3A | CONLEY J6 SANDY 1133

3A

CONLEY SANDY 1133

HEIFER 11/02/21 REG 20297282 TATTOO 1133

CONLEY NO LIMIT

+*19290775

EXAR Blue Chip 1877B

Silveiras S Sis Sandy 2355

Stevenson Turning Point

Dameron First Class
Greens Princess 1012
Silveiras Style 9303
KNC Cabin Creek Sandy 804

Plattemere Weigh Up K360
Stevenson Pride I167x
ST Power Chip 4790
Silveiras S Sis Sandy 2355

J6 SANDY 113G

*19404857

Conley Sandy 7305

CED	BW	WW	YW	MILK	CW	MARB	REA	SM	SB
1+2	1+2.4	1+64	1+104	1+15	1+33	1+.53	1+.46	51	121
								52	208

- A beautiful November show heifer prospect that blends Conley No Limit and the \$70,000 GENEX Beef AI sire and Conley herd sire, Stevenson Turning Point, back to Conley Sandy 7305, who is the \$105,000 top-selling female of the 2017 Conley Cattle Fall Production Sale going to J6 Farms of Nebraska and the 2018 Res. Grand Champion Female of the Nebraska State Fair ROV Angus Show.
- Dam is a maternal sister to the \$42,000 Conley Passport 0440, the top-selling bull of the Conley spring bull sale.



LOT 4 | CONLEY ENCHANTRESS 9100

4

CONLEY ENCHANTRESS 9100

COW 3/1/19 REG *19702015 TATTOO 9100

MCCABE BISMARCK 7016
 *18444994 SAV Bismarck 5682 GAR Grid Maker
 Womack Classic Lucy 412 SAV Abigale 0451
 BC Lookout 7024 Dameron First Class
 Womack PLC Lucy 67S
CONLEY ENCHANTRESS 3100
 17592976 Horizon Molly 100 OCC Legend 616L
 Gibbet Hill Mignonne E37
 Limestone Darkhorse U322
 SKCC Maxine Lutton 801

CED	BW	WW	YW	MILK	CW	MARB	REA	SM	SB
11	2.3	60	107	25	37	0.46	0.64	46	126
								59	210

- A direct daughter of McCabe Bismarck 7016 back to Conley Enchantress 3100, who is a daughter of the ROV Show Bull of the Year, BC Lookout 7024.
- This female is a maternal sister to the Res. Grand Champion Owned Cow/Calf Pair of the National Junior Angus Show in 2017, Conley S Sis Enchantress 5100 exhibited by Rance Wheeler of Missouri.

4A

CONLEY ENCHANTRESS 1910

HEIFER 11/9/21 REG 20297283 TATTOO 1910

PENNERS-CC DOUBLE BLACK 2257
 *17311160 PR Black Friday 0244 Duff New Edition 6108
 PR Mona Lisa 529 PR EXT Traveler 205
 PR Lisa 554 Bar EXT Traveler 205
 McCabe Bismarck 7016 SAV Bismarck 5682
 Womack Classic Lucy 412
CONLEY ENCHANTRESS 9100
 *19702015 Conley Enchantress 3100 BC Lookout 7024
 Horizon Molly 100

CED	BW	WW	YW	MILK	CW	MARB	REA	SM	SB
1+7	1+3.4	1+59	1+98	1+25	1+33	1+.17	1+.62	52	104
								57	187



LOT 4A | CONLEY ENCHANTRESS 1910

- A featured show heifer prospect and a beautiful November female by the \$140,000 Select Sires AI sire, Penners-CC Double Black 2257, who stems back to the Enchantress family. Dam is a maternal sister to the 2017 Res. Grand Champion Owned Cow/Calf Pair at the National Junior Angus Show, Conley S Sis Enchantress 5100, exhibited by Rance Wheeler of Missouri.



LOT 5 | CONLEY ERNESTINE 9311

5

CONLEY ERNESTINE 9311

COW 1/5/19 REG +*19479802 TATTOO 9311

Sma Watchout 482
 CONLEY EXPRESS 7211
 +*18941522
 DPL Sandy 3040
 EXAR Blue Chip 1877B
 PENNERS ERNESTINE 3496
 *17765528
 PR Mona Lisa 529
 Silveiras Watchout 0514
 2K Beauty 961
 Silveiras Style 9303
 KNC Cabin Creek Sandy 804
 Dameron First Class
 Greens Princess 1012
 Leachman Saugahatchee 3000C
 Meadowbrook MS Fullback 530

CED	BW	WW	YW	MILK	CW	MARB	REA	SM 17	SB 129
-2	4	77	118	14	42	0.62	0.37	\$W 57	\$C 184

- This beautiful two-year-old by the \$400,000 record-selling Conley Express 7211 and Fort Worth Champion stems back to Penners Ernestine 3496, a tremendous female who produced the maternal sister, Conley Ernestine 9478, who was the \$170,000 top-selling female of the 2019 fall production sale going to Dieckmann Cattle Company of Indiana.
- Another maternal sister, Conley Ernestine 0231, was the \$75,000 selection of the Clark family of Virginia through the 2020 fall production sale. Grandmother is the \$52,500 top-selling female of the 2010 National Finals Angus Sale who went on to produce the \$96,000 PR Black Friday 0244.

5A

CONLEY ERNESTINE 1311

HEIFER 12/25/21 REG 20297284 TATTOO 1311

PR Black Friday 0244
 PENNERS-CC DOUBLE BLACK 2257
 *17311160
 PR 629 205-554
 Conley Express 7211
 CONLEY ERNESTINE 9311
 +*19479802
 Penners Ernestine 3496
 Duff New Edition 6108
 PR Mona Lisa 529
 Bar EXT Traveler 205
 PR Lisa 554
 Sma Watchout 482
 DPL Sandy 3040
 EXAR Blue Chip 1877B
 PR Mona Lisa 529

CED	BW	WW	YW	MILK	CW	MARB	REA	SM 40	SB 106
1+0	1+4.2	1+68	1+104	1+20	1+36	1+.25	1+-.48	\$W 57	\$C 177

- This featured heifer calf by the \$140,000 Select Sires AI sire, Penners-CC Double Black 2257, is a double-bred Ernestine and stems back to PR Mona Lisa 529, the \$52,500 top-selling female of the 2010 National Finals Angus Sale for \$110,000 valuation and went on to produce the \$96,000 PR Black Friday 0244.
- Dam is a maternal sister to the \$170,000 top-selling female of the 2019 fall production sale.



LOT 6 | SRR EVERELDA 5132

6

SRR EVERELDA 5132

COW 2/8/15 REG 18291808 TATTOO 5132

MF NET RETURN 8197

#+16036822

SAV 8180 Traveler 004

SAV May 2436

N Bar Emulation EXT

LIMESTONE EVER ENTENSE 5387

+*15486994

Shadybrook Ever Entense 491G

Sitz Traveler 8180
Boyd Forever Lady 8003
SAF 598 Bando 5175
SAV May 6269

Emulation N Bar 5522
N Bar Primrose 2424
Traveler 124 GDAR
Sitz Everelda Entense 1137

CED	BW	WW	YW	MILK	CW	MARB	REA	SM 58	SB 83
I+1	I+2.2	I+39	I+67	I+29	I+18	I+.04	I+.31	SW 45	SC 166

- A daughter of MF Net Return 8197, who is a full brother-in-blood to the \$117,500 SAV Net Worth 4200. She stems back to a daughter of N Bar Emulation EXT and the record-selling Shady Brook Ever Entense 491G.
- Third-generation dam is the record-selling Sitz Everelda Entense 1137. A highly maternal pedigree that reads with proven and predictable genetics.



LOT 6A | CONLEY EVERELDA 1132

6A

CONLEY EVERELDA ENTENSE 1132

HEIFER 11/10/21 REG 20297285 TATTOO 1132

CONLEY SOUTH POINT 8362

+*19248022

Stevenson Turning Point

PR Lady 909 4200-587

MF Net Return 8197

Plattemere Weigh Up K360
Stevenson Pride 1167X
SAV Net Worth 4200
PR 587 205-537

SRR EVERELDA 5132

18291808

Limestone Ever Entense 5387

SAV 8180 Traveler 004
SAV May 2436
N Bar Emulation EXT
Shadybrook Ever Entense 491G

CED	BW	WW	YW	MILK	CW	MARB	REA	SM 67	SB 103
I+7	I+1.2	I+48	I+81	I+27	I+22	I+.31	I+.53	SW 54	SC 201

- A daughter of the \$400,000 record-selling Conley Express 7211 back to the legendary Everelda Entense family.
- Third-generation dam was the record-selling Shady Brook Ever Entense 491G.



LOT 7 | CONLEY SANDY 9111

LOT 7A | CONLEY SANDY 1911

7

CONLEY SANDY 9111

COW 4/25/19 REG #19702013 TATTOO 9111

STEVENSON TURNING POINT

+*18434747

Plattemere Weigh Up K360

Stevenson Pride I167x

Penners-CC Double Black 2257

Sitz Upward 307R
Barbara of Plattemere 337
SAV Bismarck 5682
FSHK Pride 180

PR Black Friday 0244
PR 629 205-554
BC Lookout 7024
KNC Cabin Creek Sandy

CONLEY SANDY 6111

+*18552287

KNC Cabin Creek Sandy 804

CED	BW	WW	YW	MILK	CW	MARB	REA	SM	SB
8	1.9	57	93	17	42	0.48	0.46	59	132
								51	230

- A direct daughter of the \$70,000 GENEX Beef AI sire and Conley herd sire, Stevenson Turning Point, back to a daughter of Penners-CC Double Black 2257 and the legendary KNC Cabin Creek Sandy 804.
- Dam is a maternal sister to an array of past top sellers and past champions throughout the country including the mother of Conley Express 7211, the dam of the 2016-2017 ROV Show Heifer of the Year, Conley Sandy 5104 whose offspring sell throughout this sale, and an array of others.

7A

CONLEY SANDY 1911

HEIFER 11/30/21 REG PENDING TATTOO 1911

DB ICONIC G95

*19611994

Musgrave 316 Stunner

DB Ms Discovery D13

Stevenson Turning Point

LD Capitalist 316
MCATL Blackbird 831-1378
VAR Discovery 2240
DB Ms Final Tool 4120

CONLEY SANDY 9111

*19702013

Conley Sandy 6111

Plattemere Weigh Up K360
Stevenson Pride I167X
Penners-CC Double Black 2257
KNC Cabin Creek Sandy 804

CED	BW	WW	YW	MILK	CW	MARB	REA	SM	SB
I+8	I+1.8	I+78	I+134	I+24	I+61	I+1.04	I+-.67	61	176
								78	289

- A daughter of the GENEX Beef AI sire and one of the hottest bulls of the breed, DB Iconic G95, back to a daughter of Stevenson Turning Point and the ever popular KNC Cabin Creek Sandy 804.
- This elite show heifer prospect has the ability to be extremely competitive in the PGS Show throughout the year.



LOT 8 | CONLEY SHEZA STAR D3

PB SIM **8** COW 2/20/16 REG 3143836 TATTOO D3

MR HOC BROKER
2531081

CONLEY SHEZA STAR Z32
2647395

SVF Steel Force S701
JM BF H25
WAGR Driver 706T
Conley Sheza Star W32

CNS Dream On L186
SVF Sheza Beauty L901
G&L Blackfoot 716D
YC Miss BIK B80
CNS Dream On L186
3C Melody M668 BZ
BC Lookout 7024
SVF Sheza Star S803

CED	BW	WW	YW	MILK	CW	MARB	REA	API	TI
10.5	2.1	60	75	18	5.8	-0.03	0.71	109	61

- This special sale attraction is a Broker daughter back to the Sheza Star family.
- This female went on to produce the 2020 Supreme Champion Percentage Female of the Oklahoma Youth Expo exhibited by Finley Yocham of Oklahoma and the Res. Grand Champion Simmental Heifer of the 2021 Oklahoma Youth Expo exhibited by Madilyn Norvell of Oklahoma.
- **TERMS TO BE ANNOUNCED SALE DAY.**



LOT 8A | CONLEY SHEZA STAR J3

PB SIM **8A** HEIFER 11/2/21 REG 4020080 TATTOO J3

ETR BLITZ 208E
3351835

CONLEY SHEZA STAR D3
314836

PROFIT
HCCO Countess 167C
Mr HOC Broker
Conley Sheza Star Z32

WS Pilgrim H182U
WAGR Panarama 204Z
MR CCF Vision
WW3 Countess 167Y
SVF Steel Force S701
JM BF H25
WAGR Driver 706T
Conley Sheza Star W32

CED	BW	WW	YW	MILK	CW	MARB	REA	API	TI
9.3	2.8	66.5	90	16	5.2	0.10	0.69	116	67

- A daughter of ETR Blitz back to the foundation Sheza Star donor female, Conley Sheza Star D3, who went on to produce the 2020 Supreme Champion Percentage Female of the Oklahoma Youth Expo and the Res. Grand Champion Simmental Heifer of the 2021 Oklahoma Youth Expo.



BAUER HOPELESS LOVIN | Sold in the 2020 Conley Fall Production sale, daughter of Lot 9.

LOT 9 | HIGG EASY LOVIN 793E



LOT 9A | BAUER HIGH NOON J793

21.26% CHIANINA

9

HIGG EASY LOVIN 793E
COW 4/14/21 REG 389908 TATTOO 793E

HIGG CLOCKWORK 88C

378970

Bushs Unbelievable 423
Higg Kylie
Higg Remedy 732T

HIGG ALL MY HEART 393A

389908

Higg Wild Heart 93W

SAV Bismarck 5682
Bushs Blackbird 8708
VOL Cara's Boy31J 2CA
TR Rita

MEFC Addicted 23N
HB Ms Eaglescout 933 1CA
RDD Aces High 6N 1CA
TR Kellie

CED	BW	WW	YW	MILK	CW	MARB	REA
8	1.9	56	84	14	26	0.32	0.21

- A five year old cow in the prime of her life, Easy Lovin has not missed for me yet. The mating options are endless, breed her Chianina, Angus, Maine or Simmental and still end up with a high quality registered or dual registered calf.
- Elegant fronted, bold ribbed, soft structured and big footed, the sky is the limit with this young donor!

10.63% CHIANINA

9A

BAUER HIGH NOON J793

BULL 3/21/21 REG 412044 TATTOO J793

EXAR BLUE CHIP 1877B

+*16980412

Dameron First Class
Greens Princess 1012
Higg Clockwork 88C

HIGG EASY LOVIN 793E

389908

Higg All My Heart 393A

EXG RS First Rate S903 R3
Dameron Northern Miss 3114
Greens Premium 7578
Greens Princess 7418

Bushs Unbelievable 423
Higg Kylie
Higg Remedy 732T
Higg Wild Heart 93W

CED	BW	WW	YW	MILK	CW	MARB	REA
7	2.3	72	109	14	38	0.51	0.10

- A young ChiAngus sire that has me truly excited and offers a lot of potential with his pedigree.
- A unique mating within the ChiAngus breed that still offers a lot phenotypically. A stout, square hipped, heavy structured bull that still poses all the look required to sire heifers to excel in the showing.
- This bull also offers a lot of mating flexibility as resulting offspring could be ChiAngus, MaineAngus or LimFlex depending on the cow.



LOT 10 | J6RATAMI D320

1/2 SM - 1/2 AR

10

COW

J6RATAMI D320

3/20/16

REG 3136125

TATTOO D320

MR HOC BROKER

2531081

SVF Steel Force S701

JM BF H25

CNS Dream On L186
SVF Sheza Beauty L901
G&L Blackfoot 716D
YC Miss BLK B80

1036

3136124

CED	BW	WW	YW	MILK	CW	MARB	REA	API	TI
8.2	4.4	87	137.3	25	29	-0.02	0.53	92	71

• SELLING A FLUSH TO THE BULL OF THE BUYER'S CHOICE.

- This impressive halfblood is one of the best producers from our Simmental herd. This year she proved how good she was by raising twin heifers by the rising star Conley High Rise F3. She stems from one of the best producers in the J6 and Brian McKay herd 1036 who is a pb red angus, and the legendary sire of champions HOC broker
- We know this cow has what it takes to raise high percentage Simmental or go in to the club calf world and work!
- Guaranteed six transferrable embryos up to eight; anything after eight will be at a prorated cost.
- *Buyer responsible for flush and semen costs.*

• Check out this pair of twin sisters one of the more unique pair of sisters that we have ever raised, one is a black baldy and one is a solid red. They have been fun to watch grow they are really gentle and high quality. They will be super competitive!!



LOT 10A | CONLEY TAMI J320

3/4 SM - 1/4 AR
10A

CONLEY TAMI J320

HEIFER 11/02/21 REG 4020078 TATTOO J320

CONLEY HIGH RISE F3

3700069

MCM Top Grade 018X
PRs Lady Done Right W214
MR HOC Broker

MR NLC Upgrade U8676
MCM 513R
Welshs Dew It Right 067T
SC Shoal Creek Lady T90
SVF Steel Force S701
JM BF H25

J6RATAMI D320

3136125

1036

CED	BW	WW	YW	MILK	CW	MARB	REA	API	TI
9.9	2.4	79	122	25	29	.13	.67	115	72

3/4 SM - 1/4 AR
10B

CONLEY TAMI J322

HEIFER 11/02/21 REG 4020079 TATTOO J322

CONLEY HIGH RISE F3

3700069

MCM Top Grade 018X
PRs Lady Done Right W214
MR HOC Broker

MR NLC Upgrade U8676
MCM 513R
Welshs Dew It Right 067T
SC Shoal Creek Lady T90
SVF Steel Force S701
JM BF H25

J6RATAMI D320

3136125

1036

CED	BW	WW	YW	MILK	CW	MARB	REA	API	TI
9.9	2.4	79	122	25	29	.13	.67	115	72



• Check out this pair of twin sisters one of the more unique pair of sisters that we have ever raised, one is a black baldy and one is a solid red. They have been fun to watch grow they are really gentle and high quality. They will be super competitive!!

LOT 10B | CONLEY TAMI J322



LOT 11 | JCL BELIEVE IN ME LNL413

62% LIMFLEX
11

JCL BELIEVE IN ME LNL413

COW 12/1/14 REG LFF2069330 TATTOO 413B

MAGS XYLOID

LMF1958319

DHVO Deuce 132R

Bohi Rhonda 314R

SAV Net Worth 4200

GPFF Blaque Rulon
Amy Jo Dhan 20L
EXLR New Generation 071M
Davis Rosetta 9514

SAV 8180 Traveler 004

SAV May 2410

GPFF Blaque Rulon

KEHG Juliet 10H

PBRS UNBELIEVABLE 8149U

LFF1930606

WLR Rendezvous 050R

CED	BW	WW	YW	MILK	CW	MARB	REA
10	3.0	62	95	18	31	0.14	0.50

- A unique opportunity to acquire one of the top donors out of the JCL Limousin herd.
- Believe In Me is unparalleled in terms of center body, foot size and structure.
- A powerfully constructed cow that you can't miss in the pasture and stamps that look in her progeny.
- SELLS A1'D TO ATNF HIGHER REVENUE 013H - 1/1/22 - P.E. TO 5T POWERCHIP.



ATKINSON Farms



LOT 11A | ATNF JULIET 413J

31% LIMFLEX
11A

ATNF JULIET 413J

HEIFER 11/14/21 REG LFF2480372 TATTOO 413J

CONLEY EXPRESS 7211

+*18941522

Sma Watchout 482

DPL Sandy 3040

MAGS Xyloid

Silveiras Watchout 0514

2K Beauty 961

Silveiras Style 9303

KNC Cabin Creek Sandy 804

JCL BELIEVE IN ME LNL413

LFF2069330

PBRS Unbelievable 8149U

DHVO Deuce 132R

Bohi Rhonda 314R

SAV Net Worth 4200

WLR Rendezvous 050R

CED	BW	WW	YW	MILK	CW	MARB	REA
8	2.2	70	108	16	36	0.40	0.18

- A November LimFlex show heifer that is built to be competitive. This female is square built, soft made and smooth constructed.



LOT 12 | JCL FAITH LNLM 811F



LOT 12A | ATNF REVIVAL 181J

34% LIMFLEX

12

COW

4/15/18

REG LFF2146100

TATTOO 811F

EF Xcessive Force

DA Traveler 004 703

CFLX Mollys Image

MAGS Xukaliani

MAGS Running on Empty

SAV Pioneer 7301

J Bar 7 Elba 7297

CALO Brickyard 902W

PBRS Unbelievable 8149U

HUBB BULLET PROOF

LFM2071825

MAGS Zalia

Buford Oklahoma X239

JCL KATNISS IMAGE LNLM207

LFF2049362

JCL Katniss LNLM 20Z

CED	BW	WW	YW	MILK	CW	MARB	REA
11	0.3	67	110	16	33	0.15	0.45

- JCL Faith is a productive young cow that is full of quality. When you analyze this females design you appreciate her length of spine, genuine shape and functional structural build. She'll be a standout in any herd.
- SELLS A/D TO ATNF HIGHER REVENUE 013H - 1/1/22 - P.E. TO CONLEY NO LIMIT

67% LIMFLEX

12A

BULL

11/05/21

REG LMF2480371

TATTOO 181J

MAGS Sasquatch

EXLR New Generation 071M

MAGS Fruitful 487M

GPFF Blaque Rulon

ALCM Kool Tunes

EF Xcessive Force

MAGS Zalia

Buford Oklahoma X239

JCL Katniss LNLM 20Z

MAGSWL USUAL SUSPECT 538U

NPM1925219

MAGS Phantoms Prize

Hubb Bullet Proof

JCL FAITH LNLM 811F

LFF2146100

JCL Katniss Image LNLM207

CED	BW	WW	YW	MILK	CW	MARB	REA
9	2.0	66	101	22	28	-0.02	0.72

- A herd sire prospect Tailor and I are extremely excited about. A truly special animal that combines muscle, look, and structure in a very balanced packaged to top of his wild look and outcross pedigree, his color makes him that much more unique.



LOT 13 | CONLEY MULBEN PRIDE 8546

13

CONLEY MULBEN PRIDE 8546

COW 4/10/18 REG *19290785 TATTOO 8546

SMA WATCHOUT 482

*17836525

Silveiras Watchout 0514

2K Beauty 961

Penners-CC Double Black 2257

BC Lookout 7024
Silveiras Elba 6546
SAV Brilliance 8077
2K Beauty 2004

PR Black Friday 0244
PR 629 205-554
SAV Net Worth 4200
PR 587 205-537

PENNERS MULBEN PRIDE 546

+*18198489

PR Lady 909 4200-587

CED	BW	WW	YW	MILK	CW	MARB	REA	\$M 54	\$B 107
3	3.7	59	98	15	27	0.23	0.55	\$W 43	\$C 193

- A Mulben Pride female by the 2016 Denver Champion, SMA Watchout 482, back to the legendary Mulben Pride foundation female, PR Lady 909 4200-587.
- Dam is a maternal sister to the International Grand Champion, Conley South Point 8362, the 2020 National Western Stock Show Grand Champion Bull and the Canadian Agribition Grand Champion Angus Bull. Dam is also a full sister to Penners Mulben Pride 528, the \$30,000 2019 Owned Mature Cow/Calf Champion Pair of the National Junior Angus Show, the 2016 Tulsa State Fair Champion Angus Female, and the Res. Supreme Champion of that same event.
- She is also a maternal sister to a past American Royal Grand Champion and the \$113,500 top seller.



LOT 13A | CONLEY EXPRESS 1854

13A

CONLEY EXPRESS 1854

BULL 11/1/21 REG 20297286 TATTOO 1854

CONLEY EXPRESS 7211

+*18941522

Sma Watchout 482

DPL Sandy 3040

Sma Watchout 482

Silveiras Watchout 0514
2K Beauty 961
Silveiras Style 9303
KNC Cabin Creek Sandy 804

CONLEY MULBEN PRIDE 8546

*19290785

Penners Mulben Pride 546

Silveiras Watchout 0514
2K Beauty 961
Penners-CC Double Black 2257
PR Lady 909 4200-587

CED	BW	WW	YW	MILK	CW	MARB	REA	\$M 33	\$B 118
I-2	I+3.8	I+61	I+101	I+15	I+29	I+.42	I+.34	\$W 43	\$C 186

- Bred to be a champion of the \$400,000 record-selling Conley Express 7211 back to the 2016 Denver Champion, SMA Watchout 482, and the \$140,000 Select Sires AI sire, Penners-CC Double Black 2257, and the legendary Mulben Pride family.
- Grandmother is a maternal sister to Conley South Point 8362, the 2020 National Western Stock Show Grand Champion and the 2019 Canadian Agribition Grand Champion.

MARCH 26, 2022 - SULPHUR, OKLAHOMA



LOT 14 | CONLEY WCC FRONTIER GAL 7405

14

CONLEY WCC FRONTIER GAL 7405

COW 2/13/17 REG +*18849888 TATTOO 7405

BC LOOKOUT 7024

#+14791623

OCC Legend 616L

Gibbet Hill Mignonne E37
Exar Lutton 1831

OCC Emblazon 854E
OCC Blackbird 632J
Papa Equator 2928
Gibbet Hill Mignonne TR 29

Northern Improvement 4480 GF
Exar Saras Dream 9809
B/R New Frontier 095
PAF Travel Gal 8712

WCC FRONTIER GAL 893

+*16297280

WCC Frontier Gal 39

CED	BW	WW	YW	MILK	CW	MARB	REA	SM 51	SB 118
3	3.1	57	90	12	30	0.37	0.47	SW 43	SC 204

14A

CONLEY EXPRESS 2740

BULL 1/15/22 REG PENDING TATTOO 2740

CONLEY EXPRESS 7211

+*18941522

Sma Watchout 482

DPL Sandy 3040
BC Lookout 7024

Silveiras Watchout 0514
2K Beauty 961
Silveiras Style 9303
KNC Cabin Creek Sandy 804

CONLEY WCC FRONTIER GAL 7405

+*18849888

WCC Frontier Gal 893

OCC Legend 616L
Gibbet Hill Mignonne E37
Exar Lutton 1831
WCC Frontier Gal 39

- This featured female by the Pathfinder sire and ROV Sire of the Year, BC Lookout 7024, stems back to the foundation Frontier Gal donor female in the Conley program, WCC Frontier Gal 893, who has produced a long list of top sellers and past champions.
- Maternal sisters to this female include Conley WCC Frontier Gal 7776, who produced the \$160,000 top-selling female of the 2021 fall production sale; the \$100,000 Conley PR Frontier Gal 541; the \$50,000 Conley PR Gal 5159; and the 2015 Junior Champion Div. IV at the National Junior Angus Show.
- Sells with a bull calf at side (Lot 14A) born January 15, 2022 by CONLEY EXPRESS 7211.

LOT 14B | CONLEY FRONTIER GAL 1405

14B

CONLEY FRONTIER GAL 1405

HEIFER 11/02/21 REG 20298046 TATTOO 1405

Dameron First Class

EXAR BLUE CHIP 1877B

+*16980412

Greens Princess 1012
BC Lookout 7024

EXG RS First Rate S903 R3
Dameron Northern Miss 3114
Greens Premium 7578
Greens Princess 7418

CONLEY WCC FRONTIER GAL 7405

+*18849888

WCC Frontier Gal 893

OCC Legend 616L
Gibbet Hill Mignonne E37
Exar Lutton 1831
WCC Frontier Gal 39

CED	BW	WW	YW	MILK	CW	MARB	REA	SM 87	SB 124
I-1	I+4.2	I+64	I+103	I+13	I+34	I+.52	I+.36	SW 44	SC 198

- This featured heifer calf by the ROV Show Bull of the Year, EXAR Blue Chip 1877B, stems back to a daughter of BC Lookout 7024 and the WCC Frontier Gal 893, who was the American Royal Sr. Champion, and stems back to the National Western Stock Show Champion, WCC Frontier Gal 39.



• Featured heifer calf by Colburn Primo 5153 back to Champion Hill Georgina 8577, who was named Grand Champion Cow of the 2016 North American, American Royal, and the World Beef Expo, as well as the Res. Grand Champion Cow of the 2016 National Junior Angus Show and the 2016 All-American Junior Show; she was also at the side of her dam, Champion Hill Georgina 8154, as the 2014 All-American Supreme Champion, and her dam went on to be the record-selling \$200,000 valued female in the Champion Hill Dispersal, Champion Hill Georgina 8154.

LOT 15 | CONLEY DT GEORGINA 1076

15

CONLEY DT GEORGINA 1076

HEIFER 9/8/21 REG 20139927 TATTOO 1076

Dameron First Class

EXG R5 First Rate S903 R3
Dameron Northern Miss 3114
Silveiras Style 9303
EXG Saras Dream S609 R3

COLBURN PRIMO 5153

+*18217480

Silveiras Saras Dream 1339
SAV Bismarck 5682

CHAMPION HILL GEORGINA 8577

*17738436

Champion Hill Georgina 8154

GAR Grid Maker
SAV Abigale 0451
SAV First Class 0207
Champion Hill Georgina 6959

CED	BW	WW	YW	MILK	CW	MARB	REA	SM 25	SB 84
I+2	I+2.8	I+5.1	I+8.0	I+1.6	I+1.7	I+-.08	I+-.43	SW B8	SC 134

16

CONLEY DT GEORGINA 1061

HEIFER 10/04/21 REG 20298688 TATTOO 1061

Dameron First Class

EXG R5 First Rate S903 R3
Dameron Northern Miss 3114
Silveiras Style 9303
EXG Saras Dream S609 R3

COLBURN PRIMO 5153

+*18217480

Silveiras Saras Dream 1339
SAV Bismarck 5682

CHAMPION HILL GEORGINA 6154

+*18728811

Champion Hill Georgina 8154

GAR Grid Maker
SAV Abigale 0451
SAV First Class 0207
Champion Hill Georgina 6959

CED	BW	WW	YW	MILK	CW	MARB	REA	SM 35	SB 91
I+7	I+2.1	I+4.8	I+7.3	I+1.5	I+1.3	I+-.29	I+-.43	SW B9	SC 153

- A full sister-in-blood to Lot 15 and a direct daughter of Colburn Primo 5153 back to a daughter of SAV Bismarck 5682 and the \$200,000 top-selling female of the Champion Hill Dispersal Sale, Champion Hill Georgina 8154.
- A full sister to the dam, was the Grand Champion Cow of the 2016 North American, American Royal, and World Beef Expo as well as the Res. Grand Champion Cow of the 2016 National Junior Angus Show.
- Third-generation dam sold for one-half interest for \$100,000 as the top-selling heifer calf of a past Champion Hill spring sale and went on to be a many-time champion including Grand Champion Female of both the Atlantic National Open and Junior Shows.



LOT 16 | CONLEY DT GEORGINA 1061

- A daughter of the past ROV Show Bull of the Year EXAR Blue Chip, back to a daughter of SAV Bismarck 5682 and the \$200,000 top-selling female of the Champion Hill Dispersal Sale, Champion Hill Georgina 8154.
- A full sister to the dam, was the Grand Champion Cow of the 2016 North American, American Royal, and World Beef Expo as well as the Res. Grand Champion Cow of the 2016 National Junior Angus Show.
- Third-generation dam sold for one-half interest for \$100,000 as the top-selling heifer calf of a past Champion Hill spring sale and went on to be a many-time champion including Grand Champion Female of both the Atlantic National Open and Junior Shows.



LOT 17 | CONLEY DT GEORGINA 1062

17 HEIFER 9/21/21 REG 20139899 TATTOO 1062

Dameron First Class EXG R5 First Rate S903 R3
 Dameron Northern Miss 3114
EXAR BLUE CHIP 1877B Greens Premium 7578
 Greens Princess 7418
 +*16980412 Greens Princess 1012
 SAV Bismarck 5682
CHAMPION HILL GEORGINA 6154 GAR Grid Maker
 SAV Abigale 0451
 *18728811 SAV First Class 0207
 Champion Hill Georgina 8154 Champiion Hill Georgina 6959

CED	BW	WW	YW	MILK	CW	MARB	REA	SM	SB
I-3	I+4.7	I+64	I+104	I+17	I+31	I+ .54	I+ .26	28	115
								46	177

18 HEIFER 11/27/21 REG PENDING TATTOO 1126

Sinclair Emulation XXN N Bar Emulation EXT
 N Bar Primrose Y3051
SAV EXTENSION 6856 SAV 8180 Traveler 004
 SAV May 2397
 +*18579001 SAV Blackcap May 4136
 Silveiras Style 9303
SILVEIRAS S SIS SANDY 2355 Gambles Hot Rod
 Silveiras Elba 2520
 +*17286745 KNC Cabin Creek Sandy 804
 BC Lookout 7024
 KNC Cabin Creek Sandy

CED	BW	WW	YW	MILK	CW	MARB	REA	SM	SB
I+1	I+2.9	I+60	I+100	I+22	I+29	I+ .35	I+ .5	43	104
								54	179



LOT 18 | CONLEY SANDY 1126

- A daughter of the \$65,000 SAV Extension 6856, a featured herd sire in the Ingram Angus program in Tennessee, back to the foundation Silveiras S Sis Sandy 2355 the high income-producing female in the Conley program.
- This female is a maternal sister to Conley Sandy 7084, the 2018 North American Champion and Early Junior Champion of the 2019 National Western Stock Show and the \$80,000 past top seller.
- Other maternal sisters include the 2021 National Junior Angus Show Late Sr. Champion, and the 2021 National Junior Angus Show Res. Late Sr. Champion, and the \$130,000 2018 North American Spring Heifer Calf Champion, Conley Sandy 8522.



• This outstanding daughter of Conley No Limit stems back to Conley S Sis Sandy 4350, who sold for one-half interest at \$25,000 for a \$50,000 valuation as the top-selling fall pair of the 2019 fall production sale where a full sister sold at \$27,000 for a \$54,000 valuation and is the foundation Sandy donor female in the Sunrise Sunset Farms program in Indiana.

LOT 19 | CONLEY SANDY 1350

19

CONLEY SANDY 1350
HEIFER 11/30/21 REG 20297287 TATTOO 1350

CONLEY NO LIMIT

+*19290775

EXAR Blue Chip 1877B

Silveiras S Sis Sandy 2355
Gambles Hot Rod

CONLEY S SIS SANDY 4350

+*17907731

KNC Cabin Creek Sandy 804

Dameron First Class
Greens Princess 1012
Silveiras Style 9303
KNC Cabin Creek Sandy 804

Famous 7001
Champion Hill Lady 703
BC Lookout 7024
KNC Cabin Creek Sandy

CED	BW	WW	YW	MILK	CW	MARB	REA	SM	SB
I-6	I+5.5	I+63	I+105	I+16	I+38	I+.49	I+22	17	127
								38	182

20

CONLEY DT BLACKBIRD 1067

HEIFER 9/14/21 REG 20139959 TATTOO 1067

SAV PRESIDENT 6847

+*18578964

Coleman Charlo 0256

SAV Blackcap May 4136
SAV Perfection 1891

CHAMPION HILL BLACKBIRD 8411

+*17556413

SAV Blackbird 5296

OCC Paxton 730P
Bohi Abigale 6014
SAV 8180 Traveler 004
SAV May 2397

SAV Iron Mountain 8066
SAV Emblynette 7260
Boyd New Day 8005
SAV Blackbird 1082

CED	BW	WW	YW	MILK	CW	MARB	REA	SM	SB
I+2	I+4.1	I+68	I+113	I+30	I+37	I-.11	I+.77	69	94
								70	191

• This featured Blackbird female stems from the \$18,000 Champion Hill Blackbird 8411, who is a flush sister to the \$22,000 fourth top seller of the 2012 Champion Hill Fall Sale where a maternal sister sold for one-half interest for \$22,500 as the third top seller and went on to be the 2016 ROV Res. Cow of the Year.

• Grandmother is a full sister to SAV Blackbird 5297, more widely known as the mother of the Pathfinder sire and \$60,000 GENEX Beef AI sire, SAV Pioneer 7301.



LOT 20 | CONLEY DT BLACKBIRD 1067

- This featured Blackbird female by the \$400,000 Fort Worth Champion and record seller, Conley Express 7211, stems from the \$18,000 Champion Hill Blackbird 8411, who is a flush sister to the \$22,000 fourth top seller of the 2012 Champion Hill Fall Sale where a maternal sister sold for one-half interest for \$22,500 as the third top seller and went on to be the 2016 ROV Res. Cow of the Year.
- Grandmother is a full sister to SAV Blackbird 5297, more widely known as the mother of the Pathfinder sire and \$60,000 GENEX Beef AI sire, SAV Pioneer 7301.



LOT 21 | CONLEY DT BLACKBIRD 1068

21 | **CONLEY DT BLACKBIRD 1068**
 HEIFER 9/20/21 REG 20139948 TATTOO 1068

Sma Watchout 482
CONLEY EXPRESS 7211
 +*18941522 DPL Sandy 3040
 SAV Perfection 1891

CHAMPION HILL BLACKBIRD 8411
 +*17556413 SAV Blackbird 5296

Silveiras Watchout 0514
 2K Beauty 961
 Silveiras Style 9303
 KNC Cabin Creek Sandy 804

SAV Iron Mountain 8066
 SAV Emblynette 7260
 Boyd New Day 8005
 SAV Blackbird 1082

CED	BW	WW	YW	MILK	CW	MARB	REA	SM	B5	SB	115
I-3	I+4.3	I+62	I+103	I+27	I+33	I+26	I+41	SW	56	SC	184

22 | **CONLEY DT SANDY 1086**
 HEIFER 9/25/21 REG 20139933 TATTOO 1086

Dameron First Class
EXAR BLUE CHIP 1877B
 +*16980412 Greens Princess 1012
 GCC Total Recall 806T

S SIS SANDY 104
 *16742581 KNC Cabin Creek Sandy 804

EXG RS First Rate 5903 R3
 Dameron Northern Miss 3114
 Greens Premium 7578
 Greens Princess 7418

OCC Missing Link 830M
 OCC Juanada 741K
 BC Lookout 7024
 KNC Cabin Creek Sandy

CED	BW	WW	YW	MILK	CW	MARB	REA	SM	28	SB	115
I-3	I+4.7	I+64	I+104	I+17	I+31	I+.54	I+.26	SW	46	SC	177



LOT 22 | CONLEY DT SANDY 1086

- This special sale attraction is a full sister to the 2016-2017 ROV Show Heifer of the Year, Conley Sandy 5104, who has been a dominant producer in the Conley program and went on to produce the \$150,000 Supreme Champion of the 2019 Hoosier Beef Congress, Conley Sandy 9743, as well as being named the 2019 North American Junior Heifer Calf Champion; the \$140,000 Conley Sandy 0213; the \$75,000 Conley Sandy 0732; and the \$60,000 Conley Sandy 8510 who was the 2019 Res. Grand Champion Female of the National Western Junior Show.
- This outstanding, young female has the ability to not only stand in the purple but also to produce purple.



• A full sister to Conley Sandy 5104 who was the 2016-2017 ROV Show Heifer of the Year and the Grand Champion Female at the 2016 Fort Worth Stock Show, Grand Champion at the American Royal, Grand Champion at the Tennessee State Fair, West Virginia State Fair, and Res. Grand Champion Female at the North American.

LOT 23 | CONLEY DT SANDY 1078

23

CONLEY DT SANDY 1078

HEIFER 9/24/21 REG 20139928 TATTOO 1078

EXAR BLUE CHIP 1877B

+*16980412

Dameron First Class
EXG RS First Rate S903 R3
Dameron Northern Miss 3114
Greens Premium 7578
Greens Princess 7418

Greens Princess 1012
GCC Total Recall 806T

S SIS SANDY 104

*16742581

OCC Missing Link 830M
OCC Juanada 741K
BC Lookout 7024
KNC Cabin Creek Sandy

KNC Cabin Creek Sandy 804

CED	BW	WW	YW	MILK	CW	MARB	REA	SM	SB
I-3	I+4.7	I+64	I+104	I+17	I+31	I+.54	I+.26	28	115
								46	177

24

CONLEY DT SANDY 1084

HEIFER 8/26/21 REG 20139931 TATTOO 1084

EXAR BLUE CHIP 1877B

+*16980412

Dameron First Class
EXG RS First Rate S903 R3
Dameron Northern Miss 3114
Greens Premium 7578
Greens Princess 7418

Greens Princess 1012
GCC Total Recall 806T

S SIS SANDY 104

*16742581

OCC Missing Link 830M
OCC Juanada 741K
BC Lookout 7024
KNC Cabin Creek Sandy

KNC Cabin Creek Sandy 804

CED	BW	WW	YW	MILK	CW	MARB	REA	SM	SB
I-3	I+4.7	I+64	I+104	I+17	I+31	I+.54	I+.26	28	115
								46	177

• A full sister to Conley Sandy 5104 who was the 2016-2017 ROV Show Heifer of the Year and the Grand Champion Female at the 2016 Fort Worth Stock Show, Grand Champion at the American Royal, Grand Champion at the Tennessee State Fair, West Virginia State Fair, and Res. Grand Champion Female at the North American.



LOT 24 | CONLEY DT SANDY 1084

• A daughter of SAV Bismarck 5682 back to the featured S Sis Sandy 104. This female is a maternal sister to the 2016-2017 ROV Show Heifer of the Year who went on to produce the \$150,000 featured Lot 1 female of the 2019 fall production sale and went on to be named the 2019 Hoosier Beef Congress Supreme Champion, the 2019 North American Junior Heifer Champion, and the \$60,000 2019 Res. Grand Champion Female of the National Western Junior Show.



LOT 25 | CONLEY DT SANDY 1056

25

CONLEY DT SANDY 1056

HEIFER 9/11/21 REG 20139896 TATTOO 1056

SAV BISMARCK 5682

#+15109865

GAR Grid Maker

SAV Abigale 0451

GCC Total Recall 806T

S SIS SANDY 104

*16742581

KNC Cabin Creek Sandy 804

GDAR Traveler 044

GAR Precision 2536

Schoenes Fix It 826

SAV Abigale 6062

OCC Missing Link 830M

OCC Juanada 741K

BC Lookout 7024

KNC Cabin Creek Sandy

CED	BW	WW	YW	MILK	CW	MARB	REA	SM	SW	SB	SC
I+6	I+2.0	I+55	I+91	I+21	I+25	I+.31	I+.46	49	55	106	187

26

CONLEY DT GEORGINA 1066

HEIFER 10/25/21 REG 20139917 TATTOO 1066

CONLEY EXPRESS 7211

+*18941522

Sma Watchout 482

DPL Sandy 3040

SAV Bismarck 5682

CHAMPION HILL GEORGINA 9039

+*18496428

Champion Hill Georgina 4402

Silveiras Watchout 0514

2K Beauty 961

Silveiras Style 9303

KNC Cabin Creek Sandy 804

GAR Grid Maker

SAV Abigale 0451

GAR Integrity

CHAMPION HILL Georgina 2121

CED	BW	WW	YW	MILK	CW	MARB	REA	SM	SW	SB	SC
I+1	I+2.3	I+64	I+103	I+16	I+34	I+.52	I+.34	43	54	126	207



LOT 26 | CONLEY DT GEORGINA 1066

• A direct daughter of the \$400,000 Conley Express 7211 back to Champion Hill Georgina 9039 who is a full sister to the 2011 ROV Res. Show Heifer of the Year, Champion Hill Georgina 72561 named the All-American Grand Champion, All-American Junior Show Supreme Champion, American Royal Res. Grand Champion, and the Atlantic National Res. Grand Champion.

• Another full sib, Champion Hill Georgina 8601, sold for one-half interest at \$35,000 as the second top seller of the 2014 Champion Hill fall sale. Grandmother sold for one-half interest for \$70,000 as the past top-selling female of a Champion Hill fall sale and stems back to the third-generation dam who is a National Western Grand Champion, Res. Grand Champion of the All-American, and Res. Grand Champion Cow of the North American International.



LOT 27 | CONLEY DT GEORGINA 1080

27 | **CONLEY DT GEORGINA 1080**
 HEIFER 9/12/21 REG 20139930 TATTOO 1080

Sma Watchout 482 Silveiras Watchout 0514
 2K Beauty 961
 Silveiras Style 9303
 KNC Cabin Creek Sandy 804
CONLEY EXPRESS 7211
 +*18941522 DPL Sandy 3040
 SAV Bismarck 5682
CHAMPION HILL GEORGINA 9039
 +*18496428 Champion Hill Georgina 4402
 GAR Grid Maker
 SAV Abigale 0451
 GAR Integrity
 CHAMPION HILL Georgina 2121

CED	BW	WW	YW	MILK	CW	MARB	REA	SM	SB
I+1	I+2.3	I+64	I+103	I+16	I+34	I+.52	I+.34	43	126
								54	207

- This featured daughter of the Select Sires AI Sire, SAV Rainfall 6846, stems back to the popular Lucy family. Her mother is by the featured Conley herdsire, 5T Power Chip, a past Texas State Fair, Ft. Worth, and Canadian Royal Winter Fair Champion.
- The grandmother is the foundation Lucy donor female in the Conley program that is one of the very best daughters of the past ROV Sire of the year, BC Lookout 7024. She has been a donor that passes on tremendous phenotype, added performance, and many past champions.

- A direct daughter of the \$400,000 Conley Express 7211 back to Champion Hill Georgina 9039 who is a full sister to the 2011 ROV Res. Show Heifer of the Year, Champion Hill Georgina 72561 named the All-American Grand Champion, All-American Junior Show Supreme Champion, American Royal Res. Grand Champion, and the Atlantic National Res. Grand Champion. Another full sib, Champion Hill Georgina 8601, sold for one-half interest at \$35,000 as the second top seller of the 2014 Champion Hill fall sale.
- Grandmother sold for one-half interest for \$70,000 as the past top-selling female of a Champion Hill fall sale and stems back to the third-generation dam who is a National Western Grand Champion, Res. Grand Champion of the All-American, and Res. Grand Champion Cow of the North American International.

28 | **CONLEY DT MISS LUCY 1063**
 HEIFER 9/04/21 REG 20195290 TATTOO 1063

Coleman Charlo 0256 OCC Paxton 730P
 Bohi Abigale 6014
 SAV 8180 Traveler 004
 SAV May 2397
SAV RAINFALL 6846
 +*18578963 SAV Blackcap May 4136
 5T Power Chip 4790
CONLEY MISS LUCY 7011
 *19180417 Womack Miss Lucy 011
 EXAR Blue Chip 1877B
 5T Miss Wix 8002
 BC Lookout 7024
 Womack Miss Lucy 6780

CED	BW	WW	YW	MILK	CW	MARB	REA	SM	SB
6	2.1	62	110	24	31	0.54	0.62	66	125
								62	228



LOT 28 | CONLEY DT LUCY 1063

- A direct daughter of Colburn Primo 5153 back to a daughter of the ABS Global AI sire, SAV Momentum 9274, and the featured LD Blackcap 8222 on the bottom side.
- This powerful female reads with balance in a high-quality package.



LOT 29 | CONLEY DT BLACKCAP 1069

29

CONLEY DT BLACKCAP 1069

HEIFER 8/22/21 REG 20139919 TATTOO 1069

Dameron First Class

EXG R5 First Rate S903 R3
Dameron Northern Miss 3114
Silveiras Style 9303
EXG Saras Dream S609 R3

COLBURN PRIMO 5153

+*18217480

Silveiras Saras Dream 1339
SAV Momentum 9274

SAV Net Worth 4200
SAV Emblynette 3301
DHD Traveler 6807
GAR Expectation 822

BALDCO BLACKCAP 97E

+*18884499

LD Blackcap 8222

CED	BW	WW	YW	MILK	CW	MARB	REA	\$M 27	\$B 108
I+4	I+3.6	I+59	I+102	I+19	I+33	I+28	I+44	\$W 45	\$C 167

30

CONLEY DT BLACKCAP 1054

HEIFER 9/24/21 REG 20139894 TATTOO 1054

Sma Watchout 482

Silveiras Watchout 0514
2K Beauty 961
Silveiras Style 9303
KNC Cabin Creek Sandy 804

CONLEY EXPRESS 7211

+*18941522

DPL Sandy 3040
SAV Momentum 9274

SAV Net Worth 4200
SAV Emblynette 3301
DHD Traveler 6807
GAR Expectation 822

BALDCO BLACKCAP 97E

+*18884499

LD Blackcap 8222

CED	BW	WW	YW	MILK	CW	MARB	REA	\$M 82	\$B 128
I-2	I+3.7	I+62	I+109	I+22	I+38	I+.46	I+.31	\$W 51	\$C 198



LOT 30 | CONLEY DT BLACKCAP 1054

- A direct daughter of the \$400,000 Conley Express 7211 back to the ABS Global AI sire, SAV Momentum 9274, and the featured Blackcap family.
- The dam was bred in the Baldrige-Tiedeman program in Nebraska.



LOT 31 | CONLEY DT SARAS DREAM 1079



LOT 32 | CONLEY DT BLACKBIRD 1073



LOT 33 | CONLEY DT GEORGINA 1082

31 CONLEY DT SARAS DREAM 1079
HEIFER 9/20/21 REG 20139929 TATTOO 1079

Sma Watchout 482 Silveiras Watchout 0514
CONLEY EXPRESS 7211 2K Beauty 961
 +*18941522 DPL Sandy 3040 Silveiras Style 9303
 Silveiras Watchout 0514 KNC Cabin Creek Sandy 804
SILVEIRAS SARAS DREAM 5308 BC Lookout 7024
 +*18204675 Silveiras Saras Dream 1339 Silveiras Elba 6546
 Silveiras Style 9303
 EXG Saras Dream S609 R3

CED	BW	WW	YW	MILK	CW	MARB	REA	SM 23	SB 119
I-4	I+4.5	I+60	I+100	I+13	I+28	I+ .47	I+ .26	SW 37	SC 177

- A daughter of Conley Express 7211 back to the featured Silveiras Saras Dream 1339.
- Dam is a maternal sister to Colburn Primo and the 2016 National Junior Angus Show, National Western, American Royal, and North American Champion.

32 CONLEY DT BLACKBIRD 1073
HEIFER 9/25/21 REG 20139952 TATTOO 1073

Dameron First Class EXG RS First Rate S903 R3
EXAR BLUE CHIP 1877B Dameron Northern Miss 3114
 +*16980412 Greens Princess 7578
 Greens Princess 7418
 SAV Perfection 1891 SAV Iron Mountain 8066
CHAMPION HILL BLACKBIRD 8411 SAV Emblynette 7260
 +*17556413 SAV Blackbird 5296 Boyd New Day 8005
 SAV Blackbird 1082

CED	BW	WW	YW	MILK	CW	MARB	REA	SM 40	SB 115
I-2	I+5.0	I+66	I+109	I+26	I+37	I+ .28	I+ .47	SW 56	SC 189

- A daughter of the past ROV Show Bull of the Year and the featured Conley herd sire, EXAR Blue Chip 1877B, back to Champion Hill Blackbird 8411, who was the \$18,000 feature through the Champion Hill Dispersal Sale and is a flush sister to the \$22,000 fourth top seller of a Champion Hill fall sale where a maternal sister sold for one-half interest for \$22,500 as the third high seller and went on to be the 2016 ROV Res. Cow of the Year.

33 CONLEY DT GEORGINA 1082
HEIFER 9/24/21 REG 20139956 TATTOO 1082

Sma Watchout 482 Silveiras Watchout 0514
CONLEY EXPRESS 7211 2K Beauty 961
 +*18941522 DPL Sandy 3040 Silveiras Style 9303
 SAV Angus Valley 1867 KNC Cabin Creek Sandy 804
CHAMPION HILL GEORGINA 8547 SAV Iron Mountain 8066
 +*17728045 CHAMPION HILL Georgina 3080 SAV May 2397
 Leachman Saughatchee 3000C
 LLA Georgina 419

CED	BW	WW	YW	MILK	CW	MARB	REA	SM 34	SB 122
I-5	I+4.1	I+61	I+102	I+18	I+32	I+ .46	I+ .37	SW 45	SC 192

- This featured daughter of the \$400,000 Conley Express 7211 back to Champion Hill Georgina 8547, the \$60,000 one-half interest for a \$120,000 valuation Lot 1 female of the Champion Hill Dispersal, was selected as the reigning two-time ROV Show Heifer of the Year who won titles in 2014-2015 and 2015-2016 show years and was one of the most successful champion females in modern day Angus history; she reigns as the 2016 Atlantic National Grand Champion and Supreme Champion, Atlantic National and Junior Show Grand Champion, Western National Grand Champion, Dixie National Grand Champion, and named the 2016 National Western Open and Junior Shows Senior Champion along with an array of other past championships.

34

CONLEY DT BLACKBIRD 1064

HEIFER 9/22/21 REG 20139947 TATTOO 1064

GAR Grid Maker

GDAR Traveler 044

SAV BISMARCK 5682

#+15109865

SAV Abigale 0451

GAR Precision 2536
Schoenes Fix It 826
SAV Abigale 6062

SAV Perfection 1891

CHAMPION HILL BLACKBIRD 8411

+*17556413

SAV Blackbird 5296

SAV Iron Mountain 8066
SAV Emblynette 7260
Boyd New Day 8005
SAV Blackbird 1082

CED	BW	WW	YW	MILK	CW	MARB	REA	SM 58	SB 107
I+7	I+2.3	I+57	I+96	I+30	I+31	I+.05	I+.66	SW 65	SC 197

• A daughter of the Pathfinder and GENEX Beef AI sire, SAV Bismarck 5682, back to Champion Hill Blackbird 8411, who was the \$18,000 feature through the Champion Hill Dispersal Sale and is a flush sister to the \$22,000 fourth top seller of a Champion Hill fall sale where a maternal sister sold for one-half interest for \$22,500 as the third high seller and went on to be the 2016 ROV Res. Cow of the Year.



LOT 34 | CONLEY DT BLACKBIRD 1064

35

CONLEY DT BLACKBIRD 1085

HEIFER 9/27/21 REG 20139958 TATTOO 1085

Dameron First Class

EXG RS First Rate S903 R3

EXAR BLUE CHIP 1877B

+*16980412

Greens Princess 1012

Dameron Northern Miss 3114
Greens Premium 7578
Greens Princess 7418

SAV Perfection 1891

CHAMPION HILL BLACKBIRD 8411

+*17556413

SAV Blackbird 5296

SAV Iron Mountain 8066
SAV Emblynette 7260
Boyd New Day 8005
SAV Blackbird 1082

CED	BW	WW	YW	MILK	CW	MARB	REA	SM 40	SB 115
I-2	I+5.0	I+66	I+109	I+26	I+37	I+.28	I+.47	SW 56	SC 189

• A daughter of the past ROV Show Bull of the Year and the featured Conley herd sire, EXAR Blue Chip 1877B, back to Champion Hill Blackbird 8411, who was the \$18,000 feature through the Champion Hill Dispersal Sale and is a flush sister to the \$22,000 fourth top seller of a Champion Hill fall sale where a maternal sister sold for one-half interest for \$22,500 as the third high seller and went on to be the 2016 ROV Res. Cow of the Year.



LOT 35 | CONLEY DT BLACKBIRD 1085

36

CONLEY DT GEORGINA 1081

HEIFER 9/20/21 REG 20139955 TATTOO 1081

Sma Watchout 482

Silveiras Watchout 0514

CONLEY EXPRESS 7211

+*18941522

DPL Sandy 3040

2K Beauty 961
Silveiras Style 9303
KNC Cabin Creek Sandy 804

SAV Angus Valley 1867

CHAMPION HILL GEORGINA 8547

+*17728045

CHAMPION HILL Georgina 3080

SAV Iron Mountain 8066
SAV May 2397
Leachman Saugahatchee 3000C
LLA Georgina 419

CED	BW	WW	YW	MILK	CW	MARB	REA	SM 34	SB 122
I-5	I+4.1	I+61	I+102	I+18	I+32	I+.46	I+.37	SW 45	SC 192

• This featured daughter of the \$400,000 Conley Express 7211 back to Champion Hill Georgina 8547, the \$60,000 one-half interest for a \$120,000 valuation Lot 1 female of the Champion Hill Dispersal, was selected as the reigning two-time ROV Show Heifer of the Year who won titles in 2014-2015 and 2015-2016 show years and was one of the most successful champion females in modern day Angus history; she reigns as the 2016 Atlantic National Grand Champion and Supreme Champion, Atlantic National and Junior Show Grand Champion, Western National Grand Champion, Dixie National Grand Champion, and named the 2016 National Western Open and Junior Shows Senior Champion along with an array of other past championships.



LOT 36 | CONLEY DT GEORGINA 1081





37 **PENNER ERNESTINE 3496**

COW 12/22/13 REG *17765528 TATTOO 3496

Dameron First Class EXG RS First Rate S903 R3
 Dameron Northern Miss 3114
 Greens Premium 7578
 Greens Princess 7418
EXAR BLUE CHIP 1877B
 +*16980412 Greens Princess 1012
 Leachman Saugahatchee 3000C
PR MONA LISA 529
 13790410 Meadowbrook MS Fullback 530
 N Bar Emulation EXT
 Leachman BC 7100
 Rito 9FB3 of 5H11 Fullback
 Mona Lisa of Meadowbrook 339

CED	BW	WW	YW	MILK	CW	MARB	REA	\$M 23	\$B 135
1	4	73	118	20	42	0.67	0.6	\$W 58	\$C 198

- This special sale attraction is an elite donor and direct daughter of EXAR Blue Chip 1877B back to the featured PR Mona Lisa 529, who sold for \$52,500 as the top-selling female of the 2010 National Finals Angus Sale for \$110,000 valuation and went on to produce the \$96,000 top-selling bull, PR Black Friday 0244; she also produced the \$30,000 PR 579 205-529, who in turn produced the 2004 National Junior Angus Show Grand Champion Bred & Owned Heifer, PR 629 205-554.
- This featured donor female is also the dam of Lot 5 in this year's event.



CONLEY ERNESTINE 9478 |
 The \$170,000 sale feature daughter of Lot 37.



CONLEY ERNESTINE 0231 |
 The \$75,000 sale feature daughter of Lot 37.



DONOR | SILVEIRAS S SIS SANDY 2355

38A SILVEIRAS S SIS SANDY 2355 EMBRYOS

4 REVERSE SORT IVF FEMALE EMBRYOS

SCC SCH 24 KARAT 838 +*19262743	SCC Tradition of 24 FCF Proven Queen 419 Silveiras Style 9303	Wright SCC Bootlegger 0522 SCC Royal Blackbird GAF 112 SCC First-N-Goal GAF 114 FCF SCC PVF Proven Queen 615 Gambles Hot Rod Silveiras Elba 2520 BC Lookout 7024 KNC Cabin Creek Sandy
SILVEIRAS S SIS SANDY 2355 +*17286745	KNC Cabin Creek Sandy 804	

SIRE	CED	BW	WW	YW	MILK	CW	MARB	REA	\$M	\$B
EPDS	0	5.3	55	90	26	27	0.03	0.41	44	104
									\$W 47	\$C 179

DAM	CED	BW	WW	YW	MILK	CW	MARB	REA	\$M	\$B
EPDS	-5	4.9	54	91	15	22	0.39	0.41	18	110
									\$W 32	\$C 161

• These featured frozen embryos by SCC SCH 24 Karat 838, a son of a past ROV Show Bull of the Year, stem back to Silveiras S Sis Sandy 2355, one of the top income-producing females in the Conley program and went on to produce the 2018 North American Res. Grand Champion Female, the Res. Early Junior Champion Female of the National Western, and the \$80,000 feature along with the 2021 Late Sr. Champion Female at the National Junior Angus Show, and Res. Late Sr. Champion Female of that same event; she also produced the 2018 North American Spring Heifer Calf Champion, the 2018 American Royal Late Jr. Heifer Calf Champion, and the 2019 Grand Champion Female of the Arizona National.



SCC SCH 24 KARAT 838

38B SILVEIRAS S SIS SANDY 2355 EMBRYOS

3 REVERSE SORT IVF FEMALE EMBRYOS

GATEWAY FOLLOW ME F163 *19334239	C&C McKinley 3000 EXAR Dunk-W Maxine HR 505C Silveiras Style 9303	Dameron First Class RAC Winnie 7456 Gambles Hot Rod KB Lady Maxine Lut 857 Gambles Hot Rod Silveiras Elba 2520 BC Lookout 7024 KNC Cabin Creek Sandy
SILVEIRAS S SIS SANDY 2355 +*17286745	KNC Cabin Creek Sandy 804	

SIRE	CED	BW	WW	YW	MILK	CW	MARB	REA	\$M	\$B
EPDS	-4	5.1	55	85	5	10	0.45	0.63	15	96
									\$W 20	\$C 140

DAM	CED	BW	WW	YW	MILK	CW	MARB	REA	\$M	\$B
EPDS	-5	4.9	54	91	15	22	0.39	0.41	18	110
									\$W 32	\$C 161

• These featured frozen embryos by Gateway Follow Me F163 stem back to Silveiras S Sis Sandy 2355, one of the top income-producing females in the Conley program and went on to produce the 2018 North American Res. Grand Champion Female, the Res. Early Junior Champion Female of the National Western, and the \$80,000 feature along with the 2021 Late Sr. Champion Female at the National Junior Angus Show, and Res. Late Sr. Champion Female of that same event; she also produced the 2018 North American Spring Heifer Calf Champion, the 2018 American Royal Late Jr. Heifer Calf Champion, and the 2019 Grand Champion Female of the Arizona National.



GATEWAY FOLLOW ME F163



DONOR | CONLEY S SIS SANDY 4313

39A CONLEY S SIS SANDY 4313 EMBRYOS

4 REVERSE SORT IVF FEMALE EMBRYOS

Conley No Limit
CONLEY DS CLEAR CUT 0510
 *20032604
 Conley Sandy 5104
 Silveiras Style 9303
CONLEY S SIS SANDY 4313
 +*17908018
 KNC Cabin Creek Sandy 804

EXAR Blue Chip 1877B
 Silveiras S Sis 2355
 EXAR Blue Chip 1877B
 S Sis Sandy 104
 Gambles Hot Rod
 Silveiras Elba 2520
 BC Lookout 7024
 KNC Cabin Creek Sandy

SIRE	CE	BW	WW	YW	MILK	CW	MAR	RE	\$M	\$B
EPDS	-3	3.8	69	109	9	34	0.14	0.47	\$W 44	\$C 162

DAM	CE	BW	WW	YW	MILK	CW	MAR	RE	\$M	\$B
EPDS	1	3.5	43	75	13	I+19	I+0.6	I+.18	\$W 20	\$C 150

• These featured frozen embryos by the 2022 National Western Stock Show Grand Champion, Conley DS Clear Cut 0510, who was also the graduate of this sale last year and the \$250,000 record-selling fall bull calf in Conley history going to Ferree and Fitzgerald of Indiana. The donor dam was the \$27,000 one-half interest for a \$54,000 valuation feature of the 2019 fall production sale going to Sunrise Sunset Farms of Indiana where a full sister was the \$25,000 one-half interest for a \$50,000 valuation top-selling fall pair of that same event.



CONLEY DS CLEAR CUT 0510

39B CONLEY S SIS SANDY 4313 EMBRYOS

4 REVERSE SORT IVF FEMALE EMBRYOS

Colburn Primo 5153
SSF ON POINT 4028
 +*19272390
 Plum Creek Annie lu 4472
 Silveiras Style 9303
CONLEY S SIS SANDY 4313
 +*17908018
 KNC Cabin Creek Sandy 804

Dameron First Class
 Silveiras Saras Dream 1339
 Gambles Hot Rod
 SH Miss Annie Lu 6087
 Gambles Hot Rod
 Silveiras Elba 2520
 BC Lookout 7024
 KNC Cabin Creek Sandy

SIRE	CE	BW	WW	YW	MILK	CW	MAR	RE	\$M	\$B
EPDS	0	4.2	53	93	16	23	-.30	0.35	\$W 31	\$C 103

DAM	CE	BW	WW	YW	MILK	CW	MAR	RE	\$M	\$B
EPDS	1	3.5	43	75	13	I+19	I+0.6	I+.18	\$W 20	\$C 150

• These featured frozen embryos by the featured \$100,000 SSF On Point 4028 stem back to the \$27,000 one-half interest for a \$54,000 valuation donor female and past feature of the 2019 fall production sale going to Sunrise Sunset Farms of Indiana where a full sister was the \$25,000 one-half interest for a \$50,000 valuation top-selling fall pair of that same event.



SSF ON POINT 4028



DONOR | CONLEY SANDY 5104

40A CONLEY SANDY 5104 EMBRYOS
3 REVERSE SORT IVF FEMALE EMBRYOS

CONLEY NO LIMIT

+*19290775

EXAR Blue Chip 1877B

Silveiras S Sis Sandy 2355

EXAR Blue Chip 1877B

Dameron First Class
Greens Princess 1012
Silveiras Style 9303
KNC Cabin Creek Sandy 804

Dameron First Class
Greens Princess 1012
GCC Total Recall 806T
KNC Cabin Creek Sandy 804

CONLEY SANDY 5104

*18197707

S Sis Sandy 104

SIRE	CED	BW	WW	YW	MILK	CW	MARB	REA	\$M	\$B
EPDS	-8	4.6	63	96	10	28	0.42	0.13	\$W 13	\$B 102
									\$W 85	\$C 145

DAM	CED	BW	WW	YW	MILK	CW	MARB	REA	\$M	\$B
EPDS	0	2.9	72	116	16	29	0.22	0.50	\$W 43	\$B 96
									\$W 61	\$C 168

• These featured frozen embryos by Conley No Limit stem back to Conley Sandy 5104, who was the 2016-2017 ROV Show Heifer of the Year and went on to produce the \$150,000 Conley Sandy 9743, the 2019 Hoosier Beef Congress Supreme Champion. She is also the mother to the top-selling female of the 2020 fall production sale.



CONLEY NO LIMIT

40B CONLEY SANDY 5104 EMBRYOS
3 REVERSE SORT IVF FEMALE EMBRYOS

COLEMAN GLACIER 041

*19866409

SAV Renown 3439

Coleman Donna 439

EXAR Blue Chip 1877B

Rito 707 of Ideal 3407 7075
SAV Blackcap May 4136
GDAR Game Day 449
Coleman Donna 714

Dameron First Class
Greens Princess 1012
GCC Total Recall 806T
KNC Cabin Creek Sandy 804

CONLEY SANDY 5104

*18197707

S Sis Sandy 104

SIRE	CED	BW	WW	YW	MILK	CW	MARB	REA	\$M	\$B
EPDS	2	2.7	74	132	29	45	-0.32	0.82	\$M 87	\$B 93
									\$W 79	\$C 208

DAM	CED	BW	WW	YW	MILK	CW	MARB	REA	\$M	\$B
EPDS	0	2.9	72	116	16	29	0.22	0.50	\$M 43	\$B 96
									\$W 61	\$C 168

• These featured frozen embryos by the \$270,000 featured Lot 1 and top-selling bull of the 2022 Coleman Angus Bull Sale, Coleman Glacier 041, stem back to Conley Sandy 5104, who was the 2016-2017 ROV Show Heifer of the Year and went on to produce the \$150,000 Conley Sandy 9743, the 2019 Hoosier Beef Congress Supreme Champion. She is also the mother to the top-selling female of the 2020 fall production sale.



COLEMAN GLACIER 041



DONOR | SCHELKES MSF MADDIE 8229

41A SCHELKES MSF MADDIE 8229 EMBRYOS
3 REVERSE SORT IVF FEMALE EMBRYOS

CONLEY NO LIMIT
+*19290775
EXAR Blue Chip 1877B
Silveiras S Sis Sandy 2355
BCII MLA Next Up 015

Dameron First Class
Greens Princess 1012
Silveiras Style 9303
KNC Cabin Creek Sandy 804

Silveiras Style 9303
RMA Miss Edge 208
EXAR Lutton 1831
Plainview Pride C123

SIRE	CED	BW	WW	YW	MILK	CW	MARB	REA	\$M	\$B
EPDS	-8	4.6	63	96	10	28	0.42	0.13	\$W 35	\$C 145
DAM	CED	BW	WW	YW	MILK	CW	MARB	REA	\$M	\$B
EPDS	3	2.2	60	98	32	31	0.36	0.42	\$W 67	\$C 192

- These featured frozen embryos by Conley No Limit stem back to Schelske MSF Maddie 8229, a featured donor female in the Conley Cattle program who offers unlimited genetic potential and tremendous earning power.



CONLEY NO LIMIT

41B SCHELKES MSF MADDIE 8229 EMBRYOS
3 REVERSE SORT IVF FEMALE EMBRYOS

CONLEY RANSOM 1810
*20174820
Conley No Limit
Conley Sandy 8104
BCII MLA Next Up 015

EXAR Blue Chip 1877B
Silveiras S Sis Sandy 2355
E&B Confederate 507
S Sis Sandy 104

Silveiras Style 9303
RMA Miss Edge 208
EXAR Lutton 1831
Plainview Pride C123

SIRE	CED	BW	WW	YW	MILK	CW	MARB	REA	\$M	\$B
EPDS	7	2.1	56	92	26	31	0.81	0.66	\$W 61	\$B 131
DAM	CED	BW	WW	YW	MILK	CW	MARB	REA	\$M	\$B
EPDS	3	2.2	60	98	32	31	0.36	0.42	\$W 67	\$C 192

- These featured frozen embryos by Conley Ransom 1810 stem back to Schelske MSF Maddie 8229, a featured donor female in the Conley Cattle program who offers unlimited genetic potential and tremendous earning power. Here is one of the first opportunities to acquire genetics from the \$70,000 top-selling bull of the 2022 Conley Cattle Spring Bull Sale, Conley Ransom 1810.



CONLEY RANSOM 1810



DONOR | CONLEY SANDY 8522

42A CONLEY SANDY 8522 EMBRYOS
4 REVERSE SORT IVF FEMALE EMBRYOS

SCC SCH 24 KARAT 838
+*19262743
SCC Tradition of 24
FCF Proven Queen 419
Stevenson Turning Point

CONLEY SANDY 8522
+*19181136
Wright SCC Bootlegger 0522
SCC Royal Blackbird GAF 112
SCC First-N-Goal GAF 114
FCF SCC PVF Proven Queen 615
Plattmehere Weigh Up K360
Stevenson Pride 1167x
Silveiras Style 9303
KNC Cabin Creek Sandy 804

SIRE	CED	BW	WW	YW	MILK	CW	MARB	REA	\$M	\$B
EPDS	0	5.3	55	90	26	27	0.03	0.41	44	104
									\$W 47	\$C 179

DAM	CED	BW	WW	YW	MILK	CW	MARB	REA	\$M	\$B
EPDS	5	1.8	62	104	24	40	0.50	0.67	69	131
									\$W 63	\$C 239

• These featured frozen embryos by SCC SCH 24 Karat 838, a son of a past ROV Show Bull of the Year, stem back to Conley Sandy 8522 who was the \$130,000 top-selling heifer of the 2018 fall production sale and named the 2018 North American Spring Heifer Calf Champion.



SCC SCH 24 KARAT 838

42B CONLEY SANDY 8522 EMBRYOS
3 REVERSE SORT IVF FEMALE EMBRYOS

EXAR BLUE CHIP 1877B
+*16980412
Dameron First Class
Greens Princess 1012
Stevenson Turning Point

CONLEY SANDY 8522
+*19181136
EXG RS First Rate S903 R3
Dameron Northern Miss 3114
Greens Premium 7578
Greens Princess 7418
Plattmehere Weigh Up K360
Stevenson Pride 1167x
Silveiras Style 9303
KNC Cabin Creek Sandy 804

SIRE	CED	BW	WW	YW	MILK	CW	MARB	REA	\$M	\$B
EPDS	-4	5.3	71	115	13	38	0.66	0.24	23	128
									\$W 43	\$C 189

DAM	CED	BW	WW	YW	MILK	CW	MARB	REA	\$M	\$B
EPDS	5	1.8	62	104	24	40	0.50	0.67	69	131
									\$W 63	\$C 239

• These featured frozen embryos by EXAR Blue Chip 1877B, past ROV Show Bull of the Year, stem back to Conley Sandy 8522 who was the \$130,000 top-selling heifer of the 2018 fall production sale and named the 2018 North American Spring Heifer Calf Champion.



EXAR BLUE CHIP 1877B



• These featured frozen embryos by the ROV Show Bull of the Year, Silveiras Forbes 8088, stem back to Conley Sandy 0123, who was the \$140,000 uncollectible feature through the 2020 fall production sale, and stems back to the 2016-2017 ROV Show Heifer of the Year. Sisters to the dam include the \$150,000 Conley Sandy 9743, the 2019 Hoosier Beef Congress Supreme Champion; the \$60,000 Conley Sandy 8510; and the \$75,000 Conley Sandy 0732.

SILVEIRAS FORBES 8088



DONOR | CONLEY DS SANDY 0213

43 CONLEY DS SANDY 0213 EMBRYOS

3 REVERSE SORT IVF FEMALE EMBRYOS

SILVEIRAS FORBES 8088

*19131646

Silveiras Style 9303

Collison Forever Lady 1622
Conley Express 7211

Gambles Hot Rod
Silveiras Elba 2520
EXAR Blue Chip 1877B
Moffitt Forever Lady M831

Sma Watchout 482
DPL Sandy 3040
EXAR Blue Chip 1877B
S Sis Sandy 104

CONLEY SANDY 0213

+*19780682

Conley Sandy 5104

SIRE	CED	BW	WW	YW	MILK	CW	MARB	REA	SM	SB
EPDS	4	3.0	48	80	14	22	0.70	0.44	23	122
									83	181
DAM	CED	BW	WW	YW	MILK	CW	MARB	REA	SM	SB
EPDS	-1	3.0	69	112	17	33	0.11	0.27	81	96
									57	156

44 WCAT TOPPER 509Y EMBRYOS

3 CONVENTIONAL IVF EMBRYOS

MANN RED BOX 55C

3525359

SLGN Wideload 920W

Pelton Miss Aja 0839U
NBAR Hamley S913

UBar High Capacity 224
Meado-West Persuasion
5L Norseman King 2291
Peltons miss Ida 0547R

Pie Billings 487
NBar Kelly 913
Red Northline Atlantic City
Red Wheel Topper 38N

WCAT TOPPER 509Y

1497475

Redwheel Topper 38X

SIRE	CED	BW	WW	YW	MILK	CW	MARB	REA
EPDS	11	-0.1	68	112	16	36	0.34	0.47
DAM	CED	BW	WW	YW	MILK	CW	MARB	REA
EPDS	15	-1.6	39	51	23	-15	0.19	-0.22

• Here is an opportunity to make a herd changing acquisition with the mother of the newly crowned Cattlemen's Congress Champion Red. Angus bull, JCL Polo.



MANN RED BOX 55C





DONOR | CONLEY SHEZA STAR D3

PB SIM 45	CONLEY SHEZA STAR D3	
COW	2/20/16	REG 3143836 TATTOO D3
MR HOC BROKER	SVF Steel Force S701	CNS Dream On L186 SVF Sheza Beauty L901 G&L Blackfoot 716D YC Miss BIK B80
2531081	JM BF H25 WAGR Driver 706T	CNS Dream On L186 3C Melody M668 BZ BC Lookout 7024 SVF Sheza Star S803
CONLEY SHEZA STAR Z32	Conley Sheza Star W32	
2647395		

CED	BW	WW	YW	MILK	CW	MARB	REA	API	TI
10.5	2.1	60	75	18	5.8	-0.03	0.71	109	61

- **SELLING A FLUSH TO THE BULL OF THE BUYER'S CHOICE.**
- Guaranteed six transferrable embryos up to eight; anything after eight will be at a prorated cost.
- *Buyer responsible for flush and semen costs.*
- This featured donor produced the 2021 Res. Champion Simmental Female of the OYE and the 2020 Supreme Champion Percentage Female of the OYE. She stems from the same family as the \$13,000 featured and top-selling Simmental pair in the fall 2021 production sale.

45A CONLEY SHEZA STAR D3 EMBRYOS

4 CONVENTIONAL IVF EMBRYOS

CONLEY LEAD THE WAY 0738
 *19881255
CONLEY SHEZA STAR D3
 3143836

Gateway Follow Me F163
 EXAR Princess 1637
 MR HOC Broker
 Conley Sheza Star Z32

C&C McKinley 3000 EXAR
 Dunk-W Maxine HR 505C
 S&R Roundtable J328
 EXAR Princess S391
 SVF Steel Force S701
 JM BF H25
 WAGR Driver 706T
 Conley Sheza Star W32

SIRE	CED	BW	WW	YW	MILK	CW	MARB	REA	SM	SB
EPDS	2	4.2	60	98	18	38	0.57	0.65	27	137
									SW	SC
									44	205

DAM	CED	BW	WW	YW	MILK	CW	MARB	REA	API	TI
EPDS	10.5	2.1	60	75	18	5.8	-0.03	0.71	109	61

- These featured frozen embryos by the 2022 Fort Worth Res. Grand Champion Bull, Conley Lead the Way, stem back to Conley Sheza Star D3. These are maternal sibs to the 2021 Res. Grand Champion Simmental Heifer at OYE and the 2020 Supreme Champion Percentage Female at OYE.



CONLEY LEAD THE WAY 0738

45B CONLEY SHEZA STAR D3 EMBRYOS

3 CONVENTIONAL IVF EMBRYOS

SO REMEDY 7F
 3419044
CONLEY SHEZA STAR D3
 3143836

HPF/Hill Uprising C104
 B&K Cream Soda 8D
 MR HOC Broker
 Conley Sheza Star Z32

LLSF Uprising Z925
 RP/MP Right to Love 015U
 HPF Quantum Leap Z952
 HPF Cream Soda A901
 SVF Steel Force S701
 JM BF H25
 WAGR Driver 706T
 Conley Sheza Star W3

SIRE	CED	BW	WW	YW	MILK	CW	MARB	REA	API	TI
EPDS	13.0	1.5	83	137	24	40	-0.06	0.91	118	78

DAM	CED	BW	WW	YW	MILK	CW	MARB	REA	API	TI
EPDS	10.5	2.1	60	75	18	5.8	-0.03	0.71	109	61

- These featured frozen embryos by the record-selling Remedy stem back to Conley Sheza Star D3. These are maternal sibs to the 2021 Res. Grand Champion Simmental Heifer at OYE and the 2020 Supreme Champion Percentage Female at OYE.



SO REMEDY 7F

45C CONLEY SHEZA STAR D3 EMBRYOS

3 CONVENTIONAL IVF EMBRYOS

LKCC BOLD VENTURE 194F
 3439419
CONLEY SHEZA STAR D3
 3143836

WS Pilgrim H182U
 MS Crysteel Voltage 194A
 MR HOC Broker
 Conley Sheza Star Z32

CNS Dream On L186
 WS Marla 276M
 SS/PRS High Voltage 244X
 BF Miss Crysteel Tango
 SVF Steel Force S701
 JM BF H25
 WAGR Driver 706T
 Conley Sheza Star W3

SIRE	CED	BW	WW	YW	MILK	CW	MARB	REA	API	TI
EPDS	12.2	2.0	80	107	18	5.5	0.04	0.60	122	76

DAM	CED	BW	WW	YW	MILK	CW	MARB	REA	API	TI
EPDS	10.5	2.1	60	75	18	5.8	-0.03	0.71	109	61

- These featured frozen embryos by Bold Venture stem back to Conley Sheza Star D3. These are maternal sibs to the 2021 Res. Grand Champion Simmental Heifer at OYE and the 2020 Supreme Champion Percentage Female at OYE.



LKCC BOLD VENTURE 194F

45D CONLEY SHEZA STAR D3 EMBRYOS

3 CONVENTIONAL IVF EMBRYOS

IN GOD WE TRUST
 382787
CONLEY SHEZA STAR D3
 3143836

Business Done Right
 HL 961
 MR HOC Broker
 Conley Sheza Star Z32

Commercial Bull
 HL 338
 Heat Wave
 Miss Horn 127
 SVF Steel Force S701
 JM BF H25
 WAGR Driver 706T
 Conley Sheza Star W3

- These featured frozen embryos by In God We Trust stem back to Conley Sheza Star D3. These are maternal sibs to the 2021 Res. Grand Champion Simmental Heifer at OYE and the 2020 Supreme Champion Percentage Female at OYE.



IN GOD WE TRUST



DONOR | GCC CHARISMA E254



CONLEY HIGH RISE F3

46

GCC CHARISMA E254 EMBRYOS

3 CONVENTIONAL EMBRYOS

CONLEY HIGH RISE F3

3700069

TJ High Calibre 556B

Conley Sheza Star D3

Conley GCC Shocker C19

MCM Top Grade 018X
PRs Lady Done Right W214
MR HOC Broker
Conley Sheza Star Z32

GCC CHARISMA E254

3424031

ETR GCC Charisma A415

MR TR Hammer 308A ET
Conley Sheza Star W32
SVF Steel Force S701
ETR Charisma X418

• These featured frozen embryos are by the featured Conley High Rise and GCC Charisma E254.

SIRE	CED	BW	WW	YW	MILK	CW	MARB	REA	API
EPDS	11	0.3	70	108	25	29	0.27	0.80	146
									TI 79
DAM	CED	BW	WW	YW	MILK	CW	MARB	REA	API
EPDS	14.9	-2.4	57	70	15	7.0	0.02	0.35	116
									TI 65



- 47A - 5 units conventional semen
- 47B - 5 units conventional semen
- 47C - 5 units conventional semen
- 47D - 5 units conventional semen

REF | **CONLEY LEAD THE WAY 0738**
 BULL 3/7/20 REG *19881255 TATTOO 738

GATEWAY FOLLOW ME F163 *19334239	C&C McKinley 3000 EXAR Dunk-W Maxine HR 505C S&R Roundtable J328	Dameron First Class RAC Winnie 7456 Gambles Hot Rod KB Lady Maxine Lut 857
EXAR PRINCESS 1637 +*18877017	EXAR Princess 5391	Plainview Lutton E102 PVF Proven Queen 786 Dameron First Class EXAR Princess 6414

CED	BW	WW	YW	MILK	CW	MARB	REA	SM	SB
2	4.2	60	97	18	37	0.57	0.65	29	135
								44	204

- **FOR REFERENCE ONLY.**
- OWNED WITH C-4 LAND & CATTLE, OK; CHEROKEE PRIDE, OK.
- Conley Lead the Way was recently selected as the 2022 Fort Worth Grand Champion Bull, Res. Junior Champion of the Cattleman's Congress Super Point ROV Angus Show, and is one of the hottest sires in the industry.
- He stems back to the legendary Princess family, the same family as EXAR Blue Chip, another featured herd sire in the Conley program.
- Lead The Way is a special Angus bull that resembles the most desirable look and composition that breeders are looking for.
- He is extremely attractive, well balance, long fronted, sound structured with a beautiful haircoat in a fault-free package.
- He is a son of Gateway Follow Me F163 back to a daughter of S&R Roundtable J328 and the featured Princess family.
- Lead the Way stems back to the National Western Stock Show Champion, Greens Princess 1012.



- 48A - 5 units conventional semen
- 48B - 5 units conventional semen
- 48C - 5 units conventional semen
- 48D - 5 units conventional semen

REF

CONLEY DS CLEAR CUT 0510

BULL 10/25/20 REG *20032604 TATTOO 510

CONLEY NO LIMIT

+*19290775

EXAR Blue Chip 1877B

Silveiras S Sis Sandy 2355
EXAR Blue Chip 1877B

Dameron First Class
Greens Princess 1012
Silveiras Style 9303
KNC Cabin Creek Sandy 804

CONLEY SANDY 5104

*18197707

S Sis Sandy 104

Dameron First Class
Greens Princess 1012
GCC Total Recall 806T
KNC Cabin Creek Sandy 804

CE	BW	WW	YW	MILK	CW	MARB	REA	SM	30	SB	101
-4	3.8	69	109	9	34	0.14	0.48	SW	44	SC	161

• FOR REFERENCE ONLY.

- OWNED WITH LOOKOUT RIDGE, CO; FERREE/FITZGERALD, IN.
- Conley DS Clear Cut 0510, a graduate of last year's spring production sale and the \$200,000 one-half interest for a \$400,000 valuation top-selling bull.
- The Lot 1 bull of the spring sale that went on to be named National Western Stock Show Grand Champion Bull, the 2022 Dixie National Grand Champion Bull, Grand Champion Bull of the World Beef Expo, Res. Sr. Bull Calf Champion at the 2021 American Royal, Grand Champion Bull of the 2021 Tulsa State Fair, and Grand Champion Bull of the 2021 Tennessee State Fair.
- He is a son of Conley No Limit back to the 2016-2017 ROV Show Female of the Year, Conley Sandy 5104.



- 49A - 5 units conventional semen
- 49B - 5 units conventional semen
- 49C - 5 units conventional semen
- 49D - 5 units conventional semen

REF

CONLEY RANSOM 1810

BULL 4/9/21 REG *20174820 TATTOO 1810

CONLEY NO LIMIT

+*19290775

EXAR Blue Chip 1877B

Silveiras S Sis Sandy 2355
E&B Confederate 507

Dameron First Class
Greens Princess 1012
Silveiras Style 9303
KNC Cabin Creek Sandy 804

Connealy Confidence Plus
E&b Lady Complete 330
GCC Total Recall 806T
KNC Cabin Creek Sandy 804

CONLEY SANDY 8104

*19288274

S Sis Sandy 104

CED	BW	WW	YW	MILK	CW	MARB	REA	\$M	\$B
6	1.5	60	94	14	28	0.35	0.38	44	100
								\$W 52	\$C 174

• FOR REFERENCE ONLY.

- OWNED WITH K&M CATTLE CO, IN; CARROL CATTLE CO., CA; BLACK KNIGHT CATTLE CO, TX; CASE CONLEY.
- The first opportunity to acquire semen on the \$70,000 top-selling bull of the 2022 Conley Cattle Spring Bull Sale and the bull that was selected as Res. Spring Bull Calf Champion at the Cattleman's Congress in 2022.
- He is a direct son of Conley No Limit back to a daughter of E&B Confederate 507 and back to the foundation Sandy in the Conley program, S Sis Sandy 104.
- He has the combination of power and style while displaying tremendous shape, bone, and balance when viewed from every angle.



- 50A - 5 units conventional semen
- 50B - 5 units conventional semen
- 50C - 5 units conventional semen
- 50D - 5 units conventional semen

REF | **CONLEY VERIFIED 0853**
 BULL 3/12/20 REG *19781321 TATTOO 853

MILL BRAE IDENTIFIED 4031
 #*17928462
CONLEY SANDY 8355
 *19290787

Koupals B&B Identity
 Mill Brae Pro Blackcap 1092
 E&B Confederate 507
 Silveiras S Sis Sandy 2355

Sitz Upward 307R
 B&B Erica 605
 GAR-EGL Protege
 Mill Brae FL Blackcap 5002
 Connealy Confidence Plus
 E&B Lady Complete 330
 Silveiras Style 9303
 KNC Cabin Creek Sandy 804

CED	BW	WW	YW	MILK	CW	MARB	REA	\$M	\$B
4	2.8	90	156	28	71	0.95	1.07	65	176
								92	293

- **FOR REFERENCE ONLY.**
- OWNED WITH MORIANDO FARMS, MO; MCCURRY ANGUS, KS; RON FERRIS, IN; MARK DOLLAR, CO.
- Conley Verified 0853 is a member of the 2021 Pen at the Cattleman's Congress and a bull with tremendous power and depth along with what we consider the combination of what we all set out to do as breeders.
- This bull has a tremendous EPD profile across the board. He ranks in the Top 1% for weaning, Top 2% for yearling, Top 15% for marbling, Top 4% for ribeye, Top 40% for \$M, and in the Top 10% for both \$B and \$C along with tremendous eye appeal, balance, and quality.
- He was the \$77,500 top-selling bull of the National Angus Bull Sale in 2021.
- This bull excels on paper from indicators that we needed to strengthen in our breeding program and he is the perfect combination of both phenotype and numerics.



- 51A - 5 units conventional semen
- 51B - 5 units conventional semen
- 51C - 5 units conventional semen
- 51D - 5 units conventional semen

REF | **CONLEY PASSPORT 0440**
 BULL 4/8/20 REG 19802224 TATTOO 440

MILL BRAE IDENTIFIED 4031 #*17928462	Koupals B&B Identity Mill Brae Pro Blackcap 1092 5T Power Chip 4790	Sitz Upward 307R B&B Erica 605 GAR-EGL Protege Mill Brae FL Blackcap 5002
CONLEY SANDY 7305 +*18849925	Silveiras S Sis Sandy 2355	EXAR Blue Chip 1877B 5T Miss Wix 8002 Silveiras Style 9303 KNC Cabin Creek Sandy 804

CED	BW	WW	YW	MILK	CW	MARB	REA	SM	SB
11	-0.5	54	93	23	21	1.08	0.81	72	135
								60	247

- **FOR REFERENCE ONLY.**
- RON FERRIS, IN; BRANDYWINE CATTLE & DEER, IN.
- A sure shot heifer bull with double-digit, calving-ease direct, negative birth, and a son of Mill Brae Identified 4031 back to the \$105,000 past top seller and champion at the Nebraska State Fair, Conley Sandy 7305.
- This bull reads with +1 on marbling and balanced numbers across the board. Passport will be the next step where you are headed and is a bull that crosses over both sectors of our breed.
- He adds value to the industry.



- 52A - 5 units conventional semen
- 52B - 5 units conventional semen
- 52C - 5 units conventional semen
- 52D - 5 units conventional semen

REF | **J RESILIENT 1037**
 BULL 1/18/21 REG 20160403 TATTOO 1037

SITZ RESILIENT 10208
 *19057457
 Sitz Stellar 726D
 Sitz Miss Burgess 1856
 Koupals B&B Identity

MILL BRAE IDEN GEORGINA 4086
 17928486
 Mill Brae FA Georgina 0237

Mohlen Substantial 272
 SITZ Pride 200B
 Sitz Top Game 561X
 Sitz Miss Burgess 4381
 Sitz Upward 307R
 B&B Erica 605
 SAV Final Answer 0035
 Mill Brae 878 Georgina 2156

CED	BW	WW	YW	MILK	CW	MARB	REA	\$M ⁹³	\$B ¹⁹⁵
11	0	83	154	30	83	0.59	0.88	\$W ⁹³	\$C ³⁴⁶

- **FOR REFERENCE ONLY.**
- OWNED WITH COLEMAN ANGUS, MT.
- The newest addition to our herd sire battery is this son of Sitz Resilient 10208 back to a daughter of Koupals B&B Identity who has a progeny production record of WR 8@106.
- This bull is a calving-ease bull with tremendous spread from birth to yearling without sacrificing carcass genetics and \$Values.
- He is the highest \$Combined bull in the breed in AAHIR at American Angus for Resilient sons at +346 and ranks in the Top 2% for both \$M and \$B.
- He has an exquisite phenotype, added muscle and body along with performance and an outcross pedigree combined as one of the most sought after young bulls in our breed.



- 53A - 5 units conventional semen
- 53B - 5 units conventional semen
- 53C - 5 units conventional semen
- 53D - 5 units conventional semen

REF | **BUCK CREEK EMINENCE**
 BULL 1/8/20 REG 3701500 TATTOO H005

WLE COPACETIC E02
3299037

HPF Quantum Leap Z952
 CMFM Joy 027B
 Rubys Wide Open 909W

HTP/SVF Duracell T52
 RP/MP Right to Love 015U
 Circle M Tejas
 CMFM Brushs Joy 8002Z

RP/MP BUILT TO LOVE A021
2735009

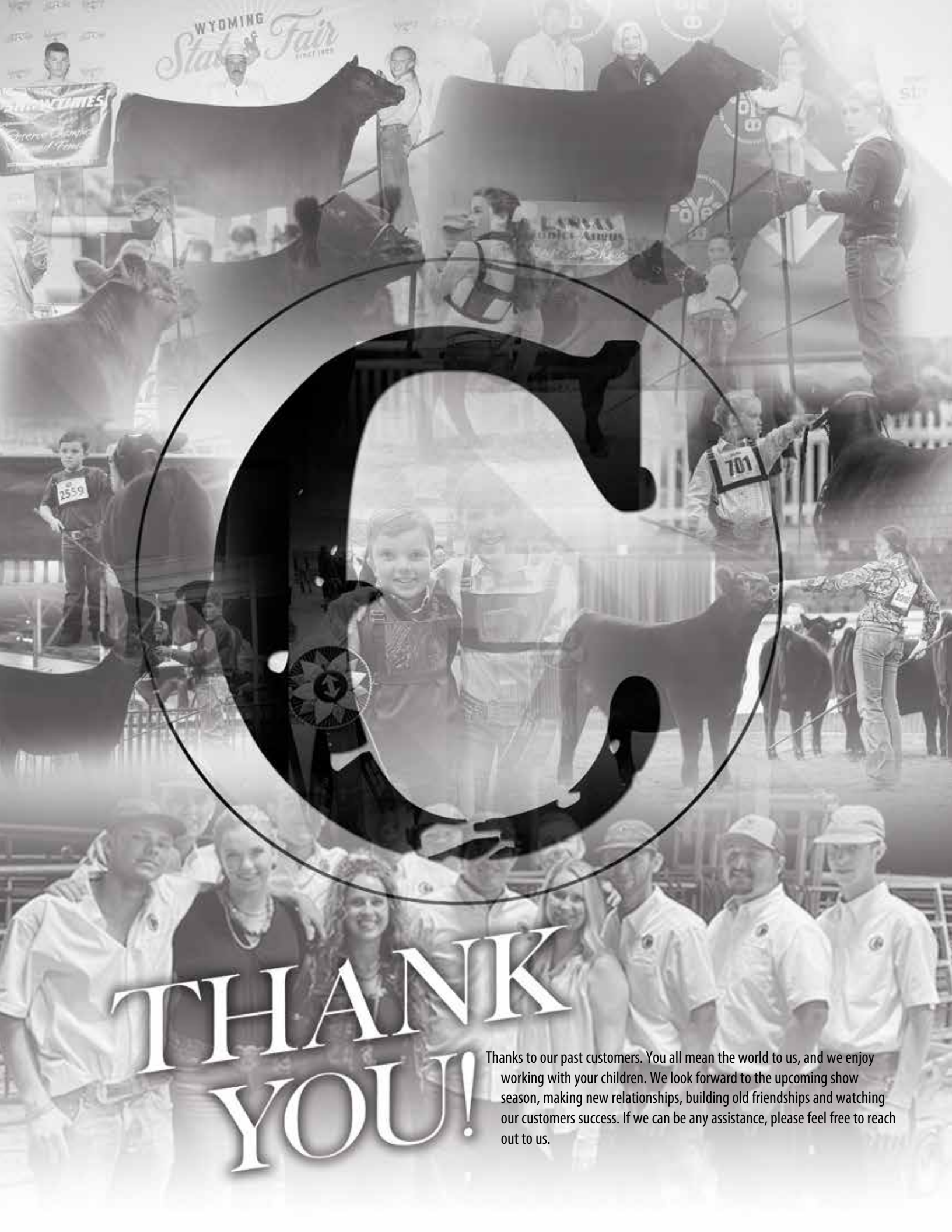
RP/MP Built to Love 076W

LBS The Foreman 702T
 Rubys Miss Cleo S601
 SVF/NJC Built Right N48
 MCLF RP Ms Love Me S311

CED	BW	WW	YW	MILK	CW	MARB	REA	API	TI
11	1.5	78	116	20	29	0.17	0.76	130	79

- **FOR REFERENCE ONLY.**
- OWNED WITH BUCK CREEK, OK; C-4 LAND & CATTLE, OK.
- RP/BCR Eminence H005 is a direct son of WLE Copacetic and out of the RP/MP Built to Love A021 donor that needs absolutely no introduction into this business. Seldom do individuals come along that are this unique in their build, so genuine in their structural integrity and so seamless about the transitions between their pieces. As you break H005 down it becomes evident, that there is little further to desire, a big circumference of foot and bone meets the earth with fluid joints and shaggy hide. All build to carry the extra volume and mass that he's matured with.






THANK YOU!

Thanks to our past customers. You all mean the world to us, and we enjoy working with your children. We look forward to the upcoming show season, making new relationships, building old friendships and watching our customers success. If we can be any assistance, please feel free to reach out to us.



3555 Koller Road
Sulphur, OK 73086

proudly designed by sci designs
402-682-2570 - stephaniecronin.com 



CONLEY

CATTLE

SPRING PRODUCTION SALE

MARCH 26, 2022 6:30 PM CDT ARTESIAN HOTEL, SULPHUR, OKLAHOMA