

L I M O U S I N | C H A R O L A I S | A N G U S | S I M M E N T A L



Balamore Farm Ltd.
THICKNESS SELLS
10TH ANNUAL BULL SALE

M A R C H 1 9 , 2 0 2 2 | 2 : 0 0 _{PM} | B A L A M O R E F A R M , G R E A T V I L L A G E , N S

10th Annual
BALAMORE FARM
THICKNESS SELLS
Bull Sale

2:00PM SATURDAY MARCH 19, 2022

Balamore Farm Sale Barn, 9036 Highway #2, Great Village, Nova Scotia B0M 1L0

SALE DAY CONTACTS

Joe Cooper (902) 893-0744
Robert Cooper (902) 890-0663
Mike Geddes CONSULTANT (519) 502-8864
William Cooper (902) 324-2005
Taylor Stewart HERDSMAN (902) 956-4894
Scott Dixon ATLANTIC STOCKYARDS (902) 364-9464
Andy Carter AUCTIONEER (902) 664-8873

TERMS AND CONDITIONS

Cattle will sell under the standard Canadian Limousin, Simmental, Angus or Charolais Association Sale Terms & Conditions. These are available on request.

INTERNET BIDDING

Jill Renton, DLMS.ca (780) 603-1636
Internet bidding will be available at dlms.ca. Please pre-register before the sale.

VIDEOS

Videos of each lot will be available in early March on www.cattlevids.ca

BUYING ON ORDER

Buyers from away can contact Joe, Robert or Mike and we will get a fair competent person to bid for you and try to buy your choices as cheaply as they can.

HEALTH

Sale cattle have been vaccinated with Pyramid FP5, Fusoguard and Ultrabac 7. Commercial sale heifers have also had SelonE and Scourbos 9

INSURANCE

Insurance forms will be available sale day.

SEMEN

All bulls will be semen tested prior to sale day. Balamore reserves the right to collect IN HERD semen only on any bull sold, at our expense and the owners convenience.

ULTRASOUND DATA

Ultrasound data will be available prior to sale day.

CATALOGUE INFORMATION & ANNOUNCEMENTS

EPDs are current and up-to-date as of publication date. Information in this document is believed to be accurate but any updates at the sale by the owners, auctioneer or sales management will take precedence over the information provided in the sale catalogue.

DIRECTIONS TO BALAMORE SALE BARN

FROM THE NORTH: Exit 10 off Hwy 104. Take a right off the ramp and travel for 2 miles. At stop sign, go straight for ½ mile. Farm is on the right and you will see a farm sign in front of the grain bins.

FROM THE SOUTH AND EAST: Exit 12 off Hwy 104. Follow the signs for Parrsboro, Bass River, Great Village. In 3 miles turn left towards Great Village. Travel three miles and farm sign will be on your left in front of grain bins.



@balamorefarmLtd | e: j.cooper@balamore.com



Balamore Farm Ltd.

Welcome to our 10th Annual "Thickness Sells" Bull Sale.

We extend a sincere thank you to the people who have helped and supported us since we started. We are fortunate to have our wonderful sons and their partners by our side, and truly awesome, dedicated staff that play a huge role in allowing us to pursue our passion for good cattle.

The word "program" often gets used in describing cattle operations, but I always struggle to define one for Balamore. The only thing I can quantify is that we use sires we like, retain the heifers we like and sell the bulls we like.

Regardless of the breed, our cattle share the traits we love: thickness, clean front ends, length, docility and good structure.

We hope that you will look at the sale catalogue and see them as we do!

See you sale day,

Joe & Carolyn Cooper



Mike & Shannon Geddes



Douglas Congdon
Herdsman



Taylor Stewart
Herdsman



Joe & Carolyn Cooper



Robert & Emily



David & Kathleen



William



1



LOT 1



RLF 148D - DAM OF LOT 1

1 BALAMORE HICKORY 060H

HOMO POLLED | BLM 060H | MAY 11, 2020 | CPM4105728 | RED

MARYVALE JOURNEYMAN J455
MORRISVALE LUMBERJACK
 MARYVALE JOSEPHINE J302

TMF ARIZONA 584X
 MARYVALE DEW DROP 8135D
 WULFS XTRACTOR X233X
 MARYVALE GERALDINE G102

TMF LANDMARK 601L
RLF 148D
 RLF 567X

EXLR DAKOTA 353G
 NP SHAMELESS HUSSEY 2037G
 TMF SOHO 160S
 SPRING VALLEY ROSETTA

| BW | ADJ WW | ADJ YW | CE | BW | WW | YW | MILK |
|----|--------|--------|----|-----|----|-----|------|
| 88 | 678 | 1162 | 8 | 3.3 | 79 | 119 | 22 |

- an impressive individual with the herdsire look
- genetically unique with performance and maternal power intertwined
- thick and powerful with a striking profile
- dam is a great Landmark daughter from Rail Line with natural muscle and a great udder



2

2 BALAMORE HIGH VOLTAGE 081H

HOMO POLLED (T) | BLM 081H | MAY 20, 2020 | CPM4105747 | RED

BIRUBI SIR GOTHIC G211
BIRUBI KAISER K140
 DONNA VALLEY P. FINNA-CELESTE

DONNA VALLEY POLL DICTATOR
 BIRUBI ABAIGAIL BON B130
 FROGHOLLOW X-MAN X114
 DONNA VALLEY POLL CELESTE C171

TMF COLLINGWOOD 301A
MISS TMF 58E
 TMF MISS 721W

MARYVALE FEDERA 0067F
 TMF MISS 1009U
 WULFS TAILOR MADE 2107T
 TOP MEADOW 712S

| BW | ADJ WW | ADJ YW | CE | BW | WW | YW | MILK |
|----|--------|--------|----|-----|----|-----|------|
| 91 | 731 | 1216 | 8 | 4.1 | 83 | 131 | 18 |

- the first Birubi Kaiser son to sell in Canada
- Kaiser was chosen as an outcross sire from Australia to add natural muscle, growth, and strong maternal traits
- an impressive individual with mass and power
- 58E is a problem-free Collingwood daughter selected from Top Meadow Farms.
- recommended for cows only



LOT 2 - SUMMER 2020



3 BALAMORE HARLEM 082H

HET POLLED (T) | BLM 082H | MAY 20, 2020 | CPM4105748 | RED

┌ BIRUBI SIR GOTHIC G211
BIRUBI KAISER K140
└ DONNA VALLEY P. FINNA-CELESTE

┌ TMF 51A
BALAMORE DODGER 662D
└ TMF MISS 302A

DONNA VALLEY POLL DICTATOR
BIRUBI ABAIGAIL BON B130
FROGHOLLOW X-MAN X114
DONNA VALLEY POLL CELESTE C171
CARROUSELS PEAK POWER
TMF MISS 610X
RLF X MAN 573X
TOP MEADOW 543P

- another Kaiser son that is as rugged as they come with added muscle shape
- big-topped with a powerful front third
- recommended for cows only

| BW | ADJ WW | ADJ YW | CE | BW | WW | YW | MILK |
|-----|--------|--------|----|-----|----|-----|------|
| 102 | 728 | 1236 | 3 | 5.8 | 66 | 103 | 20 |



TMF MISS 302A - MATERNAL GRAND DAM OF LOT 3



4 BALAMORE HODSON 096H

HET POLLED (T) | BLM 096H | MAY 15, 2020 | CPM4106249 | HOMO BLACK (T)

┌ WULFS WILLARD 5115W
RLF 224E
└ RLF 406W

┌ EXLR MATRIX 075M
RLF 319F
└ RLF 409W

WULFS REVOLVER 1219R
WULFS REMI 5115R
CARROUSELS PEAK POWER
JDK DREAM WEAVER 79S
AUTO BLACK DAKOTA 129J
EXLR LUVLY 084F
AUTO DOLLAR GENERAL 122R
RLF 4T

- an awesome bull that is noticed as soon as you step in the pen
- a moderate-framed tank
- his young dam is 2 for 2 for making the good ones with a standout maternal sister by Kaiser standing near the top of the replacement pen
- nice-headed he is a proud and distinct individual

| BW | ADJ WW | ADJ YW | CE | BW | WW | YW | MILK |
|----|--------|--------|----|-----|----|-----|------|
| 91 | 696 | 1130 | 8 | 2.1 | 79 | 120 | 14 |



MATERNAL SISTER TO LOT 4



LOT 5

5 BALAMORE HUCKLEBERRY 069H

HOMO POLLED (P-1) | BLM 069H | MAY 29, 2020 | CPM4105737 | HET BLACK

RLF YARDLEY 601Y
BALAMORE ENDEAVOR 701E
CLARKS AFFECTIVE KISS

MORRISVALE LUMBERJACK
BALAMORE FROYO 868F
BALAMORE AUDI 334A

WULFS TAILOR MADE 2107T
RLF 406W
WULFS SPRING LOADED 3158S
DKC UNFORGETTABLE KISS
MARYVALE JOURNEYMAN J455
MARYVALE JOSEPHINE J302
ROMN YIPPY KI YEH 101Y
GRANTS UNICE

- a bull to represent our breeding program, an Endeavor out of a Lumberjack heifer
- a full brother is a standout for next year's sale
- heifer-approved
- 868F is an exciting young cow backed by an excellent cow family

| BW | ADJ WW | ADJ YW | CE | BW | WW | YW | MILK |
|----|--------|--------|----|-----|----|----|------|
| 89 | 779 | 1226 | 11 | 2.3 | 64 | 93 | 26 |



DAM AND FULL BROTHER TO LOT 5 (SUMMER 2021)



LOT 6

6 BALAMORE HOMICIDE 047H

HET POLLED (T) | BLM 047H | MAY 1, 2020 | CPM4105715 | HET BLACK (T)

RLF YARDLEY 601Y
BALAMORE ENDEAVOR 701E
CLARKS AFFECTIVE KISS

WULFS WILLARD 5115W
MISS TMF 1E
TMF MISS 4Y

WULFS TAILOR MADE 2107T
RLF 406W
WULFS SPRING LOADED 3158S
DKC UNFORGETTABLE KISS
WULFS REVOLVER 1219R
WULFS REMI 5115R
WULFS TAILOR MADE 2107T
JYF PENNY

- stout and masculine power bull who carries the same rugged features as his sire
- standout from birth
- maternal sister was a fan favourite in the show barn

| BW | ADJ WW | ADJ YW | CE | BW | WW | YW | MILK |
|----|--------|--------|----|-----|----|-----|------|
| 78 | 766 | 1236 | 13 | 1.2 | 86 | 135 | 20 |



MISS TMF 1E - DAM OF LOT 6



LOT 7

7 BALAMORE HUSTLER 061H

HOMO POLLED (P-1) | BLM 061H | MAY 11, 2020 | CPM4105729 | HET BLACK

RLF YARDLEY 601Y
BALAMORE ENDEAVOR 701E
 CLARKS AFFECTIVE KISS

TMF LANDMARK 601L
BALAMORE DIVA 637D
 BLACK RIVERS WANITA

WULFS TAILOR MADE 2107T
 RLF 406W
 WULFS SPRING LOADED 3158S
 DKC UNFORGETTABLE KISS

EXLR DAKOTA 353G
 NP SHAMELESS HUSSEY 2037G
 JDK TIME BOMB 52R
 GRANTS RIGHT ON

- Limousin breed character and predictable pedigree
- big-hipped and long with an extra frame score
- light birthweight and smooth shoulders point to a calving ease bull with added performance
- female-maker

| BW | ADJ WW | ADJ YW | CE | BW | WW | YW | MILK |
|----|--------|--------|----|-----|----|-----|------|
| 85 | 652 | 1131 | 8 | 3.2 | 73 | 110 | 18 |



637D - DAM OF LOT 7



LOT 8

8 BALAMORE HILARIO 087H

HOMO POLLED (P-2) | BLM 087H | MAY 22, 2020 | CPM4106103 | HET BLACK

RLF YARDLEY 601Y
BALAMORE ENDEAVOR 701E
 CLARKS AFFECTIVE KISS

MORRISVALE LUMBERJACK
BALAMORE FAMOUS 832F
 OTHBERGS WHISPER

WULFS TAILOR MADE 2107T
 RLF 406W
 WULFS SPRING LOADED 3158S
 DKC UNFORGETTABLE KISS

MARYVALE JOURNEYMAN J455
 MARYVALE JOSEPHINE J302
 JDK KFH HELL YA 46R
 OTHBERG'S MELANIE

- Endeavor out of a Lumberjack heifer does it again
- eye appeal with an attractive skull that he carries high and proud
- stems from one of our most prolific cow family's tracing back to our accomplished Othbergs Whisper donor
- fault-free bull who stands on an excellent set of feet and legs

| BW | ADJ WW | ADJ YW | CE | BW | WW | YW | MILK |
|----|--------|--------|----|-----|----|-----|------|
| 84 | 691 | 1149 | 9 | 1.9 | 77 | 109 | 18 |



9

9 BALAMORE HARIBO 0113H

HOMO POLLED (T) | BLM 0113H | JUN 27, 2020 | CPM4106264 | HET BLACK (T)

WULFS WILLARD 5115W
RLF 224E
 RLF 406W

WULFS COMPLIANT K687C ET
BALAMORE FIRST LADY 867F
 WGL ANTIGUA 14A

WULFS REVOLVER 1219R
 WULFS REMI 5115R
 CARROUSELS PEAK POWER
 JDK DREAM WEAVER 79S

WULFS WILLARD 5115W
 WULFS SOLOIST 6284S
 RICHMOND WYATT 5RD 48W
 TOP MEADOW 442M

- moderate son of walking sire RLF 224E
- deep-sided and easy-fleshing
- smooth-jointed and easy-moving

| BW | ADJ WW | ADJ YW | CE | BW | WW | YW | MILK |
|----|--------|--------|----|-----|----|----|------|
| 82 | 610 | 1023 | 8 | 2.6 | 63 | 88 | 23 |



WULFS COMPLIANT K687 - SIRE OF DAM OF LOT 9



10

10 BALAMORE HOBO 052H

HOMO POLLED (P-1) | BLM 052H | MAY 6, 2020 | CPM4105720 | HET BLACK

WULFS SPRING LOADED 3158S
BALAMORE ELITE 763E
 WGL ARITZIA 5A

TMF DILLON 143D
BALAMORE FLAME 18F
 TMF MISS 612W

COLE WULF HUNT
 WULFS NADINE 3158N
 RICHMOND WYATT 5RD 48W
 WGL XCLUSIVE 18X

EXLR MATRIX 075M
 TMF MISS 519W
 FWLY BIG TIME
 TOP MEADOW 602L

- stylishly-necked with a small head and eye-catching profile
- natural muscle and tons of bone
- great testicle development
- breed-leading maternal pedigree tracing back to the Top Meadow 602L donor

| BW | ADJ WW | ADJ YW | CE | BW | WW | YW | MILK |
|----|--------|--------|----|-----|----|-----|------|
| 84 | 706 | 1187 | 12 | 3.3 | 78 | 117 | 20 |



BALAMORE ELITE 763E - SIRE OF LOT 10



TMF MISS 612W - MATERNAL GRAND DAM OF LOT 10



11

11 BALAMORE HARLEY 0137H

HOMO POLLED | BLM 0137H | SEPT 29, 2020 | CPM4107681 | HET BLACK

RF YARDLEY 601Y
BALAMORE ENDEAVOR 701E
CLARKS AFFECTIVE KISS

TMF LANDMARK 601L
MISS 151D ET
TMF MISS 623T

WULFS TAILOR MADE 2107T
RLF 406W
WULFS SPRING LOADED 3158S
DKC UNFORGETTABLE KISS
EXLR DAKOTA 353G
NP SHAMELESS HUSSEY 2037G
AUTO DOLLAR GENERAL 122R
OTSS MISS 9199J

- high performing - absolute beast of a bull
- great feet
- powerful top and shapely muscle expression
- no guess work with this pedigree
- TMF 151D is one of 4 daughters of the famous TMF 623T donor cow at work at Balamore

| BW | ADJ WW | ADJ YW |
|----|--------|--------|
| 89 | 672 | 1003 |

| CE | BW | WW | YW | MILK |
|----|-----|----|-----|------|
| 12 | 1.2 | 76 | 112 | 22 |



MISS 151D - DAM OF LOT 11



12

12 BALAMORE HACKER 0125H

HOMO POLLED (P-1) | BLM 0125H | SEPT 1, 2020 | CPM4107670 | HOMO BLACK

RF YARDLEY 601Y
BALAMORE ENDEAVOR 701E
CLARKS AFFECTIVE KISS

TMF LANDMARK 601L
BALAMORE FACEBOOK 841F
TMF MISS 302A

WULFS TAILOR MADE 2107T
RLF 406W
WULFS SPRING LOADED 3158S
DKC UNFORGETTABLE KISS
EXLR DAKOTA 353G
NP SHAMELESS HUSSEY 2037G
RLF X MAN 573X
TOP MEADOW 543P

- extremely long
- great-haired
- moves very well on top of a big foot
- another predictable maternal pedigree with breed greats Landmark, X-Man, and Matrix

| BW | ADJ WW | ADJ YW |
|----|--------|--------|
| 79 | 613 | 1028 |

| CE | BW | WW | YW | MILK |
|----|-----|----|-----|------|
| 11 | 0.3 | 70 | 105 | 20 |



TMF MISS 302A - MATERNAL GRAND DAM OF LOT 12



13

13 BALAMORE HERSHEY 0120H

HOMO POLLED | BLM 0120H | AUG 30, 2020 | CPM4107665 | HOMO BLACK

RF YARDLEY 601Y
BALAMORE ENDEAVOR 701E
CLARKS AFFECTIVE KISS

CLARKS BLOCKBUSTER
CLARKS EXTRAVAGANT KISS
DKC UNFORGETTABLE KISS

WULFS TAILOR MADE 2107T
RLF 406W
WULFS SPRING LOADED 3158S
DKC UNFORGETTABLE KISS

WULFS WILLARD 5115W
WULFS USHEILA 8283U
DKC POLLED SECRET WEAPON
DKC POLLED SECRET KISS

- calving ease prospect
- another bull that is cast in the image of his sire and types in nicely with his contemporaries
- free-moving and athletic

| BW | ADJ WW | ADJ YW | CE | BW | WW | YW | MILK |
|----|--------|--------|----|-----|----|----|------|
| 80 | 697 | 1035 | 8 | 0.1 | 69 | 99 | 19 |



CLARKS EXTRAVAGANT KISS - DAM OF LOT 13



14

14 BALAMORE HALI 0134H

HOMO POLLED | BLM 0134H | SEPT 10, 2020 | CPM4107678 | HOMO BLACK

RF YARDLEY 601Y
BALAMORE ENDEAVOR 701E
CLARKS AFFECTIVE KISS

TMF WESTWOOD 505W
RLF 260E
RLF ZAARA 725Z

WULFS TAILOR MADE 2107T
RLF 406W
WULFS SPRING LOADED 3158S
DKC UNFORGETTABLE KISS

TMF TANKARD 206T
TOP MEADOW 902P
AHCC WESTWIND W544
RLF 406W

- good-footed
- performance epd spread is impressive ranking in the top 4% for YW and WW
- moderate birthweight

| BW | ADJ WW | ADJ YW | CE | BW | WW | YW | MILK |
|----|--------|--------|----|----|----|-----|------|
| 84 | 663 | 1018 | 10 | 1 | 77 | 115 | 14 |



TMF WESTWOOD 505W - SIRE OF DAM OF LOT 14



15

15 BALAMORE JURASSIC 110J

HOMO POLLED (P-1) | BLM 110J | JAN 4, 2021 | CPM4108759 | HET BLACK

RLF YARDLEY 601Y
BALAMORE ENDEAVOR 701E
 CLARKS AFFECTIVE KISS

RPY PAYNES ELVIS 34X
WGL ABERCROMBIE 35A
 WGL XAMINER 7X

WULFS TAILOR MADE 2107T
 RLF 406W
 WULFS SPRING LOADED 3158S
 DKC UNFORGETTABLE KISS
 ROMN TUFF ENUFF 103T
 IVY'S POLLED PRINCESS 1P
 ROMN MADE TO ORDER
 TOP MEADOW 380N

- this guy is just a flat out herd bull
- hair, muscle, and a striking presence
- 3 maternal sisters are walking the pastures of Balamore
- Full sibling to Balamore Gryphon 930G who topped our 2020 sale to the breed leading Rail Line Farms, ON and Red Oak Limousin, Australia.
- top 1% of the breed for YW and WW

| BW | ADJ WW | ADJ YW | CE | BW | WW | YW | MILK |
|----|--------|--------|----|-----|----|-----|------|
| 95 | 889 | 1354 | 8 | 2.3 | 93 | 130 | 21 |



BALAMORE GRYPHON 930G - FULL SIB TO LOT 15



MATERNAL SISTER TO LOT 15



16

16 BALAMORE JOKER 101J

HET POLLED | BLM 101J | JAN 1, 2021 | CPM4108746 | HOMO BLACK

RLF YARDLEY 601Y
BALAMORE ENDEAVOR 701E
 CLARKS AFFECTIVE KISS

MARYVALE FEDERA 0067F
MISS TMF4E
 TMF MISS 707W

WULFS TAILOR MADE 2107T
 RLF 406W
 WULFS SPRING LOADED 3158S
 DKC UNFORGETTABLE KISS
 MARYVALE COCONUT RUM
 MARYVALE ZEUDO ECHO
 WULFS TAILOR MADE 2107T
 TOP MEADOW 732S

- explosive growth and performance
- performance epd profile is off the charts
- great hair and a ton of bone
- Federa dam offers a neat pedigree twist

| BW | ADJ WW | ADJ YW | CE | BW | WW | YW | MILK |
|----|--------|--------|----|-----|----|-----|------|
| 84 | 847 | 1435 | 10 | 0.9 | 86 | 127 | 20 |



MARYVALE FEDERA 0067F - SIRE OF DAM OF LOT 16



17 BALAMORE JAMESON 127J

HOMO POLLED | BLM 127J | JAN 18, 2021 | CPM4108774 | HET BLACK

FLEMINGTON LEGEND L12
AFTER HOURS GAMBLER
 AFTER HOURS CELEBRITY

TMF 26A
BALAMORE CHARLOTTE 577C
 BALAMORE ZORA 235Z

WARRIGAL HIGH VISION
 FLEMINGTON POLLED PRIDE H1
 WULFS YONKERS K682Y
 AFTER HOURS YOGI

RLF YARDLEY 601Y
 TMF 525T
 ATJ POLLED ULTRA SOUND
 OTHBERGS SASSY 52S

| BW | ADJ WW | ADJ YW | CE | BW | WW | YW | MILK |
|----|--------|--------|----|-----|----|----|------|
| 98 | 790 | 1160 | 10 | 2.6 | 68 | 99 | 25 |

- first son to sell from our exciting new herd bull, After Hours Gambler 131G
- one of the first bulls to catch your eye with his striking profile and herdsire look
- tremendous feet and legs
- lots of hair
- dam is a typical 26A daughter who brings in a good one each year



BALAMORE CHARLOTTE 577C - DAM OF LOT 17



18 BALAMORE JESSE JAMES 130J

HOMO POLLED (P-2) | BLM 130J | JAN 19, 2021 | CPM4108777 | RED

FLEMINGTON LEGEND L12
AFTER HOURS GAMBLER
 AFTER HOURS CELEBRITY

ROMN CADILLAC JACK 101C
PINCH HILL FOOTLOOSE 812F
 ATJ POLLED ROYALTY

WARRIGAL HIGH VISION
 FLEMINGTON POLLED PRIDE H1
 WULFS YONKERS K682Y
 AFTER HOURS YOGI

WULFS APOSTLE T343A
 ROMN RITA 28R
 L7 LUCKY ME 9041J
 ATJ POLLED LANTERNE

| BW | ADJ WW | ADJ YW | CE | BW | WW | YW | MILK |
|----|--------|--------|----|-----|----|----|------|
| 86 | 646 | 1055 | 8 | 2.1 | 54 | 75 | 26 |

- complete moderate calf
- attractive head with a ton of hair
- dam is a nice female sourced through the Color of Autumn sale from Pinch Hill Limousin



PINCH HILL FOOTLOOSE 812F - DAM OF LOT 18 AS A CALF



19



BALAMORE GOLD RUSH 927G - MATERNAL BROTHER TO LOT 19



BALAMORE HALIFAX 019H - MATERNAL BROTHER TO LOT 19

19 BALAMORE JAWZ 104J

HOMO POLLED (P-1) | BLM 104J | JAN 2, 2021 | CPM4108748 | HET BLACK

BALAMORE ENDEAVOR 701E
BALAMORE GRYPHON 930G
WGL ABERCROMBIE 35A

RLF YARDLEY 601Y
CLARKS AFFECTIVE KISS
RPY PAYNES ELVIS 34X
WGL XAMINER 7X

ROMN YIPPY KI YEH 101Y
BALAMORE A-PLUS 304A
OTHBERGS WISPER

ROMN JUSTICE
ROMN WINNERS CIRCLE 44W
JDK KFH HELL YA 46R
OTHBERGS LINDA

| BW | ADJ WW | ADJ YW | CE | BW | WW | YW | MILK |
|----|--------|--------|----|-----|----|-----|------|
| 92 | 744 | 1145 | 6 | 2.8 | 80 | 110 | 24 |

- the most consistent bull producer, 930G, has done it again
- the 5th son of the 304A cow that will sell through our bull sale
- maternal brother Balamore Halifax 019H is an exciting young herdbull we retained and used heavily this past year
- maternal brother Balamore Gold Rush 927G owned by Plains Limousin/North Slope Farms, AB sired the 2021 Junior Heifer Calf Champion at Farmfair
- definite herdsire that is extremely long with real world hair and a stylish attractive skull



20



RLF 814A - MATERNAL GRAND DAM OF LOT 20



BALAMORE GOLD DIGGER 917G - DAM OF LOT 20

20 BALAMORE JEDI 119J

HOMO POLLED (P-1) | BLM 119J | JAN 3, 2021 | CPM4108783 | RED

BALAMORE ENDEAVOR 701E
BALAMORE GRYPHON 930G
WGL ABERCROMBIE 35A

RLF YARDLEY 601Y
CLARKS AFFECTIVE KISS
RPY PAYNES ELVIS 34X
WGL XAMINER 7X

MORRISVALE LUMBERJACK
BALAMORE GOLD DIGGER 917G
RLF 814A

MARYVALE JOURNEYMAN J455
MARYVALE JOSEPHINE J302
TMF WESTWOOD 505W
RLF 306U

| BW | ADJ WW | ADJ YW | CE | BW | WW | YW | MILK |
|----|--------|--------|----|-----|----|-----|------|
| 80 | 696 | 1132 | 7 | 1.8 | 82 | 117 | 22 |

- striking profile
- cherry-red
- excellent growth epds
- maternally-proven pedigree
- his young dam is another young Lumberjack cow who commands attention



LOT 21

21 BALAMORE JUVENILE 107J

DOUBLE POLLED | BLM 107J | JAN 3, 2021 | CPM4108756 | RED

— BALAMORE ENDEAVOR 701E
BALAMORE GRYPHON 930G
 — WGL ABERCROMBIE 35A

— WULFS COMPLIANT K687C ET
BALAMORE ETHNIC 776E
 — BALAMORE ZORA 235Z

RLF YARDLEY 601Y
 CLARKS AFFECTIVE KISS
 RPY PAYNES ELVIS 34X
 WGL XAMINER 7X

WULFS WILLARD 5115W
 WULFS SOLOIST 6284S
 ATJ POLLED ULTRA SOUND
 OTHBERGS SASSY 52S

- another outstanding Gryphon
- fluid on the move
- smoothly-built and easy-keeping look
- maternal sister was selected in our 2021 sale by 3-Ridge Farms

| BW | ADJ WW | ADJ YW | CE | BW | WW | YW | MILK |
|----|--------|--------|----|-----|----|-----|------|
| 89 | 680 | 1166 | 5 | 2.9 | 75 | 107 | 24 |



MATERNAL SISTER TO LOT 21



LOT 22

22 BALAMORE JACKSONVILLE 111J

HOMO POLLED (P-1) | BLM 111J | JAN 5, 2021 | CPM4108760 | RED

— WULFS SPRING LOADED 3158S
BALAMORE ELITE 763E
 — WGL ARITZIA 5A

— TMF LANDMARK 601L
BALAMORE BARBARA 423B
 — OTHBERGS TAFFY

COLE WULF HUNT
 WULFS NADINE 3158N
 RICHMOND WYATT SRD 48W
 WGL XCLUSIVE 18X
 EXLR DAKOTA 353G
 NP SHAMELESS HUSSEY 2037G
 BLUEBERRY'S LEGEND
 OTHBERG'S JULIE

- growthy and powerful with added frame
- the Elite sons are built with the commercial cattleman in mind consistently weaning off near the top of their contemporary groups
- 2 maternal sisters are walking the pastures at Balamore

| BW | ADJ WW | ADJ YW |
|----|--------|--------|
| 98 | 750 | 1220 |

| CE | BW | WW | YW | MILK |
|----|----|----|-----|------|
| 9 | 3 | 71 | 103 | 22 |



BALAMORE ELITE 763E - SIRE OF LOTS 22 & 23



BALAMORE BARBARA 423B - DAM OF LOT 22



LOT 23

23 BALAMORE JETTA 131J

HET POLLED | BLM 131J | JAN 20, 2021 | CPM4108778 | RED

WULFS SPRING LOADED 3158S
BALAMORE ELITE 763E
 WGL ARITZIA 5A

BIRUBI KAISER K140
BALAMORE FUNDY 11F
 TMF 525T

COLE WULF HUNT
 WULFS NADINE 3158N
 RICHMOND WYATT SRD 48W
 WGL XCLUSIVE 18X

BIRUBI SIR GOTHIC G211
 DONNA VALLEY P. FINNA-CELESTE
 CARROUSELS MVP
 TOP MEADOW 602L

- the Elite thickness in a more moderate package
- dam is one of the first Kaiser females milking in Canada and is stamped with the feminine maternal look
- great feet

| BW | ADJ WW | ADJ YW | CE | BW | WW | YW | MILK |
|----|--------|--------|----|-----|----|----|------|
| 79 | 665 | 1137 | 12 | 1.6 | 68 | 99 | 17 |



BALAMORE JETTA 131J - FRONT VIEW



LOT 24

24 HL JAX 4J

DOUBLE POLLED | JTH 4J | FEB 16, 2021 | CPM4111928 | DOUBLE BLACK

BALAMORE ENDEAVOR 701E
BALAMORE GRYPHON 930G
 WGL ABERCROMBIE 35A

WULFS TAILOR MADE 2107T
TMF MISS TAILOR
 TMF MISS 314A

RLF YARDLEY 601Y
 CLARKS AFFECTIVE KISS
 RPY PAYNES ELVIS 34X
 WGL XAMINER 7X

WZRK PRIMESTAR 861P
 WULFS MASTERPIECE 2107M
 TMF WESTWOOD 505W
 TOP MEADOW 733R

- an attractive loose-hided calf with real world hair
- top 2% for WW and Top 3% for YW
- dam is a proven producer sired by the breed great, Wulfs Tailor Made
- a maternal sib is working in the progressive Frey herd

| BW | ADJ WW | ADJ YW | CE | BW | WW | YW | MILK |
|----|--------|--------|----|-----|----|-----|------|
| 94 | | | 8 | 1.6 | 81 | 118 | 22 |

CONSIGNOR - HILTZ LIVESTOCK
 Jay Hiltz — 902-227-1102



MATERNAL BROTHER TO LOT 24



LOT 25

25 BALAMORE HYBRID 067H

HOMO POLLED | BLM 67H | SEP 11, 2020 | MC794149 | WHITE

GERRARD PASTOR 35Z
ELDER'S BLACKJACK 788B
SVY STARSTRUCK 8X

GERRARD PREACHER 31U
GERRARD ROXANNE 18P
SVY AD INVINCIBLE P 748T
SVY STARSTRUCK 559R

LT LEDGER 0332 P
BALAMORE DEJAVU 166D
CEDARDALE MISS 3B

LT BLUEGRASS 4017 P
LT BRENDA 6120 PLD
MERIT ROUNDUP 9508W
CEDARDALE UPSTANDING 58U

- smooth-shouldered and long-bodied
- excellent natural muscle expression
- great hair and big-hipped with a maternal pedigree
- 166D is a great young cow that commands attention among herd visits

| BW | ADJ WW | ADJ YW |
|----|--------|--------|
| 94 | 838 | 1220 |

| CE | BW | WW | YW | MILK |
|------|------|----|----|------|
| 10.4 | -0.6 | 36 | 71 | 19 |



CEDARDALE MISS 3B - MATERNAL GRAND DAM OF LOT 25



LOT 26

26 BALAMORE HIEROGLYPHIC 065H

HETERO POLLED | BLM 65H | SEP 11, 2020 | MC794097 | WHITE

LT JOURNEY 5208 PLD
LT RANSOM 8644
LT SHEILA 337 PLD

LT QUEST 2203 PLD
LT MOLLY 3011 PLD
LT BLUE VALUE 7903 ET
LT MISS BREEZY 524

SPARROWS COPENHAGEN 210Z
STEPPLER U WISH 155C
MEDONTE YOU WISH 6Y

WINN MANS LANZA 610S
SPARROWS SIMONE 150X
D R REVELATION 467
MEDONTE WISHFUL THINKING 7W

- rugged brute of a bull that screams performance
- extremely sound bull with a big foot
- stockmen's bull who is built for steer making
- 155C is a consistent-producing Copenhagen daughter

| BW | ADJ WW | ADJ YW |
|----|--------|--------|
| 97 | 946 | 1298 |

| CE | BW | WW | YW | MILK |
|-----|----|----|----|------|
| 8.5 | -1 | 49 | 98 | 21 |



SPARROWS COPENHAGEN 210Z - MAT GRAND SIRE OF LOT 26



27



28



MATERNAL SISTER TO LOT 28



CEDARDALE MISS 45C - DAM OF LOT 28

27 BALAMORE HURRICANE 071H
 HOMO POLLED | BLM 71H | SEP 15, 2020 | MC794216 | WHITE

LT JOURNEY 5208 PLD
LT RANSOM 8644
 LT SHEILA 337 PLD

LT QUEST 2203 PLD
 LT MOLLY 3011 PLD
 LT BLUE VALUE 7903 ET
 LT MISS BREEZY 524

CEDARDALE WINCHESTER 70W
CEDARDALE MISS 121B
 CEDARDALE PATIENCE 48P

SPARROWS ALCATRAZ 18N
 CEDARDALE NOSTALGIA 3N
 SHARP HILLS 206J
 BERICH ANCHOR LADY 125K

- maternal brother to Balamore Driftwood 196D working at Stepler Charolais, MB
- super haircoat
- large outline with an excellent maternal pedigree
- dam is a standout Winchester daughter who was put into our embryo program this summer

| BW | ADJ WW | ADJ YW | CE | BW | WW | YW | MILK |
|----|--------|--------|-----|------|----|----|------|
| 87 | 913 | 1171 | 9.8 | -3.4 | 37 | 65 | 26 |



BALAMORE DRIFTWOOD 196D - MAT BROTHER TO LOT 27

28 BALAMORE JUGGERNAUT 113J
 HOMO POLLED | BLM 113J | JAN 5, 2021 | MC805126 | WHITE

LT JOURNEY 5208 PLD
LT RANSOM 8644
 LT SHEILA 337 PLD

LT QUEST 2203 PLD
 LT MOLLY 3011 PLD
 LT BLUE VALUE 7903 ET
 LT MISS BREEZY 524

CEDARDALE WINCHESTER 70W
CEDARDALE MISS 45C
 MISS CEDARDALE 5W

SPARROWS ALCATRAZ 18N
 CEDARDALE NOSTALGIA 3N
 LT WYOMING WIND 4020 PLD
 CEDARDALE PASSION 28P

- breeder bull quality
- striking front end with a picture-perfect skull
- female-maker
- stout and soggy and very athletic in his movement
- dam is another beast of a Winchester daughter who is the matriarch of one our top cow families

| BW | ADJ WW | ADJ YW | CE | BW | WW | YW | MILK |
|----|--------|--------|-----|------|----|----|------|
| 97 | 862 | 1382 | 8.7 | -1.1 | 50 | 93 | 16 |



LOT 29

29 BALAMORE JUSTICE 126J

HOMO POLLED | BLM 126J | JAN 12, 2021 | MC805463 | WHITE

LT JOURNEY 5208 PLD
LT RANSOM 8644
 LT SHEILA 337 PLD

LT QUEST 2203 PLD
 LT MOLLY 3011 PLD
 LT BLUE VALUE 7903 ET
 LT MISS BREEZY 524

LT LEDGER 0332 P
BALAMORE DAHLIA 46D
 JSR WESC APHRODITE 51B

LT BLUEGRASS 4017 P
 LT BRENDA 6120 PLD
 HTA VEGAS 134Y
 JSR APHRODITE 49X

- heifer-approved
- excellent testicular development
- powerful and balanced he sacrifices nothing as a complete head-turning herdsire
- great feet while standing on awesome set of legs
- 3 maternal sisters have been retained in herd
- dam is a front pasture female with an excellent udder

| BW | ADJ WW | ADJ YW | CE | BW | WW | YW | MILK |
|----|--------|--------|------|------|----|-----|------|
| 89 | 884 | 1425 | 11.8 | -3.4 | 52 | 104 | 21 |



BALAMORE DAHLIA 46D - DAM OF LOT 29



LOT 30

30 BALAMORE JACKAL 125J

HETERO POLLED | BLM 125J | JAN 12, 2021 | MC805461 | WHITE

LT JOURNEY 5208 PLD
LT RANSOM 8644
 LT SHEILA 337 PLD

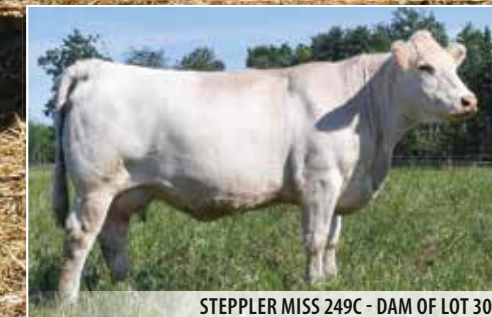
LT QUEST 2203 PLD
 LT MOLLY 3011 PLD
 LT BLUE VALUE 7903 ET
 LT MISS BREEZY 524

SPARROWS LORENZO 329A
STEPPLER MISS 249C
 STEPPLER MISS 153X

WINN MANS LANZA 610S
 SPARROWS BLANCHE 85T
 STEPPLERS DISTINCTION38T
 STEPPLER MISS 67G

- wide-based and stout
- excellent bone and skeletal structure
- epds are in the top 2% for BW, top 3% for CE, top 3% for Milk
- 249C continues to bring in the good ones
- maternal sib to Balamore Godzilla 925G who topped our 2020 sale to Cedardale Charolais, ON
- maternal sibling Balamore Harpoon 042H was a sale feature in our 2021 sale selling to Fundy Charolais/Lower Village Farms

| BW | ADJ WW | ADJ YW | CE | BW | WW | YW | MILK |
|----|--------|--------|------|------|----|----|------|
| 87 | 846 | 1273 | 13.2 | -4.9 | 40 | 78 | 28 |



STEPPLER MISS 249C - DAM OF LOT 30



BALAMORE GODZILLA 925G - MATERNAL SIB TO LOT 30



31



LOT 31 ON PASTURE SUMMER 2021

31 BALAMORE JAGUAR 119J

HETERO POLLED | BLM 119J | JAN 8, 2021 | MC805341 | WHITE

LT JOURNEY 5208 PLD
LT RANSOM 8644
 LT SHEILA 337 PLD

SPARROWS COPENHAGEN 210Z
STEPPLER MISS 208C
 STEPPLER MISS WHY NOT 230W

LT QUEST 2203 PLD
 LT MOLLY 3011 PLD
 LT BLUE VALUE 7903 ET
 LT MISS BREEZY 524

WINN MANS LANZA 610S
 SPARROWS SIMONE 150X
 SPARROWS BERLIN 30M
 MLK'S WHY NOT 7K

- power, power, power
- heaviest-weaning Charolais calf
- an absolute tank with muscle and mass everywhere
- Copenhagen dam drags in a heavy calf each fall

| BW | ADJ WW | ADJ YW | CE | BW | WW | YW | MILK |
|----|--------|--------|------|------|----|-----|------|
| 96 | 924 | 1428 | 11.2 | -3.1 | 52 | 112 | 21 |



STEPPLER MISS 208C - DAM OF LOT 31



32 & 33



CEDARDALE WINCHESTER 70W - MAT GS OF LOT'S 32 & 33

32 BALMORE JEOPARDY 106J

HOMO POLLED | BLM 106J | JAN 2, 2021 | MC805032 | WHITE

| BW | ADJ WW | ADJ YW |
|----|--------|--------|
| 70 | 709 | 1025 |

| CE | BW | WW | YW | MILK |
|------|------|----|----|------|
| 13.6 | -3.8 | 44 | 82 | 18 |

LT JOURNEY 5208 PLD
LT RANSOM 8644
 LT SHEILA 337 PLD

CEDARDALE WINCHESTER 70W
CEDARDALE MISS 105C
 CEDARDALE MISS 57U

LT QUEST 2203 PLD
 LT MOLLY 3011 PLD
 LT BLUE VALUE 7903 ET
 LT MISS BREEZY 524

SPARROWS ALCATRAZ 18N
 CEDARDALE NOSTALGIA 3N
 LT BLUEGRASS 4017 P
 CEDARDALEMAJESTICLADY2M

33 BALAMORE JUSTIFY 107J

DOUBLE POLLED | BLM 107J | JAN 2, 2021 | MC805034 | WHITE

| BW | ADJ WW | ADJ YW |
|----|--------|--------|
| 68 | 759 | 1095 |

| CE | BW | WW | YW | MILK |
|------|------|----|----|------|
| 13.5 | -3.6 | 44 | 90 | 23 |

- long and smooth
- maternal brother was selected by Marshall Crowley in our 2018 sale and is siring some seriously impressive sets of calves
- eye appeal with a slender neck
- TWINS



CEDARDALE MISS 105C - DAM OF LOT'S 32 & 33



LOT 34 ON PASTURE SUMMER 2021



LJC ADA 3A - DAM OF LOT 34

34 BALAMORE JIGSAW 105J

HOMO POLLED | BLM 105J | JAN 1, 2021 | MC805031 | WHITE

LT LEDGER 0332 P
LT VIKING 8156 PLD
 LT PRAISE 0462 ET P

MERIT ROUNDUP 9508W
LJC ADA 3A
 LEN XEN 1X

LT BLUEGRASS 4017 P
 LT BRENDA 6120 PLD
 LT EASY BLEND 5125 PLD
 LT WYOMING BREEZE 7188P

MXS VERMILLION 527R
 MERIT YOLANDA 7244T
 CHARHAVEN TALLEDEGA 775T
 LJC ROSIE 1R

- rugged and strong with a big hip
- real-world performance
- excellent foot score
- 4th sale bull for the ever productive 3A

| BW | ADJ WW | ADJ YW | CE | BW | WW | YW | MILK |
|----|--------|--------|------|------|----|----|------|
| 93 | 878 | 1331 | 10.1 | -1.8 | 50 | 95 | 13 |



CEDARDALE FAIRMOUNT 33F - FULL SIB TO DAM OF LOT 35

35 BALAMORE JOHN WICK 122J

HOMO POLLED | BLM 122J | JAN 10, 2021 | MC805395 | WHITE

LT LEDGER 0332 P
LT VIKING 8156 PLD
 LT PRAISE 0462 ET P

CEDARDALE ZEAL 125Z
CEDARDALE MISS 15D
 CEDARDALE MISS 33Z

LT BLUEGRASS 4017 P
 LT BRENDA 6120 PLD
 LT EASY BLEND 5125 PLD
 LT WYOMING BREEZE 7188P

CEDARDALE TYRANT 31T
 CEDARDALE MISS 64T
 CEDARDALE WINCHESTER 70W
 MISS CEDARDALE 1W

- herdbull that can be used on heifers
- clean-fronted
- dam is a full sibling to 2019 Reserve National Champion Cedardale Gunner 99G as well as Cedardale Fairmount 33F who is doing a great job at Circle Cee Charolais, AB
- double-bred calving ease

| BW | ADJ WW | ADJ YW | CE | BW | WW | YW | MILK |
|----|--------|--------|------|------|----|----|------|
| 76 | 777 | 1337 | 10.1 | -0.3 | 42 | 80 | 18 |



CEDARDALE GUNNER 99G - FULL SIB TO DAM OF LOT 35



LOT 36

36 BALAMORE JUPITER 116J

HOMO POLLED | BLM 116J | JAN 6, 2021 | MC805233 | WHITE

LT LEDGER 0332 P
LT VIKING 8156 PLD
 LT PRAISE 0462 ET P

WDZ FIREMAKER 6062 P ET
CEDARDALE MISS 55B
 CEDARDALE MISS 38Y

LT BLUEGRASS 4017 P
 LT BRENDA 6120 PLD
 LT EASY BLEND 5125 PLD
 LT WYOMING BREEZE 7188P

M6 GRID MAKER 104 PET
 THOMASWISSERSWEET1764ET
 SPARROWS ALLIANCE 513G
 BERICH VEGAS' LADY 19K

- impressive performance-based calf
- excellent skeletal structure
- profiles extremely well
- dam is Emily's 55B cow who is a herd matriarch and has been a mainstay in our ET program

| BW | ADJ WW | ADJ YW | CE | BW | WW | YW | MILK |
|----|--------|--------|----|------|----|----|------|
| 93 | 833 | 1244 | 11 | -2.4 | 43 | 81 | 20 |



CEDARDALE MISS 55B - DAM OF LOT 36



LOT 37

37 BALAMORE JAVELIN 130J

HOMO POLLED | BLM 130J | JAN 15, 2021 | MC805701 | WHITE

LT LEDGER 0332 P
LT VIKING 8156 PLD
 LT PRAISE 0462 ET P

TR PZC MR TURTON 0794 ET
CORNERSTONE CANDY 14C
 CORNERSTONE WHAT A GAL2W

LT BLUEGRASS 4017 P
 LT BRENDA 6120 PLD
 LT EASY BLEND 5125 PLD
 LT WYOMING BREEZE 7188P

TR MR FIRE WATER 5792RET
 THOMAS MS IMPRESSIVE 0641
 WCR SIR FA MAC 2244
 DBAR PRECIOUS 912J

- Proud-fronted while carrying an attractive head
- extra hair
- 14C has been arguably the best producer of the cows purchased from the Miltons. Elegant-fronted and extra-thick she consistently passes her best traits on to her progeny
- maternal sibling was the high selling Charolais yearling in 2020 going north to the McAfee's

| BW | ADJ WW | ADJ YW | CE | BW | WW | YW | MILK |
|----|--------|--------|----|------|----|----|------|
| 95 | 821 | 1189 | 12 | -3.2 | 47 | 85 | 17 |



MATERNAL BROTHER TO LOT 37



CORNERSTONE CANDY 14C - DAM OF LOT 37



LOT 38



CORNERSTONE CANDY 14C - MAT GRAND DAM OF LOT 38

38 BALAMORE JAWBREAKER 152J

HOMO POLLED | BLM 152J | FEB 3, 2021 | MC807358 | WHITE

LT LEDGER 0332 P
LT VIKING 8156 PLD
 LT PRAISE 0462 ET P
 SPARROWS KINGSTON 139Y
BALAMORE FANTA 806F
 CORNERSTONE CANDY 14C

LT BLUEGRASS 4017 P
 LT BRENDA 6120 PLD
 LT EASY BLEND 5125 PLD
 LT WYOMING BREEZE 7188P
 WINN MANS LANZA 610S
 SPARROWS DELIGHT 374P
 TR PZC MR TURTON 0794 ET
 CORNERSTONE WHAT A GAL2W

- the youngest Charolais calf on offer
- huge-topped bull
- excellent hair and extra bone
- 806F is sired by female maker Kingston on the topside and is a maternal sibling to Lot 35 on the bottom

| BW | ADJ WW | ADJ YW | CE | BW | WW | YW | MILK |
|----|--------|--------|-----|------|----|----|------|
| 94 | 750 | 1227 | 9.9 | -1.1 | 42 | 76 | 16 |



BALAMORE FANTA 806F - DAM OF LOT 38



LOT 39

39 BALAMORE JEREBKO 129J

HOMO POLLED | BLM 129J | JAN 13, 2021 | MC805600 | WHITE

LT LEDGER 0332 P
LT VIKING 8156 PLD
 LT PRAISE 0462 ET P
 STEPLER JACKSONVILLE335Z
STEPLER MISS 32C
 STEPLER MISS YEAGER 1A

LT BLUEGRASS 4017 P
 LT BRENDA 6120 PLD
 LT EASY BLEND 5125 PLD
 LT WYOMING BREEZE 7188P
 STEPLER BLUE 83X
 STEPLER MISS 83T
 STEPLER BLUE BOMBER 74Y
 STEPLER MISS 256Y

- loose-hided easy-doing type
- growth-oriented
- large scrotal
- Viking and Jacksonville should be a bulletproof calving option
- 2 maternal sisters are retained in herd

| BW | ADJ WW | ADJ YW | CE | BW | WW | YW | MILK |
|----|--------|--------|-----|------|----|----|------|
| 88 | 873 | 1305 | 9.4 | -1.8 | 35 | 82 | 23 |



STEPLER JACKSONVILLE 335Z - SIRE OF DAM OF LOT 39



40



CEDARDALE MISS 55B - MAT GRAND DAM OF LOT 40



BALAMORE FARRAH 838F - DAM OF LOT 40

40 BALAMORE JUMANJI 147J

HETERO POLLED | BLM 147J | JAN 25, 2021 | MC806665 | WHITE

LT LEDGER 0332 P
LT VIKING 8156 PLD
 LT PRAISE 0462 ET P

LT BLUEGRASS 4017 P
 LT BRENDA 6120 PLD
 LT EASY BLEND 5125 PLD
 LT WYOMING BREEZE 7188P

CEDARDALE DELTA 4D
BALAMORE FARRAH 838F
 CEDARDALE MISS 55B

CEDARDALE ZEAL 125Z
 CEDARDALE MISS 129A
 WDZ FIREMAKER 6062 P ET
 CEDARDALE MISS 38Y

- flashy and stylish
- female-maker that would be one to keep replacements out of
- light birthweight bull with smooth shoulders
- from the 55B lineage, 838F is a maternal sibling to Lot 36

| BW | ADJ WW | ADJ YW | CE | BW | WW | YW | MILK |
|----|--------|--------|------|------|----|----|------|
| 84 | 832 | 1127 | 10.4 | -2.2 | 38 | 63 | 21 |



41

41 BALAMORE JAGGED 111J

HOMO POLLED | BLM 111J | JAN 4, 2021 | MC805067 | WHITE

GERRARD PASTOR 35Z
ELDER'S BLACKJACK 788B
 SVY STARSTRUCK 8X

GERRARD PREACHER 31U
 GERRARD ROXANNE 18P
 SVY AD INVINCIBLE P 748T
 SVY STARSTRUCK 559R

SPARROWS KINGSTON 139Y
BALAMORE FEVER 815F
 STEPLER MISS 307C

WINN MANS LANZA 610S
 SPARROWS DELIGHT 374P
 SPARROWS SEMINOLE 927W
 STEPLER MISS 73X

- explosive hip and length of spine
- one of Dad's picks
- on the profile there may not be one better
- sired by the popular Blackjack who is impressing us with his cow-making abilities
- Kingston X Seminole dam is a maternal powerhouse

| BW | ADJ WW | ADJ YW | CE | BW | WW | YW | MILK |
|----|--------|--------|-----|-----|----|-----|------|
| 95 | 856 | 1324 | 7.2 | 1.9 | 48 | 101 | 21 |



Lot 42

42 BALAMORE JUNIPER 140J

HOMO POLLED | BLM 140J | JAN 20, 2021 | MC806205 | WHITE

GERRARD PASTOR 35Z
ELDER'S BLACKJACK 788B
 SVY STARSTRUCK 8X

GERRARD PREACHER 31U
 GERRARD ROXANNE 18P
 SVY AD INVINCIBLE P 748T
 SVY STARSTRUCK 559R

STEPPLER JACKSONVILLE335Z
STEPPLER MISS DIAMOND 6C
 STEPPLER MISS 40A

STEPPLER BLUE 83X
 STEPPLER MISS 83T
 SPARROWS SEMINOLE 927W
 STEPPLER MISS 2U

- another Blackjack son that would power up a calf crop
- soggy, hairy makeup
- big square foot
- super maternal Jacksonville dam
- maternal sister is one of our favorite first calf heifers

| BW | ADJ WW | ADJ YW | CE | BW | WW | YW | MILK |
|----|--------|--------|-----|------|----|----|------|
| 96 | 822 | 1191 | 8.1 | -0.3 | 41 | 72 | 21 |



DAM AND MATERNAL SISTER TO LOT 42



Lot 43

43 BALAMORE JACKRABBIT 112J

HOMO POLLED | BLM 112J | JAN 4, 2021 | MC805068 | WHITE

WC DOUBLETREE 2009 P
HRJ MAVERICK 556C
 PRO-CHAR CASSY 32A

LT LONG DISTANCE 9001 PLD
 WC PRAISE 0058 P
 SPARROWS KINGSTON 139Y
 CST MISS CASTINE 7S

CEDARDALE ZEAL 125Z
BALAMORE SAGITTARIUS 915G
 BALAMORE EXOTICA 702E

CEDARDALE TYRANT 31T
 CEDARDALE MISS 64T
 CIRCLE CEE LEGEND 307A
 CEDARDALE MISS 45C

- the only Maverick son on offer
- double bred calving ease
- 71lb birthweight, top 2% BWT, top 3% CE
- extra hair and adequate muscle
- stylish Zeal dam with excellent udder who belongs to same cow family as Lot 28

| BW | ADJ WW | ADJ YW | CE | BW | WW | YW | MILK |
|----|--------|--------|------|------|----|----|------|
| 71 | 867 | 1183 | 13.2 | -4.2 | 37 | 71 | 23 |



LOT 43 ON PASTURE SUMMER 2021



BALAMORE EXOTICA 702E - MAT GRAND DAM OF LOT 43



Lot 44

44 BALAMORE HEMISPHERE 012H

POLLED | BLM 12H | JUN 2, 2020 | CA-BPG1340464 | HET BLACK

WHEATLAND CIRCUIT BREAKER
OUTLAW BREAKER 77C
RUST BULL 66Z

CMS LADY GAGA 21X
BALAMORE EMERALD 703E
MELVERN MS JUSTICE 171C

WHEATLAND HIGHVOLTAGE122Y
WHEATLAND BULL 131L
ER RED DECK 639D
MLC MR JUSTICE W744
WHEATLAND LADY 81X
TNT MISS SADIE M68
ERIXON LADY 2025
MELVERN MS GUNNER 26U

- loose-hided and easy-doing
- moderate and soggy
- the Breaker bull from Lobster Point is making some awesome females and this guy has the look as one to keep replacement heifers from

| BW | ADJ WW | ADJ YW | CE | BW | WW | YW | MILK |
|----|--------|--------|-----|-----|------|-------|------|
| 89 | 794 | 1039 | 7.7 | 3.7 | 81.7 | 123.9 | 23.1 |



BALAMORE EMERALD 703E - DAM OF LOT 44



Lot 45

45 BALAMORE HOPKINS 018H

POLLED | BLM 18H | JUN 20, 2020 | CA-PG1340472 | RED

WHEATLAND CIRCUIT BREAKER
OUTLAW BREAKER 77C
MRC WALL STREET 183Z

CMS LADY GAGA 21X
MRC MISS UREIKA 48D
TWIN CHIEF UREIKA 47U

WHEATLAND HIGHVOLTAGE122Y
MR HOC BROKER
ER RED DECK 639D
WFL COMMANDER 78R
WHEATLAND LADY 81X
LFE BS CROCUS 183W
ERIXON LADY 2025
TWIN-CHIEF LARAMIE 248L

- the only red Simmental to sell
- same loose-hided soggy look as his paternal brother with added frame
- great feet
- large scrotal
- dam is a hardworking cow from M&Rs Ureika family

| BW | ADJ WW | ADJ YW | CE | BW | WW | YW | MILK |
|----|--------|--------|-----|-----|------|-------|------|
| 85 | 832 | 1015 | 6.4 | 3.7 | 82.8 | 123.8 | 23.9 |



MRC MISS UREIKA 48D - DAM OF LOT 45



46 MAPLE STONE JACKSON 8J

POLLED | MSF 8J | FEB 14, 2021 | CA-PG1362324 | BLACK

W/C LOADED UP 1119Y
IRCC GUSTO 903G
 W/C BANKROLL 811D

IRCC EXQUISITE 724E
DOUBLE BAR D SUSE 438F
 DOUBLE BAR D SUSE 402D

REMINGTON LOCK N LOAD 54U
 W/C LOADED UP 1119Y
 GSC ALL IN 72A
 WHEATLAND CIRCUIT BREAKER
 AUBREYS BLACK BLAZE III
 MISS WERNING KP 8543U
 IRCC CHA CHA 520C
 WLE CRUISIN SUSAN T26

- extremely eye-appealing bull with a striking look
- tons of hair and bone
- beautiful baldie markings
- light birthweight
- dam was a past sale feature in the famed Double Bar D production sale

| BW | ADJ WW | ADJ YW | CE | BW | WW | YW | MILK |
|----|--------|--------|------|-----|------|-------|------|
| 86 | | | 10.7 | 2.1 | 76.4 | 112.6 | 22.8 |



DOUBLE BAR D SUSE 438F - DAM OF LOT 46



47 BALAMORE HIGHTOWER 012H

POLLED | ANG 012H | JUL 17, 2020 | 2184350 | BLACK

DAINES SIR INSIGHT 33C
DAINES INSIGHT 27E
 DAINES MISS T510 22U

WILBAR CAPACITY 99Z
WILBAR MAYFLOWER 836C
 WILBAR MAYFLOWER 412Y

PVF INSIGHT 0129
 DAINES MISS LEGEND 141S
 DAINES T510 124P
 DAINES MISS LEGEND 24P 54S

PEAK DOT CAPACITY 601W
 WILBAR GEORGINA 17P
 WILBAR ADVANTAGE 202R
 WILBAR MAYFLOWER 265R

- full of Angus breed character
- smooth and balanced
- big-bodied
- maternal sister is an awesome young cow with a maternal brother working in the Ebbett herd

| BW | ADJ WW | ADJ YW | CE | BW | WW | YW | MILK |
|----|--------|--------|----|----|----|----|------|
| 88 | 805 | 1274 | | | | | |



MATERNAL BROTHER TO LOT 47



LOT 48

48 BALAMORE JOURNEY 102J

POLLED | ANG 102J | JAN 3, 2021 | 2184994 | BLACK

PLAINVIEW LUTTON E102
PLEASANT VALLEY LUTE 1207
 CHERRY KNOLL ELSA 8014

EXAR LUTTON 1831
 PLAINVIEW PRIDE C123
 H S A F BANDO 1961
 ELSA OF CONANGA 868 1112

S TITLST 1145
BALAMORE ENVY 901G
 BALAMORE ENVY 705E

RA LINCOLN W144
 S CORA 572
 S A V RADIANCE 0801
 WILBAR GEORGINA 710C

- Lute continues to sire Angus cattle with style and performance
- fresh front end with a proud head
- extra bone
- impeccable feet
- maternal and calving ease in his Titlest X Radiance dam

| BW | ADJ WW | ADJ YW | CE | BW | WW | YW | MILK |
|----|--------|--------|----|----|----|----|------|
| 86 | 840 | 1213 | | | | | |



PLEASANT VALLEY LUTE 1207 - SIRE OF LOT'S 48 & 49



LOT 49

49 BALAMORE JUNGLE 101J

POLLED | ANG 101J | JAN 1, 2021 | 2184993 | BLACK

PLAINVIEW LUTTON E102
PLEASANT VALLEY LUTE 1207
 CHERRY KNOLL ELSA 8014

EXAR LUTTON 1831
 PLAINVIEW PRIDE C123
 H S A F BANDO 1961
 ELSA OF CONANGA 868 1112

HF SMOKIN' ACES 105Y
WILBAR GEORGINA 710C
 WILBAR GEORGINA 335A

GREENS PREMIUM 7578
 HF ERICA 26T
 BAR-E-L UNFORGIVEN 102U
 WILBAR GEORGINA 706M

- full brothers working for Stephen Lund and Double Trouble Cattle Co
- wide based and stout
- 2 maternal sisters retained in herd
- no guess work here

| BW | ADJ WW | ADJ YW | CE | BW | WW | YW | MILK |
|----|--------|--------|----|----|----|----|------|
| 91 | 795 | 1195 | | | | | |



FULL BROTHER TO LOT 49



50

50 RED PATCHELL BOCEPHUS 5J

BBP 5J | JAN 3, 2021 | 2193511 | RED

RED LAZY MC STOUT 30S
 RED DIAMOND T HIPS STOUT 107U
 RED TOWAW MONIQUE 2K

RED LAZY MC SMASH 41N
 RED LAZY MC SCYTHIA 78N
 RED BJR JR 107
 RED TWIN D MONIQUE 811H

RED BBP SOLO CUP 6Z
 RED PATCHELL'S FAVORITE SODA
 RED BAR 5 FAVORITE 2204W

RED TER-RON FULLY LOADED 540R
 RED BWA BARONESS 4P
 RED BAR 5 AR WAREHOUSE 244R
 RED BRYLOR SDL PASSION 225P

- a bull that could help any Red Angus herd
- power bull with impressive muscle pattern
- sired by the time-tested Stout
- purchased beside his dam in a package of cows from the Patchell herd to increase quality in our growing Red Angus herd
- maternal sister was campaigned successfully throughout the Ontario show circuit in 2021

| BW | ADJ WW | ADJ YW |
|----|--------|--------|
| | | |

| CE | BW | WW | YW | MILK |
|-----|-----|----|----|------|
| 3.0 | 0.0 | 28 | 45 | 26 |



SIRE OF LOT 50



51

51 RED PATCHELL RAMSAY 210J

BBP 210J | FEB 2, 2021 | 2193509 | RED

RED U-2 RECON 192Y
 RED U-2 RECKONING 149A
 RED U-2 ANEXA 271Y

RED BRYLOR WEST JET 69W
 RED U-2 LARKABA 8133U
 RED HOWE MAGNUM 169W
 RED U-2 ANEXA 333N

RED LAZY MC CC DETOUR 2W
 RED PATCHELL BARONESS BURLEQUE
 RED BBP PISTOL ANNIE 2Z

RED RMJ REDMAN 1T
 RED LAZY MC BESS 12S
 RED TER-RON FULLY LOADED 540R
 RED BWA BARONESS 4P

- a different style than Lot 52 but just as good
- stylish, complete and correct bull
- this is the type of bull that drew us to the Red Angus breed
- sired by Reckoning who continues to make the good ones
- Detour dam is the ideal type of cow that the breed is famous for

| BW | ADJ WW | ADJ YW |
|----|--------|--------|
| | | |

| CE | BW | WW | YW | MILK |
|-----|-----|----|----|------|
| 5.0 | 0.2 | 36 | 64 | 27 |



DAM OF LOT 51



LOT 52

52 TOTH JOY 4J

HOMO POLLED (P-2) | TOTH 4J | JAN 6, 2021 | CPF4109233 | BLACK

RLF YARDLEY 601Y
BALAMORE ENDEAVOR 701E
 CLARKS AFFECTIVE KISS

WULFS TAILOR MADE 2107T
 RLF 406W
 WULFS SPRING LOADED 3158S
 DKC UNFORGETTABLE KISS

- typical Endeavor female
- all the parts and pieces
- halter broken with a great temperament
- dam is a proven producer from a great cow family

WULFS APOSTLE T343A
BALAMORE ESTER 714E
 BALAMORE BO PEEP 419B

WULFS YANKEE K689Y
 WULFS ULTRA DIAMOND 8571U
 TMF LANDMARK 601L
 BALAMORE YASMINE 12Y

| BW | ADJ WW | ADJ YW | CE | BW | WW | YW | MILK |
|----|--------|--------|----|----|----|----|------|
| 82 | 714 | 943 | | | | | |



BALAMORE BO PEEP 419B - MAT GRAND AM OF LOT 52



LOT 53

53 TOTH JEWEL 2J

HOMO POLLED (T) | TOTH 2J | JAN 3, 2021 | CPF4109230 | RED

B BAR TITANIUM 3Z
B BAR GRANITE 57C
 B BAR POLLED STARBURST

ROMN TUFF ENUFF 103T
TOTH BABY JEWEL
 JC'S MAGICAL JEWEL

| BW | ADJ WW | ADJ YW | CE | BW | WW | YW | MILK |
|----|--------|--------|----|------|----|----|------|
| 72 | 706 | 980 | 16 | -3.4 | 50 | 62 | 22 |

WULFS TIBON T750T
 ANCHOR B URBAN GIRL
 JYF PALADIN
 B BAR NOTHIN BUT LOVE

WULFS RANSOM 3059R
 ROMN ROBERTA 35R
 ARER SLVL NIGHTWATCHMAN
 JC'S JEWEL

- sired by the popular B Bar Granite
- calving ease epd profile Top 1% CED Top 3% BW
- halter broken
- brood cow look



B BAR GRANITE 57C - SIRE OF LOT 53



LOTS 56 to 100

COMMERCIAL BRED HEIFERS

Lots 56 – 100 are commercial bred females sourced from Alberta, Ontario and our own breeding program. These heifers are bred to calving ease Balamore Black Limo bulls for April, May, and June.



REFERENCE SIREs

LIMOUSIN SIREs



AFTER HOURS GAMBLER 131G

CE 13 BW 1.2 WW 53 YW 75 MILK 23
 WARRIGAL HIGH VISION
 FLEMINGTON LEGEND L12
 FLEMINGTON POLLED PRIDE H1
 WULFS YONKERS K682Y
 AFTER HOURS CELEBRITY
 AFTER HOURS YOGI



BALAMORE ENDEAVOR 701E

CE 10 BW 0.0 WW 81 YW 120 MILK 12
 WULFS TAILOR MADE 2107T
 RLF YARDLEY 601Y
 RLF 406W
 WULFS SPRING LOADED 3158Y
 CLARKS AFFECTIVE KISS
 DKC UNFORGETTABLE KISS



BALAMORE GRYPHON 930G

CE 3 BW 2.2 WW 86 YW 116 MILK 21
 RLF YARDLEY 601Y
 BALAMORE ENDEAVOR 701E
 CLARKS AFFECTIVE KISS
 RPY PAYNES ELVIS 34X
 WGL ABERCROMBIE 35A
 WGL XAMINER 7X



BIRUBI KAISER K140

CE 6 BW 5.6 WW 73 YW 110 MILK 13
 DONNA VALLEY POLL DICTATOR
 BIRUBI SIR GOTHIC G211
 BIRUBI ABAIGAIL BON B130
 FROGHOLLOW X-MAN X114
 DONNA VALLEY P. FINNA-CELESTE
 DONNA VALLEY POLL CELESTE C171

CHAROLAIS SIREs



ELDER'S BLACKJACK 788B

CE 4.8 BW 2.3 WW 54 YW 94 MILK 17
 GERRARD PREACHER 31U
 GERRARD PASTOR 35Z
 GERRARD ROXANNE 18P
 SVY AD INVINCIBLE P 748T
 SVY STARSTRUCK 8X
 SVY STARSTRUCK 559R



LT RANSOM 8644

CE 15.9 BW -6.6 WW 46 YW 88 MILK 22
 LT QUEST 2203 PLD
 LT JOURNEY 5208 PLD
 LT MOLLY 3011 PLD
 LT BLUE VALUE 7903 ET
 LT SHEILA 337 PLD
 LT MISS BREEZY 524



LT VIKING 8156 PLD

CE 14.3 BW -3.8 WW 46 YW 88 MILK 16
 LT BLUEGRASS 4017 P
 LT LEDGER 0332 P
 LT BRENDA 6120 PLD
 LT EASY BLEND 5125 PLD
 LT PRAISE 0462 ET P
 LT WYOMING BREEZE 7188P

ANGUS SIRE



DAINES INSIGHT 27E

CE 0.0 BW 3.0 WW 47 YW 73 MILK 19
 PVF INSIGHT 0129
 DAINES SIR INSIGHT 33C
 DAINES MISS LEGEND 141S
 DAINES T510 124P
 DAINES MISS T510 22U
 DAINES MISS LEGEND 24P 54S

Save the Date!

SHORELINE FEMALE SALE

WITH GUEST LOBSTER POINT PROPERTIES



OCTOBER 10, 2022
AT BALAMORE FARMS
 LIMOUSIN • CHAROLAIS • SIMMENTAL • SHORTHORN • ANGUS
 50 BRED COMMERCIAL HEIFERS



BALAMORE FARM

9036 Hwy 2
Great Village, NS
B0M 1L0



Thickness Sells Bull Sale **MARCH 19TH, 2022** | Shoreline Female Sale **OCTOBER 10, 2022**