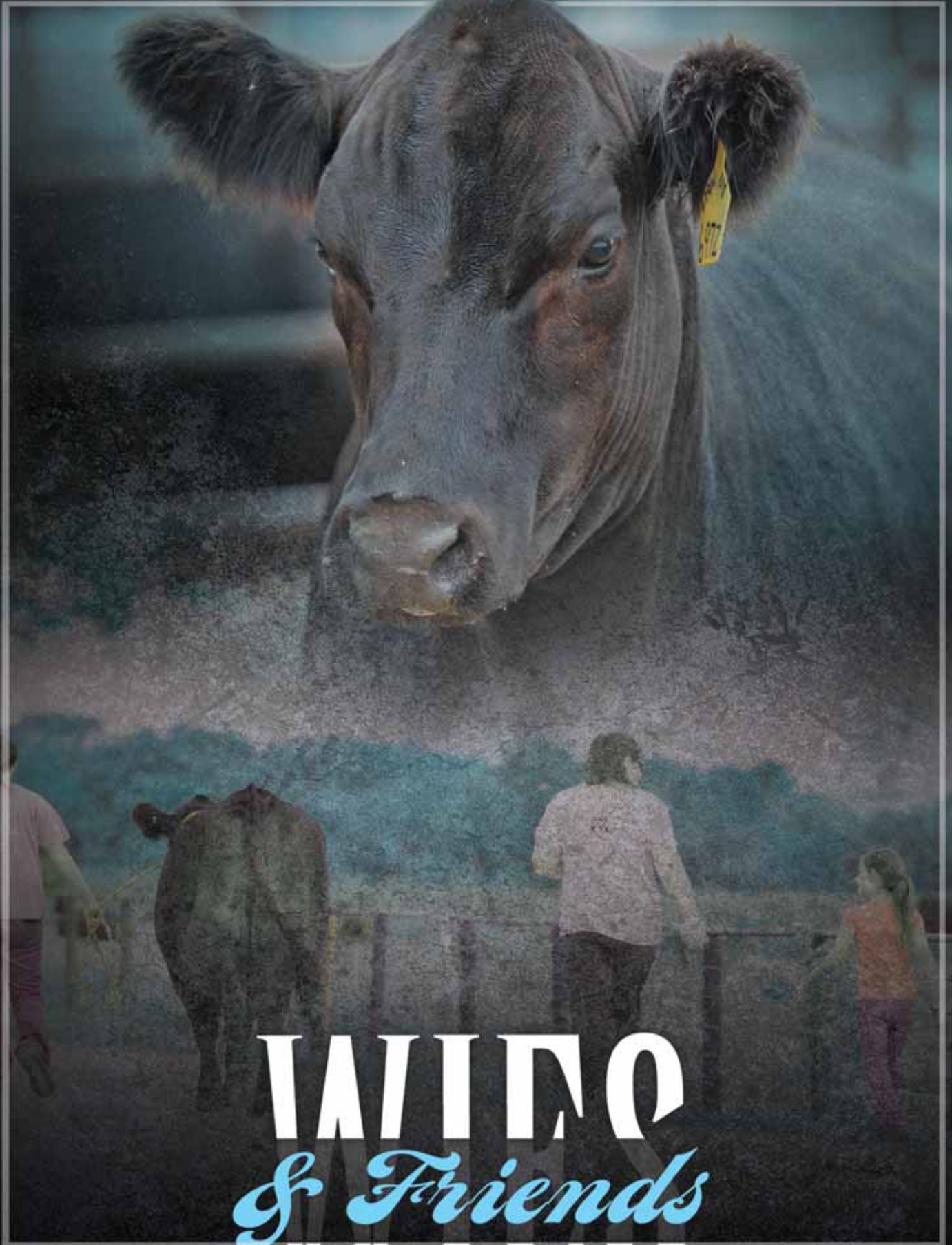


Saturday, November 2, 2013



**WILD**  
*& Friends*  
**WILD**

Columbia, Missouri )  
*at Sho-Me Farms (directions below)*

Saturday November 2 1:00pm

WIES  
& Friends  
WIES

Heather Henderson with  
Triple Crown Winning Bull,  
MAGS WLR Usual Suspect

Wies Limousin pictures were taken by  
Morgan Meisenheimer.



**SCHEDULE OF EVENTS**

Friday, November 1st

- 1:00 pm .....cattle available for viewing
- 5:30 pm .....refreshments and snacks

Saturday, November 2nd

- 9:00 am .....Doughnuts, Coffee & cattle available for viewing
- 11:30 am .....Complimentary Lunch
- 1:00 pm .....Wies Limousin & Friends Sale

**SALE DAY PHONES**

- Mike Henderson .....573.220.5786
- Heather Henderson .....573.220.5768
- Randy Ratliff .....615.330.2735
- Mark Smith .....515.229.5227

**AUCTIONEER**

- Cody Lowderman .....309.313.2171

**DIRECTIONS TO SALE LOCATION (SHO-ME FARMS)**

Sale Address for GPS is 7750 Hwy. AB East Columbia, MO 65201

From Columbia: Take Hwy. 63 south approximately 8 miles to Deer Park. Turn left on to Hwy AB. Go east 1.5 miles to Sho-Me Farms on right

From Jefferson City: At intersection of Hwy 54 & Hwy 63 take Hwy 63 north approximately 20 miles to Deer Park. Turn right on Hwy AB. Go east 1.5 miles to Sho-Me Farms on right.

**HOTEL ACCOMMODATIONS**

- Super 8, 573.474.8307 .....Columbia, MO (I-70, Exit 131)
- Hilton Garden Inn, 573.814.5464 .....3300 Vandiver Dr., Columbia, MO
- Howard Johnson, 573.474.6161 .....3100 I-70 Dr. SE, Columbia, MO

**SALE ORDER & SUPPLEMENTAL INFORMATION** - Sale order and supplemental sheet information will be posted Friday afternoon, November 1st on [www.rrmktg.com](http://www.rrmktg.com).

**ANNOUNCEMENTS** - Announcements at the sale by the owners, auctioneers or sale management will take precedence over statements in the sale catalog.

**TRUCKING** - Will be available on site to haul any purchases out the day of the sale. To make prior arrangements feel free to call R&R Marketing Co. at 615.330.2735 and we will make your buying easy and accommodating.

**TERMS & CONDITIONS & INSURANCE** - Terms of the sale are cash unless satisfactory credit arrangements have been made prior to the sale. A representative will be on hand sale day if your wishes are to insure your purchases. Please note: The sale manager is only an agent for the seller and has no responsibility other than those involved in conducting the sale. All persons who attend the sale do so at their own risk. Neither the sale manager nor Wies Limousin Ranch assume liability, legal or otherwise for, any accidents which may occur.

**PAYMENT** - All cattle must be paid for immediately following the conclusion of the sale. R&R Marketing Company will now be accepting credit cards the day of the sale.



**SALE CONSULTANT** - GRASSROOTS, Mark Smith, 515.965.1458 • cell: 515.229.5227

**SALE MANAGEMENT** -

R&R MARKETING COMPANY

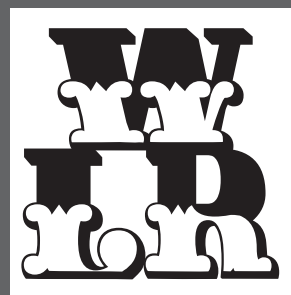
**Randy Ratliff**, 615.330.2735  
 PO Box 281677, Nashville, TN 37228  
[Randy@RRmktg.com](mailto:Randy@RRmktg.com) • [www.rrmktg.com](http://www.rrmktg.com)



(L#2845)

**SELLING 43.5 Registered Purebred & Lim-Flex**

- 1 Pick of the Fall Calf Crop from Wies Limousin
  - 2.5 Donors
  - 18 Open Show Heifers
- 1/2 Red Angus Donor Prospects
  - 5 Herd Sire Prospects
  - 11 Bred Females
  - 67 Embryos



**WIES LIMOUSIN RANCH**

103 Harris School Rd., Wellsville, MO 63384  
 Bob & Euvonne Wies  
 Mike & Heather Henderson, Mgrs.  
 573.684.2773  
[www.wieslimousin.com](http://www.wieslimousin.com)





Wies Limousin )

# Pick of the Fall Calf Crop



(WLR Tainted Love 746X

- Owned with Edwards Land & Cattle Co., Beulaville, NC & Heart Felt Farms, Gettysburg, PA
- MOE Gold Medal Show Heifer of the Year
- 2010 Missouri State Fair & American Royal Reserve Division
- 2010 North American & 2011 NWSS Reserve Grand Champion Female
- 2011 Missouri State Fair Field Day & NAILE Grand Champion Female
- 2011 Missouri State Fair & American Royal Reserve Grand Champion Female
- 2012 NWSS Reserve Division Champion
- 2012 FWSS & Missouri State Fair Division Champion

AUTO Rebeca 292S )



(WLR Ugly Betty 432U

Buyer's will have a chance to choose from progeny from these breed greats that proudly represent Wies Limousin Ranch; Select from 70+ calves from our top shelf genetics bulls and heifers.

Can pick your favorite by March 15, 2014.

50% down and 50% at selection.

## lot 1A **WLR Tainted Love 746X**

PB Limousin (100) Cow DP Red 04.05.10 BJLR 746Z NPF 1958572

WULFS REALTOR 1503R HUNT MR JOCK 44J  
**WULFS URBAN COWBOY 2149U** WULFS LENA 1503L  
 WULFS MEADOW GRASS 2149M WULFS GOLIATH 2453G  
 MISS WULFETTE 9062J  
 GPPF BLAQUE RULON BLACK DIAMOND  
**MAGS PHANTOMS PRIZE** QUAIL RUN RAMONA BP  
 ALCM KOOL TUNES EXLR DAKOTA 353G  
 NP ERROLLINE 250E

	CED	BW	WW	YW	MA	CEM	SC	ST	DOC	CW	RE	YG	MS	SMTI
EPDs	6	2.3	59	102	17	4	0.3	-	18	34	0.85	-0.22	-0.11	45
	30	38	28	23	19	28	20	-	P	24	23	23	23	

## lot 1B **AUTO Rebeca 292S**

Lim-Flex (75) Cow HP HB 10.03.06 AUTO 292S LFF 1860664

GPPF BLAQUE RULON BLACK DIAMOND  
**LESF ASPHALT 9N** QUAIL RUN RAMONA BP  
 GPPF EXTRA SWEET ELITE LKCC TOMAHAWKS TOUCHDOWN  
 HC EXTRAORDINARY HCR 61X  
 BR MIDLAND TWIN VALLEY PRECISIONE161  
**EXLR REBECA 1019P** BR ROYAL LASS 7036-19  
 EXLR REBECA 614H WULFS DAWSON 4421D  
 LVLS REBECA

	CED	BW	WW	YW	MA	CEM	SC	ST	DOC	CW	RE	YG	MS	SMTI
EPDs	6	1.2	48	95	24	-1	0.8	21	9	-2	0.04	0.05	0.11	48
	47	55	43	30	22	46	23	P	27	48	44	44	44	

## lot 1C **WLR Ugly Betty 432U**

PB Limousin (88) Cow HP Black 03.29.12 BJLR 432U NPF 1900655

JCL LODESTAR 27L HUNTS HI-LITER 245G  
**MAGS SHYLLO** LOGAN'S CHEERLEADER 280G  
 MAGS PHYLLO BR MIDLAND  
 MISS WULFETTE 6230F  
 EF MAIN STAY 541M AUTO BLACK DAKOTA 129J  
**JCL HEIDI 2S** EXLR 231J  
 DVFC HEIDI 302K DVFC COOKIE MONSTER 108H  
 MISS ATLANTIC SLBO 6Y

	CED	BW	WW	YW	MA	CEM	SC	ST	DOC	CW	RE	YG	MS	SMTI
EPDs	8	0.3	31	67	20	5	0.1	-	15	11	0.21	0.05	0.07	41
	28	29	21	15	12	27	P	-	P	40	36	36	35	

**MAGS WLR Usual Suspect**  
 Breeds Triple Crown Winning Bull



### **AUTO Bette**

- 2012 National Junior Heifer Show Grand Champion Lim-Flex Female
- 2012 All-American Futurity Reserve Division Champion
- Purchased as an embryo lot in the Wies Maternal Magic 3 Sale by Pinegar Limousin, Springfield, MO



- 2011 NAILE Reserve Division Champion
- 2012 NWSS Division Champion
- 2012 Missouri AGR Show Grand Champion Limousin Female
- 2012 Eastern Regional Junior Show Grand Champion Female
- 2012 Southeast Summer Classic Reserve Division Champion
- 2012 Heartland Regional Junior Show Division Champion
- 2012 National Junior Heifer Show Reserve Grand Champion Female
- 2012 All-American Limousin Futurity Division Champion
- 2012 Ozark Empire Fair Grand Champion Female
- 2012 Missouri State Fair Grand Champion Female
- 2012 American Royal Open Show Reserve Grand Champion Female
- 2012 NAILE Junior Show Grand Champion Female
- 2012 NAILE Open Show Reserve Grand Champion Female
- 2013 FWSS Open Show Grand Champion

### **WLR Prada**

Just a few samples of the great ones who proudly carry the WLR prefix. They have dominated the show ring in the past few years.

# CHAMPIONS

### **WLR Euphoria**

- 2013 NWSS Junior Show Grand Champion Female
- 2013 FWSS Open Show Grand Champion Female
- 2012 American Royal Open Show Grand Champion Female
- Owned by Tanner Walden, Tonganoxie



### **WLR Reload**

- 2013 All-American Futurity Grand Champion Bull
- Owned with Edwards Land & Cattle Co., Beulaville, NC

### **AUTO Grand Am**

- 2012 All-American Futurity Grand Champion Bull
- Purchased as an embryo lot in the Wies Maternal Magic 3 Sale
- Owned by Pinegar Limousin, Springfield, MO





Sells open and ready for immediate reproduction.

Pinegar Limousin, Springfield, MO maintains 50% embryo interest and full possession of the cow.

Featured in this sale will be the selling of half interest in AUTO Rebeca 292S. She just happens to be one of the breed's all time great producers. She has earned that right because of how well her progeny have done in the show ring and then in the pasture. Listed here are only a select few and what they have accomplished in the Pinegar and Wies program.

Consigned by Wies Limousin, Wellsville, MO

Sons and daughters of this proven, powerful donor.

# PROGENY



## lot 2 AUTO Rebeca 292S

Lim-Flex (75) Cow HP HB 10.03.06 AUTO 292S LFF 1860664  
 GPFF BLAQUE RULON BLACK DIAMOND  
**LESF ASPHALT 9N** QUAIL RUN RAMONA BP  
 GPFF EXTRA SWEET ELITE LKCC TOMAHAWKS TOUCHDOWN  
 HC EXTRAORDINARY HCR 61X  
 BR MIDLAND TWIN VALLEY PRECISIONE161  
**EXLR REBECA 1019P** BR ROYAL LASS 7036-19  
 EXLR REBECA 614H WULFS DAWSON 4421D  
 LVLS REBECA

	CED	BW	WW	YW	MA	CEM	SC	ST	DOC	CW	RE	YG	MS	SMTI
EPDs	6	1.2	48	95	24	-1	0.8	21	9	-2	0.04	0.05	0.11	48
	47	55	43	30	22	46	23	P	27	48	44	44	44	

## lot 2A NINE Embryos

87.5% Limousin HP HB  
 DHVO DEUCE 132R GPFF BLAQUE RULON  
**MAGS XYLOPOLIST** AMY JO DHAN 20L  
 MAGS STRAWBERRY EXLR NEW GENERATION 071M  
 MAGS FRUITFUL 487M  
 LESF ASPHALT 9N GPFF BLAQUE RULON  
**AUTO REBECA 292S** GPFF EXTRA SWEET ELITE  
 EXLR REBECA 1019P BR MIDLAND  
 EXLR REBECA 614H

	CED	BW	WW	YW	MA	CEM	SC	ST	DOC	CW	RE	YG	MS	SMTI
EPDs	8	1.7	49	97	26	0	0.7	11	16	23	0.35	0.03	0.04	46

Consigned by Wies Limousin, Wellsville, MO

## lot B SEVEN Embryos

59% Lim-Flex HP HB  
 BASIN FRANCHISE P142 C A FUTURE DIRECTION 5321  
**LH U HAUL 135U** BASIN CHLOE 812L  
 EXLR DUCHESS 7129R EXLR NEW GENERATION 071M  
 EXLR 199H  
 LESF ASPHALT 9N GPFF BLAQUE RULON  
**AUTO REBECA 292S** GPFF EXTRA SWEET ELITE  
 EXLR REBECA 1019P BR MIDLAND  
 EXLR REBECA 614H

	CED	BW	WW	YW	MA	CEM	SC	ST	DOC	CW	RE	YG	MS	SMTI
EPDs	8	-0.2	56	109	31	1	0.5	11	11	38	-0.01	0.32	0.33	57

Consigned by Wies Limousin, Wellsville, MO



AUTO Pia 245X



AUTO Show Off 233X



WLR Euphoria



WLR Prada 865Y



AUTO Will Power 160X



AUTO Cruze 132X



# Open Heifers )



— (WRUgly Betty 432U

*Full sib to Lot 3.*



# Full Sib to WLR Ugly Betty



lot **3 WLR Zasha**  
 PB Limousin (88) Cow DP Black 10.12.12 BJLR 2Z NPF 2035435  
 JCL LODESTAR 27L HUNTS HI-LITER 245G  
**MAGS SHYLLO** LOGAN'S CHEERLEADER 280G  
 MAGS PHYLLO BR MIDLAND  
 EF MAIN STAY 541M MISS WULFETTE 6230F  
**JCL HEIDI 2S** AUTO BLACK DAKOTA 129J  
 DVFC HEIDI 302K EXLR 231J  
 DVFC COOKIE MONSTER 108H  
 MISS ATLANTIC SLBO 6Y

	CED	BW	WW	YW	MA	CEM	SC	ST	DOC	CW	RE	YG	MS	SMTI
EPDs	9	1.0	38	78	20	7	0.1	-	15	11	0.21	0.07	0.07	44
	P	P+	P	P	P	P	P	-	P	P	P	P	P	

2Z is a full sister to WLR Ugly Betty. She is one of the premier donors the proudly represents Wies Limousin. This young heifer is sired by the Wies herd sire MAGS Shyllo, the leading son of JCL Lodestar 27L from MAGS Phyllo. JCL Heidi 2S is her dam and is the purebred daughter of the once national champion EF Main Stay 541M from DVFC Heidi 302K. 2Z represents a pedigree that has worked in this show ring and has been proven in the market place. This young heifer will forever be a full sibling to the famed WLR Ugly Betty.

Consigned by Wies Limousin, Wellsville, MO

LOT 3 - WLR Zasha

# Open Heifers )



***LOT 4A - WLR Heart of Glass***





# Selling Choices of 3 Full Sisters

The buyer will have a chance to select from these three full siblings. They are sired by the popular A.I. bull MAGS Yip 144Y. He is the son of MAGS The General and from a daughter of the multiple trait leading sire, JCL Lodestar 27L. He was a top selling bull from Magness Land & Cattle and was purchased by Braun Limousin in Kansas. These three heifers will be some of the very first ones of his to sell and we really think you will be impressed. They are from the Magness Land & Cattle and Wies Limousin donor WLR Ugly Betty. She has proven again and again what a great job she can do in production. It is not hard to create ones from a female that is so well made and so desirable in her conformation. Selling will be these three purebred show heifer prospects that firmly believe will have a bright future either in the show ring or in the pasture.

Consigned by Wies Limousin, Wellsville, MO



**LOT 4A - WLR Call Me**

**lot 4A WLR Heart of Glass**  
 PB Limousin Cow HP DB 03.24.13 BJLR 12A NPF Pending

MAGS THE GENERAL AUTO DOLLAR GENERAL 122R  
**MAGS YIP** EXLR LUVLY 821M  
 AUTO CARMINDA 656S JCL LODESTAR 27L  
 AUTO CARMINDA 872P  
 MAGS SHYLLO JCL LODESTAR 27L  
**WLR UGLY BETTY 432U** MAGS PHYLLO  
 JCL HEIDI 2S EF MAIN STAY 541M  
 DVFC HEIDI 302K

	CED	BW	WW	YW	MA	CEM	SC	ST	DOC	CW	RE	YG	MS	SMTI
EPDs	11	1.1	47	91	24	8	0.3	-	19	27	33	0.05	0.05	45

**lot 4B WLR Call Me**  
 PB Limousin Cow HP DB 04.02.13 BJLR 18A NPF Pending

MAGS THE GENERAL AUTO DOLLAR GENERAL 122R  
**MAGS YIP** EXLR LUVLY 821M  
 AUTO CARMINDA 656S JCL LODESTAR 27L  
 AUTO CARMINDA 872P  
 MAGS SHYLLO JCL LODESTAR 27L  
**WLR UGLY BETTY 432U** MAGS PHYLLO  
 JCL HEIDI 2S EF MAIN STAY 541M  
 DVFC HEIDI 302K

	CED	BW	WW	YW	MA	CEM	SC	ST	DOC	CW	RE	YG	MS	SMTI
EPDs	11	1.1	47	91	24	8	0.3	-	19	27	33	0.05	0.05	45

**lot 4C WLR Rapture**  
 PB Limousin Cow HP DB 04.03.13 BJLR 28A NPF Pending

MAGS THE GENERAL AUTO DOLLAR GENERAL 122R  
**MAGS YIP** EXLR LUVLY 821M  
 AUTO CARMINDA 656S JCL LODESTAR 27L  
 AUTO CARMINDA 872P  
 MAGS SHYLLO JCL LODESTAR 27L  
**WLR UGLY BETTY 432U** MAGS PHYLLO  
 JCL HEIDI 2S EF MAIN STAY 541M  
 DVFC HEIDI 302K

	CED	BW	WW	YW	MA	CEM	SC	ST	DOC	CW	RE	YG	MS	SMTI
EPDs	11	1.1	47	91	24	8	0.3	-	19	27	33	0.05	0.05	45

# Open Heifers )



## lot 5 **WLR Jagged Little Pill**

Lim-Flex (48) Cow DP DB 03.04.13 BJLR 07A LFF 2035533  
 BT CROSSOVER 758N C A FUTURE DIRECTION 5321  
**MAGS WINSTON** BT ROYAL PRIDE 237G  
 MAGS STRAWBERRY EXLR NEW GENERATION 071M  
 MAGS FRUITFUL 487M  
 LH U HAUL 135U BASIN FRANCHISE P142  
**MAGS YEAST** EXLR DUCHESS 7129R  
 MAGS PHYLLLO BR MIDLAND  
 MISS WULFETTE 6230F

	CED	BW	WW	YW	MA	CEM	SC	ST	DOC	CW	RE	YG	MS	SMTI
EPDs	14	-0.7	54	111	31	4	-0.1	-	12	46	-0.23	0.47	0.56	63
	P	P	P	P	P	P	P	-	P	P	P	P	P	

This 48.3% Lim-Flex heifer is one big numbered brood cow prospect from the heart of the Wies Limousin program. She is sired by the now deceased and big numbered MAGS Winston. She is from a daughter of LH U Haul 135U and from the Wies donor MAGS Phyllo. This young heifer has a breed leading set of numbers with a -0.7 for birth, 111 for yearling weight and 31 for milk. She is one of the highest marbling females in the offering with a .56 for marbling and 63 for MTI. This female offers a breed leading pedigree with a superb number package.

Consigned by Wies Limousin, Wellsville, MO



## lot 6 **WLR Lip Balm**

Lim-Flex (50) Cow DP Black 03.12.13 BJLR 10A LFF Pending  
 GAMBLES HOT ROD FAMOUS 7001  
**SILVEIRAS EL CAPITAN 6510** CHAMPION HILL LADY 703  
 SILVEIRAS ELBA 2520 TWIN VALLEY PRECISION E161  
 D A R ELBA 55  
 MAGSWL USUAL SUSPECT 538U MAGS SASQUATCH  
**WLR XAVIERA** MAGS PHANTOMS PRIZE  
 JB'S ALLISON 1G JCL BLACK OUT  
 ACCL POLLED KATY 23A

	CED	BW	WW	YW	MA	CEM	SC	ST	DOC	CW	RE	YG	MS	SMTI
EPDs	7	2.3	52	100	20	8	0.2	-	6	26	0.52	0.10	-0.01	-
	-	-	-	-	-	-	-	-	-	-	-	-	-	-

This young show heifer is sired by the popular Angus show champion, Silveiras El Capitan 6510. He is a son of Gambles Hot Rod from a daughter of Twin Valley Precision E161. This heifers dam is a red and double polled daughter of MAGS WLR Usual Suspect, the breed's Triple Crown Winning Bull for Wies and Magness. This fancy made show heifer prospect represents a unique and very prominent pedigree to the Lim-Flex breed. We are certain you will find this heifer to be every bit and more of what we are describing.

Consigned by Wies Limousin, Wellsville, MO



## lot 7 **WLR Date Night**

Lim-Flex (75) Cow DP Black 03.25.13 BJLR 21A LFF Pending  
 MAGS SASQUATCH EXLR NEW GENERATION 071M  
**MAGS WL USUAL SUSPECT 538U** MAGS FRUITFUL 487M  
 MAGS PHANTOMS PRIZE GPFF BLAQUE RULON  
 ALCM KOOL TUNES  
 MYTTY IN FOCUS S A F FOCUS OF E R  
**EF UNHEARD OF** MYTTY COUNTESS 906  
 MAGS MANUELA EXLR LIMITED EDITION 765J  
 AUTO CITY NIGHTS 214H

	CED	BW	WW	YW	MA	CEM	SC	ST	DOC	CW	RE	YG	MS	SMTI
EPDs	11	0.6	51	96	27	6	0.3	8	14	25	0.13	0.16	0.20	52
	-	-	-	-	-	-	-	-	-	-	-	-	-	-

Here is one fancy made and very attractive daughter of the once Triple Crown Winning bull, MAGS WLR Usual Suspect. His progeny are big boned, big footed, sound in their structure and very eye appealing. This young 75% Lim-Flex heifer is from the now deceased but once big time Etherton Farms and Wies donor, EF Unheard Of. She was a daughter of MYTTY In Focus and from the famed Sugar Bush donor MAGS Manuela 662M. This young heifer is bred in the purple and represents a breed leading pedigree with the strength in numbers.

Consigned by Wies Limousin, Wellsville, MO



lot **8** **WLR Zelma**

Lim-Flex (63) Cow DP HB 10.25.12 BJLR 289Z LFF 2035438

JCL LODESTAR 27L  
**MAGS SHYLLO**  
 MAGS PHYLLO  
 TNUH BLUE PRINT 245H  
**BOHI RASBERRY 289R**  
 EXAR LASS 2454  
 HUNTS HI-LITER 245G  
 LOGAN'S CHEERLEADER 280G  
 BR MIDLAND  
 MISS WULFETTE 6230F  
 WADDLES COBALT 3106  
 TNUH MISS C245  
 BON VIEW NEW DESIGN 1407



	CED	BW	WW	YW	MA	CEM	SC	ST	DOC	CW	RE	YG	MS	SMTI
<b>EPDs</b>	9	0.5	49	94	26	3	0.5	-	-	28	-0.08	0.33	0.32	54
	P	P+	P	P	P	P	P	-	-	P	P	P	P	

WLR Zelma is a 62.5% Lim-Flex daughter of MAGS Shyllo, a son of JCL Lodestar 27L from the BR Midland daughter and top Magness donor MAGS Phyllo. This double polled, homozygous black heifer is from the TNUH Blue Print daughter that goes back to the Angus sire Bon View New Design 1407. This heifer posts a 0.5 for birth, 94 for yearling weight, 26 for milk and .32 for marbling.

Consigned by Wies Limousin, Wellsville, MO

lot **9** **WLR Collective Soul**

Lim-Flex (50) Cow HP DB 09.18.12 BJLR 210Z LFF 2027479

BC 7022 RAVEN 7965  
**LIMESTONE DARKHORSE U322**  
 PAF TRIDGE 5768  
 AUTO BLACK DAKOTA 129J  
**MAGS NIGHT AMBUSH**  
 MISS WULFETTE 6230F  
 B C MARATHON 7022  
 O C C BLACKBIRD 796F  
 PAF 741C 0137  
 P A F MAX TRIDGE 8694  
 EXLR DAKOTA 353G  
 DFCL JET SET BPC 34Y  
 WULFS QUARTERBACK 4222B  
 MISS WOLFETTE 0278Y



	CED	BW	WW	YW	MA	CEM	SC	ST	DOC	CW	RE	YG	MS	SMTI
<b>EPDs</b>	5	2.6	54	104	28	2	-	-	-	38	0.00	0.27	0.23	53
	P	36	27	23	17	P	-	-	-	P	P	P	P	

Homozygous polled, double black and a strong 50% Lim-Flex heifer from Wies Limousin is WLR Collective Soul. She is sired by the Angus sire Limestone Darkhorse U322 and goes back to the top donor MAGS Night Ambush. Ambush is the dam of many top progeny in our breed with the most noted being WLR Direct Hit. This young heifer posts a 104 for yearling weight, 28 for milk, .23 for marbling and 53 for MTI. We love the unique profile, straight lines and excellent structure found within this appealing heifer.

Consigned by Wies Limousin, Wellsville, MO

lot **10** **WLR Zoey**

Lim-Flex (50) Cow HP HB 10.01.12 BJLR 932Z LFF 2027490

S A V 8180 TRAVELER 004  
**S A V NET WORTH 4200**  
 S A V MAY 2410  
 GPFF BLAQUE RULON  
**WLR ROMANCE 033R**  
 KEHG JULIET 10H  
 SITZ TRAVELER 8180  
 BOYD FOREVER LADY 8003  
 SAF 598 BANDO 5175  
 S A V MAY 6269  
 BLACK DIAMOND  
 QUAIL RUN RAMONA BP  
 WULFS RAMBLER 8400X  
 TLTL POLLED PEACHES 007B



	CED	BW	WW	YW	MA	CEM	SC	ST	DOC	CW	RE	YG	MS	SMTI
<b>EPDs</b>	6	1.3	53	104	30	3	0.2	-	5	32	0.02	0.31	0.18	50
	P	33	23	20	20	P	P	-	P	P	P	P	P	

This 50% Lim-Flex heifer is sired by the Angus sire SAV Net Worth 4200 and is from the elite and proven Wies donor WLR Romance 033R. This heifer is full sibling to the up and coming elite herd sire prospect, WLR The Goose owned by Wies Limousin and Hearstone Farm of Urbana, OH. The genetics that represent this heifer are tried and proven. A full sister in blood was a top selling female at the recent P Bar S Ranch sale and another is the leading donor for JCL Land & Cattle Co. which raised the grand champion female of the 2013 National Junior Heifer Show and most recently the Tulsa State Fair for Linden Linthicum. The future of this young heifer is bright so buy with confidence.

Consigned by Wies Limousin, Wellsville, MO

Here are three of the finest ever created at Salt Creek Cattle Co. They are the very first weaned calves to be sold from the \$100,000 valued sire EBFL Ypsilanti 420Y. He is the leading sire for Sugar Bush Cattle, Stowers Limousin and Milam Cattle Co. He is the big footed and soggy middle son of TC Aberdeen 759 from the once National Champion Female MAGS Ramada. He has earned a 105 for yearling weight, 44 for milk, .46 for marbling and 61 for MTI. This flush of calves are absolutely amazing heifers. Their dam is KYLD Blackbird 003X, a daughter of KRVN Naskar 013N and from the EXLR Blackbird 7182R donor. She was a very successful show heifer for Heart Felt Farms. Salt Creek Cattle paid \$8100 for half in the Heart Felt sale and after the sale she was named the Supreme Champion Heifer of the Keystone International Show. These calves stand on a solid foundation, are very big middle and extremely pretty to look at. We just know they have a bright future and as you will see on sale day they certainly stand out in a crowd.

Consigned by Salt Creek Cattle & Genetics, LLC., Amber, OK



## lot 11 SALT Crk Accuracy 027A

Lim-Flex (68) Cow DP DB 03.27.13 STSF 027A LFF Pending

TC ABERDEEN 759  
EBFL YPSILANTI 420Y  
MAGS RAMADA

TC ABERDEEN 759  
TC BLACKBIRD 4034  
TNUH BLUE PRINT 245H  
MAGS MANDA  
GPF BLAQUE RULON  
WL JU JU GAL 149J  
EF MAIN STAY 541M  
EXLR BLACKBIRD 5109J

KRVN NASKAR 013N  
KYLD BLACKBIRD 003X  
EXLR BLACKBIRD 7182R

	CED	BW	WW	YW	MA	CEM	SC	ST	DOC	CW	RE	YG	MS	SMTI
EPDs	8	0.4	49	93	32	3	0.5	10	11	24	0.24	0.26	0.18	50



## lot 12 SALT Crk Accumulate 028A

Lim-Flex (68) Cow DP DB 03.27.13 STSF 028A LFF Pending

TC ABERDEEN 759  
EBFL YPSILANTI 420Y  
MAGS RAMADA

TC ABERDEEN 759  
TC BLACKBIRD 4034  
TNUH BLUE PRINT 245H  
MAGS MANDA  
GPF BLAQUE RULON  
WL JU JU GAL 149J  
EF MAIN STAY 541M  
EXLR BLACKBIRD 5109J

KRVN NASKAR 013N  
KYLD BLACKBIRD 003X  
EXLR BLACKBIRD 7182R

	CED	BW	WW	YW	MA	CEM	SC	ST	DOC	CW	RE	YG	MS	SMTI
EPDs	8	0.4	49	93	32	3	0.5	10	11	24	0.24	0.26	0.18	50



## lot 13 SALT Crk Accrue 042A

Lim-Flex (68) Cow DP DB 04.08.13 STSF 042A LFF Pending

TC ABERDEEN 759  
EBFL YPSILANTI 420Y  
MAGS RAMADA

TC ABERDEEN 759  
TC BLACKBIRD 4034  
TNUH BLUE PRINT 245H  
MAGS MANDA  
GPF BLAQUE RULON  
WL JU JU GAL 149J  
EF MAIN STAY 541M  
EXLR BLACKBIRD 5109J

KRVN NASKAR 013N  
KYLD BLACKBIRD 003X  
EXLR BLACKBIRD 7182R

	CED	BW	WW	YW	MA	CEM	SC	ST	DOC	CW	RE	YG	MS	SMTI
EPDs	8	0.4	49	93	32	3	0.5	10	11	24	0.24	0.26	0.18	50





**LOT 14 - SALT Crk Alani 308A**



**LOT 15 - SALT Crk Apple Red 157A**

**lot 14 SALT Crk Alani 308A**

Lim-Flex (56) Cow DP HB 03.08.13 STSF 308A LFF Pending

RITO 112 OF 2536 RITO 616  
**MAGS XUKALANI**  
 MAGS UKALANI

DHVO DEUCE 132R  
**HBRL YELLOW GEM 108Y**  
 WLR WILONA 625W

RITO 616 OF 4B20 6807  
 G A R PRECISION 2536  
 BASIN FRANCHISE P142  
 CARROUSELS PINA COLADA  
 GPFF BLAQUE RULON  
 AMY JO DHAN 20L  
 LH RODEMASTER 338R  
 CARROUSELS MY OH MY 2232M

	CED	BW	WW	YW	MA	CEM	SC	ST	DOC	CW	RE	YG	MS	SMTI
EPDs	9	-0.2	58	110	28	2	0.7	-	17	48	-0.04	0.40	0.29	55

Take a look at this fancy show heifer! She is near perfect and comes from the heart of the Salt Creek Cattle program. She is sired by the leading calving ease and once valued \$28,000 half interest sire, MAGS Xukalani. He is now working for Linhart, Magness and Salt Creek. He is a son of RITO 112 of 2536 RITO 616 and from a daughter of Basin Franchise back to the famed Carrouseles Pina Colada. The genetics behind this female are top shelf and are some of the finest you can invest in. This heifer is extremely big numbered, very well made from the ground up and has the power, look and profile needed to work at any level.

Consigned by Salt Creek Cattle & Genetics, LLC., Amber, OK

**lot 15 SALT Crk Apple Red 157A**

PB Limousin Cow DP Red 04.10.13 STSF 157A NPF Pending

AUTO BLACK DAKOTA 129J  
**EF MAIN STAY 541M**  
 EXLR 231J

MAGS SASQUATCH  
**PBRS YESTERDAY 0157X**  
 LFL PLAYGIRL 31

EXLR DAKOTA 353G  
 DFCL JET SET BPC 34Y  
 WULFS GUARDIAN 5074G  
 EXLR LUVLY 081F  
 EXLR NEW GENERATION 071M  
 MAGS FRUITFUL 487M  
 LFL FIRST EDITION 1013L  
 LFL PLAYGIRL III

	CED	BW	WW	YW	MA	CEM	SC	ST	DOC	CW	RE	YG	MS	SMTI
EPDs	8	1.2	36	75	28	5	-0.02	7	19	-12	0.17	-0.01	-0.03	40

This apple red purebred Limousin show heifer is a top consignment from Salt Creek Cattle & Genetics. She is sired by the once national champion and now deceased EF Main Stay 541M. She is from a daughter of the once highly syndicated MAGS Sasquatch that is the leading sire for Council Family Limousin, Madisonville, TX and P Bar S Ranch, Sand Springs, OK. Her dam is also a daughter of the leading P Bar S donor LFL Playgirl, a daughter of LFL First Edition 1013L that stems from the prominent Lawrence Family Limousin. Take a close look at the structure, near perfect lines and balance that this red heifer has stacked in her favor.

Consigned by Salt Creek Cattle & Genetics, LLC, Amber, OK



LOT 16 - DBGR Windsong 222A



- MOE Gold Medal Show Heifer of the Year **WLR Tainted Love**
- 2010 Missouri State Fair & American Royal Reserve Division
- 2010 North American & 2011 NWSS Reserve Grand Champion Female
- 2011 Missouri State Fair Field Day & NAILE Grand Champion Female
- 2011 Missouri State Fair & American Royal Reserve Grand Champion Female
- 2012 NWSS Reserve Division Champion
- 2012 FWSS & Missouri State Fair Division Champion



LOT 17 - DBGR Crazy Girl 301A

lot **16** **DBGR Windsong 222Z**

PB Limousin (100) Cow HP DB 09.04.12 DBGR 222Z NPF 2028939

WULFS REALTOR 1503R HUNT MR JOCK 44J  
**WULFS URBAN COWBOY 2149U** WULFS LENA 1503L  
 WULFS MEADOW GRASS 2149M WULFS GOLIATH 2453G  
 MISS WULFETTE 9062J  
 GPFf BLAQUE RULON BLACK DIAMOND  
**MAGS PHANTOMS PRIZE** QUAIL RUN RAMONA BP  
 ALCM KOOL TUNES EXLR DAKOTA 353G  
 NP ERROLLINE 250E

	CED	BW	WW	YW	MA	CEM	SC	ST	DOC	CW	RE	YG	MS	SMTI
EPDs	6	2.1	57	100	15	4	0.3	-	18	34	0.86	-0.24	-0.11	45
	P	35	31	23	15	P	P	-	P	P	P	P	P	P

Here is a black and homozygous polled open female that just happens to be a full sibling in blood to the ever-popular WLR Tainted Love. Tainted Love is the female that holds a special place in the hearts and minds of the owners Wies, Heart Felt and Edwards Land & Cattle Co.

DBGR Windsong 222Z is a result of the blending of some of the very finest in our breed with the sire of Wulf's Urban Cowboy and from the most noted donor MAGS Phantoms Prize. This young heifer is a maternal sibling to the Triple Crown Winning Bull, MAGS WLR Usual Suspect.

Consigned by Double B Grain Farm, McAlisterville, PA

lot **17** **DBGR Crazy Girl 301A**

Lim-Flex (50) Cow DP DB 03.12.13 DBGR 301A LFF 2035852

CONNEALY CONSENSUS MK ALLIANCE 6595 187  
**CONNEALY CONSENSUS 7229** BLINDA OF CONANGA 004  
 BLUE LILLY OF CONANGA 16 WOODHILL ADMIRAL 77K  
 LESF ASPHALT 9N BLUE CASH OF CONANGA 6020  
**TYEJ DB SERENITY** GPFf BLAQUE RULON  
 TYEJ DB SIZZLE GPFF EXTRA SWEET ELITE  
 EXLR GATEWAY 396K  
 MOSR SIZZLE 037K

	CED	BW	WW	YW	MA	CEM	SC	ST	DOC	CW	RE	YG	MS	SMTI
EPDs	8	1.1	58	103	26	-1	-	-	13	-10	0.04	0.00	-0.04	46
	P	P+	P+	P	P	P	-	-	P	P	P	P	P	P

Here is a very nice made black and homozygous polled open heifer from Double B Grain Farm. She is a daughter of Connealy Consensus 7229 from the famed and proven donor TYEJ DB Serenity. She is leading donor for Double B and Wies Limousin that has done an amazing job in siring show champion females in our breed. Her daughters by WLR Direct Hit have been some of the top show heifers in our breed. This young maternal sibling to those heifers has a 103 for yearling weight and 26 for milk.

Consigned by Double B Grain Farm, McAlisterville, PA



# Choice of Two Paternal Sisters

(Open Heifers

## lot 18 **MCBN Zaylee 273Z**

Lim-Flex (50) Cow HP HB 09.01.12 MCBN 273Z LFF 2031392

SITZ UPWARD 307R  
**EXAR UPSHOT 0562B**  
 EXAR BARBARA T020

JCL LODESTAR 27L  
**MAGS ROBERTA**  
 MAGS JODI

CONNELLY ONWARD  
 SITZ HENRIETTA PRIDE 81M  
 ISU IMAGING Q 9111  
 LCC MC HENRY BARBAR MG382  
 HUNTS HI-LITER 245G  
 LOGAN'S CHEERLEADER 280G  
 CHAZ FIRST CHOICE 6004F  
 SLVL SABLE COOKIE 381E

	CED	BW	WW	YW	MA	CEM	SC	ST	DOC	CW	RE	YG	MS	SMTI
EPDs	11	-0.2	59	122	35	7	-	-	-	55	0.08	0.28	0.86	78

Here is one of the biggest numbered Lim-Flex heifers to be offered for sale this fall. She is a daughter of EXAR Upshot 0562B, the big marbling and SB Angus sire and son of SITZ Upward. She is from the MAGS Roberta donor owned by Sugar Bush Cattle, Inc. and Brown Land & Cattle Co. MAGS Roberta is one of the highest marbling purebred cows of the entire breed. This young homozygous polled, homozygous black heifer not only has a very proven and prominent pedigree but a great profile and balance to her. She posts a breed leading set of EPD's across the board with a 122 for yearling weight, 35 for milk, .86 for marbling and 78 for MTI. All that above is to mention but we haven't started talking about her flawless profile and design. This is one great breeding piece and one top-notch donor in the near future.

Consigned by Wies Limousin, Wellsville, MO



## lot 19 **MCBN Blackbird Brown 284Z**

Lim-Flex (25) Cow HP HB 09.25.12 MCBN 284Z NPF 2028095

SITZ UPWARD 307R  
**EXAR UPSHOT 0562B**  
 EXAR BARBARA T020

LVLS TOP CRITERIA 8862P  
**LVLS MISS BLACKBIRD 111U**  
 FRENZEN BLACKBIRD M120

CONNELLY ONWARD  
 SITZ HENRIETTA PRIDE 81M  
 ISU IMAGING Q 9111  
 LCC MC HENRY BARBAR MG382  
 COLE WOLF HUNT  
 LVLS8862M  
 FRENZEN KEYSTONE K17  
 FRENZEN BLACKBIRD H115

	CED	BW	WW	YW	MA	CEM	SC	ST	DOC	CW	RE	YG	MS	SMTI
EPDs	11	-1.9	59	120	41	2	-	-	-	58	0.00	0.37	0.86	77

What a future donor cow in the making! After this young female has her first calf she will need to go into immediate embryo transfer. She is one of our breed's biggest numbered females. We appreciate her low birth of -1.9, 120 for yearling weight, 41 for milk, .86 for marbling and 77 for MTI. This young homozygous polled, homozygous black heifer is sired by the big numbered Angus sire EXAR Upshot 0562B. Her dam is the big league donor for Brown Land & Cattle Co., Diamond, MO, LVLS Miss Blackbird 111U. She is a 50% Lim-Flex daughter of the outcross sire LVLS Top Criteria. If you want a female to be a cornerstone of your program then consider this young heifer!

Consigned by Wies Limousin, Wellsville, MO



WINDO  
 & Friends  
 W W I L L U



**lot 20 WLR Wagon Wheel**  
 Lim-Flex (75) Bull HP Black 11.02.12 BJLR 95Z LFM 2036319

MAGS SASQUATCH  
**MAGSWL USUAL SUSPECT 538U**  
 MAGS PHANTOMS PRIZE  
 RADS BLACK PRODIGY  
**EXLR SCOTCH CAP 1009N**  
 EXAR SCOTCH CAP 1548

EXLR NEW GENERATION 071M  
 MAGS FRUITFUL 487M  
 GPFF BLAQUE RULON  
 ALCM KOOL TUNES  
 COLE FIRST DOWN 46D  
 RADS POLL BLACK POWDER I  
 BON VIEW NEW DESIGN 1407  
 EXAR SCOTCH CAP 9427

	CED	BW	WW	YW	MA	CEM	SC	ST	DOC	CW	RE	YG	MS	SMTI
<b>EPDs</b>	8	0.9	42	82	29	3	0.1	-	8	22	0.09	0.18	0.19	48
	P	P+	P	P	P	P	P	-	P	P	P	P	P	

Here is a big time herd sire prospect consigned by Wies and ready to be highlighted in someone's program. He is a 75% Lim-Flex black and homozygous polled beef bull that has so much going for him. He is sired by the Wies and Magness Triple Crown Winning bull, MAGS WLR Usual Suspect 538U. His dam is the Wies donor EXLR Scotch Cap 1009N, a daughter of RADS Black Prodigy from the Bon View New Design 1407 female, EXAR Scotch Cap 1548. This young bull is super big footed, very soft in his pasterns and extremely sound in his structure. We love his extra thickness, over all power and the mass that he has. He is solid in his number package and we think he will be a top herd sire for the new owner. BW: 79 lbs.

Consigned by Wies Limousin, Wellsville, MO



**lot 21 WLR Swagger 504Z**  
 Lim-Flex (50) Bull DP DB 10.04.12 BJLR 504Z LFM Pending

S A V 8180 TRAVELER 004  
**S A V NET WORTH 4200**  
 S A V MAY 2410  
 GPFF BLAQUE RULON  
**WLR ROMANCE 033R**  
 KEHG JULIET 10H

SITZ TRAVELER 8180  
 BOYD FOREVER LADY 8003  
 SAF 598 BANDO 5175  
 S A V MAY 6269  
 BLACK DIAMOND  
 QUAIL RUN RAMONA BP  
 WULFS RAMBLER 8400X  
 TLTL POLLED PEACHES 007B

	CED	BW	WW	YW	MA	CEM	SC	ST	DOC	CW	RE	YG	MS	SMTI
<b>EPDs</b>	6	1.2	53	103	30	3	0.2	11	5	32	0.02	0.31	0.18	50

This is one terrific herd sire prospect to come from the prominent Wies Limousin program. He represents a pedigree that as popular and proven as you can get in SAV Net Worth from the Rulon x KEHG Juliet 10H lineage. This young bull is a full sibling to the top selling female of the recent P Bar S Ranch sale, PBRS Your Addicting 8160U. Also a full sister is PBRS Unbelievable 8149U, the Linden Linthicum donor that raised the 2013 National Junior Show champion Bred and Owned and the grand champion of the All American Futurity show. This young bull calf has a world of notoriety stacked in his favor and we feel he will make a huge impact in any program. He is also a full sibling to the prominent young herd sire WLR The Goose that is owned with Wies and good friends at Hearthstone Farm, Urbana, OH.

Consigned by Wies Limousin, Wellsville, MO



**lot 22 WLR Night Watch 460Z**  
 Lim-Flex (50) Bull HP DB 10.02.12 BJLR 460Z LFM Pending

S A F CONNECTION  
**SYDGEN CC & 7**  
 SYDGEN FOREVER LADY 4087  
 GPFF BLAQUE RULON  
**MAGS PHANTOMS PRIZE**  
 ALCM KOOL TUNES

SVF GDAR 216 LTD  
 S A F ROYAL QUEEN 5084  
 SYDGEN 1407 CORONA 2016  
 S A F FOREVER LADY 8292  
 BLACK DIAMOND  
 QUAIL RUN RAMONA BP  
 EXLR DAKOTA 353G  
 NP ERROLLINE 250E

	CED	BW	WW	YW	MA	CEM	SC	ST	DOC	CW	RE	YG	MS	SMTI
<b>EPDs</b>	3	2.7	61	108	31	3	0.66	9	19	43	0.93	0.11	-0.12	23

Here is a maternal sibling to the Triple Crown Winning Bull, MAGS WLR Usual Suspect. This young bull is a 50% Lim-Flex homozygous polled, double black and sired by the Angus sire Syden CC & 7. His dam is one of the most proven donors of our entire breed and partnership donor for Wies and Magness, MAGS Phantoms Prize. She is a daughter of GPFF Blaques Rulon and is from the EXLR Dakota 353G daughter, ALCM Kool Tunes. This young Lim-Flex herd sire is a result of the blending of the bone, footsize, thickness and look of MAGS Phantom's Prize with the rib, volume and capacity of Syden CC & 7.

Consigned by Wies Limousin, Wellsville, MO





**LOT 23 - DBGR Smoking Gun 303A**



**LOT 24 - DBGR Winchester 226Z**

**lot 23 DBGR Smoking Gun 303A**

Lim-Flex (75) Bull HP HB 03.17.13 DBGR 303A LFM 2035853

JCL LODESTAR 27L HUNTS HI-LITER 245G  
**LH RODEMASTER 338R** LOGAN'S CHEERLEADER 280G  
 VERMILION E BLACKBIRD9546 VERMILION 31 STACLER 3491  
 CH ENV BLACKBIRD C5941  
 KRVN NASKAR 013N GPFF BLAQUE RULON  
**MAGS SONG PROMOTER** WL JU JU GAL 149J  
 MAGS PROMOTER 728P JCL LODESTAR 27L  
 MAGS LINDA 858L

	CED	BW	WW	YW	MA	CEM	SC	ST	DOC	CW	RE	YG	MS	SMTI
EPDs	12	-0.1	51	100	23	8	0.7	-	13	39	0.10	0.39	0.17	48
	P	P+	P	P	P	P	P	-	P	P	P	P	P	

This homozygous polled, homozygous black Lim-Flex bull is sired by LH Rodemaster 338Rd and out of a proven donor MAGS Song Promoter. 303A has a -0.1 birth weight EPD, 58 weaning and a 100 yearling weight EPD. In addition, he combines plenty of maternal strength with a .17 for marbling. This bull is deep in both his fore and rare rib, broody in his look and sound in his structure. BW: 88 lbs.

Consigned by Double B Grain Farm, McAlisterville, PA

**lot 24 DBGR Winchester 226Z**

Lim-Flex (50) Bull HP DB 09.08.12 DBGR 226Z LFM 2029244

BT CROSSOVER 758N C A FUTURE DIRECTION 5321  
**MAGS WINSTON** BT ROYAL PRIDE 237G  
 MAGS STRAWBERRY EXLR NEW GENERATION 071M  
 MAGS FRUITFUL 487M  
 G A R PREDESTINED B/R NEW DESIGN 036  
**MAGS UGLIES** G A R EXT 4206  
 MAGS RIO RITA JCL LODESTAR 27L  
 MAGS JODI

	CED	BW	WW	YW	MA	CEM	SC	ST	DOC	CW	RE	YG	MS	SMTI
EPDs	13	-0.3	57	115	29	6	-0.2	-	15	41	-0.19	0.49	0.55	63
	P	P	P	P	P	P	P	-	P	P	P	P	P	

Sired by MAGS Winston, this 50% Lim-Flex is homozygous polled and double black. His dam, MAGS Ugliers is sired by GAR Predestined and out of a JCL Lodestar 27L dam. This young prospect has a 13 for calving ease, a 115 yearling weight EPD, 29 for milk, .55 for marbling and a MTI of 63. In addition, he had an adjusted weaning weight of 785, yearling weight of 1158 and scrotal of 39.3. This is a very complete yearling bull that offers calving ease, performance and maternal traits in a stout made, well balanced package. BW: 90 lbs.; WW: 785 lbs.

Consigned by Double B Grain Farm, McAlisterville, PA

# Cow/Calf Pairs )



***morris***

**LOT 25 - WLR Wanton Lover 599W,**  
shown here as a yearling!

**lot 25 WLR Wanton Lover 599W**

Lim-Flex (75) Cow DP HB 04.19.09 BJLR 599W LFF 1936174

AUTO DOLLAR GENERAL 122R LVL5 SECRET WEAPON 4408K  
**MAGS TWAIN** AUTO KYRIA 232K  
 THOMAS PATRICIA 1911 GAR PRECISION 1680  
 THOMAS PATRICIA 1176  
 GPFF BLAQUE RULON BLACK DIAMOND  
**WLR REMARKABLE 103R** QUAIL RUN RAMONA BP  
 KEHG JULIET 10H WULFS RAMBLER 8400X  
 TLTL POLLED PEACHES 007B

	CED	BW	WW	YW	MA	CEM	SC	ST	DOC	CW	RE	YG	MS	SMTI
EPDs	4	3.1	64	111	29	3	0.4	-	6	52	0.43	0.19	0.15	53
	27	39	30	16	24	26	12	-	25	22	21	21	21	

Here is a featured donor cow that has been in production for CC's Delight Limousin, Jacksonville, MO and Wies Limousin, Wellsville, MO. She is the past successful show heifer WLR Wanton Lover 599W, a daughter of the big numbered MAGS Twain. Her dam is the WLR Remarkable 103R, a daughter of GPFF Blaque Rulon from the big time producer KEHG Juliet 10H. This homozygous black, polled 75% Lim-Flex female has earned a 64 for weaning weight, 111 for yearling weight, 29 for milk, .43 for ribeye and .15 for marbling. She sells with her young heifer at side sired by the big numbered MAGS Y-Axis 3874Y.

Consigned by CC's Delight Limousin, Jacksonville, MO and Wies Limousin, Wellsville, MO

**lot 25A WLR Ariel**

Lim-Flex (63) Cow DP HB 09.25.13 BJLR 599A LFF Pending

**MAGS Y-AXIS**

TC ABERDEEN 759  
 MAGS UAHUKA  
 MAGS TWAIN  
 WLR REMARKABLE 103R

**WLR WANTON LOVER 599W**

	CED	BW	WW	YW	MA	CEM	SC	ST	DOC	CW	RE	YG	MS	SMTI
EPDs	6	2.1	64	116	32	3	0.7	-	11	52	0.38	0.28	0.25	56
	-	-	-	-	-	-	-	-	-	-	-	-	-	-



# Featured Proven Donor Pairs



## DBGR Something Cool 124Y

- 2012 Missouri Junior Field Reserve Grand Champion Female
- 2012 Southeast Summer Classic Division Champion
- 2012 Missouri State Fair Division Champion
- Owned by Carly Henderson



## lot 26 MAGS Song Promoter

PB Limousin (100) Cow HP DB 03.18.06 MAGS 386S NPF 1846210

GPFF BLAQUE RULON BLACK DIAMOND  
 KRVN NASKAR 013N QUAIL RUN RAMONA BP  
 WL JU JU GAL 149J COLE FIRST DOWN 46D  
 CHR GOSSIP GAL  
 JCL LODESTAR 27L HUNTS HI-LITER 245G  
 MAGS PROMOTER 728P LOGAN'S CHEERLEADER 280G  
 MAGS LINDA 858L EXLR DAKOTA 353G  
 SSVL 151F

	CED	BW	WW	YW	MA	CEM	SC	ST	DOC	CW	RE	YG	MS	SMTI
EPDs	12	-1.1	37	78	13	7	0.7	23	13	8	0.29	0.09	-0.03	39
	21	36	25	21	18	20	16	P	P	41	38	38	37	

A.I. 8.12.13 to LH U Haul

MAGS Song Promoter has been a big time producing donor for Double B Grain Farm. She is the black and homozygous polled daughter of KRVN Naskar 013N from the donor MAGS Promoter 728P. She is massive in her design, full of rib and performance and very big footed and heavy boned. This female continues to amaze us with her producing ability. Her young heifer sired by DHVO Deuce was purchased by Carly Henderson, Wellsville, MO and was the '12 Missouri State Fair reserve grand champion, '12 Southeast Summer Classic division champion and '12 Missouri State Fair division champion. Her young daughter selling in this sale is sired by MAGS Winston is a highlight of this sale as well. MAGS Song Promoter sells bred to the big numbered LH U Haul for a spring calf.

## lot 26A DBGR Song Promoter 302A

Lim-Flex (75) Cow HP HB 03.14.13 DBGR 302A LFF 2034593

MAGS WINSTON

BT CROSSOVER 758N

MAGS STRAWBERRY

KRVN NASKAR 013N

MAGS SONG PROMOTER

MAGS PROMOTER 728P

	CED	BW	WW	YW	MA	CEM	SC	ST	DOC	CW	RE	YG	MS	SMTI
EPDs	15	-1.1	44	93	22	6	0.1	-	13	28	-0.05	0.32	0.31	52
	P	P+	P+	P	P	P	P	-	P	P	P	P	P	P

Here is DBGR Song Promoter 302A, a 75% Lim-Flex daughter of the now deceased and big numbered MAGS Winston. She is a daughter of the MAGS Song Promoter and represents that cow family extremely well. This young heifer has a -1.1 for birth, 93 for yearling weight, 22 for milk and .31 for marbling.

Consigned by Double B Grain Farm, McAlisterville, PA



*Wies Limousin is one of the longest running purebred Limousin firms in the entire breed. They want to thank you for your continued support over the years and show their appreciation for your support.*



**lot 27 LH Ya Gotta Luv It 122Y**  
 Lim-Flex (50) Cow HP HB 09.02.11 LCHA 122Y LFF 2002579  
 JCL LODESTAR 27L HUNTS HI-LITER 245G  
**LH RODEMASTER 338R** LOGAN'S CHEERLEADER 280G  
 VERMILION E BLACKBIRD9546 VERMILION 31 STACLER 3491  
 CH ENV BLACKBIRD C5941  
 DHVO TREY 133R GPF BLAQUE RULON  
**LH WAGONETTE 109W** AMY JO DHAN 20L  
 EXAR ENCHANTRESS 7358 EXAR NEW LOOK 2971  
 STEVENSON ENCHANTRESS 858

	CED	BW	WW	YW	MA	CEM	SC	ST	DOC	CW	RE	YG	MS	SMTI
EPDs	10	0.6	55	104	27	4	0.5	-	-	49	-0.17	0.56	0.36	55
	20	35	29	20	17	19	16	-	-	P	P	P	P	

Here is a young 50% Lim-Flex daughter of LH Rodemaster 338R that is from a daughter of DHVO Trey 133R. She is homozygous polled, homozygous black and very strong in her number package. She offers a low birth of 0.6 for birth, 104 for yearling weight, 27 for milk, .36 for marbling and 55 for MTI. She is moderate in her frame score and very sound in her structure from the ground up. She sells with her homozygous black, double polled bul calf sired by the once All-American Futurity Grand Champion bull, MAGS Xyloid 3712X.

Consigned by Wies Limousin, Wellsville, MO

**lot 27A WLR 122A**  
 Lim-Flex (63) Bull DP HB 09.15.13 BJLR 122A LFM Pending  
 MAGS XYLOID DHVO DEUCE 132R  
 BOHI RHONDA 314R  
 LH YA GOTTA LUV IT 122Y LH RODEMASTER 338R  
 LH WAGONETTE 109W

	CED	BW	WW	YW	MA	CEM	SC	ST	DOC	CW	RE	YG	MS	SMTI
EPDs	9	1.3	52	98	27	2	0.7	-	10	44	0.02	0.33	0.18	50

**lot 28 WLR Yevette**  
 PB Limousin (88) Cow DP DB 10.26.11 BJLR 117Y NPF 2035528  
 WULFS TITUS 2149T WULFS REALTOR 1503R  
**MAGS WIGGLER** WULFS MEADOW GRASS 2149M  
 MAGS SNICKERS BR MIDLAND  
 MAGS LADY ACE  
 FWLY BIG TIME GPF BLAQUE RULON  
**TMCK PRUDENCE 117U** CLLL BANANA CREAM PIE  
 LFRO PRUDENCE 489P COLE MAGNUM 15M  
 TUBB BROADWAY 865H

	CED	BW	WW	YW	MA	CEM	SC	ST	DOC	CW	RE	YG	MS	SMTI
EPDs	6	4.1	50	88	18	2	0.6	-	-	26	0.53	0.03	0.08	47
	P	P+	P	P	P	P	P	-	-	P	P	P	P	

Will calve by the sale to WLR Redman

Here is a purebred first calf heifer that is sired by MAGS Wiggler, a son of Wulf's Titus from the once \$20,000 half interest valued donor, MAGS Snickers. This young female is double polled, double black and sells bred carrying the service to the red, homozygous polled son of MAGS Winston from the dam of the once national champion, MAGS Woodstock.

Consigned by Wies Limousin, Wellsville, MO



lot **29** **RVF Worth Ur While 535Y**

Lim-Flex (50) Cow DP DB 03.20.11 JJKH 535Y LFF 1985814

S A V 8180 TRAVELER 004  
**S A V NET WORTH 4200**  
 S A V MAY 2410

NEW GENERATION MAN 219R  
**JJKH NEW NGM MISSY 432T**  
 JJKH NEW COOKIE 229N

SITZ TRAVELER 8180  
 BOYD FOREVER LADY 8003  
 SAF 598 BANDO 5175  
 S A V MAY 6269  
 EXLR NEW GENERATION 071M  
 OKF LAURA 225L  
 WCF COOKIE TIME  
 CC

	CED	BW	WW	YW	MA	CEM	SC	ST	DOC	CW	RE	YG	MS	SMTI
EPDs	7	0.9	43	90	29	4	0.0	-	-	-	-	-	-	0
	19	34	28	16	20	18	P	-	-	-	-	-	-	-

Here is a 50% Lim-Flex replacement sired by SAV Net Worth 4200. This two-year-old female exemplifies what a young cow should look like. In addition she has a balanced EPD portfolio, combining calving ease and growth, with a 29 milk EPD. 535Y is easy fleshing, deep sided, and has a super disposition. She sales with a stout bull calf sired by DHVO Deuce 132R.

Consigned by Riverside Valley Farm, Hohenwald, TN

lot **30** **RVF Inspiration 542Y**

PB Limousin (100) Cow DP Black 04.11.11 JJKH 542Y NPF 1986727

JCL LODESTAR 27L  
**WIN VUE LODESTAR HP 602**  
 MISS BWSG ELEANOR 86E

COSC PAPERBOY 478P  
**JJKH PAPER BEAUTY 404T**  
 COSC POCAHONTAS 401P

HUNTS HI-LITER 245G  
 LOGAN'S CHEERLEADER 280G  
 JCL BLACK OUT  
 MISS BWSG 43Y  
 COSC GRANVILLE 447G  
 MISS WULFETTE 8038H  
 JCL LODESTAR 27L  
 COSC INSPIRATION 300F

	CED	BW	WW	YW	MA	CEM	SC	ST	DOC	CW	RE	YG	MS	SMTI
EPDs	10	1.4	54	100	23	6	0.6	-	-	-	-	-	-	0
	16	32	26	11	11	15	9	-	-	-	-	-	-	-

Black and double polled is this purebred female out of a JCL Lodestar 27L sire. She has a 1.4 birth weight EPD, 54 weaning EPD, 100 yearling weight EPD and a 23 for milk. 542Y is thick ended, stout made and has plenty of eye appeal.

Consigned by Riverside Valley Farm, Hohenwald, TN

lot **3** **RVF Xtra Sassy 524X**

PB Limousin (100) Cow DP HB 10.16.10 JJKH 524X NPF 1974121

LVLS SECRET WEAPON 4408K  
**AUTO DOLLAR GENERAL 122R**  
 AUTO KYRIA 232K

WCF COOKIE TIME  
**JJKH NEW IDOL 226N**  
 JJKH FOXY LADY 609F

LVLS FARMER 4G  
 LVLS 408H  
 AUTO HACKETT 702H  
 WULFS HAPPINESS 8136H  
 SLVL CORL OREO COOKIE  
 WCF KATARINA  
 MASTER BWSG DEFENSE 145D  
 JJKH BLACK JEWEL 245D

	CED	BW	WW	YW	MA	CEM	SC	ST	DOC	CW	RE	YG	MS	SMTI
EPDs	10	0.6	48	85	33	9	0.3	-	-	-	-	-	-	0
	21	34	27	16	19	20	14	-	-	-	-	-	-	-

Due before the sale to Connealy Consensus.

This purebred female is sired by the multiple trait leading herd sire, AUTO Dollar General 122R. She is homozygous black and double polled. 524X is a three-year-old replacement that offers calving ease and performance with a 33 milk EPD. This moderate framed female is deep sided, square hipped and easy fleshing.

Consigned by Riverside Valley Farm, Hohenwald, TN

lot **29A** **JJKH 535A**

Lim-Flex (75) Bull DP DB 09.13.13 JJKH 535A LFM Pending

**DHVO DEUCE 132R**

**RVF WORTH UR WHILE 535Y**

GPFf BLAQUE RULON  
 AMY JO DHAN 20L  
 S A V NET WORTH 4200  
 JJKH NEW NGM MISSY 432T

	CED	BW	WW	YW	MA	CEM	SC	ST	DOC	CW	RE	YG	MS	SMTI
EPDs	7	1.6	57	101	27	1	0.7	12	14	36	0.48	-0.02	-0.06	24
	-	-	-	-	-	-	-	-	-	-	-	-	-	-

lot **30A** **JJKH 542A**

Lim-Flex (50) Bull DP DB 09.23.13 JJKH 542A LFM Pending

**CONNEALY CONSENSUS 7229**

**RVF INSPIRATION 542Y**

CONNEALY CONSENSUS  
 BLUE LILLY OF CONANGA 16  
 WIN VUE LODESTAR HP 602  
 JJKH PAPER BEAUTY 404T

	CED	BW	WW	YW	MA	CEM	SC	ST	DOC	CW	RE	YG	MS	SMTI
EPDs	10	-0.04	61	112	25	4	0.3	-	7	-7	-0.07	0.04	-0.01	25
	-	-	-	-	-	-	-	-	-	-	-	-	-	-





lot **32** **WLR Zelia**  
 PB Limousin (100) Cow DP Black 04.12.12 BJLR 697Z NPF 2035525

MAGS SASQUATCH  
**MAGSWL USUAL SUSPECT 538U**  
 MAGS PHANTOMS PRIZE

WLR SALIENT 149S  
**WLR WILLABELLA 679W**  
 WLR ROMANTIC 028R

EXLR NEW GENERATION 071M  
 MAGS FRUITFUL 487M  
 GPFF BLAQUE RULON  
 ALCM KOOL TUNES  
 KEYI NO DOWN 211N  
 JCL MISS LODESTAR 88N  
 GPFF BLAQUE RULON  
 KEHG JULIET 10H

	CED	BW	WW	YW	MA	CEM	SC	ST	DOC	CW	RE	YG	MS	SMTI
EPDs	7	2.6	48	87	21	4	-	-	-	-	-	-	-	0
	P	P+	P	P	P	P	-	-	-	-	-	-	-	

A.I. 5.23.13 to HBRL Solution; P.E. 6.01.13 to 7.25.13 to WLR Yuma.  
 Sired by the past national champion bull, MAGS WL Usual Suspect 538U is this black and double polled replacement female. WLR Zelia is big footed, heavy boned and fluid in her movement. In addition, she is feminine fronted, blending very nicely in her neck, shoulder and body. 697Z is long and level down her top and square in her hip.

Consigned by Wies Limousin, Wellsville, MO



lot **33** **WLR Zanette**  
 PB Limousin (88) Cow DP DB 04.10.12 BJLR 242Z NPF 2035522

JCL LODESTAR 27L  
**MAGS SHYLLO**  
 MAGS PHYLLO

WULFS QUARTERBACK 4222B  
**DESP 242M**  
 GEORGOUS GIRL

HUNTS HI-LITER 245G  
 LOGAN'S CHEERLEADER 280G  
 BR MIDLAND  
 MISS WULFETTE 6230F  
 LKCC TOMAHAWKS TOUCHDOWN  
 MISS WOLFETTE 4221S  
 SY POLLED 770W  
 ROTB'S MISS SHAGOLA

	CED	BW	WW	YW	MA	CEM	SC	ST	DOC	CW	RE	YG	MS	SMTI
EPDs	9	1.4	41	79	22	5	0.4	-	17	20	0.48	-0.03	0.09	46
	P	P+	P	P	P	P	P	-	P	P	P	P	P	

A.I. 5.23.13 to HBRL Solution; P.E. 6.01.13 to 7.25.13 to WLR Yuma.  
 Double black and double polled. Sired by MAGS Shyllo and out of a Wulf's Quarterback 4222B dam. This female is moderate with frame, bold in her rib and stands firm on a big foot.

Consigned by Wies Limousin, Wellsville, MO



lot **34** **WLR Zera**  
 % Limousin (81) Cow DP DB 04.12.12 BJLR 815Z NXF 2035523

WULFS TITUS 2149T  
**MAGS WIGGLER**  
 MAGS SNICKERS

MAGS SHYLLO  
**WLR XANNE**  
 QUVA MAGGIE 210M

WULFS REALTOR 1503R  
 WULFS MEADOW GRASS 2149M  
 BR MIDLAND  
 MAGS LADY ACE  
 JCL LODESTAR 27L  
 MAGS PHYLLO  
 EXLR POLLED BENCHMARK709G  
 QUVA HARD ROCK

	CED	BW	WW	YW	MA	CEM	SC	ST	DOC	CW	RE	YG	MS	SMTI
EPDs	8	1.6	47	91	20	4	0.7	-	-	20	0.35	0.04	0.13	49
	P	P+	P	P	P	P	P	-	-	P	P	P	P	

A.I. 5.23.13 to MAGS Shyllo; P.E. 6.01.13 to 7.25.13 to WLR Yuma  
 Sired by MAGS Wiggler and out of a MAGS Shyllo cow, is this double black and double polled female. She has a moderate birth EPD of 1.6, a yearling EPD of 91 and a marbling of .13. She is very complete in her design, level in her hip and stands square on all four corners.

Consigned by Wies Limousin, Wellsville, MO



lot **35** **WLR Zanna**

Lim-Flex (69) Cow HP HB 03.06.12 BJLR 621Z LFF 2035526

AUTO DOLLAR GENERAL 122R LVLS SECRET WEAPON 4408K  
**MCBN XALVADOR 022X** AUTO KYRIA 232K  
 EXLR REBECA 1019P BR MIDLAND  
 EXLR REBECA 614H  
 WULFS SIRLOIN 3172S COLE WULF HUNT  
**MAGS XTRA FAIR** WULFS NEGOTIABLE 3172N  
 MAGS UNFAIREST RITO 4L60 OF 2536 BVND208  
 MAGS SHIRLEY

	CED	BW	WW	YW	MA	CEM	SC	ST	DOC	CW	RE	YG	MS	SMTI
EPDs	9	0.3	59	111	35	5	-	-	-	-	-	-	-	0
	P	P+	P	P	P	P								

A.I. 5.23.13 to MAGS Shyllo; P.E. 6.01.13 to 7.25.13 to WLR Yuma

Homozygous black and homozygous polled. This huge numbered female has many trait leading herd sires in her pedigree. Those would include AUTO Dollar General 122r, BR Midland and Wulf's Sirloin 3172S. 621Z has a .3 Birth EPD, 59 weaning and 111 yearling EPD respectively. In addition she has strong maternal traits with a 35 milk EPD. She is long and level down her top, smooth in her shoulder and feminine in her front.

Consigned by Wies Limousin, Wellsville, MO



MAGS Shyllo, service sire to Lot 35 & 36.

lot **36** **ELCX Snacks 174Z**

Lim-Flex (50) Cow DP DB 03.22.12 ELCX 174Z LFF 2002637

BASIN FRANCHISE P142 C A FUTURE DIRECTION 5321  
**ELCX WILLARD 823W** BASIN CHLOE 812L  
 MAGS ROSE MARIE TNUH BLUE PRINT 245H  
 MAGS MANDA  
 CRSL 5064R WULFS FANFARE 4055F  
**ELCX IN TIME 174X** MINE SOUTHERN DOLL 1154L  
 CALLAWAYS TRAVELER 0206 G T MAXIMUM  
 R C C MS TRAVELER 312

	CED	BW	WW	YW	MA	CEM	SC	ST	DOC	CW	RE	YG	MS	SMTI
EPDs	9	-1.1	43	82	32	3	-	-	-	22	-0.16	0.39	0.39	54
	12	27	14	10	9	11				P	P	P	P	

A.I. 5.23.13 to MAGS Shyllo ; P.E. from 6.01.13 to 7.25.13 to WLR Yuma

Here is a really nice replacement heifer that is sired by ELCX Willard 823W, a son of Basin Franchise from a TNUH Blue Print daughter back to MAGS Manda. This female is

from a daughter of CRSL 5064R that is a top brood cow in the Wies Limousin program. She posts a 32 for milk and -1.1 for birth and .39 for marbling. She is a 50% Lim-Flex that is double polled and double black and will work in any program at any level.

Consigned by Wies Limousin, Wellsville, MO



lot **37** **DBJP Miss Westwest 63Y**

PB Limousin (100) Cow Polled Black 12.08.11 DBJP 63Y NPF 2026134

KAJO RESPONDER 120R JCL LODESTAR 27L  
**AHCC WESTWIND W544** KAJO SHERYL SWOOPS 11H  
 AHCC MISS WULF HUNT R544 COLE WULF HUNT  
 AHCC MISS OUTCROSS N844  
 RUNL MESQUITE 188M ELVIS  
**DBJP MISS MESQUITE 3T** RUNL 577G  
 DBJP MISS CHALLENGER 70L WULF'S CHALLENGER 6044Y  
 FLIP MISS RAMBLER 27D

	CED	BW	WW	YW	MA	CEM	SC	ST	DOC	CW	RE	YG	MS	SMTI
EPDs	7	2.4	46	89	20	5	0.3	-	9	27	0.32	0.03	-0.05	42
	17	29	25	17	10	16	16		P	P	P	P	P	

A.I. 6.15.13 to EBFL Ypsilanti 420Y Safe bred; P.E. 6.22.13 to 7.14.13 to BDHC Ironman 2006Z.

Here is a black and polled purebred female sired by AHCC Westwind W544. 63Y is attractive in her profile, thick ended and bold sprung. She has a balanced set of EPDs with a .32 REA EPD. She is sired by the ever popular and breed top selling sire AHCC Westwind W544. He is a son of KAJO Responder from a daughter of COLE Wulf Hunt. This female is packed full of muscle and has the prominent look and desirable profile to her.

Consigned by Owen Cattle Co., Hornbeak, TN



## lot 38 RVF Winner's Circle 541Y

PB Limousin (100) Cow DP HB 03.31.11 JJKH 541Y NPF 1985822

GPFF BLAQUE RULON  
**MAGS SAVAGE**  
 MAGS MANDA

AUTO DOLLAR GENERAL 122R  
**MCBN WILDE 925W**  
 MCBN SANDRA DEE 683S

BLACK DIAMOND  
 QUAIL RUN RAMONA BP  
 EXLR DAKOTA 353G  
 MAGS JEWEL  
 LVLS SECRET WEAPON 4408K  
 AUTO KYRIA 232K  
 MCBN PRIMETIME  
 MCBN PEPPERMINT PATTY

	CED	BW	WW	YW	MA	CEM	SC	ST	DOC	CW	RE	YG	MS	SMTI
EPDs	5	2.1	44	83	30	4	0.5	-	-	12	0.31	0.07	0.14	48
	20	34	27	16	17	20	13	-	-	P	P	P	P	

P.E. 12.03.12 to 2.20.13 to MAGS Xtra Taste; P.E. 3.20.13 to 8.30.13 to AUTO Long Drive 111X.

Homozygous black and double polled. This purebred female is sired by MAGS Savage and out of a AUTO Dollar General 122R dam. This deep sided and bold sprung two-year-old has a moderate birth EPD, plenty of performance and a 30 for milk. In addition, she is positive for all carcass traits, is broody in her look and well balanced.

Consigned by Riverside Valley Farm, Hohenwald, TN

## lot 40 RVF Zabrina 579Z

Lim-Flex (62) Cow HP Red 03.28.12 JJKH 579Z LFF 2020196

G A R PREDESTINED  
**MAGS TEDDIE**  
 EXLR 199H

AUTO TRADE MARK 138T  
**AUTO HEARTBREAKER 678W**  
 AUTO DEMETRIA 403S

B/R NEW DESIGN 036  
 G A R EXT 4206  
 WULFS FANFARE 4055F  
 EXLR 558F  
 CARROUSELS PURE POWER  
 EXLR REBECA 1019P  
 LESF ASPHALT 9N  
 STBR DEMETRIA 669D

	CED	BW	WW	YW	MA	CEM	SC	ST	DOC	CW	RE	YG	MS	SMTI
EPDs	8	2.0	53	102	28	2	0.6	-	9	13	0.05	0.13	0.24	54
	P	31	19	13	9	P	P	-	P	P	P	P	P	

P.E. 6.20.13 to 8.30.13d to AUTO Long Drive 111X

Red and homozygous polled. This big numbered 62% Lim-Flex sired by MAGS Teddie and out of a granddaughter of the proven STBR Demetria 669D. She combines a moderate birth with tremendous growth having a 102 yearling EPD, a 28 for milk and .24 for marbling. This female combines product with rib and eye appeal.

Consigned by Riverside Valley Farm, Hohenwald, TN



## lot 39 RVF Zathura 570Z

PB Limousin (100) Cow DP DB 01.22.12 JJKH 570Z NPF 2014427

AUTO DOLLAR GENERAL 122R  
**AUTO DOLLAR SIGN 561W**  
 AUTO REMEDY 812R

JCL LODESTAR 27L  
**COSC POCAHONTAS 401P**  
 COSC INSPIRATION 300F

LVLS SECRET WEAPON 4408K  
 AUTO KYRIA 232K  
 AUTO SILVERADO 100N  
 AUTO NATASHA 229N  
 HUNTS HI-LITER 245G  
 LOGAN'S CHEERLEADER 280G  
 WULFS RAMBLER 8400X  
 SPITZ FAVORITE PUNCH 629U

	CED	BW	WW	YW	MA	CEM	SC	ST	DOC	CW	RE	YG	MS	SMTI
EPDs	13	0.7	49	90	31	10	0.3	-	-	25	0.22	0.02	0.07	47
	13	31	17	12	12	12	P	-	-	P	P	P	P	

A.I. 4.17.13 to SAV Bismarck; P.E. 5.02.13 to 8.06.14 MAGS Yu The Man

This big numbered purebred female is double black and double polled. Her dam is sired by JC Lodestar 27L and out of a Wulf's Rambler 8400X cow. She has a 13 calving ease EPD, 90 yearling weight EPD and a 31 for milk. 570Z is thick ended, long and wide down her top and has a super disposition.

Consigned by Riverside Valley Farm, Hohenwald, TN

## lot 41 RVF Dream On 852Z

PB Limousin (94) Cow DP HB 05.15.12 JJKH 582Z NPF 2021527

BOHI TITELIST 7050T  
**AUTO LONG DRIVE 111X**  
 AUTO REBECA 292S

DVFC SITTING BULL  
**SKYLARK**  
 DVFC 1036G

AUTO DOLLAR GENERAL 122R  
 CARROUSELS PINA COLADA  
 LESF ASPHALT 9N  
 EXLR REBECA 1019P  
 EXLR NATIVE 7133N  
 DVFC MONICA 136H  
 LOJW IRONSIDES 3P  
 RR PUNCH COW 67X

	CED	BW	WW	YW	MA	CEM	SC	ST	DOC	CW	RE	YG	MS	SMTI
EPDs	6	2.0	45	82	26	3	0.4	-	-	8	0.25	0.03	0.03	44
	12	28	13	7	7	11	P	-	-	P	P	P	P	

A.I. 8.20.13 to Connealy Consensus 7229

This purebred female is sired by AUTO Longdrive 111X, the leading herd sire for Riverside Valley Farm in Tennessee. Her dam is sired by DVFC Sitting Bull out of an Ironsides 3P cow. 582Z is homozygous black and double polled and has a 26 milk EPD.

Consigned by Riverside Valley Farm, Hohenwald, TN

## lot 42 SALT Working Girl 907W

PB Limousin (100) Cow DP Red 03.04.09 STSF 907W NPF 1974333

AUTO AMERICAN IDOL 162L  
**AUTO CAPT SPRINGFIELD351P**  
 AUTO BARBARA ANN 277H

HARVEST OLYMPUS  
**RADE PRINCESS OLYMPUS**  
 MISS FANCY CASH 06U

AUTO ROUGH IDLE 141J  
 WULFS DELIGHT 4114D  
 WULF'S COUNT DOWN 9251C  
 AMBL LUVLY 340Y  
 WINTERSHALL JUPITER  
 LABORIEUSE  
 LB COLD CASH 442N  
 FZ PERKY 90P

	CED	BW	WW	YW	MA	CEM	SC	ST	DOC	CW	RE	YG	MS	SMTI
EPDs	1	4.2	51	92	35	-1	0.3	19	15	17	0.55	-0.14	-0.03	45
	P	P	P	P	P	P	P	P	P	P	P	P	P	

P.E. 5.01.13 to 8.10.13 to SBLX Zemar 214Z

This is one amazing red and polled purebred female from the progressive Salt Creek Cattle Co. program. She is near perfect and is so sound structured you are going to love her. No matter whether you mate her for a purebred or create red Lim-Flex we just really think the results will be amazing. She is sired by one of the breed's biggest milk numbered bulls in our breed, AUTO Captain Springfield 351P. Her dam is one of the long time donors at Salt Creek Cattle Co., RADE Princess Olympus, a purebred daughter of Harvest Olympus from a daughter of LB Cold Cash. She sells carrying the service to SBLX Zemar 214Z, a son of MAGS Winston from the \$30,000 valued donor SBLX Untouchable 101U. She is a daughter of GAR Predestined from the MAGS Night Ambush.

Consigned by Salt Creek Cattle & Genetics, LLC, Amber, OK



## lot 43 SEVEN Embryos

50% Lim-Flex Double Black Double Polled

S A V HERITAGE 6295  
**S A V HARVESTER 0338**  
 S A V EMBLYNETTE 7749

DHVO DEUCE 132R  
**ELCX TWILIGHT 114X**  
 DFCL HBHPC 1S

CAR DUKE 104  
 S A V BLACKCAP MAY 4136  
 S A V NET WORTH 4200  
 S A V EMBLYNETTE DIAMOND 6377  
 GPFF BLAQUE RULON  
 AMY JO DHAN 20L  
 JCL LODESTAR 27L  
 DFCL HBPC 25L

	CED	BW	WW	YW	MA	CEM	SC	ST	DOC	CW	RE	YG	MS	SMTI
EPDs	2	3.2	64	124	26	2	0.93	-	20	52	0.42	0.34	0.05	23

I am not sure you can get your hands on any better genetics then the following. These future calves are sired by the \$275,000 valued herd sire SAV Harvester 0338. Herbster Angus in Nebraska set a record for purchasing 2/3 interest in this bull at the all time great Schaff Angus Valley sale. He was at that time the #1 yearling EPD and #2 weaning EPD bull in the '11 SAV bull offering. He recorded a 205-day weight of 988# and a weaning ratio of 111. We think him mated to the 2013 National Champion Purebred Limousin female will be one of the all time great matings. ELCX Twilight 114X is the purebred daughter of DHVO Deuce from DFCL 1S that dominated the Denver National Show this year. She was bred in the Edwards Land & Cattle Co. program in Beulaville, NC and is owned with Wies Limousin, Wellsville, MO. Buy with confidence because these future calves are going to be something special.

Consigned by Edwards Land & Cattle Co., Beulaville, NC



ELCX Twilight 114X,  
dam of Lot 43 embryos.

## lot 44 SEVEN Embryos

87.5% Limousin Homozygous Polled

MAGS SASQUATCH  
**MAGSWL USUAL SUSPECT 538U**  
 MAGS PHANTOMS PRIZE

JCL LODESTAR 27L  
**DFCL HBHPC 16S**  
 DFCL HBPC 25L

EXLR NEW GENERATION 071M  
 MAGS FRUITFUL 487M  
 GPFF BLAQUE RULON  
 ALCM KOOL TUNES  
 HUNTS HI-LITER 245G  
 LOGAN'S CHEERLEADER 280G  
 DFCL DOUBLE SHOT BPB 41E  
 DALTONS EDITH ERICA 25O

	CED	BW	WW	YW	MA	CEM	SC	ST	DOC	CW	RE	YG	MS	SMTI
EPDs	10	1.7	47	94	23	6	0.1	11	10	24	0.18	0.11	0.08	46

These 7 embryos are sired by the Triple Crown winning bull, MAGS WLR Usual Suspect 538U. His first daughters are just now in production and they are doing a tremendous job. His sons are big footed, sound structured and very appealing in their profile. We think these future calves by Usual Suspect and from DFCL 16S will be awesome. She is the dam of the 2013 National Champion Purebred Limousin female, ELCX Twilight. So these future calves will have a world of promotion and marketing to help the new owner receive recognition.

Consigned by Edwards Land & Cattle Co., Beulaville, NC



MAGS WL Usual  
Suspect 538U,  
sire to Lot 44  
embryos.



DFCL HBHPC  
16S, dam of Lot 44  
embryos.

## lot 45 SEVEN Embryos

50% Lim-Flex Double Black Double Polled

S A V 8180 TRAVELER 004  
**S A V NET WORTH 4200**  
 S A V MAY 2410

GPFF BLAQUE RULON  
**WLR ROMANCE 033R**  
 KEHG JULIET 10H

SITZ TRAVELER 8180  
 BOYD FOREVER LADY 8003  
 SAF 598 BANDO 5175  
 S A V MAY 6269  
 BLACK DIAMOND  
 QUAIL RUN RAMONA BP  
 WULFS RAMBLER 8400X  
 TLTL POLLED PEACHES 007B

	CED	BW	WW	YW	MA	CEM	SC	ST	DOC	CW	RE	YG	MS	SMTI
EPDs	6	1.2	53	103	30	3	0.2	11	5	32	0.01	0.31	0.18	50

These embryos represent one of the strongest matings that have ever been created at Wies Limousin. They are sired by the elite Angus sire SAV Net Worth and from the elite Wies donor, WLR Romance 033R. She is a purebred daughter of GPFF Blaques Rulon from KEHG Juliet 10H. These future calves will be full siblings to the big time herd sire prospect WLR The Goose that was raised by Wies and was recently invested in by Hearsthstone Farm in Urbana, OH.

Consigned by Wies Limousin, Wellsville, MO



WLR The Goose,  
full sib to Lot 45  
embryos.



WLR Romance  
033R, dam of  
Lot 45 embryos.



AUTO Bette, sib to Lot 46 embryos

## lot 46 SIX Embryos

76.4% Limousin Double Black Homozygous Polled

BASIN FRANCHISE P142  
**LH U HAUL 135U**  
 EXLR DUCHESS 7129R

MAGS SHYLLO  
**WLR UGLY BETTY 432U**  
 JCL HEIDI 2S

C A FUTURE DIRECTION 532I  
 BASIN CHLOE 812L  
 EXLR NEW GENERATION 071M  
 EXLR 199H  
 JCL LODESTAR 27L  
 MAGS PHYLLO  
 EF MAIN STAY 541M  
 DVFC HEIDI 302K

	CED	BW	WW	YW	MA	CEM	SC	ST	DOC	CW	RE	YG	MS	SMTI
EPDs	9	0.2	48	95	29	4	0.1	-	14	45	0.08	0.32	0.31	53

These future calves are sired by the big numbered Lim-Flex sire and breed leading A.I. sire LH U Haul 135U. He is the thick made and performance oriented son of LH Rodemaster 338R. The dam of these future calves is WLR Ugly Betty 432U. She is the MAGS Shyllo daughter from JCL Heidi that continues to amaze us with her offspring. Embryos we sold to Pinegar Limousin, Springfield, MO created AUTO Bette, the '12 National Junior Heifer show grand champion female for Adam Griffith of Moonsboro, MA. Buy with confidence and create the next national champion with resulting progeny from these embryos.

Consigned by Wies Limousin, Wellsville, MO



BOHI Top Dollar 7144T, sire to Lot 47 embryos

## lot 47 SEVEN Embryos

62.5% Limousin Homozygous Black Double Polled

AUTO DOLLAR GENERAL 122R  
**BOHI TOP DOLLAR 7144T**  
 CARROUSELS PINA COLADA

BC 7022 RAVEN 7965  
**MAGS UNBELIEVABLE**  
 MAGS PHYLLO

LVLS SECRET WEAPON 4408K  
 AUTO KYRIA 232K  
 AUTO BLACK DAKOTA 129J  
 ELMW GINNIE P58G  
 B C MARATHON 7022  
 O C C BLACKBIRD 796F  
 BR MIDLAND  
 MISS WULFETTE 6230F

	CED	BW	WW	YW	MA	CEM	SC	ST	DOC	CW	RE	YG	MS	SMTI
EPDs	9	3.1	57	105	28	5	0.6	-	10	32	0.14	0.29	0.36	58

The results of this tremendous mating will be homozygous black and doubled polled. The resulting calf will be 62.5% Lim-Flex and will have an 8 for calving ease, a 57 weaning weight EPD, 105 for yearling weight and a 27 for milk. In addition, the resulting progeny will have a .36 marbling score and a 58 MTI.

Consigned by Wies Limousin, Wellsville, MO



PBRS Equinox 161Y, sire to Lot 48 embryos

## lot 48 SEVEN Embryos

60.75% Lim-Flex Red Double Polled

LH U HAUL 135U  
**PBRS EQUINOX 161Y**  
 MAGS NATASHA

LCC CHEYENNE B221L  
**MAGS UNNECESSARY**  
 MAGS PARKER

BASIN FRANCHISE P142  
 EXLR DUCHESS 7129R  
 AUTO BLACK DAKOTA 129J  
 MAGS JULIET  
 BFCK CHEROKEE CNYN 4912  
 HXC 701G  
 LVLS POLLED BLACK JACK  
 CANE RIDGE POLL ANGEL 318

	CED	BW	WW	YW	MA	CEM	SC	ST	DOC	CW	RE	YG	MS	SMTI
EPDs	5	0.8	63	69	29	3	0.3	7	18	50	-0.14	0.41	0.38	60

Here is a tremendous Lim-Flex mating sired by PBRS equinox 161Y and out of MAGS Unnecessary. This mating will have tremendous numbers, combining calving ease with a 63 weaning weight EPD, a 119 yearling EDP, and a 29 for milk and a .38 for marbling. Here are some of the most sought after genetics with breed leading EPDs and tremendous marketing ability.

Consigned by Massey Limousin, London, KY



MAGS Unnecessary, dam of Lot 48 embryos



lot **49** **SIX Embryos**

50% Lim-Flex      Homozygous Black      Homozygous Polled

RITO 112 OF 2536 RITO 616  
**MAGS XUKALANI**  
 MAGS UKALANI

CFLX WILD CARD  
**CFLX COOKIE CUTTER 012X**  
 AUTO COOKIE CUTTER 295R

RITO 616 OF 4B20 6807  
 G A R PRECISION 2536  
 BASIN FRANCHISE P142  
 CARROUSELS PINA COLADA  
 DHVO DEUCE 132R  
 JCL PEPPERMINT  
 BR MIDLAND  
 AUTO MINDA 824M

	CED	BW	WW	YW	MA	CEM	SC	ST	DOC	CW	RE	YG	MS	SMTI
EPDs	7	1.6	64	116	26	3	0.8	-	12	39	-0.08	0.41	0.34	58

These 50% Lim-Flex calves will be homozygous black and double polled. They will have all the performance one could ask for, having a 63 weaning EPD and a 116 yearling EPD. In addition, the resulting calf will have a 26 for milk, and a .33 for marbling. There is no doubt that these calves should be long, stout, deep and attractive.

Consigned by Massey Limousin, London, KY

lot **50** **THREE Embryos**

50% Lim-Flex      Double Polled      Double Black

CONNEALY CONSENSUS  
**CONNEALY CONSENSUS 7229**  
 BLUE LILLY OF CONANGA 16

LESF ASPHALT 9N  
**TYEJ DB SERENITY**  
 TYEJ DB SIZZLE

MK ALLIANCE 6595 187  
 BLINDA OF CONANGA 004  
 WOODHILL ADMIRAL 77K  
 BLUE CASH OF CONANGA 6020  
 GPFF BLAQUE RULON  
 GPFF EXTRA SWEET ELITE  
 EXLR GATEWAY 396K  
 MOSR SIZZLE 037K

	CED	BW	WW	YW	MA	CEM	SC	ST	DOC	CW	RE	YG	MS	SMTI
EPDs	8	0.5	58	103	26	1	0.2	10	13	-4	0.04	0.01	-0.04	46

These three future calves represent a very predictable and consistent mating. They are sired by the big numbered and very well thought of Angus sire Connealy Consensus. Their dam is TYEJDB Serenity. She is the LESF Asphalt daughter that is known for producing the once All American Futurity Champion female for Pinegar and Cody Heavin, Springfield, MO., AUTO Luckie. Her full sister was named the grand champion purebred female at the '13 National Junior Heifer show. Those two champions were just from the WLR Direct Hit and TYEJ DB Serenity mating. These 50% Lim-Flex calves will be extremely big numbered across the board and will truly believe they will be very desirable inventory for the marketplace for the new owners.

Consigned by Double B Grain Farm, McAlisterville, PA

lot **51** **FIVE Embryos**

PB Limousin      Double Black      Double Polled

ROMN TUFF ENUFF 103T  
**GV X-MAN 701X**  
 GV MISS GENERAL 841U

LESF ASPHALT 9N  
**TYEJ DB SERENITY**  
 TYEJ DB SIZZLE

WULFS RANSOM 3059R  
 ROMN ROBERTA 35R  
 AUTO DOLLAR GENERAL 122R  
 GV MISS DOWN 921J  
 GPFF BLAQUE RULON  
 GPFF EXTRA SWEET ELITE  
 EXLR GATEWAY 396K  
 MOSR SIZZLE 037K

	CED	BW	WW	YW	MA	CEM	SC	ST	DOC	CW	RE	YG	MS	SMTI
EPDs	11	2.7	57	103	27	3	0.7	9	17	27	0.57	-0.03	0.00	48

These five embryos are sired by GV X-Man 701X. He is the leading sire for GV Limousin, Garnett, KS. He is a huge numbered purebred son of ROMN Tuff Enuff 103T from a daughter of AUTO Dollar General 122 back to a granddaughter of COLE First Down. He has earned a 66 for weaning weight, 123 for yearling weight, 29 for milk and .92 for REA. The dam of these embryos is TYEJ DB Serenity 397R, the leading donor for Double B Grain Farm and Wies Limousin. Her progeny are some of the top in the breed and have dominated major shows across the country.

Consigned by Double B Grain Farm, McAlisterville, PA

MAGS Xukalani,  
sire to Lot 49  
embryos.



CFLX Cookie Cutter  
012X, dam of Lot  
49 embryos.



Connealy Consensus 7229, sire to Lot 50 embryos.



TYEJ DB Serenity, dam of Lot 50 embryos.



**SIX Embryos**  
**lot 52 Debusk 1680 Blackcap 3076**  
 PB Angus Cow Polled Black 08.17.03 3076 AAA +14725807

TEHAMA BANDO 155 BAND 234 OF IDEAL 3163  
**G A R PRECISION 1680** TEHAMA BLACKCAP G373  
 919 G A R 856 RITO 919 OF B156 7T26  
 BLACKBIRD G A R 833  
 BON VIEW BANDO 598 TEHAMA BANDO 155  
**A PLUS BLACKCAP 1014** BON VIEW DORA 56  
 G A R SCOTCH CAP 867 SCOTCH CAP  
 BLACKCAP G A R 51

	CED	BW	WW	YW	MA	CEM	SC	ST	DOC	CW	RE	YG	MS	SMTI
EPDs	5	3.3	37	69	28	7	-0.26	-	14	23	0.13	-0.12	+23	-
	29	40	32	29	35	26	29	-	27	25	32	28	28	-

Selling is six embryos sired by the bull of the buyer's choice from Debusk 1680 Blackcap 3076. She is the leading purebred Angus donor for Weiker Angus of Fayette, MO. She is a proven daughter of GAR Precision 1680 and goes back to a daughter of Bon View Bando 598 back to a daughter of Scotch Cap. This proven donor has made a positive impact in the Weiker herd and we feel when mated to Angus or Limousin that the results will be terrific.

Consigned by Weiker Angus, Fayette, Missouri



**SIX Embryos**  
**lot 53 BAAR USA Lady Jaye 486**  
 PB Angus Cow Polled Black 01.16.04 486 AAA +14901680

N BAR EMULATION EXT EMULATION N BAR 5522  
**B A R EXT TRAVELER 205** N BAR PRIMROSE 2424  
 B A R QUEEN TRAVELER 3015 D H D TRAVELER 6807  
 MAGIC QUEEN 963  
 G A R SLEEP EASY 1009 TEHAMA BANDO 155  
**CRA LADY JAYE 608 498 S EASY** BLACKLASS G A R 103  
 H H F 917 LADY 975 498 HHF TRAVELER 688 917  
 HHF ESSO LADY 650 975

	CED	BW	WW	YW	MA	CEM	SC	ST	DOC	CW	RE	YG	MS	SMTI
EPDs	15	-0.1	30	58	25	13	-0.67	-	2	-2	0.37	0.03	0.58	-
	37	46	38	34	41	28	34	-	28	30	38	35	34	-

Selling is six embryos sired by the bull of the buyer's choice from BAAR USA Lady Jaye 486. This Weiker Angus donor is sired by BAR Ext Traveler 205 and from a daughter of GAR Sleep Easy. This female is extremely deep bodied, sound in her structure and one of the finest from this prominent Angus firm.

Consigned by Weiker Angus, Fayette, Missouri







## WIES LIMOUSIN RANCH

Bob & Euvonne Wies • Mike & Heather Henderson, Mgrs., 573.220.5786  
103 Harris School Rd., Wellsville, MO 63384  
[www.wieslimousin.com](http://www.wieslimousin.com)

# WIES & Friends



## SALT CREEK CATTLE & GENETICS LLC

405.224.6008  
[www.oksaltcreek.com](http://www.oksaltcreek.com)

Billy Stewart cell, 405.274.9338 • [billy@oksaltcreek.com](mailto:billy@oksaltcreek.com)  
Floyd Gauntt, 405.816.8877 • [floyd@oksaltcreek.com](mailto:floyd@oksaltcreek.com)  
1903 County St. 2840 • Amber, Oklahoma 73004



**Doug, Eric and Mike Brubaker**  
262 Shade Road, McAlisterville, PA 17049  
717.649.6929 • [dbrubake@nmax.net](mailto:dbrubake@nmax.net)  
[www.doubleblimousin.com](http://www.doubleblimousin.com)



**OWEN CATTLE COMPANY**  
Kelley, Holly & Cash Owen • Ferrell Owen  
731.694.7996 • [Owencattleco1@yahoo.com](mailto:Owencattleco1@yahoo.com) • [www.owencattleco.com](http://www.owencattleco.com)  
242 Short Road, Hornbeak, TN 38232



**Keith Hamm**  
4403 Buffalo Road, Hohenwald, TN 38462  
mobile: 931.628.6730 • [ekhamm@hotmail.com](mailto:ekhamm@hotmail.com) • [www.riversidevalleyfarm.com](http://www.riversidevalleyfarm.com)  
Colby Hamm, 931.628.3212 • [pduncan38462@yahoo.com](mailto:pduncan38462@yahoo.com)



**Dexter and Nicholas Edwards**  
314 Willard Edwards Road • Beulaville, NC 28518  
910.298.3012 • FAX: 910.298.6155 • [edwardslimousin@earthlink.net](mailto:edwardslimousin@earthlink.net)  
Nicholas, cell: 910.290.1424 • Nicholas, email: [npedwards07@yahoo.com](mailto:npedwards07@yahoo.com)



**Joey, Melissa & Makayla Massey**  
80 Sublimity School Rd., London, KY 40744  
606.877.5571 • cell: 606.682.2126 • [josephlmassey@yahoo.com](mailto:josephlmassey@yahoo.com)

**Donnie & Barbara Massey**  
1253 Old Whitley Rd., London, KY 40744  
606.864.6961 • cell: 606.682.2125



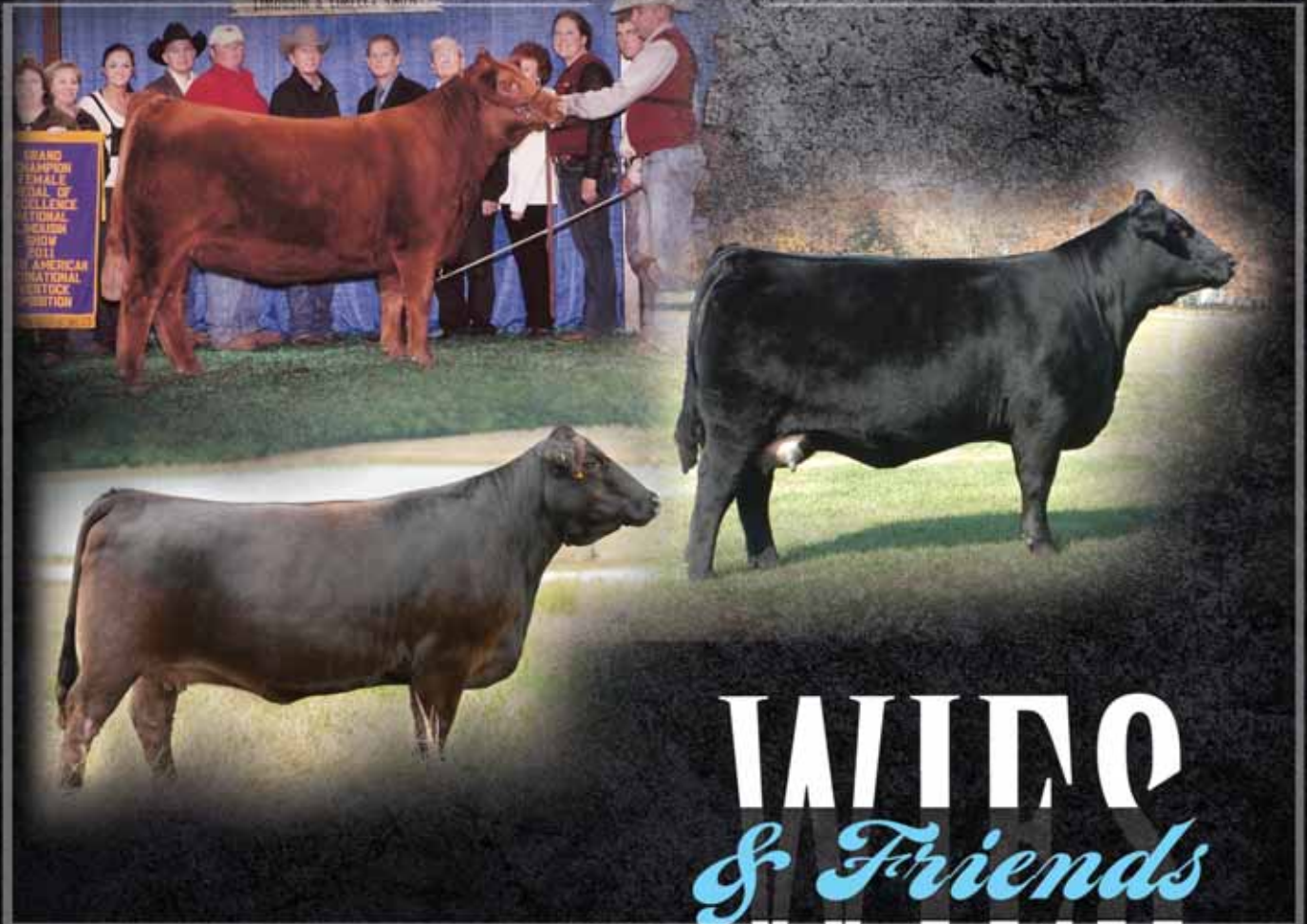
**Coolie & Joyce Callahan** - home: 660.295.4546  
**Chuck Callahan** - cell: 573.355.4261  
Jacksonville, Missouri • [cooliec@cvalley.net](mailto:cooliec@cvalley.net)

R&R MARKETING COMPANY

PO Box 281677, Nashville, TN 37228

FIRST CLASS  
PRE-SORTED  
PAID  
Montezuma, Iowa  
Permit No. 30

Designed  
by  
  
designs by  
*arin*  
[www.designsbyarin.com](http://www.designsbyarin.com)



Saturday, November 2, 2013

WILD  
& Friends  
WILD