



Thursday ★ January 30, 2014 ★ Bridgeport, Texas



# Texas TRADITION

Thursday ★ January 30, 2014 ★ 6 p.m.  
At The Ranch ★ Bridgeport, Texas

## *Selling 43 Lots*

- 8 Show-Heifer Prospects
- 2 Heifer Pregnancies
- 1 Bull Pregnancy
- ½ Angus Fall Bred Heifer
- 2 Fall Bred Heifers
- 8 Fall Pairs
- 4 Spring Bred Cow
- 4 Spring Bred Heifers
- 9 Herd-Sire Prospects
- 21 Embryos

## *Schedule of Events...*

### THURSDAY, JANUARY 30

- All Day..... Cattle Available for Viewing
- 5:00 p.m..... Complimentary Supper
- 6:00 p.m..... Texas Tradition Sale

### FRIDAY, JANUARY 31

- 6:00 p.m..... Cowtown Classic Sale, Fort Worth Stock Show Grounds

### SATURDAY, FEBRUARY 1

- 8:00 a.m..... Fort Worth Stock Show Limousin/Lim-Flex Shows

*Plan to make a weekend in Fort Worth for two great sales and the Level I MOE Show.*

## *Sale-Day Phones...*

- Jason Gatson ..... 817.247.8011
- Randy Ratliff ..... 615.330.2735
- Ken Holloway ..... 580.581.7652
- Mark Smith ..... 515.229.5227
- Thad Combs ..... 615.406.5766

## *Sale Consultants..*



- Ken Holloway • 580.597.2419
- Bruce Brooks • 580.276.5137
- Office • 580.597.2419
- acs@americancattleservices.com
- www.americancattleservices.com

## *Sale Management..*



### **R&R MARKETING COMPANY**

- Randall O. Ratliff • 615.330.2735
- PO Box 281677 • Nashville, TN 37228
- Randy@RRMktg.com • www.RRMktg.com

## *Auctioneer...*

- C.K. "Sonny" Booth ..... 918.533.5587



- Mark Smith
- cell: 515.229.5227
- grgenetics@aol.com





**Scott, Donna & Lauren Stowers**  
 430 CR 1326 ★ Bridgeport, TX 76426  
 940/644-2747 ★ Scott, cell: 940/577-1300  
 Jason Gaston, ranch manager: 817/247-8011  
 Jason, e-mail: jasangaston85@gmail.com  
 stowers@boldwireless.net ★ www.stowerslimousin.com

**The Stowers Family...**  
 Scott, Donna & Lauren



**The Gaston Family...**  
 Jason, Kendall & Kylee

### *Sale Accommodations...*

La Quinta Inn & Suites ..... 940.683.2040  
 2000 10th St., Bridgeport, TX 76426  
 Comfort Inn ..... 940.683.5777  
 2302 10th St., Bridgeport, TX 76426

### *Directions...*

**FROM GAINESVILLE:** Take FM 51 south to Decatur. In Decatur, take Hwy. 380 west toward Bridgeport. Half way between Decatur and Bridgeport you will take FM 1655 north. Go a little over 1 mile and take a left onto CR 1326. It will be not quite half a mile on the right.

**FROM FORT WORTH:** Go north to Hwy. 287. Take Hwy. 287 to Decatur. In Decatur, take Hwy. 380 west toward Bridgeport. Half way between Decatur and Bridgeport you will take FM 1655 North. Go a little over 1 mile and take a left onto CR 1326. It will be not quite half a mile on the right.

### *Airports...*

Dallas Love Field is 72 miles to Bridgeport.  
 Dallas-Fort Worth is 52 miles to Brdgeport.  
 Oklahoma City Will Rogers is 155 miles to Bridgeport.

### *Sale Note...*

Open heifers with the Lone Star Shoot-Out logo are eligible to compete in the 2015 Lone Star Shoot-Out held in conjunction with the Fort Worth Junior heifer show. The Lone Star Shoot-Out is a futurity sanctioned by the Texas Limousin Association for Texas 4-H and FFA members and is funded by consignors of nominated heifers. The 2014 purse was \$7,000 with \$2,000 going to the champion, \$1,500 to reserve and the remaining \$3,500 paid down through the classes.



They also are eligible for the Oklahoma Leading Ladies Show.



### *Sale Order & Supplemental Information...*

The sale order and supplemental information will be posted at [www.RRmktg.com](http://www.RRmktg.com) for your convenience Wednesday, January 29.

### *Sale Terms & Agreements...*

#### **Guarantee...**

All cattle sell under the standard guarantee of the North American Limousin Foundation

#### **EPDs...**

EPDs are current as of Fall 2013. Updated EPDs will be available sale day.

#### **Terms and Conditions...**

Terms of the sale are cash unless satisfactory credit arrangements have been made prior to sale. A representative will be on hand sale day if your wishes are to insure your purchases. Please note: The sale manager is only an agent for the seller and has no responsibility other than those involved in conducting the sale. All persons who attend the sale do so at their own risk. Neither the sale manager nor Stowers Limousin assume liability, legal or otherwise for any accidents which may occur.

#### **Sight-Unseen Purchase Agreement...**

If you are unable to attend the sale and want to speak with anyone involved with the sale, please don't hesitate to call. The marketing agents, owners or manager will provide you with a complete satisfaction guarantee on the cattle selling.

#### **Trucking...**

A trucking company will be on hand sale day to assist with any trucking needs. The Stowers family appreciates your business and will see to it that the cattle will be delivered to several central locations to accommodate anyone who lives throughout the United States and Canada.

#### **Financing...**

For financing options, contact Jason Gaston at 817.247.8011 or R&R Marketing Company at 615.330.2735.

#### **Payment...**



All cattle must be paid for immediately following the conclusion of the sale. R&R Marketing Company will be accepting credit cards the day of the sale.

# BOHI Red Robin *cow family*



Lot 1



## SSTO ZAYL 2819Z

10/2/2012 HOMO BLK(T) HOMO PLD(T)  
 LIM-FLEX(75/64.7) COW SSTO 2819Z LFF 2040047

EXLR DAKOTA 353G	WULF'S COUNT DOWN 9251C
<b>AUTO BLACK DAKOTA 129J</b>	CANE RIDGE DAPHNE 011D
DFLC JET SET BPC 34Y	GENERAL LEE LOJW 40S
	DFLC BPC 20U
CONNEALY LEAD ON	CONNEALY LEADTIME
<b>BOHI RED ROBIN 282R</b>	ELIGENCE PLUS OF CONANGA
MAGS MANUELA	EXLR LIMITED EDITION 765J
	AUTO CITY NIGHTS 214H

	CE	BW	WW	YW	MA	CM	SC	DC	CW	RE	YG	MS	\$MI
EPDs	6	1.6	55	103	29	6	0.4	13	28	.05	.19	.13	50



Dam of Lot 1

- Homozygous polled & homozygous black.
- This featured lot is one of the very best females to ever carry and represent the SSTO prefix.
- She is a 75% Lim-Flex daughter of the two-time national gold medal sire, AUTO Black Dakota 129J, and from the big-league donor, BOHI Red Robin 282R.
- BOHI Red Robin 282R is the 50% Lim-Flex daughter of the famed MAGS Manuela and sired by Connealy Lead On. She is owned in partnership with Council Family Limousin, Madisonville, TX, and has proven she is one of the best Lim-Flex donors in our breed. A full sister sold in the CFLX sale at \$34,000 for half interest to DeMar Farms.
- This future donor prospect posts a 1.6 for BW, 103 for YW, 29 for Milk, .13 for Marbling and 50 for \$MI.
- SSTO Zayl 2819Z is big-boned, huge-footed and fluid in her movement. We love her extreme depth of flank, massive volume combined with her feminine look. If you are looking to show her then you will only need a little luck, and if you plan on her to be a donor then enjoy the excitement that is about to come.



# BOHI Red Robin *cow family*



## SSTO ALL RED ROBIN 3807A

3/16/2013 HOMO BLK(P) HOMO PLD(T)  
 LIM-FLEX(75/67.3) COW SSTO 3807A LFF 2039758

BLACK DIAMOND ..... CANE RIDGE BLACK DRAK  
**GPFF BLAQUE RULON** ..... WULFS DIADEM 4260D  
 QUAIL RUN RAMONA BP ..... LKCC TOMAHAWKS TOUCHDOWN  
 AMBL FAVORITE GIRL 36W  
 CONNEALY LEADTIME  
**BOHI RED ROBIN 282R** ..... ELIGENCE PLUS OF CONANGA  
 MAGS MANUELA ..... EXLR LIMITED EDITION 765J  
 AUTO CITY NIGHTS 214H

	CE	BW	WW	YW	MA	CM	SC	DC	CW	RE	YG	MS	\$MI
EPDs	9	0.3	52	94	23	2	0.5	10	24	.36	.12	.13	49

- Homozygous polled & homozygous black
- This 75% Lim-Flex show prospect has it all stacked in her favor to be labeled as a great one!
- SSTO All Red Robin 3807A combines the feminine front end, strength of top, square hip and perfect hind leg structure to enjoy much future success in the show ring.
- She is sired by the all-time great sire of show champions, GPFF Blaque Rulon. He adds the cool front end, stylish profile and heaviness of bone we appreciate in a show heifer
- Her dam, BOHI Red Robin 282R, is the breed's first champion Lim-Flex which happens to be recognized in our breed as one of the very best ever created to date.
- Buy with confidence in knowing your child will get recognized and talked about in a good way when leading this young show-heifer prospect.



## SSTO ROUND ROBIN 3805A

3/15/2013 HOMO BLK(P) HET PLD(T)  
 LIM-FLEX(75/67.3) COW SSTO 3805A LFF 2039761

BLACK DIAMOND ..... CANE RIDGE BLACK DRAK  
**GPFF BLAQUE RULON** ..... WULFS DIADEM 4260D  
 QUAIL RUN RAMONA BP ..... LKCC TOMAHAWKS TOUCHDOWN  
 AMBL FAVORITE GIRL 36W  
 CONNEALY LEADTIME  
**BOHI RED ROBIN 282R** ..... ELIGENCE PLUS OF CONANGA  
 MAGS MANUELA ..... EXLR LIMITED EDITION 765J  
 AUTO CITY NIGHTS 214H

	CE	BW	WW	YW	MA	CM	SC	DC	CW	RE	YG	MS	\$MI
EPDs	9	0.6	52	94	23	2	0.5	10	24	.36	.12	.13	49

- Retaining one-half embryo interest.
- Polled & homozygous black
- SSTO Round Robin 3805A is a 75% Lim-Flex heifer from the heart of the Stower's extensive transplant program.
- She is the result of a mating that has created tremendous acceptance amongst the many who have seen her and her sister, SSTO All Red Robin 3807A, who is Lot 2 in this sale.
- This young heifer is suppose to be good and is no accident. She has the length of neck, heaviness of muscle and substance of bone from her sire GPFF Blaque Rulon; and her depth of body, strength of top line and prominent look from her dam, BOHI Red Robin 282R
- If you're looking for an elite show heifer to compete at any level, consider this young female straight from the prominent show barn where champions have been created by Jason Gaston at Stowers Limousin.

# MAGS Manuela *cow family*



Lot 4



Dam of Lot 4



## SBLX ZERO TURN

9/3/2012 HOMO BLK(T) PLD  
 LIM-FLEX(50/45.2) COW SBLX 1178Z LFF 2024426

S A V BISMARCK 5682 ..... G A R GRID MAKER  
 S A V BRILLIANCE 8077 ..... S A V ABIGALE 0451  
 S A V BLACKCAP MAY 5270 ..... S A V 8180 TRAVELER 004  
 S A V MAY 2420  
 EXLR LIMITED EDITION 765J ..... EXLR POLLED BENCHMARK709G  
 MAGS MANUELA ..... WULFS GLENDA 7021G  
 AUTO CITY NIGHTS 214H ..... COLE FIRST DOWN 46D  
 MISS WOLFETTE 9049X

	CE	BW	WW	YW	MA	CM	SC	DC	CW	RE	YG	MS	\$MI
EPDs	11	-1.2	50	96	37	6	N/A	6	29	-.22	.41	.39	56

- Polled & homozygous black.
- This 50% Lim-Flex heifer is one of the big-time donors in the making!
- She is a known daughter of the famed and ever-popular Sugar Bush donor MAGS Manuela. Manuela is like no other in our breed, and her excellence in progeny continue to amaze us time and time again.
- SBLX Zero Turn is sired by the big-numbered and prominent Angus sire, SAV Brilliance 8077, the son of SAV Bismarck 5682 back to a daughter of SAV 8180 Traveler 004
- This young female posts a breed-leading set of EPDs with a -1.2 BW, 96 YW, 37 Milk, .39 Marbling and 56 \$MI.
- When you see this heifer early sale evening, you will stop in your tracks and be amazed! She is soft in her pasterns, sound in her movement, extremely long-bodied from her hooks to her pens.
- For a heifer with so much performance and volume, it's amazing how well made she is. With all economically important traits, considered this young heifer, she has everything you would ever want stacked in her favor.

# MAGS Manuela *cow family*



## LSTO ALL ABOUT YOU 3817A

4/18/2013 DBL BLK DBL PLD  
LIM-FLEX(50/44.9) COW LSTO 3817A LFF 2040746

S A V BISMARCK 5682 ..... G A R GRID MAKER  
S A V BRAND NAME 9115 ..... S A V ABIGALE 0451  
S A V BLACKCAP MAY 5530 ..... B C C BUSHWACKER 41-93  
S A V MAY 7238  
DHVO DEUCE 132R ..... GPFF BLAQUE RULON  
SBLX XTRA SPECIAL ..... AMY JO DHAN 20L  
MAGS MANUELA ..... EXLR LIMITED EDITION 765J  
AUTO CITY NIGHTS 214H



	CE	BW	WW	YW	MA	CM	SC	DC	CW	RE	YG	MS	\$MI
EPDs	8	0.8	64	114	34	2	N/A	10	39	-.01	.33	.18	53

- Double black & double polled (hasn't been tested for either trait)
- She is moderate framed, extremely deep, and has tremendous volume and capacity. She is huge-footed and sound and we love the softness of her pasterns.
- Her dam was a wildly successful show heifer and is one of the all-time great MAGS Manuela daughters.
- The number package on this heifer is near-perfect.



Lot 5



## LSTO 3816A

4/14/2013 HOMO BLK(T) HOMO PLD(T)  
LIM-FLEX(50/44.9) BULL LSTO 3816A LFM2040747

S A V BISMARCK 5682 ..... G A R GRID MAKER  
S A V BRAND NAME 9115 ..... S A V ABIGALE 0451  
S A V BLACKCAP MAY 5530 ..... B C C BUSHWACKER 41-93  
S A V MAY 7238  
DHVO DEUCE 132R ..... GPFF BLAQUE RULON  
SBLX XTRA SPECIAL ..... AMY JO DHAN 20L  
MAGS MANUELA ..... EXLR LIMITED EDITION 765J  
AUTO CITY NIGHTS 214H

	CE	BW	WW	YW	MA	CM	SC	DC	CW	RE	YG	MS	\$MI
EPDs	8	0.8	64	114	34	2	N/A	10	39	-.01	.33	.18	53

- Homozygous polled & homozygous black
- This well-made 50% Lim-Flex herd-sire prospect has all the ingredients.
- He's moderate in his frame and combines great balance with volume and muscle.
- He represents S A V Brand Name back to the \$53,000-valued donor SBLX Xtra Special, a DHVO Deuce back to the famed MAGS Manuela.
- If you want to add strength in numbers, he is well above breed average.



Lot 6



SBLX Xtra Special 214X

Dam of Lot 6



## HEIFER PREGNANCY

DUE 2/24/2014 DBL BLK DBL PLD  
LIM-FLEX (71.5)

BASIN FRANCHISE P142P ..... C A FUTURE DIRECTION 5321  
LH U HAUL 135U ..... BASIN CHLOE 812L  
EXLR DUCHESS 7129R ..... EXLR NEW GENERATION 071M  
EXLR 199H  
DHVO DEUCE 132R ..... GPFF BLAQUE RULON  
SBLX XTRA SPECIAL 214X ..... AMY JO DHAN 20L  
MAGS MANUELA ..... EXLR LIMITED EDITION 765J  
AUTO CITY NIGHTS 214H

	CE	BW	WW	YW	MA	CM	SC	DC	CW	RE	YG	MS	\$MI
EPDs	8	0.8	61	111	33	3	0.6	17	60	.26	.27	.29	57

- This guaranteed heifer has the honor of being born into royalty. She will be sired by LH U Haul 135U whose progeny are extremely thick, heavy-structured and stout. U Haul mated to past show heifer SBLX Xtra Special 214X will create amazing results.
- SBLX Xtra Special 214X has her first embryo progeny highlighted in this sale. For those of us who watched Lauren Stowers show, we remember her as one of the all-time great ones! She is perfect in her structure and an overachiever in every economically important trait.



## BULL PREGNANCY

DUE 2/24/2014 HOMO BLK DBL PLD  
LIM-FLEX (50)

SITZ UPWARD 307R ..... CONNEALY ONWARD  
EXAR UPSHOT 0562B ..... SITZ HENRIETTA PRIDE 81M  
EXAR BARBARA T020 ..... ISU IMAGING Q 9111  
LCC MC HENRY BARBAR MG382  
DHVO DEUCE 132R ..... GPFF BLAQUE RULON  
SBLX XTRA SPECIAL 214X ..... AMY JO DHAN 20L  
MAGS MANUELA ..... EXLR LIMITED EDITION 765J  
AUTO CITY NIGHTS 214H

	CE	BW	WW	YW	MA	CM	SC	DC	CW	RE	YG	MS	\$MI
EPDs	10	0.3	62	119	37	3	N/A	NA	10	.22	-.02	-.05	48

- Double polled & homozygous black
- Some of the best cattle in our breed are the result of blending the best Angus with the best purebred Limousin. This future bull will be a prime example of that.
- His sire is the huge-numbered, breed-leading Angus bull EXAR Upshot and from the elite purebred show heifer and now leading donor, SBLX Xtra Special 214X.
- The numbers, prominent pedigree and the expectation of what is to come, makes this mating exciting.



# C094 *cow family*



## SSTO AMY JO 3804A

3/18/2013 HOMO BLK(P) HOMO PLD(P)  
 LIM-FLEX(50/44.5) COW SSTO 3804A LFF 2035292

DHVO TREY 133R ..... GPFf BLAQUE RULON ..... BLACK DIAMOND  
 AMY JO DHAN 20L ..... QUAIL RUN RAMONA BP  
 GAR SLEEP EASY 1009 ..... TEHAMA BANDO 155  
 MA C094 OF 875 SLEEP EASY ..... BLACKLASS GAR 103  
 MLCC CALIFORNIA BLACKCAP ..... CALIFORNIA TRAVELER  
 BLACKCAP OF TEHAMA C242

	CE	BW	WW	YW	MA	CM	SC	DC	CW	RE	YG	MS	\$MI
EPDs	7	0.3	38	73	19	-1	0.3	7	17	-.36	.35	.38	52

- Homozygous polled & homozygous black
- This 50% Lim-Flex heifer is one of the best show heifers ever created at Stowers Limousin!
- She is a daughter of the many-time show champion sire, DHVO Trey 133R, the full brother to the prominent sire DHVO Deuce 132R.
- Her dam is one of the premier Angus donors to represent Stowers Limousin, MA C094 of 875 Sleep Easy, a proven daughter of GAR Sleep Easy. This Angus donor is a freak and that is in a good way. She is big-footed, soft in her pasterns, easy in her middle and heavy in her bone and foot size. When mated to Trey something magical happened and we are certain you will agree evening when you see this young heifer.
- SSTO Amy Jo 3804A is extremely long up through her front end, strong and level down her top line, and very square out of her hip. We love and so admire her heaviness of bone, extreme foot size and ease of movement she has. For as pretty of a female she is, she is also extreme in her depth of body and overall volume.



MA C094 Of 875 Sleep Easy

Dam of Lots 9 & 10



## SEVEN EMBRYOS

LIM-FLEX(50) HOMO BLK(P) HOMO PLD(P)

DHVO TREY 133R ..... GPFf BLAQUE RULON ..... BLACK DIAMOND  
 AMY JO DHAN 20L ..... QUAIL RUN RAMONA BP  
 GAR SLEEP EASY 1009 ..... TEHAMA BANDO 155  
 MA C094 OF 875 SLEEP EASY ..... BLACKLASS GAR 103  
 MLCC CALIFORNIA BLACKCAP ..... CALIFORNIA TRAVELER  
 BLACKCAP OF TEHAMA C242

	CE	BW	WW	YW	MA	CM	SC	DC	CW	RE	YG	MS	\$MI
EPDs	7	0.3	38	73	19	-1	0.3	7	17	-.36	.35	.38	53

- Full sibling to Lot 9



# Show-Heifer *prospects*



## LSTO 3826A

5/3/2013 HOMO BLK PLD  
LIM-FLEX (50) COW LSTO 3826A APPLIED FOR

S A V BISMARCK 5682 ..... G A R GRID MAKER  
S A V BRAND NAME 9115 ..... S A V ABIGALE 0451  
S A V BLACKCAP MAY 5530 ..... B C G BUSHWACKER 41-93  
S A V MAY 7238

MAGS SAVAGE ..... GPFF BLAQUE RULON  
SSTO WATERCOLORS 9450W ..... MAGS MANDA  
CARROUSELS PINA COLADA ..... AUTO BLACK DAKOTA 129J  
ELMW GINNIE P58G



	CE	BW	WW	YW	MA	CM	SC	DC	CW	RE	YG	MS	\$MI
EPDs	7	0.4	55	105	35	3	N/A	-1	17	-0.14	0.35	0.18	51

- Polled & homozygous black
- This is one terrific show heifer who represents a superb mating
- She is from the elite show heifer SSTO Watercolors 9450W.
- She posts a breed leading set of EPDs,



Dam of Lot 11



## SSTO AMY 3801

3/8/2013 HOMO BLK(P) HET PLD(T)  
LIM-FLEX(50/44.8) COW SSTO 3801A LFF 2031755

COLEMAN PRODUCTION 608 ..... GAR PRECISION 1680  
COLE WINDFALL 144W ..... COLEMAN BLACKCAP 211  
COLE MISS FIRSTDOWN 6162S ..... CLONE-COLE FIRST DOWN 46D  
COLE 18K

JCL LODESTAR 27L ..... HUNTS HI-LITER 245G  
SSTO TOP OF THE LINE 7863 ..... LOGAN'S CHEERLEADER 280G  
HPCA GAR GRIDMAKER P044 ..... G A R GRID MAKER  
G A R FOCUS C91



	CE	BW	WW	YW	MA	CM	SC	DC	CW	RE	YG	MS	\$MI
EPDs	12	0.0	62	123	27	5	0.4	21	43	-0.27	0.48	0.4	59

- Polled and homozygous black
- A big-time brood cow and donor in the making! who is huge numbered and well made.
- She offers an extreme set of EPDs with a highlighted 0.0 for BW, 62 for WW, 123 for YW and 27 for Milk. We also admire her .40 for Marbling and 59 for \$MI.
- The numbers are breed-leading, the pedigree is predictable and her conformation is near perfect-all that is left is to be the last bidder when Colonel Sonny Booth drops the hammer.



Lot 12



Lot 13



## SSTO AFTER YOU 3821A

4/23/2013 HET BLK(T) HOMO PLD(T)  
LIM-FLEX(75/68.4) COW SSTO 3821A LFF 2031747

GPFF BLAQUE RULON ..... BLACK DIAMOND  
MAGS UNEQUALED ..... QUAIL RUN RAMONA BP  
MAGS MANDA ..... EXLR DAKOTA 353G

AUTO AMERICAN IDOL 162L ..... AUTO ROUGH IDLE 141J  
SSTO XTRA FANCY 0802X ..... WULFS DELIGHT 4114D  
G A R 616 RITO P072 ..... RITO 616 OF 4B20 6807  
GARLD 1489 TRAVELER 9002



	CE	BW	WW	YW	MA	CM	SC	DC	CW	RE	YG	MS	\$MI
EPDs	6	0.1	42	86	30	1	N/A	N/A	14	0.12	0.21	0.18	48

- Black & homozygous polled
- This April 75% Lim-Flex heifer is sure to get your attention. She is strong in her stance and appealing in her profile.
- She stands structurally correct and we love her heaviness of bone, soft pasterns and ease of movement.
- Her sire is a proven son of GPFF Blaque Rulon from the top-producing MAGS Manda. Her dam is a daughter of AUTO American Idol back to a 616 daughter.



## SSTO ASK LATER 3827A

5/8/2013 DBL BLK DBL PLD  
LIM-FLEX(50/44.9) COW SSTO 3827A LFF 2041212

GPFF BLAQUE RULON ..... BLACK DIAMOND  
MAGS UNEQUALED ..... QUAIL RUN RAMONA BP  
MAGS MANDA ..... EXLR DAKOTA 353G

G A R US PREMIUM BEEF ..... GAR PRECISION 1680  
SSTO PREMIUM DESIGN 5623R ..... G A R EXT 2928  
G A R NEW DESIGN A180 ..... B/R NEW DESIGN 036  
G A R 6807 TRAVELER 1716



	CE	BW	WW	YW	MA	CM	SC	DC	CW	RE	YG	MS	\$MI
EPDs	7	-0.8	43	85	33	2	0.3	N/A	21	-0.10	0.39	0.43	55

- Double polled & double black
- A big-numbered 50% Lim-Flex heifer from the heart of the Stowers program.
- Her dam is a proven, predictable Angus female by GAR US Premium Beef from a B/R New Design 036 daughter.
- We admire her predictable and prominent pedigree, along with her fault-free conformation and EPD package, a -0.8 BW, 33 Milk and .43 Marbling.

# Pregnancy & Bred *heifer*



## HEIFER PREGNANCY

DUE 2/24/2014 DBL BLK DBL PLD  
PUREBRED (96.8/85.8)

KRVN NASKAR 013N ..... GPFF BLAQUE RULON  
**WLR DIRECT HIT** ..... WL JU JU GAL 149J  
MAGS NIGHT AMBUSH ..... AUTO BLACK DAKOTA 129J  
MISS WULFETTE 6230F  
LESF ASPHALT 9N ..... GPFF BLAQUE RULON  
**TYEJ DB SERENITY** ..... GPFF EXTRA SWEET ELITE  
TYEJ DB SIZZLE ..... EXLR GATEWAY 396K  
MOSR SIZZLE 037K

	CE	BW	WW	YW	MA	CM	SC	DC	CW	RE	YG	MS	\$MI
EPDs	6	3.1	49	84	27	1	0.8	14	15	.53	-.06	-.10	42

- Recipient ID - Registered Purebred - NPF 1885388
- Double polled & double black
- This young heifer to be will be born into genetics that have worked and worked well. Two of her sisters have created a ton of interest and received acclaim are AUTO Luckie 246W, the 2012 All-American Futurity Grand Champion Female; and AUTO Luckie Too 423Y, the 2013 National Junior Show Grand Champion Limousin Female.
- Buy with confidence and invest into this young heifer, and you too will see amazing results possibly in the show ring, but definitely in the pasture



**AUTO Luckie 246W**



**AUTO Luckie Too 423Y**

Full sisters of Lot 15



## EXAR BLACKBIRD 2830

3/5/2012 DBL BLK HOMO PLD(P)  
ANGUS COW 2830Z AAA 17208050

CONNEALY CONSENSUS ..... MK ALLIANCE 6595 187  
**CONNEALY CONSENSUS 7229** ..... BLINDA OF CONANGA 004  
BLUE LILLY OF CONANGA 16 ..... WOODHILL ADMIRAL 77K  
BLUE CASH OF CONANGA 6020  
G A R PREDESTINED ..... B/R NEW DESIGN 036  
**MGR BLACKBIRD 8055** ..... G A R EXT 4206  
EXAR BLACKBIRD 5005 ..... RITO 112 OF 2536 RITO 616  
ACF BLACKBIRD 0308

	CE	BW	WW	YW	MA	CM	SC	DC	CW	RE	YG	MS	\$MI
EPDs		-1.8	66	123	36	N/A	N/A	N/A	10	-.24	.32	.30	58

- Sells bred 5-1/2 months safe to MAGS Yard Man 1910U
- Selling half interest and no possession
- This purebred Angus bred heifer is a true sale highlight and one of the finest you'll find anywhere.
- She's Connealy Consensus 7229 daughter from the MGR Blackbird 8055 donor at Express Ranches, who is daughter of G A R Predestined who goes back to a Rito 112 of 2536 Rito 616 daughter.
- This future donor is made near-perfect with her flawless and unique profile. Her foundation from the ground up is constructed well. She is huge-footed, sound in her mobility and easy in her condition.
- This broody female posts an amazing set of EPDs with a breed-leading 117 for YW, 38 for Milk, .94 for RE and .64 for Marbling.
- Invest with Stowers to create amazing Lim-Flex and superb purebred Angus.



**Lot 16**



# DVFC Kick Back *cow family*



Lot 17



## SSTO EX GIRLFRIEND 0806X

1/10/2010 HOMO BLK(T) HOMO PLD(P)  
 LIM-FLEX(50/43.3) COW SSTO 0806X LFF 1963849

G A R GRID MAKER ..... GDAR TRAVELER 044  
**S A V BISMARCK 5682** ..... G A R PRECISION 2536  
 S A V ABIGALE 0451 ..... SCHOENES FIX IT 826  
 S A V ABIGALE 6062  
 AUTO BLACK DAKOTA 129J ..... EXLR DAKOTA 353G  
**DVFC KICK BACK 220R** ..... DFLC JET SET BPC 34Y  
 ADKL HOLLYWOOD 33C ..... MOSR TOUCHBACK 17A  
 ADKL IMAN 825W

	CE	BW	WW	YW	MA	CM	SC	DC	CW	RE	YG	MS	\$MI
EPDs	8	0.3	55	102	30	4	0.1	9	33	-.05	.27	.09	48

- Homozygous polled & homozygous black
- She represents a proven and productive pedigree created at Stowers Limousin. Her dam, DVFC Kick Back 220R, is a daughter of AUTO Black Dakota 129J from the once prominent-producing donor ADKL Hollywood 3C.
- This 2010 model female is maternal and productive in her look.
- She offers a strong set of EPDs with a 0.3 BW, 102 YW and 30 for Milk.



## FOUR EMBRYOS



## FOUR EMBRYOS

LIM-FLEX(50/43.3) HOMO BLK HOMO PLD

G A R GRID MAKER ..... GDAR TRAVELER 044  
**S A V BISMARCK 5682** ..... G A R PRECISION 2536  
 S A V ABIGALE 0451 ..... SCHOENES FIX IT 826  
 S A V ABIGALE 6062  
 AUTO BLACK DAKOTA 129J ..... EXLR DAKOTA 353G  
**DVFC KICK BACK 220R** ..... DFLC JET SET BPC 34Y  
 ADKL HOLLYWOOD 33C ..... MOSR TOUCHBACK 17A  
 ADKL IMAN 825W

	CE	BW	WW	YW	MA	CM	SC	DC	CW	RE	YG	MS	\$MI
EPDs	9	-0.1	55	102	30	4	0.1	9	34	-.06	.26	18	48

- The calves will be 50% Lim-Flex and represent a mating you can see results throughout this sale book in Lots 17, 36 and 37.
- Impressive EPDs with a BW of -0.2, YW of 101, Milk of 30 and Marbling of .10.



## SSTO AFTER ALL 3870A

9/16/2013 HOMO BLK(P) HOMO PLD  
 LIM-FLEX(75/66.2) COW SSTO 3870A LFF 2041204

GPFF BLAQUE RULON ..... BLACK DIAMOND  
**DHVO DEUCE 132R** ..... QUAIL RUN RAMONA BP  
 AMY JO DHAN 20L ..... BLACK CAT DHAN 152G  
 GPFF AMBER JO

ACT. BW  
81

	CE	BW	WW	YW	MA	CM	SC	DC	CW	RE	YG	MS	\$MI
EPDs	7	1.3	63	111	27	1	0.8	18	51	.45	.13	-.01	48



## SIX EMBRYOS

LIM-FLEX (71.5) DBLBLK HOMO PLD

BASIN FRANCHISE P142 ..... C A FUTURE DIRECTION 5321  
**LH U HAUL 135U** ..... BASIN CHLOE 812L  
 EXLR DUCHESS 7129R ..... EXLR NEW GENERATION 071M  
 EXLR 199H  
 AUTO BLACK DAKOTA 129J ..... EXLR DAKOTA 353G  
**DVFC KICK BACK 220R** ..... DFLC JET SET BPC 34Y  
 ADKL HOLLYWOOD 33C ..... MOSR TOUCHBACK 17A  
 ADKL IMAN 825W

	CE	BW	WW	YW	MA	CM	SC	DC	CW	RE	YG	MS	\$MI
EPDs	6	1.5	57	105	31	4	0.2	17	48	.18	.22	.22	54

- This mating is a hit in the making including a huge EPD profile!
- They are by LH U Haul and from the elite purebred donor, DVFC Kick Back.

# Fall-Calving *pairs*



## HCC 5682 GEORGINA 0244

8/28/2010 BLK HOMO PLD(P)  
ANGUS COW 0244X AAA 16789561

G A R GRID MAKER ..... GDAR TRAVELER 044  
**S A V BISMARCK 5682** ..... G A R PRECISION 2536  
 S A V ABIGALE 0451 ..... SCHOENES FIX IT 826  
 ..... S A V ABIGALE 6062  
 ..... D H D TRAVELER 6807  
**RITO 616 OF 4B20 6807** ..... RITA 4B20 OF OFB1  
**HCC 616 GEORGINA 5204** ..... TC FOREFRONT 185  
 HCC 185 GEORGINA 3263 ..... HCC BR GEORGINA 1107

	CE	BW	WW	YW	MA	CM	SC	DC	CW	RE	YG	MS	\$MI
EPDs	N/A	-3.2	52	105	30	N/A	N/A	N/A	37	-.44	.53	.30	53

- This purebred Angus female is one of the top lots of the sale.
- She is a daughter of S A V Bismarck 5682 from a daughter of Rito 616 Of 4820 6807.
- She has earned her -3.2 for BW, 105 for YW, .30 for Marbling and 53 for \$MI.
- This 2010 model is made as nice as you would want one.
- She is sound, plenty deep in her flank and appealing in her front end and strong down her top line.



## SSTO XENIA 0813X

3/1/2010 HOMO BLK(P) HOMO PLD(P)  
LIM-FLEX(50/45.4) COW SSTO 0813X LFF 1976491

HUNTS HI-LITER 245G ..... WADDLES COBALT 3106  
**JCL LODESTAR 27L** ..... TNUH MISS C245  
 LOGAN'S CHEERLEADER 280G ..... COLE FIRST DOWN 46D  
 ..... TTCC CONFIDENCE MAKER  
 ..... GAR PRECISION 1680  
 G A R RETAIL PRODUCT ..... G A R EXT 4927  
**HPCA RETAIL PRODUCT 264** ..... B/R NEW DESIGN 036  
 HPCA NEW DESIGN 911 ..... DEER CREEK 044 TRAVELER 5

	CE	BW	WW	YW	MA	CM	SC	DC	CW	RE	YG	MS	\$MI
EPDs	14	-0.8	51	110	30	9	0.5	7	44	-.28	.53	.48	59

- Homozygous polled & homozygous black
- This big-league donor in the making is one you will admire on paper and take a liking to when you see her January 30.
- She represents one of the strongest matings our breed has ever experienced-Angus back to the multiple trait-leading JCL Lodestar 27L.
- This 2010 model 50% Lim-Flex has earned a -0.8 for BW, 110 for YW, 30 for Milk and .48 for Marbling.
- Her sire, JCL Lodestar 27L, is deceased, has left some amazing daughters in production. This young brood cow is a prime example of that statement.
- SSTO Xenia is moderate, angular and doing a tremendous job with her heifer.



## SSTO ALL ABOUT YOU 3863A

9/6/2013 DBL BLK DBL PLD  
LIM-FLEX(50/44.5) COW SSTO 3863A LFF 2041211

GPFF BLAQUE RULON ..... BLACK DIAMOND  
**DHVO DEUCE 132R** ..... QUAIL RUN RAMONA BP  
 AMY JO DHAN 20L ..... BLACK CAT DHAN 152G  
 ..... GPFF AMBER JO

**ACT. BW**  
68

	CE	BW	WW	YW	MA	CM	SC	DC	CW	RE	YG	MS	\$MI
EPDs	N/A	-0.7	62	112	28	N/A	N/A	N/A	53	.26	.24	.10	50



## SSTO AFTER HOURS 3860A

9/4/2013 DBL BLK HOMO PLD(P)  
LIM-FLEX(46.5/42.5) COW SSTO 3860A LFF 2041206

BASIN FRANCHISE P142 ..... C A FUTURE DIRECTION 5321  
**LH U HAUL 135U** ..... BASIN CHLOE 812L  
 EXLR DUCHESS 7129R ..... EXLR NEW GENERATION 071M  
 ..... EXLR 199H

**ACT. BW**  
69

	CE	BW	WW	YW	MA	CM	SC	DC	CW	RE	YG	MS	\$MI
EPDs	11	-0.8	58	116	33	6	0.4	10	61	-.17	.56	.52	62



# Fall-Calving *pairs*



Lot 22



Lot 23



## SSTO WHISTLIN DIXIE 9813W

3/5/2009 HOMO BLK(P) HOMO PLD(P)  
LIM-FLEX(50/44.7) COW SSTO 9813W LFF 1946886

BLACK DIAMOND ..... CANE RIDGE BLACK DRAK  
**GPFF BLAQUE RULON** ..... WULFS DIADEM 4260D  
 QUAIL RUN RAMONA BP ..... LKCC TOMAHAWKS TOUCHDOWN  
 AMBL FAVORITE GIRL 36W  
 GAR SLEEP EASY 1009 ..... TEHAMA BANDO 155  
**MA C094 OF 875 SLEEP EASY** ..... BLACKLASS GAR 103  
 MLCC CALIFORNIA BLACKCAP ..... CALIFORNIA TRAVELER  
 BLACKCAP OF TEHAMA C242

	CE	BW	WW	YW	MA	CM	SC	DC	CW	RE	YG	MS	\$MI
EPDs	8	-0.7	36	76	21	0	0.4	5	3	-.24	.29	.31	50

- Homozygous polled & homozygous black
- A known daughter of the big-time Stowers Angus donor C094.
- She is sired by GPFF Blaque Rulon and scanned a 13.42 for REA and 4.4 for IMF.
- This female represents the blending of Rulon with Angus—results have been very positive in the past and this female represents that mating to the fullest.
- She is thick, big-boned and heavy structured. We love her feminine front end, length of body and squareness of hip. She is doing a great job with her heifer.



## SSTO YA YA 1854Y

9/13/2011 HOMO BLK(P) HET PLD(T)  
LIM-FLEX(63/56.1) COW SSTO 1854Y LFF 2008315

JCL LODESTAR 27L ..... HUNTS HI-LITER 245G  
**LH RODEMASTER 338R** ..... LOGAN'S CHEERLEADER 280G  
 VERMILION E BLACKBIRD9546 ..... VERMILION 31 STACLER 3491  
 CH ENV BLACKBIRD C5941  
 GPFF BLAQUE RULON ..... BLACK DIAMOND  
**LFL MY GIRL 3077N** ..... QUAIL RUN RAMONA BP  
 LFL 51F ..... TYRE DEAN 17B  
 FOUNDATION DAM

	CE	BW	WW	YW	MA	CM	SC	DC	CW	RE	YG	MS	\$MI
EPDs	9	0.3	49	91	26	5	0.6	10	39	.21	.30	.16	48

- Polled & homozygous black
- This 63% Lim-Flex first-calf heifer is pouring all of her energy into her heifer at side.
- She is by the big-numbered LH Rodemaster and from the famed donor LFL My Girl.
- She has posted a 0.3 for BW, 91 for YW, 26 for Milk, .40 for Marbling and 51 for \$MI.
- Her young heifer is by LH U Haul 135U and has a great set of EPDs with a highlighted 0.2 for BW, 106 for YW, 31 for Milk and .36 for \$MI.



## LSTO ALL ALONE 3874A

10/8/2013 HOMO BLK DBL PLD  
LIM-FLEX(75/66.4) COW LSTO 3874A LFF 2041205

AUTO DOLLAR GENERAL 122R ..... LVLS SECRET WEAPON 4408K  
**BOHI TITELIST 7050T** ..... AUTO KRYIA 232K  
 CARROUSELS PINA COLADA ..... AUTO BLACK DAKOTA 129J  
 ELMW GINNIE P58G

ACT. BW  
79

	CE	BW	WW	YW	MA	CM	SC	DC	CW	RE	YG	MS	\$MI
EPDs	8	0.8	44	88	28	4	0.5	7	4	.01	.19	.17	48



## SSTO AVERAGE JOE 3859A

9/4/2013 DBL BLK DBL PLD  
LIM-FLEX(53/47.8) COW SSTO 3859A LFF 2041210

BASIN FRANCHISE P142 ..... C A FUTURE DIRECTION 5321  
**LH U HAUL 135U** ..... BASIN CHLOE 812L  
 EXLR DUCHESS 7129R ..... EXLR NEW GENERATION 071M  
 EXLR 199H

ACT. BW  
71

	CE	BW	WW	YW	MA	CM	SC	DC	CW	RE	YG	MS	\$MI
EPDs	9	0.2	57	106	31	4	0.4	12	58	.08	.45	.36	56

# Fall-Calving *pairs*



## TF BLACKBIRD 9106

1/25/2009 DBL BLK HOMO PLD(P)  
ANGUS COW 9106W AAA 16342341

RITO 616 OF 4B20 6807 ..... D H D TRAVELER 6807  
**RITO 112 OF 2536 RITO 616** ..... RITA 4B20 OF OFB1  
 G A R PRECISION 2536 ..... GAR PRECISION 1680  
 G A R EXT 2104  
 BR MIDLAND ..... TWIN VALLEY PRECISION161  
**EXG BLACKBIRD S064 R3** ..... BR ROYAL LASS 7036-19  
 DAVIS YR BLACKBIRD 558H ..... GAR PRECISION 1680  
 G A R TRAVELER 760

	CE	BW	WW	YW	MA	CM	SC	DC	CW	RE	YG	MS	\$MI
EPDs	10	-2.1	56	108	31	3	N/A	N/A	47	-.70	.83	.76	68

- This purebred Angus cow has been a terrific producer.
- A .76 for Marbling is what sets this female apart from all others in this offering. She is exactly what a program could use if you are trying to add marbling and fleshing ability.
- This well-made female sells with her young September 50% Lim-Flex heifer by the national champion DHVO Deuce 132R.



## SSTO YELLOW ROSE 1856Y

10/19/2011 HOMO BLK(T) HOMO PLD(P)  
LIM-FLEX(50/42.1) COW SSTO 1856Y LFF 2004717

G A R GRID MAKER ..... GDAR TRAVELER 044  
**S A V BISMARCK 5682** ..... G A R PRECISION 2536  
 S A V ABIGALE 0451 ..... SCHOENES FIX IT 826  
 S A V ABIGALE 6062  
 LKCC TOMAHAWKS TOUCHDOWN ..... LKCC BLACK NUGGET 906U  
**MINE PLD EXCEPTIONAL 981E** ..... LKCC SMITH CATTLE 755S  
 HC EXTRAORDINARY HCR 61X ..... BVFL BLACK POLL POWER  
 HC GUSSET HCR 18G

	CE	BW	WW	YW	MA	CM	SC	DC	CW	RE	YG	MS	\$MI
EPDs	8	0.5	52	97	29	-3	0.2	5	26	-.12	.31	.14	48

- Homozygous polled & homozygous black
- A big-time 50% Lim-Flex first-calf heifer who is doing a tremendous job.
- She is sired by S A V Bismarck 5682 and from one of the very first donors to be incorporated into the Stower's program, MINE Pld Exceptional 981E.
- She posts a 0.5 BW, 97 YW, 29 Milk, .40 for Marbling and 52 \$MI.
- Take a close look at the EPD profile of her young 47% Lim-Flex bull by LH U Haul 135U. He offers a -0.2 BW, 110 YW, 33 Milk and .48\$ MI.



## SSTO U GOT IT 8818U

12/2/2008 HOMO BLK(P) HOMO PLD(P)  
LIM-FLEX(50/45.4) COW SSTO 8818U LFF 1934291

HUNTS HI-LITER 245G ..... WADDLES COBALT 3106  
**JCL LODESTAR 27L** ..... TNUH MISS C245  
 LOGAN'S CHEERLEADER 280G ..... COLE FIRST DOWN 46D  
 TTCC CONFIDENCE MAKER  
 TEHAMA BANDO 155  
 GAR SLEEP EASY 1009 ..... BLACKLASS GAR 103  
**MA C094 OF 875 SLEEP EASY** ..... CALIFORNIA TRAVELER  
 MLCC CALIFORNIA BLACKCAP ..... BLACKCAP OF TEHAMA C242

	CE	BW	WW	YW	MA	CM	SC	DC	CW	RE	YG	MS	\$MI
EPDs	14	-1.7	43	94	25	9	0.5	11	31	-.52	.53	.45	55

- Homozygous polled & homozygous black
- This female represents one of the best crosses in our breed. She is a daughter of the multiple-trait-leading JCL Lodestar 27L from the Stowers Angus donor C094.
- She posts a top set of EPDs with a -1.7 BW, 94 YW, 25 Milk and .45 Marbling, and she scanned a 4.82 IMF.
- We admire her feminine front end, strong top line, heaviness of bone and sound structure.



## SSTO AINT LUCK 3852A

9/1/2013 DBL BLK DOUBLE PLD  
LIM-FLEX(50/44.5) COW SSTO 3852A LFF 2041208

GPFF BLAQUE RULON ..... BLACK DIAMOND  
**DHVO DEUCE 132R** ..... QUAIL RUN RAMONA BP  
 AMY JO DHAN 20L ..... BLACK CAT DHAN 152G  
 GPFF AMBER JO

ACT. BW  
72

	CE	BW	WW	YW	MA	CM	SC	DC	CW	RE	YG	MS	\$MI
EPDs	8	-0.1	64	114	28	0	N/A	N/A	58	.13	.40	.33	58



## SSTO AVERAGE WAGES 3858A

9/3/2013 DBL BLK HOMO PLD(P)  
LIM-FLEX(47/40.8) BULL SSTO 3858A LFM 2041209

BASIN FRANCHISE P142 ..... C A FUTURE DIRECTION 5321  
**LH U HAUL 135U** ..... BASIN CHLOE 812L  
 EXLR DUCHESS 7129R ..... EXLR NEW GENERATION 071M  
 EXLR 199H

ACT. BW  
77

	CE	BW	WW	YW	MA	CM	SC	DC	CW	RE	YG	MS	\$MI
EPDs	8	-0.2	58	110	33	0	0.2	9	52	-.09	.45	.35	57



Lot 26



## SSTO ALL LUCK 3872A

10/6/2013 DBL BLK DBL PLD  
LIM-FLEX(75/67.6) BULL SSTO 3872A LFM 2041207

GPFF BLAQUE RULON ..... BLACK DIAMOND  
**MAGS UNEQUALED** ..... QUAIL RUN RAMONA BP  
 MAGS MANDA ..... EXLR DAKOTA 353G  
 MAGS JEWEL

ACT. BW  
69

	CE	BW	WW	YW	MA	CM	SC	DC	CW	RE	YG	MS	\$MI
EPDs	9	0.1	45	89	26	5	0.6	N/A	15	-.01	.24	.23	50



# Spring Bred *cow's*



Lot 27



SSTO Zig Zag 2869Z

Daughter of Lot 27



Lot 28



## UR THA ONE

12/5/2008 DBL BLK HOMO PLD(P)  
LIM-FLEX(50/45.3) COW SSTO 8816U LFF 1935190

EXLR NEW GENERATION 071M ..... AUTO BLACK DAKOTA 129J  
MAGS SASQUATCH ..... EXLR LUVLY 084F  
MAGS FRUITFUL 487M ..... EXLR LIMITED EDITION 765J  
WULFS FRUITFUL 6052F  
GAR PRECISION 1680  
G A R RETAIL PRODUCT ..... GAR PRECISION 1680  
HPCA RETAIL PRODUCT 264 ..... G A R EXT 4927  
HPCA NEW DESIGN 911 ..... B/R NEW DESIGN 036  
DEER CREEK 044 TRAVELER 5

	CE	BW	WW	YW	MA	CM	SC	DC	CW	RE	YG	MS	SMI
EPDs	15	-3.3	33	81	30	5	-0.1	4	22	-27	.42	.42	52

- AI'd 5.15.13 to DHVO Deuce 132R
- PE'd 5.29.13 to 8.01.13 safe to MAGS Zincograph 4906Z (62.5% LFM - H/H)
- This well-made brood cow continues to amaze us with her producing talent.
- This 50% Lim-Flex female has earned a strong set of EPDs with a low BW of -3.3, 30 for Milk, .42 for Marbling and 52 for \$MI. She also scanned a 14.39 for REA and 3.99 for IMF.
- Her last calf, SSTO Zig Zag 2869Z, a daughter of DHVO Deuce, sold privately to our good friends the Wilder Family of Snook, TX. She was a successful show heifer and received much notoriety as she was shown throughout Texas.



## SALT YARN WEAVER 004Y

8/13/2011 DBL BLK HOMO PLD(P)  
PERCENTAGE(81/73.1) COW STSF 004Y NXF 2021540

KAJO RESPONDER 120R ..... JCL LODESTAR 27L  
AHCC WESTWIND W544 ..... KAJO SHERYL SWOOPS 11H  
AHCC MISS WULF HUNT R544 ..... COLE WULF HUNT  
AHCC MISS OUTCROSS N844  
MAGS REMOTE ..... JCL LODESTAR 27L  
EXLR MARDI 263W ..... MAGS 13M  
EXLR MARDI 7253S ..... EXAR NEW LOOK 2971  
JCL MARDI

	CE	BW	WW	YW	MA	CM	SC	DC	CW	RE	YG	MS	SMI
EPDs	11	1.7	57	113	22	6	0.6	14	46	.11	.27	.13	50

- AI'd 5.15.13 to LH U Haul
- PE'd 5.29.13 to 8.01.13 safe to MAGS Zincograph 4906Z (62.5% LFM - H/H)
- This 81% Limousin female is by the popular purebred AI bull AHCC WestWind whose daughters are known to have a striking profile, along with plenty of thickness and tons of performance. We think she represents that statement well.
- This young first-calf heifer is feminine and smooth up through her front end, and very long and straight lined. She is big-boned, sound and broody in her appearance.
- She posts a low BW of 1.7, a strong YW of 113 and a breed-leading Marbling of .40.

# Spring Bred *cows*



Lot 29



Lot 30



## SSTO WALLPAPER 9850W

9/4/2009 HOMO BLK(T) HOMO PLD(T)  
 LIM-FLEX(50/44.8) COW SSTO 9850W LFF 1959025

AUTO BLACK DAKOTA 129J ..... EXLR DAKOTA 353G  
 EXLR NEW GENERATION 071M ..... DFCL JET SET BPC 34Y  
 EXLR LUVLY 084F ..... WULFS DAWSON 4421D  
 AMBL LUVLY 340Y  
 BON VIEW NEW DESIGN 1407  
 G A R INTEGRITY ..... G A R PRECISION 1019  
 SSTO INTEGRITY 5620R ..... S A F FOCUS OF E R  
 G A R FOCUS C91 ..... G A R 1489 TRAVELER 767

	CE	BW	WW	YW	MA	CM	SC	DC	CW	RE	YG	MS	SMI
EPDs	12	-0.6	38	81	29	4	-0.2	17	6	-.71	.50	.52	56

- AI'd 5.14.13 to DHVO Deuce 132R, safe
- Homozygous polled & homozygous black
- This daughter of a once national sale top-selling bull, EXLR New Generation 071M, is out a Stowers-bred purebred Angus female by GAR Integrity.
- SSTO Wallpaper 9850W is one high marbling female who scanned a 5.37 for IMF and posts a .52 for Marbling EPD.
- She has earned a -0.6 for BW and a 29 for Milk.
- We love her number package, along with her unique and prominent look. She is deep flanked, maternal in her look and holds her condition well. This brood cow is well bred, big-numbered and sells bred to the sire of champions, DHVO Deuce.



## URIAH

12/6/2008 DBL BLK HOMO PLD(P)  
 LIM-FLEX(50/42.1) COW SSTO 8825U LFF 1935193

EXLR DAKOTA 353G ..... WULF'S COUNT DOWN 9251C  
 AUTO BLACK DAKOTA 129J ..... CANE RIDGE DAPHNE 011D  
 DFCL JET SET BPC 34Y ..... GENERAL LEE LOJW 40S  
 DFCL BPC 20U  
 N BAR EMULATION EXT  
 G A R EXPECTATION 4915 ..... G A R TRAVELER 2421  
 HPCA GAR EXPECTATION P284 ..... B/R NEW DESIGN 036  
 G A R NEW DESIGN A180 ..... G A R 6807 TRAVELER 1716

	CE	BW	WW	YW	MA	CM	SC	DC	CW	RE	YG	MS	SMI
EPDs	3	1.8	48	97	24	3	0.2	12	26	-.30	.40	.24	50

- AI'd 5.14.13 to LH Rodemaster 338R, safe
- Homozygous black & double polled
- A daughter of the two-time national gold medal sire, AUTO Black Dakota 129J and from a daughter of GAR Expectation 4915 back to a daughter of B/R New Design 036.
- She scanned an impressive 13.46 for REA and 4.04 for IMF.
- She has earned a strong set of numbers with a 1.8 BW, 97 YW, 24 Milk and .24 for Marbling.
- This brood cow is in her prime production and continues to amaze us with her producing ability. She sells bred to the big-numbered LH Rodemaster 338R.



# Spring Bred *heifers*



Lot 31



Lot 32



## CHR ZAR'S BELLE 033Z

3/21/2012 HOMO BLK(P) HOMO PLD(P)  
LIM-FLEX(50/45.4) COW KQ 033Z LFF 2014534

HUNTS HI-LITER 245G.....	WADDLES COBALT 3106
<b>JCL LODESTAR 27L</b> .....	TNUH MISS C245
LOGAN'S CHEERLEADER 280G.....	COLE FIRST DOWN 46D
	TTCC CONFIDENCE MAKER
	GARDENS BRAVO
GARDENS BONUS A37 S1.....	GREEN GARDEN SUSIE 437 S1
<b>GREEN GARDEN IDA G59</b> .....	C A FUTURE DIRECTION 5321
GREEN GARDEN IDA D59.....	GREEN GARDEN IDA A56 S1

	CE	BW	WW	YW	MA	CM	SC	DC	CW	RE	YG	MS	\$MI
EPDs	15	-2.1	45	95	23	9	0.3	10	28	-.37	.55	.58	60

- AI'd 5.01.13 to EBFL Ypsilanti 420Y
- Homozygous polled & homozygous black
- A sale highlight and one of the top bred females of the offering.
- She posts an EPD profile that is as fine as you can get your hands on. She has a -2.1 for BW, 95 for YW, .58 for Marbling and 60 for \$MI. She also scanned a 11.52 for REA and 4.54 for IMF.
- This female represents a mating that has proven to be valuable in our breed and continues to produce excellence time and time again.
- Her future calf sired by the \$100,000-valued sire EBFL Ypsilanti 420Y will be homozygous polled, homozygous black and extremely big-numbered.



## LH ZACHNABBY 022Z

3/15/2012 HOMO BLK(P) HOMO PLD(P)  
LIM-FLEX(50/45.4) COW LCHA 022Z LFF 2014562

HUNTS HI-LITER 245G.....	WADDLES COBALT 3106
<b>JCL LODESTAR 27L</b> .....	TNUH MISS C245
LOGAN'S CHEERLEADER 280G.....	COLE FIRST DOWN 46D
	TTCC CONFIDENCE MAKER
	T C STOCKMAN
TC STOCKMAN 365.....	TC PRIDE 0014
<b>G 13 GALA 1221</b> .....	ONIELLS DYNASTY
G 13 GALA 6197.....	G 13 EARLINE GALA 9420

	CE	BW	WW	YW	MA	CM	SC	DC	CW	RE	YG	MS	\$MI
EPDs	13	-1.2	45	94	25	8	0.3	16	45	-.54	.59	.40	53

- AI'd 5.01.13 to EBFL Ypsilanti 420Y
- This first-calf heifer is a result of blending the multiple-trait-leading JCL Lodestar 27L and a proven Angus female by the performance sire TC Stockman.
- We love her EPD profile, the spread she has from her low BW of -1.2 to YW of 94, and a perfect Milk number of 25. She also posts a .40 Marbling and \$MI of 53.
- When you find a female bred this well and with her strength of numbers, know you have something special.
- Here future calf by EBFL Ypsilanti 420Y, the big-numbered son of TC Aberdeen 759 back to the once national champion female MAGS Ramada, will be an nice bonus to the buyer to offset the investment.

# Spring Bred *heifers*



## LH ZAMBRA 026Z

3/17/2012 HOMO BLK(P) HOMO PLD(P)  
 LIM-FLEX(50/45.4) COW LCHA 026Z LFF 2014565

HUNTS HI-LITER 245G..... WADDLES COBALT 3106  
**JCL LODESTAR 27L**..... TNUH MISS C245  
 LOGAN'S CHEERLEADER 280G..... COLE FIRST DOWN 46D  
 TTCC CONFIDENCE MAKER  
 RITO 9FB3 OF 5H11 FULLBACK  
**J&C ERIN 001**..... HALL WAY GINA H408  
 DEER CREEK MAX 610..... G T MAXIUM  
 QUEEN G A R 34Z

	CE	BW	WW	YW	MA	CM	SC	DC	CW	RE	YG	MS	\$MI
EPDs	14	-1.8	39	92	22	9	0.4	13	20	-.27	.34	.07	42

- Al'd 5.01.13 to EBFL Ypsilanti 420Y
- Homozygous polled & homozygous black
- We love the results when you blend JCL Lodestar 27L with Angus females. Zambra is a prime example of that statement and we know you will appreciate her sale day. She is absolutely flawless in her design and admirable in her profile.
- This double homozygous female's resulting calf will be double homozygous and extremely good being by EBFL Ypsilanti 420Y. He is a huge-numbered son of TC Aberdeen from MAGS Ramada.
- It's females that have genetics and look like Zambra that are going to keep the Limousin business strong and appealing.



## LH ZABULA 008Z

2/29/2012 HOMO BLK(P) HOMO PLD(P)  
 LIM-FLEX(50/45.4) COW LCHA 008Z LFF 2014555

HUNTS HI-LITER 245G..... WADDLES COBALT 3106  
**JCL LODESTAR 27L**..... TNUH MISS C245  
 LOGAN'S CHEERLEADER 280G..... COLE FIRST DOWN 46D  
 TTCC CONFIDENCE MAKER  
 VERMILION YELLOWSTONE  
 STEVENSON YELLOWSTONE808 .. STEVENSON ZARA 6468  
**BASIN EILEENMERE LASS 442**..... C A FUTURE DIRECTION 5321  
 BASIN EILEENMERE LASSP283..... BASIN EILEENMERE LASS480Z

	CE	BW	WW	YW	MA	CM	SC	DC	CW	RE	YG	MS	\$MI
EPDs	13	-1.7	50	107	28	8	0.4	N/A	40	-.30	.55	.51	59

- Al'd 5.01.13 to EBFL Ypsilanti 420Y
- Homozygous polled & homozygous black
- This daughter of JCL Lodestar 27L is one of the top bred females in the offering. JCL Lodestar 27L is a multiple-trait-leading sire who has left our breed with some of the best females in production. They are moderate and easy in their condition.
- Zabula is a one big-numbered brood cow and for sure a future donor.
- She has a strong set of EPDs with a low BW of -1.7, 107 for YW, 28 for Milk and .51 for Marbling, along with a 59 for \$MI.
- We love the idea that she will have a calf at side shortly after the sale by the ever-popular EBFL Ypsilanti 420Y.





Lot 35



Lot 35



## JEPS BROADWAY 170Z

2/27/2012 HOMO BLK(P) HET PLD(T)  
LIM-FLEX(50/44.8) BULL JEPS 170Z LFM 2022062

DHVO DEUCE 132R ..... GPFF BLAQUE RULON  
MAGS WAZOWSKI ..... AMY JO DHAN 20L  
BOHI RED ROBIN 282R ..... CONNEALY LEAD ON  
MAGS MANUELA  
BON VIEW NEW DESIGN 1407 ..... B/R NEW DESIGN 036  
EXLR BARB 170R ..... BON VIEW PRIDE 664  
EXLR BARB 1027M ..... EXLR BROADWAY 041E  
C & C BARB

ACT. BW  
76

ADJ. WW  
746

	CE	BW	WW	YW	MA	CM	SC	DC	CW	RE	YG	MS	\$MI
EPDs	9	-0.3	55	99	29	2	0.4	10	48	-.04	.37	.49	61

- Polled & homozygous black
- This big-time herd-sire prospect can make a positive impact in most herds.
- He is a 50% Lim-Flex son of MAGS Wazowski, the leading sire for Fuchs Limousin and Magness Land & Cattle. He is a son of DHVO Deuce from the leading Stowers and Council donor, BOHI Red Robin 282R.
- His dam is one of the big-time marbling cows in our breed, EXLR Barb 170R. She is a daughter of Bon View New Design 1407 and now heads up the Jepson program.
- This young bull posts a -0.3 for BW, 99 for YW and 29 for Milk, with a breed-leading .49 for Marbling and 61 for \$MI. He also has a 76-lb. BW and 746-lb. Adj. WW.
- We admire his heaviness of bone, soft pasterns, ease of movement and overall balance. We know that when cattle are sound from the ground up it makes everything else so much better. He is also deep in his flank, big-volumed and performance-oriented. We love the mass, capacity and prominent look he has.

# Herd-Sire *prospects*



Lot 36



Lot 38



Lot 37



Lot 39



## SSTO ZUBIN 2804Z

9/16/2012 HOMO BLK(T) HOMO PLD(P)  
LIM-FLEX(50/43.3) BULL SSTO 2804Z LFM 2035289

G A R GRID MAKER . . . . .	GDAR TRAVELER 044	
S A V BISMARCK 5682 . . . . .	G A R PRECISION 2536	
S A V ABIGALE 0451 . . . . .	SCHOENES FIX IT 826	
	S A V ABIGALE 6062	
	EXLR DAKOTA 353G	
AUTO BLACK DAKOTA 129J . . . . .	DFLC JET SET BPC 34Y	<b>ACT. BW</b>
DVFC KICK BACK 220R . . . . .	MOSR TOUCHBACK 17A	89
ADKL HOLLYWOOD 33C . . . . .	ADKL IMAN 825W	<b>ADJ. WW</b>
		720

	CE	BW	WW	YW	MA	CM	SC	DC	CW	RE	YG	MS	\$MI
EPDs	8	0.1	53	101	30	4	0.1	9	33	-.06	.27	.10	48

- Want to add power, performance and extra muscle? He is by the Angus sire S A V Bismarck 5682 and from the leading Stowers donor, DVFC Kick Back 220R.
- His EPD profile will make a positive impact in most herds.
- This herd-sire prospect offers balance, symmetry and performance.



## SSTO ZAYNE 2813Z

9/10/2012 HOMO BLK(T) HOMO PLD(P)  
LIM-FLEX(50/43.3) BULL SSTO 2813Z LFM 2035290

G A R GRID MAKER . . . . .	GDAR TRAVELER 044	
S A V BISMARCK 5682 . . . . .	G A R PRECISION 2536	
S A V ABIGALE 0451 . . . . .	SCHOENES FIX IT 826	
	S A V ABIGALE 6062	
	EXLR DAKOTA 353G	
AUTO BLACK DAKOTA 129J . . . . .	DFLC JET SET BPC 34Y	<b>ACT. BW</b>
DVFC KICK BACK 220R . . . . .	MOSR TOUCHBACK 17A	86
ADKL HOLLYWOOD 33C . . . . .	ADKL IMAN 825W	<b>ADJ. WW</b>
		765

	CE	BW	WW	YW	MA	CM	SC	DC	CW	RE	YG	MS	\$MI
EPDs	8	-0.2	57	101	30	4	0.1	9	33	-.06	.27	.10	48

- This 50% Lim-Flex herd-sire is strong down his top, straight and level out of his rump and striking in his profile.
- This mating has been proven time and time again at Stowers.
- Strength in numbers, fault-free conformation and a predictable pedigree.



## SSTO ZACK 2811Z

9/29/2012 HOMO BLK(T) HOMO PLD(T)  
LIM-FLEX(50/44.0) BULL SSTO 2811Z LFM 2031035

AUTO DOLLAR GENERAL 122R . . . . .	LVLS SECRET WEAPON 4408K	
BOHI TITLELIST 7050T . . . . .	AUTO KYRIA 232K	
CARROUSELS PINA COLADA . . . . .	AUTO BLACK DAKOTA 129J	
	ELMW GINNIE P58G	
	RITO 616 OF 4B20 6807	
RITO 112 OF 2536 RITO 616 . . . . .	G A R PRECISION 2536	<b>ACT. BW</b>
TF BLACKBIRD 9106 . . . . .	BR MIDLAND	66
EXG BLACKBIRD S064 R3 . . . . .	DAVIS YR BLACKBIRD 558H	<b>ADJ. WW</b>
		738

	CE	BW	WW	YW	MA	CM	SC	DC	CW	RE	YG	MS	\$MI
EPDs	9	-1.0	54	105	33	6	N/A	N/A	25	-.23	.45	.39	57

- He's moderate in his frame, easy in his condition and stout. We appreciate many things about this bull as he is strong in all economically important traits.
- He posts a -1.0 for BW, 105 for YW, 33 for Milk and .39 for Marbling, along with 68-lb. BW and 738-lb. Adj. WW.



## SSTO ZENO 2820Z

9/17/2012 HOMO BLK(P) HOMO PLD(P)  
LIM-FLEX(50/44.7) BULL SSTO 2820Z LFM 2031036

BLACK DIAMOND . . . . .	CANE RIDGE BLACK DRAK	
GPF BLAQUE RULON . . . . .	WULFS DIADM 4260D	
QUAIL RUN RAMONA BP . . . . .	LKCC TOMAHAWKS TOUCHDOWN	
	AMBL FAVORITE GIRL 36W	
	O C C BACKSTOP 888B	
O C C EUREKA 865E . . . . .	BLACKBIRD OF RR 1204	
C R C ERICA 3031N . . . . .	EMULATION N BAR 5522	<b>ACT. BW</b>
THOMAS ERICA 6591 . . . . .	THOMAS ERICA 3493	84
		<b>ADJ. WW</b>
		680

	CE	BW	WW	YW	MA	CM	SC	DC	CW	RE	YG	MS	\$MI
EPDs	7	0.6	43	82	20	0	0.4	11	16	-.04	.35	.15	46

- A top herd-sire prospect and one of the best in the sale.
- He is packed full of muscle with tons of performance.
- He is moderate framed, thick down his top and extremely wide from behind. He is huge in his scrotal and a top performance beef bull who will sire pounds.



# Herd-Sire *prospects*



Lot 40



Lot 41



Lot 42



Lot 43



## SSTO ZAFAR 2812Z

9/10/2012 HET BLK(T) HET PLD(T)  
LIM-FLEX(75/67.2) BULL SSTO 2812Z LFM 2031037

WULFS REALTOR 1503R	HUNT MR JOCK 44J	
<b>WULFS TITUS 2149T</b>	WULFS LENA 1503L	
WULFS MEADOW GRASS 2149M	WULFS GOLIATH 2453G	
	MISS WULFETTE 9062J	
	JCL LODESTAR 27L	<b>ACT. BW</b>
DVFC HUSTLER 301P	DVFC CHOCOLATECHIP COOKIE	72
<b>SSTO UNDER THE RADAR 8811</b>	S A F FOCUS OF E R	<b>ADJ. WW</b>
G A R FOCUS 1581	G A R 6807 TRAVELER 504	741

	CE	BW	WW	YW	MA	CM	SC	DC	CW	RE	YG	MS	\$MI
EPDs	7	1.0	60	113	21	5	0.6	23	54	.37	.21	.13	52

- A son of Wulfs Titus 2149T, a complete outcross to most established lines.
- He offers a balanced set of numbers with a 1.0 for BW, 60 for WW and 113 for YW.
- This 75% Lim-Flex herd-sire prospect posts a 73-lb. BW and 741-lb. Adj. WW.



## SSTO ZING 2834Z

9/12/2012 DBL BLK DBL PLD  
LIM-FLEX(75/66.7) BULL SSTO 2834Z APPLIED FOR

WULFS REALTOR 1503R	HUNT MR JOCK 44J	
<b>WULFS TITUS 2149T</b>	WULFS LENA 1503L	
WULFS MEADOW GRASS 2149M	WULFS GOLIATH 2453G	
	MISS WULFETTE 9062J	
	GPFF BLAQUE RULON	<b>ACT. BW</b>
DHVO DEUCE 132R	AMY JO DHAN 20L	70
<b>SSTO WOUNDER WOMAN 9807W</b>	B/R NEW DESIGN 036	<b>ADJ. WW</b>
G A R NEW DESIGN A180	G A R 6807 TRAVELER 1716	760

	CE	BW	WW	YW	MA	CM	SC	DC	CW	RE	YG	MS	\$MI
EPDs	6	1.5	60	108	24	1	0.8	20	51	.45	.11	.16	53

- Double black & double polled
- A well-made and bred herd-sire prospect. This son of Wulfs Titus is from a daughter of the once national champion Deuce back to a daughter of G A R New Design A180.
- He posts a 70-lb. BW and 760-lb. WW.



## SSTO ZAPPING 2802Z

9/13/2012 HOMO BLK(T) HOMO PLD(T)  
LIM-FLEX(50/44.3) BULL SSTO 2802Z LFM 2025079

S A V 8180 TRAVELER 004	SITZ TRAVELER 8180	
<b>S A V MANDAN 5664</b>	BOYD FOREVER LADY 8003	
S A V ABIGALE 0451	SCHOENES FIX IT 826	
	S A V ABIGALE 6062	
	GPFF BLAQUE RULON	<b>ACT. BW</b>
DHVO DEUCE 132R	AMY JO DHAN 20L	79
<b>SSTO WAFFLES 8415U</b>	LVLS SECRET WEAPON 4408K	<b>ADJ. WW</b>
MAGS POMEGRANTE	EXLR 054H	759

	CE	BW	WW	YW	MA	CM	SC	DC	CW	RE	YG	MS	\$MI
EPDs	10	1.4	65	118	35	2	0.7	N/A	57	-.07	.49	.18	52

- 1.4 for BW, 65 for WW, 118 for YW and 35 for Milk are the numbers you can have influencing your cowherd. He is a true breeding bull who will positively influence a set of cows.
- Zapping is long-bodied, level out of his rump and sound in his structure.



## SSTO ZONKED OUT 2809Z

10/1/2012 HOMO BLK(P) HET PLD(T)  
LIM-FLEX(75/66.7) BULL SSTO 2809Z LFM 2031034

AUTO DOLLAR GENERAL 122R	LVLS SECRET WEAPON 4408K	
<b>BOHI TITLELIST 7050T</b>	AUTO KYRIA 232K	
CARROUSELS PINA COLADA	AUTO BLACK DAKOTA 129J	
	ELMW GINNIE P58G	
	HUNTS HI-LITER 245G	<b>ACT. BW</b>
JCL LODESTAR 27L	LOGAN'S CHEERLEADER 280G	74
<b>SSTO U GOT IT 8818U</b>	GAR SLEEP EASY 1009	<b>ADJ. WW</b>
MA C094 OF 875 SLEEP EASY	MLCC CALIFORNIA BLACKCAP	785

	CE	BW	WW	YW	MA	CM	SC	DC	CW	RE	YG	MS	\$MI
EPDs	11	0.3	52	98	31	9	0.5	10	18	-.14	.31	.24	50

- Look at the style, balance and prominent stance of this exciting prospect.
- This son of BOHI Titlelist 7050T is from a proven daughter of JCL Lodestar 27L.
- He has a solid set of EPDs and is rock solid from all angles—thick, square-hipped, sound and muscular. He will make a positive impact on any set of cows.

# Texas TRADITION



Lot 1



Lot 4



Lot 9



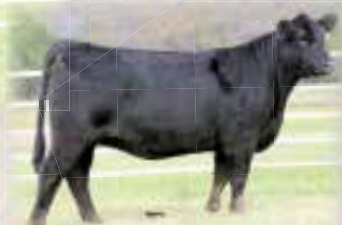
Lot 17



Lot 16



Lot 22



Lot 28



Lot 23



Lot 29



Lot 32



Lot 36



Lot 33



Lot 37



Lot 40



Lot 41





**Lot 2**



**Lot 3**



**Lot 5**



**Lot 6**



**Lot 12**



**Lot 13**



**Lot 20**



**Lot 21**



**Lot 26**



**Lot 27**



**Lot 30**



**Lot 31**



**Lot 34**



**Lot 35**



**Lot 38**



**Lot 39**



**Lot 42**



**Lot 43**





Scott, Donna & Lauren Stowers  
430 CR 1326 ★ Bridgeport, TX 76426  
940/644-2747 ★ Scott, cell: 940/577-1300  
Jason Gaston, ranch manager: 817/247-8011  
Jason, e-mail: [jasongaston85@gmail.com](mailto:jasongaston85@gmail.com)  
[stowers@boldwireless.net](mailto:stowers@boldwireless.net) ★ [www.stowerslimousin.com](http://www.stowerslimousin.com)

