



**ALL  
AMERICAN  
Limousin  
Futurity  
SALE of SALES**

**Wednesday,  
July 3, 2013 • 6 pm**  
in conjunction with the  
**All American Limousin Futurity  
Springfield, Missouri  
Boot Daddy Hospitality Room  
Ozark Empire Fairgrounds**

*All lots will be viewed as a slide show  
presentation during this live auction*

*Offering 31 Lots of  
Premier Limousin &  
Lim-Flex Genetics!*

*Sale Managers:*



**KEN HOLLOWAY**  
580/597-2419 • 580/581-7652 mobile  
**BRUCE BROOKS** • 580/276-5137  
24018 State Hwy. 5  
Chattanooga, OK 73528  
580/597-3006 • FAX: 580/597-6619  
E-mail—acs@americancattleservices.com  
www.americancattleservices.com



**R&R Marketing Company**  
Randall O. Ratliff • 615.330.2735  
Randy@RRMktg.com  
www.RRMktg.com  
PO Box 281677, Nashville, TN 37228

*Sale Consultant:*

**Mark Smith**  
Phone/Fax: 515/965-1458  
Mobile: 515/229-5227  
2511 NE 99th Place, Ankeny, IA 50021  
email: GRGenetics@aol.com



*Auctioneer & Livestock Press Representatives:*

C.K. "Sonny" Booth ..... Auctioneer  
Thad Combs..... *Limousin World*  
Kiley McKinna..... *Limousin World*

*All lots sell under the standard terms & conditions  
of the North American Limousin Foundation.  
[www.nalf.org/pdf/2010/aug23/saleterms.pdf](http://www.nalf.org/pdf/2010/aug23/saleterms.pdf)*

*Consignors:*

Barton Limousin  
P.O. Box 357  
Jarrell, TX 76537  
(512) 848-8360

Counsil Family Limousin  
21314 OSR  
Madisonville, TX 77864  
(281) 808-3473

Double B Grain Farm  
262 Shade Rd.  
McAlisterville, PA 17049  
(717) 649-6929

Hall Cattle Co.  
P.O. Box 168  
Sweetwater, TX 79556  
(325) 235-4345

Magness Land & Cattle Co.  
P.O. Box 190  
Platteville, CO 80651  
(918) 541-5482

Buck Ridge Limousin  
5244 S Farm Rd. 213  
Rogersville, MO 65742  
(417) 838-6109

Diamond Hill Cattle Co.  
1817 Devonshire Blvd  
Nichols Hills, OK 73116  
(405) 520-5846

Godfrey Cattle Co.  
P.O. Box 747  
Madill, OK 73446  
(580) 795-2400

Lawrence Family Limousin  
P.O. Box 299  
Anton, TX 79313  
(806) 790-2535

Pinegar Limousin  
850 W Farm 56  
Springfield, MO 65803  
(877) 746-3427

Coyote Hills Ranch  
23998 State Hwy 5  
Chattanooga, OK 73528  
(580) 581-7652

Double A Limousin  
22286 W 74th Street  
Shawnee, KS 66227  
(913) 558-7966

Hager Cattle Co.  
4651 2nd St.  
Karlsruhe, ND 58744  
(701) 626-2345

Linhardt Limousin/Aaron Linhardt  
27195 175th St.  
Leon, IA 50144  
(641) 340-1306

Sugar Bush Cattle, Inc.  
2400 Hog Creek Road  
Allen, MI 49227  
(517) 937-3399

Tubmill Creek Farms  
152 Florida Lane  
New Florence, PA 15944  
(724) 235-2178

Wies Limousin/Shelby Skinner  
103 Harris School Road  
Wellsville, MO 63384  
(573) 220-5768

# Featured Proven Donor

SBLX UNTOUCHABLE 101U

1

LIM-FLEX COW  
(50/43.8) BD: 3/16/08

HET PLD(T) HET BLK(T)  
SBLX101U LFF1910293

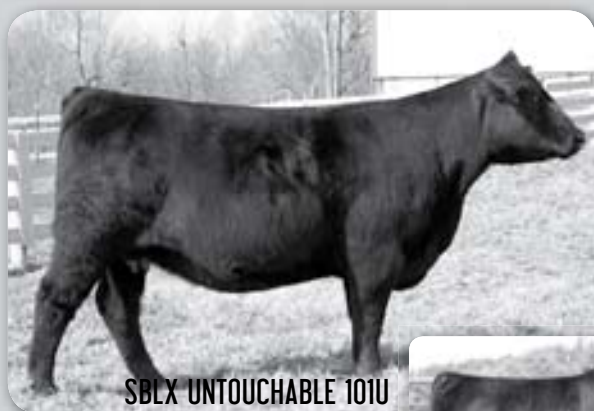
- └ B/R NEW DESIGN 036
- G A R PREDESTINED**
- └ G A R EXT 4206
- └ AUTO BLACK DAKOTA 129J
- MAGS NIGHT AMBUSH**
- └ MISS WULFETTE 6230F

	EPDs	Proj AI
CD:	5	7
BW:	3.2	0.5
WW:	62	67
YW:	109	120
MA:	33	34
CM:	2	2
SC:	0.3	
DC:	14	13
CW:	40	
RE:	0.32	
YG:	0.15	
MS:	0.33	
\$MI:	59	

BW: 84

CONSIGNED BY: SUGAR BUSH CATTLE INC, ALLEN, MI

- Due 1/15/14 to Connealy Consensus 7229
- Selling half interest with the option to double up
- Dam of the \$20,000 valued SBLX Zip It that topped the Sugar Bush Sale and is now owned by Salt Creek & Genetics, LLC.
- SBLX Zip It was the 2013 Ft. Worth Grand Champion and 2013 Denver National Western Division 1 champion
- SBLX Untouchable 101U is a daughter of GAR Predestined and is from the dam of WLR Direct Hit, MAGS Nigh Ambush
- This 50% Lim-Flex donor offers a 62 for WW, 109 for YW, 33 for MA, .32 for REA and .33 for MARB
- Her future calf sired by Consensus will be huge numbered and we think valuable



SBLX UNTOUCHABLE 101U



SBLX ZIP IT

## Planned Mating

YPSILANTI X UNTOUCHABLE

2

50% LIM-FLEX

DUE DATE: 9/1/13

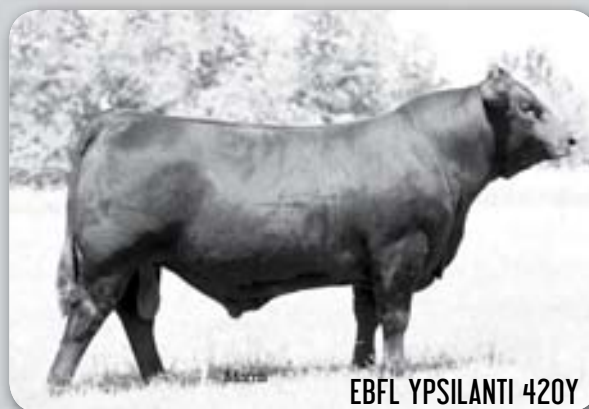
DBL PLD DBL BLK

- └ TC ABERDEEN 759
- EBFL YPSILANTI 420Y**
- └ MAGS RAMADA
- └ GAR PREDESTINED (ANGUS)
- SBLX UNTOUCHABLE 101U (B/P)**
- └ MAGS NIGHT AMBUSH

	Proj EPDs
CD:	6
BW:	1.8
WW:	59
YW:	107
MA:	39
CM:	2
SC:	0.4
DC:	13
CW:	43
RE:	0.24
YG:	0.27
MS:	0.39
\$MI:	60

CONSIGNED BY: SUGAR BUSH CATTLE INC, ALLEN, MI

- This future calf will be double polled, double black with a world of potential
- Sired by the \$100,000 valued EBFL Ypsilanti 420Y, the huge numbered 50% Lim-Flex son of TC Aberdeen 759 and from the once national champion MAGS Ramada



EBFL YPSILANTI 420Y

- This future calf is from the elite and leading donor highlighted in this sale as lot 1, SBLX Untouchable. She is the big numbered GAR Predestined donor and the dam of the \$20,000 sire SBLX Zip It that is was the 2013 Ft. Worth Grand Champion bull and 2013 Denver Division 1 Champion

## Guaranteed Heifer Planned Mating

DEUCE X UMBRELLA

3

75% LIM-FLEX  
DUE DATE: 9/27/13

DBL PLD DBL BLK

- └ GPFF BLAQUE RULON
- DHVO DEUCE (B/HP)**
- └ QUAIL RUN RAMONA BP
- └ GAR PREDESTINED
- SBLX UMBRELLA 305U (B/P)**
- └ ELMW GINNIE P5BG

	Proj EPDs
CD:	7
BW:	1.4
WW:	58
YW:	105
MA:	26
CM:	1
SC:	0.7
DC:	16
CW:	42
RE:	0.49
YG:	0.12
MS:	0.12
\$MI:	51

CONSIGNED BY: PINEGAR LIMOUSIN, SPRINGFIELD, MO & SUGAR BUSH CATTLE INC, ALLEN, MI

- Here is a guaranteed heifer from one of the most progressive mating's ever created at Pinegar and Sugar Bush
- Sired by the once national champion and popular A.I. sire in our breed DHVO Deuce
- This heifer is from SBLX Umbrella 305U, the daughter of GAR Predestined



DHVO DEUCE



SBLX UMBRELLA 305U

- and from ELMW Ginnie P58G, the dam of the popular national champion Carrousel's Pina Colada
- SBLX Umbrella 305U will be on display sale day at which time you can see how deep bodied, maternal and yet great structured she is
- This young heifer will have a world of promotion backing her and we are certain her future looks bright

# Featured Donor Pair



LFL UPPER CRUST 0090X



WLR PRADA

- Selling 7 embryos sired by the bull of the buyer's choice from one of the most prominent show heifers in our breed for year 2012.
- 2011 NAILE reserve grand, 2012 Denver division champion, 2012 MO AGR show grand champion, 2012 Eastern Regional Junior show grand champion, 2012 Southeast Summer Classic reserve division, 2012 Heartland Regional



KEIFERS LULU Y55

- Selling 7 embryos sired by the bull of the buyer's choice. Here is your chance to select embryos and get future progeny from the 2013 National Champion Red Angus Female, Keifers Lulu Y55. Half interest sold for \$22,000 to the Brubaker family of Double B Grain Farm, McAlisterville, PA. She was incorporated in the Sugar Bush Cattle, Inc. program to create outcross genetics and some of

4

## LFL UPPER CRUST 0090 X

LIM-FLEX COW HOMO PLD(T) HOMO BLK(P)  
(47/42.3) BD: 10/13/10 BLAW0090X LFF1977258

- └─AUTO DOLLAR GENERAL 122R
- MAGS USDA CHOICE**
- └─HA LADY 1079
- └─LH RODEMASTER 338R
- LFL UPPER CRUST 8083 U**
- └─TYCU 1009S

BW: 61 ADJ WW: 748 ADJ YW: 1009

CONSIGNED BY: LAWRENCE FAMILY LIMOUSIN, ANTON, TX

- 4A: 2/23/12, homo black, homo polled 46% Lim-Flex heifer calf, tattoo BLAW 3014A, by MAGS Unite Together.
- Selling half interest with option to double up.
- A tremendous deep-ribbed, high quality, double homozygous cow by the popular USDA Choice with a great prospect at side. A great donor prospect that we flushed once to MAGS Yip and are retaining five embryos. Dam is a maternal sister to Sykles heifer that was Grand Champion Lim-Flex at the 2013 Fort Worth and Houston shows.

EPDs	Calf
CD: 11	8
BW: -0.1	-0.9
WW: 64	51
YW: 116	102
MA: 41	39
CM: 6	5
SC: 0.7	0.4
DC:	
CW: 45	21
RE: -0.09	-0.25
YG: 0.5	0.41
MS: 0.48	0.49
SMI: 63	60

## Featured Embryo Flush

### WLR PRADA

5

PUREBRED COW HOMO PLD(T) BLK  
(88/77.9) BD: 3/2/11 BJLR865Y NPF1988708

- └─MAGS SASQUATCH
- MAGSWL USUAL SUSPECT 538U**
- └─MAGS PHANTOMS PRIZE
- └─LESF ASPHALT 9N
- AUTO REBECA 292S**
- └─EXLR REBECA 1019P

BW: 72 ADJ WW: 611 ADJ YW: 1025

CONSIGNED BY: WIES/SHELBY SKINNER, WELLSVILLE, MO

- division champion, 2012 NALJA reserve grand champion, 2012 All American Futurity reserve grand champion, 2012 Ozark Empire Fair grand champion, 2012 MO State Fair grand champion
- Buyers can use the bull of the buyer's choice and create future calves sired by the bull of your choice. She is black, homozygous polled and represents one of the breed's most prominent pedigrees.

EPDs
CD: 6
BW: 1.4
WW: 43
YW: 85
MA: 22
CM: 1
SC: 0.4
DC: 2
CW: 8
RE: 0.17
YG: 0.05
MS: 0.09
SMI: 46

## Featured Embryo Flush

### KEIFERS LULU Y55

6

RED ANGUS COW POLLED RED  
BD: 5/18/2011 KEIF Y55 RAA 1425806

- └─WHITESTONE CAYENNE 423R
- MAJESTIC LIGHTNING 717 SGMR**
- └─WHITESTONE BLOCKANNA R227
- └─BUF CRK HOBO 1961
- CEA LYNETTE**
- └─JMDF MISS LANA

CONSIGNED BY: SUGAR BUSH CATTLE, INC., ALLEN, MI AND DOUBLE B GRAIN FARM, MCALISTERVILLE, PA

- the breeds best Lim-Flex cattle as possible. There has been extreme interest across both the Red Angus and the Limousin breeds. She easily dominated the Red Angus National Show and is now in production doing an amazing job with her first calf. Details on sale day as to the flush date and further details.

EPDs
CD: 0
BW: 1.9
WW: 66
YW: 98
MA: 16
CM: 6
SC:
DC:
CW: 30
RE: -0.03
YG: 0.07
MS: 0.16
SMI:

# Featured Embryo Flush

## EF YADDA YADDA 809Y

7

PUREBRED COW  
(100/89.7) BD: 3/7/11

DOUBLE PLD HOMO BLK(P)  
ETHR809Y NPF1989205

┌ GPF BLAQUE RULON  
DHVO DEUCE 132R  
└ AMY JO DHAN 20L  
┌ TNUH BLUE PRINT 245H  
MAGS RUFFLES  
└ MAGS LADY DOCTOR

BW: 94 ADJ WW: 561 ADJ YW: 1019

CONSIGNED BY: AARON LINHART/LINHART LIMOUSIN, LEON, IA

EPDs
CD: 4
BW: 4.4
WW: 68
YW: 110
MA: 24
CM: -1
SC: 1.2
DC: 18
CW: 67
RE: 0.99
YG: -0.09
MS: -0.04
\$MI: 50

- Selling 6 embryos sired by the bull of the buyer's choice from this leading donor from Linhart Limousin. Aaron Linhart let this purebred female to win the ever-competitive 2012 Magness Jackpot show and the 2012 Missouri Limousin Field Day as well as many other competitive shows across the country. She is a purebred daughter of the once national champion DHVO



EF YADDA YADDA 809Y

Deuce 132R and from the leading Etherton Farms donor MAGS Ruffles. Make note that she one of the largest REA females in our breed with a .99, she scanned a 15.54 and still maintained a 3.48 for IMF. She posts a 110 for yearling weight, 24 for milk and is double polled and homozygous black. Buy with confidence when considering the future genetics from this leading donor. She is a big league donor and we are certain she will produce excellence for the new owner. She will be ready to flush the first of August.

# Featured Embryo Flush

## AHCC XHIBIT THIS X045

8

PUREBRED COW  
(100/90.0) BD: 2/20/10

DOUBLE PLD DOUBLE BLK  
AHCC045X NPF1964025

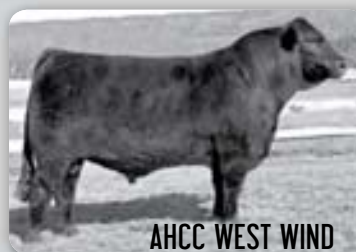
┌ JCL LODESTAR 27L  
KAJO RESPONDER 120R  
└ KAJO SHERYL SWOOPS 11H  
┌ COLE WULF HUNT  
AHCC MISS WULF HUNT R544  
└ AHCC MISS OUTCROSS N844

BW: 75 ADJ WW: 773 ADJ YW: 1013

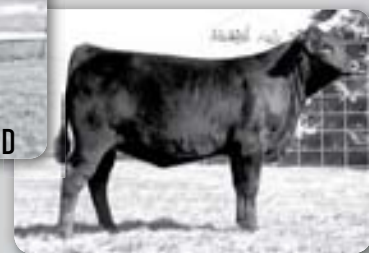
CONSIGNED BY: LINHART LIMOUSIN, LEON, IA & HAGER CATTLE CO., KARLSRUHE, ND

EPDs
CD: 12
BW: 1.2
WW: 53
YW: 102
MA: 29
CM: 5
SC: 0.8
DC: 8
CW: 34
RE: 0.45
YG: 0.03
MS: 0.03
\$MI: 47

- Selling 6 embryos sired by the bull of the buyer's choice. AHCC Xhibit This X045 is a full sister to ever-popular AHCC Westwind. The breed's top selling bull of the year 2012 and one of most sought after A.I. bulls in our breed for Hager Cattle Co. and Southern Cattle Co. in Florida. This



AHCC WEST WIND



CJSL 2037Z • DAUGHTER OF AHCC XHIBIT THIS X045

purebred donor female was the pick of the herd purchased by Linhart Limousin and now owned in partnership with Hager Cattle Co. Her first calf sold for \$7,000 to Fuchs Limousin, Cameron, TX. She does a spectacular job in production and she is set up and ready to flush first of August. This purebred female offers a breed leading set of EPD's with a 1.2 for birth, 102 for yearling weight, 29 for milk and .45 for ribeye. We look forward to working with the buyer in determining what leading sire will work well on this prominent donor.

# Open Heifer

## AUTO KELSEA 259Z

9

LIM-FLEX COW  
(56/50.8) BD: 9/17/12

HOMO PLD(T) HOMO BLK(P)  
AUTO259Z LFF2024388

┌ DHVO DEUCE 132R  
MAGS XYLOID  
└ BOHI RHONDA 314R  
┌ MYTTY IN FOCUS  
SBLX UNNA 391U  
└ MAGS SALMETTO

BW: 61 ADJ WW: 721

CONSIGNED BY: PINEGAR LIMOUSIN, SPRINGFIELD, MO

EPDs
CD: 9
BW: -0.1
WW: 52
YW: 99
MA: 28
CM: 2
SC: 0.8
DC: 21
CW: 50
RE: 0.11
YG: 0.38
MS: 0.31
\$MI: 54

- Homozygous polled and homozygous black
- One of the great show prospects ever created and to carry the AUTO prefix
- Sired by the breed leading MAGS Xyloid, the leading sire for Magness and Edwards Land & Cattle Co.
- From the leading donor SBLX Unna 391U, a daughter of MYTTY In Focus from MAGS Salmetto owned by Pinegar and Council Family Limousin
- This 56.3% Lim-Flex show heifer is super from the ground up and is so much the right kind
- Entered in the All American Limousin Futurity



AUTO KELSEA 259Z

# Open Heifers



**AUTO SPITZ 289Z**

10

## AUTO SPITZ 289Z

PUREBRED COW (94/83.2) BD: 9/14/12 HOMO PLD(P) HOMO BLK(T) AUTO289Z NPF2024910

┌ MAGS THE GENERAL  
**AUTO CRUZE 132X**  
┌ AUTO REBECA 292S  
┌ GPFF BLAQUE RULON  
**KRVN SPRITZER 243S**  
┌ WULFS LEMONADE 1182L

**BW: 68 ADJ WW: 602**

CONSIGNED BY: PINEGAR LIMOUSIN, SPRINGFIELD, MO

- Homozygous polled and homozygous black
- Sired by the breed top selling bull owned by Pinegar and Sugar Bush, AUTO Cruze 132X, the young sire and son of MAGS The General from AUTO Rebeca 292S
- She is from the proven daughter of GPFF Blaque Rulon that has been such a leading donor at Pinegar and is now heading the Ochsner herd in Kersey, CO
- This heifer is moderate in her frame, easy in her condition and very appealing in her make-up and design
- Full sister sold to Caitlyn Ochsner, Colorado

EPDs	
CD:	7
BW:	2.0
WW:	50
YW:	90
MA:	25
CM:	4
SC:	0.4
DC:	15
CW:	19
RE:	0.43
YG:	-0.04
MS:	0.03
\$MI:	



**LH U HAUL 135U**

11

## BDHC URBAN SIDE 2812Z

LIM-FLEX COW (47/42.3) BD: 10/8/12 HOMO PLD(P) DOUBLE BLK BDHC2812Z LFF2018745

┌ BASIN FRANCHISE P142  
**LH U HAUL 135U**  
┌ EXLR DUCHESS 7129R  
┌ LH RODEMASTER 338R  
**PBRB URBAN SIDE 8131U**  
┌ CHR SILKY 208S

**BW: 86**

CONSIGNED BY: DIAMOND HILL CATTLE CO, NICHOLS HILLS, OK

- An outstanding young lady out of a top young donor cow in the Diamond Hill program and sired by the ever-popular young, proven sire, LH U Haul.

EPDs	
CD:	9
BW:	0.7
WW:	59
YW:	110
MA:	28
CM:	3
SC:	0.4
DC:	
CW:	43
RE:	-0.08
YG:	0.44
MS:	0.36
\$MI:	57



# Pick of Three

## MAGS MANUELA daughters

- Here are three big time daughters of MAGS Manuela, the leading donor and one of the most proven and dollar generating donors in our breed which headlines the Sugar Bush program
- MAGS Manuela has certainly made her stance in our breed as one of the all time great ones ever to exist. Her daughters are breed top sellers and certainly excel in the market place



**12a** **AUTO ZINA 246Z**  
 LIM-FLEX COW POLLED HOMO BLK(T)  
 (50/45.2) BD: 9/1/12 AUTO246Z LFF2022396

—S A V BISMARCK 5682  
**S A V BRILLIANCE 8077**  
 —S A V BLACKCAP MAY 5270  
 —EXLR LIMITED EDITION 765J  
**MAGS MANUELA**  
 —AUTO CITY NIGHTS 214H

EPDs	
CD:	10
BW:	-0.9
WW:	50
YW:	93
MA:	36
CM:	5
SC:	
DC:	6
CW:	34
RE:	-0.21
YG:	0.42
MS:	0.36
\$MI:	55

**BW: 62 ADJ WW: 710**  
 CONSIGNED BY: PINEGAR LIMOUSIN, SPRINGFIELD,MO

- This young heifer is sired by the leading Angus sire SAV Brilliance 8077, the proven and ever popular son of SAV Bismarck
- This heifer is super long bodied, level down her topline and extremely sound in her structure. There is a world of breeding and show potential all wrapped up into one package
- Full sibs sold to Colin Ochsner, Colorado, which was Reserve Champion overall at the Magness Jackpot Show recently; Rachel Booth, Oklahoma; and DeMar Farms, Texas



**12b** **AUTO ZOELEE 448Z**  
 LIM-FLEX COW POLLED HET BLK(T)  
 (50/45.2) BD: 10/31/12 AUTO448Z LFF2022486

—S A V BISMARCK 5682  
**S A V BRAND NAME 9115**  
 —S A V BLACKCAP MAY 5270  
 —EXLR LIMITED EDITION 765J  
**MAGS MANUELA**  
 —AUTO CITY NIGHTS 214H

EPDs	
CD:	9
BW:	1
WW:	59
YW:	104
MA:	35
CM:	4
SC:	
DC:	7
CW:	32
RE:	-0.17
YG:	0.35
MS:	0.27
\$MI:	55

**BW: 68 ADJ WW: 704**  
 CONSIGNED BY: PINEGAR LIMOUSIN, SPRINGFIELD,MO

- This super donor cow in the making is sired by SAV Brand Name 9115, the up and coming big time producing son of SAV Bismarck 5682
- The daughters of MAGS Manuela have continued to top the market and win in the show ring and we are this young heifer has a bright future. She offers a breed leading set of EPDs with a 59 for WW, 104 for YW, 35 for MA, .27 for MARB and 55 for MTI



**12c** **AUTO SALSA 425Z**  
 PUREBRED COW POLLED DOUBLE BLK  
 (94/83.9) BD: 9/27/12 AUTO425Z NPF2021850

—MAGS THE GENERAL  
**AUTO CRUZE 132X**  
 —AUTO REBECA 292S  
 —EXLR LIMITED EDITION 765J  
**MAGS MANUELA**  
 —AUTO CITY NIGHTS 214H

EPDs	
CD:	7
BW:	3.3
WW:	51
YW:	90
MA:	29
CM:	5
SC:	0.5
DC:	16
CW:	20
RE:	0.2
YG:	0.04
MS:	0.12
\$MI:	49

**BW: 72 ADJ WW: 657**  
 CONSIGNED BY: PINEGAR LIMOUSIN, SPRINGFIELD,MO

- Polled and double black daughter of MAGS Manuela and sired by AUTO Cruze 132X, the son of MAGS The General from the leading donor AUTO Rebeca 292S
- We are certain this heifer is going to be leader for the program that gets the winning bid on sale day
- Full sister sold to Circle R Limousin in Florida



# Pick of Two

## DFLC HBHPC 1S daughters

- └ WULFS TITUS 2149T
- └ MAGS LANDMARK
- └ MAGS SHARI
- └ JCL LODESTAR 27L
- └ DFLC HBHPC 1S
- └ DFLC HBPC 25L

CONSIGNED BY: PINEGAR LIMOUSIN, SPRINGFIELD, MO



DFLC HBHPC 1S

**13a** AUTO ZINNIA 404Z  
 PUREBRED COW HOMO PLD(T) HOMO BLK(T)  
 (88/77.8) BD: 9/21/12 AUTO404Z NPF2021868

BW: 70 ADJ WW: 641



AUTO ZINNIA 404Z

EPDs
CD: 7
BW: 1.9
WW: 47
YW: 90
MA: 21
CM: 4
SC: 0.6
DC:
CW: 38
RE: 0.39
YG: 0.14
MS: 0.05
\$MI: 45

- Homozygous polled and homozygous black
- Here is a maternal sister to the 2013 National Champion purebred female ELCX Twilight. She is the leading female raised by Edwards Land & Cattle Co., Beulaville, NC and owned and shown by Wies Limousin, Wellsville, MO
- This daughter of MAGS Landmark from the leading Wies, Jepson and Milam donor DFLC 1S

**13b** AUTO ZASHA 409Z  
 PUREBRED COW HOMO PLD(T) HOMO BLK(T)  
 (88/77.8) BD: 9/23/12 AUTO409Z NPF2021867

BW: 68 ADJ WW: 656



AUTO ZASHA 409Z

EPDs
CD: 7
BW: 1.6
WW: 47
YW: 90
MA: 21
CM: 4
SC: 0.6
DC:
CW: 38
RE: 0.39
YG: 0.14
MS: 0.05
\$MI: 45

- Homozygous polled and homozygous black
- This purebred female is a maternal sibling to the 2013 National Champion purebred female ELCX Twilight. She is the leading female owned by Edwards Land & Cattle Co. and Wies Limousin
- This heifer is extremely deep bodied, sound in her structure and is sired by the heavy muscled and proven sire MAGS Landmark

# Bred Heifer

**14** AUTO BLACK SEA 426Y  
 LIM-FLEX COW HOMO PLD(P) HOMO BLK(T)  
 (75/66.2) BD: 9/29/11 AUTO426Y LFF2001844

- └ CARROUSELS PURE POWER
- └ AUTO TRADE MARK 138T
- └ EXLR REBECA 1019P
- └ CLLL NEW DIRECTION 394P
- └ AUTO MISS GATEWAY 287S
- └ MISS GATEWAY 1121J

BW: 60 ADJ WW: 691 ADJ YW: 1046

CONSIGNED BY: PINEGAR LIMOUSIN, SPRINGFIELD, MO

- Due 10/7/13 to Cherry Creek Higher Standard (Angus)
- Homozygous polled and homozygous black
- Sired by the Pure Power x EXLR Rebeca 1019P, AUTO Trade Mark 138T
- From the daughter of CLLL New Direction back to the deceased Miss Gateway 1121J
- This young 75% Lim-Flex female is moderate in her frame, sound made and yet very maternal in her look
- She sells bred for a 37.5% Lim-Flex calf sired by the great Angus sire Cherry Creek Higher Standard

EPDs	Proj
CD: 8	
BW: 0.7	-2.0
WW: 57	55
YW: 105	122
MA: 17	36
CM: 1	
SC: 0.6	
DC:	
CW: 25	
RE: 0.11	-0.22
YG: 0.21	
MS: 0.19	0.73
\$MI: 52	



AUTO BLACK SEA 426Y

# Bred Heifers

## 15

### AUTO PICKLE 806Y

PERCENTAGE COW HOMO PLD(P) HET BLK(T)  
(81/73.0) BD: 10/22/11 AUTO806Y NXF2008854

┌ AUTO DOLLAR GENERAL 122R  
**MAGS THE GENERAL**  
┌ EXLR LUVLY 821M  
┌ MAGS REMOTE  
**AUTO ANGELINA 203U**  
┌ KRVN PROGENY 175P

**BW: 68 ADJ WW: 636 ADJ YW: 822**

CONSIGNED BY: PINEGAR LIMOUSIN, SPRINGFIELD, MO

- Due 8/25/13 to EBFL Ypsilanti 420Y (50% Lim-Flex/H/H)
- Black and homozygous polled
- Sired by MAGS The General and from a daughter of MAGS Remote back to the big time donor KRVN Progeny 175P, one of the leading and proven donors at Pinegar Limousin and now is owned by Blair Springs of Gurley, AL
- She posts a 1.9 for BW, 101 for YW, 31 for MA, .23 for REA and .10 for MARB
- Her future calf coming right away will be sired by the breed leading EPD sire EBFL Ypsilanti 420Y

EPDs	Proj
CD: 10	8
BW: 1.9	1.1
WW: 57	57
YW: 101	103
MA: 31	38
CM: 6	4
SC: 0.6	0.6
DC:	
CW: 30	38
RE: 0.23	0.19
YG: 0.14	0.26
MS: 0.1	0.28
SMI: 50	55



AUTO PICKLE 806Y

## 16

### AUTO HEART 260Y

PUREBRED COW DOUBLE PLD-INC(T) HOMO BLK(T)  
(100/89.4) BD: 9/14/11 AUTO260Y NPF2001802

┌ DHVO DEUCE 132R  
**CFLX WILD CARD**  
┌ JCL PEPPERMINT  
┌ JCL LODESTAR 27L  
**AUTO MANUELA 298S**  
┌ MAGS MANUELA

**BW: 72 ADJ WW: 796 ADJ YW: 1129**

CONSIGNED BY: PINEGAR LIMOUSIN, SPRINGFIELD, MO

- Due 10/21/13 to MAGS Robin Hood 276Y (75% Lim-Flex/HB)
- Double polled and homozygous black
- Here is a daughter of the ever popular CFLX Wild Card that is working hard producing excellence in our breed and at CFLX Ranches
- From the leading partnership donor AUTO Manuela 298S for Council Family and Pinegar Limousin. She is a daughter of JCL Lodestar 27L and from the famed MAGS Manuela donor
- She is extremely big numbered with a 65 for WW, 112 for YW, 25 for MA and .43 for REA

EPDs	Proj
CD: 7	7
BW: 3.8	2.5
WW: 65	63
YW: 112	110
MA: 25	87
CM: 7	5
SC: 0.8	0.7
DC: 18	
CW: 40	42
RE: 0.43	0.23
YG: 0.04	0.15
MS: 0	0.10
SMI: 49	51



AUTO HEART 260Y

## 17

### AUTO GRACIOUS GIRL 813Y

PUREBRED COW HET PLD(T) HET BLK(T)  
(88/79.3) BD: 10/5/11 AUTO813Y NPF2004420

┌ CARROUSELS PURE POWER  
**AUTO TRADE MARK 138T**  
┌ EXLR REBECA 1019P  
┌ CLLL NEW DIRECTION 394P  
**AUTO GALLA 807T**  
┌ AUTO ROSA 239N

**BW: 61 ADJ WW: 670 ADJ YW: 852**

CONSIGNED BY: PINEGAR LIMOUSIN, SPRINGFIELD, MO

- Due 8/25/13 to EBFL Ypsilanti 420Y (50% Lim-Flex/H/H)
- Black and polled and top replacement heifer from the heart of the progressive Pinegar Limousin program
- Sired by AUTO Trade Mark 138T and from the CLLL New Direction daughter AUTO Galla 807T
- She sells bred to the big numbered, double homozygous 50% Lim-Flex sired owned by Milam Cattle Co., Sugar Bush Cattle, Inc., Salt Creek Genetics and Stowers Limousin

EPDs	Proj
CD: 5	6
BW: 1.1	0.7
WW: 67	62
YW: 117	111
MA: 18	31
CM: 0	1
SC: 0.7	0.6
DC:	
CW: 40	43
RE: 0.54	0.35
YG: 0.06	0.22
MS: 0.01	0.23
SMI: 50	55



AUTO GRACIOUS GIRL 813Y



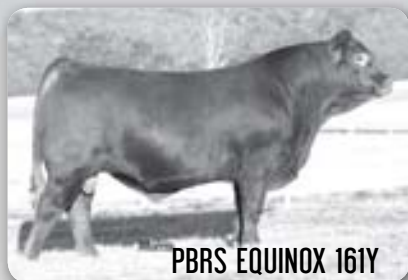
# Embryos



LH RODEMASTER 338R



MAGS TINY TOON



PBRS EQUINOX 161Y



STAR G TILLY P415



G A R PREDESTINED



MAGS RISSA 286R

## 18

### FIVE EMBRYOS

50% LIM-FLEX  
HOMOZYGOUS BLACK • DOUBLE POLLED

- └ JCL LODESTAR 27L
- LH RODEMASTER 338R (HB/HP)**
- └ VERMILION E BLACKBIRD
- └ BR MIDLAND
- MAGS TINY TOON (HB/P)**
- └ MAGS GRETCHEN 848M

CONSIGNED BY: DOUBLE A LIMOUSIN, SHAWNEE, KS

- Sired by the leading Lim-Flex sire LH Rodemaster and from the leading Double A Limousin donor MAGS Tiny Toon. She is a daughter of BR Midland that is from the famed donor, MAGS Gretchen 848M. MAGS Tiny Toon is a high marbling daughter that posts a .66 for MARB and 65 for MTI. She also scanned a 14.1 for REA and 5.76 for IMF.
- The blending of these two greats we are certain will create positive results for the buyer These future calves will have a 103 for YW, 28 for MA, .49 for MARB and 60 for MTI

Proj EPDs
CD: 9
BW: 0.9
WW: 55
YW: 104
MA: 28
CM: 5
SC: 0.8
DC: 9
CW: 41
RE: -0.26
YG: 0.51
MS: 0.49
SMI: 61

## 19

### FIVE EMBRYOS

35.75% LIM-FLEX  
RED • HOMOZYGOUS POLLED

- └ LH U HAUL
- PBRS EQUINOX 161Y (RP)**
- └ MAGS NATASHA
- └ BADLANDS CUT ABOVE 012
- STAR G TILLY P415 (RED ANGUS) (B/HP)**
- └ BJR TILLY 677-777

CONSIGNED BY: SUGAR BUSH CATTLE, INC, ALLEN, MI

- These future calves are sired by the leading red Lim-Flex sire owned by Double A Limousin, Lonely Valley Limousin and Sugar Bush Limousin. He is a remarkable son of LH U Haul 135U and from a daughter of AUTO Black Dakota 129J. He offers a great set of EPD's with a 118 for YW, 31 for MA, .23 for MARB and 57 for MTI. He scanned a 14.49 for REA and 5.13 for IMF
- Their dam is Star G Tilly P 415, the leading Red Angus donor for Abele Cattle Co. and Sugar Bush Cattle, Inc.. She is a big footed, sound structured donor that is full of rib, volume and capacity. She scanned a 4.26 for IMF and 14.04 for REA
- The future calves will be red and homozygous polled

Proj EPDs
CD: 3.5
BW: 20
WW: 61
YW: 99
MA: 27
CM: 5
SC:
DC:
CW: 42
RE: 0.07
YG: 22
MS: 0.25
SMI:

## 20

### THREE EMBRYOS

50% LIM-FLEX  
DOUBLE POLLED • DOUBLE BLACK

- └ B/R NEW DESIGN 036
- G A R PREDESTINED (HB/HP)**
- └ G A R EXT 4206
- └ TNUH BLUE PRINT 245H
- MAGS RISSA 286R (B/P)**
- └ MAGS MARISSA

CONSIGNED BY: GODFREY CATTLE CO., MADILL, OK

- Sired by the leading Angus sire GAR Predestined and from MAGS Rissa 286S, a maternal sister in blood to the famed MAGS Manuela
- MAGS Rissa has been a leading donor at the GCC program and now is owned solely by Hayhook Limousin, Lexington, OK
- These 50% Lim-Flex calves will predict will be moderate in their frame, big footed, super sound and very appealing in their design

Proj EPDs
CD: 7
BW: 1.5
WW: 49
YW: 94
MA: 30
CM: 2
SC: 0.3
DC:
CW: 20
RE: 0.09
YG: 0.23
MS: 0.44
SMI: 58

# Embryos

## 21

### THREE EMBRYOS

75% LIM-FLEX  
HOMOZYGOUS POLLED • HOMOZYGOUS BLACK

- └ SITZ UPWARD 307R
- EXAR UPSHOT 0562B (HB/HP)**
  - └ EXAR BARBARA T020
  - └ DHVO DEUCE 132R
- PBRs TOUCH ME GENTLY 798T (HB/HP)**
  - └ CARROUSELS PINA COLADA

CONSIGNED BY DIAMOND HILL CATTLE CO, NICHOLS HILLS, OK, HALL CATTLE CO, SWEETWATER, TX & COYOTE HILLS RANCH, CHATTANOOGA, OK

- Embryos out of a top daughter of the National Champion Pina Colada and by the highly proven Angus sire, Upshot.
- These will be tremendous double homozygous calves that will be easy to merchandise if you so choose.

Proj EPDs
CD:
BW: 0.4
WW: 60
YW: 119
MA: 34
CM:
SC:
DC:
CW:
RE:
YG:
MS:
\$MI:



EXAR UPSHOT 0562B



PBRs TOUCH ME GENTLY 798T

## 22

### THREE EMBRYOS

PUREBRED  
HOMOZYGOUS POLLED • HOMOZYGOUS BLACK

- └ MAGS THE GENERAL
- MAGS YIP (HB/HP)**
  - └ AUTO CARMINDA 656S
  - └ DHVO DEUCE 132R
- PBRs TOUCH ME GENTLY (HB/HP)**
  - └ CARROUSELS PINA COLADA

CONSIGNED BY DIAMOND HILL CATTLE CO, NICHOLS HILLS, OK, HALL CATTLE CO, SWEETWATER, TX & COYOTE HILLS RANCH, CHATTANOOGA, OK

- A purebred mating that will produce exciting double homozygous calves with great EPDs and predictable quality.

Proj EPDs
CD: 8
BW: 2.1
WW: 59
YW: 107
MA: 26
CM: 5
SC: 0.6
DC: 20
CW: 39
RE: 0.51
YG: 0.02
MS: -0.04
\$MI: 46



MAGS YIP



PBRs TOUCH ME GENTLY

## 23

### SIX EMBRYOS

50% LIM-FLEX  
HOMOZYGOUS POLLED • HOMOZYGOUS BLACK

- └ TC ABERDEEN 759
- EFBL YPSILANTI 420Y (HB/HP)**
  - └ MAGS RAMADA
  - └ BR MIDLAND
- MAGS SANDBOX 2415S (HB/HP)**
  - └ MAGS LADY ACE

CONSIGNED BY: SUGAR BUSH CATTLE INC, ALLEN, MI

- What a breed leading mating here with these guaranteed homozygous polled and homozygous black embryos from the heart of the Sugar Bush Cattle, Inc. program
- Sired by the \$100,000 Lim-Flex sire EBFL Ypsilanti 420Y. Possession owned by Sugar Bush Cattle, Inc. and Milam Cattle Co. His first calves are just now on the ground and appear to be very promising with a ton of rib, performance and excellent structure
- They are from MAGS Sandbox, the leading SBLX donor and daughter of BR Midland from the famed MAGS Lady Ace
- These future calves will be huge numbered, double homozygous and will represent some of the very best we have to offer in our breed

Proj EPDs
CD: 8
BW: 1.3
WW: 54
YW: 102
MA: 36
CM: 2
SC: 0.8
DC: 11
CW: 46
RE: 0.12
YG: 0.44
MS: 0.50
\$MI: 61



EFBL YPSILANTI 420Y



MAGS SANDBOX 2415S

# Embryos



MAGS Y SO TANGLED



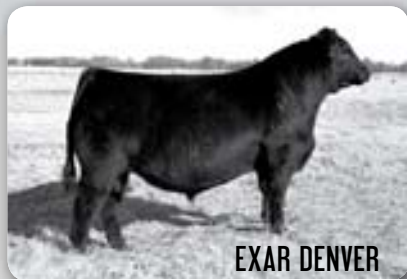
MAGS YOKO



EBFL YPSILANTI



MAGS SUZANNE



EXAR DENVER



AUTO EXCEPTIONAL 282S

## 24

### SIX EMBRYOS

69% LIM-FLEX

HOMOZYGOUS POLLED • HOMOZYGOUS BLACK

- ┌ MAGS WINSTON
- MAGS Y SO TANGLED (HB/HP)**
- ┌ MAGS UNTANGLE
- ┌ DHVO DEUCE 132R
- MAGS YOKO (HB/HP)**
- ┌ EXLR LADY 5112N

CONSIGNED BY: MAGNESS LAND & CATTLE, PLATTEVILLE, CO & TUBMILL CREEK FARMS, FLORENCE, PA

- An exciting mating of two great individuals – both Grand Champion Lim-Flex winners at the 2013 National Western.
- Outstanding double homozygous individuals with outstanding EPDs, quality and performance

Proj EPDs
CD: 8
BW: 1.3
WW: 52
YW: 98
MA: 28
CM: 3
SC: 0.3
DC:
CW: 28
RE: -0.11
YG: 0.30
MS: 0.20
SMI: 51

## 25

### SIX EMBRYOS

50% LIM-FLEX

DOUBLE POLLED • HOMOZYGOUS BLACK

- ┌ C R A BEXTOR 872
- TC ABERDEEN 759 (HB/HP)**
- ┌ TC BLACKBIRD 4034
- ┌ TNUH BLUE PRINT 245H
- MAGS SUZANNE (HB/P)**
- ┌ MAGS MANDA

CONSIGNED BY: BUCK RIDGE LIMOUSIN, ROGERSVILLE, MO

- TC Aberdeen produced two of the most talked about bulls in 2012, Ypsilanti and Y-Axis. Unfortunately he is off the market.
- MAGS Suzanne is a full-sib to MAGS Ramada (National Grand Champion and dam of Ypsalanti). That makes these embryos full sibs in blood to the \$100,000 Ypsalanti bull.
- Buck Ridge is pleased to make this one-time open market offer on these unique embryos.

Proj EPDs
CD: 9
BW: -1.3
WW: 51
YW: 97
MA: 41
CM: 2
SC: 0.4
DC: 11
CW: 39
RE: 0.10
YG: 0.41
MS: 0.47
SMI: 59

## 26

### SIX EMBRYOS

50% LIM-FLEX

HOMOZYGOUS POLLED • DOUBLE BLACK

- ┌ EXAR UPSHOT 0562B
- EXAR DENVER 2002B (B/HP)**
- ┌ EXAR ROYAL LASS 1067
- ┌ JCL LODESTAR 27L
- AUTO EXCEPTIONAL 282S (HB/HP)**
- ┌ MINE PLD EXCEPTIONAL 981E

CONSIGNED BY BUCK RIDGE LIMOUSIN, ROGERSVILLE, MO

- AUTO Exceptional 282S has been a bedrock of the Buck Ridge Program. She has had “exceptional” consistency and fertility.
- This spring, EXAR Denver brought \$340,000 for one-third semen interest giving a total valuation of \$1,020,000. The all time high for a bull.
- Look at the EPDs. Buck Ridge is extremely excited about the possibilities of this mating!

Proj EPDs
CD:
BW: -0.1
WW: 65
YW: 135
MA: 35
CM:
SC:
DC:
CW:
RE:
YG:
MS:
SMI:

# Embryos

## 27

### FIVE EMBRYOS

75% LIM-FLEX  
HOMOZYGOUS POLLED • DOUBLE BLACK

- ┌ AUTO DOLLAR GENERAL 122R
- BOHI TOP DOLLAR 7144T (HB/HP)**
- └ AUTO KYRIA 232K
- ┌ MYTTY IN FOCUS
- RVDR WHITLEY 901W (B/HP)**
- └ EXG SELENA SUE 604S RVDR

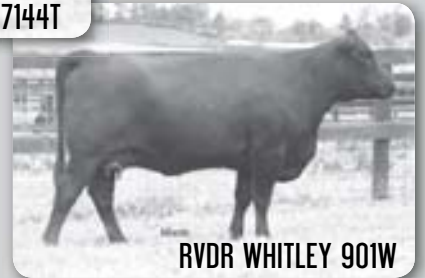
CONSIGNED BY: GODFREY CATTLE CO, MADILL, OK

- The future of these homozygous polled and double black calves will for sure be bright
- Sired by the highly syndicated sire BOHI Top Dollar 7144T, the leading Edwards Land & Cattle Co. and Magness Land & Cattle Co. sire
- They are from the \$20,000 donor for Godfrey Cattle Co. and Salt Creek Genetics, RVDR Whitley 901W. She is a big time daughter of MYTTY In Focus that is perfect in her structure and very appealing in her design
- These 75% Lim-Flex calves we feel will really have a bright future and are from the leading GCC program

Proj EPDs
CD: 11
BW: 1.1
WW: 53
YW: 100
MA: 31
CM: 7
SC: 0.5
DC: 16
CW: 17
RE: 0.2
YG: 0.25
MS: 0.19
\$MI: 51



BOHI TOP DOLLAR 7144T



RVDR WHITLEY 901W

## 28

### THREE EMBRYOS

50% LIM-FLEX  
DOUBLE POLLED • DOUBLE BLACK

- ┌ DUFF NEW EDITION 6108
- RSKY WIPEOUT 0029X (HB/HP)**
- └ WK GEORGINA 937S
- ┌ GPFF BLAQUE RULON
- ASHTON JO DHVO 720R (B/P)**
- └ AMY HO DHAN 20L

CONSIGNED BY: BARTON LIMOUSIN, JARRELL, TX

- Out of the 2007 National Western Reserve Grand Champion female, Ashton Jo – also a flushmate to Deuce.
- Two full sibs to these embryos are being shown this week in Springfield – a heifer by Garrett Lockner of Texas and a bull by Lawrence Family Limousin

Proj EPDs
CD: 6
BW: 2.6
WW: 58
YW: 98
MA: 26
CM: 4
SC:
DC: 11
CW: 27
RE: -0.10
YG: 0.40
MS: 0.16
\$MI: 50



ASHTON JO DHVO 720R

## 29

### THREE EMBRYOS

81% LIMOUSIN  
HOMOZYGOUS POLLED • DOUBLE BLACK

- ┌ MAGS WINSTON
- MAGS Y SO TANGLED (HB/HP)**
- └ MAGS UNTANGLE
- ┌ SCHILLING'S TALLADEGA
- EXLR LUVLY 173X (DB/HP)**
- └ EXLR LUVLY 7127N

CONSIGNED BY: DIAMOND HILL CATTLE CO, NICHOLS HILLS, OK

- Championship mating by the 2013 National Western Grand Champion Lim-Flex bull and the 2012 National Western purebred Champion in the junior show.

Proj EPDs
CD: 10
BW: 1.5
WW: 49
YW: 95
MA: 26
CM: 4
SC: 0.3
DC: 8
CW: 14
RE: 0.04
YG: 0.12
MS: 0.13
\$MI: 48



MAGS Y SO TANGLED



EXLR LUVLY 173X

# Embryos



LLKT YVONNE 102Y



JCL PEPPERMINT 94N



MYTTY IN FOCUS

## 30

### FOUR EMBRYOS

PUREBRED  
DOUBLE POLLED • HOMOZYGOUS BLACK

- ┌ GPFF BLAQUE RULON
- LLKT TREMOR 704T (HB/HP)
- ┌ LLKT MISS 508R
- ┌ AUTO BLACK DAKOTA 129J
- JCL PEPPERMINT (HB/DP)
- ┌ JCL PEPPER

CONSIGNED BY: COUNCIL FAMILY LIMOUSIN,  
MADISONVILLE, TX

- Here will be maternal siblings to the once national top selling and now breed leading sire CFLX Wild Card. They are from the prominent CFLX donor JCL Peppermint 94N. She has proven herself time and time again for CFLX and her progeny continue to amaze us with their producing ability and what they have accomplished in our breed
- These future calves are sired by LLKT Tremor 704T, the double homozygous son of GPFF Blaque Rulon back to a daughter of LVLS Secret Weapon. His daughter LLKT Yvonne 102Y was the 2013 Ft. Worth Grand Champion Junior Heifer and has numerous shows for the Keeton Family
- Buy with confidence from the CFLX family that these future calves will really be something special

Proj EPDs
CD: 4
BW: 3.2
WW: 56
YW: 96
MA: 23
CM: 5
SC: 0.5
DC: 14
CW: 14
RE: 0.44
YG: -0.09
MS: -0.10
\$MI: 44

## 31

### FIVE EMBRYOS

50% LIM-FLEX  
POLLED • DOUBLE BLACK

- ┌ SAF FOCUS OF E R
- MYTTY IN FOCUS (B/HP)
- ┌ MYTTY COUNTLESS 906
- ┌ EXLR DAKOTA 353G
- AUTO MORGAN 809M (B/H)
- ┌ AUTO JUSTY 239J

CONSIGNED BY: GODFREY CATTLE CO, MADILL, OK

- Sired by MYTTY In Focus, the leading Angus sire that seems to work so well in our Limousin breed in creating quality Lim-Flex
- From the new GCC donor AUTO Morgan 809M, the daughter of EXLR Dakota 353G from a daughter of SLVL Black Oxen back to the once national sale top selling female, Wulf's Freyja 6036F
- These future calves will be 50% Lim-Flex and we really feel will be moderate in their frame score and very easy in their rib shape and volume

Proj EPDs
CD: 10
BW: -2.1
WW: 51
YW: 96
MA: 30
CM: 5
SC: 0.7
DC: 17
CW: 24
RE: -0.29
YG: 0.46
MS: 0.3
\$MI: 53

THE PROCEEDS FROM THE FOLLOWING LOTS WILL GO TO THE MISSOURI LIMOUSIN ASSOCIATION TO AID IN THE HOSTING OF THIS YEAR'S AALF & NJLSC.

## A

### SELLING TWO IVF ASPIRATION CERTIFICATES

- IVF aspiration using conventional or pre-sorted semen (value of \$750 each)

## B

CONTRIBUTED BY: TRANS OVA GENETICS

## C

### GENETIC PRESERVATION CERTIFICATE

- ViaGen, our cloning division, would like to donate 1 certificate for a genetic preservation

CONTRIBUTED BY: TRANS OVA GENETICS