



**ALL AMERICAN
Limousin
Futurity
SALE of SALES**

**Wednesday,
July 16, 2014 • 6 pm**
in conjunction with the
**All American Limousin Futurity
Amarillo, Texas
Coors Cowboy Club**
located on the southwest corner of the Tri-State Fairgrounds

*All lots will be viewed as a slide show
presentation during this live auction*

*Offering 33 Lots of Premier
Limousin & Lim-Flex Genetics!*

Marketing Team:



KEN HOLLOWAY
580/597-2419 • 580/581-7652 mobile
BRUCE BROOKS • 580/276-5137
24018 State Hwy. 5
Chattanooga, OK 73528
580/597-3006 • FAX: 580/597-6619
acs@americancattleservices.com
www.americancattleservices.com



Randall O. Ratliff
P.O. Box 281677 • Nashville, TN 37228
randy@rrmktg.com
www.rrmktg.com
mobile: 615/330-2735



Mark Smith
Phone/Fax: 515/965-1458
Mobile: 515/229-5227
2511 NE 99th Place, Ankeny, IA 50021
grgenetics@aol.com
www.grassrootsgenetics.com



Kiley McKinna
28 Pheasant Place #202
Dakota Dunes, SD 57049
mobile 402/350-3447
mcmarketingsales@aol.com
www.mcmmarketingmanagement.com

Auctioneer & Livestock Press Representatives:

C.K. "Sonny" Booth Auctioneer
Thad Combs Limousin World
Cody Shelley Limousin World

*All lots sell under the standard terms & conditions
of the North American Limousin Foundation.
www.nalf.org/pdf/2010/aug23/saleterms.pdf*

Consignors:

ATAK LIMOUSIN
436 140th St
Avon, IL 61415
309/333-0029

EDWARDS LAND & CATTLE CO.
290 Willard Edwards Road
Beulaville, NC 28518
910/290-1424

**JCL CATTLE CO & LINDEN
FAITH LINTHICUM**
11852 S 4430 Road
Welch, OK 74369
918/533-0445 text

MASSEY LIMOUSIN
80 Sublimity School Road
London, KY 40744
606/682-2126

PINEGAR LIMOUSIN
850 West Farm Road 56
Springfield, MO 65803
877-PINEGAR

COUNCIL FAMILY LIMOUSIN
21314 OSR
Madisonville, TX 77864
281/808-5511

ETHERTON FARMS
8961 Oak Crest Road
Dawson, IL 62520
217/899-0162

LAWRENCE FAMILY LIMOUSIN
P.O. Box 299
Anton, TX 79313
806/790-2535

**MCCARTHY'S
OMEGA 8 RANCH**
26107 CR 137
Bedias, TX 77831
714/404-8739

**SALT CREEK CATTLE
& GENETICS LLC**
1903 County St. 2840
Amber, OK 73004
405/274-9338

COYOTE HILLS RANCH
23998 State Hwy 5
Chattanooga, OK 73528
580/581-7652

GATES LIMOUSIN
250 Stillwater River Road
Absarokee, MT 59001
406/328-4393

LINHART LIMOUSIN
27195 175th St
Leon, IA 50144
641/340-1306

MILAM CATTLE CO.
785 Cedar Grove Road
Olmstead, KY 42265
270/847-0634

STOWERS LIMOUSIN
430 CR 1326
Bridgeport, TX 76426
817/247-8011

DIAMOND HILL CATTLE CO
1817 Devonshire Blvd
Nichols Hills, OK 73116
405/520-5846

HALL CATTLE CO.
P.O. Box 168
Sweetwater, TX 79556
325/235-4345

MAGNESS LAND & CATTLE CO.
P.O. Box 190
Platteville, CO 80651
970/785-6170

MORENO RANCHES, INC
17 Virginia Circle,
Moreno Estate
Venus, FL 33960
305/218-1238

SUGAR BUSH CATTLE, INC
2400 Hog Creek Road
Allen, MI 49227
517/937-3399

DOUBLE B GRAIN FARM
262 Shade Road
McAlisterville, PA 17049
717/649-6929

Embryos

SBLX UNDER THE COVERS 201U

1

LIM-FLEX COW HET BLK(T) HET PLD(T)
(50/44.1) BD: 4/12/08 SBLX201U LFF1906082

- ┌ B/R NEW DESIGN 036
- G A R PREDESTINED**
- ┌ G A R EXT 4206
- ┌ TCDT MR T.D'S POWER PACK
- ELMW GINNIE P58G**
- ┌ ELMW POLLED ECSTASY 67E

EPDs
CD: 9
BW: 0.8
WW: 45
YW: 93
MA: 29
CM: 4
SC: 0.2
DC: 6
CW: 30
RE: 0.19
YG: 0.33
MS: 0.40
\$MI: 56

BW: 68

CONSIGNED BY: SUGAR BUSH CATTLE, INC., ALLEN, MI AND DOUBLE B GRAIN FARM, MCALISTERVILLE, PA

- Double B and Sugar Bush are offering six embryos sired by the bull of the buyer's choice from this premier donor. Buyer supplies the semen and sellers pay for the embryo work.
- SBLX Under The Covers 201U is the leading donor for Double B Grain Farm and Sugar Bush Cattle Co. She is the \$25,000 valued donor from the recent Edwards Land & Cattle Co sale and represents one of the premier cow families of the entire breed.



SBLX UNDER THE COVERS 201U

- She is a daughter of GAR Predestined and from the leading donor ELMW Ginnie P58G, the dam of the once national champion female Carrousel's Pina Colada.
- SBLX Under The Covers 201U is the dam of the \$55,000-valued female, SBLX Zane, owned by Edwards Land & Cattle Co., Beulaville, NC and in a show partnership with Wies Limousin, Wellsville, MO. She just happens to be one of the premier red and double polled females in our entire breed.

EXAR BLACKBIRD 2830

2

ANGUS COW HOMO PLD(P) DOUBLE BLK
(0/100) BD: 3/5/12 AAA2830Z AAA17208050

- ┌ CONNEALY CONSENSUS
- CONNEALY CONSENSUS 7229**
- ┌ BLUE LILLY OF CONANGA 16
- ┌ G A R PREDESTINED
- MGR BLACKBIRD 8055**
- ┌ EXAR BLACKBIRD 5005

EPDS	LIMI	ANGUS
CD: 0		
BW: -1.6 3.0		
WW: 64 67		
YW: 119 107		
MA: 48 38		
CM: 4		
SC: 0.62		
DC: 16 46		
RE: -0.2 1.07		
YG: 0.33		
MS: 0.36 0.85		
\$MI: 60		

CONSIGNED BY: STOWERS LIMOUSIN, BRIDGEPORT, TX AND SUGAR BUSH CATTLE, INC, ALLEN, MI

- Selling six embryos by the bull of the buyer's choice
- EXAR Blackbird 2830 is the purebred Angus female that highlighted the Stowers Limousin January sale. She was valued at \$20,500 and half interest was purchased by Sugar Bush Cattle, Inc.
- She is a very moderate framed, well structured and prominent looking female. She is a daughter of Connealy Consensus 7229 and from a daughter of GAR Predestined back to a daughter of Rito 112 of 2536 Rito 616. She posts a



EXAR BLACKBIRD 2830

- breed leading set of EPD's with a 123 for yearling weight, 36 for milk and .30 for marbling.
- The buyer can use the bull of the buyer's choice and the sellers pay the embryo transplant expense.

Flush

MAGS GINGER

3

LIM-FLEX COW HOMO PLD(T) RED
(50/45.3) BD: 2/16/10 MAGS2725X LFF1963624

- ┌ LJC LANCER 806
- LJC MISSION STATEMENT P27**
- ┌ LJC HANNAH 106
- ┌ LVLS POLLED BLACK JACK
- MAGS PARKER**
- ┌ CANE RIDGE POLL ANGEL 318

EPDs
CD: 3
BW: 1.8
WW: 61
YW: 125
MA: 24
CM: 1
SC: 0.3
DC: 12
CW: 28
RE: -0.25
YG: 0.39
MS: 0.36
\$MI: 59

BW: 82 ADJ WW: 662 ADJ YW: 1089

CONSIGNED BY: ATAK LIMOUSIN, AVON, IL

- Selling Right To A Flush - Bull Of Buyers Choice
- Guarantee of six embryos, maximum of 12. Flush cost at buyer's expense.
- On offer is a genetic opportunity on one the finest homozygous polled, red Lim-Flex females ever created! MAGS Ginger combines a high degree of structural integrity, body depth and thickness in an outcross



MAGS GINGER

- pedigreed package. On paper you simply can't make one much better - she charts weaning and yearling growth in the top 1% while posting an \$MTI figure in the top 10%.

Flushes

4

PCC XOTIC 016 X

PUREBRED COW HET PLD(T) HET BLK(T)
(100/90.3) BD: 7/22/10 JNPF016X NPF1975818

┌ GPFF BLAQUE RULON
DHVO TREY 133R
└ AMY JO DHAN 20L
┌ EXLR INTRIGUE 361G
LFL LORETTA 1039L
└ LFL 905J

BW: 78 ADJ WW: ADJ YW:

CONSIGNED BY: LAWRENCE FAMILY LIMOUSIN, ANTON, TX

- Selling six embryos sired by the bull of the buyer's choice
- Guarantee six embryos with any over six being divided equally between the buyer and the seller. Cost of ET work divided on a per embryo basis.
- Xotic was Division Champion at the 2011 AALF, Division Champion at the 2012 National Western and Grand Champion at Fort Worth and Houston.
- Her full sister was Grand Champion Purebred Female at 2014 Fort Worth open

EPDs
CD: 3
BW: 2.7
WW: 55
YW: 72
MA: 11
CM: -1
SC: 0.5
DC: 15
CW: 18
RE: 0.43
YG: -0.04
MS: -0.06
SMI: 44



PCC XOTIC 016X

- show and Reserve Grand Champion in San Antonio and Houston junior shows.
- Xotic will be shown in the 2014 National Junior Heifer Show and AALF by our grandson, Tucker Parkinson.

5

LH ZABULA 008Z

LIM-FLEX COW HOMO PLD(P) HOMO BLK(P)
(50/45.4) BD: 2/29/12 LCHA008Z LFF2014555

┌ HUNTS HI-LITER 245G
JCL LODESTAR 27L
└ LOGAN'S CHEERLEADER 280G
┌ STEVENSON YELLOWSTONEM808
BASIN EILEENMERE LASS 442
└ BASIN EILEENMERE LASSP283

BW: 81 ADJ WW: 644 ADJ YW: 982

CONSIGNED BY: STOWERS LIMOUSIN, BRIDGEPORT, TX AND SUGAR BUSH CATTLE, INC., ALLEN, MI

- Selling six embryos by the bull of the buyer's choice
- LH Zabula 008Z is a leading donor for Sugar Bush Cattle, Inc. and Stowers Limousin. She is a huge numbered daughter of JCL Lodestar 27L. He is a multiple trait-leading sire that is now deceased. It is a proven fact that when JCL Lodestar is blended with Angus female the results are astounding. This young donor cow is a 50% Lim-Flex offers a top set of EPD's with a -1.6 for birth, 104 for yearling weight, 29 for

EPDs
CD: 13
BW: -1.6
WW: 49
YW: 104
MA: 29
CM: 8
SC: 0.4
DC: 15
CW: 40
RE: -0.3
YG: 0.55
MS: 0.54
SMI: 60



LH ZABULA 008Z

- milk and .54 for marbling. She is double homozygous and one big time donor female.

6

AHCC MISS DEUCE X078

PUREBRED COW DOUBLE PLD DOUBLE BLK
(100/85.8) BD: 3/9/10 AHCC078X NPF1964493

┌ GPFF BLAQUE RULON
DHVO DEUCE 132R
└ AMY JO DHAN 20L
┌ ANDERS JAG
AHCC MISS JAG P78
└ LVLST864L

BW: 88 ADJ WW: 816 ADJ YW: 1078

CONSIGNED BY: GATES LIMOUSIN RANCH LLC, ABSAROKEE, MT

- Selling six embryos sired by the bull of your choice
- Buyer furnishes semen and seller pays ET costs.
- We are pleased to have Gates Limousin highlight this annual sale with the opportunity to get genetics from one of their premier purebred donors, AHCC Mis Deuce X078. She is a true power and performance purebred female.
- Make note she has earned a 80 for weaning weight, 130 for yearling weight, 35 for milk and .65 for ribeye. She is a known daughter of DHVO Deuce from a

EPDs
CD: 2
BW: 5.6
WW: 80
YW: 130
MA: 35
CM: -3
SC: 1.2
DC: 20
CW: 52
RE: 0.65
YG: -0.01
MS: -0.06
SMI: 52



DHVO DEUCE 132R

- daughter of Jag back to a daughter of LVLs Farmer.
- This donor is super big footed, sound in her structure and has plenty of muscle. Whether you want to keep the future calves purebred or go Lim-Flex we don't thing you can go wrong either way.

Donor Flushes

SBRX ZAMBER

7

RED ANGUS COW
(0/100) BD: 4/10/12 SBRX029Z POLLED RED
RAA1603427

┌ MESSMER JOSHUA 019P
└ MESSMER PACKER S008
┌ MESSMER MILLIE 124P
└ GLACIER MARIAS 548
┌ BUF CRK AMBER N029
└ BUF CRK AMBER 3912

BW: 80 ADJ WW: 618

CONSIGNED BY: DOUBLE B GRAIN FARM, MCALISTERVILLE, PA

- Selling six embryos sired by the bull of the buyer's choice
- Buyer supplies semen and seller pays for the embryo work.
- SBRX Zamber is the \$22,000-valued donor and once top seller from the Fall '13 Sugar Bush Cattle, Inc. sale, now working in the Double B Grain Farm program.
- She is a gorgeous and well-made, purebred daughter of Messmer Packer, a grandson of Beckton Julian. Her dam is the leading Sugar Bush donor Buf Crk Amber N029. She is super-sound, very big-footed and one of the top

EPDs
CD: 3
BW: 0.1
WW: 71
YW: 109
MA: 14
CM: 4
SC:
DC:
CW: 35
RE: 0.36
YG: 0.05
MS: 0.54
\$MI:



SBRX ZAMBER

Red Angus donors to come from the Sugar Bush program and now headlining the Double B Grain Farm.

- Her Limousin EPDs have her at -1.0 for birth, 103 for yearling weight and a breed leading .90 for marbling. She is ready for immediate embryo transplant and is ready to either create more purebred Red Angus or some amazing red Lim-Flex cattle.

Planned Matings

MAGS ACAPULCO X MAGS UBEDA HEIFER PREGNANCY

8

37.5% LIM-FLEX DOUBLE BLACK DOUBLE POLLED
DUE DATE: 3/6/15

┌ CONNEALY CONSENSUS 7229
└ MAGS ACAPULCO
┌ EXLR LUVLY 821M
└ RITO 112 OF 2536 RITO 616
┌ MAGS UBEDA
└ AUTO MS NEW DESIGN 827P

CONSIGNED BY: LINHART LIMOUSIN, LEON, IA

- Selling a Guaranteed Heifer Pregnancy & Commercial Recipient
- Here's a genetic piece that's an impressive outcross mating with loads of potential - the type you can build a program around
- The mating features the very first service offered by MAGS Acapulco, one of the recently syndicated \$48,000 A.I sires at the 2014 Annual Magness Bull Sale.
- The recently appraised \$27,000 donor female, MAGS Ubeda, is simply

Proj EPDs
CD: 7
BW: 0.0
WW: 62
YW: 107
MA: 36
CM: 2
SC: 0.2
DC: 14
CW: 32
RE: -0.21
YG: 0.40
MS: 0.28
\$MI: 55



MAGS ACAPULCO

amazing because she's huge footed, bold ribbed, load with performance and has that head turning eye appeal all can appreciate.

- On sale day assess the true value in this package - you'll have a black, polled heifer calf that's big numbered and fresh pedigreed being a complete outcross to all Lodestar and Rulon lineages plus, a commercial recipient.



MAGS UBEDA

MAGS ANCHOR X MAGS TOTALLY GORGEOUS

9

56.3% LIM-FLEX DOUBLE BLACK HOMO POLLED

┌ LH WAR HERO 195W
└ MAGS ANCHOR
┌ MGS XIPHOPAGOUS
└ MYTTY IN FOCUS
┌ MAGS TOTALLY GORGEOUS
└ MAGS PROM NIGHT

CONSIGNED BY: MAGNESS LAND & CATTLE, PLATTEVILLE, CO

- Selling four embryos
- From the heart of the Magness Land & Cattle program on offer is the first opportunity to invest in service by the highly popular, \$48,000 syndicated, MAGS Anchor sire that was the lead bull in the 2014 National Western champion carload.
- The elite donor female, MAGS Totally Gorgeous, was part of the 2012 All

Proj EPDs
CD: 11
BW: 0.7
WW: 61
YW: 108
MA: 33
CM: 3
SC: 0.9
DC: 20
CW: 38
RE: -0.04
YG: 0.33
MS: 0.20
\$MI: 53



MAGS ANCHOR

American Limousin Futurity Grand Champion pair.

- The bottomline is this elite mating promises to produce homozygous polled, phenotypically exceptional calves that rank among the breed's top 20% for CE, WW, YW, MA and SC.



MAGS TOTALLY GORGEOUS

Planned Matings

10

EF XCESSIVE FORCE X MAGS WASSAIL

75% LIM-FLEX

DOUBLE BLACK DOUBLE POLLED

- ┌ D A TRAVELER 004 703
- EF XCESSIVE FORCE
- ┌ CFLX MOLLYS IMAGE
- ┌ DHVO DEUCE 132R
- MAGS WASSAIL
- ┌ MAGS MANDA

Proj EPDs
CD: 8.5
BW: -0.5
WW: 52
YW: 98
MA: 35
CM: 2
SC: 0.8
DC: 15
CW: 34
RE: 0.19
YG: 0.17
MS: 0.11
\$MI: 49

CONSIGNED BY: LINHART LIMOUSIN, LEON, IA

- Selling three Sexed Heifer Embryos
- If you're looking for a genetic opportunity that promises to produce elite show heifer prospects then here's the mating for you!
- Featuring service by EF Xcessive Force, a sire that simply needs no introduction - he's known for siring big bodied, attractive made cattle that have consistently left their mark both in production and in the show ring.



EF XCESSIVE FORCE

- The donor female, MAGS Wassail, the 2011 All American Futurity grand champion female has produced in a big way being the dam of the \$20,000 '14 National Western Stock Show Reserve Grand Champion junior female. Don't overlook this buying opportunity sale day.



MAGS WASSAIL

11

MAGS EAGLE X AUTO BLISS 265Y

57% LIM-FLEX

HOMO BLACK HOMO POLLED

- ┌ MAGS WINSTON
- MAGS EAGLE
- ┌ MAGS WEB OF DECEIT
- ┌ LH U HAUL 135U
- AUTO BLISS 265Y
- ┌ WLR UGLY BETTY 432U

Proj EPDs
CD: 9.5
BW: 0.7
WW: 59
YW: 109
MA: 30
CM: 5
SC: 0.1
DC: 14
CW: 54
RE: -0.07
YG: 0.48
MS: 0.41
\$MI: 59

CONSIGNED BY: DIAMOND HILL CATTLE CO., NICHOLS HILLS, OK, LAWRENCE FAMILY LIMOUSIN, ANTON, TX, HALL CATTLE, CO., SWEETWATER, OK, & COYOTE HILLS RANCH, CHATTANOOGA, OK

- Lot 11A: Selling four embryos
- Lot 11B: Selling four embryos
- Embryos out of a top daughter of LH U Haul 135U.
- AUTO Bliss 265Y is the \$30000 double homozygous Lim-Flex 65% whose



MAGS EAGLE

- flushmate sister is AUTO Bette 266Y was Grand Champion Lim-Flex Female at the 2012 National Junior Heifer Show.
- Sired by MAGS Eagle, sire of the top selling bull in the 2014 Hall-CHR bull sale.



AUTO BLISS 265Y

12

LH RODEMASTER X AUTO BLISS 265Y

57% LIM-FLEX

HOMO BLACK HOMO POLLED

- ┌ JCL LODESTAR 27L
- LH RODEMASTER 338R
- ┌ VERMILION E BLACKBIRD9546
- ┌ LH U HAUL 135U
- AUTO BLISS 265Y
- ┌ WLR UGLY BETTY 432U

Proj EPDs
CD: 11.5
BW: 0.3
WW: 55
YW: 106
MA: 30
CM: 6
SC: 0.4
DC: 13
CW: 57
RE: -0.02
YG: 0.51
MS: 0.35
\$MI: 55

CONSIGNED BY: DIAMOND HILL CATTLE CO., NICHOLS HILLS, OK, LAWRENCE FAMILY LIMOUSIN, ANTON, TX, HALL CATTLE, CO., SWEETWATER, OK, & COYOTE HILLS RANCH, CHATTANOOGA, OK

- Selling four embryos out of a great young Lim-Flex female by the deceased LH Rodemaster 338R.
- A mating that can't miss!



LH RODEMASTER 338R



AUTO BLISS 265Y

Planned Matings

MAGS USDA CHOICE X HCC MS BIS ELINE 0218

13

25% LIM-FLEX

HOMO BLACK HOMO POLLED

- ┌ AUTO DOLLAR GENERAL 122R
- └ MAGS USDA CHOICE
- ┌ HA LADY 1079
- └ S A V BISMARCK 5682
- ┌ HCC MS BIS ELINE 0218
- └ HCC MS JUP ELINE 778

Proj EPDs
CD: 13
BW: -2.1
WW: 52
YW: 101
MA: 34
CM: 7
SC: 0.3
DC: 6
CW: 41
RE: -0.36
YG: 0.56
MS: 0.55
SMI: 61

CONSIGNED BY: MORENO RANCHES, INC., MIAMI, FL

- Selling seven sexed heifer embryos
- These embryos are guaranteed to be heifers and from the heart of the Moreno Ranches, Inc. program in Miami, FL. They have a very progressive and intensive embryo transplant program where they are rapidly growing their program.
- These embryos are sired by the huge numbered and now deceased MAGS USDA Choice, a double homozygous son of AUTO Dollar General 122R that



MAGS USDA CHOICE

scanned a 5.55 for IMF and 17.3 for REA. He also offers a low birth of -1.2, yearling weight of 106 and milk of 40.

- They are from the SAV Bismarck-sired Angus female that headlines the progressive Moreno Ranches embryo program. She is moderate in her frame, big boned and easy in her rib shape with lots of volume.



HCC MS BIS ELINE 0218

EBFL YPSILANTI X HCC MS BIS ELINE 0218

14

25% LIM-FLEX

HOMO BLACK HOMO POLLED

- ┌ TC ABERDEEN 759
- └ EBFL YPSILANTI 420Y
- ┌ MAGS RAMADA
- └ S A V BISMARCK 5682
- ┌ HCC MS BIS ELINE 0218
- └ HCC MS JUP ELINE 778

Proj EPDs
CD: 8.5
BW: -1.5
WW: 54
YW: 102
MA: 34
CM: 3
SC: 0.5
DC: 14
CW: 40
RE: -0.27
YG: 0.53
MS: 0.40
SMI: 57

CONSIGNED BY: MORENO RANCHES, INC., MIAMI, FL

- Selling four embryos
- The future calves from this mating are going to be something special.
- They are sired by the leading \$100,000 valued sire EBFL Ypsilanti 420Y. He is the leading outcross, big numbered sire for Stowers, Salt Creek, Milam and Sugar Bush Cattle. His first calves have been very well accepted in the market place.
- It is a known fact that when Ypsilanti is mated to Angus females in the creation of 25% Lim-Flex that the results have been astounding.



EBFL YPSILANTI 420Y



HCC MS BIS ELINE 0218

MAGS XYLOID X HCC MS BIS ELINE 0218

15

37% LIM-FLEX

HOMO BLACK DOUBLE POLLED

- ┌ DHVO DEUCE 132R
- └ MAGS XYLOID
- ┌ BOHI RHONDA 314R
- └ S A V BISMARCK 5682
- ┌ HCC MS BIS ELINE 0218
- └ HCC MS JUP ELINE 778

Proj EPDs
CD: 10
BW: -0.7
WW: 49
YW: 93
MA: 27
CM: 2
SC: 0.4
DC: 24
CW: 41
RE: -0.21
YG: 0.44
MS: 0.22
SMI: 49

CONSIGNED BY: MORENO RANCHES, INC., MIAMI, FL

- Selling six embryos
- This mating is absolutely perfect! The blending of the heavy-muscled, well-structured sire MAGS Xyloid back to the big numbered and easy middled purebred Angus female will create very positive results for this buyer of this lot.
- These 50% Lim-Flex calves will be homozygous black and double polled and we think really nice.



MAGS XYLOID



HCC MS BIS ELINE 0218

Planned Matings

16

EF XCESSIVE FORCE X MAGS SANDBOX

50% LIM-FLEX

HOMO BLACK DOUBLE POLLED

- └ D A TRAVELER 004 703
- EF XCESSIVE FORCE
- └ CFLX MOLLYS IMAGE
- └ BR MIDLAND
- MAGS SANDBOX
- └ MAGS LADY ACE

Proj EPDs	
CD:	11
BW:	0.4
WW:	51
YW:	98
MA:	30
CM:	4
SC:	0.9
DC:	11
CW:	34
RE:	0.01
YG:	0.35
MS:	0.30
\$MI:	54



EF XCESSIVE FORCE



MAGS SANDBOX

CONSIGNED BY: ETHERTON FARMS, DAWSON, IL

- Selling six embryos
- Highlighting the Sale of Sales will be six embryos from one of the breed's most proven and sought after donors. She is the leading 50% Lim-Flex donor the represents one of the strongest lines of cattle in our breed in BR Midland and back to MAGS Lady Ace.
- This donor has raised several of the breed's top sellers for the many programs that have invested in her lineage. She is homozygous polled, homozygous black and scanned a 15.1 for REA and 3.95 for IMF. She is super sound in her structure, extremely long and pretty up through her front end, very straight and

level down her top and square out of her rump.

- These embryos are sired by the once national champion Lim-Flex sire, EF Xcessive Force. He is the leading A.I. sire where his calves are dominating the showing and the market place across the breed.

17

EXAR DENVER X TARA JO 7132T

50% LIM-FLEX

DOUBLE BLK HOMO POLLED

- └ EXAR UPSHOT 0562B
- EXAR DENVER 2002B
- └ EXAR ROYAL LASS 1067
- └ GPFF BLAQUE RULON
- TARA JO 7132T
- └ VOET ANNA JO

Proj EPDs	
CD:	10
BW:	0.7
WW:	55
YW:	104
MA:	35
CM:	1
SC:	0.6
DC:	13
CW:	17
RE:	0.16
YG:	0.17
MS:	0.08
\$MI:	48



BLAW ARNOLD 3065A



BLAW ALLISON 3043A

CONSIGNED BY: LAWRENCE FAMILY LIMOUSIN, ANTON, TX

- Selling five embryos
- Tara Jo 7132T is a full sister in blood to the outstanding flush mates Deuce, Trey, Alma Jo, Ashton Jo and others.
- Tara Jo is the dam of the top-selling purebred heifer and champion purebred at the 2014 National Sale in Denver, BLAW Allison 3043A, purchased by Burnett Brothers of Hale Center, Texas.

- Tara Jo produced LFL Arnold 3065A the Reserve Grand Champion purebred bull at the 2014 National Western, purchased by Kitchens Limousin of Arkansas.

18

MAGS ANCHOR X MAGS GINGER

56.3% LIM-FLEX

BLACK HOMO POLLED

- └ LH WAR HERO 195W
- MAGS ANCHOR
- └ MGS XIPHOPAGOUS
- └ LJC MISSION STATEMENT P27
- MAGS GINGER
- └ MAGS PARKER

Proj EPDs	
CD:	6.5
BW:	2.0
WW:	66
YW:	124
MA:	26
CM:	3
SC:	0.7
DC:	12
CW:	36
RE:	-0.07
YG:	0.32
MS:	0.24
\$MI:	56



MAGS ANCHOR



MAGS GINGER

CONSIGNED BY: ATAK LIMOUSIN, AVON, IL

- Selling four embryos
- Invest in this truly unique, big-numbered, elite mating that promises tremendous results.
- The mating features service by MAGS Anchor, a recently syndicated \$48,000 A.I. sire that was the lead bull in the 2014 National Western champion carload.
- The donor female is truly a one of a kind - she's structurally-sound, big-bodied and outcross-pedigree.

- The bottomline is this mating projects to produce high quality, homozygous polled offspring that will have a WW figure in the top 2%, YW in the top 1% and a \$MTI figure in the top 15%. The math simply adds up, don't miss this buying opportunity sale day.

Planned Matings

OKSU THE PROFIT 3401 X EBFL SAN JOSE 170X

19

50% LIM-FLEX

HOMO BLACK DOUBLE POLLED

- ┌ LH RODEMASTER 338R
- OKSU THE PROFIT 3401
- └ OKSU EXCITEMENT 0406
- ┌ S A V PIONEER 7301
- EBFL SAN JOSE 170X
- └ TMCK SAN JOSE 170U

CONSIGNED BY: EDWARDS LAND & CATTLE CO., BEULAVILLE, NC AND MILAM CATTLE CO., OLMSTEAD, KY

- 19A: Selling five embryos
- 19B: Selling four embryos
- A sale feature from Edwards Land & Cattle Co. and Milam Cattle Co. are genetics from one of their very best donor cows, EBFL San Jose 170X. She is without a doubt one of the breed's very best donors and a daughter of SAV Pioneer 7301. She is from the leading Tubmill Creek Farm donor, TMCK San Jose 170U, a daughter of GAR Predestined back to the MAGS San Jose donor. This female is amazing no matter how you look at her and she posts some of the finest EPD's you

Proj EPDs
CD: 9
BW: 1.8
WW: 57
YW: 104
MA: 32
CM: 4
SC: 0.4
DC: 11
CW: 41
RE: -0.07
YG: 0.47
MS: 0.40
\$MI: 58



OKSU THE PROFIT 3401X



EBFL SAN JOSE 170X

- can imagine.
- She has a 1.7 for birth, 63 for weaning, 114 for yearling weight, 38 for milk, .56 for marbling and 64 for MTI. She also scanned a 14.8 for REA and 6.61 for IMF.
- Her mating to the ever-popular OKSU The Profit is really going to be something. He is the LH Rodemaster homozygous black 75% Lim-Flex herd sire that has gotten everyone's attention. He too scanned a 6.22 for IMF and is absolutely perfect in his design. Fall possession was recently purchased by P Bar S Ranch and is owned with Sugar Bush, OSU and Double B Grain Farm. Buy with the utmost confidence and these future calves are going to really have value once they hit the ground.

EF ZEN X PBRS TOUCH ME GENTLY

20

PUREBRED

DOUBLE BLACK HOMO POLLED

- ┌ CJSL WINDFALL 9072W
- EF ZEN 344Z
- └ EF TREND SETTER 206T
- ┌ DHVO DEUCE 132R
- PBRS TOUCH ME GENTLY 798T
- └ CARROUSELS PINA COLADA

CONSIGNED BY: DIAMOND HILL CATTLE CO., NICHOLS HILLS, OK, HALL CATTLE CO., SWEETWATER, TX AND COYOTE HILLS RANCH, CHATTANOOGA, OK

- Selling three embryos
- Embryos out of a top daughter of the 2006 National Western Grand Champion Female, Pina Colada
- Sired by the 2014 National Western Grand Champion purebred bull
- A purebred mating of highly predictable genetics.

Proj EPDs
CD: 6
BW: 2.5
WW: 54
YW: 98
MA: 24
CM: 3
SC: 0.6
DC: 19
CW: 28
RE: 0.59
YG: -0.07
MS: -0.08
\$MI: 44



EF ZEN



PBRS TOUCH ME GENTLY

DJH HANLEY X EXLR SHEZA

21

50% LIM-FLEX

RED DOUBLE POLLED

- ┌ PIE BILLINGS 487
- DJH HANLEY
- └ NBAR KELLY 913
- ┌ EXLR DAKOTA 353G
- EXLR SHEZA 518P
- └ EXLR 255J

CONSIGNED BY: MCCARTHY'S OMEGA 8 RANCH, BEDIAS, TX

- Selling five sexed heifer embryos
- One of the top purebred red donors at McCarthy's Omega 8 Ranch is EXLR Sheza 518P. She is a daughter of EXLR Dakota 353G and is from a daughter of Wulf's Guardian from EXLR Sheza Dandy 38D.
- This female was a top seller at Express Ranches where McCarthy added her to their strong line up of donors. She has been in transplant to the purebred Red Angus bull Hanley to create some of the finest red and polled 50% Lim-Flex calves.
- These embryos are guaranteed heifers and we are certain will be something special for the new owner.

EPDS	SIRE	DAM
CD: 6		
BW: -2.8 1.6		
WW: 32 28		
YW: 41 50		
MA: 23 19		
CM: 8		
SC:		
DC:		
CW: -10		
RE: -0.39 0.45		
YG: 0.01		
MS: 0.45 -0.14		
\$MI:		



EXLR SHEZA 518P

Planned Matings

22

FIRESTORM X KEIFERS LULU Y55

PUREBRED RED ANGUS

RED POLLED

- ┌ RED SIX MILE SAKIC 832S
- └ PZC TMAS FIRESTORM 1800
- ┌ GT CITA 4060
- └ MAJESTIC LIGHTNING 717 SGMR
- ┌ KEIFERS LULU Y55
- └ CEA LYNETTE

Proj EPDs	
CD:	-1
BW:	0.0
WW:	58
YW:	98
MA:	19
CM:	4
SC:	
DC:	
CW:	23
RE:	-0.37
YG:	0.22
MS:	0.28
\$MI:	57

CONSIGNED BY: SUGAR BUSH CATTLE, INC., ALLEN, MI

- Selling two embryos
- Without a doubt one of the greatest Red Angus donors anywhere to be found is Keifers Lulu Y55. She was the 2013 National Champion Red Angus Female and is now owned in partnership with Sugar Bush Cattle, Inc. and Twin Willows Farm, Springfield, MO.
- She is so massive in her foot size, soft in her pasterns and extremely deep bodied and powerful in her stance. She dominated that National show and has



KEIFERS LULU Y55

- been in extensive transplant hopefully recreating her look. She is a daughter of Majestic Lightning 717 and from CEA Lynette, a daughter of Buf Crk Hobo.
- These future calves selling are sired by the leading Red Angus sire Firestorm and we think will be something truly special.

23

FEDDES BIG SKY X 3R MS TOUCH 51H 21M

PUREBRED RED ANGUS

RED POLLED

- ┌ BIEBER MAKE MIMI 7249
- └ FEDES BIG SKY R9
- ┌ FEDES LAKINA 310
- └ 3R 2595 HOBO 133G
- ┌ 3R MS TOUCH 51H 21M
- └ 3R MS TOUCH 143F 51H

Proj EPDs	
CD:	12.5
BW:	-4.4
WW:	44
YW:	85
MA:	27
CM:	2
SC:	
DC:	17
CW:	27
RE:	-1.52
YG:	0.88
MS:	1.16
\$MI:	78

CONSIGNED BY: SUGAR BUSH CATTLE, INC., ALLEN, MI

- Selling five embryos
- Here are five purebred Red Angus embryos that represent some of the finest genetics ever created at Sugar Bush Cattle, Inc.
- They are sired by Feddes Big Sky, the big-numbered, performance, Red Angus sire. He is one of the breed's biggest numbered marbling sires with a .90.
- Their dam is 3R Ms Touch 51H 21M, the big ribbed and powerhouse of a donor for Sugar Bush Cattle, Inc. She has made a big impact in the SBRX



3R MS TOUCH 51H 21M

- purebred Red Angus herd in creating some of their finest purebred Red Angus and amazing red and polled Lim-Flex cattle.

24

BROWN COMMITMENT X ARWL PLD CASHABANKA

50% LIM-FLEX

RED DOUBLE POLLED

- ┌ LJC LANCER 806
- └ BROWN COMMITMENT S7206
- ┌ BROWN MS SHAZZAM P7940
- └ WULFS NOBEL PRIZE 3861N
- ┌ ARWL PLD CASHABANKA 7131T
- └ MINE PLD DOLLEY 3205N

EPDs	Sire	Dam
CD:		
BW:	-2.7	3.0
WW:	62	49
YW:	93	83
MA:	25	26
CM:		
SC:		
DC:		
CW:		
RE:	0.06	0.70
YG:		
MS:	1.59	-0.02
\$MI:		

CONSIGNED BY: MASSEY LIMOUSIN, LONDON, KY

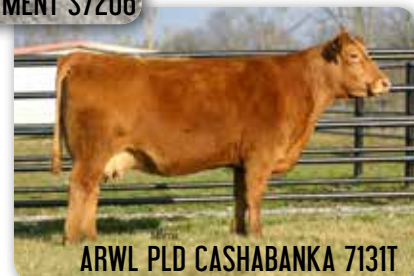
- Selling five embryos
- The future calves from this mating are sure to impress you. They will be maternal siblings to MINE 1020Y, the top selling open heifer at \$6500 in the last '12 Minerich Sale selling to Massey Limousin.
- They are sired by the elite purebred Red Angus sire, Brown Commitment. The dam ARWL Pld Cashabanka 7131T is one of the nicest purebred red and polled females.



BROWN COMMITMENT S7206

- She is headlining the Massey donor program and is a daughter of Wulf's Noble Prize 3861N.

- Buy with the utmost confidence, this works an works really well and has proven itself in the market place.



ARWL PLD CASHABANKA 7131T

Planned Mating

25 LH U HAUL 135U X JCL PEPPERMINT 94N
 71.5% LIM-FLEX DOUBLE BLACK DOUBLE POLLED

- ┌ BASIN FRANCHISE P142
- └ LH U HAUL 135U
- ┌ EXLR DUCHESS 7129R
- └ AUTO BLACK DAKOTA 129J
- JCL PEPPERMINT**
- └ JCL PEPPER

CONSIGNED BY COUNCIL FAMILY LIMOUSIN, MADISONVILLE, TX

- Selling three guaranteed heifer embryos
- Highlighting the sale will be these guaranteed heifer embryos from the heart of the Council Family Limousin herd.
- They are sired by the huge numbered LH U Haul 135U.
- Their dam is the leading CFLX donor JCL Peppermint. She is the dam of the once national champion top selling bull CFLX Wild Card and the once National Junior Heifer Show grand champion female and many times show champion CFLX Mollys Image.

Proj EPDs	
CD:	
BW: 1.4	
WW: 56	
YW: 108	
MA: 33	
CM:	
SC:	
DC:	
CW:	
RE: 0.20	
YG:	
MS: 0.22	
SMI: 53	



LH U HAUL 135U



JCL PEPPERMINT

- These future calves will follow the footsteps of so many progeny from the popular donor JCL Peppermint.
- Buy with the utmost confidence, this mating is one of the very best to come from the CFLX program.

Semen
26 AUTO CRUZE 132X
 PERCENTAGE BULL HOMO PLD(T) HOMO BLK(T)
 (88/77.4) BD: 9/14/10 AUTO132X NXM1979953

- ┌ AUTO DOLLAR GENERAL 122R
- └ **MAGS THE GENERAL**
- ┌ EXLR LUVLY 821M
- └ LESF ASPHALT 9N
- AUTO REBECA 292S**
- └ EXLR REBECA 1019P

BW: 62 ADJ WW: 722 ADJ YW: 1117

CONSIGNED BY: PINEGAR LIMOUSIN, SPRINGFIELD, MO

- Selling Lot 26A 5 units • Lot 26B 5 units • Lot 26C 5 units • Lot 26D 5 units • Lot 26E 5 units
- One of the finest bulls to ever represent the AUTO prefix is AUTO Cruze 132X. He is the 88% Limousin homozygous polled, homozygous black bull that has sired some of the finest calves at Pinegar Limousin.
- He is the prominent son of MAGS The General and from the elite donor AUTO

EPDs	
CD: 14	
BW: -1.5	
WW: 54	
YW: 100	
MA: 27	
CM: 5	
SC: 0.3	
DC: 15	
CW: 31	
RE: 0.44	
YG: 0.1	
MS: 0.17	
SMI: 52	



AUTO CRUZE 132X

- Rebeca 292S. He represents the premier genetics on both side of his pedigree and has resulted into something rather special. He posts a breed leading set of EPD's with a low birth of -1.5, yearling weight of 100, milk of 27, ribeye of .44 and marbling of .17.
- This is unique opportunity to invest in genetics from this proven sire that is not on the open market.

Herd Sire Prospect

27 SSTO AFTER HOURS 3403A
 PUREBRED BULL HOMO PLD(T) HOMO BLK(T)
 (100/85.8) BD: 3/26/13 SSTO3403A NPM2040046

- ┌ KRVN NASKAR 013N
- └ **WLR DIRECT HIT**
- ┌ MAGS NIGHT AMBUSH
- └ LESF ASPHALT 9N
- TYEJ DB SERENITY**
- └ TYEJ DB SIZZLE

BW: 70 ADJ WW: 634 ADJ YW:

CONSIGNED BY: STOWERS LIMOUSIN, BRIDGEPORT, TX

- Homozygous polled and homozygous black is the leading herd sire prospect from the heart of the Stowers Limousin program.
- Buy with confidence when investing in this young herd sire prospect. He is packed full of muscle has a ton of performance.
- SSTO After Dark 3403A is massive in his foot size and is very soft in his pasterns and fluid in his movement. He just happens to be a full brother

EPDs	
CD: 6	
BW: 2.3	
WW: 46	
YW: 77	
MA: 26	
CM: 0	
SC: 0.8	
DC: 13	
CW: 19	
RE: 0.57	
YG: -0.14	
MS: -0.12	
SMI: 40	



SSTO AFTER HOURS 3403A

- to the '12 All American Futurity grand champion female, AUTO Luckie 246W and a the '13 National Junior Heifer Show grand champion, AUTO Luckie Too 423Y.
- This young herd sire could be that big time performance PUREBRED sire that everyone is so excited about finding.

Donor Prospect

28

MCBN ZAREENA BROWN 223Z

LIM-FLEX COW (75/67.6) BD: 2/20/12 HET PLD(T) HOMO BLK(P) MCBN223Z LFF2022557

- ┌ DHVO DEUCE 132R
- MAGS WAZOWSKI**
- ┌ BOHI RED ROBIN 282R
- ┌ AUTO DOLLAR GENERAL 122R
- MCBN XTREME GAL**
- ┌ SBLX TAP DANCE 267T

BW: 75

CONSIGNED BY: SALT CREEK CATTLE & GENETICS, AMBER, OK

- Selling half interest in this future donor cow prospect. She sells with her first calf at her side sired by the leading outcross sire EBFL Ypsilanti 420Y. MCBN Zareena Brown 223Z is a daughter of MAGS Wazowski. Though he is now

EPDs	Cow	Calf
CD:	9	7
BW:	1.9	1.2
WW:	68	61
YW:	118	110
MA:	31	35
CM:	4	2
SC:	0.8	0.6
DC:	16	15
CW:	41	40
RE:	0.24	0.17
YG:	0.28	0.32
MS:	0.21	0.31
SMI:	56	57



MCBN ZAREENA BROWN 223Z

deceased he was the leading son of DHVO Deuce where half interest was purchased at \$28,000 by Fuchs Limousin at a Magnesss Bull sale.

This homozygous black 75% Lim-Flex female is from a daughter of the multiple trait leading sire AUTO Dollar General 122R back to a daughter of MYTTY In Focus. She offers a 1.9 for birth, 118 for yearling weight and 31 for milk. Buy with confidence and join Salt Creek Cattle and invest into one of their finest young donors.

- Lot 28A: SALT Crk Bonanza 401B, a 4/1/14 62.5% Lim-Flex homozygous black, double polled bull sired by EBFL Ypsilanti 420Y, BW: 78 lb.

Open Heifers

29

JCL DELCIE LNLN 213A

LIM-FLEX COW (50/44.8) BD: 10/11/13 HOMO PLD(T) HOMO BLK(P) LNLN213A LFF2046914

- ┌ D A TRAVELER 004 703
- EF XCESSIVE FORCE**
- ┌ CFLX MOLLYS IMAGE
- ┌ B C LOOKOUT 7024
- JCL UNDYING LOVE 013X**
- ┌ CHR UNDYING LOVE 156U

BW: 63 ADJ WW: 815

CONSIGNED BY: JCL CATTLE CO. & LINDEN FAITH LINTHICUM, WELCH, OK

- JCL and Linden have teamed up to bring you one of their finest to sell. She is a 50% Lim-Flex daughter of the once National Champion sire, EF Xcessive Force.
- This young female is a result of the breeding of only the finest in the entire breed. She is a known daughter of the big time donor JCL Undying Love 013X. She is the daughter of BC Lookout from the remarkable donor and

EPDs	
CD:	9
BW:	-0.6
WW:	52
YW:	99
MA:	28
CM:	1
SC:	0.4
DC:	12
CW:	36
RE:	0.03
YG:	0.33
MS:	0.21
SMI:	51



JCL DELCIE LNLN 213A

- daughter of GPFF Blaque Rulon.
- This young heifer selling is so very well made, flawless in her design and very straight in her lines. Buy with confidence...this is one terrific show female.

30

SSTO ALL ABOUT YOU 3863A

LIM-FLEX COW (50/44.5) BD: 9/6/13 HET PLD(T) DOUBLE BLK SSTO3863A LFF2041211

- ┌ GPFF BLAQUE RULON
- DHVO DEUCE 132R**
- ┌ AMY JO DHAN 20L
- ┌ S A V BISMARCK 5682
- HCC 5682 GEORGINA 0244**
- ┌ HCC 616 GEORGINA 5204

BW: 68

CONSIGNED BY: STOWERS LIMOUSIN, BRIDGEPORT, TX

- Double polled (not tested) and homozygous black is this 50% Lim-Flex heifer that is truly something special.
- She is extremely long bodied from the side profile with a tremendous amount of rib shape and volume. We so appreciate the amount of volume and capacity that this heifer has and the future that she has in production. She is a true breeding piece and one that will be appreciated in the show ring and we are certain in the pasture. SSTO

EPDs	
CD:	10
BW:	-1
WW:	58
YW:	108
MA:	26
CM:	0
SC:	
DC:	
CW:	53
RE:	0.26
YG:	0.27
MS:	0.09
SMI:	49



SSTO ALL ABOUT YOU 3863A

All About You is a 50% Lim-Flex daughter of the national champion DHVO Deuce and from a purebred Angus daughter of SAV Bismarck 5682

Open Heifer

31

DHIL XCLUSIVE BELLE 3013A

LIM-FLEX COW HOMO PLD(P) HOMO BLK(P)
 (50/45.0) BD: 10/10/13 BDHC3013A LFF2038866

┌ JCL LODESTAR 27L
 LH WAR HERO 195W
 ┌ VERMILION ERICA LADY 1229
 ┌ DHVO TREY 133R
 LH XCLUSIVE BELLE 013X
 ┌ STEVENSON ELDORENE T457

BW: 81

CONSIGNED BY: DIAMOND HILL CATTLE CO, NICHOLS HILLS, OK

- A high-quality, deep-ribbed, double homozygous War Hero daughter that has tremendous EPDs for growth which ranks her in the top 20% of the breed for WW and YW.

EPDs
CD: 10
BW: 1.9
WW: 56
YW: 106
MA: 24
CM: 4
SC: 0.7
DC: 36
CW: 36
RE: -0.36
YG: 0.43
MS: 0.28
\$MI: 54



DHIL XCLUSIVE BELLE 3013A

Bred Heifers

32

BDHC PLAYMATE 2301Z

LIM-FLEX COW DOUBLE PLD HET BLK
 (50/44.5) BD: 2/27/12 BDHC2301Z LFF2021552

┌ GPFF BLAQUE RULON
 DHVO DEUCE 132R
 ┌ AMY JO DHAN 20L
 ┌ LEACHMAN FUNDAMENTAL
 LEACHMAN PLAYMATE 3002
 ┌ LEACHMAN PLAYMATE 1010

BW: 67 ADJ WW: 668 ADJ YW: 857

CONSIGNED BY: DIAMOND HILL CATTLE CO, NICHOLS HILLS, OK

- A deep-ribbed, easy-fleshing, sound-made daughter of four-time MOE Gold Medal Sire, DHVO Deuce. Bred 11/21/13 to MAGS Xukalani.
- DD carrier

EPDs	Cow	Calf
CD:		
BW: -1.2	-1.5	
WW: 55	56	
YW: 102	107	
MA: 29	29	
CM:		
SC: 0.8	0.7	
DC:		
CW: 48	52	
RE: -0.08	-0.27	
YG: 0.43	0.57	
MS: 0.26	0.40	
\$MI: 53	57	



BDHC PLAYMATE 2301Z

33

BDHC EFFIE 2241Z

LIM-FLEX COW HOMO PLD(P) HOMO BLK(T)
 (25/22.7) BD: 1/29/12 BDHC2241Z LFF2014649

┌ JCL LODESTAR 27L
 LH RODEMASTER 338R
 ┌ VERMILION E BLACKBIRD9546
 ┌ BON VIEW NEW DESIGN 1407
 RR BLACKCAP EFFIE 2410
 ┌ SITZ BLACKCAP EFFIE 727

BW: 80 ADJ WW: 572 ADJ YW: 815

CONSIGNED BY: DIAMOND HILL CATTLE CO, NICHOLS HILLS, OK

- A really broody, deep-ribbed daughter of the now deceased LH Rodemaster 338R.
- She had a yearling IMF scan of 6.32
- Bred 11/22/13 to MAGS Y-Axis

EPDs	Cow	Calf
CD:		
BW: -1.1	-1.2	
WW: 51	52	
YW: 103	104	
MA: 30	31	
CM:		
SC: 0.4	0.4	
DC:		
CW: 51	51	
RE: -0.58	-0.13	
YG: 0.83	0.60	
MS: 0.66	0.48	
\$MI: 63	58	



BDHC EFFIE 2241Z