



**COLEMAN ANGUS**  
YOUR MATERNAL SOURCE

# Online EMBRYO Sale

11.29.22 | [www.LiveAuctions.TV](http://www.LiveAuctions.TV)

# Online EMBRYO Sale

Live 11/29 | 7 PM (MST)

Larry & Dee Coleman Family  
406.240.2751

Jeremy & Jenny Haag Family  
406.833.0117

PATHFINDER® STATUS IS  
EARNED THE OLD  
FASHIONED WAY IN THE  
PASTURE



**COLEMAN ANGUS**  
YOUR MATERNAL SOURCE

40067 Morris Road  
Charlo, Montana 59824  
colemanangus@blackfoot.net

[WWW.COLEMANANGUS.COM](http://WWW.COLEMANANGUS.COM)

# Lot 1 – 3 IVF RSF EMBRYOS

Coleman Chloe 975 x Coleman Rock 7200



Coleman Chloe 975  
Dam of Embryos

O C C Juneau 807J

## Coleman Rock 7200

19107936.00 Coleman Donna 714

Coleman Bravo 6313

## Coleman Chloe 975

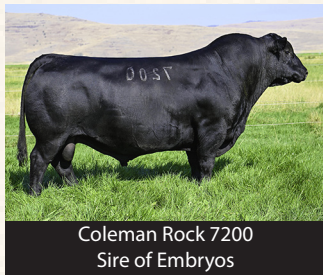
19483324 Lawsons Chloe C815

CED	BW	WW	YW	MILK	SC	MARB	RE	SM
8	0.7	77	132	25	1.20	.30	.70	73

Bid price is per embryo. Package prices is 3x bid price. Buyer is responsible for cost of shipping embryos.

## Online EMBRYO Auction Closes 11/29 | 7 PM (MST)

“975” has been a visitor favorite since she was a calf here. Two daughters of “975” were special highlights in our recent female sale, commanding \$40,000 each. These would be the first two daughters we have ever sold out of her. No doubt “975” has a very bright future here. “975” has a Glacier heifer calf at her side now, and she is exceptional, visitors here this summer have loved her. “975” is a flush sister to Triumph, she was our high selling female in our 2019 female sale to Jocko Valley in MT. We feel she has as much potential as any female we have had the opportunity to work with here. Big time mating here! Rock was the \$240,000 record selling bull in our 2022 female sale to Ingram Angus and Sandford Cattle. Demand for Rock is at an all-time high across the World right now. The cattleman’s kind is a perfect way describe the early indicators on Coleman Rock 7200. Rock would currently be one of the heaviest used sires here at Coleman Angus.



Coleman Rock 7200  
Sire of Embryos

He sires cattle with extra three-dimensional shape with added performance in the right size package. His offspring have tons of center body and explosive muscle shape in a sound-structured package. Rock is low birthweight, high growth, and ranks in the Top 10% for \$M. **These are IVF embryos (Trans Ova), we are selling three embryos in this mating and guaranteeing one pregnancy.** These embryos are exportable to Canada. These embryos have been sexed for females, 90-95% accurate.

# Lot 2 – 3 IVF SF F EMBRYOS

Coleman Donna 504 x J Trademark 1037



Coleman Donna 504  
Dam of Embryos

Sitz Resilient 10208

## J Trademark 1037

20160403.00 Mill Brae Iden Georgina 4086

S A V Resource 1441

## Coleman Donna 504

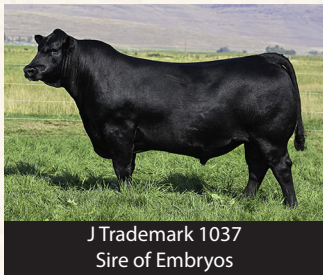
18238090 Coleman Donna 714

CED	BW	WW	YW	MILK	SC	MARB	RE	SM
13	0.2	77	143	28	.70	.40	.90	86

Bid price is per embryo. Package prices is 3x bid price. Buyer is responsible for cost of shipping embryos.

## Online EMBRYO Auction Closes 11/29 | 7 PM (MST)

Donna 504 has been one of my favorite females we have ever made since she was a calf. I try not to get too excited about young cows, but I'm having a tough time with her, she is special in my opinion. Very first time we have ever offered embryos out of her for sale on this mating. Ratio's on her BR 4/89, NR 4/110, YR 3/110. 504's sons topped our 2021 bull sale, many going to registered breeders all across the US. Take advantage here. "Trademark" is a bull we're excited to add to our program. We're excited to be working with Conley Angus on this elite herd-sire. Trademark was selected as the \$165,000 top selling bull of the Cattleman's Cut Bull Sale. He is a low-birth weight calving ease bull, with double digit calving ease direct, with an outcross pedigree for our program. "Trademark" has caught the attention of cattleman from all across the country. He has tremendous performance, added muscle shape, with unique combination of phenotype,



J Trademark 1037  
Sire of Embryos

and an incredible number package. We are excited to own Trademark's dam. She was the record selling \$210,000 ½ interest female in our recent female sale to Jocko Valley in MT. She has a progeny record of 6 head/103 weaning, and a calving interval of 347 on 6 head. **These are IVF embryos (Trans Ova), we are selling three embryos in this mating and guaranteeing one pregnancy.** These embryos have been sexed for females, 90-95% accurate.

# Lot 3 – 3/6 IVF EMBRYOS

Coleman Donna 504 x Sitz Barricade 632F



Coleman Donna 504  
Dam of Embryos

Sitz Stellar 726D

## Sitz Barricade 632F

19078148.00 SITZ Barbaramere Nell 765D

S A V Resource 1441

## Coleman Donna 504

18238090 Coleman Donna 714

CED	BW	WW	YW	MILK	SC	MARB	RE	SM
8	1.5	79	142	23	.90	.40	.80	80

Bid price is per embryo. Package prices is 3/6x bid price. Buyer is responsible for cost of shipping embryos.

## Online EMBRYO Auction Closes 11/29 | 7 PM (MST)

Donna 504 has been one of my favorite females we have ever made since she was a calf. I try not to get too excited about young cows, but I'm having a tough time with her, she is special in my opinion. Very first time we have ever offered embryos out of her for sale on this mating. Ratio's on her BR 4/89, NR 4/110, YR 3/110. 504's sons topped our 2021 bull sale, many going to registered breeders all across the US. The sire of these embryos is Sitz Barricade, a featured Genex sire. He's a new bull we have started using, lots of body, deep ribbed, and good footed. Extremely exciting mating here for sure.

**These are IVF embryos (Trans Ova), we are selling three embryos in this mating and guaranteeing one pregnancy.** Buyer has the option to take six embryos out of this mating and we will guarantee 2 pregnancies. These embryos are exportable to Canada.



Sitz Barricade 632F  
Sire of Embryos

# Lot 4 – 3 IVF EMBRYOS

Coleman Donna 9220 x Coleman Rock 7200



Coleman Donna 9220  
Dam of Embryos

O C C Juneau 807J

## Coleman Rock 7200

19107936.00 Coleman Donna 714

S A V Resource 1441

## Coleman Donna 9220

19717715 Coleman Donna 4203

CED	BW	WW	YW	MILK	SC	MARB	RE	SM
9	0.2	69	121	29	1.00	.10	.80	80

Bid price is per embryo. Package prices is 3x bid price. Buyer is responsible for cost of shipping embryos.

## Online EMBRYO Auction Closes 11/29 | 7 PM (MST)

**C**oleman Donna 9220 – The definition of what you want your two-year-old females to look like is this daughter of SAV Resource 1441, back to the now deceased Coleman Donna 4203. This was our lot 1 female this past fall and we sold one-half interest for \$45,000 for a \$90,000 valuation. She ranks among current dams as the 14th highest daughter of Resource for \$M for non-parent females in the breed. Coleman Banker, a maternal brother, was the \$75,000 feature in the same sale and two other maternal sisters sold for \$22,000 and \$22,500. Another maternal sister sold in the 2020 sale for \$20,000. This mating will be incredibly special. Rock was the \$240,000 record selling bull in our 2022 female sale to Ingram Angus and Sandford Cattle. Demand for Rock is at an all-time high across the World right now. The cattleman's kind is a perfect way describe the early indicators on Coleman Rock 7200. Rock would currently be one of



Coleman Rock 7200  
Sire of Embryos

the heaviest used sires here at Coleman Angus. He sires cattle with extra three-dimensional shape with added performance in the right size package. His offspring have tons of center body and explosive muscle shape in a sound-structured package. Rock is low birthweight, high growth, and ranks in the Top 10% for \$M. **These are IVF embryos (Trans Ova), we are selling three embryos in this mating and guaranteeing one pregnancy.** These embryos are exportable to Canada.

# Lot 5 – 3/6 IVF EMBRYOS

Coleman Donna 9220 x J Trademark 1037



Coleman Donna 9220  
Dam of Embryos

Sitz Resilient 10208

## J Trademark 1037

20160403.00 Mill Brae Iden Georgina 4086

S A V Resource 1441

## Coleman Donna 9220

19717715 Coleman Donna 4203

CED	BW	WW	YW	MILK	SC	MARB	RE	SM
10	0.3	76	139	31	.60	.40	.90	87

Bid price is per embryo. Package prices is 3/6x bid price. Buyer is responsible for cost of shipping embryos.

## Online EMBRYO Auction Closes 11/29 | 7 PM (MST)

**C**oleman Donna 9220 – The definition of what you want your two-year-old females to look like is this daughter of SAV Resource 1441, back to the now deceased Coleman Donna 4203. This was our lot 1 female this past fall and we sold one-half interest for \$45,000 for a \$90,000 valuation. She ranks among current dams as the 14th highest daughter of Resource for \$M for non-parent females in the breed. Coleman Banker, a maternal brother, was the \$75,000 feature in the same sale and two other maternal sisters sold for \$22,000 and \$22,500. Another maternal sister sold in the 2020 sale for \$20,000. “Trademark” is a bull we’re excited to add to our program. We’re excited to be working with Conley Angus on this elite herd-sire. Trademark was selected as the \$165,000 top selling bull of the Cattleman’s Cut Bull Sale. He is a low-birth weight calving ease bull, with double digit calving ease direct, with an outcross pedigree for our program. “Trademark” has caught the attention of cattleman from all across the country. He has tremendous performance, added



J Trademark 1037  
Sire of Embryos

muscle shape, with unique combination of phenotype, and an incredible number package. We are excited to own Trademark’s dam. She was the record selling \$210,000 ½ interest female in our recent female sale to Jocko Valley in MT. She has a progeny record of 6 head/103 weaning, and a calving interval of 347 on 6 head. **These are IVF embryos (Trans Ova), we are selling three embryos in this mating and guaranteeing one pregnancy.** Buyer has the option to take six embryos out of this mating and we will guarantee 2 pregnancies.

[www.LiveAuctions.TV](http://www.LiveAuctions.TV)

# Lot 6 – 3 IVF RSF EMBRYOS

Coleman Donna 7181 x Coleman Glacier 041



Coleman Donna 7181  
Dam of Embryos

S A V Renown 3439

## Coleman Glacier 041

19866409.00 Coleman Donna 439

Coleman Charlo 0256

## Coleman Donna 7181

19102649 Coleman Donna 197

CED	BW	WW	YW	MILK	SC	MARB	RE	SM
8	0.6	60	109	34	.30	.20	.70	78

Bid price is per embryo. Package prices is 3x bid price. Buyer is responsible for cost of shipping embryos.

## Online EMBRYO Auction Closes 11/29 | 7 PM (MST)

“7181” is a Pathfinder female here, with a calving interval of 3/360, BR 3/98, NR 3/107, and YR 1/106. “7181” has been a visitor favorite since she was a calf here, extremely deep bodied, big hip, with a beautiful udder. “7181” is the kind of females that made “Charlo” famous. 7181 has been extremely productive here, her second calf was one of the featured “Summer” heifers last falls in our female sale and brought \$24,000. Her third calf was a \$21,000 feature in our recent female sale, and a visitor favorite all summer. We don’t sell many embryos out of this female, so pay attention here. “Glacier” has been a standout since he was born. Glacier’s first calves are on the ground, they are very impressive as babies. Glacier has the best feet I’ve ever seen on a bull before, extremely sound, and athletic, with a great herd bull look and presence. He’s the bull the industry has been looking for. Glacier’s flush sisters are calving this spring, and look impressive, perfect udders, great feet, stout, with a great look. We believe it all starts with the mother cow; Glaciers Pathfinder dam is the fourth consecutive generation to make it the donor pen here. “439”



Coleman Glacier 041  
Sire of Embryos

has ratios of BR 5/93, NR 5/107, and YR 5/106. 439 has been a favorite of visitors here since she was a heifer calf, we’ve kept 4 different sons of her here that we are currently using, she would be as good as any female we’ve ever had the opportunity to work with here. “439” is also the Dam of Ace 989, who is doing a tremendous job for us also. **These are IVF embryos (Trans Ova), we are selling three embryos in this mating and guaranteeing one pregnancy.** These embryos are exportable to Canada. These embryos have been sexed for females, 90-95% accurate.



# Lot 7 – 3/6 IVF RSF EMBRYOS

## Coleman Donna 7181 x Coleman Rock 7200



Coleman Donna 7181  
Dam of Embryos

O C C Juneau 807J

### Coleman Rock 7200

19107936.00 Coleman Donna 714

Coleman Charlo 0256

### Coleman Donna 7181

19102649 Coleman Donna 197

CED	BW	WW	YW	MILK	SC	MARB	RE	SM
11	-0.1	60	103	32	.80	-.01	.70	80

**Bid price is per embryo. Package prices is 3/6x bid price. Buyer is responsible for cost of shipping embryos.**

## Online EMBRYO Auction Closes 11/29 | 7 PM (MST)

“7181” is a Pathfinder female here, with a calving interval of 3/360, BR 3/98, NR 3/ 107, and YR 1/ 106. “7181” has been a visitor favorite since she was a calf here, extremely deep bodied, big hip, with a beautiful udder. “7181” is the kind of females that made “Charlo” famous. 7181 has been extremely productive here, her second calf was one of the featured “Summer” heifers last falls in our female sale and brought \$24,000. Her third calf was a \$21,000 feature in our recent female sale, and a visitor favorite all summer. We don’t sell many embryos out of this female, so pay attention here. Rock was the \$240,000 record selling bull in our 2022 female sale to Ingram Angus and Sandford Cattle. Demand for Rock is at an all-time high across the World right now. The cattleman’s kind is a perfect way describe the early indicators on Coleman Rock 7200. Rock would currently be one of the heaviest used sires here at Coleman Angus. He sires cattle with extra three-dimensional shape with added performance in the right size package. His offspring



Coleman Rock 7200  
Sire of Embryos

have tons of center body and explosive muscle shape in a sound-structured package. Rock is low birthweight, high growth, and ranks in the Top 10% for \$M. **These are IVF embryos (Trans Ova), we are selling three embryos in this mating and guaranteeing one pregnancy.** Buyer has the option to take six embryos out of this mating and we will guarantee 2 pregnancies. These embryos are exportable to Canada. These embryos have been sexed for females, 90-95% accurate.

# Lot 8 – 3 IVF RSF EMBRYOS

Coleman Donna 3125 x Coleman Rock 7200



Coleman Donna 3125  
Dam of Embryos

OCC Juneau 807J

## Coleman Rock 7200

19107936.00 Coleman Donna 714

Leachman Right Time

## Coleman Donna 3125

17783497 Coleman Donna 714

CED	BW	WW	YW	MILK	SC	MARB	RE	SM
11	-0.4	62	103	31	1.30	.20	.60	83

Bid price is per embryo. Package prices is 3x bid price. Buyer is responsible for cost of shipping embryos.

## Online EMBRYO Auction Closes 11/29 | 7 PM (MST)

“3125” is as complete of a female as we have had the opportunity to work with here.

“3125” checks all of the boxes for us as an ideal Angus female, progeny ratios of birth ratio 4@94, nursing ratio 4@110, and a yearling ratio of 4@110. She has proven herself the old-fashioned way, in the pasture. She brings so much to the table with her massive amount of rib and body, perfect udder, and overall femininity. “3125” is the best “Right Time” daughter we have seen and had the opportunity to work with. Extremely excited for here future here. Rock was the \$240,000 record selling bull in our 2022 female sale to Ingram Angus and Sandford Cattle. Demand for Rock is at an all-time high across the World right now. The cattleman’s kind is a perfect way describe the early indicators on Coleman Rock 7200. Rock would currently be one of the heaviest used sires here at Coleman Angus. He sires cattle with extra three-dimensional shape



Coleman Rock 7200  
Sire of Embryos

with added performance in the right size package. His offspring have tons of center body and explosive muscle shape in a sound-structured package. Rock is low birthweight, high growth, and ranks in the Top 10% for \$M. **These are IVF embryos (Trans Ova), we are selling three embryos in this mating and guaranteeing one pregnancy.** These embryos are exportable to Canada. These embryos have been sexed for females, 90-95% accurate.

# Lot 9 – 3/6 IVF RSF EMBRYOS

Coleman Donna 3125 x Coleman Banker 9215



Coleman Donna 3125  
Dam of Embryos

Coleman Bravo 6313

## Coleman Banker 9215

19583404.00 Coleman Donna 4203

Leachman Right Time

## Coleman Donna 3125

17783497 Coleman Donna 714

CE	BW	WW	YW	MILK	SC	MARB	RE	SM
14	-1.4	58	102	37	.70	.40	.40	92

Bid price is per embryo. Package prices is 3/6x bid price. Buyer is responsible for cost of shipping embryos.

## Online EMBRYO Auction Closes 11/29 | 7 PM (MST)

//3125" is as complete of a female as we have had the opportunity to work with here.

"3125" checks all of the boxes for us as an ideal Angus female, progeny ratios of birth ratio 4@94, nursing ratio 4@110, and a yearling ratio of 4@110. She has proven herself the old-fashioned way, in the pasture. She brings so much to the table with her massive amount of rib and body, perfect udder, and overall femininity. "3125" is the best "Right Time" daughter we have seen and had the opportunity to work with. Extremely excited for here future here. These embryos are sired by the now deceased "Banker" who is a bull we kept to use in our program, visitors have loved him here this summer. "Banker" is extremely impressive, exceptionally smooth, extremely sound on the move, stout, with about as much rib shape and depth as you can put in one. Banker's flush sisters that calved here this summer are as impressive as anything we have ever calved here. We



Coleman Banker 9215  
Sire of Embryos

have plugged Banker in here extremely hard, Banker's first calves are very impressive. Calves come light and explode quickly. Banker is one of the heaviest used sires here at Coleman Angus. **These are IVF embryos (Trans Ova), we are selling three embryos in this mating and guaranteeing one pregnancy.** Buyer has the option to take six embryos out of this mating and we will guarantee 2 pregnancies. These embryos are exportable to Canada. These embryos have been sexed for females, 90-95% accurate.

[www.LiveAuctions.TV](http://www.LiveAuctions.TV)

# Lot 10 – 3 IVF EMBRYOS

## Coleman Donna 6206 x Coleman Glacier 041



Coleman Donna 6206  
Dam of Embryos

S A V Renown 3439

### Coleman Glacier 041

19866409.00 Coleman Donna 439

Coleman Juneau 044

### Coleman Donna 6206

18734920 Coleman Donna 2252

CED	BW	WW	YW	MILK	SC	MARB	RE	SM
6	1.5	66	113	30	.30	.20	.60	76

Bid price is per embryo. Package prices is 3x bid price. Buyer is responsible for cost of shipping embryos.

## Online EMBRYO Auction Closes 11/29 | 7 PM (MST)

“6206” is a very Maternal Pathfinder female that we have pulled out of production and started flushing. “6206” has an impeccable record here, calving interval of 364 on her first 4 calves, BR 4/95 NR of 110 and YR of 105. She has her fifth calf on her now, has always bred 1st straw AI in her life. Her son was one of our feature bulls in our 2022 Bull Sale and was one of the sale toppers. “6206” has proved herself the old-fashioned way, in the pasture. Her heifer calf by Triumph has been a visitor favorite here this summer. Perfect udder, and feet on her also. Study her pedigree, lots of very proven maternal bulls in there. “Glacier” has been a standout since he was born. Glacier’s first calves are on the ground, they are very impressive as babies. Glacier has the best feet I’ve ever seen on a bull before, extremely sound, and athletic, with a great herd bull look and presence. He’s the bull the industry has been looking for. Glacier’s flush sisters are calving this spring, and look impressive, perfect udders, great feet, stout, with a great look. We believe it all starts with the mother cow; Glaciers Pathfinder dam is the fourth consecutive generation to make it the donor pen here. “439” has ratios of BR 5/93, NR 5/107, and YR 5/106. 439 has been a favorite of visitors here since she was a heifer calf, we’ve kept 4 different sons of her here that we are currently using, she would be as good as any female we’ve ever had the opportunity to work with here. “439” is also the Dam of Ace 989, who is doing a tremendous job for us also. **These are IVF embryos (Trans Ova), we are selling three embryos in this mating and guaranteeing one pregnancy.** These embryos are exportable to Canada.



Coleman Glacier 041  
Sire of Embryos

# Lot 11 – 3 IVF RSF EMBRYOS

Coleman Donna 6206 x J Trademark 1037



Coleman Donna 6206  
Dam of Embryos

Sitz Resilient 10208

## J Trademark 1037

20160403.00 Mill Brae Iden Georgina 4086

Coleman Juneau 044

## Coleman Donna 6206

18734920 Coleman Donna 2252

CED	BW	WW	YW	MILK	SC	MARB	RE	SM
10	0.5	72	124	30	.50	.40	.60	86

Bid price is per embryo. Package prices is 3x bid price. Buyer is responsible for cost of shipping embryos.

## Online EMBRYO Auction Closes 11/29 | 7 PM (MST)

“6206” is a very Maternal Pathfinder female that we have pulled out of production and started flushing. “6206” has an impeccable record here, calving interval of 364 on her first 4 calves, BR 4/95 NR of 110 and YR of 105. She has her fifth calf on her now, has always bred 1st straw AI in her life. Her son was one of our feature bulls in our 2022 Bull Sale and was one of the sale toppers. “6206” has proved herself the old-fashioned way, in the pasture. Her heifer calf by Triumph has been a visitor favorite here this summer. Perfect udder, and feet on her also. Study her pedigree, lots of very proven maternal bulls in there. “Trademark” is a bull we’re excited to add to our program. We’re excited to be working with Conley Angus on this elite herd-sire. Trademark was selected as the \$165,000 top selling bull of the Cattleman’s Cut Bull Sale. He is a low-birth weight calving ease bull, with double digit calving ease direct, with an outcross pedigree for our program. “Trademark” has caught the attention of cattleman from all across the country.



J Trademark 1037  
Sire of Embryos

He has tremendous performance, added muscle shape, with unique combination of phenotype, and an incredible number package. We are excited to own Trademark’s dam. She was the record selling \$210,000 ½ interest female in our recent female sale to Jocko Valley in MT. She has a progeny record of 6 head/103 weaning, and a calving interval of 347 on 6 head. **These are IVF embryos (Trans Ova), we are selling three embryos in this mating and guaranteeing one pregnancy.** These embryos have been sexed for females, 90-95% accurate.

[www.LiveAuctions.TV](http://www.LiveAuctions.TV)

# Lot 12 – 3 IVF SF F EMBRYOS

Coleman Eriskay 291 x J Trademark 1037



Coleman Eriskay 291  
Dam of Embryos

Sitz Resilient 10208

## J Trademark 1037

20160403.00 Mill Brae Iden Georgina 4086

Coleman Juneau 044

## Coleman Eriskay 291

17246470 Sinclair Eriskay 2N1 7883

CED	BW	WW	YW	MILK	SC	MARB	RE	SM
12	-1.1	65	116	29	.60	.50	.70	82

Bid price is per embryo. Package prices is 3x bid price. Buyer is responsible for cost of shipping embryos.

## Online EMBRYO Auction Closes 11/29 | 7 PM (MST)

“291” has been a particularly good female here. “291” is the dam of “Navigator 614” a proven bull that is leaving an extremely good set of daughters here, and whose sons have been topping our sales. “Navigator” throws as much true muscle as any bull we have ever used here. “Navigator” sons were very well received in our 2019 bull sale. We sold out of semen on Navigator last spring but have some more now available. “291” has 6 calves with a calving interval of 367, BR 8/88 NR 8/105 and YR 7/101. “291” has a perfect udder, long sided, deep ribbed and complete. Not very often you have a female that is extreme low BW like “291” and then throws this much performance. “Trademark” is a bull we’re excited to add to our program. We’re excited to be working with Conley Angus on this elite herd-sire. Trademark was selected as the \$165,000 top selling bull of the Cattleman’s Cut Bull Sale. He is a low-birth weight calving ease bull, with double digit calving ease direct, with an outcross pedigree for our program. “Trademark” has caught the attention of cattlemen from all across the country. He has tremendous performance, added muscle shape,



J Trademark 1037  
Sire of Embryos

with unique combination of phenotype, and an incredible number package. We are excited to own Trademark’s dam. She was the record selling \$210,000 ½ interest female in our recent female sale to Jocko Valley in MT. She has a progeny record of 6 head/103 weaning, and a calving interval of 347 on 6 head. **These are IVF embryos (Trans Ova), we are selling three embryos in this mating and guaranteeing one pregnancy.** These embryos have been sexed for females, 90-95% accurate.

# Lot 13 – 3/6 IVF EMBRYOS

Coleman Eriskay 291 x Coleman Resource 708



Coleman Eriskay 291  
Dam of Embryos

S A V Resource 1441

## Coleman Resource 708

18933681 Coleman Donna 376

Coleman Juneau 044

## Coleman Eriskay 291

17246470 Sinclair Eriskay 2N1 7883

CED	BW	WW	YW	MILK	SC	MARB	RE	SM
13	-1.1	50	90	27	.50	.20	.60	67

Bid price is per embryo. Package prices is 3/6x bid price. Buyer is responsible for cost of shipping embryos.

## Online EMBRYO Auction Closes 11/29 | 7 PM (MST)

“291” has been a particularly good female here. “291” is the dam of “Navigator 614” a proven bull that is leaving an extremely good set of daughters here, and whose sons have been topping our sales. “Navigator” throws as much true muscle as any bull we have ever used here. “Navigator” sons were very well received in our 2019 bull sale. We sold out of semen on Navigator last spring but have some more now available. “291” has 6 calves with a calving interval of 367, BR 8/88 NR 8/105 and YR 7/101. “291” has a perfect udder, long sided, deep ribbed and complete. Not very often you have a female that is extreme low BW like “291” and then throws this much performance. Sire of these embryos is a bull that has become known as “708” here at Coleman Angus. “708” reminds me of the early days when bulls proved themselves in the pasture one calf at a time, and everyone started calling them by their tattoo. “708” has been a visitor favorite here this fall, we bred him to a bunch of females and have been flushing him to our top donors. Here’s the first opportunity to purchase embryos out of him. Get on board with “708” he’s the real deal, proving himself the old-fashioned way, one



Coleman Resource 708  
Sire of Embryos

great daughter at a time. “Resource 708” is a bull we are extremely excited to be adding to our program. We’ve watched “708” and his progeny since we sold “708” to Gaugler Angus in MT. “708’s” Dam was a fourth-generation donor here for us, perfect feet, perfect udder, moderate, very maternal. “708” has perfect feet also, his daughters have perfect feet and udders, extremely fertile, raise big calves and breed back early. **These are IVF embryos (Trans Ova), we are selling three embryos in this mating and guaranteeing one pregnancy.** Buyer has the option to take six embryos out of this mating and we will guarantee 2 pregnancies.

# Lot 14 – 3/6 IVF EMBRYOS

Coleman Eriskay 291 x Coleman Galactic 1164



Coleman Eriskay 291  
Dam of Embryos

Coleman Triumph 9145

## Coleman Galactic 1164

20155616 Coleman Eriskay 8138

Coleman Juneau 044

## Coleman Eriskay 291

17246470 Sinclair Eriskay 2N1 7883

CED	BW	WW	YW	MILK	SC	MARB	RE	SM
13	-0.1	54	100	25	1.20	.20	.40	69

Bid price is per embryo. Package prices is 3/6x bid price. Buyer is responsible for cost of shipping embryos.

## Online EMBRYO Auction Closes 11/29 | 7 PM (MST)

“291” has been a particularly good female here. “291” is the dam of “Navigator 614” a proven bull that is leaving an extremely good set of daughters here, and whose sons have been topping our sales. “Navigator” throws as much true muscle as any bull we have ever used here. “Navigator” sons were very well received in our 2019 bull sale. We sold out of semen on Navigator last spring but have some more now available. “291” has 6 calves with a calving interval of 367, BR 8/88 NR 8/105 and YR 7/101. “291” has a perfect udder, long sided, deep ribbed and complete. Not very often you have a female that is extreme low BW like “291” and then throws this much performance. “Galactic” was the \$150,000 top selling yearling bull of our 2022 Spring Bull Sale, going to Voss Angus in Iowa. We are extremely excited to get our first set of calves out of Galactic next spring.



Coleman Galactic 1164  
Sire of Embryos

Galactic excels, with tremendous phenotype, added body and dimension, extremely good feet, with a wonderful structure. Exciting mating here for sure. **These are IVF embryos (Trans Ova), we are selling three embryos in this mating and guaranteeing one pregnancy.** Buyer has the option to take six embryos out of this mating and we will guarantee 2 pregnancies.



# Lot 15 – 3/6 IVF EMBRYOS

Coleman Everelda Entense 4327 x J Trademark 1037



Coleman Everelda Entense 4327  
Dam of Embryos

Sitz Resilient 10208

## J Trademark 1037

20160403.00 Mill Brae Iden Georgina 4086

Coleman Charlo 0256

## Coleman Everelda Entense 4327

18105675 Coleman Everelda Entense2235

CED	BW	WW	YW	MILK	SC	MARB	RE	SM
7	1.5	79	139	31	.90	.50	.80	87

Bid price is per embryo. Package prices is 3/6x bid price. Buyer is responsible for cost of shipping embryos.

## Online EMBRYO Auction Closes 11/29 | 7 PM (MST)

"4327" is a Pathfinder female, with a calving interval of 366 days on her first 6 calves, BR 6/97, NR 6/116, and YR 5/115. "4327" has a much power as any female we've ever had the opportunity to work with here. She is the Dam of Coleman Alamo, who was the \$40,000 feature bull in our 2022 bull sale. "Alamo" has sold semen worldwide, excited to get his first calves next spring. "4327's" pedigree is as maternal as you can make one. Her daughter was one of our feature's last fall in our female sale, selling for \$22,000 to Hideaway Cattle in MT. She can make great females and bulls, excellent mating here for sure. Very rarely have we sold embryos out of this female. "Trademark" is a bull we're excited to add to our program. We're excited to be working with Conley Angus on this elite herd-sire. Trademark was selected as the \$165,000 top selling bull of the Cattleman's Cut Bull Sale. He is a low-birth weight calving ease bull, with double digit calving ease direct, with an outcross pedigree for our program. "Trademark" has caught the attention of cattleman from all across the country. He has tremendous performance, added muscle shape, with unique combination of phenotype, and an incredible number package. We are excited to own Trademark's dam. She has a progeny record of 6 head/103 weaning, and a calving interval of 347 on 6 head. **These are IVF embryos (Trans Ova), we are selling three embryos in this mating and guaranteeing one pregnancy.** Buyer has the option to take six embryos out of this mating and we will guarantee 2 pregnancies.



J Trademark 1037  
Sire of Embryos

# Lot 16 – 3/6 IVF RSF EMBRYOS

Coleman Donna 1234 x Coleman Rock 7200



Coleman Donna 1234  
Dam of Embryos

O C C Juneau 807J

## Coleman Rock 7200

19107936.00 Coleman Donna 714

N Bar Emulation EXT

## Coleman Donna 1234

17185287 Coleman Donna 714

CED	BW	WW	YW	MILK	SC	MARB	RE	SM
11	-0.6	61	97	28	.60	.10	.60	85

Bid price is per embryo. Package prices is 3/6x bid price. Buyer is responsible for cost of shipping embryos.

## Online EMBRYO Auction Closes 11/29 | 7 PM (MST)

Donna 1234 is an incredibly special female, she has BR 6/90, NR 6/104 and YR 5/102. Donna 1234 is now 11 years old, tremendous longevity, we've got lots of daughters out of her in production here, they are working very well for us. Some of the very last embryos we will be selling out of her. "1234" is picture perfect to look at. She has a Charlo daughter that weaned her first calf, and she is impressive. Donna 1234 has a calving interval of 353 days on her first 3 calves. Big time mating here! Rock was the \$240,000 record selling bull in our 2022 female sale to Ingram Angus and Sandford Cattle. Demand for Rock is at an all-time high across the World right now. The cattleman's kind is a perfect way describe the early indicators on Coleman Rock 7200. Rock would currently be one of the heaviest used sires here at Coleman Angus. He sires cattle with extra three-dimensional shape with added performance in the right size package. His offspring have tons of center body



Coleman Rock 7200  
Sire of Embryos

and explosive muscle shape in a sound-structured package. Rock is low birthweight, high growth, and ranks in the Top 10% for \$M. **These are IVF embryos (Trans Ova), we are selling three embryos in this mating and guaranteeing one pregnancy.** Buyer has the option to take six embryos out of this mating and we will guarantee 2 pregnancies. These embryos are exportable to Canada. These embryos have been sexed for females, 90-95% accurate.

# Lot 17 – 3/6 IVF RSF EMBRYOS

Coleman Donna 1234 x Coleman Banker 9215



Coleman Donna 1234  
Dam of Embryos

Coleman Bravo 6313

## Coleman Banker 9215

19583404.00 Coleman Donna 4203

N Bar Emulation EXT

## Coleman Donna 1234

17185287 Coleman Donna 714

CED	BW	WW	YW	MILK	SC	MARB	RE	SM
14	-1.5	57	96	33	-.01	.30	.50	94

Bid price is per embryo. Package prices is 3/6x bid price. Buyer is responsible for cost of shipping embryos.

## Online EMBRYO Auction Closes 11/29 | 7 PM (MST)

Donna 1234 is an incredibly special female, she has BR 6/90, NR 6/104 and YR 5/102. Donna 1234 is now 11 years old, tremendous longevity, we've got lots of daughters out of her in production here, they are working very well for us. Some of the very last embryos we will be selling out of her. "1234" is picture perfect to look at. She has a Charlo daughter that weaned her first calf, and she is impressive. Donna 1234 has a calving interval of 353 days on her first 3 calves. These embryos are sired by the now deceased "Banker" who is a bull we kept to use in our program, visitors have loved him here this summer. "Banker" is extremely impressive, exceptionally smooth, extremely sound on the move, stout, with about as much rib shape and depth as you can put in one. Banker's flush sisters that calved here this summer are as impressive as anything we have ever calved here. We have plugged Banker in here extremely hard, Banker's first calves are very impressive.



Coleman Banker 9215  
Sire of Embryos

Calves come light and explode quickly. Banker is one of the heaviest used sires here at Coleman Angus. **These are IVF embryos (Trans Ova), we are selling three embryos in this mating and guaranteeing one pregnancy.** Buyer has the option to take six embryos out of this mating and we will guarantee 2 pregnancies. These embryos are exportable to Canada. These embryos have been sexed for females, 90-95% accurate.

# Lot 18 – 3/6 IVF RSF EMBRYOS

Coleman Everelda Entense 2406 x Coleman Glacier 041



Coleman Everelda Entense 2406  
Dam of Embryos

S A V Renown 3439

## Coleman Glacier 041

19866409.00 Coleman Donna 439

Coleman Juneau 044

## Coleman Everelda Entense 2406

17544770 BT Everelda Entense 613L

CED	BW	WW	YW	MILK	SC	MARB	RE	SM
6	1.4	59	102	33	.30	.04	.60	83

Bid price is per embryo. Package prices is 3/6x bid price. Buyer is responsible for cost of shipping embryos.

## Online EMBRYO Auction Closes 11/29 | 7 PM (MST)

**C**oleman Everelda Entense 2406 - This Pathfinder donor female is a direct daughter of Coleman Juneau 044 and back to the foundation Everelda Entense in our program, BT Eveleda Entense 613L. Everelda Entense 2406 is a flat-out producer, as she records a progeny production record of BR 8/94, WR 8/109, YR 6/104, and IMF 2/110, with a calving interval of 8/361. Ingram Everelda Entense 7621, a daughter, sold one-half interest for \$40,000 for a \$80,000 valuation in the 2021 fall production sale at Ingram Angus. Through that same event she produced the top selling bull at \$37,000 one-half interest for a \$74,000 valuation, Ingram Intensity 0300, (sire of Lot 10 in this event). "Glacier" has been a standout since he was born. Glacier's first calves are on the ground, they are very impressive as babies. Glacier has the best feet I've ever seen on a bull before, extremely sound, and athletic, with a great herd bull look and presence. He's the bull the industry has been looking for. Glacier's flush sisters are calving this spring, and look impressive, perfect udders, great feet, stout, with a great look. We believe it all starts with the mother cow; Glaciers Pathfinder dam is the fourth consecutive generation to make it the donor pen here. "439" has ratios of BR 5/93, NR 5/107, and YR 5/106. 439 has been



Coleman Glacier 041  
Sire of Embryos

a favorite of visitors here since she was a heifer calf, we've kept 4 different sons of her here that we are currently using, she would be as good as any female we've ever had the opportunity to work with here. "439" is also the Dam of Ace 989, who is doing a tremendous job for us also. **These are IVF embryos (Trans Ova), we are selling three embryos in this mating and guaranteeing one pregnancy.** Buyer has the option to take six embryos out of this mating and we will guarantee 2 pregnancies. These embryos are exportable to Canada. These embryos have been sexed for females, 90-95% accurate.

# Lot 19 – 3/6 IVF EMBRYOS

Coleman Everelda Entense 2406 x Coleman Resource 708



Coleman Everelda Entense 2406  
Dam of Embryos

S A V Resource 1441

## Coleman Resource 708

18933681

Coleman Donna 376

Coleman Juneau 044

## Coleman Everelda Entense 2406

17544770

BT Everelda Entense 613L

CEB	BW	WW	YW	MILK	SC	MARB	RE	SM
9	0.2	51	88	31	.40	-.04	.50	77

Bid price is per embryo. Package prices is 3/6x bid price. Buyer is responsible for cost of shipping embryos.

## Online EMBRYO Auction Closes 11/29 | 7 PM (MST)

**C**oleman Everelda Entense 2406 - This Pathfinder donor female is a direct daughter of Coleman Juneau 044 and back to the foundation Everelda Entense in our program, BT Everelda Entense 613L. Ingram Everelda Entense 7621, a daughter, sold one-half interest for \$40,000 for a \$80,000 valuation in the 2021 fall production sale at Ingram Angus. Through that same event she produced the top selling bull at \$37,000 one-half interest for a \$74,000 valuation, Ingram Intensity 0300, (sire of Lot 13 in this event) who is enrolled at Breeder Link. Everelda Entense 2406 is a flat-out producer, as she records a progeny production record of BR 8@94, WR 8@109, YR 6@104, and IMF 2@110, with a calving interval of 8/361. Sire of these embryos is a bull that has become known as "708" here at Coleman Angus. "708" reminds me of the early days when bulls proved themselves in the pasture one calf at a time, and everyone started calling them by their tattoo. "708" has been a visitor favorite here this fall, we bred him to a bunch of females and have been flushing him to our top donors. Here's the first opportunity to purchase embryos out of him. Get on board with "708" he's the real deal, proving himself the old-fashioned way, one great daughter at a time. "Resource 708" is a bull we are extremely



Coleman Resource 708  
Sire of Embryos

excited to be adding to our program. We've watched "708" and his progeny since we sold "708" to Gaugler Angus in MT. "708's" Dam was a fourth-generation donor here for us, perfect feet, perfect udder, moderate, very maternal. "708" has perfect feet also, his daughters have perfect feet and udders, extremely fertile, raise big calves and breed back early. **These are IVF embryos (Trans Ova), we are selling three embryos in this mating and guaranteeing one pregnancy.** Buyer has the option to take six embryos out of this mating and we will guarantee 2 pregnancies.

# Lot 20 – 3/6 IVF EMBRYOS

Coleman Donna 8265 x Coleman Rock 7200



Coleman Donna 8265  
Dam of Embryos

O C C Juneau 807J

## Coleman Rock 7200

19107936.00 Coleman Donna 714

S A V President 6847

## Coleman Donna 8265

19402572 Coleman Donna 0308

CED	BW	WW	YW	MILK	SC	MARB	RE	SM
12	-0.8	64	106	25	.90	-.01	.60	86

Bid price is per embryo. Package prices is 3/6x bid price. Buyer is responsible for cost of shipping embryos.

## Online EMBRYO Auction Closes 11/29 | 7 PM (MST)

“8265” was a feature in our 2022 female sale, and a daughter of “0308” who is the model female of our program here. “8265” is very similar to her mother, perfect udder, perfect feet, long level hip, wide based and very sound structured. We don’t have many embryos out of this female, so take advantage here. Rock was the \$240,000 record selling bull in our 2022 female sale to Ingram Angus and Sandford Cattle. Demand for Rock is at an all-time high across the World right now. The cattleman’s kind is a perfect way describe the early indicators on Coleman Rock 7200. Rock would currently be one of the heaviest used sires here at Coleman Angus. He sires cattle with extra three-dimensional shape with added performance in the right size package. His offspring have tons of center body and explosive muscle shape in a sound-structured package.



Coleman Rock 7200  
Sire of Embryos

Rock is low birthweight, high growth, and ranks in the Top 10% for \$M. **These are IVF embryos (Trans Ova), we are selling three embryos in this mating and guaranteeing one pregnancy.** Buyer has the option to take six embryos out of this mating and we will guarantee 2 pregnancies. These embryos are exportable to Canada.

# Lot 21 – 3/6 IVF EMBRYOS

Coleman Donna 8265 x J Trademark 1037



Coleman Donna 8265  
Dam of Embryos

Sitz Resilient 10208

## J Trademark 1037

20160403.00 Mill Brae Iden Georgina 4086

S A V President 6847

## Coleman Donna 8265

19402572 Coleman Donna 0308

CED	BW	WW	YW	MILK	SC	MARB	RE	SM
13	-0.7	70	124	28	.50	.30	.61	93

Bid price is per embryo. Package prices is 3/6x bid price. Buyer is responsible for cost of shipping embryos.

## Online EMBRYO Auction Closes 11/29 | 7 PM (MST)

//8265" was a feature in our 2022 female sale, and a daughter of "0308" who is the model female of our program here. "8265" is very similar to her mother, perfect udder, perfect feet, long level hip, wide based and very sound structured. We don't have many embryos out of this female, so take advantage here. "Trademark" is a bull we're excited to add to our program. We're excited to be working with Conley Angus on this elite herd-sire. Trademark was selected as the \$165,000 top selling bull of the Cattleman's Cut Bull Sale. He is a low-birth weight calving ease bull, with double digit calving ease direct, with an outcross pedigree for our program. "Trademark" has caught the attention of cattleman from all across the country. He has tremendous performance, added muscle shape, with unique combination of phenotype, and an incredible number package. We are excited



J Trademark 1037  
Sire of Embryos

to own Trademark's dam. She was the record selling \$210,000 ½ interest female in our recent female sale to Jocko Valley in MT. She has a progeny record of 6 head/103 weaning, and a calving interval of 347 on 6 head. **These are IVF embryos (Trans Ova), we are selling three embryos in this mating and guaranteeing one pregnancy.** Buyer has the option to take six embryos out of this mating and we will guarantee 2 pregnancies.

[www.LiveAuctions.TV](http://www.LiveAuctions.TV)

# Lot 22 – 3/6 IVF RSF EMBRYOS

Coleman Donna 7100 x J Trademark 1037



Coleman Donna 7100  
Dam of Embryos

Sitz Resilient 10208

## J Trademark 1037

20160403.00 Mill Brae Iden Georgina 4086

S A V Resource 1441

## Coleman Donna 7100

18838366 Coleman Donna 714

CED	BW	WW	YW	MILK	SC	MARB	RE	SM
9	1.1	81	145	27	.80	.40	.80	91

**Bid price is per embryo. Package prices is 3/6x bid price. Buyer is responsible for cost of shipping embryos.**

## Online EMBRYO Auction Closes 11/29 | 7 PM (MST)

//7100" is a Pathfinder Female. "7100" has production records of 3/95 for BR, 3/109 NR, and 3/109 YR.

"7100" has one of the best sets of ET calves here this spring, she's making here mark here! "7100" is the dam of our herd bull "Logo 947", that Little Goose Ranch in WY bought spring possession from us in our 2020 bull sale. First calves this spring out of "947" look incredibly good. "7100" has been extremely productive here for us, we are excited to be partners with Shady Brook in TN on this tremendous young female. "7100" reminds me a lot of Donna 504 when she was this age, extremely long, tons of power, excellent udder. I feel she is one of the really good young females on the ranch here. "Trademark" is a bull we're excited to add to our program. We're excited to be working with Conley Angus on this elite herd-sire. Trademark was selected as the \$165,000 top selling bull of the Cattleman's Cut Bull Sale. He is a low-birth weight calving ease bull, with double digit calving ease direct, with an outcross pedigree for our program. "Trademark" has caught the attention of cattleman from all across the country. He has tremendous performance, added



J Trademark 1037  
Sire of Embryos

muscle shape, with unique combination of phenotype, and an incredible number package. We are excited to own Trademark's dam. She was the record selling \$210,000 1/2 interest female in our recent female sale to Jocko Valley in MT. She has a progeny record of 6 head/103 weaning, and a calving interval of 347 on 6 head. **These are IVF embryos (Trans Ova), we are selling three embryos in this mating and guaranteeing one pregnancy.** Buyer has the option to take six embryos out of this mating and we will guarantee 2 pregnancies. These embryos have been sexed for females, 90-95% accurate.



# Lot 23 – 3/6 IVF RSF EMBRYOS

## Coleman Donna 7100 x Coleman Rock 7200



Coleman Donna 7100  
Dam of Embryos

O C C Juneau 807J

### Coleman Rock 7200

19107936.00 Coleman Donna 714

S A V Resource 1441

### Coleman Donna 7100

18838366 Coleman Donna 714

CED	BW	WW	YW	MILK	SC	MARB	RE	SM
8	1.0	74	127	25	1.20	.07	.70	83

Bid price is per embryo. Package prices is 3/6x bid price. Buyer is responsible for cost of shipping embryos.

## Online EMBRYO Auction Closes 11/29 | 7 PM (MST)

“7100” is a Pathfinder Female. “7100” has production records of 3/95 for BR, 3/109 NR, and 3/109 YR. “7100” has one of the best sets of ET calves here this spring, she’s making here mark here! “7100” is the dam of our herd bull “Logo 947”, that Little Goose Ranch in WY bought spring possession from us in our 2020 bull sale. First calves this spring out of “947” look incredibly good. “7100” has been extremely productive here for us, we are excited to be partners with Shady Brook in TN on this tremendous young female. “7100” reminds me a lot of Donna 504 when she was this age, extremely long, tons of power, excellent udder. I feel she is one of the really good young females on the ranch here. Rock was the \$240,000 record selling bull in our 2022 female sale to Ingram Angus and Sandford Cattle. Demand for Rock is at an all-time high across the World right now. The cattleman’s kind is a perfect way describe the early indicators on Coleman Rock 7200. Rock would currently be one of the heaviest used sires here at Coleman Angus. He sires cattle with extra three-dimensional shape with added performance



Coleman Rock 7200  
Sire of Embryos

in the right size package. His offspring have tons of center body and explosive muscle shape in a sound-structured package. Rock is low birthweight, high growth, and ranks in the Top 10% for \$M. **These are IVF embryos (Trans Ova), we are selling three embryos in this mating and guaranteeing one pregnancy.** Buyer has the option to take six embryos out of this mating and we will guarantee 2 pregnancies. These embryos are exportable to Canada. These embryos have been sexed for females, 90-95% accurate.

# Lot 24 – 3/6 IVF RSF EMBRYOS

Coleman Donna 5207 x Coleman Rock 7200



Coleman Donna 5207  
Dam of Embryos

O C C Juneau 807J

## Coleman Rock 7200

19107936.00 Coleman Donna 714

O C C Great Plains 943G

## Coleman Donna 5207

18410196 Coleman Donna 714

CED	BW	WW	YW	MILK	SC	MARB	RE	SM
11	-0.7	59	96	29	.80	-.01	.70	80

Bid price is per embryo. Package prices is 3/6x bid price. Buyer is responsible for cost of shipping embryos.

## Online EMBRYO Auction Closes 11/29 | 7 PM (MST)

“5207” is a Pathfinder female, with a calving interval of 352 days on her first 4 calves, BR 4/95, NR 4/109, and YR 3/108. She has bred back first straw AI for the 3rd year in a row. “5207” is extremely angular, deep sided, perfect udder, and a big, long level hip. We’re overly excited for her future here. “5207” consistently has one of our best calves each year, her son by Coleman Resource 710 was one of our high selling bulls in our 2021 Bull sale. “5207” just weaned a big stout bull by Coleman Rock 7200. These embryos will be full sibs to the bull she just weaned, who is a standout. Rock was the \$240,000 record selling bull in our 2022 female sale to Ingram Angus and Sandford Cattle. Demand for Rock is at an all-time high across the World right now. The cattleman’s kind is a perfect way describe the early indicators on Coleman Rock 7200. Rock would currently be one of the heaviest used sires here at Coleman Angus. He sires cattle with extra three-dimensional shape with added performance in the right size package. His offspring have tons of center body and



Coleman Rock 7200  
Sire of Embryos

explosive muscle shape in a sound-structured package. Rock is low birthweight, high growth, and ranks in the Top 10% for \$M. **These are IVF embryos (Trans Ova), we are selling three embryos in this mating and guaranteeing one pregnancy.** Buyer has the option to take six embryos out of this mating and we will guarantee 2 pregnancies. These embryos are exportable to Canada. These embryos have been sexed for females, 90-95% accurate.

# Lot 25 – 3/6 IVF RSF EMBRYOS

Coleman Donna 5207 x Coleman Charlo 0256



Coleman Donna 5207  
Dam of Embryos

O C C Paxton 730P

## Coleman Charlo 0256

16879074.00 Bohi Abigale 6014

O C C Great Plains 943G

## Coleman Donna 5207

18410196 Coleman Donna 714

CE	BW	WW	YW	MILK	SC	MARB	RE	SM
12	-0.8	47	82	29	.90	.20	.60	68

Bid price is per embryo. Package prices is 3/6x bid price. Buyer is responsible for cost of shipping embryos.

## Online EMBRYO Auction Closes 11/29 | 7 PM (MST)

“5207” is a Pathfinder female, with a calving interval of 352 days on her first 4 calves, BR 4/95, NR 4/109, and YR 3/108. She has bred back first straw AI for the 3rd year in a row. “5207” is extremely angular, deep sided, perfect udder, and a big, long level hip. We’re overly excited for her future here. “5207” consistently has one of our best calves each year, her son by Coleman Resource 710 was one of our high selling bulls in our 2021 Bull sale. “5207” just weaned a big stout bull by Coleman Rock 7200. The progeny out of Charlo are very good, exactly what we have been looking for, tremendous amount of natural base width, wide topped, and a true power bull, all in a sleep all night heifer bull. Charlo is seeing tremendous use all around the world. It’s been very rewarding to see progeny out of Charlo topping many sales around the country. His daughters here in



Coleman Charlo 0256  
Sire of Embryos

production have perfect udders, very maternal. Big time mating here for sure. **These are IVF embryos (Trans Ova), we are selling three embryos in this mating and guaranteeing one pregnancy.** Buyer has the option to take six embryos out of this mating and we will guarantee 2 pregnancies. These embryos are exportable to Canada. These embryos have been sexed for females, 90-95% accurate.

# Lot 26 – 3/6 IVF EMBRYOS

Coleman Donna 5207 x Sitz Barricade 632F



Coleman Donna 5207  
Dam of Embryos

Sitz Stellar 726D

## Sitz Barricade 632F

19078148.00 SITZ Barbaramere Nell 765D

OCC Great Plains 943G

## Coleman Donna 5207

18410196 Coleman Donna 714

CE	BW	WW	YW	MILK	SC	MARB	RE	SM
7	1.0	67	113	26	.60	.40	.70	81

Bid price is per embryo. Package prices is 3/6x bid price. Buyer is responsible for cost of shipping embryos.

## Online EMBRYO Auction Closes 11/29 | 7 PM (MST)

"5207" is a Pathfinder female, with a calving interval of 352 days on her first 4 calves, BR 4/95, NR 4/109, and YR 3/108. She has bred back first straw AI for the 3rd year in a row. "5207" is extremely angular, deep sided, perfect udder, and a big, long level hip. We're overly excited for her future here. "5207" consistently has one of our best calves each year, her son by Coleman Resource 710 was one of our high selling bulls in our 2021 Bull sale. "5207" just weaned a big stout bull by Coleman Rock 7200. Sitz Barricade, a featured Genex sire, is a new bull we have started using, lots of body, deep ribbed, and good footed. Extremely exciting mating here for sure. **These are IVF embryos (Trans Ova), we are selling three embryos in this mating and guaranteeing one pregnancy.** Buyer has the option to take six embryos out of this mating and we will guarantee 2 pregnancies. These embryos are exportable to Canada.



Sitz Barricade 632F  
Sire of Embryos

# Lot 27 – 3 IVF EMBRYOS

## Coleman Abigale 8130 x Coleman Glacier 041



Coleman Abigale 8130  
Dam of Embryos

S A V Renown 3439

### Coleman Glacier 041

19866409.00 Coleman Donna 439

Connealy Thunder

### Coleman Abigale 8130

19243291 Coleman Abigale 0277

CED	BW	WW	YW	MILK	SC	MARB	RE	SM
7	1.5	66	118	29	.50	.30	.70	79

Bid price is per embryo. Package prices is 3x bid price. Buyer is responsible for cost of shipping embryos.

## Online EMBRYO Auction Closes 11/29 | 7 PM (MST)

“8130” was a feature in our 2022 female sale. “8130” has a production record of BR 2/96, WR 2/105, and YR 1/102. She stems from the Pathfinder Donor, “0277”, who is the flush sister to Charlo 0256. “8130” has as much muscle as you can put in one, perfect udder, extremely long sided, and tremendous profile. We don’t have many embryos out of her, so take advantage of this mating. She has a Glacier heifer calf on her side now that is awesome. “Glacier” has been a standout since he was born. Glacier’s first calves are on the ground, they are very impressive as babies. Glacier has the best feet I’ve ever seen on a bull before, extremely sound, and athletic, with a great herd bull look and presence. He’s the bull the industry has been looking for. Glacier’s flush sisters are calving this spring, and look impressive, perfect udders, great feet, stout, with a great look. We believe it all starts with the mother cow; Glaciers Pathfinder dam is the fourth consecutive generation to make it the donor pen here. “439” has ratios of BR 5/93, NR 5/107, and



Coleman Glacier 041  
Sire of Embryos

YR 5/106. 439 has been a favorite of visitors here since she was a heifer calf, we’ve kept 4 different sons of her here that we are currently using, she would be as good as any female we’ve ever had the opportunity to work with here. “439” is also the Dam of Ace 989, who is doing a tremendous job for us also. **These are IVF embryos (Trans Ova), we are selling three embryos in this mating and guaranteeing one pregnancy.** These embryos are exportable to Canada.

# Lot 28 – 3/6 IVF RSF EMBRYOS

Coleman Donna 7232 x Coleman Rock 7200



Coleman Donna 7232  
Dam of Embryos

O C C Juneau 807J

## Coleman Rock 7200

19107936.00 Coleman Donna 714

S A V Resource 1441

## Coleman Donna 7232

19110860 Coleman Donna 714

CED	BW	WW	YW	MILK	SC	MARB	RE	SM
5	2.0	76	130	22	1.10	.20	.90	74

Bid price is per embryo. Package prices is 3/6x bid price. Buyer is responsible for cost of shipping embryos.

## Online EMBRYO Auction Closes 11/29 | 7 PM (MST)

//7232" has production records of BR 2/97, NR 2/104, and YR 2/106. She has a tremendous herd bull on her now from our summer calving group. "7232" is throwing a tremendous amount of performance in her progeny, she has the power to change one! "7232" is extremely long, big hiped, with a beautiful udder. This Resource X Donna 714 cross has been one of the best we have ever made here. "7232" has the potential to make a big time "Herd Bull". Big time mating here! Rock was the \$240,000 record selling bull in our 2022 female sale to Ingram Angus and Sandford Cattle. Demand for Rock is at an all-time high across the World right now. The cattleman's kind is a perfect way describe the early indicators on Coleman Rock 7200. Rock would currently be one of the heaviest used sires here at Coleman Angus. He sires cattle with extra three-dimensional shape with added performance in the right size package. His offspring have tons of center body



Coleman Rock 7200  
Sire of Embryos

and explosive muscle shape in a sound-structured package. Rock is low birthweight, high growth, and ranks in the Top 10% for \$M. **These are IVF embryos (Trans Ova), we are selling three embryos in this mating and guaranteeing one pregnancy.** Buyer has the option to take six embryos out of this mating and we will guarantee 2 pregnancies. These embryos are exportable to Canada. These embryos have been sexed for females, 90-95% accurate.

# Lot 29 – 3/6 IVF RSF EMBRYOS

## Coleman Donna 7232 x N Bar Emulation EXT



Coleman Donna7232  
Dam of Embryos

Emulation N Bar 5522

### N Bar Emulation EXT

10776479.00 N Bar Primrose 2424

S A V Resource 1441

### Coleman Donna 7232

19110860 Coleman Donna 714

CEW	BW	WW	YW	MILK	SC	MARB	RE	SM
2	2.7	58	104	20	.50	.20	.60	54

Bid price is per embryo. Package prices is 3/6x bid price. Buyer is responsible for cost of shipping embryos.

### Online EMBRYO Auction Closes 11/29 | 7 PM (MST)

//7232" has production records of BR 2/97, NR 2/104, and YR 2/106. She has a tremendous herd bull on her now from our summer calving group. "7232" is throwing a tremendous amount of performance in her progeny, she has the power to change one! "7232" is extremely long, big hipped, with a beautiful udder. This Resource X Donna 714 cross has been one of the best we have ever made here. "7232" has the potential to make a big time "Herd Bull". "Ext" needs no introduction, he's a bull that we have reached back to use on a few females here. These females out of this mating will be "Foundation Females" to build any herd around. Extremely good mating here for sure.

**These are IVF embryos (Trans Ova), we are selling three embryos in this mating and guaranteeing one pregnancy.** Buyer has the option to take six embryos out of this

mating and we will guarantee 2 pregnancies. These embryos are exportable to Canada. These embryos have been sexed for females, 90-95% accurate.



N Bar Emulation EXT  
Sire of Embryos

# Lot 30 – 3/6 IVF EMBRYOS

Coleman Donna 7232 x Coleman Banker 9215



Coleman Donna7232  
Dam of Embryos

Coleman Bravo 6313

## Coleman Banker 9215

19583404.00 Coleman Donna 4203

S A V Resource 1441

## Coleman Donna 7232

19110860 Coleman Donna 714

CED	BW	WW	YW	MILK	SC	MARB	RE	SM
8	1.1	72	129	27	.50	.30	.70	84

Bid price is per embryo. Package prices is 3/6x bid price. Buyer is responsible for cost of shipping embryos.

## Online EMBRYO Auction Closes 11/29 | 7 PM (MST)

//7232" has production records of BR 2/97, NR 2/104, and YR 2/106. She has a tremendous herd bull on her now from our summer calving group. "7232" is throwing a tremendous amount of performance in her progeny, she has the power to change one! "7232" is extremely long, big hiped, with a beautiful udder. This Resource X Donna 714 cross has been one of the best we have ever made here. "7232" has the potential to make a big time "Herd Bull". These embryos are sired by the now deceased "Banker" who is a bull we kept to use in our program, visitors have loved him here this summer. "Banker" is extremely impressive, exceptionally smooth, extremely sound on the move, stout, with about as much rib shape and depth as you can put in one. Banker's flush sisters that calved here this summer are as impressive as anything we have ever calved



Coleman Banker 9215  
Sire of Embryos

here. We have plugged Banker in here extremely hard, Banker's first calves are very impressive. Calves come light and explode quickly. Banker will be used very heavily here this spring. **These are IVF embryos (Trans Ova), we are selling three embryos in this mating and guaranteeing one pregnancy.** Buyer has the option to take six embryos out of this mating and we will guarantee 2 pregnancies. These embryos are exportable to Canada.

[www.LiveAuctions.TV](http://www.LiveAuctions.TV)



# THANK YOU

Let us know if we can be of assistance.

[www.LiveAuctions.TV](http://www.LiveAuctions.TV)

## COLEMAN ANGUS

Larry & Dee Coleman Family  
406.240.2751

Jeremy & Jenny Haag Family  
406.833.0117

40067 Morris Road  
Charlo, Montana 59824  
[colemanangus@blackfoot.net](mailto:colemanangus@blackfoot.net)

[WWW.COLEMANANGUS.COM](http://WWW.COLEMANANGUS.COM)