



**MILAM**  
& FRIENDS

# MILAM & FRIENDS

Limousin & Lim-Flex Sale

## DIRECTIONS

Address for GPS is 785 Cedar Grove Road, Olmstead, KY 42265

From Bowling Green, Ky. Take Highway 68/80 west to Russellville and turn left on Highway 79 south. Travel approximately five miles and turn left on Highway 1041 (by Ed's BBQ). Go five to six miles and turn right on Cedar Grove Road and the farm is the second house on the left.

From Clarksville, TN. Take Highway 79 North to Highway 775 (Olmstead road) and turn right. Go three to four miles to intersection and go right one mile to Cedar Grove Road on the left. Cross the bridge and the farm is the second house on the right.

From Springfield, Tn. Take Highway 431 north just outside of town and turn left on Highway 161. Travel 13 miles to Keysburg, Ky. And turn right on Highway 96. Go four miles to highway 1041 and turn left. Travel five miles to Cedar Grove Road on the left and the farm will be the second house on the left.

## AIR TRANSPORTATION

Sale site is located 1 hour north of Nashville, TN where all major airlines are located. For assistance with your travel arrangements feel free to call Randy Ratliff his office would more than happy to assist you.

## TERMS & CONDITIONS & INSURANCE

Terms of the sale are cash unless satisfactory credit arrangements have been made prior to the sale. A representative from American Livestock Insurance will be available to offer insurance on any purchases.

## LIABILITIES

Please note: The sale manager is only an agent for the seller and has no responsibilities other than those involved in conducting the sale. All persons who attend the sale do so at their own risk. Neither the sale manager or Milam Cattle Company assume liability, legal or otherwise, for any accidents which may occur.

## ANNOUNCEMENTS

Announcements at the sale by the owners, auctioneer and/or sale management will take precedence over statements listed in the sale catalog.

## INFORMATION

Friday, October 19th the sale order and supplemental information will be posted at [www.RRmktg.com](http://www.RRmktg.com) for your convenience.

## GUARANTEE

All cattle sell under the standard guarantee of the North American Limousin Foundation.

## SCHEDULE OF EVENTS

### Friday, October 18th

afternoon cattle available for viewing

### Saturday, October 19th

8:00 a.m. cattle available for viewing

11:00 a.m. Free Limousin hamburger lunch complements of Milam Cattle Company and Friends

**12:30 p.m. Milam Cattle Company AND FRIENDS SALE begins**

## ACCOMODATIONS

Quality Inn .....	270.725.9771
1120 Bowling Green Rd. Russellville, KY	
Holiday Inn .....	270.745.0088
1021 Wilkinson Trace, Bowling Green, KY	
Holiday Inn Express .....	931.368.0057
700 Sango Rd. Clarksville, TN 37043	

## SALE DAY PHONES

Chris Milam.....	270.847.0634
Randy Ratliff .....	615.330.2735
Thad Combs .....	615.406.5766

## AUCTIONEER

Cody Lowderman

## SALE MANAGEMENT

R&R MARKETING  
COMPANY

**Randy Ratliff**

cell: 615.330.2735

PO Box 281677, Nashville, TN 37228

[Randy@RRmktg.com](mailto:Randy@RRmktg.com) • [www.rrmktg.com](http://www.rrmktg.com)



(L#2845)

R & R Marketing will now be accepting payment by credit cards.



# Saturday, October 19, 2013 at 12:30 pm CST

At the Milam Cattle Company Sale Facility near Olmstead, KY

Selling 59 Lots ...1 ½ Donors • 4 ½ Open heifers • 41 Bred Females  
1 Cow/Calf Pair • 6 Bulls • 32 Embryos



**Joey, Melissa & Makayla Massey**

80 Sublimity School Rd., London, KY 40744  
606.877.5571 • cell: 606.682.2126 • josephmassey@yahoo.com

**Donnie & Barbara Massey**

1253 Old Whitley Rd., London, KY 40744  
606.864.6961 • cell: 606.682.2125



**RIVERSIDE VALLEY**  
*Farm*  
Limousin Cattle

**Keith Hamm**

4403 Buffalo Road, Hohenwald, TN 38462  
mobile: 931.628.6730 • ekhamm@hotmail.com • www.riversidevalleyfarm.com  
Colby Hamm, 931.628.3212 • pduncan38462@yahoo.com



**TICHENOR**  
Farms

**Bill Tichenor**

3595 St Rt 85 West, Centertown, KY 42328  
270.256.0023 • tichenorfarmsgreg@yahoo.com  
Scott Tichenor, herdsman • 270.256.4919



**MILAM**  
Cattle Company

**Chris, Laura, Caroline, Andrew & Zachary Milam**

270.847.0634 • cmila2@uky.edu  
785 Cedar Grove Road, Olmstead, KY 42265



*Morris*



Morris

## EBFL YPSILANTI 420Y

1

Lim-Flex (50) Bull      03.13.11      EBFL 420Y      LFM 1995458      Homo Polled/Double Black

C R A BEXTOR 872 5205 608  
**TC ABERDEEN 759**  
 TC BLACKBIRD 4034

TNUH BLUE PRINT 245H  
**MAGS RAMADA**  
 MAGS MANDA

BAR EXT TRAVELER 205  
 CRA LADY JAYE 608 498 S E  
 BON VIEW DESIGN 208  
 TC BLACKBIRD 1013  
 WADDLES COBALT 3106  
 TNUH MISS C245  
 EXLR DAKOTA 353G  
 MAGS JEWEL

	CED	BW	WW	YW	MA	CEM	SC	ST	DOC	CW	REA	YG	MARB	\$MTI
EPDs	7	0.4	56	105	44	2	0.5	-	12	42	0.12	0.37	0.46	61
	P	35	29	25	22	P	P	-	P	21	20	20	20	

	UREA	UFAT	UIMF	BW	WW	Adj. YW
EPDs	14.38	0.1	2.73	86 lbs.	781 lbs.	1,327 lbs.

EBFL Ypsilanti 420Y with out a doubt could be one of the very best breeding bulls to surface our breed in a long time. His first calves are just now being weaned and are coming off their dams with heavy weaning weights and have the look of promise. On the average they were born with very moderate birth weights and appear to have the top weights within their contemporary groups. He appears to be the talk of the Lim-Flex breed at present and we must agree with the many that have his calves. Ypsilanti is a 50% Lim-Flex son of TC Aberdeen from the once national champion female MAGS Ramada. He is one of the biggest numbered bulls in our breed. He has earned a 0.4 for birth, 105 for yearling weight, 44 for milk, .46 for marbling and 61 for MTI. He is a extreme in his foot size, very soft in his pasterns and very fluid in his movement and that very heritable trait is shining through in his offspring. Join Ryan and Shane Poindexter of Sugar Bush Cattle, Inc and own fall possession and 10% semen interest in one of the breed's greats.

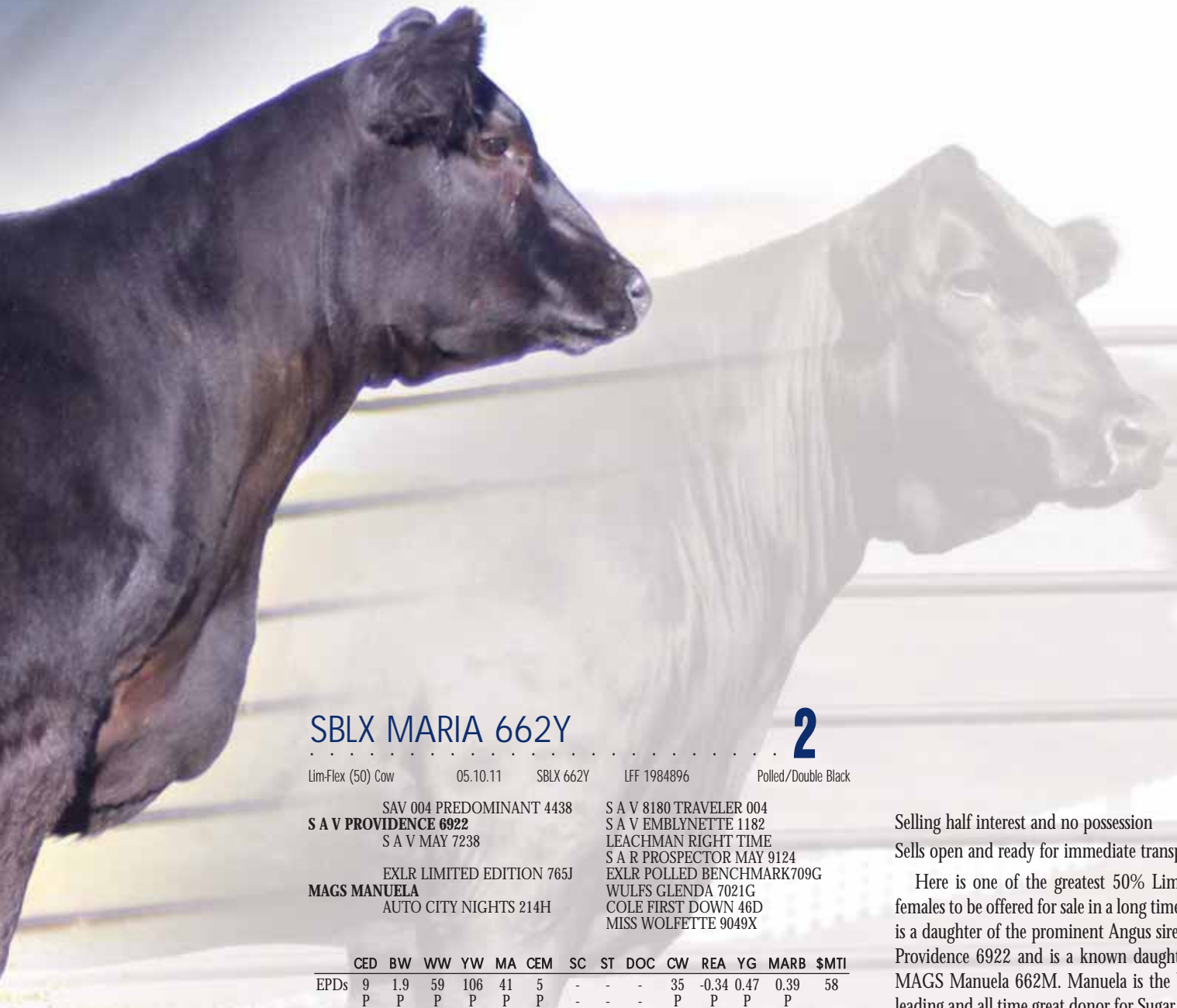
**Selling will be fall possession (September 01 to March 01) and 10% semen.** Sugar Bush owns spring possession and semen interest owners are Stowers Limousin, Bridgeport, TX and Salt Creek Cattle & Genetics, LLC., Amber, OK.

*For more details contact Chris Milam or R & R Marketing Company to invest in one of the breed's greats.*



*Morris*

Morri



## SBLX MARIA 662Y

2

Lim-Flex (50) Cow      05.10.11      SBLX 662Y      LFF 1984896      Polled/Double Black

SAV 004 PREDOMINANT 4438  
**S A V PROVIDENCE 6922**  
 S A V MAY 7238

EXLR LIMITED EDITION 765J  
**MAGS MANUELA**  
 AUTO CITY NIGHTS 214H

S A V 8180 TRAVELER 004  
 S A V EMBLYNETTE 1182  
 LEACHMAN RIGHT TIME  
 S A R PROSPECTOR MAY 9124  
 EXLR POLLED BENCHMARK709G  
 WULFS GLENDA 7021G  
 COLE FIRST DOWN 46D  
 MISS WOLFETTE 9049X

	CED	BW	WW	YW	MA	CEM	SC	ST	DOC	CW	REA	YG	MARB	\$MTI
EPDs	9	1.9	59	106	41	5	-	-	-	35	-0.34	0.47	0.39	58
	P	P	P	P	P	P	-	-	-	P	P	P	P	



Dam of Lot 2, MAGS Manuela

Selling half interest and no possession

Sells open and ready for immediate transplant

Here is one of the greatest 50% Lim-Flex females to be offered for sale in a long time. She is a daughter of the prominent Angus sire SAV Providence 6922 and is a known daughter of MAGS Manuela 662M. Manuela is the breed leading and all time great donor for Sugar Bush Cattle, Inc. in Michigan. She is responsible for creating some of the finest show animals and breeding pieces in our breed. This 50% Lim-Flex black and polled female has just weaned first calf and is now open and ready for immediate transplantation. She has a breed leading set of EPD's with a 1.9 for birth, 106 for yearling weight, 41 for milk, .39 for marbling and 58 for MTI. She is so big footed, sound and soft in her pasterns and just darn near perfect any position you look at her. We love and admire her femininity, length of front end and extreme length of body. When females are this good it is amazing what can be created! If you are interested in the 50% embryo interest being you will be joining Chris Milam and his family in creating future progeny from this leading donor.

Consigned by Milam Cattle Co.,  
 Olmstead, KY



**Morris**

LOT 3 MCBN You Gotta See Me 152

**MCBN YOU GOTTA SEE ME 152 3**

Lim-Flex (50) Cow 09.03.11 MCBN 152Y LFF 2001208 Polled / Homo Black

JCL LODESTAR 27L  
**LH RODEMASTER 338R**  
 VERMILION E BLACKBIRD9546

HUNTS HI-LITER 245G  
 LOGAN'S CHEERLEADER 280G  
 VERMILION 31 STACLER 3491  
 CH ENV BLACKBIRD C5941  
 B/R NEW DESIGN 036  
 G A R EXT 4206  
 JCL BLACK OUT  
 STBR GRACIOUS GIRL

G A R PREDESTINED  
**SBLX UTOPIAN QUEEN 1305U**  
 AUTO ELITE 270F

	CED	BW	WW	YW	MA	CEM	SC	ST	DOC	CW	REA	YG	MARB	\$MTI
EPDs	8	0.7	59	114	35	4	0.5	-	10	46	-0.04	0.51	0.34	56
	P	34	23	19	17	P	P	-	P	P	P	P	P	

This 50% Lim-Flex female is just nursing her first calf ever. He is a young homozygous black, double polled bull sired by the highly syndicated \$100,000 valued sire EBFL Ypsilanti 420Y. She is a daughter of the now deceased LH Rodemaster 338R, the prominent 50% Lim-Flex son of JCL Lodestar 27L from a Vermillion Angus female. MCBN 152Y is from the leading Brown Land & Cattle Co., donor SBLX Utopian Queen 1305U. She is daughter of GAR Predestined and from the \$40,000 valued donor AUTO Elite 270F. We admire so much the EPD's of this young female. She posts a 0.7 for birth, 114 for yearling weight, 35 for milk, .34 for marbling and 56 for MTI. Just as importantly she is extremely deep bodied, strong down her top line and very complete in her profile. This double polled, homozygous black female along with her Ypsilanti calf will make a great addition for any program at any level.

Consigned by Milam Cattle Co., Olmstead, KY

**MCC TO BE SEEN 324A 3A**

Lim-Flex (50) Bull 09.01.13 CMIL 324A LFB Pending Double Polled / Homo Black

**EBFL YPSILANTI 420Y**

TC ABERDEEN 759  
 MAGS RAMADA  
 LH RODEMASTER 338R  
 SBLX UTOPIAN QUEEN 1305U

**SBLX UTOPIAN QUEEN 1305U**

	CED	BW	WW	YW	MA	CEM	SC	ST	DOC	CW	REA	YG	MARB	\$MTI
EPDs	8	0.5	58	110	40	3	0.5	-	11	44	0.04	0.44	0.40	59

EBFL Ypsilanti 420Y, sire to Lot 3A.







LOT 4 MAGS Reminiscent

# MAGS REMINISCENT 4

Lim-Flex (50) Cow      09.09.05      MAGS 9316R      LFF 1840011      Homo Polled / Homo Black

<p><b>BR MIDLAND</b> BR ROYAL LASS 7036-19</p> <p><b>MAGS LADY ACE</b> CHAZ MISS GRETA 7003G</p>	<p>TWIN VALLEY PRECISIONE161 GAR PRECISION 1680 WCC BLACKCAP C9 S A F NEUTRON S A F ROYAL LASS 7036 WULF'S COUNT DOWN 9251C CANE RIDGE DAPHNE 011D WULFS QUARTERBACK 4222B EAFM NOEL E27Y</p>
--	---

	CED	BW	WW	YW	MA	CEM	SC	ST	DOC	CW	REA	YG	MARB	\$MTI
EPDs	7	0.6	48	93	28	4	0.9	16	11	13	0.16	0.17	0.36	56
	31	34	31	27	32	30	17	7	P	47	44	44	4	

Sells open and ready for immediate transplant

MAGS Reminiscent is the leading donor for Milam Cattle Co. and Massey Limousin. She is a member of one of the premier cow families ever created in our breed. She is sired by the prominent Angus sire BR Midland and from the leading lady MAGS Lady Ace. This homozygous polled, homozygous black donor is moderate in her frame score, very easy in her condition and has the brood cow look to her. We love her foundation that she stands on and her ease in her movement. She has earned herself a 0.6 for birth, 93 for yearling weight, 28 for milk and .36 for marbling. She scanned a 12.9 for REA and 4.32 for IMF. This female has not been worked a lot in transplant to date and the last flush she produced 16 good embryos. Her mating to the ever-popular EBFL Ypsilanti 420Y we are certain will result in some amazing progeny. They will be double homozygous and 50% Lim-Flex.

# SEVEN EMBRYOS 4A

50% Lim-Flex • Homo Polled • Homo Black

<p><b>EBFL YPSILANTI 420Y</b> MAGS RAMADA</p> <p><b>MAGS REMINISCENT</b> MAGS LADY ACE</p>	<p>C R A BEXTOR 872 5205 608 TC BLACKBIRD 4034 TNUH BLUE PRINT 245H MAGS MANDA TWIN VALLEY PRECISIONE161 BR ROYAL LASS 7036-19 EXLR INTRIGUE 361G CHAZ MISS GRETA 7003G</p>
--	---

	CED	BW	WW	YW	MA	CEM	SC	ST	DOC	CW	REA	YG	MARB	\$MTI
EPDs	7	0.5	52	99	86	3	0.7	8	11	28	0.14	0.27	0.41	59

Consigned by Milam Cattle Co., Olmstead, KY and Massey Limousin, London, KY



Brown JYJ  
Redemption  
Y1334, sire to  
Lot 5 embryos.



Miss Wulfette  
8310U, dam to  
Lot 5 embryos.

## SEVEN EMBRYOS

5

50% Lim-Flex • Double Polled • Red

BECKTON NEBULA P P707  
**BROWN JYJ REDEMPTION Y1334**  
JYJ MS JOLENE W16

WULFS NOBEL PRIZE 3861N  
**MISS WULFETTE 8310U**  
ELOR BLACK MAGIC 780L

BECKTON NEBULA M045  
BECKTON LANA M809 EP  
LJC MISSION STATEMENT P27  
HXC JOLENE R548  
COLE WULF HUNT  
WULF'S CASUAL 3161C  
ELOR ELWAY 045 J  
ELOR MISS COW CAMP 780G

### DAM EPD's

	CED	BW	WW	YW	MA	CEM	SC	ST	DOC	CW	REA	YG	MARB	\$MTI
EPDs	11	1.4	49	83	26	4	0.1	22	24	27	0.47	0.00	0.04	46
	29	39	33	27	32	29	19	P	26	42	38	38	37	

### SIRE RED ANGUS EPD's

	CED	BW	WW	YW	MA	CEM	SC	ST	DOC	CW	REA	YG	MARB	\$MTI
EPDs	13	-6.3	67	125	19	7	-	17	-	36	0.12	0.16	0.67	-
	30	42	36	38	27	25	-	7	-	31	30	28	35	-

Highlighting this sale will be seven embryos from the leading donor at Tichenor Farms. She is Miss Wulfette 8310U, a daughter of Wulf's Nobel Prize 3861N. She is a huge footed, sound structured red and polled female that will stop you in your tracks when you see her. You will appreciate her for her extreme depth of body, ease of condition and overall balance. She is strong numbered when mated to the powerful Red Angus sire Brown JYJ Redemption we think the results are going to be terrific. They will most likely be homozygous polled, for sure red and we imagine they will be sound made and easy in their condition.

Consigned by Tichenor Farms, Centertown, KY



MAGS Xyloid,  
sire to Lot 6  
embryos.



MAGS  
Rockcross,  
dam to Lot 6  
embryos.

## FOUR EMBRYOS

6

62.5% Lim-Flex • Double Polled • Homo Black

DHVO DEUCE 132R  
**MAGS XYLOID**  
BOHI RHONDA 314R

EXAR NEW DESIGN 2997  
**MAGS ROCKCRESS**  
MAGS LARK

GPFF BLAQUE RULON  
AMY JO DHAN 20L  
EXLR NEW GENERATION 071M  
DAVIS ROSETTA 9514  
BON VIEW NEW DESIGN 1407  
LEACHMAN EVERGREEN 8020  
MAGS JUMANJI  
AUTO CITY NIGHTS 214H

	CED	BW	WW	YW	MA	CEM	SC	ST	DOC	CW	REA	YG	MARB	\$MTI
EPDs	7	0.7	47	95	32	0	0.7	9	15	27	-0.23	0.20	0.29	53

- Homozygous black and double polled are these future calves from one of the top matings at Milam Cattle Co. and Magness Land & Cattle Co.
- MAGS Rockcross 301R is the \$40,000 valued donor that has consistently proven her worth again and again. She is one of the breed's biggest numbered 50% Lim-Flex donors with a 38 for milk and .59 for marbling and she scanned a 7.01 for IMF. When mated to the stylish and breed leading sire and once All American Futurity Supreme Champion bull, MAGS Zyloid 3712X the results have been great.

Consigned by Milam Cattle Co., Olmstead, KY

# FOUR EMBRYOS

# 7

50% Lim-Flex • Double Polled • Double Black

BT CROSSOVER 758N

**MAGS WINSTON**

MAGS STRAWBERRY

EXAR NEW DESIGN 2997

**MAGS ROCKCRESS**

MAGS LARK

C A FUTURE DIRECTION 5321

BT ROYAL PRIDE 237G

EXLR NEW GENERATION 071M

MAGS FRUITFUL 487M

BON VIEW NEW DESIGN 1407

LEACHMAN EVERGREEN 8020

MAGS JUMANJI

AUTO CITY NIGHTS 214H

	CED	BW	WW	YW	MA	CEM	SC	ST	DOC	CW	REA	YG	MARB	\$MTI
EPDs	13	-1.2	47	102	35	3	0.0	8	11	32	-0.53	0.53	0.62	63

- Great things will happen when you line-up proven, predictable genetics for one common goal. We are certain you will really like the outcome of this mating. They are sired by the now deceased and once highly syndicated sire, MAGS Winston and leading sire for Edwards Land & Cattle Co. and Magness
- The resulting calves are going to be extremely deep bodied, big numbered and very high marbling ... if you are into cattle that will work in the real world and excel in the marketplace then consider these superb embryos

Consigned by Milam Cattle Co., Olmstead, KY



MAGS Winston, sire to Lot 7 embryos.

# THREE EMBRYOS

# 8

50% Lim-Flex • Homo Polled • Homo Black

SCHILLING'S TALLADEGA

**CALO BRICKYARD 902W**

EXG E839 1407 M175 LS

JCL LODESTAR 27L

**PBR8 78U**

LOUP RIVER ENCHANGRESS 24

KRVN NASKAR 013N

RCSX RAINY DAY 80R

BON VIEW NEW DESIGN 1407

PAF 4019 6807 E839

HUNTS HI-LITER 245G

LOGAN'S CHEERLEADER 280G

SUMMITCREST EXT 1J67

LOUP RIVER ENCHANTRESS 26

	CED	BW	WW	YW	MA	CEM	SC	ST	DOC	CW	REA	YG	MARB	\$MTI
EPDs	12	-0.3	44	93	26	6	0.0	-	5	9	-0.08	0.19	0.16	26

- Sired by the 2012 National champion Lim-Flex sire CALO Brickyard 902W and from the leading Edwards Land & Cattle Co. \$15,000 valued donor PBR8 78U. She is a 50% Lim-Flex daughter of the multiple trait leading sire JCL Lodestar 27L and from a Summitcrest Angus female
- These future calves sure have the prominent pedigree, the strength in promotion and they have a solid set of numbers to back them

Consigned by Milam Cattle Co., Olmstead, KY

MAGS Rockress, dam to Lot 7 embryos.



CALO Brickyard 902W, sire to Lot 8 embryos.



# SEVEN EMBRYOS

# 9

68.5% Lim-Flex • Homo Polled • Double Black

TC ABERDEEN 759

**EBFL YPSILANTI 420Y**

MAGS RAMADA

MAGSWL USUAL SUSPECT 538U

**ERICA 128Y**

DFLC HBHPC 16S

C R A BEXTOR 872 5205 608

TC BLACKBIRD 4034

TNUH BLUE PRINT 245H

MAGS MANDA

MAGS SASQUATCH ELCX EDITH

MAGS PHANTOMS PRIZE

JCL LODESTAR 27L

DFLC HBPC 25L

	CED	BW	WW	YW	MA	CEM	SC	ST	DOC	CW	REA	YG	MARB	\$MTI
EPDs	9	1.5	53	101	33	4	0.4	-	11	32	0.11	0.24	0.29	55

- These future calves are going to be sired by the ever popular EBFL Ypsilanti 420Y. He is the \$100,000 valued sire and son of TC Aberdeen 759 from the once national champion MAGS Ramada. He posts a 44 for milk, 105 for yearling weight and .46 for marbling. His first calves are just now being weaned and we are certain they will remain very positive in the market place for some time to come
- There dam ELCX Edith Erica 128Y is a daughter of MAGSWL Usual Suspect is from a daughter of the multiple trait-leading sire JCL Lodestar. The future embryos are also maternal siblings to the 2013 National Champion female ELCX Twilight raised and owned by Edwards Land & Cattle Co. and with Wies Limousin, Wellsville, MO

Consigned by Milam Cattle Co., Olmstead, KY

EBFL Ypsilanti 420Y, sire to Lot 9 embryos.



Erica 128Y, dam to Lot 9 embryos.





Morris

LOT 10 MCC Freshness 136Z



RVDR Xtra Treat 1038X, dam of Lot 10.

## MCC FRESHNESS 136Z

# 10

Lim-Flex (25) Cow    12.15.12    CMIL 136Z    LFF Pending    Double Polled / Homo Black

O C C EMBLAZON 854E  
**RITO 6EM3 OF 4LI EMBLAZON**  
 RITA 4LI OF 2536 208

D H D TRAVELER 6807  
 DIXIE ERICA OF C H 1019  
 BON VIEW DESIGN 208  
 G A R PRECISION 2536  
 EF MAIN STAY 541M  
 M L PRUDENCE 427  
 JCL LODESTAR 27L  
 HF B/R RUBY OF TIFFANY

EF SMACK DOWN 764S  
**RVDR XTRA TREAT 1038X**  
 EF UNMARKED

	CED	BW	WW	YW	MA	CEM	SC	ST	DOC	CW	REA	YG	MARB	\$MTI
EPDs	14	-2.8	51	101	31	5	0.0	-	7	36	-0.55	0.65	0.50	58

This young show heifer prospect is one terrific lot to highlight the Milam & Friends Sale. She is a 25% Lim-Flex that is homozygous polled, double black and we think very well made. MCC Freshness 136Z is a daughter of the powerful Angus sire RITO 6EM3 of 4LI. Her dam is the \$20,000 valued RVDR Xtra Treat 1038X that is owned by Milam along with partners Double B Grain Farm in McAlisterville, PA. She is a daughter of the once national champion EF Smack Down and from a daughter of JCL Lodestar 27L. She scanned a 6.87 for IMF and has earned a 32 for milk. This young daughter of hers is huge numbered, well made and very appealing in her profile.

Consigned by Milam Cattle Co., Olmstead, KY



Morris

LOT 11 MCC Valentine 2731A

MAGS Xanthopsias,  
dam of Lot 11.



Morris



AUTO Will Power 160X,  
sire of Lot 11.

## MCC VALENTINE 2731A

# 11

Lim-Flex (56) Cow      02.14.13      CMLL 2731A      LFF Pending      Double Polled / Homo Black

G A R PREDESTINED  
**AUTO WILL POWER 160X**  
AUTO REBECA 292S

DHVO DEUCE 132R  
**MAGS XANTHOPSIAS**  
BOHI RHONDA 314R

B/R NEW DESIGN 036  
G A R EXT 4206  
LESF ASPHALT 9N  
EXLR REBECA 1019P  
GPFF BLAQUE RULON  
AMY JO DHAN 20L  
EXLR NEW GENERATION 071M  
DAVIS ROSETTA 9514

	CED	BW	WW	YW	MA	CEM	SC	ST	DOC	CW	REA	YG	MARB	\$MTI
EPDs	7	0.0	50	99	30	0	0.6	-	14	31	0.08	0.24	0.29	54

Here is very fancy made and eye appealing show heifer prospect from the Milam program. She is sired by AUTO Will Power 160X, the \$35,000 half interest valued sire purchased by Edwards Land & Cattle Co., Beulaville, NC from Pinegar Limousin, Springfield, MO. His first calves are exciting and this young heifer will be one of the very first to sell. Her dam was selected by Milam and was a top lot in the Edwards Fall '12 sale. She is a full sister to the consistent sire of show champions MAGS Xyloid 3712X. This young heifer has the sound structure, clean lines and striking profile to get any judges attention.

Consigned by Milam Cattle Co., Olmstead, KY



LOT 12 R VF Erica 589Z



LOT 13 MCC Bright Lights 89Z



LOT 14 JEPS 103Z

## R VF ERICA 589Z

12

Lim-Flex (69) Cow 10.04.12 JKH 589Z LFF 2027668 Double Polled / Homo Black

BOHI TITELIST 7050T  
**AUTO LONG DRIVE 111X**  
 AUTO REBECA 292S

DHVO DEUCE 132R  
**WIN VUE LADY DEUCE 073X**  
 WIN VUE FOCUS PRIDE

AUTO DOLLAR GENERAL 122R  
 CARROUSELS PINA COLADA  
 LESF ASPHALT 9N  
 EXLR REBECA 1019P  
 GPFF BLAQUE RULON  
 AMY JO DHAN 20L  
 MYTTY IN FOCUS  
 LONGACRES PURE PRIDE 201

	CED	BW	WW	YW	MA	CEM	SC	ST	DOC	CW	REA	YG	MARB	\$MTI
EPDs	8	1.2	56	105	29	2	0.8	-	-	23	0.07	0.24	0.15	50
	P	29	15	9	7	P	P	-	-	P	P	P	P	

Selling half interest with the option to double up

This for sure could be one of very best females ever created at Riverside Valley Farm. She is a daughter of the leading sire AUTO Long Drive 111X. He was their top purchase from Pinegar Limousin and is a son of BOHI Titlelist 7050T from the famed AUTO Rebeca 292S. His calves have been easily marketed at Riverside Valley and very well accepted. This young heifer puts all the important traits together into one package and has been well accepted at a few competitive shows around. She is very moderate in her frame, very deep and bold in her spring of rib and has the promising look of a future donor all working in her favor. This homozygous black heifers dam is a daughter of DHVO Deuce and is from a daughter of MYTTY In Focus. So with all this said you will quickly realize that this heifer is good because she is suppose to be. She has so many of the breed greats lined up in her pedigree so she we think she is a future donor in the making.

Consigned by Riverside Valley Farm, Hohenwald, TN

## MCC BRIGHT LIGHTS 89Z

13

Lim-Flex (63) Cow 09.09.12 CMIL 89Z LFF 2022058 Double Polled / Homo Black

DHVO DEUCE 132R  
**MAGS XYLOID**  
 BOHI RHONDA 314R

EXAR NEW DESIGN 2997  
**MAGS ROCKCRESS**  
 MAGS LARK

GPFF BLAQUE RULON  
 AMY JO DHAN 20L  
 EXLR NEW GENERATION 071M  
 DAVIS ROSETTA 9514  
 BON VIEW NEW DESIGN 1407  
 LEACHMAN EVERGREEN 8020  
 MAGS JUMANJI  
 AUTO CITY NIGHTS 214H

	CED	BW	WW	YW	MA	CEM	SC	ST	DOC	CW	REA	YG	MARB	\$MTI
EPDs	8	0.7	48	95	32	0	0.7	-	15	27	-0.23	0.30	0.29	52
	P	P	P	P	P	P	P	-	P	P	P	P	P	

- This 62.5% Lim-Flex open heifer stands strong and proud as she represents one of the top matings created by Milam and Magness
- Sired by the once All American Futurity grand champion bull MAGS Zyloid and from the \$40,000 valued donor MAGS Rockcress 301R
- This young heifer has a 0.7 for birth, 95 for yearling and 32 for milk

Consigned by Milam Cattle Co., Olmstead, KY

## JEPS 103Z

14

Lim-Flex (62.5) Cow 09.24.12 JEPS 103Z LFF Pending Double Polled / Homo Black

AUTO DOLLAR GENERAL 122R  
**BOHI TOP DOLLAR 7144T**  
 CARROUSELS PINA COLADA

EF MAIN STAY 541M  
**DIAMOND ROSE R014**

LVLS SECRET WEAPON 4408K  
 AUTO KYRIA 232K  
 AUTO BLACK DAKOTA 129J  
 ELMW GINNIE P58G  
 AUTO BLACK DAKOTA 129J  
 EXLR 231J

	CED	BW	WW	YW	MA	CEM	SC	ST	DOC	CW	REA	YG	MARB	\$MTI
EPDs	7	2.2	49	90	31	6	0.4	5	7	5	0.35	-0.06	0.02	24
	-	-	-	-	-	-	-	-	-	-	-	-	-	

- Double polled, double black and we think a really nice replacement female
- Sired by the highly syndicated sire BOHI Top Dollar 7144T, the top sire working for Edwards Land & Cattle Co., Magness and Jepson Limousin
- She is from a 50% Lim-Flex daughter of the once national champion EF Main Stay 541M that scanned a 4.26 for IMF with a 28 for milk and low birth
- This heifer is sound in her structure, long down her top line and very appealing in her profile

Consigned by Milam Cattle, Olmstead, KY & Jepson Limousin, Franklin, KY



Morris

LOT 15 MCC In Focus 23Z

GPFX Blaque Elga, dam of Lots 15 & 16.

## MCC IN FOCUS 23Z

15

Lim-Flex (75) Bull 03.01.12 ZMCC 23Z LFM 2012219 Homo Polled / Homo Black

WULFS TITUS 2149T  
**MAGS LANDMARK**  
 MAGS SHARI

WULFS REALTOR 1503R  
 WULFS MEADOW GRASS 2149M  
 GPFX BLAQUE RULON  
 MAGS MANDA  
 S A F FOCUS OF E R  
 MYTTY COUNTESS 906  
**GPFX BLAQUE ELGA**  
 AUTO POLLED ELGA 273F  
 LKCC TOMAHAWKS TOUCHDOWN  
 DFCL JET SET BPC 34Y

BW: 82 lbs.  
 WW: 703 lbs.

	CED	BW	WW	YW	MA	CEM	SC	ST	DOC	CW	REA	YG	MARB	\$MTI
EPDs	7	-0.1	45	89	26	2	0.7	-	17	25	0.23	0.17	0.11	46
	P	P	P	P	P	P	P	-	P	P	P	P	P	

- MCC In Focus 23Z is a tremendous herd bull prospect with a promising future! He has been successfully campaigned by Zachary and is extremely long bodied, well balanced, and stands on a big foot.
  - This exciting bull measured a 43 cm scrotal at the All American Futurity and had a yearling weight of 1375 lbs.
  - He combines a -0.1 birth EPD with plenty of growth, a 26 for milk and is positive for REA with a .23 and marbling with a .11.
  - His dam is the \$30,000 valued donor GPFX Blaque Elga who is owned by Milam Cattle Co. and Massey Limousin and is one of the best Lim-Flex donors in our breed.
  - If you want a rugged, sound and predictable herd bull with unlimited potential then tie into MCC In Focus 23Z.
  - 2013 National Junior Heifer Show reserve division; 2013 All American Futurity reserve division; 2013 Kentucky State Fair Junior show reserve grand champion; 2013 Tennessee State Fair reserve grand champion
- Consigned by Zachary Milam of Milam Cattle Co., Olmstead, KY

## MCC ALLIANCE 17Z

16

Lim-Flex (75) Bull 02.24.12 ZMCC 17Z LFM 2022061 Double Polled / Homo Black

WULFS TITUS 2149T  
**MAGS LANDMARK**  
 MAGS SHARI

WULFS REALTOR 1503R  
 WULFS MEADOW GRASS 2149M  
 GPFX BLAQUE RULON  
 MAGS MANDA  
 S A F FOCUS OF E R  
 MYTTY COUNTESS 906  
**GPFX BLAQUE ELGA**  
 AUTO POLLED ELGA 273F  
 LKCC TOMAHAWKS TOUCHDOWN  
 DFCL JET SET BPC 34Y

BW: 80 lbs.  
 WW: 740 lbs.

	CED	BW	WW	YW	MA	CEM	SC	ST	DOC	CW	REA	YG	MARB	\$MTI
EPDs	7	-0.1	45	89	26	2	0.7	-	17	25	0.23	0.17	0.11	46
	P	P	P	P	P	P	P	-	P	P	P	P	P	

- A flushmate to 23Z is this 75% Lim-Flex who is homozygous black and double polled.
- 17Z has amazing foot size and is super sound in his movement.
- He is long and wide down his top, square ended and blends very nicely in his neck and shoulder.
- MCC Alliance has a great set of EPD's, a large scrotal and a super disposition.

Consigned by Zachary Milam of Milam Cattle Co., Olmstead, KY





# MCC JEPS DOUBLE SHOT 05Z 18

Lim-Flex (75) Bull      02.19.12      CMIL 05Z      LFM 2012217      Double Polled / Double Black

**MAGS WAZOWSKI**  
DHVO DEUCE 132R  
BOHI RED ROBIN 282R

GPF BLAQUE RULON  
AMY JO DHAN 20L  
CONNEALY LEAD ON  
MAGS MANUELA  
HUNTS HI-LITER 245G  
LOGAN'S CHEERLEADER 280G  
DFLC DOUBLE SHOT BPB 41E  
DALTONS EDITH ERICA 250

BW: 74 lbs.  
WW: 710 lbs.

**DFLC HBHPC 1S**  
JCL LODESTAR 27L  
DFLC HBPC 25L



DFLC HBHPC 1S, dam of Lot 18.

	CED	BW	WW	YW	MA	CEM	SC	ST	DOC	CW	REA	YG	MARB	\$MTI
EPDs	10	1.0	55	104	26	5	0.5	-	16	40	0.10	0.29	0.17	51
	P	P	P	P	P	P	P	-	P	P	P	P	P	P

- Wow. Here is a striking young prospect out of MAGS Wazowski and DFLC HBHPC 1S, the dam of the 2013 National Champion Lim-Flex female owned by Wies Limousin and Edwards Land and Cattle.
  - 05Z is long fronted, smooth made and has tremendous spring of rib.
  - This young Lim-Flex offers calving ease with a 55 weaning and a 104 yearling respectively. In addition he has a 26 milk EPD and a .17 for marbling.
  - We think Double Shot 05Z can provide consistency and performance to cattle while maintaining eye appeal and soundness.
- Consigned by Milam Cattle Co., Olmstead, KY, Wies Limousin, Wellsville, MO and Jepson Limousin, Franklin, KY

# JEPS 363Z 19

Lim-Flex (63) Bull      02.27.12      JEPS 363Z      LFM 2009347      Homo Polled / Homo Black

**CALO BRICKYARD 902W**  
SCHILLING'S TALLADEGA  
EXG E839 1407 M175 LS

KRVN NASKAR 013N  
RCSX RAINY DAY 80R  
BON VIEW NEW DESIGN 1407  
PAF 4019 6807 E839  
MAGS JUMANJI  
KEYI 350F  
JCL LODESTAR 27L  
HOMEACRES GILDA D50

BW: 66 lbs.

**WLR XANTIPP**  
KEYI NO DOWN 211N  
PBRS 97T



LOT 19 JEPS 363Z

	CED	BW	WW	YW	MA	CEM	SC	ST	DOC	CW	REA	YG	MARB	\$MTI
EPDs	11	-0.8	43	85	26	5	0.4	-	8	23	-0.22	0.38	0.38	54
	12	32	20	11	7	11	P	-	P	P	P	P	P	P

- Another very exciting 62.5% Lim-Flex prospect sired by CALO Brickyard 902W and out of a KEYI No Down 211N dam.
- 363Z has a tremendous pattern with all kinds of rib, balance and is sound structured.
- He has an 11 for calving ease, 85 yearling EPD, 26 for milk and a .38 marbling EPD.

Milam Cattle Co., Olmstead, KY

# CLVF BURRELL LEE 72Z 20

% Limousin (88) Bull      04.23.12      CLVF 72Z      NXM 2006384      Double Polled / Double Black

**MAGS UNMERCIFUL**  
GPF BLAQUE RULON  
MAGS PARADISE CANYON

BLACK DIAMOND  
QUAIL RUN RAMONA BP  
BR MIDLAND  
MISS WULFETTE 6230F  
AUTO BLACK DAKOTA 129J  
EXLR 231J  
TUBB GRINDER 749D  
MISS CMCC BANKER 628P

BW: 71 lbs.  
WW: 624 lbs.

**CMIL STAY AWAY 957W**  
EF MAIN STAY 541M  
TUBB HARDBODY 815H

	CED	BW	WW	YW	MA	CEM	SC	ST	DOC	CW	REA	YG	MARB	\$MTI
EPDs	11	1.1	42	81	26	5	0.1	-	-	-1	0.32	-0.03	-0.02	42
	P	27	17	12	11	P	P	-	-	P	P	P	P	P

- This is a nice and complete 87.5% prospect that is double polled, double black.
- Sired by MAGS Unmerciful and out of a young EF Main Stay 541M daughter.
- 72Z has a 11 for calving ease and a 26 milk EPD.
- He is deep ribbed and sound in his structure. In addition 72Z has plenty of muscle and has a great disposition.

Consigned by Milam Cattle Co., Olmstead, KY





LVLS Yukon 398Y,  
service sire to Lots 21 - 24.

Lots 21 - 24 are consigned by  
Milam Cattle Co., Olmstead, KY

## PBR3 389W

# 21

Lim-Flex (50) Cow 04.06.09 PBR3 389W LFF 1944333 Homo Polled / Homo Black

HUNTS HI-LITER 245G  
**JCL LODESTAR 27L**  
LOGAN'S CHEERLEADER 280G

CALIFORNIA TRAVELER  
**BT ECHO 33M**  
KMK ECHO J29

WADDLES COBALT 3106  
TNUH MISS C245  
COLE FIRST DOWN 46D  
TTCC CONFIDENCE MAKER  
R R TRAVELER 5204  
TEHAMA EISA ERICA Y699  
LEACHMAN RIGHT TIME  
TEHAMA ECHO G463

	CED	BW	WW	YW	MA	CEM	SC	ST	DOC	CW	REA	YG	MARB	\$MTI
EPDs	14	-2.1	47	97	27	8	0.4	-	-	47	-0.40	0.56	0.41	54
	20	37	31	26	26	20	15	-	-	23	22	22	22	

- P.E. 5.27.13 to 8.15.13 to LVLS Yukon 398Y
- Homozygous black and homozygous polled.
- What a tremendous Lim-Flex that is sired by JCL Lodestar 27L.
- 389W has a -2.1 birth EPD, 97 yearling EPD, 27 for milk and a .41 marbling EPD.
- This great producing female has all the potential in the world. They have been out working on grass and are truly the cow mans kind.
- She sells bred to LVLS Yukon 398Y who is proving to be a great producing Herd bull and one you are surely going to hear more about in the future.

## PBR3 WOODEN CROSS 179W

# 23

Lim-Flex (50) Cow 03.18.09 PBR3 179W LFF 1940517 Homo Polled / Homo Black

HUNTS HI-LITER 245G  
**JCL LODESTAR 27L**  
LOGAN'S CHEERLEADER 280G

PLATTEMERE DATABASE  
**SEDGWICKS GEORGINA 4792**  
SEDGWICKS GEORGINA 4796

WADDLES COBALT 3106  
TNUH MISS C245  
COLE FIRST DOWN 46D  
TTCC CONFIDENCE MAKER  
CONNELLY DATELINE  
PLATTEMERE REVA 109  
O C C BACKSTOP 888B  
SEDGWICKS GEORGINA 14

	CED	BW	WW	YW	MA	CEM	SC	ST	DOC	CW	REA	YG	MARB	\$MTI
EPDs	14	-2.0	48	102	27	9	0.4	-	-	49	-0.24	0.56	0.33	52
	28	37	31	20	26	25	14	-	-	22	21	21	21	

- P.E. 5.27.13 to 8.15.13 to LVLS Yukon 398Y
- Homozygous black and homozygous polled.
- Here is another big number and very good 50% Lim-Flex sired by the multiple trait leading sire JCL Lodestar 27L.
- She has a -2.0 birth EPD, 102 yearling EPD, 27 for milk and a .33 marbling EPD.
- 179W has a beautiful udder, is sound on her feet and legs and angular in her design.

## PBR3 WAY OF LIFE 169W

# 22

Lim-Flex (50) Cow 03.17.09 PBR3 169W LFF 1940516 Homo Polled / Homo Black

HUNTS HI-LITER 245G  
**JCL LODESTAR 27L**  
LOGAN'S CHEERLEADER 280G

R P BUSHWACKER 3 944  
**SEDGWICKS BLACKAP 4364**  
SEDGWICKS BLACKCAP 4361

WADDLES COBALT 3106  
TNUH MISS C245  
COLE FIRST DOWN 46D  
TTCC CONFIDENCE MAKER  
R P 3RD BUSHWACKER  
R P NEW DESIGN MISS JUICE  
RR 9440 SCOTCH CAP 1483  
SEDGWICKS BLACKCAP 4366

	CED	BW	WW	YW	MA	CEM	SC	ST	DOC	CW	REA	YG	MARB	\$MTI
EPDs	15	-3.0	41	94	22	8	0.3	-	-	20	-0.33	0.43	0.42	54
	27	38	30	26	22	25	14	-	-	23	23	23	22	

- P.E. 5.27.13 to 8.15.13 to LVLS Yukon 398Y
- Homozygous black and homozygous polled.
- Sired by JCL Lodestar 27L is this 50% Lim-Flex with superb EPD's.
- 169W has a 15 for calving ease, 94 yearling EPD, 22 for milk and a .42 marbling EPD.
- This female is tremendous in her design, bold in her rib and has a tremendous udder.
- There are no limits to what this female can do.

## PBR3 WINTEX 159W

# 24

Lim-Flex (50) Cow 03.17.09 PBR3 159W PBR3 159W Homo Polled / Homo Black

HUNTS HI-LITER 245G  
**JCL LODESTAR 27L**  
LOGAN'S CHEERLEADER 280G

HOMEACRES PLATINUM 723  
**HOMEACRES LAURIE D51**  
HOMEACRES LAURIE J984

WADDLES COBALT 3106  
TNUH MISS C245  
COLE FIRST DOWN 46D  
TTCC CONFIDENCE MAKER  
G D A R OSCAR 711  
HOMEACRES HANA 103  
V R S TRAVELER 9375  
HOMEACRES RDJ LAURIE 518

	CED	BW	WW	YW	MA	CEM	SC	ST	DOC	CW	REA	YG	MARB	\$MTI
EPDs	15	-2.2	41	83	20	9	0.3	-	-	28	-0.59	0.57	0.31	49
	20	35	30	24	22	20	14	-	-	23	22	22	22	

- P.E. 5.27.13 to 8.15.13 to LVLS Yukon 398Y
- Homozygous black and homozygous polled.
- 50% Lim-Flex sired by JCL Lodestar 27L.
- 159W is long and level down her top, smooth in her shoulder and feminine in her front.
- This brood cow has a 15 calving ease EPD, 83 yearling EPD and a .31 for marbling.
- 159W is a tremendous cow with unlimited potential!

# JEPS ZAVANNAH 361Z

# 25

Lim-Flex (56) Cow      03.02.12      JEPS 361Z      LFF 2009346      Homo Polled / Homo Black

JCL LODESTAR 27L  
**LH RODEMASTER 338R**  
 VERMILION E BLACKBIRD 9546  
  
 WULFS URBAN COWBOY 2149U  
**WLR TINY DANCER**  
 FLLR TANGO

HUNTS HI-LITER 245G  
 LOGAN'S CHEERLEADER 280G  
 VERMILION 31 STACLER 3491  
 CH ENV BLACKBIRD C5941  
 WULFS REALTOR 1503R  
 WULFS MEADOW GRASS 2149M  
 MYTTY IN FOCUS  
 DIAMOND ROSE R044



LOT 25 JEPS ZAVANNAH 361Z

	CED	BW	WW	YW	MA	CEM	SC	ST	DOC	CW	REA	YG	MARB	\$MTI
EPDs	12	-0.1	54	104	27	6	0.6	-	-	46	0.08	0.40	0.26	52
	20	34	23	18	15	19	P	-	-	P	P	P	P	

- A.I. 4.17.13 to MAGS Xyloid 3712X Due 1.28.14
- One of the top lots from Riverside Valley Farm
- Sired by LH Rodemaster 338R and from a female bred in the Wies program and sired by Wulf's Urban Cowboy back to a daughter of In Focus
- She posts a great set of EPD's with a -0.1 for birth, 104 for yearling weight, 27 for milk and .26 for marbling
- She sells bred for a guaranteed homozygous black, double polled calf sired by the popular MAGS Xyloid 3712X

Consigned by Riverside Valley Farm, Hohenwald, TN

# RVF SEDUCTION 561Y

# 26

PB Limousin (100) Cow      11.28.11      JJKH 561Y      NPF 2012417      Homo Polled / Homo Black

GPFF BLAQUE RULON  
**DHVO DEUCE 132R**  
 AMY JO DHAN 20L

BLACK DIAMOND  
 QUAIL RUN RAMONA BP  
 BLACK CAT DHAN 152G  
 GPFF AMBER JO  
 HUNTS HI-LITER 245G  
 LOGAN'S CHEERLEADER 280G  
 SY POLLED 770W  
 LB PRETTY FANCY 217R



LOT 26 RVF SEDUCTION 561Y

	CED	BW	WW	YW	MA	CEM	SC	ST	DOC	CW	REA	YG	MARB	\$MTI
EPDs	8	2.6	59	105	23	3	1.1	-	22	44	0.57	-0.01	-0.01	47
	21	34	24	20	20	P	P	-	P	P	P	P	P	

- A.I. 2.16.13 to Connealy Consensus 7229; P.E. 3.01.13 to 5.27.13 to MAGS U The Man 3876Y
- Here is a top purebred daughter of the once national champion DHVO Deuce 132R
- She is from a daughter of the now deceased but multiple trait leading sire JCL Lodestar 27L
- Her future calf sired by the big numberd Angus sire Consensus 7229 will be a nice coupon for the new owner

Consigned by Riverside Valley Farm, Hohenwald, TN

# RVF ALL STARTS HERE 553Y

# 27

Lim-Flex (75) Cow      09.09.11      JJKH 553Y      LFF 1998191      Homo Polled / Homo Black

EXLR DAKOTA 353G  
**AUTO BLACK DAKOTA 129J**  
 DFLC JET SET BPC 34Y  
  
 WIN VUE BLAQUE RULON 357R  
**WIN VUE BLAQ RULETTE 874**  
 WIN VUE MS ALLIANCE 9126

WULF'S COUNT DOWN 9251C  
 CANE RIDGE DAPHNE 011D  
 GENERAL LEE LOJW 40S  
 DFLC BPC 20U  
 GPFF BLAQUE RULON  
 WIN VUE RAMBLIN RUBY 04K  
 WAR ALLIANCE 9126 8006  
 LONGACRES IDESSA 878-319



LOT 27 RVF ALL STARTS HERE 553Y

	CED	BW	WW	YW	MA	CEM	SC	ST	DOC	CW	REA	YG	MARB	\$MTI
EPDs	4	1.8	54	103	28	3	0.4	-	-	-	-	-	-	0
	P	32	24	17	19	P	P	-	-	-	-	-	-	

- A.I. 12.01.12 to CALO Brickyard 902W; P.E. 12.03.12 to 1.03.13 to MAGS U The Man 3876Y
- Sired by the two time national gold medal sire AUTO Black Dakota 129J and from a granddaughter of GPFF Blaque Rulon is this young first calf heifer
- She posts a low birth of 1.8, yearling weight of 108 and milk of 28
- She sells bred to either the national champion Lim-Flex Brickyard or to the 50% Lim-Flex son of SAV Net Worth that is homozygous black and extremely big numbered

Consigned by Riverside Valley Farm, Hohenwald, TN

# RVF TEMPTATION 568Z

# 28

PB Limousin (100) Cow 01.02.12 JJKH 568Z NPF 2013168 Double Polled / Double Black

LVLS SECRET WEAPON 4408K  
**AUTO DOLLAR GENERAL 122R**  
 AUTO KYRIA 232K

LVLS FARMER 4G  
 LVLS 408H  
 AUTO HACKETT 702H  
 WULFS HAPPINESS 8136H  
 EXLR NEW GENERATION 071M  
 OKF LAURA 225L  
 SCF POLLED ATHOS 318A  
 JJKH FANCY 611F

NEW GENERATION MAN 219R  
**DREAM ON 501W**  
 JJKH MISS GLITTER 195M

	CED	BW	WW	YW	MA	CEM	SC	ST	DOC	CW	REA	YG	MARB	\$MTI
EPDs	8	2.4	55	97	38	7	0.4	-	-	-	-	-	-	0
	20	33	22	16	17	20	P	-	-	-	-	-	-	

- A.I. 4.17.13 to SAV Bismarck 5682 Due 1.28.14
- This black and double polled first calf heifer is one really nice female
- She posts one of the highest milk numbers in the entire sale offering with a 38
- She is sired by the multiple trait-leading sire AUTO Dollar General 122R and from a daughter of EXLR New Generation 071M
- Her future 50% Lim-Flex calf sired by the powerful Angus sire SAV Bismarck will be a very nice coupon for the new owner

Consigned by Riverside Valley Farm, Hohenwald, TN



LOT 30 RVF Zoloft 572Z

# RVF INVEST 'N FUTURE 536Y

# 29

Lim-Flex (50) Cow 03.21.11 JJKH 536Y LFF 1985816 Double Polled / Homo Black

S A V 8180 TRAVELER 004  
**S A V NET WORTH 4200**  
 S A V MAY 2410

SITZ TRAVELER 8180  
 BOYD FOREVER LADY 8003  
 SAF 598 BANDO 5175  
 S A V MAY 6269  
 JCL LODESTAR 27L  
 MISS BWSG ELEANOR 86E  
 WULFS PERKINS 2096P  
 SVL PUMPKIN 624P

WIN VUE LODESTAR HP 602  
**UR SO FINE 477W**  
 JJKH PUMPKIN PRIZE 384S

	CED	BW	WW	YW	MA	CEM	SC	ST	DOC	CW	REA	YG	MARB	\$MTI
EPDs	7	0.9	50	105	28	3	0.4	-	-	-	-	-	-	0
	19	32	27	17	19	18	P	-	-	-	-	-	-	

- A.I. 12.01.12 to CALO Brickyard 902W; P.E. 12.03.12 to 1.21.13 to MAGS U The Man 3876Y
- She is from the prominent Riverside Valley Farm.
- She is sired by the Angus sire SAV Net Worth and from a granddaughter of JCL Lodestar 27L
- She posts a 0.9 for birth, 105 for yearling weight and 28 for milk

Consigned by Riverside Valley Farm, Hohenwald, TN

# RVF ZOLOFT 572Z

# 30

Lim-Flex (50) Cow 02.20.12 JJKH 572Z LFF 2014799 Double Polled / Homo Black

S A V 8180 TRAVELER 004  
**S A V NET WORTH 4200**  
 S A V MAY 2410

SITZ TRAVELER 8180  
 BOYD FOREVER LADY 8003  
 SAF 598 BANDO 5175  
 S A V MAY 6269  
 AUTO LONELY NITES 720P  
 AUTO BLACK BIRD 458P  
 WCF COOKIE TIME  
 JJKH FOXY LADY 609F

HMMPLD PLD SARGE 658S  
**YOUNG 'N RESTLESS 495W**  
 JJKH NEW IDOL 226N

	CED	BW	WW	YW	MA	CEM	SC	ST	DOC	CW	REA	YG	MARB	\$MTI
EPDs	7	0.4	50	101	32	4	0.2	-	-	-	-	-	-	0
	19	33	22	16	16	18	P	-	-	-	-	-	-	

- A.I. 4.17.13 to MAGS Xyloid Due 1.28.14
- Polled and homozygous black
- Here is a very well made and moderate framed female from the heart of the Riverside Valley Farm program
- She is sired by the elite Angus sire SAV Net Worth and has a sound set of EPD's to go with her flawless design. She posts a 0.4 for birth, 101 for yearling weight and a 32 for milk
- Her mating to the consistent sire MAGS Xyloid 3712X will be a nice coupon

Consigned by Riverside Valley Farm, Hohenwald, TN

# RVF COUNTRY IDOL 552Y

# 31

PB Limousin (94) Cow 09.07.11 NPF 1998187 JJKH 552Y Double Polled / Homo Black

AUTO ROUGH IDLE 141J  
**AUTO AMERICAN IDOL 162L**  
 WULFS DELIGHT 4114D

JCL BLACK OUT  
 STBR DEMETRIA 669D  
 WULF'S CHALLENGER 6044Y  
 MISS WOLFETTE 9081X  
 HUNTS HI-LITER 245G  
 TDJC MISS 90  
 MASTER BWSG 33A PROFILE  
 JJKH JOY ELAINE 25W

TDJC MISTER 015M  
**JJKH MISTER'S SILK 338R**  
 JJKH BLACK SILK 534E

	CED	BW	WW	YW	MA	CEM	SC	ST	DOC	CW	REA	YG	MARB	\$MTI
EPDs	4	1.8	34	73	26	1	0.2	18	-	-	-	-	-	0
	P	28	20	13	16	P	P	P	-	-	-	-	-	

- A.I. 12.01.12 to Connealy Consensus 7229; P.E. 3.20.13 to 5.02.13 to AUTO Long Drive 111X
- Double polled and homozygous black
- This purebred Riverside Valley Farm female is a first calf heifer and represents their program very well
- She is sired by the homozygous polled AUTO American Idol and is from a granddaughter of Hunts Hi-Liter

Consigned by Riverside Valley Farm, Hohenwald, TN



LOT 31 RVF Country Idol 552Y

# RVF FUTURE IDOL 558Y

# 32

PB Limousin (100) Cow 10.05.11 JJKH 558Y NPF 1998916 Homo Polled / Red

AUTO ROUGH IDLE 141J JCL BLACK OUT  
**AUTO AMERICAN IDOL 162L** STBR DEMETRIA 669D  
 WULFS DELIGHT 4114D WULF'S CHALLENGER 6044Y  
 MISS WOLFETTE 9081X  
 WIN VUE LODESTAR HP 602 JCL LODESTAR 27L  
**STARS 'N STRIPES 485W** MISS BWSG ELEANOR 86E  
 HBFL THELMA 9P WCF COOKIE TIME 531  
 WEEZ MISS SALLY



LOT 32 RVF Future idol 558Y

	CED	BW	WW	YW	MA	CEM	SC	ST	DOC	CW	REA	YG	MARB	\$MTI
EPDs	4	2.4	45	90	30	1	0.4	-	-	-	-	-	-	0
	19	32	20	14	14	19	P	-	-	-	-	-	-	-

- A.I. 1.23.13 to AUTO Full Throttle; P.E. 1.26.13 to 2.27.13 to MAGS Xtra Taste 514X
- Red and homozygous polled
- Here is a very well made first calf heifer sired by the homozygous polled AUTO American Idol, a once national top selling bull
- She is from a granddaughter of JCL Lodestar 27L and posts a yearling EPD of 90 and milk of 30

Consigned by Riverside Valley Farm, Hohenwald, TN

# RVF GLORY STEALER 567Y

# 33

PB Limousin (100) Cow 12.30.11 JJKH 567Y NPF 2013167 Double Polled / Homo Black

AUTO DOLLAR GENERAL 122R LVL5 SECRET WEAPON 4408K  
**BLACK GENERAL MIST 09W** AUTO KYRIA 232K  
 JCL EBONY MIST JCL BLACK OUT  
 LL MISS KNOLL  
 WCF COOKIE TIME SLVL CORL OREO COOKIE  
**JJKH NEW COOKIE 229N** WCF KATARINA  
 CC RCDA TALIS POLL 111A  
 MISS 0101X



LOT 33 RVF Glory Stealer 567Y

	CED	BW	WW	YW	MA	CEM	SC	ST	DOC	CW	REA	YG	MARB	\$MTI
EPDs	9	1.4	47	81	31	6	0.3	-	-	-	-	-	-	0
	P	28	20	8	11	P	6	-	-	-	-	-	-	-

- A.I. 2.14.13 to CALO Brickyard 902W; due 11.27.13
- Polled and homozygous black
- This purebred daughter of Black General Miss 09W is from a daughter of WCF Cookie Time, a son of SLVL COLR Oreo Cookie
- This female offers a low birth of 1.4 and milk of 31
- She sells with her future calf that will be homozygous black, double polled and sired by the once national champion CALO Brickyard 902W

Consigned by Riverside Valley Farm, Hohenwald, TN

# RVF WISH LIST 551Y

# 34

PB Limousin (100) Cow 05.27.11 JJKH 551Y NPF 1989384 Double Polled / Double Black

AUTO DOLLAR GENERAL 122R LVL5 SECRET WEAPON 4408K  
**BLACK GENERAL MIST 09W** AUTO KYRIA 232K  
 JCL EBONY MIST JCL BLACK OUT  
 LL MISS KNOLL  
 EF BACK IN BLACK 224P RADS BLACK PRODIGY  
**JEPS PRODIGY 91S** DSUL FIRST LADY 277H  
 H&H POLLED GUARDIAN ANGEL WULFS GUARDIAN 5074G  
 CANE RIDGE TEMPTRESS 008A

# RVF LACY 564Y

# 35

PB Limousin (100) Cow 11.28.11 JJKH 564Y NPF 2012419 Double Polled / Homo Black

AUTO DOLLAR GENERAL 122R LVL5 SECRET WEAPON 4408K  
**BLACK GENERAL MIST 09W** AUTO KYRIA 232K  
 JCL EBONY MIST JCL BLACK OUT  
 LL MISS KNOLL  
 AUTO BLACK DAKOTA 129J EXLR DAKOTA 353G  
**LCYS STAR 310R** DFLC JET SET BPC 34Y  
 EXLR LIMITED EDITION 765J  
 EXLR LUVLY 223J

	CED	BW	WW	YW	MA	CEM	SC	ST	DOC	CW	REA	YG	MARB	\$MTI
EPDs	7	1.9	44	86	32	6	0.3	-	-	-	-	-	-	0
	14	29	20	10	12	13	9	-	-	-	-	-	-	-

- A.I. 1.23.13 to SAV Bismarck 5682; P.E. 3.20.13 to 5.27.13 to AUTO Long Drive 111X
- She is sired by the big numbered AUTO Dollar General son Black General Mist and from a daughter of AUTO Black Dakota 129J back to a daughter of EXLR Limited Edition 765J
- She sells to calf to the big numbered Angus sire SAV Bismarck or the proven and top Riverside Valley sire AUTO Long Drive 111X

Consigned by Riverside Valley Farm, Hohenwald, TN

21 FALL BRED FEMALES

	CED	BW	WW	YW	MA	CEM	SC	ST	DOC	CW	REA	YG	MARB	\$MTI
EPDs	8	0.8	44	82	33	4	0.3	-	-	-	-	-	-	0
	14	17	17	8	9	13	7	-	-	-	-	-	-	-

- A.I. 12.01.12 to DHVO Deuce 132R; P.E. 12.03.12 to 1.03.13 to MAGS U The Man 3876Y
- The first calf heifer from the Riverside Valley Farm is one nice replacement
- She is sired by the big numbered AUTO Dollar General 122R son, Black General Mist and is from a granddaughter of RADS Black Prodigy
- This young female offers a low birth of 0.8 and milk of 33

Consigned by Riverside Valley Farm, Hohenwald, TN



LOT 36 R/V Neon Moon 554Y

## R/V NEON MOON 554Y

36

PB Limousin (100) Cow 09.10.11 JJKH 554Y NPF 1998192 Double Polled / Homo Black

GPFF BLAQUE RULON  
**MAGS SAVAGE**  
 MAGS MANDA

BLACK DIAMOND  
 QUAIL RUN RAMONA BP  
 EXLR DAKOTA 353G  
 MAGS JEWEL  
 JCL LODESTAR 27L  
 MISS BWSG ELEANOR 86E  
 SFKL HIGHBRIDGE 1051L  
 JJKH FELICIA 657F

WIN VUE LODESTAR HP 602  
**BLAQUE 'N SASSY 481W**  
 HIGH STAKES 351S

	CED	BW	WW	YW	MA	CEM	SC	ST	DOC	CW	REA	YG	MARB	\$MTI
EPDs	6	1.9	42	79	27	2	0.5	-	-	-	-	-	-	0
	P	32	21	14	14	P	P	-	-	-	-	-	-	

- A.I. 3.06.13 to CALO Brickyard 902W; P.E. 3.20.13 to 5.27.13 to AUTO Long Drive 111X
- Double polled and homozygous black
- You are really going to like this MAGS Savage daughter
- She is from a daughter of JCL Lodestar 27L that is a top foundation cow for Riverside Valley Farm
- She posts a low birth of 1.9 and milk of 27

Consigned by Riverside Valley Farm, Hohenwald, TN

## R/V HIGH VOLTAGE 569Z

37

Lim-Flex (50) Cow 01.20.12 JJKH 569Z LFF 2014429 Homo Polled / Homo Black

S A V 8180 TRAVELER 004  
**S A V NET WORTH 4200**  
 S A V MAY 2410

SITZ TRAVELER 8180  
 BOYD FOREVER LADY 8003  
 SAF 598 BANDO 5175  
 S A V MAY 6269  
 AUTO LONELY NITES 720P  
 AUTO BLACK BIRD 458P  
 MASTER BWSG DEFENSE 145D  
 JJKH BLACK JEWEL 245D

HMMP PLD SARGE 658S  
**SHE'S A KNOCKOUT 493W**  
 JJKH LEANNE 140L

	CED	BW	WW	YW	MA	CEM	SC	ST	DOC	CW	REA	YG	MARB	\$MTI
EPDs	5	1.4	52	105	32	3	0.2	-	-	-	-	-	-	0
	19	33	22	16	16	19	P	-	-	-	-	-	-	

- A.I. 4.17.13 DHVO Deuce 132R; P.E. 4.20.13 to 8.05.13 to AUTO Long Drive 111X
- Homozygous polled and homozygous black
- This 50% Lim-Flex daughter of SAV Net Worth 4200 is a top replacement from the group selling here from Riverside Valley Farm
- She posts a low birth of 1.4, yearling weight of 104 and milk of 32

Consigned by Riverside Valley Farm, Hohenwald, TN

## R/V COUNTRY STAR 557Y

38

PB Limousin (100) Cow 10.05.11 JJKH 557Y NPF 1998915 Double Polled / Homo Black

AUTO DOLLAR GENERAL 122R  
**AUTO DOLLAR SIGN 561W**  
 AUTO REMEDY 812R

LVLS SECRET WEAPON 4408K  
 AUTO KYRIA 232K  
 AUTO SILVERADO 100N  
 AUTO NATASHA 229N  
 EXLR NEW GENERATION 071M  
 OKF LAURA 225L  
 MASTER BWSG DEFENSE 145D  
 JJKH MISS STINGRAY 350C

NEW GENERATION MAN 219R  
**JJKH NGM'S BLAQ LACE 442U**  
 JJKH LACE 145L

	CED	BW	WW	YW	MA	CEM	SC	ST	DOC	CW	REA	YG	MARB	\$MTI
EPDs	8	1.7	45	83	30	5	0.1	-	-	-	-	-	-	0
	P	P	P	P	P	P	P	-	-	-	-	-	-	

- A.I. 3.06.13 to DHVO Deuce 132R; P.E. 3.20.13 to 8.05.13 to AUTO Long Drive 111X
- Double polled and homozygous black
- This purebred female has a 1.7 for birth and a breed leading 30 for milk
- She is sired by the AUTO Dollar General 122R son, AUTO Dollar Sign 561W and from a granddaughter of New Generation 071M
- She sells either bred to the DHVO Deuce or to the Riverside Valley bull AUTO Long Drive 111X

Consigned by Riverside Valley Farm, Hohenwald, TN

## R/V RIVER GIRL 560Y

39

PB Limousin (100) Cow 10.25.11 JJKH 560Y NPF 2009613 Double Polled / Black

AUTO DOLLAR GENERAL 122R  
**AUTO DOLLAR SIGN 561W**  
 AUTO REMEDY 812R

LVLS SECRET WEAPON 4408K  
 AUTO KYRIA 232K  
 AUTO SILVERADO 100N  
 AUTO NATASHA 229N  
 COLE FIRST DOWN 46D  
 TUBB STORM BREKEN 299B  
 WULFS DAVID 2150D  
 BAR BRIBERY 202B

COSC GRANVILLE 447G  
**COSC NANNY 358N**  
 COSC 458G

	CED	BW	WW	YW	MA	CEM	SC	ST	DOC	CW	REA	YG	MARB	\$MTI
EPDs	8	1.9	47	87	26	5	0.3	-	-	11	0.24	-0.04	0.02	45
	13	30	17	11	11	11	P	-	-	P	P	P	P	

- A.I. 3.06.13 to BOHI Titlelist 7050T; P.E. 3.20.13 to 5.02.13 to AUTO Long Drive 111X
- Here is a really good numbered purebred first calf heifer
- Sired by the AUTO Dollar General 122R son, AUTO Dollar Sign 561W
- She offers a 1.9 for birth, 87 for yearling weight and 26 for milk
- Her future calf sired by BOHI Titlelist 7050T or the Riverside Valley sire AUTO Long Drive 111X will be a nice coupon for the new owner

Consigned by Riverside Valley Farm, Hohenwald, TN





EBFL Ypsilanti420Y, service sire to Lots 40 - 43.

## ELCX WINNIE 391W

# 40

Lim-Flex (50) Cow 03.01.09 ELCX 391W LL 1945512 Homo Polled / Homo Black

JCL LODESTAR 27L  
**SENNETT LODESTAR 502R**  
 DVFC COOKIES CHOICE 215H

HYLINE RIGHT TIME 338  
**FCA 6391 IDEAL 964 338**  
 FAIRCREST 964 020 R M 340

HUNTS HI-LITER 245G  
 LOGAN'S CHEERLEADER 280G  
 CHAZ FIRST CHOICE 6004F  
 SLVL DIVINE COOKIE 371E  
 LEACHMAN RIGHT TIME  
 HYLINE PRIDE 265  
 G D A R RAINMAKER 340  
 IDEAL 020 OF 7365 8351

	CED	BW	WW	YW	MA	CEM	SC	ST	DOC	CW	REA	YG	MARB	\$MTI
EPDs	7	0.9	47	95	28	5	-	-	-	39	-0.33	0.55	0.25	49
	15	32	19	13	12	15	-	-	-	P	P	P	P	

- A.I. 6.20.13 to EBFL Ypsilanti 420Y; P.E. 6.22.13 to 8.15.13 to LVLS Yukon 398Y
- Homozygous black and homozygous polled.
- Sired by Sennett Lodestar 502R is this 50% Lim-Flex.
- 391W has as much power and rib as any female you can find.
- She has plenty of growth, post a 28 milk EPD and a .25 for marbling.
- You will agree that 391W is in her prime and has the making of a tremendous brood cow.

Consigned by Milam Cattle Co., Olmstead, KY

## CMIL POLLED DIAMOND 997W

# 42

Lim-Flex (75) Cow 03.10.09 CMIL 997W LFF 1937508 Double Polled / Double Black

AUTO DOLLAR GENERAL 122R  
**MAGS TWAIN**  
 THOMAS PATRICIA 1911

BLACK DIAMOND  
**TUBB DIAMOND 081K**  
 TUBB ROOKIE 744G

LVLS SECRET WEAPON 4408K  
 AUTO KYRIA 232K  
 GAR PRECISION 1680  
 THOMAS PATRICIA 1176  
 CANE RIDGE BLACK DRAK  
 WULFS DIADEM 4260D  
 EXLR ROOKIE 217D  
 MISS M T 5591T

	CED	BW	WW	YW	MA	CEM	SC	ST	DOC	CW	REA	YG	MARB	\$MTI
EPDs	7	2.5	52	99	28	2	0.3	-	9	26	0.21	0.16	0.15	50
	26	29	22	15	20	24	10	-	P	22	21	21	20	

- A.I. 6.20.13 to EBFL Ypsilanti 420Y; P.E. 6.22.13 to 8.15.13 to LVLS Yukon 398Y
- This is a super 75% Lim-flex cow sired by MAGS Twain and out of a leading donor for Massey Limousin, TUBB Diamond 081K.
- She has a 99 yearling EPD, 28 for milk and a .15 for marbling.
- 997W has tremendous depth of rib and flank, is level from hooks to pins and very sound in her structure.
- This replacement has a tremendous udder and maintains a super disposition.

Consigned by Milam Cattle Co., Olmstead, KY

## ORAC WHY WAIT 931W

# 41

PB Limousin (100) Cow 05.18.09 ORAC 931W NPF 1944438 Double Polled / Double Black

LVLS SECRET WEAPON 4408K  
**AUTO DOLLAR GENERAL 122R**  
 AUTO KYRIA 232K

EXLR NEW GENERATION 071M  
**ORAC LADY LIBERTY 549R**  
 H&H POLLED LUCY 260M

LVLS FARMER 4G  
 LVLS 408H  
 AUTO HACKETT 702H  
 WULFS HAPPINESS 8136H  
 AUTO BLACK DAKOTA 129J  
 EXLR LUVLY 084F  
 COLE WULF HUNT  
 CANE RIDGE POLL LUCY 377B

	CED	BW	WW	YW	MA	CEM	SC	ST	DOC	CW	REA	YG	MARB	\$MTI
EPDs	12	1.0	53	98	36	9	0.3	-	18	24	0.32	0.04	0.14	51
	P	33	22	19	18	P	P	-	P	P	P	P	P	

- P.E. 5.27.13 to 8.15.13 to LVLS Yukon 398Y
- Double black and double polled.
- Sired by AUTO Dollar General 122R and out of a EXLR New Generation 071M daughter.
- 931W has a 53 weaning and a 98 yearling EPD respectively. In addition she has a 36 milk EPD and a .14 for marbling.
- If you are looking for good young purebreds with tremendous EPD's that work in production then don't overlook 931W.

Consigned by Milam Cattle Co., Olmstead, KY

## HAHK WAINETTE 003W

# 43

Lim-Flex (50) Cow 02.25.09 HAHK 003W LFF 1932703 Homo Polled / Homo Black

AUTO DOLLAR GENERAL 122R  
**MAGS TWAIN**  
 THOMAS PATRICIA 1911

WK DAKOTA 4003  
**RVDR TIARA 1720T**  
 EXG PHOEBE 006P RVDR

LVLS SECRET WEAPON 4408K  
 AUTO KYRIA 232K  
 GAR PRECISION 1680  
 THOMAS PATRICIA 1176  
 KG DAKOTA  
 WK HI BLACKCAP 8016  
 RADS BLACK PRODIGY  
 EXLR 005H

	CED	BW	WW	YW	MA	CEM	SC	ST	DOC	CW	REA	YG	MARB	\$MTI
EPDs	7	1.2	46	90	34	3	0.3	-	-	-	-	-	-	0
	18	32	20	13	13	17	P	-	-	-	-	-	-	

- A.I. 6.20.13 to EBFL Ypsilanti 420Y; P.E. 6.22.13 to 8.15.13 to LVLS Yukon 398Y
- Here is a cow that is hard to part with. She is homozygous black and homozygous polled.
- A 50% Lim-Flex sired by MAGS Twain out of RVDR Tiara 1720T.
- 003W has a 1.2 birth EPD, 90 yearling EPD and a 34 for milk.
- This tremendous female always brings in a big stout and stylish calf.

Consigned by Milam Cattle Co., Olmstead, KY



LOT 44 JEPS Sherri 61Y

## JEPS SHERRI 61Y

44

Lim-Flex (50) Cow 09.03.11 JEPS 61Y LFF 2001990 Double Polled / Double Black

SCHILLING'S TALLADEGA  
**CALO BRICKYARD 902W**  
 EXG E839 1407 M175 LS

BR MIDLAND  
**AUTO SHERRI 227S**  
 SLF JEZABEL

KRVN NASKAR 013N  
 RCSX RAINY DAY 80R  
 BON VIEW NEW DESIGN 1407  
 PAF 4019 6807 E839  
 TWIN VALLEY PRECISIONE161  
 BR ROYAL LASS 7036-19  
 SOGF SPECIAL K 247B  
 DVFC ROYAL DREAM 1105D

	CED	BW	WW	YW	MA	CEM	SC	ST	DOC	CW	REA	YG	MARB	\$MTI
EPDs	9	0.2	47	92	28	2	0.3	-	10	12	-0.02	0.23	0.30	53
	P	P	P	P	P	P	P	-	P	P	P	P	P	

- P.E. 5.27.13 to 8.15.13 to LVLS Yukon 398Y
- Sired by CALO Brickyard 902W and out of the beautiful AUTO Sherri 227S is the two year old who is double black and double polled.
- 61Y has a 0.2 birth EPD, 92 yearling EPD, 28 for milk and a .30 for marbling.
- This female blends very well in her neck to shoulder and shoulder to body.
- She has tremendous depth and volume, a beautiful udder and is fluid in her movement.

Consigned by Milam Cattle Co., Olmstead, KY

## JEPS PEPPER ANN 547 W

45

PB Limousin (100) Cow 03.06.09 JEPS 547W NPF 1935344 Double Polled / Double Black

GPFF BLAQUE RULON  
**DOUBLE TAKE DHVO 158R**  
 GPFF AMBER JO

EF BACK IN BLACK 224P  
**JEPS PRODIGY 547T**  
 SVL PEPPER ANN 547P

BLACK DIAMOND  
 QUAIL RUN RAMONA BP  
 COLE FIRST DOWN 46D  
 KRMC HOLIJO 331D  
 RADS BLACK PRODIGY  
 DSUL FIRST LADY 277H  
 WULFS GAGE 5158G  
 SVL 153L

	CED	BW	WW	YW	MA	CEM	SC	ST	DOC	CW	REA	YG	MARB	\$MTI
EPDs	5	3.2	52	90	34	-1	0.5	-	-	-	-	-	-	0
	25	32	17	9	12	23	P	-	-	-	-	-	-	

- P.E. 5.27.13 to 8.15.13 to LVLS Yukon 398Y
- Double black and double polled purebred sired by Double Take DHVO 158R.
- This moderate framed female is very efficient and productive in her look.
- She is thick ended, bold sprung, sound and gentle.
- 547W has a 52 weaning and a 90 yearling EPD respectively along with a 34 for milk.

Consigned by Milam Cattle Co., Olmstead, KY

## RVF E Z DOLLAR 571Z

46

PB Limousin (100) Cow 01.26.12 JKH 571Z NPF 2014428 Homo Polled / Homo Black

AUTO DOLLAR GENERAL 122R  
**AUTO DOLLAR SIGN 561W**  
 AUTO REMEDY 812R

EF BACK IN BLACK 224P  
**JEPS FIRST LADY 55U**  
 JEPS KNOCKOUT 55N

LVLS SECRET WEAPON 4408K  
 AUTO KYRIA 232K  
 AUTO SILVERADO 100N  
 AUTO NATASHA 229N  
 RADS BLACK PRODIGY  
 DSUL FIRST LADY 277H  
 TMF POLLED KNOCKOUT 270K  
 MISS OAK LEAF 34J

	CED	BW	WW	YW	MA	CEM	SC	ST	DOC	CW	REA	YG	MARB	\$MTI
EPDs	7	1.8	47	87	33	4	0.3	-	-	11	0.17	0.01	0.03	45
	13	30	15	8	8	11	P	-	-	P	P	P	P	

- A.I. 4.17.13 to LVLS Yukon 798Y; P.E. 5.02.13 to 8.06.13 to MAGS You the Man 3876Y
- Here is a very maternal AUTO Dollar General 122R granddaughter that is homozygous black and homozygous polled.
- This purebred female has a moderate birth EPD, ample growth and a 33 for milking ability.
- 571Z is powerful, easy in her condition and broody in her look.
- This young replacement female should make a great cow.

Consigned by Riverside Valley Farm, Hohenwald, TN



LOT 47 RVF Dream On 549Y

## RVF DREAM ON 549Y

47

PB Limousin (100) Cow 05.15.11 JKH 549Y NPF 1989383 Homo Polled / Homo Black

AUTO DOLLAR GENERAL 122R  
**BLACK GENERAL MIST 09W**  
 JCL EBONY MIST

JCL LODESTAR 27L  
**LFL SHORTSTUFF 6019S**  
 RWSS NADINE 323N

LVLS SECRET WEAPON 4408K  
 AUTO KYRIA 232K  
 JCL BLACK OUT  
 LL MISS KNOLL  
 HUNTS HI-LITER 245G  
 LOGAN'S CHEERLEADER 280G  
 WULFS RAMBLER 8400X  
 OTSS MISS 8112H

	CED	BW	WW	YW	MA	CEM	SC	ST	DOC	CW	REA	YG	MARB	\$MTI
EPDs	12	0.5	50	96	30	9	0.5	-	-	-	-	-	-	0
	13	30	20	10	11	12	9	-	-	-	-	-	-	

- P.E. 3.20.13 to 8.05.13 to AUTO Long Drive 111X
- Homozygous polled and homozygous black.
- This female has tremendous numbers highlighted by a12 for calving ease, 96 yearling EPD and a 30 for milk.
- This purebred is thick ended, deep sided and easy fleshing.
- We love the bone and foot size of the replacement.

Consigned by Riverside Valley Farm, Hohenwald, TN



# TUBB TALLA 002X

# 48

PB Limousin (100) Cow 01.13.10 TUBB 002X NPF 1955309 Double Polled / Homo Black

KRVN NASKAR 013N  
**SCHILLING'S TALLADEGA**  
RCSX RAINY DAY 80R

EXLR RESTORE 7154R  
**TUBB RESTORE 7145T**  
TUBB LAWD OG 584R

GPFF BLAQUE RULON  
WL JU JU GAL 149J  
EF MAIN STAY 541M  
TUBB BENCHMARK 0005K  
AUTO BLACK DAKOTA 129J  
AUTO LAILA 805L  
TUBB LAW DOG 009L  
EXLR 7111G

	CED	BW	WW	YW	MA	CEM	SC	ST	DOC	CW	REA	YG	MARB	\$MTI
EPDs	7	2.8	42	82	25	3	0.3			-6	0.36	-0.09	-0.12	39
	26	36	28	15	11	23	11	-	-	P	P	P	P	

- A.I. 6.20.13 to EBFL Ypsilanti 420Y; P.E. 6.22.13 to 8.15.13 to LVLS Yukon 398Y
- Sired by Schilling's Talladega and out of a EXLR Restore 7154R dam is this homozygous black and double polled purebred.
- This female always raises an attractive, productive looking calf.
- 002X has a balanced EPD portfolio highlighted with a 25 milk EPD.
- This 3 year old is long and level down her top, smooth in her shoulder and feminine in her front and very youthful in her udder.

Consigned by Milam Cattle Co., Olmstead, KY

# CMIL LADY DAKOTA 540R

# 50

PB Limousin (93) Cow 08.30.05 CMIL 540R NPF 1819844 Double Polled / Double Black

EXLR DAKOTA 353G  
**AUTO BLACK DAKOTA 129J**  
DFLC JET SET BPC 34Y

WULF'S POLLED PROGRESS  
**DVFC MAKIN PROGRESS 409K**  
DVFC 103H

WULF'S COUNT DOWN 9251C  
CANE RIDGE DAPHNE 011D  
GENERAL LEE LOJW 40S  
DFLC BPC 20U  
WULF'S BUSINESSMAN 714W  
MISS WOLFETTE 9081X  
WULF'S RAMBLER 8400X  
SLVL 108F

	CED	BW	WW	YW	MA	CEM	SC	ST	DOC	CW	REA	YG	MARB	\$MTI
EPDs	6	1.0	44	86	25	5	0.2	19	17	2	0.18	-0.07	-0.09	40
	29	40	24	19	24	26	18	16	P	P	P	P	P	

- A.I. 6.21.13 to LVLS Yukon 398Y; P.E. 6.22.13 to 8.15.13 to LVLS Yukon 398Y
- Sired by AUTO Black Dakota 129J and out of a Wulf's Polled Progress dam.
- Double black and double polled.
- This is a big, stout made female that can sure raise bulls and replacement females.
- 540R has a 25 milk EPD and a 17 for docility.

Consigned by Milam Cattle Co., Olmstead, KY

# CJLM COOKIE 794Y

# 51

Lim-Flex (50) Cow 11.01.11 CJLM 794Y LFF 2025211 Polled / Double Black

S A F FOCUS OF E R  
**MYTTY IN FOCUS**  
MYTTY COUNTESS 906

WULFS QUARTERBACK 4222B  
**DVFC COOKIE JAR 300H**  
EAFM COOKIE

S A F FAME  
G D A R FOREVER LADY 246  
SITZ ALLIANCE 6595  
BALDRIDGE COUNTESS 357  
LKCC TOMAHAWKS TOUCHDOWN  
MISS WOLFETTE 4221S  
POLLED POWER BUIT 8V  
WLCC SABLE

	CED	BW	WW	YW	MA	CEM	SC	ST	DOC	CW	REA	YG	MARB	\$MTI
EPDs	13	-1.6	44	87	28	6	0.4	11	20	21	-0.01	0.31	0.27	51
	P	P	P	P	P	P	P	P	P	P	P	P	P	

- P.E. 5.01.13 to 9.01.13 to LVLS 3202U
- Double black and polled and sired by MYTTY In Focus.
- This 50% Lim-Flex is out of DVFC Cookie Jar 300H and has a -1.6 birth EPD, 28 for milk and a .27 marbling EPD.
- 794Y is a powerful two year old with style, length and balance.
- This is a great combination of genetics that has a lot to offer to fresh genetics.

Consigned by Massey Limousin, London, KY

# BBJY ANGEL 697S

# 49

PB Limousin (100) Cow 06.18.06 BBJY 697S NPF 1859605 Homo Polled / Homo Black

WADDLES COBALT 3106  
**TNUH BLUE PRINT 245H**  
TNUH MISS C245

WULFS QUARTERBACK 4222B  
**WULFS KIND HEARTED 0112K**  
WULFS EXAMPLE 5074E

D&M POLLED BRITE-LITES  
MISS WOLFETTE 9230X  
RUNL 486A  
MS ROTT 172A  
LKCC TOMAHAWKS TOUCHDOWN  
MISS WOLFETTE 4221S  
WULF'S CHOPPER 1014C  
MISS WOLFETTE 2151B

	CED	BW	WW	YW	MA	CEM	SC	ST	DOC	CW	REA	YG	MARB	\$MTI
EPDs	1	1.8	44	80	22	-3	0.7	19	24	21	0.70	-0.09	-0.05	42
	30	28	24	21	23	29	P	P	P	P	P	P	P	

- A.I. 6.20.13 to EBFL Ypsilanti 420Y; P.E. 6.22.13 to 8.15.13 to LVLS Yukon 398Y
- Sired by TNUH Blue Print 245H is this double homozygous purebred.
- This is as complete of a female as you will find. She is the perfect size, deep in her fore rib and flank, bold in her rib, big footed and sound and easy in her condition.
- 697S is balanced in her numbers and one of the easiest cows you will find to mate.

Consigned by Milam Cattle Co., Olmstead, KY

Thanks for your consideration of our product. We take pride in propagating quality Limousin and Lim-Flex cattle and are in hopes you appreciate them as much as we do.



LVLS 3202U, service sire for Lots 51 - 61.



LOT 52 JEPS 368Z

## JEPS 368Z

52

Lim-Flex (38) Cow 01.02.12 JEPS 368Z LFF 2009344 Homo Polled / Homo Black

**MAGS WHY** G A R PREDESTINED  
MAGS ROCKCRESS  
BR MIDLAND  
**MAGS SPEEDY GONZALES** ANLC MAGGIE MAY 2112M

B/R NEW DESIGN 036  
G A R EXT 4206  
EXAR NEW DESIGN 2997  
MAGS LARK  
TWIN VALLEY PRECISIONE161  
BR ROYAL LASS 7036-19  
WULFS JOHN HANCOCK 7048J  
ANLC KATIE GIRL 0716K

	CED	BW	WW	YW	MA	CEM	SC	ST	DOC	CW	REA	YG	MARB	\$MTI
EPDs	8	0.7	48	96	27	1	0.4	-	-	14	-0.29	0.40	0.49	59
	P	30	17	12	12	P	P	-	-	P	P	P	P	

- P.E. 5.01.13 to 9.01.13 to LVLS 3202U
- Homozygous black and homozygous polled.
- Sired by the marbling trait leading sired MAGS Why and out of a BR Midland dam.
- 368Z has a .7 birth EPD, 27 milk EPD and a .49 marbling EPD.
- A super replacement with tremendous potential with a 59 MTI.

Consigned by Massey Limousin, London, KY



PBRS Watch This 988W, dam of Lot 53.

## PBRS 182Y

53

PB Limousin (100) Cow 08.17.11 PBRS 182Y NPF 2014515 Double Polled / Black

**MAGS LANDMARK** WULFS TITUS 2149T  
MAGS SHARI  
KRVN NASKAR 013N  
**PBRS WATCH THIS 988W** MAGS NEXT DAY

WULFS REALTOR 1503R  
WULFS MEADOW GRASS 2149M  
GPFF BLAQUE RULON  
MAGS MANDA  
GPFF BLAQUE RULON  
WL JU JU GAL 149J  
AUTO BLACK DAKOTA 129J  
AUTO NATASHA 273G

	CED	BW	WW	YW	MA	CEM	SC	ST	DOC	CW	REA	YG	MARB	\$MTI
EPDs	11	-0.3	38	76	20	5	0.7	-	9	23	0.65	-0.05	-0.10	38
	14	33	21	12	9	13	P	-	P	P	P	P	P	

- P.E. 5.01.13 to 9.01.13 to LVLS 3202U
- Sired by MAGS Landmark and out of a KRVN Naskar 013N is this double polled and black purebred.
- 182Y has a 11 for calving ease, 20 for milk and a .65 for REA.
- This female is long and attractive and has plenty of bone, a big foot and is very sound.

Consigned by Massey Limousin, London, KY

## CJLM MISS KENTUCKY 640Z

54

PB Limousin (88) Cow 01.01.12 CJLM 640Z NPF 2010194 Double Polled / Homo Black

**BOHI TITLELIST 7050T** AUTO DOLLAR GENERAL 122R  
CARROUSELS PINA COLADA  
AUTO BLACK CROSS 133P  
**AUTO MISS MISSOURI 640S** KRVN NABBED 320N

LVLS SECRET WEAPON 4408K  
AUTO KYRIA 232K  
AUTO BLACK DAKOTA 129J  
ELMW GINNIE P58G  
AUTO THE BACHELOR 158L  
EXLR LUVLY 087F  
GPFF BLAQUE RULON

	CED	BW	WW	YW	MA	CEM	SC	ST	DOC	CW	REA	YG	MARB	\$MTI
EPDs	9	0.9	46	90	29	5	0.4	-	-	11	0.48	-0.04	-0.01	44
	15	31	18	11	8	14	P	-	-	P	P	P	P	

- P.E. 5.01.13 to 9.01.13 to LVLS 3202U
- Homozygous black and double polled.
- Sired by BOHI Titlelist 7050T and out of AUTO Miss Missouri 640S, one of the most productive cows at Massey Limousin.
- CJLM Miss Kentucky 640Z is very complete and well made and will make a great replacement female.

Consigned by Massey Limousin, London, KY

## MCC MISS LANDMARK

55

Lim-Flex (75) Cow 09.09.11 CMIL 74Y LFF 2010473 Double Polled / Homo Black

**MAGS LANDMARK** WULFS TITUS 2149T  
MAGS SHARI  
LEACHMAN RIGHT TIME  
**FULC SUPER FOX 314S** LVLS 8943M

WULFS REALTOR 1503R  
WULFS MEADOW GRASS 2149M  
GPFF BLAQUE RULON  
MAGS MANDA  
N BAR EMULATION EXT  
LEACHMAN ERICA 0025  
JCL BLACK OUT  
LVLS JENI 601V

	CED	BW	WW	YW	MA	CEM	SC	ST	DOC	CW	REA	YG	MARB	\$MTI
EPDs	5	1.1	45	89	25	1	0.5	-	10	36	0.21	0.25	0.13	46
	13	32	19	12	10	12	P	-	P	P	P	P	P	

- P.E. 5.01.13 to 9.01.13 to LVLS 3202U
- Homozygous black and double polled.
- 74Y is sired by MAGS Landmark and out of a leading donor for Massey Limousin and Cole Abele, FULC Super Fox 314S.
- This female has tremendous potential and superior genetics.
- MCC Miss Landmark has excellent EPD's with a 25 milk EPD, .21 for REA and a .13 marbling EPD.
- She is long and deep, big hipped and stands square on all corners.

Consigned by Massey Limousin, London, KY

# ELCX CANDY APPLE 526Y

# 56

Lim-Flex (63) Cow 12.03.11 ELCX 526Y LFF 2001080 Double Polled / Red

BR MIDLAND  
**MAGS SCOTLAND**  
 MAGS MARQUEE

CRSL 5064R  
**CC'S UPPER CLASS 526U**  
 AUTO ROSE 619R

TWIN VALLEY PRECISIONE161  
 BR ROYAL LASS 7036-19  
 EXLR DAKOTA 353G  
 MAGS JEWEL  
 WULFS FANFARE 4055F  
 MINE SOUTHERN DOLL 1154L  
 EXAR NEW DESIGN 3903  
 AUTO ROSE 257N

	CED	BW	WW	YW	MA	CEM	SC	ST	DOC	CW	REA	YG	MARB	\$MTI
EPDs	7	1.3	46	85	25	4	0.5	-	7	13	-0.04	0.24	0.23	50
	19	29	19	14	12	19	P	-	P	P	P	P	P	

- P.E. 5.01.13 to 9.01.13 to LVLS 3202U
- Red and double polled.
- 526Y is a 62.5% Lim-Flex sired by MAGS Scotland and out of a 5064R daughter.
- Candy Apple has a moderate birth EPD, 85 yearling EPD, 25 milk EPD and a .23 marbling score.

Consigned by Massey Limousin, London, KY

# ELCX BREAKING DAWN 164 Y

# 57

Lim-Flex (50) Cow 12.06.11 ELCX 164Y LFF 2001082 Double Polled / Double Black

BT CROSSOVER 758N  
**MAGS WINSTON**  
 MAGS STRAWBERRY

CRSL 5064R  
**ELCX BELLE 64W**  
 PCF APACHE BLUE BELLE 628

C A FUTURE DIRECTION 532I  
 BT ROYAL PRIDE 237G  
 EXLR NEW GENERATION 071M  
 MAGS FRUITFUL 487M  
 WULFS FANFARE 4055F  
 MINE SOUTHERN DOLL 1154L  
 ROSEWOOD APACHE 1084  
 PCF BLUE BELLE ULTRAVOX

	CED	BW	WW	YW	MA	CEM	SC	ST	DOC	CW	REA	YG	MARB	\$MTI
EPDs	13	-1.2	46	96	31	5	-	-	-	22	-0.13	0.25	0.33	54
	16	32	20	16	8	15	-	-	-	P	P	P	P	

- P.E. 5.01.13 to 9.01.13 to LVLS 3202U
- Double black and double polled is this 50% Lim-Flex.
- Here is huge numbered MAGS Winston daughter that has tremendous body and rib.
- 164Y has a -1.2 birth EPD, 96 for yearling weight, 31 for milk and a .33 marbling EPD.

Consigned by Massey Limousin, London, KY

# ELCX RITA 88Y

# 58

Lim-Flex (93) Cow 10.26.11 ELCX 88Y LFF 2001070 Double Polled / Double Black

BT CROSSOVER 758N  
**MAGS WINSTON**  
 MAGS STRAWBERRY

SENNETT LODESTAR 502R  
**ELCX STAR STRUCK 88W**  
 OAK HILL H H F ATLAS RITA

C A FUTURE DIRECTION 532I  
 BT ROYAL PRIDE 237G  
 EXLR NEW GENERATION 071M  
 MAGS FRUITFUL 487M  
 JCL LODESTAR 27L  
 DVFC COOKIES CHOICE 215H  
 MF E82 HHF ATLAS 471 J94  
 BLUE RIDGE ALEXA SIBYL H1

	CED	BW	WW	YW	MA	CEM	SC	ST	DOC	CW	REA	YG	MARB	\$MTI
EPDs	12	-0.1	46	97	29	6	-0.3	-	-	34	-0.10	0.29	0.33	54
	16	30	21	15	8	15	P	-	-	P	P	P	P	

- P.E. 5.01.13 to 9.01.13 to LVLS 3202U
- This MAGS Winston daughter is out of a really nice Sennett Lodestar 502R dam.
- Double black and double polled.
- This is a powerful female that is square hipped, long topped and smooth shouldered.
- 88Y has a tremendous EPD portfolio combining calving ease, growth and a 54 MTI.

Consigned by Massey Limousin, London, KY

# ELCX SKY MILES 820Y

# 59

Lim-Flex (50) Cow 10.30.11 ELCX 820Y LFF 2000850 Homo Polled / Double Black

BR MIDLAND  
**MAGS SCOTLAND**  
 MAGS MARQUEE

BASIN FRANCHISE P142  
**ELCX WIZDOM 820W**  
 MAGS ROSE MARIE

TWIN VALLEY PRECISIONE161  
 BR ROYAL LASS 7036-19  
 EXLR DAKOTA 353G  
 MAGS JEWEL  
 C A FUTURE DIRECTION 532I  
 BASIN CHLOE 812L  
 TNUH BLUE PRINT 245H  
 MAGS MANDA

	CED	BW	WW	YW	MA	CEM	SC	ST	DOC	CW	REA	YG	MARB	\$MTI
EPDs	7	0.6	52	94	29	3	0.6	-	7	27	-0.06	0.37	0.38	56
	19	33	21	16	14	19	P	-	P	P	P	P	P	

- P.E. 5.01.13 to 9.01.13 to LVLS 3202U
- Homozygous polled and double black.
- A 50% Lim-Flex sired by MAGS Scotland that goes back to a TNUH Blue Print 245H and MAGS Manda dam.
- She has a 52 weaning and 94 yearling EPD respectively and a 29 milk EPD.
- If you are looking for efficient and easy doing female then don't over look 820Y.

Consigned by Massey Limousin, London, KY

# SBLX ZARB

# 60

Lim-Flex (50) Cow 03.23.12 SBLX 788Z LFF 2009394 Double Polled / Homo Black

DHVO DEUCE 132R  
**MAGS WAZOWSKI**  
 BOHI RED ROBIN 282R

BON VIEW NEW DESIGN 1407  
**EXLR BARB 170R**  
 EXLR BARB 1027M

GPFF BLAQUE RULON  
 AMY JO DHAN 20L  
 CONNEALY LEAD ON  
 MAGS MANUELA  
 B/R NEW DESIGN 036  
 BON VIEW PRIDE 664  
 EXLR BROADWAY 041E  
 C & C BARB

	CED	BW	WW	YW	MA	CEM	SC	ST	DOC	CW	REA	YG	MARB	\$MTI
EPDs	9	0.0	54	97	29	2	0.4	-	10	54	0.01	0.38	0.49	61
	P	32	27	21	11	P	11	-	P	19	18	18	18	

- P.E. 5.01.13 to 9.01.13 to LVLS 3202U
- SBLX Zarb is out of one of the breeds highest marbling cows and one of the most noted donors.
- Sired by MAGS Wazowski is this homozygous black and double polled Lim-Flex that sells bred to LVLS 3202U.
- 788Z has a 0 birth EPD, 29 for milk, .49 marbling EPD and a MTI of 61.
- In addition to superb numbers she scanned a 4.93 IMF.

Consigned by Massey Limousin, London, KY

# ALER 545Y

# 61

Lim-Flex (69) Cow 11.23.11 LWE 545Y LFF 2023235 Double Polled / Black

WULFS TITUS 2149T  
**MAGS PAYDAY**  
 MAGS SNICKERS

AUTO BLAQUE LABEL 176S  
**AUTO HOLLY 270U**  
 MISS GATEWAY 1121J

WULFS REALTOR 1503R  
 WULFS MEADOW GRASS 2149M  
 BR MIDLAND  
 MAGS LADY ACE  
 LESF ASPHALT 9N  
 EXLR REBECA 1019P  
 LOGAN'S DUAL RUN  
 BEELINE PRINCESS E111

	CED	BW	WW	YW	MA	CEM	SC	ST	DOC	CW	REA	YG	MARB	\$MTI
EPDs	6	1.2	46	92	22	2	0.6	-	-	11	0.12	0.20	0.19	49
	P	P	P	P	P	P	P	-	-	P	P	P	P	

- P.E. 5.01.13 to 9.01.13 to LVLS 3202U
- This black and double polled Lim-Flex is sired by MAGS Payday out of a AUTO Blaque Label 176S dam.
- She has a moderate birth EPD, 22 for milk and a .19 for marbling.
- We love the length of top, the smoothness of shoulder and over all look of this replacement female.

Consigned by Massey Limousin, London, KY



(L#2845)

R&R MARKETING  
COMPANY  
P.O. Box 281677  
Nashville, TN 37228

FIRST CLASS  
PRE-SORTED  
PAID

Montezuma, Iowa  
Permit No. 30

Catalog  
designed by



designs by  
arin  
[www.designsbyarin.com](http://www.designsbyarin.com)

# MILAM & FRIENDS



Morris



Morris