

MI

QUALITY IN VOLUME



Welcome to Maternal Legends,

The past year has been the most rewarding of times for being a seedstock supplier here at Sullivan Farms. It is so gratifying to hear the positive comments, from bred heifer customers expressing their satisfaction on their SULL females, many with strong endorsements on the mothering ability and their SULL Payday calves. From our young exhibitors, the reports of champions this summer and fall have come in at a staggering rate from all across the nation. Thank you for your hard work and dedication junior families.

Sullivan Farms prides itself on stacking cow families for multiple generations with an emphasis on structural integrity for a more predictable and consistent product. This philosophy allows us to offer Quality in Volume ... available at all price points. Please study pages 52 and 53. This proven formula for success truly does exist every year in Dunlap, Iowa, at all prices cheaper than what one may think.

It is a tremendous time to be in the beef industry. It is nice to see the cow calf producer get rewarded for their efforts. It is time to cull the bottom third of your herd and invest in proven genetic success.

A very special thanks to the entire Sullivan Farms crew. What a group of hard working and humble employees. Your passion drives this program, your loyalty, longevity and knowledge is respected by all. I can't thank you enough.

To our customers, it is our goal to build a long lasting relationship where the cattle and people are here for the long haul. We are here to help in any way possible. We sincerely thank you for your interest in our program.



On the cover are bred heifers selling as
Lot 13E, a Red Demand daughter;
Lot 18, a Red Reward daughter;
& Lot 6E, an Ace of Diamonds daughter.

Videos on-line October 10th at
www.maternallegends.com.



Maternal Legends

SULLIVAN

farms

John, Dede, Sara & Sage • James • Nick

712.263.0263 • Dunlap, Iowa 51529

www.maternallegends.com

John Elder, 402.650.1385

Josh Elder, 402.650.1380



SHORTHORN HEIFERS

PAGES 5 - 17, 26 - 33 & 38 - 49

SHORTHORN PLUS HEIFERS

PAGES 18 - 24, 34 - 37 & 42 - 44

ANGUS HEIFERS

PAGES 65 - 71

CHAROLAIS/CHAROLAIS COMPOSITE HEIFERS

PAGES 74 - 76

CHIANINA/CHIANGUS HEIFERS

PAGES 34 - 36 & 80 - 81

POLLED & HORNED HEREFORDS HEIFERS

PAGES 55 - 56

MAINE-ANJOU/MAINETAINER HEIFERS

PAGES 14 - 16, 31, 39, 42 - 43 & 49

RED ANGUS HEIFERS

PAGES 72 - 73

FOUNDATION SIMMENTAL HEIFERS

PAGES 77

Livestock Representatives

Montie D. Soules, <i>ASA Executive Secretary</i>	918.645.4322
Jake Alden, <i>ASA Field Representative</i>	402.660.9048
Bruce Brooks, <i>Auctioneer</i>	580.695.2036
Darryl Rahn, <i>Shorthorn Country</i>	217.473.1124
Stuart Wilson, <i>Livestock Insurance</i>	217.454.9355
Dwyer Cattle Services	Bob, 309.337.1404 & Nick, 309.337.6404
Dr. Roger Hunsley	502.468.5714
Kevin Wendt	419.566.1599
Tyler Humphrey	419.230.3450
Kent Jaecke	405.408.2440
Alan K. Sears	970.396.7521
Jeff Bedwell	580.822.5590
Frank Sullivan	612.860.6665
Aaron Hahn	309.645.4488
Jeff Sargent	903.624.7265
Tom Rooney	515.491.6025
Craig Talkington	785.623.1789
Joel Edge	319.540.1731
Scott Harden	217.417.8335
Jim Suver	402.690.7354
Scott Trennepohl	765.620.1700
Colt Keffer	765.376.8784
Brian Kohlstaedt	816.716.4614
Joe Rickabaugh	785.633.3188
John Tucker	308.530.5765
Cody Lowderman	309.313.2171
Monte W. Lowderman	309.255.0110
Tom Bigilini	417.827.8482
Mark McClintock	325.650.4223

Accommodations

SALE HEADQUARTERS, Denison Inn, Denison, Iowa	712.263.2500
Boulder Inn & Suites, Denison, Iowa	712.263.2200
Travelodge, Denison, Iowa	712.263.5081
Settle Inn, Harlan, Iowa	712.755.2930
Days Inn, Missouri Valley, Iowa	712.642.4003
Oak Tree Inn, Missouri Valley, Iowa	712.642.3000
Cobblestone Inn, Avoca, Iowa	712.307.6006
Harrah's Casino & Hotel, Council Bluffs, Iowa	712.329.6000

Trucking & Registration

For trucking assistance, call John Elder, 402.650.1385.
For registration assistance, call Summer Pieper, 712.269.5925

Air Travel

Omaha, Nebraska : 50 miles Des Moines, Iowa : 120 miles
Denison, Iowa : 18 miles, 712.263.6392 ***Hard surfaced & lighted runway, length 5,000 feet*

Photos

Photos by Darla Aegerter & cover photo by Luke Bolin.

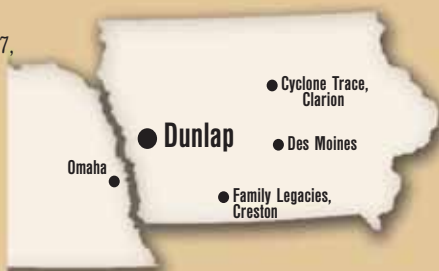
Maternal Legends & Leading A Legacy On-Line

At www.LiveAuctions.tv. See page 73 for more information.

Directions to Farm

Sullivan Farms is located on Hwy. 37,
1/4 mile East of Dunlap.
20 minutes from I-80 or I-29

Omaha, NE is 1 hour
Des Moines, IA is 2 hours
Sioux Falls, SD is 2 1/2 hours
Kansas City, MO is 3 1/2 hours
Oklahoma City, OK is 7 1/2 hours
Indianapolis, IN is 9 hours
Dallas/Fort Worth, TX is 11 1/2 hours



MATERNAL LEGENDS SALE

Sunday, October 19, 2014

12:00 PM CST, at the farm, Dunlap, IA

Schedule

FRIDAY, OCTOBER 17th

5:00 PM Shorthorns Up Front Sale, Clarion, Iowa

SATURDAY, OCTOBER 18th

12:30 PM Family Legacies Sale, Creston, Iowa

3:00 PM Cattle available for viewing.
Food and refreshments will be served all day.

4:00 PM Watch Live, candid interviews with Livestock World's
'The Anchorman', Chris Terembes on www.LiveAuctions.tv

6:00 PM Prime Rib Meal & Social at Sullivan Farms

7:00 PM Leading A Legacy Junior National Fundraiser Sale

7:30 PM Vegas Night

SUNDAY, OCTOBER 19th

8:00 AM Complimentary Breakfast at Sullivan Farms

10:00 AM Complimentary refreshments and a beef meal
Watch Live, candid interviews with Livestock World's
'The Anchorman', Chris Terembes on www.LiveAuctions.tv

12:00 PM Sullivan Farms Maternal Legends Sale
at the Farm, Dunlap, Iowa

Sale Day Phones

Josh Elder	402.650.1380	John Sullivan.....	712.263.0263
John Elder	402.650.1385	Nate Tice	717.926.0874
Sale Barn	712.643.2126	Drew Davis	712.592.9627
James Sullivan	712.263.9434	Summer Pieper	712.269.5925

Sullivan Farms Marketing Representative

Josh Elder : 402.650.1380

Sale Manager's

AGITATER MARKETING : Jeff K. & Darla Aegerter : 402.641.4696
jaegerter@neb.rr.com : www.aegertercattle.com
520 South Evergreen Drive, Seward, NE 68434

CAGWIN CATTLE SERVICES, INC. : Dr. Don Cagwin, cell 217.341.7552
Cindy Cagwin-Johnston, 217.452.3056
PO Box 77, Virginia, IL 62691 : 217.452.3051 : FAX: 217.452.3053
cagwincattle@casscomm.com : www.cagwincattle.com

Marketing Representative

R&R MARKETING COMPANY : Randy Ratliff
615.330.2735 : randy@rrmktg.com : www.rrmktg.com

Lady Crystal/Dream Girl

cow family



SULL Crystal's Tootie

Grand Champion Female, 2013 NAILE Open Show
 Grand Champion Female, 2013 NAILE Junior Show
 Grand Champion Female, 2013 American Royal
 Grand Champion Female, 2013 Iowa State Fair Open Show



SULL Crystal's Lucy

Grand Champion Female,
 2012 National Junior Shorthorn Show
 Grand Champion Female,
 2012 NWSS Jr Show



SULL Crystals First

Fourth Overall Champion Female,
 2014 National Junior Shorthorn Show
 Congratulations Andrew Hodges!



Sherwood Lady Crystal



SS Dream Lady 161

Reserve Grand Champion Female, 2013 NWSS Junior Show



AF Margies Dream Lady 05

la

04.11.14 Heifer LE 4120 Polled Reg. # 4211407

SULL Crystal Charms *x

SULL RIGHT DIRECTION CF TRUMP X *x, roan
ET *x, r/w
NPS DESERT ROSE 004 *, r/w

SULL LADY CRYSTAL-434P-1 WHR SONNY 8114 ET *x, roan
ET *x, white
AF MARGIES DREAM LADY 05 ET *, roan

Shorthorn • BW:1.0; WW:60.5; YW:68.1; M:24.9

- A farm favorite from day one! This heifer with her roan color and eye appeal will be a head turner at all the shows.
- Her dam, Lady Crystal 434P, in the last two years has produced multiple champions at major shows - 2013 Grand Champion Female NAILE Junior and Open Shows; 2013 Grand Champion Female at the NWSS Junior Show; and the 2012 National Junior Heifer Show Grand Champion Female. This is the power of consistent production.



lb

03.28.14 Heifer LE 4277 Polled Reg. # 4211391

SULL Crystals Symphony *x

SULL RIGHT DIRECTION CF TRUMP X *x, roan
ET *x, r/w
NPS DESERT ROSE 004 *, r/w

SHERWOOD LADY CRYSTAL WHR SONNY 8114 ET *x, roan
ET *x, white
AF MARGIES DREAM LADY 05 ET *, roan

Shorthorn • BW:2.1 WW:63.3 YW:72.8 M:23.1

- Ultra complete show heifer with worlds of potential and a pedigree that just keeps getting better.
- Her dam, Lady Crystal 434P, in the last two years has produced multiple champions at major shows - 2013 Grand Champion Female NAILE Junior and Open Shows; 2013 Grand Champion Female at the NWSS Junior Show; and the 2012 National Junior Heifer Show Grand Champion Female. This is the power of consistent production.



lc

02.24.14 Heifer LE 4121 Polled Reg. # 4211425

SULL Crystal's Tootsie *x

SULL RIGHT DIRECTION CF TRUMP X *x, roan
ET *x, r/w
NPS DESERT ROSE 004 *, r/w

SHERWOOD LADY CRYSTAL WHR SONNY 8114 ET *x, roan
ET *x, white
AF MARGIES DREAM LADY 05 ET *, roan

Shorthorn • BW:2.1 WW:63.3 YW:72.8 M:23.1

- You have to admire the extra substance and power in this heifer. She also possesses a beautiful look.
- Her dam, Lady Crystal 434P, in the last two years has produced multiple champions at major shows - 2013 Grand Champion Female NAILE Junior and Open Shows; 2013 Grand Champion Female at the NWSS Junior Show; and the 2012 National Junior Heifer Show Grand Champion Female. This is the power of consistent production.





66 **1d**

03.14.14 Heifer LE 4309 Polled Reg. # 4211471

SULL Crystal Rings *x

CF TRUMP X *x, roan
 SULL RIGHT DIRECTION ET *x, r/w
 NPS DESERT ROSE 004 *, r/w
 WHR SONNY 8114 ET *x, roan
 SHERWOOD LADY CRYSTAL ET *x, white
 AF MARGIES DREAM LADY 05 ET *, roan

Shorthorn • BW:2.1 WW:63.3 YW:72.8 M:23.1

- An extra-long heifer from end to end that is still green in her condition but has the flawless structure and impeccable pedigree to someday stand in front of the backdrop.
- Her dam, Lady Crystal 434P, in the last two years has produced multiple champions at major shows - 2013 Grand Champion Female NAILE Junior and Open Shows; 2013 Grand Champion Female at the NWSS Junior Show; and the 2012 National Junior Heifer Show Grand Champion Female. This is the power of consistent production.



66 **1e**

04.02.14 Heifer LE 4148 Polled Reg. # 4211470

SULL Crystal Light *x

CF TRUMP X *x, roan
 SULL RIGHT DIRECTION ET *x, r/w
 NPS DESERT ROSE 004 *, r/w
 WHR SONNY 8114 ET *x, roan
 SHERWOOD LADY CRYSTAL ET *x, white
 AF MARGIES DREAM LADY 05 ET *, roan

Shorthorn • BW:2.1 WW:63.3 YW:72.8 M:23.1

- A young green sleeper, one that keeps grabbing your attention. She is coming on.
- Her dam, Lady Crystal 434P, in the last two years has produced multiple champions at major shows - 2013 Grand Champion Female NAILE Junior and Open Shows; 2013 Grand Champion Female at the NWSS Junior Show; and the 2012 National Junior Heifer Show Grand Champion Female. This is the power of consistent production.



66 **1f**

04.29.14 Heifer LE 4258 Polled Reg. # 4211408

SULL Crystal Wand 4258 *x

WHR SONNY 8114 ET *x, roan
 LITTLE CEDAR AVIATOR 503X *x, red
 NPS ROSES RIDER 031 ET *x, r/w/m
 WHR SONNY 8114 ET *x, roan
 SULL LADY CRYSTAL-434P-1 ET *x, white
 AF MARGIES DREAM LADY 05 ET *, roan

Shorthorn • BW:2.1 WW:63.3 YW:72.8 M:23.1

- One of the most eye appealing Aviator daughters to come out of the Lady Crystal family. This heifer has the look and maternal design to compete at a high level.
- Her dam, Lady Crystal 434P, in the last two years has produced multiple champions at major shows - 2013 Grand Champion Female NAILE Junior and Open Shows; 2013 Grand Champion Female at the NWSS Junior Show; and the 2012 National Junior Heifer Show Grand Champion Female. This is the power of consistent production.

661 **lg**

03.21.14 Heifer LE 4310 Polled Reg. # 4211417

SULL Cloudy Crystal *x

WHR SONNY 8114 ET *x, roan

LITTLE CEDAR AVIATOR ^{503X} *x, red
NPS ROSES RIDER 031 ET *x, r/w/m

WHR SONNY 8114 ET *x, roan

SULL LADY CRYSTAL-434P-1 ET *x, white
AF MARGIES DREAM LADY 05 ET *x, roan

Shorthorn • BW:1.6 WW:51.0 YW:60.0 M:21.0

- A very highly competitive show heifer with donor potential written all over her. This is one that we have been excited about since day one.
- Her dam, Lady Crystal 434P, in the last two years has produced multiple champions at major shows - 2013 Grand Champion Female NAILE Junior and Open Shows; 2013 Grand Champion Female at the NWSS Junior Show; and the 2012 National Junior Heifer Show Grand Champion Female. This is the power of consistent production.



661 **lh**

02.19.14 Heifer LE 4125 Polled Reg. # 4211398

SULL Crystal Ball 4125 *x

WHR SONNY 8114 ET *x, roan

LITTLE CEDAR AVIATOR ^{503X} *x, red
NPS ROSES RIDER 031 ET *x, r/w/m

WHR SONNY 8114 ET *x, roan

SULL LADY CRYSTAL-434P-1 ET *x, white
AF MARGIES DREAM LADY 05 ET *x, roan

Shorthorn • BW:1.6 WW:51.1 YW:60.1 M:21.0

- Dark roan, big bodied, powerfully made heifer that will compete in the show ring and has cow written all over her after her show career.
- Her dam, Lady Crystal 434P, in the last two years has produced multiple champions at major shows - 2013 Grand Champion Female NAILE Junior and Open Shows; 2013 Grand Champion Female at the NWSS Junior Show; and the 2012 National Junior Heifer Show Grand Champion Female. This is the power of consistent production.



661 **li**

05.03.14 Heifer LE 4350 Polled Reg. # 4211399

SULL Crystal Clear 4350 *x

SULL RED REWARD 9321 7/8 *x, red

SULL RED BLOOD ET *x, red
RL CUMBERLAND 5N35 *, roan

WHR SONNY 8114 ET *x, roan

SULL LADY CRYSTAL-434P-1 ET *x, white
AF MARGIES DREAM LADY 05 ET *x, roan

Shorthorn • BW:0.1 WW:50.2 YW:57.2 M:22.4

- This young, roan heifer has a little extra hip and power yet still possesses the Lady Crystal show ring pizzazz. She will be hard to get around in the show ring.
- Her dam, Lady Crystal 434P, in the last two years has produced multiple champions at major shows - 2013 Grand Champion Female NAILE Junior and Open Shows; 2013 Grand Champion Female at the NWSS Junior Show; and the 2012 National Junior Heifer Show Grand Champion Female. This is the power of consistent production.





1j 05.14.14 Heifer LE 4345 Polled Reg. # 4211420
SULL Crystals Energy *x
 SULL RED BLOOD ET *x, red
 SULL RED REWARD 9321 7/8 *x, red
 RL CUMBERLAND 5N35 *, roan
 WHR SONNY 8114 ET *x, roan
 SULL LADY CRYSTAL-434P-1 ET *x, white
 AF MARGIES DREAM LADY 05 ET *, roan

Shorthorn • BW:0.1 WW:50.2 YW:57.2 M:22.4

- The Red Blood x Lady Crystal calves are very consistent and this is an example of why. A younger, greener heifer like her sisters that will keep getting better every day.
- Her dam, Lady Crystal 434P, in the last two years has produced multiple champions at major shows - 2013 Grand Champion Female NAILE Junior and Open Shows; 2013 Grand Champion Female at the NWSS Junior Show; and the 2012 National Junior Heifer Show Grand Champion Female. This is the power of consistent production.



1k 05.16.14 Heifer LE 4344 Polled Reg. # 4211404
SULL Crystal Juju 4344 *x
 SULL RED BLOOD ET *x, red
 SULL RED REWARD 9321 7/8 *x, red
 RL CUMBERLAND 5N35 *, roan
 WHR SONNY 8114 ET *x, roan
 SULL LADY CRYSTAL-434P-1 ET *x, white
 AF MARGIES DREAM LADY 05 ET *, roan

Shorthorn • BW:0.1 WW:50.2 YW:57.2 M:22.4

- A young May heifer but one that has the proven pedigree and the eye appeal and completeness that is bound for greatness.
- Her dam, Lady Crystal 434P, in the last two years has produced multiple champions at major shows - 2013 Grand Champion Female NAILE Junior and Open Shows; 2013 Grand Champion Female at the NWSS Junior Show; and the 2012 National Junior Heifer Show Grand Champion Female. This is the power of consistent production.



1m 06.11.14 Heifer LE 4353 Horned Reg. # 4211414
SULL-TSF Dream Ladies *
 CF SOLUTION X ET *x, r/w/w
 CF TRUMP X *x, roan
 NPS DESERT ROSE 004 *, r/w
 HD SWAGGER 802 ET *x, roan
 SS DREAM LADY 161 ET *x, red
 SS DREAM LADY 424 ET *x, red

Shorthorn • BW:4.4 WW:78.0 YW:98.7 M:20.0

- This heifer will catch your eye on sale day and will command you to spend a little extra time studying her. This young June female is an example of what great cow families are all about.
- SS Dream Lady 161 was the 2013 NWSS Reserve Champion.
- Owned with Terry Stade Farms

1n

03.28.14 Heifer LE 4311 Horned Reg. # 4211411

SULL-TSF Dream Lady *

SULL RIGHT DIRECTION ET ^{*x, r/w}
 CF TRUMP X *x, roan
 NPS DESERT ROSE 004 *x, r/w
 HD SWAGGER 802 ET *x, roan
 SS DREAM LADY 161 ET *x, red
 SS DREAM LADY 424 ET *x, red

Shorthorn • BW:2.3 WW:66.9 YW:77.8 M:30.3

- This heifer is a sale highlight! SULL-TSF Dream Lady has a lot of the same traits of her dam SS Dream Lady 161 plus the extension of her sire, SULL Right Direction.
- SS Dream Lady 161 was the 2013 NWSS Reserve Champion.
- Owned with Terry Stade Farms



1p

01.20.13 Bred LE 3285 Polled Reg. # 4210794

SULL Right Dreams 3285 *x

SULL RIGHT DIRECTION ET ^{*x, r/w}
 CF TRUMP X *x, roan
 NPS DESERT ROSE 004 *x, r/w
 CCC GOLD RUSH *x, red
 SS DREAM LADY 424 ET *x, red
 AF MARGIES DREAM LADY 05 ET *x, roan

Shorthorn • BW:1.7 WW:63.8 YW:72.6 M:28.6

- Bred to SULL Red Demand; due January 29, 2015
- This heifer's substance of bone, overall mass and dimension makes her the definition of brood cow.
- Dream Lady 424 has been a dominate cow in the Shorthorn breed producing SS Dream Lady 161 shown Sammi Schrag that was Reserve Champion Junior Heifer at the NWSS.



1q

02.07.13 Bred LE 3364 Horned Reg. # 4210798

SULL Traveling Dream *

SULL TRAVELER 9807 ET *x, roan
 SULL GNCC ASSET ET *x, r/w
 SULL SABLE DELIGHT ET *x, red
 CCC GOLD RUSH *x, red
 SS DREAM LADY 424 ET *x, red
 AF MARGIES DREAM LADY 05 ET *x, roan

Shorthorn • BW:2.4 WW:62.8 YW:75.9 M:25.1

- Bred to SULL Red Demand; due January 29, 2015
- This ultra-feminine, powerfully constructed Traveler daughter should click well with the overall softness of SULL Red Demand.
- Dream Lady 424 has been a dominate cow in the Shorthorn breed producing SS Dream Lady 161 shown by Sammi Schrag that was Reserve Champion Junior Heifer at the NWSS.





1r 01.10.13 Bred LE 3058 Polled Reg. # pending
SULL Dreamer 3058
 CCC GOLD RUSH *x, red
 WHR DEIDRA D 8R72 ET *x, roan
 STUDERS PRETENDER 96TH *x, red
 SULL DREAM LADY 05-3 ET *x, roan
 AF IN MY DREAMS 487 ET *x, roan

Shorthorn • BW:3.3 WW:54.9 YW:64.8 M:23.2

- Bred to Free K-Kim Hot Commodity; due February 4, 2015
- This is one of the best genetic pieces to sell this year. The Gold Rush females out of Dream Lady 05 have proven time and time again how valuable they are.
- This is a complete outcross pedigree in an attractive phenotype package, that is hard to come by. The Dream Lady/Lady Crystal cow family has sure produced their share of popular genetics the last two years.



1s 03.13.13 Bred LE 3243 Polled Reg. # 4210793
SULL Dream Lady 3243 *x
 WHR SONNY 8114 ET *x, roan
 CF TRUMP X *x, roan
 WR4 RODEO CUMBERLAND 3R52 *x, red
 STUDERS PRETENDER 96TH *x, red
 AF MARGIES DREAM LADY 05 ET *x, roan
 AF IN MY DREAMS 487 ET *x, roan

Shorthorn • BW:2.9 WW:53 YW:64.0 M:19.0

- Bred to Mr. Hankey Angus bull; due January 29, 2015
- Extremely feminine, correct in her lines and flawless structured. This heifer is mated to one of our newest calving ease Angus bulls and should click very well.
- This heifer's full sister, Lady Crystal 434P, has produced champion after champion after champion the last few years.



1t 02.11.13 Bred LE 3333 Horned Reg. # 4210795
SULL Dreamer 3333 *
 WHR SONNY 8114 ET *x, roan
 CF TRUMP X *x, roan
 WR4 RODEO CUMBERLAND 3R52 *x, red
 STUDERS PRETENDER 96TH *x, red
 AF MARGIES DREAM LADY 05 ET *x, roan
 AF IN MY DREAMS 487 ET *x, roan

Shorthorn • BW:4.4 WW:78.0 YW:98.7 M:20.0

- Bred to SULL Payday; due January 29, 2015
- Long, extended and feminine from some of the most dominate genetics in the Shorthorn breed.
- This heifer's full sister Lady Crystal 434P the last few years has produced champion after champion after champion.



CYT Max Rosa 1145

A new young, elite donor cow at Sullivan Farms.

Max Rosa

cow family



CYT Max Rosa 9111

2

12.07.13 Heifer

SULL Teets Max Rosa *x

LE 4974 Polled Reg. # 4211474

CF TRUMP X *x, roan

WR4 RODEO CUMBERLAND 3R52 *, red

GFS CREOLE 9590 ET *x, red

HOMEDALE TO THE MAX, roan

WHR SONNY 8114 ET *x, roan

HOMEDALE MAX ROSA *x, roan

Shorthorn • BW:3.5 WW:49.9 YW:59.7 M:14.0



- Donor cow!! Not only will this December heifer be highly competitive in the show ring, but comes from a long line of proven genetics that produce champions. Her dam is now deceased and there is no frozen egg bank. This is it!
- This heifer is a full sister to the NWSS Champion, Mindemann Max Rosa 310, shown by the Darbyshire family, which produced the two-time National Champion Max Rosa 9111 shown by the Crall family.
- Owned with Teets Farms

Join Us!

We invite everyone to join us on Saturday evening, October 18th for a complimentary prime rib meal and drinks, a casino Vegas night and the Funding the Future Junior National Fundraiser.

A very special Thank You for all who have showed interest in our program and have attended our Maternal Legends Sale.

Videos of sale cattle on-line October 10th at www.youtube.com/SullivanShorthorn

Rose Mary

cow family



SULL Rose Mary 636
2007 National Champion Female
Supreme Champion Heifer, 2007 NAILE
Congratulations to the O'Sullivan Family



SULL Special Rose 3280
Division Champion,
2013 Louisville
Reserve Division
Champion, 2014
NWSS
Congratulations to
the Aegerter Family



SULL Blooded Ruby 3278
Reserve Supreme Champion Female, 2014 Illinois State Fair; Grand Champion Shorthorn,
2014 Illinois State Fair Junior Show; Grand Champion Polled Shorthorn, 2014 Illinois
State Fair Open Show ... Congratulations to the Gellerman Family



3a 04.09.14 Heifer LE 4164 Polled Reg. # 4211525
TEGM RED ADVANTAGE 100T *x, red
SULL RED REWARD 9321 *xar, red
MCV MARGIE MILLION 503Q *x *, roan
CF TRUMP X *x, roan
SULL ROSE MARY -1 ET CL *x, r/w
NPS DESERT ROSE 004 *, r/w

Shorthorn/MaineTainer • BW:1.5 WW:59.1 YW:71.2 M:18.0

- This heifer is one of our favorites in the open heifer offering. She has the unique combination of a flawless structure, cow power and all still in a feminine package. This one is hard to put a hole in. We are sure she will be one to find her way to the backdrop.
- This heifer's full sister, SULL Roses Are Red, was a many time champion including 2014 NWSS Reserve Champion, Champion Bred & Owned at Junior Nationals and 2014 Champion at Iowa State Fair Open Show.

3b**SULL Rose Mary's Way *x**

01.06.14 Heifer LE 4114 Polled Reg. # 4211424

SULL RED BLOOD ET *x, red

SULL RED REWARD 9321 7/8 *x, red

RL CUMBERLAND 5N35 *, roan

SULL ROSE MARY 636-5 ET CL

*x, r/w
CF TRUMP X *x, roan

NPS DESERT ROSE 004 *, r/w

Shorthorn • BW:2.8 WW:60.3 YW:71.2 M:17.6

- Show heifer ALERT! This heifer has been a top pick since she was brought into the barn. Complete and powerful, with a stunning profile.
- Stemming from one of the most successful cow families in the shorthorn breed SULL Rose Mary 636 was herself the 2007 National Champion Female, National Junior Show Champion and Supreme Champion Female Overall Breeds at the NAILE. Her full sisters SULL Red Rose Mary and HD Ruby were National Champions as well. Her full brothers CF Solution and SULL Right Direction have been two of the most dominate sires in the shorthorn breed.

**3c****SULL Rose Mary 4165 *x**

03.10.14 Heifer LE 4165 Polled Reg. # 4211397

SULL RED BLOOD ET *x, red

SULL RED REWARD 9321 7/8 *x, red

RL CUMBERLAND 5N35 *, roan

SULL ROSE MARY 636-5 ET CL

*x, r/w
CF TRUMP X *x, roan

NPS DESERT ROSE 004 *, r/w

Shorthorn • BW:2.8 WW:60.3 YW:71.2 M:17.6

- An attractive, deep red, show heifer prospect with the extra pizzazz and show ring presence. A lights out show heifer prospect.
- Stemming from one of the most successful cow families in the shorthorn breed, SULL Rose Mary 636 was herself the 2007 National Champion Female, National Junior Show Champion and Supreme Champion Female Overall Breeds at the NAILE. Her full sisters SULL Red Rose Mary and HD Ruby were National Champions as well. Her full brothers CF Solution and SULL Right Direction have been two of the most dominate sires in the shorthorn breed.

**3d****SULL Rose Mary 4295 *x**

05.09.14 Heifer LE 4295 Polled Reg. # 4211410

SULL RED BLOOD ET *x, red

SULL RED REWARD 9321 7/8 *x, red

RL CUMBERLAND 5N35 *, roan

SULL ROSE MARY 636-3 ET CL

*x, r/w
CF TRUMP X *x, roan

NPS DESERT ROSE 004 *, r/w

Shorthorn • BW:2.1 WW:59.8 YW:70.5 M:18.8

- A unique eye catching color pattern with the quality to stand out, not only on sale day, but in the show ring as well. A little younger and greener with worlds of potential.
- Stemming from one of the most successful cow families in the shorthorn breed SULL Rose Mary 636 was herself the 2007 National Champion Female, National Junior Show Champion and Supreme Champion Female Overall Breeds at the NAILE. Her full sisters SULL Red Rose Mary and HD Ruby were National Champions as well. Her full brothers CF Solution and SULL Right Direction have been two of the most dominate sires in the shorthorn breed.





3e

02.27.14 Heifer

SULL Red Rose 4094 *x

LE 4094 Polled Reg. # 4211423

SULL RED BLOOD ET *x, red

SULL RED REWARD 9321 7/8 *x, red

RL CUMBERLAND 5N35 *, roan

HD LITTLE SISTER 705 ET *x, r/w/m

CF TRUMP X *x, roan

NPS DESERT ROSE 004 *, r/w

Shorthorn • BW:2.9 WW:60.5 YW:71.6 M:17.5

- Again, the Red Blood females have had extremely consistent and impressive calf crops, especially with the Rose Mary blood line.
- Stemming from one of the most successful cow families in the Shorthorn breed SULL Rose Mary 636 was herself the 2007 National Champion Female, National Junior Show Champion and Supreme Champion Female Overall Breeds at the NAILE. Her full sisters SULL RED Rose Mary and HD Ruby were National Champions as well. Her full brothers CF Solution and SULL Right Direction have been two of the most dominate sires in the Shorthorn breed.



3f

03.16.14 Heifer

SULL Desert Rose 4159 *x

LE 4159 Polled Reg. # 4211401

SULL RED BLOOD ET *x, red

SULL RED REWARD 9321 7/8 *x, red

RL CUMBERLAND 5N35 *, roan

HD LITTLE SISTER 705 ET *x, r/w/m

CF TRUMP X *x, roan

NPS DESERT ROSE 004 *, r/w

Shorthorn • BW:2.9 WW:60.5 YW:71.6 M:17.5

- A real looker here! Powerfully built, smooth and photogenic in deep red pattern.
- Stemming from one of the most successful cow families in the Shorthorn breed SULL Rose Mary 636 was herself the 2007 National Champion Female, National Junior Show Champion and Supreme Champion Female Overall Breeds at the NAILE. Her full sisters SULL Red Rose Mary and HD Ruby were National Champions as well. Her full brothers CF Solution and SULL Right Direction have been two of the most dominate sires in the Shorthorn breed.



3g

03.22.14 Heifer

SULL Rose Mary Reward *x

LE 4163 Polled Reg. # 4211426

SULL RED REWARD 9321 7/8 *x, red

TEGM RED ADVANTAGE 100T 3/4 *x, red

MCV MARGIE MILLION 503Q *x, r/w/m

SULL RED ROSEMARY -2 ET CL *x, red

CF TRUMP X *x, roan

NPS DESERT ROSE 004 *, r/w

Shorthorn/MaineTainer • BW:0.5 WW:57.4 YW:67.2 M:21.9

- A great opportunity to own the hottest genetics in the breed! This full sib to many of the breed greats has a lot of potential as a brood cow producer as well as a show heifer.
- This heifer's full sister, SULL Roses Are Red, was a many time champion including 2014 NWSS Reserve Grand Champion, Grand Champion Bred & Owned at Junior Nationals and 2014 Grand Champion Shorthorn at Iowa State Fair Open Show.

3h

SULL Mary Reward *x

01.13.13 Bred LE 3205 Polled Reg. # 4210791

SULL RED REWARD 9321 7/8 *x, red
 TEGM RED ADVANTAGE 100T 3/4 *x, red
 MCV MARGIE MILLION 503Q *x, r/w/m

SULL RED ROSEMARY -2 ET CL *x, red
 CF TRUMP X *x, roan
 NPS DESERT ROSE 004 *, r/w

Shorthorn/MaineTainer • BW:0.5 WW:57.4 YW:67.2 M:21.9

- Bred to SULL Payday; due February 22, 2015
- This may be one of the best bred heifers that we have ever offered in the Maternal Legends Sale. This type of female with her quality and genetics are the definition of a cash cow. Her pedigree, individual quality and performance data offers endless mating options.
- Her popular full sister, SULL Roses Are Red, has been a dominate force in the show ring that comes from a pedigree of champions. The Rose Mary cow family consistently makes champions and breed leading sires.



3i

SULL Reward Mary 3467 *x

02.10.13 Bred LE 3467 Polled Reg. # 4211541

SULL RED REWARD 9321 7/8 *x, red
 TEGM RED ADVANTAGE 100T 3/4 *x, red
 MCV MARGIE MILLION 503Q *x, r/w/m

SULL RED ROSEMARY -2 ET CL *x, red
 CF TRUMP X *x, roan
 NPS DESERT ROSE 004 *, r/w

Shorthorn/MaineTainer • BW:0.5 WW:57.4 YW:67.2 M:21.9

- Bred to Free K-Kim Hot Commodity; due January 29, 2015
- This ultra-feminine maternally designed female crossed with K-Kim Hot Commodity should be a quick return on your investment.
- Her popular full sister, SULL Roses Are Red, has been a dominate force in the show ring that comes from a pedigree of champions. The Rose Mary cow family consistently makes champions and breed leading sires.



3j

SULL Reward Mary 3098 *x

01.10.13 Bred LE 3098 Polled Reg. # 4210790

SULL RED REWARD 9321 7/8 *x, red
 TEGM RED ADVANTAGE 100T 3/4 *x, red
 MCV MARGIE MILLION 503Q *x, r/w/m

SULL RED ROSEMARY -2 ET CL *x, red
 CF TRUMP X *x, roan
 NPS DESERT ROSE 004 *, r/w

Shorthorn/MaineTainer • BW:0.5 WW:57.4 YW:67.2 M:21.9

- Bred to SULL Payday; due February 28, 2015
- The SULL Red Reward daughters will be in demand on sale day as they are making a huge impact in the breed throughout the country.
- Her popular full sister, SULL Roses Are Red, has been a dominate force in the show ring that comes from a pedigree of champions. The Rose Mary cow family consistently makes champions and breed leading sires.





3k

03.04.13 Bred LE 3411 Polled Reg. # 4210800

SULL Mary's Reward *x

SULL RED REWARD 9321 7/8 *x, red
 TEGM RED ADVANTAGE 100T 3/4 *x, red
 MCV MARGIE MILLION 503Q *x, r/w/m
 SULL RED ROSEMARY -2 ET CL *x, red
 CF TRUMP X *x, roan
 NPS DESERT ROSE 004 *x, r/w

Shorthorn/MaineTainer • BW:0.5 WW:57.4 YW:67.2 M:21.9

- Bred to Free K-Kim Hot Commodity; due February 4, 2015
- Another high quality SULL Red Reward daughter. This heifer's pedigree will give you some of the hottest genetics and endless mating options.
- Her popular full sister, SULL Roses Are Red, has been a dominate force in the show ring that comes from a pedigree of champions. The Rose Mary cow family consistently makes champions and breed leading sires.



3m

02.09.13 Bred LE 3348 Polled Reg. # 4210796

SULL Trump's Rose 3348 *x

CF TRUMP X *x, roan
 PHILDON CUNIA DIVIDEND 7/8 *x, r/w
 CF CARMELE NG NG 158X *x, r/w/m
 SULL DESERT ROSE 004 ET CL *x, r/w
 NPS DURANGO 774 CBH ET *x, roan
 NPS DESERT ROSE 833 ET *x, red

Shorthorn • BW:4.4 WW:60.1 YW:72.8 M:15.7

- Bred to SULL Red Demand; due January 29, 2015
- A broody full sister to many breed legends.
- Genetics that are proven and keep producing year after year. This valuable genetics breeding piece is a full sib to HD Ruby 903, SULL Rose Mary 636, SULL Red Rose Mary, CF Solution and SULL Right Direction.



3n

01.03.13 Bred LE 3074 Polled Reg. # 4210788

SULL Rose Mary 3074 *x

SULL TRAVELER 9807 ET *x, roan
 SULL GNCC ASSET ET *x, r/w
 SULL SABLE DELIGHT ET *x, red
 SULL ROSE MARY 636-3 ET *x, r/w
 CF TRUMP X *x, roan
 NPS DESERT ROSE 004 *x, r/w

Shorthorn • BW:3.7 WW:69 YW:85.0 M:52

- Bred to SULL Red Demand; due January 29, 2015
- A powerfully constructed Traveler daughter that has the same depth that her mother puts into her progeny.
- SULL Rose Mary 636 was one of my favorite all time show heifers and has not missed a beat in the donor program at Sullivan Farms.

3p

01.07.13 Bred LE 3053 Polled Reg. # 4210784

SULL Traveling Mary *x

SULL TRAVELER 9807 ET *x, roan
 SULL GNCC ASSET ET *, r/w
 SULL SABLE DELIGHT ET *x, red
 CF TRUMP X *x, roan
 SULL ROSE MARY 636-3 ET *x, r/w
 NPS DESERT ROSE 004 *, r/w

Shorthorn • BW:3.7 WW:69.2 YW:84.7 M:18.0

- Bred to SULL Payday; due March 10, 2015
- Flawless structured combined with the body depth and capacity of the Rose Mary cow family.
- The Rose Mary cow family consistently produces champions and generates income into ones program.

**3q**

11.02.12 Bred LE 2407 Polled Reg. # 4194558

SULL Red Ruby 2407 *x

SULL TRAVELER 9807 ET *x, roan
 SULL GNCC ASSET ET *, r/w
 SULL SABLE DELIGHT ET *x, red
 CF TRUMP X *x, roan
 HD RUBY 903 ET *x, r/w/m
 NPS DESERT ROSE 004 *, r/w

Shorthorn • BW:3.8 WW:68.7 YW:84.2 M:17.1

- Bred to SULL Red Demand; due February 4, 2015
- This smooth built, sound structured, ultra feminine female combined with SULL Red Demand's softness and power should be an interesting mating.
- SULL Red Ruby 2407 is a daughter of the National Champion HD Ruby 903.



2015 Junior Nationals

- National Junior **Shorthorn** Show - June 20-25, 2015 - Grand Island, NE
- National Junior **Maine-Anjou** Show - June 20-25, 2015 - Springfield, IL
- National Junior **Chianina** Show - June 20-25, 2015 - Springfield, IL
- North American Junior **Red Angus** Event - June 16-20, 2015 - Grand Island, NE
- Junior National **Hereford** Expo - June 26 - July 3, 2015 - Grand Island, NE
- American Junior **Simmental** Association National Classic - July 5-12, 2015 - College Station, TX
- National Junior **Angus** Show - July 13-18, 2015 - Tulsa, OK
- National Junior **Charolais** Show - July 5-10, 2015 - St. Paul, MN
- National Junior **Gelbvieh** Show - June 28 - July 3, 2015 - Springfield, OH
- National Junior **Limousin** Show - July 19-25, 2015 - Tulsa, OK

Stockman 898/ cow family

Breathless P898



**SULL
Stockman
7302**

Clone to SULL
Stockman 898. She
sells as Lot 57.



SULL Blue Raspberry

Reserve Grand Champion ShorthornPlus
Female, 2014 NWSS Junior Show
Grand Champion ShorthornPlus Female,
2013 NAILE Open Show
Grand Champion ShorthornPlus Female,
2013 American Royal Open Show
Grand Champion ShorthornPlus Bred &
Owned Female, 2013 National Junior
Shorthorn Show



SULL Blue Mamba 1902

Grand Champion ShorthornPlus Female,
2012 National Junior Shorthorn Show
Congratulations to the Winegardner Family



SULL Blue Bunny 8112

2010 ASA ShorthornPlus Show Heifer of the Year
2009 National Champion ShorthornPlus Female
Grand Champion ShorthornPlus Female, 2010 NWSS
Reserve Grand Champion ShorthornPlus Female, 2010 NWSS Junior Show
Reserve Grand Champion ShorthornPlus Female, 2009 American Royal
Congratulations to the O'Sullivan Family



4a

03.27.14 Heifer

SULL Blue Harmony *xar

LE 4249 Polled Reg. # ar61094

DF VEGAS 310M ET *x, white

CF TRUMP X *x, roan

NPS MIRAGE 544 ET *sx, roan

SULL STOCKMAN 7294

TC STOCKMAN 365

PRIDE 886 S D G

ShorthornPlus • BW:3.7 WW:51.1 YW:67.0 M:18.0

- This sharp featured, attractive blue roan female reminds me more of SULL Breathless P898 than any of her sisters. This one will see many backdrops.
- A full sister was Grand Champion ShorthornPlus Female at the 2012 NAILE. At the 2012 National Junior Heifer Show a full sister shown by Hannah Winegardner, exhibited the Grand Champion ShorthornPlus Female. In the past few years Joseph O'Sullivan, James Sullivan and Nick Sullivan have all shown National Champion ShorthornPlus females that were Vegas x Stockman 898's. This is the dominate mating in the ShorthornPlus industry.

4b**SULL Blue Heaven 4131 *xar**

01.25.14 Heifer LE 4131 Polled Reg. # ar61092

DF VEGAS 310M ET *x, white

CF TRUMP X *x, roan

NPS MIRAGE 544 ET *sx, roan

TC STOCKMAN 365

SULL STOCKMAN 898

PRIDE 886 S D G

ShorthornPlus • BW:3.9 WW:51.0 YW:65.0 M:17.7

- Smooth and maternally built with extra depth of body and femininity.
- A full sister was Grand Champion ShorthornPlus Female at the 2012 NAILE. At the 2012 National Junior Heifer Show a full sister shown by Hannah Winegardner, exhibited the Grand Champion ShorthornPlus Female. In the past few years Joseph O'Sullivan, James Sullivan and Nick Sullivan have all shown National Champion ShorthornPlus females that were Vegas x Stockman 898's. This is the dominate mating in the ShorthornPlus industry.

**4c****SULL Blue Chrome 4110 *xar**

01.27.14 Heifer LE 4110 Polled Reg. # ar61096

DF VEGAS 310M ET *x, white

CF TRUMP X *x, roan

NPS MIRAGE 544 ET *sx, roan

TC STOCKMAN 365

SULL STOCKMAN 8409, blk

PRIDE 886 S D G

ShorthornPlus • BW:3.6 WW:51.7 YW:68.1 M:18.2

- The most powerfully constructed of the Vegas x Stockman's in the offering but still maintains a stunning presence about her. She will be sure to catch your eye on sale day.
- A full sister was Grand Champion ShorthornPlus Female at the 2012 NAILE. At the 2012 National Junior Heifer Show a full sister shown by Hannah Winegardner, exhibited the Grand Champion ShorthornPlus Female. In the past few years Joseph O'Sullivan, James Sullivan and Nick Sullivan have all shown National Champion ShorthornPlus females that were Vegas x Stockman 898's. This is the dominate mating in the ShorthornPlus industry.

**4d****SULL Blue Infinity *xar**

02.03.14 Heifer LE 4111 Polled Reg. # ar61089

DF VEGAS 310M ET *x, white

CF TRUMP X *x, roan

NPS MIRAGE 544 ET *sx, roan

TC STOCKMAN 365

SULL STOCKMAN 8409, blk

PRIDE 886 S D G

ShorthornPlus • BW:3.9 WW:51.0 YW:65.0 M:17.7

- We truly think that this will be one of the top ShorthornPlus females to be sold this year. Flawless structure with the traditional Vegas x Stockman look.
- A full sister was Grand Champion ShorthornPlus Female at the 2012 NAILE. At the 2012 National Junior Heifer Show a full sister shown by Hannah Winegardner, exhibited the Grand Champion ShorthornPlus Female. In the past few years Joseph O'Sullivan, James Sullivan and Nick Sullivan have all shown National Champion ShorthornPlus females that were Vegas x Stockman 898's. This is the dominate mating in the ShorthornPlus industry.





4e 01.26.14 Heifer LE 4152 Polled Reg. # ar61082
 DF VEGAS 310M ET *x, white
 SULL STOCKMAN 8404 . blk

SULL Blue Orchid 4152 *xar

CF TRUMP X *x, roan
 NPS MIRAGE 544 ET *sx, roan
 TC STOCKMAN 365
 PRIDE 886 S D G x, blk

ShorthornPlus • BW:3.7 WW:51.4 YW:67.2 M:18.2

- Extremely feminine, high volumed ShorthornPlus female with the attractive blue roan color.
- A full sister was Grand Champion ShorthornPlus Female at the 2012 NAILE. At the 2012 National Junior Heifer Show a full sister shown by Hannah Winegardner, exhibited the Grand Champion ShorthornPlus Female. In the past few years Joseph O'Sullivan, James Sullivan and Nick Sullivan have all shown National Champion ShorthornPlus females that were Vegas x Stockman 898's. This is the dominate mating in the ShorthornPlus industry.



4f 04.29.14 Heifer LE 4340 Polled Reg. # ar61090
 DF VEGAS 310M ET *x, white
 SULL STOCKMAN 7302

SULL Blue Chip 4340 *xar

CF TRUMP X *x, roan
 NPS MIRAGE 544 ET *sx, roan
 TC STOCKMAN 365
 PRIDE 886 S D G x, blk

ShorthornPlus • BW:3.7 WW:51.4 YW:67.2 M:18.2

- A younger, greener heifer but none the less still has all the pieces and pedigree to strive for the purple banner.
- A full sister was Grand Champion ShorthornPlus Female at the 2012 NAILE. At the 2012 National Junior Heifer Show a full sister shown by Hannah Winegardner, exhibited the Grand Champion ShorthornPlus Female. In the past few years Joseph O'Sullivan, James Sullivan and Nick Sullivan have all shown National Champion ShorthornPlus females that were Vegas x Stockman 898's. This is the dominate mating in the ShorthornPlus industry.



4g 03.25.14 Heifer LE 4253 Polled Reg. # ar61817
 DF VEGAS 310M ET *x, white
 SULL STOCKMAN 7294

SULL Bluegrass 4253 *xar

CF TRUMP X *x, roan
 NPS MIRAGE 544 ET *sx, roan
 TC STOCKMAN 365
 PRIDE 886 S D G x, blk

ShorthornPlus • BW:3.7 WW:51.4 YW:67.2 M:18.2

- Femininity, soundness and maternal features are what describes this full sister to many of the breed greats.
- A full sister was Grand Champion ShorthornPlus Female at the 2012 NAILE. At the 2012 National Junior Heifer Show a full sister shown by Hannah Winegardner, exhibited the Grand Champion ShorthornPlus Female. In the past few years Joseph O'Sullivan, James Sullivan and Nick Sullivan have all shown National Champion ShorthornPlus females that were Vegas x Stockman 898's. This is the dominate mating in the ShorthornPlus industry.

4h

01.19.14 Heifer LE 4105 Polled Reg. # ar61093

SULL Blue Angel 4105 *xar

DF VEGAS 310M ET *x, white

CF TRUMP X *x, roan

NPS MIRAGE 544 ET *sx, roan

TC STOCKMAN 365 x, blk

PRIDE 886 S D G x, blk

SULL STOCKMAN 898

ShorthornPlus • BW:3.9 WW:51.0 YW:65.0 M:19.0

- Tremendous foot and bone under this heifer with extra hair and style and the pedigree to go along with it.
- A full sister was Grand Champion ShorthornPlus female at the 2012 NAILE. At the 2012 National Junior Heifer Show a full sister shown by Hannah Winegardner, exhibited the Grand Champion ShorthornPlus Female. In the past few years Joseph O'Sullivan, James Sullivan and Nick Sullivan have all shown National Champion ShorthornPlus females that were Vegas x Stockman 898's. This is the dominate mating in the ShorthornPlus industry.

**4i**

02.14.14 Heifer LE 4093 Polled Reg. # ar61087

SULL Blue's Blast 4093 *xar

SULL ROAN BLAST 0301 ET *x, roan

SULL GNCC ASSET ET *, r/w

SULL BEAUTY QUEEN 570 ET *, roan

TC STOCKMAN 365 x, blk

PRIDE 886 S D G x, blk

SULL STOCKMAN 8240 ET x, blk

ShorthornPlus • BW:2.9 WW:57.0 YW:76.6 M:16.8

- One of the most valuable donor prospects in the sale. Whether you are looking for a cow to make females or breed back for steers, this one can do it all.
- Her maternal sisters are the popular blue roan Vegas' x Stockman 898.

**4j**

02.28.14 Heifer LE 4029 Polled Reg. # ar61085

SULL Indigo Blue 4029 *xar

SULL ROAN BLAST 0301 ET *x, roan

SULL GNCC ASSET ET *, r/w

SULL BEAUTY QUEEN 570 ET *, roan

TC STOCKMAN 365 x, blk

PRIDE 886 S D G x, blk

SULL STOCKMAN 8410, blk

ShorthornPlus • BW:2.9 WW:57.0 YW:76.6 M:16.8

- Another example of how consistent the Stockman 898 cow really is. Big bodied, sound and feminine.
- Her maternal sisters are the popular blue roan Vegas' x Stockman 898.





4k 03.16.14 Heifer LE 4032 Polled Reg. # ar61084
SULL Blue Sapphire *xar61084
 SULL GNCC ASSET ET *, r/w
 SULL ROAN BLAST 0301 ET *, roan
 SULL BEAUTY QUEEN 570 ET *, roan
 TC STOCKMAN 365 x, blk
 SULL STOCKMAN 8410, blk
 PRIDE 886 S D G x, blk

ShorthornPlus • BW:2.8 WW:60.4 YW:80.0 M:16.7

- Moderate framed, big bodied with that show ring look. This heifer is one of our favorites when you think about show ring and donor value.
- Her maternal sisters are the popular blue roan Vegas' x Stockman 898.



4m 02.16.14 Heifer LE 4027 Polled Reg. # ar61083
SULL Blue Iris 4027 *xar
 SULL GNCC ASSET ET *, r/w
 SULL ROAN BLAST 0301 ET *, roan
 SULL BEAUTY QUEEN 570 ET *, roan
 DF VEGAS 310M ET *x, white
 SULL BLUE BUNNY 8112 ET 1/2 *x, b/r
 SULL STOCKMAN 365

ShorthornPlus • BW:3.9 WW:57.1 YW:66.7 M:15.5

- Powerfully constructed ShorthornPlus female that has valuable genetic assets with donor potential.
- This heifer's dam, SULL Blue Bunny was a NWSS Champion for the O'Sullivan family.



4n 04.24.14 Heifer LE 4306 Polled Reg. # *xar61091
SULL Breathless 4306 *xar
 CF SOLUTION X ET *x, r/w/m
 SULL RED KNIGHT 2030 ET *, red
 K-KIM MONA LISA 101 ET *x, red
 DF VEGAS 310M ET *x, white
 SULL BREATHLESS P898 1/2 *x, b/r
 SULL ANGUS

ShorthornPlus • BW:1.3 WW:66.1 YW:83.7 M:15.3

- Extremely high quality, national level show prospect. Stunning look and build of her dam SULL Breathless P898. This one is a farm favorite!
- Her dam, SULL Breathless P898, was a many time supreme champion. The Red Knight cross may be her best progeny yet.

4p

SULL Red Breathless *xar

04.27.14 Heifer LE 4351 Polled Reg. # ar61095

CF SOLUTION X ET *x, r/w/m

SULL RED KNIGHT 2030 ET *, red
K-KIM MONA LISA 10T ET *x, red

DF VEGAS 310M ET *x, white

SULL BREATHLESS P898 1/2 *x, b/r
SULL ANGUS

ShorthornPlus • BW:1.3 WW:66.1 YW:83.7 M:15.3

- A young, dark red powerhouse with a stunning look. This heifer will be competitive on any level.
- Her dam, SULL Breathless P898, was a many time supreme champion. The Red Knight cross may be her best progeny yet.



4q

SULL Breathless Lady *xar

04.24.14 Heifer LE 4339 Polled Reg. # ar61086

CF SOLUTION X ET *x, r/w/m

SULL RED KNIGHT 2030 ET *, red
K-KIM MONA LISA 10T ET *x, red

DF VEGAS 310M ET *x, white

SULL BREATHLESS P898 1/2 *x, b/r
SULL ANGUS

ShorthornPlus • BW:1.3 WW:66.1 YW:83.7 M:15.3

- Angularity and sharp features combined with flawless structure. This heifer has an unlimited future. Bid with confidence!
- Her dam, SULL Breathless P898, was a many time supreme champion. The Red Knight cross may be her best progeny yet.



4r

SULL Breathless Beauty *xar

03.01.13 Bred LE 3184 Polled Reg. # ar58058

CF TRUMP X *x, roan

SULL RIGHT DIRECTION ET *x, r/w
NPS DESERT ROSE 004 *, r/w

DF VEGAS 310M ET *x, white

SULL BREATHTAKER 7152 ET 1/2 *x, b/r
SULL STOCKMAN 365

ShorthornPlus • BW:1.3 WW:66.1 YW:83.7 M:15.3

- Bred to SULL Payday; due February 22, 2015
- Here is a powerhouse of a bred heifer. We think this heifer will give you a lot of options when mating her back, whether you want to go maternal or back for steers.
- She is a full sibling to Kane Aegerter's 2011 Shorthorn Junior National, 2012 NWSS and 2012 Fort Worth Grand Champion ShorthornPlus Female.





4s 04.16.13 Bred LE 3471 Polled Reg. # ar60996
SULL Right Breaths 3471 *xar
 CF TRUMP X *x, roan
 SULL RIGHT DIRECTION ET *x, r/w
 NPS DESERT ROSE 004 *, r/w
 DF VEGAS 310M ET *x, white
 SULL BREATHTAKER 7152 ET 1/2 *x, b/r
 SULL STOCKMAN 365

ShorthornPlus • BW:2.6 WW:59.5 YW:66.2 M:20.8

- Bred to SULL Payday; due February 22, 2015
- Some of the hottest ShorthornPlus genetics are incorporated into this phenotypically flawless female.
- She is a full sibling to Kane Aegerter's 2011 Shorthorn Junior National, 2012 NWSS and 2012 Fort Worth Grand Champion ShorthornPlus Female.



4t 01.26.13 Bred LE 3096 Polled Reg. # ar60926
SULL Stockman's Berry *xar
 CF TRUMP X *x, roan
 DF VEGAS 310M ET *x, white
 NPS MIRAGE 544 ET *sx, roan
 CF SOLUTION X ET *x, r/w/m
 SULL BLACK BERRY 7418 1/2 *x, blk
 SULL STOCKMAN 365

ShorthornPlus • BW:4.7 WW:59.4 YW:70.9 M:13.8

- Bred to SULL Payday; due March 10, 2015
- This beautifully maternally designed female should click very well with SULL Payday.
- This heifer's dam SULL Blackberry 7418 is a young donor in our herd. This Solution x Stockman 898 daughter is the perfect ShorthornPlus female. SULL Blue Breathless purchased by Cole Hanna off the 2013 Maternal Legends Sale has been dominate in the show ring.



4u 01.10.13 Bred LE 3170 Polled Reg. # *ar60928
SULL Berry Baby 3170 *xar
 CF TRUMP X *x, roan
 DF VEGAS 310M ET *x, white
 NPS MIRAGE 544 ET *sx, roan
 CF SOLUTION X ET *x, r/w/m
 SULL BLACK BERRY 7418 1/2 *x, blk
 SULL STOCKMAN 365

ShorthornPlus • BW:4.7 WW:59.4 YW:70.9 M:13.8

- Bred to SULL Payday; due February 22, 2015
- This heifer has a lot of the traits that the Stockman cow family has incorporated into their progeny. This easy fleshing female with her pedigree should give you endless options when mating her back.
- This heifer's dam SULL Blackberry 7418 is a young donor in our herd. This Solution x Stockman 898 daughter is the perfect ShorthornPlus female. SULL Blue Breathless purchased by Cole Hanna off the 2013 Maternal Legends Sale was dominate in the show ring.

National
Champion
Chianina Female,
'13 NAILE

Congratulations to
Schaeffer/Tice and
the Teague Family



SULL Champions

Reserve Grand
Champion Chianina
Female, '14 Fort
Worth Stock Show

Congratulations to
the Hagie Family



Grand Champion ShorthornPlus Female, '14 NWSS Open & Jr

Reserve Grand Champion ShorthornPlus Female,
'13 National Junior Shorthorn Show

Grand Champion Prospect Heifer, '13 NWSS

Grand Champion ShorthornPlus Female, '13 NWSS Open Show

Congratulations to the Aegerter Family



Reserve Grand Champion Shorthorn Female,
'13 San Antonio Stock Show & Rodeo

Congratulations to the Skiles Family



Grand Champion Female,
'13 NWSS Open & Jr Show

2012 Reserve National
Champion Female

Reserve Grand Champion
Female, '12 NAILE Open
Show

Congratulations to
the O'Sullivan Family



Reserve Grand Champion
ShorthornPlus Female, '13
American Royal Open Show

Congratulations to
the Boyert Family

Grand Champion Bull, '13 NAILE
Grand Champion Bull, '13 American Royal
2012 National Champion Shorthorn Bull
Grand Champion Bull, '13 NWSS
Grand Champion Bull, '12 NAILE



Cherri cow family



SULL Wild Cherri
Grand Champion Female,
2014 National Junior Shorthorn Show



SULL Cherri Mary Lou
Grand Champion Female,
2013 National Junior Shorthorn Show



DJS Cherri 205



5a

04.16.14 Heifer LE 4287 Polled Reg. # 4211409
SULL RED BLOOD ET *x, red
SULL RED REWARD 9321 7/8 *x, red
RL CUMBERLAND 5N35 *, roan
SULL CHERRI 205-3 ET *x, red
WHR SONNY 8114 ET *x, roan
MCKEE'S ASL CHERRI 742 x, red

SULL Cherri Jubilee *x

Shorthorn • BW:1.6 WW:50.8 YW:57.8 M:19.7

- A little younger greener heifer that is full of potential. The Red Blood cat-tle in the 2013 & 2014 show season have been very successful.
- Cherri 205 is a predictable, dominate donor. She produced the 2013 and 2014 Junior National Champion Females.



5b

06.04.14 Heifer LE 4341 Polled Reg. # 4211418
SULL RIGHT DIRECTION ET *x, r/w
CF TRUMP X *x, roan
NPS DESERT ROSE 004 *, r/w
SULL CHERRI 205-7 ET CL *x, red
WHR SONNY 8114 ET *x, roan
MCKEE'S ASL CHERRI 742 x, red

SULL Cherri Blossom *x

Shorthorn • BW:2.4 WW:61.1 YW:68.6 M:22.3

- Predictability, future and patience will be all this heifer needs. She has all the right parts and pieces.
- Cherri 205 is a predictable dominate donor. She produced the 2013 and 2014 Junior National Champion Females.

5c

05.17.13 Bred LE 3808 Polled Reg. # 4206916

SULL Right Cherri 3808 *xSULL RIGHT DIRECTION ET *x, r/w
CF TRUMP X *x, roan
NPS DESERT ROSE 004 *, r/wSULL CHERRI 205-2 ET *x, red
WHR SONNY 8114 ET *x, roan
MCKEE'S ASL CHERRI 742 x, red

Shorthorn • BW:2.4 WW:61.1 YW:68.7 M:22.2

- Bred to SULL Payday; due March 10, 2015
- Another highlight in the bred heifer offering. At times we have wondered if this heifer shouldn't be in the show barn getting her ready for the NWSS.
- 3808 is a full sister to the 2013 and 2014 National Junior Heifer Show Grand Champion Females.

**5d**

02.06.13 Bred LE 3436 Polled Reg. # 4210806

SULL Travel Cherri *xSULL TRAVELER 9807 ET *, roan
SULL GNCC ASSET ET *, r/w
SULL SABLE DELIGHT ET *x, redSULL A CHERRI SOLUTION ET *x, r/w
CF SOLUTION X ET *x, r/w/m
DJS CHERRI 205 *x, red

Shorthorn • BW:4.1 WW:72.5 YW:89.8 M:14.1

- Bred to SULL Red Demand; due January 29, 2015
- This heifer possesses the femininity and phenotype that her pedigree consistently produces.
- This heifer's dam, SULL Cherri Solution, was a former Maternal Legends sale topper and a dominant force in the show ring.

**5e**

02.03.13 Bred LE 3423 Polled Reg. # 4210804

SULL Cherri's Traveling *xSULL TRAVELER 9807 ET *, roan
SULL GNCC ASSET ET *, r/w
SULL SABLE DELIGHT ET *x, redSULL A CHERRI SOLUTION ET *x, r/w
CF SOLUTION X ET *x, r/w/m
DJS CHERRI 205 *x, red

Shorthorn • BW:4.1 WW:72.5 YW:89.8 M:14.1

- Bred to SULL Payday; due February 18, 2015
- Tremendous smoothness and correctness of lines with the phenotype of her dominating dam. We are excited about the Payday mating on this tremendous female.
- This heifer's dam, SULL Cherri Solution, was a former Maternal Legends sale topper and a dominant force in the show ring.



Myrtle Bo

cow family

CF Myrtle Bo 46P



SULL Bo's Traveling
 Grand Champion Female, 2014 NWSS Junior Show
 Third Overall Champion Female, 2013 National Junior Shorthorn Show
 Reserve Grand Champion Bred & Owned Female,
 2013 National Junior Shorthorn Show



SULL Miss Myrtle Beau
 Grand Champion Female, 2011 NWSS Open
 Grand Champion Female, 2011 NWSS Junior Show
 Grand champion Female, 2010 American Royal Open Show
 Congratulations to the Moore Family



SULL Myrtle's Rock
 The new lead donor at Springlake Farm of Tennessee.
 This Myrtle Bo female was our top selling bred heifer in 2013.



6a 03.10.14 Heifer LE 4124 Polled Reg. # pending
 SULL GNCC ASSET ET *, r/w
 SULL TRAVELER 9807 ET *, roan
 SULL SABLE DELIGHT ET *x, red
 CF TRUMP X *x, roan
 SULL MYRTLE BO 46P-2, r/w
 GF MISS MYRTLE BO 305 ET *x, r/w

Shorthorn • BW:4.1 WW:62.6 YW:78.1 M:18.9

- Big time show ring potential in this female! She comes from greatness on top and bottom of her pedigree and one that just keeps getting better.
- Myrtle Bo 46P is one of the most consistent donors in the Shorthorn Breed. Her most recent champion was SULL Bo's Traveling, that was the 2014 NWSS Grand Champion Shorthorn, Junior Show and a full sister to Lot 6A.

6b**SULL Myrtle's Love 4285 *x**

05.29.14 Heifer LE 4285 Polled Reg. # 4211421

SULL RED KNIGHT 2030 ET *, red

CF SOLUTION X ET *x, r/w/m

K-KIM MONA LISA 10T ET *x, red

SULL MYRTLE BO 46P-1 *x, r/w

CF TRUMP X *x, roan

GF MISS MYRTLE BO 305 ET *x, r/w

Shorthorn • BW:1.7 WW:67.7 YW:86.0 M:18.7

- This heifer is an example of why Myrtle Bo 46P is such a consistent cow. Three heifer calves all out of different bulls have been big time show heifers.
- The first crop of SULL Red Knight calves have exceeded our expectations and this heifer is an example why.
- Myrtle Bo 46P is one of the most consistent donors in the Shorthorn Breed. Her most recent champion was SULL Bo's Traveling that was the 2014 NWSS Grand Champion Shorthorn, Junior Show.

**6c****SULL Myrtle Bo 4161 *x**

04.03.14 Heifer LE 4161 Polled Reg. # pending

MAV CHARISMA 906W *x, r/w/m

GFS CREOLE 9590 ET *x, red

MAV FELECIA 721T ET *x, r/w

SULL MYRTLE BO 46P-2, r/w

CF TRUMP X *x, roan

GF MISS MYRTLE BO 305 ET *x, r/w

Shorthorn • BW:5.8 WW:58.6 YW:73.4 M:20.1

- This dark red heifer will be a crowd pleaser on sale day and when she walks into the show ring.
- This heifer is very complete with the flawless structure of her dam and the look and pizzazz of her sire MAV Charisma.
- Myrtle Bo 46P is one of the most consistent donors in the Shorthorn Breed. Her most recent champion was SULL Bo's Traveling that was the 2014 NWSS Grand Champion Shorthorn, Junior Show.

**6d****SULL Traveling Bo *x**

02.18.13 Bred LE 3073 Polled Reg. # 4210780

SULL TRAVELER 9807 ET *, roan

SULL GNCC ASSET ET *, r/w

SULL SABLE DELIGHT ET *x, red

CF MYRTLE BO 93TP *x

CF TRUMP X *x, roan

GF MISS MYRTLE BO 305 ET *x, r/w

Shorthorn • BW:3.9 WW:68.8 YW:84.3 M:17.1

- Bred to SULL Red Demand; due January 29, 2015
- This heifer possesses the balance, structural integrity and femininity of her sire SULL Traveler. This will be a very intriguing mating.
- This may be one of your last opportunities for the old great Myrtle Bo 93TP female.





6e

01.12.13 Bred

SULL Myrtle Bo 3193 *x

LE 3193 Polled Reg. # pending

HI VIEW'S ACE OF DIAMONDS *x, roan

WERNACRES ACE HIGH 620 *x, roan

HI-VIEW 2ND ZELDA *x, red

CF MYRTLE BO 46 TP X ET *x, r/w/m

CF TRUMP X *x, roan

GF MISS MYRTLE BO 305 ET *x, r/w

Shorthorn • BW:3.4 WW:41.6 YW:49.4 M:19.0

- Bred to SULL Payday; due April 28, 2015
- Another one of our favorite breeds in the offering. This one has the quality and structure and look to be a must see highlight on sale day. This heifer is the kind that goes in the front pasture.
- This heifer resembles her full sister, SULL Miss Myrtle Beau, shown by Hannah Moore that was a popular NWSS Champion in the open and junior shows.



6f

01.09.13 Bred

SULL Ace's Bo 3356 ET *x

LE 3356 Polled Reg. # 4210797

HI VIEW'S ACE OF DIAMONDS *x, roan

WERNACRES ACE HIGH 620 *x, roan

HI-VIEW 2ND ZELDA *x, red

CF MYRTLE BO 46 TP X ET *x, r/w/m

CF TRUMP X *x, roan

GF MISS MYRTLE BO 305 ET *x, r/w

Shorthorn • BW:3.4 WW:41.6 YW:49.4 M:19.0

- Bred to SULL Red Demand; due January 29, 2015
- This heifer has the flawless structure and phenotype of her dam Myrtle Bo 46P. One should be excited about the potential that this heifer mated with SULL Red Demand will have.
- This heifer's full sister, SULL Miss Myrtle Beau, was a popular NWSS champion in the open and junior show for Hannah Moore. Myrtle Bo 46P is one of the most dominate, consistent in the Shorthorn breed.



6g

03.10.13 Bred

SULL Myrtle's Bo 3368

LE 3368 Polled Reg. # 4211540

SULL GNCC ASSET ET *x, r/w

CF SOLUTION X ET *x

K-KIM MONA LISA 35L ET *x, white

CF MYRTLE BO 46 TP X ET *x, r/w/m

CF TRUMP X *x, roan

GF MISS MYRTLE BO 305 ET *x, r/w

Shorthorn • BW:3.6 WW:70.5 YW:87.5 M:17

- Bred to SULL Payday; due March 25, 2015
- The Asset x 46P mating is one that we always look forward to at Sullivan Farms. Whether it's in the pasture or the show ring these heifers are an impressive sight.
- 46P has been one of the most consistent cows in the Shorthorn breed that has produced high quality champions and breed leading donors. To name just a quick few she has produced the 2011 NWSS Champion for Hannah Moore in the open and junior shows and the 2012 NWSS Reserve Champion for Rockin' G Land & Cattle and the 2014 NWSS Champion in the Junior Show.

6h

SULL Myrtle Bo 3325

02.20.13 Bred LE 3325 Polled Reg. # 4211539

CF SOLUTION X ET *x

SULL GNCC ASSET ET *, r/w

K-KIM MONA LISA 35L ET *, white

CF MYRTLE BO 46 TP X ET *x, r/w/m

CF TRUMP X *x, roan

GF MISS MYRTLE BO 305 ET *x, r/w

Shorthorn • BW:3.6 WW:70.5 YW:87.5 M:17

- Bred to KL Primetime Paymaster; due January 29, 2015
- Myrtle Bo genetics in this heifer gives her the quality to be a big time donor. One of our favorites of the bred heifer offering. Mated to Paymaster she should be a quick and easy investment. She will pay for herself.
- 46P has been one of the most consistent cows in the Shorthorn breed that has produced high quality champions and breed leading donors. To name just a quick few she has produced the 2011 NWSS Champion for Hannah Moore in the open and junior shows and the 2012 NWSS Reserve Champion for Rockin' G Land & Cattle and the 2014 NWSS Champion in the Junior Show.



6i

SULL Myrtle Bo 3420 *x

03.04.13 Bred LE 3420 Polled Reg. # 4210803

CF SOLUTION X ET *x, RWM

SULL GNCC ASSET ET *, Roan

K-KIM MONA LISA 35L ET *, White

CF MYRTLE BO 46 TP X ET *x, r/w/m

CF TRUMP X *x, roan

GF MISS MYRTLE BO 305 ET *x, r/w

Shorthorn • BW:3.6 WW:70.1 YW:88.2 M:17.0

- Bred to KL Primetime Paymaster; due January 29, 2015
- She has the maternal design and flawless structure that the Myrtle Bo cow family consistently produces.
- 46P has been one of the most consistent cows in the Shorthorn breed that has produced high quality champions and breed leading donors. To name just a quick few she has produced the 2011 NWSS Champion for Hannah Moore in the open and junior shows and the 2012 NWSS Reserve Champion for Rockin' G Land & Cattle and the 2014 NWSS Champion in the Junior Show.



6j

SULL Mollie Jo 3067 *x

01.06.13 Bred LE 3067 Polled Reg. # 4210787

TEGM RED ADVANTAGE 100T 3/4 *x, red

SULL RED REWARD 9321 7/8 *x, red

MCV MARGIE MILLION 503Q *x, r/w/m

MISS V8 MOLLIE JO 93S2 ET *x, r/w/m

SR RED RIDERS DRIVE *x, red

CF MYRTLE BO 93 TP X ET *x, roan

Shorthorn/MaineTainer • BW:1.6 WW:57.0 YW:70.2 M:21.1

- Bred to SULL Payday; due March 10, 2015
- This heifer's pedigree is some of the hottest genetics in the Shorthorn breed to date. SULL Red Reward x SR Red Riders Drive mating will produce a tremendous brood cow.
- This heifer's dam V8 Mollie Jo was one of the winningest heifers in the Shorthorn breed. Study the pedigree and potential in this female.





6k

01.18.13 Bred

SULL Myrtle Bo 3226 *x

LE 3226 Polled Reg. # 4210792

SULL RED BLOOD ET *x, red

SULL RED REWARD 9321 7/8 *x, red

RL CUMBERLAND 5N35 *, roan

CF MYRTLE BO 93 TP X ET *x, roan

CF TRUMP X *x, roan

GF MISS MYRTLE BO 305 ET *x, r/w

Shorthorn • BW:2.8 WW:54.2 YW:65.5 M:20.8

- Bred to SULL Payday; due February 18, 2015
- This high quality female is an example of why this set of bred heifers has been exciting to watch throughout the year. Take a look at this heifer's extension, structure and femininity.
- This may be one of your last opportunities for the old great Myrtle Bo 93TP cow.



6m

02.01.13 Bred

SULL Mollie's Right *x

LE 3412 Polled Reg. # 4210801

SULL RIGHT DIRECTION ET *x, r/w

CF TRUMP X *x, roan

NPS DESERT ROSE 004 *, r/w

MISS V8 MOLLIE JO 93S2 ET *x, r/w/m

SR RED RIDERS DRIVE *x, red

CF MYRTLE BO 93 TP X ET *x, roan

Shorthorn • BW:3.6 WW:68.0 YW:80.0 M:23.7

- Bred to SULL Payday; due February 22, 2015
- Extra feminine, loose structured, big bodied.
- This heifer's dam V8 Mollie Jo was one of the winningest heifers in the Shorthorn breed. Study the pedigree and potential in this female.

Bred Heifer Service Sires



SULL Payday 1507 *x

CE: 10.1; BW: 1.9; WW: 54; YW: 71; MILK: 21; MW: 49



SULL Red Demand 9329 *xar

CE: 6.2; BW: 0.3; WW: 50; YW: 67; MILK: 12; MW: 37



KL Prime Time Paymaster x

CE: 11.6; BW: 0.2; WW: 48; YW: 60; MILK: 36; MW: 60

Free K-Kim Hot Commodity *x

CE: 9.2; BW: 1.3; WW: 58; YW: 65; MILK: 18; MW: 47

Glamour Girl

cow family



SULL Glamours 3343
Grand Champion Shorthorn, 2014 South Dakota State Fair
Congratulations to Haley Becking



SULL Glamour Blood
Grand Champion Shorthorn
Female, 2014 Illinois State Fair
Jackpot Show
Congratulations to Sara Pieper

Lot 7a 04.28.14 Heifer LE 4282 Polled Reg. # 4211392
SULL Glamorous Virtue *x
SULL RED BLOOD ET *x, red
SULL RED REWARD 9321 7/8 *x, red
RL CUMBERLAND 5N35 *, roan
CF SOLUTION X ET *x, r/w/m
CYT SOLUTION GIRL 9114 ET *, roan
JA SONNY GIRL 1J40 ET *x, white

Shorthorn • BW:2.2 WW:63.6 YW:77.7 M:13.4

- A young April heifer that is out of a young up-and-coming donor at Sullivan Farms.
- This heifer is hard to put a hole in. On sale day this is one you want to study.
- Her full sister was recently named Champion Shorthorn at the 2014 South Dakota State Fair in the Open and 4-H Show for the Becking Family.



Lot 7b 04.27.14 Heifer LE 4259 Polled Reg. # 4211402
SULL Glamour Girl 4259 *x
SULL RED BLOOD ET *x, red
SULL RED REWARD 9321 7/8 *x, red
RL CUMBERLAND 5N35 *, roan
CF SOLUTION X ET *x, r/w/m
CYT SOLUTION GIRL 9114 ET *, roan
JA SONNY GIRL 1J40 ET *x, white

Shorthorn • BW:2.2 WW:63.6 YW:77.7 M:13.4

- Much like her full sister above, Lot 7A, this heifer possesses endless potential in the show ring.
- Her full sister was recently named Champion Shorthorn at the 2014 South Dakota State Fair in the Open and 4-H Show for the Becking Family.



Hot Tamale/Jalynn

cow family



SULL Hot Tamale
Supreme Champion Female, 2010 NAILE
2010 National Champion ShorthornPlus Female
Grand Champion ShorthornPlus Female,
2010 NAILE Open & Junior Show



SULL Red Tamale 3260
Grand Champion ShorthornPlus Female, 2014
National Junior Shorthorn Show
Congratulations to Konner Kirkpatrick



SULL Timeless Tamale
Grand Champion Chianina
Female, 2014 National Junior
Chi Show
Reserve Grand Champion
ShorthornPlus Female, 2014
National Junior Shorthorn Show
Congratulations to Kane Aegerter



SULL Jalynn 0904
Supreme Champion Female, 2011 NAILE
Supreme Champion Female, 2011
American Royal
Grand Champion ShorthornPlus Female,
2011 NAILE Open & Jr Show
Grand Champion ShorthornPlus,
2011 American Royal Open & Jr Show



SULL Jalyn Patches
Grand Champion ShorthornPlus Female,
2014 Iowa State Fair Open & Jr Show



SULL Jalynn Beauty
Grand Champion ShorthornPlus Female,
2014 NWSS Open & Jr Show
Reserve Grand Champion ShorthornPlus Female,
2013 National Junior Shorthorn Show
Grand Champion Prospect Heifer, 2013 NWSS
Grand Champion ShorthornPlus Female, 2013 NWSS Open Show
Congratulations to Kane Aegerter



SULL Jalynn's Hippie *xar



8a

04.02.14 Heifer LE 4250B Polled Reg. # ar61149

SULL RIGHT DIRECTION ET *x, r/w
CF TRUMP X *x, roan
NPS DESERT ROSE oo4 *x, r/w

JSUL JALYNN 344 *x, blk

HEAT WAVE *x, blk

ShorthornPlus/Chianina • BW: 2.9 WW: 54.0 YW: 66.0 M: 19.0

- This heifer is a standout and she is one that always presents herself to the max. She has a little extra look and strut about her with the unique Right Direction x Jalynn color pattern with the added extra depth of body and femininity. Sure to be a crowd favorite on sale day!
- SULL Jalynn 0904 and SULL Jalynn Beauty were many time champions including Junior Nationals, American Royal, NAILE and NWSS Champions shown by Nick Sullivan and Kane Aegerter. Here is your opportunity for a full sib.

8b**SULL Tamale's Vixen *xar**

02.18.14 Heifer LE 4091B Polled Reg. # ar61100

SULL RIGHT DIRECTION ET CF TRUMP X *x, roan
*x, r/w
NPS DESERT ROSE 004 *, r/wSUL TAMALE *x, blk
HEAT WAVE *x, blk
JSULAN X MX₅₈

ShorthornPlus/Chianina • BW:2.9 WW:55 YW:69 M:19

- National level ShorthornPlus contender! Complete, smooth, sound and feminine cow that resembles her full sister, SULL Red Tamale of Konner Kirkpatrick's.
- The Right Direction x SUL Tamale 588 mating is one of the most successful and consistent matings in the show ring from the 2010 - 2014 show season. Successful champions include SULL Hot Tamale, Supreme Champion 2010 NAILE and 2010 Champion ShorthornPlus Female, Junior Nationals. SULL Timeless Tamale shown by Kane Aegerter was Grand Champion Chianina Female at the 2014 Chi Junior Nationals and Reserve Grand Champion ShorthornPlus at the 2014 Shorthorn Junior Nationals. SULL Red Tamale shown by Konner Kirkpatrick was a many time champion ShorthornPlus including 2014 Jr Nationals and 2014 Indiana State Fair.

**8c****SULL Tamale's Lady *xar**

03.05.14 Heifer LE 4128B Polled Reg. # ar61101

SULL RIGHT DIRECTION ET CF TRUMP X *x, roan
*x, r/w
NPS DESERT ROSE 004 *, r/wSUL TAMALE *x, blk
HEAT WAVE *x, blk
JSULAN X MX₅₈

ShorthornPlus/Chianina • BW:2.9 WW:55 YW:69 M:19

- Powerfully constructed combined with flawless structure and yet still a feminine package. This heifer possesses the traits of her many successful sisters.
- The Right Direction x SUL Tamale 588 mating is one of the most successful and consistent matings in the show ring from the 2010 - 2014 show season. Successful champions include SULL Hot Tamale, Supreme Champion 2010 NAILE and 2010 Champion ShorthornPlus Female, Junior Nationals. SULL Timeless Tamale shown by Kane Aegerter was Grand Champion Chianina Female at the 2014 Chi Junior Nationals and Reserve Grand Champion ShorthornPlus at the 2014 Shorthorn Junior Nationals. SULL Red Tamale shown by Konner Kirkpatrick was a many time champion ShorthornPlus including 2014 Jr Nationals and 2014 Indiana State Fair.

**8d****SULL Foxy Tamale 4057 *xar**

02.11.14 Heifer LE 4057B Polled Reg. # ar61099

SULL RIGHT DIRECTION ET CF TRUMP X *x, roan
*x, r/w
NPS DESERT ROSE 004 *, r/wSUL TAMALE *x, blk
HEAT WAVE *x, blk
JSULAN X MX₅₈

ShorthornPlus/Chianina • BW:2.9 WW:55 YW:69 M:19

- Brood cow look combined with flawless structure will make this heifer valuable and useful in any aspect.
- The Right Direction x SUL Tamale 588 mating is one of the most successful and consistent matings in the show ring from the 2010 - 2014 show season. Successful champions include SULL Hot Tamale, Supreme Champion 2010 NAILE and 2010 Champion ShorthornPlus Female, Junior Nationals. SULL Timeless Tamale shown by Kane Aegerter was Grand Champion Chianina Female at the 2014 Chi Junior Nationals and Reserve Grand Champion ShorthornPlus at the 2014 Shorthorn Junior Nationals. SULL Red Tamale shown by Konner Kirkpatrick was a many time champion ShorthornPlus including 2014 Jr Nationals and 2014 Indiana State Fair.





8e

03.05.14

Heifer

SULL Vibrant Jalynn *xar

LE 4096B

Polled

Reg. # ar61102

SULL RIGHT DIRECTION ET

CF TRUMP X *x, roan

*x, r/w

NPS DESERT ROSE 004 *x, r/w

HEAT WAVE *x, blk

JSUL JALYNN 7244T *x, blk

ShorthornPlus/Chianina • BW:2.9 WW:54.0 YW:66.0 M:19.0

- This heifer has all the parts, pieces and look to be a high quality show heifer. She has been a standout from day one.
- SULL Jalynn 0904 and SULL Jalynn Beauty were many time champions including Junior Nationals, American Royal, NAILE and NWSS Champions shown by Nick Sullivan and Kane Aegerter. Here is your opportunity for a full sib.



8f

01.20.14

Heifer

SULL Jalynn 4130 *xar

LE 4130B

Polled

Reg. # ar61098

SULL RIGHT DIRECTION ET

CF TRUMP X *x, roan

*x, r/w

NPS DESERT ROSE 004 *x, r/w

HEAT WAVE *x, blk

JSUL JALYNN 7244T *x, blk

ShorthornPlus/Chianina • BW:2.9 WW:54.0 YW:66.0 M:19.0

- Extremely feminine, smooth, sound, maternally built dual registered female. The Jalynn 344 cow family has been a dominate source of some of the best cattle in the breed.
- SULL Jalynn 0904 and SULL Jalynn Beauty were many time champions including Junior Nationals, American Royal, NAILE and NWSS Champions shown by Nick Sullivan and Kane Aegerter. Here is your opportunity for a full sib.

SHORTHORN 

8g

05.04.14

Heifer

SULL Sophia Grace 4343

LE 4343B

Polled

Reg. # ar61196

SULL RED KNIGHT 2030 ET *

red

CF SOLUTION X ET *x, rw

K-KIM MONA LISA 10T ET *x, white

HEAT WAVE

JSUL MAGIC SOPHIA 6S, black

MISS FOREPLAY

ShorthornPlus/Chianina • BW:0.6 WW:67 YW:87 M:14

- A very dominating show heifer prospect here. Extra style, correctness and substance in this ShorthornPlus female.
- Her dam raised the 2012 Iowa State Fair Supreme Champion Heifer for the Elder family.

8h

SULL Sweet Direction *xar

03.16.14 Heifer LE 4135 Polled Reg. # ar61088

SULL RIGHT DIRECTION ET

CF TRUMP X *x, roan
*x, r/w
NPS DESERT ROSE 004 *, r/w

SULL ZERO GRAVITY, blk

CARNAC
GROUND ZERO

ShorthornPlus •

- Solid red heifer that combines power, structural correctness and angularity all in one package.
- Her young dam was a many time champion in the show ring. We look forward to what is yet to come from this young donor.



8i

SULL Miss Double Stuff *xar

01.03.13 Bred LE 3000 Polled Reg. # ar60924

SULL BLUE ET 1/2 *x, b/r

DF VEGAS 310M ET *x, white
SULL STOCKMAN 365

SULL MISS DOUBLE STUFF *x, roan

AHL DOUBLE STUFF 306 *, roan
DMS MARGARET ELITE 805 *x, r/w/m

ShorthornPlus • BW:3.8 WW:51.8 YW:54.4 M:12.5

- Bred to Gold Standard; due January 29, 2014
- This 3/4 blood daughter out of the popular SULL Blue has donor quality. Whether you're looking for clubby's or Shorthorn quality calves she is your gal. Gold Standard is a low birth weight purebred Angus bull at Griswold Cattle Company.
- SULL Miss Double Stuff is a powerhouse donor cow. She is truly impressive if you get to see her. She is the dam of the AI sire SULL Blue Blood.



8j

SULL Diamond 3020 *xar

01.01.13 Bred LE 3020 Polled Reg. # ar60925

DF VEGAS 310M ET *x, white

CF TRUMP X *x, roan
NPS MIRAGE 544 ET *sx, roan

TRIPLE B R DIAMOND 1304

CONNELLY DANNY BOY
TRIPLE B R DIAMOND 938

ShorthornPlus • BW:3.6 WW:50.9 YW:66.1 M:18.1

- Bred to SULL Payday; due March 29, 2015
- This attractive blue roan heifer is the definition of a cow. Big time brood cow ability, sound structured, feminine and big bodied.
- Danny Boy 1304 is truly one of the most impressive Angus cows that we have ever seen. Her Vegas daughter on last year's Maternal Legends sale sold for \$40,000. Her set of First Class daughters Lots 46 and 47 are an example of why 1304 is a dominate cow.



Mona Lisa

cow family



SULL Red Knight 2030



**K-Kim
Mona
Lisa 35L**



9a

04.03.14 Heifer

SULL Mona Lisa 4313 *x

LE 4313 Polled Reg. # 4211475

CF TRUMP X *x, roan

PHILDON CUNIA DIVIDEND 7/8 *x, r/w

CF CARMELE NG NG 158X *x, r/w/m

K-KIM MONA LISA 10T ET *x, red

SULL GNCC SALUTE 532R ET *x, roan

K-KIM MONA LISA 157N ET *, red

Shorthorn • BW:3.4 WW:62.4 YW:79.2 M:17.1

- One of the top show heifer prospects in the offering. Complete from end to end.
- SULL Mona Lisa 4313 is a maternal sister to SULL Red Knight one of the most successful bulls in the show ring to date and is exceeding himself in his first calf crop at Sullivan Farms.



9b

01.05.14 Heifer

SULL Mona Lisa 4133 *x

LE 4133 Polled Reg. # 4211406

SULL RED BLOOD ET *x, red

SULL RED REWARD 9321 7/8 *x, red

RL CUMBERLAND 5N35 *, roan

SULL MONA LISA 8295 ET *x, roan

CF SOLUTION X ET *x, r/w/m

K-KIM MONA LISA 35L ET *, white

Shorthorn • BW:2.7 WW:66.9 YW:80.1 M:15.9

- Powerfully built, big footed, roan colored Shorthorn show heifer prospect.
- SULL Mona Lisa 8295 is a full sister to breed leading sires, SULL-GNCC Asset, SULL Grey Goose and SULL Roan Goose.
- Owned with Dennis Moore

9c

SULL Mona's Traveling *x

02.25.13 Bred LE 3426 Polled Reg. # 4210805

SULL RED REWARD 9321 7/8 *x, red
TEGM RED ADVANTAGE 100T 3/4 *x, red
MCV MARGIE MILLION 503Q *x, r/w/m

K-KIM MP MONA LISA 34P *x, white
JM VORTEC ET *, roan
K-KIM TIA ET *x, white

Shorthorn/MaineTainer • BW:1.8 WW:53.5 YW:62.7 M:20.0

- Bred to SULL Payday; due February 22, 2015
- The SULL Red Reward females are making quite a buzz around the country, this heifer is an example of why. The udders of 34P have been perfect along with her phenotype and flawless structure.
- Mona Lisa 34P has produced some of the top sires in the Shorthorn breed including SULL Primetime and SULL Stockman.



9d

SULL Mona's Rewards *x

03.04.13 Bred LE 3452 Polled Reg. # 4210807

SULL RED REWARD 9321 7/8 *x, red
TEGM RED ADVANTAGE 100T 3/4 *x, red
MCV MARGIE MILLION 503Q *x, r/w/m

K-KIM MONA LISA 35L ET *, white
JM VORTEC ET *, roan
HR MONA LISA W684Y *x, r/w/m

Shorthorn/MaineTainer • BW:1.2 WW:59.2 YW:69.0 M:20.9

- Bred to SULL Payday; due January 29, 2015
- This Red Reward daughter has a little extra punch from her dam but still maintains femininity and flawless structure.
- Mona Lisa 35L over the years has generated numerous top sires and top donors throughout the country.



9e

SULL Reward Tia 3064 *x

01.05.13 Bred LE 3064 Polled Reg. # 4210786

SULL RED REWARD 9321 7/8 *x, red
TEGM RED ADVANTAGE 100T 3/4 *x, red
MCV MARGIE MILLION 503Q *x, r/w/m

CYT TIAWANA 864U ET *, white
JM VORTEC ET *, roan
K-KIM TIA ET *x, white

Shorthorn/MaineTainer • BW:1.7 WW:53.3 YW:62.1 M:19.6

- Bred to SULL Payday; due February 22, 2015
- This Red Reward daughter combined with SULL Payday should be the ideal first calf mating. SULL Reward Tia 3064's full sister SULL Mona Lisa's Reward was purchased by Cates Farms as an open heifer off of the 2013 Maternal Legends Sale and will be a valued new young donor.



Picture Perfect cow family

CF
Picture
Perfect
076



SULL Picture Solution 505



10a

05.24.14 Heifer LE 4256 Polled Reg. # 4211400

SULL Perfect Picture *x

R-C WG DAMN PROUD *x, roan

JAKE'S PROUD JAZZ 266L *x, roan

WG RC GOLDEN CHERRY 622 *x, roan

CF SOLUTION XET *x, r/w/m

SULL PERFECT SOLUTION 505 *x, r/w/m

CF PICTURE PERFECT 076TPX *x, red

Shorthorn • BW:5.6 WW:64.6 YW:77.2 M:12.6

- Big time show heifer with the presence and power that any judge will not deny. Whoever shows this heifer will have a lot of fun and success throughout the year.
- Her dam, Picture Perfect 505, was a highly successful show heifer and has been a prominent donor to our program.



10b

03.20.14 Heifer LE 4257 Polled Reg. # 4211395

SULL Picture Perfect *x

R-C WG DAMN PROUD *x, roan

JAKE'S PROUD JAZZ 266L *x, roan

WG RC GOLDEN CHERRY 622 *x, roan

CF SOLUTION XET *x, r/w/m

SULL PERFECT SOLUTION 505 *x, r/w/m

CF PICTURE PERFECT 076TPX *x, red

Shorthorn • BW:5.6 WW:64.6 YW:77.2 M:12.6

- The Damn Proud x Picture Perfect 505 mating is a consistent successful mating here at Sullivan Farms. This heifer has the look of her dam and a little extra power from her sire.
- Her dam, Picture Perfect 505, was a highly successful show heifer and has been a prominent donor to our program.

10c

04.02.14 Heifer LE 4251 Horned Reg. # 4211396

SULL Perfect Portrait *

R-C WG DAMN PROUD *x, roan

JAKE'S PROUD JAZZ 266L *x, roan

WG RC GOLDEN CHERRY 622 *x, roan

CF SOLUTION X ET *x, r/w/m

SULL PERFECT SOLUTION 505 *x, r/w/m
CF PICTURE PERFECT 076TPX *x, red

Shorthorn • BW:5.6 WW:64.6 YW:77.2 M:12.6

- A smooth built, big bodied, high quality show heifer.
- Her dam, Picture Perfect 505, was a highly successful show heifer and has been a prominent donor to our program.



10d

01.09.14 Heifer LE 4034 Polled Reg. # 4211405

SULL Perfection's Picture *x

CF TRUMP X *x, roan

CF SOLUTION X ET *x, r/w/m

NPS DESERT ROSE 004 *x, r/w

CF TRUMP X *x, roan

SULL PICTURE PERFECT 076 ET *x, red
SBF PICTURE PERFECT 101D ET *x, red

Shorthorn • BW:5.0 WW:73.0 YW:91.7 M:11.1

- This heifer goes back to some of the original breed's great genetics. She possesses the maternal design and structural correctness of the Picture Perfect cow family.
- Picture Perfect genetics here!



GENERAL SALE INFORMATION

Terms: The terms of the sale are cash or check payable to Sullivan Farms. Payment to be made to the clerk immediately following the sale and before the cattle are removed from Sullivan Farms. Purchasers or their representative must sign the bill of sale prior to leaving the sale site.

Insurance will be available for your purchase at the sale through Stuart Wilson. Contact either their representative or the clerk at the settlement desk.

Health: Each animal will be represented by a state approved health certificate for interstate shipment. Buyers should make themselves aware of the health requirements for their respective states. All vaccinations are up-to-date, and cattle born at Sullivan Farms have been vaccinated.

Semen Rights: We are retaining an in-herd semen use on all bulls selling in the Maternal Legends Sale.

Genetic Conditions: All genetic conditions that Sullivan Farms has received results on will be on a supplement sheet sale day.

Liability: Each animal will be at the buyer's risk as soon as sold, but will be cared for by the seller for a reasonable amount of time. Neither the owners, employees, auctioneer, sale manager or other affiliated personnel can be responsible for any accidents, but they will make every effort to provide for the safety and comfort of those attending.

Announcements made sale day will take precedence over printed material in this catalog.

Breeding Update/Calving Information: There will be added information available at the sale site that will list any additions to the catalog information as to new

calves born and new breeding information that will occur after the printing of this catalog.

ASA Breeding Guarantee: All animals sell guaranteed to be fertile. Exceptions 1) Disease, or injury occurring after purchase; 2) Bulls being run with the herd prior to 14 months of age. Sullivan Farms will guarantee open heifers to breed; however, please keep in mind that animal conditions influence fertility greatly. If there is a problem, we would want the females to be returned to us to be bred. Open heifers that have been transplanted are not guaranteed. In the event that an animal will not settle with the efforts of the buyer and seller, a sale credit in the amount of the purchase price will be issued to the buyer that can be used at any time on any animal, flush, semen or embryos sold by Sullivan Farms.

Flushes & DNA: Sullivan Farms reserves one flush of eight or more grade 1 or 2 embryos at our expense on all females selling. Sullivan Farms retains at our expense the opportunity to obtain a DNA cell line for cloning purposes on all cattle selling in this sale.

Embryos: Guarantee one pregnancy on each package of embryos sold if implanted by a certified technician. If a pregnancy is not confirmed, an additional embryo will be received.

Retained Flushes: Flushes to take place at the convenience of the buyer at a location of their choice. We will pay all normal costs associated with the flush. Animals may be returned here for transplant if buyer desires at no cost.

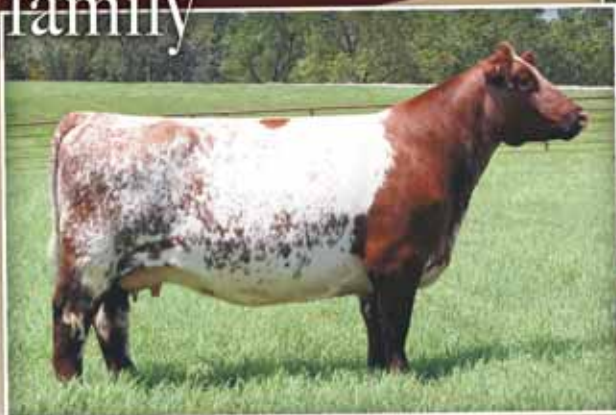
Augusta Pride

cow family



Little Cedar Augusta Pride 701

**GCC Augusta
Pride 3127**



11a

06.03.14 Heifer LE 4352 Polled Reg. # 4211394

SULL Augusta's Pride *x

SULL RED BLOOD ET *x, red

SULL RED REWARD 9321 7/8 *x, red

RL CUMBERLAND 5N35 *x, roan

WHR SONNY 8114 ET *x, roan

GCC AUGUSTA PRIDE 3127 *x, roan

SS AUGUSTA PRIDE 3127 *x, r/w/m

Shorthorn • BW:1.0 WW:49.1 YW:54.2 M:16.6

- This young June heifer calf is one of our favorites. Flawless structure, powerfully constructed from end to end but still possessing the show ring look. This will be one that is sure to see some purple banners.
- She comes from the proven popular cow SS Augusta Pride that was a many time Champion herself.



11b

02.09.14 Heifer LE 4088 Polled Reg. # ar61121

SULL Augusta Lady 4088 *xar

MONOPOLY *x, blk

LFCC UNSTOPPABLE 727X *x, blk

WHR SONNY 8114 ET *x, roan

LITTLECEDAR AUGUSTA PRIDE 701 ET *x, roan

WHR RT AUGUSTA PRIDE 2202 ET *x, roan

ShorthornPlus/MaineTainer • BW:4.3 WW:27.7 YW:71.2 M:16.6

- An easy fleshing, maternally built ShorthornPlus/MaineTainer female.
- Her dam Little Cedar August Pride 701 was a division champion at NAILE and NWSS that we recently purchased off of the Shorthorn Revival sale. She is the powerfully constructed Sonny daughter that comes from the famous Augusta Pride cow family.

11c

SULL Miss Augusta 4100 *xar

02.27.14 Heifer LE 4100 Polled Reg. # ar61122

MONOPOLY *x, blk

LFCC UNSTOPPABLE 727X *x, blk

WHR SONNY 8114 ET *x, roan

LITTLECEDAR AUGUSTA PRIDE 701 ET *x, roan

WHR RT AUGUSTA PRIDE 2202 ET *x, roan

ShorthornPlus/MaineTainer • BW:4.3 WW:27.7 YW:71.2 M:16.6

- A dual registered, extremely feminine, highly competitive heifer that is sure to catch anyone's eye.
- Her dam Little Cedar August Pride 701 was a division champion at NAILE and NWSS that we recently purchased off of the Shorthorn Revival sale. She is the powerfully constructed Sonny daughter that comes from the famous Augusta Pride cow family.



Tina cow family

SULL Total Tina 3981

Supreme Champion Female, 2014 Minnesota State Fair
 Congratulations to the Ruble Family.



SULL Tina Class 0247

Supreme Champion Female, 2011 Ohio State Fair
 Third Overall Female, 2011 National Junior Shorthorn Show
 Congratulations to the Hunt Family

12

SULL Tina's Style 4166 *x

02.27.14 Heifer LE 4166 Polled Reg. # 4211413

SULL RED DEMAND 9329 ET 7/8 *x, red

SULL DEMAND SOUNDNESS ET *x, red

K-KIM C.J. *x, red

WHR SONNY 8114 ET *x, roan

SULL TINA CLASS 0247 ET *x, white

SULL TINA MARIE P921 *x, roan

Shorthorn • BW:2.7 WW:53.3 YW:64.1 M:15.3

- This is exactly what we thought the Demand Soundness crossed with SULL Tina Class would look like. Her maternal sister was the recent Supreme Champion for the Ruble family at the Minnesota State Fair.
- She has the flawless structure and body depth of her sire, SULL Demand Soundness, and the show ring extension and look of her dam, SULL Tina Class.





Milestone Sable 01

Sable

cow family



SULL Bobbi's Sable

Grand Champion Bred & Owned Shorthorn Plus Female,
2014 National Junior Shorthorn Show



13a

02.20.14 Heifer

SULL Sable's Future *xar

LE 4137 Polled Reg. # ar61097

MONOPOLY *x, blk

HEAT WAVE *x, blk

W T F RUTH MEDINA x, blk

SULL SABLE 01 - 2CL ET CL *x, red
CCS EQUITY'S CHARMER ET *x, r/w/m
WF EVERGREEN SABLE ET *x, roan

Shorthorn Plus • BW:5.6 WW:50.1 YW:74.0 M:15

- This is the type of heifer that will be a load to get around in the show ring and will be a standout in the donor pen.
- This heifer's full sib was Supreme Champion at Badger Kick-off and Grand Champion ShorthornPlus at the 2012 NAILE and a recent full sib was Reserve Supreme at the 2013 Badger Kick-off.



13b

02.10.14 Heifer

SULL Evergreen's Sable *x

LE 4016 Polled Reg. # 4211403

SULL RED BLOOD ET *x, red

SULL RED REWARD 9321 7/8 *x, red

RL CUMBERLAND 5N35 *, roan

SULL EVERGREEN SABLE ET *x, roan
CF SOLUTION X ET *x, r/w/m
WF EVERGREEN SABLE ET *x, roan

Shorthorn • BW:3.2 WW:64.9 YW:81.0 M:16.2

- Powerful show heifer prospect. This one will be a load from the get go. Huge bodied, flawless structure will make this one successful.
- The Sable cow family has been a dominate producer of National Champions throughout her career.

13c

02.10.14 Heifer

SULL Evergreen Sable *x

LE 4136 Polled Reg. # 4211422

SULL RED BLOOD ET *x, red

SULL RED REWARD 9321 7/8 *x, red

RL CUMBERLAND 5N35 *, roan

CF TRUMP X *x, roan

SULL EVERGREEN SABLE -2CL ET *x, roan

NPS MATTIS 530 ET *sx, roan

Shorthorn • BW:2.2 WW:51.3 YW:60.9 M:17.9

- Stunning profile in this attractive roan colored female.
- Evergreen Sable has stood the test of time both in the show ring and in the donor pen.

**13d**

05.09.14 Heifer

SULL Sara's Sable 4290 *x

LE 4290 Polled Reg. # 4211412

SULL DEMAND SOUNDNESS ET *x, red

SULL RED DEMAND 9329 ET 7/8 *x, red

K-KIM C.J. *x, red

SULL SARA'S SABLE ET *x, r/w

CCS EQUITY'S CHARMER ET *x, r/w/m

WF EVERGREEN SABLE ET *x, roan

Shorthorn • BW:4.0 WW:60.3 YW:76.6 M:18.9

- This heifer has the design of what this mating was intended for. She possesses the femininity and balance of her dam and the mass and structural correctness of her sire.
- Sara's Sable P321 was a many time champion including Supreme Female at the American Royal, Champion Shorthorn at NAILE and NWSS.

**13e**

01.09.13 Bred

SULL Demand Sable 3060 *x

LE 3060 Polled Reg. # 4210785

SULL RED DEMAND 9329 ET 7/8 *x, red

TEGM RED ADVANTAGE 100T 3/4 *x, red

KL MARIGOLD MARIA 974 *x, red

SULL SABLE 01-3CL ET *x, red

CCS EQUITY'S CHARMER ET *x, r/w/m

WF EVERGREEN SABLE ET *x, roan

Shorthorn • BW:3.5 WW:55.5 YW:72.8 M:15.2

- Bred to Free K-Kim Hot Commodity; due January 29, 2015
- This is a big bodied, powerfully built heifer sired by the outcross SULL Red Demand. Mated with Hot Commodity should be perfect for out-cross genetics.



Margie

cow family



MCV Margie Million 503Q
503Q, the dam of SULL Red Reward. His influence will be a driving force in breed progress. 503Q only builds that confidence.



SULL Solutions Margie
Grand Champion Female, 2009 NWSS



14a

03.26.14 Heifer LE 4155 Polled Reg. # 4211416

SULL Margie Million *x

SULL TRAVELER 9807 ET *, roan
SULL GNCC ASSET ET *, r/w
SULL SABLE DELIGHT ET *x, red

MCV MARGIE MILLION 503Q *x, r/w/m
CCC GOLD RUSH *x, red
ROCKDALE MARGIE MILLION *x, roan

Shorthorn • BW:1.1 WW:61.2 YW:73.0 M:27.0

- A standout not only because of her unique color pattern but also because of her flawless design.
- A little greener in her condition but with a little extra TLC this heifer will be one to watch in the ring.
- Margie Million 503Q is the dam of SULL Red Reward.



14b

02.23.14 Heifer LE 4113 Polled Reg. # 4211393

SULL Margie's Million *x

SULL TRAVELER 9807 ET *, roan
SULL GNCC ASSET ET *, r/w
SULL SABLE DELIGHT ET *x, red

MCV MARGIE MILLION 503Q *x, r/w/m
CCC GOLD RUSH *x, red
ROCKDALE MARGIE MILLION *x, roan

Shorthorn • BW:1.1 WW:61.2 YW:73.0 M:27.0

- This heifer is phenotypically flawless. She possesses the same features and foot and bone as her sire, SULL Traveler, and the body and dimension of her dam.
- Margie Million 503Q is the dam of SULL Red Reward.

14c

03.22.14 Heifer LE 4162 Polled Reg. # 4211415

SULL Margie's Spell *x

SULL RED BLOOD ET *x, red

SULL RED REWARD 9321 7/8 *x, red

RL CUMBERLAND 5N35 *, roan

SULL SOLUTIONS MARGIE ET *x, red

CF SOLUTION X ET *x, r/w/m

DFS MARGIE 6109 *x, red

Shorthorn • BW:2.8 WW:66.1 YW:79.7 M:15.9

- This heifer like her mother, is phenotypically fault free from end to end and built for the long haul with her impeccable structure.
- A heifer that is a true sale highlight. Her mother SULL Solutions Margie was a Maternal Legends Sale topper herself and a NWSS Champion for the Klug family.



Revival

cow family

SS Revival 7/8

15

01.10.13 Bred LE 3081 Polled Reg. # 4211037

SULL Revival 3081 *x

SULL RED BLOOD ET *x, red

SULL RED REWARD 9321 7/8 *x, red

RL CUMBERLAND 5N35 *, roan

SS REVIVAL 7/8 *x, r/w/m

DUNBEACON VENTURE x, r/w/m

MARIEHAMN MS REVIVAL 1A 3/4, red

Shorthorn • BW:1.6 WW:58.3 YW:70.3 M:25.7

- Bred to SULL Payday; due April 28, 2015
- It is hard to argue the success that the old Revival cow has had over the years. She has truly been a production masterpiece for Schrag Farms and many others.
- This Red Blood daughter has the brood cow features of Revival to make a great breeding piece.



Paymaster/Lauer

cow family



KL Primetime Paymaster



16a

KL Melita Rosewood 337 *x

02.24.13 Bred LE 337 Polled Reg. # 4204300

KL ROYAL DUTY 840 *x, red

KL ROYAL DUTY x, red

KL TRADITIONAL DAPHNE 644 *x, red

KL MELITA ROSEWOOD H13 x, roan

WAUKARU GOLD ELEMENT 156 x, red

KL MELITA ROSEWOOD 103 x, roan

Shorthorn • BW: 4.9 WW: 66.1 YW: 80.5 M: 26.8

- Bred to Free K-Kim Hot Commodity; due January 29, 2015
- This big bodied, sound structured outcross female should be the perfect match for Hot Commodity.
- We have purchased many genetics from the Lauer cow herd that have gone on to do very well at Sullivan Farms including our popular AI bull KL Primetime Paymaster 953.



16b

KL Mary Ann 330 *x

02.23.13 Bred LE RE 330 Polled Reg. # 4204296

KL ROYAL DUTY 840 *x, red

KL ROYAL DUTY x, red

KL TRADITIONAL DAPHNE 644 *x, red

KL MARY ANN 7003 *x, red

KL FOREMOST ACHIEVER x, red

KL MARY ANN'S WC *, red

Shorthorn • BW: 02 WW: 45.1 YW: 49.0 M: 27.2

- Bred to Free K-Kim Hot Commodity; due January 29, 2015
- Tremendous outcross genetics KL Mary Ann 330 crossed with Hot Commodity will be an exciting mating.
- We have purchased many genetics from the Lauer cow herd that have gone on to do very well at Sullivan Farms including our popular AI bull KL Primetime Paymaster 953.



Fool's cow family

Miss V8 Can't Fool Me

17

SULL Foolish Lady 3463 *

04.21.13 Bred LE 3463 Horned Reg. # 4200691

SULL RIGHT DIRECTION ET¹ *x, r/w
CF TRUMP X *x, roan
NPS DESERT ROSE 004 *x, r/w

SULL FOOLISH FAVOR 8192 ET¹ *x, roan
SULL GNCC SALUTE 532R ET *x, roan
CF 18TH FOOL 458 X ET *x, roan

Shorthorn • BW:2.9 WW:67.0 YW:81.2 M:23.3

- Bred to SULL Payday; due March 20, 2015
- This young Right Direction daughter is phenotypically flawless in her overall design. Bred to have a quick return on your investment SULL Payday has done an outstanding job at Sullivan Farms.



Queens cow family

CF BOY Caroline 210

Supreme Champion Female, 2013 Keystone Autumn Classic and a decedent of the Queens family.

18

SULL Queen's Reward *x

01.08.13 Bred LE 3045 Polled Reg. # pending

SULL RED REWARD 9321 7/8 *x, red
TEGM RED ADVANTAGE 100T 3/4 *x, red
MCV MARGIE MILLION 503Q *x, r/w/m

CF SULL QUEEN'S STONE 587 ET *x, red
HD BLOODSTONE 603 ET *x, roan
CF RODEO CASINO 100 *x, r/w/m

Shorthorn/MaineTainer • BW:2.9 WW:59.1 YW:72.8 M:19.8

- Bred to SULL Payday; due January 29, 2015
- This SULL Red Reward daughter crossed with SULL Payday will an outstanding mating. The SULL Payday calves have been popular around the country. 587R was purchased as the high seller at Cates.





Sullivan Farms
DUNLAP, IA.

We Sell Junior National Champions.

ML
QUALITY IN VOLUME

- NATIONAL JUNIOR SHORTHORN SHOW**
- Grand Champion Female
 - Grand Champion ShorthornPlus Female
 - Reserve Grand Champion ShorthornPlus Female
 - Third Overall Champion Female
 - Fourth Overall Champion Female
 - 11 Division Champions
 - 15 Class Winners



Grand Champion Chi Female,
'14 National Junior Chianina Show
Reserve Grand Champion ShorthornPlus
Female, '14 National Junior
Shorthorn Show
Congratulations Kane Aegerter



Grand Champion ShorthornPlus Female,
'14 National Junior Shorthorn Show
Congratulations Konner Kirkpatrick



Fourth Overall
Champion Female,
'14 National Junior
Shorthorn Show
Congratulations
Andrew Hodges



Reserve Grand Champion
Female, '14 National
Junior Red Angus Show
Bred by Sullivan/Bayer
Congratulations
Cooper Harris Rogers



Reserve Grand Champion Charolais Composite Female,
'14 National Junior Charolais Show
Congratulations Kash Long



Supreme Champion Female,
'14 NE State Fair FFA Show & Open Show
Congratulations to the Aegerter Family



Supreme Champion Female, '14 IL State Fair 4-H Show
Congratulations to the Humphrey Family



Reserve Supreme Champion Female,
'14 IL State Fair 4-H Show & Grand Champion
Polled Shorthorn, '14 IL State Fair Shorthorn Show
Congratulations to the Gellerman Family



Grand
Champion
ShorthornPlus
Female, '14 IL
State Fair Open
Show
Congratulations to
the Pieper Family



Supreme Champion Female,
'14 MN State Fair
4-H Show
Congratulations to the
Ruble Family



Reserve Supreme
Champion Female,
'14 IN State Fair
4-H Show
Congratulations to the
Harvey Family

We Sell State Fair Champions.



Grand Champion Shorthorn Female,
'14 CA State Fair
Congratulations to the Kerlee Family



Grand Champion Steer,
'14 IL State Fair
Congratulations to the Varner Family



Grand Champion
Horned Shorthorn,
'14 IL State Fair
Congratulations to the
Olson Family

Grand Champion
Shorthorn, '14 SD State
Fair 4-H & Open Show
Congratulations to the
Becking Family



Additional State Fair Champions ...

- Congratulations Weber Family - Third Overall & Champion ShorthornPlus Female, '14 MN
- Congratulations Sennett Family - Reserve Grand Champion Hereford Female, '14 IN
- Congratulations Kirkpatrick Family - Grand Champion ShorthornPlus Female, '14 IN
- Congratulations Sanders Family - Grand Champion Maine-Anjou Female, '14 IN
- Congratulations Pieper Family - Reserve Grand Champion ShorthornPlus Female, '14 IL
- Congratulations Haverback Family - Reserve Grand Champion Shorthorn Female, '14 IL
- Congratulations Haverback Family - Grand Champion ShorthornPlus Female, '14 IL
- Congratulations Pieper Family - Grand Champion Shorthorn Female, '14 IL Jackpot Show
- Congratulations Zeech Family - Reserve Grand Champion ShorthornPlus Female, '14 IL
- Congratulations Smith Family - Grand Champion ShorthornPlus Female, '14 CO
- Congratulations Hanna Family - Reserve Grand Champion AOB Female, '14 KS
- Congratulations Cooksey Family - Reserve Grand Champion ShorthornPlus Female, '14 CO
- Congratulations O'Sullivan Family - Grand Champion Charolais Female, '14 MN
- Congratulations Goecke Family - Reserve Grand Champion ShorthornPlus Female, '14 IA
- Congratulations Schweer Family - Reserve Grand Champion ShorthornPlus Female, '14 IA 4-H Show
- Congratulations Lehman Family - Third Overall Female & Champion ShorthornPlus, '14 OH
- Congratulations Schrag Family - Reserve Grand Champion ShorthornPlus Female, '14 SD

We Sell Champions Everywhere.

AT ALL PRICE RANGES.

A very special Thank You and Congratulations to the exhibitors for all your hard work and dedication.



Purchased for \$4,000

Reserve Supreme Champion Heifer & Champion Chianina Female, Iowa Beef Expo ... Congratulations Bailey Core



Purchased for \$5,250

Grand Champion Maine-Anjou Female, Austin; Reserve Division Champion, San Antonio & Fort Worth ... Congratulations Kenadee Kuykendall



Purchased for \$11,000

Reserve Grand Champion ShorthornPlus, National Junior Shorthorn Show; Grand Champion Chianina Female, National Junior Chianina Show; Division Champion, NWSS; Grand Champion ShorthornPlus Heifer, Ring A, Kansas Beef Expo; Champion ShorthornPlus Heifer, Nebraska AGR ... Congratulations Kane Aegerter



Purchased for \$4,500

Supreme Champion Female, Heart of Texas Fair Calf Scramble; Supreme Champion Female, Houston Livestock & Rodeo Calf Scramble ... Congratulations Danielle Thompson



Purchased for \$8,000

Supreme Champion Female, Loup Valley Challenge ... Congratulations Jace Stagemeyer



Purchased for \$5,000

Grand Champion Shorthorn Female, 2014 California State Fair ... Congratulations Aaron Kerlee



Purchased for \$6,800

Reserve Grand Champion Hereford Heifer, Indiana State Fair Open Show ... Congratulations Ellie Sennett



Purchased for \$7,500

Reserve Grand Champion Missouri Shorthorn, Missouri AGR; Fourth Overall Heifer & MO Club Calf High Point Shorthorn; Grand Champion Shorthorn, MO Block & Bridle; & many time champion... Congratulations Stetson Kliese

Reserve Champion Shorthorn Heifer, San Antonio ... Congratulations Lillie Skiles



Purchased for \$5,100

Third Overall Exotic Heifer, Belt Buckle Bonanza ... Congratulations Kalli Ellis



Purchased for \$10,000

Reserve Grand Champion ShorthornPlus Female, Badger Kick-off ... Congratulations Madison Snyder

Grand Champion AOB Female, Kansas State Fair; Grand Champion Kansas ShorthornPlus Female, Kansas Beef Expo; Grand Champion ShorthornPlus, Ring A & B, Wichita Mountain Classic; & many time champion ... Congratulations Cole Hanna



Purchased for \$8,000



Purchased for \$4,500

Grand Champion ShorthornPlus Female, National Junior Shorthorn Show; Grand Champion ShorthornPlus Heifer, Indiana State Fair, Jr Show & 4-H Show; Grand Champion ShorthornPlus Heifer, Hoosier Beef Congress ... Congratulations Konner Kirkpatrick



Purchased for \$11,000



Purchased for \$6,500

Reserve Grand Champion ShorthornPlus Heifer, American Royal Open Show ... Congratulations Clayton Boyert



Grand Champion ShorthornPlus, Colorado State Fair ... Congratulations David Smith



Purchased for \$8,000



Purchased for \$5,000

Reserve Division, National Junior Shorthorn Show; Division Champion, Illinois State Fair, Open Polled Show; Reserve Division Champion, American Royal Jr Show ... Congratulations Renee Lock



Grand Champion Chi Female, Heart of It All, Ohio Midwest Showdown & KILE; Champion ShorthornPlus Heifer, Purdue; Reserve Division Champion, NAILE Jr & Open Chi Show; Grand Champion Chi Heifer, Kentucky Beef Expo ... Congratulations Kiley Blanding

Reserve Grand Champion AOB Female, Wisconsin State Fair, Jr Show ... Congratulations Nathan McConnell



Purchased for \$1,800

Grand Champion ShorthornPlus Female, Illinois State Fair Open Show; Grand Champion ShorthornPlus Female, Illinois Beef Expo; Grand Champion ShorthornPlus Female, U of I Hoof & Horn; & many time Champion ... Congratulations Katie Pieper



Purchased for \$5,000

Purchased for \$8,250

Supreme Champion Heifer, Minnesota State Fair 4-H Show; Supreme Champion Female, Brookings; Reserve Champion Shorthorn, Badger Kick-Off; Reserve Shorthorn Sioux Falls ... Congratulations Riley Ruble



Purchased for \$6,500

Reserve Grand Champion Shorthorn, Illinois State Fair Jr Show; & many time champion ... Congratulations Haley Haverback



Reserve Grand Champion Female, Ring B, Kansas Beef Expo; & Division I Champion Female, San Antonio ... Congratulations Stewart Skiles

Reserve Grand Champion ShorthornPlus Female, Hoosier Beef Congress; Fifth Overall Female, Huntington Jackpot Show; & Top Five Female, Bill Rogers Classic ... Congratulations Megan Schroeder



Purchased for \$6,000

Third Overall Heifer, March Madness Preview; Fourth Overall Heifer, UW River Falls Prospect Weekend; Champion Angus Heifer, Black River Spring Thaw; Division Champion, Minnesota Junior Angus Field Day ... Congratulations Knudsen Family



Purchased for \$7,250

Supreme Champion Female, Madison Kentucky ... Congratulations Respite Farms



Purchased for \$6,500

Grand Champion Shorthorn Female, Illinois State Fair Jackpot Show & many time champion ... Congratulations Sara Pieper



Purchased for \$8,000

Grand Champion Shorthorn Female, Scarlet & Grey ... Congratulations Hunter Prescott

Grand Champion Shorthorn, Illinois State Fair Jr Show; Grand Champion Polled Shorthorn, Illinois State Fair Open Show ... Congratulations John Gellerman



Purchased for \$8,750

Power in the Program



C Miles McKee 2103



ECR WHO MAKER 210

Hereford



TCC MS Diana 01

A four time National Champion and one of the breeds popular females. A daughter of Shelby 82, the granddaughter of Harley 438.



LCC Miss Two Timin 'Harley' 438

One of the most prolific cows in the Hereford breed. A National Champion, dam of National Champion's and grand dam of National Champions.

C Eye Candy 2079
Grand Champion Polled Hereford Heifer, 2013 NWSS



JWG Miss Serendipity 1114

Grand Champion Horned Hereford Heifer, 2012 National Junior Expo
Grand Champion Horned Hereford Heifer, 2013 NWSS

STAR KK HSSF Valedictorian ET
Grand Champion Polled Hereford Heifer, 2008 NWSS



19

01.11.14 Heifer

SULL TCC Diana 4064B

LE 4064B Horned Reg. # 43512013

C MILES MCKEE 2103 ET

NJW 98S R117 RIBEYE 88X ET

C NOTICE ME ET

TCC MS DIANA 01

CRR ABOUT TIME 743

TCC MISS SHELBY 82 ET

Horned Hereford • BW: 3.2 WW: 52 YW: 80 MA: 30 M&G: 56

- Could be one of the best females to sell this year. Smooth, stout and sound. This horned prospect will give the big heifers all they want. Remember the cheapest thing you can do in life is come and look! You won't be disappointed.
- She has four national champions in her pedigree, talk about proven genetics that win.



20

02.24.14 Heifer

SULL TCC Harley 4069B

LE 4069B Polled Reg. # 43512016

C MILES MCKEE 2103 ET

NJW 98S R117 RIBEYE 88X ET

C NOTICE ME ET

LCC TWO TIMIN 438 ET

REMITALL ONLINE 122L

RST ROF REBA 28H

Polled Hereford • BW: 4.6 WW: 53 YW: 89 MA: 22 M&G: 49

- Here we go! One of the best yearling prospects in the sale! FLAWLESS!
- Harley, her mother, was the 2006 National Champion Female and has left her mark as the most prolific producer of phenotype and power in our breed.



21

03.02.14 Heifer

SULL TCC Harley 4087B

LE 4087B Horned Reg. # 43512018

C MILES MCKEE 2103 ET

NJW 98S R117 RIBEYE 88X ET

C NOTICE ME ET

LCC TWO TIMIN 438 ET

REMITALL ONLINE 122L

RST ROF REBA 28H

Horned Hereford • BW: 4.6 WW: 53 YW: 89 MA: 22 M&G: 49

- One of John's favorites! A hairy, stout, sound horned heifer that will get her picture taken a lot! This is a National Champion caliber heifer. This is what you would expect from C Miles McKee x 438 Harley.
- Harley, her mother, was the 2006 National Champion Female and has left her mark as the most prolific producer of phenotype and power in our breed.





22

04.03.14 Heifer

SULL TCC Harley 4262

LE 4262 Polled Reg. # 43512019

C MILES MCKEE 2103 ET

NJW 98S R117 RIBEYE 88X ET

C NOTICE ME ET

LCC TWO TIMIN 438 ET

REMITALL ONLINE 122L

RST ROF REBA 28H

Polled Hereford • BW: 4.6 WW: 53 YW: 89 MA: 22 M&G: 49

- SULL TCC Harley 4262 has been a great one since birth. Come see her for yourself! If the Tucker boys were showing, they would try to purchase this great one. NICE!
- Harley, her mother, was the 2006 National Champion Female and has left her mark as the most prolific producer of phenotype and power in our breed.



23

01.03.14 Heifer

SULL TCC Harley 4085B

LE 4085B Polled Reg. # 43512017

C MILES MCKEE 2103 ET

NJW 98S R117 RIBEYE 88X ET

C NOTICE ME ET

LCC TWO TIMIN 438 ET

REMITALL ONLINE 122L

RST ROF REBA 28H

Polled Hereford • BW: 4.6 WW: 53 YW: 89 MA: 22 M&G: 49

- One of the stoutest heifers in the sale! A powerful show heifer with endless mating options as a donor.
- C Miles McKee is a buyer for the ages. His function and flawless design set him apart.



24

03.05.14 Heifer

SULL TCC Harley 4063B

LE 4063B Polled Reg. # 43512012

C MILES MCKEE 2103 ET

NJW 98S R117 RIBEYE 88X ET

C NOTICE ME ET

LCC TWO TIMIN 438 ET

REMITALL ONLINE 122L

RST ROF REBA 28H

Polled Hereford • BW: 4.6 WW: 53 YW: 89 MA: 22 M&G: 49

- This mating could be one of the best ever! A daughter of the \$600,000 Miles McKee has the lines to be really good. Please see the Miles McKee calves, they are incredible.
- Harley, her mother, was the 2006 National Champion Female and has left her mark as the most prolific producer of phenotype and power in our breed.

25

03.10.14 Heifer

SULL TCC Harley 4267

LE 4267 Polled Reg. # 43512021

C MILES MCKEE 2103 ET

NJW 98S R117 RIBEYE 88X ET

C NOTICE ME ET

LCC TWO TIMIN 438 ET

REMITALL ONLINE 122L

RST ROF REBA 28H

Polled Hereford • BW: 4.6 WW: 53 YW: 89 MA: 22 M&G: 49

- A solid marked heifer that has the lines to be a really good one. Don't miss the opportunity to get a Miles x Harley heifer. There won't be many of these made. Harley is ten now. What a prospect!
- Harley, her mother, was the 2006 National Champion Female and has left her mark as the most prolific producer of phenotype and power in our breed.



26

03.14.14 Heifer

SULL Miles Candy 4264

LE 4264 Horned Reg. # 43512298

C MILES MCKEE 2103 ET

NJW 98S R117 RIBEYE 88X ET

C NOTICE ME ET

C EYE CANDY 2079

NJW 98S R117 RIBEYE 88X ET

HHR PAY IN GOLD 1008X ET

Horned Hereford • BW: 2.5 WW: 57 YW: 84 MA: 31 M&G: 29

- SULL Miss Candy 4264 maybe be one of the sleepers on the sale. She is extremely extended from end to end, sound structured, and hard to put a hole in. We think she will be one that keeps getting better and better. This heifer has national champions on both the top and bottom sides of her pedigree.
- C Eye Candy 2079 dominated the show ring winning the Polled Hereford Show as a calf at the NWSS. This heifer is not only some of her first progeny but is some of the first out of Miles McKee as well.



27

03.19.14 Heifer

SULL Miles Candy 4276

LE 4276 Polled Reg. # 43512299

C MILES MCKEE 2103 ET

NJW 98S R117 RIBEYE 88X ET

C NOTICE ME ET

C EYE CANDY 2079

NJW 98S R117 RIBEYE 88X ET

HHR PAY IN GOLD 1008X ET

Polled Hereford • BW: 2.5 WW: 57 YW: 84 MA: 31 M&G: 29

- In terms of genetics and individual quality this heifer is as good as it gets. We expect great things here.
- C Eye Candy 2079 dominated the show ring winning the Polled Hereford Show as a calf at the NWSS. This heifer is not only some of her first progeny but is some of the first out of Miles McKee as well. This heifer has national champions on the top and bottom sides of her pedigree.





28

02.07.14 Heifer

SULL Keyshona 4003

LE 4003 Polled Reg. # 43512300

CRR ABOUT TIME 743

THM DURANGO 4037

CRR D03 CASSIE 206

STAR KKH SSF KEYSHONA 25W ET

REMITALL ONLINE 122L

SSF KEYSHA 949

Polled Hereford • BW: 4.1 WW: 58 YW: 97 MA: 26 M&G: 55

- This heifer is extremely feminine, stout, square made and has the kind of hair that you will enjoy working on.
- Her dam Keyshona 25W is a full sister to one of the breed greats Olivia 15U. These genetics are built to go the total distance. Brood cow, show heifer and production machine.



29

01.05.14 Heifer

SULL TCC Harley 4066B

LE 4066B Polled Reg. # 43512005

CRR ABOUT TIME 743

THM DURANGO 4037

CRR D03 CASSIE 206

LCC TWO TIMIN 438 ET

REMITALL ONLINE 122L

RST ROF REBA 28H

Polled Hereford • BW: 4.5 WW: 55 YW: 92 MA: 22 M&G: 50

- Harley keeps stamping them. Tremendous phenotype with flawless structure! How about that look!
- Harley, her mother, was the 2006 National Champion Female and has left her mark as the most prolific producer of phenotype and power in our breed.



30

03.04.14 Heifer

SULL TCC Harley 4266

LE 4266 Polled Reg. # 43511496

CRR ABOUT TIME 743

THM DURANGO 4037

CRR D03 CASSIE 206

LCC TWO TIMIN 438 ET

REMITALL ONLINE 122L

RST ROF REBA 28H

Polled Hereford • BW: 4.5 WW: 55 YW: 92 MA: 22 M&G: 50

- A full sister to the 2013 Maternal Legends second high selling Hereford that went to the Walker family. This mating is incredible! Neat made, stout and hairy.
- Her mother was the 2006 National Champion Female and has left her mark as the most prolific producer of phenotype and power in our breed.

31

01.03.14 Heifer

SULL TCC Harley 4065B

LE 4065B Polled Reg. # 43512006

CRR ABOUT TIME 743

THM DURANGO 4037

CRR D03 CASSIE 206

LCC TWO TIMIN 438 ET

REMITALL ONLINE 122L

RST ROF REBA 28H

Polled Hereford • BW: 4.5 WW: 55 YW: 92 MA: 22 M&G: 50

- It's not hard to find this one. A farm favorite, this polled heifer is genetically no accident. Power built from the ground up, yet smooth.
- Harley, her mother, was the 2006 National Champion Female and has left her mark as the most prolific producer of phenotype and power in our breed.



32

03.23.14 Heifer

SULL TCC Harley 4263

LE 4263 Polled Reg. # 43512002

CRR ABOUT TIME 743

THM DURANGO 4037

CRR D03 CASSIE 206

LCC TWO TIMIN 438 ET

REMITALL ONLINE 122L

RST ROF REBA 28H

Polled Hereford • BW: 4.5 WW: 55 YW: 92 MA: 22 M&G: 50

- How about this one! Don't miss the opportunity to own progeny from one of the most prolific cows in the breed – Harley!
- Harley, her mother, was the 2006 National Champion Female and has left her mark as the most prolific producer of phenotype and power in our breed.



33

05.02.14 Heifer

SULL Who's Shelby 4261

LE 4261 Polled Reg. # 43514043

ECR WHO MAKER 210 ET 3DLF

DKF RO CASH FLOW 0245 ET

RV GOLDEN LADY 5064

TCC BPF MS SHELBY Z02 ET

NJW FHF 9710 TANK 45P

TCC MISS SHELBY 82 ET

Polled Hereford • BW: 4 WW: 53 YW: 87 MA: 29 M&G: 55

- WOW! This one will be a head turner come sale day. She is young and is coming on big time! She has the extra style of her mother and the body of her sire.
- SULL Who's Shelby is the first calf out of Shelby Z02 and National Champion Who Maker. The Who Maker progeny at Schaeffer/Tice and Minnaert were among the best ones they had of any breed.





34

04.12.14 Heifer

SULL TCC Harley 4976

LE 4976 Polled Reg. # 43511999

NJW 98S R117 RIBEYE 88X ET

SHF RIB EYE M326 R117

NJW 9126J DEW DOMINO 98S

LCC TWO TIMIN 438 ET

REMITALL ONLINE 122L

RST ROF REBA 28H

Polled Hereford • BW: 4.1 WW: 59 YW: 96 MA: 21 M&G: 51

- Here is a chance to own possibly one of Harley's great ones! SULL TCC Harley 4976 is a sexy show prospect with endless donor potential! A must see individual.
- Harley, her mother, was the 2006 National Champion Female and has left her mark as the most prolific producer of phenotype and power in our breed.



35

03.11.14 Heifer

SULL Valedictorian 4268

LE 4268 Polled Reg. # 43514479

NJW 98S R117 RIBEYE 88X ET

SHF RIB EYE M326 R117

NJW 9126J DEW DOMINO 98S

STAR KKH SSF VALEDICTORIAN ET

STAR BRIGHT FUTURE 533P ET

STAR SPIRIDGE KESSEY 321L ET

Polled Hereford • BW: 3.7 WW: 62 YW: 99 MA: 26 M&G: 57

- SULL Valedictorian 4268 is another example of why 298s is becoming a popular top donor at Sullivan Farms. This heifer, like her sister, is big bodied, flawless in her structure and still maintains a feminine package.
- Valedictorian 298s has exceeded our expectations in her calf crop at Sullivan Farms.



36

03.12.14 Heifer

SULL Valedictorian 4273

LE 4273 Polled Reg. # 43514480

NJW 98S R117 RIBEYE 88X ET

SHF RIB EYE M326 R117

NJW 9126J DEW DOMINO 98S

STAR KKH SSF VALEDICTORIAN ET

STAR BRIGHT FUTURE 533P ET

STAR SPIRIDGE KESSEY 321L ET

Polled Hereford • BW: 3.7 WW: 62 YW: 99 MA: 26 M&G: 57

- BIG time show heifer prospect! Talk about perfect structured, big bodied and still has a stylish package. She will be a blast to show and will make a whale of a cow.
- Valedictorian 298s has exceeded our expectations in her calf crop at Sullivan Farms. 88X was a great combination on this cow.

37

02.12.14 Heifer LE 4067B Polled Reg. # 43512007

SULL TCC Diana 4067B

NJW 73S W18 HOMETOWN 10Y ET
 SHF WONDER M326 W18 ET
 NJW P606 72N DAYDREAM 73S
 TCC MS DIANA 01
 CRR ABOUT TIME 743
 TCC MISS SHELBY 82 ET

Polled Hereford • BW: 3.2 WW: 57 YW: 97 MA: 26 M&G: 54

- A beautiful made, fault free heifer that is a full sister to our high seller last year. This mating was unique! Sully thinks Diana 01 is one of the most prolific donors in our breed.
- She has four national champions in her pedigree, talk about proven genetics that win.



38

04.02.14 Heifer LE 4079B Polled Reg. # 43512004

SULL TCC Diana 4079B

NJW 73S W18 HOMETOWN 10Y ET
 SHF WONDER M326 W18 ET
 NJW P606 72N DAYDREAM 73S
 TCC MS DIANA 01
 CRR ABOUT TIME 743
 TCC MISS SHELBY 82 ET

Polled Hereford • BW: 3.2 WW: 57 YW: 97 MA: 26 M&G: 54

- This is a full sister to one of the most talked about Herefords to sell in the fall of 2013, SULL TCC Miss Diana 315. This heifer resembles her sister with her added power, structure and spring of rib.
- She has four national champions in her pedigree, talk about proven genetics that win.



39

03.28.14 Heifer LE 4975 Horned Reg. # 43512000

SULL TCC Serendipity 4975

NJW 73S W18 HOMETOWN 10Y ET
 SHF WONDER M326 W18 ET
 NJW P606 72N DAYDREAM 73S
 JWG MISS SERENDIPITY 1114
 STAR TCF SHOCK & AWE 158W ET
 L1 DOMINETTE 04450

Horned Hereford • BW: 3.6 WW: 55 YW: 93 MA: 23 M&G: 50

- A full sister to Lot 40, SULL TCC Serendipity 4975, reminds me of a lot of her mother. Serendipity 1114 might be one of the best horned females in our breed.
- Her dam, Miss Serendipity 1114, was the 2012 Junior National Hereford Expo, Horned Hereford National Champion, the 2012 NWSS Junior Show Champion and the 2013 NWSS Open Show Division Champion.





40 05.09.14 Heifer LE 4271 Horned Reg. # 43511533
SULL TCC Serendipity 4271
 SHF WONDER M₃₂₆ W₁₈ ET
 NJW _{73S} W₁₈ HOMETOWN _{10Y} ET
 NJW P₆₀₆ 7_{2N} DAYDREAM _{73S}
 JWG MISS SERENDIPITY ₁₁₁₄ STAR TCF SHOCK & AWE _{158W} ET
 L₁ DOMINETTE ₀₄₄₅₀

Horned Hereford • BW: 3.6 WW: 55 YW: 93 MA: 23 M&G: 50

- A full sister to one of our high sellers a year ago. This May horned heifer will be some kind of tough this next year! Stout!
- Her dam, Miss Serendipity 1114, was the 2012 Junior National Hereford Expo, Horned Hereford National Champion, the 2012 NWSS Junior Show Champion and the 2013 NWSS Open Show Division Champion. Serendipity has been considered by many as one of the best Horned heifers to ever show.



TCC Hereford Partner ...
 John, Jill, Blake & Mitchell Tucker
 John cell, 308.530.5765

Hereford Eggs and Pregnancies on Page 86.



41a 02.29.12 Cow LE 1201 Polled Reg. # 43272586
TWJ 49S Faith 1201
 MCCOY _{55M} ABSOLUTE _{49S} MCCOY _{3J} MATADOR _{55M}
 MCCOY _{58G} CONNIE _{119L}
 TWJ _{BBH} _{45P} FAITH ₁₀₀₆ NJW FHF ₉₇₁₀ TANK _{45P} CHB₃DLF
 BBH _{19D} FAITH _{411P}

Polled Hereford • BW: 1.3 WW: 48 YW: 76 MA: 23 M&G: 47

- Bred to BBH 743 Red Wine 112Y; due March 10, 2015.
- How often do you have the opportunity to purchase 100% of a female this young, this proven and this good with impeccable design and pedigree.
- Her son, Lot 41B, is her natural calf as a two-year-old. The udder quality and maternal excellence is second to none. We reserve the right to one successful flush at our expense.

41b 02.26.14 Bull LE 1401 Polled Reg. # 43472305
SULL Victory 2014
 TH ₁₂₂ _{71I} VICTOR _{719T} DRF JWR PRINCE VICTOR _{71I}
 KBCR _{19D} DOMINETTE ₁₂₂
 TWJ _{49S} FAITH ₁₂₀₁ MCCOY _{55M} ABSOLUTE _{49S}
 TWJ _{BBH} _{45P} FAITH ₁₀₀₆

Polled Hereford • BW: -0.1 WW: 54 YW: 79 MA: 25 M&G: 52

- One of the most ideal Hereford bulls in the breed. SULL Victory possesses the balance and optimum middle of the road traits in every basic function needed in producing superior genetics. He does this with an extra shot of balance and eye appeal.
- SULL Victory is the natural calf out of a tremendous first calf heifer selling as Lot 41A. He is the best son of Victor 719T we have seen to date. If you are interested in moving the breed forward, get involved with this young stud. Retaining 1/3 semen interest. BW: 72 lbs.

M

QUALITY IN VOLUME



The Good ...



The Ugly...



The Bad...

Complete Angus Dispersal

Of our Angus Cow Herd and Embryos. Turn to Page 90 & 91 for our Angus Embryo Inventory and page 94 for our Angus Semen.



SULL Stockman 7302

Clone to SULL Stockman 898. She sells as Lot 57.
Her daughters sell as Lots 48 - 51.



SLL ES Keymura Katy 0084

Her daughters sell as Lots 42 - 45.



SLL Ellie 2201

This young, well bred donor sells as Lot 54.



Dameron First Class

His daughters are sale features!



Werner Marathon 1789

Service sire to many of the Angus females.

42

02.10.14 Heifer LE 4086B Polled Reg. # 17893832

SULL Keymura's First 4086

DAMERON FIRST CLASS

EXG RS FIRST RATE S903 R3
DAMERON NORTHERN MISS 3114
PLAINVIEW LUTTON E102
STEELE MISS KYMRA KATY K006

SLL ES KEYMURA KATY 0084

Angus • BEPD: 5.3 WEPD: 59 YEPD: 90 MILK: 32

- A true standout from day one. She has all the parts and pieces and maternal design to be a national contender.
- SLL ES Keymura Katy 0084 is a standout daughter of K006 Sugar who has been a leading donor cow for Steele Land & Cattle. 0084 is now a lead donor at Hoffman Ranch, Thedford, Nebraska, and Skiles Cattle Company, Dalhart, Texas.



43

03.23.14 Heifer LE 4083B Polled Reg. # 17893830

SULL Keymura Class 4083

DAMERON FIRST CLASS

EXG RS FIRST RATE S903 R3
DAMERON NORTHERN MISS 3114
PLAINVIEW LUTTON E102
STEELE MISS KYMRA KATY K006

SLL ES KEYMURA KATY 0084

Angus • BEPD: 5.3 WEPD: 59 YEPD: 90 MILK: 32

- This heifer is moderate framed, broody, yet feminine. First Class genetics.
- SLL ES Keymura Katy 0084 is a standout daughter of K006 Sugar who has been a leading donor cow for Steele Land & Cattle. 0084 is now a lead donor at Hoffman Ranch, Thedford, Nebraska, and Skiles Cattle Company, Dalhart, Texas.



44

04.10.14 Heifer LE 4270 Polled Reg. # 17893831

SULL Keymura's Classes

DAMERON FIRST CLASS

EXG RS FIRST RATE S903 R3
DAMERON NORTHERN MISS 3114
PLAINVIEW LUTTON E102
STEELE MISS KYMRA KATY K006

SLL ES KEYMURA KATY 0084

Angus • BEPD: 5.3 WEPD: 59 YEPD: 90 MILK: 32

- One of the youngest heifers in our Angus offering. Nonetheless, she has as much quality and potential as any. Big bodied, sound structured with the First Class look.
- SLL ES Keymura Katy 0084 is a standout daughter of K006 Sugar who has been a leading donor cow for Steele Land & Cattle. 0084 is now a lead donor at Hoffman Ranch, Thedford, Nebraska, and Skiles Cattle Company, Dalhart, Texas.





45

01.09.14 Heifer

SULL Keymura 4073

LE 4073B Polled Reg. # 17893833

DAMERON FIRST CLASS

EXG RS FIRST RATE S903 R3

DAMERON NORTHERN MISS 3114

SLL ES KEYMURA KATY 0084

PLAINVIEW LUTTON E102

STEELE MISS KYMRA KATY K006

Angus • BEPD: 5.3 WEPD: 59 YEPD: 90 MILK: 32

- Brood cow with extra mass and body including proven genetics on both sides.
- SLL ES Keymura Katy 0084 is a standout daughter of K006 Sugar who has been a leading donor cow for Steele Land & Cattle. 0084 is now a lead donor at Hoffman Ranch, Thedford, Nebraska, and Skiles Cattle Company, Dalhart, Texas.



46

02.10.14 Heifer

SULL Diamond Class 4076

LE 4076B Polled Reg. # +17885702

DAMERON FIRST CLASS

EXG RS FIRST RATE S903 R3

DAMERON NORTHERN MISS 3114

TRIPLE B R DIAMOND 1304

CONNELY DANNY BOY

TRIPLE B R DIAMOND 938

Angus • BEPD: 3.9 WEPD: 59 YEPD: 95 MILK: 27

- Extremely bold ribbed, with a little extra punch, and still in a feminine package.
- Triple B R Diamond 1304 is a tremendously versatile donor. Last year, we sold a ShorthornPlus daughter out of her for \$40,000. We think these First Class daughters have endless potential and will be highly competitive show heifers.



47

02.27.14 Heifer

SULL Diamond's Class 4070

LE 4070 Polled Reg. # +17885701

DAMERON FIRST CLASS

EXG RS FIRST RATE S903 R3

DAMERON NORTHERN MISS 3114

TRIPLE B R DIAMOND 1304

CONNELY DANNY BOY

TRIPLE B R DIAMOND 938

Angus • BEPD: 3.9 WEPD: 59 YEPD: 95 MILK: 27

- SULL Diamond's Class 4070 has enough extra to be a stand-out in the ring or in the pasture for production. This heifer has the unique combination of power, structural correctness and still in a feminine package. This one will see the backdrop in her near future.
- Triple B R Diamond 1304 is a tremendously versatile donor. Last year, we sold a ShorthornPlus daughter out of her for \$40,000. We think these First Class daughters have endless potential and will be highly competitive show heifers.

48**SULL Stockman's Class 4081**

03.19.14 Heifer LE 4081B Polled Reg. # +17885922

DAMERON FIRST CLASS

EXG RS FIRST RATE S903 R3
DAMERON NORTHERN MISS 3114
TC STOCKMAN 365
PRIDE 886 S D G

SULL STOCKMAN 803

Angus • BEPD: 4.2 WEPD: 48.5 YEPD: 79 MILK: 26

- This heifer is extremely hard to put a hole in. Extremely well balanced from end to end, perfect structured and has a presence about her that will sure make her a force in the show ring.
- The Stockman 898 cow family has produced numerous ShorthornPlus champion females. Now crossed with SAV Brilliance and First Class she proves why she has been a leading donor at Sullivan Farms for over a decade. For more information on the Stockman 898 turn to Lot 4.

**49****SULL Classy Stockman 4071**

01.14.14 Heifer LE 4071B Polled Reg. # +17885920

DAMERON FIRST CLASS

EXG RS FIRST RATE S903 R3
DAMERON NORTHERN MISS 3114
TC STOCKMAN 365
PRIDE 886 S D G

SULL STOCKMAN 8233

Angus • BEPD: 4.2 WEPD: 48.5 YEPD: 79 MILK: 26

- Big bodied, with extra foot and bone and structural correctness. First Class genetics.
- The Stockman 898 cow family has produced numerous ShorthornPlus champion females. Now crossed with SAV Brilliance and First Class she proves why she has been a leading donor at Sullivan Farms for over a decade. For more information on the Stockman 898 turn to Lot 4.

**50****SULL Stockman's Genius**

04.14.14 Heifer LE 4302 Polled Reg. # +17885915

SAV BRILLIANCE 8077

SAV BISMARCK 5682
SAV BLACKCAP MAY 5270
TC STOCKMAN 365
PRIDE 886 S D G

SULL STOCKMAN 8409

Angus • BEPD: 2.1 WEPD: 41 YEPD: 72 MILK: 22.5

- The youngest of the Angus offering. Extremely smooth and feminine from end to end out of the popular SAV Brilliance bull.
- The Stockman 898 cow family has produced numerous ShorthornPlus champion females. Now crossed with SAV Brilliance and First Class she proves why she has been a leading donor at Sullivan Farms for over a decade. For more information on the Stockman 898 turn to Lot 4.





51

03.03.14 Heifer

SULL Stockman 4072

LE 4072B Polled Reg. # +17885981

SAV BRILLANCE 8077

SAV BISMARCK 5682

SAV BLACKCAP MAY 5270

SULL STOCKMAN 8240

TC STOCKMAN 365

PRIDE 886 S D G

Angus • BEPD: 2.1 WEPD: 41 YEPD: 72 MILK: 22.5

- One of the flashiest well balanced show heifer prospects of the Angus offering. This one will be a national contender.
- The Stockman 898 cow family has produced numerous ShorthornPlus champion females. Now crossed with SAV Brilliance and First Class she proves why she has been a leading donor at Sullivan Farms for over a decade. For more information on the Stockman 898 turn to Lot 4.



52

02.20.14 Heifer

SULL Brilliant Stockman

LE 4074B Polled Reg. # Pending

SAV BRILLANCE 8077

SAV BISMARCK 5682

SAV BLACKCAP MAY 5270

SULL STOCKMAN 8240

TC STOCKMAN 365

PRIDE 886 S D G

Angus • BEPD: 2.1 WEPD: 41 YEPD: 72 MILK: 22.5

- Extremely feminine, flashy, maternal built show heifer prospect with the pedigree to be a valuable donor piece.
- The Stockman 898 cow family has produced numerous ShorthornPlus champion females. Now crossed with SAV Brilliance and First Class she proves why she has been a leading donor at Sullivan Farms for over a decade. For more information on the Stockman 898 turn to Lot 4.



53

04.06.06 Cow

MDMC Ellie's Image

LE 6939 Polled Reg. # +15613854

LEACHMAN SAUGAHATCHEE 3000C

N BAR EMULATION EXT

LEACHMAN B C 7100

O G L OSAGE ELLIE 939-634

HOFF WESTWIND S C 070

O G L ELLIE 634-446

Angus • BEPD: 3.4 WEPD: 35 YEPD: 63 MILK: 11

- Selling open and ready to flush.
- A brood cow powerhouse with easy fleshing ability. The Saugahatchee cows have been big time producers. Whether you are looking to breed club calves or breed back maternally for purebred cows, we think this one has the ability to be a real asset in any program.
- She has been IVF'd four times, freezing 21 embryos.

54

04.17.12 Cow LE 2201 Polled Reg. # +17364660

SLL Ellie 2201

PLAINVIEW LUTTON E102

EXAR LUTTON 1831

PLAINVIEW PRIDE C123

G L ELLIE 634-446

O G L RAPSCALLION 408-308

O G L ELLIE 446 008

Angus • BEPD: 2.8 WEPD: 41 YEPD: 65 MILK: 17

- Bred to Werner Marathon 1789; due March 24, 2015
- This is the type of young female you only have the opportunity to buy with a true complete dispersal. With her phenotype and flawless structure and proven pedigree this female is sure to do big things.
- Her full sister 0084 is the dam of Lots 42 - 45, sired by First Class, these calves are truly impressive to see and will be a force in the show ring. Mate this young future donor cow to First Class or whatever works for your program, and we promise she will not disappoint you.
- She has been IVF'd three times, freezing nine embryos.

**55**

04.24.12 Cow LE 2205 Polled Reg. # +17364661

SLL Ellie 2205

PLAINVIEW LUTTON E102

EXAR LUTTON 1831

PLAINVIEW PRIDE C123

G L ELLIE 634-446

O G L RAPSCALLION 408-308

O G L ELLIE 446 008

Angus • BEPD: +2.8 WEPD: +41 YEPD: +65 MILK: +17

- Bred to Affliction (Maine-Anjou); due January 23, 2015
- This is one of our favorite young donor cows selling in the offering. This is the type of cow that belongs in the front pasture. I will be anxious to hear from her new owner of the big things she has done for them.
- Her full sister 0084 is the dam of Lots 42 - 45, sired by First Class, these calves are truly impressive to see and will be a force in the show ring. Mate this young future donor cow to First Class or whatever works for your program and we promise she will not disappoint you.
- She has never been flushed or IVF'd.

**56**

2010 Pair LE 0132 Polled Reg. # Pending

SLL Princess 0132

EXAR TITTELIST T011

BR MIDLAND

EXG BLACKCAP R05 R3

STEELE PRINCESS L116

H F A MUFASA 83

STEELE PRINCESS J903

Angus • BEPD: 4.2 WEPD: 46 YEPD: 83 MILK: 21

- Extremely feminine and structurely correct Titlelist female. This young female is doing a nice job with her calf at side. It allows for a quick pay day.
- Angus females like this are worth their premium around the country. This female will raise fantastic Angus, ShorthornPlus, Foundation Simmental or MaineTainer progeny.
- She has never been flushed or IVF'd.
- LOT 56A - Heifer, born 07.20.14, black, polled sired by SULL Roan Blast. BW: 78 lbs.





57

03.25.07 Cow

SULL Stockman 7302

LE 7302 Polled Reg. # ^17297498

TC STOCKMAN 365

TC STOCKMAN

TC PRIDE 0014

PRIDE 886 S D G

BALDRIDGE OCAR

PRIDE 379 S D G

Angus • BEPD: 4.2 WEPD: 29 YEPD: 51 MILK: 13

- Bred to Werner Marathon 1789; due January 1, 2015
- The 898 Stockman cow has been the foundation of our ShorthornPlus program and molded it into what it has become today. These 5 clones to 898 have all been big time consistent producers. These clones like 898 herself, have been big egg producers when being IVF'd or flushed. A rare opportunity to own one of these absolute great cows out of our herd. These are the true definition of a cash cow.
- The SULL Stockman clones are big time proven Angus genetics. They are a no miss whether it is ShorthornPlus and the many National Champions they have produced (check out Lot 4) or check out the initial mating to the Angus bull SAV Brilliance and Dameron First Class, Lots 48 - 51.
- SULL Stockman 7302 has been IVF'd 19 times, freezing 114 embryos.



58

02.05.08 Cow

SULL Stockman 8404

LE 8404 Polled Reg. # ^17297494

TC STOCKMAN 365

TC STOCKMAN

TC PRIDE 0014

PRIDE 886 S D G

BALDRIDGE OCAR

PRIDE 379 S D G

Angus • BEPD: 4.2 WEPD: 29 YEPD: 51 MILK: 13

- Bred to Werner Marathon 1789; due February 27, 2015
- The 898 Stockman cow has been the foundation of our ShorthornPlus program and molded it into what it has become today. These five clones to 898 have all been big time consistent producers. These clones like 898 herself, have been big egg producers when being IVF'd or flushed. A rare opportunity to own one of these absolute great cows out of our herd. These are the true definition of a cash cow.
- The SULL Stockman clones are big time proven Angus genetics. They are a no miss whether it is ShorthornPlus and the many National Champions they have produced (check out Lot 4) or check out the initial mating to the Angus bull SAV Brilliance and Dameron First Class, Lots 48 - 51.
- SULL Stockman 8404 has been flushed once and froze five embryos and IVF'd 18 times, freezing 48 embryos.



59

01.31.08 Cow

SULL Stockman 8406

LE 8406 Polled Reg. # ^17297495

TC STOCKMAN 365

TC STOCKMAN

TC PRIDE 0014

PRIDE 886 S D G

BALDRIDGE OCAR

PRIDE 379 S D G

Angus • BEPD: 4.2 WEPD: 29 YEPD: 51 MILK: 13

- Bred to SAV Brilliance; due January 28, 2015
- The 898 Stockman cow has been the foundation of our ShorthornPlus program and molded it into what it has become today. These 5 clones to 898 have all been big time consistent producers. These clones like 898 herself, have been big egg producers when being IVF'd or flushed. A rare opportunity to own one of these absolute great cows out of our herd. These are the true definition of a cash cow.
- The SULL Stockman clones are big time proven Angus genetics. They are a no miss whether it is ShorthornPlus and the many National Champions they have produced (check out Lot 4) or check out the initial mating to the Angus bull SAV Brilliance and Dameron First Class, Lots 48 - 51.
- SULL Stockman 8406 has been IVF'd 10 times, freezing 52 embryo. She has also been flushed twice freezing nine embryos.

60

09.17.08 Cow LE 8233 Polled Reg. # ^17297492

SULL Stockman 8233

TC STOCKMAN 365

TC STOCKMAN

TC PRIDE 0014

BALDRIDGE OCAR

PRIDE 886 S D G

PRIDE 379 S D G

Angus • BEPD: 4.2 WEPD: 29 YEPD: 51 MILK: 13

- Bred to Werner Marathon 1789; due March 9, 2015
- The 898 Stockman cow has been the foundation of our ShorthornPlus program and molded it into what it has become today. These five clones to 898 have all been big time consistent producers. These clones like 898 herself, have been big egg producers when being IVF'd or flushed. A rare opportunity to own one of these absolute great cows out of our herd. These are the true definition of a cash cow.
- The SULL Stockman clones are big time proven Angus genetics. They are a no miss whether it is ShorthornPlus and the many National Champions they have produced (check out Lot 4) or check out the initial mating to the Angus bull SAV Brilliance and Dameron First Class, Lots 48 - 51.
- SULL Stockman 8233 has been flushed three times, freezing 23 embryos.

**61**

01.26.08 Cow LE 8409 Polled Reg. # ^17297496

SULL Stockman 8409

TC STOCKMAN 365

TC STOCKMAN

TC PRIDE 0014

BALDRIDGE OCAR

PRIDE 886 S D G

PRIDE 379 S D G

Angus • BEPD: 4.2 WEPD: 29 YEPD: 51 MILK: 13

- Bred to DF Vegas; due February 27, 2015
- The 898 Stockman cow has been the foundation of our ShorthornPlus program and molded it into what it has become today. These 5 clones to 898 have all been big time consistent producers. These clones like 898 herself, have been big egg producers when being IVF'd or flushed. A rare opportunity to own one of these absolute great cows out of our herd. These are the true definition of a cash cow.
- The SULL Stockman clones are big time proven Angus genetics. They are a no miss whether it is ShorthornPlus and the many National Champions they have produced (check out Lot 4) or check out the initial mating to the Angus bull SAV Brilliance and Dameron First Class, Lots 48 - 51.
- SULL Stockman 8409 has been flushed six times, freezing 25 embryos. She has been IVF'd twice, freezing 11 embryos.

**62**

02.13.12 Cow LE 2810 Polled Reg. # +17344993

RCL Blackbird 2810

EXAR LUTTON 1831

NORTHERN IMPROVEMENT 4480

EXAR SARAS DREAM 9809

SAV 8180 TRAVELER 004

ALC BLACKBIRD S13U

ALC BLACKBIRD 15R

Angus • BEPD: 3.4 WEPD: 55 YEPD: 96 MILK: 25

- Bred to Werner Marathon 1789; due March 30, 2015
- This is a beautiful maternally designed young female with the extra look and features that should mate well with any sire or breed that you choose.
- This cow has had one natural calf, unassisted, and has never been flushed. Blackbird 2810 has a big future ahead of her in production.



Red Angus



Weber Ms Ellie 1024

One of the top females of the Red Angus breed. Ellie 1024 is the dam of the Reserve Grand Champion Female at the 2014 North American Red Angus Event and the Calf Champion at the 2013 NWSS, purchased by Sullivan Farms. Daughters sell as Lots 63 & 64.



TC SULL Ellie 224

Reserve Grand Champion Female,
2014 North American Red Angus Event
Congratulations to Cooper Rogers



Six Mile Countess 105Y

Grand Champion Red Angus Female, 2012 NWSS



63

01.27.14 Heifer LE 4080B Polled Reg. # 1684019

3 ACES SIDWAYS

WEBER MS ELLIE 1024

SULL Miss Ellie 4080

BUF CRK HOBO 1961
TROWBRIDGE LANA 707
NBAR HAMLEY S913
WEBR MS. ELLIE 14S

Red Angus • BEPD: -0.5 WEPD: 48 YEPD: 72 MILK: 15

- One of the best Red Angus show heifer prospect I have ever seen. This heifer has the pedigree and is phenotypically flawless in her overall design. We think this may be the best daughter of Weber MS Ellie 1024 yet!
- Ellie 1024 is one of the most dominate and consistent cows in the Red Angus breed. Her first calf, TC Ellie 32Z was a NWSS Calf Champion and is our leading young donor in our Red Angus division. TC Ellie 224 shown by Cooper Rogers, also an Ellie 1024 daughter, was crowned the 2014 Reserve Grand Champion at the North American Junior Red Angus Event.

64

04.04.14 Heifer LE 4274 Polled Reg. # 1684020

SULL Ellie Mae 4274

BHR DURANGO 1158

BHR DURANGO 60
MISS BHR GRAND VAQUERO 8150

WEBR MS ELLIE 1024

NBAR HAMLEY S913
WEBR MS. ELLIE 14S

Red Angus • BEPD: -1.8 WEPD: 37 YEPD: 55 MILK: 18

- This April 1024 daughter is hard to put a hole in. She resembles her full sister that was Reserve Champion at the 2014 North American Junior Red Angus Event shown by Cooper Rogers.
- Ellie 1024 is one of the most dominate and consistent cows in the Red Angus breed. Her first calf, TC Ellie 32Z was a NWSS Calf Champion and is our leading young donor in our Red Angus division. TC Ellie 224 shown by Cooper Rogers, also an Ellie 1024 daughter, was crowned the 2014 Reserve Grand Champion at the North American Junior Red Angus Event.



65

03.28.14 Heifer LE 4077B Polled Reg. # 1684018

SULL Miss Hamley

NBAR HAMLEY S913

PIE BILLINGS 487
NBAR KELLY 913
RED TER-RON REBEL 102N
RED SOO COUNTESS 3211

SOO LINE COUNTESS 6124

Red Angus • BEPD: -1.3 WEPD: 45 YEPD: 65 MILK: 22

- Sharp featured, phenotypically designed Red Angus female.
- Red Soo Line Countess 6125's dam raised the 2012 US National Grand Champion Female and was also named the 2012 Grand Champion Female at Fort Worth, Lot 65 is a full sister to this champion.



LIVE ON THE INTERNET. LIVE AUDIO. LIVE VIDEO. BIDDING

LiveAuctions.TV

<http://www.LiveAuctions.tv> - Call Brad Fahrmeier for Details - 816.392.9241

To register and follow the auction in real time on the internet, log on to Website - www.liveauctions.tv
For More Information, call Brad Fahrmeier at **816.392.9241**.

If you wish to follow the sale on the computer and bid by telephone, please call the sale day phone numbers or one of the consultants listed in our catalog.

Also on www.LiveAuctions.tv be sure to watch, LIVE, candid interviews with Livestock World's 'The Anchorman', Chris Terembes at 4:00 p.m., Saturday, October 18th and Sunday, October 19th at 10:00 a.m.



Videos of sale cattle on-line
October 10th at
www.maternallegends.com

Charolais/ Charolais Composite



Ivory Angel 0711

One of the most popular Charolais Champion Femals of all times. Her daughters sell as Lots 71, 72 & 73 and full sisters sell as Lots 66 - 70.

SULL Ivory Queen 3203

Supreme Champion Female, '14 Nebraska State Fair FFA & Open Shows
Congratulations to Kane Aegerter



SULL Ivory Queen 3215

Reserve Grand Champion Female, '14 National Junior Shorthorn Show
Congratulations to Kash Long



66

05.15.14 Heifer LE 4272 Polled Reg. # Pending

SULL Impressive 4272

THOMAS OAHE WIND 0772ET
THOMASSWISSERSWEET 1764 ET
JWK IMPRESSIVE D040 ET
THOMAS MS IMPRESSIVE 0641-2 BCI MISS VERYLIMIT 6033P

Charolais • CE:-12.7 BW: 2.8 WW: 29 YW: 47 MILK: 18 MCE: 0.0

- This young May heifer has as much future and completeness as any of the 0641 daughters being offered.
- Thomas MS Impressive 0641 has dominated the Charolais breed by producing numerous champions such as Ivory Angel 0711. Her daughters are out doing themselves after their show careers. These Firewater x 0641 daughters have unlimited value with being able to mate them to whatever you want.



67

03.02.14 Heifer LE 4158B Polled Reg. # Pending

SULL Impressive Beauty 4158

THOMAS OAHE WIND 0772ET
THOMASSWISSERSWEET 1764 ET
JWK IMPRESSIVE D040 ET
THOMAS MS IMPRESSIVE 0641 BCI MISS VERYLIMIT 6033P

Charolais • CE:-1.9 BW: 1.2 WW: 26 YW: 54 MILK: 10 MCE: 0.0

- Here is a well-balanced heifer that combines brood cow potential with show ring look.
- Thomas MS Impressive 0641 has dominated the Charolais breed by producing numerous champions such as Ivory Angel 0711. Her daughters are out doing themselves after their show careers. These Firewater x 0641 daughters have unlimited value with being able to mate them to whatever you want.

68

SULL Impressive Skye 4314

02.11.14 Heifer LE 4314 Polled Reg. # Pending

TR MR FIRE WATER 5792RET

THOMAS OAHE WIND 0772ET

THOMASSWISSERSWEET 1764 ET

THOMAS MS IMPRESSIVE 0641

JWK IMPRESSIVE D040 ET

BCI MISS VERYLIMIT 6033P

Charolais • CE:-1.9 BW:1.2 WW:26 YW:54 MILK:10 MCE:0.0

- One of the most well balanced, feminine designed Charolais heifers that we have been around. She has big time show heifer potential.
- Thomas MS Impressive 0641 has dominated the Charolais breed by producing numerous champions such as Ivory Angel 0711. Her daughters are out doing themselves after their show careers. These Firewater x 0641 daughters have unlimited value with being able to mate them to whatever you want.



69

SULL Impressive Lady 4160

03.17.14 Heifer LE 4160B Polled Reg. # Pending

TR MR FIRE WATER 5792RET

THOMAS OAHE WIND 0772ET

THOMASSWISSERSWEET 1764 ET

THOMAS MS IMPRESSIVE 0641-1

JWK IMPRESSIVE D040 ET

BCI MISS VERYLIMIT 6033P

Charolais • CE:-1.9 BW:1.2 WW:26 YW:54 MILK:10 MCE:0.0

- This heifer's body shape and structural correctness is extremely impressive. Unlimited potential as a top donor.
- Thomas MS Impressive 0641 has dominated the Charolais breed by producing numerous champions such as Ivory Angel 0711. Her daughters are out doing themselves after their show careers. These Firewater x 0641 daughters have unlimited value with being able to mate them to whatever you want.



70

SULL Miss Impressive

04.21.14 Heifer LE 4316 Polled Reg. # Pending

TR MR FIRE WATER 5792RET

THOMAS OAHE WIND 0772ET

THOMASSWISSERSWEET 1764 ET

THOMAS MS IMPRESSIVE 0641-1

JWK IMPRESSIVE D040 ET

BCI MISS VERYLIMIT 6033P

Charolais • CE:-1.9 BW:1.2 WW:26 YW:54 MILK:10 MCE:0.0

- SULL Miss Impressive combines everything that you look for in a Charolais heifer; structural correctness, body, mass and femininity. She will be successful in her show career and will generate unlimited potential as a donor.
- Thomas MS Impressive 0641 has dominated the Charolais breed by producing numerous champions such as Ivory Angel 0711. Her daughters are out doing themselves after their show careers. These Firewater x 0641 daughters have unlimited value with being able to mate them to whatever you want.





71

01.26.14 Heifer

SULL Ivory's Light 4115

LE 4115B Polled Reg. # ERF707584

MONOPOLY

HEAT WAVE iCM

W T F RUTH MEDINA

TR PZC MS IVORY ANGEL 0711 ET

TR MR FIRE WATER 5792RET

THOMAS MS IMPRESSIVE 0641

Charolais Composite

- This is the type of female that you would like to keep for yourself. This heifer will be very competitive in the show ring and the success and potential she will have as a donor is unlimited.
- Kane Aegerter's full sister was the Supreme Champion Female at the 2014 Nebraska State Fair FFA and Open Shows and another full sister, SULL Ivory's Queen, shown by Kash Long was Reserve Grand Champion at the 2014 Charolais Junior Nationals. TR PZC MS Ivory Angel has been one of the most successful show heifers in the Charolais breed as she dominated the majors in NAILE and NWSS.
- Owned with James Sullivan



72

04.14.14 Heifer

SULL Ivory Tour 4255

LE 4255 Polled Reg. # ERF707583

MONOPOLY

HEAT WAVE iCM

W T F RUTH MEDINA

TR PZC MS IVORY ANGEL 0711 ET

TR MR FIRE WATER 5792RET

THOMAS MS IMPRESSIVE 0641

Charolais Composite

- Big time show heifer potential with her stylish look and tremendous cow features. After her show career this heifer will have unlimited value in what she could do in the industry as a donor.
- Kane Aegerter's full sister was the Supreme Champion Female at the 2014 Nebraska State Fair FFA and Open Shows and another full sister, SULL Ivory's Queen, shown by Kash Long was Reserve Grand Champion at the 2014 Charolais Junior Nationals. TR PZC MS Ivory Angel has been one of the most successful show heifers in the Charolais breed as she dominated the majors in NAILE and NWSS.
- Owned with James Sullivan



73

02.19.14 Heifer

SULL Ivory Coast 4149

LE 4149 Polled Reg. # ERF707582

MONOPOLY

HEAT WAVE iCM

W T F RUTH MEDINA

TR PZC MS IVORY ANGEL 0711 ET

TR MR FIRE WATER 5792RET

THOMAS MS IMPRESSIVE 0641

Charolais Composite

- Extremely valuable genetics in this heifer. For anyone serious about raising show steers, this one has the build and pedigree to do just that.
- Kane Aegerter's full sister was the Supreme Champion Female at the 2014 Nebraska State Fair FFA and Open Shows and another full sister, SULL Ivory's Queen, shown by Kash Long was Reserve Grand Champion at the 2014 Charolais Junior Nationals. TR PZC MS Ivory Angel has been one of the most successful show heifers in the Charolais breed as she dominated the majors in NAILE and NWSS.
- Owned with James Sullivan

Foundation Simmental



GCC Yardley Total Recall X23

Daughter sells as Lot 74.

A many-time champion for the Udell Family, including Grand Champion Foundation Simmental Female, 2013 NWSS.



Lot 74

02.16.14 Heifer LE 4018B Polled Reg. # 2879052

JSUL Total Recall 4018

MR HOC BROKER

SVF STEEL FORCE S701

JM BF H25

GCC YARDLEY TOTAL RECALL X23

GCC TOTAL RECALL 806T

GCC QUINCE 419U

Foundation Simmental •

BW: 2.8 WW: 66.2 YW: 98.9 MILK: 20.6 API: 94.3

- This heifer, with her flawless structure and overwhelming depth of body, will be a force in the show ring with even more potential in the pasture.
- Her young dam GCC Yardley Total Recall X23 is a young top donor at Sullivan Farms that we are anxious to see more progeny out of.



Lot 75

01.12.14 Heifer LE 4141B Polled Reg. # 2877442

Hara's SULL Princess

MR HOC BROKER

SVF STEEL FORCE S701

JM BF H25

HARA'S HAIRIETTA CLONE H4W

WHO ADE WHO 411F

ANGUS

Foundation Simmental •

BW: 2.9 WW: 59.4 YW: 87.4 MILK: 17.4 API: 77.3

- One of the top foundation heifers to sell this year. She comes from a pedigree of greatness. She will be one to see on sale day.
- This female is a full sister to the many time Champion heifer for the Udell family and the Walker family's Reserve Champion at Junior Nationals. We all know Hara Farms raises some of the best stock in the country by stacking generations of great ones. A full sister recently sold for \$80,000 on the Schaeffer/Tice pasture sale. Owned with Hara Farms



Chianina & Maine-Anjou/Maine Tainer



JSUL Who Dat 1602

Supreme Champion Female, 2012 NAILE
Supreme Champion Female, 2012 American Royal



JSUL Knock Out 3271

Supreme Champion Female, 2014 Illinois State Fair
Congratulations to the Humphrey Family



JSUL Dreams Come True

Supreme Champion Female, 2009 NAILE
Supreme Champion Female, 2009 Indiana State Fair
Congratulations to the Bedwell Family



KS Erica 36T

Grand Champion Maine-Anjou Female,
Kansas City NWSS & NAILE



JSUL I Da Man

Who Da Man x JSUL Dream Maker HS46
Popular AI sire.



SULL Timeless Tamale

Grand Champion Female, 2014 National Junior Chianina Show
Reserve Grand Champion ShorthornPlus Female, 2014 National Junior Shorthorn Show
Congratulations to Kane Aegerter

76

03.10.14 Heifer

JSUL Erica's Prime 4129

LE 4129B Polled Reg. # 447095

LFCC UNSTOPPABLE 727X

MONOPOLY

LFCC LADY K 727T

KS ERICA 36T

SLC SOONER 101M

WCC ERICA 36R

Maine-Anjou • BW: 4.3 WW: 27.7 YW: 71.2 MILK: 16.6

- Overwhelming show heifer prospect. Her design is unique and striking for a Maine-Anjou female. She has the pedigree, build and quality to make a big impact. Her full sister shown by the Sanders family of Indiana was a many time supreme champion and the Champion Maine-Anjou at the 2014 Indiana State Fair.
- KS Erica 36T is one of the winningest Main-Anjou females of all time. Not only was she the Grand Champion Maine Anjou at American Royal, NAILE and NWSS, but her dam was a many time major show champion herself.



77

05.03.14 Heifer

JSUL Erica's Coven 4144

LE 4144B Polled Reg. # 447096

LFCC UNSTOPPABLE 727X

MONOPOLY

LFCC LADY K 727T

KS ERICA 36T

SLC SOONER 101M

WCC ERICA 36R

Maine-Anjou • BW: 4.3 WW: 27.7 YW: 71.2 MILK: 16.6

- Tremendous depth of rib and eye appeal in this Erica 36T daughter. She has a lot of potential, not only in the show ring, but in the pasture.
- KS Erica 36T is one of the winningest Main-Anjou females of all time. Not only was she the Grand Champion Maine Anjou at American Royal, NAILE and NWSS, but her dam was a many time major show champion herself.



78

04.28.14 Heifer

JSUL True Love 4296

LE 4296 Polled Reg. # Pending

EYE CANDY 1CM

TFR NAUGHTY PINE 1CM

WELL MISS FUZZ

MAGGIE N198

STRICTLY BUSINESS

MAINE-ANJOU

MaineTainer •

- Big time Mainetainer show heifer prospect from a top notch pedigree.
- N198 is a dominate donor of Kerry Lawrence's. She herself was a force in the show ring as she dominated the Maine-Anjou show at the NWSS for Mitch Daka.





Lot 79

04.08.14 Heifer LE 4298B Polled Reg. # 373233

JSUL Miss Who Lady 4298

ASHW WHO DA MAN

GCC CRAZY GIRL 041Y

WHO MADE WHO 411F 1CM
 ASHW CAX MAX SM 55
 MONOPOLY 1CM
 GCC SIOUX MISS 36/6S

Chianina • BW: 4.7 WW: 33.8 YW: 62.5 MILK: 9.6

- A striking show heifer prospect. We think this heifer has the potential for greatness!
- We all know what the Who Da Man daughters have been doing in the show ring. Her young dam 041Y is quickly becoming a top donor at Sullivan Farms. Lady 4298 has the ability to win a major.



Lot 80

05.11.14 Heifer LE 4248B Polled Reg. # 373225

JSUL Miss Tamale 4248

ASHW WHO DA MAN

SUL TAMALE 2CM

WHO MADE WHO 411F 1CM
 ASHW CAX MAX SM 55
 HEAT WAVE 1CM
 JSUL MOMMA TAMALE 58 CM

Chianina • BW: 4.7 WW: 33.8 YW: 62.5 MILK: 9.6

- This heifer has the Who Da Man look and potential, but she is still a little green. We see lots of potential in her as she continues to mature.
- Her dam SUL Tamale has been a leading donor at Sullivan Farms producing numerous National Champions. The most recent champion being the 2014 Grand Champion Chianina Female at Chianina Junior Nationals for Kane Aegerter. For more information on SULL Tamale refer to Lots 8.



Lot 81

04.11.14 Heifer LE 4150B Polled Reg. # 373226

JSUL Dreamer 4150

ASHW WHO DA MAN

JSUL DREAM MAKER 7268T

WHO MADE WHO 411F 1CM
 ASHW CAX MAX SM 55
 BHCS HEAT SEEKER 23 1CM
 MISS FOREPALY

Chianina • BW: 3.9 WW: 32.3 YW: 52.4 MILK: 9.6

- Extremely well balanced, complete Who Da Man daughter that will compete on any level.
- She is a full sister to JSUL Dreams Come True, the 2009 NAILE Supreme Champion Female that herself has gone on to produce AI sires and show ring champions. Also a full sib to the popular sire I Da Man.

82

02.27.14 Heifer LE 4052B Polled Reg. # 373227

SULL Sultry Lady 4052

ASHW WHO DA MAN

WHO MADE WHO 411F 1CM
ASHW CA X MA X SM 55
BHCS HEAT SEEKER 23 1CM
JSUL MA X AN 6651

JSUL SULTRY 6640

ChiAngus • BW: 3.9 WW: 33.2 YW: 54.7 MILK: 9.9

- This heifer has been one that keeps improving every day. She has the design, look and the unprecedented pedigree that is destined for greatness.
- 6640 has been one of our standout black cows on the farm, since the day she was born she was special. She carries that into her progeny producing JSUL Who Dat 1602, the very popular 2012 NAILE and American Royal Supreme Champion Female and the recently crowned 2014 Illinois State Fair Supreme Champion Female, JSUL Knock, shown by Derek Humphrey.



83

01.27.14 Heifer LE 4145B Polled Reg. # 373224

JSUL Sultry Love 4145

ASHW WHO DA MAN

WHO MADE WHO 411F 1CM
ASHW CA X MA X SM 55
BHCS HEAT SEEKER 23 1CM
JSUL MA X AN 6651

JSUL SULTRY 6640

Chianina • BW: 3.9 WW: 33.2 YW: 54.7 MILK: 9.9

- Stunner!! She has the look to catch anyone's eye!
- 6640 has been one of our standout black cows on the farm, since the day she was born she was special. She carries that into her progeny producing JSUL Who Dat 1602, the very popular 2012 NAILE and American Royal Supreme Champion Female and the recently crowned 2014 Illinois State Fair Supreme Champion Female, JSUL Knock, shown by Derek Humphrey.



84

03.07.14 Heifer LE 4043B Polled Reg. # 373298

SULL Miss Interstate

MONOPOLY

HEAT WAVE
W T F RUTH MEDINA
INTERSTATE (HOO DOO)

SULL X 36

Low Chianina •

- Big time show heifer prospect! She will be a force right out of the gate.
- Extremely big bodied, powerfully constructed yet still possesses the look to make her way to the backdrop. This heifer's mother is a full sister to the popular AI sire Interstate.



Brood Cows



85

03.11.12 Cow LE 2023 Horned Reg. # 4189618

SULL Crystal Love 2023 *

SULL RIGHT DIRECTION ET *x, r/w
CF TRUMP X *x, roan
NPS DESERT ROSE 004 *, r/w

SULL LADY CRYSTAL -2 ET CL *x, roan
WHR SONNY 8114 ET *x, roan
AF MARGIES DREAM LADY 05 ET *x, roan

Shorthorn • BW: 2.3 WW: 63.2 YW: 72.5 MILK: 21.1

- Bred to KL Right Time; due March 3, 2015
- This cow like many of the Right Direction x Lady Crystals is extremely sound and very feminine. SULL Crystal Love 2023 was a many time champion herself, including Supreme at the Minnesota State Fair.
- Her dam, Lady Crystal, in the last three years has produced the 2012 National Junior Show Grand Champion Female, 2013 Iowa State Fair Champion Female, 2013 Minnesota State Fair Supreme Champion Female, 2012 National Junior Heifer Show Grand and Reserve Champion Female and her maternal sister was the 2013 Grand Champion Female at the NWSS Junior and Open Show. Her full sister SULL Crystal's Tootie was the 2013 NAILE Grand Champion Female.
- She had never been flushed or IVF'd.



86

09.10.10 Cow LE 0677 Polled Reg. # 4173594

SULL Cherri Cyclone *x

SULL CYCLONE 8242 ET *x, red
CF TRUMP X *x, roan
NPS DESERT ROSE 004 *, r/w

SULL CHERRI 205 - 4 ET *x, red
WHR SONNY 8114 ET *x, roan
MCKEE'S ASL CHERRI 742 x, red

Shorthorn • BW: 4.0 WW: 57.9 YW: 68.3 MILK: 18.1

- Bred to FREE K-Kim Hot Commodity; due March 15, 2015
- This young cow has the extra mass and substance in a sound structured package. Her foot and bone work is truly impressive.
- This cow is a full sister in blood to the past two Junior National Champions, SULL Cherri Mary Lou and SULL Wild Cherri. Hard to beat genetics like this.
- She had never been flushed or IVF'd.



87

01.03.09 Cow LE 9038 Polled Reg. # 4155200

SULL Myrtle Bo Babea 9038 *x

JM VORTEC ET *, roan
KABA LEGEND 102 *x, roan
WAUKARU WIMPLE 165 7/8 *, red

CF MYRTLE BO 46 TP X ET *x, r/w/m
CF TRUMP X *x, roan
GF MISS MYRTLE BO 305 ET *x, r/w

Shorthorn • BW: 4.5 WW: 51.1 YW: 61.2 MILK: 23.5

- Bred to CF Solution; due January 24, 2015
- We held this Vortec daughter back as an open heifer, and we think she has donor potential. She is hard to let go of as we see a very bright future for her. Myrtle Bo 46P over the years has raised national champions, sale toppers and has been one of the most consistent donors on the farm. She clicks with every bull she has been bred to.
- SULL Myrtle Bo Babea has been flushed once, freezing six embryos.

88

02.28.08 Cow LE RE 43U Horned Reg. # 4147932

SAKO Legend 43U

JM VORTEC ET *, roan

KABA LEGEND 102 *x, roan
 WAUKARU WIMPLE 165 7/8 *, red
 DVM KISS THIS *, roan
 DL GLORIA 02 *x, r/w/m

TPS GLORIA 504 *, roan

Shorthorn • BW: 5.3 WW: 49.0 YW: 58.7 MILK: 17.6

- Bred to FREE K-Kim Hot Commodity; due February 7, 2015
- 43U was a top selling open heifer purchased from Sojka Farms. This cow has always been a top pick to look at in the pasture. She is perfect structured, deep bodied, feminine and has a little extra power.
- Year after year she has a sellable calf. Take her home and whether you decided to breed her back maternally or for steers she is one that can do everything for your program.
- She has been flushed six times, freezing 16 embryos.



89

09.21.11 Cow LE 215Y Polled Reg. # 4183318

SULL GNCC Max Rosa 215Y *x

SULL RIGHT DIRECTION ET *x, r/w

CF TRUMP X *x, roan
 NPS DESERT ROSE 004 *, r/w
 WHR SONNY 8114 ET *x, roan
 HOMEDALE MAX ROSA *x, roan

TF ROSA 86 ET *x, red

Shorthorn • BW: 2.6 WW: 61.5 YW: 70.6 MILK: 18.8

- Bred to SULL Red Blood; due January 26, 2015
- This heifer's full sister was a 2012 No Bull high selling female. She is as beautifully designed as you can make one and from the ground up is as sound as they come.
- The Max Rosa cow family is quickly becoming a popular breed leader.



90

07.23.10 Cow LE 0679 Horned Reg. # 4174000

SULL Too Foolish 0679 *

WHR SONNY 8114 ET *x, roan

CF TRUMP X *x, roan
 WR4 RODEO CUMBERLAND 3R52 *, red
 DEERPARK LEADER 18TH, roan
 HS NOBODY'S FOOL 7/8 *x, red

SULL 18TH FOOL 458-1 ET *x, roan

Shorthorn • BW: 3.5 WW: 48.5 YW: 60.3 MILK: 18.2

- Bred to SULL Red Blood; due February 25, 2015
- A favorite in the offering. Take her home, flush her, breed her and she will be a valuable asset to your program.
- This impressive donor cow is a full sister to many time champion V8 Can't Fool Me 458N2.
- She has never been flushed or IVF'd.





91

02.14.07

Cow

SULL Miss Montana 7037 *x

LE 7037

Polled

Reg. # 4128129

WHR SONNY 814 ET *x, roan

CF TRUMP X *x, roan

WR4 RODEO CUMBERLAND 3R52 *, red

NPS MISS MONTANA 973 X *x, r/w

NPS DURANGO 774 CBH ET *x, roan

NPS MISS MONTANA 654 *x, roan

Shorthorn • BW: 4.2 WW: 57.7 YW: 72.5 MILK: 11.5

- Bred to Free K-Kim Hot Commodity; due March 23, 2015
- This cow is in her prime. She has been a consistent producer and has always had a sellable high quality calf. Her full sister Montana Ruby 221P was a Reserve National Champion and is a big time donor.
- SULL Miss Montana 7037 has been flushed eight times, freezing 29 embryos.



92

05.04.10

Cow

SULL Sara's Class 0310 *x

LE 0310

Polled

Reg. # 4168192

SULL GNCC ASSET ET *, r/w

CF SOLUTION X ET *x, r/w/m

K-KIM MONA LISA 35L ET *, white

SULL SARA'S SABLE ET *x, r/w

CCS EQUITY'S CHARMER ET *x, r/w/m

WF EVERGREEN SABLE ET *x, roan

Shorthorn • BW: 5.3 WW: 76.0 YW: 98.0 MILK: 16.2

- Bred to SULL Red Knight; due January 23, 2015
- This sound structured, maternally built Asset daughter is a full sister in blood to SULL Traveler.
- She is AI'd to SULL Red Knight which we think can be a big time mating and a quick turn around on your investment. Out of the few Red Knight calves we had born in 2014, these exceeded our expectations and we can't wait for more progeny from this breed leading sire.
- She has been flushed once, freezing two embryos.



93

2007

Cow

LE 707

Polled

Commercial

HANNIBAL

WHO MADE WHO 411F iCM

PJWC TOTAL PLAY X ANGUS

WAR HORSE/DABULL

- Bred to Walks This Way; due March 3, 2015 Commercial •
- Added length and femininity in this cow should be added value when mating with today's selection of herd sires.
- This cow was purchased as an open heifer and was very successful in her show career.
- She has never been flushed.



94

2008

Cow

LE 847

Polled

Commercial

IRISH WHISKEY

CKE PRIMETIME 74F

PANNELL MISS 4072

ANGUS

SULL Irish Whiskey 847

- Bred to Believe in Me; due January 18, 2015 Commercial •
- It's no secret what the Irish Whiskey daughters have done throughout the country, whether you are looking to raise steers or go back maternal to make show heifers or breeding bulls, the Irish Whiskey's can do it all.
- She has never been flushed or IVF'd.

95

04.10.07 Cow LE 7246 Polled Reg. # Pending

SULL Who's That 7246

WHO MADE WHO 411F 1CM

TAKE CHARGE
LSC MISS GLORY 411C CAX

BACC ANGUS

Chianina • BW: 1.3 WW: 15.5 YW: 30.5 MILK: 12.3

- Bred to Walks This Way; due January 19, 2015
- A clone to 76J Who's That was successfully shown by Megan Hunt, one of her wins include Champion Chi at the NAILE.
- She has consistently raised a marketable calf year after year out of a handful of different bulls.
- She has been flushed once, freezing five embryos.



96

03.02.07 Cow LE 10T Polled Reg. # 331395

DLBC Ivana 10T

HF MANCHILD 1CM

HANNIBAL
SCHANBACHER'S SARAH

DLBC SM XAN 368

- Bred to I-80; due March 1, 2015 Chianina •
- A Manchild daughter that is in the prime years of her life. This cow's build and power is just the right mating away from having a great one. Mated with I-80 could be just the ticket!
- She has never been flushed.



97

2006 Cow LE 6353 Polled Commercial

SULL 6353

HEAT WAVE

BHCS HEAT SEEKER 23N
FAWL MAX XAN XCA 100

FULL FLUSH X CHAR KROUPA G1

- Bred to Werner Marathon; due March 28, 2015 Commercial •
- This cow is a true powerhouse! Year after year she has a sellable calf. We have sold six calves out of her on our pasture sales that have averaged \$8,500. She is a full sister to the Reserve Champion Steer that was shown at the Iowa Beef Expo by the Stutsman Family.
- She has been flushed five times, freezing 33 embryos.



98

03.13.12 Cow LE 600Z Polled Reg. # 365010

SULL Beth 600z

MONOPOLY

HEAT WAVE
W T F RUTH MEDINA
EBB STRICTLY BUSINESS
SSUL TOTALLY PLAYING 420P

SSUL MISS STRICTLY BUSINESS 140

Chianina • BW: 4.9 WW: 36.9 YW: 71.9 MILK: 3.6

- Bred to I Da Man; due March 9, 2015
- This heifer in her show career was very successful, being named Supreme Breeding Heifer at the 2013 Sioux Empire Farm Show and Fifth Overall at the 2013 Winter Iowa Beef Expo. Bred to I Da Man should be a very exciting mating.
- 600Z is a full sister to AI sire King of the Mountain and maternal sister to Luke Elder's Reserve Supreme Breeding Heifer at the Iowa State Fair.
- She has never been flushed.



Hereford HEIFER PREGNANCIES



STAR KKH SSF Olivia 15U



C Miles Mckee

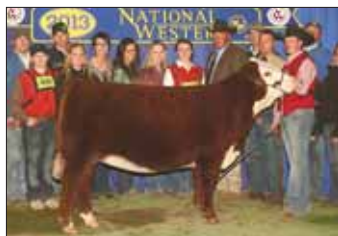
lot
100

Sexed HEIFER PREGNANCY

Due February 15, 2015

C MILES MCKEE X STAR KKH SSF OLIVIA 15U

The anticipation of the arrival of this mating is at an all-time high here at Sullivan Farms!



C Eye Candy 2079



Lot 27, SULL Miles Candy 4276

lot
101

Sexed HEIFER PREGNANCY

Due February 11, 2015

C MILES MCKEE X C EYE CANDY 2079

Two of the best National Champions merged together for this mating. We had two born in 2014, both standouts in this sale, Lots 26 and 27.



JWG Miss Serendipity 1114



C Miles Mckee

lot
102

Sexed HEIFER PREGNANCY

Due March 20, 2015

C MILES MCKEE X JWG MISS SERENDIPITY 1114

The first merger of C Miles McKee and the Horned Denver Champion JWG MISS Serendipity 1114.

EMBRYO PACKAGES

Eggs and Semen are not exportable out side of the continental US.

Call Summer Pieper at 712.269.5925 for embryo and semen shipment.

All eggs and semen will be available at the sale sight to pick-up. Shipping is the responsibility of the buyer.

Hereford EMBRYOS



STAR KKH SSF Olivia 15U



C Miles Mckee

lot
103

FOUR Sexed HEIFER Embryos

4 Grade 1, IVF embryos

C MILES MCKEE X STAR KKH SSF OLIVIA 15U

These embryos commanded over \$4,000 an embryo at the Hereford Summit Sale going to Buck Cattle Co in Oklahoma. You can imagine how good these will be.



LCC Two Timin 438 (Harley)



Lot 21, SULL TCC Harley 4087

lot
104

FOUR Embryos

Conventional embryos

C MILES MCKEE X LCC TWO TIMIN 438 (HARLEY)

A genetic merger of two of the best in the Hereford industry. Refer to Lot 21 for more proof.

105a *lot* **FOUR Embryos**
 Conventional Embryos
 EXCEL 8051 X LCC TWO TIMIN 438 (HARLEY)

105b *lot* **FOUR Embryos**
 Conventional Embryos
 EXCEL 8051 X LCC TWO TIMIN 438 (HARLEY)
 Elite Hereford genetics, full sib to Sara Sullivan's 2014 NWSS Junior Show Polled Hereford Grand Champion who will be making a return trip to Denver in 2015.

106 *lot* **FOUR Sexed HEIFER Embryos**
 4 Grade 1, IVF Embryos
 NJW 73S W18 HOMETOWN 10Y X TCC MS DIANA 01
 Heifer embryos and full sib to the 2013 Maternal Legends \$100,000 sale topper.

107a *lot* **FOUR Sexed HEIFER Embryos**
 4 Grade 1, IVF Embryos
 NJW 73S W18 HOMETOWN 10Y X JWG MISS SERENDIPITY 1114

107b *lot* **FOUR Sexed HEIFER Embryos**
 4 Grade 1, IVF Embryos
 NJW 73S W18 HOMETOWN 10Y X JWG MISS SERENDIPITY 1114
 Last year we sold the natural calf from this mating and it brought \$28,000.



SULL TCC Ms Harley 322



TCC Miss Shelby 82, Harley daughter



TCC Ms Diana 01



SULL TCC Ms Diana 315, top seller 2013



JWG Miss Serendipity 1114



SULL TCC Ms Serendipity 317

Shorthorn EMBRYOS

108 *lot* **FOUR Sexed HEIFER Embryos**
 4 Grade 1, IVF Embryos
 SULL RIGHT DIRECTION X SULL LADY CRYSTAL 434P
 A sale attraction.

109 *lot* **FOUR Sexed HEIFER Embryos**
 4 Grade 2, IVF Embryos
 SULL DEMAND SOUNDNESS X SULL LADY CRYSTAL 434P (7304CL)
 If you truly wanted to get ahead in the Shorthorn business I would buy these. Look at page four in this catalog. 434P progeny have dominated the Shorthorn tan bark the past two years.

110a *lot* **FOUR Embryos**
 4 Grade 1, IVF Embryos
 WHR SONNY X AF MARGIE'S DREAM LADY 05 (7305CL)

110b *lot* **THREE Sexed HEIFER Embryos**
 3 Grade 1, IVF Embryos
 WHR SONNY X AF MARGIE'S DREAM LADY 05 (7305CL)
 Look at Lot 1 cow family! The winningest cow family in the breed the last two years. The embryos are full sibs to 434P and the 2013 NWSS Grand Champion Female.

111 *lot* **FOUR Sexed HEIFER Embryos**
 4 Grade 2, IVF Embryos
 HD SWAGGER X AF MARGIE'S DREAM LADY 05 (7305)

112 *lot* **FOUR Sexed HEIFER Embryos**
 4 Grade 2, IVF Embryos
 LITTLE CEDAR AVIATOR X AF MARGIE'S DREAM LADY 05
 From the dam of 434P and sexed heifer!!



Sherwood's Lady Crystal 434P



SULL Crystal's Tootie



AF Margies Dream Lady 05



SULL Demand Soundness



SULL Crystal's Lucy



SULL Dream Big 1126, full sib to Lot 110.



Milestone Sable 01



SULL Bobbi's Sable



Shadybrook Quantas 2B



Royalla Lady Margie J6196



SULL Red Reward



Shadybrook Delia 39R



SULL Dede's Sable 562



SULL Dede's Money 3460



CF Solution



SULL Red Reward



SULL Ruby Goose 9019



SULL Demand Soundness

lot 113 **FOUR Sexed HEIFER Embryos**
4 Grade 2, IVF Embryos
HD SWAGGER X MILESTONE SABLE 01

lot 114 **THREE Sexed HEIFER Embryos**
3 Grade 1 & 2, IVF Embryos
SULL DEMAND SOUNDNESS X MILESTONE SABLE 01
Sable 01 has produced many champion Shorthorn and ShorthornPlus females. The Swagger and Demand Soundness mating will work!

lot 115a **FIVE Embryos**
Conventional Embryos
MARELLAN FERRARI X ROYALLA LADY MARGIE J6196

lot 115b **FOUR Embryos**
Conventional Embryos
MARELLAN FERRARI X ROYALLA LADY MARGIE J6196
Full sibs to the \$36,000, 2014 Shadybrook Farms top selling lot, Shadybrook Quantas 2-B. Proven outcross pure Australian genetics.

lot 116 **FOUR Embryos**
Conventional Embryos
SULL RED REWARD X SHADYBROOK DELIA 39R
Two of the most exciting and popular outcross genetics merge here. Great phenotype and EPD's to do it all.

lot 117 **FOUR Sexed HEIFER Embryos**
4 Grade 1, IVF Embryos
SULL DEMAND SOUNDNESS X SULL DEDE'S SABLE 562
The National Champion SULL Dede's Sable 562 should cross well on the powerful outcross sire, SULL Demand Soundness. Look how well Demand Soundness did for the Meyer family.

lot 118a **FOUR Embryos**
Conventional Embryos
SULL RED REWARD X NPS DESERT ROSE 833

lot 118b **FOUR Embryos**
Conventional Embryos
SULL RED REWARD X NPS DESERT ROSE 833
This is the grandmother of breed legend CF Solution on the wildly popular SULL Red Reward. Modern outcross genetics with phenotype and impeccable EPD's

lot 119a **THREE Embryos**
Conventional Embryos
SULL DEMAND SOUNDNESS X SULL RUBY GOOSE 9019

lot 119b **FOUR Embryos**
Conventional Embryos
SULL DEMAND SOUNDNESS X SULL RUBY GOOSE 9019
SULL Ruby Goose was Supreme Champion at the Minnesota State Fair and Division Champion at NWSS. SULL Demand Soundness should result in some class act Shorthorn show heifers.

120a *lot*
FOUR Embryos
Conventional Embryos
TEGM RED ADVANTAGE X SULL PERFECT SOLUTION 505

120b *lot*
FOUR Embryos
Conventional Embryos
TEGM RED ADVANTAGE X SULL PERFECT SOLUTION 505

This is an outstanding mating of future Shorthorn brood cows or show cattle. Look at Lot 10A to see what SULL Perfect Solutin 505 can do.



SULL Perfect Solution 505



Lot 10A, SULL Perfect Picture 4256

ShorthornPlus EMBRYOS

121a *lot*
FOUR Sexed HEIFER Embryos
4 Grade 1, IVF Embryos
DF VEGAS 310M X SULL STOCKMAN 898 (7302CL)

121b *lot*
FOUR Sexed HEIFER Embryos
4 Grade 1, IVF Embryos
DF VEGAS 310M X SULL STOCKMAN 898 (7302CL)

Only as a sale feature do we offer these eggs. The Lot 4 Vegas x Stockman females are her best set yet.



SULL Stockman 7302, 898 clone



LOT 4B, SULL Blue Heaven 4131

122a *lot*
FOUR Sexed HEIFER Embryos
4 Grade 1, IVF Embryos
MONOPOLY X MILESTONE SABLE 01

122b *lot*
FOUR Sexed HEIFER Embryos
4 Grade 1 & 2, IVF Embryos
MONOPOLY X MILESTONE SABLE 01

Sable 01 has produced many champion Shorthorn and ShorthornPlus females. Pictured are two full sisters to these embryos selling.



SULL Sables Luck 1097



SULL Bobbi Sable 3292

123a *lot*
FOUR Sexed HEIFER Embryos
4 Grade 1, IVF Embryos
DF VEGAS 310M X SULL BLACK BERRY 7418

123b *lot*
FOUR Sexed HEIFER Embryos
4 Grade 1, IVF Embryos
DF VEGAS 310M X SULL BLACK BERRY 7418

SULL Black Berry 7418 is a fabulous Solution x Stockman 898 daughter in our donor pool. The blue roan Vegas heifer calves will be as good as any ShorthornPlus cattle we have ever produced.



SULL Pure Hottie



SULL Blue Bunny 8112

124a *lot*
FOUR Sexed HEIFER Embryos
4 Grade 1, IVF Embryos
RG WC DAMN PROUD X SULL STOCKMAN 898 (7294CL)

124b *lot*
FOUR Sexed HEIFER Embryos
4 Grade 1, IVF Embryos
RG WC DAMN PROUD X SULL STOCKMAN 898 (7294CL)

Damn Proud will produced phenomenal ShorthornPlus females on these Stockman cows just like Vegas has. Refer to Lot 4



RC WG Damn Proud



Lot 4A, SULL Blue Harmony

125a *lot*
FOUR Embryos
Conventional Embryos
SULL ROAN BLAST X SULL BLUE BUNNY 8112

125b *lot*
THREE Embryos
Conventional Embryos
SULL ROAN BLAST X SULL BLUE BUNNY 8112
Blue Bunny was herself a National Champion now producing like one. Champions in Ohio for Si/Grauer and recent Third Overall Female at the Minnesota State Fair for the Weber family and O'Sullivan Cattle Company's recent sale topper.



SULL Blue Bunny 8112



SULL Roan Blast



SULL Blue Bunny 8112



SULL White Bunny 2991

lot
126a

FOUR Embryos

Conventional Embryos
TWO TONE X SULL BLUE BUNNY 8112

lot
126b

FOUR Embryos

Conventional Embryos
TWO TONE X SULL BLUE BUNNY 8112

Blue Bunny was herself a National Champion now producing like one. Champions in Ohio for Si/Grauer and recent Third Overall at the Minnesota State Fair for Weber family and O'Sullivan Cattle Company's recent sale topper. Progeny will be ¼ ShorthornPlus.

Angus EMBRYOS



SULL Stockman 7302 (898 Clone)



SULL Stockman 4032, Lot 51



SULL Pure Hottie



SULL Blue Bunny 8112



Lot 50, SULL Stockmans Genius 4302

lot
127a

FOUR Sexed HEIFER Embryos

4 Grade 1, IVF Embryos
SAV BRILLIANCE 8077 X SULL STOCKMAN 898 (7294CL)

lot
127b

FOUR Sexed HEIFER Embryos

4 Grade 1, IVF Embryos
SAV BRILLIANCE 8077 X SULL STOCKMAN 898 (7294CL)

lot
127c

FOUR Sexed HEIFER Embryos

4 Grade 1, IVF Embryos
SAV BRILLIANCE 8077 X SULL STOCKMAN 898 (7294CL)

lot
127d

FOUR Sexed HEIFER Embryos

4 Grade 1 & 2, IVF Embryos
SAV BRILLIANCE 8077 X SULL STOCKMAN 898 (8406CL)

lot
127e

FOUR Sexed HEIFER Embryos

4 Grade 1 & 2, IVF Embryos
SAV BRILLIANCE 8077 X SULL STOCKMAN 898 (8406CL)

lot
127f

THREE Sexed HEIFER Embryos

3 Grade 1 & 2, IVF Embryos
SAV BRILLIANCE 8077 X SULL STOCKMAN 898 (8406CL)
Full sibs to Lots 50 and 51. Maternal sisters to Lot 4 Vegas females. BIG TIME money making genetics.

lot
129a

FOUR Sexed HEIFER Embryos

4 Grade 1, IVF Embryos
LEACHMAN SAUGAHATCHEE X SULL STOCKMAN 898 (7306CL)

lot
129b

FIVE Sexed HEIFER Embryos

5 Grade 1 & 2, IVF Embryos
LEACHMAN SAUGAHATCHEE X SULL STOCKMAN 898 (7306CL)

lot
129c

THREE Sexed HEIFER Embryos

3 Grade 1, IVF Embryos
LEACHMAN SAUGAHATCHEE X SULL STOCKMAN 898 (7306CL)
Stockman 898 works with every bull. Look at the Lot 4 ShorthornPlus females and Lots 48, 49, 50 & 51 Angus females.

lot
128

FOUR Sexed HEIFER Embryos

4 Grade 1 & 2, IVF Embryos
SILVEIRAS STYLE X SULL STOCKMAN 898 (8404CL)

The initial mating of the champion making Silverias Style on the proven SULL Stockman 898 clones, expect national caliber Angus cattle.

Chi/Maine EMBRYOS



JSUL Who Dat 1602



JSUL Dreams Come True

lot
130a

FOUR Sexed HEIFER Embryos

4 Grade 1, IVF Embryos
WHO DA MAN X JSUL DREAM MAKER HS46

lot
130b

FOUR Sexed HEIFER Embryos

4 Grade 1, IVF Embryos
WHO DA MAN X JSUL DREAM MAKER HS46

Quite simply the most predictable and elite heifer mating in the country. Proven!

131a *lot* **THREE Embryos**
Conventional Embryos
JSUL NIGHT TRIPS X JSUL DREAM MAKER HS46 (7268CL)

131b *lot* **THREE Embryos**
Conventional Embryos
JSUL NIGHT TRIPS X JSUL DREAM MAKER HS46 (7268CL)

From the dam of the Supreme Champion Females at the NAILE and the popular AI sire I Da Man comes the initial mating Night Trips. The Monopoly son out of the famous 105 cow.

132 *lot* **FOUR Sexed HEIFER Embryos**
4 Grade 1, IVF Embryos
SULL TRAVELER X JSUL DREAM MAKER HS46

This ShorthornPlus mating out of the proven dam HS46 should make some phenomenal females. Traveler sired the Champion Female at NWSS and Third Overall Female, 2014 National Junior Shorthorn Show. Progeny will be ShorthornPlus or Chianina eligible.

133 *lot* **FOUR Embryos**
4 Grade 1, IVF Embryos
FU MAN CHU X TR PZC MS IVORY ANGEL 0711

This is the best in Charolais Composite genetics. Good steers or heifers. Ivory Angel is the elite Charolais female in the breed! Ivory Angel's progeny dominated the shows this summer.

134 *lot* **FOUR Embryos**
IVF Embryos
I-80 X SULL PURE HOTTIE 7033

135a *lot* **FOUR Sexed HEIFER Embryos**
4 Grade 1, IVF Embryos
KING OF THE MOUNTAIN X SULL PURE HOTTIE 7033

135b *lot* **FOUR Sexed HEIFER Embryos**
4 Grade 1, IVF Embryos
KING OF THE MOUNTAIN X SULL PURE HOTTIE 7033

Pure Hottie was the most dominate ShorthornPlus female of all time. Winning every major show. Her mating to I-80 or King of the Mountain will make tremendous steers or heifers.

136a *lot* **FOUR Embryos**
Conventional Embryos
MONOPOLY X SULL POLLED ENERGIZER 43K

136b *lot* **FOUR Embryos**
Conventional Embryos
MONOPOLY X SULL POLLED ENERGIZER 43K

Progeny from this mating have averaged over \$14,000 and have produced the Reserve Grand Champion MaineTainer Female at Junior Nationals and the Tulsa State Fair Supreme Champion.

137a *lot* **FOUR Embryos**
Conventional Embryos
MONOPOLY X SULL X36 (INTERSTATE/HOO DOO)

137b *lot* **FOUR Embryos**
Conventional Embryos
MONOPOLY X SULL X36 (INTERSTATE/HOO DOO)

Full sib to lot 84. The Char composite cattle are winning everywhere. X36 is the full sister to the popular AI sire Interstate.



I Da Man



JSUL Dreams Come True



JSUL Who Dat 1602



JSUL Dreams Come True



SULL Ivory Angel 3203



SULL Ivory's Queen 3215



SULL Pure Hottie 7033



King of the Mountain



Supreme Champion, Tulsa State Fair



Reserve Champion MaineTainer, Jr Nationals



Lot 84, SULL Miss Interstate 4043B



Monopoly



SULL Stockman 7302 (898 Clone)



GCC ZKCC Exit 174

138

FOUR Sexed HEIFER Embryos

4 Grade 1, IVF Embryos

GCC ZKCC EXIT 174 X SULL STOCKMAN 898 (7302CL)

The amazing 7302 cow sells as Lot 57. Look at the Lot 4 ShorthornPlus females and Lots 48, 49, 50 & 51 Angus females. Exit 174 progeny are winning State Fairs in limited use.



SULL Blue Raspberry



SULL Blue Bunny 8112

139a

FOUR Sexed HEIFER Embryos

4 Grade 1, IVF Embryos

TWO TONE X SULL STOCKMAN 898 (7306CL)

139b

FOUR Sexed HEIFER Embryos

4 Grade 1, IVF Embryos

TWO TONE X SULL STOCKMAN 898 (7306CL)

The popular Two Tone should hit a home run. Look at the Lot 4 ShorthornPlus females and Lots 48, 49, 50 & 51 Angus females.



Lot 58 - SULL Stockman 8404, 898 clone



SULL Pure Hottie

140

FIVE Embryos

Conventional Embryos

HEAT WAVE X SULL STOCKMAN 898 (8404CL)

This is the initial mating to SULL Stockman clones to Heat Wave. The females will be unbelievable in production.

SEMEN

Rare semen not available on the open market.



SULL Red Knight 2030



SULL Red Knight 2030

141

SULL Red Knight 2030 ET *4190557

Selling 5 straws, conventional

We will be exhibiting a Red Knight bull calf and female at NAILE that will draw your attention.



SULL Blue ET *xar



SULL Blue Magic

142

SULL Blue ET *xar44266

Selling 5 straws, conventional

Deceased sire of sale toppers and show champions. His semen is very limited in supply.



SULL Bo's Traveling



SULL Red Traveler

143a

SULL Traveler 9807 ET* - Sexed HEIFER

Selling 5 straws of SEXED HEIFER

143b

SULL Traveler 9807 ET* - Sexed HEIFER

Selling 5 straws of SEXED HEIFER

Sired champion heifer in Denver and the popular Third Overall Champion Female at the 2014 National Junior Shorthorn Show.

144a *lot* **SULL Demand Soundness 1506 *4180125 – Sexed HEIFER**
Selling 5 straws of SEXED HEIFER



SULL Demand Soundness 1506



Lot 13D - SULL Saras Sable 4290

144a *lot* **SULL Demand Soundness 1506 *4180125 – Sexed HEIFER**
Selling 5 straws of SEXED HEIFER

Sire of the Alan Meyer families sale topper. A red outcross beef machine.

145 *lot* **SULL Red Blood 1334 ET *4181029**
Selling 5 straws, conventional

Siring champions all across the country including NAILE and the Illinois State Fair.



SULL Special Rose



SULL Red Blooded

146a *lot* **SULL Roan Blast 0301 ET *4169279**
Selling 5 straws, conventional



SULL Roan Blast 0301



Lot 4K - SULL Blue Sapphire

146b *lot* **SULL Roan Blast 0301 ET *4169279**
Selling 5 straws, conventional

Examples of SULL Roan Blast progeny can be found at Lots 4I, 4J, 4K and 4M.

147a *lot* **SULL Muscle Man *4157800 – Sexed HEIFER**
Selling 5 straws of SEXED HEIFER



SULL Muscle Man



SULL Muscle Man daughter

147b *lot* **SULL Muscle Man *4157800 – Sexed HEIFER**
Selling 5 straws of SEXED HEIFER

Proven sire of mass and mobility. Watch for the CYT Udell sired Muscle Man heifer in Louisville.

148a *lot* **WHR Sonny 8114 ET *4009301**
Selling 5 straws, conventional



WHR Sonny 8114



Sherwood's Lady Crystal 434P

148b *lot* **WHR Sonny 8114 ET *4009301**
Selling 5 straws, conventional

Still one of the all-time best!

148a *lot* **KL Primetime Paymaster x4162111**
Selling 5 straws, conventional



KL Primetime Paymaster



SULL Payday

148b *lot* **KL Primetime Paymaster x4162111**
Selling 5 straws, conventional

One of the most popular outcross heifer bulls in the breed today.



CF Primo



KOLT Carlys Pride 305



SULL Sara's Bo 3284



SULL Sage's Bo



SULL Master of Rose



SULL Roan Rosemary



SULL Red Demand 9329



SULL Demand Soundness,
son of Red Demand

149a *lot* **CF Primo X ET *x4094372 – Sexed HEIFER**
Selling 5 straws of SEXED HEIFER

149b *lot* **CF Primo X ET *x4094372 – Sexed HEIFER**
Selling 5 straws of SEXED HEIFER

Proven full brother of SULL Right Direction and CF Solution.

150a *lot* **SULL GNCC Asset *4099888**
Selling 5 straws, conventional

150b *lot* **SULL GNCC Asset *4099888**
Selling 5 straws, conventional

Proven sire of National Champions combined with balance and power.

151a *lot* **SULL Master of Rose *x4176292**
Selling 5 straws, conventional

151b *lot* **SULL Master of Rose *x4176292**
Selling 5 straws, conventional

Smooth, sound with a different twist of outcross genetics.

152a *lot* **SULL Red Demand 9329 ET *xar49219**
Selling 5 straws, conventional

152b *lot* **SULL Red Demand 9329 ET *xar49219**
Selling 5 straws, conventional

Deep red, soggy and sound, birth weight reducer, in an outcross package.

Angus SEMEN



Leachman Saughatchee 3000c

153 *lot* **Plainview Lutton E102**
Selling 5 straws, conventional

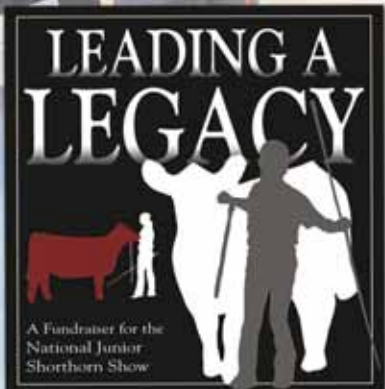
154a *lot* **Leachman Saughatchee 3000c**
Selling 5 straws, conventional

154b *lot* **Leachman Saughatchee 3000c**
Selling 6 straws, conventional

155 *lot* **BC Lookout**
Selling 5 straws,
conventional

The Family Friendly Breed.

100% of the proceeds goes towards the National Junior Shorthorn Heifer Show.



Saturday, October 18, 2014 at Sullivan Farms, Dunlap, Iowa

- 6:00 PM Prime Rib Meal and Social compliments of Sullivan Farms
 - 7:00 PM Leading A Legacy, Junior National Fundraiser Sale
 - 7:30 PM Vegas Night, Casino fun chips
- **What Vegas celebrity will show up this year!

Sale Day Phones ...	Frank Sullivan, Auctioneer ..612.860.6665	Roger Sullivan612.860.0158
Montie Soules918.645.4322	Kent Jaecke405.408.2440	Alan Sears970.396.7521
Jake Alden402.660.9048	Jeff Aegerter.....402.641.4696	Darryl Rahn.....217.473.1124
Gwen Crawford402.616.5556	Don Cagwin217.341.7552	Tyler Pierson612.719.5289
Haley Alden816.465.0575	Kendra Davis.....507.440.6933	

If interested in bidding, please contact any of the ringmen or visit LiveAuctions.tv. Thank you to all of the above for donating your time.

Event Chairmen ... Advisor, Gwen Crawford & Junior Auction Chairman, Haley Alden.

Special Thank You ... A special Thank You to everyone who donated to support this sale and the legacy of the National Junior Shorthorn Show. Your support and generosity is greatly appreciated. Thank You to *Shorthorn Country* for advertising this event.

Also, a big Thank You to John Sullivan for supplying the meal and hosting this event.

Watch It LIVE & BID!! ... Catch candid interview's by *Livestock World's* anchorman, Chris Terembes, live starting Saturday, October 18th at 4:00 pm broadcast, on www.LiveAuctions.tv.



1 Foundation Female - RGLC Mirages Legacy 302

*x4211079 • 03.12.14 • Roan • Polled

SULL RED REWARD 9321 *xar TEGM RED ADVANTAGE 100T
 MCV MARGIE MILLION 503Q
 SULL MIRAGE FOREVER 8121 CF SOLUTION X ET *x
 AF SL MIRAGE 226ET

CE: 0.0; BW:1.9; WW:64.3; YW: 78.1; M: 16.0

Thank you Rockin' G Land & Cattle,
Bob and Mark Gordon.

VALUE - Priceless

A tremendous breeding piece and show heifer prospect. This year's foundation female is a full sib to many of the breed greats from the past few years. The SULL Mirage Forever 8121 female has been the top revenue producing female in the breed. This is a good opportunity to help yourselves and help the juniors. A huge thank you to Bob and Mark Gordon for donating this female.





2 Show Supply Package

Thank you Sullivan Supply/Stock Show University for your donation.

www.sullivanssupply.com

VALUE - \$1,500

Includes Sullivan's 5' Upright Treadbright Dolly Box (\$965 value) fully loaded with Sullivan show supplies, Sullivan's Turbo Fan (\$265 value) and a complete Sullivan's Smart Series Package.

A special thank you to Sullivan Supply and Stock Show University. They are always generous sponsors of the American Junior Shorthorn Association.



3 Nebraska Cornhuskers vs. Minnesota Gophers

Thank you Craig Gana and family of Nebraska, for your donation.

VALUE - \$800

There are not many things in life that are better than college football. The Nebraska Cornhuskers play the Minnesota Gophers on Saturday, November 22nd in Lincoln Nebraska. Time to be announced.

Come to Nebraska and enjoy a great tail-gating experience with the Gana Family. This package includes four tickets, premium seats; one night hotel stay; \$100 gift certificate for Huskers gear; \$100 gift certificate to Lazlos Brewery and Grill (an unforgettable dining experience); and tailgating at the Gana Family tailgate location where you will enjoy great food and drinks.



4 Sunglo Show Feeds & Supplement Package

Thank you Sunglo for your donation.

VALUE - \$1,050

Sunglo® Feeds whole-heartedly believes in Feeding Their Potential™ whether that is the animal at stake or the exhibitor in the ring. We want to partner with our feeders to provide the best experience possible and maximize the potential of their projects. We have built our considerable experience in animal nutrition manufacturing by providing products and solutions with a distinctive difference for our customers. Sunglo® Feeds is a partner you can count on for integrity, excellence and profound respect for you and your animal nutrition needs.

Right Now® minerals are formulated to make it easy to match the mineral feeding program to the growing seasons, forage conditions and nutritional needs of your cattle.

4A - 500 pounds/ 10 bags of Right Now® Mineral. Redeemable at any Cargill or Nutrena dealer.

4B - 40 bags of Sunglo Premium Cattle Feed (1 ton). Redeemable at any Sunglo dealer.



5 National Junior Heifer Show Program Cover

www.shorthorn.org

VALUE - Priceless

Outstanding opportunity! This will be the cover of the 2015 National Junior Shorthorn Show & Youth Conference program for both days, Wednesday and Thursday. This can be a special ad featuring your program in front of all juniors in America. The ad will need to be clean lined and approved by the ASA staff. This ad will be approximately 2/3 of the cover and full color. The other 1/3 will be needed for show logo, date, etc.

5A - Cover, Jr National Show Program

5B - Inside Front Cover, Jr National Show Program

5C - Inside Back Cover, Jr National Show Program

5D - Back Cover, Jr National Show Program



6 One Free Conventional In-Vitro Fertilization Cycle

Thank you Trans Ova Genetics of Iowa, for your donation.

VALUE - \$750

Breeders who choose to use IVF technology have the opportunity to obtain more offspring from valuable females in their herd, similar to the benefit of embryo transfer. Many breeders do not realize however, the additional benefits when using IVF, such as the ability to sex-sort previously frozen semen as well as use sorted frozen semen and conventional semen in the IVF fertilization process.



7 Legacy Livestock Photo Shoot

Thank you Legacy Livestock Imaging, Charles & Heidi Anderson of Kansas, for your donation.

VALUE - \$1,200

Show day, farm visits or the picture pen nobody captures the moment like Legacy Livestock Imaging. We are excited to donate a one day agricultural photo shoot. We will provide eight hours of photography, transportation to the location or to the nearest major airport and a file of edited images. Valid in the continental United States only. Must be used by October 20, 2015. Buyer is responsible for meals, overnight accommodations and secondary transportation.



8 Shorthorn Country Advertising

Thank you *Shorthorn Country* for your donation
www.shorthorncountry.net

VALUE - \$1,530

A full color, two-page ad in the May/June issue of *Shorthorn Country*. No additional charges for graphics. A very special thank you to the *Shorthorn Country* and Don Cagwin for all his support he has shown the Junior's through the years. Including the free advertisements on this very sale, Leading A Legacy. Let's give the *Shorthorn Country* staff, Darryl, Cindy, Tracy and Jennie a big thank you for the expansive and tremendous coverage of the major national Shorthorn shows!



9 Kids Western Saddle

Thank you Hooley Family Shorthorns of Minnesota, for your donation.

VALUE - \$500

Dennis Hooley from Stillwater, Minnesota has donated a beautiful kids western saddle from the late 1940's mounted on a wood rocker for this year's Leading A Legacy Sale. Dennis raises Shorthorn cattle and is a grain trader working from his home office. Dennis found that while he focuses on buying and selling barley and oats that his hands needed something to do. He collects youth saddles and cleans them and polishes them while he is on the phone with his customers.



10 NHL & Mystic Lake Casino & Hotel Package

Thank you Terry & Alex Stade of Minnesota, for your donation.

www.mysticlake.com

VALUE - \$1,300

Enjoy four seats at a Minnesota Wild Hockey Game. These tickets also include two parking passes. Game to be mutually agreed upon with donor. NO need to worry about a hotel expense either. Spend the night at Minnesota's most all-inclusive entertainment destination which is located just 25 minutes southwest of the Twin Cities! Enjoy a two-night get-a-way and stay at Mystic Lake Casino and Hotel. Each of the 600 Luxurious rooms and suites at Mystic Lake feature full room service and the ultimate in comfort. Other amenities include golf, spa, shopping and entertainment. The Meadows at Mystic Lake is a par-72 Championship golf course just steps away from the casino! As a guest at our hotel, you also have access to the 230,000 sq. ft. Dakotah! Sport and Fitness center, which includes bowling and arcade.



11 Purina Show Feed Package

Thank you Purina Mills for your donation.
www.shorthorncountry.net

VALUE - \$500

This is a \$500 gift certificate redeemable at any Purina Mills feed store location. It can be used on any show feed or highly successful Purina supplements.

Show Chow is the choice of champions and is fed by many of the top cattle operations in the country today.



12 Eli Young Band Signed Acoustic Guitar

Thank you to the Eli Young Band for your donation.

VALUE - Inestimable

Attention country music fans! Here is a unique opportunity to purchase a signed acoustic guitar from the Eli Young Band. The Eli Young Band is one of the new iconic country music groups rising to stardom. They have already had three number one hits. The Eli Young Band won the Academy of Country Music Award for Song of the Year "Crazy Girl." This is a great item for country music collectors or an excellent gift for those hard to buy for people. Thank you Tiffany Glover for getting this donation item signed.



13 Duck Hunt in Louisiana

Thank you RL Cattle Co, Ricky Guidry, of Louisiana, for your donation.

VALUE - Private

This is a two man duck hunt in 'Sportsman's Paradise' in Bell City, Louisiana. Get ready for a private, two day experience and a great time. Lodging, food, whiskey, beer and wine will be furnished. Weather permitting one afternoon can be spent trout fishing. You will be guaranteed such a good time, you won't care if you shoot a live or wooden duck! Ricky says you will not go hungry either and will get food (wild game) you cannot buy in the store. These trips are not available for purchase and are only offered as private experience so the personal attention will be fabulous!



14 Showtimes Advertisement

Thank you to the Reid Family of Colorado, for your donation.

www.theshowtimesmagazine.com

VALUE - \$650

One page, full color advertisement. Design is included. The Showtimes junior livestock magazine is owned and operated by the Reid family of Colorado. They have grown into a prominent national junior livestock magazine business from the love their family has for the industry. The Reid family are Shorthorn enthusiasts and sure enjoyed Shorthorn Junior Nationals.



15 4X4 Barn Quilt

Thank you Cannondale Farms of Minnesota, for your donation.

www.cannondalefarms.com

VALUE - Handcrafted

Handmade by Dean and Jan Lee of Amboy, Minnesota this beautiful barn quilt is hand made and is completely safe to be outdoors. Barn quilts are square pieces of wood painted with colorful designs that are usually mounted on the sides of barns or garages.



16 NAILE Show Program Covers

www.shorthorn.org

VALUE - Priceless

Advertise your farm at one of the largest Shorthorn Shows of the year on the back cover of the 2014 North American Livestock Show programs. Where else could you get this kind of exposure for the price?! Ads will be black and white.

16A - Jr Shorthorn & Shorthorn Plus Show Program Back Cover (Sunday)

16B - Open National Shorthorn Show Program Back Cover (Monday)



17 Iowa State Basketball Package

Thank you Cyclone Trace Cattle Co., John Hagie of Iowa, for your donation.

www.cyclonetrace.com

VALUE - Precious

Attention Cyclone Fans! John Hagie is offering four seats to any Iowa State Basketball game with the exception of the Kansas game. John will even reimburse the purchaser for hotel, food and gas to attend the game as long as original receipts are sent with the request for reimbursement. WOW! This is a full paid weekend or game day for the purchaser. These are excellent seats, on the third row close to mid-court. This is close enough you will be able to see and hear everything and feel the sweat from the players. Iowa State Basketball is a force in the Big 12 and you can experience it with this purchase. Nothing like feeling the excitement at the game! John requests at least a two week notification of which game you would like to attend. These seats and the experience is unmeasurable and one you will remember for a lifetime!



18 Collectible Toy Tractor

Thank you GCF Shorthorns of Nebraska, for your donation.

VALUE - Rare

A Firestone limited edition Allis Chalmers D15 with sprayer. This model is not sold in retail stores. The tractor is 3,332 out of 3,500. Greg Crawford is a long time Shorthorn breeder and flies the Shorthorn flag high every day. Thanks for your donation Greg.



19 Vintage Bronze Ceiling Tile Photo Frame

Thank you Sivad Farms of Minnesota for your donation.

VALUE - \$100

This unique vintage picture frame was hand-crafted out of an antique ceiling tile. It is bronze in color and would look very nice in any room of the house! This would be a wonderful way to display photo of the next memory your family makes in the show ring! This beautiful frame will hold an 8 X 10 photo.

You can purchase these items at auction from your dollars earned at Vegas casino night. Items include ... Andis Clippers; American Shorthorn Association Apparel, donated by ASA; Stock Show University Apparel, donated by Sullivan Supply; 12 pack of toilet paper, donated by Kent Jaecke; Preparation H, donated by Jeff Aegerter; and numerous other highly valued items.



20 Handcrafted Wine Rack

Thank you AJSA Board member Mackenzie Cash of Wisconsin for your donation.

VALUE - \$200

Your choice of a handcrafted wine rack made out of retired barn boards with a linseed oil finish. On the face of the rack is a 3" x 5" face plate with either the 2014 or 2015 Shorthorn Junior National logo. Included in this is four bottles of Wisconsin wine; including: Wollersheim Winery's 2012 Pinot Noir, Botham Vineyard's Badger Blush, Spurgeon Vineyard's Wisconsin Cranberry Wine, and Cedar Creek Winery's Settlement Gold.



21 National Western Stock Show Program Covers

www.shorthorn.org

VALUE - Priceless

The recognition you receive from your firm being on the back cover of the program is endless. Ads are black & white.

- 21A - Shorthorn Pen Show Program Back Cover (Saturday)
- 21B - Shorthorn Junior Show Program Back Cover (Sunday)
- 21C - National Shorthorn Show Program Back Cover (Monday)



22 Montie Soules Cowboy Boots

VALUE - We don't know because we forgot to ask him again this year!

Well to be quite honest, we didn't ask Montie again this year either! We are pretty sure he won't mind donating his custom made Mercedes boots since he was such a good sport last year and a strong believer in the American Junior Shorthorn Association. One thing we do know, if you purchase his boots this year, you have big shoes to fill!! We all should appreciate what CEO Montie Soules is doing for the American Shorthorn Association and the American Junior Shorthorn Association.

A New Tradition Has Started

The American Junior Shorthorn Association has started a new program beginning this year. We are going to ask the exhibitor of the Grand Champion Purebred Female and the Grand Champion ShorthornPlus Female from the National Junior Shorthorn Heifer Show to voluntarily donate a flush.

This year, both exhibitors were excited to participate. What a great way for our Junior Members to give back and appreciate their success!



SULL Red Tamale 3260, Grand Champion ShorthornPlus Female, 2014 National Junior Shorthorn Show

BW:2.9 WW: 55 YW: 69 M: 19

23 Conventional Flush

Thank you to the Kirkpatrick and Dice Families of Indiana, for your donation.

VALUE - A progressive breeder will bid without hesitation

Selling one conventional flush on SULL Red Tamale 3260, the 2014 National Junior Shorthorn Show Grand Champion ShorthornPlus Female. Red Tamale is due February 7, 2015 and will be available to get early calves back. You will receive her first flush. Konner Kirkpatrick will guarantee a minimum of six embryos. Take advantage of this unique opportunity to own some of the famous Hot Tamale genetics, some of the most prevalent in the ShorthornPlus program. A special Thank you to the Kirkpatrick and Dice families for this amazing donation. All flushing expenses and semen are the buyers responsibility.



SULL Wild Cherri 3269, Grand Champion Shorthorn Female, 2014 National Junior Shorthorn Show

BW:2.4 WW: 61 YW: 69 M: 22

24 IVF Flush

Thank you Nick Sullivan and Sara Sullivan of Iowa, for your donation.

VALUE - A progressive breeder will bid without hesitation

Selling one IVF cycle flush on SULL Wild Cherri 3269, the 2014 National Junior Shorthorn Show Grand Champion Shorthorn Female. You will receive Cherri's very first flush and she will be ready for an early IVF cycle as she is due to calve January 2015. Nick will guarantee a minimum of three embryos on the IVF Cycle. This heifer looks as good as ever making her a strong contender this fall. The Sullivan family is thankful for all the fun we have enjoyed over the years at the National Junior Shorthorn Show, so we are proud to give back to this great breed. All flushing expenses and semen are the buyers responsibility.

SULLIVAN

farms

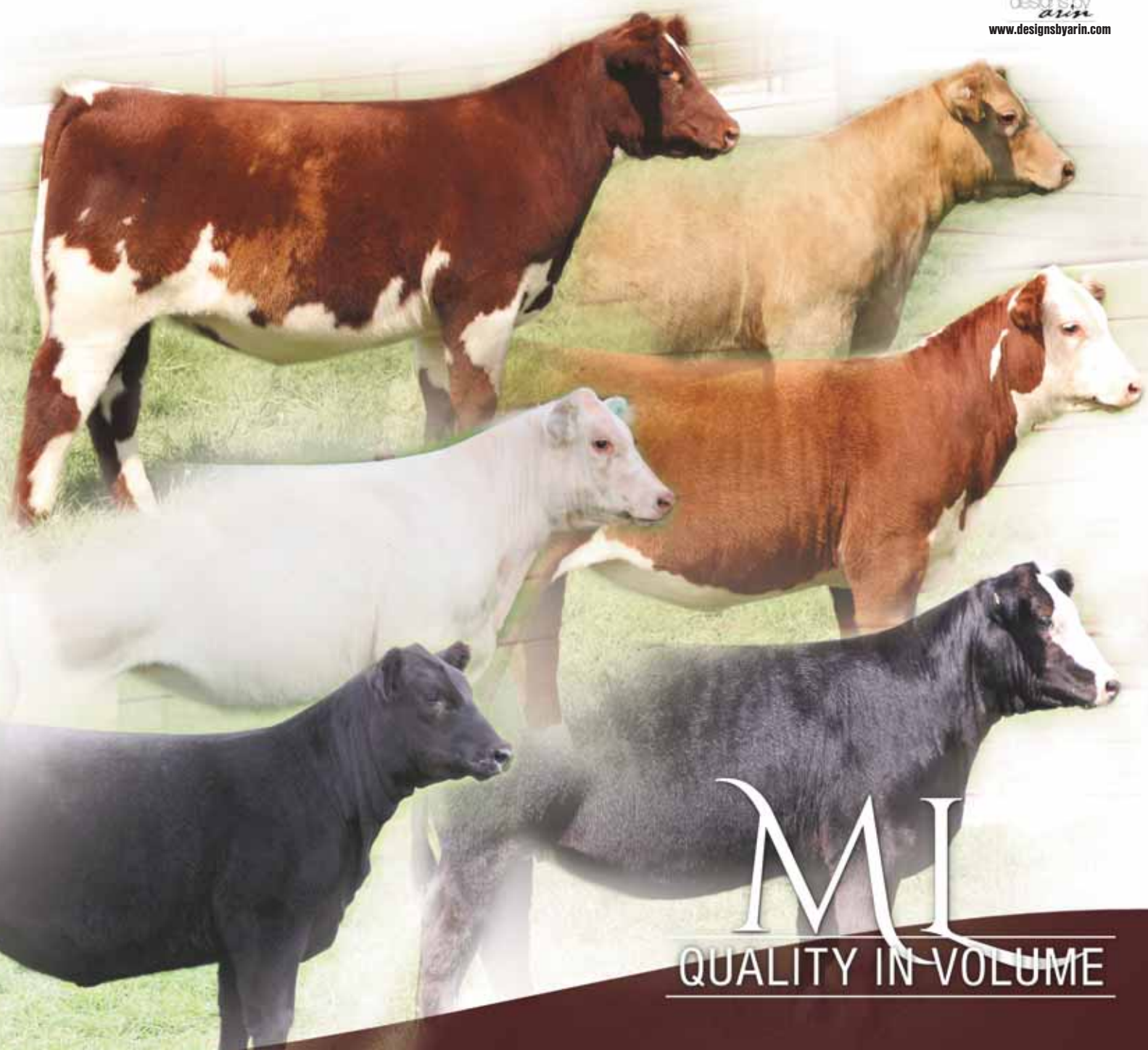
701 Iowa Ave.
Dunlap, IA 51529

FIRST CLASS
PRE-SORTED
PAID
Montezuma, Iowa
Permit No. 30

Designed
by



www.designsbyarin.com



MI
QUALITY IN VOLUME