




LONELY VALLEY'S  
**Keepin' Kind**  
Bull Sale



**SATURDAY, FEBRUARY 22, 2014**

**LVLS** Lonely Valley  
Seedstock

**84** Yearling Limousin,  
Lim-Flex and Angus Bulls



Saturday, February 22, 2014 • 1:00 PM CST at the farm, Creston, Nebraska

---

Welcome to our 23rd Annual 'Keepin' Kind' Production Sale. After 31 years in the seedstock business, we have been blessed to have so many friends in this business. We are very grateful for the opportunity to bring another set of bulls to you, our customer.

We know that there are other places to make your seed stock purchases and we appreciate your loyalty. Last year we sold 90% of our bulls to repeat customers. Taking care of you our customer is our #1 priority. As always, we offer an unconditional guarantee on all cattle sold. If you should have a bull go down during breeding season, we can usually have a replacement for you within a few days, available at our ranch or we will try to meet you half way, depending on the distance. We are very proud to say that we replace very few bulls each year.

We continue to run our cows in pastures ranging from across Nebraska. Our herd consists of over 400hd of registered Limousin, Lim-Flex and Angus cattle. Our goal is to become a one-stop bull shop for all your genetic needs. Lonely Valley's Bull Battery continues to be ranked in the top 10% for all EPD traits.

Currently our bull battery ranks in the top of the breed for weaning and yearling growth and milk and does so with a low to moderate birth weight. Our Marbling and Scrotal circumference EPD is unsurpassed, not just on one bull, but all LVLS herd sires combined. 25 plus years of selection pressure really do pay off. We continue to place extensive selection pressure on calm, easy doing cattle. This set of bulls have been easy to work with. You will notice the difference. As well, cows that fail to breed being sent down the road. Fertility in these bulls is excellent with an average scrotal measurement that is unequalled in the Limousin and Angus.

The bulls will be available to be viewed at the ranch near Creston a few days prior to the sale. As well, we will have 300 calves on the ground by sale day and several of the herd bulls for your viewing. We will be serving a complimentary Limousin Beef lunch at 11:00 a.m. Should you need assistance with travel plans, trucking and delivery or anything else, please call and we will be happy to assist you. See you Saturday, February 22nd at the Ranch.

Sincerely,

*The Settje Family*

*Stan & Marilyn Settje*

*Mike & Cindy Settje*

*Dean & Kristi Settje*

*Chad & Kristi Settje*

*Mark & Joann Settje*

*Reed & Shannon Settje*

***Celebrating 31 years in the  
Purebred Seedstock business!!***

***LONELY VALLEY  
SEEDSTOCK***

Stan, Mike, Mark, Dean & Chad Settje  
Chad, 402.910.5504 • Dean, 402.649.2615  
Mike, 402.920.0230 • Mark, 402.920.0218  
*csettje@agri-city.com • chad.settje@gmail.com*  
82291 560th Ave., Creston, Nebraska 68631  
[www.lonelyvalley.com](http://www.lonelyvalley.com)



# Lonely Valley's Keepin' Kind Bull Sale

**Airports:** Columbus Municipal Airport, Norfolk Regional Airport & Omaha Eppley Airfield

**Delivery:** Free delivery within a 250 mile radius and cost share arrangements will be made for traveling beyond 250 miles.

**Announcements:** Announcements made sale day will take precedence over printed material in the catalog. Please take note of any changes.

**Semen:** Lonely Valley Seedstock reserves the right to semen int. on any bull in the sale.

**Terms:** Terms of the sale are cash unless prior credit arrangements are established between buyer and seller. Settlements are to be made with the clerk immediately after the conclusion of the auction.

**Mail & Phone Bids:** Mailed or phone bids will be handled in a confidential matter. If you are unable to attend the sale, simply contact anyone at the sale day phone numbers.

Please call in advance of the sale so we can help you ringside sale day. All cattle purchased through our 'sight unseen program' are unconditionally guaranteed, if the cattle purchased for you on order are not what you expected, we don't expect you to pay for them, no questions.

**Blood Type for Parentage Verification:** All animals sold are guaranteed to be offspring of the recorded parents. Under the rules of NALF, all bulls born after January 1, 1991 that are to be used for artificial insemination or used naturally in a herd other than the owner of record must be parent verified by blood typing to both sire and dam. All females born after July 1, 1987 and December 31, 1990 that are to be used for artificial insemination or naturally in a herd other than the owner of record must be sire verified through blood typing. Sellers shall make the necessary parent blood samples available to purchasers upon written request by the purchaser's so long as a written request is received by sellers within 60 days after the sale of the applicable animal.

**Liability:** Each animal will be the buyer's risk as soon as it is sold, but will be cared for by the seller for a reasonable period of time. Every precaution will be taken for the welfare of the cattle sold. Neither owner nor sales management can be responsible for accidents, but every effort will be made to provide for safety and comfort of those attending the sale.

**Insurance:** Insurance on your purchase can be provided by Mark Smith, Grass Roots Genetics & Consulting, Ankeny, IA, 515.229.5227

**Payment:** Cattle must be paid for at the time of the sale unless prior arrangements are made with sale management at the time of the sale at 615.330.2735.



**Sale Day Phones:**

Chad Settje .....	402.910.5504	Dean Settje .....	402.649.2615
Mike Settje.....	402.920.0230	Mark Settje .....	402.920.0218
Randy Ratliff .....	615.330.2735	Kyley McKinna.....	402.350.3447
Mark Smith .....	515.229.5227		

**Sale Representatives:**

Bruce Brooks, Auctioneer .....	580.695.2036
Randy Ratliff, Sale Manager.....	615.330.2735
Mark Smith, Sale Consultant.....	515.229.5227
Kiley McKenna, Sale Consultant .....	402.350-3447
Alan Sears, Western Livestock Journal .....	970.396.7521

**Hotel Accommodation:**

Holiday Inn Express, East Hwy 30, Columbus, NE .....402.564-2566

**DIRECTIONS to Lonely Valley Seedstock:** From Omaha: Take Hwy 275 north and travel northwest to Hwy 91. Turn west on Hwy 91 and travel west to Leigh, NE, and look for the large propane tank on South side of road, continue to travel west on Hwy 91 four more miles to 160th Ave. Turn north on 160th Ave. and go three miles north to the ranch.

From Columbus: Go to Hwy 30 and 23rd Ave. (Kentucky Fried Chicken) and travel 18 miles north on blacktop road to Hwy 91. Then turn east on Hwy. 91 and go one mile to 160th Ave. Turn north on 160th Ave. and go three miles north to the ranch.

**Marketing Team:**



**Mark Smith**  
515.229.5227



**Kiley McKinna**  
402.350.3447  
mcmarketingsales@aol.com  
www.MCMarketingManagement.com



(L#2845)

**R&R  
MARKETING COMPANY**

**Randy Ratliff**, cell: 615.330.2735  
Randy@RRmktg.com  
PO Box 281677, Nashville, TN 37228  
www.rrmktg.com



## ABOUT OUR CATTLE ...

### **Feeding:**

The yearling cattle are fed to gain 3.25 per day, receiving a ration of corn gluten and alfalfa. We feed our bulls to gain sufficiently, without pushing a lot corn in the ration. We believe that corn causes structure problems later in life and causes yearling bulls to 'melt' when turned out to pasture. We are very proud of the success rate our yearling bulls have had.

### **Semen Testing:**

This year's average testicle measurement at 12 months of age of 37. All bulls have been semen tested and measured and a certificate will go with each bull sold.

### **Unconditional Guarantee:**

If the cattle that you purchase at our sale fail to meet your expectations, we will replace the animal, providing you return the animal to our ranch at your expense. We will provide you with a replacement animal or give you full credit toward next year's sale or a cash refund. This guarantee expires after the first breeding season. We ask that you provide travel expenses for the replacement animal. Customer Service is #1!

## ANALYZING THE PERFORMANCE DATA ...

### **BW - Birth Weight:**

We take birth weights on our cattle in order to give you some method of determining calving ease. Larger calves will sometimes come very easy. We believe that calf structure determines calving ease along with size.

### **WW - Weaning Weight:**

This is the weight of the cattle taken at weaning time adjusted to a constant age of 205 days, and a good indication of early growth.

### **YW - Yearling Weight:**

This is the weight of the cattle taken at approximately one year of age and adjusted to a constant age of 365 days with at least 150 days between actual weaning and yearling weight dates.

### **ADG - Average Daily Gain:**

Growth rate is highly heritable and these numbers will give you an idea of how the cattle respond to environmental conditions. i.e. feed, weather, etc.

## HOW TO FIND WHAT YOU ARE LOOKING FOR IN THIS YEAR'S SALE ...

The following names have been applied to each bull, based on their percent Limousin and percent Angus. All the cattle go back to our Angus base. Maternal selection can be accomplished by selecting those bulls that are above breed average for Milk and Total Maternal EPDs. We suggest that you match your selection with your environment, as there is consideration for too much Milk in some environments. These 'lines' of performance bred bulls have undergone one of the most rigorous selection criteria of any seedstock provider.

We first select without papers, finding all visible phenotypic defects and problems. Once the outliers are eliminated, we then select on paper, eliminating those cattle with performance, EPD or genetic problems. This two step selection process is done at weaning and repeated again just before the sale with yearling data and semen checking added to the criteria. Of course, disposition is still the number one culling criteria in our herd. Choose the type of bull that best meets your cowherd or feel free to call us to further discuss your options. We would be happy to visit with you.

### **'Maximizers' - Purebred & High Percentage Limousin Bulls:**

These lean, red meat machines will maximize hybrid vigor on your British and British X cows. These bulls will maximize performance without sacrificing calving ease. Several of these prospects go back into the purebred industry each year, being purchased by other purebred breeders.

### **'Lim-Flex 75' - 75% Limousin x 25% Angus Bulls:**

Our most popular hybrid for 28 years, these ultra thick and deep machines are unequalled in their muscle, volume and phenotype. These bulls work well on most any cowherd, offering the extreme thickness of Limousin and the volume of Angus. Hybrid vigor can be increased and maintained with these bulls on most all straight bred and crossbred cows.

### **'Lim-Flex 50' - 50% Angus x 50% Limousin Bulls:**

These Angus x Limousin F1 Composites have been a hit on our sale for many years as well. Many cattlemen are using these bulls to moderate their cow size and create consistency or in a four way cross breeding system. Optimizers are moderately framed, very deep and offer much more thickness.

### **'Lim-Flex 25' - 25% Limousin x 75% Angus Bulls:**

They are 25% Limousin and 75% Angus. These bulls combine the best of the numbers of the elite Angus combined with the prominent Limousin. These bulls are huge numbered and have some of the strongest weights and stats of the entire sale offering. These bulls bring the statement of Lim-Flex to a whole new level in our breed. We urge you to see for yourself how any one of these bulls might fit into your program to sire a uniform and very desirable calf crop.

### **'Angus' - Purebred Registered Angus Bulls:**

Over the past several years we have acquired over 100 Registered Angus females, along with flushing one of our top Angus cows in our Embryo Transfer Program, to promulgate a complimentary breed to our existing lines of seedstock. Our goal is to provide Purebred Angus bulls that can offer an ideal compliment to high percentage Limousin based cows. We have known for years that the Limousin x Angus cross is the best, now we will be offering both sides of the equation.



# LIMOUSIN Means Profit...

Whether you are a producer or a feeder, whether you sell calves or retain ownership, wherever you are, whatever your cowherd, whatever your market; Limousin and Lim-Flex genetics can enhance your profit from the pasture to the rail.

## In the Pasture...

- Research has shown that Limousin cows wean a higher percent calf crop per cow exposed.
- Limousin cows are efficient producers on both low and high intake diets, making them fit in various environments
- The average Limousin cow culled for age is over 12 years old, adding 5 to 6 years of production past breakeven
- Docility EPD values have doubled in the past ten years
- Strauss Veal© offers a premium market for weaning age, natural, Limousin/Lim-Flex calves

*"Some of these old cows we're running are 93 to 95 models. Those cows are 15 to 17 years of age. They calve well, wean heavy, and keep breeding back. They've paid for themselves a long time ago."*

~ Casey Deuter, Deuter Ranches, Ree Heights, SD

Current rank of four major Continental Breeds, based off of MARC trial results.

Breed	Feed Efficiency		Repro/Maternal 1 <sup>st</sup> Calf Heifers	Repro/Maternal 3-6 Year Old Cows	
	Time 187 d	Fat Thickness 0.43 in	Weaned %	Born Alive %	Weaned %
Simmental	2	2	2	2	2
Gelbvieh	3	3	4	2	3
<b>Limousin</b>	<b>1</b>	<b>1</b>	<b>1</b>	<b>1<sup>1</sup></b>	<b>1<sup>1</sup></b>
Charolais	4	4	1	2	3

\*Ranking determined from results published in the 2007 Germ Plasm Evaluation Report, ARS-USDA Meat Animal Research Center, Clay Center Nebraska.

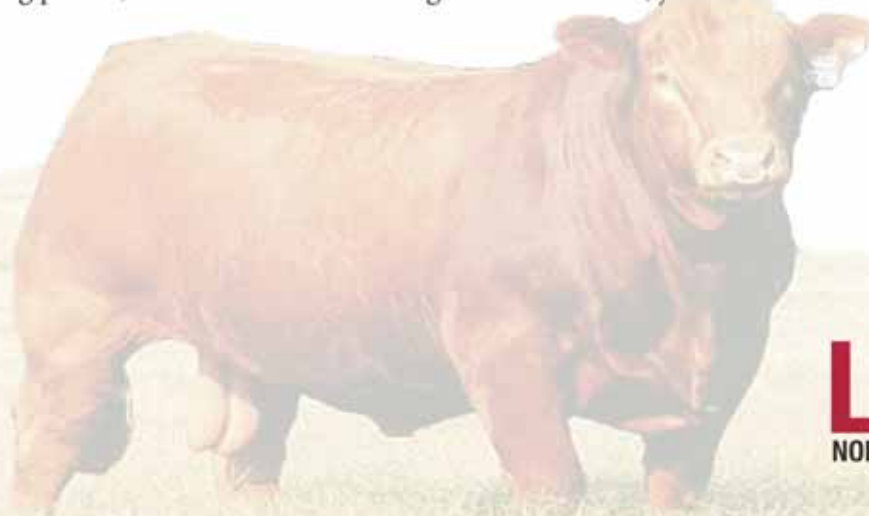
<sup>1</sup>Denotes ranking amongst all breeds included in study (Hereford, Angus, Red Angus, Simmental, Gelbvieh, Limousin, Charolais)

## In the Feedlot...

- Limousin remains atop the Continental breeds for feed efficiency
- Limousin cattle maintain high feed efficiency at higher finishes and deeper in the feeding cycle
- Marketing opportunity with Laura's Lean Beef for high percentage or full blood Limousin cattle

## On the Rail...

- Limousin can eliminate Yield Grade 4 and 5 cattle and increase percent Yield Grade 2 in one generation
- Limousin cattle excel in percent retail product, yield grade and ribeye area
- In tasting panels, Limousin beef ranks high for tenderness, juiciness and flavor



**LIMOUSIN**  
NORTH AMERICAN LIMOUSIN FOUNDATION

303/220-1693

www.TodaysLimousin.com



# WHAT CAN LIM-FLEX<sup>®</sup> DO FOR YOUR BOTTOM LINE?

## **Why Lim-Flex?**

- **Flexible bulls** that add feed efficiency, growth and docility to your system without sacrificing important maternal traits.
- **Flexible fat cattle** that hit dressing percentage, yield and quality grade targets.
- **Flexible females** adapted for efficiency across a wide range of environments.

Superior Video Royale XXII, Winnemucca, NV  
1,103 Lim-Flex steers from 4 CA Ranches

**Average \$1,288.97 per head**



**REPLACEMENT FEMALES • FEEDER & STOCKER CALVES • HERD BULLS**  
....see how Limousin influenced cattle will keep you in the black.

**LIM·FLEX** <sup>®</sup>  
LIMOUSIN·ANGUS HYBRID

Celebrating 10 Years Of Breed Changing Hybrid Vigor. est 2003

Contact The North American Limousin Foundation For a Limousin Supplier Near You.  
303-220-1693 or [info@nalf.org](mailto:info@nalf.org) - [www.nalf.org](http://www.nalf.org)



## LVLS Adidas 967A

% Limousin (88) Bull

LVLS 967A

NXM 2041230

Double P / Red

01.11.13

LOT **1**

**BREED RANKING**  
20% YW  
1% MA  
1% MARB  
2% MTI

LVLS FARMER 4G  
**LVLS SECRET WEAPON 4408K**  
LVLS 408H

MAGS SAVAGE  
**MCBN WANETA 967W**  
MAGS SHANTAY 6479S

COLE FIRST DOWN 46D  
LVLS JENI 601V  
LVLS POLLED JUSTICE 0601E  
LVLS MISS STABILIZER 1408E  
GPF BLAQUE RULON  
MAGS MANDA  
C A FUTURE DIRECTION 5321  
AUTO ELITE 270F

	CED	BW	WW	YW	MA	CEM	SC	ST	DOC	CW	REA	YG	MARB	\$MTI
EPDs	6	2.9	56	99	37	7	0.8	-	13	21	0.06	0.14	0.21	53
	P	P	P	P	P	P	P	-	P	P	P	P	P	

Individual Bull Data ...	BW	Adj. WW	Adj. YW	Adj. SC	ADG
	88 lbs.	745 lbs.	1,315 lbs.	37.3	3.59

- 2014 Denver National Pen Show member
- This red and polled 87.5% Limousin herd sire prospect shows a tremendous amount of promise as a true breeding bull
- He is sired by the breed leading EPD sire LVLS Secret Weapon and from a female bred in the Brown Land & Cattle Co. program sired by MAGS Savage back to a daughter of CA Future Direction
- He is massive in his EPD numbers ... 99 for yearling weight, 37 for milk & .21 for marbling
- We admire the foot size, strong stance and over all mass and the amount of thickness that this bull has



## LVLS Apollo 1015A

Lim-Flex (63) Bull

LVLS 1015A

LFM 2042519

Double P / Red

01.05.13

LOT **2**

**BREED RANKING**  
30% MA

EXLR DAKOTA 353G  
**AUTO BLACK DAKOTA 129J**  
DFLC JET SET BPC 34Y

LVLS 9307R  
**LVLS 794S**  
LVLS 794B

WULF'S COUNT DOWN 9251C  
CANE RIDGE DAPHNE 011D  
GENERAL LEE LOJW 40S  
DFLC BPC 20U  
B/R NEW FRONTIER 095  
L V MISS IDEAL 9307  
YKCC IRONSIDE BULL 155NS

	CED	BW	WW	YW	MA	CEM	SC	ST	DOC	CW	REA	YG	MARB	\$MTI
EPDs	6	1.3	39	80	30	5	0.3	14	-	17	-0.06	0.16	0.09	44
	P	P+	P+	P	P	P	P	-	P	P	P	P	P	

Individual Bull Data ...	BW	Adj. WW	Adj. YW	Adj. SC	ADG
	89 lbs.	663 lbs.	1,308 lbs.	39.1	4.01

- Red, double polled and one of the finest red bulls ever created at Lonely Valley Limousin
- Sired by the two time National Gold Medal sire AUTO Black Dakota 129J and from a grand daughter of B/R New Frontier 095 and back to an Ironsides daughter
- We love his clean front end, long head and neck and his excellent structure
- He smooth and flawless in his design and has a very desirable in conformation
- He is massive in his foot size, very soft in his pasterns and fluid in his movement
- His EPD profile has a great spread from birth weight at 1.2 to his milking number of 30



## LVLS Accolade 807A

PB Limousin (100) Bull

LVLS 807A

NPM 2033406

Homo P / Homo B

01.03.13

LOT **3**

**BREED RANKING**  
3% YW  
30% MA  
20% MARB

KAJO RESPONDER 120R  
**AHCC WESTWIND W544**  
AHCC MISS WULF HUNT R544

AUTO DOLLAR GENERAL 122R  
**MCBN UNQUA 807U**  
MCBN SEDUCTIVE LADY 603S

JCL LODESTAR 27L  
KAJO SHERYL SWOOPS 11H  
COLE WULF HUNT  
AHCC MISS OUTCROSS N844  
LVLS SECRET WEAPON 4408K  
AUTO KYRIA 232K  
JCL LODESTAR 27L  
JCL COOL BREEZE

	CED	BW	WW	YW	MA	CEM	SC	ST	DOC	CW	REA	YG	MARB	\$MTI
EPDs	12	1.3	57	109	25	8	0.7	-	17	46	0.39	0.13	0.07	49
	19	34	29	18	13	18	17	-	P	P	P	P	P	

Individual Bull Data ...	BW	Adj. WW	Adj. YW	Adj. SC	ADG
	86 lbs.	662 lbs.	1,232 lbs.	35.5	3.86

- 2014 Denver National Pen Show member
- Here is one of the top purebred bulls in the sale offering
- Sired by the ever popular A.I. sire AHCC Westwind and from a daughter of AUTO Dollar General 122R back to a daughter of JCL Lodestar 27L is this thick made and moderate framed herd sire
- He is homozygous polled, homozygous black and extreme in his number package with a 109 for yearling weight, 25 for milk, .39 for ribeye and .07 for marbling
- If you want a purebred bull that has the prominent pedigree, extreme numbers and the cool look to him then consider 807A





Lim-Flex (50) Bull

**LOT 4**

**BREED RANKING**  
30% WW  
1% REA  
2% MARB

LVLS 8212A LFM Pending  
GPFF BLAQUE RULON  
**DHVO DEUCE 132R**  
AMY JO DHAN 20L  
CONNEALY LEAD ON  
**LVLS 8212R**  
SILVER OAK VINTAGE 807

Double P / Homo B 02.01.13  
BLACK DIAMOND  
QUAIL RUN RAMONA BP  
BLACK CAT DHAN 152G  
GPFF AMBER JO  
CONNEALY LEADTIME  
ELIGENCE PLUS OF CONANGA  
H A PRIMETIME 0019  
S O PRIDE OF FULLBACK H630-

	CED	BW	WW	YW	MA	CEM	SC	ST	DOC	CW	REA	YG	MARB	\$MTI
EPDs	4	2.7	55	97	23	-	1	-	22	37	0.7	0.01	0.60	46

Individual Bull Data ...	BW	Adj. WW	Adj. YW	Adj. SC	ADG
	88 lbs.	745 lbs.	1,309 lbs.	37.3	3.73

- Here is one of the favorite herd sire prospect from the select few that have viewed the sale offering
- Sired by the leading purebred sire DHVO Deuce and from a daughter of Connealy Lead On
- This young bull is super big footed, very sound and soft in his pasterns
- We admire his pedigree, his performance and his striking profile



Lim-Flex (25) Bull

**LOT 5**

**BREED RANKING**  
30% MA  
20% MARB

LVLS 4059A LFM 2040433  
SCHILLING'S TALLADEGA  
**CALO BRICKYARD 902W**  
EXG E839 1407 M175 LS  
FRENZEN KEYSTONE K17  
**FRENZEN BLACKBIRD M120**  
FRENZEN BLACKBIRD H115

Homo P / Homo B 02.04.13  
KRVN NASKAR 013N  
RCSX RAINY DAY 80R  
BON VIEW NEW DESIGN 1407  
PAF 4019 6807 E839  
SITZ ALLIANCE 6595  
WK BANDO 6314  
F&F BLACKBIRD Y38

	CED	BW	WW	YW	MA	CEM	SC	ST	DOC	CW	REA	YG	MARB	\$MTI
EPDs	9	-0.2	48	95	31	3	0.2	-	-	17	-0.64	0.29	0.36	53
	P	34	28	15	12	P	P	-	-	P	P	P	P	P

Individual Bull Data ...	BW	Adj. WW	Adj. YW	Adj. SC	ADG
	86 lbs.	760 lbs.	1,340 lbs.	36.5	3.66

- Here is a big time 25% Lim-Flex herd sire prospect that proudly carries the LVLS prefix
- He is sired by CALO Brickyard 902W, the once national champion Lim-Flex sire and now top breeding bull for Jepson Limousin, Franklin, KY and Salt Creek Cattle, Amber, OK
- His dam is a leading purebred Angus from in the LVLS donor pen. She is a daughter of WK Bando and is the dam of the LVLS donor LVLS Miss Blackbird 111U
- This moderately framed, yet extremely thick made bull is so complete and appealing in his profile. We admire his front end, strength of lines, sound structure and mass that he has
- His numbers rank as some of the highest in the sale offering with a -0.2 for birth, 95 for yearling weight, 31 for milk and .36 for marbling
- If you want to change the numbers, moderate their size and add extra pounds to your future calf crop then consider this young bull



Lim-Flex (25) Bull

**LOT 6**

**BREED RANKING**  
10% WW  
4% YW  
2% MA

LVLS 3A LFM 2039092  
S A V MANDAN 5664  
**S A V BRAVE 8320**  
S A V MAY 2397  
LVLS TOP CRITERIA 8862P  
**LVLS MISS BLACKBIRD 111U**  
FRENZEN BLACKBIRD M120

Homo P / Homo B 01.16.13  
S A V 8180 TRAVELER 004  
S A V ABIGALE 0451  
SAF 598 BANDO 5175  
S A V MAY 7238  
COLE WULF HUNT  
LVLS8862M  
FRENZEN KEYSTONE K17  
FRENZEN BLACKBIRD H115

	CED	BW	WW	YW	MA	CEM	SC	ST	DOC	CW	REA	YG	MARB	\$MTI
EPDs	10	0.2	62	116	39	2	-	-	-	-	-	-	-	0
	P	35	30	17	15	P	-	-	-	-	-	-	-	-

Individual Bull Data ...	BW	Adj. WW	Adj. YW	Adj. SC	ADG
	86 lbs.	763 lbs.	1,292 lbs.	35.8	3.35

- 2014 Denver National Pen Show member
- Homozygous polled, homozygous black and one very well bred herd sire prospect
- This January yearling herd bull is sired by the leading Angus sire SAV Brave, the big numbered son of SAV Mandan 5664
- His dam LVLS Miss Blackbird 111U is recognized at Lonely Valley as one of their finest ever created. She is a daughter of LVLS Top Criteria that continues to produce excellence time and time again
- His EPD's are some of the finest of any in the sale offering with a 0.2 for birth, 62 for yearling weight, 116 for yearling weight and 39 for milking ability



**LVLS 9803A**

% Limousin (19) Bull    LVLS 9803A    NXM 2037503    Double P / Homo B    01.01.13

LOT **7**

**BREED RANKING**  
 30% YW  
 5% MA  
 3% MARB  
 10% MTI

S A V BISMARCK 5682  
**S A V BRILLIANCE 8077**  
 S A V BLACKCAP MAY 5270

MYTTY IN FOCUS  
**LVLS 9803X**  
 LVLS9803N

G A R GRID MAKER  
 S A V ABIGALE 0451  
 S A V 8180 TRAVELER 004  
 S A V MAY 2420  
 S A F FOCUS OF E R  
 MYTTY COUNTESS 906  
 LVLS DOUBLEDOWN 3615K  
 LVLS 803C

	CED	BW	WW	YW	MA	CEM	SC	ST	DOC	CW	REA	YG	MARB	\$MTI	
EPDs	12	-2.2	51	103	36	5	0.5	-	10	37	-0.45	0.66	0.50	58	
	P	35	30	19	P	P	P	-	P	P	P	P	P		
Individual Bull Data ...	BW	Adj. WW	Adj. YW	Adj. SC	ADG										
	79 lbs.	659 lbs.	1,220 lbs.	37.9	3.49										



REFERENCE SIRE ... SAV Brilliance 8007

- Here is one of the biggest numbered bulls in the entire sale offering
- He is a 18.8% Limousin sire with a breed leading set of numbers. He posts a -2.2 for birth, 103 for yearling weight, 36 for milk and .50 for marbling
- This son of SAV Brilliance 8077 is from a daughter of MYTTY In Focus and goes back to the well bred sire LVLS Doubledown 3615K
- This bull bring forth a powerful number package in a very desirable conformation

**LVLS 1010A**

Lim-Flex (25) Bull    LVLS 1010A    LFM 2042958    Homo P / Double B    01.02.13

LOT **8**

**BREED RANKING**  
 20% BW  
 2% MA  
 10% MARB  
 30% MTI

S A V BISMARCK 5682  
**S A V BRILLIANCE 8077**  
 S A V BLACKCAP MAY 5270

LVLS 276N  
**LVLS7100R**  
 L V L S 7100

G A R GRID MAKER  
 S A V ABIGALE 0451  
 S A V 8180 TRAVELER 004  
 S A V MAY 2420  
 JCL BLACK OUT  
 LVLS JENI 601V  
 LOUP VALLEY FOCUS 882  
 L V MISS PROMPTER 9100

	CED	BW	WW	YW	MA	CEM	SC	ST	DOC	CW	REA	YG	MARB	\$MTI	
EPDs	8	-1.7	47	94	39	3	0.3	-	-	31	-0.55	0.62	0.41	54	
	P	P+	P	P	P	P	P	-	-	P	P	P	P		
Individual Bull Data ...	BW	Adj. WW	Adj. YW	Adj. SC	ADG										
	84 lbs.	685 lbs.	1,161 lbs.	35.9	2.99										



- 2014 Denver National Pen Show member
- Here is one of the sale features and one of the top herd sire prospects every offered by the long running LVLS program
- This son of SAV Brilliance 8077 is from a daughter of JCL Black Out back to the consistent producing donor LVLS Jeni 601V
- This 25% Lim-Flex herd sire prospect will make a positive impact on any set of cows. He offers a breed leading set of EPD's with a -1.7 for birth, 94 for yearling and 39 for milk. He also has a .41 for marbling and 54 for MTI
- If you are looking for a lower percentage herd sire to add numbers and create a uniform calf crop then consider this January yearling

**LVLS 1022A**

Lim-Flex (38) Bull    LVLS 1022A    LFM 2037494    Homo P / Black    01.06.13

LOT **9**

**BREED RANKING**  
 20% BW  
 10% MA

S A V BISMARCK 5682  
**S A V BRILLIANCE 8077**  
 S A V BLACKCAP MAY 5270

LVLS POLLED BLACK JACK  
**LVLS6792K**  
 LVLS 792B

G A R GRID MAKER  
 S A V ABIGALE 0451  
 S A V 8180 TRAVELER 004  
 S A V MAY 2420  
 MAYS BLACK JET  
 LVLS REBECA  
 YKCC IRONSIDE BULL 155NS

	CED	BW	WW	YW	MA	CEM	SC	ST	DOC	CW	REA	YG	MARB	\$MTI	
EPDs	9	-1.2	45	91	35	3	0.3	-	4	32	-0.19	0.43	0.36	53	
	P	36	31	20	23	P	P	-	P	P	P	P	P		
Individual Bull Data ...	BW	Adj. WW	Adj. YW	Adj. SC	ADG										
	85 lbs.	693 lbs.	1,254 lbs.	34.1	3.63										

- Black and homozygous polled
- This 37.5% Lim-Flex herd sire prospect is extreme in his numbers with a very predictable pedigree
- Sired by SAV Brilliance and from a daughter of LVLS Polled Blackjack and back to Ironsides is this beef bull
- He posts a -1.2 for birth, 91 for yearling weight, and 35 for milk. He also has a .36 for marbling and 53 for MTI
- 1022A is moderately sized herd sire that possesses the breed leading numbers backed with a very prominent pedigree

**LVLS 7428A**

Lim-Flex (50) Bull    LVLS 7428A    LFM 2037497    Scurred / Double B    01.01.13

LOT **10**

**BREED RANKING**  
 20% CED  
 10% MA  
 4% MTI

S A V BISMARCK 5682  
**S A V BRILLIANCE 8077**  
 S A V BLACKCAP MAY 5270

ROMN JUSTICE  
**LVLS 7428Y**  
 LVLS UNDER THE STARS 7428

G A R GRID MAKER  
 S A V ABIGALE 0451  
 S A V 8180 TRAVELER 004  
 S A V MAY 2420  
 ROMN FORTUNE  
 ROMN LADY ROCK 57G  
 LVLS TOP CRITERIA 8862P  
 LVLS7428L

	CED	BW	WW	YW	MA	CEM	SC	ST	DOC	CW	REA	YG	MARB	\$MTI	
EPDs	13	-1.5	53	103	35	5	0.3	-	12	47	0.12	0.42	0.29	53	
	14	35	30	19	18	13	P	-	P	P	P	P	P		
Individual Bull Data ...	BW	Adj. WW	Adj. YW	Adj. SC	ADG										
	70 lbs.	714 lbs.	1,257 lbs.	35.9	3.45										

- This SAV Brilliance 8077 son posts a 76# birth weight and -1.5 for birth weight EPD
- He also has a 103 for yearling weight, 35 for milk and .29 for marbling
- This 50% Lim-Flex bull is from a daughter of ROMN Justice back to a daughter of LVLS Top Criteria
- Every important economically important trait is above breed average with this young herd sire and we are certain he will make a huge impact on any set of cows

## HBRL WINNER 961W SONS



REFERENCE SIRE ... HBRL Winner 961W



## LVLS Optimizer 9099A

Lim-Flex (50) Bull

LVLS 9099A

LFM 2033342

Homo P / Homo B

01.02.13

LOT **11**

**BREED RANKING**  
20% CED  
20% BW  
20% YW  
20% MA  
20% MARB  
10% MTI

MYTTY IN FOCUS  
**HBRL WINNER 961W**  
HBRL TRUE STAR 760T  
  
LVLS TOP CRITERIA 8862P  
**LVLS WITHOUT U 9098W**  
KG CAMMIE 326

S A F FOCUS OF E R  
MYTTY COUNTESS 906  
JCL LODESTAR 27L  
AUTO MATTY 402M  
COLE WULF HUNT  
LVLS8862M  
VERMILION YELLOWSTONE  
TRAVELER 6807 K G 9

	CED	BW	WW	YW	MA	CEM	SC	ST	DOC	CW	REA	YG	MARB	\$MTI
EPDs	11	-1.2	57	106	27	4	0.2	-	-	39	-0.06	0.42	0.38	58
	14	34	27	15	13	12	12	-	-	P	P	P	P	P

Individual Bull Data ...	BW	Adj. WW	Adj. YW	Adj. SC	ADG
	82 lbs.	696 lbs.	1,225 lbs.	33.9	3.27

- Homozygous polled and homozygous black
- Here is a 50% Lim-Flex herd sire prospect that has so much positive stacked in his favor. He posts a -1.2 for birth, 57 for weaning, 107 for yearling weight, 27 for milk and .38 for marbling
- Sired by the big numbered A.I. sire HBRL Winner and back to a daughter of LVLS Top Criteria is this powerful beef bull
- The best of the best is lined up in this bull favor and all indications tell us that he will be a powerful breeding bull for the new owner

## LVLS Allied 9105A

Lim-Flex (50) Bull

LVLS 9105A

LFM 2033357

Double P / Double B

02.07.13

LOT **12**

**BREED RANKING**  
2% WW  
5% YW  
10% SC  
30% MARB  
20% MTI

MYTTY IN FOCUS  
**HBRL WINNER 961W**  
HBRL TRUE STAR 760T  
  
LVLS 842L  
**LVLS 9105S**  
KG RACHEL 3971

S A F FOCUS OF E R  
MYTTY COUNTESS 906  
JCL LODESTAR 27L  
AUTO MATTY 402M  
LVLS POLLED JUSTICE 0601E  
LVLS CANDY 842C  
D B KENTER 019  
STOCKMAN 365 K G 5

	CED	BW	WW	YW	MA	CEM	SC	ST	DOC	CW	REA	YG	MARB	\$MTI
EPDs	9	2.0	66	115	28	5	0.8	-	13	44	-0.25	0.47	0.31	57
	14	35	29	16	14	12	13	-	P	P	P	P	P	P

Individual Bull Data ...	BW	Adj. WW	Adj. YW	Adj. SC	ADG
	92 lbs.	740 lbs.	1,365 lbs.	36.6	3.94

- This 50% Lim-Flex herd sire prospect is one of the top bred bulls of the sale offering. He is sired by the popular Buck Ridge Limousin and T Hill Limousin herd sire HBRL Winner 961W. This popular breed's A.I. sire is a son of BR Midland from a daughter of JCL Lodestar 27L. His sons are highlighted in this sale and represent strength in numbers with breed leading numbers
- This young HBRL Winner son is from a grand daughter of LVLS Polled Justice
- He posts a 2.0 for birth, 66 for weaning weight, 115 for yearling weight and 28 for milk. He also has a .31 for marbling and 57 for MTI
- This February yearling herd sire is very well made, square out of his hip and stands very correctly on all fours

## LVLS Optimizer 9075A

% Limousin (50) Bull

LVLS 9075A

NXM 2042015

Double P / Double B

01.16.13

LOT **13**

MYTTY IN FOCUS  
**HBRL WINNER 961W**  
HBRL TRUE STAR 760T  
  
WLR DIRECT HIT  
**LVLS WENDY 9075W**

S A F FOCUS OF E R  
MYTTY COUNTESS 906  
JCL LODESTAR 27L  
AUTO MATTY 402M  
KRNV NASKAR 013N  
MAGS NIGHT AMBUSH

	CED	BW	WW	YW	MA	CEM	SC	ST	DOC	CW	REA	YG	MARB	\$MTI
EPDs	10	0.8	50	93	26	4	-	-	-	38	0.19	0.21	0.16	49
	P	P	P	P	P	P	-	-	-	P	P	P	P	P

Individual Bull Data ...	BW	Adj. WW	Adj. YW	Adj. SC	ADG
	89 lbs.	734 lbs.	1,306 lbs.	34.8	3.56

- This 50% Lim-Flex herd sire prospect is sired by the MYTTY In Focus son, HBRL Winner
- 9075A along with his half brothers in this sale represents the strength in numbers and premier genetics of HBRL Winner
- This January yearling herd sire is from a 50% Lim-Flex daughter of WLR Direct Hit
- He posted a 734# adjusted weaning weight, birth EPD of 0.8, 93 for yearling weight and 26 for milk

Lim-Flex (50) Bull

LVLS 9076A

LFM 2037157

Double P / Double B

01.05.13

LOT **14**

**BREED RANKING**  
20% YW  
20% MA  
10% CEM  
20% SC

MYTTY IN FOCUS  
**HBRL WINNER 961W**  
HBRL TRUE STAR 760T  
  
LVLS SECRET WEAPON 4408K  
**LVLS UNKNOWN 9075U**

S A F FOCUS OF E R  
MYTTY COUNTESS 906  
JCL LODESTAR 27L  
AUTO MATTY 402M  
LVLS FARMER 4G  
LVLS 408H

	CED	BW	WW	YW	MA	CEM	SC	ST	DOC	CW	REA	YG	MARB	\$MTI
EPDs	11	0.0	57	107	32	6	0.6	-	-	37	0.09	0.24	0.23	54
	11	33	20	14	12	9	P	-	-	P	P	P	P	P

Individual Bull Data ...	BW	Adj. WW	Adj. YW	Adj. SC	ADG
	86 lbs.	763 lbs.	1,161 lbs.	35.1	3.59

- This 50% Lim-Flex herd sire is double polled, double black and very solid in his EPD's
- This son of HBRL Winner 961W is from a 50% Lim-Flex daughter of LVLS Secret Weapon
- He posts a 57 for weaning weight, 107 for yearling weight, 32 for milk and .23 for marbling
- This January yearling bull is the result of the blending of some of our breed's strongest genetics



Lim-Flex (61) Bull

## LVLS Stablizer 1886A

LVLS 1886A LFM 2032666

Double P / Double B 01.02.13

LOT **15**

**BREED RANKING**  
10% YW  
20% SC  
30% MARB  
20% MTI

MYTTY IN FOCUS  
**HBRL WINNER 961W**  
HBRL TRUE STAR 760T  
  
LVLS FARMER 4G  
**LVLS YOU FARMING 1885Y**  
LVLS WILLA 1885W

S A F FOCUS OF E R  
MYTTY COUNTESS 906  
JCL LODESTAR 27L  
AUTO MATTY 402M  
COLE FIRST DOWN 46D  
LVLS JENI 601V  
BASIN MAX 602C  
LVLS1885P

	CED	BW	WW	YW	MA	CEM	SC	ST	DOC	CW	REA	YG	MARB	\$MTI
EPDs	9	1.0	60	111	27	7	0.6	-	19	34	-0.24	0.38	0.32	57
	13	34	28	15	11	11	13	-	P	P	P	P	P	

Individual Bull Data ...	BW	Adj. WW	Adj. YW	Adj. SC	ADG
	87 lbs.	681 lbs.	1,207 lbs.	32.9	3.35

- This 60.8% Lim-Flex herd sire has a solid set of numbers backed with a very predictable pedigree
- He posts a 1.0 for birth, 60 for weaning weight, 111 for yearling weight, 27 fo milk and .32 for marbling
- HBRL Winner 961W is the big numbered son of MYTTY In Focus back to a JCL Lodestar 27L daughter
- His dam is a daughter of LVLS Farmer that goes back to a daughter of Basin Max
- Buy with confidence here in this big numbered herd sire prospect

Lim-Flex (63) Bull

## LVLS Stablizer 6617A

LVLS 6617A LFM 2032705

Double P / Double B 01.11.13

LOT **17**

**BREED RANKING**  
30% CED  
30% YW

COLE WULF HUNT  
**LVLS TOP CRITERIA 8862P**  
LVLS8862M  
  
RITO 616 OF 4B20 6807  
**LVLS YOUNG LADY 6618Y**  
LVLS WIKIKI 6618W

COLE FIRST DOWN 46D  
COLE CATALINA 3309C  
WZRK BIG KAHUNA 8046K  
LVLS 3862G  
D H D TRAVELER 6807  
RITA 4B20 OF OFB1  
BASIN MAX 602C  
LVLS6618K

	CED	BW	WW	YW	MA	CEM	SC	ST	DOC	CW	REA	YG	MARB	\$MTI
EPDs	10	-0.4	56	103	27	3	-0.1	17	19	32	0.23	0.20	0.20	53
	20	35	29	19	19	19	14	P	P	P	P	P	P	

Individual Bull Data ...	BW	Adj. WW	Adj. YW	Adj. SC	ADG
	84 lbs.	763 lbs.	1,305 lbs.	29.3	3.45

- This double polled, double black herd sire prospect combines an amazing set of numbers with a very desirable conformation
- He is sired by LVLS Top Criteria 8862P, the breed leading A.I. sire and complete outcross
- He posts a -0.4 for birth, 56 for weaning weight, 103 for yearling weight, 27 for milk and .20 for marbling
- His dam is a daughter of RITO 616 of 4B20 6807 and from a daughter of Basin Max

Lim-Flex (50) Bull

## LVLS After Dark 1000A

LVLS 1000A LFM 2041465

Homo P / Homo B 01.01.13

LOT **18**

**BREED RANKING**  
5% CED  
20% BW

COLE WULF HUNT  
**LVLS TOP CRITERIA 8862P**  
LVLS8862M  
  
S A V 8180 TRAVELER 004  
**LVLS 919W**  
LVLS MISS 616 919P

COLE FIRST DOWN 46D  
COLE CATALINA 3309C  
WZRK BIG KAHUNA 8046K  
LVLS 3862G  
SITZ TRAVELER 8180  
BOYD FOREVER LADY 8003  
RITO 616 OF 4B20 6807  
L V MISS LUCY 919

	CED	BW	WW	YW	MA	CEM	SC	ST	DOC	CW	REA	YG	MARB	\$MTI
EPDs	14	-1.4	48	91	27	4	-0.1	-	-	37	0.10	0.36	0.25	51
	20	34	27	19	20	19	13	-	-	P	P	P	P	

Individual Bull Data ...	BW	Adj. WW	Adj. YW	Adj. SC	ADG
	74 lbs.	774 lbs.	1,365 lbs.	35.9	3.63

- This young herd sire is one of the very best of the sale. His full brother was a top selling bull in 2012 to Kevin Smith, LA.
- This son of LVLS Top Criteria is a 50% Lim-Flex bull that is homozygous polled and homozygous black
- His dam is a proven purebred Angus female and daughter of SAV 8180 Traveler 004 back to a daughter of RITO 616 of 4B20 6807
- His numbers are superb with a low birth of -1.4, 91 for yearling weight, 27 for milk and .25 for marbling
- From the ground up this young bull is near perfect. He is big boned, soft in his pasterns. He is very appealing up through his front end, strong down is top and very square from his hooks to his pens

## LVLS Stablizer 04A

LVLS 04A LFM 2032667

Double P / Homo B 01.01.13

Lim-Flex (50) Bull

LOT **16**

**BREED RANKING**  
5% WW  
10% YW  
20% MA  
20% SC  
30% DOC

MYTTY IN FOCUS  
**HBRL WINNER 961W**  
HBRL TRUE STAR 760T  
  
AUTO BLACK DAKOTA 129J  
**LVLS 04W**  
LVLS 4P

S A F FOCUS OF E R  
MYTTY COUNTESS 906  
JCL LODESTAR 27L  
AUTO MATTY 402M  
EXLR DAKOTA 353G  
DFLC JET SET BPC 34Y  
LVLS2022M  
JDPM 321F

	CED	BW	WW	YW	MA	CEM	SC	ST	DOC	CW	REA	YG	MARB	\$MTI
EPDs	7	1.4	63	114	32	4	0.7	-	19	37	0.13	0.17	0.17	54
	13	33	27	14	13	12	13	-	P	P	P	P	P	

Individual Bull Data ...	BW	Adj. WW	Adj. YW	Adj. SC	ADG
	83 lbs.	740 lbs.	1,263 lbs.	33.9	3.24

- This double polled, homozygous black 68.8% Lim-Flex bull is a son of the big numbered son of HBRL Winner. Winner is a very popular son of MYTTY In Focus that is from a daughter of the multiple trait leading sire JCL Lodestar 27L
- His numbers are very well above breed average with a 1.4 for birth weight, 63 for weaning weight, 114 for yearling weight and 32 for milk
- His dam is a daughter of the MOE National Gold Medal sire AUTO Black Dakota 129J

## LVLS TOP CRITERIA 8862P SONS



REFERENCE SIRE ... LVLS Top Criteria 8862P





# LVLS Automatic 13A

Lim-Flex (50) Bull

LVLS 13A

LFM 2040431

Homo P / Homo B

01.03.13

LOT **19**

**BREED RANKING**  
30% CED  
20% BW

COLE WULF HUNT  
LVLS TOP CRITERIA 8862P  
LVLS8862M

FRENZEN KEYSTONE K17  
FRENZEN BLACKBIRD M120  
FRENZEN BLACKBIRD H115

COLE FIRST DOWN 46D  
COLE CATALINA 3309C  
WZRK BIG KAHUNA 8046K  
LVLS 3862G  
SITZ ALLIANCE 6595

WK BANDO 6314  
F&F BLACKBIRD Y38

	CED	BW	WW	YW	MA	CEM	SC	ST	DOC	CW	REA	YG	MARB	\$MTI
EPDs	10	-1.4	47	92	27	2	-0.2	-	-	40	0.07	0.38	0.24	50
	P	35	30	19	22	P	P	P	-	P	P	P	P	P

Individual Bull Data ...	BW	Adj. WW	Adj. YW	Adj. SC	ADG
	81 lbs.	667 lbs.	1,253 lbs.	34.0	3.70

- This homozygous black and homozygous polled 50% Lim-Flex herd sire prospect is fault free in his design and very appealing from his side profile
- He is son of the big numbered, complete outcross sire that has done a tremendous job siring calves that have instant value. And a full brother to LVLS Miss Blackbird 111U, the dam of Lots 6 and 27
- This bull is very clean up through his front end, straight lined, sound made and very calm in his disposition
- He posts a solid set of numbers with a -1.4 for birth, 92 for yearling weight, 27 for milk and .24 for marbling
- Take a strong look at this well made herd sire and buy with confidence

# LVLS 5792A

Lim-Flex (75) Bull

LVLS 5792A

LFM 2037490

Double P / Homo B

01.01.13

LOT **20**

**BREED RANKING**  
30% MA  
20% CEM  
20% REA  
10% YG

COLE WULF HUNT  
LVLS TOP CRITERIA 8862P  
LVLS8862M

LVLS 616 216  
LVLS5792T  
LVLS5792R

COLE FIRST DOWN 46D  
COLE CATALINA 3309C  
WZRK BIG KAHUNA 8046K  
LVLS 3862G  
RITO 616 OF 4B20 6807  
SILVER OAK VINTAGE 159  
LVLS SECRET WEAPON 4408K  
LVLS JANNA 5792J

	CED	BW	WW	YW	MA	CEM	SC	ST	DOC	CW	REA	YG	MARB	\$MTI
EPDs	10	0.1	52	95	30	5	0.1	-	-	24	0.27	0.10	0.19	52
	19	34	29	16	19	18	14	-	-	P	P	P	P	P

Individual Bull Data ...	BW	Adj. WW	Adj. YW	Adj. SC	ADG
	84 lbs.	745 lbs.	1,243 lbs.	28.9	3.17

- We appreciate so many things about this 75% Lim-Flex sire that is double polled, homozygous black
- He posts a 0.1 for birth, 95 for yearling weight, 30 for milk and .19 for marbling
- His MTI number is 52 and we feel his numbers will add value to his set of calves
- His grand dam is a daughter of RITO 616 of 4B20 6807 and then back to a daughter of the bug numbered sire LVLS Secret Weapon

# LVLS 1011A

Lim-Flex (50) Bull

LVLS 1011A

LFM 2042166

Homo P / Homo B

01.02.13

LOT **22**

**BREED RANKING**  
10% CED  
5% BW  
20% REA  
10% YG

COLE WULF HUNT  
LVLS TOP CRITERIA 8862P  
LVLS8862M

MYTTY IN FOCUS  
LVLS MISS FOCUS 2200Y  
L V MISS EXT 2200

COLE FIRST DOWN 46D  
COLE CATALINA 3309C  
WZRK BIG KAHUNA 8046K  
LVLS 3862G  
S A F FOCUS OF E R  
MYTTY COUNTESS 906  
C H EXT 9615  
L V MISS F RUSS 0123

	CED	BW	WW	YW	MA	CEM	SC	ST	DOC	CW	REA	YG	MARB	\$MTI
EPDs	13	-2.7	49	92	27	3	0.1	13	-	25	0.29	0.13	0.16	49
	P	P+	P	P	P	P	P	P	-	P	P	P	P	P

Individual Bull Data ...	BW	Adj. WW	Adj. YW	Adj. SC	ADG
	68 lbs.	689 lbs.	1,107 lbs.	32.9	2.64

- This son of LVLS Top Criteria 8862P is from a daughter of MYTTY In Focus
- He is homozygous black and homozygous polled and a strong made 50% Lim-Flex bull
- For well over 30 years Lonely Valley Farm has concentrated on only the most economically important traits and this young bull is a result of all the resources they have made over those years
- We admire his birth EPD of -2.7, yearling weight of 92, milk of 27 and marbling of .16
- We know you will be pleased with this homozygous polled herd sire prospect

Lim-Flex (71) Bull

LVLS 1005A

LFM 2037487

Double P / Homo B

01.17.13

LOT **21**

**BREED RANKING**  
20% REA  
10% YG

COLE WULF HUNT  
LVLS TOP CRITERIA 8862P  
LVLS8862M

TC FREEDOM 104  
LVLS 4867U  
LVLS 2867H

COLE FIRST DOWN 46D  
COLE CATALINA 3309C  
WZRK BIG KAHUNA 8046K  
LVLS 3862G  
CONNELLY FOREFRONT  
TC RUBY 9095  
WULF'S PAYDAY 1198C  
LVLS MS STABILIZER 2867F

	CED	BW	WW	YW	MA	CEM	SC	ST	DOC	CW	REA	YG	MARB	\$MTI
EPDs	8	0.4	50	91	24	1	-0.3	-	12	33	0.32	0.10	0.10	48
	20	35	29	18	21	20	14	-	P	P	P	P	P	P

Individual Bull Data ...	BW	Adj. WW	Adj. YW	Adj. SC	ADG
	86 lbs.	697 lbs.	1,202 lbs.	30.6	3.24

- This double polled, homozygous black son of LVLS Top Criteria 8862P is from a daughter of TC Freedom back to a daughter of Wulf's Payday 1198C
- He is a 71% Lim-Flex bull is double polled, double black and we appreciate his straight lines, sound structure and overall mass
- This LVLS bull posts a 0.4 for birth, 91 for yearling weight, 24 for milk and .10 for marbling
- This bull is calm in his disposition, extra heavy in his structure, super thick made and very appealing

# LVLS 1002A

Lim-Flex (63) Bull

LVLS 1002A

LFM 2037481

Double P / Double B

01.12.13

LOT **23**

**BREED RANKING**  
20% CED  
10% REA  
20% YG

COLE WULF HUNT  
LVLS TOP CRITERIA 8862P  
LVLS8862M

MYTTY IN FOCUS  
LVLS 2240U  
LVLS 2240S

COLE FIRST DOWN 46D  
COLE CATALINA 3309C  
WZRK BIG KAHUNA 8046K  
LVLS 3862G  
S A F FOCUS OF E R  
MYTTY COUNTESS 906  
LVLS 842L  
L V MISS BANDITO 2240

	CED	BW	WW	YW	MA	CEM	SC	ST	DOC	CW	REA	YG	MARB	\$MTI
EPDs	12	-0.5	52	97	24	4	0.2	15	-	28	0.29	0.16	0.16	50
	20	35	30	19	21	20	16	P	-	P	P	P	P	P

Individual Bull Data ...	BW	Adj. WW	Adj. YW	Adj. SC	ADG
	80 lbs.	686 lbs.	1,217 lbs.	35.4	3.42

- This 62.5% Lim-Flex herd sire is double polled and double black
- His sire LVLS Top Criteria 8862P is a complete outcross sire to most established lines of cattle in our breed. He is a son of COLE Wulf Hunt.
- His dam is a daughter of MYTTY In Focus that has been solid producer of the years
- This beef bull proudly represents the solid performance, efficiency and unique profile that you have come to expect from the LVLS program
- It is bulls like this one that will create a uniform calf crop and thus bring forth extra value for the buyer



## LVLS Applicator 2217A

Lim-Flex (50) Bull

LVLS 2217A

LFM 2040432

Homo P / Homo B

01.25.13

LOT **24**

**BREED RANKING**  
20% BW  
20% CW

COLE WULF HUNT  
LVLS TOP CRITERIA 8862P  
LVLS8862M

FRENZEN KEYSTONE K17  
FRENZEN BLACKBIRD M120  
FRENZEN BLACKBIRD H115

COLE FIRST DOWN 46D  
COLE CATALINA 3309C  
WZRK BIG KAHUNA 8046K  
LVLS 3862G  
SITZ ALLIANCE 6595

WK BANDO 6314  
F&F BLACKBIRD Y38

	CED	BW	WW	YW	MA	CEM	SC	ST	DOC	CW	REA	YG	MARB	\$MTI
EPDs	10	-1.3	46	90	27	2	-0.2	-	-	40	0.07	0.38	0.24	49
	P	35	30	19	22	P	P	-	-	P	P	P	P	

Individual Bull Data ...	BW	Adj. WW	Adj. YW	Adj. SC	ADG
	84 lbs.	642 lbs.	1,217 lbs.	32.0	3.63

- Homozygous black and homozygous polled
- This 50% Lim-Flex sire is a son of LVLS Top Criteria 8862P, the leading purebred outcross sire
- His numbers will change a cowherd in the most positive way. He posts a low birth of -1.3, 90 for yearling weight, 27 for milk and .24 for marbling
- His dam Frenzen Blackbird M120 is the leading Angus donor at LVLS with her biggest accomplishment being the LVLS Miss Blackbird 111U

## LVLS 1001A

Lim-Flex (56) Bull

LVLS 1001A

LFM 2044093

Double P / Homo B

01.01.13

LOT **25**

**BREED RANKING**  
20% CED  
10% BW

COLE WULF HUNT  
LVLS TOP CRITERIA 8862P  
LVLS8862M

MYTTY IN FOCUS  
LVLS2241Y  
LVLS 2241W

COLE FIRST DOWN 46D  
COLE CATALINA 3309C  
WZRK BIG KAHUNA 8046K  
LVLS 3862G  
S A F FOCUS OF E R  
MYTTY COUNTLESS 906  
MOGCK LEAD ON 245  
LVLS 2240S

	CED	BW	WW	YW	MA	CEM	SC	ST	DOC	CW	REA	YG	MARB	\$MTI
EPDs	12	-2.3	45	95	28	3	0.2	-	-	25	0.29	0.13	0.16	50
	P	P+	P	P	P	P	P	-	-	P	P	P	P	

Individual Bull Data ...	BW	Adj. WW	Adj. YW	Adj. SC	ADG
	69 lbs.	637 lbs.	1,175 lbs.	33.9	3.38

- Double polled, homozygous black and one very well made herd sire in the making
- Sired by the complete outcross sire LVLS Top Criteria 8862P and from a daughter of MYTTY In Focus
- This bull is well bred and with his prominent pedigree you should be count on his genetics working well
- His number package is impressive and we think when you see him on sale day you will agree with us

## LVLS Optimizer 7004A

Lim-Flex (38) Bull

LVLS 7004A

LFM 2032713

Double P / Homo B

01.02.13

LOT **26**

**BREED RANKING**  
10% CED  
20% BW  
20% CEM  
2% SC  
10% MARB  
20% MTI

S A F FOCUS OF E R  
MYTTY IN FOCUS  
MYTTY COUNTLESS 906

AHCC WESTWIND W544  
LVLS YVETTE 7003Y  
LVLS7003L

S A F FAME  
G D A R FOREVER LADY 246  
SITZ ALLIANCE 6595  
BALDRIDGE COUNTLESS 357  
KAJO RESPONDER 120R  
AHCC MISS WULF HUNT R544  
LVLS FARMER 4G

	CED	BW	WW	YW	MA	CEM	SC	ST	DOC	CW	REA	YG	MARB	\$MTI
EPDs	13	-1.0	53	104	28	5	1.0	-	23	32	-0.32	0.48	0.37	56
	P	35	30	19	20	P	P	-	P	P	P	P	P	

Individual Bull Data ...	BW	Adj. WW	Adj. YW	Adj. SC	ADG
	82 lbs.	655 lbs.	1,250 lbs.	35.9	3.77

- This double polled, homozygous black 37.5% Lim-Flex herd sire prospect is one that will sure impress you on sale day. He is a son of MYTTY In Focus that goes back a daughter of AHCC Westwind W544 back to a daughter of LVLS Farmer 4G
- This bull is packed with solid performance posting a low birth of -1.0, 104 for yearling weight, 28 for milk, .37 for marbling and 56 for MTI
- This young bull will make a very positive impact in any cow herd and will result more dollars for the buyer
- Buy with confidence and enjoy the rewards that will come in time with your investment in his herd sire

## MYTTY IN FOCUS SONS



REFERENCE SIRE ... MYTTY In Focus

## LVLS Atlas 2A

Lim-Flex (25) Bull

LVLS 2A

LFM 2039177

Homo P / Homo B

01.02.13

LOT **27**

**BREED RANKING**  
10% CED  
5% BW  
30% WW  
20% YW  
10% MA  
10% CW  
10% MARB  
10% MTI

S A F FOCUS OF E R  
MYTTY IN FOCUS  
MYTTY COUNTLESS 906

LVLS TOP CRITERIA 8862P  
LVLS MISS BLACKBIRD 111U  
FRENZEN BLACKBIRD M120

S A F FAME  
G D A R FOREVER LADY 246  
SITZ ALLIANCE 6595  
BALDRIDGE COUNTLESS 357  
COLE WULF HUNT  
LVLS8862M  
FRENZEN KEYSTONE K17  
FRENZEN BLACKBIRD H115

	CED	BW	WW	YW	MA	CEM	SC	ST	DOC	CW	REA	YG	MARB	\$MTI
EPDs	13	-2.7	54	105	35	3	0.5	-	-	44	-0.33	0.65	0.47	58
	P	35	30	20	22	P	P	-	-	P	P	P	P	

Individual Bull Data ...	BW	Adj. WW	Adj. YW	Adj. SC	ADG
	81 lbs.	673 lbs.	1,248 lbs.	34.9	3.63

- Homozygous polled and homozygous black
- This one big numbered and very well made herd sire prospect
- He posts a -2.7 for birth, 105 for yearling weight, 35 for milk and .47 for marbling
- This moderate framed, easy doing herd sire is sired by the big numbered Angus sire MYTTY In Focus and he is from the leading LVLS and Brown donor LVLS Miss Blackbird 111U. She is a proven donor and daughter of LVLS Top Criteria 8862P





Lim-Flex (46) Bull

LVLS 5788A

LFM 2035085

Double P / Homo B

01.12.13

LOT **28**

**BREED RANKING**  
 4% CED  
 5% BW  
 20% CEM  
 20% SC  
 4% DOC  
 3% CW  
 20% MARB  
 20% MTI

S A F FOCUS OF E R  
**MYTTY IN FOCUS**  
 MYTTY COUNTESS 906  
 COLE WULF HUNT  
**LVLS 5788U**  
 LVLS 5789S

S A F FAME  
 G D A R FOREVER LADY 246  
 SITZ ALLIANCE 6595  
 BALDRIDGE COUNTESS 357  
 COLE FIRST DOWN 46D  
 COLE CATALINA 3309C  
 JCL LODESTAR 27L  
 LVLS 5789J

	CED	BW	WW	YW	MA	CEM	SC	ST	DOC	CW	REA	YG	MARB	\$MTI
EPDs	15	-2.6	48	97	27	5	0.7	18	28	29	-0.18	0.42	0.39	55
	P	35	30	20	22	P	P	P	P	P	P	P	P	P

Individual Bull Data ...	BW	Adj. WW	Adj. YW	Adj. SC	ADG
	83 lbs.	668 lbs.	1,133 lbs.	33.4	2.99

- Here is one terrific herd sire prospect that represents a terrific pedigree
- He is sired by the leading Angus sire MYTTY In Focus and goes back to a purebred daughter of COLE Wulf Hunt back to JCL Lodestar 27L
- This double polled, homozygous black herd bull posts a -2.6 for birth, 97 for yearling weight, 27 for milk and .39 for marbling
- We admire his heaviness of bone, foot size, extra thickness and over all mass
- If you want a herd sire to add extra pounds and solid performance to your calf crop then consider this young bull



Lim-Flex (50) Bull

LVLS 8128A

LFM 2032731

Polled / Homo B

01.12.13

LOT **29**

**BREED RANKING**  
 30% CED  
 30% BW  
 10% MA  
 2% SC  
 20% MARB  
 20% MTI

S A F FOCUS OF E R  
**MYTTY IN FOCUS**  
 MYTTY COUNTESS 906  
 MAGS JUMANJI  
**LVLS8127M**  
 D&M MISS BARON 868A

S A F FAME  
 G D A R FOREVER LADY 246  
 SITZ ALLIANCE 6595  
 BALDRIDGE COUNTESS 357  
 KRMC BLACK LEGACY 917B  
 MAGS BLACK & SATIN  
 YKCC BARON 297W  
 D&M MISS MIDAS 75V

	CED	BW	WW	YW	MA	CEM	SC	ST	DOC	CW	REA	YG	MARB	\$MTI
EPDs	10	-0.6	51	95	35	1	1.0	14	14	30	-0.33	0.44	0.40	56
	22	36	31	20	25	21	P	P	P	P	P	P	P	P

Individual Bull Data ...	BW	Adj. WW	Adj. YW	Adj. SC	ADG
	86 lbs.	682 lbs.	1,280 lbs.	34.4	3.80

- Here is one of the bigger numbered bulls of the entire sale offering
- He is a 50% Lim-Flex son of MYTTY In Focus and goes back to a big numbered daughter of MAGS Jumanji
- Take a close look at his EPD profile with a breed leading milk of 35, yearling weight of 95 and marbling of .40
- He posted a very low birth weight of -0.6 and MTI number of 56
- We love his conformation, flawless design and his calm disposition

## LVLS Optimizer 1003A

Lim-Flex (25) Bull

LVLS 1003A

LFM Pending

Double P / Double B

01.08.13

LOT **30**

**BREED RANKING**  
 10% CED  
 10% BW  
 10% MA  
 20% SC  
 10% DOC  
 10% MARB  
 10% MTI

S A F FOCUS OF E R  
**MYTTY IN FOCUS**  
 MYTTY COUNTESS 906

LVLS LETHAL WEAPON 1308U  
**LVLS MISS 7100Y**  
 LVLS 7100R

S A F FAME  
 G D A R FOREVER LADY 246  
 SITZ ALLIANCE 6595  
 BALDRIDGE COUNTESS 357  
 LVLS SECRET WEAPON 4408K  
 LVLS 308P  
 LVLS 276N  
 LVLS 7100

	CED	BW	WW	YW	MA	CEM	SC	ST	DOC	CW	REA	YG	MARB	\$MTI
EPDs	13	-2.5	52	100	35	-	0.75	-	25	28	-0.7	0.7	0.45	57
	-	-	-	-	-	-	-	-	-	-	-	-	-	-

Individual Bull Data ...	BW	Adj. WW	Adj. YW	Adj. SC	ADG
	74 lbs.	650 lbs.	1,191 lbs.	33.2	3.59

- This 25% Lim-Flex herd sire prospect is one of the biggest numbered bulls in the sale offering
- This son of MYTTY In Focus is from a daughter of LVLS Lethal Weapon 1308U and posts a low birth of -2.5, 100 for yearling weight, 35 for milk and .45 for marbling
- His MTI is a 57 and he posted a 74 pounds birth weight

Lim-Flex (25) Bull

LVLS 7701A

LFM Pending

01.01.13

LOT **31**

**BREED RANKING**  
 4% CED  
 10% BW  
 20% YW  
 10% MA  
 15% SC  
 20% DOC  
 3% MARB  
 3% MTI

S A F FOCUS OF E R  
**MYTTY IN FOCUS**  
 MYTTY COUNTESS 906  
 LAGRAN V RD 7185  
**LVLS 7701Y**  
 LVLS7701L

S A F FAME  
 G D A R FOREVER LADY 246  
 SITZ ALLIANCE 6595  
 BALDRIDGE COUNTESS 357  
 VERMILION DATELINE 7078  
 LAGRAN LUCY 4206  
 LVLS FARMER 4G  
 LVLS 701H

	CED	BW	WW	YW	MA	CEM	SC	ST	DOC	CW	REA	YG	MARB	\$MTI
EPDs	15	-2.5	54	105	34	-	0.7	-	20	31	-0.6	0.7	0.55	61
	-	-	-	-	-	-	-	-	-	-	-	-	-	-

Individual Bull Data ...	BW	Adj. WW	Adj. YW	Adj. SC	ADG
	72 lbs.	695 lbs.	1,278 lbs.	36.9	3.84

- This young bull offers a very predictable pedigree and extreme numbers
- This son of MYTTY In Focus goes back to a daughter of the EPD giant LVLS Secret Weapon
- He posts a low birth, high yearling weight of 105, milk of 34 and marbling of .55
- Buy with confidence and we think you will be pleased when you see this young bull



Lim-Flex (50) Bull

# LVLS After Thought 1014A

LVLS 1014A LFM 2041464 Homo P / Homo B 02.07.13

JCL LODESTAR 27L  
**LVLS OLD SCHOOL 5751U**  
 LVLS 5750S  
 MYTTY IN FOCUS  
**LVLS MISS FOCUS 9101W**  
 LVLS ND 1407 9100T  
 HUNTS HI-LITER 245G  
 LOGAN'S CHEERLEADER 280G  
 COLE WULF HUNT  
 LVLS5750P  
 S A F FOCUS OF E R  
 MYTTY COUNTESS 906  
 BON VIEW NEW DESIGN 1407  
 L V MISS PROMPTER 9100

	CED	BW	WW	YW	MA	CEM	SC	ST	DOC	CW	REA	YG	MARB	\$MTI
EPDs	13	-2.1	46	94	29	7	0.6	-	-	35	-0.22	0.43	0.41	55
	13	32	24	11	12	12	8	-	-	P	P	P	P	

Individual Bull Data ...	BW	Adj. WW	Adj. YW	Adj. SC	ADG
	83 lbs.	733 lbs.	1,358 lbs.	39.6	3.84

LOT **32**  
**BREED RANKING**  
 10% CED  
 10% BW  
 5% CEM  
 20% SC  
 20% MARB  
 20% MTI

- Homozygous polled and homozygous black
- This 50% Lim-Flex sire is everything and more than what you would want in a beef bull to sire a set of calves that will make a profit in the market place
- His sire is a son of JCL Lodestar 27L that is from a daughter of COLE Wulf Hunt
- His dam is purebred daughter of MYTTY In Focus that goes back to a daughter of Bon View New Design 1407
- This herd sire prospect posts a -2.1 for birth, 94 for yearling weight, 29 for milk and .41 for marbling
- He is big numbered, well made and one of the top bulls in the sale



*Video's on all bulls are available for viewing at [www.lonelyvalley.com](http://www.lonelyvalley.com) and [wwwDVAuctions.com](http://wwwDVAuctions.com).*

## EXAR UPSHOT 0562B SONS



REFERENCE SIRE ... EXAR Upshot 0562B

Lim-Flex (50) Bull

# LVLS 1018A

LVLS 1018A LFM 2037496 Double P / Homo B 01.01.13

SITZ UPWARD 307R  
**EXAR UPSHOT 0562B**  
 EXAR BARBARA T020  
 LVLS TOP CRITERIA 8862P  
**LVLS 7316U**  
 LVLS7316L  
 CONNEALY ONWARD  
 SITZ HENRIETTA PRIDE 81M  
 ISU IMAGING Q 9111  
 LCC MC HENRY BARBAR MG382  
 COLE WULF HUNT  
 LVLS8862M  
 LVLS COWBOY 015F  
 LVLS MISS STABILIZER 1386E

	CED	BW	WW	YW	MA	CEM	SC	ST	DOC	CW	REA	YG	MARB	\$MTI
EPDs	8	0.3	46	98	34	2	-	12	2	0.28	-0.06	-0.07	42	
	12	35	30	19	14	11	-	P	P	P	P	P	P	

Individual Bull Data ...	BW	Adj. WW	Adj. YW	Adj. SC	ADG
	85 lbs.	613 lbs.	1,157 lbs.	35.9	3.49

LOT **33**  
**BREED RANKING**  
 10% MA  
 20% REA

- This 50% Lim-Flex herd sire prospect is sired by the leading Angus sire EXAR Upshot 0562B, the performance Angus sire and son of SITZ Upward
- His dam is a daughter of the big numbered sire LVLS Top Criteria 8862P back to a daughter of LVLS Cowboy 015F
- This herd sire offers a low birth of 0.3, yearling weight of 98 and milking ability of 34

Lim-Flex (25) Bull

# LVLS 239A

LVLS 239A LFM 2037512 Double P / Double B 01.01.13

SITZ UPWARD 307R  
**EXAR UPSHOT 0562B**  
 EXAR BARBARA T020  
 EXAR NEW LOOK 2971  
**EXLR SPLASH 239R**  
 EXLR SPLASH 563N  
 CONNEALY ONWARD  
 SITZ HENRIETTA PRIDE 81M  
 ISU IMAGING Q 9111  
 LCC MC HENRY BARBAR MG382  
 BON VIEW NEW DESIGN 1407  
 N BAR PRIMROSE 2424  
 AUTO CLIFF HANGER 194D  
 AUTO SPLASH 275G

	CED	BW	WW	YW	MA	CEM	SC	ST	DOC	CW	REA	YG	MARB	\$MTI
EPDs	12	-0.6	51	109	36	2	-	2	1	-0.18	0.21	0.12	48	
	P	34	30	20	13	P	-	P	P	P	P	P	P	

Individual Bull Data ...	BW	Adj. WW	Adj. YW	Adj. SC	ADG
	85 lbs.	820 lbs.	1,278 lbs.	33.9	3.63

LOT **34**  
**BREED RANKING**  
 25% CED  
 30% BW  
 15% YW  
 5% MA

- This 25% Lim-Flex herd sire prospect is strong in so many given traits
- He posts a low birth of -0.6 for birth, 109 for yearling weight and 36 for milking ability
- This lower percentage herd bull represents strength in numbers and strength in his pedigree
- His dam is a daughter of EXAR New Look 2971 back to a fullblood daughter of AUTO Cliff Hanger 194D

## LVLS SECRET WEAPON SONS



REFERENCE SIRE ... LVLS Secret Weapon

## LVLS Optimizer 9061A

Lim-Flex (50) Bull

LVLS 9061A

LFM Pending

Double P / Double B

01.18.13

LOT **36**

**BREED RANKING**  
30% CED  
2% SC  
5% YG  
30% MARB  
30% MTI

LVLS FARMER 4G  
**LVLS SECRET WEAPON 4408K**  
LVLS 408H  
  
NEW DESIGN 1407  
**LVLS 9068T**

COLE FIRST DOWN 46D  
LVLS JENI 601V  
LVLS POLLED JUSTICE 0601E  
LVLS MISS STABILIZER 1408E

EPDs	CED	BW	WW	YW	MA	CEM	SC	ST	DOC	CW	REA	YG	MARB	\$MTI
	10	0.8	50	90	26	-	1	-	15	25	0.01	0.04	0.3	54

Individual Bull Data ...	BW	Adj. WW	Adj. YW	Adj. SC	ADG
	76 lbs.	730l. lbs.	1,143 lbs.	36.7	3.03

- Sired by the proven LVLS Secret Weapon and out of a 1407 dam is this super herd sire prospect.
- This 50% Lim-Flex has a 0.8 birth EPD, 50 weaning EPD and a 26 for milking ability.
- 9061A stands on a big square foot, is fluid in his movement and is long and deep sided.
- He had a 76 lb birth weight and posted a 730 lb weaning weight.

## LVLS Optimizer 9075A

Lim-Flex (50) Bull

LVLS 9075A

NXM Pending

Double P / Double B

02.14.13

LOT **38**

LVLS FARMER 4G  
**LVLS SECRET WEAPON 4408K**  
LVLS 408H  
  
WLR DIRECT HIT  
**LVLS WENDY 9075W**

COLE FIRST DOWN 46D  
LVLS JENI 601V  
LVLS POLLED JUSTICE 0601E  
LVLS MISS STABILIZER 1408E  
KRVN NASKAR 013N  
MAGS NIGHT AMBUSH

EPDs	CED	BW	WW	YW	MA	CEM	SC	ST	DOC	CW	REA	YG	MARB	\$MTI
	1	1.5	40	80	25	-	0.7	-	20	15	0	0.04	0.25	50

Individual Bull Data ...	BW	Adj. WW	Adj. YW	Adj. SC	ADG
	89 lbs.	734 lbs.	1,306 lbs.	34.6	3.56

## BOHI TOP DOLLAR 7144T SONS



REFERENCE SIRE ...  
BOHI Top Dollar 7114T

## LVLS 944A

Lim-Flex (50) Bull

LVLS 944A

LFM 2042165

Double P / Homo B

01.01.13

LOT **35**

**BREED RANKING**  
5% MA  
3% CEM  
20% MARB  
20% MTI

LVLS FARMER 4G  
**LVLS SECRET WEAPON 4408K**  
LVLS 408H

BON VIEW NEW DESIGN 1407  
**LVLS 944R**  
L V MISS ROYCE 944

COLE FIRST DOWN 46D  
LVLS JENI 601V  
LVLS POLLED JUSTICE 0601E  
LVLS MISS STABILIZER 1408E  
B/R NEW DESIGN 036  
BON VIEW PRIDE 664  
LUKENS ROYCE 74  
L V MISS GATEWAY 366

EPDs	CED	BW	WW	YW	MA	CEM	SC	ST	DOC	CW	REA	YG	MARB	\$MTI
	9	-0.1	47	96	36	8	0.5	15	-	27	-0.48	0.43	0.41	57

Individual Bull Data ...	BW	Adj. WW	Adj. YW	Adj. SC	ADG
	85 lbs.	645 lbs.	1,113 lbs.	33.9	2.92

- This 50% Lim-Flex son of LVLS Secret Weapon is huge numbered and one of the biggest numbered bulls in the sale offering
- He posts a low birth of -0.1, 96 for yearling weight, 36 for milking ability
- He is one of the highest marbling bulls in the sale offering with a .41 and MTI of 57

## LVLS 1017A

Lim-Flex (50) Bull

LVLS 1017A

LFM 2042167

Double P / Homo B

01.01.13

LOT **37**

**BREED RANKING**  
15% MA  
5% CEM  
20% SC

LVLS FARMER 4G  
**LVLS SECRET WEAPON 4408K**  
LVLS 408H

C H EXT 9615  
**L V MISS EXT 2200**  
L V MISS F RUSS 0123

COLE FIRST DOWN 46D  
LVLS JENI 601V  
LVLS POLLED JUSTICE 0601E  
LVLS MISS STABILIZER 1408E  
BROOKS EXT 747  
C H BLACK MISS 7578  
SVF SIEBRINGS FOREVER RUS  
L V MISS NORTHLAND 412

EPDs	CED	BW	WW	YW	MA	CEM	SC	ST	DOC	CW	REA	YG	MARB	\$MTI
	9	2.4	56	95	33	7	0.6	13	-	-	-	-	-	0

Individual Bull Data ...	BW	Adj. WW	Adj. YW	Adj. SC	ADG
	94 lbs.	726 lbs.	1,370 lbs.	34.9	4.05

- This double polled, homozygous black 50% Lim-Flex herd sire prospect is sired by the breed leading EPD sire LVLS Secret Weapon
- Over the years LVLS Secret Weapon has surfaced as one of the big time performance sires in our breed with his progeny bringing a premium in the market place
- This young Lim-Flex sire posts a 95 for yearling weight, 33 for milk and .6 for scrotal
- If you want to add pounds, performance and uniformity to your calf crop then consider this young bull

- Sired by HBRL Winner 961W is this balanced trait, big numbered 50% herd sire prospect.
- This double black and double polled bull is out of a WLR Direct Hit dam.
- 9075A has a 10 for calving ease, a 93 yearling EPD, 26 for milk and a .16 marbling EPD.
- The combination in muscle and volume and structure are superb in this individual.

## LVLS Aircraft 9066A

Lim-Flex (50) Bull

LVLS 9066A

LFM 2032511

Homo P / Homo B

01.17.13

LOT **39**

**BREED RANKING**  
30% YW  
10% MA  
10% CEM  
30% MARB  
30% MTI

AUTO DOLLAR GENERAL 122R  
**BOHI TOP DOLLAR 7144T**  
CARROUSELS PINA COLADA

POSS NEW DESIGN 410  
**LVLS MISS ND 410 9066 S**  
SILVER OAK BOTTOMLINE 816

LVLS SECRET WEAPON 4408K  
AUTO KYRIA 232K  
AUTO BLACK DAKOTA 129J  
ELMW GINNIE P58G  
BON VIEW NEW DESIGN 1407  
POSS MAVERICK 252  
CONNELLY BOTTOMLINE  
S O BLACKCAP M L H163

EPDs	CED	BW	WW	YW	MA	CEM	SC	ST	DOC	CW	REA	YG	MARB	\$MTI
	9	1.1	52	102	34	6	0.4	-	-	29	-0.28	0.40	0.33	55

Individual Bull Data ...	BW	Adj. WW	Adj. YW	Adj. SC	ADG
	90 lbs.	707 lbs.	1,333 lbs.	36.6	3.94

- Homozygous polled and homozygous black is this prospect sired by Top Dollar.
- 9066A has a 1.1 birth EPD, 52 weaning and a 102 yearling EPD respectively complemented with a 34 milk and a .33 marbling EPD.
- Out of a 1407 dam this young sire is deep ribbed, easy fleshing and has plenty of muscle.



## LVLS 1008A

Lim-Flex (75) Bull

LVLS 1008A

LFM 2037482

Double P / Homo B

01.02.13

AUTO DOLLAR GENERAL 122R  
BOHI TOP DOLLAR 7144T  
CARROUSELS PINA COLADA

LVLS SECRET WEAPON 4408K  
AUTO KYRIA 232K  
AUTO BLACK DAKOTA 129J  
ELMW GINNIE P58G  
JCL BLACK OUT  
LVLS JENI 601V  
C H EXT 9615  
L V MISS F RUSS 0123

LVLS 276N  
LVLS 259R  
L V MISS EXT 2200

	CED	BW	WW	YW	MA	CEM	SC	ST	DOC	CW	REA	YG	MARB	\$MTI
EPDs	6	3.0	50	94	31	5	0.7	-	-	15	0.18	0.00	0.07	48
	P	P	P	P	P	P	P	-	-	P	P	P	P	P

Individual Bull Data ...	BW	Adj. WW	Adj. YW	Adj. SC	ADG
	80 lbs.	664 lbs.	1,206 lbs.	36.9	3.42

40

**BREED RANKING**  
25% MA  
20% CEM  
15% SC  
4% YG

- 1008A is sired by the high performing Purebred herd sired BOHI Top Dollar 7144T.
- This yearling bull posted a 664 lb weaning weight and combines that with a 50 weaning EPD and a 94 yearling EPD.
- In addition to tremendous performance this prospect has a 31 milk EPD and a .7 scrotal EPD.
- 1008A is powerfully sound and big footed.



## LVLS 1004A

Lim-Flex (50) Bull

LVLS 1004A

LFM 2042168

Homo P / Double B

01.01.13

AUTO DOLLAR GENERAL 122R  
BOHI TOP DOLLAR 7144T  
CARROUSELS PINA COLADA

LVLS SECRET WEAPON 4408K  
AUTO KYRIA 232K  
AUTO BLACK DAKOTA 129J  
ELMW GINNIE P58G  
B/R NEW DESIGN 036  
BON VIEW PRIDE 664  
RALLY PROMPTER 1071  
L V MISS EXTRAORDINARY073

BON VIEW NEW DESIGN 1407  
LVLS MISS NEW DESIGN 9101  
L V MISS PROMPTER 9100

	CED	BW	WW	YW	MA	CEM	SC	ST	DOC	CW	REA	YG	MARB	\$MTI
EPDs	9	3.0	40	90	35	6	0.4	-	-	27	-0.32	0.40	0.44	56
	P	P+	P	P	P	P	P	-	-	P	P	P	P	P

Individual Bull Data ...	BW	Adj. WW	Adj. YW	Adj. SC	ADG
	103 lbs.	629 lbs.	1,62 lbs.	34.9	4.01

41

**BREED RANKING**  
7% MA  
10% CEM  
7% MARB  
15% MTI

- 1004A is another great example of the genetic combination of Top Dollar on a 1407 dam.
- He is homozygous polled and double black.
- This young sire combines growth with a 35 milk EPD and a .44 marbling EPD.
- He is well balanced, sound in his structured and has a great disposition.

## LVLS 1009A

Lim-Flex (75) Bull

LVLS 1009A

LFM 2037513

Double P / Double B

01.02.13

AUTO DOLLAR GENERAL 122R  
BOHI TOP DOLLAR 7144T  
CARROUSELS PINA COLADA

LVLS SECRET WEAPON 4408K  
AUTO KYRIA 232K  
AUTO BLACK DAKOTA 129J  
ELMW GINNIE P58G  
JCL BLACK OUT  
LVLS JENI 601V  
C H EXT 9615  
L V MISS F RUSS 0123

LVLS 276N  
LVLS 259R  
L V MISS EXT 2200

	CED	BW	WW	YW	MA	CEM	SC	ST	DOC	CW	REA	YG	MARB	\$MTI
EPDs	6	3.0	50	94	31	5	0.7	-	-	15	0.18	0.00	0.07	48
	P	P	P	P	P	P	P	-	-	P	P	P	P	P

Individual Bull Data ...	BW	Adj. WW	Adj. YW	Adj. SC	ADG
	81 lbs.	678 lbs.	1,190 lbs.	38.9	3.24

42

**BREED RANKING**  
25% MA  
20% CEM  
15% SC  
4% YG

- This 75% Lim-Flex is out of a JCL Black Out dam and is double black and double polled.
- He has strength in numbers combining growth, milk and balanced carcass numbers.
- 1009A is long sided, level in his design and has plenty of product.
- We think this young prospect will add uniformity and pounds to his calf crop.

## LVLS All Business 778A

Lim-Flex (50) Bull

LVLS 778A

LFM 2035077

Homo P / Homo B

02.07.13

AUTO DOLLAR GENERAL 122R  
BOHI TOP DOLLAR 7144T  
CARROUSELS PINA COLADA

LVLS SECRET WEAPON 4408K  
AUTO KYRIA 232K  
AUTO BLACK DAKOTA 129J  
ELMW GINNIE P58G  
SAF 598 BANDO 5175  
L L A GEORGINA 419  
G A R 6807 TRAVELER 4144  
VISION MISS POWERMARK 486

S A V 5175 BANDO 0699  
LVLS MISS BANDO 775W  
LVLS NEW DESIGN 775P

	CED	BW	WW	YW	MA	CEM	SC	ST	DOC	CW	REA	YG	MARB	\$MTI
EPDs	7	1.2	67	105	30	5	0.5	-	12	19	-0.44	0.44	0.35	56
	P	P+	P+	P	P	P	P	-	P	P	P	P	P	P

Individual Bull Data ...	BW	Adj. WW	Adj. YW	Adj. SC	ADG
	79 lbs.	760 lbs.	1,315 lbs.	33.6	3.63

43

**BREED RANKING**  
2% WW  
20% YW  
30% MA  
30% CEM  
20% MARB  
20% MTI

- 778A is another fine BOHI Top Dollar 7144T son out of a Bando dam.
- This homozygous polled and homozygous black prospect is deep sided and thick ended.
- He combines a moderate birth EPD of 1.2 with a trait leading 67 weaning EPD, 105 for yearling EPD and a 30 for milk.
- In addition to the economically important traits 778A has a .35 marbling EPD and a 56 MTI.

# 23rd Annual KEEPIN' KIND Bull Sale

## LVLS YUKON 798Y SONS



REFERENCE SIRE ... LVLS Yukon 798Y

Lim-Flex (38) Bull

44

**BREED RANKING**  
25% BW  
3% MA

LVLS 1068A LFM 2032523

MAGS UNHOOKS  
**LVLS YUKON 798Y**  
LVLS 798R  
  
WOODHILL FORESIGHT  
**LVLS OUT OF SIGHT 1069U**  
LVLS EBONY 1069E

## LVLS Optimizer 1068A

Double P / Homo B 01.18.13

BASIN FRANCHISE P142  
MAGS MARQUEE  
BON VIEW NEW DESIGN 1407  
BLACKCAP V935  
PAPA FORTE 1921  
BON VIEW GAMMER 85  
CLHB HITCHIN POST 108Y  
HUNT BLACK COTTON 83C

	CED	BW	WW	YW	MA	CEM	SC	ST	DOC	CW	REA	YG	MARB	\$MTI
EPDs	7	-0.8	47	90	37	2	0.1	-	-	-	-	-	-	0
	P	33	25	9	12	P	3	-	-	-	-	-	-	-

Individual Bull Data ...	BW	Adj. WW	Adj. YW	Adj. SC	ADG
	87 lbs.	700 lbs.	1,284 lbs.	40.7	3.73

- This young prospect is a lower percentage Lim-Flex with all the muscle and growth of a Purebred.
- 1068A combines a negative birth EPD with a 90 yearling EPD and a 37 for milk.
- He posted a 700 lb weaning weight.
- Sired by LVLS Yukon 798Y, the top selling bull in the 2012 sale going to Milam Cattle Co.



Lim-Flex (63) Bull

45

**BREED RANKING**  
30% CED  
30% BW  
3% MA  
5% CEM

LVLS 8906A LFM 2033320

MAGS UNHOOKS  
**LVLS YUKON 798Y**  
LVLS 798R  
  
AUTO DOLLAR GENERAL 122R  
**LVLS MISS GENERAL 8906X**  
LVLS8906M

## LVLS A Big Heart 8906A

Double P / Homo B 02.13.13

BASIN FRANCHISE P142  
MAGS MARQUEE  
BON VIEW NEW DESIGN 1407  
BLACKCAP V935  
LVLS SECRET WEAPON 4408K  
AUTO KYRIA 232K  
LVLS FARMER 4G  
LVLS6906K

	CED	BW	WW	YW	MA	CEM	SC	ST	DOC	CW	REA	YG	MARB	\$MTI
EPDs	10	-0.5	50	91	37	7	0.2	-	-	-	-	-	-	0
	P	P	P+	P	P	P	P	-	-	-	-	-	-	-

Individual Bull Data ...	BW	Adj. WW	Adj. YW	Adj. SC	ADG
	78 lbs.	712 lbs.	1,307 lbs.	36.9	3.70

- The LVLS Yukon 798Y progeny are really looking good and this prospect is a great example.
- Double black and double polled is this 62.5% Lim-Flex out of a AUTO Dollar General 122R dam.
- 8906A has a -0.5 birth EPD and a 37 milk EPD.
- This prospect is moderate, heavy muscled and sound in his structure.

## CHR WHITE ROSE 162W SONS



REFERENCE SIRE ... CHR White Rose 162W

Lim-Flex (69) Bull

46

**BREED RANKING**  
15% YG

LVLS 1791A LFM 2037480

GPFF BLAQUE RULON  
**CHR WHITE ROSE 162W**  
CHR MOLLY ROSE 001M  
  
BASIN MAX 602C  
**LVLS 1791U**  
LVLS MISS STABILIZER 1792E

Homo P / Double B 01.04.13

BLACK DIAMOND  
QUAIL RUN RAMONA BP  
EXLR HERITAGE 056H  
CHR JOLLY ROSE  
G T MAXIMUM  
BASIN ELINE ERICA 315U  
MAYS BLACK JET  
LVLS 792B

	CED	BW	WW	YW	MA	CEM	SC	ST	DOC	CW	REA	YG	MARB	\$MTI
EPDs	3	2.9	55	99	24	-2	0.3	-	-	16	0.13	0.12	0.07	48
	14	33	27	12	14	13	9	-	-	P	P	P	P	P

Individual Bull Data ...	BW	Adj. WW	Adj. YW	Adj. SC	ADG
	94 lbs.	734 lbs.	1,262 lbs.	35.0	3.38

- Homozygous polled and double black.
- This Lim-Flex prospect is out of a Basin Max 602C dam.
- 1791A has a 99 yearling EPD, 24 for milk and is positive for REA and marbling.
- We love the balance and completeness of this young prospect and feel he will add muscle and quality to his calf crop.



## LVLS 9113A

Lim-Flex (50) Bull

LVLS 9113A

LFM 2042169

Homo P / Homo B

02.02.13

LO **47**

**BREED RANKING**  
30% WW  
25% MARB  
20% MTI

GPFF BLAQUE RULON  
CHR WHITE ROSE 162W  
CHR MOLLY ROSE 001M

BON VIEW NEW DESIGN 1407  
LVLS MISS NEW DESIGN 9113  
L V MISS ROYCE 9113

BLACK DIAMOND  
QUAIL RUN RAMONA BP  
EXLR HERITAGE 056H  
CHR JOLLY ROSE  
B/R NEW DESIGN 036  
BON VIEW PRIDE 664  
LUKENS ROYCE 74  
L V MISS STACKER 758

	CED	BW	WW	YW	MA	CEM	SC	ST	DOC	CW	REA	YG	MARB	\$MTI
EPDs	6	0.8	54	96	28	-1	0.4	-	-	29	-0.18	0.37	0.33	55
	P	P+	P+	P	P	P	P	-	-	P	P	P	P	

Individual Bull Data ...	BW	Adj. WW	Adj. YW	Adj. SC	ADG
	86 lbs.	720 lbs.	1,343 lbs.	36.4	3.84

- Sired by the GPFF Blaque Rulon son, CHR White Rose 162W and out of a New Design 1407 dam is this homozygous polled and homozygous black prospect.
- 9113A has tremendous balance to his EPD portfolio combining a 54 weaning EPD with a 96 yearling EPD, 28 for milk and a .33 for marbling.
- He posted a 720 lb weaning weight.
- 9113A has tremendous rib and volume, muscle and strength of structure.



## LVLS 9732A

Lim-Flex (71) Bull

LVLS 9732A

LFM 2037501

Double P / Homo B

02.07.13

LO **48**

**BREED RANKING**  
25% YG

GPFF BLAQUE RULON  
CHR WHITE ROSE 162W  
CHR MOLLY ROSE 001M

BASIN MAX 602C  
LVLS 9731W  
LVLS9731N

BLACK DIAMOND  
QUAIL RUN RAMONA BP  
EXLR HERITAGE 056H  
CHR JOLLY ROSE  
G T MAXIMUM  
BASIN ELINE ERICA 315U  
LVLS DOUBLEDOWN 3615K  
LVLS MS STABILIZER 2731F

	CED	BW	WW	YW	MA	CEM	SC	ST	DOC	CW	REA	YG	MARB	\$MTI
EPDs	5	1.3	51	95	21	-1	0.4	-	-	20	0.09	0.17	0.07	46
	13	33	26	11	13	12	8	-	-	P	P	P	P	

Individual Bull Data ...	BW	Adj. WW	Adj. YW	Adj. SC	ADG
	85 lbs.	700 lbs.	1,279 lbs.	36.6	3.59

- Homozygous black and double polled is this 71.8% Lim-flex.
- Sired by CHR White Rose 162W and out of a Basin Max 602C dam.
- 9732A has a moderate birth EPD, superb growth numbers and adequate milk and carcass numbers.
- He is long and level down his top, thick in his quarter and performance oriented.

Video's on all bulls are available for viewing at  
[www.lonelyvalley.com](http://www.lonelyvalley.com) and [www.DVAuctions.com](http://www.DVAuctions.com).

### CHR WILD BILL 150W SONS



REFERENCE SIRE ...  
CHR Wild Bill 150W

## LVLS 2861A

Lim-Flex (55) Bull

LVLS 2861A

LFM 2037483

Double P / Homo B

01.19.13

LO **49**

GPFF BLAQUE RULON  
CHR WILD BILL 150W  
MAGS SHUTTERBUG

BASIN MAX 602C  
LVLS 2861U  
LVLS MS STABILIZER 2861F

BLACK DIAMOND  
QUAIL RUN RAMONA BP  
BR MIDLAND  
MAGS LADY ACE  
G T MAXIMUM  
BASIN ELINE ERICA 315U  
LVLS BLACK HAWK 790D  
LJ MISS 084Y

	CED	BW	WW	YW	MA	CEM	SC	ST	DOC	CW	REA	YG	MARB	\$MTI
EPDs	9	1.1	51	95	23	0	0.5	-	10	20	0.13	0.21	0.16	49
	13	32	26	11	13	12	9	-	P	P	P	P	P	

Individual Bull Data ...	BW	Adj. WW	Adj. YW	Adj. SC	ADG
	87 lbs.	739 lbs.	1,255 lbs.	35.7	3.31

- Sired by CHR Wild Bill 150W and out of a proven Basin Max 602C dam is this high performing herd sire prospect.
- This Lim-Flex is homozygous black and double polled.
- 2861A has a 1.1 birth EPD, 95 yearling EPD, 23 for milk and is positive for REA and marbling.
- He posted a 739 lb weaning weight.





Lim-Flex (44) Bull

LOT **50**

**BREED RANKING**  
30% SC

LVLS 3002A LFM 2037484

Double P / Homo B 02.01.13

GPFF BLAQUE RULON  
**CHR WILD BILL 150W**  
MAGS SHUTTERBUG

BLACK DIAMOND  
QUAIL RUN RAMONA BP  
BR MIDLAND  
MAGS LADY ACE  
BON VIEW NEW DESIGN 878  
L V MISS PROMPTER 9109  
LVLS NEW DESIGN 9109  
LVLS7002L

LVLS NEW DESIGN 9109  
**LVLS 3002U**  
LVLS 7002S

	CED	BW	WW	YW	MA	CEM	SC	ST	DOC	CW	REA	YG	MARB	\$MTI
EPDs	9	0.0	42	83	22	2	0.6	-	-	23	-0.03	0.35	0.29	50
	P	32	25	10	10	P	0.8	-	-	P	P	P	P	

Individual Bull Data ...	BW	Adj. WW	Adj. YW	Adj. SC	ADG
	84 lbs.	670 lbs.	1,235 lbs.	32.3	3.63

- This homozygous black and double polled Lim-Flex is loaded with performance and doability.
- 3002A has a 0 birth EPD, adequate performance and a .29 marbling EPD.
- His dam goes back to a proven New Design 878 cow.
- Whether you sell at weaning, background or own your calves to the rail 3002A will add to your bottom line.

## LVLS X-TRA PROFIT 2014 SONS



Lim-Flex (75) Bull

LOT **51**

**BREED RANKING**  
10% WW  
15% YW  
20% SC  
30% CW  
30% REA  
30% YG

LVLS 8101A LFM 2035090

Double P / Double B 02.27.13

AUTO DOLLAR GENERAL 122R  
**LVLS X-TRA PROFIT 2014**  
JCL MAYBERRY 62S

LVLS SECRET WEAPON 4408K  
AUTO KYRIA 232K  
CARROUSELS PURE POWER  
JCL MAYBERRY  
JCL BLACK OUT  
LVLS REBECA  
WK BANDO 6314  
FRENZEN MOONSHINE K90

LVLS COWBOY 015F  
**LVLS8101R**  
FRENZEN MOONSHINE M02

	CED	BW	WW	YW	MA	CEM	SC	ST	DOC	CW	REA	YG	MARB	\$MTI
EPDs	5	2.1	60	110	27	3	0.6	-	-	31	0.17	0.19	0.13	51
	P	32	27	11	13	P	8	-	-	P	P	P	P	

Individual Bull Data ...	BW	Adj. WW	Adj. YW	Adj. SC	ADG
	88 lbs.	734 lbs.	1,296 lbs.	36.5	3.56

- Sired by LVLS X-Tra Profit 2014, a son of AUTO Dollar General 122R and out of a LVLS Cowboy 015F dam.
- Double black and double polled.
- 8101A has a 60 weaning EPD, 110 yearling EPD and a 27 milk EPD.
- A 75% Lim-Flex that is loaded with muscle and performance.

REFERENCE SIRE ... LVLS X-Tra Profit 2014

## LVLS Stabilizer 1506A

Lim-Flex (72) Bull

LVLS 1506A

LFM 2032668

Double P / Homo B

01.18.13

LOT **52**

**BREED RANKING**  
15% WW  
20% YW  
20% CEM  
20% SC

AUTO DOLLAR GENERAL 122R  
**LVLS X-TRA PROFIT 2014**  
JCL MAYBERRY 62S

LVLS SECRET WEAPON 4408K  
AUTO KYRIA 232K  
CARROUSELS PURE POWER  
JCL MAYBERRY  
WCC PRECISION E161 J239  
LAGRAND ERICA 3934  
LVLS DOUBLEDOWN 3615K  
LVLS 2506E

LAGRAND J239 PRECISION  
**LVLS 1506U**  
LVLS2506P

	CED	BW	WW	YW	MA	CEM	SC	ST	DOC	CW	REA	YG	MARB	\$MTI
EPDs	6	2.4	57	105	23	5	0.6	-	-	30	0.08	0.26	0.16	51
	12	33	27	10	12	10	6	-	-	P	P	P	P	

Individual Bull Data ...	BW	Adj. WW	Adj. YW	Adj. SC	ADG
	89 lbs.	689 lbs.	1,231 lbs.	34.7	3.49

- This 71.5% Lim-Flex is homozygous black and double polled.
- He has a moderate birth EPD, a 57 weaning EPD, 105 yearling EPD and a .16 for marbling.
- 1506A is easy fleshing, big footed and has a super disposition.
- Goes back to a proven LVLS DoubleDown cow.

Lim-Flex (50) Bull

LOT **53**

**BREED RANKING**  
25% MARB

LVLS 1924A

LFM 2035080

Homo P / Homo B

01.14.13

AUTO DOLLAR GENERAL 122R  
**LVLS X-TRA PROFIT 2014**  
JCL MAYBERRY 62S

LVLS SECRET WEAPON 4408K  
AUTO KYRIA 232K  
CARROUSELS PURE POWER  
JCL MAYBERRY  
B/R NEW DESIGN 036  
BON VIEW ERICA 443  
BULLDOZER OF CONANGA  
C S U MS POWERMARK 6186

BON VIEW DESIGN 208  
**LVLS NEW DESIGN 924P**  
VISION MISS POWERMARK 486

	CED	BW	WW	YW	MA	CEM	SC	ST	DOC	CW	REA	YG	MARB	\$MTI
EPDs	6	0.1	49	93	26	4	0.4	-	-	28	-0.29	0.47	0.34	53
	13	32	27	12	14	12	6	-	-	P	P	P	P	

Individual Bull Data ...	BW	Adj. WW	Adj. YW	Adj. SC	ADG
	92 lbs.	617 lbs.	1,107 lbs.	32.0	3.10

- Homozygous polled and homozygous black.
- This 50% Lim-Flex combines calving ease with performance and a 26 milk EPD and a .34 marbling EPD.
- 1924A has plenty of muscle while maintaining the maternal look.
- He is rugged and stout and should make an excellent herd sire.



## LVLS Optimizer 9101A

Lim-Flex (50) Bull

LVLS 9101A

LFM Pending

Double P / Homo B

02.01.13

LOT **54**

**BREED RANKING**  
15% REA  
10% YG

AUTO DOLLAR GENERAL 122R  
**LVLS X-TRA PROFIT 2014**  
JCL MAYBERRY 62S

S A F PHANTOM  
**KG EDEN 381**  
KG EDEN

LVLS SECRET WEAPON 4408K  
AUTO KYRIA 232K  
CARROUSELS PURE POWER  
JCL MAYBERRY  
S A F FAME  
GDAR MISS WIX 3325  
S A F FAME  
HEARTLAND K G 3

	CED	BW	WW	YW	MA	CEM	SC	ST	DOC	CW	REA	YG	MARB	\$MTI
EPDs	1	2.5	50	90	19	-	-	13	1	20	0.25	0.07	0.17	51

Individual Bull Data ...	BW	Adj. WW	Adj. YW	Adj. SC	ADG
	90 lbs.	775 lbs.	1,247 lbs.	36.3	3.17

- This high quality 50% Lim-Flex is sired by LVLS X-Tra Profit.
- Homozygous black and double polled.
- He combines performance and maternal traits in a very nicely balanced and rugged package.
- 9101A posted a 775 lb weaning weight.

## LVLS Optimizer 8211A

Lim-Flex (50) Bull

LVLS 8211A

LFM Pending

Double P / Double B

01.02.13

LOT **55**

**BREED RANKING**  
25% YW  
45% MA  
15% SC  
7% CW  
30% MARB

AUTO DOLLAR GENERAL 122R  
**LVLS X-TRA PROFIT 2014**  
JCL MAYBERRY 62S

**LVLS MISS WORTH 8211W**

LVLS SECRET WEAPON 4408K  
AUTO KYRIA 232K  
CARROUSELS PURE POWER  
JCL MAYBERRY

	CED	BW	WW	YW	MA	CEM	SC	ST	DOC	CW	REA	YG	MARB	\$MTI
EPDs	2	3.4	52	103	28	-	0.7	-	11	24	0.4	-	0.3	51

Individual Bull Data ...	BW	Adj. WW	Adj. YW	Adj. SC	ADG
	90 lbs.	840 lbs.	1,374 lbs.	38.9	3.63

- Here is a really nice X-Tra Profit son out of a SAV Net Worth Dam.
- This 50% Lim-Flex is a tank in terms of volume but yet he stills has plenty of muscle and shape.
- 8211A has a 52 weaning and a 103 yearling EPD respectively and a 28 milk EPD.
- There is tremendous predictability and performance in this prospect.

## LVLS Artic 1019A

Lim-Flex (72) Bull

LVLS 1019A

LFM 2037485

Homo P / Double B

01.01.13

LOT **56**

**BREED RANKING**  
20% WW  
15% YW

KAJO RESPONDER 120R  
**AHCC WESTWIND W544**  
AHCC MISS WULF HUNT R544

S A V 5175 BANDO 0699  
**LVLS 4751X**  
LVLS4750R

JCL LODESTAR 27L  
KAJO SHERYL SWOOPS 11H  
COLE WULF HUNT  
AHCC MISS OUTCROSS N844  
SAF 598 BANDO 5175  
L L A GEORGINA 419  
LVLS POLLED BLACK JACK  
LVLS 750H

	CED	BW	WW	YW	MA	CEM	SC	ST	DOC	CW	REA	YG	MARB	\$MTI
EPDs	8	1.6	56	110	23	2	0.5	-	14	40	0.03	0.27	0.15	50
	19	35	29	18	14	18	14	-	P	P	P	P	P	

Individual Bull Data ...	BW	Adj. WW	Adj. YW	Adj. SC	ADG
	82 lbs.	710 lbs.	1,276 lbs.	35.9	3.52

- 2014 Denver National Pen Show member
- 1019A is out of the high performing proven sire AHCC Westwind W544 and a SAV Bando cow.
- He is homozygous polled and double black.
- This prospect has a 56 weaning and a 110 yearling EPD respectively. In addition he has a 23 milk EPD and positive carcass numbers.



## LVLS Atractor 9577A

PB Limousin (100) Bull

LVLS 9577A

NPM 2033378

Double P / Red

01.05.13

LOT **57**

**BREED RANKING**  
1.5% WW  
4% YW  
4% SC  
7% CW  
30% REA

WULFS TITUS 2149T  
**WULFS XTRACTOR X233X**  
WULFS MYRLENE 2332M

ANDERS JAG  
**LVLS NADINE 9578N**  
LVLS 408H

WULFS REALTOR 1503R  
WULFS MEADOW GRASS 2149M  
COLE WULF HUNT  
WULFS JOY BELLS 9202J  
GREENWOODPOLLED455ROCKET  
ANDERS GEMINI  
LVLS POLLED JUSTICE 0601E  
LVLS MISS STABILIZER 1408E

	CED	BW	WW	YW	MA	CEM	SC	ST	DOC	CW	REA	YG	MARB	\$MTI
EPDs	7	2.9	65	107	24	4	1.0	-	20	45	0.65	-0.04	0.03	51
	17	35	30	18	15	15	18	-	P	P	P	P	P	

Individual Bull Data ...	BW	Adj. WW	Adj. YW	Adj. SC	ADG
	87 lbs.	739 lbs.	1,239 lbs.	34.1	3.42

- 2014 Denver National Pen Show member
- Red and double polled Purebred.
- Sired by Wulf's Xtractor X233X and out of LVLS Nadine 9578N.
- 9577A posted a 701 lb weaning weight and has a 65 weaning EPD and a 107 yearling EPD.
- This prospect is a powerhouse and should add pounds and profit to your calf crop.





## LVLS Zantac 9871Z

Lim-Flex (50) Bull LVLS 9871Z LFM 2036670 Homo P / Double B 12.01.12

LO **58**

**BREED RANKING**  
 15% CED  
 20% BW  
 30% YW  
 15% CW  
 15% MARB  
 15% MTI

BT CROSSOVER 758N  
**MAGS WINSTON**  
 MAGS STRAWBERRY  
 S A V BISMARCK 5682  
**MAGS XTRA RAIN**  
 MAGS TELEGRAM  
 C A FUTURE DIRECTION 5321  
 BT ROYAL PRIDE 237G  
 EXLR NEW GENERATION 071M  
 MAGS FRUITFUL 487M  
 G A R GRID MAKER  
 S A V ABIGALE 0451  
 GPFF BLAQUE RULON  
 MAGS MANDA

	CED	BW	WW	YW	MA	CEM	SC	ST	DOC	CW	REA	YG	MARB	\$MTI
EPDs	12	-1.3	53	102	25	4	-0.1	-	9	46	-0.11	0.41	0.40	57
	P	P	P	P	P	P	P	P	P	P	P	P	P	P

Individual Bull Data ...	BW	Adj. WW	Adj. YW	Adj. SC	ADG
	82 lbs.	726 lbs.	1,225 lbs.	34.4	4.01

- Homozygous polled and double black is this 50% Lim-Flex herd sire prospect
- Huge numbers with a very cool look.
- He is sired by MAGS Winston and out of a SAV Bismarck 5682 dam.
- This exceptional prospect has a -1.3 birth EPD, 102 yearling EPD, 25 for milk and a .40 marbling EPD.
- 9871Z combines all the economically important traits in a well balanced, high performing package.

## LVLS Optimizer 0718A

Lim-Flex (50) Bull LVLS 0718A LFM 2035075 Double P / Double B 01.14.13

LO **59**  
**BREED RANKING**  
 7% MA  
 4% YG

CONNEALY CONSENSUS  
**CONNEALY CONSENSUS 7229**  
 BLUE LILLY OF CONANGA 16  
 EXLR NEW GENERATION 071M  
**MCBN RACHEL**  
 LVLS GABBY 3302G  
 MK ALLIANCE 6595 187  
 BLINDA OF CONANGA 004  
 WOODHILL ADMIRAL 77K  
 BLUE CASH OF CONANGA 6020  
 AUTO BLACK DAKOTA 129J  
 EXLR LUVLY 084F  
 GALILEO  
 LVLS REBECA

	CED	BW	WW	YW	MA	CEM	SC	ST	DOC	CW	REA	YG	MARB	\$MTI
EPDs	8	0.3	50	95	35	4	-	12	4	0.12	0.00	0.06	0.47	47
	13	35	29	20	20	12	-	-	P	P	P	P	P	P

Individual Bull Data ...	BW	Adj. WW	Adj. YW	Adj. SC	ADG
	84 lbs.	633 lbs.	1,146 lbs.	33.5	3.24

- This double polled, double black herd sire prospect is royally bred and one that you will appreciate sale day
- Sired by the prominent Angus sire Connealy Consensus 7229 and from a daughter of EXLR New Generation 071M is this beef bull
- His numbers are very strong and above breed average with a highlighted yearling of 95 and milk of 35

## LVLS 6791A

% Limousin (22) Bull LVLS 6791A NXM 2037492 Homo P / Double B 01.01.13

LO **60**  
**BREED RANKING**  
 20% CED  
 3% BW  
 10% ST  
 25% DOC  
 15% MARB  
 10% MTI

B/R NEW DESIGN 036  
**BON VIEW NEW DESIGN 878**  
 BON VIEW GAMMER 85  
 MYTTY IN FOCUS  
**LVLS 6792Y**  
 LVLS 6792W  
 V D A R NEW TREND 315  
 B/R BLACKCAP EMPRESS 76  
 BON VIEW BANDO 598  
 BON VIEW GAMMER 233  
 S A F FOCUS OF E R  
 MYTTY COUNTLESS 906  
 CARROUSELS PURE POWER  
 LVLS6792K

	CED	BW	WW	YW	MA	CEM	SC	ST	DOC	CW	REA	YG	MARB	\$MTI
EPDs	11	-3.1	39	85	29	2	0.5	22	17	34	-0.46	0.65	0.60	58
	P	35	30	20	21	P	P	P	P	P	P	P	P	P

Individual Bull Data ...	BW	Adj. WW	Adj. YW	Adj. SC	ADG
	71 lbs.	608 lbs.	1,304 lbs.	35.9	3.87

- Homozygous polled and double black is this young bull sired by Bon View New Design 878 and out of a MYTTY In Focus dam.
- He has a -3.1 birth EPD, a 29 for milk and a trait leading .60 for marbling EPD.
- 6791A is stout, long topped, smooth shouldered prospect that has plenty of rib and volume.

## LVLS Optimizer 722A

Lim-Flex (63) Bull LVLS 722A LFM 2032519 Homo P / Double B 01.18.13

LO **61**  
**BREED RANKING**  
 15% CED  
 25% MA  
 5% CEM  
 20% SC  
 7% CW  
 25% MARB

JCL LODESTAR 27L  
**LH RODEMASTER 338R**  
 VERMILION E BLACKBIRD9546  
 MAGS TWAIN  
**HAHK WATERBUG 722W**  
 SBLX TUESDAY 511T  
 HUNTS HI-LITER 245G  
 LOGAN'S CHEERLEADER 280G  
 VERMILION 31 STACLER 3491  
 CH ENV BLACKBIRD C5941  
 AUTO DOLLAR GENERAL 122R  
 THOMAS PATRICIA 1911  
 EXLR EXCELLANTE 251L  
 PBR'S CREEK STYLE 511R

	CED	BW	WW	YW	MA	CEM	SC	ST	DOC	CW	REA	YG	MARB	\$MTI
EPDs	12	0.0	49	98	31	7	0.6	-	14	50	-0.12	0.50	0.32	52
	20	35	28	18	18	19	16	-	P	P	P	P	P	P

Individual Bull Data ...	BW	Adj. WW	Adj. YW	Adj. SC	ADG
	83 lbs.	614 lbs.	1,099 lbs.	35.2	3.06

- Sired by LH Rodemaster 338R and out of a MAGS Twain dam is this 62.5% Lim-Flex.
- Homozygous polled and double black.
- 722A has a 0 birth EPD, 98 yearling EPD, 31 for milk and a .32 marbling EPD.
- This big footed, heavy structured herd bull will work on heifers and add pounds to cows.

## LVLS Stabilizer 8204A

% Limousin (84) Bull LVLS 8204A NXM 2033308 Double P / Homo B 01.03.13

LO **62**  
**BREED RANKING**  
 4% CED  
 20% BW  
 20% YW  
 2% MA  
 10% CEM  
 1% MARB  
 5% MTI

AUTO DOLLAR GENERAL 122R  
**MAGS UNREAL**  
 MAGS PASSION FLOWER  
 LVLS TOP CRITERIA 8862P  
**LVLS YOUNG WOMEN 8205Y**  
 LVLS 8205W  
 LVLS SECRET WEAPON 4408K  
 AUTO KYRIA 232K  
 JCL LODESTAR 27L  
 CANE RIDGE POLL ELLIE  
 COLE WULF HUNT  
 LVLS8862M  
 BON VIEW NEW DESIGN 878  
 LVLS8205T

	CED	BW	WW	YW	MA	CEM	SC	ST	DOC	CW	REA	YG	MARB	\$MTI
EPDs	18	0.0	50	95	33	9	0.1	-	-	23	0.22	0.22	0.22	51
	19	35	29	18	14	18	16	-	-	P	P	P	P	P

Individual Bull Data ...	BW	Adj. WW	Adj. YW	Adj. SC	ADG
	89 lbs.	696 lbs.	1,274 lbs.	33.0	3.66

- Homozygous black and double polled is this MAGS Unreal son.
- This high percentage prospect has a CED of 18 and a yearling EPD of 95.
- In addition 8204A offers a 33 milk EPD and a .22 for marbling.
- Out of a LVLS Top Criteria dam, this sire is long and level down his top and thick ended.



Lim-Flex (63) Bull

LVLS 837A

LFM 2035651

Double P / Homo B

01.25.13

# LVLS Alley Cat 837A

LO **63**

**BREED RANKING**  
15% YW  
20% SC

SAV 004 PREDOMINANT 4438  
**MAGS XTRASPECIAL**  
MAGS RAPHAELA  
  
MAGS SAVAGE  
**MCBN URSINA 837U**  
MCBN RACHEL

S A V 8180 TRAVELER 004  
S A V EMBLYNETTE 1182  
SUMMITCRESTHIGHPRIME 0H29  
MAGS LADY ACE  
GPFF BLAQUE RULON  
MAGS MANDA  
EXLR NEW GENERATION 071M  
LVLS GABBY 3302G

	CED	BW	WW	YW	MA	CEM	SC	ST	DOC	CW	REA	YG	MARB	\$MTI
EPDs	8	1.4	58	103	29	4	0.6	-	-	-	-	-	-	0
	13	31	23	11	13	12	6	-	-	-	-	-	-	-

Individual Bull Data ...	BW	Adj. WW	Adj. YW	Adj. SC	ADG
	83 lbs.	791 lbs.	1,322 lbs.	36.0	3.45

- 837A is sired by the SAV Predominant son, MAGS Xtraspecial and out of a MAGS Savage dam.
- He combines a 1.4 birth EPD with a 58 weaning and a 103 yearling EPD.
- He posted a tremendous 791 pound weaning weight.
- This prospect is well balanced, has eye appeal and style and more importantly he has the product and structure to be a great breeding bull.



Lim-Flex (75) Bull

LVLS 9872Z

LFM 2042520

Homo P / Double B

12.01.12

# LVLS 9872Z

LO **64**

**BREED RANKING**  
15% WW  
25% YW  
20% MA  
15% CW  
15% YG

MAGS SAVAGE  
**SBLX WHY WAIT**  
AUTO ELITE 270F  
  
S A V BISMARCK 5682  
**MAGS XTRA CHOCOLATE**  
MAGS TELEGRAM

GPFF BLAQUE RULON  
MAGS MANDA  
JCL BLACK OUT  
STBR GRACIOUS GIRL  
G A R GRID MAKER  
S A V ABIGALE 0451  
GPFF BLAQUE RULON  
MAGS MANDA

	CED	BW	WW	YW	MA	CEM	SC	ST	DOC	CW	REA	YG	MARB	\$MTI
EPDs	5	1.4	58	104	32	1	-	-	-	28	0.32	0.10	0.03	48
	P	P	P	P	P	P	-	-	-	P	P	P	P	P

Individual Bull Data ...	BW	Adj. WW	Adj. YW	Adj. SC	ADG
	82 lbs.	746 lbs.	1,210 lbs.	32.4	3.66

- Homozygous polled and double black.
- Here is a 75% Lim-Flex out of a MAGS Savage son and a SAV Bismark dam.
- He has tremendous balance and quality to his numbers and predictability in his pedigree.



% Limousin (21) Bull

LVLS 1023A

NXM 2037486

Double P / Double B

02.18.13

# LVLS 1023A

LO **65**

**BREED RANKING**  
20% BW  
10% MA

MYTTY IN FOCUS  
**LVLS FOCUS 5047Y**  
LVLS 5048 S  
  
BASIN MAX 602C  
**LVLS4867T**  
LVLS 2867H

S A F FOCUS OF E R  
MYTTY COUNTLESS 906  
BON VIEW NEW DESIGN 1407  
BLACKCAP V935  
G T MAXIMUM  
BASIN ELINE ERICA 315U  
WULF'S PAYDAY 1198C  
LVLS MS STABILIZER 2867F

	CED	BW	WW	YW	MA	CEM	SC	ST	DOC	CW	REA	YG	MARB	\$MTI
EPDs	-	-1.1	51	99	30	-	-	-	-	-	-	-	-	0
		31	24	10	13	-	-	-	-	-	-	-	-	-

Individual Bull Data ...	BW	Adj. WW	Adj. YW	Adj. SC	ADG
	85 lbs.	690 lbs.	1,173 lbs.	33.1	3.06

- 1023A is a double black, double polled bull out of a MYTTY In Focus sire and a Basin Max 602C dam.
- He has a -1.1 birth EPD, 99 yearling EPD and a 30 for milk.
- This prospect is deep in his fore and rear rib, soft in his pastern and stout in his stance.

PB Limousin (94) Bull

LVLS 454A

NPM 2043513

Double P / Double Black

02.06.13

# LVLS Army General 454A

LO **66**

**BREED RANKING**  
7% WW  
10% YW  
15% MA  
7% CW

AUTO DOLLAR GENERAL 122R  
**MAGS THE GENERAL**  
EXLR LUVLY 821M  
  
LVLS COWBOY 015F  
**LVLS7428L**  
LVLS MS STABILIZER 2408E

LVLS SECRET WEAPON 4408K  
AUTO KYRIA 232K  
AUTO BLACK DAKOTA 129J  
EXLR LUVLY 084F  
JCL BLACK OUT  
LVLS REBECA  
LVLS POLLED BLACK JACK  
LVLS 408X

	CED	BW	WW	YW	MA	CEM	SC	ST	DOC	CW	REA	YG	MARB	\$MTI
EPDs	6	2.6	58	101	34	5	0.6	-	22	42	0.58	0.02	-0.02	46
	P	P	P	P	P	P	P	-	P	P	P	P	P	P

Individual Bull Data ...	BW	Adj. WW	Adj. YW	Adj. SC	ADG
	89 lbs.	716 lbs.	1,252 lbs.	32.6	3.35

- This purebred prospect is sired by MAGS The General and out of a LVLS Cowboy dam who is a leading donor cow owned with Linhart Limousin
- Double black and double polled.
- 454A offers muscle and performance while maintaining the maternal characteristics necessary to produce excellent replacements.
- 454A blends smoothly from neck to shoulder and shoulder to body, is wide down his top, square in his hip and thick in his quarter.

## LVLS 5742A

Lim-Flex (47) Bull

LVLS 5742A

LFM 2037489

Double P / Double B

01.20.13

LOT **67**

**BREED RANKING**  
25% BW  
30% MARB

GPFF BLAQUE RULON  
**LH XPLOER 152X**  
G A R T510 TRAVELER H93  
  
MYTTY IN FOCUS  
**LVLS MISS FOCUS 5741Y**  
LVLS 5741U

BLACK DIAMOND  
QUAIL RUN RAMONA BP  
SS TRAVELER 6807 T510  
G A R PRECISION 1559  
S A F FOCUS OF E R  
MYTTY COUNTESS 906  
LVLS TOP CRITERIA 8862P  
LVLS5741J

	CED	BW	WW	YW	MA	CEM	SC	ST	DOC	CW	REA	YG	MARB	\$MTI
EPDs	-	-0.8	49	92	28	-	0.5	-	-	28	0.03	0.35	0.30	53
	-	29	24	11	12	-	8	-	-	P	P	P	P	

Individual Bull Data ...	BW	Adj. WW	Adj. YW	Adj. SC	ADG
	80 lbs.	694 lbs.	1,273 lbs.	35.8	3.66

- A superb genetic package here combining Blaque Rulon, MYTTY In Focus and LVLS Top Criteria.
- 5742A has a -0.8 birth EPD, 92 yearling EPD, 28 for milk and a .30 marbling EPD.
- Double black and double polled Lim-Flex.
- 694 lb weaning weight.

## LVLS Optimizer 2107A

Lim-Flex (50) Bull

LVLS 2107A

LFM 2042016

Homo P / Double B

02.10.13

LOT **69**

WLR DIRECT HIT  
**MAGS UNWASHED**  
H&H POLLED STARGAZER  
  
LAGRAND VRD 7185  
**LVLS VALLERIE 2107X**  
K G VALLERIE 3E3

KRVN NASKAR 013N  
MAGS NIGHT AMBUSH  
CHAZ FIRST CHOICE 6004F  
CANE RIDGE POLL LUCY 377B  
VERMILION DATELINE 7078  
LAGRAND LUCY 4206  
D B PRECISION 136  
TRIUMPH K G 9

	CED	BW	WW	YW	MA	CEM	SC	ST	DOC	CW	REA	YG	MARB	\$MTI
EPDs	2	1.1	44	88	22	-	0.02	-	-	29	0.13	0.17	0.17	0
	-	-	-	-	-	-	-	-	-	P	P	P	P	

Individual Bull Data ...	BW	Adj. WW	Adj. YW	Adj. SC	ADG
	83 lbs.	730 lbs.	1,194 lbs.	35.7	2.89

- Homozygous polled and double black 50% Lim-Flex.
- This guy is big footed and stout in his stance and packed full of red meat.
- We love the balance and eye appeal and are certain 2107A will add pounds to your calf crop.

## LVLS Optimizer 18A

Lim-Flex (50) Bull

LVLS 18

LFM Pending

Double P / Double B

02.01.13

LOT **71**

**BREED RANKING**  
15% REA

WLR DIRECT HIT  
**MAGS UNWASHED**  
H&H POLLED STARGAZER  
  
**LVLS 18 FOUNDATION COW**

KRVN NASKAR 013N  
MAGS NIGHT AMBUSH  
CHAZ FIRST CHOICE 6004F  
CANE RIDGE POLL LUCY 377B

	CED	BW	WW	YW	MA	CEM	SC	ST	DOC	CW	REA	YG	MARB	\$MTI
EPDs	2	2.1	45	90	23	-	0.25	-	20	20	0.3	0	0.1	46
	-	-	-	-	-	-	-	-	-	-	-	-	-	-

Individual Bull Data ...	BW	Adj. WW	Adj. YW	Adj. SC	ADG
	86 lbs.	754 lbs.	1,385 lbs.	38.3	3.94

- Here is a son of MAGS Unwashed, the leading LVLS herd sire and son of WLR Direct Hit
- This yearling herd sire prospect offers a prominent pedigree, strength in numbers and is very strong in his stance
- This young bull represents 31 years of Lonely Valley concentrating on only the most economically important traits

## LVLS Stabilizer 859A

Lim-Flex (85) Bull

LVLS 859A

LFM Pending

Homo B

02.11.13

LOT **73**

JCL LODESTAR 27L  
**LVLS OLD SCHOOL 5751U**  
LVLS 5750S  
  
LVLS DURAMAX 2408M  
**LVLS 859R**  
LJ MISS 869C

HUNTS HI-LITER 245G  
LOGAN'S CHEERLEADER 280G  
COLE WULF HUNT  
LVLS5750P  
LVLS DOUBLEDOWN 3615K  
LVLS MS STABILIZER 2408E  
LJ TED 068Y  
FC#116320

	CED	BW	WW	YW	MA	CEM	SC	ST	DOC	CW	REA	YG	MARB	\$MTI
EPDs	10	2	50	95	27	-	0.7	-	22	30	0.45	0.02	0.05	47
	-	-	-	-	-	-	-	-	-	-	-	-	-	-

Individual Bull Data ...	BW	Adj. WW	Adj. YW	Adj. SC	ADG
	97 lbs.	675 lbs.	1,224 lbs.	35.8	3.45

- Sired by LVLS Old School 5751U is this 85% Lim-Flex.
- 859A is powerfully made being long and wide down his top and thick ended.
- We love the structure of this prospect in the way he moves and the way his foot hits the ground.
- He has a 10 for calving ease EPD, a 95 yearling EPD and a 27 for milk.

## LVLS Stabilizer

Lim-Flex (72) Bull

LVLS 1206A

LFM 2035098

Double P / Double B

01.12.13

LOT **68**

**BREED RANKING**  
20% CED  
25% BW  
5% CEM

JCL LODESTAR 27L  
**LVLS X-TERNAL 3506X**  
LVLS 2506S  
  
RITO 616 OF 4B20 6807  
**LVLS 1206S**  
LVLS2206P

HUNTS HI-LITER 245G  
LOGAN'S CHEERLEADER 280G  
AUTO BLACK DAKOTA 129J  
LVLS 2506E  
D H D TRAVELER 6807  
RITA 4B20 OF OFB1  
COLE WULF HUNT  
LVLS MS STABILIZER 2206F

	CED	BW	WW	YW	MA	CEM	SC	ST	DOC	CW	REA	YG	MARB	\$MTI
EPDs	11	-0.9	46	97	25	7	-	-	-	-	-	-	-	0
	P	33	27	19	22	P	-	-	-	-	-	-	-	

Individual Bull Data ...	BW	Adj. WW	Adj. YW	Adj. SC	ADG
	89 lbs.	778 lbs.	1,282 lbs.	36.4	3.73

- 1206A is another stout made long sided herd bull prospect that has a lot to offer.
- He is double black and double polled and posted a 778 lb weaning weight.
- 1206A combines a negative birth EPD with a 97 yearling EPD and a 25 for milk.

## LVLS Stabilizer 9114A

Lim-Flex (75) Bull

LVLS 9114A

LFM 2033599

Double P / Red

02.15.13

LOT **70**

**BREED RANKING**  
25% WW  
15% SC

WLR DIRECT HIT  
**MAGS UNWASHED**  
H&H POLLED STARGAZER  
  
LVLS 842L  
**LVLS 9112S**  
KG LASSIE 3939

KRVN NASKAR 013N  
MAGS NIGHT AMBUSH  
CHAZ FIRST CHOICE 6004F  
CANE RIDGE POLL LUCY 377B  
LVLS POLLED JUSTICE 0601E  
LVLS CANDY 842C  
KG EASY PRIME  
EXT 447 K G

	CED	BW	WW	YW	MA	CEM	SC	ST	DOC	CW	REA	YG	MARB	\$MTI
EPDs	6	2.1	55	89	23	6	0.7	-	-	30	0.06	0.22	0.08	47
	P	P	P	P	P	P	P	-	-	P	P	P	P	

Individual Bull Data ...	BW	Adj. WW	Adj. YW	Adj. SC	ADG
	80 lbs.	654 lbs.	1,217 lbs.	33.0	3.56

- Sired by MAGS Unwashed and out of a cow that goes back to LVLS Polled Justice is this red and double polled 75% Lim-Flex.
- He takes a moderate birth EPD and combines it with plenty of growth and milk and is positive for carcass traits.

## LVLS 1016A

PB Limousin (93) Bull

LVLS 1016A

NPM 2043897

Double P / Homo B

01.24.13

LOT **72**

**BREED RANKING**  
15% WW  
15% YW  
30% SC

EXLR DAKOTA 353G  
**AUTO BLACK DAKOTA 129J**  
DFLC JET SET BPC 34Y  
  
LVLS MAVERICK 753G  
**LVLS7306P**  
LVLS7306L

WULF'S COUNT DOWN 9251C  
CANE RIDGE DAPHNE 011D  
GENERAL LEE LOUW 40S  
DFLC BPC 20U  
COLE FIRST DOWN 46D  
LVLS JENI 601V  
LVLS POLLED BLACK JACK  
LVLS 306W

	CED	BW	WW	YW	MA	CEM	SC	ST	DOC	CW	REA	YG	MARB	\$MTI
EPDs	3	3.8	55	98	30	4	0.6	15	17	18	0.25	-0.04	-0.11	43
	-	-	-	-	-	-	-	-	-	-	-	-	-	-

Individual Bull Data ...	BW	Adj. WW	Adj. YW	Adj. SC	ADG
	86 lbs.	670 lbs.	1,234 lbs.	35.0	3.52

- Here is real stout made herd sire prospect sired by the National M.O.E. Gold medal sire AUTO Black Dakota 129J
- This purebred bull is double polled and homozygous black
- He is packed full of muscle, stout made and very appealing in his profile



## LVLS Consensus 4025A

Angus Bull 4025A AAA 17672866 Polled / Black 01.17.13

LOT 74

CONNEALY CONSENSUS  
**CONNEALY CONSENSUS 7229**  
 BLUE LILLY OF CONANGA 16

TC FREEDOM 104  
**LVLS FREEDOM 4026T**  
 VISION MISS POWERMARK 486

KMK ALLIANCE 6595 187  
 BLINDA OF CONANGA 004  
 WOODHILL ADMIRAL 77K  
 BLUE CASH OF CONANGA 6020  
 CONNEALY FOREFRONT  
 T C RUBY 9095  
 BULLDOZER OF CONANGA  
 C S U MS POWERMARK 6186

	CED	BW	WW	YW	MA	CEM	SC	ST	DOC	CW	REA	YG	MARB	\$MTI
EPDs	1	3.2	53	87	26	7	-	-	-	-	-	-	-	0
	28	35	27	22	20	15	-	-	-	-	-	-	-	-

Individual Bull Data ...	BW	Adj. WW	Adj. YW	Adj. SC	ADG
	90 lbs.	716 lbs.	1,240 lbs.	34.6	3.42

- Sired by Connealy Consensus and out of a TC Freedom dam is this January bull.
- This young prospect has a 53 weaning EPD, a 87 yearling EPD and a 26 milk EPD.
- This guy is deep and soggy yet has the muscle and eye appeal we all want.
- If you are looking for a Angus bull that has performance and predictability then look at 4025A.



REFERENCE SIRE ...  
 Connealy Consensus

## LVLS 1029A

Angus Bull 1029A AAA 17684183 Polled / Black 01.01.13

LOT 75

CONNEALY CONSENSUS  
**CONNEALY CONSENSUS 7229**  
 BLUE LILLY OF CONANGA 16

BR MIDLAND  
**LVLS MISS MIDLAND 2063 S**  
 VISION MISS POWERMARK 486

KMK ALLIANCE 6595 187  
 BLINDA OF CONANGA 004  
 WOODHILL ADMIRAL 77K  
 BLUE CASH OF CONANGA 6020  
 TWIN VALLEY PRECISION E161  
 BR ROYAL LASS 7036-19  
 BULLDOZER OF CONANGA  
 C S U MS POWERMARK 6186

	CED	BW	WW	YW	MA	CEM	SC	ST	DOC	CW	REA	YG	MARB	\$MTI
EPDs	3	2.4	52	84	21	7	-	-	-	-	-	-	-	0
	28	33	26	22	19	15	-	-	-	-	-	-	-	-

Individual Bull Data ...	BW	Adj. WW	Adj. YW	Adj. SC	ADG
	85 lbs.	712 lbs.	1,169 lbs.	36.9	3.06

- This Connealy Consensus son is out of a BR Midland dam.
- 1029A combines a moderate birth EPD with ample performance and a 22 for milk.
- This young prospect is long down his top, level from hooks to pens and is loaded with product.

## LVLS 1012A

Angus Bull 1012A AAA 17712566 Polled / Black 01.01.13

LOT 77

S A V BISMARCK 5682  
**S A V BRILLIANCE 8077**  
 S A V BLACKCAP MAY 5270

MYTTY IN FOCUS  
**LVLS 9101Y**  
 LVLS NEW DESIGN 9100P

G A R GRID MAKER  
 S A V ABIGALE 0451  
 S A V 8180 TRAVELER 004  
 S A V MAY 2420  
 S A F FOCUS OF E R  
 MYTTY COUNTESS 906  
 BON VIEW NEW DESIGN 208  
 L V MISS PROMPTER 9100

	CED	BW	WW	YW	MA	CEM	SC	ST	DOC	CW	REA	YG	MARB	\$MTI
EPDs	10	0.6	48	86	29	12	-	-	-	-	-	-	-	0
	-	-	-	-	-	-	-	-	-	-	-	-	-	-

Individual Bull Data ...	BW	Adj. WW	Adj. YW	Adj. SC	ADG
	78 lbs.	737 lbs.	1,334 lbs.	35.9	4.05

- This SAV Brilliance 8077 son is from a daughter of MYTTY In Focus back to a daughter of Bon View New Design 208
- This young herd sire prospect offers a low birth of .6, milk of 29 and has a very prominent look to him
- This herd sire prospect is moderate in his frame, easy in his condition and very docile

## LVLS Consensus 2966A

Angus Bull 2966A AAA Pending Polled / Black 01.18.13

LOT 76

CONNEALY CONSENSUS  
**CONNEALY CONSENSUS 7229**  
 BLUE LILLY OF CONANGA 16

BON VIEW NEW DESIGN 208  
**LVLS NEW DESIGN 2966P**  
 VISION MISS POWERMARK 486

KMK ALLIANCE 6595 187  
 BLINDA OF CONANGA 004  
 WOODHILL ADMIRAL 77K  
 BLUE CASH OF CONANGA 6020  
 B/R NEW DESIGN 036  
 BON VIEW ERICA 443  
 BULLDOZER OF CONANGA  
 C S U MS POWERMARKER 6186

	CED	BW	WW	YW	MA	CEM	SC	ST	DOC	CW	REA	YG	MARB	\$MTI
EPDs	4	1.7	49	82	27	-	0.9	-	27	25	0.4	-	0.7	-
	-	-	-	-	-	-	-	-	-	-	-	-	-	-

Individual Bull Data ...	BW	Adj. WW	Adj. YW	Adj. SC	ADG
	86 lbs.	713 lbs.	1,162 lbs.	35.2	3.45

- Another great Consensus son out of a New Design dam is this thick ended prospect.
- 2966A has a 1.7 birth EPD, 82 yearling EPD and a 27 for milk.
- This bull has superior performance, plenty of muscle and a quiet disposition.





REFERENCE SIRE ... MYTTY In Focus

Video's on all bulls are available for viewing at [www.lonelyvalley.com](http://www.lonelyvalley.com) and [www.DVAuctions.com](http://www.DVAuctions.com).



Angus Bull

489A AAA 17609305

**LVLS Ali 489A**  
Polled / Black 01.10.13

LOT **78**

S A F FOCUS OF E R  
**MYTTY IN FOCUS**  
MYTTY COUNTESS 906  
BON VIEW NEW DESIGN 1407  
**LVLS 489R**  
BLACKCAP V935

S A F FAME  
G D A R FOREVER LADY 246  
SITZ ALLIANCE 6595  
BALDRIDGE COUNTESS 357  
B/R NEW DESIGN 036  
BON VIEW PRIDE 664  
B T FREEWAY 91F  
BLACKCAP V632

	CED	BW	WW	YW	MA	CEM	SC	ST	DOC	CW	REA	YG	MARB	\$MTI
EPDs	11	-0.4	55	91	29	11	-	-	-	-	-	-	-	0
	29	35	27	22	22	19	-	-	-	-	-	-	-	-

Individual Bull Data ...	BW	Adj. WW	Adj. YW	Adj. SC	ADG
	83 lbs.	784 lbs.	1,361 lbs.	38.3	3.80

- This yearling Angus herd sire prospect has a prominent pedigree representing MYTTY In Focus on the sire side and New Design 1407 on the dam side.
- 489A has a 11 calving ease EPD, 54 weaning EPD and a 91 yearling EPD.
- In addition to calving ease and growth 489A has a 29 milk EPD.
- A full brother was high selling Angus bull last year selling to Massey Limousin.



Angus Bull

2965A AAA Pending

**LVLS Focus 2965A**  
Polled / Black 02.14.13

LOT **79**

S A F FOCUS OF E R  
**MYTTY IN FOCUS**  
MYTTY COUNTESS 906  
IMAGE MAKER  
**LVLS IMAGE MAKER 2966Y**  
LVLS 2966P

S A F FAME  
G D A R FOREVER LADY 246  
SITZ ALLIANCE 6595  
BALDRIDGE COUNTESS 357

	CED	BW	WW	YW	MA	CEM	SC	ST	DOC	CW	REA	YG	MARB	\$MTI
EPDs	10	-0.2	51	90	27	-	1.5	-	18	18	0.17	-	0.52	1.17

Individual Bull Data ...	BW	Adj. WW	Adj. YW	Adj. SC	ADG
	78 lbs.	780 lbs.	1,238 lbs.	34.9	3.45

- This In Focus son is out of a Image maker dam and is a very stout made Angus bull.
- We love the combination of calving ease, growth and maternal strengths of this elite pedigree.
- 2965A posted a 780 lb weaning weight.
- This young prospect is long and level, sound in his structure and well balanced.



## LVLS In Focus 1027A

Angus Bull 1027A AAA Pending Polled / Black 01.10.13

LO **80**

S A F FOCUS OF E R  
**MYTTY IN FOCUS**  
MYTTY COUNTESS 906

S A F FAME  
G D A R FOREVER LADY 246  
SITZ ALLIANCE 6595  
BALDRIDGE COUNTESS 357

LVLS 9313Y

	CED	BW	WW	YW	MA	CEM	SC	ST	DOC	CW	REA	YG	MARB	\$MTI
EPDs	10	-1.3	52	100	30	-	0.5	-	25	25	0	0.01	0.6	52

Individual Bull Data ...	BW	Adj. WW	Adj. YW	Adj. SC	ADG
	74 lbs.	685 lbs.	1,273 lbs.	36.9	4.01

- This purebred Angus bull is very well bred and from the prominent sire MYTTY In Focus
- We love the moderation of frame, doing ability and his docility
- He posts a low birth of -1.3, yearling weight of 100 and milk of 30
- His marbling number is .60 and MTI of 52

## LVLS Upshot 8106A

Angus Bull 8106A AAA 17609529 Polled / Black 01.10.13

LO **81**

SITZ UPWARD 307R  
**EXAR UPSHOT 0562B**  
EXAR BARBARA T020

CONNELLY ONWARD  
SITZ HENRIETTA PRIDE 81M  
ISU IMAGING Q 9111  
LCC MC HENRY BARBAR MG382  
SITZ TRAVELER 8180  
BOYD FOREVER LADY 8003  
FRENZEN KEYSTONE K17  
FRENZEN TRICIA H214

S A V 8180 TRAVELER 004  
**LVLS MISS TRAVELER 8106W**  
FRENZEN TRICIA M76

	CED	BW	WW	YW	MA	CEM	SC	ST	DOC	CW	REA	YG	MARB	\$MTI
EPDs	7	2.8	52	100	25	9	-	-	-	-	-	-	-	0
	28	36	28	22	13	10	-	-	-	-	-	-	-	-

Individual Bull Data ...	BW	Adj. WW	Adj. YW	Adj. SC	ADG
	86 lbs.	654 lbs.	1,265 lbs.	33.3	3.91

- Sired by EXAR Upshot and out of a Traveler 004 dam is this high performing prospect.
- 8106A has a moderate birth EPD, 52 weaning EPD and a 100 Yearling EPD.
- In addition to exceptional growth and carcass merit in this young sire he has an 26 milk EPD if you need to keep replacement heifers.

## LVLS Brilliance 8112A

Angus Bull 8112A AAA 17674310 Polled / Black 01.10.13

LO **82**

S A V BISMARCK 5682  
**S A V BRILLIANCE 8077**  
S A V BLACKCAP MAY 5270

G A R GRID MAKER  
S A V ABIGALE 0451  
S A V 8180 TRAVELER 004  
S A V MAY 2420  
VERMILION DATELINE 7078  
LAGRAND LUCY 4206  
K G CONSTITUTION  
FRENZEN LADY K153

LAGRAND VRD 7185  
**LVLS 8099W**  
FRENZEN LADY M48

	CED	BW	WW	YW	MA	CEM	SC	ST	DOC	CW	REA	YG	MARB	\$MTI
EPDs	9	0.9	48	89	21	12	-	-	-	-	-	-	-	0
	26	34	25	19	16	12	-	-	-	-	-	-	-	-

Individual Bull Data ...	BW	Adj. WW	Adj. YW	Adj. SC	ADG
	88 lbs.	650 lbs.	1,265 lbs.	37.3	4.01

- SAV Brilliance progeny have been topping sale all over the country because of the benefits they bring to the cattle business.
- This young prospect has tremendous potential with the growth and calving ease he offers.
- 8112A has a .9 birth EPD, 47 weaning EPD and a 89 yearling EPD.
- The level design, smoothness of shoulder and structure of this bull makes him a top prospect in the sale.



## LVLS Final Product 8107A

Angus Bull 8107A AAA 17609424 Polled / Black 01.01.13

LO **83**

CONNELLY PRODUCT 568  
**CONNELLY FINAL PRODUCT**  
EBONISTA OF CONANGA 471

G A R RETAIL PRODUCT  
PRIDE FINE OF CONANGA 566  
CONNELLY DEEP CANYON 454  
EBONISA OF CONANGA 5469  
HERO 6267 OF R R 2418  
H A RITO BLACKCAP 9038  
S A V 8180 TRAVELER 004  
FRENZEN TRICIA M76

H A IMAGE MAKER 0415  
**LVLS MISS MAKER 8106Y**  
LVLS MISS TRAVELER 8106W

	CED	BW	WW	YW	MA	CEM	SC	ST	DOC	CW	REA	YG	MARB	\$MTI
EPDs	5	1.7	59	105	33	8	-	-	-	-	-	-	-	0
	30	36	27	22	19	15	-	-	-	-	-	-	-	-

Individual Bull Data ...	BW	Adj. WW	Adj. YW	Adj. SC	ADG
	81 lbs.	692 lbs.	1,235 lbs.	38.9	3.77

- Sired by Connealy Final Product and out of a HA Image Maker dam is this exceptional herd bull prospect.
- 8107A has a 1.7 birth EPD, exceptional growth with a 58 weaning and a 105 yearling EPD and a 34 for milk.
- If you are need of a high quality herd sire that will add pounds of product to your next calf crop then look no further.

## LVLS 157A

Angus Bull 157A AAA 17684136 Polled / Black 01.03.13

LO **84**

CONNELLY PRODUCT 568  
**CONNELLY FINAL PRODUCT**  
EBONISTA OF CONANGA 471

G A R RETAIL PRODUCT  
PRIDE FINE OF CONANGA 566  
CONNELLY DEEP CANYON 454  
EBONISA OF CONANGA 5469  
BANDO OF CONANGA 573  
WK ESSA 4102  
F F PINE DRIVE T50 W08  
F F MISS MACHINIST S06

WK BANDO 6314  
**FRENZEN BELLE M157**  
F&F LADY DRIVE W08 Z76

	CED	BW	WW	YW	MA	CEM	SC	ST	DOC	CW	REA	YG	MARB	\$MTI
EPDs	3	0.8	50	96	26	7	1.12	-	13	25	0.46	0.04	0.19	0
	27	35	27	22	20	15	5	-	5	5	5	5	5	-

Individual Bull Data ...	BW	Adj. WW	Adj. YW	Adj. SC	ADG
	80 lbs.	702 lbs.	1,185 lbs.	37.0	3.27

- This January yearling bull is also out of Final Product and a WK Bando dam.
- He is moderate in his frame, easy in his condition and has exceptional bone and foot work.
- His EPD's are superb combining a .8 birth EPD with a 50 weaning and a 96 yearling EPD which are complimented with a 27 for milking ability.



**R&R**  
**Marketing Company**  
 P.O. Box 281677  
 Nashville, TN 37228

(L#2845)

**FIRST CLASS**  
**PRE-SORTED**  
**PAID**  
 Montezuma, Iowa  
 Permit No. 30

Catalog  
 designed  
 by  
  
 designs by  
 arin  
[www.designsbyarin.com](http://www.designsbyarin.com)



**LONELY VALLEY'S**  
**Keepin' Kind**  
 Bull Sale