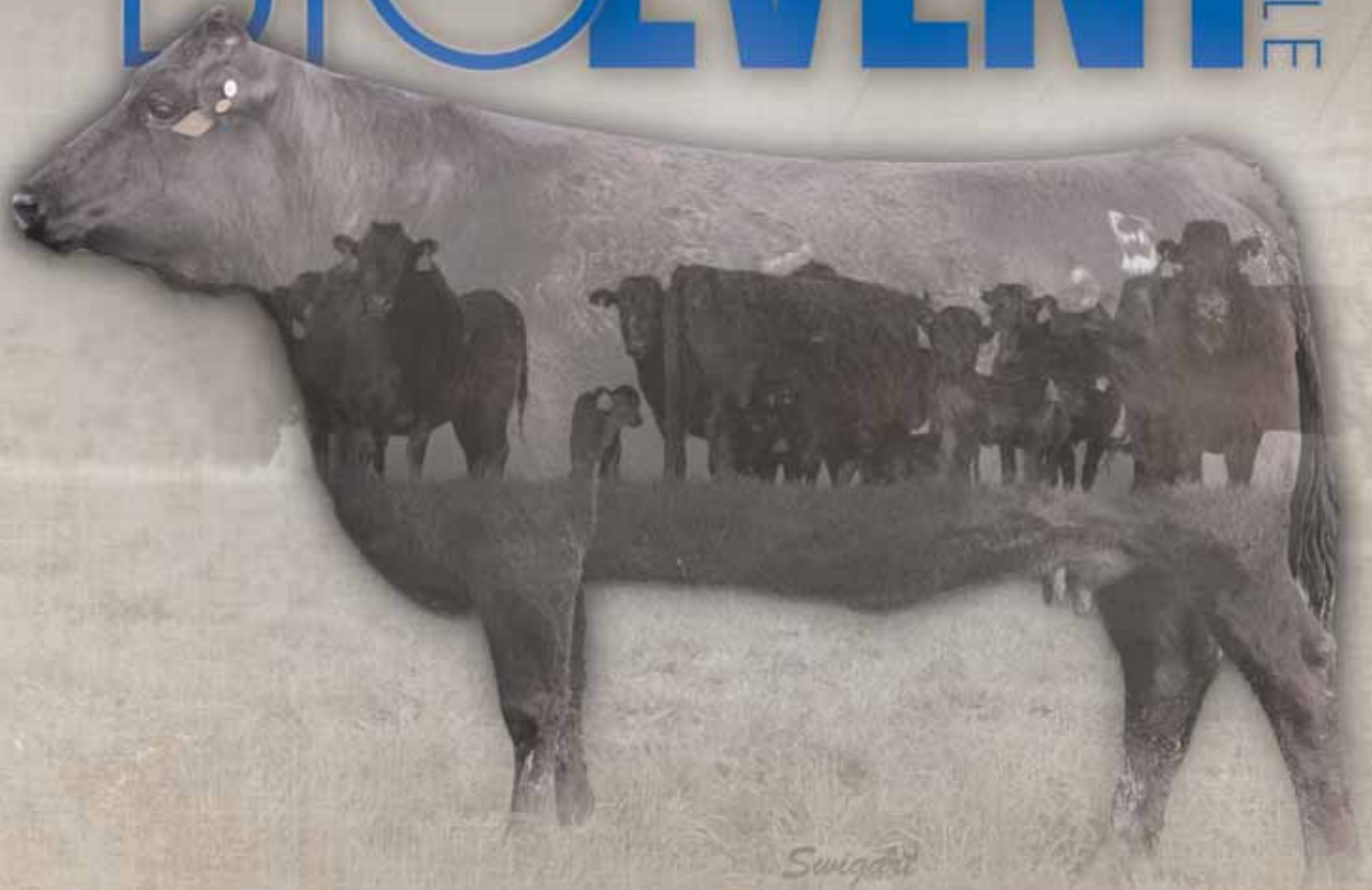




SUNDAY, JUNE 9, 2019 | 2:00 P.M. | MAGNOLIA HOTEL | OMAHA, NE

# THE BIG EVENT SALE





JDH WAGYU IS OVER 29 YEARS IN THE MAKING!

JDH, Inc. was created in 1985 as an original farming company where they began breeding cattle in 1990. With the influence of Wagyu genetics to the operation in 1999 and then a feedlot featuring Wagyu cattle started in year 2000. For nearly 30 years Joe and his wife Galynn and their family along with a strong list of employees grew their operation to the largest herd of Registered Wagyu in the United States to date.

As you view this sale catalog, you will see that JDH wanted to showcase all the facets of the JDH operation. We have elite breeding genetics masterpieces, production cattle, females ready to breed, open heifers, Angus bred to Wagyu, herd sire prospects along with fat steers and feeder calves.

Join JDH in the movement in celebrating all things that are good in Wagyu!





## SALE SCHEDULE

FRIDAY & SATURDAY, JUNE 7 & 8, 2019

10:00 A.M. – 6:00 P.M. JDH Sale Offering Sale Preview, Villisca, IA  
All sale cattle are on display at JDH.

SUNDAY, JUNE 9TH, 2019

8:00 A.M. Sale cattle on display at the JDH Farm

The following takes place at the Magnolia Hotel in Omaha, NE

12:00 P.M. Complimentary Brunch & Refreshments

12:30 P.M. Wagyu Industry Seminar

2:00 P.M. The BIG EVENT Sale



To view the sale cattle use this GPS address.  
JDH WAGYU, INC., 64919 Yankton Road, Villisca, Iowa 50864



## SALE CONTACTS

Randy Ratliff	Wagyu365	615.330.2735
Kiley McKinna	Wagyu365	402.350.3447
PJ Budler	Wagyu365	682.597.0380
Joe Hoye	JDH Wagyu	712.249.2076
Tony Orstad	JDH Wagyu	712.249.6979
Chisum Peterson	Auctioneer	605.730.4214

Visit [Wagyu365.com](http://Wagyu365.com)  
to view this sale book and all videos online.



# A NOTE FROM JOE



Welcome to the Old Market of Omaha! My wife (Galynn) and I would like to thank you for helping us make our first sale a memorable event. If there is anything we can do for you during your stay please don't hesitate to ask! We are excited to be able to offer you what we believe to be the best representation of what we spend our time and effort producing. We are nearly 30 years into our Wagyu business venture and it is now time to make our offerings available to the buying public. We, along with our very able team members, have done all we can to create the finest and very best Wagyu product that we could. In this "The Big Event" Sale you will have the opportunity to select from all segments of our program. There are the elite genetics, the production cow calf pairs, fall bred females, open heifers, herd sire prospects, Angus commercial females bred for an F1 Wagyu calf, fat steers along with feeder steers. In this event we are hoping to bring all segments of the breed together to one event that showcases everything that is good in Wagyu.

Diversity has been my goal in the breeding of these sale animals. Particular attention was paid to the inbreeding coefficients specific to the ABCD breeding method in most cases.

We welcome anyone's inquiry in regards to the sale and we are more than excited to show you what the JDH Wagyu program has to offer. Come to the farm and take a look at our program prior to the sale, leave your trailer and then head on in to Omaha where we will showcase the sale offering via a video platform.

If there is anything that anyone in the JDH program or any member of the Wagyu365 team can do, then please feel free to call any of us.

Sincerely,

Joe and Galynn Hoye, JDH Wagyu



JOE & GALYNN HOYE

Office, 712.763.4611 / Joe cell, 712.249.2076

JOEH@NETINS.NET

HERDSMAN, Tony Orstad, 712.249.6979

64919 Yankton Rd., Villisca, IA 50864



LEFT to RIGHT: Daniel & Amanda Mahaffy with daughters Abigail and Ruth A'Lynn (and now arrived Grace); Galynn Hoye, Parker Hoye, Jessica Hoye, Joe Hoye, Shelby Hoye, Preston Hoye, Savannah Palmer, and Justin Palmer

## WELCOME

We invite new and old friends to come together under our common love for the Wagyu breed with hopes that we all leave with a fresh perspective of all we have to offer each other across programs and the cattle industry as a whole.

Make plans to join us for a fun-filled weekend of fellowship and camaraderie!



# MEET THE WAGYU 365 TEAM

Dear Fellow Wagyu enthusiasts,

We would like to cordially welcome you to the JDH Wagyu “The Big Event Sale.” Joe and Galynn Hoye are the owners of JDH Wagyu – a family operation located near Villisca, Iowa. Their Wagyu operation started in 1990 (20 years ago) and has grown to in excess of 1600 Registered Wagyu. Over the years they have always taken great pride in producing a quality product, their customers successes and doing things the right way.

The very first Registered Wagyu were purchased from Gary Yamamoto in year 2009 and with the growth of the business the JDH program began to expand. Joe served as the AWA Treasurer and then the President in year 2014 thru 2016. He was one of the original owners of Imperial Beef starting in year 2006 and his shares were later sold in year 2018. Joe is now totally focused on creating a solid foundation that produces the finest Wagyu possible.

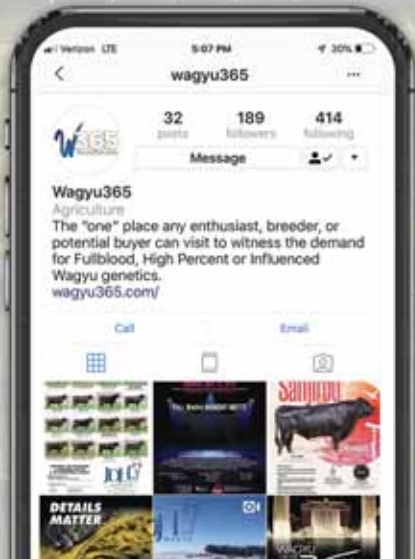
In this sale offering JDH has brought you their very best. As you flip through the catalog, we hope you’ll notice the reflection of many of their premier donor cow families, elite herd sires, a progressive A.I. program and the no ‘short-cuts’ approach they have adopted over the years. In this “Big Event” sale offering we have not only brought you their very finest heifer, cow prospects and bred females, but also a highly productive set of spring calving cows with calves at side. In totality, whether you’re looking for replacement heifers or a breeder looking to make an investment, rest assured they have quality products backed with quality service.

That said, it’s a priority of ours to make all business transactions with customers a pleasant experience. We will be displaying the sale cattle at the JDH Wagyu headquarters for three days prior to the sale and then they will be auctioned off on video screens at the Magnolia Hotel Omaha. (Approximately 45 minutes from the main JDH headquarters). Of course all cattle being offered are fully guaranteed and JDH fully stands behind all information printed in the sale catalog and on the additional supplemental information sheet.

Furthermore, if you would like to discuss the sight unseen purchase program, financial arrangements or trucking plans we are happy to accommodate.

If we can be of any assistance to you prior to or during the sale we have an open door policy and welcome all calls and questions. We take all calls very seriously and handle all transactions in a respectful manner.

Best regards,  
The Wagyu365 team



RANDALL O. RATLIFF  
SALES REPRESENTATIVE  
615.330.2735 | Randy@wagyu365.com



KILEY MCKINNA  
SALES REPRESENTATIVE  
402.350.3447 | Kiley@wagyu365.com



ABBY LANE  
OFFICE MANAGEMENT  
9119.618.8098 | Abby@wagyu365.com



P J BUDLER  
INTERNATIONAL AFFAIRS  
682.597.0380 | PJ@wagyu365

To learn more about Wagyu365 events, sale updates and more, visit [Wagyu365.com](http://Wagyu365.com).



@Wagyu365

## CONNECT WITH US

FOLLOW WAGYU365 ON SOCIAL MEDIA ~

#Wagyumarketingatitsfinest

#24/7/365Wagyu

#alldayeverydaywagyu

## TABLE OF CONTENTS

- 3 THE BIG EVENT SALE SCHEDULE
- 6 SALE TERMS & CONDITIONS
- 7 W365Auctions.com ~ WATCH & BID LIVE INFORMATION
- 8 JDH WAGYU FEEDER PROGRAM
- 9 MEET THE JDH TEAM

## LIVE LOTS

- 10 SANJIROU GENETICS
- 16 ITOZURUDOL TF151 GENETICS
- 19 FULLBLOOD WAGYU COW/ CALF PAIRS
- 26 PUREBRED WAGYU COW/ CALF PAIRS
- 30 FULLBLOOD WAGYU FALL CALVING FEMALES
- 36 PUREBRED WAGYU FALL CALVING FEMALES
- 70 FULLBLOOD WAGYU YEARLING HEIFERS
- 45 FULLBLOOD WAGYU 10-MONTH-OLD OPEN HEIFERS
- 48 PUREBRED WAGYU 20-MONTH-OLD OPEN HEIFERS
- 51 COMMERCIAL ANGUS FEMALES BRED TO WAGYU BULLS
- 53 FULLBLOOD WAGYU 14-MONTH-OLD BULLS
- 58 PUREBRED WAGYU TWO-YEAR-OLD BULLS
- 60 HIGH % WAGYU 26-MONTH-OLD STEERS
- 61 HIGH % WAGYU 12-MONTH-OLD STEERS
- 62 WAGYU SEMEN
- 64 REFERENCE SIREs



## SALE LOCATION

The sale will be broadcast live at the Magnolia Hotel Omaha in Omaha, NE.  
The following GPS address should be used for directions;  
1615 Howard Street, Omaha, NE 68102  
402.341.2500 for reservations and/or directions



### VIEWING

Sale offering will be available for viewing Friday and Saturday, June 7th and 8th at the farm between 10:00 a.m. and 6:00 p.m. Also viewing will be available sale morning Sunday, June 9th from 8 a.m. to 11 a.m. at the farm. SALE CATTLE ARE ONLY on site at the farm near Villisca, IA. The sale cattle will be sold via video and viewed on TV's at the sale held in Omaha, NE at the Magnolia Hotel.

### SALE DAY UPDATES

Updates will be provided as of Thursday, June 6th via a supplemental information sheet which can be found on [www.Wagyu365.com](http://www.Wagyu365.com).

### ANNOUNCEMENTS

Any announcements from the sale block will take precedence over printed material.

### INSURANCE

Insurance will be available through any representative at [Wagyu365.com](http://Wagyu365.com).

### TRUCKING

Please notify Randy Lathrop of Lathrop Livestock at 847.428.5806. He will be available for long-distance trucking.

### LOAD OUT

Cattle may be loaded out at any time following the sale and PREFERRED load out would be the morning of June 10th. Any questions in regards to load out or pick-up contact JDH representative Tony Orstad 712.249.6979

### ABSENTEE BIDS

Buyers unable to attend the sale should contact the [Wagyu365](http://Wagyu365.com) staff.

### AIR TRANSPORTATION

Omaha Eppley Airfield  
4501 Abbott Dr., Omaha, NE 68110

### ACCOMMODATIONS

Magnolia Hotel, 402.341.2500 (sale headquarters)  
Embassy Suites by Hilton, 402.346.9000  
Hilton Omaha, 402.998.3400

### HEALTH PAPERS

All cattle sold will be accompanied with an appropriate health paper for immediate shipment. Additional health testing may be required from some locations. A veterinarian will be available sale day to assist the buyer with all purchases and will be with the clerks at the sale.

### TERMS AND CONDITIONS

Terms of sale are cash, check, Visa or Master Card. If a credit card is used there will be a 3% fee charged to the buyer on purchases.

### REGISTRATIONS

Transfer of registration papers will not be made until payment is made in full. Cattle will sell under the Standard Terms and Conditions of the American Wagyu Association. If you are unfamiliar with these standard terms and conditions then please log onto [www.Wagyu.org](http://www.Wagyu.org)

### PLEASE NOTE

EVERY EFFORT HAS BEEN MADE TO BE COMPLETELY TRANSPARENT WITH ALL THE CATTLE SELLING. Many of the cattle in the sale offering have been tested for all known genetic defects to the best to our knowledge. In addition many have been tested for SCD and Tenderness panels. All the results will be available on a sale supplemental sheet prior to the sale

### OMAHA'S OLD MARKET WAGYU CULINARY EXPERIENCES

Sullivan's Steakhouse, 402.342.0077  
V. Mertz, 402.345.8980  
Monarch Prime & Bar, 402.933.7437

### OMAHA'S ARTS & ENTERTAINMENT

We hope you take the opportunity to explore Omaha's Arts and Entertainment District while you are here. Street musicians and artists offer entertainment as you wander in and out of the many boutiques and galleries that line the cobblestone streets – a sure hit for the wives! My personal favorite is Mangelsen's Images of Nature Gallery.



WATCH &  
BID LIVE AT



# CONVENIENCE BUYING

JDH Wagyu and Wagyu365 want to make your buying experience easy and convenient!

## 1. VISIT US

You can't beat the experience of seeing your potential new investments in person! We are looking forward to this day of opportunity to view the sale cattle, see old friends, connect with new friends and answer any questions you have about your interests before sale day. We hope you can make it out to Iowa before sale day to get the full JDH experience, but if you can't make it, we've got you covered with quality options to purchase cattle with convenience!

## 2. CALL US IN ADVANCE

With all the quick-messaging technology at our disposal, sometimes picking up the phone is the easiest way to get the information you need! At JDH, we are happy to have a conversation and walk you through any questions or information you need for sale day to make the best buying decisions for your program. Any member of our team would be happy to talk with you and connect you to the right people and information you need to feel fully informed for sale day. Contact any member of Wagyu365.

## 3. BID ONLINE

If you are unable to make it to Omaha for the sale, join us online for REAL TIME, LIVE online bidding for The BIG EVENT Sale. All lots in the sale will be available for viewing prior to sale day and bidding on sale day at [www.wagyu365.com](http://www.wagyu365.com).

## 4. VALUE PURCHASING

Our JDH program is one of the AWA's largest source of registered Wagyu cattle in the US. No matter what your needs are, this offering is sure to add value to an already thriving program and enhance the future of your herd. From commercial options to some of the highest quality genetic influences of the breed — this will be the sale for you.

# JDH WAGYU FEEDER CALF PROGRAM



## FEEDER CALF PROGRAM

How do you qualify for the JDH Wagyu Feeder Calf Program? We want our customers to reap the full benefits of using our JDH Wagyu genetics. We have listed requirements that if met by any customers we will be happy to visit with you about purchasing and/or placing them in the hands of potential buyers of Wagyu steers.

- No hormones added.
- Antibiotic Free
- Third party verification.
- Predominately JDH Wagyu genetics.
- Weaned at a minimum of 45 days.
- No more than 90 days from the youngest to the oldest.
- Subject to a minimal sort by a JDH representative to ensure uniformity.



# THE JDH TEAM

---

Joe and Galynn Hoye realize their program is only as good as the people they surround themselves with. We cannot thank these people enough for all they do to keep our operation going at the pace we wish!



## MEET THE TEAM

TONY ORSTAD  
Operations Manager

CODY BOURRETTE  
Animal Health

ANDY GRIESHABER  
Feeding

NICK ORSTAD  
Operations

JEREMY PALMER  
Mechanical

ROBIN GRIESHABER  
Grounds & Maintenance

KRIS SCHULER  
Office

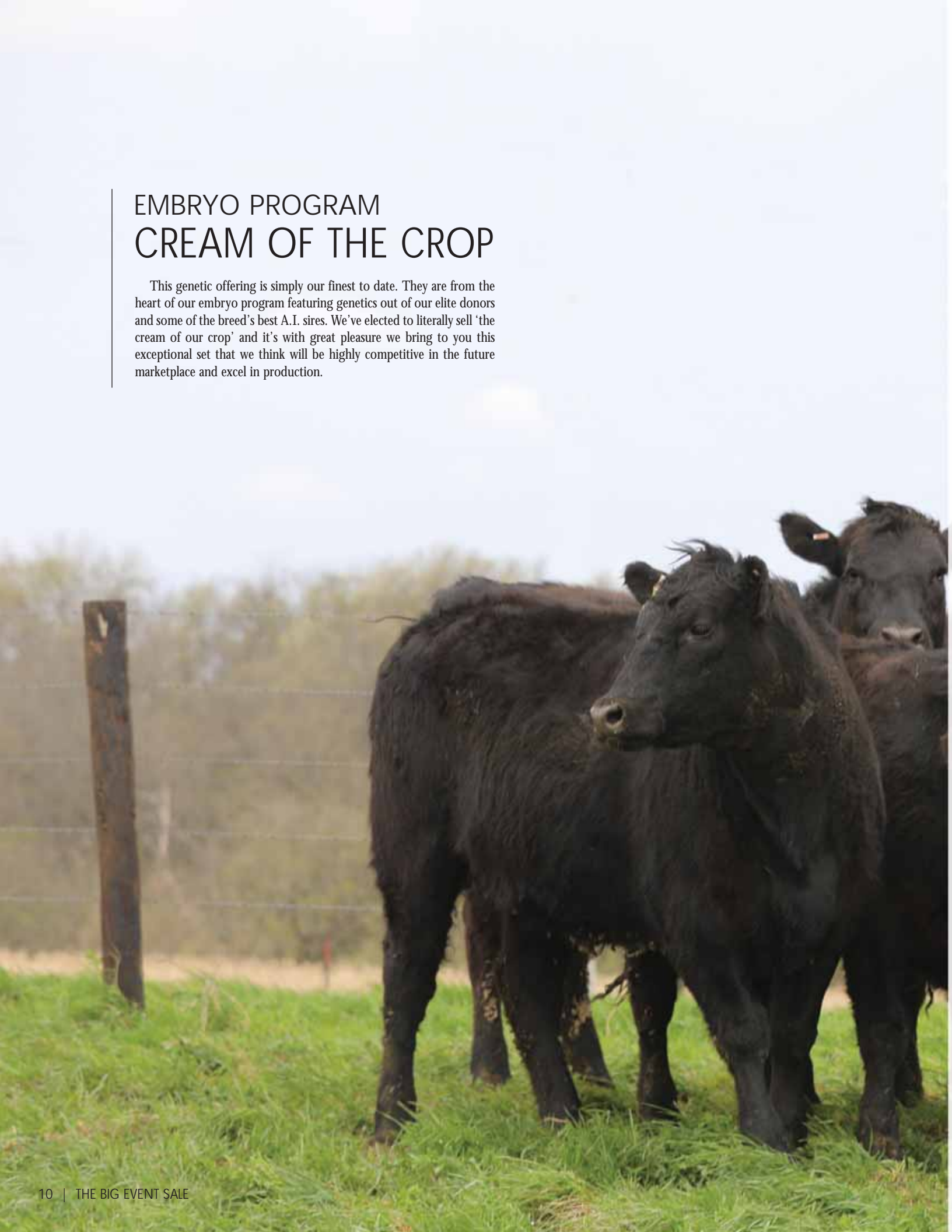
GARRETT WINTHER  
Missouri Operations Manager

CLYDE RAUCH  
Missouri Herdsman

AUSTIN LININGER  
Missouri Operations

## EMBRYO PROGRAM CREAM OF THE CROP

This genetic offering is simply our finest to date. They are from the heart of our embryo program featuring genetics out of our elite donors and some of the breed's best A.I. sires. We've elected to literally sell 'the cream of our crop' and it's with great pleasure we bring to you this exceptional set that we think will be highly competitive in the future marketplace and excel in production.





# SANJIROU 3 HEIFERS

1

## JDH MS SANJIROU 3 236F ET

FB37161 | 07.23.18 | HEIFER | JDH 236F

SANJIROU 3	WORLD K'S MICHIFUKU	ONJIRO 11550
	WORLD K'S SUZUTANI	MICHIKO 655635
	HIRASHIGETAYASU J2351	TANISHIGE 1526
EF HIRAHANNA B87	CHR MS KITAGUNI 398	SUZUNAMI 472255
		DAI 20 HIRASHIGE 287
		DAI 5 YURUHIME
		CHR MS KITAGUNI 398
		CHR MS SANJIROU 185R

Selling full possession and 50% embryo interest with the option to double and take all.

This 10 month old heifer is front pasture material in anyone's breeding program. She brings tremendous pedigree and phenotype. The photo of her dam shows off her extremely correct phenotype and exhibits her exceptional power. This provides a great base for this Sanjiro 3 heifer. Her sire, Sanjiro 3, has leaped to the #1 ranking of the 2017 WSU sire summary for Marbling and also ranks highly for Rib Eye Area. This should come as no surprise as he is the product of a Suzutani x Michifuku mating. The depth on the maternal side of this heifer's pedigree brings excitement by reading the unique sire stack. The dam is sired by Hirashigetayasu, who continues to solidify his reputation as a tremendous foundation sire supplying enormous growth while maintaining carcass qualities. His daughters are excellent brood cows from which to breed. The sire stack continues with CHR Kitaguni 07K x Sanjiro x JVP 400 x JVP Yasutanisakura providing a balanced pedigree of carcass traits and growth. This JVP Yasuyoshi maternal line is an emerging carcass trait line as evidenced by leading carcass performance in the Marble Ranch program and through leading marbling sire CHR Shigesigetani 5. There are not many Yasuyoshis out there and even fewer Sanjiro 3 daughters. This is a great opportunity to acquire both in one beautiful heifer!



EF HIRAHANNA B87 / DAM OF LOT 1

2

## JDH SANJIROU 3 445F ET

FB41983 | 08.17.18 | HEIFER | JDH 445F

SANJIROU 3	WORLD K'S MICHIFUKU	ONJIRO 11550
	WORLD K'S SUZUTANI	MICHIKO 655635
	CHR YASUFUKU 246T	TANISHIGE 1526
EF MS YASUTAKA 4PZ	TAKANASHI	SUZUNAMI 472255
		WORLD K'S YASUFUKU JR
		CHR MS KITATERU 59J
		CHR TAKAZAKUR 101L
		OTANASHII

Selling full possession and 50% embryo interest with the option to double and take all.

Sanjiro 3 daughters are rare and here is a Sanjiro 3 heifer with a pedigree that combines genetics from three of the elite maternal lines of the breed! Suzutani is represented through Sanjiro 3 on the paternal side and the Hikokuras and Okutani are present on the maternal side. The photo of the dam shows what these maternal genetics can produce. The dam is the product of two successive Hikokura sires – CHR 246T and CHR 101L, both of whom have produced some tremendous progeny. Michifuku and Haruki II back up these two sires while tracing back to the popular Fujiko and an original import female, Okutani. Okutani has been building a legacy of her own through generations of top performing females and sires. This heifer provides a pedigree that will allow a diversity of sires to be used, enhancing her value as a herd foundation female. She will soon be flush age for a quick return on investment. Think of the potential of a heifer sired by the #1 Marbling sire, Sanjiro 3, combined with the elite performance of the Okutani maternal line!



EF MS YASUTAKA 4PZ / DAM OF LOT 2



# SANJIROU 3 GENETICS



EF MS YASUTAKA 4PZ / DAM OF LOT 4

3

## PLANNED MATING

Recip: Blue 26 | Fullblood Angus/ Wagyu | Due 08.19.19

**SANJIRO 3 FB2900**  
WORLD K'S MICHIFUKU  
WORLD K'S SUZUTANI

**HIRASHIGETAYASU EIOKO FB14976**  
HIRASHIGETAYASU J2351  
CHR MS SANJIROU 434

ONJIRO 11550  
MICHIKO 655635  
TANISHIGE 1526  
SUZUNAMI 472255  
DAI 20 HIRASHIGE 287  
DAI 5 YURUHIME  
WORLD KS SANJIROU  
MJB MS KITAFUKU 05K

4

## PLANNED MATING

Recip: Blue 56 | Fullblood Angus/ Wagyu | Due 08.19.19

**SANJIRO 3 FB2900**  
WORLD K'S MICHIFUKU  
WORLD K'S SUZUTANI

**EF MS YASUTAKA 4PZ FB18569**  
CHR YASUFUKU 246T  
TAKANASHI

ONJIRO 11550  
MICHIKO 655635  
TANISHIGE 1526  
SUZUNAMI 472255  
WORLD K'S YASUFUKU JR  
CHR MS KITATERU 59J  
CHR TAKAZAKUR 101L  
OTANASHII

Opportunity presents itself again with a Sanjiro 3 pregnancy from Eioko 51Z, FB14976. The resulting calf will be highly desirable, whether a male or female. Eioko 51Z is a daughter of the great growth and phenotype sire Hirashigetayasu. The mating of Sanjiro 3 with Hirashigetayasu is a dream one with Hirashigetayasu providing the frame and growth and Sanjiro 3 providing tremendous carcass traits as the #1 Marbling bull in the US. The maternal line here, is the JVP Chisahime line, which is internationally proven with elite sires in the US and Australia, including the highly respected Westholme program. The strong maternal line of this pregnancy is enhanced with a sire stack of growth traits leader Hirashigetayasu x rib eye area leader Sanjiro x marbling leader JVP 068 x international marbling leader Kitaguni Jr x JVP 400 x Chisahime. A pedigree this deep is very hard to find, especially topped off with a bull like Sanjiro 3. Carcass genetics at their best!

A Sanjiro 3 on an Okutani female will bring excitement to any breeder. This Sanjiro 3 pregnancy is backed by the tremendous Okutani line with a maternal sire path that includes two TF Hikokura sires, CHR Yasufuku 246T and CHR Takazakura 101L, and then carcass leader Michifuku and growth/maternal leader Haruki II. This sire stack exhibits great balance between carcass traits and growth while the maternal line features two of the great cows of the Wagyu breed in Fujiko and import female Okutani. The Okutani line has performed well in both the US and Australia. Because of that, the resulting calf from this pregnancy will be highly desired if either a heifer or bull. A tremendous opportunity here to capitalize on Sanjiro 3.

# 5

## PLANNED MATING

Recip: Blue 32 | Fullblood Angus/ Wagyu | Due 08.19.19

<p><b>SANJIRO 3</b> FB2900</p> <p>WORLD K'S MICHIFUKU</p> <p>WORLD K'S SUZUTANI</p> <p>JVP HIRATAFUJI 402</p> <p><b>HIRATA SANJI B278</b> FB20440</p> <p>CHR MS SANJIROU 434</p>	<p>ONJIRO 11550</p> <p>MICHIKO 655635</p> <p>TANISHIGE 1526</p> <p>SUZUNAMI 472255</p> <p>HIRATA 1317</p> <p>JVP YASUFUJI 1-4 266</p> <p>WORLD K'S SANJIROU</p> <p>MOB MS KITAFUKU 05K</p>
--	--

This Sanjiro 3 pregnancy provides another chance to get into the JVP Chisahime line. This time through the rare sire JVP Hiratafuji 402. This pregnancy is a great opportunity to acquire rare and unique genetics through the sire, Sanjiro 3, and the maternal grandsire, Hiratafuji. Hiratafuji descends from the emerging Yasuyoshi maternal line and only has 23 progeny registered with the AWA. He is a grandson of the incredible Japanese sire Dai 7 Itozakura. Continuing the maternal pathway of this pregnancy beyond Hiratafuji are the highly reliable carcass sires Sanjiro, JVP 068, and Kitaguni Jr. This pregnancy is built for high marbling performance. With Sanjiro 3 and Hiratafuji in the pedigree it is a chance to own something unique backed by generations of proven sires.



HIRATA SANJI B278 / DAM OF LOT 5

# 6

## PLANNED MATING

Recip: Green 399 | Fullblood Angus/ Wagyu | Due 08.19.19

<p><b>SANJIRO 3</b> FB2900</p> <p>WORLD K'S MICHIFUKU</p> <p>WORLD K'S SUZUTANI</p> <p>HIRASHIGETAYASU J2351</p> <p><b>HIRASHIGETAYASU ASAMI</b> FB14101</p> <p>CHR MS SANJIROU 434</p>	<p>ONJIRO 11550</p> <p>MICHIKO 655635</p> <p>TANISHIGE 1526</p> <p>SUZUNAMI 472255</p> <p>DAI 20 HIRASHIGE 287</p> <p>DAI 5 YURUHIME</p> <p>WORLD K'S SANJIROU</p> <p>MOB MS KITAFUKU 05K</p>
---	---

A look at the photo of the dam of this Sanjiro 3 pregnancy will make you realize the unique opportunity this lot represents. There may be no better sire to cross Sanjiro 3 onto than Hirashigetayasu, who is the maternal grandsire of the pregnancy. Sanjiro 3 brings elite level carcass traits as the #1 Marbling US sire and Hirashigetayasu contributes elite growth and superb phenotype. This provides tremendous balance to a pedigree that is extremely potent for carcass traits with sires such as Sanjiro, former Marbling #1 JVP 068, and internationally proven marbling leader Kitaguni Jr. These bulls lead back directly in the maternal side of the pregnancy to the matriarch, JVP Chisahime. Chisahime has now made a strong contribution to the gene pool of elite genetics within the breed. The resulting calf from this pregnancy will make a valuable contribution to any breeding program!



HIRASHIGETAYASU ASAMI / DAM OF LOT 6



# SANJIROU 3 EMBRYO PACKAGES



ITOSHIGEFUJI FUMIKO / DAM OF LOT 7

LOT 7 & 8 EMBRYOS are located at Trans Ova Genetics, 2938 380th St., Sioux Center, IA 51250, 712.722.3586. Once paid for, the embryos will be released to the buyer where they pay shipping costs.



EF MISS YASUTAKA 4PZ / DAM OF LOT 8

## 7 THREE IVF EMBRYOS

Three Grade 1 IVF Embryos | Fullblood

WORLD K'S MICHIFUKU	ONJIRO 11550
<b>SANJIRO 3 FB2900</b>	MICHIKO 655635
WORLD K'S SUZUTANI	TANISHIGE 1526
	SUZUNAMI 472255
ITOSHIGEFUJI	ITOFUJI 483
<b>ITOSHIGEFUJI FUMIKO FB14979</b>	DAI 30 NOBORU J920752
CHR MS FUKUTSURU 193R	MBJ MUSASHI 03K
	CHR MS KIKUSHIGE 16

This embryo lot is another exciting mating, putting the #1 Marbling bull, Sanjiro 3, onto a daughter of the highly predictable growth bull, TF 147 Itoshigefuji. This is a wonderful complementary mating of carcass qualities to growth traits. The Itoshigefuji dam descends from the powerful Yuriko maternal line which has proven its genetic power in the US and Australia. The maternal line of these embryos traces back through the Itoshigefuji dam to daughters of MJB Musashi (068 son), TF Kikuhana, and JVP 400 and then to Yuriko herself. There is a ton of growth in this pedigree coming from Itoshigefuji and Kikuhana, making these embryos very desirable because of a nice balance of genetic traits. Sanjiro 3 is obviously an elite carcass bull and TF 147 Itoshigefuji has made some of the all-time great brood cows. TF 147 daughters are the ideal cows to breed to carcass bulls so as to keep growth in the resulting calves. Great genetics in these embryos.

## 8 THREE IVF EMBRYOS

Three Grade 1 IVF Embryos | Fullblood

WORLD K'S MICHIFUKU	ONJIRO 11550
<b>SANJIRO 3 FB2900</b>	MICHIKO 655635
WORLD K'S SUZUTANI	TANISHIGE 1526
	SUZUNAMI 472255
CHR YASUFUKU 246T	WORLD K'S YASUFUKU JR
<b>EF MS YASUTAKA 4PZ FB18569</b>	CHR MS KITATERU 59J
TAKANASHI	CHR TAKAZAKURA 101L
	OTANASHII

This embryo lot is another exciting mating, putting the #1 Marbling bull, Sanjiro 3, onto a daughter of the highly predictable growth bull, TF 147 Itoshigefuji. This is a wonderful complementary mating of carcass qualities to growth traits. The Itoshigefuji dam descends from the powerful Yuriko maternal line which has proven its genetic power in the US and Australia. The maternal line of these embryos traces back through the Itoshigefuji dam to daughters of MJB Musashi (068 son), TF Kikuhana, and JVP 400 and then to Yuriko herself. There is a ton of growth in this pedigree coming from Itoshigefuji and Kikuhana, making these embryos very desirable because of a nice balance of genetic traits. Sanjiro 3 is obviously an elite carcass bull and TF 147 Itoshigefuji has made some of the all-time great brood cows. TF 147 daughters are the ideal cows to breed to carcass bulls so as to keep growth in the resulting calves. Great genetics in these embryos.



# ITOZURUDOI TF 151 PLANNED MATINGS



HIRASHIGETAYASU ASAMI / DAM OF LOT 9

## 9 PLANNED MATING

Recip: Orange 1307 | Angus Commercial | Due 08.19.19

ITOKITATSURU	DAI 7 ITOZAKURA
<b>ITOZURU DOI FB3685</b>	NISHIZURU
YASHUIME	YASUMI DOI
	FUJIHIME
HIRASHIGETAYASU J2351	DAI 20 HIRASHIGE 287
<b>HIRASHIGETAYASU ASAMI FB14979</b>	DAI 5 YURUHIME
CHR MS SANJIROU 434	WORLD K'S SANJIROU
	MJB MS KITAFUKU 05K

## 10 PLANNED MATING

Recip: Red 97 | Angus Commercial | Due 08.19.19

ITOKITATSURU	DAI 7 ITOZAKURA
<b>ITOZURU DOI FB3685</b>	NISHIZURU
YASHUIME	YASUMI DOI
	FUJIHIME
HIRASHIGETAYASU J2351	DAI 20 HIRASHIGE 287
<b>HIRASHIGETAYASU EIOKO FB14976</b>	DAI 5 YURUHIME
CHR MS SANJIROU 434	WORLD KS SANJIROU
	MJB MS KITAFUKU 05K

Itozurudoi TF 151 is heralded as the best all-round sire ever of the Wagyu breed by established breeders in the US and Australia. His progeny make tremendous brood cows and carcasses from his progeny excel in marbling, rib eye area, and carcass weight. His is a "complete" bull which is why his semen currently commands several thousand dollars per straw. Any opportunity to invest in his genetics should not be missed. The genetics in this pregnancy combine the immortal Itozurudoi with two more Takeda Farms greats, TF 147 Itoshigefuji and TF Kikuhana, on the maternal side. This a special growth pedigree that matches top Takeda sires with the extremely desirable Yuriko maternal line which has consistently proven its value internationally. This pregnancy provides lots of growth genetics which will be extremely valuable for breeding to high Tajima in future generations.

The highly admired brood cow, Eiko 51Z, appears as the dam of this pregnancy. The sire is Itozurudoi TF 151, the undisputed, top all-round sire in the Wagyu breed outside of Japan. Think of the prospects for this pregnancy! Consider this sire stack of Itozurudoi x Hirashigetayasu x Sanjiro x JVP 068 x Kitaguni Jr x JVP 400 x Chisahime. Hirashigetayasu brings growth/phenotype and Sanjiro brings incredible rib eye area performance up close in this pedigree. It is a beautiful pedigree which still leaves the prospects for mating to Michifuku, Itoshigenami TF 148, and Kitateruyasudoi 003 genetics in future generations. The sky is the limit for this genetic gem when you consider the excellent balance and depth presented in this pregnancy.

# ITOZURUDOI TF 151 EMBRYO PACKAGES



HIRASHIGETAYASU ASAMI / DAM OF LOT 11

These three embryo lots provide the chance to acquire genetics sired by the incomparable Itozurudo TF 151 and mated to elite genetics females. TF 151 is a sire with “no-holes” performance, taking the risks out of matings. These embryo lots consist of two donor dams previously mentioned (Eiko, FB14976, and Fumiko, FB14979). The third donor represented here is FB18267, a Hirashigetayasu daughter from the Yuriko line. Any one of the three lots has highly desirable genetics. When considering the genetic impact TF 151 will have on the resulting calves, combined with the maternal power of the donor dams, you have unmatched genetic opportunity.



EF HIRAHANNA B87 / DAM OF LOT 11

11

## THREE IN ONE IVF EMBRYO PACKAGE

One Grade 1 IVF Embryo | Fullblood

ITOKITATSURU  
**ITOZURU DOI FB3685**  
 YASHUIME

HIRASHIGETAYASU J2351  
**HIRASHIGETAYASU EIKO FB14973**  
 CHR MS SANJIROU 434

DAI 7 ITOZAKURA  
 NISHIZURU  
 YASUMI DOI  
 FUJIHIME  
 DAI 20 HIRASHIGE 287  
 DAI 5 YURUHIME  
 WORLD KS SANJIROU  
 MJB MS KITAFUKU 05K

LOT 11, 12, 13 & 14 EMBRYOS are located at  
 Trans Ova Genetics, 2938 380th St., Sioux Center, IA  
 51250, 712.722.3586. Once paid for, the embryos will be  
 released to the buyer where they pay shipping costs.

One Grade 1 IVF Embryo | Fullblood

ITOKITATSURU  
**ITOZURU DOI FB3685**  
 YASHUIME

ITOSHIGEFUJI  
**ITOSHIGEFUJI FUMIKO FB14979**  
 CHR MS FUKUTSURU 193R

DAI 7 ITOZAKURA  
 NISHIZURU  
 YASUMI DOI  
 FUJIHIME  
 ITOFUJI 483  
 DAI 30 NOBORU J920752  
 MJB MUSASHI 03K  
 CHR MS KIKUSHIGE 16

One Grade 1 IVF Embryo | Fullblood

ITOKITATSURU  
**ITOZURU DOI FB3685**  
 YASHUIME

HIRASHIGETAYASU J2351  
**EF HIRAHANNA B87 FB18267**  
 CHR MS KITAGUNI 398

DAI 7 ITOZAKURA  
 NISHIZURU  
 YASUMI DOI  
 FUJIHIME  
 DAI 20 HIRASHIGE 287  
 DAI 5 YURUHIME  
 CHR MS KITAGUNI 398  
 CHR MS SANJIROU 185R





ITOSHIGEFUJI FUMIKO / DAM OF LOT 7

12

THREE IVF EMBRYOS

Two Grade 1 IVF Embryos | Fullblood

ITOKITATSURU  
 ITOZURU DOI FB3685  
 YASHUIME

ITOSHIGEFUJI  
 ITOZURU DOI FUMIKO FB14979  
 CHR MS FUKUTSURU 193R

DAI 7 ITOZAKURA  
 NISHIZURU  
 YASUMI DOI  
 FUJIHIME  
 ITOFUJI 483  
 DAI 30 NOBORU J920752  
 MJB MUSASHI 03K  
 CHR MS KIKUSHIGE 16

One Grade 1 IVF Embryo | Fullblood

ITOKITATSURU  
 ITOZURU DOI FB3685  
 YASHUIME

HIRASHIGETAYASU J2351  
 HIRASHIGETAYASU EIOKO FB144976  
 CHR MS SANJIROU 434

DAI 7 ITOZAKURA  
 NISHIZURU  
 YASUMI DOI  
 FUJIHIME  
 DAI 20 HIRASHIGE 287  
 DAI 5 YURUHIME  
 WORLD KS SANJIROU  
 MJB MS KITAFUKU 05K

13

THREE IVF EMBRYOS

Two Grade 1 IVF Embryos | Fullblood

ITOKITATSURU  
 ITOZURU DOI FB3685  
 YASHUIME

HIRASHIGETAYASU J2351  
 HIRASHIGETAYASU EIOKO FB144976  
 CHR MS SANJIROU 434

DAI 7 ITOZAKURA  
 NISHIZURU  
 YASUMI DOI  
 FUJIHIME  
 DAI 20 HIRASHIGE 287  
 DAI 5 YURUHIME  
 WORLD KS SANJIROU  
 MJB MS KITAFUKU 05K

14

THREE IVF EMBRYOS

Three Grade 1 IVF Embryos | Fullblood

ITOKITATSURU  
 ITOZURU DOI FB3685  
 YASHUIME

HIRASHIGETAYASU J2351  
 HIRASHIGETAYASU EIOKO FB144976  
 CHR MS SANJIROU 434

DAI 7 ITOZAKURA  
 NISHIZURU  
 YASUMI DOI  
 FUJIHIME  
 DAI 20 HIRASHIGE 287  
 DAI 5 YURUHIME  
 WORLD KS SANJIROU  
 MJB MS KITAFUKU 05K

One Grade 1 IVF Embryo | Fullblood

ITOKITATSURU  
 ITOZURU DOI FB3685  
 YASHUIME

ITOSHIGEFUJI  
 ITOZURU DOI FUMIKO FB14979  
 CHR MS FUKUTSURU 193R

DAI 7 ITOZAKURA  
 NISHIZURU  
 YASUMI DOI  
 FUJIHIME  
 ITOFUJI 483  
 DAI 30 NOBORU J920752  
 MJB MUSASHI 03K  
 CHR MS KIKUSHIGE 16

All embryo transfer paperwork is available from JDH as all the work was done thru Trans Ova, Sioux Center, IA.



# ITOZURUDOI TF 151 EMBRYO TRANSPLANT CALVES



ITOSHIGEFUJI FUMIKO / DAM OF LOT 15

15

JDH ITOZURIU DOI 233F ET

FB37164 | 06.16.18 | BULL | JDH 233F

ITOKITATSURU  
ITOZURU DOI FB3685  
YASHUIME

ITOSHIGEFUJI  
ITOSHIGEFUJI FUMIKO FB14979  
CHR MS FUKUTSURU 193R

DAI 7 ITOZAKURA  
NISHIZURU  
YASUMI DOI  
FUJIHIME  
ITOFUJI 483  
DAI 30 NOBORU J920752  
MJB MUSASHI 03K  
CHR MS KIKUSHIGE 16

Selling full possession and 50% semen interest with the option to double and take all.

All Wagyu breeders will take notice of this bull calf when looking at his photo! With Itozurudoi TF 151 as his sire, and a big influence from Takeda Farms sires Itoshigefuji TF 147 and TF Kikuhana, he will attract a lot of attention from breeders who are looking to put some size, growth, and maternal traits into their breeding program. Itoshigefuji and Kikuhana are two of the premier, high reliability growth sires of the breed. This young bull already exhibits great thickness. His Yuriko maternal line will also greatly contribute to the emphasis on growth. Here is a chance to invest in an impressive son of the incredible Itozurudoi and put his genetics to work in your herd.

16

JDH MS ITOZURU DOI 234F ET

FB37162 | 06.16.18 | HEIFER | JDH 243F

ITOKITATSURU  
ITOZURU DOI FB3685  
YASHUIME

WORLD K'S SHIGESHIGETANI  
SHIGESHIGE ATSUKO FB14100  
CHR MS MICHIFUKU 433

DAI 7 ITOZAKURA  
NISHIZURU  
YASUMI DOI  
FUJIHIME  
WORLD K'S HARUKI 2  
WORLD K'S SUZUTANI  
WORLD K'S MICHIFUKU  
CHR MS TAK 120L

Selling full possession and 50% semen interest with the option to double and take all.

A heifer cannot get any more special than this one! Take a look at the photo! She is an unbelievable low risk/high return heifer. Think of the value she has with Itozurudoi TF 151 as her sire. Then look at her maternal line. She is a Chishime with a sire stack of Itozurudoi x Shigeshigetani x Michifuku x Takazakura x Kitaguni Jr x JVP 400 x Chishime. This heifer looks fantastic and has an equally fantastic genetic makeup. Itozurudoi brings balance to this extremely deep, high Tajima pedigree. Carcass genetics to burn with an unlimited future ahead of her!

# FULLBLOOD COW/ CALF PAIRS



HARUKI NAMI B266 / LOT 17

17

## HARUKI NAMI B266

FB20430 | 07.18.14 | COW | EF B266

MONJIRO 11550  
WORLD K'S HARUKI 2  
SAKURA 2 741638

ITOSHIGENAMI  
MS CHR YASUFUKU 260  
CHR MS YASUFUKU 189R

YASUMI DOI  
HARUMI 1086409  
KENSHIN 902  
ITOHIME 3 545978  
SHIGESHIGENAMI 10632  
FUKUYUKI  
WORLD K'S YASUFUKU JR  
CHR MS MICHIFUKU 030H

Will calve by sale day to MFC Shigeshigetani 2-12, FB13944

This cow is not to be missed! Her good looks are backed by a spectacular pedigree. She is backed by the breed leading Hikokuras with this particular line producing popular Crescent Harbor bulls Kitaguni 07K and Takazakura 101L. Her sire, Haruki II, is highly proven and provides excellent growth traits. Haruki II is a Monjiro son, and in turn Haruki II is the sire of the great Shigeshigetani. Tracing the sire pathway shows three of the breed's elite carcass bulls stacked on top of each other - Itoshigenami TF 148, Yasufuku Jr, and Michifuku. The fourth dam of this lot is the great Crescent Harbor cow, Kikuhanaime. It doesn't get any better than this.



## SALE CATTLE

To view the sale cattle use this GPS address.  
JDH WAGYU, INC., 64919 Yankton Road, Villisca, Iowa 50864

## SALE LOCATION

The sale will be broadcast live at the Magnolia Hotel Omaha in Omaha, NE. The following GPS address should be used for directions; 1615 Howard Street, Omaha, NE 68102  
402.341.2500 for reservations and/or directions



# FULLBLOOD COW/ CALF PAIRS



EF MS SANJI B55 / LOT 18



YAR 385C / LOT 19

## 18 EF MS SANJI B55

FB18792 | 03.08.14 | COW | B55

WORLD K'S MICHIFUKU MONJIRO 11550  
 WORLD K'S SANJIROU MICHIKO 655635  
 WORLD K'S SUZUTANI TANISHIGE 1526  
 SUZUNAMI 472255  
 CHR HIRASHIGE 081L HIRASHIGETAYASU J2351  
 CHR MS HIRASHIGE 192R CHR MS TERUTANI 024  
 CHR MS KITAGUNI 037H WORLD K'S KITAGUNI JR.  
 CHR MS KIKUHIME 007F

Will calve by sale day to Shigesshigetani, FB2907.

This deep bodied cow is a daughter of Sanjiro. Sanjiro is a high Tajima bull resulting from the mating of breed legends Michifuku and Suzutani. Sanjiro has established himself as a legend as well with his great carcass traits, especially with breed leading Rib Eye Area scores in both the US and Australia. This solid Chisahime pedigree is backed by popular sires Kitaguni Jr and JVP 400. She is just hitting her prime producing years.

## 19 YAR 385C

FB33486 | 06.18.15 | COW | 385C

GENESIS ITOMORITAKA J2703 ITOHIRASHIGE  
 DAI 6 OEFUJII J565554-KURO KOH  
 JVP KIKU SHIGE 5298E JVP KIKUYASU-400  
 JVP KIKUHANA 298  
 TJP 100X ITOSHIGENAMI SHIGESHIGENAMI 10632  
 FUKUYUKI  
 LAKE WAGYU Y011 JVP FUKUKANE 402E  
 JAPANESE COW (BLACK)

Will calve by sale day to Shigesshigetani, FB2907.

Take a look at her. The influence of Itomoritaka through his son Genesis is very evident here. Tremendous growth characteristics are dominant in this young cow. Genesis is making his mark. Adding to her impressive phenotype is a pedigree backed by carcass great, Itoshigenami TF 148 as the maternal grandsire. The dam of this young Genesis daughter was the result of an embryo imported from Australia originating in the well-known Lake Wagyu breeding program. This is a well-balanced pedigree of growth and carcass performance.





YAR 172C / LOT 20



YAR 162C / LOT 21

20

YAR 172C

FB33462 | 06.01.15 | COW | 172C

GENESIS

ITOMORITAKA J2703	ITOHIRASHIGE
JVP KIKU SHIGE 5298E	DAI 6 OEFUJII J565554-KURO KOH
	JVP KIKUYASU-400
	JVP KIKUHANA 298
BR KITATERUYASUDOI 0632	KITATERUYASUDOI J2810
BR MS KITDOI/0632 6621	MISS BAR R 321H
BR MS KITATERU-9676 2608	BR KITATERUYASUDOI 9676
	BR MS FUKUTSURU 9665

Will calve by sale day to MFC Shigesigetani 2-12, FB13944.

A look at this young cow shows the stamp that her sire, Genesis, is putting on his daughters. Behind Genesis on the maternal side are two Kitateruyasudo 003 sons from the well respected Bar R sire program. Kitateruyasudo 003 is the prominent carcass bull from the Westholme program. He is a highly proven carcass trait improver. The next sire back is former #1 Marbling sire JVP 068. This cow possesses a great future as a brood cow with a strong Tajima base topped off with the exciting new growth sire Genesis.

21

YAR 162C

FB33476 | 05.29.15 | COW | 162C

GENESIS

ITOMORITAKA J2703	ITOHIRASHIGE
JVP KIKU SHIGE 5298E	DAI 6 OEFUJII J565554-KURO KOH
	JVP KIKUYASU-400
	JVP KIKUHANA 298
BR KITATERUYASUDOI 0632	KITATERUYASUDOI J2810
BR MS KITDOI/0632 6621	MISS BAR R 321H
BR MS KITATERU-9676 2608	BR KITATERUYASUDOI 9676
	BR MS FUKUTSURU 9665

Will calve by sale day to Tishiro 1/3, FB7475.

Another Genesis daughter continues to impress with her phenotype. Just look at the photo to see a tremendous bodied young cow. She is a full sister to the previous lot and carries the same great Kitateruyasudo 003 genetics. Her pedigree is highlighted by a balance of genetics ranging from the tremendous growth of Itomoritaka blood to the extreme marbling genetics of JVP 068. She will have many breeding options ahead of her.

# FULLBLOOD COW/ CALF PAIRS



JDHMS YASUFUKU 1556 / LOT 22



YAR ITOMICHI MICHIFUKUC 591 / LOT 23

22

JDH MS YASUFUKU 1556

FB24951 | 09.07.15 | COW | 1556

CHR YASUFUKU 16  
 WORLD K'S YASUFUKU JR YASUFUKU 930  
 CHR MS MICHIFUKU 035H KANEKO 5  
 ITOSHIGEFUJI WORLD K'S MICHIFUKU  
 JVP MS KIKUSHIGE 403  
 JDH 7288T ITOFUJI 483  
 TF HIKOKURA 7/12 DAI 30 NOBORU J920752  
 TF TERUTANI  
 HIKOKURA 7/11

Will calve by sale day to Shigesshigetani, FB2907.

This young cow exudes quality. Her sire, Yasufuku 16, brings tremendous carcass traits through highly proven bulls Yasufuku Jr and Michifuku. Her dam is a Hikokura, which is the leading maternal line from the great Takeda Farms herd. The Hikokuras exhibit superior growth with good carcass traits. The dam of this young cow is a daughter of Itoshigefuji TF 147 who has been extremely popular in the US and Australia for his ability to make wonderful brood cows with great growth and milk. Behind Itoshigefuji we find the Takeda staples of TF Terutani and Itomichi. Both of these bulls helped to establish the superiority and appeal of Takeda genetics. This young cow will mate extremely well to the popular Tajima bulls.

23

YAR ITOMICHI MICHIFUKUC 591

FB21829 | 03.22.15 | COW | C591

TF ITOMICHI 1/2  
 ITOMICHI  
 DAI 2 KINTOU  
 DAI 7 ITOZAKURA  
 TOMISAKAE 2/1  
 DAI 3 KIYOHIME  
 EZOKINTOU 1A  
 LMR MS MICHIFUKU 607S  
 LMR MS FUKUTSURU 606S  
 WORLD K'S MICHIFUKU  
 JVP MS KIKUSHIGE 08E  
 FUKUTSURU-068  
 HOSHI

Will calve by sale day to LMR Kitaguni 1441Y, FB14630.

This young cow has a desired pedigree of a blend of growth and carcass traits. Her sire, Itomichi 1/2, is well known for his ability to sire growth and milk traits. Further back in this cow's pedigree is another Takeda growth bull, TF Kikuhana. These two bulls sandwich a couple of Tajima bulls, LMR Michifuku 607S and former #1 Marbling sire JVP 068. On top of this is the fact that this pedigree traces to Fujiko and Okutani on the maternal side.





YAR 574C / LOT 24



EF VT B21 / LOT 25

24

YAR 574C

FB33488 | 06.12.15 | COW | 574C

JVP KIKUYASU-400  
KIKUYASU MIKOMI  
MIKOMI

HIRASHIGETAYASU J2351  
HIRASHIGETAYASU CHIKA  
CHR MS SANJIROU 434

KIKUYASU DOI 575  
FUKUYOSHI 703223  
TF ITOMICHI 1/2  
FUJIKO  
DAI 20 HIRASHIGE 287  
DAI 5 YURUHIME  
WORLD K'S SANJIROU  
MJB MS KITAFUKU 05K

Will calve by sale day to LMR Kitaguni 1441Y, FB14630.

JVP Kikuyasu 400 has been a recently popular sire with semen selling for extreme prices. The sire of this lot is his son stemming from the elite import cow Okutani. JVP 400 has drawn attention because of his large size as a Tajima. The growth in the pedigree of this lot is further enhanced by her maternal grandsire, Hirashigetayasu, who is a superior growth sire. The genetic foundation of this young cow is built on three great carcass bulls, rib eye specialist Sanjiro and marbling specialists JVP 068 and Kitaguni Jr. This young cow will thrive as a deep pedigreed cow from the Chisahime line that has a beautiful sire stack.

25

EF VT B21

FB18780 | 03.04.14 | COW | B21

ITOZURU DOI  
VT YASUZURU DOI  
CHR MS YASUFUKU 189R

KEVINHANIFUJI  
VT MS SUZUZAKURA W07  
MUTSUKO

ITOKITATSURU  
YASUHIME  
WORLD K'S YASUFUKU JR  
CHR MS MICHIFUKU 030H  
KENHANAFUJI  
HEATHERKURA  
CHR TAKAZAKURA 101L  
KOJIHANA

Will calve by sale day to FB681.

This cow possesses a unique pedigree that features a couple of the most influential maternal lines of the breed. Her sire is a son of the incomparable Itozurudo TF 151 mated to the Hikokura line. Her maternal grandsire, Kevinhanafuji, is a son of legendary bull Kenhanafuji mated to a Suzutani daughter. The maternal line of this cow is hard to find, making this young cow a unique genetic combination within the Wagyu breed.

# FULLBLOOD COW/ CALF PAIRS



YAR ITOMORITAKA SANJIROU C551 / LOT 26

26

YAR ITOMORITAKA SANJIROU C511

FB21798 | 03.20.15 | COW | C511

ITOHIRASHIGE ITOMORITAKA J2703 DAI 6 OEFUJII J565554-KURO KOH KEDAKAFUJI	ITOKITATSURU HIRASHIGEKIYOSHI OOE WORLD K'S MICHIFUKU WORLD K'S SUZUTANI JVP FUKUTSURU-068 CHR MS KITAGUNI 037H
WORLD K'S SANJIROU CHR MS SANJIROU 432 MJB MS KITAFUKU 05K	

Will calve by sale day to Shigesshigetani, FB2907.

The sire of this lot is Itomoritaka. He is known for great growth and milk which is evident in the photo of this cow making her an excellent cow to breed from. She is from the proven performance maternal line of Chisahime and backed by great proven carcass bulls such as Sanjiro, JVP 068, and Kitaguni Jr. This particular line of the Chisahimes has proven itself to be extremely valuable in several established breeding programs. Don't miss out on this one.

27

YAR 186C

FB33465 | 06.08.15 | COW | 186C

WORLD K'S SHIGESHIGETANI TAI MR TANIMARA BL141W MS 92T	WORLD K'S HARUKI 2 WORLD K'S SUZUTANI TF KIKUHANA WORLD K'S NAKAZAKURA DAI 20 HIRASHIGE 287 DAI 5 YURUHIME WORLD K'S SANJIROU MJB MS KITAFUKU 05K
HIRASHIGETAYASU J2351 HIRASHIGETAYASU CHIKA CHR MS SANJIROU 434	

Will calve by sale day to Shigesshigetani, FB2907.

Shigesshigetani is continually solidifying his spot as an all-time great carcass sire. He has put up tremendous data in herds such as Mayura and Lone Mountain. His semen is in demand and getting hard to find. With this lot we have a young cow sired by a Shigesshigetani son from a growth line of the Nakagishi cow. The maternal grandsire of this lot is the outstanding growth bull, Hirashigetayasu, who makes some great phenotypical progeny. The maternal line continues to extend back to Chisahime through the highly proven carcass sires Sanjiro, JVP 068, and Kitaguni Jr. This is a nicely balanced pedigree.

28

EF 12P B66

FB18773 | 03.11.14 | COW | EF B66

BAR R 12P JVP MS FUKUSHIGE T10E	BAR R TAKASURU 1 K JVP MS FUKUSHIGE T10E	WORLD K'S TAKAZAKURA JVP MS FUKUSHIGE T10E JVP FUKUTSURU-068 JVP SHIGEHIME 208 DAI 20 HIRASHIGE 287 DAI 5 YURUHIME WORLD K'S SANJIROU CHR MS KIKUMICHI 028
VT MS HIRASHIGEJIROU CHR MS SANJIROU 185R	HIRASHIGETAYASU J2351 CHR MS SANJIROU 185R	

Will calve by sale day to Shigesshigetani, FB2907.

This cow traces her lineage to the high performing carcass line of JVP Yasuyoshi. Her sire, 12P, was developed in the Lone Mountain program. The sires in her maternal sire pathway are some of the true foundation greats of the breed - Hirashigetayasu, Sanjiro, and JVP 400. This is a low risk/high return kind of pedigree. This cow has the right kind of pedigree to build a herd on and she is just reaching her prime.

29

ESF KOBE 108-255

FB13516 | 04.10.12 | COW | 255

ITOZURU DOI CHR MS ITOZURU DOI 364 CF504	ITOKITATSURU YASUHIME ITOSHIGENAMI HIKOKURA 1/10 WORLD K'S MICHIFUKU WORLD K'S SUZUTANI WORLD K'S SANJIROU WORLD K'S NAKAGISHI 5
WORLD K'S SANJIROU MPCC 108B BAR R 57T	

Will calve by sale day to MFC Shigesshigetani 2-12, FB13944.

Itozurudo TF 151 is a highly sought-after breed legend. The sire of this lot is a TF 151 son that has made some outstanding progeny of his own. He was a feature herd sire in the Empire State herd. The bottom side of this pedigree traces back to another popular, feature cow - Nakagishi, who is behind the well-known Bar R sire, 56T. This line shows a unique double up of Sanjiro which will lock carcass traits into this pedigree. This lot is a super opportunity to get into the Nakagishi line.

30

YAR 198C

FB33466 | 05.21.15 | COW | 198C

GENESIS JVP KIKU SHIGE 5298E	ITOMORITAKA J2703 JVP KIKU SHIGE 5298E	ITOHIRASHIGE DAI 6 OEFUJII J565554-KURO KOH JVP KIKUYASU-400 JVP KIKUHANA 298 SHIGESHIGENAMI 10632 FUKUYUKI JVP FUKUKANE 402E JAPANESE COW (BLACK)
TJP 100X LAKE WAGYU Y011	ITOSHIGENAMI LAKE WAGYU Y011	

Will calve by sale day to LMR Kitaguni 1441Y, FB14630.

This four-year-old Genesis daughter is backed by the highly proven carcass sire Itoshigenami, an ideal mating for the high growth Itomoritaka son Genesis. Further back is a Lake Wagyu cow from Ken Dungey's Australian herd. She has a solid sire stack of JVP Fukukane 402E x Michifuku x Itomichi 1/2 x Yuriko. This cow is a solid blend of growth and carcass traits.





IWA ICHIRO B276 / LOT 31

31

**IWA ICHIRO B276**

FB20439 | 07.22.14 | COW | EF B276

ITOMORITAKA J2703  
 LMR RMW ITOMORITAKA  
 LMR MS SANJIROU 767T

BAR R ICHIRO 32R  
 PLC ICHI 210W  
 BAR R MISS YASAFUKU 45K

ITOHIRASHIGE  
 DAI 6 OEFUJII J565554-KURO KOH  
 WORLD K'S SANJIROU  
 WORLD K'S NAKAZAKURA  
 JVP FUKUTSURU-068  
 BAR R MISS 2N  
 WORLD K'S YASUFUKU JR  
 MISS BAR R 337H

Will calve by sale day to MFC Shigeshigetani 2-12, FB13944.

LMR RMW Itomoritaka has been a recently popular sire and we can see why when looking at this daughter. She will be a great powerhouse to breed from as she exhibits the growth of her sire's pedigree with Itomoritaka being an elite growth sire from the Westholme program. On the maternal side are the proven Tajima sires Bar R Ichiro 32R, Yasufuku Jr, and Blue Rock Michifuku. She has fantastic potential as a brood cow based upon her pedigree.



**20 YEARS IN THE MAKING**

# PUREBRED COW/ CALF PAIRS



BAR R POLLED ZURUTANI D64 / SIRE OF CALVES

## 32

### YAR SANJIROU 101L C581

PB22332 | 03.29.15 | COW | C581

WORLD K'S SANJIROU	WORLD K'S MICHIFUKU	MONJIRO 11550
WORLD K'S SUZUTANI	WORLD K'S SUZUTANI	MICHIKO 655635
		TANISHIGE 1526
		SUZUNAMI 472255
SATOKO	CHR TAKAZAKURA 101L	WORLD K'S TAKAZAKURA
	MS. WILLAMITE VALLEY	CHR KIKUHANAHIME
		HAMMONDYAMA
		MAY LOU

Will calf by sale day to Bar R Polled Zuritani D64 (PB25456), homozygous polled

This cow is a 99% cow with a deep pedigree with carcass trait leader Sanjirou as her sire stacked on top of the well-known Takazakura 101L.

## 33

### JDH MS SANJIROU 1583C

PB25551 | 09.29.15 | COW | 1583C

CHR SANJIROU 391	WORLD K'S SANJIROU	WORLD K'S MICHIFUKU
	CHR MS HARUKI 027	WORLD K'S SUZUTANI
		WORLD K'S HARUKI 2
		JVP MS KIKUSHIGE 409
JDH5102	JDH2673S2	TF KIKUHANA
		JDH2440SD
	JDH2236D	TF KINTO
		JDH2446DD

Will calf by sale day to Bar R Polled Zuritani D64 (PB25456), homozygous polled

The genetics of carcass sire, Sanjirou, and growth sire, TF Kikuhana, are featured in this pedigree along with Takeda sires Kinto and Terutani.

## 34

### JDH MS SANJIROU 1524

PB24221 | 01.19.15 | COW | 1524

CHR SANJIROU 391	WORLD K'S SANJIROU	WORLD K'S MICHIFUKU
	CHR MS HARUKI 027	WORLD K'S SUZUTANI
		WORLD K'S HARUKI 2
		JVP MS KIKUSHIGE 409
JDH 7248-L	372 BRG 151 ITOSURU DOI	ITOZURU DOI
	JDH7248	CF 503
		TF TERUTANI
		JDH6412D

Will calf by sale day to Bar R Polled Zuritani D64 (PB25456), homozygous polled

This cow carries a strong Takeda Farms genetics influence on her maternal side through the mighty Hikokuras.

Her sire is a Sanjirou son to promote great carcass traits.

## 35

### JDH MS MICHIFUKU 1600

PB25018 | 08.10.15 | COW | 1600

WORLD K'S MICHIFUKU	MONJIRO 11550	YASUMI DOI
	MICHIKO 655635	HARUMI 1086409
		TANISHIGE 1526
		MICHIFUKU 494290
JDH KINTOU 8740-M	KGW MISAKI II 10053	CHR MUSASHI 222S
	JDH8740	KGW 07025
		ATHENS 202-TT
		JDH3108D

Will calf by sale day to Bar R Polled Zuritani D64 (PB25456), homozygous polled

Sired by the legendary carcass trait leader and foundation import bull, Michifuku.

## 36

### JDH MS MICHIFUKU 1557

PB24952 | 08.10.15 | COW | 1557

WORLD K'S MICHIFUKU	MONJIRO 11550	YASUMI DOI
	MICHIKO 655635	HARUMI 1086409
		TANISHIGE 1526
		MICHIFUKU 494290
JDH MS FUJIMOTO 1327	KGW FUJIMOTO 10051	CHR MUSASHI 222S
	JDH 5820	KGW TEIKO 04016
		TF KIKUHANA
		JDH7269

Will calf by sale day to Bar R Polled Zuritani D64 (PB25456), homozygous polled

Sired by the legendary carcass sire, Michifuku.

Foundation bulls TF Kikuhana and TF 148 Itoshigenami form the base of the maternal side



37

## JDH 7282-L

PB19005 | 10.19.12 | COW | 7282-L

	TF KIKUHANA	ITOHANA
CHR NAKAZAKURA 74T	WORLD K'S NAKAZAKURA	NAYORI 1 ITOMICHI WORLD K'S NAKAGISHI 5
JDH7282	ITOSHIGEFUJI	ITOFUJI 483 DAI 30 NOBORU J920752
	JDH3487	JDH2673S2 JDH2526

Will calf by sale day to Bar R Polled Zuritani D64 (PB25456), homozygous polled

Great growth pedigree with TF Kikuhana featured on the top and bottom of the pedigree and TF 147 Itoshigefuji as the maternal grandsire.

38

## JDH MS MICHISURU 1608

PB25025 | 10.12.15 | COW | 1608

JLBB SUZIFUKU O4	BAR R MICHISURU 2 K HARUKI SUZI 4151	WORLD K'S MICHIFUKU JVP MS FUKUSHIGE T10E WORLD K'S HARUKI 2 WORLD K'S SUZUTANI
JDH7165	JDH2505S6 JDH7165D	ITOSHIGENAMI JDH2435SD TF KIKUHANA JDH7192-2430

Will calf by sale day to Bar R Polled Zuritani D64 (PB25456), homozygous polled

Carcass traits are the feature of this pedigree with Suzutani genetics on the sire side and TF 148 Itoshigenami appearing in the pedigree on the maternal side.

39

## JDH MS YASUFUKU 1566

PB24960 | 10.11.15 | COW | 1566

CHR YASUFUKU 16	WORLD K'S YASUFUKU JR CHR MS MICHIFUKU 035H	YASUFUKU 930 KANEKO 5 WORLD K'S MICHIFUKU JVP MS KIKUSHIGE 403
JDH 9118	ATHENS 2003-KS YCB KIKUHIME TOMIKO 4929-21	TF KIKUTSURUDOI 15/16 WAGYU COW TF KIKUHANA TF HIKOHIME 8

Will calf by sale day to Bar R Polled Zuritani D64 (PB25456), homozygous polled

This cow carries a balanced pedigree showing a blend of carcass sires, Yasufuku Jr and Michifuku, and growth sires, TF Kikuhana and Itomichi

Her maternal grandsire is a son of the rare TF146.

40

## JDH MS KITAGUNI 1579C

PB25549 | 09.14.15 | COW | 1579C

LMR KITAGUNI 1441Y	WORLD K'S KITAGUNI JR. BR MS YASUFUKU 0645	KITAGUNI 7/8 WORLD K'S NAKAYUKI WORLD K'S YASUFUKU JR MISS BAR R 321H BAR R TAKASURU 1 K
JDH MS ITOMICHI	BR 1K MITCH SON JDH 5856	MISS BARR-ARLIE TF ITOMICHI 1/2 JDH 9198

Will calf by sale day to Bar R Polled Zuritani D64 (PB25456), homozygous polled

The top side of the pedigree is packed with marbling through sire LMR Kitaguni Jr.

The bottom of the pedigree features the popular Takeda sire, TF Itomichi 1/2.

41

## JDH NAYORI 9258-L

PB17403 | 10.04.12 | COW | 9258-L

372 BRG 151	ITOZURU DOI ITOSURU DOI CF 503	ITOKITATSURU YASUHIME ITOSHIGENAMI HIKOKURA 1/10
JDH9258	ATHENS 202-TT JDH4922D	TF TERUTANI 15/16 WAGYU COW TF KIKUHANA JDH549DD

Will calf by sale day to Bar R Polled Zuritani D64 (PB25456), homozygous polled

This is a great Takeda Farms pedigree on both sides.

Features the immortal Itozurudo, Itoshigenami, Terutani, Kikuhana, and Itomichi!

42

## JDH HIKOKURA 87989-L

PB17399 | 10.26.12 | COW | 8789-L

372 BRG 151	ITOZURU DOI ITOSURU DOI CF 503	ITOKITATSURU YASUHIME ITOSHIGENAMI HIKOKURA 1/10
JDH8789	ATHENS 202-TT HIKOKURA 1/9	TF TERUTANI 15/16 WAGYU COW ITOMICHI HIKOKURA 1/8

Will calf by sale day to Bar R Polled Zuritani D64 (PB25456), homozygous polled

An awesome Takeda pedigree with Hikokura genetics on the top and bottom.

Features breed greats Itozurudo, Itoshigenami, Terutani, and Itomichi

# PUREBRED COW/ CALF PAIRS

## 43

### EF YASUTAKA A12

PB18718 | 04.04.13 | COW | EF A12

WORLD K'S YASUFUKU JR YASUFUKU 930  
 CHR YASUFUKU 246T KANEKO 5  
 CHR MS KITATERU 59J KITATERUYASUDO J2810  
 CHR KIKUHANAHIME  
 KINATAKA CHR TAKAZAKURA 101L WORLD K'S TAKAZAKURA  
 CHR KIKUHANAHIME  
 MARIE 2 HAMMONDYAMA  
 TAKARA

Will calf by sale day to Bar R Polled Zuritani D64 (PB25456), homozygous polled

The sire is a heavy carcass-based bull featuring Yasufuku Jr and Kitateruyasudo J003. The dam's line shows performance proven bulls 101L and Haruki II.

## 44

### EF YASU OKURI A9

PB18715 | 04.06.13 | COW | EF A9

WORLD K'S YASUFUKU JR YASUFUKU 930  
 CHR YASUFUKU 246T KANEKO 5  
 CHR MS KITATERU 59J KITATERUYASUDO J2810  
 CHR KIKUHANAHIME  
 OKURIMONO WORLD K'S MICHIFUKU  
 SILVERTON PRINCESS FUJIKO  
 MS. SILVERTON HAMMONDYAMA  
 CASSIE

Will calf by sale day to Bar R Polled Zuritani D64 (PB25456), homozygous polled

The sire, Yasufuku 246T, brings great carcass traits to this lot. The dam's line also shows plenty of carcass traits through Michifuku and Okutani.



YAR IWA 101L B318 / LOT 45

## 45

### YAR IWA 101L B318

PB21357 | 09.25.14 | COW | EF B318

ITOMORITAKA J2703 ITOHIRASHIGE  
 LMR RMW ITOMORITAKA DAI 6 OEFUJII J565554-KURO KOH  
 LMR MS SANJIROU 767T WORLD K'S SANJIROU  
 WORLD K'S NAKAZAKURA  
 SATOKO CHR TAKAZAKURA 101L WORLD K'S TAKAZAKURA  
 CHR KIKUHANAHIME  
 MS. WILLAMITE VALLEY HAMMONDYAMA  
 MAY LOU

A powerful daughter of LMR RMW Itomoritaka – look at the photo!  
 This pedigree spells tremendous growth and maternal traits!



# BRED FEMALES

Found in this very special offering of bred heifers is the direct reflection of our commitment to raising exceptionally high quality, genetically diverse, impressive cattle that exceed the demands of today's beef industry. For many decades, females of this quality have been the life blood of the JDH Wagyu program and continue to be today. This is a unique opportunity to invest in young females destined to anchor many elite programs across North America.



# FULLBLOOD FALL-CALVING FEMALES



YAR MS GENESIS SHIGESHIGE C592 / LOT 46

This group of cows features four daughters of LMR RMW Itomoritaka who is putting a significant stamp on his daughters. They show tremendous thickness and growth. They are the kind that are great to breed from and will make tremendous herd cows. These characteristics are what has driven the popularity of this sire.

The maternal lines represented in this group of cows include some of the breed's best such as the Okutanis, Hikokuras, and Chiyotakes. The sires found on the maternal side of these lots are heavy in proven bulls such as carcass trait leaders TF 148 itoshigenami, JVP 068, Shigeshigetani, and Yasufuku Jr.

These cows are in their prime and will produce highly desirable calves with lots of performance genetics behind them. They are currently bred to some great sires including the highly proven carcass leaders Yasufuku Jr and Kitateruyasudoji 003. Two cows are bred to the new generation standout, LMR Kitaguni Jr 1441Y. This bull is establishing himself as an elite sire for carcass performance. As a son of Kitaguni Jr, bred and developed in the highly regarded Lone Mountain program, he is clearly passing on the marbling trait as evidenced by his early high EBV for Marbling. He is one of the best of a new generation of sires.

46

YAR MS GENESIS SHIGESHIGE C592

FB21830 | 04.19.15 | COW | C592

GENESIS

ITOMORITAKA J2703	ITOHIRASHIGE
JVP KIKU SHIGE 5298E	DAI 6 OEFUJII J565554-KURO KOH
	JVP KIKUYASU-400
	JVP KIKUHANA 298
ITOSHIGENAMI	SHIGESHIGENAMI 10632
	FUKUYUKI
LAKE WAGYU Y011	JVP FUKUKANE 402E
	JAPANESE COW (BLACK)

TJP 100X

100 days safe bred to LMR Kitaguni Jr 1441Y, FB14630





YAR 308C / LOT 47

47

**YAR 308C**

FB33485 | 06.04.15 | COW | 380C

GENESIS

ITOMORITAKA J2703	ITOHIRASHIGE
JVP KIKU SHIGE 5298E	DAI 6 OEFUJII J565554-KURO KOH
	JVP KIKUYASU-400
	JVP KIKUHANA 298

TJP 112X

ITOSHIGENAMI	SHIGESHIGENAMI 10632
	FUKUYUKI
LAKE WAGYU Y011	JVP FUKUKANE 402E
	JAPANESE COW (BLACK)

100 days safe bred to LMR Kitaguni Jr 1441Y, FB14630

48

**JDH MS SANJIROU 3D**

FB25731 | 04.27.16 | COW | 3D

CHR SANJIROU 391

WORLD K'S SANJIROU	WORLD K'S MICHIFUKU
CHR MS HARUKI 027	WORLD K'S SUZUTANI
	WORLD K'S HARUKI 2
	JVP MS KIKUSHIGE 409
364 BRG 151 ITOSURU DOI	ITOZURU DOI
JDH HIKOKURA 7288-L	CHR MS SANJIROU 185R
JDH 7288T	ITOSHIGEFUJI
	TF HIKOKURA 7/12

70 days safe bred to LMR Kitaguni Jr 1441Y, FB14630.

49

**JDH MS HIRAKAORU 30D**

FB25754 | 05.03.16 | COW | 30D

2+K HIRAKAORU 167J

WESTHOLME HIRASHIGETAYASU Z278	HIRASHIGETAYASU J2351
2+K KAORU 01	WESTHOLME OHYURIHIME X106
	CHR HIRASHIGE 081L
	MS ASUKA 304
TF ITOMICHI 1/2	ITOMICHI
JDH 5583X	DAI 2 KINTOU
YCB MS KIKUHANA 2207	TF KIKUHANA
	TF CHIYOTAKE 8

70 days safe bred to LMR Kitaguni Jr 1441Y, FB14630.

# FULLBLOOD FALL-CALVING FEMALES



JDH MS GENESIS 199D ET / LOT 50



JDH MS GENESIS 189D ET / LOT 51

50

JDH MS GENESIS199D ET

FB30230 | 05.14.16 | COW | 199D

ITOMORITAKA J2703  
GENESIS  
JVP KIKU SHIGE 5298E

WORLD K'S SHIGESHIGETANI  
QUEENFUJI SHIG  
QUEENFUJI

ITOHIRASHIGE  
DAI 6 OEFUJII J565554-KURO KOH  
JVP KIKUYASU-400  
JVP KIKUHANA 298  
WORLD K'S HARUKI 2  
WORLD K'S SUZUTANI  
INAKA YAMA  
UTSUKUSHI QUEEN

100 days safe bred to World K'S Yasufuku Jr., FB5061

51

JDH MS GENESIS 189D ET

FB30225 | 05.11.16 | COW | 189D

ITOMORITAKA J2703  
GENESIS  
JVP KIKU SHIGE 5298E

ITOSHIGENAMI  
TJP 100X  
LAKE WAGYU Y011

ITOHIRASHIGE  
DAI 6 OEFUJII J565554-KURO KOH  
JVP KIKUYASU-400  
JVP KIKUHANA 298  
SHIGESHIGENAMI 10632  
FUKUYUKI  
JVP FUKUKANE 402E  
JAPANESE COW (BLACK)

70 days safe bred to World K'S Yasufuku Jr., FB5061





HANSHOKU 068 B273 / LOT 52

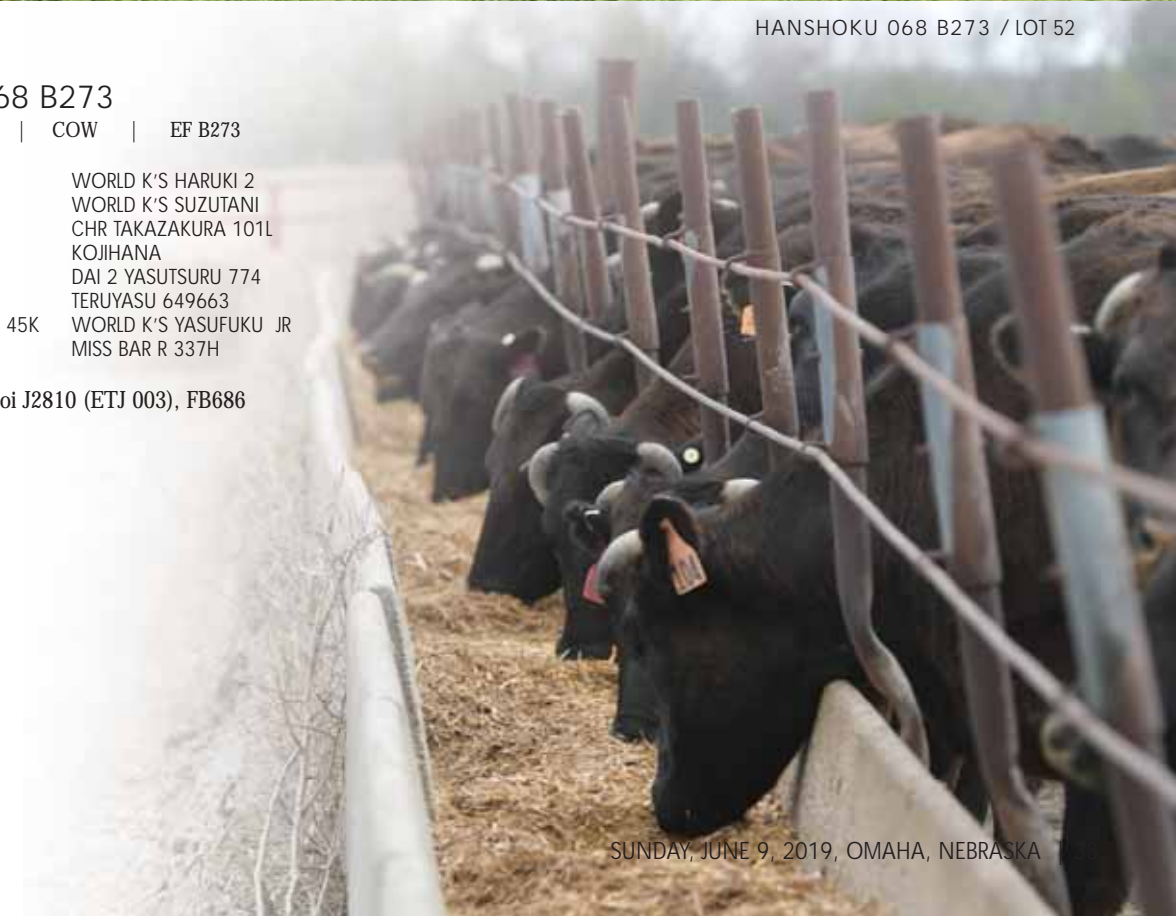
52

**HANSHOKU 068 B273**

FB20436 | 07.19.14 | COW | EF B273

<p>SHOKURA 4</p> <p>TAKAHANA</p> <p>JVP FUKUSURU-068</p> <p>PLC FUKUSURU 316W</p> <p>BAR R MISS YASAFUKU 45K</p>	<p>WORLD K'S HARUKI 2</p> <p>WORLD K'S SUZUTANI</p> <p>CHR TAKAZAKURA 101L</p> <p>KOJIHANA</p> <p>DAI 2 YASUTSURU 774</p> <p>TERUYASU 649663</p> <p>WORLD K'S YASUFUKU JR</p> <p>MISS BAR R 337H</p>
--	--

100 days safe bred to Kitateruyasudoi J2810 (ETJ 003), FB686



# FULLBLOOD FALL-CALVING FEMALES



BAR R NAMA KAWA 63Y / REFERENCE SIRE

This group of cows features tremendous growth potential through the sire of four of the lots, BRG Itoshigefuji 6F, who is a son of TF 147 Itoshigefuji. These cows are the kind of cows to build a strong herd from.

The maternal side of these cows is built on genetics from breed greats that include Itozurudo, JVP 068, Hirashigetayasu, Kikuhana, Michifuku, and Sanjiro. This is a blend of sires that will form a superior genetic base from which to breed future generations of great Wagyu cattle.

The service sires for these cows include the new marbling standout, LMR Kitaguni Jr, who was bred and proven in the highly respected Lone Mountain program; and Bar R Namakawa 63Y, who was bred and developed in Jerry Reeves great Bar R program. 63Y is a 30T son from the Yuriko maternal line that performed extremely well in a GrowSafe test program and emerged as one of the highest ranking young bulls in his test group.

53

## BRG ITOSHIGEFUJI 035

FB23448 | 05.13.14 | COW | ORANGE 35

ITOSHIGEFUJI  
**BRG ITOSHIGEFUJI 6F**  
 LMR MS MICHIFUKU 610S  
 364 BRG 151 ITOSURU DOI  
**BRG ITOSURUFUKU 115B**  
 CHR MS FUKUTSURU 362S

ITOFUJI 483  
 DAI 30 NOBORU J920752  
 WORLD K'S MICHIFUKU  
 JVP MS KIKUSHIGE 08E  
 ITOZURU DOI  
 CHR MS SANJIROU 185R  
 JVP FUKUTSURU-068  
 CHR MS TAK 096L

85 days safe bred to Bar R Namakawa 63Y, FB13918

54

## BRG ITOSHIGEFUJI 030

FB23443 | 07.20.14 | COW | ORANGE 30

ITOSHIGEFUJI  
**BRG ITOSHIGEFUJI 6F**  
 LMR MS MICHIFUKU 610S  
 HIRASHIGETAYASU J2351  
**SC HIRANIRU 66**  
 NIRU

ITOFUJI 483  
 DAI 30 NOBORU J920752  
 WORLD K'S MICHIFUKU  
 JVP MS KIKUSHIGE 08E  
 DAI 20 HIRASHIGE 287  
 DAI 5 YURUHIME  
 TF KIKUHANA  
 JVP MS KIKUSHIGE 08E

85 days safe bred to MFC Shigesigetani 2-12



BRG MS MICHI 10E / LOT 55

55

## BRG MS MICHI 10E

FB37984 | 07.05.17 | COW | BRG 10E

WORLD K'S MICHIFUKU  
**BRG MICHIFUKU C7**  
 BRG ITOFUKU W17  
 WORLD K'S MICHIFUKU  
**CHR MS MICHIFUKU 56T**  
 CHR MS KIKUSHIGE 023

MONJIRO  
 MICHIKO  
 CHR ITOSURU DOI  
 CHR MS FUKUTSURU 065S  
 MONJIRO  
 MICHIKO  
 JVP YASUTANISAKURA  
 JVP MS KIKUSHIGE 403

110 days safe bread to LMR Kitaguni Jr 1441Y, FB14630



**56****BRG ITOSHIGEFUJI 019**

FB23432 | 05.05.14 | COW | ORANGE 19

ITOSHIGEFUJI  
**BRG ITOSHIGEFUJI 6F**  
 LMR MS MICHIFUKU 610S

372 BRG 151 ITOSURU DOI  
**BRG MS MICHIFUKU Y61**  
 CHR MS MICHIFUKU 61

ITOFUJI 483  
 DAI 30 NOBORU J920752  
 WORLD K'S MICHIFUKU  
 JVP MS KIKUSHIGE 08E  
 ITOZURU DOI  
 CF 503  
 WORLD K'S MICHIFUKU  
 CHR MS KIKUSHIGE 023

100 days safe bred to Bar R Namakawa 63Y, FB13918

**57****BRG ITOSHIGEFUJI 026**

FB23439 | 05.21.14 | COW | ORANGE 26

ITOSHIGEFUJI  
**BRG ITOSHIGEFUJI 6F**  
 LMR MS MICHIFUKU 610S

180 BRG 151 ITOSURU DOI  
**BRG Y113**  
 113 BRG SANJIRO KIKUHANA

ITOFUJI 483  
 DAI 30 NOBORU J920752  
 WORLD K'S MICHIFUKU  
 JVP MS KIKUSHIGE 08E  
 ITOZURU DOI  
 CF 501  
 WORLD K'S SANJIROU  
 CHR MS KIKUSHIGE 018

100 days safe bred to Bar R Namakawa 63Y, FB13918

**58****YAR 190D AI**

FB33425 | 05.05.16 | COW | 190D

SHIDOOSHA  
**EFCC HOSHI MARU**  
 LMR MS FUKUTSURU 606S

CHR YASUFUKU 246T  
**EF YASUMICHI A18**  
 BR MS MICHIFUKU 0636

WORLD K'S MICHIFUKU  
 FUJIKO  
 JVP FUKUTSURU-068  
 HOSHI  
 WORLD K'S YASUFUKU JR  
 CHR MS KITATERU 59J  
 WORLD K'S MICHIFUKU  
 BR MS KIKUHANA 8620

100 days safe bred to Itomoritaka J2703 (ETJ002), FB681

**59****BRG SABURO 021**

FB23434 | 05.03.14 | COW | ORANGE 21

BAR R 12P  
**LMR SABURO**  
 BR MS MICHIFUKU 0638

372 BRG 151 ITOSURU DOI  
**BRG ITOMOUTSU Y177**  
 SC ITOMOUTSU 77

BAR R TAKASURU 1 K  
 JVP MS FUKUSHIGE T10E  
 WORLD K'S MICHIFUKU  
 BR MS MICHIFUKU T4E 8605  
 ITOZURU DOI  
 CF 503  
 ITOMORITAKA J2703  
 UTSUKUSHII

80 days safe bred to MFC Shigesigetani 2-12



# PUREBRED FALL-CALVING FEMALES (Bred to Homozygous Polled bull)



BAR R POLLED ZURUTANI D64 / REFERENCE SIRE

60

EF YASUHIRATAKA A24

PB18730 | 04.08.13 | COW | EF A24

WORLD K'S YASUFUKU JR	YASUFUKU 930
CHR YASUFUKU 246T	KANEKO 5
CHR MS KITATERU 59J	KITATERUYASUDOJ J2810
	CHR KIKUHANAHIME
CHR HIRASHIGE 170P	CHR HIRASHIGE 081L
HIRASHIGE TAK ETSU EF	CHR MS KIKUSHIGE 017
ETSU	CHR TAKAZAKURA 101L
	MS. SILVERTON

A.I. to Bar R Polled Zuritani D64 (PB25456) on 11.1.18. Due date 8.13.19.

This purebred cow carries the genetics from three highly regarded "second generation" sires. Her sire is Yasufuku 246T. 246T boasts an exceptional pedigree with Yasufuku Jr as his sire and Kitateruyasudoj 003 as his maternal grandsire. The maternal grandsire of this lot is 170P, a proven good growth bull sired by legend Hirashigetayasu 001. Her Maternal grandsire is Takazakura 101L, a Takazakura son, who comes from the Hikokuras. Hikokura genetics on both sides of this cow's pedigree make her very desirable.

61

YASU OKURI B251

PB20418 | 07.03.14 | COW | EF B251

YASUFUKU 930	YASUTANI DOI
WORLD K'S YASUFUKU JR	CHIZURU
KANEKO 5	MONJIRO 11550
	KANEKO 47492
OKURIMONO	WORLD K'S MICHIFUKU
MAREKURINOMO	FUJIKO
MARLEKO	RUESHAW
	SLOW MOTION

A.I. to Bar R Polled Zuritani D64 (PB25456) on 11.1.18. Due date 8.13.19.

62

JDH MS YASUFUKU 1062

PB25020 | 09.13.15 | COW | 1602

WORLD K'S YASUFUKU JR	YASUFUKU 930
CHR YASUFUKU 16	KANEKO 5
CHR MS MICHIFUKU 035H	WORLD K'S MICHIFUKU
	JVP MS KIKUSHIGE 403
JDH2505S6	ITOSHIGENAMI
JDH7172	JDH2435SD
JDH7172D	YCB ITOHANA 394
	JDH4848DD

A.I. to Bar R Polled Zuritani D64 (PB25456) on 11.1.18. Due date 8.13.19.

63

JDH MS YASUFUKU 1546

PB24253 | 04.25.15 | COW | 1546

WORLD K'S YASUFUKU JR	YASUFUKU 930
CHR YASUFUKU 16	KANEKO 5
CHR MS MICHIFUKU 035H	WORLD K'S MICHIFUKU
	JVP MS KIKUSHIGE 403
ATHENS 202-TT	TF TERUTANI
JDH9262	15/16 WAGYU COW
	TF TERUTANI
JDH3636D	JDH3718DD

A.I. to Bar R Polled Zuritani D64 (PB25456) on 11.1.18. Due date 8.13.19.

64

JDH MS YASUFUKU 1542

PB24512 | 04.15.15 | COW | 1542

WORLD K'S YASUFUKU JR	YASUFUKU 930
CHR YASUFUKU 16	KANEKO 5
CHR MS MICHIFUKU 035H	WORLD K'S MICHIFUKU
	JVP MS KIKUSHIGE 403
ITOSHIGENAMI	SHIGESHIGENAMI 10632
JDH7262	FUKUYUKI
	JDH2554S4
JDH5412	HIKOKURA 8/6

A.I. to Bar R Polled Zuritani D64 (PB25456) on 11.1.18. Due date 8.13.19.

This group of four purebred cows are sired by either Yasufuku Jr or his son, Yasufuku 16. Yasufuku genetics will contribute outstanding marbling and rib eye area to any pedigree. The Yasufuku blood daughters featured here will provide great foundations to continue breeding from to produce tremendous quality carcasses. Their maternal lines contain some elite sires such as TF 148 Itoshigenami, TF Terutani, and Rueshaw.



This group of nine cows features five daughters of JVP Kikayasu 400 son, Kikayasu Mikomi. JVP 400 is touted as the heaviest Tajima bull to be exported from Japan. Combining JVP 400 with the brood cow Mikomi should fix growth traits into the Kikayasu Mikomi bull.

The sires found on the maternal side of this group of cows feature names such as Yasufuku Jr, Michifuku, JVP 068, Haruki II, and Itoshigenami. These bulls are certainly the right bulls to build a Wagyu breeding program around.

65

YAR 206D AI

PB33432 | 05.27.16 | COW | 206D

JVP KIKUYASU-400	KIKUYASU DOI 575
KIKUYASU MIKOMI	FUKUYOSHI 703223
MIKOMI	TF ITOMICHI 1/2
	FUJIKO
EFCC HOSHI MARU	SHIDOOSHA
EF HIRASHIGE KISS	LMR MS FUKUTSURU 606S
FUJI SANJIROU	RSC SANJI-DOI O-2
	HIRASHIGE FUKUTSURU E

A.I. to Bar R Polled Zuritani D64 (PB25456) on 11.1.18;  
Due date: 8.13.19

67

YAR 236D AI

PB33441 | 05.09.16 | COW | 236D

JVP KIKUYASU-400	KIKUYASU DOI 575
KIKUYASU MIKOMI	FUKUYOSHI 703223
MIKOMI	TF ITOMICHI 1/2
	FUJIKO
CHR YASUFUKU 246T	WORLD K'S YASUFUKU JR
EF YASUHIRATAKA A24	CHR MS KITATERU 59J
HIRASHIGE TAK ETSU EF	CHR HIRASHIGE 170P
	ETSU

A.I. to Bar R Polled Zuritani D64 (PB25456) on 11.1.18;  
Due date: 8.13.19

69

YAR 263D

PB33452 | 05.25.16 | COW | 263D

JVP KIKUYASU-400	KIKUYASU DOI 575
KIKUYASU MIKOMI	FUKUYOSHI 703223
MIKOMI	TF ITOMICHI 1/2
	FUJIKO
CHR HIRASHIGE 170P	CHR HIRASHIGE 081L
AYAJA HIROSHIGI	CHR MS KIKUSHIGE 017
TSUNATSURU	JVP FUKUTSURU-068
	KABOCHA KISS

A.I. to Bar R Polled Zuritani D64 (PB25456) on 11.1.18; Due date:  
8.13.19

71

JDH MS ITOMORITAKA 213D ET

PB30247 | 05.10.16 | COW | 213D

ITOMORITAKA J2703	ITOHIRASHIGE
LMR RMW ITOMORITAKA	DAI 6 OEFUJII J565554-KURO KOH
LMR MS SANJIROU 767T	WORLD K'S SANJIROU
	WORLD K'S NAKAZAKURA
SHIDOOSHA	WORLD K'S MICHIFUKU
MONFUJI	FUJIKO
TSURU	WORLD K'S HARUKI 2
	TSUNAMI

A.I. to Bar R Polled Zuritani D64 (PB25456) on 11.1.18;  
Due date: 8.13.19

66

JDH MS KIKUYASU MIKOMI 209D ET

PB30224 | 04.16.16 | COW | 209D

JVP KIKUYASU-400	KIKUYASU DOI 575
KIKUYASU MIKOMI	FUKUYOSHI 703223
MIKOMI	TF ITOMICHI 1/2
	FUJIKO
CHR TAKAZAKURA 101L	WORLD K'S TAKAZAKURA
EFCC AJISAI	CHR KIKUHANAHIME
TSUNATSURU	JVP FUKUTSURU-068
	KABOCHA KISS

A.I. to Bar R Polled Zuritani D64 (PB25456) on 11.1.18;  
Due date: 8.13.19

68

JDH MS KIKUYASU MIKOMI 218D ET

PB30219 | 04.10.16 | COW | 218D

JVP KIKUYASU-400	KIKUYASU DOI 575
KIKUYASU MIKOMI	FUKUYOSHI 703223
MIKOMI	TF ITOMICHI 1/2
	FUJIKO
OKURIMONO	WORLD K'S MICHIFUKU
MAREKURINOMO	FUJIKO
MARLEKO	RUESHAW
	SLOW MOTION

A.I. to Bar R Polled Zuritani D64 (PB25456) on 11.1.18; Due date:  
8.13.19

70

YAR 258D

PB33451 | 06.02.16 | COW | 258D

TF ITOMICHI 1/2	ITOMICHI
EF ITOMICHI TETSU	DAI 2 KINTOU
QUEENFUJI	INAKA YAMA
	UTSUKUSHI QUEEN
RSC KIKU-SURU 629B	JVP KIKUSHIGE 401E
EF PB 401E TAKA 29Y	BR MS FUKUTSURU 0629
SATOKO	CHR TAKAZAKURA 101L
	MS. WILLAMITE VALLEY

A.I. to Bar R Polled Zuritani D64 (PB25456) on 11.1.18;  
Due date: 8.13.19

# PUREBRED FALL-CALVING FEMALES (Bred to Homozygous Polled bull)

72

JDH MS FUJIMOTO 1522  
PB24219 | 03.30.15 | COW | 1522

CHR MUSASHI 222S	MRB MUSASHI 03K
KGW FUJIMOTO 10051	CHR MS MICHIFUKU 030H
KGW TEIKO 04016	CHR TAKAZAKURA 095L
	KGW MOMOKO
ITOSHIGENAMI	SHIGESHIGENAMI 10632
JDH 7790	FUKUYUKI
JDH6437	KIMIFUKU 3
	JDHTF413D

A.I. to Bar R Polled Zuritani D64 (PB25456) on 11.1.18;  
Due date: 8.13.19

73

JDH MS MEEKO II 1537  
PB24232 | 05.06.15 | COW | 1537

CHR MUSASHI 222S	MRB MUSASHI 03K
KGW MEEKO II 10048	CHR MS MICHIFUKU 030H
KGW 01013	JVP YASUTANISAKURA
	MORIYAMA
ATHENS 2004-KT1	KIKUTERUSHIGE
JDH7675	15/16 WAGYU COW
JDH6413	YCB ITOHANA 394
	JDH4732SD

A.I. to Bar R Polled Zuritani D64 (PB25456) on 11.1.18;  
Due date: 8.13.19

This group of three purebred cows is sired by EFCC Hoshi Maru. He is a double bred Okutani with the awesome Okutani cow appearing on the paternal and maternal sides of his pedigree. His sire is the well-known Michifuku son, Shidoosha. His balanced breeding should allow Hoshi Maru to pass great genetics on to his progeny. The three daughters here will provide a nice genetic base to breed from moving forward to future generations

74

EF HIRASHIGE KISS  
PB15884 | 03.25.13 | COW | EF A7

SHIDOOSHA	WORLD K'S MICHIFUKU
EFCC HOSHI MARU	FUJIKO
LMR MS FUKUTSURU 606S	JVP FUKUTSURU-068
	HOSHI
RSC SANJI-DOI O-2	SR Y13 SANJI
FUJI SANJIROU	BR MS KITATERUYASUDOI 96
HIRASHIGE FUKUTSURU EF	CHR HIRASHIGE 170P
	TSUNATSURU

A.I. to Bar R Polled Zuritani D64 (PB25456) on 11.1.18;  
Due date: 8.20.19

75

HOSHI 101L B210  
PB20387 | 06.24.14 | COW | EF B210

SHIDOOSHA	WORLD K'S MICHIFUKU
EFCC HOSHI MARU	FUJIKO
LMR MS FUKUTSURU 606S	JVP FUKUTSURU-068
	HOSHI
CHR TAKAZAKURA 101L	WORLD K'S TAKAZAKURA
ZANEUCHI	CHR KIKUHANAHIME
NOVA'S NEUCHI	SHIDOOSHA
	NOVA

A.I. to Bar R Polled Zuritani D64 (PB25456) on 11.1.18;  
Due date: 8.20.19

76

HOSHI OKURI B211  
PB20388 | 06.24.14 | COW | EF B211

SHIDOOSHA	WORLD K'S MICHIFUKU
EFCC HOSHI MARU	FUJIKO
LMR MS FUKUTSURU 606S	JVP FUKUTSURU-068
	HOSHI
OKURIMONO	WORLD K'S MICHIFUKU
SILVERTON PRINCESS	FUJIKO
MS. SILVERTON	HAMMONDYAMA
	CASSIE

A.I. to Bar R Polled Zuritani D64 (PB25456) on 11.1.18;  
Due date: 8.20.19



## 20 YEARS IN THE MAKING





## OPEN HEIFERS

This offering of open heifers are from the heart of the JDH breeding program and feature genetics from only the best they have to offer. JDH has elected to sell only their very finest—simply put, these are the type of elite prospects that a new or established breeder would want to consider for their program. JDH offers them for

Your evaluation and appreciated appraisal through this Big Event Sale.

# FULLBLOOD YEARLING HEIFERS



JDH 184F AI / LOT 77



JDH 128F / LOT 78

77

JDH 184F AI

FB36315 | 05.12.18 | COW | 184F

OA07

ECHIGO FARMS MAIFUKU

ECHIGO FARMS F B1002

HIRASHIGETAYASU J2351

HIRASHIGETAYASU EIKO

CHR MS SANJIROU 434

KITATERUYASUDOJ J2810

JAPANESE COW (BLACK)

ITOMORITAKA J2703

WESTHOLME AYAKA V13

DAI 20 HIRASHIGE 287

DAI 5 YURUHIME

WORLD K'S SANJIROU

MJB MS KITAFUKU 05K

78

JDH 128F

FB39941 | 04.19.18 | COW | 128F

2+K KYORYOKUNA 14/89K

WORLD K'S YASUFUKU JR

2+K KIBOU

TF ITOMICHI 1/2

YAR 169C

ESF SHIDOOSHA 158-053

YASUFUKU 930

KANEKO 5

KIRU BIRU

2+K ASAKO 08

ITOMICHI

DAI 2 KINTOU

SHIDOOSHA

ESF HIRASHIGE N 047J 158

This beautiful heifer brings a unique pedigree to the table. Her sire is a combination of westholme sires. Westholme are nearly impossible to find in the US, with the exception of 001, 002, and 003. In fact, the sire of this bull is the result of an embryo imported from Australia, giving him a special pedigree with Westholme breeding on the top and bottom. The dam of this heifer is by Hirashigetayasu 001 which will put size and growth into her. Behind him are three exceptional carcass sires – Sanjirou, 068, and Kitaguni Jr. This is an amazing pedigree from the Chisahimes which will attract a serious amount of attention!

This heifer grabs your attention with her good looks. Follow that to her pedigree where you will find her sired by a son of marbling great, Yasufuku Jr. When you drop down to the maternal side of the pedigree you will find the high growth/maternal sire Itomichi 1/2 as the maternal grandsire. He is one of the top, high reliability sires from Takeda Farms. The sire pathway continues with Shidoosha x 001 son x JVP 068. There are a lot of good genetics represented here.





JDH 70F / LOT 79



JDH 27F / LOT 80



JDH 2F / LOT 81

These three heifers are sired by the 14/89K bull. He carries a very high Tajima pedigree with Yasufuku Jr as his sire and two crosses to former #1 Marbling sire JVP 068. Two of these heifers are the result of smartly crossing 14/89K on Genesis daughters to give a balance of carcass traits and growth traits. Both of the Genesis daughters descend from excellent marbling foundations. The third heifer carries a highly desirable genetic base that features JVP 400, Shigeshigetani, and Michifuku. These heifers will provide a strong genetic base for any breeding program. 14/89K has a AA7 SCD Tenderness.

79	JDH 70F	FB39940	04.17.18	COW	70F
	2+K KYORYOKUNA 14/89K	WORLD K'S YASUFUKU JR	YASUFUKU 930		
YAR 198C	GENESIS	KANEKO 5	KIRU BIRU		
	TJP 100X	2+K ASAKO 08	ITOMORITAKA J2703		
		JVP KIKU SHIGE 5298E	ITOSHIGENAMI		
		LAKE WAGYU Y011			

80	JDH 27F	FB39939	04.17.18	COW	27F
	2+K KYORYOKUNA 14/89K	WORLD K'S YASUFUKU JR	YASUFUKU 930		
YAR 193C	KIKUYASU MIKOMI	KANEKO 5	KIRU BIRU		
	ESF SHIGETANI 16-242	2+K ASAKO 08	JVP KIKUYASU-400		
		MIKOMI	WORLD K'S SHIGESHIGETANI		
		ESF MICHIFUKU P 614 016			

81	JDH 2F	FB39938	04.11.18	COW	2F
	2+K KYORYOKUNA 14/89K	WORLD K'S YASUFUKU JR	YASUFUKU 930		
YAR 162C	GENESIS	KANEKO 5	KIRU BIRU		
	BR MS KITDOI/0632 6621	2+K ASAKO 08	ITOMORITAKA J2703		
		JVP KIKU SHIGE 5298E	BR KITATERUYASUDOI 0632		
		BR MS KITATERU-9676 2608			

# FULLBLOOD YEARLING HEIFERS

Okutani and Yuriko are the matriarchs of two of the most respected lines of the breed. They are the maternal foundation for two of the heifers in this group. They provide proven performance on the bottom side of the pedigree here. Sires like Itozurudo, Yasufuku, Itomichi 1/2, JVP 068, and Kenhanafuji also lend proven performance to these heifers. The sire side of the pedigrees are dominated by the highly sought after Suzutani genetics. Shigeshigetani is her son, 59T is her double grandson, and 63Y is her great grandson. These genetics are sought after throughout the breed.



JDH 15F / LOT 82

82

JDH 15F

FB36166 | 05.09.18 | COW | 15F

BAR R NAMIKAWA 63Y	BAR R SHIGESHIGETANI 30T	WORLD K'S SHIGESHIGETANI
BAR R 2P		BAR R 68P
		BAR R TAKASURU 1 K
		BAR R MISS 53J
FUJI SAKURA	TF ITOMICHI 1/2	ITOMICHI
	QUEENFUJI	DAI 2 KINTOU
		INAKA YAMA
		UTSUKUSHI QUEEN

83

JDH 22F

FB36173 | 04.10.18 | COW | 22F

BAR R DBL SUZUTANI 59T	WORLD K'S SANJIROU	WORLD K'S MICHIFUKU
	AKIKO 3	WORLD K'S SUZUTANI
		WORLD K'S MICHIFUKU
		WORLD K'S SUZUTANI
EF VT B21	VT YASUZURU DOI	ITOZURU DOI
	VT MS SUZUZAKURA W07	CHR MS YASUFUKU 189R
		KEVINHANIFUJI
		MUTSUOKO

84

BRG 58F

FB37320 | 04.29.18 | COW | BRG 58F

WORLD K'S SHIGESHIGETANI	WORLD K'S HARUKI 2	MONJIRO 11550
	WORLD K'S SUZUTANI	SAKURA 2
		TANISHIGE 1526
		SUZUNAMI
BRG ITOFUKU W17	CHR ITOSURU DOI 282T	ITOZURU DOI
	CHR MS FUKUTSURU 065S	SUZUTAKA 2
		JVP FUKUTSURU-068
		JVP MS KIKUSHIGE 403



**85****JDH 157F**

FB36294 | 05.09.18 | COW | 157F

WORLD K'S YASUFUKU JR	YASUFUKU 930
TBR YASUFUKU JR 4312B	KANEKO 5
TBR HIKOFUJINAMI 4 1051X	ITOSHIGEFUJI
	CF 500
LMR RMW ITOMORITAKA	ITOMORITAKA J2703
IWA 101L B282	LMR MS SANJIROU 767T
PLC TAKA MICKO MIJ 334W	CHR TAKAZAKURA 101L
	MIKOMIS MIJIKO



JDH 157F / LOT 85

Shigeshigetani is proving to be one of the truly elite sires of the breed. He is a son of the legendary Suzutani and has gone on to become one of the elite carcass bulls of the breed with tremendous performance in many established breeding programs. His son, MFC Shigeshigetani 2-12, is the sire of these three heifers. 2-12 is from the Hikokura line giving him all of the tools to become an outstanding sire in his own right. All three of these heifers trace back to the elite brood cow, Yuriko. Yuriko has established herself as a genetic powerhouse in both the US and Australia. These heifers have it all! SCD AA and Tenderss = 5.



MFC SHIGESHIGETANI 2-12 / SIRE OF LOTS 86 - 88

**86****BRG MS SHIGESHIGE 2-12 79F**

FB37341 | 05.06.18 | COW | 79F

WORLD K'S SHIGESHIGETANI	WORLD K'S HARUKI 2
MFC SHIGESHIGETANI 2-12	WORLD K'S SUZUTANI
MFC MS ITOSURU DOI 8-1	ITOZURU DOI
	CF502
JVP FUKUTSURU-068	DAI 2 YASUTSURU 774
CHR MS FUKUTSURU 148	TERUYASU 649663
JVP MS KIKUSHIGE 403	JVP KIKUYASU-400
	JVP YURIKO-1 050

**87****BRG MS SHIGESHIGE 2-12 57F**

FB37319 | 05.15.18 | COW | 57F

WORLD K'S SHIGESHIGETANI	WORLD K'S HARUKI 2
MFC SHIGESHIGETANI 2-12	WORLD K'S SUZUTANI
MFC MS ITOSURU DOI 8-1	ITOZURU DOI
	CF502
180 BRG 151 ITOSURU DOI	ITOZURU DOI
BRG G500	CF 501
CHR MS MICHIFUKU 194S	WORLD K'S MICHIFUKU
	CHR MS KIKUSHIGE 017

**88****BRG MS TRIPLE SUZUTANI 73F**

FB37335 | 04.05.18 | COW | 73F

WORLD K'S SHIGESHIGETANI	WORLD K'S HARUKI 2
MFC SHIGESHIGETANI 2-12	WORLD K'S SUZUTANI
MFC MS ITOSURU DOI 8-1	ITOZURU DOI
	CF502
WORLD K'S SANJIROU	WORLD K'S MICHIFUKU
BRG Y10	WORLD K'S SUZUTANI
CHR MS SANJIROU 19	WORLD K'S SANJIROU
	CHR MS KIKUSHIGE 017

# FULLBLOOD YEARLING HEIFERS



These seven heifers bring some great marbling genetics to the game. Three of them are sired by emerging sire LMR Kitaguni Jr. Not only is he a son of the marbling superstar Kitaguni Jr, he is establishing himself as a sire who transmits outstanding EBVs for marbling and carcass traits, too. The fourth heifer is sired by a son of Yasufuku Jr, who sires elite carcasses also. These heifers are a tremendous opportunity to acquire elite Tajima genetics. The maternal side of these heifers incorporate a terrific balance of Wagyu genetics through sires such as Sanjirou, Kitaguni Jr, Shigesigetani, TF Kikuhana, Hirashigetayasu, and LMR RMW Itomoritaka. These bulls laid a strong foundation for these heifers.

JDH 10F / LOT 89

89

JDH 10F

FB 36161 | 04.14.18 | COW | 10F

WORLD K'S KITAGUNI JR.  
LMR KITAGUNI 1441Y  
BR MS YASUFUKU 0645

EFCC HOSHI MARU  
YAR HOSHI RUESHAW C557  
HIRASHIGETAYASU EISUKO

KITAGUNI 7/8  
WORLD K'S NAKAYUKI  
WORLD K'S YASUFUKU JR  
MISS BAR R 321H  
SHIDOOSHA  
LMR MS FUKUTSURU 606S  
HIRASHIGETAYASU J2351  
CHR MS SANJIROU 434

90

JDH 134F

FB36274 | 03.28.18 | COW | 134F

WORLD K'S KITAGUNI JR.  
LMR KITAGUNI 1441Y  
BR MS YASUFUKU 0645

CHR SANJIROU 391  
JDH MS SANJIROU 1592C  
JDH 4895K

KITAGUNI 7/8  
WORLD K'S NAKAYUKI  
WORLD K'S YASUFUKU JR  
MISS BAR R 321H  
WORLD K'S SANJIROU  
CHR MS HARUKI 027  
TF KIKUHANA  
TF HIKOHIME 8

91

JDH 42F

FB36191 | 04.13.18 | COW | 42F

WORLD K'S KITAGUNI JR.  
LMR KITAGUNI 1441Y  
BR MS YASUFUKU 0645

ITOMORITAKA J2703  
YAR SANJIROUITOMORI C711  
CHR MS SHIGESHIGETANI 509

KITAGUNI 7/8  
WORLD K'S NAKAYUKI  
WORLD K'S YASUFUKU JR  
MISS BAR R 321H  
ITOHIRASHIGE  
DAI 6 OEFUJII J565554-KURO KOH  
WORLD K'S SHIGESHIGETANI  
CHR MS KITAGUNI 84L



# FULLBLOOD TEN-MONTH OLD OPEN HEIFERS

92

JDH 409F

U41807 | 08.25.18 | COW | 409F

WORLD K'S KITAGUNI JR.      KITAGUNI 7/8  
 LMR KITAGUNI 1441Y      WORLD K'S NAKAYUKI  
 BR MS YASUFUKU 0645      WORLD K'S YASUFUKU JR  
    MISS BAR R 321H  
 WORLD K'S SHIGESHIGETANI      WORLD K'S HARUKI 2  
 SHIGESHIGETANI CHIE      WORLD K'S SUZUTANI  
 CHR MS FUKUTSURU 440      JVP FUKUTSURU-068  
    CHR MS HIRASHIGE 055J



JDH 409F / LOT 92

93

JDH 413F

U41810 | 08.29.18 | COW | 413F

WORLD K'S KITAGUNI JR.      KITAGUNI 7/8  
 LMR KITAGUNI 1441Y      WORLD K'S NAKAYUKI  
 BR MS YASUFUKU 0645      WORLD K'S YASUFUKU JR  
    MISS BAR R 321H  
 WORLD K'S SHIGESHIGETANI      WORLD K'S HARUKI 2  
 SHIGESHIGETANI CHIEKO      WORLD K'S SUZUTANI  
 CHR MS MICHIFUKU 433      WORLD K'S MICHIFUKU  
    CHR MS TAK 102L



JDH 413F / LOT 93

94

JDH 397F

U41798 | 08.28.18 | COW | 397F

WORLD K'S KITAGUNI JR.      KITAGUNI 7/8  
 LMR KITAGUNI 1441Y      WORLD K'S NAKAYUKI  
 BR MS YASUFUKU 0645      WORLD K'S YASUFUKU JR  
    MISS BAR R 321H  
 JVP HIRATAFUJI 402      HIRATA 1317  
 HIRATA SANJI B278      JVP YASUFUJI 1-4 266  
 CHR MS SANJIROU 434      WORLD K'S SANJIROU  
    MJB MS KITAFUKU 05K



# FULLBLOOD TEN-MONTH OLD OPEN HEIFERS



JDH 433F / LOT 95

95

JDH 433F

U41823 | 08.21.18 | COW | 433F

LMR KITAGUNI 1441Y

BR MS YASUFUKU 0645

EF MS YASUTAKA 4PZ

TAKANASHI

KITAGUNI 7/8  
WORLD K'S NAKAYUKI  
WORLD K'S YASUFUKU JR  
MISS BAR R 321H  
WORLD K'S YASUFUKU JR  
CHR MS KITATERU 59J  
CHR TAKAZAKURA 101L  
OTANASHII



BRG 387F / LOT 96

96

BRG 387F

U42050 | 09.26.18 | COW | 387F

BAR R NAMIKAWA 63Y

BAR R 2P

BRG Y1356

372 BRG 151 ITOSURU DOI

BRG FUKUHIRA W51

WORLD K'S SHIGESHIGETANI  
BAR R 68P  
BAR R TAKASURU 1 K  
BAR R MISS 53J  
ITOZURU DOI  
CF 503  
BR FUKUTSURU 068 4610  
SC HIRANIRU 51



BRG MS NAMIKAWA 389F / LOT 97

97

BRG MS NAMIKAWA 389F

FB42051 | 08.18.18 | COW | 389F

BAR R NAMIKAWA 63Y

BAR R 2P

BRG FUKUHIRA W51

BR FUKUTSURU 068 4610

SC HIRANIRU 51

WORLD K'S SHIGESHIGETANI  
BAR R 68P  
BAR R TAKASURU 1 K  
BAR R MISS 53J  
JVP FUKUTSURU-068  
MISS BAR R 321H  
HIRASHIGETAYASU J2351  
NIRU

This lot is sired by 63Y, a 30T son, who is proving to be a worthwhile sire. He will transmit balanced performance to his progeny. The dam of this heifer exhibits strength of pedigree on her maternal side with genetic support from breed leading sires JVP 068, Hirashigetayasu, and TF Kikuhana. It is a great base from which to breed future progeny that will have outstanding performance in the herd and in the feedlot.



**98****BRG 417F**

U42058 | 08.09.18 | COW | 417F

BAR R SHIGESHIGETANI 30T	WORLD K'S SHIGESHIGETANI
BAR R NAMIKAWA 63Y	BAR R 68P
BAR R 2P	BAR R TAKASURU 1 K
	BAR R MISS 53J
BRG ITOSHIGEFUJI 792F	ITOSHIGEFUJI
BRG Y1358	LMR MS MICHIFUKU 610S
SC HIRANIRU 51	HIRASHIGETAYASU J2351
	NIRU

**99****BRG NAMIKAWA 440F**

FB42064 | 08.16.18 | COW | 440F

BAR R SHIGESHIGETANI 30T	WORLD K'S SHIGESHIGETANI
BAR R NAMIKAWA 63Y	BAR R 68P
BAR R 2P	BAR R TAKASURU 1 K
	BAR R MISS 53J
372 BRG 151 ITOSURU DOI	ITOSURU DOI
BRG Y1353	CF 503
CHR MS YASUFUKU 091S	WORLD K'S YASUFUKU JR
	MRB MS SHINYU 014M

63Y is represented again as the sire of this heifer. 63Y should continue to establish himself as a top sire as more progeny mature and move into herds and feedlots. His pedigree and GrowSafe performance indicate that he has a lot to offer. This heifer has a lot to offer as well. The bottom side of her pedigree is outstanding. She is backed by the great sires of the breed – Itozurudo, Yasufuku Jr, and Kitaguni Jr. With these genetics this heifer is assured of a great future.

**100****BRG MS NAMIKAWA 423F**

FB42061 | 08.19.18 | COW | 423F

BAR R SHIGESHIGETANI 30T	WORLD K'S SHIGESHIGETANI
BAR R NAMIKAWA 63Y	BAR R 68P
BAR R 2P	BAR R TAKASURU 1 K
	BAR R MISS 53J
LMR SABURO	BAR R 12P
BRG SABURO 025	BR MS MICHIFUKU 0638
CHR MS SANJIROU 43	WORLD K'S SANJIROU
	CHR MS KIKUSHIGE 017

This is a heifer that garners attention with her looks and the fact that she is from the Yuriko line. She is sired by the solid 63Y. She should be a great performing cow in the future being backed by such great bulls as Sanjiro, TF Kikuhana, and JVP 400 stacked on Yuriko.



BRG MS NAMIKAWA 423F / LOT 100

LETS CELEBRATE ALL THINGS  
THAT ARE GOOD IN WAGYU ...  
JOIN US JUNE 9TH!

# PUREBRED TWENTY-MONTH OLD OPEN HEIFERS



BAR R NAMIKAWA 63Y / REFERENCE SIRE

This set of three purebred heifers is sired by 63Y. He has great potential to develop into a great bull based on his pedigree as a 30T son and his own feeding trial performance. The heifers will have many years of productive performance ahead of them based on the past performance of the JDH herd and breeding program.

101

JDH MS NAMIKAWA 283E AI

PB33262 | 08.08.17 | COW | P283E

BAR R SHIGESHIGETANI 30T  
 BAR R NAMIKAWA 63Y  
 BAR R 2P

372 BRG 151 ITOSURU DOI  
 JDH MS ITOSURU DOI 1473  
 JDH BURANDE OR7

WORLD K'S SHIGESHIGETANI  
 BAR R 68P  
 BAR R TAKASURU 1 K  
 BAR R MISS 53J  
 ITOZURU DOI  
 CF 503  
 15/16 WAGYU SIRE  
 JDH9262

102

JDH MS NAMIKAWA 297E AI

PB33274 | 06.13.17 | COW | 297E

BAR R SHIGESHIGETANI 30T  
 BAR R NAMIKAWA 63Y  
 BAR R 2P

KGW HARUKO 10055  
 JDH MS HARUKO 1472  
 JDH W339

WORLD K'S SHIGESHIGETANI  
 BAR R 68P  
 BAR R TAKASURU 1 K  
 BAR R MISS 53J  
 CHR MUSASHI 222S  
 KGW 99010  
 LMR SABURO  
 JDH9303

103

JDH MS NAMIKAWA 366E AI

FB42061 | 08.19.18 | COW | 423F

BAR R SHIGESHIGETANI 30T  
 BAR R NAMIKAWA 63Y  
 BAR R 2P

KGW FUJIMOTO 10051  
 JDH MS FUJIMOTO 1327  
 JDH 5820

WORLD K'S SHIGESHIGETANI  
 BAR R 68P  
 BAR R TAKASURU 1 K  
 BAR R MISS 53J  
 CHR MUSASHI 222S  
 KGW TEIKO 04016  
 TF KIKUHANA  
 JDH7269



WATCH &  
 BID LIVE AT



CONVENIENCE BUYING

JDH Wagyu and Wagyu365 want to make your buying experience easy and convenient!



These four heifers are sired by 14/89K. He possesses an absolutely dynamic carcass pedigree stacked with Tajima genetics. His sire is Yasufuku Jr, and he has two crosses on his maternal side to JVP 068. 068 was #1 bull for Marbling in the US for many years! Marbling should be infused into these young heifers! The maternal side of these heifers is amazing. Three originate from Takeda lines such as Hikokura, Chiyotake, and Aizakura, and the fourth heifer has Kimifuku 3 in her pedigree. Takeda genetics are always worth acquiring. SCD = AA and Tenderness = 7.

104

JDH KYOR 89K 280E AI  
PB33261 | 08.18.17 | COW | P280E

WORLD K'S YASUFUKU JR  
2+K KYORYOKUNA 14/89K  
2+K KIBOU

KGW FUJIMOTO 10051  
JDH MS FUJIMOTO 1552  
JDH 9288

YASUFUKU 930  
KANEKO 5  
KIRU BIRU  
2+K ASAKO 08  
CHR MUSASHI 222S  
KGW TEIKO 04016  
ATHENS 2003-KS  
TF AIZAKURA 6/1

105

JDH MS KYOR 89K 270E AI  
PB33274 | 06.13.17 | COW | 297E

WORLD K'S YASUFUKU JR  
2+K KYORYOKUNA 14/89K  
2+K KIBOU

KGW MEEKO II 10048  
JDH MS MEEKO II 1539  
JDH 9113

YASUFUKU 930  
KANEKO 5  
KIRU BIRU  
2+K ASAKO 08  
CHR MUSASHI 222S  
KGW 01013  
ATHENS 2003-KS  
JDH 5449D

106

JDH MS KYORYOKUNA 276E AI  
PB33249 | 09.08.17 | COW | 276E

WORLD K'S YASUFUKU JR  
2+K KYORYOKUNA 14/89K  
2+K KIBOU

KGW TAISORO III 10054  
JDH MS TAISORO III 1506  
JDH 5570

YASUFUKU 930  
KANEKO 5  
KIRU BIRU  
2+K ASAKO 08  
CHR MUSASHI 222S  
KGW 05020  
JDHGY41-44S  
JDH9132

107

JDH MS KYORYOKUNA 275E AI  
PB33248 | 08.31.17 | COW | 275E

WORLD K'S YASUFUKU JR  
2+K KYORYOKUNA 14/89K  
2+K KIBOU

BAR R JIRO 22T  
JDH MS JIRO 1533  
JDH7678

YASUFUKU 930  
KANEKO 5  
KIRU BIRU  
2+K ASAKO 08  
JVP FUKUTSURI-068  
BAR R MISS 2N  
ATHENS 2004-KT1  
JDH6333D



## FEEDER CALF PROGRAM

How do you qualify for the JDH Wagyu Feeder Calf Program?

We want our customers to reap the full benefits of using our JDH Wagyu genetics. We have listed requirements that if met by any customers we will be happy to visit with you about purchasing and/or placing them in the hands of potential buyers of Wagyu steers.

- No hormones added.
- Antibiotic Free
- Third party verification.
- Predominately JDH Wagyu genetics.
- Weaned at a minimum of 45 days.
- No more than 90 days from the youngest to the oldest.
- Subject to a minimal sort by a JDH representative to ensure uniformity.

# PUREBRED TWENTY-MONTH OLD OPEN HEIFERS

## 108

JDH MS HIRA 0-40 369E AI  
PB33863 | 09.23.17 | COW | 369E

MFC HIRASHIGE 0-40  
HIRASHIGETAYASU J2351  
CHR MS MICHIFUKU 209S

JDH W292  
LMR SABURO  
JDH9289

DAI 20 HIRASHIGE 287  
DAI 5 YURUHIME  
WORLD K'S MICHIFUKU  
CHR MS KITAGUNI 84L  
BAR R 12P  
BR MS MICHIFUKU 0638  
ATHENS 2003-KS  
ITOCHIYO 5

The sire of this lot is 0-40. This Hirashigetayasu son has huge potential to be an elite sire. His sire, Hirashigetayasu, brings tremendous growth and phenotype with good carcass traits. Going back the maternal line of 0-40 are Michifuku and Kitaguni Jr. These two bulls are legendary carcass trait improvers with Michifuku being the king of rib eye area and 068 being the king of marbling. The maternal side of this heifer is extremely strong with Takeda genetics like TF 146 and the Itochiyo cow.



MFC SHIGESHIGETANI 2-12 / SIRE OF LOT 110



CJR YASUFUKU 16 / SIRE OF LOT 111

## 109

JDH MS HIRA 0-40 359E AI  
PB33853 | 10.01.17 | COW | 359E

MFC HIRASHIGE 0-40  
HIRASHIGETAYASU J2351  
CHR MS MICHIFUKU 209S

JDH MS FUJIMOTO 1333  
KGW FUJIMOTO 10051  
JDH8188

DAI 20 HIRASHIGE 287  
DAI 5 YURUHIME  
WORLD K'S MICHIFUKU  
CHR MS KITAGUNI 84L  
CHR MUSASHI 222S  
KGW TEIKO 04016  
JDH9298S  
JDH3476D

As in the previous lot, the sire of this heifer is a daughter of 0-40. He provides confidence that this heifer will provide a wonderful opportunity to develop quality genetics into the future.

## 110

BRG MS SHIGESHIGETANI 9E AI  
PB32430 | 05.14.17 | COW | 9E

MFC SHIGESHIGETANI 2-12  
WORLD K'S SHIGESHIGETANI  
MFC MS ITOSURU DOI 8-1

BRG SABURO 029  
LMR SABURO  
BRG ITOSURUSUZI 102B

WORLD K'S HARUKI 2  
WORLD K'S SUZUTANI  
ITOZURU DOI  
CF502  
BAR R 12P  
BR MS MICHIFUKU 0638  
364 BRG 151 ITOSURU DOI  
JL BB SUZIFUKU 02

The sire of this heifer, 2-12, has all of the genetic tools to become a great one. He is a Shigeshigetani x Itozurudo cross on the Hikokura line. This particular line has a strong history of outstanding performance. It is one of Takeda's best. This heifer has Itozurudo in her pedigree again on the maternal side along with Kitateruyasudo 003. She is a good one!

## 111

JDH MS YASUFUKU 351E AI  
PB33845 | 12.07.17 | COW | 351E

CHR YASUFUKU 16  
WORLD K'S YASUFUKU JR  
CHR MS MICHIFUKU 035H

JDH7161  
JDH2508S  
JDH3651D

YASUFUKU 930  
KANEKO 5  
WORLD K'S MICHIFUKU  
JVP MS KIKUSHIGE 403  
ITOSHIGENAMI  
JDH2435DD  
JDH1601S3  
TF DAI 2 KINNTOU35/17

This heifer offers a unique opportunity. She traces to the incredible brood cow Dai 2 Kinntou 3 on the maternal side. This cow was a genetic giant in the Takeda program. Don't miss this opportunity to acquire these genetics that will certainly enhance the sire of this heifer. He brings tremendous Tajima genetic to the pedigree through his sire, Yasufuku Jr and his grandsire, Michifuku. This heifer is a good one!



# COMMERCIAL ANGUS FALL CALVING FEMALES

Bred to Purebred (98% and higher) bulls as these 24 females were from a group of 250 head.  
All females were born from September and October of 2017.

112	GROUP OF THREE FEMALES	Top 10% Marbling	Top 20% WW	Top 20% Feeder Index
	A Y774Y	93	87	89
	B Y705S	92	86	91
	C Y784S	92	81	84
113	GROUP OF THREE FEMALES	Top 10% Marbling	Top 40% WW	Top 30% Feeder Index
	A Y774S	92	65	77
	B Y7126S	92	67	75
	C Y786S	91	77	74
114	GROUP OF THREE FEMALES	Top 15% Marbling	Top 30% WW	Top 30% Feeder Index
	A Y785Y	87	91	76
	B Y757S	87	70	74
	C Y724Y	85	75	82
115	GROUP OF THREE FEMALES	Top 15% Marbling	Top 30% WW	Top 30% Feeder Index
	A Y760Y	83	85	89
	B Y706Y	81	77	84
	C G445	80	75	83
116	GROUP OF THREE FEMALES	Top 20% Marbling	Top 20% WW	Top 25% Feeder Index
	A Y780Y	83	83	78
	B Y761S	81	91	79
	C Y795S	80	80	78
117	GROUP OF THREE FEMALES	Top 25% Marbling	Top 30% WW	Top 20% Feeder Index
	A Y748S	78	84	86
	B Y762S	76	71	81
	C G489	75	89	92
118	GROUP OF THREE FEMALES	Top 30% Marbling	Top 30% WW	Top 35% Feeder Index
	A G502	71	81	74
	B G504	71	71	67
	C Y707Y	70	85	90
119	GROUP OF THREE FEMALES	Top 5% Marbling	WW	Feeder Index
	A Y723S	95	55	78
	B Y7170S	95	34	67
	C G476	95	34	65

Breeding information will be available on sale day. JDH is willing to work with buyers on a contract to purchase the resulting calves from these females.

# BULLS

We are proud to offer this outstanding set of yearling bulls and coming two-year-old bulls. Through our aggressive A.I. and embryo transfer program, we continually push the genetic envelope while using the same common sense approach we know our commercial customers use. While fresh pedigrees have value in the marketplace, they are of little importance if the bulls themselves are not packed with the convenience traits all true cattleman demand. We feel our program is on the right track, but you, our customers, are the measuring stick. Your feedback is not only welcomed, but appreciated, as we continue to fine tune our program into one capable of assuring our customers remain profitable based in part on the genetics we supply them.



JDH 123F AI / LOT 120

120

JDH 123F AI

FB36174 | 04.21.18 | BULL | 23F

BW 75 lbs.

TF KIKUHANA  
LMR TOSHIRO 1/3  
WORLD K'S REIKO

ITOHANA  
NAYORI 1  
KITAGUNI 7/8  
WORLD K'S OKAHANA  
TF ITOHANA 2  
TF CHIYOTAKE 8/1  
TF ITOHANA 2  
TF HIKOKURA 2/25

YCB ITOHANA 394  
JDH 5476  
YCB MS ITOHANA2 2201

This bull had one of the best ADG of any animal in the JDH herd! He is a son of LMR Toshiro 1/3, the leading growth and carcass weight sire from the world-renowned Lone Mountain Cattle Company. LMR Toshiro 1/3 has a +59 carcass weight EBV on Breedplan, which ranks in the top 1% of the breed. This lot is backed by two crosses of Itohana 2 on the maternal side, a highly proven bull with balanced carcass and growth traits. If you are looking to produce heavy weaning weights or improve carcass weights, this is the bull for you!



# FULLBLOOD FOURTEEN-MONTH OLD BULLS



JDH 17F AI / LOT 121

121

JDH 17F AI

FB36168 | 04.12.18 | BULL | 17F

TF KIKUHANA  
LMR TOSHIRO 1/3  
WORLD K'S REIKO

CHR MS ITOZURU DOI 364  
ESF KOBE 108-255  
MPCC 108B

ITOHANA  
NAYORI 1  
KITAGUNI 7/8  
WORLD K'S OKAHANA  
ITOZURU DOI  
CF504  
WORLD K'S SANJIROU  
BAR R 57T

BW 72 lbs.

The phenotype of this bull is fantastic, he has a perfectly straight top line and is long, deep, and balanced throughout. This lot stands of an ideal set of feet and legs and to top it all off has one of the best ADG in the JDH herd. He is sired by the growth specialist LMR Toshiro 1/3 and backed by TF 151, two crosses of Sanjirou, and the World K's Nakagishi cow on the maternal side. His great grandam, Bar R 57T sold for \$15,000 in the 2016 Bar R Production Sale.

# FULLBLOOD FOURTEEN-MONTH OLD BULLS



JDH 77FAI / LOT 122

122

JDH 77F AI

FB36220 | 04.02.18 | BULL | 77F

WORLD K'S HARUKI 2  
WORLD K'S SHIGESHIGETANI  
WORLD K'S SUZUTANI

372 BRG 151 ITOSURU DOI  
JDH MS ITOSURU DOI 1479  
MS ITOHANA 394 - 6401

MONJIRO 11550  
SAKURA 2 741638  
TANISHIGE 1526  
SUZUNAMI 472255  
ITOUZURU DOI  
CF 503  
YCB ITOHANA 394  
YCB MS KIMIFUKU 2216

BW 61 lbs.

Here is an opportunity to purchase a premium carcass bull. He is sired by World K's Shigeshigetani, who is a direct son of World K's Suzutani who is arguably the best cow to have left Japan. Shigeshigetani has produced high marble scores and large rib eye areas in herds around the world such as Lone Mountain Ranch, Mayura Station, and Marble Ranch. Stacked behind this on the maternal side are TF 151, TF 148, Itohana 2, and Kimifuku 3. All premier carcass sires combined with the Hikokura female line.





JDH 125F AI / LOT 123



JDH 148F AI / LOT 124

123

JDH 159F AI

FB36296 | 05.04.18 | BULL | 159F

BAR R SHIGESHIGETANI 30T  
**BAR R NAMIKAWA 63Y**  
 BAR R 2P

ITOMORITAKA J2703  
**YAR ITOMORISHIGESHIGI C603**  
 CHR MS SHIGESHIGETANI 509

WORLD K'S SHIGESHIGETANI  
 BAR R 68P  
 BAR R TAKASURU 1 K  
 BAR R MISS 53J  
 ITOHIRASHIGE  
 DAI 6 OEFUJII J565554-KURO KOH  
 WORLD K'S SHIGESHIGETANI  
 CHR MS KITAGUNI 84L

BW 67 lbs.

This is a son of newly proven Bar R 63Y, who on the 2017 WSU Sire Summary has EPDs of .06 marbling, 1.47 rib eye area, -.04 external fat, and -21.85 hot carcass weight. The second sire is Itomoritaka, a foundation Westholme sire with huge growth. Behind this are breed great carcass sires, Shigesigetani, and Kitaguni Jr. This bull is a unique balance of new genetics and foundation sires. Then to top it all off is put together correctly with a good set of feet and legs carrying a deep, long frame.

124

JDH 148F AI

FB36286 | 05.01.18 | BULL | 148F

BAR R SHIGESHIGETANI 30T  
**BAR R NAMIKAWA 63Y**  
 BAR R 2P

MITSUHIKOKURA 149  
**JDH 5584X**  
 TF HIKOHIME 63/1

WORLD K'S SHIGESHIGETANI  
 BAR R 68P  
 BAR R TAKASURU 1 K  
 BAR R MISS 53J  
 ITOHIKARI  
 HIKOKURA 3/9  
 TF TERUTANI  
 F HIKOHIME 44/1

BW 65 lbs.

Another son of newly proven Bar R 63Y, who on the 2017 WSU Sire Summary has EPDs of .06 marbling, 1.47 rib eye area, -.04 external fat, and -21.85 hot carcass weight. Behind his is the relatively under used TF Mitsuhiokura 149, who has put up some fantastic carcasses in the Marble Ranch program averaging 31.63% IMF and 964 lbs HCW on 38 carcasses. This strong framed and deep bull can be an asset to any herd.

# FULLBLOOD FOURTEEN-MONTH OLD BULLS



JDH 197F AI / LOT 125



JDH 133F AI / LOT 126

125

JDH 197F AI

FB36327 | 05.11.18 | BULL | 197F

OA07

ECHIGO FARMS MAIFUKU

ECHIGO FARMS F B1002

HIRASHIGETAYASU J2351

HIRASHIGETAYASU CHIKA

CHR MS SANJIROU 434

KITATERUYASUDOJ J2810  
JAPANESE COW (BLACK)  
ITOMORITAKA J2703  
WESTHOLME AYAKA V13  
DAI 20 HIRASHIGE 287  
DAI 5 YURUHIME  
WORLD K'S SANJIROU  
MJB MS KITAFUKU 05K

BW 53 lbs.

This is a special bull, a son of OA07 who has high Kedaka/Tottori content thru his sire Echigo Farms Maifuku and Westholme descended dam Echigo Farms F B1002. Maifuku is a leading sire on Breedplan for eye muscle area and has a high Self Replacing Index of \$167. This lot has multiple crosses to Kedaka/Tottori content sires in Maifuku, Itomoritaka, Hirashigetayasu, and even Kedakafuji. OA07 is a full brother to Prescott Ranch OZO who has impressive marbling and carcass weight EPDs on the WSU Sire Summary of +0.33 marbling and +25.81 HCW. The maternal side of this lot features an impressive sire stack of 001 x SanjiroU x JVP 068 x Kitaguni Jr. On top of all this 197F is a fancy eye catching bull who possesses depth, width, and length from front to back!

126

JDH 133F AI

FB36371 | 05.10.18 | BULL | 133F

OA07

ECHIGO FARMS MAIFUKU

ECHIGO FARMS F B1002

WESTHOLME HIRASHIGETAYASU Z278

EF TERU

VT MS KIKUNAHANA W02

KITATERUYASUDOJ J2810

JAPANESE COW (BLACK)

ITOMORITAKA J2703

WESTHOLME AYAKA V13

HIRASHIGETAYASU J2351

WESTHOLME OHYURIHIME X106

TF TERUTANI

CHR MS KIKUSHIGE 013

BW 75 lbs.

Another son of OA07 who has high Kedaka/Tottori content thru his sire Echigo Farms Maifuku and Westholme descended dam Echigo Farms F B1002. OA07 is a full brother to Prescott Ranch OZO who has impressive marbling and carcass weight EPDs on the WSU Sire Summary of +0.33 marbling and +25.81 HCW. Echigo Farms Maifuku is a high marbling and rib eye area sire from Tak Suzuki's program in Australia. The maternal side of this lot's pedigree includes another great Australian sire in Westholme Hirashigetayasu Z278 who is known for his high growth. This bull has a solid frame with great depth of body on a strong set of feet and legs.



# 127

## JDH 188F AI

FB36319 | 05.16.18 | BULL | 188F

WORLD K'S YASUFUKU JR  
2+K KYORYOKUNA 14/89K  
2+K KIBOU

YASUFUKU 930  
KANEKO 5  
KIRU BIRU  
2+K ASAKO 08  
ITOHKARI  
HIKOKURA 3/9  
TF TERUTANI  
CHR MS KIKUSHIGE 013

MITSUHIKOKURA 149  
EF MS149 B51  
VT MS KIKUNAHANA W02

BW 70 lbs.

This is a solid pedigreed bull with premium carcass sires in his pedigree such as World K's Yasufuku Jr, JVP 068, TF Terutani, and Mitsuhiokura. Behind this on the maternal side are TF Kikuhana and JVP 400, both leading growth sires. This combined with the Yuriko maternal line he descends from make a solid all-round sire.



JDH 188F AI / LOT 127

# 128

## JDH 35F AI

FB36185 | 04.12.18 | BULL | 35F

WORLD K'S KITAGUNI JR.  
LMR KITAGUNI 1441Y  
BR MS YASUFUKU 0645

KITAGUNI 7/8  
WORLD K'S NAKAYUKI  
WORLD K'S YASUFUKU JR  
MISS BAR R 321H  
ITOFUJI 483  
DAI 30 NOBORU J920752  
MJB MUSASHI 03K  
CHR MS KIKUSHIGE 016

ITOSHIGEFUJI  
ITOSHIGEFUJI FUMIKO  
CHR MS FUKUTSURU 193R

BW 70 lbs.

The sire of this bull is the up and coming Lone Mountain sire, LMR Kitaguni 1441Y, who is leading the 2019 LMR Sire Summary for average IMF%. On four carcasses he has averaged an astounding 39.54% IMF! He is a son of legendary carcass sire Kitaguni Jr who has averaged 32.05% IMF on 87 carcasses at Lone Mountain. This proven marbling potential on a TF 147 dam, who is a leading growth sire creates an ideal mating. The potential for high marbling and high growth is right here!

# 129

## JDH 93F AI

FB36236 | 05.09.18 | BULL | 93F

WORLD K'S YASUFUKU JR  
CHR YASUFUKU 16  
CHR MS MICHIFUKU 035H

LMR RMW ITOMORITAKA  
EF IWATANI B32  
CHR MS SHIGESHIGETANI 41

YASUFUKU 930  
KANEKO 5  
WORLD K'S MICHIFUKU  
JVP MS KIKUSHIGE 403  
ITOMORITAKA J2703  
LMR MS SANJIROU 767T  
WORLD K'S SHIGESHIGETANI  
CHR MS MICHIFUKU 220S

BW 68 lbs.

Here is one not to miss! This a rare Suzutani maternal line bull. He is sired by CHR Yasufuku 16, who has a stacked carcass pedigree including Yasufuku Jr, Michifuku, and JVP 068. His dam is sired by LMR RMW Itomoritaka "Rocky", a popular high growth Nakagishi line sire known for great phenotype. The Suzutani are in high demand because of their high marbling and large rib eyes, this pedigree is no different. The maternal sire stack of CHR Yasufuku 16 x "Rocky" x Shigesigetani x Michifuku x Takazakura x Suzutani is created to produced high value carcasses. Suzutani is known as the "Queen of the Breed" and here is a chance to own a direct maternal descendant of her.



# PUREBRED TWO-YEAR-OLD BULLS

## 130

JC TOSHIRO 272E AI  
PB30528 | 04.23.17 | BULL | 272E

LMR TOSHIRO 1/3  
TF KIKUHANA  
WORLD K'S REIKO

JDH7262  
ITOSHIGENAMI  
JDH5412  
ITOHANA  
NAYORI 1  
KITAGUNI 7/8  
WORLD K'S OKAHANA  
SHIGESHIGENAMI 10632  
FUKUYUKI  
JDH2554S4  
HIKOKURA 8/6

BW 61 lbs.

Here is great phenotype breeding age bull. His sire is growth leader LMR Toshiro 1/3 who ranks in the top 1% for most growth traits on Breedplan. Beyond this we find renown carcass sire TF 148 and all-round specialist Itohana 2 of the maternal side. The foundation of his pedigree is rock solid with the base of the Takeda Farms Hikokura line, who has produced many leading sires in the USA and Australia.

## 131

JDH TOSHIRO 280E AI  
PB30533 | 04.20.17 | BULL | 280E

LMR TOSHIRO 1/3  
TF KIKUHANA  
WORLD K'S REIKO

JDH8713  
ATHENS 202-TT  
TCB MS ITOHANA2 2210  
ITOHANA  
NAYORI 1  
KITAGUNI 7/8  
WORLD K'S OKAHANA  
TF TERUTANI  
15/16 WAGYU COW  
TF ITOHANA 2  
TF HIKOKURA 3/15A

BW 66 lbs.

This LMR Toshiro 1/3 son has inherited the massive growth from his sire, already weighing over 1,000 lbs. He is backed by two crosses to the well known carcass specialist TF Terutani on the maternal side. This makes him a balanced combination of growth and carcass traits, all stacked on the famous Hikokura maternal line.

## 132

JDH HIRASHIGE 285E AI  
PB30536 | 04.26.17 | BULL | 285E

MFC HIRASHIGE 0-40  
HIRASHIGETAYASU J2351  
CHR MS MICHIFUKU 209S

JDH 5820  
TF KIKUHANA  
JDH7269  
DAI 20 HIRASHIGE 287  
DAI 5 YURUHIME  
WORLD K'S MICHIFUKU  
CHR MS KITAGUNI 84L  
ITOHANA  
NAYORI 1  
ITOSHIGENAMI  
JDH3639D

BW 80 lbs.

This bull is a potential gold mine, he descends from the TF Dai 2 Kinntou 3 female who has produced breed leading sires Mayura Itoshigenami JNR and TF Terutani 40/1 in Australia. The great, great grandam of this bull is a full sister to TF Terutani 40/1! The sire of this lot is a popular Muddy Flats bull who is sired by growth and phenotype leader Hirashigetayasu backed by proven high marbling sires Michifuku and Kitaguni Jr. This is a special opportunity to own a world class sire!

## 133

JDH HIRASHIGE 238E AI  
PB30505 | 04.18.17 | BULL | 238E

MFC HIRASHIGE 0-40  
HIRASHIGETAYASU J2351  
CHR MS MICHIFUKU 209S

JDH 7354  
TF KIKUHANA  
JDH9286  
DAI 20 HIRASHIGE 287  
DAI 5 YURUHIME  
WORLD K'S MICHIFUKU  
CHR MS KITAGUNI 84L  
ITOHANA  
NAYORI 1  
ATHENS 2003-KS  
TF HIKOKURA 21/1

BW 72 lbs.

Another high growth bull with Hirashigetayasu, TF Kikuhana, and the successful Takeda Farms large Shimane female line, the Hikokuras. This combined with TF 146, Michifuku, and Kitaguni Jr provide a balanced pedigree that can perform on the rail and in the feedlot.

## 134

JDH HIRASHIGE 241E AI  
PB30508 | 04.17.17 | BULL | 241E

MFC HIRASHIGE 0-40  
HIRASHIGETAYASU J2351  
CHR MS MICHIFUKU 209S

JDH 6480  
TF KIKUHANA  
15/16 WAGYU COW  
DAI 20 HIRASHIGE 287  
DAI 5 YURUHIME  
WORLD K'S MICHIFUKU  
CHR MS KITAGUNI 84L  
ITOHANA  
NAYORI 1  
JAPANESE BULL (BLACK)  
7/8 WAGYU COW

BW 67 lbs.

This bull is sired by the well-bred and balanced Muddy Flats sire, MFC Hirashige 0-40, who has Hirashigetayasu for growth on top of Michifuku and Kitaguni Jr for superior carcass quality. This is all on top of the Yuriko maternal line, who has produced breed leading sire Bar R Shigesigetani 30T. On this lot's maternal side are a 15/16th purebred cow and high growth Takeda Farms sire TF Kikuhana.

WATCH &  
BID LIVE AT







# HIGH PERCENTAGE WAGYU STEERS

## HIGH PERCENTAGE TWENTY-SIX MONTH OLD STEERS

### 135

GROUP OF THREE STEERS	WEIGHTS				ORIGINAL		
	10.04.17	07.26.18	05.03.19	AGD	TAG	DOB	SIRE
A BL274	95	988	1,144	1.82	R14	04.10.17	212
B BL275	412	938	1,334	1.60	9193	04.17.17	0-40
C BL287	328	534	1,500	2.04	9300	04.13.17	0-40

### 136

GROUP OF THREE STEERS	WEIGHTS				ORIGINAL		
	10.04.17	07.26.18	05.03.19	AGD	TAG	DOB	SIRE
A BL231	270	852	1,218	1.65	8091	05.15.17	63Y
B BL237	276	698	1,062	1.37	5613	05.11.17	63Y
C BL253	313	844	1,272	1.67	7282-L	05.04.17	63Y

### 137

GROUP OF THREE STEERS	WEIGHTS				ORIGINAL		
	10.04.17	07.26.18	05.03.19	AGD	TAG	DOB	SIRE
A BL256	265	862	1,320	1.83	8751	05.21.17	63Y
B BL257	268	684	1,124	1.49	9262	05.07.17	63Y
C BL264	362	930	1,396	1.80	8789-L	04.14.17	63Y

### 138

GROUP OF THREE STEERS	WEIGHTS				ORIGINAL		
	10.04.17	07.26.18	05.03.19	AGD	TAG	DOB	SIRE
A BL271	329	952	1,508	2.05	5834	05.12.17	63Y
B BL293	281	808	1,264	1.71	7678	05.20.17	63Y
C BL297	217	652	1,162	1.64	7323	06.06.17	63Y

### 139

GROUP OF THREE STEERS	WEIGHTS				ORIGINAL		
	10.04.17	07.26.18	05.03.19	AGD	TAG	DOB	SIRE
A BL243	339	878	1,386	1.82	8756	04.15.17	Toshiro
B BL250	402	954	1,400	1.74	7654	04.11.17	Toshiro
C BL262	387	1,160	1,728	2.33	91.45	04.15.17	Toshiro

### 140

GROUP OF THREE STEERS	WEIGHTS				ORIGINAL		
	10.04.17	07.26.18	05.03.19	AGD	TAG	DOB	SIRE
A BL281	371	998	1,406	1.80	1450	04.12.17	Toshiro
B BL282	387	854	1,278	1.49	7662	04.14.17	Toshiro
C BL304	344	784	1,198	1.49	1336	04.09.17	Toshiro

## HIGH PERCENTAGE TWELVE-MONTH OLD STEERS

### 141

GROUP OF THREE STEERS	DOB	REG.#	BW	WW	CW	ADG	SIRE REG	SIRE	DAM REG
				10.22.18	5.02.19				
A 59F	05.02.18	PB36205	62	318	548	1.20	FB7475	Toshiro 1/3	PB24078
B 60F	04.08.18	PB36206	70	442	850	2.13	FB7475	Toshiro 1/3	PB17399
C 7F	04.07.18	PB36158	60	464	696	1.21	FB7475	Toshiro 1/3	PB17397

### 142

GROUP OF THREE STEERS	DOB	REG.#	BW	WW	CW	ADG	SIRE REG	SIRE	DAM REG
				10.22.18	5.02.19				
A 19F	04.09.18	PB36170	72	432	820	2.02	FB7475	Toshiro 1/3	PB17915
B 24F	04.09.18	PB36175	72	442	816	1.95	FB7475	Toshiro 1/3	PB18915
C 47F	04.09.18	PB36195	78	470	816	1.80	FB7475	Toshiro 1/3	PB17400



# HIGH PERCENTAGE TWELVE-MONTH OLD STEERS

143

GROUP OF THREE STEERS	DOB	REG.#	BW	WW 10.22.18	CW 5.02.19	ADG	SIRE REG	SIRE	DAM REG
A 119F	04.27.18	U36262	60	364	694	1.72	FB7475	Toshiro 1/3	PB17481
B 154F	05.01.18	PB36291	65	311	606	1.54	FB7475	Toshiro 1/3	PB24052
C 195F	04.30.18	PB36325	75	258	650	2.04	FB7475	Toshiro 1/3	PB16220

144

GROUP OF THREE STEERS	DOB	REG.#	BW	WW 10.22.18	CW 5.02.19	ADG	SIRE REG	SIRE	DAM REG
A 43F	4.13.18	PB36192	66	365	560	1.02	FB7721	Sanjirou 59T	PB14344
B 103F	5.13.18	PB37074	58	339	708	1.92	FB7475	Toshiro 1/3	PB24055
C 117F	3.12.18	PB36260	52	340	578	1.24	FB7475	Toshiro 1/3	PB20503

145

GROUP OF THREE STEERS	DOB	REG.#	BW	WW 10.22.18	CW 5.02.19	ADG	SIRE REG	SIRE	DAM REG
A 164F	5.14.18	PB36301	80	371	792	2.19	FB7721	Sanjirou 59T	PB21370
B 182F	5.12.18	PB36313	70	327	680	1.84	FB7721	Sanjirou 59T	PB14343
C 200F	5.11.18	PB36330	66	384	752	1.92	FB7721	Sanjirou 59T	PB11227

146

GROUP OF THREE STEERS	DOB	REG.#	BW	WW 10.22.18	CW 5.02.19	ADG	SIRE REG	SIRE	DAM REG
A 142F	5.07.18	PB3628	76	356	776	2.19	FB12246	MFC 0-40	PB16313
B 211F	5.20.18	FB37098	76	374	728	1.84	FB12246	MFC 0-40	PB18301
C 177F	5.12.18	PB39936	62	310	690	1.98	FB16879	O13	PB33458

147

GROUP OF THREE STEERS	DOB	REG.#	BW	WW 10.22.18	CW 5.02.19	ADG	SIRE REG	SIRE	DAM REG
A 61F	4/13/18	PB39935	60	508	924	2.17	FB15180	89K	PB33475
B 74F	5/13/18	PB37073	85	370	742	1.94	FB13918	63Y	PB24065
C 85F	5/29/18	PB36228	72	357	724	1.91	FB13918	63Y	PB18053

148

GROUP OF THREE STEERS	DOB	REG.#	BW	WW 10.22.18	CW 5.02.19	ADG	SIRE REG	SIRE	DAM REG
A 64F	4/9/18	PB36208	66	370	708	1.76	FB13918	63Y	PB17393
B 74F	5/13/18	PB37073	85	370	742	1.94	FB13918	63Y	PB24065
C 85F	5/29/18	PB36228	72	357	724	1.91	FB13918	63Y	PB18053

149

GROUP OF THREE STEERS	DOB	REG.#	BW	WW 10.22.18	CW 5.02.19	ADG	SIRE REG	SIRE	DAM REG
A 152F	5.12.18	PB36289	65	365	650	1.48	FB13918	63Y	PB18373
B 30F	4.12.18	PB36180	75	444	740	1.54	FB13918	63Y	PB18324
C 49F	4.7.18	PB36197	75	488	872	2.00	FB13918	63Y	PB23659

150

GROUP OF THREE STEERS	DOB	REG.#	BW	WW 10.22.18	CW 5.02.19	ADG	SIRE REG	SIRE	DAM REG
A 198F	4.22.18	PB36328	58	341	636	1.54	FB14630	1441Y	PB25025
B 96F	5.01.18	PB36239	80	296	676	1.98	FB14630	1441Y	PB24235
C 150F	4.29.18	PB36287	63	367	636	1.40	FB13918	63Y	PB24082

151

GROUP OF THREE STEERS	DOB	REG.#	BW	WW 10.22.18	CW 5.02.19	ADG	SIRE REG	SIRE	DAM REG
A 120F	3.23.18	PB36263	80	412	704	1.52	FB14630	1441Y	PB24955
B 125F	5.21.18	PB36268	70	371	724	1.84	FB14630	1441Y	PB18539
C 165F	4.17.18	PB36302	53	355	612	1.34	FB14630	1441Y	PB25012

# SEMEN



BAR R NAMIKAWA 63Y /

## BAR R NAMIKAWA 63Y

FB13918 | 10.15.11 | BULL | 63Y

WORLD K'S SHIGESHIGETANI BAR R SHIGESHIGETANI 30T BAR R 68P	WORLD K'S HARUKI 2 WORLD K'S SUZUTANI BAR R MICHISURU 2 K MISS BAR R 18H WORLD K'S TAKAZAKURA JVP MS FUKUSHIGE T10E HIRASHIGETAYASU J2351 JVP MS KIKUSHIGE 24E
BAR R 2P	BAR R TAKASURU 1K BAR R MISS 53J

LOT 152 Selling 10 units of semen on Bar R Namikawa 63Y  
 LOT 153 Selling 10 units of semen on Bar R Namikawa 63Y  
 LOT 154 Selling 10 units of semen on Bar R Namikawa 63Y

Free of all genetic disorders.

Semen is located at Hawkeye Breeders, 32642 Old Portland Rd, Adel, IA 50003. Phone 515.993.4711 where it will be released to the buyer once it is paid for in full. Buyer pays for the shipping.



MFC SHIGESHIGETANI 2-12 /

## MFC SHIGESHIGETANI 2-12

FB13944 | 03.04.12 | BULL | MFC 2-12

WORLD K'S HARUKI 2 WORLD K'S SHIGESHIGETANI WORLD K'S SUZUTANI	MONHIRO 11550 SAKURA 2 741638 TANISHIGE 1526 SUZUNAMI 472255 ITOKITATSURU YASUHIME ITOSHIGENAMI HIKOKURA 1/10
MFC MS ITOSURU DOI 8-1 CF502	ITOZURU DOI

LOT 155 Selling 10 units of semen on MFC Shigeshigetani 2-12  
 LOT 156 Selling 10 units of semen on MFC Shigeshigetani 2-12  
 LOT 157 Selling 10 units of semen on MFC Shigeshigetani 2-12

SCD AA and Tenderness 5. Free of all genetic disorders.

Semen is located at Hawkeye Breeders, 32642 Old Portland Rd, Adel, IA 50003. Phone 515.993.4711 where it will be released to the buyer once it is paid for in full. Buyer pays for the shipping.



MICHİYOSHI /

## MICHİYOSHI

FB9420 | 02.22.06 | BULL | AWB 334

WORLD K'S MICHIFUKU WORLD K'S SANJIROU WORLD K'S SUZUTANI	MONJIRO 11550 MICHIKO 655635 TANISHIGE 1526 SUZUNAMI 72255 DAI 2 YASUTSURU 774 TERUYASU 649663 WORLD K'S TAKAZAKURA CHR MS KIKUSHIGE 016
CHR MS FUKUTSURU 107L	JVP FUKUTSURU-068 CHR MS TAKAZAKURA 044J

LOT 158 Selling 5 units of semen on Michiyoshi  
 LOT 159 Selling 5 units of semen on Michiyoshi  
 LOT 160 Selling 5 units of semen on Michiyoshi

Very limited semen available.

SCDAA and Tenderness 7. Free of all genetic disorders.

Number 11 marbling bull in the 2017 National Sire Summary (AWA).

Semen is located at Hawkeye Breeders, 32642 Old Portland Rd, Adel, IA 50003. Phone 515.993.4711 where it will be released to the buyer once it is paid for in full. Buyer pays for the shipping.



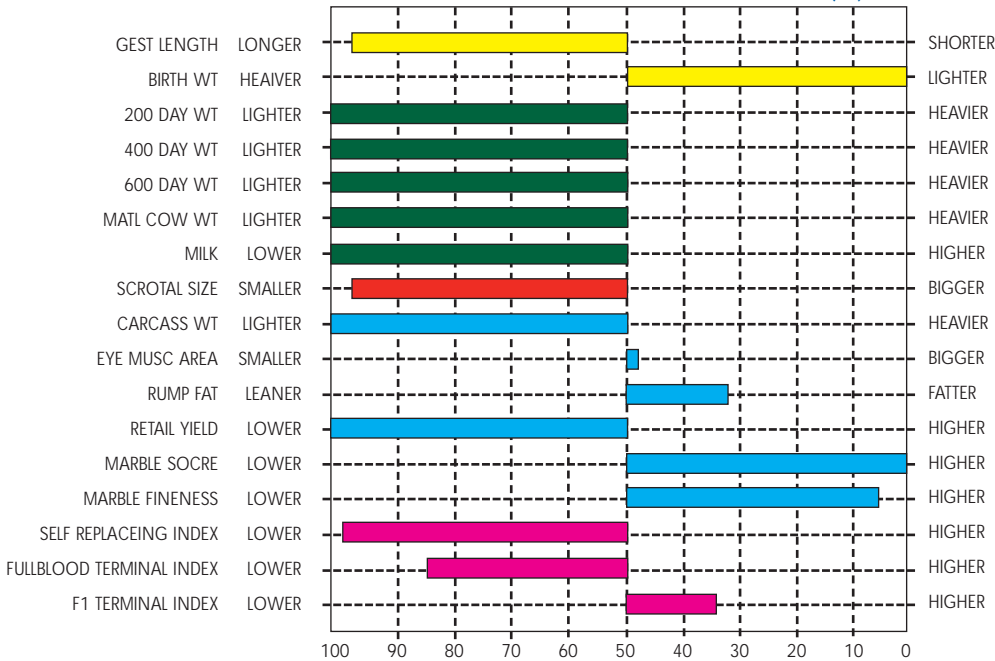
# BULL DATA

Listed below is the data on LMR Kitaguni 1441Y.

## December Analysis 2018 Wagyu Group Breedplan

	GESTATION LENGTH (days)	BIRTH WT (kg)	200 DAY WT (kg)	400 DAY WT (kg)	600 DAY WT (kg)	MAT COW WT (kg)	MILK (kg)	SCROTAL SIZE (cm)	CARCASS WT (kg)	EYE MUSCLE AREA (sq cm)	RUMP FAT (mm)	RETAIL BEEF YIELD (%)	MARBLE SCORE	MARBLE FINENESS (%)
EBV	+1.6	-3.3	-14	-22	-36	-17	-8	-1.3	-17	+0.9	+0.8	-1.5	+1.7	+0.30
ACC	61%	77%	75%	73%	71%	62%	64%	58%	67%	58%	59%	52%	61%	59%
BREED AVG. EBF'S FOR 2016 BORN CALVES														
EBV	+0.3	-1.0	+9	+15	+18	+19	+0	+0.0	+13	+0.8	+0.2	-0.1	+0.5	+0.12
Traits observed: BWT, 200WT, 400WT, Genomics Statistics: NUMBER OF HERDS: 1, PROGENY ANALYSED: 6, CARCASS PROGENY: 3														

EBV Percentiles for LMR KITAGUNI 1441Y (ET)



## PERFORMANCE of 30T Sons 2013

BULL	WT	FCR	ADG	RFI	RFI-ADG INDEX
53Y	950	5.9	2.6	-3.6	101
63Y	1125	6.5	3.3	-2.7	108
61Y	1095	6.8	3.0	-2.3	98
39Y	1035	9.1	2.0	-1.4	63
52Y	1160	8.1	2.8	-1.2	81
54Y	1145	8.3	2.6	-0.8	73
70Y	950	7.5	2.2	-0.8	64
75Y	1105	7.9	2.7	-0.6	73
84Y	1020	8.1	2.4	-0.3	60
78Y	890	5.9	3.3	0.2	81
58Y	1015	7.6	2.8	0.4	65
86Y	1000	9.9	1.9	0.5	43
65Y	980	7.0	3.0	0.8	66
87Y	785	6.2	2.8	1.0	59
81Y	775	6.5	2.6	1.2	52
76Y	1285	10.2	3.1	5.5	21
85Y	920	10	1.9	2.6	22
92Y	1285	10.2	3.1	5.5	21
FREE	F11	CL16	CHS	NOT TESTED	

All bulls in the table to the left were half sibs and within four months of age of each other. The RFI of bull 53Y is -3.6 which means this bull will eat 3.6 pounds of feed less per pound of gain than the average of bulls

# REFERENCE SIRES



CHR YASUFUKU 16 /



CHR SANJIROU 391 /



MFC SHIGESHIGETANI 2-12 /



BAR R POLLED ZURUTANI D64 /

**A**

**CHR YASUFUKU 16**

FB9864 | 10.25.08 | BULL | 16 RED

YASUFUKU 930  
WORLD K'S YASUFUKU JR  
KANEKO 5

WORLD KS MICHIFUKU  
CHR MS MICHIFUKU 035H  
JVP MS KIKUSHIGE 403

YASUTANI DOI  
CHIZURU  
MONJIRO  
KANEKO 47492  
MONJIRO 11550  
MICHIKO 655635  
JVP KIKUYASU-400  
JVP YURIKO-1 050

**B**

**CHR SANJIROU 391**

FB9956 | 04.06.09 | BULL | 391

WORLD K'S MICHIFUKU  
WORLD K'S SANJIROU  
WORLD K'S SUZUTANI

WORLD K'S HARUKI 2  
CHR MS HARUKUI 027  
JVP MS KIKUSHIGE 409

MONJIRO 11550  
MICHIKO 655635  
TANISHIGE 1526  
SUZUNAMI 72255  
MONJIRO 11550  
SAKURA 2 741638  
JVP KIKUYASU-400  
JVP SHIGEHIME 2008

**C**

**MFC SHIGESHIGETANI 2-12**

FB13944 | 03.04.12 | BULL | MFC 2-12

WORLD K'S HARUKI 2  
WORLD K'S SHIGESHIGETANI  
WORLD K'S SUZUTANI

ITOZURU DOI  
MFC MS ITOSURU DOI 8-1  
CF502

MONHIRO 11550  
SAKURA 2 741638  
TANISHIGE 1526  
SUZUNAMI 472255  
ITOKITATSURU  
YASUHIME  
ITOSHIGENAMI  
HIKOKURA 1/10

**D**

**BAR R POLLED ZURUTANI D64**

PB25456 | 05.15.16 | BULL | D64

BAR R 52Y

BAR R 57X

BAR R SHIGESHIGETANI 30T  
BAR R 16T  
LMR ITOZURUDOI 8161U  
BAR R 16T

WORLD K'S SHIGESHIGETANI  
BAR R 68P  
BAR R 72P  
MISS BAR R 52L  
ITOZURU DOI  
CF 500  
BAR R 72P  
MISS BAR R 52L



**E****OA07**

FB16603 | 09.13.13 | BULL | OA07

KITATERUYASUDO J2810  
 ECHIGO FARMS MAIFUKU  
 JAPANESE COW

TERUNAGADOI  
 YOSHIMI3

ITOMORITAKA J2703  
 ECHIGO FARMS F B1002  
 WESTHOLME AYAKA V13

ITOHIRASHIGE  
 DAI 6 OEFUJII J56554-KURO  
 KITATERUYASUDO J2810  
 JAPANESE COW



OA07 /

**F****BAR R NAMIKAWA 63Y**

FB13918 | 10.15.11 | BULL | 63Y

WORLD K'S SHIGESHIGETANI  
 BAR R SHIGESHIGETANI 30T  
 BAR R 68P

WORLD K'S HARUKI 2  
 WORLD K'S SUZUTANI  
 BAR R MICHISURU 2 K  
 MISS BAR R 18H

BAR R TAKASURU 1 K  
 BAR R 2P

WORLD K'S TAKAZAKURA  
 JVP MS FUKUSHIGE T10E  
 HIRASHIGETAYASU J2351  
 JVP MS KIKUSHIGE 24E



BAR R NAMIKAWA 63Y /

**G****LMR KITAGUNI 1441Y**

FB14630 | 11.26.11 | BULL | 1441Y

KITAGUNI 7/8  
 WORLD K'S KITAGUNI JR  
 WORLD K'S NAKAYUKI

DAI 7 ITOZAKURA  
 KITAGUNI 7  
 KOUFUKU  
 NAKAHANA 3  
 YASUFUKU 930  
 KANEKO 5  
 WORLD K'S MICHIFUKU  
 JVP MS KIKUCHISA 19E

WORLD K'S YASUFUKU JR  
 BR MS YASUFUKU 0645  
 MISS BAR R 321H



LMR KITAGUNI 1441Y /

**H****LMR TOSHIRO 1/3**

FB7475 | 04.30.07 | BULL | LMR 723T

ITOHANA  
 TF KIKUHANA  
 NAYORI 1

DAI 7 ITOZAKURA  
 YOSHIFUKUHANA  
 DAI ITOZAKURA  
 NAYORI  
 DAI 7 ITOZAKURA  
 KITAGUNI 7  
 MONJIRO 11550  
 TOSHIHANA 742193

KITAGUNI 7/8  
 WORLD K'S REIKO  
 WORLD K'S OKAHANA



LMR TOSHIRO 1/3 /

# HOMOZYGOUS POLLED

*Wagyu Genetics at its finest!*



DAM: BarR 5U

*Pearls Pias*

PB 35482 « 99.71 Wagyu/ Breed Seek tested DNA « AA 6

## BarV TAZSURU 753E

11.12.17 « Homozygous Polled « Red/Black « BW 74 lbs.

Congratulations to JDH Wagyu for purchasing full possession of this great new herd sire!

As of **May 31, 2019**, feel free to log onto [www.Wagyu365.com](http://www.Wagyu365.com) and click to buy on a first come, first serve basis as we are offering the following for sale:

**OPTION 1 – 2.5% Semen Interest ownership**  
(buyer gets 100 units per year)

**OPTION 2 – International Semen Interest**  
(offering in Russia, South America, Australia, South Africa & Canadian)



The Wagyu breed's PROVEN homozygous polled donor! Bar R 5U is recognized as one of the very best and proven donors in the entire breed. She is the lead donor for Bar V Wagyu and was the \$34,000 investment from the predictable Bar R program. Her daughter Bar R 27Y also joined the Bar V program at a \$25,000 price point.

These are some of the breed's only homozygous polled genetics and we have no doubt they will chart the path for future generations to come as the polled and homozygous polled genetics increase.

For Wagyu inquiries, contact any of the W365 team ...



### SALE MANAGEMENT

Sales Representative	Randall O. Ratliff	615.330.2735	Randy@wagyu365.com
Sales Representative	Kiley McKinna	402.350.3447	Kiley@wagyu365.com
Office Management	Abby Lane	919.618.8098	Abby@wagyu365.com
International Affairs	P J Budler	682.597.0380	PJ@wagyu365.com





THANK YOU  
FROM  
JDH WAGYU

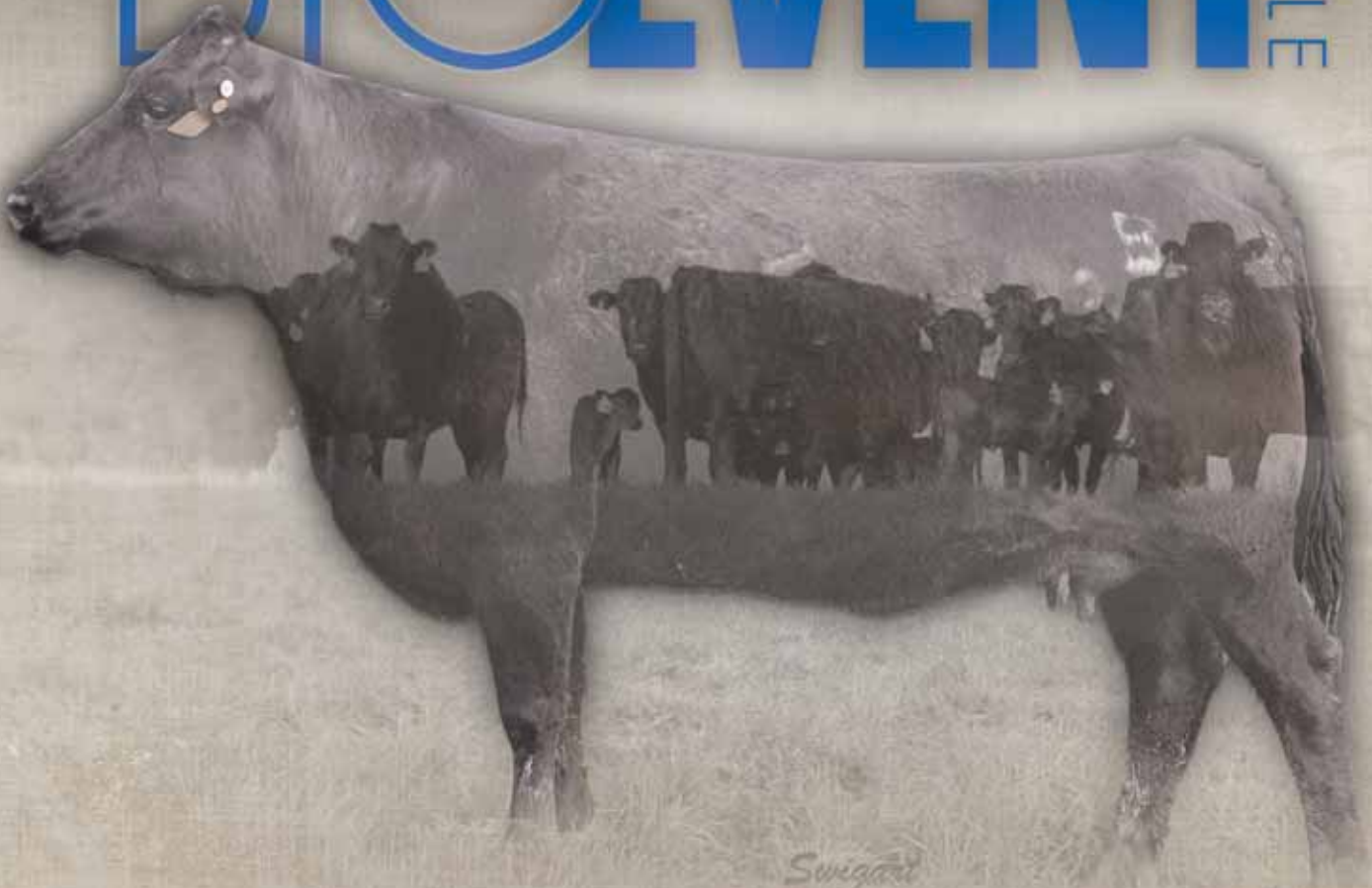


FIRST CLASS  
PRE-SORTED  
PAID  
Montezuma, Iowa  
Permit No. 30

Catalog  
designed  
by  
  
designs by  
*arin*  
www.designsbyarin.com

SUNDAY, JUNE 9, 2019 | 2:00 P.M. | MAGNOLIA HOTEL | OMAHA, NE

THE **BIG EVENT** SALE



*Sungard*