

GENETICS on ICE

Benefit Auction



A fundraiser for
the National Junior Limousin Show & Congress
&
the All American Limousin Futurity

Monday, January 12, 2015 - 6 p.m.
Double Tree Hotel - Denver, Colorado



GENETICS on ICE



Benefit Auction

A large part of the excellence achieved at the National Junior Limousin Show and Congress and the All American Limousin Futurity stems from support of involved Limousin breeders—support from both the heart and the wallet.

This year, the National Junior Limousin Show and Congress and All American Limousin Futurity in Tulsa, Oklahoma, promises to surpass even the high points of past experiences.

As you can see from the program, this year's benefit auction is filled with genetic opportunity, thanks to the generosity of the many contributors. You will have the opportunity to choose from:

- *some of the most popular and useful sires and dams in the breed today*
- *preferred position pages in the National Junior Limousin—All American Limousin Futurity Show program to advertise your ranch or program*
- *award sponsorships*
- *unique art*
- *genetic packages*
- *hunting trips*

This "Genetics On Ice" benefit auction gives you the opportunity to help yourself and your program while supporting one of the breed's major events of the year.

The benefit auction as we know it today was started in 1984 by American Cattle Services to fund the first All American Limousin Futurity in the summer of 1985 in Springfield, Missouri, which was the first time to hold the National Junior Heifer Show in conjunction with an open Limousin show. This first auction was held at the American Royal in Kansas City with assistance from the Kansas and Missouri Limousin Breeders Associations. Most items offered were frozen semen and pregnant recipients, thus the auction was named "Genetics On Ice" from the very beginning.

The fundraiser was initially one where the donor received 50% of the revenue and the AALF received 50%. After the second such auction in Kansas City in 1985, Dr. Greg Martin, NALF Executive Vice President, and Ken Holloway, principal partner of American Cattle Services, thought it would be appropriate to hold the benefit auction in Denver at the NALF banquet and split the proceeds between NALJA and AALF. The "Genetics On Ice" auction has enjoyed a 30 year run with much success thanks in no small part to the generosity of those who attended, contributed and purchased.

Totals indicate some \$1.65 million have been raised from Limousin breed promotion at the "Genetics On Ice" auction. A special thanks to all involved!

All items, unless otherwise noted, sell with proceeds split 50-50 between NALJA and the AALF.

All semen and embryos will be released for shipment upon payment, unless otherwise noted.

Shipment will be at the buyer's expense. Semen and embryos are not necessarily exportable outside the United States.

Please make your checks payable to the

North American Limousin Education Corporation.

EPDs are current as of Spring 2015.



Frozen Embryos



FI

PUREBRED • RED/BLACK DOUBLE POLLED
SELLING THREE FROZEN EMBRYOS

- WULFS YANKEE K689
- **WULFS APOSTLE T343A (R/HP)**
- WULFS ULTRA DIAMOND 8571U
- WULFS SIRLOIN 3172S
- **WULFS YAM PUDDING 1437Y (B/P)**
- WULFS MISSIVE 2258M

CONTRIBUTED BY: WULF CATTLE CO.

Take a look at this unique genetic opportunity from the heart of the Wulf Cattle program. Blending of the highly popular AI sire, Wulfs Apostle, the top seller at the 2014 Wulf Cattle Sale and the dam of the mating is not only a good milking, big-bodied donor but, also a full sister to the popular Wulfs Xcellsior X252X sire that is known for his muscle shape and thickness.

EPDs
CE: 6.9
BW: 1.2
WW: 72.1
YW: 103.5
MCE: 10.3
MILK: 33.7
SC:
DOC: 26.1
CWT: 32.4
REA: 0.58
YG: -0.09
MARB: 0.25



MAGS

62% LIM-FLEX • HOMO BLACK DOUBLE POLLED
SELLING FOUR FROZEN EMBRYOS

- DA TRAVELER 0047
- **EF XCESSIVE FORCE (HB/P)**
- CFLX MOLLYS IMAGE
- WULFS TITUS 2149T
- **MAGS WITH CLASS (HB/HP)**
- MAGS PHYLLLO

CONTRIBUTED BY: MAGNESS LAND & CATTLE

Sired by the 2012 National Western Grand Champion Lim-Flex bull and sire of countless champions.

EPDs
CE: 9.2
BW: 0.5
WW: 69.8
YW: 101.4
MCE: 8.4
MILK: 17.7
SC:
DOC: 16.9
CWT: 30.2
REA: 0.20
YG: 0.02
MARB: 0.11



LCHA

75% LIM-FLEX • HOMO BLACK HOMO POLLED
SELLING FOUR FROZEN EMBRYOS

- JCL LODESTAR 27L
- **LH RODEMASTER 338R (HB/HP)**
- VERMILLION E BLACKBIRD 9546
- GPFF BLAQUE RULON
- **KRVN NACHES 151N (HB/HP)**
- TL HI-ROSE 917J

CONTRIBUTED BY: HALL CATTLE CO.

Sired by the time-tested, highly-proven and deceased Rodemaster bull and out of the long-necked, beautifully-patterned Naches cow. Embryos are full sibs to the LH Xpress Freight bull used so successfully by Diamond Hill Cattle Co.

EPDs
CE: 5.5
BW: 3.1
WW: 74.2
YW: 104.2
MCE: 6.4
MILK: 21.8
SC:
DOC: 12.0
CWT: 35.4
REA: 0.51
YG: -0.10
MARB: 0.21



BLAW

75% LIM-FLEX • HOMO BLACK DOUBLE POLLED
SELLING THREE FROZEN EMBRYOS

- MAGS THE GENERAL
- **MAGS YIP (HB/HP)**
- AUTO CARMINDA 656S
- BR MIDLAND
- **MAGS SILHOUETTE (HB/P)**
- MAGS LADY ACE

CONTRIBUTED BY: LAWRENCE FAMILY LIMOUSIN

Embryos from the highly-predictable and widely-respected Silhouette cow and by Yip. Can't miss!

EPDs
CE: 8.8
BW: 1.5
WW: 67.4
YW: 104.7
MCE: 6.6
MILK: 27.6
SC:
DOC: 6.0
CWT: 34.1
REA: 0.32
YG: 0.03
MARB: 0.41



Frozen Embryos & Semen

5 ♂

CFLX

50% LIM-FLEX • DOUBLE BLACK DOUBLE POLLED

SELLING FOUR FROZEN EMBRYOS

- SAV BISMARCK 5682
- SAV BRILLIANCE 8077 (DB/HP)**
- SAV BLACKCAP MAY 5270
- JCL LODESTAR 27L
- AUTO MANUELA 298S (B/P)**
- MAGS MANUELA

CONTRIBUTED BY: COUNCIL FAMILY LIMOUSIN

Out of a very special Manuela daughter that has 54 offspring recorded by the Pinegar and Council firms. These strong EPDs and superb pedigree should make this a "can't miss" mating!

EPDs	
CE:	14.6
BW:	-0.4
WW:	65.1
YW:	105.7
MCE:	9.3
MILK:	31.1
SC:	
DOC:	-0.3
CWT:	32.2
REA:	0.51
YG:	0.00
MARB:	0.46



6 ♂

ATAK

71% LIM-FLEX • HOMO BLACK, DOUBLE POLLED

SELLING THREE FROZEN EMBRYOS

- DA TRAVELER 004 703
- EF XCESSIVE FORCE (HB/P)**
- CFLX MOLLYS IMAGE
- AUTO CRUZE 132X
- AUTO POPPY 421Z (HB/P)**
- MAGS MANUELA

CONTRIBUTED BY: ATAK LIMOUSIN

Study the unique combination of the highly regarded EF Xcessive Force sire which has produced numerous national champions and the tremendous purebred donor, AUTO Poppy 421Z, which goes back to the legendary MAGS Manuela cow family and ranks in the top 20% or better for WW, YW, MA, MS and \$MTI. Simply stated, the rare combination of numbers, predictability and unique pedigree twist make this genetic lot one to invest in sale day.

EPDs	
CE:	9.7
BW:	0.0
WW:	67.2
YW:	96.6
MCE:	7.5
MILK:	28.6
SC:	
DOC:	16.9
CWT:	26.7
REA:	0.24
YG:	0.05
MARB:	0.30



7 ♂

MJMB

75% LIM-FLEX • DOUBLE BLACK HOMO POLLED

SELLING THREE FROZEN EMBRYOS

- SCHILLINGS TALLADEGA
- CALO BRICKYARD 902W (HB/HP)**
- EXG E839 1407 M175 LS
- GPFF BLAQUE RULON
- MAGS WENCH (B/HP)**
- JBRH SHEZA LOOKER

CONTRIBUTED BY: MARK BLAKE

Sired by the National Western Grand Champion Lim-Flex bull, Brickyard, and from a top-producing Rulon daughter.

EPDs	
CE:	8.9
BW:	1.6
WW:	56.5
YW:	78.1
MCE:	2.9
MILK:	18.2
SC:	
DOC:	8.2
CWT:	18.1
REA:	0.50
YG:	-0.22
MARB:	-0.06



8 ♂

EF XCESSIVE FORCE

LIM-FLEX(50/44.1) • HET PLD(T) HOMO BLK(P)

BD: 3/18/10 • ACET105X • LFM1958710

SELLING 10 UNITS SEMEN

- S A V 8180 TRAVELER 004
- D A TRAVELER 004 703**
- ROSEWOOD ERICA 5010
- DHVO DEUCE 132R
- CFLX MOLLYS IMAGE**
- JCL PEPPERMINT

ACT BW: 72 ADJ WW: 842 ADJ YW: 1282
 ADJ UREA: 14.1 ADJ UFAT:0.37 ADJ UIMF: 3.52

CONTRIBUTED BY: ETHERTON FARMS/THOMAS AND SON

An opportunity to put some "Force" in your breeding program. The 2012 National Western Grand Champion Lim-Flex bull that has sired countless champions himself.

EPDs	
CE:	9.7
BW:	-1.3
WW:	68.7
YW:	101.0
MCE:	7.5
MILK:	27.5
SC:	
DOC:	16.9
CWT:	27.4
REA:	0.05
YG:	0.17
MARB:	0.17



Semen

9

DHVO DEUCE 132R

PUREBRED(100/89.0) • DOUBLE PLD-INC(T) HOMO BLK(T)
BD: 3/13/05 • DHVO132R • NPM1797878

SELLING 10 UNITS SEMEN

— BLACK DIAMOND
GPFF BLAQUE RULON
— QUAIL RUN RAMONA BP
— BLACK CAT DHAN 152G
AMY JO DHAN 20L
— GPFF AMBER JO

ACT BW: 88 ADJ WW: 713 ADJ YW: 1231
ADJ UREA: ADJ UFAT: ADJ UIMF:

EPDs
CE: 7.1
BW: 3.2
WW: 92.9
YW: 127.3
MCE: 3.4
MILK: 22.9
SC:
DOC: 28.8
CWT: 48.7
REA: 0.66
YG: -0.09
MARB: -0.27

CONTRIBUTED BY: MAGNESS/LAWRENCE/KERVIN/HALL/CHR

National Champion bull that has been National MOE Gold Medal Sire the past four years. Ranks in the top of the breed for WW, YW, SC, CW and REA.



10

LH RODEMASTER 338R

LIM-FLEX(50/45.4) • HOMO PLD(T) HOMO BLK(T)
BD: 10/2/05 • LCHA338R • LFM1832688

SELLING 10 UNITS SEMEN

— HUNTS HI-LITER 245G
JCL LODESTAR 27L
— LOGAN'S CHEERLEADER 280G
— VERMILION 31 STACLER 3491
VERMILION E BLACKBIRD9546
— CH ENV BLACKBIRD C5941

ACT BW: 74 ADJ WW: 686 ADJ YW: 1268
ADJ UREA: 15.1 ADJ UFAT:0.45 ADJ UIMF: 3.59

EPDs
CE: 7.8
BW: 1.6
WW: 85.5
YW: 127.4
MCE: 9.5
MILK: 26.0
SC:
DOC: 14.7
CWT: 47.1
REA: 0.54
YG: 0.06
MARB: 0.46

CONTRIBUTED BY: MAGNESS / LANCE HALL

The deceased performance bull that is no longer available on the open market. Ranks well when compared to other Lim-Flex sires — top of the breed for WW, YW, MA, CEM, SC, CW and MARB.



11

MAGS Y-AXIS

LIM-FLEX(50/43.8) • HOMO PLD(P) HOMO BLK(T)
BD: 3/29/11 • MAGS3847Y • LFM1985477

SELLING 10 UNITS SEMEN

— C R A BEXTOR 872 5205 608
TC ABERDEEN 759
— TC BLACKBIRD 4034
— DHVO DEUCE 132R
MAGS UAHUKA
— CARROUSELS PINA COLADA

ACT BW: 72 ADJ WW: 861 ADJ YW: 1327
ADJ UREA: 17.9 ADJ UFAT:0.31 ADJ UIMF: 3.76

EPDs
CE: 16.1
BW: -1.5
WW: 73.0
YW: 126.7
MCE: 8.5
MILK: 29.6
SC:
DOC: 29.7
CWT: 43.2
REA: 1.16
YG: -0.31
MARB: -0.05

CONTRIBUTED BY: ENGLEWOOD FARM

A double homozygous Lim-Flex sire that combines calving ease, growth and docility in an attractive package.



12

WULFS AMAZING BULL T341A

PUREBRED(100/88.3) • HOMO PLD(T) RED
BD: 3/6/13 • FIT341A • NPM2042673

SELLING 10 UNITS SEMEN

— LVLs POLLED JUSTICE 0601E
HUNT MR JOCK 44J
— HUNT MISS GIGGLE 129G
— JLWM DIRE STRAYTS 4109P
WULFS ULTRA DIAMOND 8571U
— WULFS NICHOLA 3279N

ACT BW: 85 ADJ WW: 755 ADJ YW: 1288
ADJ UREA: 16.68 ADJ UFAT:0.2 ADJ UIMF: 2.49

EPDs
CE: 4.3
BW: 2.7
WW: 74.9
YW: 112.2
MCE: 11.4
MILK: 29.9
SC:
DOC:
CWT: 40
REA: 0.66
YG: -0.2
MARB: -0.02

CONTRIBUTED BY: WULF & SOUTHERN CATTLE CO

If you like big, stout, wide-made, high-performance, homozygous polled cattle then let the \$33,000 Wulf's Amazing Bull go to work in your program. He excels in WW, YW, MA, CM, SC and REA.



Semen

13 EBFL YPSILANTI 420Y

LIM-FLEX(50/45.7) • HOMO PLD(T) HOMO BLK(T)
BD: 3/13/11 • EBFL420Y • LFM1995458

SELLING 10 UNITS SEMEN

- C R A BEXTOR 872 5205 608
- TC ABERDEEN 759**
 - TC BLACKBIRD 4034
 - TNUH BLUE PRINT 245H
- MAGS RAMADA**
 - MAGS MANDA

ACT BW: 86 ADJ WW: 781 ADJ YW: 1327
ADJ UREA: 14.38 ADJ UFAT: 0.1 ADJ UIMF: 2.73

CONTRIBUTED BY: SUGARBUSH / STOWERS / SALT CREEK
A syndicated double homozygous bull that is sound-made, deep-ribbed thick and pretty patterned.

EPDs
CE: 7.3
BW: 1.5
WW: 71.2
YW: 106.8
MCE: 9.4
MILK: 30.3
SC:
DOC: 10.8
CWT: 35.1
REA: 0.95
YG: -0.20
MARB: 0.29



14 JCL LODESTAR 27L

PUREBRED(100/90.8) • HOMO PLD(T) HOMO BLK(T)
BD: 3/18/01 • JCLC27L • NPM1623559

SELLING 10 UNITS SEMEN

- WADDLES COBALT 3106
- HUNTS HI-LITER 245G**
 - TNUH MISS C245
 - COLE FIRST DOWN 46D
- LOGAN'S CHEERLEADER 280G**
 - TTCC CONFIDENCE MAKER

ACT BW: 79 ADJ WW: 814 ADJ YW: 1508
ADJ UREA: ADJ UFAT: ADJ UIMF:

CONTRIBUTED BY: MAGNESS/KERVIN/COYOTE HILLS
The purebred bull with curve-bending numbers — BW to YW and double homozygous to boot. Semen is in limited supply — so help yourself to Lodestar while available.

EPDs
CE: 11.8
BW: 0.2
WW: 78.4
YW: 129.6
MCE: 7.4
MILK: 23.8
SC:
DOC: 22.0
CWT: 47.1
REA: 0.31
YG: 0.09
MARB: 0.30



A

*Selling Four-Color
Inside Front Cover*

Preferred Position in the National Junior Limousin Show and Congress and All American Limousin Futurity program

The Impact of Y-AXIS

MASS Y-AXIS - 2015 Limousin Futurity Champion
C-10 per 1.2 YW: 204
MCE: 10.2
CWT: 35.1
REA: 0.95
YG: -0.20
MARB: 0.29

SEMIN \$40 - Progeny Available

ENIGMATIC FOUR-COLOR 2015
by MAGS RAMADA
TC ABERDEEN 759
TC BLACKBIRD 4034
TNUH BLUE PRINT 245H
LFB: 2015 • Registered FPMMS
LFB: Feb 15th

ENIGMATIC SPARK 2014
by MAGS RAMADA
TC ABERDEEN 759
TC BLACKBIRD 4034
TNUH BLUE PRINT 245H
LFB: 2014 • Registered FPMMS
LFB: Feb 15th

ENIGMATIC SHELTON 2013A
by MAGS RAMADA
TC ABERDEEN 759
TC BLACKBIRD 4034
TNUH BLUE PRINT 245H
LFB: 2013 • Registered FPMMS
LFB: Feb 15th

BULLS • BREDS • PAIRS • SHOW PROSPECTS FOR SALE PRIVATELY

WATCH FOR HIGHLIGHTS ON THESE UPCOMING SALES:
SEPTEMBER 27, 2015 • 41st Anniversary of America's Registered Farms
APRIL 25, 2015 • Registered Farms, Bull & Female Sale

ENGLEWOOD FARMS
4000 N. 100th St., Oklahoma City, OK 73154
Phone: 405.221.1234
Fax: 405.221.1235
www.EnglewoodFarms.com

B

*Selling Four-Color
First Page*

Preferred Position in the National Junior Limousin Show and Congress and All American Limousin Futurity program

Tubmill Creek
STEEL FOUNDATIONS

TMCK

PLEASE JOIN US ON BREEDERS WORLD FOR OUR THREE, UNIQUE SALE OFFERINGS!

Bulls Show Market Call Sale - October 7, 2014
Bull Show Sale - October 26, 2014
Bull Sale - March 2015

Same Stability. Same Reliability. New Energy. New Attitude.

C

*Selling Four-Color
Left Center Spread*

Preferred Position in the National Junior Limousin Show and Congress and All American Limousin Futurity program

There are some things better than Fishing!

Another M Cattle understands and appreciates the effort that goes into a show project. The juniors are learning life skills through these projects that will lead them throughout their lives. We wish all exhibitors this week, both junior and open, the best of luck. We look forward to seeing you in our home state of Oklahoma next year!

Anchor M Limousin
4000 N. 100th St., Oklahoma City, OK 73154
Phone: 405.221.1234
Fax: 405.221.1235
www.AnchorMCattle.com

D

*Selling Four-Color
Right Center Spread*

Preferred Position in the National Junior Limousin Show and Congress and All American Limousin Futurity program

Generational Genetics!

For generations, genetic improvements at Wolf Cattle have been made using sound genetic, technology and best practice management. Proven sires continue to produce breed leading Wolf sires and herd sires. From registered Limousin, Lim-Flex and Angus to commercial bulls, and registered females to feeder cattle. Generational Genetics continue to add value throughout the food chain.

- Bull Selection Index
- Bull Retirement Program
- Feeder Calf Procurement
- Value Added Programs
- Feedlot & Carcass Data
- Integrated Branding
- Beef Relationships
- Genetic Consultation

Through our extensive cattle feeding operations, Wolf Cattle is always interested in bidding on high-influenced feeder calves.

If you are a Wolf Cattle fan and want to see more information on our operations, please give us a call.

WOLF CATTLE
4000 N. 100th St., Oklahoma City, OK 73154
Phone: 405.221.1234
www.WolfCattle.com

Semen

15

MAGS Y SO TANGLED

LIM-FLEX(63/56.2) • HOMO PLD(T) HOMO BLK(T)
BD: 9/15/11 • MAGS415Y • LFM1999507

SELLING 10 UNITS SEMEN

- BT CROSSOVER 758N
- MAGS WINSTON**
 - MAGS STRAWBERRY
 - MAGS SASQUATCH
- MAGS UNTANGLE**
 - AUTO COOKIE CUTTER 295R

ACT BW: 86 ADJ WW: 827 ADJ YW: 1235
ADJ UREA: ADJ UFAT: ADJ UIMF:

EPDs
CE: 9.2
BW: 0.6
WW: 56.3
YW: 91.6
MCE: 6.2
MILK: 24.5
SC:
DOC:
CWT: 25.4
REA: 0.26
YG: 0.06
MARB: 0.60

CONTRIBUTED BY: MAGNESS/EDWARDS LIMOUSIN/LOGAN HILLS
The 2013 National Western Grand Champion Lim-Flex bull — whose first calves are equally impressive.



16

MAGS ZODIAC

LIM-FLEX(63/56.1) • HOMO PLD(P) HOMO BLK(T)
BD: 1/23/12 • MAGS612Z • LFM2006060

SELLING 10 UNITS SEMEN

- BT CROSSOVER 758N
- MAGS WINSTON**
 - MAGS STRAWBERRY
 - DHVO DEUCE 132R
- MAGS XANTHOUS**
 - BOHI RHONDA 314R

ACT BW: 61 ADJ WW: 862 ADJ YW: 1499
ADJ UREA: 13.98 ADJ UFAT: 0.37 ADJ UIMF: 3.93

EPDs
CE: 14.3
BW: -0.9
WW: 73.4
YW: 116.4
MCE: 8.7
MILK: 25.0
SC:
DOC:
CWT: 37.5
REA: 0.23
YG: 0.11
MARB: 0.31

CONTRIBUTED BY: MAGNESS / BUCK RIDGE LIMOUSIN
The top-selling bull in the 2013 Magness bull sale. Study his curve-bending numbers from BW to YW, double homozygous, powerful performance and very attractive.



E

*Selling Four-Color
Last Page*

Preferred Position in the National Junior Limousin Show and Congress and All American Limousin Futurity program

F

*Selling Four-Color
Inside Back Cover*

Preferred Position in the National Junior Limousin Show and Congress and All American Limousin Futurity program

G

*Selling Four-Color
Back Cover*

Preferred Position in the National Junior Limousin Show and Congress and All American Limousin Futurity program

*Thank You for
Your Support!*

Semen

17

LH U HAUL 135U

LIM-FLEX(43/39.5) • HOMO PLD(P) DOUBLE BLK
BD: 9/18/08 • LCHA135U • LFM1927490

SELLING 10 UNITS SEMEN

— C A FUTURE DIRECTION 5321
BASIN FRANCHISE P142
— BASIN CHLOE 812L
— EXLR NEW GENERATION 071M
EXLR DUCHESS 7129R
— EXLR 199H

ACT BW: 76 ADJ WW: 796 ADJ YW: 1439
ADJ UREA: 17.5 ADJ UFAT:0.36 ADJ UIMF: 4.45

EPDs
CE: 13.9
BW: 0.3
WW: 67.0
YW: 112.5
MCE: 7.5
MILK: 36.9
SC:
DOC: 19.6
CWT: 37.4
REA: 0.41
YG: 0.11
MARB: 0.83

CONTRIBUTED BY: HALL CATTLE / DIAMOND HILL

Sire of performance cattle that can also excel in the show ring.

UHaul ranks well when compared to other Lim-Flex sires — top in breed in WW, YW, MA, CW and MARB.



18

MAGS EAGLE

LIM-FLEX(50/45.2) • HOMO PLD(T) HOMO BLK(T)
BD: 3/18/11 • MAGS229Y • LFM1985442

SELLING 10 UNITS SEMEN

— BT CROSSOVER 758N
MAGS WINSTON
— MAGS STRAWBERRY
— AUTO DOLLAR GENERAL 122R
MAGS WEB OF DECEIT
— CABIN CREEK BEHAVE 6040

ACT BW: 86 ADJ WW: 929 ADJ YW: 1342
ADJ UREA: 14.18 ADJ UFAT:0.44 ADJ UIMF: 5.57

EPDs
CE: 11.0
BW: 1.7
WW: 92.3
YW: 139.1
MCE: 9.4
MILK: 26.1
SC:
DOC: 16.0
CWT: 54.1
REA: 0.33
YG: 0.18
MARB: 0.60

CONTRIBUTED BY: MAGNESS / HALL CATTLE CO

Combines performance and soundness, eye appeal in a double

homozygous package. Ranks in top of breed for WW, YW, CEM, CW and MARB.



19

MAGS XUKALANI

LIM-FLEX(25/21.6) • HET PLD(T) HOMO BLK(T)
BD: 1/25/10 • MAGS691X • LFM1958299

SELLING 10 UNITS SEMEN

— RITO 616 OF 4B20 6807
RITO 112 OF 2536 RITO 616
— G A R PRECISION 2536
— BASIN FRANCHISE P142
MAGS UKALANI
— CARROUSELS PINA COLADA

ACT BW: 56 ADJ WW: 777 ADJ YW: 1308
ADJ UREA: 13.7 ADJ UFAT:0.26 ADJ UIMF: 4.58

EPDs
CE: 17.6
BW: -2.0
WW: 75.0
YW: 107.6
MCE: 11.4
MILK: 17.3
SC:
DOC: -7.3
CWT: 30.0
REA: 0.39
YG: -0.04
MARB: 0.77

CONTRIBUTED BY: MAGNESS / SALT CREEK / EDWARDS

A homozygous black, Lim-Flex sire that does so many things right.

Siring deep-ribbed, high-quality, sound-made offspring with great EPDs. He ranks in the top of Lim-Flex sires for CED, BW, WW, YW, CW and MARB.



20

WULFS WILLARD 5115W

PUREBRED(100/90.9) • HOMO PLD(P) BLK
BD: 4/5/09 • F15115W • NPM1931762

SELLING 10 UNITS SEMEN

— MR SYES GENTLEMAN 118M
WULFS REVOLVER 1219R
— WULFS LEAF BUTTERFLY 1219
— WULFS NAPOLEON 1018N
WULFS REMI 5115R
— WULFS MAJORITY 2093M

ACT BW: 100 ADJ WW: 756 ADJ YW: 1270
ADJ UREA: 17.92 ADJ UFAT:0.28 ADJ UIMF: 3.63

EPDs
CE: 4.3
BW: 4.2
WW: 77.4
YW: 111.7
MCE: 3.6
MILK: 27.5
SC:
DOC: 26
CWT: 41.7
REA: 0.92
YG: -0.19
MARB: 0.09

CONTRIBUTED BY: CLARK CATTLE

Study this homozygous polled, outcross-pedigreed, purebred

that brings a combination of growth and muscle to the table. Visually he is sleek-fronted, wide-topped and sound-footed.



Semen

21

WZRK ATLAS 8012A

PUREBRED(100/88.5) • HOMO PLD(P) RED
BD: 1/30/13 • WZRK8012A • NPM2037377

SELLING 10 UNITS SEMEN

- WULFS TITUS 2149T
- **WULFS XTRACTOR X233X**
- WULFS MYRLENE 2332M
- WULFS NASCAR G949N
- **WZRK MISS NASCAR 8012U**
- WZRK MISS F LINER 1021L

ACT BW: 93 ADJ WW: 693 ADJ YW: 1261
ADJ UREA: 16.86 ADJ UFAT:0.18 ADJ UIMF:

EPDs
CE: 4.8
BW: 3.5
WW: 85.5
YW: 129.5
MCE: 9.1
MILK: 23.4
SC:
DOC: 34.1
CWT: 51.3
REA: 0.85
YG: -0.22
MARB: -0.18

CONTRIBUTED BY: LIBERTY RANCH

A homozygous polled, purebred bull with great performance — topped the 2014 Wieczorek Bull Sale. Ranks well when compared to other purebred sires — top WW, YW, DOC, CW, REA and MARB.



22

WULFS XCLUSIVE 2458X

PUREBRED(100/88.4) • HOMO PLD(T) HET BLK(T)
BD: 4/7/10 • FI2458X • NPM1967755

SELLING 10 UNITS SEMEN

- JCL LODESTAR 27L
- **WZRK PRIMESTAR 861P**
- WZRK MISS P ULTRA 861F
- LVLS POLLED BLACK JACK
- **WULFS MISSIVE 2258M**
- WULFS FAITH 6501F

ACT BW: 99 ADJ WW: 810 ADJ YW: 1316
ADJ UREA: 13.98 ADJ UFAT:0.33 ADJ UIMF: 3.28

EPDs
CE: 6.1
BW: 3.3
WW: 83.7
YW: 131.3
MCE: 8.3
MILK: 27.7
SC:
DOC: 22.3
CWT: 52.3
REA: 0.08
YG: 0.14
MARB: 0.43

CONTRIBUTED BY: SYMENS & WULF

The lead-off bull in the 2012 Wulf Opportunity Sale. A powerful performance bull with strong EPDs, ranking him in the top of the breed for WW, YW, SC, CW and MARB.



23

WZRK PRIME CUT 8012Y

PUREBRED(100/87.8) • HOMO PLD(T) RED
BD: 1/21/11 • WZRK8012Y • NPM1990907

SELLING 10 UNITS SEMEN

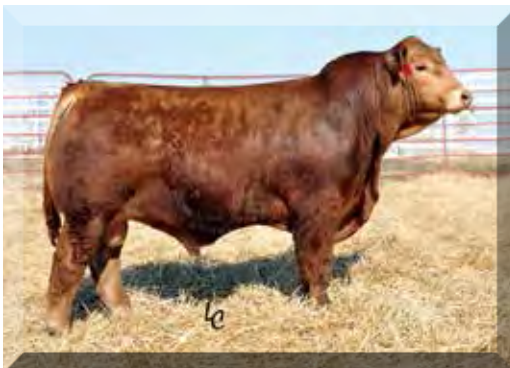
- JCL LODESTAR 27L
- **WZRK PRIMESTAR 861P**
- WZRK MISS P ULTRA 861F
- WULFS NASCAR G949N
- **WZRK MISS NASCAR 8012U**
- WZRK MISS F LINER 1021L

ACT BW: 88 ADJ WW: 724 ADJ YW: 1354
ADJ UREA: 14.98 ADJ UFAT:0.19 ADJ UIMF: 3.29

EPDs
CE: 2.4
BW: 6.3
WW: 83.4
YW: 136.2
MCE: 9.7
MILK: 26.4
SC:
DOC: 23.0
CWT: 60.0
REA: 0.87
YG: -0.20
MARB: -0.10

CONTRIBUTED BY: TULLIS LIMOUSIN FARMS

Powerful red, purebred bull with tremendous growth. Semen cleared for export to Canada, Australia, Argentina and Brazil.



24

MAGS WAZOWSKI

LIM-FLEX(75/67.1) • HET PLD(T) HOMO BLK(P)
BD: 10/16/09 • MAGS8711W • LFM1958029

SELLING 10 UNITS SEMEN

- GPFF BLAQUE RULON
- **DHVO DEUCE 132R**
- AMY JO DHAN 20L
- CONNEALY LEAD ON
- **BOHI RED ROBIN 282R**
- MAGS MANUELA

ACT BW: 88 ADJ WW: 851 ADJ YW: 1405
ADJ UREA: 15 ADJ UFAT:0.22 ADJ UIMF: 2.53

EPDs
CE: 8.5
BW: 1.7
WW: 90.8
YW: 127.4
MCE: 2.0
MILK: 20.0
SC:
DOC: 18.1
CWT: 46.7
REA: 0.48
YG: 0.06
MARB: 0.40

CONTRIBUTED BY: FUCHS LIMOUSIN

An opportunity to acquire semen on the now-deceased Wazowski — the 75% Lim-Flex bull that sires them with depth of rib, easy-fleshing and sound-made. Ranks in the top of the breed for WW, YW, SC, CW and REA.



Semen

25

MAGS XYLOID

LIM-FLEX(75/66.9) • HET PLD(T) HOMO BLK(P)
BD: 3/7/10 • MAGS3712X • LFM1958319

SELLING 10 UNITS SEMEN

— GPFF BLAQUE RULON
DHVO DEUCE 132R
— AMY JO DHAN 20L
— EXLR NEW GENERATION 071M
BOHI RHONDA 314R
— DAVIS ROSETTA 9514

ACT BW: 81 ADJ WW: 837 ADJ YW: 1271
ADJ UREA: 15.16 ADJ UFAT:0.43 ADJ UIMF: 3.35

CONTRIBUTED BY: MAGNESS / EDWARDS LAND & CATTLE

Xyloid makes them thick, stout, correct, attractive and easy to market.

EPDs
CE: 8.5
BW: 2.3
WW: 62.3
YW: 88.5
MCE: 9.8
MILK: 17.9
SC:
DOC: 31.1
CWT: 25.4
REA: -0.05
YG: 0.01
MARB: 0.25



26

MAGS ZAPPO

LIM-FLEX(63/56.0) • HET PLD(T) HOMO BLK(P)
BD: 10/2/12 • MAGS8911Z • LFM2029041

SELLING 10 UNITS SEMEN

— DHVO DEUCE 132R
MAGS XYLOID
— BOHI RHONDA 314R
— AUTO DOLLAR GENERAL 122R
MAGS TIMELESS
— TWIN EAGLES PRIDE 405P

ACT BW: 90 ADJ WW: 879 ADJ YW: 1354
ADJ UREA: 16.62 ADJ UFAT:0.33 ADJ UIMF: 2.04

CONTRIBUTED BY: MAGNESS LAND AND CATTLE

One of the first opportunities to get semen on this deep-ribbed, thick-made, sound-moving, young sire. See him in the Magness show string on the hill.

EPDs
CE: 9.5
BW: 1.3
WW: 62.9
YW: 94.5
MCE: 10.9
MILK: 26.9
SC:
DOC:
CWT: 27.7
REA: 0.30
YG: 0.05
MARB: 0.28



27

MAGS YIP

PUREBRED(100/89.7) • HOMO PLD(T) HOMO BLK(T)
BD: 4/10/11 • MAGS144Y • NPM1985615

SELLING 10 UNITS SEMEN

— AUTO DOLLAR GENERAL 122R
MAGS THE GENERAL
— EXLR LUVLY 821M
— JCL LODESTAR 27L
AUTO CARMINDA 656S
— AUTO CARMINDA 872P

ACT BW: 76 ADJ WW: 822 ADJ YW: 1249
ADJ UREA: 14.76 ADJ UFAT:0.31 ADJ UIMF: 3.9

CONTRIBUTED BY: MAGNESS BRAUN

Top-selling bull in the 2012 Magness Bull Sale. A very popular choice for a purebred bull that will sire soundness and performance in an attractive package.

EPDs
CE: 10.0
BW: 0.2
WW: 64.6
YW: 96.7
MCE: 7.7
MILK: 33.1
SC:
DOC: 13.9
CWT: 27.3
REA: -0.17
YG: 0.11
MARB: 0.24



28

LH WAR HERO 195W

LIM-FLEX(50/45.4) • HOMO PLD(P) HOMO BLK(T)
BD: 10/26/09 • LCHA195W • LFM1954296

SELLING 10 UNITS SEMEN

— HUNTS HI-LITER 245G
JCL LODESTAR 27L
— LOGAN'S CHEERLEADER 280G
— VERMILION DATELINE 7078
VERMILION ERICA LADY 1229
— VERMILION ERICA LADY 8417

ACT BW: 82 ADJ WW: 709 ADJ YW: 1274
ADJ UREA: 13.5 ADJ UFAT:0.29 ADJ UIMF: 3.88

CONTRIBUTED BY: MAGNESS / LANCE HALL

A double homozygous, stout, sound-made Lodestar son with curve-bending numbers from BW to YW.

EPDs
CE: 11.3
BW: -0.3
WW: 70.1
YW: 113.0
MCE: 5.8
MILK: 24.0
SC:
DOC:
CWT: 36.5
REA: 0.16
YG: -0.03
MARB: 0.20



Miscellaneous

29 COWS IN YOUR POCKET

Grassroots Genetics and Consulting will put your herd on any iPhone, iTouch or iPad and train you how to pull up your herd anywhere at anytime, without a internet connection. Also included will be a three-times a year update of the Grassroots Genetics Bulls complete with pictures. If you have wanted to access that great cow and see who she goes back to, we can make it happen. Contact Mark Smith for details.

CONTRIBUTED BY: GRASSROOTS GENETICS



30 TURKEY HUNT FOR TWO

at Hamm's Sportsman Oasis, Frederick, Oklahoma. Hamm's Sportsman Oasis is nestled in the heart of Southwest Oklahoma. With over 12,000 acres of land, Sportsman Oasis is truly a haven for the avid sportsman. Hunting package includes a one-day hunt for two hunters, lodging, meals, bird cleaning, dogs and guides.

CONTRIBUTED BY: HAMM'S SPORTSMAN OASIS

580/335-1892

WWW.HAMMSOASIS.COM



31 DAY OF GOLF & LUNCH

A day of golf and lunch for four at the Patriot Country Club in Tulsa, Oklahoma with Paul Sisemore and the P Bar S Ranch riders — Elgin and Slim. Form your own foursome. Available anytime in 2015, Tuesday through Thursday.

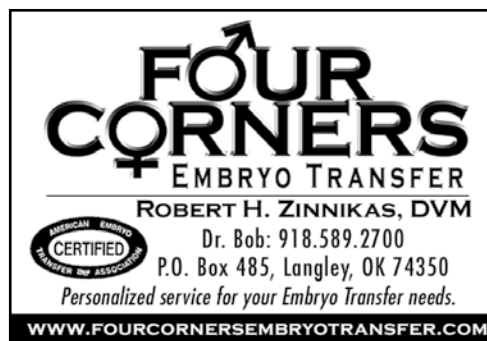
CONTRIBUTED BY: P BAR S RANCH, SAND SPRINGS, OK



32 ET FLUSH & TRANSFER

Embryo transfer includes board, pre-flush shots, flush and transplanitng embryos into your recipient cows. Buyer furnishes semen.

CONTRIBUTED BY: FOUR CORNERS EMBRYO TRANSFER



Miscellaneous

33 FOOT STOOL

Cowhide-adorned foot stool.

CONTRIBUTED BY: SHANA HOLLOWAY



34 LIMOUSIN TORCH ART

Created by the Ol' Coyote — you choose your design, western scene, Limousin bull, Limousin cow or your ranch logo. Ken will create and ship to you.

CONTRIBUTED BY: COYOTE HILLS RANCH



35 TURKEY HUNT FOR TWO

CONTRIBUTED BY: LIBERTY RANCH, PLAINVILLE, KS
MIKE SMITH • 785/737-6033



Liberty Ranch

36 ET FLUSH & TRANSFER

Embryo transfer including board, pre-flush shots, flush and transferring of emgryos into your recipient cows. Buyer furnishes semen.

CONTRIBUTED BY: FLYING COW GENETICS • WELCH, OK
TONY SMALL, DVM • 918/929-3178



37 TULSA TIME RIFLE

Henry limited edition 22 Mag "Silver Boy." Engraved with the NJLSC 2015 logo, Tulsa Time, on one side of the woodgrain stock.

Proceeds go to the Oklahoma Limousin Breeders Association, host of the 2015 NJLSC & AALF.

CONTRIBUTED BY: OKLAHOMA LIMOUSIN BREEDERS ASSOCIATION



38 WOODFORD RESERVE

750 ml limited edition and hand-etched with "2015 Limousin @ NWSS"

CONTRIBUTED BY: AGRI-EXPOSURE, LLC
HARRODSBURG, KY



Miscellaneous

39 LASER ENGRAVED HAIR ON HIDE ART

Poem engraved into hair-on cowhide with handmade wood frame.

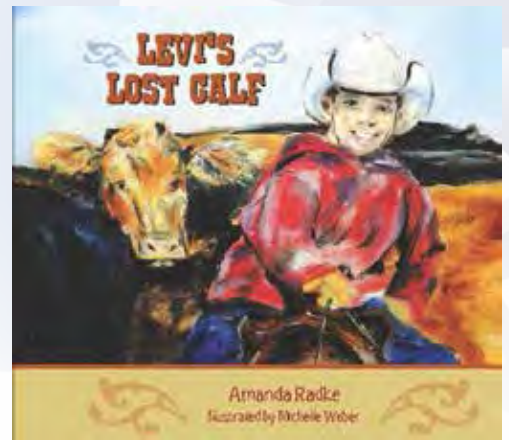
CONTRIBUTED BY: COWBOY FIRE INC, NANCY, KY



40 SIGNED COPY OF "LEVI'S LOST CALF"

"Levi's Lost Calf" is a children's book geared towards ages 4-8. The story is set on a ranch and is based off South Dakota Limousin breeder and author Amanda (Nolz) Radke's childhood growing up on her family's cattle operation. The book includes ranch vocabulary and a fun recipe just for kids.

CONTRIBUTED BY: AMANDA RADKE



41 CANVAS PORTRAIT

This 11" x 14" canvas wrap features a black & white candid photo from the 2014 National Jr. Limousin Show in Amarillo, TX. The photo was taken by Audrey Christensen, a professional freelance photographer located in the Oklahoma City area. She is the owner and operator/photographer of Aush Rae Photography & Designs. From picturing livestock and scenic views, to portraits and events, Audrey's main focus is to capture the moments in the agricultural community that make it so unique and special. Visit her online photo gallery on her website at aushRae.com

Proceeds go to Limi-Boosters

CONTRIBUTED BY: AUDREY CHRISTIANSEN



42 'HEADING HOME' PAINTING

Heading Home is a beautiful 20" x 30" painting featuring a Limousin herd heading home from fall pasture to prepare for winter. Michelle Weber, Lake Benton, Minnesota, is the artist who created Heading Home. Michelle is an up-and-coming artist who depicts life in today's cattle industry. She has a wide array of work that captures scenes all cattle lovers can relate to from newborn calves to majestic bulls to unique moments in the show ring. Her work has been featured on the cover of DRIVE magazine and she was commissioned by the American Maine-Anjou Association to do all of their Hall of Fame Portraits since 2010. You can view samples of her work at www.webercustompainting.com.

Proceeds go to Limi-Boosters

CONTRIBUTED BY: AGRI-EXPOSURE, LLC • HARRODSBURG, KY

Miscellaneous

43

2014 NATIONAL JUNIOR SHOW T-SHIRT QUILT

This 56" X 74" quilt was created from t-shirts donated by states that participated in the national junior show this past summer. A Texas Junior Limousin Association member, Mykala Moore, with the help of her grandmother donated their time and the additional materials to complete the quilt.

Proceeds go to Limi-Boosters

CONTRIBUTED BY: MYKALA MOORE



44

NALF SERVICES PACKAGE

- 10 registrations and transfers
- 2 E-blasts
- In depth training on the new NALF registry system and its features
- Evaluation of in herd genetic and phenotypic trends over the last 10 years

CONTRIBUTED BY: NALF



45

WOODEN LIMOUSIN SIGN

8' x 2' x 2" hand-painted sign that folds down to 4' x 2' and comes complete with hooks for hanging. Strong and made to last, it displays "The Opportunity Breed" slogan which will be the focus of NALF advertising this year.

CONTRIBUTED BY: NALF



46

CELEBRITY CLUB RESTAURANT \$200 GIFT CARD

For nearly 50 years, Celebrity Restaurant has been a Tulsa favorite. Their award-winning menu and classic decor provide guests with a one-of-a-kind fine dining experience.

CONTRIBUTED BY: JIM BOB & PJ HENDRICKSON AND FAMILY

47

DAYS INN EASTERN REGIONAL HOTEL HEADQUARTERS

One Double Room at the Eastern Regional at the Days Inn Murfreesboro, Tennessee. Stay is from Thursday, June 11 to Sunday, June 14th. Valued at over \$300.

CONTRIBUTED BY: DAYS INN MURFREESBORO

48

HAND-CRAFTED LEATHER COVERED BOX

15" x 8' x 7" leather-topped box with cowhide, hand-crafted by Brian Skaggs.

CONTRIBUTED BY: C.K. "SONNY", MARY & RACHEL BOOTH

Miscellaneous

49 TOOLED LEATHER WALLET

Hand-crafted leather wallet created by Brian Skaggs, artist that has been commissioned to create many awards for the 2015 NJLSC.

Proceeds go to the Oklahoma Limousin Breeders Association, host of the 2015 NJLSC & AALF.

CONTRIBUTED BY: BRIAN SKAGGS



50 HAND-CRAFTED CLAY PLATE

This hand-crafted clay plate was made by an Indiana woman. It portrays an old farmstead.

CONTRIBUTED BY: COX FAMILY



51 COWBOY WESTERN METAL ART

Metal torch work wall hanging measuring 2' x 2' by skilled metal artist Joe Bob Wright. See on display.

CONTRIBUTED BY: JOE BOB & ELIZABETH WRIGHT FAMILY

Miscellaneous

Be sure to visit the Silent Auction area to view additional items including, but not limited to:

Hand Roasted Coffee contributed by Emma Johnson

Mary Kay Cosmetics contributed by Susan Carmichael

Limousin Bling Sweatshirts contributed by Troy Richardson

Necklace contributed by Caitlyn Ochsner

Montana Silversmith Jewelry contributed by Gates Limousin

Sponsorships

H

NALJA AWARDS BANQUET PROGRAM SPONSORSHIP

Selling sponsorship of the official awards program for the 2015 National Junior Limousin Show & Congress.

I

NALJA SHOW SHIRT SPONSORSHIP

Sponsor the official NALJA show shirt for the 2015 National Junior Limousin Show and have your logo embroidered on the sleeve.



**National Junior Limousin
Show & Congress**

Tulsa, Oklahoma | June 27-July 3, 2015

tulsatime.

Contacts...

**IF YOU ARE UNABLE TO ATTEND THE AUCTION, CONTACT
ANY OF THE FOLLOWING TO REPRESENT YOU:**

Sonny Booth.....918/533-5587
Ken Holloway.....580/581-7652
Mark Anderson.....970/590-9576
Joe Epperly.....303/884-3900
Frank Padilla.....308/350-3323

Kaye Kaufman.....860/716-3626
Kyle Haley.....405/590-1388
Thad Combs.....615/406-5766
Weston Geppert.....605/933-1387

*Thank You for Your Support!
See you in Tulsa!*