

# ETHERTON FARMS

---

**Saturday, February 15, 2014**

1:00 PM at Etherton Farms, Dawson, Illinois

# ETHERTON FARMS ANNUAL BULL & FEMALE

**Saturday, February 15, 2014**

1:00 PM at Etherton Farms, Dawson, Illinois

**TRUCKING** ... Will be available on site to haul any purchases out the day of the sale. To make prior arrangements feel free to call R & R Marketing Co. at 615.330.2735 and we will make your buying easy and accommodating.

**ANNOUNCEMENTS** ... Announcements at the sale by the owners, auctioneers or sale management will take precedence over statements in the sale catalog.

**SALE ORDER & SUPPLEMENTAL INFORMATION** ... Sale order is the catalog order. Supplemental information will be posted Friday, February 14, 2014 at [www.RRMktg.com](http://www.RRMktg.com).

**TERMS & CONDITIONS** ... Terms of the sale are cash unless satisfactory credit arrangements have been made prior to the sale. A representative will be on hand sale day if your wishes are to insure your purchases. Please note: The sale manager is only an agent for the seller and has no responsibility other than those involved in conducting the sale. All persons who attend the sale do so at their own risk. Neither the sale manager nor Etherton Farms assume liability, legal or otherwise, for any accidents which may occur.

**TESTING** ... All cattle have DNA on file at NALF and have been homozygous tested if required.

**DIRECTIONS** ... See back cover

**EPD'S** ... All EPD's are current as of December '13. Make note that the new EPD's are subject to change as of January 01, 2014.

**FLUSH** ... Etherton Farms reserves the right to one flush of six or more embryos on all females in this sale at our expense and the buyers convenience.

**SEMEN CHECK** ... Etherton Farms asks that purchasers of bulls have them semen tested prior to turning out with cows. We will gladly pay for the semen check, just send us an invoice and we will get it handled. It will be the buyers responsibility to assure that their purchases will check out as producing quality semen.

**FREE SEMEN** ... Etherton Farms will give 2 units of semen on either EF Zen, EF Xcessive Force or BC Bad Romance 612X for each female purchased. Semen will be available at Interglobe Genetics, 14814 North 1500 East Rd, Pontiac, IL 61764, 815.844.3733. Bull information and pictures can be found on page 33.

**PAYMENT** ... Cattle must be paid for at the time of the sale unless prior arrangements are made with sale management at the time of the sale at 615.330.2735.



# E SALE

## Schedule ...

Friday, February 14th

Afternoon

Cattle Available for Viewing

Saturday, February 15th

8:00 a.m.

Coffee and Pastries

11:00 a.m.

Complementary lunch served

1:00 p.m.

Etherton Farms Sale

## SELLING 54 LOTS ...

Etherton Farms is offering 12 Spring Breds, 26 Open Show Heifers and 15 Yearling Bulls.

## SALE DAY PHONES & REPRESENTATIVES ...

Bob Etherton, <i>Owner</i> .....	217.899.0162
Rob Bruce, <i>Show/Sale Cattle Manager</i> .....	217.737.0692
Kyle Beutke, <i>Show/Sale Cattle</i> .....	815.674.6655
Randy Ratliff, <i>Sale Management</i> .....	615.330.2735
Thad Combs, <i>Ringman</i> .....	615.406.5766
Sonny Booth, <i>Auctioneer</i> .....	918.533.5587
DeRon Heldermon, <i>Ringman</i> .....	405.850.5102
Jon Gevelinger, <i>Ringman</i> .....	918.914.0810
Kyley McKinna, <i>Sale Consultant</i> .....	402.350.3447
Mark Smith, <i>Sale Consultant</i> .....	515.229.5227

## ACCOMMODATIONS ... Hotels are located in Springfield, Illinois

Hilton Garden Inn (I-55 Stevenson Dr., Exit 94) .....	217.529.7171
Drury Inn & Suites (I-55 Stevenson Dr., Exit 94) .....	217.529.3900
Hampton Inn (I-55 Stevenson Dr., Exit 94) .....	217.529.1100
Super 8 Lodge of Springfield (I-55 S. Grand Ave., Exit 96B).....	217.528.8889

## VIDEOS ON EACH ANIMAL ...

To watch a video on each animal be sure to log onto [www.ethertonfarms.com](http://www.ethertonfarms.com).

## DISCOUNT ... In an effort to show our appreciation to our loyal customers, we will be offering our VOLUME DISCOUNT!

- 2-5 head you will get a 5% discount off your purchase price
- 5 head or more you will get a 10% discount off your purchase price

## SALE CONSULTANTS ...



Mark Smith

515.229.5227

[grgenetics@aol.com](mailto:grgenetics@aol.com)

[www.grasrootsgenetics.com](http://www.grasrootsgenetics.com)



Kiley McKinna

402.350.3447

[mcmarketingsales@aol.com](mailto:mcmarketingsales@aol.com)

[www.MCMarketingManagement.com](http://www.MCMarketingManagement.com)

## SALE MANAGEMENT ...

R&R MARKETING COMPANY

Randy Ratliff, 615.330.2735

PO Box 281677, Nashville, TN 37228

[Randy@RRmktg.com](mailto:Randy@RRmktg.com) • [www.rrmktg.com](http://www.rrmktg.com)



(L#2845)

If you need assistance with your purchases or want to discuss the genetics selling then please feel free to contact R & R Marketing Company. As a paid marketing agent for Etherton Farms we take pride in the opportunity to work closely with this program. We can assist you with your phone order and/or handle your bid in the most confidential manner. Email, call or text and we will be more than happy to assist.

**Etherton Farms**

Bob & Austen Etherton • Ashley, Kyle and Kallen Beutke  
8961 Oak Crest Road, Dawson, IL 62520  
Phone 217.629.7650 • Cell 217.899.0162  
Rob Bruce, 217.737.0692 • Kyle Beutke, 815.674.6655  
[ethertonfarms@gmail.com](mailto:ethertonfarms@gmail.com) • [www.ethertonfarms.com](http://www.ethertonfarms.com)



Grand Champion Female  
**EF ZIPPY 103Z**  
 Owned by Riley Smith, Macomb, IL



Reserve Grand Champion Female  
**EF YONDER 338Y**  
 Owned by Rachel Booth, Miami, OK



Kayla Waite, Sheridan, IN



Nada Stonebraker, Avon, IL



Grand Champion Steer  
**EF XCESSIVE FORCE son**  
 Owned by Addam Dickey, Eldridge, IA



Reserve Grand Champion Steer  
**EF HUTTON son**  
 Owned by Riley Smith, Macomb, IL



Brandon Gilfillan, Avon, IL



Duncan Smith, Macomb, IL



**2013 EF Scholarship Winners**  
 Riley Smith, Rachel Booth & Kayla Waite



Maycee Ratliff, Westphalia, KS



Tanner Walden, Tonganoxie, KS



Kyle Eike, Glenarm, IL



Carly Henderson, Wellsville, MO



Liam Steward, Raymond, IL



Kaitlyn Ruwald, Waterloo, IL



ETHERTON  
FARMS

# Junior JACKPOT SHOW

Held in conjunction with the Illinois Limousin Field Day ...

Sunday, JUNE 22, 2014  
Taylorville, Illinois

- Any animal that carries the EF prefix, sired by or out of an EF bred animal or if the sire is owned by EF qualifies for the show.
- All exhibitors will receive money for showing their EF bred or EF influenced animal

## \$10,000 JACKPOT

Visit [www.ethertonfarms.com](http://www.ethertonfarms.com) or call for complete details.

## EF XCLUSIVE

Grand Champion Pair, AALF  
Supreme Over-All Breed, '13 Nebraska State Fair  
Congratulations Ashlyn Ochsner, Kersey, CO



## EF YONDER 338Y

Div. V Reserve Champion Limousin Female,  
NJLS&C  
Congratulations Rachel Booth, Miami, OK

## EF ZAYLEE 573Z

Div. IV Champion Limousin Female, NJLS&C  
Congratulations Tanner Walden, Tonganoxie, KS

## EF ZELDA 221Z

Div. IV Champion Lim-Flex Female, NJLS&C  
Congratulations Carly  
Henderson, Wellsville, MO



## EF ZEN 344Z

Div. V Champion Bull, AALF  
Congratulations ATAK  
Limousin, Avon, IL;  
D&J Davis Farms, Kenton, TN;  
& Eike Farms, Glenarm, IL



## EF ZONKED 338Z

Div. V Reserve Champion Female, AALF  
Reserve Grand Champion Female, NAILE  
Congratulations Massey Limousin, London, KY



## EF YAFFA 821Y

Div. Champion Lim-Flex Pair, NJLS&C  
Grand Champion, '13 Oklahoma Limousin  
Field Day  
Congratulations Rachel Booth, Miami, OK

## EF ZIGGY 339Z

Div. IV Reserve Champion Lim-Flex Female,  
NJLS&C  
Grand Champion, '13 Texas Limousin Field Day  
Congratulations Spencer Wilder, Snook, TX

# Congratulations

# EF CUSTOMERS

# OPEN HEIFERS





*Cori Harrison*





MAGS Wrigley, dam of Lot 1

## lot 1

### EF ALL IN FUN 851A

PB Limousin (100) Cow    ETHR 851A    NPF 2032661    Homo P    Double B    01.07.13

GPF BLAQUE RULON  
**DHVO DEUCE 132R**  
 AMY JO DHAN 20L

MAGS SASQUATCH  
**MAGS WRIGLEY**  
 BOHI REJOICE 308R

BLACK DIAMOND  
 QUAIL RUN RAMONA BP  
 BLACK CAT DHAN 152G  
 GPF AMBER JO  
 EXLR NEW GENERATION 071M  
 MAGS FRUITFUL 487M  
 GPF BLAQUE RULON  
 AUTO ELITE 270F

EPD'S	CED	BW	WW	YW	MA	CEM	SC	ST	DOC	CW	REA	YG	MARB	\$MTI
	6	2.0	56	102	24	-1	0.8	-	19	39	0.67	-0.01	-0.06	45
	P	P	P	P	P	P	P	-	P	P	P	P	P	

2013 NAILE M.O.E. Show Reserve Division Champion

EF All In Fun 851A has been selected as Lot 1 and as one of the highlight show heifers of the annual Etherton Farms Sale. She is a daughter of the \$46,000 valued donor selected by Etherton Farm from Sugar Bush Cattle, Inc., Allen, MI and Magness Land & Cattle Co., Platteville, CO. She was the once All American Futurity grand champion and Denver National Limousin Show grand champion female and her young embryo calf is now featured in this sale. She is a daughter of DHVO Deuce 132R and is black and homozygous polled. This young show heifer follows the same pattern and design as her dam, MAGS Wrigley. She is very appealing up through her front end, very capacious and stands on a tremendous amount of bone and foot size. If you want to experience standing in front of a picture backdrop or ever wonder where to hang all the ribbons then we would strongly urge your consideration of this purchase.

**lot 1**  
 EF ALL IN FUN 851A



*Cori Harrison*



lot 2

## EF AFTER HOURS 850A

PB Limousin (100) Cow    ETHR 850A    NPF 2032660    Double P    Double B    01.07.13

GPF BLAQUE RULON  
**DHVO DEUCE 132R**  
 AMY JO DHAN 20L

MAGS SASQUATCH  
**MAGS WRIGLEY**  
 BOHI REJOICE 308R

BLACK DIAMOND  
 QUAIL RUN RAMONA BP  
 BLACK CAT DHAN 152G  
 GPF AMBER JO  
 EXLR NEW GENERATION 071M  
 MAGS FRUITFUL 487M  
 GPF BLAQUE RULON  
 AUTO ELITE 270F

EPD'S	CED	BW	WW	YW	MA	CEM	SC	ST	DOC	CW	REA	YG	MARB	\$MTI
	6	2.0	56	102	24	-1	0.8	-	19	39	0.67	-0.01	-0.06	45
	P	P	P	P	P	P	P	-	P	P	P	P	P	

This January purebred show heifer prospect represents national champion genetics at their finest! EF After Hours 850A is sired by the once national champion sire DHVO Deuce 132R. He is the breed's leading sire of show champions and a son of GPF Blaque Rulon from the famed Amy Jo DHAN 20L donor. Her dam is the ever-popular MAGS Wrigley. She was a daughter of the once highly syndicated sire MAGS Sasquatch and from the Council/Sugar Bush donor BOHI Rejoice 308R. Wrigley was a once Denver national champion purebred female for the Etherton Family. We appreciate the muscle mass and overall performance that this January heifer has. She, just like her parents, is very sound in her structure, flawless in her conformation and has that pose to her no matter when you take a look.

lot 2

EF AFTER HOURS 850A



*Cori Harrison*



## lot 3

### EF ALL OR NOTHING 761A

Lim-Flex (75) Cow      ETHR 761A      LFF 2031498      Homo P      Homo B      01.06.13

D A TRAVELER 004 703  
**EF XCESSIVE FORCE**  
 CFLX MOLLYS IMAGE

KRVN NOAH 015N  
**MAGS SUNFLOWER**  
 MAGS MISS DAISEY

S A V 8180 TRAVELER 004  
 ROSEWOOD ERICA 5010  
 DHVO DEUCE 132R  
 JCL PEPPERMINT  
 GPFF BLAQUE RULON  
 BLACK MOLLY KDPI 62F  
 EXLR LIMITED EDITION 765J  
 MAGS JULIET

EPD'S	CED	BW	WW	YW	MA	CEM	SC	ST	DOC	CW	REA	YG	MARB	\$MTI
	10	0.6	43	81	29	3	0.3	-	-	20	0.05	0.16	0.08	45
	P	P+	P	P	P	P	P	-	-	P	P	P	P	

EF All Or Nothing 761A is one of the most promising and exciting January show heifers in the entire sale and to be sold in year 2014. She is a 75% Lim-Flex homozygous polled and homozygous black heifer that stands for so much that is good in our breed of cattle. This daughter of EF Xcessive Force is from a proven daughter of KRVN Noah 015N from a daughter of EXLR Limited Edition back to the consistent donor MAGS Juliet. This young heifer offers a breathtaking profile with the look of success and promise written all over her. We love her sharp front end, extreme length combined with her heaviness of structure and overall mass. With all that said she offers a breed leading set of numbers with 0.6 for birth, 29 for milk and is solid in other economically important traits.



*Cori Harrison*



**lot 4**  
**EF ABRA 904A**

PB Limousin (88) Cow    ETHR 904A    NPF 2032664    Homo P    Homo B    01.01.13

DHVO DEUCE 132R  
**MAGS XYLOID**  
 BOHI RHONDA 314R

COLE MONTANA SKY 36M  
**EXLR MOLLY 605R**  
 EXLR MOLLY 4139J

GPFF BLAQUE RULON  
 AMY JO DHAN 20L  
 EXLR NEW GENERATION 071M  
 DAVIS ROSETTA 9514  
 ANDERS JAG  
 COLE 87G  
 EXLR DAKOTA 353G  
 EXLR MOLLY 343G

EPD'S	CED	BW	WW	YW	MA	CEM	SC	ST	DOC	CW	REA	YG	MARB	\$MTI
	8	1.2	35	71	23	2	0.5	-	12	9	0.18	0.05	-0.05	38
	P	P	P	P	P	P	P	-	P	P	P	P	P	

EF Abra 904A is and for sure could be one of the very best females to ever represent the EF brand. For the few that have laid eyes on this January show heifer they have been taken back in amazement. She IS PERFECT in everyway possible. We are certain she will be one of the top show heifers on the show circuit this year. Her sire MAGS Xyloid was the 2012 All American Futurity Supreme Champion bull and is now one of the breed's leading sires for Edwards Land & Cattle Co., Beulaville, NC and Magness Land & Cattle Co., Platteville, CO. Her dam EXLR Molly 605R was the once All American Futurity reserve grand champion and the grand at the National Junior Heifer show. If you are ready to get your kid in the spotlight of any show at any level then consider EF Abra 904A. We are excited to have a coffee, sit on a bale of hay and see what your opinion is.

**lot 4**  
 EF ABRA 904A



## lot 5

### EF ADDICTED TO LOVE 771A

Lim-Flex (50) Cow    ETHR 771A    LFF 2031506    Double P    Homo B    02.03.13

G A R GRID MAKER  
**S A V BISMARCK 5682**  
 S A V ABIGALE 0451

GDAR TRAVELER 044  
 G A R PRECISION 2536  
 SCHOENES FIX IT 826  
 S A V ABIGALE 6062  
 EXLR DAKOTA 353G  
 DFCL JET SET BPC 34Y  
 COLE FIRST DOWN 46D  
 TUBB STORM BREKEN 299B

AUTO BLACK DAKOTA 129J

**TUBB BLK DAKOTA 304N**  
 COSC GABRIELLA 444G

EPD'S	CED	BW	WW	YW	MA	CEM	SC	ST	DOC	CW	REA	YG	MARB	\$MTI
	8	-0.1	55	102	27	4	0.3	-	7	26	-0.20	0.29	0.11	48
	P	P+	P	P	P	P	P	-	P	P	P	P	P	

EF Addicted to Love 771A is a big league show heifer that stands proud and ready to represent the EF brand. She is a 50% Lim-Flex polled, homozygous black show heifer in the making. She is sired by the leading Angus sire SAV Bismarck 5682 and from TUBB Blk Dakota 304N. EF Addicted To Love 771A offers a balanced set of EPD's with a -0.1 for birth, 102 for yearling weight and 27 for milk. As you can see in the picture of this heifer that she is almost perfect at any angle that you look at her. She has the femininity and thickness down her topline when standing behind her. She sits down with excellent structure and her movement is very fluid. This heifer has a bright future in the show ring and for sure as a future donor.



## lot 6

### EF ABOVE AND BEYOND 767A

PB Limousin (100) Cow    ETHR 767A    NPF 2031504    Double P    Double B    01.18.13

GPF BLAQUE RULON  
**DHVO DEUCE 132R**  
 AMY JO DHAN 20L

BLACK DIAMOND  
 QUAIL RUN RAMONA BP  
 BLACK CAT DHAN 152G  
 GPF AMBER JO  
 ANDERS JAG  
 COLE 87G  
 EXLR DAKOTA 353G  
 EXLR MOLLY 343G

COLE MONTANA SKY 36M

**EXLR MOLLY 605R**  
 EXLR MOLLY 4139J

EPD'S	CED	BW	WW	YW	MA	CEM	SC	ST	DOC	CW	REA	YG	MARB	\$MTI
	7	1.3	46	84	22	1	0.8	-	16	24	0.55	-0.03	-0.10	40
	P	P	P	P	P	P	P	-	P	P	P	P	P	

EF Above and Beyond 767A is one of the very well made January show heifers in this sale offering. This purebred heifer is very moderate in her frame score and easy in her condition. She has the look of a tremendous brood cow with her extreme rib shape and volume. We admire her body capacity and the amount of volume that she has. We can only imagine what she would look like as a long bred. This daughter of the once national champion DHVO Deuce is from the once National Junior Heifer show grand champion and All American Futurity Grand Champion, EXLR Molly 605R. The national champion genetics make up this young heifer and we think you will agree that she will brighten anyone's program with her poise and prominence.





Cori Harrison

## lot 7

### EF AS GOOD AS GOLD 783A

Lim-Flex (75) Cow    ETHR 783A    LFF 2036234    Double P    Double B    03.14.13

GPFF BLAQUE RULON  
**MAGS UNLOOSEN**  
 MAGS PARADISE CANYON

DHVO TREY 133R  
**KRVN TIRAMUSU 215T**  
 ANLC LIM-FLEX 3143N

BLACK DIAMOND  
 QUAIL RUN RAMONA BP  
 BR MIDLAND  
 MISS WULFETTE 6230F  
 GPFF BLAQUE RULON  
 AMY JO DHAN 20L  
 ANLC LOADMASTER 1139L  
 ANLC MS RAINMAKER LASS

EF As Good As Gold 783A will capture your attention like no other in this sale. Oh my goodness do we have an elite show heifer in the making! Sired by the highly syndicated sire and son of GPFF Blaque Rulon, MAGS Unloosen. His calves have been a hit at the EF program for the last several years and this young March yearling heifer is one of the many reasons why. This 75% Lim-Flex is so gorgeous up through her front end, very appealing in stance and has that "I know I am good lookin" approach to her. We welcome all complements on this heifer because we know she is expecting them! Ha!

EPD'S	CED	BW	WW	YW	MA	CEM	SC	ST	DOC	CW	REA	YG	MARB	\$MTI
	7	2.0	55	96	18	-1	0.5	-	-	25	0.44	0.11	0.09	49
	P	P+	P	P	P	P	P	-	-	P	P	P	P	



*Cori Harrison*

**lot 8**  
**EF A MESS 935A**

EPD'S	CED	BW	WW	YW	MA	CEM	SC	ST	DOC	CW	REA	YG	MARB	\$MTI
	5	3.6	52	93	27	1	0.6	-	-	34	0.43	0.04	-0.05	44
	P	P+	P	P	P	P	P	-	-	P	P	P	P	

% Limousin (81) Cow    ETHR 935A    NPF 2033702    Homo P    Homo B    02.15.13

DHVO DEUCE 132R  
**MAGS XYLOID**  
 BOHI RHONDA 314R

EXLR NATIVE 7133N  
**DVFC FERGIE 109T**  
 DVFC 290H

GPFF BLAQUE RULON  
 AMY JO DHAN 20L  
 EXLR NEW GENERATION 071M  
 DAVIS ROSETTA 9514  
 EXLR JUDO 459J  
 TRAK EXLR ANNIE  
 SLDJ POLLED EQUITY  
 SLVL 104E

Here is a gorgeous and very well made February show heifer from the heart of the Ether-ton Farms program, EF A Mess 935A. She is homozygous polled, homozygous black and sired by the leading sire of champions, MAGS Xyloid. Her dam is the once Eastern Regional Heifer show grand champion and now leading donor in the EF program, DVFC Fergie 109T. This young heifer stands with prominence and poise that you would demand in a big league show heifer. She is nearly perfect at any angle you look at her.

## lot 9

### EF ABOUT LAST NIGHT 937A

% Limousin (81) Cow    ETHR 937A    NXF 2033716    Homo P    Homo B    02.16.13

DHVO DEUCE 132R    GPFF BLAQUE RULON  
**MAGS XYLOID**    AMY JO DHAN 20L  
 BOHI RHONDA 314R    EXLR NEW GENERATION 071M  
                                  DAVIS ROSETTA 9514  
 EXLR NATIVE 7133N    EXLR JUDO 459J  
**DVFC FERGIE 109T**    TRAK EXLR ANNIE  
 DVFC 290H    SLDJ POLLED EQUITY  
                                  SLVL 104E

EPD'S	CED	BW	WW	YW	MA	CEM	SC	ST	DOC	CW	REA	YG	MARB	\$MTI
	5	2.0	52	93	27	1	0.6	-	-	34	0.43	0.04	-0.05	44
	P	P+	P	P	P	P	P	-	-	P	P	P	P	

Here is a top show heifer and tremendous breeding piece for the new owner. EF About Last Night 937A is a February daughter of MAGS Xyloid from DVFC Fergie 109T. DVFC Fergie has earned her way to the top of the donor pen in the EF program and rightfully so. She was a past champion of the once Eastern Regional show and is a daughter of the once \$70,000 valued donor DVFC 290H that headlines the Council Family Limousin program. Maternal sisters to this heifer selling were in demand in the '12 Etherton Farms sale with EF Ying Yang 662Y selling to Ashlyn Ochsner, Kelsey, CO at \$10,500 and EF Yikes 742Y selling for \$6500 to Riley Smith of Macomb, IL.



EF About Last Night 937A is extremely long up through her neck and very feminine in her front end. She is extreme in length of body and yet maintains a tremendous amount of rib shape and volume. She is homozygous polled, homozygous black with strength in her EPD profile and flawless in her design.

## lot 10

### EF AS GOOD AS GOLD 948A

% Limousin (81) Cow    ETHR 948A    NXF 2035553    Double P    Homo B    02.25.13

DHVO DEUCE 132R    GPFF BLAQUE RULON  
**MAGS XYLOID**    AMY JO DHAN 20L  
 BOHI RHONDA 314R    EXLR NEW GENERATION 071M  
                                  DAVIS ROSETTA 9514  
 EXLR NATIVE 7133N    EXLR JUDO 459J  
**DVFC FERGIE 109T**    TRAK EXLR ANNIE  
 DVFC 290H    SLDJ POLLED EQUITY  
                                  SLVL 104E

EPD'S	CED	BW	WW	YW	MA	CEM	SC	ST	DOC	CW	REA	YG	MARB	\$MTI
	5	2.9	52	93	27	1	0.6	-	-	34	0.43	0.04	-0.05	44
	P	P+	P	P	P	P	P	-	-	P	P	P	P	

EF As Good As Gold 948A is a polled, homozygous black February show heifer. She proudly represents premier and proven lineage along with a very prominent stance. This young heifer is definitely proud of who she is, where she came from and I think already knows where she is headed ... to the winners circle! This show female is just like you have come to expect with the EF branded product. She is extreme in her length of neck and blends in very smoothly into her shoulder. She is heavy in her bone, big footed and very sound made. They only thing and of course the most important thing that is missing is a young boy or girl proudly standing in front of her learning the important things in life ... hard work and determination will certainly pay positive dividends in the future.





lot 11

EF ADRIANA 942A

PB Limousin (94) Cow ETHR 942A NPF 2033719 Double P Double B 02.18.13

GPFF BLAQUE RULON  
DHVO DEUCE 132R  
AMY JO DHAN 20L

BLACK DIAMOND  
QUAIL RUN RAMONA BP  
BLACK CAT DHAN 152G  
GPFF AMBER JO  
EXLR JUDO 459J  
TRAK EXLR ANNIE  
SLDJ POLLED EQUITY  
SLVL 104E

EXLR NATIVE 7133N  
DVFC FERGIE 109T  
DVFC 290H

EPD'S	CED	BW	WW	YW	MA	CEM	SC	ST	DOC	CW	REA	YG	MARB	\$MTI
	5	2.8	63	106	26	-1	0.8	-	-	50	0.80	-0.02	-0.10	45
	P	P+	P	P	P	P	P	-	-	P	P	P	P	



lot 12

EF ALL HEART 939A

PB Limousin (94) Cow ETHR 939A NPF 2034996 Double P Double B 02.17.13

GPFF BLAQUE RULON  
DHVO DEUCE 132R  
AMY JO DHAN 20L

BLACK DIAMOND  
QUAIL RUN RAMONA BP  
BLACK CAT DHAN 152G  
GPFF AMBER JO  
EXLR JUDO 459J  
TRAK EXLR ANNIE  
SLDJ POLLED EQUITY  
SLVL 104E

EXLR NATIVE 7133N  
DVFC FERGIE 109T  
DVFC 290H

EPD'S	CED	BW	WW	YW	MA	CEM	SC	ST	DOC	CW	REA	YG	MARB	\$MTI
	5	1.9	63	106	26	-1	0.8	-	-	50	0.80	-0.02	-0.10	45
	P	P+	P	P	P	P	P	-	-	P	P	P	P	



lot 13

EF ABOVE THE REST 773A

Lim-Flex (44) Cow ETHR 773A LFF 2031517 Homo P Homo B 02.09.13

S A V 8180 TRAVELER 004  
D A TRAVELER 004 703  
ROSEWOOD ERICA 5010

SITZ TRAVELER 8180  
BOYD FOREVER LADY 8003  
LEACHMAN SAUGAHATCHEE3000  
R A ERICA 456  
EXLR JUDO 459J  
TRAK EXLR ANNIE  
SLDJ POLLED EQUITY  
SLVL 104E

EXLR NATIVE 7133N  
DVFC FERGIE 109T  
DVFC 290H

EPD'S	CED	BW	WW	YW	MA	CEM	SC	ST	DOC	CW	REA	YG	MARB	\$MTI
	7	2.7	60	107	33	2	0.2	-	-	40	-0.18	0.49	0.30	55
	P	P+	P	P	P	P	P	-	-	P	P	P	P	

2013 NAILE M.O.E. division champion

EF Adriana 942A is a superb purebred show heifer and a known daughter of the once national champion DHVO Deuce. Her dam DVFC Fergie 109T has earned her right in the EF program to be known as an A list donor. She made her mark years ago when she dominated the once Eastern Regional Heifer Show and since being in production has done nothing but great things and this heifer is certainly one of them. She is so level and square out of her hip and hind leg and very upright in her stance. We appreciate her EPD's with a highlighted 63 for weaning weight, 106 for yearling weight, 26 for milk and a breed leading .80 for ribeye.

EF All Heart 939A is a very stout made and heavy muscled February show heifer prospect. If you are looking for a heifer that is clean fronted, thick made and very wide standing from behind then here she is. This daughter of DHVO Deuce is from the elite EF donor DVFC Fergie 109T. She has a balanced and breed leading set of EPD's with a highlighted 63 for weaning weight, 106 for yearling weight, 26 for milk and .80 for ribeye. This lineage of cattle has proven their worth in the pasture and for sure their status in the show ring.

EF Above The Rest 773A is homozygous polled and homozygous black. She represents the DVFC Fergie 109T cow family very well. There are several Fergie progeny throughout this sale and this young daughter speaks very highly of the genetics. She is sired by the now deceased EF Angus sire DA Traveler 004 703. He has done wonders in this program and this young heifer is a prime example. She is a 43.5% Lim-Flex that has a great EPD profile with a 60 for weaning weight, 107 for yearling weight, 33 for milk and .30 for marbling. She is a great breeding piece and proudly represents genetics that have been proven time and time again in the EF program.

# lot 14

## EF ACROSS TOWN 934A

PB Limousin (88) Cow ETHR 934A NPF 2033701 Homo P Homo B 02.15.13

DHVO DEUCE 132R GPF BLAQUE RULON  
**MAGS XYLOID** AMY JO DHAN 20L  
 BOHI RHONDA 314R EXLR NEW GENERATION 071M  
 DAVIS ROSETTA 9514  
 AUTO BLACK DAKOTA 129J EXLR DAKOTA 353G  
**EF SHADOW DANCER 209N** DFCL JET SET BPC 34Y  
 EXLR 231J WULFS GUARDIAN 5074G  
 EXLR LUVLY 081F

EPD'S	CED	BW	WW	YW	MA	CEM	SC	ST	DOC	CW	REA	YG	MARB	\$MTI
7	1.9	49	92	29	3	0.4	-	21	25	0.34	-0.01	-0.09	42	
P	P+	P	P	P	P	P	-	P	P	P	P	P		

EF Across Town 934A is one of our favorites in the sale and rightfully so! As you view her picture and when you see her sale day just sit down and try really hard to fault her on any given characteristic ... we are certain it will be a tough task. This February yearling heifer is sired by the once All American Futurity Supreme Champion bull MAGS Xyloid. Her dam is EF Shadow Dancer 209N, the leading donor for Etherton Farms, Fosdick Limousin, Chenoa, IL and ATAK Limousin, Avon, IL. EF Across Town 934A is full of rib, deep in her flank and very square out of her hip, stout in her hind leg stance and very, very complete in her design.



# lot 15

## EF AIM TO PLEASE 941A

PB Limousin (88) Cow ETHR 941A NPF 2033717 Homo P Double B 02.18.13

DHVO DEUCE 132R GPF BLAQUE RULON  
**MAGS XYLOID** AMY JO DHAN 20L  
 BOHI RHONDA 314R EXLR NEW GENERATION 071M  
 DAVIS ROSETTA 9514  
 AUTO BLACK DAKOTA 129J EXLR DAKOTA 353G  
**EF SHADOW DANCER 209N** DFCL JET SET BPC 34Y  
 EXLR 231J WULFS GUARDIAN 5074G  
 EXLR LUVLY 081F

EPD'S	CED	BW	WW	YW	MA	CEM	SC	ST	DOC	CW	REA	YG	MARB	\$MTI
7	5.3	49	92	29	3	0.4	-	21	25	0.34	-0.01	-0.09	42	
P	P+	P	P	P	P	P	-	P	P	P	P	P		

EF Aim To Please 941A is an elite purebred show heifer prospect. This 87.5% Limousin heifer is black and homozygous polled. This February show heifer prospect is by the leading sire of show champions MAGS Xyloid. He is the son of the once national champion sire DHVO Deuce from the now deceased BOHI Rhonda 314R. His calves have dominated the show ring this year and we feel will continue to do so. This young heifer represents show champion royalty as being a daughter of EF Shadow Dancer 209N. She was a once national junior heifer show reserve grand champion and has earned her right as a big league donor at Etherton Farms.





## lot 16

### EF ALL IN 781A

Lim-Flex (25) Cow    ETHR 781A    LFF 20362632    Homo P    Double B    03.11.13

S A V 8180 TRAVELER 004    SITZ TRAVELER 8180  
**D A TRAVELER 004 703**    BOYD FOREVER LADY 8003  
 ROSEWOOD ERICA 5010    LEACHMAN SAUGAHATCHEE3000  
                                          R A ERICA 456  
 B C MATRIX 4132    O C C EMBLAZON 854E  
**NBLF DOLL BABY 715T**    CAF PURE PRIDE EXT 99  
 NBLF DOLL BABY 518R    NBLF DROVER 309N  
                                          NBLF DOLL BABY 243M

EPD'S	CED	BW	WW	YW	MA	CEM	SC	ST	DOC	CW	REA	YG	MARB	\$MTI
	9	0.8	56	106	29	3	0.2	-	-	41	-0.61	0.73	0.46	58
	P	P	P	P	P	P	P	-	P	P	P	P	P	

EF All In 781A is one of the favorites from Rob, Kyle and the crew around the show barn. At the time of this picture she appears to be a tad green in her condition and not quite ready, but the future will shine brighter on her than it does at the present time. This homozygous polled daughter of the Angus sire DA Traveler 004 703 back to a granddaughter of OCC Emblazon 854A represents a prominent 25% Lim-Flex pedigree that we think on sale day you will really appreciate. She not only has a bright future but she also has a breed leading set of EPD's. We appreciate her 0.8 for birth, 106 for yearling weight, 29 for milk, .46 for marbling and 58 for MTL.



## lot 17

### EF AS CUTE AS A BUG 780A

PB Limousin (88) Cow    ETHR 780A    NPF 2036231    Double P    Homo B    03.10.13

GPFF BLAQUE RULON    BLACK DIAMOND  
**MAGS UNLOOSEN**    QUAIL RUN RAMONA BP  
 MAGS PARADISE CANYON    BR MIDLAND  
                                          MISS WULFETTE 6230F  
 EXLR NATIVE 7133N    EXLR JUDO 459J  
**DVFC NATIVE DANCE 116S**    TRAK EXLR ANNIE  
 DVFC FIRST DANCE 266H    CHAZ FIRST CHOICE 6004F  
                                          EDGE ATLANTICS OLY 114B

EPD'S	CED	BW	WW	YW	MA	CEM	SC	ST	DOC	CW	REA	YG	MARB	\$MTI
	4	2.3	59	100	24	0	0.5	-	-	36	0.74	0.00	-0.01	47
	P	P	P	P	P	P	P	-	P	P	P	P	P	

EF As Cute As A Bug 780A is a terrific purebred March show heifer prospect. This daughter of MAGS Unloosen is from the consistent producing DVFC Native Dance 116S. This double polled, homozygous black show heifer prospect is very well put together. We love her combination of extreme thickness with the amount of rib shape and volume that she has. She is fault-free in her structure and very appealing from the side profile. Buy with confidence when considering this young purebred show heifer. We are certain you are going to appreciate her on sale day.

## lot 18

### EF A NEW ROMANCE 766A

Lim-Flex (72) Cow    ETHR 766A    NPF 2031503    Homo P    Double B    01.18.13

RGMA NIGHT RIDER 73N    GPF BLAQUE RULON  
**BC BAD ROMANCE 612X**    WULFS GIGGLE BOX 7030G  
 SENNETT ROSEANNE 612SLF37    EXLR POWER GRID 034P  
                                          SENNETT ROSEANNE 433P  
 LH RODEMASTER 338R    JCL LODESTAR 27L  
**ALE XENDER 516X**    VERMILION E BLACKBIRD9546  
 LH TENDER MERCY 567T    GPF BLAQUE RULON  
                                          LOGAN HILLS HEAVEN SENT

EPD'S	CED	BW	WW	YW	MA	CEM	SC	ST	DOC	CW	REA	YG	MARB	\$MTI
	8	0.4	46	87	26	4	-	-	-	-	-	-	-	0
	P	P+	P	P	P	P	-	-	-	-	-	-	-	

EF A New Romance 766A is one of the very first daughters of BC Bad Romance to be offered for sale. This 71.8% Lim-Flex double black, homozygous polled show heifer has about as good of a show look to her as any in the entire sale. She is so long and clean up through her front end. She is extreme in her length of body and levelness down her top line. If you are looking for a January show heifer to capture any cattleman's attention then you may have your answer right here.



## lot 19

### EF AIM HIGH 769A

Lim-Flex (72) Cow    ETHR 769A    LFF 2031505    Double P    Homo B    01.30.13

RGMA NIGHT RIDER 73N    GPF BLAQUE RULON  
**BC BAD ROMANCE 612X**    WULFS GIGGLE BOX 7030G  
 SENNETT ROSEANNE 612SLF37    EXLR POWER GRID 034P  
                                          SENNETT ROSEANNE 433P  
 CLLL HAHK THE APPRENTICE    MNWS FRONTIER 507R  
**HAHK 431X**    GPF ALLIE  
 DJ TEMPTING DEAL    MYTTY IN FOCUS  
                                          MAGS NO BIG DEAL

EPD'S	CED	BW	WW	YW	MA	CEM	SC	ST	DOC	CW	REA	YG	MARB	\$MTI
	78	0.8	42	81	29	1	-	-	-	-	-	-	-	0
	P	P+	P	P	P	P	-	-	-	-	-	-	-	

EF Aim High 769A is a polled, homozygous black 71.8% Lim-Flex daughter of BC Bad Romance. He is the 68% Lim-Flex son of RGMA Night Rider 73N from the Sennett Rosanne 612S donor. He was shown and campaigned successfully by the EF crew and his first calves are highlighted in this sale. This young heifer's dam is a daughter of the once All American Futurity grand champion bull CLLL HAHK The Apprentice and from a daughter of MYTTY In Focus.





## lot 20

### EF AIMEE 756A

Lim-Flex (75) Cow    ETHR 756A    LFF 2031491    Homo P    Black    01.03.13

D A TRAVELER 004 703  
**EF XCESSIVE FORCE**  
 CFLX MOLLYS IMAGE

AUTO BLACK DAKOTA 129J  
**AUTO KRISHNA 210N**  
 AUTO JULIA 247J

S A V 8180 TRAVELER 004  
 ROSEWOOD ERICA 5010  
 DHVO DEUCE 132R  
 JCL PEPPERMINT  
 EXLR DAKOTA 353G  
 DFCL JET SET BPC 34Y  
 WULFS GUARDIAN 5074G  
 EXLR LUVLY 087F

EPD'S	CED	BW	WW	YW	MA	CEM	SC	ST	DOC	CW	REA	YG	MARB	\$MTI
	10	0.5	53	101	25	3	0.4	-	-	22	0.05	0.17	0.08	48
	P	P+	P	P	P	P	P	-	-	P	P	P	P	



## lot 21

### EF AMERICAN GIRL 758A

Lim-Flex (75) Cow    ETHR 758A    LFF 2031495    Double P    Homo B    01.04.13

D A TRAVELER 004 703  
**EF XCESSIVE FORCE**  
 CFLX MOLLYS IMAGE

KRVN PACESETTER 053P  
**LFL TEDDY BEAR 7075T**  
 ALCM NIGHT OF THE FOX

S A V 8180 TRAVELER 004  
 ROSEWOOD ERICA 5010  
 DHVO DEUCE 132R  
 JCL PEPPERMINT  
 GPFF BLAQUE RULON  
 CHR KOKO  
 EXLR DAKOTA 353G  
 MAGS GRENADINE

EPD'S	CED	BW	WW	YW	MA	CEM	SC	ST	DOC	CW	REA	YG	MARB	\$MTI
	8	-0.9	50	92	26	2	0.5	-	-	28	0.10	0.22	0.13	48
	P	P+	P	P	P	P	P	-	-	P	P	P	P	



## lot 22

### EF ANGEL EYES 772A

Lim-Flex (50) Cow    ETHR 772A    LFF 2031507    Double P    Black    02.08.13

BT CROSSOVER 758N  
**MAGS WINSTON**  
 MAGS STRAWBERRY

LJC MISSION STATEMENT P27  
**MAGS YEAR ROUND**  
 MAGS MARQUEE

C A FUTURE DIRECTION 5321  
 BT ROYAL PRIDE 237G  
 EXLR NEW GENERATION 071M  
 MAGS FRUITFUL 487M  
 LJC LANCER 806  
 LJC HANNAH 106  
 EXLR DAKOTA 353G  
 MAGS JEWEL

EPD'S	CED	BW	WW	YW	MA	CEM	SC	ST	DOC	CW	REA	YG	MARB	\$MTI
	11	0.3	48	102	32	4	-0.2	-	10	33	-0.34	0.41	0.51	60
	P	P+	P	P	P	P	P	-	P	P	P	P	P	

EF Aimee 756A is a very stout made and performance oriented 75% Lim-Flex heifer. She is sired by the once national champion Lim-Flex sire EF Xcessive Force that is now working for Linhart Limousin, Leon, IA, Thomas & Son Farms, Boonsboro, MA and Etherton Farms. His daughters, just like this one, are very well made with moderate thickness and plenty of rib shape. Her dam is a daughter of the once national gold medal sire AUTO Black Dakota 129J from a daughter of Wulf; Guardian back to the famed donor EXLR Luvly 087F. This young heifer is stacked with predictable genetics, strength in EPD's and a very desirable look.

EF American Girl 758A is one big time brood cow and future donor in the making! This January polled, homozygous black 75% Lim-Flex heifer is extreme in her capacity and rib shape. We so love and appreciate the amount of doability that she has and all that she stands for. She is super sound made, soft in her pasterns and very broody in her appearance. She is a daughter of EF Xcessive Force back to a Lawrence Family bred female sired by KRVN Pacesetter 053P back to a daughter of EXLR Dakota. If you want to invest in a female that will certainly stand out in a crowd let alone in your pasture then consider EF American Girl 758A.

EF Angel Eyes 772A is one of the really well bred brood cow prospects of the entire sale. She is a 50% Lim-Flex black and polled daughter of the deceased MAGS Winston. Her dam is a daughter of LJC Mission Statement P27 back to daughter of EXLR Dakota 353G back to MAGS Jewel. She offers a -0.9 for birth, 102 for yearling weight, 32 for milk, .51 for marbling and 60 for MTI. This feminine fronted heifer is straight in her lines and very sound in her structure. She has all the positive traits stacked in her favor and we are excited to see what your opinion of her is on sale day.



## lot 23

### EF APRIL FOOL 789A

Lim-Flex (38) Cow    ETHR 789A    LFF 2036235    Homo P    Black    04.01.13

S A V 8180 TRAVELER 004  
**D A TRAVELER 004 703**  
 ROSEWOOD ERICA 5010

MAGS WINSTON  
**KYLD LUVLY 101Y**  
 EXLR LUVLY 291T

SITZ TRAVELER 8180  
 BOYD FOREVER LADY 8003  
 LEACHMAN SAUGAHATCHEE3000  
 R A ERICA 456  
 BT CROSSOVER 758N  
 MAGS STRAWBERRY  
 CARROUSELS PURE POWER  
 EXLR LUVLY 7127N

EPD'S	CED	BW	WW	YW	MA	CEM	SC	ST	DOC	CW	REA	YG	MARB	\$MTI
	10	1.3	58	110	32	3	0.2	-	-	43	-0.46	0.61	0.48	60
	P	P	P	P	P	P	P	-	-	P	P	P	P	

EF April Fool 789A is a very complete and well made daughter of DA Traveler 004 703. Her dam is a Heart Felt Farms bred female sired by MAGS Winston from the Carrouseles Pure Power daughter, EXLR Luvly 291T. This fancy show heifer born on April fools day is black and homozygous polled. She offers a solid set of numbers with a 1.3 for birth, 110 for yearling weight, 32 for milk, .48 for marbling and 60 for MTL.

EF Avanti 910A is one very well made and admired female around the EF headquarters. This January homozygous black purebred show heifer prospect is really something special. She is a daughter of DHVO Deuce, the once national champion bull and from the once reserve national junior heifer show champion EF Shadow Dancer 209N. We love and admire the growth, performance and overall look of this heifer. She is extreme up through her head and neck and very long and level down her topline. She has plenty of softness to her pasterns and is very fluid in her movement. She represents national champion genetics and feel she easily can live up to her expectations in the show ring.

## lot 25

### EF AVANTI 910A

PB Limousin (100) Cow    ETHR 910A    NPF 2035003    Double P    Homo B    01.03.13

GPFF BLAQUE RULON  
**DHVO DEUCE 132R**  
 AMY JO DHAN 20L

AUTO BLACK DAKOTA 129J  
**EF SHADOW DANCER 209N**  
 EXLR 231J

BLACK DIAMOND  
 QUAIL RUN RAMONA BP  
 BLACK CAT DHAN 152G  
 GPFF AMBER JO  
 EXLR DAKOTA 353G  
 DFCL JET SET BPC 34Y  
 WULFS GUARDIAN 5074G  
 EXLR LUVLY 081F

EPD'S	CED	BW	WW	YW	MA	CEM	SC	ST	DOC	CW	REA	YG	MARB	\$MTI
	7	2.6	60	106	28	1	0.7	-	25	41	0.71	-0.10	-0.14	44
	P	P	P	P	P	P	P	-	-	P	P	P	P	

EF All The Best 603A is a 62.5% Lim-Flex double polled, double black daughter of MAGS Unloosen. Her dam was an Ethern Farms top purchase from the Edwards Land & Cattle Co. program in Beulaville, NC. She is ELCX On Sale 16Y, a daughter of Deer Valley New Direction S6118 back to daughter of EXLR Excellante 251L. This heifer is very well made and has a super set of EPD's. She posts a 0.1 for birth, 100 for yearling weight, 29 for milk and .30 for marbling.

## lot 26

### EF ALL THE BEST 603A

Lim-Flex (63) Cow    ETHR 603A    LFF 2036240    Double P    Double B    05.29.13

GPFF BLAQUE RULON  
**MAGS UNLOOSEN**  
 MAGS PARADISE CANYON

DEERVALLEYDIRECTION S6118  
**ELCX ON SALE 16 Y**  
 GPFX TERI

BLACK DIAMOND  
 QUAIL RUN RAMONA BP  
 BR MIDLAND  
 MISS WULFETTE 6230F  
 C A FUTURE DIRECTION 532I  
 E F RITA 022I  
 EXLR EXCELLANTE 251L  
 GPFX LEVITRA

EPD'S	CED	BW	WW	YW	MA	CEM	SC	ST	DOC	CW	REA	YG	MARB	\$MTI
	9	0.5	54	100	29	1	-	-	-	34	0.33	0.22	0.30	55
	P	P+	P	P	P	P	-	-	-	P	P	P	P	

## lot 24

### EF ALMOST THERE 927A

Lim-Flex (75) Cow    ETHR 927A    LFF 2033694    Homo P    Homo B    02.10.13

D A TRAVELER 004 703  
**EF XCESSIVE FORCE**  
 CFLX MOLLYS IMAGE

COLE MONTANA SKY 36M  
**EXLR MOLLY 605R**  
 EXLR MOLLY 4139J

S A V 8180 TRAVELER 004  
 ROSEWOOD ERICA 5010  
 DHVO DEUCE 132R  
 JCL PEPPERMINT  
 ANDERS JAG  
 COLE 87G  
 EXLR DAKOTA 353G  
 EXLR MOLLY 343G

EPD'S	CED	BW	WW	YW	MA	CEM	SC	ST	DOC	CW	REA	YG	MARB	\$MTI
	11	-2.5	37	75	26	3	0.4	-	-	10	-0.05	0.23	0.10	43
	P	P+	P	P	P	P	P	-	-	P	P	P	P	

EF Almost There 927A is a 75% Lim-Flex open heifer that is homozygous polled, homozygous black and we think really nice. She represents a prominent pedigree and stems from the elite EF donor EXLR Molly 605R. Her sire is the once national champion Lim-Flex sire, EF Xcessive Force. Her pedigree is solid, her performance is commendable and her pedigree is superb.



# BRED FEMALES





Cori Harrison

## lot 27

### EF ZYNGA 356Z

Lim-Flex (50) Cow    ETHR 356Z    LFF 2014372    Homo P    Black    02.29.12

BON VIEW DESIGN 208  
**TC TOTAL 410**  
 TC ERICA EILEEN 2047

LVLS SECRET WEAPON 4408K  
**MAGS PRETTY CHRISTINE**  
 ROYAL DRL 108K

B/R NEW DESIGN 036  
 BON VIEW ERICA 443  
 TWIN VALLEY PRECISIONE161  
 TC ERICA EILEEN 5116  
 LVLS FARMER 4G  
 LVLS 408H  
 EXLR DAKOTA 353G  
 CANE RIDGE DUTCHESS 124D

#### SCAN

UFAT  
0.23

UREA  
12.62

IMF  
5.14

Observed bred 6.12.13 BC Bad Romance

EF Zynga 356Z is a big league donor in the making and one of the very finest bred females to ever be offered from the Etherton Farms program and to carry the EF brand. She is a 50% Lim-Flex daughter of the Angus sire TC Total 410. He is a big numbered son of Bon View New Design 208 from a daughter of Twin Valley Precision E161. Her dam is MAGS Pretty Christine, a young and proven daughter of the big numbered LVLS Secret Weapon back to a daughter of EXLR Dakota 353G. This first calf heifer is black, homozygous polled and has as good of an EPD package you would ever want. She posts a 71 for weaning weight, 128 for yearling weight, 39 for milk. She also posts a .43 for marbling and 63 for MTI. We so appreciate her scan data of 12.62 for REA and 5.14 for IMF. This female has it all the important traits wrapped up in a gorgeous package.

EPD'S	CED	BW	WW	YW	MA	CEM	SC	ST	DOC	CW	REA	YG	MARB	\$MTI
	5	3.9	71	128	39	4	0.4	-	12	36	-0.24	0.47	0.43	63
	P	35	30	25	21	P	P	-	P	19	17	17	17	

**lot 28**  
EF YUPPIE 222Y



MAGS Sandbox, dam of Lots 28, 29 & 30.

Here are three full siblings from the heart of the Etherton Farms program. They are all bred to the once national champion Lim-Flex sire EF Xcessive Force and pasture exposed to the senior EF herd sire BC Bad Romance. They are sired by the popular show sire bull DHVO Trey 133R and from the prominent donor MAGS Sandbox. She is the leading donor hard at work for Sugar Bush Cattle, Inc., Allen, MI. She is a daughter of BR Midland and back to the famed MAGS Lady Ace. These females are well made, sound in their structure and all three are homozygous polled and homozygous black.

## lot 28 EF YUPPIE 222Y

Lim-Flex (75) Cow    ETHR 222Y    LFF 2003224    Homo P    Homo B    09.07.11

GPFF BLAQUE RULON  
**DHVO TREY 133R**  
AMY JO DHAN 20L

BLACK DIAMOND  
QUAIL RUN RAMONA BP  
BLACK CAT DHAN 152G  
GPFF AMBER JO  
TWIN VALLEY PRECISIONE161  
BR ROYAL LASS 7036-19  
EXLR INTRIGUE 361G  
CHAZ MISS GRETA 7003G

EPD'S	CED	BW	WW	YW	MA	CEM	SC	ST	DOC	CW	REA	YG	MARB	\$MTI
	7	2.5	49	85	18	0	0.8	-	12	24	0.39	0.09	0.16	50
	P	36	30	25	19	P	18	-	P	P	P	P	P	

A.I. 5.20.13 to EF Xcessive Force; P.E. from 6.01.13 - 9.01.13 to BC Bad Romance.

## lot 30 EF YUMMY 223Y

Lim-Flex (75) Cow    ETHR 223Y    LFF 2006009    Homo P    Homo B    09.08.11

GPFF BLAQUE RULON  
**DHVO TREY 133R**  
AMY JO DHAN 20L

BLACK DIAMOND  
QUAIL RUN RAMONA BP  
BLACK CAT DHAN 152G  
GPFF AMBER JO  
TWIN VALLEY PRECISIONE161  
BR ROYAL LASS 7036-19  
EXLR INTRIGUE 361G  
CHAZ MISS GRETA 7003G

EPD'S	CED	BW	WW	YW	MA	CEM	SC	ST	DOC	CW	REA	YG	MARB	\$MTI
	7	2.9	51	88	18	0	0.8	-	12	24	0.39	0.09	0.16	50
	P	P	P	P	P	P	P	-	P	P	P	P	P	

A.I. 5.20.13 to EF Xcessive Force; P.E. from 6.01.13 - 9.01.13 to BC Bad Romance.



**lot 30**  
EF YUMMY 223Y

## lot 29 EF YOU CAN DO IT 220Y

Lim-Flex (75) Cow    ETHR 220Y    LFF 2003223    Homo P    Homo B    09.05.11

GPFF BLAQUE RULON  
**DHVO TREY 133R**  
AMY JO DHAN 20L

BLACK DIAMOND  
QUAIL RUN RAMONA BP  
BLACK CAT DHAN 152G  
GPFF AMBER JO  
TWIN VALLEY PRECISIONE161  
BR ROYAL LASS 7036-19  
EXLR INTRIGUE 361G  
CHAZ MISS GRETA 7003G

BR MIDLAND  
**MAGS SANDBOX**  
MAGS LADY ACE

EPD'S	CED	BW	WW	YW	MA	CEM	SC	ST	DOC	CW	REA	YG	MARB	\$MTI
	7	1.5	48	88	18	0	0.8	-	12	24	0.39	0.09	0.16	49
	P	36	30	25	19	P	18	-	P	P	P	P	P	

A.I. 5.20.13 to EF Xcessive Force; P.E. from 6.01.13 - 9.01.13 to BC Bad Romance.

A.I. 5.21.13 to EF Xcessive Force; P.E. from 6.01.13 - 9.01.13 to BC Bad Romance.

EF Zilch 212Z is a 75% Lim-Flex daughter of MAGS Sandbox and sired by the once national champion DHVO Deuce 132R. She is polled, homozygous black and extremely big numbered and very well made. We love her 63 for weaning weight, 111 for yearling weight, 26 for milk, .59 for ribeye and .11 for marbling. We respect her scan data of 12.62 for ribeye and 3.78 for IMF. This replacement female is well bred, big numbered and is one that you will certainly appreciate once you see her on sale day.

A.I. 5.20.13 to EF Xcessive Force; P.E. from 6.01.13 - 9.01.13 to BC Bad Romance.

EF Zany 342Z is a purebred replacement female and daughter of the once national sale top selling sire MAGS Savage. She is from MAGS Tranquil, a daughter of LVLS Secret Weapon back to the famed ALCM Kool Tunes. Her EPD's are very well above breed average with a 58 for weaning weight, 98 for yearling weight, 31 for milk and .45 for ribeye. She scanned a 3.64 for IMF and 12.06 for REA.

A.I. 5.21.13 to MAGS Y So Tangled; P.E. from 6.01.13 - 9.01.13 to BC Bad Romance.

Here is a 37.5% Lim-Flex first calf heifer and daughter of DA Traveler 004 703, the once and now deceased leading Angus service sire at Etherton Farms. He was a son of SAV 8180 Traveler 004 that helped the EF create big numbered and very well made Lim-Flex progeny. This young heifer is from a daughter of CHAZ First Choice, DSUL First Maria 5281R. EF Y Not Now 340Y is homozygous polled, homozygous black and has a strong set of EPD's with a leading yearling number of 94, milk of 32 and marbling of .35.

## lot 31

### EF ZILCH 212Z

Lim-Flex (75) Cow ETHR 212Z LFF 2009839 Double P Homo B 01.15.12

GPFF BLAQUE RULON  
DHVO DEUCE 132R  
AMY JO DHAN 20L

BR MIDLAND  
MAGS SANDBOX  
MAGS LADY ACE

BLACK DIAMOND  
QUAIL RUN RAMONA BP  
BLACK CAT DHAN 152G  
GPFF AMBER JO  
TWIN VALLEY PRECISIONE161  
BR ROYAL LASS 7036-19  
EXLR INTRIGUE 361G  
CHAZ MISS GRETA 7003G

SCAN  
UFAT  
0.1  
UREA  
12.62  
IMF  
3.78

EPD'S	CED	BW	WW	YW	MA	CEM	SC	ST	DOC	CW	REA	YG	MARB	\$MTI
	7	3.4	63	111	26	1	1.3	-	19	46	0.59	0.11	0.11	52
	23	36	31	25	20	22	19	-	P	24	24	24	23	



EF Excessive Force, service sire to Lot 31 & 32.

## lot 32

### EF ZANY 342Z

PB Limousin (100) Cow ETHR 342Z NPF 2009978 Double P Double B 01.02.12

GPFF BLAQUE RULON  
MAGS SAVAGE  
MAGS MANDA

LVLS SECRET WEAPON 4408K  
MAGS TRANQUIL  
ALCM KOOL TUNES

BLACK DIAMOND  
QUAIL RUN RAMONA BP  
EXLR DAKOTA 353G  
MAGS JEWEL  
LVLS FARMER 4G  
LVLS 408H  
EXLR DAKOTA 353G  
NP ERROLLINE 250E

SCAN  
UFAT  
0.10  
UREA  
12.06  
IMF  
3.64

EPD'S	CED	BW	WW	YW	MA	CEM	SC	ST	DOC	CW	REA	YG	MARB	\$MTI
	4	4.1	58	98	31	6	0.7	-	2	23	0.45	0.02	0.06	49
	P	36	30	19	18	P	16	-	P	23	23	23	23	



## lot 33

### EF Y NOT NOW 340Y

Lim-Flex (38) Cow ETHR 340Y LFF 2003216 Homo P Homo B 10.08.11

S A V 8180 TRAVELER 004  
D A TRAVELER 004 703  
ROSEWOOD ERICA 5010

CHAZ FIRST CHOICE 6004F  
DSUL FIRST MARIA 5281R  
DSUL SULLIVAN'S MARIA

SITZ TRAVELER 8180  
BOYD FOREVER LADY 8003  
LEACHMAN SAUGAHATCHEE3000  
R A ERICA 456  
COLE FIRST DOWN 46D  
CHAZ MISS ROXANNE 92C  
KRM C POLLFECTION 192W

SCAN  
UFAT  
-  
UREA  
-  
IMF  
-

EPD'S	CED	BW	WW	YW	MA	CEM	SC	ST	DOC	CW	REA	YG	MARB	\$MTI
	7	1.8	51	94	32	3	-0.1	-	-	30	-0.41	0.47	0.35	54
	P	30	17	11	12	P	P	-	-	P	P	P	P	





Cori Harrison

**lot 34**

**EF ZILLOW 353Z**

Lim-Flex (50) Cow    ETHR 353Z    LFF 2009986    Homo P    Homo B    02.25.12

S A F FOCUS OF E R  
**MYTTY IN FOCUS**  
 MYTTY COUNTESS 906

WULFS GUARDIAN 5074G  
**EF KRISTIANNE 102P**  
 EXLR BLACK STARR 8011K

S A F FAME  
 G D A R FOREVER LADY 246  
 SITZ ALLIANCE 6595  
 BALDRIDGE COUNTESS 357  
 WULFS RAMBLER 8400X  
 WULFS EXAMPLE 5074E  
 WULFS DAWSON 4421D  
 MINE PLD BLACK STARR 312E

**SCAN**

UFAT  
 0.26

UREA  
 9.94

IMF  
 4.93

A.I. 5.20.13 to EF Xcessive Force; P.E. from 6.01.13 - 9.01.13 to BC Bad Romance

EF Zillow 353Z is a moderate framed and very broody made 50% Lim-Flex first calf heifer that proudly represents the EF prefix. She is a daughter of MYTTY In Focus from a daughter of Wulf's Guardian back to a daughter of Wulf's Dawson. The MYTTY In Focus bull has proven to be very valuable in our breed for creating superb Lim-Flex females and this young heifer is a prime example of that statement. We love her rib shape, volume, capacity and docility. She is a high marbling female that scanned a 4.93 for IMF and posts a .25 for IMF. She is low in her birth weight of -3.7 and maintains a 24 for milk. This young female is homozygous polled, homozygous black and sells bred to the once national champion Lim-Flex sire EF Xcessive Force or the 68.5% Lim-Flex homozygous black sire BC Bad Romance.

EPD'S	CED	BW	WW	YW	MA	CEM	SC	ST	DOC	CW	REA	YG	MARB	\$MTI
	14	-3.7	39	83	24	2	0.5	16	27	20	-0.25	0.45	0.25	47
	P	34	29	24	20	P	P	P	P	23	22	22	22	

# lot 35

## EF ZAMORA 350Z

Lim-Flex (50) Cow    ETHR 350Z    LFF 2009983    Homo P    Homo B    02.20.12

S A F FOCUS OF E R  
**MYTTY IN FOCUS**  
 MYTTY COUNTESS 906  
 WULFS GUARDIAN 5074G  
**EF KRISTIANNE 102P**  
 EXLR BLACK STARR 8011K

S A F FAME  
 G D A R FOREVER LADY 246  
 SITZ ALLIANCE 6595  
 BALDRIDGE COUNTESS 357  
 WULFS RAMBLER 8400X  
 WULFS EXAMPLE 5074E  
 WULFS DAWSON 4421D  
 MINE PLD BLACK STARR 312E

**SCAN**  
 UFAT  
 0.27  
 UREA  
 11.64  
 IMF  
 5.21

EPD'S	CED	BW	WW	YW	MA	CEM	SC	ST	DOC	CW	REA	YG	MARB	\$MTI
	14	-4.4	34	80	24	2	0.5	16	27	9	-0.25	0.41	0.26	47
	P	34	29	24	20	P	P	P	P	23	22	22	22	

A.I. 5.20.13 to EF Xcessive Force; P.E. from 6.01.13 - 9.01.13 to BC Bad Romance.

EF Zamora 350Z is a 50% Lim-Flex first calf heifer that has so much good stacked in her favor! She is homozygous polled, homozygous black and very well made. She is a daughter of the prominent Angus sire MYTTY In Focus and goes back to the top producing Eike Farms donor EF Kristianne 102P. This young female offers a -4.4 for birth, 24 for milking ability and .26 for marbling. She scanned a breed leading 5.21 for IMF and 11.64 for REA. She sells bred to the once national champion Lim-Flex sire EF Xcessive Force or the heavy muscled powerful homozygous black sire BC Bad Romance.



# lot 36

## EF ZUNI 354Z

Lim-Flex (50) Cow    ETHR 354Z    LFF 2009987    Homo P    Double B    02.26.12

C F RIGHT DESIGN 1802  
**SUMMITCREST COMPLETE 1P55**  
 SUMMITCREST ELBA 1M17  
 AUTO BLACK DAKOTA 129J  
**EXLR JUMP AND SHOUT 210P**  
 MAGS JUMP AND SHOUT

BON VIEW NEW DESIGN 1407  
 VISION HF BLACKCAP 0015  
 VERMILION DATELINE 7078  
 SUMMITCREST ELBA 1F43  
 EXLR DAKOTA 353G  
 DFLC JET SET BPC 34Y  
 COLE FIRST DOWN 46D  
 WULFS GRAVITY 7191G

**SCAN**  
 UFAT  
 0.14  
 UREA  
 12.46  
 IMF  
 4.34

EPD'S	CED	BW	WW	YW	MA	CEM	SC	ST	DOC	CW	REA	YG	MARB	\$MTI
	9	1.3	56	107	37	4	-	-	-	47	0.07	0.28	0.27	54
	P	36	31	25	21	P	-	-	-	17	16	16	15	

A.I. 5.21.13 to EF Xcessive Force; P.E. from 6.01.13 - 9.01.13 to BC Bad Romance.

EF Zuni 354Z is one big numbered and one very well made female that we are certain you are going to want to view on sale day. She is a black, homozygous polled daughter of Summitcrest Complete 1P55 and from EXLR Jump and Shout 210P, a daughter of AUTO Black Dakota 129J back to a daughter of COLE First Down. Take a close look here at her extreme number package. She has a 1.3 for birth, 56 for weaning weight, 107 for yearling weight, 37 for milk and .27 for marbling. She also scanned a 12.46 for REA and 4.34 for IMF.



# lot 37

## EF ZOUNDS 216Z

Lim-Flex (69) Cow	ETHR 216Z	LFF 2009864	Homo P	Double B	02.09.12
GPFF BLAQUE RULON		BLACK DIAMOND			
<b>EF TUNE UP 210T</b>		QUAIL RUN RAMONA BP			
DSUL BEDAZZLED 497K		CHAZ FIRST CHOICE 6004F			
EXAR NEW LOOK 2971		DSUL SULLIVAN'S MARIA			
<b>EXLR REBEKA 299R</b>		BON VIEW NEW DESIGN 1407			
EXLR REBECA 7296N		N BAR PRIMROSE 2424			
		MAGS JUMANJI			
		EXLR REBECA 384K			

**SCAN**  
UFAT  
0.12  
UREA  
12.42  
IMF  
3.14

EPD'S	CED	BW	WW	YW	MA	CEM	SC	ST	DOC	CW	REA	YG	MARB	\$MTI
	3	3.9	55	99	24	0	0.4	-	-	22	0.10	0.1	0.16	51
	15	32	26	17	13	14	6	-	-	18	17	17	16	

A.I. 5.20.13 to EF Xcessive Force; P.E. from 6.01.13 - 9.01.13 to BC Bad Romance.

EF Zounds 216Z is a 68.5% Lim-Flex daughter of EF Tune Up 210T. He is a son of GPFF Blaque Rulon back to the once big time show female DSUL Bedazzled 497K. This first calf heifer is from a daughter of EXAR New Look 2971 and from a daughter of MAGS Jumanji back to EXLR Rebeca. This homozygous polled female is bred to be good and do well in production given the prominent lineage that she came from. She offers a strong set of EPD's with a 55 for weaning weight, 99 for yearling weight and 24 for milk. She scanned a 12.42 for REA and 3.14 for IMF.

# lot 38

## EF YARD SALE 343Y

Lim-Flex (50) Cow	ETHR 343Y	LFF 2003221	Homo P	Double B	10.21.11
S A V 8180 TRAVELER 004		SITZ TRAVELER 8180			
<b>D A TRAVELER 004 703</b>		BOYD FOREVER LADY 8003			
ROSEWOOD ERICA 5010		LEACHMAN SAUGAHATCHEE3000			
JCL LODESTAR 27L		R A ERICA 456			
<b>JCL SHEILA 7S</b>		HUNTS HI-LITER 245G			
EXLR SHEILA 756F		LOGAN'S CHEERLEADER 280G			
		WULFS DAWSON 4421D			
		YKCC BUBBLIN BABE 165C			

**SCAN**  
UFAT  
-  
UREA  
-  
UREA  
-

EPD'S	CED	BW	WW	YW	MA	CEM	SC	ST	DOC	CW	REA	YG	MARB	\$MTI
	8	5.0	64	117	31	5	0.4	-	-	40	-0.36	0.52	0.33	57
	14	30	18	12	12	13	P	-	-	P	P	P	P	

A.I. 5.20.13 to CALO Brickyard; P.E. from 6.01.13 - 9.01.13 to BC Bad Romance.

EF Yard Sale 343Y is a big performance bred female from the replacement pen at Etherton Farms. She is a 50% Lim-Flex daughter of DA Traveler 004 703 that goes back to a daughter of JCL Lodestar 27L back to a daughter of Wulf's Dawson. This female is very well bred with a predictable pedigree and a stout set of EPD's. She posts a 64 for weaning weight, 117 for yearling weight, 31 for milk and .33 for marbling. This homozygous polled first calf heifer posts a 57 for MTI as well.





reference sire  
**EF XCESSIVE FORCE**

Lim-Flex (50) Bull ACET 105X LFM 1958710 Double P Homo B 03.18.10

**D A TRAVELER 004 703**

S A V 8180 TRAVELER 004  
ROSEWOOD ERICA 5010  
DHVO DEUCE 132R  
JCL PEPPERMINT

**CFLX MOLLYS IMAGE**

EPD'S	CED	BW	WW	YW	MA	CEM	SC	ST	DOC	CW	REA	YG	MARB	\$MTI
	12	-2.0	53	101	34	2	0.6	-	-	41	-0.25	0.46	0.28	52
	23	62	40	22	11	19	9	-	-	38	34	34	33	

EF Xcessive  
Force



reference sire  
**BC BAD ROMANCE 612X**

Lim-Flex (68) Bull JKLD 612X LFM 1974062 Double P Homo B 06.07.10

**RGMA NIGHT RIDER 73N**

GPFF BLAQUE RULON  
WULFS GIGGLE BOX 7030G  
EXLR POWER GRID 034P  
SENNETT ROSEANNE 433P

**SENNETT ROSEANNE 612SLF37**

EPD'S	CED	BW	WW	YW	MA	CEM	SC	ST	DOC	CW	REA	YG	MARB	\$MTI
	8	-0.4	38	74	29	2	0.3	-	-	21	0.13	0.21	0.12	44
	26	35	21	16	18	24	P	-	-	P	P	P	P	

BC Bad  
Romance  
612X



reference sire  
**D A TRAVELER 004 703**

Angus Bull AAA 703T AAA 15739634 Polled Black 03.03.07

**S A V 8180 TRAVELER 004**

SITZ TRAVELER 8180  
BOYD FOREVER LADY 8003  
LEACHMAN SAUGAHATCHEE 3000C  
R A ERICA 456

**ROSEWOOD ERICA K010**

EPD'S	CED	BW	WW	YW	MA	CEM	SC	ST	DOC	CW	REA	YG	MARB	\$MTI
	10	1.8	64	120	40	2	0.2	-	-	51	-0.99	0.98	0.68	66
	31	53	39	28	24	29	2	-	-	43	39	39	38	

D A  
Traveler  
004 703



**EF ZEN 344Z**

PB Limousin (100) Bull ETHR 344Z NPM 2011079 Homo P Black 01.03.12

**CJSL WINDFALL 9072W**

LVLS SECRET WEAPON 4408K  
CJ'S MS ARROWHEAD 456P  
GPFF BLAQUE RULON  
TUBB BLK DAKOTA 304N

**EF TREND SETTER 206T**

EPD'S	CED	BW	WW	YW	MA	CEM	SC	ST	DOC	CW	REA	YG	MARB	\$MTI
	6	2.5	54	96	24	6	0.2	-	20	22	0.57	-0.12	-0.04	46
	P	34	29	23	12	P	25	-	P	19	18	18	18	

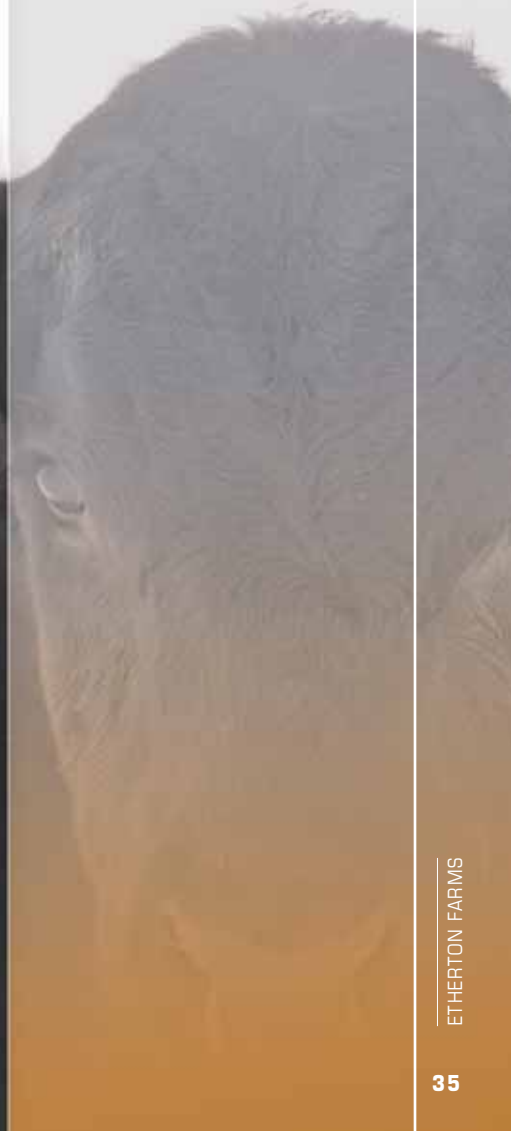
EF  
Zen 344Z



# THANK YOU



# BULLS





*Cori Harrison*



**reference**  
RLBH AIR FORCE ONE



EF Yaffa 821Y, dam of  
RLBH Air Force One



MAGS Rose Petal, grandam  
of RLBH Air Force One

## lot 39 - SEMEN PACKAGES

### RLBH AIR FORCE ONE

Lim-Flex (62.5) Bull      RLBH 821A      LFM 2026301      Double P      Homo B      03.28.13

D A TRAVELER 004 703  
**EF XCESSIVE FORCE**  
CFLX MOLLYS IMAGE

EXLR NEW GENERATION 071M  
**EF YAFFA 821Y**  
MAGS ROSE PETAL

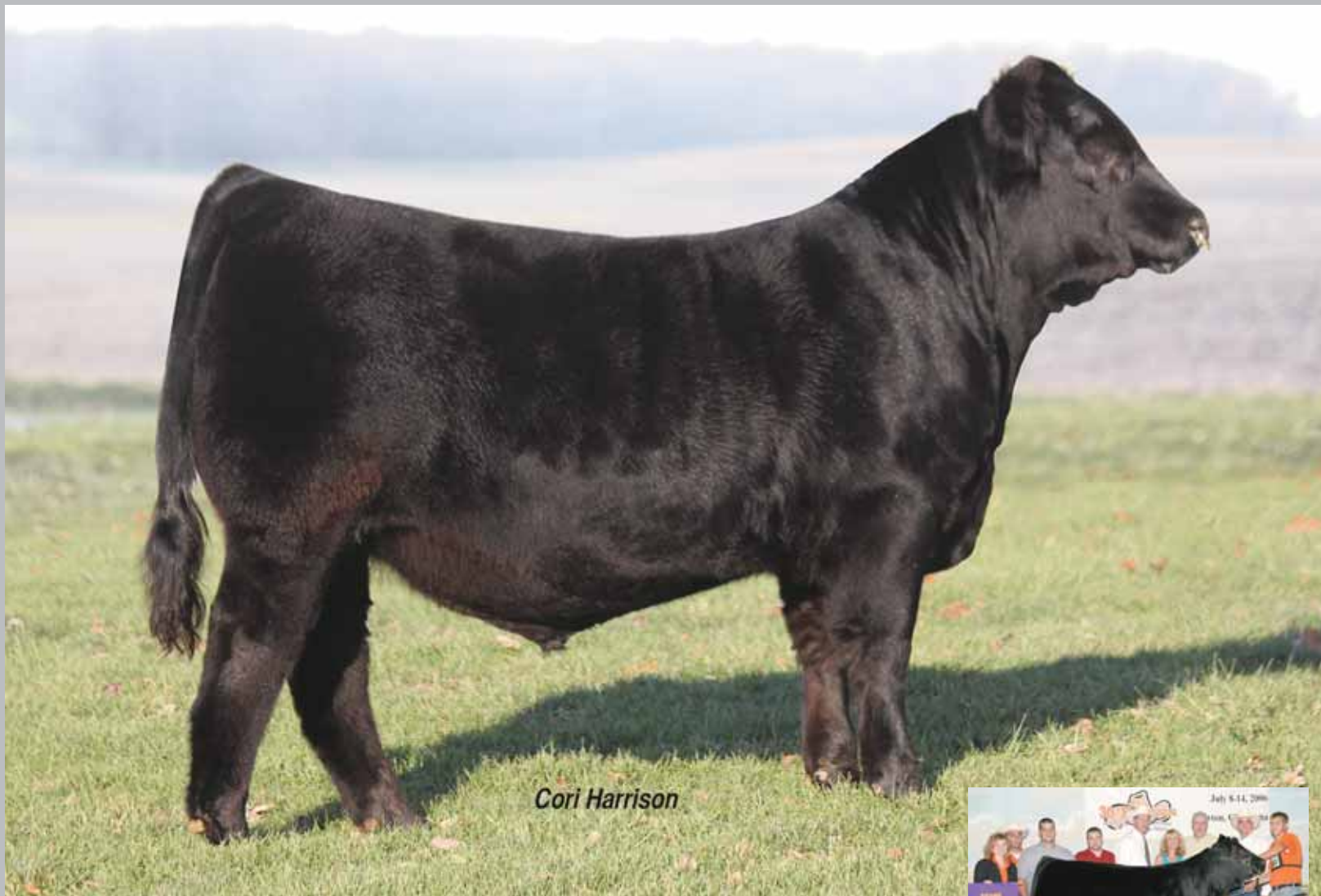
S A V 8180 TRAVELER 004  
ROSEWOOD ERICA 5010  
DHVO DEUCE 132R  
JCL PEPPERMINT  
AUTO BLACK DAKOTA 129J  
EXLR LUVLY 084F  
GPFF BLAQUE RULON  
TECC DATELINE'S GAL 10J

**Wts.**  
BW  
89  
WW  
865

EPD'S	CED	BW	WW	YW	MA	CEM	SC	ST	DOC	CW	REA	YG	MARB	\$MTI
	10	0.3	48	94	27	3	0.3	-	-	25	-0.14	0.31	0.20	49
	P	P	P	P	P	P	P	-	-	P	P	P	P	

2013 NAILE M.O.E. Grand Champion Lim-Flex Bull

EF Yaffa 821Y was a top lot purchase by Rachel Booth, Miami, OK in the '12 Etherton Farms production sale. She recently showed her to win a cow-calf pair division of the 2013 National Junior Heifer Show and this young bull highlighted here is her son. He is RLBH Air Force One, a 62.5% Lim-Flex polled and homozygous black son of the once national champion EF Xcessive Force. He is one big, stout and performance minded beef bull that stands for all things that matter most in the Lim-Flex breed. He posts an 865# adjusted weaning weight and a solid set of EPD's with a highlighted 0.3 birth, 94 for yearling weight, 27 for milk and .20 for marbling. Etherton Farms purchased half interest back in this young bull after seeing him at the National Junior Heifer show. Rachel will campaign this bull in the bred and owned competition at the '14 National Junior Heifer show and other shows throughout the show season. Take a close look at how well made this bull is made and all the positive things he has stacked in his favor. We will be offering semen packages on this elite herd sire in this sale. For further information contact anyone on the sale staff or Etherton Farms.



Cori Harrison

EXLR Molly 605R



2013 NAILE reserve grand champion  
Lim-Flex Bull

EF Aviator 933A is the lead herd sire prospect highlighting this '14 EF sale. He is a 75% Lim-Flex son of EF Xcessive Force, the once national champion Lim-Flex bull. His dam EXLR Molly 605R was the once All American Futurity reserve grand champion female and national junior heifer show grand champion female for Austen Etherton. This young herd sire prospect is homozygous polled, homozygous black and absolutely flawless in his design and conformation. He was named to the Reserve Grand Champion spot of the competitive '13 NAILE show. He represents national champion genetics to the finest and we are certain you might agree with our passion toward this young guy when you see him sale day.

## lot 40 EF AVIATOR 933A

Lim-Flex (75) Bull    ETHR 933A    LFM 2035548    Homo P    Homo B    02.15.13

D A TRAVELER 004 703  
**EF XCESSIVE FORCE**  
CFLX MOLLYS IMAGE

COLE MONTANA SKY 36M  
**EXLR MOLLY 605R**  
EXLR MOLLY 4139J

S A V 8180 TRAVELER 004  
ROSEWOOD ERICA 5010  
DHVO DEUCE 132R  
JCL PEPPERMINT  
ANDERS JAG  
COLE 87G  
EXLR DAKOTA 353G  
EXLR MOLLY 343G

Wts.  
BW  
76  
WW  
705

EPD'S	CED	BW	WW	YW	MA	CEM	SC	ST	DOC	CW	REA	YG	MARB	\$MTI
	11	-1.4	37	75	26	3	0.4	-	-	10	-0.05	0.23	0.10	43
	P	P+	P	P	P	P	P	-	-	P	P	P	P	



Cori Harrison

## lot 41

### EF AC DC 905A

Lim-Flex (75) Bull    ETHR 905A    LFM 2034984    Scurred    Double B

01.01.13

D A TRAVELER 004 703  
**EF XCESSIVE FORCE**  
 CFLX MOLLYS IMAGE  
 COLE MONTANA SKY 36M  
**EXLR MOLLY 605R**  
 EXLR MOLLY 4139Y

S A V 8180 TRAVELER 004  
 ROSEWOOD ERICA 5010  
 DHVO DEUCE 132R  
 JCL PEPPERMINT  
 ANDERS JAG  
 COLE 87G  
 EXLR DAKOTA 353G  
 EXLR MOLLY 343G

**Wts.**  
**BW**  
 84  
**WW**  
 732

EF AC DC 905A represents all the good things in Lim-Flex genetics! This 75% Lim-Flex bull has it all. He is so thick and heavily muscled but yet still maintains a tremendous amount of rib shape and volume. He is big footed, sound in his pasterns and very eye appealing. He is sired by EF Xcessive Force, the now leading sire for Linhart Limousin, Etherton Farms and Thomas & Son Farms and was the once national champion Lim-Flex sire. His dam EXLR Molly 605R was the 2006 National Junior Heifer Show grand champion female and All American Futurity reserve grand champion. A maternal sibling sold to ATAK Limousin, Avon, IL in the '12 EF sale at \$7500 and then in the '13 EF sale sold to Tanner Walden, Tonganoxie, KS at \$4250. She was later named division champion at the '13 National Junior Show.

EPD'S	CED	BW	WW	YW	MA	CEM	SC	ST	DOC	CW	REA	YG	MARB	\$MTI
	11	-0.3	47	75	26	3	0.4	-	-	10	-0.05	0.23	0.10	43
	P	P+	P	P	P	P	P	-	-	P	P	P	P	



lot 42

EF ACE IN THE HOLE 853A

Lim-Flex (50) Bull ETHR 853A LFM 2032662 Homo P Homo B 02.01.13

D A TRAVELER 004 703  
**EF XCESSIVE FORCE**  
 CFLX MOLLYS IMAGE

S A V 8180 TRAVELER 004  
 ROSEWOOD ERICA 5010  
 DHVO DEUCE 132R  
 JCL PEPPERMINT  
 CARROUSELS PURE POWER  
 BLACKBIRD OF R R 7694  
 CARROUSELS PURE POWER  
 SENNETT BLACKCAP 412P

**Wts.**  
 BW 84  
 WW 832

SENNETT POWER RANGER 707T  
**SENNETT WHISPER 919W**  
 SENNETT BLACKCAP 705T

EPD'S	CED	BW	WW	YW	MA	CEM	SC	ST	DOC	CW	REA	YG	MARB	\$MTI
-	0.2	52	99	32	-	0.5	-	-	36	-0.11	0.37	0.28	53	
-	P	P	P	P	-	P	-	-	P	P	P	P		



lot 43

EF ABRUPT STOP 911A

% Limousin (81) Bull ETHR 911A NXM 2034988 Double P Double B 01.04.13

DHVO DEUCE 132R  
**MAGS XYLOID**  
 BOHI RHONDA 314R

GPFF BLAQUE RULON  
 AMY JO DHAN 20L  
 EXLR NEW GENERATION 071M  
 DAVIS ROSETTA 9514  
 EXLR JUDO 459J  
 TRAK EXLR ANNIE  
 SLDJ POLLED EQUITY  
 SILVL 104E

**Wts.**  
 BW 90  
 WW 742

EXLR NATIVE 7133N  
**DVFC FERGIE 109T**  
 DVFC 290H

EPD'S	CED	BW	WW	YW	MA	CEM	SC	ST	DOC	CW	REA	YG	MARB	\$MTI
5	3.1	58	93	27	1	0.6	-	-	34	0.43	0.04	-0.05	44	
P	P+	P	P	P	P	P	-	-	P	P	P	P		



lot 44

EF AMIGO 764A

Lim-Flex (75) Bull ETHR 764A LFM 2031501 Homo P Homo B 01.12.13

D A TRAVELER 004 703  
**EF XCESSIVE FORCE**  
 CFLX MOLLYS IMAGE

S A V 8180 TRAVELER 004  
 ROSEWOOD ERICA 5010  
 DHVO DEUCE 132R  
 JCL PEPPERMINT  
 WADDLES COBALT 3106  
 TNUH MISS C245  
 MAGS JUMANJI  
 AUTO CITY NIGHTS 214H

**Wts.**  
 BW 84  
 WW 750

TNUH BLUE PRINT 245H  
**MAGS RUFFLES**  
 MAGS LADY DOCTOR

EPD'S	CED	BW	WW	YW	MA	CEM	SC	ST	DOC	CW	REA	YG	MARB	\$MTI
7	1.3	53	95	30	1	0.8	-	-	42	0.32	0.16	0.15	50	
P	P	P	P	P	P	P	-	-	P	P	P	P		

EF Ace In the Hole 853A is a big league herd sire prospect! He represents a pedigree that has been proven in the show ring and the marketplace. He is a 50% Lim-Flex homozygous polled, homozygous black son of the once national champion Lim-Flex bull EF Xcessive Force. His dam is Sennett Whisper 919W that has surfaced to the top as one of the big time donors in the EF program. In the '13 EF sale full siblings to EF Ace In the Hole 853A sold for \$10,000 to Aaron Linhart, Leon, IA , \$8100 to D & J Davis Farms, Kenton, Tennessee ATA Limousin, Avon, IL at \$7500 and \$3000. We love the mass and power that this Lim-Flex bull has. He is very square out of his hip, extremely deep in his flank and very deep in his middle. His numbers follow is powerful look. He posts a 0.2 for birth, 99 for yearling weight, 32 for milk and .28 for marbling.

EF Abrupt Stop 911A is an 81% Limousin herd sire prospect sired by MAGS Xyloid. He is a from the A-List EF donor DVFC Fergie 109T. 911A is very structurally sound, complete in his design and very heavily muscled. This beef bull is definitely one that can get out and breed some cows and we are certain will change a calf crop for the better. His prominent look, design and balance will enhance the value to any cowherd.

EF Amigo 764A is a performance oriented herd sire prospect that represents a pedigree that has produced tremendous dividends over the years. This herd sire prospect is a 75% Lim-Flex homozygous polled, homozygous black son of EF Xcessive Force. His dam is MAGS Ruffles, a proven donor and daughter of TNUH Blue Print from MAGS Lady Doctor. Two of her daughters highlighted the '12 Etherton Farms sale at \$11,000 selling to Kyle Delaplaine of Heart Felt Farms, Gettysburg, PA and Aaron Linhart of Limousin, Leon, IA at \$13,000. This beef bull is packed full of muscle and has the balance and added performance to make a positive impact in any programs cowherd.



## lot 45

### EF ALIVE AND KICKIN 854A

Lim-Flex (75) Bull    ETHR 854A    LFM 2033721    Double P    Homo B    02.08.13

D A TRAVELER 004 703  
**EF XCESSIVE FORCE**  
 CFLX MOLLYS IMAGE

EF MAIN STAY 541M  
**EF UPTOWN GIRL**  
 MAGS SHEILA

S A V 8180 TRAVELER 004  
 ROSEWOOD ERICA 5010  
 DHVO DEUCE 132R  
 JCL PEPPERMINT  
 AUTO BLACK DAKOTA 129J  
 EXLR 231J  
 GPFF BLAQUE RULON  
 MAGS MANDA

Wts.

BW  
80

WW  
685

EPD'S	CED	BW	WW	YW	MA	CEM	SC	ST	DOC	CW	REA	YG	MARB	\$MTI
8	1.3	51	95	36	3	0.4	-	14	19	0.09	0.17	0.09	48	
P	P+	P+	P	P	P	P	-	-	P	P	P	P		

EF Alive and Kickin 854A is a big time herd sire prospect from the ever-popular EF program. He is a son of EF Xcessive Force and from EF Uptown Girl, the once NAILE Champion female and once reserve grand champion of the National Junior Heifer Show. This bulls maternal sister EF Zonked 338Z (pictured here) is the \$15,000 half interest valued female purchased by Massey Limousin, London, KY and just recently was named reserve grand champion at the very competitive NAILE show. If you want to have a sire with big time notoriety and promotion then consider this beef bull. He is massive in terms of thickness and performance. He posts a 0.9 for birth, 98 for yearling weight, 37 for milk and solid in his carcass numbers.



Cori Harrison



EF Zonked 388Z

## lot 46

### EF ACCELERATOR 762A

% Limousin (84) Bull    ETHR 762A    NXM 2031499    Double P    Black    01.08.13

RGMA NIGHT RIDER 73N  
**BC BAD ROMANCE 612X**  
 SENNETT ROSEANNE 612SLF37

AUTO BLACK DAKOTA 129J  
**EF SURPRISE PARTY 491R**  
 EXLR 231J

GPFF BLAQUE RULON  
 WULFS GIGGLE BOX 7030G  
 EXLR POWER GRID 034P  
 SENNETT ROSEANNE 433P  
 EXLR DAKOTA 353G  
 DFCL JET SET BPC 34Y  
 WULFS GUARDIAN 5074G  
 EXLR LUVLY 081F

Wts.

BW  
88

WW  
662

EPD'S	CED	BW	WW	YW	MA	CEM	SC	ST	DOC	CW	REA	YG	MARB	\$MTI
9	1.0	45	84	35	4	-	-	-	-	-	-	-	-	0
P	P+	P	P	P	P	-	-	-	-	-	-	-	-	

EF Accelerator 762A is a maternal sibling to the \$26,000 valued female and one of the top sellers in the '13 EF sale going to the Blake Family's Marjon Farm in Indiana. She was the 2012 All American Futurity reserve grand champion female and the 2012 NAILE reserve division champion female. This young herd sire prospect is sired by the senior herd sire at Etherton Farms, BC Bad Romance. He is the homozygous black son of RGMA Night Rider 73N that was a popular show bull and now a top sire creating some of the finest to carry the EF prefix. This top performance sire offers a low birth of 0.9 and a milk of 35.



Cori Harrison



EF Your Wish 334Y



## lot 47 EF APACHE 852A

Lim-Flex (75) Bull    ETHR 852A    LFM 2042444    Homo P    Black    01.10.13

LVLS SECRET WEAPON 4408K    LVLS FARMER 4G  
**CJSL WINDFALL 9072W**    LVLS 408H  
 CJ'S MS ARROWHEAD 456P    DVFC ARROWHEAD 1004J  
                                          CJ'S MAGDELINE 252M  
 SENNETT POWER RANGER 707T    CARROUSELS PURE POWER  
**SENNETT WHISPER 919W**    BLACKBIRD OF R R 7694  
 SENNETT BLACKCAP 705T    CARROUSELS PURE POWER  
                                          SENNETT BLACKCAP 412P

**Wts.**  
**BW**  
 82  
**WW**  
 677

EPD'S	CED	BW	WW	YW	MA	CEM	SC	ST	DOC	CW	REA	YG	MARB	\$MTI
-	2.9	55	101	32	-	0.6	-	-	-	29	0.28	0.09	0.15	51
-	P	P	P	P	-	P	-	-	-	P	P	P	P	

EF Apache 852A is one powerhouse of a herd sire. He is massive in his thickness down his top and his rear quarter. He has a tremendous amount of rib shape and volume and is just a beef bull no matter how you look at him. He is a 75% Lim-Flex black, homozygous polled sire that represents an outcross pedigree to most established lines of cattle in our breed. He is sired by CJSL Windfall, the red and polled LVLS Secret Weapon herd sire for Linhart Limousin, Leon, IA. His dam is Sennett Whisper 919W, the leading donor for EF where her progeny have been widely accepted across the breed. This bulls maternal sibling brother sold to D & J Davis Farms, Kenton, TN at \$8100 in the '13 EF sale. His maternal sisters in the same sale sold at \$10,000 to Linhart Limousin, Leon, IA and \$7500 and \$3000 to ATAK Limousin, Avon, IL. This homozygous polled bull offers a 101 for yearling weight, 32 for milk and solid in all other economically important traits.



## lot 48 EF APOLLO 923A

PB Limousin (94) Bull    ETHR 923A    NPM 2034995    Double P    Double B    01.10.13

GPFF BLAQUE RULON    BLACK DIAMOND  
**DHVO DEUCE 132R**    QUAIL RUN RAMONA BP  
 AMY JO DHAN 20L    BLACK CAT DHAN 152G  
                                          GPFF AMBER JO  
 EXLR NATIVE 7133N    EXLR JUDO 459J  
**DVFC FERGIE 109T**    TRAK EXLR ANNIE  
 DVFC 290H    SLDJ POLLED EQUITY  
                                          SLVL 104E

**Wts.**  
**BW**  
 84  
**WW**  
 761

EPD'S	CED	BW	WW	YW	MA	CEM	SC	ST	DOC	CW	REA	YG	MARB	\$MTI
5	2.6	63	106	26	-1	0.8	-	-	-	50	0.80	-0.02	-0.10	45
P	P+	P	P	P	P	P	P	-	-	P	P	P	P	

EF Apollo 923A is a one of those herd sires that will for sure change a calf crop for the better in one breeding season. He is a purebred son of the national champion sire DHVO Deuce. His dam is the big league Etherton Farms donor DVFC Fergie 109T, the once Eastern Regional Heifer show grand champion female. This past yearling beef bull has so much good in him with this extreme length, extra thickness and overall performance. He is super thick made down his topline and for sure impressive when you stand behind him. If you are looking to add a prominent look and extreme thickness to a future calf crop then take a long look here.

# lot 49

## EF ANTWAN 907A

% Limousin (88) Bull ETHR 907A NXM 2034986 Double P Double B 01.03.13

DHVO DEUCE 132R	GPFF BLAQUE RULON	<b>Wts.</b> BW 84
<b>MAGS XYLOID</b>	AMY JO DHAN 20L	
BOHI RHONDA 314R	EXLR NEW GENERATION 071M	<b>WW</b> 652
COLE MONTANA SKY 36M	DAVIS ROSETTA 9514	
<b>EXLR MOLLY 605R</b>	ANDERS JAG	
EXLR MOLLY 4139J	COLE 87G	
	EXLR DAKOTA 353G	
	EXLR MOLLY 343G	

EPD'S	CED	BW	WW	YW	MA	CEM	SC	ST	DOC	CW	REA	YG	MARB	\$MTI
	-9	1.0	32	66	23	2	0.3	-	15	10	0.19	0.08	-0.02	38
	P	36	25	17	12	P	P	-	P	P	P	P	P	

EF Antwan 907A is a full brother to Lot 4 EF Abra 904A, one of the top show heifers of the entire sale offering. EF Antwan 907A by all rights was destined to be a great heard bull and we think you will agree when you see him. His sire, MAGS Xyloid, was once an All American Futurity Supreme champion bull. Antwan's dam, EXLR Molly 605R, was also a national junior heifer show grand champion female. He is well made, sound in his structure and represents a lineage worth bragging about.

# lot 51

## EF AFFIRMATIVE 765A

PBLimousin (100) Bull ETHR 765A NPM 2031502 Homo P Black 01.15.13

GPFF BLAQUE RULON	BLACK DIAMOND	<b>Wts.</b> BW 88
<b>DHVO DEUCE 132R</b>	QUAIL RUN RAMONA BP	
AMY JO DHAN 20L	BLACK CAT DHAN 152G	<b>WW</b> 699
EXLR LIMITED EDITION 765J	GPFF AMBER JO	
<b>EF RAGDOLL 238R</b>	EXLR POLLED BENCHMARK709G	
EXLR 231J	WULFS GLENDA 7021G	
	WULFS GUARDIAN 5074G	
	EXLR LUVLY 081F	

EPD'S	CED	BW	WW	YW	MA	CEM	SC	ST	DOC	CW	REA	YG	MARB	\$MTI
	10	1.5	53	92	29	2	0.6	-	25	28	0.63	-0.09	-0.12	42
	P	P+	P	P	P	P	P	-	P	P	P	P	P	

EF Affirmative 765A is a black, homozygous polled son of DHVO Deuce. His dam is a daughter of EXLR Limited Edition back to the famed EF donor EXLR 231J. This bull is bred in the purple and we feel will really sire a set of calves that you will be pleased with. Given his predictable pedigree, his solid performance and all that he stands for we are certain you will be pleased with the results.

# lot 53

## EF ACE HIGH 932A

Lim-Flex (75) Bull ETHR 932A LFM 2035547 Homo P Double B 02.15.13

D A TRAVELER 004 703	S A V 8180 TRAVELER 004	<b>Wts.</b> BW 68
<b>EF XCESSIVE FORCE</b>	ROSEWOOD ERICA 5010	
CFLX MOLLYS IMAGE	DHVO DEUCE 132R	<b>WW</b> 525
COLE MONTANA SKY 36M	JCL PEPPERMINT	
<b>EXLR MOLLY 605R</b>	ANDERS JAG	
EXLR MOLLY 4139J	COLE 87G	
	EXLR DAKOTA 353G	
	EXLR MOLLY 343G	

EPD'S	CED	BW	WW	YW	MA	CEM	SC	ST	DOC	CW	REA	YG	MARB	\$MTI
	11	-2.5	37	75	26	3	0.4	-	-	10	-0.05	0.23	0.10	43
	P	P+	P	P	P	P	P	-	-	P	P	P	P	

EF Ace High 932A is a 75% Lim-Flex black and homozygous polled son of EF Xcessive Force and goes back to the elite EF donor EXLR Molly 605R. Both the sire and dam are national champions themselves and after blending their two pedigrees together it has resulted in this young beef bull. He offers a 68# birth weight and we feel will be a calving ease sire.

# lot 50

## EF ALL OUT 919A

PB Limousin (100) Bull ETHR 919A NPM 2034992 Homo P Homo B 01.08.13

GPFF BLAQUE RULON	BLACK DIAMOND	<b>Wts.</b> BW 76
<b>DHVO DEUCE 132R</b>	QUAIL RUN RAMONA BP	
AMY JO DHAN 20L	BLACK CAT DHAN 152G	<b>WW</b> 691
COLE MONTANA SKY 36M	GPFF AMBER JO	
<b>EXLR MOLLY 605R</b>	ANDERS JAG	
EXLR MOLLY 4139J	COLE 87G	
	EXLR DAKOTA 353G	
	EXLR MOLLY 343G	

EPD'S	CED	BW	WW	YW	MA	CEM	SC	ST	DOC	CW	REA	YG	MARB	\$MTI
	7	0.3	48	84	22	1	0.8	-	16	24	0.55	-0.03	-0.10	40
	-	P	P	P	P	P	P	-	P	P	P	P	P	

A purebred herd sire that is homozygous polled and homozygous black. He is a son of the once national champion sire DHVO Deuce. His dam is the consistent producing dam EXLR Molly 605R. You will find her progeny sprinkled throughout this sale catalog as featured lots. This herd sire is moderate in his birth weight and we feel will be a nice calving ease sire for the new owner. One thing for certain is the DHVO Deuce sons have a prominent look to them.

# lot 52

## EF ANALIZE THIS 855A

Lim-Flex (69) Bull ETHR 855A LFM 2040459 Double P Double B 02.26.13

D A TRAVELER 004 703	S A V 8180 TRAVELER 004	<b>Wts.</b> BW 72
<b>EF XCESSIVE FORCE</b>	ROSEWOOD ERICA 5010	
CFLX MOLLYS IMAGE	DHVO DEUCE 132R	<b>WW</b> 656
EXLR NATIVE 7133N	JCL PEPPERMINT	
<b>DVFC FERGIE 109T</b>	EXLR JUDO 459J	
DVFC 290H	TRAK EXLR ANNIE	
	SLDJ POLLED EQUITY	
	SLVL 104E	

EPD'S	CED	BW	WW	YW	MA	CEM	SC	ST	DOC	CW	REA	YG	MARB	\$MTI
	8	0.8	54	97	30	2	0.4	-	-	36	0.20	0.22	0.10	48
	P	P	P	P	P	P	P	-	-	P	P	P	P	

EF Analyze This 855A is an 68.5% Lim-Flex herd sire prospect that is sired by the once national champion Lim-Flex EF Xcessive Force. The Xcessive Force progeny are super thick made and have plenty of rib shape and volume and this one of his is no exception. This young bull offers a low birth of 0.8, yearling weight of 97 and milk of 30. His dam DVFC Fergie 109T has created a tremendous set of calves that have made it in this sale as highlights.

# lot 54

## EF AFTER FIVE 931A

Lim-Flex (44) Bull ETHR 931A LFM 2035546 Homo P Double B 02.15.13

S A V 8180 TRAVELER 004	SITZ TRAVELER 8180	<b>Wts.</b> BW 86
<b>D A TRAVELER 004 703</b>	BOYD FOREVER LADY 8003	
ROSEWOOD ERICA 5010	LEACHMAN SAUGAHATCHEE3000	<b>WW</b> 539
EXLR NATIVE 7133N	R A ERICA 456	
<b>DVFC FERGIE 109T</b>	EXLR JUDO 459J	
DVFC 290H	TRAK EXLR ANNIE	
	SLDJ POLLED EQUITY	
	SLVL 104E	

EPD'S	CED	BW	WW	YW	MA	CEM	SC	ST	DOC	CW	REA	YG	MARB	\$MTI
	7	2.7	60	107	33	2	0.2	-	-	40	-0.18	0.49	0.30	55
	P	P	P	P	P	P	P	-	-	P	P	P	P	

EF After Five 931A is a 43.5% Lim-Flex herd sire prospect that is double black and homozygous polled. He is sired by the Angus sire DA Traveler 004 703. His dam is the once Eastern Regional champion female DVFC Fergie 109T. This herd bull prospect posts a 60 for weaning weight, 107 for yearling weight, 33 for milk and .30 for marbling. We appreciate the unique profile and the overall balance of this herd bull.



R&R MARKETING  
COMPANY

P.O. Box 281677  
Nashville, TN 37228

(L#2845)

**FIRST CLASS  
PRE-SORTED  
PAID**

Montezuma, Iowa  
Permit No. 30

Catalog  
designed  
by  
  
designs by  
*arin*  
[www.designsbyarin.com](http://www.designsbyarin.com)

# ETHERTON FARMS

**Saturday, February 15, 2014**

1:00 PM at Etherton Farms, Dawson, Illinois

## DIRECTIONS ...

**FROM DECATUR:** Take I-72 West to Exit 108. Go South on Overpass Road to Oak Crest Road. Turn East on Oak Crest Road. Go 3 miles to sale site on East side of road.

**FROM CHICAGO:** Take I-55 South to Exit 98A (Decatur Exit). Head East on I-72 to Exit 108. Go South on Overpass Road to Oak Crest Road. Turn East on Oak Crest Road. Go 3 miles to sale site on East side of road.

**FROM ST. LOUIS, MO:** Take I-55 North to Exit 98A (Decatur Exit). Head East on I-72 to Exit 108. Go South on Overpass Road to Oak Crest Road. Turn East on Oak Crest Road. Go 3 miles to sale site on East side of road.

