

**CHAROLAIS**



**SIMMENTAL**



**SHORTHORN**



**ANGUS**



**LIMOUSIN**



**BALAMORE FARM LTD.**  
**SHORELINE FEMALE SALE**

WITH GUESTS LOBSTER POINT PROPERTIES AND FRASER FARMS

**OCTOBER 9, 2023**



**1:00 PM**



**BALAMORE FARM, GREAT VILLAGE, NS**

# WELCOME TO SHORE



# ON THE SHORELINE



## BALAMORE FARM LTD. SHORELINE FEMALE SALE

WITH GUESTS LOBSTER POINT PROPERTIES AND FRASER FARMS

OCTOBER 9, 2023 | 1:00 PM | BALAMORE FARM, GREAT VILLAGE, NS

### SALE STAFF:



#### AUCTIONEER

Chris Poley - 306-220-5006

#### RINGSIDE

Ben Wright - 519-374-3335

Shane Michelson - 403-363-0073

Glen Mills - 306-567-8078

### SALE DAY CONTACTS:

Joe Cooper - 902-893-0744

Robert Cooper - 902-890-0663

William Cooper - 902-324-2005

Mike Geddes - 519-502-8864

Taylor Stewart - 902-956-4894

Jay Hiltz *Lobster Point* - 902-277-1102

Adam Fraser *Fraser Farms* - 902-759-6862

### AMERICAN SALES REPRESENTATIVES:



Randal O. Ratliff - 615-330-2735



Kiley Mckenna - 402-350-2447

Wiley Fanta - 320-287-0751

### ONLINE BIDDING:



Mark Shologan - 780-699-5082

### VIDEOS:

Videos of each lot will be available in early October on [www.cattlevids.ca](http://www.cattlevids.ca)

### INSURANCE:

Insurance forms will be available sale day

### DELIVERY:

Trucking available to central points in Canada and the US.

### HEALTH:

Bred animals have been vaccinated with Pyramid FP5, Inforce3, and Vibrin. The purebred heifers have also had Bovillis Nasalgen.

## SCHEDULE OF EVENTS

### SUNDAY, OCTOBER 8

Cattle available to view from 2 to 4pm

### MONDAY, OCTOBER 9

Cattle available to view all morning  
11:15-12:35 - Lunch  
1:00 Sale begins



I believe that the hallmark of an astute cattlemen is the recognition that behind every great herd bull is a power-packed and productive dam of distinction. The Cooper family are cattle people in every essence. 2024 will mark the 12th edition of their annual bull sale; Thickness Sells, which features bulls across multiple breeds selling throughout the country for record status against other operations. I say all this to drive home the prolific impact and influence that these females have. For the second year, Balamore has truly opened the gates to the cornerstone females that walk the pastures of Great Village.

There are many components and details that give the Balamore operation its edge; a picturesque landscape, extreme hospitality, and genuine cattle knowledge all comes to mind. That said, what sticks out in my mind is their true appreciation of quality cattle, and the genuine disregard for what breed that animal may be. Shoreline features representation from Balamore across four breeds, with each sector featuring a fusion of the appropriate breed character with the Balamore stamp of thickness and stoutness that they know works. No matter the colour you are in the market for, there are herd amplifying breeding pieces within these pages.

When I say the Cooper family have opened the gates, it takes only analyzing the lot 1 offer to know that I mean it. An intriguing opportunity to flush your choice of the 450+ Balamore cow herd across 4 breeds is truly the catalyst to elevate a program. And while we're on the topic of elevating a program, I must make mention of the Lot 2 cow that sells in her entirety. Analyze her feature picture with her son that sells in 2024 to know what the Balamore operation is about. Each breed section is loaded with mass and stoutness, while still maintaining a feminine look and maternal values. These are the kind that make a bull sale.

If the Cooper family can not fill a market, they find the right people to bridge the gap. The two Shorthorn heifers on offer from the great people of Fraser Farms feature longevity built right into their pedigree, and have the look of heifers that will hold their own in the show ring and go on to make front pasture females. Also included in the Angus and Simmental divisions are striking, powerfully made females from Lobster Point Properties. These girls have alluring paperwork and pedigree to burn.

Not only was the inaugural Shoreline Female Sale a success in terms of the animals sold, but to see the crowd of people gathered in the state of the art Balamore sale facility is a testament to the hosts and their hospitality. It has been a long while since I have seen a facility that full, and I would encourage everyone that if they are able, this event is worth the trip. All of us at T Bar C were astounded by the scenery and the Balamore operation; from the pastures to the Strawberry fields, there is much to see and learn.

Plan to celebrate Thanksgiving weekend with us on the Shoreline! - **BEN WRIGHT**



**CHRIS POLEY**  
306-220-5006



**BEN WRIGHT**  
519-374-3335



**SHANE MICHELSON**  
403-363-9973

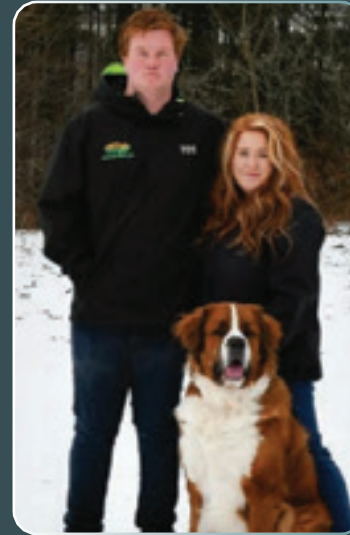


# WELCOME

## FROM BALAMORE FARM



Joe, Carolyn & William Cooper



Robert and Emily



David and Kathleen



Taylor Stewart



Douglas Congdon



The Geddes Family

Welcome to Balamore Farm Ltd.'s second edition of the Shoreline Female Sale featuring females from our purebred herd, commercial bred heifers, as well as consignments from our sale partners at Lobster Point Properties and Fraser Farms.

Our enthusiasm for the cattle industry is shared by all the people who help make this sale possible and we invite you to attend on October 9th, 2023

**THE COOPER FAMILY**



BLM 703E



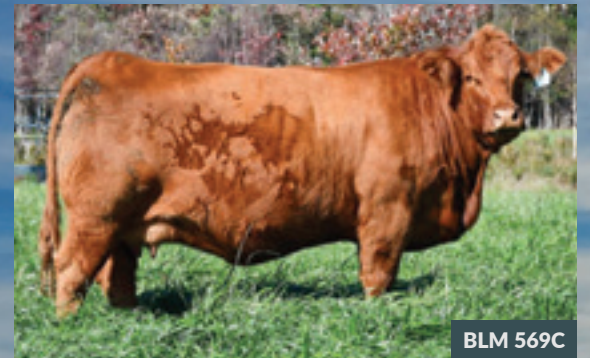
BLM 864F



TMF 169D



CDC 526C



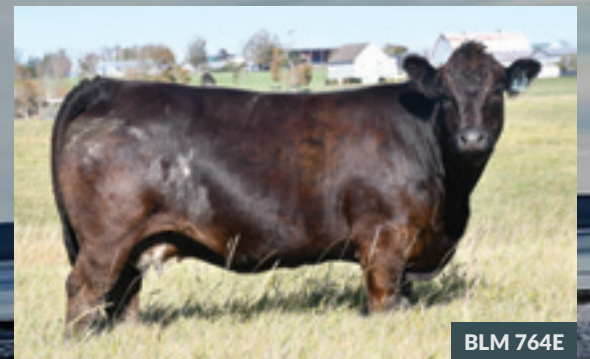
BLM 569C



ANG 705E



RLF 100C



BLM 764E



BLM 664D



TMF 45A



BLM 148D



RNM 13D



BLM 186D



BLM 806F



BLM 811F



CED 45C



BLM 702E



BLM 915G

## LOT 1A & 1B

- The first opportunity to flush any breeding age female in the herd
- Over 450+ purebred breeding females to choose from
- Limousin, Charolais, Simmental, Angus/Red Angus all on offer

# RIGHT TO FLUSH ANY FEMALE

Buyer must make selection before March 25, 2024

All flush costs at the expense of the buyer

**Balmore guarantees 6 freezable embryos with no cap**





LOT 2 PICTURED WITH SON | HE SELLS IN 2024 BULL SALE

6 | CHAROLAIS





# BALAMORE KNOCKOUT 127J

HOMO POLLED | PFC805464 | BLM 127J | JANUARY 12 2021 | BW: 84 LBS.

WC DOUBLETREE 2009 P	JSR ESTRADA 52E
HRJ MAVERICK 556C	JSR KNOCKOUT 80G
PRO-CHAR CASSY 32A	JSR KNOCKOUT 72D

BW: 0.4 WW: 69 YW: 128 MILK: 40 MCE: 7.8

AI bred to Keys Powermax 57G on March 25. Vet checked safe.  
**Balamore retains the right to one successful flush at the buyers convenience and Balamore's expense.**

## LOT 2

- Awesome phenotype and EPDs in this young 2 year old
- Great feet with a beautiful udder
- Seedstock quality son retained for 2024 bull sale
- The type and kind to build on and headline a program



BALAMORE LIONHEART 341L | SON, SELLS IN 2024!



BALAMORE KNOCKOUT 127J | LOT 2



## LOT 3

- Top quality prospect that puts it together in a guesswork free package
- Intense maternal genetics that point to a useful breeding piece
- Fanta cow family is one of our best
- Maternal brother is a big-time prospect for 2024 bull sale

# BALAMORE FANTA 263K

HETERO POLLED | PFC829531 | BLM 263K | JANUARY 24 2022 | BW: 88 LBS.

LT LEDGER 0332 P  
LT VIKING 8156 PLD  
LT PRAISE 0462 ET P

SPARROWS KINGSTON 139Y  
BALAMORE FANTA 806F  
CORNERSTONE CANDY 14C

BW: -1.2 WW: 55 YW: 105 MILK: 24 MCE: 9.2

Pasture exposed to Pro-Char Patriarch 70K from April 1 to June 1. Observed bred on April 16. Vet checked safe.



DAM



GRANDAM

8 | CHAROLAIS



## LOT 4

- High caliber kind
- Herd matron female who is powerful and proud
- Stamped with the Powermax look from birth - has been a stand-out since day one
- Strong cow family with sisters being retained in herd and brothers working for various commercial cattlemen

# BALAMORE **OBSESSION** 309L

HETERO POLLED | PFC851352 | BLM 309L | JANUARY 02 2023 | BW: 80 LBS.

OW MAXIMIZER 3041 PLD	STEPPLER JACKSONVILLE335Z
KEYS POWERMAX 57G	STEPPLER MISS 32C
MISS KEY JERI 26E	STEPPLER MISS YEAGER 1A

BW: -0.7 WW: 63 YW: 101 MILK: 29 MCE: 3.0



DAM

9 | CHAROLAIS



## LOT 5

- Beautiful headed with a deep hind quarter
- Big time stretch and hair
- Loaded with maternal values
- Solid cow family with a good track record



# BALAMORE APHRODITE 316L

HOMO POLLED | PFC851503 | BLM 316L | JANUARY 05 2023 | BW: 87 LBS.

OW MAXIMIZER 3041 PLD	CEDARDALE DELTA 4D
KEYS POWERMAX 57G	BALAMORE FLAVOUR 858F
MISS KEY JERI 26E	JSR WESC APHRODITE 51B

BW: 0.5   WW: 67   YW: 116   MILK: 30   MCE: 8.3



MATERNAL SISTER TO DAM



## LOT 6

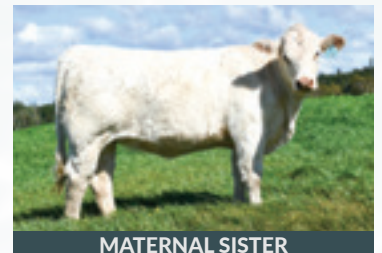
- Striking female that would look good on a halter
- Big mass to go with her tremendous shape
- Sisters were well received in our first edition of the Shoreline. A full sister was selected by CJD & Fundy Charolais and a maternal sister was chosen by BKC Farms Inc.

# BALAMORE EXQUISITE 319L

HOMO POLLED | PFC851506 | BLM 319L | JANUARY 06 2023 | 81 LBS.

OW MAXIMIZER 3041 PLD	HTA MAX 124X
KEYS POWERMAX 57G	WLM MACKS EXQUISIT 1E
MISS KEY JERI 26E	WLM MACKS AMY 1A

BW: -1.3 WW: 62 YW: 91 MILK: 37 MCE: 8.5



MATERNAL SISTER



## LOT 7

- Sired by the \$31,000 Justice. She is a great way to lead off this fresh new sire group
- Big ribbed with a look at me front end
- Numbers support her claim with an outstanding EPD profile
- Heavy milking dam from our Cowgirl family that is putting her all into this young breeding piece

# BALAMORE COWGIRL 301L

HOMO POLLED | PFC850980 | BLM 301L | JANUARY 01 2023 | BW: 72 LBS.

LT RANSOM 8644	HRJ MAVERICK 556C
BALAMORE JUSTICE 126J	BALAMORE COWGIRL 128J
BALAMORE DAHLIA 46D	BALAMORE COWGIRL 939G

BW: -1.3   WW: 66   YW: 131   MILK: 35   MCE: 9.7



GRANDAM

12 | CHAROLAIS



## LOT 8

- Dam has been a producer with 3 sale bulls and 2 maternal sisters retained
- Eye appeal and style in a hairy angular package
- These Justice females are going to be outstanding
- From the same cow family as Lot 3

# BALAMORE FANTA 336L

HOMO POLLED | PFC852029 | BLM 336L | JANUARY 13 2023 | BW: 91 LBS.

LT RANSOM 8644 | TR PZC MR TURTON 0794 ET  
BALAMORE JUSTICE 126J | CORNERSTONE CANDY 14C  
BALAMORE DAHLIA 46D | CORNERSTONE WHAT A GAL2W

BW: 0.3 WW: 58 YW: 112 MILK: 26 MCE: 3.1



DAM



MATERNAL SISTER



## LOT 9

- Long spined attractive calf with expressive muscle pattern
- The Hummers are good, look for more of him going forward
- Maternal sister was the high selling heifer calf to North Shore Charolais in our 2022 sale

# BALAMORE VALENTINA 361L

HOMO POLLED | PFC852946 | BLM 361L | JANUARY 22 2023 | BW: 89 LBS.

KEYS ALL STATE 149X	CEDARDALE ZEAL 125Z
CEDARDALE HUMMER 20H	CEDARDALE MISS 14G
CEDARDALE MISS 82A	CEDARDALE MISS 142D

BW: 0.8   WW: 68   YW: 114   MILK: 12   MCE: 5.9



SIRE





## LOT 10

- Performance front runner
- Powerful and deep chested with tons of bone and mass
- Heavy milking Blackjack dam
- Solid footed on an excellent set of legs



# BALAMORE ROOT BEER 220K

HOMO POLLED | PFC828404 | BLM 220K | JANUARY 08 2022 | BW: 81 LBS.

LT LEDGER 0332 P	ELDER'S BLACKJACK 788B
LT VIKING 8156 PLD	BALAMORE ROOT BEER 914G
LT PRAISE 0462 ET P	LJC ADA 3A

BW: -0.5 WW: 67 YW: 113 MILK: 18 MCE: 6.9

Pasture exposed to Pro-Char Patriarch 70K from April 1 to June 1. Observed bred on April 17. Vet checked safe.



SERVICE SIRE

15 | CHAROLAIS



## LOT 11

- Feminine look from a productive family
- Viking is leaving some extremely sound females that work any way they are mated and 246K is no exception
- Full sister has a top end Powermax bull prospect for 2024

# BALAMORE PRECIOUS 246K

HOMO POLLED | PFC829115 | BLM 246K | JANUARY 16 2023 | BW: 76 LBS.

LT LEDGER 0332 P	CORNERSTONE BOBBY ORR 4B
LT VIKING 8156 PLD	CORNERSTONE DOLLY PARTON 13D
LT PRAISE 0462 ET P	CORNERSTONE SHAKIRA 2S

BW: -3.1 WW: 46 YW: 76 MILK: 15 MCE: 13.2

AI bred to Keys Powermax 57G on April 6. Vet checked safe.



DAM



FULL SISTER



## LOT 12

- Big time shape and quality
- A truly unique breeding piece who could headline a program
- Prolific cow family - 778E dam is as good as it gets
- Maternal sister was a feature to Treftz Limousin, South Dakota in our 2022 sale

# BALAMORE EDNA 327L

HOMO POLLED | HETERO BLACK | CPF4118989 | BLM 327L | JANUARY 11 2023 | BW: 81 LBS.

MORRISVALE LUMBERJACK  
BALAMORE HICKORY 060H  
RLF 148D

WULFS COMPLIANT K687C ET  
BALAMORE EDNA 778E  
BALAMORE ARTEMIS 311A

BW: 3.2 WW: 62 YW: 87 MILK: 24 TM: 54  
F94L: 2 | PUREBRED PERCENTAGE: 93.7%





## LOT 13

- Big hipped and stout
- Extremely well structured with longevity written all over her
- Another cow family with deep ties in our herd that has been pumping the good ones out
- Maternal brothers are working in some progressive commercial operations

# BALAMORE ETIQUETTE 311L

HOMO POLLED | HETERO BLACK | CPF4118507 | BLM 311L | JANUARY 03 2023 | BW: 70 LBS.

MORRISVALE LUMBERJACK	TMF LANDMARK 601L
BALAMORE HICKORY 060H	BALAMORE FACEBOOK 841F
RLF 148D	TMF MISS 302A

BW: 1.0   WW: 63   YW: 99   MILK: 24   TM: 56  
 F94L: 2 | PUREBRED PERCENTAGE: 93.5%



MATERNAL BROTHER



## LOT 14

- Feminine cherry red option of the Hickory sire group
- Longer spined with extra stretch
- Big performance EPD spread and the performance to back up the numbers
- Architect dam is a powerhouse

# BALAMORE HULLABALOO 319L

HOMO POLLED | RED | CPF4118516 | BLM 319L | JANUARY 07 2023 | BW: 86 LBS.

MORRISVALE LUMBERJACK	COLE ARCHITECT 08A
BALAMORE HICKORY 060H	MISS TMF2E
RLF 148D	TMF MISS 17A

BW: 2.5   WW: 80   YW: 118   MILK: 16   TM: 56  
F94L: 2 | PUREBRED PERCENTAGE: 92.4%



LOT 14 & DAM

19 | LIMOUSIN



## LOT 15

- Balanced calf with the look
- Substance and style to burn
- The first of the Hector calves she has us excited for more
- Federa dam offers a different twist to today's mainstream pedigrees

# BALAMORE HELEN 348L

HETERO POLLED | HOMO BLACK | CPF4119117 | BLM 348L | JANUARY 21 2023 | BW: 80 LBS.

BALAMORE ENDEAVOR 701E | MARYVALE FEDERA 0067F  
EAST COAST HECTOR 009H | MISS TMF4E  
EAST COAST FLOWER 829F | TMF MISS 707W

BW: 1.3 WW: 72 YW: 117 MILK: 23 TM: 59  
F94L: 2 | PUREBRED PERCENTAGE: 91.8%



DAM



SIRE



## LOT 16

- Feminine heifer with that Limousin shape
- Outcross pedigree with shots of Australian breeding on each side
- Big solid footed heifer who is very sound
- Maternal sister is a front runner in our fall group

# BALAMORE GLEE 305L

HETERO POLLED | RED | CPF4118500 | BLM 305L | JANUARY 01 2023 | BW: 75 LBS.

BIRUBI KAISER K140	MORRISVALE LUMBERJACK
BALAMORE HALIFAX 019H	BALAMORE GLEE 973G
BALAMORE A-PLUS 304A	MISS TMF58E

BW: -0.4   WW: 55   YW: 75   MILK: 23   TM: 50  
F94L: 2 | PUREBRED PERCENTAGE: 95.8%



SIRE

21 | LIMOUSIN







AROUND THE SHORELINE OF  
**BALAMORE**





## LOT 17

- 3/4 sister to Lot 16 they are cut from the same cloth
- Limousin muscle pattern while remaining flexible on the move
- Thick and deep with a feminine look
- Some of our best maternal genetics

# BALAMORE GEMINI 315L

HOMO POLLED | RED | CPF4118511 | BLM 315L | JANUARY 5 2023 | BW: 80 LBS.

BIRUBI KAISER K140	MORRISVALE LUMBERJACK
BALAMORE HALIFAX 019H	BALAMORE GEMINI 953G
BALAMORE A-PLUS 304A	BALAMORE DORIS 663D

BW: 2.8   WW: 64   YW: 96   MILK: 20   TM: 52  
F94L: 2 | PUREBRED PERCENTAGE: 96.2%



24 | LIMOUSIN



## LOT 18

- Middle of February calf with splash and eye appeal
- The only progeny of the newly imported Flemington Ready to Roll R20 to sell in Canada in 2023
- Paynes Blossom has been the backbone of William's Limousin herd and has a long track record of producing the special ones
- Genetic originality and predictability in one cool package

# EAST COAST BLOSSOM 359L

HOMO POLLED | HOMO BLACK | CPF4119192 | ECL 359L | FEBRUARY 12 2023 | BW: 91 LBS.

FLEMINGTON NEWSFLASH N70  
FLEMINGTON READYTO ROLL R20  
BIRUBI LUNNETTE L81

CFLX WILD CARD  
RPY PAYNES BLOSSOM 20B  
FBR STORM 3S

BW: 3.3 WW: 70 YW: 107 MILK: 22 TM: 56

F94L: 2 | PUREBRED PERCENTAGE: 90.8%

Balamore retains the right to one successful flush at the buyers convenience and Balamore's expense.

25 | LIMOUSIN



MATERNAL SISTER



## LOT 19

- Extremely long and balanced female
- Cow making sires like Gambler, Lumberjack, and Westwood in her pedigree point to a maternal giant
- Excellent big feet and a great set of legs
- Square and solid from any angle

# BALAMORE HEART 206K

HOMO POLLED | HETERO BLACK | CPF4114341 | BLM 206K | JANUARY 04 2022 | BW: 65 LBS.

FLEMINGTON LEGEND L12  
AFTER HOURS GAMBLER  
AFTER HOURS CELEBRITY

BALAMORE FLASH 821F  
BALAMORE HEART 041H  
RLF 100C

BW: 1.0 WW: 58 YW: 84 MILK: 18 TM: 47

AI bred to East Coast Hector 009H on April 7. Vet checked safe.

F94L: 2 | PUREBRED PERCENTAGE: 94.0%



MATERNAL GRANDAM

26 | LIMOUSIN



## LOT 20

- Another cow kind of heifer in a nice red package
- We love our young Gambler cows and she is a prime example of why
- Complete in every aspect with a ton of length and rib shape
- 224E X Westwood dam is an excellent young cow with a son retained for 2024 bull sale

# BALAMORE **KHALEESI** 237K

HOMO POLLED | RED | CPF4114856 | BLM 237K | JANUARY 16 2022 | BW: 87 LBS.

FLEMINGTON LEGEND L12 | RLF 224E  
AFTER HOURS GAMBLER | BALAMORE GROUPIE 9112G  
AFTER HOURS CELEBRITY | BALAMORE ELMWOOD 755E

BW: 4.0 WW: 67 YW: 97 MILK: 18 TM: 51

Pasture exposed to Balamore Endeavor 701E from April 1 to June 1. Observed bred on April 19. Vet checked safe.

F94L: 2 | PUREBRED PERCENTAGE: 93.9%

27 | LIMOUSIN



SERVICE SIRE



## LOT 21

- Ties together a striking profile, smooth lines, and a unique look
- Easy to admire from any angle
- Our first offering of Limflex genetics has us revved up for the future
- Endeavor X 612W dam combines some of our best maternal genetics

# BALAMORE FLAME 206K

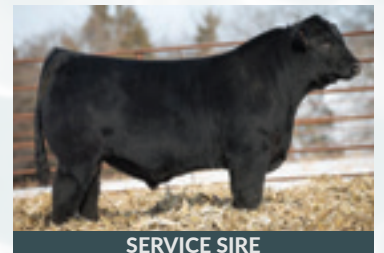
HOMO POLLED | HETERO BLACK | CXF4118087 | BLM 249K | FEBRUARY 13 2022 | BW: 82 LBS.

PLEASANT VALLEY LUTE 1207	BALAMORE ENDEAVOR 701E
BALAMORE GOLD 902G	BALAMORE MISS 9121G
WILBAR RUBY 853C	TMF MISS 612W

BW: 2.0 WW: 70 YW: 113 MILK: 17 TM: 52

AI bred to CELL History Maker 0256H on April 7. Vet checked safe.

F94L: 1 | PUREBRED PERCENTAGE: 44.9% - LIMFLEX



SERVICE SIRE

28 | LIMOUSIN



## LOT 22

- Square topped power heifer with the perfect shape
- Brood cow makeup and the Trailblazer imprint
- EPD profile backs up her impressive growth
- Maternal sister was chosen by Stepler in 2022

# BALAMORE HOLIDAY 303L

HOMO POLLED | HOMO BLACK | BPG1424552 | BLM 303L | JANUARY 03 2023 | BW: 85 LBS.

NGDB STRUCTURE 34D	MLC MR JUSTICE W744
WJS TRAILBLAZER 108H	MELVERN MS JUSTICE 154C
RF JOY'S ELEGANCE 747E	MELVERN MS WHOPPER 147Z

BW: 5.6   WW: 96.9   YW: 158.0   MILK: 26.8   MCE: 2.2



SIRE



## LOT 23

- Moderate and thick daughter of the popular Betts
- Dam stems from the famous Lara Croft cow family and has been one of our top producing Simmental cows
- One of Taylor's favorites
- Maternal sister was the high selling Simmental in 2022 to M&R Cattle Co, Alberta

# BALAMORE LARA 309L

HOMO POLLED | RED | PG1424562 | BLM 309L | JANUARY 06 2023 | BW: 92 LBS.

BGS/BM CAPTAIN SCREAM 63D | WAGR HIGHMORE 173B  
SVS BETTS 808F | BALAMORE FASHIONISTA 806F  
WFL RED SAGE 506C | MRC MISS LARA CROFT 39D

BW: 5.0 WW: 83.1 YW: 115.0 MILK: 20.1 MCE: 5.7



LOT 23 & DAM



MATERNAL SISTER





## LOT 24

- Practical female who will be a strong production piece
- Fault free and solid on all four corners
- The 8200 progeny have been a breath of fresh air stamping them with length and look
- Form and function tied together

LPP **LISA** 23L

POLLED | BLACK | BPG1432074 | LPP 23L | JANUARY 18 2023 | BW: 85 LBS.

CCLT ALLIANCE 91C	MR HOC BROKER
WHEATLAND BULL 8200F	BLACK DIAMOND GIGI
WHEATLAND LADY 268Z	MAR MAC CARLI 91X

BW: 4.0   WW: 80.5   YW: 107.9   MILK: 21.6   MCE: 2.1



SIRE



## LOT 25

- Powerhouse female with elegance and style
- Bold sprung and unmatched rib-shape
- Breaker has been a production powerhouse, siring tidy uddered females and soggy sons
- A paternal brother was a sale feature in the record setting RPlus dispersal selling for \$26,000 to Lewis Farms and CRM Simmentas

# LPP KATE 3K

POLLED | HETERO BLACK | BPG1396451 | LPP 3K | JANUARY 01 2022 | BW: 80 LBS.

WHEATLAND CIRCUIT BREAKER  
OUTLAW BREAKER 77C  
CMS LADY GAGA 21X

CLO LTS ENTOURAGE 72T  
MELVERN MS ENTOURAGE 56C  
MELVERN MS TANKER 41A

BW: 2.8 WW: 82.3 YW: 122.2 MILK: 21.3 MCE: 7.5  
AI bred to KT Bravo (Angus) on April 3. Vet checked safe.



\$26,000 PATERNAL  
BROTHER



SERVICE SIRE

32 | SIMMENTAL



## LOT 26

- Big soggy female who types in nicely with her paternal sister Lot 25
- Generations of cow making ability with Breaker, Wide Track, and Prowler at the forefront of her pedigree
- Nice solid feet and extremely sound
- Bred early to the hot black baldie True North the resulting progeny should be very exciting

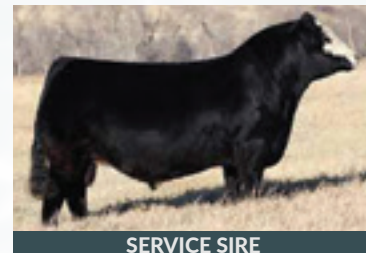
# LPP MS BREAKER 20K

POLLED | HETERO BLACK | BPG1396487 | LPP 20K | JANUARY 14 2022 | BW: 86 LBS.

WHEATLAND CIRCUIT BREAKER	W/C WIDE TRACK 694Y
OUTLAW BREAKER 77C	LPP QUEEN 10E
CMS LADY GAGA 21X	LPP MISS NOREMAC 5A

BW: 3.9 WW: 79.1 YW: 119.4 MILK: 22.9 MCE: 4.9

AI bred to LLW CARD True North G71 on March 21. Vet checked safe.



SERVICE SIRE

33 | SIMMENTAL



## LOT 27

- Pretty roan show prospect with a ton of eye appeal
- Backed by a powerful dam, Lucy is sure to become a great brood cow when her show days are done
- A maternal sister New View Dixie Chick 5D is part of the embryo program at Muridale
- Sired by Alphie Bette 2B she has longevity on both sides of her pedigree

# NVF 2B LUCY 2L

POLLED | ROAN | X-[CAN]F702977 | NVF 2L | JANUARY 12 2023 | BW: 80 LBS.

CUMBERLAND GAY LAD | SASKVALLEY TANDEM 34T  
WORKMAN'S ALPHIE BETTE 2B | CREEKSIDE CORONET 6Z  
MAJESTIC SUPERMODEL 8S | EIONMOR CORONET 26P

BW: 0.3 WW: 43 YW: 67 MILK: 20 TM: 42



DAM



SIRE

34 | SHORTHORN



## LOT 28

- Easy keeping Feb calf who is starting to come into her own
- With Supermodel, Gay Lad on the top and Yesterday and our matriarch cow Ester 2E on the bottom side she packs quite a pedigree
- Alphie Bette 2B has left behind a great set of heifers that all come with excellent udders
- A full sister to 7L sold to Shutz Cattle Co.

# NVF 2B **LADY MAY** 7L

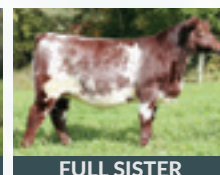
POLLED | RED | X-[CAN]F702978 | NVF 7L | FEBRUARY 05 2023 | BW: 83 LBS.

CUMBERLAND GAY LAD | SASKVALLEY YESTERDAY 116Y  
WORKMAN'S ALPHIE BETTE 2B | NVF 116Y AMAZING GRACE 3G  
MAJESTIC SUPERMODEL 8S | FRASER'S SINDY'S ESTER 2E

BW: 0.3   WW: 44   YW: 67   MILK: 24   TM: 46



DAM



FULL SISTER

35 | SHORTHORN



## LOT 29

- Striking individual with structural integrity and dimension
- Just an early February calf she ties it together in an end to end package
- Full sister commanded \$20,000 through this same sale in 2022
- Proven pedigree and a high class female

# LOBSTER POINT MS GOLD 27L

2330261 | LPP 27L | FEBRUARY 01 2023 | BW: 80 LBS.

PLEASANT VALLEY LUTE 1207	S TITLEST 1145
BALAMORE GOLD 902G	BALAMORE ENVY 901G
WILBAR RUBY 853C	BALAMORE ENVY 705E

BW: - WW: - YW: - MILK: - TM: -



\$20,000 FULL SISTER



## LOT 30

- From our most decorated Angus cow family who produced the \$20,000 Balamore Envy 201K to Lobster Point in 2022
- Bold sprung daughter of our performance bull Balamore Gold 902G
- Pathfinder type of female who can make her mark on a herd
- Power, type, and presence she is a hard one to ignore

# BALAMORE ENVY 127J

2285863 | ANG 127J | OCTOBER 21 2021 | BW: 78 LBS.

PLEASANT VALLEY LUTE 1207  
BALAMORE GOLD 902G  
WILBAR RUBY 853C

S A V RADIANCE 0801  
BALAMORE ENVY 705E  
WILBAR GEORGINA 710C

BW: 1.4 WW: 30 YW: 56 MILK: 21 MCE: 7.0

AI bred to Coleman Triumph 9145 on March 25. Vet checked safe.



DAM

37 | ANGUS



## LOT 31

- High quality fall born bred from the heart of our Angus program
- Maternally powered pedigree with a shot of extra performance
- Deep ribbed and square made
- Large solid feet



# BALAMORE EARTHQUAKE 126J

2285862 | ANG 126J | OCTOBER 12 2021 | BW: 69 LBS.

PLEASANT VALLEY LUTE 1207	DAINES INSIGHT 27E
BALAMORE GOLD 902G	BALAMORE EARTHQUAKE 913G
WILBAR RUBY 853C	BALAMORE EARTHQUAKE 708E

BW: 1.4 WW: 49 YW: 84 MILK: 20 MCE: 4.0

AI bred to Coleman Triumph 9145 on March 25. Vet checked safe.



SERVICE SIRE

38 | ANGUS





## LOT 32

- Big bodied and cherry red
- Attractive look with an extra shot of frame
- Maternal sister to our high selling Red Angus in 2022
- Dam is a feature in our Red Angus program

RED BALAMORE **BURLESQUE** 301L

2301400 | ANG 301L | JANUARY 01 2023 | BW: 81 LBS.

RED GOLD-BAR MERCEDES K 116M  
RED PATCHELL LEXUS 3H  
RED PATCHELL'S NATASHA

RED LAZY MC CC DETOUR 2W  
RED PATCHELL BARONESS BURLEQUE  
RED BBP PISTOL ANNIE 2Z



MATERNAL SISTER



## LOT 33 - 110

75 commercial bred heifers sourced from Alberta and our own program. These big solid heifers have been bred to Balamore Limousin bulls. The resulting progeny of past sale heifers have been extremely successful with groups topping Atlantic Stockyards. The beef industry is on the rise and these young females will be producers for years to come.

# COMMERCIAL HEIFERS



# REFERENCE SIREs



KEYS POWERMAX 57G



BALAMORE JUSTICE 126J



LT VIKING 8156



WJS TRAILBLAZER 108H



BALAMORE GOLD 904G



BALAMORE HALIFAX 019H



BALAMORE HICKORY 060H



AFTER HOURS GAMBLER 131G





# JOIN US

THANKSGIVING WEEKEND ON THE SHORELINE!





PLEASE JOIN US AT THE

# Balamore Farm Ltd.

# THICKNESS SELLS

12TH ANNUAL BULL SALE

MARCH 16, 2024

| 2:00 PM

| BALAMORE FARM, GREAT VILLAGE, NS

# TERMS AND CONDITIONS

## **TERMS**

The terms of the sale are cash or cheque, payable at par at the sale location. The right of property shall not pass until after settlement has been made; no invoicing on buyers in attendance unless previous arrangements have been made. Every animal sells to the highest bidder and in cases of disputes, the auctioneer's decision will be final. Announcements from the auction block will take precedence over the printed matter in the catalogue. Current exchange rates will be announced sale day. All monies are in Canadian funds.

## **CERTIFICATE OF REGISTRATION**

Each animal will carry papers issued by the appropriate breed association, unless otherwise stated. A certificate of registry duly transferred will be furnished to the buyer for each animal after payment has been made.

## **HEALTH**

All animals in the sale have met all necessary health requirements.

## **GUARANTEE**

Each animal becomes the purchaser's risk immediately after the animal is sold. All animals in this sale will be sold under the terms and guarantees set forth by the appropriate breed association with regard to health, freedom from defects and from both reproductive and specific genetic unsoundness.

## **PREGNANCY INFORMATION**

All serviceable age females have been pregnancy examined by an accredited veterinarian, giving an estimated length of gestation. This estimated gestation period shall be used only as a guideline to calving and is not a guarantee of actual service|

## **PEDIGREE ESTIMATES**

Pedigree Estimates (PE) are created on the projected mating of the animal's sire and dam based on averages of the two, creating estimated values that do not hold the same accuracy of actual EPDs issued from the association and should be used as such.

## **LIABILITIES**

All persons attend the sale at their own risk. The seller, facility owner and sale manager assume no liability legal or otherwise, for any accidents that occur. It is understood that T Bar C Cattle Co. (2013) Ltd. is acting only as a medium between buyer and seller and is not responsible for any failure on the part of either party to live up to his obligations. Neither does T Bar C Cattle Co. (2013) Ltd. assume any financial obligations to collect or enforce collection of any monies between parties and any legal action that may in exceptional cases be taken must be between the buyer and the seller. T Bar C Cattle Co. (2013) Ltd. assumes no responsibility for any credit extended by the seller to the buyer. The buyer must look to the seller for fulfillment of all guarantees and representations made hereunder.

## **DELIVERY**

Assistance will be given in getting your purchases home. Each animal becomes the risk of the purchaser as soon as sold.

## **PHONE, MAIL, WIRE BIDS**

Bidders unable to attend the sale may phone, wire or mail their bids and instructions to the sale manager, auctioneer or special representatives. Bids must be received in sufficient time prior to the sale.

## **INSURANCE**

We strongly recommend that insurance is purchased for full value.

## **ERRORS**

All announcements at sale time, written or oral, supersede any written material in the catalogue.



**Return Undeliverable  
Canadian Addresses To:**

T Bar C Cattle Co. Ltd.  
Box 2330  
Warman, SK S0K 4S0



# SHORELINE