

Morris

Saturday,
September 13, 2014

at 1:00 pm

Titus County Fair Arena

1800 North Jefferson Ave., Mount Pleasant, TX 75455





4-States Limousin Association BOARD of DIRECTORS

PresidentKevin Council.....Madisonville, TX
 Vice PresidentLarry Garrison.....Waskom, TX
 Secretary/TreasurerJoyce KirbyMt. Vernon, TX
 DirectorJoe HootCanton, TX
 DirectorLeon StewartMansfield, TX

Saturday, September 13, 2014
 at 1:00 pm
 Titus County Fair Arena
 1800 North Jefferson Ave., Mount Pleasant, TX 75455



I would like to welcome and thank you in advance for your evaluation and attendance of our Third Annual Fall Sale at Mt. Pleasant, Texas. We are entering uncharted waters in the cattle business, we are seeing the highest prices of all times with these prices expected to continue for at least the next five years. I

would like to thank our consignors that have stepped up to provide you the buyer the opportunity to add quality at many levels. Weather you are looking for a herd bull that has been Trich and Fertility tested, cows and heifers that are AI bred to some of the hottest bulls in the breed, or a fancy show heifer for that FFA or 4-H project for the upcoming show season with the opportunity to come back to the Tyler fair next fall to grab your share of the guaranteed \$2,000 purse. There is a set of planned matings that are out of champion caliber genetics that will put you at the top of any lineup!

We have set up a live broadcast of the sale on sale day where you can view and bid real time through LiveAuctionTV.com if you cannot make it sale day. You will need to register through their website before the sale, it will explain the easy steps to watch or bid, or you may contact any of the sale consultants and they will look over your interest and give you an unbiased opinion. We will see you on September 13th come eat lunch with us and evaluate a great set of cattle.

Thanks again,
 Kevin Council, President

... CONSIGNORS ...

COUNCIL FAMILY LIMOUSIN

281.808.3473 • 281.808.5511 • Cookinkev@aol.com • 21314 O.S.R., Madisonville, TX 77864

SCHULER FAMILY LIMOUSIN

936.520.4926 • Alanschuler@sbcglobal.net • 20615 Ginger Meadow Lane, Cleveland, TX 77328

SUGAR BUSH CATTLE, INC.

Ryan, Shane and Miley Marie Poindexter
 517.937.3399 • Sugarbushlimousin@hotmail.com • 2400 Hog Creek Road, Allen, MI 49227

T. HILL LIMOUSIN

479.331.3467 • 479.264.0720 • Thilllimousin@yahoo.com • 179 Tom Drive, Dover, AR 72837

YOUNG & ROGERS FARM

Brandon Rogers • Rogers@wf.net • 15607 U.S. Hwy 281, Windthorst, TX 76389

PINEGAR LIMOUSIN

877-PINEGAR • Abbi@pinegarchevrolet.com • 850 W Farm Rd 56, Springfield, MO 65803

MCCARTHY'S OMEGA 8 RANCH

936.827.5972 • Rusty@mccarthysomega8.com • 26107 CR 137, Bedias, TX 77831

L & M LIMOUSIN

918.520.0682 • Hayman1951@hotmail.com • 19350 South 250 Rd., Okmulgee, OK 74447

KURT LEBEOUF/S & B SPRINGCREEK STABLES

337.375.7537 • Thelebeoufs@gmail.com • 916 Hwy 1147, DeRidder, LA 70634

4K LIMOUSIN

903.466.1125 • fourklimo@peoplescom.net • 1426 CR SW 3110, Mt Vernon, TX 75457

MASSEY LIMOUSIN

606.682.2126 • josephlmassey@yahoo.com • 80 Sublimity School Road, London, KY 40744

SALT CREEK CATTLE & GENETICS, LLC

405.274.9338 • billy@oksaltcreek.com • 1903 County St. 2840, Amber, OK 73004

... Watch the sale Live at ...



SCHEDULE OF EVENTS

Friday, September 12th

6:00 p.m. Cattle available for viewing

Saturday, September 13th

8:00 a.m. Cattle available for viewing

11:30 a.m. Lunch served

1:00 p.m. Sale Begins

SALE OFFERING INCLUDES

41 Bred Heifers & Cows

9 Herd Sire Prospects

7 Cow/Calf Pairs

14 Open Heifers

6 Sets of Embryos

Selling a total of 77 lots as 82 Head

SALE DAY PHONES

Randy Ratliff.....615.330.2735

Mark Smith.....515.229.5227

Bill Helton.....256.962.0256

SALE LOCATION

Titus County Fair Arena

1800 North Jefferson Avenue

Mount Pleasant, TX 75455

** 115 miles East of Dallas, TX &
64 miles West of Texarkana, TX*

DIRECTIONS

Off I-30 is Exit #162 or business 271 which is also North Jefferson Street go .2 tenths south civic center is on the left. Turn left between the civic center and fire station.

SALE ORDER & SUPPLEMENTAL INFORMATION

Sale order and supplemental information will be posted Friday evening, September 12th at www.RRMktg.com

ACCOMMODATIONS

Holiday Inn Express, Headquarters

903.577.3800 • Rate is \$89.99

2306 Green Hill Rd., Mt. Pleasant, TX 75455

** Ask for the 4-States Limousin Sale block of rooms rate, deadline is 09.06.14.*

Hampton Inn & Suites

903.572.7100 • Rate is \$79 or \$89 for suite

2504 West Ferguson St., Mt. Pleasant, TX 75455

** Ask for the 4-States Limousin Sale block of rooms rate, deadline is 09.06.14.*

ANNOUNCEMENTS

Announcements at the sale by the owners, auctioneers or sale management will take precedence over the statements in the sale catalog.

TERMS & CONDITIONS

Terms of the sale are cash unless satisfactory credit arrangements have been made prior to the sale. Mark Smith will be on hand sale day if you desire to purchase insurance on your purchases. Please note: The sale manager is only an agent for the seller and has no responsibility other than those involved in conducting the sale. All persons who attend the sale do so at their own risk. Neither the sale manager nor anyone involved as a consignor of the 4-States Limousin sale assume liability, legal or otherwise for, any accidents which may occur.

PAYMENT

All cattle must be paid for immediately following the conclusion of the 4-States Limousin Association Sale unless prior payment arrangements have been made with R & R Marketing Company at 615.330.2735

TRUCKING

To make you're buying easy and accommodating please feel free to contact R & R Marketing Company at 615.330.2735 and we will assist in arranging trucking to any location in the United States.

THANK YOU

Watch for our 4-States Limousin Association "Run for the Roses" show heifer futurity sale the spring of 2015.

AUCTIONEER C.K. "Sonny" Booth

SALE CONSULTANTS

Grassroots Genetics

Mark Smith.....515.229.5227

Circle H Farm

Bill Helton256.962.0256

SALE MANAGEMENT

R&R
MARKETING

Randall O. Ratliff
615.330.2735

Randy@RRMktg.com
www.RRMktg.com

PO Box 281677
Nashville, TN 37228
(L#2845)

All September or younger heifers are "Run for the Roses" Futurity eligible to show at the East Texas State Fair Open Limousin Show. It will be held in September of 2015. There will be a \$2,000 purse with a \$1,000 payout to the Grand Champion Heifer and \$500 to the Reserve Grand Champion Heifer. The remainder of the money will be divided among the remaining females at show. Heifers must sell the ring to the buyer listed as the owner at the show in September. This is an open futurity for juniors and adults.

RUN for the
ROSES



Miss Gateway 1121J,
granddam of Lot 1.

lot 1 AUTO KIT KAT 648A

Lim-Flex (75) Cow Homo Polled Homo Black 09.21.13 AUTO 648A LFF 2049736

LH RODEMASTER 338R
MAGS OUT FRONT 136Y
 SBLX ULTRA 4566U
 DHVO DEUCE 132R
AUTO CATT 264X
 MISS GATEWAY 1121J

JCL LODESTAR 27L
 VERMILION E BLACKBIRD9546
 GPFF BLAQUE RULON
 MAGS REMBRANDT
 GPFF BLAQUE RULON
 AMY JO DHAN 20L
 LOGAN'S DUAL RUN
 BEELINE PRINCESS E111

	CED	BW	WW	YW	MA	CEM	SC	ST	DOC	CW	REA	YG	MARB	SMTI
EPDs	9	-0.2	58	105	18	1	0.6	-	-	33	0.16	0.27	0.09	48
	18	32	20	15	10	17	P	-	-	P	P	P	P	

- Homozygous polled and homozygous black
- One of the very finest show heifers to ever carry the AUTO prefix
- This 75% Lim-Flex show heifer is huge footed, big boned and sound in her structure. She has that powerful show look, design and backed with unbelievable performance that you have come to expect from the AUTO brand
- Her dam is a daughter of Deuce back to the deceased proven donor Miss Gateway 1121J
- **Consigned by Pinegar Limousin, Springfield, MO**

lot 2 AUTO ARISSA 468A

Lim-Flex (50) Cow Double Polled Homo Black 10.08.13 AUTO 468A LFF 2049570

S A V BISMARCK 5682
S A V BRILLIANCE 8077
 S A V BLACKCAP MAY 5270
 DHVO DEUCE 132R
AUTO FOREVER 219X
 MAGS MANUELA

G A R GRID MAKER
 S A V ABIGALE 0451
 S A V 8180 TRAVELER 004
 S A V MAY 2420
 GPFF BLAQUE RULON
 AMY JO DHAN 20L
 EXLR LIMITED EDITION 765J
 AUTO CITY NIGHTS 214H

	CED	BW	WW	YW	MA	CEM	SC	ST	DOC	CW	REA	YG	MARB	SMTI
EPDs	11	-1.2	57	103	36	4	0.5	-	9	50	0.01	0.46	0.32	55
	P	P	P	P	P	P	P	-	P	P	P	P	P	

- Double polled and homozygous black
- This 50% Lim-Flex is one of the big time entries from the heart of the Pinegar showbarn
- Sired by the leading Angus sire SAV Brilliance 8077 and from a daughter of DHVO Deuce from the famed MAGS Manuela 662M
- This female is super good from the ground up. She is big footed, soft in her pasterns and very broody in her appearance. She has the show look along with broody cow look to her.
- She posts a -1.2 for birth, 103 for yearling, 36 for milk and .32 for marbling
- **Consigned by Pinegar Limousin, Springfield, MO**



AUTO Forever 219X,
dam of Lot 2.

lot 3 AUTO ALPHIE 451A

Lim-Flex (50) Cow Double Polled Double Black 09.27.13 AUTO 451A LFF 2056201

S A V BISMARCK 5682
S A V BRILLIANCE 8077
 S A V BLACKCAP MAY 5270
 DHVO DEUCE 132R
AUTO FOREVER 219X
 MAGS MANUELA

G A R GRID MAKER
 S A V ABIGALE 0451
 S A V 8180 TRAVELER 004
 S A V MAY 2420
 GPFF BLAQUE RULON
 AMY JO DHAN 20L
 EXLR LIMITED EDITION 765J
 AUTO CITY NIGHTS 214H

	CED	BW	WW	YW	MA	CEM	SC	ST	DOC	CW	REA	YG	MARB	SMTI
EPDs	11	-1.2	57	103	36	4	0.5	-	9	50	0.01	0.46	0.32	55
	P	P	P	P	P	P	P	-	P	P	P	P	P	

- What a truly great 50% Lim-Flex female from the leading Pinegar program
- Sired by the big numbered and prominent Angus sire SAV Brilliance is this top show heifer prospect. She is moderate in her frame score, easy in her condition and yet very maternal in her look. Her dam is the DHVO Deuce x MAGS Manuela daughter, AUTO Forever 219X
- She posts a -1.2 for birth, 103 for yearling, 36 for milk and .32 for marbling
- **Consigned by Pinegar Limousin, Springfield, MO**



AUTO Forever 219X,
dam of Lot 3.

lot 4

AUTO ANNEMARIE 440A

Lim-Flex (69) Cow Polled Homo Black 10.14.13 AUTO 440A LFF 2046538

G A R PREDESTINED
AUTO WILL POWER 160X
 AUTO REBECA 292S
 EXLR LIMITED EDITION 765J
MAGS MANUELA
 AUTO CITY NIGHTS 214H

B/R NEW DESIGN 036
 G A R EXT 4206
 LESF ASPHALT 9N
 EXLR REBECA 1019P
 EXLR POLLED BENCHMARK709G
 WULFS GLENDA 7021G
 COLE FIRST DOWN 46D
 MISS WOLFETTE 9049X

	CED	BW	WW	YW	MA	CEM	SC	ST	DOC	CW	REA	YG	MARB	SMTI
EPDs	9	0.7	49	87	31	5	0.4	-	13	21	0.09	0.17	0.37	57
	P	36	23	16	13	P	P	-	P	P	P	P	P	P

- Polled and homozygous black
- Sired by the \$35,000 valued half interest sire AUTO Will Power 160X and from the breed great matron MAGS Manuela 662M is this young show heifer prospect. She is a 68.8% Lim-Flex that is made extremely well. She is straight in her lines, very level and square out of her rump and stands strong and proud.
- Lauren Stowers won her class at the '14 All American Futurity with a full sister to this heifer with SSTO Ageless Beauty 345A.
- We admire her 87 for yearling weight, 31 for milk and .37 for marbling
- **Consigned by Pinegar Limousin, Springfield, MO**



MAGS Manuela, dam of Lot 4.

lot 5

SALT CRK SEPHORA 715A

Lim-Flex (75) Cow Polled Homo Black 10.05.13 STSF 715A LFF 2050354

GPFF BLAQUE RULON
DHVO DEUCE 132R
 AMY JO DHAN 20L
 EXAR TITELIST T011
EXLR LUVLY 037X
 EXLR LUVLY 7127N

BLACK DIAMOND
 QUAIL RUN RAMONA BP
 BLACK CAT DHAN 152G
 GPFF AMBER JO
 BR MIDLAND
 EXG BLACKCAP R054 R3
 AUTO BLACK DAKOTA 129J
 EXLR LUVLY 4100J

	CED	BW	WW	YW	MA	CEM	SC	ST	DOC	CW	REA	YG	MARB	SMTI
EPDs	8	1.3	62	105	27	1	1.0	-	16	56	0.45	0.17	0.06	49
	P	33	24	20	18	P	P	-	P	P	P	P	P	P

- Polled and homozygous black
- This is one of the finest to represent the Salt Creek program
- Sired by the national champion DHVO Deuce and from the proven Salt Creek donor EXLR Luvly 037X, a daughter of EXAR Titlelist T011 and from the past national champion female EXLR Luvly 7127N
- This 75% Lim-Flex heifer posts a low birth of 1.3, 105 for yearling, and 27 for milk
- **Consigned by Salt Creek Cattle & Genetics, LLC, Amber, OK**



DHVO Deuce 132R, sire of Lot 5.



EXLR Luvly 037X, dam of Lot 5.

lot 6

SBSC MISS NATASHA

Lim-Flex (50) Cow Double Polled Double Black 12.20.13 SBSC 06A LFF 2050408

CONNEALY CONSENSUS 7229
EXAR SIGNIFICANT 1769B
 SITZ HENRIETTA PRIDE 643T
 EXLR BENCHMARK 145L
HPNT MISS NATASHA 34N
 ANLC KEEPSAKE 0122K

CONNEALY CONSENSUS
 BLUE LILLY OF CONANGA 16
 CONNEALY ONWARD
 SITZ HENRIETTA PRIDE 81M
 EXLR POLLED BENCHMARK709G
 CABIN CREEK BILLYE 116G
 KRMC BLACK LEGACY 917B
 COLE FIRST GLIMPSE 606F

	CED	BW	WW	YW	MA	CEM	SC	ST	DOC	CW	REA	YG	MARB	SMTI
EPDs	-	0.5	52	91	33	-	-	-	-	-	-	-	-	0
	-	P	P	P	P	-	-	-	-	-	-	-	-	-

- Here is a direct daughter of the \$270,000 valued EXAR Significant.
- She is extremely gentle and would be great for a young showman.
- She is an outstanding show heifer that offers unlimited genetic potential and can compete at any level.
- **Consigned by Kurt LeBaouf/S & B Springcreek Stables, DeRidder, LA**



EXLR Molly 7103K,
dam of Lots 7 & 8.



SBLX University Girl
105U, dam of Lot 9.



lot 7 AUTO ANNIKA 469A

PB Limousin (88) Cow Polled Red 10.15.13 AUTO 469A LFF 2049571

LH RODEMASTER 338R
AUTO GUNN POINT 192Y
 AVA JO DHVO 721R
 EXLR DAKOTA 353G
EXLR MOLLY 7103K
 EXLR MOLLY 343G

JCL LODESTAR 27L
 VERMILION E BLACKBIRD9546
 GPFF BLAQUE RULON
 AMY JO DHAN 20L
 WULF'S COUNT DOWN 9251C
 CANE RIDGE DAPHNE 011D
 CANE RIDGE POLLED WYATT
 JCL MOLLY

	CED	BW	WW	YW	MA	CEM	SC	ST	DOC	CW	REA	YG	MARB	SMTI
EPDs	5	1.0	49	79	29	4	0.3	-	-	28	0.32	0.13	-0.08	40
	P	P	P	P	P	P	P	-	-	P	P	P	P	P

- Red, polled and one of the exciting show heifers from the Pinegar program
- This purebred show heifer is so pretty up through her front end, straight lined and very complete in her structure
- She is sired by AUTO Gunn Point 192Y and from one of the most consistent producing donors in the Pinegar program, EXLR Molly 7103K.
- **Consigned by Pinegar Limousin, Springfield, MO**

lot 8 AUTO AURORA 475A

Lim-Flex (50) Cow Polled Black 10.23.13 AUTO 475A LFF 2049572

S A V BISMARCK 5682
S A V BRILLIANCE 8077
 S A V BLACKCAP MAY 5270
 EXLR DAKOTA 353G
EXLR MOLLY 7103K
 EXLR MOLLY 343G

G A R GRID MAKER
 S A V ABIGALE 0451
 S A V 8180 TRAVELER 004
 S A V MAY 2420
 WULF'S COUNT DOWN 9251C
 CANE RIDGE DAPHNE 011D
 CANE RIDGE POLLED WYATT
 JCL MOLLY

	CED	BW	WW	YW	MA	CEM	SC	ST	DOC	CW	REA	YG	MARB	SMTI
EPDs	7	-2.0	46	81	38	4	-0.1	-	1	34	-0.11	0.44	0.17	46
	P	P	P	P	P	P	P	-	P	P	P	P	P	P

- This black and polled show prospect represents a lineage of cattle that has proven their worth in the Pinegar program over the years. She is a daughter of the elite Pinegar donor EXLR Molly 7103K. Her sire is the big numbered SAV Brilliance that has worked so well on purebred females in this young heifer solidifies that statement.
- She posts a -2.0 for birth, 38 for milk and .17 for marbling
- **Consigned by Pinegar Limousin, Springfield, MO**

lot 9 JEPS GRACIOUS GIRL 344A

Lim-Flex (50) Cow Homo Polled Homo Black 10.09.13 JEPS 344A LFF 2054476

CONNEALY CONSENSUS
CONNEALY CONSENSUS 7229
 BLUE LILLY OF CONANGA 16
 G A R PREDESTINED
SBLX UNIVERSITY GIRL 105U
 AUTO ELITE 270F

MK ALLIANCE 6595 187
 BLINDA OF CONANGA 004
 WOODHILL ADMIRAL 77K
 BLUE CASH OF CONANGA 6020
 B/R NEW DESIGN 036
 G A R EXT 4206
 JCL BLACK OUT
 STBR GRACIOUS GIRL

	CED	BW	WW	YW	MA	CEM	SC	ST	DOC	CW	REA	YG	MARB	SMTI
EPDs	5	-0.5	59	111	41	-1	-	-	12	32	-0.01	0.28	0.49	63
	P	P	P	P	P	P	-	-	P	P	P	P	P	P

- Homozygous polled and homozygous black
- This young 25% Lim-Flex heifer is a true sale highlight and was bred in our good friends Jesse Jepsens program. She is a daughter of Connealy Consensus and from the big time donor SBLX University Girl 105U that is now working for DeMar Farms in Texas.
- This young heifer offers a breed leading set of EPD's with a -0.5 for birth, 111 for yearling, 41 for milk and .49 for marbling
- **Consigned by Pinegar Limousin, Springfield, MO**

lot 10

AUTO BECKY 488A

PB Limousin (88) Cow Homo Polled Homo Black 11.23.13 AUTO 488A NPF 2049479

DHVO DEUCE 132R

MAGS XYLOPOLIST

MAGS STRAWBERRY

LESF ASPHALT 9N

AUTO REBECA 292S

EXLR REBECA 1019P

GPFF BLAQUE RULON

AMY JO DHAN 20L

EXLR NEW GENERATION 071M

MAGS FRUITFUL 487M

GPFF BLAQUE RULON

GPFF EXTRA SWEET ELITE

BR MIDLAND

EXLR REBECA 614H

	CED	BW	WW	YW	MA	CEM	SC	ST	DOC	CW	REA	YG	MARB	SMTI
EPDs	10	1.1	45	89	24	2	0.7	-	-	23	0.34	0.05	0.08	46
	P	P	P	P	P	P	P	-	-	P	P	P	P	P

- Homozygous polled and homozygous black
- Here is a fancy show heifer that represents a powerful and proven pedigree
- She is sired by the now deceased MAGS Xylopolist and from the famed donor AUTO Rebeca 292S. She is a maternal sister to the recent '14 All American Futurity reserve grand champion female for Cody Heavin
- We really admire this purebred show heifer prospect and all she stands for
- **Consigned by Pinegar Limousin, Springfield, MO**

AUTO Rebeca 292S,
dam of Lot 10.

lot 11

AUTO FOREVER 474A

Lim-Flex (69) Cow Homo Polled Homo Black 11.12.13 AUTO 474A LFF 2047229

DHVO DEUCE 132R

MAGS XYLOPOLIST

MAGS STRAWBERRY

MYTTY IN FOCUS

SBLX UNNA 391U

MAGS SALMETTO

GPFF BLAQUE RULON

AMY JO DHAN 20L

EXLR NEW GENERATION 071M

MAGS FRUITFUL 487M

S A F FOCUS OF E R

MYTTY COUNTESS 906

TNUH BLUE PRINT 245H

MAGS PALMETTO

	CED	BW	WW	YW	MA	CEM	SC	ST	DOC	CW	REA	YG	MARB	SMTI
EPDs	12	-0.6	48	92	25	2	0.8	-	-	44	0.24	0.27	0.21	50
	P	P	P	P	P	P	P	-	-	P	P	P	P	P

- This female represents an exciting, current and up to date pedigree
- She is sired by the leading Edwards Land & Cattle and Pinegar sire AUTO Will Power 160X. Her dam is one of the leading donors for Council Family Limousin and DeMar Farms in Canton Texas.
- This heifer is very well made, calm in her disposition represents genetics that you can count on
- **Consigned by Pinegar Limousin, Springfield, MO**

SBLX Unna 391U,
dam of Lot 11.

lot 12

AUTO BEVERLY 200B

Lim-Flex (69) Cow Double Polled Homo Black 01.02.14 AUTO 200B LFF 2056202

G A R PREDESTINED

AUTO WILL POWER 160X

AUTO REBECA 292S

DHVO DEUCE 132R

AUTO FOREVER 219X

MAGS MANUELA

B/R NEW DESIGN 036

G A R EXT 4206

LESF ASPHALT 9N

EXLR REBECA 1019P

GPFF BLAQUE RULON

AMY JO DHAN 20L

EXLR LIMITED EDITION 765J

AUTO CITY NIGHTS 214H

	CED	BW	WW	YW	MA	CEM	SC	ST	DOC	CW	REA	YG	MARB	SMTI
EPDs	9	0.9	54	96	29	3	0.7	-	16	33	0.26	0.17	0.30	56
	P	P	P	P	P	P	P	-	P	P	P	P	P	P

- This female represents an exciting, current and up to date pedigree
- She is sired by the leading Edwards Land & Cattle and Pinegar sire AUTO Will Power 160X. Her dam is the leading daughter of DHVO Deuce from the elite MAGS Manuela 662M
- This heifer is very well made, calm in her disposition represents genetics that you can count on
- **Consigned by Pinegar Limousin, Springfield, MO**

AUTO Forever 219X,
dam of Lot 12.

... open heifers ...



MAGS U-Haul, sire of Lots 13 & 14.

lot 13 THIL 49A DELTA GIRL

PB Limousin (88) Cow Double Polled Double Black 09.05.13 THIL 49A NPF 2054023

GPF BLAQUE RULON
MAGS U HAUL
 MAGS PARADISE CANYON
 AUTO DIESEL POWER 953R
AUTO CHEYENNE 202W
 STBR DEMETRIA 669D

BLACK DIAMOND
 QUAIL RUN RAMONA BP
 BR MIDLAND
 MISS WULFETTE 6230F
 IBRR BLACK SHADOW
 BLACK INK POLLED JINGLE
 WRC PUNCH
 STBR WENDY'S KIMMIE 194A

	CED	BW	WW	YW	MA	CEM	SC	ST	DOC	CW	REA	YG	MARB	SMTI
EPDs	6	1.1	40	73	19	2	0.4	-	-	8	0.46	-0.09	0.04	44
	P	P	P	P	P	P	P	-	-	P	P	P	P	

- T Hill Limousin is proud to offer this young open heifer. She is sired by MAGS U Haul, the proven son of GPF Blaque Rulon from the BR Midland daughter MAGS Paradise Canyon
- This purebred heifer is double polled, double black and from a daughter of AUTO Diesel Power back to the proven Pinegar Fullblood donor STBR Demetria
- **Consigned by T Hill Limousin, Dover, AR**

lot 14 THIL 57A KAREN B

Lim-Flex (75) Cow Homo Polled Homo Black 09.06.13 THIL 57A LFF 2054024

GPF BLAQUE RULON
MAGS U HAUL
 MAGS PARADISE CANYON
 GPF BLAQUE RULON
AUTO JELLY BEAN 250X
 BOHI SUNSET 6156S

BLACK DIAMOND
 QUAIL RUN RAMONA BP
 BR MIDLAND
 MISS WULFETTE 6230F
 BLACK DIAMOND
 QUAIL RUN RAMONA BP
 BR MIDLAND
 CARROUSELS PEACHES 4330P

	CED	BW	WW	YW	MA	CEM	SC	ST	DOC	CW	REA	YG	MARB	SMTI
EPDs	8	0.2	45	81	14	2	0.6	-	-	10	0.50	-0.02	0.08	46
	P	P	P	P	P	P	P	-	-	P	P	P	P	

- Homozygous polled and homozygous black
- This daughter of MAGS U Haul is from daughter of BOHI Sunset 6156S
- This fancy and well made open heifer proudly represents the proven and predictably genetics that make up T Hill Limousin
- **Consigned by T Hill Limousin, Dover, AR**

lot 15 OMEGA NON BLONDE

Lim-Flex (75) Cow Double Polled Homo Black 09.03.13 MAMM 116A LFF Pending

D A TRAVELER 004 703
EF XCESSIVE FORCE
 CFLX MOLLYS IMAGE
 DVFC SITTING BULL
TAVES REPLAY 472U
 EXLR REPLAY 7128R

S A V 8180 TRAVELER 004
 ROSEWOOD ERICA 5010
 DHVO DEUCE 132R
 JCL PEPPERMINT
 EXLR NATIVE 7133N
 DVFC MONICA 136H
 LESF ASPHALT 9N
 COLE 29M

	CED	BW	WW	YW	MA	CEM	SC	ST	DOC	CW	REA	YG	MARB	SMTI
EPDs	7	1.1	50	82	27	1	0.9	-	13	22	-0.03	0.27	0.07	45
	P	P	P	P	P	P	P	-	P	P	P	P	P	

- Here is a young show heifer prospect from the heart of the McCarthy's Omega 8 Ranch. She is sired by one of the breed's hottest bulls in our breed, EF Xcessive Force. Her dam represents a proven and successful show career in DVFC Sitting Bull and EXLR Replay 7128R
- Buy with confidence when considering this well bred open show heifer prospect
- **Consigned by McCarthy's Omega 8 Ranch, Bedias, TX**

... bred females ...



CFLX Wild Card



CFLX Molly's Image

lot 16 CFLX PEPPERMINT 064X

PB Limousin (100) Cow Homo Polled Homo Black 09.28.10 CFLX 064X NPF 1981600

GPF BLAQUE RULON
DHVO DEUCE 132R
 AMY JO DHAN 20L
 AUTO BLACK DAKOTA 129J
JCL PEPPERMINT
 JCL PEPPER

BLACK DIAMOND
 QUAIL RUN RAMONA BP
 BLACK CAT DHAN 152G
 GPF AMBER JO
 EXLR DAKOTA 353G
 DFCL JET SET BPC 34Y
 WULFS RAMBLER 8400X
 JCL MOCHA

	CED	BW	WW	YW	MA	CEM	SC	ST	DOC	CW	REA	YG	MARB	SMTI
EPDs	5	2.9	63	109	25	2	1.0	17	20	40	0.71	-0.05	-0.15	44
	P	28	27	21	23	P	P	P	P	P	P	P	P	

- Bred to Sennett Wonderful, seven months safe
- Homozygous polled and homozygous black
- A true highlight of the sale is this full sister to one of the most successful show heifers of all time, CFLX Molly's Image. She is also a sister to the popular A.I. sire CFLX Wild Card. This purebred heifer represents the heart of the CFLX program and is one of their finest
- **Consigned by Council Family Limousin, Madisonville, TX**

lot 17

DMAR YOUR DREAM 66Y

PB Limousin (100) Cow Homo Polled Double Black 12.14.11 DMAR 66Y NPF 2011741

HUNTS HI-LITER 245G

JCL LODESTAR 27L

LOGAN'S CHEERLEADER 280G

AUTO BLACK DAKOTA 129J

DMAR TANZANITE 53T

DSUL KAYLA 418K

WADDLES COBALT 3106

TNUH MISS C245

COLE FIRST DOWN 46D

TTCC CONFIDENCE MAKER

EXLR DAKOTA 353G

DFLC JET SET BPC 34Y

JCL BLACK OUT

MISS WULFETTE 3333C

	CED	BW	WW	YW	MA	CEM	SC	ST	DOC	CW	REA	YG	MARB	SMTI
EPDs	8	2.8	55	105	23	9	0.6	24	20	31	0.24	0.06	0.03	47
	21	29	22	19	19	21	P	P	P	P	P	P	P	P

- P.E. 5.11.14 to 9.12.14 to MJ Zapata 16Z
- Double black and homozygous polled
- Here is the lead consignment from the DeMar program. She is a daughter of JCL Lodestar 27L and from a daughter of AUTO Black Dakota 129J back to a daughter of JCL Black Out
- This young bred female comes from the long running and prominent DeMar Farm herd
- Consigned by DeMar Farms, Canton, TX



lot 18

ELCX UNDERCOVER 201Y

Lim-Flex (50) Cow Double Polled Double Black 10.01.11 ELCX 201Y LFF 2001547

SCHILLING'S TALLADEGA

CALO BRICKYARD 902W

EXG E839 1407 M175 LS

G A R PREDESTINED

SBLX UNDERTHECOVERS 201U

ELMW GINNIE P58G

KRVN NASKAR 013N

RCSX RAINY DAY 80R

BON VIEW NEW DESIGN 1407

PAF 4019 6807 E839

B/R NEW DESIGN 036

G A R EXT 4206

TCDT MR T.D'S POWER PACK

ELMW POLLED ECSTASY 67E

	CED	BW	WW	YW	MA	CEM	SC	ST	DOC	CW	REA	YG	MARB	SMTI
EPDs	9	0.1	38	82	28	3	0.4	-	7	6	-0.19	0.31	0.33	51
	P	34	27	16	9	P	10	-	P	19	17	17	17	17

- P.E. 1.04.14 to 6.14.14 to SBLX Zip It
- Highlighting this sale is this Lim-Flex heifer from the Salt Creek Cattle herd
- She is a 50% Lim-Flex daughter of CALO Brickyard 902W and from the \$25,000 valued donor SBLX Underthecovers 201U. She is owned by Sugar Bush Cattle, Inc and Double B Grain Farm, McAlisterville, NC. She is a daughter of GAR Predestined from the national gold medal dam ELMW Ginnie P58G
- She sells bred the national gold medal bull SBLX Zip It, the proven son of GAR Predestined back to the \$30,000 valued donor for Sugar Bush and Owen Cattle Co., SBLX Untouchable 101U
- Consigned by Salt Creek Cattle & Genetics, LLC, Amber, OK



SBLX Underthecovers 201U, dam of Lot 18.

lot 19

SBLX YOU DREAM A LOT

Lim-Flex (75) Cow Homo Polled Homo Black 09.19.11 SBLX 193Y LFF 2005135

GPFF BLAQUE RULON

DHVO DEUCE 132R

AMY JO DHAN 20L

WULFS NOBEL PRIZE 3861N

GPFX BLAQUE DESTINY

C A SHENANDOAH 409

BLACK DIAMOND

QUAIL RUN RAMONA BP

BLACK CAT DHAN 152G

GPFF AMBER JO

COLE WULF HUNT

WULF'S CASUAL 3161C

B/R NEW DESIGN 323

T B R BANDO LADY Y167

	CED	BW	WW	YW	MA	CEM	SC	ST	DOC	CW	REA	YG	MARB	SMTI
EPDs	9	-0.2	50	87	25	0	0.6	-	-	51	0.48	0.11	0.16	50
	P	35	30	21	19	P	20	-	-	P	P	P	P	P

- P.E. 1.04.14 to 6.14.14 to SBLX Zip It
- Homozygous polled and homozygous black
- Here is a very well bred heifer sired by DHVO Deuce and the elite donor GPFX Destiny that is now owned by Owen Cattle Co., Hornbeak, TN
- This heifer is very well bred and sells carrying the service to the MAGS Winston son, SBLX Zip It
- Consigned by Salt Creek Cattle & Genetics, LLC, Amber, OK



GPFX Blaque Destiny, dam of Lot 19.



MAGS Manuela,
dam of Lot 20.



SSTO Starla 6803S,
dam of Lot 21.



CFLX Zula 269Z at Fort
Worth Stock Show.

lot 20

AUTO ELLEN 425Z

PB Limousin (94) Cow Polled Double Black 09.27.12 AUTO 425Z NPF 2021850

MAGS THE GENERAL
AUTO CRUZE 132X
AUTO REBECA 292S
EXLR LIMITED EDITION 765J
MAGS MANUELA
AUTO CITY NIGHTS 214H

AUTO DOLLAR GENERAL 122R
EXLR LUVLY 821M
LESF ASPHALT 9N
EXLR REBECA 1019P
EXLR POLLED BENCHMARK709G
WULFS GLENDA 7021G
COLE FIRST DOWN 46D
MISS WOLFETTE 9049X

	CED	BW	WW	YW	MA	CEM	SC	ST	DOC	CW	REA	YG	MARB	SMTI
EPDs	12	1.0	52	87	29	7	0.4	-	14	37	0.52	0.10	0.18	51
	P	36	28	19	12	P	10	-	P	23	22	22	21	

- Due 10.31.14 to AUTO Road Miles (HB/HP)
- This polled and black purebred heifer an amazing consignment from Pinegar Limousin
- She is a daughter of one of the hottest bulls in the breed right now, AUTO Cruze 132X. He is a son of MAGS The General from AUTO Rebeca 292S
- Her dam is the breed all time great donor MAGS Manuela 662M.
- The heifer is a result of the blending of the best with the best
- **Consigned by Pinegar Limousin, Springfield, MO**

lot 21

AUTO GINNIE 416Z

Lim-Flex (75) Cow Homo Polled Homo Black 09.24.12 AUTO 416Z LFF 2031861

DHVO DEUCE 132R
CFLX WILD CARD
JCL PEPPERMINT
JCL LODESTAR 27L
SSTO STARLA 6803S
C R C C DIXIE ERICA 2621M

GPFF BLAQUE RULON
AMY JO DHAN 20L
AUTO BLACK DAKOTA 129J
JCL PEPPER
HUNTS HI-LITER 245G
LOGAN'S CHEERLEADER 280G
THREE TREES EXPLORER 9035
C R C C DIXIE ERICA 9022J

	CED	BW	WW	YW	MA	CEM	SC	ST	DOC	CW	REA	YG	MARB	SMTI
EPDs	9	2.5	66	118	23	5	0.8	-	16	60	0.35	0.29	0.13	52
	P	P	P	P	P	P	P	-	P	P	P	P	P	

- Due 10.30.14 to MAGS Y-Axis (Homo Blk/Homo Pld)
- Homozygous polled and homozygous black
- This 75% Lim-Flex female is sired by CFLX Wild Card, one of the breed's hottest A.I. bulls
- Her dam is the proven daughter of JCL Lodestar 27L, SSTO Starla 6803S.
- This female is full of rib, volume and sells bred to the popular A.I. sire MAGS Y-Axis, one of the biggest numbered sons of TC Aberdeen
- **Consigned by Pinegar Limousin, Springfield, MO**

lot 22

CFLX ZULA 269Z

% Limousin (81) Cow Homo Polled Homo Black 03.04.12 CFLX 269Z NXF 2018771

DHVO DEUCE 132R
CFLX WILD CARD
JCL PEPPERMINT
MAGS STOCKMAN
YRTX UNIQUE 58U
KRVN SHANDI 013S

GPFF BLAQUE RULON
AMY JO DHAN 20L
AUTO BLACK DAKOTA 129J
JCL PEPPER
BR MIDLAND
MINE PLD QUEEN SHEBA9006J
SBRS LOADMASTER 451
KRVN PUNKY 114P

	CED	BW	WW	YW	MA	CEM	SC	ST	DOC	CW	REA	YG	MARB	SMTI
EPDs	7	2.3	54	99	19	4	0.8	-	-	30	0.36	0.10	0.17	52
	P	P	P	P	P	P	P	-	-	P	P	P	P	

- Will calve by the sale to Sennett Wonderful 857U
- Homozygous polled and homozygous black
- Here is a leading lot from the CFLX program and daughter of CFLX Wild Card from a daughter of MAGS Stockman from a granddaughter of JCL Lodestar 27L
- We love the heaviness of muscle, mass and overall capacity that this female has
- **Consigned by Council Family Limousin, Madisonville, TX**

lot 23

CFLX MISTY 005X

Lim-Flex (75) Cow Homo Polled Double Black 03.05.10 CFLX 005X LFF 1967529

EF MAIN STAY 541M
EF SMACK DOWN 764S
 M L PRUDENCE 427

GPF BLAQUE RULON
CCJE MISTY 911M
 ROYAL JIFFY

AUTO BLACK DAKOTA 129J
 EXLR 231J
 V A R GATEWAY 4101
 M L PRUDENCE 9014
 BLACK DIAMOND
 QUAIL RUN RAMONA BP
 WULFS GUARDIAN 5074G
 CANE RIDGE GLENNA 7053G

	CED	BW	WW	YW	MA	CEM	SC	ST	DOC	CW	REA	YG	MARB	SMTI
EPDs	9	0.2	43	82	26	1	-0.1	-	8	11	0.24	0.09	-0.03	41
	27	24	20	14	15	25	P	-	P	P	P	P	P	P

- Bred to CFLX Wild Card, seven months safe
- Black and homozygous polled
- Here is a daughter of EF Smack Down 764S, the once national reserve champion Lim-Flex sire
- She is from a daughter of the breed popular GPF Blaque Rulon back to a daughter of Wulf's Guardian
- **Consigned by Council Family Limousin, Madisonville, TX**



lot 24

DL ZAHARA 734Z

Lim-Flex (75) Cow Double Polled Double Black 08.10.12 AAFC 734Z LFF 2033086

KRVN NASKAR 013N
SCHILLING'S SENOR
 FBF MY GIRL 629M

GPF BLAQUE RULON
KRVN POLLY 228P
 BLACK MOLLY KDPI 62F

GPF BLAQUE RULON
 WL JU JU GAL 149J
 EAGLE SCOUT
 MISS WINTER FORTUNE 2
 BLACK DIAMOND
 QUAIL RUN RAMONA BP
 LKCC TOMAHAWKS TOUCHDOWN
 PIGA 1U

	CED	BW	WW	YW	MA	CEM	SC	ST	DOC	CW	REA	YG	MARB	SMTI
EPDs	9	-1.1	38	68	19	1	0.2	-	11	0	0.47	-0.08	-0.14	37
	16	31	18	10	12	16	P	-	P	P	P	P	P	P

- Will calve by sale day to EF Smack Down 764S
- We think you will be very pleased when you view this well made heifer from the heart of the CFLX herd
- She is a daughter of Schilling's Senor and from a daughter of GPF Blaque Rulon
- This 75% Lim-Flex female sells bred to the once national reserve champion bull EF Smack Down
- **Consigned by Council Family Limousin, Madisonville, TX**



lot 25

MAGS XYSTARCH

PB Limousin (100) Cow Homo Polled Double Black 01.01.10 MAGS 1837X NPF 1958136

GPF BLAQUE RULON
DHVO DEUCE 132R
 AMY JO DHAN 20L

TCDT MR T.D'S POWER PACK
ELMW GINNIE P58G
 ELMW POLLED ECSTASY 67E

BLACK DIAMOND
 QUAIL RUN RAMONA BP
 BLACK CAT DHAN 152G
 GPF AMBER JO
 LKCC TOMAHAWKS TOUCHDOWN
 MISS TOMAHAWK'S MILKER
 TYRE DEAN 17B
 MICALE 37X

	CED	BW	WW	YW	MA	CEM	SC	ST	DOC	CW	REA	YG	MARB	SMTI
EPDs	9	2.6	57	101	20	1	0.8	17	16	51	0.77	0.00	-0.12	43
	P	36	33	22	22	P	20	P	P	27	27	27	27	27

- P.E. 1.04.14 to 4.15.14 to CALO Brickyard
- Black and homozygous polled
- This daughter of DHVO Deuce 132R represents a top notch and exciting pedigree
- Her dam the once national gold medal dam ELMW Ginnie P58G, the dam of the once national champion female Carrousel's Pina Colada
- She sells bred the once national champion Lim-Flex sire CALO Brickyard 902W
- **Consigned by Salt Creek Cattle & Genetics, LLC., Amber, OK**



ELMW Ginnie P58G, dam of Lot 25.



lot 26 **DMAR YANG 07Y**

PB Limousin (100) Cow Homo Polled Homo Black 03.17.11 DMAR 07Y NPF 1990179

EXLR NATIVE 7133N
DVFC SITTING BULL
 DVFC MONICA 136H
 GPF BLAQUE RULON
KRVN RACHEL ANN 107R
 EAFF BLACK MITE 308K

EXLR JUDO 459J
 TRAK EXLR ANNIE
 CHAZ FIRST CHOICE 6004F
 JDP MISS GENERAL 170B
 BLACK DIAMOND
 QUAIL RUN RAMONA BP
 QUAIL RUN BLACK GOLD BP
 SOGF TOOTSIE ROLL 643G

	CED	BW	WW	YW	MA	CEM	SC	ST	DOC	CW	REA	YG	MARB	SMTI
EPDs	1	3.4	50	76	20	-1	0.6	-	12	24	0.54	-0.08	-0.09	42
	28	26	17	13	10	26	P	-	P	P	P	P	P	

- A.I. 2.28.14 to Connealy Consensus; P.E. 3.21.14 to 9.12.14 to MJ Zapata 16Z
- Homozygous polled and homozygous black
- Here is a purebred daughter of the once All American Futurity champion bull DVFC Sitting Bull. Her dam is a daughter of GPF Blaue Rulon that has been a top producing donor in the DeMar program
- **Consigned by DeMar Farms, Canton, TX**



lot 27 **DMAR YVETTE 13Y**

PB Limousin (100) Cow Homo Polled Homo Black 03.22.11 DMAR 13Y NPF 2036590

EXLR NATIVE 7133N
DVFC SITTING BULL
 DVFC MONICA 136H
 GPF BLAQUE RULON
KRVN RACHEL ANN 107R
 EAFF BLACK MITE 308K

EXLR JUDO 459J
 TRAK EXLR ANNIE
 CHAZ FIRST CHOICE 6004F
 JDP MISS GENERAL 170B
 BLACK DIAMOND
 QUAIL RUN RAMONA BP
 QUAIL RUN BLACK GOLD BP
 SOGF TOOTSIE ROLL 643G

	CED	BW	WW	YW	MA	CEM	SC	ST	DOC	CW	REA	YG	MARB	SMTI
EPDs	2	2.0	46	71	20	-1	0.6	-	12	24	0.54	-0.08	-0.09	41
	28	34	19	13	10	26	P	-	P	P	P	P	P	

- A.I. 2.28.14 to Connealy Consensus; P.E. 3.21.14 to 9.12.14 to MJ Zapata 16Z
- Here is a full sister to DMAR 07Y and one of the finest in the consignments from DeMar Farms
- This daughter of DVFC Sitting Bull has the striking profile, complete balance and prominence you will appreciate when you see him on sale day
- **Consigned by DeMar Farms, Canton, TX**



lot 28 **SBSC MISS GOLLY**

Fullblood (100) Cow Horned Red 02.01.11 SBSC 03Y NPF 1984000

WINTERSHALL JUPITER
HARVEST OLYMPUS
 LABORIEUSE
 LB COLD CASH 442N
CASHIE
 GLORY

FLEURI
 FAIENCE
 FLAMBEAU
 FABIOLA (INITIAL ENTRY)
 WRC NAPOLEON 207K
 GRETCHEN
 XTRA SIR EAGER
 HAWS SOLITAIRE 440X

	CED	BW	WW	YW	MA	CEM	SC	ST	DOC	CW	REA	YG	MARB	SMTI
EPDs	-4	6.2	52	84	25	-5	0.1	18	6	13	0.64	-0.26	-	0
	21	31	23	20	20	P	P	P	P	P	P	P	-	

- P.E. 12.01.13 to 7.01.14 to MAGS Xerox
- She sells bred to the homozygous polled and homozygous black son of SAV Bismack 5682 and should calve by sale day.
- **Consigned by Kurt LeBaouf/S & B Springcreek Stables, DeRidder, LA**

Harvest Olympus, sire of Lot 28.

lot 29

HAHK 418X

Lim-Flex (75) Cow Double Polled Homo Black 12.15.10 HAHK 4178X LFF 1978797

AUTO DOLLAR GENERAL 122R

LVLS SECRET WEAPON 4408K

MAGS TWAIN

THOMAS PATRICIA 1911

AUTO KYRIA 232K

GAR PRECISION 1680

THOMAS PATRICIA 1176

LESF ASPHALT 9N

GPFF BLAQUE RULON

EXLR REPLAY 7179R

COLE 29M

GPFF EXTRA SWEET ELITE

ANDERS JAG

COLE 9123J

	CED	BW	WW	YW	MA	CEM	SC	ST	DOC	CW	REA	YG	MARB	SMTI
EPDs	8	1.6	44	83	28	4	0.5	-	9	17	-0.04	0.23	0.16	47
	21	34	22	16	15	20	P	-	P	P	P	P	P	P

- P.E. 1.04.14 to 6.14.14 to SBLX Zip It
- Homozygous black and double polled
- Here is a big numbered daughter of MAGS Twain. Twain is the leading sire for O'Neal and Hayhook Limousin. He is one of the breeds very finest numbered and proven sons of AUTO Dollar General
- Her dam is the once big time show female EXLR Replay 7179R, a proven daughter of LESF Asphalt 9N
- **Consigned by Salt Creek Cattle & Genetics, LLC, Amber, OK**



SLBX Zip It, service sire to Lots 29 & 30.

lot 30

EXLR MARDI 263W

Lim-Flex (63) Cow Homo Polled Double Black 09.29.09 EXLR 263W LFF 1939341

JCL LODESTAR 27L

HUNTS HI-LITER 245G

MAGS REMOTE

MAGS 13M

LOGAN'S CHEERLEADER 280G

MAGS JUMANJI

EXAR NEW LOOK 2971

WK QUEEN LASSIE 0332

EXLR MARDI 7253S

JCL MARDI

BON VIEW NEW DESIGN 1407

N BAR PRIMROSE 2424

TUBB GRINDER 749D

JCL MARDI GRAS

	CED	BW	WW	YW	MA	CEM	SC	ST	DOC	CW	REA	YG	MARB	SMTI
EPDs	11	0.6	48	95	21	7	0.5	19	10	35	-0.24	0.41	0.28	51
	P	26	22	19	19	P	P	P	P	P	P	P	P	P

- P.E. 1.04.14 to 6.14.14 to SBLX Zip It
- Homozygous polled and double black
- This female along with his full sister will be a part of this sale
- She is a 62.5% Lim-Flex daughter of MAGS Remote and from a daughter of EXAR New Look 2971 from JCL Mardi
- She sells bred to the breeds national gold medal bull SBLX Zip It, the proven and popular son of MAGS Winston
- **Consigned by Salt Creek Cattle & Genetics, LLC, Amber, OK**

lot 31

EXLR MARDI 262W

Lim-Flex (63) Cow Homo Polled Double Black 09.29.09 EXLR 262W LFF 1939340

JCL LODESTAR 27L

HUNTS HI-LITER 245G

MAGS REMOTE

MAGS 13M

LOGAN'S CHEERLEADER 280G

MAGS JUMANJI

EXAR NEW LOOK 2971

WK QUEEN LASSIE 0332

EXLR MARDI 7253S

JCL MARDI

BON VIEW NEW DESIGN 1407

N BAR PRIMROSE 2424

TUBB GRINDER 749D

JCL MARDI GRAS

	CED	BW	WW	YW	MA	CEM	SC	ST	DOC	CW	REA	YG	MARB	SMTI
EPDs	11	0.5	48	94	21	7	0.5	19	10	35	-0.24	0.41	0.28	51
	P	P	P	P	P	P	P	P	P	P	P	P	P	P

- P.E. 1.04.14 to 4.15.14 to CALO Brickyard 902W
- Homozygous polled and double black
- This daughter of the now deceased MAGS Remote is from a daughter of EXAR New Look
- She is extreme in her depth of rib shape, volume and capacity
- Her mating to the once national champion CALO Brickyard 902W will make for a very nice incentive to make this investment
- **Consigned by Salt Creek Cattle & Genetics, LLC, Amber, OK**

lot 32

CFLX MADONNA 275Z

Lim-Flex (50) Cow Polled Black 10.21.12 CFLX 275Z LFF 2027606

BON VIEW NEW DESIGN 1407

B/R NEW DESIGN 036

G A R INTEGRITY

G A R PRECISION 1019

BON VIEW PRIDE 664

GAR PRECISION 1680

EXLR LIMITED EDITION 765J

EXLR POLLED BENCHMARK709G

BLAW CFLX MADONNA 252

LFL 022K

WULFS GLENDA 7021G

CHAZ FIRST CHOICE 6004F

MISS OTSS 8009 W

	CED	BW	WW	YW	MA	CEM	SC	ST	DOC	CW	REA	YG	MARB	SMTI
EPDs	10	-0.9	31	64	23	5	-0.1	16	11	12	-0.35	0.36	0.54	56
	P	P	P	P	P	P	P	P	P	P	P	P	P	P

- A.I. 12.31.13 safe bred to MAGS Twain
- This black and polled daughter of GAR Integrity is from a daughter of EXLR Limited Edition back to a daughter of CHAZ First Choice
- She pattern and design is very complete. We admire her complete structural correctness and the prominent look that she possesses
- Her future calf sired by MAGS Twain will be very exciting for the new owner
- **Consigned by Council Family Limousin, Madisonville, TX**



BLAW CFLX Madonna 252, dam of Lot 32.



BLAW CFLX Madonna
252, dam of Lot 33.



lot 33 **BLCX BLACK MADONNA 033U**

PB Limousin (100) Cow Polled Double Black 04.02.08 BLCX 033U NPF 1908592

GPPF BLAQUE RULON
KRVN PABLO 011P
 EXLR MISS HERITAGE 7384L
 EXLR LIMITED EDITION 765J
BLAW CFLX MADONNA 252
 LFL 022K

BLACK DIAMOND
 QUAIL RUN RAMONA BP
 EXLR HERITAGE 056H
 EXLR 189G
 EXLR POLLED BENCHMARK709G
 WULFS GLENDA 7021G
 CHAZ FIRST CHOICE 6004F
 MISS OTSS 8009 W

	CED	BW	WW	YW	MA	CEM	SC	ST	DOC	CW	REA	YG	MARB	SMTI
EPDs	7	2.7	43	77	12	2	0.1	18	22	9	0.45	-0.09	-0.07	41
	28	34	27	17	18	27	16	P	P	P	P	P	P	

- A.I. 5.21.14 safe bred to MAGS Y So Tangled
- Here is a very thick made and heavily muscled daughter of KRVN Pablo.
- This purebred brood cow is sure to impress you on sale day.
- She sells bred to the once national champion bull, MAGS Y-So Tangled
- **Consigned by Council Family Limousin, Madisonville, TX**

lot 34 **CFLX SUNRISE 321A**

PB Limousin (100) Cow Homo Polled Homo Black 03.23.13 CFLX 321A NPF 2042513

KRVN NASKAR 013N
WLR THRILL RIDE 345T
 MAGS NIGHT AMBUSH
 MAGS SASQUATCH
CFLX SUNRISE 963W
 KRCO 33G

GPPF BLAQUE RULON
 WL JU JU GAL 149J
 AUTO BLACK DAKOTA 129J
 MISS WULFETTE 6230F
 EXLR NEW GENERATION 071M
 MAGS FRUITFUL 487M
 COLE FIRST DOWN 46D
 GAR 6807 TRAVELER 902

	CED	BW	WW	YW	MA	CEM	SC	ST	DOC	CW	REA	YG	MARB	SMTI
EPDs	9	-0.2	39	74	26	5	0.4	-	-	18	0.24	0.09	0.03	42
	16	31	24	11	12	16	7	-	-	P	P	P	P	

- A.I. 5.21.14 safe bred to AHCC West Wind
- Homozygous polled and homozygous black
- This daughter of WLR Thrill Ride is from a daughter of the highly syndicated MAGS Sasquatch
- This purebred female sells bred to the purebred AHCC West Wind sire
- **Consigned by Council Family Limousin, Madisonville, TX**



lot 35 **CFLX REESES 234Z**

Lim-Flex (75) Cow Polled Black 03.14.12 CFLX 234Z LFF 2019710

EF MAIN STAY 541M
EF SMACK DOWN 764S
 M L PRUDENCE 427
 TNUH BLUE PRINT 245H
EXLR REESES 087T
 TYEJ REESES

AUTO BLACK DAKOTA 129J
 EXLR 231J
 V A R GATEWAY 4101
 M L PRUDENCE 9014
 WADDLES COBALT 3106
 TNUH MISS C245
 GPPF BLAQUE RULON
 MAGS EVENING ROSE

	CED	BW	WW	YW	MA	CEM	SC	ST	DOC	CW	REA	YG	MARB	SMTI
EPDs	6	-0.6	38	75	26	-1	0.0	-	9	21	0.21	0.14	0.04	42
	19	34	27	14	16	19	9	-	P	P	P	P	P	

- Bred to Sennett Wonderful 857U; seven months safe
- This 75% Lim-Flex female is sired by the once national reserve champion sire EF Smack Down and is from a daughter of TNUH Blue Print
- She sells bred to the consistent producing and prominent Lim-Flex CFLX sire Sennett Wonderful
- **Consigned by Council Family Limousin, Madisonville, TX**



lot 36

CFLX MADONNA 284Z

Lim-Flex (50) Cow Polled Black 11.07.12 CFLX 284Z LFF 2030256

BON VIEW NEW DESIGN 1407

B/R NEW DESIGN 036

G A R INTEGRITY

BON VIEW PRIDE 664

G A R PRECISION 1019

GAR PRECISION 1680

G A R EXT 755

EXLR LIMITED EDITION 765J

EXLR POLLED BENCHMARK 709G

BLAW CFLX MADONNA 252

WULFS GLENDA 7021G

LFL 022K

CHAZ FIRST CHOICE 6004F

MISS OTSS 8009 W

	CED	BW	WW	YW	MA	CEM	SC	ST	DOC	CW	REA	YG	MARB	SMTI
EPDs	10	-0.9	31	64	23	5	-0.1	16	11	12	-0.35	0.36	0.54	56
	P	P	P	P	P	P	P	P	P	P	P	P	P	P

- A.I. 12.31.13 safe bred to CLLL Burbank
- This 50% Lim-Flex daughter of GAR Integrity will make a tremendous brood cow and foundation female for any program
- She represents a proven pedigree being sired by Integrity and back to a past successful show heifer BLAW CFLX Madonna 252
- Her future calf will be sired by the big time herd sire CLLL Burbank
- **Consigned by Council Family Limousin, Madisonville, TX**



BLAW CFLX Madonna 252, dam of Lot 36.

lot 37

CFLX JOY 255Z

PB Limousin (100) Cow Double Polled Homo Black 04.24.12 CFLX 255Z NPF 2023607

GPFF BLAQUE RULON

BLACK DIAMOND

DHVO TREY 133R

QUAIL RUN RAMONA BP

AMY JO DHAN 20L

BLACK CAT DHAN 152G

GPFF AMBER JO

WULFS GUARDIAN 5074G

WULFS RAMBLER 8400X

AUTO JOY 253J

WULFS EXAMPLE 5074E

EXLR LUVLY 087F

WULFS DAWSON 4421D

AMBL LUVLY 340Y

	CED	BW	WW	YW	MA	CEM	SC	ST	DOC	CW	REA	YG	MARB	SMTI
EPDs	8	1.9	43	74	16	-2	0.2	-	19	15	0.70	-0.14	-0.13	39
	P	P	P	P	P	P	P	-	P	P	P	P	P	P

- Safe 150 days as of 9.13.14 to EF Smack Down
- Polled and homozygous black
- This purebred daughter of DHVO Trey is from the once national show winning female AUTO Joy 253J
- She sells bred to the once national reserve national champion bull EF Smack Down
- **Consigned by Council Family Limousin, Madisonville, TX**



lot 38

KELO ZINNA

Lim-Flex (75) Cow Double Polled Double Black 05.27.12 KELO 1212Z LFF 2034139

CARROUSELS PEAK POWER

GPFF BLAQUE RULON

SPRNG CRKS URLACHER 311U

HC CHERISH

2K PRIDE 311

TC STOCKMAN 365

2K PRIDE 856

EF MAIN STAY 541M

AUTO BLACK DAKOTA 129J

KELO MAGGIE MAY

EXLR 231J

GRIL MS PROGRESS 994E

WULF'S POLLED PROGRESS

BXDB SAPPHIRE 944C

	CED	BW	WW	YW	MA	CEM	SC	ST	DOC	CW	REA	YG	MARB	SMTI
EPDs	7	1.7	43	78	30	0	0.1	-	21	7	-0.10	0.18	-	0
	18	30	20	13	11	17	P	-	P	P	P	P	-	-

- A.I. 5.20.14 safe bred to MAGS Y So Tangled
- Polled and homozygous black
- Here is a daughter of the once national champion sire Sprng Crks Urlacher
- She is from a daughter of the once national champion sire EF Main Stay 541M
- This female from the prominent CFLX program sells bred to MAGS Y So Tangled that was also a national champion
- **Consigned by Council Family Limousin, Madisonville, TX**





lot 39 **DMAR ZARIAH 34Z**

Lim-Flex (69) Cow Double Polled Double Black 09.10.12 DMAR 34Z LFF 2032173

G A R PREDESTINED
MAGS UTLEY
 EXLR 199H
 DVFC COOKIE MONSTER 108H
LOGAN'S CHEYENNE 931K
 ADKL DEMI 696F

B/R NEW DESIGN 036
 G A R EXT 4206
 WULFS FANFARE 4055F
 EXLR 558F
 CHAZ FIRST CHOICE 6004F
 SLVL ANGEL COOKIE 140D
 MOSR TOUCHBACK 17A
 ADKL IMAN 825W

	CED	BW	WW	YW	MA	CEM	SC	ST	DOC	CW	REA	YG	MARB	SMTI
EPDs	3	3.7	51	90	25	5	0.1	-	21	29	0.18	0.18	0.28	54
	17	34	20	14	13	16	P	-	P	P	P	P	P	P

- A.I. 4.25.14 to HAHK Uber-Cool; P.E. 5.08.14 to 9.12.14 to DMAR Yank 05Y
- This 68.5% Lim-Flex female is from the DeMar Farms program. She is sired by the big numbered MAGS Utley that is doing a tremendous job in the Hayhook Limousin program
- This young female offers a strong set of EPD's with a 91 for yearling weight, 25 for milk and .25 for marbling
- **Consigned by DeMar Farms, Canton, TX**



lot 40 **DMAR X-EMPTION LIMITED 08**

PB Limousin (100) Cow Polled Double Black 02.17.10 DMAR 08X NPF 1971688

TOMAHAWKS BLACK FRONTIER
WULFS FANFARE 4055F
 WULFS DELTA DAWN 4055D
 CARROUSELS NASDAQ
DMAR TILLIE 47T
 TNUH MISS DYNASTY 260J

BLACK DUKE 045P
 TOMAHAWK'S MISS GOLDMINE
 WULFS RAMBLER 8400X
 MISS WOLFETTE 1012A
 AUTO BLACK DAKOTA 129J
 CARROUSELS JAMAICA
 WADDLES COBALT 3106
 TNUH MISS C245

	CED	BW	WW	YW	MA	CEM	SC	ST	DOC	CW	REA	YG	MARB	SMTI
EPDs	10	-1.0	29	58	29	8	0.8	23	13	8	0.25	-0.07	0.06	41
	26	35	26	19	19	24	18	P	P	P	P	P	P	P

- A.I. 2.28.14 to Carrouels Nasdaq; P.E. 3.16.14 to 9.12.14 to MJ Xtravaganza
- Here is very nice purebred black and polled daughter of Wulf's Fanfare
- She is from a daughter of the once national champion bull Carrouels Nasdaq
- **Consigned by DeMar Farms, Canton, TX**



lot 41 **DMAR ABBIE 05A**

PB Limousin (94) Cow Double Polled Homo Black 01.09.13 DMAR 05A NPF 2039133

JCL LODESTAR 27L
HAHK UBER-COOL
 CLLL 202S
 MAGS UNLOOSEN
DMAR X-TRA TERRESTRAL 36X
 PBRS TWINKIE 731T

HUNTS HI-LITER 245G
 LOGAN'S CHEERLEADER 280G
 EXLR EXCELLANTE 251L
 AUTO BLACK EXCLAIM 202J
 GPPF BLAQUE RULON
 MAGS PARADISE CANYON
 AUTO DOLLAR GENERAL 122R
 CARROUSELS PINA COLADA

	CED	BW	WW	YW	MA	CEM	SC	ST	DOC	CW	REA	YG	MARB	SMTI
EPDs	15	-0.8	49	95	23	7	0.8	-	-	-	-	-	-	0
	12	31	15	10	8	11	P	-	-	-	-	-	-	-

- A.I. 6.06.14 to Carrouels Nasdaq; P.E. 6.15.14 to 9.12.14 to DMAR Yank 05Y
- Double polled and homozygous black
- This daughter of HAHK Uber-Cool is from a daughter of the once highly syndicated MAGS Unloosen
- This purebred female offers a balanced profile and prominent pedigree
- **Consigned by DeMar Farms, Canton, TX**

lot 42

DMAR ZANETA 40Z

PB Limousin (100) Cow Double Polled Black 09.27.12 DMAR 40Z NPF 2032158

JCL LODESTAR 27L

HAHK UBER-COOL
CLLL 202SCARROUSELS NASDAQ
DMAR X-ECUTIVE ASSISTANT
DVFC V I P 236U

HUNTS HI-LITER 245G

LOGAN'S CHEERLEADER 280G
EXLR EXCELLANTE 251L
AUTO BLACK EXCLAIM 202J
AUTO BLACK DAKOTA 129J
CARROUSELS JAMAICA
AUTO DOLLAR GENERAL 122R
ADKL HOLLYWOOD 33C

	CED	BW	WW	YW	MA	CEM	SC	ST	DOC	CW	REA	YG	MARB	SMTI
EPDs	16	-2.9	36	73	25	8	0.7	-	16	-	-	-	-	0
	13	31	15	10	10	11	P	-	P	-	-	-	-	

- A.I. 4.25.14 to COLE Wulf Hunt; P.E. 6.13.14 to 9.12.14 to DMAR Yank 05Y

- This purebred female is sired by the JCL Lodestar 27L son HAHK Uber-Cool and her dam is a daughter of the once national champion sire Carrouels Nasdaq

- This female is royally bred and has the structural correctness and balance you will appreciate when you see her on sale day

- Consigned by DeMar Farms, Canton, TX



lot 43

DMAR ZANTA 45Z

PB Limousin (100) Cow Double Polled Homo Black 10.11.12 DMAR 45Z NPF 2032179

JCL LODESTAR 27L

HAHK UBER-COOL
CLLL 202SCARROUSELS NASDAQ
DMAR WOWEE 68W
DSUL HEART THROB 395K

HUNTS HI-LITER 245G

LOGAN'S CHEERLEADER 280G
EXLR EXCELLANTE 251L
AUTO BLACK EXCLAIM 202J
AUTO BLACK DAKOTA 129J
CARROUSELS JAMAICA
CHAZ FIRST CHOICE 6004F
YKCC HEART THROB 141W

	CED	BW	WW	YW	MA	CEM	SC	ST	DOC	CW	REA	YG	MARB	SMTI
EPDs	7	3.0	50	91	22	6	0.6	-	16	-	-	-	-	0
	13	31	16	10	10	12	P	-	P	-	-	-	-	

- A.I. 4.27.14 to AUTO Grand Am; P.E. 6.13.14 to 9.12.14 to DMAR Yank 05Y

- Double polled and homozygous black

- Here is another daughter of the big numbered JCL Lodestar 27L son, HAHK Uber-Cool

- On the bottom of her pedigree she has such great sires as Carrouels Nasdaq and CHAZ First Choice

- Consigned by DeMar Farms, Canton, TX



lot 44

PERF CIP BP H 260Z

Lim-Flex (50) Cow Double Polled Double Black 10.02.12 PERF 260Z LFF 2017483

MYTTY IN FOCUS

CONNEALY IN FOCUS 4925

BLACK CANA OF CONANGA 206
MILLERS BULLSEYE J373
BLACK CRYSE OF CONANGA 20

PERF BP LS 605S

PERF BP 605 LS 875U

PERF MISS BP FEATURE 362N

S A F FOCUS OF E R

MYTTY COUNTESS 906

JCL LODESTAR 27L

PERF MISS BP FEATURE 371N

ELMW FEATURED CHOICE 141F

TBOK DIXIE DIAMOND

	CED	BW	WW	YW	MA	CEM	SC	ST	DOC	CW	REA	YG	MARB	SMTI
EPDs	12	-0.5	68	118	37	5	-	-	-	21	0.30	0.08	0.08	53
	12	33	23	18	16	12	-	-	-	P	P	P	P	

- P.E. 4.15.14 to 7.01.14 to MAGS Xerox

- She sells bred to the double homozygous son of SAV Bismarck 5682

- Consigned by Kurt LeBaouf/S & B Springcreek Stables, DeRidder, LA

lot 45

L&M DOLLY

PB Limousin (100) Cow Homo Polled Homo Black 09.23.12 AVNT 457Z NPF 2020049

WULFS NOBEL PRIZE 3861N

WULFS WARBONNET 6254W

WULFS SPIRAL 6254S

AUTO DOLLAR GENERAL 122R

UGNX 423U

OPUS PICTURE PERFECT 048P

COLE WULF HUNT

WULF'S CASUAL 3161C

JCL LODESTAR 27L

MISS WULFETTE 1264L

LVLS SECRET WEAPON 4408K

AUTO KYRIA 232K

COLE MAGNUM 15M

PPLF MISS BLACK OUT 28K

	CED	BW	WW	YW	MA	CEM	SC	ST	DOC	CW	REA	YG	MARB	SMTI
EPDs	9	1.6	51	87	30	6	0.3	-	18	37	0.63	0.01	0.2	46
	19	31	27	22	14	18	18	-	P	P	P	P	P	

- A.I. 1.13.14 to EXLR Native 7133N; P.E. 2.03.14 to 8.15.14 to L & M Dillinger (Homo Blk/Homo Pld)

- This heifer is very complete in her profile and very well balanced. An A.I. daughter of Wulf's Warbonnet 6254W, she represents a strong and proven pedigree including JCL Lodestar and AUTO Dollar General. Dolly is a purebred double homozygous first calve heifer that is due this fall.

- Consigned by L & M Limousin, Okmulgee, OK

lot 46 **L&M ELISE**

PB Limousin (100) Cow Homo Polled Homo Black 04.01.11 AVNT 429Y NPF 1981737

EXLR NATIVE 7133N
L&M TECHNICIAN
 MAUPIN SPECIAL SWEETIE
 NCUT BLACK GOLD 591R
NCUT LITTLE BIT 901W
 NCUT BLAQUE DYNASTY 629S

EXLR JUDO 459J
 TRAK EXLR ANNIE
 EXLR ENERGIZER 069L
 WHSP FIRST HARVEST
 JCL LODESTAR 27L
 DVFC BLACK DAWN 169J
 GPF BLAQUE RULON
 TNUH MISS DYNASTY 533J

	CED	BW	WW	YW	MA	CEM	SC	ST	DOC	CW	REA	YG	MARB	SMTI
EPDs	9	0.3	48	86	23	3	0.6	-	12	-	-	-	-	0
	24	33	24	16	15	21	9	-	P	-	-	-	-	-



lot 47 **CFLX EDITH 242Z**

Lim-Flex (63) Cow Homo Polled Double Black 05.16.12 CFLX 242Z LFF 2019720

EF MAIN STAY 541M
EF SMACK DOWN 764S
 M L PRUDENCE 427

JCL LODESTAR 27L
DFLC HBPC 2S
 DFLC HBPC 25L

AUTO BLACK DAKOTA 129J
 EXLR 231J
 V A R GATEWAY 4101
 M L PRUDENCE 9014
 HUNTS HI-LITER 245G
 LOGAN'S CHEERLEADER 280G
 DFLC DOUBLE SHOT BPB 41E
 DALTONS EDITH ERICA 250

	CED	BW	WW	YW	MA	CEM	SC	ST	DOC	CW	REA	YG	MARB	SMTI
EPDs	13	-1.8	37	81	29	5	-0.1	-	9	25	-0.20	0.33	0.15	44
	20	34	28	14	15	20	9	-	P	P	P	P	P	P

- Black and homozygous polled
- Here is very complete made and feminine daughter of the once national reserve champion sire EF Smack Down.
- She sells with her bull calf sired by the highly syndicated sire COLE Zone
- **Consigned by Council Family Limousin, Madisonville, TX**
- **LOT 47A - CFLX 900B** - bull, double polled/double black, born 7.25.14, 081.5% Limousin. Sired by COLE Zone 89Z. BW: 62 lbs.

EPDs	CED	BW	WW	YW	MA	CEM	SC	ST	DOC	CW	REA	YG	MARB	SMTI
47A	15	-2.0	49	98	30	4	0.6	11	16	52	38	0.29	0.7	45

lot 48 **NCUT LITTLE BIT 901A**

PB Limousin (100) Cow Homo Polled Homo Black 01.18.09 NCUT 901W NPF 1923135

JCL LODESTAR 27L
NCUT BLACK GOLD 591R
 DVFC BLACK DAWN 169J

GPF BLAQUE RULON
NCUT BLAQUE DYNASTY 629S
 TNUH MISS DYNASTY 533J

HUNTS HI-LITER 245G
 LOGAN'S CHEERLEADER 280G
 SLVL BLACK OXEN 190D
 SLVL DVFC DAWN 250G
 BLACK DIAMOND
 QUAIL RUN RAMONA BP
 COLE FIRST DOWN 46D
 TNUH MISS C245

	CED	BW	WW	YW	MA	CEM	SC	ST	DOC	CW	REA	YG	MARB	SMTI
EPDs	11	-0.2	44	84	26	6	0.7	-	13	-	-	-	-	0
	28	35	20	13	24	26	9	-	P	-	-	-	-	-

- P.E. 5.02.14 to 9.10.14 to L & M Dillinger (Homo Blk/Homo Pld)
- This double homozygous female represents a pedigree that has been tried and proven and includes such notable sires as JCL Lodestar, GPF Blaque Rulon and COLE First Down.
- Most impressive is her actual birth of 60# and BW EPD of -0.2. At her side is her double homozygous purebred bull calf born 5.01.14.
- **Consigned by L & M Limousin, Okmulgee, OK**
- **LOT 48A - L&M Benton** - bull, homo polled/homo black, 05.01.14, AVNT 497B, NPM 2053580, PB Limousin. Sired by L&M Full Throttle.

EPDs	CED	BW	WW	YW	MA	CEM	SC	ST	DOC	CW	REA	YG	MARB	SMTI
48A	8	1.4	53	97	30	4	0.6	-	-	-	-	-	-	0

lot 49 **SBSC 233Y**

Fullblood (100) Cow Horned Red 07.23.11 SBSC 233Y NFF 2004477

SECOND TO NONE DHAN 1216L
PRFR KID SECOND 27U
 PACC LADY BLASTERI 219H

JOKER
HHBB HOPE 233R
 HHBB MUFFET 217N

SOGF SPECIAL K 247B
 STBR CONSTELLA 216G
 STBR ORIONROYALE 375B
 CHR SPECIAL PLAYMATE
 WRC PUNCH
 LAURAS AMULET
 NP 2797F
 OAKM LADY OLENA 588F

	CED	BW	WW	YW	MA	CEM	SC	ST	DOC	CW	REA	YG	MARB	SMTI
EPDs	2	3.9	43	71	27	-2	-0.1	-	-	-	-	-	-	0
	P	P	P	P	P	P	P	-	-	-	-	-	-	-

- **LOT 49A - SBSC 04B** - bull, black/polled, 07.15.14, 75% Lim-Flex. Sired by MAGS Xerox. BW: 75 lbs.
- **Consigned by Kurt LeBaouf/S & B Springcreek Stables, DeRidder, LA**

EPDs	CED	BW	WW	YW	MA	CEM	SC	ST	DOC	CW	REA	YG	MARB	SMTI
49A	-	.07	55	85	26	-	-	-	-	-	-	-	-	-

lot 50

MAGS ZERASIA

Lim-Flex (56) Cow Double Polled Homo Black 03.17.12 MAGS 688Z LFF 2008987

BT CROSSOVER 758N

MAGS WHITCOMB
EXLR 199H

WULFS TITUS 2149T

MAGS XERASIA
MAGS PHYLLIO

C A FUTURE DIRECTION 5321

BT ROYAL PRIDE 237G

WULFS FANFARE 4055F

EXLR 558F

WULFS REALTOR 1503R

WULFS MEADOW GRASS 2149M

BR MIDLAND

MISS WULFETTE 6230F

	CED	BW	WW	YW	MA	CEM	SC	ST	DOC	CW	REA	YG	MARB	SMTI
EPDs	8	1.5	51	96	24	4	0.5	-	-	37	-0.08	0.29	0.30	54
	17	35	28	17	14	16	13	-	-	21	20	20	20	

- A.I. 5.30.14 to American Classic (Full brother to Dameron First Class)
- Here is a sale highlight from our consignors from Louisiana. She is a daughter of MAGS Whitcomb and just happens to be very big numbered and from a daughter of Wulf's Titus

- **Consigned by Kurt LeBaouf/S & B Springcreek Stables, DeRidder, LA**
- **LOT 50A - SBSC 02B** - Bull, double polled, double black, 04.04.14, SBSC 02B, LFM 2050410, 25% Lim-Flex. Sired by EXAR Significant 1769B. BW: 72 lbs.

EPD's	CED	BW	WW	YW	MA	CEM	SC	ST	DOC	CW	REA	YG	MARB	SMTI
50A	-	0.4	59	105	34	-	-	-	-	-	-	-	-	0

lot 52

SSCL ALLSTAR 46A

PB Limousin (100) Bull Double Polled Homo Black 03.11.13 SSCL 46A NPM 2052035

MAGS SASQUATCH

SSCL WORKMAN 16W

TJTF LADY MADISON 001P

DHVO DEUCE 132R

98T

MISS NITRO

EXLR NEW GENERATION 071M

MAGS FRUITFUL 487M

EF KRACKLE 934K

EF MADISON 152M

GPFF BLAQUE RULON

AMY JO DHAN 20L

KRCM OUTCROSS 192G

AUTO DAISEY 265H

	CED	BW	WW	YW	MA	CEM	SC	ST	DOC	CW	REA	YG	MARB	SMTI
EPDs	-	1.1	39	78	24	-	-	-	-	-	-	-	-	0
	-	P	P	P	P	-	-	-	-	-	-	-	-	-

- BW: 63 lbs.; WW: 701 lbs.; YW: 1,157 lbs.
- Polled and homozygous black
- Double polled and homozygous black is this well made purebred herd sire prospect
- He is sired by SSCL Workman 16W, the sire of Allstar and is a double homozygous son of MAGS Sasquatch from TGTF Lady Madison which is the dam of SSCL Tara. Tara was the 2008 National Junior Heifer Show grand and Bred and Owned Grand champion female for the Schuler Family. She also name reserve grand at the Houston Limousin show
- **Consigned by Schuler Limousin, Cleveland, TX**

lot 53

THIL BLACK STAR 4A

Lim-Flex (44) Bull Double Polled Double Black 03.12.13 THIL 4A LFM 2046382

BR MIDLAND

HBRL SOLUTION 051X

AUTO TOYA 233T

GARDENS PRIME STAR

EXLR REBECA 8200W

EXLR REBECA 070R

TWIN VALLEY PRECISIONE161

BR ROYAL LASS 7036-19

AUTO DOLLAR GENERAL 122R

EXLR EXPRESSWAY 736J

N BAR PRIME TIME D806

GREEN GARDEN JILT C242 S1

EXLR NEO 614N

DVFC REBECA 101M

	CED	BW	WW	YW	MA	CEM	SC	ST	DOC	CW	REA	YG	MARB	SMTI
EPDs	13	-1.5	44	88	23	6	0.5	-	5	36	-0.07	0.43	0.48	57
	P	25	16	10	10	P	P	-	P	P	P	P	P	P

- BW: 68 lbs.
- This double polled, double black son of HBRL Solution is one of the top bulls coming from T Hill Limousin
- Sired by the T Hill herd sire HBRL Solution and from a daughter of Gardens Prime Star is THIL Black Star 4A
- He offers a sold set of numbers with a highlighted .48 for marbling
- **Consigned by T Hill Limousin, Dover, AR**

lot 51

PERF BP 605 LS 875U

PB Limousin (100) Cow Double Polled Homo Black 10.23.08 PERF 875U NPF 1931637

JCL LODESTAR 27L

PERF BP LS 605S

PERF MISS BP FEATURE 371N

ELMW FEATURED CHOICE 141F

PERF MISS BP FEATURE 362N

TBOK DIXIE DIAMOND

HUNTS HI-LITER 245G

LOGAN'S CHEERLEADER 280G

ELMW FEATURED CHOICE 141F

PERF MISS CARRIE 780G

FWADDLES CLEAR CHOICE 360

ELMW POLLED BLACK PUFF 5B

GENERAL LEE LOJW 40S

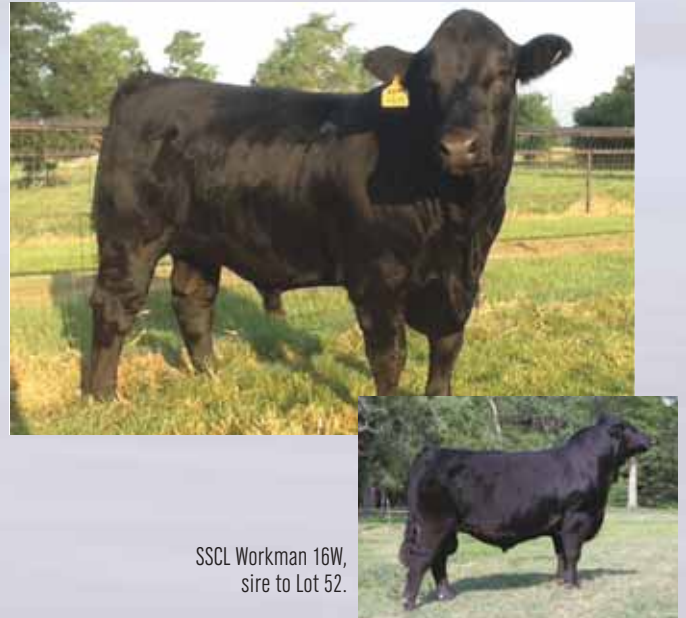
TBOK MISS DIAMOND D JET

	CED	BW	WW	YW	MA	CEM	SC	ST	DOC	CW	REA	YG	MARB	SMTI
EPDs	10	2.6	54	90	24	7	0.8	-	12	29	0.55	-0.04	-0.02	46
	29	37	28	15	18	26	14	-	P	P	P	P	P	P

- A.I. 6.20.14 to American Classic (Full brother to Dameron First Class)
- Polled and homozygous black
- This grand daughter of the multiple trait leading and now deceased sire JCL Lodestar is one of the top consignments from LeBeouf and Springcreek
- **Consigned by Kurt LeBaouf/S & B Springcreek Stables, DeRidder, LA**
- **LOT 51A - SBSC 03B** - Bull, double polled, double black, 03.11.14, SBSC 03B, LFM 2050407, 50% Lim-Flex. Sired by EXAR Significant 1769B. BW: 69 lbs.

EPD's	CED	BW	WW	YW	MA	CEM	SC	ST	DOC	CW	REA	YG	MARB	SMTI
50A	-	-0.3	57	98	34	-	-	-	-	-	-	-	-	0

... bulls ...

SSCL Workman 16W,
sire to Lot 52.

HBRL Solution 051X, sire of Lot 53



lot 54

AUTO SECRET WEAPON 522A

% Limousin (88) Bull Homo Polled Homo Black 03.30.13 AUTO 522A NXM 2039460

LVLS SECRET WEAPON 4408K
AUTO DOLLAR GENERAL 122R
 AUTO KYRIA 232K
 WULFS NASA 1212N
AUTO OLIVA 623X
 AUTO ZOE 219U

LVLS FARMER 4G
 LVLS 408H
 AUTO HACKETT 702H
 WULFS HAPPINESS 8136H
 WULFS FANFARE 4055F
 MISS WULFETTE 1212L
 AUTO DIESEL POWER 953R
 PRECISIONSPROMPTITUDEP417

	CED	BW	WW	YW	MA	CEM	SC	ST	DOC	CW	REA	YG	MARB	SMTI
EPDs	13	0.2	52	91	36	11	0.6	-	19	26	0.14	0.15	0.23	53
	20	35	28	20	19	20	17	-	P	23	23	23	22	

- BW: 68 lbs.; WW: 554 lbs.; YW: 1,088 lbs.; REA: 14.05; IMF: 3.44
- Homozygous polled and homozygous black
- Here is a big time herd sire prospect that represents the Pinegar program
- He is an extremely big numbered son of AUTO Dollar General 122R and from a daughter of Wulf's Nasa
- He posts a 0.2 for birth, 91 for yearling and 36 for milk. This 87.5% Limousin bull is super thick made and one of the leading herd sire prospects in the sale
- **Consigned by Pinegar Limousin, Springfield, MO**



lot 55

AUTO BRITE LIGHTS 101A

PB Limousin (100) Bull Homo Polled Homo Black 01.01.13 AUTO 101A NPM 2039458

AUTO DOLLAR GENERAL 122R
MAGS THE GENERAL
 EXLR LUVLY 821M
 JCL LODESTAR 27L
AUTO MANUELA 298S
 MAGS MANUELA

LVLS SECRET WEAPON 4408K
 AUTO KYRIA 232K
 AUTO BLACK DAKOTA 129J
 EXLR LUVLY 084F
 HUNTS HI-LITER 245G
 LOGAN'S CHEERLEADER 280G
 EXLR LIMITED EDITION 765J
 AUTO CITY NIGHTS 214H

	CED	BW	WW	YW	MA	CEM	SC	ST	DOC	CW	REA	YG	MARB	SMTI
EPDs	13	2.2	63	111	28	11	0.5	-	21	44	0.43	0.05	0.11	53
	P	P	P	P	P	P	P	-	P	P	P	P	P	P

- BW: 66 lbs.; WW: 669 lbs.; YW: 1,120 lbs.; REA: 12.61; MARB: 2.81
- Homozygous polled and homozygous black
- This purebred son of MAGS The General is from the leading donor for Council Family Limousin and Pinegar Limousin. AUTO Manuel 298S. She is a daughter of JCL Lodestar 27L from the famed MAGS Manuela 662M
- He posts a 2.2 for birth, 63 for weaning , 111 for yearling, 28 for milk and .11 for marbling
- **Consigned by Pinegar Limousin, Springfield, MO**



lot 56

EDKY AMPED 746A

% Limousin (81) Cow Double Polled Homo Black 02.23.13 EDKY 746A NXM 2033551

HUNT CORNHUSKER 225N
CFLX HUSKIE 7130
 JCL RED PEPPER
 EXLR NEW DESIGN N048
EDKY 413T
 CFLX MS 707N

HUNT MR JOCK 44J
 HUNT KANDACE 19K
 AUTO BLACK DAKOTA 129J
 JCL PEPPER
 H B A R NEW DESIGN 035
 EXLR LASS 041L
 DAUPHIN
 MIEARS KAREN 148K

	CED	BW	WW	YW	MA	CEM	SC	ST	DOC	CW	REA	YG	MARB	SMTI
EPDs	4	1.9	51	89	22	6	0.4	-	14	10	0.02	0.11	0.08	47
	14	31	24	15	9	13	19	-	12	17	16	16	16	

- BW: 93 lbs.; WW: 578 lbs.; YW: 1,000 lbs.
- This 81% Limousin herd sire prospect is double polled and homozygous black
- He is sired by CFLX Huskie 7103, a son of HUNT Cornhusker from the top female JCL Red Pepper
- **Consigned by 4K Limousin, Mount Vernon, TX**

lot 57

EDKY ARTWORK 745A

% Limousin (81) Bull Double Polled Homo Black 02.20.13 EDKY 745A NXM 2027014

HUNT CORNHUSKER 225N

HUNT MR JOCK 44J

CFLX HUSKIE 7130
JCL RED PEPPERHUNT KANDACE 19K
AUTO BLACK DAKOTA 129J
JCL PEPPER

EXLR NEW DESIGN N048

H B A R NEW DESIGN 035
EXLR LASS 041L
JSWR BLACK DESTINY 030J
SSLR NATALIE

4K 425T

4K MISS LOUISA 259M

	CED	BW	WW	YW	MA	CEM	SC	ST	DOC	CW	REA	YG	MARB	SMTI
EPDs	5	2.4	52	93	21	6	0.6	-	22	21	0.24	0.08	0.03	46
	15	32	24	15	10	14	19	-	12	17	16	16	16	

- BW: 91 lbs.; WW: 618 lbs.; YW: 1,061 lbs.
- Double polled and homozygous black, this is a powerful herd sire prospect
- He is a son of CFLX Huskie, the son of Hunt Cornhusker 225N
- Consigned by 4K Limousin, Mount Vernon, TX



lot 58

EDKY AT&T 752A

% Limousin (81) Bull Double Polled Double Black 03.10.13 EDKY 752A NXM 2027009

HUNT CORNHUSKER 225N

HUNT MR JOCK 44J

CFLX HUSKIE 7130
JCL RED PEPPERHUNT KANDACE 19K
AUTO BLACK DAKOTA 129J
JCL PEPPER

EXLR NEW DESIGN N048

H B A R NEW DESIGN 035
EXLR LASS 041L
EXLR KKCC NIGHT RAIDER
KRCM MS BILLY JACK 410J

4K 432T

WEHH 16N

	CED	BW	WW	YW	MA	CEM	SC	ST	DOC	CW	REA	YG	MARB	SMTI
EPDs	5	2.4	64	106	28	5	0.5	-	17	47	0.55	0.03	0.05	51
	15	32	24	15	9	14	16	-	12	17	16	16	16	

- BW: 98 lbs.; WW: 735 lbs.; YW: 1,170 lbs.
- This herd sire prospect is packed full of muscle and has a lot of power
- He is 81% Limousin and is double polled and double black
- Consigned by 4K Limousin, Mount Vernon, TX



lot 59

OMEG ALPHA JR.

PB Limousin Bull Double Polled Homo Black 08.08.13 TAYM 115A NPM Pending

BOHI TITLELIST 7050T

AUTO DOLLAR GENERAL 122R

OMEG SEEKING ALPHA
D'HANIS BLACK PEARL 707RCARROUSELS PINA COLADA
GPF BLAQUE RULON
HIGHLAND JACKPOT 46J

AHCC WESTWIND W544

KAJO RESPONDER 120R
AHCC MISS WULF HUNT R544
DVFC SITTING BULL
DVFC SWEET DEAL 1128L

OMEG DAISY

DVFC IRRESISTABLE 207U

	CED	BW	WW	YW	MA	CEM	SC	ST	DOC	CW	REA	YG	MARB	SMTI
EPDs	5	2.9	53	96	26	4	0.5	-	13	25	0.49	0.00	-0.05	44

- Double polled and homozygous black
- This powerful son of AHCC West Wind goes back to a daughter of BOHI Titlelist
- We admire this bull for his extra thickness and his unique profile
- Consigned by McCarthy's Omega 8 Ranch, Bedias, TX

... embryos ...

lot 60

5 PUREBRED RED ANGUS EMBRYOS

Purebred Red Angus

NBAR HAMLEY S913

PIE BILLINGS 487

WDZ-GLS RIO 116 ET
PZC DOLLY 7031NBAR KELLY 913
LCC MAJOR LEAGUE A502M
WEBR MS DOLLY 1L

RED FINE LINE MULBERRY 26P

RED COMPASS MULBERRY 449M
RED DUS FAYETTE 8G
3R 2595 HOBO 133G
3R MS TOUCH 143F 51H

SBRX ZOUCH

3R MS TOUCH 51H 21M

	CED	BW	WW	YW	MA	CEM	SC	ST	DOC	CW	REA	YG	MARB	SMTI
EPDs	-1	0.6	63	94	14	9	-	8	-	26	-0.10	0.17	0.01	-

- What a tremendous mating here with this purebred Red Angus package
- These future calves will be sired by the Rio bull and from the leading Sugar Bush donor 3R Ms Touch 51H 21M
- A full sister to these embryos highlighted the 2014 Southeast Summer Classic where half interest was sold to Twin Willow Farms, Springfield, MO
- Consigned by Sugar Bush Cattle, Inc., Allen, MI



SBRX Zouch, dam of Lot 60 embryos.



3R MS Touch 51H 21M, dam of Lot 61 embryos.



MAGS Xukalani, sire of Lot 62 embryos.



CFLX Cookie Cutter 012X, dam of Lot 62 embryos.



WULFS Space Ship 3223S, sire of Lot 63 embryos.



SSCL Tara 04T, dam of Lot 63 embryos.

lot 61

3 PUREBRED RED ANGUS EMBRYOS

Purebred Red Angus

BIEBER MAKE MIMI 7249
FEDDES BIG SKY R9
 FEDDES LAKINA 310
 3R 2595 HOBO 133G
3R MS TOUCH 51H 21M
 3R MS TOUCH 143F 51H

BJR MAKE MY DAY 981
 BIEBER SIRENA 6708
 LCHMN GRANDCANYON 1244G
 FEDDES LAKINA 954
 BUF CRK HOBO 2595
 3R ICE WOMAN 118Z 58C
 BUF CRK HOBO 1961
 MS FASHION TOUCH 143F

CED	BW	WW	YW	MA	CEM	SC	ST	DOC	CW	REA	YG	MARB	SMTI
EPDs 12.5	-4.4	44	85	27	2	-	-	17	27	-1.52	0.88	1.16	78

- Here are five purebred Red Angus embryos that represent some of the finest genetics ever created at Sugar Bush Cattle, Inc.
- They are sired by Feddes Big Sky, the big-numbered, performance, sire. He is one of the breed's biggest-numbered marbling sires with a .90.
- Their dam is 3R Ms Touch 51H 21M, the big ribbed and powerhouse of adonor for Sugar Bush Cattle, Inc. She is has made a big impact in the SBRX purebred Red Angus herd in creating some of their finest purebred Red Angus and amazing red and polled Lim-Flex cattle.
- **Consigned by Sugar Bush Cattle, Inc., Allen, MI**

lot 62

THREE EMBRYOS

50% Lim-Flex • Homozygous Black • Double Polled

RITO 112 OF 2536 RITO 616
MAGS XUKALANI
 MAGS UKALANI

RITO 616 OF 4B20 6807
 G A R PRECISION 2536
 BASIN FRANCHISE P142
 CARROUSELS PINA COLADA
 DHVO DEUCE 132R
CFLX COOKIE CUTTER 012X
 AUTO COOKIE CUTTER 295R

CFLX WILD CARD
 BR MIDLAND
 AUTO MINDA 824M

CED	BW	WW	YW	MA	CEM	SC	ST	DOC	CW	REA	YG	MARB	SMTI
EPDs 9	1.4	65	117	24	4	0.8	-	11	47	0.01	0.41	0.38	60

- These future calves are really going to be something special
- Sired by the popular A.I. bull MAGS Xukalani, the big numbered 25% Lim-Flex son of RITO 112 of 2536 from a daughter of Basin Franchise from the national champion Carrouseles Pina Colada
- They are from a daughter of CFLX Wild Card from AUTO Cookie Cutter, a daughter of BR Midland from a daughter of EXLR Dakota
- **Consigned by Council Family Limousin, Madisonville, TX**

lot 63

THREE EMBRYOS

WULFS NAPOLEON 1018N
WULFS SPACE SHIP 3223S
 WULFS NANNY 3223N

WULFS KEYSTONE 7522K
 WULFS LOTION 1018L
 WULFS LINCOLN 6638L
 WULFS KAREN 0007K
 BLACK DIAMOND
SSCL TARA 04T
 TJTF LADY MADISON 001P

QUAIL RUN RAMONA BP
 EF KRACKLE 934K
 EF MADISON 152M

CED	BW	WW	YW	MA	CEM	SC	ST	DOC	CW	REA	YG	MARB	SMTI
EPDs 8	2.3	42	76	18	2	1.3	21	10	20	0.68	-0.08	-0.08	40

- These embryos are a true highlight for this sale from the Schuler Limousin program
- They are sired by the leading Wulf bull, Wulf's Spaceship and from the leading donor SSCL Tara 04T. 04T was named the 2008 National Junior Heifer show grand champion and bred and owned grand champion. She was also named the 2008 Houston Limousin show reserve grand champion female. This mating will certainly be a highlight for any program at any level
- **Consigned by Schuler Limousin, Cleveland, TX**

lot 64

THREE EMBRYOS

Purebred Limousin • Red • Double Polled

MAGS SASQUATCH
MAGSWL USUAL SUSPECT 538U
 MAGS PHANTOMS PRIZE

EXLR DAKOTA 353G
EXLR SHEZA 518P
 EXLR 255J

EXLR NEW GENERATION 071M
 MAGS FRUITFUL 487M
 GPFF BLAQUE RULON
 ALCM KOOL TUNES
 EXLR DAKOTA 353G
 CANE RIDGE DAPHNE 011D
 WULFS GUARDIAN 5074G
 EXLR SHAZA DANDY 38D

	CED	BW	WW	YW	MA	CEM	SC	ST	DOC	CW	REA	YG	MARB	SMTI
EPDs	5	2.5	40	73	19	4	0.0	9	6	12	0.46	-0.13	-0.10	40

- These red purebred future calves will have instant value for the new buyer
- Sired by the trip crown winning bull MAGS WLR Usual Suspect and from the many times show champion female, EXLR 516P
- This mating will result in progeny that will certainly be in demand by any quality conscious cattlemen
- **Consigned by McCarthy's Omega 8 Ranch, Bedias, TX**



MAGS WL Usual
 Suspect 538U, sire of
 Lot 64 embryos.



EXLR Sheza 518P,
 dam of Lot 64 embryos.

lot 65

FOUR EMBRYOS

75% Lim-Flex • Homozygous Black • Double Polled

D A TRAVELER 004 703
EF XCESSIVE FORCE
 CFLX MOLLYS IMAGE

DVFC SITTING BULL
TAVES REPLAY 472U
 EXLR REPLAY 7128R

S A V 8180 TRAVELER 004
 ROSEWOOD ERICA 5010
 DHVO DEUCE 132R
 JCL PEPPERMINT
 EXLR NATIVE 7133N
 DVFC MONICA 136H
 LESF ASPHALT 9N
 COLE 29M

	CED	BW	WW	YW	MA	CEM	SC	ST	DOC	CW	REA	YG	MARB	SMTI
EPDs	7	1.1	50	82	27	1	0.9	-	13	22	-0.03	0.27	0.07	45

- Sired by the one of the breed's most popular herd sires in the business, EF Xcessive Force
- They are from a big time past show female Taves Replay 472U, a daughter of the once All American Futurity champion bull DVFC Sitting Bull from a daughter of LESF Asphalt 9N
- **Consigned by McCarthy's Omega 8 Ranch, Bedias, TX**



EF Xcessive Force,
 sire to Lot 65
 embryos.



TAVES Replay 472U, dam of
 Lot 65 embryos.

lot 66

FIVE EMBRYOS

50% Lim-Flex • Homozygous Black • Double Polled

DHVO DEUCE 132R
MAGS WAZOWSKI
 BOHI RED ROBIN 282R

G A R PREDESTINED
CFLX LIM FLEX 7110U
 MAGS RUNNING WILD

GPFF BLAQUE RULON
 AMY JO DHAN 20L
 CONNEALY LEAD ON
 MAGS MANUELA
 B/R NEW DESIGN 036
 G A R EXT 4206
 SUMMITCRESTHIGHPRIME 0H29
 MAGS LADY ACE

	CED	BW	WW	YW	MA	CEM	SC	ST	DOC	CW	REA	YG	MARB	SMTI
EPDs	10	-0.1	60	105	31	3	0.6	18	12	48	0.10	0.42	0.49	62

- These homozygous black, double polled future calves will be really extremely big numbered and very well bred
- Sired by the deceased big time A.I. sire MAGS Wazowski and from a daughter of GAR Predestined from a daughter of MAGS Lady Ace
- This mating represents one of the strongest from the prominent Massey program in Kentucky
- **Consigned by Massey Limousin, London, KY**



MAGS Wazowski, sire
 of Lot 66 embryos.



CFLX Lim Flex 7110U,
 dam of Lot 66 embryos.



Saturday, September 13, 2014
at 1:00 pm
Titus County Fair Arena
1800 North Jefferson Ave., Mount Pleasant, TX 75455

... DONATION SEMEN ...

donation lot	LOT A ... 5 UNITS OF SEMEN AUTO AMMO 135A
donation lot	LOT B ... 5 UNITS OF SEMEN AUTO AMMO 135A

% Limousin (88) Bull Homo Polled Homo Black 02.19.13 AUTO 135A NXM 2039266

MAGS THE GENERAL MAGS YIP AUTO CARMINDA 656S LESF ASPHALT 9N AUTO REBECA 292S EXLR REBECA 1019P	AUTO DOLLAR GENERAL 122R EXLR LUVLY 821M JCL LODESTAR 27L AUTO CARMINDA 872P GPFF BLAQUE RULON GPFF EXTRA SWEET ELITE BR MIDLAND EXLR REBECA 614H
--	--

EPDs	CED	BW	WW	YW	MA	CEM	SC	ST	DOC	CW	REA	YG	MARB	SMTI
11	0.8	49	94	25	5	0.6	-	8	16	0.14	0.09	0.16	50	
P	P	P	P	P	P	P	-	P	P	P	P	P	P	

- Homozygous polled and homozygous black
- One of the breed's newest and hottest sires in the breed
- Owned by Young and Rogers along with Council Family Limousin
- He is a son of MAGS Yip and from the famed donor AUTO Rebeca 292S
- **Donated by Council Family Limousin, Madisonville, TX and Young & Rogers Limousin, Windhorst, TX**



AUTO Ammo 135A