



COLEMAN ANGUS
YOUR MATERNAL SOURCE

Online EMBRYO Sale

4.18.23

www.LiveAuctions.TV



LIVE • 4.18.23 • 7PM
ONLINE SALE
www.LiveAuctions.TV

Larry & Dee Coleman Family
406.240.2751

Jeremy & Jenny Haag Family
406.833.0117

40067 Morris Road | Charlo, Montana 59824
colemanangus@blackfoot.net

WWW.COLEMANANGUS.COM



Lot 1 – 3/6 IVF EMBRYOS

Coleman Donna 7221 x Hummel South America



Coleman Donna 7221
Dam of Embryos

Don Aparicio Serrucho57 Maxi

Hummel South America

19919943 Rubeta Fontana 7567-T/E-

S A V Renown 3439

Coleman Donna 7221

19102656 Coleman Donna 714

CED	BW	WW	YW	MILK	SC	MARB	RE	SM
11	-0.6	70	119	25	.45	.01	.80	79

Bid price is per embryo. Package prices is 3/6x bid price. Buyer is responsible for cost of shipping embryos.

Online EMBRYO Auction Closes 4/18 | 7 PM (MST)

Donna 7221 is as a dominant producer as any female we have ever owned here. 7221 has production records of BR 3/90, NR 3/112, YR 2,111. 7221's first calf was the \$110,000 top-selling bull of the 2021 Your Maternal Source Female Sale for a \$220,000 valuation, Coleman Poncho 9426, purchased by Sandford Ranches in TX. Her second calf was the \$51,000 selection of Roberts Angus in ND. Her third calf was on her side when she was selected by K&M Farms in IN for \$140,000 for ½ interest for a valuation of \$280,000. These embryos are full sibs to this third calf, a bull we feel is as good as she has ever made and has a ton of future here. First time we have ever offered embryos out of her in our embryo auctions here. These embryos might have as much potential as any embryos we have ever offered for sale. In our recent bull sale in February, South America sons averaged over \$30,000 per bull. Demand for his sons was extremely high. In our recent "Your Maternal Source" Female Sale, South America's first progeny to sale were on fire, 11 heifer calves averaged over \$36,000. Demand for South America is at an all-time high! "South America" has created quite a stir, he was the \$180,000 top-selling bull, the people's choice, and pick of the flush, at the 2021 Cattleman's Congress. We rarely go and purchase bulls to bring into our program, however, he fits our visions, beliefs, and breeding philosophies. South America is a son of a past Palermo Grand Champion Bull, Don Aparicio Serrucho 57 Maxi, one of the great female sire makers in South America. His mother was selected as the heifer calf champion at the 2018 Palermo show one of the worlds most respected and admired shows. He is an individual with outcross genetics, tremendous shape, and extra center belly depth in a dense, eye-appealing package. Visitors here to the ranch have loved him, he's having a major impact on our program. BIG TIME OPPORTUNITY! **These are IVF embryos (Trans Ova), we are selling three embryos in this mating and guaranteeing one pregnancy.** Buyer has the option to take six embryos out of this mating and we will guarantee 2 pregnancies. These embryos are exportable to Canada.



Hummel South America
Sire of Embryos

Lot 2 – 3/6 IVF EMBRYOS

Mill Brae Iden Georgia 4086 x Sitz Resilient 10208



Mill Brae Iden Georgia 4086
Dam of Embryos

Sitz Stellar 726D

Sitz Resilient 10208

19057457

Sitz Miss Burgess 1856

Koupals B&B Identity

Mill Brae Iden Georgia 4086

17928486

Mill Brae FA Georgia 0237

CED	BW	WW	YW	MILK	SC	MARB	RE	SM
9	-0.1	72	127	27	.94	.93	.66	91

Bid price is per embryo. Package prices is 3/6x bid price. Buyer is responsible for cost of shipping embryos.

Online EMBRYO Auction Closes 4/18 | 7 PM (MST)

4086 sold for \$210,000 for ½ interest and was the top-selling female in our recent “Your Maternal Source Sale”. 4086 is the Dam of J Trademark 1037, a featured herd sire at Coleman Angus and Conley Cattle programs. Trademark has been one of the most sought-after young herd bulls this spring, with semen selling to many of the leading registered herds across the US. 4086 has a progeny record of 6 head/103 weaning, and a calving interval of 347 on 6 head. When you combine Calving Ease, Growth, Marbling, and \$ Values, she is the #1 cow in AHIR her age or older. “4086” did this the old-fashioned way, in the pasture and through her progeny. These embryos will be full sibs to the \$165,000 record-selling J Trademark bull. First reports on Trademark calves this spring are impressive, been getting lots of great feedback from customers. Take advantage here. The sire of these embryos is Sitz Resilient, who himself was the \$165,000 record-setting bull of the Fall 2019 Sitz Bull Sale. As his dam’s first calf, Resilient had a weaning ratio of 121 and an adjusted



Sitz Resilient 10208
Sire of Embryos

yearling weight of 1,530 pounds for a yearling ratio of 117. His PAP score of 37 at 18 months of age contributes to an elite PAP score EPD and makes him an excellent choice for producing cattle that will work at altitude. **These are IVF embryos (Trans Ova), we are selling three embryos in this mating and guaranteeing one pregnancy.** Buyer has the option to take six embryos out of this mating and we will guarantee 2 pregnancies. These embryos are exportable to Canada.

Lot 3 – 3 IVF EMBRYOS

Mill Brae Iden Georgia 4086 x S A V Renovation 6822



Mill Brae Iden Georgia 4086
Dam of Embryos

S A V Renown 3439

S A V Renovation 6822

18579309 S A V Madame Pride 0151

Koupals B&B Identity

Mill Brae Iden Georgia 4086

17928486 Mill Brae FA Georgia 0237

CED	BW	WW	YW	MILK	SC	MARB	RE	SM
7	0.9	69	121	27	1.00	.67	.40	79

Bid price is per embryo. Package prices is 3x bid price. Buyer is responsible for cost of shipping embryos.

Online EMBRYO Auction Closes 4/18 | 7 PM (MST)

4086 sold for \$210,000 for ½ interest and was the top-selling female in our recent “Your Maternal Source Sale”. 4086 is the Dam of J Trademark 1037, a featured herd sire at Coleman Angus and Conley Cattle programs. Trademark has been one of the most sought-after young herd bulls this spring, with semen selling to many of the leading registered herds across the US. 4086 has a progeny record of 6 head/103 weaning, and a calving interval of 347 on 6 head. When you combine Calving Ease, Growth, Marbling, and \$ Values, she is the #1 cow in AHIR her age or older. “4086” did this the old-fashioned way, in the pasture and through her progeny. The sire of these embryos is Renovation. “Renovation” is an impressive individual with abundance of muscle, body shape, depth of rib in a modest frame size. His daughters are easy fleshing, deep ribbed,



S A V Renovation 6822
Sire of Embryos

with beautiful udders. We feel “Renovation” is one of the best and most proven Renown sons out there. Extremely good mating here for sure. **These are IVF embryos (Trans Ova), we are selling three embryos in this mating and guaranteeing one pregnancy.** These embryos are exportable to Canada.

Lot 4 – 3/6 IVF RS F EMBRYOS

Coleman Donna 5247 x N Bar Emulation EXT



Coleman Donna 5247
Dam of Embryos

Emulation N Bar 5522

N Bar Emulation EXT

10776479.00 N Bar Primrose 2424

Coleman Charlo 0256

Coleman Donna 5247

18402681 Coleman Donna 194

CED	BW	WW	YW	MILK	SC	MARB	RE	SM
7	1.3	50	90	24	.45	.59	.35	66

Bid price is per embryo. Package prices is 3/6x bid price. Buyer is responsible for cost of shipping embryos.

Online EMBRYO Auction Closes 4/18 | 7 PM (MST)

Donna 5247 is a Model Angus Cow, and Pathfinder dam is as good as it gets and as consistent of a producer that has ever been produced in our program. 5247 has tremendous three-dimensional shape, volume, muscle, and mass. Combine this with a progeny production record of BR 4/94, NR 4/111, and YR 3/113, with a calving interval under 360 days. 5247's dam was also a Pathfinder, then back to Donna 386, and Donna J311 who started was the Matriarch that started the Donna cow family here. 5247, has had numerous top selling females and sons. In our recent Bull Sale in February, 5247 had 5 different sons that sold into leading Registered operations across the country. 5247 has also had progeny top numerous other sales across the country. "Ext" needs no introduction, he's a bull that we have reached back to use on a few females here.



N Bar Emulation EXT
Sire of Embryos

These females out of this mating will be "Foundation Females" to build any herd around. Extremely good mating here for sure. **These are IVF embryos (Trans Ova), we are selling three embryos in this mating and guaranteeing one pregnancy.** Buyer has the option to take six embryos out of this mating and we will guarantee 2 pregnancies. These embryos are exportable to Canada. These embryos have been sexed for females, 90-95% accurate.

www.LiveAuctions.TV

Lot 5 – 3/6 IVF EMBRYOS

Coleman Donna 5247 x J Trademark 1037



Coleman Donna 5247
Dam of Embryos

Sitz Resilient 10208

J Trademark 1037

20160403 Mill Brae Iden Georgina 4086

Coleman Charlo 0256

Coleman Donna 5247

18402681 Coleman Donna 194

CED	BW	WW	YW	MILK	SC	MARB	RE	SM
11	0.7	75	135	28	.79	.46	.66	93

Bid price is per embryo. Package prices is 3/6x bid price. Buyer is responsible for cost of shipping embryos.

Online EMBRYO Auction Closes 4/18 | 7 PM (MST)

Donna 5247 is a Model Angus Cow, and Pathfinder dam is as good as it gets and as consistent of a producer that has ever been produced in our program. 5247 has tremendous three-dimensional shape, volume, muscle, and mass. Combine this with a progeny production record of BR 4/94, NR 4/111, and YR 3/113, with a calving interval under 360 days. 5247's dam was also a Pathfinder, then back to Donna 386, and Donna J311 who started was the Matriarch that started the Donna cow family here. 5247, has had numerous top selling females and sons. In our recent Bull Sale in February, 5247 had 5 different sons that sold into leading Registered operations across the country. 5247 has also had progeny top numerous other sales across the country. We have calves out of this mating here, they are extremely good. Trademark was selected as the \$165,000 top selling bull of the Cattleman's Cut Bull Sale. He is a low-birth weight calving ease bull, with double digit calving ease direct, with an outcross pedigree for our program. "Trademark" has caught the attention of cattleman from all across the country. He has tremendous performance, added



J Trademark 1037
Sire of Embryos

muscle shape, with unique combination of phenotype, and an incredible number package. We are excited to own Trademark's dam. She was the record selling \$210,000 1/2 interest female in our recent female sale to Jocko Valley in MT. She has a progeny record of 6 head/103 weaning, and a calving interval of 347 on 6 head. **These are IVF embryos (Trans Ova), we are selling three embryos in this mating and guaranteeing one pregnancy.** Buyer has the option to take six embryos out of this mating and we will guarantee 2 pregnancies.

Lot 6 – 3/6 IVF EMBRYOS

Coleman Donna 504 x Coleman Below Zero 2106



Coleman Donna 504
Dam of Embryos

Sitz Stellar 726D

Coleman Below Zero 2106

20512901

Sitz Stellar 726D

S A V Resource 1441

Coleman Donna 504

18238090

Coleman Donna 714

CED	BW	WW	YW	MILK	SC	MARB	RE	SM
11	-0.4	69	127	27	.83	.23	.64	89

Bid price is per embryo. Package prices is 3/6x bid price. Buyer is responsible for cost of shipping embryos.

Online EMBRYO Auction Closes 4/18 | 7 PM (MST)

Donna 504 has been a visitor favorite since she was a calf here. 504 has done a tremendous job here with her calves, and her progeny have been some of the favorites in our bull and female sales. Ratio's on her BR 4/89, NR 4/110, YR 3/110. 504's sons topped our 2021 bull sale, many going to registered breeders all across the US. Take advantage here. Coleman Below Zero 2106 was the \$150,000 top-selling bull of the 2023 Coleman Angus bull sale and selected by Janssen Angus of Iowa, Marshall Fenner Farms of Missouri, Pinewood Farms of Tennessee and GENEX BEEF AI stud. A sure shot heifer bull with exceptional phenotype, exceptional depth of body, and represents great breed character in a well-balanced number package. Coleman Donna 0153, his dam, is a great three-year-old with a beautiful udder and look. She has a progeny



Coleman Below Zero 2106
Sire of Embryos

production record of BR 1@91, WR 1@107, YR 1@104 and her dam is a full sister to Coleman Donna 8146 and Coleman Donna 4203, who is the dam of the \$150,000 Coleman Banker 9215. **These are IVF embryos (Trans Ova), we are selling three embryos in this mating and guaranteeing one pregnancy.** Buyer has the option to take six embryos out of this mating and we will guarantee 2 pregnancies.

Lot 7 – 3 IVF EMBRYOS

Coleman Donna 504 x Sitz Barricade 632F



Coleman Donna 504
Dam of Embryos

Sitz Stellar 726D

Sitz Barricade 632F

19078148 SITZ Barbaramere Nell 765D

S A V Resource 1441

Coleman Donna 504

18238090 Coleman Donna 714

CED	BW	WW	YW	MILK	SC	MARB	RE	SM
7	2.4	76	139	23	.95	.33	.73	82

Bid price is per embryo. Package prices is 3x bid price. Buyer is responsible for cost of shipping embryos.

Online EMBRYO Auction Closes 4/18 | 7 PM (MST)

Donna 504 has been a visitor favorite since she was a calf here. 504 has done a tremendous job here with her calves, and her progeny have been some of the favorites in our bull and female sales. Ratio's on her BR 4/89, NR 4/110, YR 3/110. 504's sons topped our 2021 bull sale, many going to registered breeders all across the US. Sitz Barricade, a featured Genex sire, is a new bull we have started using, lots of body, deep ribbed, and good footed. Barricade is now deceased, and semen is extremely limited. Extremely exciting mating here for sure. **These are IVF embryos (Trans Ova), we are selling three embryos in this mating and guaranteeing one pregnancy.** These embryos are exportable to Canada.



Sitz Barricade 632F
Sire of Embryos

Lot 8 – 3 IVF EMBRYOS

Coleman Chloe 975 x Coleman Below Zero 2106



Coleman Chloe 975
Dam of Embryos

Sitz Stellar 726D

Coleman Below Zero 2106

20512901

Sitz Stellar 726D

Coleman Bravo 6313

Coleman Chloe 975

19483324

Lawsons Chloe C815

CED	BW	WW	YW	MILK	SC	MARB	RE	SM
8	-0.1	74	133	27	.88	.48	.53	81

Bid price is per embryo. Package prices is 3x bid price. Buyer is responsible for cost of shipping embryos.

Online EMBRYO Auction Closes 4/18 | 7 PM (MST)

//975" has been a visitor favorite since she was a calf here. "975" has 2 calves BR 6/95,

NR 2/106, and YR 1/109. "975" has a Glacier heifer calf at her side now, and she is exceptional, visitors here this summer have loved her. "975" is a flush sister to Triumph, she was our high selling female in our 2019 female sale to Jocko Valley in MT. We feel she has as much potential as any female we have had the opportunity to work with here. Big time mating here! Coleman Below Zero 2106 was the \$150,000 top-selling bull of the 2023 Coleman Angus bull sale and selected by Janssen Angus of Iowa, Marshall Fenner Farms of Missouri, Pinewood Farms of Tennessee and GENEX BEEF AI stud. A sure shot heifer bull with exceptional phenotype, exceptional depth of body, and represents great breed character in a well-balanced number package. Coleman Donna 0153, his



Coleman Below Zero 2106
Sire of Embryos

dam, is a great three-year-old with a beautiful udder and look. She has a progeny production record of BR 1@91, WR 1@107, YR 1@104 and her dam is a full sister to Coleman Donna 8146 and Coleman Donna 4203, who is the dam of the \$150,000 Coleman Banker 9215. These are IVF embryos (Trans Ova), we are selling three embryos in this mating and guaranteeing one pregnancy.

Lot 9 – 3/6 IVF SF F EMBRYOS

Coleman Chloe 975 x J Trademark 1037



Coleman Chloe 975
Dam of Embryos

Sitz Resilient 10208

J Trademark 1037

20160403 Mill Brae Iden Georgina 4086

Coleman Bravo 6313

Coleman Chloe 975

19483324 Lawsons Chloe C815

CED	BW	WW	YW	MILK	SC	MARB	RE	SM
10	0.6	83	150	28	.77	.55	.72	82

Bid price is per embryo. Package prices is 3/6x bid price. Buyer is responsible for cost of shipping embryos.

Online EMBRYO Auction Closes 4/18 | 7 PM (MST)

“975” has been a visitor favorite since she was a calf here. “975” has 2 calves BR 6/95, NR 2/106, and YR 1/109. “975” has a Glacier heifer calf at her side now, and she is exceptional, visitors here this summer have loved her. “975” is a flush sister to Triumph, she was our high selling female in our 2019 female sale to Jocko Valley in MT. We feel she has as much potential as any female we have had the opportunity to work with here. Big time mating here! Trademark was selected as the \$165,000 top selling bull of the Cattleman’s Cut Bull Sale. He is a low-birth weight calving ease bull, with double digit calving ease direct, with an outcross pedigree for our program. “Trademark” has caught the attention of cattleman from all across the country. He has tremendous performance, added muscle shape, with unique combination of phenotype, and an incredible number package. We are excited to own Trademark’s dam. She was the record selling \$210,000 ½



J Trademark 1037
Sire of Embryos

interest female in our recent female sale to Jocko Valley in MT. She has a progeny record of 6 head/103 weaning, and a calving interval of 347 on 6 head. **These are IVF embryos (Trans Ova), we are selling three embryos in this mating and guaranteeing one pregnancy.** Buyer has the option to take six embryos out of this mating and we will guarantee 2 pregnancies. These embryos are exportable to Canada. These embryos have been sexed for females, 90-95% accurate.

Lot 10 – 3 IVF EMBRYOS

Coleman Chloe 173 x Coleman Rock 7200



Coleman Chloe 173
Dam of Embryos

O C C Juneau 807J

Coleman Rock 7200

19107936 Coleman Donna 714

Coleman Bravo 6313

Coleman Chloe 173

20076459 Lawsons Chloe C815

CED	BW	WW	YW	MILK	SC	MARB	RE	SM
10	0.4	79	134	29	1.30	-.01	.81	101

Bid price is per embryo. Package prices is 3x bid price. Buyer is responsible for cost of shipping embryos.

Online EMBRYO Auction Closes 4/18 | 7 PM (MST)

173 was the \$130,000 selling foundation heifer we donated to the American Junior Angus Association. 173 was the top \$M female we had in our herd when we sold her. 173 calved and has a beautiful udder, extremely wedge shaped, long bodied, with a big hip. She is a flush sister to the record selling female here, Chloe 9275. We feel 173 has a very bright future ahead of her. Big time mating here! Rock was the \$240,000 record selling bull in our 2022 female sale to Ingram Angus and Sandford Cattle. Demand for Rock is at an all-time high across the World right now. The cattleman's kind is a perfect way describe the early indicators on Coleman Rock 7200. Rock would currently be one of the heaviest used sires here at Coleman Angus. He sires cattle with extra three-dimensional shape with added performance in the right size package. His offspring have



Coleman Rock 7200
Sire of Embryos

tons of center body and explosive muscle shape in a sound-structured package. Rock is low birthweight, high growth, and ranks in the Top 10% for \$M. **These are IVF embryos (Trans Ova), we are selling three embryos in this mating and guaranteeing one pregnancy.** These embryos are exportable to Canada.

Lot 11 – 3/6 IVF EMBRYOS

Coleman Chloe 173 x J Trademark 1037



Coleman Chloe 173
Dam of Embryos

Sitz Resilient 10208

J Trademark 1037

20160403 Mill Brae Iden Georgina 4086

Coleman Bravo 6313

Coleman Chloe 173

20076459 Lawsons Chloe C815

CED	BW	WW	YW	MILK	SC	MARB	RE	SM
10	0.8	86	152	31	.84	.35	.88	101

Bid price is per embryo. Package prices is 3/6x bid price. Buyer is responsible for cost of shipping embryos.

Online EMBRYO Auction Closes 4/18 | 7 PM (MST)

173 was the \$130,000 selling foundation heifer we donated to the American Junior Angus Association. 173 was the top \$M female we had in our herd when we sold her. 173 calved and has a beautiful udder, extremely wedge shaped, long bodied, with a big hip. She is a flush sister to the record selling female here, Chloe 9275. We feel 173 has a very bright future ahead of her. This mating to Trademark will be extremely good. Trademark was selected as the \$165,000 top selling bull of the Cattleman's Cut Bull Sale. He is a low-birth weight calving ease bull, with double digit calving ease direct, with an outcross pedigree for our program. "Trademark" has caught the attention of cattleman from all across the country. He has tremendous performance, added muscle shape, with unique combination of phenotype, and an incredible number package. We are excited to own Trademark's dam. She was the record selling \$210,000 ½ interest female



J Trademark 1037
Sire of Embryos

in our recent female sale to Jocko Valley in MT. She has a progeny record of 6 head/103 weaning, and a calving interval of 347 on 6 head. **These are IVF embryos (Trans Ova), we are selling three embryos in this mating and guaranteeing one pregnancy.** Buyer has the option to take six embryos out of this mating and we will guarantee 2 pregnancies. These embryos are exportable to Canada.

Lot 12 – 3 IVF SF F EMBRYOS

Coleman Donna 7100 x Coleman Rock 7200



Coleman Donna 7100
Dam of Embryos

O C C Juneau 807J

Coleman Rock 7200

19107936 Coleman Donna 714

S A V Resource 1441

Coleman Donna 7100

18838366 Coleman Donna 714

CED	BW	WW	YW	MILK	SC	MARB	RE	SM
9	0.6	74	129	25	1.30	-.03	.69	95

Bid price is per embryo. Package prices is 3x bid price. Buyer is responsible for cost of shipping embryos.

Online EMBRYO Auction Closes 4/18 | 7 PM (MST)

“7100” is a Pathfinder Female. “7100” has production records of 4/97 for BR, 4/110 NR, and 3/109 YR. “7100” has one of the best sets of ET calves here this spring, she’s making here mark here! “7100” is the dam of our herd bull “Logo 947”, that Little Goose Ranch in WY bought spring possession from us in our 2020 bull sale. First calves this spring out of “947” look incredibly good. “7100” has been extremely productive here for us, we are excited to be partners with Shady Brook in TN on this tremendous young female. “7100” has another herd bull in the making on her right now, she is extremely long, tons of power, excellent udder. I feel she is one of the really good young females on the ranch here. Rock was the \$240,000 record selling bull in our 2022 female sale to Ingram Angus and Sandford Cattle. Demand for Rock is at an all-time high across the World right now. The cattleman’s kind is a perfect way describe the early indicators on Coleman Rock 7200. Rock would currently be one of the heaviest used sires here at Coleman Angus. He sires



Coleman Rock 7200
Sire of Embryos

cattle with extra three-dimensional shape with added performance in the right size package. His offspring have tons of center body and explosive muscle shape in a sound-structured package. Rock is low birthweight, high growth, and ranks in the Top 10% for \$M. **These are IVF embryos (Trans Ova), we are selling three embryos in this mating and guaranteeing one pregnancy.** These embryos are exportable to Canada. These embryos have been sexed for females, 90-95% accurate.

Lot 13 – 3 IVF SF F EMBRYOS

Coleman Donna 7100 x J Trademark 1037



Coleman Donna 7100
Dam of Embryos

Sitz Resilient 10208

J Trademark 1037

20160403 Mill Brae Iden Georgina 4086

S A V Resource 1441

Coleman Donna 7100

18838366 Coleman Donna 714

CED	BW	WW	YW	MILK	SC	MARB	RE	SM
9	1.1	81	146	27	.84	.33	.77	95

Bid price is per embryo. Package prices is 3x bid price. Buyer is responsible for cost of shipping embryos.

Online EMBRYO Auction Closes 4/18 | 7 PM (MST)

“7100” is a Pathfinder Female. “7100” has production records of 4/97 for BR, 4/110 NR, and 3/109 YR. “7100” has one of the best sets of ET calves here this spring, she’s making here mark here! “7100” is the dam of our herd bull “Logo 947”, that Little Goose Ranch in WY bought spring possession from us in our 2020 bull sale. First calves this spring out of “947” look incredibly good. “7100” has been extremely productive here for us, we are excited to be partners with Shady Brook in TN on this tremendous young female. “7100” has another herd bull in the making on her right now, she is extremely long, tons of power, excellent udder. I feel she is one of the really good young females on the ranch here. Trademark was selected as the \$165,000 top selling bull of the Cattleman’s Cut Bull Sale. He is a low-birth weight calving ease bull, with double digit calving ease direct, with an outcross pedigree for our program. “Trademark” has caught the attention of cattleman from all across the country. He has tremendous performance, added muscle shape,



J Trademark 1037
Sire of Embryos

with unique combination of phenotype, and an incredible number package. We are excited to own Trademark’s dam. She was the record selling \$210,000 ½ interest female in our recent female sale to Jocko Valley in MT. She has a progeny record of 6 head/103 weaning, and a calving interval of 347 on 6 head. **These are IVF embryos (Trans Ova), we are selling three embryos in this mating and guaranteeing one pregnancy.** These embryos are exportable to Canada. These embryos have been sexed for females, 90-95% accurate.

Lot 14 – 3 IVF EMBRYOS

Coleman Donna 9220 x Coleman Glacier 041



Coleman Donna 4203
Dam of Embryos

S A V Renown 3439

Coleman Glacier 041

19866409 Coleman Donna 439

S A V Resource 1441

Coleman Donna 9220

19717715 Coleman Donna 4203

CED	BW	WW	YW	MILK	SC	MARB	RE	SM
8	0.2	72	130	31	.40	-.20	.85	87

Bid price is per embryo. Package prices is 3x bid price. Buyer is responsible for cost of shipping embryos.

Online EMBRYO Auction Closes 4/18 | 7 PM (MST)

Coleman Donna 9220 – The definition of what you want your two-year-old females to look like is this daughter of SAV Resource 1441, back to the now deceased Coleman Donna 4203. This was our lot 1 female this past fall and we sold one-half interest for \$45,000 for a \$90,000 valuation. She ranks among current dams as the 14th highest daughter of Resource for \$M for non-parent females in the breed. Coleman Banker, a maternal brother, was the \$75,000 feature in the same sale and two other maternal sisters sold for \$22,000 and \$22,500. Another maternal sister sold in the 2020 sale for \$20,000. “Glacier” has been a standout since he was born. Glacier’s first calves are on the ground, they are very impressive as babies. Glacier has the best feet I’ve ever seen on a bull before, extremely sound, and athletic, with a great herd bull look and presence. He’s the bull the industry has been looking for. Glacier’s flush sisters are calving this spring, and look impressive, perfect udders, great feet, stout, with a great look. We believe it all starts with



Coleman Glacier 041
Sire of Embryos

the mother cow; Glaciers Pathfinder dam is the fourth consecutive generation to make it the donor pen here. “439” has ratios of BR 5/93, NR 5/107, and YR 5/106. 439 has been a favorite of visitors here since she was a heifer calf, we’ve kept 4 different sons of her here that we are currently using, she would be as good as any female we’ve ever had the opportunity to work with here. “439” is also the Dam of Ace 989, who is doing a tremendous job for us also. These are IVF embryos (Trans Ova), we are selling three embryos in this mating and guaranteeing one pregnancy.

Lot 15 – 3/6 IVF EMBRYOS

Coleman Donna 9220 x Coleman Below Zero 2106



Coleman Donna 4203
Dam of Embryos

Sitz Stellar 726D

Coleman Below Zero 2106

20512901

Sitz Stellar 726D

S A V Resource 1441

Coleman Donna 9220

19717715

Coleman Donna 4203

CED	BW	WW	YW	MILK	SC	MARB	RE	SM
8	-0.5	67	124	30	.70	.24	.70	88

Bid price is per embryo. Package prices is 3/6x bid price. Buyer is responsible for cost of shipping embryos.

Online EMBRYO Auction Closes 4/18 | 7 PM (MST)

Coleman Donna 9220 – The definition of what you want your two-year-old females to look like is this daughter of SAV Resource 1441, back to the now deceased Coleman Donna 4203. This was our lot 1 female this past fall and we sold one-half interest for \$45,000 for a \$90,000 valuation. She ranks among current dams as the 14th highest daughter of Resource for \$M for non-parent females in the breed. Coleman Banker, a maternal brother, was the \$75,000 feature in the same sale and two other maternal sisters sold for \$22,000 and \$22,500. Another maternal sister sold in the 2020 sale for \$20,000. Coleman Below Zero 2106 was the \$150,000 top-selling bull of the 2023 Coleman Angus bull sale and selected by Janssen Angus of Iowa, Marshall Fenner Farms of Missouri, Pinewood Farms of Tennessee and GENEX BEEF AI stud. A sure shot heifer bull with exceptional phenotype, exceptional depth of body, and represents great breed character in a well-balanced number package. Coleman Donna 0153, his dam, is a great three-year-old with a



Coleman Below Zero 2106
Sire of Embryos

beautiful udder and look. She has a progeny production record of BR 1@91, WR 1@107, YR 1@104 and her dam is a full sister to Coleman Donna 8146 and Coleman Donna 4203, who is the dam of the \$150,000 Coleman Banker 9215. **These are IVF embryos (Trans Ova), we are selling three embryos in this mating and guaranteeing one pregnancy.** Buyer has the option to take six embryos out of this mating and we will guarantee 2 pregnancies.

Lot 16 – 3 IVF EMBRYOS

Coleman Miss Wix 0204 x Coleman Glacier 041



Coleman Miss Wix 0204
Dam of Embryos

S A V Renown 3439

Coleman Glacier 041

19866409 Coleman Donna 439

Coleman Alliance 6156

Coleman Miss Wix 0204

16879054 Coleman Miss Wix 7138

CED	BW	WW	YW	MILK	SC	MARB	RE	SM
6	0.7	61	110	31	.36	-.02	.44	73

Bid price is per embryo. Package prices is 3x bid price. Buyer is responsible for cost of shipping embryos.

Online EMBRYO Auction Closes 4/18 | 7 PM (MST)

//0204" is a pathfinder female that has proven herself in the pasture. "0204" had a calving interval of 357 on her first 8 calves before we pulled her out of production to flush her. "0204" has a BR of 9/100, NR 9/109 and YR 9/107. Exceptionally good cow here, excellent udder, disposition, feet, really can't pick on her. "0204" never misses. "0204" is currently 13 years old, has a great calf at her side again, pretty special female here. "Glacier" has been a standout since he was born. Glacier's first calves are on the ground, they are very impressive as babies. Glacier has the best feet I've ever seen on a bull before, extremely sound, and athletic, with a great herd bull look and presence. He's the bull the industry has been looking for. Glacier's flush sisters are calving this spring, and look impressive, perfect udders, great feet, stout, with a great look. We believe it all starts with the mother cow; Glaciers Pathfinder dam is the fourth consecutive generation to make it the donor



Coleman Glacier 041
Sire of Embryos

pen here. "439" has ratios of BR 5/93, NR 5/107, and YR 5/106. 439 has been a favorite of visitors here since she was a heifer calf, we've kept 4 different sons of her here that we are currently using, she would be as good as any female we've ever had the opportunity to work with here. "439" is also the Dam of Ace 989, who is doing a tremendous job for us also. **These are IVF embryos (Trans Ova), we are selling three in the mating and guaranteeing one pregnancy.**

Lot 17 – 3/6 IVF EMBRYOS

Lawsons Chloe C815 x PM Executive Decision 5'17



Lawsons Chloe C815
Dam of Embryos

Bar-E-L Natural Law 52Y

PM Executive Decision 5'17

19310189 PM Blossom 124'13

S A V Renown 3439

Lawsons Chloe C815

18359250 Lawsons Chloe Z341

CED	BW	WW	YW	MILK	SC	MARB	RE	SM
1	3.1	78	135	23	1.03	.28	1.02	62

Bid price is per embryo. Package prices is 3/6x bid price. Buyer is responsible for cost of shipping embryos.

Online EMBRYO Auction Closes 4/18 | 7 PM (MST)

C815 needs no introduction here, she has produced more high valued cattle here in the past few years than any cow we have owned. Here is your opportunity to acquire genetics from one of the hottest cows in the breed. Coleman Chloe 9275, a maternal sister, is the \$375,000 one-half interest, for a \$750,000 valuation, and the record selling female in the history of our program. "9275" is the dam of the Record Selling Flush in our 2022 Your Maternal Source Female Sale for \$80,000. Coleman Chloe 034, another maternal sister, was the \$150,000 one-half interest, for a \$300,000 valuation top selling bred heifer of our 2021 "Your Maternal Source Female Sale". Coleman Triumph 9145, a maternal brother to these embryos, was the \$225,000 one-half interest, top-selling lot of the 2020 Your Maternal Source Sale for a \$450,000 valuation. There's an extensive list of maternal siblings to these embryos that have sold very well here. The sire of these embryos is PM Executive Decision. Executive Decision is a Canadian bull that we have used here quite a bit.



PM Executive Decision 5'17
Sire of Embryos

He sire's cattle with added muscle shape, length, and good feet. These are some of the very last embryos we have out of "197". Her daughters here are doing a tremendous job for us. **These are IVF embryos (Trans Ova), we are selling three embryos in this mating and guaranteeing one pregnancy.** Buyer has the option to take six embryos out of this mating and we will guarantee 2 pregnancies. These embryos are exportable to Canada.

Lot 18 – 3/6 IVF EMBRYOS

Coleman Donna 023 x Coleman Charlo 0256



Coleman Donna 046
Flush Sister to Dam of Embryos

O C C Paxton 730P

Coleman Charlo 0256

16879074

Bohi Abigale 6014

S A V Renown 3439

Coleman Donna 023

19857109

Coleman Donna 439

CED	BW	WW	YW	MILK	SC	MARB	RE	SM
8	0.1	58	103	28	.91	.07	.77	79

Bid price is per embryo. Package prices is 3/6x bid price. Buyer is responsible for cost of shipping embryos.

Online EMBRYO Auction Closes 4/18 | 7 PM (MST)

“023” The flush sister to Coleman Glacier 041 the top selling bull of the 2022 spring bull sale. She is also a flush sister to Donna 046, who sold for \$120,000 for ½ interest to Ingram Angus in TN. This past summer when we were trying to pick out our favorite two sisters to Glacier, it came down to these two. “023” and “046” (pictured above) Jeremy was fond of “023” and I liked “046”, so we flipped a coin to see which female to put in the sale and “046” was the one. “023” is a stout made, deep bodied female, who had a beautiful udder and did a wonderful job on her first natural calf and comes in the right kind of package. The progeny out of Charlo are very good, exactly what we have been looking for, tremendous amount of natural base width, wide topped, and a true power bull, all in a sleep all night heifer bull. Charlo is seeing tremendous use all around the world. It’s been very rewarding to see progeny out of Charlo topping



Coleman Charlo 0256
Sire of Embryos

many sales around the country. His daughters here in production have perfect udders, very maternal. Big time mating here for sure. **These are IVF embryos (Trans Ova), we are selling three embryos in this mating and guaranteeing one pregnancy.** Buyer has the option to take six embryos out of this mating and we will guarantee 2 pregnancies. These embryos are exportable to Canada.

Lot 19 – 3 IVF EMBRYOS

Coleman Donna 023 x Sitz Barricade 632F



Coleman Donna 046
Flush Sister to Dam of Embryos

Sitz Stellar 726D

Sitz Barricade 632F

19078148 SITZ Barbaramere Nell 765D

S A V Renown 3439

Coleman Donna 023

19857109 Coleman Donna 439

CED	BW	WW	YW	MILK	SC	MARB	RE	SM
3	2.3	74	130	24	.71	.24	.85	86

Bid price is per embryo. Package prices is 3x bid price. Buyer is responsible for cost of shipping embryos.

Online EMBRYO Auction Closes 4/18 | 7 PM (MST)

“023” The flush sister to Coleman Glacier 041 the top selling bull of the 2022 spring bull sale. She is also a flush sister to Donna 046, who sold for \$120,000 for ½ interest to Ingram Angus in TN. This past summer when we were trying to pick out our favorite two sisters to Glacier, it came down to these two. “023” and “046” (pictured above) Jeremy was fond of “023” and I liked “046”, so we flipped a coin to see which female to put in the sale and “046” was the one. “023” is a stout made, deep bodied female, who had a beautiful udder and did a wonderful job on her first natural calf and comes in the right kind of package. Sitz Barricade, a featured Genex sire, is a new bull we have started using, lots of body, deep ribbed, and good footed. Barricade is now deceased, and semen is extremely limited. Extremely exciting mating here for sure. **These are IVF embryos (Trans Ova), we are selling three embryos in this mating and guaranteeing one pregnancy.** These embryos are exportable to Canada.



Sitz Barricade 632F
Sire of Embryos

Lot 20 – 3/6 IVF SF F EMBRYOS

Coleman Eriskay 291 x Leachman Right Time



Coleman Eriskay 291
Dam of Embryos

N Bar Emulation EXT

Leachman Right Time

11750711

Leachman Erica 0025

Coleman Juneau 044

Coleman Eriskay 291

17246470

Sinclair Eriskay 2N1 7883

CED	BW	WW	YW	MILK	SC	MARB	RE	SM
11	-0.4	41	74	26	.65	.11	.30	64

Bid price is per embryo. Package prices is 3/6x bid price. Buyer is responsible for cost of shipping embryos.

Online EMBRYO Auction Closes 4/18 | 7 PM (MST)

“291” has been a particularly good female here. “291” is the dam of “Navigator 614” a proven bull that is leaving an extremely good set of daughters here, and whose sons have been topping our sales. “Navigator” throws as much true muscle as any bull we have ever used here. “Navigator” sons were very well received in our 2019 bull sale. We sold out of semen on Navigator last spring but have some more now available. “291” has 6 calves with a calving interval of 367, BR 8/88 NR 8/105 and YR 7/101. “291” has a perfect udder, long sided, deep ribbed, and complete. Not very often you have a female that is extreme low BW like “291” and then throws this much performance. This mating will be special. Right Time is known as one of the best female-making sires in the history of the breed. I really feel like this mating could be very special. There’s no guesswork



Leachman Right Time
Sire of Embryos

here. When the daughters out of this mating come into production, watch out. Whoever buys these, please let me know how these turn out. **These are IVF embryos (Trans Ova), we are selling three embryos in this mating and guaranteeing one pregnancy.** Buyer has the option to take six embryos out of this mating and we will guarantee 2 pregnancies. These embryos are exportable to Canada. These embryos have been sexed for females, 90-95% accurate.

www.LiveAuctions.TV

Lot 21 – 3/6 IVF SF F EMBRYOS

Coleman Eriskay 291 x Coleman Banker 9215



Coleman Eriskay 291
Dam of Embryos

Coleman Bravo 6313

Coleman Banker 9215

19583404 Coleman Donna 4203

Coleman Juneau 044

Coleman Eriskay 291

17246470 Sinclair Eriskay 2N1 7883

CE	BW	WW	YW	MILK	SC	MARB	RE	SM
17	-2.4	58	102	32	.69	.29	.47	91

Bid price is per embryo. Package prices is 3/6x bid price. Buyer is responsible for cost of shipping embryos.

Online EMBRYO Auction Closes 4/18 | 7 PM (MST)

“291” has been a particularly good female here. “291” is the dam of “Navigator 614” a proven bull that is leaving an extremely good set of daughters here, and whose sons have been topping our sales. “Navigator” throws as much true muscle as any bull we have ever used here. “Navigator” sons were very well received in our 2019 bull sale. We sold out of semen on Navigator last spring but have some more now available. “291” has 6 calves with a calving interval of 367, BR 8/88 NR 8/105 and YR 7/101. “291” has a perfect udder, long sided, deep ribbed, and complete. Not very often you have a female that is extreme low BW like “291” and then throws this much performance. These embryos are sired by the now deceased “Banker” who is a bull we kept to use in our program, visitors have loved him here this summer. “Banker” is extremely impressive, exceptionally smooth, extremely sound on the move, stout, with about as much rib shape and depth as you can put in one. Banker’s flush sisters that calved here this summer are as impressive



Coleman Banker 9215
Sire of Embryos

as anything we have ever calved here. We have plugged Banker in here extremely hard, Banker’s first calves are very impressive. Calves come light and explode quickly. Banker is one of the heaviest used sires here at Coleman Angus. **These are IVF embryos (Trans Ova), we are selling three embryos in this mating and guaranteeing one pregnancy.** Buyer has the option to take six embryos out of this mating and we will guarantee 2 pregnancies. These embryos are exportable to Canada. These embryos have been sexed for females, 90-95% accurate.

Lot 22 – 3/6 IVF SF F EMBRYOS

Coleman Everelda Entense 4327 x Coleman Rock 7200



Coleman Everelda Entense 4327
Dam of Embryos

O C C Juneau 807J

Coleman Rock 7200

19107936 Coleman Donna 714

Coleman Charlo 0256

Coleman Everelda Entense 4327

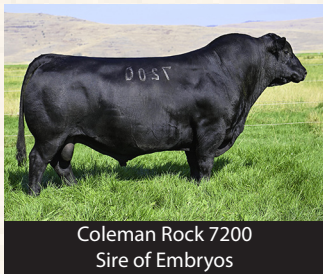
18105675 Coleman Everelda Entense2235

CED	BW	WW	YW	MILK	SC	MARB	RE	SM
7	1.1	72	122	29	1.32	.06	.74	89

Bid price is per embryo. Package prices is 3/6x bid price. Buyer is responsible for cost of shipping embryos.

Online EMBRYO Auction Closes 4/18 | 7 PM (MST)

“4327” is a Pathfinder female, with a calving interval of 366 days on her first 6 calves, BR 6/97, NR 6/116, and YR 5/115. “4327” has a much power as any female we’ve ever had the opportunity to work with here. She is the Dam of Coleman Alamo, who was the \$40,000 feature bull in our 2022 bull sale. Alamo has seen worldwide demand for his semen. “4327’s” pedigree is as maternal as you can make one. Her daughter was one of our feature’s last fall in our female sale, selling for \$22,000 to Hideaway Cattle in MT. She can make great females and bulls, excellent mating here for sure. Very rarely have we sold embryos out of this female. Rock was the \$240,000 record selling bull in our 2022 female sale to Ingram Angus and Sandford Cattle. Demand for Rock is at an all-time high across the World right now. The cattleman’s kind is a perfect way describe the early indicators on Coleman Rock 7200. Rock would currently be one of the heaviest used sires here at Coleman Angus. He sires cattle with extra three-dimensional shape with added performance in the right



Coleman Rock 7200
Sire of Embryos

size package. His offspring have tons of center body and explosive muscle shape in a sound-structured package. Rock is low birthweight, high growth, and ranks in the Top 10% for \$M. **These are IVF embryos (Trans Ova), we are selling three embryos in this mating and guaranteeing one pregnancy.** Buyer has the option to take six embryos out of this mating and we will guarantee 2 pregnancies. These embryos are exportable to Canada. These embryos have been sexed for females, 90-95% accurate.

Lot 23 – 3 IVF SF F EMBRYOS

Coleman Everelda Entense 4327 x N Bar Emulation EXT



Coleman Everelda Entense 4327
Dam of Embryos

Emulation N Bar 5522

N Bar Emulation EXT

10776479.00 N Bar Primrose 2424

Coleman Charlo 0256

Coleman Everelda Entense 4327

18105675 Coleman Everelda Entense2235

CED	BW	WW	YW	MILK	SC	MARB	RE	SM
4	2.1	54	95	28	.52	.24	.51	62

Bid price is per embryo. Package prices is 3x bid price. Buyer is responsible for cost of shipping embryos.

Online EMBRYO Auction Closes 4/18 | 7 PM (MST)

//4327" is a Pathfinder female, with a calving interval of 366 days on her first 6 calves, BR 6/97, NR 6/116, and YR 5/115. "4327" has a much power as any female we've ever had the opportunity to work with here. She is the Dam of Coleman Alamo, who was the \$40,000 feature bull in our 2022 bull sale. Alamo has seen worldwide demand for his semen. "4327's" pedigree is as maternal as you can make one. Her daughter was one of our feature's last fall in our female sale, selling for \$22,000 to Hideaway Cattle in MT. She can make great females and bulls, excellent mating here for sure. Very rarely have we sold embryos out of this female. "Ext" needs no introduction, he's a bull that we have reached back to use on a few females here. These females out of this mating will be "Foundation Females" to build any herd around. Extremely good mating here for sure. **These are IVF embryos (Trans Ova), we are selling three embryos in this mating and guaranteeing one pregnancy.** These embryos are exportable to Canada. These embryos have been sexed for females, 90-95% accurate.



N Bar Emulation EXT
Sire of Embryos

Lot 24 – 3 IVF SF F EMBRYOS

Coleman Donna 7232 x Coleman Rock 7200



Coleman Donna 7232
Dam of Embryos

O C C Juneau 807J

Coleman Rock 7200

19107936 Coleman Donna 714

S A V Resource 1441

Coleman Donna 7232

19110860 Coleman Donna 714

CED	BW	WW	YW	MILK	SC	MARB	RE	SM
5	1.6	75	131	23	1.14	.02	.83	85

Bid price is per embryo. Package prices is 3x bid price. Buyer is responsible for cost of shipping embryos.

Online EMBRYO Auction Closes 4/18 | 7 PM (MST)

//7232" has production records of BR 3/96, NR 3/107, and YR 2/106. She has a tremendous herd bull on her now from our summer calving group. "7232" is throwing a tremendous amount of performance in her progeny, she has the power to change one! "7232" is extremely long, big hiped, with a beautiful udder. This Resource X Donna 714 cross has been one of the best we have ever made here. "7232" has the potential to make a big time "Herd Bull". Trademark was selected as the \$165,000 top selling bull of the Cattleman's Cut Bull Sale. He is a low-birth weight calving ease bull, with double digit calving ease direct, with an outcross pedigree for our program. "Trademark" has caught the attention of cattleman from all across the country. He has tremendous performance, added muscle shape, with unique combination of phenotype, and an incredible number package. We are excited to own Trademark's dam. She was the record selling



Coleman Rock 7200
Sire of Embryos

\$210,000 ½ interest female in our recent female sale to Jocko Valley in MT. She has a progeny record of 6 head/103 weaning, and a calving interval of 347 on 6 head. **These are IVF embryos (Trans Ova), we are selling three embryos in this mating and guaranteeing one pregnancy.** Buyer has the option to take six embryos out of this mating and we will guarantee 2 pregnancies. These embryos are exportable to Canada. These embryos have been sexed for females, 90-95% accurate.

Lot 25 – 3/6 IVF SF F EMBRYOS

Coleman Donna 7232 x J Trademark 1037



Coleman Donna 7232
Dam of Embryos

Sitz Resilient 10208

J Trademark 1037

20160403 Mill Brae Iden Georgina 4086

S A V Resource 1441

Coleman Donna 7232

19110860 Coleman Donna 714

CE	BW	WW	YW	MILK	SC	MARB	RE	SM
6	2.0	82	149	25	.68	.37	.91	85

Bid price is per embryo. Package prices is 3/6x bid price. Buyer is responsible for cost of shipping embryos.

Online EMBRYO Auction Closes 4/18 | 7 PM (MST)

"7232" has production records of BR 3/96, NR 3/107, and YR 2/106. She has a tremendous herd bull on her now from our summer calving group. "7232" is throwing a tremendous amount of performance in her progeny, she has the power to change one! "7232" is extremely long, big hiped, with a beautiful udder. This Resource X Donna 714 cross has been one of the best we have ever made here. "7232" has the potential to make a big time "Herd Bull". Trademark was selected as the \$165,000 top selling bull of the Cattleman's Cut Bull Sale. He is a low-birth weight calving ease bull, with double digit calving ease direct, with an outcross pedigree for our program. "Trademark" has caught the attention of cattleman from all across the country. He has tremendous performance, added muscle shape, with unique combination of phenotype, and an incredible number package. We are excited to own Trademark's dam. She was the record



J Trademark 1037
Sire of Embryos

selling \$210,000 1/2 interest female in our recent female sale to Jocko Valley in MT. She has a progeny record of 6 head/103 weaning, and a calving interval of 347 on 6 head. **These are IVF embryos (Trans Ova), we are selling three embryos in this mating and guaranteeing one pregnancy.** Buyer has the option to take six embryos out of this mating and we will guarantee 2 pregnancies. These embryos are exportable to Canada. These embryos have been sexed for females, 90-95% accurate.

www.LiveAuctions.TV

Lot 26 – 3/6 IVF EMBRYOS

Coleman Donna 7232 x Coleman Patron 269



Coleman Donna 7232
Dam of Embryos

Hummel South America

Coleman Patron 269

20503514 Coleman Donna 5247

S A V Resource 1441

Coleman Donna 7232

19110860 Coleman Donna 714

CE	BW	WW	YW	MILK	SC	MARB	RE	SM
5	2.3	75	133	21	.92	.15	.84	72

Bid price is per embryo. Package prices is 3/6x bid price. Buyer is responsible for cost of shipping embryos.

Online EMBRYO Auction Closes 4/18 | 7 PM (MST)

"7232" has production records of BR 3/96, NR 3/107, and YR 2/106. She has a tremendous herd bull on her now from our summer calving group. "7232" is throwing a tremendous amount of performance in her progeny, she has the power to change one! "7232" is extremely long, big hiped, with a beautiful udder. This Resource X Donna 714 cross has been one of the best we have ever made here. "7232" has the potential to make a big time "Herd Bull". Trademark was selected as the \$165,000 top selling bull of the Cattleman's Cut Bull Sale. He is a low-birth weight calving ease bull, with double digit calving ease direct, with an outcross pedigree for our program. "Trademark" has caught the attention of cattlemen from all across the country. He has tremendous performance, added muscle shape, with unique combination of phenotype, and an incredible number package. We are excited to own Trademark's dam. She was the record



Coleman Patron 269
Sire of Embryos

selling \$210,000 1/2 interest female in our recent female sale to Jocko Valley in MT. She has a progeny record of 6 head/103 weaning, and a calving interval of 347 on 6 head. **These are IVF embryos (Trans Ova), we are selling three embryos in this mating and guaranteeing one pregnancy.** Buyer has the option to take six embryos out of this mating and we will guarantee 2 pregnancies. These embryos are exportable to Canada. These embryos have been sexed for females, 90-95% accurate.

Lot 27 – 3/6 IVF EMBRYOS

Coleman Donna 5207 x Coleman Rock 7200



Coleman Donna 5207
Dam of Embryos

OCC Juneau 807J

Coleman Rock 7200

19107936 Coleman Donna 714

OCC Great Plains 943G

Coleman Donna 5207

18410196 Coleman Donna 714

CED	BW	WW	YW	MILK	SC	MARB	RE	SM
13	-1.2	58	98	29	.83	-.10	.65	91

Bid price is per embryo. Package prices is 3/6x bid price. Buyer is responsible for cost of shipping embryos.

Online EMBRYO Auction Closes 4/18 | 7 PM (MST)

“5207” is a Pathfinder female, with a calving interval of 352 days on her first 4 calves, BR 4/95, NR 4/109, and YR 3/108. She has bred back first straw AI for the 3rd year in a row. “5207” is extremely angular, deep sided, perfect udder, and a big, long level hip. We’re overly excited for her future here. “5207” consistently has one of our best calves each year, her son by Coleman Resource 710 was one of our high selling bulls in our 2021 Bull sale. “5207” just weaned a big stout bull by Coleman Rock 7200. These embryos will be full sibs to the bull she just weaned, who is a standout. Rock was the \$240,000 record selling bull in our 2022 female sale to Ingram Angus and Sandford Cattle. Demand for Rock is at an all-time high across the World right now. The cattleman’s kind is a perfect way describe the early indicators on Coleman Rock 7200. Rock would currently be one of the heaviest used sires here at Coleman Angus. He sires cattle with extra three-dimensional



Coleman Rock 7200
Sire of Embryos

shape with added performance in the right size package. His offspring have tons of center body and explosive muscle shape in a sound-structured package. Rock is low birthweight, high growth, and ranks in the Top 10% for \$M. **These are IVF embryos (Trans Ova), we are selling three embryos in this mating and guaranteeing one pregnancy.** Buyer has the option to take six embryos out of this mating and we will guarantee 2 pregnancies. These embryos are exportable to Canada.

Lot 28 – 3 IVF EMBRYOS

Coleman Donna 5207 x Coleman Below Zero 2106



Coleman Donna 5207
Dam of Embryos

Sitz Stellar 726D

Coleman Below Zero 2106

20512901

Sitz Stellar 726D

OCC Great Plains 943G

Coleman Donna 5207

18410196

Coleman Donna 714

CE	BW	WW	YW	MILK	SC	MARB	RE	SM
11	-1.5	56	98	30	.78	.23	.54	90

Bid price is per embryo. Package prices is 3x bid price. Buyer is responsible for cost of shipping embryos.

Online EMBRYO Auction Closes 4/18 | 7 PM (MST)

“5207” is a Pathfinder female, with a calving interval of 352 days on her first 4 calves, BR 4/95, NR 4/109, and YR 3/108. She has bred back first straw AI for the 3rd year in a row. “5207” is extremely angular, deep sided, perfect udder, and a big, long level hip. We’re overly excited for her future here. “5207” consistently has one of our best calves each year, her son by Coleman Resource 710 was one of our high selling bulls in our 2021 Bull sale. “5207” just weaned a big stout bull by Coleman Rock 7200. Coleman Below Zero 2106 was the \$150,000 top-selling bull of the 2023 Coleman Angus bull sale and selected by Janssen Angus of Iowa, Marshall Fenner Farms of Missouri, Pinewood Farms of Tennessee and GENEX BEEF AI stud. A sure shot heifer bull with exceptional phenotype, exceptional depth of body, and represents great breed character in a well-



Coleman Below Zero 2106
Sire of Embryos

balanced number package. Coleman Donna 0153, his dam, is a great three-year-old with a beautiful udder and look. She has a progeny production record of BR 1@91, WR 1@107, YR 1@104 and her dam is a full sister to Coleman Donna 8146 and Coleman Donna 4203, who is the dam of the \$150,000 Coleman Banker 9215. These are IVF embryos (Trans Ova), we are selling three embryos in this mating and guaranteeing one pregnancy.

www.LiveAuctions.TV

Lot 29 – 3/6 IVF EMBRYOS

Coleman Donna 5207 x S A V Renovation 6822



Coleman Donna 5207
Dam of Embryos

S A V Renown 3439

S A V Renovation 6822

18579309 S A V Madame Pride 0151

O C C Great Plains 943G

Coleman Donna 5207

18410196 Coleman Donna 714

CE	BW	WW	YW	MILK	SC	MARB	RE	SM
10	0.3	56	99	26	.72	.14	.41	75

Bid price is per embryo. Package prices is 3/6x bid price. Buyer is responsible for cost of shipping embryos.

Online EMBRYO Auction Closes 4/18 | 7 PM (MST)

“5207” is a Pathfinder female, with a calving interval of 352 days on her first 4 calves, BR 4/95, NR 4/109, and YR 3/108. She has bred back first straw AI for the 3rd year in a row. “5207” is extremely angular, deep sided, perfect udder, and a big, long level hip. We’re overly excited for her future here. “5207” consistently has one of our best calves each year, her son by Coleman Resource 710 was one of our high selling bulls in our 2021 Bull sale. “5207” just weaned a big stout bull by Coleman Rock 7200. The sire of these embryos is Renovation. “Renovation” is an impressive individual with abundance of muscle, body shape, depth of rib in a modest frame size. His daughters are easy fleshing, deep ribbed, with beautiful udders. We feel “Renovation” is one of the best and most proven Renown sons out there. Extremely good mating here for sure. **These are IVF embryos (Trans Ova), we are selling three embryos in this mating and guaranteeing one pregnancy.** Buyer has the option to take six embryos out of this mating and we will guarantee 2 pregnancies. These embryos are exportable to Canada.



S A V Renovation 6822
Sire of Embryos

Lot 30 – 3/6 IVF EMBRYOS

Coleman Donna 6206 x S A V Renovation 6822



Coleman Donna 6206
Dam of Embryos

S A V Renown 3439

S A V Renovation 6822

18579309

S A V Madame Pride 0151

Coleman Juneau 044

Coleman Donna 6206

18734920

Coleman Donna 2252

CEB	BW	WW	YW	MILK	SC	MARB	RE	SM
8	1.5	64	109	26	.80	.15	.22	73

Bid price is per embryo. Package prices is 3/6x bid price. Buyer is responsible for cost of shipping embryos.

Online EMBRYO Auction Closes 4/18 | 7 PM (MST)

“6206” is a very Maternal Pathfinder female that we have pulled out of production and started flushing. “6206” has an impeccable record here, calving interval of 364 on her first 5 calves, BR 5/96 NR 5/110 and YR 4/108. 6206 has always bred 1st straw AI every year of her life. Her son was one of our feature bulls in our 2022 Bull Sale and was one of the sale toppers. “6206” has proved herself the old-fashioned way, in the pasture. Her heifer calf by Triumph has been a visitor favorite here this summer. The sire of these embryos is “Renovation” is an impressive individual with abundance of muscle, body shape, depth of rib in a modest frame size. His daughters are easy fleshing, deep ribbed, with beautiful udders. We feel “Renovation” is one of the best and most proven Renown sons out there. Extremely good mating here for sure. **These are IVF embryos**



S A V Renovation 6822
Sire of Embryos

(Trans Ova), we are selling three embryos in this mating and guaranteeing one pregnancy. Buyer has the option to take six embryos out of this mating and we will guarantee 2 pregnancies. These embryos are exportable to Canada.

Lot 31 – 3 IVF EMBRYOS

Coleman Donna 6206 x Coleman Below Zero 2106



Coleman Donna 6206
Dam of Embryos

Sitz Stellar 726D

Coleman Below Zero 2106

20512901

Sitz Stellar 726D

Coleman Juneau 044

Coleman Donna 6206

18734920

Coleman Donna 2252

CED	BW	WW	YW	MILK	SC	MARB	RE	SM
9	-0.2	64	108	30	.56	.24	.34	88

Bid price is per embryo. Package prices is 3x bid price. Buyer is responsible for cost of shipping embryos.

Online EMBRYO Auction Closes 4/18 | 7 PM (MST)

“6206” is a very Maternal Pathfinder female that we have pulled out of production and started flushing. “6206” has an impeccable record here, calving interval of 364 on her first 5 calves, BR 5/96 NR 5/110 and YR 4/108. 6206 has always bred 1st straw AI every year of her life. Her son was one of our feature bulls in our 2022 Bull Sale and was one of the sale toppers. “6206” has proved herself the old-fashioned way, in the pasture. Her heifer calf by Triumph has been a visitor favorite here this summer. Coleman Below Zero 2106 was the \$150,000 top-selling bull of the 2023 Coleman Angus bull sale and selected by Janssen Angus of Iowa, Marshall Fenner Farms of Missouri, Pinewood Farms of Tennessee and GENEX BEEF AI stud. A sure shot heifer bull with exceptional phenotype, exceptional depth of body, and represents great breed character in a well-



Coleman Below Zero 2106
Sire of Embryos

balanced number package. Coleman Donna 0153, his dam, is a great three-year-old with a beautiful udder and look. She has a progeny production record of BR 1@91, WR 1@107, YR 1@104 and her dam is a full sister to Coleman Donna 8146 and Coleman Donna 4203, who is the dam of the \$150,000 Coleman Banker 9215. These are IVF embryos (Trans Ova), we are selling three embryos in this mating and guaranteeing one pregnancy.

www.LiveAuctions.TV

Lot 32 – 3/6 IVF EMBRYOS

Coleman Donna 928 x Coleman Glacier 041



Coleman Donna 928
Dam of Embryos

S A V Renown 3439

Coleman Glacier 041

19866409 Coleman Donna 439

SITZ Logo 12964

Coleman Donna 928

19544172 Coleman Donna 787

CED	BW	WW	YW	MILK	SC	MARB	RE	SM
9	-1.0	67	109	31	.97	-.06	.54	106

Bid price is per embryo. Package prices is 3/6x bid price. Buyer is responsible for cost of shipping embryos.

Online EMBRYO Auction Closes 4/18 | 7 PM (MST)

"928" has production records of Br 2/95, NR 2/110. "928" was our high selling bred heifer in our 2020 female sale. Her Dam, "787" is a cow we refer to as the "Sleeping Giant" here, she has become very dominant, and a visitor favorite here. We are excited to be able to get "928" back here in the program, and immediately she entered into our Donor program. "928" was a visitor favorite all summer back in 2020, and we're fortunate to be able to add her back to our program. When she calves, she will take an exceptional picture. "Glacier" has been a standout since he was born. Glacier's first calves are on the ground, they are very impressive as babies. Glacier has the best feet I've ever seen on a bull before, extremely sound, and athletic, with a great herd bull look and presence. He's the bull the industry has been looking for. Glacier's flush sisters are calving this spring, and look impressive, perfect udders, great feet, stout, with a great look. We believe it all starts with the mother cow; Glaciers Pathfinder dam is the fourth consecutive generation to make it the donor pen here. "439" has ratios of BR 5/93, NR 5/107, and YR 5/106. 439 has been



Coleman Glacier 041
Sire of Embryos

a favorite of visitors here since she was a heifer calf, we've kept 4 different sons of her here that we are currently using, she would be as good as any female we've ever had the opportunity to work with here. "439" is also the Dam of Ace 989, who is doing a tremendous job for us also. **These are IVF embryos (Trans Ova), we are selling three embryos in this mating and guaranteeing one pregnancy.** Buyer has the option to take six embryos out of this mating and we will guarantee 2 pregnancies. These embryos are exportable to Canada.

Lot 33 – 3/6 IVF EMBRYOS

Coleman Donna 928 x S A V Renovation 6822



Coleman Donna 928
Dam of Embryos

S A V Renown 3439

S A V Renovation 6822

18579309 S A V Madame Pride 0151

SITZ Logo 12964

Coleman Donna 928

19544172 Coleman Donna 787

CED	BW	WW	YW	MILK	SC	MARB	RE	SM
8	0.1	62	103	26	1.50	.29	.27	92

Bid price is per embryo. Package prices is 3/6x bid price. Buyer is responsible for cost of shipping embryos.

Online EMBRYO Auction Closes 4/18 | 7 PM (MST)

//928" has production records of Br 2/95, NR 2/110. "928" was our high selling bred heifer in our 2020 female sale. Her Dam, "787" is a cow we refer to as the "Sleeping Giant" here, she has become very dominant, and a visitor favorite here. We are excited to be able to get "928" back here in the program, and immediately she entered into our Donor program. "928" was a visitor favorite all summer back in 2020, and we're fortunate to be able to add her back to our program. When she calves, she will take an exceptional picture. Big time mating here! The sire of these embryos is Renovation. "Renovation" is an impressive individual with abundance of muscle, body shape, depth of rib in a modest frame size. His daughters are easy fleshing, deep ribbed, with beautiful udders. We feel "Renovation" is one of the best and most proven Renown sons out there.



S A V Renovation 6822
Sire of Embryos

Extremely good mating here for sure. **These are IVF embryos (Trans Ova), we are selling three embryos in this mating and guaranteeing one pregnancy.** Buyer has the option to take six embryos out of this mating and we will guarantee 2 pregnancies. These embryos are exportable to Canada.

Lot 34 – 3/6 IVF SF F EMBRYOS

Coleman Everelda Entense 2406 x Coleman Glacier 041



Coleman Everelda Entense 2406
Dam of Embryos

S A V Renown 3439

Coleman Glacier 041

19866409 Coleman Donna 439

Coleman Juneau 044

Coleman Everelda Entense 2406

17544770 BT Everelda Entense 613L

CED	BW	WW	YW	MILK	SC	MARB	RE	SM
9	0.1	61	103	34	.26	-.31	.56	93

Bid price is per embryo. Package prices is 3/6x bid price. Buyer is responsible for cost of shipping embryos.

Online EMBRYO Auction Closes 4/18 | 7 PM (MST)

Coleman Everelda Entense 2406 - This Pathfinder donor female is a direct daughter of Coleman Juneau 044 and back to the foundation Everelda Entense in our program, BT Everelda Entense 613L. Everelda Entense 2406 is a flat-out producer, as she records a progeny production record of BR 9/94, WR 9/109, YR 7/105, and IMF 2/110, with a calving interval of 9/365. Ingram Everelda Entense 7621, a daughter, sold one-half interest for \$40,000 for a \$80,000 valuation in the 2021 fall production sale at Ingram Angus. Through that same event she produced the top selling bull at \$37,000 one-half interest for a \$74,000 valuation, Ingram Intensity 0300. "Glacier" has been a standout since he was born. Glacier's first calves are on the ground, they are very impressive as babies. Glacier has the best feet I've ever seen on a bull before, extremely sound, and athletic, with a great herd bull look and presence. He's the bull the industry has been looking for. Glacier's flush sisters are calving this spring, and look impressive, perfect udders, great feet, stout, with a great look. We believe it all starts with the mother cow; Glaciers Pathfinder dam is the fourth consecutive generation to make it the donor pen here. "439" has ratios of



Coleman Glacier 041
Sire of Embryos

BR 5/93, NR 5/107, and YR 5/106. 439 has been a favorite of visitors here since she was a heifer calf, we've kept 4 different sons of her here that we are currently using, she would be as good as any female we've ever had the opportunity to work with here. "439" is also the Dam of Ace 989, who is doing a tremendous job for us also. **These are IVF embryos (Trans Ova), we are selling three embryos in this mating and guaranteeing one pregnancy.** Buyer has the option to take six embryos out of this mating and we will guarantee 2 pregnancies. These embryos are exportable to Canada. These embryos have been sexed for females, 90-95% accurate.

Lot 35 – 3/6 IVF EMBRYOS

Coleman Everelda Entense 2406 x Coleman Arrowhead 235



Coleman Everelda Entense 2406
Dam of Embryos

Coleman Charlo 0256

Coleman Arrowhead 235

20503506 Coleman Chloe 9275

Coleman Juneau 044

Coleman Everelda Entense 2406

17544770 BT Everelda Entense 613L

CED	BW	WW	YW	MILK	SC	MARB	RE	SM
7	1.0	61	104	30	.87	-.01	.59	83

Bid price is per embryo. Package prices is 3/6x bid price. Buyer is responsible for cost of shipping embryos.

Online EMBRYO Auction Closes 4/18 | 7 PM (MST)

Coleman Everelda Entense 2406 - This Pathfinder donor female is a direct daughter of Coleman Juneau 044 and back to the foundation Everelda Entense in our program, BT Everelda Entense 613L. Everelda Entense 2406 is a flat-out producer, as she records a progeny production record of BR 9/94, WR 9/109, YR 7/105, and IMF 2/110, with a calving interval of 9/365. Ingram Everelda Entense 7621, a daughter, sold one-half interest for \$40,000 for a \$80,000 valuation in the 2021 fall production sale at Ingram Angus. Through that same event she produced the top selling bull at \$37,000 one-half interest for a \$74,000 valuation, Ingram Intensity 0300. The sire of these embryos is Coleman Arrowhead 235. These embryos are the first to ever sell out of Arrowhead. Coleman Arrowhead 235 was the third top-selling bull of the 2023 Coleman Angus bull sale at \$125,000 to Voss Angus of Dexter, Iowa. Arrowhead is as impressive of Charlo son ever to be born at the ranch and is loaded with three-dimensional shape, tons of muscle, added depth of body, in a beautifully designed, bigger scaled package. Coleman Chloe 9275, his dam, was the record selling



Coleman Arrowhead 235
Sire of Embryos

female of the 2021 Your Maternal Source Sale and sold for one-half interest for \$375,000 for a \$750,000 valuation to Voss Angus of Dexter, Iowa. Coleman Chloe 9275 is as good as a three-year-old that is on the ranch and has a progeny production record of BR 2@90, WR 2@117, and YR 1@121. She is also a full sister to the record selling Coleman Triumph 9145 and an array of top selling full sisters. **These are IVF embryos (Trans Ova), we are selling three embryos in this mating and guaranteeing one pregnancy.** Buyer has the option to take six embryos out of this mating and we will guarantee 2 pregnancies.

Lot 36 – 3 IVF EMBRYOS

Coleman Donna 7181 x J Trademark 1037



Coleman Donna 7181
Dam of Embryos

Sitz Resilient 10208

J Trademark 1037

20160403 Mill Brae Iden Georgina 4086

Coleman Charlo 0256

Coleman Donna 7181

19102649 Coleman Donna 197

CED	BW	WW	YW	MILK	SC	MARB	RE	SM
12	-0.6	66	122	34	.47	.29	.72	92

Bid price is per embryo. Package prices is 3x bid price. Buyer is responsible for cost of shipping embryos.

Online EMBRYO Auction Closes 4/18 | 7 PM (MST)

“7181” is a Pathfinder female here, with a calving interval of 3/360, BR 3/98, NR 3/ 107, and YR 1/ 106. “7181” has been a visitor favorite since she was a calf here, extremely deep bodied, big hip, with a beautiful udder. “7181” is the kind of females that made “Charlo” famous. 7181 has been extremely productive here, her second calf was one of the featured “Summer” heifers last falls in our female sale and brought \$24,000. Her third calf was a \$21,000 feature in our recent female sale, and a visitor favorite all summer. We don’t sell many embryos out of this female, so pay attention here. Trademark was selected as the \$165,000 top selling bull of the Cattleman’s Cut Bull Sale. He is a low-birth weight calving ease bull, with double digit calving ease direct, with an outcross pedigree for our program. “Trademark” has caught the attention of cattleman from all across the country. He has tremendous performance, added muscle shape, with



J Trademark 1037
Sire of Embryos

unique combination of phenotype, and an incredible number package. We are excited to own Trademark’s dam. She was the record selling \$210,000 ½ interest female in our recent female sale to Jocko Valley in MT. She has a progeny record of 6 head/103 weaning, and a calving interval of 347 on 6 head. **These are IVF embryos (Trans Ova), we are selling three embryos in this mating and guaranteeing one pregnancy.** These embryos are exportable to Canada.

COLEMAN ANGUS

Larry & Dee Coleman Family
406.240.2751

Jeremy & Jenny Haag Family
406.833.0117

40067 Morris Road
Charlo, Montana 59824

colemanangus@blackfoot.net

THANK YOU

Let us know if we can be of assistance.

www.LiveAuctions.TV