



# ANNUAL BULL SALE

FEBRUARY 5, 2024 - 1.P.M. CST - PERKINS, OK

**AUCTIONEER:**

Ryan Dorran - (403) 507-6483

**MARKETING AGENTS:**

Kiley McKinna, *MC Marketing Management* - (402) 350-3447

Wiley Fanta, *MC Marketing Management* - (320) 287-0751

Randy Ratliff, *R&R Marketing* - (615) 330-2735

Scott Borhson, *Borhson Marketing Services* - (403) 370-3010

**RING STAFF:**

Jeff Mafi, *Angus Journal* - (816) 344-4266

Colton Pratz, *Oklahoma Cowman* - (405) 385-1054

Juston Stelzer, *Special Assignment* - (817) 992-7059

**SALE MANAGER:**

MARLOW CATTLE SERVICES

Mike & Heather Marlow

8618 S. Western RD Pekins, OK 74059

405-880-0108

Email: marlowcpc@gmail.com

Buyers unable to attend the sale may send their bids to the Sale Manager, Marketing Agents, Regional Manager, Field Representatives or Auctioneer.

**VETERINARIAN:**

Dr. Bret White, White Veterinarian Services

(918) 225-8061

**AIR TRAVEL:**

Will Rogers World Airport in Oklahoma City - 1 hour from ranch

Tulsa International Airport - 1 hour from ranch

Stillwater Regional Airport - 25 minutes from ranch

(American Airlines)

**HOTEL ACCOMMODATIONS:**

Best Western Plus Cimarron Suites

315 N. Husband St.

Stillwater, OK 74075

(405) 372-2878

**DELIVERY:**

Free nationwide delivery.

**ANNOUNCEMENTS/ UPDATES:**

Announcements from sale block take precedence over any printed material.

Update sheet on sale lots will be provided.

# FEBRUARY 5, 2024

**SCHEDULE OF EVENTS:**

NOON - Lunch will be served

**1 P.M. - ANNUAL SADLER RANCHES BULL SALE**

**DNA - EPDS**

All Registered cattle selling have been parent verified and sell with genomic enhanced EPD's by the respective breed associations.

**ONLINE BIDDING:**

Superior Livestock

Superiorclicktobid.com

Blake Tucker, Superior Livestock

(308) 660-3963



Livestock Auction

**ALL NEW PUREBRED PLATFORM**

Bid.SuperiorLivestock.com

**SALE LOCATION:**

SADLER RANCHES

10819 South Rose Rd. - Perkins, OK 74059

# SALE INFORMATION

# WELCOME.

*Dear Friends*

I want to welcome you to the Second Annual Sadler Ranches Bull Sale. We are excited to say the least about this outstanding group of Angus bulls, we can truly say they are the best yet. Brent Sadler and crew has put together a prolific set of donors to build this powerful set of calving ease maternal oriented bulls that are built around phenotype, structure, fertility and much more! As you study the catalog you will find the very best, we have to offer from the front to back of the catalog. Rest assured that the sale bulls have been sorted for 100% soundness and fully guaranteed to do their job efficiently. Our goal is for you to purchase problem free herd sires to add value to your operation. Feel free to swing by the ranch anytime for a full tour of the sale bulls and look at their dams prior to the sale. If you haven't noticed this offering was built around a select few top end Maternal Donor females through an intensive embryo transfer program. That being said they are dialed tight to consistently produce exactly what they need to offer the very best possible lineup year after year. As well as building a solid foundation that is the backbone today and in the future of Sadler Ranches. If you have questions, please feel free to contact any of us. We look forward to seeing you February 5th, 2024, in Perkins, Oklahoma. *Mike Marlow*



# Sadler Ranch Personnel

---

BRENT SADLER, OWNER - 405-334-2752

LUCAS REINHART - Ranch Manager - 405-334-6389

BRADEN HENRICKS - Sale Cattle Manager - 405-863-1663

BRODY PETTYJOHN - Cow herd - 580-372-6555

CODY KLUSER - Sale Cattle - 541-699-6316

DEAN HEINS - Customer Relations - 612-816-7951



LUCAS & BAILEE REINHART



BRADEN, LINDSAY,  
CARSON & HOLLY HENRICKS



BRODY PETTYJOHN



CODY KLUSER



DEAN HEINS

SADLER RANCHES - 10819 S. ROSE RD. - PERKINS, OKLAHOMA 74059

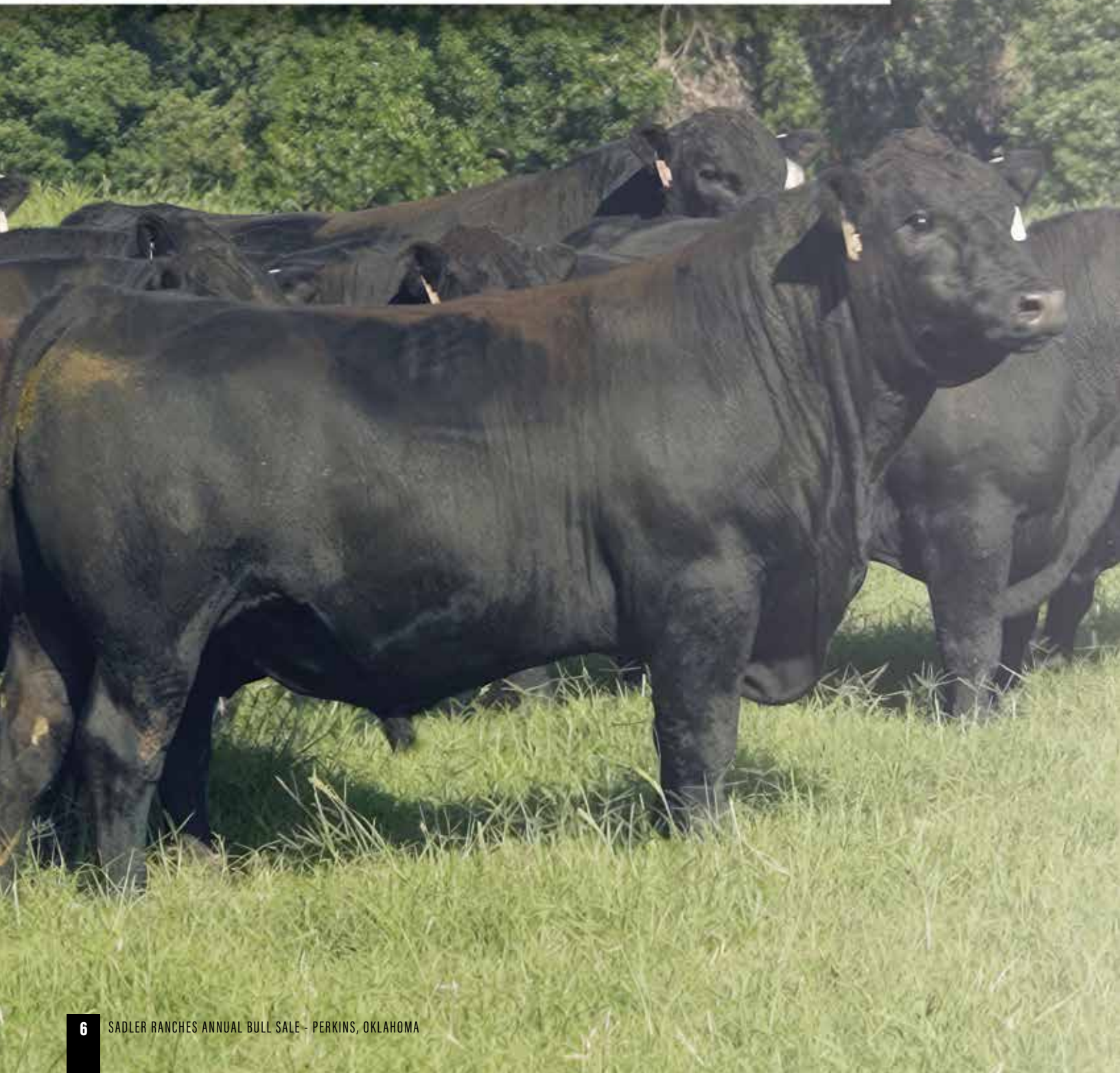


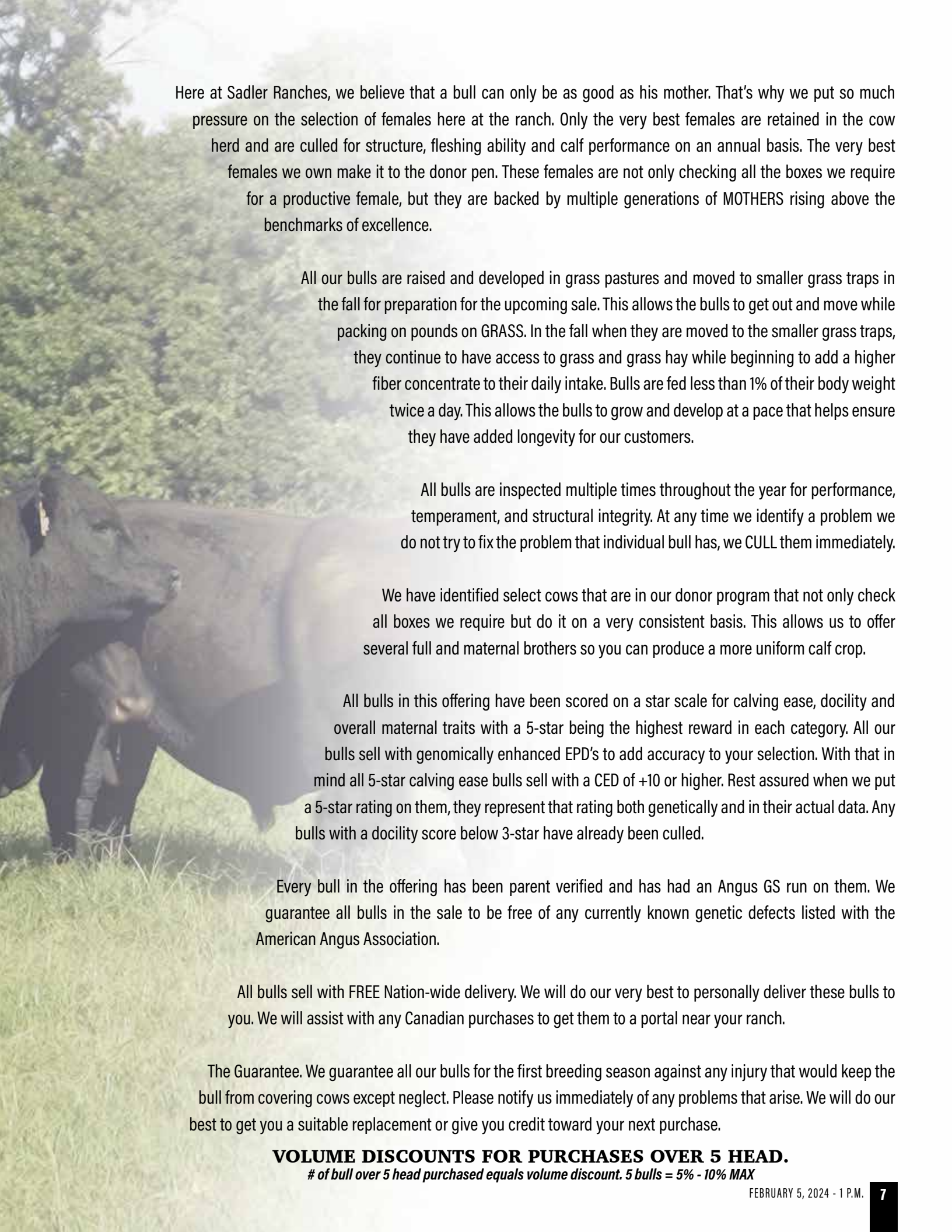
# THE AMERICAN RANCHER



LEARN MORE ABOUT SADLER RANCHES

# SADLER GUARANTEE





Here at Sadler Ranches, we believe that a bull can only be as good as his mother. That's why we put so much pressure on the selection of females here at the ranch. Only the very best females are retained in the cow herd and are culled for structure, fleshing ability and calf performance on an annual basis. The very best females we own make it to the donor pen. These females are not only checking all the boxes we require for a productive female, but they are backed by multiple generations of MOTHERS rising above the benchmarks of excellence.

All our bulls are raised and developed in grass pastures and moved to smaller grass traps in the fall for preparation for the upcoming sale. This allows the bulls to get out and move while packing on pounds on GRASS. In the fall when they are moved to the smaller grass traps, they continue to have access to grass and grass hay while beginning to add a higher fiber concentrate to their daily intake. Bulls are fed less than 1% of their body weight twice a day. This allows the bulls to grow and develop at a pace that helps ensure they have added longevity for our customers.

All bulls are inspected multiple times throughout the year for performance, temperament, and structural integrity. At any time we identify a problem we do not try to fix the problem that individual bull has, we CULL them immediately.

We have identified select cows that are in our donor program that not only check all boxes we require but do it on a very consistent basis. This allows us to offer several full and maternal brothers so you can produce a more uniform calf crop.

All bulls in this offering have been scored on a star scale for calving ease, docility and overall maternal traits with a 5-star being the highest reward in each category. All our bulls sell with genomically enhanced EPD's to add accuracy to your selection. With that in mind all 5-star calving ease bulls sell with a CED of +10 or higher. Rest assured when we put a 5-star rating on them, they represent that rating both genetically and in their actual data. Any bulls with a docility score below 3-star have already been culled.

Every bull in the offering has been parent verified and has had an Angus GS run on them. We guarantee all bulls in the sale to be free of any currently known genetic defects listed with the American Angus Association.

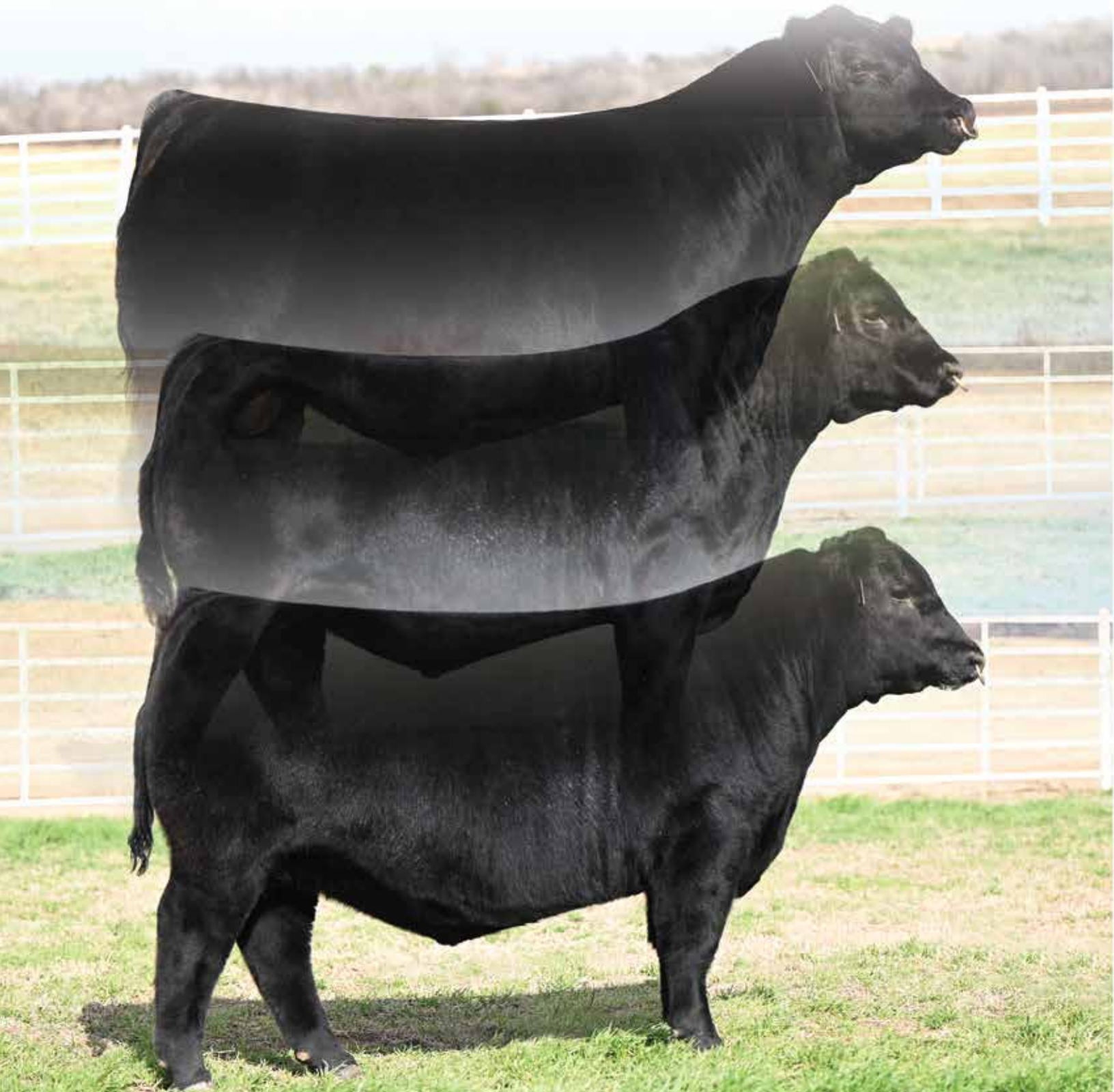
All bulls sell with FREE Nation-wide delivery. We will do our very best to personally deliver these bulls to you. We will assist with any Canadian purchases to get them to a portal near your ranch.

The Guarantee. We guarantee all our bulls for the first breeding season against any injury that would keep the bull from covering cows except neglect. Please notify us immediately of any problems that arise. We will do our best to get you a suitable replacement or give you credit toward your next purchase.

**VOLUME DISCOUNTS FOR PURCHASES OVER 5 HEAD.**

*# of bull over 5 head purchased equals volume discount. 5 bulls = 5% - 10% MAX*

# PEN BULLS.







**LOT 1**

**1**

**SADLER PASSPORT 3052**

DOB: 1/22/23      Bull AAA. +\*20708002      TATTOO. 3052

**HUMMEL ARGENTINE**

+\*19919948

DON APARICIO SERRUCHO57 MAXI

RUBETA FONTANA 7567-T/E-

DON JOSE 176 MAXI  
DON APARICIO SERRANIAS 57  
CONSENZA DON ROBERTO 338 T/E  
RUBETA FONTANA 6207-T/E-

SAV RESOURCE 1441

COLEMAN DONNA 714

RITO 707 OF IDEAL 3407 7075  
SAV BLACKCAP MAY 4136  
CONNELY ONWARD  
COLEMAN DONNA 386

SM
78
SW
61

CED	BW	WW	YW	DOC	CLAW	ANGLE	HP	MM	MARB	RE
13	0.3	65	117	24	0.32	0.37	15.9	24	0.07	0.8

BW: 76      A.J.D. WW: 723      PROJ. 2/5/24: 1446

This is truly the next chapter herd sire we have been waiting for! The best Hummel Argentine son to date without a shadow of a doubt! His no holes overall design is next level from nose to tail, powerfully constructed, with added bone and foot size along with an abundance of muscle and rib shape infused naturally. His perfect structure and overall movement is flawless, as well he holds his head up high with a very proud easy-going nature. Backed by his elite dam, Coleman Donna 504 has proven her status producing numerous herd sires and donors in many progressive herds across the country. She adds a load of maternal strengths, length of spine, and muscle all wrapped in an easy fleshing package. Passport is the perfect combination outcross sire that will add value in many facets of the Angus Breed, claw, angle, muscle, efficiency, with plenty of maternal. Nothing but blue sky's ahead for this young up and coming outcross phenotypic herd sire! Terms announced sale day.



**COLEMAN DONNA 504**  
Dam of Lot 1



**HUMMEL ARGENTINE**  
Sire of Lot 1



**LOT 2**

**2**

**SADLER DECREE 3044**

DOB. 1/20/23      Bull AAA. +\*20707997      TATTOO. 3044

**BLAIR'S EXTERNAL LAW**  
+\*19639203

DUFF NAPOLEON 232  
BAR-E-L ERICA 74A

DUFF DISTINCTION 9105  
DUFF EUR 443 MERLE 808  
BAR-E-L NATURAL LAW 52Y  
HF ERICA 339T

**COLEMAN DONNA 8113**  
+\*19258348

MUSGRAVE SKY HIGH 1535  
COLEMAN DONNA 714

MUSGRAVE BIG SKY  
FLAG QUEEN W 00649  
CONNELLY ONWARD  
COLEMAN DONNA 386

SM
83
SW
67

CED	BW	WW	YW	DOC	CLAW	ANGLE	HP	MM	MARB	RE
8	2.4	64	97	35	0.58	0.45	10.5	26	0.12	0.59

BW: 82      AJD. WW: 692      PROJ. 2/5/24: 1338

Proven is a word we like to use here at Sadler Ranches! This mating is one for the record books for eye appeal, muscle shape and length that we demand and have come to expect from his proven powerhouse dam! Donna 8113 has been a major cog to our donor lineup that stamps her progeny with consistent phenotype, muscle, with an impeccable structure and maternal attributes. This mating has been proven in the sale ring with his full sisters highlighting our fall sale as lots 1A-C catching the eye of many progressive breeders with their ability to lead the pack for total phenotype with muscle and rib shape infused!



**COLEMAN DONNA 8113**  
Dam of Lot 2



**SADLER DONNA 3004**  
Full sister to Lot 2



LOT 3

3

**SADLER ALLEGIANCE 3058**

DOB. 1/23/23      Bull AAA. +\*20708005      TATTOO. 3058

**HUMMEL ARGENTINE**

+\*19919948

DON APARICIO SERRUCHO57 MAXI

RUBETA FONTANA 7567-T/E-

DON JOSE 176 MAXI  
DON APARICIO SERRANIAS 57  
CONSENZA DON ROBERTO 338 T/E  
RUBETA FONTANA 6207-T/E-

**COLEMAN CHLOE 9146**

+\*19541341

COLEMAN BRAVO 6313

LAWSONS CHLOE C815

COLEMAN CHARLO 0256  
COLEMAN DONNA 714  
SAV RENOWN 3439  
LAWSONS CHLOE Z341

SM
89
SW
61

CED	BW	WW	YW	DOC	CLAW	ANGLE	HP	MM	MARB	RE
8	0.8	56	94	17	0.27	0.46	13	24	0.01	0.35

BW: 76      A.J.D. WW: 662      PROJ. 2/5/24: 1316

Another stellar son of the Sadler Ranches herd sire Hummel Argentine. With built in qualities infused, top 1% Claw and top 4% \$M all the while carrying a top 11% \$EN. 3058 is smooth statured, wide based, with an abundance of muscle along with excellent phenotype. His dam has been a superb producer of muscle, maternal, and eye appeal with performance galore. His grandam the epic producer of performance and power, Lawsons Chole C815, has paved an enormous path of valuable offspring in the sale ring and the pasture. 3058 is the outcross sire that will add plenty of real-world balance of maternal, muscle, and soundness with true lasting genetics that is sure to stamp his offspring and make his mark.



**COLEMAN CHLOE 9146**

Dam of Lot 3



**SADLER CHLOE 2020**

Maternal sister to Lot 3 by Hummel South America



**COLEMAN NIGHTWATCH 9259**



**COLEMAN DONNA 9309**  
Full sister

**NIGHT WATCH 9259**- Sure, Shot Calving ease, with incredible angularity along with style and eye appeal. His full sister Donna 9309 is a flat amazing female loaded with maternal with a perfect udder. The first Night Watch calves came 100% unassisted and immediately up and sucking with extreme vigor. As you study his first large group of sons you will find consistency. Natural growth, length, muscle, soundness, and excellent footed herd sires that are eagerly waiting for their first mission. Night Watch himself not only looks the part, he dominates for low birth and much more including CED top 1%, BW 1%, Claw 1%, \$M 1%, with big time maternal built in genetically.



LOT 4



LOT 5

# 4

## SADLER NIGHT WATCH 2010

DOB. 1/1/22      Bull AAA. +\*20387295      TATTOO. 2010

**COLEMAN NIGHT WATCH 9259**  
+\*19583413

COLEMAN BRAVO 6313  
COLEMAN DONNA 4203

COLEMAN CHARLO 0256  
COLEMAN DONNA 714  
CONNELY THUNDER  
COLEMAN DONNA 714

**COLEMAN DONNA 986**  
+\*19543203

SAV RAINDANCE 6848  
COLEMAN DONNA 504

COLEMAN CHARLO 0256  
SAV BLACKCAP MAY 4136  
SAV RESOURCE 1441  
COLEMAN DONNA 714

SM
92
SW
66

CED	BW	WW	YW	DOC	CLAW	ANGLE	HP	MM	MARB	RE
18	-1.8	61	113	28	0.33	0.39	20	31	0.11	0.5

BW: 76      AJD. WW: 619      PROJ. 2/5/24: 1952

CALVING EASE - ★★★★★★  
MATERNAL - ★★★★★★  
DOCILITY - ★★★★★★

# 5

## SADLER NIGHT WATCH 2017

DOB. 1/1/22      Bull AAA. +\*20387309      TATTOO. 2017

**COLEMAN NIGHT WATCH 9259**  
+\*19583413

COLEMAN BRAVO 6313  
COLEMAN DONNA 4203

COLEMAN CHARLO 0256  
COLEMAN DONNA 714  
CONNELY THUNDER  
COLEMAN DONNA 714

**COLEMAN DONNA 986**  
+\*19543203

SAV RAINDANCE 6848  
COLEMAN DONNA 504

COLEMAN CHARLO 0256  
SAV BLACKCAP MAY 4136  
SAV RESOURCE 1441  
COLEMAN DONNA 714

SM
98
SW
71

CED	BW	WW	YW	DOC	CLAW	ANGLE	HP	MM	MARB	RE
15	-2.3	55	99	30	0.45	0.41	19.9	38	0.2	0.65

BW: 66      AJD. WW: 570      PROJ. 2/5/24: 1858

CALVING EASE - ★★★★★★  
MATERNAL - ★★★★★★  
DOCILITY - ★★★★★★



LOT 6



LOT 7

# 6 SADLER NIGHT WATCH 2045

DOB. 1/21/22      Bull AAA. +\*20387388      TATTOO. 2045

COLEMAN BRAVO 6313      COLEMAN CHARLO 0256  
 COLEMAN DONNA 714  
 CONNEALY THUNDER  
 COLEMAN DONNA 4203

SAV RENOWN 3439      RITO 707 OF IDEAL 3407 7075  
 SAV BLACKCAP MAY 4136  
 N BAR SHADOW X4124  
 COLEMAN DONNA 3220      COLEMAN DONNA 714

SM
88
SW
50

CED	BW	WW	YW	DOC	CLAW	ANGLE	HP	MM	MARB	RE
19	-4	42	81	23	0.3	0.36	12.2	23	0.35	0.41

BW: 64      AJD. WW: 588      PROJ. 2/5/24: 1862

CALVING EASE - ★★★★★★  
 MATERNAL - ★★★★★★  
 DOCILITY - ★★★★★★

# 7 SADLER NIGHT WATCH 2047

DOB. 1/24/22      Bull AAA. +\*20387390      TATTOO. 2047

COLEMAN BRAVO 6313      COLEMAN CHARLO 0256  
 COLEMAN DONNA 714  
 CONNEALY THUNDER  
 COLEMAN DONNA 4203

SAV RENOWN 3439      RITO 707 OF IDEAL 3407 7075  
 SAV BLACKCAP MAY 4136  
 N BAR SHADOW X4124  
 COLEMAN DONNA 3220      COLEMAN DONNA 714

SM
106
SW
73

CED	BW	WW	YW	DOC	CLAW	ANGLE	HP	MM	MARB	RE
14	-2.2	55	96	31	0.29	0.37	16.7	36	0.25	0.41

BW: 72      AJD. WW: 638      PROJ. 2/5/24: 1910

CALVING EASE - ★★★★★★  
 MATERNAL - ★★★★★★  
 DOCILITY - ★★★★★★



**COLEMAN DONNA 7301**  
Dam of Lots 6-8

## 8

### SADLER NIGHT WATCH 2055

DOB. 1/30/22      Bull AAA. +\*20387391      TATTOO. 2055

<p><b>COLEMAN NIGHT WATCH 9259</b> +*19583413</p> <p><b>COLEMAN DONNA 7301</b> *19103417</p>	<p>COLEMAN BRAVO 6313 COLEMAN DONNA 4203</p> <p>SAV RENOWN 3439 COLEMAN DONNA 3220</p> <p>COLEMAN CHARLO 0256 COLEMAN DONNA 714 CONNEALY THUNDER COLEMAN DONNA 714</p> <p>RITO 707 OF IDEAL 3407 7075 SAV BLACKCAP MAY 4136 N BAR SHADOW X4124 COLEMAN DONNA 714</p>
--	--

CED	BW	WW	YW	DOC	CLAW	ANGLE	HP	MM	MARB	RE
12	-0.8	60	99	28	0.39	0.41	15.2	31	-0.17	0.62

BW: 76    AJD. WW: 562    PROJ. 2/5/24: 1786

CALVING EASE - ★★★★★  
MATERNAL - ★★★★★  
DOCILITY - ★★★★★

## 9

### SADLER NIGHT WATCH 2176

DOB. 2/25/22      Bull AAA. 20309767      TATTOO. 2176

<p><b>COLEMAN NIGHT WATCH 9259</b> +*19583413</p> <p><b>VC3 REGIS LASS 0002</b> 19976766</p>	<p>COLEMAN BRAVO 6313 COLEMAN DONNA 4203</p> <p>SAV RAINDANCE 6848 KLA REGIS 36</p> <p>COLEMAN CHARLO 0256 COLEMAN DONNA 714 CONNEALY THUNDER COLEMAN DONNA 714</p> <p>COLEMAN CHARLO 0256 SAV BLACKCAP MAY 4136 COLEMAN REGIS 904 KLA VALE 166</p>
--	---

CED	BW	WW	YW	DOC	CLAW	ANGLE	HP	MM	MARB	RE
21	-4.4	26	52	14	0.34	0.43	11	30	0.53	0.46

BW: 56    AJD. WW: 501    PROJ. 2/5/24: 1622

CALVING EASE - ★★★★★  
MATERNAL - ★★★★★  
DOCILITY - ★★★★★

## 10

### SADLER NIGHT WATCH 2273

DOB. 3/2/22      Bull AAA. \*20309771      TATTOO. 2273

<p><b>COLEMAN NIGHT WATCH 9259</b> +*19583413</p> <p><b>VC3 BLACKCAP 0009</b> 19885320</p>	<p>COLEMAN BRAVO 6313 COLEMAN DONNA 4203</p> <p>SAV RAINDANCE 6848 KLA BLACKCAP 3120</p> <p>COLEMAN CHARLO 0256 COLEMAN DONNA 714 CONNEALY THUNDER COLEMAN DONNA 714</p> <p>COLEMAN CHARLO 0256 SAV BLACKCAP MAY 4136 SAV SOLID GOLD 9187 KLA BLACKCAP 2900-99</p>
--	--

CED	BW	WW	YW	DOC	CLAW	ANGLE	HP	MM	MARB	RE
7	2.9	68	128	22	0.44	0.37	15.2	25	0.43	0.32

BW: 76    AJD. WW: 618    PROJ. 2/5/24: 1866

CALVING EASE - ★★★  
MATERNAL - ★★★★★  
DOCILITY - ★★★★★



**SADLER NIGHT WATCH 2012**  
Full brother to Lots 6-8.



LOT 11



**COLEMAN BRAVO 6313**  
Sire of Lots 11-15

# 11

## SADLER BRAVO 2175

DOB. 2/25/22      Bull AAA. \*20309766      TATTOO. 2175

**COLEMAN BRAVO 6313**  
+\*18734838

COLEMAN CHARLO 0256  
COLEMAN DONNA 714

SAV FOREFATHER 3024  
KLA HEROINE 488

OCC PAXTON 730P  
BOHI ABIGALE 6014  
CONNELY ONWARD  
COLEMAN DONNA 386

SAV BIRTHSTONE 8258  
SAV ELBA 1401  
MCKELLAR FIRST CALL  
HONEY OF CONANGA 971

SM
88
SW
76

CED	BW	WW	YW	DOC	CLAW	ANGLE	HP	MM	MARB	RE
13	0.3	80	130	18	0.46	0.47	14.6	17	0.15	0.46

BW: 72      AJD. WW: 629      PROJ. 2/5/24: 1866

CALVING EASE - ★★★★★★  
MATERNAL - ★★★★★★  
DOCILITY - ★★★

# 12

## SADLER BRAVO 2204

DOB. 2/26/22      Bull AAA. \*20314809      TATTOO. 2204

**COLEMAN BRAVO 6313**  
+\*18734838

COLEMAN CHARLO 0256  
COLEMAN DONNA 714

SAV PRESIDENT 6847  
MCKELLAR QUEEN MILA 3119

OCC PAXTON 730P  
BOHI ABIGALE 6014  
CONNELY ONWARD  
COLEMAN DONNA 386

COLEMAN CHARLO 0256  
SAV BLACKCAP MAY 4136  
CONNELY CONSENSUS 7229  
JMC QUEEN MICA 7442 4510

SM
91
SW
53

CED	BW	WW	YW	DOC	CLAW	ANGLE	HP	MM	MARB	RE
14	0.6	52	93	27	0.21	0.33	12.6	21	-0.12	0.67

BW: 76      AJD. WW: 564      PROJ. 2/5/24: 1698

CALVING EASE - ★★★★★★  
MATERNAL - ★★★★★★  
DOCILITY - ★★★★★★





LOT 13

13

SADLER BRAVO 2224

DOB: 2/27/22 Bull AAA: \*20314807 TATTOO: 2224

COLEMAN CHARLO 0256 OCC PAXTON 730P  
 BOHI ABIGALE 6014  
 CONNEALY ONWARD  
 COLEMAN DONNA 386  
 SAV RAINDANCE 6848 COLEMAN CHARLO 0256  
 SAV BLACKCAP MAY 4136  
 SAV SOLID GOLD 9187  
 KLA BLACKBIRD 3134 KLA BLACKBIRD 856

SM
97
SW
65

CED	BW	WW	YW	DOC	CLAW	ANGLE	HP	MM	MARB	RE
12	1.3	61	115	15	0.42	0.48	17.4	27	0.26	0.46

BW: 64 AJD. WW: 509 PROJ. 2/5/24: 1708

CALVING EASE - ★★★★★  
 MATERNAL - ★★★★★  
 DOCILITY - ★★★

15

SADLER BRAVO 2306

DOB: 3/7/22 Bull AAA: 20314805 TATTOO: 2306

COLEMAN CHARLO 0256 OCC PAXTON 730P  
 BOHI ABIGALE 6014  
 CONNEALY ONWARD  
 COLEMAN DONNA 386  
 SAV PRESIDENT 6847 COLEMAN CHARLO 0256  
 SAV BLACKCAP MAY 4136  
 SAF 598 BANDO 5175  
 KLA RITA 111 CEDAR CREEK RITA 9842

SM
91
SW
61

CED	BW	WW	YW	DOC	CLAW	ANGLE	HP	MM	MARB	RE
5	3.8	64	108	25	0.4	0.39	14.6	27	0.38	0.61

BW: 70 AJD. WW: 571 PROJ. 2/5/24: 1578

CALVING EASE - ★★★  
 MATERNAL - ★★★★★  
 DOCILITY - ★★★★★

14

SADLER BRAVO 2285

DOB: 3/3/22 Bull AAA: \*20314806 TATTOO: 2285

COLEMAN CHARLO 0256 OCC PAXTON 730P  
 BOHI ABIGALE 6014  
 CONNEALY ONWARD  
 COLEMAN DONNA 386  
 QUAKER HILL RAMPAGE 0A36 MCC DAYBREAK  
 QHF BLACKCAP 6E2 0F4V16 4355  
 BUFORD PATHFINDER C304  
 KLA RUTH 2162

SM
85
SW
58

CED	BW	WW	YW	DOC	CLAW	ANGLE	HP	MM	MARB	RE
13	-0.2	58	108	25	0.36	0.39	13.7	23	0.33	0.44

BW: 58 AJD. WW: 541 PROJ. 2/5/24: 1696

CALVING EASE - ★★★★★  
 MATERNAL - ★★★★★  
 DOCILITY - ★★★★★



**HUMMEL ARGENTINE**  
Sire of Lot 16

**16**

**SADLER ARGENTINE 2075**

DOB. 2/8/22      Bull AAA. +\*20329743      TATTOO. 2075

**HUMMEL ARGENTINE**  
+\*19919948

DON APARICIO SERRUCHO57 MAXI  
RUBETA FONTANA 7567-T/E-

DON JOSE 176 MAXI  
DON APARICIO SERRANIAS 57  
CONSENZA DON ROBERTO 338 T/E  
RUBETA FONTANA 6207-T/E-

**COLEMAN DONNA 7301**  
\*19103417

SAV RENOWN 3439  
COLEMAN DONNA 3220

RITO 707 OF IDEAL 3407 7075  
SAV BLACKCAP MAY 4136  
N BAR SHADOW X4124  
COLEMAN DONNA 714

SM
66
SW
48

CED	BW	WW	YW	DOC	CLAW	ANGLE	HP	MM	MARB	RE
6	0.4	48	82	7	0.41	0.43	11.4	20	-0.07	0.55

BW: 70      AJD. WW: 600      PROJ. 2/5/24: 1686

- CALVING EASE - ★★ ★
- MATERNAL - ★★ ★
- DOCILITY - ★★ ★



**SADLER ARGENTINE 2076**  
Full brother to Lot 16



LOT 17



COLEMAN DONNA 7205  
Dam of 17 & 18

**17**

**SADLER ARGENTINE 2077**

DOB. 2/10/22      Bull AAA. +\*20329739      TATTOO. 2077

**HUMMEL ARGENTINE**

+\*19919948

DON APARICIO SERRUCHO57 MAXI  
RUBETA FONTANA 7567-T/E-

DON JOSE 176 MAXI  
DON APARICIO SERRANIAS 57  
CONSENZA DON ROBERTO 338 T/E  
RUBETA FONTANA 6207-T/E-

**COLEMAN DONNA 7205**

+\*19103993

COLEMAN FOUNDATION 972  
COLEMAN DONNA 714

RR RITO 707  
COLEMAN DONNA 386  
CONNELY ONWARD  
COLEMAN DONNA 386

SM
83
SW
49

CED	BW	WW	YW	DOC	CLAW	ANGLE	HP	MM	MARB	RE
4	0.8	51	82	27	0.19	0.35	14.3	19	-0.15	0.31

BW: 66      AJD. WW: 548      PROJ. 2/5/24: 1720

CALVING EASE - ★★★★★  
MATERNAL - ★★★★★  
DOCILITY - ★★★★★

**18**

**SADLER ARGENTINE 2081**

DOB. 2/14/22      Bull AAA. +\*20329742      TATTOO. 2081

**HUMMEL ARGENTINE**

+\*19919948

DON APARICIO SERRUCHO57 MAXI  
RUBETA FONTANA 7567-T/E-

DON JOSE 176 MAXI  
DON APARICIO SERRANIAS 57  
CONSENZA DON ROBERTO 338 T/E  
RUBETA FONTANA 6207-T/E-

**COLEMAN DONNA 7205**

+\*19103993

COLEMAN FOUNDATION 972  
COLEMAN DONNA 714

RR RITO 707  
COLEMAN DONNA 386  
CONNELY ONWARD  
COLEMAN DONNA 386

SM
68
SW
52

CED	BW	WW	YW	DOC	CLAW	ANGLE	HP	MM	MARB	RE
9	-0.1	48	85	15	0.24	0.32	8	25	-0.37	0.38

BW: 68      AJD. WW: 525      PROJ. 2/5/24: 1700

CALVING EASE - ★★★★★  
MATERNAL - ★★★★★  
DOCILITY - ★★★



LOT 19



LOT 20

# 19

## RUBETA HUMMEL 202K

DOB. 4/09/22      Bull AAA. PENDING      TATTOO. 202K

**ERRE TE 383 CONDOR EURO-T/E**  
 BENJAMIN 1547 ZORZAL LIDER  
 ERRE TE 27 GRINGA TOULUCA-T/E

**VOLCAN ZELDA 4956-T/E**  
 SAV BRILLIANCE 8077  
 VOLCAN ZELDA 3912

TRES MARIAS 6301 ZORZAL-T/E  
 LA LEGUA LIDER 8174 BELLE  
 RUBETA 3910 GRINGO-T/E  
 ERRE TE 3241 ESCRIBANA BROMISTA-T/E

SAV BISMARCK 5682  
 SAV BLACKCAP MAY 5270  
 SIBILA ENCHANTRESS 1099-T/E  
 SIBILA ZELDA 2424-T/E

BW:      AJD. WW:      PROJ. 2/5/24: 1674

CALVING EASE - ★★★★★  
 MATERNAL - ★★★★★  
 DOCILITY - ★★★★★

# 20

## RUBETA HUMMEL 203K

DOB. 4/30/22      Bull AAA. PENDING      TATTOO. 203K

**SAV BISMARCK 5682**  
 GAR GRID MAKER  
 SAV ABIGALE 0451

**VOLCAN ZELDA 3912**  
 SIBILA ENCHANTRESS 1099-T/E/I  
 SIBILA ZELDA 2424-T/E

GDAR TRAVELER 044  
 GAR PRECISION 2536  
 SCHOENES FIT IT 826  
 SAV ABIGALE 6062

SITZ TRAVELER 8180  
 N BAR ENCHANTRESS 4906  
 SITZ TRAVELER 043  
 SIBILA ZELDA 925Y

BW:      AJD. WW:      PROJ. 2/5/24: 1894

CALVING EASE - ★★★★★  
 MATERNAL - ★★★★★  
 DOCILITY - ★★★★★



LOT 22

# 21

## RUBETA HUMMEL 217K

DOB. 5/22/22 | Bull AAA. PENDING | TATTOO. 217K

**ERRE TE 383 CONDOR EURO-T/E**

BENJAMIN 1547 ZORZAL LIDER  
ERRE TE 27 GRINGA TOLUCA-T/E

TRES MARIAS 6301 ZORZAL-T/E  
LA LEGUA LIDER 8174 BELLE  
RUBETA 3910 GRINGO-T/E  
ERRE TE 3241 ESCRIBANA BROMISTA-T/E

**VOLCAN ZELDA 4956**

SAV BRILLIANCE 8077  
VOLCAN ZELDA 3912

SAV BISMARCK 5682  
SAV BLACKCAP MAY 5270  
SIBILA ENCHANTRESS 1099-T/E/I  
SIBILA ZELDA 2424

BW:      AJD. WW:      PROJ. 2/5/24: 1686

CALVING EASE - ★★★  
MATERNAL - ★★★★★  
DOCILITY - ★★★

# 22

## RUBETA HUMMEL 213K

DOB. 5/22/22 | Bull RAA. PENDING | TATTOO. 217K

**RUBETA 7951 PRECOZ**

RUBETA FRANCO 6595  
RUBETA MULATA 6584

RUBETA 5386 LAPACHO-T/E  
TRES MARIAS 7952 BRIGADIER 6694  
RUBETA 4444 QUEBRANT ADDR  
TRES MARIAS 8522 SAKIC 6978

**RUBETA MEDUSA 7950-T/E**

DON APARICIO SERRUCHO 57 MAXI  
TRES MARIAS 7952 BRIGADIER 6694

DON JOSE 176 MAXI  
DON APARICIO SERRANIAS 57 BISMARCK  
PASTORIZA 565 BRIGADIER  
TRES MARIAS 6994 EMILIA 6302

BW:      AJD. WW:      PROJ. 2/5/24: 1904

CALVING EASE - ★★★  
MATERNAL - ★★★★★  
DOCILITY - ★★★



LOT 24

# 23

## SADLER MAVERICK 2011

DOB. 1/1/22 Bull AAA. +\*20309774 TATTOO. 2011

**COLEMAN MAVERICK 7384**  
\*19102342

COLEMAN MAVERICK 5322  
COLEMAN DONNA 3202  
COLEMAN KNIGHT 209  
COLEMAN EVERELDA ENTENSE2200

**COLEMAN DONNA 9157**  
+\*19539775

COLEMAN CHARLO 0256  
COLEMAN DONNA 6143  
OCC PAXTON 730P  
BOHI ABIGALE 6014  
WULFFS EXT 6106  
KMK DONNA 1311

SM
64
SW
53

CED	BW	WW	YW	DOC	CLAW	ANGLE	HP	MM	MARB	RE
16	-0.9	55	93	16	0.42	0.4	9	16	0.16	0.26

BW: 78 AJD. WW: 670 PROJ. 2/5/24: 1858

CALVING EASE - ★★★★★  
MATERNAL - ★★★  
DOCILITY - ★★★

# 25

## SADLER TRIUMPH 2344

DOB. 2/28/22 Bull AAA. +\*20344685 TATTOO. 2344

**COLEMAN TRIUMPH 9145**  
+\*19555917

COLEMAN BRAVO 6313  
LAWSONS CHLOE C815  
COLEMAN CHARLO 0256  
COLEMAN DONNA 714  
SAV RENOWN 3439  
LAWSONS CHLOE 2341

**COLEMAN BEAUTY 981**  
+\*19539782

SAV RESOURCE 1441  
TLA BEAUTY 5R  
RITO 707 OF IDEAL 3407 7075  
SAV BLACKCAP MAY 4136  
RR 7407 RAINMAKER 2154  
TERRLENE BEAUTY 35F

SM
81
SW
48

CED	BW	WW	YW	DOC	CLAW	ANGLE	HP	MM	MARB	RE
10	-0.6	49	89	20	0.24	0.38	14.7	19	0.14	0.55

BW: 68 AJD. WW: 609 PROJ. 2/5/24: 1644

CALVING EASE - ★★★★★  
MATERNAL - ★★★★★  
DOCILITY - ★★★

## COLEMAN ERISKAY 6102

Dam of Lot 24

# 24

## SADLER MARSHALL 2065

DOB. 2/12/22 Bull AAA. \*20309760 TATTOO. 2065

**COLEMAN MARSHALL 7170**  
+\*19102287

SAV RESOURCE 1441  
COLEMAN DONNA 197  
RITO 707 OF IDEAL 3407 7075  
SAV BLACKCAP MAY 4136  
BASIN RAINMAKER 654X  
KMK DONNA 1311

**COLEMAN ERISKAY 6102**  
\*18570018

COLEMAN JUNEAU 3296  
COLEMAN ERISKAY 316  
COLEMAN JUNEAU 044  
COLEMAN DONNA 194  
COLEMAN CHARLO 0256  
SINCLAIR ERISKAY 2N17883

SM
90
SW
62

CED	BW	WW	YW	DOC	CLAW	ANGLE	HP	MM	MARB	RE
4	2.5	60	101	26	0.36	0.42	11.3	23	-0.08	0.53

BW: 88 AJD. WW: 719 PROJ. 2/5/24: 1906

CALVING EASE - ★★★  
MATERNAL - ★★★★★  
DOCILITY - ★★★★★



**COLEMAN BEAUTY 981**  
Dam of Lot 25



# FALL BULLS.

FEBRUARY 5, 2024 - 1 P.M.



LOT 26

26

**SADLER HERITAGE 2615**

DOB. 10/28/22      Bull AAA. +\*20634923      TATTOO. 2615

**SADLER HERITAGE 1006**

+\*20126621

COLEMAN CHARLO 0256

COLEMAN DONNA 8113

OCC PAXTON 730P  
BOHI ABIGALE 6014  
MUSGRAVE SKY HIGH 1535  
COLEMAN DONNA 714

COLEMAN BRAVO 6313

COLEMAN DONNA 4203

COLEMAN CHARLO 0256  
COLEMAN DONNA 714  
CONNELY THUNDER  
COLEMAN DONNA 714

SM
88
SW
70

**COLEMAN DONNA 9309**

+\*19583466

CED	BW	WW	YW	DOC	CLAW	ANGLE	HP	MM	MARB	RE
16	-1.5	66	128	32	0.29	0.36	11.9	28	0.36	0.69

BW: 74      AJD. WW: 648      PROJ. 2/5/24: 1606

CALVING EASE - ★★★★★

MATERNAL - ★★★★★

DOCILITY - ★★★★★



**SADLER HERITAGE 1006**

Sire of Lots 26-28





LOT 27



LOT 28

# 27

## SADLER HERITAGE 2620

DOB. 11/1/22 Bull AAA. +\*20634924 TATTOO. 2620

### SADLER HERITAGE 1006

+\*20126621

COLEMAN CHARLO 0256

COLEMAN DONNA 8113

OCC PAXTON 730P  
BOHI ABIGALE 6014  
MUSGRAVE SKY HIGH 1535  
COLEMAN DONNA 714

### COLEMAN DONNA 7205

+\*19103993

COLEMAN FOUNDATION 972

COLEMAN DONNA 714

RR RITO 707  
COLEMAN DONNA 386  
CONNELY ONWARD  
COLEMAN DONNA 386

SM
103
SW
72

CED	BW	WW	YW	DOC	CLAW	ANGLE	HP	MM	MARB	RE
6	1.8	68	113	39	0.24	0.31	14.1	28	0.02	0.7

BW: 78 AJD. WW: 636 PROJ. 2/5/24: 1478

CALVING EASE - ★★★★★  
MATERNAL - ★★★★★★  
DOCILITY - ★★★★★★

# 28

## SADLER HERITAGE 2621

DOB. 11/1/22 Bull AAA. +\*20634925 TATTOO. 2621

### SADLER HERITAGE 1006

+\*20126621

COLEMAN CHARLO 0256

COLEMAN DONNA 8113

OCC PAXTON 730P  
BOHI ABIGALE 6014  
MUSGRAVE SKY HIGH 1535  
COLEMAN DONNA 714

### COLEMAN DONNA 7205

+\*19103993

COLEMAN FOUNDATION 972

COLEMAN DONNA 714

RR RITO 707  
COLEMAN DONNA 386  
CONNELY ONWARD  
COLEMAN DONNA 386

SM
99
SW
61

CED	BW	WW	YW	DOC	CLAW	ANGLE	HP	MM	MARB	RE
8	0.2	56	104	35	0.25	0.29	12.4	26	0.26	0.3

BW: 70 AJD. WW: 632 PROJ. 2/5/24: 1510

CALVING EASE - ★★★★★  
MATERNAL - ★★★★★★  
DOCILITY - ★★★★★★



LOT 29

**29**

**SADLER CHARLO 2514**

DOB: 9/10/22      Bull AAA: +\*20634900      TATTOO: 2514

**COLEMAN CHARLO 0256**

#+\*16879074

OCC PAXTON 730P  
BOHI ABIGALE 6014

OCC FOCUS 813F  
OCC BLACKBIRD 736K  
SITZ TRAVELER 8180  
SAV ABIGALE 6062

**COLEMAN DONNA 8113**

+\*19258348

MUSGRAVE SKY HIGH 1535  
COLEMAN DONNA 714

MUSGRAVE BIG SKY  
FLAG QUEEN W 00649  
CONNELLY ONWARD  
COLEMAN DONNA 386

SM
95
SW
75

CED	BW	WW	YW	DOC	CLAW	ANGLE	HP	MM	MARB	RE
13	-0.2	53	93	24	0.29	0.46	11.5	41	0.3	0.71

BW: 72      A.J.D. WW: 635      PROJ. 2/5/24: 1666

CALVING EASE - ★★★★★

MATERNAL - ★★★★★

DOCILITY - ★★★★★



**SADLER DONNA 1004**

Full sister to Lot 29



LOT 30



**COLEMAN DONNA 504**  
Dam of Lot 31

**30**

**SADLER CHARLO 2517**

DOB. 9/12/22      Bull AAA. +\*20634902      TATTOO. 2517

**COLEMAN CHARLO 0256**  
# +\*16879074      OCC PAXTON 730P  
BOHI ABIGALE 6014

OCC FOCUS 813F  
OCC BLACKBIRD 736K  
SITZ TRAVELER 8180  
SAV ABIGALE 6062

**COLEMAN DONNA 8113**  
+\*19258348      MUSGRAVE SKY HIGH 1535  
COLEMAN DONNA 714

MUSGRAVE BIG SKY  
FLAG QUEEN W 00649  
CONNELY ONWARD  
COLEMAN DONNA 386

SM
83
SW
70

CED	BW	WW	YW	DOC	CLAW	ANGLE	HP	MM	MARB	RE
10	0.1	62	110	25	0.35	0.43	11	29	0.36	1.07

BW: 70      AJD. WW: 678      PROJ. 2/5/24: 1770

CALVING EASE - ★★★★★★  
MATERNAL - ★★★★★★  
DOCILITY - ★★★★★★

**31**

**SADLER CHARLO 2519**

DOB. 9/12/22      Bull AAA. +\*20634911      TATTOO. 2519

**COLEMAN CHARLO 0256**  
# +\*16879074      OCC PAXTON 730P  
BOHI ABIGALE 6014

OCC FOCUS 813F  
OCC BLACKBIRD 736K  
SITZ TRAVELER 8180  
SAV ABIGALE 6062

**COLEMAN DONNA 504**  
+\*18238090      SAV RESOURCE 1441  
COLEMAN DONNA 714

RITO 707 OF IDEAL 3407 7075  
SAV BLACKCAP MAY 4136  
CONNELY ONWARD  
COLEMAN DONNA 386

SM
83
SW
66

CED	BW	WW	YW	DOC	CLAW	ANGLE	HP	MM	MARB	RE
13	-1.7	56	100	10	0.49	0.44	12	22	0.24	0.48

BW: 62      AJD. WW: 672      PROJ. 2/5/24: 1604

CALVING EASE - ★★★★★★  
MATERNAL - ★★★★★★  
DOCILITY - ★★★



**SADLER CHARLO 1005**  
Full brother to Lot 32



**SADLER DONNA 2342**  
Full sister to Lot 33

**32**

**SADLER CHARLO 2524**

DOB. 9/14/22      Bull AAA. +\*20634903      TATTOO. 2524

**COLEMAN CHARLO 0256**  
# +\*16879074

OCC PAXTON 730P  
BOHI ABIGALE 6014

OCC FOCUS 813F  
OCC BLACKBIRD 736K  
SITZ TRAVELER 8180  
SAV ABIGALE 6062

**COLEMAN DONNA 8113**  
+\*19258348

MUSGRAVE SKY HIGH 1535  
COLEMAN DONNA 714

MUSGRAVE BIG SKY  
FLAG QUEEN W 00649  
CONNELY ONWARD  
COLEMAN DONNA 386

SM
75
SW
68

CED	BW	WW	YW	DOC	CLAW	ANGLE	HP	MM	MARB	RE
15	-1.4	52	102	25	0.33	0.43	9.3	42	0.3	0.69

BW: 80      AJD. WW: 625      PROJ. 2/5/24: 1590

CALVING EASE - ★★★★★★

MATERNAL - ★★★★★★

DOCILITY - ★★★★★★

**33**

**SADLER NIGHT WATCH 2605**

DOB. 10/20/22      Bull AAA. +\*20634918      TATTOO. 2605

**COLEMAN NIGHT WATCH 9259**  
+\*19583413

COLEMAN BRAVO 6313  
COLEMAN DONNA 4203

COLEMAN CHARLO 0256  
COLEMAN DONNA 714  
CONNELY THUNDER  
COLEMAN DONNA 714

**COLEMAN DONNA 986**  
+\*19543203

SAV RAINDANCE 6848  
COLEMAN DONNA 504

COLEMAN CHARLO 0256  
SAV BLACKCAP MAY 4136  
SAV RESOURCE 1441  
COLEMAN DONNA 714

SM
104
SW
76

CED	BW	WW	YW	DOC	CLAW	ANGLE	HP	MM	MARB	RE
23	-4.2	55	97	33	0.32	0.45	15.5	40	0.18	0.61

BW: 68      AJD. WW: 604      PROJ. 2/5/24: 1478

CALVING EASE - ★★★★★★

MATERNAL - ★★★★★★

DOCILITY - ★★★★★★





LOT 37

# 35 SADLER EXTERNAL LAW 2558

DOB. 9/22/22 Bull AAA. \*20634912 TATTOO. 2558

**BLAIR'S EXTERNAL LAW**  
+\*19639203  
DUFF NAPOLEON 232  
BAR-E-L ERICA 74A  
DUFF DISTINCTION 9105  
DUFF EUR 443 MERLE 808  
BAR-E-L NATURAL LAW 52Y  
HF ERICA 339T

**BLOOM SPOT 918G**  
+\*19532701  
SILVEIRAS STYLE 9303  
RCL DC MISS 605  
GAMBLES HOT ROD  
SILVEIRAS ELBA 2520  
PVF INSIGHT 0129  
BR MISS WHITTY 05X

SM
63
SW
57

CED	BW	WW	YW	DOC	CLAW	ANGLE	HP	MM	MARB	RE
2	3.5	66	99	13	0.56	0.53	11.3	18	0.1	0.98

BW: 72 AJD. WW: 619 PROJ. 2/5/24: 1402

CALVING EASE - ★★★

MATERNAL - ★★★★★

DOCILITY - ★★★★★

# 36 SADLER EXTERNAL LAW 2560

DOB. 9/22/22 Bull AAA. +\*20634913 TATTOO. 2560

**BLAIR'S EXTERNAL LAW**  
+\*19639203  
DUFF NAPOLEON 232  
BAR-E-L ERICA 74A  
DUFF DISTINCTION 9105  
DUFF EUR 443 MERLE 808  
BAR-E-L NATURAL LAW 52Y  
HF ERICA 339T

**COLEMAN DONNA 8292**  
+\*19400618  
SAV PRESIDENT 6847  
COLEMAN DONNA 504  
COLEMAN CHARLO 0256  
SAV BLACKCAP MAY 4136  
SAV RESOURCE 1441  
COLEMAN DONNA 714

SM
92
SW
67

CED	BW	WW	YW	DOC	CLAW	ANGLE	HP	MM	MARB	RE
5	3.2	62	101	28	0.46	0.45	13.3	30	-0.13	0.88

BW: 72 AJD. WW: 655 PROJ. 2/5/24: 1520

CALVING EASE - ★★★★★

MATERNAL - ★★★★★★

DOCILITY - ★★★★★★

# 37 SADLER EXTERNAL LAW 2591

DOB. 10/8/22 Bull AAA. 20634916 TATTOO. 2591

**BLAIR'S EXTERNAL LAW**  
+\*19639203  
DUFF NAPOLEON 232  
BAR-E-L ERICA 74A  
DUFF DISTINCTION 9105  
DUFF EUR 443 MERLE 808  
BAR-E-L NATURAL LAW 52Y  
HF ERICA 339T

**C-4 KBB DONNA 9422**  
+\*19838556  
COLEMAN CHARLO 0256  
ZWT DONNA 5726  
OCC PAXTON 730P  
BOHI ABIGALE 6014  
CONNEALY ONWARD  
COLEMAN DONNA 386

SM
83
SW
68

CED	BW	WW	YW	DOC	CLAW	ANGLE	HP	MM	MARB	RE
1+2	1+3.5	1+71	1+116	1+24	1+48	1+47	1+13.5	1+25	1+.02	1+.65

BW: 84 AJD. WW: 743 PROJ. 2/5/24: 1544

CALVING EASE - ★★★

MATERNAL - ★★★★★★

DOCILITY - ★★★★★★



SADLER DONNA 2513  
Full sister to Lot 36



**COLEMAN DONNA 9309**

Dam of Lot 38



**COLEMAN DONNA 8292**

Dam of Lots 36 & 39

**38**

**SADLER ARGENTINE 2515**

DOB. 9/11/22      Bull AAA. +\*20634901      TATTOO. 2515

**HUMMEL ARGENTINE**

+\*19919948

DON APARICIO SERRUCHO57 MAXI  
RUBETA FONTANA 7567-T/E-

DON JOSE 176 MAXI  
DON APARICIO SERRANIAS 57  
CONSENZA DON ROBERTO 338 T/E  
RUBETA FONTANA 6207-T/E-

**COLEMAN DONNA 9309**

+\*19583466

COLEMAN BRAVO 6313  
COLEMAN DONNA 4203

COLEMAN CHARLO 0256  
COLEMAN DONNA 714  
CONNELY THUNDER  
COLEMAN DONNA 714

SM
90
SW
72

CED	BW	WW	YW	DOC	CLAW	ANGLE	HP	MM	MARB	RE
12	-0.4	64	107	16	0.31	0.41	11.7	27	0.34	0.23

BW: 62      AJD. WW: 718      PROJ. 2/5/24: 1604

CALVING EASE - ★★★★★

MATERNAL - ★★★★★

DOCILITY - ★★★★★

**39**

**SADLER ARGENTINE 2540**

DOB. 9/18/22      Bull AAA. +\*20634910      TATTOO. 2540

**HUMMEL ARGENTINE**

+\*19919948

DON APARICIO SERRUCHO57 MAXI  
RUBETA FONTANA 7567-T/E-

DON JOSE 176 MAXI  
DON APARICIO SERRANIAS 57  
CONSENZA DON ROBERTO 338 T/E  
RUBETA FONTANA 6207-T/E-

**COLEMAN DONNA 8292**

+\*19400618

SAV PRESIDENT 6847  
COLEMAN DONNA 504

COLEMAN CHARLO 0256  
SAV BLACKCAP MAY 4136  
SAV RESOURCE 1441  
COLEMAN DONNA 714

SM
68
SW
56

CED	BW	WW	YW	DOC	CLAW	ANGLE	HP	MM	MARB	RE
7	2.1	60	104	18	0.26	0.43	10.6	23	-0.15	0.76

BW: 88      AJD. WW: 676      PROJ. 2/5/24: 1630

CALVING EASE - ★★★★★

MATERNAL - ★★★★★

DOCILITY - ★★★★★



**COLEMAN ABIGALE 7187**  
Dam of Lot 40 & 41



**LOT 41**

**40**

**SADLER ARGENTINE 2570**

DOB. 9/26/22      Bull AAA. +\*20634914      TATTOO. 2570

**HUMMEL ARGENTINE**  
+\*19919948

DON APARICIO SERRUCHO57 MAXI  
RUBETA FONTANA 7567-T/E-

DON JOSE 176 MAXI  
DON APARICIO SERRANIAS 57  
CONSENZA DON ROBERTO 338 T/E  
RUBETA FONTANA 6207-T/E-

**COLEMAN ABIGALE 7187**  
+\*19108020

SAV RESOURCE 1441  
COLEMAN ABIGALE 0277

RITO 707 OF IDEAL 3407 7075  
SAV BLACKCAP MAY 4136  
OCC PAXTON 730P  
BOHI ABIGALE 6014

SM
54
SW
45

CED	BW	WW	YW	DOC	CLAW	ANGLE	HP	MM	MARB	RE
4	1.2	51	90	6	0.31	0.48	11.5	19	-0.06	0.66

BW: 78      AJD. WW: 671      PROJ. 2/5/24: 1632

CALVING EASE - ★★★★★

MATERNAL - ★★★★★

DOCILITY - ★★★★★

**41**

**SADLER ARGENTINE 2588**

DOB. 10/7/22      Bull AAA. +\*20634915      TATTOO. 2588

**HUMMEL ARGENTINE**  
+\*19919948

DON APARICIO SERRUCHO57 MAXI  
RUBETA FONTANA 7567-T/E-

DON JOSE 176 MAXI  
DON APARICIO SERRANIAS 57  
CONSENZA DON ROBERTO 338 T/E  
RUBETA FONTANA 6207-T/E-

**COLEMAN ABIGALE 7187**  
+\*19108020

SAV RESOURCE 1441  
COLEMAN ABIGALE 0277

RITO 707 OF IDEAL 3407 7075  
SAV BLACKCAP MAY 4136  
OCC PAXTON 730P  
BOHI ABIGALE 6014

SM
51
SW
49

CED	BW	WW	YW	DOC	CLAW	ANGLE	HP	MM	MARB	RE
14	-1.6	49	98	12	0.25	0.39	9.9	26	0.02	0.73

BW: 72      AJD. WW: 600      PROJ. 2/5/24: 1578

CALVING EASE - ★★★★★★

MATERNAL - ★★★★★

DOCILITY - ★★★



# 42 SADLER SOUTH AMERICA 2528

DOB. 9/15/22 Bull AAA. +\*20574389 TATTOO. 2528

**HUMMEL SOUTH AMERICA**  
+\*19919943  
DON APARICIO SERRUCHO57 MAXI  
RUBETA FONTANA 7567-T/E-

DON JOSE 176 MAXI  
DON APARICIO SERRANIAS 57  
CONSENZA DON ROBERTO 338 T/E  
RUBETA FONTANA 6207-T/E-

**COLEMAN DONNA 8113**  
+\*19258348  
MUSGRAVE SKY HIGH 1535  
COLEMAN DONNA 714

MUSGRAVE BIG SKY  
FLAG QUEEN W 00649  
CONNEALY ONWARD  
COLEMAN DONNA 386

SM
62
SW
63

CED	BW	WW	YW	DOC	CLAW	ANGLE	HP	MM	MARB	RE
13	-0.1	64	119	33	0.36	0.43	13.9	31	0.36	0.97

BW: 82 A.J.D. WW: 711 PROJ. 2/5/24: 1676

CALVING EASE - ★★★★★★  
MATERNAL - ★★★★★★  
DOCILITY - ★★★★★★



LOT 42

FALL BULLS

# 43 SADLER SOUTH AMERICA 2546

DOB. 9/19/22 Bull AAA. +\*20574391 TATTOO. 2546

**HUMMEL SOUTH AMERICA**  
+\*19919943  
DON APARICIO SERRUCHO57 MAXI  
RUBETA FONTANA 7567-T/E-

DON JOSE 176 MAXI  
DON APARICIO SERRANIAS 57  
CONSENZA DON ROBERTO 338 T/E  
RUBETA FONTANA 6207-T/E-

**COLEMAN DONNA 8113**  
+\*19258348  
MUSGRAVE SKY HIGH 1535  
COLEMAN DONNA 714

MUSGRAVE BIG SKY  
FLAG QUEEN W 00649  
CONNEALY ONWARD  
COLEMAN DONNA 386

SM
79
SW
58

CED	BW	WW	YW	DOC	CLAW	ANGLE	HP	MM	MARB	RE
11	0	59	110	33	0.4	0.39	12.9	25	0.2	0.96

BW: 76 A.J.D. WW: 736 PROJ. 2/5/24: 1656

CALVING EASE - ★★★★★★  
MATERNAL - ★★★★★★  
DOCILITY - ★★★★★★



LOT 43

# 44 SADLER SOUTH AMERICA 2548

DOB. 9/19/22 Bull AAA. +\*20574390 TATTOO. 2548

**HUMMEL SOUTH AMERICA**  
+\*19919943  
DON APARICIO SERRUCHO57 MAXI  
RUBETA FONTANA 7567-T/E-

DON JOSE 176 MAXI  
DON APARICIO SERRANIAS 57  
CONSENZA DON ROBERTO 338 T/E  
RUBETA FONTANA 6207-T/E-

**COLEMAN DONNA 8113**  
+\*19258348  
MUSGRAVE SKY HIGH 1535  
COLEMAN DONNA 714

MUSGRAVE BIG SKY  
FLAG QUEEN W 00649  
CONNEALY ONWARD  
COLEMAN DONNA 386

SM
69
SW
46

CED	BW	WW	YW	DOC	CLAW	ANGLE	HP	MM	MARB	RE
12	-0.4	48	93	31	0.37	0.46	13.5	23	-0.05	1.08

BW: 76 A.J.D. WW: 702 PROJ. 2/5/24: 1550

CALVING EASE - ★★★★★★  
MATERNAL - ★★★★★★  
DOCILITY - ★★★★★★



HUMMEL SOUTH AMERICA  
Sire of Lot 44



LOT 46



LOT 47

# 45

## SADLER GLACIER 2538

DOB. 9/17/22 Bull AAA. +\*20634905 TATTOO. 2538

### COLEMAN GLACIER 041

+\*19866409

SAV RENOWN 3439

COLEMAN DONNA 439

RITO 707 OF IDEAL 3407 7075

SAV BLACKCAP MAY 4136

GDAR GAME DAY 449

COLEMAN DONNA 714

### COLEMAN DONNA 8113

+\*19258348

MUSGRAVE SKY HIGH 1535

COLEMAN DONNA 714

MUSGRAVE BIG SKY

FLAG QUEEN W 00649

CONNELLY ONWARD

COLEMAN DONNA 386

SM
73
SW
68

CED	BW	WW	YW	DOC	CLAW	ANGLE	HP	MM	MARB	RE
10	0.9	67	120	29	0.3	0.37	13.2	32	-0.35	0.91

BW: 80 AJD. WW: 668 PROJ. 2/5/24: 1556

CALVING EASE - ★★★★★

MATERNAL - ★★★★★

DOCILITY - ★★★★★

# 47

## SADLER GLACIER 2564

DOB. 9/24/22 Bull AAA. +\*20634907 TATTOO. 2564

### COLEMAN GLACIER 041

+\*19866409

SAV RENOWN 3439

COLEMAN DONNA 439

RITO 707 OF IDEAL 3407 7075

SAV BLACKCAP MAY 4136

GDAR GAME DAY 449

COLEMAN DONNA 714

### COLEMAN DONNA 8113

+\*19258348

MUSGRAVE SKY HIGH 1535

COLEMAN DONNA 714

MUSGRAVE BIG SKY

FLAG QUEEN W 00649

CONNELLY ONWARD

COLEMAN DONNA 386

SM
73
SW
76

CED	BW	WW	YW	DOC	CLAW	ANGLE	HP	MM	MARB	RE
7	1.7	81	144	39	0.35	0.4	16.5	33	-0.08	0.88

BW: 84 AJD. WW: 768 PROJ. 2/5/24: 1768

CALVING EASE - ★★★

MATERNAL - ★★★★★

DOCILITY - ★★★★★

# 46

## SADLER GLACIER 2551

DOB. 9/20/22 Bull AAA. +\*20634906 TATTOO. 2551

### COLEMAN GLACIER 041

+\*19866409

SAV RENOWN 3439

COLEMAN DONNA 439

RITO 707 OF IDEAL 3407 7075

SAV BLACKCAP MAY 4136

GDAR GAME DAY 449

COLEMAN DONNA 714

### COLEMAN DONNA 8113

+\*19258348

MUSGRAVE SKY HIGH 1535

COLEMAN DONNA 714

MUSGRAVE BIG SKY

FLAG QUEEN W 00649

CONNELLY ONWARD

COLEMAN DONNA 386

SM
71
SW
71

CED	BW	WW	YW	DOC	CLAW	ANGLE	HP	MM	MARB	RE
10	0.2	69	119	33	0.34	0.39	72	26	0	0.93

BW: 82 AJD. WW: 645 PROJ. 2/5/24: 1642

CALVING EASE - ★★★★★

MATERNAL - ★★★★★

DOCILITY - ★★★★★



LOT 48

**48**

**SADLER GLACIER 2589**

DOB. 10/7/22      Bull AAA. +\*20634922      TATTOO. 2589

**COLEMAN GLACIER 041**

+\*19866409

SAV RENOWN 3439

COLEMAN DONNA 439

RITO 707 OF IDEAL 3407 7075

SAV BLACKCAP MAY 4136

GDAR GAME DAY 449

COLEMAN DONNA 714

**C-4 KBB DONNA 9422**

+\*19838556

COLEMAN CHARLO 0256

ZWT DONNA 5726

OCC PAXTON 730P

BOHI ABIGALE 6014

CONNEALY ONWARD

COLEMAN DONNA 386

SM
73
SW
70

CED	BW	WW	YW	DOC	CLAW	ANGLE	HP	MM	MARB	RE
8	1.6	75	142	21	0.4	0.49	18.2	31	-0.11	0.63

BW: 70      AJD. WW: 677      PROJ. 2/5/24: 1708

CALVING EASE - ★★★★★

MATERNAL - ★★★★★

DOCILITY - ★★★★★



**C-4 KBB DONNA 9422**

Dam of Lot 48



**SADLER DONNA 2627**  
Full sister to Lot 49

**49**

**SADLER GLACIER 2592**

DOB. 10/9/22 | Bull AAA, +\*20634908 | TATTOO. 2592

**COLEMAN GLACIER 041**  
+\*19866409

SAV RENOWN 3439  
COLEMAN DONNA 439

RITO 707 OF IDEAL 3407 7075  
SAV BLACKCAP MAY 4136  
GDAR GAME DAY 449  
COLEMAN DONNA 714

**COLEMAN DONNA 8113**  
+\*19258348

MUSGRAVE SKY HIGH 1535  
COLEMAN DONNA 714

MUSGRAVE BIG SKY  
FLAG QUEEN W 00649  
CONNELY ONWARD  
COLEMAN DONNA 386

SM
81
SW
67

CED	BW	WW	YW	DOC	CLAW	ANGLE	HP	MM	MARB	RE
14	-1.9	55	99	34	0.33	0.45	14.7	37	-0.36	0.8

BW: 86 | A.J.D. WW: 647 | PROJ. 2/5/24: 1472

CALVING EASE - ★★★★★  
MATERNAL - ★★★★★  
DOCILITY - ★★★★★



**COLEMAN GLACIER 041**  
Sire of Lots 45-50

**50**

**SADLER GLACIER 2597**

DOB. 10/11/22 | Bull AAA, +\*20634909 | TATTOO. 2597

**COLEMAN GLACIER 041**  
+\*19866409

SAV RENOWN 3439  
COLEMAN DONNA 439

RITO 707 OF IDEAL 3407 7075  
SAV BLACKCAP MAY 4136  
GDAR GAME DAY 449  
COLEMAN DONNA 714

**COLEMAN DONNA 8113**  
+\*19258348

MUSGRAVE SKY HIGH 1535  
COLEMAN DONNA 714

MUSGRAVE BIG SKY  
FLAG QUEEN W 00649  
CONNELY ONWARD  
COLEMAN DONNA 386

SM
72
SW
74

CED	BW	WW	YW	DOC	CLAW	ANGLE	HP	MM	MARB	RE
3	2.6	78	130	41	0.4	0.44	15.4	34	-0.21	0.7

BW: 104 | A.J.D. WW: 734 | PROJ. 2/5/24: 1650

CALVING EASE - ★★★  
MATERNAL - ★★★★★  
DOCILITY - ★★★★★



**W/C BANKROLL 811D**  
Sire of Lot 51

**51**

**SADLER BANKROLL 2623L**

DOB. 11/8/23 | Bull ASA, 4306545 | TATTOO. 2623L

**W/C BANKROLL 811D**  
3187005

W/C LOADED UP 1119Y  
MISS WERNING KP 8543U

REMINGTON LOCK N LOAD 54U  
AUBREYS BLACK BLAZE III  
WAGR DREAM CATCHER 03R  
MISS WERNING 534R

**COLEMAN DONNA 8113**  
+\*19258348

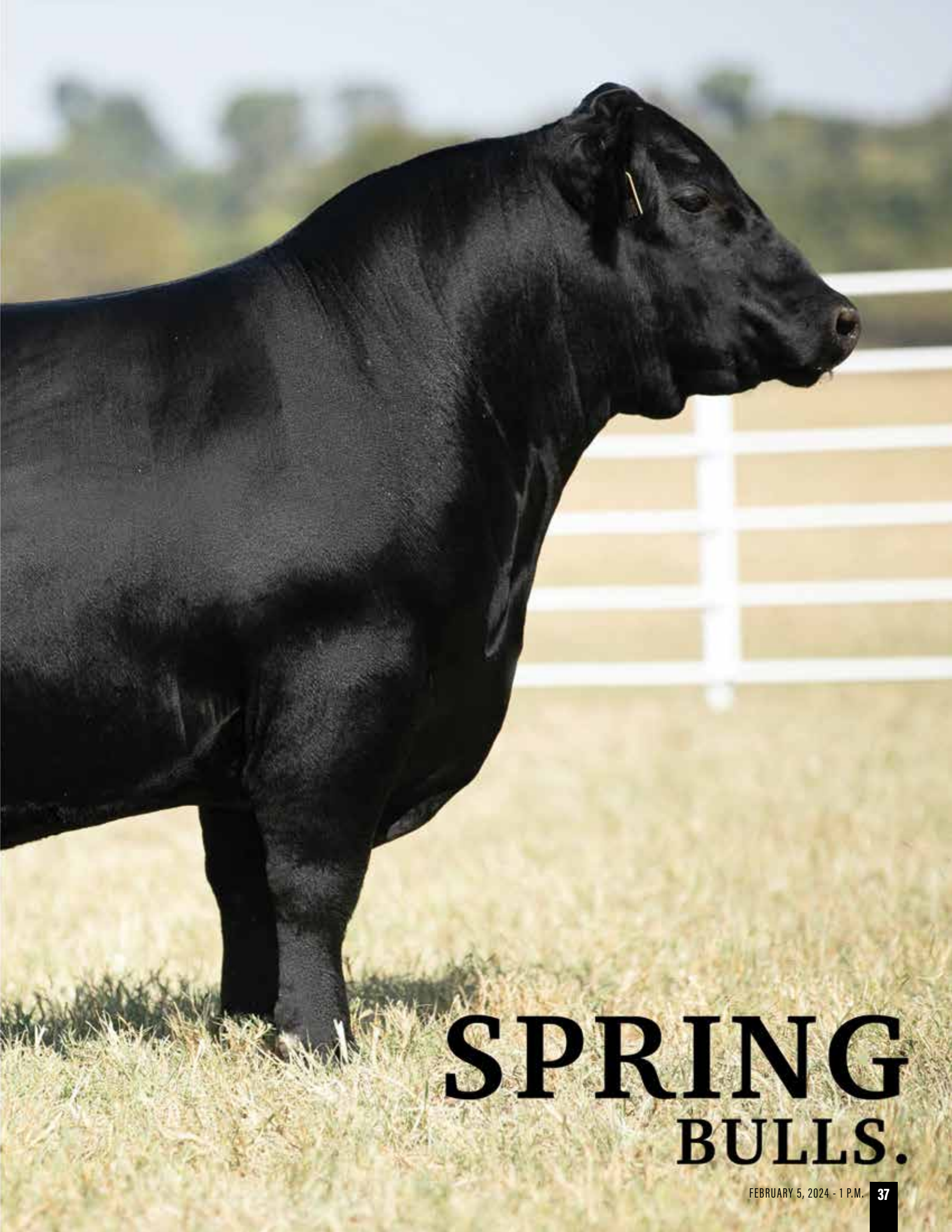
MUSGRAVE SKY HIGH 1535  
COLEMAN DONNA 714

MUSGRAVE BIG SKY  
FLAG QUEEN W 00649  
CONNELY ONWARD  
COLEMAN DONNA 386

CED	BW	WW	YW	MILK	DOC	CW	MARB	REA	API	TI
14	1.3	77	117	25	14	31.6	0.3	.78	120	77

BW: 88 | A.J.D. WW: 815 | PROJ. 2/5/24: 1612

CALVING EASE - ★★★  
MATERNAL - ★★★★★  
DOCILITY - ★★★★★



# SPRING BULLS.

FEBRUARY 5, 2024 - 1 P.M.



LOT 52

# 52

## SADLER HERITAGE 3024

DOB. 1/16/23 Bull AAA. +\*20707986 TATTOO. 3024

**SADLER HERITAGE 1006**  
+\*20126621  
COLEMAN CHARLO 0256  
COLEMAN DONNA 8113

**COLEMAN CHLOE 9146**  
+\*19541341  
COLEMAN BRAVO 6313  
LAWSONS CHLOE C815

OCC PAXTON 730P  
BOHI ABIGALE 6014  
MUSGRAVE SKY HIGH 1535  
COLEMAN DONNA 714

COLEMAN CHARLO 0256  
COLEMAN DONNA 714  
SAV RENOWN 3439  
LAWSONS CHLOE Z341

SM
86
SW
62

CED	BW	WW	YW	DOC	CLAW	ANGLE	HP	MM	MARB	RE
8	0.1	55	98	25	0.4	0.47	11.2	25	0.06	0.51

BW: 76 A.J.D. WW: 652 PROJ. 2/5/24: 1336

CALVING EASE - ★★★★★  
MATERNAL - ★★★★★  
DOCILITY - ★★★★★

# 53

## SADLER HERITAGE 3025

DOB. 1/17/23 Bull AAA. +\*20707987 TATTOO. 3025

**SADLER HERITAGE 1006**  
+\*20126621  
COLEMAN CHARLO 0256  
COLEMAN DONNA 8113

**COLEMAN CHLOE 9146**  
+\*19541341  
COLEMAN BRAVO 6313  
LAWSONS CHLOE C815

OCC PAXTON 730P  
BOHI ABIGALE 6014  
MUSGRAVE SKY HIGH 1535  
COLEMAN DONNA 714

COLEMAN CHARLO 0256  
COLEMAN DONNA 714  
SAV RENOWN 3439  
LAWSONS CHLOE Z341

SM
82
SW
55

CED	BW	WW	YW	DOC	CLAW	ANGLE	HP	MM	MARB	RE
12	-1.4	52	98	37	0.39	0.47	13.1	24	0.16	0.81

BW: 68 A.J.D. WW: 620 PROJ. 2/5/24: 1298

CALVING EASE - ★★★★★  
MATERNAL - ★★★★★  
DOCILITY - ★★★★★



**COLEMAN CHLOE 9146**  
Dam of Lots 52 & 53

# 54

## SADLER HERITAGE 3113

DOB. 2/8/23 Bull AAA. \*20710280 TATTOO. 3113

**SADLER HERITAGE 1006**  
+\*20126621  
COLEMAN CHARLO 0256  
COLEMAN DONNA 8113

**COLEMAN DONNA 057**  
+\*19857117  
SAV RENOWN 3439  
COLEMAN DONNA 439

OCC PAXTON 730P  
BOHI ABIGALE 6014  
MUSGRAVE SKY HIGH 1535  
COLEMAN DONNA 714

RITO 707 OF IDEAL 3407 7075  
SAV BLACKCAP MAY 4136  
GDAR GAME DAY 449  
COLEMAN DONNA 714

SM
86
SW
52

CED	BW	WW	YW	DOC	CLAW	ANGLE	HP	MM	MARB	RE
10	-1	48	94	31	0.31	0.37	12.3	24	-0.13	0.7

BW: 78 A.J.D. WW: 734 PROJ. 2/5/24: 1212

CALVING EASE - ★★★★★  
MATERNAL - ★★★★★  
DOCILITY - ★★★★★



**COLEMAN DONNA 057**  
Dam of Lot 54



**COLEMAN NIGHTWATCH 9259**  
Sire of Lots 55-59



**SADLER DONNA 3015**  
Full sister to Lots 55 & 56

**55**

**SADLER NIGHT WATCH 3008**

DOB. 1/13/23      Bull AAA. +\*20707975      TATTOO. 3008

**COLEMAN NIGHT WATCH 9259**  
+\*19583413

COLEMAN BRAVO 6313  
COLEMAN DONNA 4203

COLEMAN CHARLO 0256  
COLEMAN DONNA 6143

COLEMAN CHARLO 0256  
BOHI ABIGALE 6014  
WULFES EXT 6106  
KMK DONNA J311

COLEMAN CHARLO 0256  
COLEMAN DONNA 714  
CONNELLY THUNDER  
COLEMAN DONNA 714

OCC PAXTON 730P  
BOHI ABIGALE 6014  
WULFES EXT 6106  
KMK DONNA J311

SM
101
SW
55

CED	BW	WW	YW	DOC	CLAW	ANGLE	HP	MM	MARB	RE
20	-4.8	34	69	31	0.36	0.38	18.5	36	0.53	0.24

BW: 58      A.J.D. WW: 617      PROJ. 2/5/24: 1200

CALVING EASE - ★★★★★  
MATERNAL - ★★★★★  
DOCILITY - ★★★★★

**56**

**SADLER NIGHT WATCH 3021**

DOB. 1/16/23      Bull AAA. +\*20707984      TATTOO. 3021

**COLEMAN NIGHT WATCH 9259**  
+\*19583413

COLEMAN BRAVO 6313  
COLEMAN DONNA 4203

COLEMAN CHARLO 0256  
COLEMAN DONNA 6143

COLEMAN CHARLO 0256  
BOHI ABIGALE 6014  
WULFES EXT 6106  
KMK DONNA J311

COLEMAN CHARLO 0256  
COLEMAN DONNA 714  
CONNELLY THUNDER  
COLEMAN DONNA 714

OCC PAXTON 730P  
BOHI ABIGALE 6014  
WULFES EXT 6106  
KMK DONNA J311

SM
94
SW
58

CED	BW	WW	YW	DOC	CLAW	ANGLE	HP	MM	MARB	RE
17	-2.8	38	68	25	0.32	0.41	15.5	32	0.16	0.13

BW: 60      A.J.D. WW: 618      PROJ. 2/5/24: 1172

CALVING EASE - ★★★★★  
MATERNAL - ★★★★★  
DOCILITY - ★★★★★



LOT 59

# 57 SADLER NIGHT WATCH 3027

DOB. 1/17/23 Bull AAA. +\*20707989 TATTOO. 3027

**COLEMAN NIGHT WATCH 9259**  
+\*19583413  
COLEMAN BRAVO 6313  
COLEMAN DONNA 4203

**COLEMAN DONNA 986**  
+\*19543203  
SAV RAINDANCE 6848  
COLEMAN DONNA 504

COLEMAN CHARLO 0256  
COLEMAN DONNA 714  
CONNELY THUNDER  
COLEMAN DONNA 714

COLEMAN CHARLO 0256  
SAV BLACKCAP MAY 4136  
SAV RESOURCE 1441  
COLEMAN DONNA 714

SM
106
SW
85

CED	BW	WW	YW	DOC	CLAW	ANGLE	HP	MM	MARB	RE
18	-2.3	65	117	36	0.41	0.46	20.2	47	0.01	0.66

BW: 64 AJD. WW: 679 PROJ. 2/5/24: 1332

CALVING EASE - ★★★★★★

MATERNAL - ★★★★★★

DOCILITY - ★★★★★★

# 58 SADLER NIGHT WATCH 3028

DOB. 1/17/23 Bull AAA. +\*20707990 TATTOO. 3028

**COLEMAN NIGHT WATCH 9259**  
+\*19583413  
COLEMAN BRAVO 6313  
COLEMAN DONNA 4203

**COLEMAN DONNA 986**  
+\*19543203  
SAV RAINDANCE 6848  
COLEMAN DONNA 504

COLEMAN CHARLO 0256  
COLEMAN DONNA 714  
CONNELY THUNDER  
COLEMAN DONNA 714

COLEMAN CHARLO 0256  
SAV BLACKCAP MAY 4136  
SAV RESOURCE 1441  
COLEMAN DONNA 714

SM
83
SW
73

CED	BW	WW	YW	DOC	CLAW	ANGLE	HP	MM	MARB	RE
18	-0.1	68	128	29	0.31	0.41	15.2	36	0.22	0.82

BW: 68 AJD. WW: 608 PROJ. 2/5/24: 1244

CALVING EASE - ★★★★★★

MATERNAL - ★★★★★★

DOCILITY - ★★★★★★

# 59 SADLER NIGHT WATCH 3043

DOB. 1/20/23 Bull AAA. +\*20707996 TATTOO. 3043

**COLEMAN NIGHT WATCH 9259**  
+\*19583413  
COLEMAN BRAVO 6313  
COLEMAN DONNA 4203

**COLEMAN DONNA 986**  
+\*19543203  
SAV RAINDANCE 6848  
COLEMAN DONNA 504

COLEMAN CHARLO 0256  
COLEMAN DONNA 714  
CONNELY THUNDER  
COLEMAN DONNA 714

COLEMAN CHARLO 0256  
SAV BLACKCAP MAY 4136  
SAV RESOURCE 1441  
COLEMAN DONNA 714

SM
81
SW
77

CED	BW	WW	YW	DOC	CLAW	ANGLE	HP	MM	MARB	RE
12	1.2	78	139	34	0.39	0.37	14.8	32	-0.01	0.54

BW: 78 AJD. WW: 727 PROJ. 2/5/24: 1398

CALVING EASE - ★★★★★★

MATERNAL - ★★★★★★

DOCILITY - ★★★★★★



**SADLER DONNA 3011**  
Full sister to Lots 57-59



# 60

## SADLER EXTERNAL LAW 3098

DOB. 2/4/23 Bull AAA. +\*20708010 TATTOO. 3098

### BLAIR'S EXTERNAL LAW

+\*19639203

DUFF NAPOLEON 232  
BAR-E-L ERICA 74A

DUFF DISTINCTION 9105  
DUFF EUR 443 MERLE 808  
BAR-E-L NATURAL LAW 52Y  
HF ERICA 339T

### COLEMAN CHLOE 9146

+\*19541341

COLEMAN BRAVO 6313  
LAWSONS CHLOE C815

COLEMAN CHARLO 0256  
COLEMAN DONNA 714  
SAV RENOWN 3439  
LAWSONS CHLOE Z341

SM
67
SW
62

CED	BW	WW	YW	DOC	CLAW	ANGLE	HP	MM	MARB	RE
5	2.4	70	118	25	0.52	0.58	11.2	19	-0.12	0.59

BW: 80 A.J.D. WW: 676 PROJ. 2/5/24: 1316

CALVING EASE - ★★ ★

MATERNAL - ★★ ★★ ★

DOCILITY - ★★ ★★ ★★



**SADLER CHLOE 3178**

Full sister to Lots 60 & 61

SPRING BULLS

# 61

## SADLER EXTERNAL LAW 3114

DOB. 2/8/23 Bull AAA. +\*20708017 TATTOO. 3114

### BLAIR'S EXTERNAL LAW

+\*19639203

DUFF NAPOLEON 232  
BAR-E-L ERICA 74A

DUFF DISTINCTION 9105  
DUFF EUR 443 MERLE 808  
BAR-E-L NATURAL LAW 52Y  
HF ERICA 339T

### COLEMAN CHLOE 9146

+\*19541341

COLEMAN BRAVO 6313  
LAWSONS CHLOE C815

COLEMAN CHARLO 0256  
COLEMAN DONNA 714  
SAV RENOWN 3439  
LAWSONS CHLOE Z341

SM
77
SW
58

CED	BW	WW	YW	DOC	CLAW	ANGLE	HP	MM	MARB	RE
7	0.4	64	108	28	0.52	0.56	13.8	14	0.11	0.69

BW: 72 A.J.D. WW: 629 PROJ. 2/5/24: 1212

CALVING EASE - ★★ ★★ ★

MATERNAL - ★★ ★★ ★★

DOCILITY - ★★ ★★ ★★



**LOT 61**

# 62

## SADLER EXTERNAL LAW 3133

DOB. 2/11/23 Bull AAA. \*20708021 TATTOO. 3133

### BLAIR'S EXTERNAL LAW

+\*19639203

DUFF NAPOLEON 232  
BAR-E-L ERICA 74A

DUFF DISTINCTION 9105  
DUFF EUR 443 MERLE 808  
BAR-E-L NATURAL LAW 52Y  
HF ERICA 339T

### INGRAM EMBLYNETTE 0034

\*19684432

SAV REIGN 6845  
INGRAM EMBLYNETTE 8001

COLEMAN CHARLO 0256  
SAV BLACKCAP MAY 4136  
HA COWBOY UP 5405  
SAV EMBLYNETTE 7531

SM
45
SW
58

CED	BW	WW	YW	DOC	CLAW	ANGLE	HP	MM	MARB	RE
12	0.2	64	105	19	0.47	0.46	8.4	19	-0.09	0.4

BW: 66 A.J.D. WW: 712 PROJ. 2/5/24: 1304

CALVING EASE - ★★ ★★ ★★

MATERNAL - ★★ ★★

DOCILITY - ★★ ★★ ★



**LOT 62**



**BLAIR'S EXTERNAL LAW 266F**  
Sire of Lots 60-64



**LOT 64**

**63 SADLER EXTERNAL LAW 3141**

DOB. 2/13/23 Bull AAA. \*20689034 TATTOO. 3141

**BLAIR'S EXTERNAL LAW**  
+\*19639203  
DUFF NAPOLEON 232  
BAR-E-L ERICA 74A  
DUFF DISTINCTION 9105  
DUFF EUR 443 MERLE 808  
BAR-E-L NATURAL LAW 52Y  
HF ERICA 339T

**COLEMAN DONNA 9157**  
+\*19539775  
COLEMAN CHARLO 0256  
COLEMAN DONNA 6143  
OCC PAXTON 730P  
BOHI ABIGALE 6014  
WULFFS EXT 6106  
KMK DONNA J311

SM
86
SW
63

CED	BW	WW	YW	DOC	CLAW	ANGLE	HP	MM	MARB	RE
8	0.2	43	65	28	0.39	0.48	11.8	30	0.14	0.49

BW: 74 AJD. WW: 658 PROJ. 2/5/24: 1212

CALVING EASE - ★★★★★  
MATERNAL - ★★★★★  
DOCILITY - ★★★★★

**64 SADLER EXTERNAL LAW 3204**

DOB. 3/7/23 Bull AAA. +\*20708046 TATTOO. 3204

**BLAIR'S EXTERNAL LAW**  
+\*19639203  
DUFF NAPOLEON 232  
BAR-E-L ERICA 74A  
DUFF DISTINCTION 9105  
DUFF EUR 443 MERLE 808  
BAR-E-L NATURAL LAW 52Y  
HF ERICA 339T

**COLEMAN DONNA 504**  
+\*18238090  
SAV RESOURCE 1441  
COLEMAN DONNA 714  
RITO 707 OF IDEAL 3407 7075  
SAV BLACKCAP MAY 4136  
CONNELLY ONWARD  
COLEMAN DONNA 386

SM
91
SW
70

CED	BW	WW	YW	DOC	CLAW	ANGLE	HP	MM	MARB	RE
5	1.9	68	114	21	0.49	0.46	15.1	25	0.05	0.75

BW: 78 AJD. WW: 785 PROJ. 2/5/24: 1346

CALVING EASE - ★★★★★  
MATERNAL - ★★★★★  
DOCILITY - ★★★★★



**HUMMEL ARGENTINE**

Sire of Lots 65-70



**COLEMAN CHLOE 9146**

Dam of Lots 65&66

**65 SADLER ARGENTINE 3039**

DOB. 1/20/23	Bull AAA. +*20708000	TATTOO. 3039
--------------	----------------------	--------------

**HUMMEL ARGENTINE**  
+\*19919948

DON APARICIO SERRUCHO57 MAXI  
RUBETA FONTANA 7567-T/E-

DON JOSE 176 MAXI  
DON APARICIO SERRANIAS 57  
CONSENZA DON ROBERTO 338 T/E  
RUBETA FONTANA 6207-T/E-

SM
83
SW
64

**COLEMAN CHLOE 9146**  
+\*19541341

COLEMAN BRAVO 6313  
LAWSONS CHLOE C815

COLEMAN CHARLO 0256  
COLEMAN DONNA 714  
SAV RENOWN 3439  
LAWSONS CHLOE Z341

CED	BW	WW	YW	DOC	CLAW	ANGLE	HP	MM	MARB	RE
4	2.3	67	107	24	0.37	0.47	14.4	22	-0.02	0.4

BW: 76    AJD. WW: 600    PROJ. 2/5/24: 1194

CALVING EASE - ★★★★★  
MATERNAL - ★★★★★  
DOCILITY - ★★★★★

**66 SADLER ARGENTINE 3050**

DOB. 1/22/23	Bull AAA. +*20708001	TATTOO. 3050
--------------	----------------------	--------------

**HUMMEL ARGENTINE**  
+\*19919948

DON APARICIO SERRUCHO57 MAXI  
RUBETA FONTANA 7567-T/E-

DON JOSE 176 MAXI  
DON APARICIO SERRANIAS 57  
CONSENZA DON ROBERTO 338 T/E  
RUBETA FONTANA 6207-T/E-

SM
68
SW
62

**COLEMAN CHLOE 9146**  
+\*19541341

COLEMAN BRAVO 6313  
LAWSONS CHLOE C815

COLEMAN CHARLO 0256  
COLEMAN DONNA 714  
SAV RENOWN 3439  
LAWSONS CHLOE Z341

CED	BW	WW	YW	DOC	CLAW	ANGLE	HP	MM	MARB	RE
5	0.8	64	109	24	0.33	0.48	11.7	24	0.08	0.53

BW: 82    AJD. WW: 550    PROJ. 2/5/24: 1244

CALVING EASE - ★★★★★  
MATERNAL - ★★★★★  
DOCILITY - ★★★★★



LOT 67

# 67

## SADLER ARGENTINE 3101

DOB. 2/5/23 Bull AAA. +\*20708011 TATTOO. 3101

**HUMMEL ARGENTINE**  
+\*19919948

DON APARICIO SERRUCHO57 MAXI  
RUBETA FONTANA 7567-T/E-

DON JOSE 176 MAXI  
DON APARICIO SERRANIAS 57  
CONSENZA DON ROBERTO 338 T/E  
RUBETA FONTANA 6207-T/E-

**COLEMAN ERISKAY 6102**  
\*18570018

COLEMAN JUNEAU 3296  
COLEMAN ERISKAY 316

COLEMAN JUNEAU 044  
COLEMAN DONNA 194  
COLEMAN CHARLO 0256  
SINCLAIR ERISKAY 2NI 7883

SM
63
SW
52

CED	BW	WW	YW	DOC	CLAW	ANGLE	HP	MM	MARB	RE
0	2.2	58	95	12	0.34	0.47	9.9	17	-0.23	0.53

BW: 76 A.J.D. WW: 673 PROJ. 2/5/24: 1254

CALVING EASE - ★★★  
MATERNAL - ★★★  
DOCILITY - ★★★★★

# 68

## SADLER ARGENTINE 3109

DOB. 2/6/23 Bull AAA. +\*20708014 TATTOO. 3109

**HUMMEL ARGENTINE**  
+\*19919948

DON APARICIO SERRUCHO57 MAXI  
RUBETA FONTANA 7567-T/E-

DON JOSE 176 MAXI  
DON APARICIO SERRANIAS 57  
CONSENZA DON ROBERTO 338 T/E  
RUBETA FONTANA 6207-T/E-

**COLEMAN DONNA 8113**  
+\*19258348

MUSGRAVE SKY HIGH 1535  
COLEMAN DONNA 714

MUSGRAVE BIG SKY  
FLAG QUEEN W 00649  
CONNELLY ONWARD  
COLEMAN DONNA 386

SM
64
SW
51

CED	BW	WW	YW	DOC	CLAW	ANGLE	HP	MM	MARB	RE
12	-1.3	44	81	27	0.34	0.43	10.3	30	-0.21	0.53

BW: 64 A.J.D. WW: 655 PROJ. 2/5/24: 1138

CALVING EASE - ★★★★★  
MATERNAL - ★★★  
DOCILITY - ★★★★★

# 69

## SADLER ARGENTINE 3111

DOB. 2/3/23 Bull AAA. +\*20708016 TATTOO. 3111

**HUMMEL ARGENTINE**  
+\*19919948

DON APARICIO SERRUCHO57 MAXI  
RUBETA FONTANA 7567-T/E-

DON JOSE 176 MAXI  
DON APARICIO SERRANIAS 57  
CONSENZA DON ROBERTO 338 T/E  
RUBETA FONTANA 6207-T/E-

**COLEMAN DONNA 8113**  
+\*19258348

MUSGRAVE SKY HIGH 1535  
COLEMAN DONNA 714

MUSGRAVE BIG SKY  
FLAG QUEEN W 00649  
CONNELLY ONWARD  
COLEMAN DONNA 386

SM
69
SW
66

CED	BW	WW	YW	DOC	CLAW	ANGLE	HP	MM	MARB	RE
15	-2.7	54	86	22	0.34	0.43	7.4	28	0.06	0.62

BW: 64 A.J.D. WW: 617 PROJ. 2/5/24: 1178

CALVING EASE - ★★★★★  
MATERNAL - ★★★★★  
DOCILITY - ★★★★★

# 70

## SADLER ARGENTINE 3123

DOB. 2/9/23 Bull AAA. +\*20710281 TATTOO. 3123

**HUMMEL ARGENTINE**  
+\*19919948

DON APARICIO SERRUCHO57 MAXI  
RUBETA FONTANA 7567-T/E-

DON JOSE 176 MAXI  
DON APARICIO SERRANIAS 57  
CONSENZA DON ROBERTO 338 T/E  
RUBETA FONTANA 6207-T/E-

**COLEMAN ERISKAY 6102**  
\*18570018

COLEMAN JUNEAU 3296  
COLEMAN ERISKAY 316

COLEMAN JUNEAU 044  
COLEMAN DONNA 194  
COLEMAN CHARLO 0256  
SINCLAIR ERISKAY 2NI 7883

SM
65
SW
60

CED	BW	WW	YW	DOC	CLAW	ANGLE	HP	MM	MARB	RE
9	-1	47	75	13	0.34	0.33	4.4	28	0.37	0.64

BW: 78 A.J.D. WW: 587 PROJ. 2/5/24: 1147

CALVING EASE - ★★★★★  
MATERNAL - ★★★  
DOCILITY - ★★★

# 71

## SADLER SOUTH AMERICA 3042

DOB. 1/20/23 Bull AAA. +\*20707995 TATTOO. 3042

**HUMMEL SOUTH AMERICA**  
+\*19919943

DON APARICIO SERRUCHO57 MAXI  
RUBETA FONTANA 7567-T/E-

DON JOSE 176 MAXI  
DON APARICIO SERRANIAS 57  
CONSENZA DON ROBERTO 338 T/E  
RUBETA FONTANA 6207-T/E-

**COLEMAN CHLOE 9146**  
+\*19541341

COLEMAN BRAVO 6313  
LAWSON'S CHLOE C815

COLEMAN CHARLO 0256  
COLEMAN DONNA 714  
SAV RENOWN 3439  
LAWSON'S CHLOE Z341

SM
75
SW
60

CED	BW	WW	YW	DOC	CLAW	ANGLE	HP	MM	MARB	RE
9	-0.1	62	109	27	0.38	0.53	12.8	22	0.18	0.7

BW: 78 A.J.D. WW: 623 PROJ. 2/5/24: 1334

CALVING EASE - ★★★★★  
MATERNAL - ★★★★★  
DOCILITY - ★★★★★



LOT 73

# 72

## RUBETA HUMMEL 3077

DOB. 1/31/23	Bull AAA. PENDING	TATTOO. 3077
<b>DON JOSE 176 MAXI</b> <b>DON APARICIO SERRUCHO 57 MAXI</b> DON APARICIO SERRANIAS 57 BISMARCK	OCC HEADLINER 661H RES MARIAS 6204 HORNERO 5314 SAV BISMARCK 5682 DON APARICIO 15 SERRANA NET WORTH	
SAV PIONEER 7301 <b>GUAICOS 1831 PIONEER-TIMBRE</b> GUAICOS 545-T/E	SAV FINAL ANSWER 0035 SAV BLACKBIRD 5297 GUAICOS 383 GUAICOS 358	
BW: 82    AJD. WW: 618    PROJ. 2/5/24: 1302		
CALVING EASE - ★★★★★ MATERNAL - ★★★★★ DOCILITY - ★★★★★		

# 73

## RUBETA HUMMEL 3080

DOB. 1/31/23	Bull AAA. PENDING	TATTOO. 3080
<b>DON JOSE 176 MAXI</b> <b>DON APARICIO SERRUCHO 57 MAXI</b> DON APARICIO SERRANIAS 57 BISMARCK	OCC HEADLINER 661H RES MARIAS 6204 HORNERO 5314 SAV BISMARCK 5682 DON APARICIO 15 SERRANA NET WORTH	
SAV PIONEER 7301 <b>GUAICOS 1831 PIONEER-TIMBRE</b> GUAICOS 545-T/E	SAV FINAL ANSWER 0035 SAV BLACKBIRD 5297 GUAICOS 383 GUAICOS 358	
BW: 92    AJD. WW: 680    PROJ. 2/5/24: 1322		
CALVING EASE - ★★★★★ MATERNAL - ★★★★★ DOCILITY - ★★★★★		



LOT 74

**74**

**RUBETA HUMMEL 3107**

DOB. 2/6/23      Bull AAA. PENDING      TATTOO. 3107

**ERRE TE 383 CONDOR EURO-T/E**  
ERRE TE 27 GRINGA TOLUCA

BENJAMIN 1547 ZORZAL LIDER

TRES MARIAS 6301 ZORZAL  
LA LEGUA LIDER 8174 BELLE  
RUBETA 3910 GRINGO  
ERRE TE 3241 ESCRIBANA BROMISTA

**VOLCAN ZELDA 4390**

SAV BISMARCK 5682  
VOLCAN ZELDA 3912

GAR GRID MAKER  
SAV ABIGALE 0451  
SIBILA ENCHANTRESS 1099  
SIBILA ZELDA 2424

BW: 86      AJD. WW: 677      PROJ. 2/5/24: 1300

CALVING EASE - ★★★  
MATERNAL - ★★★★★  
DOCILITY - ★★★★★

**75**

**RUBETA HUMMEL 3122**

DOB. 2/9/23      Bull AAA. PENDING      TATTOO. 3122

**COSENZA DON ROBERTO 338 T/E**  
COSENZA FACONERA SANF 39-T/E

TRES MARIAS 6301 ZORZAL-T/E

TRES MARIAS 5887 HORNERO-T/E  
TRES MARIAS 4850 WIND EXT-T/E  
SANFER PERFORMA 941  
SANFER VENTA J24 PER 1072

**RUBETA FORJADORA 7853-T/E**

ERRE TE 383 CONDOR EURO-T/E  
RUBETA FORJADORA 5859

BENJAMIN 1547 ZORZAL LIDERRP  
ERRE TE 27 GRINGA TOLUCA-T/E  
AV 004 DENSITY  
RUBETA 4625 FORJADORA-T/E

BW: 76      AJD. WW: 631      PROJ. 2/5/24: 1328

CALVING EASE - ★★★  
MATERNAL - ★★★★★  
DOCILITY - ★★★★★

# 76

## SADLER 4REAL 3010

DOB. 1/13/23      Bull AAA. +\*20707977      TATTOO. 3010

**DUFF-JC 4REAL 16250**  
+\*18983584

DUFF NAPOLEON 232      DUFF DISTINCTION 9105  
DUFF AMIGO 927K JUANADA 071      DUFF EUR 443 MERLE 808  
DUFF AMIGO 815  
OCC JUANADA 927K

**COLEMAN DONNA 8113**  
+\*19258348

MUSGRAVE SKY HIGH 1535      MUSGRAVE BIG SKY  
COLEMAN DONNA 714      FLAG QUEEN W 00649  
CONNEALY ONWARD  
COLEMAN DONNA 386

SM
79
SW
64

CED	BW	WW	YW	DOC	CLAW	ANGLE	HP	MM	MARB	RE
15	-1.7	55	101	31	0.34	0.31	10.6	32	0.46	0.52

BW: 76      A.J.D. WW: 668      PROJ. 2/5/24: 1334

CALVING EASE - ★★★★★★  
MATERNAL - ★★★★★★  
DOCILITY - ★★★★★★



LOT 76

SPRING BULLS

# 77

## SADLER 4REAL 3103

DOB. 2/5/23      Bull AAA. +\*20708012      TATTOO. 3103

**DUFF-JC 4REAL 16250**  
+\*18983584

DUFF NAPOLEON 232      DUFF DISTINCTION 9105  
DUFF AMIGO 927K JUANADA 071      DUFF EUR 443 MERLE 808  
DUFF AMIGO 815  
OCC JUANADA 927K

**COLEMAN DONNA 8113**  
+\*19258348

MUSGRAVE SKY HIGH 1535      MUSGRAVE BIG SKY  
COLEMAN DONNA 714      FLAG QUEEN W 00649  
CONNEALY ONWARD  
COLEMAN DONNA 386

SM
70
SW
56

CED	BW	WW	YW	DOC	CLAW	ANGLE	HP	MM	MARB	RE
16	-1.7	52	95	31	0.45	0.37	10.1	25	0.48	0.56

BW: 72      A.J.D. WW: 647      PROJ. 2/5/24: 1228

CALVING EASE - ★★★★★★  
MATERNAL - ★★★★★★  
DOCILITY - ★★★★★★



LOT 77

# 78

## SADLER GLACIER 3012

DOB. 1/14/23      Bull AAA. +\*20707979      TATTOO. 3012

**COLEMAN GLACIER 041**  
+\*19866409

SAV RENOWN 3439      RITO 707 OF IDEAL 3407 7075  
COLEMAN DONNA 439      SAV BLACKCAP MAY 4136  
GDAR GAME DAY 449  
COLEMAN DONNA 714

**COLEMAN DONNA 504**  
+\*18238090

SAV RESOURCE 1441      RITO 707 OF IDEAL 3407 7075  
COLEMAN DONNA 714      SAV BLACKCAP MAY 4136  
CONNEALY ONWARD  
COLEMAN DONNA 386

SM
75
SW
68

CED	BW	WW	YW	DOC	CLAW	ANGLE	HP	MM	MARB	RE
11	0.7	77	142	33	0.36	0.36	16.4	25	-0.02	0.85

BW: 88      A.J.D. WW: 619      PROJ. 2/5/24: 1466

CALVING EASE - ★★★★★★  
MATERNAL - ★★★★★★  
DOCILITY - ★★★★★★



**COLEMAN GLACIER 041**  
Sire of Lots 78-81



LOT 79

# 79

## SADLER GLACIER 3020

DOB. 1/16/23 Bull AAA. 20823067 TATTOO. 3020

SAV RENOWN 3439 RITO 707 OF IDEAL 3407 7075  
**COLEMAN GLACIER 041** SAV BLACKCAP MAY 4136  
 +\*19866409 COLEMAN DONNA 439 GDAR GAME DAY 449  
 COLEMAN DONNA 714

BROOKING BANK NOTE 4040 CONNEALY EARNAN 076E  
**ZWT GEORGINA 7211** EA ROSE 918  
 +18884689 ZWT GEORGINA 2718 S00 LINE MOTIVE 9016  
 WK GEORGINA 9375

CED	BW	WW	YW	DOC	CLAW	ANGLE	HP	MM	MARB	RE
1+6	1+1.0	1+66	1+115					1+24	1+.04	1+.60

BW: 86 A.J.D. WW: 714 PROJ. 2/5/24: 1414

CALVING EASE - ★★★★★  
 MATERNAL - ★★★★★★  
 DOCILITY - ★★★★★★

# 80

## SADLER GLACIER 3064



**COLEMAN DONNA 504**  
 Dam of Lots 78, 80 & 81

DOB. 1/24/23 Bull AAA. +\*20708007 TATTOO. 3064

SAV RENOWN 3439 RITO 707 OF IDEAL 3407 7075  
**COLEMAN GLACIER 041** SAV BLACKCAP MAY 4136  
 +\*19866409 COLEMAN DONNA 439 GDAR GAME DAY 449  
 COLEMAN DONNA 714

SAV RESOURCE 1441 RITO 707 OF IDEAL 3407 7075  
**COLEMAN DONNA 504** SAV BLACKCAP MAY 4136  
 +\*18238090 COLEMAN DONNA 714 CONNEALY ONWARD  
 COLEMAN DONNA 386

CED	BW	WW	YW	DOC	CLAW	ANGLE	HP	MM	MARB	RE
7	3.8	86	150	33	0.32	0.3	14.9	27	0.05	1.18

BW: 98 A.J.D. WW: 711 PROJ. 2/5/24: 1412

CALVING EASE - ★★★★★  
 MATERNAL - ★★★★★★  
 DOCILITY - ★★★★★★

# 81

## SADLER GLACIER 3069



**SADLER DONNA 3029**  
 Full sister to Lots 78, 80 & 81

DOB. 1/26/23 Bull AAA. +\*20708008 TATTOO. 3069

SAV RENOWN 3439 RITO 707 OF IDEAL 3407 7075  
**COLEMAN GLACIER 041** SAV BLACKCAP MAY 4136  
 +\*19866409 COLEMAN DONNA 439 GDAR GAME DAY 449  
 COLEMAN DONNA 714

SAV RESOURCE 1441 RITO 707 OF IDEAL 3407 7075  
**COLEMAN DONNA 504** SAV BLACKCAP MAY 4136  
 +\*18238090 COLEMAN DONNA 714 CONNEALY ONWARD  
 COLEMAN DONNA 386

CED	BW	WW	YW	DOC	CLAW	ANGLE	HP	MM	MARB	RE
7	2.5	75	133	35	0.33	0.34	171	29	-0.11	0.66

BW: 88 A.J.D. WW: 642 PROJ. 2/5/24: 1322

CALVING EASE - ★★★★★  
 MATERNAL - ★★★★★★  
 DOCILITY - ★★★★★★



# 82

## SADLER UNMISTAKABLE 3115

DOB. 2/8/23 Bull AAA. +\*20708018 TATTOO. 3115

**OCC UNMISTAKABLE 946U**  
#+\*16294218  
OCC PAXTON 730P  
FCC REVOLUTION ROSE 2476

OCC FOCUS 813F  
OCC BLACKBIRD 736K  
OCC EMBLAZON 854E  
OCC REVOLUTION ROSE 887H

**COLEMAN CHLOE 9146**  
+\*19541341  
COLEMAN BRAVO 6313  
LAWSONS CHLOE C815

COLEMAN CHARLO 0256  
COLEMAN DONNA 714  
SAV RENOWN 3439  
LAWSONS CHLOE Z341

SM
76
SW
66

CED	BW	WW	YW	DOC	CLAW	ANGLE	HP	MM	MARB	RE
7	0.2	62	106	13	0.39	0.47	14.9	26	0.08	0.68

BW: 76 A.J.D. WW: 611 PROJ. 2/5/24: 1290

CALVING EASE - ★★ ★  
MATERNAL - ★★ ★★ ★  
DOCILITY - ★★ ★



**OCC UNMISTAKABLE 946U**  
Sire of Lots 82-84

SPRING BULLS

# 83

## SADLER UNMISTAKABLE 3143

DOB. 2/13/23 Bull AAA. +\*20708022 TATTOO. 3143

**OCC UNMISTAKABLE 946U**  
#+\*16294218  
OCC PAXTON 730P  
FCC REVOLUTION ROSE 2476

OCC FOCUS 813F  
OCC BLACKBIRD 736K  
OCC EMBLAZON 854E  
OCC REVOLUTION ROSE 887H

**COLEMAN CHLOE 9146**  
+\*19541341  
COLEMAN BRAVO 6313  
LAWSONS CHLOE C815

COLEMAN CHARLO 0256  
COLEMAN DONNA 714  
SAV RENOWN 3439  
LAWSONS CHLOE Z341

SM
78
SW
68

CED	BW	WW	YW	DOC	CLAW	ANGLE	HP	MM	MARB	RE
5	0.1	65	109	22	0.34	0.37	14.6	25	0.16	0.52

BW: 76 A.J.D. WW: 663 PROJ. 2/5/24: 1246

CALVING EASE - ★★ ★  
MATERNAL - ★★ ★★ ★  
DOCILITY - ★★ ★



**COLEMAN CHLOE 9146**  
Dam of Lots 82-84

# 84

## SADLER UNMISTAKABLE 3145

DOB. 2/14/23 Bull AAA. +\*20816037 TATTOO. 3145

**OCC UNMISTAKABLE 946U**  
#+\*16294218  
OCC PAXTON 730P  
FCC REVOLUTION ROSE 2476

OCC FOCUS 813F  
OCC BLACKBIRD 736K  
OCC EMBLAZON 854E  
OCC REVOLUTION ROSE 887H

**COLEMAN CHLOE 9146**  
+\*19541341  
COLEMAN BRAVO 6313  
LAWSONS CHLOE C815

COLEMAN CHARLO 0256  
COLEMAN DONNA 714  
SAV RENOWN 3439  
LAWSONS CHLOE Z341

SM
89
SW
66

CED	BW	WW	YW	DOC	CLAW	ANGLE	HP	MM	MARB	RE
1	2.1	66	115	20	0.41	0.46	17.7	25	0.51	0.58

BW: 78 A.J.D. WW: 637 PROJ. 2/5/24: 1296

CALVING EASE - ★★ ★  
MATERNAL - ★★ ★★ ★  
DOCILITY - ★★ ★



**SADLER CHLOE 3125**  
Sister to Lots 82-84



**W SUNRISE EXECUTIVE LAW 507H**  
Sire of Lot 85



**PINE COULEE BLACKBIRD J65**  
Dam of Lot 85

# 85 SADLER EXECUTIVE LAW 3014

DOB: 1/14/23 Bull AAA. \*20708053 TATTOO: 3014

**W SUNRISE EXECUTIVE LAW 507H**  
19940954  
PM EXECUTIVE DECISION 5'17  
HF TIBBIE 27D

**PINE COULEE BLACKBIRD J65**  
\*20201936  
COLEMAN BRAVO 6313  
PINE COULEE BLACKBIRD G86

BAR-E-L NATURAL LAW 52Y  
PM BLOSSOM 124'13  
HF SYNDICATE 213Z  
HF TIBBIE 162B

COLEMAN CHARLO 0256  
COLEMAN DONNA 714  
MUSGRAVE 316 STUNNER  
PINE COULEE BLACKBIRD E14

SM
80
SW
72

CED	BW	WW	YW	DOC	CLAW	ANGLE	HP	MM	MARB	RE
8	1.4	67	117	17	0.45	0.38	13.6	31	0.36	0.64

BW: 74 AJD. WW: 689 PROJ. 2/5/24: 1320

CALVING EASE - ★★★★★  
MATERNAL - ★★★★★  
DOCILITY - ★★★

# 87 SADLER SAFE & SOUND 3087

DOB: 2/2/23 Bull AAA. \*20815948 TATTOO: 3087

**HF SAFE & SOUND 019**  
\*19705988  
MILL BRAE IDENTIFIED 4031  
HF EMPRESS 804

**HF QUEEN 005**  
+\*19706960  
CONNEALY CONFIDENCE PLUS  
HF QUEEN 7012

KOUPALS B&B IDENTITY  
MILL BRAE PRO BLACKCAP 1092  
TEX PLAYBOOK 5437  
HF EMPRESS 6007

CONNEALY CONFIDENCE 0100  
ELBANNA OF CONANGA 1209  
SITZ TOP GAME 561X  
OSU QUEEN 2139

SM
78
SW
74

CED	BW	WW	YW	DOC	CLAW	ANGLE	HP	MM	MARB	RE
11	1.8	70	124	26	0.45	0.51	9.5	32	0.9	1.01

BW: 96 AJD. WW: 698 PROJ. 2/5/24: 1326

CALVING EASE - ★★★★★  
MATERNAL - ★★★★★  
DOCILITY - ★★★★★

# 86 SADLER OUTRIDER 3076

DOB: 1/30/23 Bull AAA. 20817472 TATTOO: 3076

**HA OUTRIDER 9672**  
\*19571162  
HA OUTSIDE 7876  
HA MISS BLACKCAP 7661

**OX BOW EVERELDA ENTENSE 555**  
18163523  
COLEMAN CHARLO 0256  
OX BOW EVERELDA ENTENSE 904

KG SOLUTION 0018  
HA EVER LADY 1575  
HA COWBOY UP 5405  
HA MISS BLACKCAP 1969

OCC PAXTON 730P  
BOHI ABIGALE 6014  
WOODHILL FORESIGHT  
BT EVERELDA ENTENSE 989N

SM
60
SW
52

CED	BW	WW	YW	DOC	CLAW	ANGLE	HP	MM	MARB	RE
10	0.2	49	91	9	0.5	0.64	13.7	27	0.06	0.14

BW: 80 AJD. WW: 716 PROJ. 2/5/24: 1312

CALVING EASE - ★★★★★★  
MATERNAL - ★★★★★  
DOCILITY - ★★★



**BLAIRSWEST ERICA 84H**  
Dam of Lot 88



**SAV RENOVATION 6822**  
Sire of Lot 88



**BROOKING CAN-AM**  
Sire of Lot 89

**88**

**SADLER RENOVATION 3110**

DOB. 2/6/23      Bull AAA. +\*20708015      TATTOO. 3110

**SAV RENOVATION 6822**  
+\*18579309

SAV RENOWN 3439  
SAV MADAME PRIDE 0151

RITO 707 OF IDEAL 3407 7075  
SAV BLACKCAP MAY 4136  
SAV 004 DENSITY 4336  
SAV MADAME PRIDE 0075

												SM
												80
												SW
												63

**BLAIRSWEST ERICA 84H**  
+\*20346553

COLEMAN CHARLO 0256  
BAR-E-L ERICA 74A

OCC PAXTON 730P  
BOHI ABIGALE 6014  
BAR-E-L NATURAL LAW 52Y  
HF ERICA 339T

CED	BW	WW	YW	DOC	CLAW	ANGLE	HP	MM	MARB	RE
8	1.3	63	114	27	0.43	0.39	8.4	23	0.19	0.83

BW: 86      AJD. WW: 600      PROJ. 2/5/24: 1181

CALVING EASE - ★★★★★  
MATERNAL - ★★★★★  
DOCILITY - ★★★★★

**89**

**SADLER CAN AM 3135**

DOB. 2/12/23      Bull AAA. 20708056      TATTOO. 3135

**BROOKING CAN AM 0012**  
20057295

SAV RENOVATION 6822  
BROOKING ROSE 6067

													SM
													74
													SW
													56

**MONTANA DONNA 1043**  
+\*20193395

SAV RAINFALL 6846  
COLEMAN DONNA 3202

SAV RENOWN 3439  
SAV MADAME PRIDE 0151  
CONNELY EARNAN 076E  
S00 LINE ROSE 1019

COLEMAN CHARLO 0256  
SAV BLACKCAP MAY 4136  
WULFS EXT 6106  
COLEMAN DONNA 714

CED	BW	WW	YW	DOC	CLAW	ANGLE	HP	MM	MARB	RE
6	1.5	67	122	1+19	1+.43	1+.43	1+13.4	21	1+.43	1+.69

BW: 72      AJD. WW: 610      PROJ. 2/5/24: 1224

CALVING EASE - ★★★  
MATERNAL - ★★★★★  
DOCILITY - ★★★



# FROZEN GENETICS.

**DONNA 9309** is a spotlight donor female that is the best of all spectrums of the beef business. Not only is she in the Top 1% Phenotype, she records Top 1% DOC, Angle, Claw, and \$M! As well as Top 3% YW and Top 4% \$W. We honestly can't say enough about the impact this young donor female has made at a rapid pace here at Sadler Ranches. Her overall design, laser topline, hip, and hind leg along with udder quality is unmatched. Now when it comes to pedigree, all the stars lineup, being a full sister to Coleman Night Watch, and Coleman Banker. You can count on her dam, Coleman Donna 4203, to pass on the total maternal package. 9309 is a considered an essential donor female to carry the torch as one of the most dominant forces of the Donna cow family in our program.



**COLEMAN  
GLACIER 041**  
Sire of Lot 101



**MONTANA  
JUDGEMENT**  
Sire of Lot 102

## 101 COLEMAN DONNA 9309 EMBRYOS

THREE OR SIX CONVENTIONAL EMBRYOS

**COLEMAN GLACIER 041**  
+\*19866409

SAV RENOWN 3439  
COLEMAN DONNA 439

RITO 707 IF IDEAL 3407 7075  
SAV BLACKCAP MAY 4136  
GDAR GAME DAY 449  
COLEMAN DONNA 714

S	D
Epds	Epds
SM	SM
95	96
SW	SW
74	74

**COLEMAN DONNA 9309**  
+\*19583466

COLEMAN BRAVO 6313  
COLEMAN DONNA 4203

COLEMAN CHARLO 0256  
COLEMAN DONNA 714  
CONNELLY THUNDER  
COLEMAN DONNA 714

	CED	BW	WW	YW	DOC	CLAW	ANGLE	HP	MM	MARB	RE
S Epds	8	.7	75	130	34	.26	.35	18.6	29	-.30	.75
D Epds	15	-.4	71	136	35	.26	.34	18.2	34	.43	.60

This exciting mating is sired by Coleman Glacier, who offers outstanding phenotype and a big-time genetic profile. His explosive growth ranks in the top 15% of the Angus breed for weaning and yearling and top 5% for \$M. This combination of cow families is a sure fire no miss opportunity, that has a ton of real-world value in the pasture.

## 102 COLEMAN DONNA 9309 EMBRYOS

THREE OR SIX CONVENTIONAL EMBRYOS

**MONTANA JUDGEMENT 1038**  
+\*20193391

SQUARE B ATLANTIS 8060  
MILL BRAE FP JOANIE 3063

SAV RAINFALL 6846  
ELBANNA OF CONANGA 1209  
CONNELLY FINAL PRODUCT  
MILL BRAE FA JOANIE 9263

S	D
Epds	Epds
SM	SM
82	96
SW	SW
68	74

**COLEMAN DONNA 9309**  
+\*19583466

COLEMAN BRAVO 6313  
COLEMAN DONNA 4203

COLEMAN CHARLO 0256  
COLEMAN DONNA 714  
CONNELLY THUNDER  
COLEMAN DONNA 714

	CED	BW	WW	YW	DOC	CLAW	ANGLE	HP	MM	MARB	RE
S Epds	3	3.2	73	121	12	.36	.55	16.3	25	.63	.87
D Epds	15	-.4	71	136	35	.26	.34	18.2	34	.43	.60

Embryos by Montana Judgement the \$180,000 record-selling bull of the 2022 Montana Maternal Revival Sale. A revolutionary sire for type, maternal excellence, feed efficiency, fertility and cow longevity - the real-world profit drivers for ranchers, Judgement excels for growth relative to mature size. Ideal mating option.

**C815**



**HUMMEL SOUTH AMERICA**  
Sire of Lot 103



**HUMMEL ARGENTINE**  
Sire of Lot 104



**504**

**103 LAWSONS CHLOE C815 EMBRYOS**

THREE OR SIX CONVENTIONAL EMBRYOS - CA QUALIFIED

<b>HUMMEL SOUTH AMERICA</b> +*19919943	DON APARICIO SERRUCHO57 MAXI	DON JOSE 176 MAXI	S	D
	RUBETA FONTANA 7567-T/E	CONSENZA DON ROBERTO 338 T/E		
<b>LAWSONS CHLOE C815</b> +*18359250	SAV RENOWN 3439	RITO 707 OF IDEAL 3407 7075	Epds	Epds
	LAWSONS CHLOE Z341	SAV BLACKCAP MAY 4136	SM	SM
		SITZ UPWARD 307R	49	78
		BASIN CHLOE 7126	SW	SW
			54	84

	CED	BW	WW	YW	DOC	CLAW	ANGLE	HP	MM	MARB	RE
S	7	.8	73	123	23	.32	.40	9.5	13	-.08	.95
D	-2	3.0	94	163	31	.36	.46	14.5	29	.20	1.02

C815 has a birth ratio of 3@ 101, nursing ratio of 3@ 110, and 2@ 110 for yearling ratio. C815's fist daughter by "Bravo 6313" sold at public auction for \$60,000 for 1/2 interest, topping the 2019 Female sale. Since then, C815 has blazed a massive trail of success producing top selling females and bulls including the \$750,000 Coleman Chloe 9275, the \$300,000 Coleman Chloe 034, the \$130,000 Coleman Chloe 173, the \$120,000 Coleman Chloe 975, the \$70,000 Coleman Chloe 9274, the \$60,000 Coleman Chloe 1102, the \$47,000 Coleman Chloe 030, and others. C815 has the rare ability to make great ones, both females and bulls. Her embryos have topped many sales across the country in the US and Canada. South America brings elite outcross genetics without sacrificing phenotype, performance, or maternal ability. South America is an elite herd sire for Coleman Angus and his semen is a rarity outside of Coleman Genetics. We have seen what South America can do and they are consistent, high phenotype and high performance seedstock. This mating will produce wide-based, huge bodied cattle that will weigh a lot at weaning.

**104 COLEMAN DONNA 504 EMBRYOS**

THREE CONVENTIONAL EMBRYOS

<b>HUMMEL ARGENTINE</b> +*19919948	DON APARICIO SERRUCHO57 MAXI	DON JOSE 176 MAXI	S	D
	RUBETA FONTANA 7567-T/E	CONSENZA DON ROBERTO 338 T/E		
<b>COLEMAN DONNA 504</b> +*18238090	SAV RESOURCE 1441	RITO 707 OF IDEAL 3407 7075	Epds	Epds
	COLEMAN DONNA 714	SAV BLACKCAP MAY 4136	SM	SM
		CONNELLY ONWARD	43	76
		COLEMAN DONNA J311	SW	SW
			42	61

	CED	BW	WW	YW	DOC	CLAW	ANGLE	HP	MM	MARB	RE
S	11	-1.5	42	71	-10	.35	.50	7.6	18	-.05	.40
D	14	.4	68	134	34	.44	.39	15.6	25	-.03	.92

When we set out to build Sadler Ranches main nucleus of donor females we wanted to infuse the most proven females with real data as we could. And 504 is just that with her recording right off the bat a BR 4/89, NR 4/110, YR 3/110. And then dominating the 2021 Coleman Angus Bull sale with pure power-plus maternal sons that scattered across the U.S. What is the most intriguing, is the amount of Fertility, body mass, length, and true efficiency along with performance she transmits is extraordinary. The consistency is evident in this year's offering of Donna 504 seedstock selling the excitement continues! Hummel Argentine is truly an elite outcross sire his first offspring have wowed us. Daughters are next level cookie cutters, that will make incredible long-lasting females for years to come. All the while his sons are mashing the scales with tons of look and balance. Buy with confidence here!

3202



**HUMMEL SOUTH AMERICA**  
Sire of Lot 105



**ELLINGSON BADLANDS 0285**  
Sire of Lot 106



6102

FROZEN GENETICS

# 105 COLEMAN DONNA 3202 EMBRYOS

THREE OR SIX CONVENTIONAL EMBRYOS - CA QUALIFIED

**HUMMEL SOUTH AMERICA**  
+\*19919943  
DON APARICIO SERRUCHO57 MAXI  
RUBETA FONTANA 7567-T/E

**COLEMAN DONNA 3202**  
+\*17783501  
WULFFS EXT 6106  
COLEMAN DONNA 714

DON JOSE 176 MAXI  
DON APARICIO SERRANIAS 57  
CONSENZA DON ROBERTO 338 T/E  
RUBETA FONTANA 6207-T/E

N BAR EMULATION EXT  
WULFFS ERICA DIANNA C116  
CONNELLY ONWARD  
COLEMAN DONNA 386

	S	D
	Epds	Epds
SM	SM	
49	99	
SW	SW	
54	67	

	CED	BW	WW	YW	DOC	CLAW	ANGLE	HP	MM	MARB	RE
S	7	.8	73	123	23	.32	.40	9.5	13	-.08	.95
D	16	-1.4	56	101	34	.41	.47	17.3	30	.33	.34
Epds											

Coleman Donna 3202 Pathfinder dam of the calving ease specialist Coleman Maverick 5322. With a rich maternal pedigree, Donna 3202 is a deep-sided, wedge-shaped and ultra-feminine powerhouse with picture-perfect udder and footed. Progeny from Donna 3202 earned her a record of BR 6@94; WR 6@101 and YR 4@106, including the dam of the elite calving ease sire, Sadler Top Gun 1030. South America is an elite herd sire for Coleman Angus and his semen is a rarity outside of Coleman Genetics. We have seen what South America can do and they are consistent, high phenotype and high performance seedstock. This mating will produce high maternal low birth weight eye appealing performance oriented seedstock.

# 106 COLEMAN ERISKAY 6102 EMBRYOS

THREE OR SIX CONVENTIONAL EMBRYOS

**ELLINGSON BADLANDS 0285**  
+\*19811197  
ELLINGSON RIDER PRIDE 7282  
EA BELLS GIRL 7617

**COLEMAN ERISKAY 6102**  
\*18570018  
COLEMAN JUNEAU 3296  
COLEMAN ERISKAY 316

ELLINGSON ROUGH RIDER 4202  
EA QUEEN DOLLY 3246  
KOUPAL ADVANCE 28  
EA BELLS GIRL 2181

COLEMAN JUNEAU 044  
COLEMAN DONNA 194  
COLEMAN CHARLO 0256  
SINCLAIR ERISKAY 2N1 7883

	S	D
	Epds	Epds
SM	SM	
93	64	
SW	SW	
64	57	

	CED	BW	WW	YW	DOC	CLAW	ANGLE	HP	MM	MARB	RE
S	12	0	65	116	12	.26	.22	17.5	25	.47	.71
D	1	1.7	48	81	17	.52	.50	10.4	26	.11	.67
Epds											

This outstanding donor was the top selling bred cow in the 2021 Coleman Angus Female Sale. A major game changer in terms of body mass and capacity, power packed with muscle, along with an immense amount of real maternal. 6102 has done a tremendous job producing offspring built like her in our program. As you study her first calf crop of Embryo Transfer calves, they all have one thing in common "powerful" packed full of red meat and a stupendous amount of body capacity with a cookie cutter design. We are excited about the future of this top donor in our operation knowing what the combination of OCC Juneau, Coleman Charlo, and Eriskay 2N1 does when infused together. Embryos are sire by Ellingson Badlands 0285, and we feel it will complement her well so much power, maternal, longevity and performance all wrapped up in this exciting mating!

**EVERY** breeder I've talked to over the years has different opinions of what they look for in their cow herd and what they prefer to purchase to add to their operation. Most all of them want a balance of maternal, power, easy fleshing and eye appeal and most importantly a female that is not one sided. Basically, an essential producer of valuable females and bulls and 7301 does all of that in an impressive way! Her stack of classic proven genetics on top and bottom bleed through to this ultimate powerful low input, high output donor. South America brings elite outcross genetics without sacrificing phenotype, performance, or maternal ability.



**HUMMEL SOUTH AMERICA**  
Sire of Lot 107



**COLEMAN NIGHT WATCH 9259**  
Sire of Lot 108

# 107 COLEMAN DONNA 7301 EMBRYOS

THREE CONVENTIONAL EMBRYOS - CA QUALIFIED

<b>HUMMEL SOUTH AMERICA</b> +*19919943	<b>DON APARICIO SERRUCHO57 MAXI</b> RUBETA FONTANA 7567-T/E	<b>DON JOSE 176 MAXI</b> DON APARICIO SERRANIAS 57 CONSENZA DON ROBERTO 338 T/E RUBETA FONTANA 6207-T/E	S Epds	D Epds
<b>COLEMAN DONNA 7301</b> *19103417	<b>SAV RENOWN 3439</b> COLEMAN DONNA 3220	<b>RITO 707 OF IDEAL 3407 7075</b> SAV BLACKCAP MAY 4136 N BAR SHADOW X4124 COLEMAN DONNA 714	SM	SM
			49	71
			SW	SW
			54	58

	CED	BW	WW	YW	DOC	CLAW	ANGLE	HP	MM	MARB	RE
S Epds	7	.8	73	123	23	.32	.40	9.5	13	-.08	.95
D Epds	2	2.3	70	119	23	.42	.38	14.2	17	-.05	.34

South America is an elite herd sire for Coleman Angus and his semen is a rarity outside of Coleman Genetics. We have seen what South America can do and they are consistent, high phenotype and high performance seedstock. This mating will produce wide-based, huge bodied cattle that mash the scales.

# 108 COLEMAN DONNA 7301 EMBRYOS

THREE OR SIX CONVENTIONAL EMBRYOS

<b>COLEMAN NIGHT WATCH 9259</b> +*19583413	<b>COLEMAN BRAVO 6313</b> COLEMAN DONNA 4203	<b>COLEMAN CHARLO 0256</b> COLEMAN DONNA 714 CONNELLY THUNDER COLEMAN DONNA 714	S Epds	D Epds
<b>COLEMAN DONNA 7301</b> *19103417	<b>SAV RENOWN 3439</b> COLEMAN DONNA 3220	<b>RITO 707 OF IDEAL 3407 7075</b> SAV BLACKCAP MAY 4136 N BAR SHADOW X4124 COLEMAN DONNA 714	SM	SM
			98	71
			SW	SW
			58	58

	CED	BW	WW	YW	DOC	CLAW	ANGLE	HP	MM	MARB	RE
S Epds	22	-5.0	43	85	33	.27	.36	17.2	36	.39	.25
D Epds	2	2.3	70	119	23	.42	.38	14.2	17	-.05	.34

Coleman Night Watch adds growth, length, style and maternal with balance and phenotype foremost. Backed by leading proven cow families top and bottom, excellent combination mating here!



9310



**HUMMEL SOUTH AMERICA**  
Sire of Lots 109 & 110



7187

FROZEN GENETICS

# 109 COLEMAN DONNA 9310 EMBRYOS

THREE OR SIX CONVENTIONAL EMBRYOS - CA QUALIFIED

**HUMMEL SOUTH AMERICA**  
+\*19919943  
DON APARICIO SERRUCHO57 MAXI  
RUBETA FONTANA 7567-T/E

**COLEMAN DONNA 9310**  
+\*19583467  
COLEMAN CHARLO 0256  
COLEMAN DONNA 4203

DON JOSE 176 MAXI  
DON APARICIO SERRANIAS 57  
CONSENZA DON ROBERTO 338 T/E  
RUBETA FONTANA 6207-T/E

OCC PAXTON 730P  
BOHI ABIGALE 6014  
CONNELY THUNDER  
COLEMAN DONNA 714

	S	D
SM	SM	
49	108	
SW	SW	
54	76	

	CED	BW	WW	YW	DOC	CLAW	ANGLE	HP	MM	MARB	RE
S	7	.8	73	123	23	.32	.40	9.5	13	-.08	.95
D	15	-1.9	58	110	29	.27	.37	19.6	42	.27	.56

This powerful Coleman Charlo 0256 daughter stems back to the featured Coleman Donna 4203. A true no hole's donor female loaded with an abundance of maternal power with excellent udder quality and production record. She has a progeny production record of BR 2@85, WR 2@107, YR 2@108 and stems from a dam that records BR 4@91, WR 4@105, YR 4@106, %IMF 3@118 with 21 daughters in production with an average nursing ratio of 104. South America is an elite herd sire for Coleman Angus and his semen is a rarity outside of Coleman Angus. We have seen what South America can do and they are consistent, high phenotype and high performance seedstock. This mating will produce wide-based, huge bodied cattle that will weigh a lot at weaning. Proven elite opportunity mating.

# 110 COLEMAN ABIGALE 7187 EMBRYOS

THREE CONVENTIONAL EMBRYOS - CA QUALIFIED

**HUMMEL SOUTH AMERICA**  
+\*19919943  
DON APARICIO SERRUCHO57 MAXI  
RUBETA FONTANA 7567-T/E

**COLEMAN ABIGALE 7187**  
+\*19108020  
SAV RESOURCE 1441  
COLEMAN ABIGALE 0277

DON JOSE 176 MAXI  
DON APARICIO SERRANIAS 57  
CONSENZA DON ROBERTO 338 T/E  
RUBETA FONTANA 6207-T/E

RITO 707 OF IDEAL 3407 7075  
SAV BLACKCAP MAY 4136  
OCC PAXTON 730P  
BOHI ABIGALE 6014

	S	D
SM	SM	
49	57	
SW	SW	
54	52	

	CED	BW	WW	YW	DOC	CLAW	ANGLE	HP	MM	MARB	RE
S	7	.8	73	123	23	.32	.40	9.5	13	-.08	.95
D	5	1.7	58	111	23	.29	.41	13	27	.21	.99

Another top Sadler donor female that has the combination of pure power on the top and bottom side of her pedigree. This SAV Resource daughter has all the major ingredients infused in her that we look for in an ideal Angus female. As you study her pedigree you will find her dam, Abigale 0277, the most powerful full sister to the Pathfinder AI sire Coleman Charlo 0256. 7187 brings her power genetics to life with an abundance of muscle, body shape, long spine with a wedge-shaped maternal front one-third. She passes all these valuable traits to her offspring, and not to forget, running gear as they stand on impeccable feet. South America brings elite outcross genetics without sacrificing phenotype, performance, or maternal ability. South America is an elite herd sire for Coleman Angus and his semen is a rarity outside of Coleman Genetics. We have seen what South America can do and they are consistent, high phenotype and high performance seedstock. Proven mating!

**COELMAN** Chloe 9146 is a member of one of the most elite flushes to date at Coleman Angus where her sister Coleman Chloe 9275 sold for one-half interest at \$375,000 and full brother Coleman Triumph 9145 sold for \$225,000. I'd say in the sale ring they have dominated! All that being said in a short time 9146 has proven herself in the most valuable way here in our program, producing high end powerful offspring that catch your eye immediately. The actual density, wide base, clean front 1/3 and muscle that she passes on to her offspring is undeniable. Not to mention her dam Lawsons Chloe C815 that records BR 2@90, WR 2@117, YR 1@121 that is plain to see she adds real performance to this already staggering maternal female. 9146 is another major building block that is an important part of the future of Sadler Ranches.



**HUMMEL ARGENTINE**  
Sire of Lot 111



**DUFF NAPOLEON 232**  
Sire of Lot 112

## 111 COLEMAN CHLOE 9146 EMBRYOS

THREE OR SIX CONVENTIONAL EMBRYOS

**HUMMEL ARGENTINE**  
+\*19919948

DON APARICIO SERRUCHO57 MAXI  
RUBETA FONTANA 7567-T/E

DON JOSE 176 MAXI  
DON APARICIO SERRANIAS 57  
CONSENZA DON ROBERTO 338 T/E  
RUBETA FONTANA 6207-T/E

S		D	
SM	SM	Epds	Epds
43	90		
SW	SW		
42	68		

**COLEMAN CHLOE 9146**  
+\*19541341

COLEMAN BRAVO 6313  
LAWSONS CHLOE C815

COLEMAN CHARLO 0256  
COLEMAN DONNA 714  
SAV RENOWN 3439  
LAWSONS CHLOE Z341

	CED	BW	WW	YW	DOC	CLAW	ANGLE	HP	MM	MARB	RE
S Epds	11	-1.5	42	71	-10	.35	.50	76	18	-.05	.40
D Epds	9	-.3	66	114	35	.39	.51	14.8	23	.18	.55

Hummel Argentine is truly an elite outcross sire his first offspring have wowed us. Daughters are next level cookie cutters, that will make incredible long-lasting females for years to come. At the while his sons are mashing the scales with tons of look and balance. Excellent opportunity mating.

## 112 COLEMAN CHLOE 9146 EMBRYOS

THREE OR SIX CONVENTIONAL EMBRYOS

**DUFF NAPOLEON 232**  
\*17780630

DUFF DISTINCTION 9105  
DUFF EUR 443 MERLE 808

DUFF BASIC INSTINCT 6501  
DUFF NL B351 LADY POP 619  
DUFF NEW EDITINO 6108  
DCC NL 652K MERLE 443

S		D	
SM	SM	Epds	Epds
71	90		
SW	SW		
50	68		

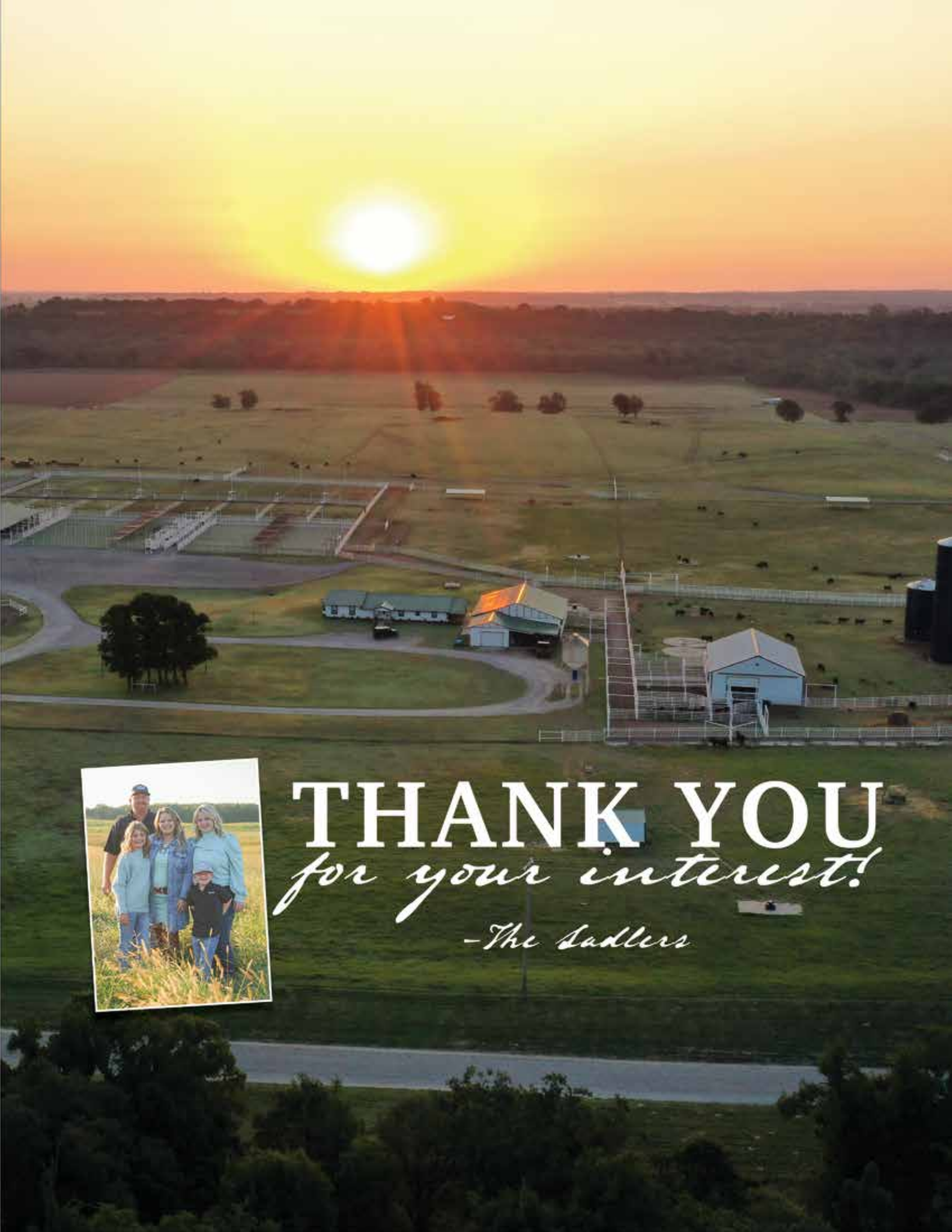
**COLEMAN CHLOE 9146**  
+\*19541341

COLEMAN BRAVO 6313  
LAWSONS CHLOE C815

COLEMAN CHARLO 0256  
COLEMAN DONNA 714  
SAV RENOWN 3439  
LAWSONS CHLOE Z341

	CED	BW	WW	YW	DOC	CLAW	ANGLE	HP	MM	MARB	RE
S Epds	9	.8	51	78	12	.57	.48	12.1	13	-.14	.52
D Epds	9	-.3	66	114	35	.39	.51	14.8	23	.18	.55

Embryos are sired by Duff Napoleon 232 a proven power-plus maternally driven sire of extreme phenotype, real power, and ease of fleshing.



**THANK YOU**  
*for your interest!*  
*-The Sadlers*



10819 South Rose Rd.  
Perkins, OK 74059

Designed by SCI Designs 



2.5.24