

CHAROLAIS | SIMMENTAL | ANGUS | LIMOUSIN



Balamore Farm Ltd.
THICKNESS SELLS
12TH ANNUAL BULL SALE

MARCH 16, 2024 | 2:00 PM | BALAMORE FARM, GREAT VILLAGE, NS

WELCOME TO OUR

12th Annual “Thickness Sells” Bull Sale.

We extend a sincere thank you to the people who have helped and supported us since we started. We are fortunate to have our wonderful sons and their partners by our side, and truly awesome, dedicated staff that play a huge role in allowing us to pursue our passion for good cattle.

The word “program” often gets used in describing cattle operations, but I always struggle to define one for Balamore. The only thing I can quantify is that we use sires we like, retain the heifers we like and sell the bulls we like.

Regardless of the breed, our cattle share the traits we love: Thickness, Clean Front Ends, Length, Docility and Good Structure.

We hope that you will look at the sale catalogue and see them as we do!

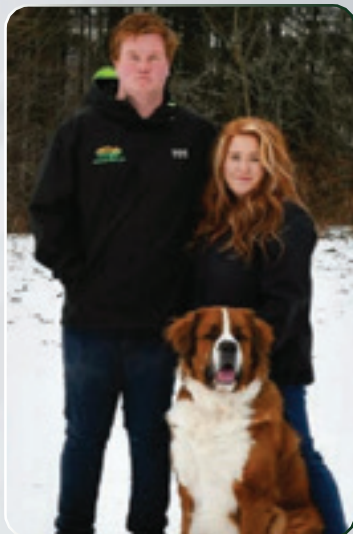
We hope to see you sale day,

THE COOPER FAMILY





Joe, Carolyn and William



Robert and Emily



David and Kathleen



Taylor Stewart and Family



Douglas Congdon



Mike and Shannon Geddes

Balamore Farm Ltd. THICKNESS SELLS

12TH ANNUAL BULL SALE

SATURDAY, MARCH 16, 2024 AT 2:00 PM AST

AT THE FARM, GREAT VILLAGE, NS

9036 Highway #2 Great Village Nova Scotia, B0M 1L0

BALAMORE FARM LTD.

Joe Cooper - 902.893.0744

Robert Cooper - 902.890.0663

William Cooper - 902.324.2005

Mike Geddes - 519.502.8864

Taylor Stewart *Herdsmen* - 902.956.4894

DNA:

All Balamore bulls on offer will have been DNA tested for Homo Polled, Coat Colour, Sire Verified, and 100K. The Limousin bulls have been tested for F94L (the muscling gene.)

HEALTH:

Sale cattle have been vaccinated with Pyramid FP5, Fusoguard and Ultrabac 7. Commercial sale heifers have also had SelonE and Scourbos 9

INSURANCE:

Insurance forms will be available sale day

SEMEN :

All bulls will be semen tested prior to sale day. Balamore reserves the right to draw IN HERD semen only on any bull sold at our expense and the owners convenience.

ULTRASOUND DATA :

Ultrasound data will be available prior to sale day.

CATALOGUE INFORMATION & ANNOUNCEMENTS :

EPDs are current and up-to-date as of publication date. Information in this document is believed to be accurate but any updates at the sale by the owners, auctioneer or sales management will take precedence over the information provided in the sale catalogue.

VIDEOS:

Videos will be available on CattleVids.ca in early March.

TERMS AND CONDITIONS:

Cattle will sell under the standard Canadian Limousin, Simmental, Angus, and/or Shorthorn Association Sale Terms and Conditions. These are available on request.

AUCTIONEER:

Ryan Hurlburt - 306.292.9812

SALE DAY PHONES:

Ben Wright *T Bar C Cattle Co.*

519.374.3335

Andrew Johnson *T Bar C Cattle Co.*

306.736.7393

Scott Dixon *Atlantic Stockyards*

902.364.9464

Glenn Mills *Sale Consultant*

306.567.8078



Randall O. Ratliff *R&R Marketing Co.*

615.330.2735



Kiley McKenna *MC Marketing*

402.350.2447

Wiley Fanta *MC Marketing*

615.287.0751

Internet Bidding Available



For more information call:
Mark Sholagan 780-699-5082 or Purebred Team 780-991-3025

A note regarding
DELIVERY
A N D S A L E T I M E

SALE BEGINS AT 2 PM AST

PDT - 10 AM

MDT - 11 AM

CDT - 11 AM

EDT - 1 PM

We understand that the idea of getting your bull from Nova Scotia to your pasture may seem daunting, but we at Balamore are well versed in how to get it done not only simply and efficiently, but at an extremely low, fixed cost as listed below:

Quebec and Ontario: \$250 Canadian

Manitoba to BC: \$500 Canadian

USA: \$750 Canadian

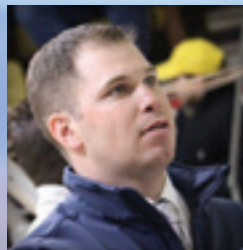




Chris Poley
306-220-5006



Shane Michelson
403-363-9973



Ben Wright
519-374-3335



Levi Rimke
204-851-4515



FROM THE DESK AT T BAR C

2024 is showing all indications of being another exciting year in the cattle business, and the upward trajectory we have all been so grateful in seeing matches perfectly with the direction that the Cooper family behind Balamore Farm have been driving their program. It is truly an honor and privilege to work with a family operation that is not only progressive minded, astute, and hard working; but is also passionate and strong in their beliefs towards the type of cattle they set to raise and market to other breeders and commercial cattlemen alike.

The secret to the cattle business is quite simple when you boil it down... pounds drive dollars, and a bull that can add profitability to your herd is crucial as inputs only continue to skyrocket. When you analyze the Balamore offering, no matter the colour and breed, the one consistent trait throughout is incredible thickness. The genuine muscle shape and stoutness in these bulls is commendable, they are true beef bulls that are designed to infuse profit into any operation.

It is the white hides leading the charge this year, and starting off the Charolais division is a standout herd bull prospect that caught my eye immediately on my tour through the ocean side pens. Mothered by the high selling Charolais female to Rail Line Farms in the Shoreline sale this past fall, this muscled up, excellent structured individual combines not only some of the standouts of the breed today in his pedigree, but assembles a lot of pieces that are certain to propel even the most established of herds forward. Powermax continues to do great things in the breed, stamping his progeny with big performance, balance, and an outcross option. The Limousin section of the catalogue shows a variety of sires represented, with Endeavor continuing his status as a shining star. These bulls are full of breed character, the trademarked and ideal Limo muscle pattern, and a bold spring appearance. The vast majority of the lots on offer have been tested with 2 copies of the F94L gene, a pretty handy little tool if you want a crop of extra thick calves. The Simmental and Angus divisions may be smaller in numbers, but the genetic quality within the extra age bulls and yearlings is tough to find elsewhere. Whether you are looking for a bull that will offer sleep easy calving ease, or you're looking for an individual that can pack a performance punch, you will find it within these pages. I would encourage you to study the delivery options they have on the left-hand page, don't allow the distance to be a barrier in reaping all the tremendous benefits of a Balamore herd sire.

Joe, Carolyn, Robert, Emily, and William operate at a first-class standard, no matter the undertaking. To see the level of hospitality and long-term relationships they have with customers and friends is nothing short of refreshing. To see the beautiful sale facility and pens full every year is a testament to the respect and friendships that the Cooper family has in the area. I highly encourage you to attend this sale if you are so able. The scenery is stunning, the strawberry fields interesting, and the bulls second to none. That said, if you are unable to or simply have questions, we at T Bar are very knowledgeable about the offering and would be happy to assist!

See you on the coast,
Ben Wright

T H E
CHAROLAIS
D I V I S I O N

The 2024 Charolais line up is once again headlined by sons of Key's Powermax 57G (pictured below.) Powermax continues to stamp them with a proud look, extra hair and muscle shape, with superior feet which is what made him catch our eye originally. But please don't just take our word for it, if you look at these pages we truly feel the proof is in the pudding. As a whole, this a stout made group that is structurally sound with masculine appearances. Whether you are in the market for pure performance or a calving ease edge, you will find it here.





Lot 1

- well-structured herd bull with extra hair and muscle shape
- dam was a feature in the 2023 Shoreline to Rail Line Farms, ON
- combines some of the breed greats in Powermax/Estrada/Maverick

BALAMORE *Lionheart* 341L

HOMO POLLED PMC852037 BLM 341L JAN 15 2023													
BW	ADJ WW	ADJ YW	EPDS	BW	RANK	WW	RANK	YW	RANK	MILK	RANK	CE	RANK
89	922	1490	2.4	85%	80	3%	135	4%	33	3%	4.3	60%	

OW MAXIMIZER 3041 PLD
KEYS POWERMAX 57G
 MISS KEY JERI 26E

DC-OW MAXIMIZER 385PLD
 OW MISS SANDCREEK Y46
 KEYS BENTLEY 134B
 MISS KEY JERI 95A

HRJ MAVERICK 556C
BALAMORE KNOCKOUT 127J
 JSR KNOCKOUT 80G

WC DOUBLETREE 2009 P
 PRO-CHAR CASSY 32A
 JSR ESTRADA 52E
 JSR KNOCKOUT 72D



Lot 1



Dam and Lot 1



Lot 3

- first calf heifer knocked it out of the park
- loose hided and an easy doer
- calving ease and performance

BALAMORE *Lancelot* 308L

HOMO POLLED | PMC851351 | BLM 308L | JAN 2 2023

BW	ADJ WW	ADJ YW	EPDS	BW	RANK	WW	RANK	YW	RANK	MILK	RANK	CE	RANK
89	708	1224	-0.9	25%	48	95%	87	95%	22	50%	12.9	5%	

OW MAXIMIZER 3041 PLD
KEYS POWERMAX 57G
 MISS KEY JERI 26E

DC-OW MAXIMIZER 385PLD
 OW MISS SANDCREEK Y46
 KEYS BENTLEY 134B
 MISS KEY JERI 95A

LT VIKING 8156 PLD
BALAMAMORE PRECIOUS 148J
 CORNERSTONE DOLLY PARTON 13D

LT LEDGER 0332 P
 LT PRAISE 0462 ET P
 CORNERSTONE BOBBY ORR 4B
 CORNERSTONE SHAKIRA 2S



Dam and Lot 3



Maternal Grandam



BALAMORE *Lighthouse* 325L



Lot 4

- calving ease and muscle shape in a hairy package
- heavy milking Jacksonville dam has been a producer
- big hipped and wide across his top

HOMO POLLED PNC851512 BLM 325L JAN 9 2023													
BW	ADJ WW	ADJ YW	EPDS	BW	RANK	WW	RANK	YW	RANK	MILK	RANK	CE	RANK
88	863	1309	-3.5	10%	54	80%	100	80%	37	1%	13.3	5%	

OW MAXIMIZER 3041 PLD
KEYS POWERMAX 57G
 MISS KEY JERI 26E

DC-OW MAXIMIZER 385PLD
 OW MISS SANDCREEK Y46
 KEYS BENTLEY 134B
 MISS KEY JERI 95A

STEPPLER JACKSONVILLE335Z
STEPPLER MISS DIAMOND 6C
 STEPPLER MISS 40A

STEPPLER BLUE 83X
 STEPPLER MISS 83T
 SPARROWS SEMINOLE 927W
 STEPPLER MISS 2U



Dam and Maternal Sister



Lot 5

- big quartered performance calf with extra bone and mass
- foundation cow family with 4 maternal sisters retained
- from the same cow family as Lot 6

BALAMORE *Lakota* 318L

HOMO POLLED PMC851505 BLM 318L JAN 5 2023													
BW	ADJ WW	ADJ YW	EPDS	BW	RANK	WW	RANK	YW	RANK	MILK	RANK	CE	RANK
91	710	1236	-0.7	30%	65	25%	116	35%	27	20%	10.1	15%	

OW MAXIMIZER 3041 PLD
KEYS POWERMAX 57G
 MISS KEY JERI 26E

DC-OW MAXIMIZER 385PLD
 OW MISS SANDCREEK Y46
 KEYS BENTLEY 134B
 MISS KEY JERI 95A

SPARROWS SEMINOLE 927W
STEPPLER MISS 307C
 STEPPLER MISS 73X

ABC LATORO 263G
 SPARROWS ANGEL EYES 258N
 STEPPLERS DISTINCTION38T
 STEPPLER ROSE 29R



Lot 5



BALAMORE *Loch Ness* 329L

HOMO POLLED			PMC851534	BLM 329L		JAN 11 2023							
BW	ADJ WW	ADJ YW	EPDS	BW	RANK	WW	RANK	YW	RANK	MILK	RANK	CE	RANK
96	803	1250	-0.5	35%	72	10%	121	35%	35	1%	10.1	15%	

OW MAXIMIZER 3041 PLD
KEYS POWERMAX 57G
 MISS KEY JERI 26E


DC-OW MAXIMIZER 385PLD
 OW MISS SANDCREEK Y46
 KEYS BENTLEY 134B
 MISS KEY JERI 95A

SPARROWS KINGSTON 139Y
BALAMORE FEVER 815F
 STEPLER MISS 307C

WINN MANS LANZA 610S
 SPARROWS DELIGHT 374P
 SPARROWS SEMINOLE 927W
 STEPLER MISS 73X



Maternal Brother



Lot 6

- athletic and stretchy
- deep hip shape with the structure we love
- maternal sibling was a past sale feature selling to Brian Kruk, MB
- 3/4 Sibling to Lot 9



Lot 7

- sleep easy heifer bull
- smooth shouldered makeup with a streamlined profile
- maternal sister was selected by Ella Macdonald for her 4H project

BALAMORE *Levitate* 315L

HOMO POLLED | PMC851362 | BLM 315L | JAN 4 2023

BW	ADJ WW	ADJ YW	EPDS	BW	RANK	WW	RANK	YW	RANK	MILK	RANK	CE	RANK
76	767	1301		-3.0	10%	71	10%	122	25%	33	2%	14.0	4%

OW MAXIMIZER 3041 PLD
KEYS POWERMAX 57G
 MISS KEY JERI 26E

DC-OW MAXIMIZER 385PLD
 OW MISS SANDCREEK Y46
 KEYS BENTLEY 134B
 MISS KEY JERI 95A

CIRCLE CEE LEGEND 307A
CEDARDALE MISS 56G
 CEDARDALE MISS 65E

LT LEDGER 0332 P
 CIRCLE CEE STUNNING 125Y
 CEDARDALEABRACADABRA123A
 MISS CEDARDALE 51W



Lot 7 on Pasture / Summer 2023



Lot 8

- stout made high performance bull
- 7F dam is a large framed power producer
- full brother is walking at Cedardale Charolais, ON

BALAMORE *Limelight* 335L

HOMO POLLED		PMC851554		BLM 335L		JAN 12 2023							
BW	ADJ WW	ADJ YW	EPDS	BW	RANK	WW	RANK	YW	RANK	MILK	RANK	CE	RANK
105	765	1346	1.5	35%	70	10%	112	35%	25	1%	4.3	15%	

OW MAXIMIZER 3041 PLD
KEYS POWERMAX 57G
 MISS KEY JERI 26E

DC-OW MAXIMIZER 385PLD
 OW MISS SANDCREEK Y46
 KEYS BENTLEY 134B
 MISS KEY JERI 95A

HC CABARET 519C
BALAMORE FILTHY GURL 7F
 CORNERSTONE BETTY LOU 5B


LT LEDGER 0332 P
 HC WHITE GLORY 340A
 MERIT ROUNDUP 9508W
 CORNERSTONE YAMAGUCHI 5Y



Dam



Full Brother

Lot 9

- moderate and masculine with a stocky makeup
- 806F dam is a standout
- easy fleshing with a moderate birthweight
- maternal sister was the high selling bred heifer in the 2023 Shoreline to Stepler Farms, MB

BALAMORE *Loki* 349L

HOMO POLLED		PMC852256		BLM 349L		JAN 17 2023							
BW	ADJ WW	ADJ YW	EPDS	BW	RANK	WW	RANK	YW	RANK	MILK	RANK	CE	RANK
85	751	1356	0.0	45%	50	85%	95	70%	37	1%	7.7	30%	

OW MAXIMIZER 3041 PLD KEYS POWERMAX 57G MISS KEY JERI 26E	DC-OW MAXIMIZER 385PLD OW MISS SANDCREEK Y46 KEYS BENTLEY 134B MISS KEY JERI 95A	SPARROWS KINGSTON 139Y BALAMORE FANTA 806F CORNERSTONE CANDY 14C	WINN MANS LANZA 610S SPARROWS DELIGHT 374P TR P2C MR TURTON 0794 ET CORNERSTONE WHAT A GAL2W
--	---	---	---



Dam



Maternal Sister



Lot 10

- Emily's donor cow pumped out another powerhouse
- large hairy outline with that stud bull head
- maternal brothers have been selected in consecutive years to Three Triangle Ranch, AB and J&J McAfee Charolais, NB

BALAMORE *Labyrinth* 354L

HOMO POLLED | PMC852279 | BLM 354L | JAN 19 2023

BW	ADJ WW	ADJ YW	EPDS	BW	RANK	WW	RANK	YW	RANK	MILK	RANK	CE	RANK
103	777	1248	2.1	75%	77	4%	120	35%	28	15%	4.7	50%	

OW MAXIMIZER 3041 PLD
KEYS POWERMAX 57G
 MISS KEY JERI 26E

DC-OW MAXIMIZER 385PLD
 OW MISS SANDCREEK Y46
 KEYS BENTLEY 134B
 MISS KEY JERI 95A

WDZ FIREMAKER 6062 P ET
CEDARDALE MISS 55B
 CEDARDALE MISS 38Y


M6 GRID MAKER 104 PET
 THOMASSWISSERSWEET1764ET
 SPARROWS ALLIANCE 513G
 BERICH VEGAS' LADY 19K



Dam and Lot 10



Maternal Brother

Lot 11

- extra extension and style
- carcass merit and Powermax thickness
- light birthweight option who is structurally sound

BALAMORE *Ladies Man* **338L**

HOMO POLLED PMC852034 BLM 338L JAN 14 2023													
BW	ADJ WW	ADJ YW	EPDS	BW	RANK	WW	RANK	YW	RANK	MILK	RANK	CE	RANK
89	776	1277	-3.3	10%	55	70%	101	75%	32	4%	13.0	10%	

OW MAXIMIZER 3041 PLD
KEYS POWERMAX 57G
 MISS KEY JERI 26E

HBC RANSOM 717E
BALAMORE SAGITTARIUS 032H
 BALAMORE EXOTICA 702E

DC-OW MAXIMIZER 385PLD
 OW MISS SANDCREEK Y46
 KEYS BENTLEY 134B
 MISS KEY JERI 95A

HBC G2 430B
 LAE BRANDY 4141B
 CIRCLE CEE LEGEND 307A
 CEDARDALE MISS 45C



Maternal Grandam



BALAMORE *Lightning* 331L

HOMO POLLED | PMC851542 | BLM 331L | JAN 11 2023

BW	ADJ WW	ADJ YW	EPDS	BW	RANK	WW	RANK	YW	RANK	MILK	RANK	CE	RANK
90	756	1281	0.2	50%	54	75%	99	75%	38	1%	4.6	55%	

OW MAXIMIZER 3041 PLD
KEYS POWERMAX 57G
 MISS KEY JERI 26E

DC-OW MAXIMIZER 385PLD
 OW MISS SANDCREEK Y46
 KEYS BENTLEY 134B
 MISS KEY JERI 95A

ELDER'S BLACKJACK 788B
BALAMORE EMBER 062H
 STEPLER MISS KELLEY 53C

GERRARD PASTOR 35Z
 SVY STARSTRUCK 8X
 SPARROWS COPENHAGEN 210Z
 STEPLER MISS KELLEY 93S



Maternal Grandsire



Lot 12

- cattleman kind of bull
- more of that Powermax thickness
- will sire those wide topped hairy calves that order buyers love



BALAMORE *Lithium* 328L

HETERO POLLED | QPMC851532 | BLM 328L | JAN 11 2023

BW	ADJ WW	ADJ YW	EPDS	BW	RANK	WW	RANK	YW	RANK	MILK	RANK	CE	RANK
94	760	1375	-0.6	35%	63	35%	114	25%	33	2%	9.0	20%	

OW MAXIMIZER 3041 PLD
KEYS POWERMAX 57G
 MISS KEY JERI 26E

DC-OW MAXIMIZER 385PLD
 OW MISS SANDCREEK Y46
 KEYS BENTLEY 134B
 MISS KEY JERI 95A

MR LOUBER PREFIX 638A
CNB MISS FEMROUGE 76F
 CNB TWO TONE GIRL 35Z

TRI-N PREFIX PLD ET 54Y
 LOUB MISS ELDORADO 314S
 JSR SEMINOLE 27S
 CNB JJ TIFFANY 2T



Dam



Full Brother



Lot 13

- larger frame with bone and hair
- maternal sister topped the Shoreline in 2022 to BKC Farms, NB with full brother heading to Three Triangle Ranch, AB in 2023
- small scurrs



Lot 14

- densely packed and easy fleshing
- Estrada/Lanza dam is a cross that works
- small birthweight bull who would work in a heifer pen

BALAMORE *Libra* 332L

HOMO POLLED PMC851545 BLM 332L JAN 12 2023													
BW	ADJ WW	ADJ YW	EPDS	BW	RANK	WW	RANK	YW	RANK	MILK	RANK	CE	RANK
81	733	1458		-1.5	35%	61	35%	115	25%	25	2%	10.1	20%

LHD CHOTEAU B1669 P
LT CHROME 9159 PLD
 LT BELLE 4054 PLD

JSR ESTRADA 52E
MAIN JASMINE 21031H
 MAIN LANZA 526C

JDJ JUSTICE U319
 LHD MS CIGARSON T983
 LT RUSHMORE 8060 PLD
 LT BELLE 2338 PLD
 PLEASANT DAWN CHISUM 216A
 JSR JASMINE 167C
 LT LANZA 1427 PLD
 MAIN EL MAGICO 343A



Maternal Grandsire



BALAMORE *Lisbon* 304L

HETERO POLLED | QPMC862198 | BLM 304L | JAN 01 2023

BW	ADJ WW	ADJ YW	EPDS	BW	RANK	WW	RANK	YW	RANK	MILK	RANK	CE	RANK
81	722	1071	0.6	50%	63	35%	104	60%	18	85%	6.0	45%	

LHD CHOTEAU B1669 P
LT CHROME 9159 PLD
 LT BELLE 4054 PLD

JDJ JUSTICE U319
 LHD MS CIGARSON T983
 LT RUSHMORE 8060 PLD
 LT BELLE 2338 PLD

CEDARDALE DELTA 4D
BALAMORE FARRAH 838F
 CEDARDALE MISS 55B

CEDARDALE ZEAL 125Z
 CEDARDALE MISS 129A
 WDZ FIREMAKER 6062 P ET
 CEDARDALE MISS 38Y



Maternal Grandam



Lot 15

- maternal brother is working for Rocky Knoll Farm, NS
- soft made and big middled
- deep quartered and wide
- twin



BALAMORE *Limitless* 307L



Lot 16

- complete son of the now deceased LT Chrome 9159 PLD
- smooth shouldered with added length
- calving ease without giving up performance

HOMO POLLED | PMC851349 | BLM 307L | JAN 2 2023

BW	ADJ WW	ADJ YW	EPDS	BW	RANK	WW	RANK	YW	RANK	MILK	RANK	CE	RANK
88	808	1401	-2.5	15%	60	45%	102	45%	28	25%	10.8	15%	

LHD CHOTEAU B1669 P
LT CHROME 9159 PLD
 LT BELLE 4054 PLD

JDJ JUSTICE U319
 LHD MS CIGARSON T983
 LT RUSHMORE 8060 PLD
 LT BELLE 2338 PLD

CEDARDALE ZEAL 125Z
BALAMORE PRECIOUS 002H
 CORNERSTONE AVA 10A

CEDARDALE TYRANT 31T
 CEDARDALE MISS 64T
 GERRARD MONTEZUMA 6T
 CORNERSTONE WHAT A GAL2W



Maternal Grandam



BALAMORE *Longshot* 330L

HOMO POLLED | QPMC862196 | BLM 330L | JAN 11 2023

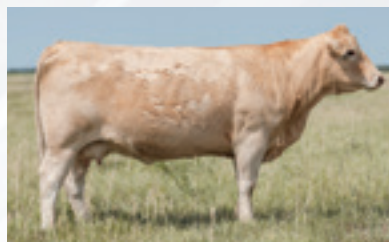
BW	ADJ WW	ADJ YW	EPDS	BW	RANK	WW	RANK	YW	RANK	MILK	RANK	CE	RANK
94	740	1210	2.2	80%	78	4%	141	10%	17	75%	1.0	80%	

PLEASANT DAWN MVP 316Y
TURNBULLS DUTY-FREE 358D
 CTP MISS GOOGLE 358Z

PLEASANT DAWN MAGNUM 56T
 PLEASANT DAWN RIO 216P
 PLEASANT DAWN MAXIMUM138X
 RTP MISS SELECT 14K

JWX DOWNTOWN 7C
MXS MEG 751E
 MXS MEG 480B

JWX FIFTY SHADES 706Z
 JWY MERCEDES 20Z
 ERIXON'S SPITFIRE 127T
 MXS MEGARA 429P



Dam



Maternal Sister



Lot 17

- tan son of the breed leading Duty Free
- commercial bull who will sire rugged steers
- big performance



Lot 18

- sired by a past sale feature in 2022 to Brian Kruk, MB
- buff colored with a big square hip
- maternal brother is working in the heifer pen of Johnson Ranching, AB

BALAMORE *Lunar* 360L

HOMO POLLED PMC852284 BLM 360L JAN 22 2023													
BW	ADJ WW	ADJ YW	EPDS	BW	RANK	WW	RANK	YW	RANK	MILK	RANK	CE	RANK
95	727	1318	0.2	50%	66	25%	123	15%	24	45%	3.5	60%	

ELDER'S BLACKJACK 788B
BALAMORE JAGGED 111J
 BALAMORE FEVER 815F

HBC RANSOM 717E
BALAMORE CALYPSO 033H
 BALAMORE DURTYGURL 216D

GERRARD PASTOR 35Z
 SVY STARSTRUCK 8X
 SPARROWS KINGSTON 139Y
 STEPLER MISS 307C

HBC G2 430B
 LAE BRANDY 4141B
 CEDARDALE ZEAL 125Z
 CEDARDALE MISS 121B



Maternal Grandsire



BALAMORE *Lucid* 357L

HOMO POLLED | PMC852281 | BLM 357L | JAN 20 2023

BW	ADJ WW	ADJ YW	EPDS	BW	RANK	WW	RANK	YW	RANK	MILK	RANK	CE	RANK
94	785	1425	-1.1	25%	63	30%	118	15%	18	85%	8.6	25%	

LT RANSOM 8644
BALAMORE JUSTICE 126J
 BALAMORE DAHLIA 46D

LT JOURNEY 5208 PLD
 LT SHEILA 337 PLD
 LT LEDGER 0332 P
 JSR WESC APHRODITE 51B

SPARROWS SEMINOLE 927W
STEPPLER MISS HUNTER 236C
 HC WAY TOO HOT 924W

ABC LATORO 263G
 SPARROWS ANGEL EYES 258N
 SPARROWS SANCHEZ 715T
 GLM WINDY RIVER 17R



Maternal Grandsire



Lot 19

- the first crop of the \$31,000 Balamore Justice 126J have been extremely impressive
- big power bull that will add pounds
- large outline and deep bodied



Lot 20

- small headed, calving ease bull
- prolific young dam has sons working in the heifer pens of Lady Fane Charolais, PEI and Char-Maine Ranching, AB
- from the same cow family as Lot 11

BALAMORE *Labrador* 310L

HOMO POLLED			PMC851353		BLM 310L		JAN 3 2023					
BW	ADJ WW	ADJ YW	EPDS BW	RANK	WW	RANK	YW	RANK	MILK	RANK	CE	RANK
87	745	1139	-0.8	30%	70	15%	130	35%	29	15%	6.5	40%

LT RANSOM 8644
BALAMORE JUSTICE 126J
 BALAMORE DAHLIA 46D

LT JOURNEY 5208 PLD
 LT SHEILA 337 PLD
 LT LEDGER 0332 P
 JSR WESC APHRODITE 51B

CEDARDALE ZEAL 125Z
BALAMORE SAGITTARIUS 915G
 BALAMORE EXOTICA 702E


CEDARDALE TYRANT 31T
 CEDARDALE MISS 64T
 CIRCLE CEE LEGEND 307A
 CEDARDALE MISS 45C



Dam



Maternal Grandam

Lot 21

- typical Viking look and style
- long and fluid with an attractive head
- heavy milking Blackjack dam who has a bright future

BALAMORE *Loyal* 359L

HOMO POLLED PMC852283			BLM 359L JAN 21 2023										
BW	ADJ WW	ADJ YW	EPDS	BW	RANK	WW	RANK	YW	RANK	MILK	RANK	CE	RANK
84	802	1382	-1.6	25%	62	35%	108	45%	18	85%	11.4	15%	

LT LEDGER 0332 P	LT BLUEGRASS 4017 P	ELDER'S BLACKJACK 788B	GERRARD PASTOR 35Z
LT VIKING 8156 PLD	LT BRENDA 6120 PLD	BALAMORE VERSACE 061H	SVY STARSTRUCK BX
LT PRAISE 0462 ET P	LT EASY BLEND 5125 PLD	BALAMORE DOVE 66D	MERIT ROUNDUP 9508W
	LT WYOMING BREEZE 7188P		CEDARDALE MISS 101B



Dam and Lot 21



Sire



BALAMORE *Lake* 366L

HETERO POLLED | PMC852949 | BLM 366L | JAN 31 2023

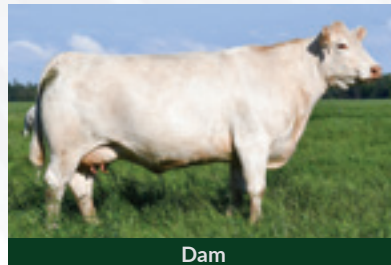
BW	ADJ WW	ADJ YW	EPDS	BW	RANK	WW	RANK	YW	RANK	MILK	RANK	CE	RANK
87	704	1114	-3.2	10%	54	75%	85	100%	19	75%	8.7	25%	

KEYS ALL STATE 149X
CEDARDALE HUMMER 20H
 CEDARDALE MISS 82A

KEYS SPECIALIST 18U
 MISS KEY MEG 2T
 CEDARDALE WINCHESTER 70W
 MISS CEDARDALE 2W

LAE CRUISE 502C
BALAMORE ENCHANTED 726E
 STEPLER U WISH 155C

CIRCLE CEE LEGEND 307A
 LAE ABBY 302A
 SPARROWS COPENHAGEN 210Z
 MEDONTE YOU WISH 6Y



Dam



Maternal Brother



Lot 22

- long and thick
- maternal brother was selected in 2023 by Jason MacDonald, NS
- a pasture favorite all summer



Lot 23

- from the same cow family as Lot 3
- a maternal sister was selected by Emma McFadgen, NB in the 2023 Shoreline
- scurred

BALAMORE *Lark* 365L

HETERO POLLED PMC852948 BLM 365L JAN 28 2023													
BW	ADJ WW	ADJ YW	EPDS BW	RANK	WW	RANK	YW	RANK	MILK	RANK	CE	RANK	
88	662	1136	2.0	15%	41	100%	74	100%	15	95%	10.0	15%	

KEYS ALL STATE 149X
CEDARDALE HUMMER 20H
 CEDARDALE MISS 82A

KEYS SPECIALIST 18U
 MISS KEY MEG 2T
 CEDARDALE WINCHESTER 70W
 MISS CEDARDALE 2W

CORNERSTONE BOBBY ORR 4B
CORNERSTONE DOLLY PARTON 13D
 CORNERSTONE SHAKIRA 2S

MERIT ROUNDUP 9508W
 MNE MINDY 26M
 SVY FREEDOM PLD 307N
 DBAR PRECIOUS 912J



Dam



Maternal Sister



THE LIMOUSIN DIVISION

Our Limousin herd bull prospects on offer this year are full of breed character, bold sprung, and ideal in their muscle pattern. With a variety of sires represented, you can rest assured that your needs will be met. The vast majority have been tested with 2 copies of the F94L gene, which is responsible for the trademarked limo muscle. If you want extra thick calves, pick a bull with 2 copies.





Lot 24

- herd bull
- shape, mass, and muscle
- this deep bodied bull is an absolute powerhouse

BALAMORE *Kessel* 256K

HOMO POLLED | CPM4116862 | BLM 256K | MAY 13 2022 | HETERO BLACK | F94L: 2 | 91.0%

BW	ACT WW	ADJ YW	EPDS	BW	RANK	WW	RANK	YW	RANK	MILK	RANK	CE	RANK
86	771	1204	2.3	55%	72	10%	109	10%	18	>95	10	25%	

RLF YARDLEY 601Y
BALAMORE ENDEAVOR 701E
 CLARKS AFFECTIVE KISS

WULFS WILLARD 5115W
CLARKS CI-HANNA
 DKC POLLED LI-HANNA

WULFS TAILOR MADE 2107T
 RLF 406W
 WULFS SPRING LOADED 3158S
 DKC UNFORGETTABLE KISS

WULFS REVOLVER 1219R
 WULFS REMI 5115R
 ROYAL JOURNEYMAN
 BRIAR HILL DI-HANNA



Sire



Lot 25

- full brother to Balamore Gryphon 930G and Balamore Jurassic 110J
- the last 35A progeny to sell
- no guesswork here

BALAMORE *Kickstart* 289K

HOMO POLLED | CPM4117026 | BLM 289K | JUNE 3 2022 | HETERO BLACK | F94L: 2 | 89.9%

BW	ACT WW	ADJ YW	EPDS	BW	RANK	WW	RANK	YW	RANK	MILK	RANK	CE	RANK
86	770	1096	2.3	55%	73	10%	106	10%	22	80%	6	80%	

RLF YARDLEY 601Y
BALAMORE ENDEAVOR 701E
 CLARKS AFFECTIVE KISS

WULFS TAILOR MADE 2107T
 RLF 406W
 WULFS SPRING LOADED 3158S
 DKC UNFORGETTABLE KISS

RPY PAYNES ELVIS 34X
WGL ABERCROMBIE 35A
 WGL XAMINER 7X

ROMN TUFF ENUFF 103T
 IVY'S POLLED PRINCESS 1P
 ROMN MADE TO ORDER
 TOP MEADOW 380N



Gryphon 930G / Full Brother



Jurassic 110J / Full Brother



Lot 26

- ideal Limousin shape
- young Kaiser dam has a perfect udder
- big performance numbers spread

BALAMORE *Kez* 270K

HOMO POLLED | CPM4116873 | BLM 270K | MAY 21 2022 | HETERO BLACK | F94L: 2 | 93.2%

BW	ACT WW	ADJ YW	EPDS	BW	RANK	WW	RANK	YW	RANK	MILK	RANK	CE	RANK
85	699	1091	5.2	>95	76	4%	116	3%	17	>95	8	50%	

RLF YARDLEY 601Y
BALAMORE ENDEAVOR 701E
 CLARKS AFFECTIVE KISS

WULFS TAILOR MADE 2107T
 RLF 406W
 WULFS SPRING LOADED 3158S
 DKC UNFORGETTABLE KISS

BIRUBI KAISER K140
BALAMORE HALLUJAH 078H
 BALAMORE BILLE JEAN 410B

BIRUBI SIR GOTHIC G211
 DONNA VALLEY P. FINNA-CELESTE
 TMF LANDMARK 601L
 OTHBERGS U THE ONE





Lot 27

- carbon copy Endeavor son
- from the same cow family as Lot 24
- maternal sister is a promising young cow

Consigned by High Tide Limousin - Ian Kittilsen
902-986-0426

HTL HIGH TIDE *Kai* 276K

HOMO POLLED | CPM4117325 | HTL 276K | MAY 26 2022 | HOMO BLACK | F94L: 2 | 93.0%

BW	ACT WW	ADJ YW	EPDS	BW	RANK	WW	RANK	YW	RANK	MILK	RANK	CE	RANK
77	763	1151	1.0	30%	64	25%	99	20%	17	>95	10	25%	

RLF YARDLEY 601Y
BALAMORE ENDEAVOR 701E
CLARKS AFFECTIVE KISS

WULFS TAILOR MADE 2107T
RLF 406W
WULFS SPRING LOADED 3158S
DKC UNFORGETTABLE KISS

MORRISVALE LUMBERJACK
BALAMORE GIANNA 968G
CLARKS CI-HANNA

MARYVALE JOURNEYMAN J455
MARYVALE JOSEPHINE J302
WULFS WILLARD 5115W
DKC POLLED LI-HANNA





Lot 28

- shapely and bold sprung
- smooth fronted with a nice skull
- commercial kind

BALAMORE *Koa* 262K

HOMO POLLED | CPM4116867 | BLM 262K | MAY 18 2022 | HETERO BLACK | F94L: 2 | 93.1%

BW	ACT WW	ADJ YW	EPDS	BW	RANK	WW	RANK	YW	RANK	MILK	RANK	CE	RANK
90	732	1195	1.4	40%	60	35%	87	40%	27	30%	7	65%	

FLEMINGTON LEGEND L12
AFTER HOURS GAMBLER
 AFTER HOURS CELEBRITY

WARRIGAL HIGH VISION
 FLEMINGTON POLLED PRIDE H1
 WULFS YONKERS K682Y
 AFTER HOURS YOGI

WULFS COMPLIANT K687C ET
BALAMORE FELINE 842F
 BALAMORE BLACK MAMBA 412B

WULFS WILLARD 5115W
 WULFS SOLOIST 6284S
 RLF YARDLEY 601Y
 NORDAL FOURTEEN



Dam



Lot 29

- fancy made Halifax son
- thick from end to end
- big time cow family

BALAMORE *Kickbox* 2105K

HOMO POLLED | CPM4117133 | BLM 2105K | JUNE 20 2022 | HETERO BLACK | F94L: 2 | 93.0%

BW	ACT WW	ADJ YW	EPDS	BW	RANK	WW	RANK	YW	RANK	MILK	RANK	CE	RANK
92	753	1106	2.7	65%	66	20%	96	25%	26	40%	7	65%	

BIRUBI KAISER K140
BALAMORE HALIFAX 019H
 BALAMORE A-PLUS 304A

BIRUBI SIR GOTHIC G211
 DONNA VALLEY P. FINNA-CELESTE
 ROMN YIPPY KI YEH 101Y
 OTHBERGS WISPER

TMF DILLON 143D
BALAMORE FLAME 18F
 TMF MISS 612W

EXLR MATRIX 075M
 TMF MISS 519W
 FWLY BIG TIME
 TOP MEADOW 602L



Maternal Grandam



Maternal Sister to Dam



Lot 30

- typical Gambler
- full of breed character
- wide topped and long

EAST COAST *Kolten* 261K

HOMO POLLED CPM4116866 ECL 261K MAY 18 2022 RED F94L: 2 92.7%			EPDS		BW	RANK	WW	RANK	YW	RANK	MILK	RANK	CE	RANK
84	781	1136	1.2	30%	66	20%	94	25%	26	40%	11	20%		

FLEMINGTON LEGEND L12
AFTER HOURS GAMBLER
 AFTER HOURS CELEBRITY

WARRIGAL HIGH VISION
 FLEMINGTON POLLED PRIDE H1
 WULFS YONKERS K682Y
 AFTER HOURS YOGI

LFLC EASY STREET 107E
EAST COAST HAZEL 075H
 BALAMORE ZEE 243Z

LFLC BANK ACCOUNT 701B
 LFLC CANDY CANE 107C
 TMF WESTWOOD 505W
 OTHBERGS WILLA



Lot 30



Lot 31

- maternal brother was a sale topper in 2022 to Simon Bowman, ON
- problem free Collingwood dam
- explosive shape and growth

BALAMORE *Kayak* 2104K

HOMO POLLED CPM4117132 BLM 2104K			JUNE 15 2022			RED		F94L: 2		93.7%			
BW	ACT WW	ADJ YW	EPDS	BW	RANK	WW	RANK	YW	RANK	MILK	RANK	CE	RANK
90	674	1055	0.5	20%	49	85%	65	90%	27	30%	7	65%	

FLEMINGTON LEGEND L12
AFTER HOURS GAMBLER
 AFTER HOURS CELEBRITY

TMF COLLINGWOOD 301A
MISS TMF58E
 TMF MISS 721W

WARRIGAL HIGH VISION
 FLEMINGTON POLLED PRIDE H1
 WULFS YONKERS K682Y
 AFTER HOURS YOGI


MARYVALE FEDERA 0067F
 TMF MISS 1009U
 WULFS TAILOR MADE 2107T
 TOP MEADOW 712S



Maternal Brother



BALAMORE *Keltic* 266K



Lot 32

- calving ease pedigree
- smooth in his lines
- quality steer maker

HOMO POLLED CPM4117012			BLM 266K	MAY 20 2022	RED	F94L: 2	93.1%					
BW	ACT WW	ADJ YW	EPDS BW	RANK	WW	RANK	YW	RANK	MILK	RANK	CE	RANK
81	646	1029	3.2	75%	68	15%	100	15%	20	90%	6	40%

MORRISVALE LUMBERJACK
BALAMORE FORTITUDE 838F
 BALAMORE CHARLIE 514C ET

MARYVALE JOURNEYMAN J455
 MARYVALE JOSEPHINE J302
 TMF LANDMARK 601L
 TMF MISS 623T

BALAMORE ENDEAVOR 701E
BALAMORE MISS 9117G
 BALAMORE DANCE STEP 652D

RLF YARDLEY 601Y
 CLARKS AFFECTIVE KISS
 WULFS XCELLSIOR X252X
 OTHBERGS WILLA



Lot 32



EAST COAST *Kero* 2135K

HOMO POLLED | CPM4117192 | ECL 2135K | SEPT 8 2022 | HETERO BLACK | F94L: 2 | 93.0%

BW	ACT WW	ADJ YW	EPDS	BW	RANK	WW	RANK	YW	RANK	MILK	RANK	CE	RANK
82	625	1031	1.9	45%	64	25%	98	20%	22	80%	12	10%	

FLEMINGTON LEGEND L12
AFTER HOURS GAMBLER
AFTER HOURS CELEBRITY

WARRIGAL HIGH VISION
FLEMINGTON POLLED PRIDE H1
WULFS YONKERS K682Y
AFTER HOURS YOGI

RLF YARDLEY 601Y
EAST COAST COWGIRL 524C
TMF MISS 326Z

WULFS TAILOR MADE 2107T
RLF 406W
RLF X MAN 573X
TMF 525T



Dam



Maternal Grandam



Lot 33

- stretchy and athletic
- extremely long bull with extra hair
- top cow family keeps cranking them out



Lot 34

- thick and heavy haired
- maternal brother is working at Noble Land and Forage, NB
- full of bone and mass

BALAMORE *Killboy* 2133K

HOMO POLLED | CPM4117191 | BLM 2133K | SEPT 7, 2022 | HETERO BLACK | F94L: 2 | 93.1%

BW	ACT WW	ADJ YW	EPDS	BW	RANK	WW	RANK	YW	RANK	MILK	RANK	CE	RANK
85	658	1032	0.2	20%	54	70%	75	75%	27	30%	11	20%	

FLEMINGTON LEGEND L12
AFTER HOURS GAMBLER
 AFTER HOURS CELEBRITY

BALAMORE ENDEAVOR 701E
BALAMORE GALAXY 966G
 RLF 802A

WARRIGAL HIGH VISION
 FLEMINGTON POLLED PRIDE H1
 WULFS YONKERS K682Y
 AFTER HOURS YOGI

RLF YARDLEY 601Y
 CLARKS AFFECTIVE KISS
 RLF X MAN 573X
 TMF 706T



Maternal Brother



Lot 35

- large frame, large outline
- volume and performance
- maternal sibling to past herd sire Balamore Elite 763E

BALAMORE *Ketone* 2130K

HOMO POLLED CPM4117189			BLM 2130K		SEPT 5 2022		RED		F94L: 2		93.7%		
BW	ACT WW	ADJ YW	EPDS	BW	RANK	WW	RANK	YW	RANK	MILK	RANK	CE	RANK
100	605	1044	4.0	90%	54	65%	83	55%	26	40%	7	65%	

FLEMINGTON LEGEND L12
AFTER HOURS GAMBLER
 AFTER HOURS CELEBRITY

RICHMOND WYATT SRD 48W
WGL ARITZIA 5A
 WGL XCLUSIVE 18X

WARRIGAL HIGH VISION
 FLEMINGTON POLLED PRIDE H1
 WULFS YONKERS K682Y
 AFTER HOURS YOGI

RICHMOND SIR J.R. SRD 128S
 TOP MEADOW 303N
 HIGHLAND PREDATOR
 IVYS HEART HTZ 6T



Maternal Brother



Lot 36

- unique genetic twist
- picture perfect profile
- has the herd bull look

BALAMORE *Leo* 329L

HOMO POLLED CPM4118843 BLM 329L JAN 11 2023 RED F94L: 2 93.1%													
BW	ACTWW	ADJYW	EPDS	BW	RANK	WW	RANK	YW	RANK	MILK	RANK	CE	RANK
88	713	1142	2.3	50%	75	4%	111	10%	18	>95	9	40%	

MORRISVALE LUMBERJACK
BALAMORE HICKORY 060H
 RLF 148D

WASY BAKERS MAN 629B
RLF 285E
 RLF 833A

MARYVALE JOURNEYMAN J455
 MARYVALE JOSEPHINE J302
 TMF LANDMARK 601L
 RLF 567X

SYES XEROX 464Z
 MISS WASY LINEBACKER 621S
 AHCC WESTWIND W544
 TMF JUST PEACHY 521S



Maternal Grandam



Lot 37

- these Hickory calves are impressive
- tidy uddered Zolt dam from the Darlings
- cherry red with a light birthweight

BALAMORE *Lex* 303L

HOMO POLLED		CPM4118397		BLM 303L		JAN 1 2023		RED		F94L: 2		92.9%	
BW	ACT WW	ADJ YW	EPDS	BW	RANK	WW	RANK	YW	RANK	MILK	RANK	CE	RANK
82	729	1222	0.0	15%	64	25%	96	20%	27	30%	10	25%	

MORRISVALE LUMBERJACK
BALAMORE HICKORY 060H
 RLF 148D

WULFS ZOLT X421Z
DARLING DUCHESS 21D
 B BAR REESE 21R

MARYVALE JOURNEYMAN J455
 MARYVALE JOSEPHINE J302
 TMF LANDMARK 601L
 RLF 567X

WULFS XTRACTOR X233X
 WULFS PLEASURE 4251P
 DVCL MR UNBELIEVABLE U03
 B BAR POLLED REESE



Maternal Sister



Lot 38

- big performance calf who is a tank
- will sire sale topping steers
- wide from every angle

BALAMORE *Levi* 324L

HETERO POLLED CPM4118987 BLM 324L JAN 9 2023 RED F94L: 2 94.2%													
BW	ACT WW	ADJ YW	EPDS	BW	RANK	WW	RANK	YW	RANK	MILK	RANK	CE	RANK
85	755	1154	2.2	50%	59	45%	88	45%	27	30%	9	40%	

MORRISVALE LUMBERJACK
BALAMORE HICKORY 060H
 RLF 148D

RLF X MAN 573X
TMF MISS 302A
 TOP MEADOW 543P

MARYVALE JOURNEYMAN J455
 MARYVALE JOSEPHINE J302
 TMF LANDMARK 601L
 RLF 567X

TMF SOHO 160S
 JDK GOLD 66S
 EXLR MATRIX 075M
 DBRO FAWN 212F



Dam



Lot 39

- types in well with his half brothers
- Limousin character from any angle
- maternal sister sold in the 2023 Shoreline to 3-Ridge, ON

BALAMORE *Lender* 332L

HOMO POLLED | CPM4118990 | BLM 332L | JAN 12 2023 | HETERO BLACK | F94L: 2 | 94.2%

BW	ACT WW	ADJ YW	EPDS	BW	RANK	WW	RANK	YW	RANK	MILK	RANK	CE	RANK
82	671	1030	1.2	35%	53	75%	76	75%	21	85%	6	80%	

MORRISVALE LUMBERJACK
BALAMORE HICKORY 060H
 RLF 148D

MARYVALE JOURNEYMAN J455
 MARYVALE JOSEPHINE J302
 TMF LANDMARK 601L
 RLF 567X

RLF 224E
BALAMORE GROUPIE 9112G
 BALAMORE ELMWOOD 755E

WULFS WILLARD 5115W
 RLF 406W
 TMF WESTWOOD 505W
 GRANTS UNICE



Maternal Sister



Lot 40

- expressive muscle shape
- loose and agile on the move
- from the same cow family as Lot 33

EAST COAST *Limon* 321L

HOMO POLLED CPM4118986 ECL 321L JAN 8 2023 HETERO BLACK F94L: 2 93.6%													
BW	ACT WW	ADJ YW	EPDS	BW	RANK	WW	RANK	YW	RANK	MILK	RANK	CE	RANK
85	722	1120	2.2	50%	64	20%	95	25%	26	40%	6	80%	

MORRISVALE LUMBERJACK
BALAMORE HICKORY 060H
 RLF 148D

MARYVALE JOURNEYMAN J455
 MARYVALE JOSEPHINE J302
 TMF LANDMARK 601L
 RLF 567X

RLF X MAN 573X
TMF MISS 326Z
 TMF 525T

TMF SOHO 160S
 JDK GOLD 66S
 CARROUSELS MVP
 TOP MEADOW 602L



Dam



Maternal Sister



Lot 41

- from the same cow family as Lot 38
- all around solid bull
- strong topped and long spined

BALAMORE *Linear* 339L

HOMO POLLED | CPM4119079 | BLM 339L | JAN 13 2023 | HETERO BLACK | F94L: 2 | 93.6%

BW	ACT WW	ADJ YW	EPDS	BW	RANK	WW	RANK	YW	RANK	MILK	RANK	CE	RANK
84	672	1010	2.6	60%	66	20%	98	20%	21	85%	4	95%	


MORRISVALE LUMBERJACK MARYVALE JOURNEYMAN J455
BALAMORE HICKORY 060H MARYVALE JOSEPHINE J302
 RLF 148D TMF LANDMARK 601L
 RLF 567X
 RLF 845A RLF YARDLEY 601Y
BALAMORE ETIQUETTE 768E RLF 4T
 TMF MISS 302A RLF X MAN 573X
 TOP MEADOW 543P



Maternal Grandam



BALAMORE *Lambo* 340L



Lot 42

- old school power Limousin
- performance oriented and out of a 12-year-old cow
- use to add hip and muscle

HOMO POLLED CPM4119080			BLM 340L	JAN 14 2023	RED	F94L: 2	94.3%						
BW	ACTWW	ADJYW	EPDS	BW	RANK	WW	RANK	YW	RANK	MILK	RANK	CE	RANK
98	714	1155	4.0	90%	57	60%	81	60%	26	40%	6	80%	

BIRUBI KAISER K140
BALAMORE HALIFAX 019H
 BALAMORE A-PLUS 304A

JDK KFH HELL YA 46R
OTHBERGS WISPER
 OTHBERGS LINDA

BIRUBI SIR GOTHIC G211
 DONNA VALLEY P. FINNA-CELESTE
 ROMN YIPPY KI YEH 101Y
 OTHBERGS WISPER

TMF LANDMARK 601L
 DVFC MOLL 968G
 CAM POLL FAMOUS CASH
 OTHBERGS ALLOWISHES



Maternal Sister



Lot 43

- full ET brothers to the industry leading PLNS Polled Executioner 19E
- explosive muscle pattern and shape
- proven donor dam TMF 574X offers some of the most intense maternal genetics the breed has to offer

BALAMORE *Landmine* 362L ET

HOMO POLLED CPM4121522 BLM 362L FEB 2 2023 HETERO BLACK F94L: 2 91.0%													
BW	ACT WW	ADJYW	EPDS	BW	RANK	WW	RANK	YW	RANK	MILK	RANK	CE	RANK
90	860	1435	3.6	85%	63	30%	94	25%	24	60%	11	20%	

RLF YARDLEY 601Y
PLNS POLLED ABRAHAM
 PLNS POLLED YAKIRA 25Y

WULFS TAILOR MADE 2107T
 RLF 406W
 EXLR TOTAL IMPACT 054T
 PLNS REPLI-KAT

TMF TRAVELER 742T
TMF MISS 574X
 TMF MISS 623T

RPY PAYNES ROUGH RIDER 40
 JYF RAE
 AUTO DOLLAR GENERAL 122R
 OTSS MISS 9199J





BALAMORE *Lawless* 364L ET

HOMO POLLED CPM4121524 BLM 364L FEB 12 2023			HOMO BLACK F94L: 2 91.0%									
BW	ACT WW	ADJ YW	EPDS BW	RANK	WW	RANK	YW	RANK	MILK	RANK	CE	RANK
94	808	1010	2.2	50%	63	30%	96	25%	24	60%	9	40%



Full Brother



Full Brother


Lot 44

Full Brother
TO LOT 43



Lot 45

- full brother in blood to Lot 46
- red or black option, both are studs
- Lumberjack/Blossom dams just flat out produce
- Lot 46 is a maternal sibling to East Coast Hector 009H, Fisher Farms, NS and East Coast Kaleidoscope 214K, Stewart Limousin, AB

EAST COAST *Luigi* 335L

HOMO POLLED CPM4118855 ECL 335L JAN 12 2023 RED F94L: 1 95.1%			EPDS	BW	RANK	WW	RANK	YW	RANK	MILK	RANK	CE	RANK
86	668	1058		2.5	60%	58	50%	85	50%	22	80%	9	40%

BIRUBI KAISER K140	BIRUBI SIR GOTHIC G211
BALAMORE HALIFAX 019H	DONNA VALLEY P. FINNA-CELESTE
BALAMORE A-PLUS 304A	ROMN YIPPY KI YEH 101Y
	OTHBERGS WISPER
MORRISVALE LUMBERJACK	MARYVALE JOURNEYMAN J455
EAST COAST GUAVA 913G	MARYVALE JOSEPHINE J302
RPY PAYNES BLOSSOM 20B	CFLX WILD
	FBR STORM 3S



Lot 45




Lot 46
 Full brother in blood
TO LOT 45

EAST COAT *Lucius* 326L

HOMO POLLED | CPM4118842 | ECL 326L | JAN 11 2023 | HETERO BLACK | F94L: 2 | 95.1%

BW	ACT WW	ADJ YW	EPDS	BW	RANK	WW	RANK	YW	RANK	MILK	RANK	CE	RANK
91	676	1092	4.0	90%	67	20%	104	15%	23	70%	6	80%	

BIRUBI KAISER K140 BALAMORE HALIFAX 019H BALAMORE A-PLUS 304A	BIRUBI SIR GOTHIC G211 DONNA VALLEY P. FINNA-CELESTE ROMN YIPPY KI YEH 101Y OTHBERGS WISPER	MORRISVALE LUMBERJACK EAST COAST FLOWER 829F RPY PAYNES BLOSSOM 20B	MARYVALE JOURNEYMAN J455 MARYVALE JOSEPHINE J302 CFLX WILD FBR STORM 3S
--	--	--	--



Hector 009H / Maternal Brother



Kaleidoscope 214K / Maternal Brother



Lot 47

- good profiled bull
- will sire the commercial kind buyers love
- scurred

Consigned by Top of the Hill Farm - John-Calvin Siddall
902-664-8008

TOTH *Lumberjack* 14L

HETERO POLLED CPM4119195 TOTH 14L JAN 11 2023 RED F94L: 2 95.1%													
BW	ACT WW	ADJYW	EPDS	BW	RANK	WW	RANK	YW	RANK	MILK	RANK	CE	RANK
91	678	1059	2.5	60%	68	15%	101	15%	25	50%	6	80%	

MARYVALE JOURNEYMAN J455
MORRISVALE LUMBERJACK
MARYVALE JOSEPHINE J302

TMF ARIZONA 584X
MARYVALE DEW DROP 8135D
WULFS XTRACTOR X233X
MARYVALE GERALDINE G102

BALAMORE FJORD 816F
TOTH JUNIPER 16J
BALAMORE DAMASK ROSE 623D

HUNT CREDENTIALS 37C
RLF 48C
CJSL WINDFALL 9072W
RLF 838A



Maternal Grandsire



THE
SIMMENTAL
DIVISION

While our offering of Simmental genetics may be smaller than others, we feel as though the genetic quality is truly superb. Featured here is a small selection of extra aged bulls with the maturity to cover more cows. The yearling bulls are solid made, sound structured, and carry extremely exciting pedigrees, including a son out of our pick of the R Plus Dispersal. We also want to take this time to make a special thank you to Rehorst Farms as they purchased the high selling lot in our 2023 Shoreline Female Sale, a Simmental heifer Balamore Holiday 303L (pictured above.)



Lot 48

- big framed power bull with the money stripe
- top 2% WW, YW
- dam was purchased from the 2018 edition of Friday Night Lights

BALAMORE *Knighthood* 220K

HOMO POLLED BPG1408368 BLM 220K JULY 7 2022 HETERO BLACK													
BW	ACT WW	ADJ YW	EPDS	BW	RANK	WW	RANK	YW	RANK	MILK	RANK	CE	RANK
90	790	1137	6.6	95%	97.7	3%	146.7	3%	19.8	90%	6.9	60%	

MR TR HAMMER 308A ET
BALAMORE TITAN 904G
 MELVERN MS JUSTICE 171C

MR NLC UPGRADE U8676
 SVF/HS EXPECTING A DREAM
 MLC MR JUSTICE W744
 MELVERN MS GUNNER 26U

MRC RED ALERT 261D
MRC MISS TUTI 612F
 TWIN-CHIEF TUTI 601T

MRC BOLD RULER 183B
 TWIN CHIEF ULYSSES 260U
 D BAR C MATADOR 39M
 TWIN-CHIEF JAVA 104J



Dam



Maternal Grandsire



Lot 49

- wide, thick, and round
- predictable Wall Street dam
- maternal brother was a past feature to J.T Anderson, NB

BALAMORE *Kingly* 219K

HOMO POLLED BPG1408207 BLM 219K			JULY 3, 2022			HOMO BLACK						
BW	ACT WW	ADJ YW	EPDS BW	RANK	WW	RANK	YW	RANK	MILK	RANK	CE	RANK
90	752	1163	4.8	75%	90.9	10%	140.8	5%	22.0	75%	7.7	55%

MR TR HAMMER 308A ET	MR NLC UPGRADE U8676
BALAMORE TITAN 904G	SVF/HS EXPECTING A DREAM
MELVERN MS JUSTICE 171C	MLC MR JUSTICE W744
	MELVERN MS GUNNER 26U
MRC WALL STREET 183Z	MR HOC BROKER
MRC MISS UREIKA 48D	LFE BS CROCUS 183W
TWIN CHIEF UREIKA 47U	WFL COMMANDER 78R
	TWIN-CHIEF LARAMIE 248L



Dam and Lot 49



Lot 50

- moderate and round ribbed
- standout since birth
- maternal brother will be a feature in 2025

BALAMORE *Kosmos* 228K

HOMO POLLED		BPG1408393		BLM 228K		AUG 1 2022		HETERO BLACK					
BW	ACT WW	ADJ YW	EPDS	BW	RANK	WW	RANK	YW	RANK	MILK	RANK	CE	RANK
94	817	1135	6.4	95%	84.9	25%	118.6	40%	24.6	55%	7.1	60%	

MR TR HAMMER 308A ET
BALAMORE TITAN 904G
 MELVERN MS JUSTICE 171C

MRC INVESTOR 60B
MRC MISS LARA CROFT 38G
 REMINGTON LARA CROFT 39T

MR NLC UPGRADE U8676
 SVF/HS EXPECTING A DREAM
 MLC MR JUSTICE W744
 MELVERN MS GUNNER 26U

MR HOC BROKER
 TWIN-CHIEF TAHITI 60T
 REMINGTON RED LABEL HR
 CMS LARA CROFT 04L



Dam and Maternal Brother



Lot 51

- dam was our \$25,000 pick of the famed R-Plus dispersal
- son of the famous Sochi
- would work in a heifer pen
- moderate and loose hided with hair and look to burn

BALAMORE *Leblanc* 311L

HOMO POLLED PG1428051 BLM 311L JAN 14 2023 RED													
BW	ACT WW	ADJ YW	EPDS	BW	RANK	WW	RANK	YW	RANK	MILK	RANK	CE	RANK
76	808	1248	0.3	10%	76.3	55%	121.3	30%	25.8	45%	11.4	20%	

DRAKE POKER FACE 2X
CMS SOCHI 307A
 YR BLK PRIMADONNA 930W

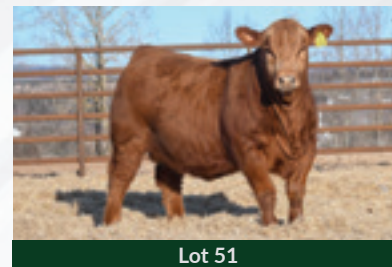
JS SURE BET 4T
 DRAKE TULA 1R
 IPU BLACK HEAVYWEIGHT 64S
 YR BLK PRIMADONNA 11L

R PLUS 5015C
MISS R PLUS 1257J
 MISS R PLUS 7249E

WFL ABSOLUTE 51Y
 IPU MS. 56U LINER 15A
 R PLUS HAMMERTIME 5051C
 ASR FANCY FIGURES Y1131



Dam and Lot 51



Lot 51



Lot 52

- complete and solid bull
- perfectly marked with that nice blaze
- super structured

BALAMORE *Louie* 315L

HOMO POLLED PG1424568 BLM 315L FEB 3 2023 RED													
BW	ACT WW	ADJ YW	EPDS	BW	RANK	WW	RANK	YW	RANK	MILK	RANK	CE	RANK
89	623	1199	4.2	65%	81.9	35%	123.2	30%	15.8	100%	7.4	55%	

KWA LAW MAKER 59C
COME AS U R 52H
 COME AS U R SCREAM 632D

WAGR HIGHMORE 173B
MRC MISS BROKER 609G
 MRC MISS BROKER 603Z

CDI AUTHORITY 77X
 KWA MS ROCK 14X
 COME AS U R RED ROCKET
 RF SCREAM 215Z


WS PILGRIM H182U
 WAGR LULLABY 703T
 MR HOC BROKER
 TWIN-CHIEF TOOTS 603T



Lot 52 Summer 2023



BALAMORE *Lazer* 313L

 **Lot 53**

- built in calving ease
- good outlined bull with hair and bone
- 35J dam is a model 8200 daughter

HOMO POLLED		BPG1424566		BLM 313L		FEB 1 2023		HETERO BLACK				
BW	ACT WW	ADJ YW	EPDS BW	RANK	WW	RANK	YW	RANK	MILK	RANK	CE	RANK
84	710	1177	2.4	30%	83.2	30%	121.6	35%	18.3	95%	6.6	65%

KWA LAW MAKER 59C
COME AS U R 52H
 COME AS U R SCREAM 632D

 WHEATLAND BULL 8200F
LPP JACEY 35J
 LPP BS LADY 16G

CDI AUTHORITY 77X
 KWA MS ROCK 14X
 COME AS U R RED ROCKET
 RF SCREAM 215Z

 CCLT ALLIANCE 91C
 WHEATLAND LADY 268Z
 BF SPECIAL CONSENSUS
 LPP MS. STARDUST 11B



Dam



Lot 54

- March born calf with curly hair and extra mass
- commercial steer maker with all the parts and pieces
- bred by Edgewood Road Farm

BALAMORE *Braveheart* 319L

POLLED BPG1450615 BLM 319L MAR 4 2023 HETERO BLACK			EPDS	BW	RANK	WW	RANK	YW	RANK	MILK	RANK	CE	RANK
89	678	934		4.5	70%	74.0	65%	103.5	75%	17.3	100%	8.2	45%

LFE TRIUMPH 816A
LFE STRATTON 3094F
 LFE RS AMBER 2140B

 WHEATLAND BULL 8200F
LPP MISS 27J
 LPP LADY 9B

LFE BEER MONEY 811Y
 LFE BISS BS SUNSHINE 609X
 LFE SPRINGSTEEN 449Y
 LFE RS AMBER 41W

 CCLT ALLIANCE 91C
 WHEATLAND LADY 268Z
 REMINGTON PROWLER 111T
 LPP 18W LADY



Sire

THE ANGUS DIVISION

Once again our Angus division featured a select few extra age bulls to cover a wide range of breeding needs, all sired by Balamore Gold (pictured below.) These bulls are all deep sided and square made with an extra shot of performance. Expect these bulls to sire calves that pound down the scale. The yearlings are backed by productive cow families and feature perfect outlines.





BALAMORE *Kelp* 223K



Lot 56

- large frame, large outline
- will add pounds and mass to calf crop
- big solid feet

2291788 | ANG 223K | AUG 10 2022

BW	ACT WW	ADJ YW	EPDS	BW	RANK	WW	RANK	YW	RANK	MILK	RANK	CE	RANK
83	675	1180	5.1	96%	51	60%	88	65%	18	91%	-6.0	96%	

PLEASANT VALLEY LUTE 1207
BALAMORE GOLD 902
 WILBAR RUBY 853C

PLAINVIEW LUTTON E102
 CHERRY KNOLL ELSA 8014
 HF REBEL 183A
 WILBAR RUBY 326A

DAINES INSIGHT 27E
BALAMORE BLOCKANNA 912G
 RED WILBAR BLOCKANNA 795C

DAINES SIR INSIGHT 33C
 DAINES MISS T510 22U
 RED BAR-E-L DOUBLE DEUCE 198Y
 RED WILBAR BLOCKANNA 218W



Maternal Grand sire



Lot 57

- square on all four corners
- broad and burly
- deep sided

BALAMORE *Komodo* 227K

2291861 | ANG 227K | SEPT 15 2022 | BLACK

BW	ACT WW	ADJ YW	EPDS	BW	RANK	WW	RANK	YW	RANK	MILK	RANK	CE	RANK
85	751	1083		4.4	92%	54	50%	99	40%	16	95%	-8.0	98%

PLEASANT VALLEY LUTE 1207
BALAMORE GOLD 902G
 WILBAR RUBY 853C

PLAINVIEW LUTTON E102
 CHERRY KNOLL ELSA 8014
 HF REBEL 183A
 WILBAR RUBY 326A

DAINES INSIGHT 27E
BALAMORE LANA 004H
 RED WILBAR LANA 742C

DAINES SIR INSIGHT 33C
 DAINES MISS T510 22U
 RED BAR-E-L DOUBLE DEUCE 198Y
 RED WILBAR LANA 353X





Lot 58

- cherry red and bold sprung
- use to keep replacements or breed heifers
- low maintenance, easy keeping kind

RED BALAMORE *Local* 314L

2301463 | ANG 314L | JAN 16 2023 | RED

BW	ACT WW	ADJ YW	EPDS	BW	RANK	WW	RANK	YW	RANK	MILK	RANK	CE	RANK
88	674	1128	2.2	65%	43	50%	84	25%	24	60%	5.0	35%	

RED GOLD-BAR MERCEDES K 116M
RED PATCHELL LEXUS 3H
 RED PATCHELL'S NATASHA
 RED SIX MILE TIMBERLINE 880W
RED BSFA MISS HOBO 18D
 RED BSFA MISS HOBO 31B

RED GOLD-BAR KING V415 107K
 RED LPC BIRDIE DYNAMICS 2K
 RED SILVEIRAS MISSION NEXUS
 RED HARRON HANNAH 40R
 RED SIX MILE TIMBERLAKE 180T
 RED SIX MILE FLOWER 713S
 RED GOLD-BAR UNIQUE J W 1113U
 RED SWAN CREEK MISS HOBO 115S





Lot 59

- 3/4 brother was a high seller to LLB Angus, AB in 2023
- cool outline
- good big feet

BALAMORE *Leopard* 306L

2301445 | ANG 306L | JAN 12 2023 | BLACK

BW	ACT WW	ADJ YW	EBDS	BW	RANK	WW	RANK	YW	RANK	MILK	RANK	CE	RANK
89	664	1006	3.7	85%	40	85%	68	90%	21	75%	-4.0	95%	

PLAINVIEW LUTTON E102
PLEASANT VALLEY LUTE 1207
 CHERRY KNOLL ELSA 8014

GLEN ISLAY MARSHALL 24Z
GLEN ISLAY MAGGIE 27E
 SUNRISE MAGGIE 5A

EXAR LUTTON 1831
 PLAINVIEW PRIDE C123
 H S A F BANDO 1961
 ELSA OF CONANGA 868 1112

COALBRIDGE MARSHALL 15
 GLEN ISLAY PRIDE 14S
 ANGUS ACRES BANDY 96X
 HEATHERLEA MAGGIE 2S



3/4 Brother



Lot 60

- stretchy and athletic
- maternal sisters have been sale toppers in the Shoreline to Lobster Point, NS and Iris Creek Farms, ON
- productive cow family

BALAMORE *Lincoln* 305L

2301403 | ANG 305L | JAN 6 2023 | BLACK

BW	ACT WW	ADJ YW	EPDS	BW	RANK	WW	RANK	YW	RANK	MILK	RANK	CE	RANK
88	721	1065	1.9	45%	45	75%	77	80%	21	75%	6.0	30%	

PLAINVIEW LUTTON E102
PLEASANT VALLEY LUTE 1207
 CHERRY KNOLL ELSA 8014

S A V RADIANCE 0801
BALAMORE ENVY 705E
 WILBAR GEORGINA 710C

EXAR LUTTON 1831
 PLAINVIEW PRIDE C123
 H S A F BANDO 1961
 ELSA OF CONANGA 868 1112

S A V BRILLIANCE 8077
 S A V ELBA 801
 HF SMOKIN' ACES 105Y
 WILBAR GEORGINA 335A



Dam



Lot 61

50 commercial heifers sourced from our breeding program and Alberta. These big solid heifers have been bred to Balamore Endeavor 701E and sons. The resulting progeny have been extremely successful for past buyers with groups topping Atlantic Stockyards. The beef industry is on the rise and these young females will be producers for years to come.

Commercial HEIFERS



REFERENCE SIRE



AFTER HOURS GAMBLER



BALAMORE ENDEAVOR 701E



BALAMORE HALIFAX 019H



BALAMORE HICKORY 060H



BALAMORE TITAN 904G



BALAMORE GOLD 902G



KEYS POWERMAX 57G



CEDARDALE HUMMER 20H



LT CHROME 9159 PLD









JOIN US

THANKSGIVING WEEKEND ON THE SHORELINE!

MONDAY, OCTOBER 14, 2024
BALAMORE FARM SHORELINE FEMALE SALE
LIMOUSIN | CHAROLAIS | SIMMENTAL | ANGUS | SHORTHORN
AND A SELECTION OF COMMERCIAL BRED HEIFERS

BALAMORE FARM
9036 Hwy 2
Great Village, NS
B0M 1L0



Balamore Farm Ltd.
THICKNESS SELLS
12TH ANNUAL BULL SALE

MARCH 16, 2024 | 2:00 PM | BALAMORE FARM, GREAT VILLAGE, NS

FROM THE NORTH: Exit 10 off Hwy 104. Take a right off the ramp and travel for 2 miles. At stop sign, go straight for 1/2 mile. Farm is on the right and you will see a farm sign in front of the grain bins.

FROM THE SOUTH AND EAST: Exit 12 off Hwy 104. Follow the signs for Parrsboro, Bass River, Great Village. In 3 miles turn left towards Great Village. Travel three miles and farm sign will be on your left in front of grain bins.