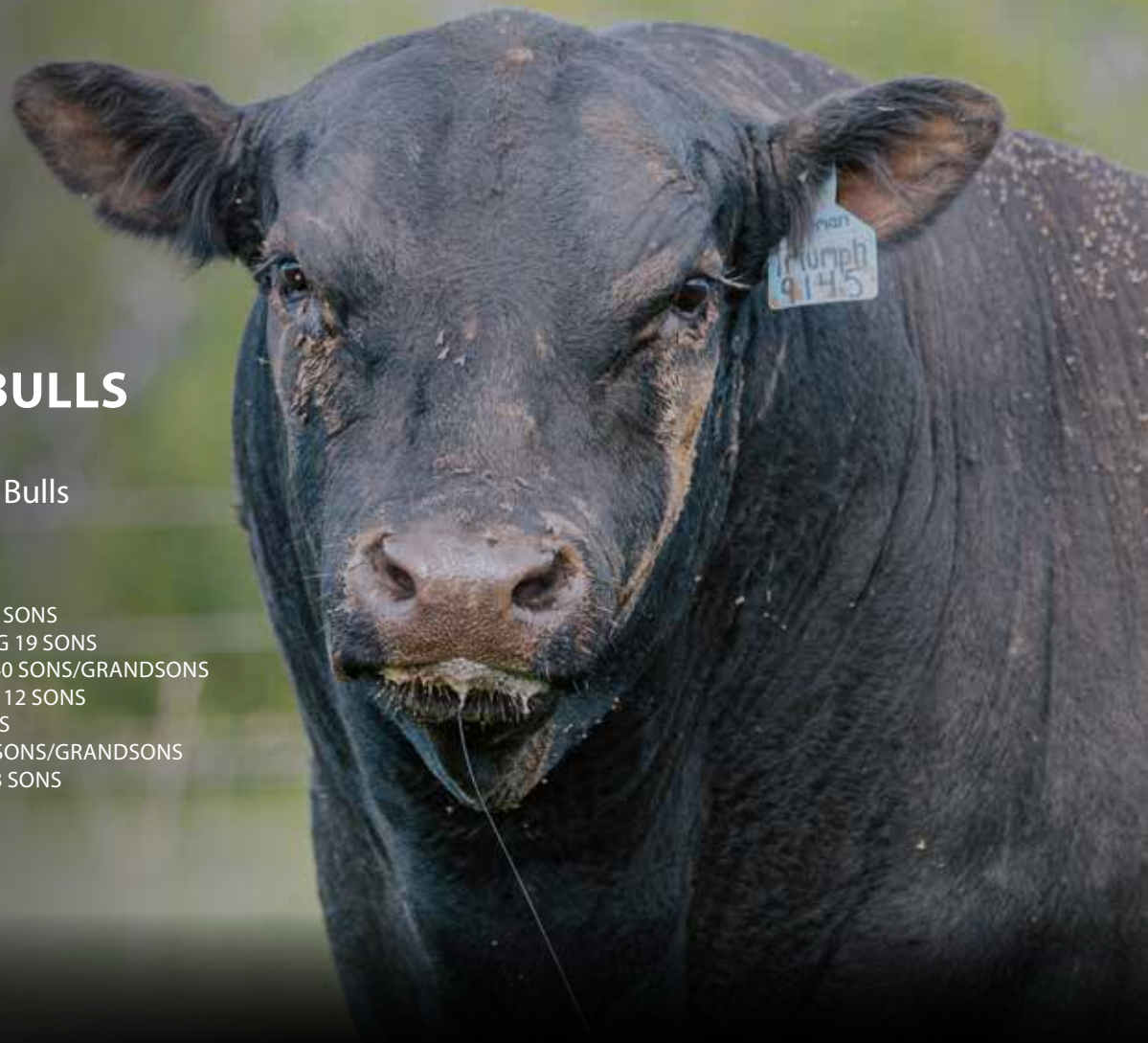



COLEMAN ANGUS & **TREXLER** *Angus*
YOUR MATERNAL SOURCE

ANNUAL *Performance Tested* **BULL SALE**

TUESDAY • FEBRUARY 21, 2023 • 1:00 P.M. (MST)

FIVE VALLEY LIVESTOCK • MISSOULA, MONTANA



**SELLING 200
SERVICE-AGE BULLS**

95 18-Month-Old Bulls

105 Big, Stout, Yearling Bulls

Featuring Sons of:

- COLEMAN ROCK 7200** SELLING 20 SONS
- COLEMAN TRIUMPH 9145** SELLING 19 SONS
- COLEMAN BRAVO 6313** SELLING 40 SONS/GRANDSONS
- COLEMAN CHARLO 0256** SELLING 12 SONS
- SOUTH AMERICA** SELLING 21 SONS
- SAV RESOURCE 1441** SELLING 27 SONS/GRANDSONS
- SAV RENOVATION 6822** SELLING 8 SONS



SUPERIOR
LIVESTOCK AUCTION
ALL NEW BIDDING PLATFORM

bld.superiorlivestock.com | 800.422.2117

ALL BULLS HAVE:

- FREE NATIONWIDE DELIVERY
- PASSED A SEMEN TEST
- BEEN FREEZE BRANDED
- HAD FOOT ROT VACCINE
- BEEN TESTED FREE OF PI-BVD
- FIRST BREEDING SEASON GUARANTEE
- VOLUME DISCOUNTS
- SIGHT UNSEEN GUARANTEE

COME BUY THE PROGRAM *"The Cowboy's Kind"* **BULL SALE**

ANNUAL *Performance Tested* BULL SALE

Tuesday • February 21, 2023 • 1:00 p.m. (MST)

Five Valleys Livestock • Missoula, Montana

SALE LOCATION:

Five Valleys Livestock, 8598 Robbins Rd,
Missoula, MT 59808

INSPECTION:

Cattle may be inspected at any time prior to
the sale.

SALE DAY PHONES:

(406) 728-3052 • (406) 240-2751
(406) 363-8818 • (406) 833-0117

LUNCH 12 p.m. Sale Time 1 p.m.

AUCTIONEER Joe Goggins • (406) 861-5664

PRESS REPRESENTATIVES:

Dawson Coleman _____ SPECIAL ASSIGNMENT
Kurt Kangas _____ (406) 366-4190
ANGUS JOURNAL

John Goggins (406) 698-4159 or (406) 373-5000
WESTERN LIVESTOCK REPORTER

Andy Rest _____ (406) 254-7576
CATTLE BUSINESS WEEKLY

Devin Murnin _____ (406) 696-1502
WESTERN LIVESTOCK JOURNAL

BIDS:

Bids can be phoned to our publication
representatives or to:

Larry Coleman _____ (406) 240-2751
Jeremy Haag _____ (406) 833-0117
Larry Trexler _____ (406) 363-8818

CONSULTANTS:

Kent McCune _____ (817) 602-8629
Scott Bohrsen _____ (403) 370-3010
Kiley McKinna _____ (402) 350-3447
Wiley Fanta _____ (615) 287-0751
Randy Ratliff _____ (615) 330-2735
Isaiah Shnurman _____ (515) 371-5065

**Please bring this sale book
with you sale day.**

LIVE BROADCAST



For Bidding Instructions
See Inside Back Cover

SIGHT UNSEEN BUYERS PROGRAM: If you cannot attend the sale and want to purchase
bulls, please give us a call. We will be glad to help you with your order. We guarantee 100%
satisfaction on all orders.

TRUCKING: Free Nationwide Delivery with your purchase. \$100/Head Discount per bull if you
pick up on sale day. Haul your neighbor's bull home and \$100/HEAD Discount on them.

HEALTH: Interstate health papers are furnished on all cattle selling.

INTEREST: Coleman Angus and Trexler Angus are retaining one-half revenue sharing
semen interest in every bull selling in this sale. Full possession and full salvage value sells on all
bulls.

SALE ORDER: Bulls will sell in numerical order.

TERMS & CONDITIONS: Cattle will sell under the suggested Terms and Conditions of the
American Angus Association (http://www.angus.org/Pub/suggested_sale_terms.pdf).
Announcements from the block will take precedence over information in the sale book.

VOLUME BULL DISCOUNT

5 bulls 5% - 6 bulls 6% - Up to 10 bulls at 10%

FIRST BREEDING SEASON GUARANTEE:

We offer a full breeding season guarantee for any injury that would keep the bull from
being a breeder for the first breeding season. If a problem occurs, we will give you a suitable
replacement or you will receive full credit, minus the salvage value of the original bull, toward
another purchase in next year's sale. The bulls that sell have passed a breeding soundness
exam. We require that you notify the seller of the bull in case of injury. We also reserve the right
to a second opinion by a veterinarian of our choice. In the situation where we need to bring
the bull back to the ranch after delivery for our vet to examine, it's the buyer's responsibility to
get the bull back to our ranch at their expense. We will pay to have our vet examine the bull
again, if he passes the exam, it's the buyer's responsibility to come pick up the bull at our ranch
at their expense.

PERFORMANCE INFORMATION:

RATIOS: All ratios are within contemporary groups.

PATHFINDER® Sires and Dams are indicated by the # sign.

FERTILITY: The bulls will have a breeding soundness exam and fertility test by Dr. Leroy
Hoversland. Scrotal measurements will be available sale day.

ACCOMMODATIONS:

C'Mon Inn _____ (406) 543-4600

Wingate _____ (406) 541-8000

Stone Creek Lodge _____ (406) 541-3600

TRANSPORTATION: Commercial air service is available for Missoula via Northwest, United
Airlines and Delta.

VISIT the Angus Journal® Website, www.angus.org, and view this sale book online. References: American Angus Association®, AHIR®,
AngusSource®, CAB®, Pathfinder®. EPDs contained in the original printed version of this sale book were current as of the printing date. Digital
versions of this sale book online at angus.org will have EPDs updated every Friday. Any PDFs downloaded from the website will contain EPDs
current as of the date of the download.

To View Videos Please Visit www.colemanangus.com

Dear Cattlemen,

It is a pleasure to welcome you to our upcoming Coleman Angus/Trexler Angus Ranch Annual Performance Tested Bull Sale. Bull sale time is one of our favorite times of the year. We look forward to seeing our customers and friends, along with meeting some new customers and getting to know you and more about your operation. One of our goals is to make sure that these bulls go out and work for you, our customers. It is something we take very seriously. Our programs are totally committed to the commercial cowman. Every mating we make is designed to leave bulls that will work for you and make your ranch profitable. As you study the EPDs and data in this sale book, you can see that we are committed to raising cattle that are balanced. This is particularly important in today's world of big framed, extended growth, high carcass cattle that will not make momma cows. In the end it is you the commercial cowman that suffers when you try to make these cattle work in the real cattle world. Sad to say, there are many terminal cattle out there today.

This is the most powerful and consistent set of bulls that we have ever sold. These bulls are designed with extra thickness, fleshing ability, length and will keep their condition while breeding your cows. They are the "Cowboy's Kind." These bulls have been developed on a high roughage ration for moderate gain. It is our goal to have these bulls remain sound, problem-free and to become long term genetic contributors to the herds that they go into. Our fall bulls after weaning run on grass all summer, no supplements. We believe that this is the best and soundest way to develop bulls. After weaning the spring bulls, we bring the fall bulls in the feedlot with them. The bulls are never pushed hard, we feed them to gain 3#'s per day. The quickest way to ruin a bull is to feed it too much. They may look really good on sale day and also when you turn them out, but it is only a matter of time before their feet and legs start going bad. It has been good to get data back from our customers on their calves in the feedlots and on the rail. Consistently calves sired by our bulls have been the most profitable sets of calves in those feedlots and on the rail. We know that our bulls will leave a top set of replacement females, especially nice to hear that they will be at the top end in all segments of the industry. We have had many customers tell us about the extra years they are getting out of their Coleman & Trexler Bulls. It puts money in their pockets.

We believe that it all starts with the mother cow. We sort our cows hard for economically sound traits: longevity, fertility, efficiency, fleshing ability, disposition, udder quality, and structural soundness. We would welcome anyone to come and see the cows that these bulls are out of. We know that if you are keeping replacement females, it is vital that you look at the mothers to the bulls. Many of the bulls selling have photos of the mothers in the sale book. A large number of these bulls are from our embryo program. These bulls are backed by generations of highly productive females that have stood the test of time. We will once again be offering many full brothers, three-quarter brothers, and half-brothers. The easiest way to get consistency in your cowherd is to buy bulls that are bred alike. We have had great feedback from our customers that have bought these full brothers about how consistent their calf crop is and the consistency in the daughters they have retained in their herd.

Please note that there is free nationwide delivery on all of the bulls selling; \$100 discount per bull if you pick it up on sale day. Haul your neighbor's bulls home and get \$100/head discount on them. We will start delivering the bulls the middle of March. We also offer a first breeding season guarantee on the bulls against anything. You do not need to purchase insurance on them, just let us know if there is any problem, and we will take care of it. We feel it is the best guarantee in the business, (Our goal, is to treat you like we would want to be treated if a problem ever occurred)and have had our customers tell us that. Make sure and visit with us about it if you are not aware of it. Look at the inside front cover for more information. We offer a volume discount on the bulls; 5% on 5 bulls bought, 6% on 6 and up to 10% on 10 or more bulls bought.

It has been a pleasure hearing all of the positive feedback on our bulls. We look forward to seeing you all on sale day. Please feel free to call on us with any questions. Videos of the bulls are available to look at on our YouTube channel www.youtube.com/user/colemanangusranch. Sale will be live on Superior Productions (see Inside back cover for details) for those unable to make it to the sale. Check our web site (www.colemanangus.com) as we get closer to the sale, we will have the update sheet on there. Check us out on Facebook also. There are lots of new photos, videos of the bulls, family, and what is happening on our ranch.

Thanks

Larry & Dee Coleman Jeremy and Jenny Haag Larry & Peggy Trexler



THE COLEMAN & HAAG FAMILIES



THE TREXLER FAMILY



REFERENCE SIRES %



COLEMAN CHARLO 0256

REFERENCE SIRE A. SIRE OF LOTS 25, 37, 79, 101, 125, 133, 136, 139, 155, 166, 184, 185.

A COLEMAN CHARLO 0256

BULL #+*16879074 TATTOO 256 DOB: 8/11/2010

OCC Focus 813F
OCC Paxton 730P
#*14940735 OCC Blackbird 736K

Sitz Traveler 8180
Bohi Abigale 6014
15353355 SAV Abigale 6062

Basin Rainmaker 654X
Dixie Erica of CH 1019
OCC Great Plains 943G
OCC Blackbird 824G
GDAR Traveler 71
Sitz Everelda Entense 1137
Bon View Emulation Ext 473
Circle A Abigale 3008

CED	BEPD	WEPD	YEPD	SC	MILK	RE	\$W	\$M
9	-0.1	50	91	1.40	26	.45	74	59

- Charlo was the 2012 top-selling bull of the Coleman Spring Bull Sale and has captivated the entire world with his ability to sire low birth weight cattle with explosive muscle shape and performance in an easy-fleshing package.
- In the 2018 bull sale, Charlo sired the \$450,000 all-time, record-selling bull in the state of Montana, Coleman Bravo 6313.
- The 2023 Coleman Angus Bull Sale will offer 12 direct progeny of this legendary sire.



COLEMAN BRAVO 6313

REFERENCE SIRE B. SIRE OF LOTS 21, 24, 26, 27, 43, 45, 56, 68, 71, 83, 91, 143, 145, 158, 164, 199.

B COLEMAN BRAVO 6313

BULL +*18734838 TATTOO 6313 DOB: 7/4/2016

OCC Paxton 730P
Coleman Charlo 0256
#+*16879074 Bohi Abigale 6014

Connealy Onward
Coleman Donna 714
+*15706882 Coleman Donna 386

OCC Focus 813F
OCC Blackbird 736K
Sitz Traveler 8180
SAV Abigale 6062
Connealy Lead On
Altune of Conanga 6104
Basin Rainmaker 654X
KMK Donna J311

CED	BEPD	WEPD	YEPD	SC	MILK	RE	\$W	\$M
15	-0.4	55	100	.87	21	.40	57	100

- Coleman Bravo, a graduate of a past Coleman bull sale and the all-time, record-selling bull in the state of Montana that has captivated the globe in popularity. Bravo combines low birth weight genetics with tremendous performance and eye appeal. His daughters are some of the very best cattle on the ranch that flesh easy, have tremendous udders, and a great cow look.
- Bravo's dam is a staple in the program, Coleman Donna 714, who is a consistent producer with excellent maternal strength and proven power. She is the top income-producing female in the program and the mother of herd sires: Rock, Resolve, Playmaker, Summit, and Manning.
- The 2023 Coleman Angus Bull Sale will be highlighted by 16 direct Bravo progeny selling.



COLEMAN TRIUMPH 9145

REFERENCE SIRE C. SIRE OF LOTS 19, 20, 22, 23, 31, 33, 41, 52, 57, 78, 109, 119, 122, 141, 163, 168, 188.

C COLEMAN TRIUMPH 9145

BULL +*19555917 TATTOO 9145 DOB: 2/1/2019

Coleman Charlo 0256
Coleman Bravo 6313
+*18734838 Coleman Donna 714

SAV Renown 3439
Lawsons Chloe C815
+*18359250 Lawsons Chloe Z341

OCC Paxton 730P
Bohi Abigale 6014
Connealy Onward
Coleman Donna 386
Rito 707 of Ideal 3407 7075
SAV Blackcap May 4136
Sitz Upward 307R
Basin Chloe 7T26

CED	BEPD	WEPD	YEPD	SC	MILK	RE	\$W	\$M
8	-0.5	62	114	.91	22	.49	61	94

- Coleman Triumph 9145 is among one of the most popular sires in the industry. He was selected as the top-selling bull of the 2020 Coleman Angus Fall Production Sale at \$225,000 by Rust Mountain and has gained the attention of cattlemen across the Northern Hemisphere. He sires cattle with tremendous phenotype, added depth of body with exceptional width of base from front to rear. His offspring have a notch more scale and perform with the best of the genetics in our industry.
- His mother, Chloe C815, has established herself as one of the really good producing females in the Coleman herd. She produced, the last four years, the top-selling females in the fall production sales.
- The 2023 Coleman Angus Bull Sale will be highlighted by 17 direct Triumph progeny selling.



COLEMAN MAVERICK 5322

REFERENCE SIRE D. SIRE OF LOTS 29, 49, 54, 60, 66, 84, 190, 192, 195, 196, 197, 198, 200.

D COLEMAN MAVERICK 5322

BULL *18402732 TATTOO 5322 DOB: 7/14/2015

OCC Paxton 730P
Coleman Charlo 0256
#+*16879074 Bohi Abigale 6014

Wulffs Ext 6106
Coleman Donna 3202
#+*17783501 Coleman Donna 714

OCC Focus 813F
OCC Blackbird 736K
Sitz Traveler 8180
SAV Abigale 6062
N Bar Emulation EXT
Wulffs Erica Dianna C116
Connealy Onward
Coleman Donna 386

CED	BEPD	WEPD	YEPD	SC	MILK	RE	\$W	\$M
17	-2.4	49	94	1.25	21	.47	51	83

- Maverick is a sure shot heifer bull with double-digit, calving-ease and low birth weight genetics. He is also loaded with tremendous maternal genetics being a son of Charlo and back to a great donor in the program, Coleman Donna 3202. His sons are calving-ease bulls with added muscle and a great phenotype.
- The 2023 Coleman Angus Bull Sale will offer 13 direct progeny.

% COLEMAN ANGUS

E COLEMAN BANKER 9215

BULL +*19583404 TATTOO 9215 DOB: 6/30/2019

Coleman Charlo 0256
Coleman Bravo 6313
 +*18734838 Coleman Donna 714

Connealy Thunder
Coleman Donna 4203
 +*18105600 Coleman Donna 714

OCC Paxton 730P
 Bohi Abigale 6014
 Connealy Onward
 Coleman Donna 386
 Baldrige Kaboom K243 KCF
 Parka of Conanga 241
 Connealy Onward
 Coleman Donna 386

CED	BEPD	WEPD	YEPD	SC	MILK	RE	\$W	\$M
15	-1.8	67	116	.09	35	.45	80	107

- Coleman Banker 9215, the now-deceased and calving ease specialist was the \$75,000 top-seller through the 2021 fall production sale. He was the second heaviest bull in his contemporary group and was the No. 1 ADG Bull on Test and had an actual birth weight of 75 lbs. The combination of this tremendous gain makes him one of the tremendous calving ease sires ever produced in the Coleman Angus program.
- The 2023 Coleman Angus Bull Sale will offer 3 direct progeny.



COLEMAN BANKER 9215

REFERENCE SIRE E. SIRE OF LOTS 160, 172, 175.

F COLEMAN PLAYMAKER 427

BULL +*17914039 TATTOO 427 DOB: 1/18/2014

Boyd New Day 8005
GDAR Game Day 449
 #+14691231 GDAR Miss Wix 474

Connealy Onward
Coleman Donna 714
 +*15706882 Coleman Donna 386

AAR New Trend
 SVF Forever Lady 57D
 Tehama Band 207
 GDAR Miss Wix 749
 Connealy Lead On
 Altune of Conanga 6104
 Basin Rainmaker 654X
 KMK Donna J311

CED	BEPD	WEPD	YEPD	SC	MILK	RE	\$W	\$M
7	-0.8	57	98	.76	26	.38	62	93

- Coleman Playmaker, a featured member of GENEX Beef AI Stud is an ultra-low birth weight bull that is sure shot calving ease. Playmaker has the unique combination of low birth with tremendous muscle and shape. He has true Aberdeen breed character with added balance and quality. His daughters are some of the high-ratioing cattle in the Coleman program.
- Coleman Donna 714, his mother, is the all-time, high income-producing cow in the Coleman herd. She has as much influence as any in the program and maternal brothers to Playmaker include: Bravo, Rock, Summitt, and Resolve.
- The 2023 Coleman Angus Bull Sale will offer 6 calving ease sons of Playmaker.



COLEMAN PLAYMAKER 427

REFERENCE SIRE F. SIRE OF LOTS 55, 69, 88, 92, 157, 183.

G BC ROBUST 0807

BULL 18456252 TATTOO 0807 DOB: 12/26/2015

BC Eagle Eye 110-7
BC Surveyor 680D
 +*17629667 BC 2266 Prides Lass 4132 680

BC Pure Pride 327-8
BC 327-8 CP Belle 0-807
 16833528 BC 607 CP Belle MF 807

B C Lookout 7024
 B C Pure Pride Erica D 110
 B C Matrix 4132
 Cane Ridge Prides Lass 2266L
 B C Lookout 7024
 B C Pure Pride 110 825J 327
 BC Charlie Pride 304-6
 BC 901 Dr Belle Matrix MF607

CED	BEPD	WEPD	YEPD	SC	MILK	RE	\$W	\$M
5	1.5	63	90	.68	28	.45	50	58

- This son of BC Surveyor 680D stems back to the famous Belle family. He is an outstanding sire that has generations of stacked maternal and fleshing ability in one powerful package.
- This son of BC Surveyor 680D stems back to the famous Belle family. He is an outstanding sire that has generations of stacked maternal and fleshing ability in one powerful package.
- The 2023 Coleman Angus Bull Sale will offer 8 progeny of Robust.



BC ROBUST 0807

REFERENCE SIRE G. SIRE OF LOTS 7, 8, 36, 42, 47, 51, 65, 87.

H HUMMEL ARGENTINE

BULL +*19919948 TATTOO 0204 DOB: 02/14/2020

Don Jose 176 Maxi
Don Aparicio Serrucho57 Maxi
 811896 Don Aparicio Serranias 57

Consenza Don Roberto 338 T/E
Rubeta Fontana 7567-T/E-
 834746 Rubeta Fontana 6207-T/E-

OCC Headliner 661H
 Tres Marias 6204 Homero5314
 S A V Bismarck 5682
 Don Aparicio15 SerranaNtwrth
 Tres Marias 6301 Zorzal-T/E
 Consenza Faconera Sanf 39-T/E
 S A V Bismarck 5682
 Rubeta 3873 Fontana-T/E-

CED	BEPD	WEPD	YEPD	SC	MILK	RE	\$W	\$M
8	0.4	36	70	-.64	22	.37	33	45

- A wonderful outcross sire from South America, Argentina. This is a full brother to the bull we purchased from the 2020 Cattleman's Congress in Oklahoma City, Oklahoma, Hummel South America. These outcross genetics have proven to be a great addition to our genetic pool.
- Argentine cattle have a wonderful look with added body and great muscle shape. He is a moderate, calving-ease bull with a wonderful look. His daughters were well accepted in our 2022 fall production sale, and these will be some of the first sons to sell at public auction.
- The 2023 Coleman Angus Bull Sale will offer 9 progeny of Argentine.



HUMMEL ARGENTINE

REFERENCE SIRE H. SIRE OF LOTS 134, 135, 137, 138, 140, 169, 171, 176, 178.

REFERENCE SIRE %



COLEMAN GLACIER 041

REFERENCE SIRE I. SIRE OF LOTS 127, 128, 177, 181.

I COLEMAN GLACIER 041

BULL +*19866409 TATTOO 41 DOB: 1/11/2020

Rito 707 of Ideal 3407 7075 RR Rito 707
 SAV Renown 3439 Ideal 3407 of 1418 076
 #+*17633839 SAV Blackcap May 4136 SAV 8180 Traveler 004
 SAV May 2397
 GDAR Game Day 449 Boyd New Day 8005
 Coleman Donna 439 GDAR Miss Wix 474
 #+*17914042 Coleman Donna 714 Connealy Onward
 Coleman Donna 386

CED	BEPD	WEPD	YEPD	SC	MILK	RE	\$W	\$M
2	2.5	74	131	.13	30	.80	71	84

- Coleman Glacier 041 offers an outstanding genetic and visual package representing everything we look for in an ideal Angus bull. His herd bull look and presence, along with his pedigree, is exactly what the industry is looking for. He has explosive growth with exceptional weaning and yearling numbers compiled with his maternal genetics that rank him highly in the breed for \$M. He was the featured Lot 1 bull of the 2022 Coleman Angus Spring Bull Sale where 25% of this outstanding individual sold for \$270,000.
- The 2023 Coleman Angus Bull Sale will offer 4 progeny of Glacier.



S A V RESOURCE 1441

REFERENCE SIRE J. SIRE OF LOTS 4, 11, 12, 35, 39, 53.

J S A V RESOURCE 1441

BULL #+*17016597 TATTOO 1441 DOB: 1/7/2011

R R Rito 707 Rito N Bar
 Rito 707 of Ideal 3407 7075 Eriskay of Rollin Rock 3
 +13066860 Ideal 3407 of 1418 076 Ideal 1418 of 8103 4286
 SAV 8180 Traveler 004 Ideal 076 of 692 8375
 SAV Blackcap May 4136 Sitz Traveler 8180
 *14739095 SAV May 2397 Boyd Forever Lady 8003
 S A F 598 Bando 5175
 S A V May 7238

CED	BEPD	WEPD	YEPD	SC	MILK	RE	\$W	\$M
0	4	69	131	1.10	17	1.04	51	54

- A popular AI sire who sires cattle with power, proven performance, and represents the timeless genetics of the Rito 707 lineage. He stamps his offspring with the basics commercial cattlemen admire.
- His dam, SAV Blackcap May 4136, is a high income-producing female and is also the mother of SAV Renown, whose sons also sell in this event.
- Resource offers 6 direct sons in the 2023 Coleman Angus Bull Spring Sale.



COLEMAN MARSHALL 7170

REFERENCE SIRE K. SIRE OF LOTS 18, 40, 82, 86, 95, 156, 182.

K COLEMAN MARSHALL 7170

BULL +*19102287 TATTOO 7170 DOB: 6/29/2017

Rito 707 of Ideal 3407 7075 RR Rito 707
 SAV Resource 1441 Ideal 3407 of 1418 076
 #+*17016597 SAV Blackcap May 4136 SAV 8180 Traveler 004
 SAV May 2397
 Basin Rainmaker 654X Basin Rainmaker DS 380U
 Coleman Donna 197 Basin Bardolene 423U
 +*17188528 KMK Donna J311 DHD Traveler 6807
 Brooks Donna 319

CED	BEPD	WEPD	YEPD	SC	MILK	RE	\$W	\$M
9	0.9	61	114	.42	26	.91	60	85

- Marshall is a direct son of Resource and back to Coleman Donna 197, who is a full sister to the legendary Coleman Donna 386. Marshall is a curve bender and an elite calving-ease sire. His pedigree blends some of the all-time breed leaders for low birthweight genetics and performance.
- The 2023 Coleman Angus Bull Sale will offer 7 direct calving-ease sons.



S A V RENOVATION 6822

REFERENCE SIRE L. SIRE OF LOTS 115, 116, 117, 118, 129, 165.

L S A V RENOVATION 6822

BULL +*18579309 TATTOO 6822 DOB: 01/28/2016

Rito 707 of Ideal 3407 7075 R R Rito 707
 SAV Renown 3439 Ideal 3407 of 1418 076
 #+*17633839 SAV Blackcap May 4136 SAV 8180 Traveler 004
 SAV May 2397
 SAV 004 Density 4336 SAV 8180 Traveler 004
 SAV Madame Pride 0151 SAV May 7238
 +*16638001 SAV Madame Pride 0075 S A F 598 Bando 5175
 SAV Madame Pride 8264

CED	BEPD	WEPD	YEPD	SC	MILK	RE	\$W	\$M
4	2.3	69	124	1.14	19	.26	55	69

- A featured member of the Semex AI Stud in Canada. He continues to sire functional, deep-bodied, muscular progeny with mass and performance. His daughters are the right kind with added capacity, broodiness, udder quality, and milk production to become great cows in any kind of breeding program.
- His progeny offered in this event match his ability to make great junior herd sires in both commercial and seedstock programs.
- The 2023 Coleman Angus Bull Sale will offer 6 progeny of Renovation.

% COLEMAN ANGUS

M COLEMAN RESOURCE 003

BULL +*19873258 TATTOO 003 DOB: 01/11/2020

SAV Resource 1441

#+*17016597

Rito 707 of Ideal 3407 7075
SAV Blackcap May 4136

Coleman Donna 3125

+*17783497

Leachman Right Time
Coleman Donna 714

RR Rito 707
Ideal 3407 of 1418 076
SAV 8180 Traveler 004
SAV May 2397
N Bar Emulation EXT
Leachman Erica 0025
Connealy Onward
Coleman Donna 386

CED	BEPD	WEPD	YEPD	SC	MILK	RE	\$W	\$M
8	2	56	102	1.65	17	.58	45	77

- A past feature in our Coleman spring production sale and herd sire in the Trexler Angus program. This son of Pathfinder® sire, SAV Resource 1441, stems back to a past Lot 1 top-selling female, Coleman Donna 3125.
- 003 Has continued stamp his progeny with added dimension, power, and the ability to gain, perform, and consistently produce the cattleman's kind.
- The 2023 Coleman Angus Bull Sale will offer 10 progeny of Resource 003.



COLEMAN RESOURCE 003

COLEMAN RESOURCE 003 – REFERENCE SIRE M. SIRE OF LOTS 144, 146, 148, 149, 150, 151, 152, 191, 193, 194.

N BAR-E-L NATURAL LAW 52Y

BULL 19310190 TATTOO 52Y DOB: 2/18/2011

SAV Bismarck 5682

#+15109865

G A R Grid Maker
SAV Abigale 0451

Bar-E-L Magnolia 143K

1023388

Bar E L MCC 365 Icon 20H
Double Four Duchess 12G

G D A R Traveler 044
G A R Precision 2536
Schoenes Fix It 826
SAV Abigale 6062
TC Stockman 365
Strathmore April 3A
HF Lancer 77D
KBJ Duchess 125A

CED	BEPD	WEPD	YEPD	SC	MILK	RE	\$W	\$M
4	3.2	56	104	.94	23	.68	42	39

- Bar E-L Natural Law 52Y is one of the dominant sires north of the border and has dominated Canada as one of the great sires in modern time. He is a son of the Pathfinder® sire, SAV Bismarck 5682, back to the Magnolia family.
- He is a bull that sires a bit more scale in a long-bodied, attractive package with added performance. His sons offer a look similar to EXT genetics with more true shape. There are several sons in this year's sale that stem from foundation Coleman genetics to give our customers a little different genetic package.
- The 2023 Coleman Angus Bull Sale will offer 18 progeny of Natural Law.



BAR-E-L NATURAL LAW 52Y

REFERENCE SIRE N. SIRE OF LOTS 5, 6, 9, 10, 14, 15, 16, 17, 28, 30, 32, 34, 46, 48, 50, 58, 77, 93.

O SITZ ACCOMPLISHMENT 720F

BULL *19078208 TATTOO 720F DOB: 01/24/2018

Poss Achievement

*18631344

Poss Lasting Impact 3118
Poss Erica 327

Sitz Barbaramere Nell 166D

18415163

SAV Resource 1441
Sitz Barbaramere Nell 14Y

Poss Easy Impact 0119
Poss Blackbird 005
KM Broken Bow 002
Poss Erica 1203
Rito 707 of Ideal 3407 7075
SAV Blackcap May 4136
Connealy Right Answer 746
Sitz Barbaramere Nell 143W

CED	BEPD	WEPD	YEPD	SC	MILK	RE	\$W	\$M
10	0.6	73	133	1.22	25	.52	65	67

- A past top-selling bull in the 2019 Sitz Angus Ranch sale and a bull that combines calving ease and carcass merit with the power and mass of SAV Resource 1441 from his dam's side.
- His offspring have loads of body with lots of foot and structure and are pounds heavy. His first set of sons in this sale will be very popular with cattlemen if you want growth, performance, and power.
- The 2023 Coleman Angus Bull Sale will offer 6 progeny of Accomplishment.



SITZ ACCOMPLISHMENT 720F

REFERENCE SIRE O. SIRE OF LOTS 107, 108, 120, 121, 131, 132.

P SITZ STELLAR 726D

BULL *18397542 TATTOO 726D DOB: 1/23/2016

Mohnen Substantial 272

#*17292558

Benfield Substance 8506
Mohnen Glyn Mawr Elba 1758

SITZ Pride 200B

*17776820

Connealy Final Product
Sitz Pride 308Y

H A Image Maker 0415
Benfield Edella 1105
LT Territory 5824 of EA
Mohnen Glyn Mawr Elba 1345
Connealy Product 568
Ebonista of Conanga 471
Sitz Upward 307R
Sitz Pride 44P

CED	BEPD	WEPD	YEPD	SC	MILK	RE	\$W	\$M
3	-0.3	71	128	.91	18	.58	61	61

- Stellar is a past top-selling bull of the 2017 Sitz Angus Ranch sale and a member of the ABS Global AI Stud. He brings calving ease and performance to the table. His progeny have added dimension with big tops, added depth of body, and in a heavy package without sacrificing paper. An outcross genetics sire with the same criteria we select for at Coleman Angus.
- The 2023 Coleman Angus Bull Sale will offer 3 progeny of Stellar.



SITZ STELLAR 726D

REFERENCE SIRE P. SIRE OF LOTS 72, 153, 154.

COLEMAN ANGUS – WHERE MATERNAL MATTERS

At Coleman Angus, maternal matters. Our philosophy in breeding Angus has always been the mother cow. The mother cow makes the difference in everything we do in this industry. The Coleman program has been built the old fashion way in the pasture, where maternal is measured by production records, calving intervals, udder quality, mature size, longevity, fertility, and Pathfinder® status sit means something. We don't believe in throwing computer-generated numbers out there to confuse or mislead you, we believe in "real world" data.

We demand our cows to raise big calves, rebred on time, and do this for years. WE place emphasis on these desired traits for bot seedstock and commercial cattlemen and have continued to be a part of the Maternal Plus program at Coleman Angus. This program places emphasis on the \$M Index, an index for commercial cattlemen and breeders alike. The \$M index incorporates the following traits and data collected at Coleman Angus: CED, BW, WW, CEM, Milk, MW, Docility, Heifer Pregnancy, Foot Scores both claw and angle foot scores. If you sell your cattle at weaning or retain heifers, we recommend you take a look at the \$M Index on this set of bulls.



Coleman 2023 Bull Sale Facts

- % 19 Bulls Rank in the Top 1% of the breed for \$M
- % 20 Bulls Rank in the Top 2% of the breed for \$M
- % 4 Bulls Rank in the Top 3% of the breed for \$M
- % 15 Bulls Rank in the Top 4% of the breed for \$M
- % 5 Bulls Rank in the Top 5% of the breed for \$M
- % 32 Bulls Rank in the Top 10% of the breed for \$M
- % 12 Bull Rank in the Top 15% of the breed for \$M
- % 21 Bull Rank in the Top 20% of the breed for \$M
- % 11 Bull Rank in the Top 25% of the breed for \$M

32% of the bulls in this sale offering rank in the **Top 5%** of the breed for \$M

65% of the bulls in this sale offering rank in the **Top 25%** of the breed for \$M

The Entire Sale offering averages 78 on \$M which is in the of the breed for \$M.



COLEMAN **DONNA** 0308
THIS PHOTO TAKEN AT 11 YEARS OF AGE



COLEMAN **DONNA** 040
THIS PHOTO TAKEN AT 11 YEARS OF AGE

Coleman Donna 040 is the #1 cow in AHIR at American Angus Association for \$M that is a Pathfinder® and 11 years of age or older. Coleman Donna 0308 is the #3 cow in AHIR at American Angus Association for \$M that is a Pathfinder® and 11 years of age or older.

THE REAL \$ VALUE FOR COMMERCIAL CATTLEMAN

MATERNAL WEANED CALF VALUE (\$M) – THE REAL \$ VALUE

\$M is the most maternally focused selection index currently available to Angus members and commercial users of Angus genetics. \$M, expressed in dollars per head, aims to predict profitability differences in progeny due to genetics from conception to weaning. \$M places greater emphasis on the cost side of commercial cow calf production than any other tool available in the past. Increased selection pressure on \$M aims to decrease overall mature cow size while maintaining weaning weights consistent with today's production.

TRAIT	\$M	\$W
CED	✓	
BW		✓
WW	✓	✓
YW		
CEM	✓	
Milk	✓	✓
MW	✓	✓
DOC	✓	
HP	✓	
Claw	✓	
Angle	✓	

HAND SHAKE GUARANTEE



We may be a little old fashioned but we still believe in a good old "Hand Shake" as our guarantee. We stand behind our program and these bulls 100%, if there's any problem at all in the first breeding season, even death, these bulls are fully guaranteed. We don't ask you to buy insurance, we believe it's our responsibility to stand behind our product. We do understand that sometimes accidents can happen, it's very simple, please give us a call, and we will make it right. Look on the Inside Front Cover about our First Season Breeding Guarantee.

% COLEMAN ANGUS



COLEMAN ROCK 7200

COLEMAN ROCK 7200 – REFERENCE SIRE Q. SIRE OF LOTS 1, 2, 3, 13, 63, 64, 67, 70, 75, 76, 85, 90, 126, 159, 161, 173, 174.



COLEMAN DONNA 714 – DAM OF REFERENCE SIRE Q.

Q COLEMAN ROCK 7200

BULL +*19107936 TATTOO 7200 DOB: 7/12/2017
 OCC Emblazon 854E DHD Traveler 6807
 OCC Juneau 807J Dixie Erica of CH 1019
 #*13627989 OCC Dixie Erica 903E OCC Candor 763C
 Connealy Onward OCC Dixie Erica 799B
 Coleman Donna 714 Altune of Conanga 6104
 +*15706882 Coleman Donna 386 Basin Rainmaker 654X
 KMK Donna J311

CED	BEPD	WEPD	YEPD	SC	MILK	RE	\$W	\$M
8	-0.1	73	118	1.22	25	.67	72	92

- Rock was the top-selling bull of the 2022 Your Maternal Source Annual Production Sale and sold one-half interest for \$240,000 to Ingram Angus and Sandford Ranches as the top-valued individual of that event.
- His mother is the famous \$290,000 valued Coleman Donna 714, one of the all-time, high income-producing females on the ranch. She has a progeny production record of BR 4@94, WR 4@115, YR 3@112, %IMF 11@101.
- Coleman Donna 063, a full sister, was the top-selling female of the 2016 fall production sale going to Lawson Family Farms of Virginia. Full brothers include past sellers Coleman Juneau 044 and Coleman Manning, which have been highlights of this past event.
- Rock offers 17 direct sons in the 2023 Coleman Angus Bull Spring Sale.



COLEMAN DONNA 756 – FULL SISTER TO REFERENCE SIRE Q.



COLEMAN DONNA 769 – FULL SISTER TO REFERENCE SIRE Q.

PERFORMANCE TESTED BULL SALE %



COLEMAN NORTH COUNTRY 1424 – HE SELLS AS LOT 1.



LAWSONS CHLOE C815 – DAM OF LOTS 1, 2, 3, 7, 8, 110, 111, 112, 169, AND 171.

1 COLEMAN NORTH COUNTRY 1424

BULL 20500590 TATTOO 1424 DOB: 06/27/21



OCC Juneau 807J
Coleman Rock 7200
 19107936 Coleman Donna 714

SAV Renown 3439
Lawsons Chloe C815
 18359250 Lawsons Chloe Z341

OCC Emblazon 854E
 OCC Dixie Erica 903E
 Connealy Onward
 Coleman Donna 386
 Rito 707 of Ideal 3407 7075
 SAV Blackcap May 4136
 Sitz Upward 307R
 Basin Chloe 7T26

BW	205 Wt	Dam's Nursing Ratio
87	878	3 - 110

CED	BW	WW	YW	SC	MILK	RE	\$W	\$M
3	1.3	83	143	1.31	28	.83	80	80

% Actual weight as of December 31, 2022: 1768 lbs.

3 COLEMAN ROCK 1467

BULL 20500599 TATTOO 1467 DOB: 07/03/21



OCC Juneau 807J
Coleman Rock 7200
 19107936 Coleman Donna 714

SAV Renown 3439
Lawsons Chloe C815
 18359250 Lawsons Chloe Z341

OCC Emblazon 854E
 OCC Dixie Erica 903E
 Connealy Onward
 Coleman Donna 386
 Rito 707 of Ideal 3407 7075
 SAV Blackcap May 4136
 Sitz Upward 307R
 Basin Chloe 7T26

BW	205 Wt	Dam's Nursing Ratio
90	866	3 - 110

CED	BW	WW	YW	SC	MILK	RE	\$W	\$M
3	1.3	83	143	1.57	28	.83	80	80

% Actual weight as of December 31, 2022: 1624 lbs.

2 COLEMAN ROCK 1405

BULL 20500583 TATTOO 1405 DOB: 06/28/21



OCC Juneau 807J
Coleman Rock 7200
 19107936 Coleman Donna 714

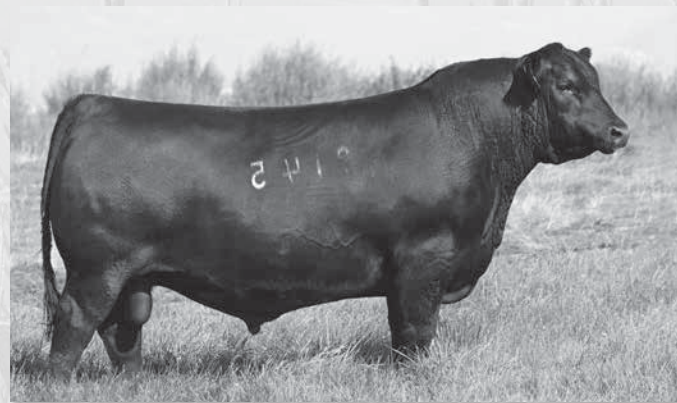
SAV Renown 3439
Lawsons Chloe C815
 18359250 Lawsons Chloe Z341

OCC Emblazon 854E
 OCC Dixie Erica 903E
 Connealy Onward
 Coleman Donna 386
 Rito 707 of Ideal 3407 7075
 SAV Blackcap May 4136
 Sitz Upward 307R
 Basin Chloe 7T26

BW	205 Wt	Dam's Nursing Ratio
94	914	3 - 110

CED	BW	WW	YW	SC	MILK	RE	\$W	\$M
3	1.3	83	143	1.08	28	.83	80	80

% Actual weight as of December 31, 2022: 1728 lbs.



COLEMAN TRIUMPH 9145 – MATERNAL BROTHER TO LOTS 1, 2, 3, 7, 8, 110, 111, 112, 169, AND 171.

% COLEMAN ANGUS



COLEMAN RESOURCE 1737 – HE SELLS AS LOT 4.

4

COLEMAN RESOURCE 1737

BULL 20503456 TATTOO 1737 DOB: 06/28/21



SAV Resource 1441

17016597

Rito 707 of Ideal 3407 7075

SAV Blackcap May 4136

Coleman Charlo 3212

Coleman Everelda Entense 8607

19492046

Coleman Everelda Entense5521

RR Rito 707

Ideal 3407 of 1418 076

SAV 8180 Traveler 004

SAV May 2397

Coleman Charlo 0256

Coleman Donna 714

Coleman Missing Link 017

Coleman Everelda Entense1306

BW	205 Wt	Dam's Nursing Ratio
94	814	2 - 112

CED	BW	WW	YW	SC	MILK	RE	\$W	\$M
2	3.1	80	141	1.69	23	.66	63	61

% Actual weight as of December 31, 2022: 1630 lbs.



The mother cow (factory)

We believe that it all starts with the mother cow. There is a big difference between a good cow and a great cow. A great breeding bull is known because they "stamp" their calves. It's the same with a great cow; she should be able to "stamp" her calves regardless of who the sire is. They calve early each year, bring in a big calf at weaning, and are gentle with beautiful udders. Then you see that their daughters are doing the same thing. These are the ones that make a ranch profitable. We have seen a tremendous increase in quality and consistency of our cow herd. This is the result from the large groups of females that are half, three quarter, and full sisters. Consistency is one of the most profitable traits that make the difference between a good calf crop and a great one

YOUR MATERNAL SOURCE

“Coleman Angus bulls have made a positive impact on our cow herd. Their moderated framed, muscular bulls are easy fleshing, taking little winter feed and have good quite dispositions. When we sorted our replacement heifers, 75% of those retained were sired by Coleman bulls. They are high volume, easy fleshing females that will make moderate framed cows that we appreciate in our family operation. We plan to add more Coleman bulls this year. They are the kind of bulls that will help keep our program profitable”

Clyde Brewer III
Melstone, MT



COLEMAN SHERIDAN 9295 – MATERNAL BROTHER TO LOTS 5, 6, 9, 10, 15, 16, 17, 32, 34, 46, 50, AND 114.

5 COLEMAN NATURAL LAW 1407

BULL 20500584 TATTOO 1407 DOB: 06/21/21



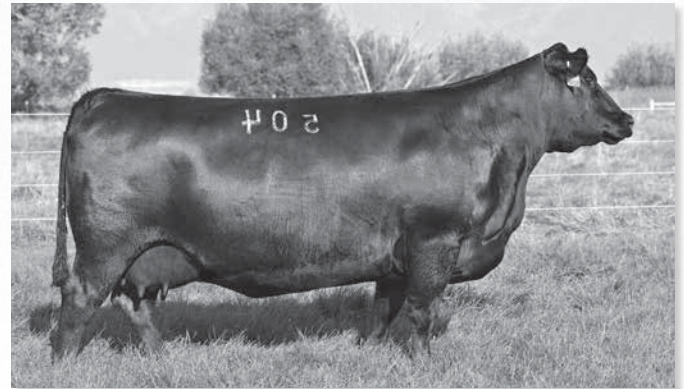
S A V Bismarck 5682
Bar-E-L Natural Law 52Y
19310190 Bar-E-L Magnolia 143K

S A V Resource 1441
Coleman Donna 504
18238090 Coleman Donna 714

G A R Grid Maker
S A V Abigale 0451
Bar E L MCC 365 Icon 20H
Double Four Duchess 12G
Rito 707 of Ideal 3407 7075
S A V Blackcap May 4136
Connealy Onward
Coleman Donna 386

CED	BW		205 Wt		Dam's Nursing Ratio		RE	\$W	\$M
	BW	WW	YW	SC	MILK	RE			
9	1.8	62	119	1.25	25	.74	54	58	

% Actual weight as of December 31, 2022: 1644 lbs.



COLEMAN DONNA 504 – DAM OF LOTS 5, 6, 9, 10, 15, 16, 17, 32, 34, 46, 50, AND 114.

6 COLEMAN NATURAL LAW 1443

BULL 20500593 TATTOO 1443 DOB: 06/28/21



S A V Bismarck 5682
Bar-E-L Natural Law 52Y
19310190 Bar-E-L Magnolia 143K

S A V Resource 1441
Coleman Donna 504
18238090 Coleman Donna 714

G A R Grid Maker
S A V Abigale 0451
Bar E L MCC 365 Icon 20H
Double Four Duchess 12G
Rito 707 of Ideal 3407 7075
S A V Blackcap May 4136
Connealy Onward
Coleman Donna 386

CED	BW		205 Wt		Dam's Nursing Ratio		RE	\$W	\$M
	BW	WW	YW	SC	MILK	RE			
9	1.8	62	119	1.29	25	.74	54	58	

% Actual weight as of December 31, 2022: 1652 lbs.



COLEMAN ROBUST 1468 – HE SELLS AS LOT 7.

7 COLEMAN ROBUST 1468

BULL 20500600 TATTOO 1468 DOB: 07/04/21



BC Surveyor 680D
BC Robust 0807
18456252 BC 327-8 CP Belle 0-807

S A V Renown 3439
Lawsons Chloe C815
18359250 Lawsons Chloe Z341

BC Eagle Eye 110-7
BC 2266 Prides Lass 4132 680
BC Pure Pride 327-8
BC 607 CP Belle MF 807
Rito 707 of Ideal 3407 7075
S A V Blackcap May 4136
Sitz Upward 307R
Basin Chloe 7T26

CED	BW		205 Wt		Dam's Nursing Ratio		RE	\$W	\$M
	BW	WW	YW	SC	MILK	RE			
1	2.3	78	127	.91	20	.72	69	68	

% Actual weight as of December 31, 2022: 1570 lbs.

“Coleman bulls have worked well on our ranch. We purchased two bulls sight unseen in 2005 and were so happy with the performance they show that we bought seven bulls the next spring. The bulls have proven to work at 7,000 ft in irrigated pastures. They are versatile, functional, and easy-keeping bulls that do their job in a variety of pasture situations. Thanks Coleman Angus.”

Ryan Malone
Three Peaks Ranch, Montana

% COLEMAN ANGUS



COLEMAN NATURAL LAW 1409 – HE SELLS AS LOT 9

8

COLEMAN ROBUST 1453



BULL 20500596 TATTOO 1453 DOB: 06/28/21

BC Robust 0807
18456252 BC Surveyor 680D
BC 327-8 CP Belle 0-807

Lawsons Chloe C815
18359250 S A V Renown 3439
Lawsons Chloe Z341

BC Eagle Eye 110-7
BC 2266 Prides Lass 4132 680
BC Pure Pride 327-8
BC 607 CP Belle MF 807
Rito 707 of Ideal 3407 7075
S A V Blackcap May 4136
Sitz Upward 307R
Basin Chloe 7T26

	BW	205 Wt	Dam's Nursing Ratio										
	88	811	3 - 110		CED	BW	WW	YW	SC	MILK	RE	\$W	\$M
1	2.3	78	127	.44	20	.72	69	68					

% Actual weight as of December 31, 2022: 1558 lbs.



COLEMAN ROBUST 1453 – HE SELLS AS LOT 8.

9

COLEMAN NATURAL LAW 1409



BULL 20500586 TATTOO 1409 DOB: 07/02/21

Bar-E-L Natural Law 52Y
19310190 S A V Bismarck 5682
Bar-E-L Magnolia 143K

Coleman Donna 504
18238090 S A V Resource 1441
Coleman Donna 714

G A R Grid Maker
S A V Abigale 0451
Bar E L MCC 365 Icon 20H
Double Four Duchess 12G
Rito 707 of Ideal 3407 7075
S A V Blackcap May 4136
Connealy Onward
Coleman Donna 386

	BW	205 Wt	Dam's Nursing Ratio										
	89	825	4 - 110		CED	BW	WW	YW	SC	MILK	RE	\$W	\$M
9	1.8	62	119	.84	25	.74	54	58					

% Actual weight as of December 31, 2022: 1602 lbs.

10

COLEMAN NATURAL LAW 1464



BULL 20500598 TATTOO 1464 DOB: 07/01/21

Bar-E-L Natural Law 52Y
19310190 S A V Bismarck 5682
Bar-E-L Magnolia 143K

Coleman Donna 504
18238090 S A V Resource 1441
Coleman Donna 714

G A R Grid Maker
S A V Abigale 0451
Bar E L MCC 365 Icon 20H
Double Four Duchess 12G
Rito 707 of Ideal 3407 7075
S A V Blackcap May 4136
Connealy Onward
Coleman Donna 386

	BW	205 Wt	Dam's Nursing Ratio										
	96	757	4 - 110		CED	BW	WW	YW	SC	MILK	RE	\$W	\$M
9	1.8	62	119	1.46	25	.74	54	58					

% Actual weight as of December 31, 2022: 1608 lbs.

PERFORMANCE TESTED BULL SALE %



COLEMAN EASY DECISION 1539 – HE SELLS AS LOT 13.

11 COLEMAN RESOURCE 1738

BULL 20503457 TATTOO 1738 DOB: 06/28/21



Rito 707 of Ideal 3407 7075
SAV Resource 1441
 17016597 SAV Blackcap May 4136

Coleman Bravo 6313
Coleman Everelda Entense 8610
 19492048 Coleman Everelda Entense 703

RR Rito 707
 Ideal 3407 of 1418 076
 SAV 8180 Traveler 004
 SAV May 2397
 Coleman Charlo 0256
 Coleman Donna 714
 Wulffs Ext 6106
 BT Everelda Entense 613L

	BW	205 Wt	Dam's Nursing Ratio						
	85	775	2 - 110						
CED	BW	WW	YW	SC	MILK	RE	\$W	\$M	
5	2.3	76	134	1.16	19	.61	58	72	

% Actual weight as of December 31, 2022: 1606 lbs.

12 COLEMAN RESOURCE 1732

BULL 20503453 TATTOO 1732 DOB: 07/04/21



Rito 707 of Ideal 3407 7075
SAV Resource 1441
 17016597 SAV Blackcap May 4136

Coleman Cedar Ridge 4212
Coleman Everelda Entense 7523
 19102719 Coleman Everelda Entense 5521

RR Rito 707
 Ideal 3407 of 1418 076
 SAV 8180 Traveler 004
 SAV May 2397
 Cole Creek Cedar Ridge 1V
 Coleman Donna 714
 Coleman Missing Link 017
 Coleman Everelda Entense 1306

	BW	205 Wt	Dam's Nursing Ratio						
	97	837	3 - 110						
CED	BW	WW	YW	SC	MILK	RE	\$W	\$M	
1	2.9	76	135	1.73	23	.42	60	65	

% Actual weight as of December 31, 2022: 1634 lbs.

13 COLEMAN EASY DECISION 1539

BULL 20503415 TATTOO 1539 DOB: 06/30/21



OCC Juneau 807J
Coleman Rock 7200
 19107936 Coleman Donna 714

Coleman Charlo 0256
Coleman Donna 7386
 19102692 Coleman Donna 5309

OCC Emblazon 854E
 OCC Dixie Erica 903E
 Connealy Onward
 Coleman Donna 386
 OCC Paxton 730P
 Bohi Abigale 6014
 Wulffs Ext 6106
 Coleman Donna 714

	BW	205 Wt	Dam's Nursing Ratio						
	73	763	3 - 112						
CED	BW	WW	YW	SC	MILK	RE	\$W	\$M	
15	-3.0	74	126	1.64	29	.50	77	88	

% Actual weight as of December 31, 2022: 1610 lbs.



COLEMAN DONNA 7386 – PATHFINDER® DAM OF LOT 13.

% COLEMAN ANGUS



COLEMAN DONNA 439 – PATHFINDER® DAM OF LOTS 14, 25 37, AND 116.

14 COLEMAN NATURAL LAW 1459

BULL 20500597 TATTOO 1459 DOB: 06/27/21

S A V Bismarck 5682
Bar-E-L Natural Law 52Y
19310190 Bar-E-L Magnolia 143K

GDAR Game Day 449
Coleman Donna 439
17914042 Coleman Donna 714

G A R Grid Maker
S A V Abigale 0451
Bar E L MCC 365 Icon 20H
Double Four Duchess 12G
Boyd New Day 8005
G D A R Miss Wix 474
Connealy Onward
Coleman Donna 386

	BW	205 Wt	Dam's Nursing Ratio						
	90	725	5 - 107						
CED	BW	WW	YW	SC	MILK	RE	\$W	\$M	
10	1.0	50	94	.00	27	.67	50	64	

% Actual weight as of December 31, 2022: 1526 lbs.

15 COLEMAN NATURAL LAW 1469

BULL 20500601 TATTOO 1469 DOB: 06/30/21

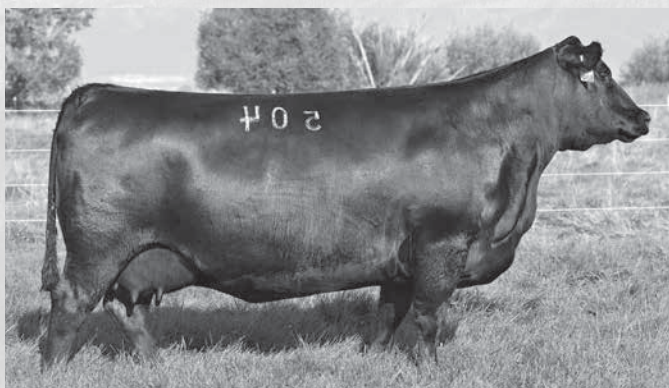
S A V Bismarck 5682
Bar-E-L Natural Law 52Y
19310190 Bar-E-L Magnolia 143K

S A V Resource 1441
Coleman Donna 504
18238090 Coleman Donna 714

G A R Grid Maker
S A V Abigale 0451
Bar E L MCC 365 Icon 20H
Double Four Duchess 12G
Rito 707 of Ideal 3407 7075
S A V Blackcap May 4136
Connealy Onward
Coleman Donna 386

	BW	205 Wt	Dam's Nursing Ratio						
	92	723	4 - 110						
CED	BW	WW	YW	SC	MILK	RE	\$W	\$M	
9	1.8	62	119	.90	25	.74	54	58	

% Actual weight as of December 31, 2022: 1530 lbs.



COLEMAN DONNA 504 – DAM OF LOTS 5, 6, 9, 10, 15, 16, 17, 32, 34, 46, 50, AND 114.

16 COLEMAN NATURAL LAW 1471

BULL 20500602 TATTOO 1471 DOB: 06/29/21

S A V Bismarck 5682
Bar-E-L Natural Law 52Y
19310190 Bar-E-L Magnolia 143K

S A V Resource 1441
Coleman Donna 504
18238090 Coleman Donna 714

G A R Grid Maker
S A V Abigale 0451
Bar E L MCC 365 Icon 20H
Double Four Duchess 12G
Rito 707 of Ideal 3407 7075
S A V Blackcap May 4136
Connealy Onward
Coleman Donna 386

	BW	205 Wt	Dam's Nursing Ratio						
	84	709	4 - 110						
CED	BW	WW	YW	SC	MILK	RE	\$W	\$M	
9	1.8	62	119	.67	25	.74	54	58	

% Actual weight as of December 31, 2022: 1502 lbs.

17 COLEMAN NATURAL LAW 1433

BULL 20500591 TATTOO 1433 DOB: 07/01/21

S A V Bismarck 5682
Bar-E-L Natural Law 52Y
19310190 Bar-E-L Magnolia 143K

S A V Resource 1441
Coleman Donna 504
18238090 Coleman Donna 714

G A R Grid Maker
S A V Abigale 0451
Bar E L MCC 365 Icon 20H
Double Four Duchess 12G
Rito 707 of Ideal 3407 7075
S A V Blackcap May 4136
Connealy Onward
Coleman Donna 386

	BW	205 Wt	Dam's Nursing Ratio						
	86	747	4 - 110						
CED	BW	WW	YW	SC	MILK	RE	\$W	\$M	
9	1.8	62	119	1.46	25	.74	54	58	

% Actual weight as of December 31, 2022: 1598 lbs.

18 COLEMAN MARSHALL 1517

BULL 20503407 TATTOO 1517 DOB: 06/27/21

S A V Resource 1441
Coleman Marshall 7170
19102287 Coleman Donna 197

Wulffs Ext 6106
Coleman Donna 7157
19102641 Coleman Donna 040

Rito 707 of Ideal 3407 7075
S A V Blackcap May 4136
Basin Rainmaker 654X
KMK Donna J311
N Bar Emulation EXT
Wulffs Erica Dianna C116
O C C Juneau 807J
Coleman Donna 714

	BW	205 Wt	Dam's Nursing Ratio						
	90	796	3 - 117						
CED	BW	WW	YW	SC	MILK	RE	\$W	\$M	
8	0.5	74	127	.61	30	.83	73	90	

% Actual weight as of December 31, 2022: 1608 lbs.

19 COLEMAN TRIUMPH 1581

BULL 20503430 TATTOO 1581 DOB: 06/29/21

Coleman Bravo 6313
Coleman Triumph 9145
19555917 Lawsons Chloe C815

S A V Sensation 5615
Coleman Abigale 8377
19402548 Coleman Abigale 4286

Coleman Charlo 0256
Coleman Donna 714
S A V Renown 3439
Lawsons Chloe Z341
S A V Registry 2831
S A V Blackcap May 4136
Coleman Manning 0299
Coleman Abigale 0221

	BW	205 Wt	Dam's Nursing Ratio						
	86	779	2 - 119						
CED	BW	WW	YW	SC	MILK	RE	\$W	\$M	
6	0.9	75	129	.80	26	.53	69	70	

% Actual weight as of December 31, 2022: 1510 lbs.

YOUR MATERNAL SOURCE

20

COLEMAN TRIUMPH 1480

BULL 20503394 TATTOO 1480 DOB: 06/30/21



Coleman Triumph 9145
19555917 Lawsons Chloe C815

Coleman Donna 756
18841167 Coleman Donna 714

Coleman Charlo 0256
Coleman Donna 714
S A V Renown 3439
Lawsons Chloe Z341
O C C Emblazon 854E
O C C Dixie Erica 903E
Connealy Onward
Coleman Donna 386

	BW	205 Wt	Dam's Nursing Ratio						
	84	761	3 - 104						
CED	BW	WW	YW	SC	MILK	RE	\$W	\$M	
9	-0.4	73	121	1.27	25	.62	71	100	

% Actual weight as of December 31, 2022: 1526 lbs.



COLEMAN DONNA 756 – DAM OF LOT 20.

21

COLEMAN BRAVO 1412

BULL 20505313 TATTOO 1412 DOB: 06/24/21



Coleman Bravo 6313
18734838 Coleman Donna 714

HF Echo 111Y
19780993 HF Echo 207N

O C C Paxton 730P
Bohi Abigale 6014
Connealy Onward
Coleman Donna 386
HF Kodiak 5R
HF Echo 84R
TC Freedom 104
Duralta 14C Echo 32E

	BW	205 Wt	Dam's Nursing Ratio						
	78	725	-						
CED	BW	WW	YW	SC	MILK	RE	\$W	\$M	
9	1.3	47	88	1.29	32	.26	55	85	

% Actual weight as of December 31, 2022: 1518 lbs.

24

COLEMAN BRAVO 1722

BULL 20503447 TATTOO 1722 DOB: 06/29/21



Coleman Bravo 6313
18734838 Coleman Donna 714

Coleman Everelda Entense 5521
18812941 Coleman Everelda Entense 1306

O C C Paxton 730P
Bohi Abigale 6014
Connealy Onward
Coleman Donna 386
O C C Missing Link 830M
Coleman Everelda Entense 840
S Chisum 6175
Coleman Everelda Entense 703

	BW	205 Wt	Dam's Nursing Ratio						
	80	736	5 - 105						
CED	BW	WW	YW	SC	MILK	RE	\$W	\$M	
13	-0.8	63	111	.91	27	.29	64	85	

% Actual weight as of December 31, 2022: 1586 lbs.

22

COLEMAN TRIUMPH 1514

BULL 20503406 TATTOO 1514 DOB: 06/23/21



Coleman Triumph 9145
19555917 Lawsons Chloe C815

Coleman Anita 6454
18734987 Pine Coulee Anita W93

Coleman Charlo 0256
Coleman Donna 714
S A V Renown 3439
Lawsons Chloe Z341
Coleman Charlo 0256
Coleman Donna 714
N Bar Emulation EXT
B C C Ambush Anita 41-101

	BW	205 Wt	Dam's Nursing Ratio						
	72	700	4 - 111						
CED	BW	WW	YW	SC	MILK	RE	\$W	\$M	
12	-2.0	58	104	1.43	23	.45	56	77	

% Actual weight as of December 31, 2022: 1530 lbs.

25

COLEMAN CHARLO 1447

BULL 20500595 TATTOO 1447 DOB: 06/27/21



Coleman Charlo 0256
16879074 Bohi Abigale 6014

Coleman Donna 439
17914042 Coleman Donna 714

O C C Focus 813F
O C C Blackbird 736K
Sitz Traveler 8180
Boyd New Day 8005
G D A R Miss Wix 474
Connealy Onward
Coleman Donna 386

	BW	205 Wt	Dam's Nursing Ratio						
	78	738	5 - 107						
CED	BW	WW	YW	SC	MILK	RE	\$W	\$M	
12	-0.7	47	87	.63	28	.56	57	81	

% Actual weight as of December 31, 2022: 1522 lbs.

23

COLEMAN TRIUMPH 1528

BULL 20503411 TATTOO 1528 DOB: 07/02/21



Coleman Triumph 9145
19555917 Lawsons Chloe C815

Coleman Donna 7224
19293650 Coleman Donna 714

Coleman Charlo 0256
Coleman Donna 714
S A V Renown 3439
Lawsons Chloe Z341
Rito 707 of Ideal 3407 7075
S A V Blackcap May 4136
Connealy Onward
Coleman Donna 386

	BW	205 Wt	Dam's Nursing Ratio						
	88	751	3 - 113						
CED	BW	WW	YW	SC	MILK	RE	\$W	\$M	
6	0.7	76	134	1.11	23	.69	66	86	

% Actual weight as of December 31, 2022: 1582 lbs.



COLEMAN DONNA 7100 – FLUSH SISTER TO THE DAM OF LOTS 23 AND 33.

% COLEMAN ANGUS



COLEMAN BRAVO 1509 – HE SELLS AS LOT 26.

26 COLEMAN BRAVO 1509

BULL 20503405 TATTOO 1509 DOB: 06/28/21



Coleman Charlo 0256
Coleman Bravo 6313
18734838 Coleman Donna 714

Coleman Juneau 044
Coleman Donna 6318
18734955 Coleman Donna 801

O C C Paxton 730P
Bohi Abigale 6014
Connealy Onward
Coleman Donna 386
O C C Juneau 807J
Coleman Donna 714
N Bar Emulation EXT
KMK Donna J311

	BW	205 Wt			Dam's Nursing Ratio				
	77	712			4 - 105				
CED	BW	WW	YW	SC	MILK	RE	\$W	\$M	
17	-1.9	52	96	.98	29	.38	57	87	

% Actual weight as of December 31, 2022: 1532 lbs.

27 COLEMAN BRAVO 1495

BULL 20503402 TATTOO 1495 DOB: 07/02/21



Coleman Charlo 0256
Coleman Bravo 6313
18734838 Coleman Donna 714

Coleman Juneau 0290
Coleman Dixie Erica 5233
18402673 Coleman Dixie Erica 1501

O C C Paxton 730P
Bohi Abigale 6014
Connealy Onward
Coleman Donna 386
O C C Juneau 807J
Coleman Donna 732
Akers United 8858
Akers Dixie Erica 8149

	BW	205 Wt			Dam's Nursing Ratio				
	88	712			5 - 106				
CED	BW	WW	YW	SC	MILK	RE	\$W	\$M	
11	0.0	58	102	1.27	25	.40	57	94	

% Actual weight as of December 31, 2022: 1500 lbs.



COLEMAN DONNA 197 – DAM OF LOT 28.

28 COLEMAN NATURAL LAW 1401

BULL 20500581 TATTOO 1401 DOB: 06/26/21



S A V Bismarck 5682
Bar-E-L Natural Law 52Y
19310190 Bar-E-L Magnolia 143K

Basin Rainmaker 654X
Coleman Donna 197
17188528 KMK Donna J311

G A R Grid Maker
S A V Abigale 0451
Bar E L MCC 365 Icon 20H
Double Four Duchess 12G
Basin Rainmaker D S 380U
Basin Bardolene 423U
D H D Traveler 6807
Brooks Donna 319

	BW	205 Wt			Dam's Nursing Ratio				
	77	690			4 - 112				
CED	BW	WW	YW	SC	MILK	RE	\$W	\$M	
6	1.6	49	95	.22	32	.63	52	61	

% Actual weight as of December 31, 2022: 1508 lbs.

29 COLEMAN MAVERICK 1721

BULL 20503446 TATTOO 1721 DOB: 07/22/21



Coleman Charlo 0256
Coleman Maverick 5322
18402732 Coleman Donna 3202

Coleman Charlo 0256
Coleman Prides of Lass 4480
18105737 Coleman Prides of Lass 1303

O C C Paxton 730P
Bohi Abigale 6014
Wulffs Ext 6106
Coleman Donna 714
O C C Paxton 730P
Bohi Abigale 6014
Coleman Regis 904
Coleman Prides of Lass 8114

	BW	205 Wt			Dam's Nursing Ratio				
	86	756			6 - 105				
CED	BW	WW	YW	SC	MILK	RE	\$W	\$M	
10	0.1	62	111	1.39	23	.55	58	77	

% Actual weight as of December 31, 2022: 1518 lbs.

30 COLEMAN NATURAL LAW 1402

BULL 20500582 TATTOO 1402 DOB: 06/27/21



S A V Bismarck 5682
Bar-E-L Natural Law 52Y
19310190 Bar-E-L Magnolia 143K

HF El Tigre 28U
HF Echo 111Y
19780993 HF Echo 207N

G A R Grid Maker
S A V Abigale 0451
Bar E L MCC 365 Icon 20H
Double Four Duchess 12G
HF Kodiak 5R
HF Echo 84R
TC Freedom 104
Duralta 14C Echo 32E

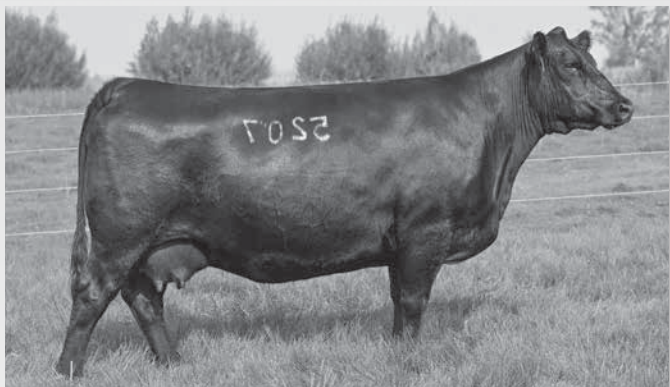
	BW	205 Wt			Dam's Nursing Ratio				
	87	737			-				
CED	BW	WW	YW	SC	MILK	RE	\$W	\$M	
3	3.1	47	90	1.48	32	.40	44	53	

% Actual weight as of December 31, 2022: 1500 lbs.



COLEMAN DONNA 801 – GRANDDAM OF LOT 26.

PERFORMANCE TESTED BULL SALE %



COLEMAN DONNA 5207 – FLUSH SISTER TO THE DAM OF LOT 31.



COLEMAN SHERIDAN 9295 – MATERNAL BROTHER TO LOTS 5, 6, 9, 10, 15, 16, 17, 32, 34, 46, 50, AND 114.

31 COLEMAN TRIUMPH 1500

BULL 20503403 TATTOO 1500 DOB: 06/30/21



Coleman Bravo 6313
Coleman Triumph 9145
19555917 Lawsons Chloe C815

O C C Great Plains 943G
Coleman Donna 5404
18410201 Coleman Donna 714

Coleman Charlo 0256
Coleman Donna 714
S A V Renown 3439
Lawsons Chloe Z341
N Bar Emulation EXT
Dixie Erica of C H 1019
Connealy Onward
Coleman Donna 386

	BW	205 Wt		Dam's Nursing Ratio					
	87	WW	YW	SC	MILK	RE	\$W	\$M	
CED	0.3	64	111	.37	22	.44	57	74	

% Actual weight as of December 31, 2022: 1506 lbs.

32 COLEMAN NATURAL LAW 1417

BULL 20500587 TATTOO 1417 DOB: 06/28/21



S A V Bismarck 5682
Bar-E-L Natural Law 52Y
19310190 Bar-E-L Magnolia 143K

S A V Resource 1441
Coleman Donna 504
18238090 Coleman Donna 714

G A R Grid Maker
S A V Abigale 0451
Bar E L MCC 365 Icon 20H
Double Four Duchess 12G
Rito 707 of Ideal 3407 7075
S A V Blackcap May 4136
Connealy Onward
Coleman Donna 386

	BW	205 Wt		Dam's Nursing Ratio					
	84	WW	YW	SC	MILK	RE	\$W	\$M	
CED	1.8	62	119	.90	25	.74	54	58	

% Actual weight as of December 31, 2022: 1580 lbs.

33 COLEMAN TRIUMPH 1529

BULL 20503412 TATTOO 1529 DOB: 06/26/21



Coleman Bravo 6313
Coleman Triumph 9145
19555917 Lawsons Chloe C815

S A V Resource 1441
Coleman Donna 7231
19108071 Coleman Donna 714

Coleman Charlo 0256
Coleman Donna 714
S A V Renown 3439
Lawsons Chloe Z341
Rito 707 of Ideal 3407 7075
S A V Blackcap May 4136
Connealy Onward
Coleman Donna 386

	BW	205 Wt		Dam's Nursing Ratio					
	86	WW	YW	SC	MILK	RE	\$W	\$M	
CED	-0.3	66	118	.26	25	.68	61	80	

% Actual weight as of December 31, 2022: 1520 lbs.

34 COLEMAN NATURAL LAW 1445

BULL 20500594 TATTOO 1445 DOB: 07/03/21



S A V Bismarck 5682
Bar-E-L Natural Law 52Y
19310190 Bar-E-L Magnolia 143K

S A V Resource 1441
Coleman Donna 504
18238090 Coleman Donna 714

G A R Grid Maker
S A V Abigale 0451
Bar E L MCC 365 Icon 20H
Rito 707 of Ideal 3407 7075
S A V Blackcap May 4136
Connealy Onward
Coleman Donna 386

	BW	205 Wt		Dam's Nursing Ratio					
	91	WW	YW	SC	MILK	RE	\$W	\$M	
CED	1.8	62	119	.69	25	.74	54	58	

% Actual weight as of December 31, 2022: 1514 lbs.

35 COLEMAN RESOURCE 1742

BULL 20503460 TATTOO 1742 DOB: 07/04/21



Rito 707 of Ideal 3407 7075
S A V Resource 1441
17016597 S A V Blackcap May 4136

Coleman Bravo 6313
Coleman Blackbird 8628
19492055 Coleman Blackbird 5520

R R Rito 707
Ideal 3407 of 1418 076
S A V 8180 Traveler 004
S A V May 2397
Coleman Charlo 0256
Coleman Donna 714
Coleman Missing Link 017
Coleman Blackbird 2425

	BW	205 Wt		Dam's Nursing Ratio					
	78	WW	YW	SC	MILK	RE	\$W	\$M	
CED	0.9	65	119	1.42	25	.71	58	64	

% Actual weight as of December 31, 2022: 1470 lbs.



COLEMAN TRIUMPH 1529 – HE SELLS AS LOT 33.

% COLEMAN ANGUS



COLEMAN CHARLO 1440 – HE SELLS AS LOT 37.

38 COLEMAN RESOURCE 1572

BULL 20503425 TATTOO 1572 DOB: 07/07/21

SAV Resource 1441
Coleman Resource 710
 18933682 Coleman Donna 4121

SAV President 6847
Coleman Donna 8297
 19400621 Coleman Donna 197

Rito 707 of Ideal 3407 7075
 SAV Blackcap May 4136
 O C C Juneau 807J
 Coleman Donna 005
 Coleman Charlo 0256
 SAV Blackcap May 4136
 Basin Rainmaker 654X
 KMK Donna J311

BW		205 Wt		Dam's Nursing Ratio					
95		776		2 - 114					
CED	BW	WW	YW	SC	MILK	RE	\$W	\$M	
3	3.4	65	118	.54	33	.55	58	65	

% Actual weight as of December 31, 2022: 1502 lbs.

36 COLEMAN ROBUST 1556

BULL 20503419 TATTOO 1556 DOB: 06/26/21

BC Surveyor 680D
BC Robust 0807
 18456252 BC 327-8 CP Belle 0-807

Soo Line Motive 9016
Coleman Donna 8214
 19403171 Coleman Donna 197

BC Eagle Eye 110-7
 BC 2266 Prides Lass 4132 680
 BC Pure Pride 327-8
 BC 607 CP Belle MF 807
 HF Kodiak 5R
 TLA Beauty 5R
 Basin Rainmaker 654X
 KMK Donna J311

BW		205 Wt		Dam's Nursing Ratio					
88		733		2 - 103					
CED	BW	WW	YW	SC	MILK	RE	\$W	\$M	
4	1.5	66	111	.16	16	.49	52	59	

% Actual weight as of December 31, 2022: 1460 lbs.

39 COLEMAN RESOURCE 1735

BULL 20503454 TATTOO 1735 DOB: 07/02/21

Rito 707 of Ideal 3407 7075
SAV Resource 1441
 17016597 SAV Blackcap May 4136

Coleman Bravo 6313
Coleman Everelda Entense8605
 19492044 Coleman Everelda Entense4493

R R Rito 707
 Ideal 3407 of 1418 076
 SAV 8180 Traveler 004
 SAV May 2397
 Coleman Charlo 0256
 Coleman Donna 714
 Coleman Regis 904
 Coleman Everelda Entense1306

BW		205 Wt		Dam's Nursing Ratio					
77		729		2 - 105					
CED	BW	WW	YW	SC	MILK	RE	\$W	\$M	
8	0.5	70	122	.37	22	.79	61	75	

% Actual weight as of December 31, 2022: 1488 lbs.

37 COLEMAN CHARLO 1440

BULL 20500592 TATTOO 1440 DOB: 06/28/21

O C C Paxton 730P
Coleman Charlo 0256
 16879074 Bohi Abigale 6014

GDAR Game Day 449
Coleman Donna 439
 17914042 Coleman Donna 714

O C C Focus 813F
 O C C Blackbird 736K
 Sitz Traveler 8180
 SAV Abigale 6062
 Boyd New Day 8005
 G D A R Miss Wix 474
 Connealy Onward
 Coleman Donna 386

BW		205 Wt		Dam's Nursing Ratio					
84		809		5 - 107					
CED	BW	WW	YW	SC	MILK	RE	\$W	\$M	
12	-0.7	47	87	1.25	28	.56	57	81	

% Actual weight as of December 31, 2022: 1500 lbs.

40 COLEMAN MARSHALL 1741

BULL 20503459 TATTOO 1741 DOB: 07/04/21

SAV Resource 1441
Coleman Marshall 7170
 19102287 Coleman Donna 197

Coleman Charlo 0256
Coleman Blackcap 8618
 19492052 Coleman Blackcap 6522

Rito 707 of Ideal 3407 7075
 SAV Blackcap May 4136
 Basin Rainmaker 654X
 KMK Donna J311
 O C C Paxton 730P
 Bohi Abigale 6014
 Coleman Juneau 3345
 Coleman Blackcap 3453

BW		205 Wt		Dam's Nursing Ratio					
87		744		2 - 108					
CED	BW	WW	YW	SC	MILK	RE	\$W	\$M	
6	1.0	63	110	.21	28	.68	63	91	

% Actual weight as of December 31, 2022: 1470 lbs.

41 COLEMAN TRIUMPH 1494

BULL 20503401 TATTOO 1494 DOB: 06/29/21

Coleman Bravo 6313
Coleman Triumph 9145
 19555917 Lawsons Chloe C815

Cole Creek Black Cedar 46P
Coleman Donna 5212
 18405465 Coleman Donna 0308

Coleman Charlo 0256
 Coleman Donna 714
 SAV Renown 3439
 Lawsons Chloe Z341
 CH Quantum 6247
 Cole Creek Clova Juanada 67
 O C C Juneau 807J
 Coleman Donna 732

BW		205 Wt		Dam's Nursing Ratio					
78		708		5 - 102					
CED	BW	WW	YW	SC	MILK	RE	\$W	\$M	
9	-0.6	59	100	1.18	25	.39	59	87	

% Actual weight as of December 31, 2022: 1438 lbs.



COLEMAN DONNA 5212 – DAM OF LOT 41.

YOUR MATERNAL SOURCE

42 COLEMAN ROBUST 1493

BULL 20503400 TATTOO 1493 DOB: 06/28/21



BC Robust 0807
18456252 BC 327-8 CP Belle 0-807

Coleman Donna 4350
18105692 Coleman Donna 2254

BC Eagle Eye 110-7
BC 2266 Prides Lass 4132 680
BC Pure Pride 327-8
BC 607 CP Belle MF 807
N Bar Emulation EXT
Wulffs Erica Dianna C116
Coleman Juneau 044
Coleman Donna 905

BW 205 Wt Dam's Nursing Ratio
90 704 6 - 101

CED	BW	WW	YW	SC	MILK	RE	\$W	\$M
8	1.2	57	92	-.06	18	.47	49	71

% Actual weight as of December 31, 2022: 1426 lbs.



COLEMAN DONNA EVERELDA ENTENSE 2406 -
PATHFINDER® DAM OF LOT 43.

43 COLEMAN BRAVO 1486

BULL 20503397 TATTOO 1486 DOB: 07/02/21



Coleman Bravo 6313
18734838 Coleman Donna 714

Coleman Everelda Entense2406
17544770 BT Everelda Entense 613L

O C C Paxton 730P
Bohi Abigale 6014
Connealy Onward
Coleman Donna 386
O C C Juneau 807J
Coleman Donna 714
Sitz Traveler 6802
BT Everelda Entense 567H

BW 205 Wt Dam's Nursing Ratio
84 773 8 - 109

CED	BW	WW	YW	SC	MILK	RE	\$W	\$M
13	-0.3	57	97	.79	29	.37	62	94

% Actual weight as of December 31, 2022: 1462 lbs.

46 COLEMAN NATURAL LAW 1418

BULL 20500588 TATTOO 1418 DOB: 06/28/21



Bar-E-L Natural Law 52Y
19310190 Bar-E-L Magnolia 143K

Coleman Donna 504
18238090 Coleman Donna 714

G A R Grid Maker
S A V Abigale 0451
Bar E L MCC 365 Icon 20H
Double Four Duchess 12G
Rito 707 of Ideal 3407 7075
S A V Blackcap May 4136
Connealy Onward
Coleman Donna 386

BW 205 Wt Dam's Nursing Ratio
84 696 4 - 110

CED	BW	WW	YW	SC	MILK	RE	\$W	\$M
9	1.8	62	119	.97	25	.74	54	58

% Actual weight as of December 31, 2022: 1458 lbs.

44 COLEMAN SUMMITT 1743

BULL 20503461 TATTOO 1743 DOB: 07/05/21



ZWT Summitt 6507
18561289 Coleman Donna 714

Coleman Everelda Entense9600
19583499 Coleman Everelda Entense7507

Rito 707 of Ideal 3407 7075
S A V Blackcap May 4136
Connealy Onward
Coleman Donna 386
O C C Paxton 730P
Bohi Abigale 6014
Coleman Cedar Ridge 4212
Coleman Everelda Entense2423

BW 205 Wt Dam's Nursing Ratio
72 735 1 - 111

CED	BW	WW	YW	SC	MILK	RE	\$W	\$M
13	-0.9	67	111	.86	26	.52	68	94

% Actual weight as of December 31, 2022: 1422 lbs.

47 COLEMAN ROBUST 1550

BULL 20503418 TATTOO 1550 DOB: 06/29/21



BC Robust 0807
18456252 BC 327-8 CP Belle 0-807

Coleman Donna 8188
19403167 Coleman Donna 197

BC Eagle Eye 110-7
BC 2266 Prides Lass 4132 680
BC Pure Pride 327-8
BC 607 CP Belle MF 807
HF Kodiak 5R
TLA Beauty 5R
Basin Rainmaker 654X
KMK Donna J311

BW 205 Wt Dam's Nursing Ratio
90 719 2 - 110

CED	BW	WW	YW	SC	MILK	RE	\$W	\$M
4	1.5	61	100	.34	22		53	66

% Actual weight as of December 31, 2022: 1400 lbs.

45 COLEMAN BRAVO 1703

BULL 20503445 TATTOO 1703 DOB: 06/29/21



Coleman Bravo 6313
18734838 Coleman Donna 714

Coleman Donna 5514
18402858 Coleman Donna 2420

O C C Paxton 730P
Bohi Abigale 6014
Connealy Onward
Coleman Donna 386
R R Rito 707
Coleman Donna 714
Coleman Regis 904
Coleman Donna 8309

BW 205 Wt Dam's Nursing Ratio
78 665 5 - 102

CED	BW	WW	YW	SC	MILK	RE	\$W	\$M
14	-0.8	51	88	.25	21	.32	49	92

% Actual weight as of December 31, 2022: 1420 lbs.



COLEMAN DONNA 0441 - MATERNAL SISTER
TO LOT 47.

% COLEMAN ANGUS



The Key to the Puzzle = Balance

It's the hardest thing to keep in the front of our minds. We always want to think that bigger is better or we buy bulls based on spread EPD's, or we choose a bull because he has one trait that really stands out. We've all been guilty of it but the real key is "balance." I really believe that this is one of the hardest, if not the hardest, hurdle in breeding cattle. If we stay focused on this, it will make us more profitable and better cattle breeders.



48 COLEMAN NATURAL LAW 1419

BULL 20500589 TATTOO 1419 DOB: 06/28/21



S A V Bismarck 5682
Bar-E-L Natural Law 52Y
 19310190 Bar-E-L Magnolia 143K

HF El Tigre 28U
HF Echo 111Y
 19780993 HF Echo 207N

G A R Grid Maker
 S A V Abigale 0451
 Bar E L MCC 365 Icon 20H
 Double Four Duchess 12G
 HF Kodiak 5R
 HF Echo 84R
 TC Freedom 104
 Duralta 14C Echo 32E

BW		205 Wt		Dam's Nursing Ratio					
92		709		-					
CED	BW	WW	YW	SC	MILK	RE	\$W	\$M	
3	3.1	47	90	1.18	32	.40	44	53	

% Actual weight as of December 31, 2022: 1482 lbs.

49 COLEMAN MAVERICK 1726

BULL 20503451 TATTOO 1726 DOB: 07/25/21



Coleman Charlo 0256
Coleman Maverick 5322
 18402732 Coleman Donna 3202

Pine Coulee Traveler 39B
JVC Donna 625
 18501973 Tar Donna 222

O C C Paxton 730P
 Bohi Abigale 6014
 Wulffs Ext 6106
 Coleman Donna 714
 FairView Traveler 1171
 MW Black Nellie Rita 032
 O C C Paxton 730P
 Coleman Donna 6154

BW		205 Wt		Dam's Nursing Ratio					
82		691		4 - 107					
CED	BW	WW	YW	SC	MILK	RE	\$W	\$M	
12	-0.6	55	99	1.84	26	.37	55	75	

% Actual weight as of December 31, 2022: 1420 lbs.



COLEMAN DONNA 8265 - FLUSH SISTER TO THE DAM OF LOT 51.

50 COLEMAN NATURAL LAW 1408

BULL 20500585 TATTOO 1408 DOB: 06/28/21



S A V Bismarck 5682
Bar-E-L Natural Law 52Y
 19310190 Bar-E-L Magnolia 143K

S A V Resource 1441
Coleman Donna 504
 18238090 Coleman Donna 714

G A R Grid Maker
 S A V Abigale 0451
 Bar E L MCC 365 Icon 20H
 Double Four Duchess 12G
 Rito 707 of Ideal 3407 7075
 S A V Blackcap May 4136
 Connealy Onward
 Coleman Donna 386

BW		205 Wt		Dam's Nursing Ratio					
78		640		4 - 110					
CED	BW	WW	YW	SC	MILK	RE	\$W	\$M	
9	1.8	62	119	.97	25	.74	54	58	

% Actual weight as of December 31, 2022: 1418 lbs.

51 COLEMAN ROBUST 1574

BULL 20503427 TATTOO 1574 DOB: 07/04/21



BC Surveyor 680D
BC Robust 0807
 18456252 BC 327-8 CP Belle 0-807

S A V President 6847
Coleman Donna 8304
 19402573 Coleman Donna 0308

BC Eagle Eye 110-7
 BC 2266 Prides Lass 4132 680
 BC Pure Pride 327-8
 BC 607 CP Belle MF 807
 Coleman Charlo 0256
 S A V Blackcap May 4136
 O C C Juneau 807J
 Coleman Donna 732

BW		205 Wt		Dam's Nursing Ratio					
91		814		2 - 112					
CED	BW	WW	YW	SC	MILK	RE	\$W	\$M	
3	2.9	72	109	.96	18	.48	60	79	

% Actual weight as of December 31, 2022: 1380 lbs.

52 COLEMAN TRIUMPH 1535

BULL 20503414 TATTOO 1535 DOB: 06/29/21



Coleman Bravo 6313
Coleman Triumph 9145
 19555917 Lawsons Chloe C815

S A V Renown 3439
Coleman Everelda Entense7304
 19103418 Coleman Everelda Entense3318

Coleman Charlo 0256
 Coleman Donna 714
 S A V Renown 3439
 Lawsons Chloe Z341
 Rito 707 of Ideal 3407 7075
 S A V Blackcap May 4136
 Coleman Charlo 0256
 Coleman Everelda Entense1169

BW		205 Wt		Dam's Nursing Ratio					
84		674		3 - 106					
CED	BW	WW	YW	SC	MILK	RE	\$W	\$M	
7	-0.7	63	109	1.07	27	.63	63	85	

% Actual weight as of December 31, 2022: 1422 lbs.

53 COLEMAN RESOURCE 1739

BULL 20503458 TATTOO 1739 DOB: 07/03/21



Rito 707 of Ideal 3407 7075
S A V Resource 1441
 17016597 S A V Blackcap May 4136

Coleman Bravo 6313
Coleman Polly 8612
 19492050 Coleman Polly 9231

R R Rito 707
 Ideal 3407 of 1418 076
 S A V 8180 Traveler 004
 S A V May 2397
 Coleman Charlo 0256
 Coleman Donna 714
 D H D Traveler 6807
 M H Polly 850

BW		205 Wt		Dam's Nursing Ratio					
75		682		2 - 102					
CED	BW	WW	YW	SC	MILK	RE	\$W	\$M	
11	0.1	60	111	.48	24	.71	54	71	

% Actual weight as of December 31, 2022: 1400 lbs.

PERFORMANCE TESTED BULL SALE %

54 COLEMAN MAVERICK 1723

BULL 20503448 TATTOO 1723 DOB: 08/16/21



Coleman Charlo 0256
Coleman Maverick 5322
 18402732 Coleman Donna 3202

Coleman Juneau 3345
Coleman Rita 6501
 18734992 Coleman Rita 4481

O C C Paxton 730P
 Bohi Abigale 6014
 Wulffs Ext 6106
 Coleman Donna 714
 Coleman Juneau 044
 Coleman Donna 801
 Coleman Charlo 0256
 Coleman Rita 8219

BW 205 Wt Dam's Nursing Ratio
 85 722 4 - 110

CED	BW	WW	YW	SC	MILK	RE	\$W	\$M
12	-0.6	55	103	1.90	28	.57	56	78

% Actual weight as of December 31, 2022: 1410 lbs.



COLEMAN ABIGALE 0277 - FLUSH SISTER TO THE DAM OF LOT 58.

55 COLEMAN PLAYMAKER 1654

BULL 20503441 TATTOO 1654 DOB: 07/15/21



GDAR Game Day 449
Coleman Playmaker 427
 17914039 Coleman Donna 714

Coleman Charlo 0256
Coleman Donna 9427
 19583446 Coleman Donna 7224

Boyd New Day 8005
 G D A R Miss Wix 474
 Connealy Onward
 Coleman Donna 386
 O C C Paxton 730P
 Bohi Abigale 6014
 S A V Resource 1441
 Coleman Donna 714

BW 205 Wt Dam's Nursing Ratio
 82 800 1 - 121

CED	BW	WW	YW	SC	MILK	RE	\$W	\$M
7	-0.3	71	125	1.79	29	.51	72	93

% Actual weight as of December 31, 2022: 1520 lbs.

58 COLEMAN NATURAL LAW 1555

BULL 20517407 TATTOO 1555 DOB: 07/04/21



S A V Bismarck 5682
Bar-E-L Natural Law 52Y
 19310190 Bar-E-L Magnolia 143K

O C C Paxton 730P
Coleman Abigale 8208
 19400598 Bohi Abigale 6014

G A R Grid Maker
 S A V Abigale 0451
 Bar E L MCC 365 Icon 20H
 Double Four Duchess 12G
 O C C Focus 813F
 O C C Blackbird 736K
 Sitz Traveler 8180
 S A V Abigale 6062

BW 205 Wt Dam's Nursing Ratio
 82 704 2 - 104

CED	BW	WW	YW	SC	MILK	RE	\$W	\$M
7	1.8	59	109	1.57	24	.49	50	45

% Actual weight as of December 31, 2022: 1524 lbs.

56 COLEMAN BRAVO 1482

BULL 20503395 TATTOO 1482 DOB: 06/26/21



Coleman Charlo 0256
Coleman Bravo 6313
 18734838 Coleman Donna 714

Coleman Navigator 614
Coleman Donna 856
 19243304 Coleman Donna 0308

O C C Paxton 730P
 Bohi Abigale 6014
 Connealy Onward
 Coleman Donna 386
 Cole Creek Black Cedar 46P
 Coleman Eriskay 291
 O C C Juneau 807J
 Coleman Donna 732

BW 205 Wt Dam's Nursing Ratio
 72 704 2 - 101

CED	BW	WW	YW	SC	MILK	RE	\$W	\$M
14	-0.8	61	100	1.34	19	.37	57	93

% Actual weight as of December 31, 2022: 1460 lbs.

59 COLEMAN JUSTIFIED 1620

BULL 20505918 TATTOO 1620 DOB: 07/08/21



Connealy Judgment
KG Justified 3023
 17707279 KG Miss Magic 1443

Leachman Right Time
Coleman Abigale 9277
 19720583 Coleman Abigale 0277

Connealy Consensus 7229
 Entrine of Conanga 9876
 Sitz Wisdom 481T
 KG Miss Magic 3528
 N Bar Emulation EXT
 Leachman Erica 0025
 O C C Paxton 730P
 Bohi Abigale 6014

BW 205 Wt Dam's Nursing Ratio
 68 737 1 - 112

CED	BW	WW	YW	SC	MILK	RE	\$W	\$M
14	-2.1	64	118	.93	31	.20	67	73

% Actual weight as of December 31, 2022: 1480 lbs.

57 COLEMAN TRIUMPH 1563

BULL 20503423 TATTOO 1563 DOB: 07/03/21



Coleman Bravo 6313
Coleman Triumph 9145
 19555917 Lawsons Chloe C815

S A V Renown 3439
Coleman Donna 8254
 19403297 Coleman Donna 194

Coleman Charlo 0256
 Coleman Donna 714
 S A V Renown 3439
 Lawsons Chloe Z341
 Rito 707 of Ideal 3407 7075
 S A V Blackcap May 4136
 Sitz Upward 307R
 Coleman Donna 386

BW 205 Wt Dam's Nursing Ratio
 87 702 2 - 102

CED	BW	WW	YW	SC	MILK	RE	\$W	\$M
6	1.3	69	123	.84	25	.58	62	90

% Actual weight as of December 31, 2022: 1512 lbs.



COLEMAN DONNA 8254 - DAM OF LOT 57.

% COLEMAN ANGUS



COLEMAN ROCK 1579 – HE SELLS AS LOT 63.



COLEMAN DONNA 7181 – FLUSH SISTER TO THE DAM OF LOT 62.

60 COLEMAN MAVERICK 1729

BULL 20503452 TATTOO 1729 DOB: 07/24/21



Coleman Charlo 0256
Coleman Maverick 5322
18402732 Coleman Donna 3202

SAV Resource 1441
Coleman Everelda Entense 7512
19110862 Coleman Everelda Entense 703

OCC Paxton 730P
Bohi Abigale 6014
Wulffs Ext 6106
Coleman Donna 714
Rito 707 of Ideal 3407 7075
SAV Blackcap May 4136
Wulffs Ext 6106
BT Everelda Entense 613L

BW	205 Wt	Dam's Nursing Ratio
86	658	3 - 100

CED	BW	WW	YW	SC	MILK	RE	\$W	\$M
13	-0.7	54	108	1.24	24	.61	49	76

% Actual weight as of December 31, 2022: 1452 lbs.

61 COLEMAN EMULATION EXT 1747

BULL 20503463 TATTOO 1747 DOB: 07/25/21



Sinclair Emulation 5522 XP
HL Emulation Rito 6FX5
18461600 HL Primrose 4RI4 9P50

Coleman Navigator 614
Coleman Polly 9641
19583347 Coleman Polly 2434

Emulation N Bar 5522
N Bar Primrose Y3051
Rito 707 of Ideal 3407 7075
Sinclair Primrose 9P50 6S9
Cole Creek Black Cedar 46P
Coleman Eriskay 291
Coleman Missing Link 9246
Coleman Polly 9251

BW	205 Wt	Dam's Nursing Ratio
78	671	1 - 102

CED	BW	WW	YW	SC	MILK	RE	\$W	\$M
7	1.1	59	103	.26	23	.49	53	57

% Actual weight as of December 31, 2022: 1484 lbs.

“Good morning, Larry,
Abigale 9125 had a really nice heifer calf this a.m.
Both are looking great and are doing fine. Just
thought I would let you know. Thanks for making
a great pair.”

Scott Woods
Kansas

62 COLEMAN REBOUND 1521

BULL 20503409 TATTOO 1521 DOB: 07/30/21



SAV Renown 3439
Coleman Rebound 7220
19102306 Coleman Donna 714

Coleman Charlo 0256
Coleman Donna 7174
19102645 Coleman Donna 197

Rito 707 of Ideal 3407 7075
SAV Blackcap May 4136
Connealy Onward
Coleman Donna 386
OCC Paxton 730P
Bohi Abigale 6014
Basin Rainmaker 654X
KMK Donna J311

BW	205 Wt	Dam's Nursing Ratio
92	718	3 - 107

CED	BW	WW	YW	SC	MILK	RE	\$W	\$M
3	2.0	63	119	1.07	31	.63	59	80

% Actual weight as of December 31, 2022: 1512 lbs.

63 COLEMAN ROCK 1579

BULL 20503429 TATTOO 1579 DOB: 07/03/21



OCC Juneau 807J
Coleman Rock 7200
19107936 Coleman Donna 714

Coleman Bravo 6313
Coleman Everelda Entense 8365
19400640 Coleman Everelda Entense 3280

OCC Emblazon 854E
OCC Dixie Erica 903E
Connealy Onward
Coleman Donna 386
Coleman Charlo 0256
Coleman Donna 714
Wulffs Ext 6106
Coleman Everelda Entense 8165

BW	205 Wt	Dam's Nursing Ratio
92	703	2 - 102

CED	BW	WW	YW	SC	MILK	RE	\$W	\$M
8	1.2	65	114	.56	25		57	84

% Actual weight as of December 31, 2022: 1480 lbs.

64 COLEMAN ROCK 1584

BULL 20503431 TATTOO 1584 DOB: 06/27/21



OCC Juneau 807J
Coleman Rock 7200
19107936 Coleman Donna 714

Coleman Bravo 6313
Coleman Donna 8393
19400650 Coleman Donna 5225

OCC Emblazon 854E
OCC Dixie Erica 903E
Connealy Onward
Coleman Donna 386
Coleman Charlo 0256
Coleman Donna 714
Connealy Onward
Coleman Donna 197

BW	205 Wt	Dam's Nursing Ratio
84	692	2 - 106

CED	BW	WW	YW	SC	MILK	RE	\$W	\$M
12	-0.4	65	114	1.47	28		62	89

% Actual weight as of December 31, 2022: 1488 lbs.

YOUR MATERNAL SOURCE



COLEMAN DONNA 0308 – PATHFINDER® GRANDAM OF LOTS 56, 91, 92, 127, AND 179.



COLEMAN BRAVO 1598 – HE SELLS AS LOT 68.

65 COLEMAN ROBUST 1573

BULL 20503426 TATTOO 1573 DOB: 06/30/21



BC Robust 0807
18456252 BC 327-8 CP Belle 0-807

Coleman Donna 8298
19400622 Coleman Donna 0308

BC Eagle Eye 110-7
BC 2266 Prides Lass 4132 680
BC Pure Pride 327-8
BC 607 CP Belle MF 807
Coleman Charlo 0256
S AV Blackcap May 4136
O C C Juneau 807J
Coleman Donna 732

BW	205 Wt	Dam's Nursing Ratio
78	708	2 - 101

CED	BW	WW	YW	SC	MILK	RE	\$W	\$M
7	1.0	68	102	.90	17	.62	60	82

% Actual weight as of December 31, 2022: 1380 lbs.

68 COLEMAN BRAVO 1598

BULL 20503434 TATTOO 1598 DOB: 07/07/21



Coleman Bravo 6313
18734838 Coleman Donna 714

Coleman Donna 9218
19717713 Coleman Donna 4203

O C C Paxton 730P
Bohi Abigale 6014
Connealy Onward
Coleman Donna 386
Rito 707 of Ideal 3407 7075
S AV Blackcap May 4136
Connealy Thunder
Coleman Donna 714

BW	205 Wt	Dam's Nursing Ratio
85	672	1 - 102

CED	BW	WW	YW	SC	MILK	RE	\$W	\$M
8	1.8	68	125	1.00	23	.58	56	94

% Actual weight as of December 31, 2022: 1410 lbs.

66 COLEMAN MAVERICK 1724

BULL 20503449 TATTOO 1724 DOB: 07/22/21



Coleman Maverick 5322
18402732 Coleman Donna 3202

Coleman Prides of Lass 6506
18734993 Coleman Prides of Lass 4480

O C C Paxton 730P
Bohi Abigale 6014
Wulffs Ext 6106
Coleman Donna 714
Coleman Juneau 044
Coleman Donna 801
Coleman Charlo 0256
Coleman Prides of Lass 1303

BW	205 Wt	Dam's Nursing Ratio
75	670	4 - 106

CED	BW	WW	YW	SC	MILK	RE	\$W	\$M
15	-1.8	54	96	.84	25	.55	56	91

% Actual weight as of December 31, 2022: 1416 lbs.

69 COLEMAN PLAYMAKER 1638

BULL 20503439 TATTOO 1638 DOB: 07/13/21



Coleman Playmaker 427
17914039 Coleman Donna 714

Coleman Donna 9310
19583467 Coleman Donna 4203

GDAR Game Day 449
Boyd New Day 8005
G D A R Miss Wix 474
Connealy Onward
Coleman Donna 386
O C C Paxton 730P
Bohi Abigale 6014
Connealy Thunder
Coleman Donna 714

BW	205 Wt	Dam's Nursing Ratio
68	713	1 - 108

CED	BW	WW	YW	SC	MILK	RE	\$W	\$M
12	-2.3	61	110	.93	33	.47	68	99

% Actual weight as of December 31, 2022: 1388 lbs.

67 COLEMAN ROCK 1576

BULL 20503428 TATTOO 1576 DOB: 07/19/21



Coleman Rock 7200
19107936 Coleman Donna 714

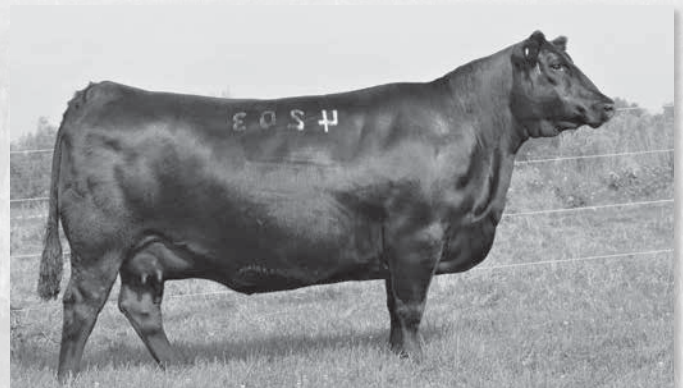
Coleman Donna 8338
19400633 Coleman Donna 514

O C C Emblazon 854E
O C C Dixie Erica 903E
Connealy Onward
Coleman Donna 386
Cole Creek Black Cedar 46P
Coleman Eriskay 291
Coleman Charlo 0256
Coleman Donna 066

BW	205 Wt	Dam's Nursing Ratio
76	767	2 - 108

CED	BW	WW	YW	SC	MILK	RE	\$W	\$M
10	-0.6	77	125	1.21	25		72	84

% Actual weight as of December 31, 2022: 1460 lbs.



COLEMAN DONNA 4203 – GRANDDAM OF LOTS 69, 81, 88, AND 89.

% COLEMAN ANGUS



COLEMAN DONNA 9406 – DAM OF LOT 74.

72 COLEMAN STELLAR 1606

BULL 20512908 TATTOO 1606 DOB: 07/10/21

Mohnen Substantial 272
Sitz Stellar 726D
 18397542 SITZ Pride 200B

Coleman Bravo 6313
Coleman Abigale 9244
 19583272 Coleman Abigale 0277

Benfield Substance 8506
 Mohnen Glyn Mawr Elba 1758
 Connealy Final Product
 Sitz Pride 308Y
 Coleman Charlo 0256
 Coleman Donna 714
 O C C Paxton 730P
 Bohi Abigale 6014

	BW	205 Wt	Dam's Nursing Ratio						
	70	661	1 - 100						
CED	BW	WW	YW	SC	MILK	RE	\$W	\$M	
9	-0.2	60	110	.54	24	.58	56	79	

% Actual weight as of December 31, 2022: 1346 lbs.

70 COLEMAN ROCK 1586

BULL 20503432 TATTOO 1586 DOB: 06/29/21

O C C Juneau 807J
Coleman Rock 7200
 19107936 Coleman Donna 714

Coleman Playmaker 427
Coleman Donna 8459
 19400668 Coleman Donna 6308

O C C Emblazon 854E
 O C C Dixie Erica 903E
 Connealy Onward
 Coleman Donna 386
 GDAR Game Day 449
 Coleman Donna 714
 Coleman Charlo 0256
 Coleman Donna 0304

	BW	205 Wt	Dam's Nursing Ratio						
	76	667	2 - 101						
CED	BW	WW	YW	SC	MILK	RE	\$W	\$M	
10	-0.8	65	115	1.82	27		61	91	

% Actual weight as of December 31, 2022: 1414 lbs.

73 COLEMAN REBOUND 1525

BULL 20503410 TATTOO 1525 DOB: 07/06/21

S AV Renown 3439
Coleman Rebound 7220
 19102306 Coleman Donna 714

O C C Juneau 807J
Coleman Donna 7198
 19107938 Coleman Donna 714

Rito 707 of Ideal 3407 7075
 S AV Blackcap May 4136
 Connealy Onward
 Coleman Donna 386
 O C C Emblazon 854E
 O C C Dixie Erica 903E
 Connealy Onward
 Coleman Donna 386

	BW	205 Wt	Dam's Nursing Ratio						
	75	732	3 - 110						
CED	BW	WW	YW	SC	MILK	RE	\$W	\$M	
11	-1.3	61	103	.30	33	.72	68	92	

% Actual weight as of December 31, 2022: 1360 lbs.

71 COLEMAN BRAVO 1725

BULL 20503450 TATTOO 1725 DOB: 07/07/21

Coleman Charlo 0256
Coleman Bravo 6313
 18734838 Coleman Donna 714

Coleman Knight 209
Coleman Prides of Lass 6524
 18735000 Coleman Prides of Lass 8114

O C C Paxton 730P
 Bohi Abigale 6014
 Connealy Onward
 Coleman Donna 386
 R R Rito 707
 Coleman Donna 714
 S AV Net Worth 4200
 Coleman Prides of Lass 461

	BW	205 Wt	Dam's Nursing Ratio						
	84	652	4 - 97						
CED	BW	WW	YW	SC	MILK	RE	\$W	\$M	
11	0.2	46	80	.89	18	.48	40	77	

% Actual weight as of December 31, 2022: 1410 lbs.

74 COLEMAN LOGO 1651

BULL 20503440 TATTOO 1651 DOB: 07/23/21

SITZ Logo 12964
Coleman Logo 947
 19559369 Coleman Donna 7100

Coleman Charlo 0256
Coleman Donna 9406
 19583432 Coleman Donna 7158

Sitz Tebow 11860
 SITZ Shauna 3152
 S AV Resource 1441
 Coleman Donna 714
 O C C Paxton 730P
 Bohi Abigale 6014
 Wulffs Ext 6106
 Coleman Donna 040

	BW	205 Wt	Dam's Nursing Ratio						
	80	687	1 - 104						
CED	BW	WW	YW	SC	MILK	RE	\$W	\$M	
11	-0.5	71	122	1.00	25	.43	69	100	

% Actual weight as of December 31, 2022: 1306 lbs.



COLEMAN DIXIE ERICA 0133 – FLUSH SISTER TO THE DAM OF LOTS 75, 77, AND 176.

75 COLEMAN ROCK 1561

BULL 20503422 TATTOO 1561 DOB: 07/21/21

O C C Juneau 807J
Coleman Rock 7200
 19107936 Coleman Donna 714

O C C Paxton 730P
Coleman Dixie Erica 8249
 19400608 Coleman Dixie Erica 8273

O C C Emblazon 854E
 O C C Dixie Erica 903E
 Connealy Onward
 Coleman Donna 386
 O C C Focus 813F
 O C C Blackbird 736K
 Leachman Right Time
 Coleman Dixie Erica 143

	BW	205 Wt	Dam's Nursing Ratio						
	84	705	2 - 104						
CED	BW	WW	YW	SC	MILK	RE	\$W	\$M	
9	0.2	65	109	.58	24	.54	62	78	

% Actual weight as of December 31, 2022: 1432 lbs.

PERFORMANCE TESTED BULL SALE %

76 COLEMAN ROCK 1492

BULL 20503399 TATTOO 1492 DOB: 07/09/21



O C C Juneau 807J
Coleman Rock 7200
 19107936 Coleman Donna 714

Coleman Charlo 0256
Coleman Everelda Entense 432
 18105675 Coleman Everelda Entense 2235

O C C Emblazon 854E
 O C C Dixie Erica 903E
 Connealy Onward
 Coleman Donna 386
 O C C Paxton 730P
 Bohi Abigale 6014
 Coleman Regis 904
 Coleman Everelda Entense 578

BW	205 Wt	Dam's Nursing Ratio
72	740	6 - 116

CED	BW	WW	YW	SC	MILK	RE	\$W	\$M
12	-1.4	71	118	1.08	29	.72	73	83

% Actual weight as of December 31, 2022: 1420 lbs.



COLEMAN DONNA 9435 - DAM OF LOT 80.

77 COLEMAN NATURAL LAW 1551

BULL 20517408 TATTOO 1551 DOB: 06/21/21



S A V Bismarck 5682
Bar-E-L Natural Law 52Y
 19310190 Bar-E-L Magnolia 143K

O C C Paxton 730P
Coleman Dixie Erica 8189
 19400592 Coleman Dixie Erica 8273

G A R Grid Maker
 S A V Abigale 0451
 Bar E L MCC 365 Icon 20H
 Double Four Duchess 12G
 O C C Focus 813F
 O C C Blackbird 736K
 Leachman Right Time
 Coleman Dixie Erica 143

BW	205 Wt	Dam's Nursing Ratio
78	672	2 - 100

CED	BW	WW	YW	SC	MILK	RE	\$W	\$M
10	-0.3	51	96	.19	23	.37	46	60

% Actual weight as of December 31, 2022: 1434 lbs.

80 COLEMAN SUMMITT 1655

BULL 20503442 TATTOO 1655 DOB: 08/01/21



ZWT Summitt 6507
Coleman Summitt 9370
 19583398 Coleman Donna 5412

Coleman Playmaker 427
Coleman Donna 9435
 19583309 Coleman Donna 7244

S A V Renown 3439
 Coleman Donna 714
 Coleman Charlo 0256
 Coleman Donna 0296
 GDAR Game Day 449
 Coleman Donna 714
 Coleman Charlo 0256
 Coleman Donna 2252

BW	205 Wt	Dam's Nursing Ratio
73	695	1 - 105

CED	BW	WW	YW	SC	MILK	RE	\$W	\$M
12	-0.8	61	108	.74	25	.47	61	90

% Actual weight as of December 31, 2022: 1414 lbs.

78 COLEMAN TRIUMPH 1490

BULL 20503398 TATTOO 1490 DOB: 06/28/21



Coleman Bravo 6313
Coleman Triumph 9145
 19555917 Lawsons Chloe C815

Connealy Thunder
Coleman Donna 4203
 18105600 Coleman Donna 714

Coleman Charlo 0256
 Coleman Donna 714
 S A V Renown 3439
 Lawsons Chloe Z341
 Baldridge Kaboom K243 KCF
 Parka of Conanga 241
 Connealy Onward
 Coleman Donna 386

BW	205 Wt	Dam's Nursing Ratio
74	705	4 - 105

CED	BW	WW	YW	SC	MILK	RE	\$W	\$M
15	-3.0	56	103	.49	29	.47	59	92

% Actual weight as of December 31, 2022: 1406 lbs.

81 COLEMAN LOGO 1637

BULL 20503438 TATTOO 1637 DOB: 07/27/21



SITZ Logo 12964
Coleman Logo 947
 19559369 Coleman Donna 7100

Coleman Bravo 6313
Coleman Donna 9308
 19583465 Coleman Donna 4203

Sitz Tebow 11860
 SITZ Shauna 3152
 S A V Resource 1441
 Coleman Donna 714
 Coleman Charlo 0256
 Coleman Donna 714
 Connealy Thunder
 Coleman Donna 714

BW	205 Wt	Dam's Nursing Ratio
78	715	1 - 108

CED	BW	WW	YW	SC	MILK	RE	\$W	\$M
11	0.2	66	118	1.78	29	.47	65	95

% Actual weight as of December 31, 2022: 1380 lbs.

79 COLEMAN CHARLO 1746

BULL 20503462 TATTOO 1746 DOB: 07/01/21



O C C Paxton 730P
Coleman Charlo 0256
 16879074 Bohi Abigale 6014

ZWT Summitt 6507
Coleman Blackcap 9610
 19583508 Coleman Blackcap 6522

O C C Focus 813F
 O C C Blackbird 736K
 Sitz Traveler 8180
 S A V Abigale 6062
 S A V Renown 3439
 Coleman Donna 714
 Coleman Juneau 3345
 Coleman Blackcap 3453

BW	205 Wt	Dam's Nursing Ratio
78	689	1 - 104

CED	BW	WW	YW	SC	MILK	RE	\$W	\$M
10	-0.4	57	99	.46	23	.59	56	87

% Actual weight as of December 31, 2022: 1378 lbs.



COLEMAN DONNA 9220 - MATERNAL SISTER TO THE DAM OF LOT 81.

% COLEMAN ANGUS



COLEMAN DONNA 040 – GRANDDAM OF LOTS 18, 82, 83, 160, AND 187.

84 COLEMAN MAVERICK 1736

BULL 20503455 TATTOO 1736 DOB: 07/24/21

Coleman Charlo 0256
Coleman Maverick 5322
18402732 Coleman Donna 3202

Coleman Bravo 6313
Coleman Rita 8606
19492045 Coleman Rita 4495

O C C Paxton 730P
Bohi Abigale 6014
Wulffs Ext 6106
Coleman Donna 714
Coleman Charlo 0256
Coleman Donna 714
Coleman Missing Link 017
Coleman Rita 1310

	BW	205 Wt	Dam's Nursing Ratio						
	76	670	2 - 102						
CED	BW	WW	YW	SC	MILK	RE	\$W	\$M	
16	-1.8	51	95	1.50	25	.41	51	80	

% Actual weight as of December 31, 2022: 1400 lbs.

82 COLEMAN MARSHALL 1518

BULL 20503408 TATTOO 1518 DOB: 08/13/21

SAV Resource 1441
Coleman Marshall 7170
19102287 Coleman Donna 197

Wulffs Ext 6106
Coleman Donna 7158
19102642 Coleman Donna 040

Rito 707 of Ideal 3407 7075
S AV Blackcap May 4136
Basin Rainmaker 654X
KMK Donna J311
N Bar Emulation EXT
Wulffs Erica Dianna C116
O C C Juneau 807J
Coleman Donna 714

	BW	205 Wt	Dam's Nursing Ratio						
	84	761	3 - 115						
CED	BW	WW	YW	SC	MILK	RE	\$W	\$M	
10	-0.4	69	121	.25	30	.64	70	86	

% Actual weight as of December 31, 2022: 1420 lbs.

85 COLEMAN ROCK 1560

BULL 20503421 TATTOO 1560 DOB: 07/26/21

O C C Juneau 807J
Coleman Rock 7200
19107936 Coleman Donna 714

O C C Paxton 730P
Coleman Abigale 8245
19400607 Bohi Abigale 6014

O C C Emblazon 854E
O C C Dixie Erica 903E
Connealy Onward
Coleman Donna 386
O C C Focus 813F
O C C Blackbird 736K
Sitz Traveler 8180
S AV Abigale 6062

	BW	205 Wt	Dam's Nursing Ratio						
	88	687	2 - 102						
CED	BW	WW	YW	SC	MILK	RE	\$W	\$M	
4	1.9	68	116	1.47	22	.43	58	78	

% Actual weight as of December 31, 2022: 1410 lbs.

83 COLEMAN BRAVO 1664

BULL 20503444 TATTOO 1664 DOB: 07/04/21

Coleman Charlo 0256
Coleman Bravo 6313
18734838 Coleman Donna 714

SAV Extension 6856
Coleman Donna 9264
19720765 Coleman Donna 040

O C C Paxton 730P
Bohi Abigale 6014
Connealy Onward
Coleman Donna 386
Sinclair Emulation XXP
S AV Blackcap May 4136
O C C Juneau 807J
Coleman Donna 714

	BW	205 Wt	Dam's Nursing Ratio						
	64	724	-						
CED	BW	WW	YW	SC	MILK	RE	\$W	\$M	
15	-1.6	53	91	.77	30	.51	67	92	

% Actual weight as of December 31, 2022: 1320 lbs.

86 COLEMAN MARSHALL 1559

BULL 20503420 TATTOO 1559 DOB: 07/26/21

SAV Resource 1441
Coleman Marshall 7170
19102287 Coleman Donna 197

Wulffs Ext 6106
Coleman Donna 8239
19403104 Coleman Donna 989

Rito 707 of Ideal 3407 7075
S AV Blackcap May 4136
Basin Rainmaker 654X
KMK Donna J311
N Bar Emulation EXT
Wulffs Erica Dianna C116
R R Rito 707
Coleman Donna 386

	BW	205 Wt	Dam's Nursing Ratio						
	75	704	2 - 104						
CED	BW	WW	YW	SC	MILK	RE	\$W	\$M	
10	-0.5	52	91	.83	26	.55	54	81	

% Actual weight as of December 31, 2022: 1400 lbs.



COLEMAN ABIGALE 0277 – GRANDDAM OF LOTS 58, 59, 72, 85, 94, 122, AND 177.

87 COLEMAN ROBUST 1663

BULL 20503443 TATTOO 1663 DOB: 07/03/21

BC Surveyor 680D
BC Robust 0807
18456252 BC 327-8 CP Belle 0-807

HF Kodiak 5R
Coleman Donna 8114
19248261 Coleman Donna 714

BC Eagle Eye 110-7
BC 2266 Prides Lass 4132 680
BC Pure Pride 327-8
BC 607 CP Belle MF 807
Sandy Bar Advantage 43M
Wilbar Ruby 955N
Connealy Onward
Coleman Donna 386

	BW	205 Wt	Dam's Nursing Ratio						
	75	679	2 - 101						
CED	BW	WW	YW	SC	MILK	RE	\$W	\$M	
13	-1.3	58	92	1.33	19	.53	55	75	

% Actual weight as of December 31, 2022: 1380 lbs.

YOUR MATERNAL SOURCE

88 COLEMAN PLAYMAKER 1589

BULL 20503433 TATTOO 1589 DOB: 07/21/21



GDAR Game Day 449
Coleman Playmaker 427
 17914039 Coleman Donna 714

S A V Resource 1441
Coleman Donna 9154
 19539773 Coleman Donna 3125

Boyd New Day 8005
 G D A R Miss Wix 474
 Connealy Onward
 Coleman Donna 386
 Rito 707 of Ideal 3407 7075
 S A V Blackcap May 4136
 Leachman Right Time
 Coleman Donna 714

BW		205 Wt		Dam's Nursing Ratio					
73		684		1 - 104					
CED	BW	WW	YW	SC	MILK	RE	\$W	\$M	
9	-0.3	64	113	.78	26	.60	62	81	

% Actual weight as of December 31, 2022: 1380 lbs.



COLEMAN DONNA 6143 - GRANDDAM OF LOT 89.

89 COLEMAN RESOURCE 1570

BULL 20503424 TATTOO 1570 DOB: 07/19/21



S A V Resource 1441
Coleman Resource 710
 18933682 Coleman Donna 4121

Coleman Bravo 6313
Coleman Donna 8284
 19400616 Coleman Donna 6143

Rito 707 of Ideal 3407 7075
 S A V Blackcap May 4136
 O C C Juneau 807J
 Coleman Donna 005
 Coleman Charlo 0256
 Coleman Donna 714
 Wulffs Ext 6106
 KMK Donna J311

BW		205 Wt		Dam's Nursing Ratio					
72		690		2 - 107					
CED	BW	WW	YW	SC	MILK	RE	\$W	\$M	
11	0.4	65	112	.04	26	.56	62	82	

% Actual weight as of December 31, 2022: 1360 lbs.

92 COLEMAN PLAYMAKER 1624

BULL 20503437 TATTOO 1624 DOB: 07/11/21



GDAR Game Day 449
Coleman Playmaker 427
 17914039 Coleman Donna 714

Coleman Bravo 6313
Coleman Donna 9283
 19583280 Coleman Donna 0308

Boyd New Day 8005
 G D A R Miss Wix 474
 Connealy Onward
 Coleman Donna 386
 Coleman Charlo 0256
 Coleman Donna 714
 O C C Juneau 807J
 Coleman Donna 732

BW		205 Wt		Dam's Nursing Ratio					
72		686		1 - 104					
CED	BW	WW	YW	SC	MILK	RE	\$W	\$M	
10	-0.3	58	98	.82	28	.35	62	101	

% Actual weight as of December 31, 2022: 1302 lbs.

90 COLEMAN ROCK 1549

BULL 20503417 TATTOO 1549 DOB: 06/29/21



O C C Juneau 807J
Coleman Rock 7200
 19107936 Coleman Donna 714

Leachman Right Time
Coleman Donna 8187
 19403103 Coleman Donna 989

O C C Emblazon 854E
 O C C Dixie Erica 903E
 Connealy Onward
 Coleman Donna 386
 N Bar Emulation EXT
 Leachman Erica 0025
 R R Rito 707
 Coleman Donna 386

BW		205 Wt		Dam's Nursing Ratio					
75		667		2 - 100					
CED	BW	WW	YW	SC	MILK	RE	\$W	\$M	
11	-1.1	58	102	.68	26	.48	58	82	

% Actual weight as of December 31, 2022: 1388 lbs.

93 COLEMAN NATURAL LAW 1548

BULL 20503416 TATTOO 1548 DOB: 07/04/21



S A V Bismarck 5682
Bar-E-L Natural Law 52Y
 19310190 Bar-E-L Magnolia 143K

O C C Paxton 730P
Coleman Dixie Erica 8186
 19400591 Coleman Dixie Erica 8277

G A R Grid Maker
 S A V Abigale 0451
 Bar E L M C C 365 Icon 20H
 Double Four Duchess 12G
 O C C Focus 813F
 O C C Blackbird 736K
 N Bar Emulation EXT
 Coleman Dixie Erica 143

BW		205 Wt		Dam's Nursing Ratio					
90		692		2 - 104					
CED	BW	WW	YW	SC	MILK	RE	\$W	\$M	
3	2.6	56	101	1.32	24	.45	46	51	

% Actual weight as of December 31, 2022: 1406 lbs.

91 COLEMAN BRAVO 1623

BULL 20503436 TATTOO 1623 DOB: 07/09/21



Coleman Charlo 0256
Coleman Bravo 6313
 18734838 Coleman Donna 714

S A V Resource 1441
Coleman Donna 9282
 19717728 Coleman Donna 0308

O C C Paxton 730P
 Bohi Abigale 6014
 Connealy Onward
 Coleman Donna 386
 Rito 707 of Ideal 3407 7075
 S A V Blackcap May 4136
 O C C Juneau 807J
 Coleman Donna 732

BW		205 Wt		Dam's Nursing Ratio					
67		668		1 - 101					
CED	BW	WW	YW	SC	MILK	RE	\$W	\$M	
14	-0.9	58	105	.44	22	.52	54	96	

% Actual weight as of December 31, 2022: 1386 lbs.



COLEMAN DIXIE ERICA 0146 - FLUSH SISTER TO THE DAM OF LOT 93.

% COLEMAN ANGUS



COLEMAN ABIGALE 0277 – GRANDDAM OF LOTS 58, 59, 72, 85, 94, 122, AND 177.

95 COLEMAN MARSHALL 1506



BULL 20503404 TATTOO 1506 DOB: 07/17/21

S AV Resource 1441
Coleman Marshall 7170
 19102287 Coleman Donna 197

Coleman Juneau 044
Coleman Abigale 6290
 18734944 Coleman Abigale 0277

Rito 707 of Ideal 3407 7075
 S AV Blackcap May 4136
 Basin Rainmaker 654X
 KMK Donna J311
 O C C Juneau 807J
 Coleman Donna 714
 O C C Paxton 730P
 Bohi Abigale 6014

	BW	205 Wt	Dam's Nursing Ratio						
	75	660	4 - 108						
CED	BW	WW	YW	SC	MILK	RE	\$W	\$M	
12	-0.9	54	101	.34	29	.61	55	74	

% Actual weight as of December 31, 2022: 1340 lbs.

94 COLEMAN LOGO 1616



BULL 20503435 TATTOO 1616 DOB: 07/23/21

SITZ Logo 12964
Coleman Logo 947
 19559369 Coleman Donna 7100

Coleman Bravo 6313
Coleman Abigale 9268
 19583418 Coleman Abigale 0277

Sitz Tebow 11860
 SITZ Shauna 3152
 S AV Resource 1441
 Coleman Donna 714
 Coleman Charlo 0256
 Coleman Donna 714
 O C C Paxton 730P
 Bohi Abigale 6014

	BW	205 Wt	Dam's Nursing Ratio						
	68	662	1 - 100						
CED	BW	WW	YW	SC	MILK	RE	\$W	\$M	
13	-1.0	62	109	1.99	26	.41	62	91	

% Actual weight as of December 31, 2022: 1368 lbs.

96 COLEMAN REBOUND 1531



BULL 20503413 TATTOO 1531 DOB: 07/24/21

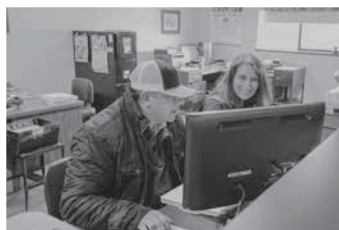
S AV Renown 3439
Coleman Rebound 7220
 19102306 Coleman Donna 714

Coleman Charlo 0256
Coleman Donna 7245
 19102661 Coleman Donna 2252

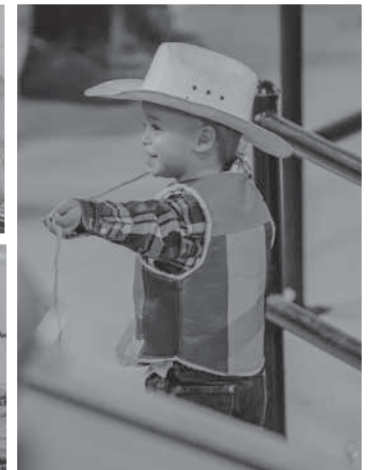
Rito 707 of Ideal 3407 7075
 S AV Blackcap May 4136
 Connealy Onward
 Coleman Donna 386
 O C C Paxton 730P
 Bohi Abigale 6014
 Wulffs Ext 6106
 Coleman Donna 989

	BW	205 Wt	Dam's Nursing Ratio						
	87	669	3 - 104						
CED	BW	WW	YW	SC	MILK	RE	\$W	\$M	
6	0.5	58	102	.71	29	.41	60	85	

% Actual weight as of December 31, 2022: 1326 lbs.



THANK YOU FOR YOUR CONTINUED SUPPORT %



% COLEMAN ANGUS TEAM

We want to Thank these men for all their hard work and dedication, each and every day!



Luke Harl



Hector Esparza



Chico Stipe



Moises, Coya, Diego, and Daniel



DEICHMANN LIVESTOCK BROKERAGE
Dan & Marilyn Deichmann

Over the years, through up and down markets, the Colemans have weathered every storm, producing quality Angus cattle. Today, this program continues to breed top-tier genetics that are the bread and butter of their loyal customers. When you buy bulls here, you're getting the Coleman and Trexler quality to produce the kind of steers and heifers that will keep your herd at the very top of the beef business. Whether you need one bull or a truckload, you are getting the Coleman and Trexler trademark handshake, and integrity of service that's behind every bull sold.

Each year, buying progeny out of this set of bulls is an exciting part of our business. We see firsthand the success of the genetics when they're on the ground, hitting the scales each fall at load-outs around the country. Our feeding customers are loyal to cattle that work and produce in the feed yard. And the females are key as replacements in every herd they are utilized in. Replacement females just don't come any better.

When we purchase Coleman-Trexler genetics, we can count on the cattle to get the job done in the feed year, and that gives us satisfied, repeat feeder customers. We continue to

be an enthusiastic marketing arm for Coleman-Trexler sired calves, and look forward to working with you on marketing your feeders. With 35 years experience through all phases of the marketing chain, we look forward to working with Coleman-Trexler bull buyers in merchandising their premium feeders, as both rancher and feeders appreciate superior quality genetics.

Give me a call to visit about marketing your calves or yearlings, or assistance with selecting bulls at the sale. See you on sale day!

Sincerely,
Dan Deichmann

P O Box 310 • Hobson, MT 59452 | 406-423-5500 • 406-799-5200 • deichmannlivestock@gmail.com

PERFORMANCE TESTED BULL SALE %



COLEMAN ARROWHEAD 235 – HE SELLS AS LOT 101.

101 COLEMAN ARROWHEAD 235

BULL 20503506 TATTOO 235 DOB: 01/25/22



Coleman Charlo 0256
16879074 Bohi Abigale 6014

Coleman Chloe 9275
19583423 Lawsons Chloe C815

O C C Focus 813F
O C C Blackbird 736K
Sitz Traveler 8180
S AV Abigale 6062
Coleman Charlo 0256
Coleman Donna 714
S AV Renown 3439
Lawsons Chloe Z341



COLEMAN CHLOE 034 – FULL SISTER TO THE DAM OF LOTS 101, 125, 139, AND 155.



LAWSONS CHLOE C815 – GRANDAM OF LOTS 101, 125, 139, AND 155.

	BW	205 Wt	365 Wt	Dam's Nursing Ratio				
	94	854	1459	1 - 110				
CED	BW	WW	YW	SC	MILK	RE	\$W	\$M
4	2.6	74	130	1.43	22	.81	67	71



COLEMAN CHARLO 0256 – HIS SONS SELL AS LOTS 25, 37, 79, 101, 125, 133, 136, 139, 155, 166, 184, AND 185.



COLEMAN CHLOE 9275 – DAM OF LOTS 101, 125, 139, AND 155.

% COLEMAN ANGUS



HUMMEL SOUTH AMERICA

REFERENCE SIRE R. SIRE OF LOTS 102, 103, 104, 105, 106, 113, 114, 123, 130, 170.



RUBETA FONTANA 7567-T/E- - DAM OF REFERENCE SIRE R.

R HUMMEL SOUTH AMERICA

BULL +*19919943 TATTOO 0203 DOB: 02/09/2020

Don Jose 176 Maxi Consenza Don Roberto 338 T/E
Don Aparicio Serrucho57 Maxi **Rubeta Fontana 7567-T/E-**
 811896 834746
 Don Aparicio Serranias 57 Rubeta Fontana 6207-T/E-

CED	BEPD	WEPD	YEPD	SC	MILK	RE	\$W	\$M
6	1.2	73	122	.58	13	.74	55	43

- South America is the first of his kind to ever come to the United States. His genetics are total outcross genetics that give programs around the world the opportunity to capitalize on these impressive genetics. South America sold for \$180,000 for one-half interest in the Night at Remington Park sale at the 2021 Cattlemen's Congress. He captivated cattlemen

from all over the world and was the pick of the pen and the people's choice of him and his brothers.

- He is a direct son of Don Aparicio Serrucho 57 Maxi the only two-time Palermo champion in Argentina. He stems back to one of the great producing dams in the La Rubeta program and the female they call, "Tank." She got this name for her overwhelming body, fleshing ability, and three-dimensional design.
- South America's first 11 daughters sold at public auction have averaged over \$36,000, and the set of sons selling in this year's event will get your attention. They have added body and performance with a lot of muscle shape in the right kind of package. Be the first on the block to have these outcross genetics.
- The 2023 Coleman Angus Bull Sale will offer 10 direct progeny.



COLEMAN DONNA 264 - A DAUGHTER OF REFERENCE SIRE R.



COLEMAN DONNA 2121 - A DAUGHTER OF REFERENCE SIRE R.



COLEMAN DONNA 252 - A DAUGHTER OF REFERENCE SIRE R.

YOUR MATERNAL SOURCE



COLEMAN SOUTH AMERICA 271 – HE SELLS AS LOT 102.

102 COLEMAN SOUTH AMERICA 271



BULL 20503516 TATTOO 271 DOB: 01/25/22

Hummel South America
19919943 Don Aparicio Serrucho57 Maxi
Rubeta Fontana 7567-T/E-
Coleman Charlo 0256
Coleman Donna 5247
18402681 Coleman Donna 194

Don Jose 176 Maxi
Don Aparicio Serranias 57
Consenza Don Roberto 338 T/E
Rubeta Fontana 6207-T/E-
O C C Paxton 730P
Bohi Abigale 6014
Sitz Upward 307R
Coleman Donna 386

	BW	205 Wt	365 Wt	Dam's Nursing Ratio				
	88	855	1412	5 - 109				
CED	BW	WW	YW	SC	MILK	RE	\$W	\$M
8	1.4	66	116	.96	20	.61	60	68



COLEMAN DONNA 1432 –
MATERNAL SISTER TO LOTS
102, 104, 113, 115, 117, 118,
124, 130, 137, AND 13



COLEMAN DONNA 1458 –
MATERNAL SISTER TO LOTS
102, 104, 113, 115, 117, 118, 124, 130,
137, AND 138.



COLEMAN DONNA 9357 – MATERNAL SISTER TO LOTS 102, 104,
113, 115, 117, 118, 124, 130, 137, AND 138.



COLEMAN DONNA 5247 – DAM OF LOTS 102, 104, 113, 115, 117,
118, 124, 130, 137, AND 138.

% COLEMAN ANGUS



COLEMAN SOUTH AMERICA 2169 – HE SELLS AS LOT 103.

103

COLEMAN SOUTH AMERICA 2169



BULL 20503488 TATTOO 2169 DOB: 02/08/22

Hummel South America

19919943

Don Aparicio Serrucho57 Maxi
Rubeta Fontana 7567-T/E-

Don Jose 176 Maxi
Don Aparicio Serranias 57
Consenza Don Roberto 338 T/E
Rubeta Fontana 6207-T/E-
N Bar Emulation EXT
Wulffs Erica Dianna C116
Basin Rainmaker 654X
KMK Donna J311

Coleman Donna 9101

19543024

Wulffs Ext 6106
Coleman Donna 197

	BW	205 Wt	365 Wt	Dam's Nursing Ratio				
	87	935	1519	2 - 116				
CED	BW	WW	YW	SC	MILK	RE	\$W	\$M
6	1.2	77	131	.93	26	.61	70	63



SPECIAL THANKS TO SANTIAGO DEBERNARDI AND SOUTH AMERICAN VISITORS. IT WAS A GREAT DAY!



COLEMAN DONNA 197 – GRANDDAM OF LOTS 28, 36, 38, 47, 103, AND 162.



KMK DONNA J311 – THIRD-GENERATION DAM OF LOT 103.

PERFORMANCE TESTED BULL SALE %



COLEMAN SOUTH AMERICA 269 – HE SELLS AS LOT 104.

104

COLEMAN SOUTH AMERICA 269



BULL 20503514 TATTOO 269 DOB: 01/25/22

Hummel South America

19919943

Don Aparicio Serrucho57 Maxi
Rubeta Fontana 7567-T/E-

Don Jose 176 Maxi
Don Aparicio Serranias 57
Consenza Don Roberto 338 T/E
Rubeta Fontana 6207-T/E-
O C C Paxton 730P
Bohi Abigale 6014
Sitz Upward 307R
Coleman Donna 386

Coleman Charlo 0256

Coleman Donna 5247

18402681

Coleman Donna 194

	BW	205 Wt	365 Wt	Dam's Nursing Ratio				
	92	869	1408	5 - 109				
CED	BW	WW	YW	SC	MILK	RE	\$W	\$M
8	1.4	66	116	1.06	20	.61	60	65



COLEMAN DONNA 9357 –
MATERNAL SISTER TO LOTS
102, 104, 113, 115, 117, 118,
124, 130, 137, AND 138



COLEMAN DONNA 1432 – MATERNAL SISTER TO LOTS 102, 104, 113, 115, 117, 118, 124, 130, 137, AND 138.



SPECIAL THANKS TO WESTON MERRILL AND HIS GROUP OF VISITORS FROM GENPRO! WONDERFUL DAY SPENT TOGETHER!



COLEMAN DONNA 5247 – DAM OF LOTS 102, 104, 113, 115, 117, 118, 124, 130, 137, AND 138.

To View Videos Please Visit www.colemanangus.com

% COLEMAN ANGUS



COLEMAN SOUTH AMERICA 270 – HE SELLS AS LOT 105.

105 COLEMAN SOUTH AMERICA 270

BULL 20503515 TATTOO 270 DOB: 01/22/22



Hummel South America
19919943
Don Aparicio Serrucho57 Maxi
Don Jose 176 Maxi
Don Aparicio Serranias 57
Consenza Don Roberto 338 T/E
Rubeta Fontana 6207-T/E-
Rubeta Fontana 6207-T/E-
Coleman Bravo 6313
Coleman Charlo 0256
Coleman Donna 714
S A V Renown 3439
Lawsons Chloe Z341

Coleman Chloe 975
19483324
Lawsons Chloe C815

	BW	205 Wt	365 Wt	Dam's Nursing Ratio					
	92	868	1425	1 - 104					
CED	BW	WW	YW	SC	MILK	RE	\$W	\$M	
7	1.3	77	134	.66	19	.67	66	57	

106 COLEMAN SOUTH AMERICA 2155

BULL 20503481 TATTOO 2155 DOB: 01/20/22



Hummel South America
19919943
Don Aparicio Serrucho57 Maxi
Don Jose 176 Maxi
Don Aparicio Serranias 57
Consenza Don Roberto 338 T/E
Rubeta Fontana 6207-T/E-
Rubeta Fontana 6207-T/E-
Baldridge Kaboom K243 KCF
Parka of Conanga 241
Connealy Onward
Coleman Donna 386

Coleman Donna 8144
19243297
Connealy Thunder
Coleman Donna 714

	BW	205 Wt	365 Wt	Dam's Nursing Ratio					
	87	886	1454	3 - 108					
CED	BW	WW	YW	SC	MILK	RE	\$W	\$M	
9	0.2	72	121	1.00	24	.61	66	64	



COLEMAN CHLOE 975 – DAM OF LOT 105.



COLEMAN DONNA 8146 – FULL SISTER TO THE DAM OF LOT 106.

YOUR MATERNAL SOURCE



COLEMAN ACCOUNTABLE 2147 – HE SELLS AS LOT 107.

107 COLEMAN ACCOUNTABLE 2147



BULL 20512818 TATTOO 2147 DOB: 01/22/22

Poss Achievement
Sitz Accomplishment 720F
 19078208 Sitz Barbaramere Nell 166D

NCC Prestige 317 736K
Coleman Donna 7252
 20062188 Coleman Donna 3207

Poss Lasting Impact 3118
 Poss Erica 327
 S A V Resource 1441
 Sitz Barbaramere Nell 14Y
 O C C Prestige 672P
 O C C Blackbird 736K
 Sitz Traveler 8180
 Coleman Donna 714

BW	205 Wt	365 Wt	Dam's Nursing Ratio					
96	838	1497	3 - 104					
CED	BW	WW	YW	SC	MILK	RE	\$W	\$M
4	3.1	79	144	1.78	28	.45	64	65

108 COLEMAN ACCOMPLISHMENT 2152



BULL 20512851 TATTOO 2152 DOB: 01/20/22

Poss Achievement
Sitz Accomplishment 720F
 19078208 Sitz Barbaramere Nell 166D

Coleman Playmaker 427
Coleman Dixie Erica 7401
 19102697 Coleman Dixie Erica 5362

Poss Lasting Impact 3118
 Poss Erica 327
 S A V Resource 1441
 Sitz Barbaramere Nell 14Y
 GDAR Game Day 449
 Coleman Donna 714
 Coleman Charlo 0256
 Coleman Dixie Erica 3262

BW	205 Wt	365 Wt	Dam's Nursing Ratio					
91	850	1487	3 - 111					
CED	BW	WW	YW	SC	MILK	RE	\$W	\$M
9	0.3	75	137	1.39	28	.42	69	72



COLEMAN DONNA 7252 – DAM OF LOT 107.



COLEMAN DIXIE ERICA 7401 – DAM OF LOT 108.

% COLEMAN ANGUS



COLEMAN TRIUMPH 2212 – HE SELLS AS LOT 109.

109 COLEMAN TRIUMPH 2212



BULL 20503495 TATTOO 2212 DOB: 01/23/22

Coleman Bravo 6313
Coleman Triumph 9145
 19555917 Lawsons Chloe C815

Coleman Charlo 0256
 Coleman Donna 714
 S A V Renown 3439
 Lawsons Chloe Z341
 Connealy Lead On
 Altune of Conanga 6104
 O C C Paxton 730P
 Bohi Abigale 6014

Connealy Onward

Coleman Abigale 686
 18573944 Coleman Abigale 0277

BW	205 Wt	365 Wt	Dam's Nursing Ratio					
84	830	1348	5 - 110					
CED	BW	WW	YW	SC	MILK	RE	\$W	\$M
11	0.1	56	100	.40	28	.55	60	87



COLEMAN ABIGALE 7185 –
 MATERNAL SISTER TO THE
 DAM OF LOT 109.



COLEMAN ABIGALE 1112 –
 MATERNAL SISTER TO LOT 109.



COLEMAN ABIGALE 686 – DAM OF LOTS 109, 129, AND 165.



COLEMAN ABIGALE 8130 – MATERNAL SISTER TO THE
 DAM OF LOT 109.

PERFORMANCE TESTED BULL SALE %



COLEMAN ID 248 – HE SELLS AS LOT 110.

LAWSONS CHLOE C815 – DAM OF LOTS 1, 2, 3, 7, 8, 110, 111, 112, 169, AND 171.

110 COLEMAN ID 248

BULL 20512857 TATTOO 248 DOB: 01/21/22



Koupals B&B Identity
Mill Brae Identified 4031
 17928462 Mill Brae Pro Blackcap 1092

S A V Renown 3439
Lawsons Chloe C815
 18359250 Lawsons Chloe Z341

Sitz Upward 307R
 B&B Erica 605
 GAR-EGL Protege
 Mill Brae FL Blackcap 5002
 Rito 707 of Ideal 3407 7075
 S A V Blackcap May 4136
 Sitz Upward 307R
 Basin Chloe 7T26

BW		205 Wt		365 Wt		Dam's Nursing Ratio			
89		939		1475		3	-	110	
CED	BW	WW	YW	SC	MILK	RE	\$W	\$M	
5	1.0	77	140	1.08	27	.96	75	73	

112 COLEMAN IDENTIFIED 250

BULL 20539106 TATTOO 250 DOB: 01/19/22



Koupals B&B Identity
Mill Brae Identified 4031
 17928462 Mill Brae Pro Blackcap 1092

S A V Renown 3439
Lawsons Chloe C815
 18359250 Lawsons Chloe Z341

Sitz Upward 307R
 B&B Erica 605
 GAR-EGL Protege
 Mill Brae FL Blackcap 5002
 Rito 707 of Ideal 3407 7075
 S A V Blackcap May 4136
 Sitz Upward 307R
 Basin Chloe 7T26

BW		205 Wt		365 Wt		Dam's Nursing Ratio			
94		864		1418		3	-	110	
CED	BW	WW	YW	SC	MILK	RE	\$W	\$M	
5	1.0	77	140	1.07	27	.96	75	73	

111 COLEMAN IDENTIFIED 247

BULL 20512850 TATTOO 247 DOB: 01/17/22



Koupals B&B Identity
Mill Brae Identified 4031
 17928462 Mill Brae Pro Blackcap 1092

S A V Renown 3439
Lawsons Chloe C815
 18359250 Lawsons Chloe Z341

Sitz Upward 307R
 B&B Erica 605
 GAR-EGL Protege
 Mill Brae FL Blackcap 5002
 Rito 707 of Ideal 3407 7075
 S A V Blackcap May 4136
 Sitz Upward 307R
 Basin Chloe 7T26

BW		205 Wt		365 Wt		Dam's Nursing Ratio			
96		884		1510		3	-	110	
CED	BW	WW	YW	SC	MILK	RE	\$W	\$M	
5	1.0	77	140	.98	27	.96	75	73	

“For the past 8 years, we have been purchasing Coleman Bulls. We started buying these bulls because we believe that the fastest way to improve cow herd genetics is through bull selection. Our goal was to create the perfect cow herd, one that is uniform, flourishes on grass with lower feed intake, is maternal, and takes care of herself as well as her calf. For the past decade, our calf crop has been marketed through a grass finished program. We have discovered that Coleman genetics was the perfect fit for this market given the early maturing, easy fleshing characteristics of their genetic base. The carcass traits for our forage finished calves continue to stand out in the marketplace. Coleman bulls have improved our cattle grading choice on average of 20-40% better than the industry average on forage.”

Flying M Livestock
 Ellensburg, WA

% COLEMAN ANGUS



COLEMAN RENOVATION 211 – HE SELLS AS LOT 116.



COLEMAN RENOVATION 230 – HE SELLS AS LOT 115.

113 COLEMAN SOUTH AMERICA 267

BULL 20503513 TATTOO 267 DOB: 01/25/22



Hummel South America
19919943 Don Aparicio Serrucho57 Maxi
Rubeta Fontana 7567-T/E-

Coleman Donna 5247
18402681 Coleman Charlo 0256
Coleman Donna 194

Don Jose 176 Maxi
Don Aparicio Serranias 57
Consenza Don Roberto 338 T/E
Rubeta Fontana 6207-T/E-
O C C Paxton 730P
Bohi Abigale 6014
Sitz Upward 307R
Coleman Donna 386

	BW	205 Wt	365 Wt	Dam's Nursing Ratio				
	96	902	1406	5 - 109				
CED	BW	WW	YW	SC	MILK	RE	\$W	\$M
8	1.4	66	116	.98	20	.61	60	65

115 COLEMAN RENOVATION 230

BULL 20512841 TATTOO 230 DOB: 01/25/22



SAV Renovation 6822
18579309 SAV Renown 3439
SAV Madame Pride 0151

Coleman Donna 5247
18402681 Coleman Charlo 0256
Coleman Donna 194

Rito 707 of Ideal 3407 7075
SAV Blackcap May 4136
SAV 004 Density 4336
SAV Madame Pride 0075
O C C Paxton 730P
Bohi Abigale 6014
Sitz Upward 307R
Coleman Donna 386

	BW	205 Wt	365 Wt	Dam's Nursing Ratio				
	92	951	1447	5 - 109				
CED	BW	WW	YW	SC	MILK	RE	\$W	\$M
7	2.0	64	117	1.37	23	.37	61	78

114 COLEMAN SOUTH AMERICA 255

BULL 20503510 TATTOO 255 DOB: 01/19/22



Hummel South America
19919943 Don Aparicio Serrucho57 Maxi
Rubeta Fontana 7567-T/E-

Coleman Donna 504
18238090 SAV Resource 1441
Coleman Donna 714

Don Jose 176 Maxi
Don Aparicio Serranias 57
Consenza Don Roberto 338 T/E
Rubeta Fontana 6207-T/E-
Rito 707 of Ideal 3407 7075
SAV Blackcap May 4136
Connealy Onward
Coleman Donna 386

	BW	205 Wt	365 Wt	Dam's Nursing Ratio				
	98	865	1383	4 - 110				
CED	BW	WW	YW	SC	MILK	RE	\$W	\$M
10	0.8	71	128	.98	20	.77	61	62

116 COLEMAN RENOVATION 211

BULL 20512861 TATTOO 211 DOB: 01/25/22



SAV Renovation 6822
18579309 SAV Renown 3439
SAV Madame Pride 0151

Coleman Donna 439
17914042 GDAR Game Day 449
Coleman Donna 714

Rito 707 of Ideal 3407 7075
SAV Blackcap May 4136
SAV 004 Density 4336
SAV Madame Pride 0075
Boyd New Day 8005
G D A R Miss Wix 474
Connealy Onward
Coleman Donna 386

	BW	205 Wt	365 Wt	Dam's Nursing Ratio				
	89	870	1396	5 - 107				
CED	BW	WW	YW	SC	MILK	RE	\$W	\$M
10	0.6	57	104	.99	25	.46	58	81

YOUR MATERNAL SOURCE

117 COLEMAN RENOVATION 225

BULL 20512839 TATTOO 225 DOB: 01/23/22



SAV Renown 3439
SAV Renovation 6822
 18579309 SAV Madame Pride 0151

Rito 707 of Ideal 3407 7075
 SAV Blackcap May 4136
 SAV 004 Density 4336
 SAV Madame Pride 0075
 O C C Paxton 730P
 Bohi Abigale 6014
 Sitz Upward 307R
 Coleman Donna 386

Coleman Charlo 0256
Coleman Donna 5247
 18402681 Coleman Donna 194

BW	205 Wt	365 Wt	Dam's Nursing Ratio					
90	829	1383	5 - 109					
CED	BW	WW	YW	SC	MILK	RE	\$W	\$M
7	2.0	64	117	1.08	23	.37	61	76



COLEMAN ERISKAY 291 - GRANDDAM OF LOT 119.

118 COLEMAN RENOVATION 228

BULL 20512840 TATTOO 228 DOB: 01/25/22



SAV Renown 3439
SAV Renovation 6822
 18579309 SAV Madame Pride 0151

Rito 707 of Ideal 3407 7075
 SAV Blackcap May 4136
 SAV 004 Density 4336
 SAV Madame Pride 0075
 O C C Paxton 730P
 Bohi Abigale 6014
 Sitz Upward 307R
 Coleman Donna 386

Coleman Charlo 0256
Coleman Donna 5247
 18402681 Coleman Donna 194

BW	205 Wt	365 Wt	Dam's Nursing Ratio					
84	822	1313	5 - 109					
CED	BW	WW	YW	SC	MILK	RE	\$W	\$M
7	2.0	64	117	.87	23	.37	61	76

120 COLEMAN ACCOMPLISHMENT 2170

BULL 20512844 TATTOO 2170 DOB: 01/14/22



Poss Achievement
Sitz Accomplishment 720F
 19078208 Sitz Barbamere Nell 166D

Poss Lasting Impact 3118
 Poss Erica 327
 SAV Resource 1441
 Sitz Barbamere Nell 14Y
 Coleman Charlo 0256
 Coleman Donna 714
 Vermilion Payweight J847
 Basin Chloe 812L

Coleman Bravo 6313
Coleman Chloe 9138
 19541339 Basin Chloe 7T26

BW	205 Wt	365 Wt	Dam's Nursing Ratio					
92	816	1411	2 - 105					
CED	BW	WW	YW	SC	MILK	RE	\$W	\$M
8	1.8	66	124	.88	30	.55	60	75

119 COLEMAN TRIUMPH 2154

BULL 20503480 TATTOO 2154 DOB: 01/22/22



Coleman Bravo 6313
Coleman Triumph 9145
 19555917 Lawsons Chloe C815

Coleman Charlo 0256
 Coleman Donna 714
 SAV Renown 3439
 Lawsons Chloe Z341
 C H Quantum 6247
 Cole Creek Clova Juanada 67
 Coleman Juneau 044
 Sinclair Eriskay 2N1 7883

Cole Creek Black Cedar 46P
Coleman Eriskay 8138
 19251880 Coleman Eriskay 291

BW	205 Wt	365 Wt	Dam's Nursing Ratio					
84	855	1468	3 - 110					
CED	BW	WW	YW	SC	MILK	RE	\$W	\$M
8	0.1	66	116	.93	26	.35	62	76

121 COLEMAN ACCOMPLISHMENT 2148

BULL 20512855 TATTOO 2148 DOB: 01/13/22



Poss Achievement
Sitz Accomplishment 720F
 19078208 Sitz Barbamere Nell 166D

Poss Lasting Impact 3118
 Poss Erica 327
 SAV Resource 1441
 Sitz Barbamere Nell 14Y
 O C C Juneau 807J
 Coleman Donna 714
 N Bar Emulation EXT
 B C C Ambush Anita 41-101

Coleman Juneau 044
Coleman Anita 7262
 19102666 Pine Coulee Anita W93

BW	205 Wt	365 Wt	Dam's Nursing Ratio					
92	803	1414	3 - 102					
CED	BW	WW	YW	SC	MILK	RE	\$W	\$M
5	1.5	66	117	.68	25	.45	59	76

122 COLEMAN TRIUMPH 2133

BULL 20503474 TATTOO 2133 DOB: 01/20/22



Coleman Bravo 6313
Coleman Triumph 9145
 19555917 Lawsons Chloe C815

Coleman Charlo 0256
 Coleman Donna 714
 SAV Renown 3439
 Lawsons Chloe Z341
 R R Rito 707
 Coleman Donna 714
 O C C Paxton 730P
 Bohi Abigale 6014

Coleman Knight 209
Coleman Abigale 5219
 18402660 Coleman Abigale 0277

BW	205 Wt	365 Wt	Dam's Nursing Ratio					
94	784	1363	5 - 99					
CED	BW	WW	YW	SC	MILK	RE	\$W	\$M
5	1.9	61	111	.41	22	.47	51	73



SALE DAY PHONES:

(406) 728-3052 • (406) 240-2751
 (406) 363-8818 • (406) 833-0117

% COLEMAN ANGUS



COLEMAN SOUTH AMERICA 2209 – HE SELLS AS LOT 123.



COLEMAN ABIGALE 686 –
MATERNAL SISTER TO LOTS
123 AND 170.



COLEMAN ABIGALE 7185 –
MATERNAL SISTER TO LOTS 123
AND 170.

123

COLEMAN SOUTH AMERICA 2209



BULL 20503493 TATTOO 2209 DOB: 01/31/22

Hummel South America
19919943 Don Aparicio Serrucho57 Maxi
Rubeta Fontana 7567-T/E- Don Jose 176 Maxi
Don Aparicio Serranias 57
Consenza Don Roberto 338 T/E
Rubeta Fontana 6207-T/E-
O C C Paxton 730P
O C C Focus 813F
O C C Blackbird 736K
Coleman Abigale 0277
16879081 Bohi Abigale 6014 Sitz Traveler 8180
S A V Abigale 6062

	BW	205 Wt	365 Wt	Dam's Nursing Ratio				
	86	815	1369	5 - 108				
CED	BW	WW	YW	SC	MILK	RE	\$W	\$M
8	0.9	58	102	.44	23	.59	55	50



COLEMAN ABIGALE 0277 – DAM OF LOTS 123 AND 170.



COLEMAN CHARLO 0256 – FULL BROTHER TO THE DAM OF LOTS
123 AND 170.

PERFORMANCE TESTED BULL SALE %



COLEMAN BIG COUNTRY 260 – HE SELLS AS LOT 124.

124 COLEMAN BIG COUNTRY 260

BULL 20503511 TATTOO 260 DOB: 01/21/22



SAV Renown 3439
17633839 SAV Blackcap May 4136

Coleman Charlo 0256
Coleman Donna 5247
18402681 Coleman Donna 194

RR Rito 707
Ideal 3407 of 1418 076
SAV 8180 Traveler 004
SAV May 2397
OCC Paxton 730P
Bohi Abigale 6014
Sitz Upward 307R
Coleman Donna 386

	BW	205 Wt	365 Wt	Dam's Nursing Ratio					
	96	841	1350	5 - 109					
CED	BW	WW	YW	SC	MILK	RE	\$W	\$M	
3	2.2	64	117	.98	23	.65	59	71	



COLEMAN DONNA 1432
– MATERNAL SISTER TO
LOTS 102, 104, 113, 115,
117, 118, 124, 130, 137,
AND 138.



COLEMAN DONNA 1458 – MATERNAL
SISTER TO LOTS 102, 104, 113, 115, 117,
118, 124, 130, 137, AND 138.



COLEMAN DONNA 9357 – MATERNAL SISTER TO LOTS 102, 104,
113, 115, 117, 118, 124, 130, 137, AND 138.



COLEMAN DONNA 5247 – DAM OF LOTS 102, 104, 113, 115, 117,
118, 124, 130, 137, AND 138.

% COLEMAN ANGUS



COLEMAN MAHOMES 2216 – HE SELLS AS LOT 125.



COLEMAN ARROWHEAD 235 – FULL BROTHER TO LOT 125.



COLEMAN KELCE 226 – FULL BROTHER TO LOT 125.

125 COLEMAN MAHOMES 2216



BULL 20503498 TATTOO 2216 DOB: 01/28/22

OCC Paxton 730P
Coleman Charlo 0256
 16879074 Bohi Abigale 6014
 Coleman Bravo 6313
Coleman Chloe 9275
 19583423 Lawsons Chloe C815

OCC Focus 813F
 OCC Blackbird 736K
 Sitz Traveler 8180
 SAV Abigale 6062
 Coleman Charlo 0256
 Coleman Donna 714
 SAV Renown 3439
 Lawsons Chloe Z341

	BW	205 Wt	365 Wt	Dam's Nursing Ratio				
	88	884	1337	1 - 110				
CED	BW	WW	YW	SC	MILK	RE	\$W	\$M
4	2.6	74	130	1.29	22	.81	67	71

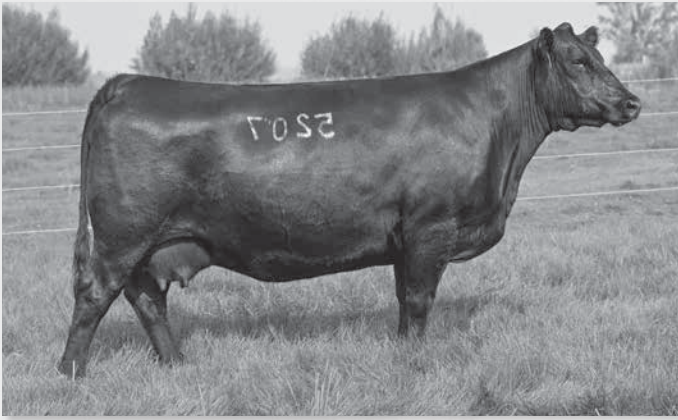


COLEMAN CHLOE 9275 – DAM OF LOTS 101, 125, 139, AND 155.



COLEMAN CHLOE 034 – FULL SISTER TO THE DAM OF LOTS 101, 125, 139, AND 155.

YOUR MATERNAL SOURCE



COLEMAN DONNA 5207 – DAM OF LOT 126.



COLEMAN ABIGALE 686 – DAM OF LOTS 109, 129, AND 165.

126 COLEMAN ROCK 2132

BULL 20503473 TATTOO 2132 DOB: 02/12/22



O C C Juneau 807J
Coleman Rock 7200
 19107936 Coleman Donna 714

O C C Great Plains 943G
Coleman Donna 5207
 18410196 Coleman Donna 714

O C C Emblazon 854E
 O C C Dixie Erica 903E
 Connealy Onward
 Coleman Donna 386
 N Bar Emulation EXT
 Dixie Erica of CH 1019
 Connealy Onward
 Coleman Donna 386

	BW	205 Wt	365 Wt	Dam's Nursing Ratio				
	82	877	1471	5 - 110				
CED	BW	WW	YW	SC	MILK	RE	\$W	\$M
13	-1.4	67	113	.52	28	.63	69	82

129 COLEMAN RENOVATION 2213

BULL 20512829 TATTOO 2213 DOB: 01/28/22



S A V Renown 3439
S A V Renovation 6822
 18579309 S A V Madame Pride 0151

Connealy Onward
Coleman Abigale 686
 18573944 Coleman Abigale 0277

Rito 707 of Ideal 3407 7075
 S A V Blackcap May 4136
 S A V 004 Density 4336
 S A V Madame Pride 0075
 Connealy Lead On
 Altune of Conanga 6104
 O C C Paxton 730P
 Bohi Abigale 6014

	BW	205 Wt	365 Wt	Dam's Nursing Ratio				
	92	844	1410	5 - 110				
CED	BW	WW	YW	SC	MILK	RE	\$W	\$M
8	1.5	59	107	1.02	27	.43	59	75

127 COLEMAN GLACIER 2160

BULL 20503484 TATTOO 2160 DOB: 02/08/22



S A V Renown 3439
Coleman Glacier 041
 19866409 Coleman Donna 439

Coleman Charlo 0256
Coleman Donna 8196
 19400595 Coleman Donna 0308

Rito 707 of Ideal 3407 7075
 S A V Blackcap May 4136
 GDAR Game Day 449
 Coleman Donna 714
 O C C Paxton 730P
 Bohi Abigale 6014
 O C C Juneau 807J
 Coleman Donna 732

	BW	205 Wt	365 Wt	Dam's Nursing Ratio				
	87	822	1422	2 - 103				
CED	BW	WW	YW	SC	MILK	RE	\$W	\$M
5	1.6	68	123	.64	32	.61	67	88

130 COLEMAN SOUTH AMERICA 262

BULL 20503512 TATTOO 262 DOB: 01/25/22



Don Aparicio Serrucho57 Maxi
Hummel South America
 19919943 Rubeta Fontana 7567-T/E-

Coleman Charlo 0256
Coleman Donna 5247
 18402681 Coleman Donna 194

Don Jose 176 Maxi
 Don Aparicio Serranias 57
 Consenza Don Roberto 338 T/E
 Rubeta Fontana 6207-T/E-
 O C C Paxton 730P
 Bohi Abigale 6014
 Sitz Upward 307R
 Coleman Donna 386

	BW	205 Wt	365 Wt	Dam's Nursing Ratio				
	94	778	1303	5 - 109				
CED	BW	WW	YW	SC	MILK	RE	\$W	\$M
8	1.4	66	116	.98	20	.61	60	65

128 COLEMAN GLACIER 2135

BULL 20503475 TATTOO 2135 DOB: 02/17/22



S A V Renown 3439
Coleman Glacier 041
 19866409 Coleman Donna 439

Coleman Charlo 0256
Coleman Donna 5319
 18402729 Coleman Donna 3213

Rito 707 of Ideal 3407 7075
 S A V Blackcap May 4136
 GDAR Game Day 449
 Coleman Donna 714
 O C C Paxton 730P
 Bohi Abigale 6014
 Leachman Right Time
 Coleman Donna 714

	BW	205 Wt	365 Wt	Dam's Nursing Ratio				
	86	828	1279	5 - 106				
CED	BW	WW	YW	SC	MILK	RE	\$W	\$M
8	0.3	65	112	.63	31	.60	68	86

“Hello Larry, we just shipped our heifers and steers. The Bravos and Summits are as good as we have had in a long time. Steers weighed 635, and heifers 600, April calves. The Bravos and Summits were weighing 670-685. Will get you a video on those heifers, they are as good as I have seen in a long time. We will be using those bulls again.”

Thanks,
 Jeff Harwood
 Geyser, Montana

% COLEMAN ANGUS



COLEMAN CHARLO 283 – HE SELLS AS LOT 133.

COLEMAN GLACIER 041 – FULL BROTHER TO THE DAM OF LOTS 133, AND 184.

131

COLEMAN ACCOMPLISHMENT 2144

BULL 20512859 TATTOO 2144 DOB: 01/17/22



Poss Achievement
Sitz Accomplishment 720F
19078208 Sitz Bararamere Nell 166D

NCC Prestige 317 736K
Coleman Donna 7197
19102651 Coleman Donna 714

Poss Lasting Impact 3118
Poss Erica 327
S AV Resource 1441
Sitz Bararamere Nell 14Y
O C C Prestige 672P
O C C Blackbird 736K
Connealy Onward
Coleman Donna 386

BW		205 Wt		365 Wt		Dam's Nursing Ratio			
97		788		1382		3	98		
CED	BW	WW	YW	SC	MILK	RE	\$W	\$M	
6	2.0	65	120	1.02	25	.54	54	72	

132

COLEMAN ACCOMPLISHMENT 2142

BULL 20512863 TATTOO 2142 DOB: 01/18/22



Poss Achievement
Sitz Accomplishment 720F
19078208 Sitz Bararamere Nell 166D

Cole Creek Black Cedar 46P
Coleman Donna 7114
18935231 Coleman Donna 714

Poss Lasting Impact 3118
Poss Erica 327
S AV Resource 1441
Sitz Bararamere Nell 14Y
C H Quantum 6247
Cole Creek Clova Juanada 67
Connealy Onward
Coleman Donna 386

BW		205 Wt		365 Wt		Dam's Nursing Ratio			
90		775		1287		4	102		
CED	BW	WW	YW	SC	MILK	RE	\$W	\$M	
9	0.4	55	99	1.41	28	.40	54	75	



COLEMAN ACCOMPLISHMENT 2144 – HE SELLS AS LOT 131.

133

COLEMAN CHARLO 283

BULL 20503520 TATTOO 283 DOB: 01/24/22



O C C Paxton 730P
Coleman Charlo 0256
16879074 Bohi Abigale 6014

S AV Renown 3439
Coleman Donna 028
19857111 Coleman Donna 439

O C C Focus 813F
O C C Blackbird 736K
Sitz Traveler 8180
S AV Abigale 6062
Rito 707 of Ideal 3407 7075
S AV Blackcap May 4136
GDAR Game Day 449
Coleman Donna 714

BW		205 Wt		365 Wt		Dam's Nursing Ratio			
67		837		1426		1	108		
CED	BW	WW	YW	SC	MILK	RE	\$W	\$M	
14	-2.3	63	113	.93	29	.58	67	81	

PERFORMANCE TESTED BULL SALE %



COLEMAN ARGENTINE 2162 – HE SELLS AS LOT 135.

134 COLEMAN ARGENTINE 2159

BULL 20503483 TATTOO 2159 DOB: 01/22/22



Hummel Argentine

19919948

Don Aparicio Serrucho57 Maxi
Rubeta Fontana 7567-T/E-

Don Jose 176 Maxi
Don Aparicio Serranias 57
Consenza Don Roberto 338 T/E
Rubeta Fontana 6207-T/E-
O C C Paxton 730P
Bohi Abigale 6014
O C C Juneau 807J
Coleman Donna 732

Coleman Donna 8192

19400593

Coleman Charlo 0256
Coleman Donna 0308

	BW	205 Wt	365 Wt	Dam's Nursing Ratio				
	84	796	1313	2 - 100				
CED	BW	WW	YW	SC	MILK	RE	\$W	\$M
7	0.7	47	84	.15	25	.45	47	67

135 COLEMAN ARGENTINE 2162

BULL 20503485 TATTOO 2162 DOB: 01/20/22



Hummel Argentine

19919948

Don Aparicio Serrucho57 Maxi
Rubeta Fontana 7567-T/E-

Don Jose 176 Maxi
Don Aparicio Serranias 57
Consenza Don Roberto 338 T/E
Rubeta Fontana 6207-T/E-
O C C Paxton 730P
Bohi Abigale 6014
O C C Juneau 807J
Coleman Donna 732

Coleman Donna 8216

19400600

Coleman Charlo 0256
Coleman Donna 0308

	BW	205 Wt	365 Wt	Dam's Nursing Ratio				
	71	775	1324	2 - 107				
CED	BW	WW	YW	SC	MILK	RE	\$W	\$M
12	-1.0	49	86	.30	24	.55	50	72

Time well spent!

I've always felt that the most important key in selecting your bull battery is to spend a day visiting and looking at the cowherd or cowherds where you buy your bulls. If you like the cows and the management of them, that's where you need to be buying your bulls. It's pretty simple, bulls produce daughters like their mothers and grandmothers!



COLEMAN DONNA 8216 – DAM OF LOT 135.

% COLEMAN ANGUS



COLEMAN RELIABLE 206 – HE SELLS AS LOT 136.



COLEMAN DONNA 7100 – FULL SISTER-IN-BLOOD TO THE DAM OF LOTS 136, 166, AND 185.



COLEMAN DONNA 504 – FULL SISTER-IN-BLOOD TO THE DAM OF LOTS 136, 166, AND 185.



COLEMAN DONNA 7221 – DAM OF LOTS 136, 166, AND 185.

136 COLEMAN RELIABLE 206

BULL 20503464 TATTOO 206 DOB: 01/23/22



OCC Paxton 730P
Coleman Charlo 0256
 16879074 Bohi Abigale 6014

S AV Renown 3439
Coleman Donna 7221
 19102656 Coleman Donna 714

OCC Focus 813F
 OCC Blackbird 736K
 Sitz Traveler 8180
 S AV Abigale 6062
 Rito 707 of Ideal 3407 7075
 S AV Blackcap May 4136
 Connealy Onward
 Coleman Donna 386

	BW	205 Wt	365 Wt	Dam's Nursing Ratio				
	74	815	1305	2 - 110				
CED	BW	WW	YW	SC	MILK	RE	\$W	\$M
11	-0.8	54	97	1.08	30	.56	66	87



COLEMAN PONCHO 9246 – FULL BROTHER TO LOTS 136, 166, AND 185.

YOUR MATERNAL SOURCE

“We purchased our first bulls in 2010 and have bought 18 since. We have been very happy with the bulls. We run up to 7,000 feet in tough, rugged environment and the bulls have held up very well, have had no PAP problems, easy to handle, really like their daughters, and the bulls have always kept their condition very well. We will be back again. We really appreciate your dedication to the mother cow in your program.”

Thanks,
John Dooling



COLEMAN DONNA 5247 – DAM OF LOTS 102, 104, 113, 115, 117, 118, 124, 130, 137, AND 138.

137 COLEMAN ARGENTINE 237

BULL 20503507 TATTOO 237 DOB: 01/20/22



Hummel Argentine
19919948
Don Aparicio Serrucho57 Maxi
Rubeta Fontana 7567-T/E-

Coleman Donna 5247
18402681
Coleman Charlo 0256
Coleman Donna 194

Don Jose 176 Maxi
Don Aparicio Serranias 57
Consenza Don Roberto 338 T/E
Rubeta Fontana 6207-T/E-
O C C Paxton 730P
Bohi Abigale 6014
Sitz Upward 307R
Coleman Donna 386

	BW	205 Wt	365 Wt	Dam's Nursing Ratio						
	88	754	1271	5 - 109						
CED	BW	WW	YW	SC	MILK	RE	\$W	\$M		
9	1.0	48	90	.15	24	.42	49	64		

140 COLEMAN ARGENTINE 2149

BULL 20503479 TATTOO 2149 DOB: 01/24/22



Hummel Argentine
19919948
Don Aparicio Serrucho57 Maxi
Rubeta Fontana 7567-T/E-

Coleman Dixie Erica 7324
19102681
Coleman Charlo 3212
Coleman Dixie Erica 4261

Don Jose 176 Maxi
Don Aparicio Serranias 57
Consenza Don Roberto 338 T/E
Rubeta Fontana 6207-T/E-
Coleman Charlo 0256
Coleman Donna 714
Coleman Manning 0299
Coleman Dixie Erica 0146

	BW	205 Wt	365 Wt	Dam's Nursing Ratio						
	82	726	1288	3 - 103						
CED	BW	WW	YW	SC	MILK	RE	\$W	\$M		
10	-1.2	44	78	-.04	25	.35	46	63		

138 COLEMAN ARGENTINE 242

BULL 20503509 TATTOO 242 DOB: 01/25/22



Hummel Argentine
19919948
Don Aparicio Serrucho57 Maxi
Rubeta Fontana 7567-T/E-

Coleman Donna 5247
18402681
Coleman Charlo 0256
Coleman Donna 194

Don Jose 176 Maxi
Don Aparicio Serranias 57
Consenza Don Roberto 338 T/E
Rubeta Fontana 6207-T/E-
O C C Paxton 730P
Bohi Abigale 6014
Sitz Upward 307R
Coleman Donna 386

	BW	205 Wt	365 Wt	Dam's Nursing Ratio						
	89	766	1300	5 - 109						
CED	BW	WW	YW	SC	MILK	RE	\$W	\$M		
9	1.0	48	90	.48	24	.42	49	64		

141 COLEMAN TRIUMPH 2128

BULL 20503471 TATTOO 2128 DOB: 01/18/22



Coleman Triumph 9145
19555917
Coleman Bravo 6313
Lawsons Chloe C815

Coleman Donna 2252
17544672
Wulffs Ext 6106
Coleman Donna 989

Coleman Charlo 0256
Coleman Donna 714
S A V Renown 3439
Lawsons Chloe Z341
N Bar Emulation EXT
Wulffs Erica Dianna C116
R R Rito 707
Coleman Donna 386

	BW	205 Wt	365 Wt	Dam's Nursing Ratio						
	90	722	1271	8 - 103						
CED	BW	WW	YW	SC	MILK	RE	\$W	\$M		
7	0.5	47	83	.73	22	.46	43	82		

139 COLEMAN CHARLO 229

BULL 20503503 TATTOO 229 DOB: 01/25/22



Coleman Charlo 0256
16879074
O C C Paxton 730P
Bohi Abigale 6014

Coleman Chloe 9275
19583423
Coleman Bravo 6313
Lawsons Chloe C815

O C C Focus 813F
O C C Blackbird 736K
Sitz Traveler 8180
S A V Abigale 6062
Coleman Charlo 0256
Coleman Donna 714
S A V Renown 3439
Lawsons Chloe Z341

	BW	205 Wt	365 Wt	Dam's Nursing Ratio						
	80	764	1234	1 - 110						
CED	BW	WW	YW	SC	MILK	RE	\$W	\$M		
4	2.6	74	130	1.20	22	.81	67	71		



COLEMAN DONNA 2252 – DAM OF LOT 141.

TREXLER ANGUS



TAR HONDO 202 – HE SELLS AS LOT 142.

142 TAR HONDO 202

BULL 20447337 TATTOO 202 DOB: 01/12/22

Coleman Bravo 6313
19869368 Lawsons Chloe C815

Coleman Charlo 0256
Coleman Donna 714
S A V Renown 3439
Lawsons Chloe Z341
S A V Renown 3439
Coleman Donna 714
Wulffs Ext 6106
TAR Miss Wix 761

BW	205 Wt	365 Wt	Dam's Nursing Ratio					
78	806	1225	1 - 117					
CED	BW	WW	YW	SC	MILK	RE	\$W	\$M
9	-0.2	64	108	1.15	30		64	92



TAR BRAVO 236 – HE SELLS AS LOT 143.

143 TAR BRAVO 236

BULL 20447446 TATTOO 236 DOB: 02/02/22

Coleman Charlo 0256
18734838 Coleman Donna 714

Apex Windy 078
TAR Everelda Entense 518
18242196 TAR Everelda Entense 113

O C C Paxton 730P
Bohi Abigale 6014
Connealy Onward
Coleman Donna 386
H A R B Windy 702 JH
Apexette Lucy 6037
Coleman Regis 904
BT Everelda Entense 613L

BW	205 Wt	365 Wt	Dam's Nursing Ratio					
80	826	1316	4 - 112					
CED	BW	WW	YW	SC	MILK	RE	\$W	\$M
9	1.1	58	102	1.71	28	.34	64	84



TAR RESOURCE 206 – HE SELLS AS LOT 144.

144 TAR RESOURCE 206

BULL 20441870 TATTOO 206 DOB: 01/16/22

S A V Resource 1441
19873258 Coleman Donna 3125

Coleman Playmaker 427
TAR Emulous 834
19233040 Pine Coulee Emulous C175

Rito 707 of Ideal 3407 7075
S A V Blackcap May 4136
Leachman Right Time
Coleman Donna 714
GDAR Game Day 449
Coleman Donna 714
Pine Coulee EXT U160
Pine Coulee Emulous W73

BW	205 Wt	365 Wt	Dam's Nursing Ratio					
80	715	1166	3 - 94					
CED	BW	WW	YW	SC	MILK	RE	\$W	\$M
8	0.6	53	93	1.43	19		43	80



TAR BRAVO 232 – HE SELLS AS LOT 145.

145 TAR BRAVO 232

BULL 20447442 TATTOO 232 DOB: 01/29/22

Coleman Charlo 0256
18734838 Coleman Donna 714

Cole Creek Black Cedar 1100
TAR Miss Wix 711
18888365 Tar Miss Wix 529

O C C Paxton 730P
Bohi Abigale 6014
Connealy Onward
Coleman Donna 386
Cole Creek Black Cedar 46P
Cole Creek Juanada Bird 38N
Tar Charlo 303
Tar Miss Wix 205

BW	205 Wt	365 Wt	Dam's Nursing Ratio					
85	724	1156	4 - 103					
CED	BW	WW	YW	SC	MILK	RE	\$W	\$M
11	0.1	46	81	.89	27		46	97



TREXLER ANGUS

146 TAR RESOURCE 208

BULL 20441872 TATTOO 208 DOB: 01/17/22



S AV Resource 1441
Coleman Resource 003
 19873258 Coleman Donna 3125

Pine Coulee Traveler 39B
TAR Blackcap 960
 19538043 Tar Blackcap 526

Rito 707 of Ideal 3407 7075
 S AV Blackcap May 4136
 Leachman Right Time
 Coleman Donna 714
 FairView Traveler 1171
 MW Black Nellie Rita 032
 Tar Charlo 303
 TAR Blackcap 320

BW	205 Wt	365 Wt	Dam's Nursing Ratio					
85	679	1149	1 - 99					
CED	BW	WW	YW	SC	MILK	RE	\$W	\$M
7	1.7	53	94	1.69	22		44	87



TAR HONDO 204 – HE SELLS AS LOT 147.

147 TAR HONDO 204

BULL 20447346 TATTOO 204 DOB: 01/13/22



Coleman Bravo 6313
Coleman Hondo 022
 19869368 Lawsons Chloe C815

Coleman Rebound 7220
TAR Emulous 056
 19837949 Tar Emulous 704

Coleman Charlo 0256
 Coleman Donna 714
 S AV Renown 3439
 Lawsons Chloe Z341
 S AV Renown 3439
 Coleman Donna 714
 Cole Creek Cedar Ridge 1V
 Pine Coulee Emulous C175

BW	205 Wt	365 Wt	Dam's Nursing Ratio					
72	683	1179	1 - 99					
CED	BW	WW	YW	SC	MILK	RE	\$W	\$M
10	-0.6	54	102	1.37	28		51	94



TAR RESOURCE 247 – HE SELLS AS LOT 148.

148 TAR RESOURCE 247

BULL 20441877 TATTOO 247 DOB: 02/07/22



S AV Resource 1441
Coleman Resource 003
 19873258 Coleman Donna 3125

Pine Coulee Traveler 39B
Tar BY Design 840
 19229558 S M A Prospector By Design

Rito 707 of Ideal 3407 7075
 S AV Blackcap May 4136
 Leachman Right Time
 Coleman Donna 714
 FairView Traveler 1171
 MW Black Nellie Rita 032
 Genetics by Design 049
 Paws Up Prospector 2026

BW	205 Wt	365 Wt	Dam's Nursing Ratio					
80	701	1171	3 - 101					
CED	BW	WW	YW	SC	MILK	RE	\$W	\$M
9	0.7	52	91	1.12	24		47	76



TAR RESOURCE 263 – HE SELLS AS LOT 149.

149 TAR RESOURCE 263

BULL 20441882 TATTOO 263 DOB: 03/03/22



S AV Resource 1441
Coleman Resource 003
 19873258 Coleman Donna 3125

Coleman Charlo 0256
Tar Wandering Creek 801
 19232857 Tar Wandering Creek 649

Rito 707 of Ideal 3407 7075
 S AV Blackcap May 4136
 Leachman Right Time
 Coleman Donna 714
 O C C Paxton 730P
 Bohi Abigale 6014
 Sma Upward Design 26
 SMA Wandering Creek 2524

BW	205 Wt	365 Wt	Dam's Nursing Ratio					
88	730		3 - 106					
CED	BW	WW	YW	SC	MILK	RE	\$W	\$M
7	1.5	57	102	1.48	23		48	75

“We’ve been using Larry Trexler’s bulls for the last four years. We are really happy with the quality of the calves, and our weaning weights have gone up. We are very pleased with these bulls and we plan to continue using them.”

*Bob Gingerich
 Montana*

TREXLER ANGUS



TAR RESOURCE 258 – HE SELLS AS LOT 150.

151 TAR RESOURCE 207

BULL 20441871 TATTOO 207 DOB: 01/17/22



S A V Resource 1441
Coleman Resource 003
 19873258 Coleman Donna 3125

Rito 707 of Ideal 3407 7075
 S A V Blackcap May 4136
 Leachman Right Time
 Coleman Donna 714
 Coleman Charlo 0256
 Coleman Donna 714
 Coleman Regis 904
 TAR Donna 028

TAR Donna 906
 19540732 TAR Donna 237

	BW	205 Wt	365 Wt	Dam's Nursing Ratio				
	88	679	1186	2 - 97				
CED	BW	WW	YW	SC	MILK	RE	\$W	\$M
8	2.6	56	100	1.28	20		41	84

150 TAR RESOURCE 258

BULL 20441881 TATTOO 258 DOB: 02/27/22



S A V Resource 1441
Coleman Resource 003
 19873258 Coleman Donna 3125

Rito 707 of Ideal 3407 7075
 S A V Blackcap May 4136
 Leachman Right Time
 Coleman Donna 714
 FairView Traveler 1171
 MW Black Nellie Rita 032
 Tar Ext 221
 TAR Countess 235 V962

Pine Coulee Traveler 39B
Tar Countess 846
 19229559 Tar Countess 539

	BW	205 Wt	365 Wt	Dam's Nursing Ratio				
	90	712		3 - 99				
CED	BW	WW	YW	SC	MILK	RE	\$W	\$M
7	1.3	53	94	1.63	21		43	82

152 TAR RESOURCE 213

BULL 20441873 TATTOO 213 DOB: 01/20/22



S A V Resource 1441
Coleman Resource 003
 19873258 Coleman Donna 3125

Rito 707 of Ideal 3407 7075
 S A V Blackcap May 4136
 Leachman Right Time
 Coleman Donna 714
 FairView Traveler 1171
 MW Black Nellie Rita 032
 Coleman Final Answer 222
 TAR Everelda Entense 103

Pine Coulee Traveler 39B
Tar Everelda Entense 847
 19229560 TAR Everelda Entense 427

	BW	205 Wt	365 Wt	Dam's Nursing Ratio				
	90	662	1195	3 - 96				
CED	BW	WW	YW	SC	MILK	RE	\$W	\$M
6	2.4	51	95	1.43	20		36	82

“We have been very impressed with how your bulls have held up for us. We run in dry foothills and mountains of Eastern Washington with 8-11 inches of annual precipitation all on open range land and no irrigated pastures. Your bulls have worked so well and held their condition so well that we are able to use them both in our spring herd and fall herds through the winter. Your bulls produce thick calves with heavy weaning weights, and keep on performing when we retain ownership. We consistently see 90% or better Prime and Choice carcasses also. We have been impressed enough to have collected a couple of the bulls and have AI'd several hundred cows to them, and those half-sisters are making phenomenal cows in our herd. Thanks Colemans and Trexlers.”

Cass Gebbers, Gebbers Farms, Brewster, WA



COLEMAN ANGUS %



COLEMAN BELOW ZERO 2106 – HE SELLS AS LOT 153.

153 COLEMAN BELOW ZERO 2106

BULL 20512901 TATTOO 2106 DOB: 01/20/22

Mohnen Substantial 272 Benfield Substance 8506
Sitz Stellar 726D Mohnen Glyn Mawr Elba 1758
 18397542 SITZ Pride 200B Connealy Final Product
 SitZ Pride 308Y
 Coleman Charlo 0256 O C C Paxton 730P
Coleman Donna 0153 Bohi Abigale 6014
 19857101 Coleman Donna 8147 Connealy Thunder
 Coleman Donna 714

	BW	205 Wt	365 Wt	Dam's Nursing Ratio				
	70	831	1372	1 - 107				
CED	BW	WW	YW	SC	MILK	RE	\$W	\$M
9	-1.4	71	127	.95	21	.65	62	72

154 COLEMAN STELLAR 297

BULL 20512897 TATTOO 297 DOB: 01/22/22

Mohnen Substantial 272 Benfield Substance 8506
Sitz Stellar 726D Mohnen Glyn Mawr Elba 1758
 18397542 SITZ Pride 200B Connealy Final Product
 SitZ Pride 308Y
 Coleman Charlo 0256 O C C Paxton 730P
Coleman Donna 075 Bohi Abigale 6014
 19857126 Coleman Donna 504 S A V Resource 1441
 Coleman Donna 714

	BW	205 Wt	365 Wt	Dam's Nursing Ratio				
	83	821	1429	1 - 106				
CED	BW	WW	YW	SC	MILK	RE	\$W	\$M
1	1.7	74	136	1.25	22	.71	60	66



COLEMAN DONNA 8146 – FULL SISTER TO THE GRANDAM OF LOT 153.



COLEMAN DONNA 714 – THIRD DAM OF LOTS 153 AND 154.

% COLEMAN ANGUS



COLEMAN KELCE 226 – HE SELLS AS LOT 155.

155 COLEMAN KELCE 226

BULL 20503502 TATTOO 226 DOB: 01/21/22



Coleman Charlo 0256
16879074 Bohi Abigale 6014

Coleman Chloe 9275
19583423 Lawsons Chloe C815

OCC Focus 813F
OCC Blackbird 736K
Sitz Traveler 8180
S AV Abigale 6062
Coleman Charlo 0256
Coleman Donna 714
S AV Renown 3439
Lawsons Chloe Z341

	BW	205 Wt	365 Wt	Dam's Nursing Ratio					
	78	758	1284	1 - 110					
CED	BW	WW	YW	SC	MILK	RE	\$W	\$M	
4	2.6	74	130	1.28	22	.81	67	71	

156 COLEMAN MARSHALL 2158

BULL 20503482 TATTOO 2158 DOB: 02/04/22



Coleman Marshall 7170
19102287 Coleman Donna 197

Coleman Donna 8185
19400590 Coleman Donna 714

Rito 707 of Ideal 3407 7075
S AV Blackcap May 4136
Basin Rainmaker 654X
KMK Donna J311
Coleman Charlo 0256
S AV Blackcap May 4136
Connealy Onward
Coleman Donna 386

	BW	205 Wt	365 Wt	Dam's Nursing Ratio					
	94	786	1412	2 - 98					
CED	BW	WW	YW	SC	MILK	RE	\$W	\$M	
7	2.3	67	128	.71	29	.73	58	83	



COLEMAN CHLOE 9275 – DAM OF LOTS 101, 125, 139, AND 155.



COLEMAN DONNA 386 – THIRD DAM OF LOT 156.

PERFORMANCE TESTED BULL SALE %



COLEMAN DONNA 3202 – GRANDDAM OF LOT 157.

159 COLEMAN ROCK 2115

BULL 20503468 TATTOO 2115 DOB: 03/02/22

Coleman Rock 7200
19107936

O C C Juneau 807J
Coleman Donna 714

O C C Emblazon 854E
O C C Dixie Erica 903E
Connealy Onward
Coleman Donna 386

Coleman Everelda Entense 302
17603369

S Chisum 6175
Coleman Everelda Entense 059
S Alliance 3313
S Gloria 464
O C C Juneau 807J
Coleman Everelda Entense 599

	BW	205 Wt	365 Wt	Dam's Nursing Ratio				
	80	814	1265	8 - 106				
CED	BW	WW	YW	SC	MILK	RE	\$W	\$M
10	0.0	65	107	.74	25	.63	65	98



157 COLEMAN PLAYMAKER 288

BULL 20503523 TATTOO 288 DOB: 01/14/22

Coleman Playmaker 427
17914039

GDAR Game Day 449
Coleman Donna 714

Coleman Donna 043
19857115

Coleman Charlo 0256
Coleman Donna 3202

Boyd New Day 8005
G D A R Miss Wix 474
Connealy Onward
Coleman Donna 386
O C C Paxton 730P
Bohi Abigale 6014
Wulffs Ext 6106
Coleman Donna 714

	BW	205 Wt	365 Wt	Dam's Nursing Ratio				
	72	795	1336	1 - 102				
CED	BW	WW	YW	SC	MILK	RE	\$W	\$M
12	-1.6	60	104	1.05	25	.36	61	92



160 COLEMAN BANKER 2109

BULL 20503467 TATTOO 2109 DOB: 01/27/22

Coleman Banker 9215
19583404

Coleman Bravo 6313
Coleman Donna 4203

Coleman Donna 0164
19873320

S A V Resource 1441
Coleman Donna 040

Coleman Charlo 0256
Coleman Donna 714
Connealy Thunder
Coleman Donna 714
Rito 707 of Ideal 3407 7075
S A V Blackcap May 4136
O C C Juneau 807J
Coleman Donna 714

	BW	205 Wt	365 Wt	Dam's Nursing Ratio				
	84	798	1403	1 - 103				
CED	BW	WW	YW	SC	MILK	RE	\$W	\$M
10	0.2	69	126	.82	33	.80	69	88



158 COLEMAN BRAVO 298

BULL 20503527 TATTOO 298 DOB: 01/25/22

Coleman Bravo 6313
18734838

Coleman Charlo 0256
Coleman Donna 714

Coleman Donna 081
19857128

Coleman Navigator 614
Coleman Donna 504

O C C Paxton 730P
Bohi Abigale 6014
Connealy Onward
Coleman Donna 386
Cole Creek Black Cedar 46P
Coleman Eriskay 291
S A V Resource 1441
Coleman Donna 714

	BW	205 Wt	365 Wt	Dam's Nursing Ratio				
	75	789	1357	1 - 101				
CED	BW	WW	YW	SC	MILK	RE	\$W	\$M
14	-0.5	64	115	.95	23	.54	59	96



161 COLEMAN ROCK 2146

BULL 20503478 TATTOO 2146 DOB: 02/05/22

Coleman Rock 7200
19107936

O C C Juneau 807J
Coleman Donna 714

Coleman Donna 7217
19105448

C H Quantum 3330
Coleman Donna 714

O C C Emblazon 854E
O C C Dixie Erica 903E
Connealy Onward
Coleman Donna 386
G D A R Quantum 1245
Dixie Erica of C H 6180
Connealy Onward
Coleman Donna 386

	BW	205 Wt	365 Wt	Dam's Nursing Ratio				
	90	756	1354	3 - 99				
CED	BW	WW	YW	SC	MILK	RE	\$W	\$M
11	0.3	54	101	1.15	26	.52	51	82



162 COLEMAN ACE 2176

BULL 20503490 TATTOO 2176 DOB: 02/13/22

Coleman Ace 989
19554432

Coleman Bravo 6313
Coleman Donna 439

Coleman Donna 9412
19583438

Coleman Playmaker 427
Coleman Donna 7181

Coleman Charlo 0256
Coleman Donna 714
GDAR Game Day 449
Coleman Donna 714
GDAR Game Day 449
Coleman Donna 714
Coleman Charlo 0256
Coleman Donna 197

	BW	205 Wt	365 Wt	Dam's Nursing Ratio				
	80	802	1391	1 - 103				
CED	BW	WW	YW	SC	MILK	RE	\$W	\$M
12	-0.9	60	108	.28	34	.53	68	95



COLEMAN DONNA 7181 – GRANDDAM OF LOT 162.

% COLEMAN ANGUS



COLEMAN DONNA 787 – DAM OF LOTS 163 AND 178.



COLEMAN DONNA 7221 – DAM OF LOTS 136, 166, AND 185.

163 COLEMAN TRIUMPH 2214

BULL 20503496 TATTOO 2214 DOB: 02/04/22



Coleman Bravo 6313
Coleman Triumph 9145
 19555917 Lawsons Chloe C815

Coleman Charlo 0256
Coleman Donna 787
 18838394 Coleman Donna 063

Coleman Charlo 0256
 Coleman Donna 714
 S A V Renown 3439
 Lawsons Chloe Z341
 O C C Paxton 730P
 Bohi Abigale 6014
 O C C Juneau 807J
 Coleman Donna 714

BW	205 Wt	365 Wt	Dam's Nursing Ratio					
86	754	1301	4 - 107					
CED	BW	WW	YW	SC	MILK	RE	\$W	\$M
10	-0.6	61	104	1.11	26	.43	69	99

165 COLEMAN RENOVATION 2211

BULL 20512826 TATTOO 2211 DOB: 01/20/22



S A V Renown 3439
S A V Renovation 6822
 18579309 S A V Madame Pride 0151

Connealy Onward
Coleman Abigale 686
 18573944 Coleman Abigale 0277

Rito 707 of Ideal 3407 7075
 S A V Blackcap May 4136
 S A V 004 Density 4336
 S A V Madame Pride 0075
 Connealy Lead On
 Altune of Conanga 6104
 O C C Paxton 730P
 Bohi Abigale 6014

BW	205 Wt	365 Wt	Dam's Nursing Ratio					
86	752	1248	5 - 110					
CED	BW	WW	YW	SC	MILK	RE	\$W	\$M
8	1.5	59	107	.83	27	.43	59	75

164 COLEMAN BRAVO 291

BULL 20503525 TATTOO 291 DOB: 01/14/22



Coleman Charlo 0256
Coleman Bravo 6313
 18734838 Coleman Donna 714

Coleman Navigator 614
Coleman Beauty 054
 19859553 TLA Beauty 5R

O C C Paxton 730P
 Bohi Abigale 6014
 Connealy Onward
 Coleman Donna 386
 Cole Creek Black Cedar 46P
 Coleman Eriskay 291
 RR 7407 Rainmaker 2154
 Terrlene Beauty 35F

BW	205 Wt	365 Wt	Dam's Nursing Ratio					
68	735	1279	1 - 94					
CED	BW	WW	YW	SC	MILK	RE	\$W	\$M
14	-1.0	50	88	1.11	21	.42	47	75

166 COLEMAN CHARLO 209

BULL 20503465 TATTOO 209 DOB: 01/21/22



O C C Paxton 730P
Coleman Charlo 0256
 16879074 Bohi Abigale 6014

S A V Renown 3439
Coleman Donna 7221
 19102656 Coleman Donna 714

O C C Focus 813F
 O C C Blackbird 736K
 Sitz Traveler 8180
 S A V Abigale 6062
 Rito 707 of Ideal 3407 7075
 S A V Blackcap May 4136
 Connealy Onward
 Coleman Donna 386

BW	205 Wt	365 Wt	Dam's Nursing Ratio					
79	718	1212	2 - 110					
CED	BW	WW	YW	SC	MILK	RE	\$W	\$M
11	-0.8	54	97	1.15	30	.56	66	87



COLEMAN JUSTIFIED 217 – HE SELLS AS LOT 167.

167 COLEMAN JUSTIFIED 217

BULL 20505939 TATTOO 217 DOB: 01/20/22



Connealy Judgment
KG Justified 3023
 17707279 KG Miss Magic 1443

O C C Juneau 807J
Coleman Donna 040
 16584279 Coleman Donna 714

Connealy Consensus 7229
 Entrine of Conanga 9876
 Sitz Wisdom 481T
 KG Miss Magic 3528
 O C C Emblazon 854E
 O C C Dixie Erica 903E
 Connealy Onward
 Coleman Donna 386

BW	205 Wt	365 Wt	Dam's Nursing Ratio					
78	708	1159	8 - 107					
CED	BW	WW	YW	SC	MILK	RE	\$W	\$M
12	-1.7	63	105	.25	30	.61	75	100

YOUR MATERNAL SOURCE



COLEMAN DONNA 3125 – DAM OF LOT 168.

168 COLEMAN TRIUMPH 2130

BULL 20503472 TATTOO 2130 DOB: 01/20/22

Coleman Bravo 6313
Coleman Triumph 9145
19555917 Lawsons Chloe C815

Leachman Right Time
Coleman Donna 3125
17783497 Coleman Donna 714

Coleman Charlo 0256
Coleman Donna 714
S A V Renown 3439
Lawsons Chloe Z341
N Bar Emulation EXT
Leachman Erica 0025
Connealy Onward
Coleman Donna 386

BW	205 Wt	365 Wt	Dam's Nursing Ratio					
78	750	1302	6 - 107					
CED	BW	WW	YW	SC	MILK	RE	\$W	\$M
13	-1.7	51	92	1.19	29	.43	55	86

169 COLEMAN ARGENTINE 238

BULL 20503508 TATTOO 238 DOB: 01/24/22

Hummel Argentine
19919948 Don Aparicio Serrucho57 Maxi
Rubeta Fontana 7567-T/E-

S A V Renown 3439
Lawsons Chloe C815
18359250 Lawsons Chloe Z341

Don Jose 176 Maxi
Don Aparicio Serranias 57
Consenza Don Roberto 338 T/E
Rubeta Fontana 6207-T/E-
Rito 707 of Ideal 3407 7075
S A V Blackcap May 4136
Sitz Upward 307R
Basin Chloe 7T26

BW	205 Wt	365 Wt	Dam's Nursing Ratio					
88	704	1258	3 - 110					
CED	BW	WW	YW	SC	MILK	RE	\$W	\$M
2	1.7	64	117	.27	26	.68	60	57

170 COLEMAN SOUTH AMERICA 2210

BULL 20503494 TATTOO 2210 DOB: 01/25/22

Hummel South America
19919943 Don Aparicio Serrucho57 Maxi
Rubeta Fontana 7567-T/E-

O C C Paxton 730P
Coleman Abigale 0277
16879081 Bohi Abigale 6014

Don Jose 176 Maxi
Don Aparicio Serranias 57
Consenza Don Roberto 338 T/E
Rubeta Fontana 6207-T/E-
O C C Focus 813F
O C C Blackbird 736K
Sitz Traveler 8180
S A V Abigale 6062

BW	205 Wt	365 Wt	Dam's Nursing Ratio					
84	723	1209	5 - 108					
CED	BW	WW	YW	SC	MILK	RE	\$W	\$M
8	0.9	58	102	.49	23	.59	55	50

171 COLEMAN ARGENTINE 232

BULL 20503504 TATTOO 232 DOB: 01/20/22

Hummel Argentine
19919948 Don Aparicio Serrucho57 Maxi
Rubeta Fontana 7567-T/E-

S A V Renown 3439
Lawsons Chloe C815
18359250 Lawsons Chloe Z341

Don Jose 176 Maxi
Don Aparicio Serranias 57
Consenza Don Roberto 338 T/E
Rubeta Fontana 6207-T/E-
Rito 707 of Ideal 3407 7075
S A V Blackcap May 4136
Sitz Upward 307R
Basin Chloe 7T26

BW	205 Wt	365 Wt	Dam's Nursing Ratio					
78	727	1205	3 - 110					
CED	BW	WW	YW	SC	MILK	RE	\$W	\$M
2	1.7	64	117	.25	26	.68	60	57

172 COLEMAN BANKER 289

BULL 20503524 TATTOO 289 DOB: 01/25/22

Coleman Banker 9215
19583404 Coleman Bravo 6313
Coleman Donna 4203

S A V Resource 1441
Coleman Donna 044
19873257 Coleman Donna 3125

Coleman Charlo 0256
Coleman Donna 714
Connealy Thunder
Coleman Donna 714
Rito 707 of Ideal 3407 7075
S A V Blackcap May 4136
Leachman Right Time
Coleman Donna 714

BW	205 Wt	365 Wt	Dam's Nursing Ratio					
69	791	1362	1 - 102					
CED	BW	WW	YW	SC	MILK	RE	\$W	\$M
15	-2.2	60	113	1.44	34	.59	66	92

173 COLEMAN ROCK 2177

BULL 20503491 TATTOO 2177 DOB: 03/02/22

Coleman Rock 7200
19107936 O C C Juneau 807J
Coleman Donna 714

Connealy Onward
Coleman Donna 6106
18570019 Coleman Donna 197

O C C Emblazon 854E
O C C Dixie Erica 903E
Connealy Onward
Coleman Donna 386
Connealy Lead On
Altune of Conanga 6104
Basin Rainmaker 654X
KMK Donna J311

BW	205 Wt	365 Wt	Dam's Nursing Ratio					
82	791	1223	5 - 106					
CED	BW	WW	YW	SC	MILK	RE	\$W	\$M
12	-0.7	54	97	.81	28	.63	55	77

Have you ever stopped to think how much more time you spend with the poor cattle, than the good ones? The good ones not only take care of themselves, they make the ranch profitable.

% COLEMAN ANGUS

174 COLEMAN ROCK 2168

BULL 20503487 TATTOO 2168 DOB: 03/03/22



Coleman Rock 7200
19107936 Coleman Donna 714

O C C Juneau 807J
NCC Prestige 317 736K

Coleman Abigale 8404
19400653 Coleman Abigale 5330

O C C Emblazon 854E
O C C Dixie Erica 903E
Connealy Onward
Coleman Donna 386
O C C Prestige 672P
O C C Blackbird 736K
Leachman Right Time
Bohi Abigale 6014

BW	205 Wt	365 Wt	Dam's Nursing Ratio					
85	810	1296	2 - 103					
CED	BW	WW	YW	SC	MILK	RE	\$W	\$M
6	0.9	66	113		24		58	75



COLEMAN DONNA 787 - DAM OF LOTS 163 AND 178.

175 COLEMAN BANKER 284

BULL 20503521 TATTOO 284 DOB: 01/22/22



Coleman Banker 9215
19583404 Coleman Donna 4203

Coleman Bravo 6313
S A V Resource 1441

Coleman Donna 032
19873234 Coleman Donna 3125

Coleman Charlo 0256
Coleman Donna 714
Connealy Thunder
Coleman Donna 714
Rito 707 of Ideal 3407 7075
S A V Blackcap May 4136
Leachman Right Time
Coleman Donna 714

BW	205 Wt	365 Wt	Dam's Nursing Ratio					
72	750	1284	1 - 96					
CED	BW	WW	YW	SC	MILK	RE	\$W	\$M
15	-2.6	55	102	.58	33	.49	62	90

178 COLEMAN ARGENTINE 2215

BULL 20503497 TATTOO 2215 DOB: 01/19/22



Hummel Argentine
19919948 Rubeta Fontana 7567-T/E-

Don Aparicio Serrucho57 Maxi
Rubeta Fontana 7567-T/E-

Don Jose 176 Maxi
Don Aparicio Serranias 57
Consenza Don Roberto 338 T/E
Rubeta Fontana 6207-T/E-
O C C Paxton 730P
Bohi Abigale 6014
O C C Juneau 807J
Coleman Donna 714

Coleman Donna 787
18838394 Coleman Donna 063

Coleman Charlo 0256

BW	205 Wt	365 Wt	Dam's Nursing Ratio					
84	735	1173	4 - 107					
CED	BW	WW	YW	SC	MILK	RE	\$W	\$M
9	-0.1	48	85	.78	26	.37	54	75

176 COLEMAN ARGENTINE 2143

BULL 20503477 TATTOO 2143 DOB: 01/18/22



Hummel Argentine
19919948 Rubeta Fontana 7567-T/E-

Don Aparicio Serrucho57 Maxi
Rubeta Fontana 7567-T/E-

Coleman Dixie Erica 7117
18838371 Coleman Dixie Erica 8273

Coleman Charlo 0256

Don Jose 176 Maxi
Don Aparicio Serranias 57
Consenza Don Roberto 338 T/E
Rubeta Fontana 6207-T/E-
O C C Paxton 730P
Bohi Abigale 6014
Leachman Right Time
Coleman Dixie Erica 143

BW	205 Wt	365 Wt	Dam's Nursing Ratio					
74	810	1280	4 - 104					
CED	BW	WW	YW	SC	MILK	RE	\$W	\$M
12	-2.2	45	76	-.31	27	.37	52	77

179 COLEMAN ACE 2125

BULL 20503469 TATTOO 2125 DOB: 03/03/22



Coleman Ace 989
19554432 Coleman Donna 439

Coleman Bravo 6313

Coleman Donna 978
19544122 Coleman Donna 0308

Basin Rainmaker 654X

Coleman Charlo 0256
Coleman Donna 714
GDAR Game Day 449
Coleman Donna 714
Basin Rainmaker D S 380U
Basin Bardolene 423U
O C C Juneau 807J
Coleman Donna 732

BW	205 Wt	365 Wt	Dam's Nursing Ratio					
80	788	1265	2 - 103					
CED	BW	WW	YW	SC	MILK	RE	\$W	\$M
14	-1.5	50	86	.55	34	.42	62	94

177 COLEMAN GLACIER 2173

BULL 20503489 TATTOO 2173 DOB: 02/18/22



Coleman Glacier 041
19866409 Coleman Donna 439

S A V Renown 3439

Coleman Abigale 9242
19583271 Coleman Abigale 0277

Coleman Bravo 6313

Rito 707 of Ideal 3407 7075
S A V Blackcap May 4136
GDAR Game Day 449
Coleman Donna 714
Coleman Charlo 0256
Coleman Donna 714
O C C Paxton 730P
Bohi Abigale 6014

BW	205 Wt	365 Wt	Dam's Nursing Ratio					
78	798	1252	1 - 103					
CED	BW	WW	YW	SC	MILK	RE	\$W	\$M
7	1.0	63	110	.52	31	.71	65	74



COLEMAN DONNA 0133 - A FLUSH SISTER TO THE DAM OF LOTS 75, 77, AND 176.

PERFORMANCE TESTED BULL SALE %



COLEMAN EVERELDA ENTENSE 2323 – GRANDDAM OF LOT 182.

182 COLEMAN MARSHALL 2164



BULL 20503486 TATTOO 2164 DOB: 02/12/22

S A V Resource 1441
Coleman Marshall 7170
 19102287 Coleman Donna 197

Rito 707 of Ideal 3407 7075
 S A V Blackcap May 4136
 Basin Rainmaker 654X
 KMK Donna J311
 Coleman Charlo 0256
 Coleman Donna 714
 Basin Rainmaker 654X
 Coleman Everelda Entense 578

Coleman Bravo 6313
Coleman Everelda Entense 8278
 19400615 Coleman Everelda Entense 2323

	BW	205 Wt	365 Wt	Dam's Nursing Ratio				
	78	772	1276	2 - 101				
CED	BW	WW	YW	SC	MILK	RE	\$W	\$M
13	-0.8	50	95	.78	29	.68	52	83

180 COLEMAN RENOVATION 2102



BULL 20552206 TATTOO 2102 DOB: 03/13/22

S A V Renovation 6822
Brooking Can Am 0012
 20057295 Brooking Rose 6067

S A V Raindance 6848
Montana Dixie Erica 0103
 19856439 GCC Dixie Erica 658W

S A V Renown 3439
 S A V Madame Pride 0151
 Connealy Earnan 076E
 Soo Line Rose 1019
 Coleman Charlo 0256
 S A V Blackcap May 4136
 O C C Missing Link 830M
 O C C Dixie Erica 620N

	BW	205 Wt	365 Wt	Dam's Nursing Ratio				
	88	764	1199	1 - 98				
CED	BW	WW	YW	SC	MILK	RE	\$W	\$M
1	2.0	65	114	.88	18	.68	52	59

183 COLEMAN PLAYMAKER 282



BULL 20503519 TATTOO 282 DOB: 01/25/22

GDAR Game Day 449
Coleman Playmaker 427
 17914039 Coleman Donna 714

Coleman Bravo 6313
Coleman Chloe 027
 19859529 Lawsons Chloe C815

Boyd New Day 8005
 G D A R Miss Wix 474
 Connealy Onward
 Coleman Donna 386
 Coleman Charlo 0256
 Coleman Donna 714
 S A V Renown 3439
 Lawsons Chloe Z341

	BW	205 Wt	365 Wt	Dam's Nursing Ratio				
	75	748	1316	1 - 96				
CED	BW	WW	YW	SC	MILK	RE	\$W	\$M
8	0.2	63	114	.73	24	.44	57	91

181 COLEMAN GLACIER 2140



BULL 20503476 TATTOO 2140 DOB: 02/13/22

S A V Renown 3439
Coleman Glacier 041
 19866409 Coleman Donna 439

Cole Creek Black Cedar 1100
Coleman Donna 6371
 18736878 Coleman Donna 4269

Rito 707 of Ideal 3407 7075
 S A V Blackcap May 4136
 GDAR Game Day 449
 Coleman Donna 714
 Cole Creek Black Cedar 46P
 Cole Creek Juanada Bird 38N
 Coleman Charlo 0256
 Coleman Donna 1133

	BW	205 Wt	365 Wt	Dam's Nursing Ratio				
	80	807	1269	4 - 102				
CED	BW	WW	YW	SC	MILK	RE	\$W	\$M
7	-0.2	56	93	.66	27	.68	58	86

184 COLEMAN CHARLO 287



BULL 20503522 TATTOO 287 DOB: 01/18/22

O C C Paxton 730P
Coleman Charlo 0256
 16879074 Bohi Abigale 6014

S A V Renown 3439
Coleman Donna 039
 19857113 Coleman Donna 439

O C C Focus 813F
 O C C Blackbird 736K
 Sitz Traveler 8180
 S A V Abigale 6062
 Rito 707 of Ideal 3407 7075
 S A V Blackcap May 4136
 GDAR Game Day 449
 Coleman Donna 714

	BW	205 Wt	365 Wt	Dam's Nursing Ratio				
	78	774	1296	1 - 99				
CED	BW	WW	YW	SC	MILK	RE	\$W	\$M
7	0.3	56	99	.92	26	.60	56	90

185 COLEMAN CHARLO 223



BULL 20503501 TATTOO 223 DOB: 01/20/22

O C C Paxton 730P
Coleman Charlo 0256
 16879074 Bohi Abigale 6014

S A V Renown 3439
Coleman Donna 7221
 19102656 Coleman Donna 714

O C C Focus 813F
 O C C Blackbird 736K
 Sitz Traveler 8180
 S A V Abigale 6062
 Rito 707 of Ideal 3407 7075
 S A V Blackcap May 4136
 Connealy Onward
 Coleman Donna 386

	BW	205 Wt	365 Wt	Dam's Nursing Ratio				
	76	673	1111	2 - 110				
CED	BW	WW	YW	SC	MILK	RE	\$W	\$M
11	-0.8	54	97	.21	30	.56	66	87



COLEMAN DONNA 046 – FLUSH SISTER TO THE DAM OF LOTS 133 AND 184.

% COLEMAN ANGUS

TREXLER ANGUS

186 COLEMAN SUMMITT 278

BULL 20503517 TATTOO 278 DOB: 03/09/22



ZWT Summitt 6507
Coleman Summitt 9370
 19583398 Coleman Donna 5412

S AV Renown 3439
 Coleman Donna 714
 Coleman Charlo 0256
 Coleman Donna 0296
 Coleman Charlo 0256
 Coleman Donna 714
 Duff Jetset 7122
 O C C Lady Blackcap 753L

Coleman Bravo 6313
Coleman Blackcap 011
 19859540 ZWT Blackcap 1508

BW	205 Wt	365 Wt	Dam's Nursing Ratio					
84	795	1237	1 - 102					
CED	BW	WW	YW	SC	MILK	RE	\$W	\$M
7	2.3	65	112	.83	26	.47	60	81



TAR MAVERICK 227 - HE SELLS AS LOT 190.

187 COLEMAN SUMMITT 2107

BULL 20503466 TATTOO 2107 DOB: 01/30/22



ZWT Summitt 6507
Coleman Summitt 9370
 19583398 Coleman Donna 5412

S AV Renown 3439
 Coleman Donna 714
 Coleman Charlo 0256
 Coleman Donna 0296
 Coleman Charlo 0256
 Coleman Donna 714
 O C C Juneau 807J
 Coleman Donna 714

Coleman Bravo 6313
Coleman Donna 0160
 19857103 Coleman Donna 040

BW	205 Wt	365 Wt	Dam's Nursing Ratio					
76	724	1207	1 - 93					
CED	BW	WW	YW	SC	MILK	RE	\$W	\$M
9	1.4	55	92	1.14	24	.69	53	95

190 TAR MAVERICK 227

BULL 20441874 TATTOO 227 DOB: 01/27/22



Coleman Charlo 0256
Coleman Maverick 5322
 18402732 Coleman Donna 3202

O C C Paxton 730P
 Bohi Abigale 6014
 Wulffs Ext 6106
 Coleman Donna 714
 S AV Final Answer 0035
 Coleman Donna 714
 O C C Emblazon 854E
 O C C Juanada 710K

Coleman Regis 904
Coleman Juanada 280
 17238459 Chloe Juanada 7009

BW	205 Wt	365 Wt	Dam's Nursing Ratio					
80	659	1097	9 - 103					
CED	BW	WW	YW	SC	MILK	RE	\$W	\$M
16	-1.7	41	73	.56	24	.52	44	72

188 COLEMAN TRIUMPH 2222

BULL 20503499 TATTOO 2222 DOB: 01/28/22



Coleman Bravo 6313
Coleman Triumph 9145
 19555917 Lawsons Chloe C815

Coleman Charlo 0256
 Coleman Donna 714
 S AV Renown 3439
 Lawsons Chloe Z341
 Rito 707 of Ideal 3407 7075
 S AV Blackcap May 4136
 Connealy Thunder
 Coleman Donna 714

S AV Renown 3439
Coleman Donna 0104
 20189853 Coleman Donna 4203

BW	205 Wt	365 Wt	Dam's Nursing Ratio					
78	779	1245	1 - 100					
CED	BW	WW	YW	SC	MILK	RE	\$W	\$M
8	-0.3	60	110		25		54	86

191 TAR RESOURCE 230

BULL 20441875 TATTOO 230 DOB: 01/29/22



S AV Resource 1441
Coleman Resource 003
 19873258 Coleman Donna 3125

Rito 707 of Ideal 3407 7075
 S AV Blackcap May 4136
 Leachman Right Time
 Coleman Donna 714
 N Bar Emulation EXT
 Wulffs Erica Dianna C116
 D H D Traveler 6807
 BT Everelda Entense 613L

Wulffs Ext 6106
Tar Everelda Entense 638
 18552743 TAR Everelda Entense 812

BW	205 Wt	365 Wt	Dam's Nursing Ratio					
80	655	1194	5 - 96					
CED	BW	WW	YW	SC	MILK	RE	\$W	\$M
12	0.1	49	93	1.26	20	.42	41	60

189 COLEMAN GAME CHANGER 2225

BULL 20503500 TATTOO 2225 DOB: 02/10/22



Coleman Playmaker 427
Coleman Game Changer 7369
 19102339 Coleman Donna 5247

GDAR Game Day 449
 Coleman Donna 714
 Coleman Charlo 0256
 Coleman Donna 194
 Coleman Charlo 0256
 Coleman Donna 714
 Connealy Thunder
 Coleman Donna 714

Coleman Bravo 6313
Coleman Donna 0108
 20176486 Coleman Donna 4203

BW	205 Wt	365 Wt	Dam's Nursing Ratio					
72	776	1238	1 - 100					
CED	BW	WW	YW	SC	MILK	RE	\$W	\$M
15	-1.3	58	110		28		55	92

Buy The Program - It Makes A Difference!

- Selling Full, ¾, and ½ Brothers
- Bulls Selling are Parent Verified and Free of Any Known Genetic Defects
- Free Delivery Anywhere in the Continental United States
- Free Board Until April 1, 2022
- Fertility Tested
- Volume Discounts: 5 Bulls = 5%; 10 Bulls = 10%
- First Season Breeding Guarantee
- Freeze Branded
- Tested Free of PI-BVD
- Sight Unseen Buyer's Program

TREXLER ANGUS



TAR MAVERICK 251 – HE SELLS AS LOT 192.



192 TAR MAVERICK 251

BULL 20447431 TATTOO 251 DOB: 02/10/22



Coleman Charlo 0256
Coleman Maverick 5322
18402732 Coleman Donna 3202

Tar Charlo 303
Tar Anita 748
18886422 TAR Anita 403

O C C Paxton 730P
Bohi Abigale 6014
Wulffs Ext 6106
Coleman Donna 714
Coleman Charlo 0256
Coleman Donna 6154
O C C Juneau 807J
Pine Coulee Anita W05

BW		205 Wt		365 Wt		Dam's Nursing Ratio			
94		693		1258		3	-	95	
CED	BW	WW	YW	SC	MILK	RE	\$W	\$M	
8	1.2	54	102	.61	21		42	80	

194 TAR RESOURCE 240

BULL 20441878 TATTOO 249 DOB: 02/09/22



S AV Resource 1441
Coleman Resource 003
19873258 Coleman Donna 3125

Pine Coulee Traveler 39B
TAR Miss Wix 964
19538045 Tar Miss Wix 603

Rito 707 of Ideal 3407 7075
S AV Blackcap May 4136
Leachman Right Time
Coleman Donna 714
FairView Traveler 1171
MW Black Nellie Rita 032
Coleman Charlo 0256
TAR Miss Wix 407

BW		205 Wt		365 Wt		Dam's Nursing Ratio			
90		676		1057		2	-	95	
CED	BW	WW	YW	SC	MILK	RE	\$W	\$M	
5	1.9	52	88	1.20	22		44	86	

193 TAR RESOURCE 270

BULL 20441883 TATTOO 270 DOB: 03/16/22



S AV Resource 1441
Coleman Resource 003
19873258 Coleman Donna 3125

Soo Line Motive 9016
Tar Dixie Erica 819
19237869 O C C Dixie Erica 626P

Rito 707 of Ideal 3407 7075
S AV Blackcap May 4136
Leachman Right Time
Coleman Donna 714
HF Kodiak 5R
TLA Beauty 5R
O C C Hunter 928H
O C C Dixie Erica 948E

BW		205 Wt		365 Wt		Dam's Nursing Ratio			
92		745				3	-	102	
CED	BW	WW	YW	SC	MILK	RE	\$W	\$M	
4	2.1	57	102	.78	20		43	64	

195 TAR MAVERICK 268

BULL 20447424 TATTOO 268 DOB: 03/12/22



Coleman Charlo 0256
Coleman Maverick 5322
18402732 Coleman Donna 3202

S AV President 6847
TAR Lass Trader 936
19559512 TAR Lass Trader 002

O C C Paxton 730P
Bohi Abigale 6014
Wulffs Ext 6106
Coleman Donna 714
Coleman Charlo 0256
S AV Blackcap May 4136
Duff Encore 702
TAR Lass Trader 701

BW		205 Wt		365 Wt		Dam's Nursing Ratio			
93		688				2	-	94	
CED	BW	WW	YW	SC	MILK	RE	\$W	\$M	
6	2.2	55	99		19		40	82	



TAR RESOURCE 270 – HE SELLS AS LOT 193.

196 TAR RESOURCE 246

BULL 20441876 TATTOO 246 DOB: 02/07/22



S AV Resource 1441
Coleman Resource 003
19873258 Coleman Donna 3125

S AV President 6847
TAR Miss Wix 941
19559500 Tar Miss Wix 216

Rito 707 of Ideal 3407 7075
S AV Blackcap May 4136
Leachman Right Time
Coleman Donna 714
Coleman Charlo 0256
S AV Blackcap May 4136
Wulffs Ext 6106
TAR Miss Wix 761

BW		205 Wt		365 Wt		Dam's Nursing Ratio			
83		637		1127		2	-	99	
CED	BW	WW	YW	SC	MILK	RE	\$W	\$M	
9	1.2	51	92	1.09	20		41	75	

TREXLER ANGUS



TAR MAVERICK 250 – HE SELLS AS LOT 197.



THANKS BRIAN FOR COMING TO SEE US.
MUCH APPRECIATED!

197 TAR MAVERICK 250

BULL **20447438** TATTOO **250** DOB: **02/09/22**



Coleman Charlo 0256
Coleman Maverick 5322
18402732 Coleman Donna 3202

Coleman Charlo 0256
TAR Miss Wix 424
17915948 TAR Miss Wix 876

O C C Paxton 730P
Bohi Abigale 6014
Wulffs Ext 6106
Coleman Donna 714
O C C Paxton 730P
Bohi Abigale 6014
D H D Traveler 6807
Coleman Miss Wix 923

BW	205 Wt	365 Wt	Dam's Nursing Ratio					
92	634	1111	5 - 99					
CED	BW	WW	YW	SC	MILK	RE	\$W	\$M
9	0.2	38	76	1.01	22	.36	34	61

199 TAR BRAVO 252

BULL **20441879** TATTOO **252** DOB: **02/10/22**



TAR Bravo 903
19540745

TAR Donna 049
19837946

Coleman Bravo 6313
TAR Donna 030
Pine Coulee Traveler 39B
Tar Donna 524

Coleman Charlo 0256
Coleman Donna 714
O C C Juneau 807J
Coleman Donna 6154
FairView Traveler 1171
MW Black Nellie Rita 032
O C C Juneau 807J
TAR Donna 120

BW	205 Wt	365 Wt	Dam's Nursing Ratio					
82	689	1185	1 - 100					
CED	BW	WW	YW	SC	MILK	RE	\$W	\$M
6	1.7	48	86	.92	25		42	85

198 TAR MAVERICK 237

BULL **20447443** TATTOO **237** DOB: **02/03/22**



Coleman Charlo 0256
Coleman Maverick 5322
18402732 Coleman Donna 3202

Coleman Regis 904
TAR Everelda Entense 113
16991815 BT Everelda Entense 613L

O C C Paxton 730P
Bohi Abigale 6014
Wulffs Ext 6106
Coleman Donna 714
S A V Final Answer 0035
Coleman Donna 714
Sitz Traveler 6802
BT Everelda Entense 567H

BW	205 Wt	365 Wt	Dam's Nursing Ratio					
70	668	1113	10 - 103					
CED	BW	WW	YW	SC	MILK	RE	\$W	\$M
17	-3.2	41	74	1.23	26	.33	46	78

200 TAR MAVERICK 265

BULL **20447427** TATTOO **265** DOB: **03/10/22**



Coleman Charlo 0256
Coleman Maverick 5322
18402732 Coleman Donna 3202

Tar Juneau 621
Tar Blackcap 944
19542900 Tar Blackcap 713

O C C Paxton 730P
Bohi Abigale 6014
Wulffs Ext 6106
Coleman Donna 714
Coleman Juneau 044
TAR Miss Wix 876
Connealy Thunder
TAR Blackcap 775

BW	205 Wt	365 Wt	Dam's Nursing Ratio					
72	691		2 - 105					
CED	BW	WW	YW	SC	MILK	RE	\$W	\$M
15	-2.5	46	84		23		44	83



THANKS TO OUR GREAT FRIENDS AT SELECT SIRES, AND BRIAN HOUSE
FOR SPENDING A DAY WITH US! HAD A GREAT TIME!

% YOUR MATERNAL SOURCE - COLEMAN ANGUS %

\$M % BREAKDOWN

Lot #	Name	\$M	% Breakdown	Lot #	Name	\$M	% Breakdown
20	Coleman Triumph 1480	100	1%	62	Coleman Rebound 1521	80	10%
27	Coleman Bravo 1495	94	1%	63	Coleman Rock 1579	84	10%
43	Coleman Bravo 1486	94	1%	65	Coleman Robust 1573	82	10%
44	Coleman Summitt 1743	94	1%	67	Coleman Rock 1576	84	10%
68	Coleman Bravo 1598	94	1%	76	Coleman Rock 1492	83	10%
69	Coleman Playmaker 1638	99	1%	84	Coleman Maverick 1736	80	10%
74	Coleman Logo 1651	100	1%	86	Coleman Marshall 1559	81	10%
81	Coleman Logo 1637	95	1%	88	Coleman Playmaker 1589	81	10%
91	Coleman Bravo 1623	96	1%	89	Coleman Resource 1570	82	10%
92	Coleman Playmaker 1624	101	1%	90	Coleman Rock 1549	82	10%
145	TAR Bravo 232	97	1%	116	Coleman Renovation 211	81	10%
147	TAR Hondo 204	94	1%	126	Coleman Rock 2132	82	10%
158	Coleman Bravo 298	96	1%	133	Coleman Charlo 283	81	10%
159	Coleman Rock 2115	98	1%	141	Coleman Triumph 2128	82	10%
162	Coleman Ace 2176	95	1%	143	TAR Bravo 236	84	10%
163	Coleman Triumph 2214	99	1%	144	TAR Resource 206	80	10%
167	Coleman Justified 217	100	1%	150	TAR Resource 258	82	10%
179	Coleman Ace 2125	94	1%	151	TAR Resource 207	84	10%
187	Coleman Summitt 2107	95	1%	152	TAR Resource 213	82	10%
				156	Coleman Marshall 2158	83	10%
18	Coleman Marshall 1517	90	2%	161	Coleman Rock 2146	82	10%
40	Coleman Marshall 1741	91	2%	182	Coleman Marshall 2164	83	10%
45	Coleman Bravo 1703	92	2%	186	Coleman Summitt 278	81	10%
55	Coleman Playmaker 1654	93	2%	192	TAR Maverick 251	80	10%
56	Coleman Bravo 1482	93	2%	195	TAR Maverick 268	82	10%
57	Coleman Triumph 1563	90	2%	200	TAR Maverick 265	83	10%
66	Coleman Maverick 1724	91	2%				
70	Coleman Rock 1586	91	2%	22	Coleman Triumph 1514	77	15%
73	Coleman Rebound 1525	92	2%	29	Coleman Maverick 1721	77	15%
78	Coleman Triumph 1490	92	2%	51	Coleman Robust 1574	79	15%
80	Coleman Summitt 1655	90	2%	54	Coleman Maverick 1723	78	15%
83	Coleman Bravo 1664	92	2%	71	Coleman Bravo 1725	77	15%
94	Coleman Logo 1616	91	2%	72	Coleman Stellar 1606	79	15%
142	TAR Hondo 202	92	2%	75	Coleman Rock 1561	78	15%
157	Coleman Playmaker 288	92	2%	85	Coleman Rock 1560	78	15%
172	Coleman Banker 289	92	2%	115	Coleman Renovation 230	78	15%
175	Coleman Banker 284	90	2%	173	Coleman Rock 2177	77	15%
183	Coleman Playmaker 282	91	2%	176	Coleman Argentine 2143	77	15%
184	Coleman Charlo 287	90	2%	198	TAR Maverick 237	78	15%
189	Coleman Game Changer 2225	92	2%				
				31	Coleman Triumph 1500	74	20%
13	Coleman Easy Decision 1539	88	3%	39	Coleman Resource 1735	75	20%
64	Coleman Rock 1584	89	3%	49	Coleman Maverick 1726	75	20%
127	Coleman Glacier 2160	88	3%	60	Coleman Maverick 1729	76	20%
160	Coleman Banker 2109	88	3%	87	Coleman Robust 1663	75	20%
				95	Coleman Marshall 1506	74	20%
23	Coleman Triumph 1528	86	4%	117	Coleman Renovation 225	76	20%
26	Coleman Bravo 1509	87	4%	118	Coleman Renovation 228	76	20%
41	Coleman Triumph 1494	87	4%	119	Coleman Triumph 2154	76	20%
79	Coleman Charlo 1746	87	4%	120	Coleman Accomplishment 2170	75	20%
82	Coleman Marshall 1518	86	4%	121	Coleman Accomplishment 2148	76	20%
109	Coleman Triumph 2212	87	4%	129	Coleman Renovation 2213	75	20%
128	Coleman Glacier 2135	86	4%	132	Coleman Accomplishment 2142	75	20%
136	Coleman Reliable 206	87	4%	148	TAR Resource 247	76	20%
146	TAR Resource 208	87	4%	149	TAR Resource 263	75	20%
166	Coleman Charlo 209	87	4%	164	Coleman Bravo 291	75	20%
168	Coleman Triumph 2130	86	4%	165	Coleman Renovation 2211	75	20%
181	Coleman Glacier 2140	86	4%	174	Coleman Rock 2168	75	20%
185	Coleman Charlo 223	87	4%	177	Coleman Glacier 2173	74	20%
188	Coleman Triumph 2222	86	4%	178	Coleman Argentine 2215	75	20%
194	TAR Resource 240	86	4%	196	TAR Resource 246	75	20%
21	Coleman Bravo 1412	85	5%	11	Coleman Resource 1738	72	25%
24	Coleman Bravo 1722	85	5%	59	Coleman Justified 1620	73	25%
52	Coleman Triumph 1535	85	5%	108	Coleman Accomplishment 2152	72	25%
96	Coleman Rebound 1531	85	5%	110	Coleman ID 248	73	25%
199	TAR Bravo 252	85	5%	111	Coleman Identified 247	73	25%
				112	Coleman Identified 250	73	25%
1	Coleman North Country 1424	80	10%	122	Coleman Triumph 2133	73	25%
2	Coleman Rock 1405	80	10%	131	Coleman Accomplishment 2144	72	25%
3	Coleman Rock 1467	80	10%	135	Coleman Argentine 2162	72	25%
25	Coleman Charlo 1447	81	10%	153	Coleman Below Zero 2106	72	25%
33	Coleman Triumph 1529	80	10%	190	TAR Maverick 227	72	25%
37	Coleman Charlo 1440	81	10%				

REFERENCE SIRE %



COLEMAN RESOURCE 708 – REFERENCE SIRE S.



COLEMAN DONNA 376 – DAM OF REFERENCE SIRE S.

S COLEMAN RESOURCE 708

BULL *18933681 TATTOO 708 DOB: 1/11/2017

Rito 707 of Ideal 3407 7075
SAV Resource 1441
 #+*17016597 SAV Blackcap May 4136
 Coleman Manning 0299
Coleman Donna 376
 *17544050 Coleman Donna 005

R R Rito 707
 Ideal 3407 of 1418 076
 SAV 8180 Traveler 004
 SAV May 2397
 O C C Juneau 807J
 Coleman Donna 714
 N Bar Shadow X4124
 Coleman Donna 386

CED	BEPD	WEPD	YEPD	SC	MILK	RE	\$W	\$M
8	-0.1	73	118	1.22	25	.67	72	92

- Coleman Resource 708 is a powerful bull that is a graduate of this sale and went to Gaugler Angus Ranch in Montana. A bull that has proven himself the old-fashioned way and became a visitor favorite this summer by many. His daughters at Gaugler have beautiful udders are easy fleshing with perfect structure and feet coupled with excellent calving easy, extra muscle shape, and wonderful maternal strengths. This bull exemplifies the days when a bull did it the old-fashioned way and we are recognizing him by just their tattoo number, so we call him 708.
- He is a son of Resource 1441 and brings the best of the 707 lineages to the front of the pedigree. He is by a daughter of Coleman Manning 0299 and back to the \$93,000 record-selling Coleman Donna 005, who is a daughter of the outcross sire N Bar Shadow X4124 and the \$200,000 Coleman Donna 386.

ORDER ➡ FREE SHIPPING ➡ RECEIVE



WAYS TO ORDER:

 www.shopcolemanangus.com

 406.644.2697

 colemanangus@blackfoot.net

FOR VOLUME DISCOUNTS PLEASE CONTACT OUR OFFICE AT 406.644.2697

VIEWING THE AUCTION

The auction will be broadcast online at Bid.SuperiorLivestock.com and the pre-recorded videos will also be hosted there. You do not need an account just to watch the auction or view videos of the sale offering.



SUPERIOR

LIVESTOCK AUCTION

ALL NEW BIDDING PLATFORM

MOBILE BIDDING PHONE BID LINE VIDEO PREVIEWS AUCTION CLERKING

bid.superiorlivestock.com | 800.422.2117

ONLINE BIDDING

Go to Bid.SuperiorLivestock.com for Superior's new online bidding platform. If you have not registered there before you will need to create an account. The first time you register an account you will receive a confirmation e-mail that you must click on. Once you have completed this, select the auction you would like to bid on and click the "Request a Buyer Number" button. The first time you request a buyer number you will be sent a confirmation code via text. Enter that code in the login portal and you will receive a buyer number. This 2-step verification process will only have to be done once and in the future you will be able to simply login and request a buyer number and receive it instantly for any auction. Once you have successfully registered and received a buyer number it will show your name and buyer number on both the video preview page and the online bidding page when you are logged in. If you have an account at LiveAuctions.tv you may

skip the registration process and use those login credentials to request a buyer number as LiveAuctions is a division of Superior Livestock. For more details on registering an account and also how to bid, you may watch a tutorial at Bid.SuperiorLivestock.com/how-it-works

TURN IN BIDS OVER THE PHONE

This is Superior's traditional method of buying cattle and is the suggested process for anybody who does not have consistent, high-speed internet. You still must register an account at Bid.SuperiorLivestock.com and request a buyer number. Once you receive a buyer number you will see the bid line phone number. Just watch the auction online and call in at least 2 lots ahead of the lot you are looking to bid on. A Superior Livestock representative will be with you on the phone and will assist you in placing bids.

**FOR HELP WITH REGISTRATION OR ANY PART OF THE BIDDING PROCESS
PLEASE CALL SUPERIOR AT (800) 422-2117.**



COLEMAN ANGUS

40067 Morris Road
Charlo, MT 59824




COLEMAN ANGUS & **TREXLER** *Angus*
YOUR MATERNAL SOURCE

ANNUAL *Performance Tested* BULL SALE

Tuesday • **February 21, 2023** • 1:00 p.m. (MST)

Five Valley Livestock • Missoula, Montana

SELLING 200 SERVICE-AGE BULLS

95 18-Month-Old Bulls • **105** Big, Stout, Yearling Bulls



**COLEMAN
ARROWHEAD
235**

**HE SELLS
AS LOT 101.**