

CHAROLAIS | SIMMENTAL | SHORTHORN | ANGUS | LIMOUSIN



Balamore Farm Ltd.
THICKNESS SELLS
11TH ANNUAL BULL SALE

MARCH 18, 2023 | 2:00 PM | BALAMORE FARM, GREAT VILLAGE, NS



WELCOME TO OUR

11th Annual “Thickness Sells” Bull Sale.

We extend a sincere thank you to the people who have helped and supported us since we started. We are fortunate to have our wonderful sons and their partners by our side, and truly awesome, dedicated staff that play a huge role in allowing us to pursue our passion for good cattle.

The word “program” often gets used in describing cattle operations, but I always struggle to define one for Balamore. The only thing I can quantify is that we use sires we like, retain the heifers we like and sell the bulls we like.

Regardless of the breed, our cattle share the traits we love: Thickness, Clean Front Ends, Length, Docility and Good Structure.

We hope that you will look at the sale catalogue and see them as we do!

We hope to see you sale day,

THE COOPER FAMILY



Joe and Carolyn Cooper



Robert and Emily



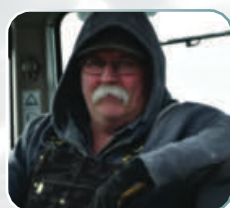
David and Kathleen



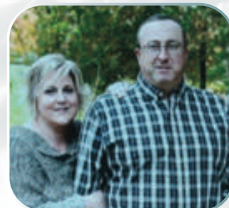
William



Taylor Stewart



Douglas Congdon



Mike and Shannon
Geddes

Balamore Farm Ltd. THICKNESS SELLS

11TH ANNUAL BULL SALE

SATURDAY, MARCH 18, 2023 AT 2:00 PM AST

AT THE FARM, GREAT VILLAGE, NS

9036 Highway #2 Great Village Nova Scotia, B0M 1L0

BALAMORE FARMS LTD.

Joe Cooper - 902.893.0744

Robert Cooper - 902.890.0663

William Cooper - 902.324.2005

Mike Geddes - 519.502.8864

Taylor Stewart *Herdsmen* - 902.956.4894

DNA:

All Balamore bulls on offer will have been DNA tested for Homo Polled, Coat Colour, Sire Verified, and 100K. The Limousin bulls have been tested for F94L (the muscling gene) and have all tested with 2 Copies.

HEALTH:

Sale cattle have been vaccinated with Pyramid FP5, Fusoguard and Ultrabac 7. Commercial sale heifers have also had SelonE and Scourbos 9

INSURANCE:

Insurance forms will be available sale day

SEMEN :

All bulls will be semen tested prior to sale day. Balamore reserves the right to draw IN HERD semen only on any bull sold at our expense and the owners convenience.

ULTRASOUND DATA :

Ultrasound data will be available prior to sale day.

CATALOGUE INFORMATION & ANNOUNCEMENTS :

EPDs are current and up-to-date as of publication date. Information in this document is believed to be accurate but any updates at the sale by the owners, auctioneer or sales management will take precedence over the information provided in the sale catalogue.

VIDEOS:

Videos will be available on CattleVids.ca in early March.

TERMS AND CONDITIONS:

Cattle will sell under the standard Canadian Limousin, Simmental, Angus, and/or Shorthorn Association Sale Terms and Conditions. These are available on request. Please make all cheques payable to Atlantic Stockyards Ltd.

AUCTIONEER:

Andy Carter - 902.664.8873

SALE DAY PHONES:

Ben Wright *T Bar C Cattle Co.*

519.374.3335

Taylor Richards *Bohrson Marketing Services*

306.821.4169

Scott Bohrson *Bohrson Marketing Services*

403.370.3010

Scott Dixon *Atlantic Stockyards*

902.364.9464

Glenn Mills *Sale Consultant*

306.567.8078

Randall O. Ratliff *R&R Marketing Co.*

615.330.2735

Kiley McKenna *MC Marketing*

402.350.2447

ONLINE BIDDING:

DLMS

Jill Renton - 780.603.1636

Thickness Sells. I challenge you to find an example of any sale that is more aptly titled than the one Balamore Farms has trademarked across North America. This continually nationally recognized event and offering sees an outstanding number of breeder bulls placed throughout the land, no matter the breed and colour of hide. The Cooper family's ability to cultivate bulls in four different breeds; as well as the consignments on offer from great friends and breeders, that stay true to their respective characteristics and diverse benefits, but while stamping them with the Balamore performance and genuine thickness is commendable. These are the type of true beef bulls that infuse profit into whatever herd they are set loose in.

The 2023 edition of the Balamore bull sale finds the Limousin division leading the charge. These two-year old and yearling future herd sires are packed full of well-balanced muscle, with every lot on offer featuring two copies of the F94L genetic variant gene. This all but guarantees these boys are going to stamp their progeny with the exceptional Limo muscle and thickness that sets the breed apart. Take special note of the Balamore Endeavour progeny and semen on offer, who the Cooper's praise as being one of the best they have utilized, and whose Australian semen fetched an appraisal of \$740 per unit. It goes without saying that you know how highly regarded an individual is when they are named after a breeder's home town, and Great Village easily deserves this honour in the Charolais division. A maternal brother to the \$31,000 Balamore Justice, and out of the great Balamore Dahlia 46D, who last fall saw a \$25,000 evaluation at the inaugural Balamore Farms Shoreline Production Sale. Even considering the number of bull pens I have been invited to evaluate thus far for the season, this big performance, well balanced outcross Powermax son still sticks at the top of mind. Following our Lot 25 phenom, the rest of the white offering stacks up extremely well.

These bulls have a herd bull look, with a nice range of performance to calving ease sires in order to fit any cattlemen's criteria.

The Simmental, Shorthorn, and Angus divisions may be smaller in numbers, but no one can claim that quality is sacrificed. The Simmental section features soggy made, stout based cattle with elite pedigrees, who are all exceptionally athletic when set in motion. The great people at Fraser Farms have consigned the standout from their 2022 calf crop to make up the Shorthorn division. A dark red calf backed by a highly maternal pedigree, and as is the theme, stamped with an extra shot of thickness. The Angus bulls on offer are powerhouses, with the Balamore Gold influence showing consistency throughout. Putting the strength of the offering aside for a moment, in can not be stated highly enough that the Cooper family are salt of the Earth people. Joe, Carolyn, Robert and William pull out all the stops when given the opportunity to tour and host. Balamore Farms is truly a spectacular place to see with your own eyes, I can not encourage you enough to make the time to stop. Their large strawberry operation, employing on upwards of 200 workers in the summer months, is something that must be seen to be truly appreciated. We have all gained a new respect for the intense labour that goes behind our common grocery store purchase. To truly sum it all up, the Cooper family operates at a first class standard no matter the undertaking, and they are truly a pleasure to do business with.

We at T Bar C have evaluated and are extremely knowledgeable regarding this power stacked offering, so please do not hesitate to be in touch with any questions you may have.

Not only does thickness sell, it is imperative to profit.

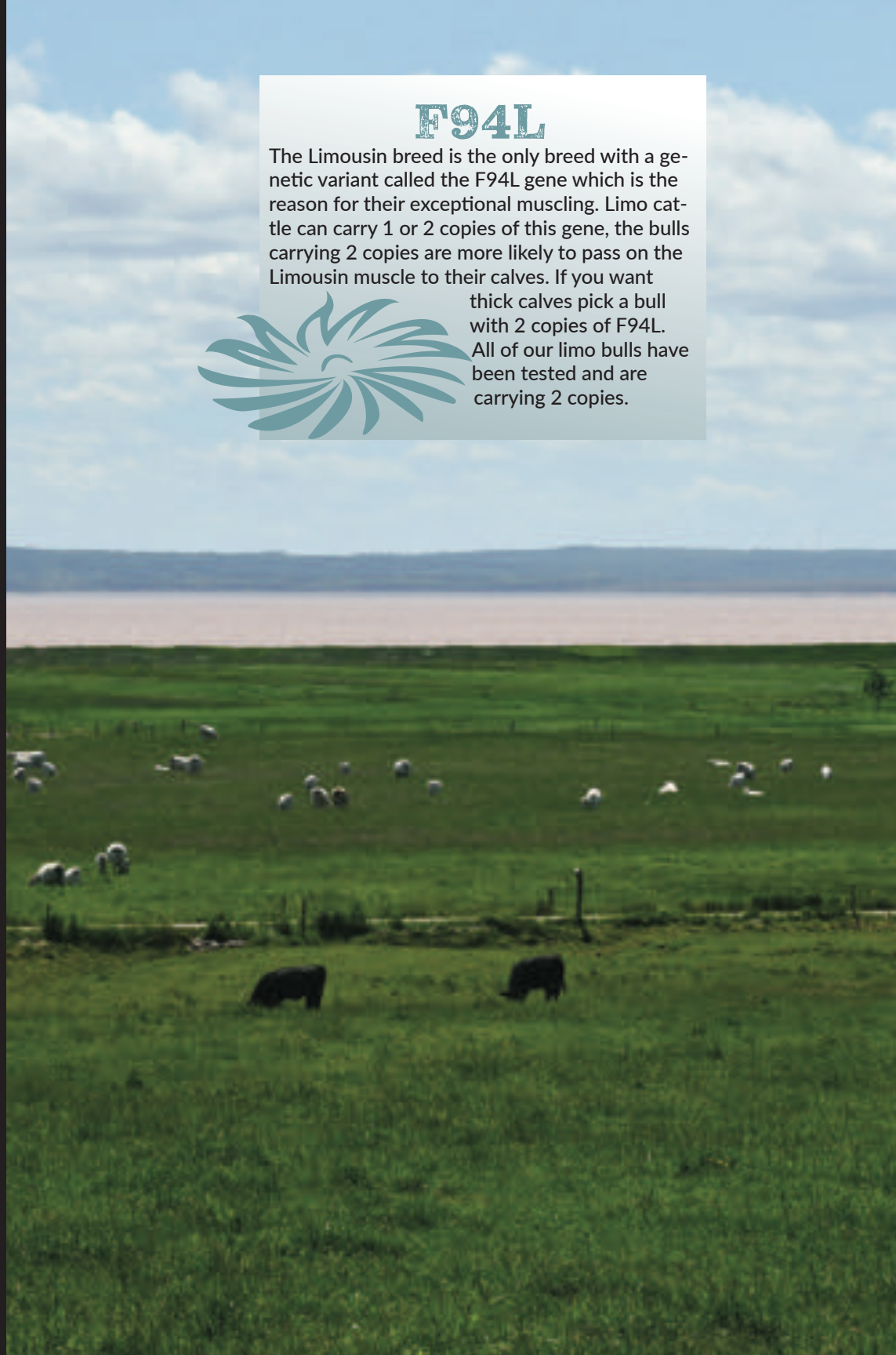
BEN WRIGHT

F94L

The Limousin breed is the only breed with a genetic variant called the F94L gene which is the reason for their exceptional muscling. Limo cattle can carry 1 or 2 copies of this gene, the bulls carrying 2 copies are more likely to pass on the Limousin muscle to their calves. If you want

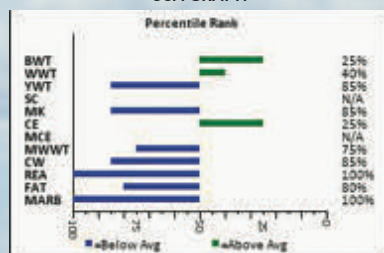
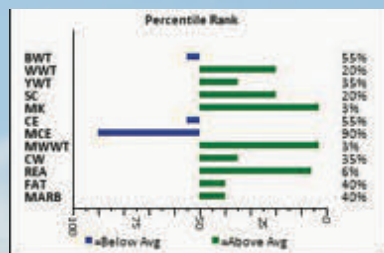
thick calves pick a bull with 2 copies of F94L.

All of our limo bulls have been tested and are carrying 2 copies.



POWERMAX

With Powermax being such an outcross to Canada the EPD formula did not do us any favours as there are no pedigree contemporaries to compare to. We are confident when the Canadian and USA EPD herdbooks combine this spring that his EPDs will represent his USA numbers and vastly improve the EPDs on his sons.



WELCOME FROM BOHRSON

Balamore "Thickness Sells" Bull sale is exactly what the name entails and more for their 2023 offering, where they have done an impressive job of carefully piecing together a diverse offering of multiple breeds that are so consistent and similar in type its commendable. Angus, Charolais, Limousin, Simmental and a Shorthorn bull on offer that are all "thick" and the kind to be extremely profitable to an operation. On behalf of the Cooper family, all of us at Bohrsen Marketing are pleased to help welcome you to this one stop shop of beef bulls in the maritimes for what's surely one of the most highly anticipated sales within North America.

The Cooper family is full of hard working folks with irons in many different fires that are 110% dedicated to every avenue they venture into. Their vision to supply the Canadian Beef Industry with breeding bulls that will positively impact your bottom line has become a reality and as you analyze the offering here, you will quickly see the type and kind they strive to produce. Long bodied, sound made, thick ended bulls that are the true payweight kind to fill your jean pockets come sale time once you utilize their genetics. The uniformity they have put fourth across multiple different breeds is unique as they have bred in the same beliefs into the cowherd no matter what colour they are. Cattle that are expected to be born easy, thrive in any environment, be easy fleshing and get out and work with the fundamentals at the forefront of selection, foot and udder quality with structural integrity is not to be sacrificed. The sale bulls are simply right for the times and are the type to be appreciated by the most critical of stockmen. Top commercial outfits and industry leading breeding programs annually come to Great Village, NS to source their next herd bull(s) and we feel the 2023 offering has as much depth of quality and different options as ever before.

We highly encourage you to contact anyone listed from Balamore to discuss the sale offering, your own needs and finding the best options for your program. The best thing to do would be to book a ticket and make plans to come for the sale and enjoy the hospitality the Cooper's are so well known for and come see the great set of cows they have assembled and tour their operation. If any of us from Bohrsen Marketing can be of any assistance on sale day or the days leading up, please do not hesitate to contact us to utilize our free order buying and consultation services.

Best Regards,
The Bohrsen Marketing Team



LOT 1

- proud herd bull look
- maternal brother was our lead off 2-year-old in 2020 selling to Strutt Farms
- complete calf that ties it all together

BALAMORE JACEK 1104J

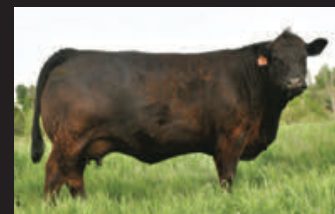
HOMO POLLED | CPM4111914 | BLM 1104J | JULY 8 2021 | HETERO BLACK | F94L: 2

FLEMINGTON LEGEND L12
AFTER HOURS GAMBLER
 AFTER HOURS CELEBRITY

WARRIGAL HIGH VISION
 FLEMINGTON POLLED PRIDE H1
 WULFS YONKERS K682Y
 AFTER HOURS YOGI
 TMF TANKARD 206T
 TOP MEADOW 902P
 GPFF BLAQUE RULON
 KRVN NICOLLET 038N

TMF WESTWOOD 505W
RLF 100C
 KRVN SECRETS 268S

BW	ADJ WW	ADJ YW	CE	BW	WW	YW	MILK
86	706	1217	12	1.6	69	98	17



RLF 100C | DAM



LOT 2

- Endeavor X Lumberjack is a cross we love
- full brother was a sale feature in 2022
- well-balanced with muscle shape, eye appeal, and extra punch



BALAMORE JACKPOT 183J

HOMO POLLED | CPM4111894 | BLM 183J | JUNE 6 2021 | HETERO BLACK | F94L: 2

RLF YARDLEY 601Y
BALAMORE ENDEAVOR 701E
 CLARKS AFFECTIVE KISS

MORRISVALE LUMBERJACK
BALAMORE FROYO 868F
 BALAMORE AUDI 334A

WULFS TAILOR MADE 2107T
 RLF 406W
 WULFS SPRING LOADED 3158S
 DKC UNFORGETTABLE KISS
 MARYVALE JOURNEYMAN J455
 MARYVALE JOSEPHINE J302
 ROMN YIPPY KI YEH 101Y
 GRANTS UNICE

BW	ADJ WW	ADJ YW	CE	BW	WW	YW	MILK
88	728	1194	10	1.1	76	112	15



FULL BROTHER



LOT 2 WITH DAM | PICTURED
 SUMMER 2021



LOT 3

- extra frame
- athletic with lots of stretch
- the last progeny of TMF 370Z to sell

BALAMORE JULIAN 197J

HOMO POLLED | CPM4111907 | BLM 197J | JUNE 24 2021 | HETERO BLACK | F94L: 2

RLF YARDLEY 601Y
BALAMORE ENDEAVOR 701E
 CLARKS AFFECTIVE KISS

TMF WESTWOOD 505W
TMF MISS 370Z
 K-VIEW TESS

WULFS TAILOR MADE 2107T
 RLF 406W
 WULFS SPRING LOADED 3158S
 DKC UNFORGETTABLE KISS
 TMF TANKARD 206T
 TOP MEADOW 902P
 TNGC REDMAN
 K-VIEW JUKEBOX JUDY

BW	ADJ WW	ADJ YW	CE	BW	WW	YW	MILK
80	711	1202	11	1.1	67	102	17



TMF MISS 370Z | DAM



MATERNAL SISTER





LOT 4

- another Endeavor out of a young Lumberjack
- full of breed character and thickness
- good big feet



BALAMORE JOHNSON 158J

HOMO POLLED | CPM4110394 | BLM 158J | MAY 18 2021 | HETERO BLACK | F94L: 2

RLF YARDLEY 601Y
BALAMORE ENDEAVOR 701E
 CLARKS AFFECTIVE KISS

MORRISVALE LUMBERJACK
BALAMORE GOLDY 969G
 BALAMORE BO PEEP 419B

WULFS TAILOR MADE 2107T
 RLF 406W
 WULFS SPRING LOADED 3158S
 DKC UNFORGETTABLE KISS
 MARYVALE JOURNEYMAN J455
 MARYVALE JOSEPHINE J302
 TMF LANDMARK 601L
 BALAMORE YASMINE 12Y

BW	ADJ WW	ADJ YW	CE	BW	WW	YW	MILK
91	757	1175	9	1.1	68	100	15



ENDEAVOR 701E | SIRE



LOT 5

- types in well with his sire
- commercial kind
- big-hipped

BALAMORE JAXON 194J

HETERO POLLED | CPM4111904 | BLM 194J | JUNE 22 2021 | HETERO BLACK | F94L: 2

RLF YARDLEY 601Y
BALAMORE ENDEAVOR 701E
 CLARKS AFFECTIVE KISS

OTHBERGS U-BET
BALAMORE YAKIRA 18Y
 OTHBERGS U-BET 135U

WULFS TAILOR MADE 2107T
 RLF 406W
 WULFS SPRING LOADED 3158S
 DKC UNFORGETTABLE KISS
 OTHBERG'S POLLED PRELUDE
 OTHBERG'S NARCISSE
 JDK KFH HELL YA 46R
 OTHBERG'S KELSEY

BW	ADJ WW	ADJ YW	CE	BW	WW	YW	MILK
81	830	1178	10	-0.1	60	75	17





LOT 6

- free moving type
- round muscle pattern
- maternal brothers have sold to RiverMac and West River Farms

BALAMORE JASPER 1102J

HOMO POLLED | CPM4111912 | BLM 1102J | JUNE 29 2021 | HETERO BLACK | F94L: 2

RLF YARDLEY 601Y
BALAMORE ENDEAVOR 701E
 CLARKS AFFECTIVE KISS

TMF WESTWOOD 505W
TMF MISS 925Z
 TOP MEADOW 748R

WULFS TAILOR MADE 2107T
 RLF 406W
 WULFS SPRING LOADED 3158S
 DKC UNFORGETTABLE KISS
 TMF TANKARD 206T
 TOP MEADOW 902P
 EXLR MATRIX 075M
 TOP MEADOW 30N

BW	ADJ WW	ADJ YW	CE	BW	WW	YW	MILK
84	755	1217	10	2.5	72	112	19



TMF MISS 925Z | DAM





LOT 7

- full brother to the \$20,500 Balamore Hilario 087H
- maternal value is huge-dam is an own daughter of our Whisper cow
- good shape and ample muscle

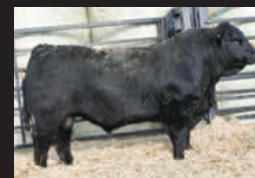
BALAMORE JARDINE 1110J

HOMO POLLED | CPM4114316 | BLM 1110J | SEPTEMBER 3 2021 | HETERO BLACK | F94L: 2

RLF YARDLEY 601Y
BALAMORE ENDEAVOR 701E
 CLARKS AFFECTIVE KISS

MORRISVALE LUMBERJACK
BALAMORE FAMOUS 832F
 OTHBERG'S WHISPER

WULFS TAILOR MADE 2107T
 RLF 406W
 WULFS SPRING LOADED 3158S
 DKC UNFORGETTABLE KISS
 MARYVALE JOURNEYMAN J455
 MARYVALE JOSEPHINE J302
 JDK KFH HELL YA 46R
 OTHBERG'S MELANIE



FULL BROTHER



ENDEAVOR 701E | SIRE

BW	ADJ WW	ADJ YW	CE	BW	WW	YW	MILK
82	693	1188	9	2.0	74	112	16





LOT 8

- reverse cross of Lumberjack X Endeavor
- big performance with moderate birth
- scurred



BALAMORE JOHN CENA 1117J

HETERO POLLED | CPM4114321 | BLM 1117J | SEPTEMBER 10 2021 | HETERO BLACK | F94L: 2

MARYVALE JOURNEYMAN J455
MORRISVALE LUMBERJACK
 MARYVALE JOSEPHINE J302

BALAMORE ENDEAVOR 701E
BALAMORE GALAXY 966G
 RLF 802A

TMF ARIZONA 584X
 MARYVALE DEW DROP 8135D
 WULFS XTRACTOR X233X
 MARYVALE GERALDINE G102
 RLF YARDLEY 601Y
 CLARKS AFFECTIVE KISS
 RLF X MAN 573X
 TMF 706T

BW	ADJ WW	ADJ YW	CE	BW	WW	YW	MILK
82	697	1205	6	2.4	72	111	21



MATERNAL BROTHER TO DAM



LOT 9

- true beef bull
- top 3% for all the major growth traits
- they don't make them thicker

BALAMORE JETER 177J

HOMO POLLED | CPM4111889 | BLM 177J | MAY 29 2021 | RED | F94L: 2

BIRUBI SIR GOTHIC G211
BIRUBI KAISER K140
 DONNA VALLEY P. FINNA-CELESTE

WULFS WILLARD 5115W
MISS TMF29E
 TMF MISS 612W

DONNA VALLEY POLL DICTATOR
 BIRUBI ABAIGAIL BON B130
 FROGHOLLOW X-MAN X114
 DONNA VALLEY POLL CELESTE C171
 WULFS REVOLVER 1219R
 WULFS REMI 5115R
 FWLY BIG TIME
 TOP MEADOW 602L



MISS TMF29E | DAM



MATERNAL SISTER

BW	ADJ WW	ADJ YW	CE	BW	WW	YW	MILK
92	827	1302	8	4.7	81	121	16





LOT 10

- moderate framed tank
- a maternal brother was retained to breed commercial heifers
- Lumberjack dam is a good one

BALAMORE JENGA 145J

HOMO POLLED | CPM4110383 | BLM 145J | MAY 9 2021 | RED | F94L: 2

BIRUBI SIR GOTHIC G211
BIRUBI KAISER K140
 DONNA VALLEYP.FINNA-CELESTE

MORRISVALE LUMBERJACK
BALAMORE FLORENCE 839F
 BALAMORE DORIS 663D

DONNA VALLEY POLL DICTATOR
 BIRUBI ABAIGAIL BON B130
 FROGHOLLOW X-MAN X114
 DONNA VALLEY POLL CELESTE C171
 MARYVALE JOURNEYMAN J455
 MARYVALE JOSEPHINE J302
 PLNS POLLED BOHEMIAN
 GRANTS UNICE

BW	ADJ WW	ADJ YW	CE	BW	WW	YW	MILK
87	747	1236	6	2.7	73	107	13



BALAMORE FLORENCE 839F | DAM



LOT 11

- high performing
- mass and depth
- will stamp them with the Limousin shape

BALAMORE JUDO 156J

HETERO POLLED | CPM4110392 | BLM 156J | MAY 17 2021 | RED | F94L: 2

BIRUBI SIR GOTHIC G211
BIRUBI KAISER K140
 DONNA VALLEY P. FINNA-CELESTE

RICHMOND WYATT SRD 48W
DARLING BELLA STAR 2B
 TMF MISS 20Y

DONNA VALLEY POLL DICTATOR
 BIRUBI ABAIGAIL BON B130
 FROGHOLLOW X-MAN X114
 DONNA VALLEY POLL CELESTE C171
 RICHMOND SIR J.R. SRD 128S
 TOP MEADOW 303N
 TMF TANKARD 206T
 K-VIEW PREMINITION

BW	ADJ WW	ADJ YW	CE	BW	WW	YW	MILK
90	741	1115	10	2.5	65	92	19



BIRUBI KAISER K140 | SIRE



LOT 12

- different genetic twist
- thick from end to end
- light birthweight option

BALAMORE JUDGE 170J

HOMO POLLED | CPM4110405 | BLM 170J | MAY 24 2021 | RED | F94L: 2

BALAMORE CUMMINS 531C
BALAMORE GALAHAD 951G
 RLF 148D

RLF 224E
BALAMORE GLOSSY 9109G
 BALAMORE BILLE JEAN 410B

WULFS XCELLSIOR X252X
 TMF MISS 922Z
 TMF LANDMARK 601L
 RLF 567X
 WULFS WILLARD 5115W
 RLF 406W
 TMF LANDMARK 601L
 OTHBERGS U THE ONE

BW	ADJ WW	ADJ YW	CE	BW	WW	YW	MILK
87	790	1283	7	2.6	69	107	24



RFL 148D | DAM OF SIRE



LOT 13

- lots of hair
- steer maker
- big YW ratio of 119
- extra frame

BALAMORE JETSTREAM 179J

HOMO POLLED | CPM4111890 | BLM 179J | JUNE 1 2021 | RED | F94L: 2

FLEMINGTON LEGEND L12
AFTER HOURS GAMBLER
 AFTER HOURS CELEBRITY

ROMN YIPPY KI YEH 101Y
BALAMORE BELATRIX 401B
 BLACKRIVERS XARA

WARRIGAL HIGH VISION
 FLEMINGTON POLLED PRIDE H1
 WULFS YONKERS K682Y
 AFTER HOURS YOGI
 ROMN JUSTICE
 ROMN WINNERS CIRCLE 44W
 ORBIT VALLEY RALPH
 BLACKRIVERS WILLOW 4U

BW	ADJ WW	ADJ YW	CE	BW	WW	YW	MILK
94	710	1337	10	2.9	67	104	21



BALAMORE BELATRIX 401B | LOT 13
 AND DAM PICTURED SUMMER 2021



LOT 14

- breeder type
- athletic and hairy with the look
- Top cow family – Dam is a maternal sister to Balamore Gryphon 930G (Rail Line), Balamore Jurassic (North Slope Limousin), Balamore Cilantro 569C (Retained), and Balamore Hollister 007H (Retained).



BALAMORE KEROSENE 211K

HOMO POLLED | CPM4114346 | BLM 211K | JANUARY 6 2022 | HETERO BLACK | F94L: 2

FLEMINGTON LEGEND L12
AFTER HOURS GAMBLER
 AFTER HOURS CELEBRITY

RLF YARDLEY 601Y
BALAMORE FROZEN 802F
 WGL ABERCROMBIE 35A

WARRIGAL HIGH VISION
 FLEMINGTON POLLED PRIDE H1
 WULFS YONKERS K682Y
 AFTER HOURS YOGI
 WULFS TAILOR MADE 2107T
 RLF 406W
 RPY PAYNES ELVIS 34X
 WGL XAMINER 7X

BW	ADJ WW	ADJ YW	CE	BW	WW	YW	MILK
83	686	1170	12	1.7	72	102	15



LOT 14 WITH DAM |
 PICTURED THIS SUMMER



MATERNAL BROTHER TO
 DAM



LOT 15

- square hipped and long-bodied
- William's Blossom cow continues to produce
- impressive fault free calf who puts it all together

EAST COAST KRYPTON 207K

HOMO POLLED | CPM4114342 | ECL 207K | JANUARY 5 2022 | HETERO BLACK | F94L: 2

FLEMINGTON LEGEND L12
AFTER HOURS GAMBLER
 AFTER HOURS CELEBRITY

CFLX WILD CARD
RPY PAYNES BLOSSOM 20B
 FBR STORM 3S

WARRIGAL HIGH VISION
 FLEMINGTON POLLED PRIDE H1
 WULFS YONKERS K682Y
 AFTER HOURS YOGI
 DHVO DEUCE 132R
 JCL PEPPERMINT
 WULFS GUARDIAN 5074G
 RPY PAYNES PINUP GIRL 28P

BW	ADJ WW	ADJ YW	CE	BW	WW	YW	MILK
77	727	1245	14	1.3	60	90	18



MATERNAL SISTER



LOT 16

- built in performance
- small attractive skull
- dam has a superstar udder

BALAMORE KAINE 219K

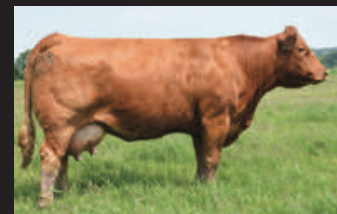
HOMO POLLED | CPM4114842 | BLM 219K | JANUARY 8 2022 | HETERO BLACK | F94L: 2

FLEMINGTON LEGEND L12
AFTER HOURS GAMBLER
 AFTER HOURS CELEBRITY

PLNS POLLED BOHEMIAN
BALAMORE DIAMOND 613D
 TMF MISS 948Z

WARRIGAL HIGH VISION
 FLEMINGTON POLLED PRIDE H1
 WULFS YONKERS K682Y
 AFTER HOURS YOGI
 RLF YARDLEY 601Y
 CL THATS THATS
 TMF LANDMARK 601L
 TOP MEADOW 440M

BW	ADJ WW	ADJ YW	CE	BW	WW	YW	MILK
91	769	1259	12	1.5	64	84	25



TMF MISS 948Z | MATERNAL GRANDAM





LOT 17

- this Endeavor son from Top of the Hill types in nicely with his brothers
- longer made calf with extra rib and shape
- will add punch and style to his progeny

CONSIGNED BY TOP OF

THE HILL FARM:

John Calvin Siddall:

(902) 664-8008

TOTH KING 10K

HOMO POLLED | CPM4114955 | TOTH 10K | JANUARY 9 2022 | HETERO BLACK | F94L: 2

RLF YARDLEY 601Y
BALAMORE ENDEAVOR 701E
 CLARKS AFFECTIVE KISS

ROMN TUFF ENUFF 103T
TOTH BABY JEWEL
 JC'S MAGICAL JEWEL

WULFS TAILOR MADE 2107T
 RLF 406W
 WULFS SPRING LOADED 3158S
 DKC UNFORGETTABLE KISS
 WULFS RANSOM 3059R
 ROMN ROBERTA 35R
 ARER SLVL NIGHTWATCHMAN
 JC'S JEWEL

BW	ADJ WW	ADJ YW	CE	BW	WW	YW	MILK
96	725	1134	10	-0.5	68	96	16



BALAMORE ENDEAVOR 701E | SIRE



LOT 18

- beautiful dark red haircoat
- predictability – 304A has produced 6 sale bulls and a herd bull
- they don't make them longer

BALAMORE KONG 233K

HOMO POLLED | CPM4114799 | BLM 233K | JANUARY 16 2022 | RED | F94L: 2

FLEMINGTON LEGEND L12
AFTER HOURS GAMBLER
 AFTER HOURS CELEBRITY

ROMN YIPPY KI YEH 101Y
BALAMORE A-PLUS 304A
 OTHBERGS WISPER

WARRIGAL HIGH VISION
 FLEMINGTON POLLED PRIDE H1
 WULFS YONKERS K682Y
 AFTER HOURS YOGI
 ROMN JUSTICE
 ROMN WINNERS CIRCLE 44W
 JDK KFH HELL YA 46R
 OTHBERGS LINDA

BW	ADJ WW	ADJ YW	CE	BW	WW	YW	MILK
88	791	1294	11	2.4	72	103	25



BALAMORE HALIFAX 019H | MATERNAL BROTHER





LOT 19

- large outline, large performance
- maternal brother to the \$25,000 East Coast Hector 009H
- a lot of bull in a functional package

EAST COAST KALEIDOSCOPE 214K

HOMO POLLED | CPM4114800 | ECL 214K | JANUARY 7 2022 | RED | F94L: 2

FLEMINGTON LEGEND L12
AFTER HOURS GAMBLER
 AFTER HOURS CELEBRITY

MORRISVALE LUMBERJACK
EAST COAST FLOWER 829F
 RPY PAYNES BLOSSOM 20B

WARRIGAL HIGH VISION
 FLEMINGTON POLLED PRIDE H1
 WULFS YONKERS K682Y
 AFTER HOURS YOGI
 MARYVALE JOURNEYMAN J455
 MARYVALE JOSEPHINE J302
 CFLX WILD CARD
 FBR STORM 3S



EAST COAST FLOWER 829F | DAM



MATERNAL BROTHER

BW	ADJ WW	ADJ YW	CE	BW	WW	YW	MILK
94	849	1231	10	3.8	71	98	19



LOT 20

- complete bull with a clean front
- deep sided and loose made
- outcross - Galahad X Bakers Man is a neat twist

BALAMORE KINGSTON 243K

HOMO POLLED | CPM4114862 | BLM 243K | JANUARY 27 2022 | RED | F94L: 2

BALAMORE CUMMINS 531C
BALAMORE GALAHAD 951G
 RLF 148D

WASY BAKERS MAN 629B
RLF 285E
 RLF 833A

WULFS XCELLSIOR X252X
 TMF MISS 922Z
 TMF LANDMARK 601L
 RLF 567X
 SYES XEROX 464Z
 MISS WASY LINEBACKER 621S
 AHCC WESTWIND W544
 TMF JUST PEACHY 521S

BW	ADJ WW	ADJ YW	CE	BW	WW	YW	MILK
95	726	1129	9	4.6	85	127	17



RLF 833A | MATERNAL GRANDAM



LOT 21

- the first son to sell from our newest herd bull Halifax
- carcass improver
- the one to sire the stocky steer calves

BALAMORE KALIFORNIA 208K

HOMO POLLED | CPM4114343 | BLM 208K | JANUARY 5 2022 | RED | F94L: 2

BIRUBI KAISER K140
BALAMORE HALIFAX 019H
 BALAMORE A-PLUS 304A

TMF LANDMARK 601L
BALAMORE FACEBOOK 841F
 TMF MISS 302A

BIRUBI SIR GOTHIC G211
 DONNA VALLEY P. FINNA-CELESTE
 ROMN YIPPY KI YEH 101Y
 OTHBERGS WISPER
 EXLR DAKOTA 353G
 NP SHAMELESS HUSSEY 2037G
 RLF X MAN 573X
 TOP MEADOW 543P

BW	ADJ WW	ADJ YW	CE	BW	WW	YW	MILK
90	714	1179	9	1.9	58	85	23



TMF MISS 302A | GRANDAM



MATERNAL BROTHER





LOT 22

- another thick Halifax in a more moderate package
- beautiful dark red color with ample hair
- growth numbers are impressive

CONIGNED BY HIGH
TIDE LIMOUSIN:
Ian Kittleson:
(902) 986-0426



HTL KEVIN 226K

HOMO POLLED | CPM4115968 | HTL 226K | JANUARY 8 2022 | RED | F94L: 2

BIRUBI KAISER K140
BALAMORE HALIFAX 019H
BALAMORE A-PLUS 304A

BALAMORE ENDEAVOR 701E
BALAMORE GREY GOOSE 938G
PLNS POLLED BRANDY 26B

BIRUBI SIR GOTHIC G211
DONNA VALLEY P. FINNA-CELESTE
ROMN YIPPY KI YEH 101Y
OTHBERGS WISPER
RLF YARDLEY 601Y
CLARKS AFFECTIVE KISS
TMF YELLOW JACKET 32Y
PLNS TIANNEE

BW	ADJ WW	ADJ YW	CE	BW	WW	YW	MILK
93	708	1036	7	3.0	79	114	16



BALAMORE HALIFAX 019H | SIRE



LOT 23

- proven bull who is one of the best we have ever used
- the first Endeavor semen ever marketed in Canada
- his Australian semen commanded over **\$740 CAN** a straw
- CAN qualified, stored at Alta Genetics

FIVE PACKAGES OF TEN UNITS BALAMORE ENDEAVOR 701E

HOMO POLLED | CPM4088118 | BLM 701E | JANUARY 1 2017 | HOMO BLACK

WULFS TAILOR MADE 2107T
RLF YARDLEY 601Y
RLF 406W

WULFS SPRING LOADED 3158S
CLARKS AFFECTIVE KISS
DKC UNFORGETTABLE KISS

WZRK PRIMESTAR 861P
WULFS MASTERPIECE 2107M
CARROUSELS PEAK POWER
JDK DREAM WEAVER 79S
COLE WOLF HUNT
WULFS NADINE 3158N
DKC POLLED SECRET WEAPON
DKC POLLED SECRET KISS



DAUGHTER



SON

BW	ADJ WW	ADJ YW	CE	BW	WW	YW	MILK
71	836	1318	10	0.6	77	113	10



LOT 24

- outcross to most Canadian pedigrees
- progeny is impressive with thick power bulls and soft made daughters with great udders
- CAN qualified, stored at Alta Genetics

THREE PACKAGES OF SIX UNITS BIRUBI KAISER K140

HOMO POLLED | AUSLMMATPK140 | MATPK140 | SEPTEMBER 28 2014 | RED

DONNA VALLEY POLL DICTATOR
BIRUBI SIR GOTHIC G211
BIRUBI ABAIGAIL BON B130

FROGHOLLOW X-MAN X114
DONNA VALLEY P. FINNA-CELESTE
DONNA VALLEY POLL CELESTE C171

TMF KODIAK 210K
DONNA VALLEY POLL WHITE HOPE
IONESCO
STEVENS POLLED ABAIGAIL R1
WULFS RAMBLER 8400X
FROGHOLLOW POLLED SARAH U018
EXLR LATIGO 029M
DONNA VALLEY POLL CELESTE



SON



SON

BW	ADJ WW	ADJ YW	CE	BW	WW	YW	MILK
			6	5.4	74	110	13



LOT 25

- outcross premium breeder bull
- maternal brother to the \$31,000 Balamore Justice 126J
- son of the \$25,000 Balamore Dahlia 46D
- big performance and balanced

- flawless feet

**Selling 2/3 Interest
Full Possession**

BALAMORE GREAT VILLAGE 212K

HOMO POLLED | PMC828032 | BLM 212K | JANUARY 5 2022

OW MAXIMIZER 3041 PLD
KEYS POWERMAX 57G
 MISS KEY JERI 26E

DC-OW MAXIMIZER 385PLD
 OW MISS SANDCREEK Y46
 KEYS BENTLEY 134B
 MISS KEY JERI 95
 LT BLUEGRASS 4017 P
 LT BRENDA 6120 PLD
 HTA VEGAS 134Y
 JSR APHRODITE 49X

LT LEDGER 0332 P
BALAMORE DAHLIA 46D
 JSR WESC APHRODITE 51B



BALAMORE DAHLIA 46D | DAM



MATERNAL BROTHER

BW	ADJ WW	ADJ YW	CE	BW	WW	YW	MILK
94	865	1454	8.7	-1.6	46	82	18



LOT 26

- correct moderate calf with lots of hair
- from one of our best cow families
- use in heifer pen or to keep replacements – daughters should be awesome



BALAMORE KANSAS 210K

HOMO POLLED | PMC827969 | BLM 210K | JANUARY 4 2022

OW MAXIMIZER 3041 PLD
KEYS POWERMAX 57G
 MISS KEY JERI 26E

CIRCLE CEE LEGEND 307A
BALAMORE EXOTICA 702E
 CEDARDALE MISS 45C

DC-OW MAXIMIZER 385PLD
 OW MISS SANDCREEK Y46
 KEYS BENTLEY 134B
 MISS KEY JERI 95
 LT LEDGER 0332 P
 CIRCLE CEE STUNNING 125Y
 CEDARDALE WINCHESTER 70W
 MISS CEDARDALE 5W

BW	ADJ WW	ADJ YW	CE	BW	WW	YW	MILK
86	822	1313	12.3	-3.2	47	78	14



BALAMORE EXOTICA 702E
 | DAM



LOT 26 WITH DAM |
 PICTURED THIS SUMMER



LOT 27

- herd bull look
- big performance with excellent skeletal structure
- maternal brothers have been siring sale toppers for RiverMac and Margaree Harbour Resources
- Pastor X Wood River Princess Dam has been a producer

**Selling 2/3 Interest
Full Possession**



BALAMORE KRAKEN 235K

HOMO POLLED | PMC828800 | BLM 235K | JANUARY 13 2022

OW MAXIMIZER 3041 PLD
KEYS POWERMAX 57G
 MISS KEY JERI 26E

GERRARD PASTOR 35Z
SOS PRINCESS BARBIE 111D
 WOOD RIVER PRINCESS 28N

DC-OW MAXIMIZER 385PLD
 OW MISS SANDCREEK Y46
 KEYS BENTLEY 134B
 MISS KEY JERI 95
 GERRARD PREACHER 31U
 GERRARD ROXANNE 18P
 P-3 PERFECT LAD 0-17K
 WOOD RIVER SHANIA 39J

BW	ADJ WW	ADJ YW	CE	BW	WW	YW	MILK
98	953	1434	1.5	1.4	53	86	19



MATERNAL SISTER



LOT 28

- extremely long with a big hip
- outcross to most Canadian pedigrees
- a maternal brother has been siring some serious sets of calves for Marshall Crowley
- dam is a beast of a Winchester cow

Selling 2/3 Interest
Full Possession



BALAMORE KELCE 241K

HOMO POLLED | PMC829108 | BLM 241K | JANUARY 15 2022

OW MAXIMIZER 3041 PLD
KEYS POWERMAX 57G
MISS KEY JERI 26E

DC-OW MAXIMIZER 385PLD
OW MISS SANDCREEK Y46
KEYS BENTLEY 134B
MISS KEY JERI 95
SPARROWS ALCATRAZ 18N
CEDARDALE NOSTALGIA 3N
LT BLUEGRASS 4017 P
CEDARDALEMAJESTICLADY2M

CEDARDALE WINCHESTER 70W
CEDARDALE MISS 105C
CEDARDALE MISS 57U

BW	ADJ WW	ADJ YW	CE	BW	WW	YW	MILK
96	889	1416	7.1	0.2	51	87	18



CEDARDALE MISS 105C | DAM



LOT 29

- proud-fronted with an attractive skull
- extra hair
- real world type

BALAMORE KENWORTH 230K

HOMO POLLED | PMC828598 | BLM 230K | JANUARY 12 2022

OW MAXIMIZER 3041 PLD
KEYS POWERMAX 57G
 MISS KEY JERI 26E

LAE CRUISE 502C
BALAMORE ENCHANTED 726E
 STEPLER U WISH 155C

DC-OW MAXIMIZER 385PLD
 OW MISS SANDCREEK Y46
 KEYS BENTLEY 134B
 MISS KEY JERI 95
 CIRCLE CEE LEGEND 307A
 LAE ABBY 302A
 SPARROWS COPENHAGEN 210Z
 MEDONTE YOU WISH 6Y

BW	ADJ WW	ADJ YW	CE	BW	WW	YW	MILK
93	909	1353	9.7	-1.8	45	77	22



BALAMORE ENCHANTED 726E | DAM



LOT 30

- loose-hided calf in a moderate package
- deep-ribbed
- Powermax look



BALAMORE KANATA 228K

HETERO POLLED | PMC828485 | BLM 228K | JANUARY 10 2022

OW MAXIMIZER 3041 PLD
KEYS POWERMAX 57G
 MISS KEY JERI 26E

LAE CANADIANA 561C
BALAMORE EVERGREEN 709E
 STEPLER MISS 217C

DC-OW MAXIMIZER 385PLD
 OW MISS SANDCREEK Y46
 KEYS BENTLEY 134B
 MISS KEY JERI 95A
 MERIT ROUNDUP 9508W
 POST MISS WANDA 241W
 SPARROWS SEMINOLE 927W
 STEPLER MISS 104W

BW	ADJ WW	ADJ YW	CE	BW	WW	YW	MILK
90	918	1259	7.3	-0.8	43	71	18



LOT 30 PICTURED THIS SUMMER



LOT 31

- rugged and strong with great muscle shape
- performance calf
- big time power

BALAMORE KAPACITY 218K

HOMO POLLED | PMC828402 | BLM 218K | JANUARY 8 2022

OW MAXIMIZER 3041 PLD
KEYS POWERMAX 57G
 MISS KEY JERI 26E

DC-OW MAXIMIZER 385PLD
 OW MISS SANDCREEK Y46
 KEYS BENTLEY 134B
 MISS KEY JERI 95A
 LT LEDGER 0332 P
 HC CABARET 519C
BALAMORE FILTHY GURL 7F
 CORNERSTONE BETTY LOU 5B

CORNERSTONE YAMAGUCHI 5Y

BW	ADJ WW	ADJ YW	CE	BW	WW	YW	MILK
105	777	1382	5.2	1.2	54	86	12



BALAMORE FILTHY GURL 7F | DAM



LOT 32

- long-spined tan calf
- maternal sister brought \$13,500 in the first Balamore Shoreline Female Sale to BKC Farm
- dam is a beautiful young cow



BALAMORE KRIMSON 223K

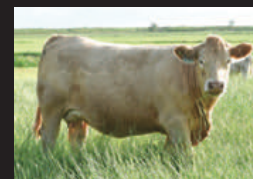
HOMO POLLED | QPMC828432 | BLM 223K | JANUARY 9 2022

OW MAXIMIZER 3041 PLD
KEYS POWERMAX 57G
 MISS KEY JERI 26E

MR LOUBER PREFIX 638A
CNB MISS FEMROUGE 76F
 CNB TWO TONE GIRL 35Z

DC-OW MAXIMIZER 385PLD
 OW MISS SANDCREEK Y46
 KEYS BENTLEY 134B
 MISS KEY JERI 95A
 TRI-N PREFIX PLD ET 54Y
 LOUB MISS ELDORADO 314S
 JSR SEMINOLE 27S
 CNB JJ TIFFANY 2T

BW	ADJ WW	ADJ YW	CE	BW	WW	YW	MILK
94	838	1259	7.8	-0.2	40	67	19



CNB MISS FEMROUGE 76F
| DAM



MATERNAL SISTER



LOT 33

- power, bone, and hair
- a maternal brother was selected by Fundy Charolais in 2022
- will sire the commercial kind

BALAMORE JIVE 165J

HETERO POLLED | PMC817814 | BLM 165J | SEPTEMBER 15 2021

OW MAXIMIZER 3041 PLD
KEYS POWERMAX 57G
 MISS KEY JERI 26E

DC-OW MAXIMIZER 385PLD
 OW MISS SANDCREEK Y46
 KEYS BENTLEY 134B
 MISS KEY JERI 95A
 WINN MANS LANZA 610S
 SPARROWS SIMONE 150X
 D R REVELATION 467
 MEDONTE WISHFUL THINKING 7W

SPARROWS COPENHAGEN 210Z
STEPPLER U WISH 155C
 MEDONTE YOU WISH 6Y

BW	ADJ WW	ADJ YW	CE	BW	WW	YW	MILK
88	875	1250	6.9	-0.6	49	90	19



MATERNAL SISTER



LOT 34

- small attractive skull
- full sibling in blood to Lot 27
- extra length

BALAMORE JONES 164J

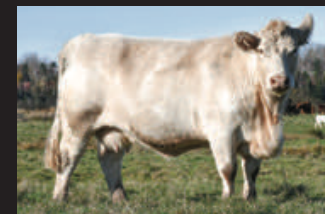
HOMO POLLED | PMC817813 | BLM 164J | SEPTEMBER 11 2021

OW MAXIMIZER 3041 PLD
KEYS POWERMAX 57G
 MISS KEY JERI 26E

GERRARD PASTOR 35Z
SOS DILLY 83D
 WOOD RIVER PRINCESS 28N

DC-OW MAXIMIZER 385PLD
 OW MISS SANDCREEK Y46
 KEYS BENTLEY 134B
 MISS KEY JERI 95A
 GERRARD PREACHER 31U
 GERRARD ROXANNE 18P
 P-3 PERFECT LAD 0-17K
 WOOD RIVER SHANIA 39J

BW	ADJ WW	ADJ YW	CE	BW	WW	YW	MILK
90	832	1235	1.5	2.8	47	87	18



SOS DILLY 83D | DAM





BALAMORE GODZILLA 925G | SIRE OF LOT
35 AND 36

LOT 35

- balanced calf who is a son of our 2020 high seller to Cedardale
- big-footed with excellent leg structure
- cattlemans type

BALAMORE KREW 211K

HOMO POLLED | PMC827971 | BLM 211K | JANUARY 4 2022

ELDER'S BLACKJACK 788B
BALAMORE GODZILLA 925G
STEPPLER MISS 249C

GERRARD PASTOR 35ZOW
SVY STARSTRUCK 8X
SPARROWS LORENZO 329A
STEPPLER MISS 153X
CEDARDALE ZEAL 125Z
CEDARDALE MISS 129A
HTA VEGAS 134Y
JSR APHRODITE 49X

CEDARDALE DELTA 4D
BALAMORE FLAVOUR 858F
JSR WESC APHRODITE 51B

BW	ADJ WW	ADJ YW	CE	BW	WW	YW	MILK
88	807	1335	2.9	3.1	47	91	16



CEDARDALE DELTA 4D | MATERNAL
GRANDSIRE



LOT 36

- proud headed with proven pedigree and balanced performance
- dam is full sibling to Cedardale Gunner 99G & Cedardale Fairmount 33F
- a maternal brother is working in Dubuc Charolais heifer pen



BALAMORE KINETIC 219K

HOMO POLLED | PMC828403 | BLM 219K | JANUARY 8 2022

ELDER'S BLACKJACK 788B
BALAMORE GODZILLA 925G
 STEPLER MISS 249C

CEDARDALE ZEAL 125Z
CEDARDALE MISS 15D
 CEDARDALE MISS 33Z

GERRARD PASTOR 35ZOW
 SVY STARSTRUCK 8X
 SPARROWS LORENZO 329A
 STEPLER MISS 153X
 CEDARDALE TYRANT 31T
 CEDARDALE MISS 64T
 CEDARDALE WINCHESTER 70W
 MISS CEDARDALE 1W

BW	ADJ WW	ADJ YW	CE	BW	WW	YW	MILK
91	850	1296	4.5	2.2	49	88	17



FULL BROTHER TO DAM



MAT BROTHER AT DUBUC CHAROLAIS



LOT 37

- powerful
- as thick as they make them
- big-quartered and broad-backed
- scurred

BALAMORE KARDINAL 268K

HETERO POLLED | PMC829810 | BLM 268K | JANUARY 29 2022

HBC RANSOM 717E
BALAMORE GUINNESS 952G
 CEDARDALE MISS 55B

CEDARDALE DELTA 4D
BALAMORE FASHIONABLY LATE 842F
 STEPPLER MISS 267C

HBC G2 430B
 LAE BRANDY 4141B
 WDZ FIREMAKER 6062 P ET
 CEDARDALE MISS 38Y
 CEDARDALE ZEAL 125Z
 CEDARDALE MISS 129A
 SPARROWS SEMINOLE 927W
 STEPPLER MISS 130W

BW	ADJ WW	ADJ YW	CE	BW	WW	YW	MILK
95	909	1495	3.7	0.4	47	76	16



MATERNAL GRANDAM



LOT 38

- calving ease prospect
- clean and smooth
- soggy-middled and loose-hided

BALAMORE KNICKERBOCKER 205K

HOMO POLLED | PMC827611 | BLM 205K | JANUARY 2 2022

LT LEDGER 0332 P
LT VIKING 8156 PLD
 LT PRAISE 0462 ET P

HBC RANSOM 717E
BALAMORE CALYPSO 033H
 BALAMORE DURTYGURL 216D

LT BLUEGRASS 4017 P
 LT BRENDA 6120 PLD
 LT EASY BLEND 5125 PLD
 LT WYOMING BREEZE 7188P
 HBC G2 430B
 LAE BRANDY 4141B
 CEDARDALE ZEAL 125Z
 CEDARDALE MISS 121B

BW	ADJ WW	ADJ YW	CE	BW	WW	YW	MILK
74	866	1285	11.7	-4.2	37	80	21



HBC RANSOM 717E | MATERNAL GRANDSIRE



LOT 39

- dam is Emily's 55B cow who has been a mainstay from the beginning in our Charolais program
- herd bull character and muscle shape
- proven pedigree - full brother sold in 2022 to the McAfee's

BALAMORE KAHLUA 269K

HOMO POLLED | PMC829812 | BLM 269K | JANUARY 29 2022

LT LEDGER 0332 P
LT VIKING 8156 PLD
 LT PRAISE 0462 ET P

WDZ FIREMAKER 6062 P ET
CEDARDALE MISS 55B
 CEDARDALE MISS 38Y

LT BLUEGRASS 4017 P
 LT BRENDA 6120 PLD
 LT EASY BLEND 5125 PLD
 LT WYOMING BREEZE 7188P
 M6 GRID MAKER 104 PET
 THOMASSWISSERSWEET1764ET
 SPARROWS ALLIANCE 513G
 BERICH VEGAS' LADY 19K



CEDARDALE MISS 55B | DAM



FULL BROTHER

BW	ADJ WW	ADJ YW	CE	BW	WW	YW	MILK
95	833	1262	10.7	-1.1	47	86	17





LOT 40

- double bred calving ease
- attractive profile
- smooth look and clean-fronted

BALAMORE KACTUS 226K

HOMO POLLED | PMC828483 | BLM 226K | JANUARY 10 2022

LT LEDGER 0332 P
LT VIKING 8156 PLD
 LT PRAISE 0462 ET P

CEDARDALE ZEAL 125Z
BALAMORE PRECIOUS 002H
 CORNERSTONE AVA 10A

LT BLUEGRASS 4017 P
 LT BRENDA 6120 PLD
 LT EASY BLEND 5125 PLD
 LT WYOMING BREEZE 7188P
 CEDARDALE TYRANT 31T
 CEDARDALE MISS 64T
 GERRARD MONTEZUMA 6T
 CORNERSTONE WHAT A GAL2W

BW	ADJ WW	ADJ YW	CE	BW	WW	YW	MILK
87	848	1326	6.2	0.7	49	95	17



CORNERSTONE AVA 10A | MATERNAL GRANDAM



LOT 41

- Viking X Zeal heifer bull prospect
- complete calf in a moderate package
- stylish look and small-headed

BALAMORE KAMARA 244K

HOMO POLLED | PMC829112 | BLM 244K | JANUARY 16 2022

LT LEDGER 0332 P
LT VIKING 8156 PLD
 LT PRAISE 0462 ET P

CEDARDALE ZEAL 125Z
CEDARDALE MISS 46G
 CEDARDALE MISS 128D

LT BLUEGRASS 4017 P
 LT BRENDA 6120 PLD
 LT EASY BLEND 5125 PLD
 LT WYOMING BREEZE 7188P
 CEDARDALE TYRANT 31T
 CEDARDALE MISS 64T
 CEDARDALE WINCHESTER 70W
 CEDARDALE MISS 57U

BW	ADJ WW	ADJ YW	CE	BW	WW	YW	MILK
81	879	1333	7.4	-1.0	47	90	21



LT VIKING 8156 PLD | SIRE



LOT 42

- ¾ brother to lot 40 and 41
- maternal brother was selected in 2022 by Char-Maine Ranching
- extra length



BALAMORE KARATE 216K

HOMO POLLED | PMC828300 | BLM 216K | JANUARY 7 2022

LT LEDGER 0332 P
LT VIKING 8156 PLD
 LT PRAISE 0462 ET P

CEDARDALE ZEAL 125Z
BALAMORE SAGITTARIUS 915G
 BALAMORE EXOTICA 702E

LT BLUEGRASS 4017 P
 LT BRENDA 6120 PLD
 LT EASY BLEND 5125 PLD
 LT WYOMING BREEZE 7188P
 CEDARDALE TYRANT 31T
 CEDARDALE MISS 64T
 CIRCLE CEE LEGEND 307A
 CEDARDALE MISS 45C

BW	ADJ WW	ADJ YW	CE	BW	WW	YW	MILK
91	870	1262	9.0	-0.8	47	91	15



BALAMORE SAGITTARIUS 915G
 | DAM



MATERNAL GRANDAM



LOT 43

- easy-doing kind
- bigger frame
- will power up a calf crop

BALAMORE KITTLE 249K

HOMO POLLED | PMC829153 | BLM 249K | JANUARY 17 2022

LT LEDGER 0332 P
LT VIKING 8156 PLD
 LT PRAISE 0462 ET P

MERIT ROUNDUP 9508W
CEDARDALE MISS 3B
 CEDARDALE UPSTANDING 58U

LT BLUEGRASS 4017 P
 LT BRENDA 6120 PLD
 LT EASY BLEND 5125 PLD
 LT WYOMING BREEZE 7188P
 MXS VERMILLION 527R
 MERIT YOLANDA 7244T
 LT WYOMING WIND 4020 PLD
 CEDARDALE NEPTUNE 34N

BW	ADJ WW	ADJ YW	CE	BW	WW	YW	MILK
103	823	1285	6.2	0.9	44	88	17



CEDARDALE MISS 3B | DAM



LOT 44

- black blazeface who has the look
- stout based bull with good muscle definition
- big foot



BALAMORE JANKOVICH 121J

HOMO POLLED | BPG1377960 | BLM 121J | JUNE 3 2021 | HETERO BLACK

MR TR HAMMER 308A ET
BALAMORE TITAN 904G
 MELVERN MS JUSTICE 171C

WAGR HIGHMORE 173B
MRC MISS BROKER 150D
 MRC MISS BROKER 47Z

MR NLC UPGRADE U8676
 SVF/HS EXPECTING A DREAM
 MLC MR JUSTICE W744
 MELVERN MS GUNNER 26U
 WS PILGRIM H182U
 WAGR LULLABY 703T
 MR HOC BROKER
 TWIN-CHIEF KALYPSO 47X

BW	WW	YW	CE	BW	WW	YW	MILK
93	805	1070	9.5	4.8	88.7	127.9	25.1



FULL SISTER



LOT 45

- excellent maternal value
- baldy bull will throw some extra chrome and muscle on your calves
- lots of stretch and confident on the move

- white socks

BALAMORE JORGENSEN 126J

HOMO POLLED | BPG1377966 | BLM 126J | JULY 3 2021 | HETERO BLACK

MR TR HAMMER 308A ET
BALAMORE TITAN 904G
 MELVERN MS JUSTICE 171C

MRC BOLD RULER 183B
MRC MISS LARA CROFT 39D
 REMINGTON LARA CROFT 39T

MR NLC UPGRADE U8676
 SVF/HS EXPECTING A DREAM
 MLC MR JUSTICE W744
 MELVERN MS GUNNER 26U
 MR HOC BROKER
 LFE BS CROCUS 183W
 REMINGTON RED LABEL HR
 CMS LARA CROFT 04L

BW	WW	YW	CE	BW	WW	YW	MILK
89	795	1035	8.0	4.4	83.9	123.0	22.7



LOT 45 WITH DAM | PICTURED
SUMMER 2021



FULL SISTER



LOT 46

- masculine, powerful, big ribbed
- clean outlined in a cool genetic package
- extra bone



BALAMORE KINGSMAN 205K

HOMO POLLED | BPG1387251 | BLM 205K | JANUARY 24 2022 | HETERO BLACK

LCDR WITNESS 541C
LCDR FAVOR 149F
 WS MISS SUGAR C4

MRC RED ALERT 261D
MRC MISS SUGAR 604G
 MRC MISS SUGAR 602C

OLF OTIS Y43
 WS MOTHER LODGE W21
 CLRS GRADE-A 875 A
 WS ANISE A71
 MRC BOLD RULER 183B
 TWIN CHIEF ULYSSES 260U
 MR TR HAMMER 308A ET
 MRC MISS COMMANDER 607Y

BW	ADJ WW	ADJ YW	CE	BW	WW	YW	MILK
93	917	1399	6.6	2.5	101.1	157.4	23.5



LCDR FAVOR 149F | SIRE



LFE STRATTON 3094F | SIRE

LOT 47

- Stratton X Cobra cross is designed for the commercial stockman
- athletic moving calf with a ton of stretch

- blaze face

BALAMORE KILO 204K

HOMO POLLED | BPG1387250 | BLM 204K | JANUARY 4 2022 | HETERO BLACK

LFE TRIUMPH 816A
LFE STRATTON 3094F
 LFE RS AMBER 2140B

NCB COBRA 47Y
MRC MISS WALLSTREET 132G
 MRC MISS WALLSTREET 134E

LFE BEER MONEY 811Y
 LFE BISS BS SUNSHINE 609X
 LFE SPRINGSTEEN 449Y
 LFE RS AMBER 41W
 LFE VIPER 455U
 NCB MISS DREAM 22T
 WHEATLAND KILL SWITCH
 MRC MISS WALL STREET 135B

BW	ADJ WW	ADJ YW	CE	BW	WW	YW	MILK
97	837	1171	6.7	3.5	77.1	109.8	22.4



NCB COBRA 47Y | MATERNAL GRANDSIRE



LOT 48

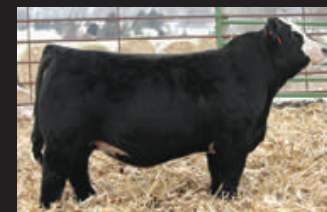
- elite pedigree
- top 1% for YW, WW
- big performance cherry red calf
- substance, width, and shape

BALAMORE KNIGHT 201K

HOMO POLLED | PG1379308 | BLM 201K | JANUARY 2 2022 | RED

BGS/BM CAPTAIN SCREAM 63D SVS CAPTAIN MORGAN 11Z
 SVS BETTS 808F RF SCREAM 215Z
 WFL RED SAGE 506C R PLUS RELOAD 2006Z
 WFL RED SAGE 1003Y
 W/C LOCK DOWN 206Z
 WS STEPPING STONE B44 WS MS UPGRADE Z15
 BALAMORE FERGALICIOUS 801F MLC MR JUSTICE W744
 MELVERN MS JUSTICE 154C MELVERN MS WHOPPER 147Z

BW	ADJ WW	ADJ YW	CE	BW	WW	YW	MILK
91	820	1260	7.6	5.8	99.0	152.2	25.4



WS STEPPING STONE B44 | MATERNAL GRANDSIRE



LOT 49

- another from the popular Betts
- moderate-framed
- soggy-middled and loose-hided

BALAMORE KODIAK 206K

HOMO POLLED | PG1387252 | BLM 206K | FEBRUARY 1 2022 | RED

BGS/BM CAPTAIN SCREAM 63D SVS CAPTAIN MORGAN 11Z
SVS BETTS 808F RF SCREAM 215Z
 WFL RED SAGE 506C R PLUS RELOAD 2006Z
 WFL RED SAGE 1003Y
 MR HOC BROKER

MRC BOLD RULER 183B
MRC MISS UREIKA 46G
 TWIN CHIEF UREIKA 47U

LFE BS CROCUS 183W
 WFL COMMANDER 78R
 TWIN-CHIEF LARAMIE 248L

BW	ADJ WW	YW	CE	BW	WW	YW	MILK
94	830	1192	6.7	5.3	90.4	126.8	20.8



SVS BETTS 808F | SIRE



LOT 50

We are very pleased to be back in the Balamore Thickness Sells Bull Sale this year and we have consigned our best bull from the 2022 calf crop. We are excited to offer NVF 1777 Kayce 1K. He's a solid red calf with a great disposition, loads of thickness and a pedigree that is second to none. Sired by the great ARG Hector 1777 ET bull that has proven very popular in North America. NVF 1K's dam is a never miss cow with a beautiful udder and excellent feet and legs. If you are looking for a new herd sire to go to work for you this guy checks all the boxes regardless of if it's a purebred or commercial herd. Be sure to have a good look at this fella. Don't hesitate to contact us for more information.

CONSIGNEE BY FRASER FARMS:

Adam Fraser (902) 759-6862 Austin Fraser (902) 759-4461

NVF 1777 KAYCE 1K

SCURRED | X-[CAN]M485689 | NVF 1K | JANUARY 1 2022

ROOSMO MATIAS STAR
ARG HECTOR 1777 ET
 LEAVE ELVIRA X1013 ET

FRASER'S WALKER'S BOB 3B
NEW VIEW DOUBLE D DOLLY 2D
 NEW VIEW XALENE 3X

ALSTON POLAR STAR
 ROOSMO CLARA FOGOSA
 LEAVE FRONTIER
 LEAVE ADELAIDA
 FRASER'S STRIKERS WALKER 1W
 FRASER'S YETTA ROSE 4Y
 MURIDALE BUSTER 14K
 FRASER'S KARA'S PRINCESS 4P

BW	ADJ WW	ADJ YW	CE	BW	WW	YW	MILK
86			16	-1.7	36	47	22



MATERNAL BROTHER



LOT 51

- calving ease
- super maternal will sire excellent replacement heifers
- good sound bull
- Red U2 Renown sire is a breed favourite

RED BALAMORE JARGON 124J

POLLED | 2281225 | ANG 124J | OCTOBER 4 2022 | RED

RED U-2 RECKONING 149A
RED U-2 RENOWN 193C
 RED U-2 ENVIOUS 147X

DAINES INSIGHT 27E
BALAMORE LANA 907G
 RED WILBAR LANA 742C

RED U-2 RECON 192Y
 RED U-2 ANEXA 271Y
 RED U-2 DYNAMO 7021T
 RED U-2 ENVIOUS 216M
 DAINES SIR INSIGHT 33C
 DAINES MISS T510 22U
 RED BAR-E-L DOUBLE DEUCE 198Y
 RED WILBAR LANA 353X

BW	ADJ WW	ADJ YW	CE	BW	WW	YW	MILK
76	660	905	-4.0	3.5	40	75	22



RED U-2 RENOWN 193G | SIRE



LOT 52

- proud look and attractive skull
- dam was purchased from Don Currie and will be a big part of our Angus program going forward
- lots of muscle with excellent definition and shape



BALAMORE KNOXVILLE 202K

POLLED | 2285865 | ANG 202K | JANUARY 18 2022 | BLACK

PLEASANT VALLEY LUTE 1207 PLAINVIEW LUTTON E102
BALAMORE GOLD 902G CHERRY KNOLL ELSA 8014
 WILBAR RUBY 853C HF REBEL 183A
 WILBAR RUBY 326A
 COALBRIDGE MARSHALL 15
 GLEN ISLAY MARSHALL 24Z GLEN ISLAY PRIDE 14S
GLEN ISLAY MAGGIE 27E ANGUS ACRES BANDY 96X
 SUNRISE MAGGIE 5A HEATHERLEA MAGGIE 2S

BW	ADJ WW	ADJ YW	CE	BW	WW	YW	MILK
79	836	1195	-7.0	5.8	60	97	20





LOT 53

- powerhouse with a big quarter
- production type
- deep-sided

BALAMORE JARL 110J

POLLED | 2285860 | ANG 110J | JUNE 18 2022 | BLACK

PLEASANT VALLEY LUTE 1207 PLAINVIEW LUTTON E102
BALAMORE GOLD 902G CHERRY KNOLL ELSA 8014
 WILBAR RUBY 853C HF REBEL 183A
 WILBAR RUBY 326A
 RA LINCOLN W144
 S CORA 572
 S TITLEST 1145 PLEASANT VALLEY LUTE 1207
BALAMORE EARTHQUAKE 708E WILBAR RUBY 74W
 WILBAR RUBY 875C

BW	ADJ WW	ADJ YW	CE	BW	WW	YW	MILK
84	707	1110	4.0	2.9	51	93	24





LOT 54

- these Gold sons are peas in a pod
- outcross red dam from Hamco
- thick power bull
- decided a straw bath was in order on picture day, still a good bull

BALAMORE JULIO 106J

POLLED | 2285859 | ANG 106J | JUNE 1 2022 | BLACK (RED CARRIER)

PLEASANT VALLEY LUTE 1207 PLAINVIEW LUTTON E102
BALAMORE GOLD 902G CHERRY KNOLL ELSA 8014
 WILBAR RUBY 853C HF REBEL 183A
 WILBAR RUBY 326A
 RED SSS NORSEMAN 412S
 RED SSS LARKABA 298S
 RED GLACIER NYACK 688
 RED HAMCO MIMI 512C RED HAMCO MIMI ROBIN HOOD 40J
 RED SSS NORSE 152U

BW	ADJ WW	ADJ YW	CE	BW	WW	YW	MILK
71	770	1042	1.0	3.1	37	55	17



LOT 55

These are commercial bred heifers primarily sourced from Alberta. These big powerful heifers have been bred to calving ease Balamore Limousin bulls for April, May, and June. These heifers in previous years have been extremely successful with the resulting progeny topping feeder sales at Atlantic Stockyards

COMMERCIAL HEIFERS



REFERENCE SIRES



AFTER HOURS **GAMBLER**



BALAMORE **ENDEAVOR** 701E



KEYS **POWERMAX** 57G



LT **VIKING** 8156



BALAMORE **TITAN** 904G



BALAMORE **GOLD** 902G







JOIN US

OCTOBER 9, 2023
FOR THE BALAMORE FARM
SHORELINE FEMALE SALE

LIMOUSIN | CHAROLAIS | SIMMENTAL
| ANGUS | SHORTHORN
AND A SELECTION OF COMMERCIAL BRED HEIFERS



SALE MANAGED BY:
CHRIS POLEY: 306-220-5006
BEN WRIGHT: 519-374-3335
SHANE MICHELSON: 403-363-9973



BALAMORE FARM
9036 Hwy 2
Great Village, NS
B0M 1L0



Balamore Farm Ltd.
THICKNESS SELLS
11TH ANNUAL BULL SALE

MARCH 18, 2023 | 2:00 PM | BALAMORE FARM, GREAT VILLAGE, NS

FROM THE NORTH: Exit 10 off Hwy 104. Take a right off the ramp and travel for 2 miles. At stop sign, go straight for 1/2 mile. Farm is on the right and you will see a farm sign in front of the grain bins.
FROM THE SOUTH AND EAST: Exit 12 off Hwy 104. Follow the signs for Parrshoro, Bass River, Great Village. In 3 miles turn left towards Great Village. Travel three miles and farm sign will be on your left in front of grain bins.