

PCC

PEMBROOK CATTLE COMPANY



ANNUAL FALL PRODUCTION SALE

OCTOBER 15 - AT THE RANCH - FAIRVIEW, OKLAHOMA

WELCOME

PEMBROOK PCC CATTLE COMPANY

PEMBROOK CATTLE CO.

49061 SCR 249-FAIRVIEW, OK 73737

TRAVIS PEMBROOK • 405.206.7997
BETH PEMBROOK • 405.245.1834

PEMBROOKCC@PLDI.NET
WWW.PEMBROOKCATTLE.COM

LONDON BOLIN • SHOW/SALE CATTLE MANAGER

870.754.1161

RYLEE WAHL • COWHERD MANAGER



LONDON
BOLIN

CATTLE ARE AVAILABLE FOR VIEWING AT ANYTIME PRIOR TO THE SALE. FEEL FREE TO CALL TRAVIS OR BETH TO SCHEDULE YOUR VISIT. VISITORS ARE ALWAYS WELCOME AT PCC!

LUNCH WILL BE SERVED SALE DAY SPONSORED BY LIVESTOCK NUTRITION CENTER



BRYSON PEMBROOK'S PAINTING THAT WAS THE INSPIRATION FOR CATALOG COVER DESIGN.

On behalf of the Pembroke family, Beth and I would like to welcome and extend a special thank you to everyone that has taken the time to read through the catalog, stop by the ranch, or called with interest regarding the 2022 fall offering at PCC.

This fall's offering is without a doubt the most diverse and elite set of genetics to be offered at Pembroke Cattle. As you read through the catalog you will notice that every lot offered has their own unique history of success in their pedigree, either in the show ring or in the donor pen and is the product of cutting-edge genetics. One thing we would like to note, and as many of us that raise cattle and have shown cattle know, these animals go through different stages in timing and maturity as they grow and age. We would encourage everyone to really study their lesson as they go through the offering. Every year there are hidden gems in the sale that end up either winning one of the big shows or becoming big time donors and high revenue generators and this year is no different.

At Pembroke Cattle, our success is still based on "Great Cattle, Great People, and Strong Relationships equaling Incredible Results!" We appreciate all who made us who we are today and, as always, we look forward to making those same kind of relationships with our new friends and customers. One thing that we never take for granted is what a blessing it is to be in an industry that still promotes and rewards the core values and principles that we have grown up with, where sharing your faith in God and your love for your country are not just expected but applauded.

In conclusion, if myself, Beth, Bret, Landon, or Matt can be of any assistance please do not hesitate to call or come by. We take every call and question very seriously and it is our goal to put you on the right path to the genetics that best fit your goals for the future. We appreciate your friendship and your faith in our program!

Travis & Beth Pembroke

Pembroke Cattle Company

"Putting Good Cattle Together with Great People"



BETTER FEED, BETTER RESULTS

Livestock Nutrition Center specializes in blending customized rations, supplements and premixes to meet the specific nutritional needs of your operation. We understand that management, performance objectives and feeding practices can be vastly different between operations, and that these differences dictate specific nutritional or formulation requirements. Our experienced sales staff and nutritionist will work with you to design a feeding program that is specific to your operation.

MULTIPLE LOCATIONS TO BETTER SERVE

ALTUS, OK	580.482.2700	KEOTA, OK	918.208.0029	PARIS, TX	903.784.6656
CHICKASHA, OK	405.561.2900	FOREMAN, AR	870.542.5250	SAGINAW, TX	817.232.8161
GUTHRIE, OK	405.260.1841	HEREFORD, TX	806.391.1001	N. KANSAS CITY	913.725.0300

LNC-ONLINE.COM



PO Box 1219
Edmond, OK 73083
(405) 641-6081
matt@mcsauction.com
www.mcsauction.com

PEMBROOK FALL PRODUCTION SALE

OCTOBER 15, 2022 AT 1:00PM

SELLING 65 LOTS

ANGUS • CHIANINA • SIMMENTAL • % SIMMENTAL • LIM-FLEX
MAINETAINER • MAINE-ANJOU • MAINE ANGUS • RED ANGUS • HEREFORD

Dear Friends and Fellow Breeders:

Welcome to the **2022 Pembroke Cattle Co. Fall Production Sale**. This sale has become one of the top events of the fall in terms of offering multiple breeds that accumulate success in the show ring and the pasture after sale day for their customers. This unique offering is once again the effort of forward thinking seedstock producers with an eye for cattle that can compete in any venture. Pembroke Cattle Company has worked toward the goal of assembling an offering of elite show heifer prospects, exceptional bred females, and proven donors that represent the best of all breeds.

Travis and Beth Pembroke go the extra mile in terms of customer service to maximize the success of the juniors while making it a learning experience as well. They truly are about "putting good cattle together with great people", and the lasting relationships with their customers and the past and current champions they have bred and sold are a testament to this fact.



MATT C. SIMS

These females combine performance with excellent phenotype to become competitors at any level in the industry. The genetics represented from all breeds in this offering, on both sides of the pedigree, are second to none and are, in many cases, daughters of or full or maternal sibs to some of the most highly valued and successfully shown females in the country. This is a well-balanced offering, and quality is present throughout. These show heifer and donor prospects are halter broke and started. Whatever breed/s you are interested in, you will find something to your liking in this special sale.



CALLEE FISCHER

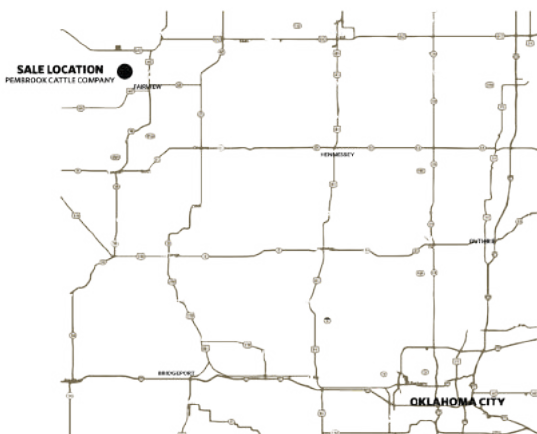
I encourage each of you to evaluate your own situation and goals, and on Saturday, October 15, take advantage of the knowledge and cutting-edge efforts of PCC and their program. If I can be of assistance to you, please let me know.

Sincerely,

Matt C. Sims

SALE LOCATION

49061 SOUTH COUNTY ROAD 249 • FAIRVIEW, OK 73737



SALE STAFF

MATT SIMS
AUCTIONEER & SALE MANAGER.....405.641.6081
JEFF MAFI
AMERICAN ANGUS ASSOCIATION.....816.344.4266
DELVIN HELDERMON
SPECIAL ASSIGNMENT.....405.205.1116
DERON HELDERMON
SPECIAL ASSIGNMENT.....405.850.510

SALE CONSULTANTS

WILLY COUCH.....405.627.5200
LES JONES.....972.743.8603
KENT MCCUNE.....817.602.8629



Marketing Management

MCMARKETINGMANAGEMENT.COM

COURIER
KILEY MCKINNA
402-350-3447

JR SALES ASSOCIATE
WILEY FANTA
320-287-0751

MCMARKETINGMANAGEMENT.COM



RANDALL O. RATLIFF

615.330.2735

RRMKTG.COM

MOTEL ACCOMMODATION

BEST WESTERN PLUS FAIRVIEW INN & SUITES
802 N. MAIN ST., FAIRVIEW.....580.227.2880
ASK FOR THE PEMBROOK CATTLE RATE & ROOM BLOCK
HERITAGE INN MOTEL
911 N. MAIN, FAIRVIEW.....580.227.2534
HOLIDAY INN EXPRESS
4702 W. OWEN K. GARRIOTT RD, ENID.....580.237.7722
HAMPTON INN AND SUITES
511 DEMIA CT., ENID.....580.234.4600

FOR FURTHER ASSISTANCE WITH RESERVATIONS,
CALL BETH PEMBROOK.....405.245.1834

AIR TRANSPORTATION

Oklahoma City's Will Rogers World Airport is served by most major airlines and is a 1-3/4 hour drive from the ranch; rental cars are available. Private aircraft can be accommodated at Fairview Municipal Airport or Enid Woodring Regional Airport.

SALE TERMS AND CONDITIONS

All cattle are to be paid for during or immediately after the sale and will not be released until after settlement has been made. Cattle will not be transferred until paid for in full.

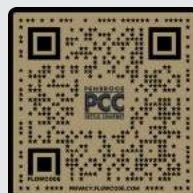


Bid Live Online
"Gavel's Down, The Best in Online Marketing"
(516) 369-0734 - CCI Live schedule@ccilive.com

THE PCC SALE BOOK & ADVERTISING PREPARED BY

MATT C. SIMS AUCTION, INC. - 405.641.6081
DESIGN & PRODUCTION BY THE SHOWTIMES, INC
PHOTOGRAPHY BY JOHN REASOR & MATT SIMS
VIDEOS BY OUTCROSS GROUP, JOHN REASOR

LOT
VIDEOS:



SCAN
TO VIEW
VIDEOS

HERD HEALTH

Cattle will be accompanied by proper health certificates needed for immediate transport. All females have been brucellosis vaccinated

GUARANTEE

The cattle sell under Suggested Terms and Conditions of the breed association that applies to each lot. (American Angus Association, American Red Angus Association, American Simmental Association, American International Charolais Association, American Maine-Anjou Association, and American Chianina Association.)

REGISTRATION CERTIFICATES

Animals will be transferred to the buyer at the seller's expense. Each buyer must be sure to give the sale clerk the proper name and address for making transfers. All calves born before the sale are to be registered by the seller; proper breeding certificates will be signed for the buyer to use in registering calves born after the sale.

ABSENTEE BIDS

Real-time bidding will be available via the internet through the CCI Live website. Be sure to register to bid prior to the sale. You may also contact the owners, sale manager, sale consultants or any member of the sale staff to place a bid if you will not be able to attend the sale.

TRUCKING

Randy Lathrop, (847) 910-4673, and Tom Snell, (580) 374-4168 are reliable options. Let us know if you need assistance with your trucking arrangements.

INSURANCE

Insurance for your purchases will be available sale day at the clerk's desk. We recommend that insurance be obtained on lots purchased.



INSURE YOUR
CATTLE.COM



NOTE

Supplemental information will be available at sale time. Announcements made at the sale from the auction block will take precedence over statements in the sale book. We reserve the right to withdraw any lot not meeting our specifications prior to sale time. All persons who attend the sale do so at their own risk. Neither the owners nor the sale manager assume liability, legal or otherwise, for accidents or loss of property. As the sale manager, Matt C. Sims Auction, Inc. is only an agent for the seller and has no responsibilities other than those involved in conducting the sale.

VIDEOS ONLINE ON THE PEMBROOKCATTLE.COM & AT MCSAUCTION.COM



2021 LEBANON, TN 2021

KANSAS CITY STOCK SHOW

GRAND CHAMPION FEMALE



The GRANDEST now

98 DIVISION 11
BEST OF SHOW
NATIONAL
GRAND CHAMPION FEMALE
2022



FANGUS



CATTLEMEN'S 2022



PCC





PCC Evening Tinge 430J
Daughter of Lot 1



PCC Evening Tinge 430J
Daughter of Lot 1



PCC Evening Tinge 430J
Daughter of Lot 1



PCC Evening Tinge 120G
Full Sister to Lot 1

OCTOBER 15, 2022

LOT 1

PCC MISS EVENING TINGE 430E

DOB	REG. #	TATTOO			
5/20/17	18884454	430E			
CED	BW	WW	YW	MILK	ANGUS
-1	3.3	64	111	27	

DAMERON FIRST IMPRESSION

PCC Witten 111A

JL EVENING TINGE 8001

LEACHMAN SAUGAHATCHEE 3000C

PCC Evening Tinge 226 8001

JL EVENING TINGE 8001

PCC

- Selling 100% in the \$151,000 highest-valued female in the Pembroke Angus donor arsenal.
- One-half interest in this female sold to Sullivan Farms for \$75,500 as a heifer calf, and since that time has continued to add to her legacy with her first natural heifer calf being named Division 2 Champion at 2021 National Junior Angus Heifer Show for Jelani King after also winning her class at the 2021 Cattlemen's Congress and co-topping the Angus offering of the 2021 Limited Edition Sale at PCC at \$29,000. That same daughter was the Angus Bronze Medallion winner at OYE.
- Two flushes have been sold from 430E for \$12,500 in the 2021 PCC Fall Sale and \$12,000 in the 2020 PCC Fall Sale and her embryos have been among the high sellers in three of our recent online sales. We feel we have secured enough of her progeny in our herd to part with her in her entirety and allow someone else to profit from her genetics and would entertain working with the new owner to market her progeny in future PCC sales.
- This powerful donor offers an impressive visual quality, while being backed by the genetic power and consistency of the Tinge cow family. Evening Tinge 430E is super feminine, high volumed, stout made and sound footed with a beautiful udder. Her body type reads of brood cow utility, as she is deep, bold hearted and robust in her upper rib shape. This, in combination with her extraordinary width and power, suggests she is sure to generate profit as both a show and performance donor.
- Tinge 430E is quite possibly the best Angus female ever produced at PCC, so take advantage of this opportunity to own her while she is still in her prime.
- During her years of production at PCC, the dam of lot 1, PCC Evening Tinge 226 8001, generated an average of \$110,000 per year in progeny sales!
- Ranks in the top 10% for RE, \$F; top 15% for CW; top 20% for RADG; top 25% for WW, YW, MW, \$AxJ.
- Bred safe AI to Silveiras Convoy, due approximately 3/26/23.



Saras Dream S609 R3
Third Dam of Lot 2



SULL PCC SARAS DREAM 1544J
Maternal sister to Lot 2



SULL PCC SARAS DREAM 1541J
Maternal sister to Lot 2



SULL PCC SARAS DREAM 1551J
Maternal sister to Lot 2

LOT 2

SULL PCC SARAS DREAM 2110K

DOB	REG. #	TATTOO			
2/25/2022	20433755	2110K			
CED	BW	WW	YW	MILK	ANGUS
3	4.6	55	96	16	

- SILVEIRAS STYLE 9303
- Silveiras Forbes 8088
- COLLISON FOREVER LADY 1622
- C&C MCKINLEY 3000 EXAR
- Colburn Saras Dream 6758
- SILVEIRAS SARAS DREAM 1339



- Travis and Beth feel lot 2 is among the best Angus in the offering. She is powerful and stout, with huge feet and legs, exceptional body, and is tremendous patterned and wide from behind while being great haired and possessing a sweet disposition suitable for any level of showman.
- The Dam of lot 2 is the grand-Dam of lots 3 and 4 in this offering and the Dam of lots 2 thru 5 in the 2022 Spring PCC Sale that grossed \$232,000 to average an incredible \$38,667 and included the \$85,000 top selling heifer in that event, SULL PCC SARAS DREAM 1551J, selected by Brown Farms in Texas to join their elite donor program.
- Colburn Saras Dream 6758 is a maternal sister to Colburn Primo 5153 and traces to the legendary deceased donor EXG Saras Dream S609 R3. Other maternal sibs to the Dam of lot 2 include: the \$75,000 2016 National Junior Angus Show Grand Champion Female, CCC Saras Dream 5116 who was also the Supreme Champion Over All Breeds at the 2016 American Royal, Grand Champion Owned Heifer at the 2016 National Junior Angus Show, Supreme Champion Female at the 2016 Indiana State Fair, Reserve Grand Champion Female at the 2016 Atlantic National, Reserve Grand Champion at the 2016 Fort Worth Stock Show, Grand Champion Angus Heifer at the North American International Livestock Exposition, and the Late Winter Calf Champion in the Jr. & ROV Show at the 2016 National Western Stock Show, as well as the \$50,500 Colburn Saras Dream 5082, who was Supreme Champion Female at the 2016 Indiana State Fair, Division III Champion at the 2016 National Junior Angus Show, Supreme Champion Heifer at the 2016 Illinois Beef Expo, Reserve Grand Champion at the 2016 All American Breeders Futurity, Reserve Champion Late Spring Heifer Calf at the 2016 Atlantic National, and Grand Champion Prospect Heifer at the 2016 National Western Stock Show, all shown by the Guyer Family.
- Ranks in the top 10% for DMI.
- Sells open.

SARA'S DREAM

ANGUS



PCC LB SARA'S DREAM 938
Maternal sister to Lot 3



PCC SULL SARAS DREAM 9838G
Dam of Lot 3 as a calf



SCC SCH 24 Karat 838
Sire of Lot 4



Colburn's Sara's Dream 6758
Grand Dam of Lot 4

LOT 3

PCC LB SARA'S DREAM 404

DOB	REG. #	TATTOO
4/6/2022	PENDING	404

SILVEIRAS STYLE 9303
Silveiras Forbes 8088
 COLLISON FOREVER LADY 1622
 CONLEY EXPRESS 7211
SULL Sara's Dream 9838G
 COLBURN SARAS DREAM 6758

•Sells open.

LOTS 3+4

ANGUS

- Lots 3 and 4 are the first E.T. daughters of the \$34,000 selection of Little Bull Farm in Kentucky from the 2020 TXLE Sale after her first natural calf sold for \$25,000 as lot 1 in the Spring 2022 PCC Sale to Jelani King and has already found her way to the backdrop winning her class at the 2022 NJAS and recently being named Supreme Champion at the highly competitive Garfield County Show.

- These show and donor prospects offer a pedigree that is truly "packed with purple" and the phenotype to generate more.

- Sara's Dream 938 combine the popular sires Forbes and 24 Karat with a daughter of Conley Express 7211, who hails from the Sandy family, out of a maternal sister to Colburn Primo 5153, Colburn Saras Dream 6758, that traces to the legendary deceased donor EXG Saras Dream S609 R3.

- Other maternal sibs to the grand-dam of lots 3 and 4 include: the \$75,000 2016 National Junior Angus Show Grand Champion Female, CCC Saras Dream 5116 who was also the Supreme Champion Over All Breeds at the 2016 American Royal, Grand Champion Owned Heifer at the 2016 National Junior Angus Show, Supreme Champion Female at the 2016 Indiana State Fair, Reserve Grand Champion Female at the 2016 Atlantic National, Reserve Grand Champion at the 2016 Fort Worth Stock Show, Grand Champion Angus Heifer at the North American International Livestock Exposition, and the Late Winter Calf Champion in the Jr. & ROV Show at the 2016 National Western Stock Show, as well as the \$50,500 Colburn Saras Dream 5082, who was Supreme Champion Female at the 2016 Indiana State Fair, Division III Champion at the 2016 National Junior Angus Show, Supreme Champion Heifer at the 2016 Illinois Beef Expo, Reserve Grand Champion at the 2016 All American Breeders Futurity, Reserve Champion Late Spring Heifer Calf at the 2016 Atlantic National, and Grand Champion Prospect Heifer at the 2016 National Western Stock Show, all shown by the Guyer Family.

LOT 4

PCC LB SARA'S DREAM 408

DOB	REG. #	TATTOO
3/25/2022	PENDING	408

SCC TRADITION OF 24
SCC SCH 24 Karat 838
 FCF PROVEN QUEEN 419
 CONLEY EXPRESS 7211
SULL Sara's Dream 9838G
 COLBURN SARAS DREAM 6758

•Sells open.

PEMBROOK

OCTOBER 15, 2022



Silveiras Forbes 8088
Sire of Lot 5

UDE Ellie 9230
Dam of Lot 5

LOT 5

PCC SULL ELLIE 2397K

DOB 4/8/2022

REG. # 20433754

TATTOO 2397K

ANGUS

SILVEIRAS STYLE 9303
Silveiras Forbes 8088
COLLISON FOREVER LADY 1622

EXAR BLUE CHIP 1877B
UDE Ellie 9230
SLL ELLIE 2201

- This heifer has that high neck set that makes one look elite. She's long sided, with a soft hind leg set, and a long feminine neck and perfect outline and pattern. Beth and Travis really like this one. This will be the first progeny to sell out of her \$100,000 donor dam, UDE Ellie 9230, that is a true outlier for stoutness, look, and sheer presence from one of the most successful matings to ever carry the UDE prefix...EXAR Blue Chip 1877B x SLL Ellie 2201.
- This mating yielded two of the most popular Angus heifer calves to sell during the 2019 sale season. The first, UDE Ellie 9230, who the Dam of lot 5, was the 2020 NWSS Division Champion for Sara Sullivan, prior to being named 2020 NJAS Grand Champion Owned Female. She capped off her career with a victory in Freedom Hall when she was selected as the 2020 Grand Champion Junior Angus Female for Sara Sullivan.
- The second, UDE Ellie 9197, was the \$32,000 full sister that sold to our friends North of the border in Canada. She was the Reserve Supreme Champion Heifer Overall at the 2019 Kansas Beef Expo, Supreme Champion Overall at the 2020 Kentucky Beef Expo, and was a division winner at the 2020 NWSS.
- A maternal sister to the Dam of lot 5 was the 2018 NAILE Grand Champion Heifer in the Junior show shown by the Steenhoek family. This female was a favorite of many on the 2018 show circuit and has become a role model matriarch in production.
- Sells open.

PCC

PROVEN QUEEN

ANGUS



LOT 6

PCC LB PROVEN QUEEN 406

DOB	REG. #	TATTOO		
4/4/22	20433169	406		
CED	BW	WW	YW	MILK
4	2.9	43	74	14

- Lot 6 is elegantly designed while also possessing added substance, bone, and power.
- Ranks in the top 4% for DMI.
- Sells open.

GAMBLES HOT ROD
Silveiras Style 9303
 SILVEIRAS ELBA 2520
 DAMERON FIRST CLASS
Dameron Proven Queen 333
 P V F PROVEN QUEEN 602



Dameron Proven Queen 933
 Dam of Lots 6 & 7



SSF PROVEN QUEEN 5029
 Full sister to Lots 6 & 7



SSF PROVEN QUEEN 5029
 Full sister to Lots 6 & 7

PCC



LOTS 6+7

ANGUS

- These angular and ultra-feminine daughters of Style have been a favorite of all who have visited PCC.
- Lots 6 and 7 are flush sisters to SSF Proven Queen 5029, Champion Intermediate Division 3 at the 2020 National Junior Angus Show that also won her division at Cattlemen's Congress, Denver, Louisville, and Kansas City for Sara Sullivan that later sold to Skylar Bennett and was named Division Champion in the Junior Owned show at the 2021 Atlantic National.
- Our partner on these heifers, Little Bull Farms, purchased the embryos from Sunset Sunrise Farm in Modoc IN.
- Full sisters to these heifers have been national contenders in the past and include the Division 1 Champion at the 2020 NWSS; Division Champion at the NJAS, and many others.
- These sisters are two of the most elegant heifers in the Angus offering. They are very feminine with added length and extension through front one-third while being long sided, pretty outlined, and sound structured with enough gas in their tank for the long haul.

LOT 7

PCC LB PROVEN QUEEN 405

DOB	REG. #	TATTOO		
4/8/22	20433170	405		
CED	BW	WW	YW	MILK
4	2.9	43	74	14

- Lot 7 is ultra-feminine and blends perfectly from shoulder to forerib with tremendous depth of body.
- Ranks in the top 4% for DMI.
- Sells open.



PCC SSF PROVEN QUEEN 5061
 Full sister to Lots 6 & 7



Silveiras Style 9303
 Sire of Lots 6 & 7

PEMBROOK

OCTOBER 15, 2022



LOT 8

DKBF PCC QUEEN 401

DOB 5/4/2022 REG. # PENDING TATTOO 401

SCHILLINGS R&L CLASSIFIED
Schilling's R&L Confidential
GRUBBS MISS NEWSBREAK 111

DAMERON FIRST CLASS
LFPCC Class Queen 0168 1804
OSU QUEEN 0168

- As you can tell from the support photo below, lot 8 is the spitting image of her dam, LFPCC CLASS QUEEN 0168 1804, in terms of the way her head and neck come high out of her shoulder creating a profile that is second to none.
- Sells open.



Eva Henrichsen & BF PCC Queen



BF PCC Queen 80H
Maternal sister to the Dam of Lots 8 & 9



LFPCC CLASS QUEEN 0168 1804
Dam of Lots 8 & 9

LOTS 8+9

ANGUS

- These maternal sisters by Confidential and 24 Karat, combine length of neck, femininity, and a striking look with excellent rib shape and volume that is sure to transmit to their progeny once in production.
- The dam of lots 8 and 9 is a First Class out of a powerful calving-ease daughter of Bismarck that stems from the branch of the famous Queen family that has been cultivated in the J&J and Oklahoma State herds.
- The dam of lots 8 and 9, LF PCC Class Queen 0168 1804, was the \$25,750 top seller in the Pembroke Cattle Co. Holiday Lights sale while another full sister and three maternal sisters by Confidential grossed \$58,000 for an impressive average of \$14,500 and included BF PCC Queen 80H who was named Reserve Supreme Champion Female at the Kansas State Fair for Eva Henrichsen and LWHF PCC Queen 160H who was a class winner at Cattlemen's Congress and Angus Junior National.
- The grand-dam of lots 8 and 9, Queen 0168 was the \$15,500 top-selling spring pair in the 2017 OSU Cowboy Classic Sale and has already proven her worth through her progeny sales.

PCC



LOT 9

DKBF PCC QUEEN 400

DOB 6/2/2022 REG. # PENDING TATTOO 400K

SCC TRADITION OF 24
SCC SCH 24 Karat 838
FCF PROVEN QUEEN 419

DAMERON FIRST CLASS
LFPCC Class Queen 0168 1804
OSU QUEEN 0168

- Lot 9 has the rib shape, muscle, and power we have come to expect from the Queen cow family.
- Sells open.



OSU QUEEN 0168
Grand Dam of Lots 8 & 9



LWHF PCC QUEEN 160H
Maternal sister to the Dam of Lots 8 & 9



PF PCC Queen 9H
Maternal sister to the Dam of Lots 8 & 9



EXAR Princess 6414
Third Dam to the Dam of Lot 10



EXAR PRINCESS 6680
Grand Dam of Lot 10



WB PRINCESS 902
Dam of Lot 10

OCTOBER 15, 2022

LOT 10

SULL PCC PRINCESS 2176K

DOB
1/17/2022

REG. #
PENDING

TATTOO
2176K

ANGUS

C&C MCKINLEY 3000 EXAR
Gateway Follow Me F163
DUNK-W MAXINE HR 505C

WB PENDLETON 708 PVF SWSN
WB Princess 902
EXAR PRINCESS 6680

PCC

• Lot 10 is among the first daughters ever offered on the 2021 Cattlemen's Congress Grand Champion Angus female in the open show. WB Princess 902 started her decorative show career with a division champion at the American Royal and then a Supreme banner at the 2020 Iowa Beef Expo. This female comes from a long line of superior genetics that have hung multiple banners and continues to generate champions and sale toppers. EXAR Princess 6680, the grand-dam of lot 10, was a many time champion for Carter Ward including being named Grand Champion Female at the 2018 National Western Super ROV Show and has since went on to surpass her success in the show ring by generating multiple champions this past year and multiple highlights in the Ward Brothers spring and fall sales.

- Like her dam and grand-dam, this heifer is fault free in her structure and design with stoutness and power that is unique in the Angus realm.
- Sells open.



LOT 11
SULL PCC ANNIE LOU 2329K

DOB	REG. #	TATTOO			
1/20/2022	20433753	2329K			
CED	BW	WW	YW	MILK	ANGUS
-1	4.7	65	108	18	

SILVEIRAS STYLE 9303
Silveiras Forbes 8088
 COLLISION FOREVER LADY 1622
 DAMERON FIRST CLASS
Nords PlmCrk KCC Annie Lu
 PLUMCREEK MISS ANNIE LU 361C

- Lot 11 combines her exceptional lineage with tremendous body and depth of rib, indicating that her value will extend beyond the show ring.
- Ranks in the top 15% for DMI.
- Sells open.



PlumCreek Miss Annie Lu 361C
Grand Dam of Lot 11



Silveiras Forbes 8088
Sire of Lot 11

PCC

LOTS 11+12

- Lots 11 and 12 are maternal sisters out of Nords PlmCrk KCC Annie Lu who is a direct First Class sired daughter of the past NAILE champion, PlumCreek Miss Annie Lu 361C. the dam of lots 11 and 12 is a female of added frame, added foot and bone with incredible structure that makes her a desirable beast of a donor cow.
- Two full sibs in blood to lots 11 and 12 sold for \$55,000 and \$25,000.
- These females have the look, pedigree, and phenotype to compete at any level and become top income generators for any program as a donor that can be mated to multiple breeds once their show career is complete.
- Both of these maternal sisters are big footed, extremely sound, and just really functional. They are big-bodied and easy fleshing kind with a cool look.



LOT 12
PCC SULL ANNIE LOU 2323K

DOB	REG. #	TATTOO
2/26/2022	20438576	2323K
ANGUS		

DAMERON FIRST CLASS
COLBURN PRIMO
 DAMERON NORTHERN MISS 3114
 DAMERON FIRST CLASS
Nords PlmCrk KCC Annie Lu
 PLUMCREEK MISS ANNIE LU 361C

- We like the square hip and impeccable structure this Annie Lu offers and feel it will lead to a bright future in and out of the show ring.
- Sells open.



Colburn Primo 5153
Sire of Lot 12



SULL PCC ANNIE LU 1534J
Full sister to Lot 12

HENRIETTA PRIDE

(01) ANGUS (10)

PEMBROOK



PF HENRIETTA PRIDE 5634
Grand Dam of Lot 13



Sitz Henrietta Pride 643T
Third Dam of Lot 13

OCTOBER 15, 2022

LOT 13

PCC LWHF HENRIETTA PRIDE 416H

DOB	REG. #	TATTOO	ANGUS		
9/19/2020	20041167	416H			
CED	BW	WW	YW	MILK	
4	1.6	76	140	26	

CONNEALY CONFIDENCE PLUS
E&B Plus One
E&B LADY 1023 PRECISION 936
JINDRA ACCLAIM
Pollard Henrietta Pride 8562
PF HENRIETTA PRIDE 5634

PCC

- Bred AI on 2/3/22 to PVF Marvel 9185. Checked safe with a sexed heifer calf, due approximately 11/12/22.
- This lead lot in the bred Angus female division descends from the \$6 million plus dollar producing sister to Upward that anchors the donor programs of Pollard Farms, Express Ranches, and Deer Valley, Henrietta Pride 643T.
- The Dam of lot 12 was our partner Doug Hughes' selection from the 2019 Pollard Fall Sale.
- Full sibs to the grand-Dam of lot 13 include, PF 7229 Henrietta Pride 1536 who sold for \$26,000 to South River Genetics in the 2016 Pollard sale; PF 7229 Henrietta Pride 1554, the \$80,000 top-selling Lot 1 female of the 2012 Pollard Sale, selected by Vintage Angus; the \$270,000 valued EXAR Significant 1769B, whose ½ interest topped the 2012 Bases Loaded Sale in Denver; PF Waukomis 7229 643T 1539, whose ½ interest sold to Rimrock Productions for \$55,000 in the 2012 Pollard Farms' sale; and PF Docs Cowboy 2523, the \$24,000.00 2/3 interest selection of Rick Hauschild, Anadarko OK and Lance and Sherry Shenold, Anadarko OK from the 2014 Pollard bull sale.
- A full sib heifer pregnancy to the Dam of lot 13 was the \$20,000 selection of BoBo from out the 2011 Pollard Sale.
- Ranks in the top 4% for \$AxH; top 10% for YW, Angle, RE, \$AxJ, \$F, \$G, \$B, \$C; top 15% for WW; top 20% for CW, Marb.

BRED HEIFERS

ANGUS



• This exquisitely designed female is a daughter of Silveiras Saras Dream 1349, the Supreme Champion Female at the 2013 Cattleman's Jackpot for Parkerlynn Barnes and is a member of the great flush that produced: Silveiras Saras Dream 2335, who was a \$36,000 for 1/2 interest heifer in the 2012 Partners for Performance Sale and the Champion Female at the 2013 American Royal R.O.V. Show, the Champion Female at the 2013 Western Idaho R.O.V. Show and Reserve Supreme Female at the 2013 California State Fair. She additionally won Reserve Division Champion at the 2013 R.O.V. Show in Denver for the Colburn family; the \$46,000 valued Silveiras Saras Dream

3306; and Silveiras Saras Dream 1339, the past Supreme Champion at the 2012 Western Bonanza and Division Champion at the 2012 NJAS for the Colburn family that is the Dam of "Primo".

- Ranks in the top 4% for RE; top 20% for \$F.
- Bred AI on 2/3/22 to PVF Marvel 9185. Checked safe with a sexed heifer calf, due approximately 11/12/22.

LOT 14 PCC LWHF SARAS DREAM 412H

DOB	REG. #	TATTOO			
9/10/2020	20013614	412H			
CED	BW	WW	YW	MILK	ANGUS
5	2.2	62	104	23	

S A V BRILLIANCE 8077
 PVF Insight 0129
 PVF MISSIE 790
 SILVEIRAS STYLE 9303
 Silveiras Saras Dream 1349
 EXG SARAS DREAM S609 R3



Silveiras Saras Dream 1349
 Dam of Lot 14



EXG Saras Dream S609 R3
 Grand Dam of Lot 14



PCC PCC LWHF SARA'S DREAM 16J
 Full sister to Lot 14



JL Evening Tinge 8001
 Full Sib to Dam of Lot 15

LOT 15 PCC LWHF EVENING TINGE 20H

DOB	REG. #	TATTOO			
9/19/2020	20025827	20H			
CED	BW	WW	YW	MILK	ANGUS
-4	4.6	66	112	24	

BARSTOW CASH
 BSF Hot Lotto 1401
 BSF PRINCESS EL CAP W2
 JUSTAMERE 253 BADA BING 4065
 JL Evening Tinge 1270
 HF EVENING TINGE 57R

- Ranks in the top 20% for MW.
- This Female exemplifies the power, bone and rib shape that comes with the Evening Tinge cow family. Lot 15 is huge bodied, stout hiped, and deep centered with a great look. The donor potential is endless with this female.
- Dam is a full sister to the foundation donor, HF Evening Tinge 8001.
- Bred AI on 2/3/22 to PVF Marvel 9185. PE'd to EXAR Stallion 0117B. Checked safe to PE< due approximately 12/16/22.

PCC

LOT 16 PCC DW LIBBY 130

DOB	REG. #	TATTOO			
4/1/20	20435402	130X			
CED	BW	WW	YW	MILK	ANGUS
1	3.4	64	113	26	

CHESTNUT KNOCK OUT 204
 PCC Knock Out 526E
 PCC EVENING TINGE 226 8001
 BC CLASSIC 385-7
 PCC Miss Classic 130X
 PCC BUSHWACKER 27T



PCC Knock Out 526E
 Sire of Lot 16

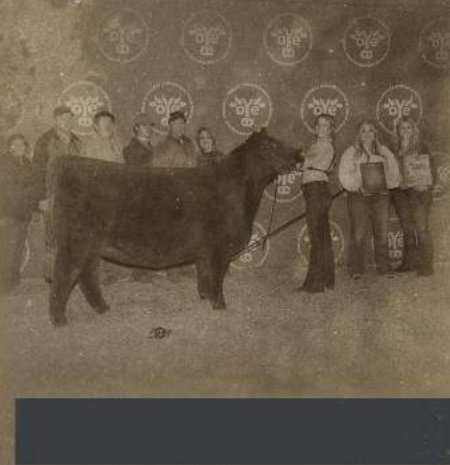


PCC MISS CLASSIC 130X
 Dam of Lot 16

- Lot 16 is out of a female that was a great producer that always worked on anything we bred her to, and this daughter by the PCC herd sire, Knock Out might be the best yet once in production. She is absolutely enormous in terms of rib shape while maintaining that cool pattern needed to cultivate great show prospects. This donor worthy female would be fun to flush Angus or Simmental to see what she could produce. The calf she is carrying by Confidential could pay for the whole package at weaning time.
- Ranks in the top 20% for PAP; top 25% for \$F.
- PE'd to Schilling's R&L Confidential from 12/1/21 to 3/1/22. Checked safe, due approximately 11/15/22.
- Lot 16A: Heifer calf born 9/25/22 by Schilling's R&L Confidential. Name: PCC Libby 765K. Tattoo: 765K



RED



ANGUS



PCC

(RED ANGUS)

EL REY SEMEN



RED DIAMOND

EL REY

102

PEMBROOK FALL PRODUCTION SALE

PEMBROOK



BRED BY
JACKSON BRAGG

RAA / 4445797

SIRE

MANN RED BOX 55C

DAM

COLLIER RUBY 37

DOB /

02.01.2021

ONE OF THE
MOST EXCITING
HERD SIRES TO HIT THE BREED!



GRAND CHAMPION RED ANGUS BULL
2022 FWSSR REGIONAL RED ANGUS SHOW
2022 NATIONAL WESTERN



SCAN ME!

LOT 17 A-J

EL REY SEMEN PACKAGES

SELLING 50 UNITS IN TEN 5-UNIT PACKAGES

and is the most popular son of the now-deceased MANN RED BOX 55C. Semen is not being released on the open market and will only be available at auction for the foreseeable future, so take advantage of this rare opportunity to obtain genetics from one of the most promising young herd sires to hit the Red Angus breed in quite some time.

• RED DIAMOND EL REY 102, was named Champion Red Angus Bull at the 2022 NWSS and the 2022 FWSS. El Rey is one of hottest sires in the Red Angus breed

RED DIAMOND
Land & Cattle

Brown
FARMS

PEMBROOK
PCC
CATTLE COMPANY



LOT 18 A-E

PZC TMAS FIRESTORM 1800 ET

DOB	REG. #	TATTOO			
3/30/11	1472101	1800			
CED	BW	WW	YW	MILK	RED ANGUS
13	-0.8	62	92	31	100% AR

RED SIX MILE AVIATOR 217P
 RED SIX MILE SAKIC 832S
 RED SIX MILE SIERA 257P
 CITATION 138
 GT CITA 4060
 JMDF MISS LANA

FIRESTORM SEMEN PACKAGES

SELLING 25 UNITS IN FIVE 5-UNIT PACKAGES

- Firestorm has been deceased for some time now and semen is becoming limited. No bull that we know of has been able to stand the test of time like Firestorm. Firestorm started off 2021 with a bang siring the 2021 National Champion Red Angus Female ROJAS VALENTINA 9113 "SASSY" for Bret Pembrook. As seen by his progeny in this sale and others, and the cattle that have competed and won this show season, Firestorm still gets it done like no other. Having a little Firestorm in your tank can be like having the codes to launch weapons.
- Ranks in the top 25% for HP.

PCC



LOT 19 A-E

ROJAS EAGLE FORD 9106

DOB	REG. #	TATTOO			
2/1/19	-4130112	9106			
CED	BW	WW	YW	MILK	RED ANGUS
10	-0.3	59	87	27	100% AR

RED SIX MILE SAKIC 832S
 PZC TMAS FIRESTORM 1800 ET
 GT CITA 4060
 RED U-2 BIG LEAGUE 7136T
 ROJAS SIXMILELAKOTA 16W C1
 RED SIX MILE LAKOTO 723L

EAGLE FORD SEMEN PACKAGES

SELLING 25 UNITS IN FIVE 5-UNIT PACKAGES

- The first Eagle Ford progeny are hitting the sales and finding their way to the backdrop. As you can see by his daughters that sold as lots 23 and 24 in our Fall 2021 sale and the sons that sold as lots 41 thru 43 in the Spring 2022 PCC offering, and the Red Composite daughters that sell as lots 26 and 27 in this offering, the Eagle Ford Sired progeny are going to be among the most elite cattle in the Red Angus breed. Semen is limited and will only be offered at auction.
- Ranks in the top 25% for HP.

OCTOBER 15, 2022

PEMBROOK



Rojas Valentina 9113
Dam of Lot 20



Six Mile John Wick 882E
Sire of Lot 20

LOT 20

BWP DKBF VALENTINA 206K

DOB	REG. #			
5/5/22	4637639			
CED	BW	WW	YW	MILK
14	-1.4	67	105	27

TATTOO
206K

RED ANGUS

100% AR

- RED U-2 RECKONING 149A
- SIX MILE JOHN WICK 882E
- RED SIX MILE & CO GLORIA 29A
- PZC TMAS FIRESTORM 1800 ET
- ROJAS VALENTINA 9113
- SIX MILE LAKOTA 112Y

PCC

- This lead lot in the Red Angus show and donor prospects represents a real investment opportunity.
- The first heifer calf out of Rojas Valentina, aka "Sassy", the 2021 Cattlemen's Congress Grand Champion Red Angus Female and National Champion, to be offered at public auction.
- Like her famous dam, this female has all the ingredients for long term, high-level success in and out of the show ring. She is sound and functional, with tremendous rib and volume, and has a deadly look when standing on the profile.
- The sire of lot 20, John Wick, is deceased and his semen is next to impossible to find and when you do its generally over \$2000 per unit.
- Ranks in the top 25% for WW.
- Selling ½ interest and full possession. ½ embryo interest is being retained by Bret Pembroke and Brown Farms.
- PCC and Brown Farms would entertain the opportunity to campaign this female if the new owner would desire, and would be glad to discuss that possibility with the buyer after the sale.
- Sells open.



LOT **21**

MF RACHEL 279

DOB
3/8/22

REG. #
PENDING

TATTOO
279

RED ANGUS
100% AR

KJHT POWER TAKE OFF
BIX MR PTO 399
C-BAR ABIGRACE 425B

MF FULL BLAST 2150
MF RACHEL 7908
MF BIG RED 4908

- Our neighbors over at Alva, McMurphy Farms, are known for raising elite Red Angus genetics and this female is no exception. It is an interesting story on how this heifer ended up at PCC. One of our good friends, Jerod Arthur at Lucky Strike, knows that we are always on the lookout for the best red genetics that we can find for our customers whether we raise them or not, called and told us he saw one we probably need to take a look at. As you can see, she did not disappoint.
- This female is so unique in terms of how wide pinned and big stifted she is and how she combines that with fantastic structure and excellent phenotype. We think enough of her to incorporate into our embryo program after her show career.
- Retaining ½ embryo interest.
- Sells open.

PCC



LOT **22**

DKBF PCC BLOCKANA 202K

DOB
3/27/22

REG. #
4637633

TATTOO
202K

CED	BW	WW	YW	MILK
8	2.2	76	118	21

RED ANGUS
100% AR

RED U-2 RIFF 1213C
EGL GCC RED EAGLE E7194
TJS SARABEL A174
RED FINE LINE MULBERRY 26P
DamAR 101J BLOCKANA A121
DFRA BLOCKANA 101

- The Dam of 22 is one powerful beast and is one of the true pride and joy females at Brown Farms. She was purchased out of the Cloud 9 Dispersal and was one of their high sellers for \$26,000 where her natural heifer calf and maternal sister to lot 22 commanded \$25,000 as well.
- We feel like this Red Eagle Sired heifer calf out of Blockana is, without question, one of the standout Red Angus heifers in this offering. Her unique blend of mobility, stoutness of bone, thickness, femininity, and outline make her special. This gal also has a cool first time show person personality and incredible hair. Buy with confidence!
- A maternal sister to lot 22 was the \$21,000 high-selling Red Angus in the 2021 PCC Fall Sale and is being successfully campaigned by Madeline McClain.
- We love everything from the Brown's Blockana donor and look forward to seeing this one develop.
- Ranks in the top 10% for WW; top 15% for YW; top 25% for RADG.
- Sells open.



BF PCC BLOCKANA 155J
Maternal sister to Lot 22



Damar 101J Blockana A121
Dam of Lot 22



EGL GCC Red Eagle E7194
Sire of Lot 22

OCTOBER 15, 2022

PEMBROOK



PZC TMAS Firestorm 1800 ET
Sire of Lot 23



3JF MS MAI F459
Full sister to Lot 23



OHRR 63G KIMAS Mahogany 105R
Dam of Lot 23

LOT 23
3JF MS RED ZINNIA F700

DOB	REG. #			
2/18/18	3941917			
CED	BW	WW	YW	MILK
11	-0.5	54	85	25

TATTOO
F700

RED ANGUS

100% AR

RED SIX MILE SAKIC 832S
PZC TMAS FIRESTORM 1800 ET
GT CITA 4060
SRR RED CANYON 213
OHRR 63G KIMAS MAHOGANY 105R
OHRR MS MAHOGANY 63G

PCC

- Lot 23 is a Firestorm daughter that was shown successfully by Bret Pembroke and is off to a great start to her career as a donor by being a great embryo producer, thus allowing us to part with her in her prime.
- From a phenotypic standpoint, there is no doubt this young donor also has what she needs to produce progeny that can compete at any level. This female also has great hair and a super disposition, and we expect her progeny should follow suit.
- The dam of lot 23, Mahogany 105R, has as much bone, rib shape, and look as we've seen in a Red Angus cow.
- A full sister to lot 23, 3JF MS MAI F459, sold for \$20,000 to Kinleigh Guidry in the 2018 PCC Fall Sale.
- Ranks in the top 20% for HP.
- Bred AI on 4/6/222 to Duff Red Wood 1941 with heifer plus semen. Checked safe, due approximately 1/13/23.



EGL GCC Red Eagle E7194
Sire of Lot 24

LOT 24

EGL DREAM GIRL 0077

DOB	REG. #	TATTOO		
4/8/20	4343259	77		
CED	BW	WW	YW	MILK
10	1.1	70	104	22

RED ANGUS
100% AR

RED U-2 RIFF 1213C
EGL GCC RED EAGLE E7194
TJS SARABEL A174
RED SIX MILE SAKIC 832S
PZC TMAS DREAMGIRL 2367Z
GT CITA 4060

- This striking daughter of Red Eagle, who is one of the best Red Angus bulls on the market, has the look to produce top show heifers and replacements and the power and numerical balance needed to produce sons that will work both in the purebred and commercial sectors of the industry.
- This donor prospect was shown successfully by Bret Pembrook and Brown Farms and was named Reserve Division Champion at the 2022 Cattlemen's Congress.
- Dam was the \$12,000 selection of Standridge and LeDoux from the 2013 TXLE Sale.
- Ranks in the top 20% for WW.
- Bred AI on 4/14/222 to Duff Red Wood 1941 with heifer plus semen. Checked safe, due approximately 1/21/23.

PCC



Duff Red Wood 1941
Service Sire to Lots 23, 24 & 25

LOT 25

PCC GINGER 391F

DOB	REG. #	TATTOO		
1/18/18	3874537	391		
CED	BW	WW	YW	MILK
11	-0.1	63	99	24

RED ANGUS
100% AR

RED SIX MILE SAKIC 832S
PZC TMAS FIRESTORM 1800 ET
GT CITA 4060
HXC JACKHAMMER 8800U
RAVISHING GINGER 391
KW GINGER 660S

- This huge bodied, powerfully constructed female is another example of why Firestorm genetics are still in demand.
- A full sister to lot 25 was Bret Pembrook's first bred and owned show heifer and was named Division One Champion Female in the Bred and Owned Show and Owned Show at the 2017 Red Angus Junior National.
- Her Dam, Ravishing Ginger, has been a top donor for Bret as well, producing high sellers, beautiful replacements and other winners. Here is a female with all the guess work taken out.
- Bred AI on 4/27/222 to Duff Red Wood 1941 with heifer plus semen. Checked safe, due approximately 2/3/23.

OCTOBER 15, 2022

PEMBROOK



DUELLO 007 TURTON 021H
Dam of Lot 26

LOT 26

BWP DKBF TURTON 204K

DOB	REG. #	TATTOO
5/18/22	4639353	204K

PZC TMAS FIRESTORM 1800 ET
ROJAS EAGLE FORD 9106
ROJAS SIXMILELAKOTA 16W C1

TR PZC MR TURTON 0794 ET
DUEL 007'S TURTON 021H ET

- This cream-colored Red Angus Composite is among the best we have offered in this division of PCC Sales. She is exceptional in her feminine design while maintaining the structure and power needed to compete on a national level.
- Sells open.

LOTS 26+27 RED ANGUS COMPOSITE

50% AR 50% XX

- Lots 26 and 27 are full-sibs-in-blood that combine Eagle Ford with Turton x Yellow Jacket Full Sisters who are, in turn, full sisters to Dave Duello's premier donor females.
- Eagle Ford is really working in the Red Angus Composite realm, and we feel these daughters will be extremely competitive within that breed. Both females have all the bells and whistles to go out and compete at any level. If you are looking for a Red Composite with structure, style, balance, and eye appeal needed to compete at any level, look no further!
- We feel that after their show career these females would be exceptional options to produce show steers, particularly ones that would classify Red Angus.

PCC



DUELLO 007 TURTON 020H
Dam of Lot 27

LOT 27

BWP DKBF TURTON 207K

DOB	REG. #	TATTOO
5/20/22	4639355	207K

PZC TMAS FIRESTORM 1800 ET
ROJAS EAGLE FORD 9106
ROJAS SIXMILELAKOTA 16W C1

TR PZC MR TURTON 0794 ET
DUEL 007'S TURTON 020H ET

- This beautiful red female is functional and sound with an exceptional front end explosive rib shape that creates a profile that is sure to capture the judge's eye and keep it through the Grand drive.
- Sells open.



HARRISON COUNTY
Jr. Livestock Show
FARM CITY WEEK

SIMM

ENTAL



PCC



JSUL PCC ALL ABOUT ROSIE 1115J
Full sister to Lots 28-32



Peine/GS Rosie 677D
Dam of Lots 28-32

W/C RELENTLESS 32C
JSUL SOMETHING ABOUT MARY 8421
JBSF PROUD MARY
LLSF ADDICTION AY792
PEINE/GS ROSIE 677D
GUNN Z27 DO BLACK ROSE

LOT 28
PCC JSUL ROSIE 2225K

DOB	REG. #	TATTOO		
3/3/22	4091668	2225K		
CED	BW	WW	YW	MILK
11.9	2.7	76.6	115.1	20.3

PB SM

PCC

- This march blaze-faced has big-time show winning potential. Picking a favorite in this year's PCC Simi lineup has been a challenge for us, but one thing is for certain, this one has checked all the boxes for everyone that's stopped by. She's big-ribbed, cool fronted, and huge boned with an almost flawless look about her.
- Sells open.

LOTS 28-32

PB SM

- Simply put, this is one phenomenal set of flush sisters! These females exemplify the kind and quality of purebred Simmentals that Beth and Travis want to offer their customers at PCC.
- They are perfect structured, with flex and cushion in their pasterns, while being wide based, soft middled, and long sided with femininity to spare.
- True outliers within the Simmental breed... we love the pedigree as well. The SAM progeny are exceeding expectations!
- Their Dam, Peine/GS Rosie 677D, was selected as the Reserve grand champion purebred female at the 2018 NWSS and FWSS open shows and was also selected 7th overall at the 2018 National Jr heifer show.
- A full sister to lots 28 thru 32, JSUL PCC All About Rosie 1115J, was the \$50,000 top-selling Simmental from the 2021 Fall PCC Sale selected by Jaxon Hilbrands and is going to be a big part of our Simmental program as we retained a ½ embryo interest in her.

ROSIE

((PUREBRED SIMMENTAL))

PEMBROOK



LOT 29

PCC JSUL ROSIE 2171K

DOB	REG. #	TATTOO		
1/10/22	4091674	2171K		
CED	BW	WW	YW	MILK
11.9	2.7	76.6	115.1	20.3

- Lot 29 has a unique blend of maternal look while still maintaining stoutness of bone and adequate shape and base width. This is a big time show prospect and the powerhouse of the sisters.
- Sells open.

JSUL Something About Mary 8421
Sire of Lots 28-32



PCC



LOT 30

PCC JSUL RED ROSIE 2306K

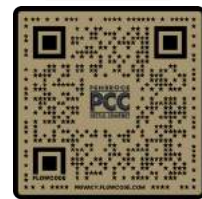
DOB	REG. #	TATTOO		
3/3/22	4091669	2306K		
CED	BW	WW	YW	MILK
11.9	2.7	76.6	115.1	20.3

- Lot 30 is the best red Simmental we've seen in a while. Her unique blend of mobility, stoutness of bone, thickness, femininity, and outline make her special.
- Sells open.



Full Sister to Lots 28-32
2022 Reserve Champion Simmental FWSS
Abbygayle Spivey

LOT VIDEOS:



SCAN TO VIEW VIDEOS

OCTOBER 15, 2022



LOT 31

PCC JSUL SPECIAL ROSIE 2189K

DOB	REG. #	TATTOO			
2/7/22	4091672	2189K			
CED	BW	WW	YW	MILK	PB SM
11.9	2.7	76.6	115.1	20.3	

W/C RELENTLESS 32C
 JSUL SOMETHING ABOUT MARY 8421
 JBSF PROUD MARY
 LLSF ADDICTION AY792
 PEINE/GS ROSIE 677D
 GUNN Z27 DO BLACK ROSE

- This solid black sister is the wild card in the group and is always make someone's list. She is a beautiful necked, perfect structured prospect with a phenomenal profile and pattern.
- Sells open.



JSUL PCC ALL ABOUT ROSIE 1115J
 Full sister to Lots 28-32



Peine/GS Rosie 677D
 Dam of Lots 28-32

PCC



LOT 32

PCC JSUL SHINY ROSIE 2395K

DOB	REG. #	TATTOO			
5/5/22	4091673	2395K			
CED	BW	WW	YW	MILK	PB SM
11.9	2.7	76.6	115.1	20.3	

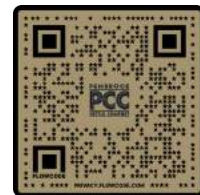
W/C RELENTLESS 32C
 JSUL SOMETHING ABOUT MARY 8421
 JBSF PROUD MARY
 LLSF ADDICTION AY792
 PEINE/GS ROSIE 677D
 GUNN Z27 DO BLACK ROSE

- This May blaze-faced heifer is the youngest of this phenomenal set of sisters. When placed in park, this female has impressive muscle expression for her age, coupled with an inviting pattern, profile and front end. This one will be a force as she continues to mature.
- Sells open.



JSUL Something About Mary 8421
 Sire of Lots 28-32

LOT VIDEOS:



SCAN TO VIEW VIDEOS



JSUL PCC LEAPIN LOLA 1098J
Maternal sister to Lot 33



PCC JSUL ABOUT LOLA 1539J
Full sister to Lot 33



WPRF Wise Lola
Dam of Lot 33



WPRF Wise Lola
Dam of Lot 33

OCTOBER 15, 2022

LOT 33

JSUL PCC ABOUT LOLA 2267K

DOB 3/20/22 **REG. #** 4091667

CED 14.4 **BW** 1.1 **WW** 75.7 **YW** 109.1 **MILK** 16.1

TATTOO 2267K

7/8 PB SM

PB SM

W/C RELENTLESS 32C
JSUL SOMETHING ABOUT MARY 8421
JBSF PROUD MARY

SS/PRS TAIL GATER 621Z
WPRF WISE LOLA
LIMESTONE LOLA W217

PCC

- This is one of our favorites in sale and a smoking good purebred. She is as maternal, smooth and impressive in her design as any female in the offering. We love the true and natural rib shape you see in this one. Her outline and silhouette are flawless with incredible structure that spells longevity.
- The Dam of lot 33, WPRF WISE LOLA, was the reserve grand champion % Simmental female at the 2018 Junior National and has been a staple in the Sullivan donor program since. This ¾ blood is becoming one of Sullivan's favorite females that is very versatile in her mating options to make 7/8 purebred cattle.
- A full sister to lot 33 was the \$29,000 selection of Finn Romanchuk from the 2022 Spring PCC Sale while a Quantum Leap Sired maternal sister to lot 33 sold for \$17,000 to Gus Goodsen in the fall 2021 PCC Sale.
- Trust me when we say this cow family is getting it done. You don't want to miss out on this Lola daughter.
- Eligible for the San Antonio Simmental and Simbrah Super Bowl.
- Ranks in the top 15% for CED.
- Sells open.



LOT 34

JSUL PCC HONEY BUN 2311K

DOB	REG. #	TATTOO		
2/4/22	4091666	2311K		
CED	BW	WW	YW	MILK
8.9	2.5	71.2	103.3	17

- Ranks in the top 25% for BF.
- Sells open.

W/C LOADED UP 1119Y
 W/C BANKROLL 811D
 MISS WERNING KP 8543U
 SILVEIRAS STYLE 9303
 S&S STYLIN HONEY 733E
 HPF MS HONEY R007



JSUL PCC HONEY BANK 1150J
 Full sister to Lot 34 & 35

PCC



LOTS 34 + 35

3/4 SM

3/4 SM 1/4 AN

- These 3/4 Simmental flush sisters could be our favorite breeding pieces of the percentage offering. It is hard to decide which of these heifers will turn out to be the best in the end, so we are offering choice on sale day and will let the crowd decide. We look forward to watching them develop throughout their show careers.
- Not only when showing these females, but when you consider their genetic makeup and their value as a donor, their value is unlimited. These sisters are very powerful females with the right kind of muscle shape and body shape and the structure needed to support that power while maintaining an exquisite head and neck.
- Their dam, S&S STYLIN HONEY 733E, is quickly becoming one of Sullivan's best donor cows for making elite show heifers and future donor cows. She was a calf champion at the NAILE, NWSS, and FWSS, then, went onto a Top 5 finish at the National Jr. Heifer Show along with Champion at the American Royal and Reserve Champion at the NAILE.
- Jump on board here if you're looking for a show heifer with unlimited donor potential.
- Eligible for the San Antonio Simmental and Simbrah Super Bowl.
- 3/4 blood genetics are extremely popular right now and with one straw of semen, and you have a purebred.

LOT 35

JSUL PCC HONEY 2275K

DOB	REG. #	TATTOO		
2/26/22	4091665	2275K		
CED	BW	WW	YW	MILK
8.9	2.5	71.2	103.3	17

- Ranks in the top 25% for BF.
- Sells open.



S&S Stylin Honey 733E
 Dam of Lot 34 & 35

RITA 8288F

3/4 SIMMENTAL

LOT **36**

PCC JKSM RITA 502K

• Sells open.

DOB	REG. #	TATTOO
4/12/22	4096659	502K



JSUL Something About Mary 8421
Sire of Lots 36-38



W/C RELENTLESS 32C
JSUL SOMETHING ABOUT MARY 8421
JBSF PROUD MARY
W/C BANKROLL 811D
RJ PF RITA 8288F
EXAR RITA 5406



EXAR Rita 5406
Grand Dam of Lots 36-38



RJ PF RITA 8288F
Dam of Lots 36-38

LOTS 36-38

3/4 SM.

3/4 SM 1/4 AN

- Here are another set of big time 3/4 Simmental sisters that will compete at the highest level, but most importantly, have the revenue generating potential to be the only donor your operation may ever need.
- Their Dam, RJ PF RITA 8288F, dominated the show ring throughout her career, not just winning within her breed, but also being crowned Supreme Champion Female at the NAILE in Louisville KY while her grand-Dam "Rita 5406" is a lead donor in the RJ Cattle Co. herd.
- We are excited to offer these flush mates with our partners, KLS Farms.
- Eligible for the San Antonio Simmental and Simbrah Super Bowl.
- 3/4 blood genetics are extremely popular right now and with one straw of semen, and you have a purebred.



LOT **37**

PCC JKSM RITA 500K

• Sells open.

DOB	REG. #	TATTOO
1/2/22	4096655	500K

LOT **38**

PCC JKSM RITA 503K



• Sells open.

DOB	REG. #	TATTOO
2/10/22	4096657	503K

PEMBROOK

OCTOBER 15, 2022

GLAMOUR GIRL 18B

100% SIMMENTAL



HTP/SVF DURACELL T52
HPF QUANTUM LEAP Z952
RP/MP RIGHT TO LOVE 015U

SILVEIRAS STYLE 9303
UDELL GLAMOUR GIRL 18B
JSUL RED THUNDER 9051W

LOT 39

DUAL REGISTERED

JSUL PGG LEAPER GIRL 2158K

DOB	REG. #	TATTOO		
1/28/2022	413949/4091670	2158K		
CED	BW	WW	YW	MILK
13	1.1	69	101	18

- Lot 39 is solid black with an absolute beautiful outline. She has a long, slender, feminine neck and a beautiful head that is complemented by her impeccable structure and exceptional design.
- Eligible to show as an Oklahoma High Chi.
- Ranks in the top 3% for CED; top 10% for WW, YW, CEM; top 15% for Milk; top 25% for BW.
- Sells open.



PCC BROKER GIRL 1216J
Maternal sister to Lots 39 & 40

LOTS 39-40

LOW CHI + 1/2 BLOOD SM

3.735% CA | 32.735% AN | 8.005% MA | 55.525% XX

- These dual registered 1/2 Blood Simmental / Low Chi / Oklahoma High Chi sisters show two ways and are out there in terms of their color and design! Their cocky attitudes guarantee that these females will always have a show ring presence like no other. From the ground up they are as good as it gets. Very agile on the move, monster middled, and as long and pretty necked as you can make one.
- A maternal sister to lots 39 and 40 was the \$32,500 selection of Finn Romanchuk from the 2021 Fall PCC Sale that was a favorite in that event and has campaigned successfully with multiple trips to the backdrop, while another maternal sister sold for \$12,500 in the Spring 2022 PCC Sale.
- We think these females have the potential to make a run at any of the major shows throughout the country.
- Their Dam, Udell Glamour Girl 18B stems from the popular Style/Red Thunder mating from Udell Cattle Co. 18B has literally worked to every bull she has been mated to, from multiple Simi Sires, to Shorthorn, and Chi

bulls. 18B's daughter by Quantum Leap was the \$62,000 JSUL/TSSC Beth Dutton 0113H, a featured lot in the record-setting phone bid-off that took place in Hagerstown, Indiana, in September 2020. She was selected Grand Champion Overall Female at the 2020 Cattle Battle, Supreme Overall at the 2020 King of the Ridge Showdown and most notably was selected as the 2020 NAILE Reserve Grand Champion AOB Female in the Junior Show. Beth Dutton was also selected as Calf Champion in the open and junior shows at the 2020 NAILE. Another daughter of 18B shown by Ashley Moore was top 5 at the 2019 Illinois State Fair and a division winner at the 2019 NJHS in Louisville, KY.

- Eligible for the San Antonio Simmental and Simbrah Super Bowl.



PCC JSUL GLAMOUR GIRL 1525J
Maternal sister to Lots 39 & 40



LOT 40

DUAL REGISTERED

JSUL PGG COLOR GIRL 2166K

DOB	REG. #	TATTOO		
3/22/2022	413950 4091671	2166K		
CED	BW	WW	YW	MILK
13	1.1	69	101	18

- Like her \$32,500 maternal sister, lot 40 is a black and white heifer that is sure to capture the attention of whoever is evaluating her with her markings and keep it with her flawless design.
- Eligible to show as an Oklahoma High Chi.
- Ranks in the top 3% for CED; top 10% for WW, YW, CEM; top 15% for Milk; top 25% for BW.
- Sells open.



Udell Glamour Girl 18B
Dam of Lots 39 & 40

PCC



LOT 41

PCC HUBB KATE SPADE 101K

DOB	REG. #	TATTOO		
1/23/22	4086167	HUBB 101K		
CED	BW	WW	YW	MILK
7.3	2.9	64.7	94.5	17.6

1/2 SM 1/4 AN 1/4 LM

SVF STEEL FORCE S701
MR HOG BROKER
JM BF H25

SILVEIRAS STYLE 9303
CELL 7106E ET
DVFC FERGIE 109T

- We feel lot 41 is one of the best percentage Simmentals in the offering. She is a powerful female that is straight and smooth in all her lines all while being very angular and feminine. She has the feet, legs, and structure needed for the long haul.
- Dam was 2019 Champion Limousin Female at the Oklahoma Youth Expo and supreme champion female at several jackpot shows for the Hubbard family before being named Reserve Champion Cow-Calf Pair at the Junior National.
- Traces to the great Fergie cow, a foundation donor for Linhart Limousin and a Style daughter.
- Sells open.



Cell 7106E ET
Dam of Lot 41



CHIA



NINA



PCC



JSUL WHO DAT FETTY 6322D
Dam of Lot 42



JSUL PCC FETTY'S PRIDE 1407J
2022 NJCS Reserve Division Champion
Maternal sister to Lot 42



JSUL PCC FETTYS PRIDE 1407J ET
2022 Grand Champion Chi Female Ft Wort
Maternal sister to Lot 42



SULL PCC DAT STYLE 0356H
2022 OYE Bronze Medallion Heifer
Maternal sister to Lot 42

LOT 42

JSUL PCC FETTY WHO 2173K

DOB	REG. #	TATTOO			
2/4/2022	413940	2173K			
CED	BW	WW	YW	MILK	10.77% HIGH CHI
8	2.8	60	91	15	
10.773% CA 71.158% AN 10.058% MA 8.013% XX					

SCC TRADITION OF 24
SCG SCH 24 KARAT 838
FCF PROVEN QUEEN 419

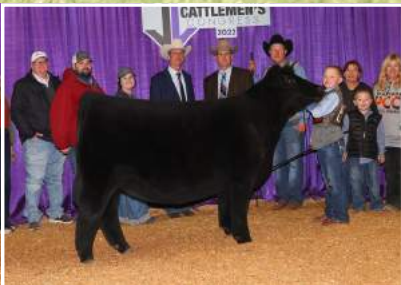
ASHW WHO DA MAN
JSUL WHO DAT FETTY 6322D ET
JSUL TOTAL GIRL 41



- One of the most unique Chi Females to ever be offered at Pembrook Cattle! Fetty Who is a female that's out there in terms of combining elegance and power! This heifer is big footed, enormous boned and extra sound in her structure. When parked she also has the show ring presence, stature, and outline to be noticed, even in a most competitive crowd. She has a phenomenal disposition and is going to have the great hair, both traits that make working on her rewarding.
- The dam of this female, JSUL Who Dat Fetty 6322D is a decorated producer of champions and high sellers and was sold for herself last year for \$85,000.
- Bret just finished showing a daughter of the Fetty Cow that was selected for \$30,000 from the 2020 PCC Fall Sale by our partners Brown Farms to add to their awesome donor arsenal. She was Calf Champion at Congress before being named the Bronze Medallion Supreme Heifer and Reserve Champion Chi at the 2022 Oklahoma Youth Expo. Bret is currently showing and a full sister to that heifer and maternal sister to lot 42 that was named Grand Champion Chi Female at the 2022 Fort Worth Stock Show as a calf.
- Ranks in the top 20% for WW, YW.
- Sells open.



JSUL FANCY DAT 0192H
Full Sister to Lot 43



JSUL PCC DAT Girl
Full Sister to Lot 43



PCC WHO DA GIRL 1068J
Full Sister to Lot 43

OCTOBER 15, 2022

LOT 43

JSUL PCC WHO'S LOOKIN 2113K

DOB	REG. #	TATTOO	
3/10/2022	413941	2113K	
CED	BW	WW	YW
6	2.9	45	70
			MILK
			10
21.545% CA 42.315% AN 20.115% MA 16.025% XX			21.55% CHI

WHO MADE WHO 411F
ASHW WHO DA MAN
ASHW CA X MA X SM 55
MONOPOLY
JSUL TOTAL GIRL 41
JSUL LUCKY PLAY GIRL 1004

PCC

- Lot 43 is clean jointed, perfect structured, and level hipped being extra smooth out over her tailhead. She has the look and presence one would expect from a Who Da Man and is high enough percentage to breed to any Angus bull and still have a high Chi, thus making her a very valuable breeding piece after her show career.
- This mating is battle tested...meaning several full sisters have claimed championships at some of the largest shows across the United States. At 21.55% high Chi, this heifer can be mated to any Sire and the progeny will still register high Chi. Who Da Man semen is becoming limited so make your claim to own one of his daughters ASAP.
- Flush sisters to 43 include the \$74,000 selection of Barrett Duncan from the 2021 Fall PCC Sale, PCC WHO DA GIRL 1068J, as well as the \$30,000 PCC SULL DAT GIRL 0393H and the \$25,000 JSUL FANCY DAT 0192H, both features of the 2020 PCC Fall Production Sale.
- Ranks in the top 25% for RE.
- Sells open.



JSUL Who Dat Raptor 6976D
Full sib to Dam of Lot 44

LOTS 44+46

LOT 44

PCC WHO DAT HOTTIE 306K

DOB	REG. #	TATTOO			
2/18/2022	413959	306K			
CED	BW	WW	YW	MILK	HIGH CHI
10	2.1	57	86	13	6.54%

6.54% CA | 69.53% AN | 12.498% MA | 11.433% XX

SILVEIRAS STYLE 9303

SILVEIRAS FORBES 8088

COLLISON FOREVER LADY 1622

ASHW WHO DA MAN

JSUL WHO DAT HOTTIE 8369F ET
JSUL SULTRY 6640

- Here is a female that Beth and I have loved from the get-go! This big-bodied, elegantly designed female is built to not only perform on her own in the pasture, but also carries the look and lineage that is sure to fill the show box with purple ribbons and banners.
- Ranks in the top 10% for Marb; top 20% for CED.
- Sells open.

- The donor Dam of lots 44 thru 46 is a member of the famous Who Da Man x Sultry 6640 flush and was a many-time champion for Ethan Timer and is a full sister to JSUL Who Dat Raptor 6976D ET, who was the Supreme Champion Junior Heifer and Grand Champion Junior Chianina Female at the 2017 North American in Louisville and is the leading Chi donor in the PCC herd. The grand Dam of these sisters, JSUL Sultry 6640 has produced more national champions and supreme champions at every level than any female in the country. Here is your opportunity to own a descendant of this incredible donor. Whether you want to produce your own donor cow or the next supreme champion at the NAILE or American Royal, these sisters have the potential to do it all.
- Maternal sisters to the Dam of lots 44 thru 46 include: JSUL Who Dat Raptor that was the 2017 NAILE Supreme champion and 2012 JSUL Who Dat 1602y who was the American Royal and NAILE supreme champion female. JSUL Who Dat Lady was the champion Chianina female and is now an elite donor of sale toppers and champions for Schaeffer/Tice. 2014 JSUL Who Dat Ginger was the champion Chianina female at the NAILE open show and is now an elite donor at Sullivan Farms. JSUL Who Dat Darling was the 2015 supreme female at the Iowa St Fair and Aksarben and now an elite donor at Sullivan Farms, she also produced JSUL Who Dat Cat that was supreme at the 2018 Iowa Beef Expo and was grand champion Chianina at the National Jr heifer show and champion Chianina female at the NAILE. 2017 JSUL Who Dat Sultry was reserve supreme at the Indiana St Fair and was also Reserve Chianina in the open and Jr show at the NAILE. And you probably have heard of JSUL Red Thunder a dominate donor for the Udell family.



Silveiras Forbes 808
Sire of Lot 44

LOT 45

PCC WHO DAT HOTTIE 307K

DOB	REG. #	TATTOO			
4/3/2022	413960	307K			
CED	BW	WW	YW	MILK	HIGH CHI 6.54%
10	2.1	57	86	13	
6.54% CA 69.53% AN 12.498% MA 11.433% XX					

SILVEIRAS STYLE 9303
 SILVEIRAS FORBES 8088
 COLLISON FOREVER LADY 1622
 ASHW WHO DA MAN
 JSUL WHO DAT HOTTIE 8369F ET
 JSUL SULTRY 6640

- Lot 45 is cool and unique in terms of her lady-like, feminine appearance. We love the style, balance, and eye appeal in this heifer possesses and feel she will compete at any level.
- The Sire of lots 44 and 45, Forbes, has a royally built, banner winning pedigree. He is Sired by the famous Silveiras Style and complemented maternally with the great Forever Lady cow family going back to EXAR Lutton and the Roth Forever Lady 2706. Forbes was named The ROV Show Bull of the Year after being slapped Grand Champion Bull at the 2021 Cattlemen's Congress and Atlantic National Angus Show. He was also Supreme Champion Open Angus Animal at Atlantic National Angus Show, Grand Champion Bull at the 2021 Western National Angus Futurity and Grand Champion Bull at the 2020 Kansas State Fair as well as being named the 2020 Grand Champion Angus Bull at the Fort Worth Stock Show & Rodeo, the 2020 Grand Champion Angus Bull at the Houston Livestock Show & Rodeo and the Reserve Grand Champion Angus Bull at the 2019 ROV American Royal Angus Show.
- Ranks in the top 10% for Marb; top 20% for CED.
- Sells open.

PCC



Duff-JC4Real16250
Sire of Lot 46

LOT 46

PCC WHO DAT HOTTIE 305K

DOB	REG. #	TATTOO			
4/27/2022	414016	305K			
CED	BW	WW	YW	MILK	HIGH CHI 6.54%
11	1.2	57	84	14	
6.54% CA 69.53% AN 12.498% MA 11.433% XX					

DUFF NAPOLEON 232
 DUFF-JC 4REAL 16250
 DUFF AMIGO 927K JUANADA 071
 ASHW WHO DA MAN
 JSUL WHO DAT HOTTIE 8369F ET
 JSUL SULTRY 6640

- The sire of lot 46, 4Real, is a proven producer of in-demand offspring siring the top-selling Angus bull of the 2021 Power Plus Bull Sale for \$90,000.00, Duff Real Deal, and the top-selling Angus Female of the 2021 Holiday Kickoff Sale for \$50,000.
- Lot 46 results from one of those "out there kind of matings" done to add new genetics back into the Chi breed. The 4REA daughters we have seen are impressive, so we decided to see what he could do in the PCC herd. As you can see by the pictures, we were not disappointed in the results. This heifer is moderate framed, big hipped and as sleek as you can make one about her head and neck. We could see this female competing well as a high Chi or even as a commercial. We think she will make one heck of an impact as a donor, whether making show steers or crossbred females.
- Ranks in the top 10% for CED.
- Sells open.



LOT 47

JSUL PCC WHO'S PARTY 2250K

DOB	REG. #	TATTOO			
3/16/2022	413942	2250K			
CED	BW	WW	YW	MILK	HIGH CHI
8	2.7	62	90	12	6.54%
6.54% CA 69.53% AN 12.495% MA 11.435% XX					

DAMERON FIRST CLASS
 COLBURN PRIMO 5153
 SILVEIRAS SARAS DREAM 1339
 ASHW WHO DA MAN
 JSUL WHO DAT 1602
 JSUL DREAM MAKER HS46

- We feel lot 47 is one of the best Chi females in the sale. She is extremely long necked with the elite presence of a great one. She profiles with an outstanding pattern and is as sound structured as any animal in the sale.
- Ranks in the top 15% for WW.
- Sells open.

LOTS 47+48

• Lots 47 and 48 are maternal sibs out of JSUL WHO DAT 1602 who is one of the most famous NAILE and American Royal Supreme Champions to have ever walked the green chips, shown by Luke Elder.

• Full sisters to lot 47 and maternal sibs to lot 48 include JSUL WHO DAT WHITNEY 091H ET, Sara Sullivan's heifer that was named Champion in the Junior Chi Show at Cattleman's Congress that went on to be named Reserve Grand Champion Female at the 2021 Chi Junior National as well as the Grand Champion, JSUL MO WHO DAT 9022G ET shown by Brock Cottrell, and Reserve Grand Female, JSUL WHO DAT COLBURN 0197H shown by Kaiser Show Cattle, in the Open Chi Show at the inaugural Cattleman's Congress and the \$22,500 selection by Cora Hardy from the 2020 PCC Fall Production Sale that just recently won Grand Champion Chianina Heifer at the 2021 Cowgirls in Cowtown, JSUL PCC LOOK AT DAT 0266H ET. They stem from the very proven and consistent Who Da Man/6640 mating that has dominated the best of the best shows and are some of the most sought-after donor cows in the country. JSUL WHO DAT 1602 has worked extremely well with multiple bulls.



JSUL MO WHO DAT 9022G ET
 Full Sis to Lot 47, Maternal Sis to Lot 48



JSUL Who Dat 1602
 Dam of Lots 47 & 48



JSUL WHO DAT COLBURN 0197H
 Full Sis to Lot 47, Maternal Sis to Lot 48

PCC



LOT 48

DUAL REGISTERED

JSUL PCC WHO'S GAME 2331K

DOB	REG. #	TATTOO			
3/20/2022	413943 533080	2331K			
CED	BW	WW	YW	MILK	HIGH CHI
8	3.1	55	81	15	6.54%
MAINETAINER + 6.54% HIGH CHI					
6.54% CA 32.442% AN 46.236% MA 14.783% XX					

BK XIKES X59
 TJSC END GAME 618 ET
 TJSC MISS HARMONY 58C
 ASHW WHO DA MAN
 JSUL WHO DAT 1602
 JSUL DREAM MAKER HS46

- Show this unique breeding piece as a high Chi, MaineTainer or even consider campaigning as a commercial.
- This female is powerful, wide based, and wide pinned with enormous bone while maintaining a feminine head and neck.
- Her sire, End Game, is now deceased and people are raving about his first progeny.
- Ranks in the top 10% for RE.
- Sells open.



JSUL WHO DAT WHITNEY 091H ET
 Full Sis to Lot 47, Maternal Sis to Lot 48



PCC LOOK AT DAT 066H
 Maternal sister to Lots 47 & 48



LOT 49

PCC BYCC SULTRY'S WHO

DOB	REG. #	TATTOO			
4/23/2022	414036	314K			
CED	BW	WW	YW	MILK	HIGH CHI
9	2.3	61	91	12	6.54%
6.54% CA 69.53% AN 12.498% MA 11.433% XX					

DAMERON FIRST CLASS
 COLBURN PRIMO 5153
 SILVEIRAS SARAS DREAM 1339
 ASHW WHO DA MAN
 JSUL SULTRY'S WHO 0399H ET
 SSUL SULTRY 6640-1

- Stylish and well-built is putting it mildly for this show and donor prospect that offers a captivating look from the side, with an impressive center body dimension. Her added depth is highlighted by the fact she is long, level, and feminine.
- Dam was the \$10,000 selection of our partners, Broomfield and York from the 2021 Limited Edition Sale.
- Ranks in the top 20% for WW, YW.
- Sells open.



JSUL SULTRY'S WHO 0399H
 Dam of Lot 49



JSUL Who Dat 1602y
 Full sib in blood to Dam of Lot 49



JSUL Who Dat Ginger
 Full sib in blood to Dam of Lot 49

PCC

LOTS 49+50

- Lots 49 and 50 are built just like their picture shows and is another example of the very proven and consistent Primo/Who Da Man/6640 mating that has dominated the best of the best shows and are some of the most sought-after donor cows in the country.
- In addition to lot 47 in this offering, full sisters in blood to lots 49 and 50 include: JSUL WHO DAT WHITNEY 091H ET, Sara Sullivan's heifer that was named Champion in the Junior Chi Show at Cattleman's Congress that went on to be named Reserve Grand Champion Female at the 2021 Chi Junior National as well as the Grand Champion, JSUL MO WHO DAT 9022G ET shown by Brock Cottrell, and Reserve Grand Female, JSUL WHO DAT COLBURN 0197H shown by Kaiser Show Cattle, in the Open Chi Show at the inaugural Cattleman's Congress and the \$22,500 selection by Cora Hardy from the 2020 PCC Fall Production Sale that just recently won Grand Champion Chianina Heifer at the 2021 Cowgirls in Cowtown, JSUL PCC LOOK AT DAT 0266H ET.



LOT 50

PCC RRC DAT SULTRY 330K ET

DOB	REG. #	TATTOO			
4/12/2022	414089	330K			
CED	BW	WW	YW	MILK	HIGH CHI
9	2.2	61	91	12	6.54%
6.54% CA 69.53% AN 12.498% MA 11.433% XX					

DAMERON FIRST CLASS
 COLBURN PRIMO 5153
 SILVEIRAS SARAS DREAM 1339
 ASHW WHO DA MAN
 JSUL DAT SULTRY 8360F ET
 SSUL SULTRY 6640-2

- Another well-balanced female with awesome hair and a killer look to compliment the famous genetic package she offers.
- Ranks in the top 20% for WW, YW.
- Sells open.



JSUL Who Dat Lady
 Full sib in blood to Dam of Lot 50



JSUL Who Dat Raptor 6976D
 Full sib in blood to Dam of Lot 50



H F PCC DAT LADY DARLING ET
Full sister to Lots 51 - 55

PCC

LOT 51

JSUL PCC DAT DARLING 2142K

DOB	REG. #	TATTOO
3/3/2022	413946	2142K

- Lot 51 is a complete and well-balanced prospect with tremendous rib shape and awesome hair.
- Ranks in the top 20% for WW, YW.
- Sells open

DAMERON FIRST CLASS
COLBURN PRIMO 5153
SILVEIRAS SARAS DREAM 1339
ASHW WHO DA MAN
JSUL WHO DAT DARLING
JSUL SULTRY 6640

LOTS 51-55

- Lots 51 thru 55 five special flush sisters to the 2020 NAILE Supreme Champion Female, JSUL WHO DAT DARLING 902G ET, by Primo out of the great Sullivan donor "Who Dat Darling". These flush mates are as good as any of the Chis sold at PCC. There is a unique blend of structural integrity, softness, femininity and show ring presence within this set of females.
- In addition to the aforementioned 902G, full sibs to lots 51 thru 55 include JSUL WHO DAT CAT 7184E ET, the 2018 Grand Champion Chianina Female at Junior Nationals; the \$61,000 JSUL DAT SHINY DARLIN 9000G that was named Reserve Grand Champion Female at the 2020 Southwestern Livestock Exposition in Ft. Worth, as well as the \$41,000 H F PCC DAT LADY DARLING ET, the \$41,000 JSUL PCC DARLIN PRIMO 1162J, and the \$39,000 JSUL PCC PRIMOS DARLIN ET, all three of which sold in the 2021 Fall PCC Sale.



JSUL DAT SHINY DARLIN 9000G
Full sister to Lots 51 - 55



JSUL WHO DAT DARLING 902G ET
Full sister to Lots 51 - 55

HIGH CHI 6.54%

6.54% CA | 69.53% AN | 12.495% MA | 11.435% XX

CED	BW	WW	YW	MILK
8	2.5	61	93	12

LOT 52

JSUL PCC WHO'S DAT 2227K

DOB	REG. #	TATTOO
3/27/2022	413945	2227K

- Lot 52 is angular and feminine with a striking profile that is sure to catch the judge's eye.
- Ranks in the top 20% for WW, YW.
- Sells open

WHO DAT DARLING

((HIGH CHI))



JSUL WHO DAT DARLING
Dam of Lots 51-55



LOT **53**

JSUL PCC WHOS LOOKIN 3001K

DOB
5/6/2022

REG. #
413948

TATTOO
3001K

- This top prospect is fault free in her design with impeccable structure and excellent hair.
- Ranks in the top 20% for WW, YW.
- Sells open



JSUL PCC DARLIN PRIMO 1162J ET
Full sister to Lots 51 - 55



JSUL PCC PRIMOS DARLIN ET
Full sister to Lots 51 - 55



JSUL WHO DAT CAT 7184E ET
Full sister to Lots 51 - 55



LOT **54**

JSUL PCC DAT LOOKER 2199K

DOB
4/2/2022

REG. #
413947

TATTOO
2199K

- Lot 54 exhibits an incredible pattern and profile and is among the neatest necked most feminine fronted heifers in the offering.
- Sells open.
- Ranks in the top 20% for WW, YW.



LOT **55**

JSUL PCC WHO DAT 2223K

DOB
4/5/2022

REG. #
413944

TATTOO
2223K

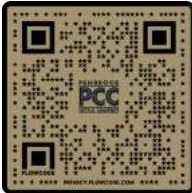
- The last of this outstanding set of sisters is tremendously long necked with a look that exudes maternal strength.
- Sells open.
- Ranks in the top 20% for WW, YW.

PEMBROOK

OCTOBER 15, 2022



LOT VIDEOS:



SCAN TO VIEW VIDEOS

NMR BEAR MOUNTAIN
Sire of Lot 56

LOT 56

KJSR PCC KYLIE 518K

DOB
4/16/2022

REG. #
414066

TATTOO
518K

CED BW WW YW MILK LOW CHI + OK HIGH CHI
11 0.1 41 60 12

2.168% CA | 21.344% AN | 10.634% MA | 65.854% XX

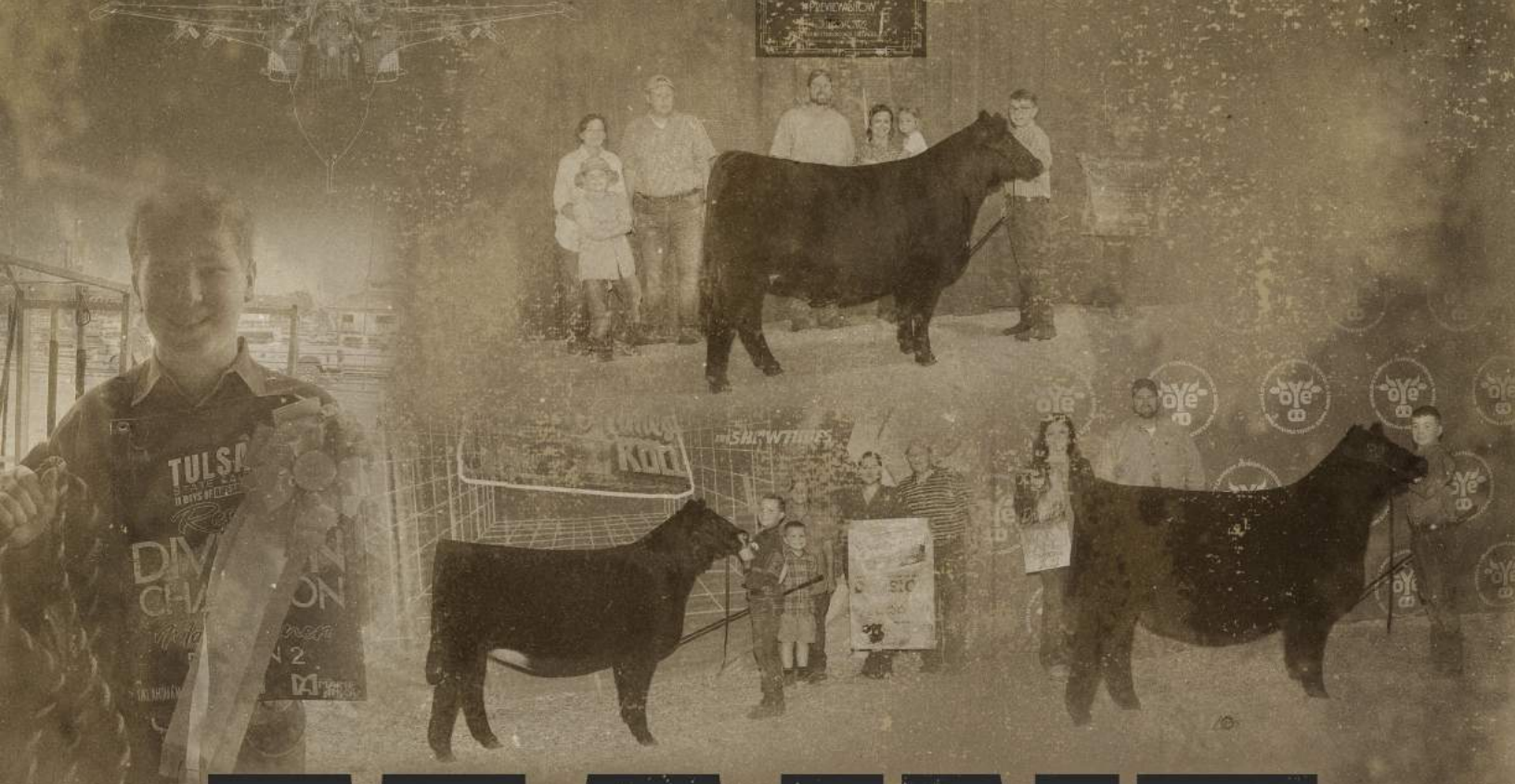
HERE I AM

NMR BEAR MOUNTAIN
6-198 ET

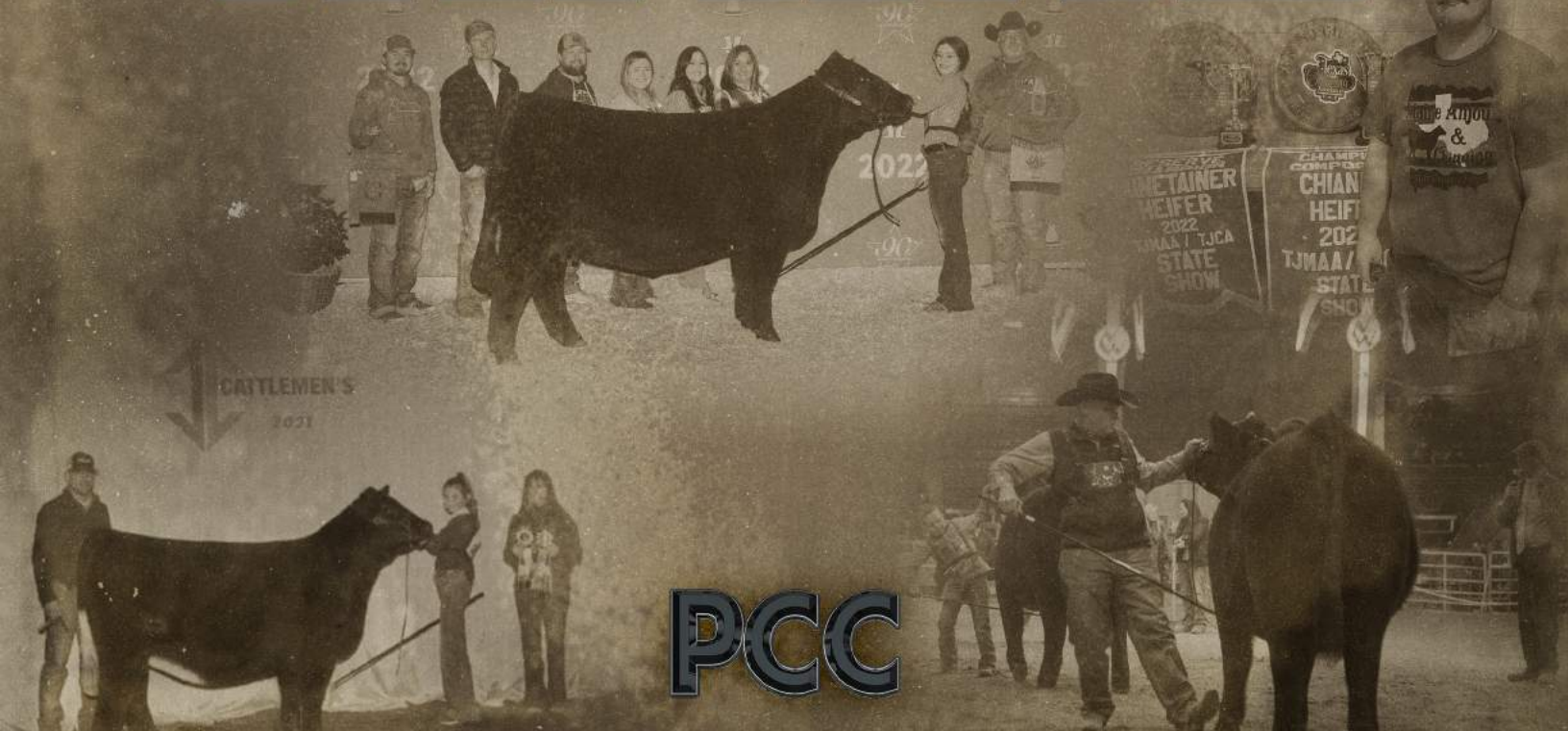
KJSR 123 COMMERCIAL



- This big-boned, stout made female has the physical attributes needed to compete at any level and produce desirable results in the ring and the pasture after her show career.
- Eligible to show as an Oklahoma High Chi.
- The sire of lot 56, Bear Mountain, is an impressive new Black Composite sire that represents everything this industry needs. He is huge backed and stout with a huge square hip and excellent structure. Bear Mountain is one of the biggest footed and most rugged boned sons of "Here I Am" in the business, and he is backed by one of the most prolific cows you will find.
- Ranks in the top 3% for Marb; top 10% for CED, BW, CEM; top 20% for CW.
- Sells open.



MAINE



PCC



LOT 57

JSUL PCC IMAGE GAME 2178K

DOB	REG. #	TATTOO			
4/3/2022	PENDING	2178K			
CED	BW	WW	YW	MILK	
					3/4 MAINE-ANJOU

BK XIKES X59
TJSC END GAME 616 ET
 TJSC MISS HARMONY 58C
 BOE BOE EPIC
DUEL IMAGE 900B
 DUEL WORRY NOT 4303B

- This incredible purebred Maine is sired by the now-deceased sire, End Game out of a full sister to DUEL ICON 802F that was named National Junior Heifer Show Grand Champion Maine-Anjou Female.
- For those that have had the chance to see her in person admire her added eye appeal, overall smoothness, and perfect structural design.
- Like her dam, this heifer is great on the move and excellent structured with a great outline and a fantastic disposition.
- Sells open.



DUEL ICON 802F
 Full sib to Dam of Lot 57

PCC



LOT 58

KJSC PCC KELLY 220K

DOB	REG. #	TATTOO			
4/22/2022	533116	220K			
CED	BW	WW	YW	MILK	
4	1.6	43	59	21	HIGH MAINE
64.28% MA 21.91% AN 7.08% SM 6.719% XX					

BOE BOE EPIC
DUEL ICON 802F
 DUEL WORRY NOT 4303B
 BOE GARTH
KJSC KYRO 820F ET
 KJSC KYRO 19M

- This full baldy is sure to be lethal in the show ring! She hits the target in terms of size and dimension while maintaining a killer profile and flawless structure. All the ingredients of a great one!
- Dam of lot 58 is a maternal sister to KJSC Real Deal 19D ET.
- Real Deal was an ultra-complete, exciting display bull at the 2017 NWSS brought out by Stierwalt's! He is extra complete and has a proven donor behind him, who's a full sister to Hairy Bear! Real Deal's full brother was 4th Overall at the 2015 Ohio State Fair. Put these proven genes to work in your herd!
- Sells open.



KJSC Real Deal 19D
 Maternal sib to Dam of Lot 58



PPCC ALRIGHT ALREADY 271F
Dam of Lots 59 & 60

PCC



DUEL ICON 802F
Sire of Lots 59 & 60

LOT **59**

DKBF PCC WHITNEY 301K

DOB 3/31/2022 REG. # 533262 TATTOO 301K

- This baldy female possesses the same phenotypic traits that led her dam to backdrop multiple times for Bret Pembrook. Her striking color draws you in and her combination of rib shape, structural substance, and length of front maintain your attention.
- Sells open.

BOE BOE EPIC
DUEL ICON 802F
DUEL WORRY NOT 4303B
W/C LOADED UP 1119Y
PPCC ALRIGHT ALREADY 271F
PCC 210B

LOTS 59 + 60

- These are her first progeny to sell from PPCC Alright Already 271F aka "Whitney" that was the \$21,000 selection of partners, Brown Farms from the 2019 TXLE Sale and then campaigned by Bret Pembrook before blossoming into a beautiful brockle-faced young donor cow.
- These females put it all together for Beth and Travis in terms of pedigree and phenotype, and they would love to visit with the new owners about the possibility of one of these two remaining in the PCC and Brown farms show string.
- The foundation dam of lots 59 and 60, May PCC 440Z, aka, "Alright Already" was Supreme Female at Aksarben, the American Royal, and the North American. We love the Icon sired progeny as well and feel like the Icon, Loaded Up, First Class, and Irish Whiskey combination in this female's pedigree should make them standouts in the show ring and the donor pen.
- Selling Choice and seller retains right to one successful flush at seller's expense and buyer's convenience that produces at least 6 transferable eggs.
- One straw of semen and you have a purebred Maine.
- Roll of the dice on which one to pick...both heifer calves are stunning and colorful and with the quality and presence to demand attention in the ring and the donor pen.

MAINTEINER + 1/4 SIMMENTAL

44.67% MA | 26.97% AN | 25.83% SM | 2.52% XX

CED	BW	WW	YW	MILK
9	0.3	45	64	26

LOT **60**

DKBF PCC WHITNEY 302K

DOB 3/30/2022 REG. # 533263 TATTOO 302K

- Lot 60 maintains the color and look that made her dam so competitive and her sire such a popular choice. This female is functional and sound with the color and profile that is sure to get her noticed.
- Sells open.

OCTOBER 15, 2022

MAINETAINER + LOW CHI

TAMALE

PEMBROOK FALL PRODUCTION SALE



JSUL TAMALE 8042F ET
Dam of Lots 61 & 62

PCC



LOT 61

DKBF PCC TAMALE 303K

DOB	REG. #	TATTOO
6/2/2022	414068	303K

- This heifer is impeccable in terms of her design! She has been one of the crew favorites and her brockle face and a cocky attitude guarantee that this female will always have a show ring presence like no other. From the ground up she's as good as it gets. Very agile on the move, monster middled, and as long and pretty necked as you can make one.
- Eligible to show as an Oklahoma High Chi.
- Ranks in the top 20% for YW, RE; top 25% for WW.
- Sells open.

BOE EPIC
 DUEL ICON 802F
 DUEL WORRY NOT 4303B
 PLUM CREEK PARADOX 161B
 JSUL TAMALE 8042F ET
 SSUL TAMALE 588-3

LOTS 61+62

- The Dam of lots 61 and 62, PCC JSUL Tamale 8042 ET, was the \$50,000 top seller in the 2018 PCC Fall Sale to Brown Farms and has become an integral part of their elite donor herd that is packed full of nationally recognized females.
- These sisters are the first of her daughters to sell and are big time show heifer and donor prospects that are big footed, huge boned, and enormous bodied, while still maintaining a sharp eye-appealing look that is sure to get them noticed the second they enter the show ring.
- The Tamale cow family has been one of the winningest names across the country and has produced numerous champions at shows across the nation, such as the American Royal, North American, National Western and multiple breed junior national shows. If you're looking for a cutting-edge female that can hang banners and generate dollars look no further. We have extreme confidence in what these females can do.

MAINETAINER + LOW CHI 4.55% + OK HIGH CHI

5.629% CA | 48.005% AN | 39.789% MA | 6.576% XX

CED	BW	WW	YW	MILK
7	2.7	58	92	16

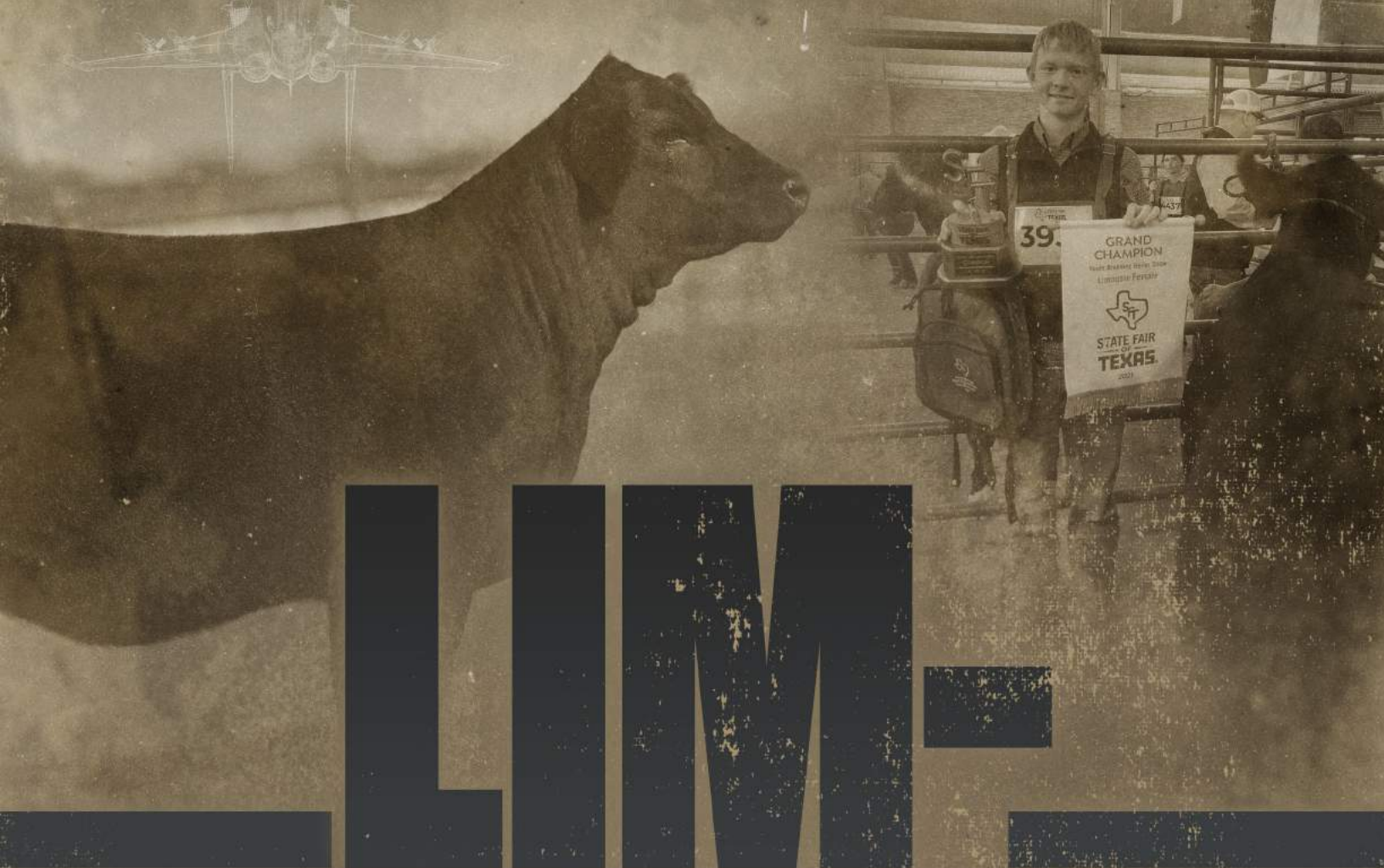
LOT 62

DKBF PCC TAMALE 300K

DOB	REG. #	TATTOO
5/28/2022	414067	300K

- As her photo indicates, lot 62 is fault free in her design with great hair and the look of a champion. This heifer doesn't need a lot of help to look good and would be a great choice for a young show person.
- Eligible to show as an Oklahoma High Chi.
- Ranks in the top 20% for YW, RE; top 25% for WW.
- Sells open.

PEMBROOK



LIM

FLEX



PCC



HSF Your Fantasy
Dam of Lots 63-65



Ratliff Howboutit 008H
Riverstone Charmed daughter



Riverstone Charmed
Maternal sister to Lots 63-65

LOT **63**

PCC JKSM FANTASY 508K

DOB
4/12/2022

REG. #
PENDING

TATTOO
508K

LIM-FLEX

C&C MCKINLEY 3000 EXAR
Gateway Follow Me F163
DUNK-W MAXINE HR 505C

MAGS WAR ADMIRAL
HSF YOUR FANTASY
HSF TINKERBELL

PCC

- The mating of HSF Your Fantasy and Gateway Follow Me F163 will make you so happy you are attending the sale to see this heifer. It's absolutely no secret what the HSF Your Fantasy cow family has done over the past few years within this breed for numerous programs. HSF Your Fantasy progeny have completely dominated the show ring and far beyond. She is the Dam of the famed 'Ratliff heifer', Riverstone Charmed, known as Larissa who set the show ring on fire in 2016. She is also the Dam of the great Riverstone Crown Royal bull. HSF Your Fantasy has become known as one of the breed's most notable purebred donors. Most recently, her granddaughter, Ratliff Howboutit 008H, was crowned the 2021 North American International Livestock Exposition Supreme Champion Female, exhibited by Sara Sullivan. Gateway Follow Me F163 is one of the hottest Angus bulls on the market today. His influence in the Angus breed and other breeds have been as good as you would ever want. He has certainly worked well on the purebred Limousin female, HSF Fantasy. This heifer is 45% Lim-Flex, double polled and double black. Buy with confidence as this heifer is flawless in every way you look at her. We are more than pleased with the future that she has for the new owner.
- Selling full possession and 50% embryo interest.
- Sells open.



LOT **64**

PCC JKSM FANTASY 511K

DOB	REG. #	TATTOO
3/28/2022	PENDING	511K

LIM-FLEX

SILVEIRAS STYLE 9303
Silveiras Forbes 8088
 COLLISON FOREVER LADY 1622
 MAGS WAR ADMIRAL
HSF YOUR FANTASY
 HSF TINKERBELL

- There is no doubt that HSF Your Fantasy is versatile and influential in her own right, but pair Silverias Forbes with her and whew, it's lights out high anticipation, folks! It's truly no secret what the HSF Your Fantasy cow family has done over the past few years within this breed for numerous programs. HSF Your Fantasy progeny have completely dominated the show ring and far beyond. She is the Dam of the famed 'Ratliff heifer', Riverstone Charmed, known as Larissa who set the show ring on fire in 2016. She is also the Dam of the great Riverstone Crown Royal bull. HSF Your Fantasy has become known as one of the breed's most notable purebred donors. Most recently, her granddaughter, Ratliff Howboutit 00H, was crowned the 2021 North American International Livestock Exposition Supreme Champion Female, exhibited by Sara Sullivan. Silverias Forbes comes from an elite banner-winning pedigree coupled with influence from the great Silverias Style and Collison Forever Lady. Silverias Forbes himself was the 2020 Grand Champion Angus Bull at the Fort Worth Stock Show & Rodeo, the 2020 Grand Champion Angus Bull at the Houston Livestock Show & Rodeo and the Reserve Grand Champion Angus Bull at the 2019 ROV American Royal Angus Show. It doesn't get much better than this, everybody! This Lim-Flex heifer is double polled and double black and one of the finest you can imagine.
- Selling full possession and 50% embryo interest.
- Sells open.

PCC



LOT **65**

PCC JKSM FANTASY 506K

DOB	REG. #	TATTOO
5/4/2022	PENDING	506K

LIM-FLEX

SCC TRADITION OF 24
SCC SCH 24 Karat 838
 FCF PROVEN QUEEN 419
 MAGS WAR ADMIRAL
HSF YOUR FANTASY
 HSF TINKERBELL

- The mating of HSF Your Fantasy and SCC SCH 24 Karat 838 is about to set the world on fire. It's absolutely no secret what the HSF Your Fantasy cow family has done over the past few years within this breed for numerous programs. HSF Your Fantasy progeny have completely dominated the show ring and far beyond. She is the Dam of the famed 'Ratliff heifer', Riverstone Charmed, known as Larissa who set the show ring on fire in 2016. She is also the Dam of the great Riverstone Crown Royal bull. HSF Your Fantasy has become known as one of the breed's most notable purebred donors. Most recently, her granddaughter, Ratliff Howboutit 008H, was crowned the 2021 North American International Livestock Exposition Supreme Champion Female, exhibited by Sara Sullivan. SCC SCH 24 Karat 838 is one of the hottest Angus bulls on the market today. Both his Sire and Dam are National Champions, so winning genetics are bred into his pedigree for generations back. This heifer is 45% Lim-Flex, double polled and double black. Folks, this heifer is bred in the purple, so don't miss this rare opportunity to obtain these elite genetics in one special heifer.
- Selling full possession and 50% embryo interest.
- Sells open.

SHORTHORNPLUS

PCC

SHORTHORNPLUS

AUGUSTA PRIDE



PEMBROOK

PEMBROOK FALL PRODUCTION SALE

LOT **66**

PCC AHGL AUGUSTA PRIDE 980K

DOB	REG. #	TATTOO
1/5/2022	*XAR4339480	980K

CED	BW	WW	YW	MILK
5	3.4	61	95	14

SHORTHORN

AR50

DAMERON FIRST CLASS
 GOLBURN PRIMO
 DAMERON NORTHERN MISS 3114
 HD BLOODSTONE 603 ET
 CF AUGUSTA PRIDE 980 BS ET
 WHR RT RODEO AUGUSTA 2R17

PCC

- Here is a tremendous Shorthorn Plus heifer that is ready to go compete anywhere at any level right now and has the color and markings to catch the judge's eye. Pride 980K is a powerfully constructed female that possesses loads of rib shape and plenty of width and dimension.
- This female is also bred in the purple as well. Her donor dam goes back to the Augusta Pride cow family. Perhaps one of the most prominent cow families in the Shorthorn breed. If you're looking for a Shorthorn Plus female to invest in, this heifer is a can't miss buying opportunity.
- Ranks in the top 3% for Marb; top 4% for WW, YW; top 10% for CW.
- Sells open.

IN MEMORY OF
Lily Romanchuk
2000-2019



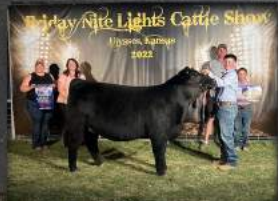
LIVE *like* LILY
FOUNDATION

— PROVERBS 31:25



PCC

GOODBYE TO A GOOD FRIEND.



PUTTING
GOOD
CATTLE
TOGETHER
WITH
GREAT
PEOPLE

PCC





PO BOX 1219
EDMOND, OK 73083

PEMBROOK PCC CATTLE COMPANY

LOT VIDEOS:



SCAN TO VIEW VIDEOS



CATALOG DESIGN BY THE SHOWTIMES, INC.