

LA

LEGENDARY
AKAUSHI GENETICS



MARK OF
EXCELLENCE

Frozen Pasture

SALE EVENT III

09.28.2022 | 4:00 p.m. - 7:00 p.m. C.S.T. | www.Wagyu365.com



LEGENDARY
AKAUSHI GENETICS

346.803.6050

sales@akaushigenetics.com
PO Box 291, Flatonia, TX 78941

The Steve Miller band, produced a song a few years ago called "Time Keeps On Slipping" and that seems an appropriate theme for our next sale.

This sale transcends all stages of my Akaushi journey, it starts with my first Akaushi purchase from Bruce Hemmingsen, when he sold Hikari Legend and 803 ID to me. He also sold us recip cattle, we learned about flushing cows and collecting semen, we birthed Judo Destiny and Judo Dyansty and we learned to manage a registered cattle business.

George Callen stewarded me along on the second stage of my journey, when we bred cows like the Big Alkari series, and bulls like SOR Big Al, we competed in shows with animals like SOR Kunisaki and SOR Onsan, and we bred a line of cows that were largely based on JVP Kunisakae 124.

As time kept slipping into the future Ken Kurosawatsu and the team from Wagyu Sekai helped me slip further along my Akaushi journey. Ken allowed me to bring Kaedemaru and his entire collection of Akaushi cattle to Texas. We bred heavily around Kaedemaru #2, bulls like SOR Hasting were born, we produced Kaedemaru's last calf, the Honjo Mass-mune, and with 100% WSI genetics, Umemaru and Kaedemaru #2 we birthed the 2018 World Champion bull SOR Mr. Hiromitsu. Those genetics are packed with show winners and we also had cows like Emma and 1104E to back it up.

Lastly, Ronald Beeman..., in the next part of the song Time Keeps on Slipping, "we fly like an eagle, to the sea, we fly like an eagle, let the spirit carry me" ... much like the soring eagle Ronald energized Legendary by allowing them to own the largest collection of double original Akaushi import cattle available domestically. The genetics in this sale, from Brooke, Nikki, 2099a, Z-cow & 1345 representing the cows Ringo, Haruko, Akiko & Fuyuko are here because of Ronald's foresight, and his vision to expand the breed and make the foundation genetics available.

So where will the eagle take us next? We'll see you in Vegas... We're sure Ume, T504, the elephant cow, Dai 9 Kobai 73 and Dai 8 Marunami will make an appearance there.

Thank everyone for their continued support of our breeding program and also tonight's sale, and we look forward to working with all of you as Legendary Keeps Slipping Into the Future.

Respectfully,
Bill Fisher

SALE DETAILS

SALE DATE, TIME & LOCATION ...

Wednesday, September 28, 2022

4:00 p.m. - 7:00 p.m. C.S.T.

Selling online at www.Wagyu365.com

WAGYU365 TEAM ...



Randall O. Ratliff 615.330.2735 randy@wagyu365.com

Kiley McKinna 402.350.3447 kiley@wagyu365.com

PJ Budler 682.597.0380 pj@wagyu365.com

TERMS & CONDITIONS

EMBRYO GUARANTEE ...

Any embryos sold as stated and are not guaranteed on conception.

EMBRYO TRANSFERS ...

The sire and dam registration numbers are listed on each lot. The Wagyu Association and the Akaushi Association management will determine registration eligibility.

PAYMENT ...

All lots must be paid for immediately following the conclusion of the Legendary Akaushi Genetics Online Sale, unless prior payment arrangements have been made with any representative of Wagyu365. Buyers are welcome to pay by credit card. If so, you will be charged a 3% fee on the total sum of your purchase.

DELIVERY ...

Buyers are responsible for any shipping cost pertaining to embryo purchases. Wagyu365 buyers and Legendary Akaushi Genetics will work together to make this the easiest and most efficient process possible.

MANAGEMENT ...

Auction money and proceeds will be conducted under

Randall O. Ratliff, DBA R & R Marketing, P.O. Box 60097, Nashville, TN 37206

Bond # 7901027402 (U.S. Department of Agriculture, Grain Inspection, Packers and Stockyards Administration Packers & Stockyards Program)



WAGYU365 TEAM



RANDALL O. RATLIFF
SALES REPRESENTATIVE
615.330.2735 | Randy@wagyu365.com



KILEY MCKINNA
SALES REPRESENTATIVE
402.350.3447 | Kiley@wagyu365.com



P.J. BUDLER
INTERNATIONAL AFFAIRS
682.597.0380 | PJ@wagyu365



ABBY LANE
OFFICE MANAGEMENT
919.618.8098 | Abby@wagyu365.com



AMY SHAW
CUSTOMER RELATIONS
214.554.8223 | Amy@wagyu365.com

Dear Akaushi Enthusiasts,

It is an honor to be working closely with Mr. Bill Fisher, owner of Legendary Akaushi in the marketing of some of his finest genetics he has ever created. The genetics you find throughout this sale catalog are from the heart of the LAG herd and we are proud to showcase them to the public in this online sales event.

The LAG program was built with only the “older foundation genetics” and has continued to excel in the creation of the very finest that the breed has to offer. This sale offering features the new and fresh genetics packages from the heart of the LAG embryo transplant program and semen from their elite and proven sires.

If there are any questions in the sale, such as the genetics, shipping, insurance or any other topic we welcome your call.

Sincerely,
Randall O. Ratliff
Wagyu365 Team Member



@Wagyu365

CONNECT WITH US

FOLLOW WAGYU365 ON SOCIAL MEDIA ~

#WagyuMarketingAtItsFinest #24/7/365Wagyu

#alldayeverydaywagyu



SIRE RUESHAW



DAM HEARTBRAND "BROOKE" B445N

- Consistent phenotype's
- Muscle, frame and IMF
- Brooke is one of the few living Ringo daughters
- Uniqueness

1

THREE IVF EMBRYOS

DUAL REGISTERED FULLBLOOD | GRADE 2 | DOMESTIC ONLY

SIRE: RUESHAW (AF6808 / FB101)
 RUEMEI H39
 KIKUTAMA 14285

RYUEI H20
 HARUMI H376
 SOCHU H10
 KIKUFUJI RK41627
 DAI 10 MITSUMARU
 AKIKO
 NAMIMARU
 DAI 8 MARUNAMI J19461

DAM: HEARTBRAND B445N "BROOKE" (AF706 / FB27541)
 HB BIG AL 502
 #1 RINGO

Embryos sired by Rueshaw! In 1976 Rueshaw (IMP JAP) was one of two of the very first Wagyu bulls ever to leave Japan. Rueshaw was the Japanese Red National Champion Bull in 1975. He originated from the Kumamoto Region which is the heart of the Japanese Akaushi breeding capital. He is a valuable outcross of blood in his genetic makeup that is vital to the Akaushi industry. With his semen rarely coming up for offer, secure genetics here!

The dam of this lot Brooke, a rare direct daughter of the Yamato 117 Ringo cow! She is sired by Big Al one of the most proven and respected bulls in the Akaushi breed. He excels in marbling, growth, and maternals making him the total package. Brooke's dam Yamato 117 Ringo is the super rare Namimaru 74 daughter x Dai 8 Marunami! This is more breed royalty here with Ringo being a paternal sibling to both Akiko and Namiko! This is a rare offering of elite genetics no breeder will want to miss!



SIRE HEARTBRAND RED EMPEROR



DAM HEARTBRAND NIKKI DR 1029P

- Off the charts fertility
- Frame, length , bone and substance
- Industry respected genetics
- Consistency and repeatability

2

THREE IVF EMBRYOS

DUAL REGISTERED FULLBLOOD | GRADE 1 | DOMESTIC ONLY

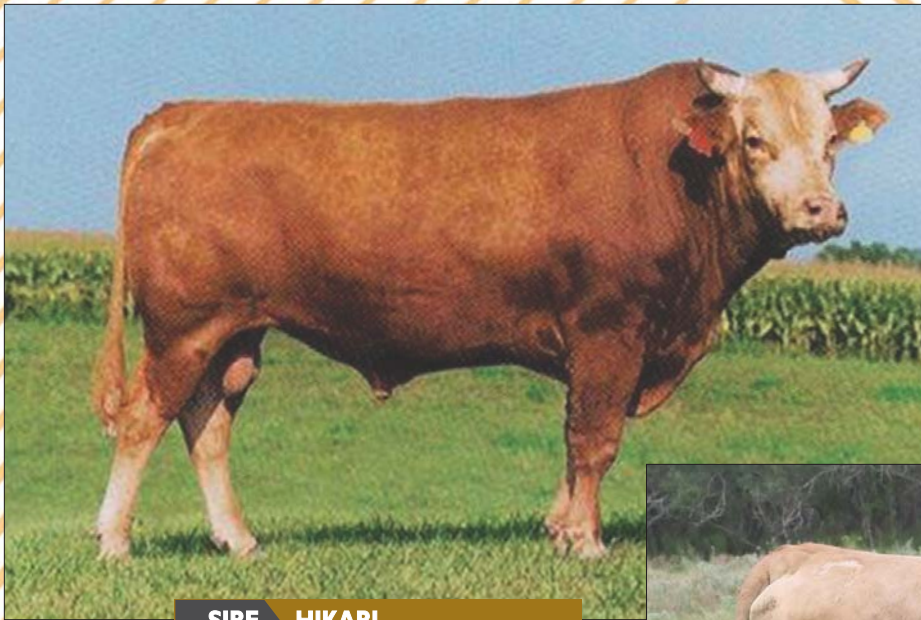
SIRE: HB BIG AL 502
HEART BRAND RED EMPEROR (EAF82294 / FB14999)
DAI 8 MARUNAMI J19461

DAM: SHIGEMARU
HEARTBRAND NIKKI DR S1029P (AF1286 / FB24700)
AKIKO

DAI 10 MITSUMARU
AKIKO
DAI 3 MITSUMARU 30
DAI 7 MARUNAMI J14289
DAI 2 SHIGENAMI
DAI YON AKIBARE 3357
NAMIMARU
MITSUKO B 9639

Red Emperor is the well proven Big Al son of Dai 8 Marunami! He is known for his elite level marbling in his progeny and backed by ideal growth traits and conformation. Marunami is the renowned original import cow and was marked for her elite genetics and had been flagged for her ability to improve genetics in Japan. Matched with Big Al one of the most proven and respected bulls in the Akaushi breed. He excels in marbling, growth, and maternals making him the total package!

The dam side of the pedigree features Heartbrand "Nikki" DR S1029, a full sister to Heartbrand Red Star! Her breeding of Shigemaru x Akiko makes this cow a rare direct daughter of Akiko. Akiko is known as one of the best carcass traits females to have been exported from Japan. She is the dam of elite sires Big Al, Red Star, Kotsukari, and Come and Take It! This is an ideal opportunity to get into the Akiko maternal line.



SIRE HIKARI



DAM HEARTBRAND 2099A

- A repeat breeding of the HB 4173 bull
- We kept one for next year's pasture service
- A balanced DAI 3, Dai 10 Shigenami package
- Haruko is absent of most domestic pedigrees
 - Hikari in one of his best mating's

3

THREE IVF EMBRYOS

DUAL REGISTERED FULLBLOOD | GRADE 1 | DOMESTIC ONLY

SIRE: HIKARI (AF107 / FB2455)
KAZUTOMO 92958

DAM: HEARTBRAND 2099A (AF41582 / FB24697)
HB HARUKO

DAI 2 MITSUMARU
GODAI
NAMIMARU
KUMI
DAI 2 SHIGENAMI
DAI YON AKIBARE 3357
DAI 3 MITSUMARU 30
DAI 7(HICHI) KIKUHIME

Hikari has a fantastic legacy that precedes him! Hikari is known for his extreme balance of growth with high marbling and carcass traits. He is a son of Japanese legend, Dai 10 Mitsumaru 76 who also sired breed legends Big Al, Kaedemaru, and "the Elephant Cow" Heartbrand T0504E. Hikari is a leading proven sire of sons having produced elite bulls such as WSI Umamaru, TWA Kajikari, Kotsukari, and Heartbrand Hercules 2619A!

The dam here is HeartBrand 2099A, a powerful pedigreed Shigemaru daughter! Do not miss her short path directly to Haruko through the outstanding foundation sire, Shigemaru. This makes her a full sister to the popular sire Samsung! This mating will produce an outstanding addition to any herd.



SIRE BRADY ET



DAM HEARTBRAND NIKKI DR 1029P

- Legendary kept a bull from this breeding
- Exceptionally fertile, mass and carcass
 - Compare favorably with the Rueshaw XXX breeding and sisters
- Nice low birthweight producing breeding

4

THREE IVF EMBRYOS

DUAL REGISTERED FULLBLOOD | GRADE 1 | DOMESTIC ONLY

SIRE: BRADY ET (AF52168 / FB30265)
HEARTBRAND Z1118P

RUEMEI H39
KIKUTAMA 14285
RUESHAW
AKIKO
DAI 2 SHIGENAMI
DAI YON AKIBARE 3357
NAMIMARU
MITSUKO B 9639

DAM: HEARTBRAND NIKKI DR S1029P (AF1286 / FB24700)
AKIKO

Sired by Brady 2627A, this is an elite and outcross embryo package. Brady 2627A is a complete outcross to three of our foundation bulls: Shigemaru, Tamamaru, and Hikari. We expect this deep, red, direct son of Rueshaw to inject the well-known marbling ability and angularity to rear skeleton of his father, as well as the maternal strength and longevity of his cornerstone dam, the “Z” cow. Brady modernizes foundation genetics and brings the mating versatility that the breed has been in search of.

The dam side of the pedigree features Heartbrand “Nikki” DR S1029, a full sister to Heartbrand Red Star! Her breeding of Shigemaru x Akiko makes this cow a rare direct daughter of Akiko. Akiko is known as one of the best carcass traits females to have been exported from Japan. She is the dam of elite sires Big Al, Red Star, Kotsukari, and Come and Take It! This is an ideal opportunity to get into the Akiko maternal line with double bred Akiko embryos!



SIRE HIKARI



DAM HEARTBRAND Z1118P

- Just works
- Mass, marbling, nothing here but Rueshaw, Akiko and Hikari
- Z cow genetics are in heavy demand
- Z cow produced to 2020 World Championship winner when mated to Kotsukari

5

THREE IVF EMBRYOS

DUAL REGISTERED FULLBLOOD | GRADE 1 | DOMESTIC ONLY

SIRE: HIKARI (AF107 / FB2455)
KAZUTOMO 92958

DAM: HEARTBRAND Z1118P (AF1375 / FB24698)
AKIKO

DAI 2 MITSUMARU
GODAI
NAMIMARU
KUMI
RUEMEI H39
KIKUTAMA 14285
NAMIMARU
MITSUKO B 9639

Hikari has a fantastic legacy that precedes him! Hikari is known for his extreme balance of growth with high marbling and carcass traits. He is a son of Japanese legend, Dai 10 Mitsumaru 76 who also sired breed legends Big Al, Kaedemaru, and “the Elephant Cow” Heartbrand T0504E. Hikari is a leading proven sire of sons having produced elite bulls such as WSI Umemaru, TWA Kajikari, Kotsukari, and Heartbrand Hercules 2619A! The dam here is the legendary “Z” cow! This is your rare chance to get into the Z-cow line and Akiko maternal line. These embryos combine the proven performance of breed leader Hikari with Rueshaw’s outcross yet high performance carcass and marbling traits. This is an ideal sire to build a branded beef or value-added program around. He brings consistent carcass traits without sacrificing performance on growth or maternal traits. These embryos put a sire stack of Hikari x Rueshaw x Akiko and are as close to original import Akiko as you will come! This super pedigree will make an enormous impact on any herd and can jump you to the pinnacle of high performance Akaushi producers.



SIRE HEARTBRAND SAMSUNG S0947P



DAM HEARTBRAND Z1118P

- Samsung a top sire of replacement heifers
- Z-cow with Shigenami and a Dai 3 enhancement
 - Fertility and easy birthweights
 - The Z cow pedigree- bred to marble

6

THREE IVF EMBRYOS

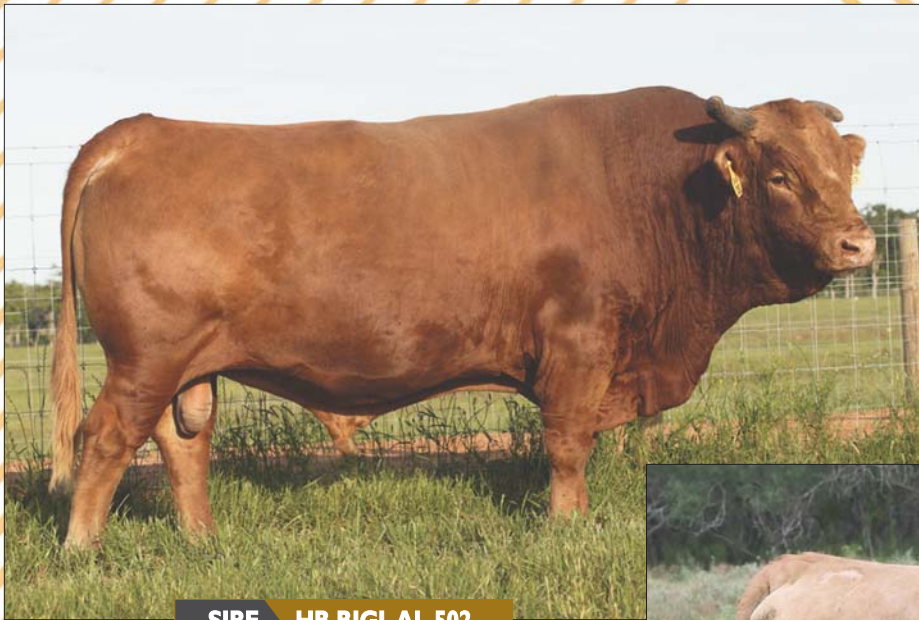
DUAL REGISTERED FULLBLOOD | GRADE 1 | DOMESTIC ONLY

SIRE: HEARTBRAND SAMSUNG S0947P (AF1208 / FB25323)
HB HARUKO

DAI 2 SHIGENAMI
DAI YON AKIBARE 3357
DAI 3 MITSUMARU 30
DAI 7(HICHI) KIKUHIME
RUEMEI H39
KIKUTAMA 14285
NAMIMARU
MITSUKO B 9639

DAM: HEARTBRAND Z1118P (AF1375 / FB24698)
AKIKO

Embryos sired by Samsung, he is the well-known and proven Shigemaru son of original import Haruko. Samsung is a legend in the Heartbrand herd because of his incredible longevity. He has endured one of the longest tenures as a herd bull in the HeartBrand herd to date. His impressive feet and leg design, fertility, and quality of offspring has kept him breeding cows twice a year for over 10 years. Samsung daughters are ideal foundation females to build around! He is mated ideally here to the legendary "Z" cow! This is your rare chance to get into the Z-cow line and Akiko maternal line. These embryos combine the proven performance of breed leader Hikari with Rueshaw's outcross yet high performance carcass and marbling traits. This is an ideal sire to build a branded beef or value-added program around. He brings consistent carcass traits without sacrificing performance on growth or maternal traits. These embryos put a sire stack of Hikari x Rueshaw x Akiko and are as close to original import Akiko as you will come! This super pedigree will make an enormous impact on any herd and can jump you to the pinnacle of high performance Akaushi producers.



SIRE HB BIGLAL 502



DAM HEARTBRAND 2099A

- Nice birth-weight, and good growth
 - Dai 10 and Dai 3 breeding's work
- Solid cow, nice set back solid structure
 - She's much better than this picture
 - A favorite cow at Legendary

7

THREE IVF EMBRYOS

DUAL REGISTERED FULLBLOOD | GRADE 1 | DOMESTIC ONLY

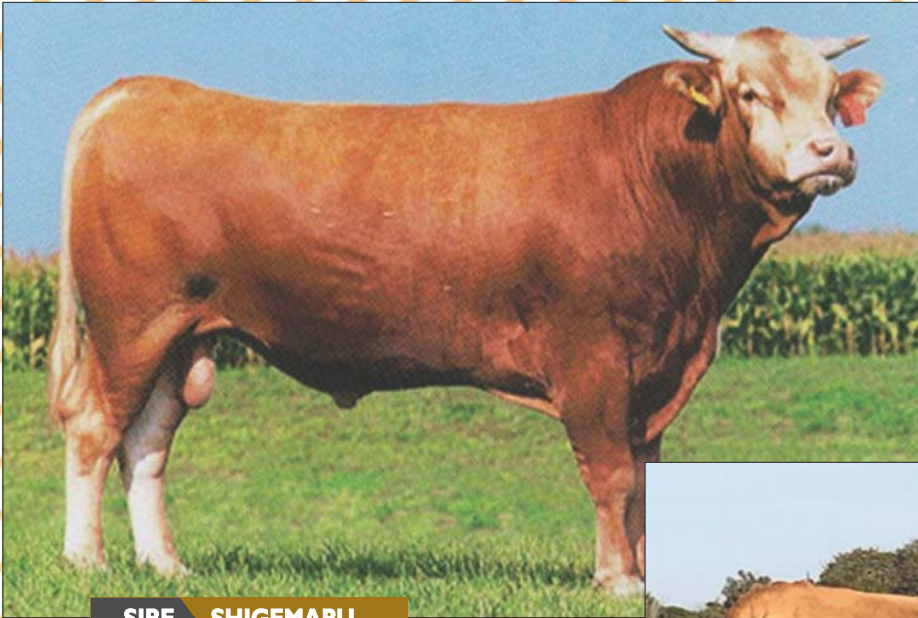
SIRE: HB BIG AL 502 (AF114 / FB2998)
DAI 10 MITSUMARU
AKIKO

DAM: HEARTBRAND 2099A (AF41582 / FB24697)
SHIGEMARU
HB HARUKO

DAI 2 MITSUMARU
GODAI
NAMIMARU
MITSUKO B 9639
DAI 2 SHIGENAMI
DAI YON AKIBARE 3357
DAI 3 MITSUMARU 30
DAI 7(HICHI) KIKUHIME

Big Al was the first bull born outside of Japan in January of 1995. Big Al is the legendary Dai 10 Mitsumaru 76 son of Akiko and is highly proven with elite EPDs. To this day Big Al has top 30% growth and maternal EPDs along with top 10% carcass EPD for Ribeye Area, Marbling, and Carcass Index! On top of his fantastic EPDs, he is known for making incredible females with growth, strength, maternal traits, and longevity. Big Al is considered by many to be the greatest Akaushi bull of all-time!

The dam here is HeartBrand 2099A, a powerful pedigreed Shigemaru daughter! Do not miss her short path directly to Haruko through the outstanding foundation sire, Shigemaru. This makes her a full sister to the popular sire Samsung! This mating will produce an outstanding addition to any herd.



SIRE SHIGEMARU



DAM HEARTBRAND B1345P

- We think Big AI Fuyuko bred cows are top carcass producers
 - Shige will add size
 - Dai 10, Dai 3, Shigenami
- Wonderful combination of genetics

8

THREE CONVENTIONAL EMBRYOS

DUAL REGISTERED FULLBLOOD | GRADE 1 | DOMESTIC ONLY

SIRE: SHIGEMARU (AF110 / FB2124)
DAI YON AKIBARE 3357

DAM: HEARTBRAND B1345P (AF1604 / FB25332)
FUYUKO

JAPANESE BULL (RED)
JAPANESE COW (RED)
DAI 10 SHIGEKAWA 65
DAI NI AKIBARE 53244
DAI 10 MITSUMARU
AKIKO
DAI 3 MITSUMARU 30
SAKAE A 85689

Shigemaru is a fantastic highly proven sire that makes the best Akaushi females you will ever own. He sires moderately sized females with extreme depth, width, and strength. They are excellent maternal traits and will last turning into elite brood cows. Shigemaru has sired elite proven bulls including Heartbrand Joe, Heartbrand Raymond Reddington, Heartbrand Samsung, and Heart Brand Red Star.

The dam is sired by the legend, Big AI, everyone knows how good the Big AI daughters are! Fuyuko is the maternal granddam of the embryos, making this a great investment opportunity to tie into foundation genetics. There are numerous breeding options to take these genetics forward!



SIRE HEARTBRAND SAMSUNG S0947P



DAM LAG 1104E ET

- 1104E, resembles a young Kaedemaru #2
- Sister of 2018 World Championship winner Hiromitsu
 - Dai 3, Dai 10, Shigenami package
- Structure, structure and structure, Win next year's GC

9

THREE IVF EMBRYOS

DUAL REGISTERED FULLBLOOD | GRADE 1 | DOMESTIC ONLY

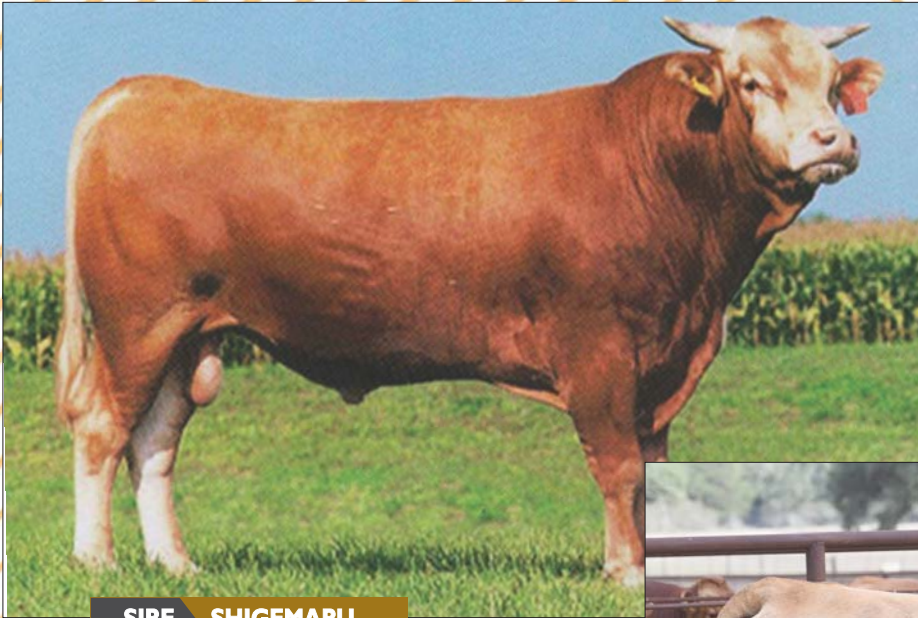
SIRE: SHIGEMARU
HEARTBRAND SAMSUNG S0947P (AF1208 / FB25323)
HB HARUKO

DAI 2 SHIGENAMI
DAI YON AKIBARE 3357
DAI 3 MITSUMARU 30
DAI 7(HICHI) KIKUHIME
HIKARI
KAEDEMARU
TAMAMARU
KAEDEMARU

DAM: WSI UMEMARU
LAG 1104E ET (AF107681 / FB29172)
WSI KAEDEMARU 2

Embryos sired by Samsung, he is the well-known and proven Shigemaru son of original import Haruko. Samsung is a legend in the Heartbrand herd because of his incredible longevity. He has endured one of the longest tenures as a herd bull in the HeartBrand herd to date. His impressive feet and leg design, fertility, and quality of offspring has kept him breeding cows twice a year for over 10 years. Samsung daughters are ideal foundation females to build around! He is mated ideally here on a The dam here is sired by WSI Umamaru, a bull known for his superior carcass traits. Behind that is the legendary Kaedemaru 2 cow who is the Tamamaru daughter of original import Kaedemaru! LAG 1104E is a past Denver National Champion Female and she is also a full sister to a past Wagyu Champion of the World!

Don't miss this legendary combination of Akiko and Kaedemaru maternal lines.



SIRE SHIGEMARU



DAM SOR 1085

- Kaedemaru #2 daughter, Hasting full sister
 - The breeding won the GC in Denver and RGC in Houston
- Fertile , in the pasture and flushing facility
- First year legendary has flush this breeding
- Check out the video on YouTube, Big Cow

10

THREE IVF EMBRYOS

DUAL REGISTERED FULLBLOOD | GRADE 1 | DOMESTIC ONLY

SIRE: SHIGEMARU (AF110 / FB2124)
DAI YON AKIBARE 3357

JAPANESE BULL (RED)
JAPANESE COW (RED)
DAI 10 SHIGEKAWA 65
DAI NI AKIBARE 53244
DAI 10 MITSUMARU
AKIKO
TAMAMARU
KAEDEMARU

DAM: SOR 1085 (EAF97361 / FB23392)
WSI KAEDEMARU 2

Shigemaru is a fantastic highly proven sire that makes the best Akaushi females you will ever own. He sires moderately sized females with extreme depth, width, and strength. They are excellent maternal traits and will last turning into elite brood cows. Shigemaru has sired elite proven bulls including Heartbrand Joe, Heartbrand Raymond Reddington, Heartbrand Samsung, and Heart Brand Red Star.

The dam is SOR 1085C ET, a Big AI x Kaedemaru 2 contributing further Akaushi royalty to her pedigree. She is a rare member of the Kaedemaru maternal line, that has produced elite sires including WSI UMEMARU, SOR HASTINGS 1066C ET, SOR MR HIROMITSU 1090D, and LAG MR HONJO MASAMUNE!



SIRE HEARTBRAND SAMSUNG S0947P



DAM SOR 1084

- Kaedemaru #2 daughter, Hasting full sister
 - The breeding won the GC in Denver and RGC in Houston
- Fertile , in the pasture and flushing facility
- First year legendary has flush this breeding
- Check out the video on YouTube, Big Cow

11

THREE IVF EMBRYOS

DUAL REGISTERED FULLBLOOD | GRADE 1 | DOMESTIC ONLY

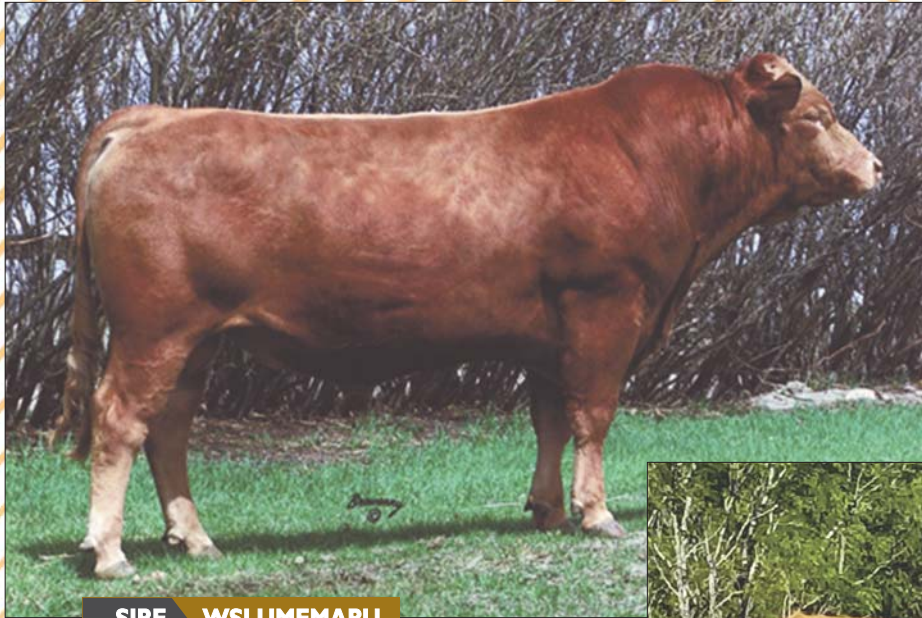
SIRE: SHIGEMARU
HEARTBRAND SAMSUNG S0947P (AF1208 / FB25323)
HB HARUKO

DAM: HB BIG AL
SOR 1084 (EAF97359 / FB23383)
WSI KAEDEMARU 2

DAI 2 SHIGENAMI
DAI YON AKIBARE 3357
DAI 3 MITSUMARU 30
DAI 7(HICHI) KIKUHIME
DAI 10 MITSUMARU
AKIKO
TAMAMARU
KAEDEMARU

Embryos sired by Samsung, he is the well-known and proven Shigemaru son of original import Haruko. Samsung is a legend in the Heartbrand herd because of his incredible longevity. He has endured one of the longest tenures as a herd bull in the HeartBrand herd to date. His impressive feet and leg design, fertility, and quality of offspring has kept him breeding cows twice a year for over 10 years. Samsung daughters are ideal foundation females to build around!

He is mated to SOR 1084C ET, a Big AI x Kaedemaru 2 contributing further Akaushi royalty to her pedigree. She is a rare member of the Kaedemaru maternal line, that has produced elite sires including WSI UMEMARU, SOR HASTINGS 1066C ET, SOR MR HIROMITSU 1090D, and LAG MR HONJO MASAMUNE!



SIRE WSI UMEMARU

- Special cow...we've turned down many offers for her
 - Kaedemaru #2 daughter, Hasting full sister
 - The breeding won the GC in Denver and RGC in Houston
 - Fertile , in the pasture and flushing facility
 - The first year Legendary has flushed this breeding commercially
 - Check out the video on YouTube, Big Cow



DAM LAG MS FAIRY PRINCESS 1064C

12

THREE IVF EMBRYOS

DUAL REGISTERED FULLBLOOD | 2 GRADE 1; 1 GRADE 2 | DOMESTIC ONLY

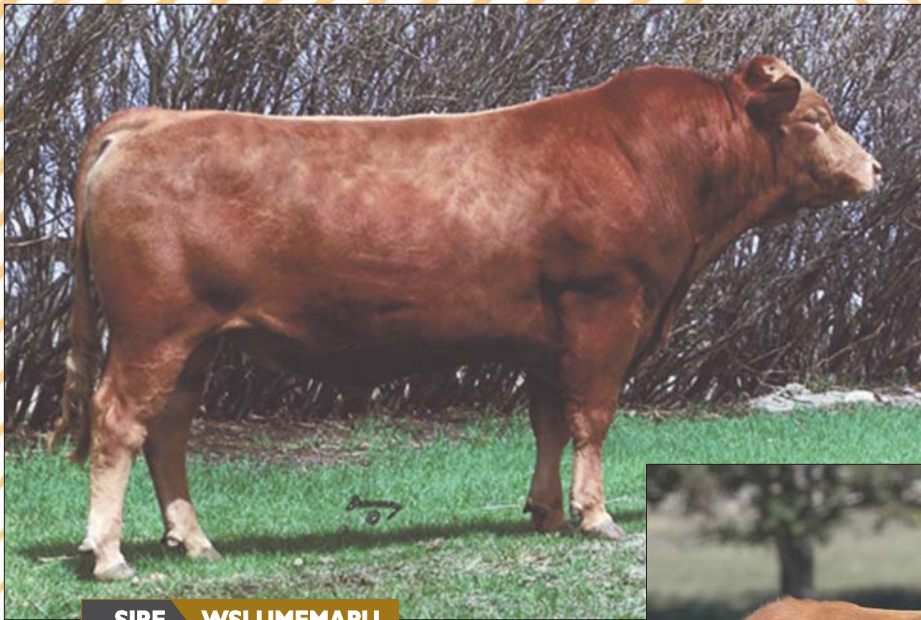
SIRE: WSI UMEMARU (EAF97014 / FB9979)
KAEDEMARU

DAM: HB BIG AL
LAG MS FAIRY PRINCESS 1064C (AF165126 / FB25932)
WSI KAEDEMARU 2

DAI 10 MITSUMARU
KAZUTOMO 92958
DAI 10 MITSUMARU
DAI-SAN NAMIAKI NI
DAI 10 MITSUMARU
AKIKO
TAMAMARU
KAEDEMARU

Sired by WSI Umamaru, this Hikari son is born out of the original import cow Kaedemaru. Umamaru is a transformational sire, he corrects many conformation inadequacies, has sired many show champions, improves carcass texture and composition and is considered by many to be the top Akaushi sire ever born in North America! His semen has become very rare, currently sells for \$4000/straw and is seldom available. He has a grandiose reputation outside of the American Akaushi Association where he is known for being the sire or grandsire of many show champions and most of the top bulls in circulation today.

He is mated to LAG 1064C, a Big AI x Kaedemaru 2 contributing further Akaushi royalty to her pedigree. She is a rare member of the Kaedemaru maternal line, that has produced elite sires including WSI UMEMARU, SOR HASTINGS 1066C ET, SOR MR HIROMITSU 1090D, and LAG MR HONJO MASAMUNE! This is a rare opportunity to acquire genetics linebred to Kaedemaru!



SIRE WSI UMEMARU



DAM LAG 1095

- WSI and I think this breeding will produce Umemaru #2
 - Loads of Kaedemaru & Hikari
- Breeding is recommended for professional Breeders
 - Kaedemaru #2 daughter
- 1095 calves have all been exceptional

13

THREE IVF EMBRYOS

DUAL REGISTERED FULLBLOOD | GRADE 1 | DOMESTIC ONLY

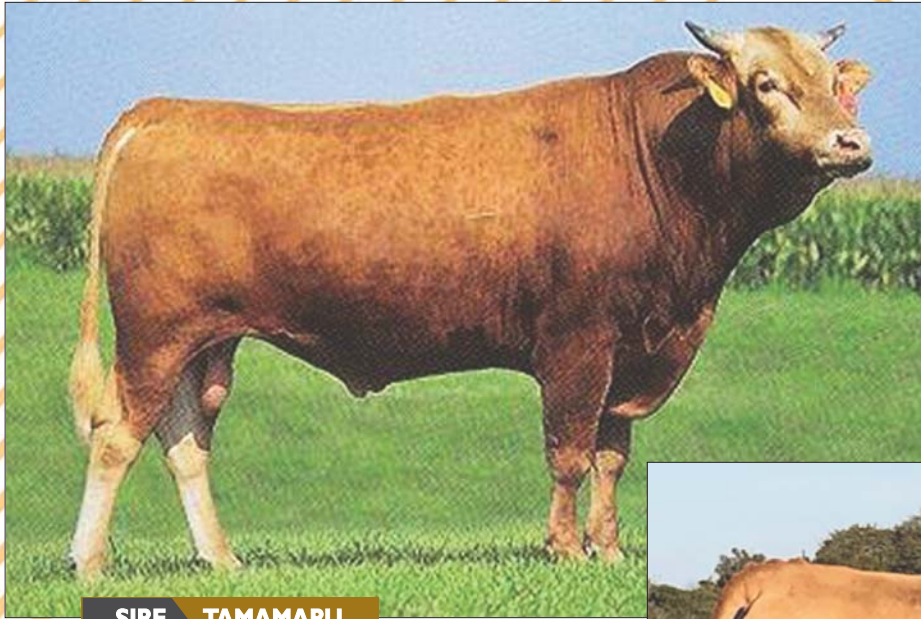
SIRE: WSI UMEMARU (EAF97014 / FB9979)
KAEDEMARU

DAM: LAG 1095 (AF238069 / FB25326)
WSI KAEDEMARU 2

DAI 10 MITSUMARU
KAZUTOMO 92958
DAI 10 MITSUMARU
DAI-SAN NAMIAMI NI
DAI 10 MITSUMARU
KAZUTOMO 92958
TAMAMARU
KAEDEMARU

Sired by WSI Umemaru, this Hikari son is born out of the original import cow Kaedemaru. Umemaru is a transformational sire, he corrects many conformation inadequacies, has sired many show champions, improves carcass texture and composition and is considered by many to be the top Akaushi sire ever born in North America! His semen has become very rare, currently sells for \$4000/straw and is seldom available. He has a grandiose reputation outside of the American Akaushi Association where he is known for being the sire or grandsire of many show champions and most of the top bulls in circulation today.

He is mated to LAG 1095, a Hikari x Kaedemaru 2 contributing further Akaushi royalty to her pedigree. She is a rare member of the Kaedemaru maternal line, that has produced elite sires including WSI UMEMARU, SOR HASTINGS 1066C ET, SOR MR HIROMITSU 1090D, and LAG MR HONJO MASAMUNE! This is a rare opportunity to acquire genetics linebred to Kaedemaru!



SIRE TAMAMARU



DAM HEARTBRAND B1345P

- We think Big AI Fuyuko bred cows are top carcass producers
- Tamamaru will add more Dai 8 and stabilize size
 - Dai 10, Dai 3, Shigenami
- Wonderful combination of genetics

14

THREE CONVENTIONAL EMBRYOS

DUAL REGISTERED FULLBLOOD | GRADE 1 | DOMESTIC ONLY

SIRE: TAMAMARU (AF109 / FB2125)
DAI 8 MARUNAMI J19461

DAM: HEARTBRAND B1345P (AF1604 / FB25332)
FUYUKO

TAMANAMI 70
FUJIMITSU 2030
DAI 3 MITSUMARU 30
DAI 7 MARUNAMI J14289
DAI 10 MITSUMARU
AKIKO
DAI 3 MITSUMARU 30
SAKAE A 85689

Don't miss these Tamamaru sired embryos! Tamamaru is the proven son of legendary original import Dai 8 Marunami. He is known for his consistent ability to transmit elite level growth, stature, and conformation.

The dam is sired by the legend, Big AI, everyone knows how good the Big AI daughters are! Fuyuko is the maternal granddam of the embryos, making this a great investment opportunity to tie into foundation genetics. There are numerous breeding options to take these genetics forward!



SIRE SOR KUNISAKI

- SOR Kunisaki 2013 Denver grand champion
- Sister is the mother of the JC Rueshaw Line
- The Big Alkari Line was a popular SOR breeding
 - Very young cow in the picture
- Interesting combination of foundation genetics
 - Was viewed as best in class when bred
 - A SOR bred Big Alkari bred cow sold for over \$13,000 recently



DAM SOR MS BIG ALKARI #2

15

FOUR IVF EMBRYOS

DUAL REGISTERED FULLBLOOD | GRADE 1 | DOMESTIC ONLY

SIRE: SOR KUNISAKI (EAF20222 / FB14115)
JVP KUNIASO J 6124F

HIKARI
KAEDEMARU
JUDO
JVP KUNISAKAE 124
DAI 10 MITSUMARU
AKIKO
HIKARI
JVP MS HOMARE J 30E

DAM: SOR MS BIG ALKARI #2 (FB16723 / EAF129735)
UKB MS HIKARI HOMARE J30E(JVP)

Embryos sired by an elite son of WSI Umemaru. Umemaru out of the original import cow Kaedemaru. Umemaru is known as a transformational sire, he corrects many conformation inadequacies, has sired many show champions, improves carcass texture and composition and is considered by many to be the top Akaushi sire ever born in North America! His semen has become very rare, currently sells for \$4000/straw and is seldom available. He is stacked on a rare Judo x Kunisakae daughter creating SOR Kunisaki!

LAG owned in partnership the donor, UKB Ms Hikari Homare J30E (JVP) and one of the best matings to her was to HB Big Al 502. It is and was such a transitional mating in the breed. She was also the 2013 Denver National Western grand champion bull and 2013 Houston Reserve Grand Champion Bull.



SIRE SUMO CATTLE CO SEISAKUSHU C221



DAM UKB MS HIKARI HOMARE J31E

- Grand Champion producing popular Australian bull
- Stylish Shigemaru bred cow

16

ONE IVF EMBRYO

DUAL REGISTERED FULLBLOOD | GRADE 1 | DOMESTIC ONLY

SIRE: HIKARI
SUMO CATTLE CO SEISAKUSHU C221 (EAF114505 / FB12682)
TWA ONESAN

DAM: SHIGEMARU
UKB MS HIKARI HOMARE J31E (EAF102189 / FB11798)
JVP MS HOMARE J 31E

DAI 10 MITSUMARU
KAZUTOMO 92958
SHIGEMARU
DAI 8 MARUNAMI J19461
DAI 2 SHIGENAMI
DAI YON AKIBARE 3357
JUDO
JVP 27-HOMARE 128

Sumo Seisakushu C221 an elite Australian bred Hikari son. Bred by the world-renowned Sumo Cattle Company and from the Marunami maternal line. His dam is a maternal sister to Tamamaru, H0518E, Red Emperor, Ringo, and Alamo! He combines Hikari's carcass traits with Shigemaru's maternals and growth.

The dam here is a rare UKB Akaushi legend! Ultimate Kobe Beef's herd has been specially bred by breed legend Bruce Hemmingsen, creating some of the best Akaushi in the world. This is an ideal example with a sire stack of Judo x Namimaru 74 x Homare! Judo is an outcross source of Akaushi genetics. This is an ideal mating on the Homare maternal line that has turned out numerous elite proven sires in the USA and Australia.



SIRE BRADY ET



DAM 803 ID

- UKB bred SOR foundation cow
- High marbling substantially sized Rueshaw son
- Transitional genetics from SOR to LAG

17

FOUR IVF EMBRYOS

DUAL REGISTERED FULLBLOOD | GRADE 1 | DOMESTIC ONLY

SIRE: RUESHAW
BRADY ET (AF52168 / FB30265)
HEARTBRAND Z1118P

DAM: SHIGEMARU
803 ID (EAF97018 / FB11702)
JVP MS HOMARE HIKARI

RUEMEI H39
KIKUTAMA 14285
RUESHAW
AKIKO
DAI 2 SHIGENAMI
DAI YON AKIBARE 3357
HIKARI
JVP MS HOMARE J 30E

Sired by Brady 2627A, this is an elite and outcross embryo package. Brady 2627A is a complete outcross to three of our foundation bulls: Shigemaru, Tamamaru, and Hikari. We expect this deep, red, direct son of Rueshaw to inject the well-known marbling ability and angularity to rear skeleton of his father, as well as the maternal strength and longevity of his cornerstone dam, the "Z" cow. Brady modernizes foundation genetics and brings the mating versatility that the breed has been in search of. The dam is a Shigemaru daughter bringing reliable growth and maternal traits to this lot. She comes from Bruce Hemmingsen's renowned UKB herd, a longtime leader in Akaushi genetics. She is backed up by the Hikari and the Homare maternal line, which have been a proven powerhouse in the Akaushi breed! Combined with Brady this is a homerun mating!



SIRE LAG ALAMO 04E ET



DAM UKB MS SHIGEMARU 803

- 803 produced correct sized calves to Alamo's brother, HeartBrand Red Emperor
- Alamo will be Legendary's top producer in 2023
- They are many similarly bred cows gracing today's pastures

18

ONE IVF EMBRYO

DUAL REGISTERED FULLBLOOD | GRADE 1 | DOMESTIC ONLY

SIRE: LAG ALAMO 04E ET (AF112621 / FB39605)
DAI 8 MARUNAMI J19461

DAM: 803 ID (EAF97018 / FB11702)
SHIGEMARU
JVP MS HOMARE HIKARI

DAI 10 MITSUMARU
AKIKO
DAI 3 MITSUMARU 30
DAI 7 MARUNAMI J14289
DAI 2 SHIGENAMI
DAI YON AKIBARE 3357
HIKARI
JVP MS HOMARE J 30E

Sired by Alamo, a full brother to the legendary Red Emperor! Who is the well proven Big Al son of Dai 8 Marunami. He is known for his elite level marbling in his progeny and backed by ideal growth traits and conformation. Marunami is the renowned original import cow and was marked for her elite genetics and had been flagged for her ability to improve genetics in Japan. Matched with Big Al one of the most proven and respected bulls in the Akaushi breed. He excels in marbling, growth, and maternals making him the total package!

The dam is a Shigemaru daughter bringing reliable growth and maternal traits to this lot. She comes from Bruce Hemmingsen's renowned UKB herd, a longtime leader in Akaushi genetics. She is backed up by the Hikari and the Homare maternal line, which have been a proven powerhouse in the Akaushi breed!

SELLING THREE UNITS OF SEMEN



19

LAG MR HONJO MASAMUNE

FULLBLOOD AKAUSHI BULL | EAF95735 / FB24705 | HORNED | RED | 01.20.2016

SIRE: HB BIG AL 502
HEART BRAND RED EMPEROR
DAI 8 MARUNAMI J19461

DAM: KAEDEMARU
DAI 10 MITSUMARU
DAI-SAN NAMIAMI NI

DAI 10 MITSUMARU
AKIKO
DAI 3 MITSUMARU 30
DAI 7 MARUNAMI J14289
DAI 2 MITSUMARU
GODAI
JAPANESE BULL (RED)
JAPANESE COW (RED)

“Click to Buy” semen selling packages of 3 units at \$200/ unit.

LAG MR HONJO MASAMUNE brings well know and proven calving ease, growth, and the carcass traits that he inherited from his sire Red Emperor and dam Kaedemaru. But who is Honjo? Honjo's story is interesting...When his dam Kaedemaru was 19 and after numerous failed attempts, an Oocyte was successfully collected and fertilized, the resultant birth being Honjo. He became the final calf ever to be produced by Kaedemaru, and he is the half-brother to both Umemaru and Kaedemaru #2. All three have now crossed the rainbow bridge, the boys succumb to injuries and Kaedemaru #2 to old age...However when it comes to genetic preservation, Honjo, will likely be the last man standing. For experimental purposes we bred many of the same cows to Umemaru, Honjo and Kotsukari, Honjo has never disappointed us and we have a good collection of his daughters in our herd!

SELLING THREE UNITS OF SEMEN



20

SOR MR HIROMITSU

FULLBLOOD AKAUSHI BULL | EAF97439 / FB24704 | HORNED | RED | 01.01.2016

SIRE: WSI UMEMARU
HIKARI
KAEDEMARU

DAM: WSI KAEDEMARU 2
TAMAMARU
KAEDEMARU

DAI 10 MITSUMARU
KAZUTOMO 92958
DAI 10 MITSUMARU
DAI-SAN NAMIAMI NI
DAI GO TAMANAMI 96
DAI 8 MARUNAMI J19461
DAI 10 MITSUMARU
DAI-SAN NAMIAMI NI

“Click to Buy” semen selling packages of 3 units at \$75/ unit.

SOR Mr Hiromitsu 1090D is an elite Kaedemaru grandson, (i.e. The Big Unit)! He was the Grand Champion of the Houston Livestock show in 2017 & 2018, The Grand Champion of the National Western in 2018, and he also won the prestigious PJ Budler Sponsored Word Championship in 2018. He is all bull all the time, and at 2400lbs stands guard over some of the best Akaushi females in our entire herd. From a conformation basis, he is superior in form to his sire WSI Umamaru who is known as one of the best marbling Akaushi sires ever produced in North America. Mr. Hiromitsu's dam is Kaedemaru #2, a Tamamaru daughter of Kaedemaru. Kaedemaru #2 is a transcendent cow and another hall of famer. Today, in our herd, we have many daughters produced by her, they are sired by Big Al, Kotsukari, Umamaru, Heart Brand Red Emperor, Honjo and we have sold calves sired by HB 518, Shigemaru and Rueshaw to other breeders. Recently one of her Shigemaru sons sold for \$20,000, and all of her female calves have sold for excess of \$15,000. Kaedemaru #2 is an amazing cow and clearly one of our top. We have a video of her on YouTube, at 15 she still looked like a show cow. Check her out. As for Mr Hiromitsu he is elite, his EPD's for Weaning Weight, Yearling Weight, and Marbling are near the top, he's an established show winner and his absolute presence say it all.

SELLING THREE UNITS OF SEMEN



21

LAG RUESHAW'S XXX 2133F ET

FULLBLOOD AKAUSHI BULL | AF147209 | HORNED | RED | 11.03.2018

SIRE: HB BIG AL 502
HEART BRAND RED EMPEROR
DAI 8 MARUNAMI J19461

DAM: KAEDEMARU
DAI 10 MITSUMARU
DAI-SAN NAMIAMI NI

DAI 10 MITSUMARU
AKIKO
DAI 3 MITSUMARU 30
DAI 7 MARUNAMI J14289
DAI 2 MITSUMARU
GODAI
JAPANESE BULL (RED)
JAPANESE COW (RED)

“Click to Buy” semen selling packages of 3 units at \$75/ unit.

If not the best, clearly one of the top Rueshaw sons in the breed! His sire stack is an impressive Rueshaw x Shigemaru (Nikki) x Akiko. This is a complementary outcrossed pedigree and is compatible with most of the USA Akaushi population (No Big Al, Tamamaru, or Hikari in this bull). Additionally, XXX differs from his contemporaries in so much that there is no Kunisakae, Homare or Judo in his background. Rueshaw semen is extremely rare and if found regularly sells for \$4,000+ per straw! Secure genetics from one of his best sons now. About LAG RUESHAW'S XXX 2133F ET's dam, she is none other than Heartbrand Nikki, a direct Shigemaru daughter from Akiko and famous in her own right. She has been a prolific donor dam for years having produced 99 registered progeny and is still going strong today! Don't miss this rare opportunity to get outcross genetics backed by the leading Akiko maternal line!

SELLING THREE UNITS OF SEMEN



22

UKB HIKARI'S LEGEND

FULLBLOOD AKAUSHI BULL | EAF11732 / FB11732 | HORNED | RED | 06.07.2008

SIRE: HB 830 HIKARI
DAI-JU 10 MITSUMARU KO 76
KAZUTOMO 1KYU 92958

DAM: JVP MS HOMARE J 30E
HEARTBRAND 027C
JUDO 1223

DAI-NI 2 MITSUMARU TOKKYU 22
GODAI KO 2739
NAMIMARU KO 74
KIKUMI TOKKYU 11875
SHIGETAKARA H 40
SAKAE RK23331
NAMIMARU KO 74
NO. 20 HOMARE 15927

“Click to Buy” semen selling packages of 3 units at \$50/ unit.

(Pictured is sire, HIKARI.) This a rare UKB Akaushi sire! Ultimate Kobe Beef’s herd has been specially bred by breed legend Bruce Hemmingsen, creating some of the best Akaushi in the world. This is an ideal example with a sire stack of Hikari x Judo x Namimaru 74 x Homare! Hikari is a premier carcass traits sire contributing elite marbling ability. This is an ideal match for the Homare maternal line that has turned out numerous elite proven sires in the USA and Australia. This is a rare semen offering!

SELLING THREE UNITS OF SEMEN



23

SHIGEMARU

FULLBLOOD AKAUSHI BULL | AF110 / FB2124 | HORNED | RED | 07.21.1993

SIRE: DAI 2 SHIGENAMI
JAPANESE BULL (RED)
JAPANESE COW (RED)

DAM: DAI 10 SHIGEKAWA 65
DAI YON AKIBARE 3357
DAI NI AKIBARE 53244

JAPANESE BULL (RED)
JAPANESE COW (RED)
DAI SAN SOSYOKU 50086
JAPANESE COW (RED)

Selling three units of semen on Shigemaru.

Shigemaru is a fantastic highly proven sire that makes the best Akaushi females you will ever own. He sires moderately sized females with extreme depth, width, and strength. They are excellent maternal traits and will last turning into elite brood cows. Shigemaru has sired elite proven bulls including Heartbrand Joe, Heartbrand Raymond Reddington, Heartbrand Samsung, and Heart Brand Red Star.

SELLING THREE UNITS OF SEMEN



24

TAMAMARU

FULLBLOOD AKAUSHI BULL | AF109 / FB2125 | HORNED | RED | 07.13.1993

SIRE: DAI GO TAMANAMI 96

TAMANAMI 70
FUJIMITSU 2030

JAPANESE BULL (RED)
JAPANESE COW (RED)
JAPANESE BULL (RED)
JAPANESE COW (RED)
MITSUTAKE
FUKUMARU 933
DAI 10 SHIGEKAWA 65
MARUNAMI

DAM: DAI 8 MARUNAMI J19461

DAI 3 MITSUMARU 30
DAI 7 MARUNAMI J14289

Selling three units of semen on Tamamaru.

Tamamaru is one of the most widely used and predictable Akaushi bulls due to his consistency and legendary mother, Dai 8 Marunami. There's no other foundation sire that can add the length of body and stoutness of structure. His sire, Dai 5 Tamanami Tokkyu 96 provides a slight outcross to the rest of the 1994 importation. Tamamaru is a paternal sib to the foundation cow Dai 9 Kobai 73. Tamamaru is F11 free.

SELLING THREE UNITS OF SEMEN



25

HB BIG AL 502

FULLBLOOD AKAUSHI BULL | AF114 / FB2998 | HORNED | RED | 01.27.1995

SIRE: DAI 10 MITSUMARU
DAI 2 MITSUMARU
GODAI
NAMIMARU
DAM: AKIKO
MITSUKO B 9639

mitsutake
DAI 3 MITSU
DAI 5 SHIGEKAWA
HATAURA
DAI 2 SHIGENAMI
DAI 2 MARUHANA
MITSUTAKE
MITSU 1753

Selling three units of semen on HB Big Al 502.

Big Al was the first bull born outside of Japan in January of 1995. Big Al is the legendary Dai 10 Mitsumaru 76 son of Akiko and is highly proven with elite EPDs. To this day Big Al has top 30% growth and maternal EPDs along with top 10% carcass EPD for Ribeye Area, Marbling, and Carcass Index! On top of his fantastic EPDs, he is known for making incredible females with growth, strength, maternal traits, and longevity. Big Al is considered by many to be the greatest Akaushi bull of all-time!

LA

LEGENDARY
AKAUSHI GENETICS



MARK OF
EXCELLENCE
Frozen Pasture
SALE EVENT III

09.28.2022 | 4:00 p.m. - 7:00 p.m. C.S.T. | www.Wagyu365.com