

SPRING PRODUCTION SALE



P E M B R O O K C A T T L E C O M P A N Y

PCC

MARCH 26TH • 12:30 PM • AT THE RANCH • FAIRVIEW, OK

PCC



SHOW CATTLE CLINIC

Please Join us Friday evening for dinner and a special evening with Travis Pembroke, Landon Bolin, and Ky Stierwalt for an informal and informative SHOW CATTLE CLINIC



"Trust the process. Just do the work and the results will handle themselves."
- Dustin Weems



PEMBROOK PCC CATTLE COMPANY

PEMBROOK CATTLE CO.

49061 SCR 249-FAIRVIEW, OK 73737

TRAVIS PEMBROOK • 405.206.7997

BETH PEMBROOK • 405.245.1834

PEMBROOKCC@PLDI.NET

WWW.PEMBROOKCATTLE.COM

LONDON BOLIN • SHOW/SALE CATTLE MANAGER
870.754.1161

RYLEE WAHL • COWHERD MANAGER



WELCOME

On behalf of the Pembroke family, Beth and I would like to extend an Oklahoma welcome and thank you to everyone that has taken the time to read through the catalog, stop by our place, or call with interest regarding this year's offering.

We believe that the cattle we have made available in this Spring's offering at PCC are the deepest, in terms of quality, that we have ever offered. Beth and I also feel like this Spring's offering is stacked so deep throughout each breed that it is a real challenge to pick a favorite. As you will also notice in going through the catalog, every animal offered within every breed has a history of success in their pedigree, either in the show ring, or the donor pen. It is truly our goal to provide unmatched genetics and service to our customers. At Pembroke Cattle, our success has always been based on "Good Cattle, Great People, and Strong Relationships equaling Great Results". We appreciate all who have made us who we are today and look forward to making the same kind of relationships with our new friends and customers in the future. It is a true blessing to be raising our kids in an industry that still promotes and rewards the core values and principles we have grown up with, where sharing your faith in God and your love for your country are not just expected, but applauded.



In conclusion, if myself, Beth, Bret, Landon, or Matt can be of any assistance please do not hesitate to call or come by. We will do our very best to put you on the right path to the genetics that best fit your goals for the future. We appreciate your friendship and your faith in our program!

Travis & Beth Pembroke

Pembroke Cattle Company

"Putting Good Cattle Together with Great People"

CATTLE ARE AVAILABLE FOR VIEWING AT ANYTIME PRIOR TO THE SALE. FEEL FREE TO CALL TRAVIS OR BETH TO SCHEDULE YOUR VISIT. VISITORS ARE ALWAYS WELCOME AT PCC!

LUNCH WILL BE SERVED SALE DAY SPONSORED BY LIVESTOCK NUTRITION CENTER



BETTER FEED, BETTER RESULTS

Livestock Nutrition Center specializes in blending customized rations, supplements and premixes to meet the specific nutritional needs of your operation. We understand that management, performance objectives and feeding practices can be vastly different between operations, and that these differences dictate specific nutritional or formulation requirements. Our experienced sales staff and nutritionist will work with you to design a feeding program that is specific to your operation.

MULTIPLE LOCATIONS TO BETTER SERVE

ALTUS, OK	580.482.2700	KEOTA, OK	918.208.0029	PARIS, TX	903.784.6656
CHICKASHA, OK	405.561.2900	FOREMAN, AR	870.542.5250	SAGINAW, TX	817.232.8161
GUTHRIE, OK	405.260.1841	HEREFORD, TX	806.391.1001	N. KANSAS CITY	913.725.0300

LNC-ONLINE.COM



PO Box 1219
Edmond, OK 73083
(405) 641-6081
matt@mcsauction.com
www.mcsauction.com

PEMBROOK SPRING PRODUCTION SALE

MARCH 26, 2022 AT 12:30PM

SELLING 52 LOTS

ANGUS • CHIANINA • SIMMENTAL • % SIMMENTAL • LIM-FLEX
MAINETAINER • MAINE-ANJOU • MAINE ANGUS • RED ANGUS • HEREFORD

Dear Friends and Fellow Breeders:

Welcome to the 2022 Pembrook Cattle Co. Spring Production Sale. This sale has become one of the top events of the spring in terms of offering multiple breeds that accumulate success in the show ring and the pasture after sale day for their customers. This unique offering is once again the effort of forward thinking seedstock producers with an eye for cattle that can compete in any venture. Pembrook Cattle Company has worked toward the goal of assembling an offering of elite heifer and herd sire prospects that represent the best of all breeds in this sale.

Travis and Beth Pembrook go the extra mile in terms of customer service to maximize the success of the juniors while making it a learning experience as well. They truly are about "putting good cattle together with great people", and the lasting relationships with their customers and the past and current champions they have bred and sold are a testament to this fact. These females combine performance with excellent phenotype to become competitors at any level in the industry. The genetics represented from all breeds in this offering, on both sides of the pedigrees, are second to none and are, in many-cases, daughters of or full or maternal sibs to some of the most highly valued and successfully shown females in the country. This is a well-balanced offering, and quality is present throughout. These show heifer and donor prospects are halter broke and started. Whatever breed/s you are interested in, you will find something to your liking in this special sale.

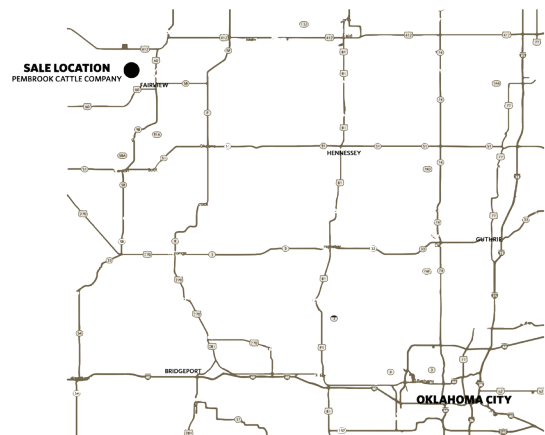
I encourage each of you to evaluate your own situation and goals, and on Saturday, March 26, take advantage of the knowledge and cutting-edge efforts of PCC and their program. If I can be of assistance to you, please let me know.

Sincerely,

Matt C. Sims

SALE LOCATION

49061 SOUTH COUNTY ROAD 249 • FAIRVIEW, OK 73737



SALE STAFF

MATT SIMS
AUCTIONEER & SALE MANAGER.....405.641.6081
JEFF MAFI
AMERICAN ANGUS ASSOCIATION.....816.344.4266
DELVIN HELDERMON
SPECIAL ASSIGNMENT.....405.205.1116

SALE CONSULTANTS

WILLY COUCH.....405.627.5200
LES JONES.....972.743.8603
KY STIERWALT.....580.302.3005
PAUL MAULSBY.....979.587.2835



Marketing Management

MCMARKETINGMANAGEMENT.COM

OWNER
KILEY MCKINNA
402-350-3447
JR SALES ASSOCIATE
WILEY FANTA
320-287-0751



MARKETING
RANDALL O. RATLIFF
615.330.2735
RRMKTG.COM

MOTEL ACCOMMODATION

BEST WESTERN PLUS FAIRVIEW INN & SUITES
802 N. MAIN ST., FAIRVIEW.....580.227.2880
ASK FOR THE PEMBROOK CATTLE RATE & ROOM BLOCK
HERITAGE INN MOTEL
911 N. MAIN, FAIRVIEW.....580.227.2534
HOLIDAY INN EXPRESS
4702 W. OWEN K. GARRIOTT RD, ENID.....580.237.7722
HAMPTON INN AND SUITES
511 DEMIA CT., ENID.....580.234.4600
FOR FURTHER ASSISTANCE WITH RESERVATIONS,
CALL BETH PEMBROOK.....405.245.1834

AIR TRANSPORTATION

Oklahoma City's Will Rogers World Airport is served by most major airlines and is a 1-3/4 hour drive from the ranch; rental cars are available. Private aircraft can be accommodated at Fairview Municipal Airport or Enid Woodring Regional Airport.

SALE TERMS AND CONDITIONS

All cattle are to be paid for during or immediately after the sale and will not be released until after settlement has been made. Cattle will not be transferred until paid for in full.



Bid Live Online CCI.LIVE
"Gavel's Down, The Best in Online Marketing"
(516) 366-0734 CCI.LIVE.schedule@cci.live

**THE PEMBROOK SALE BOOK
& ADVERTISING PREPARED BY**
MATT C. SIMS AUCTION, INC. - 405.641.6081
DESIGN & PRODUCTION BY THE SHOWTIMES, INC
PHOTOGRAPHY BY JOHN REASOR & MATT SIMS
VIDEOS BY OUTCROSS GROUP, JOHN REASOR

HERD HEALTH

Cattle will be accompanied by proper health certificates needed for immediate transport. All females have been brucellosis vaccinated

GUARANTEE

The cattle sell under Suggested Terms and Conditions of the breed association that applies to each lot. (American Angus Association, American Red Angus Association, American Simmental Association, American International Charolais Association, American Maine-Anjou Association, and American Chianina Association.)

REGISTRATION CERTIFICATES

Animals will be transferred to the buyer at the seller's expense. Each buyer must be sure to give the sale clerk the proper name and address for making transfers. All calves born before the sale are to be registered by the seller; proper breeding certificates will be signed for the buyer to use in registering calves born after the sale.

ABSENTEE BIDS

Real-time bidding will be available via the internet through the CCI.Live website. Be sure to register to bid prior to the sale. You may also contact the owners, sale manager, sale consultants or any member of the sale staff to place a bid if you will not be able to attend the sale.

TRUCKING

Randy Lathrop, (847) 910-4673, and Tom Snell, (580) 374-4168 are reliable options. Let us know if you need assistance with your trucking arrangements.

INSURANCE

Insurance for your purchases will be available sale day at the clerk's desk. We recommend that insurance be obtained on lots purchased.

NOTE

Supplemental information will be available at sale time. Announcements made at the sale from the auction block will take precedence over statements in the sale book. We reserve the right to withdraw any lot not meeting our specifications prior to sale time. All persons who attend the sale do so at their own risk. Neither the owners nor the sale manager assume liability, legal or otherwise, for accidents or loss of property. As the sale manager, Matt C. Sims Auction, Inc. is only an agent for the seller and has no responsibilities other than those involved in conducting the sale.

VIDEOS ONLINE ON THE PEMBROOKCATTLE.COM & AT MCSAUCTION.COM



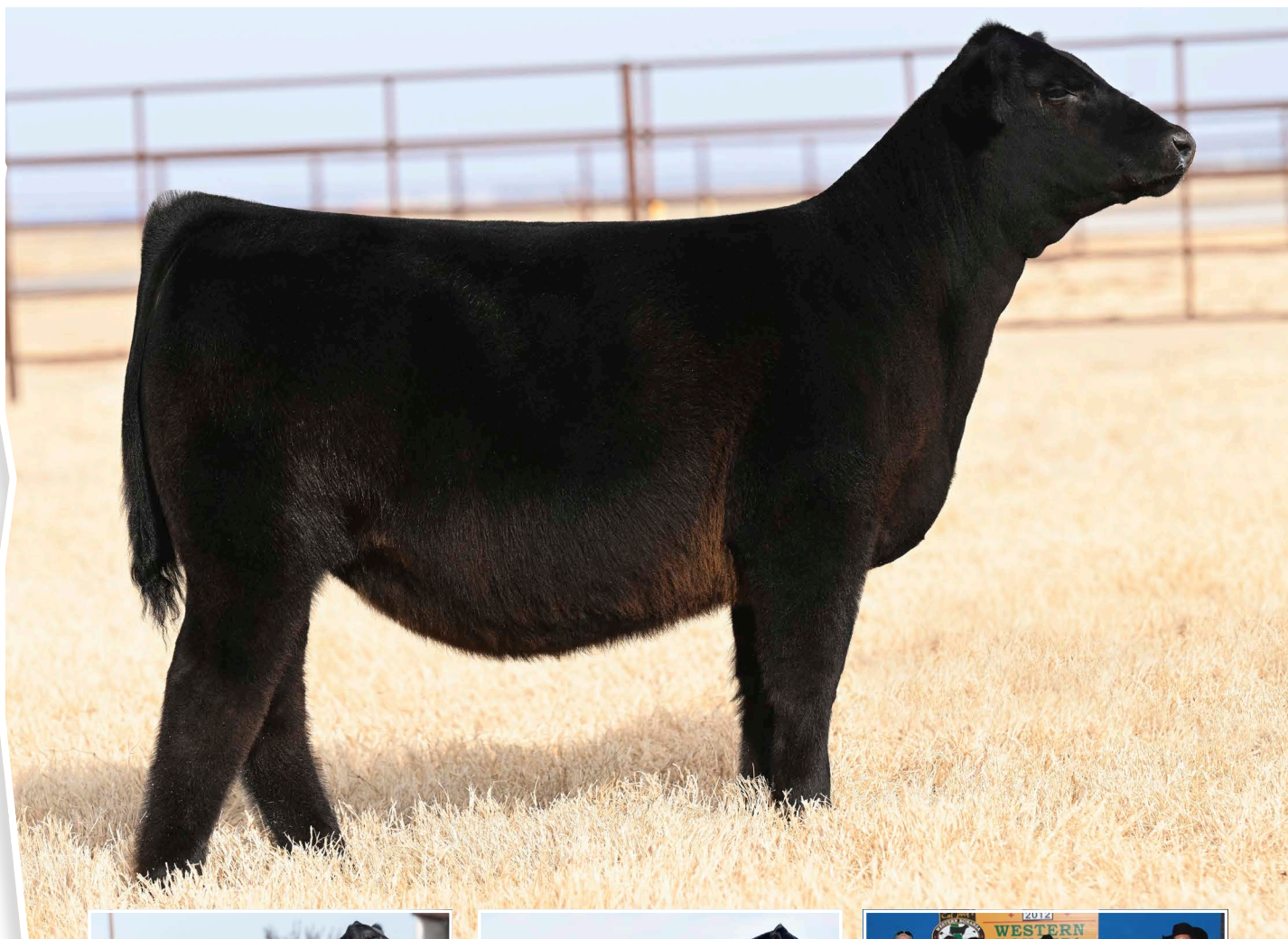
A
N
G
U
S

ANGUS



PCC





COLBURN'S SARA'S DREAM 6758
GRAND DAM OF LOT 1



SCHILLINGS R&L CONFIDENTIAL
SIRE OF LOT 1



SILVEIRAS 1339
THIRD DAM OF LOT 1

LOT 1

PCC LB SARAS DREAM 93B

DOB	REG. #	TATTOO
12/2/21	20293248	938

ANGUS

SCHILLINGS R&L CLASSIFIED
SCHILLINGS R&L CONFIDENTIAL
GRUBBS MISS NEWSBREAK 111

CONLEY EXPRESS 7211
SULL SARA'S DREAM 98386
COLBURN SARAS DREAM 6758

- Lot 1 in this offering may be as fault free in terms of phenotype as any Angus heifer sold at Pembrook Cattle Co.
- Lot 1 is the first natural calf of the \$34,000 selection of Little Bull Farm in Kentucky from the 2020 TXLE Sale and offers a pedigree that is truly "packed with purple" and the phenotype to generate more.
- Sara's Dream 938 combines the Pembrook herd sire, Confidential with a daughter of Conley Express 7211, who hails from the Sandy family, out of a maternal sister to Colburn Primo 5153, Colburn Saras Dream 6758, that traces to the legendary deceased donor EXG Saras Dream S609 R3.
- Other maternal sibs to the grand-dam of lot 1 include: the \$75,000 2016 National Junior Angus Show Grand Champion Female, CCC Saras Dream 5116 who was also the Supreme Champion Over All Breeds at the 2016 American Royal, Grand Champion Owned Heifer at the 2016 National Junior Angus Show, Supreme Champion Female at the 2016 Indiana State Fair, Reserve Grand Champion Female at the 2016 Atlantic National, Reserve Grand Champion at the 2016 Fort Worth Stock Show, Grand Champion Angus Heifer at the North American International Livestock Exposition, and the Late Winter Calf Champion in the Jr. & ROV Show at the 2016 National Western Stock Show, as well as the \$50,500 Colburn Saras Dream 5082, who was Supreme Champion Female at the 2016 Indiana State Fair, Division III Champion at the 2016 National Junior Angus Show, Supreme Champion Heifer at the 2016 Illinois Beef Expo, Reserve Grand Champion at the 2016 All American Breeders Futurity, Reserve Champion Late Spring Heifer Calf at the 2016 Atlantic National, and Grand Champion Prospect Heifer at the 2016 National Western Stock Show, all shown by the Guyer Family.
- Sells open.

PCC

PEMBROOK



PCC SULL SARA'S DREAM 9838G
DONOR DAM PICTURED AS A CALF

MCS

LOTS 1A-1C

- The dam of the embryo matings selling as lots 1A thru 1C was the \$34,000 selection of Little Bull Farm in Kentucky from the 2020 TXLE Sale and offers a pedigree that is truly "packed with purple" and the productive capacity to generate more as is evident in her daughter that sells as lot 1.
- Sara's Dream 9838G combines Conley Express 7211, who hails from the Sandy family, with a maternal sister to Colburn Primo 5153, Colburn Saras Dream 6758, that traces to the legendary deceased donor EXG Saras Dream S609 R3.
- Get in on the ground floor of the next great PCC Angus donor with these embryos.



EXG SARAS DREAM S609 RX
THIRD DAM OF LOT 1A EMBRYOS

LOT 1A
4 SEXED FEMALE IVF EMBRYOS

GATEWAY FOLLOW ME F163
CONLEY LEAD THE WAY 0738
EXAR PRINCESS 1637
CONLEY EXPRESS 7211
PCC SULL SARA'S DREAM 9838G
COLBURN SARAS DREAM 6758

ANGUS

- The sire of this mating, Conley Lead The Way 0738, is one of the hottest bulls on the show circuit this year already being named Reserve Grand Champion bull at the 2022 Southwestern Exposition and Livestock Show's Roll of Victory (ROV) Angus Show and grand champion bull at the 2021 Tulsa State Fair Angus Show.
- Conley Lead the Way semen has limited availability and is bringing up to \$600 per unit.
- Guarantee at least one pregnancy to result if implanted by a certified embryologist.



CONLEY LEAD THE WAY 0738
SIRE OF LOT 1A

LOT 1B
3 SEXED FEMALE IVF EMBRYOS

SILVEIRAS STYLE 9303
SILVEIRAS FORBES 8088
COLLISON FOREVER LADY 1622
CONLEY EXPRESS 7211
PCC SULL SARA'S DREAM 9838G
COLBURN SARAS DREAM 6758

ANGUS

- The sire of this mating, Forbes, has a royally built, banner winning pedigree. He is sired by the famous Silveiras Style and complemented maternally with the great Forever Lady cow family going back to EXAR Lutton and the Roth Forever Lady 2706. He is long-bodied and moves freely with plenty of flex, coupled with the right structure and a very attractive phenotype. He has a pedigree that is built to win and has done that being named The ROV Show Bull of the Year after being slapped Grand Champion Bull at the 2021 Cattlemen's Congress and Atlantic National Angus Show. He was also Supreme Champion Open Angus Animal at Atlantic National Angus Show, Grand Champion Bull at the 2021 Western National Angus Futurity and Grand Champion Bull at the 2020 Kansas State Fair as well as being named the 2020 Grand Champion Angus Bull at the Fort Worth Stock Show & Rodeo, the 2020 Grand Champion Angus Bull at the Houston Livestock Show & Rodeo and the Reserve Grand Champion Angus Bull at the 2019 ROV American Royal Angus Show.
- Our first Forbes sired calves are incredible.
- Guarantee at least one pregnancy to result if implanted by a certified embryologist.



SILVEIRAS FORBES 8088
SIRE OF LOT 1B

LOT 1C
4 IVF EMBRYOS

BBBN X2 201X
BNWZ DATA BANK 1311C ET
BNWZ CALYPSO 28Y
CONLEY EXPRESS 7211
PCC SULL SARA'S DREAM 9838G
COLBURN SARAS DREAM 6758

MAINE ANGUS

- Data Bank's pedigree has no I-80 or Ali and he works awesome on Angus females. Data Bank is an extremely well balanced, smooth made individual that has an undeniably great look. He hails from some of the greatest cow families in the Maine breed who have shown their power in the show ring but most importantly in the pasture. Maine-Angus cattle have been hot in the Supreme drives and Data Bank sired cattle are topping sales and winning shows. We feel this mating to the popular Saras Dream cow family will lead to great things.
- Data Bank is awesome footed, smooth jointed and is athletic as you can make a mature bull. He's square made and extremely soft middled. Look for his offspring to compete and perform at the highest levels and carry on a great family tradition.
- Guarantee at least one pregnancy to result if implanted by a certified embryologist.



BNWZ DATA BANK 1311C ET
SIRE OF LOT 1C

PCC

PEMBROOK



• Sells Open

LOT 2

SULL PCC SARAS DREAM 1546J

DOB	REG. #	TATTOO
9/23/21	20297296	1546J



SCC SCH 24 KARAT 838
SIRE OF LOTS 2-7

LOTS 2-7

SCC TRADITION OF 24
SCC SCH 24 KARAT 838
FCF PROVEN QUEEN 419
C&C MCKINLEY 3000 EXAR
COLBURN SARAS DREAM 675B
SILVEIRAS SARAS DREAM 1339

CE	BW	WW	YW	MILK	ANGUS
3	5.3	59	101	22	



LOT 3

SULL PCC SARAS DREAM 1548J

DOB	REG. #	TATTOO
10/2/21	20297294	1548J

• Sells Open

THE FLUSH SISTERS SELLING AS LOTS 2 THRU 7 ARE GOING TO BE FUN TO SELL AND WATCH AS THEY DEVELOP THROUGH THEIR SHOW CAREERS. IT IS RARE THAT YOU FIND A SET OF SIX SISTERS THAT ARE THIS GOOD AND THIS CLOSE IN TERMS OF PHENOTYPE...ITS ANYONE'S GUESS WHICH ONE IS THE BEST TODAY OR DOWN THE ROAD.



LOT 4

SULL PCC SARAS DREAM 1540J

DOB	REG. #	TATTOO
11/10/21	20297291	1540J

• Sells Open

LOTS 2-7

• The dam of lots 2 thru 7 is the grand-dam of lot 1 and the embryos selling as lots 1A thru 1C. Colburn Saras Dream 6758 is a maternal sister to Colburn Primo 5153 and traces to the legendary deceased donor EXG Saras Dream S609 R3. Other maternal sibs to the dam of lots 2 thru 7 include: the \$75,000 2016 National Junior Angus Show Grand Champion Female, CCC Saras Dream 5116 who was also the Supreme Champion Over All Breeds at the 2016 American Royal, Grand Champion Owned Heifer at the 2016 National Junior Angus Show, Supreme Champion Female at the 2016 Indiana State Fair, Reserve Grand Champion Female at the 2016 Atlantic National, Reserve Grand Champion at the 2016 Fort Worth Stock Show, Grand Champion Angus Heifer at the North American International Livestock Exposition, and the Late Winter Calf Champion in the Jr. & ROV Show at the 2016 National Western Stock Show, as well as the \$50,500 Colburn Saras Dream 5082, who was Supreme Champion Female at the 2016 Indiana State Fair, Division III Champion at the 2016 National Junior Angus Show, Supreme Champion Heifer at the 2016 Illinois Beef Expo, Reserve Grand Champion at the 2016 All American Breeders Futurity, Reserve Champion Late Spring Heifer Calf at the 2016 Atlantic National, and Grand Champion Prospect Heifer at the 2016 National Western Stock Show, all shown by the Guyer Family.

• They are daughters of the popular sire "24 Karat" who is built with a flawless phenotype, incredible build and a pedigree stacked with proven production and an unbelievable track record in the show ring. His sire was a Denver Champion as was his dam, being successfully campaigned by Leslie Rogers. In fact, some have called Proven Queen 419 the ideal Angus donor for today! His Grand-dam and Grand sire won Junior Nationals.



LOT 5

SULL PCC SARAS DREAM 1541J

• Sells Open

DOB	REG. #	TATTOO
9/13/21	20297295	1541J



LOT 6

SULL PCC SARAS DREAM 1551J

• Sells Open

DOB	REG. #	TATTOO
10/18/21	20297292	1551J

LOT 7

• Sells Open

SULL PCC SARAS DREAM 1544J

DOB	REG. #	TATTOO
9/5/21	20297293	1544J



LOT 8

PCC LWHF SARA'S DREAM 16J

DOB	REG. #	TATTOO		
11/12/21	20298185	16J		
CED	BW	WW	YW	MILK
4	2.5	55	99	20

ANGUS

S A V BRILLIANCE 8077
 PVF INSIGHT 0129
 PVF MISSIE 790

SILVEIRAS STYLE 9303
 SILVEIRAS SARAS DREAM 1349
 EXG SARAS DREAM S609 R3

- Lot 8 is a daughter of Silveiras Saras Dream 1349, the Supreme Champion Female at the 2013 Cattleman's Jackpot for Parkerlynn Barnes and is a member of the great flush that produced: Silveiras Saras Dream 2335, who was a \$36,000 for 1/2 interest heifer in the 2012 Partners for Performance Sale and the Champion Female at the 2013 American Royal R.O.V. Show, the Champion Female at the 2013 Western Idaho R.O.V. Show and Reserve Supreme Female at the 2013 California State Fair. She additionally won Reserve Division Champion at the 2013 R.O.V. Show in Denver for the Colburn family; the \$46,000 valued Silveiras Saras Dream 3306; and Silveiras Saras Dream 1339, the past Supreme Champion at the 2012 Western Bonanza and Division Champion at the 2012 NJAS for the Colburn family that is the dam of "Primo" and the grand-dam of lots 2 thru 7 in this offering and the third dam of lot 1.
- Sells open.

PCC



SARA'S DREAM 1349
 DAM OF LOT 8

LOT 9

SULL PCC SANDY 1555J

DOB	REG. #	TATTOO		
12/4/21	20297297	1555J		
CED	BW	WW	YW	MILK
0	4.2	60	95	20

ANGUS

DAMERON FIRST CLASS
 SCC FIRST-N-GOAL GAF 114
 S C C ROYAL BLACKBIRD 502

5T POWER CHIP 4790
 CONLEY SANDY 7084
 SILVEIRAS S SIS SANDY 2355

- Lot 9 is powerfully built with a killer look out of the Power Chip x Sandy that has produced several winners for the PCC program.
- The now-deceased dam of lot 9, Conley Sandy 7084, was a lead donor for PCC and Sullivan Farms and had a decorative show career as she was selected as the Reserve Grand Champion Angus Female at the 2018 NAILE Open Show. We have very high expectations for this daughter to follow in the footsteps of her dam and sisters. The Sandy cow family is some of the best genetics in the Angus breed that generate champions and sale toppers. The grand-dam of lot 9, Sandy 2355 who is the foundation "Sandy" in the Conley Cattle program
- Sells open.



SILVEIRAS S SIS SANDY 2355
 GRAND-DAM OF LOT 9



CONLEY SANDY 7084
 DAM OF LOT 9



PLUMCREEK MISS ANNIE LU 361C
GRAND-DAM OF LOTS 10 & 11

LOT 10

SULL PCC ANNIE LU 1550J

DOB	REG. #	TATTOO
11/3/21	PENDING	1550J

ANGUS

• Sells Open

LOTS 10 & 11

- Lots 10 and 11 are flush sisters out of Nords PlmCrk KCC Annie Luis who is a direct First Class daughter of the past NAILE champion, PlumCreek Miss Annie Lu 361C. the dam of lots 10 and 11 is a female of added frame, added foot and bone with incredible structure that makes her a desirable beast of a donor cow.
- Two full sibs in blood to lots 10 and 11 sold for \$55,000 and \$25,000.
- These double-bred First Class females have the look, pedigree, and phenotype to compete at any level and become top income generators for any program as a donor that can be mated to multiple breeds once their show career is complete.

DAMERON FIRST CLASS
COLBURN PRIMO
SILVEIRAS SARAS DREAM 1339

DAMERON FIRST CLASS
NORDS PLMCRK KCC ANNIE LU
PLUMCREEK MISS ANNIE LU 361C



LOT 11

SULL PCC ANNIE LU 1534J

DOB	REG. #	TATTOO
9/22/21	PENDING	1534J

ANGUS

• Sells Open

LOT 12

PCC LWHF SOPHIA 106J

DOB	REG. #	TATTOO		
9/6/21	20167083	106J		
CED	BW	WW	YW	MILK
5	2.7	87	157	30



BASIN PAYWEIGHT 1682
DEER VALLEY GROWTH FUND
DEER VALLEY RITA 36113

DAMERON FIRST CLASS
COOL PINES AHFF MB SOPHIA
LEMENAGER CLA TRAVETT 135

- This daughter of the widely used and popular sire, Growth Fund, ranks in the top 2% for WW and YW; top 4% for \$W; top 10% for RADG, MW, CW, RE, and \$F; top 20% for Milk, making her an excellent candidate for PGS shows considering her impressive phenotype that compliments her numerical balance.
- Her dam is a direct daughter of the Triple Crown winner Dameron First Class, while on the maternal side she blends OSU Currency 8173, the lead bull in the Champion Pen of Bulls at a past NWSS with Patton Travett 558 who was the Grand Champion Bred and Owned heifer at a past NJAS.
- Maternal sister sells as lot 13.
- Sells open.



MCS



DEER VALLEY GROWTH FUND
SIRE OF LOT 12



PCC

LOT 13

PCC LWHF SOPHIA 101J

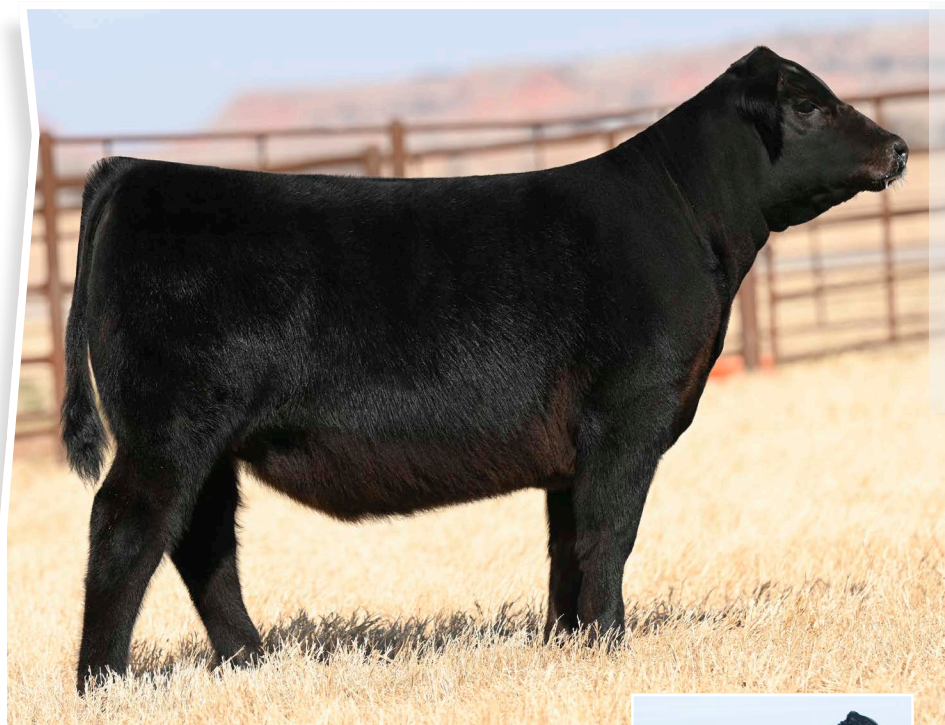
DOB	REG. #	TATTOO		
9/10/21	20167078	101J		
CED	BW	WW	YW	MILK
-1	4	61	108	12



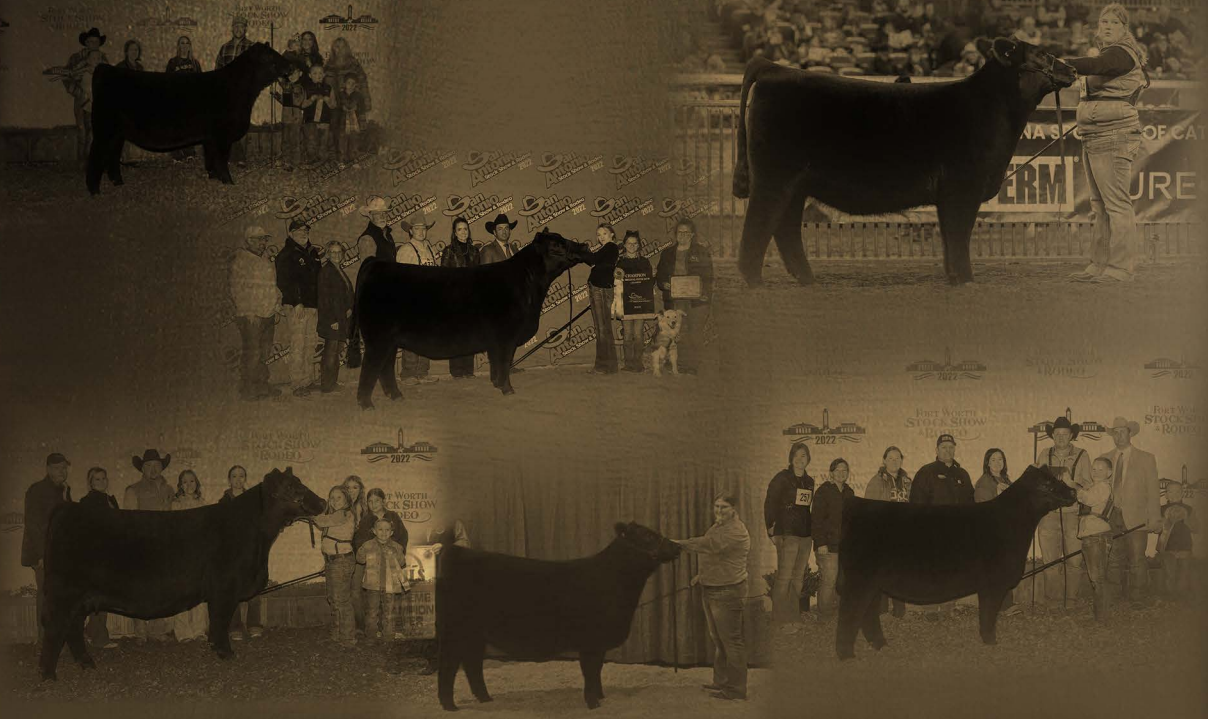
DAMERON FIRST IMPRESSION
PCC WITTEN 111A
JL EVENING TINGE 8001

DAMERON FIRST CLASS
COOL PINES AHFF MB SOPHIA
LEMENAGER CLA TRAVETT 135

- This solid September prospect blends the popular PCC sire "Witten" with a bottom side that is dyed in purple.
- Her dam is a direct daughter of the Triple Crown winner Dameron First Class, while on the maternal side she blends OSU Currency 8173, the lead bull in the Champion Pen of Bulls at a past NWSS with Patton Travett 558 who was the Grand Champion Bred and Owned heifer at a past NJAS.
- Maternal sister sells as lot 12.
- Sells open.



PCC WITTEN 111A
SIRE OF LOT 13



GHI

G
H
I
A
N
I
N
A





JSUL WHO DAT GINGER
FULL SIB IN BLOOD TO LOT 14 DONOR



JSUL WHO DAT 1602
FULL SIB IN BLOOD TO LOT 14 DONOR



JSUL WHO DAT LADY
FULL SIB IN BLOOD TO LOT 14 DONOR

LOTS 14, 14A & 14B EMBRYOS

- An exciting opportunity to acquire genetics from JSUL Who Dat Raptor 6976D ET, the powerful member of the PCC donor herd that was the Supreme Champion Junior Heifer and Grand Champion Junior Chianina Female at the 2017 North American in Louisville.
- This donor is in her prime and has already made her mark beyond the show ring with progeny sales exceeding \$100,000 including the \$25,000 PCC LF WHO DAT RAPTOR 830J that was featured as lot 2 from the 2021 Fall PCC Sale where a flush also sold for \$14,000; the \$48,000 PCC WHO DAT RAPTOR 205H ET and the \$13,000 PCC WHO DAT RAPTOR 212H ET both features of the Spring 2021 Limited Edition Sale at PCC, and the \$14,000 PCC JSUL WHO DAT 9847G from the 2020 Limited Edition Sale just to name a few.
- Whether you are adding genetics to your program to produce your next top seller or investing in this lot to generate your next champion or donor female, the upside earning potential in the pregnancy and embryos from this great female is unlimited.

JSUL WHO DAT RAPTOR 6976D ET

DOB 3/23/16 REG. # 387739

13.08% CA | 24.995% MA | 39.06% AN | 22.865% XX

WHO MADE WHO 411F
ASHW WHO DA MAN
ASHW CA X MA X SM 55
BHCS HEAT SEEKER 23
JSUL SULTRY 6640
JSUL MA X AN 6651



TJSC END GAME 61G ET
SIRE OF LOT 14 PREGNANCY

LOT 14 DUAL REGISTERED! HIGH CHI & MAINTAINER

HEIFER CALF PREGNANCY DUE 8/1/2022

BK XIKES X59
TJSC END GAME 61G ET
TJSC MISS HARMONY 58C
ASHW WHO DA MAN
JSUL WHO DAT RAPTOR 6976D ET
JSUL SULTRY 6640

- The sire of this mating, TJSC END GAME 61G ET, was named Champion Bull at the 2019 NAILE and 2020 NWSS and has sired many champions and top sellers since he concluded his successful career. If you have seen End Game in person, you know how complete from front to rear he is, super sound on all four. He has big feet, and plenty of bone, with all four pointing right where they need to. When you get behind him you love his power and you love his true shape.
- The dam of End Game, Miss Harmony, wore purple in Denver in 2017 supreme in both the Junior & Open Show and the Ohio Beef Expo that year.
- This heifer pregnancy will yield a Dual Registered Hi-Chi and Maintainer show and donor prospect with unlimited potential.



PCC WHO DAT RAPTOR 205H ET
DAUGHTER OF LOT 14 DONOR
AND FLUSH SISTER TO LOT 14A



PCC WHO DAT RAPTOR 212H ET
DAUGHTER OF LOT 14 DONOR
AND FLUSH SISTER TO LOT 14A



PCC WHO DAT RAPTOR 830J
DAUGHTER OF LOT 14 DONOR
AND FLUSH SISTER TO LOT 14A



JSUL WHO DAT RAPTOR 6976 D ET
DAM OF LOTS 14A & B EMBRYO MATINGS



COLBURN PRIMO 5153
SIRE OF LOT 14A EMBRYOS

LOT 14A 4 SEXED FEMALE IVF EMBRYOS

DAMERON FIRST CLASS
COLBURN PRIMO 5153
SILVEIRAS SARAS DREAM 1339

ASHW WHO DA MAN
JSUL WHO DAT RAPTOR 6976D ET
JSUL SULTRY 6640

- This business is all about dollars and results. We came with our best to achieve these two goals for our potential customers.
- Flush sisters to this mating include the \$25,000 PCC LF WHO DAT RAPTOR 830J that was featured as lot 2 from the 2021 Fall PCC Sale as well as the \$48,000 PCC WHO DAT RAPTOR 205H ET and the \$13,000 PCC WHO DAT RAPTOR 212H ET both features of the Spring 2021 Limited Edition Sale at PCC.
- Maternal sibs include the \$14,000 PCC JSUL WHO DAT 9847G from the 2020 Limited Edition Sale while full sibs in blood to lot 2 include the \$22,500 selection by Cora Hardy from the 2020 PCC Fall Production Sale that just recently won Grand Champion Chianina Heifer at the 2021 Cowgirls in Cowtown, as well as Sara Sullivan's heifer that was named Champion in the Junior Chi Show at Cattleman's Congress and the Grand and Reserve Grand Females in the Open Chi Show at that same event; JSUL WHO DAT CAT 7184E ET, the 2018 Grand Champion Chianina Female at Junior Nationals; the \$61,000 JSUL DAT SHINY DARLIN 9000G that was named Reserve Grand Champion Female at the 2020 Southwestern Livestock Exposition in Ft. Worth; the \$12,000 selection of Cora Hardy from the 2019 PCC sale that was named Reserve Champion at the 2020 San Antonio Stock Show, JSUL DAT PRIME GINGER 9307G, and the popular sire JSUL NIGHT MOVES 6326D and his full sister that was the 2015 National Western Stock Show Grand Champion Chianina Heifer for Stewart Skiles.
- Guarantee of at least one pregnancy to result if implanted by a certified embryologist.

LOT 14B 4 SEXED FEMALE IVF EMBRYOS

SILVEIRAS STYLE 9303
SILVEIRAS FORBES 8088
COLLISON FOREVER LADY 1622

ASHW WHO DA MAN
JSUL WHO DAT RAPTOR 6976D ET
JSUL SULTRY 6640



SILVEIRAS FORBES 8088
SIRE OF LOT 14B EMBRYOS



SILVEIRAS FORBES 8088
SIRE OF LOT 14B EMBRYOS



PCC WHO DAT 9847G
DAUGHTER OF LOT 14 DONOR
AND MATERNAL SISTER TO LOT 14B

- The sire of this mating, Forbes, has a royally built, banner winning pedigree. He is sired by the famous Silveiras Style and complemented maternally with the great Forever Lady cow family going back to EXAR Lutton and the Roth Forever Lady 2706. He is long-bodied and moves freely with plenty of flex, coupled with the right structure and a very attractive phenotype. He has a pedigree that is built to win and has done that being named The ROV Show Bull of the Year after being slapped Grand Champion Bull at the 2021 Cattlemen's Congress and Atlantic National Angus Show. He was also Supreme Champion Open Angus Animal at Atlantic National Angus Show, Grand Champion Bull at the 2021 Western National Angus Futurity and Grand Champion Bull at the 2020 Kansas State Fair as well as being named the 2020 Grand Champion Angus Bull at the Fort Worth Stock Show & Rodeo, the 2020 Grand Champion Angus Bull at the Houston Livestock Show & Rodeo and the Reserve Grand Champion Angus Bull at the 2019 ROV American Royal Angus Show.

- Travis said "I'm willing to bet our best calves next fall will be sired by Forbes" and from this cow, that should help make this a sound wager.
- Guarantee of at least one pregnancy to result if implanted by a certified embryologist.

LOT 15

PCC JSUL THE FRANCHISE 1322J

DOB	REG. #	TATTOO			
8/10/21	4T1907	1322J			
CED	BW	WW	YW	MILK	
8	2.5	51	77	17	9.88% CHI
9.883% CA 64.873% AN 11.86% MA 13.385% XX					

HIGG CLOCKWORK 88C
 HIGG FRANCHISE 868F
 HIGG MS ADVANTAGE 468B
 BHCS HEAT SEEKER 23
 SSUL SULTRY 6640-2
 JSUL MA X AN 6651

- This impressive daughter of the FWSS Champion "Franchise" is one of Travis and Beth's favorites of this offering in terms of show and donor potential with her combination of flawless phenotype and impeccable pedigree.
- Her dam is a cell clone of the famous Sullivan foundation donor, 6640 that has produced more national champions and supreme champions at every level than any female in the country becoming the most dominant Chi female line in recent history. Whether you want to produce your own donor cows or the next supreme champion at the NAILE or American Royal, this daughter of SSUL Sultry 6640-2 has the potential to do it all.
- Sells open.



HIGG FRANCHISE 868F
 SIRE OF LOTS 15 & 16

PCC

LOT 16

ACT. BW
 77 LBS

PCC JSUL THE FRANCHISE 1318J

DOB	REG. #	TATTOO			
4/20/21	4T0991	1318J			
CED	BW	WW	YW	MILK	
8	3.1	53	81	17	13.05% CHI
13.043% CA 56.93% AN 11.374% MA 18.653% XX					

HIGG CLOCKWORK 88C
 HIGG FRANCHISE 868F
 HIGG MS ADVANTAGE 468B
 ASHW WHO DA MAN
 JSUL JAZZY JALYNN 750E
 JSUL JALYNN'S DIRECTION 904A

RETAINING 1/3 SEMEN INTEREST

- This TH free and PH free high percentage Chi herd sire prospect offers a unique blend of style and balance and stoutness of bone while maintaining adequate shape and base width on an impeccable structural foundation.
- The dam of lot 16, JSUL Sassy Jalynn 750E, was Champion AOB Heifer at the 2018 American Royal and NAILE. She was also selected as the Grand Champion Chianina Female in the Open Show at the 2019 NAILE. A full sister to 750E was selected at 2019 Iowa State Fair 4-H Heifer Show as the 4th Overall Female. These two Champions stem from the ever popular and versatile donor cow, SULL Jalynn 0904, or better know as "Steiner".
- A maternal sister to lot 16, JSUL PCC SASSY MVP 0528H, was the \$15,000 selection of Gus Goodsen from the 2021 Limited Edition Sale at PCC.
- Ranks in the top 20% for Milk



JSUL PCC SASSY 0528H
 MATERNAL SISTER TO LOT 16



JSUL JAZZY JALYNN 750E
 DAM OF LOT 16

ASHLEY/WHO DAT 1602 HIGH CHI

LOT 17

PCC GS PEACHES 859J

DOB	REG. #	TATTOO			
9/5/21	4T1894	859J			
CED	BW	WW	YW	MILK	HIGH CHI
6	3.2	50	74	12	6.91%
6.908% CA 41.084% AN 18.599% MA 33.41% XX					

JSUL NIGHT TRIPS
JSUL NIGHT MOVES 6326D ET
JSUL WHO DAT 1602

MONOPOLY
PCC ASHLEY 859G
PCC ASHLEY 859E

- This high Chi is sound, elegant, and gentle...one of our best high Chis this spring and we feel she will only get better with age and attention.
- Dam was a big time show winner for Rilee Hall and is a full sister to the 2012 Reserve Grand Champion Steer at San Antonio and descends from the foundation Ashley (now deceased), a purebred Charolais female that has never missed in the Standridge Cattle and Pembrook programs.
- Sells open.



RES. GRAND CH. STEER SAN ANTONIO
FULL SIB TO DAM OF LOT 17



RES. SUPREME FEMALE AUSTIN
MATERNAL SISTER TO DAM OF LOT 17



LOT 18

PCC JSUL WHO'S DAT 1556J ET

DOB	REG. #	TATTOO			
12/2/21	4T1904 & 4019539	1556J			
CED	BW	WW	YW	MILK	HIGH CHI/50% SIMI
9	3	63	92	16	6.54%
6.54% CA 19.53% AN 12.495% MA 61.435% XX					

W/C RELENTLESS 32C
JSUL SOMETHING ABOUT MARY 842I
JBSF PROUD MARY

ASHW WHO DA MAN
JSUL WHO DAT 1602
JSUL DREAM MAKER HS46

- This heifer is dual-registered high Chi and percentage Simmental. She is extremely gentle and huge boned with excellent structure and outline.
- The dam of lot 18, JSUL WHO DAT 1602, is one of the most famous NAILE and American Royal Supreme Champions to have ever walked the green chips, shown by Luke Elder.
- Maternal sisters to lot 18 include JSUL WHO DAT WHITNEY 091H ET, Sara Sullivan's heifer that was named Champion in the Junior Chi Show at Cattleman's Congress that went on to be named Reserve Grand Champion Female at the 2021 Chi Junior National as well as the Grand Champion, JSUL MO WHO DAT 9022G ET shown by Brock Cottrell, and Reserve Grand Female, JSUL WHO DAT COLBURN 0197H shown by Kaiser Show Cattle, in the Open Chi Show at the inaugural Cattleman's Congress and the \$22,500 selection by Cora Hardy from the 2020 PCC Fall Production Sale that just recently won Grand Champion Chianina Heifer at the 2021 Cowgirls in Cowtown, JSUL PCC LOOK AT DAT 0266H ET. In the Fall 2021 PCC Sale, two daughters of 1602 grossed \$17,000. They stem from the very proven and consistent Who Da Man/6640 mating that has dominated the best of the best shows and are some of the most sought-after donor cows in the country. JSUL WHO DAT 1602 has worked extremely well with multiple bulls.
- Maternal sibs sell as lots 19 and 20.
- Sells open.



JSUL WHO DAT 1602
DAM OF LOT 18



PCC LOOK AT DAT 066H
MATERNAL SIB TO LOT 18



SOMETHING ABOUT MARY
SIRE OF LOT 18

LOT 19

PCC JSUL WHO'S DAT 1233J ET

DOB	REG. #	TATTOO			
6/9/21	4T1906	1233J			
CED	BW	WW	YW	MILK	
9	2.5	61	88	11	6.54% HIGH CHI

6.54% CA | 69.53% AN | 12.495% MA | 11.435% XX

DAMERON FIRST CLASS

COLBURN PRIMO 5153

SILVEIRAS SARAS DREAM 1339

ASHW WHO DA MAN

JSUL Who Dat 1602

JSUL DREAM MAKER HS46

- We've sold a pile of females from this mating as referenced in the footnote and they have all been really good and competed at a high level.
- Maternal sibs sell as lots 18 and 20.
- Sells open.



JSUL MO WHO DAT 9022G ET
FULL SIB TO LOT 19



JSUL WHO DAT COLBURN 0197H
FULL SIB TO LOT 19



JSUL WHO DAT WHITNEY 091H ET
FULL SIB TO LOT 19

PCC

LOTS 19 & 20

- Lots 19 and 20 maternal sibs out of JSUL WHO DAT 1602 who is one of the most famous NAILE and American Royal Supreme Champions to have ever walked the green chips, shown by Luke Elder.
- Full sisters to lot 19 and maternal sibs to lot 20 include JSUL WHO DAT WHITNEY 091H ET, Sara Sullivan's heifer that was named Champion in the Junior Chi Show at Cattleman's Congress that went on to be named Reserve Grand Champion Female at the 2021 Chi Junior National as well as the Grand Champion, JSUL MO WHO DAT 9022G ET shown by Brock Cottrell, and Reserve Grand Female, JSUL WHO DAT COLBURN 0197H shown by Kaiser Show Cattle, in the Open Chi Show at the inaugural Cattlemen's Congress and the \$22,500 selection by Cora Hardy from the 2020 PCC Fall Production Sale that just recently won Grand Champion Chianina Heifer at the 2021 Cowgirls in Cowtown, JSUL PCC LOOK AT DAT 0266H ET. They stem from the very proven and consistent Who Da Man/6640 mating that has dominated the best of the best shows and are some of the most sought-after donor cows in the country. JSUL WHO DAT 1602 has worked extremely well with multiple bulls.



MCS

LOT 20

ACT. BW
83 LBS

PCC JSUL SPECIAL VALUE 1212J ET

DOB	REG. #	TATTOO			
3/2/21	4T1908 & 529550	1212J			
CED	BW	WW	YW	MILK	
8	3.2	47	68	13	1/4 MAINE/HIGH CHI 7.67%CHI

7.669% CA | 36.678% AN | 43.355% MA | 12.299% XX

NMR MATERNAL MADE

ML MVP 23E ET

MISS GREEN VALLEY 007K

ASHW WHO DA MAN

JSUL Who Dat 1602

JSUL DREAM MAKER HS46

RETAINING 1/3 SEMEN INTEREST

- We love the combination of style, color, and power this dual-registered high Chi/Maintainer herd sire prospect brings to the table to complement his genetic base that is as good as it gets.
- TH free and PHA free.
- Ranks in the top 10% for WW; top 15% for YY; top 20% for Marb; top 25% for RE.
- Maternal sibs sell as lots 18 and 19.



ML MVP 23E ET
SIRE OF LOT 20



JSUL WHO DAT 1602
DAM OF LOTS 19 & 20



MCS



MCS



TJSC END GAME 61G ET
SIRE OF LOT 21



JSUL WHO DAT 1602
FULL SIB IN BLOOD TO DAM OF LOT 21



JSUL WHO DAT GINGER
FULL SIB IN BLOOD TO DAM OF LOT 21



MCS



ECAX DIVA 5713
DAM OF LOT 22



MINN CLASS ON CLASS 77E ET
SIRE OF LOT 22

LOT 21

ACT. BW
80 LBS

PCC JSUL GAME OVER 1325J ET

DOB	REG. #	TATTOO			
4/14/21	410990 & P526663	1325J			
CED	BW	WW	YW	MILK	
7	3.7	66	99	15	1/4 MAINTAINER AND 6.54% HIGH CHI

6.54% CA | 32.442% AN | 46.238% MA | 14.78% XX

BK XIKES X59
TJSC END GAME 61G ET
TJSC MISS HARMONY 58C

ASHW WHO DA MAN
JSUL WHOA DAT SULTRY 8196
SSUL SULTRY 6640-2

RETAINING 1/3 SEMEN INTEREST

- When you see Game Over in person, you will appreciate how complete and super sound he is. He has big feet, and plenty of bone, with all four pointing right where they need to. When you get behind him you love the power and true shape he displays in such a neat looking package.
- This dual-registered high Chi/Maintainer herd sire prospect is triple clean... TH free, PHA free, and DS free.
- The sire of lot 21, TJSC END GAME 61G ET, was named Champion Bull at the 2019 NAILE and 2020 NWSS and has sired many champions and top sellers since he concluded his successful career.
- His dam stems from the very proven and consistent Who Da Man/6640 mating that has dominated the best of the best shows and are some of the most sought-after donor cows in the country.



JSUL WHO DAT RAPTOR
FULL SIB IN BLOOD TO DAM OF LOT 81



JSUL WHO DAT LADY
FULL SIB IN BLOOD TO DAM OF LOT 81

LOT 22

PCC ECAX CLASSY 1571J

DOB	REG. #	TATTOO			
12/11/21	PENDING	1571J			
CED	BW	WW	YW	MILK	
					50% MAINTAINER/6.303% CHI

DADDYS MONEY 55Z
MINN CLASS ON CLASS 77E ET
JSC KATIE 5S

LFCC UNSTOPPABLE 727X
ECAX DIVA 5713
ECAX CLASSY DIVA 9713W

- This dual-registered high Chi/Maintainer is as elegant as they come. Flash and femininity describe this December female that is one of the coolest built heifers in the offering. She is super extended and attractive through her front end, while maintaining a look of broodiness from her shoulder back while maintaining impeccable structure.
- Sells open.

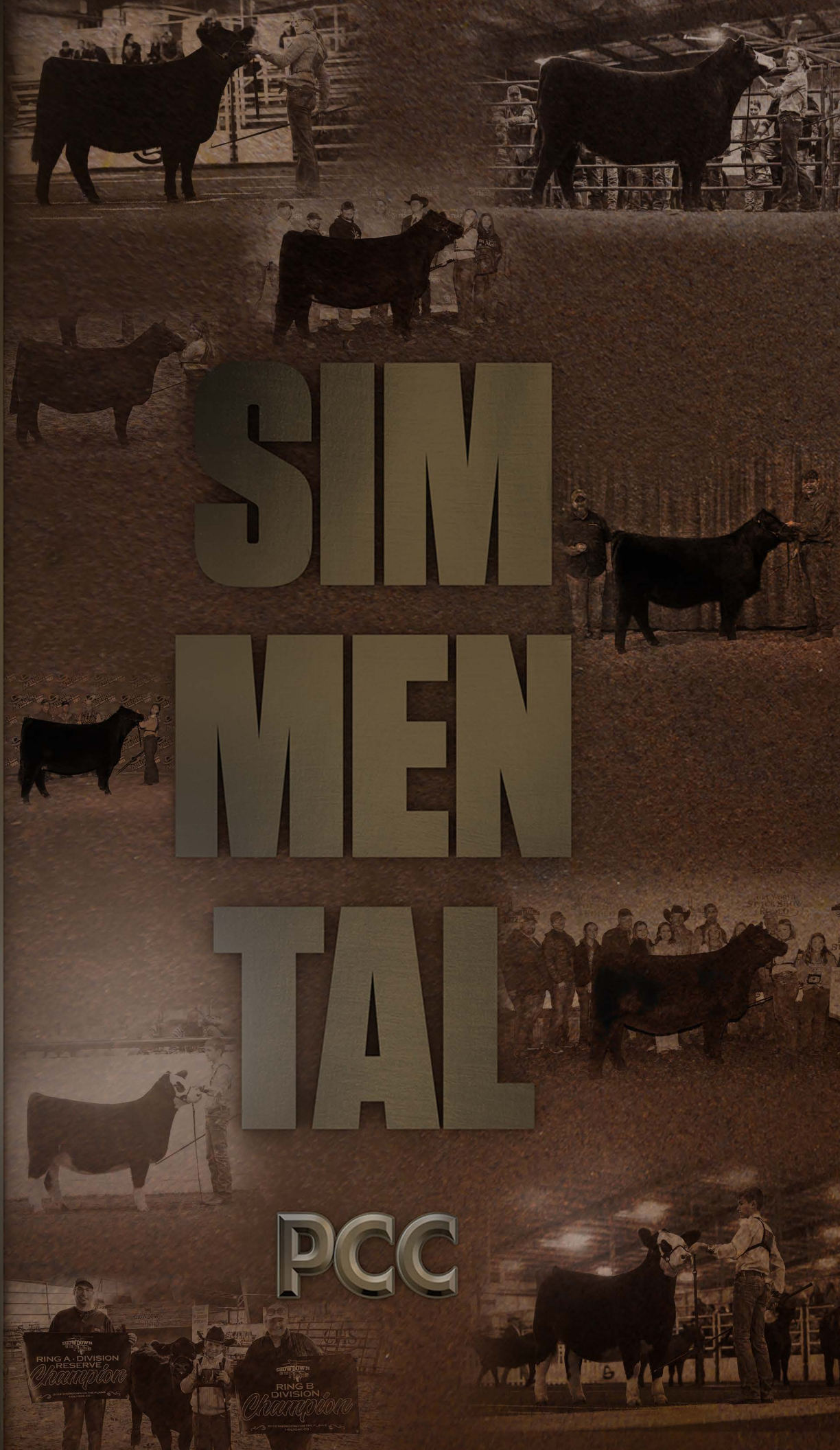
S I M M E N T A L

SIM

MEN

TAL

PCC





P E M B R O O K



1098J
MATERNAL SISTER TO LOT 23 FROM PCC FALL SALE
SHOWN BY GUS GOODSON



WPRF WISE LOLA
DAM OF LOT 23



WPRF WISE LOLA
DAM OF LOT 23

LOT 23

PCC JSUL ABOUT LOLA 1539J

DOB	REG. #	TATTOO			
11/28/21	4019538	1539J			
CED	BW	WW	YW	MILK	PB SM
12.9	1.7	77.5	111.4	16.3	

W/C RELENTLESS 32C
JSUL SOMETHING ABOUT MARY 842I
JBSF PROUD MARY
SS/PRS TAIL GATER 621Z
WPRF WISE LOLA
LIMESTONE LOLA W217

PCC

- This is one of our favorites in sale and a smoking good purebred.
- Our SAM daughters have been awesome and include the \$60,000 top selling lot from the fall PCC Sale, ALL ABOUT ROSIE 1115J, the \$25,000 lot 1 from the Pembroke Cattle Co. Holiday Lights LiveOnline™ Sale 2021 and the 2022 Reserve Champion Simmental at Ft. Worth for the Weems family.
- Along with Travis and Beth, lot 23 has been Landon and Bret's favorite purebred this winter. She is as maternal, smooth and impressive in her design as any female in the offering. We love the true and natural rib shape you see in this one. Her outline and silhouette are flawless with incredible structure that spells longevity.
- The dam of lot 23, WPRF WISE LOLA, was the reserve grand champion % Simmental female at the 2018 Junior National and has been a staple in the Sullivan donor program since. This ¾ blood is becoming one of Sullivan's favorite females that is very versatile in her mating options to make 7/8 purebred cattle. She had a really nice Quantum Leap full sister to lot 38 in their 2020 fall calf crop. Trust me when we say this cow is getting it done. You don't want to miss out on this daughter.
- Eligible for the San Antonio Simmental and Simbrah Super Bowl.
- Sells open.



1230J
MATERNAL SIB TO LOTS 24, 25 & 26



JSUL MARY IS PROUD 8047F
MATERNAL SIB TO LOTS 24, 25 & 26

LOT 24

PCC JSUL PROUD MARY 1532J

DOB	REG. #	TATTOO			
10/27/21	4019542	1532J			
CED	BW	WW	YW	MILK	PB SM
12.5	0.7	77.6	115	24.7	

HTP/SVF DURACELL T52
 THSF LOVER BOY B33
 RP/MP RIGHT TO LOVE 015U
 YARDLEY HIGH REGARD W242
 JBSF PROUD MARY
 BROOKS STEELMAGNOLIA X57

• Sells open.

JBSF PROUD MARY
DAM OF LOTS 24, 25 & 26



LOTS 24-26

- These flush sisters have been the talk at PCC by many of the visitors that have come to look at our offering of Simmental genetics. Lots 24 thru 26 are so complete in terms of structure balance and eye appeal. For purebreds, we love the way the head and neck come up high out of their shoulder and their ability to really give you that killer look from the side. After their show career these females carry as much revenue generating potential as any females in the offering.
- Their dam, JBSF Proud Mary is quickly proving herself and becoming one of the most consistent donors at Sullivan Farms to ever walk. In her first calf crop her progeny by HPF Quantum Leap Z952 has dominated the showing. JSUL Mary Is Proud 8047F a maternal sister to lots 24 thru 26, was Calf Champion and Reserve Overall Purebred Simmental Female at the 2018 NAILE Open Show and she also went on to be selected Grand Champion Simmental Female at the 2019 FWSS Open Show. Another maternal sister, JSUL Leapin Mary 8108, campaigned by Makenzie Hickman, sold through the Schaeffer/Tice Sale for \$45,000 and has been one of the most successful heifers on the jackpot circuit in the country while a full sister to lots 24 thru 26 just sold for \$100,000 in the recent Schaeffer/Tice Sale.
- Three maternal sisters to lots 24 thru 26 sold for a total of \$50,000 in the 2021 Fall PCC Sale to average \$16,667.
- The Proud Mary name carries as much regard and recognition as anyhow family within the Simmental breed.
- Eligible for the San Antonio Simmental and Simbrah Super Bowl.



LOT 25

PCC JSUL SPECIAL MARY 1554J

DOB	REG. #	TATTOO			
10/12/21	4019544	1554J			
CED	BW	WW	YW	MILK	PB SM
12.5	0.7	77.6	115	24.7	

HTP/SVF DURACELL T52
 THSF LOVER BOY B33
 RP/MP RIGHT TO LOVE 015U
 YARDLEY HIGH REGARD W242
 JBSF PROUD MARY
 BROOKS STEELMAGNOLIA X57

• Sells open.



1030J
 MATERNAL SIB TO LOTS 24, 25 & 26

PCC



LOT 26

PCC JSUL SUPER MARY 1559J

DOB	REG. #	TATTOO			
11/2/21	4019543	1559J			
CED	BW	WW	YW	MILK	PB SM
12.5	0.7	77.6	115	24.7	

HTP/SVF DURACELL T52
 THSF LOVER BOY B33
 RP/MP RIGHT TO LOVE 015U
 YARDLEY HIGH REGARD W242
 JBSF PROUD MARY
 BROOKS STEELMAGNOLIA X57

• Sells open.



1256J
 MATERNAL SIB TO LOTS 24, 25 & 26

PEMBROOK



JSUL REBA'S FANCY 8375F
DAM OF LOT 27

LOT 27

PCC JSUL BANKIN ON REBA 1500J

DOB	REG. #	TATTOO			
7/25/21	4019546	1500J			
CED	BW	WW	YW	MILK	
11.7	2	71.7	105.5	21.9	3/4 SM 1/4 AN

W/C LOADED UP 1119Y
W/C BANKROLL 811D
MISS WERNING KP 8543U
FHEN HALFTIME A127
JSUL REBA 'S FANCY 8375F
DAF REBA C85

PCC

- This year's percentage Simmental offering is deep, and this powerhouse female is just another one of the reasons why. From the ground up Reba exhibits the excellent feet, pasterns and agility to make her a standout when on the move. On the standstill she just as good being nice outlined, enormous bodied and extra maternal in the way she presents herself.
- The real power behind this Reba is her dam. JSUL REBA 'S FANCY 8375F was the dominate 2020 NJHS Grand Champion Percentage heifer. She was also the Champion Bred and Owned female at the 2019 NJHS.
- Coupled with the popular sire of champions, Bankroll, this pedigree along with her added body shape, eye appeal, and structural correctness will make her a donor candidate that will raise them to compete at any level.
- Her grand-dam, DAF Reba C85, has been a dominate producer of elite females. DAF Reba C85 herself was the 2016 Grand Champion Percentage Simmental Female in the Jr. Show at the NWSS and went on to be the Reserve Supreme at the 2016 Iowa Beef Expo as well as 5th overall female at the National Jr. Heifer Show.
- Sells open.



LOT 28

PCC JSUL LOVIN CRYSTAL 1542J

DOB	REG. #	TATTOO			
9/18/21	4019540 & AR4334804	1542J			
CED	BW	WW	YW	MILK	
12	0.6	68.7	102.1	20.6	1/2 SM 1/4 AN 1/4 SS

• Sells open.

LOTS 28 & 29

• These flush sisters are among the most complete and fault free in the offering. Their strengths start from the ground up where their ability to move will make them strong contenders for the long haul at any level. They have incredible natural body depth and shape combined into a smooth maternal design with the right kind of muscle shape and look through their front one-third.

• Lots 28 and 29 are flush sisters to JSUL CRYSTAL LOVER 9848G who started off her show career with a bang at the 2021 Cattleman's Congress where she was champion percentage female in the Open and Junior show and went onto be selected the Supreme Female in the Jr show. She carried that success to the National Jr Heifer show in Grand Island, NE where she was selected the grand champion percentage female.

• Females of this quality don't happen by mistake, their donor dam, SULL Styling Crystals 7022E, is quickly becoming one of the top donors in the country. She herself was a champion on the highest level as she was selected as the Grand Champion Shorthorn Plus at the 2018 National Jr Heifer show. We have seen a lot of consistency when mating popular Simmental sires to elite SILVEIRAS Style daughters.

• The sire of these flushmates, Lover Boy, was the 2016 NWSS Champion Simmental Bull. Lover Boy is a bull that Griswold Cattle has followed closely since Yardley's bought him in Denver. A full brother to Quantum Leap, Lover Boy is out of a dam that was champion at the American Royal.



JSUL CRYSTAL LOVER 9848G
FULL SIB TO LOTS 28 & 29



JSUL CRYSTAL LOVER 9848G
FULL SIB TO LOTS 28 & 29

PCC



HTP/SVF DURACELL T52
THSF LOVER BOY B33
RP/MP RIGHT TO LOVE 015U

SILVEIRAS STYLE 9303
SULL STYLING CRYSTALS 7022E ET
SULL LADY CRYSTAL-434P-1 ET

LOT 29

PCC JSUL EXTRA CRYSTAL 1518J

DOB	REG. #	TATTOO			
11/30/21	4019541 & AR4334805	1518J			
CED	BW	WW	YW	MILK	
12	0.6	68.7	102.1	20.6	1/2 SM 1/4 AN 1/4 SS

• Sells open.



THSF LOVER BOY B33
SIRE OF LOTS 28 & 29

PEMBROOK

GLAMOUR GIRL/ELLA % SIMMENTAL

LOT 30

PCC JSUL GLAMOUR GIRL 1525J

DOB	REG. #	TATTOO			
10/20/21	4019545 & 411905	1525J			
CED	BW	WW	YW	MILK	
13.2	-0.1	65.7	96.3	20.1	1/2 SM 3/8 AN 1/16 CA 1/16 MA

HTP/SVF DURACELL T52
 THSF LOVER BOY B33
 RP/MP RIGHT TO LOVE 015U
 SILVEIRAS STYLE 9303
 UDELL GLAMOUR GIRL 18B
 JSUL RED THUNDER 9051W



- This dual registered ½ Blood Simmental / High Chi shows two ways and is out there in terms of her color and design! She has been one of Travis's favorites all summer. Her red color and a cocky attitude guarantee that this female will always have a show ring presence like no other. From the ground up she's as good as it gets. Very agile on the move, monster middled, and as long and pretty necked as you can make one.
- Maternal sister to the \$32,500 selection of Finn Romanchuk from the 2021 Fall PCC Sale that was a favorite in that event and is being campaigned successfully as we speak.

- We think this female has the potential to make a run at any of the major shows throughout the country.
- Her dam, Udell Glamour Girl 18B stems from the popular Style/Red Thunder mating from Udell Cattle Co. 18B has literally worked to every bull she has been mated to,

from multiple Simi sires, to Shorthorn, and Chi bulls. 18B's daughter by Quantum Leap was the \$62,000 JSUL/TSSC Beth Dutton 0113H, a featured lot in the record-setting phone bid-off that took place in Hagerstown, Indiana, in September 2020. She was selected Grand Champion Overall Female at the 2020 Cattle Battle, Supreme Overall at the 2020 King of the Ridge Showdown and most notably was selected as the 2020 NAILE Reserve Grand Champion AOB Female in the Junior Show. Beth Dutton was also selected as Calf Champion in the open and junior shows at the 2020 NAILE. Another daughter of 18B shown by Ashley Moore was top 5 at the 2019 Illinois State Fair and a division winner at the 2019 NJHS in Louisville, KY.

- Eligible for the San Antonio Simmental and Simbrah Super Bowl.
- Sells open.



PCC BROKER GIRL 1216J PCC
 MATERNAL SIB TO LOT 30

PCC

LOT 31

PCC ECAX PCC ELLA 137J

DOB	REG. #	TATTOO
11/22/21	Pending	137J

50% SIMMENTAL & LOW CHI

CNS PAYS TO DREAM T759
 LLSF PAYS TO BELIEVE ZU194
 CNS PAYS TO DREAM T759
 SILVEIRAS STYLE 9303
 MINN ELLA 91F ET
 MINN ELANOR 1X



MCS

- Lot 31 is impressive in terms of her overall balance of power, structure, belly, and just "make you look" eye appeal. She stands perfectly on a huge foot and his feet and leg structure is impeccable.
- The sire of lot 31, Pays to Believe, was named Grand Champion Simmental Bull at the 2013 NAILE.
- Sells open.



PCC BROKER GIRL 1216J PCC
 MATERNAL SIB TO LOT 30



PCC BROKER GIRL 1216J PCC
 MATERNAL SIB TO LOT 30



UDELL GLAMOUR GIRL 18B
 DAM OF LOT 30



MINN ELANOR 1X
 GRANDDAM OF LOT 31



LLSF PAYS TO BELIEVE ZU194
 SIRE OF LOT 31



L I M -

F L E X

L I M - F L E X

PCC



MCS



SBLX XTRA SPECIAL
DAM OF LOT 32

PCC

LOT 32

PCC KLS MANUELA

DOB 8/25/21	REG. # Pending	TATTOO 810J	LIM
MAGS AVIATOR			
CJSL CREED 5042C			
CJSL 2090Z			
DHVO DEUCE 132R			
SBLX XTRA SPECIAL			
MAGS MANUELA			

- This beautiful necked heifer is a crowd favorite that has enormous rib shape, is athletic in her structure, and built for the long haul.
- The dam of lot 32, SBLX Xtra Special 214X, is a past champion who does an outstanding job producing cattle breeders demand. She is also the dam of the 2019 NJLS&C Reserve Champion Limousin Female. SBLX Xtra Special 214X has a perfectly engineered skeleton and stunning maternal profile that made her not only a “can’t miss me” female in the show ring, but it also has made her one of the highest valued young donors in the breed at \$106,000. The DHVO Deuce/MAGS Manuela mating has produced some of the finest cattle to set foot on ground, and SBLX Xtra Special is no exception. She is maternal sister to SBLX Znote.
- The sire of lot 32, CJSL Creed 5042C is the powerful MAGS Aviator son who completely took the Limousin breed by storm. His dam is a daughter of MAGS Xukalani. SBLX Xtra Special needs no introduction- she’s known across the industry as one of the greatest Limousin donor females in the breed. She is a daughter of DHVO Deuce 132R and out of the famed MAGS Manuela donor. She is a maternal sister to the impressive SBLX Znote female. Now is your opportunity to cultivate your program with highly predictable and proven genetics from some of the all stars within the breed. These three conventional embryos will be 76.5% Limousin, homozygous black and double polled.
- Sells open.



ELCX KINGS LANDING 599 D ET
SIRE OF LOT 33

LOT 33

PCC KLS ANNIE

DOB	REG. #	TATTOO
9/3/21	Pending	302J

LIM

- Sells open.

LOTS 33 & 34

- The dam of these flush sisters, PBRS 5136C, is a daughter of MAGS Anchor, the LH War Hero 195W son. Her dam is BUF Eppionia 7307, a daughter of SAV 8180 Traveler 004. These show and donor prospects offer an elite pedigree that combines DHVO Deuce 132R, EXLR New Generation 071M, SAV 8180 Traveler 004, MAGSWL Usual Suspect 538U and AUTO Rebeca 292S- they'll be a true force!
- The sire of these flush sisters, ELCX Kings Landing 599D, is the MAGS Xyloid son who has garnered the attention of numerous producers across the country for his impeccable ability of siring individuals with look, power and substance. His dam is the one and only WLR Prada female. WLR Prada is one of the most consistent producers of champions within the breed that go on to make world-class sires and donor females. She is a daughter of MAGSWL Usual Suspect 538U and the infamous AUTO Rebeca 292S donor.

PCC



PBRS 5136C ET
DAM OF LOT 34

LOT 34

PCC KLS ERICA

DOB	REG. #	TATTOO
9/2/21	Pending	454J

LIM

- Sells open.

PEMBROOK



RLBH AIR FORCE ONE
SIRE OF LOT 35



WLR EDEN ET
DAM OF LOT 35

LOT 35

PCC KLS BASIL HAYDEN

DOB	REG. #	TATTOO
02/28/2021	Pending	1J
EF XCESSIVE FORCE RLBH AIR FORCE ONE EF YAFFA 821Y		LIM-FLEX 56%
SILVEIRAS STYLE 9303 WLR EDEN ET MAGS PHANTOMS PRIZE		

PCC

- This is another impressive daughter of the great RLBH Air Force One. Basil Hayden is freak-necked, flawless in her shoulder and she's great on her feet and legs. She's a head-turner if we've ever seen one! RLBH Air Force One is the many-time National Champion Lim-Flex bull and has over 300 registered progeny on the ground today that are sweeping shows and sales across the entire country.
- The \$70,000 valued dam of lot 35, WLR Eden ET, is a full sib to to the popular sire, WLR Final Call and was the 2019 NWSS Grand Champion Lim-Flex Female Junior Show and 2018 Reserve Grand Champion Lim-Flex female Junior and Open Show. Davis Ranches of Brownwood, TX and Sullivan Farms, Dunlap, IA are the owners. WLR Eden ET is the Silveiras Style 9303 daughter that is quite possibly one of the very best cows in the breed today. She is out of the renowned MAGS Phantoms Prize donor female.
- Sells open.



AUTO DANA 265D
DAM OF LOTS 36 & 37

LOT 36

HOMO POLLED
HOMO BLACK

PCC PBRS JADE 158J ET

DOB	REG. #	TATTOO		
2/22/21	LFF2433796	PBRS 158J		
CED	BW	WW	YW	MILK
10	2.3	64	103	19

LIM-FLEX

COTTAGE LAKE BORDER AGENT
MJ ELITE AGENT 17E
MAGS XESTURGY
MAGS AVIATOR
AUTO DANA 265D
AUTO AJAY 206A

- Sells open.

LOTS 36 & 37

• Lots 36 and 37 are powerful flush sisters out of the \$36,000 valued AUTO DANA 265D, who was the 2017 National Western Grand Champion Junior Female. AUTO Dana 265D is a 54% Lim-Flex daughter of MAGS Aviator from the powerful donor at P Bar S Ranch, AUTO Ajay 206A, a daughter of SAV Brave and the famous, MAGS Manuela. AUTO Dana 265D is homozygous polled, homozygous black and one heck of a female. She is perfect in her foot size, structural soundness and design. She is massive in her rib shape and extremely deep in her body capacity. She is nearly perfect in her lines, down her top and out of her rump. Her elite phenotype and impeccable pedigree places her in a class by herself.

- 50% Embryo Interest in their dam sold for \$18,000 in the 2019 Night on the Town Sale in Las Vegas.

PCC



LOT 37

HOMO POLLED
DOUBLE BLACK

PCC PBRS JOLLY 16J ET

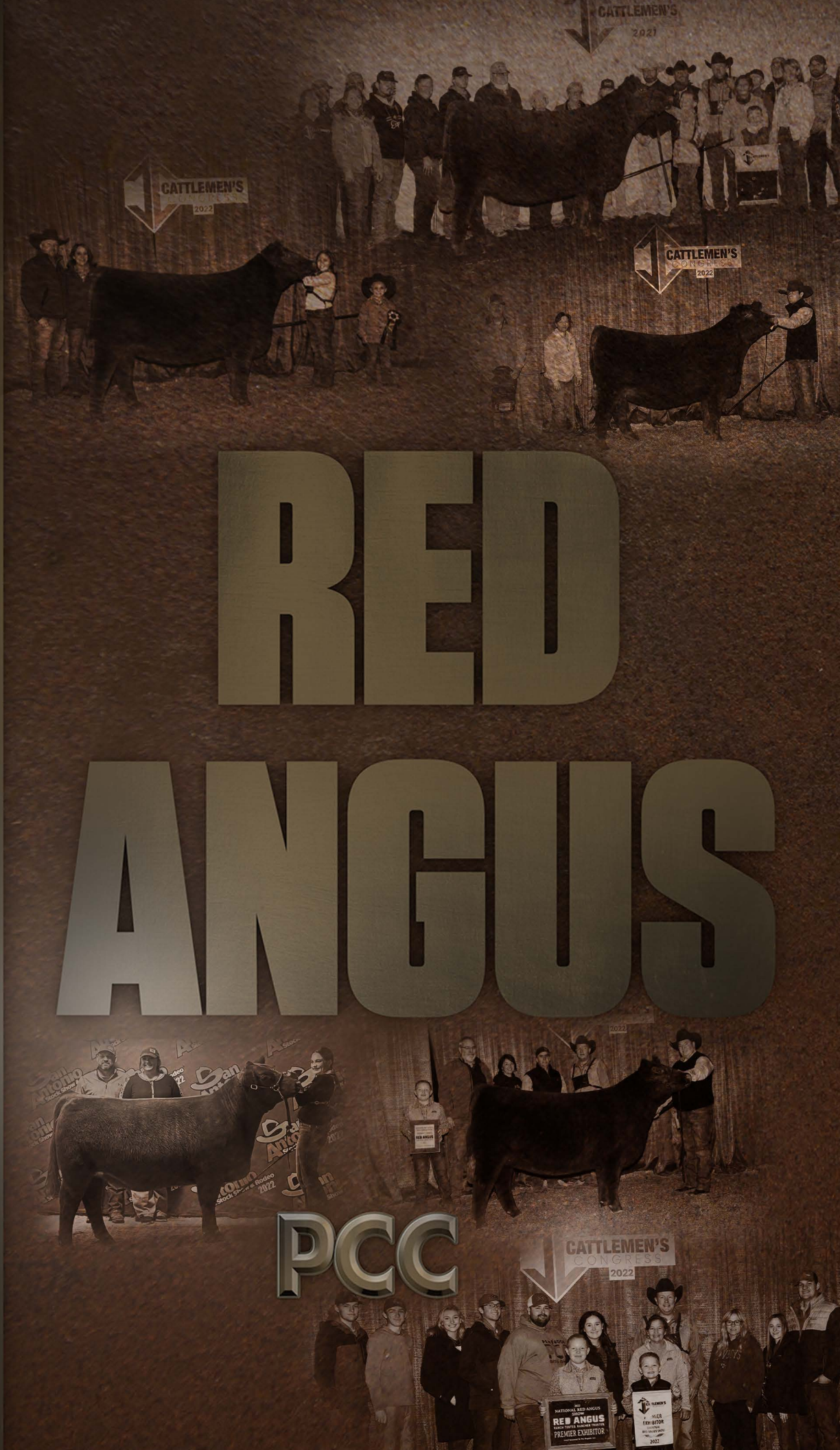
DOB	REG. #	TATTOO		
1/2/21	LFF2442564	PBRS 16J		
CED	BW	WW	YW	MILK
12	3.7	85	137	25

LIM-FLEX

HUNT CREDENTIALS 37C ET
HUNT GAMBLER 140G
HUNT MISS ACE 135C
MAGS AVIATOR
AUTO DANA 265D
AUTO AJAY 206A

- Sells open.

RED ANGLUS



CATTLEMEN'S
2022

CATTLEMEN'S
2021

CATTLEMEN'S
2022

RED ANGLUS



PCC

CATTLEMEN'S
CONGRESS
2022





MCS



155J PCC
MATERNAL SIB TO LOTS 38 & 39



DAMAR 101J BLOCKANA A121
DAM OF LOTS 38 & 39



MANN RED BOX 55C
SIRE OF LOT 38



LOT 38

ACT. BW
72 LBS

PCC DKBF DOMINATOR 472

DOB	REG. #	TATTOO		
2/16/21	4561105	472		
CED	BW	WW	YW	MILK
11	0.9	72	119	20

100% AR

SLGN WIDELOAD 920W
MANN RED BOX 55C
PELTON MISS AJA 0839U

RED FINE LINE MULBERRY 26P
DAMAR 101J BLOCKANA A121
DFRA BLOCKANA 101

RETAINING 1/3 SEMEN INTEREST

- With the famous sire of lot 38 now-deceased, this son could be the one to take his place with his combination of phenotype, pedigree, and numerical profile.
- Ranks in the top 10% for YW; top 15% for WW.

LOTS 38 & 39

- The great dam of lots 38 and 39 was purchased out of the Cloud 9 Dispersal and was one of their high sellers for \$26,000 where her natural heifer calf and maternal sister to lots 38 and 39 commanded \$25,000 as well.
- Two maternal sisters to lots 38 and 39 grossed \$30,750 in the Fall 2021 PCC Sale to average an impressive \$15,375.
- The dam of lots 38 and 39 is one powerful beast and is one of the true pride and joy females at Brown Farms.

PCC

LOT 39

ACT. BW
72 LBS

PCC DKBF HOMETOWN 610

DOB	REG. #	TATTOO		
4/2/21	4561107	610		
CED	BW	WW	YW	MILK
12	-0.4	75	125	23

100% AR

LJC MISSION STATEMENT P27
SILVEIRAS MISSION NEXUS 1378
SILVEIRAS DAORV 8399

RED FINE LINE MULBERRY 26P
DAMAR 101J BLOCKANA A121
DFRA BLOCKANA 101

RETAINING 1/3 SEMEN INTEREST

- We feel like this Nexus sired herd sire prospect out of Blockana is a top Red Angus sire prospect! His unique blend of mobility, stoutness of bone, thickness, and outline make him special.
- A flush sister sold for \$21,000 in the 2021 PCC Fall Sale to Madeline McClain.
- Ranks in the top 5% for YW; top 10% for WW.



MCS



SPUR BARMAID 2639E
DAM OF LOT 40



WEBER REFORM 618
SIRE OF LOT 40

LOT 40

ACT. BW
70 LBS

PCC DKBF RENOVATION 101J

DOB	REG. #	TATTOO			
3/23/21	4561103	101J			
CED	BW	WW	YW	MILK	100% AR
13	-1.4	67	112	22	

BIEBER ROLLIN DEEP Y118
WEBER REFORM 618
BJF LANA'S EQUAL 8021U
RAVISHING COWBOY WAY
SPUR BARMAID 2639E
BECKTON BARMAID U547 HH

RETAINING 1/3 SEMEN INTEREST

- We love the true rib, volume, and power this herd sire prospect brings to the table.
- When getting started in the Red Angus, we knew we needed an outlier type female, something different, something over the top in terms of foot size, stoutness of bone, and structural integrity and soundness. We needed a cornerstone female with these attributes that was also soft made and had a killer look. Then we found Barmaid, the dam of lot 40 who fit the bill perfect for our program. This female has done all we've asked and more. She competed in the show ring and most importantly is winning in the pasture!
- The sire of lot 40, WEBER Reform 618, is one of the most recognized individuals to ever come out of the Weber program. He was shown to a Grand Champion Bull banner at the coveted Agribition and has gone on to prove that his quality goes further than just the showing with this son being another example of that.
- Ranks in the top 10% for CW; top 25% for RE.

PCC



LOT 41

ACT. BW
70 LBS

PCC SSST GUARDIAN 1200

DOB	REG. #	TATTOO			
4/10/21	4561211	1200J			
CED	BW	WW	YW	MILK	100% AR
11	-0.9	52	79	24	

PZC TMAS FIRESTORM 1800 ET
ROJAS EAGLE FORD 9106
ROJAS SIXMILELAKOTA 16W C1
DAMAR TRUMP C512
ACCC FLAMINGO 1200F
TLC ALAYNAH 329

RETAINING 1/3 SEMEN INTEREST

- Here's a big boned, stout, good looking one that is tricked out with all the bells and whistles!
- Eagle Ford progeny are going to be among the most elite cattle in the Red Angus breed. Semen is limited and will only be offered at auction so take advantage of this opportunity to have a direct son roaming your pastures.
- The grand-dam of lot 41 is one of the most recognized cows and consistent producers in the Red Angus breed and had a hugely successful show career being named Supreme Champion all breeds at the Minnesota Beef Expo, Champion Red Angus in both 4-H and FFA shows at the Minnesota State Fair, Champion Red Angus and Reserve Supreme at the First Lady Classic Agribition, Champion Junior Yearling Female at the Agribition open show, Reserve Champion 2015 National Western Junior Show, and Reserve Champion in the 2015 National Western Open show.



ROJAS EAGLE FORD 9106
SIRE OF LOT 41



TLC ALAYNAH 329
GRANDDAM OF LOT 41



TLC ALAYNAH 329
GRANDDAM OF LOT 42

LOT 42

ACT. BW
68 LBS

PCC SSST ADVANCE 1027J

DOB	REG. #	TATTOO			
4/19/21	4561213	1027J			
CED	BW	WW	YW	MILK	100% AR
11	-0.9	52	79	24	

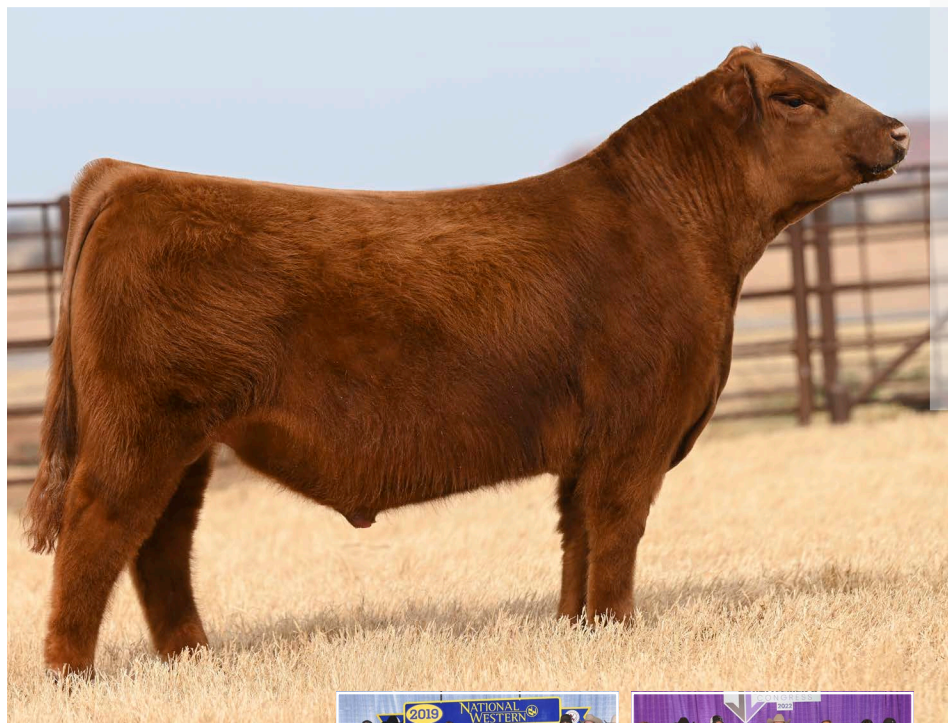
PZC TMAS FIRESTORM 1800 ET
ROJAS EAGLE FORD 9106
ROJAS SIXMILELAKOTA 16W C1

DAMAR TRUMP C512
ACCC FREE FALL 1027F
TLC ALAYNAH 329

RETAINING 1/3 SEMEN INTEREST

- This young herd sire is a sound structured, masculine individual with loads of balance and eye appeal.
- Eagle Ford sired progeny are going to be among the most elite cattle in the Red Angus breed. Semen is limited and will only be offered at auction so take advantage of this opportunity to have a direct son roaming your pastures.

PCC



DAMAR BARCELONA E067
DAM OF LOT 43



MHG BARCELONA 107J
MATERNAL SIB TO LOT 43

LOT 43

ACT. BW
70 LBS

PCC BWP RINGLEADER 153

DOB	REG. #	TATTOO			
4/4/21	4561117	153			
CED	BW	WW	YW	MILK	100% AR
12	-1.4	54	85	26	

PZC TMAS FIRESTORM 1800 ET
ROJAS EAGLE FORD 9106
ROJAS SIXMILELAKOTA 16W C1

ANDRAS FUSION R236
DAMAR BARCELONA E067
DAMAR MIMI W085

RETAINING 1/3 SEMEN INTEREST

- This is an attractive and correct made bull that will add body, substance and dimension.
- Eagle Ford sired progeny are going to be among the most elite cattle in the Red Angus breed. Semen is limited and will only be offered at auction so take advantage of this opportunity to have a direct son roaming your pastures.
- The dam of lot 43 was the NWSS and many-time champion, Barcelona E067, that dominated the Red Angus 2018 and 2019 show circuit for Morly Griffith.
- A maternal sister to lot 43 was Reserve Grand Champion Female at the 2022 Cattlemen's Congress Red Angus junior show.



LOT 44A-E

ROJAS EAGLE FORD 9106

DOB	REG. #	TATTOO			
02-01-2019	4130112	9106			
CED	BW	WW	YW	MILK	100% AR
10	-0.5	59	87	27	

RED SIX MILE SAKIC 832S
PZC TMAS FIRESTORM 1800 ET
GT CITA 4060

RED U-2 BIG LEAGUE 7136T
ROJAS SIXMILELAKOTA 16W G1
RED SIX MILE LAKOTO 723L

EAGLE FORD SEMEN PACKAGES

SELLING 25 UNITS IN FIVE 5-UNIT PACKAGES

• The first Eagle Ford progeny are hitting the sales and finding their way to the backdrop. As you can see by his daughters that sold as lots 23 and 24 in our Fall 2021 sale and the sons selling as lots 41 thru 43 in this offering, the Eagle Ford sired progeny are going to be among the most elite cattle in the Red Angus breed. Semen is limited and will only be offered at auction.



PCC



LOT 45A-E

PZC TMAS FIRESTORM 1800 ET

DOB	REG. #	TATTOO			
03-30-2011	1472101	1800			
CED	BW	WW	YW	MILK	100% AR
13	-0.9	61	92	29	

RED SIX MILE AVIATOR 217P
RED SIX MILE SAKIC 832S
RED SIX MILE SIERA 257P

CITATION 138
GT CITA 4060
JMDF MISS LANA

FIRESTORM SEMEN PACKAGES

SELLING 25 UNITS IN FIVE 5-UNIT PACKAGES

• Firestorm has been deceased for some time now and semen is becoming limited. No bull that we know of has been able to stand the test of time like Firestorm. Firestorm started off 2021 with a bang siring the 2021 National Champion Red Angus Female ROJAS VALENTINA 9113 "SASSY" for Bret Pembrook. As seen by his progeny in this sale and others, and the cattle that have competed and won this show season, Firestorm still gets it done like no other. Having a little Firestorm in your tank can be like having the codes to launch weapons.



MCS



RED WHEEL CREED 214C
SIRE OF LOT 46



TW ANNIE B 064H
1/2 SISTER TO LOT 46

LOT 46

PCC TBARS TW COURTNEY 406J

DOB	REG. #	TATTOO			
10/10/21	4564311	406J			
CED	BW	WW	YW	MILK	100% AR
9	1.8	65	97	28	

- RED WHEEL CREED 171A
- RED WHEEL CREED 214C
- BLACK WHEEL JESTRESS 1Y
- WPRA LEGACY A-314
- ENGD CARNIVAL RIDE 5132C
- WCR MISS BLOCKANA RE 2003Z

PCC

- This is Beth Pembrook's favorite Red! Lot 46 is cool and unique...extreme in terms of lady-like, feminine appearance with tremendous length and depth of rib. We love the style, balance and eye appeal in this Creed daughter.
- Herd sires with the ability to combine the power that the sire of this show and donor prospect possesses with exceptional maternal strength in an outcross pedigree are rare to find. Creed has the length of spine, muscle expression, bone and foot size which he transmit into his calves as you can see in this daughter. This sire of lot 46 is backed by an exceptional dam and cow family. Creed's dam, Black Wheel Jestress 1Y, is a herd bull producing female.
- The Blockana cow family is noted for exceptional udders and hoof quality and being big ribbed productive females and this exceptional female should continue that trend as a donor in production once her show career is over.
- Sells open.



3JF MS MAI F459
FLUSH SISTER TO THE DAM OF LOT 47



OHRR 63G KIMAS MAHOGANY 105R
GRANDDAM OF LOT 47

LOT 47

PCC BWP MS ZINNIA 710

DOB	REG. #	TATTOO			
12/5/21	4561115	710			
CED	BW	WW	YW	MILK	100% AR
9	0.6	64	96	24	

RED U-2 RIFF 1213C
EGL GCC RED EAGLE E7194
TJS SARABEL A174

PZC TMAS FIRESTORM 1800 ET
3JF MS RED ZINNIA F700
OHRR 63G KIMAS MAHOGANY 105R

PCC

- Lot 47 and her sibling embryos selling as lots 47A-C are out of a Firestorm daughter that is off to a great start to her productive career.
- The grand-dam of Lot 47 and her sibling embryos selling as lots 47A-C, Mahogany 105R has as much bone, rib shape, and look as we've seen in a Red Angus cow. That being said, from a phenotype standpoint, there is no doubt this heifer has the parts and pieces to compete at any level. She's as good as they come in terms of soundness on her feet and legs and when parked on the profile shows herself off like a winner, being freaky necked and big bodied, with a great hip and hind leg. This female also has great hair and a super disposition as well.
- Sells open.



MANN RED BOX 55C
SIRE OF LOT 47A EMBRYO MATING

LOT 47A

4 SEXED FEMALE IVF EMBRYOS

100% AR

SLGN WIDELOAD 920W
MANN RED BOX 55C
PELTON MISS AJA 0839U
PZC TMAS FIRESTORM 1800 ET
3JF MS RED ZINNIA F700
OHRR 63G KIMAS MAHOGANY 105R

- The now-deceased sire of this mating, Redbox, displays unmatched phenotypic quality and possesses many needed traits to inject into the Red Angus Breed. His body volume, fleshing ease, soundness and style are simply hard to find. His ability to make his mark as one of the great maternal sires of the breed is imminent and semen is very limited so take advantage of this opportunity to own progeny while you can.
- Guarantee at least one pregnancy to result if implanted by a certified embryologist.

LOT 47B

4 SEXED FEMALE IVF EMBRYOS

100% AR

RED U-2 RIFF 1213C
EGL GCC RED EAGLE E7194
TJS SARABEL A174
PZC TMAS FIRESTORM 1800 ET
3JF MS RED ZINNIA F700
OHRR 63G KIMAS MAHOGANY 105R

- Guarantee at least one pregnancy to result if implanted by a certified embryologist.

LOT 47C

4 SEXED FEMALE IVF EMBRYOS

100% AR

RED U-2 RIFF 1213C
EGL GCC RED EAGLE E7194
TJS SARABEL A174
PZC TMAS FIRESTORM 1800 ET
3JF MS RED ZINNIA F700
OHRR 63G KIMAS MAHOGANY 105R

- Guarantee at least one pregnancy to result if implanted by a certified embryologist.
- The sire of the embryos selling as lots 47B and 47C, EGL GCC Red Eagle E7194 is one of the best Red Angus bulls on the market. He is the real deal, big bodied, sound made, powerful, and the cow making kind! Red Eagle is unmatched in his body composition, and muscle. He has as much shape, width, and center mass as you will find regardless of color or breed, couple that with an attractive profile and great pedigree.



EGL GCC RED EAGLE E7194
SIRE OF LOTS 47B & 47C EMBRYO MATINGS

PCC



MAINE



PCC



MCS



BNWZ DATA BANK 1311C ET
SIRE OF LOT 48



KJSC PCC MISS GABBY 919G
MATERNAL SIB TO LOT 48



3RD OVERALL WESTERN BONANZA
RES. SUPREME MAINE-ANJOU 2019 AMERICAN ROAYL
MATERNAL SIB TO LOT 48

LOT 48

PCC KJSC DATA PLAN 142J

DOB	REG. #	TATTOO
4/5/21	529541	142J
ACT. BW		HIGH MAINE 3/4
79 LBS		
3/4 59.18% MA 23.255% AN 1.592% 15.973% CA		
BBBN X2 201X		
BNWZ DATA BANK 1311C ET		
BNWZ CALYPSO 28Y		
JJBFB COLLINS WHISKEY6876		
KJSC MISS Y03		
KJSC MISS KJSC 491T		

RETAINING 1/3 SEMEN INTEREST

- The dam of this herd sire prospect has been a consistent producer year after year for the Stierwalt program in Leedey. A maternal sister sold in the 2019 PCC Fall Sale to Cory Hardy while another maternal sister sold in the 2018 PCC Production Sale was campaigned successfully by Reece Richardson of Arapaho, OK, with another maternal sister was also being named Champion Maine and 3rd overall at the Western Bonanza and Res. Supreme Maine Anjou 2019 American Royal.
- This bull is striking in terms of his pattern and appearance, and he's probably a notch stouter and bigger bodied than some of the purebreds we have offered in the past. When it comes to soundness out on the move, we feel like he's as good as any in that regard as well.
- TH free PH Free.

PCC

LOT 49

PCC CJB MISS UNLEASHED

DOB 7/17/21	REG. # 529634	TATTOO CJB 8500J
MAINETAINER		

1/2 56.816% MA | 36.131% AN | 3.852% BS | 3.2% XX

BK UNLIMITED POWER 472
 MCDK LDSC UNLEASHED ET
 MISS WHISKEY DREAMS 30Z
 NMR MATERNAL MADE
 GCC MISS MATERNAL 8500F ET
 GCC MISS CERVEZA 501A

- This 50% Maine summer born heifer has the look of a contender that has value beyond the show ring.
- Dam was selected from the 2019 GCC Classic and is a Maternal Made out of a powerful Cerveza with the power, look, structure and length you've come to appreciate in these awesome made, cool built females. Double up the Irish Whiskey and double up the good!
- Sells open.



PCC

LOT 50

PCC WVR MISS BLACKBIRD

DOB 8/3/21	REG. # 529645	TATTOO 321J
MAINE ANGUS		

3/8 33.737% MA | 63.437% AN | 0.83% SM | 1.996% XX

BOE BOE EPIC
 DUELLO ICON 802F
 DUEL WORRY NOT 4303B
 PCC WITTEN 111A
 PCC BLKBIRD GIRL 129E
 PCC BLKBIRD GIRL 363A

- If you are looking for your next donor candidate or a foundation female in your herd, this Icon daughter provides all the look and flash you are in search of. Additionally, her impressive profile complements her powerful build and broody center. Check out this Maine-Angus out of a daughter of Witten and former sale feature!
- Sells open.



PCC BLKBIRD GIRL 129E
 DAM OF LOT 50

PEMBROOK



HERE FORD

H E R E F O R D



LOT 51

PCC KMR JUMPSTART 324 ET

ACT. BW
79 LBS

DOB	REG. #	TATTOO		
3/24/21	44289955	KMR 324		
CED	BW	WW	YW	MILK
-0.6	2.8	55	80	18

HEREFORD

HAPP EXTRA POINT 1220 ET
HAPP BK VALOR 376 ET
JSF 12N LADY VAL 9T
CRR ABOUT TIME 743
SC VIOLET 604 ET
H RW LADY ADVANCE 1124 ET

RETAINING 1/3 SEMEN INTEREST

- The dam of this powerful herd sire prospect was Reserve Champion Polled Hereford Heifer in Fort Worth for Karley Rayfield and is out of H RW Lady Advance 1124 ET, who was selected by Ky from the 2011 Ladies of the Royal sale as one of the top sellers and was bred by Hoffman Ranch in Nebraska and Ward Ranch in Oklahoma and has been a very consistent producer since her successful show career. If you like them good here's a must see.
- The sire of lot 51, Happy BK Valor 376 is the 2016 National Western Stock Show Horned Spring Bull Calf Champion and the 2016 Fort Worth Stock Show Horned Spring Bull Calf Champion. Valor's dam, Lady Val, has produced high revenue generating progeny and has made a huge on impact on the programs she has represented.



SC VIOLET 604 ET
DAM OF LOT 51

PCC

LOT 52

PCC KMR JOKER 428 ET

DOB	REG. #	TATTOO		
4/28/21	44290334	KMR 428		
CED	BW	WW	YW	MILK
-0.3	4.1	64	110	26

HEREFORD

CHURCHILL PILGRIM 632D ET
H THE PROFIT 8426 ET
RST GAT NST Y79D LADY 54B ET
HAPP BK VALOR 376 ET
CMCC FOOL PROOF 843F ET
BK A MAID OF HONOR 347A ET

RETAINING 1/3 SEMEN INTEREST

- The sire of lot 52, H The Profit 8426 ET is a popular National Champion bull that was selected as the Grand Champion Polled Hereford bull at the 2020 National Western Show. H The Profit is out of power house female that is also the dam of National Champion bulls H-Deberard and H-Montgomery.
- The dam of lot 52, CMCC Fool Proof 843F ET, was named Champion Polled Hereford Heifer at the 2020 Sandhills Stock Show in Odessa, TX and was a Res. Division Champion in San Antonio that same year.



H THE PROFIT 8426 ET
SIRE OF LOT 52

IN MEMORY OF

Lily Romanchuk

2000-2019



LIVE *like* LILY
FOUNDATION

— PROVERBS 31:25





Wilson
TRAILER SALES

14100 S. Meridian Ave.
 Oklahoma City, OK 73173
 800-522-9919
 Parts - Sales - Service
 Dylan Weaver - Sales 405-974-1796

PCC



PUTTING GOOD CATTLE TOGETHER WITH

GREAT PEOPLE

PHILLIPS

RESERVE GRAND

BEST WESTERN STOCK SHOW & RODEO

BREED

Grand Champion Breeding Heifer

BBARD Snow-FITE

STOCK SHOW & RODEO

PEMBROKE PCC CAPITAL CORP.



PO BOX 1219
EDMOND, OK 73083

PEMBROOK
PCC
CATTLE COMPANY



CATALOG DESIGN BY
THE SHOWTIMES, INC.