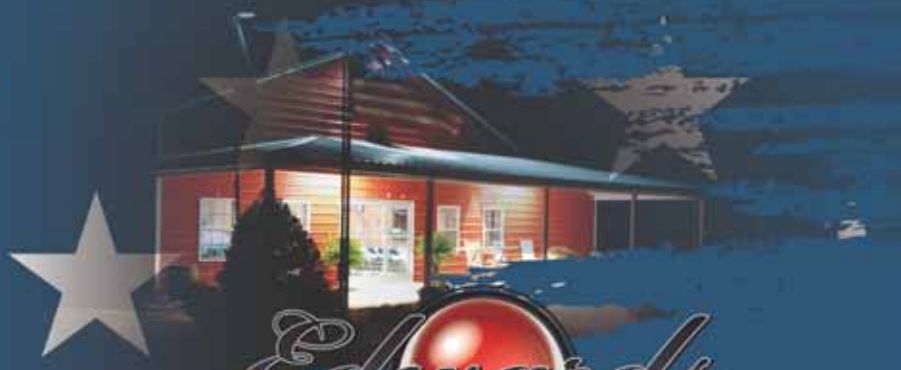




LIMOUSIN LIM-FLEX ANGUS

Saturday, September 11, 2021 | 3:00 P.M. E.S.T. | Beulaville, NC



ANNUAL FALL PRODUCTION Bull & Female Sale

LIMOUSIN LIM-FLEX ANGUS

Saturday, September 11, 2021

3:00 P.M. E.S.T. | Beulaville, NC

We will also broadcast Live Online at CCI.Live

SCHEDULE OF EVENTS

** To schedule an appointment for viewing the sale offering, contact Nicholas Edwards at 910.290.1424

SATURDAY, SEPTEMBER 11TH

- 9:00 a.m. Cattle available for viewing
- 3:00 p.m. ANNUAL FALL PRODUCTION BULL & FEMALE SALE BEGINS
- 5:00 p.m. ELCX Customer Appreciation Dinner will be served

The Edwards Land and Cattle Family is again excited to welcome you to our 2021 Annual Fall Production Sale. Again, this year the sale will continue to be held down on the farm at our sale facility located at 314 Willard Edwards Road, Beulaville, North Carolina. We were certainly hopeful that this year's sale could be back in its full fashion, but with the Covid-19 virus and its various we will continue to adjust in order to ensure the safety of all our customers and employees. The year 2020 was probably the most challenging year for farmers and stock producers in America's history and just when we thought things were improving here it comes again. Due to this fact our sale continues to be a little more challenging. However, we have raised some of the very best genetically sound cattle that you will see in the industry and are looking forward to presenting them to you. For this reason, we are again presenting ALL CATTLE ON VIDEO. We are looking forward to hosting you and will be pleased to have you visit the facility anytime prior to the sale to view the cattle, simply give us a call to set up a time. We will again be offering you some of the best genetic cattle in the Limousin breed, along with very high-quality Lim-Flex, and Angus. We remain committed to bringing you the cows that will be useful and profitable in your herd.

We take great pride in being a family operation that takes great pride in our cattle and would only like to provide you with high performing quality to enhance your herd in Limousin, Angus and Lim-flex. Our number one goal is to crate a long-term relationship with our customers; therefore, we only provide you with our finest stock. All our cattle sale under the standard guarantee of the North American Limousin Foundation and the National Angus Association. If you have any questions pertaining to any of the genetics or any other questions about our cattle, please feel free to give us a call. If you need financing or trucking arrangements, we will be glad to assist you in those matters. If you are unable to attend, please feel free to call us or any of the sale management to assist you on sale day. We will also be online at CCI.Live.

We will be serving a beef dinner directly after the sale. The whole family looks forward to seeing you in person or online.



Dexter and Nicholas Edwards
Dexter, 910.385.6192

Nicholas, cell: 910.290.1424

NicholasELC@hotmail.com | Dedwards@smithfield.com
314 Willard Edwards Road, Beulaville, NC 28518

OFFERING 83 LOTS

LIMOUSIN
LIM-FLEX
ANGUS

- 08 Cow/ Calf Pairs
- 39 Fall Calving Bred Females
- 15 Spring Bred Females
- 01 Proven Donor
- 15 Limousin/ Lim-Flex Bulls
- 05 Angus Bulls
- Also selling 18 embryos

GUARANTEE

All cattle sell under the standard guarantee of the North American Limousin Foundation.

FINANCING

For financing options please contact Dexter Edwards at 910.385.6192, Nicholas Edwards at 910.290.1424 or Randy Ratliff at 615.330.2735.

TRUCKING

A trucking company will be on hand sale day to assist with any trucking that might be needed. Edwards Land & Cattle Co. will see to it that cattle will be delivered to several central locations to accommodate anyone that lives throughout the United States and Canada.

TERMS & CONDITIONS

Terms of the sale are cash unless satisfactory credit arrangements have been made prior to the sale. A representative will be on hand sale day if your wishes are to insure your purchases. Please note: The sale manager is only an agent for the seller and has no responsibility other than those involved in conducting the sale. All persons who attend the sale do so at their own risk. Neither the sale manager nor Edwards Land & Cattle Co. assume liability, legal or otherwise for, any accidents which may occur.

SIGHT UNSEEN PURCHASE AGREEMENT

If you are unable to attend the sale and want to speak with Dexter or Nicholas Edwards or Randy Ratliff then please don't hesitate to call. They will provide you with a complete satisfaction guarantee for the have purchased. If within two weeks from the date of the sale you are not satisfied with your purchased and how they were described to you then the Edwards family will gladly take the animal back.

DRIVING DIRECTIONS

From Raleigh-Durham International Airport (RDU) to Edwards Land and Cattle Sale Facility take interstate I 40 east towards Wilmington/Benson. Continue on 40 East until exit 373 (Magnolia/Kenansville) turn left on 903 towards Kenansville, stay on 903 until intersection of Hwy 24. Take Hwy 24 East towards Beulaville. Stay on hwy 24 through Beulaville; go approximately 6 miles to Willard Edwards Rd on the left. The Sale Facility will be located approximately 1.5 miles on the left.

From Albert Ellis Airport (OAJ) take left onto NC HWY 111 to Haw Branch Rd. Take Haw Branch Rd to Hwy 24 west. Willard Edwards Rd will be approximately 4 miles on the right. The Sale Facility will be located approximately 1.5 miles on the left.

From Wilmington International Airport (ILM) take I-40 West to Exit 385 (Wallace/Beulaville). Take right towards Beulaville on Hwy NC-41. Travel 18 miles to intersection of 41/24 take hwy 24 east approximately 6 miles to Willard Edwards Rd on the left. The Sale Facility will be located approximately 1.5 miles on the left.

PAYMENTS

All cattle must be paid for immediately following the conclusion of the sale. R & R Marketing Company will now be accepting credit cards the day of the sale.

SALE DAY PHONES

Dexter Edwards910.385.6192 Nicholas Edwards910.290.1424
Randall O. Ratliff615.330.2735 Mark Smith.....515.229.5227
Kiley McKinna402.350.3447

AUCTIONEER ... Cody Shelley580.467.7887

ACCOMMODATIONS

Hampton Inn910.347.3400
1032 Hampton Inn Way, Jacksonville, NC 28546

Hilton Garden Inn910.346.2400
1016 Jacksonville Pkwy, Jacksonville, NC 28546

SALE ORDER & SUPPLEMENTAL INFORMATION

Friday, September 18th the sale order and supplemental information will be posted at www.RRMktg.com for your convenience.

SALE CONSULTANTS



Mark Smith
515.229.5227 • grgenetics@aol.com



Kiley McKinna
402.350.3447 • mcmarketingsales@aol.com
Wiley Fanta, 320.287.0751

WATCH THE SALE & BID ONLINE

Online bidding provided in partnership with CCI.LIVE. Join us to watch the sale or bid online. Please create your account and obtain credentials prior to auction date. Login not necessary to view the auction live.



SALE MANAGEMENT



Randall O. Ratliff, 615.330.2735
Randy@RRMktg.com • www.RRMktg.com
PO Box 60097, Nashville, TN 37206
(L#2845)

If you need assistance with your purchases or want to discuss the genetics selling then please feel free to contact R & R Marketing Company. As a paid marketing agent for Edwards Land & Cattle we take pride in the opportunity to work closely with this program. We can assist you with your phone order and/or handle your bid in the most confidential manner. Email, call or text and we will be more than happy to assist. Auction money and proceeds will be conducted under Randall O. Ratliff DBA R & R Marketing, P.O. Box 60097, Nashville, TN 37206. Bond # 7901027402 (U.S. Department of Agriculture, Grain Inspection, Packers and Stockyards Administration Packers and Stockyards Program).

Edwards

LAND & CATTLE CO.

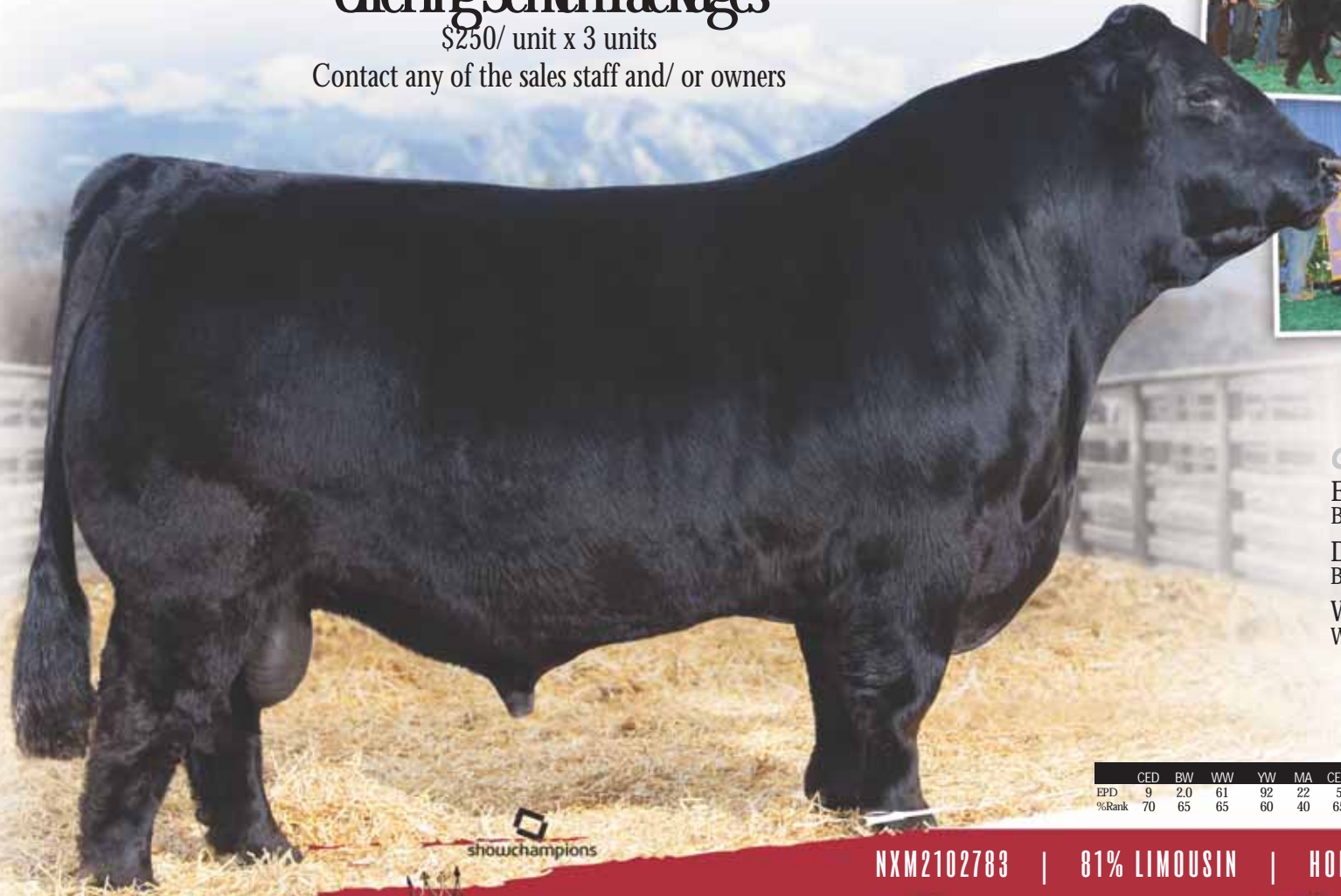


*Without a doubt the most sought after genetics in the breed.
Now deceased but his influence is being sought after by many!*

Offering Semen Packages

\$250/ unit x 3 units

Contact any of the sales staff and/ or owners



OWNED BY

Edwards Land & Cattle Co.
Buelaville, NC

Davis Ranches
Brownwood, TX

Wies Limousin
Wellsville, MO

5

	CED	BW	WW	YW	MA	CEM	SC	ST	DOC	CW	RE	YG	MS	SMTI
EPD	9	2.0	61	92	22	5	0.60	9	13	16	0.67	-0.29	-0.06	48.58
%Rank	70	65	65	60	40	65	55	65	40	70	85	70	65	75

showchampions

NXM2102783 | 81% LIMOUSIN | HOMO POLLED | HOMO BLACK

ELCX **kings landing** 0665

MAGS XYLOID X WLR PRADA

DONOR PROSPECT AT ITS FINEST



ELCX Hollywood 410H, daughter of Lot 1.

Lim-Flex (37) Cow HP / HB CJLM 410D LFF 2136006 09.16.16

CJLM San Jose 410D ET

1

	EPD	CED	BW	WW	YW	MA	CEM	SC	ST	DOC	CW	RE	YG	MS	SMTI
	10	0.8	75	121	20	6	1.27	12	12	56	1.11	-0.19	0.22	62.38	
%Rank	65	45	15	15	55	55	20	40	45	2	5	55	45	30	

S A V BRILLIANCE 8077
PVF INSIGHT 0129
 PVF MISSIE 790

AHCC WESTWIND W544
EBFL SAN JOSE 422Y
 TMCK SAN JOSE 170U

S A V BISMARCK 5682
 S A V BLACKCAP MAY 5270
 P V F NEW HORIZON 001
 P V F MISS RAPTOR 024
 KAJO RESPONDER 120R
 AHCC MISS WULF HUNT R544
 G A R PREDESTINED
 MAGS SAN JOSE

LOT 1 - Selling 50% embryo interest.

A.I. 4.16.21 to ELCX Kings Landing 599D (81% HP/HB); P.E. 5.01-8.01.21 to HWCB Eye of the Storm 406E (71% P/HB)

A female this beautiful in her design doesn't come around that often. CJLM San Jose 410D ET is a double homozygous daughter of the wildly successful PVF Insight 0129. She is a 37% Lim-Flex female that ranks in the 15th percentile for both weaning weight and yearling weight. This female's dam is EBFL San Jose 422Y, a daughter of AHCC Westwind W544 and out of a GAR Predestined female, TMCK San Jose 170U. We love this female's length of body, the extra turn and shape to her rib cage and her added depth of rib. She is smooth patterned and balanced from the ground up. This female is full of growth and performance and will raise individuals that will rise to the top of their contemporaries every time.

Her daughter ELCX Hollywood 410H was named the 2021 National Junior Heifer Show reserve grand champion Lim-Flex female. Congratulations to Bryntlee Wilkerson of Canton, TX on a job well done!

LIM-FLEX AT ITS FINEST



Lim-Flex (37) Cow HP / HB ELCX 764E LFF 2157098 12.24.17

ELCX Emagine 764E ET

2

	GED	BW	VWV	YW	MA	CEM	SC	ST	DOC	CW	RE	YG	MS	SMTI
EPD	12	0.1	76	129	20	8	1.27	9	11	50	0.61	-0.03	0.56	73.79
%Rank	35	30	25	10	55	20	25	80	70	10	75	90	3	3

MYTTY IN FOCUS
A A R TEN X 7008 S A
 A A R LADY KELTON 5551

AHCC WESTWIND W544
EBFL SAN JOSE 422Y
 TMCK SAN JOSE 170U

S A F FOCUS OF E R
 MYTTY COUNTESS 906
 S A V ADAPTOR 2213
 H S A F LADY KELTON 504B
 KAJO RESPONDER 120R
 AHCC MISS WULF HUNT R544
 G A R PREDESTINED
 MAGS SAN JOSE

A.I. 12.13.20 to ELCX Kings Landing 599D (81% HP/HB); P.E. 12.20.20 to 5.01.21 to Riverstone Exodus (PB HP/HB)

Folks, here is one truly unique individual. ELCX Emagine 764E ET is a 37% Lim-Flex daughter of AAR Ten X 7008SA, an MYTTY In Focus son. On paper this female ranks in the 3rd percentile for marbling, the 15th percentile for yearling weight and the 25th percentile for weaning weight. This female's dam is EBFL San Jose 422Y, a daughter of AHCC Westwind W544 and out of a GAR Predestined female, TMCK San Jose 170U. This female balances up extremely well and she's so cool made. She is long in her spine and deep bodied with such a feminine look about her. This one is loaded with genetic excellence and all the potential in the world. She is homozygous black and homozygous polled.

FEATURE FEMALE



8

Lim-Flex (37) Cow HP / HB ELCX 023H LFF 2333868 05.01.20

ELCX High Class 023H ET 3

	CEP	BW	WW	YW	MA	CEM	SC	ST	DOC	CW	RE	YG	MS	SMTI
EPD	16	0.6	84	136	22	10	-	12	16	42	0.42	0.03	0.37	68.78
%Rank	4	45	10	5	35	3	-	40	15	25	95	>95	90	15

MAGS APPLESEED
MAGS CABLE
 MAGS ZEQUIN

MAGS WINSTON
ELCX DLBA 512A
 PCF ELBA RP OF 512

RITO 6EM3 OF 4L1 EMBLAZON
 MAGS WAY TO SHINE
 BOHI TOP DOLLAR 7144T
 WERNER RITA 118
 BT CROSSOVER 758N
 MAGS STRAWBERRY
 G A R PREDESTINED T598
 PCF APACHE ELBA 512

A.I. 5.20.21 to LVLS Bank Account 8116B (75% P/HB); P.E. 6.05-8.01.21 to ELCX Excessive 758E (75% B/P)

A female with generations of excellent maternal power that is incredibly complete from every angle with added performance. ELCX High Class 023H ET is a homozygous polled and double black daughter of MAGS Cable. Her dam is ELCX Elba 512A, a daughter of MAGS Winston and from a GAR Predestined T598 female, PCF Elba RP of 512. You'll want to be sure to check out this female's EPDs. She ranks in the tenth percentile for weaning weight and yearling weight and in the 20th percentile for marbling. This female is super long in her skeletal makeup, very up headed and she will be a true building block for any herd. She is 37% Lim-Flex.

FEATURE FEMALE



Lim-Flex (37) Cow DP / HB ELCX 1111H LFF 2386232 03.04.20

ELCX HAPPY 111H

4

	GED	BW	VWV	YW	MA	CEM	SC	ST	DOC	CW	RE	YG	MS	SMTI
EPD	12	0.3	67	108	22	7	-	10	12	34	0.38	-0.02	0.45	66.94
%Rank	35	35	60	50	35	35	-	65	60	45	95	95	10	20

OKSU THE PROFIT 3401
ELCX CAMP FIRE 508C ET
 EBFL SAN JOSE 170X

ELCX POSTMASTER 208Y
ELCX BLACK BETTY 111B
 PCF EVA 111 OF IN FOCUS

LH RODEMASTER 338R
 OKSU EXCITEMENT 0406
 S A V PIONEER 7301
 TMCK SAN JOSE 170U
 MAGS WINSTON
 SSTO SADIE 6854S
 MYTTY IN FOCUS
 P C F EVA WOODHILL 41

A.I. 5.20.21 to ELCX Kings Landing 599D (81% HP/HB); P.E. 6.05-8.01.21 to ELCX Excessive 758E (75% B/P)

What's not to like about a soggy-made, beautiful fronted and donor quality female? ELCX Happy 111H is sired by ELCX Camp Fire 508C ET. She is a daughter of ELCX Black Betty 111B, a female sired by ELCX Postmaster 208Y. We love this female's build, her exceptional depth of body and her flawless front one third. This gal is the total package for anyone searching for a donor quality individual to add to their program. ELCX Happy 111H is a 37% Lim-Flex female that is homozygous black and double polled. She ranks in the 10th percentile for her marbling figure.



10

Lim-Flex (37) Cow DP / DB ELCX 158D LFF 2123579 10.01.16

ELCX Donna 158D

5

	CED	BW	WW	YW	MA	CEM	SC	ST	DOC	CW	RE	YG	MS	SMTI
EPD	13	-1	59	94	19	8	1.57	11	15	24	0.29	-0.03	0.26	57.61
%Rank	20	15	75	65	65	20	5	50	15	65	>95	95	35	60

MYTTY IN FOCUS
ELCX BENCHWARMER 363B
 SSTO SADIE 6854S

MAGS Y-AXIS
OCCC BAKANA 158B
 JEPS SARAFINA 146Z

S A F FOCUS OF E R
 MYTTY COUNTESS 906
 JCL LODESTAR 27L
 THOMAS LUCY ROSE 9509
 TC ABERDEEN 759
 MAGS UAHUKA
 CALO BRICKYARD 902W
 HAHK WANNA SHOUT

A.I. 1.01.21 to ELCX Kings Landing 599D (81% HP/HB); P.E. 1.15.21 to 5.01.21 to Riverstone Exodus (PB HP/HB)

Whew- This female checks all the boxes in our eyes! ELCX Donna 158D is a double black and double polled daughter of ELCX Benchwarmer 363B. ELCX Benchwarmer 363B is a son of MYTTY In Focus out of a JCL Lodestar 27L female, SSTO Sadie 6854S. This female ranks in the 15th percentile for birthweight and in the 35th percentile for marbling. ELCX Donna 158D is a smooth made female that is flawless in her overall design and structural makeup. This female is loaded with calving ease, maternal power and style from end to end. She is 37% Lim-Flex.

FEATURED DONOR

Lim-Flex (75) Cow DP / HB PBRS 489B LFF 2064119 03.21.14

PBRS Best in Class 489B 6

	CED	BW	WW	YW	MA	CEM	SC	ST	DOC	CW	RE	YG	MS	\$MTI
EPD	12	-0.4	58	80	15	6	0.45	13	12	23	0.64	-0.29	0.11	53.64
%Rank	35	20	80	90	90	55	90	30	45	70	65	30	70	80

MAGS YIP MAGS THE GENERAL AUTO DOLLAR GENERAL 122R
 AUTO CARMINDA 656S EXLR LUVLY 821M
 S A V BISMARCK 5682 JCL LODESTAR 27L
PBRS0111X S A V BISMARCK 5682 AUTO CARMINDA 872P
 MAGS NEW GAMES 169N G A R GRID MAKER
 S A V ABIGALE 0451
 MAGS LITTLE BROTHER
 MAGS GAMES WE PLAY 245L

A.I. 12.14.20 to ELCX Kings Landing 599D (81% HP/HB); P.E. 12.15.20 to 4.28.21 to ELCX Englishman 769E (50% R/HP)

Here is a female that is powerfully made, maternally oriented and structurally sound. PBRS Best In Class 489B is a 75% Lim-Flex female sired by MAGS Yip. She is homozygous black and double polled. Her dam is an SAV Bismarck 5682 daughter and goes back to EXLR Dakota 353G on the top side of her pedigree. We've always appreciated the style and dimension this female has, but truly her genomic profile and end product results will be astonishing. Now is your opportunity to capitalize on such a sound investment for the future of your operation. She ranks in the 20th percentile for birthweight.



10

11

Lim-Flex (50) Cow DP / HB PBRS 44B LFF 2057505 01.21.14

PBRS Bell Ringer 44B 7

	CED	BW	WW	YW	MA	CEM	SC	ST	DOC	CW	RE	YG	MS	\$MTI
EPD	8	1.6	68	104	22	9	-	9	8	26	0.87	-0.24	0.22	60.54
%Rank	90	70	40	40	40	10	-	75	90	60	25	40	45	40

BUFORD OKLAHOMA X239 S A V PIONEER 7301 SAV FINAL ANSWER 0035
 J BAR 7 ELBA 7297 S A V BLACKBIRD 5297
 GPF BLAQUE RULON BALDRIDGE NEBRASKA 901
WLR RENDEZVOUS 050R BLACK DIAMOND J BAR 7 JULIE JAN 5406
 KEHG JULIET 10H QUAIL RUN RAMONA BP
 WULFS RAMBLER 8400X
 TLTL POLLED PEACHES 007B

P.E. 6.05-8.01.21 to ELCX Excessive 758E (75% B/P)

This is a female that will catapult your program to the next level overnight. PBRS Bell Ringer 44B is a 50% Lim-Flex female sired by Buford Oklahoma X239. Buford Oklahoma X239 is a son of SAV Pioneer 7301. This female's dam is WLR Rendezvous 050R, a daughter of GPF Blaque Rulon. With depth of pedigree like this, PBRS Bell Ringer 44B is sure to carry on her ancestors high profile influence. She has plenty of power, substance and overall body shape. This female is level in her design and balances up so well from every angle. We appreciate the versatility this female brings to the table and her genetic influence. She is homozygous black and heterozygous polled.



10

11

FEATURED EMBRYOS



SBLX Zane, dam of Lots 8A, B & C



EGL GCC Red Eagle E7194,
sire of Lot 8A & 8B embryos.



RLBH Air Force
One, sire of Lot 8C
embryos.

25% Lim-Flex | Red | DP | Selling 2 packages of 3 Grade 1, Conventional embryos.

THREE EMBRYOS

8A & 8B

	CED	BW	WW	YW	MA	CEM	SC	ST	DOC	CW	RE	YG	MS	\$MTI
SIRE	9	0.9	71	107	25	7	-	15	-	27	0.15	0.03	0.00	-
DAM	12	0.1	60	96	23	6	0.35	8	9	40	0.52	-0.08	0.38	62.63

RED U-2 RIFF 1213C
EGL GCC RED EAGLE E7194
TJS SARABEL A174

RED U-2 RECKONING 149A
RED U2 OPHELIA 370W
LOOSLI RIGHT KIND 147
TJS LONE STAR S663
BT CROSSOVER 758N
MAGS STRAWBERRY
G A R PREDESTINED
ELMW GINNIE P58G

MAGS WINSTON
SBLX ZANE
SBLX UNDERTHECOVERS 201U

56% Lim-Flex | Black | DP | Selling 1 package of 3 Grade 1, Conventional embryos.

THREE EMBRYOS

8C

	CED	BW	WW	YW	MA	CEM	SC	ST	DOC	CW	RE	YG	MS	\$MTI
SIRE	13	-0.5	65	103	8	8	1	8	16	39	0.39	0.04	0.53	68.65
DAM	12	0.1	60	96	23	6	0.35	8	9	40	0.52	-0.08	0.38	62.63

EF XCESSIVE FORCE
RLBH AIR FORCE ONE
EF YAFFA 821Y

D A TRAVELER 004 703
CFLX MOLLYS IMAGE
EXLR NEW GENERATION 071M
MAGS ROSE PETAL
BT CROSSOVER 758N
MAGS STRAWBERRY
G A R PREDESTINED
ELMW GINNIE P58G

MAGS WINSTON
SBLX ZANE
SBLX UNDERTHECOVERS 201U

What a superb genetic combination! This pedigree will generate individuals packed full of maternal power, proven pedigree and phenomenal structural integrity. There is so much potential in this embryo lot that you'd be regretting your decision if you don't make sure these embryos end up in your tank.

This is a mating that will never go out of style. SBLX Zane is a MAGS Winston daughter out of the infamous SBLX Underthecovers 201U female. When we think of a balanced genetic profile loaded with growth, balanced numerics and stylish phenotype- this is immediately the combination that comes to mind.

Embryos are stored at ELCX.

Folks, these are some of the most highly sought after and popular genetics across the breed. RLBH Air Force One has dominated the Limousin breed with his influence for the past several years. He is the son of EF Xcessive Force and out of the famed EF Yaffa 821Y female. SBLX Zane is a MAGS Winston daughter out of the infamous SBLX Underthecovers 201U female. The amount of potential present in this pedigree is astounding.

Embryos are stored at ELCX.

FEATURE FEMALE



WULFS Emprize 242E,
sire of Lot 9A embryos.



MAGS WL Usual Suspect 538U,
sire of Lot 9B embryos.



Lim-Flex (50) Cow DP / Red BSTR 333D LFF 2102858 03.14.16

BSTR Gold Digger ET

9

	CED	BW	WW	YW	MA	CEM	SC	ST	DOC	CW	RE	YG	MS	SMTI
EPD	13	-0.3	63	102	22	6	0.35	9	10	39	0.52	-0.08	0.38	63.66
%Rank	20	25	60	45	40	55	95	75	70	20	80	85	15	25

MAGS WINSTON
MAGS STRAWBERRY

SBLX UNDERTHECOVERS 201U
ELMW GINNIE P58G

C A FUTURE DIRECTION 5321
BT ROYAL PRIDE 237G
EXLR NEW GENERATION 071M
MAGS FRUITFUL 487M
B/R NEW DESIGN 036
G A R EXT 4206
TCDT MR T.D'S POWER PACK
ELMW POLLED ECSTASY 67E

P.E. 1.06-5.01.21 to ELCX Gone Fishin 929G (50% B/P)

Here is an exciting donor female that we're ever proud to feature. We've always been a fan of this cow family. BSTR Gold Digger ET is a full sister to SBLX Zane. They are the daughters of MAGS Winston and the great SBLX Underthecovers female. This female is 50% Lim-Flex, red and double polled. She ranks in the 15th percentile for marbling and in the 20th percentile for birthweight. Stacked with proven cow families in her pedigree that are proving themselves time and time again within the breed and far beyond. Take one look at this female in person and you'll be dead set on having her influence in your herd.

Owned with Davis Ranches, Brownwood, TX

50% Lim-Flex | Red | DP | Selling 1 package of 3 Conventional embryos.

THREE EMBRYOS

9A

	CED	BW	WW	YW	MA	CEM	SC	ST	DOC	CW	RE	YG	MS	SMTI
SIRE	12	-0.3	79	130	22	9	1.60	13	12	50	1.12	-0.34	0.50	75.08
DAM	13	-0.3	63	102	22	6	0.35	9	10	39	0.52	-0.08	0.38	63.66

WULFS EMPRIZE 242E
WULFS ZUNI 2424Z

BSTR GOLD DIGGER ET
SBLX UNDERTHECOVERS 201U

BIEBER DEEP END B597
BIEBER ROLLIN DEEP Y118
BIEBER LAURA 158W
WZRK GENESIS 532E
WULFS PLEASURE 4251P
BT CROSSOVER 758N
MAGS STRAWBERRY
G A R PREDESTINED
ELMW GINNIE P58G

75% Lim-Flex | Red | DP | Selling 1 package of 3 Conventional embryos.

THREE EMBRYOS

9B

	CED	BW	WW	YW	MA	CEM	SC	ST	DOC	CW	RE	YG	MS	SMTI
SIRE	7	3.8	64	91	25	6	0.2	2	6	20	1.1	-0.54	-0.05	51.87
DAM	13	-0.3	63	102	22	6	0.35	9	10	39	0.52	-0.08	0.38	63.66

MAGS SASQUATCH
MAGSWL USUAL SUSPECT 538U
MAGS PHANTOMS PRIZE

BSTR GOLD DIGGER ET
SBLX UNDERTHECOVERS 201U

EXLR NEW GENERATION 071M
MAGS FRUITFUL 487M
GPFF BLAQUE RULON
ALCM KOOL TUNES
BT CROSSOVER 758N
MAGS STRAWBERRY
G A R PREDESTINED
ELMW GINNIE P58G

Wulfs Emprize 2424E is the impressive 50% Lim-Flex Bieber Deep End B597 son. His dam is Wulfs Zuni 2424Z, a daughter of WZRK Genesis 532E and from a JCL Lodestar 27L female, Wulfs Pleasure 4251P. BSTR Gold Digger is the MAGS Winston daughter out of the famed SBLX Underthecovers 201U female. We appreciate the versatility, dependability and power these future calves will be backed with. Three embryos that will be double polled, red and 50% Lim-Flex.

Here are three 75% Lim-Flex embryos that will be red and double polled from the highly sought after mating of MAGSWL Usual Suspect 538U and the great BSTR Gold Digger female. MAGSWL Usual Suspect 538U is the highly sought after son of MAGS Sasquatch. His dam is the all around female, MAGS Phantoms Prize. BSTR Gold Digger is the MAGS Winston daughter out of the famed SBLX Underthecovers 201U female. You definitely won't want to pass up this elite genetic offering or you'll be reading about another program's success for years in the future.

FEATURE EMBRYOS



14

Morris

PBRS Audrey 346A, dam of Lot 10A embryos.



ELCX Kings Landing 599 D ET, sire of Lot 10A embryos.

60.5% Lim-Flex | Homo Black | Homo Polled | Selling 1 package of 3 embryos

THREE EMBRYOS

10A

	CED	BW	WW	YW	MA	CEM	SC	ST	DOC	CW	RE	YG	MS	\$MTI
SIRE	8	1.9	60	91	22	5	0.6	10	13	16	0.68	-0.3	-0.08	47.79
DAM	13	1.5	50	83	14	7	-	13	12	29	0.1	0.01	0.28	55.33

ELCX KINGS LANDING 599 D ET
 WLR PRADA
 MAGS XYLOID
 DHVO DEUCE 132R
 BOHI RHONDA 314R
 MAGSWL USUAL SUSPECT 538U
 AUTO REBECA 292S
PBRS AUDREY 346A
 MAGS YIP
 MAGS THE GENERAL
 AUTO CARMINDA 656S
 BUFORD ERICA 9312
 J BAR 7 ALLIANCE 6869
 LCC ERICA LG008

High profitability will be the name of the game with these three embryos. ELCX Kings Landing will always hold a special place in our hearts and for great reason. He is the son of MAGS Xyloid and from the infamous WLR Prada female. PBRS Audrey 346A is a daughter of MAGS Yip and out of Buford Erica 9312. These embryos will be 60.5% Lim-Flex and double homozygous. What more can you ask for from an embryo offering? This is the jackpot of genetic excellence!

COW/ CALF PAIRS

Lim-Flex (50) Cow HP / HB PBRB 428B LFF 2063063 02.21.14

PBRB Back Roads 428B

11

EPD	CED	BW	WW	YW	MA	CEM	SC	ST	DOC	CW	RE	YG	MS	SMTI
12	1.0	74	115	22	5	-	13	11	11	4.6	-0.03	0.58	73.67	
%Rank	35	50	20	20	40	75	-	30	60	20	90	95	2	2

MAGS YIP

MAGS THE GENERAL

AUTO DOLLAR GENERAL 122R

AUTO CARMINDA 656S

EXLR LUVLY 821M

JCL LODESTAR 27L

AUTO CARMINDA 872P

B C MATRIX 413Z

EXG COMMITMENT N378 LS

WOODHILL FORESIGHT

J BAR 7 ERICA 614K

BUFORD ERICA 0197

LIMESTONE TRUMP

J BAR 7 ERICA 726S

Lim-Flex (43) Cow HP / DB ELCX 133D LFF 2145160 10.03.16

ELCX Darcy 133D

12

EPD	CED	BW	WW	YW	MA	CEM	SC	ST	DOC	CW	RE	YG	MS	SMTI
11	0.5	66	106	20	7	1.12	11	13	30	0.31	-0.04	0.28	60.46	
%Rank	50	40	50	40	55	35	30	50	35	45	>95	95	30	40

MYTTY IN FOCUS

ELCX BENCHWARMER 363B

SSTO SADIE 6854S

S A F FOCUS OF E R

MYTTY COUNTESS 906

JCL LODESTAR 27L

THOMAS LUCY ROSE 9509

BT CROSSOVER 758N

MAGS STRAWBERRY

LH RODEMASTER 338R

KRVN TICKLES 048T

MAGS WINSTON

ELCX JOYCE 133A

LH YESTERDAY'S DREAM 133Y

Lim-Flex (37) Cow DP / Black ELCX 020E LFF 2141006 11.10.17

ELCX Extra Cash 020E

13

EPD	CED	BW	WW	YW	MA	CEM	SC	ST	DOC	CW	RE	YG	MS	SMTI
10	0.6	59	91	23	6	1.1	10	15	22	0.27	-0.05	0.3	59.27	
%Rank	65	40	75	75	30	55	30	65	15	75	>95	90	25	45

MYTTY IN FOCUS

ELCX BENCHWARMER 363B

SSTO SADIE 6854S

S A F FOCUS OF E R

MYTTY COUNTESS 906

JCL LODESTAR 27L

THOMAS LUCY ROSE 9509

LUCHT GRAND CANYON S41

TPIE GOLD RIB 2091

WULFS NOBEL PRIZE 3861N

MINE PLD DOLLEY 3205N

TPIE RED CANYON LC 9347

MINE CANYON'S CASH 1020Y

ARWL PLD CASHABANKA 7131T

Lim-Flex (75) Cow HP / HB ELCX 428J LFF 2386639 05.06.21

ELCX Jeweled 428J

11A

EPD	CED	BW	WW	YW	MA	CEM	SC	ST	DOC	CW	RE	YG	MS	SMTI
10	2.2	65	96	23	5	-	9	12	26	0.71	-0.21	0.21	58.90	
%Rank	70	85	70	80	30	75	-	80	60	75	55	45	55	65

RIVERSTONE EXODUS ET X PBRB BACK ROADS 428B

P.E. 6.01-8.01.21 to ELCX Camp Fire 508C (50% P/HB)

A female with a huge soggy middle, excellent style and a balanced profile. PBRB Back Roads 428B is a 50% Lim-Flex daughter of MAGS Yip. Her dam is Buford Erica 0197 a female sired by Limestone Trump. This female ranks in the second percentile for her marbling EPD and in the 30th percentile for weaning weight and yearling weight. We admire this female's maternal look and productivity that will carry her through many calving seasons. She is homozygous black and homozygous polled.



lot 11

Lim-Flex (46) Cow DP / DB ELCX 133J LFF 2386640 04.20.21

ELCX Jane 133J

12A

EPD	CED	BW	WW	YW	MA	CEM	SC	ST	DOC	CW	RE	YG	MS	SMTI
10	1.4	67	108	20	6	1.07	10	12	32	0.54	-0.12	0.34	63.74	
%Rank	70	65	60	50	55	55	45	65	60	55	85	70	25	35

ELCX CAMP FIRE 508C ET X ELCX DARCY 133D

P.E. 5.05-8.01.21 to Riverstone Exodus (PB HP/HB)

A gorgeous udder design and a flawless side profile are two things we can't pass up! ELCX Darcy 133D is a homozygous polled and double black daughter of ELCX Benchwarmer 363B. Her dam is ELCX Joyce 133A, a daughter of MAGS Winston and out of an LH Rodemaster 338R female. She's a wicked good female that will rise to the top of any scenario and do so powerfully. She is the type and kind that we wish we had fifty of roaming in a pasture. Don't miss out on this quality female packed with excellent genetic influence and tremendous style. She is 43% Lim-Flex.



15

lot 12

Lim-Flex (68) Bull DP / DB ELCX 020J LFM 2386641 02.02.21

ELCX Just Cash 020J

13A

EPD	CED	BW	WW	YW	MA	CEM	SC	ST	DOC	CW	RE	YG	MS	SMTI
8	2	58	84	24	6	1.02	8	15	18	0.61	-0.21	0.078	51.69	
%Rank	90	80	90	95	20	55	45	90	20	95	75	45	85	95

RIVERSTONE EXODUS ET X ELCX EXTRA CASH 020E

P.E. 6.01-8.01.21 to ELCX Camp Fire 508C (50% P/HB)

A progressively oriented female with worlds of power and strong maternal influence. ELCX Extra Cash 020E is another impressive daughter of the great ELCX Benchwarmer 363B. She is a 37% Lim-Flex female that ranks in the 25th percentile for marbling and the 30th percentile for milk. Her dam is MINE Canyon's Cash 1020Y, a daughter of TPIE Red Canyon LC 9347.



lot 13

COW/ CALF PAIRS



14

Lim-Flex (46) Cow HP / HB EBCX 019D LFF 2116774 10.02.16

KBCX Splenda Architect 019D 14

	CED	BW	WW	YW	MA	CEM	SC	ST	DOC	CW	RE	YG	MS	\$MTI
EPD	12	1.2	70	105	22	5	0.88	13	15	27	0.49	-0.03	0.29	61.83
%Rank	35	55	30	40	40	75	60	30	15	55	85	95	30	30

TMCK HYDRAULIC 17Y
TMCK ARCHITECT 031A
 TMCK LA VEDA 909Y

MAGS XYLOID
ELCX SPLENDA 014 B
 SHAMROCKS JULIA 014P

S A V PIONEER 7301
 HSF WALL OF FAME
 DHVO DEUCE 132R
 EXLR LA VEDA 1002P
 DHVO DEUCE 132R
 BOHI RHONDA 314R
 BR MIDLAND
 SAR NEW DESIGN 036 8311

Lim-Flex (73) Bull HP / HB ELCX 019J LFM 2386642 01.08.21

ELCX Joustier 019J 14A

	CED	BW	WW	YW	MA	CEM	SC	ST	DOC	CW	RE	YG	MS	\$MTI
EPD	10	2.3	63	91	24	5	0.91	9	14	20	0.72	-0.2	0.06	52.79
%Rank	70	85	75	85	20	75	55	80	35	90	55	50	90	95

RIVERSTONE EXODUS ET X KBCX SPLENDA ARCHITECT 019D

P.E. 6.01-8.01.21 to ELCX Camp Fire 508C (50% P/HB)

A true foundation female you'll want to focus your attention to! KBCX Splenda Architect 019D is a double homozygous female sired by TMCK Architect 031A. Architect 031A is the son of TMCK Hydraulic 17Y and a DHVO Deuce 132R female. This female's dam is a daughter of MAGS Xyloid and from a BR Midland female, Shamrocks Julia 014P. The depth of pedigree and elite genetic influence present in this female is worth investing in. We've always admired this female's reproductive ability and her strong maternal influence and now we're confident she'll make a total splash for success in your program.



16

15

PB Limousin (87) Cow DP / DB ELCX 608E LPF 2271037 03.23.17

ELCX Elia 608E 15

	CED	BW	WW	YW	MA	CEM	SC	ST	DOC	CW	RE	YG	MS	\$MTI
EPD	12	1.6	69	98	24	7	0.55	10	8	23	1.02	-0.44	-0.13	49.70
%Rank	30	50	20	25	25	30	40	65	75	25	70	90	65	45

LH RODEMASTER 338R
WLR RELOAD
 MAGS PHANTOMS PRIZE

AUTO DOLLAR GENERAL 122R
AUTO TIMELESS 608T
 AUTO MISS DIAMOND 3747N

JCL LODESTAR 27L
 VERMILION E BLACKBIRD9546
 GPFF BLAQUE RULON
 ALCM KOOL TUNES
 LVLS SECRET WEAPON 4408K
 AUTO KYRIA 232K
 ANDERS JAG
 D&M MISS MERCEDES 0190U

% Limousin (81) Cow Polled / Black ELCX 608J NXF 2386643 05.02.21

ELCX Journey 608J 15A

	CED	BW	WW	YW	MA	CEM	SC	ST	DOC	CW	RE	YG	MS	\$MTI
EPD	11	0.4	72	106	17	7	0.94	8	11	31	0.81	-0.27	0.08	56.80
%Rank	50	40	25	35	90	30	35	90	70	40	55	50	65	55

AGRI CHAIRMAN 1C ET X ELCX ELIA 608E

P.E. 5.05-8.01.21 to Riverstone Exodus (PB HP/HB)

Quite the unique blend of genetics in this female! ELCX Elia 608E is a purebred daughter of WLR Reload, the son of LH Rodemaster 338R and the great MAGS Phantoms Prize donor. On paper, she ranks in the 25th percentile for her milk figure and in the thirty-fifth percentile for her weaning weight figure. We appreciate this female's depth of body, her length of spine, stylish phenotype and soundness. This is a female that will be productive no matter where she ends up. She is double black and double polled.

Lim-Flex (57) Cow DP / DB OCCC 903D LFF 2122474 09.05.16

OCCC 903D 16

	CED	BW	WW	YW	MA	CEM	SC	ST	DOC	CW	RE	YG	MS	\$MTI
EPD	12	0.7	68	106	22	7	0.76	7	11	27	0.77	-0.21	0.25	61.34
%Rank	35	45	40	40	40	35	70	90	60	55	40	50	35	35

LH U HAUL 135U
AUTO LUCKY STRIKE 118B
 AUTO LUCKIE 246W

CONNEALY CONFIDENCE 0100
DVFC AMBER 903A
 AUTO BLACK AMBER 616T

BASIN FRANCHISE P142
 EXLR DUCHESS 7129R
 WLR DIRECT HIT
 TYEJ DB SERENITY
 CONNEALY TOBIN
 BECKA GALA OF CONANGA 828
 MAGS REMOTE
 AUTO SUZANNE 278K

Lim-Flex (53) Bull DP / DB ELCX 903J LFM 2386872 04.15.21

ELCX Jester 903J 16A

	CED	BW	WW	YW	MA	CEM	SC	ST	DOC	CW	RE	YG	MS	\$MTI
EPD	11	1.2	67	106	21	6	0.89	8	11	30	0.77	-0.21	0.33	64.08
%Rank	55	60	60	55	45	55	65	90	70	60	45	45	25	35

ELCX CAMP FIRE 508C ET X OCCC 903D

P.E. 6.01-8.01.21 to ELCX Camp Fire 508C (50% P/HB)

This is a combination female if we've ever seen one! OCCC 903D is a daughter of AUTO Lucky Strike 118B a LH U Haul 135U son out of a WLR Direct Hit daughter. This female's dam is a Connealy Confidence 0100 daughter, DVFC Amber 903A. What a blend of some of the most influential genetics out there in the Limousin and Angus breeds! This is a female you have to appreciate for her broodiness, her depth of rib and capacious center body. She's destined to create success for the future of your operation. This female is double black and double polled.

Lim-Flex (50) Cow HP / HB CJSJL 6109D LFF 2106151 03.03.16

CJSJL 6109D ET

17

	CED	BW	WW	YW	MA	CEM	SC	ST	DOC	CW	RE	YG	MS	\$MTI
EPD	12	1.4	77	119	17	4	0.7	8	11	38	0.47	0	0.33	65.43
%Rank	35	60	15	15	80	90	70	85	60	25	90	>95	20	15

S A V HARVESTOR 0338
S A V HESSTON 2217
 S A V EMBLYNETTE 3301

S A V HERITAGE 6295
 S A V EMBLYNETTE 7749
 SAF 598 BANDO 5175
 S A V EMBLYNETTE 7319
 HUNTS HI-LITER 245G
 LOGAN'S CHEERLEADER 280G
 AUTO BLACK DAKOTA 129J
 AUTO JULIA 247J

JCL LODESTAR 27L
AUTO CARMINDA 656S
 AUTO CARMINDA 872P

P.E. 6.01-8.01.21 to ELCX Camp Fire 508C (50% P/HB)

An impressive set of numeric figures, an elite pedigree and a world class look! CJSJL 6109D is a 50% Lim-Flex female sired by SAV Hesston 2217. SAV Hesston 2217 is the SAV Harvester 0338 son known for his impeccable growth numbers and carcass traits. This female's dam is a daughter of JCL Lodestar 27L and out of the great AUTO Carminda 872P female who is sired by AUTO Black Dakota 129J. This female is double homozygous and ranks in the 20th percentile for weaning weight, the twenty-fifth percentile for yearling weight and in the 30th percentile for marbling. You'll appreciate this female no matter the season because she's one heck of a momma, an excellent producer and she won't let you forget her!

FALL CALVING FEMALES

Lim-Flex (62) Cow HP / HB ELCX 716E LFF 2135452 04.01.17

ELCX Ethylene 716E ET

18

	CED	BW	WW	YW	MA	CEM	SC	ST	DOC	CW	RE	YG	MS	\$MTI
EPD	14	-1.2	52	78	12	8	1.2	8	12	28	0.36	-0.06	0.25	55.31
%Rank	15	10	>95	>95	>95	20	25	90	60	70	>95	85	45	85

D A TRAVELER 004 703
EF XCESSIVE FORCE
 CFLX MOLLYS IMAGE

S A V 8180 TRAVELER 004
 ROSEWOOD ERICA 5010
 DHVO DEUCE 132R
 JCL PEPPERMINT
 HUNTS HI-LITER 245G
 LOGAN'S CHEERLEADER 280G
 DFCL DOUBLE SHOT BPB 41E
 DALTONS EDITH ERICA 250

JCL LODESTAR 27L
DFLC HBHPC 1S
 DFCL HBPC 25L

P.E. 1.20-4.28.21 to ELCX Englishman 769E (50% R/HP)

What an elite female this gal is! ELCX Ethylene 716E is a 62% Lim-Flex daughter of the powerful EF Xcessive Force. Her dam is none other than the infamous DFCL HBHPC 1S donor female. On paper this female ranks in the 10th percentile for her birthweight figure. When you study this female it's easy to see that she's functional, sound structured and built to remain productive for years. She's big middled, expressive in her muscle shape and she's as sound as a cat on the move. She is homozygous black and homozygous polled. ELCX Elevate is one of the top cows ever created by the ELCX program. She is owned by the Byers Family Cross Creek Farm in TN where she has done an amazing job in production. ELCX and the Cross Creek Farm created a set of ELCX Kings Landing calves that topped the market. Her daughter brought \$17,500 and sold to Route 66 in Missouri and her son sold for \$20,000 and went to Linhart Limousin and syndicate of Davs Ranches, Anderson Cattle and Route 66.



17



Lot 18

ELCX Elevate 684E, sister to Lot 18.

FALL CALVING FEMALES



PB Limousin (93) Cow HP / HB ELCX 656G NPF 2271446 12.15.19

ELCX Good Bet 656G

19

	CED	BW	WW	YW	MA	CEM	SC	ST	DOC	CW	RE	YG	MS	\$MTI
EPD	9	2.1	58	87	21	6	0.72	7	13	20	0.89	-0.37	-0.02	49.76
%Rank	70	70	75	65	55	50	35	90	50	50	95	95	35	65

TMCK DURHAM WHEAT 6030X
RIVERSTONE EXODUS ET
 HSF YOUR FANTASY

ENGD ZIP LINE 2515Z
ELCX DESIGNER 656D ET
 DFLC HBHPC 1S

DHVO DEUCE 132R
 MAGS STRAWBERRY PIE
 MAGS WAR ADMIRAL
 HSF TINKERBELL
 AHCC WESTWIND W544
 RTTB ROYALTY 2505R
 JCL LODESTAR 27L
 DFLC HBPC 25L

P.E. 2.01-4.10.21 to HWCB Eye of the Storm 406E (71% P/HB)

ELCX Good Bet 656X is another tremendous daughter of Riverstone Exodus. She is a purebred female out of an ENGD Zip Line 2515Z female, ELCX Designer 656D. This female's grand dam is the powerful DFLC HBHPC 1S donor. She is homozygous black and homozygous polled.



Lim-Flex (75) Cow HP / Red ELCX 723E LFF 2135065 04.05.17

ELCX Elise 723E ET

20

	CED	BW	WW	YW	MA	CEM	SC	ST	DOC	CW	RE	YG	MS	\$MTI
EPD	12	2.3	72	110	10	5	0.11	11	13	29	1.01	-0.42	-0.12	59.63
%Rank	35	85	40	45	>95	75	>95	55	45	65	15	10	75	60

WULFS XCLUSIVE 2458X
SYES BEST BUY 316B
 MISS SYES LINEBACKER 317S

BC 7022 RAVEN 7965
WLR COCOA PUFF
 MAGS TABU

WZRK PRIMESTAR 861P
 WULFS MISSIVE 2258M
 OKLF LINEBACKER 341L
 MISS SYES R JUST 318P
 B C MARATHON 7022
 O C C BLACKBIRD 796F
 JCL LODESTAR 27L
 MAGS PHANTOMS PRIZE

P.E. 1.20-4.28.21 to ELCX Englishman 769E (50% R/HP)

This female has been a favorite of everyone that's viewed her. ELCX Elise 723E is a 75% Lim-Flex daughter of the impressive SYES Best Buy 316B. Her dam is WLR Cocoa Puff, a female that goes back to BC Marathon 7022 and MAGS Phantoms Prize. You can't go wrong with this caliber of genetic influence in a female. We love this female's design, her overall build and her phenomenal structural build. She is red and homozygous polled.



Lim-Flex (57) Cow DP / HB ELCX 722G LFF 2386331 09.05.19

ELCX Gettin It 722G

21

	CED	BW	WW	YW	MA	CEM	SC	ST	DOC	CW	RE	YG	MS	\$MTI
EPD	12	0.3	62	95	18	7	0.52	10	14	33	0.57	-0.09	0.31	60.66
%Rank	35	35	80	80	75	35	90	65	35	50	80	80	30	55

ELCX CAESAR 331 C
HWCB EYE OF THE STORM 406E
 FBFL PRINCESS KATE 406C

MAGS AVIATOR
ELCX ELEGANT 722E ET
 EXLR LISA 8223X

RLBH AIR FORCE ONE
 PBRs ALICE 331A
 MAGS XYLOID
 DPBN MEDAL 4063U
 MAGS WINSTON
 MAGS XTRA REST
 EXAR SUNDANCE 6216
 EXLR LISA 8095T

P.E. 1.20-4.28.21 to ELCX Englishman 769E (50% R/HP)

Focus your attention to this impressive female, folks! HWCB Eye of the Storm 406E is a son of ELCX Caesar 331C and out of a MAGS Xyloid female, FBFL Princess Kate 406C. ELCX Elegant 722E is a daughter of MAGS Aviator and out of an EXAR Sundance 6216 female, EXLR Lisa 8223X. We have always believed that a pedigree can completely speak for itself if it's worthy and whew is this pedigree one of those that definitely can. This is a high quality female that will create individuals of high value and take your program to the next level in no time.

HWCB Eye of the Storm 406E, sire of Lot 21.

Lim-Flex (49) Cow DP / Black ELCX 171G LFF 2386233 09.22.19

ELCX Gia 171G 22

	CED	BW	WW	YW	MA	CEM	SC	ST	DOC	CW	RE	YG	MS	\$MTI
EPD	14	-1	69	106	22	8	0.54	10	12	33	0.7	-0.15	0.28	62.25
%Rank	15	15	50	55	35	20	90	65	60	50	60	65	40	45

MAGS BYLAN
MAGS ZYLAN
PBRs EQUINOX 161Y
CJLM UNNECESSARY 171B
MAGS UNNECESSARY

O C C EMBLAZON 854E
RITA 4L1 OF 2536 208
MAGS XRAYS
MAGS XYLAN
LH U HAUL 135U
MAGS NATASHA
LCC CHEYENNE B221L
MAGS PARKER

P.E. 1.20-4.28.21 to ELCX Englishman 769E (50% R/HP)

If you're searching for a female that can do it all, here's the one for you! ELCX Gia 171G is a 49% Lim-Flex daughter of MAGS Bylan, a son of Rito 6EM3 of 4L1 Emblazon. This female's dam is CJLM Unnecessary 171B, a PBRs Equinox 161Y daughter. She is double polled and ranks in the thirtieth percentile for both weaning weight and milk and in the fortieth percentile for yearling weight and marbling. It's not every day that a female can combine numerics with phenotype, but this gal certainly does and does so incredibly well! Don't let this attractive female slip by, you'll want her working for you and your program immediately.



Lim-Flex (37) Cow DP / HB ELCX 152G LFF 2386238 10.01.19

ELCX Gladly 152G 23

	CED	BW	WW	YW	MA	CEM	SC	ST	DOC	CW	RE	YG	MS	\$MTI
EPD	12	1.1	80	121	20	8	1.24	9	11	39	0.76	-0.16	0.26	65.07
%Rank	35	55	15	20	55	20	25	80	70	30	50	60	40	30

ELCX BULLET PROOF 438B ET
AUTO POEM 273Y
CONNEALY IMPRESSION
ELCX BETTER IMPRESS ME 152 B
MCBN YOU GOTTA SEE ME 152

TC ABERDEEN 759
MAGS RAMADA
S A V BISMARCK 5682
MAGS PHANTOMS PRIZE
CONNEALY REFLECTION
PEARL PAMMY OF CONANGA 19
LH RODEMASTER 338R
SBLX UTOPIAN QUEEN 1305U

P.E. 1.20-4.28.21 to ELCX Englishman 769E (50% R/HP)

Here is a female that offers superb growth numbers and a tremendously elite pedigree. ELCX Gladly 152G is a 37% Lim-Flex daughter of ELCX Bullet Proof 438B ET. ELCX Bullet Proof 438B is a son of EBFL Ypsilanti 420Y and out of the great AUTO Poem 273Y donor. This female's dam is ELCX Better Impress, a daughter of Connealy Impression and out of an LH Rodemaster 338R female. On paper this female ranks in the fifteenth percentile for weaning weight and in the twentieth percentile for yearling weight. She is homozygous black and double polled.



Lim-Flex (43) Cow DP / DB ELCX 250E LFF 2155794 03.04.17

ELCX Elexa 250E 24

	CED	BW	WW	YW	MA	CEM	SC	ST	DOC	CW	RE	YG	MS	\$MTI
EPD	12	0.3	62	100	19	7	1.36	12	15	29	0.2	0.03	0.29	59.23
%Rank	35	35	80	70	65	35	20	40	20	65	>95	>95	35	60

ELCX BENCHWARMER 363B
SSTO SADIE 6854S
MAGS XYLOID
ELCX CELLULAR 250 C
ELCX ZEMMIE 507Z

S A F FOCUS OF E R
MYTTY COUNTESS 906
JCL LODESTAR 27L
THOMAS LUCY ROSE 9509
DHVO DEUCE 132R
BOHI RHONDA 314R
MAGS WINSTON
MAGS TAPESTRY

P.E. 11.25.20 to 1.16.21 to Riverstone Exodus (PB HP/HB);
P.E. 3.01-5.01.21 to ELCX Gone Fishin 929G (50% B/P)

ELCX Elexa 250E is a 43% Lim-Flex daughter of ELCX Benchwarmer 363B, the MYTTY In Focus son. Her dam is ELCX Cellular 250C, a daughter of MAGS Xyloid and ELCX Zemmie 507Z, the MAGS Winston x MAGS Tapestry female. ELCX Elexa 250E is a double black and double polled female that ranks in the thirtyfifth percentile for birthweight and marbling. Phenotypically, this female couldn't get much better. From the ground up this female is balanced, attractive in her pattern and feminine in her design. You simply can't go wrong with a female of this nature!



FALL CALVING FEMALES



Int 25

Lim-Flex (37) Cow DP / DB ELCX 142E LFF 2155791 03.14.17

ELCX Ember 142E

25

	CED	BW	WW	YW	MA	CEM	SC	ST	DOC	CW	RE	YG	MS	\$MTI
EPD	12	0.5	66	106	19	8	1.04	9	15	33	0.25	0.08	0.64	7274
%Rank	35	40	65	55	65	20	45	80	20	50	>95	>95	1	4

G A R PROPHET
WOODSIDE RITO 4050 OF 0M3
RITA OF RITA 5F56 PRED

MAGS XYLOID
ELCX CEE 142 C
JLWM PAM 142Y

C R A BEXTOR 872 5205 608
G A R OBJECTIVE 1885
G A R PREDESTINED
RITA 5F56 OF 1I98 FD
DHVO DEUCE 132R
BOHI RHONDA 314R
C L BURBANK
JLWM MINX-MAX 4261P

P.E. 2.05 - 5.01.21 to ELCX Forgetful 11F
(56% (HP/HB))

This is an excellent female that we are so proud to have our prefix on. ELCX Ember 142E is sired by Woodside Rito 4050 of 0M3 and out of a MAGS Xyloid female, ELCX Cee 142C. This female is double black and double polled. She is 37% Lim-Flex and ranks in the top percentile for her marbling figure. ELCX Ember 142E is a female that's made exceptionally well, she's flexible when she gets out and goes and she's incredibly well designed. We admire her foot size, her width of top and her incredible style and balance.



20

Int 26

Lim-Flex (52) Cow HP / Black ELCX 717E LFF 2135454 04.02.17

ELCX Entice 717E ET

26

	CED	BW	WW	YW	MA	CEM	SC	ST	DOC	CW	RE	YG	MS	\$MTI
EPD	12	2.7	82	130	24	6	0.60	9	13	30	0.78	-0.21	0.06	58.79
%Rank	35	90	10	10	20	55	85	80	45	60	45	45	90	65

TMCK HYDRAULIC 17Y
TMCK ARCHITECT 031A
TMCK LA VEDA 909Y

EXAR NEW DESIGN 3903
AUTO CHRISTY 8889R
AUTO CHRISTY 853N

S A V PIONEER 7301
HSF WALL OF FAME
DHVO DEUCE 132R
EXLR LA VEDA 100DP
BON VIEW NEW DESIGN 1407
RR MISS EMULOUS 6391
AUTO NO MONEY DOWN 147J
AUTO AERIELA 253G

P.E. 12.21.20 -5.01.21 to ELCX Camp Fire 508C (50% P/HB)

Pay attention to this pedigree! ELCX Entice 717E is a 52% Lim-Flex daughter of TMCK Architect 031A. He is the son of TMCK Hydraulic 17Y and TMCK La Veda 909Y, a DHVO Deuce 132R daughter. This female's dam is AUTO Christy 8889R, an EXAR New Design 3903 daughter out of an AUTO No Money Down 147J female, AUTO Christy 853N. ELCX Entice 717E ranks in the 15th percentile for weaning weight and yearling weight. She is homozygous polled and heterozygous black.



Int 27

Lim-Flex (25) Cow HP / HB PBRS 4230B LFF 2073308 11.02.14

PBRS 4230B

27

	CED	BW	WW	YW	MA	CEM	SC	ST	DOC	CW	RE	YG	MS	\$MTI
EPD	13	0.5	70	103	18	8	1.45	14	10	29	0.32	0.02	0.19	57.86
%Rank	20	40	30	45	70	20	10	25	70	50	>95	>95	50	55

S A V 8180 TRAVELER 004
SAV 004 PREDOMINANT 4438
S A V EMBLYNETTE 1182

S A V BISMARCK 5682
MAGS XERAFIN
MAGS TELEGRAM

SITZ TRAVELER 8180
BOYD FOREVER LADY 8003
SAF 598 BANDO 5175
S A V EMBLYNETTE 7319
G A R GRID MAKER
S A V ABIGALE 0451
GPFF BLAQUE RULON
MAGS MANDA

P.E. 12.21.20 -5.01.21 to ELCX Camp Fire 508C (50% P/HB)

This female will blow you away in terms of presence, body and functionality. PBRS 4230B is a 25% Lim-Flex female sired by SAV 004 Predominant 4438, the SAV 8180 Traveler 004 son. Her dam is MAGS Xerafin, an SAV Bismarck 5682 daughter. On paper this female ranks in the 30th percentile for her weaning weight figure. She is maternal, sound from the ground up and will influence her calves with so much style and doability. She is homozygous black and homozygous polled.

Lim-Flex (56) Cow HP / HB CELL 5092C LFF 2081185 02.27.15

CELL 5092C

28

	CED	BW	WW	YW	MA	CEM	SC	ST	DOC	CW	RE	YG	MS	\$MTI
EPD	13	-1.3	63	100	20	7	1	10	13	33	0.79	-0.25	0.28	61.27
%Rank	20	10	60	50	55	35	40	65	35	35	35	40	30	35

MAGS Y-AXIS
PBRS ANCHOR 390A
 FLR TIGER LILY

CJSL WINDFALL 9072W
EF AFTER DARK 760A
 SENNETT WHISPER 919W

TC ABERDEEN 759
 MAGS UAHUKA
 MYTTY IN FOCUS
 DIAMOND ROSE R051
 LVLS SECRET WEAPON 4408K
 CJ'S MS ARROWHEAD 456P
 SENNETT POWER RANGER 707T
 SENNETT BLACKCAP 705T

P.E. 1.06-5.01.21 to ELCX Gone Fishin 929G (50% P/B)

CELL 5092C is a 56% Lim-Flex daughter of PBRS Anchor 390A, a MAGS Y-Axis son. Her dam is EF After Dark 760A, a daughter of CJSL Windfall 9072W and out of a Sennett Power Ranger 707T female, Sennett Whisper 919W. This female is double homozygous and ranks in the 10th percentile for birthweight and in the 30th percentile for marbling. She has been a favorite around here for many years. This female can do it all and impress the best of them. She's excellent in her structural build, functionally designed and attractive on the profile.



Lim-Flex (62) Cow Polled / DB ELCX 074F LFF 2159640 03.06.18

ELCX Firefly 074F

29

	CED	BW	WW	YW	MA	CEM	SC	ST	DOC	CW	RE	YG	MS	\$MTI
EPD	14	0.9	66	94	21	7	0.89	7	15	16	0.66	-0.26	0.2	59.13
%Rank	15	50	65	80	45	35	65	95	20	95	65	35	55	65

BOHI TITLELIST 7050T
TW FIRE N' ICE
 MAGS UPPER SAUNTER

EXAR TITLELIST T011
EXLR MISS DARCIE 8074Y
 AHFF MISS DARCIE 602S

AUTO DOLLAR GENERAL 122R
 CARROUSELS PINA COLADA
 LH RODEMASTER 338R
 MAGS SAUNTER
 BR MIDLAND
 EXG BLACKCAP R054 R3
 TRFC 01M
 JHFF 110N

P.E. 11.25.20 - 1.06.21 to Riverstone Exodus (PB HP/HB);
 P.E.3.01-5.01.21 to ELCX Gone Fishin 929G (50% P/B)

What a unique female with one heck of a pedigree. ELCX Firefly 074F is a 62% Lim-Flex daughter of TW Fire N' Ice. She is out of an EXAR Titleist T011 daughter, EXLR Miss Darcie 8074Y. ELCX Firefly 074F is a favorite of many around here. She has been a tremendous female that does an excellent job raising her calves. We appreciate this female's style, balance and length of stride. She is the type of female that will generate individuals that can be sale features or compete on the national level. This female is polled and double black.



Lim-Flex (50) Cow HP / HB ELCX 340F LFF 2149386 03.25.18

ELCX Fran 340F

30

	CED	BW	WW	YW	MA	CEM	SC	ST	DOC	CW	RE	YG	MS	\$MTI
EPD	12	1.8	78	118	20	7	-	11	11	42	0.65	-0.11	0.15	60.12
%Rank	35	75	20	25	55	35	-	55	70	25	65	75	70	55

EBFL YPSILANTI 420Y
ELCX BULLET PROOF 438B ET
 AUTO POEM 273Y

MAGS YIP
PBRS AMY 340A
 BUFORD ESSA 9022

TC ABERDEEN 759
 MAGS RAMADA
 S A V BISMARCK 5682
 MAGS PHANTOMS PRIZE
 MAGS THE GENERAL
 AUTO CARMINDA 656S
 J BAR 7 ON TIME 6537
 J BAR 7 ESSA'S AUDREY 338

P.E. 12.01.20 - 1.05.21 to Riverstone Exodus (PB HP/HB);
 P.E. 1.05-5.01.21 to Riverstone Exodus (PB HP/HB)

You would be hard pressed to find a female that looks this stout and feminine that you can rest assured is calving ease minded. ELCX Fran 340F is a 50% Lim-Flex female sired by ELCX Bullet Proof 438B, the son of EBFL Ypsilanti 420Y and AUTO Poem 273Y. Her dam is PBRS Amy 340A, a daughter of MAGS Yip. On paper, this female ranks in the 15th percentile for birthweight. Many that view this female remark how stout made, yet stylish she is from every angle. This gal can get the job done and make your operation shine brighter than ever before. She is homozygous polled and homozygous black.



ELCX Bullet Proof 438B ET, sire of Lot 30.

FALL CALVING FEMALES

Lim-Flex (62) Cow DP / DB ELCX 250C LFF 2090352 04.12.15

ELCX Cellular 250C

31

EPD	CED	BW	WW	YW	MA	CEM	SC	ST	DOC	CW	RE	YG	MS	\$MTI
10	1.7	63	100	21	5	0.72	11	15	34	0.148	-0.09	0.20	57.28	
%Rank	65	70	60	50	45	75	70	50	15	35	85	85	50	60

DHVO DEUCE 132R
MAGS XYLOID
 BOHI RHONDA 314R

GPF BLAQUE RULON
 AMY JO DHAN 20L
 EXLR NEW GENERATION 071M
 DAVIS ROSETTA 9514
 BT CROSSOVER 758N
ELCX ZEMMIE 507Z
 MAGS TAPESTRY
 MAGS STRAWBERRY
 MYTTY IN FOCUS
 MAGS GRETCHEN 143L

P.E. 12.21.20 - 5.01.21 to ELCX Camp Fire 508C (50% P/HB)

Lim-Flex (75) Cow HP / HB ELCX 844F LFF 2270473 10.22.18

ELCX First Crown 844F ET

33

EPD	CED	BW	WW	YW	MA	CEM	SC	ST	DOC	CW	RE	YG	MS	\$MTI
11	0.9	53	75	22	8	0.93	11	13	9	0.7	-0.25	0.03	49.02	
%Rank	55	50	>95	>95	35	20	55	55	45	>95	60	35	95	>95

22
 TMCK DURHAM WHEAT 6030X
RIVERSTONE CROWN ROYAL
 HSF YOUR FANTASY

DHVO DEUCE 132R
 MAGS STRAWBERRY PIE
 MAGS WAR ADMIRAL
 HSF TINKERBELL
 BON VIEW NEW DESIGN 878
CPDF ZELLY 9228Z
 CELL WATER LILLY 9228W

CONNEALY REFLECTION
 HAPPY GRILL OF CONANGA 62
 DHVO DEUCE 132R
 MAGS RED KISS

P.E. 12.01.20 - 1.05.21 to Riverstone Exodus (PB HP/HB);
 P.E. 1.05-5.01.21 to ELCX Gone Fishin 929G (50%, P/B)

% Limousin (81) Cow DP / HB ELCX 415F NXF 2386250 05.10.18

ELCX Frisky 415F

35

EPD	CED	BW	WW	YW	MA	CEM	SC	ST	DOC	CW	RE	YG	MS	\$MTI
10	1.9	71	104	16	5	0.93	8	11	24	1.01	-0.38	0.01	54.81	
%Rank	70	80	30	35	95	80	35	90	70	65	35	35	75	70

MAGS WIGGLER
WLR GAME OF THRONES
 WLR URSULA 499U

DHVO DEUCE 132R
AUTO PADDY 415Y
 KRNV ROAD WARRIOR 237R

WULFS TITUS 2149T
 MAGS SNICKERS
 DR J ANALYST M250
 MAGS PHANTOMS PRIZE
 GPF BLAQUE RULON
 AMY JO DHAN 20L
 JCL LODESTAR 27L
 QUAIL RUN RAMONA BP

P.E. 12.01.20 - 1.05.21 to Riverstone Exodus (PB HP/HB);
 P.E. 1.05-5.01.21 to ELCX Gone Fishin 929G (50%, P/B)

We love a female that compliments both cow families on either side of their pedigree. ELCX Cellular 250C is a double black, double polled female sired by MAGS Xyloid. A Lim-Flex female with the influence of some of the breed's greatest individuals that looks this excellent is one to get your hands on. We admire this female's build, her softness of lines and her excellent structure. This female is 62% Lim-Flex.

Many will be attracted to this female's pedigree early on, so don't miss your chance to own a Riverstone Crown Royal daughter. Her dam is sired by Connealy Reflection and out of a DHVO Deuce 132R female. This is truly a unique female with such a tremendously powerful ancestry that will work in her favor time and time again. She is homozygous black and homozygous polled.

ELCX Frisky 415F is a purebred daughter of WLR Game of Thrones. Her dam, is a DHVO Deuce 132R daughter out of a JCL Lodestar 27L female. This female ranks in the 30th percentile for weaning weight and in the 40th percentile for yearling weight. She is near-perfect in her structural makeup and flashy in her design. This female has donor quality written all over and she the pedigree to back her. She is homozygous black and double polled.

Lim-Flex (62) Cow DP / DB ELCX 401F LFF 2278472 11.20.18

ELCX Fourth Hour 401F

32

EPD	CED	BW	WW	YW	MA	CEM	SC	ST	DOC	CW	RE	YG	MS	\$MTI
14	0.5	71	102	21	9	1	8	16	22	0.74	-0.29	0.19	60.53	
%Rank	15	40	45	65	45	10	45	90	15	85	50	25	60	55

BOHI TITLELIST 7050T
TW FIRE N' ICE
 MAGS UPPER SAUNTER

AUTO DOLLAR GENERAL 122R
 CARROUSELS PINA COLADA
 LH RODEMASTER 338R
 MAGS SAUNTER
 CONNEALY REFLECTION
ELCX BROWSE 401B ET
 MAGS SARAFINA

P.E. 12.21.20 - 5.01.21 to ELCX Camp Fire 508C (50% P/HB)

Lim-Flex (62) Cow DP / DB ELCX 423F LFF 2271036 05.01.18

ELCX Frisbee 423F

34

EPD	CED	BW	WW	YW	MA	CEM	SC	ST	DOC	CW	RE	YG	MS	\$MTI
12	1	61	92	19	6	0.93	11	15	31	0.71	-0.19	0.06	52.15	
%Rank	35	55	85	85	65	55	55	55	20	55	55	50	90	95

DHVO DEUCE 132R
MAGS XYLOID
 BOHI RHONDA 314R

S A V BRILLIANCE 8077
ELCX BRANDY 423B ET
 WLR TAINTED LOVE 746X

GPF BLAQUE RULON
 AMY JO DHAN 20L
 EXLR NEW GENERATION 071M
 DAVIS ROSETTA 9514
 S A V BISMARCK 568Z
 S A V BLACKCAP MAY 5270
 WULFS URBAN COWBOY 2149U
 MAGS PHANTOMS PRIZE

P.E. 12.01.20 - 1.05.21 to Riverstone Exodus (PB HP/HB);
 P.E. 1.05-5.01.21 to ELCX Gone Fishin 929G (50%, P/B)

Lim-Flex (37) Cow HP / HB ELCX 604F LFF 2386249 05.02.18

ELCX Freelance 604F

36

EPD	CED	BW	WW	YW	MA	CEM	SC	ST	DOC	CW	RE	YG	MS	\$MTI
12	-0.2	61	97	15	8	1.85	12	13	30	0.09	0.11	0.39	61.95	
%Rank	35	25	85	75	95	20	3	40	45	60	>95	>95	20	45

MYTTY IN FOCUS
ELCX BENCHWARMER 363B
 SSTO SADIE 6854S

EF XCESSIVE FORCE
ELCX DELTA 604D ET
 MAGS UNLIKELY CANDIDATE

S A F FOCUS OF ER
 MYTTY COUNTESS 906
 JCL LODESTAR 27L
 THOMAS LUCY ROSE 9509
 D A TRAVELER 004 703
 CFLX MOLLYS IMAGE
 G A R PREDESTINED
 LOGAN'S CHEERLEADER 280G

P.E. 12.01.20 - 1.05.21 to Riverstone Exodus (PB HP/HB);
 P.E. 1.05-5.01.21 to ELCX Gone Fishin 929G (50%, P/B)

You won't want to miss out on this beautiful female! ELCX Fourth Hour 401F is a female with loads of body, muscle shape and a fantastic set of running gears under her. We admire this female's durability, her strength of top and her extraordinary design. This female is double polled and double black.

Whew! The caliber of genetic influence just keeps getting better! She is double polled and double black. We have admired this female since day one. ELCX Frisbee 423F is a female that is three dimensional in her build, she's soggy middled and excellent when you set her in motion. Don't miss this opportunity to have one heck of a female in your program!

This is an excellent female that we see a world of future in. On paper ELCX Freelance 604F ranks in the 15th percentile for marbling, and the 25th percentile for birth-weight. If you're in search of an all-around female that will be a highlight in your program, this is the one for you. She's long in her skeletal makeup, refined and feminine in her lines and tremendous structured. She is homozygous black and homozygous polled.

Lim-Flex (43) Cow DP / HB ELCX 311F LFF 2271034 04.20.18

ELCX First String 311F 37

EPD	CED	BW	VWV	YW	MA	CEM	SC	ST	DOC	CW	RE	YG	MS	\$MTI
12	-0.3	58	95	18	8	1.48	13	15	26	0.15	0.04	0.26	57	
%Rank	35	25	90	80	75	20	15	30	20	75	>95	>95	40	75

MYTTY IN FOCUS
ELCX BENCHWARMER 363B
 SSTO SADIE 6854S

MAGS XYLOID
ELCX ENCHANTED 311A
 SSTO SADIE 6854S

S A F FOCUS OF E R
 MYTTY COUNTESS 906
 JCL LODESTAR 27L
 THOMAS LUCY ROSE 9509
 DHVO DEUCE 132R
 BOHI RHONDA 314R
 JCL LODESTAR 27L
 THOMAS LUCY ROSE 9509

P.E. 12.01.20 - 1.05.21 to Riverstone Exodus (PB HP/HB);
 P.E. 1.05-5.01.21 to ELCX Gone Fishin 929G (50%, P/B)

Lim-Flex (56) Cow HP / DB ELCX 820F LFF 2156668 05.01.18

ELCX Flow 820F ET 39

EPD	CED	BW	VWV	YW	MA	CEM	SC	ST	DOC	CW	RE	YG	MS	\$MTI
13	0.5	46	76	18	7	0.28	9	10	26	0.22	-0.02	0.31	55.55	
%Rank	25	40	>95	>95	75	35	>95	80	80	75	>95	95	30	85

MAGS YIP
MAGS ARGO
 MAGS UNSMUDGE

MAGS WINSTON
ELCX ROSELLE 141Y
 DFLC HBPC 25L

MAGS THE GENERAL
 AUTO CARMINDA 656S
 DCC RITO 619 OF 6002 3J24
 MAGS SMIDGEN
 BT CROSSOVER 758N
 MAGS STRAWBERRY
 DFLC DOUBLE SHOT BPB 41E
 DALTONS EDITH ERICA 250

P.E. 12.01.20 - 1.05.21 to Riverstone Exodus (PB HP/HB);
 P.E. 1.05-5.01.21 to ELCX Gone Fishin 929G (50%, P/B)

You'll want this gal in your 'first string' female lineup! ELCX First String 311F is a 43% Lim-Flex daughter of ELCX Benchwarmer 363B. Her dam is ELCX Enchanted 311A, a daughter of MAGS Xyloid. On paper this female ranks in the 25th percentile for birthweight. We can't say enough about the quality of this female. She has been a tremendous standout from the beginning and for great reason. We love this female's femininity, body shape and overall design. She is homozygous black and double polled.

Without a doubt in our minds this female will impress the most critical eye. ELCX Flow 820F is a female sired by MAGS Argo, the impressive MAGS Yip son. This female's dam is ELCX Roselle 141Y, a daughter of MAGS Winston and out of the great DFLC HBPC 25L donor. ELCX Flow 820F is 50% Lim-Flex and double homozygous. She ranks in the 25th percentile for milk, the 30th percentile for birthweight and the 35th percentile for marbling. This female is the real deal- she's maternal, royally bred and she's got a killer look. A female like this will headline any program she's introduced into.

Lim-Flex (53) Cow HP / DB ELCX 762F LFF 2159636 03.25.18

ELCX Fizzle 762F 38

EPD	CED	BW	VWV	YW	MA	CEM	SC	ST	DOC	CW	RE	YG	MS	\$MTI
11	1.9	69	112	20	5	0.76	11	13	42	0.66	-0.13	0.22	60.07	
%Rank	55	80	50	40	55	75	75	55	45	25	65	70	50	55

MAGS ZODIAC
ELCX DUPLIN 602D ET
 MAGS UNLIKELY CANDIDATE

BC 7022 RAVEN 7965
WLR COCOA PUFF
 MAGS TABU

MAGS WINSTON
 MAGS XANTHOUS
 G A R PREDESTINED
 LOGAN'S CHEERLEADER 280G
 B C MARATHON 7022
 O C C BLACKBIRD 796F
 JCL LODESTAR 27L
 MAGS PHANTOMS PRIZE

P.E. 12.01.20 - 1.05.21 to Riverstone Exodus (PB HP/HB);
 P.E. 1.05-5.01.21 to ELCX Gone Fishin 929G (50%, P/B)

ELCX Fizzle 762F is a daughter of ELCX Duplin 602D ET, a son of MAGS Zodiac. This female's dam is WLR Cocoa Puff, a daughter of BC 7022 Raven 7965. We appreciate this female's overall depth of body, her muscle shape and expression and her tremendous structural build. She tracks with such ease of movement and holds herself together effortlessly. This is a female that will take you to the top with what she produces! She is homozygous polled and double black.

Lim-Flex (48) Cow DP / Black OCCC 333F LFF 2140625 02.04.18

OCCC 333F 40

EPD	CED	BW	VWV	YW	MA	CEM	SC	ST	DOC	CW	RE	YG	MS	\$MTI
14	-0.9	61	99	21	8	0.62	8	10	41	0.59	-0.11	0.39	63.65	
%Rank	15	15	85	70	45	20	85	90	80	25	75	75	20	35

LH U HAUL 135U
BDHC IRONMAN 2006Z
 KRVN UNAVAILABLE 005U

MAGS WINSTON
BSTR GOLD DIGGER ET
 SBLX UNDERTHECOVERS 201U

BASIN FRANCHISE P142
 EXLR DUCHESS 7129R
 LH RODMASTER 338R
 SCUN COOL BREEZE 202S
 BT CROSSOVER 758N
 MAGS STRAWBERRY
 G A R PREDESTINED
 ELMW GINNIE P58G

P.E. 12.01.20 - 1.05.21 to Riverstone Exodus (PB HP/HB);
 P.E. 1.05-5.01.21 to ELCX Gone Fishin 929G (50%, P/B)

We can't wait for you to check this female out. OCCC 333F is a 48% Lim-Flex daughter of BDHC Ironman 2006Z, a son of LH U Haul 135U. Her dam is BSTR Gold Digger ET, a daughter of MAGS Winston and the famed SBLX Underthecovers 201U donor. You'll want to pay close attention to this female's numeric profile. She ranks in the 15th percentile for birthweight and the 20th percentile for marbling. OCCC 333F is a powerhouse female. She's thick made, expressively muscled and she's attractively built. She is double polled.

FALL CALVING FEMALES

Lim-Flex (43) Cow HP / DB ELCX 10F LFF 2159696 05.01.2018

ELCX Flow 110F

41

	CED	BW	WW	YW	MA	CEM	SC	ST	DOC	CW	RE	YG	MS	\$MTI
EPD	12	0.7	73	113	19	6	-	10	11	37	0.6	-0.12	0.36	66.23
%Rank	35	45	20	25	65	55	-	65	60	25	70	75	15	15

MAGS WIGGLER
WLR GAME OF THRONES
WLR URSULA 499U

WULFS TITUS 2149T
MAGS SNICKERS
DR J ANALYST M250
MAGS PHANTOMS PRIZE
BT CROSSOVER 758N
MAGS STRAWBERRY
MYTTY IN FOCUS
PCF EXPECTATION HEADTIME 428

MAGS WINSTON
ELCX FANNIE 110A
PCF FANNIE 110 OF IN FOCU

P.E. 12.01.20 - 1.05.21 to Riverstone Exodus (PB HP/HB); P.E. 1.05-5.01.21 to ELCX Gone Fishin 929G (50%, P/B)

If you've been searching for a female to build your herd around- you can stop the search now! This female ranks in the 15th percentile for her marbling figure, the 20th percentile for her weaning weight figure and the 25th percentile for her yearling weight figure. This female is truly one that can do it all. She's impressively bred, she's powerfully numbered and she's attractively designed. ELCX Flowing 110F is one that will keep the money 'flowing' with her offspring for years. She is homozygous polled and double black.

Lim-Flex (62) Cow DP / DB ELCX 507G LFF 2171856 03.28.19

ELCX Good Golly 507G

42

	CED	BW	WW	YW	MA	CEM	SC	ST	DOC	CW	RE	YG	MS	\$MTI
EPD	12	0.2	59	93	21	5	0.72	11	15	34	0.48	-0.09	0.2	56.01
%Rank	35	30	75	70	45	75	70	50	15	35	85	85	50	70

DHVO DEUCE 132R
MAGS XYLOID
BOHI RHONDA 314R

GPFF BLAQUE RULON
AMY JO DHAN 20L
EXLR NEW GENERATION 071M
DAVIS ROSETTA 9514
BT CROSSOVER 758N
MAGS STRAWBERRY
MYTTY IN FOCUS
MAGS GRETCHEN 143L

MAGS WINSTON
ELCX ZEMMIE 507Z
MAGS TAPESTRY

P.E. 2.05-6.01.21 to ELCX Forgetful 11F (56% HP/HB)

This is a do-it-all female! ELCX Good Golly 507G is a 62% Lim-Flex daughter of MAGS Xyloid. Her dam is ELCX Zemmie 507Z, a daughter of MAGS Winston and the great MAGS Tapestry female. We appreciate the symmetry and depth of body this female has. Get this gal in motion and she'll impress you even more. She's flexible off both ends of her skeleton and takes a gigantic, confident stride. This double polled and double black female ranks in the 30th percentile for birthweight.

Lim-Flex (70) Cow HP / HB ELCX 277G LFF 2386240 12.28.19

ELCX Glisten 277G

43

	CED	BW	WW	YW	MA	CEM	SC	ST	DOC	CW	RE	YG	MS	\$MTI
EPD	10	1.6	66	103	20	6	0.76	7	11	25	0.7	-0.25	0.12	56.30
%Rank	70	70	65	60	55	55	75	95	70	80	60	35	75	80

MAGS XYLOID
ELCX KINGS LANDING 599 D ET
WLR PRADA

DHVO DEUCE 132R
BOHI RHONDA 314R
MAGSWL USUAL SUSPECT 538U
AUTO REBECA 292S
G A R PREDESTINED
AUTO REBECA 292S
AUTO HEART THROB 554W
AUTO MANUELA 298S

AUTO WILL POWER 160X
ELCX DERBY 277D
CFL MANUELA 277Z

P.E. 1.01-4.28.21 to ELCX Englishman (50% R/HP)

The talk of the town recently within the breed has been this gal's sire- so don't miss this! ELCX Glisten 277G is a double homozygous daughter of ELCX Kings Landing 599D ET. ELCX Kings Landing is the MAGS Xyloid son out of the one and only WLR Prada female. This female's dam is ELCX Derby 277D, a daughter of AUTO Will Power 160X and she goes back to the great MAGS Manuela female on the bottom side of her pedigree. When it comes to Lim-Flex pedigrees, it doesn't get much better than this female's. She is a shining star in our eyes because she's structurally sound, powerful on the move and she still looks like a lady while doing so. ELCX Glisten 277G is a 70% Lim-Flex female.



Int 41

24



Lim-Flex (56) Cow DP / HB ELCX 172G LFF 236330 12.18.19

ELCX Gretchen 72G

44

	CED	BW	VWV	YW	MA	CEM	SC	ST	DOC	CW	RE	YG	MS	\$MTI
EPD	8	2	69	107	15	4	0.84	9	12	31	0.34	-0.05	0.36	64.54
%Rank	90	80	50	50	95	90	65	80	60	55	>95	90	20	30

RLBH AIR FORCE ONE
ELCX CAESAR 331 C
 PBRs ALICE 331A

MAGS XUKALANI
WLR ATHENA
 WLR UGLY BETTY 432U

EF XCESSIVE FORCE
 EF YAFFA 821Y
 MAGS YIP
 BUFORD LUCY 9302
 RITO 112 OF 2536 RITO 616
 MAGS UKALANI
 MAGS SHYLLO
 JCL HEIDI 2S

P.E. 1.01-4.28.21 to ELCX Englishman 769E (50% R/HP)

Lim-Flex (56) Cow DP / HB ELCX 956G LFF 2272335 11.07.19

ELCX Godsend 956G ET

46

	CED	BW	VWV	YW	MA	CEM	SC	ST	DOC	CW	RE	YG	MS	\$MTI
EPD	10	2.6	77	121	23	4	0.9	12	12	42	0.47	-0.07	0.45	70.33
%Rank	70	90	20	20	30	90	55	40	60	25	90	85	10	10

MAGS WINSTON
MAGS ZODIAC
 MAGS XANTHOUS

G A R PREDESTINED
MAGS UNLIKELY CANDIDATE
 LOGAN'S CHEERLEADER 280G

BT CROSSOVER 758N
 MAGS STRAWBERRY
 DHVO DEUCE 132R
 BOHI RHONDA 314R
 B/R NEW DESIGN 036
 G A R EXT 4206
 COLE FIRST DOWN 46D
 TTCC CONFIDENCE MAKER

P.E. 1.01-4.28.21 to ELCX Englishman 769E (50% R/HP)

% Limousin (78) Cow DP / DB ELCX 608G NXF 2386239 10.29.19

ELCX Glisten 608G

48

	CED	BW	VWV	YW	MA	CEM	SC	ST	DOC	CW	RE	YG	MS	\$MTI
EPD	12	0.3	66	96	21	7	0.64	13	11	26	0.52	-0.16	0.16	57.01
%Rank	35	40	45	50	50	30	65	45	70	55	85	70	50	55

RLBH AIR FORCE ONE
ELCX CAESAR 331 C
 PBRs ALICE 331A

AUTO DOLLAR GENERAL 122R
AUTO TIMELESS 608T
 AUTO MISS DIAMOND 3747N

EF XCESSIVE FORCE
 EF YAFFA 821Y
 MAGS YIP
 BUFORD LUCY 9302
 LVLS SECRET WEAPON 4408K
 AUTO KYRIA 232K
 ANDERS JAG
 D&M MISS MERCEDES 0190U

P.E. 1.01-4.28.21 to ELCX Englishman 769E (50% R/HP)

You'll want to dial in on this female! ELCX Gretchen 72G ranks in the 25th percentile for her marbling figure. Many people strive to have a female of this nature. She's sound made, stylish in her design and she's one heck of a mover. This pedigree is worth studying - you'll know her worth with one glance. She is 56% Lim-Flex and homozygous black and double polled.

ELCX Godsend 956G certainly has an impressive set of numbers. She ranks in the 10th percentile for her marbling figure, the 20th percentile for her weaning weight and yearling weight figures and in the 30th percentile for her milk figure. She is homozygous black and double polled.

If you've been searching for a high quality purebred Limousin female, stop what you're doing! ELCX Glisten 608G is a female who is full of natural shape and body dimension, she's sound on all four and tremendous when you see her on the profile. She is clean fronted, feminine in her design and excellent when she stops. She is double black and double polled.

Lim-Flex (75) Cow DP / HB ELCX 922G LFF 2386248 10.28.19

ELCX Giver 922G

45

	CED	BW	VWV	YW	MA	CEM	SC	ST	DOC	CW	RE	YG	MS	\$MTI
EPD	9	1.9	62	92	22	6	0.93	10	12	18	0.67	-0.2	0.05	52.1
%Rank	85	80	80	85	35	55	55	65	60	95	65	50	90	95

TMCK DURHAM WHEAT 6030X
RIVERSTONE CROWN ROYAL
 HSF YOUR FANTASY

CONNEALY REFLECTION
CPDF ZELLY 9228Z
 CELL WATER LILLY 9228W

DHVO DEUCE 132R
 MAGS STRAWBERRY PIE
 MAGS WAR ADMIRAL
 HSF TINKERBELL
 BON VIEW NEW DESIGN 878
 HAPPY GRILL OF CONANGA 62
 DHVO DEUCE 132R
 MAGS RED KISS

A.I. 12.14.10 to MAGS Ali (37% HP/HB); P.E. 12.25.20 - 5.01.21 to Riverstone Exodus (PB HP/HB)

Lim-Flex (62) Cow HP / DB PBRs 9213G LFF 2172475 09.12.19

PBRs Gold Medal 9213G

47

	CED	BW	VWV	YW	MA	CEM	SC	ST	DOC	CW	RE	YG	MS	\$MTI
EPD	10	2.6	73	105	14	6	0.93	7	12	33	0.67	-0.17	0.17	59.56
%Rank	70	90	35	55	95	55	55	95	60	50	65	60	65	60

EF XCESSIVE FORCE
RLBH DAYS OF THUNDER ET
 EF YAFFA 821Y

PBRs BOOTLEGGER 4158B
PBRs 7142E
 PBRs CONFIDENT

D A TRAVELER 004 703
 CFLX MOLLYS IMAGE
 EXLR NEW GENERATION 071M
 MAGS ROSE PETAL
 MAGS ZAMINDAR
 PBRs0111X
 EBFL YPSILANTI 420Y
 SBLL ZRETREAT

P.E. 1.01-4.28.21 to ELCX Englishman 769E (50% R/HP)

Lim-Flex (46) Cow DP / DB ELCX 158G LFF 2386237 09.26.19

ELCX Glitter 158G

49

	CED	BW	VWV	YW	MA	CEM	SC	ST	DOC	CW	RE	YG	MS	\$MTI
EPD	12	-0.6	63	100	17	7	1.18	11	15	30	0.21	0.02	0.34	61.35
%Rank	35	20	75	70	85	35	35	55	20	60	>95	>95	25	50

RLBH AIR FORCE ONE
ELCX CAESAR 331 C
 PBRs ALICE 331A

ELCX BENCHWARMER 363B
ELCX DONNA 158D
 OCCC BAKANA 158B

EF XCESSIVE FORCE
 EF YAFFA 821Y
 MAGS YIP
 BUFORD LUCY 9302
 MYTTY IN FOCUS
 SSTS SADIE 6854S
 MAGS Y-AXIS
 JEPS SARAFINA 146Z

P.E. 1.01-4.28.21 to ELCX Englishman 769E (50% R/HP)

All the hype has been real with Crown Royal daughters and it won't stop anytime soon. This female compliment both sides of her pedigree so well. She's long and extended through her front third, sound in her structural makeup and beautifully patterned from every angle. ELCX Giver 922G is homozygous black and double polled.

A remarkable female that you won't be able to forget. PBRs Gold Medal 9213G is an impressive female no matter where she is in the pasture. She's sound on her feet and legs, excellent on the profile and she's expressively muscled. This female is 62% Lim-Flex and is homozygous polled and double black.

Need to add some sparkle to your herd? ELCX Glitter 158G will shine no matter where she ends up. This female is beautifully designed, smooth through her front one third and level out through her hip. She takes a long, comfortable stride and she's incredibly flexible off both ends of her skeleton. On paper this female ranks in the 25th percentile for birthweight and in the 30th percentile for marbling. She is double black and double polled.

FALL CALVING FEMALES



Lim-Flex (40) Cow DP / DB ELCX 798G LFF 2386235 09.23.19

ELCX GUESS 798G

50

	CED	BW	WW	YW	MA	CEM	SC	ST	DOC	CW	RE	YG	MS	\$MTI
EPD	11	0.8	76	117	19	7	0.91	8	14	44	0.44	0.01	0.46	69.50
%Rank	55	50	25	30	65	35	55	90	35	20	95	95	10	10

RLBH AIR FORCE ONE
ELCX CAESAR 331 C
 PBRS ALICE 331A

MAGS UNHOOKS
LVLS ALL ME 798A
 LVLS 798R

EF XCESSIVE FORCE
 EF YAFFA 821Y
 MAGS YIP
 BUFORD LUCY 9302
 BASIN FRANCHISE P142
 MAGS MARQUEE
 BON VIEW NEW DESIGN 1407
 BLACKCAP V935

P.E. 1.01-4.28.21 to ELCX Englishman 769E (50% R/HP)
 Looking for a female to take the 'guesswork' out of creating high quality individuals? ELCX Guess 798G is a 40% Lim-Flex daughter of ELCX Caesar 331C that will do just that. Her dam is LVLS All Me 798A, a MAGS Unhooks daughter. This female ranks in the 10th percentile for marbling, the 20th percentile for weaning weight and the 25th percentile for yearling weight. We love this female's versatility, her overall symmetry and her feminine design. She is double polled and double black.

Lim-Flex (62) Cow HP / HB ELCX 35G LFF 2386236 09.24.19

ELCX GOODIES 35G

51

	CED	BW	WW	YW	MA	CEM	SC	ST	DOC	CW	RE	YG	MS	\$MTI
EPD	11	-0.5	71	113	14	6	1.18	10	13	36	0.6	-0.11	0.29	62.95
%Rank	55	20	45	35	95	55	35	65	45	40	75	75	35	40

EF XCESSIVE FORCE
AGRI CHAIRMAN 1C ET
 TGBC SWIZZLE 270W

JCL LODESTAR 27L
LH YANKEE GAL 113Y
 SITZ RLS EISA EVERGREEN 4

D A TRAVELER 004 703
 CFLX MOLLYS IMAGE
 JCL LODESTAR 27L
 MAGS SWIZZLE
 HUNTS HI-LITER 245G
 LOGAN'S CHEERLEADER 280G
 G A R RETAIL PRODUCT
 SITZ RLS EISA EVERGREEN 3

P.E. 1.01-4.28.21 to ELCX Englishman 769E (50% R/HP)
 ELCX Goodies 35G is a 62% Lim-Flex daughter of AGRI Chairman 1C ET. AGRI Chairman 1C ET is a son of EF Xcessive Force and out of a JCL Lodestar 27L female, TGBC Swizzle 270W. This female's dam is LH Yankee Gal 113Y, a JCL Lodestar 27L daughter out of a GAR Retail Product daughter. On paper she ranks in the 30th percentile for yearling weight and in the 35th percentile for birthweight, weaning weight and marbling. She is homozygous black and homozygous polled.

26



Lim-Flex (68) Cow DP / DB ELCX 344G LFF 2386234 09.22.19

ELCX GOTTA BE 344G

52

	CED	BW	WW	YW	MA	CEM	SC	ST	DOC	CW	RE	YG	MS	\$MTI
EPD	12	0.9	60	96	19	7	1	11	9	25	0.72	-0.26	0.27	60.13
%Rank	35	50	85	80	65	35	45	55	90	80	55	35	40	55

ENGD ZIP LINE 2515Z
ELCX DEVOTED 657D ET
 DFCL HBHPC 1S

BR MIDLAND
MAGS SATCHEL
 MAGS LADY ACE

AHCC WESTWIND W544
 RTTB ROYALTY 2505R
 JCL LODESTAR 27L
 DFCL HBPC 25L
 TWIN VALLEY PRECISION E161
 BR ROYAL LASS 7036-19
 EXLR INTRIGUE 361G
 CHAZ MISS GRETA 7003G

P.E. 1.01-4.28.21 to ELCX Englishman 769E (50% R/HP)
 ELCX Gotta Be 344G is a 68% Lim-Flex daughter of ELCX Devoted 657D. ELCX Devoted 657D is a son of ENGD Zip Line 2515Z and out of the infamous DFCL HBHPC 1S donor. This female's dam is MAGS Satchel, a BR Midland daughter out of an EXLR Intrigue 361G female, MAGS Lady Ace. She is double polled and double black.



SPRING CALVING FEMALES

Lim-Flex (56) Cow HP / Black ELCX 027H LFF 2325332 05.09.20

ELCX Heiress 027H 53

	CED	BW	VWV	YW	MA	CEM	SC	ST	DOC	CW	RE	YG	MS	\$MTI
EPD	13	-1	52	80	11	8	1.35	10	12	26	0.38	-0.03	0.42	61.26
%Rank	25	15	>95	>95	>95	20	20	65	60	75	95	90	15	50

D A TRAVELER 004 703
EF XCESSIVE FORCE
 CFLX MOLLYS IMAGE

MAGS XYLOID
ELCX COVER UP 299Z
 SBLX UNDERTHECOVERS 201U

S A V 8180 TRAVELER 004
 ROSEWOOD ERICA 5010
 DHVO DEUCE 132R
 JCL PEPPERMINT
 DHVO DEUCE 132R
 BOHI RHONDA 314R
 G A R PREDESTINED
 ELMW GINNIE P58G

P.E. 6.01-8.01.21 to ELCX Camp Fire 508C (50% P/HB)

ELCX Heiress 027H is sired by the legendary EF Xcessive Force and out of a favorite donor of ours, ELCX Cover Up 299Z. ELCX Cover Up 299Z is a MAGS Xyloid daughter out of the great SBLX Underthecovers 201U donor. This female ranks in the 10th percentile for her birthweight figure and in the 15th percentile for her marbling figure. She is 56% Lim-Flex and homozygous polled and heterozygous black.



Lot 53

Lim-Flex (44) Cow DP / DB ELCX 60H LFF 2386242 01.07.20

ELCX Historic 60H 54

	CED	BW	VWV	YW	MA	CEM	SC	ST	DOC	CW	RE	YG	MS	\$MTI
EPD	11	0.8	66	106	18	7	1.43	12	14	27	0.31	-0.04	0.26	59.84
%Rank	55	50	65	55	75	35	15	40	35	70	>95	90	40	60

MYTTY IN FOCUS
ELCX BENCHWARMER 363B
 SSTO SADIE 6854S

MAGS APPLE JACK
LVBR DIXIE 60D
 LVLS BETSY 4014B

S A F FOCUS OF E R
 MYTTY COUNTESS 906
 JCL LODESTAR 27L
 THOMAS LUCY ROSE 9509
 MAGS XUKALANI
 WLR UGLY BETTY 432U
 COLEMAN REGIS 210
 HC DYNASTY 416

P.E. 6.01-8.01.21 to ELCX Excessive 758E (75% P/B)

ELCX Historic 60H is a double black and double polled daughter of ELCX Benchwarmer 363B. ELCX Benchwarmer 363B is the MYTTY In Focus son out of a JCL Lodestar female, SSTO Sadie 6854S. This female's dam is LVBR Dixie 60D, a daughter of MAGS Apple Jack. This female is 44% Lim-Flex.



27

ELCX Benchwarmer 363B, sire of Lot 54.

Lim-Flex (62) Cow HP / Black ELCX 026H LFF 2325334 10.29.19

ELCX Helena 026H ET 55

	CED	BW	VWV	YW	MA	CEM	SC	ST	DOC	CW	RE	YG	MS	\$MTI
EPD	5	4.9	92	139	6	3	1.7	10	17	58	1.17	-0.27	0.1	63.69
%Rank	>95	>95	1	4	>95	>95	4	65	10	2	10	30	80	35

MRL X-RATED 014X
COLE ARCHITECT 08A
 COLE MISS LODESTAR 826U

S A V PIONEER 7301
EBFL SAN JOSE 170X
 TMCK SAN JOSE 170U

CTCA BUCKEYE BULL 8261U
 MRL TASTE OF COUNTRY 790T
 JCL LODESTAR 27L
 COLE MISS JUSTICE 694S
 SAV FINAL ANSWER 0035
 S A V BLACKBIRD 5297
 G A R PREDESTINED
 MAGS SAN JOSE

A.I. 5.20.21 to LVLS Bank Account 8116B (75% P/HB);
 P.E. 6.01-8.01.21 to ELCX Excessive 758E (75% P/B)

ELCX Helena 026H is a 62% Lim-Flex female sired by COLE Architect 08A. Her dam is EBFL San Jose 170X, a daughter of SAV Pioneer 7301 and out of the powerful donor, TMCK San Jose 170U. This female ranks in the top percentile of the breed for her weaning weight figure and in the 4th percentile for her yearling weight figure. Talk about outstanding growth influence in a female! She is homozygous polled and heterozygous black.



Lot 55

SPRING CALVING FEMALES

Lim-Flex (75) Cow HP / Black ELCX 016H LFF 2325795 03.21.20

ELCX Humbled 016H ET 56

	CED	BW	WW	YW	MA	CEM	SC	ST	DOC	CW	RE	YG	MS	\$MTI
EPD	12	-0.3	45	64	23	8	1.27	10	16	19	0.85	-0.17	0.12	49.26
%Rank	35	25	>95	>95	30	20	25	65	15	90	65	60	75	>95

TMCK DURHAM WHEAT 6030X
RIVERSTONE EXODUS ET
 HSF YOUR FANTASY

MYTTY IN FOCUS
SBLX UNKNOWN 104U
 MAGS MANUELA

DHVO DEUCE 132R
 MAGS STRAWBERRY PIE
 MAGS WAR ADMIRAL
 HSF TINKERBELL
 S A F FOCUS OF E R
 MYTTY COUNTESS 906
 EXLR LIMITED EDITION 765J
 AUTO CITY NIGHTS 214H

P.E. 6.01-8.01.21 to ELCX Excessive 758E (75% P/B)
 ELCX Humbled 016H is a 75% Lim-Flex daughter of Riverstone Exodus, the son of TMCK Durham Wheat 6030X and out of the great HSF Your Fantasy donor. Her dam is the influential SBLX Unknown 104U, a MYTTY In Focus daughter out of the legendary MAGS Manuela female. ELCX Humbled 016H ranks in the 20th percentile for birthweight and in the 30th percentile for milk. She is homozygous polled and heterozygous black.

% Limousin (85) Cow HP / Black ELCX 272H NXF 2386231 04.02.20

ELCX Halliegh 272H 57

	CED	BW	WW	YW	MA	CEM	SC	ST	DOC	CW	RE	YG	MS	\$MTI
EPD	9	1.8	59	82	22	5	0.78	6	10	18	0.91	-0.37	-0.1	47.00
%Rank	85	80	80	85	40	80	55	>95	80	80	45	35	90	95

TMCK DURHAM WHEAT 6030X
RIVERSTONE EXODUS ET
 HSF YOUR FANTASY

WLR RELOAD
ELCX DOUBLE DEE 227D
 ELCX GOT MILK 272Z

DHVO DEUCE 132R
 MAGS STRAWBERRY PIE
 MAGS WAR ADMIRAL
 HSF TINKERBELL
 LH RODEMASTER 338R
 MAGS PHANTOMS PRIZE
 DHVO TREY 133R
 SENNETT BLACKCAP 517RLF37

A.I. 5.21.21 to ELCX Devoted 657D (87% HP/HB);
 P.E. 6.01-8.01.21 to ELCX Excessive 758E (75% P/B)
 ELCX Halliegh 272H is sired by the TMCK Durham Wheat 6030X son, Riverstone Exodus. Her dam is ELCX Double Dee 227D, a daughter of WLR Reload and out of a DHVO Trey 133R female. This female is homozygous polled.

Lim-Flex (53) Cow DP / DB ELCX 158H LFF 2386241 02.02.20

ELCX Her 158H 58

	CED	BW	WW	YW	MA	CEM	SC	ST	DOC	CW	RE	YG	MS	\$MTI
EPD	12	0.3	64	100	18	6	0.96	9	15	30	0.39	-0.07	0.28	60.23
%Rank	35	35	75	70	75	55	55	80	20	60	95	85	40	55

RLBH AIR FORCE ONE
ELCX CAESAR 331 C
 PBRS ALICE 331A

MAGS Y-AXIS
OCCC BAKANA 158B
 JEPS SARAFINA 146Z

EF XCESSIVE FORCE
 EF YAFFA 821Y
 MAGS YIP
 BUFORD LUCY 9302
 TC ABERDEEN 759
 MAGS UAHUKA
 CALO BRICKYARD 902W
 HAHK WANNA SHOUT

P.E. 6.01-8.01.21 to ELCX Camp Fire 508C (50% P/HB)
 ELCX Her 158H is a double polled and double black daughter of ELCX Caesar 331C. ELCX Caesar 331C is a son of RLBH Air Force One and out of a powerful donor female, PBRS Alice 331A. This female's dam is OCCC Bakana 158B, a daughter of MAGS Y-Axis. On paper her birthweight figure ranks in the 25th percentile. She is 53% Lim-Flex.



Lim-Flex (50) Cow DP / Black ELCX 401H LFF 2386251 04.20.20

ELCX Hidden 401H

59

EPD	CED	BW	WW	YW	MA	CEM	SC	ST	DOC	CW	RE	YG	MS	\$MTI
12	0.5	66	101	20	8	0.96	8	11	31	0.69	-0.21	0.31	62.96	
%Rank	35	40	65	65	55	20	55	90	70	55	60	45	30	40

OKSU THE PROFIT 3401
ELCX CAMP FIRE 508C ET
 EBFL SAN JOSE 170X

CONNEALY IMPRESSION
ELCX BROWSE 401B ET
 MAGS SARAFINA

LH RODEMASTER 338R
 OKSU EXCITEMENT 0406
 S A V PIONEER 7301
 TMCK SAN JOSE 170U
 CONNEALY REFLECTION
 PEARL PAMMY OF CONANGA 19
 EXLR EXCELLANTE 251L
 CARROUSELS MAVIS 2214M

P.E. 6.01-8.01.21 to ELCX
 Excessive 758E (75% P/B)

ELCX Hidden 401H is a 50% Lim-Flex daughter of ELCX Camp Fire 508C, the OKSU The Profit 3401 x EBFL San Jose 170X son. This female's dam is ELCX Browse 401B, a Connealy Impression daughter out of the MAGS Sarafina donor female. She is homozygous black and double polled.

Lim-Flex (55) Cow DP / DB ELCX 200H LFF 2386246 03.11.20

ELCX Halo 200H

61

EPD	CED	BW	WW	YW	MA	CEM	SC	ST	DOC	CW	RE	YG	MS	\$MTI
9	1.5	64	97	22	5	0.85	4	9	32	0.69	-0.18	0.25	59.85	
%Rank	85	70	75	75	35	75	65	>95	90	55	60	55	45	60

PBRS MILESTONE 137Y
PBRS ADD IT UP 3120A
 PBRS Y NOT ME 165Y

S S INCENTIVE 9J17
DBGR SWEETHEART 200Z
 TYEJ DB SERENITY

LH U HAUL 135U
 MAGS UNIVERSAL TIME
 SPRNG CRKS URLACHER 311U
 CARROUSELS PINA COLADA
 SS OBJECTIVE T510 0T26
 S S MISS FRAN P142 B76
 LESF ASPHALT 9N
 TYEJ DB SIZZLE

P.E. 6.01-8.01.21 to ELCX
 Camp Fire 508C (50% P/HB)

ELCX Halo 200H is a double polled and double black daughter of PBRS Add It Up 3120A. She is out of an SS Incentive 9J17 daughter, DBGR Sweetheart 200Z. She is 55% Lim-Flex.

Lim-Flex (55) Cow DP / HB ELCX 315H LFF 2386252 04.02.20

ELCX High Up 315H

60

EPD	CED	BW	WW	YW	MA	CEM	SC	ST	DOC	CW	RE	YG	MS	\$MTI
9	2.2	68	107	19	5	0.91	10	10	34	0.61	-0.17	0.31	63.36	
%Rank	85	85	55	50	65	75	55	65	80	45	75	60	30	35

PBRS MILESTONE 137Y
PBRS ADD IT UP 3120A
 PBRS Y NOT ME 165Y

CONNEALY CONSENSUS 7229
WIN VUE MISS CONSENSUS
 HB LACE & RIBBONS 9Y

LH U HAUL 135U
 MAGS UNIVERSAL TIME
 SPRNG CRKS URLACHER 311U
 CARROUSELS PINA COLADA
 CONNEALY CONSENSUS
 BLUE LILLY OF CONANGA 16
 AHCC WESTWIND W544
 WULFS LACE & RIBBONS 1186

P.E. 6.01-8.01.21 to ELCX
 Excessive 758E (75% P/B)

ELCX High Up 315H is a 55% Lim-Flex daughter of PBRS Add It Up 3120A, a son of PBRS Milestone 137Y. Her dam is a Connealy Consensus 7229 daughter out of an AHCC Westwind W544 female. She is homozygous black and double polled.

Lim-Flex (46) Cow HP / DB ELCX 110H LFF 2386229 04.01.20

ELCX Halley 110H

62

EPD	CED	BW	WW	YW	MA	CEM	SC	ST	DOC	CW	RE	YG	MS	\$MTI
11	1.2	70	110	21	6	-	11	13	36	0.65	-0.14	0.34	64.78	
%Rank	55	60	45	45	45	55	-	55	45	40	65	65	25	30

MAGS Y-AXIS
ELCX DANTE 618D ET
 MAGS UNLIKELY CANDIDATE

WLR GAME OF THRONES
ELCX FLOW 110F
 ELCX FANNIE 110A

TC ABERDEEN 759
 MAGS UAHUKA
 G A R PREDESTINED
 LOGAN'S CHEERLEADER 280G
 MAGS WIGGLER
 WLR URSULA 499U
 MAGS WINSTON
 PCF FANNIE 110 OF IN FOCUS

P.E. 6.01-8.01.21 to ELCX
 Excessive 758E (75% P/B)

ELCX Halley 110H is a 46% Lim-Flex daughter of ELCX Dante 618D. ELCX Dante 618D is a son of MAGS Y-Axis and out of the MAGS Unlikely Candidate donor. This female's dam is ELCX Flow 110F, a daughter of WLR Game of Thrones and out of a MAGS Winston daughter. She ranks in the 25th percentile for her marbling figure. She is homozygous polled and double black.

ELCX

Represents a family owned operation that is backed with integrity and faith needed to earn your business!

SPRING CALVING FEMALES



Lim-Flex (62) Cow Polled / HB PBRs 44H LFF 2386244 03.02.20

ELCX Hi-Five 44B

63

	CED	BW	WW	YW	MA	CEM	SC	ST	DOC	CW	RE	YG	MS	\$MTI
EPD	9	1.1	73	111	16	8	-	8	11	32	0.74	-0.17	0.25	62.54
%Rank	85	55	35	40	90	20	-	90	70	55	50	60	45	40

EF XCESSIVE FORCE
AGRI CHAIRMAN 1C ET
 TGBC SWIZZLE 270W

BUFORD OKLAHOMA X239
PBRs BELL RINGER 44B
 WLR RENDEZVOUS 050R

D A TRAVELER 004 703
 CFLX MOLLYS IMAGE
 JCL LODESTAR 27L
 MAGS SWIZZLE
 S A V PIONEER 7301
 J BAR 7 ELBA 7297
 GPF BLAQUE RULON
 KEHG JULIET 10H

P.E. 6.01-8.01.21 to ELCX Excessive 758E (75% P/B)

ELCX Hi-Five 44B is a 62% Lim-Flex daughter of AGRI Chairman 1C. AGRI Chairman 1C is a son of EF Xcessive Force and out of a JCL Lodestar daughter, TGBC Swizzle 270W. She is homozygous black.



Lim-Flex (62) Cow Polled / Black ELCX 201H LFF 2386245 03.11.20

ELCX Hottt 201H

64

	CED	BW	WW	YW	MA	CEM	SC	ST	DOC	CW	RE	YG	MS	\$MTI
EPD	11	0.3	65	97	16	6	1.11	6	11	28	0.55	-0.12	0.29	61.08
%Rank	55	35	70	75	90	55	35	>95	70	70	85	70	35	50

EF XCESSIVE FORCE
AGRI CHAIRMAN 1C ET
 TGBC SWIZZLE 270W

CALO BRICKYARD 902W
ELCX UNDERCOVER 201Y
 SBLX UNDERTHECOVERS 201U

D A TRAVELER 004 703
 CFLX MOLLYS IMAGE
 JCL LODESTAR 27L
 MAGS SWIZZLE
 SCHILLING'S TALLADEGA
 EXG E839 1407 M175 LS
 G A R PREDESTINED
 ELMW GINNIE P58G

P.E. 6.01-8.01.21 to ELCX Excessive 758E (75% P/B)

ELCX Hottt 201H is another terrific daughter of AGRI Chairman 1C. This female's dam is ELCX Undercover 201Y, a daughter of CALO Brickyard 902W and the great SBLX Underthecovers 201U donor. She is 62% Lim-Flex.



BULL LEASE Program

If purchasing a bull is NOT an option for you at this time then the Edwards Family are offering a bull lease program. The agreement is at the end of the sale, you can pay 25% of your bid purchase price with a (minimum of \$800). This pays for a 90 day lease on the herd bull. After 90 days of using the bull if not returned to the the Edwards operation then you will be charged \$5 per day. If the bull loses more than 200 pounds while in your care, a \$1 per pound for each pound over 200 pounds will be added to your cost. It is the responsibility of the lessee for all transportation/ hauling of the bulls. For further details, please feel free to contact ...

Dexter Edwards910.385.6192
Randy Ratliff615.330.2735

Nicholas Edwards.....910.290.1424



ELCX CAESAR 331C SONS

Lim-Flex (53) Bull DP / DB ELCX 762H LFM 2326002 04.21.20

ELCX Hottest 762H 65

	CED	BW	WW	YW	MA	CEM	SC	ST	DOC	CW	RE	YG	MS	\$MTI
EPD	13	0.4	66	105	15	7	0.7	10	14	35	0.46	-0.07	0.26	60.24
%Rank	25	40	65	55	95	35	75	65	35	45	90	85	40	55

RLBH AIR FORCE ONE
ELCX CAESAR 331 C
 PBRs ALICE 331A

BC 7022 RAVEN 7965
WLR COCOA PUFF
 MAGS TABU

EF XCESSIVE FORCE
 EF YAFFA 821Y
 MAGS YIP
 BUFORD LUCY 9302
 B C MARATHON 7022
 O C C BLACKBIRD 796F
 JCL LODESTAR 27L
 MAGS PHANTOMS PRIZE

BW: 70 lbs.; WW: 710 lbs; YW: 1,115 lbs.

Here is another tremendously powerful son of ELCX Caesar 331C. He is a 53% Lim-Flex bull out of the great WLR Cocoa Puff female. On paper this bull ranks in the 35th percentile for his birthweight figure and in the 40th percentile for his marbling figure. This guy is the epitome of what we all search for in a herd bull. He's masculine in his design, huge middled and expressively muscled with such structural soundness. Get this guy on the move and he's incredibly flexible off both ends of his skeleton and has a tremendous flex to his pastern. He is double polled and double black.

32

% Limousin (78) Bull DP / HB ELCX 811G NXM 2331228 09.02.19

ELCX Good Knight 811G 66

	CED	BW	WW	YW	MA	CEM	SC	ST	DOC	CW	RE	YG	MS	\$MTI
EPD	10	1.5	62	91	23	4	0.46	7	8	25	0.59	-0.23	0.18	57.15
%Rank	70	75	60	60	30	90	80	95	80	60	80	60	45	55

RLBH AIR FORCE ONE
ELCX CAESAR 331 C
 PBRs ALICE 331A

LESF ASPHALT 9N
ENGD BP MISS 8115U
 PLD BLK AMBER KRUG 102

EF XCESSIVE FORCE
 EF YAFFA 821Y
 MAGS YIP
 BUFORD LUCY 9302
 GPFF BLAQUE RULON
 GPFF EXTRA SWEET ELITE
 RADS BLACK PRODIGY
 SOGF AMBER KRUG 264B

BW: 74 lbs.; WW: 615 lbs; YW: 1,290 lbs.

Here is a bull the is right from the ground up. ELCX Good Knight 811G is a purebred son of ELCX Caesar 331C. ELCX Caesar 331C is sired by RLBH Air Force One and out of the PBRs Alice 331A donor female. This bull's dam is ENGD BP Miss 8115U, a daughter of LESF Asphalt 9N. We admire this bull's added rib shape, volume, level hip and overall style. This bull brings so many positive attributes to the table and you'll want to plan to use him extensively in your program because he's destined for extreme success. He is homozygous black and double polled.



ELCX Caesar 311C, sire of Lots 65 - 70.

Lim-Flex (53) Bull DP / DB ELCX 308G LFM 2331197 09.03.19

ELCX Greek 308G 67

	CED	BW	WW	YW	MA	CEM	SC	ST	DOC	CW	RE	YG	MS	\$MTI
EPD	12	0.5	68	109	18	6	0.46	9	13	36	0.34	-0.04	0.35	63.78
%Rank	35	40	55	45	75	55	95	80	45	40	>95	90	25	35

RLBH AIR FORCE ONE
ELCX CAESAR 331 C
 PBRs ALICE 331A

MAGS WINSTON
ELCX AERIELA 308A
 AUTO CHRISTY 8889R

EF XCESSIVE FORCE
 EF YAFFA 821Y
 MAGS YIP
 BUFORD LUCY 9302
 BT CROSSOVER 758N
 MAGS STRAWBERRY
 EXAR NEW DESIGN 3903
 AUTO CHRISTY 853N

BW: 68 lbs.; WW: 702 lbs; YW: 1,250 lbs.

This son of ELCX Caesar 331C is one to study. ELCX Greek 308G is a 53% Lim-Flex bull that ranks in the 25th percentile for his marbling figure. His dam is ELCX Aeriela 308A, a daughter of MAGS Winston and out of an EXAR New Design 3903 female. He is easy on the eyes, powerful from the side and has such added dimension, levelness of hip and strength of top. This is a bull that will take your program to the top and stay productive for the long haul. He is double polled and double black.

BEEF BULLS

Lim-Flex (62) Bull HP / HB ELCX 015H LFM 2325330 03.21.20

ELCX Hamilton 015H ET 68

	CED	BW	WW	YW	MA	CEM	SC	ST	DOC	CW	RE	YG	MS	\$MTI
EPD	9	4.7	97	150	6	6	1.7	13	13	38	1.13	-0.27	0.14	66.67
%Rank	85	>95	1	1	>95	55	4	30	45	35	10	30	70	20

MRL X-RATED 014X
COLE ARCHITECT 08A
 COLE MISS LODESTAR 826U

S A V PIONEER 7301
EBFL SAN JOSE 170X
 TMCK SAN JOSE 170U

CTCA BUCKEYE BULL 8261U
 MRL TASTE OF COUNTRY 790T
 JCL LODESTAR 27L
 COLE MISS JUSTICE 694S
 SAV FINAL ANSWER 0035
 S A V BLACKBIRD 5297
 G A R PREDESTINED
 MAGS SAN JOSE

BW: 78 lbs.; WW: 612 lbs.; YW: 1,215 lbs.

Now this is a powerfully stacked genetic profile right here! ELCX Hamilton 015H is a double homozygous son of COLE Architect 08A. COLE Architect 08A is a son of MRL X-Rated 014X and out of COLE Miss Lodestar 826U. This bull's dam is the powerful donor, EBFL San Jose 170X. She is a daughter of SAV Pioneer 7301. On paper this guy will completely blow you away with his growth numbers. He ranks in the top percentile for BOTH weaning weight and yearling weight. Truly folks, it doesn't get much better than this! He is 62% Lim-Flex.



Lim-Flex (56) Bull HP / HB ELCX 953G LFM 2331164 11.18.19

ELCX Good Grief 953G ET 69

	CED	BW	WW	YW	MA	CEM	SC	ST	DOC	CW	RE	YG	MS	\$MTI
EPD	10	1.2	61	101	23	4	0.9	8	13	34	0.52	-0.14	0.18	56.30
%Rank	70	60	85	65	30	90	55	90	45	45	85	65	60	80

MAGS WINSTON
MAGS ZODIAC
 MAGS XANTHOUS

G A R PREDESTINED
MAGS UNLIKELY CANDIDATE
 LOGAN'S CHEERLEADER 280G

BT CROSSOVER 758N
 MAGS STRAWBERRY
 DHVO DEUCE 132R
 BOHI RHONDA 314R
 B/R NEW DESIGN 036
 G A R EXT 4206
 COLE FIRST DOWN 46D
 TTCC CONFIDENCE MAKER

BW: 68 lbs.; WW: 652 lbs.; YW: 1,200 lbs.

This is a very eye-appealing bull with added bone, hip and muscle. ELCX Good Grief 953G is a double homozygous son of MAGS Zodiac. His dam is MAGS Unlikely Candidate, a daughter of GAR Predestined. We predict this bull will make a name for himself with just one calf crop- he's that good. He is a young bull with a world of future still up ahead. When we talk about structural integrity and grit- this is the bull that we always talk about first. He's masculine made, soggy middled and so comfortable off both ends of his skeleton when you get him in motion. An all-around sound investment for your operation. He is 56% Lim-Flex.

Lim-Flex (50) Bull HP / HB ELCX 170H LFM 2386247 03.13.20

ELCX Houston 170H 70

	CED	BW	WW	YW	MA	CEM	SC	ST	DOC	CW	RE	YG	MS	\$MTI
EPD	10	1	74	117	15	5	1.46	9	13	38	0.68	-0.09	0.41	68.18
%Rank	70	55	30	30	95	75	15	80	45	35	65	80	15	15

EF XCESSIVE FORCE
AGRI CHAIRMAN 1C ET
 TGBC SWIZZLE 270W

S A V PIONEER 7301
EBFL SAN JOSE 170X
 TMCK SAN JOSE 170U

D A TRAVELER 004 703
 CFLX MOLLYS IMAGE
 JCL LODESTAR 27L
 MAGS SWIZZLE
 SAV FINAL ANSWER 0035
 S A V BLACKBIRD 5297
 G A R PREDESTINED
 MAGS SAN JOSE

BW: 70 lbs.; YW: WW: 520 lbs.; YW: 990 lbs.

This is a tremendously well-made bull with added muscle expression and a tremendous set of feet and legs under him. ELCX Houston 170H is a 50% Lim-Flex son of AGRI Chairman 1C, the EF Xcessive Force son. His dam is the influential EBFL San Jose 170X female. On paper this bull ranks in the 15th percentile for his marbling figure and in the 30th percentile for both his weaning weight and his yearling weight figures. You couldn't ask for much more in a herd sire prospect! We love this bull's strong masculine look, his soundness of structure and his overall balanced look. He is homozygous black and homozygous polled.

RIVERSTONE EXODUS SONS

Lim-Flex (75 Bull HP / Black ELCX 019H LFM 2325780 03.26.20

ELCX Harden 019H ET

71

	CED	BW	WW	YW	MA	CEM	SC	ST	DOC	CW	RE	YG	MS	\$MTI
EPD	8	2.9	63	87	23	6	1.27	9	15	28	0.99	-0.34	0.01	51.97
%Rank	90	95	75	90	30	55	25	80	20	70	20	20	95	95

TMCK DURHAM WHEAT 6030X
RIVERSTONE EXODUS ET
 HSF YOUR FANTASY

MYTTY IN FOCUS
SBLX UNKNOWN 104U
 MAGS MANUELA

DHVO DEUCE 132R
 MAGS STRAWBERRY PIE
 MAGS WAR ADMIRAL
 HSF TINKERBELL
 S A F FOCUS OF E R
 MYTTY COUNTESS 906
 EXLR LIMITED EDITION 765J
 AUTO CITY NIGHTS 214H

BW: 78 lbs.; WW: 702 lbs.; YW: 1,215 lbs.

A total cattleman's kind of bull right here, folks! ELCX Harden 019H is a 75% Lim-Flex son of Riverstone Exodus. Riverstone Exodus is the TMCK Durham Wheat 6030X son out of the great HSF Your Fantasy female. This bull's dam is the legendary SBLX Unknown 104U female. She is a daughter of MYTTY In Focus and out of the one and only MAGS Manuela female. When we analyze this bull we appreciate his strong eye appeal, soundness from the ground up and his wicked style and balanced phenotype. He's the type of bull that will work on any female and improve a program no matter the scenario. This bull is homozygous polled and heterozygous black.

Lim-Flex (75) Bull Polled / HB ELCX 020H LFM 2325777 03.28.20

ELCX Holden 020H ET

72

	CED	BW	WW	YW	MA	CEM	SC	ST	DOC	CW	RE	YG	MS	\$MTI
EPD	12	-0.6	53	78	23	8	1.27	13	16	14	0.7	-0.3	-0.03	47.38
%Rank	35	20	>95	>95	30	20	25	30	15	>95	60	25	>95	>95

TMCK DURHAM WHEAT 6030X
RIVERSTONE EXODUS ET
 HSF YOUR FANTASY

MYTTY IN FOCUS
SBLX UNKNOWN 104U
 MAGS MANUELA

DHVO DEUCE 132R
 MAGS STRAWBERRY PIE
 MAGS WAR ADMIRAL
 HSF TINKERBELL
 S A F FOCUS OF E R
 MYTTY COUNTESS 906
 EXLR LIMITED EDITION 765J
 AUTO CITY NIGHTS 214H

BW: 78 lbs.; WW: 602 lbs.; YW: 1,100 lbs.

This is a rugged-made bull with a world of future in front of him! ELCX Holden 020H is a 75% Lim-Flex son of Riverstone Exodus, the TMCK Durham Wheat 6030X son. His dam is the great SBLX Unknown 104U female. She is a daughter of MYTTY In Focus and out of the one and only MAGS Manuela female. With genetic influence of this caliber, you'd be insane not to capitalize on this opportunity. We've admired this guy since he hit the ground, but now it's time he go to work in your pastures. He's one impressive individual you'll want to be sure to get your eyes on. This bull is homozygous black and heterozygous polled.



34

lot 71



lot 72

% Limousin (76) Bull DP / DB ELCX 720H NXM 2386230 04.02.20

ELCX Hallows 720H 73

	CED	BW	WW	YW	MA	CEM	SC	ST	DOC	CW	RE	YG	MS	SMTI
EPD	9	2.3	65	97	24	5	0.78	8	13	19	0.89	-0.31	-0.05	50.33
%Rank	85	90	50	50	15	80	55	90	40	80	45	45	85	90

RIVERSTONE EXODUS ET
 HSF YOUR FANTASY

ELCX EQUAL 720E ET
 TMCK ARCHITECT 031A
 AUTO CHRISTY 8889R

DHVO DEUCE 132R
 MAGS STRAWBERRY PIE
 MAGS WAR ADMIRAL
 HSF TINKERBELL
 TMCK HYDRAULIC 17Y
 TMCK LA VEDA 909Y
 EXAR NEW DESIGN 3903
 AUTO CHRISTY 853N

BW: 78 lbs.; WW: 502 lbs.; YW: 1,015 lbs.

Here is another powerful son of Riverstone Exodus, the TMCK Durham Wheat 6030X son. ELCX Hallows 720H's dam is ELCX Equal 720E ET, a daughter of TMCK Architect 031A and out of an EXAR New Design 3903 female. This bull ranks in the 15th percentile for his milk figure. He is stout made from end to end, full of natural muscle shape and expression and get him in motion he's flawless. He stands on a huge foot with incredible flex to his pastern. He is 76% Lim-Flex and is double black and double polled.

Lim-Flex (75) Bull DP / HB ELCX 021H LFM 2325778 03.28.20

ELCX Hayden 021H ET 75

	CED	BW	WW	YW	MA	CEM	SC	ST	DOC	CW	RE	YG	MS	SMTI
EPD	12	3	67	104	23	8	1.27	10	14	30	0.84	-0.21	-0.11	48.13
%Rank	35	95	60	60	30	20	25	65	35	60	35	45	>95	>95

RIVERSTONE EXODUS ET
 HSF YOUR FANTASY

SBLX UNKNOWN 104U
 MYTTY IN FOCUS
 MAGS MANUELA

DHVO DEUCE 132R
 MAGS STRAWBERRY PIE
 MAGS WAR ADMIRAL
 HSF TINKERBELL
 S A F FOCUS OF E R
 MYTTY COUNTESS 906
 EXLR LIMITED EDITION 765J
 AUTO CITY NIGHTS 214H

BW: 70 lbs.; WW: 601 lbs.; YW: 1,080 lbs.

We truly admire these Riverstone Exodus sons. ELCX Hayden 021H is another tremendous son of Riverstone Exodus, the TMCK Durham Wheat 6030X son out of the influential HSF Your Fantasy female. His dam is SBLX Unknown 104U, the daughter of MYTTY In Focus and the legendary MAGS Manuela donor. This bull is a full sibling to ELCX Hidden 013H. We appreciate this bull's foot size, his muscle expression and his capacious center body. He's stout made, rugged in his structural build and he's smooth as a cat on the move. He is homozygous black and double polled.

Lim-Flex (75) Bull Polled / HB ELCX 013H LFM 2325779 03.20.20

ELCX Hidden 013H ET 74

	CED	BW	WW	YW	MA	CEM	SC	ST	DOC	CW	RE	YG	MS	SMTI
EPD	8	1.6	57	83	23	6	1.27	13	14	26	0.65	-0.22	0.05	50.73
%Rank	90	70	95	95	30	55	25	30	35	75	65	45	90	>95

RIVERSTONE EXODUS ET
 HSF YOUR FANTASY

SBLX UNKNOWN 104U
 MYTTY IN FOCUS
 MAGS MANUELA

DHVO DEUCE 132R
 MAGS STRAWBERRY PIE
 MAGS WAR ADMIRAL
 HSF TINKERBELL
 S A F FOCUS OF E R
 MYTTY COUNTESS 906
 EXLR LIMITED EDITION 765J
 AUTO CITY NIGHTS 214H

BW: 74 lbs.; WW: 706 lbs.; YW: 1,112 lbs.

In the market for a powerful herd sire prospect with an elite pedigree? Here's the one for you! ELCX Hidden 013H is a 75% Lim-Flex son of Riverstone Exodus. Riverstone Exodus is the TMCK Durham Wheat 6030X son out of the great HSF Your Fantasy female. This bull's dam is SBLX Unknown 104U, the daughter of MYTTY In Focus and the legendary MAGS Manuela donor. We can't say enough about the quality this bull offers. From the ground up he's sound, flexible in his pastern and tremendously designed. He's built for the long haul and will add phenomenal genetic influence to your program. He is homozygous black and heterozygous polled.

Lim-Flex (62) Bull HP / HB ELCX 030H LFM 2325336 05.13.20

ELCX Houston 030H 76

	CED	BW	WW	YW	MA	CEM	SC	ST	DOC	CW	RE	YG	MS	SMTI
EPD	8	3	86	1229	6	5	1.7	13	16	36	1.04	-0.3	0.13	63.12
%Rank	90	95	4	10	>95	75	4	30	15	40	15	25	75	40

COLE ARCHITECT 08A
 MRL X-RATED 014X
 COLE MISS LODESTAR 826U

EBFL SAN JOSE 170X
 S A V PIONEER 7301
 TMCK SAN JOSE 170U

CTCA BUCKEYE BULL 8261U
 MRL TASTE OF COUNTRY 790T
 JCL LODESTAR 27L
 COLE MISS JUSTICE 694S
 SAV FINAL ANSWER 0035
 S A V BLACKBIRD 5297
 G A R PREDESTINED
 MAGS SAN JOSE

BW: 80 lbs.; WW: 612 lbs.; YW: 1,115 lbs.

Now this is a head turner if we've ever seen one! ELCX Houston 030H is a 62% Lim-Flex son of COLE Architect 08A. His dam is EBFL San Jose 170X. She is a daughter of SAV Pioneer 7301 and out of a GAR Predestined daughter, TMCK San Jose 170U. He ranks in the 4th percentile for his weaning weight figure and in the 10th percentile for his yearling weight figure. This bull is a full sibling to the impressive ELCX Hollywood 028H bull. We love this guy's silhouette, his power and his elite look. He is rugged in his structural build, long in his skeletal makeup and tremendously attractive on the profile. He is homozygous polled and homozygous black.



BEEF BULLS



Lim-Flex (62) Bull HP / HB ELCX 028H LFM 2325335 05.12.20

ELCX HOLLYWOOD 028H ET 77

	EPD	CED	BW	VWV	YW	MA	CEM	SC	ST	DOC	CW	RE	YG	MS	\$MTI
	7	2.9	87	126	6	4	1.7	12	14	30	0.96	-0.29	0.02	59.24	
%Rank	95	95	4	15	>95	90	4	40	35	60	20	25	95	60	

MRL X-RATED 014X
COLE ARCHITECT 08A
 COLE MISS LODESTAR 826U
 S A V PIONEER 7301
EBFL SAN JOSE 170X
 TMCK SAN JOSE 170U

CTCA BUCKEYE BULL 8261U
 MRL TASTE OF COUNTRY 790T
 JCL LODESTAR 27L
 COLE MISS JUSTICE 694S
 SAV FINAL ANSWER 0035
 S A V BLACKBIRD 5297
 G A R PREDESTINED
 MAGS SAN JOSE

BW: 78 lbs.; WW: 588 lbs.; YW: 1,070 lbs.

This is a bull to focus your attention on. ELCX Hollywood 028H is a double homozygous son of COLE Architect 08A. This bull's dam is EBFL San Jose 170X. She is a daughter of SAV Pioneer 7301 and out of a GAR Predestined daughter, TMCK San Jose 170U. On paper you'll appreciate the power this bull brings to the table. He ranks in the 4th percentile for his weaning weight and in the 15th percentile for his yearling weight. When we think of an all around individual that comes from an influential background that holds his own phenotypically and numerically, this is the guy that always comes to mind. This bull is designed with function in mind. He's sound structured, strong in his top and tremendously deep bodied. Get this one in motion and he's down right impressive. He takes a huge, confident stride with as much comfortability off both ends of his skeleton as we've seen in a bull. He is 62% Lim-Flex.



Lim-Flex (46) Bull HP / Black ELCX 966H LFM 2331166 01.11.20

ELCX Haulin 966H ET 78

	EPD	CED	BW	VWV	YW	MA	CEM	SC	ST	DOC	CW	RE	YG	MS	\$MTI
	15	-1.2	74	120	23	8	0.68	8	11	37	0.3	0	0.54	72.14	
%Rank	10	10	30	25	30	20	85	90	70	35	>95	95	3	5	

BASIN FRANCHISE P142
LH U HAUL 135U
 EXLR DUCHESS 7129R

MAGS WINSTON
BSTR GOLD DIGGER ET
 SBLX UNDERTHECOVERS 201U

C A FUTURE DIRECTION 5321
 BASIN CHLOE 812L
 EXLR NEW GENERATION 071M
 EXLR 199H
 BT CROSSOVER 758N
 MAGS STRAWBERRY
 G A R PREDESTINED
 ELMW GINNIE P58G

BW: 67 lbs.; WW: 608 lbs.; YW: 1,218 lbs.

You'll want to check this LH U Haul 135U son out! ELCX Haulin 966H is a 46% Lim-Flex bull out of BSTR Gold Digger, the MAGS Winston daughter from the great SBLX Underthecovers 201U female. On paper this guy will blow you away- he ranks in the 3rd percentile for his marbling figure, the 10th percentile for his birthweight figure, the 25th percentile for his yearling weight figure and the 30th percentile for both his weaning weight and milk figures. Folks, it simply doesn't get much better than this in a herd sire prospect! This bull has it all- he's wicked good on the profile, he's sound on all four and he's expressively muscled. Not only does he come from an elite ancestry, he's carrying on their legacy in the most impressive way possible. He is homozygous polled and heterozygous black.



Lim-Flex (56) Bull HP / HB ELCX 952G LFM 2331163 11.16.19

ELCX Good Candidate 952G ET 79

	EPD	CED	BW	VWV	YW	MA	CEM	SC	ST	DOC	CW	RE	YG	MS	\$MTI
	6	4	78	135	23	2	0.9	8	14	56	0.53	-0.01	0.38	67.98	
%Rank	>95	>95	20	5	30	>95	55	90	35	3	85	95	20	15	

MAGS WINSTON
MAGS ZODIAC
 MAGS XANTHOS

G A R PREDESTINED
MAGS UNLIKELY CANDIDATE
 LOGAN'S CHEERLEADER 280G

BT CROSSOVER 758N
 MAGS STRAWBERRY
 DHVO DEUCE 132R
 BOHI RHONDA 314R
 B/R NEW DESIGN 036
 G A R EXT 4206
 COLE FIRST DOWN 46D
 TTCC CONFIDENCE MAKER

BW: 68 lbs.; WW: 615 lbs.; YW: 1,220 lbs.

It's in his name folks! ELCX Good Candidate 952G is a 56% Lim-Flex son of MAGS Zodiac. He is a double homozygous bull from the powerful MAGS Unlikely Candidate female who is a daughter of GAR Predestined. This bull's numeric profile is something to rave over. He ranks in the 5th percentile for his yearling weight, the 20th percentile for his weaning weight and marbling figures and the 30th percentile for his milk figure. This guy is an impressive herd sire candidate that looks the part and is backed by wicked good numbers. We appreciate the soundness of structure, strength of top and depth of rib this bull has. This one will be a 'good candidate' for many, but only one cattleman will be introducing this bull to his program at the end of the sale.

ANGUS BULLS

Angus Bull Polled / Black ELC H015 AAA# 20102031 01.20.20

ELC Hideout H015

80

	CED	BW	WW	YW	MA	CEM	SC	ST	DOC	CW	RE	YG	MS	\$MTI
EPD	3	2.0	53	94	28	7	-	-	-	-	-	-	-	-
%Rank	80	70	70	70	30	70	-	-	-	-	-	-	-	-

ELC TWISTED EX C561
BALDRIDGE WILLIE Y34
BALDRIDGE DUCHESS T69
RITA 9MA1 OF RITA 7O67 PRED

SPRNG CRKS FOREVER LADY 0015
EXAR 263C
RITO 4L60 OF 2536 BVND 208

BALDRIDGE WAYLON W34
BALDRIDGE DUCHESS T69
G A R PREDESTINED
RITA 7O67 OF RITA 5M46 OBJ
BON VIEW NEW DESIGN 1407
EXAR JUNE C 3577
HCC FOREVER LADY 6152
HCC FOREVER LADY 3300

BW: 65 lbs.; WW: 520 lbs.; YW: 1,111 lbs.

What an impressive Angus herd sire prospect this guy is! ELC Hideout H015 is a son of ELC Twisted Ex C561. Twisted Ex is a son of Baldrige Willie Y34 and is out of a GAR Predestined female, Rita 9MA1 of Rita 7067. ELC Hideout's dam is Sprng Crks Forever Lady 0015, a daughter of EXAR 263C, a son of Bon View New Design 1407. Her dam is HCC Forever Lady 6152, a daughter of GAR Precision. Talk about an elite, loaded pedigree! ELC Hideout H015 is more than impressive on paper, but get your eyes on this powerhouse and you won't be able to erase his image from your mind. We love this bull's build, his near-perfect structure and his overwhelmingly powerful silhouette. This is one you'll be hearing about in the near future, so take this opportunity and capitalize on it for the future success of your program!



Angus Bull Polled / Black ELC H811 AAA# 20102033 02.10.20

ELCX Holy Bull H811

81

	CED	BW	WW	YW	MA	CEM	SC	ST	DOC	CW	RE	YG	MS	\$MTI
EPD	-	-	-	-	-	-	-	-	-	-	-	-	-	-
%Rank	-	-	-	-	-	-	-	-	-	-	-	-	-	-

ELC EDGAR RITO E431
WOODSIDE RITO 4050 OF 0M3
PCF ZARA BELLE 431

44 FOREVER LADY 81144
TC TOTAL 410
E F FOREVER LADY 1255

G A R PROPHET
RITA 0M3 OF RITA 5F56 PRED
SPRINGFIELD COMPLETE 1084
PCF ZARA BELLE OBJ 931
BON VIEW NEW DESIGN 208
TC ERICA EILEEN 2047
BON VIEW NEW DESIGN 878
E F FOREVER LADY 5102

BW: 68 lbs.; WW: 678 lbs.; YW: 1,152 lbs.

Holy bull is right! ELC Holy Bull H811 is a son of ELC Edgar Rito E431, a son of Woodside Rito 4050 of 0M3. His dam is 44 Forever Lady 81144, a daughter of TC Total 410, the son of Bon View New Design 208. Her dam is a Bon View New Design 878 daughter, EF Forever Lady 1255. Man oh man, this guy is flat good. He's built just right—he's long in his skeletal makeup, deep bodied and full of rib shape and in motion he's comfortable off both ends. He takes a gigantic stride and holds his powerful outline together even in motion. This one will have you saying 'holy bull' for a long time!



37

Angus Bull Polled / Black ELC H605 AAA# 20102032 03.10.20

ELCX Highlight H605

82

	CED	BW	WW	YW	MA	CEM	SC	ST	DOC	CW	RE	YG	MS	\$MTI
EPD	5	2.3	62	113	29	7	1.20	-	22	44	0.50	0.031	1.00	-
%Rank	65	75	40	35	25	70	25	-	30	55	65	75	15	-

WOODSIDE RITO 4050 OF 0M3
G A R PROPHET
RITA 0M3 OF RITA 5F56 PRED

SPRING CREEKS LUCY 6050
SITZ TOP GAME 561X
EXG LUCY T608 R3

C R A BEXTOR 872 5205 608
G A R OBJECTIVE 1885
G A R PREDESTINED
RITA 5F56 OF 1198 FD
GDAR GAME DAY 449
SITZ PRIDE 88T
BR MIDLAND
R3 LUCY DATELINE L540

BW: 60 lbs.; WW: 615 lbs.; YW: 1,182 lbs.

A true 'highlight' of our Angus genetics! ELC Highlight H605 is a son of Woodside Rito 4050 of 0M3, the GAR Prophet son. This bull's dam is Spring Creeks Lucy 6050, a daughter of Sitz Top Game 561X and out of a BR Midland female, EXG Lucy T608. We are more than confident in this guy's potential and cannot wait to see his progeny on the ground. This bull is designed with power and function at the heart of his phenotype. He's impressive on the profile, long bodied and incredibly huge middled. We appreciate his quality look and his powerful, yet refined phenotype.



Tot 82

ANGUS BULLS

Angus Bull Polled / Black ELC H025 AAA# 20061290 05.05.20

ELC Heir H025

83

	CED	BW	WW	YW	MA	CEM	SC	ST	DOC	CW	RE	YG	MS	\$MTI
EPD	8	1.9	56	103	21	10	0.26	-	12	41	0.52	0.027	0.59	-
%Rank	35	65	60	55	80	35	85	-	75	65	65	75	50	-

EXAR UPSHOT 0562B
EXAR DENVER 2002B
 EXAR ROYAL LASS 1067
 SOO LINE MOTIVE 9016
WSA LADY 9162
 GAMBLES LADY 2021

SITZ UPWARD 307R
 EXAR BARBARA T020
 EXAR 263C
 BR ROYAL LASS 19-132
 HF KODIAK 5R
 TLA BEAUTY 5R
 S A V IRON MOUNTAIN 8066
 GAMBLES LADY 3016

This bull will have everybody talking! ELC Heir H025 is a son of the great EXAR Upshot 0562B son, EXAR Denver 2002B. His dam is a Soo Line Motive 9016 daughter, WSA Lady 9162. WSA Lady 9162 is out of the impressive SAV Iron Mountain 8066 daughter, Gambles Lady 2021. With a genetic profile of this nature, this guy is sure to be a hot commodity come sale day. We love this bull's design, his stout structural build and his powerful muscle shape. Get this one in motion and he's as sound as any in this lineup. Truly a sound investment for the future of your herd!

Angus Bull Polled / Black ELC H07 AAA# +19932695 04.20.20

ELC Premier H07

84

	CED	BW	WW	YW	MA	CEM	SC	ST	DOC	CW	RE	YG	MS	\$MTI
EPD	1	3.3	52	90	15	2	-0.54	-	6	32	0.53	0.58	0.12	-
%Rank	90	90	75	80	95	95	95	-	95	85	60	50	50	-

DAMERON FIRST CLASS
COLBURN PRIMO 5153
 SILVEIRAS SARAS DREAM 1339
 G A R PREDESTINED T598
PCF JULIE 216 PRED
 PCF JULIE 922 APACHE

EXG RS FIRST RATE S903 R3
 DAMERON NORTHERN MISS 3114
 SILVEIRAS STYLE 9303
 EXG SARAS DREAM S609 R3
 G A R PREDESTINED
 G A R FUTURE DIRECTION 1804
 WERNER RETAIL PRODUCT 1357
 PCF JULIE RITA 3639 711

BW: 68 lbs.; WW: 712 lbs.; YW: 1,210 lbs.

A 'premier' Angus herd sire prospect that we couldn't be more proud of! ELC Premier H07 is a son of Colburn Primo. Colburn Primo is the Dameron First Class son out of the great Silveiras Saras Dream 1339 female. This bull's dam is PCF Julie 216, a daughter of GAR Predestined T598. The power is in the blood right here, folks! ELC Premier H07 has been a favorite of ours since he hit the ground. He's always had the 'look' but even more so, he's grown into that look with an elite build and structure.

REFERENCE BULLS



Riverstone Exodus



ELCX Kings Landing 599D

Limousin (95) Bull HP / HB CSM 32E CPM 4088530 01.13.17

Riverstone Exodus ET

A

TMCK DURHAM WHEAT 6030X X HSF YOUR FANTASY

	CED	BW	WW	YW	MA	CEM	SC	ST	DOC	CW	RE	YG	MS	\$MTI
EPD	7	3.3	56	77	25	4	0.95	5	14	14	0.95	-0.38	-0.17	43.75
%Rank	80	85	70	75	25	75	20	85	30	65	85	95	75	90

Limousin (81) Bull HP / HB ELCX 559D NXM 2102783 02.12.16

ELCX Kings Landing 599D

B

MAGS XYLOID X WLR PRADA

	CED	BW	WW	YW	MA	CEM	SC	ST	DOC	CW	RE	YG	MS	\$MTI
EPD	8	1.9	60	91	22	5	0.6	10	13	16	0.68	-0.3	-0.08	47.79
%Rank	80	65	65	60	40	65	55	55	40	70	85	70	70	80

Lim-Flex (50) Bull Polled / Black ELCX 929G LFM 2173151 05.02.19

ELCX Gone Fishin 929G ET

C

EF XCESSIVE FORCE X AUTO POEM 273Y

	CED	BW	WW	YW	MA	CEM	SC	ST	DOC	CW	RE	YG	MS	\$MTI
EPD	11	0.7	72	101	11	7	1.5	9	8	30	0.4	-0.02	0.03	52.68
%Rank	50	45	35	60	>95	30	10	65	90	55	95	90	85	85

Lim-Flex (75) Bull Polled / HB HWCB 406E LFM 2117062 03.17.17

HWCB Eye of the Storm

D

ELCX CAESAR 331 C X FBFL PRINCESS KATE 406C

	CED	BW	WW	YW	MA	CEM	SC	ST	DOC	CW	RE	YG	MS	\$MTI
EPD	12	0.2	61	86	18	7	0.68	10	14	28	0.57	-0.14	0.23	57.75
%Rank	35	35	80	90	70	30	80	55	30	60	75	65	45	65



ELCX Benchwarmer 363B

Lim-Flex (56) Bull Polled / HB ELCX 331C LFM 2082808 03.12.15

ELCX Caesar 331 C

E

RLBH AIR FORCE ONE X PBRS ALICE 331A

	CED	BW	WW	YW	MA	CEM	SC	ST	DOC	CW	RE	YG	MS	\$MTI
EPD	10	0.5	69	108	14	5	0.78	11	14	37	0.13	0.08	0.42	65.63
%Rank	65	40	45	45	95	75	70	40	30	35	>95	>95	15	20

Lim-Flex (50) Bull HP / HB ELCX 438B LFM 2074236 11.10.14

ELCX Bullet Proof 438B ET

F

EBFL YPSILANTI 420Y X AUTO POEM 273Y

	CED	BW	WW	YW	MA	CEM	SC	ST	DOC	CW	RE	YG	MS	\$MTI
EPD	10	2.8	88	129	21	6	1.4	9	10	41	0.92	-0.22	0.12	62.84
%Rank	65	90	4	10	45	50	15	65	75	25	20	45	70	35



ELCX Gone Fishin 929G

Lim-Flex (34) Bull HP / HB ELCX 170Z LFM 2014858 10.05.12

ELCX Balancer 170Z

G

TMCK BALANCER 173U X EBFL SAN JOSE 170X

	CED	BW	WW	YW	MA	CEM	SC	ST	DOC	CW	RE	YG	MS	\$MTI
EPD	8	3.7	81	127	24	4	0.95	9	9	50	0.91	-0.18	0.34	68.40
%Rank	90	>95	15	15	20	90	55	65	85	10	25	55	20	15

Lim-Flex (75) Bull HP / Black AGRI 1C LFM 2092429 07.19.15

AGRI Chairman 1C ET

H

EF XCESSIVE FORCE X TGBC SWIZZLE 270W

	CED	BW	WW	YW	MA	CEM	SC	ST	DOC	CW	RE	YG	MS	\$MTI
EPD	11	-0.8	74	113	10	7	1.32	6	14	39	0.6	0.1	0.29	63.87
%Rank	50	15	30	35	>95	30	20	90	30	30	70	75	30	30

Lim-Flex (75) Bull Polled / HB LVLS 8116B LFM 2058141 01.24.14

LVLS Bank Account 8116B

I

MAGS WAZOWSKI X LVLS WILMA 8116W

	CED	BW	WW	YW	MA	CEM	SC	ST	DOC	CW	RE	YG	MS	\$MTI
EPD	7	3.1	89	144	28	5	0.7	8	12	48	1.33	-0.33	0.32	71.35
%Rank	95	95	4	4	10	75	70	75	50	15	1	20	25	10

Lim-Flex (75) Bull Polled / Black ELCX 758E LFM 2140147 11.04.17

ELCX Excessive 758E ET

J

RIVERSTONE CROWN ROYAL X AUTO CHRISTY 8889R

	CED	BW	WW	YW	MA	CEM	SC	ST	DOC	CW	RE	YG	MS	\$MTI
EPD	11	-1.8	45	66	21	7	0.75	11	9	1	0.55	-0.27	0.18	52.32
%Rank	55	10	>95	>95	45	35	75	55	90	>95	85	30	60	95



ELCX Caesar 331C

Lim-Flex (50) Bull HP / Red ELCX 769E LFM 2140148 12.20.17

ELCX Englishman 769E ET

K

MAGS WINSTON X AUTO POEM 273Y

	CED	BW	WW	YW	MA	CEM	SC	ST	DOC	CW	RE	YG	MS	\$MTI
EPD	14	-0.6	66	99	21	8	0.45	10	10	38	0.82	-0.20	0.22	59.71
%Rank	15	20	60	65	45	20	90	55	75	30	35	50	45	50

Lim-Flex (50) Bull Polled / HB ELCX 508C LFM 2095839 03.17.15

ELCX Camp Fire 508C ET

L

OKSU THE PROFIT 340I X EBFL SAN JOSE 170X

	CED	BW	WW	YW	MA	CEM	SC	ST	DOC	CW	RE	YG	MS	\$MTI
EPD	9	2.2	68	109	21	5	1.02	9	10	33	0.76	-0.21	0.4	66.99
%Rank	80	80	50	45	45	75	45	65	75	45	45	45	15	20

Lim-Flex (56) Bull HP / HB ELCX 11F LFM 2170525 04.20.18

ELCX Forgetful 11F

M

AUTO DIRECT DRIVE 107D ET X ELCX BLACK BETTY 111B

	CED	BW	WW	YW	MA	CEM	SC	ST	DOC	CW	RE	YG	MS	\$MTI
EPD	11	1.5	70	109	23	7	-	5	10	31	0.42	-0.11	0.12	56.45
%Rank	55	70	45	45	30	35	-	>95	80	55	95	75	75	80

PB Limousin (87) Bull HP / HB ELCX 657D NPM 2116204 10.05.16

ELCX Devoted 657D ET

N

ENGD ZIP LINE 2515Z X DFCL HBHPC 1S

	CED	BW	WW	YW	MA	CEM	SC	ST	DOC	CW	RE	YG	MS	\$MTI
EPD	14	0.4	61	99	18	8	0.7	12	10	28	0.82	-0.36	0.19	58.37
%Rank	15	25	50	30	80	20	30	40	60	20	95	95	4	10



ELCX Bullet Proof 438B

R&R
MARKETING

PO Box 60097
Nashville, TN 37206

**FIRST CLASS
PRE-SORTED
PAID**
Montezuma, Iowa
Permit No. 30

The Edwards Family proudly
supports the youth of this great breed!
The future is in their hands.

Catalog
designed
by

designs by
arin
www.designsbyarin.com

Edwards
LAND & CATTLE CO.

ANNUAL FALL PRODUCTION
Bull & Female Sale

LIMOUSIN LIM-FLEX ANGUS

Saturday, September 11, 2021 | 3:00 P.M. E.S.T. | Beulaville, NC

