

MONTANA



COLEMAN ANGUS
YOUR MATERNAL SOURCE

FEMALE SALE

OCTOBER 12, 2021

• AT THE RANCH | CHARLO, MONTANA •

**ANGUS
FEMALE SALE**

**1 PM | TUESDAY
10.12.2021**

**AT THE RANCH
CHARLO, MT**

Lunch will be served
sale day and the
afternoon before.

View/Bid Live on the Internet:



**LARRY & DEE COLEMAN FAMILY
JEREMY & JENNY HAAG FAMILY**
colemanangus@blackfoot.net

406.240.2751 Larry
406.833.0017 Jeremy
406.644.2697 OffI ce

40067 MorrI s Road
Charlo, Montana 59824

www.ColemanAngus.com
follow us on Facebook

GPS ADDRESS:
40067 Morris Road
Charlo, Montana 59824

AUCTIONEER:

Roger Jacobs 406-698-7686

SALE MANAGERS:

Marlow Cattle Services MIKE MARLOW 405-880-0108
American Angus Hall of Fame - (816) 532-0811
TOM BURKE KURT SCHAFF CARTER WARD
(816) 853-2697 (816) 520-6447 (816) 261-0891

COLEMAN RANCH MARKETING AGENTS:

Kent McCune 817-602-8629
Scott Bohrsen 403-370-3010
Buyers unable to attend the sale may send their
bids to the Sale Manager, Regional Manager, Field
Representatives or Auctioneer.

LIVESTOCK PUBLICATION REPRESENTATIVES:

KURT KANGAS, Angus Journal 661-706-2041
JOHN GOGGINS, Western Livestock Reporter 406-698-4159
DEVIN MURNIN, Western Livestock Journal 406-696-1502
DAWSON COLEMAN, Special Assignment

SALE CONSULTANTS:

KILEY MCKINNA 402-350-3447
RANDY RATLIFF 615-330-2735
KELVIN JORGENSON 402-366-9475
JOE BEAVER, ANGUS MARKETING & CONSULTING 423-426-2986
DAVE MULLINS 317-503-2798
TODD ALFORD 706-207-9454
DAN DEICHMAN 406-799-5200 OR 406-423-5500

ACCOMMODATIONS:

Sale Headquarters
Ninepipes Lodge (Restaurant & Lounge)
62986 US Hwy 93, Charlo, MT 59824 406-644-2588

50 miles from the ranch
Wingate Inn, Missoula, MT 886-832-8000
C'mon Inn, Missoula, MT 888-989-5569
Days Inn, Missoula, MT 406-721-9776

25 miles from the ranch
Red Lion Inn & Suites, Polson, MT 406-872-2200

DIRECTIONS FROM MISSOULA:

From Hwy. 93N: Turn west (left) in Charlo on Hwy. 212. Follow Hwy. 212 (approximately 3 miles west 1 mile south-1/3 mile west), immediately after crossing the railroad tracks, the highway will Y - take the right Y (Morris Road) and go 1.8 miles to Coleman Angus on the left. Watch for signs.

TERMS AND CONDITIONS:

All purchases are to be settled sale day. Cattle not paid for within 30 days will be assessed 2% interest per month from the date of purchase. No cattle will leave Coleman Angus until paid for in full. Cattle will sell under the suggested Terms and Conditions of the American Angus Association (http://www.Angus.org/Pub/suggested_sale_terms.pdf). Cattle will load out after the completion of the sale.

EMBRYOS SELLING:

Embryo packages sell in groups of three. Coleman Angus guarantees one (1) pregnancy when input by a certified embryologist.

SUPPLEMENTAL INFORMATION:

A supplemental sheet will be available sale day with complete and up-to-date information. Announcements from the auction block take precedence over sale book information

HERD HEALTH:

All cattle will be accompanied by proper health certificates for immediate shipment.

TRUCKING:

Truckers believed to be reliable will be available to assist you in shipping your purchases.
Bob Woolsley, 406-652-4270 or 406-670-1877.
Randy Lathrop, 847-910-4673

LIVESTOCK MORTALITY INSURANCE:

JIM BESSLER, JAMES F BESSLER INC 815-762-2641
CORBIN COWLES, HIGGINS INSURANCE 270-991-2534

LIABILITY:

All persons attending this sale do so at their own risk, legal or otherwise, for their safety and for the behavior of the animals. The owners, sale management firm and sale staff assume no liability for property loss or any accidents that may occur.



PROUDLY
MADE IN
MONTANA
CARYL
& COMPANY

Comments from the Sale Managers:

Hello friends,

We invite everyone to attend the Coleman Angus Annual Female Production sale. Larry Coleman & Family and I have been friends for many years, I have learned and followed the Coleman Angus program from the very beginning, I contacted Larry many years ago, while I was working/managing Limestone Angus Ranch Perkins, Oklahoma about a very dominate Angus female, KMK Donna J311. We were able to purchase half interest of her and built a program around her in our herd that took us to the next level of building a highly productive, maternal, and efficient herd. With the Addition of Jeremy Haag my friend colleague to the Coleman Angus Program it brings a new dynamic to the table to help bring the very best Seedstock and customer support along with satisfaction that we possibly can. The Coleman program has had a great influence on the Angus breed year after year, and this year's offering brings together one of the best sets of females to date. The uniformity is impressive with consistency and quality running deep, giving buyers a great opportunity to buy right from the heart of their program.

They are a family operation that make their living in the cattle business and work hard to produce the kind of Seedstock that will make you money, in the pasture the old-fashioned way through highly productive females that lay a foundation for success. The Coleman Donna family needs no introduction and again the lead off females represent this great lineage. Lot 1 Coleman Donna 9220 is an elite, direct daughter of Coleman Donna 4203 sired by the Pathfinder sire SAV Resource 1441. She possesses the maternal traits from this great cow family and would be an excellent addition to any program. As a highlight we are offering two very special elite calving ease Herd Sires (Lot A) Coleman Banker 9215 a maternal brother to the Lot 1 female sired by Coleman Bravo, along with (Lot B) Coleman Poncho 9426 the powerhouse son of Coleman Charlo 0256, can't wait for folks to see these two young studs.

Each year we offer a strong set of bred heifers, cow calf pairs, yearling heifers, and a select group of open heifer calves are offered giving everyone an opportunity to buy into this great program. The cattle coming from their breeding program have been very successful for their customers. Each year at the bull and female sales, cattle have sold from coast to coast and the genetic base will bring dollars to the bottom line. Larry and Dee Coleman and their family are true breeders that care about the success of their customers and stand behind them 100%, so please look at this deep offering. It's my pleasure to help market Coleman Genetics, and work alongside these great folks, if you have any questions, please feel free to contact us, we look forward to seeing you October 12th in Charlo, Montana.

Thank you,

MIKE MARLOW
(405) 880-0108



Dear Angus Friends,

The Coleman Angus Ranch Annual Female Production Sale is set for Tuesday, October 12, 2021, at the ranch near Charlo, Montana. The degree of quality and individuality represented in this Maternal Source is unsurpassed.

More than 100 head will sell including herd sires, donor cows, cow/calf pairs, bred and open heifers, frozen embryos and semen opportunities. The depth and dimension of this set of cattle promise to be the best yet from Coleman Angus.

Two important herd bulls are included: Coleman Banker 9215 and Coleman Poncho 9426, both of whom offer incredible breed building possibilities. The females are headlined by Coleman Donna 9220, a maternal sister to Coleman Banker 9215 by SAV Resource 1441, with a heifer calf at side by Coleman Bravo 6313. The arsenal of Donna features also include direct daughters and multiple descendants of the legendary Coleman Donna 714. The leading families, Abigale, Eriskay, Everelda Entense and Chloe, are each highlighted and carry unique and valuable potential. Included among them is a dynamic full sister to the record-selling Coleman Triumph 9145 and his consecutive top-selling full sisters from Lawsons Chloe C815 sired by Coleman Bravo 6313.

The year 2021 kicked off with a bang for Coleman Angus with the additions of the widely talked about full brothers Hummel South America and Hummel Argentina. Exclusive semen opportunities from them will sell along with embryo matings produced in their very first calf crops. A new era of Angus breeding for 2022 and beyond will result!

It is a pleasure and privilege to work with the Coleman and Haag families in the presentation of this phenomenal sale offering. Please don't hesitate to call on us at American Angus Hall of Fame if we can be of assistance in any way. We are here to serve.

Sincerely,

TOM BURKE
(816) 853-2697

KURT SCHAFF
(816) 520-6447

CARTER WARD
(816) 261-0891





COLEMAN ANGUS

YOUR MATERNAL SOURCE

Coleman Angus
Larry & Dee Coleman Family
Jeremy & Jenny Haag Family
40067 Morris Road
Charlo, Montana 59824
Larry 406-240-2751
Jeremy 406-833-0117
Office 406-644-2697
colemanangus@blackfoot.net

Please consider this your personal invitation to join us at the ranch for our annual **“Your Maternal Source Female Sale”**. We have had many visitors over the past year again and would like to thank each and every one that has taken the time out of their busy schedule to come visit us, and those that have bought cattle from us in the past. We appreciate all of the positive feedback on the cattle and how they are working for each of you. One of the best things about this business is all of the friends we have made over the years, we look forward to seeing you again, and making some new ones.

As you study the females, we are offering this year, you will find some proven pathfinder females that have been very good to us here, and some of our freshest and most exciting young females. You will find calving intervals and actual production records on all of the females, something we feel is very important. The mother cow is the backbone of our cow herd. On our ranch, cattle pay the bills, and we feel it is very important to provide real world data. It's hard to pay the bills on what a female or bull is projected or predicted to do. Every animal selling has been blood typed for parentage, all of the calves at the sides of their mothers will be done also. We are excited for everyone to study and analyze them, we feel confident that you will be pleased. As you study the pedigrees and data on these females, they are stacked generations deep with cattle that have stood the test of time. There is a great opportunity here to buy females that are bred alike, very consistent in kind and type. We feel that it's truly an exciting time to be in the cattle business.

Western Montana in October is always very beautiful. The cattle always look much better in person. You are welcome anytime, and if you have any questions, or need any assistance, please let us know. Video's on all of the sale cattle can be viewed at our website www.colemanangus.com, click on the video's tab, or go to (www.youtube.com/user/colemanangusranch). Updates will be available also on our website. Sale will also be broadcast live around the world (www.liveauctions.tv), so if you can't make it, you can watch and bid with confidence over the internet.

If you want to keep up to date with our latest pictures, video's, news, and happenings, please like or follow us on Facebook at Coleman Angus and/or at Larry and Dee Coleman. We try to keep it updated with happenings around the ranch, family news, and of course the newest cattle photos and information we have going.

All of the cattle have had their fall shots and are ready to go. We guarantee the cattle 100%. If there is ever a problem or concern, let us know.



% Your Maternal Source %

The Coleman program has been built the old-fashioned way in the pasture, where maternal is measured by production records, calving intervals, longevity and Pathfinder still means something. We don't believe in throwing some computer-generated number out there to confuse or mislead you, we believe in "real world" data. As you study the AHIR data base at American Angus Association, Coleman Angus has the #1 (Coleman Donna 040) and #2 (Coleman Donna 0308) \$M females in the breed that are 11 years of age or older with the Pathfinder status. Both of these females along with others like them, currently have calves at their side, and both have progeny selling in this event. These cattle in this year's sale truly measure maternal strength!

As you study this catalog, you will see a program that has been built on balance, and genetics that have stood the test of time. As represented in this catalog you will find an array of 3/4, full, and half-sisters that are from embryo transfer. This is the easiest way to get consistency in your cow herd. We believe in moving forward from the very best we have built from day one. We believe in quality and not quantity.



Coleman Donna 0308 – Coleman Angus currently has the #1 and #2 \$M Pathfinder Dams in the breed 10 years or older for \$M. Where Production, Longevity, and Maternal becomes YOUR MATERNAL SOURCE.



Coleman Donna 8139 – Ranks in Top 1% of the breed for \$M and Sells as Lot 18.



Coleman Donna 0121 – Ranks in Top 1% of the breed for \$M and sells as Lot 2A.



Coleman Donna 0172 – Ranks in Top 1% of the breed for \$M and sells as Lot 38C.



Coleman Banker 9215 – Ranks in Top 1% of the breed for \$M and sells as Lot A.

The Rancher's Index for Commercial Cattlemen & Breeders alike.

\$M Incorporates the following traits- CED, BW, WW, Milk, MW, HP, Doc, CEM, Foot Angle, Claw Set, Fertility

\$M COLEMAN 2021 SALE OFFERING FACTS:

- % Over 80% of the sale offering rank in the Top 25% of the breed for \$M.
- % Over 50% of the sale offering rank in the Top 15% of the breed for \$M.
- % Over 40% of the sale offering rank in the Top 10% of the breed for \$M.
- % Over 25% of the sale offering rank in the Top 5% of the breed for \$M.

\$M COLEMAN HERD FACTS:

- % The entire Coleman Angus herd ranks in the TOP 11% for Current Dams
- % The entire Coleman Angus herd ranks in the TOP 15% for Non-Parent Dams
- % The entire Coleman Angus herd is 39% higher than breed average for Current Dams.
- % The entire Coleman Angus herd is 35% higher than breed average for Non-Parent Dams.
- % The average \$M for Current Dams in the Coleman herd is 74 and breed average is 57.
- % The average \$M for Non-Parent females in the Coleman herd is 76 and breed average is 62.

COLEMAN *Banker* 9215



Top 1% \$M

A

COLEMAN BANKER 9215



Reg #:*19583404 Tattoo: 9215 DOB: 06/30/19

Coleman Charlo 0256
 Coleman Bravo 6313
 +*18734838
 Coleman Donna 714
 Connealy Thunder
 Coleman Donna 4203
 +*18105600
 Coleman Donna 714

OCC Paxton 730P
 Bohi Abigale 6014
 Connealy Onward
 Coleman Donna 386
 Baldridge Kaboom K243 KCF
 Parka of Conanga 241
 Connealy Onward
 Coleman Donna 386

CED	BW	WW	YW	SC	MILK	MARB	RE	\$W	\$M
13	-2.2	66	118	.14	37	.47	.44	89	97

• **Selling ½ Interest.**

- From day one this bull has been a standout at the Coleman Ranch. He was the second-heaviest bull in his contemporary group and was the #1 ADG bull in our test program with an actual birth weight of 75#. The combination of low birth and gain makes him a tremendous calving-ease sire that will sell as much semen as he can produce. The dam, Coleman Donna 4203, has a progeny production record of BR 3@93, WR 3@104, YR 3@107.
- A full sister was the fourth top-selling open heifer from the 2020 fall female sale, Coleman Donna 9309, going to Saddler Ranch of Oklahoma. His sisters are some of the best daughters we have in the program and will make your mouth water when you see their perfect udders, front end extension, and power.



Coleman Donna 9309 - The \$20,000 flush sister to Lot A, who sold to Sadler Ranch, OK.



Coleman Donna 4203 - Dam of Lot A.

COLEMAN Donna FAMILY



Lot 1
Top 10% \$M

1

COLEMAN DONNA 9220



Reg #:+*19717715 Tattoo: 9220 DOB: 07/01/19

SAV Resource 1441 #:+*17016597	Rito 707 of Ideal 3407 7075 SAV Blackcap May 4136	RR Rito 707 Ideal 3407 of 1418 076 SAV 8180 Traveler 004 SAV May 2397 Baldridge Kaboom K243 KCF Parka of Conanga 241 Connealy Onward Coleman Donna 386
Coleman Donna 4203 +*18105600	Connealy Thunder Coleman Donna 714	

CED	BW	VV	YW	SC	MILK	MARB	RE	\$W	\$M
9	0.3	65	124	.62	30	-.04	.96	71	78

• SELLING ONE -HALF INTEREST AND NO POSSESSION WITH THE OPTION TO DOUBLE TO ACQUIRE FULL OWNERSHIP.

- This female ranks as the 14th highest daughter of SAV Resource 1441 in the breed for \$M in AHIR for non-parent females.
- This big-time donor female is the ultimate in so many aspects! Starting with her excellent phenotype and overall balance, along with the perfect udder that you come to expect from the Donna cow family. Coleman Donna 4203, the dam, records a BR 3 @ 93, WR 3@ 104, and YR 3@ 107.
- A maternal sister was the fourth top-selling open heifer of the 2020 Fall Coleman Angus Production Sale, Coleman Donna 9309, going to Sadler Ranches of Perkins, Oklahoma. She is also a maternal sister to Coleman Banker 9215, our extreme calving-ease, eye-appealing standout, who sells as Lot A.
- Sells with a heifer calf at side (lot 1A) born 7-13-21 by Coleman Bravo 6313. Tattoo 1599. BW 77 lbs. Reg#. 20102857

1B

COLEMAN DONNA EMBRYOS

3 FROZEN CONVENTIONAL IVF EMBRYOS
(EXPORTABLE CN)

Don Aparicio Serrucho57 Maxi
Hummel South America
19919943 Rubeta Fontana 7567-T/E-
SAV Resource 1441
Coleman Donna 9220
19717715 Coleman Donna 4203

1C

COLEMAN DONNA EMBRYOS

3 FROZEN CONVENTIONAL IVF EMBRYOS (US ONLY)

Don Aparicio Serrucho57 Maxi
Hummel Argentine
19919948 Rubeta Fontana 7567-T/E-
SAV Resource 1441
Coleman Donna 9220
19717715 Coleman Donna 4203

COLEMAN *Donna* FAMILY



Top 1% \$M
320 \$C

2

COLEMAN DONNA 0178



Reg #:*19873364 Tattoo: 0178 DOB: 01/29/20

LD Capitalist 316
+*17666102

Connealy Capitalist 028
LD Dixie Erica 2053

SAV Final Answer 0035
Prides Pita of Conanga 8821
CA Future Direction 5321
LD Dixie Erica Oar 0853
Baldrige Kaboom K243 KCF
Parka of Conanga 241
Connealy Onward
Coleman Donna 386

Coleman Donna 4203
+*18105600

Connealy Thunder
Coleman Donna 714

CED	BW	WW	YW	SC	MILK	MARB	RE	\$W	\$M
12	-1.5	67	130	.57	38	1.05	.40	88	97

- The highest numbered female in the entire Coleman program. This female is the #3 \$C and the 4th highest \$M LD Capitalist 316 daughter in AHIR at the American Angus Association.
- A unique breeding piece, from pedigree to an excellent EPD spread, highlighted in many categories from her extreme IMF and her Top \$M values, which makes her a valuable marketing prospect.
- The dam, Coleman Donna 4203, has a BR of 3@93, WR 3@104, YR 3@107. She has foundation genetics of epic proportions to take her offspring to the next level.
- Bred to calve 1 -23 -22 to Coleman Charlo 0256. Exposed to Coleman Poncho 9426 from 4 -18 -21 to 6 -14 -21. Examined Safe AI with a heifer calf.



Coleman Donna 9219 - \$12,000 Maternal sister sold to Pinewood Farms, TN

COLEMAN Donna FAMILY



Lot 2A Top 1% \$M

3

COLEMAN DONNA 0151



Reg #:*19857100 Tattoo: 0151 DOB: 01/18/20

OCC Paxton 730P	OCC Focus 813F
Coleman Charlo 0256	OCC Blackbird 736K
#+*16879074 Bohi Abigale 6014	Sitz Traveler 8180
	SAV Abigale 6062
Connealy Thunder	Baldrige Kaboom K243 KCF
Coleman Donna 8145	Parka of Conanga 241
+*19248241 Coleman Donna 714	Connealy Onward
	Coleman Donna 386

CED	BW	WW	YW	SC	MILK	MARB	RE	\$W	\$M
10	0.6	74	118	1.07	27	.32	.56	90	83

- Top 10% for \$M.
- This female ranks as the 13th highest daughter of Coleman Navigator 614 in the breed for \$M in the AHIR for non-parent females.
- Here's a classic pedigree that has stood the test of time in the Coleman Angus program. The Coleman Charlo 0256 females are ideal as they come with efficiency built in genetically, along with an abundance of muscle and maternal.
- She has individual BR of 96, WR of 110 and YR of 109. Her powerful dam, Coleman Donna 8145, is a full sister to the proven donor Coleman Donna 4203 and records a BR of 1@96, WR 1@110, and a YR 1@109.
- Bred to calve 1 -24 -22 to Sitz Stellar 726D. Exposed to Coleman Hondo 022 from 4 -18 -21 to 6 -14 -21. Examined Safe due approx. 3 -20 -22 to Hondo.

2A

COLEMAN DONNA 0121



Reg #:*19857084 Tattoo: 0121 DOB: 01/19/20

Cole Creek Black Cedar 46P	CH Quantum 6247
Coleman Navigator 614	Cole Creek Clova Juanada 67
*18570027 Coleman Eriskay 291	Coleman Juneau 044
	Sinclair Eriskay 2N1 7883
Connealy Thunder	Baldrige Kaboom K243 KCF
Coleman Donna 4203	Parka of Conanga 241
+*18105600 Coleman Donna 714	Connealy Onward
	Coleman Donna 386

CED	BW	WW	YW	SC	MILK	MARB	RE	\$W	\$M
11	-0.9	57	100	.82	30	.75	.28	70	100

- This female ranks as the #1 daughter of Coleman Navigator 614 in the breed for \$M in the AHIR for non-parent females.
- She has an individual BR ratio of 88, WR 102, and a YR of 103, and her proven excellent donor dam, Coleman Donna 4203, records a BR of 3@ 93, WR 3@ 104, YR 3@ 107. Coleman Navigator 614 offspring excel with added muscle and overall power across the board, with maternal built in genetically.
- Bred to calve 1 -24 -22 to Coleman Bravo 6313. Exposed to Coleman Banker 9215 from 4 -18 -21 to 6 -14 -21. Examined Safe AI with a heifer calf.





Top 2% \$M

4A

COLEMAN DONNA EMBRYOS

**3 FROZEN CONVENTIONAL IVF EMBRYOS
(EXPORTABLE CN)**

Don Aparicio Serrucho57 Maxi
Hummel South America
19919943 Rubeta Fontana 7567-T/E-
Connealy Thunder
Coleman Donna 8146
19248244 Coleman Donna 714

4B

COLEMAN DONNA EMBRYOS

3 FROZEN IVF SEXED HEIFER EMBRYOS (US ONLY)

Don Aparicio Serrucho57 Maxi
Hummel Argentine
19919948 Rubeta Fontana 7567-T/E-
Connealy Thunder
Coleman Donna 8146
19248244 Coleman Donna 714

- Coleman Donna 8146 is a full sister to the dam of Lot A and Lots 1, 2, and 2A. She records a BR 1@95, WR 1@108, YR 1@105. This elite donor is raising her second calf now and it is also really good. She has been a crowd favorite on the many tours through the ranch since she was a heifer calf. This outstanding female has a perfect udder and she is loaded with rib shape while being extremely smooth through her front one third. These embryos would be maternal sibs-in-blood to this year's features, Coleman Banker 9215 and Coleman Donna 9220, who sell as Lots A and Lot 1.





COLEMAN *Poncho* 9426



Top 15% \$M

B

COLEMAN PONCHO 9426



Reg #:*19583445 Tattoo: 9426 DOB: 06/30/19

OCC Paxton 730P
Coleman Charlo 0256
#+*16879074 Bohi Abigale 6014

SAV Renown 3439
Coleman Donna 7221
+*19102656 Coleman Donna 714

OCC Focus 813F
OCC Blackbird 736K
Sitz Traveler 8180
SAV Abigale 6062
Rito 707 of Ideal 3407 7075
SAV Blackcap May 4136
Connealy Onward
Coleman Donna 386

CED	BW	WW	YW	SC	MILK	MARB	RE	\$W	\$M
12	-1.5	57	104	1.45	29	1.23	1.57	67	77

• Selling ½ Interest.

- Coleman Poncho 9426 is one of the great breeding pieces on the ranch, from the unique combination of muscle, depth of body, and his ultra-low birth weight EPD. He had an actual birth weight of 68 lbs. It's extremely hard to find cattle in our industry that will breed with this kind of calving ease and dense body mass. He has tons of potential and the ability to sell semen worldwide.
- He has an individual BR of 90, WR of 108, and a YR of 108. Poncho's powerful dam, Coleman Donna 7221, among current dams, is the #1 \$M daughter of SAV Renown 3439 in the breed!! Poncho's dam has a progeny production record of BR 1@90, WR 1@108, and a YR of 1 @108.
- A once-in-a-lifetime opportunity to acquire one of our very best ever produced at Coleman Angus.



Coleman Donna 7221- Dam of Coleman Poncho 9426

COLEMAN Donna FAMILY



Top 10% \$M

5

COLEMAN DONNA 077



Reg #:*19857127 Tattoo: 077 DOB: 01/01/20

OCC Paxton 730P
Coleman Charlo 0256
#+*16879074 Bohi Abigale 6014
SAV Resource 1441
Coleman Donna 504
+*18238090 Coleman Donna 714

OCC Focus 813F
OCC Blackbird 736K
Sitz Traveler 8180
SAV Abigale 6062
Rito 707 of Ideal 3407 7075
SAV Blackcap May 4136
Connealy Onward
Coleman Donna 386

- This female has all the makings of a big-time maternal, grass-efficient machine. Her long list of superior genetics starts with being full sister to Coleman Ninepipes, the \$40,000, top-selling bull of the 2021 Coleman Angus Bull Sale, going to Wall Street Cattle of Lebanon, Missouri. Another full brother was the second top-selling bull of the same event, Coleman Sheridan 9295, going to Little Goose Angus of Wyoming. Maternal sister include the second top-selling bred heifer of the 2020 Coleman Angus Production Sale, Coleman Donna 985, going to Sadler Ranch of Perkins, Oklahoma and third top-selling fall pair of the same event, Coleman Donna 8292.
- Bred to calve 1 -17 -22 to Sitz Stellar 726D. Exposed to Coleman Summitt 9370 from 4 -18 -21 to 6 -14 -21. Examined Safe due approx. 3 -20 -22 to 9370.

CED	BW	WW	YW	SC	MILK	MARB	RE	\$W	\$M
11	0.1	66	122	1.16	30	.45	.80	81	79



Coleman Ninepipes 9291 – The \$40,000 top selling flush brother to 5 – 5C, to Wall Street Cattle Co, MO.



Coleman Sheridain 9295 - Flush Brother to Lot 5, 5A, 5B, 5C \$35,000 2nd high selling bull in our 2021 Bull Sale to Little Goose Ranch, WY



Coleman Donna 504 - Dam to Lots 5, 5A, 5B and 5C

COLEMAN Donna FAMILY

5A COLEMAN DONNA 068



Reg #:*19857120 Tattoo: 068 DOB: 01/02/20
 OCC Paxton 730P
 Coleman Charlo 0256 OCC Blackbird 736K
 #+*16879074 Bohi Abigale 6014 SAV Traveler 8180
 SAV Abigale 6062
 SAV Resource 1441 Rito 707 of Ideal 3407 7075
 Coleman Donna 504 SAV Blackcap May 4136
 +*18238090 Coleman Donna 714 Connealy Onward
 Coleman Donna 386

CED	BW	WW	YW	SC	MILK	MARB	RE	\$W	\$M
16	-1.5	59	108	1.27	28	.08	.68	77	102

- Lot 5A: Top 1% for \$M.
- Two direct daughters of the \$100,000 valued Coleman Donna 504, who has a progeny production record of BR of 2@ 91, WR 3@ 110, YR 3@110.
- These two flush sisters are full sisters to the high-selling bull of the 2021 Spring Bull Sale, Coleman Ninepipes. Both 072 and 068 are equally loaded with a massive amount of rib shape and body, along with muscle that you would come to expect from this powerful combination of SAV Resource 1441 and Coleman Charlo 0256; solid foundation genetics with performance, maternal, and power all wrapped into one genetic package.
- Lot 5A: Bred to calve 1 -23 -22 to ZWT Summitt 6507. Exposed to Coleman Summitt 9370 from 4 -18 -21 to 6 -14 -21. Examined safe AI with a heifer calf.
- Lot 5B: Bred to calve 1 -24 -22 to Coleman Playmaker 427. Exposed to Coleman Summitt 9370 from 4 -18 -21 to 6 -14 -21. Examined Safe AI with heifer calf.

5B COLEMAN DONNA 072



Reg #:*19857123 Tattoo: 072 DOB: 01/02/20
 OCC Paxton 730P
 Coleman Charlo 0256 OCC Blackbird 736K
 #+*16879074 Bohi Abigale 6014 SAV Traveler 8180
 SAV Abigale 6062
 SAV Resource 1441 Rito 707 of Ideal 3407 7075
 Coleman Donna 504 SAV Blackcap May 4136
 +*18238090 Coleman Donna 714 Connealy Onward
 Coleman Donna 386

CED	BW	WW	YW	SC	MILK	MARB	RE	\$W	\$M
-11	0.9	76	142	1.54	24	.21	.84	78	66

5C COLEMAN DONNA 085



Reg #:*19857130 Tattoo: 085 DOB: 01/01/20
 Cole Creek Black Cedar 46P
 Coleman Navigator 614 CH Quantum 6247
 *18570027 Coleman Eriskay 291 Cole Creek Clova Juanada 67
 SAV Resource 1441 Sinclair Eriskay 2N1 7883
 Coleman Donna 504 Rito 707 of Ideal 3407 7075
 +*18238090 Coleman Donna 714 SAV Blackcap May 4136
 Connealy Onward
 Coleman Donna 386

CED	BW	WW	YW	SC	MILK	MARB	RE	\$W	\$M
9	1.3	66	114	.74	24	.29	.76	72	95

- Top 1% for \$M.
- This female is the second-highest daughter of Coleman Navigator 614 in the breed for \$M and AHIR for non-parent females.
- Bred to calve 1 -24 -22 to Coleman Bravo 6313. Exposed to Coleman Banker from 4 -18 -21 to 6 -14 -21. Examined Safe due approx. 3 -8 -22 to Banker.



Earl Dewey



Moises Briones



Daniel Ordóñez

We want to Thank these men for all their hard work and dedication, each and every day!



Diego Flores



Coya Briones



Aiden Wilkinson

COLEMAN Donna FAMILY



Lot 7
Top 20% \$M



Coleman Donna 6112 - The \$20,000 Dam to Lot 8, to Roylance Ranch, MT.

7

COLEMAN DONNA 0471



Reg #: 20042255 Tattoo: 0471 DOB: 07/08/20

SAV Renown 3439
ZWT Summitt 6507
+*18561289 Coleman Donna 714

Coleman Charlo 0256
Coleman Donna 8285
+*19400617 Coleman Donna 504

Rito 707 of Ideal 3407 7075
SAV Blackcap May 4136
Connealy Onward
Coleman Donna 386
OCC Paxton 730P
Bohi Abigale 6014
SAV Resource 1441
Coleman Donna 714

CED	BW	WW	YW	SC	MILK	MARB	RE	\$W	\$M
9	0.8	67	122	1.80	20	1.21	1.75	62	74

- Dam is a full sister to the top and second top-selling flush brothers in the 2021 Coleman Angus Bull Sale. This female has an excellent topline, like her sire, ZWT Summitt 6507, along with that extra power punch of Coleman Charlo 0256.
- This has been a winning combination across the board here at Coleman Angus.

8

COLEMAN DONNA 0370



Reg #: *19792312 Tattoo: 0370 DOB: 06/24/20

Coleman Bravo 6313
+*18734838 Coleman Donna 714

SAV Resource 1441
Coleman Donna 6112
+*18570025 Coleman Donna 714

OCC Paxton 730P
Bohi Abigale 6014
Connealy Onward
Coleman Donna 386
Rito 707 of Ideal 3407 7075
SAV Blackcap May 4136
Connealy Onward
Coleman Donna 386

CED	BW	WW	YW	SC	MILK	MARB	RE	\$W	\$M
13	-1.1	63	113	1.13	24	1.05	1.62	66	74

- Top 20% for \$M.
- Here's a female that will definitely catch your attention—extremely feminine made with an excellent topline, along with a deep soft sweep to her rib.
- Coleman Donna 6112, the dam, was the \$20,000 highlight to Roylance Ranch of Montana, through the 2020 Fall Coleman Angus Production Sale, and a maternal sister to the dam of this featured heifer calf was the feature Lot 1 cow of the same event.

COLEMAN Donna FAMILY



Coleman Donna 4356 - Flush sister to Lot 9, owned by Montana Ranch, MT



Coleman Donna 3209 - Flush sister to Lot 9, owned by Ingram Angus, TN

9

COLEMAN DONNA 765



Reg #:*18838386 Tattoo: 765 DOB: 01/10/17

OCC Paxton 730P
Coleman Charlo 0256
#+*16879074 Bohi Abigale 6014

Connealy Onward
Coleman Donna 714
+*15706882 Coleman Donna 386

OCC Focus 813F
OCC Blackbird 736K
Sitz Traveler 8180
SAV Abigale 6062
Connealy Lead On
Altune of Conanga 6104
Basin Rainmaker 654X
KMK Donna J311

CED	BW	WW	YW	SC	MILK	MARB	RE	\$W	\$M
13	-1	63	107	.32	30	-.11	.46	84	104

- Top 1% \$M – The highest \$M female of this event.
- A full sister to the \$450,000 record-selling bull, Coleman Bravo 6313.
- This female is a beautifully made, stout, easy-fleshing female with a Progeny Production Record of BR 2@95, WR 2@107, YR 2@102, and has a calving interval of 3@357 days.
- Along with added value of her extremely proven donor dam, Coleman Donna 714, recording a BR 4@89, WR 4@107, YR 3@112. Don't miss out on this timeless genetic time piece.
- Bred to calve 1 -22 -22 to Hummel South America. Exposed to Coleman Glacier 041 from 4 -16 -21 to 6 -18 -21. Examined Safe due approx. 2 -10 -22 with a bull calf to Glacier 041.



Coleman Donna 714 - Dam
Owned with ZWT Ranch in TN



Coleman Donna 386 -granddam
Owned by ZWT Ranch in TN and AAI in MO



KMK Donna J311 - Great granddam

COLEMAN *Donna* FAMILY



9A

COLEMAN DONNA 1114



Reg #: **20079124** Tattoo: **1114** DOB: **01/21/21**

SAV Bismarck 5682
Bar-E-L Natural Law 52Y
19310190

Bar-E-L Magnolia 143K

Coleman Charlo 0256

Coleman Donna 765
+*18838386

Coleman Donna 714

GAR Grid Maker
SAV Abigale 0451
Bar EL MCC 365 Icon 20H
Double Four Duchess 12G
OCC Paxton 730P
Bohi Abigale 6014
Connealy Onward
Coleman Donna 386

CED	BW	WW	YW	SC	MILK	MARB	RE	\$W	\$M
1.9	1.11	1.59	1.104	1.73	1.26	1.12	1.59	66	67

- A standout heifer calf and daughter of the Canadian sire, Bar-E-L Natural Law 52Y, back to the flush sister to the record-selling bull of Montana, Coleman Bravo 6313.
- Super easy on the eyes and with an impeccable phenotype, her dam, Coleman Donna 765, records a BR of 2@94, WR 2@107, YR 2@102.



Coleman Bravo 6313 - The \$450,000 full brother to Lot 9 and dam of Lot 9A.



11

COLEMAN DONNA 7207



Reg #:***19103994** Tattoo: **7207** DOB: **06/25/17**

RR Rito 707
 Coleman Foundation 972
 +*16359293 Coleman Donna 386

Connealy Onward
 Coleman Donna 714
 +*15706882 Coleman Donna 386

Rito N Bar
 Eriskay of Rollin Rock 3
 Basin Rainmaker 654X
 KMK Donna J311
 Connealy Lead On
 Altune of Conanga 6104
 Basin Rainmaker 654X
 KMK Donna J311

CED	BW	WW	YW	SC	MILK	MARB	RE	\$W	\$M
10	-0.3	51	86	1.19	26	-.23	.41	61	83

- Top 4% for \$M.
- A classic pedigreed, Coleman Foundation 972 female that is super easy on the eyes with her flowing, massive rib shape, wide top, and perfect udder. She will catch your attention, not mention she's an own daughter of the legendary Coleman Donna 714!!
- She has a Birth Ratio of 1@92 and has a calving interval of 2@365 day.
- Bred to calve 1 -22 -22 to Hummel South America. Exposed to Coleman Ace 989 from 4 -16 -21 to 6 -14 -21. Examined Safe AI with a heifer calf.



Coleman Foundation 972 - Sire of Lot 11



COLEMAN Donna FAMILY

Coleman Donna 9204 - Flush sister to Lot 12, \$20,000 feature in our 2020 cow sale, selling to Lejune Cattle, LA

11A

COLEMAN DONNA 1155



Reg #:***20076423** Tattoo: **1155** DOB: **01/17/21**

Rito 707 of Ideal 3407 7075
 SAV Renown 3439
 #+*17633839 SAV Blackcap May 4136

Coleman Foundation 972
 Coleman Donna 7207
 +*19103994 Coleman Donna 714

RR Rito 707
 Ideal 3407 of 1418 076
 SAV 8180 Traveler 004
 SAV May 2397
 RR Rito 707
 Coleman Donna 386
 Connealy Onward
 Coleman Donna 386

CED	BW	WW	YW	SC	MILK	MARB	RE	\$W	\$M
15	1.1.3	161	1106	1.82	123	1-.21	1.63	64	73

- Top 25% for \$M.
- A stunning heifer calf sired by SAV Renown 3439, whose granddam is Coleman Donna 714. She stems from a dam with a progeny production record Birth Ratio of 1@92 and has a calving interval of 2@365 day.

12

COLEMAN DONNA 8194



Reg #:***19400594** Tattoo: **8194** DOB: **07/12/18**

Coleman Charlo 0256
 SAV President 6847
 +*18578964 SAV Blackcap May 4136

Connealy Onward
 Coleman Donna 714
 +*15706882 Coleman Donna 386

OCC Paxton 730P
 Bohi Abigale 6014
 SAV 8180 Traveler 004
 SAV May 2397
 Connealy Lead On
 Altune of Conanga 6104
 Basin Rainmaker 654X
 KMK Donna J311

CED	BW	WW	YW	SC	MILK	MARB	RE	\$W	\$M
10	0.3	57	105	-.22	31	.06	.65	68	94

- Top 1% for \$M.
- The 3rd highest daughter of SAV President 6847 for \$M in the AHIR among current dams. She records a progeny production record of BR of 1@98, WR 1@105.
- A full sister, Coleman Donna 9204, was the fifth top-selling open heifer of the 2020 Coleman Angus Production Sale going to Lajeune Cattle & Hay Farm, LLC of Louisiana. Another excellent opportunity to purchase an own daughter of Coleman Donna 714!
- Sells with a heifer calf at side (Lot 12A) born 7 -3 -21 by BC Robust 0807. Tattoo 1553. BW 94 lbs. Reg # 20104099.

COLEMAN Donna FAMILY



Top 15% \$M

13

COLEMAN DONNA 038



Reg #:*19857112 Tattoo: 038 DOB: 01/02/20

Rito 707 of Ideal 3407 7075
 SAV Renown 3439
 #+*17633839 SAV Blackcap May 4136
 GDAR Game Day 449
 Coleman Donna 439
 #+*17914042 Coleman Donna 714
 RR Rito 707
 Ideal 3407 of 1418 076
 SAV 8180 Traveler 004
 SAV May 2397
 Boyd New Day 8005
 GDAR Miss Wix 474
 Connealy Onward
 Coleman Donna 386

CED	BW	WW	YW	SC	MILK	MARB	RE	\$W	\$M
7	0.9	71	131	.57	21	-.32	1.11	69	76

- Top 15% for \$M.
- A set of flush sisters that have explosive growth along with style and eye appeal, all produced by one of my personal favorites, Coleman Donna 439, the full sister to Coleman Playmaker!
- Her dam records a BR 4@91, WR 4@89, YR 4@108. A full brother was the third top-selling bull of the 2021 Coleman Angus Bull Sale, Coleman Renown 029, going to Little Goose Angus of Wyoming. Another full brother is a featured herd bull in the program, Coleman Glacier 041.
- Bred to calve 1 -24 -2022 to Coleman Charlo 0256. Exposed to Coleman Poncho 9426 from 4-18-21 to 6-14-21. Examined Safe AI.



Coleman Donna 720 - The \$37,000 flush sister to Lots 13, 13A, 13B, to Canadian Donors and KT Ranch, CN



Coleman Donna 909 - The \$21,000 maternal sister to Lots 13, 13A, 13B, to Canadian Donors and KT Ranch, CN.

COLEMAN Donna FAMILY



Lot 13A



Coleman Renown 029 - The \$30,000 flush brother to Lots 13, 13A, 13B, to Little Goose Ranch, WY

13A

COLEMAN DONNA 042



Reg #:*19857114 Tattoo: 042 DOB: 01/10/20

Rito 707 of Ideal 3407 7075
 SAV Renown 3439
 #+*17633839 SAV Blackcap May 4136
 GDAR Game Day 449
 Coleman Donna 439
 #+*17914042 Coleman Donna 714

RR Rito 707
 Ideal 3407 of 1418 076
 SAV 8180 Traveler 004
 SAV May 2397
 Boyd New Day 8005
 GDAR Miss Wix 474
 Connealy Onward
 Coleman Donna 386

CED	BW	WW	YW	SC	MILK	MARB	RE	\$W	\$M
2	2.3	60	113	.79	21	-.22	.59	53	65

- A maternal sister was the \$21,000 highlight through the 2020 Coleman Angus Production Sale. This is a good-made female that

has a tremendous front-end extension, added depth as well, along with a perfect hip and hind leg structure. Coleman Donna 439, her dam, records a BR of 4@91, WR 4@108, YR 4@108.

- Bred to calve 1 -24 -2022 to Coleman Charlo 0256. Exposed to Coleman Poncho 9426 from 4 -18 -21 to 6 -24 -21. Examined Safe AI with a heifer calf.

13B

COLEMAN DONNA 057



Reg #:*19857117 Tattoo: 057 DOB: 01/08/20

Rito 707 of Ideal 3407 7075
 SAV Renown 3439
 #+*17633839 SAV Blackcap May 4136
 GDAR Game Day 449
 Coleman Donna 439
 #+*17914042 Coleman Donna 714

RR Rito 707
 Ideal 3407 of 1418 076
 SAV 8180 Traveler 004
 SAV May 2397
 Boyd New Day 8005
 GDAR Miss Wix 474
 Connealy Onward
 Coleman Donna 386

CED	BW	WW	YW	SC	MILK	MARB	RE	\$W	\$M
7	0.8	63	112	-.20	26	-.44	.61	69	84

- Top 4% for \$M.
- This female ranks as the 9th highest daughter of SAV Renown 3429 in the breed for \$M in the AHIR for non-parent females.

- Her dam, Coleman Donna 439, has earned her keep here at the Coleman Angus Ranch, with actual real data like a BR of 4@91, WR 4@108, YR 4@108.
- Bred to calve 1 -24 -2022 to Coleman Charlo 0256. Exposed to Coleman Poncho 9426 from 4 -18 -21 to 6 -14 -21. Examined Safe due approx. 2 -15 -22 to Poncho.

COLEMAN Donna FAMILY



Coleman Donna 506 – The \$102,000 valued Full Sister to Lot 14.



Lot 14
Top 10% \$M

14

COLEMAN DONNA 5318



Reg #:*18403189 Tattoo: 5318 DOB: 07/16/15

Boyd New Day 8005
GDAR Game Day 449
#+14691231 GDAR Miss Wix 474
Connealy Onward
Coleman Donna 714
+*15706882 Coleman Donna 386

AAR New Trend
SVF Forever Lady 57D
Tehama Band 207
GDAR Miss Wix 749
Connealy Lead On
Altune of Conanga 6104
Basin Rainmaker 654X
KMK Donna J311

CED	BW	WW	YW	SC	MILK	MARB	RE	\$W	\$M
12	-1.3	42	71	.16	30	.32	.08	60	73

- A full sister to this female was purchased in a past Coleman Angus Production Sale and went on to be the featured Lot 1 female of the spring Ingram Angus Production Sale in 2021. She sold for \$52,500 to Voss Angus of Iowa to be the top-selling female of that event.
- This great producer earned her stripes as a PATHFINDER female in our program and she's a full sister to the GENEX Beef AI Sire, Coleman Playmaker 427.
- Coleman Donna 439, a full sister, is a featured donor female in our program and is also the dam of two junior herd sires, Coleman Glacier 0441 and Coleman ACE 989.
- She has a progeny production record of BR of 4@89, WR 4@109, YR 3@106 as well as a calving interval of 4@363 days.
- Sells with a heifer calf at side (Lot 14A) born 6 -18 -21 by Coleman Marshall 7170. Tattoo: 1498. BW 70 lbs. Reg# 20102850.

15

COLEMAN DONNA 7321



Reg #:*19108104 Tattoo: 7321 DOB: 07/01/17

Rito 707 of Ideal 3407 7075
SAV Renown 3439
#+*17633839 SAV Blackcap May 4136
GDAR Game Day 449
Coleman Donna 4218
+*18105612 Coleman Donna 714

RR Rito 707
Ideal 3407 of 1418 076
SAV 8180 Traveler 004
SAV May 2397
Boyd New Day 8005
GDAR Miss Wix 474
Connealy Onward
Coleman Donna 386

CED	BW	WW	YW	SC	MILK	MARB	RE	\$W	\$M
8	0	63	115	-.14	24	-.12	.75	65	57

- This is a full sister-in-blood to our junior herd sire Coleman Glacier 041.
- She has an individual weaning ratio of 118 and a yearling ratio of 119 on her first calf.
- Her dam, Coleman Donna 4218, gathered a weaning ratio of 3@107 and a YR of 3@108. These highly proven genetics that will take you the long haul.
- Sells with a stout bull calf at side (Lot 15A) born 7 -26 -21 by Coleman Rock 7200. Tattoo 1536. BW 79 lbs. Reg# 20102852.

16

COLEMAN DONNA 8375



Reg #:*19400644 Tattoo: 8375 DOB: 08/15/18

Cole Creek Black Cedar 46P
Coleman Navigator 614
*18570027 Coleman Eriskay 291
GDAR Game Day 449
Coleman Donna 4218
+*18105612 Coleman Donna 714

CH Quantum 6247
Cole Creek Clova Juanada 67
Coleman Juneau 044
Sindair Eriskay 2N1 7883
Boyd New Day 8005
GDAR Miss Wix 474
Connealy Onward
Coleman Donna 386

CED	BW	WW	YW	SC	MILK	MARB	RE	\$W	\$M
4	1.3	61	104	1.39	22	1.06	1.67	59	65

- This stout Coleman Navigator 614 daughter is loaded with maternal qualities, along with being powerfully made. '8375' has an individual weaning ratio of 109 and a yearling ratio of 106. Her proven dam's weaning ratio is 3@107 and yearling ratio is 3 @108.
- Sells with a bull calf at side (Lot 16A) born 8 -21 -21 by Coleman Rock 7200. Tattoo 1580. BW 80 lbs. Reg# 20111304.

17

COLEMAN DONNA 9336



Reg #:*19717730 Tattoo: 9336 DOB: 07/05/19

Wulffs Ext 6106
Coleman Doc 2261
+*17544680 Coleman Donna 989
GDAR Game Day 449
Coleman Donna 4207
#+*18105604 Coleman Donna 714

N Bar Emulation EXT
Wulffs Erica Dianna C116
RR Rito 707
Coleman Donna 386
Boyd New Day 8005
GDAR Miss Wix 474
Connealy Onward
Coleman Donna 386

CED	BW	WW	YW	SC	MILK	MARB	RE	\$W	\$M
7	-1.3	52	84	-.10	25	-.09	.50	64	78

- Top 15% for \$M.
- Here's an own daughter of the Coleman Angus and Little Goose Ranch female-making machine, Coleman Doc 2261. Herself, carrying a birth ratio of 99. She is a very attractive-made female with a perfect udder and beautiful front one third.
- Sells with a stunning heifer calf at side (Lot 17A) born 7 -24 -21 by Coleman Summitt 9370. Tattoo 1643. BW 60 lbs. Reg# 20102860.

COLEMAN *Donna* FAMILY



Top 1% \$M



Coleman Donna 063 - The \$80,000 maternal sister to Lot 18, to Lawson Family Farms, VA.

18

COLEMAN DONNA 8139



Reg #:*19243293 Tattoo: 8139 DOB: 02/01/18

Coleman Navigator 614 *18570027	Cole Creek Black Cedar 46P Coleman Eriskay 291	CH Quantum 6247 Cole Creek Clova Juanada 67 Coleman Juneau 044 Sindair Eriskay 2N1 7883 Connealy Lead On Altune of Conanga 6104 Basin Rainmaker 654X KMK Donna J311
Coleman Donna 714 +*15706882	Connealy Onward Coleman Donna 386	

CED	BW	WW	YW	SC	MILK	MARB	RE	\$W	\$M
6	0.8	68	109	.62	26	.23	.58	77	91

- This female ranks as the #1 daughter of Coleman Navigator 614 in the breed for \$M in the AHIR among current dams.
- A maternal sister to an array of herd sires here at Coleman Angus that includes the record-selling Coleman Bravo, ZWT Summitt, Playmaker, Manning 0229, and Coleman Juneau 044.
- Sells with a bull calf at side (Lot 18A) born 8 -20 -21 by Coleman Rock 7200. Tattoo 1545. BW 84 lbs. Reg# 20111301

COLEMAN *Donna* FAMILY



Top 10% \$M

19

COLEMAN DONNA EMBRYOS

**3 FROZEN CONVENTIONAL IVF EMBRYOS
(EXPORTABLE CN)**

Don Aparicio Serrucho57 Maxi
Hummel South America
19919943 Rubeta Fontana 7567-T/E-
Leachman Right Time
Coleman Donna 3125
17783497 Coleman Donna 714

- The Donor Dam, Coleman Donna 3125, checks all the boxes for us. She is an ideal Angus female with progeny ratios of BR 4@94, NR 4@110, YR 4@110. Here is a very proven female that brings a lot to the table with her massive amount of rib and body, perfect udder, and overall femininity. Being an own daughter of Coleman Donna 714 and Leachman Right Time, there is plenty of maternal built in genetically.
- She was our Lot 1 Female in our 2020 Female Sale where she sold for ½ interest \$35,000 for a \$70,000 valuation to Rhodes Red Angus, SD.

COLEMAN Donna FAMILY



Lot 19A

Top 25% \$M



Lot 19B

Top 10% \$M

19A

COLEMAN DONNA 0347



Reg #: 19792310 Tattoo: 0347 DOB: 06/30/20

Rito 707 of Ideal 3407 7075
 SAV Renown 3439 #+*17633839
 SAV Blackcap May 4136
 Leachman Right Time
 Coleman Donna 3125
 +*17783497 Coleman Donna 714
 RR Rito 707
 Ideal 3407 of 1418 076
 SAV 8180 Traveler 004
 SAV May 2397
 N Bar Emulation EXT
 Leachman Erica 0025
 Connealy Onward
 Coleman Donna 386

CED	BW	WW	YW	SC	MILK	MARB	RE	\$W	\$M
7	0.4	59	104	1.79	28	1.01	1.58	65	70

- A daughter of the \$35,000 one-half interest, featured Lot 1 female of the 2020 Coleman Production Sale going to Rhodes Red Angus of South Dakota. These three daughters have the same conformation as their donor dam. They are loaded with rib, fleshing ability, with added maternal strength. Her individual birth ratio is 95, weaning ratio is 107. Her donor dam, Coleman Donna 3125, records a BR of 5@94, WR 5@109, YR 4@110.

19B

COLEMAN DONNA 016



Reg #: 19857102 Tattoo: 016 DOB: 01/08/20

Rito 707 of Ideal 3407 7075
 SAV Resource 1441 #+*17016597
 SAV Blackcap May 4136
 Leachman Right Time
 Coleman Donna 3125
 +*17783497 Coleman Donna 714
 RR Rito 707
 Ideal 3407 of 1418 076
 SAV 8180 Traveler 004
 SAV May 2397
 N Bar Emulation EXT
 Leachman Erica 0025
 Connealy Onward
 Coleman Donna 386

CED	BW	WW	YW	SC	MILK	MARB	RE	\$W	\$M
8	1.3	59	107	1.04	28	.09	.83	67	80

- This royally bred heifer has the look and kind we strive for, along with the highly maternal pedigree of SAV Blackcap May 4136. Her dam is Coleman Donna 3125, the Leachman Right Time by Coleman Donna 714, with a birth ratio of 5@94, WR 5@109, YR 4@110. You can buy with confidence.
- Bred to calve 1 -24 -2022 to Coleman Banker 9215. Exposed to Coleman Banker 9215 from 4 -18 -21 to 6 -14 -21. Examined Safe due approx. 2 -20 -22 to Banker.

19C

COLEMAN DONNA 033



Reg #: 19873238 Tattoo: 033 DOB: 01/10/20

Rito 707 of Ideal 3407 7075
 SAV Resource 1441 #+*17016597
 SAV Blackcap May 4136
 Leachman Right Time
 Coleman Donna 3125
 +*17783497 Coleman Donna 714
 RR Rito 707
 Ideal 3407 of 1418 076
 SAV 8180 Traveler 004
 SAV May 2397
 N Bar Emulation EXT
 Leachman Erica 0025
 Connealy Onward
 Coleman Donna 386

CED	BW	WW	YW	SC	MILK	MARB	RE	\$W	\$M
12	-0.9	57	100	.61	24	-.12	.59	62	85

- Top 4% for \$M.
- The 8th highest daughter of SAV Resource 1441 in the breed for \$M in AHIR for non-parent females.
- Her dam, Coleman Donna 3125, has a birth ratio of 5@94, WR 5@109, YR 4@110.
- Bred to calve 1 -24 -22 to Coleman Banker 9215. Exposed to Coleman Banker 9215 from 4 -18 -21 to 6 -14 -21. Examined Safe due approx. 2 -10 -22 to Banker.

COLEMAN *Donna* FAMILY



Top 10% \$M



20

COLEMAN DONNA EMBRYOS

**3 FROZEN CONVENTIONAL IVF EMBRYOS
(EXPORTABLE CN)**

Don Aparicio Serrucho57 Maxi
Hummel South America
19919943 Rubeta Fontana 7567-T/E-
Wulffs Ext 6106
Coleman Donna 3202
17783501 Coleman Donna 714

- She is more widely known as the highly productive dam of Coleman Maverick 5322. She is a Pathfinder female carrying a BR 4@94, NR 4@105, and a YR 4@105.
- She is very long bodied with a long level hip and a bolt-on perfect udder.



Coleman Maverick 5322 – Maternal Brother to Lot 20 and Flush Brother to Lots 20A and 20B.

COLEMAN Donna FAMILY



Lot 20B
Top 4% \$M

20A

COLEMAN DONNA 013



Reg #:*19857087 Tattoo: 013 DOB: 01/01/20

OCC Paxton 730P
Coleman Charlo 0256
#+*16879074 Bohi Abigale 6014

Wulffs Ext 6106
Coleman Donna 3202
#+*17783501 Coleman Donna 714

OCC Focus 813F
OCC Blackbird 736K
Sitz Traveler 8180
SAV Abigale 6062
N Bar Emulation EXT
Wulffs Erica Dianna C116
Connealy Onward
Coleman Donna 386

CED	BW	WW	YW	SC	MILK	MARB	RE	\$W	\$M
15	-1.9	47	80	.77	29	.29	.74	68	90

- Top 2% for \$M.
- This female ranks as the 9th highest daughter of Coleman Charlo 0256 in the breed for \$M in AHIR for non-parent females.

- A full sister to the GENEX Beef AI Sire, Coleman Maverick 322. The Maverick sons and daughters flat get it done. Very efficient and highly maternal.
- The dam, Coleman Donna 3202, records a Birth Ratio of 4@94, WR 4@105, YR 3@108.
- Bred to calve 1 -23 -2022 to Sitz Stellar 726D. Exposed to Coleman Hondo 022 from 4 -18 -2021 to 6 -14 -2021. Examined Safe due approx. 3 -4 -2022 to Hondo.

20B

COLEMAN DONNA 014



Reg #:*19857092 Tattoo: 014 DOB: 01/01/20

OCC Paxton 730P
Coleman Charlo 0256
#+*16879074 Bohi Abigale 6014

Wulffs Ext 6106
Coleman Donna 3202
#+*17783501 Coleman Donna 714

OCC Focus 813F
OCC Blackbird 736K
Sitz Traveler 8180
SAV Abigale 6062
N Bar Emulation EXT
Wulffs Erica Dianna C116
Connealy Onward
Coleman Donna 386

CED	BW	WW	YW	SC	MILK	MARB	RE	\$W	\$M
9	0.4	64	112	1.33	27	.19	.18	77	84

- This female ranks as the 14th highest daughter of Coleman Charlo 0256 in the breed for \$M in the AHIR for non-parent females.

- So much maternal in these proven genetics without sacrificing true red meat and muscle. Her dam, Coleman Donna 3202, records a Birth Ratio of 4@94, WR 4@105, YR 3@108.
- Bred to calve 1 -23 -2022 to Sitz Stellar 726D. Exposed to Coleman Hondo 022 from 4 -18 -2021 to 6 -14 -2021. Examined Safe due approx. 3 -4 -2022 to Hondo.

COLEMAN *Donna* FAMILY



NCC Prestige 317 736K - Sire of Lot 21, owned with Sandford Ranches, TX

21

COLEMAN DONNA 8407



Reg #:*19400654 Tattoo: 8407 DOB: 07/22/18

OCC Prestige 672P
NCC Prestige 317 736K
+*18121964 OCC Blackbird 736K
Wulffs Ext 6106
Coleman Donna 5356
#+*18405001 Coleman Donna 714

OCC Headliner 661H
OCC Dixie Erica 816B
OCC Great Plains 943G
OCC Blackbird 824G
N Bar Emulation EXT
Wulffs Erica Dianna C116
Connealy Onward
Coleman Donna 386

CED	BW	WW	YW	SC	MILK	MARB	RE	\$W	\$M
8	-0.5	50	85	1.48	30	1.41	1.26	61	56

- Here is an excellent combination of efficiency and maternal. Her sire, NCC Prestige 317, is a maternal brother to the OCC Paxton 730P, who sired OCC Prestige 672P.
- The combination of N Bar EXT and Traveler, who have paved their way into greatness genetically and in the pasture, with an individual ratio of BR 96, WR 113, and YR 108.
- Sells with a heifer calf at side (Lot 21A) born 7 -2 -21 by Coleman Rock 7200. Tattoo 1585. BW 73 lbs. Reg# 20102856.

COLEMAN *Donna* FAMILY



Top 15% \$M



Coleman Maverick 5322 - Full Brother-In-Blood to Dam of Lot 22.

22

COLEMAN DONNA 0428

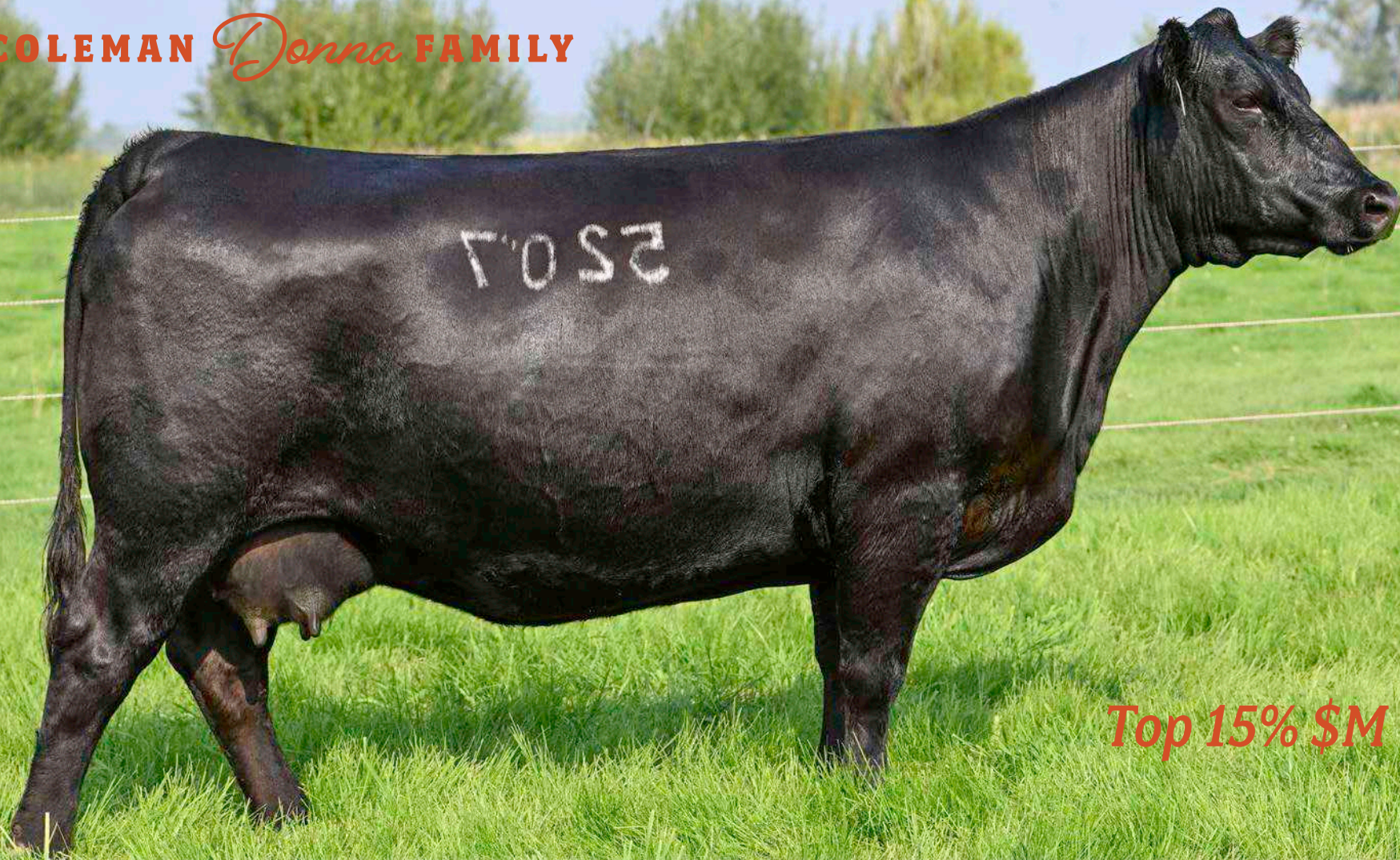


Reg #: 20042232 Tattoo: 0428 DOB: 06/27/20

SAV Renown 3439 #+*17633839	Rito 707 of Ideal 3407 7075 SAV Blackcap May 4136	RR Rito 707 Ideal 3407 of 1418 076 SAV 8180 Traveler 004 SAV May 2397 OCC Paxton 730P Bohi Abigale 6014 Wulffs Ext 6106 Coleman Donna 714
Coleman Donna 7386 *19102692	Coleman Charlo 0256 Coleman Donna 5309	

- Another classic and proven combination of SAV Renown 3439 and Coleman Charlo 0256, along with the added maternal value of Wulffs EXT 6106.
- This female has individual ratios of BR 92 and WR 108. Not to mention her dam, Coleman Donna 0428, records a Birth ratio of 2@92, WR 2@110, YR 1@108.

CED	BW	WW	YW	SC	MILK	MARB	RE	\$W	\$M
8	-0.4	66	117	1.64	26	1.13	1.56	70	75



Top 15% \$M

23

COLEMAN DONNA EMBRYOS

**3 FROZEN CONVENTIONAL IVF EMBRYOS
(EXPORTABLE CN)**

Don Aparicio Serrucho57 Maxi
Hummel South America
19919943 Rubeta Fontana 7567-T/E-
OCC Great Plains 943G
Coleman Donna 5207
18410196 Coleman Donna 714



Coleman Resource 9349 - The \$17,000
Maternal Brother to Lot 23-24, to Southern
Cattle Co., FL.

- Coleman Donna 5207 is a Pathfinder female with a calving interval of 352 days on her first three calves, with a BR 3@96, NR 3@111, YR 2@108.
- This extremely fertile female is angular, deep sided, with a perfect udder, along with her long level hip and top line. The excitement just keeps raising over this prime of her life female.
- You can't make them any better pedigreed, looking, or any more productive.

COLEMAN Donna FAMILY



Lot 23C
Top 10% \$M

23A

COLEMAN DONNA 0257



Reg #: 20060568 Tattoo: 0257 DOB: 07/05/20

Coleman Charlo 0256
SAV President 6847
+*18578964 SAV Blackcap May 4136
OCC Great Plains 943G
Coleman Donna 5207
#+*18410196 Coleman Donna 714

OCC Paxton 730P
Bohi Abigale 6014
SAV 8180 Traveler 004
SAV May 2397
N Bar Emulation EXT
Dixie Erica of CH 1019
Connealy Onward
Coleman Donna 386

CED	BW	WW	YW	SC	MILK	MARB	RE	\$W	\$M
1.8	1.0	1.61	1.100	1.41	1.27	-0.07	1.73	73	82

• Top 10% for \$M.

- Maternal sister to the sixth high-selling bull of the 2021 Coleman Angus Bull Sale, Coleman Resource 9349, going to Southern Cattle Co. of Florida.
- The dam of this female is a perfect-uddered, deep-bodied, and productive female with loads of eye appeal. Her dam records: BR 3@96, WR 3@111, YR 3@112.

23B

COLEMAN DONNA 0279



Reg #: 20060571 Tattoo: 0279 DOB: 07/02/20

Coleman Charlo 0256
SAV President 6847
+*18578964 SAV Blackcap May 4136
OCC Great Plains 943G
Coleman Donna 5207
#+*18410196 Coleman Donna 714

OCC Paxton 730P
Bohi Abigale 6014
SAV 8180 Traveler 004
SAV May 2397
N Bar Emulation EXT
Dixie Erica of CH 1019
Connealy Onward
Coleman Donna 386

CED	BW	WW	YW	SC	MILK	MARB	RE	\$W	\$M
1.8	1.0	1.61	1.100	1.41	1.27	-0.07	1.73	73	82

• Top 10% for \$M.

- A full sister to Lot 23 with the same solid pedigree that is very intriguing, going back to the ultra-proven sire OCC Great Plains 943G by Coleman Donna 714.
- These genetics are the timeless kind that go the distance. Coleman Donna 5207, her dam, has a Birth Ratio of 3@96, WR 3@111, YR 3@112.

23C

COLEMAN DONNA 0325



Reg #: 20060572 Tattoo: 0325 DOB: 06/30/20

Coleman Charlo 0256
SAV President 6847
+*18578964 SAV Blackcap May 4136
OCC Great Plains 943G
Coleman Donna 5207
#+*18410196 Coleman Donna 714

OCC Paxton 730P
Bohi Abigale 6014
SAV 8180 Traveler 004
SAV May 2397
N Bar Emulation EXT
Dixie Erica of CH 1019
Connealy Onward
Coleman Donna 386

CED	BW	WW	YW	SC	MILK	MARB	RE	\$W	\$M
1.8	1.0	1.61	1.100	1.41	1.27	-0.07	1.73	73	82

- Flush sister to Lots 23 & 23A, carrying the same value-added pedigree, along with serious maternal attributes. A blending of the most popular cow families in the breed: Donna's, Abigale's, Dixie Erica's, and Blackcap May's.

COLEMAN Donna FAMILY



24

COLEMAN DONNA 7252



Reg #:*20062188 Tattoo: 7252 DOB: 07/01/17

OCC Prestige 672P
NCC Prestige 317 736K
+*18121964 OCC Blackbird 736K

Sitz Traveler 8180
Coleman Donna 3207
+*17784838 Coleman Donna 714

OCC Headliner 661H
OCC Dixie Erica 816B
OCC Great Plains 943G
OCC Blackbird 824G
GDAR Traveler 71
Sitz Everelda Entense 1137
Connealy Onward
Coleman Donna 386

CED	BW	WW	YW	SC	MILK	MARB	RE	\$W	\$M
1	2.5	72	124	1.10	28	.40	.44	76	64

- This classic pedigreed female is built from tons of proven pedigrees. The dam has a BR of 3@91, WR 3@106, YR 3@104.
- Bred to calve 1 -21 -22 to Sitz Accomplishment 720F. Exposed to Coleman Rock 7200 from 4 -16 -21 -6 -14 -21. Examined Safe AI.

24A

COLEMAN DONNA 1158



Reg #:*20076424 Tattoo: 1158 DOB: 01/31/2021

S A V Resource 1441
Coleman Resource 710
*18933682 Coleman Donna 4121

NCC Prestige 317 736K
Coleman Donna 7252
*20062188 Coleman Donna 3207

Rito 707 of Ideal 3407 7075
S A V Blackcap May 4136
O C C Juneau 807J
Coleman Donna 005
O C C Prestige 672P
O C C Blackbird 736K
Sitz Traveler 8180
Coleman Donna 714

CED	BW	WW	YW	SC	MILK	MARB	RE	\$W	\$M
0	3.3	73	129	1.13	26	.27	.60	70	59

- An excellent, young, power-packed female loaded with red meat and muscle, along with a long list of proven genetics including OCC Blackbird 736K (OCC Paxton's Dam), OCC Juneau, Sitz Traveler 8180, and Coleman Donna 714 just to list a few!

25

COLEMAN DONNA 8360



Reg #:*19403164 Tattoo: 8360 DOB: 06/29/18

HF Kodiak 5R
Soo Line Motive 9016
#*16568189 TLA Beauty 5R

Sitz Traveler 8180
Coleman Donna 3205
+*17783504 Coleman Donna 714

Sandy Bar Advantage 43M
Wilbar Ruby 955N
RR 7407 Rainmaker 2154
Terrlene Beauty 35F
GDAR Traveler 71
Sitz Everelda Entense 1137
Connealy Onward
Coleman Donna 386

CED	BW	WW	YW	SC	MILK	MARB	RE	\$W	\$M
6	0.2	49	91	1.28	26	1.18	1.46	51	59

- This daughter of the Canadian proven super star, Soo Line Motive 9016, records an individual Birth Ratio of 99, and a Weaning Ratio of 102. Balanced across the board for growth and maternal with a perfect udder and excellent phenotype.
- Sells with a heifer calf at side (Lot 25A) born 6 -23 -21 by BC Robust 0807. Tattoo 1578. BW 79 lbs. Reg# 20104098.

26**COLEMAN DONNA 9364**Reg #:**19772291** Tattoo: **9364** DOB: **06/30/19**

Rito 707 of Ideal 3407 7075
 SAV Resource 1441
 #+*17016597 SAV Blackcap May 4136
 Coleman Donna 5359
 +*18410199 Coleman Donna 714

RR Rito 707
 Ideal 3407 of 1418 076
 SAV 8180 Traveler 004
 SAV May 2397
 N Bar Emulation EXT
 Dixie Erica of CH 1019
 Connealy Onward
 Coleman Donna 386

CED	BW	WW	YW	SC	MILK	MARB	RE	\$W	\$M
5	2.4	64	112	1.26	20	.15	1.09	59	71

- This stunning young pair has the power you'd expect from an SAV Resource 1441 daughter with an added punch of the great Dixie Erica of CH 1019, the dam of OCC great Plains and OCC Emblazon.
- She has an individual Birth Ratio of 101 and a Yearling Ratio of 105. Her dam, Coleman Donna 5359, records BR 4@97, YR 3@102.
- Sells with a heifer calf at side (Lot 26A) born 7 -11 -21 by Coleman Bravo 6313. Tattoo 1645. BW 78 lbs. Reg# 20102861.

27**COLEMAN DONNA 9380**Reg #:**19583529** Tattoo: **9380** DOB: **07/27/19**

SAV Renown 3439
 ZWT Summitt 6507
 +*18561289 Coleman Donna 714

Rito 707 of Ideal 3407 7075
 SAV Blackcap May 4136
 Connealy Onward
 Coleman Donna 386
 OCC Paxton 730P
 Bohi Abigale 6014
 Sitz Traveler 8180
 Coleman Donna 714

Coleman Charlo 0256
 Coleman Donna 6251
 #*18734938 Coleman Donna 3207

CED	BW	WW	YW	SC	MILK	MARB	RE	\$W	\$M
9	0	56	108	.55	33	.23	.78	69	48

- This daughter of the ultimate female maker, ZWT Summitt 6507, has the look of a serious brood cow. With an individual weaning ratio of 105 and yearling ratio of 106, along with her power packed Coleman Charlo dam to back it up.
- Sells with a heifer calf at side (Lot 27A) born 7 -11 -21 by Coleman Bravo 6313. Tattoo 1648. BW 68 lbs. Reg# 20102862.

27B**COLEMAN DONNA 0375**Reg #:**20042217** Tattoo: **0375** DOB: **07/05/20**

OCC Juneau 807J
 Coleman Rock 7200
 +*19107936 Coleman Donna 714

OCC Emblazon 854E
 OCC Dixie Erica 903E
 Connealy Onward
 Coleman Donna 386
 OCC Paxton 730P
 Bohi Abigale 6014
 Sitz Traveler 8180
 Coleman Donna 714

Coleman Charlo 0256
 Coleman Donna 6251
 #*18734938 Coleman Donna 3207

CED	BW	WW	YW	SC	MILK	MARB	RE	\$W	\$M
9	0.2	72	120	1.88	32	1.07	1.59	85	79

- Top 10% for \$M.
- This open, summer-born female is power packed. Sired by the up-and-coming Coleman Rock 7200; the 'Rock' calves are super-efficient, loaded with red meat, still with added maternal values to the tilt, not to mention they stand on perfect feet and legs. Her dam records Birth Ratio 3@98, WR 3@107, YR 2@106.

COLEMAN Donna FAMILY**Lot 26****Lot 27**

COLEMAN *Donna* FAMILY



Top 1% \$M
*Picture Taken at 11
Years of Age, Nursing
Another Calf.*

28A

COLEMAN DONNA EMBRYOS

**3 FROZEN CONVENTIONAL IVF EMBRYOS
(EXPORTABLE CN)**

Don Aparicio Serrucho57 Maxi
Hummel South America
19919943 Rubeta Fontana 7567-T/E-
OCC Juneau 807J
Coleman Donna 0308
17089286 Coleman Donna 732

28B

COLEMAN DONNA EMBRYOS

3 FROZEN IVF SEXED HEIFER EMBRYOS (US ONLY)

Don Aparicio Serrucho57 Maxi
Hummel Argentine
19919948 Rubeta Fontana 7567-T/E-
OCC Juneau 807J
Coleman Donna 0308
17089286 Coleman Donna 732

- "0308" is the program! This female is the #2 \$M cow in the breed, who has Pathfinder status and is eleven years of age. This represents maternal, production, fertility, and longevity.
- This Pathfinder female is MASSIVE! She has ratios of BR 6@92, WR 6@105, and a YR 5@102, with a caving interval of 362 days on five calves. She has one of the best young cows in the program, Coleman Donna 5212, starting to make her way to the donor pen.
- She is part of one of the greatest flushes to date. She is a load! Very thick topped with exceptional muscle shape throughout, massive rib shape, with a perfect udder.

COLEMAN Donna FAMILY



Lot 30
Top 2% \$M

29

COLEMAN DONNA 9281



Reg #:*19717727 Tattoo: 9281 DOB: 07/02/19

SAV Resource 1441 Rito 707 of Ideal 3407 7075
 #+*17016597 SAV Blackcap May 4136
 OCC Juneau 807J
 Coleman Donna 0308
 #+17089286 Coleman Donna 732
 RR Rito 707
 Ideal 3407 of 1418 076
 SAV 8180 Traveler 004
 SAV May 2397
 OCC Emblazon 854E
 OCC Dixie Erica 903E
 Connealy Onward
 Coleman Donna 386

CED	BW	WW	YW	SC	MILK	MARB	RE	\$W	\$M
3	2	52	98	.83	22	.14	.61	50	77

- Top 15% for \$M.
- A great two-year-old who stems from one of the great production cows in the program and the definition of maternal. This dam, at 11 years of age, has perfect feet, has bred every time AI, has a perfect udder, and is loaded with tons of rib and dense body mass.
- Her dam records BR of 6@92, WR 6@105, YR 6@103.
- Sells with a heifer calf at side (Lot 29A) born 8 -21 -21 by Coleman Summitt 9370. Tattoo 1622. BW 72 lbs. Reg# 20111306.

30

COLEMAN DONNA 9289



Reg #:*19583451 Tattoo: 9289 DOB: 07/02/19

Coleman Bravo 6313 Coleman Charlo 0256
 +*18734838 Coleman Donna 714
 OCC Juneau 807J
 Coleman Donna 0308
 #+17089286 Coleman Donna 732

CED	BW	WW	YW	SC	MILK	MARB	RE	\$W	\$M
13	-0.2	56	92	.90	22	.23	.19	69	90

- This female ranks as the 15th highest daughter of Coleman Bravo in the breed for \$M in the AHIR for non-parent females.
- This female has an excellent phenotype loaded with rib and body along with a beautiful overall balance and outline. Her dam, Coleman Donna 0308, records a BR of 6@92, WR 6@105, 6@103.
- Sells with a bull calf at side (Lot 30A) born 8 -21 -21 by Coleman Summitt 9370. Tattoo 1629. BW 70 lbs. Reg# 20111307.

31

COLEMAN DONNA 0477



Reg #:20042258 Tattoo: 0477 DOB: 07/03/20

Coleman Playmaker 427 GDAR Game Day 449
 +*17914039 Coleman Donna 714
 SAV President 6847
 Coleman Donna 8305
 +*19402574 Coleman Donna 0308
 Boyd New Day 8005
 GDAR Miss Wix 474
 Connealy Onward
 Coleman Donna 386
 Coleman Charlo 0256
 SAV Blackcap May 4136
 OCC Juneau 807J
 Coleman Donna 732

CED	BW	WW	YW	SC	MILK	MARB	RE	\$W	\$M
6	0.6	64	104	1.57	22	1-.06	1.60	67	93

- Top 1% for \$M.
- This female ranks as the #1 daughter of Coleman Playmaker 427 in the breed for \$M in the AHIR for non-parent females.
- These Coleman Playmaker 427 daughters are for real! Great mothering ability, perfect udder quality, beautiful throughout their front one third, and have great overall structure. This female has an individual Birth Ratio is a 96, and her weaning ratio is a 101. Her dam, Coleman Donna 8305, has a BR 1@96, WR 1@101.

COLEMAN Donna FAMILY



Top 15% \$M
 Picture taken at
 11 years of age,
 nursing another calf



Top 4% \$M

Coleman Rock 7200 - Reference Sire C and Full
 Brother to Dam of Lots 32 and 33.

C COLEMAN ROCK 7200

Reg #:*19107936 Tattoo: 7200 DOB: 07/12/2017

OCC Emblazon 854E D H D Traveler 6807
 Dixie Erica of C H 1019
 O C C Candor 763C
 O C C Dixie Erica 799B
 Connealy Lead On
 Altune of Conanga 6104
 Basin Rainmaker 654X
 KMK Donna J311

CED	BW	WW	YW	SC	MILK	MARB	RE	\$W	\$M
7	0	76	119	1.12	24	-.14	.68	85	85

• FOR REFERENCE ONLY



32

COLEMAN DONNA 089

Reg #:*19857131 Tattoo: 089 DOB: 01/27/20

Coleman Charlo 0256 OCC Paxton 730P
 Bohi Abigale 6014
 Connealy Onward
 Coleman Donna 386
 OCC Emblazon 854E
 OCC Dixie Erica 903E
 Connealy Onward
 Coleman Donna 386

CED	BW	WW	YW	SC	MILK	MARB	RE	\$W	\$M
5	2.8	60	99	.92	20	-.12	.57	61	100

- Top 1% for \$M.
- This female ranks as the 3rd highest daughter of Coleman Bravo 6313 in the breed for \$M in the AHIR for non-parent females.
- If you have ever visited Coleman Angus, you definitely have this female's dam, Coleman Donna 0298, on your list of great ones due to her overall mass, length of spine, and perfect udder along with her excellent weaning ratios of 7@107, yearling ratio of 7@106. She has an individual weaning ratio 102, yearling ratio 105.
- Bred to calve 1 -24 -22 to ZWT Summitt 6507. Exposed to Coleman Summitt 9370 from 4 -18 -21 to 6 -14 -21. Examined Safe AI with a heifer calf.



33

COLEMAN DONNA 0162

Reg #:*19857104 Tattoo: 0162 DOB: 01/26/20

SAV Renown 3439 Rito 707 of Ideal 3407 7075 RR Rito 707
 Ideal 3407 of 1418 076
 SAV 8180 Traveler 004
 SAV May 2397
 OCC Emblazon 854E
 OCC Dixie Erica 903E
 Connealy Onward
 Coleman Donna 386

CED	BW	WW	YW	SC	MILK	MARB	RE	\$W	\$M
10	-0.8	65	115	.04	24	-.05	.95	73	87

- Top 3% for \$M.
- This female ranks as the 6th highest daughter of SAV Renown 3439 in the breed for \$M in the AHIR for non-parent females.
- The dam, Coleman Donna 040, is the #1 \$M cow in the breed with Pathfinder status, and eleven years of age or older.
- Bred to calve 1 -24 -22 to Coleman Charlo 0256. Exposed to Coleman Poncho 9426 from 4 -18 -21 to 6 -14 -21. Examined Safe due 2 -15 -22 to Poncho.



COLEMAN Donna FAMILY



Top 1% \$M

34A

COLEMAN DONNA EMBRYOS

3 FROZEN CONVENTIONAL IVF EMBRYOS
(EXPORTABLE CN)

Don Aparicio Serrucho57 Maxi
Hummel South America
19919943 Rubeta Fontana 7567-T/E-
Coleman Charlo 0256
Coleman Donna 787
18838394 Coleman Donna 063

34B

COLEMAN DONNA EMBRYOS

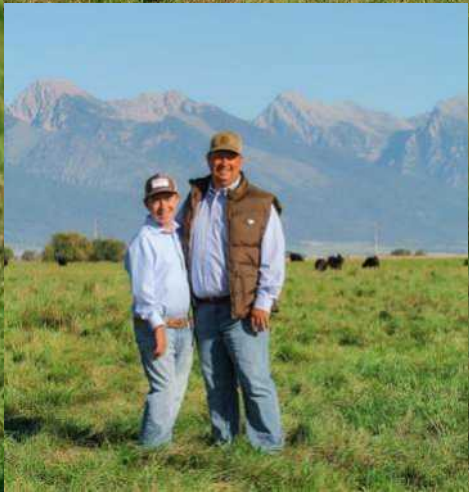
3 FROZEN IVF SEXED HEIFER EMBRYOS (US ONLY)

Don Aparicio Serrucho57 Maxi
Hummel Argentine
19919948 Rubeta Fontana 7567-T/E-
Coleman Charlo 0256
Coleman Donna 787
18838394 Coleman Donna 063



Coleman Donna 928 - Coleman Donna 928 - The \$26,000 Maternal Sister to Lots 34A and 34B, to Native Prairie Beef Genetics, KS.

- Coleman Donna 787 has a progeny production record of BR 2@94, WR 2@104, YR 2@108.
- A top-producing donor that will add true muscle shape and dimension to her offspring is this outstanding daughter of Coleman Charlo 0256.
- Her mother was a top-selling female through this same event and stems back to the \$290,000 Coleman Donna 714.
- These embryos are maternal sibs to the \$26,000 top-selling bred heifer of the 2020 fall production sale, Coleman Donna 928, going to Native Prairie Beef Genetics.





COLEMAN *Donna* FAMILY



Top 10% \$M

Dam of Lot 35C

35A

COLEMAN DONNA EMBRYOS

**3 FROZEN CONVENTIONAL IVF EMBRYOS
(EXPORTABLE CN)**

Don Aparicio Serrucho57 Maxi
Hummel South America
19919943 Rubeta Fontana 7567-T/E-
Coleman Charlo 0256
Coleman Donna 7181
19102649 Coleman Donna 197

35B

COLEMAN DONNA EMBRYOS

3 FROZEN CONVENTIONAL IVF EMBRYOS (US ONLY)

Don Aparicio Serrucho57 Maxi
Hummel Argentine
19919948 Rubeta Fontana 7567-T/E-
Coleman Charlo 0256
Coleman Donna 7181
19102649 Coleman Donna 197

- Coleman Donna 7181 has a progeny production record of WR 2@107, YR 1@106
- This female's daughter selling is one of our favorites in this year's event. This donor adds true width and dimension in an attractive package.
- She is a maternal sister to Coleman Marshall 7170 and one of the best young producers on the ranch. Her dam is a full sister to the \$200,000 Coleman Donna 386.

COLEMAN *Donna* FAMILY



Top 15% \$M

35C

COLEMAN DONNA 0399



Reg #: **20042225** Tattoo: **0399** DOB: **07/04/20**

SAV Renown 3439
 Coleman Resolve 7219
 +*19102305 Coleman Donna 714

Coleman Charlo 0256
 Coleman Donna 7181
 +*19102649 Coleman Donna 197

Rito 707 of Ideal 3407 7075
 SAV Blackcap May 4136
 Connealy Onward
 Coleman Donna 386
 OCC Paxton 730P
 Bohi Abigale 6014
 Basin Rainmaker 654X
 KMK Donna J311

- Here's a daughter of the outstanding female producer, Coleman Resolve 7219. Her dam, Coleman Donna 7181, has a weaning ratio of 2@107 and a YR of 1@106, and is a direct daughter of the foundation donor, Coleman Donna 197, who has earned her way to stardom through progeny sales that demand top dollar due to their excellent quality.
- This female was one of the high-weaning heifers in her contemporary group boasting a weaning ratio of 110!



Coleman Resolve 7219, Sire of Lot 35C

CED	BW	WW	YW	SC	MILK	MARB	RE	\$W	\$M
10	-0.1	62	113	I .79	32	I -.11	I .66	73	75



Coleman Donna 714 - Full sister in blood to Lot 36
Owned with ZWT Ranch in TN



COLEMAN Donna FAMILY



Lot 36
Top 15% \$M

36

COLEMAN DONNA 7112

Reg #:*18842029 Tattoo: 7112 DOB: 02/05/17

Connealy Lead On
Connealy Onward #*14216491
Coleman Donna 197 +*17188528

Altune of Conanga 6104
Basin Rainmaker 654X
KMK Donna J311

Connealy Leadtime
Eligence Plus of Conanga
GAR Traveler 1489
Avalon 1418 of Conanga 6276
Basin Rainmaker DS 380U
Basin Bardolene 423U
DHD Traveler 6807
Brooks Donna 319

CED	BW	WW	YW	SC	MILK	MARB	RE	\$W	\$M
10	1.4	54	116	.77	39	-.02	.80	66	72

- This is a full sister-in-blood to the \$290,000 Coleman Donna 714. The potential is endless with this highly maternal female who is carrying a WR of 2@102, YR 2@108 and has a calving interval of 366 days.
- Coleman Donna 197, her dam, has paved her way the old-fashioned way—in the pasture, as you can see. With a BR of 4@96, WR 4@112, YR 4@113.
- Bred to calve 1 -22 -22 to Hummel South America. Exposed to Coleman Rock 7200 from 4 -16 -21 to 6 -14 -21. Examined Safe AI with a bull calf.



36A

COLEMAN DONNA 1152

Reg #: *20076422 Tattoo: 1152 DOB: 01/24/2021

Coleman Navigator 614 #*18570027
Coleman Eriskay 291
Coleman Donna 7112 +*18842029

Cole Creek Black Cedar 46P
Coleman Juneau 044
Coleman Eriskay 291
Connealy Onward
Coleman Donna 197

CH Quantum 6247
Cole Creek Clova Juanada 67
Coleman Juneau 044
Sinclair Eriskay 2N1 7883
Connealy Lead On
Altune of Conanga 6104
Basin Rainmaker 654X
KMK Donna J311

CED	BW	WW	YW	SC	MILK	MARB	RE	\$W	\$M
7	0	76	119	1.12	24	-.14	.68	85	85

- Here's a fancy, young heifer calf with style and eye appeal and loaded with maternal greats. She is sired by the maternal yet powerful Coleman Navigator 614. Her dam, Coleman Donna 7112, is a full-sister-in-blood to Coleman Donna 714. Her dam's Birth Ratio is 4@96, WR 4@112, YR 4@113.

36B

COLEMAN DONNA 0142

Reg #:*19857094 Tattoo: 0142 DOB: 01/20/20

Coleman Navigator 614 #*18570027
Coleman Eriskay 291
Coleman Donna 7112 +*18842029

Cole Creek Black Cedar 46P
Coleman Juneau 044
Coleman Eriskay 291
Connealy Onward
Coleman Donna 197

CH Quantum 6247
Cole Creek Clova Juanada 67
Coleman Juneau 044
Sinclair Eriskay 2N1 7883
Connealy Lead On
Altune of Conanga 6104
Basin Rainmaker 654X
KMK Donna J311

CED	BW	WW	YW	SC	MILK	MARB	RE	\$W	\$M
2	2.2	59	106	.45	35	-.14	.61	71	66

- Another stout-made, spring-bred heifer sired by Coleman Navigator 614, along with her overall balance and eye appeal.
- Coleman Donna 7112, her dam, is a full sister-in-blood to Coleman Donna 714, who has a weaning ratio of 2@102, yearling ratio 2@108.
- Bred to calve 1 -24 -22 to Coleman Bravo 6313. Exposed to Coleman Banker 9215 from 4 -18 -21 to 6 -14 -21. Examined Safe due approx. 2 -10 -22 to Banker.

37

COLEMAN DONNA 7358

Reg #:*19102687 Tattoo: 7358 DOB: 07/04/17

Coleman Charlo 0256 #*16879074
Coleman Donna 5214 +*18402656

OCC Paxton 730P
Bohi Abigale 6014
Connealy Onward
Coleman Donna 197

OCC Focus 813F
OCC Blackbird 736K
Sitz Traveler 8180
SAV Abigale 6062
Connealy Lead On
Altune of Conanga 6104
Basin Rainmaker 654X
KMK Donna J311

CED	BW	WW	YW	SC	MILK	MARB	RE	\$W	\$M
5	1.7	62	116	.37	35	.34	.43	74	71

- Top 15% for \$M.
- This stunning Coleman Charlo 0256 daughter is a total knockout. She is powerfully made, deep soft rib shape, with an excellent top-line. Her dam, Coleman Donna 5214, is a full sister-in-blood to Coleman Donna 714. She has had an impressive start, making this female a full-sister-in-blood to the \$450,000 top-selling Coleman Bravo 6313.
- This female has an individual Birth Ratio of 96, Weaning Ratio of 109, and Yearling Ratio of 114!
- Sells with a heifer calf at side (Lot 37A) born 6 -28 -21 by Coleman Rock 7200. Tattoo 1537. BW 80 lbs. Reg# 20102853.



Coleman Donna 197 - Dam of Lots 36 and 38-38C.
Owned with Sandford Ranches in TX

COLEMAN Donna FAMILY



Lot 38C
Top 1% \$M

38

COLEMAN DONNA 025

Reg #:*19857110 Tattoo: 025 DOB: 01/30/20

Coleman Charlo 0256 OCC Paxton 730P
Bohi Abigale 6014
SAV President 6847 SAV Blackcap May 4136 SAV 8180 Traveler 004
+*18578964 SAV May 2397
Basin Rainmaker 654X Basin Rainmaker DS 380U
Basin Bardolene 423U
Coleman Donna 197 DHD Traveler 6807
+*17188528 KMK Donna J311 Brooks Donna 319

CED	BW	WW	YW	SC	MILK	MARB	RE	\$W	\$M
6	1.6	58	100	.15	35	.22	.53	74	90

- Top 2% for \$M.
- She ranks as the 14th highest daughter of SAV President 6847 in the breed for \$M in the AHIR for non-parent females.
- Her dam, Coleman Donna 197, is a full sister to Coleman Donna 386, who records a BR 4@96, WR 4@112, YW 4@113. This female is maternal sister to the Senior Herd Sire, Coleman Marshall 7170.
- Bred to calve 1 -24 -22 to Coleman Playmaker 427. Exposed to Coleman Hondo 022 from 4 -18 -21 to 6 -14 -21. Examined Safe AI with a heifer.

38A

COLEMAN DONNA 0166

Reg #:*19857105 Tattoo: 0166 DOB: 01/26/20

Coleman Charlo 0256 OCC Paxton 730P
Bohi Abigale 6014
SAV President 6847 SAV Blackcap May 4136 SAV 8180 Traveler 004
+*18578964 SAV May 2397
Basin Rainmaker 654X Basin Rainmaker DS 380U
Basin Bardolene 423U
Coleman Donna 197 DHD Traveler 6807
+*17188528 KMK Donna J311 Brooks Donna 319

CED	BW	WW	YW	SC	MILK	MARB	RE	\$W	\$M
8	0.8	52	94	-.24	28	.31	.64	66	84

- Top 4% for \$M.
- She ranks as the 15th highest daughter of SAV President 6847 in the breed for \$M in AHIR for non-parent females.
- Another excellent daughter of the now deceased, mega building block, Coleman Donna 197.
- Bred to calve 1 -23 -22 to Coleman Playmaker 427. Exposed to Coleman Hondo 022 from 4 -18 -21 to 6 -14 -21. Examined Safe, due approx. 2 -20 -22 to Hondo.

38B

COLEMAN DONNA 0167

Reg #:*19857106 Tattoo: 0167 DOB: 01/27/20

Coleman Charlo 0256 OCC Paxton 730P
Bohi Abigale 6014
SAV President 6847 SAV Blackcap May 4136 SAV 8180 Traveler 004
+*18578964 SAV May 2397
Basin Rainmaker 654X Basin Rainmaker DS 380U
Basin Bardolene 423U
Coleman Donna 197 DHD Traveler 6807
+*17188528 KMK Donna J311 Brooks Donna 319

CED	BW	WW	YW	SC	MILK	MARB	RE	\$W	\$M
1	2.2	48	89	-.82	39	-.15	.68	67	80

- Top 10% for \$M.
- What an opportunity to have the option to purchase yet another own daughter of the elite maternal Coleman Donor, Coleman Donna 197, who worked hard to get ratios like her BR 4@96, WR 4@112, YR 4@113! Heck of a combination of two powerful cow families, the Coleman Donna's and the Blackcap May's.
- Bred to calve 1 -23 -22 to Coleman Playmaker 427. Exposed to Coleman Hondo 022 from 4 -18 -21 to 6 -14 -21. Examined Safe AI with a heifer calf.

38C

COLEMAN DONNA 0172

Reg #:*19857107 Tattoo: 0172 DOB: 02/02/20

Coleman Charlo 0256 OCC Paxton 730P
Bohi Abigale 6014
SAV President 6847 SAV Blackcap May 4136 SAV 8180 Traveler 004
+*18578964 SAV May 2397
Basin Rainmaker 654X Basin Rainmaker DS 380U
Basin Bardolene 423U
Coleman Donna 197 DHD Traveler 6807
+*17188528 KMK Donna J311 Brooks Donna 319

CED	BW	WW	YW	SC	MILK	MARB	RE	\$W	\$M
-2	3.1	66	112	.12	34	-.03	1.00	77	95

- This female ranks as the 8th highest daughter of SAV President 6847 in the breed for \$M in AHIR for non-parent females.
- She is loaded with maternal power and backed by decades of proven genetics.
- Bred to calve 1 -23 -22 to Coleman Playmaker 427. Exposed to Coleman Hondo 022 from 4 -18 -21 to 6 -14 -21. Examined Safe due approx. 2 -20 -22 to Hondo.

COLEMAN Donna FAMILY



Lot 39
Top 15% \$M

39

COLEMAN DONNA 0441

Reg #: **20042240** Tattoo: **0441** DOB: **07/02/20**

Coleman Charlo 0256
Coleman Bravo 6313
+*18734838 Coleman Donna 714
Soo Line Motive 9016
Coleman Donna 8188
+*19403167 Coleman Donna 197

OCC Paxton 730P
Bohi Abigale 6014
Connealy Onward
Coleman Donna 386
HF Kodiak 5R
TLA Beauty 5R
Basin Rainmaker 654X
KMK Donna J311

CED	BW	WW	YW	SC	MILK	MARB	RE	\$W	\$M
10	0.1	57	104		29			61	76

- Here's an incredibly feminine and powerful female sired by the \$450,000 Coleman Bravo 6313. Her dam, Coleman Donna 8188, has a weaning ratio of 1@111 on her first calf. Her sire, Soo Line Motive 9016, has made some serious waves across Canada and the US producing the keeping kind at a lot of prestigious ranches.

40

COLEMAN DONNA 9408

Reg #: ***19583434** Tattoo: **9408** DOB: **06/30/19**

Coleman Charlo 0256
Coleman Bravo 6313
+*18734838 Coleman Donna 714
Cole Creek Black Cedar 46P
Coleman Donna 7166
+*19105451 Coleman Donna 197

OCC Paxton 730P
Bohi Abigale 6014
Connealy Onward
Coleman Donna 386
CH Quantum 6247
Cole Creek Clova Juanada 67
Basin Rainmaker 654X
KMK Donna J311

CED	BW	WW	YW	SC	MILK	MARB	RE	\$W	\$M
17	-1.9	46	92	.80	26	.13	.31	54	85

- Top 3% for \$M.
- This highly productive female ranks as the 18th highest daughter of Coleman Bravo 6313 in the breed for \$M in AHIR for non-parent females.
- This female has a unique twist of Cole Creek Black Cedar 46P blended in and Coleman Donna 197 as her grandam. This makes an excellent and highly maternal package. Dam records BR 2@96, WR 2@105, YR 1@104.
- Sells with a heifer calf at side (Lot 40A) born 7 -11 -21 by Coleman Playmaker 429. Tattoo 1652. BW 64 lbs. Reg# 20102863.



Top 4% \$M

D

COLEMAN MARSHALL 7170

Reg #: ***19102287** Tattoo: **7170200** DOB: **06/29/2017**

Rito 707 of Ideal 3407 7075
S AV Resource 1441
+*17016597 S AV Blackcap May 4136
Basin Rainmaker 654X
Coleman Donna 197
+*17188528 KMK Donna J311

RR Rito 707
Ideal 3407 of 1418 076
S AV 8180 Traveler 004
S AV May 2397
Basin Rainmaker D S 380U
Basin Bardolene 423U
D H D Traveler 6807
Brooks Donna 319

CED	BW	WW	YW	SC	MILK	MARB	RE	\$W	\$M
11	.5	60	116	.35	26	-.10	.94	66	84

- FOR REFERENCE ONLY

Coleman Marshall 7170 - Reference Sire D.



COLEMAN Donna FAMILY



Lot 41A

41

COLEMAN DONNA 6321



Reg #:***18734957** Tattoo: **6321** DOB: **07/02/16**

OCC Paxton 730P
Coleman Charlo 0256
#+*16879074 Bohi Abigale 6014
Wulffs Ext 6106
Coleman Donna 6143
+*15704359 KMK Donna J311

OCC Focus 813F
OCC Blackbird 736K
Sitz Traveler 8180
SAV Abigale 6062
N Bar Emulation EXT
Wulffs Erica Dianna C116
DHD Traveler 6807
Brooks Donna 319

CED	BW	WW	YW	SC	MILK	MARB	RE	\$W	\$M
6	2	62	111	.56	31	-.07	.68	76	68

- Top 25% for \$M.
- A direct daughter of one of the very best donor females in the program and a past top-selling female, Coleman Donna 6143.

41A

COLEMAN DONNA 1146



Reg #:**20079126** Tattoo: **1146** DOB: **01/20/21**

SAV Bismarck 5682
Bar-E-L Natural Law 52Y
19310190 Bar-E-L Magnolia 143K
Coleman Charlo 0256
Coleman Donna 6321
+*18734957 Coleman Donna 6143

GAR Grid Maker
SAV Abigale 0451
Bar EL MCC 365 Icon 20H
Double Four Duchess 12G
OCC Paxton 730P
Bohi Abigale 6014
Wulffs Ext 6106
KMK Donna J311

CED	BW	WW	YW	SC	MILK	MARB	RE	\$W	\$M
1.6	12.6	158	1106	1.85	127	1.14	1.70	60	48

- This female has truly done a great job in her production here with a BR 2@96, WR 2@109, YR 2@104. Absolutely has some of the oldest & most proven genetics that built our foundation, like Coleman Charlo 0256, Wulffs EXT 6106, KMK Donna J311, just to mention a few. Her dam records: BR 4@99, WR 4@110, YR 4@110.
- Bred to calve 1 -21 -22 to Sitz Accomplishment 720F. Exposed to Coleman Glacier 041 from 4 -16 -21 to 6 -14 -21. Examined Safe AI with a heifer calf.

- This female has incredible phenotype and is a daughter of the extreme female producer, BAR E-L Natural Law 52Y.
- She will be a beautifully made cow with her perfect level topline, excellent smooth front one third, super deep and soft body shape. She is truly the complete package. Her dam records BR 2@97, WR 2@109, YR 2@104.

COLEMAN Donna FAMILY



Lot 43A
Top 10% \$M



Coleman Donna 6143 - The \$60,000 Dam of Lots 41 and 42, to Hurley Angus, IN.



Coleman Donna 801 - The \$48,000 Grandam of Lots 43 and 43A.

42

COLEMAN DONNA 6404



Reg #:***18734974** Tattoo: **6404** DOB: **07/23/16**

OCC Paxton 730P
Coleman Charlo 0256
#+*16879074 Bohi Abigale 6014

Wulffs Ext 6106
Coleman Donna 6143
+*15704359 KMK Donna J311

OCC Focus 813F
OCC Blackbird 736K
Sitz Traveler 8180
SAV Abigale 6062
N Bar Emulation EXT
Wulffs Erica Dianna C116
DHD Traveler 6807
Brooks Donna 319

CED	BW	WW	YW	SC	MILK	MARB	RE	\$W	\$M
10	-1.3	36	67	-.02	33	.00	.34	54	64

- This PATHFINDER female has earned her way to this status and it's something we don't take lightly. She records BR 3@88, WR 3@106, YR 2@105. Dam records: BR 4@99, WR 4@110, YR 4@110.
- Sells with a heifer calf at side (Lot 42A) born 7 -18 -21 by Coleman Rebound 7220. Tattoo 1513. BW 85 lbs. Reg# 20102851.

43

COLEMAN DONNA 0120



Reg #:***19857083** Tattoo: **0120** DOB: **02/16/20**

Coleman Bravo 6313
+*18734838 Coleman Donna 714

Coleman Juneau 044
Coleman Donna 3347
+*17783598 Coleman Donna 801

OCC Paxton 730P
Bohi Abigale 6014
Connealy Onward
Coleman Donna 386
OCC Juneau 807J
Coleman Donna 714
N Bar Emulation EXT
KMK Donna J311

CED	BW	WW	YW	SC	MILK	MARB	RE	\$W	\$M
7	0.8	57	96	1.74	25	.26	.57	66	87

- Top 3% for \$M.
- This female ranks as the 17th highest daughter of Coleman Bravo 6313 in the breed for \$M in AHIR for non-parent females.
- Her grandam was a past top-selling female and one of the excellent phenotype females made here in the Coleman program.
- Bred to calve 1 -23 -22 to Sitz Stellar 726D. Exposed to Coleman Summitt 9370 from 4-18-21 to 6-14-21. Examined Safe due approx. 2-15-22 to Summitt 9370.

43A

COLEMAN DONNA 0255



Reg #:***20042171** Tattoo: **0255** DOB: **07/06/20**

Coleman Charlo 0256
Coleman Bravo 6313
+*18734838 Coleman Donna 714

Coleman Juneau 044
Coleman Donna 3347
+*17783598 Coleman Donna 801

OCC Paxton 730P
Bohi Abigale 6014
Connealy Onward
Coleman Donna 386
OCC Juneau 807J
Coleman Donna 714
N Bar Emulation EXT
KMK Donna J311

CED	BW	WW	YW	SC	MILK	MARB	RE	\$W	\$M
11	1.3	51	90	1.91	28	1.09	1.47	64	79

- Extremely impressive open heifer sired by the \$450,000 Coleman Bravo 6313 with a super proven high production dam, Coleman Donna 3347, who records a BR 5@95, WR 5@104, YR 5@106.
- This female's grandam, Coleman Donna 801, is a major highlight being an own daughter of KMK Donna J311 sired by the foundation sire N Bar Emulation EXT.



Coleman Doc 2261 - Flush brother to Lots 44 and 45, Owned with Little Goose Ranch, WY



Coleman Donna 989 - Dam of Lots 44 and 45.

COLEMAN Donna FAMILY



44

COLEMAN DONNA 8252

Reg #:*19403105 Tattoo: 8252 DOB: 07/06/18

Wulffs Ext 6106
#+12813196

N Bar Emulation EXT
Wulffs Erica Dianna C116

RR Rito 707

Coleman Donna 989
+*16359679

Emulation N Bar 5522
N Bar Primrose 2424
Tehama Bando 155
Wulffs Erica Dianna A308
Rito N Bar
Eriskay of Rollin Rock 3
Basin Rainmaker 654X
KMK Donna J311

CED	BW	WW	YW	SC	MILK	MARB	RE	\$W	\$M
8	-0.7	45	73	-.41	19	-.33	.23	48	75

45

COLEMAN DONNA 8263

Reg #:*19403106 Tattoo: 8263 DOB: 07/01/18

Wulffs Ext 6106
#+12813196

N Bar Emulation EXT
Wulffs Erica Dianna C116

RR Rito 707

Coleman Donna 989
+*16359679

Emulation N Bar 5522
N Bar Primrose 2424
Tehama Bando 155
Wulffs Erica Dianna A308
Rito N Bar
Eriskay of Rollin Rock 3
Basin Rainmaker 654X
KMK Donna J311

CED	BW	WW	YW	SC	MILK	MARB	RE	\$W	\$M
7	-1.3	37	67	.48	21	-.40	.47	40	58

- She is a flush sister to the timeless Coleman Doc 2261. Another female that is loaded with maternal genetics that date back for generations. Her dam is a full sister to Coleman Foundation 972, an own son of the legendary power sire RR Rito 707. This is the classic combination of Emulation, Traveler, and Basin Rainmaker 654X that has excelled in the pasture for decades.
- Dam records: BR 2@86, WR 2@105, UREA 4@109.
- Sells with a heifer calf at side (Lot 45A) born 7 -16 -21 by Coleman Marshall 7170. Tattoo 1566. BW 73lbs. Reg# 20102855.

46

COLEMAN DONNA 0407

Reg #:20042228 Tattoo: 0407 DOB: 06/29/20

OCC Juneau 807J
Coleman Rock 7200
+*19107936

Coleman Donna 714
Coleman Charlo 0256
Coleman Donna 7245
+*19102661

OCC Emblazon 854E
OCC Dixie Erica 903E
Connealy Onward
Coleman Donna 386
OCC Paxton 730P
Bohi Abigale 6014
Wulffs Ext 6106
Coleman Donna 989

CED	BW	WW	YW	SC	MILK	MARB	RE	\$W	\$M
8	-0.2	69	109	1.10	25	1.12	1.40	79	86

- This female ranks as the 3rd highest daughter of Coleman Rock 7200 in the breed for \$M in AHIR for non-parent females.
- Her sire is as powerful and athletic of a sire that you will find anywhere. He stands on perfect feet and his pedigree is solid as a 'Rock' as well as OCC Juneau 807J, by Coleman Donna 714. Without a doubt, proven genetics that work hard. Dam records: BR 2@96, WR 2@105, YR 1@102.

COLEMAN *Chloe* FAMILY



Lot 47
Top 4% \$M



Coleman Triumph 9145 - The \$225,000 Full Brother to Lots 47 and 47B.

Coleman Chloe 9274 - The \$70,000 Flush Sister to Lots 47 and 47B, to Sanford Ranches, TX.

47

COLEMAN CHLOE 034



Reg #:*19863628 Tattoo: 034 DOB: 01/08/20

Coleman Charlo 0256	OCC Paxton 730P
Coleman Bravo 6313	Bohi Abigale 6014
+*18734838	Connealy Onward
Coleman Donna 714	Coleman Donna 386
SAV Renown 3439	Rito 707 of Ideal 3407 7075
Lawsons Chloe C815	SAV Blackcap May 4136
+*18359250	Sitz Upward 307R
Lawsons Chloe Z341	Basin Chloe 7T26

- **SELLING ONE -HALF INTEREST AND NO POSSESSION WITH THE OPTION TO DOUBLE TO ACQUIRE FULL OWNERSHIP.**
- She is ranked as the 17th highest daughter of Coleman Bravo 6313 in the breed for \$M in AHIR for non-parent females.
- Mind blowing pretty much sums it up! This full sister to the \$225,000 Coleman Triumph 9145 has all the bells and whistles. Not only is she phenotypically right, she is backed by one of the great donors to ever walk the Coleman Angus pastures, Lawsons Chloe C815.
- Full sisters, have topped the 2020 and 2019 Coleman Angus Production Sales, selling to Sanford Ranches of Texas and Jocko Valley of Montana. Her dam records WR 3@110, YR 2@110.
- Bred to calve 1 -24 -22 to Coleman Playmaker 427. Exposed to Coleman Summitt 9370 from 4 -18 -21 to 6 -14 -21. Examined Safe with a heifer due approx. 2 -3 -22 to Summitt 9370.

CED	BW	WW	YW	SC	MILK	MARB	RE	\$W	\$M
11	0.4	68	119	.35	22	.06	.57	74	86

47A

COLEMAN CHLOE EMBRYOS

3 FROZEN CONVENTIONAL IVF EMBRYOS (EXPORTABLE CN)

Don Aparicio Serrucho57 Maxi
Hummel South America
19919943 Rubeta Fontana 7567-T/E-
Coleman Bravo 6313
Coleman Chloe 034
19863628 Lawsons Chloe C815



Lot 47B

47B

COLEMAN CHLOE 030

Reg #:*19859532 Tattoo: **030** DOB: **01/08/20**

Coleman Charlo 0256
Coleman Bravo 6313
+*18734838 Coleman Donna 714

SAV Renown 3439
Lawsons Chloe C815
+*18359250 Lawsons Chloe Z341

OCC Paxton 730P
Bohi Abigale 6014
Connealy Onward
Coleman Donna 386
Rito 707 of Ideal 3407 7075
SAV Blackcap May 4136
Sitz Upward 307R
Basin Chloe 7T26

CED	BW	WW	YW	SC	MILK	MARB	RE	\$W	\$M
7	1.9	80	149	.89	23	.10	.62	80	69



Coleman Chloe 900 - Flush sister to Lots 47 and 47B, owned by La Conquista Ranches, Canada



Coleman Chloe 975 - The \$120,000 valued Full Sister to Lots 47 and 47B, to Jocko Valley, MT.

47C

COLEMAN CHLOE EMBRYOS

**3 FROZEN CONVENTIONAL IVF EMBRYOS
(EXPORTABLE CN)**

Don Aparicio Serrucho57 Maxi
Hummel South America
19919943 Rubeta Fontana 7567-T/E-
Coleman Bravo 6313
Coleman Chloe 975
19483324 Lawsons Chloe C815

- Yet another high growth female with a nice spread of EPD's. BW 1.9, WW +80 to a YW +149.
- A full sister to the \$225,000 Coleman Triumph 9145. Lawsons Chloe C815, her dam, has blazed a trail of stardom through our sales and more impressive is her WR 3@110, YR 2@110. With her growth and power, this young spring bred has some serious donor potential.
- Bred to calve 1 -24 -22 to Coleman Playmaker 427. Exposed to Coleman Summitt 9370 from 4 -18 -21 to 6-14-21. Examined Safe AI with a heifer.



Rubeta Fontana 7567-T/E - Dam of Hummel South America

HUMMEL SOUTH AMERICA SEMEN

- | | |
|---|---|
| 48A Selling 5 units, Exportable World-Wide | 48F Selling 5 units, Exportable World-Wide |
| 48B Selling 5 units, Exportable World-Wide | 48G Selling 5 units, Exportable World-Wide |
| 48C Selling 5 units, Exportable World-Wide | 48H Selling 5 units, Exportable World-Wide |
| 48D Selling 5 units, Exportable World-Wide | 48I Selling 5 units, Exportable World-Wide |
| 48E Selling 5 units, Exportable World-Wide | 48J Selling 5 units, Exportable World-Wide |

Don Aparicio Serrucho57 Maxi
Hummel South America
19919943 Rubeta Fontana 7567-T/E-

- Selling 50 Units of Semen in 5 Unit Packages. This semen will be the only semen offered on South America for one full year.
- Hummel South America was the \$180,000 ½ Interest top-selling bull of the 2021 A Night at Remington Park held in conjunction with the Cattleman's Congress. He and his brothers were the most talked about bulls at this event. South America is a very special individual; we rarely go and purchase bulls to bring into our program, however, he fits our visions, beliefs, and breeding philosophies. He is an individual with outcross genetics, tremendous shape and extra center belly depth in a dense, eye-appealing package.
- His sire is as good of a bull in Argentina and named the Grand Champion Bull of Palermo in 2015. His mother was Calf Champion at the most respected event in the world, Palermo, in 2018.
- We are very excited to see what the blending of South America and Coleman Angus genetics do for our beef industry.



COLEMAN *Donna* FAMILY



Top 15% \$M

48BB

CHOICE OF HEIFER PREGNANCY

Due Date: 1 -23 -2022

Don Aparicio Serrucho57 Maxi
Hummel South America
19919943 Rubeta Fontana 7567-T/E-
Coleman Charlo 0256
Coleman Donna 5247
18402681 Coleman Donna 194

48CC

CHOICE OF HEIFER PREGNANCY

Due Date: 1 -23 -2022

Don Aparicio Serrucho57 Maxi
Hummel Argentine
19919948 Rubeta Fontana 7567-T/E-
Coleman Charlo 0256
Coleman Donna 5247
18402681 Coleman Donna 194

- **SELLING BUYER'S CHOICE of LOT 48BB (South America Preg) and A CHOICE of LOT 48CC (Argentine Preg).**
- Without question, a fan favorite of anyone who does a herd visit at Coleman Angus is this Pathfinder direct daughter of Coleman Charlo 0256 back to the famed Coleman Donna 194.
- She is the mother of the \$45,000 second top-selling open female of the 2020 fall production sale and the dam of Coleman Game Changer 7369, a featured member of the herd sire battery at Coleman Angus.
- If you like power, performance, phenotype, and production then you will like this female. She is a great-producing Pathfinder female with a progeny production record of BR 4@94, WR 4@111, and YR 3@113 with a calving interval of 4@360.

COLEMAN *Donna* FAMILY



Top 10% \$M

48BB

CHOICE OF HEIFER PREGNANCY

Due Date: 1 -23 -2022

Don Aparicio Serrucho57 Maxi
Hummel South America
19919943 Rubeta Fontana 7567-T/E-
GDAR Game Day 449
Coleman Donna 439
17914042 Coleman Donna 714

• SELLING BUYER'S CHOICE of LOT 48BB (South America Preg).

- As good as it gets! A proven donor in the Coleman program is this beautiful daughter of GDAR Game Day and the \$290,000, Coleman Donna 714. This Pathfinder female has a progeny production record of BR 4@91, WR 4@108, and YR 4@108.
- Coleman Playmaker 427, a full brother, is a featured member of the GENEX Beef AI Stud. 439 is also a maternal sister to the record-selling Coleman Bravo 6313; the ST Genetics AI Sire, ZWT Summitt 6507; Coleman Resolve 7219, Coleman Charlo 3212, and Coleman Rock 7200.
- A maternal sister to these pregnancies sold for \$21,000 through the 2020 fall production sale. Think about the mass, power, and dimension of South America and the angularity, femininity, and maternal genetics of 439.

COLEMAN *Chloe* FAMILY



48BB

CHOICE OF HEIFER PREGNANCY

Due Date: 1 -23 -2022

Don Aparicio Serrucho57 Maxi
Hummel South America
19919943 Rubeta Fontana 7567-T/E-
SAV Renown 3439
Lawson's Chloe C815
18359250 Lawsons Chloe Z341

48CC

CHOICE OF HEIFER PREGNANCY

Due Date: 1 -23 -2022

Don Aparicio Serrucho57 Maxi
Hummel Argentine
19919948 Rubeta Fontana 7567-T/E-
SAV Renown 3439
Lawson's Chloe C815
18359250 Lawsons Chloe Z341

- **SELLING BUYER'S CHOICE of LOT 48BB (South America Preg) and A CHOICE of LOT 48CC (Argentine Preg).**
- A maternal sister to the \$225,000 Coleman Triumph 9145; the \$70,000 top-selling open heifer of the 2020 fall production sale, Coleman Chloe 9274; and the \$60,000 top-selling ½ interest open heifer of the 2019 fall production sale, Coleman Donna 975.
- This female has a wonderful production record of WR 3@110, and YR 2@110. She also has a good of EPD profile as any cow as any in the herd with explosive growth and high maternal.
- This pregnancy has the opportunity to be a potential sale topper with the past history of this featured donor and the outcross genetics from the South American gene pool.

COLEMAN *Chloe* FAMILY



48CC

CHOICE OF HEIFER PREGNANCY

Due Date: 1 -23 -2022

Don Aparicio Serrucho57 Maxi
Hummel Argentine
19919948 Rubeta Fontana 7567-T/E-
Coleman Bravo 6313
Coleman Chloe 975
19483324 Lawsons Chloe C815

• SELLING BUYER'S CHOICE of LOT 48CC (Argentine Preg).

- A beautiful two-year-old female who was the \$60,000 ½ interest feature in the 2019 fall production sale. She is a full sister to the \$225,000 Coleman Triumph 9145, the top selling bull in 2020 in the state of Montana. A flush sister sold for \$70,000 as the top-selling open heifer of the 2020 fall production sale.
- The combination of the Chloe and Donna families blends the calving ease, growth, and phenotype that many look for in our industry.
- This female's dam has a progeny production record of WR 3@110, and YR 2@11.





COLEMAN *Eriskay* FAMILY



Top 20% \$M

49

COLEMAN ERISKAY 6102



Reg #:*18570018 Tattoo: 6102 DOB: 02/11/16

Coleman Juneau 044
 Coleman Juneau 3296
 *17783575
 Coleman Donna 194
 Coleman Charlo 0256
 Coleman Eriskay 316
 +*17603474
 Sinclair Eriskay 2N1 7883

OCC Juneau 807J
 Coleman Donna 714
 Sitz Upward 307R
 Coleman Donna 386
 OCC Paxton 730P
 Bohi Abigale 6014
 DHD Traveler 6807
 Papa Eriskay 7883

CED	BW	WW	YW	SC	MILK	MARB	RE	\$W	\$M
2	1.4	50	82	.29	28	.13	.66	64	67

- This female ranks as the 3rd highest daughter of Coleman Juneau 3296 in the breed for \$M in the AHIR for current dams.
- “Game changer here!” The foundation kind! This is why the Angus breed became popular from the beginning! Angus females like this don’t come around on the regular. Here’s a quick back story, the first female I (Mike Marlow) purchased from Coleman Angus was ½ interest in KMK Donna J311 for Limestone Angus in Perkins, Oklahoma. That ride was an amazing one for sure, great cows can literally change a program fast and with great success and watching what that cow family has established is mind blowing! That being said, let’s go back to ‘6102’- as Larry Coleman and I were driving through the cow herd this summer, he passed right by this cow. After we studied her a bit, I yelled, “Stop! Back up please!” We did and I said, “Larry, who does that cow look identical to?” He said immediately, “KMK Donna J311!” I said, “Exactly!” Larry had no intention of selling her.
- Ideal Angus female here that has an incredible future ahead of her. With her moderate stature, massive amount of rib shape and body, along with her extreme amount of red meat and muscle, this female deserves your full attention. Also, her current progeny records: WR 3@101, YR 3@103.
- Bred to calve 1 -21 -22 to Coleman Triumph 9145. Exposed to Coleman Marshall 7170 from 4 -16 -21 to 6 -14 -21. Examined Safe due approx. 2 -12 -22 with a bull calf to Marshall.



Lot 49A
Top 10% \$M

49A

COLEMAN ERISKAY 1144



Reg #: **20076418** Tattoo: **1144** DOB: **01/16/21**

Sitz Stellar 726D
*18397542

Mohnen Substantial 272
SITZ Pride 200B

Coleman Eriskay 6102
*18570018

Coleman Juneau 3296
Coleman Eriskay 316

Benfield Substance 8506
Mohnen Glyn Mawr Elba 1758
Connealy Final Product
Sitz Pride 308Y
Coleman Juneau 044
Coleman Donna 194
Coleman Charlo 0256
Sinclair Eriskay 2N1 7883

CED	BW	WW	YW	SC	MILK	MARB	RE	\$W	\$M
I 4	I .5	I 63	I 108	I .63	I 26	I .30	I .67	73	81

- This daughter of the extremely awesome Coleman Eriskay 6102 is sired by the outcross sire Sitz Stellar 726D, which adds a superior foot quality along with a great overall balance and eye appeal.
- Dam records weaning ratio 3@101, yearling ratio of 3@103.

49B

COLEMAN ERISKAY EMBRYOS

3 FROZEN CONVENTIONAL IVF EMBRYOS
(EXPORTABLE CN)

Don Aparicio Serrucho57 Maxi
Hummel South America
19919943 Rubeta Fontana 7567-T/E-
Coleman Juneau 3296
Coleman Eriskay 6102
18570018 Coleman Eriskay 316

COLEMAN *Eriskay* FAMILY



Picture taken at 9 years of age, nursing another calf

Coleman Eriskay 718 - The \$45,000 Maternal Sister to Lots 50A and 50B, to C-4 Land and Cattle, OK and Pine Coulee, MT.

50A

COLEMAN ERISKAY EMBRYOS

3 FROZEN CONVENTIONAL IVF EMBRYOS (EXPORTABLE CN)

Don Aparicio Serrucho57 Maxi
 Hummel South America
 19919943 Rubeta Fontana 7567-T/E-
 Coleman Juneau 044
 Coleman Eriskay 291
 17246470 Sinclair Eriskay 2N1 7883

50B

COLEMAN ERISKAY EMBRYOS

3 FROZEN CONVENTIONAL IVF EMBRYOS (US ONLY)

Don Aparicio Serrucho57 Maxi
 Hummel Argentine
 19919948 Rubeta Fontana 7567-T/E-
 Coleman Juneau 044
 Coleman Eriskay 291
 17246470 Sinclair Eriskay 2N1 7883

- One of the great Eriskay females in the country and the dam of Coleman Navigator 614, Coleman Eriskay 291, reads with a progeny production record of BR 7@88, WR 7@104, YR 7@101
- She is extremely productive and has a tremendous look and presence. Ultra-low birth weight along with exceptional maternal from a cow lineage that is second to none. These matings should prove to make tremendous and highly productive cattle that will be extremely marketable in every aspect of our industry.

51**COLEMAN ERISKAY 0147**

Reg #:*19857097 Tattoo: 0147 DOB: 01/23/20

SAV Renown 3439 Rito 707 of Ideal 3407 7075
 ZWT Summitt 6507 SAV Blackcap May 4136
 +*18561289 Coleman Donna 714 Connealy Onward
 Coleman Donna 386
 Cole Creek Black Cedar 46P CH Quantum 6247
 Coleman Eriskay 8100 Cole Creek Clova Juanada 67
 +*19251878 Coleman Eriskay 291 Coleman Juneau 044
 Sinclair Eriskay 2N1 7883

CED	BW	WW	YW	SC	MILK	MARB	RE	\$W	\$M
5	1.6	65	118	1.52	19	.59	.39	58	56

- A daughter of ZWT Summitt 6507, the supreme female-making machine. This open heifer has a beautiful design, smooth clean front, deep soft rib shape, with an excellent structure.
- Her individual birth ratio is 96, WR 105, YR 105 and her dam, Coleman Eriskay 8100, who records WR 1@106, YR 1@108, is a full sister to Coleman Navigator 614.
- Bred to calve 1 -24 -22 to Coleman Charlo 0256. Exposed to Coleman Poncho 9426 from 4 -18 -21 to 6 -14 -21. Examined Safe AI with heifer calf.

51A**COLEMAN ERISKAY 0149**

Reg #:*19857098 Tattoo: 0149 DOB: 02/04/20

Coleman Playmaker 427 GDAR Game Day 449
 Coleman Game Changer 7369 Coleman Donna 714
 *19102339 Coleman Donna 5247 Coleman Charlo 0256
 Coleman Donna 194
 Cole Creek Black Cedar 46P CH Quantum 6247
 Coleman Black Cedar 8138 Cole Creek Clova Juanada 67
 +*19251880 Coleman Eriskay 291 Coleman Juneau 044
 Sinclair Eriskay 2N1 7883

CED	BW	WW	YW	SC	MILK	MARB	RE	\$W	\$M
14	-0.5	68	124	1.36	23	.17	.39	72	80

- The first Coleman Game Changer daughter to sell has a solid performance package. She is negative BW to +124 for yearling growth. Along with that, her dam, Coleman Black Cedar 8138, is a full sister to Coleman Navigator 614. With her excellent growth curve from birth to yearling, she makes a perfect female to produce performance offspring with added maternal coming from the Donna and Eriskay combination.
- Bred to calve 1 -24 -22 to Coleman Banker 9125. Exposed to Coleman Poncho 9426 from 4 -18 -21 to 6 -14 -21. Examined Safe AI with heifer calf.

51B**COLEMAN ERISKAY 0119**

Reg #:*19857082 Tattoo: 0119 DOB: 01/19/20

Coleman Charlo 0256 OCC Paxton 730P
 Coleman Bravo 6313 Bohi Abigale 6014
 +*18734838 Coleman Donna 714 Connealy Onward
 Coleman Donna 386
 Leachman Right Time N Bar Emulation EXT
 Coleman Eriskay 3330 Leachman Erica 0025
 +*17789610 Sinclair Eriskay 2N1 7883 DHD Traveler 6807
 Papa Eriskay 7883

CED	BW	WW	YW	SC	MILK	MARB	RE	\$W	\$M
13	-1.7	53	93	.69	23	.16	.33	61	80

- Top 10% for \$M.
- Bred to calve 1 -24 -22 to Sitz Stellar 726D. Exposed to Coleman Summitt 9370 from 4 -18 -21 to 6 -14 -21. Examined safe due approx. 2 -25 -22 to Summitt 9370.

COLEMAN Eriskay FAMILY**Lot 51A
Top 10% \$M****E****COLEMAN NAVIGATOR 614**

Reg #:*18570027 Tattoo: 614 DOB: 01/06/2016

CH Quantum 6247 CH Quantum 3330
 Cole Creek Black Cedar 46P CH Blackbird 0136
 #14496765 Cole Creek Clova Juanada 67 A A R Windy Ridge 523
 Coleman Juneau 044 Cole Creek Clova Juanada 811
 Coleman Eriskay 291 O C C Juneau 807J
 +*17246470 Sinclair Eriskay 2N1 7883 Coleman Donna 714
 D H D Traveler 6807
 Papa Eriskay 7883

CED	BW	WW	YW	SC	MILK	MARB	RE	\$W	\$M
57	.8	64	103	.98	17	.10	.60	60	63

- FOR REFERENCE ONLY



Coleman Navigator 614 - Reference Sire E and Maternal Brother to 50A, 50B, and Dam of Lots 51 and 51B.

COLEMAN *Abigale* **FAMILY**



Lot 52C



Coleman Abigale 0277 - Dam of
Lots 52 - 52I, and 54. Owned with
Sandford Ranches, TX.



Coleman Bravo 6313 - Sire of Lot 52-52G

EIGHT FULL SISTERS.

52

COLEMAN ABIGALE 0267

Reg #:20042176 Tattoo:0267 DOB:07/01/20



- Lot 52: Top 25% for \$M.

52A

COLEMAN ABIGALE 0282

Reg #:20042179 Tattoo:0282 DOB:06/25/20



- Lot 52A: Top 25% for \$M.

52B

COLEMAN ABIGALE 0283

Reg #:20042180 Tattoo:0283 DOB:07/01/20



52C

COLEMAN ABIGALE 0293

Reg #:20042183 Tattoo:0293 DOB:07/01/20



52D

COLEMAN ABIGALE 0300

Reg #:20042186 Tattoo:0300 DOB:07/01/20



52E

COLEMAN ABIGALE 0330

Reg #:20042195 Tattoo:0330 DOB:07/04/20



- Lot 52E: Top 25% for \$M.

52F

COLEMAN ABIGALE 0331

Reg #:20042196 Tattoo:0331 DOB:07/01/20



- Lot 52F: Top 25% for \$M.

52G

COLEMAN ABIGALE 0511

Reg #:20042199 Tattoo:0511 DOB:06/25/20



- Lot 52G: Top 25% for \$M.

Coleman Charlo 0256
Coleman Bravo 6313
+*18734838 Coleman Donna 714

OCC Paxton 730P
Coleman Abigale 0277
#+*16879081 Bohi Abigale 6014

OCC Paxton 730P
Bohi Abigale 6014
Connealy Onward
Coleman Donna 386
OCC Focus 813F
OCC Blackbird 736K
Sitz Traveler 8180
SAV Abigale 6062

CED	BW	WW	YW	SC	MILK	MARB	RE	\$W	\$M
1.12	1.0	1.48	1.92	1.75	1.27	1.24	1.42	58	71

- Never in the history of Coleman Angus have they ever offered, at one time, eight full sisters. This is every heifer from the entire flush.
- These sisters are all sired by the record-selling Coleman Bravo 6313 and out of a full sister to the one-and-only Coleman Charlo 0256. Their dam has established herself as one of the greatest Abigale females in the breed. These flush sisters are sure to catch your eye due to their overall eye appeal, length of body, and muscle, not to mention the added efficiency. Their Pathfinder dam has a progeny production record of BR 5@95, WR 5@108, YR 5@106.

COLEMAN *Abigale* FAMILY



COLEMAN *Abigale* **FAMILY**



Coleman Abigale 0101 - The \$34,000 Maternal
Sister to Lots 52 - 52l, and Lot 54.

52H

COLEMAN ABIGALE 0298



Reg #: **20042185** Tattoo: **0298** DOB: **06/28/20**

OCC Juneau 807J	OCC Emblazon 854E
Coleman Juneau 044	OCC Dixie Erica 903E
#+*16584283	Coleman Donna 714
	Connealy Onward
	Coleman Donna 386
	OCC Focus 813F
	OCC Paxton 730P
Coleman Abigale 0277	OCC Blackbird 736K
#+*16879081	Sitz Traveler 8180
	Bohi Abigale 6014
	SAV Abigale 6062

CED	BW	WW	YW	SC	MILK	MARB	RE	\$W	\$M
1.9	1.5	1.50	1.90	1.84	1.29	1.08	1.47	61	69

COLEMAN *Abigale* FAMILY



Lot 521

521

COLEMAN ABIGALE 0311



Reg #: 20042188 Tattoo: 0311 DOB: 06/30/20

OCC Juneau 807J
Coleman Juneau 044
#+*16584283 Coleman Donna 714
OCC Paxton 730P
Coleman Abigale 0277
#+*16879081 Bohi Abigale 6014

OCC Emblazon 854E
OCC Dixie Erica 903E
Connealy Onward
Coleman Donna 386
OCC Focus 813F
OCC Blackbird 736K
Sitz Traveler 8180
SAV Abigale 6062

CED	BW	WW	YW	SC	MILK	MARB	RE	\$W	\$M
1.9	1.5	150	190	1.84	129	1.08	1.47	61	69

- Two flush sisters by the Pathfinder sire, Coleman Juneau 044, that stem back to a full sister to Coleman Charlo 0256. A maternal sister was the second top-selling heifer calf of the 2017 Coleman Angus Production Sale.

- Six maternal sisters sold in the 2020 Coleman Angus Production Sale to average \$8,833. Another sister to this set of flush sisters went on to produce the third top-selling open heifer of last year's female sale.
- The dam of these flush sisters is extremely productive and has a progeny production record of BR 5@95, WR 5@108, YR 5@106.

53

COLEMAN ABIGALE 9398



Reg #: 19772286 Tattoo: 9398 DOB: 06/26/19

Rito 707 of Ideal 3407 7075
SAV Resource 1441
#+*17016597 SAV Blackcap May 4136
Coleman Juneau 044
Coleman Abigale 6339
#+*18734962 Coleman Abigale 0277

RR Rito 707
Ideal 3407 of 1418 076
SAV 8180 Traveler 004
SAV May 2397
OCC Juneau 807J
Coleman Donna 714
OCC Paxton 730P
Bohi Abigale 6014

CED	BW	WW	YW	SC	MILK	MARB	RE	\$W	\$M
4	1.6	58	103	.94	19	-.35	.75	54	68

- This SAV Resource 1441 daughter has an individual weaning ratio of 115 and a yearling ratio of 110. On top of that, her Pathfinder dam, Coleman Abigale 6339, is sired by the maternal great Coleman

- Juneau 044, by the ever-popular full sister to Coleman Charlo-Coleman Abigale 0277! I'd say her pedigree is loaded with excellent genetics that are proven solid.
- Dam records BR 3@96, WR 3@107, YR 2@104.
- Sells with a heifer calf at side (Lot 53A) born 8 -17 -21 by Coleman ACE 989. Tattoo 1650. BW 72lbs. Reg# 20111308.

COLEMAN *Abigale* FAMILY



Lot 54

54

COLEMAN ABIGALE 7185



Reg #:**18848146** Tattoo: **7185** DOB: **07/06/17**

Rito 707 of Ideal 3407 7075
 SAV Resource 1441
 #+*17016597 SAV Blackcap May 4136
 OCC Paxton 730P
 Coleman Abigale 0277
 #+*16879081 Bohi Abigale 6014
 RR Rito 707
 Ideal 3407 of 1418 076
 SAV 8180 Traveler 004
 SAV May 2397
 OCC Focus 813F
 OCC Blackbird 736K
 Sitz Traveler 8180
 SAV Abigale 6062

CED	BW	WW	YW	SC	MILK	MARB	RE	\$W	\$M
4	3.5	61	125	1.02	22	-.12	.83	48	59

• Big time donor potential here in the prime of her life! This young female is sired by the ultra-popular SAV Resource 1441 and her

dam is none other than the extra proven phenotype queen, Coleman Abigale 0227, also known as the full sister to Coleman Charlo 0256.

- '7185' has the ultimate Angus character—beautiful design, a perfect udder, and is deep bodied and easy fleshing. Individual data WR 2@108, YR 1@108. Dam records: BR 5@95, WR 5@108, YR 5@106.
- Sells with a bull calf at side (Lot 54A) born 8 -28 -2021 by Coleman Rock 7200. Tattoo 1524. BW 94lbs. Reg.# 20119704

54B

COLEMAN ABIGALE 0400



Reg #:**20042226** Tattoo: **0400** DOB: **07/09/20**

Coleman Bravo 6313
 +*18734838 Coleman Donna 714
 SAV Resource 1441
 Coleman Abigale 7185
 +*18848146 Coleman Abigale 0277
 OCC Paxton 730P
 Bohi Abigale 6014
 Connealy Onward
 Coleman Donna 386
 Rito 707 of Ideal 3407 7075
 SAV Blackcap May 4136
 OCC Paxton 730P
 Bohi Abigale 6014

CED	BW	WW	YW	SC	MILK	MARB	RE	\$W	\$M
5	3.6	61	120	1.96	23	1.0	1.62	49	73

- Very attractive daughter of the \$450,000 Coleman Bravo 6313 who has a super powerful pedigree that will carry the mail.
- Her individual weaning ratio is a 105, her extra special dam, Coleman Abigale 7185, has a weaning ratio of 2@108, yearling ratio of 1@108.

55

COLEMAN ABIGALE 8264

Reg #:*19400610 Tattoo: 8264 DOB: 06/30/18

OCC Paxton 730P
#*14940735

OCC Focus 813F
OCC Blackbird 736K

Bohi Abigale 6014
15353355

SAV Abigale 6062

Basin Rainmaker 654X
Dixie Erica of CH 1019
OCC Great Plains 943G
OCC Blackbird 824G
GDAR Traveler 71
Sitz Everelda Entense 1137
Bon View Emulation Ext 473
Circle A Abigale 3008

CED	BW	WW	YW	SC	MILK	MARB	RE	\$W	\$M
6	1.3	59	107	1.21	21	.15	.53	59	54

- A full sister to the extra proven Coleman Charlo 0256. I could write for days talking about the impact this particular cow family has made in the Angus biz! The main thing is, if you want power, maternal, and efficiency all wrapped up in one package, here it is.
- This female has a production record of BR 1@98, WR 1@103 and her dam records U%IMF 13@102, UREA 13@104.
- Sells with a heifer calf at side (Lot 55A) born 8 -10 -21 by Coleman Rock 7200. Tattoo 1567. BW 71lbs. Reg# 20111303.



Coleman Abigale 0277 - Pathfinder full sister to Lot 55



F

COLEMAN CHARLO 0256

Reg #:*16879074 Tattoo: 0256 DOB: 08/11/2010

OCC Paxton 730P
#*14940735

OCC Focus 813F
OCC Blackbird 736K

Bohi Abigale 6014
+15353355

SAV Abigale 6062

Basin Rainmaker 654X
Dixie Erica of CH 1019
OCC Great Plains 943G
OCC Blackbird 824G
GDAR Traveler 71
Sitz Everelda Entense 1137
Bon View Emulation Ext 473
Circle A Abigale 3008

CED	BW	WW	YW	SC	MILK	MARB	RE	\$W	\$M
57	.8	64	103	.98	17	.10	.60	60	63

- FOR REFERENCE ONLY



Coleman Charlo 0256 - Full Brother to Lot 55.

COLEMAN *Beauty* FAMILY



Lot 57

TLA Beauty 5R - Dam of Lots 57, 58-58B.

57

COLEMAN BEAUTY 885



Reg #:**19248254** Tattoo: **885** DOB: **01/28/18**

Sandy Bar Advantage 43M
 Wilbar Ruby 955N
 RR 7407 Rainmaker 2154
 Terrlene Beauty 35F

TC Advantage
 Sandy Bar Jemina 44K
 Vermilion Yellowstone
 Wilbar Ruby 161J
 AAR Rainmaker 7407
 HA Concepciona 0224
 Terrlene Executive Pride 10D
 KBJ Beauty 257B

CED	BW	WW	YW	SC	MILK	MARB	RE	\$W	\$M
6	0.7	54	92	.87	26	.70	.62	59	45

- This full sister to the proven sire, Soo Line Motive 9016, has a beautiful, feminine look along with an excellent udder. That being said, the apple doesn't fall from the tree here. The dam is still in production still today, TLA Beauty 5R, who has a perfect udder and phenotype, not to mention a healthy dose of longevity.
- Dam records: BR 2@99, WR 2@101, YR 1@106, U%IMF 10@110.
- Bred to calve 1 -21 -22 to Sitz Accomplishment 720F. Exposed to Hummel South America from 4 -16 -21 to 6 -14 -21. Examined Safe AI with a bull calf.



SooLine Motive 9016 - Full brother to Lot 57

57A

COLEMAN BEAUTY 1119



Reg #:**20076409** Tattoo: **1119** DOB: **01/27/21**

Coleman Charlo 0256
 Coleman Donna 714
 HF Kodiak 5R
 TLA Beauty 5R

OCC Paxton 730P
 Bohi Abigale 6014
 Connealy Onward
 Coleman Donna 386
 Sandy Bar Advantage 43M
 Wilbar Ruby 955N
 RR 7407 Rainmaker 2154
 Terrlene Beauty 35F

CED	BW	WW	YW	SC	MILK	MARB	RE	\$W	\$M
111	10	154	197	1.89	125	1.41	1.51	62	66

- This daughter of the \$450,000 Coleman Bravo 6313 has a double shot of proven maternal genetics including Rainmaker himself. Very angular female that's smooth and feminine made. Dam records a Birth ratio of 1@87.

58A**COLEMAN BEAUTY 048**

Reg #:*19859548 Tattoo: 048 DOB: 01/02/20

Coleman Navigator 614
*18570027
Coleman Eriskay 291
RR 7407 Rainmaker 2154
Terlene Beauty 35F

CH Quantum 6247
Cole Creek Clova Juanada 67
Coleman Juneau 044
Sinclair Eriskay 2N1 7883
AAR Rainmaker 7407
HA Concepciona 0224
Terlene Executive Pride 10D
KBJ Beauty 257B

CED	BW	WW	YW	SC	MILK	MARB	RE	\$W	\$M
0	2.7	56	88	.39	14	.13	.16	43	60

- This awesome-made daughter of Coleman Navigator 614 is a maternal sister to the proven, Soo Line Motive 9016. Very correct structured and balanced with added muscle shape along with a smooth and clean front one-third.
- Dam records: Birth ratio of 2@99, WR 2@101, YR 1@106, U%IMF 10@110.
- Bred to calve 1 -23 -22 to Coleman Bravo 6313. Exposed to Coleman Banker 9125 from 4 -18 -21 to 6 -14 -21. Examined Safe AI with heifer calf.

58B**COLEMAN BEAUTY 058**

Reg #:*19859554 Tattoo: 058 DOB: 01/01/20

Coleman Navigator 614
*18570027
Coleman Eriskay 291
RR 7407 Rainmaker 2154
Terlene Beauty 35F

CH Quantum 6247
Cole Creek Clova Juanada 67
Coleman Juneau 044
Sinclair Eriskay 2N1 7883
AAR Rainmaker 7407
HA Concepciona 0224
Terlene Executive Pride 10D
KBJ Beauty 257B

CED	BW	WW	YW	SC	MILK	MARB	RE	\$W	\$M
4	1.1	61	100	.34	19	.18	.60	58	63

- A full sister to Lot 58A, the Navigator offspring are noted to express an above average amount of red meat and muscle and they keep their flesh easily, with plenty of maternal ability built in naturally.
- Dam records: BR 2@99, WR 2@101, YR 1@106, U%IMF 10@110.
- Bred to calve 1 -23 -22 to Coleman Bravo 6313. Exposed to Coleman Banker 9125 from 4 -18 -21 to 6 -14 -21. Examined Safe AI with a heifer calf.

**Lot 58B****Lot 58A****58C****COLEMAN BEAUTY EMBRYOS****3 FROZEN CONVENTIONAL IVF EMBRYOS (EXPORTABLE CN)**

Don Aparicio Serrucho57 Maxi
Hummel South America
19919943 Rubeta Fontana 7567-T/E-
TLA Beauty 5R RR 7407 Rainmaker 2154
17262980 Terlene Beauty 35F

58D**COLEMAN BEAUTY EMBRYOS****3 FROZEN CONVENTIONAL IVF EMBRYOS (US ONLY)**

Don Aparicio Serrucho57 Maxi
Hummel Argentine
19919948 Rubeta Fontana 7567-T/E-
TLA Beauty 5R RR 7407 Rainmaker 2154
17262980 Terlene Beauty 35F

- TLA Beauty 5R is the dam to Soo Line Motive 9016, who has seen tremendous use with excellent success in leading registered and commercial herds. "5R" is a very sound, 16-year plus female and still has a perfect udder.



COLEMAN *Miss Wix* FAMILY



Top 15% \$M

59

COLEMAN MISS WIX 0384



Reg #:**20042220** Tattoo:**0384** DOB:**06/30/20**

Coleman Rock 7200 +*19107936	OCC Juneau 807J Coleman Donna 714	OCC Emblazon 854E OCC Dixie Erica 903E Connealy Onward Coleman Donna 386 OCC Paxton 730P Bohi Abigale 6014 Coleman Juneau 044 Coleman Miss Wix 2385
Coleman Miss Wix 6326 #*18734959	Coleman Charlo 0256 Coleman Miss Wix 4340	

- This superb phenotype female is loaded with cow power, with her deep soft rib shape, wide thick top line, and overall mass, and has a lot to offer.
- Her dam, Coleman Miss Wix 6326, has a birth ratio of 3@99, WR 3@106, YR 2@107, as well as being loaded with maternal quality that comes naturally from the Miss Wix cow family.

CED	BW	WW	YW	SC	MILK	MARB	RE	\$W	\$M
7	-0.2	63	104	1.87	27	1.06	1.47	72	74



60

COLEMAN BLACKBIRD 0131

Reg #:*19857088 Tattoo: 0131 DOB: 02/25/20

OCC Paxton 730P
 ZWT Paxton 4686
 *17912234 Coleman Donna 714

OCC Focus 813F
 OCC Blackbird 736K
 Connealy Onward
 Coleman Donna 386
 Wulffs Ext 6106
 Coleman Donna 989
 Mytty In Focus
 Falcon Blackbird 7795



CED	BW	WW	YW	SC	MILK	MARB	RE	\$W	\$M
13	-1.1	59	105	1.15	24	.22	.58	65	66

- This is a smoking good daughter of the only OCC Paxton 730P son of Coleman Donna 714, ZWT Paxton 4686. You talk about loaded full of red meat and depth of rib. '0131's dam, Coleman Blackbird 5490, has calving ease built in genetically with a birth ratio of 3@92.
- Bred to calve 1 -24 -22 Coleman Playmaker 427. Exposed to Coleman Hondo 022 from 4 -18 -21 to 6 -14 -21. Examined Safe AI with a bull calf.

61

COLEMAN RITA 0122

Reg #:*19857085 Tattoo: 0122 DOB: 02/14/20

SAV Renown 3439
 Coleman Resolve 7219
 +*19102305 Coleman Donna 714

Rito 707 of Ideal 3407 7075
 SAV Blackcap May 4136
 Connealy Onward
 Coleman Donna 386
 OCC Paxton 730P
 Bohi Abigale 6014
 DHD Traveler 6807
 MF OSC3 Queen B 9EX1



CED	BW	WW	YW	SC	MILK	MARB	RE	\$W	\$M
12	-0.7	55	99	.64	29	-.12	.91	67	77

- Top 15% for \$M.
- Very clean made, attractive daughter of Coleman Resolve 7219, along with her calving ease dam with a birth ratio of 4@94, that has a proven pedigree like Coleman Charlo 0256, DHD Traveler 6807, and N Bar Emulation EXT.
- Bred to calve 1 -23 -22 to Coleman Charlo 0256. Exposed to Coleman Poncho 9426 from 4 -18 -21 to 6 -14 -21. Examined Safe due approx. 2 -10 -22 to Poncho.

62

COLEMAN EVERELDA ENTENSE7289

Reg #:*19102674 Tattoo: 7289 DOB: 06/29/17

Coleman Charlo 0256
 Coleman Charlo 3212
 +*17783509 Coleman Donna 714

OCC Paxton 730P
 Bohi Abigale 6014
 Connealy Onward
 Coleman Donna 386
 OCC Juneau 807J
 Coleman Donna 714
 Sitz Alliance 6595
 BT Everelda Entense 613L



CED	BW	WW	YW	SC	MILK	MARB	RE	\$W	\$M
10	-0.3	55	100	1.59	30	-.06	.01	68	82

- This is an excellent daughter of Coleman Charlo 3212, by Coleman Everelda Entense 2407, who carries a birth ratio 6@98, WR 6@103, YR 5@104, and a solid pedigree with the combination of Coleman Charlo 0256 and Coleman Juneau 044.
- Bred to calve 1 -21 -22 to Hummel South America. Exposed to Coleman Glacier 041 from 4 -16 -21 to 6 -14 -21. Examined Safe due approx. 2 -14 -22 with a bull calf to Glacier 041.



62A

COLEMAN EVERELDA ENTENSE1160

Reg #:*20076426 Tattoo: 1160 DOB: 02/10/21

SAV Resource 1441
 Coleman Marshall 7170
 +*19102287 Coleman Donna 197

Rito 707 of Ideal 3407 7075
 SAV Blackcap May 4136
 Basin Rainmaker 654X
 KMK Donna J311
 Coleman Charlo 0256
 Coleman Donna 714
 Coleman Juneau 044
 Coleman Everelda Entense 840



CED	BW	WW	YW	SC	MILK	MARB	RE	\$W	\$M
11	1.1	157	108	1.97	128	-.08	1.48	67	83

- This attractive, open spring born, sired by the powerhouse Coleman Marshall 7170, who adds a big time punch to his offspring as far as overall body mass and muscle, with added rib and body. Loaded with maternal value from decades of stacking solid proven Coleman genetics together. Her dam records BR 1@99.

62B

COLEMAN EVERELDA ENTENSE0145

Reg #:*19857095 Tattoo: 0145 DOB: 02/02/20

Cole Creek Black Cedar 46P
 Coleman Navigator 614
 *18570027 Coleman Eriskay 291

CH Quantum 6247
 Cole Creek Clova Juanada 67
 Coleman Juneau 044
 Sinclair Eriskay 2N1 7883
 Coleman Charlo 0256
 Coleman Donna 714
 Coleman Juneau 044
 Coleman Everelda Entense 840



CED	BW	WW	YW	SC	MILK	MARB	RE	\$W	\$M
9	1.1	53	94	1.37	20	.33	.09	52	78

- This daughter of the power packed Coleman Navigator 614 has some serious genetics bred into her with her dam being sired by Coleman Charlo 0256 and grandam sired by Coleman Juneau 004. She's designed to produce red meat, along with excellent production.
- Bred to calve 1 -24 -22 to Coleman Bravo 6313. Exposed to Coleman Banker 9215 from 4 -18 -21 to 6 -14 -21. Examined Safe due approx. 2 -15 -22 to Banker.

COLEMAN *Everelda Entense* FAMILY



Top 25% \$M

63

COLEMAN EVERELDA ENTENSE9330

Reg #:*19583484 Tattoo: 9330 DOB: 07/21/19

SAV Renown 3439
ZWT Summitt 6507
+*18561289 Coleman Donna 714

Coleman Charlo 0256
Coleman Everelda Entense3318
#*17783587 Coleman Everelda Entense1169

Rito 707 of Ideal 3407 7075
SAV Blackcap May 4136
Connealy Onward
Coleman Donna 386
OCC Paxton 730P
Bohi Abigale 6014
Coleman Regis 904
Coleman Everelda Entense 578



CED	BW	WW	YW	SC	MILK	MARB	RE	\$W	\$M
9	0.3	58	97	.30	20	.14	.54	62	71

- Here we have a super complete pair that brings a lot of highly noted genetics to the front, like her pathfinder dam the stunning, Coleman Everelda Entense 3318, who records a birth ratio of 5@93, WR 5@104, YR 5@108.
- She records an individual BR of 86, WR of 101, and YR of 104.
- Sells with a heifer calf at side (Lot 63A) born 7 -8 -21 by Coleman Bravo 6313. Tattoo 1642. BW 79 lbs. Reg# 20102859.



Coleman Everelda Entense 3318 - Pathfinder dam of Lot 63

COLEMAN *Everelda Entense* FAMILY



64

COLEMAN EVERELDA ENTENSE8383

Reg #:*19402545 Tattoo: 8383 DOB: 07/02/18

SAV Sensation 5615
+*18258149 SAV Blackcap May 4136

Coleman Charlo 0256
Coleman Everelda Entense4369
#*18105700 Coleman Everelda Entense2323

Rito 707 of Ideal 3407 7075
SAV Madame Pride 0075
SAV 8180 Traveler 004
SAV May 2397
OCC Paxton 730P
Bohi Abigale 6014
Basin Rainmaker 654X
Coleman Everelda Entense 578



CED	BW	WW	YW	SC	MILK	MARB	RE	\$W	\$M
4	0.7	59	113	I 1.01	29	I .09	I .55	62	49

- This is a daughter of the Pathfinder Coleman Everelda Entense 4369 who earned weaning ratio of 5@103, yearling ratio 4@105.
- Her maternal grandam is an own daughter of Rainmaker 654X nothing but timeless genetics at their finest.
- Sells with a heifer calf at side (Lot 64A) born 8 -12 -21 by Coleman Marshall 7200. Tattoo 1582. BW 76 lbs. Reg# 20111305.



Coleman Everelda Entense 2323 - Pathfinder
Granddam of Lot 64

COLEMAN *Everelda Entense* FAMILY



65

COLEMAN EVERELDA ENTENSE6325

Reg #: **18736874** Tattoo: **6325** DOB: **07/04/16**

Cole Creek Black Cedar 46P
 Cole Creek Black Cedar 1100
 16720395 Cole Creek Juanada Bird 38N

Coleman Charlo 0256
 Coleman Everelda Entense 432
 #*18105675 Coleman Everelda Entense2235

CH Quantum 6247
 Cole Creek Clova Juanada 67
 HBR Encore 0544
 Cole Creek Juanita 311
 OCC Paxton 730P
 Bohi Abigale 6014
 Coleman Regis 904
 Coleman Everelda Entense 578



CED	BW	WW	YW	SC	MILK	MARB	RE	\$W	\$M
4	3.2	56	93	.66	28	.42	.72	60	65

- This female ranks as the 7th highest daughter of Cole Creek Cedar 1100 in the breed for \$M in AHIR for current dams.
- Her Pathfinder dam, Coleman Everelda Entense 432, is not only is super easy on the eyes with a perfect udder, but she records a birth ratio of 5@99, weaning ratio of 5@116, and a yearling ratio of 4@116. Impressive as they come in our line of work!
- Bred to calve 1-22-2022 to Coleman Triumph 9145. Exposed to Coleman Rock 7200 from 4-16-21 to 6-14-21. Examined Safe with a heifer calf due approx. 3-24-22 to Rock 7200.

COLEMAN *Everelda Entense* FAMILY



Top 20% \$M

65A

COLEMAN EVERELDA ENTENSE1147

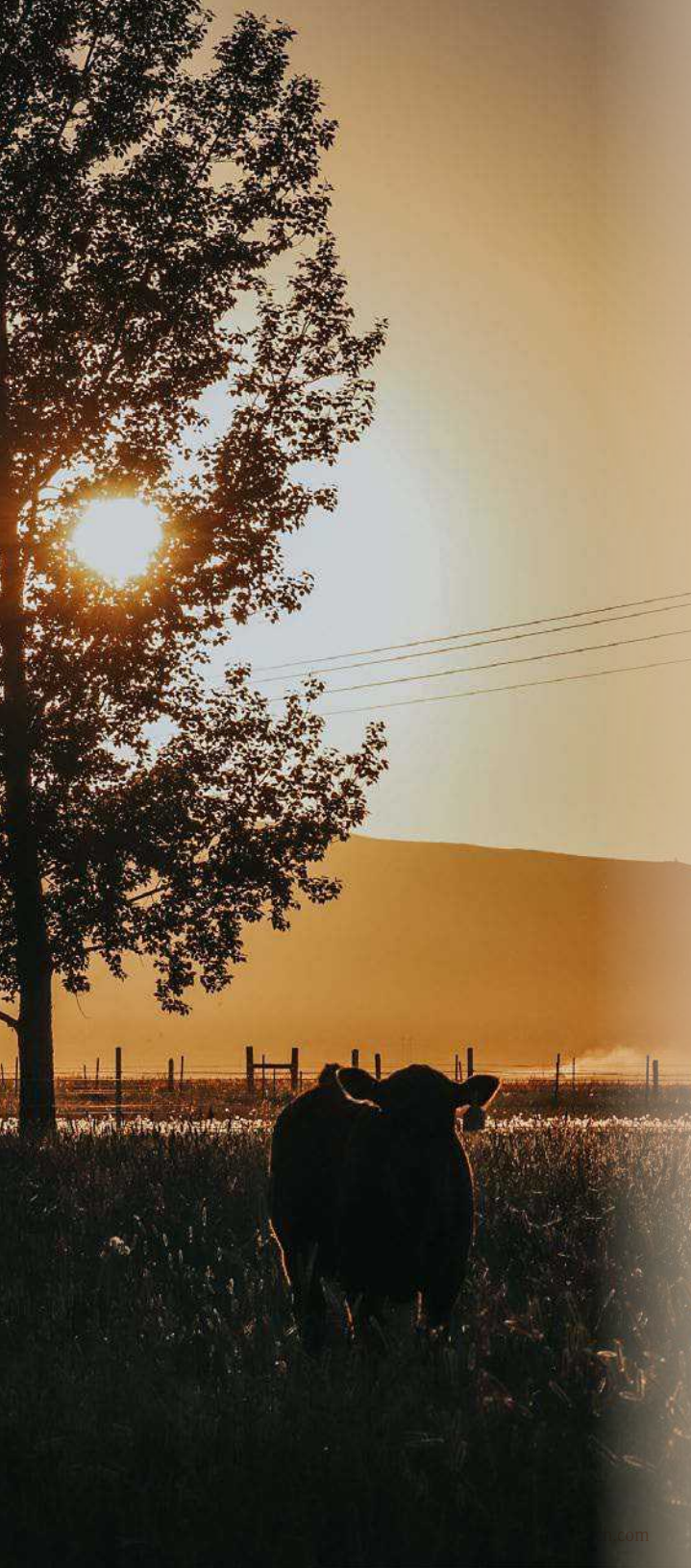
Reg #: **20076419** Tattoo: **1147** DOB: **02/06/21**

OCC Juneau 807J	OCC Emblazon 854E
Coleman Rock 7200	OCC Dixie Erica 903E
+*19107936	Connealy Onward
Coleman Donna 714	Coleman Donna 386
Cole Creek Black Cedar 1100	Cole Creek Black Cedar 46r
Coleman Everelda Entense6325	Cole Creek Juanada Bird 38N
18736874	Coleman Charlo 0256
Coleman Everelda Entense 432	Coleman Everelda Entense2235



- This absolutely stunning and powerful daughter of the maternal meat wagon, Coleman Rock 7200, is a true power female, loaded with rib, body and muscle, along with a very correct structure.
- Her powerful dam records WR 2@106 and a YR 2@112.

CED	BW	WW	YW	SC	MILK	MARB	RE	\$W	\$M
1.6	1.1.6	1.66	1.106	1.89	1.26	1.14	1.71	74	75



G

COLEMAN BRAVO 6313

Reg #:***18734838** Tattoo: **6313** DOB: **07/04/16**

OCC Paxton 730P
 Coleman Charlo 0256
 #+*16879074 Bohi Abigale 6014
 Connealy Onward
 Coleman Donna 714
 +*15706882 Coleman Donna 386

OCC Focus 813F
 OCC Blackbird 736K
 Sitz Traveler 8180
 SAV Abigale 6062
 Connealy Lead On
 Altune of Conanga 6104
 Basin Rainmaker 654X
 KMK Donna J311

CED	BW	WW	YW	SC	MILK	MARB	RE	\$W	\$M
15	-0.7	54	101	.90	24	.12	.40	62	84

• FOR REFERENCE ONLY
 Owned with Sandford Ranches TX



H

COLEMAN TRIUMPH 9145

Reg #:***19555917** Tattoo: **9145** DOB: **02/01/19**

OCC Paxton 730P
 Coleman Bravo 6313
 +*18734838 Coleman Donna 714
 SAV Renown 3439
 Lawsons Chloe C815
 +*18359250 Lawsons Chloe Z341

OCC Paxton 730P
 Bohi Abigale 6014
 Connealy Onward
 Coleman Donna 386
 Rito 707 of Ideal 3407 7075
 SAV Blackcap May 4136
 Sitz Upward 307R
 Basin Chloe 7T26

CED	BW	WW	YW	SC	MILK	MARB	RE	\$W	\$M
6	-0.1	59	118	.92	27	.35	.63	63	65

• FOR REFERENCE ONLY
 Owned with Rust Mountain View Ranch ND



I

HUMMEL ARGENTINE

Reg #:**19919948** Tattoo: **204** DOB: **02/14/20**

Don Jose 176 Maxi
 Don Aparicio Serrucho57 Maxi
 ARGAA 811896 Don Aparicio Serranias 57
 Consenza Don Roberto 338 T/E
 Rubeta Fontana 7567-T/E-
 ARGAA 0834746 Rubeta Fontana 6207-T/E-

OCC Headliner 661H
 Tres Marias 6204 Hornero5314
 SAV Bismarck 5682
 Don Aparicio15 SerranaNtwrth
 Tres Marias 6301 Zorzal-T/E-
 Consenza Faconera Sanf 39-T/E
 SAV Bismarck 5682
 Rubeta 3873 Fontana-T/E-

• FOR REFERENCE ONLY

J**COLEMAN PLAYMAKER 427**Reg #:**17914039** Tattoo:**427** DOB:**01/18/14**Boyd New Day 8005
GDAR Game Day 449
#+14691231 GDAR Miss Wix 474Connealy Onward
Coleman Donna 714
+*15706882 Coleman Donna 386AAR New Trend
SVF Forever Lady 57D
Tehama Band 207
GDAR Miss Wix 749
Connealy Lead On
Altune of Conanga 6104
Basin Rainmaker 654X
KMK Donna J311

CED	BW	WW	YW	SC	MILK	MARB	RE	\$W	\$M
7	-1.4	57	99	.66	25	-.13	.40	67	85

• FOR REFERENCE ONLY

**K****COLEMAN REBOUND 7220**Reg #:**19102306** Tattoo:**7220** DOB:**06/26/17**SAV Renown 3439
#+*17633839 SAV Blackcap May 4136Connealy Onward
Coleman Donna 714
+*15706882 Coleman Donna 386RR Rito 707
Ideal 3407 of 1418 076
SAV 8180 Traveler 004
SAV May 2397
Connealy Lead On
Altune of Conanga 6104
Basin Rainmaker 654X
KMK Donna J311

CED	BW	WW	YW	SC	MILK	MARB	RE	\$W	\$M
3	1.5	63	116	.05	29	-.26	.73	70	83

• FOR REFERENCE ONLY

Owned with Jocko Valley Cattle MT, and Trexler Angus MT

**L****KG JUSTIFIED 3023**Reg #:**17707279** Tattoo:**3023** DOB:**01/21/13**Connealy Judgment
17031468 Etrine of Conanga 9876Sitz Wisdom 481T
KG Miss Magic 1443
17127788 KG Miss Magic 3528Connealy Consensus
Blue Lilly of Conanga 16
Rito 6EMA of 4L3 Emblazon
Entrance of Conanga 206
Connealy Onward
Sitz Elluna Elite 94P
KG Traveler 8180 8171
KG Miss Magic 6560

CED	BW	WW	YW	SC	MILK	MARB	RE	\$W	\$M
10	-2.1	61	107	1.76	29	1.03	.28	85	95

• FOR REFERENCE ONLY





M

SITZ STELLAR 726D

Reg #:***18397542** Tattoo: **726D** DOB: **01/23/16**

Benfield Substance 8506
 Mohnen Substantial 272
 #*17292558 Mohnen Glyn Mawr Elba 1758
 Connealy Final Product
 Sitz Pride 200B
 *17776820 Sitz Pride 308Y

HA Image Maker 0415
 Benfield Edella 1105
 LT Territory 5824 of EA
 Mohnen Glyn Mawr Elba 1345
 Connealy Product 568
 Ebonista of Conanga 471
 Sitz Upward 307R
 Sitz Pride 44P

CED	BW	WW	YW	SC	MILK	MARB	RE	\$W	\$M
6	-0.5	75	133	.97	24	.46	.67	78	89

• FOR REFERENCE ONLY



N

SITZ ACCOMPLISHMENT 720F

Reg #:***19078208** Tattoo: **720F** DOB: **01/24/18**

Poss Lasting Impact 3118
 Poss Achievement
 *18631344 Poss Erica 327

SAV Resource 1441
 Sitz Barbaramere Nell 166D
 18415163 Sitz Barbaramere Nell 14Y

Poss Easy Impact 0119
 Poss Blackbird 005
 KM Broken Bow 002
 Poss Erica 1203
 Rito 707 of Ideal 3407 7075
 SAV Blackcap May 4136
 Connealy Right Answer 746
 Sitz Barbaramere Nell 143W

CED	BW	WW	YW	SC	MILK	MARB	RE	\$W	\$M
9	0.6	74	130	1.27	20	1.03	.47	71	79

• FOR REFERENCE ONLY



O

BC ROBUST 807C

Reg #:**18456252** Tattoo: **0807C** DOB: **12/26/15**

BC Eagle Eye 110-7
 BC Surveyor 680D
 +*17629667 BC 2266 Prides Lass 4132 680

BC Pure Pride 327-8
 BC 327-8 CP Belle 0-807
 16833528 BC 607 CP Belle MF 807

BC Lookout 7024
 BC Pure Pride Erica D 110
 BC Matrix 4132
 Cane Ridge Prides Lass 2266L
 BC Lookout 7024
 BC Pure Pride 110 825J 327
 BC Charlie Pride 304-6
 BC 901 Dr Belle Matrix MF607

CED	BW	WW	YW	SC	MILK	MARB	RE	\$W	\$M
4	1.7	56	85	.33	10	.04	.49	44	50

• FOR REFERENCE ONLY

P**COLEMAN ACE 989**

Reg #:*19554432 Tattoo: 989 DOB: 01/26/19

Coleman Charlo 0256
 Coleman Bravo 6313
 +*18734838
 Coleman Donna 714
 GDAR Game Day 449
 Coleman Donna 439
 #+*17914042 Coleman Donna 714

OCC Paxton 730P
 Bohi Abigale 6014
 Connealy Onward
 Coleman Donna 386
 Boyd New Day 8005
 GDAR Miss Wix 474
 Connealy Onward
 Coleman Donna 386

CED	BW	WW	YW	SC	MILK	MARB	RE	\$W	\$M
16	-1.1	54	96	1.39	35	-0.16	.65	77	86

• FOR REFERENCE ONLY



Coleman Donna 439 - Dam of Ace 989

Q**COLEMAN LOGO 947**

Reg #:*19559369 Tattoo: 947 DOB: 01/18/19

SITZ Logo 12964
 *17746620
 SITZ Shauna 3152
 SAV Resource 1441
 Coleman Donna 7100
 +*18838366 Coleman Donna 714

Sitz New Design 458N
 Sitz Emma E 2738
 Sitz Game Day 9470
 Sitz Shauna 1590
 Rito 707 of Ideal 3407 7075
 SAV Blackcap May 4136
 Connealy Onward
 Coleman Donna 386

CED	BW	WW	YW	SC	MILK	MARB	RE	\$W	\$M
11	-0.7	82	137	1.59	18	.37	.52	85	108

• FOR REFERENCE ONLY

Owned with Little Goose Ranch, WY



Coleman Donna 7100 - Dam of Logo 947

R**COLEMAN SUMMITT 9370**

Reg #:*19583398 Tattoo: 9370 DOB: 07/04/19

SAV Renown 3439
 ZWT Summitt 6507
 +*18561289 Coleman Donna 714
 Coleman Charlo 0256
 Coleman Donna 5412
 #+*18402791 Coleman Donna 0296

Rito 707 of Ideal 3407 7075
 SAV Blackcap May 4136
 Connealy Onward
 Coleman Donna 386
 OCC Paxton 730P
 Bohi Abigale 6014
 OCC Juneau 807J
 Coleman Donna 732

CED	BW	WW	YW	SC	MILK	MARB	RE	\$W	\$M
8	1.1	70	117	.91	20	.28	.63	72	67

• FOR REFERENCE ONLY



Coleman Donna 0308 - Flush sister to Grandam of Summitt 9370

S**COLEMAN HONDO 022**

Reg #:*19869368 Tattoo: 022 DOB: 01/02/20

Coleman Charlo 0256
 Coleman Bravo 6313
 +*18734838 Coleman Donna 714
 SAV Renown 3439
 Lawsons Chloe C815
 +*18359250 Lawsons Chloe Z341

OCC Paxton 730P
 Bohi Abigale 6014
 Connealy Onward
 Coleman Donna 386
 Rito 707 of Ideal 3407 7075
 SAV Blackcap May 4136
 Sitz Upward 307R
 Basin Chloe 7T26

CED	BW	WW	YW	SC	MILK	MARB	RE	\$W	\$M
12	-1.3	58	115	.97	30	.16	.48	71	87

• FOR REFERENCE ONLY



Lawsons Chloe C815 - Dam of Hondo





COLEMAN ANGUS
YOUR MATERNAL SOURCE

40067 Morris Road | Charlo, Montana 59824

