

THE **BIG EVENT II** SALE

SATURDAY, MAY 16, 2020

6:00 P.M. (C.D.T)

A LIVE ONLINE Auction hosted on [Wagyu365.com](http://Wagyu365.com)

# A NOTE FROM JOE



Welcome to our JDH Wagyu “Big Event II” live online sale!

My wife (Galynn) and I would like to thank you for helping us make our first sale a memorable event and here we are with our second one. We are excited to be able to offer you what we believe to be the best representation of what we spend our time and effort producing. We are nearly 31 years into our Wagyu business venture and it is now time to make our offerings available to the buying public once again. We, along with our very able team members, have done all we can to create the finest and very best Wagyu product that we could. In this “The Big Event II” Sale you will have the opportunity to select from all segments of our program. There are the elite genetics, the production cow calf pairs, bred females, open heifers, herd sire prospects and large selection of genetic packages from our intense embryo transplant program. In this event we are hoping to bring all segments of the breed together to one event that showcases everything that is good in Wagyu. Diversity has been my goal in the breeding of these sale animals. Particular attention was paid to the inbreeding coefficients specific to the ABCD breeding method in most cases. We welcome anyone’s inquiry in regards to the sale and we are more than excited to show you what the JDH Wagyu program has to offer. Come to the farm and take a look at our program prior to the sale if you wish. The sale will be all online with a live auctioneer conducting the sale at a disclosed location.

If there is anything that anyone in the JDH program or any member of the Wagyu365 team can do, then please feel free to call any of us. Sincerely, Joe and Galynn Hoye



JOE & GALYNN HOYE

Office, 712.763.4611 / Joe cell, 712.249.2076

JOEH@NETINS.NET

HERDSMAN, Tony Orstad, 712.249.6979

64919 Yankton Rd., Villisca, IA 50864

## JDH WAGYU IS OVER 30 YEARS IN THE MAKING!

JDH, Inc. was created in 1985 as an original farming company where they began breeding cattle in 1990. With the influence of Wagyu genetics to the operation in 1999 and then a feedlot featuring Wagyu cattle started in year 2000. For nearly 30 years Joe and his wife Galynn and their family along with a strong list of employees grew their operation to the largest herd of Registered Wagyu in the United States to date.

As you view this sale catalog, you will see that JDH wanted to show-case all the facets of the JDH operation. We have elite breeding genetics masterpieces, production cattle, females ready to breed, open heifers, herd sire prospects.

Join JDH in the movement in celebrating all things that are good in Wagyu!



The Hoye Family



#### VIEWING

Sale offering will be available for viewing Friday and Saturday, May 15th & 16th at the farm between 10:00 a.m. and 6:00 p.m. Please make an appointment with Joey or Tony if you would like to schedule a viewing of the sale cattle. **SALE CATTLE ARE on site at the farm near Villisca, IA.** The sale cattle will be sold via video at an offsite location.

#### SALE DAY UPDATES

Updates will be provided as of Friday, May 15th via a supplemental information sheet which can be found on [www.Wagyu365.com](http://www.Wagyu365.com).

#### SALE ORDER

All animal and embryo lots will sell in catalog order.

#### SUPPLEMENTAL INFORMATION

Any errors, updates, or changes in information contained in this catalog will be announced from the auction block and included in a supplement sheet on sale day. Announcements from the block take precedence over the catalog and any prior released information.

#### INSURANCE

Insurance will be available through any representative at [Wagyu365.com](http://Wagyu365.com).

#### TRUCKING

Please notify Randy Lathrop of Lathrop Livestock at 847.428.5806. He will be available for long-distance trucking.

#### SHIPPING/ PAYMENT

All costs involved with shipment is the buyer's responsibility and the buyer is responsible for making arrangements. All animals should be picked up from the JDH Wagyu farm headquarters once cattle are paid for. If this is not possible, please make arrangements with the seller and/or sales management to assist in setting up the best possible arrangement for your purchase. All embryos will be released to the buyer once payment has been made. Shipping is the buyer's responsibility - once embryos are paid for they will be released and ready for the buyer to get them shipped. Email [tonyorstad@outlook.com](mailto:tonyorstad@outlook.com) for shipping instructions.

#### ABSENTEE BIDS

Buyers unable to watch the sale should contact the [Wagyu365](http://Wagyu365.com) staff.

#### HEALTH PAPERS

All cattle sold will be accompanied with an appropriate health paper for immediate shipment. Additional health testing may be required from some locations.

#### TERMS AND CONDITIONS

Terms of sale are cash, check, Visa or Master Card. If a credit card is used there will be a 3% fee charged to the buyer on purchases.

#### REGISTRATIONS

Transfer of registration papers will not be made until payment is made in full. Cattle will sell under the Standard Terms and Conditions of the American Wagyu Association. If you are unfamiliar with these standard terms and conditions then please log onto [www.Wagyu.org](http://www.Wagyu.org)

#### GENETIC CONDITIONS

Log onto [www.wagyu.org](http://www.wagyu.org), go to the animal search and results of the genetic testing will be found on the lot selling.

#### EMBRYO GUARANTEE

Any embryos sold as stated and are not guaranteed on conception. All embryo lots will have statements regarding each with their descriptions.

#### REGISTRATIONS, TRANSFERS AND EMBRYO TRANSFERS

Within 60 days of the date of the sale, the cattle sold will be transferred (registrations) to the new owners through the offices of the American Wagyu Association. The fee is paid for by the seller. **PAYMENT ...** All lots must be paid for immediately following the conclusion of the JDH Sale.

Auction money and proceeds will be conducted under Randall O. Ratliff dba R & R Marketing, P.O. Box 60097, Nashville, TN 37206. Bond # 7901027402 (U.S. Department of Agriculture, Grain Inspection, Packers and Stockyards Administration Packers and Stockyards Program)



## SALE SCHEDULE

SATURDAY, MAY 16, 2020

4:00 P.M. C.D.T Pre-Sale Bidding Opens  
6:00 P.M. C.D.T The BIG EVENT II Sale Begins



## SALE CONTACTS

Randy Ratliff .....[Wagyu365](http://Wagyu365.com) ....[Randy@wagyu365.com](mailto:Randy@wagyu365.com) ....615.330.2735  
Kiley McKinna ..[Wagyu365](http://Wagyu365.com) ....[Kiley@wagyu365.com](mailto:Kiley@wagyu365.com) .....402.350.3447  
PJ Budler .....[Wagyu365](http://Wagyu365.com) ....[PJ@wagyu365.com](mailto:PJ@wagyu365.com) .....682.597.0380  
Joe Hoyer .....JDH Wagyu ..[Joeh@netins.net](mailto:Joeh@netins.net) .....712.249.2076  
Tony Orstad.....JDH Wagyu ..[Tonyorstad@outlook.com](mailto:Tonyorstad@outlook.com)..712.249.6979  
Cody Shelley .....Auctioneer (#17375) .....580.467.7887



## SALE LOCATION

The BIG EVENT II Sale will be a LIVE ONLINE Auction hosted on [www.Wagyu365.com](http://www.Wagyu365.com)



Visit [Wagyu365.com](http://Wagyu365.com)  
to view this sale book and all videos online.



# MEET THE WAGYU 365 TEAM

Dear Fellow Wagyu enthusiasts,

We would like to cordially welcome you to the JDH Wagyu “The Big Event II Sale.” Joe and Galynn Hoyer are the owners of JDH Wagyu – a family operation located near Villisca, Iowa. Their Wagyu operation started in 1990 (21 years ago) and has grown to in excess of 1600 Registered Wagyu. Over the years they have always taken great pride in producing a quality product, their customers successes and doing things the right way. The very first Registered Wagyu were purchased from Gary Yamamoto in year 2009 and with the growth of the business the JDH program began to expand. Joe served as the AWA Treasurer and then the President in year 2014 thru 2016. He was one of the original owners of Imperial Beef starting in year 2006 and his shares were later sold in year 2018. Joe is now totally focused on creating a solid foundation that produces the finest Wagyu possible. In this sale offering JDH has brought you their very best. As you flip through the catalog, we hope you’ll notice the reflection of many of their premier donor cow families, elite herd sires, a progressive A.I. program and the no ‘short-cuts’ approach they have adopted over the years. In this “Big Event II” sale offering we have not only brought you their very finest heifer, cow prospects and bred females, but also a highly productive set of spring calving cows with calves at side. In totality, whether you’re looking for replacement heifers or a breeder looking to make an investment, rest assured they have quality products backed with quality service.

That said, it’s a priority of ours to make all business transactions with customers a pleasant experience. Of course all cattle being offered are fully guaranteed and JDH fully stands behind all information printed in the sale catalog and on the additional supplemental information sheet. Furthermore, if you would like to discuss the sight unseen purchase program, financial arrangements or trucking plans we are happy to accommodate. If we can be of any assistance to you prior to or during the sale we have an open door policy and welcome all calls and questions. We take all calls very seriously and handle all transactions in a respectful manner.



**RANDALL O. RATLIFF**  
SALES REPRESENTATIVE  
615.330.2735 | Randy@wagyu365.com



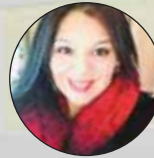
**KILEY MCKINNA**  
SALES REPRESENTATIVE  
402.350.3447 | Kiley@wagyu365.com



**ABBY LANE**  
OFFICE MANAGEMENT  
9119.618.8098 | Abby@wagyu365.com



**P J BUDLER**  
INTERNATIONAL AFFAIRS  
682.597.0380 | PJ@wagyu365.com



**AMY SHAW**  
CUSTOMER RELATIONS  
Amy@wagyu365.com



To learn more about Wagyu365 events, sale updates and more, visit [Wagyu365.com](http://Wagyu365.com).



CONNECT WITH US  
FOLLOW WAGYU365 ON SOCIAL MEDIA ~  
#Wagyumarketingatitsfinest #24/7/365Wagyu  
#alldayeverydaywagyu

WATCH &  
BID LIVE AT



# CONVENIENCE BUYING

JDH Wagyu and Wagyu365 want to make your buying experience easy and convenient!

## 1. VISIT US

You can't beat the experience of seeing your potential new investments in person! You are more than welcome to stop by JDH headquarters anytime prior to the sale to visit with JDH team and view any of the program. If you can't make it all videos of the lots can be viewed on [www.Wagyu365.com](http://www.Wagyu365.com)

## 3. BID ONLINE

Join us online for REAL TIME, LIVE online bidding for The BIG EVENT Sale. All lots in the sale will be available for viewing prior to sale day and bidding on sale day at [www.Wagyu365.com](http://www.Wagyu365.com).

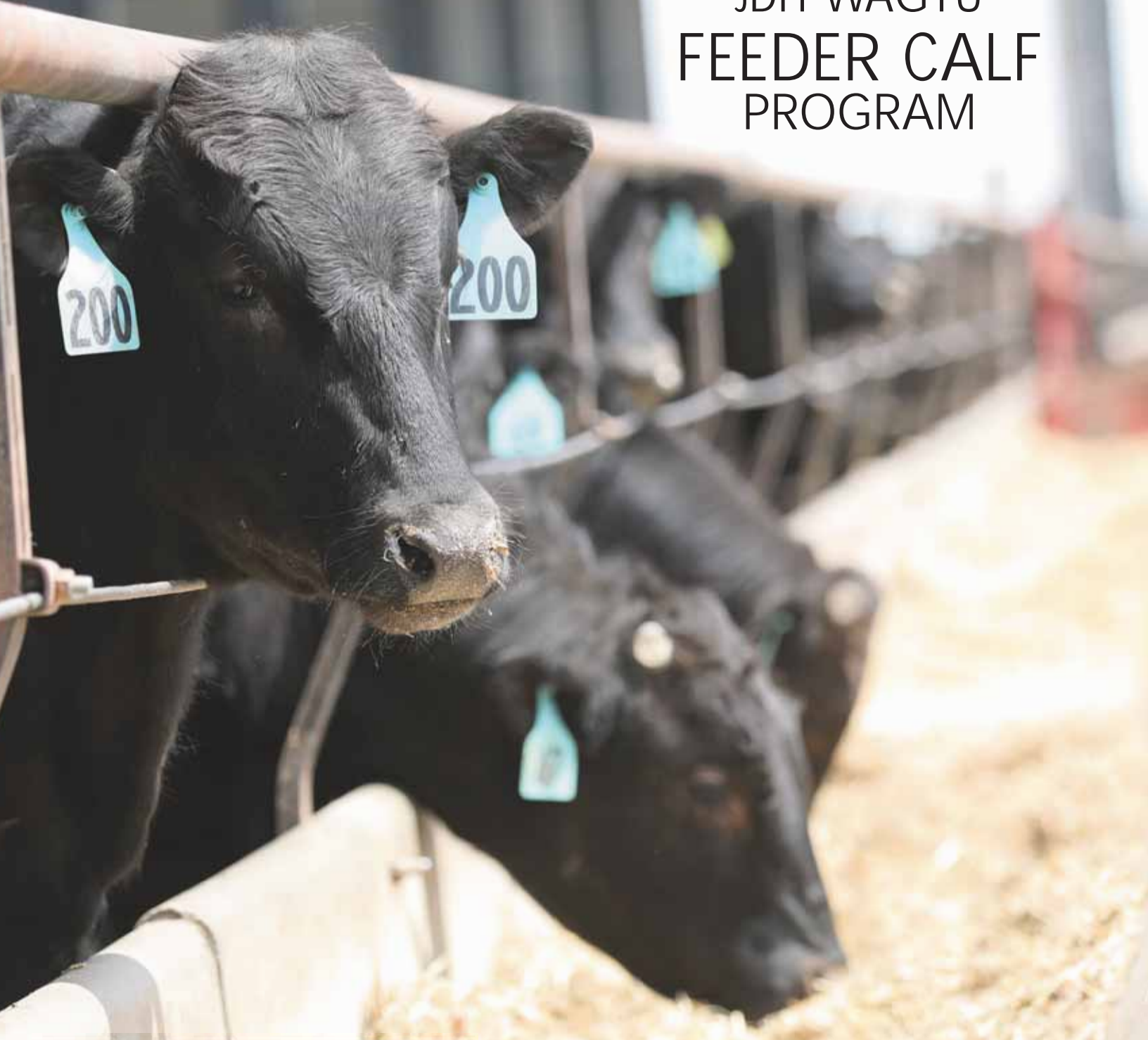
## 2. CALL US IN ADVANCE

With all the quick-messaging technology at our disposal, sometimes picking up the phone is the easiest way to get the information you need! At JDH, we are happy to have a conversation and walk you through any questions or information you need for sale day to make the best buying decisions for your program. Any member of our team would be happy to talk with you and connect you to the right people and information you need to feel fully informed for sale day. Contact any member of Wagyu365.

## 4. VALUE PURCHASING

Our JDH program is one of the AWA's largest source of registered Wagyu cattle in the US. No matter what your needs are, this offering is sure to add value to an already thriving program and enhance the future of your herd. From commercial options to some of the highest quality genetic influences of the breed — this will be the sale for you.

# JDH WAGYU FEEDER CALF PROGRAM



## FEEDER CALF PROGRAM

How do you qualify for the JDH Wagyu Feeder Calf Program? We want our customers to reap the full benefits of using our JDH Wagyu genetics. We have listed requirements that if met by any customers we will be happy to visit with you about purchasing and/or placing them in the hands of potential buyers of Wagyu steers.

- No hormones added.
- Antibiotic Free
- Third party verification age and source.
- Predominately JDH Wagyu genetics.
- Weaned at a minimum of 45 days.
- No more than 90 days from the youngest to the oldest.
- Subject to a minimal sort by a JDH representative to ensure uniformity.

# THE JDH TEAM

Joe and Galynn Hoye realize their program is only as good as the people they surround themselves with. We cannot thank these people enough for all they do to keep our operation going at the pace we wish!



## MEET THE TEAM

TONY ORSTAD  
Operations Manager

CODY BOURRETTE  
Animal Health

ANDY GRIESHABER  
Feeding

NICK ORSTAD  
Operations

JEREMY PALMER  
Mechanical

ROBIN GRIESHABER  
Grounds & Maintenance

KRIS SCHULER  
Office

GARRETT WINTHER  
Missouri Operations Manager

CLYDE RAUCH  
Missouri Herdsman

AUSTIN LININGER  
Missouri Operations

AUSTIN DOLLEN  
Ranch Hand

CHANCE JACOBS  
Missouri Feeding

BRADY KNIGHT  
Missouri Operations

## EMBRYO PROGRAM CREAM OF THE CROP

This genetic offering is simply our finest to date. They are from the heart of our embryo program featuring genetics out of our elite donors and some of the breed's best A.I. sires. We've elected to literally sell 'the cream of our crop' and it's with great pleasure we bring to you this exceptional set that we think will be highly competitive in the future marketplace and excel in production.





# FULLBLOOD READY TO BREED HEIFERS



1

**JDH MS SANJIRO 3 236F ET**  
 FB37161 | 07.23.18 | COW | JDH 236F

SANJIRO 3

WORLD K'S MICHIFUKU	MONJIRO 11550
WORLD K'S SUZUTANI	MICHIKO 655635
HIRASHIGETAYASU J2351	TANISHIGE 1526
CHR MS KITAGUNI 398	SUZUNAMI 472255
	DAI 20 HIRASHIGE 287
	DAI 5 YURUHIME
	CHR KITAGUNI 07K
	CHR MS SANJIROU 185R

B3F, CHSF, CL16F, F11F, F13F

This breeding age heifer will turn heads! 236F is from the JVP Yasuyoshi maternal line which is proving to produce superior carcasses in the Wagyu industry. Her sire, Sanjiro 3 is the #1 bull in the US for Marble Score and will add to the carcass performance genetics inherited by this heifer. This is backed by the highly proven growth sire, Hirashigetayasu 001, as the maternal grandsire. The depth of pedigree continues with sires such as Kitaguni 07K, Sanjiro, Kikuyasu 400, and Yasutanisakura. The mix of growth genetics will allow this heifer to be successfully mated to a wide range of sires. She is a genetic investment opportunity that will pay huge dividends in the future.



JDH MS SANJIRO 3 236F / LOT 1

2

**JDH 63Y 337F**  
 FB45460 | 08.21.18 | COW | JDH 337F

BAR R NAMIKAWA 63Y

BAR R SHIGESHIGETANI 30T	WORLD K'S SHIGESHIGETANI
BAR R 2P	BAR R 68P
	BAR R TAKASURU 1 K
	BAR R MISS 53J
BAR R NAKAGISHIRO 56T	WORLD K'S SANJIROU
	WORLD K'S NAKAGISHI 5
	ITOSHIGEFUJI
	LAKE WAGYU C80

YAR 235D ET

TJP 3212X

B3F, CHSC, CL16F, F11F, F13F

63Y 337 is a heifer that features explosive growth genetics. She will be a perfect female to mate to carcass trait sires and still maintain growth traits. Her sire, Namikawa 63Y, is a son of Bar R 30T and makes growth, correct phenotypic progeny. The maternal grandsire, the popular Bar R 56T bull, maintains good growth. Behind 56T are the legendary and highly proven growth bulls, TF147 Itoshigefuji and 001 Hirashigetayasu. The foundation of this super young heifer makes her extremely attractive as a potential elite brood cow with years of productivity ahead of her.



JDH 63Y 337F / LOT 2



JDH MS OAO7 269F / LOT 3

3

**JDH MS OAO7 269F**

FB41848 | 09.24.18 | COW | JDH 269F

OAO7

ECHIGO FARMS MAIFUKU

ECHIGO FARMS F B1002

JDH MS SHIGESHIGETANI 179D ET

LMR MS MICHIFUKU 607S 81

KITATERUYASUDO I J2810  
 JAPANESE COW (BLACK)  
 ITOMORITAKA J2703  
 WESTHOLME AYAKA V13  
 WORLD K'S HARUKI 2  
 WORLD K'S SUZUTANI  
 LMR MICHIFUKU 607S  
 LMR MS FUKUTSURU 606S

**RESULTS PENDING**

269F boasts a unique performance pedigree. Her maternal foundation is built on the legendary World K's import cow, Okutani. Her sire, OAO7, is a very rare son of the Australian bull, Maifuku, who has proven to produce tremendous Rib Eye size. The maternal grandsire is Shigeshigetani, who is a son of Breed Queen, Suzutani. Shigeshigetani transmits elite carcass traits and has been an absolute standout in the famed Mayura herd. The pedigree continues with a great blend of carcass leading sires, Michifuku and JVP 068, and growth sires, TF Kikuhana and Haruki II. This is another fine example of JDH breeding!



JDH MS 1441Y GENE 340F / LOT 4

4

**JDH MS 1441Y GENE 340F**

FB41914 | 08.19.18 | COW | JDH 340F

LMR KITAGUNI 1441Y

WORLD K'S KITAGUNI JR.

BR MS YASUFUKU 0645

JDH MS GENESIS 211D ET

GENESIS

EF HOSHI GO FUJIKO A22

KITAGUNI 7/8  
 WORLD K'S NAKAYUKI  
 WORLD K'S YASUFUKU JR  
 MISS BAR R 321H  
 ITOMORITAKA J2703  
 JVP KIKU SHIGE 5298E  
 EFCC HOSHI MARU  
 QUEENFUJI

**RESULTS PENDING**

LMR Kitaguni 1441Y is one of the most successful sires from the LMR full-blood breeding program. He is the tremendous marbling sire of this heifer, whose pedigree combines the maternal line of Chisahime on the top and Okutani on the bottom. These two maternal lines have continually established themselves at the top of the breed in many leading herds throughout the world. Many highly regarded sires are found in this pedigree, including Kitaguni Jr, Yasufuku Jr, Itomoritaka, JVP 068, Haruki II, and Michifuku. This heifer will be a very solid addition to any herd.

5

JDH MS 2-12 001 369F

FB 41797 | 09.07.18 | COW | JDH 396F

MFC SHIGESHIGETANI 2-12	WORLD K'S SHIGESHIGETANI	WORLD K'S HARUKI 2
	MFC MS ITOSURU DOI 8-1	WORLD K'S SUZUTANI
		ITOZURU DOI
		CF502
EF HIRAHANNA B87	HIRASHIGETAYASU J2351	DAI 20 HIRASHIGE 287
	CHR MS KITAGUNI 398	DAI 5 YURUHIME
		CHR KITAGUNI 07K
		CHR MS SANJIROU 185R

B3F, CHSF, CL16F, F11F, F13F

The sire of this heifer, MFC Shigeshigetani 2-12, is an example of the highly successful cross of Shigeshigetani with TF151 Itozuru Doi. MFC 2-12 is also a product of the incredible Takeda Hikokura maternal line. Hirashigetayasu 001 brings superior growth traits to the pedigree as the maternal grandsire. The maternal line of this heifer is built on the hard to find JVP Yasuyoshis. The Yasuyoshi line should be a great addition to any breeding program. This lot is no exception with her strong genetics featuring Kitaguni 07K and Sanjirou stacked on JVP 400 and JVP Yasutanisakura.



JDH MS 2-12 001 369F / LOT 5

6

JDH MS SHIGI 4104B 277F

FB41856 | 09.23.18 | COW | JDH 277F

TBR SHIGESSHIGETANI 4104B	WORLD K'S SHIGESHIGETANI	WORLD K'S HARUKI 2
	TBR SHIGEKO 1-9 2174Y	WORLD K'S SUZUTANI
		TBR ITOSHIGEFUKU 2 9061W
		TBR SHIGEKO 9036W
YAR 267D	HIRASHIGETAYASU J2351	DAI 20 HIRASHIGE 287
	BR MS KITDOI/0632 6621	DAI 5 YURUHIME
		BR KITATERUYASUDOJ 0632
		BR MS KITATERU-9676 2608

This lot features genetics from the outstanding Shigehime/Tamahime maternal line on both sides of this heifer's pedigree. Her sire, 4104B, should produce terrific carcasses with two crosses to Shigeshigetani behind him. 277F's maternal side features Westholme genetics with the growth sire, Hirashigetayasu 001, as the maternal grandsire. The Westholme feature carcass sire, Kitaterayasudoj 003, is found in the next two generations. With the heavy emphasis on Westholme genetics in her lineage this heifer will have lots of breeding options. She is poised for a long future as a brood cow producing profitable progeny.

7

JDH MS AO13 299F

FB41877 | 09.28.18 | COW | JDH 299F

AO13	GINJO MARBLEMAX C946	ITOZURU DOI
	WESTHOLME ASAOKA X0151	JAPANESE COW (BLACK)
		KITATERUYASUDOJ J2810
		WESTHOLME MORITAKE U38
JDH MS HIRASHIGETAYASU 237D ET	HIRASHIGETAYASU J2351	DAI 20 HIRASHIGE 287
	BR MS KITDOI/0632 6621	DAI 5 YURUHIME
		BR KITATERUYASUDOJ 0632
		BR MS KITATERU-9676 2608

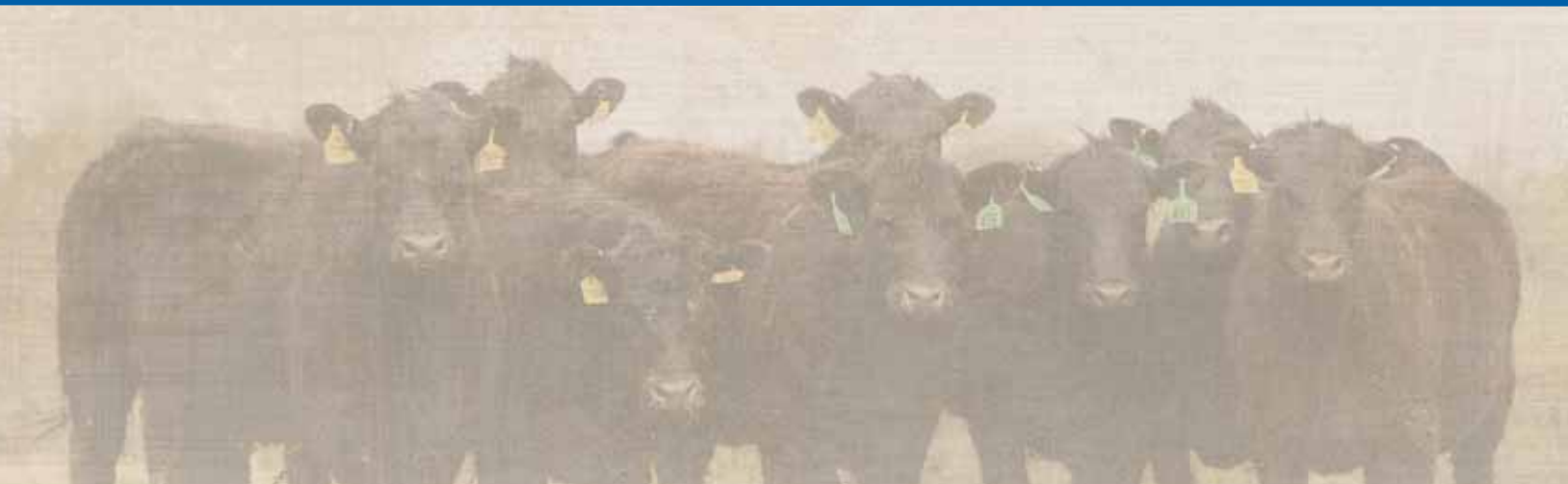
UNKNOWN

This heifer, 299F, has an exciting pedigree for US breeders. She probably carries as much Westholme genetics as anything you can find in America! Her sire, AO13, is an Itozuru Doi TF151 grandson that comes from two generations of Westholme cows. These cows were sired by the Westholme bulls 002 and 003. The maternal side of 299F's pedigree is also loaded with Westholme genetics, represented by her maternal grandsire, Hirashigetayasu 001, and then two sons of Kitateruyasudoj 003 behind that. 299F will be a great addition to any herd with her nice combination of growth and carcass traits, and the fact that she is an outcross to most of the genetics in the US Wagyu population.



JDH MS AO13 299F / LOT 7

# FULLBLOOD BRED HEIFERS



JHD MS SHIGESHIGE 2-12 207F AI / LOT 8

**8** | JHD MS SHIGESHIGE 2-12 207F AI  
 FB36335 | 05.03.18 | COW | JDH 207F

MFC SHIGESHIGETANI 2-12	WORLD K'S SHIGESHIGETANI	WORLD K'S HARUKI 2
	MFC MS ITOSURU DOI 8-1	WORLD K'S SUZUTANI
		ITOZURU DOI
		CF502
TJP 94X	ITOSHIGENAMI	SHIGESHIGENAMI 10632
	LAKE WAGYU C80	FUKUYUKI
		HIRASHIGETAYASU J2351
		JAPANESE COW (BLACK)

**RESULTS PENDING**

Sells bred A.I. 06.28.19 to Bar V 609D (FB24458) son of MFC Yasufuku Jr 7-12.

This lot has a very strong foundation built on the highly proven carcass trait leaders, Shigeshigetani and TF148 Itoshigenami. Both of these bulls transmit excellent Rib Eye size and Marbling to their progeny. The sire of this young female, MFC 2-12 has the added bonus of being a Shigeshigetani x TF151 Itozuru Doi cross while also being a direct descendent of the sensational brood cow, Hikokura 1/10. The maternal side of the pedigree traces through breed legends TF148 and Hirashigetayasu 001 to an embryo imported from the Lake Wagyu program in Australia. She will be a highly profitable cow in any type of Wagyu breeding program.



JDH O13 138F / LOT 9

**9** | JHD O13 138F  
 FB39942 | 05.07.18 | COW | JDH 138F

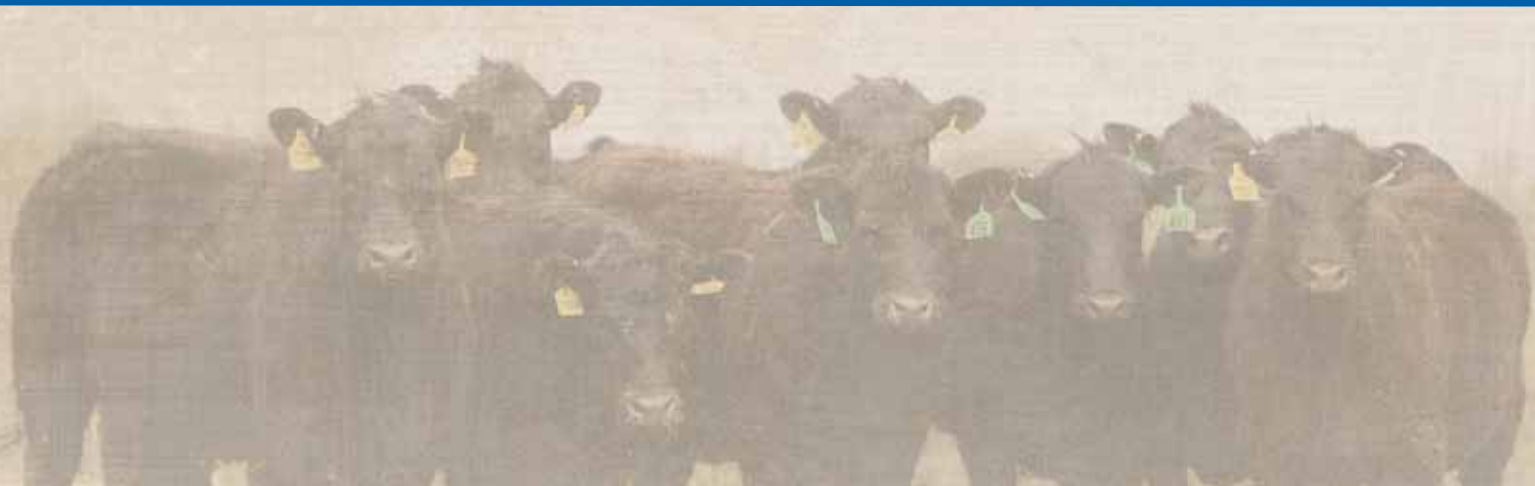
AO13	GINJO MARBLEMAX C946	ITOZURU DOI
	WESTHOLME ASAOKA X0151	JAPANESE COW (BLACK)
		KITATERUYASUDO J2810
		WESTHOLME MORITAKE U38
YAR 384C	GENESIS	ITOMORITAKA J2703
	TJP 112X	JVP KIKU SHIGE 5298E
		ITOSHIGENAMI
		LAKE WAGYU Y011

**RESULTS PENDING**

Sells bred A.I. 06.28.19 to Bar V 609D (FB24458) son of MFC Yasufuku Jr 7-12.

This young female, 138F, boasts an extremely unique pedigree with her sire being the result of an embryo imported from Australia and her dam descending from an embryo that was also imported from Australia. The sire, A013, is a son of the famed TF151 Itozuru Doi and was bred in the well-known Ginjo herd of Mike Buchanan in Australia. The maternal line of 138F was developed in the Lake Wagyu herd of Ken Dungy in Australia. Her genetics feature a unique combination of Itomoritaka, Itoshigenami, and Fukukane 402E. She will provide many breeding options, particularly with high Tajima sires.

# FULLBLOOD YEARLING OPEN HEIFERS



10

JDH MS OA07 260G  
 FB 45354 | 05.14.19 | COW | JDH 260G

OA07

ECHIGO FARMS MAIFUKU	KITATERUYASUDO J2810
ECHIGO FARMS F B1002	JAPANESE COW (BLACK)
	ITOMORITAKA J2703
CHR YASUFUKU 16	WESTHOLME AYAKA V13
JDH MS YASUFUKU 1556	WORLD K'S YASUFUKU JR
JDH 7288T	CHR MS MICHIFUKU 035H
	ITOSHIGEFUJI
	TF HIKOKURA 7/12

## UNKNOWN

260G is a maternal descendent of the Hikokura line from the famed Takeda Farms herd. Her maternal foundation includes two top Takeda bulls in TF147 Itoshigefuji and TF Terutani. A high Tajima sire, CHR Yasufuku 16 (Yasufuku Jr x Michifuku), was stacked on this strong growth base. The sire of 260G is the result of difficult to find Westholme genetics. The sire, OA07, is the result of an embryo imported from Australia and is a son of Rib Eye leader, Maifuku. His dam is a daughter of the Westholme growth and milk specialist, Itomoritaka 002. 260G has unique genetics that will match well with most of the genetics available readily in the US.



JHD MS OA07 260G / LOT 10

11

JDH MS SANJIROU SAKURA 299G  
 FB45390 | 05.19.19 | COW | JDH 299G

CHR SANJIROU 391

WORLD K'S SANJIROU	WORLD K'S MICHIFUKU
CHR MS HARUKI 027	WORLD K'S SUZUTANI
	WORLD K'S HARUKI 2
TF ITOMICHI 1/2	JVP MS KIKUSHIGE 409
FUJI SAKURA	ITOMICHI
QUEENFUJI	DAI 2 KINTOU
	INAKA YAMA
	UTSUKUSHI QUEEN

## REUSULTS PENDING

The four maternal lines in the pedigree of this lot are a rare combination of some of the most influential genetics in the Wagyu breed. The top side of the pedigree is the result of combine Suzutani with Shigehime, while the bottom side of the pedigree combines Ezokintou with Okutani! The sire of the heifer, CHR 391, should bring strong carcass traits, while the maternal side should transmit growth traits through TF Itomichi 1/2 and then two crosses to Fujiko through the Queenfuji cow. This genetic package is a rare find.



JDH MS SANJIROU SAKURA 299G / LOT 11

**12****JDH MS NAMIKAWA 206G**

FB45070 | 05.04.19 | COW | JDH 206G

BAR R SHIGESHIGETANI 30T WORLD K'S SHIGESHIGETANI  
**BAR R NAMIKAWA 63Y** BAR R 68P  
 BAR R 2P BAR R TAKASURU 1 K  
 BAR R MISS 53J  
 YAR 59B JVP HIRATAFUJI 402 HIRATA 1317  
 CHR MS SANJIROU 434 JVP YASUFUJI 1-4 266  
 WORLD K'S SANJIROU  
 MJB MS KITAFUKU 05K

**RESULTS PENDING**

Bar R 63Y makes great looking females and 206G fits the mold. She has a great lineage, descending from the well-known Chisahime. She is a very rare granddaughter of JVP Hiratafuji 402. Behind this very unique bull are the best proven carcass bulls of the breed - Sanjirou transmits large Rib Eyes, JVP068 is an extreme marbling sire, and Kitaguni Jr is also an extreme marbling sire. 206G brings a nice package of moderate growth with outstanding carcass traits.



JDH SHIGISHIGI 2-12 166G / LOT 13

**13****JDH SHIGISHIGI 2-12 166G**

FB44828 | 04.25.19 | COW | JDH 166G

WORLD K'S SHIGESHIGETANI WORLD K'S HARUKI 2  
**MFC SHIGESHIGETANI 2-12** WORLD K'S SUZUTANI  
 MFC MS ITOSURU DOI 8-1 ITOZURU DOI  
 CF502  
 WORLD K'S SANJIROU WORLD K'S MICHIFUKU  
**SANJIROU CHIYATSU** WORLD K'S SUZUTANI  
 CHR MS KITAGUNI 339 CHR KITAGUNI 07K  
 CHR MS HIRASHIGE 055J

**RESULTS PENDING**

166G displays a very balanced pedigree of carcass traits and growth traits. She has Takeda Hikokura genetics on the sire and dam side of her pedigree. Suzutani is well represented in this pedigree as well with her son, Shigeshetani, on the top side and her son, Sanjirou, on the bottom side. Those two bulls sire superior carcass traits, while sires like TF151 Itozuru Doi, Hirashigetayasu 001, and TF Kikuhana provide exceptional growth. This heifer will surely perform at an elite level.



JDH MS SHIGISHIGI 212 G / LOT 14

**14****JDH MS SHIGISHIGI 212 G**

FB45075 | 05.06.19 | COW | JDH 212G

WORLD K'S SHIGESHIGETANI WORLD K'S HARUKI 2  
**MFC SHIGESHIGETANI 2-12** WORLD K'S SUZUTANI  
 MFC MS ITOSURU DOI 8-1 ITOZURU DOI  
 CF502  
 WORLD K'S HARUKI 2 MONJIRO 11550  
**EF HARUKI B5** SAKURA 2 741638  
 CHR MS ITOZURU 459 ITOZURU DOI  
 CHR MS SANJIROU 186R

**RESULTS PENDING**

212G is another superbly bred daughter of MFC 2-12. She is a Yuriko line heifer that has a couple of fantastic carcass trait bulls, Sanjirou and Kitaguni Jr., sandwiched in the middle of her sire stack. A couple of elite growth bulls, Haruki II and TF151 Itozuru Doi, are stacked on top them. They are all backed up by TF Kikuhana and JVP 400 going right to the Yuriko cow. This blend of genetics is expected to transmit a nice balance of carcass and growth performance.

15

JDH MS NAMIKAWA 276G

FB 45370 | 05.15.19 | COW | JDH 276G

BAR R SHIGESHIGETANI 30T	WORLD K'S SHIGESHIGETANI
BAR R NAMIKAWA 63Y	BAR R 68P
BAR R 2P	BAR R TAKASURU 1 K
	BAR R MISS 53J
364 BRG 151 ITOSURU DOI	ITOZURU DOI
JDH HIKOKURA 7288-L	CHR MS SANJIROU 185R
JDH 7288T	ITOSHIGEFUJI
	TF HIKOKURA 7/12

UNKNOWN

Bar R 63Y was paired with the Hikokuras to create this heifer, 276G. 63Y brings growth and good phenotype to a maternal line that is already known for its growth and size. The maternal side of the pedigree is loaded with Takeda genetics. Not only is 276G a Hikokura, she has a stacked sire pathway which features a son of Itozuru Doi TF151, Itoshigefuji TF147, and Terutani. This heifer combines the best of breeding from Takeda Farms and Bar R Wagyu. She will be a profit producer for years to come.



JHD MS NAMIKAWA 276G / LOT 15

FULLBLOOD COW/ CALF PAIRS

16

YAR 198C

FB33466 | 05.21.15 | COW | YAR 198C

GENESIS	ITOMORITAKA J2703	ITOHIRASHIGE
	JVP KIKU SHIGE 5298E	DAI 6 OEFUJII J565554-KURO KOH
		JVP KIKUYASU-400
		JVP KIKUHANA 298
TJP 100X	ITOSHIGENAMI	SHIGESHIGENAMI 10632
	LAKE WAGYU Y011	FUKUYUKI
		JVP FUKUKANE 402E
		JAPANESE COW (BLACK)

B3F, CHSF, CL16F, F11C, F13F

LOT 16A - JDH 37H U53325, a fullblood heifer, born 04.02.2020, sired by LMR Kitaguni 1441Y (FB14630). BW: 56 lbs. B3F, CHSF, CL16U, F11C, F13F

The sire of this cow, Genesis, has earned a reputation for making beautiful progeny that a growth and very correct. He transmit the growth of his sire, Itomoritaka. Genesis was correctly used on an Itoshigenami TF148 daughter to produce this lot. The TF148 cow was the result of an embryo imported to the US from the famous Lake Wagyu herd in Australia. She represents a bit of different breeding with her maternal grandsire being Fukukane 402E. A young heifer calf sells as part of this lot. Her sire is LMR 1441Y, who was a perfect mating partner for the Genesis cow, YAR 198C.



YAR 198C / LOT 16



LMR KITAGUNI 1441Y / SIRE OF LOT 16A



EF VT B21 / LOT 17



LMR TOSHIRO 1/3 / SIRE OF LOT 17A

17

EF VT B21

FB18780 | 03.04.14 | COW | B21

ITOZURU DOI  
VT YASUZURU DOI

CHR MS YASUFUKU 189R

KEVINHANAFUJI  
VT MS SUZUZAKURA W07  
MUTSUKO

ITOKITATSURU  
YASUHIME  
WORLD K'S YASUFUKU JR  
CHR MS MICHIFUKU 030H  
KENHANAFUJI  
HEATHERKURA  
CHR TAKAZAKURA 101L  
KOJIHANA

B3F, CHSF, CL16F, F11F, F1U BY PEDIGREE

**LOT 17A - JDH 21H U53310**, Fullblood heifer, born 03.31.2020, sired by LMR Toshiro 1/3 (FB7475). BW: 63 lbs. UNKNOWN

Growth genetics are the feature of the pedigrees of this cow and her heifer calf. The elite brood cow, CHR Kikuhanahime appears on both sides of the pedigrees. The sire of the cow is a son of the immortal TF151 Itozuru Doi, and the dam of the cow is a Kevinhanafuji x CHR 101L mating. The young heifer calf has loads of potential as a herd matron with Toshiro 1/3 as her sire. The cow and her heifer are built to be bred to high-Tajima, carcass trait bulls which will produce offspring that are impressive for growth and meat qualities. This cow and heifer are the herd-building kind!

18

YAR 82B

FB33484 | 04.19.14 | COW | YAR 82B

CHR HIRASHIGE 081L  
CHR HIRASHIGE 170P  
CHR MS KIKUSHIGE 017

ITOMICHI TF 728  
HW TAKAMICHI 17X  
TAKANA 143

HIRASHIGETAYASU J2351  
CHR MS TERUTANI 024  
TF KIKUHANA  
JVP MS KIKUSHIGE 403  
ITOMICHI  
CF504  
CHR TAKAZAKURA 101L  
UTSUKUSHII

B3F, CHSF, F11F, CL16U, F13U BY PEDIGREE

**LOT 18A - JDH 61H U53347**, Fullblood heifer, born 04.06.2020, sired by LMR Kitaguni 1441Y (FB14630). BW: 59 lbs. UNKNOWN

The pedigree of this cow exudes growth and milk. Her sire, CVHR 170P, is a true growth bull with Hirashigetayasu and Kikuhana backing him up. The dam's maternal line incorporates Itomichi, CHR 101L, and Haruki II. YAR 82B will make sensational calves. Her terrific young daughter by LMR 1441Y sells with her. The calf is the result of a wise mating which paired the carcass qualities of 1441Y with the great growth of 170P. There is a lot of upside with this cow/calf pair.



YAR 82B / LOT 18



19

**YAR ITOMORISHIGESHIGI C603**

FB21834 | 03.23.15 | COW | YAR C603

ITOHIRASHIGE  
ITOMORITAKA J2703

DAI 6 OEFUJII J565554-KURO KOH

WORLD K'S SHIGESHIGETANI  
CHR MS SHIGESHIGETANI 509

CHR MS KITAGUNI 84L

ITOKITATSURU  
HIRASHIGEKIYOSHI  
KEDAKAFUJI  
OOE

WORLD K'S HARUKI 2  
WORLD K'S SUZUTANI  
WORLD K'S KITAGUNI JR.  
CHR MS KIKUSHIGE 013

B3F, CHSU, CL16F, F11C, F13U BY PEDIGREE

**LOT 19A - JDH 15H U53305**, Fullblood heifer, born on 03.31.2020, sired by MFC Shigishigitani 2-12. BW: 73 lbs. UNKNOWN

Here is a cow/calf pair to get excited about. The cow will wean outstanding calves because of her elite growth and milk sire, Itomoritaka. There is a top-notch carcass trait base in place with the proven sires Shigeshigetani and Kitaguni Jr. tucked behind Itomoritaka.

Those two bulls were used on a strong growth foundation of TF Kikuhana and JVP 400, which in turn were stacked on the legendary Yuriko. The heifer calf is the daughter of the highly sought after MFC Shigishigitani 2-12. He is an elite carcass bull, which makes the young heifer a perfect blend of proven growth and carcass genetics. With this dam and daughter pair you will get a great variety of breeding options.



YAR ITOMORISHIGESHIGI C603 / LOT 19

20

**JDH MS SANJIROU 135E AI**

FB30434 | 04.17.17 | COW | JDH 135E

WORLD K'S MICHIFUKU  
WORLD K'S SANJIROU  
WORLD K'S SUZUTANI

TF KIKUHANA  
JDH 5829

JDH 7288T

MONJIRO 11550  
MICHIKO 655635  
TANISHIGE 1526  
SUZUNAMI 472255  
ITOHANA  
NAYORI 1  
ITOSHIGEFUJI  
TF HIKOKURA 7/12

UNKNOKWN

**LOT 20A - JDH 73H U53357**, Purebred bull, born on 04.7.2020, sired by BAR V Tazaru 753. BW: 65 lbs. UNKNOKWN

This young cow is not to be missed. She is definitely a highlight of the sale offering. She combines two of the elite cow families of the Wagyu breed – Suzutani and Hikokura. Her sire is Sanjirou, who is internationally proven as a leader for Rib Eye size and transmits excellent Marbling as well. He was wisely mated to a Kikuhana daughter to make this cow, 135E. TF Kikuhana produces great frame size and growth. Behind Kikuhana are three other outstanding Takeda Farms sires. Itoshigefuji TF147 is acclaimed for his daughters which make tremendous brood cows. TF Terutani and Itomichi are the other two sires that form the foundation for this lot. You cannot ask for more in a pedigree. The bonus is that she sells with a bull calf at her side which is sired by BAR V Tazaru 753.

BAR R POLLED  
ZURUTANI D64  
PUREBRED DAUGHTERS



BAR R POLLED ZURUTANI D64 / SIRE OF LOTS 21 - 25



JDH MS ZURUTANI 19G G / LOT 21

21

JDH MS ZURUTANI 19G

PB44693 | 04.07.19 | COW | JDH 19G

BAR R 52Y  
BAR R POLLED ZURUTANI D64  
BAR R 57X

CHR YASUFUKU 16  
JDH MS YASUFUKU 1574C  
JDH8090

BAR R SHIGESHIGETANI 30T  
BAR R 16T  
LMR ITOZURUDOI 8161U  
BAR R 16T  
WORLD K'S YASUFUKU JR  
CHR MS MICHIFUKU 035H  
JDH9298S  
JDH8721D

RESULTS PENDING

HETEROZYGOUS POLLED

Zurutani D64 is a homozygous polled bull with a special pedigree combining Bar R 52Y as his sire with a TF151 Itozuru Doi son as his maternal grand-sire. It does not get any better than this for homozygous polled breeding. The maternal side of this heifer's pedigree goes back to fullblood Takeda genetics from the Ezokintou line and features sires TF148 Itoshigenami and Itomichi. She is a unique polled opportunity.

22

JDH ZURUTANI 76G

PB44744 | 04.14.19 | COW | JDH 76G

BAR R 52Y  
BAR R POLLED ZURUTANI D64  
BAR R 57X

CHR MICH 10  
JDH MS MICH 1578C  
JDH MS AIZAKURA 6443

BAR R SHIGESHIGETANI 30T  
BAR R 16T  
LMR ITOZURUDOI 8161U  
BAR R 16T  
WORLD K'S MICHIFUKU  
CHR KIKUHANAHIME  
TF KINTO  
JDH5422D

RESULTS PENDING

HETEROZYGOUS POLLED

This heifer is another daughter of the polled D64. She shows two crosses to the Japanese cow Ezokintou. With Michifuku also in her lineage she should pass on traits for both good growth and carcass quality.

# 23

## JDH MS ZURUTANI 13G

PB44687 | 04.06.19 | COW | JDH 13G

BAR R 52Y  
BAR R POLLED ZURUTANI D64  
BAR R 57X

EFCC HOSHI MARU  
HOSHI 170P B246  
HIRASHIGE TAK ETSU EF

BAR R SHIGESHIGETANI 30T  
BAR R 16T  
LMR ITOZURUDOI 8161U  
BAR R 16T  
SHIDOOSHA  
LMR MS FUKUTSURU 606S  
CHR HIRASHIGE 170P  
ETSU

RESULTS PENDING  
HETEROZYGOUS POLLED

This D64 daughter has a great foundation for growth traits based on her pedigree which incorporates the genetics of Okutani, Hirashigetayasu 001, and CHR 101L. She will do well when bred to high Tajima bulls.



JDH MS ZURUTANI 13G / LOT 23

# 24

## JDH MS ZURUTANI 71G

PB44739 | 04.14.19 | COW | JDH 71G

BAR R 52Y  
BAR R POLLED ZURUTANI D64  
BAR R 57X

EFCC HOSHI MARU  
YAR 415C  
EF PB 401E TAKA 29Y

BAR R SHIGESHIGETANI 30T  
BAR R 16T  
LMR ITOZURUDOI 8161U  
BAR R 16T  
SHIDOOSHA  
LMR MS FUKUTSURU 606S  
RSC KIKU-SURU 629B  
SATOKO

B3F, CHSF, CL16F, F11F, F13F BY PEDIGREE  
HETEROZYGOUS POLLED

71G continues the line of D64 daughters in the sale. The bottom side of her pedigree features genetics from the pioneering Wagyu breeders, the Hammonds.



JDH MS ZURUTANI 71G / LOT 24

# 25

## JDH MS ZURUTANI 96G

PB44764 | 04.15.19 | COW | JDH 96G

BAR R 52Y  
BAR R POLLED ZURUTANI D64

CHR MICH 10  
JDH ITOCHIYO 9265-L  
JDH9265

BAR R SHIGESHIGETANI 30T  
BAR R 16T  
LMR ITOZURUDOI 8161U  
BAR R 16T  
WORLD K'S MICHIFUKU  
CHR KIKUHANA HIME  
ATHENS 202-TT  
JDH3601D

RESULTS PENDING  
HETEROZYGOUS POLLED

This D64 daughter has a very interesting pedigree for a polled Wagyu. Her lineage is very strong in Takeda genetics, especially from the original, foundation sires. The Takeda bulls found in her maternal pedigree include Kikuhana, Terutani, Yukiharunami, and Itohana. This gives this heifer a powerful base to breed from and should afford her many years of profitability.



JDH MS ZURUTANI 96G / LOT 25

# FULLBLOOD TWO-YEAR-OLD BULLS



JDH ITOZURIU DOI 233F ET / LOT 26

26

JDH ITOZURIU DOI 233F ET

FB37164 | 06.16.18 | BULL | JDH 233F

ITOZURU DOI

ITOKITATSURU  
YASUHIME

DAI 7 ITOZAKURA  
NISHIZURU  
YASUMI DOI  
FUJIHIME

ITOSHIGEFUJI FUMIKO

ITOSHIGEFUJI  
CHR MS FUKUTSURU 193R

ITOFUJI 483  
DAI 30 NOBORU J920752  
MJB MUSASHI 03K  
CHR MS KIKUSHIGE 016

B3F, CHSC, CL16F, F11F, F13F. Retaining 50% semen interest

Itozuru Doi TF151 is legendary throughout the Wagyu breed for his ability to produce progeny with outstanding carcass and growth performance. Here is an opportunity to invest in his son, 233F. This young bull has incredible potential to transmit the growth that so many Wagyu breeders are seeking. He is from the Yuriko maternal line which is a line that has transmitted growth. His maternal grandsire is Itoshigefuji TF147 who is legendary for his ability to add size and maternal traits to his progeny. Behind him is the carcass trait, high – Tajima sire, MJB Musashi, and then on to another fantastic growth bull, Kikuhana.

233F will add power, growth, and maternal traits to any herd.



JDH SHIGESHIGETANI DOI 77F AI / LOT 27

27

JDH SHIGESHIGETANI DOI 77F AI

FB36220 | 04.02.18 | BULL | JDH 77F

WORLD K'S SHIGESHIGETANI

WORLD K'S HARUKI 2  
WORLD K'S SUZUTANI

MONJIRO 11550  
SAKURA 2 741638  
TANISHIGE 1526  
SUZUNAMI 472255

JDH MS ITOZURU DOI 1479

372 BRG 151 ITOZURU DOI  
MS ITOHANA 394 - 6401

ITOZURU DOI  
CF 503  
YCB ITOHANA 394  
YCB MS KIMIFUKU 2216

B3F, CHSF, CL16F, F11F, F13F. Retaining 50% semen interest

This son of Shigeshigetani has a loaded pedigree that will fit into any breeding program, whether fullblood or F1. Right off the top, he is a Hikokura, which adds great value immediately. His sire, Shigeshigetani adds tremendous carcass trait value, particularly huge Rib Eye size. His maternal granddam boasts a pedigree that includes the best of Takeda Farms sires, including Itozuru Doi, Itoshigenami, Itohana 2, Kimifuku 3, Terutani, and Itomichi! It would be very hard to find a pedigree that can compete with the genetic power that is incorporated in to the genes of 77F. He combines Suzutani with Hikokura!



JDH 4 X SUZUTANI 37F / LOT 28

28

JDH 4 X SUZUTANI 37F

FB39933 | 04.14.18 | BULL | JDH 37F

BAR R DBL SUZUTANI 59T

WORLD K'S SANJIROU  
AKIKO 3

WORLD K'S MICHIFUKU  
WORLD K'S SUZUTANI  
WORLD K'S MICHIFUKU  
WORLD K'S SUZUTANI

YAR 386C

TAI MR TANIMARA BL141W  
HIRASHIGETAYASU EIKO

WORLD K'S SHIGESHIGETANI  
MS 92T  
HIRASHIGETAYASU J2351  
CHR MS SANJIROU 434

RESULTS PENDING. Retaining 50% semen interest

37F sports a pedigree that unites two of the elite carcass producing maternal lines of the breed! Suzutani is represented on the sire side, while the maternal side is built on the internationally successful Chisahime line. His sire, 59T, is a graduate of the Bar R sire program and as his name indicates, is a double bred Suzutani. That locks in Rib Eye size and Marbling. His maternal side shows some growth up close through Hirashigetayasu and Kikuhana, and then goes back to highly proven, carcass trait leading sires

Sanjiro and Kitaguni Jr. 37F has a pedigree that spells great carcass performance.

29

JDH SHIGE HIRASHIGE 55F AI

FB36370 | 05.06.18 | BULL | JDH 55F

MFC SHIGESHIGETANI 2-12	WORLD K'S SHIGESHIGETANI	WORLD K'S HARUKI 2
	MFC MS ITOSURU DOI 8-1	WORLD K'S SUZUTANI
		ITOZURU DOI
		CF502
EF 12P B66	BAR R 12P	BAR R TAKASURU 1 K
		JVP MS FUKUSHIGE T10E
	VT MS HIRASHIGEJIROU	HIRASHIGETAYASU J2351
		CHR MS SANJIROU 185R

B3F, CHSF, CL16F, F11F, F13F BY PEDIGREE Retaining 50% semen interest

This bull descends from the Yasuyoshi maternal line. This line is proving to make outstanding carcasses on a consistent basis. The line has a strong base of breeding from the JVP program. The sire of 55F is MFC 2-12, who has a great parentage combination of Shigeshigetani on Itozuru Doi. The maternal side combines an excellent balance of sires beginning with the Bar R sire, 12P, and then a blending of growth and carcass trait bulls -

Hirashigetayasu 001, Sanjirou, and JVP 400. It would be expected that 55F will transmit a good balance of carcass traits and growth traits to his progeny, making him desirable for fullblood or F1 breeding.



JDH SHIGE HIRASHIGE 55F AI / LOT 29

30

JDH KYORUOKUNA 188F AI

FB36319 | 05.16.18 | BULL | JDH 188F

2+K KYORYOKUNA 14/89K	WORLD K'S YASUFUKU JR	YASUFUKU 930
	2+K KIBOU	KANEKO 5
		KIRU BIRU
		2+K ASAKO 08
EF MS149 B51	MITSUHIKOKURA 149	ITOHAKARI
		HIKOKURA 3/9
	VT MS KIKUNAHANA W02	TF TERUTANI
		CHR MS KIKUSHIGE 013

B3F, CHSF, CL16F, F11F, F13F. Retaining 50% semen interest

188F brings a unique sire pairing to the table. He is sired by a Yasufuku Jr. son who was bred to a daughter of Mitsuhiokura TF149. This is a rare combination of Yasufuku Jr. and TF149, but should produce highly desired results through the pairing of carcass traits with growth performance. It is also unusual to find this genetic combination that is free of all genetic disorders. This young bull has a lineage of three successive Takeda sires in TF149, Terutani, and Kikuhana. These bulls provide a great sire base on 188F's Yuriko maternal line and should mesh well with Yasufuku on the top side of his pedigree. 188F can be used with confidence bases on his excellent, yet unique, pedigree. This is a special breeder's opportunity.



SALE CONTACTS

Randy Ratliff .....Wagyu365 .....Randy@wagyu365.com .....615.330.2735  
 Kiley McKinna ..Wagyu365 ....Kiley@wagyu365.com .....402.350.3447  
 PJ Budler .....Wagyu365 ....PJ@wagyu365.com .....682.597.0380  
 Joe Hoyer .....JDH Wagyu ..Joeh@netins.net .....712.249.2076  
 Tony Orstad.....JDH Wagyu ..Tonyorstad@outlook.com..712.249.6979  
 Cody Shelley .....Auctioneer .....580.467.7887

# FULLBLOOD YEARLING BULLS



JDH SHIGISHIGI 2-12 116G / LOT 31

31

## JDH SHIGISHIGI 2-12 116G

FB44784 | 04.17.19 | BULL | JDH 116G

MFC SHIGESHIGETANI 2-12  
MFC MS ITOSURU DOI 8-1

HIRASHIGETAYASU J2351  
HIRASHIGETAYASU CHIHIRU  
CHR MS SANJIROU 434

WORLD K'S HARUKI 2  
WORLD K'S SUZUTANI  
ITOZURU DOI  
CF502  
DAI 20 HIRASHIGE 287  
DAI 5 YURUHIME  
WORLD K'S SANJIROU  
MJB MS KITAFUKU 05K

RESULTS PENDING. Retaining 50% semen interest

116G shows excellent promise as a sire based on his very balanced pedigree. The foundation was established on three superb, highly – proven carcass sires, Sanjiro, JVP 068, and Kitaguni Jr. They provide strong Marbling and Rib Eye size traits. Hirashigetayasu was then used wisely to bring in growth potential. Used on top of that combination is MFC 2-12, the sire of 116G, who is a very balanced sire. 116G has all of the ingredients to make an exceptional sire.



JDH DOUBLE SANJIROU 219G / LOT 32

32

## JDH DOUBLE SANJIROU 219G

FB45318 | 05.09.19 | BULL | JDH 219G

CHR SANJIROU 391  
WORLD K'S SANJIROU  
CHR MS HARUKI 027

EF MS SANJI B55  
WORLD K'S SANJIROU  
CHR MS HIRASHIGE 192R

WORLD K'S MICHIFUKU  
WORLD K'S SUZUTANI  
WORLD K'S HARUKI 2  
JVP MS KIKUSHIGE 409  
WORLD K'S MICHIFUKU  
WORLD K'S SUZUTANI  
CHR HIRASHIGE 081L  
CHR MS KITAGUNI 037H

B3F, CHSF, CL16F, F11F, F13F BY PEDIGREE. Retaining 50% semen interest

219G has superior carcass traits bred into his DNA. Sanjiro, the sire of 219G, is an internationally proven son of Suzutani and is a trait leader for Rib Eye size and improves Marbling. Sanjiro appears as both the paternal and maternal grandsire in this pedigree. The preceding maternal sire stack shows a Hirashigetayasu son on a Kitaguni Jr. daughter, and then JVP 400 on the extraordinary brood cow, Chisahime. The Chisahime maternal line adds credibility to any pedigree. This young bull, 219G, is bred to perform!



JDH 1441Y 111G / LOT 33

33

## JDH 1441Y 111G

FB44779 | 04.16.19 | BULL | JDH 111G

LMR KITAGUNI 1441Y  
WORLD K'S KITAGUNI JR.  
BR MS YASUFUKU 0645

YAR 179C  
GENESIS  
BR MS KITDOI/0632 6621

KITAGUNI 7/8  
WORLD K'S NAKAYUKI  
WORLD K'S YASUFUKU JR  
MISS BAR R 321H  
ITOMORITAKA J2703  
JVP KIKU SHIGE 5298E  
BR KITATERUYASUDOI 0632  
BR MS KITATERU-9676 2608

RESULTS PENDING. Retaining 50% semen interest

The sire of 111G is one of the best bulls to be proven in the LMR sire proving program. LMR Kitaguni 1441Y produces excellent carcasses and is a great mating on the Genesis dam of 111G. It is a pairing that puts elite carcass traits on to a cow sired by the leading growth bull, Genesis. It is a textbook example of rotational breeding. Behind the Genesis dam are two crosses to the highly proven, Westholme carcass bull, Kitateruyasudo 003. These two bulls were put on a cow that was a sire/daughter mating with the Marbling sensation, JVP 068. This young bull, 111G, shows great potential for making outstanding carcasses in a genetic package that is an outcross to much of the tradition high Tajima pedigrees in the US.

BAR R POLLED  
ZURUTANI D64  
PUREBRED SONS



BAR R POLLED ZURUTANI D64 / SIRE OF LOTS 34 - 37.

34

JDH ZURUTANI 20G

PB44694 | 04.08.19 | BULL | JDH 20G

BAR R 52Y  
BAR R POLLED ZURUTANI D64  
BAR R 57X

WORLD K'S MICHIFUKU  
JDH MS MICHIFUKU 1557  
JDH MS FUJIMOTO 1327

BAR R SHIGESHIGETANI 30T  
BAR R 16T  
LMR ITOZURUDOI 8161U  
BAR R 16T  
MONJIRO 11550  
MICHIKO 655635  
KGW FUJIMOTO 10051  
JDH 5820

B3F, CHSF, CL16F, F11F, F13F BY PEDIGREE. Retaining 50% semen interest

HETEROZYGOUS POLLED

Bar R Polled Zurutani D64 is creating much interest with polled Wagyu breeders because of his pedigree which includes Itozuru Doi TF151 and the Hikokura line from Takeda Farms. This young bull, 20G, creates excitement because his sire is D64 and his dam is sired by one of the breed's great carcass sires, Michifuku. 20G is a great opportunity to get into the commercial side of Wagyu with great genetics, but without the horns resulting from using full-blood bulls. His maternal line grabs your attention by the fact that it traces back to one of the most significant fullblood cows of the breed, Dai 2 Kinntou 3, and includes such influential sires as TF Kikuhana, Itoshigenami TF148, Terutani, and Itomichi. 20G will create excitement with his progeny.

35

JDH ZURUTANI 23G

PB44697 | 04.08.19 | BULL | JDH 23G

BAR R 52Y  
BAR R POLLED ZURUTANI D64  
BAR R 57X

JDH YASUFUKU 84C  
JDH MS HIKOKURA 1564C  
JDH9286

BAR R SHIGESHIGETANI 30T  
BAR R 16T  
LMR ITOZURUDOI 8161U  
BAR R 16T  
CHR YASUFUKU 16  
JDH7773  
ATHENS 2003-KS  
TF HIKOKURA 21/1

RESULTS PENDING. Retaining 50% semen interest

HETEROZYGOUS POLLED

23G is a polled bull with a unique Wagyu pedigree filled with Takeda genetics that traces back to fullblood Takeda cows from the Hikokuras. The uniqueness of sires will surely attract attention as they include the little used Takeda sires, TF Kikutsurudoi TF146 and Yukiharunami. Both of these bulls have very few progeny in the US, making this young bull, 23G, a very interesting item. He should perform extremely well in F1 or purebred production based on his genetics with the added bonus of polled.



JDH ZURUTANI 23G / LOT 35



JDH POLLED ZURU D64 78G / LOT 36

**36**

**JDH POLLED ZURU D64 78G**

PB44746 | 04.14.19 | BULL | JDH 78G

BAR R 52Y	BAR R SHIGESHIGETANI 30T
<b>BAR R POLLED ZURUTANI D64</b>	BAR R 16T
BAR R 57X	LMR ITOZURUDOI 8161U
	BAR R 16T
CHR YASUFUKU 246T	WORLD K'S YASUFUKU JR
<b>EF FUJIKO MONFUJI</b>	CHR MS KITATERU 59J
SILVER HIRA	CHR HIRASHIGE 170P
	SILVER SHADOW

B3F, CHSF, CL16F, F11F, F13F BY PEDIGREE. Retaining 50% semen interest

HETEROZYGOUS POLLED

78G has one of the most interesting pedigrees in the purebred Wagyu business. His maternal line has the great distinction of including all four of the original import Wagyu bulls that came to the US in the 1970's. Wow! That would be Mazda, Mt Fuji, Rueshaw, and Judo all lined up in this pedigree. The old meets new here with a transition from those sires to the later import bulls, Michifuku and Yasufuku Jr, and then topped off with Zurutani D64! There are many generations of fullblood Wagyu sires represented in this pedigree. This animal has scurs.



JDH ZURUTANI 142G / LOT 37

**37**

**JDH ZURUTANI 142G**

PB44808 | 04.20.19 | BULL | JDH 142G

BAR R 52Y	BAR R SHIGESHIGETANI 30T
<b>BAR R POLLED ZURUTANI D64</b>	BAR R 16T
BAR R 57X	LMR ITOZURUDOI 8161U
	BAR R 16T
WORLD K'S SANJIROU	WORLD K'S MICHIFUKU
<b>YAR SANJIROU 101L C581</b>	WORLD K'S SUZUTANI
SATOKO	CHR TAKAZAKURA 101L
	MS. WILLAMITE VALLEY

HETEROZYGOUS POLLED

B3F, CHSF, CL16F, F11F, F13F BY PEDIGREE. Retaining 50% semen interest

This polled D64 son carries much Wagyu history within his pedigree. His maternal side of his pedigree incorporates the historic brood cows, Suzutani, Hikokura, and Chisahime! Beyond that are the original four import bulls, Mt. Fuji, Rueshaw, Mazda (twice), and Judo (twice). There is much rich Wagyu history here and then the polled factor. 142G is a great young, polled Wagyu herd sire prospect. This animal has scurs.



# EXPORTABLE FULLBLOOD IVF EMBRYOS

All embryos that say they are EXPORTABLE have met the EU requirements for importation. We would ask that each buyer do their due diligence to make sure they can be imported into whatever country. We ask that you contact The Vytelle Company at 515.445.1030 if you have any questions.

All exportable Embryos Are Stored at VYTELLE, 1421 S. Bell #108, Ames, IA 50010 | 515.445.1030



HP MAYURA L0010 / SIRE OF LOTS 38 - 63 EMBRYOS.

## 38

### TWO IVF EMBRYOS

Selling two IVF, Fullblood embryos | Exportable | Grade 1

MAYURA ITOSHIGENAMI JNR  
HP [MAYURA L0010 ET](#)  
MAYURA H0159

WORLD K'S SANJIROU  
JDH [MS SANJIROU 158E AI](#)  
JDH 5584X

ITOSHIGENAMI  
WORLD K'S SANJIROU  
MAYURA ZULU  
WAGYTU GENETICS AIZAKURA D837 ET  
WORLD K'S MICHIFUKU  
WORLD K'S SUZUTANI  
MITSUHIKOKURA 149  
TF HIKOHIME 63/1

The embryos in this lot scream carcass traits with Mayura L10 as sire and a Sanjirou sired dam. Mayura L10 has breed leading EBVs of +2.4 MS, +7.1 REA, and +37 CW on the April 2020 Breedplan EBVs. Follow this with Sanjirou who has breed leading EBVs on REA and MS for proven bulls and we have a recipe for success. The dam is backed by outcross growth in TF 149 Mitsuhiokura and the Hikokura female line. Don't miss these balance high potential embryos.



JDH MS SANJIROU 158E AI / DAM OF LOT 38 EMBRYOS.

## 39

### FOUR IVF EMBRYOS

Selling four IVF, Fullblood embryos | Exportable | Grade 1

MAYURA ITOSHIGENAMI JNR  
HP [MAYURA L0010 ET](#)  
MAYURA H0159

LMR KITAGUNI 1441Y  
JDH [MS KITTIGUNI 1441Y 362F](#)  
JDH MS SHIGESHIGETANI 198D ET

ITOSHIGENAMI  
WORLD K'S SANJIROU  
MAYURA ZULU  
WAGYTU GENETICS AIZAKURA D837 ET  
WORLD K'S KITAGUNI JR.  
BR MS YASUFUKU 0645  
WORLD K'S SHIGESHIGETANI  
LMR MS ITOMICHI4632 737

Sired by Mayura L10 and with a dam sired by LMR Kitaguni 1441Y, these embryos are a combination of leading Mayura Station and Lone Mountain Ranch genetics. LMR Kitaguni 1141Y is the leading IMF sire in the 2019 LMR Sire Summary averaging 39.54% IMF on 4 carcasses. Then Mayura L10 is the \$105,000 2016 Elite Wagyu Sale top. He is a high genomic EBV son of the legendary Mayura Itoshigenami JNR. L10 has breed leading EBVs of +2.4 MS, +7.1 REA, and +37 CW on the April 2020 Breedplan EBVs. This is a high carcass traits pedigree!



JDH MS SANJIROU 1536 / DAM OF LOT 40 EMBRYOS.

**40A** | **FOUR IVF EMBRYOS**  
 Selling four IVF, Fullblood embryos | Exportable | Grade 1

MAYURA ITOSHIGENAMI JNR HP <b>MAYURA L0010 ET</b> MAYURA H0159	ITOSHIGENAMI WORLD K'S SANJIROU MAYURA ZULU WAGYTU GENETICS AIZAKURA D837 ET WORLD K'S SANJIROU CHR MS HARUKI 027 YCB ITOHANA 394 YCB MS ITOHANA2 2201
CHR SANJIROU 391 JDH <b>MS SANJIROU 1536</b> JDH 5476	

**40B** | **FOUR IVF EMBRYOS**  
 Selling four IVF, Fullblood embryos | Exportable | Grade 1

**40C** | **FOUR IVF EMBRYOS**  
 Selling four IVF, Fullblood embryos | Exportable | Grade 1

The sire of these embryos is Mayura L10, who is the \$105,000 2016 Elite Wagyu Sale top. He is a high genomic EBV son of the legendary Mayura Itoshigenami JNR. L10 has breed leading EBVs of +2.4 MS, +7.1 REA, and +37 CW on the April 2020 Breedplan EBVs. The dam hails from a JDH and Yamamoto bred branch of the Hikokura maternal line. She has Sanjirou, TF Itohana 2, and the original Itomichi in her pedigree.



JDH 5638X / DAM OF LOT 41 EMBRYOS.

**41** | **FOUR IVF EMBRYOS**  
 Selling four IVF, Fullblood embryos | Exportable | Grade 1

MAYURA ITOSHIGENAMI JNR HP <b>MAYURA L0010 ET</b> MAYURA H0159	ITOSHIGENAMI WORLD K'S SANJIROU MAYURA ZULU WAGYTU GENETICS AIZAKURA D837 ET ITOMICHI DAI 2 KINTOU KIMIFUKU 3 TF HIKOKURA 7/12
TF ITOMICHI 1/2 JDH <b>5638X</b> YCB MS KIMIFUKU 2216	

These embryos are a unique combination of genetics with Mayura L10 as the sire and a dam with Itomichi 1/2, Kimifuku 3, and TF Terutani 40 on top of the Hikokuras. Mayura L10 and Kimifuku 3 both bring carcass traits to the table and Kimifuku 3 is an outcross marbling source in the Wagyu breed. The Itomichi 1/2 and Hikokura female line pound some of the strongest growth in the breed into this pedigree. This is a unique set of embryos to invest in and will pay dividends on carcass traits and growth.

## 42A

### THREE IVF EMBRYOS

Selling three IVF, Fullblood embryos | Exportable | Grade 1

MAYURA ITOSHIGENAMI JNR  
HP MAYURA L0010 ET  
MAYURA H0159

ITOSHIGENAMI  
WORLD K'S SANJIROU  
MAYURA ZULU  
WAGYTU GENETICS AIZAKURA D837 ET  
WORLD K'S KITAGUNI JR.  
BR MS YASUFUKU 0645  
JDH MS SHIGESHIGETANI 198D ET  
WORLD K'S SHIGESHIGETANI  
BR ITOMICHI/0602 4632

LMR KITAGUNI 1441Y  
JDH MS KITTIGUNI 1441Y 362F  
JDH MS SHIGESHIGETANI 198D ET

Sired by Mayura L10 and with a dam sired by LMR Kitaguni 1441Y, these embryos are a combination of leading Mayura Station and Lone Mountain Ranch genetics. LMR Kitaguni 1141Y is the leading IMF sire in the 2019 LMR Sire Summary averaging 39.54% IMF on 4 carcasses. Then Mayura L10 is the \$105,000 2016 Elite Wagyu Sale top. He is a high genomic EBV son of the legendary Mayura Itoshigenami JNR. L10 has breed leading EBVs of +2.4 MS, +7.1 REA, and +37 CW on the April 2020 Breedplan EBVs. This is a high carcass traits pedigree!

## 42B

### FOUR IVF EMBRYOS

Selling four IVF, Fullblood embryos | Exportable | Grade 1

## 43

### THREE IVF EMBRYOS

Selling three IVF, Fullblood embryos | Exportable | Grade 1

MAYURA ITOSHIGENAMI JNR  
HP MAYURA L0010 ET  
MAYURA H0159

ITOSHIGENAMI  
WORLD K'S SANJIROU  
MAYURA ZULU  
WAGYTU GENETICS AIZAKURA D837 ET  
MONJIRO 11550  
MICHIKO 655635  
WORLD K'S SANJIROU  
CHR MS KIKUSHIGE 017

WORLD K'S MICHIFUKU  
BRG MS MICHIGUKU C1500 AI  
CHR MS SANJIROU 19

A World K's Michifuku sired donor dam is a highlight on these embryos. Especially given her fantastic pedigree including World K's Sanjiro, TF Kikuhana, JVP 400, and JVP Yuriko 1! The Yuriko female from which she descends has produced the leading EPD sires Bar R Shigeshigetani 30T and Michiyoshi. Adding that Mayura L10 is the sire of these embryos will put them in high demand. Mayura L10 is the \$105,000 2016 Elite Wagyu Sale top. He is a high genomic EBV son of the legendary Mayura Itoshigenami JNR. L10 has breed leading EBVs of +2.4 MS, +7.1 REA, and +37 CW on the April 2020 Breedplan EBVs.



BRG MS MICHIGUKU C1500 AI / DAM OF LOT 43 EMBRYOS.

## 44

### FOUR IVF EMBRYOS

Selling four IVF, Fullblood embryos | Exportable | Grade 1

MAYURA ITOSHIGENAMI JNR  
HP MAYURA L0010 ET  
MAYURA H0159

ITOSHIGENAMI  
WORLD K'S SANJIROU  
MAYURA ZULU  
WAGYTU GENETICS AIZAKURA D837 ET  
YASUFUKU 930  
KANEKO 5  
CHR KITAGUNI 07K  
MJB MS FUKUHIME 02K

WORLD K'S YASUFUKU JR  
CHR MS YASUFUKU 091S  
MJB MS SHINYU 014M

These embryos are from a donor with the proven genetic combination of Yasufuku Jr and Kitaguni Jr. This combination has been proven in the leading Lone Mountain Ranch herd to be potent for carcass quality. Stacking Mayura L10 on as the sire further emphasizes carcass traits in these embryos. Mayura L10 is the \$105,000 2016 Elite Wagyu Sale top. He is a high genomic EBV son of the legendary Mayura Itoshigenami JNR. L10 has breed leading EBVs of +2.4 MS, +7.1 REA, and +37 CW on the April 2020 Breedplan EBVs.



CHR MS YASUFUKU 091S / DAM OF LOT 44 EMBRYOS.



YAR SHIGESHIMICHI C531 / DAM OF LOT 45 EMBRYOS.

**45** | **FOUR IVF EMBRYOS**  
 Selling four IVF, Fullblood embryos | Exportable | Grade 1

MAYURA ITOSHIGENAMI JNR	ITOSHIGENAMI
HP MAYURA L0010 ET	WORLD K'S SANJIROU
MAYURA H0159	MAYURA ZULU
	WAGYTU GENETICS AIZAKURA D837 ET
WORLD K'S SHIGESHIGETANI	WORLD K'S HARUKI 2
YAR SHIGESHIMICHI C531	WORLD K'S SUZUTANI
LMR MS ITOMICHI-4632 737	BR ITOMICHI/0602 4632
	BR MS MICHIFUKU 0636

Here are embryos out of a Shigeshigetani sired donor and sired by Mayura L10. Mayura L10 needs no introduction and Shigeshigetani is equally as reputable for his extreme carcass traits. This breeding is will produce calves with excellent marbling and rib eye area EBVs. Here is a chance to add extreme carcass trait power to any herd.



YAR 241D / DAM OF LOT 46 EMBRYOS.

**46** | **FIVE IVF EMBRYOS**  
 Selling five IVF, Fullblood embryos | Exportable | Grade 1

MAYURA ITOSHIGENAMI JNR	ITOSHIGENAMI
HP MAYURA L0010 ET	WORLD K'S SANJIROU
MAYURA H0159	MAYURA ZULU
	WAGYTU GENETICS AIZAKURA D837 ET
ITOSHIGENAMI	SHIGESHIGENAMI 10632
YAR 241D	FUKUYUKI
LAKE WAGYU Y011	JVP FUKUKANE 402E
	JAPANESE COW

These embryos offer genetics coming from two Australian Wagyu herds in Mayura Station on the top side of the pedigree and Lake Wagyu on the bottom side. The sire is Mayura L10, the \$105,000 2016 Elite Wagyu Sale top. He is a high genomic EBV son of the legendary Mayura Itoshigenami JNR. L10 has breed leading EBVs of +2.4 MS, +7.1 REA, and +37 CW on the April 2020 Breedplan EBVs. The dam is a TF 148 daughter out of the Lake Wagyu Y011 donor cow. Itoshigenami TF 148 is a leading proven carcass traits specialist, with a +2.2 MS EBV on Breedplan.



**47**

**FOUR IVF EMBRYOS**

Selling four IVF, Fullblood embryos | Exportable | Grade 1

MAYURA ITOSHIGENAMI JNR  
 HP **MAYURA L0010 ET**  
 MAYURA H0159

TAI MR TANIMARA BL141W  
 JDH **MS TANIMARA 240D ET**  
 LMR MS ITOMICHI-4632 737

ITOSHIGENAMI  
 WORLD K'S SANJIROU  
 MAYURA ZULU  
 WAGYTU GENETICS AIZAKURA D837 ET  
 WORLD K'S SHIGESHIGETANI  
 MS 92T  
 BR ITMOICHI/0602 4632  
 BR MS MICHIFUKU 0636

These embryos are combination of Mayura, Bar R, and JDH genetics. The sire is Mayura L10, who is the \$105,000 2016 Elite Wagyu Sale top. He is a high genomic EBV son of the legendary Mayura Itoshigenami JNR. L10 has breed leading EBVs of +2.4 MS, +7.1 REA, and +37 CW on the April 2020 Breedplan EBVs. The dam of these embryos, 240D, will turn heads as she traces her maternal roots directly to Kikuchisa 19E and Chisahime. She is sired by a Shigeshigetani son, TAI BL141W, that should transmit excellent growth from his pedigree of Kikuhana and Itomichi daughters. The maternal side of 240D's pedigree stacks BR 4632 x Michifuku x Kikuhana directly on top of Kikuchisa and Chisahime. Mayura L10 should be a super mating on this cow.



JDH MS TANIMARA 240D ET / DAM OF LOT 47 EMBRYOS.

**48A**

**FOUR IVF EMBRYOS**

Selling four IVF, Fullblood embryos | Exportable | Grade 1

MAYURA ITOSHIGENAMI JNR  
 HP **MAYURA L0010 ET**  
 MAYURA H0159

EFCC HOSHI MARU  
 EF **HOSHISHIGE A11**  
 TSUBAKI HIROSHIGI

ITOSHIGENAMI  
 WORLD K'S SANJIROU  
 MAYURA ZULU  
 WAGYTU GENETICS AIZAKURA D837 ET  
 SHIDOOSHA  
 LMR MS FUKUTSURI 606S  
 CHR HIRASHIGE 170P  
 BR MS MICHIFUKU 0636

The sire of these embryos is Mayura L10, who is the \$105,000 2016 Elite Wagyu Sale top. He is a high genomic EBV son of the legendary Mayura Itoshigenami JNR. L10 has breed leading EBVs of +2.4 MS, +7.1 REA, and +37 CW on the April 2020 Breedplan EBVs. The dam is a combination of Shidoosha, CHR Hirashige 170P, and Michifuku genetics. This is a solid pedigree of wagyu genetics to build from for any new breeder.

**48B**

**FOUR IVF EMBRYOS**

Selling four IVF, Fullblood embryos | Exportable | Grade 1



EF HOSHISHIGE A11 / DAM OF LOT 48 EMBRYOS.

49

FOUR IVF EMBRYOS

Selling four IVF, Fullblood embryos | Exportable | Grade 1

MAYURA ITOSHIGENAMI JNR HP MAYURA L0010 ET MAYURA H0159	ITOSHIGENAMI WORLD K'S SANJIROU MAYURA ZULU WAGYTU GENETICS AIZAKURA D837 ET TF ITOHANA 2 TF CHIYOTAKE 8/1 TF ITOHANA 2 TF HIKOKURA 2/25
YCB ITOHANA 394 JDH 5476 YCB MS ITOHANA2 2201	

50

FOUR IVF EMBRYOS

Selling four IVF, Fullblood embryos | Exportable | Grade 1

MAYURA ITOSHIGENAMI JNR HP MAYURA L0010 ET MAYURA H0159	ITOSHIGENAMI WORLD K'S SANJIROU MAYURA ZULU WAGYTU GENETICS AIZAKURA D837 ET WORLD K'S YASUFUKU JR CHR MS MICHIFUKU 035H WORLD K'S YASUFUKU JR CHR MS MICHIFUKU 035H
CHR YASUFUKU 16 JDH MS YASUFUKU 1556 CHR YASUFUKU 16	

The sire of these embryos is Mayura L10, who is the \$105,000 2016 Elite Wagyu Sale top. He is a high genomic EBV son of the legendary Mayura Itoshigenami JNR. L10 has breed leading EBVs of +2.4 MS, +7.1 REA, and +37 CW on the April 2020 Breedplan EBVs. The dam is a JDH bred and owned Hikokura line female with Yasufuku Jr, TF 147, and TF Terutani 40 in her pedigree.



JDH MS YASUFUKU 1556 / DAM OF LOT 50 EMBRYOS.

51

FOUR IVF EMBRYOS

Selling four IVF, Fullblood embryos | Exportable | Grade 1

MAYURA ITOSHIGENAMI JNR HP MAYURA L0010 ET MAYURA H0159	ITOSHIGENAMI WORLD K'S SANJIROU MAYURA ZULU WAGYTU GENETICS AIZAKURA D837 ET WORLD K'S HARUKI 2 WORLD K'S SUZUTANI TF KIKUHANA JDH 7288T
WORLD K'S SHIGESHIGETANI JDH MS SHIGESHIGETANI 25D JDH 5829	

Here is premier pairing of a World K's Shigeshigetani sired donor dam with Mayura L10 to create this fantastic embryo offering. Mayura L10 needs no introduction with his breed leading EBVs of +2.4 MS, +7.1 REA, and +37 CW. Then we have Work K's Shigeshigetani who is equally as world renowned for his marbling and rib eye area abilities, plus is a Haruki 2 son of World K's Suzutani. This is all stacked on top of the tried and true Takeda Farms Hikokura maternal line. These embryos are a recipe for success!



JDH MS SHIGESHIGETANI 25D / DAM OF LOT 51 EMBRYOS.

# DOMESTIC FULLBLOOD IVF EMBRYOS

ALL DOMESTIC EMBRYOS  
ARE STORED AT ...  
**HAWKEYE BREEDERS**  
32642 Old Portland Road  
Adel, IA 50003  
515.993.4711



HP MAYURA L0010 / SIRE OF LOTS 38 - 63 EMBRYOS.

## 52

### THREE IVF EMBRYOS

Selling three IVF, Fullblood embryos | Domestic | Grade 1

MAYURA ITOSHIGENAMI JNR  
HP **MAYURA L0010 ET**  
MAYURA H0159

WORLD K'S SANJIROU  
BRG **Y10**  
CHR MS SANJIROU 19

ITOSHIGENAMI  
WORLD K'S SANJIROU  
MAYURA ZULU  
WAGYU GENETICS AIZAKURA D837 ET  
WORLD K'S MICHIFUKU  
WORLD K'S SUZUTANI  
WORLD K'S SANJIROU  
CHR MS KIKUSHIGE 017

The donor dam of these embryos is a rare double bred World K's Sanjirou daughter. Pounding the rib eye area and marbling into the pedigree through the line breeding of the Suzutani son Sanjirou is a perfect pairing with Mayura L10. Sanjirou has been proven in the multiple elite herds around the globe including Lone Mountain Ranch and Mayura Station where he has averaged 30.42% IMF and an 8.25 MS respectively. Then Mayura L10 is the 105,000 2016 Elite Wagyu Sale top and high genomic EBV son of the legendary Mayura Itoshigenami JNR. L10 has breed leading EBVs of +2.4 MS, +7.1 REA, and +37 CW on the April 2020 Breedplan EBVs.

## 53A

### THREE IVF EMBRYOS

Selling three IVF, Fullblood embryos | Domestic | Grade 1

MAYURA ITOSHIGENAMI JNR  
HP **MAYURA L0010 ET**  
MAYURA H0159

WORLD K'S SANJIROU  
113 BRG **SANJIRO KIKUHANA**  
CHR MS KIKUSHIGE 018

ITOSHIGENAMI  
WORLD K'S SANJIROU  
MAYURA ZULU  
WAGYU GENETICS AIZAKURA D837 ET  
WORLD K'S MICHIFUKU  
WORLD K'S SUZUTANI  
TF KIKUHANA  
JVP MS KIKUSHIGE 403

These embryos are sired by Mayura L10 needs no introduction as the \$105,000 2016 Elite Wagyu Sale top and high genomic EBV son of the legendary Mayura Itoshigenami JNR. Mayura L10 is a leading Breedplan EBV sire with a +2.4 MS, +7.1 REA, and +37 CW EBVs. The dam is another daughter of the immortal ribeye king Sanjirou. She is backed by solid growth foundation sires TF Kikuhana and JVP 400. That leads into original import JVP Yuriko 1 on the maternal side forming a strong foundation for calves produced from this mating.

## 53B

### FOUR IVF EMBRYOS

Selling four IVF, Fullblood embryos | Domestic | Grade 1

54

## FOUR IVF EMBRYOS

Selling four IVF, Fullblood embryos | Domestic | Grade 1

MAYURA ITOSHIGENAMI JNR HP MAYURA L0010 ET MAYURA H0159	ITOSHIGENAMI WORLD K'S SANJIROU MAYURA ZULU WAGYU GENETICS AIZAKURA D837 ET
WORLD K'S SANJIROU SANJIROU 81L B270 CHR MS HIRASHIGE 192R	WORLD K'S MICHIFUKU WORLD K'S SUZUTANI CHR HIRASHIGE 081L CHR MS KITAGUNI 037H

A World K's Sanjiro sired donor dam here paired with the elite Mayura L10. This pedigree stamps marbling and rib eye area into the resulting progeny. Carried by Mayura L10's +2.4 MS and +7.1 REA EBVs with the Chisahime female line and World K's Sanjiro behind that. Sanjiro is a highly proven Michifuku son of the legendary Suzutani and coupled with the Chisahime female line this donor dam is a recipe for success.

56

## THREE IVF EMBRYOS

Selling three IVF, Fullblood embryos | Domestic | Grade 1

MAYURA ITOSHIGENAMI JNR HP MAYURA L0010 ET MAYURA H0159	ITOSHIGENAMI WORLD K'S SANJIROU MAYURA ZULU WAGYU GENETICS AIZAKURA D837 ET
WORLD K'S SANJIROU SANJIROU CHIYATSU CHR MS KITAGUNI 339	WORLD K'S MICHIFUKU WORLD K'S SUZUTANI CHR KITAGUNI 07K CHR MS HIRASHIGE 055J

This donor cow sports as high a performance potential pedigree as you can find in Wagyu! With a sire stack of World K's Sanjiro x CHR Kitaguni 07K x Hirashigetayasu x the influential brood cow CHR Kikuhanehime. This maternal line descends from TF Hikohime 3/2 who's descendants include leading Australian sires Sumo Cattle Co Michifuku F154 and Coates Itoshigenami G113. Stack Mayura L10 who is the \$105,000 2016 Elite Wagyu Sale top and high genomic EBV son of the legendary Mayura Itoshigenami JNR and we have an elite pedigree! L10 has breed leading EBVs of +2.4 MS, +7.1 REA, and +37 CW on the April 2020 Breedplan EBVs.

58

## THREE IVF EMBRYOS

Selling three IVF, Fullblood embryos | Domestic | Grade 1

MAYURA ITOSHIGENAMI JNR HP MAYURA L0010 ET MAYURA H0159	ITOSHIGENAMI WORLD K'S SANJIROU MAYURA ZULU WAGYU GENETICS AIZAKURA D837 ET
180 BRG 151 ITOSURU DOI BRG Y113 113 BRG SANJIRO KIKUHANA	ITOZURU DOI CF 501 WORLD K'S SANJIROU CHR MS KIKUSHIGE 018

These embryos offer Mayura L10, TF 151, Sanjiro, and JVP Yuriko genetics all in one package. Mayura L10 is the \$105,000 2016 Elite Wagyu Sale top and high genomic EBV son of the legendary Mayura Itoshigenami JNR. L10 has breed leading EBVs of +2.4 MS, +7.1 REA, and +37 CW on the April 2020 Breedplan EBVs. The dam combines a TF 151 son and World K's Sanjiro on top of the Yuriko maternal line. With Mayura L10's all-round performance and the TF 151 and Sanjiro influence of the dam there is extreme performance bred into the pedigree here.

55A

## THREE IVF EMBRYOS

Selling three IVF, Fullblood embryos | Domestic | Grade 1

MAYURA ITOSHIGENAMI JNR HP MAYURA L0010 ET MAYURA H0159	ITOSHIGENAMI WORLD K'S SANJIROU MAYURA ZULU WAGYU GENETICS AIZAKURA D837 ET
WORLD K'S SANJIROU EF MS SANJI B55 CHR MS HIRASHIGE 192R	WORLD K'S MICHIFUKU WORLD K'S SUZUTANI CHR HIRASHIGE 081L CHR MS KITAGUNI 037H

55B

## THREE IVF EMBRYOS

Selling three IVF, Fullblood embryos | Domestic

Here we have embryos from a full sister to the previous lot. She is a World K's Sanjiro sired donor dam here paired with the elite Mayura L10. This pedigree stamps marbling and rib eye area into the resulting progeny. Carried by Mayura L10's +2.4 MS and +7.1 REA EBVs with the Chisahime female line and World K's Sanjiro behind that. Sanjiro is a highly proven Michifuku son of the legendary Suzutani and coupled with the Chisahime female line this donor dam is a recipe for success.

57

## FIVE IVF EMBRYOS

Selling three IVF, Fullblood embryos | Domestic | Grade 1

MAYURA ITOSHIGENAMI JNR HP MAYURA L0010 ET MAYURA H0159	ITOSHIGENAMI WORLD K'S SANJIROU MAYURA ZULU WAGYU GENETICS AIZAKURA D837 ET
GENESIS YAR 198C TJP 100X	ITOMORITAKA J2703 JVP KIKU SHIGE 5298E ITOSHIGENAMI LAKE WAGYU Y011

The donor dam here is sired by the popular Genesis bull. Genesis is known for making stylish and strong show winning progeny with enormous growth and milk potential. Follow this with the sire of the embryos as Mayura L10 and we have a winning combination. Mayura L10 is the \$105,000 2016 Elite Wagyu Sale top and high genomic EBV son of the legendary Mayura Itoshigenami JNR. L10 has breed leading EBVs of +2.4 MS, +7.1 REA, and +37 CW on the April 2020 Breedplan EBVs. This embryo package has all the makings to produce show winning and stylish progeny!

59

## THREE IVF EMBRYOS

Selling three IVF, Fullblood embryos | Domestic | Grade 1

MAYURA ITOSHIGENAMI JNR HP MAYURA L0010 ET MAYURA H0159	ITOSHIGENAMI WORLD K'S SANJIROU MAYURA ZULU WAGYU GENETICS AIZAKURA D837 ET
STONYRUN ID 151 ICHIRO 1 SRV TORA LMR MS HIROSHI 0136X	ITOZURU DOI SUZUTAKA 2 LMR HIROSHI 766T BR MS KITDOI/0632 6621

This embryo package combines Mayura L10 with a Stonyrun ID 151 Ichiro 1 sired donor dam! Mayura L10 is the \$105,000 2016 Elite Wagyu Sale top and high genomic EBV son of the legendary Mayura Itoshigenami JNR. L10 has breed leading EBVs of +2.4 MS, +7.1 REA, and +37 CW on the April 2020 Breedplan EBVs. The Ichiro sired dam combines TF 151 and Suzutani genetics with LMR and Blue Rock Ranch breeding behind that. Itozurudoi TF 151 is often called the best all-round foundation bull. Across 325 carcasses in the Blackmore Wagyu herd, he had 92.92% of carcasses grade MS 9 or 9+ with a 14.8 in2 REA and 1,007 lbs. HCW!



**60****THREE IVF EMBRYOS**

Selling three IVF, Fullblood embryos | Domestic | Grade 1

**MAYURA ITOSHIGENAMI JNR**  
**HP MAYURA L0010 ET**  
MAYURA H0159LMR KITAGUNI 1441Y  
**BRG MS KITAGUNI 39E AI**  
CHR MS MICHIFUKU 61ITOSHIGENAMI  
WORLD K'S SANJIROU  
MAYURA ZULU  
WAGYU GENETICS AIZAKURA D837 ET  
WORLD K'S KITAGUNI JR.  
BR MS YASUFUKU 0645  
WORLD K'S MICHIFUKU  
CHR MS KIKUSHIGE 023

Sired by the breed leading Mayura L10 and from an LMR Kitaguni 1141Y dam, these are impact marbling embryos. The dam is a combination elite genetics with 1441Y as her sire and backed behind that by World K's Michifuku, JVP Yasutanisakura, JVP 400, and the import cow JVP Yuriko 1. LMR Kitaguni 1141Y is the leading IMF sire in the 2019 LMR Sire Summary averaging 39.54% IMF on 4 carcasses. The Yurikos have lead performance Wagyu breeding in the USA producing sires Bar R Shigeshitani 30T and Michiyoshi! Stacked on top of all this proven performance is Mayura L10, who is the \$105,000 2016 Elite Wagyu Sale top and high genomic EBV son of the legendary Mayura Itoshigenami JNR. L10 has breed leading EBVs of +2.4 MS, +7.1 REA, and +37 CW on the April 2020 Breedplan EBVs.

**61****FOUR IVF EMBRYOS**

Selling four IVF, Fullblood embryos | Domestic | Grade 1

**MAYURA ITOSHIGENAMI JNR**  
**HP MAYURA L0010 ET**  
MAYURA H0159HIRASHIGETAYASU J2351  
**HIRASHIGETAYASU EIKO**  
CHR MS SANJIROU 434ITOSHIGENAMI  
WORLD K'S SANJIROU  
MAYURA ZULU  
WAGYU GENETICS AIZAKURA D837 ET  
DAI 20 HIRASHIGE 287  
DAI 5 YURUHIME  
WORLD K'S SANJIROU  
MJB MS KITAFUKU 05K

The donor dam here is not to be missed! Hirashige Eiko is a direct daughter of Westholme Hirashigetayasu and her pedigree reads, 001 x SanjiroU x 068 x Kitaguni Jr from the Chisahime maternal line. This is the maternal line that has produced breed leading sires including Westholme Namiyoshi 4, LMR Daisuke 2470Z, JVP Fukukane 402E, Bar R Saburo 53Y, Macquarie Wagyu C1255, and more. The sire here is Mayura L10, who is the \$105,000 2016 Elite Wagyu Sale top and high genomic EBV son of the legendary Mayura Itoshigenami JNR. L10 has breed leading EBVs of +2.4 MS, +7.1 REA, and +37 CW on the April 2020 Breedplan EBVs. This embryo package has all the parts in place to be a genomic giant with growth, marbling, and rib eye area stamped into the pedigree!

**62****THREE IVF EMBRYOS**

Selling three IVF, Fullblood embryos | Domestic | Grade 1

**MAYURA ITOSHIGENAMI JNR**  
**HP MAYURA L0010 ET**  
MAYURA H0159CHR YASUFUKU 246T  
**EF MS YASUFUKU 606Z**  
LMR MS FUKUTSURU 606SITOSHIGENAMI  
WORLD K'S SANJIROU  
MAYURA ZULU  
WAGYU GENETICS AIZAKURA D837 ET  
WORLD K'S YASUFUKU JR  
CHR MS KITATERU 59J  
JVP FUKUTSURU 774  
HOSHI

Here is a chance to acquire Mayura L10 sired embryos from an Okutani maternal line donor dam! Mayura L10 is the \$105,000 2016 Elite Wagyu Sale top and high genomic EBV son of the legendary Mayura Itoshigenami JNR. L10 has breed leading EBVs of +2.4 MS, +7.1 REA, and +37 CW on the April 2020 Breedplan EBVs. The dam of the embryos has an impressive sire stack of CHR Yasufuku 246T x Fukutsuru 068 x TF Kikuhana x Fujiko. How many pedigrees can say they have Fujiko as the 4th dam!

**63****THREE IVF EMBRYOS**

Selling three IVF, Fullblood embryos | Domestic | Grade 1

**MAYURA ITOSHIGENAMI JNR**  
**HP MAYURA L0010 ET**  
MAYURA H0159LMR RMW ITOMORITAKA  
**EF IWA B37**  
PLC TAKA MICKO MIJ 334WITOSHIGENAMI  
WORLD K'S SANJIROU  
MAYURA ZULU  
WAGYU GENETICS AIZAKURA D837 ET  
ITOMORITAKA J2703  
LMR MS SANJIROU 767T  
CHR TAKAZAKURA 101L  
MIKOMIS MIJIKO

Here is another chance to acquire Mayura L10 sired embryos from an Okutani maternal line donor dam! Mayura L10 needs no introduction as the \$105,000 2016 Elite Wagyu Sale top and high genomic EBV son of the legendary Mayura Itoshigenami JNR. The donor here is sired by the popular LMR RMW Itomoritaka a.k.a. "Rocky." Rocky has been putting up impressive numbers in the Marble Ranch herd, averaging a 1,051 lbs. HCW, 17.21 in2 REA, and 31.76% IMF. Capping off this lot is the added bonus of hailing from the Okutani maternal line and tracing to the world-famous Fujiko cow as the 5th dam!