

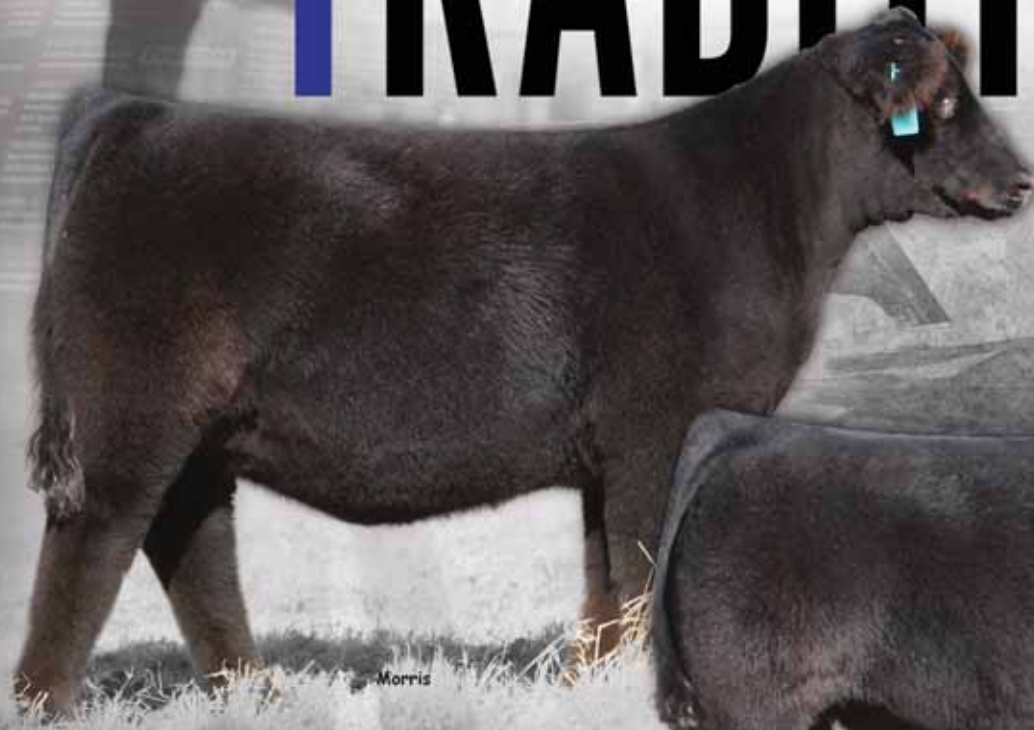
TEXAS



TRADITION

VI SALE

*Thursday,
January 31, 2019*



Morris



Morris

Schedule -

Wednesday, January 30th

1:00 p.m. Cattle available for viewing

Thursday, January 31st

Cattle available for viewing

4:30 p.m. Complementary Meal

5:30 p.m. Stowers Limousin Texas Tradition VI
Production Sale

View supplement sheet prior to the sale www.RRmktg.com
and www.stowerslimousin.com for any additional changes
in any lots having retained ownership.

Sale Day Phones -

Jason Gaston817.247.8011

Randy Ratliff....615.330.2735

Ken Holloway ..580.581.7652

Mark Smith.....515.229.5227

Kiley McKinna..402.350.3447

Auctioneer -

Ronn Cunningham918.629.9382

TEXAS

TRADITION

VI SALE

Thursday, January 31, 2019

5:30 p.m. | at the Ranch | near Bridgeport, Texas

STowers

Scott, Donna & Lauren Stowers

940.644.2747 | Scott cell: 940.577.1300 | Docstowers10@gmail.com

430 CR 1326, Bridgeport, TX 76426 | www.stowerslimousin.com

Jason Gaston, Ranch Manager | 817.247.8011 | jasongaston85@gmail.com

*Selling 30 lots as 27 head of
Registered Limousin & Lim-Flex -*

- 1 Herd Sire Prospect
- 10 Open Show and Replacement Heifers
- 1 Open E.T. Heifer Pair
- 1 Pick of an Embryo Flush of Heifers
- 4 Embryo Flush Opportunities
- 5 Bred Heifers due in January
- 5 Spring Bred Heifers
- 3 Fall Cow Calf Pairs

Sale Accommodations -

La Quinta Inn & Suites940.683.2040
2000 10th St., Bridgeport, TX 76426

Fairfield Inn & Sites940.627.0645
Decatur, TX

Airports -

Dallas Love Field is 72 miles to Bridgeport. Dallas-Fort Worth is 52 miles to Bridgeport. Oklahoma City Will Rogers is 155 miles to Bridgeport.

Sale Order & Supplemental Information -

The sale order and supplemental information will be posted at www.RRMktg.com and www.stowerslimousin.com for your convenience Wednesday, January 30th.

Directions -

FROM GAINESVILLE: Take FM 51 South to Decatur. In Decatur, take Hwy. 380 West toward Bridgeport. Half-way between Decatur & Bridgeport you will take FM 1655 North. You will drive exactly 2 miles and the Stowers Limousin sign and entrance is on the left.

FROM FORT WORTH: Go North to Hwy. 287. Take Hwy. 287 to Decatur. In Decatur, take Hwy. 380 West toward Bridgeport. Half way between Decatur & Bridgeport you will take FM 1655 North. You will drive exactly 2 miles and the Stowers Limousin sign and entrance is on the left.

Sale Terms & Agreements -

GUARANTEE ... All cattle sell under the standard guarantee of the North American Limousin Foundation EPDs. EPDs are current as of January 2019.

TERMS & CONDITIONS ... Terms of the sale are cash unless satisfactory credit arrangements have been made prior to sale. A representative will be on hand sale day if your wishes are to insure your purchases. Please note: The sale manager is only an agent for the seller and has no responsibility other than those involved in conducting the sale. All persons who attend the sale do so at their own risk. Neither the sale manager nor Stowers Limousin assume liability, legal or otherwise for any accidents which may occur.

SIGHT-UNSEEN PURCHASE AGREEMENT ... If you are unable to attend the sale and want to speak with anyone involved with the sale, please don't hesitate to call. The marketing agents, owners or manager will provide you with a complete satisfaction guarantee on the cattle selling.

TRUCKING ... A trucking company will be on hand sale day to assist with any trucking needs. The Stowers family appreciates your business and will see to it that the cattle will be delivered to several central locations to accommodate anyone who lives throughout the US and Canada.

FINANCING ... For financing options, contact Jason Gaston at 817.247.8011 or R&R Marketing Company at 615.330.2735.

PAYMENT ... All cattle must be paid for immediately following the conclusion of the sale.

Lone Star Shoot-Out -

The Lone Star Shoot Out is a heifer futurity held during the junior heifer show at the Fort Worth Stock Show. The Shoot-out is sanctioned by the Texas Limousin Association and is funded by TLA members who sell and nominate heifers. The purse has grown from \$3,400 in 2012 to \$7,000 in 2014 and now has a guaranteed purse of \$10,000. The purse is prorated through the classes based on number of entries first place in each class will receive \$500 the Champion and Reserve will receive a bonus in addition to class premiums. Every exhibitor will receive a check to be determined once entries are received. The Shoot-out is open to all 4-H and FFA students in Texas. Rules for exhibition are in accordance with those printed in the Fort Worth Stock Show premium look. Visit the TLA website or contact the TLA office to locate a participating breeder. Heifers must be purchased no later than November 1, 2018. Heifers must also have been state validated, check with your local County Extension Agent to obtain dates and location of validation in your area.

Sale Consultants -



American Cattle Services580.581.7652
Kenholloway44@gmail.com



Grassroots, Mark Smith515.229.5227
ggenetics@aol.com



Kiley McKinna.....402.350.3447
mcmarketingsales@aol.com

Sale Management -



Randall O. Ratliff, 615.330.2735
Randy@RRMktg.com www.RRMktg.com
PO Box 60097, Nashville, TN 37206



***Heifers less than
50% Lim-Flex will show
as ORB in all Texas
major shows. They will
still be eligible for the
Lone Star Shoot-Out.*

Genetics from one of the all-time greatest Purebred Limousin females to ever exist!!



Charmed

This homozygous black female comes from some of the best Limousin genetics in the breed. Commonly referred to as the 'Ratliff heifer,' she was champion at nearly every show she has shown in and was the first Limousin to win Supreme heifer at NAILE. She is sired by TMCK Durham Wheat 6030X. We are proud to have purchased half embryo interest in Riverstone Charmed. In her short career she has been honored with these titles as well, National Junior Heifer Show Grand Champion Female, Reserve Grand Champion Female at the All American Futurity, Double Supreme Champion Female in Both Ring A & Ring B at the KSU AGR Kick Off Show, Double Reserve Supreme Champion Female at the 2016 Steers & Stripes Steer & Heifer Show, Champion Limousin Heifer and Supreme Champion Overall Female 2016 Milan FFA Jackpot, Champion Limousin Heifer and Supreme Champion Overall Female 2016 NWMSU AGR Green & Gold Show and NWMSU AGR Green & Gold Show.



- | Double Supreme Champion Female, Ring A & Ring B, 2016 KSU AGR Kick Off Show
- | Double Reserve Supreme Champion Female, 2016 Steers & Stripes Steer & Heifer Show
- | Supreme Champion Overall Female & Champion Limousin Heifer, 2016 Milan FFA Jackpot
- | Supreme Champion Overall Female & Champion Limousin Heifer, 2016 NWMSU AGR Green & Gold Show and NWMSU AGR Green & Gold Show
- | Grand Champion Female, 2016 National Junior Limousin Show

- | Reserve Grand Champion Female, 2016 All-American Limousin Futurity
- | Supreme Champion Female, 2016 Kansas State Fair
- | Supreme Champion Female, 2016 Kansas Junior Livestock Show
- | Grand Champion Female, Junior & Open Divisions, 2016 American Royal
- | Supreme Champion Female, 2016 North American International Livestock Exposition
- | Grand Champion Limousin Female, 2017 National Western Stock Show



lot 1



lot 2

*Colburn's Primo x
Riverstone Charmed 50C
flushmates -*

LOT 1 - BW: 78 lbs. and LOT 2 - 78 lbs.

SSTO Fancy 8865F and SSTO Fury 8863F are two of the finest genetic masterpieces ever created by Stowers Limousin! These full siblings represent the finest genetics in the business. They are sired by the elite purebred Angus sire Colburn Primo 5153 and just happens to be progeny from the most prominent purebred female in the entire breed, Riverstone Charmed. Charmed is the once National Champion, NAILE supreme champion female and many times show champion female for the Ratliff Family with embryo ownership owned by Stowers Limousin. Her progeny continue to demand top dollar in the market place and are widely sought after in the show ring. These two embryo transplant calves are so very special. They are structurally sound, solid from the ground up and very appealing in their design. Buy with confidence when considering either one of these gorgeous creatures.

SSTO *Fancy 8865 ET*

Lim-Flex (50) Cow | HP | HB | 05.12.18 | SSTO 8865F | LFF2149911

DAMERON FIRST CLASS
COLBURN PRIMO 5153
SILVEIRAS SARAS DREAM 1339
TMCK DURHAM WHEAT 6030X
RIVERSTONE CHARMED
HSF YOUR FANTASY

EXG RS FIRST RATE S903 R3
DAMERON NORTHERN MISS 311
SILVEIRAS STYLE 9303
EXG SARAS DREAM S609 R3
DHVO DEUCE 132R
MAGS STRAWBERRY PIE
MAGS WAR ADMIRAL
HSF TINKERBELL

1



Owned by Bryson Morrow, Bridgeport, TX

	EPDs	%Rank
CED	9	75
BW	0.7	45
WW	55	85
YW	82	85
MA	24	20
TM	52	55
CEM	7	35
SC	0.82	30
ST	15	25
DOC	14	35
YG	-0.24	90
CW	18	40
CREA	0.55	95
MARB	0.13	15
SMTI	53.22	25

SSTO *Fury 8863F ET*

Lim-Flex (50) Bull | HP | HB | 05.10.18 | SSTO 8863F | LFM2149910

DAMERON FIRST CLASS
COLBURN PRIMO 5153
SILVEIRAS SARAS DREAM 1339
TMCK DURHAM WHEAT 6030X
RIVERSTONE CHARMED
HSF YOUR FANTASY

EXG RS FIRST RATE S903 R3
DAMERON NORTHERN MISS 311
SILVEIRAS STYLE 9303
EXG SARAS DREAM S609 R3
DHVO DEUCE 132R
MAGS STRAWBERRY PIE
MAGS WAR ADMIRAL
HSF TINKERBELL

2

	EPDs	%Rank
CED	10	65
BW	1	50
WW	58	70
YW	86	75
MA	16	95
TM	45	95
CEM	8	20
SC	0.82	30
ST	12	50
DOC	13	45
YG	-0.32	80
CW	14	50
CREA	0.75	75
MARB	0.11	20
SMTI	54.05	25

Pick of Flush FALL CALVES



Buyer's select their favorite of these calves at weaning!

LOT 3 - BW: 78 lbs.; Lot 4 - BW: 76 lbs.; Lot 5 - BW: 73 lbs.

What a great buying opportunity we have here! The final bidder has the opportunity to select their favorite calf from this embryo flush. These three lots are sired by Colburn Primo 5153 and from SBLX Znote 2743Z. She is the daughter of the once All-American Futurity Supreme Champion sire, MAGS Xyloid. Her dam just happens to be the all-time great MAGS Manuela 662M. Znote was the once 2014 National Junior Heifer Show champion female for Lauren Stowers. Since her big win she has become one of the top-producing females in the Limousin breed. 50% embryo interest in her highlighted the 2017 Stowers Texas Tradition V Sale for \$20,000 selling to P Bar S Ranch, Sand Springs, OK. Her progeny have commanded top dollar across the country and been at the top of numerous shows across the country. Her transplant heifers sired by PVF Insight 0129 were the talk of the sale last year where SSTO Epic 7854E sold for \$13,000 to Sarah Sullivan and two days later was named the reserve grand champion female of the 2018 Fort Worth Stock Show Open M.O.E. Limousin Show. She is now owned by Tristan Gulotta of Independence, LA, where she will be campaigned at major shows across the country.

The buyer picks their favorite of these three fall calves at weaning. They represent the blending of the best in purebred genetics with the best in Angus genetics. It doesn't get any better than this!

Colburn Primo

Morris

SSTO Fee 8876F ET

Lim-Flex (43) Cow | DP | DB | 09.07.18 | SSTO 8876F | Pending

DAMERON FIRST CLASS	EXG RS FIRST RATE S903 R3
COLBURN PRIMO 5153	DAMERON NORTHERN MISS 311
SILVEIRAS SARAS DREAM 1339	SILVEIRAS STYLE 9303
	EXG SARAS DREAM S609 R3
MAGS XYLOID	DHVO DEUCE 132R
SBLX ZNOTE	BOHI RHONDA 314R
MAGS MANUELA	EXLR LIMITED EDITION 765J
	AUTO CITY NIGHTS 214H

3

	SIRE	DAM
CED	12	5
BW	1.4	3.2
WW	69	56
YW	108	89
MA	12	25
TM	46	53
CEM	10	4
SC	0.75	0.65
ST	9	9
DOC	12	14
YG	0.19	-0.39
CW	22	22
CREA	0.09	0.66
MARB	0.55	-0.16
SMTI	69.37	44.5

SSTO Fi 8877F ET

Lim-Flex (43) Bull | DP | DB | 09.02.18 | SSTO 8877F | Pending

DAMERON FIRST CLASS	EXG RS FIRST RATE S903 R3
COLBURN PRIMO 5153	DAMERON NORTHERN MISS 311
SILVEIRAS SARAS DREAM 1339	SILVEIRAS STYLE 9303
	EXG SARAS DREAM S609 R3
MAGS XYLOID	DHVO DEUCE 132R
SBLX ZNOTE	BOHI RHONDA 314R
MAGS MANUELA	EXLR LIMITED EDITION 765J
	AUTO CITY NIGHTS 214H

4

	SIRE	DAM
CED	12	5
BW	1.4	3.2
WW	69	56
YW	108	89
MA	12	25
TM	46	53
CEM	10	4
SC	0.75	0.65
ST	9	9
DOC	12	14
YG	0.19	-0.39
CW	22	22
CREA	0.09	0.66
MARB	0.55	-0.16
SMTI	69.37	44.5

SSTO Foe 8878F ET

Lim-Flex (43) Cow | DB | DB | 09.10.18 | SSTO 8877F | Pending

DAMERON FIRST CLASS	EXG RS FIRST RATE S903 R3
COLBURN PRIMO 5153	DAMERON NORTHERN MISS 311
SILVEIRAS SARAS DREAM 1339	SILVEIRAS STYLE 9303
	EXG SARAS DREAM S609 R3
MAGS XYLOID	DHVO DEUCE 132R
SBLX ZNOTE	BOHI RHONDA 314R
MAGS MANUELA	EXLR LIMITED EDITION 765J
	AUTO CITY NIGHTS 214H

5

	SIRE	DAM
CED	12	5
BW	1.4	3.2
WW	69	56
YW	108	89
MA	12	25
TM	46	53
CEM	10	4
SC	0.75	0.65
ST	9	9
DOC	12	14
YG	0.19	-0.39
CW	22	22
CREA	0.09	0.66
MARB	0.55	-0.16
SMTI	69.37	44.5

Embryo Transplant

HEIFER



SSTO Best Bet



ELCX Twilight 114X



SAV Harvester

6 Commercial Angus Female

Commercial Angus Recip

SSTO 8886F ET

Lim-Flex (43) Cow | Polled | Black | 09.17.18 | SSTO 8886F | Pending

S A V HERITAGE 6295
S A V HARVESTOR 0338
S A V EMBLYNETTE 7749

DHVO DEUCE 132R
ELCX TWILIGHT 114X
DFLC HBHPC 1S

CAR DUKE 104
S A V BLACKCAP MAY 4136
S A V NET WORTH 4200
SAV EMBLYNETTE DIAMOND 63
GPFF BLAQUE RULON
AMY JO DHAN 20L
JCL LODESTAR 27L
DFLC HBPC 25L

	SIRE	DAM
CED	9	14
BW	4.3	0.6
WW	85	66
YW	144	100
MA	27	19
TM	70	52
CEM	3	8
SC	1.6	0.8
ST	9	11
DOC	12	10
YG	0.4	-0.49
CW	58	25
CREA	0.05	0.9
MARB	0.72	-0.28
SMTI	79.08	43.67

6A

The 2013 National Western Purebred Limousin grand champion female is ELCX Twilight 114X. She made her mark as one of the breed's finest purebred Limousin for Edwards Land & Cattle Co. and Wies Limousin. She is now deceased but her legacy lives on. One of her biggest accomplishments is SSTO Best Bet. He is the leading sire for Linhart Limousin, Leon, IA and owned with Stowers Limousin. His progeny were highly sought after in the November '18 Linhart sale and numerous progeny are highlights elite programs around the United States. A prime example of his progeny is lot 13 in this sale.

This lot 6A is a full sibling to SSTO Best Bet and represents premier genetics from a very special mating. Sired by the big numbered purebred Angus sire SAV Harvester and from ELCX Twilight 114X makes for a great combination and a unique breeding piece for the buyer.

LOT 6A - BW: 76 lbs.

Xtra Special COW FAMILY



Some of the finest progeny to ever sell from SBLX Extra Special.

SBLX Xtra Special



lot 7

SSTO 807F ET

Lim-Flex (50) Cow | DP | HB | 03.01.18 | SSTO 807F | LFF2155594

7

S A V BRILLIANCE 8077	S A V BISMARCK 5682
PVF INSIGHT 0129	S A V BLACKCAP MAY5270
PVF MISSIE 790	P V F NEW HORIZON 001
	P V F MISS RAPTOR 024
DHVO DEUCE 132R	GPFF BLAQUE RULON
SBLX XTRA SPECIAL	AMY JO DHAN 20L
MAGS MANUELA	EXLR LIMITED EDITION 765J
	AUTO CITY NIGHTS 214H



	EPDs	%Rank
CED	10	65
BW	1.4	65
WW	72	10
YW	112	10
MA	22	40
TM	58	15
CEM	6	55
SC	1.05	15
ST	10	70
DOC	14	35
YG	-0.36	80
CW	51	1
CREA	1.27	10
MARB	-0.08	35
SMTI	51.80	30

SBLX Xtra Special is the past San Antonio grand champion female and was once appraised at \$106,000 when she was added into the Stowers program. She represents the DHVO Deuce/MAGS Manuela mating that created some of the finest specimens in the business. SBLX Xtra Special 214X was a highlight in the 2018 Stowers Texas Tradition V sale where KLS Farms, Kevin Smith of Chatum, LA gave \$10,000 for 50% embryo interest. Her past progeny speak volumes to her success as a leading donor cow for Stowers and KLS Farms. Lonely Valley Seedstock purchased her son LSTO Best Effort 4833B, Lana Tittor owns her daughter SSTO Daphne 658D, LSTO Angel 3853A owned by Linhart Limousin, LSTO 609D owned by Emma Tittor and numerous others have made an impact for so many.

BW: 71 lbs.

SSTO Final Answer 8808F ET

Lim-Flex (50) Bull | HP | HB | 01.20.18 | SSTO 8808F | LFM2143910

8

HA OUTSIDE 3008
HA COWBOY UP 5405
HA BLACKCAP LADY 1602

DHVO DEUCE 132R
SBLX XTRA SPECIAL
MAGS MANUELA

KG SOLUTION 0018
HA EVER LADY 1575
HA PROGRAM 7328
HA BLCKCAP LADY 5515
GPFF BLAQUE RULON
AMY JO DHAN 20L
EXLR LIMITED EDITION 765J
AUTO CITY NIGHTS 214H

	EPDs	%Rank
CED	9	75
BW	1.3	60
WW	69	20
YW	107	20
MA	16	95
TM	50	70
CEM	4	90
SC	1	15
ST	11	60
DOC	18	10
YG	-0.26	90
CW	60	1
CREA	0.92	50
MARB	-0.04	30
SMTI	51.55	30



lot 8

SSTO Final Answer 8808F is one of the top sire prospects to ever carry the SSTO prefix. He represents the blending of the best in purebred Limousin genetics with SBLX Xtra Special and the best in purebred Angus with the powerful sire HA Cowboy Up 5405. This mating has created one absolutely amazing beef bull. He ranks in the top 1% of the breed for CW with a 59, top 5% for DOC with an 18, top 15% for SC with a 1.00, top 20% for WW with a 69 and YW with a 107 and top 30% for MB with a -0.04. This homozygous polled and homozygous black bull is extremely big boned, big footed and very solid in his footing. He stands up right, is very massive in his rib shape with a perfect blend of extreme body capacity with the perfect level of thickness.

BW: 78 lbs.; Adj. WW: 899 lbs.; Adj. YW: 1,311 lbs.

SSTO Believe Me 4819B

Lim-Flex (50) Cow | HP | HB | 03.03.14 | LSTO 4819B | LFF 2056740

9

SITZ UPWARD 307R
EXAR UPSHOT 0562B
EXAR BARBARA T020

DHVO DEUCE 132R
SBLX XTRA SPECIAL
MAGS MANUELA

CONNELLY ONWARD
SITZ HENRIETTA PRIDE 81M
ISU IMAGING Q 9111
LCC MC HENRY BARBAR MG382
GPFF BLAQUE RULON
AMY JO DHAN 20L
EXLR LIMITED EDITION 765J
AUTO CITY NIGHTS 214H

	EPDs	%Rank
CED	9	70
BW	2	70
WW	69	10
YW	112	5
MA	24	30
TM	59	10
CEM	6	50
SC	1.15	10
ST	12	45
DOC	13	35
YG	-0.28	90
CW	35	3
CREA	0.87	65
MARB	0.13	15
SMTI	58.19	10



lot 9

LSTO Believe Me 4819B is a 50% Lim-Flex female that just happens to represent one of the best matings from the long running Stowers program. She is a daughter of EXAR Upshot 0562B and from the elite donor SBLX Xtra Special. A full sibling to this female is LSTO Best Effort, a once top seller in a past Stowers sale and now leading sire for one of the largest herds in North America, Lonely Valley Seedstock and LV Bar Ranch. This female is doing a superb job with her young November calf. She is very feminine up through her head and neck, strong and level down her top line and very structurally sound. She ranks in the top 2% of the breed for CW with a 36, top 5% for YW with a 112, top 10% for WW with a 69, TM with a 59, scrotal with a 1.15, SMTI with a 58.17 top 15% for MB with a .13.

BW: 64 lbs.; WW: 673 lbs.; YW: 1,005 lbs.

SSTO Fannie May 8911F

Lim-Flex (50) Cow | DP | DB | 03.03.14 | LSTO 4819B | --

9A

SBLX FIRST CLASS

SSTO BELIEVE ME 4819B

DAMERON FIRST CLASS
MAGS MANUELA
EXAR UPSHOT 0562B
SBLX XTRA SPECIAL

	SIRE	DAM
CED	5	9
BW	1.7	2
WW	58	69
YW	90	112
MA	23	24
TM	52	59
CEM	4	6
SC	0.55	1.15
ST	5	12
DOC	9	13
YG	-0.16	-0.28
CW	31	35
CREA	0.47	0.87
MARB	0.16	0.13
SMTI	54.69	58.19



LSTO BEST EFFORT

BW: 60 lbs.



10

lot 10

SBLX *Zaahida*

Lim-Flex (75) Cow | Polled | HB | 03.12.12 | SSTO 953Z | LFF2006299

BT CROSSOVER 758N
MAGS WINSTON
MAGS STRAWBERRY
EXLR LIMITED EDITION 765J
MAGS MANUELA
AUTO CITY NIGHTS 214H

C A FUTURE DIRECTION 5321
BT ROYAL PRIDE 237G
EXLR NEW GENERATION 071M
MAGS FRUITFUL 487M
EXLR POLLED BENCHMARK709G
WULFS GLENDA 7021G
COLE FIRST DOWN 46D
MISS WOLFETTE 9049X

FAT 0.48 **REA** 13.05 **%IMF** 3.91

	EPDs	%Rank
CED	10	55
BW	1.3	55
WW	60	45
YW	99	25
MA	27	10
TM	56	20
CEM	6	50
SC	0.2	80
ST	6	90
DOC	14	30
YG	-0.36	85
CW	40	1
CREA	0.82	70
MARB	-0.07	25
SMTI	48.62	30

Embryo opportunity from SBLX Zaahida 953Z

One of the breed's greatest females is SBLX Zaahida 953Z. She is the \$100,000 valued donor for Stowers Limousin. She is a daughter of MAGS Winston and from MAGS Manuela. She is polled, homozygous black and ranks in the top 1% of the breed for CW with a 41, top 10% for MK with a 27, top 15% for TM with a 57, top 25% for YW with a 99, MB with a -0.07 and top 30% for DOC with a 14. This proven 75% Lim-Flex donor represents the very best of everything that is good with Limousin and Lim-Flex genetics.

BW: 64 lbs.; WW: 648 lbs.; YW: 979 lbs.

**Transplant work conducted under the guidance of Stowers Limousin. Only conventional embryos will be made! Stowers will pay for the transplant work and the buyer supplies the semen. Buyer gets a minimum of 5 grade 1 embryos and any further embryos created past five will be split between the buyer and the seller. This will be conducted following this sale. Buyer pays for 50% of the purchase price at sale time and the remaining balance once the embryos are made in full.



11

lot 11

THREE EMBRYOS

PBRs *You're the One 1134Y*

PB Limousin (100) Cow | Polled | HB | 09.25.11 | PBRs 1134Y | NPF2003658

GPFF BLAQUE RULON
DHVO TREY 133R
AMY JO DHAN 20L
AUTO BLACK DAKOTA 129J
CARROUSELS PINA COLADA
ELMW GINNIE P58G

BLACK DIAMOND
QUAIL RUN RAMONA BP
BLACK CAT DHAN 152G
GPFF AMBER JO
EXLR DAKOTA 353G
DFLC JET SET BPC 34Y
TCDDT MR T.D'S POWER PACK
ELMW POLLED ECSTASY 67E

	EPDs	%Rank
CED	9	70
BW	1.2	50
WW	49	90
YW	71	90
MA	22	45
TM	47	75
CEM	4	85
SC	0.4	60
ST	2	>95
DOC	6	85
YG	-0.78	20
CW	3	80
CREA	1.15	20
MARB	-0.46	70
SMTI	34.29	85

An opportunity to purchase three embryos from PBRs You're The One 1134Y.

PBRs You're The One 1134Y is a direct daughter of Carrouseles Pina Colada, making her a maternal sister to many great ones including BOHI Top Dollar, BOHI Titleist, MAGS Ukalani and SSTO All Yours 3450A and SSTO Watercolors 9450W. Sired by the Medal of Excellence aware winner, DHVO Trey. Lauren showed PBRs You're The One with winning the San Antonio Junior Limousin Show and went on to be selected supreme champion of the 17 breeds exhibited. She is one of the finest purebred Limousin females in the Stowers long list of donors. BW: 80 lbs.; WW: 810 lbs.; YW: 1,128 lbs.

**Transplant work conducted under the guidance of Stowers Limousin. Only conventional embryos will be made! Stowers will pay for the transplant work and the buyer supplies the semen. Buyer gets 3 grade 1 embryos only! This will be conducted following this sale. Buyer pays for 50% of the purchase price at sale time and the remaining balance once the embryos are made in full.



Morris



lot 12

SSTO Best Bet,
sire of Lot 12.

SSTO *Fruitful 8817F*

Lim-Flex (46) Cow | HP | HB | 03.02.18 | SSTO 8817F | LFF2149822

S A V HARVESTOR 0338	S A V HERITAGE 6295
SSTO BEST BET 456B ET	S A V EMBLYNETTE 7749
ELCX TWILIGHT 114X	DHVO DEUCE 132R
	DFLC HBHPC 1S
CONNEALY CONSENSUS 7229	CONNEALY CONSENSUS
SEEE ANGELINA	BLUE LILLY OF CONANGA 16
CARROUSELS PINA COLADA	AUTO BLACK DAKOTA 129J
	ELMW GINNIE P58G

	EPD's	%Rank
CED	14	15
BW	-0.2	25
WW	66	30
YW	104	25
MA	21	55
TM	53	45
CEM	7	35
SC	0.97	25
ST	8	85
DOC	9	80
YG	-0.11	>95
CREA	0.42	>95
MARB	0.23	10
SMTI	59.19	10

SSTO Fruitful 8817F is a big league female and one that we know when you see her on sale day she will capture your attention. She is a 46% Lim-Flex daughter of SSTO Best Bet 456B. The SSTO Best Bet calves are some of the finest in the breed at the present moment. He is the son of SAV Harvester from the 2013 national champion and now leading sire for Linhart Limousin, Leon, IA and owned with Stowers Limousin. This homozygous polled and homozygous black heifer is from an Edwards bred Limousin female sired by Connealy Consensus 7229 and from the once national champion purebred female, Carrousel's Pina Colada. There is a reason why this female is so good ... it is because she is bred to be so!

12

Red Robin COW FAMILY



PE. 4.01.18 to 5.20.18 to MAGS Bronson

SSTO Belinda 462B and SSTO Round Robin 3805A are two of the finest females to sell any way, any day and anywhere in the country! These two full siblings represent a mating that is as good as it gets. They are daughters of GPFF Blaque Rulon and from the elite donor BOHI Red Robin 282R. Rulon made his mark in the breed as the big time sire of show cattle with the extra shot of muscle and power. Red Robin was the very first grand champion Lim-Flex female in the breed and now leading donor in the CFLX program. These sisters are a true blend of their two parents. They have the heaviness of bone, power and muscle from Rulon and then rib shape, volume and structural correctness of Red Robin. Either one you pick you cant go wrong as they are good enough to headline any program at any level in the breed.

13

SSTO *Belinda 462B ET*

Lim-Flex (75) Cow | HP | HB | 09.21.14 | SSTO 462B | LFF2072459

BLACK DIAMOND	CANE RIDGE BLACK DRAK
GPFF BLAQUE RULON	WULFS DIADEM 4260D
QUAIL RUN RAMONA BP	LKCC TOMAHAWKS TOUCHDOWN
CONNEALY LEAD ON	AMBL FAVORITE GIRL 36W
BOHI RED ROBIN 282R	CONNEALY LEADTIME
MAGS MANUELA	ELIGENCE PLUS OF CONANGA
	EXLR LIMITED EDITION 765J
	AUTO CITY NIGHTS 214H

FAT 0.3 **REA** 13.78 **%IMF** 3.74

	EPDs	%Rank
CED	9	70
BW	1.5	60
WW	60	45
YW	91	45
MA	25	20
TM	55	25
CEM	6	50
SC	0.75	30
ST	7	85
DOC	9	70
YG	-0.58	65
CW	7	65
CREA	0.99	45
MARB	-0.13	30
SMTI	48.05	30



Morris



lot 14

SSTO Fargo 8803F, son of Lot 14.

*He is selling in the Cowntown Classic Limousin Sale,
February 1st at Fort Worth Texas!*

SSTO Round Robin 3805A

Lim-Flex (75) Cow | DP | HB | 03.15.13 | SSTO 3805A | LFF2039761

BLACK DIAMOND	CANE RIDGE BLACK DRAK
GPFF BLAQUE RULON	WULFS DIADEM 4260D
QUAIL RUN RAMONA BP	LKCC TOMAHAWKS TOUCHDOWN
CONNEALY LEAD ON	AMBL FAVORITE GIRL 36W
BOHI RED ROBIN 282R	CONNEALY LEADTIME
MAGS MANUELA	ELIGENCE PLUS OF CONANGA
	EXLR LIMITED EDITION 765J
	AUTO CITY NIGHTS 214H

FAT 0.3 **REA** 13.78 **%IMH** 3.74

	EPD's	%Rank
CED	9	70
BW	1.1	50
WW	56	65
YW	85	60
MA	23	35
TM	51	50
CEM	6	50
SC	0.75	30
ST	7	85
DOC	9	70
YG	-0.56	65
CW	7	65
CREA	0.94	55
MARB	-0.13	30
SMTI	46.82	35

One of the greatest females to sell ... EVER!!!

A.I. 03.24.18 to Riverstone Crown Royal; P.E. 04.01.18 to MAGS Bronson.
BW: 74 lbs.; WW: 593 lbs.

14



AUTO Rebeca 292S, dam of Lot 15.

15

AUTO Babble 277B

Lim-Flex (37) Cow | HP | HB | 10.01.14 | AUTO 277B | LFF2069274

S A V BISMARCK 5682	G A R GRID MAKER
S A V BRAND NAME 9115	S A V ABIGALE 0451
S A V BLACKCAP MAY 5530	B C C BUSHWACKER 41-93
LESF ASPHALT 9N	S A V MAY 7238
AUTO REBECA 292S	GPFF BLAQUE RULON
EXLR REBECA 1019P	GPFF EXTRA SWEET ELITE
	BR MIDLAND
	EXLR REBECA 614H

FAT 0.39 **REA** 15.75 **%IMF** 3.71

	EPDs	%Rank
CED	11	40
BW	0.7	40
WW	71	10
YW	110	10
MA	21	55
TM	56	20
CEM	5	65
SC	1.25	4
ST	5	95
DOC	10	60
YG	-0.2	95
CW	35	3
CREA	0.7	80
MARB	0.02	20
SMTI	5377	20

A.I. 03.24.18 to MAGS Xyloid; P.E. 04.01.18 to 05.20.18 to MAGS Bronson.

AUTO Babble 277B is a 37% Lim-Flex female that is homozygous polled and homozygous black. She represents a mating that is as good as any ever created in the business. She is a daughter of the famed and now deceased, MAGS Manuela. Her sire is the popular purebred Angus sire SAV Brand Name 9115. The blending of the best of purebred Angus with the best of purebred Limousin has worked very well for the owners of the few head that represent this mating. This female is hard to let go but we wanted to have only our finest represented in this event.

BW: 68 lbs.; WW: 808 lbs.



lot 16

16

SSTO Bet On It 453B ET

Lim-Flex (50) Cow | Scurred | HB | 09.04.14 | SSTO 453B | LFF2073411

DAMERON FIRST CLASS	EXG RS FIRST RATE S903 R3
EXAR CLASSEN 1422B	DAMERON NORTHERN MISS 311
EXAR PRINCESS 2006	EXAR LUTTON 1831
	GREENS PRINCESS 1012
EXLR LIMITED EDITION 765J	EXLR POLLED BENCHMARK709G
MAGS MANUELA	WULFS GLENDA 7021G
AUTO CITY NIGHTS 214H	COLE FIRST DOWN 46D
	MISS WOLFETTE 9049X

FAT 0.37 **REA** 13.29 **%IMF** 4.21

	EPDs	%Rank
CED	6	95
BW	3.8	>95
WW	69	10
YW	109	10
MA	24	30
TM	58	15
CEM	7	30
SC	0.5	50
ST	7	85
DOC	10	60
YG	-0.16	>95
CW	32	4
CREA	0.45	>95
MARB	0.3	4
SMTI	63.11	3

A.I. 03.25.18 to MAGS Bronson; P.E. 04.01.18 to 05.20.18 to MAGS Bronson.

SSTO Bet On It 453B is another elite daughter of the famed, MAGS Manuela. Though she is now deceased she has left some of the finest progeny this breed has ever seen. This 50% Lim-Flex polled, homozygous black female sired by the proven Angus sire EXAR Classen 1422B is as good as any breeder would ever want. We admire the heaviness of bone, foot size and fluidity in movement of this female. She is feminine up through her head and neck and very straight and streamlined down her top line. It is females of this level that make a positive impact on most programs. She is so good in terms of her conformation and very appealing in terms of her EPD profile. She ranks in the top 3% of the breed for SMTI with a 63.11, top 4% for CW with a 32 and MB with a .30, top 10% for WW with a 69, YW with a 109 and top 15% for TM with a 58.

BW: 72 lbs.; WW: 604 lbs.; YW: 953 lbs.

Cow / Calf PAIRS

AUTO *Chase 413C ET*

Lim-Flex (50) Cow | Polled | HB | 09.17.15 | AUTO 413C | LFF2092860

17

S A V BRILLIANCE 8077
PVF INSIGHT 0129
PVF MISSIE 790
DHVO DEUCE 132R
AUTO FOREVER 219X
MAGS MANUELA

S A V BISMARCK 5682
S A V BLACKCAP MAY 5270
P V F NEW HORIZON 001
P V F MISS RAPTOR 024
GPFF BLAQUE RULON
AMY JO DHAN 20L
EXLR LIMITED EDITION 765J
AUTO CITY NIGHTS 214H

FAT 0.26 **REA** 12.62 **%IMF** 12.18

A.I. 3.25.18 to SBLX First Class; P.E. 4.01.18 to 5.20.18 to MAGS Bronson.

This polled, homozygous black female is in the prime years of her production and man is she doing a tremendous job! She is a daughter of PVF Insight 0129 and from AUTO Forever 219X. 219X is a daughter of DHVO Deuce 132R and from the breed-leading donor MAGS Manuela that just happens to headline the well-established Pinegar Limousin program. This brood cow has earned some high rankings in the breed over the last couple of years. She ranks in the top 1% of the breed for CW with a 49, top 3% for REA with a 1.34, top 5% for WW with a 72, YW with a 113 and TM with a 61. BW: 64 lbs.; YW: 718 lbs.

	EPDs	%Rank
CED	10	55
BW	1.6	60
WW	72	5
YW	113	5
MA	25	20
TM	61	5
CEM	6	50
SC	1.05	10
ST	10	65
DOC	12	40
YG	-0.39	80
CW	49	1
CREA	1.34	3
MARB	-0.1	30
SMTI	51.32	20



lot 17

SSTO *Ageless Beauty 345A*

Lim-Flex (68) Cow | Polled | DB | 10.01.13 | SSTO 345A | LFF2050695

18

G A R PREDESTINED
AUTO WILL POWER 160X
AUTO REBECA 292S
EXLR LIMITED EDITION 765J
MAGS MANUELA
AUTO CITY NIGHTS 214H

B/R NEW DESIGN 036
G A R EXT 4206
LESF ASPHALT 9N
EXLR REBECA 1019P
EXLR POLLED BENCHMARK709G
WULFS GLENDA 7021G
COLE FIRST DOWN 46D
MISS WOLFETTE 9049X

FAT 0.36 **REA** 15.4 **%IMF** 3.89

SSTO Ageless Beauty 345A has proven herself has a top producer for the Stowers Family. She is a daughter of AUTO Will Power 160X and from the deceased and all-time great donor, MAGS Manuela. This 68% Lim-Flex, polled and double black female is extremely big footed, soft in her pasterns and very complete in her profile. We love and admire her length up through her head and neck, and extreme length down her topline and out of her rump. She has earned the right to be one of the top producers and she is now a top lot in this elite sale. You can see what kind of job she has done with her young heifer calf.

BW: 70 lbs.; WW: 679 lbs.; YW: 986 lbs.

	EPDs	%Rank
CED	6	95
BW	2.1	75
WW	60	45
YW	94	35
MA	27	10
TM	57	15
CEM	5	65
SC	0.9	15
ST	6	90
DOC	11	50
YG	-0.4	80
CW	29	10
CREA	0.84	70
MARB	0.05	20
SMTI	53.24	20



lot 18

LSTO *First Glance 8875F*

Lim-Flex (53) Cow | DP | DB | 08.28.18 | LSTO 8875F | LFF2150837

18A

MAGS ALI
SSTO AGELESS BEAUTY 345A

CONNELLY CONSENSUS 7229
MAGS YOKO
AUTO WILL POWER 160X
MAGS MANUELA

BW: 60 lbs.



	EPDs	%Rank
CED	8	90
BW	1.9	75
WW	72	0
YW	112	10
MA	23	30
TM	59	10
CEM	4	90
SC	1.75	1
ST	9	80
DOC	14	35
YG	-0.22	95
CW	35	5
CREA	0.60	90
MARB	0.15	15
SMTI	59.08	10



lot 19

SSTO *Baby Face 476B ET*

Lim-Flex (75) Cow | HP | HB | 11.21.14 | SSTO 476B | LFP2075607

19

WULFS UPGRADE 0500U	JLWM DIRE STRAYTS 4109P
ENGD YARD MACHINE 1023Y	WULFS KYAH 0500K
JONK POLL UNIQUE 70U	AUTO DOLLAR GENERAL 122R
	JONK BLACK SILK
BR MIDLAND	TWIN VALLEY PRECISIONE161
MAGS SILHOUETTE	BR ROYAL LASS 7036-19
MAGS LADY ACE	EXLR INTRIGUE 361G
	CHAZ MISS GRETA 7003G

FAT 0.31 **REA** 12.3 **%IMF** 3.82

	EPDs	%Rank
CED	8	80
BW	2.7	85
WW	62	35
YW	98	25
MA	23	35
TM	54	30
CEM	5	65
SC	0.85	25
ST	11	55
DOC	4	95
YG	-0.46	75
CW	20	20
CREA	0.95	50
MARB	0	20
SMTI	52.58	20

A.I. 3.25.18 to SBLX First Class; P.E. 4.01.18 to 5.20.18 to MAGS Bronson.

SSTO Baby Face 476B is one well made female from the heart of the Stowers program. This 75% Lim-Flex bred female is homozygous polled and homozygous black. She is a daughter of the once highly syndicated sire ENGD Yard Machine 1023Y and from the elite donor MAGS Silhouette. Silhouette is a daughter of BR Midland and from the once big-league donor, MAGS Lady Ace. This bred female has so much mass and power to her it is crazy! She is solid in her footing from the ground up and is very easy to maintain her body condition score.

BW: 78 lbs.; WW: 684 lbs.; YW: 943 lbs.

Spring Bred COW



lot 20

LH *Her 2284*

Lim-Flex (68) Cow | HP | HB | 10.01.13 | SSTO 345A | LFF2050695

GPFF BLAQUE RULON
 KRVN UNLIMITED L527U
 STEVENSON CLOVA PRIDE16P1
 EXLR POLLED BENCHMARK709G
 LH WONDEROUS 534W
 CALLAWAYS RITA 0818
 BLACK DIAMOND
 QUAIL RUN RAMONA BP
 BR MIDLAND
 STEVENSON CLOVA PRIDEL901
 WULFS DAWSON 4421D
 PMDB ALLIANCE
 G A R INTEGRITY
 G A R EXT 4406

	EPDs	%Rank
CED	6	95
BW	2.7	85
WW	61	40
YW	97	30
MA	18	80
TM	49	60
CEM	2	>95
SC	0.65	40
ST	8	80
DOC	13	35
YG	-0.32	85
CW	9	55
CREA	0.66	85
MARB	0.09	15
SMTI	54.47	15

A.I. 3.25.18 to MAGS Bronson; P.E. 4.01.18 to 5.20.18 to MAGS Bronson
 If you want to create some future show cattle and really make an impact in the breed then consider this brood cow. Take a look at how clean and feminine she is up through her head and neck. She is absolutely strong and level down her top line and out from her hooks to pens. Her structural correctness and disposition are as good as you would ever want. Her future calf will be sired by MAGS Bronson will be very big added bonus for the buyer of this special lot.

BW: 79 lbs.; WW: 592 lbs.; 1,003 lbs.

20

Spring Bred HEIFERS



lot 21



lot 22



lot 23

SSTO *Emmy 7870E*

Lim-Flex (56) Cow | HP | HB | 03.27.17 | SSTO 7870E | LFF2128070

MAGS XYLOID
MAGS ZINCOGRAPH
MAGS PARADISE CANYON

DHVO DEUCE 132R
BOHI RHONDA 314R
BR MIDLAND
MISS WULFETTE 6230F
HUNTS HI-LITER 245G
LOGAN'S CHEERLEADER 280G
G A R US PREMIUM BEEF
O&M BLACK WATERFORD 0160

FAT 0.20 **REA** 10.53 **%IMF** 3.73

	EFDs	%Rank
CED	12	35
BW	1	50
WW	62	50
YW	99	40
MA	20	65
TM	51	60
CEM	6	55
SC	0.7	40
ST	13	40
DOC	12	55
YG	-0.24	90
CW	29	15
CREA	0.61	90
MARB	0.13	15
SMTI	55.65	20

A.I. 6.02.18 to MAGS Bronson.PE. 06.11.18 to 08.01.18 to AUTO Power Plus 133B and SSTO Expectation 7804E.

SSTO Emmy 7870E is a well-made, gorgeous 56% Lim-Flex heifer from the heart of the Stowers replacement heifer pen. She is sired by the Stowers senior herd sire, MAGS Zincograph. He is a son of MAGS Xyloid and from the proven and predictable donor MAGS Paradise Canyon. This young heifer is extreme in her thickness and her depth of body.

BW: 74 lbs.; YW: 641 lbs.

SSTO *Ellington 7880E*

Lim-Flex (62) Cow | Polled | HB | 04.05.17 | SSTO 7880E | LFF2127950

DHVO DEUCE 132R
TMCK DURHAM WHEAT 6030X
MAGS STRAWBERRY PIE

GPFF BLAQUE RULON
AMY JO DHAN 20L
TNUH BLUE PRINT 245H
MAGS PIE IN THE SKY
COLEMAN PRODUCTION 608
COLE MISS FIRSTDOWN 6162S
G A R PREDESTINED
LIMESTONE ROYAL LASS N702

FAT 0.20 **REA** 10.53 **%IMF** 3.73

	EFDs	%Rank
CED	13	25
BW	1.3	60
WW	68	25
YW	104	25
MA	26	10
TM	59	10
CEM	6	55
SC	1.26	10
ST	10	70
DOC	14	35
YG	-0.28	85
CW	35	5
CREA	0.85	65
MARB	0.01	25
SMTI	53.17	25

A.I. 5.29.18 to MAGS Aviator. P.E. 06.11.18 to 08.01.18 to AUTO Power Plus 133B and SSTO Expectation 7804E.

SSTO Ellington 7880E is a daughter of TMCK Durham Wheat 6030X and from a huge numbered daughter of COLE Windfall 144W back to the proven Angus female, Limestone Royal Lass T909. This polled and homozygous black heifer ranks in the top 5% for CW with a 35, top 10% for MK, TM and SC. She sells bred to the big numbered MAGS Aviator sire that is now owned with Wilder Family and Linhart Limousin.

BW: 72 lbs.; YW: 662 lbs.

SSTO *Extra Special 702E ET*

PB Limousin (93) Cow | HP | DB | 01.09.17 | SSTO 702E | NPF2116912

DHVO DEUCE 132R
TMCK DURHAM WHEAT 6030X
MAGS STRAWBERRY PIE

GPFF BLAQUE RULON
AMY JO DHAN 20L
TNUH BLUE PRINT 245H
MAGS PIE IN THE SKY
DHVO DEUCE 132R
BOHI RHONDA 314R
EXLR LIMITED EDITION 765J
AUTO CITY NIGHTS 214H

FAT 0.31 **REA** 13.61 **%IMF** 3.85

	EFDs	%Rank
CED	9	75
BW	2.2	80
WW	64	40
YW	97	45
MA	21	55
TM	53	45
CEM	6	55
SC	0.93	25
ST	10	70
DOC	13	45
YG	-0.52	60
CW	21	30
CREA	0.93	50
MARB	-0.32	65
SMTI	42.11	65

A.I. 6.02.18 to EXAR Denver.PE. 06.11.18 to 08.01.18 to AUTO Power Plus 133B and SSTO Expectation 7804E.

SSTO Extraspecial 702E is a black and homozygous polled 93% purebred Limousin female. She represents an amazing pedigree with being sired by TMCK Durham Wheat 6030X. He is the leading sire for Stowers and P Bar S Ranch and his calves are some of the finest in the business. Her dam is SBLX Znote, the \$40,000 valued female for Stowers and P Bar S Ranch. She was a once national junior heifer show grand champion female. If you are looking for prominent purebred genetics wrapped up into a very neat package then consider this heifer.

BW: 70 lbs.; WW: 591 lbs.; YW: 798 lbs.



lot 24



lot 25

SSTO Early 7810E

Lim-Flex (50) Cow | HP | HB | 01.04.17 | SSTO 7810E | LFF2115128

24

MAGS THE GENERAL AUTO DOLLAR GENERAL 122R
 MAGS YIP EXLR LUVLY 821M
 AUTO CARMINDA 656S JCL LODESTAR 27L
 AUTO CARMINDA 872P
 RITO 112 OF 2536 RITO 616 RITO 616 OF 4B20 6807
 TF BLACKBIRD 9106 G A R PRECISION 2536
 EXG BLACKBIRD S064 R3 BR MIDLAND
 DAVIS YR BLACKBIRD 558H

FAT 0.31 **REA** 14.03 **%IMF** 4.77

	EPDs	%Rank
CED	9	75
BW	0	30
WW	62	50
YW	98	40
MA	20	65
TM	50	70
CEM	1	>95
SC	0.72	40
ST	11	60
DOC	11	65
YG	-0.15	>95
CW	24	20
CREA	0.29	>95
MARB	0.49	1
SMTI	67.71	2

A.I. 5.17.18 to EBFL Ypsilanti 420Y. P.E. 06.11.18 to 08.01.18 to AUTO Power Plus 133B and SSTO Expectation 7804E.

SSTO Early 7810E is one of the top bred females in this annual Texas Tradition VI sale. She is a 50% Lim-Flex homozygous polled, homozygous black daughter of MAGS Yip. We know one thing for sure is that the blending of MAGS Yip with purebred Angus has worked extremely well over the years and time and time again. She ranks in the top 1% of the breed for MB with a .49 and top 2% for SMTI with a 67.71.

BW: 69 lbs.; WW: 593 lbs.

SSTO Exotic 724E ET

Lim-Flex (60) Cow | HP | DB | 03.01.17 | SSTO 724E | LFF2129537

25

MAGS WINSTON BT COSOVER 758N
 MAGS AVAITOR MAGS STRAWBERRY
 MAGS XTRA REST DHVO DEUCE 132R
 MAGS UNREST
 MAGS XYLOID DHVO DEUCE 132R
 ELCX KNOWING 303Z BOHI RHONDA 314R
 SBLX UNKNOWN 104U MYTTY IN FOCUS
 MAGS MANUELA

FAT 0.08 **REA** 8.31 **%IMF** 3.4

	EPDs	%Rank
CED	13	25
BW	-0.1	60
WW	60	55
YW	94	75
MA	19	80
TM	48	20
CEM	8	60
SC	0.55	85
ST	8	3
DOC	19	90
YG	-0.26	20
CW	24	95
CREA	0.52	25
MARB	0.01	80
SMTI	50.65	35

P.E. 06.11.18 to 08.01.18 to AUTO Power Plus 133B and SSTO Expectation 7804E.

SSTO Exotic 724E is a daughter of ELCX Knowing 303Z, the \$20,000 valued national sale top selling female and now leading donor for Stowers Limousin. Knowing is a daughter of MAGS Xyloid from the big league Pinegar-Edwards donor, SBLX Unknown 104U. SSTO Exotic 724E is sired by the breed-leading sire MAGS Aviator that is now working for Wilder Family and Linhart Limousin. This homozygous polled is made nearly perfect and is one of the finest in the sale. She is absolutely flawless in her design and profile.

BW: 60 lbs.; WW: 440 lbs.; YW: 642 lbs.

Open Show & REPLACEMENT HEIFERS



SSTO *First Fling 8868F*

Lim-Flex (68) Cow | DP | HB | 04.15.18 | SSTO 8868F | LFF2146269

26

MAGS WINSTON	BT CROSSOVER 758N
MAGS ZODIAC	MAGS STRAWBERRY
MAGS XANTHOUS	DHVO DEUCE 132R
	BOHI RHONDA 314R
MAGS UNITE TOGETHER	BASIN FRANCHISE P142
SBLX SULL CARRIED AWAY ET	MAGS REMBRANDT
MAGS MANUELA	EXLR LIMITED EDITION 765J
	AUTO CITY NIGHTS 214H



	EPDs	%Rank
CED	9	75
BW	2.7	90
WW	73	10
YW	125	2
MA	28	3
TM	65	1
CEM	6	55
SC	0.53	60
ST	6	95
DOC	14	35
YG	-0.34	80
CW	43	2
CREA	0.85	65
MARB	-0.02	30
SMIT	54.59	20

lot 26

SSTO First Fling 8868F is a 68% Lim-Flex open heifer that is polled and homozygous black. She is a daughter of MAGS Zodiac and from SBLX SULL Carried Away, a daughter of MAGS Unite Together from MAGS Manuela. So many that has seen this heifer admire her so much. She is massive in her foot size, heavy in her bone structure and massive in her rib shape and volume. She ranks in the top 1% for TM with a 65, top 2% for YW with a 125 and CW with a 43.

BW: 73 lbs.; WW: 662 lbs.



lot 27

SSTO Frenchy 8834F ET

Lim-Flex (68) Cow | HP | HB | 03.14.18 | SSTO 8834F | LFF2149908

27

MAGS WINSTON
MAGS AVIATOR
MAGS XTRA REST

MAGS XUKALANI
MAGS ZALIA
MAGS RUNNING ON EMPTY

BT CROSSOVER 758N
MAGS STRAWBERRY
DHVO DEUCE 132R
MAGS UNREST
RITO 112 OF 2536 RITO 616
MAGS UKALANI
GPFF BLAQUE RULON
TWIN EAGLES JESTRESS 150K



	EPDs	%Rank
CEW	16	10
BW	-0.6	20
WW	64	40
YW	99	40
MA	18	85
TM	50	70
CEM	9	10
SC	0.53	60
ST	11	60
DOC	18	10
YG	-0.21	95
CW	25	20
CREA	0.69	85
MARB	0.29	5
SMTI	61.58	10

SSTO Frenchy 8834F is a big ribbed and very capacious heifer straight from the heart of the Stowers show heifer pen. This big time heifer is a 48% Lim-Flex that is homozygous polled and homozygous black. She is a daughter of MAGS Aviator and from MAGS Zalia, a daughter of MAGS Xukalani and two-time Junior National Champion. This heifer is one of the great show heifers in the sale and proudly represents the SSTO prefix very well.

BW: 76 lbs.; WW: 623 lbs.



lot 28



lot 29

SSTO Felicia 8402F

Lim-Flex (50) Cow | DB | HP | 0417.18 | SSTO 8402F | Pending

MAGS Y-AXIS	TC ABERDEEN 759
MAGS BRONSON	MAGS UAHUKA
MAGS RAPHAELA	SUMMITCRESTHIGHPRIME 0H29
MAGS XTRA WET	MAGS LADY ACE
RRDC 3042 A	DHVO DEUCE 132R
RRA BLACKBIRD 0045	MAGS PUDDLES
	SCHURRTOP X654 H473
	TCC BLACKBIRD 3344

28



	SIRE	DAM
CED	15	11
BW	-0.5	1.6
WW	65	61
YW	106	89
MA	22	16
TM	54	46
CEM	10	4
SC	1.2	0.55
ST	12	7
DOC	13	22
YG	-0.52	-0.22
CW	19	34
CREA	1.17	0.58
MARB	0.19	0.13
SMTI	60.92	54.92

SSTO Finnick 802F ET

Limousin (81) Cow | Polled | HB | 02.27.18 | SSTO 802F | NXF2155590

MAGS WINSTON	BT CROSSOVER 758N
MAGS ZODIAC	MAGS STRAWBERRY
SILVEIRAS SARAS DREAM 1339	DHVO DEUCE 132R
MAGS SAVAGE	BOHI RHONDA 314R
SSTO WATERCOLORS 9450W	GPFF BLAQUE RULON
CARROUSELS PINA COLADA	MAGS MANDA
	AUTO BLACK DAKOTA 129J
	ELMW GINNIE P58G

29



	EPDS	%Rank
CED	12	35
BW	1.8	75
WW	68	25
YW	112	10
MA	25	15
TM	59	10
CEM	6	55
SC	0.45	70
ST	4	>95
DOC	10	75
YG	-0.45	70
CW	34	10
CREA	0.92	50
MARB	-0.17	45
SMTI	48.45	40

This young show heifer prospect is a 50% Lim-Flex daughter of MAGS Bronson that has a world of potential behind her pedigree. MAGS Bronson is a son of MAGS Y-Axis from the big time Magness donor, MAGS Raphaela.

Her dam RRDC 3042A is a 50% Lim-Flex daughter of MAGS Xtra Wet from a purebred Angus female.

BW: 70 lbs.

This polled and homozygous black heifer is one that is hard to part with. She is a very big numbered daughter of MAGS Zodiac. He is the huge numbered son of MAGS Winston that has made such a positive impact in the breed with his sound made and excellent structured progeny. This heifer just happens to be a daughter of one of the finest purebred donors at Stowers Limousin. PBRs You're The One 1134Y is a direct daughter of Carrouseles Pina Colada, making her a maternal sister to many great ones including BOHI Top Dollar, BOHI Titleist, MAGS Ukalani and SSTO All Yours 3450A and SSTO Watercolors 9450W. Sired by the Medal of Excellence aware winner, DHVO Trey. Lauren showed PBRs You're The One with winning the San Antonio Junior Limousin Show and went on to be selected Supreme Champion of the 17 breeds exhibited. BW: 73 lbs.



lot 30



lot 31

SSTO Fiona 804F

Lim-Flex (42) Cow | DP | DB | 03.02.18 | SSTO 804F | Pending

S A V PIONEER 7301	SAV FINAL ANSWER 0035
TMCK HYDRAULIC 17Y	S A V BLACKBIRD 5297
HSF WALL OF FAME	RPY PAYNES SIGNAL 6S
	HSF PENTHOUSE PIN-UP
COLE WINDFALL 144W	COLEMAN PRODUCTION 608
LFL PEACHES 1032Y	COLE MISS FIRSTDOWN 6162S
MAGS SILHOUETTE	BR MIDLAND
	MAGS LADY ACE

	SIRE	DAM
CED	10	8
BW	2.9	2.2
WW	85	66
YW	135	115
MA	18	26
TM	60	59
CEM	6	4
SC	0.5	1.4
ST	14	10
DOC	13	13
YG	-0.2	-0.21
CW	28	38
CREA	0.66	0.91
MARB	0.21	0.18
SMTI	65.02	58.61

30

Here is a terrific show heifer from the heart of the Stowers embryo transplant program. She is a daughter of the elite donor LFL Peaches. Her dam is the cant miss donor for Lawrence and Stowers. She is the daughter of BR Midland from MAGS Lady Ace. This heifer's sire is the Logan Hills-Tubmill Creek sire TMCK Hydraulic that has done a fabulous job siring big numbered and big footed cattle.

BW: 82 lbs.

SSTO Fusion 8823F

Lim-Flex (25) Cow | HP | HB | 03.04.18 | SSTO 8823F | LFF2149803

MAGS Y-AXIS	TC ABERDEEN 759
MAGS BRONSON	MAGS UAHUKA
MAGS RAPHAELA	SUMMITCRESTHIGHPRIME 0H29
	MAGS LADY ACE
RITO 112 OF 2536 RITO 616	RITO 616 OF 4B20 6807
TF BLACKBIRD 9106	G A R PRECISION 2536
EXG BLACKBIRD S064 R3	BR MIDLAND
	DAVIS YR BLACKBIRD 558Y

	EPDs	%Rank
CED	10	65
BW	-0.6	20
WW	68	25
YW	108	20
MA	22	40
TM	56	25
CEM	4	90
SC	1.12	10
ST	11	65
DOC	12	55
YG	-0.18	95
CW	22	30
CREA	0.63	90
MARB	0.67	1
SMTI	76.47	1

31

This 25% Lim-Flex heifer is a tremendous cow prospect! She is a daughter of MAGS Bronson and from the elite Stowers Angus donor, TF Blackbird 9106. She ranks in the top 1% of the breed for MW with a .67, SMTI with a 76.47, top 10% for SC with a 1.12 and top 20% for BW with a -0.6. Buy with confidence when considering this double homozygous female as she is something special.

BW: 72 lbs.





PO Box 60097
Nashville, TN 37206

FIRST CLASS
PRE-SORTED
PAID
Montezuma, Iowa
Permit No. 30



TEXAS
TRADITION VI SALE
*Thursday,
January 31, 2019*